

## **AT-121-1 43007100050 UPPER**

PD2000074-00 SWING UNIT

PG2000081-00 BOOM UNIT

PH1000463-01 SAFETY DEVICES (MOTION CONTROLLER)

PJ3000262-00 BUCKET SYSTEM

PK2000279-00 FRAME UNIT

PO1000149-00 INDICATION PLATES

PW1000118-00 ACCESSORIES & TOOLS

PY1000767-03 OPTIONS,1

PY2000126-02 OPTION UNIT,2 (UPPER)

ASSEMBLY

CLICK HERE TO **DOWNLOAD** THE COMPLETE MANUAL

- Thank you very much for reading the preview of the manual.
- You can download the complete manual from: [www.heydownloads.com](http://www.heydownloads.com) by clicking the link below



- Please note: If there is no response to CLICKING the link, please download this PDF first and then click on it.

CLICK HERE TO **DOWNLOAD** THE COMPLETE MANUAL

# AT-121-1 43007100050 UPPER

Pos No.	Parts No	Parts Name	Qty	Unit	Technical Data	Serial No (Start)	Serial No (End)	Remarks	Pa
1	(*****)	FRAME	1						00
2	(*****)	OUTRIGGER	1						00
3	(*****)	OPE.ASSY,CONT.VALVE	1						00
4	(*****)	PIPING,OUTRIGGER	1						00
5	(*****)	ELEC.ASSY (FRAME)	1						00
6	(*****)	BOOM REST	1						00
7	(*****)	TANK SUPPORT	1						00
8	(*****)	OPE.ASSY,OUTRIGGER	1						00

## AT-121-1 43007100050 UPPER

PI1240014-01 VALVE  
PI1240015-00 VALVE  
PI1240042-00 VALVE  
PI1240062-00 VALVE  
PI1250137-00 VALVE,COUNTERBALANCE  
PI1250141-00 VALVE,COUNTERBALANCE  
PI1280051-00 VALVE,PILOT CHECK  
PJ3010228-00 BUCKET  
PJ3010239-00 BUCKET  
PJ3010285-00 BUCKET  
PK1010751-02 FRAME  
PK1100382-00 SWING FRAME  
PK1200396-00 COVER,SWING FRAME  
PK1230050-00 WEIGHT  
PK1330146-00 COVER (BOOM)  
PK1330147-00 COVER (BUCKET OR BASKET FRAME)  
PK1330148-00 COVER  
PK1330150-00 COVER  
PK1330151-00 COVER  
PK1330153-00 COVER (BOOM)  
PK1330174-01 COVER  
PK1330175-00 COVER  
PK1330197-00 COVER (BOOM)  
PL1010977-00 OPE.ASSY,CONT.VALVE  
PL1020045-00 LEVER,CONTROL  
PL1250034-03 VALVE,CONTROL  
PL1920021-00 OPE.ASSY (BUCKET OR BASKET)  
PL1920025-00 OPE.ASSY (BUCKET OR BASKET)  
PM5230001-01 MOTOR,OIL  
PN1013229-00 ELEC.ASSY (SWING FRAME)  
PN1013230-00 ELEC.ASSY (BOOM)  
PN1013232-01 ELEC.ASSY (LOWER)  
PN1013233-03 ELEC.ASSY (FRAME)  
PN1013234-00 ELEC.ASSY (EMERGENCY PUMP)  
PN1013393-02 ELEC.ASSY (BUCKET)  
PN1013479-00 ELEC.ASSY (BOOM)  
PN1013564-02 ELEC.ASSY (BUCKET)  
PN1020057-00 POWER SOURCE (BUCKET OR BASKET)  
PN1020058-01 POWER SOURCE (LOWER)  
PN1060152-01 SWITCH PANEL  
PN1080164-02 LAMP (O/R FLICKER)  
PN1110326-01 RELAY ASSY  
PN1110377-01 RELAY ASSY (INTERLOCK)  
PN1110416-01 RELAY ASSY  
PN1140164-00 SWITCH ASSY (WITH HARNESS,3 SW)  
PN1210121-00 TRANSMITTER,SIGNAL  
PN1210151-01 TRANSMITTER,SIGNAL  
PN5011210-00 NAME PLATE ASSY  
PO1013121-01 PLATE ASSY,NAME (HYDRAULIC OIL)  
PO1013824-01 PLATE ASSY,NAME (UPPER CONTROLS)  
PO1013829-02 PLATE ASSY,NAME (LOWER CONTROLS)  
PO1013973-02 PLATE ASSY,NAME (UPPER)  
PO1013974-01 PLATE ASSY,NAME (BUCKET)  
PO1014061-01 PLATE ASSY,NAME (UPPER CONTROLS)  
PO1050100-01 MARKING  
PP5450004-00 PUMP,GREASE (400CC)  
PV1020307-02 VALVE,REMOTE CONTROL  
PW1010299-01 ACCESSORIES  
PW1030049-01 TOOLS  
PW1050018-01 WEDGE (STOPPER FOR TIRE/JUSTIN)  
PW5110002-00 WEDGE (STOPPER FOR TIRE/WAZUMI)  
PW5110003-00 WEDGE (STOPPER FOR TIRE/NAKAMURA KIKI)  
PX1100239-01 TANK SUPPORT  
PX1120452-00 BOOM REST



# AT-121-1 43007100050 UPPER

Pos No.	Parts No	Parts Name	Qty	Unit	Technical Data	Serial No (Start)	Serial No (End)
1	(*****)	ELECTRICAL PARTS,POWER SUPPLY(100V)	1				
2	(*****)	ELEC.ASSY (LOWER)	1				

# AT-121-1 4300710050 UPPER

Pos No.	Parts No	Parts Name	Qty	Unit	Technical Data	Serial No (Start)	Serial No (End)	Remarks
1	42613560100	COVER	2					
2	90101208012	BOLT	10		M8X12			
3	90302040801	WASHER,SPRING	14		8			
4	42613560800	COVER	2					
5	42613561000	OUTRIGGER (FRONT)	2					
6	90171116065	BOLT	4		M16X65			
7	90303501601	WASHER,PLAIN	18		16			
8	36035290000	CYLINDER,JACK	2					
9	37000176340	PIN	2					
10	80136380050	PIN,SPLIT	4		8X50			
11	36623930000	VALVE,PILOT CHECK	2					
12	90172110040	BOLT,HEXAGON SOCKET	4		M10X40			
13	42611720300	FLOAT	2					
14	90172110020	BOLT,HEXAGON SOCKET	4		M10X20			
15	42613560700	SUPPORT	2					
16	90171108025	BOLT	4		M8X25			
17	90303070801	WASHER,PLAIN	4		8		HJ0915	
	90303070801	WASHER,PLAIN	8		8	HJ0916		
18	82104501120	SWITCH,LIMIT	2					
19	82104501140	SWITCH,LIMIT	2					
20	90131506012	BOLT,HEXAGON SOCKET	4		M6X12			
21	90302040601	WASHER,SPRING	14		6			
22	82100002002	CLAMP	6		WR6		HJ0525	
	82100002002	CLAMP	2		WR6	HJ0526		
23	90201200600	NUT	6		M6			
24	42613560400	SUPPORT	2					
25	90171116040	BOLT	8		M16X40			
26	90201200800	NUT	2		M8			
27	90101208035	BOLT	2		M8X35		HJ0377	
	90101208040	BOLT	2		M8X40	HJ0378		
28	42613560500	SUPPORT	2					
29	90101206014	BOLT	4		M6X14			
30	42613560600	SUPPORT	2					
31	90186208010	BOLT,FLANGE	4		M8X10			
32	90201701600	NUT	4		M16			
33	90203701600	NUT	4		M16			
34	90171116035	BOLT	6		M16X35			
35	91002801000	O-RING	4		1B P10			
36	82401800080	PLUG (FOR M8)	4					
38	91810132530	FASTENER	2					
52	82100002006	CLAMP	4		WR10	HJ0526		
63	42612930660	INSULATOR	4					

# AT-121-1 43007100050 UPPER

Pos No.	Parts No	Parts Name	Qty	Unit	Technical Data	Serial No (Start)	Serial No (End)	Remarks
1	36637490000	VALVE,MANUAL CONTROL	1					
2	90101208025	BOLT	3		M8X25			
3	90302040801	WASHER,SPRING	3		8			
4	90186208020	BOLT,FLANGE	2		M8X20			
5	42701340100	LEVER	1					
6	42701340200	LEVER	1					
7	42701340300	LEVER	1					
8	42701340400	LEVER	2					
9	42701340500	SUPPORT	1					
10	31323330200	KNOB (RED)	1					
11	31323330100	KNOB (BLACK)	4					
12	37000105610	PIN	10		L=18			
13	90303070501	WASHER,PLAIN	12		5			
14	80136320010	PIN,SPLIT	8		2X10			
15	34700161000	LEVEL	1					
16	80620210050	PIN,SNAP	2					

# AT-121-1 43007100050 UPPER

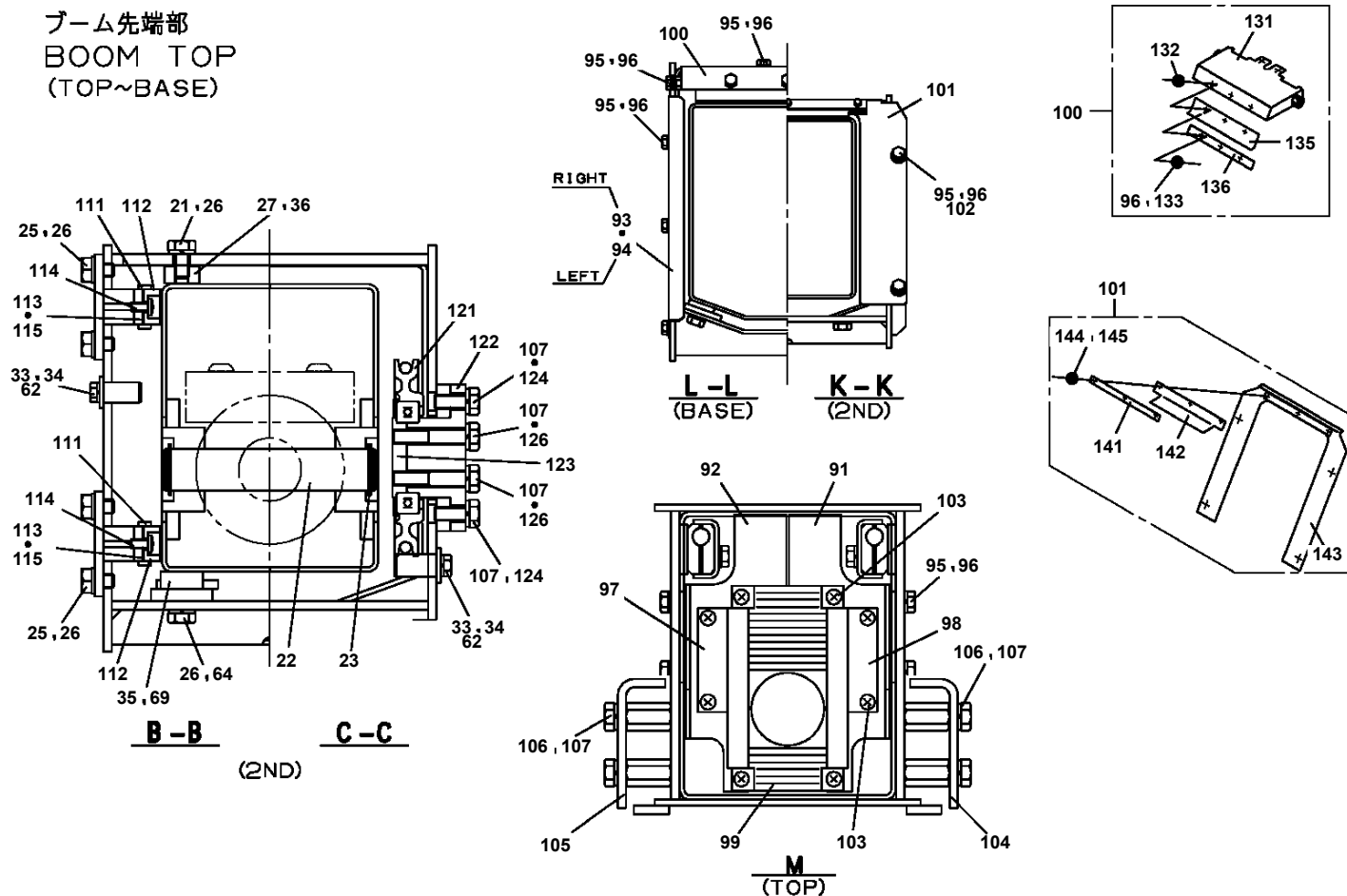
Pos No.	Parts No	Parts Name	Qty	Unit	Technical Data	Serial No (Start)	Ser
1	36081325090	RING,SNAP	1				
2	36081325010	SPACER	1				
3	36081325080	SHIM SET	1				
4	36081325110	BEARING,TAPER ROLLER	1				
5	36081325020	WORM	1				
6	36081325120	BEARING,TAPER ROLLER	1				
7	36080755040	GAUGE,OIL	1				
8	36080235080	WASHER,SEAL	1		M16		
9	80316090060	PLUG	1		KKT PT3/8		
12	91280431931	SEAL,OIL	1				
13	36081325050	CASE,GEAR	1				
14	36081325130	BEARING,BALL(METAL SHIELD TYPE 6210ZZC3)	1				
15	36081325140	BEARING,BALL (RUBBER SEAL TYPE 6210LLU)	1				
16	36080495050	BOLT,SEMS (M10X25,WITH WASHER)	9				
17	36080505080	KEY	1				
18	36081325060	WHEEL,WORM	1				
19	36081325070	CASE,GEAR	1				
20	80500006209	BEARING,BALL	1				
21	80601110450	RING,RITAINING	1		S45		
22	36080015000	PIN	2				
23	82400000478	BREATHER	1				
31	36081325500	GEAR,SPUR	1				
50	36081320000	REDUCER,SWING SPEED	1				

# AT-121-1 4300710050 UPPER

Pos No.	Parts No	Parts Name	Qty	Unit	Technical Data	Serial No (Start)	Serial No (End)	Remarks	Pa
1	36027010000	CYLINDER,LEVELING	1						
2	36624110000	VALVE,CHECK	1						
3	90180210050	BOLT,BUTTON	4		M10X50				000
4	82400000459	CAP	1						
24	36026412000	PISTON	1						
25	91300009500	BEARING,PLAIN	1						
26	91002802600	O-RING	1		1B P26				
29	80612110520	RING,RITAINING	1		AR52				
30	91002909000	O-RING	1		1B G90				
31	80801004525	BEARING,PLAIN	1						
32	91694004500	PACKING	1						
33	91410204502	RING,BACKUP	1						
34	91660004501	SEAL,DUST	1						
36	80801003030	BEARING,PLAIN	2						
37	80820003030	BEARING,PLAIN	2						
38	80720105025	PIN,SPRING	1		5X25				
39	82455106000	NIPPLE,GREASE	2		A-M6F FE				
40	91684009500	PACKING	2						
41	91411208002	RING,BACKUP	2						
42	91002909500	O-RING	1		1B G95				
51	36027019510	CYLINDER ASSY	1						
52	36027019520	ROD ASSY	1						
53	36026419530	COVER,ROD	1						
54	36026929900	PACKING SET	1						

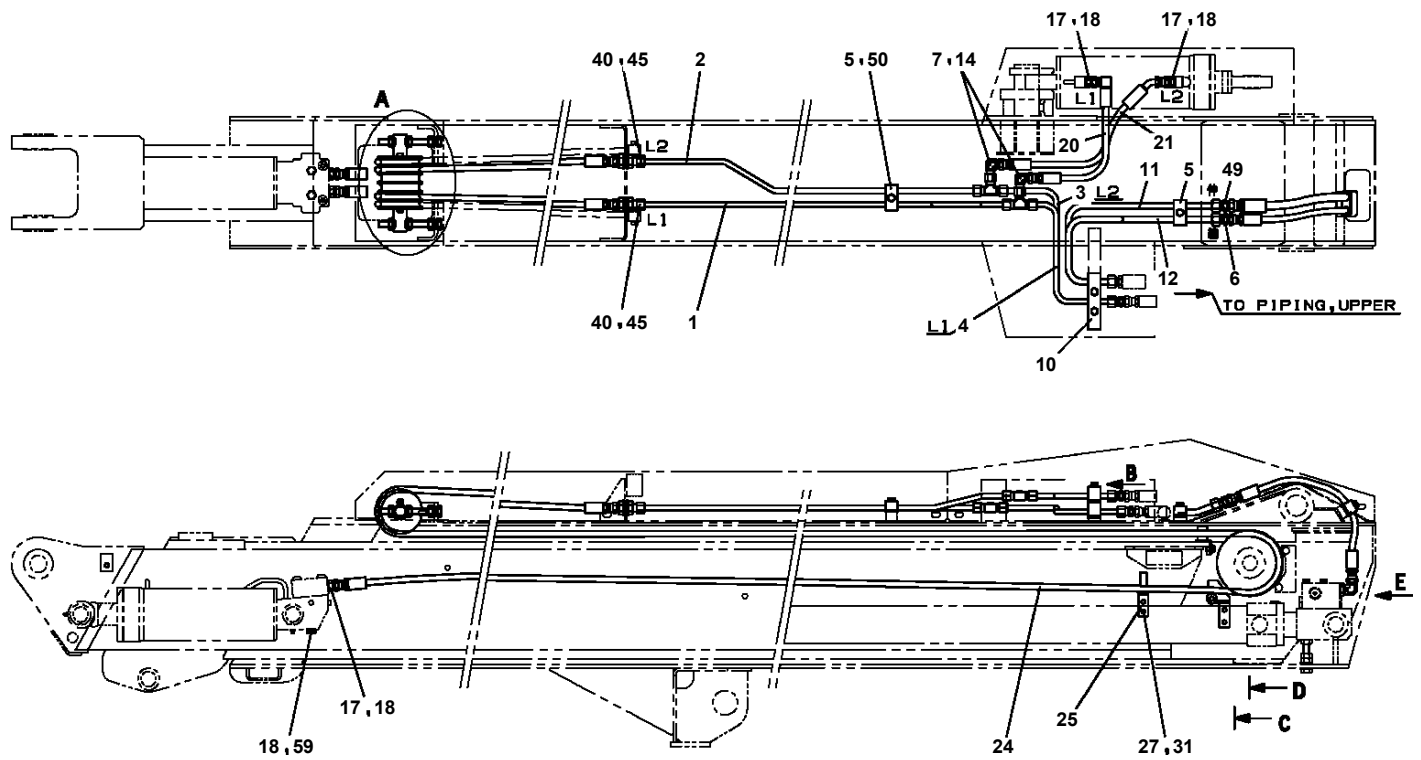
# AT-121-1 43007100050 UPPER PG1010822-05 BOOM

ブーム先端部  
BOOM TOP  
(TOP~BASE)



図中の左右の表示は、ブーム後端から先端を見たものです。  
THE RIGHT AND LEFT IN FIGURE ARE THE EXPRESSION THAT SEES FROM BOOM END TO TOP.

AT-121-1 43007100050 UPPER  
PG1220107-01 PIPING,BOOM

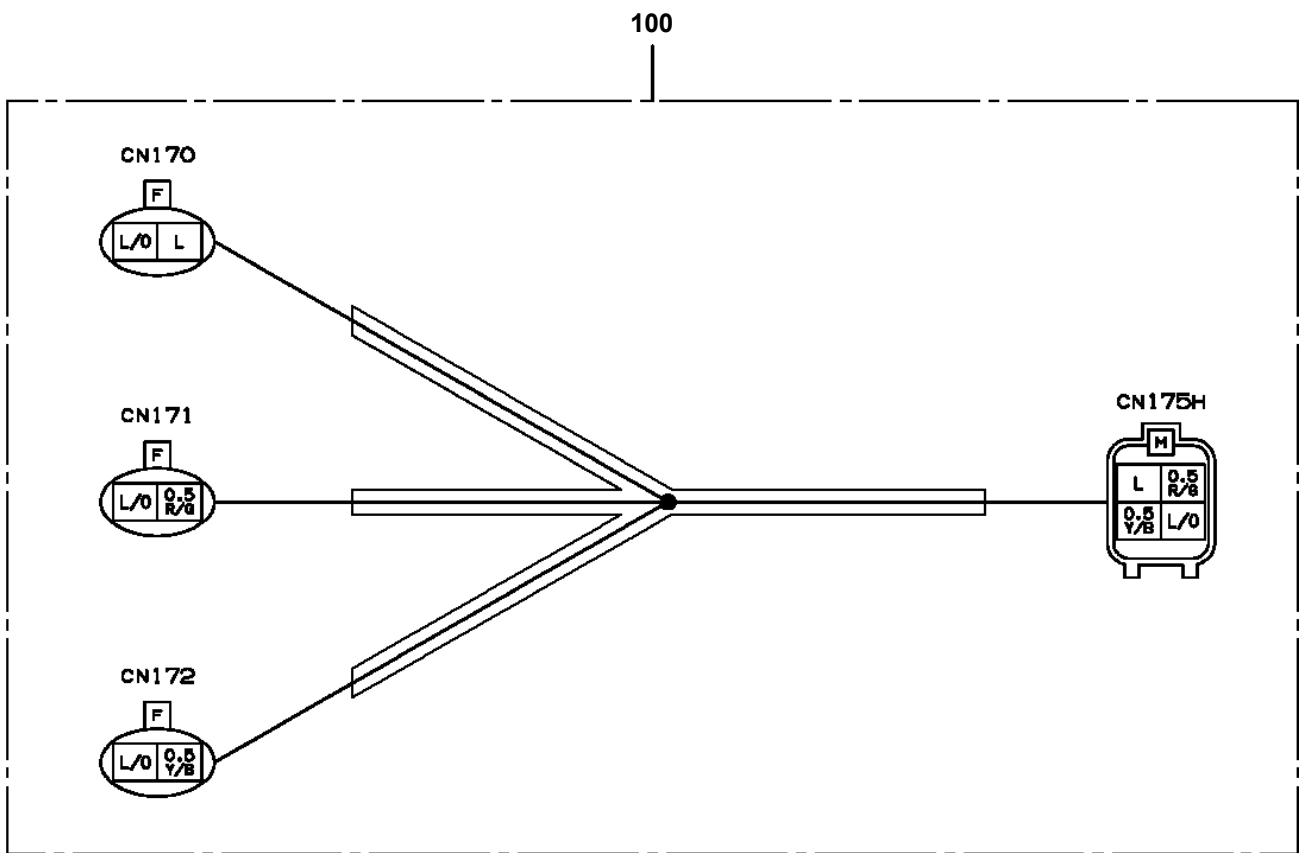


# AT-121-1 43007100050 UPPER

Pos No.	Parts No	Parts Name	Qty	Unit	Technical Data	Serial No (Start)	Serial No (End)	Rema
2	36190191060	BOARD,CIRCUIT	1					
3	36190191070	BOARD,CIRCUIT	1				HJ1332	
	36190191071	BOARD ASSY	1			HJ1333		
4	36190185150	SEAT	1					
5	36190185050	BOX	1					
6	36190185060	PANEL ASSY	1					
7	36190185070	FITTING (SET)	1					
8	36190185080	COVER (SET)	1					
9	36190195020	STAY SET	1					
10	36190185100	FRAME ASSY	1					
11	36190185111	HARNESS ASSY	1				HJ0652	
	36191045020	HARNESS ASSY	1			HJ0653		
12	36190185121	HARNESS ASSY	1					
14	36190185160	HARNESS	1					
31	36191195012	BOARD,CIRCUIT (WITH DATA)	1				HJ0331	
	36191195013	BOARD,CIRCUIT (WITH DATA)	1			HJ0332	HJ0587	
	36191195014	BOARD,CPU (WITH DATA)	1			HJ0588	HJ1384	
	36191195015	BOARD,CPU (WITH DATA)	1			HJ1385		
100	36191190001	MOTION CONTROLLER (AMC)	1					

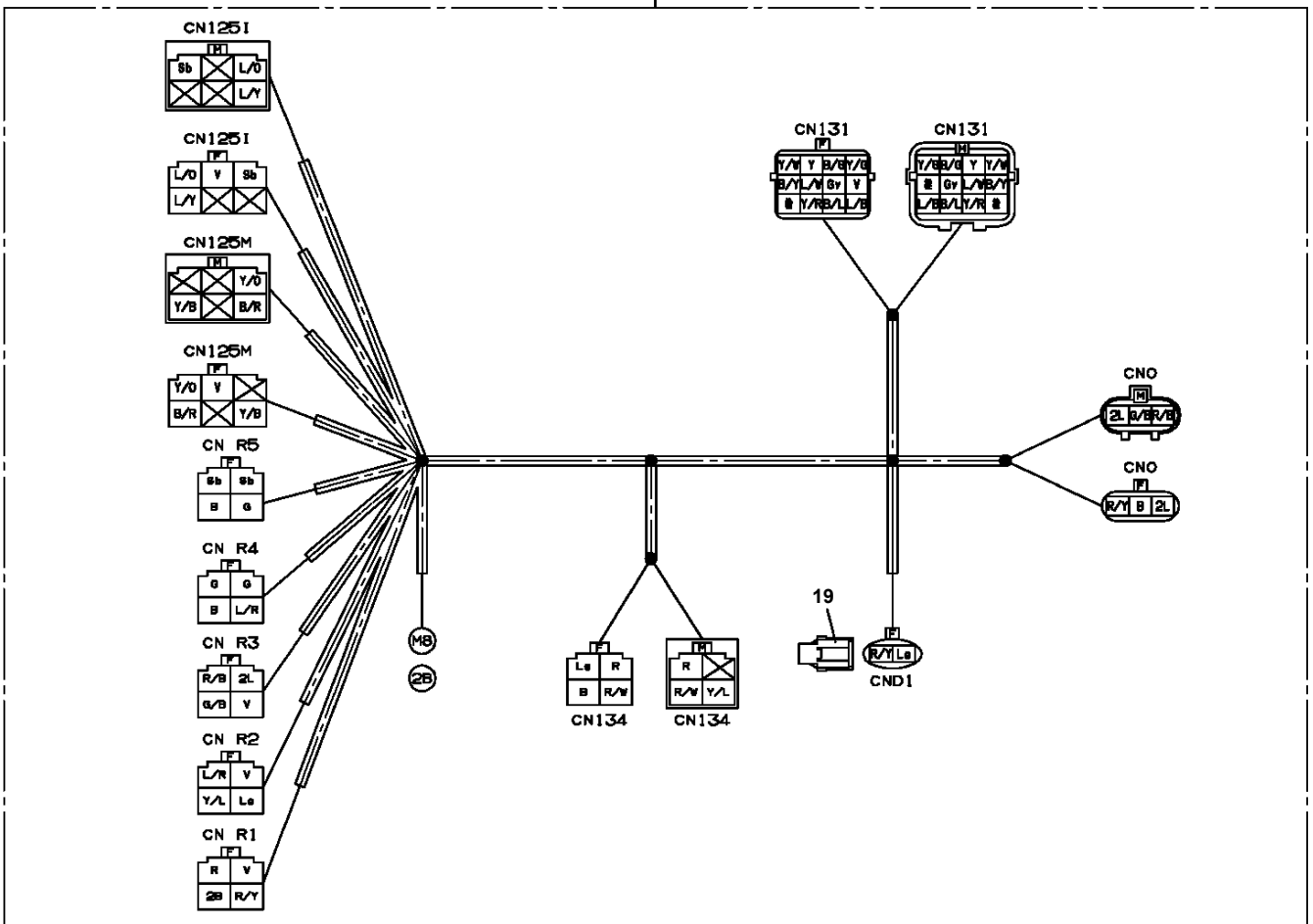


AT-121-1 43007100050 UPPER  
PH5031639-00 HARNESS



# AT-121-1 43007100050 UPPER PH5031645-00 HARNESS

100





CLICK HERE TO **DOWNLOAD** THE COMPLETE MANUAL

- Thank you very much for reading the preview of the manual.
- You can download the complete manual from: [www.heydownloads.com](http://www.heydownloads.com) by clicking the link below

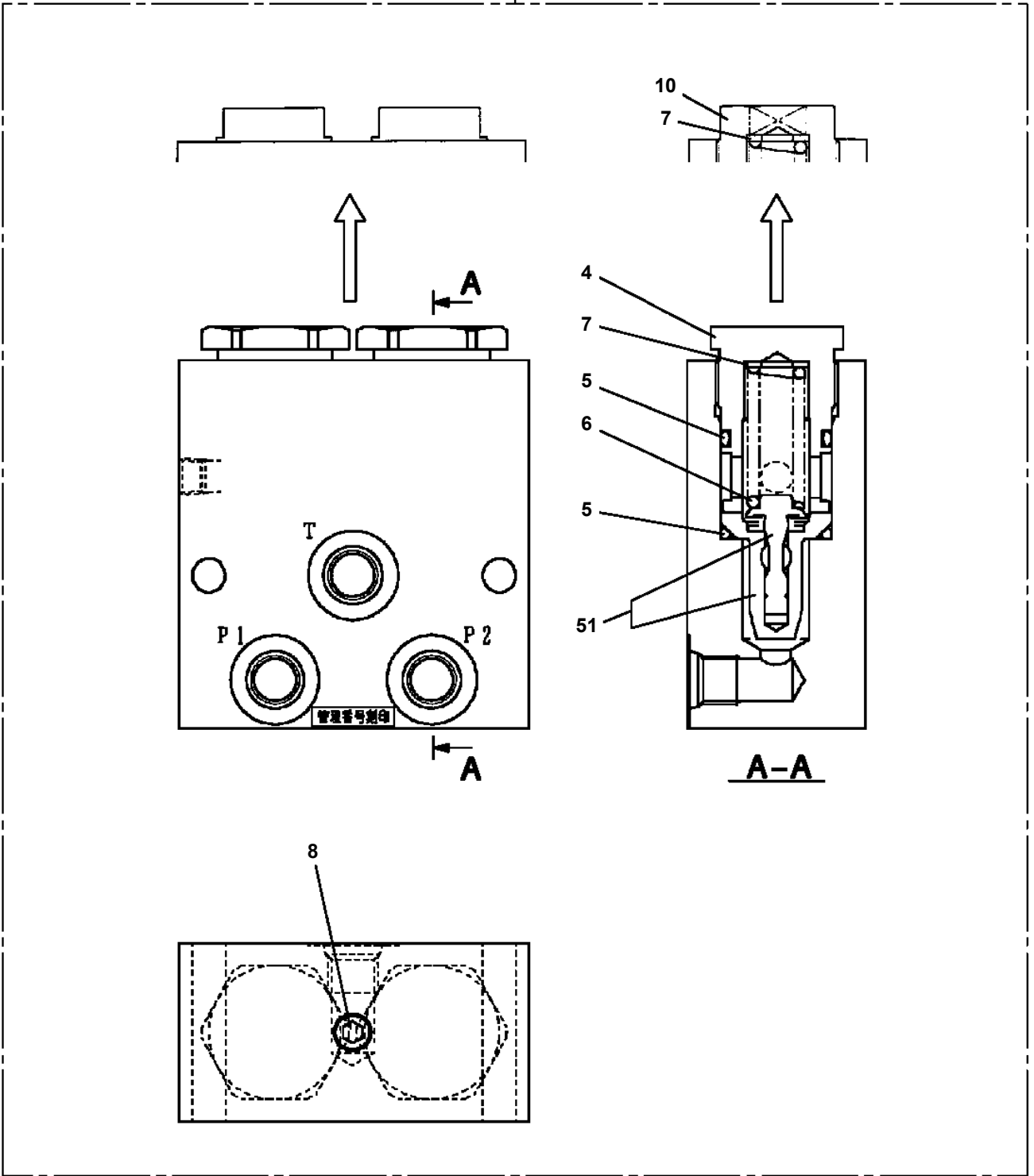


- Please note: If there is no response to CLICKING the link, please download this PDF first and then click on it.

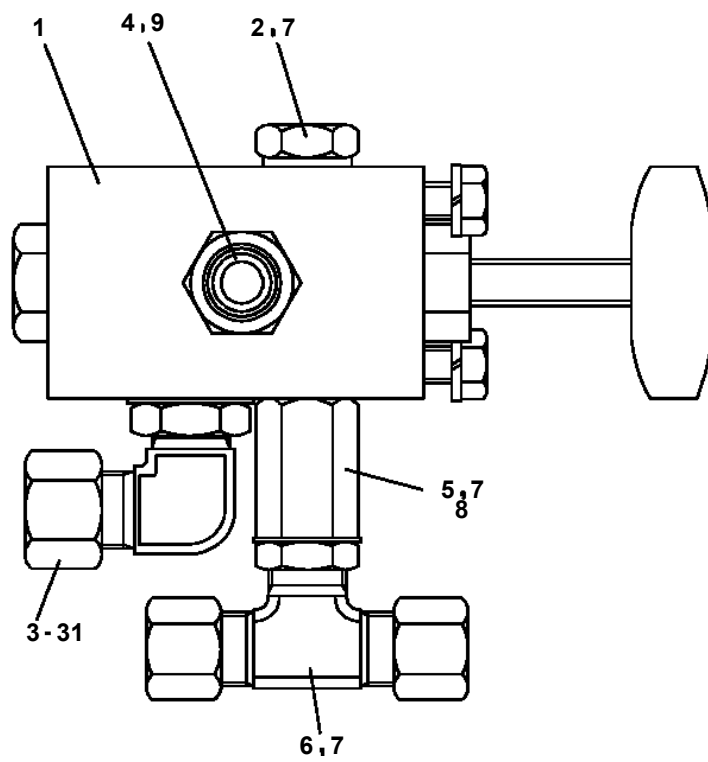
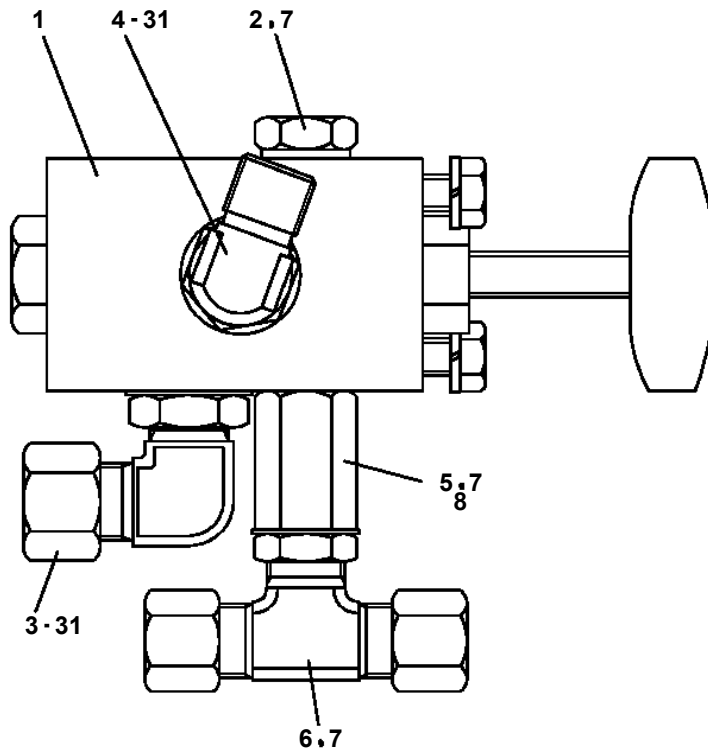
CLICK HERE TO **DOWNLOAD** THE COMPLETE MANUAL

AT-121-1 43007100050 UPPER  
PI1100132-01 VALVE,RELIEF

100

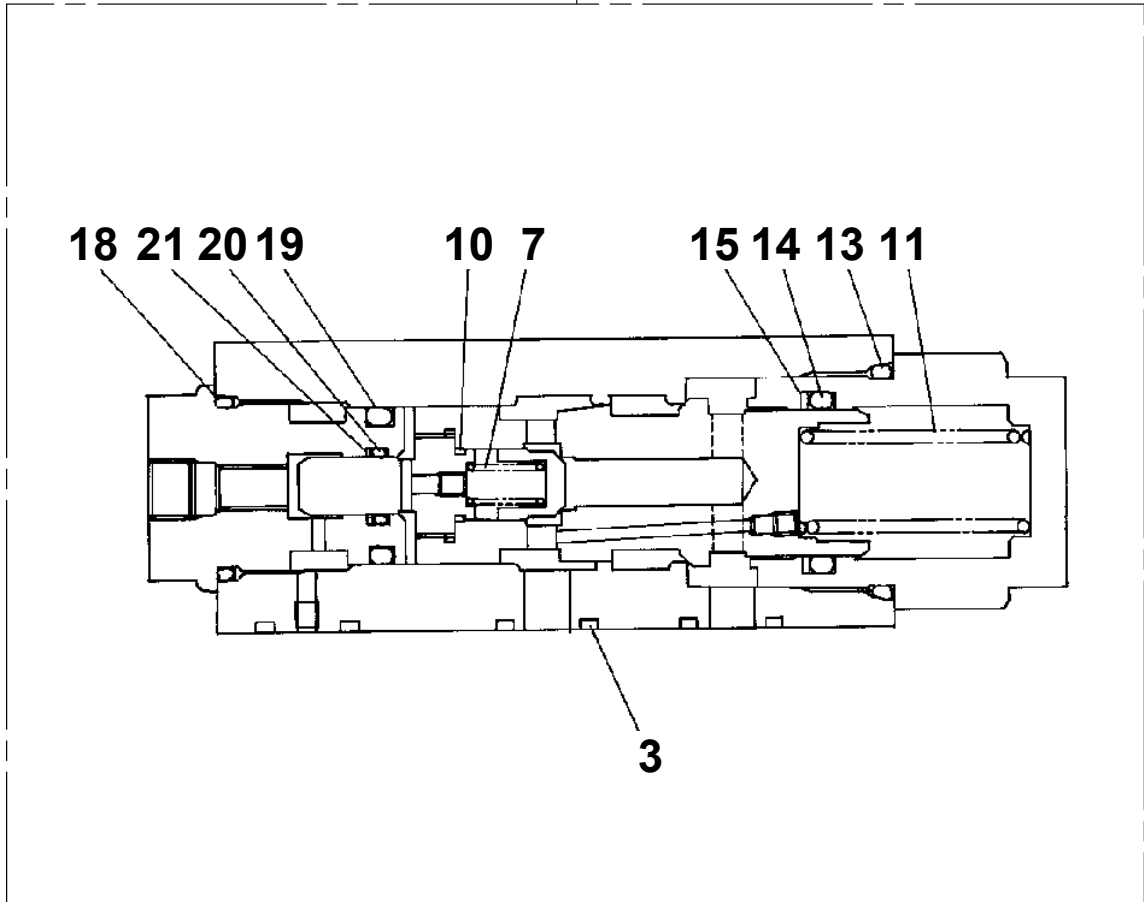


AT-121-1 43007100050 UPPER  
PI1240014-01 VALVE



**AT-121-1 43007100050 UPPER  
PI1250141-00 VALVE,COUNTERBALANCE**

**50**



# AT-121-1 43007100050 UPPER

Pos No.	Parts No	Parts Name	Qty	Unit	Technical Data	Serial No (Start)	Serial No (End)	Remarks
113	90172110035	BOLT,HEXAGON SOCKET	2		M10X35			
114	90309341003	WASHER,SPRING (10)	2					
121	42262053410	MOTOR,ELECTRIC	1					
122	44260301150	COVER	1					
123	91810132530	FASTENER	2					
131	42264154110	SUPPORT	1					
	42264153550	SUPPORT (IP)	1			HJ1640		
132	42264154300	WORM	1					
133	42264154120	COVER	1					
134	90171108016	BOLT	4		M8X16			
135	90302040801	WASHER,SPRING	4		8			
136	42264154500	SHIM	N		T=0.5			
137	42264154600	SHIM	N		T=0.2			
138	80513006304	BEARING,BALL	2					
139	42264154130	SPACER	1					
151	44260307510	GEAR ASSY (WHEEL)	1					
152	44260307530	WASHER,TOOTH	1					

# AT-121-1 43007100050 UPPER

Pos No.	Parts No	Parts Name	Qty	Unit	Technical Data	Serial No (Start)	Serial No (End)	Remarks	Pages
1	42280300100	WEIGHT	1						
2	42280300200	WEIGHT	1						
3	90171112030	BOLT	8		M12X30				
4	90302041201	WASHER,SPRING	8		12				
5	37000517380	PLATE	8		T=2.3 TO 3.2				
6	82401800080	PLUG (FOR M8)	3						

**AT-121-1 43007100050 UPPER**

Pos No.	Parts No	Parts Name	Qty	Unit	Technical Data	Serial No (Start)	Serial No (End)	Remarks	Pages
1	42623370200	COVER	1						
2	82460025402	CATCH	1						
3	80175305010	SCREW,MACHINE	4		M5X10				
4	90201200500	NUT	4		M5				
5	90302040501	WASHER,SPRING	4		5				
6	42622600110	INSULATOR	1						
7	82400000393	INSULATOR	2						
8	80172803014	SCREW,MACHINE	2		M3X14				
9	90303520301	WASHER,PLAIN	2		3				
10	90201500300	NUT	2		M3				
50	42623370100	COVER	1						

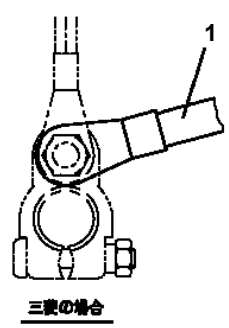
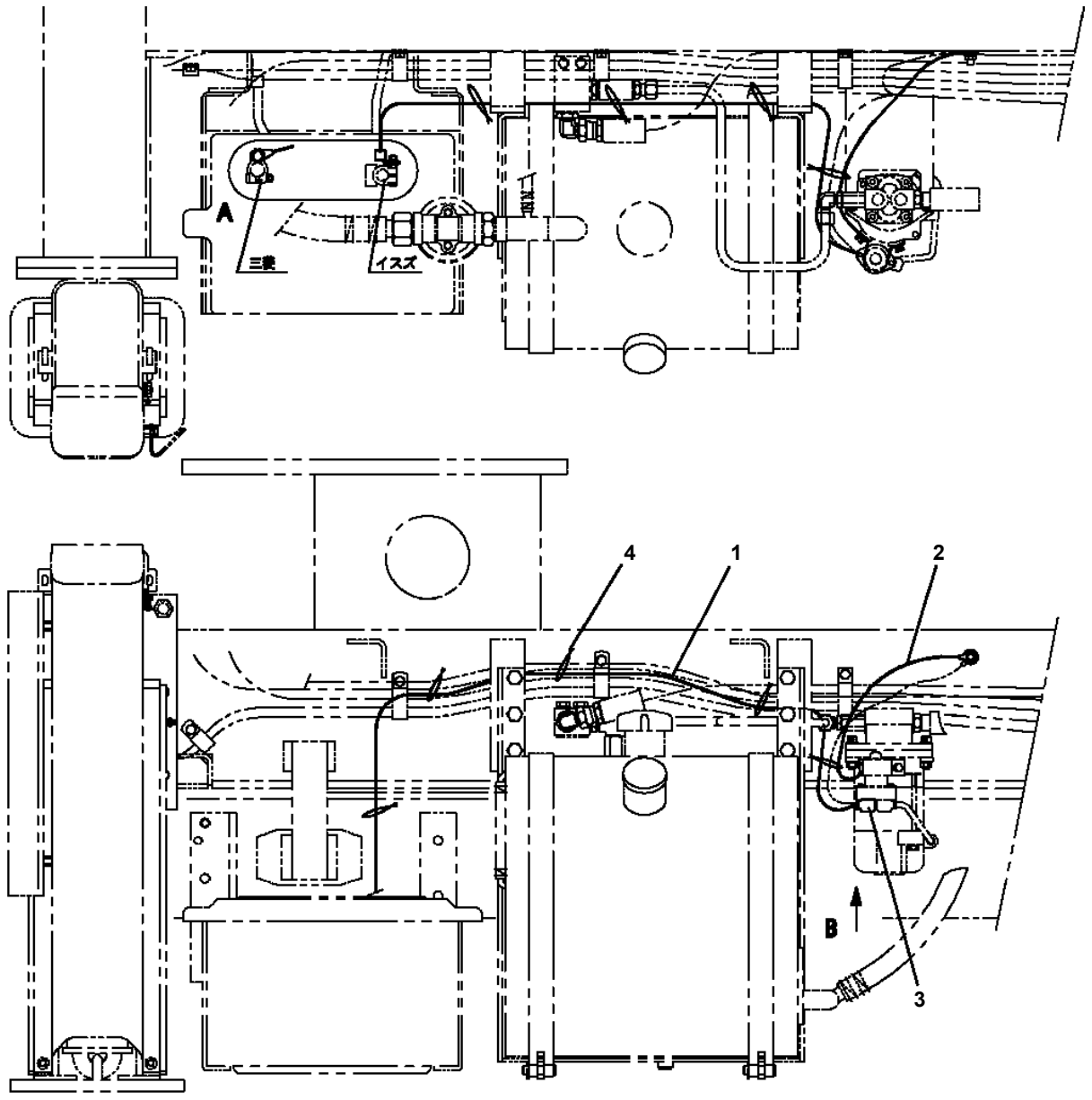
# AT-121-1 43007100050 UPPER

Pos No.	Parts No	Parts Name	Qty	Unit	Technical Data	Serial No (Start)	Serial No (End)	Remarks	Pages
1	42321051100	SUPPORT	1						
2	(*****)	VALVE,CONTROL	1						000100
3	42321052000	COVER	1						000091
4	90101208020	BOLT	9		M8X20				
5	90302040801	WASHER,SPRING	7		8				
6	37000547660	PLATE	4		T=2.3				
7	90101210035	BOLT	4		M10X35				
8	90302041001	WASHER,SPRING	4		10				
9	90303370801	WASHER	2		M8				
10	37000549940	PLATE	1		T=3.2				

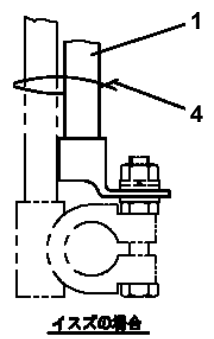
# AT-121-1 43007100050 UPPER

Pos No.	Parts No	Parts Name	Qty	Unit	Technical Data	Serial No (Start)	Serial No (End)	Remarks
1	36663955100	SHAFT	1					
2	80500006206	BEARING,BALL	1					
4	91001206500	O-RING	1		1A G65			
5	36660025021	COVER (OIL SEAL)	1					
6	36660025140	SEAL,OIL	1					
7	36663485110	RING,RETAINING	1		R72			
8	36663955020	PLATE,THRUST	1					
9	36663955030	BARREL ASSY (CYLINDER)	1					
10	36663955040	PLATE (VALVE)	1					
11	36661925030	COVER (BOTTOM)	1					
12	80500006203	BEARING,BALL	1					
13	36662355110	PIN	2					
14	36663955050	O-RING	1					
15	36663955060	BOLT	6		M10X35			
16	14125151020	KEY	1					
17	36660125060	PLUG	2		PF3/8			
18	36081315130	PROTECTOR (THREAD)	2					
44	36660025100	SPRING (PLUNGER)	5					
45	14125151300	RING,RETAINING	1					
46	12645103171	SPRING (CENTER)	1					
100	36664070000	MOTOR,OIL	1					

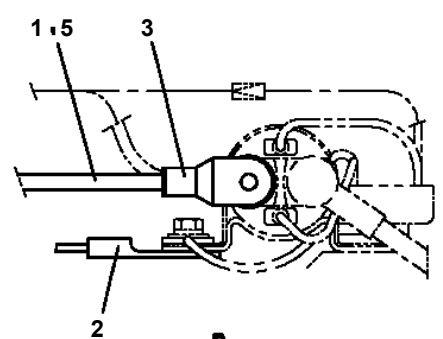
**AT-121-1 43007100050 UPPER  
PN1013234-00 ELEC.ASSY (EMERGENCY PUMP)**



**A**

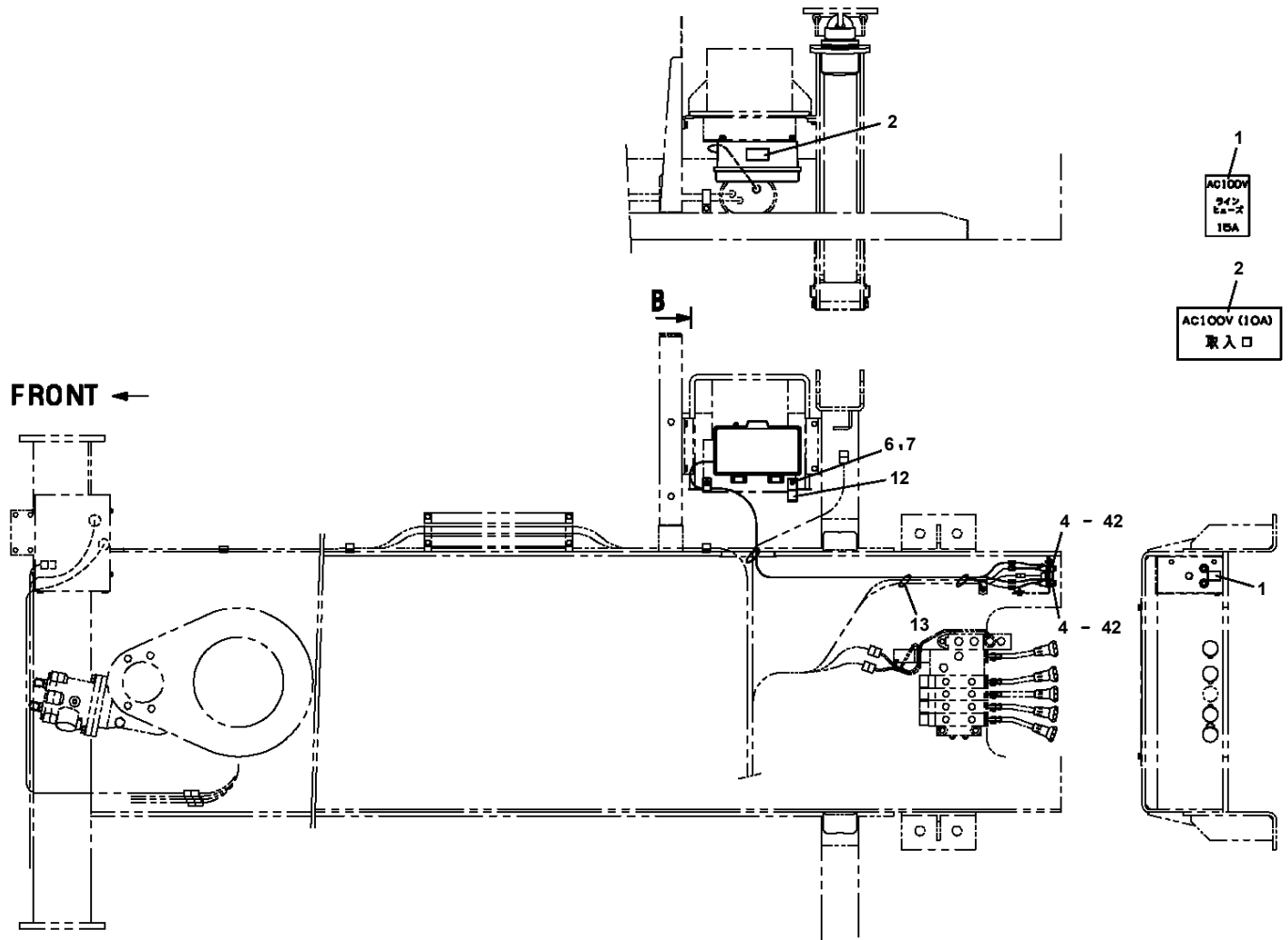


**A**



**B**

AT-121-1 43007100050 UPPER  
PN1020058-01 POWER SOURCE (LOWER)



# AT-121-1 43007100050 UPPER

Pos No.	Parts No	Parts Name	Qty	Unit	Technical Data	Serial No (Start)	Serial No (End)	Remarks	Pages
1	42500761100	HARNESS	1						000061
2	82100002596	RELAY	5						
3	90101206012	BOLT	3		M6X12				
4	90302040601	WASHER,SPRING	3		6				
5	90303070601	WASHER,PLAIN	2		6				

# AT-121-1 43007100050 UPPER

Pos No.	Parts No	Parts Name	Qty	Unit	Technical Data	Serial No (Start)	Serial No (End)	Rema
1	36191194210	PLATE,NAME (361-911-94100)	1					

AT-121-1 43007100050 UPPER  
PO1013973-02 PLATE ASSY,NAME (UPPER)

4

6	労働安全衛生法第45条第2項による	7
5	特定自主検査（法定年次検査）	8
4	を実施しましょう	9
3	第1回検査は□年□月です	10
2		11
1	試験取得後2年安全検査協会 (労働部指導)	12

5  
AT-121TT

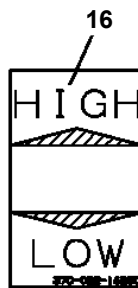
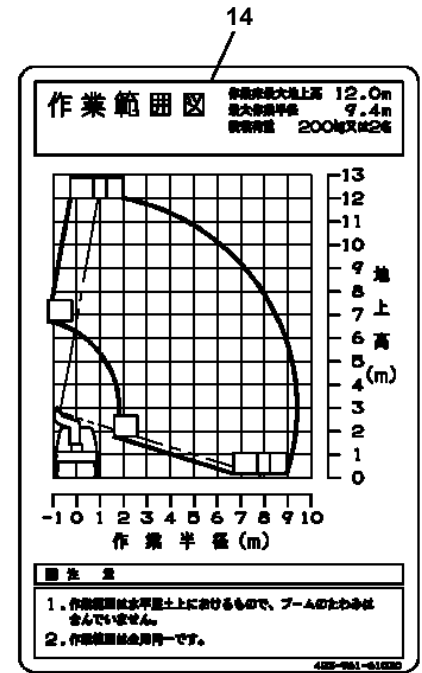
6  
積載荷重 200kg



12

△警告 / 使用上の注意

- 本機の運転は高所作業車技能講習修了者に限られます。
- 取扱説明書をよく読み、操作および取扱い方法を理解してから使用してください。
- 作業開始前点検を実施してください。
- ヘルメット・安全帯を着用してください。
- 積載荷重を守ってください。
- 作業中以外で作業しないでください。
- 強風・雷などの悪天候時には作業しないでください。
- 電線付近では作業しないでください。



18

建築物用脚車材料表 (出荷時)		
品目名	材料名	備考
ブームスライドプレート	PA, PE, POM	
ブーム内ガイドローラ	PA	
ブームケーブルベア	PA	
操作レバーノブ	ABS	
アトリガスライドプレート	PA	
ケーブル・ホース保護用品	PA, PE, PP	
配管用クランプ	PA	
タイヤ歯止め	再生プラスチック	
100V電源ケーブル収納箱	ABS	オプション
絶縁シリング用ブーツ	PVC, PA	
旋回台操作部カバー	ABS	

430-022-25550



# AT-121-1 43007100050 UPPER

Pos No.	Parts No	Parts Name	Qty	Unit	Technical Data	Serial No (Start)	Serial No (End)	Remarks
1	37004100040	PUMP,GREASE (DOMESTIC)	1					

# AT-121-1 43007100050 UPPER

Pos No.	Parts No	Parts Name	Qty	Unit	Technical Data	Serial No (Start)	Serial No (End)
1	42460012550	WEDGE (STOPPER FOR TIRE/JUSTIN)	1				

# AT-121-1 43007100050 UPPER

Pos No.	Parts No	Parts Name	Qty	Unit	Technical Data	Serial No (Start)	Serial No (End)	Remarks	Pages
1	42501510100	SUPPORT	1						
2	42501510200	SUPPORT	1						
3	90174110025	BOLT	6		M10X25				
4	90302041001	WASHER,SPRING	6		10				
5	37000566320	PLATE	N		T=1.0				

CLICK HERE TO **DOWNLOAD** THE COMPLETE MANUAL

- Thank you very much for reading the preview of the manual.
- You can download the complete manual from: [www.heydownloads.com](http://www.heydownloads.com) by clicking the link below



- Please note: If there is no response to CLICKING the link, please download this PDF first and then click on it.

CLICK HERE TO **DOWNLOAD** THE COMPLETE MANUAL