

AT-110-5 42084532846 UPPER,LOWER,HINO TPG-XZU600X-TYTMC6

PB0000275-02 UPPER STRUCTURE SYSTEM

PB0000500-02 LOWER STRUCTURE SYSTEM

ASSEMBLY

CLICK HERE TO **DOWNLOAD** THE COMPLETE MANUAL

- Thank you very much for reading the preview of the manual.
- You can download the complete manual from: www.heydownloads.com by clicking the link below



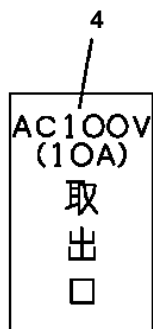
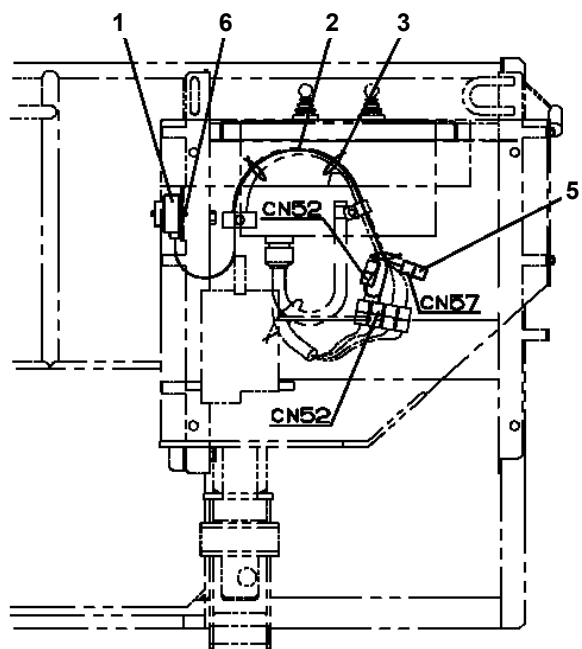
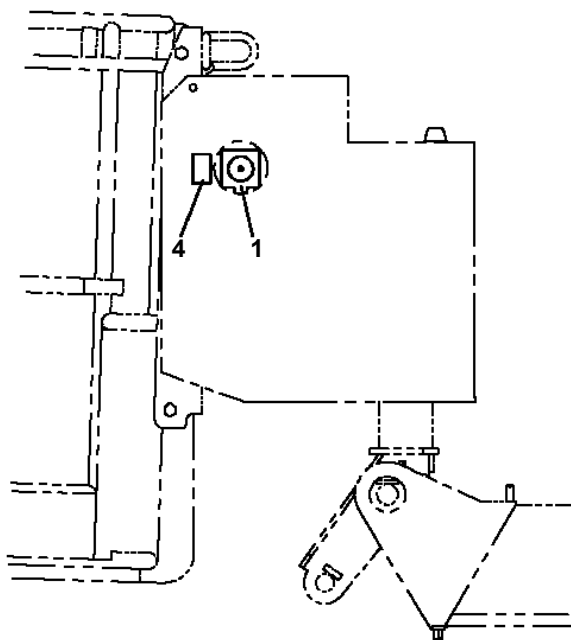
- Please note: If there is no response to CLICKING the link, please download this PDF first and then click on it.

CLICK HERE TO **DOWNLOAD** THE COMPLETE MANUAL

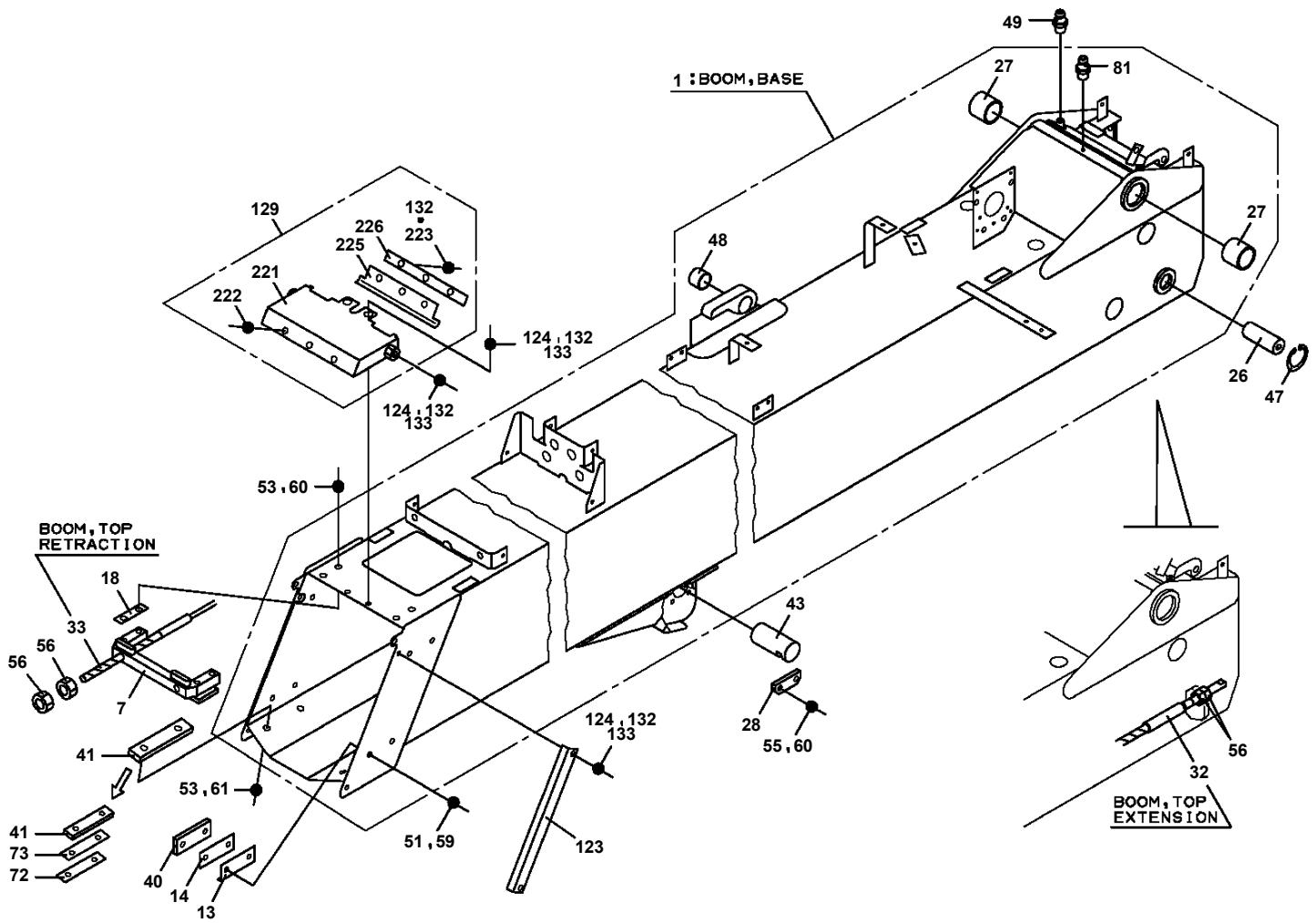
AT-110-5 42084532846 UPPER,LOWER,HINO TPG-XZU600X-TYTM C6

PP5340029-01 POWER SUPPLY ASSY,ELECTRICITY (LOWER/INVERTER)
PP5340030-01 POWER SUPPLY ASSY,ELECTRICITY (LOWER/POWER TAKEOUT)
PP5340036-00 POWER SUPPLY ASSY,ELECTRICITY (LOWER,3POLES OUTLET)
PP5420012-02 PUMP ASSY,OIL
PP5450004-00 PUMP,GREASE (400CC)
PP6010236-01 PIPING ASSY
PP6010255-01 PIPING ASSY
PP6060007-01 PIPING ASSY,BOOM
PP6130040-00 PIPING ASSY,FRAME
PP6210016-03 PIPING ASSY,MOUNTING
PP6330005-03 PIPING ASSY,SWING FRAME
PR5090237-00 RELAY ASSY
PR5100116-00 RELAY BOX ASSY
PR5100151-00 RELAY BOX ASSY
PR5100167-00 RELAY BOX ASSY
PR5150056-00 ROLLER ASSY
PS5110004-00 SENSOR
PS5360014-00 STEP ASSY
PS5420229-00 SUPPORT ASSY (2-DECK TOOL BOX: FIXED LADDER REST)
PS5420230-00 SUPPORT ASSY (1-DECK TOOL BOX: FIXED LADDER REST)
PS5420231-00 SUPPORT ASSY (1&2-DECK TOOL BOX: LOWER SHELF,ONE SIDE)
PS5420232-00 SUPPORT ASSY (HOOK FOR CARRIER ROPE)
PS5420266-00 SUPPORT ASSY (1-DECKER:ROTARY RADDER REST)
PS5420267-00 SUPPORT ASSY (2-DECKER:ROTARY RADDER REST)
PS5420481-00 SUPPORT ASSY
PS5420505-00 SUPPORT ASSY
PS5420508-00 SUPPORT ASSY (DANKITI BUFFER,25MM)
PS5420509-00 SUPPORT ASSY (DANKITI BUFFER,30MM)
PS5420534-00 SUPPORT ASSY
PS5510021-00 SWING FRAME ASSY
PS5530132-00 SWITCH ASSY (WITH HARNESS,3 SW)
PS5530195-00 SWITCH ASSY
PS5530332-00 SWITCH ASSY (WITH HARNESS,5 SW)
PS5530351-00 SWITCH ASSY (WITH HARNESS,4 SW)
PS5530360-01 SWITCH ASSY (SAFETY ROPE INTERLOCK/FOR ENABLE)
PS5530361-00 SWITCH ASSY
PS5530393-00 SWITCH ASSY
PS5530422-00 SWITCH ASSY
PS5530424-00 SWITCH ASSY (SAFETY ROPE INTERLOCK/FOR DOUBLE RIDING)
PS5530425-00 SWITCH ASSY
PS5550005-00 SUPPORT (7 DEGREES ANGLE METER MOUNTING)
PT5090008-00 TANK ASSY,OIL
PT5130050-00 TELESCOPE ASSY
PV1300020-00 CABLE (3 POLE)
PV5010007-00 VALVE ASSY (JACK CONTROL)
PV5070007-00 VALVE ASSY,COUNTERBALANCE
PV5140017-00 VALVE ASSY,RELIEF
PV5150018-01 VALVE ASSY,REMOTE CONTROL
PV5170018-00 VALVE ASSY,SELECTOR
PV5450154-00 VIEW SYSTEM (REARVIEW SYSTEM/WITHOUT MONITOR)
PW1000118-00 ACCESSORIES & TOOLS
PW1010251-00 ACCESSORIES (MAT/FOR SI BUCKET)
PW1010309-00 ACCESSORIES (MAT)
PW1010337-01 ACCESSORIES
PW1010407-00 ACCESSORIES (MAT)
PW1030049-01 TOOLS
PW1050018-01 WEDGE (STOPPER FOR TIRE/JUSTIN)
PW5110005-00 WEDGE (YELLOW)
PX1270056-00 WOOD BLOCK (OPTION)
PX1350803-00 BOX,TOOL (NEO KANSAI/BUCKET)
PX1351247-00 BOX,TOOL (BUCKET)
PX1351334-00 BOX,TOOL
PX1390858-00 MODIFICATION PARTS
PX2001793-00 CARRIER UNIT

AT-110-5 42084532846 UPPER,LOWER,HINO TPG-XZU600X-TYTM6
PB1380283-01 POWER SUPPLY (BUCKET)



AT-110-5 42084532846 UPPER,LOWER,HINO TPG-XZU600X-TYTMC6
PB5190050-02 BOOM ASSY



AT-110-5 42084532846 UPPER,LOWER,HINO TPG-XZU600X-TYTMC6

Pos No.	Parts No	Parts Name	Qty	Unit	Technical Data	Serial No (Start)	Serial No (End)	Remarks
1	42508782701	BOX	1					
2	42508782611	COVER	1					
3	42508782650	PLATE	1					
4	80175804012	SCREW,MACHINE	2		M4X12			
5	90302510401	WASHER,SPRING	2		4			
6	90201500400	NUT	2		M4			
7	82400000346	CATCH	1					
8	80172803008	SCREW,MACHINE	2		M3X8			
9	90302510301	WASHER,SPRING (SUS 3)	4					
10	90201500300	NUT	4		M3			
11	82464110004	HINGE	1					
12	90303520301	WASHER,PLAIN	2		3			
13	80175803008	SCREW,MACHINE	2		M3X8			
14	82400000393	INSULATOR	1					
15	90303070401	WASHER,PLAIN	1		4			
16	90302040401	WASHER,SPRING	1		4			
17	80172804020	SCREW,MACHINE	1		M4X20			
18	80147310430	RIVET	4		NSA 4-3			
19	42835450010	PLATE	1					
45	82400000202	GROMMET	1					
100	42508782601	BOX ASSY	1					

AT-110-5 42084532846 UPPER,LOWER,HINO TPG-XZU600X-TYTMC6

Pos No.	Parts No	Parts Name	Qty	Unit	Technical Data	Serial No (Start)	Serial No (End)	Rema
1	42267710310	BUCKET	1					
2	42267710320	DOOR	1					
3	42267710330	HINGE	1					
4	90201200800	NUT	2		M8			
5	42267710340	SUPPORT	1					
6	82466308293	INSULATOR	1					
7	90201200400	NUT	1		M4			
8	42267710350	SUPPORT	1					
9	42267710360	SUPPORT	1					
10	82470062402	LEVER	1					
11	80175805010	SCREW,MACHINE	3		M5X10			
12	80185806012	SCREW,MACHINE	2					
100	42267710300	BUCKET (WITH DOOR,WHITE)	1					

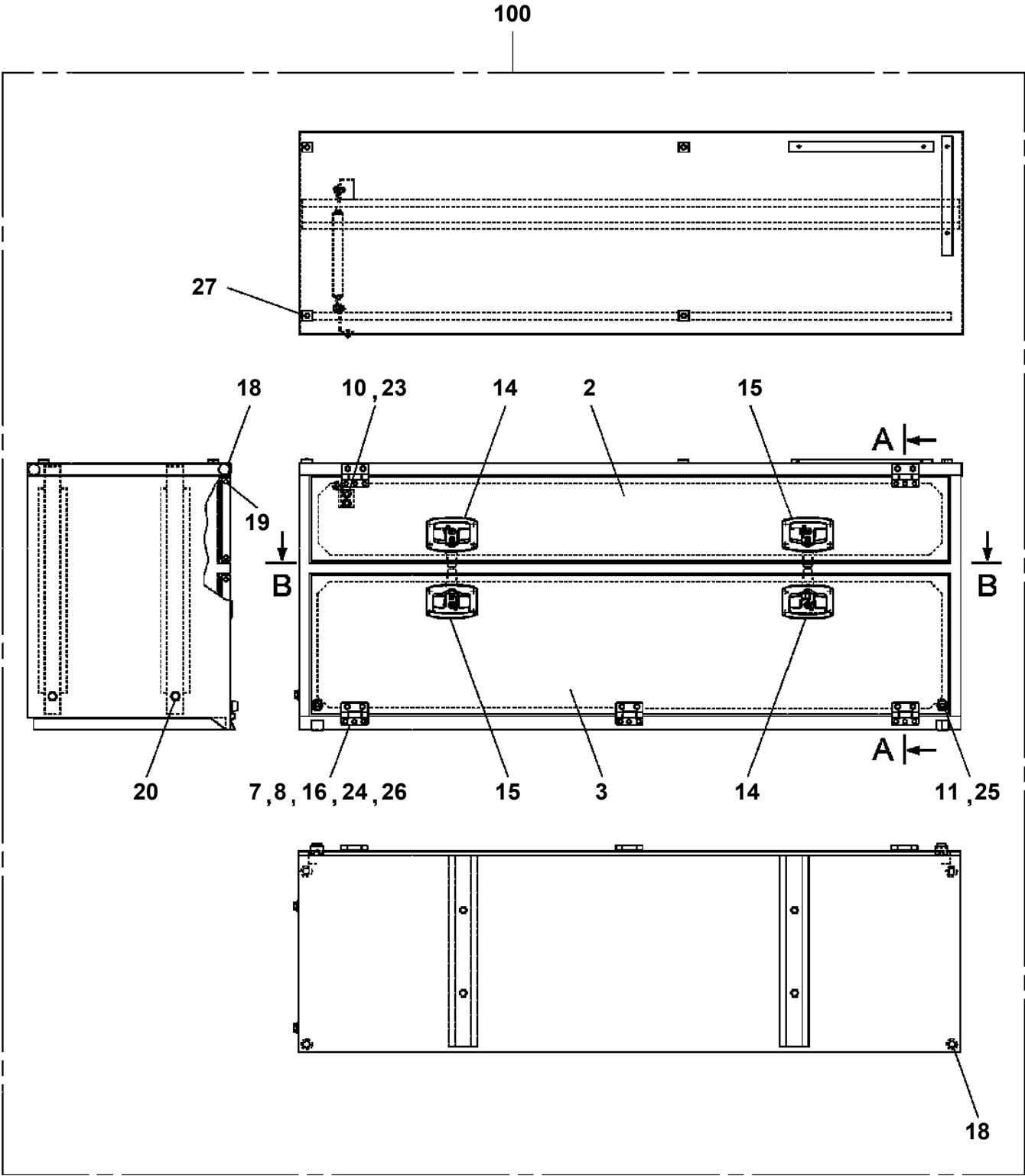
AT-110-5 42084532846 UPPER,LOWER,HINO TPG-XZU600X-TYTMC6

Pos No.	Parts No	Parts Name	Qty	Unit	Technical Data	Serial No (Start)	Serial No (End)	Remarks
1	42973100200	HARNESS	1					
2	91810132530	FASTENER	10					
3	90302040601	WASHER,SPRING	2		6			
6	34354781710	RELAY (WITH BRACKET)	2					
9	42973100101	HARNESS	1					
30	90101206010	BOLT	2		M6X1.0			

AT-110-5 42084532846 UPPER,LOWER,HINO TPG-XZU600X-TYTMC6

Pos No.	Parts No	Parts Name	Qty	Unit	Technical Data	Serial No (Start)
2	42839107520	DOOR	1			
3	42839107530	MAT	1			
4	42836317920	PLATE	3			
5	42836317930	PLATE	3			
6	82400000393	INSULATOR	2			
7	42836317950	WEATHER STRIP	4	M		
8	42835867870	CATCH	1			
9	42838117510	CATCH	1			
10	42835487650	HINGE	3			
11	42833077610	BUSH	8			
12	42835797580	PLUG (HOLE)	4			
13	42839117570	BOLT SET(M10X16 WITH WASHER+SPRINGWASHER)	2			
14	42839117600	SCREW,SET (M5X14 WITH SPRINGWASHER)	6			
15	42839117610	SCREW,SET (M4X16 WITH WASHER+NUT)	2			
16	42839117620	SCREW,MACHINE (M5X12)	9			
17	82401800080	PLUG (FOR M8)	5			
18	82401800100	PLUG (FOR M10)	2			
100	42839101002	BOX,TOOL	1			

AT-110-5 42084532846 UPPER,LOWER,HINO TPG-XZU600X-TYTMC6
PB5410110-01 BOX,TOOL



AT-110-5 42084532846 UPPER,LOWER,HINO TPG-XZU600X-TYTMC6

Pos No.	Parts No	Parts Name	Qty	Unit	Technical Data	Serial No (Start)	Serial No (End)	Rem
2	42839507510	DOOR ASSY (SLIDE)	1					
	42839507510	DOOR ASSY (SLIDE)	1					
3	42837377520	LOCK ASSY	1					
	42837377520	LOCK ASSY	1					
4	42839507520	SHELF	1					
	42839507520	SHELF	1					
5	42839507530	STOPPER (DOOR)	2					
	42839507530	STOPPER (DOOR)	2					
6	42839507540	GUARD	1					
	42839507540	GUARD	1					
7	42835257620	PLATE	4					
	42835257620	PLATE	4					
8	42839117630	SUPPORT	4					
	42839117630	SUPPORT	4					
9	42835467570	RAIL	1					
	42835467570	RAIL	1					
10	42839127510	MAT	1					
	42839127510	MAT	1					
11	42835767580	STOPPER	1					
	42835767580	STOPPER	1					
12	42835797550	SEAL	1					
	42835797550	SEAL	1					
13	42833077610	BUSH	8					
	42833077610	BUSH	8					
14	42836317940	SEAL (TAPE)	3	M				
	42836317940	SEAL (TAPE)	3	M				
15	42837157510	MOHAIR	1	M				
	42837157510	MOHAIR	1	M				
16	42837377830	COVER (HARNESS)	3	M				
	42837377830	COVER (HARNESS)	3	M				
17	42835867840	GROMMET	1					
	42835867840	GROMMET	1					
18	42839507560	BOLT (SUS WITH W,SW)	2		M10X16			
	42839507560	BOLT (SUS WITH W,SW)	2		M10X16			
19	99164804010	BOLT (M4X10,WITH WASHER)	3					
	99164804010	BOLT (M4X10,WITH WASHER)	3					
20	42500577560	SCREW,MACHINE (SEMS)	5		M4X8			
	42500577560	SCREW,MACHINE (SEMS)	5		M4X8			
21	42835467840	SCREW,MACHINE (WITH W,SW)	2		M5X22			
	42835467840	SCREW,MACHINE (WITH W,SW)	2		M5X22			
22	42834707555	SCREW,MACHINE (WITH W,SW)	2		M6X14			
	42834707555	SCREW,MACHINE (WITH W,SW)	2		M6X14			
23	42835257660	SCREW,MACHINE	8		M4X18			
	42835257660	SCREW,MACHINE	8		M4X18			
24	42835257680	SCREW,MACHINE (WITH SW,N)	6		M5X10			
	42835257680	SCREW,MACHINE (WITH SW,N)	6		M5X10			
25	82401800080	PLUG (FOR M8)	5					
	82401800080	PLUG (FOR M8)	5					
26	82401800100	PLUG (FOR M10)	2					
	82401800100	PLUG (FOR M10)	2					
100	42839731100	BOX,TOOL	1					
	42839731100	BOX,TOOL	1					

AT-110-5 42084532846 UPPER,LOWER,HINO TPG-XZU600X-TYTMC6

Pos No.	Parts No	Parts Name	Qty	Unit	Technical Data	Serial No (Start)	Serial No (End)	R
1	42501773000	FLOAT ASSY (WITHOUT SPACER)	4					
	42501771000	FLOAT ASSY (WITH SPACER)	4					

AT-110-5 42084532846 UPPER,LOWER,HINO TPG-XZU600X-TYTMC6

Pos No.	Parts No	Parts Name	Qty	Unit	Technical Data	Serial No (Start)	Serial No (End)	Remarks	P
100	36172650000	CONTROLLER (GSMT)	1						

AT-110-5 42084532846 UPPER,LOWER,HINO TPG-XZU600X-TYTMC6

Pos No.	Parts No	Parts Name	Qty	Unit	Technical Data	Serial No (Start)	Serial No (End)	Remarks	Pages
1	42442840400	COVER	1						
2	42442840500	COVER	1						
3	90303070801	WASHER,PLAIN	6		8				
4	42442840010	PLATE	1						
5	42442840020	PLATE	1						
6	90183108030	BOLT	2		M8X30				
7	90183108040	BOLT	4		M8X40				

AT-110-5 42084532846 UPPER,LOWER,HINO TPG-XZU600X-TYTMC6

Pos No.	Parts No	Parts Name	Qty	Unit	Technical Data	Serial No (Start)	Serial No (End)	Remarks	Pages
1	42268791010	COVER	1						
2	42268791020	COVER	1						
3	90183108020	BOLT	5		M8X20				

AT-110-5 42084532846 UPPER,LOWER,HINO TPG-XZU600X-TYTMC6

Pos No.	Parts No	Parts Name	Qty	Unit	Technical Data	Serial No (Start)	Serial No (End)	Remarks	Pages
1	42513930100	COVER (LEFT)	1						
2	42513940100	COVER (RIGHT)	1						
3	90101208014	BOLT	6		M8X14				
4	90302040801	WASHER,SPRING	6		8				
5	90303070801	WASHER,PLAIN	6		8				
6	90201200800	NUT	6		M8				

AT-110-5 42084532846 UPPER,LOWER,HINO TPG-XZU600X-TYTMC6

Pos No.	Parts No	Parts Name	Qty	Unit	Technical Data	Serial No (Start)	Serial No (End)	Remarks
1	82455106000	NIPPLE,GREASE	2		A-M6F FE			
3	91302209000	BEARING,PLAIN	4					
4	91684009001	PACKING	4					
5	91411207502	RING,BACKUP	4					
6	91002903500	O-RING	2		1B G35			
7	36027802000	PISTON	1					
8	36028439520	ROD ASSY	1					
10	80612110720	RING,RITAINING	1		AR72			
11	37000403650	BEARING,PLAIN	1					
12	36026899530	COVER,ROD	1					
13	91002909500	O-RING	2		1B G95			
14	91694106500	PACKING	2					
15	91410206503	RING,BACKUP	2					
16	91660006500	SEAL,DUST	2					
17	80622000650	RING,RITAINING	1		SP65			
18	80530000114	BEARING,SPHERICAL	1					
19	80820004040	BEARING,PLAIN	2					
21	91002910500	O-RING	2		1B G105			
23	36028439510	CYLINDER ASSY	1					
24	90730008120	SCREW,SET	1		M8X12			
80	36026899900	PACKING SET	2		65X90			
100	36028430000	CYLINDER ASSY,DERRICK	1					

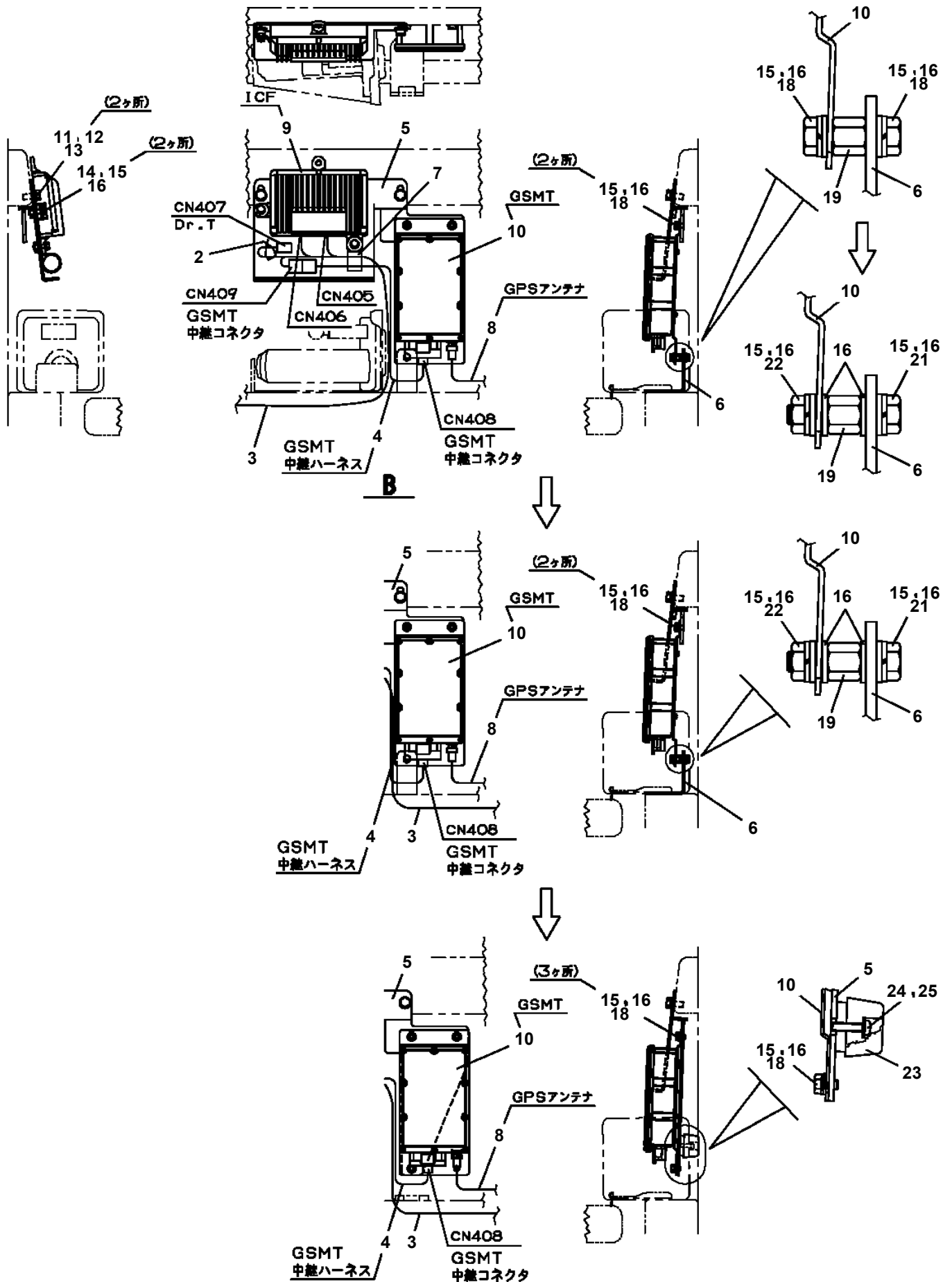
AT-110-5 42084532846 UPPER,LOWER,HINO TPG-XZU600X-TYTMC6

Pos No.	Parts No	Parts Name	Qty	Unit	Technical Data	Serial No (Start)	Serial No (End)
2	31300070010	BOLT	19		M20X80		
3	37001505940	BOLT	10		M18X60		
4	90171116040	BOLT	4		M16X40		
5	90302041601	WASHER,SPRING	4		16		
6	36081610000	REDUCER,SWING SPEED	1				
7	91001208500	O-RING	1		1A G85		
8	90174112035	BOLT	2		M12X35		
9	90302041201	WASHER,SPRING	2		12		
10	36664070000	MOTOR,OIL	1				
31	37002304190	BEARING,SWING (NIHON MONORACE)	1				
32	37002304160	BEARING,SWING (NTN TO ROBALLO)	1				

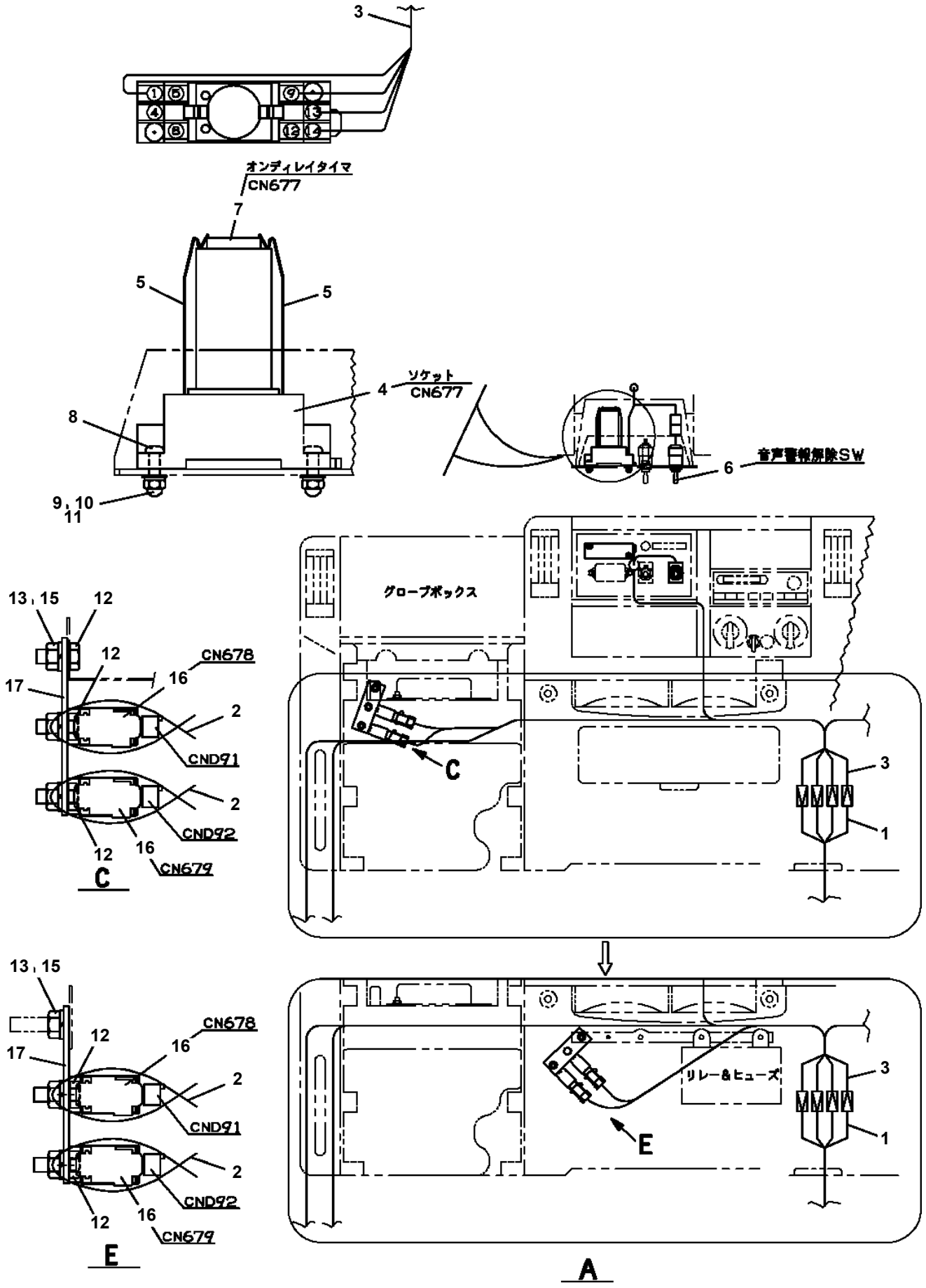
AT-110-5 42084532846 UPPER,LOWER,HINO TPG-XZU600X-TYTMC6

Pos No.	Parts No	Parts Name	Qty	Unit	Technical Data	Serial No (Start)	Serial No (End)	Remark
1	36027510000	CYLINDER ASSY,LEVELING	1					
2	36624110000	VALVE,CHECK	1					
3	90180210050	BOLT,BUTTON	4		M10X50			

AT-110-5 42084532846 UPPER,LOWER,HINO TPG-XZU600X-TYTMC6
 PE5020676-03 ELEC.ASSY (TELEMATICS)



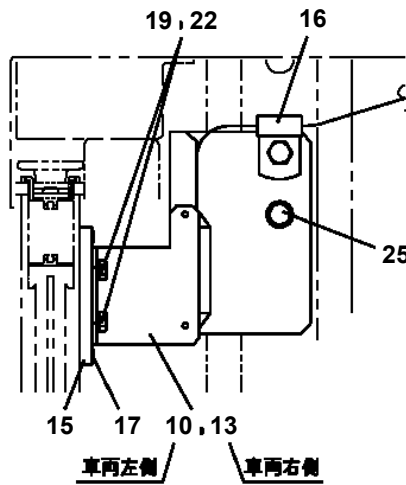
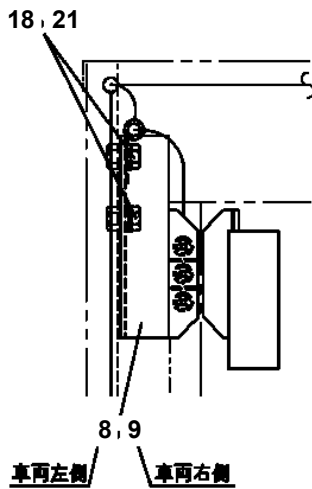
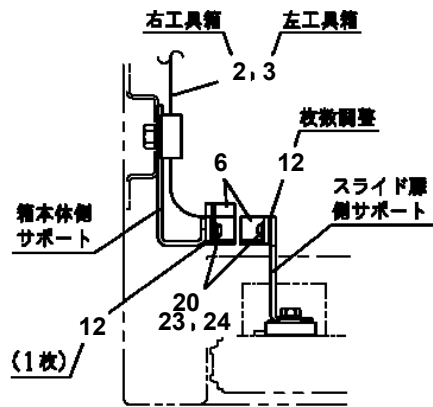
AT-110-5 42084532846 UPPER,LOWER,HINO TPG-XZU600X-TYTMC6
 PE5020779-01 ELEC.ASSY (CARRIER/ISUZU)



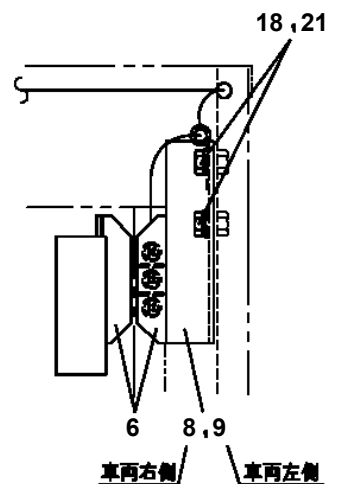
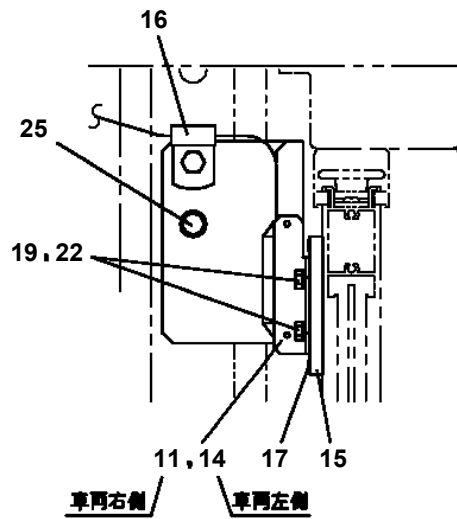
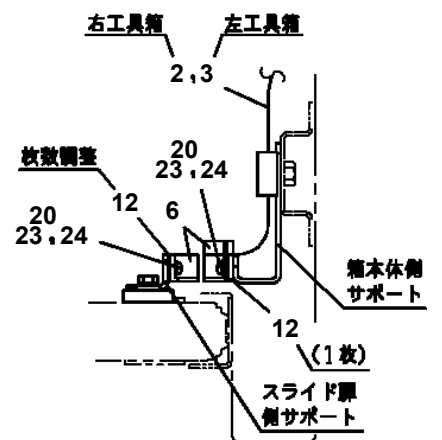
AT-110-5 42084532846 UPPER,LOWER,HINO TPG-XZU600X-TYTMC6

Pos No.	Parts No	Parts Name	Qty	Unit	Technical Data	Serial No (Start)	Serial No (End)
1	42809631200	LAMP ASSY (RED,WITH HARNESS)	1				
2	42652990200	BUZZER ASSY	1				
3	42652120300	BUZZER ASSY	1				
4	80172304016	SCREW,MACHINE	4		M4X16		
5	90302040401	WASHER,SPRING	4		4		
6	90201200400	NUT	4		M4		
7	90303070401	WASHER,PLAIN	8		4		
8	42509530100	PLATE,NAME (EXHAUST GASU ALARM)	1				
9	42512090100	HARNESS	1				
10	42971431200	PLATE,CAUTION	1				
11	42971431400	SWITCH ASSY (WITH HARNESS)	1				
12	91810130240	FASTENER	5				
13	42971491400	PLATE,NAME	1				

AT-110-5 42084532846 UPPER,LOWER,HINO TPG-XZU600X-TYTC6
PE5021094-02 ELEC.ASSY (FRAME)



A

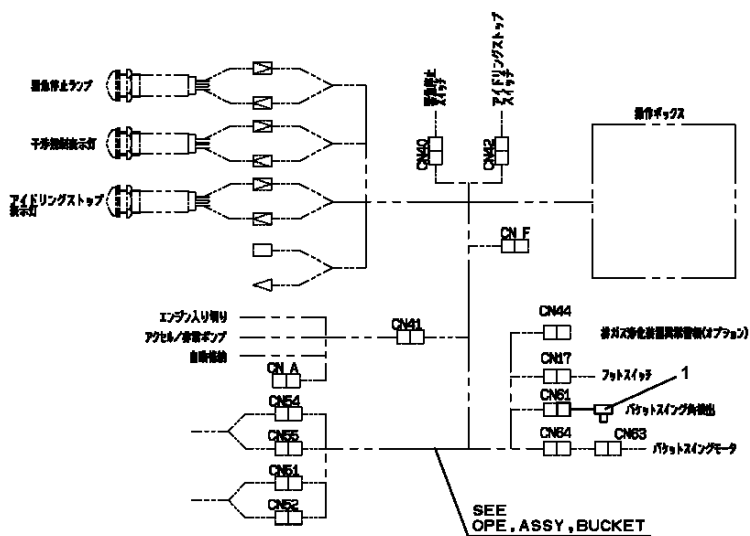


B

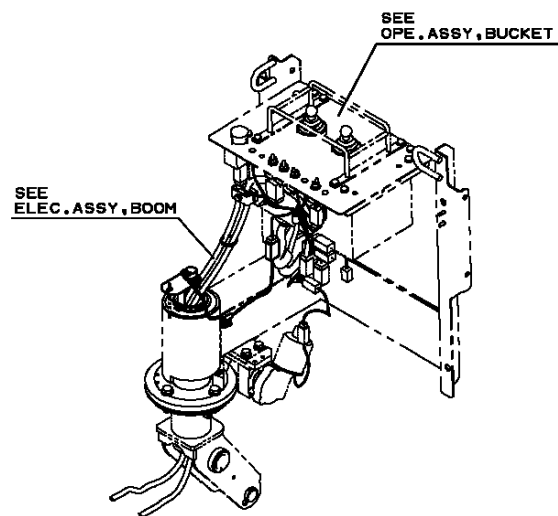
AT-110-5 42084532846 UPPER,LOWER,HINO TPG-XZU600X-TYTMC6

Pos No.	Parts No	Parts Name	Qty	Unit	Technical Data	Serial No (Start)	Serial No (End)	Remarks	Page
3	(*****)	ELEC.ASSY (FRAME)	1						0001
4	(*****)	ELEC.ASSY (CARRIER)	1						0002
5	(*****)	NAME PLATE ASSY	1						0003

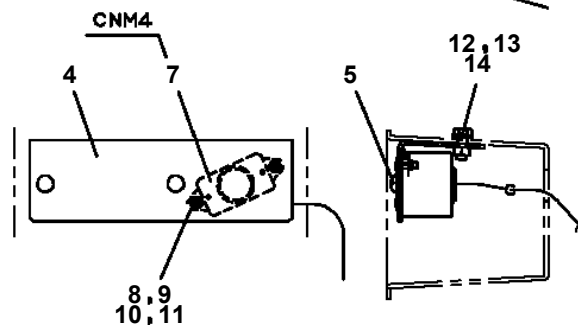
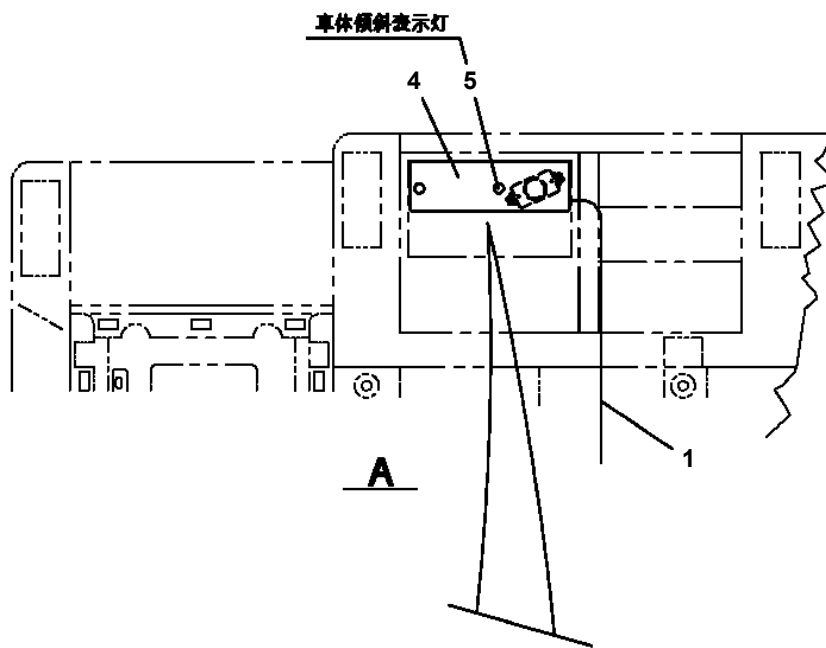
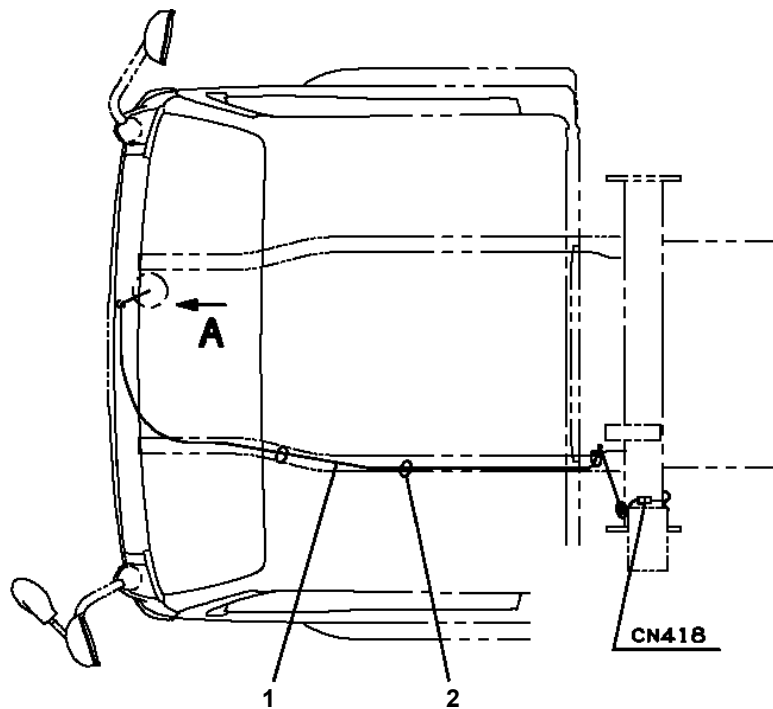
AT-110-5 42084532846 UPPER,LOWER,HINO TPG-XZU600X-TYTMC6
PE5060027-01 ELEC.ASSY,BUCKET



配線接続図



AT-110-5 42084532846 UPPER,LOWER,HINO TPG-XZU600X-TYTMC6
 PE5070048-02 ELEC.ASSY,CARRIER



AT-110-5 42084532846 UPPER,LOWER,HINO TPG-XZU600X-TYTMC6

Pos No.	Parts No	Parts Name	Qty	Unit	Technical Data	Serial No (Start)	Serial No (End)	Remarks	Pages
1	42357570101	COVER	1						
2	90101208014	BOLT	3		M8X14				
3	90303070801	WASHER,PLAIN	5		8				
4	90302040801	WASHER,SPRING	4		8				
5	90201200800	NUT	1		M8				
6	91850400601	CLAMP	1						
7	91810132530	FASTENER	10						
8	82100002011	CLAMP	3		WRC15				
9	82100002052	CLAMP	2						
10	90201200600	NUT	2		M6				
11	90302040601	WASHER,SPRING	2		6				
14	90102206018	BOLT	3		M6X18				
16	91850400801	CLAMP	1						

AT-110-5 42084532846 UPPER,LOWER,HINO TPG-XZU600X-TYTMC6

Pos No.	Parts No	Parts Name	Qty	Unit	Technical Data	Serial No (Start)	Serial No (End)	Remarks	Pa
1	42972612000	GUARD (ASSY ONLY)	1						
2	90101208012	BOLT	4		M8X12				
3	90302040801	WASHER,SPRING	4		8				
4	90303070801	WASHER,PLAIN	4		8				

AT-110-5 42084532846 UPPER,LOWER,HINO TPG-XZU600X-TYTMC6

Pos No.	Parts No	Parts Name	Qty	Unit	Technical Data	Serial No (Start)	Serial No (End)	Remarks	Pages
1	42974340100	GUARD	1						
2	42974340200	GUARD	1						

AT-110-5 42084532846 UPPER,LOWER,HINO TPG-XZU600X-TYTMC6

Pos No.	Parts No	Parts Name	Qty	Unit	Technical Data	Serial No (Start)	Serial No (End)	Remarks	Pages
1	42739962100	VIEW SYSTEM	1						000128
2	91810130240	FASTENER	10						

AT-110-5 42084532846 UPPER,LOWER,HINO TPG-XZU600X-TYTMC6

Pos No.	Parts No	Parts Name	Qty	Unit	Technical Data	Serial No (Start)	Serial No (End)	Remarks	I
1	(*****)	VIEW SYSTEM (MONITOR)	1						0
2	(*****)	VIEW SYSTEM (CAMERA)	1						0

AT-110-5 42084532846 UPPER,LOWER,HINO TPG-XZU600X-TYTMC6

Pos No.	Parts No	Parts Name	Qty	Unit	Technical Data	Serial No (Start)	Serial No (End)	Remarks	Pages
100	42936480101	HARNESS	1						

AT-110-5 42084532846 UPPER,LOWER,HINO TPG-XZU600X-TYTMC6

Pos No.	Parts No	Parts Name	Qty	Unit	Technical Data	Serial No (Start)	Serial No (End)	Remarks	Pages
1	42508783600	HARNESS	1						

AT-110-5 42084532846 UPPER,LOWER,HINO TPG-XZU600X-TYTMC6

Pos No.	Parts No	Parts Name	Qty	Unit	Technical Data	Serial No (Start)	Serial No (End)	Remarks	Pages
100	42839071100	HARNESS	1						
	42839071100	HARNESS	1						

AT-110-5 42084532846 UPPER,LOWER,HINO TPG-XZU600X-TYTMC6

Pos No.	Parts No	Parts Name	Qty	Unit	Technical Data	Serial No (Start)	Serial No (End)	Remarks	Pages
100	42501080100	HARNESS	1						

AT-110-5 42084532846 UPPER,LOWER,HINO TPG-XZU600X-TYTMC6

Pos No.	Parts No	Parts Name	Qty	Unit	Technical Data	Serial No (Start)	Serial No (End)	Remarks	Pages
100	42973100101	HARNESS	1						

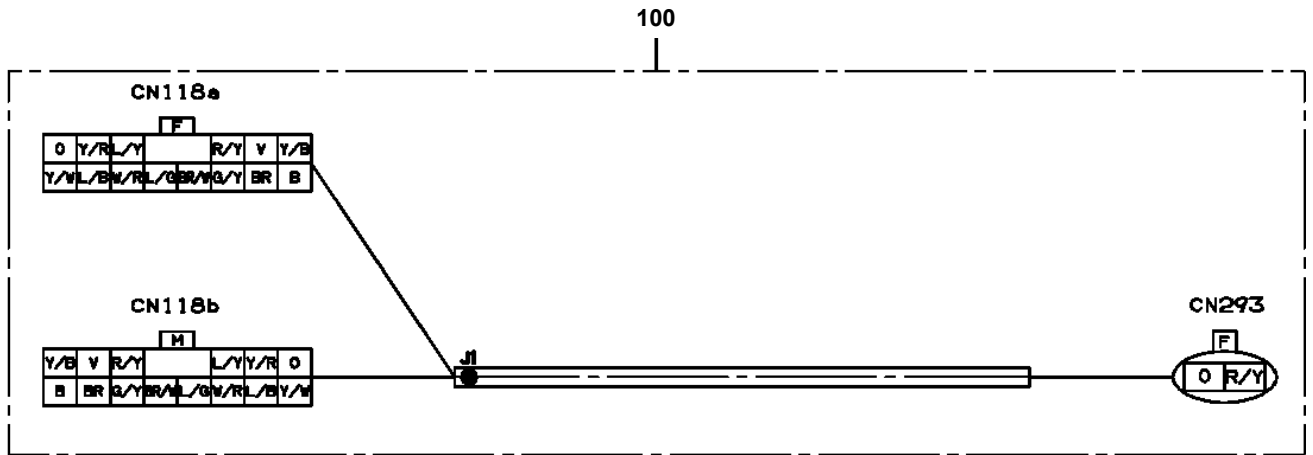
AT-110-5 42084532846 UPPER,LOWER,HINO TPG-XZU600X-TYTMC6

Pos No.	Parts No	Parts Name	Qty	Unit	Technical Data	Serial No (Start)	Serial No (End)	Remarks	Pages
100	42512391100	HARNESS	1						

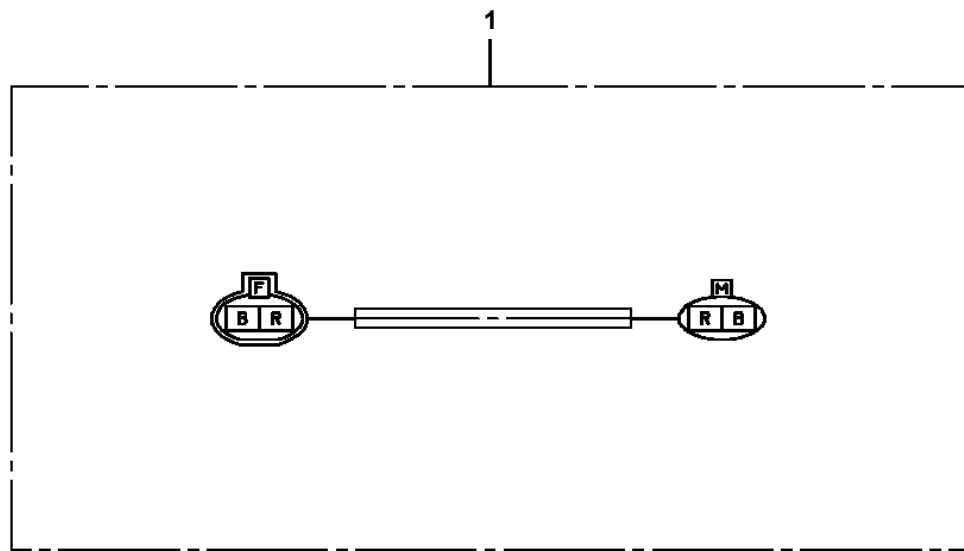
AT-110-5 42084532846 UPPER,LOWER,HINO TPG-XZU600X-TYTMC6

Pos No.	Parts No	Parts Name	Qty	Unit	Technical Data	Serial No (Start)	Serial No (End)	Remarks	Pages
1	82182809623	DIODE	1						
19	82174103527	FUSE	1		65A				
37	82181809981	RESISTANCE	1						
39	82100001839	FUSE	2		10A.RED				
100	42974061100	HARNESS	1						

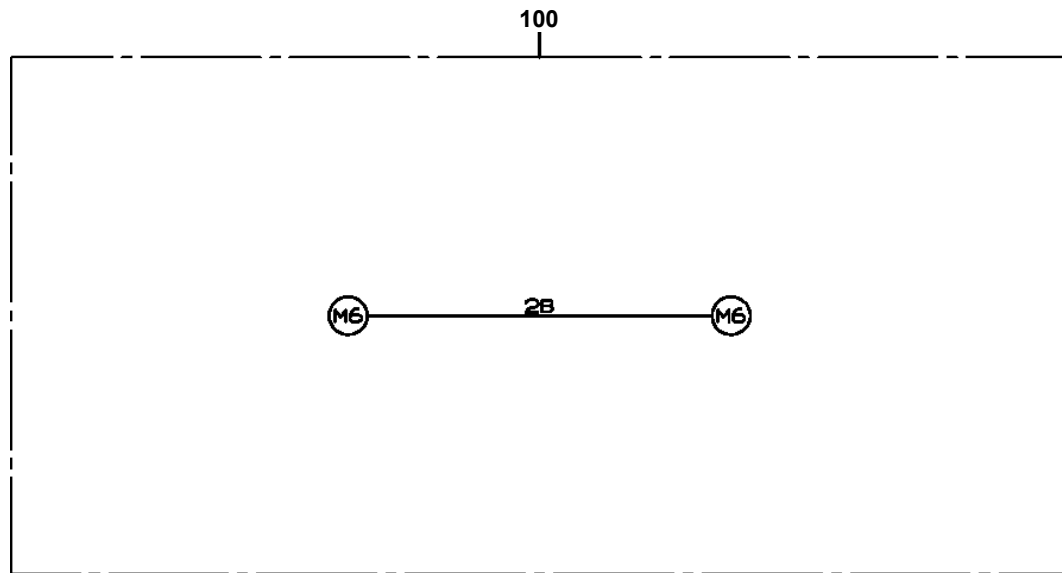
AT-110-5 42084532846 UPPER,LOWER,HINO TPG-XZU600X-TYTMC6
 PH5033743-00 HARNESS



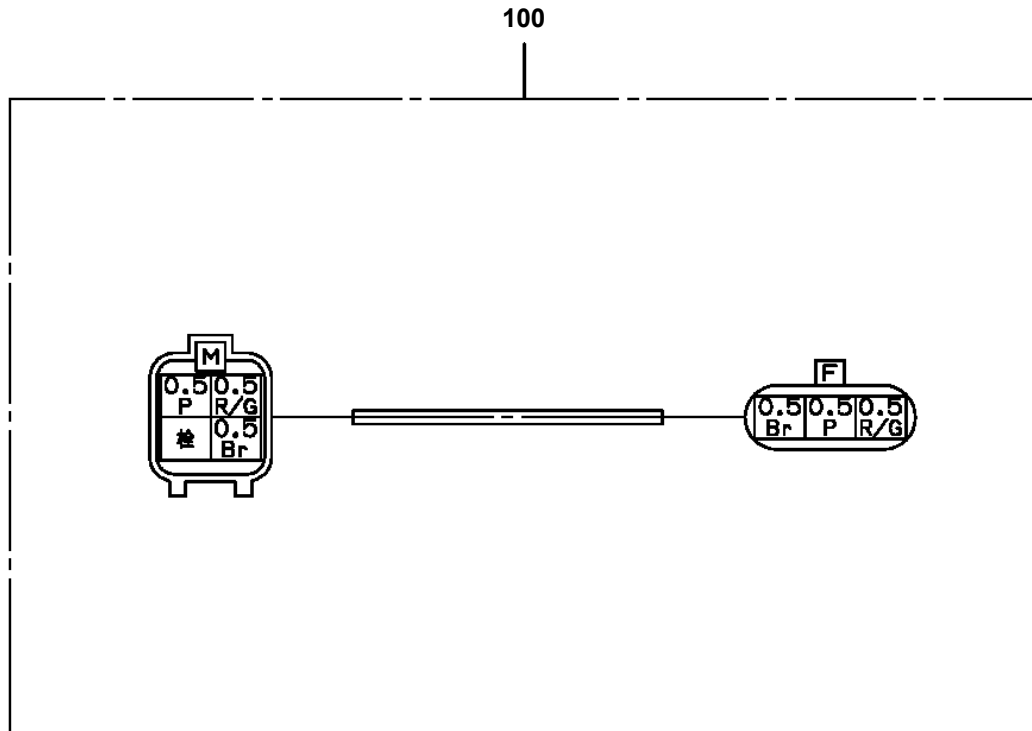
AT-110-5 42084532846 UPPER,LOWER,HINO TPG-XZU600X-TYTMC6
PH5034148-00 HARNESS



AT-110-5 42084532846 UPPER,LOWER,HINO TPG-XZU600X-TYTMC6
PH5034167-00 HARNESS

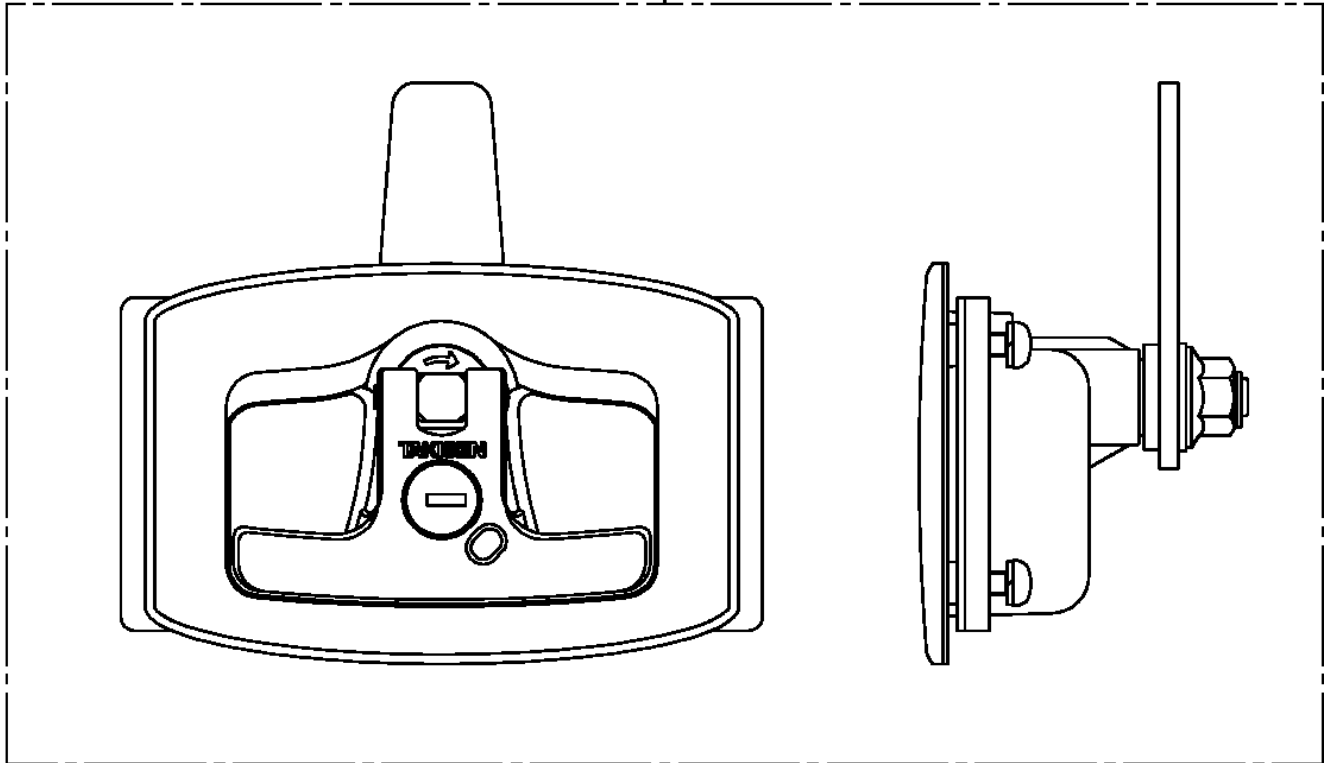


AT-110-5 42084532846 UPPER,LOWER,HINO TPG-XZU600X-TYTMC6
PH5034175-00 HARNESS



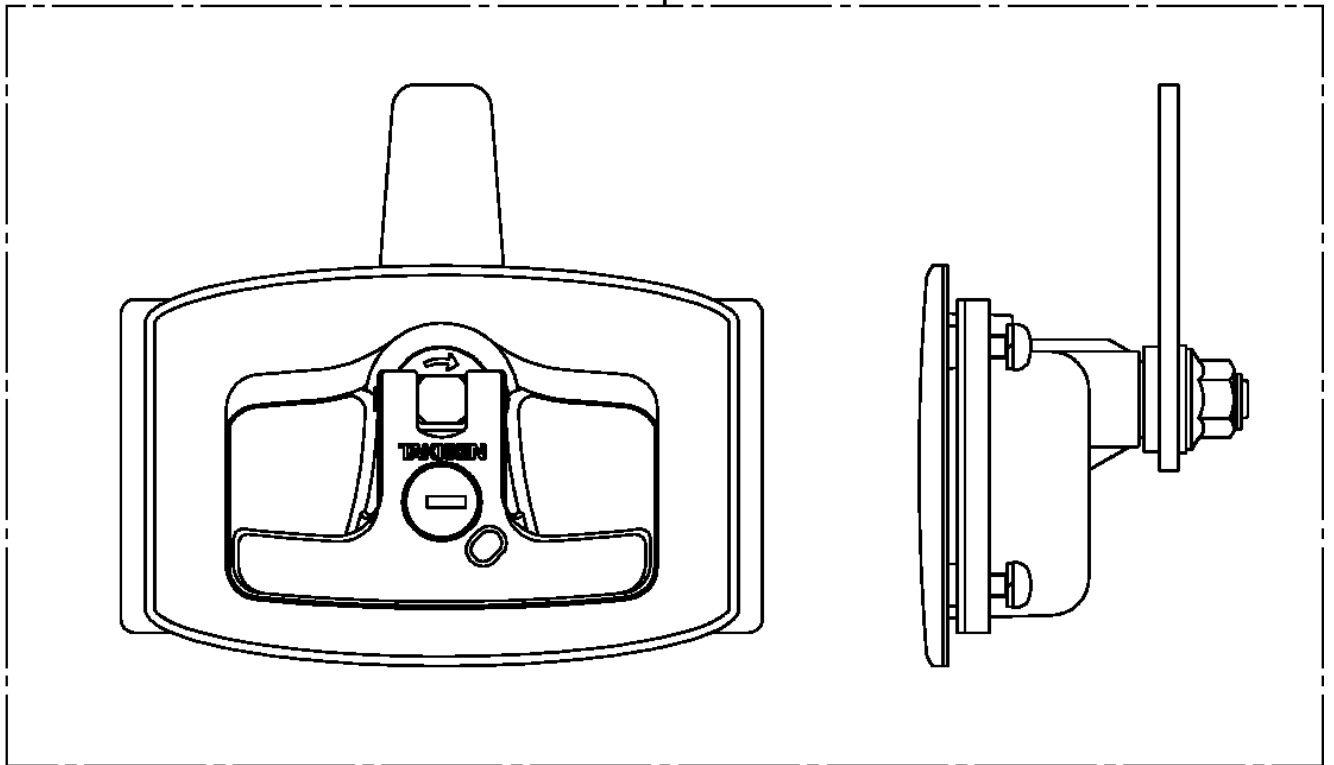
AT-110-5 42084532846 UPPER,LOWER,HINO TPG-XZU600X-TYTMC6
PH5190001-00 HANDLE

1



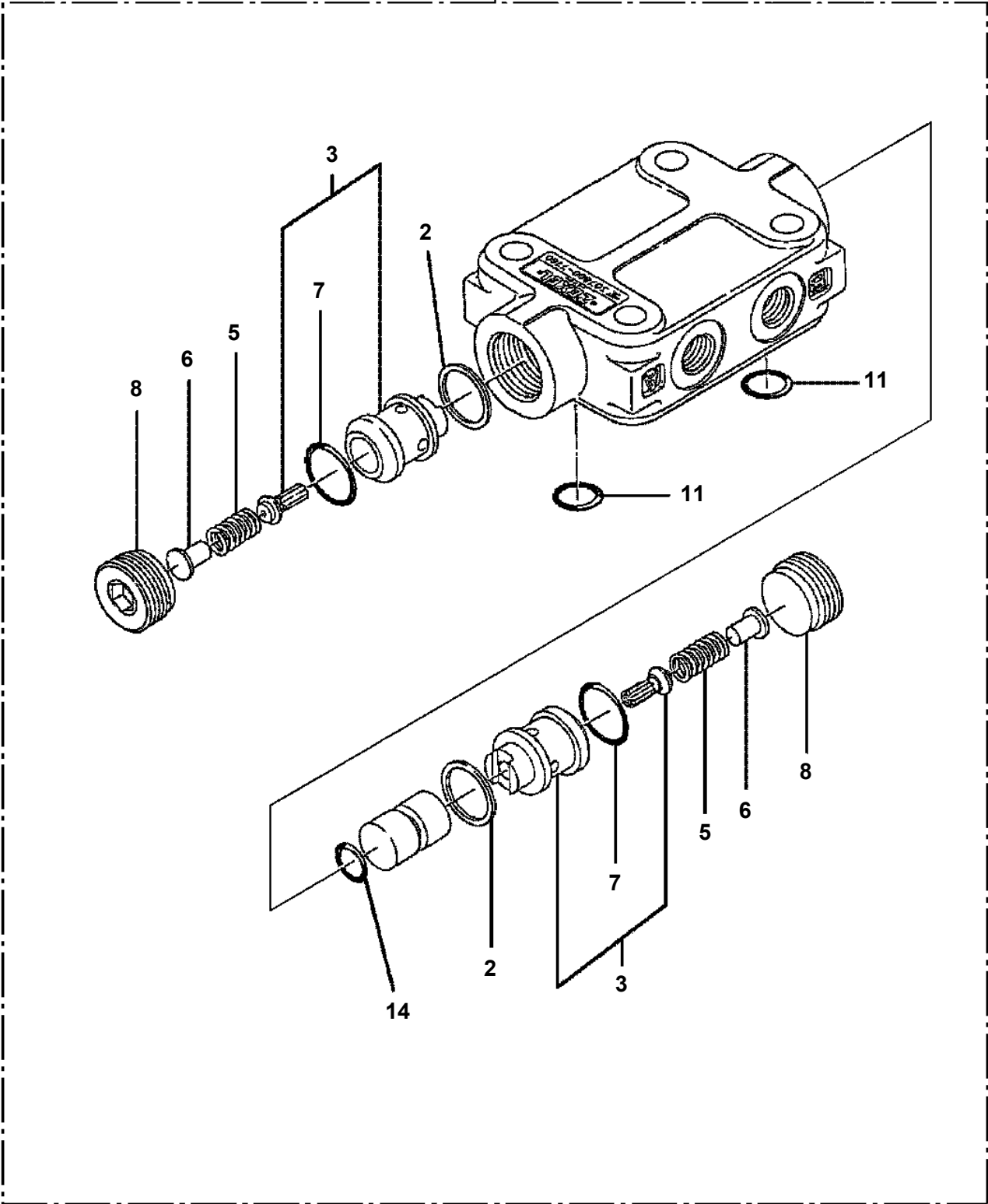
AT-110-5 42084532846 UPPER,LOWER,HINO TPG-XZU600X-TYTMC6
PH5190001-00 HANDLE

1

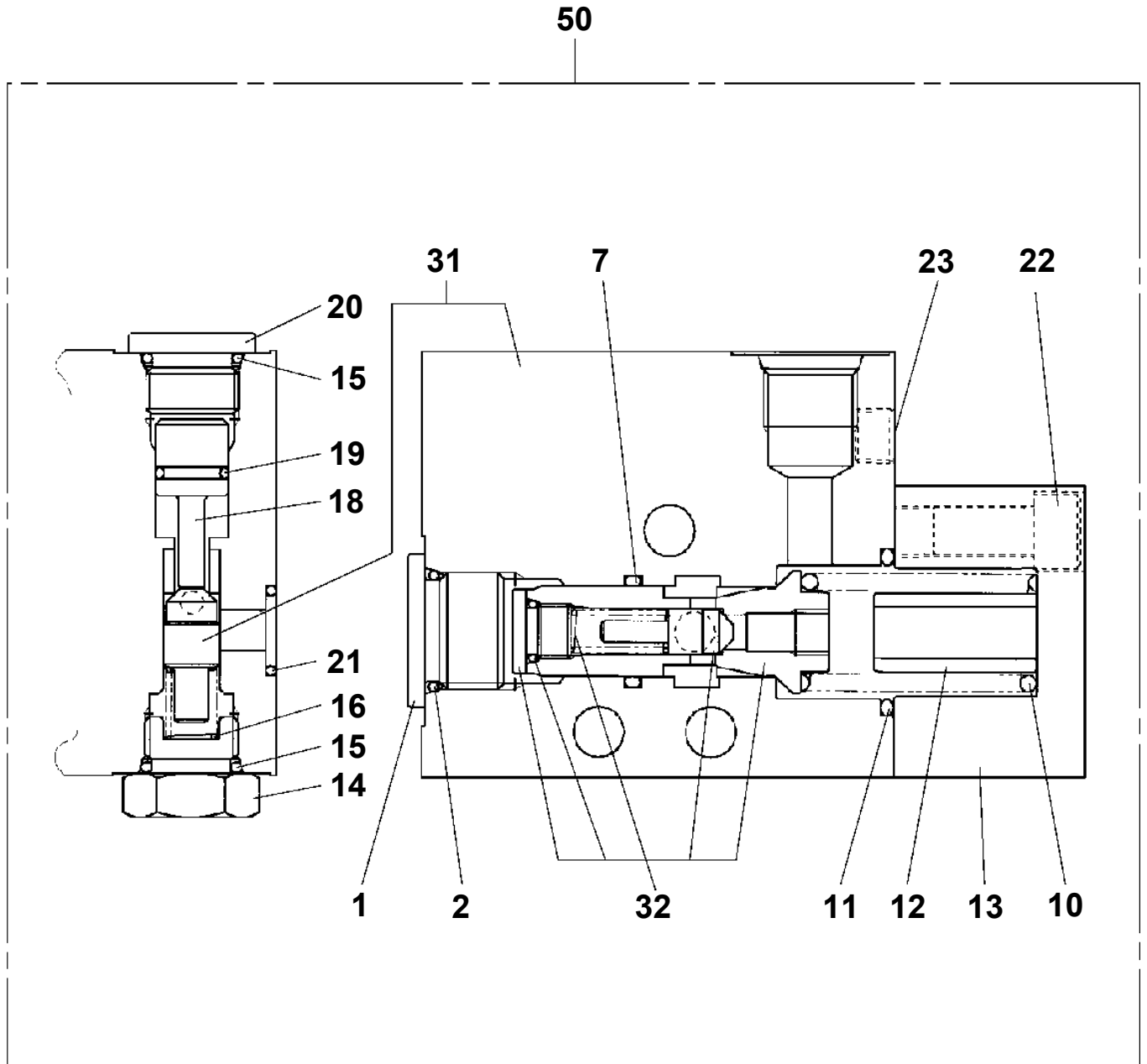


AT-110-5 42084532846 UPPER,LOWER,HINO TPG-XZU600X-TYTMC6
PI1140133-01 VALVE,CHECK

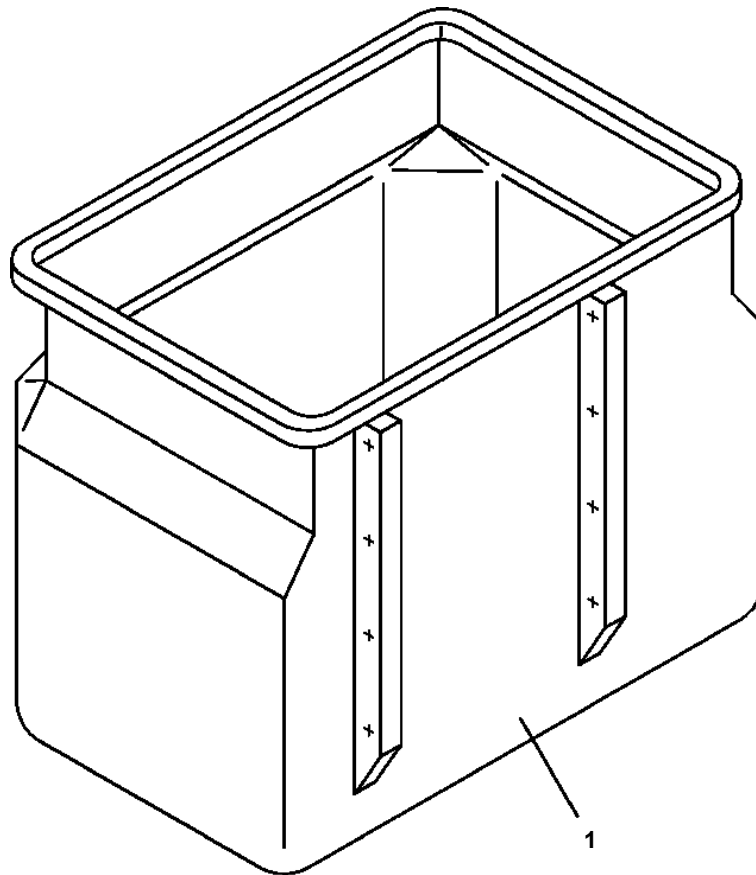
100 → (A)



AT-110-5 42084532846 UPPER,LOWER,HINO TPG-XZU600X-TYTMC6
PI1250137-00 VALVE,COUNTERBALANCE



**AT-110-5 42084532846 UPPER,LOWER,HINO TPG-XZU600X-TYTMC6
PJ3010199-00 BUCKET (WHITE/WITHOUT BOSS)**



CLICK HERE TO **DOWNLOAD** THE COMPLETE MANUAL

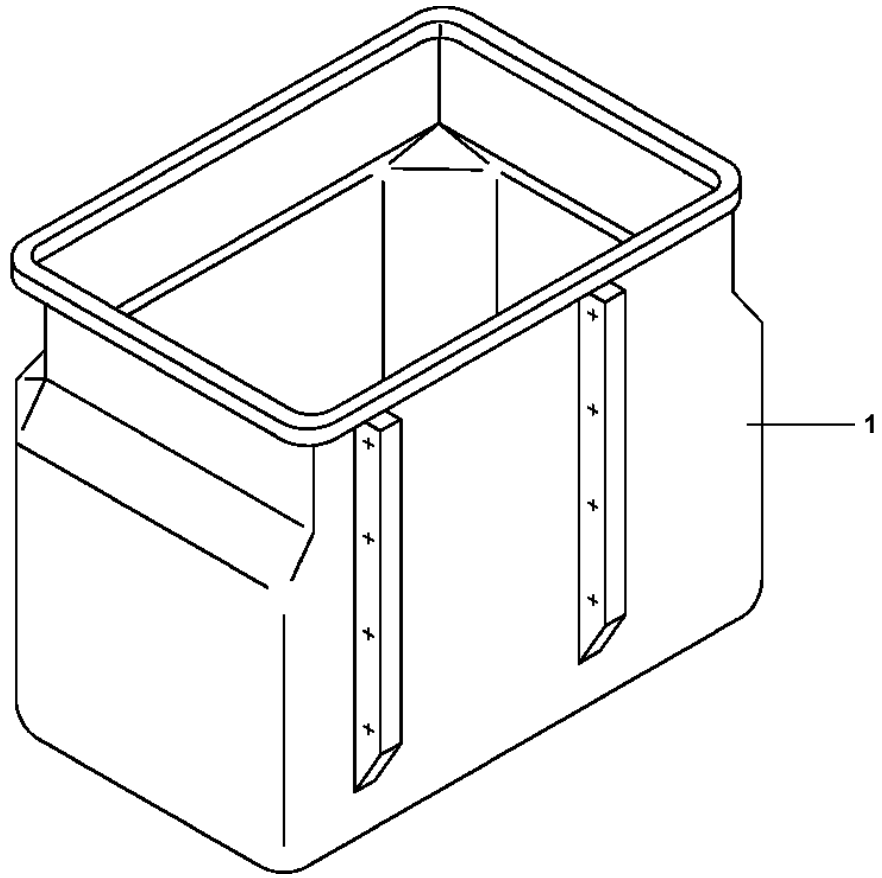
- Thank you very much for reading the preview of the manual.
- You can download the complete manual from: www.heydownloads.com by clicking the link below



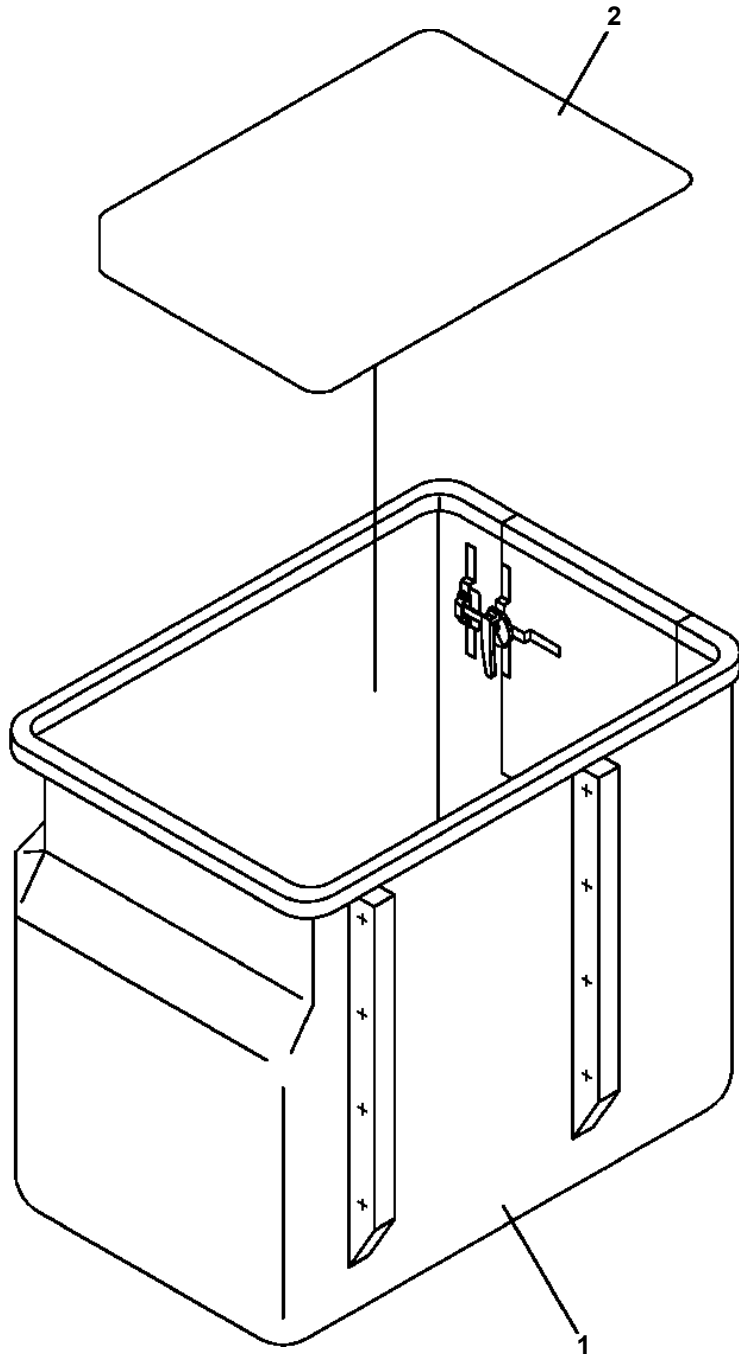
- Please note: If there is no response to CLICKING the link, please download this PDF first and then click on it.

CLICK HERE TO **DOWNLOAD** THE COMPLETE MANUAL

**AT-110-5 42084532846 UPPER,LOWER,HINO TPG-XZU600X-TYTMC6
PJ3010299-00 BUCKET (WITH BOSS ON ONE SIDE)**

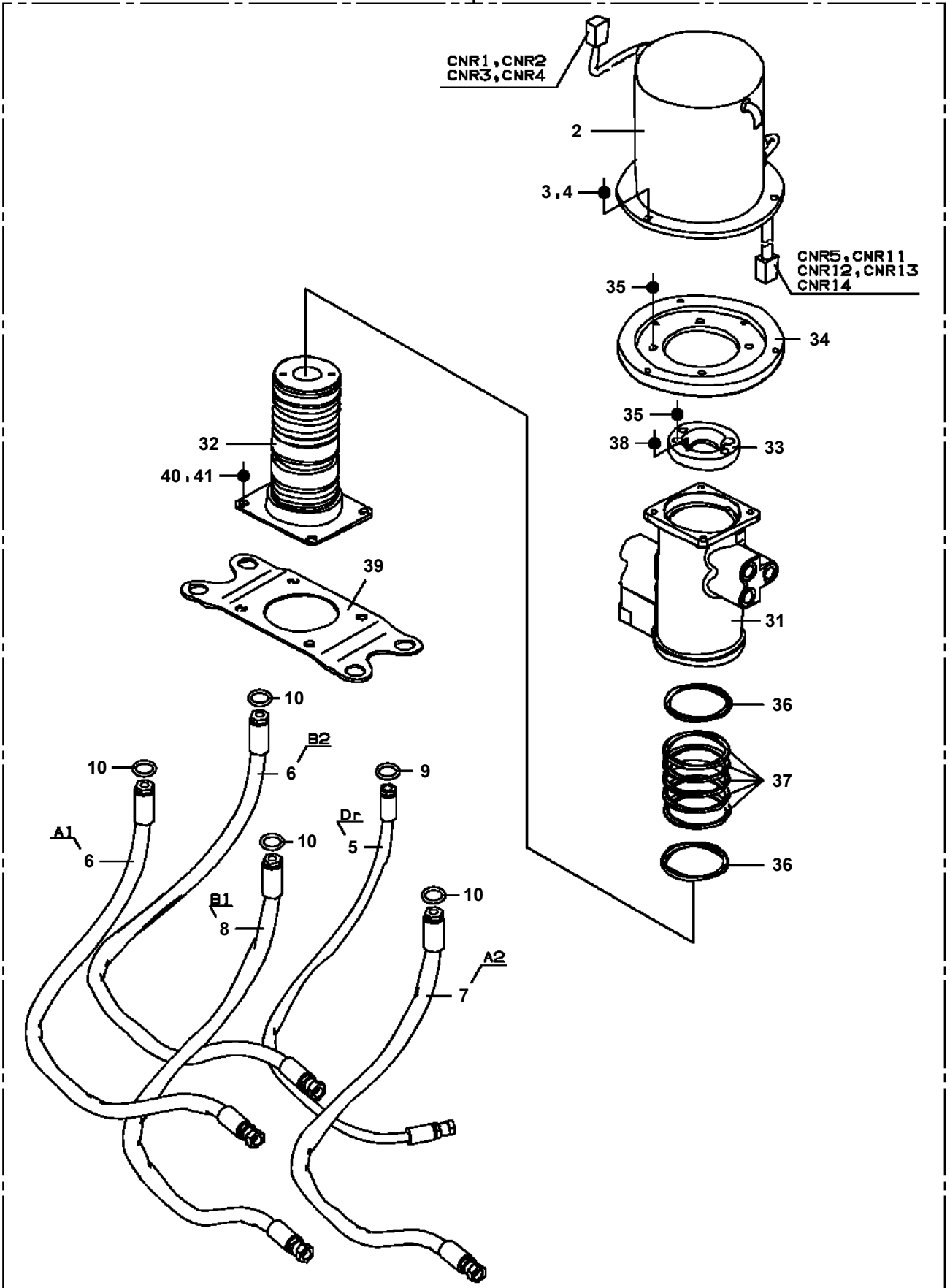


**AT-110-5 42084532846 UPPER,LOWER,HINO TPG-XZU600X-TYTMC6
PJ3010364-00 BUCKET (WHITE/WITH DOOR)**

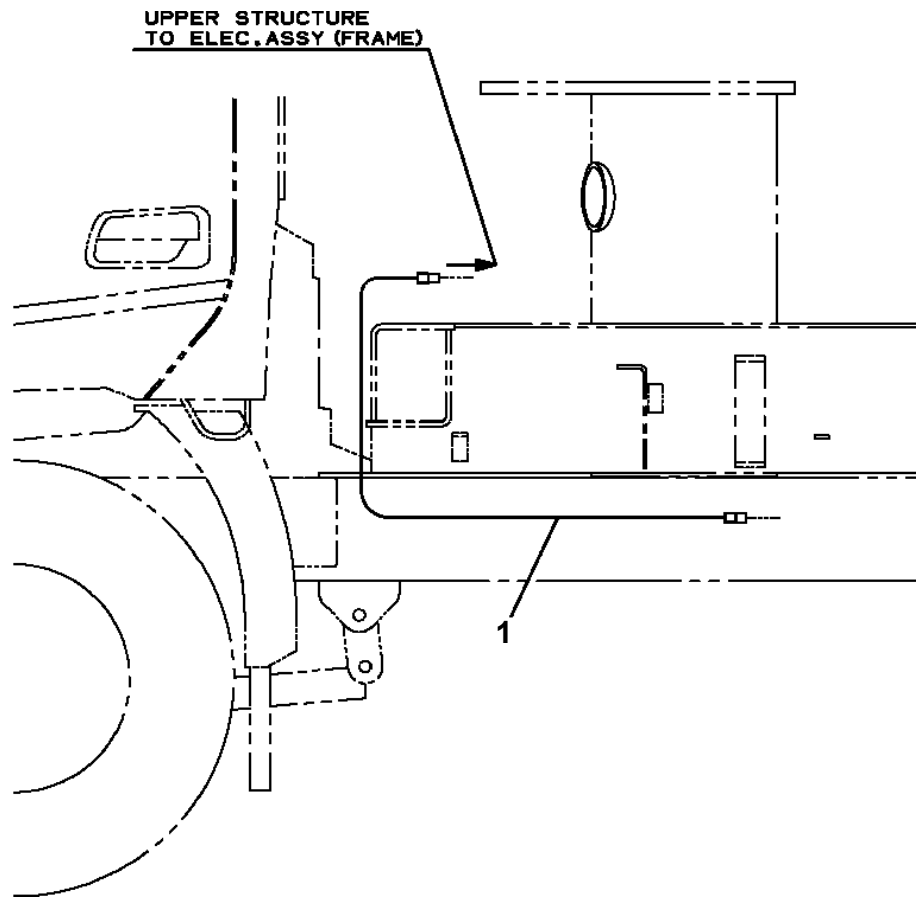


AT-110-5 42084532846 UPPER,LOWER,HINO TPG-XZU600X-TYTMC6
PJ5090039-00 JOINT ASSY,SWIVEL

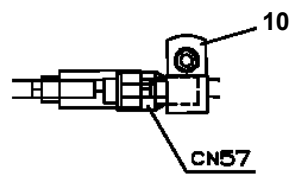
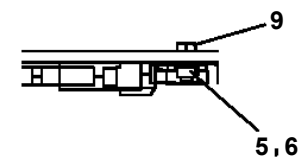
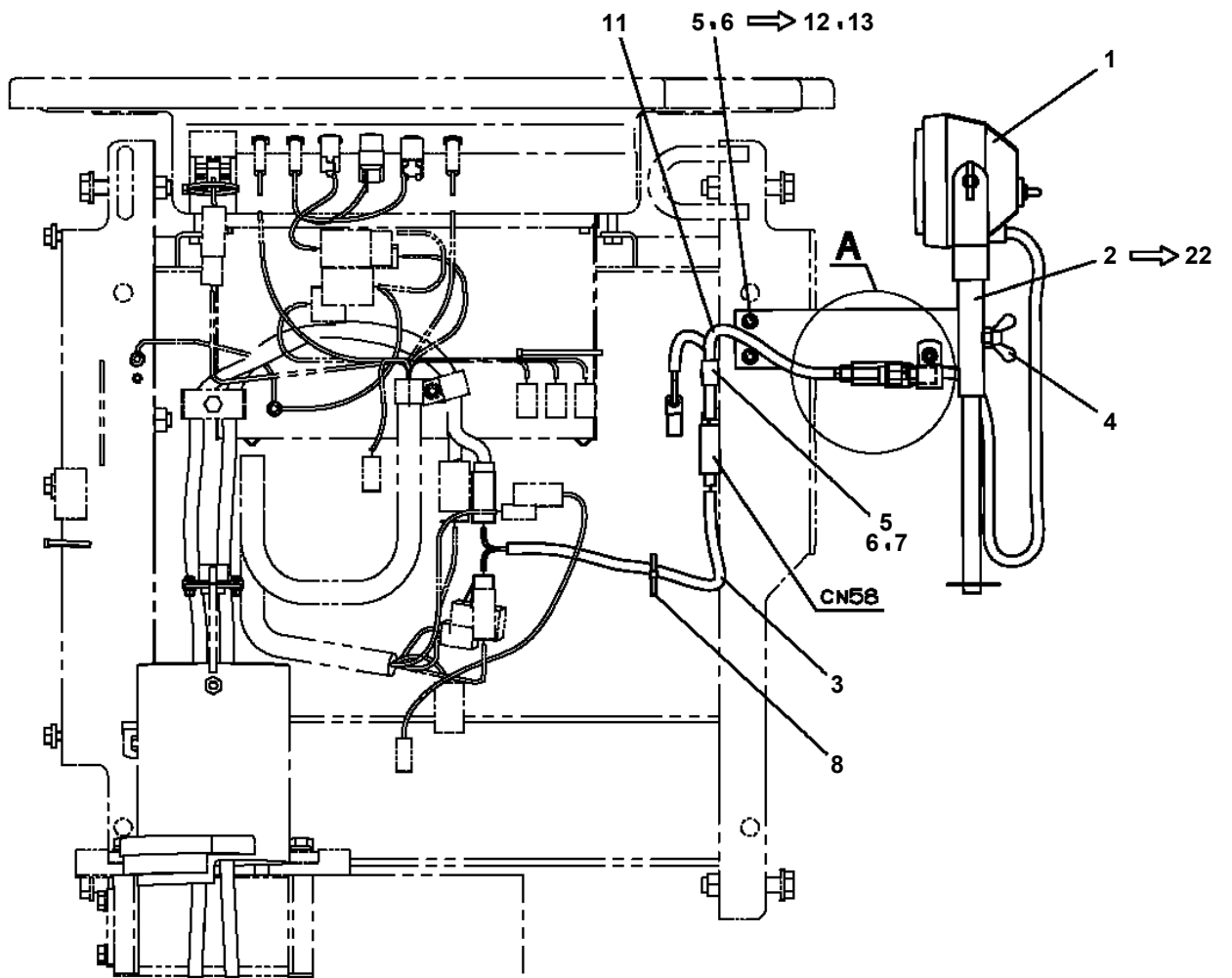
100



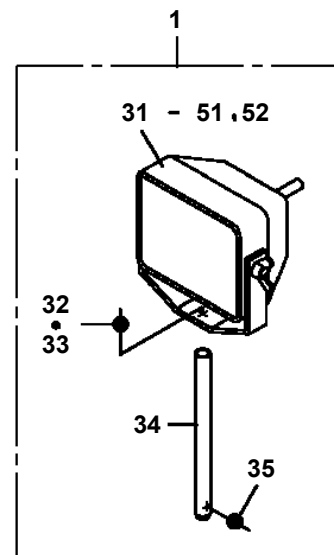
**AT-110-5 42084532846 UPPER,LOWER,HINO TPG-XZU600X-TYTMC6
PL1031085-00 OPE.ASSY,ACCELERATOR**



AT-110-5 42084532846 UPPER,LOWER,HINO TPG-XZU600X-TYTMC6
PL5140007-02 LAMP ASSY,WORKING (UPPER/HALOGEN)



A



AT-110-5 42084532846 UPPER,LOWER,HINO TPG-XZU600X-TYTMC6

Pos No.	Parts No	Parts Name	Qty	Unit	Technical Data	Serial No (Start)	Serial No (End)	Remarks
101	42837377580	ACTUATOR	2					
	42837377580	ACTUATOR	2					
102	42837377590	LOCK ASSY	2					
	42837377590	LOCK ASSY	2					
103	42837377600	SUPPORT	2					
	42837377600	SUPPORT	2					
104	42837377610	LINK	1					
	42837377610	LINK	1					
105	42837377620	LINK	1					
	42837377620	LINK	1					
106	42837377630	STOPPER	2					
	42837377630	STOPPER	2					
107	42837377640	NUT	2					
	42837377640	NUT	2					
108	42837377650	BEARING	2					
	42837377650	BEARING	2					
109	42837377660	PLATE	4					
	42837377660	PLATE	4					
110	42837377670	SPACER	2					
	42837377670	SPACER	2					
111	42837377680	SCREW,MACHINE	6		M4X20			
	42837377680	SCREW,MACHINE	6		M4X20			
112	42837377690	SCREW,MACHINE	2		M4X16			
	42837377690	SCREW,MACHINE	2		M4X16			
113	32830487740	SCREW,MACHINE (SEMS)	2		M4X10			
	32830487740	SCREW,MACHINE (SEMS)	2		M4X10			
114	42837377700	SCREW,MACHINE	6		M4X8			
	42837377700	SCREW,MACHINE	6		M4X8			
115	42837377710	SCREW,MACHINE	4		M4X12			
	42837377710	SCREW,MACHINE	4		M4X12			
116	42837377720	SCREW,MACHINE	4		M4X14			
	42837377720	SCREW,MACHINE	4		M4X14			
117	42837377730	WASHER,PLAIN	14		M4			
	42837377730	WASHER,PLAIN	14		M4			
118	42837377740	WASHER,SPRING	20		M4			
	42837377740	WASHER,SPRING	20		M4			
119	42837377750	NUT	6		M4			
	42837377750	NUT	6		M4			
120	42837377850	LOCK ASSY	1					
	42837377850	LOCK ASSY	1					
121	42837377860	U-NUT	2					
	42837377860	U-NUT	2					
200	42837377520	LOCK ASSY	1					
	42837377520	LOCK ASSY	1					

AT-110-5 42084532846 UPPER,LOWER,HINO TPG-XZU600X-TYTMC6

Pos No.	Parts No	Parts Name	Qty	Unit	Technical Data	Serial No (Start)	Serial No (End)
1	42839551050	LOCK ASSY (U9SL99-2,ASSY ONLY)	2				
2	82460027206	HANDLE	2				

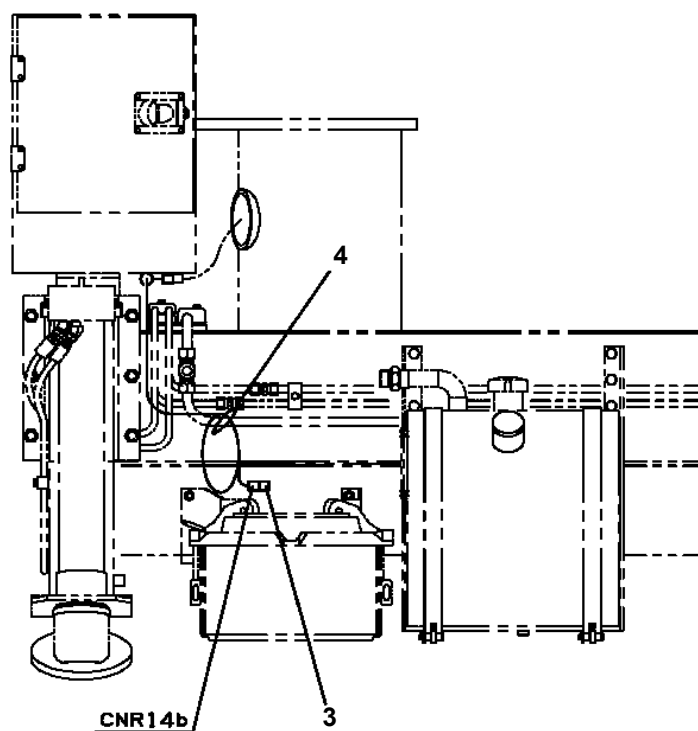
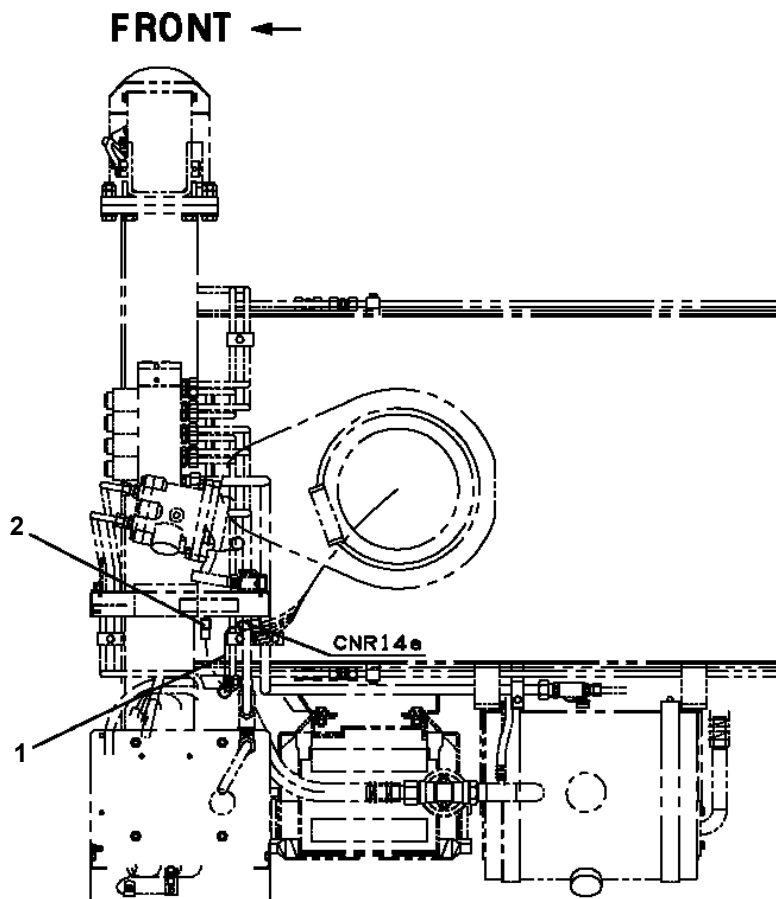
AT-110-5 42084532846 UPPER,LOWER,HINO TPG-XZU600X-TYTMC6

Pos No.	Parts No	Parts Name	Qty	Unit	Technical Data	Serial No (Start)	Serial No (End)
1	42839551100	LOCK ASSY (U9SL99-2,ASSY ONLY)	2				
2	82460027211	HANDLE	2				

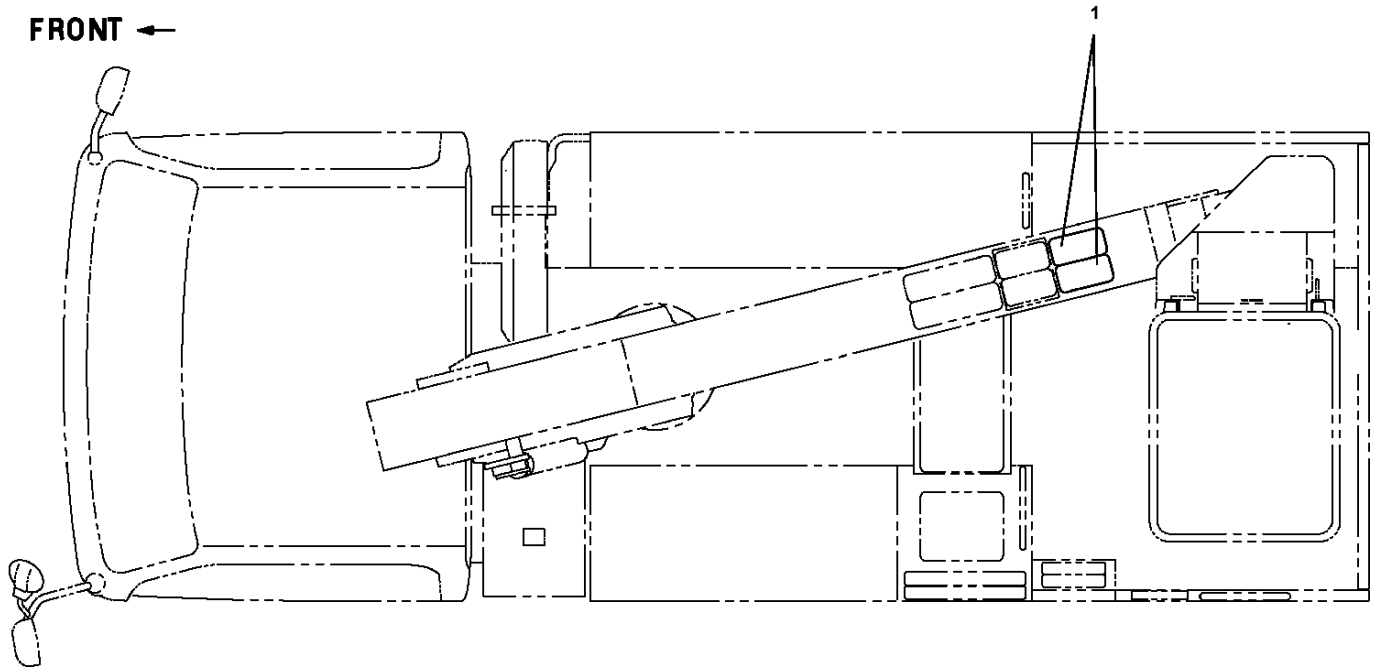
AT-110-5 42084532846 UPPER,LOWER,HINO TPG-XZU600X-TYTMC6

Pos No.	Parts No	Parts Name	Qty	Unit	Technical Data	Serial No (Start)	Serial No (End)	Remarks	Pages
1	42503742010	PLATE	2		T=16				
2	42503100200	PLATE	2						

AT-110-5 42084532846 UPPER,LOWER,HINO TPG-XZU600X-TYTMC6
PN1014285-00 ELEC.ASSY (INVERTER)



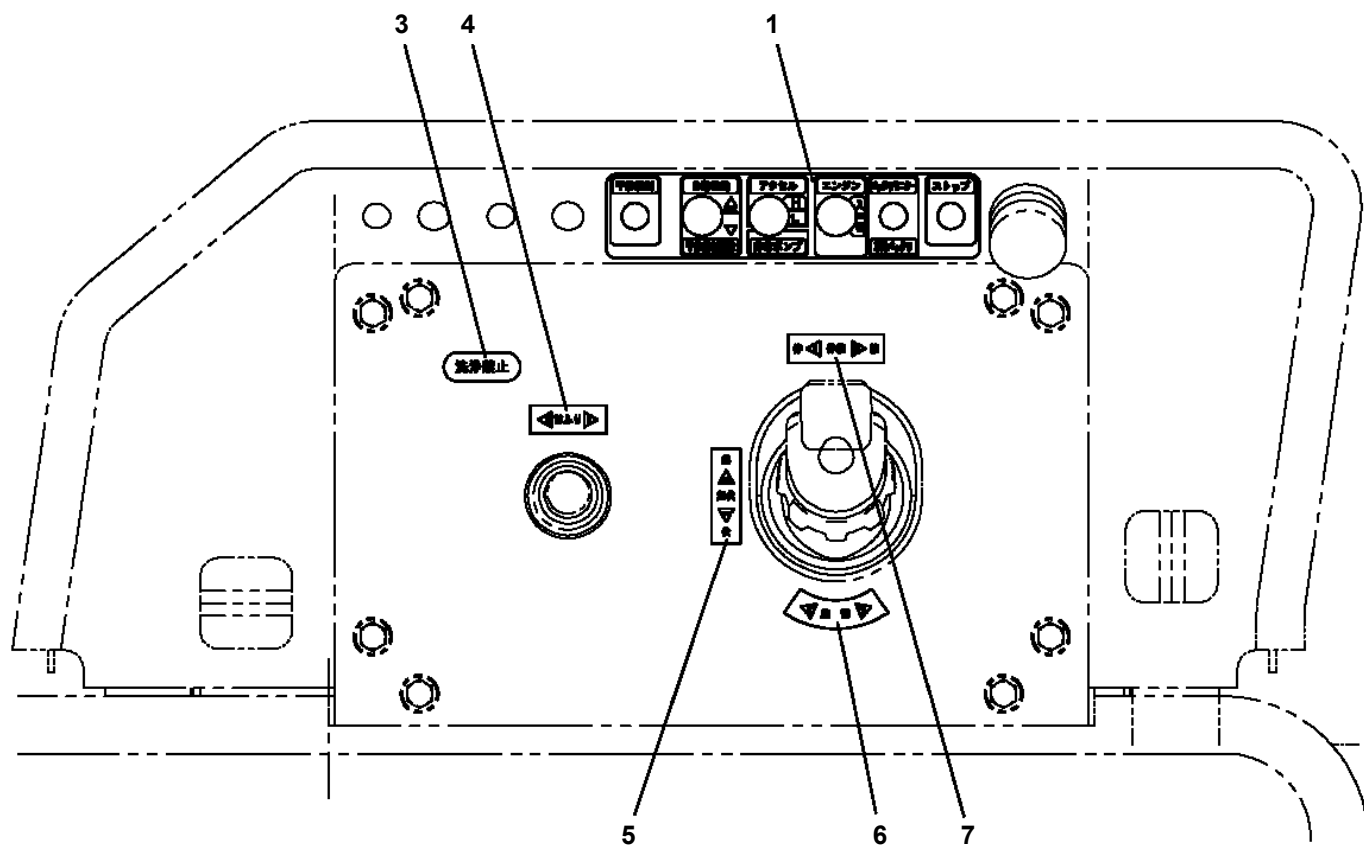
**AT-110-5 42084532846 UPPER,LOWER,HINO TPG-XZU600X-TYTMC6
PN5010521-00 NAME PLATE ASSY (NON-SLIP/BOOM UPPER)**



AT-110-5 42084532846 UPPER,LOWER,HINO TPG-XZU600X-TYTMC6

Pos No.	Parts No	Parts Name	Qty	Unit	Technical Data	Serial No (Start)	Serial No (End)	Remarks	Pages
1	42391860700	REFLECTOR (RED)	2						

AT-110-5 42084532846 UPPER,LOWER,HINO TPG-XZU600X-TYTMC6
PN5010752-00 NAME PLATE ASSY (BUCKET CONTROL)



AT-110-5 42084532846 UPPER,LOWER,HINO TPG-XZU600X-TYTMC6

Pos No.	Parts No	Parts Name	Qty	Unit	Technical Data	Serial No (Start)	Serial No (End)	Remarks	Pages
1	82444100400	PLATE,NAME	1						

AT-110-5 42084532846 UPPER,LOWER,HINO TPG-XZU600X-TYTMC6

Pos No.	Parts No	Parts Name	Qty	Unit	Technical Data	Serial No (Start)	Serial No (End)	Remarks	Pages
1	42397246010	PLATE (NON-SLIP)	1						
2	34393926550	PLATE (NON-SLIP)	1						
3	42833782010	PLATE (NON-SLIP)	2						

AT-110-5 42084532846 UPPER,LOWER,HINO TPG-XZU600X-TYTMC6

Pos No.	Parts No	Parts Name	Qty	Unit	Technical Data	Serial No (Start)	Serial No (End)	Rem
3	90451700100	SCREW,TAPPING	4		M4X6.4			
	90451700100	SCREW,TAPPING	4		M4X6.4			
4	42591522010	PLATE,NAME (FUSE)	1					
	42591522010	PLATE,NAME (FUSE)	1					
5	37002216230	PLATE,NAME (HIGH/LOW)	1					
	37002216230	PLATE,NAME (HIGH/LOW)	1					
6	34393926530	PLATE (NON-SLIP)	1					
	34393926530	PLATE (NON-SLIP)	1					
7	42394271100	PLATE (NON-SLIP)	1					
	42394271100	PLATE (NON-SLIP)	1					
8	34393926540	PLATE (NON-SLIP)	2					
	34393926540	PLATE (NON-SLIP)	2					
9	42393891070	PLATE (NON-SLIP)	2					
	42393891070	PLATE (NON-SLIP)	2					
10	42397246010	PLATE (NON-SLIP)	2					
	42397246010	PLATE (NON-SLIP)	2					
11	34393926550	PLATE (NON-SLIP)	1					
	34393926550	PLATE (NON-SLIP)	1					
12	42834433300	PLATE (NON-SLIP)	2					
	42834433300	PLATE (NON-SLIP)	2					
13	42396111040	PLATE (NON-SLIP)	1					
	42396111040	PLATE (NON-SLIP)	1					
14	42398402080	PLATE (NON-SLIP)	1					
	42398402080	PLATE (NON-SLIP)	1					
15	42392000150	PLATE (NON-SLIP)	2					
	42392000150	PLATE (NON-SLIP)	2					
16	32940951010	PLATE (NON-SLIP)	2					
	32940951010	PLATE (NON-SLIP)	2					
31	37002228460	PLATE,NAME (BLUE & BLACK)	2					
	37002228460	PLATE,NAME (BLUE & BLACK)	2					
32	37002228470	PLATE,NAME (WHITE & WHITE)	2					
	37002228470	PLATE,NAME (WHITE & WHITE)	2					

AT-110-5 42084532846 UPPER,LOWER,HINO TPG-XZU600X-TYTMC6

Pos No.	Parts No	Parts Name	Qty	Unit	Technical Data	Serial No (Start)	S
1	42392350070	PLATE,CAUTION	2				
2	42397401080	PLATE,CAUTION (PREOPERATION CHECK)	1				
3	42397401210	PLATE,NAME (TOOL BOX)	2				
4	31397731040	PLATE,CAUTION	1				
5	42397982020	PLATE,NAME (EMERGENCY PUMP OPERATION)	2				
6	42397401020	PLATE,CAUTION (EMERGENCY SWITCH)	1				
7	42393891090	PLATE,CAUTION	1				
8	42397401050	PLATE,NAME (EMERGENCY STOP OPERATION)	1				
9	37002226530	PLATE,NAME	1				
10	37002212700	PLATE,NAME	1				
11	42590221040	PLATE,NAME (BOOM OPERATION)	2				
12	42391720040	PLATE,CAUTION	1				
13	42397401200	PLATE,NAME (CAUTION FOR TRAVELING)	2				
14	42397401060	PLATE,CAUTION (BUCKET HORIZONTAL ADJUST)	1				
15	42590591010	PLATE,NAME	1				
16	12117140000	PLATE,NAME (GREASE)	11				
18	42394441050	PLATE,CAUTION	1				
19	42331782100	PLATE,NAME	1				

**AT-110-5 42084532846 UPPER,LOWER,HINO TPG-XZU600X-TYTM C6
PN5012291-00 NAME PLATE ASSY (MITSUBISHI/BATTERY,INSIDE TOOL BOX)**

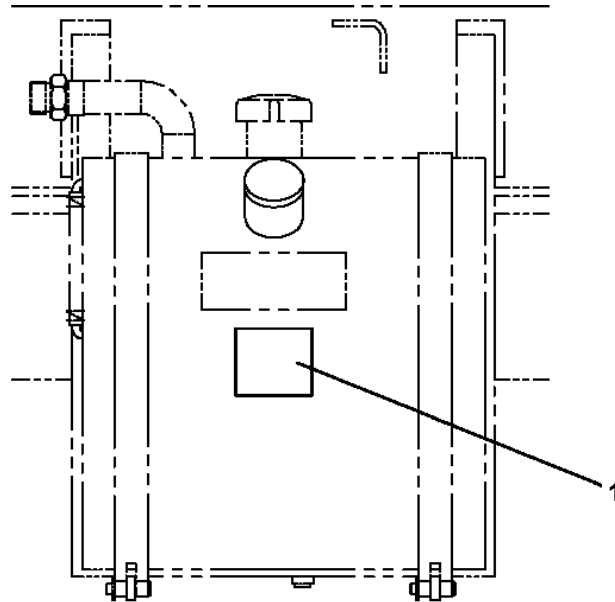
ネームプレートASSY (ミツビシ/バッテリー,ニターイナイヒターリシヨウ)
NAME PLATE ASSY (MITSUBISHI/BATTERY,INSIDE TOOL BOX)
110TTE (D) バケット積載200kg 三菱車架装専用

符号	日本語名称	英語名称	備考
1	ネームプレートASSY	NAME PLATE ASSY	車両全体銘板 三菱車架装専用
2	ネームプレートASSY	NAME PLATE ASSY	TADANO銘板、ノンスリッパ 他 三菱車架装専用
3	ネームプレートASSY	NAME PLATE ASSY	旋回マーク銘板
4	ネームプレートASSY	NAME PLATE ASSY	操作銘板
5	ネームプレートASSY	NAME PLATE ASSY	仕様銘板


適用製造番号によっては取り付けがないものもあります。

MACHINES OF SOME SERIAL NO. ARE NOT EQUIPPED WITH THESE PARTS.

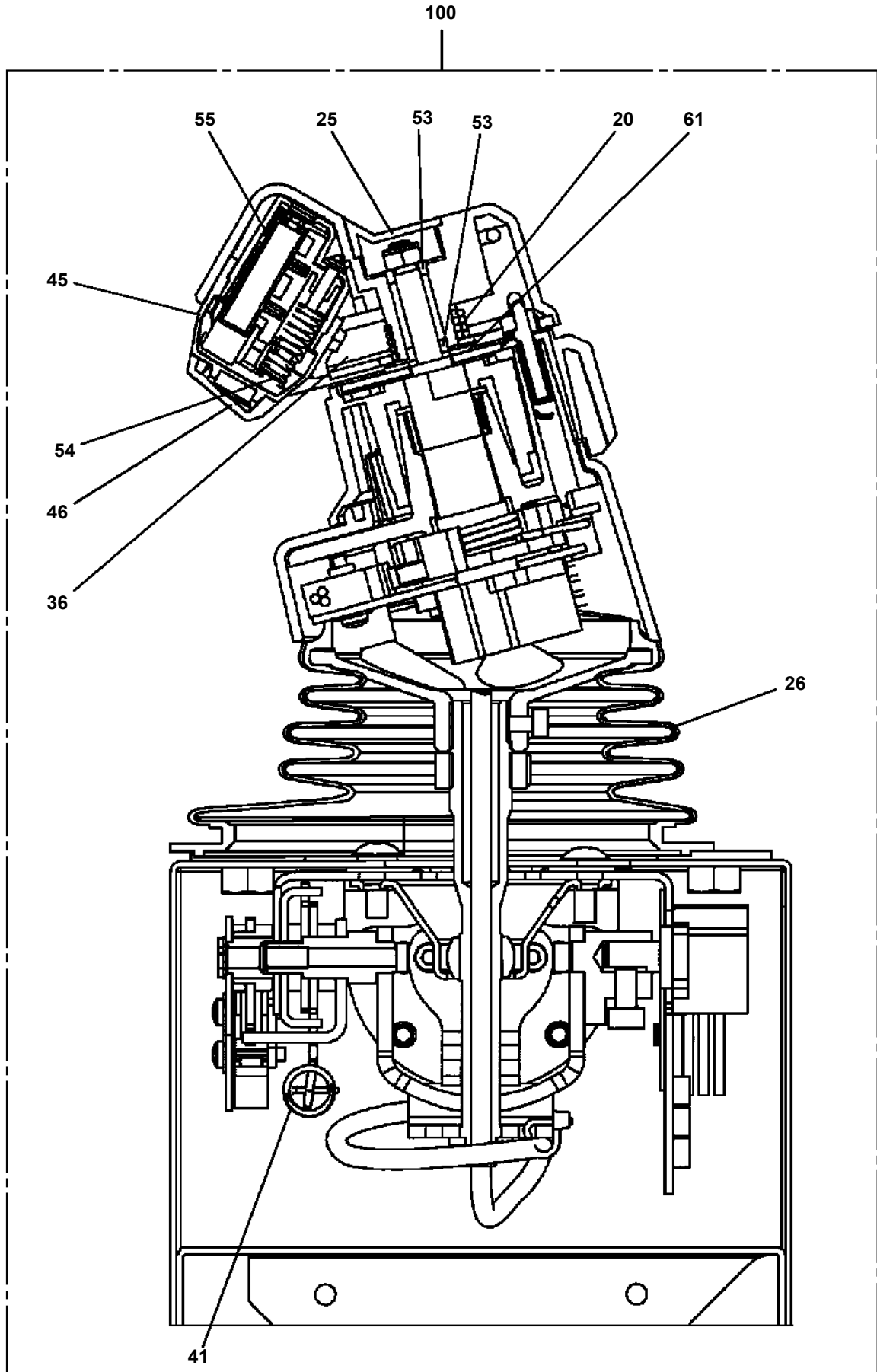
AT-110-5 42084532846 UPPER,LOWER,HINO TPG-XZU600X-TYTMC6
PO1013121-01 PLATE ASSY,NAME (HYDRAULIC OIL)



1

 注 意
<ul style="list-style-type: none">• ポンプの換付等により重大な故障の原因となるので、 "作動油"または"油圧ポンプ"を交換したときは、 必ず油圧ポンプのエア抜きを行ってください。• 油量は、必ず全行実測で確認してください。
純正作動油
タダノハイドロリックオイル LL
<small>370-022-17330-2</small>

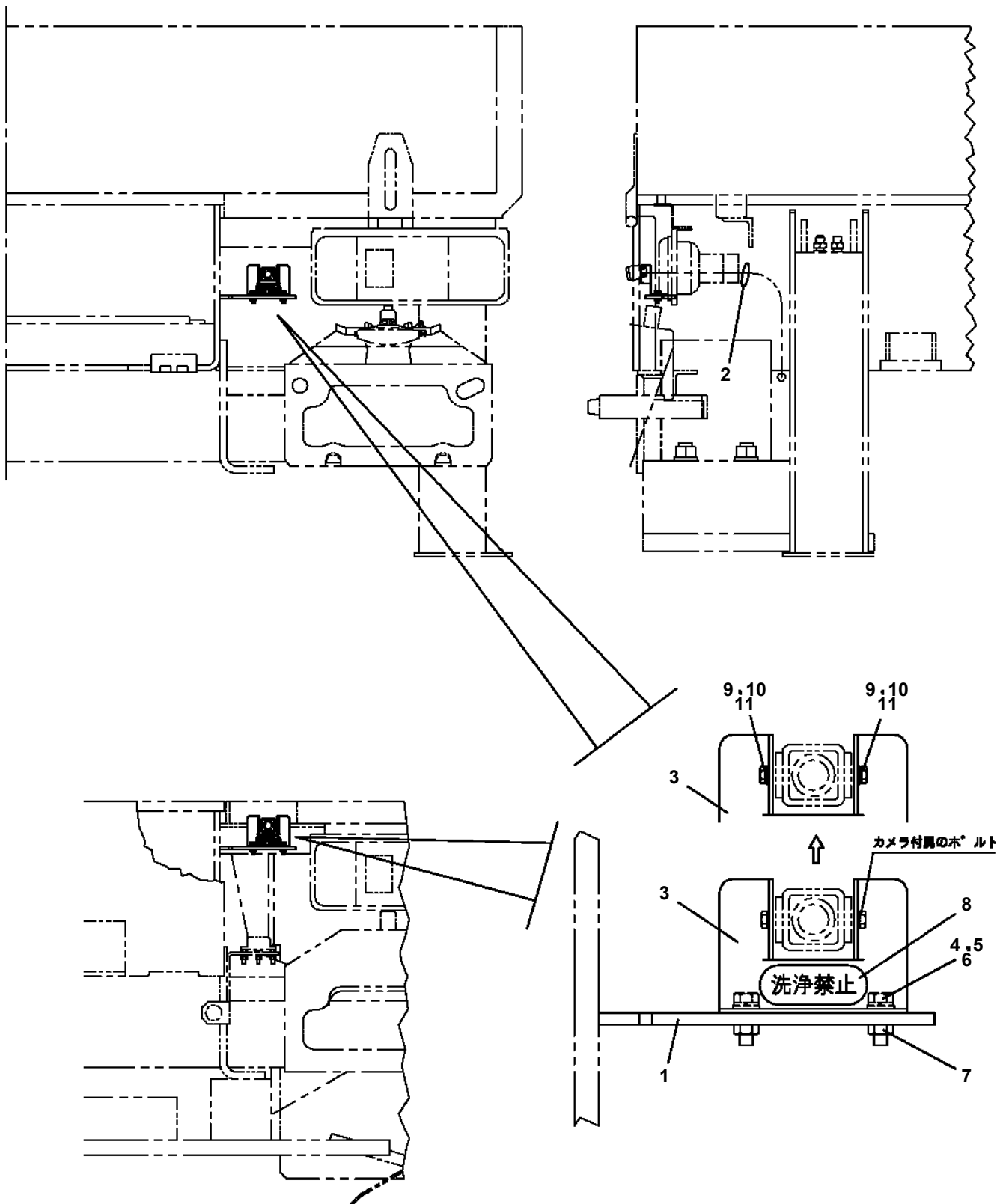
AT-110-5 42084532846 UPPER,LOWER,HINO TPG-XZU600X-TYTMC6
PO5010027-02 OPE.ASSY (LEVER,CONTROL)



AT-110-5 42084532846 UPPER,LOWER,HINO TPG-XZU600X-TYTM C6

Pos No.	Parts No	Parts Name	Qty	Unit	Technical Data	Serial No (Start)	Serial No (End)
1	42333021100	PANEL	1				HK2902
	42333021101	PANEL	1			HK2903	
2	42332892002	OPE.ASSY	1				
3	42809631200	LAMP ASSY (RED,WITH HARNESS)	2				
4	42332521300	SWITCH ASSY (WITH HARNESS)	1				
5	37002709630	HARNESS	1				
6	42333461100	SWITCH ASSY (WITH HARNESS,3 SW)	1				
7	90183108020	BOLT	8		M8X20		
8	37000568770	PLATE	N		T=1.5		
9	82199514013	CAP	2				
10	82199504017	NUT	3		AT-401N		
11	37000714020	CLAMP ASSY	1		12X2		
12	82100002012	CLAMP	1		WR18		
13	90201200600	NUT	2		M6		
14	90302040601	WASHER,SPRING	2		6		
15	90280200600	NUT,FLANGE	1		M6		
16	90303070601	WASHER,PLAIN	2		6		
17	42350250150	PLUG (6 POLES,MALE)	1				
18	82199504064	CAP	1				
19	42350250080	PLUG (3 POLES,MALE)	2				
20	91810130240	FASTENER	10				
21	42333081100	HARNESS	1				
22	42332521500	HARNESS	1				
23	82100002014	CLAMP	1		WR20		
24	42900001200	COVER	1				
25	82467300103	PLUG	2				
26	82467300105	PLUG	2				
27	82199504018	WASHER	3				
28	42653673200	LAMP ASSY (GREEN,WITH HARNESS)	1				
29	42350250090	PLUG (4 POLES,MALE)	1				
30	91810132530	FASTENER	2				
41	42355641010	COVER	1				
51	42355641210	BUTTON	1				

AT-110-5 42084532846 UPPER,LOWER,HINO TPG-XZU600X-TYTMC6
 PP5100164-01 PARTS ASSY,ELECTRICITY (CAMERA INSTALLATION)

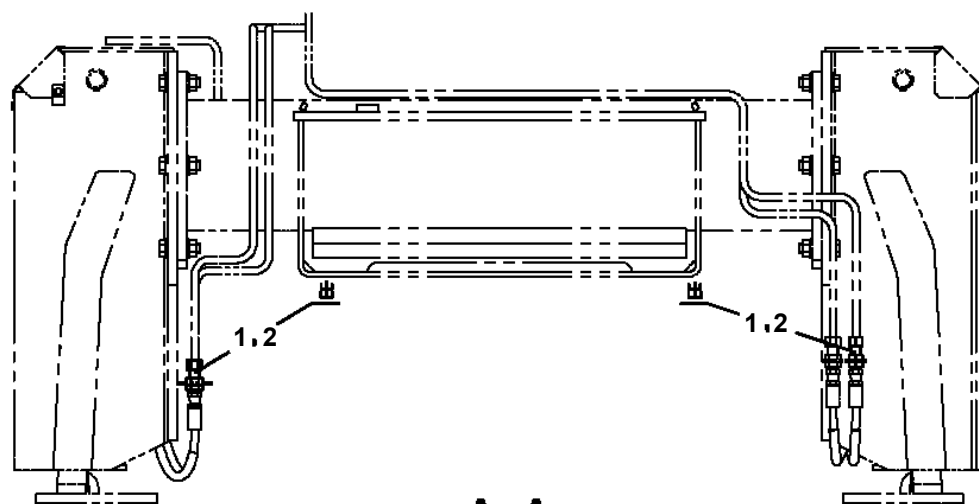
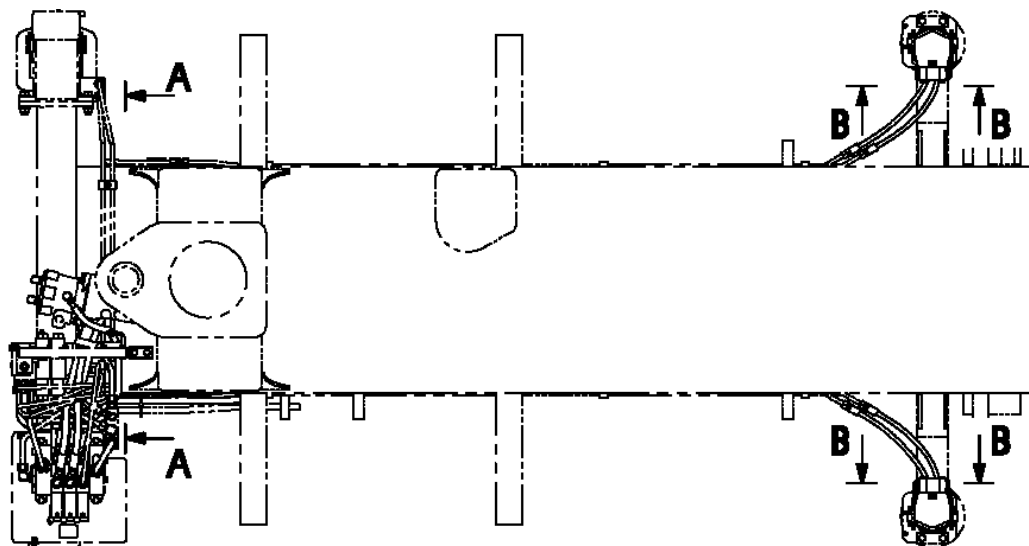


AT-100TE-5型密内仕様の場合

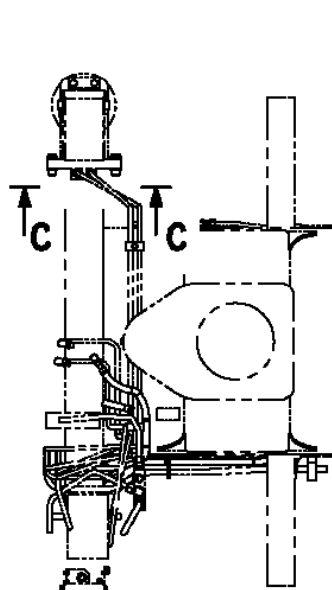
AT-110-5 42084532846 UPPER,LOWER,HINO TPG-XZU600X-TYTMC6

Pos No.	Parts No	Parts Name	Qty	Unit	Technical Data	Serial No (Start)	Serial No (End)	Ren
1	42500582101	COVER	1					
2	42500582400	SUPPORT	1					
3	42500581000	INVERTER	1					
4	90101208018	BOLT	9		M8X18			
5	90302040801	WASHER,SPRING	13		8			
6	90303070801	WASHER,PLAIN	13		8			
7	42500582020	CABLE (INVERTTER--BATTERY)	1		L=2500			
8	42511372010	CABLE	1					
9	82100002006	CLAMP	1		WR10			
10	90302040601	WASHER,SPRING	3		6			
11	90201200600	NUT	3		M6			
12	90303070601	WASHER,PLAIN	2		6			
13	90101206040	BOLT	1		M6X40			
14	91810130250	FASTENER	20					
15	91850310405	CLAMP (BLACK)	2					
16	42500582010	COVER	1					
17	80172805008	SCREW,MACHINE	2		M5X8			
18	90302510501	WASHER,SPRING	2		5			
19	90101208014	BOLT	4		M8X14			
20	42502151010	CABLE	1		L=2500			
21	82100002014	CLAMP	1		WR20			
22	82100002015	CLAMP	1		WRC20	HK2736		
23	90280200800	NUT,FLANGE	1		M8	HK2736		

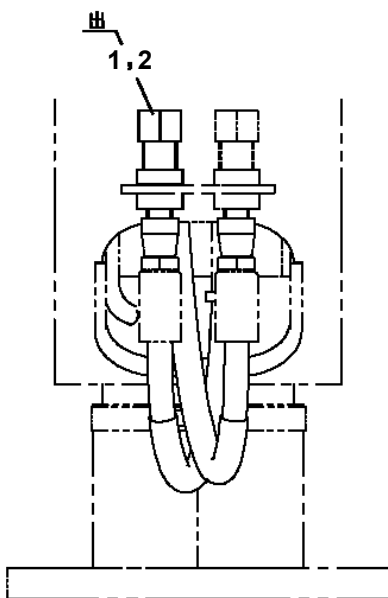
AT-110-5 42084532846 UPPER,LOWER,HINO TPG-XZU600X-TYTMC6
 PP6010236-01 PIPING ASSY



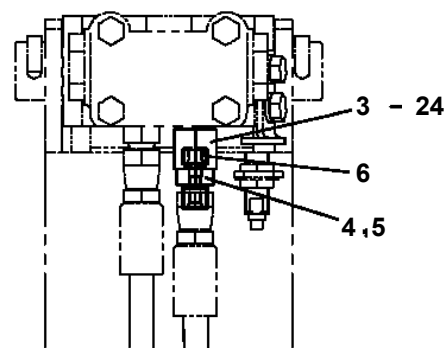
A-A



アウトリガ左右共通使用の場合

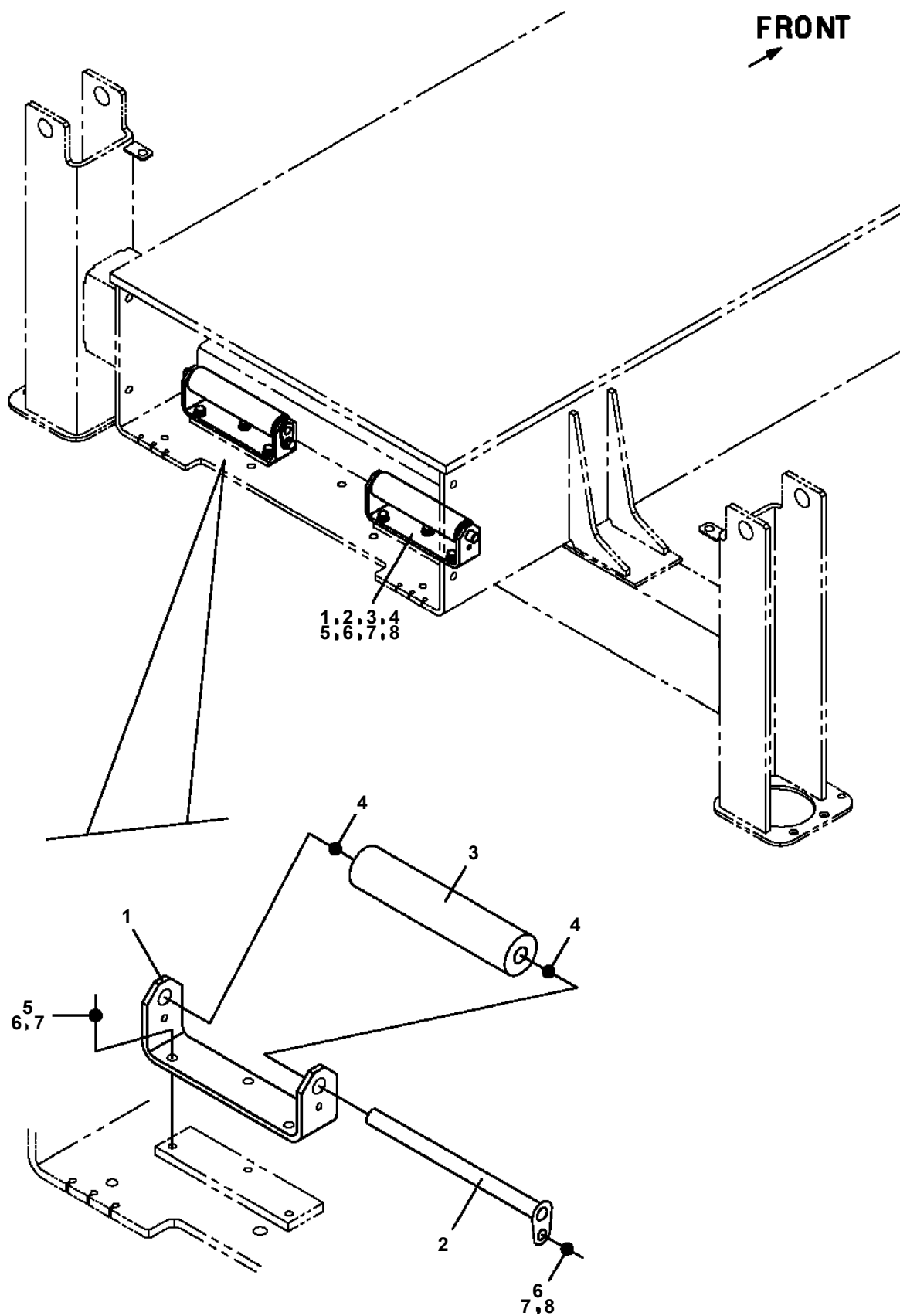


C-C
(2ヶ所)

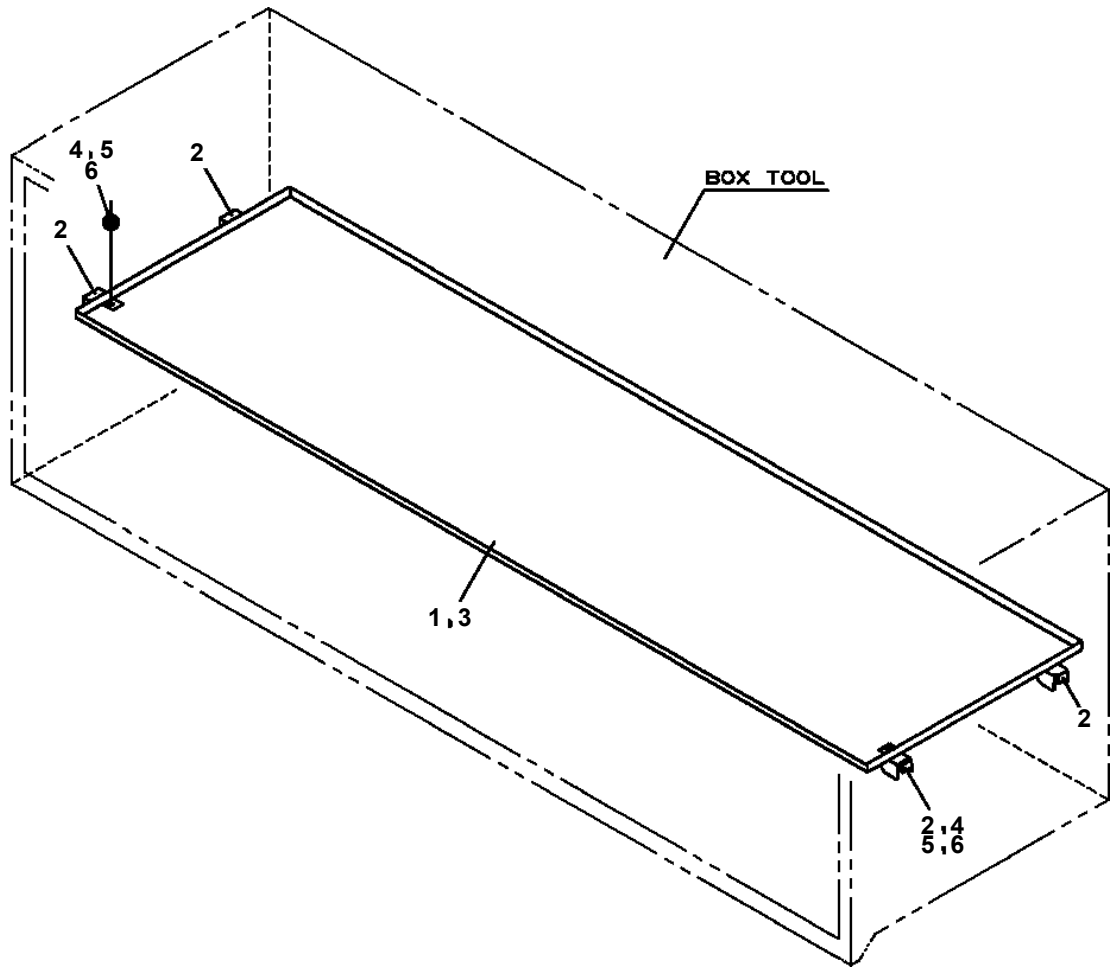


B-B
(2ヶ所)

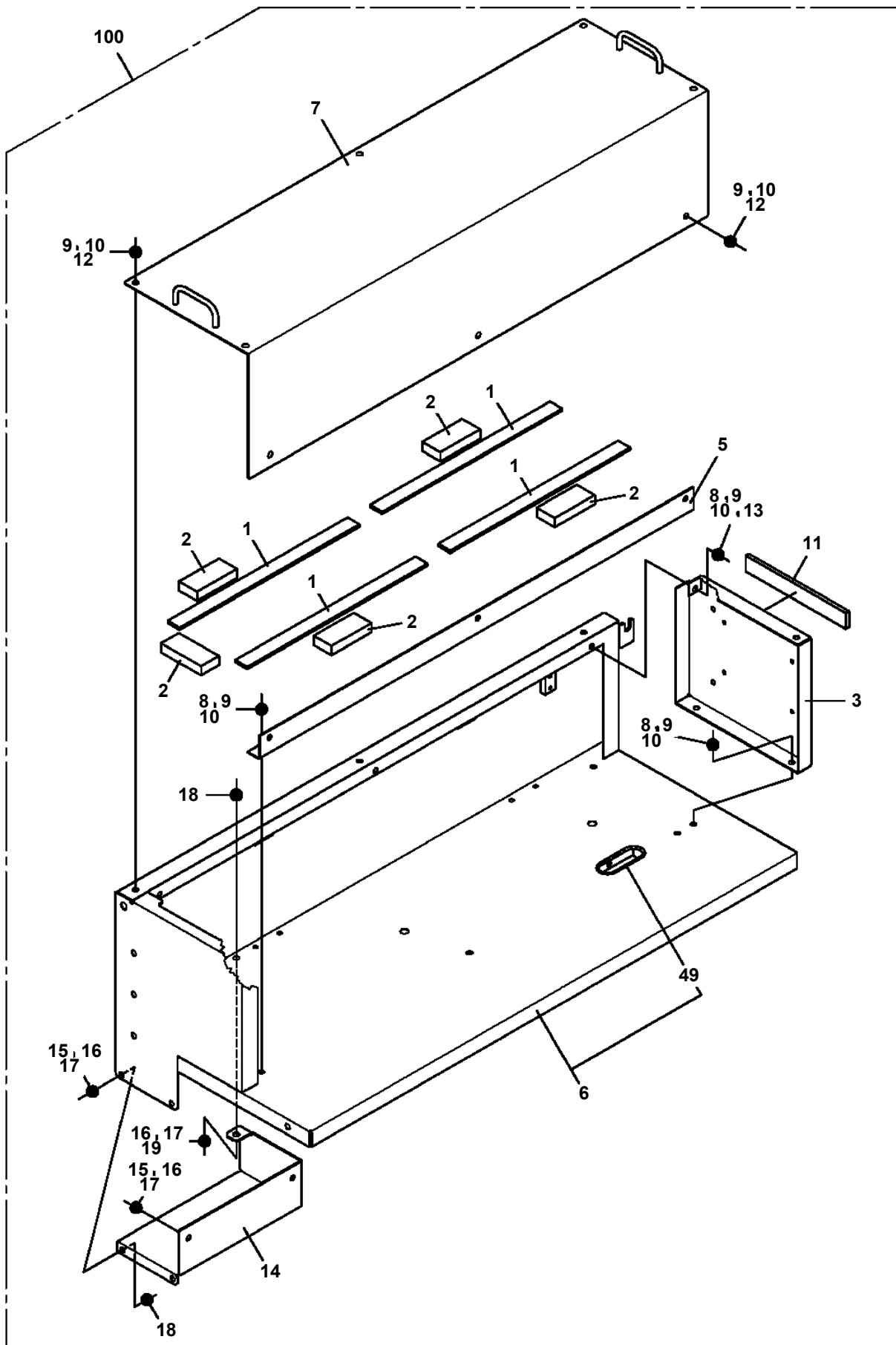
AT-110-5 42084532846 UPPER,LOWER,HINO TPG-XZU600X-TYTMC6
PR5150056-00 ROLLER ASSY



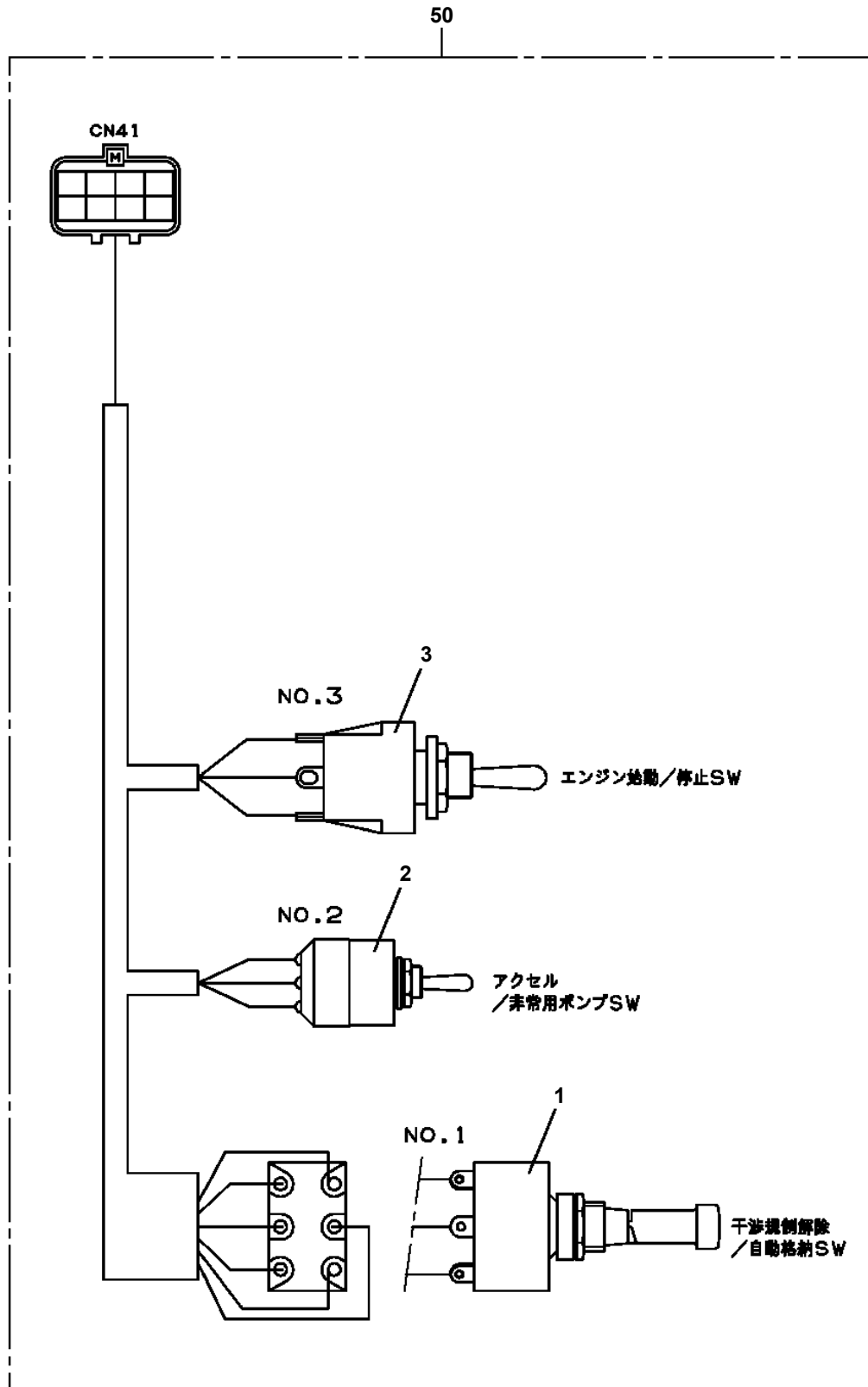
AT-110-5 42084532846 UPPER,LOWER,HINO TPG-XZU600X-TYTMC6
PS5420231-00 SUPPORT ASSY (1&2-DECK TOOL BOX: LOWER SHELF,ONE SIDE)



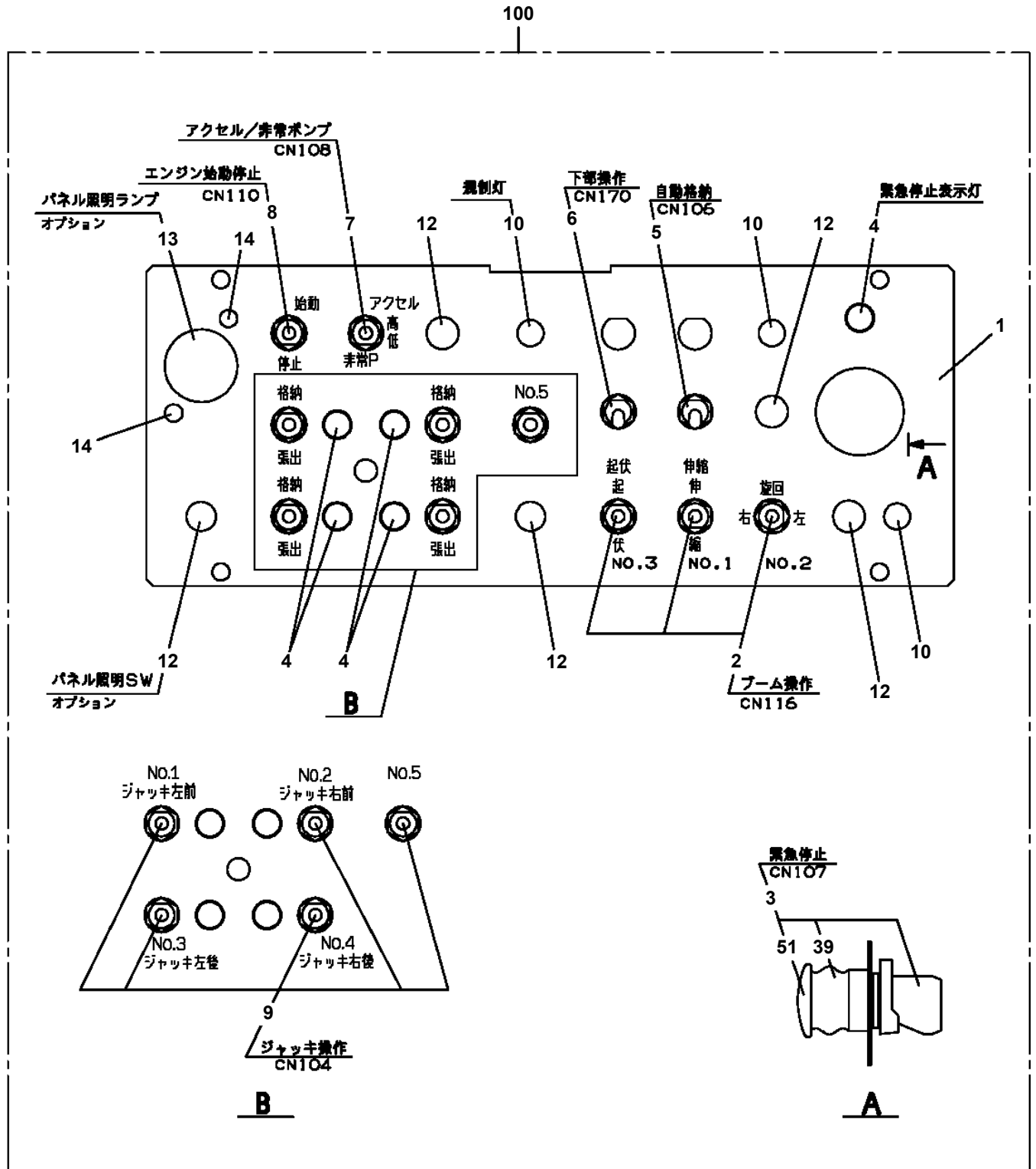
AT-110-5 42084532846 UPPER,LOWER,HINO TPG-XZU600X-TYTMC6
PS5420505-00 SUPPORT ASSY



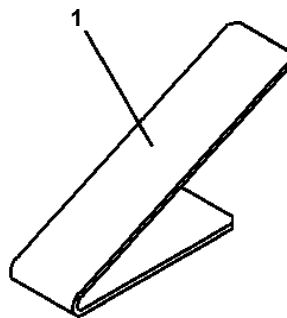
AT-110-5 42084532846 UPPER,LOWER,HINO TPG-XZU600X-TYTMC6
PS5530132-00 SWITCH ASSY (WITH HARNESS,3 SW)



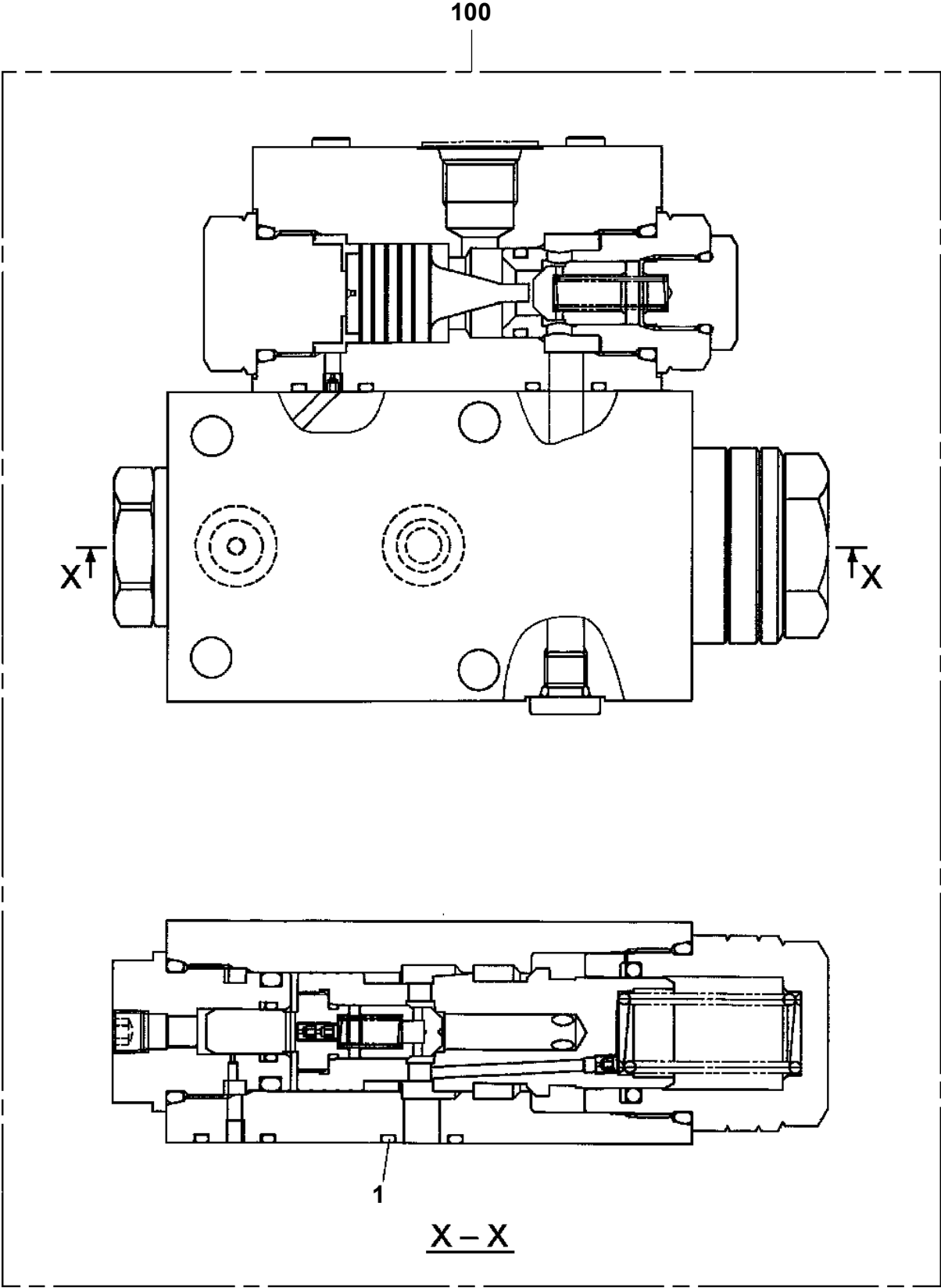
AT-110-5 42084532846 UPPER,LOWER,HINO TPG-XZU600X-TYTC6
 PS5530361-00 SWITCH ASSY



**AT-110-5 42084532846 UPPER,LOWER,HINO TPG-XZU600X-TYTMC6
PS5550005-00 SUPPORT (7 DEGREES ANGLE METER MOUNTING)**



AT-110-5 42084532846 UPPER,LOWER,HINO TPG-XZU600X-TYTMC6
PV5070007-00 VALVE ASSY,COUNTERBALANCE



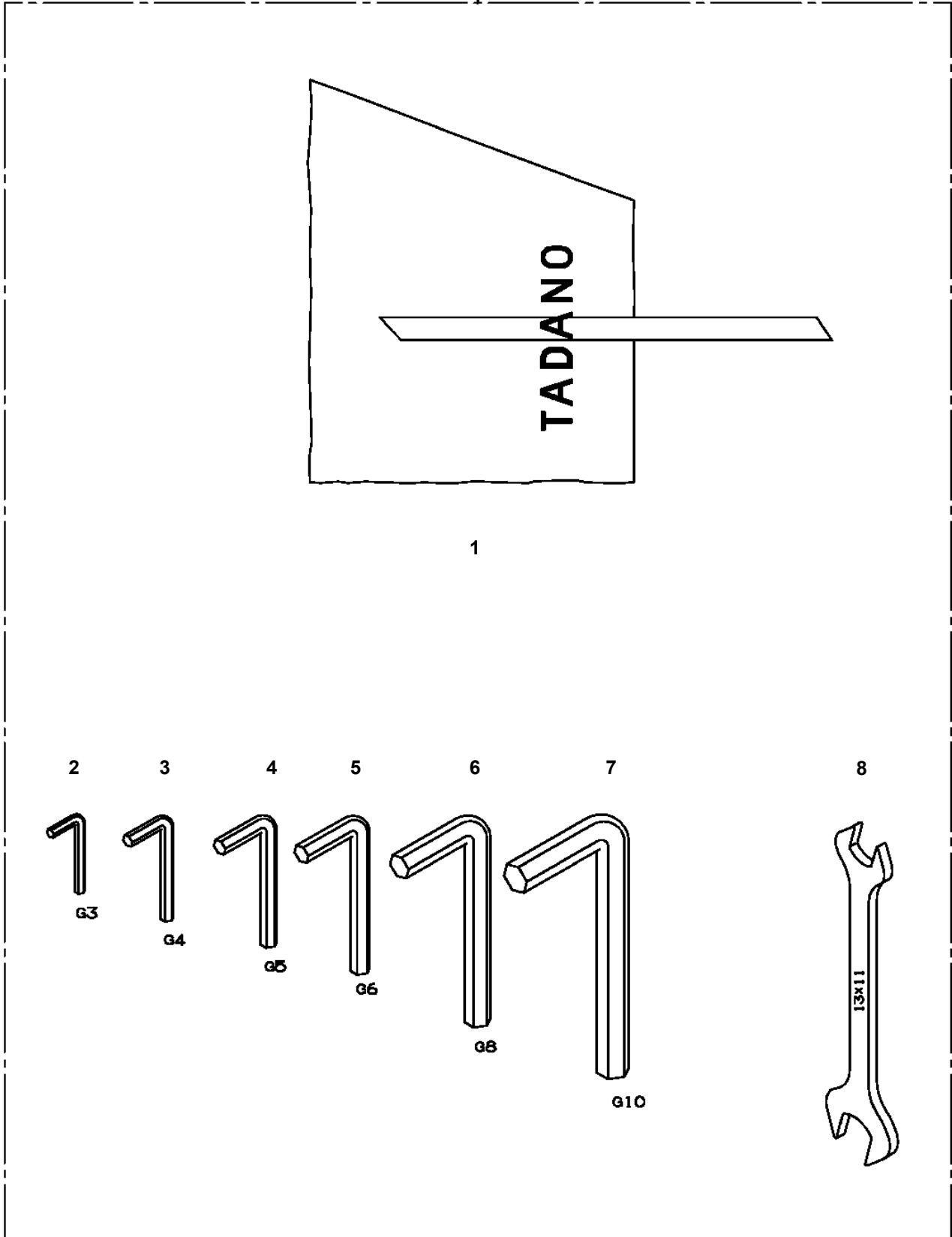
**AT-110-5 42084532846 UPPER,LOWER,HINO TPG-XZU600X-TYTMC6
PW1000118-00 ACCESSORIES & TOOLS**

フソク ア ヒン
ACCESSORIES & TOOLS

【組立名称一覧】より選択してください。
SEE THE CORRESPONDING "ASSEMBLY NAME" LIST.

AT-110-5 42084532846 UPPER,LOWER,HINO TPG-XZU600X-TYTMC6
PW1030049-01 TOOLS

50



1

2



G3

3



G4

4



G5

5



G6

6



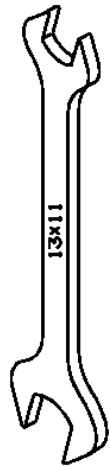
G8

7



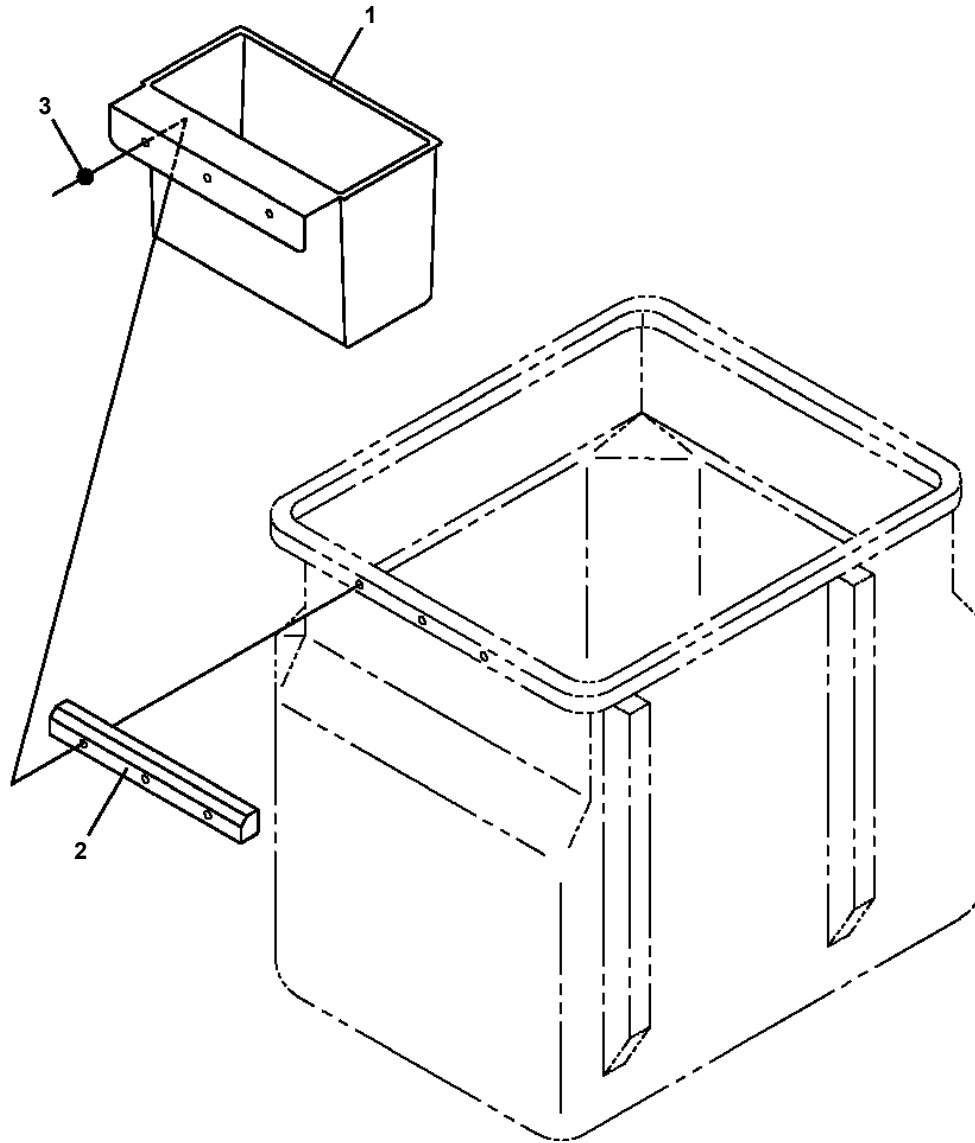
G10

8

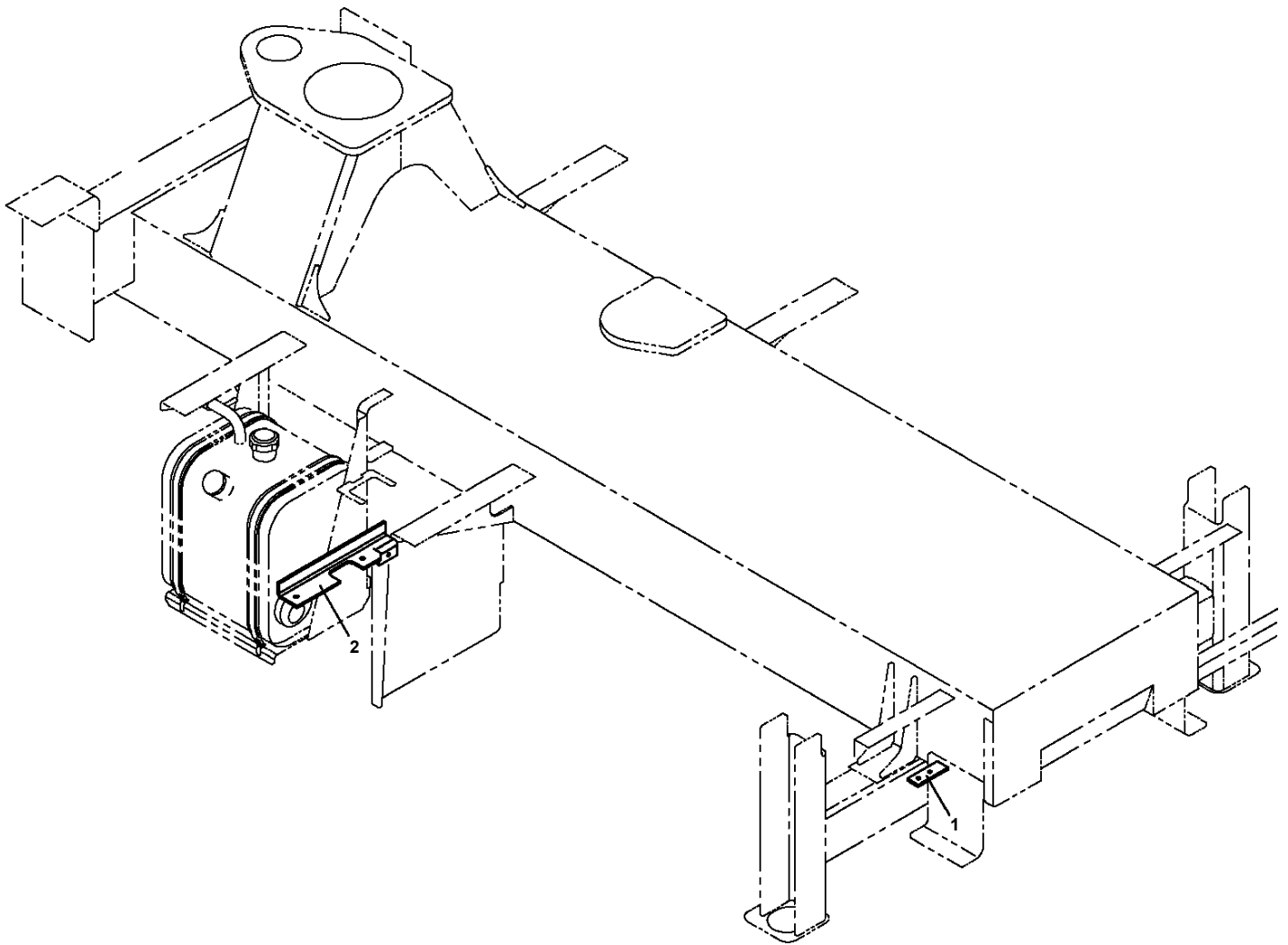


13x11

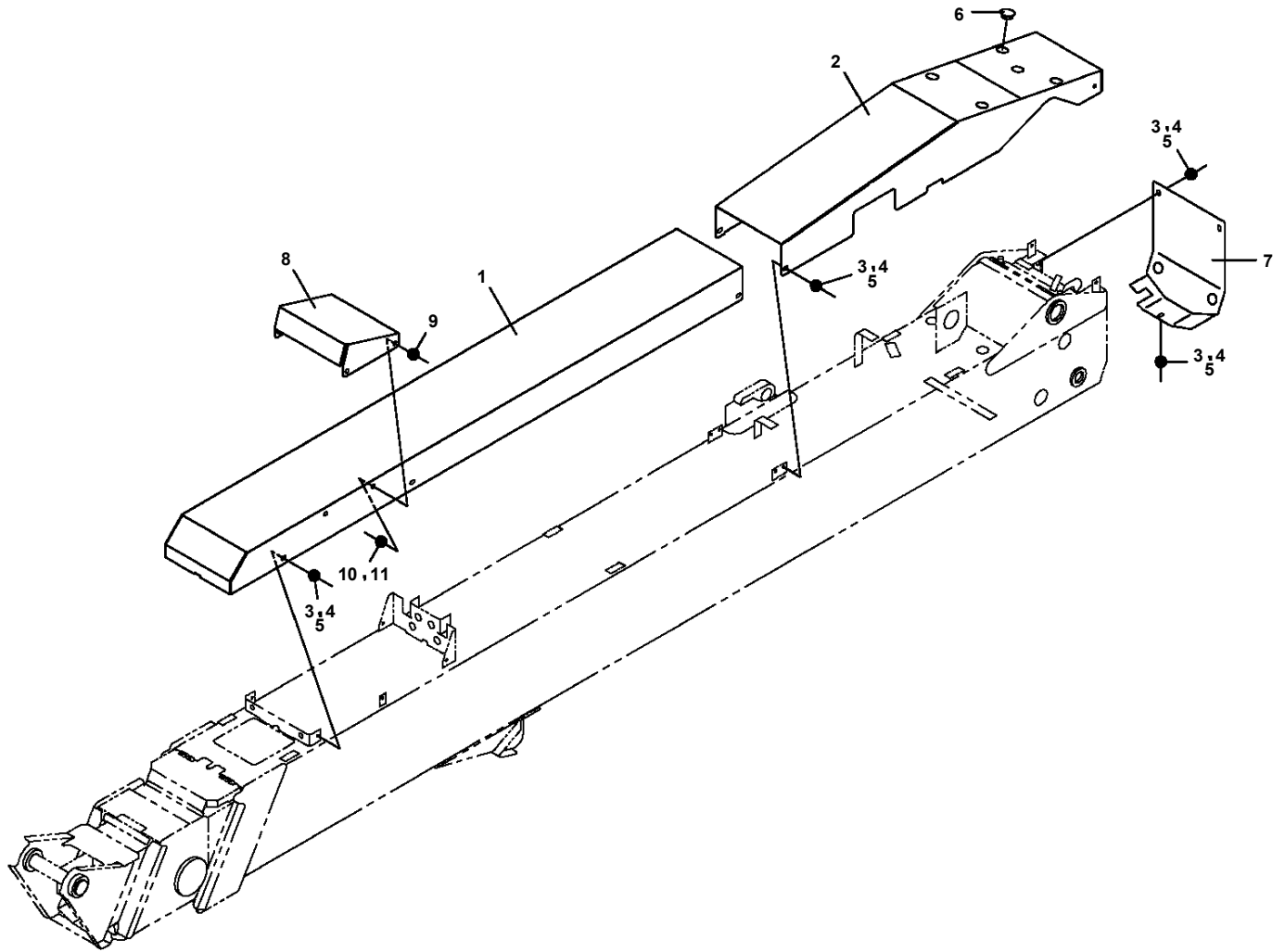
AT-110-5 42084532846 UPPER,LOWER,HINO TPG-XZU600X-TYTMC6
PX1351247-00 BOX,TOOL (BUCKET)



**AT-110-5 42084532846 UPPER,LOWER,HINO TPG-XZU600X-TYTMC6
PX5010345-00 MOUNT ASSY**



AT-110-5 42084532846 UPPER,LOWER,HINO TPG-XZU600X-TYTMC6
PX5260010-00 MOUNT ASSY,COVER



AT-110-5 42084532846 UPPER,LOWER,HINO TPG-XZU600X-TYTMC6

Pos No.	Parts No	Parts Name	Qty	Unit	Technical Data	Serial No (Start)	Serial No (End)	Remarks	Pages
1	31792500001	COUPLING ASSY	1						000050

AT-110-5 42084532846 UPPER,LOWER,HINO TPG-XZU600X-TYTMC6

Pos No.	Parts No	Parts Name	Qty	Unit	Technical Data	Serial No (Start)	Serial No (End)	Remarks	Pages
1	42972560300	STEP	1						
2	90101210018	BOLT	2		M10X18				
3	90302041001	WASHER,SPRING	3		10				
4	90303071001	WASHER,PLAIN	2		10				
5	90180210025	BOLT,BUTTON	1		M10X25				
6	37000549940	PLATE	1		T=3.2				
7	90201201000	NUT	1		M10				

AT-110-5 42084532846 UPPER,LOWER,HINO TPG-XZU600X-TYTMC6

Pos No.	Parts No	Parts Name	Qty	Unit	Technical Data	Serial No (Start)	Serial No (End)	Remarks	Pages
1	37001601660	NUT	2		M14/B=41				
2	37000513890	PLATE	2		T=3.2				
3	42839100010	SUPPORT	1						
4	90201201000	NUT	2		M10				
5	90302041001	WASHER,SPRING	2		10				
6	90303071001	WASHER,PLAIN	2		10				

AT-110-5 42084532846 UPPER,LOWER,HINO TPG-XZU600X-TYTMC6

Pos No.	Parts No	Parts Name	Qty	Unit	Technical Data	Serial No (Start)	Serial No (End)	Remarks	Pages
1	42972891000	BOX,TOOL	1						000040
2	42972890010	PLATE	1						
3	90101208014	BOLT	2		M8X14				
4	90302040801	WASHER,SPRING	2		8				
5	37000553000	PLATE	2						

AT-110-5 42084532846 UPPER,LOWER,HINO TPG-XZU600X-TYTMC6

Pos No.	Parts No	Parts Name	Qty	Unit	Technical Data	Serial No (Start)	Serial No (End)	Remarks	Pages
1	42839731300	BOX,TOOL	1						000038
	42839731300	BOX,TOOL	1						000038
2	42839731100	BOX,TOOL	1						000039
	42839731100	BOX,TOOL	1						000039
3	90101210025	BOLT	8		M10X25				
	90101210025	BOLT	8		M10X25				
4	90302041001	WASHER,SPRING	8		10				
	90302041001	WASHER,SPRING	8		10				
5	37000505950	PLATE	8		T=3.2				
	37000505950	PLATE	8		T=3.2				
6	42839110200	SUPPORT	1						
	42839110200	SUPPORT	1						
7	90101208014	BOLT	8		M8X14				
	90101208014	BOLT	8		M8X14				
8	42839110100	SUPPORT	2						
	42839110100	SUPPORT	2						
11	90302040801	WASHER,SPRING	8		8				
	90302040801	WASHER,SPRING	8		8				
13	37000547660	PLATE	4		T=2.3				
	37000547660	PLATE	4		T=2.3				

AT-110-5 42084532846 UPPER,LOWER,HINO TPG-XZU600X-TYTMC6

Pos No.	Parts No	Parts Name	Qty	Unit	Technical Data	Serial No (Start)	Serial No (End)	Remarks	Pages
2	42839101002	BOX,TOOL	1						000031
3	90101210025	BOLT	8		M10X25				
4	90302041001	WASHER,SPRING	8		10				
5	37000505950	PLATE	8		T=3.2				
6	42912320100	SUPPORT	1						
7	90101208014	BOLT	8		M8X14				
8	42839110100	SUPPORT	2						
11	90302040801	WASHER,SPRING	8		8				
13	37000547660	PLATE	4		T=2.3				
14	42910871000	BOX,TOOL	1						000042
31	42398701010	PLATE,CAUTION	2						

AT-110-5 42084532846 UPPER,LOWER,HINO TPG-XZU600X-TYTMC6
 PY1001855-04 OPTION UNIT,1 (UPPER)

30

マウントアッシー、ブームサポート (左右2デッキ用)
 MOUNT ASSY,BOOM SUPPORT (LEFT/RIGHT 2-DECK TOOL BOYS)

キー番号 KEY NO.	部品名 PART NAME	備考 REMARK
1	マウントアッシー、ブームサポート MOUNT ASSY,BOOM SUPPORT	
2	ステップアッシー STEP ASSY	交換用
3	ブームプレートアッシー BOOM PLATE ASSY	交換用
4	ブームプレートアッシー BOOM PLATE ASSY	ステップ/ノンスリップ用

36

パワーサプライアッシー、エレキ (1.0kW/100V)
 POWER SUPPLY ASSY,ELECTRICITY

NO.	部品名/PART NAME	備考/REMARK
1	ランプアッシー、ワーキング LAMP ASSY,WORKING	ハットライト (100V 3相コンセント、アース) (標準)
2	パワーサプライアッシー、エレキ POWER SUPPLY ASSY,ELECTRICITY	75 (インバータ)
3	パワーサプライアッシー、エレキ POWER SUPPLY ASSY,ELECTRICITY	75 (標準:3相コンセント、アース)
4	モディフィケーションパーツ MODIFICATION PARTS	None

42

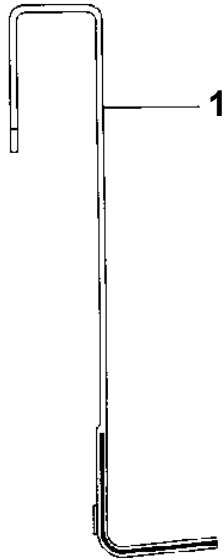
スイッチアッシー (ダブルリフト用)
 SWITCH ASSY (SAFETY ROPE INTERLOCK FOR DOUBLE RIDING)

キー番号 KEY NO.	部品名 PART NAME	備考 REMARK
1	エレキアッシー ELEC.ASSY	ハット用 (2入)
2	モディフィケーションアッシー MODIFICATION ASSY	ハットフレーム用 (2入)
3	エレキアッシー ELEC.ASSY	フレーム用 (2入)

適用製造番号によっては取り付けがないものもあります。

MACHINES OF SOME SERIAL NO. ARE NOT EQUIPPED WITH THESE PARTS.

**AT-110-5 42084532846 UPPER,LOWER,HINO TPG-XZU600X-TYTMC6
PY1760001-00 STEP,BUCKET**



AT-110-5 42084532846 UPPER,LOWER,HINO TPG-XZU600X-TYTMC6
 PY2000288-00 OPTION UNIT,2 (UPPER)

符号	日本語名称	英語名称	備考
27	ロックASSY	LOCK ASSY	AT-100TTE宅内用：スライド 工具箱×2、 脚立入れ×1、梯子入れ×1 鍵交換No.1
28	ロックASSY	LOCK ASSY	AT-100TTE宅内用：スライド 工具箱×2、 脚立入れ×1、梯子入れ×1 鍵交換No.2
29	ロックASSY	LOCK ASSY	AT-100TTE宅内用：スライド 工具箱×2、 脚立入れ×1、梯子入れ×1 鍵交換No.3
30	ロックASSY	LOCK ASSY	AT-100TTE宅内用：スライド 工具箱×2、 脚立入れ×1、梯子入れ×1 鍵交換No.4
31	ロックASSY	LOCK ASSY	AT-100TTE宅内用：スライド 工具箱×2、 脚立入れ×1、梯子入れ×1 鍵交換No.5
32	ロックASSY	LOCK ASSY	AT-100TTE宅内用：スライド 工具箱×2、 脚立入れ×1、梯子入れ×1 鍵交換No.6
33	ロックASSY	LOCK ASSY	AT-100TTE宅内用：スライド 工具箱×2、 脚立入れ×1、梯子入れ×1 鍵交換No.7
34	ロックASSY	LOCK ASSY	AT-100TTE宅内用：スライド 工具箱×2、 脚立入れ×1、梯子入れ×1 鍵交換No.8
35	ロックASSY	LOCK ASSY	AT-100TTE宅内用：スライド 工具箱×2、 脚立入れ×1、梯子入れ×1 鍵交換No.9
36	ロックASSY	LOCK ASSY	AT-100TTE宅内用：スライド 工具箱×2、 脚立入れ×1、梯子入れ×1 鍵交換No.10
37	ハンドル	HANDLE	1段・2段工具箱,梯子入れ用T字型ハンドル 鍵No.01
38	ハンドル	HANDLE	1段・2段工具箱,梯子入れ用T字型ハンドル 鍵No.02
39	ハンドル	HANDLE	1段・2段工具箱,梯子入れ用T字型ハンドル 鍵No.03
40	ハンドル	HANDLE	1段・2段工具箱,梯子入れ用T字型ハンドル 鍵No.04
41	ハンドル	HANDLE	1段・2段工具箱,梯子入れ用T字型ハンドル 鍵No.05
42	ハンドル	HANDLE	1段・2段工具箱,梯子入れ用T字型ハンドル 鍵No.06
43	ハンドル	HANDLE	1段・2段工具箱,梯子入れ用T字型ハンドル 鍵No.07
44	ハンドル	HANDLE	1段・2段工具箱,梯子入れ用T字型ハンドル 鍵No.08
45	ハンドル	HANDLE	1段・2段工具箱,梯子入れ用T字型ハンドル 鍵No.09
46	ハンドル	HANDLE	1段・2段工具箱,梯子入れ用T字型ハンドル 鍵No.10

適用製造番号によっては取り付けがないものもあります。

MACHINES OF SOME SERIAL NO. ARE NOT EQUIPPED WITH THESE PARTS.

AT-110-5 42084532846 UPPER,LOWER,HINO TPG-XZU600X-TYTMC6
PY5170060-00 ALARM ASSY (HINO/VOICE ALARM)

アラームASSY (ヒノ/オンセイケイホウ)
ALARM ASSY (HINO/VOICE ALARM)

キャブドア開時、前方音声警報ON
後端操作BOX扉開時、後方音声警報ON
ライト点灯時消音型

指示番号 KEY NO.	部品名称 PART NAME	備考 REMARK
1	ハイセンASSY ELEC.ASSY	サブ フレーム部配線
2	ハイセンASSY ELEC.ASSY	日野用 キャリヤ部配線
3	ネームプレートASSY NAME PLATE ASSY	

AT-110-5 42084532846 UPPER,LOWER,HINO TPG-XZU600X-TYTMC6
PZ0000000-00 MOUNT ASSY,TOOL BOX (CENTRAL LOCK/HINO≠TOYOTA,2RG)

販売部品 検討中につき、イラストはありません。

Parts for sale : Under consideration now.
Therefore not illustrated.

CLICK HERE TO **DOWNLOAD** THE COMPLETE MANUAL

- Thank you very much for reading the preview of the manual.
- You can download the complete manual from: www.heydownloads.com by clicking the link below



- Please note: If there is no response to CLICKING the link, please download this PDF first and then click on it.

CLICK HERE TO **DOWNLOAD** THE COMPLETE MANUAL