

# **AT-110-4 42084400054 UPPER**

**PD2000176-00 SWING UNIT**

**PG2000223-00 BOOM UNIT**

**PH1000550-00 SAFETY DEVICES (MOTION CONTROLLER)**

**PJ3000503-00 BUCKET SYSTEM**

**PK2001239-00 FRAME UNIT**

**PO1000171-00 INDICATION PLATES**

**PW1000118-00 ACCESSORIES & TOOLS**

**PY1001436-03 OPTIONS,1**

**PY2000164-08 OPTIONS,2 (UPPER)**

**ASSEMBLY**

CLICK HERE TO **DOWNLOAD** THE COMPLETE MANUAL

- Thank you very much for reading the preview of the manual.
- You can download the complete manual from: [www.heydownloads.com](http://www.heydownloads.com) by clicking the link below



- Please note: If there is no response to CLICKING the link, please download this PDF first and then click on it.

CLICK HERE TO **DOWNLOAD** THE COMPLETE MANUAL

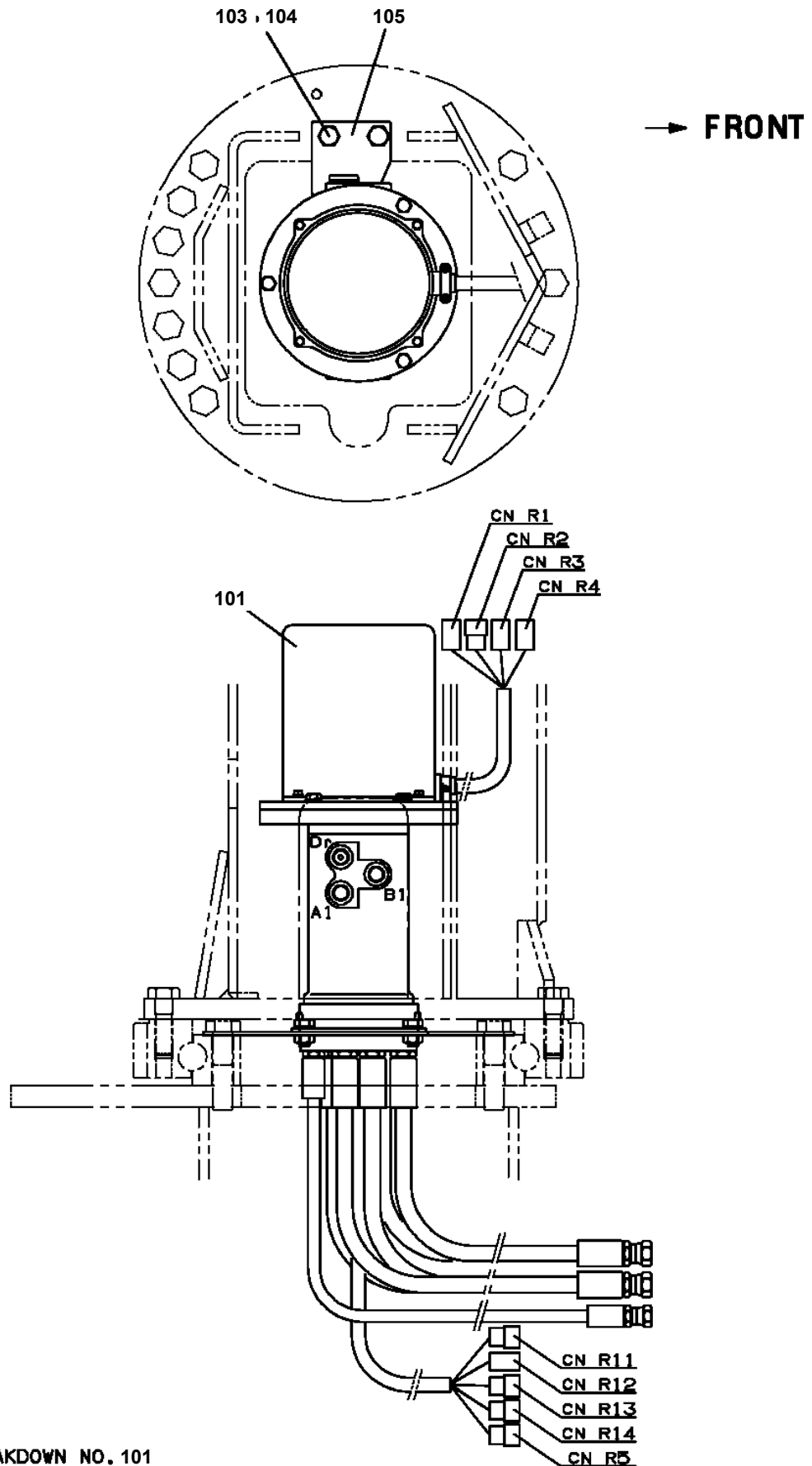
# AT-110-4 42084400054 UPPER

Pos No.	Parts No	Parts Name	Qty	Unit	Technical Data	Serial No (Start
1	(***** *****)	FRAME	1			
	(***** *****)	FRAME	1			219416
2	(***** *****)	OUTRIGGER (MOUNT)	1			
	(***** *****)	OUTRIGGER ASSY	1			219911
3	(***** *****)	OPE.ASSY,CONT.VALVE	1			
4	(***** *****)	PIPING,OUTRIGGER	1			
	(***** *****)	PIPING,OUTRIGGER	1			219416
	(***** *****)	PIPING ASSY,FRAME	1			219911
6	(***** *****)	ELEC.ASSY (FRAME)	1			
7	(***** *****)	ELEC.ASSY (LOWER CONTROLS)	1			
8	(***** *****)	ELEC.ASSY (MOTOR UNIT)	1			
	(***** *****)	ELEC.ASSY (MOTOR UNIT)	1			219577
9	(***** *****)	ELEC.ASSY (EMERGENCY SW FUNCTION LIMIT CIRCUIT)	1			
10	(***** *****)	TANK SUPPORT	1			
11	(***** *****)	BOOM REST	1			
	(***** *****)	BOOM REST	1			219416
12	(***** *****)	COVER (MOTOR UNIT)	1			
	(***** *****)	COVER (MOTOR UNIT)	1			219577
13	(***** *****)	POWER SUPPLY(MOTOR UNIT)	1			
	(***** *****)	POWER SUPPLY (MOTOR UNIT)	1			219577
14	(***** *****)	BATTERY	1			
15	(***** *****)	MOUNT,CHARGER	1			

# AT-110-4 42084400054 UPPER

Pos No.	Parts No	Parts Name	Qty	Unit	Technical Data	Se
1	42470020000	CLAMP HEAD (IZUMI 8TON,2.5M)	1			
	42472640000	CLAMP HEAD (IZUMI 8TON 3.5M ELECTRIC)	1			
	42470590000	CLAMP HEAD (O.D.K 7.5TON 3M)	1			
	42473090000	CLAMP HEAD (IZUMI 7.5TON 3M ELECTRIC)	1			
	42473850000	CLAMP HEAD (IZUMI 8TO,3.5M)	1			
	42470230000	CLAMP HEAD (IZUMI 12TON 3.5M)	1			
	42470180000	CLAMP HEAD (IZUMI 12TON 2.5M)	1			
	42972380000	CLAMP HEAD ASSY (YONDENKO/SAFETY HOSE)	1			HK
2	42471070000	CLAMP HEAD (O.D.K 10TON ELECTRIC)	1			
	(*****)	CLAMP HEAD (SANWA,12TON)	1			
	42470365000	CLAMP HEAD (SANWA,12TON,TITANIUM)	1			
3	42470530000	CUTTER HEAD (IZUMI 6.4TON AIR)	1			
	42473190000	CUTTER HEAD (IZUMI 6.4TON 2.5M ELECTRICSANWA)	1			
	42470030000	CUTTER HEAD (IZUMI 6.4TON 2.5M ELECTRIC)	1			
	42972390000	CUTTER HEAD ASSY (YONDENKO/SAFETY HOSE)	1			HK
4	42471800000	HOSE,BOOSTER (WITH AIR BALLOON,2M)	1			
	42470363000	HOSE,BOOSTER (WITH AIR BALLOON,5M)	1			
	(*****)	HOSE,BOOSTER (WITH AIR BALLOON)	1			
	42470364000	HOSE,BOOSTER (WITH AIR BALLOON,8M)	1			
5	42471085000	HOSE,BOOSTER (MALE-FEMALE,5M)	1			
	42472130000	HOSE,BOOSTER (FEMALE-FEMALE,5M)	1			
	42471084000	HOSE,BOOSTER (MALE-FEMALE,8M)	1			
	42471080000	HOSE,BOOSTER (MAIL-FEMALE,3M)	1			
	42472480000	HOSE,BOOSTER (FEMALE-FEMALE,3M)	1			
6	(*****)	HOSE,BOOSTER (3M)	1			
7	42471561000	HOSE,BOOSTER (SMALL,WITH AIR BALLOON)	1			
	42506280000	HOSE,BOOSTER (LARGE,AIR BALLOON ONLY)	1			
11	42509150000	SWITCH ASSY (ELEC.BOOSTER, REMOTE:2M,NANABOSI,KASUGA)	1			
	42509170000	SWITCH ASSY (ELEC.BOOSTER, REMOTE:5M,NANABOSI,KASUGA)	1			
	42509160000	SWITCH ASSY (ELEC.BOOSTER, REMOTE:3M,NANABOSI,KASUGA)	1			
	42470984000	SWITCH BOX (ELECTRIC BOOSTER, 8M,NANABOSI,SINKOU DENKI)	1			
	42470985000	SWITCH BOX (ELECTRIC BOOSTER, 5M,NANABOSI,SINKOU DENKI)	1			
	42470980000	SWITCH BOX (FOR BOOSTER)	1			
	42470983000	SWITCH BOX (ELECTRIC BOOSTER, 3M,NANABOSI,SINKOU DENKI)	1			
12	(*****)	SWITCH INSTALLATION	1			
18	(*****)	PRUNER ASSY	1			
19	42471270000	DRIL,HYDRAULIC	1			
20	(*****)	WRENCH,IMPACT (HYDRAULIC)	1			
21	42460021000	BELT,SAFETY	1			
	42461162000	FALL ARREST SYSTEM (TB-LSA-550/FUJII-DENKO)	1			HK
22	42470050000	ROPE (SAFETY,1.5M,WITH HOOK)	1			
23	42472670000	ROPE (SAFETY,WHITE)	1			
24	42472650000	HANGER (FOR BUCKET)	1			
	42474540000	HANGER (FOR BUCKET,FRP)	1			
26	42474030000	STEP,BUCKET (GRAY,FOR BUCKET INNER)	1			
	42473340000	STEP,BUCKET	1			
27	42503180000	BOX,TOOL (FOR BUCKET,FRP)	1			
28	42472530000	BOX,TOOL (FOR BUCKET)	1			
29	42472990000	BOX,TOOL (FOR BUCKET)	1			
30	(*****)	WOOD BLOCK (OPTION)	4			
31	(*****)	PUMP,GREASE (400CC)	1			
32	42473931000	TOOLS	1			
33	(*****)	EARTH ASSY	1			
48	42508690000	ROPE ASSY (YELLOW)	1			
52	42461681000	WEDGE (YELLOW)	1			HK
53	42973990100	SUPPORT (7 DEGREES ANGLE METER MOUNTING)	1			
54	42974561000	BLOCK,WOOD	1			HK
55	42516080000	MAT	1			HK

AT-110-4 42084400054 UPPER  
PB1300478-02 JOINT,ROTARY



展開図有  
ILLUSTRATED BREAKDOWN NO. 101

# AT-110-4 42084400054 UPPER

Pos No.	Parts No	Parts Name	Qty	Unit	Technical Data	Serial No (Start)	Serial No (End)	Remarks
1	42501251000	LAMP ASSY (HALOGEN)	1					
2	42501070100	SUPPORT	1					
3	42501541100	HARNESS	1					
4	90813108020	BOLT,WING	1		M8X20			
5	90101208016	BOLT	2		M8X16			
6	90302040801	WASHER,SPRING	2		8			
7	90201200600	NUT	2		M6			
8	90302040601	WASHER,SPRING	2		6			
9	82100002006	CLAMP	2		WR10			
10	91810130240	FASTENER	N					
11	82119422100	CONNECTOR	1					
12	80175304016	SCREW,MACHINE	2		M4X16			
13	42477640080	PLATE,NAME	1					
14	42501541010	INSULATOR	1				HK0096	
31	82199100032	LAMP	1					
32	90101212020	BOLT	1		M12X20			
33	90302041201	WASHER,SPRING	1		12			
34	37000179070	PIN	1					
35	80620210160	PIN,SNAP	1					
41	82100002850	LENS	1					
42	82100005003	BULB,LAMP	1		24V 55W ÈÙ'ÞÝ			



# AT-110-4 42084400054 UPPER

Pos No.	Parts No	Parts Name	Qty	Unit	Technical Data	Serial No (Start)	Serial No (End)	Remarks
1	37000176340	PIN	2					
2	80136380050	PIN,SPLIT	4		8X50		219476	
	80136380045	PIN,SPLIT	4		8X45	219477		
3	36625740001	VALVE,CHECK	2					
4	90172108055	BOLT,HEXAGON SOCKET	8		M8X55		219001	
	90171108055	BOLT	8		M8X55	219002		
5	90172106012	BOLT,HEXAGON SOCKET	4		M6X12			
6	82108501250	SWITCH	2					
7	82104501140	SWITCH,LIMIT	2					
8	90302040601	WASHER,SPRING	10		6			
9	42614000080	SUPPORT	2					
10	36035840000	CYLINDER,JACK	2					
11	91803601200	CLIP	2		D=90-120			
12	42614000020	PLATE	2				219548	
	42614520010	PLATE	2		T=5	219549		
13	42611720300	FLOAT	2				219548	
	42614520200	FLOAT	2			219549	219807	
	42614520300	FLOAT (PLATE WORKING)	2			219808		
14	90172110020	BOLT,HEXAGON SOCKET	4		M10X20			
15	90201200600	NUT	6		M6			
16	82100002006	CLAMP	4		WR10			
17	42614401001	OUTRIGGER	2				219552	
	42614401002	OUTRIGGER	2			219553		
18	82100002002	CLAMP	2		WR6			
20	90171116060	BOLT	4		M16X60			
21	90303501601	WASHER,PLAIN	22		16			
22	90201781600	NUT	4		M6			
24	90171116040	BOLT	8		M16X40			
25	90171116035	BOLT	6		M16X35			
26	42613560100	COVER	2					
27	91810132530	FASTENER	2					
28	82401800080	PLUG (FOR M8)	8					
29	42614000060	PLATE	2		T=12			
30	90171112040	BOLT	4		M12X40			
31	90201781200	NUT	4		M12			
32	90302041201	WASHER,SPRING	4		12			
33	42613560400	SUPPORT	2					
34	90101208012	BOLT	8		M8X12			
35	90302040801	WASHER,SPRING	8		8			
36	82401800100	PLUG (FOR M10)	2				219386	
	82401800100	PLUG (FOR M10)	6			219387		

# AT-110-4 42084400054 UPPER

Pos No.	Parts No	Parts Name	Qty	Unit	Technical Data	Serial No (Start)	Serial No (End)	R
1	42500820100	FLOAT	2					
2	42501771000	FLOAT ASSY (WITH SPACER)	2					
	42501773000	FLOAT ASSY (WITHOUT SPACER)	2			219615		
3	90171110035	BOLT	8		M10X35			
4	90302041001	WASHER,SPRING	8		10			

# AT-110-4 42084400054 UPPER

Pos No.	Parts No	Parts Name	Qty	Unit	Technical Data	Serial No (Start)	Serial No (End)
1	42972380000	CLAMP HEAD ASSY (YONDENKO/SAFETY HOSE)	1				

# AT-110-4 42084400054 UPPER

Pos No.	Parts No	Parts Name	Qty	Unit	Technical Data	Serial No (Start)	Serial No (End)
1	36027861001	CYLINDER	1				
2	90302042401	WASHER,SPRING	1		24		
3	90209402400	NUT	1		M24		
4	36028490100	PISTON	1				
5	91332207500	BEARING,PLAIN	1				
6	91002802000	O-RING	1		1B P20		
7	36027549510	ROD ASSY	1				
8	36026159530	COVER,ROD	1				
9	80612110400	RING,RITAINING	1		AR40		
10	91002907000	O-RING	1		1B G70		
11	80801003525	BEARING,PLAIN	1				
12	91694003500	PACKING	1				
13	91410203501	RING,BACKUP	1				
14	91660003501	SEAL,DUST	1				
15	91002907500	O-RING	1		1B G75		
16	80541700030	BEARING,SPHERICAL (NTN)	1		SA4-30B		
17	91350307500	PACKING ASSY (PACKING X2+BACKUP RING X2)	1				
18	90303072401	WASHER,PLAIN	1		24		
30	36028499900	PACKING SET	1		35X75		
100	36028610000	CYLINDER ASSY,LEVELING (LOWER)	1				

# AT-110-4 42084400054 UPPER

Pos No.	Parts No	Parts Name	Qty	Unit	Technical Data	Serial No (Start)	Ser
1	36081325090	RING,SNAP	1				
2	36081325010	SPACER	1				
3	36081325080	SHIM SET	1				
4	36081325110	BEARING,TAPER ROLLER	1				
5	36081325020	WORM	1				
6	36081325120	BEARING,TAPER ROLLER	1				
7	36080755040	GAUGE,OIL	1				
8	36080235080	WASHER,SEAL	1		M16		
9	80316090060	PLUG	1		KKT PT3/8		
12	91280431931	SEAL,OIL	1				
13	36081325050	CASE,GEAR	1				
14	36081325130	BEARING,BALL(METAL SHIELD TYPE 6210ZZC3)	1				
15	36081325140	BEARING,BALL (RUBBER SEAL TYPE 6210LLU)	1				
16	36080495050	BOLT,SEMS (M10X25,WITH WASHER)	9				
17	36080505080	KEY	1				
18	36081325060	WHEEL,WORM	1				
19	36081325070	CASE,GEAR	1				
20	80500006209	BEARING,BALL	1				
21	80601110450	RING,RITAINING	1		S45		
22	36080015000	PIN	2				
23	82400000478	BREATHER	1				
31	36081615500	GEAR,SPUR	1				
50	36081610000	REDUCER,SWING SPEED	1				

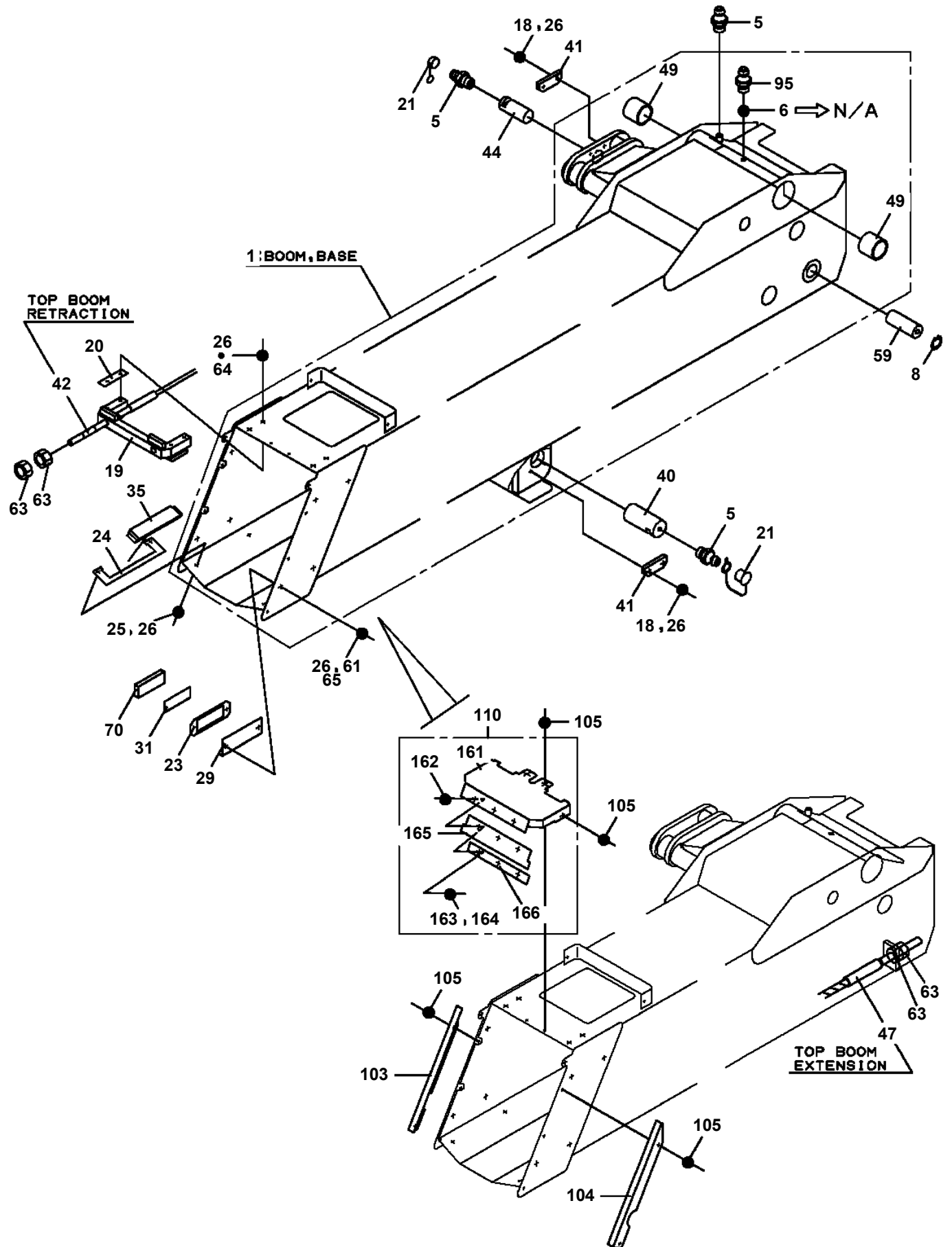
# AT-110-4 42084400054 UPPER

Pos No.	Parts No	Parts Name	Qty	Unit	Technical Data	Serial No (Start)	Serial No (End)	Remarks
1	36160650000	REEL, CORD	1					
2	42733030100	CABLE ASSY	1		L=20100			
3	82198103050	CLIP (WITH CAP/BLACK)	1					
4	90201200500	NUT	1		M5		HK0988	
	90201200500	NUT	2		M5	HK0989		
5	90302040501	WASHER, SPRING	1		5		HK0988	
	90302040501	WASHER, SPRING	2		5	HK0989		
6	90303070501	WASHER, PLAIN	1		5		HK0988	
	90303070501	WASHER, PLAIN	2		5	HK0989		
7	42505071001	SUPPORT	1					
8	90101208012	BOLT	2		M8X12			
9	90302040801	WASHER, SPRING	2		8			
10	42505072000	CABLE	1		L=2000			
11	42698150300	INSULATOR	4					
12	80172304010	SCREW, MACHINE	4		M4X10		HK0988	
	80172304010	SCREW, MACHINE	5		M4X10	HK0989		
13	90302040401	WASHER, SPRING	4		4		HK0988	
	90302040401	WASHER, SPRING	5		4	HK0989		
14	90303070401	WASHER, PLAIN	4		4		HK0988	
	90303070401	WASHER, PLAIN	5		4	HK0989		
15	80173305010	SCREW, MACHINE	1			HK0989		
16	90201200400	NUT	1		M4	HK0989		

# AT-110-4 42084400054 UPPER

Pos No.	Parts No	Parts Name	Qty	Unit	Technical Data	Serial No (Start)	Serial No (End)	Remarks	Pages
1	42503741601	SUPPORT	1						
2	82165911020	LAMP (UMBER)	2		24V6W				
3	42503741510	HARNESS	1						000078
4	82100002006	CLAMP	3		WR10				
5	90201200600	NUT	4		M6				
6	90302040601	WASHER,SPRING	4		6				
7	82100002596	RELAY	1						

AT-110-4 42084400054 UPPER  
PG1010995-03 BOOM

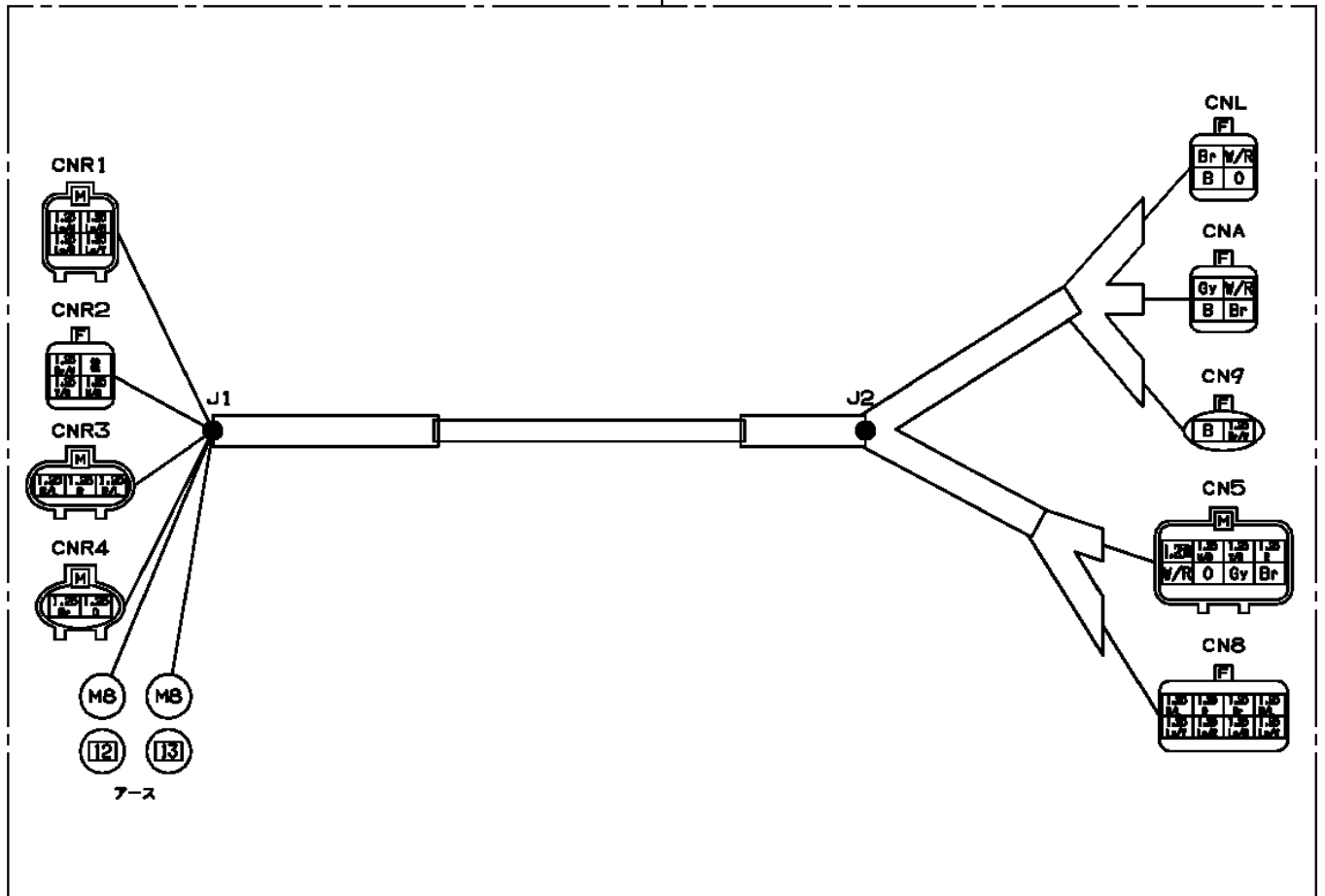


# AT-110-4 42084400054 UPPER

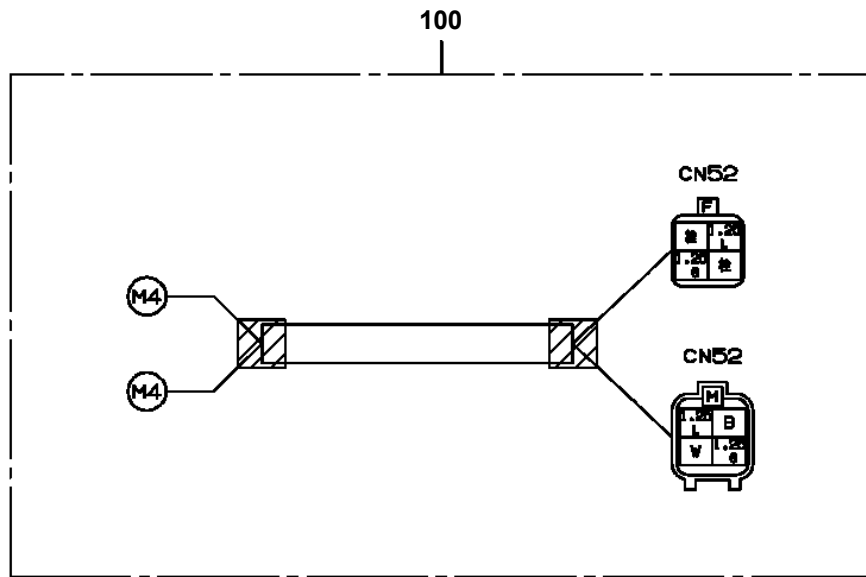
Pos No.	Parts No	Parts Name	Qty	Unit	Technical Data	Serial No (Start)	Serial No (End)	Remarks	Pages
2	42346740100	JOINT	1						
3	80316070040	PLUG	2		PF1/4				
4	37002485510	HOSE	2		L=7050				
5	37000917220	FITTING	2		PF3/8XPF3/8				
6	91002801100	O-RING	2		1B P11				
7	37001600820	NUT	2		PF3/8				
8	37000916080	PLUG	2		PF3/8				
9	90101208016	BOLT	2		M8X16	219665			
10	90302040801	WASHER,SPRING	2		8	219665			

AT-110-4 42084400054 UPPER  
PH5030975-00 HARNESS

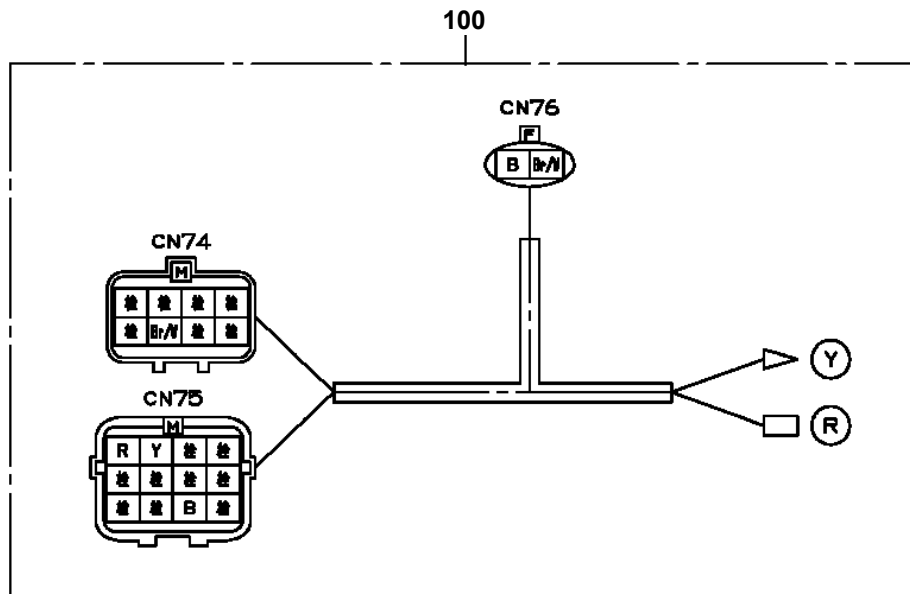
100



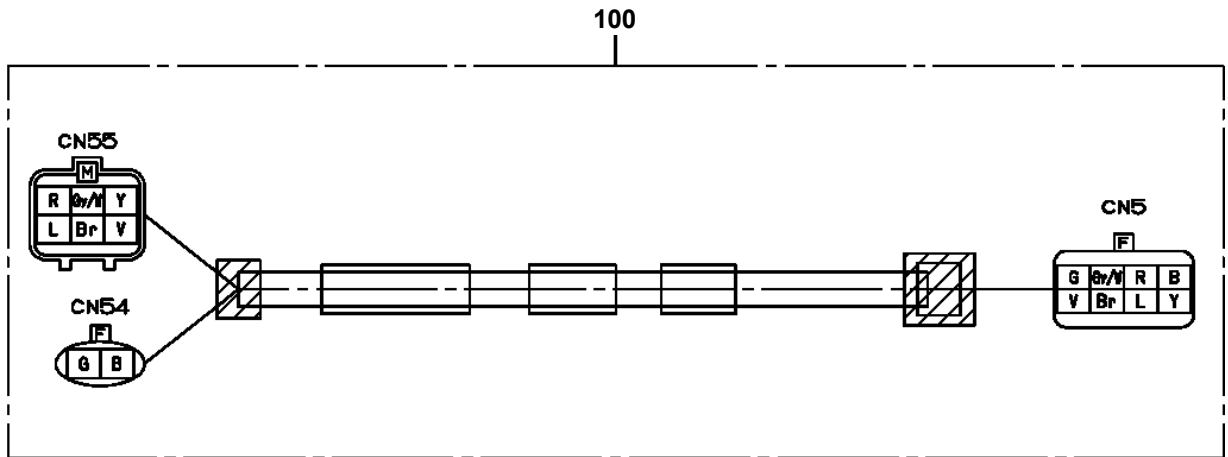
AT-110-4 42084400054 UPPER  
PH5031023-00 HARNESS



AT-110-4 42084400054 UPPER  
PH5031831-00 HARNESS

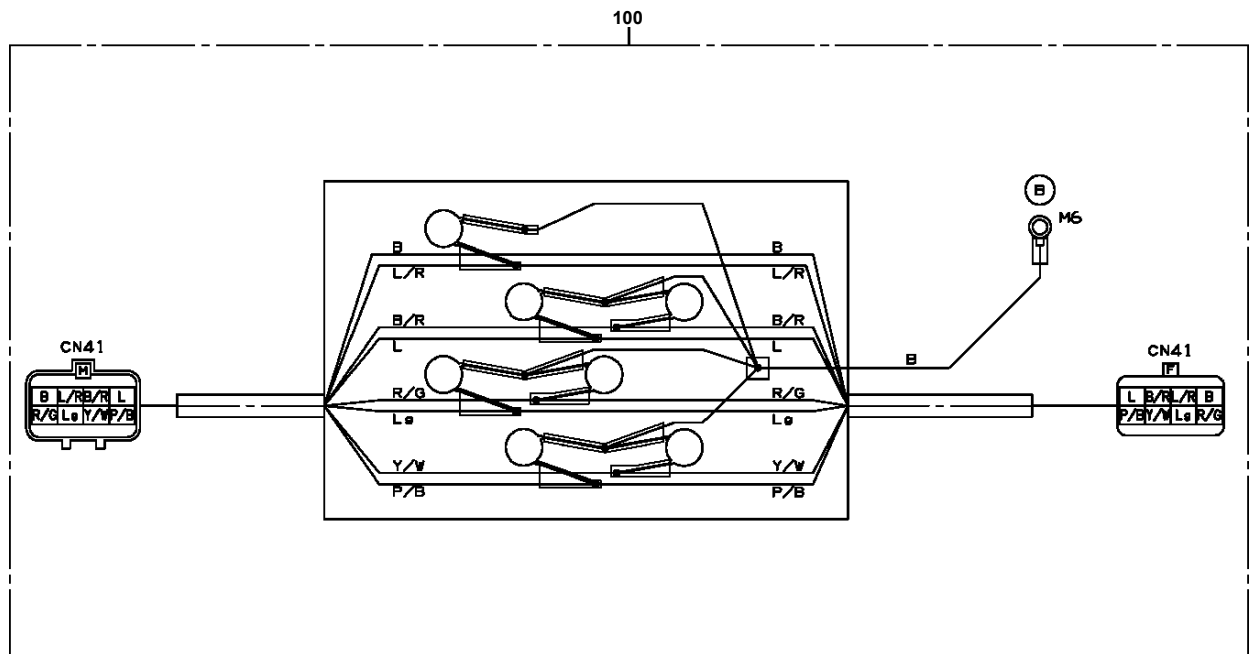


AT-110-4 42084400054 UPPER  
PH5032630-00 HARNESS

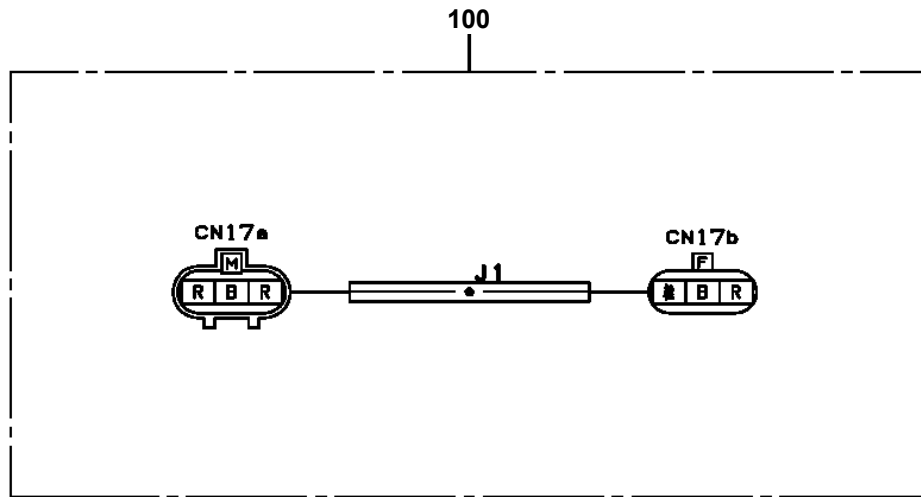




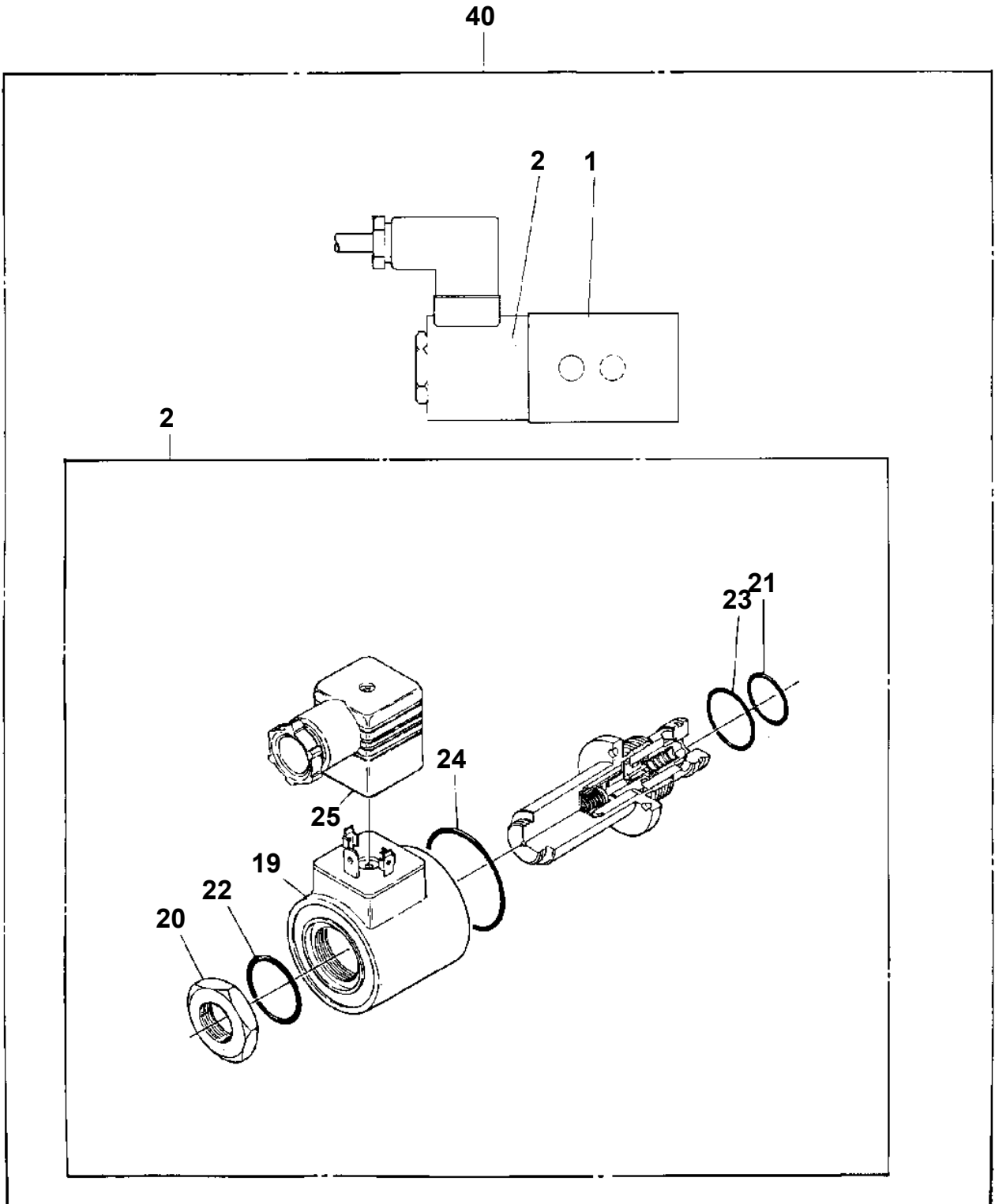
AT-110-4 42084400054 UPPER  
PH5034166-00 HARNESS



AT-110-4 42084400054 UPPER  
PH5034178-00 HARNESS

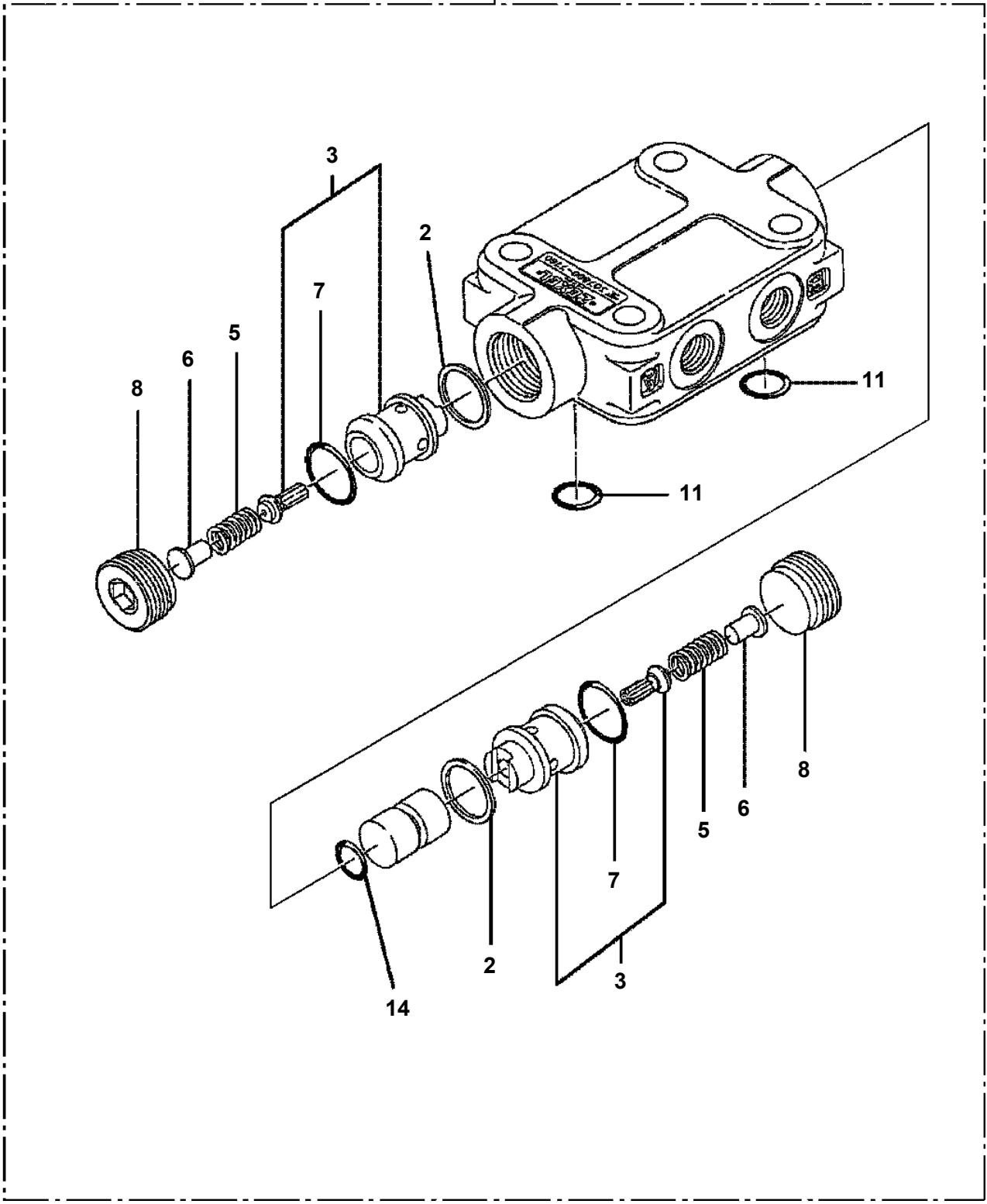


AT-110-4 42084400054 UPPER  
PI1120053-00 VALVE, SOLENOID

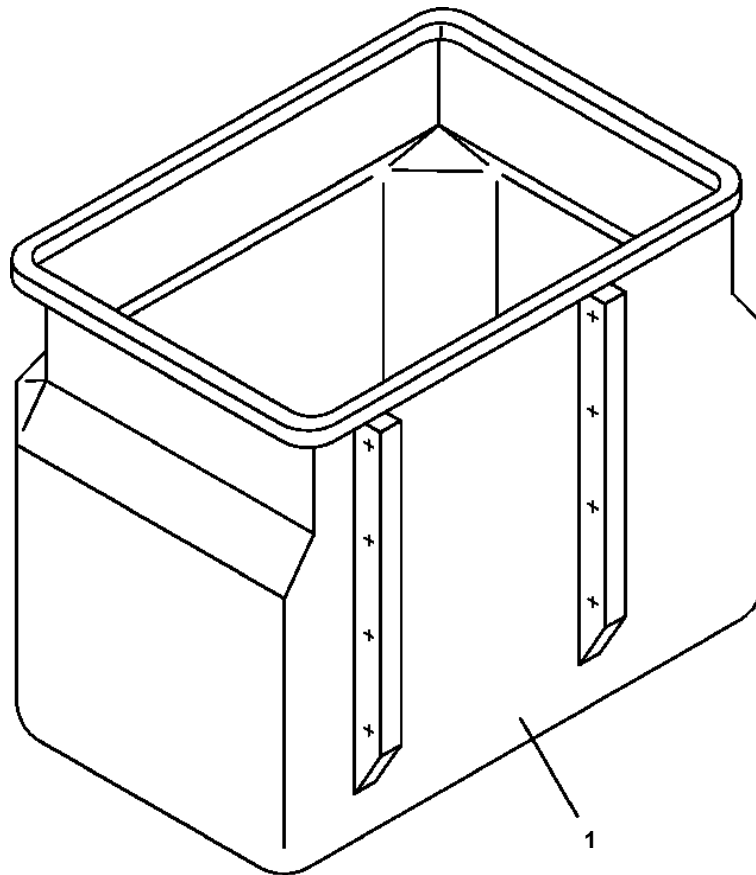


AT-110-4 42084400054 UPPER  
PI1140133-01 VALVE,CHECK

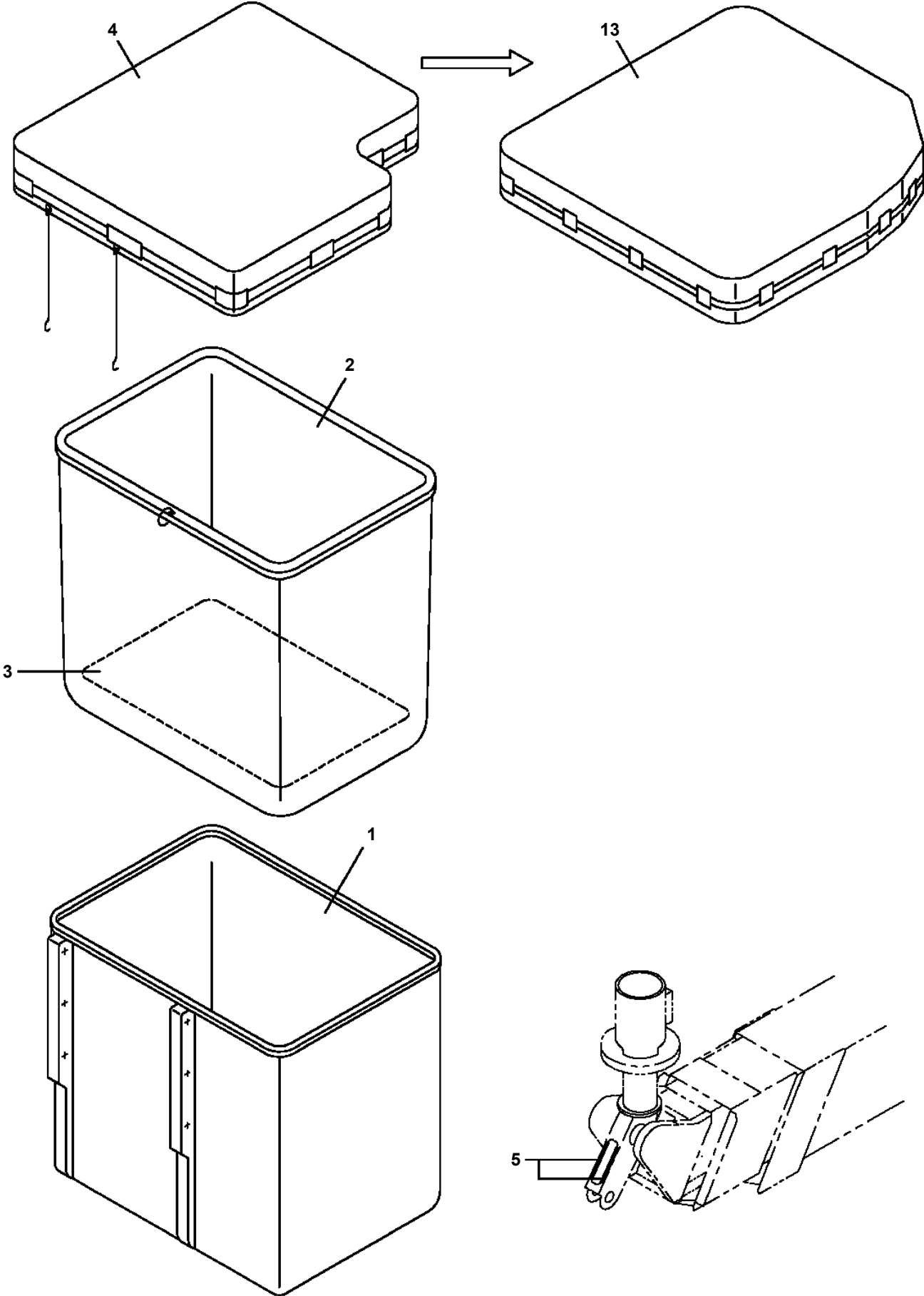
100 → (A)



**AT-110-4 42084400054 UPPER  
PJ3010199-00 BUCKET (WHITE/WITHOUT BOSS)**



**AT-110-4 42084400054 UPPER  
PJ3010362-01 BUCKET (DI BUCKET/WHITE,WITH INNER CASE)**



# AT-110-4 42084400054 UPPER

Pos No.	Parts No	Parts Name	Qty	Unit	Technical Data	Serial No (Start)	Serial No (End)	Remarks	Page
1	42625701000	FRAME ASSY	1						
2	42625310100	COVER ASSY	1						
3	82464107814	HINGE	2						
4	90190205012	BOLT	6		M5X12				
5	90201500500	NUT	12		M5				
6	90302510501	WASHER,SPRING	12		5				
7	90303520501	WASHER,PLAIN	6		5				
8	80172805014	SCREW,MACHINE	6		M5X14				
9	42624600030	PLATE,NAME	2						
10	42653672450	INSULATOR	2						
11	80172804016	SCREW,MACHINE	2		M4X16				
12	90302040401	WASHER,SPRING	2		4				
13	90303070401	WASHER,PLAIN	2		4				
14	90180212020	BOLT,BUTTON	6		M12X20				
15	42624920100	COVER	1						
16	90190206025	BOLT	2		M6X25				
17	90302510601	WASHER,SPRING (6)	2						
18	90303520601	WASHER,PLAIN	2		6				
19	82401800080	PLUG (FOR M8)	2			219658			
41	42625310200	COVER	1						
42	82460015181	CATCH (WITH KEY)	1						
43	80175805010	SCREW,MACHINE	2		M5X10				
44	80172805012	SCREW,MACHINE	2		M5X12				
45	90302510501	WASHER,SPRING	2		5				
46	82466016470	COVER	1						
59	82400000204	GROMMET	2		L=320				

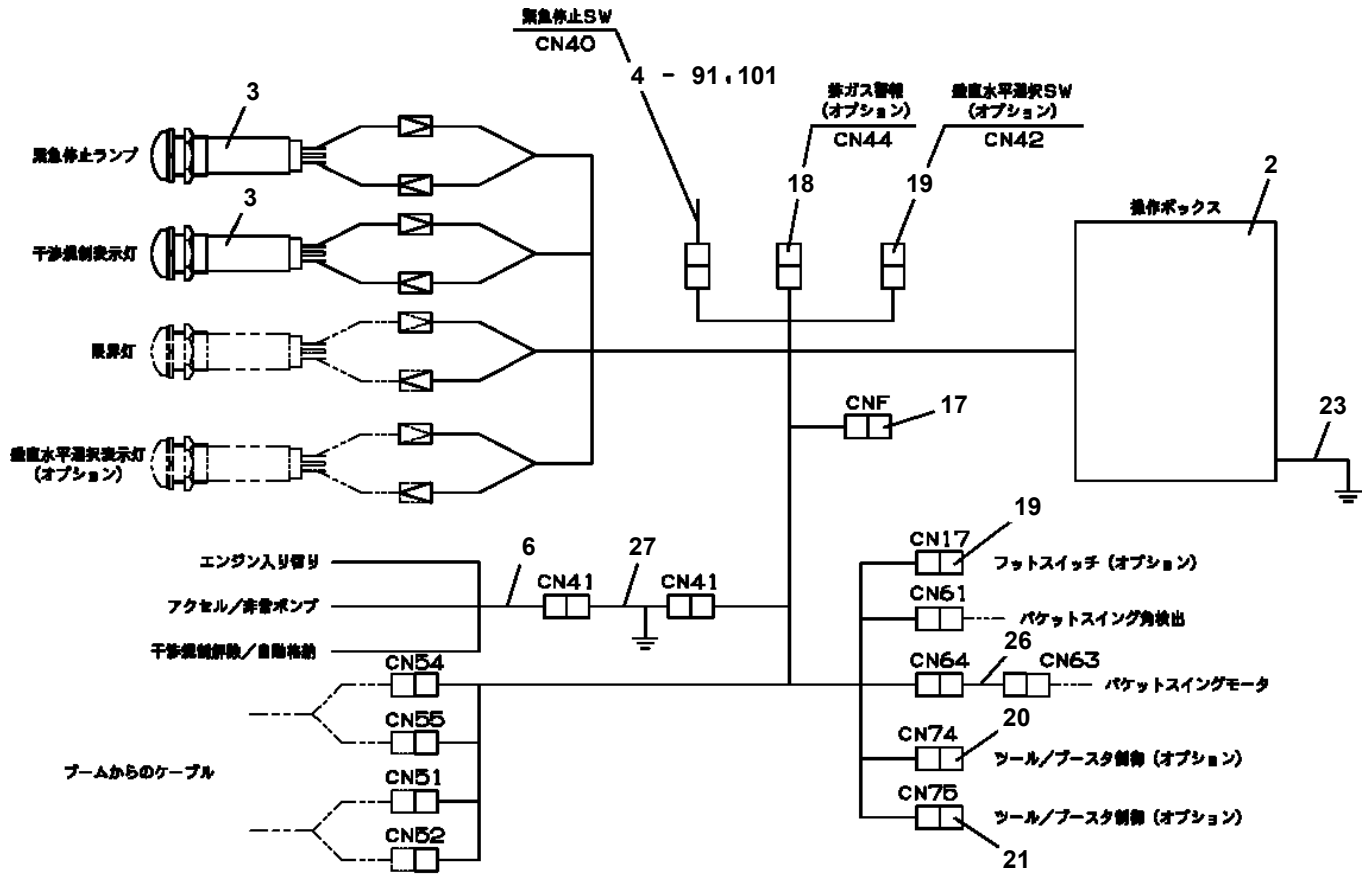
# AT-110-4 42084400054 UPPER

Pos No.	Parts No	Parts Name	Qty	Unit	Technical Data	Serial No (Start)	Serial No (End)	Remarks	Pages
1	42443190200	COVER	1						
2	42443190600	COVER	1						
4	90186208014	BOLT,FLANGE	14		M8X14				
6	90303070801	WASHER,PLAIN	14		8				
7	82100000952	GROMMET	5						
8	42442790401	COVER	1						
33	82400000200	GROMMET	1		KG-012,L=250				

# AT-110-4 42084400054 UPPER

Pos No.	Parts No	Parts Name	Qty	Unit	Technical Data	Serial No (Start)	Serial No (End)	Remarks	Pages
2	90302040801	WASHER,SPRING	7		8				
3	90101208014	BOLT	7		M8X14				
4	42422413100	COVER	1						
5	90303070801	WASHER,PLAIN	7		8				
6	42422414100	COVER	1						
7	90303070601	WASHER,PLAIN	5		6				
8	90302040601	WASHER,SPRING	5		6				
9	90101206010	BOLT	5		M6X1.0				
10	42421093300	COVER	1						

AT-110-4 42084400054 UPPER  
 PL1920070-02 OPE.ASSY (BUCKET/1-LEVER,3-OPE.)



配線接続

# AT-110-4 42084400054 UPPER

Pos No.	Parts No	Parts Name	Qty	Unit	Technical Data	Serial No (Start)	Serial
1	42507442100	VALVE ASSY,SOLENOID (WITH CONNECTOR)	1				219907
	36742160000	VALVE ASSY,SOLENOID	1			219908	
21	36644890000	VALVE,SOLENOID	1				219907

# AT-110-4 42084400054 UPPER

Pos No.	Parts No	Parts Name	Qty	Unit	Technical Data	Serial No (Start)	Serial No (End)
1	42809631200	LAMP ASSY (RED,WITH HARNESS)	1				
2	42434712200	SWITCH ASSY	1				
3	91810130240	FASTENER	2				
4	82199514013	CAP	1				
5	82199504017	NUT	1		AT-401N		
6	42502181100	HARNESS	1			219327	
21	42331782030	PLATE,NAME	1				
22	42331782110	PLATE,NAME	1				
23	42331782070	PLATE,NAME	1				

# AT-110-4 42084400054 UPPER

Pos No.	Parts No	Parts Name	Qty	Unit	Technical Data	Serial No (Start)	Serial No (End)	Remarks	Pages
1	42355810200	COVER	1						
2	90101208014	BOLT	4		M8X14				
3	90303070801	WASHER,PLAIN	6		8				
4	90302040801	WASHER,SPRING	5		8				
5	90201200800	NUT	1		M8				
6	91850400601	CLAMP	3						
7	91810132530	FASTENER	10						
9	82100002015	CLAMP	1		WRC20		219882		
	82100002011	CLAMP	1		WRC15	219883			
10	82100002052	CLAMP	2						
11	90201200600	NUT	2		M6				
12	90302040601	WASHER,SPRING	2		6				
13	82400000347	GROMMET	1		L=320				
22	82400000200	GROMMET	1		KG-012,L=250				

# AT-110-4 42084400054 UPPER

Pos No.	Parts No	Parts Name	Qty	Unit	Technical Data	Serial No (Start)	Serial No (End)	Remarks	Pages
1	42422411100	RELAY ASSY	1						000164
2	90101206014	BOLT	11		M6X14				
3	90302040601	WASHER,SPRING	11		6				
4	82100002019	CLAMP	2		WR40				
5	90201200800	NUT	2		M8				
6	90302040801	WASHER,SPRING	2		8				
7	90101205012	BOLT	4		M5X12				
8	90302040501	WASHER,SPRING	4		5				
9	90303070501	WASHER,PLAIN	4		5				
10	37000574830	SUPPORT	1						
11	42420501100	BLOWER	1						
12	37002707760	CABLE ASSY	1		L=300				
13	91810132530	FASTENER	N						
14	42420854500	CABLE ASSY	1		L=1200				
15	37002708120	CABLE ASSY	1		L=4000				
16	90303070601	WASHER,PLAIN	6		6				
17	42421091400	PLATE	1						
18	42421091410	PLATE	1						
41	42420507510	CLAMP	1						

CLICK HERE TO **DOWNLOAD** THE COMPLETE MANUAL

- Thank you very much for reading the preview of the manual.
- You can download the complete manual from: [www.heydownloads.com](http://www.heydownloads.com) by clicking the link below



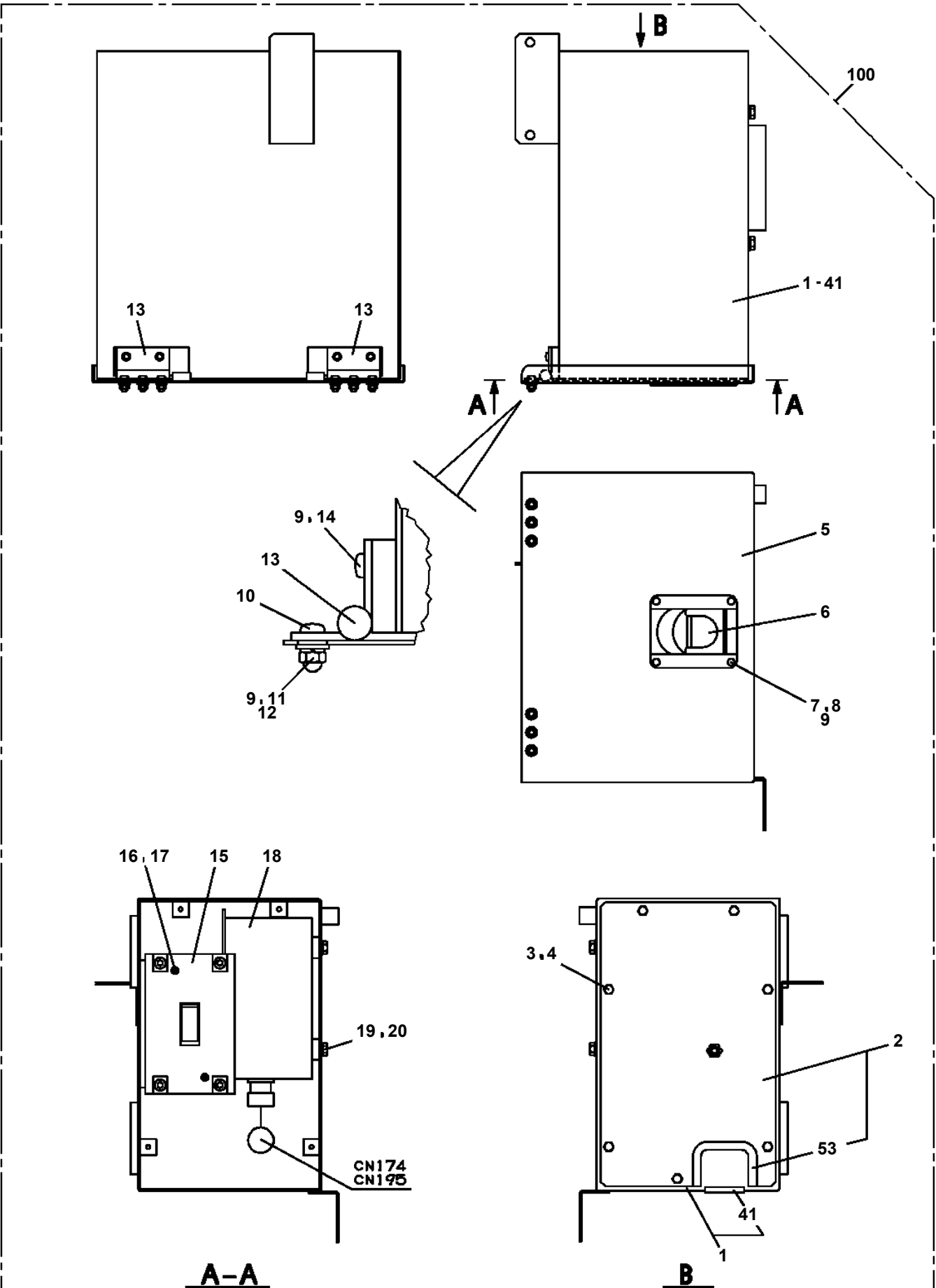
- Please note: If there is no response to CLICKING the link, please download this PDF first and then click on it.

CLICK HERE TO **DOWNLOAD** THE COMPLETE MANUAL

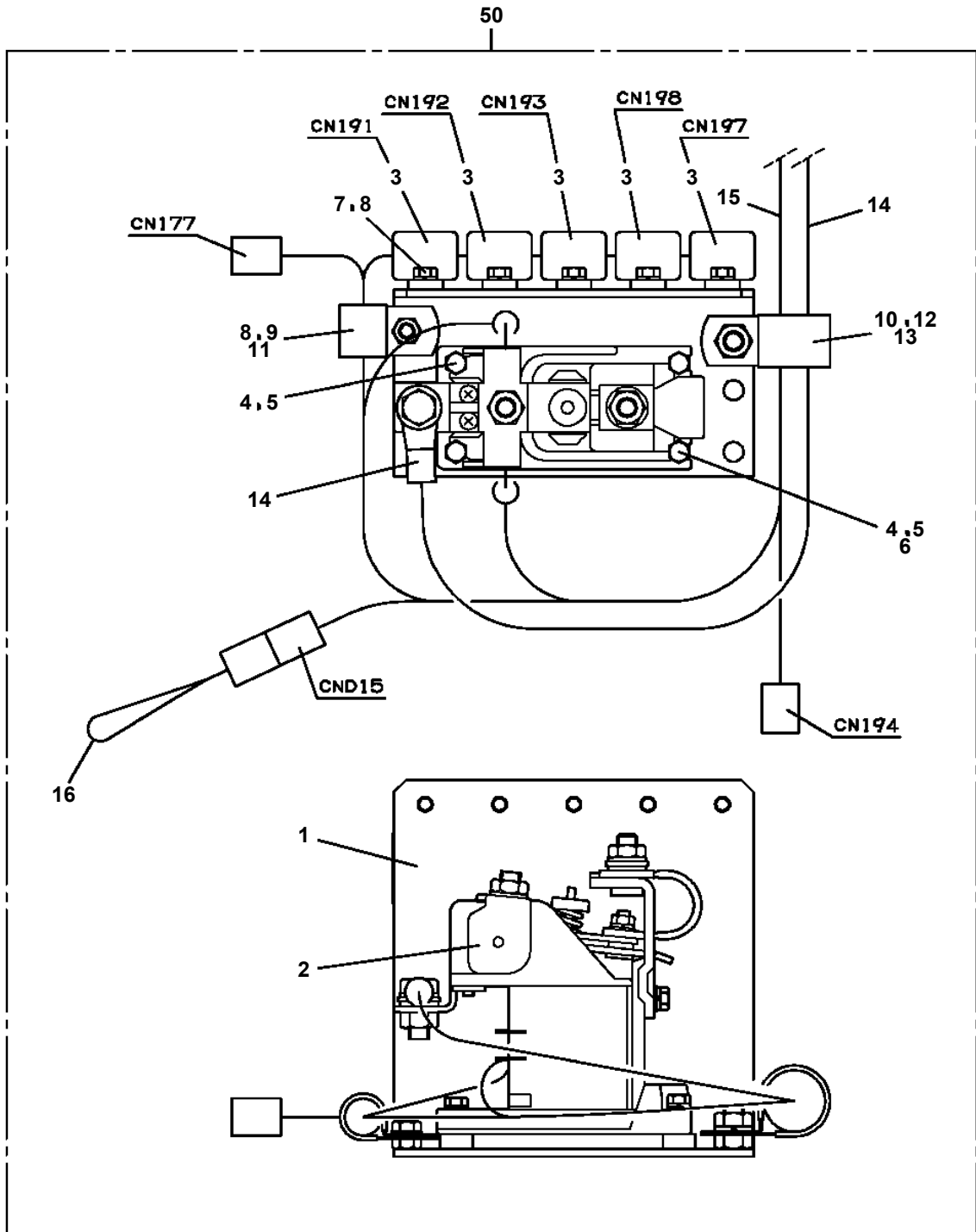
# AT-110-4 42084400054 UPPER

Pos No.	Parts No	Parts Name	Qty	Unit	Technical Data	Serial No (Start)	Serial No (End)
2	42809631200	LAMP ASSY (RED,WITH HARNESS)	1				
3	42736070100	SWITCH ASSY (WITH HARNESS)	1				
4	82199504017	NUT	1		AT-401N		
5	82199514013	CAP	1				
6	91810130230	FASTENER	1				

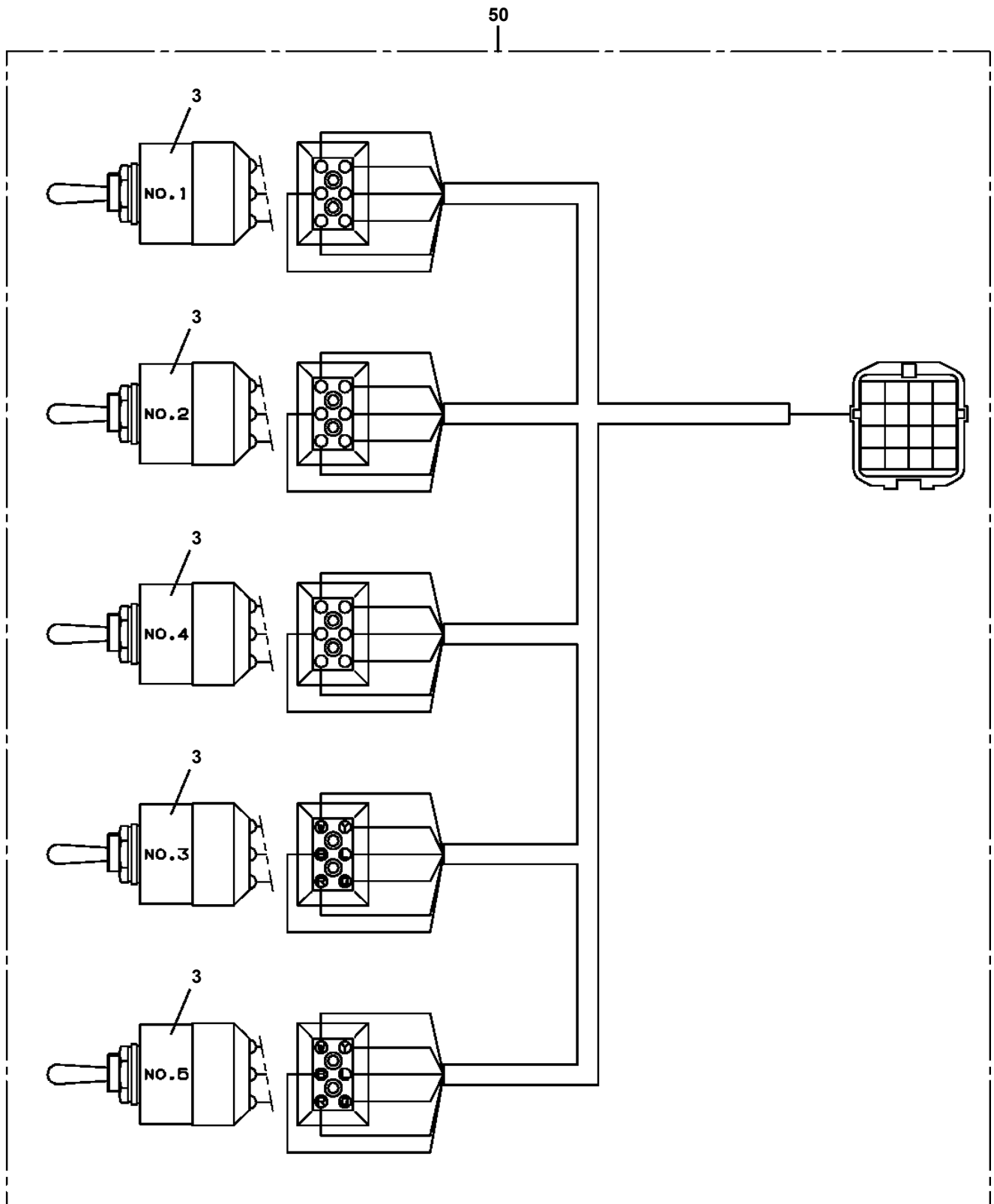
**AT-110-4 42084400054 UPPER  
PN1100057-00 RELAY BOX**



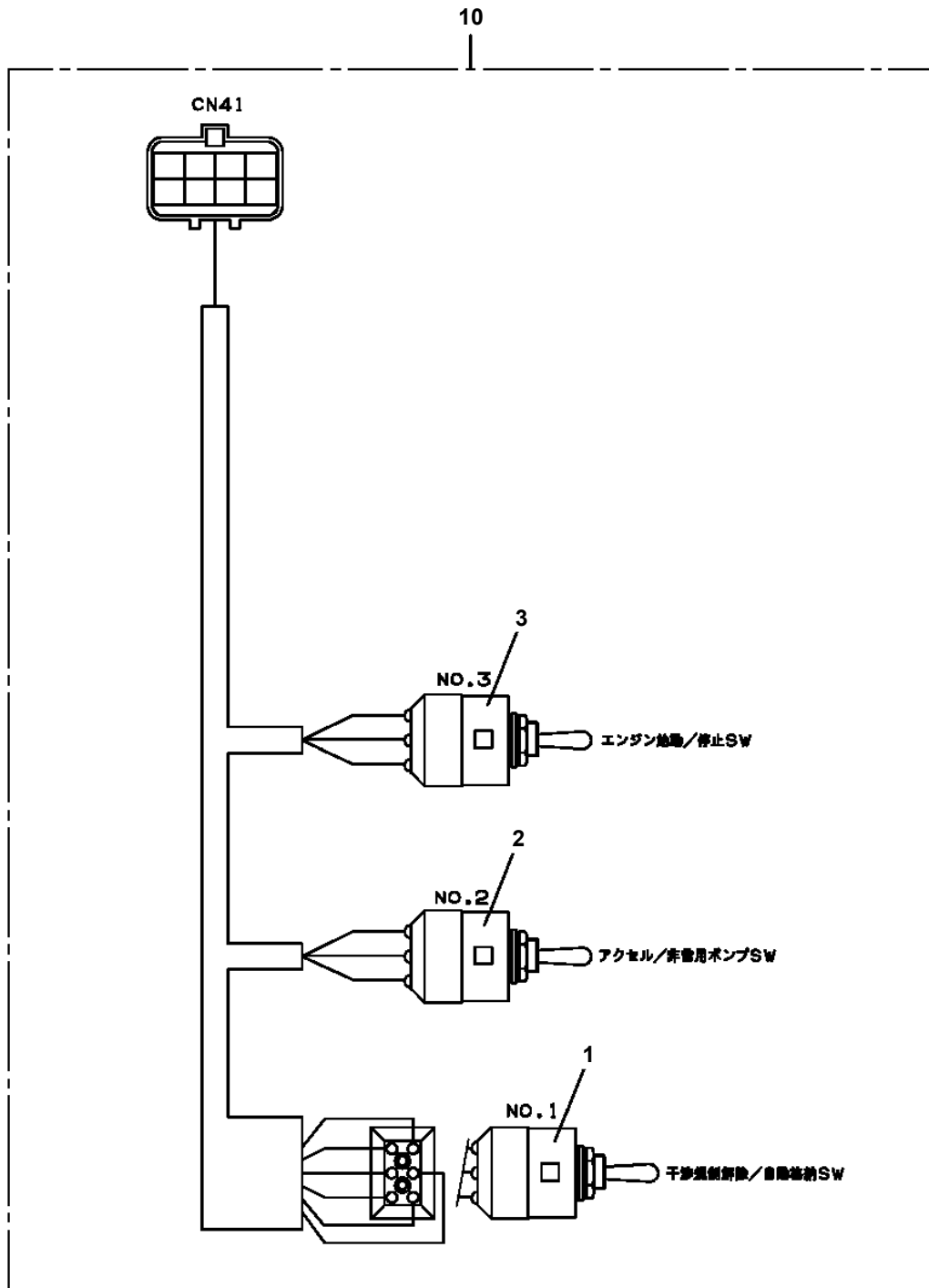
AT-110-4 42084400054 UPPER  
PN1110561-00 RELAY ASSY



**AT-110-4 42084400054 UPPER  
PN1140167-00 SWITCH ASSY (WITH HARNESS,5 SW)**



AT-110-4 42084400054 UPPER  
PN1140206-00 SWITCH ASSY (WITH HARNESS,3 SW)

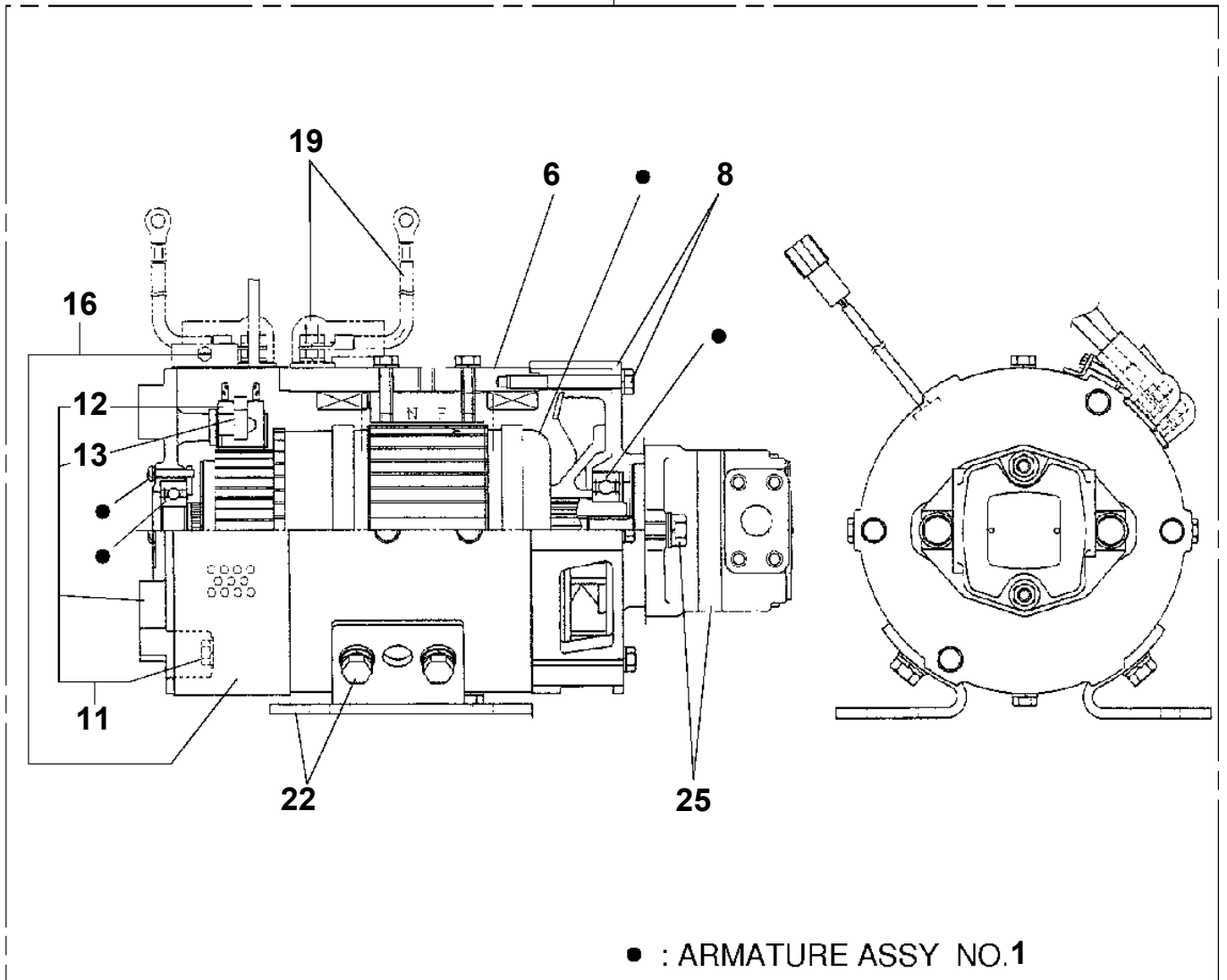


# AT-110-4 42084400054 UPPER

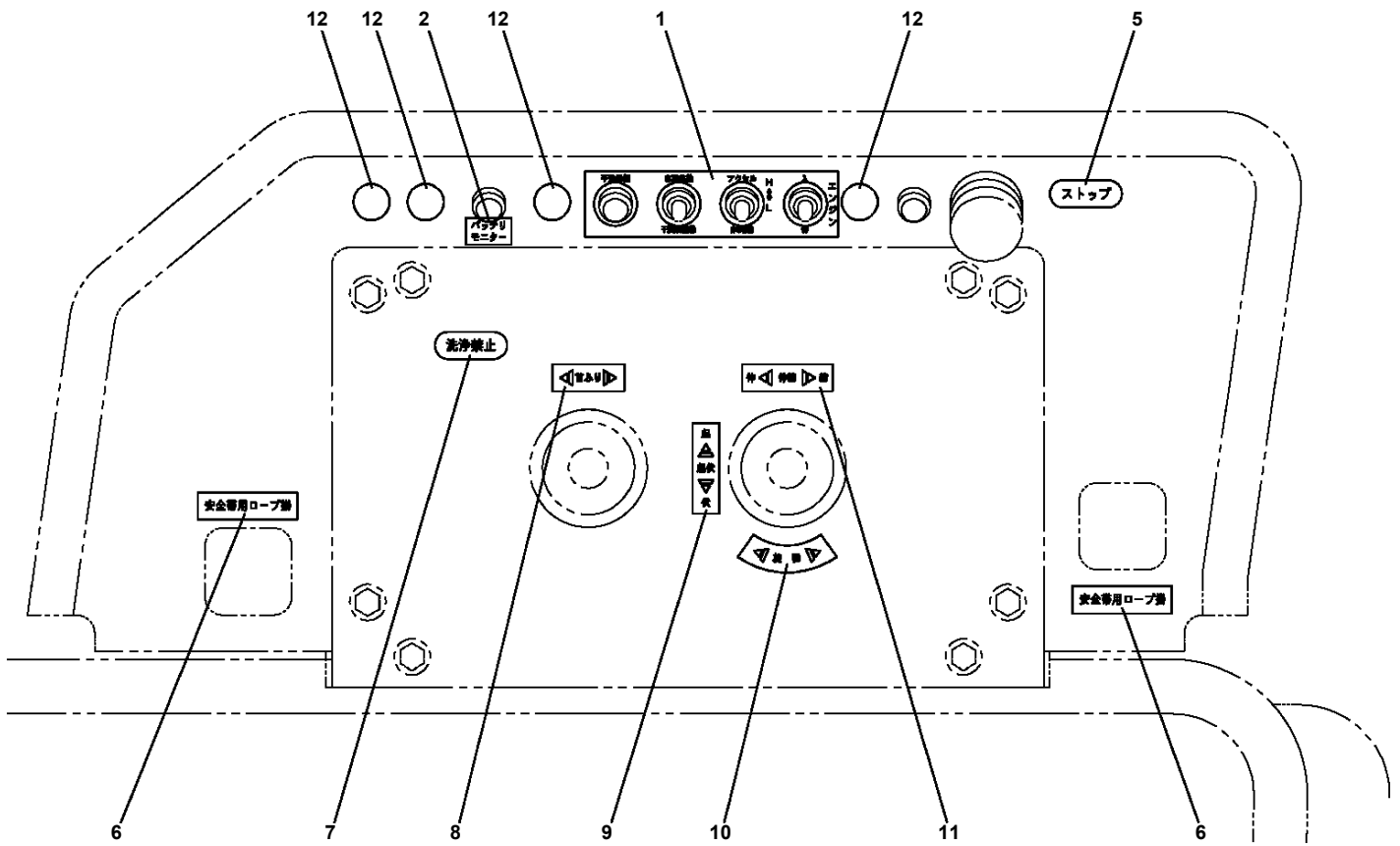
Pos No.	Parts No	Parts Name	Qty	Unit	Technical Data	Serial No (Start)	Serial No (End)	Remarks	Pages
5	36160017550	HANDLE	1						
6	36160655020	SHAFT	1						
7	36160017560	WASHER,PLAIN	1						
8	36160655050	PLATE (RING)	1						
10	36160017590	PLATE (CONTACT)	1						
50	36160650000	REEL,CORD	1						

**AT-110-4 42084400054 UPPER  
PN1410006-00 MOTOR,ELECTRIC**

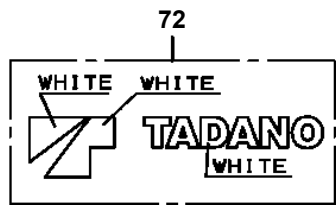
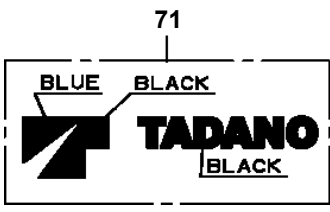
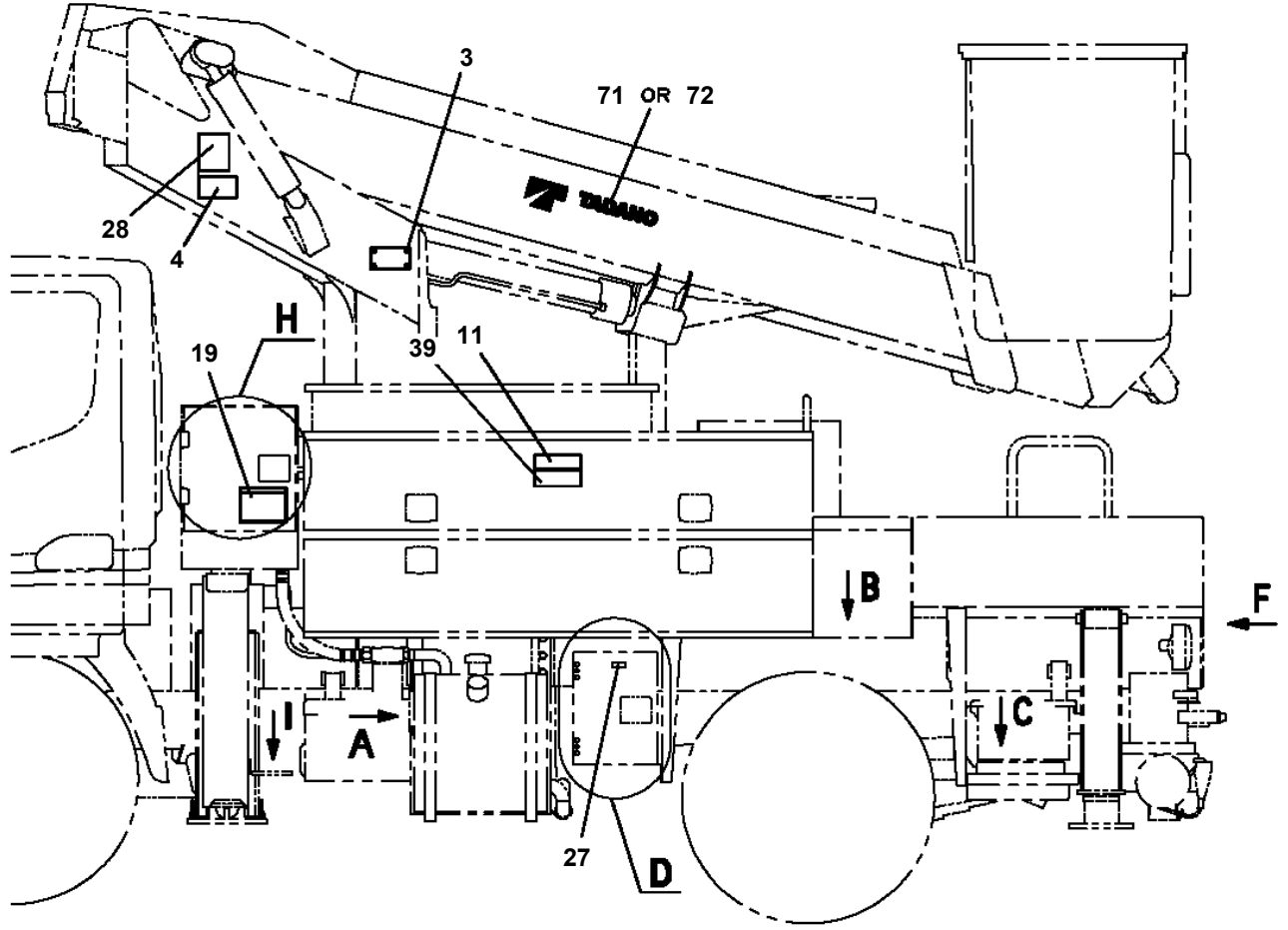
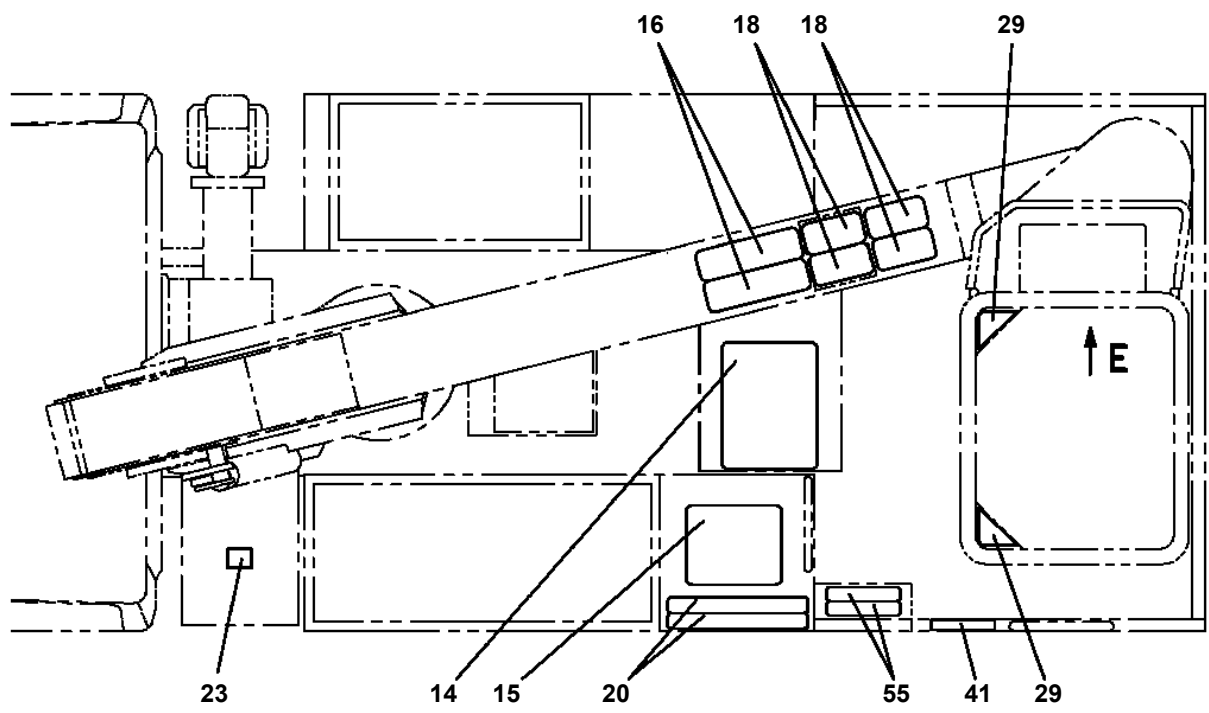
100



**AT-110-4 42084400054 UPPER  
PN5010092-00 NAME PLATE ASSY (BUCKET CONTROL)**



**AT-110-4 42084400054 UPPER  
PN5010260-00 NAME PLATE ASSY (VEHICLE)**

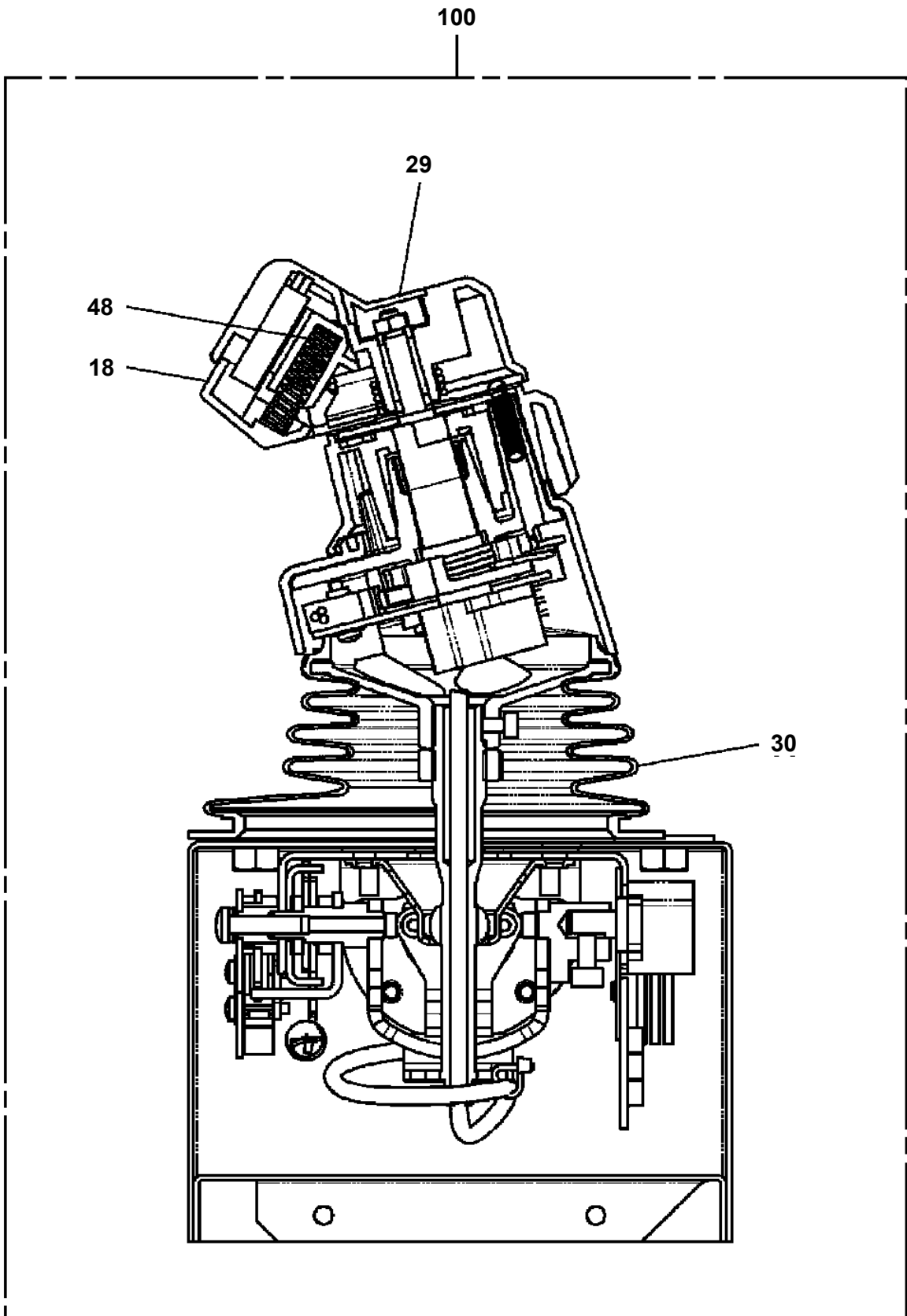


# AT-110-4 42084400054 UPPER

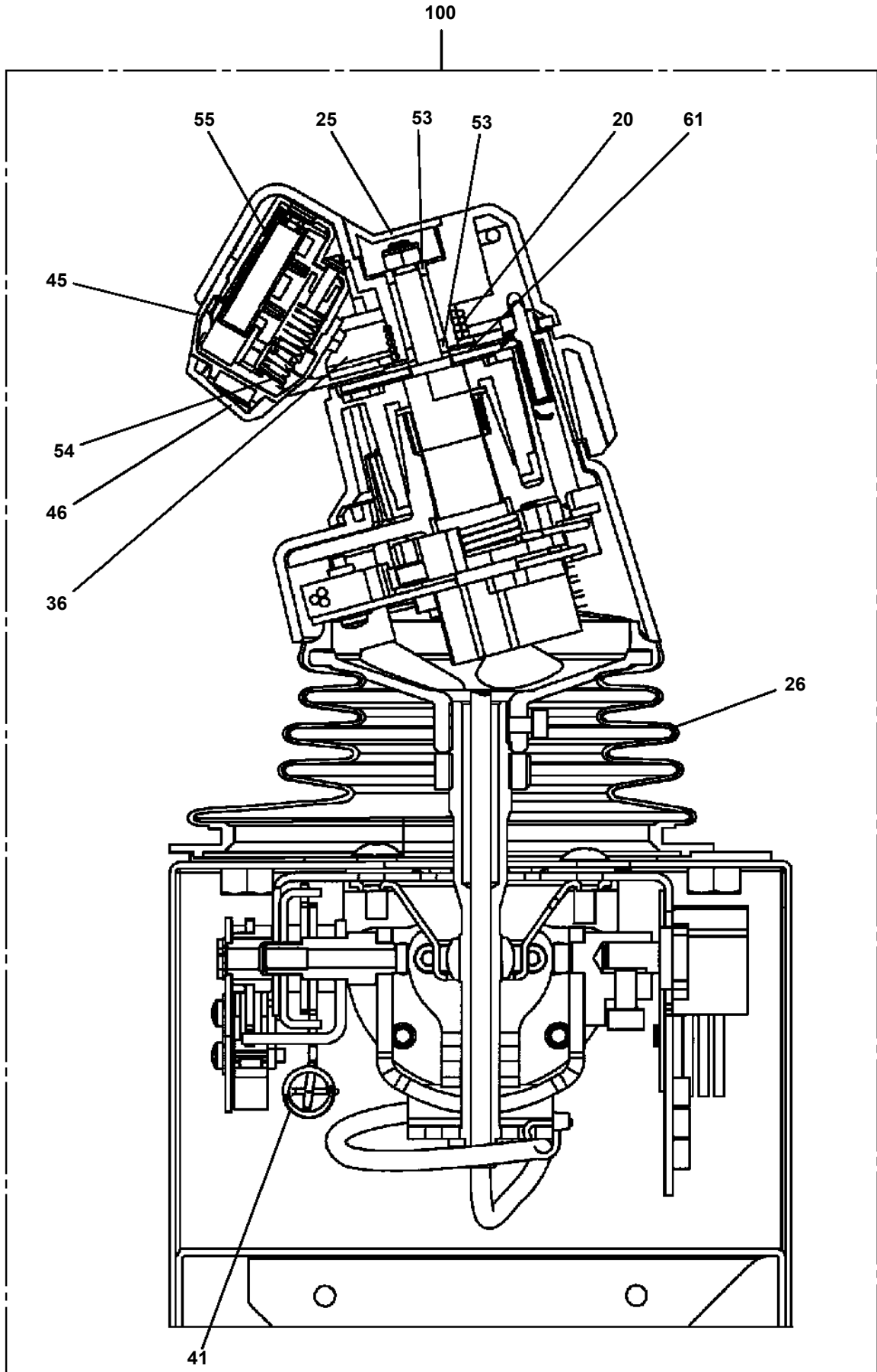
Pos No.	Parts No	Parts Name	Qty	Unit	Technical Data	Serial No (Start)	Serial No (End)
1	42450951010	PLATE,CAUTION (HYDRAULIC OIL ISO VG22)	1				



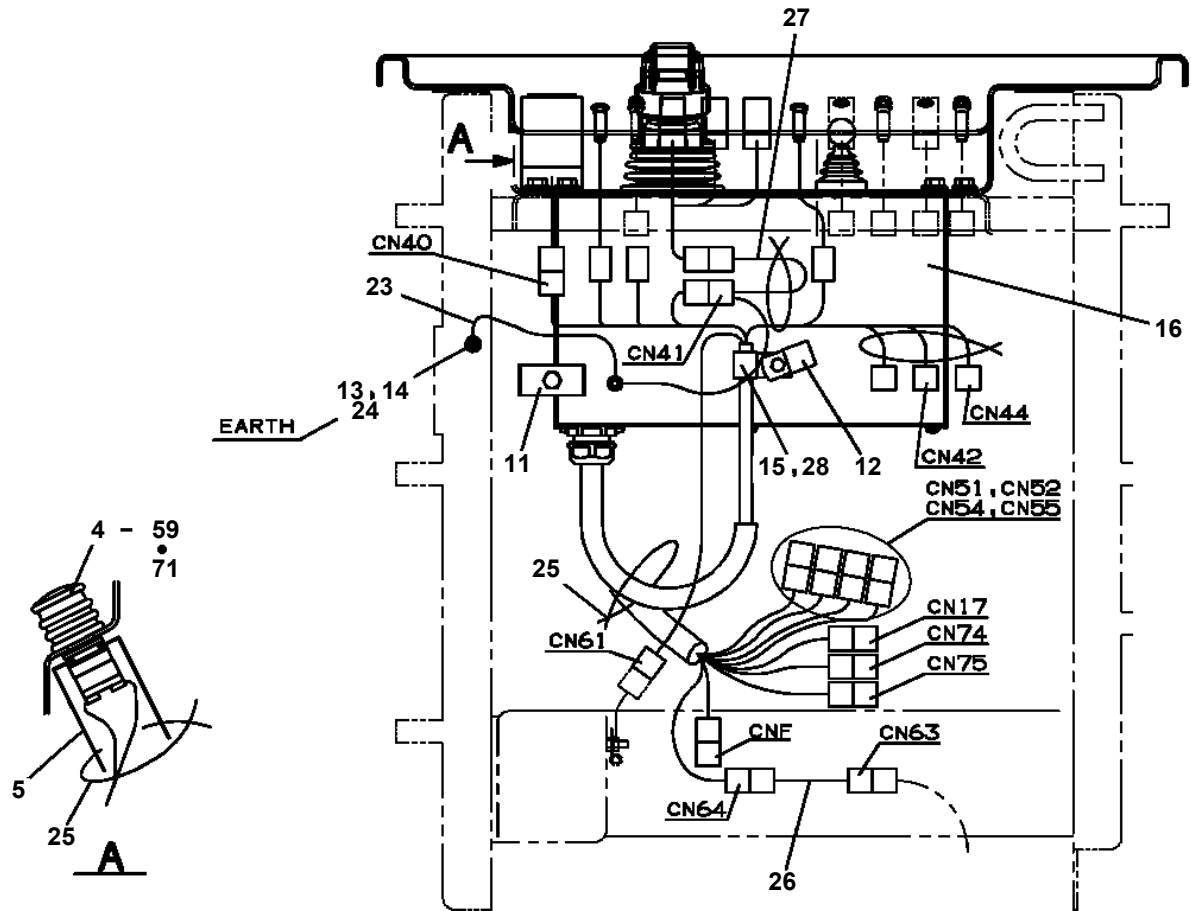
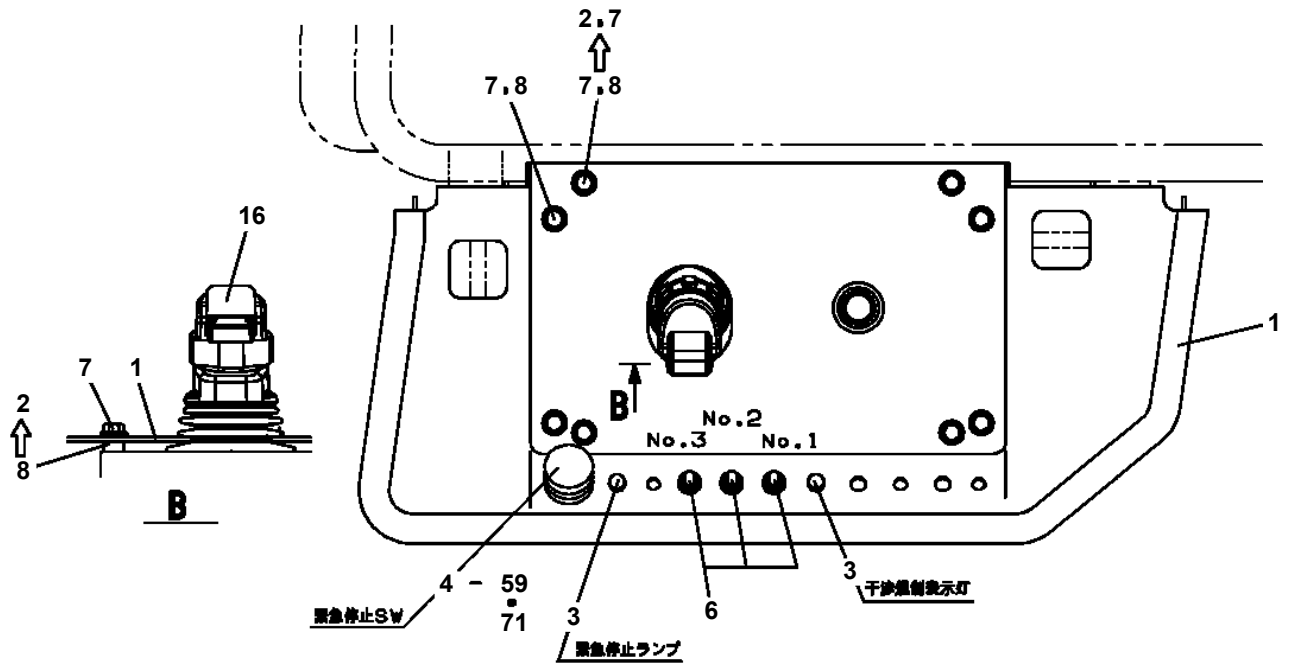
AT-110-4 42084400054 UPPER  
PO5010010-00 OPE.ASSY (LEVER,CONTROL)



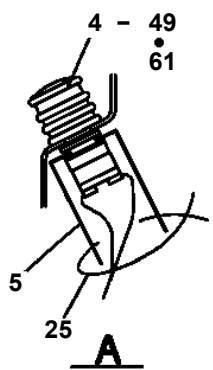
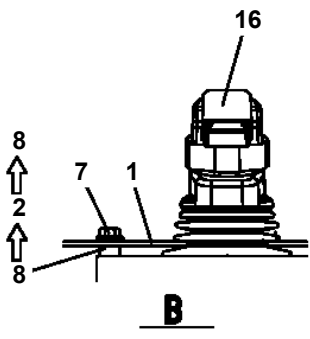
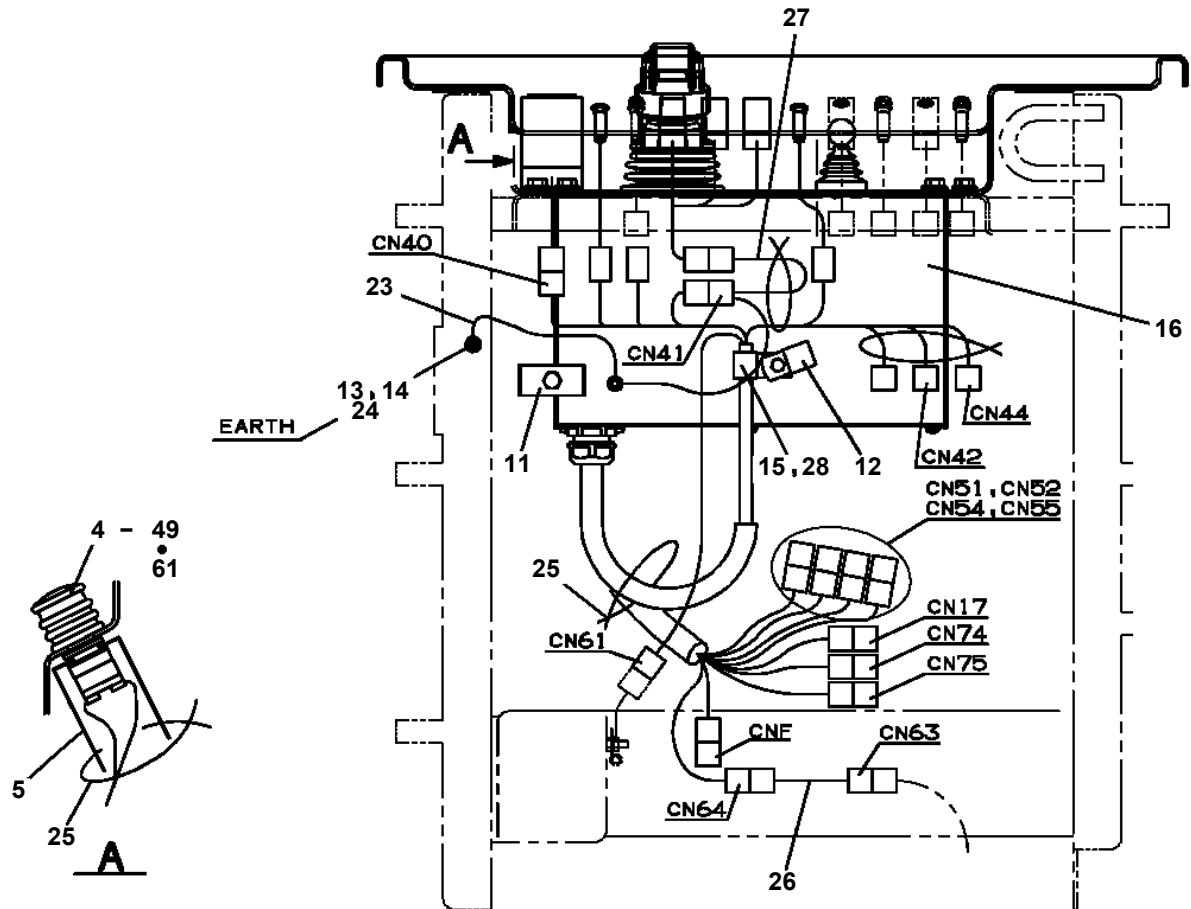
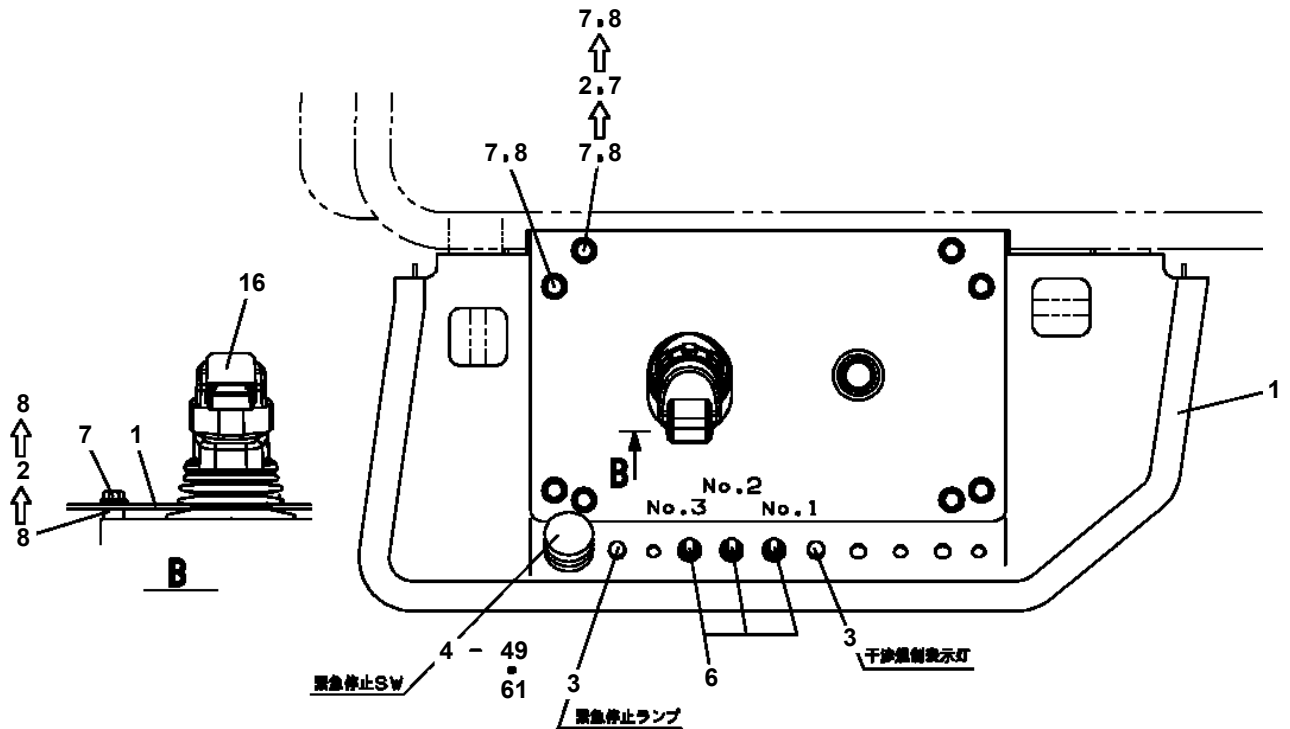
AT-110-4 42084400054 UPPER  
PO5010027-02 OPE.ASSY (LEVER,CONTROL)



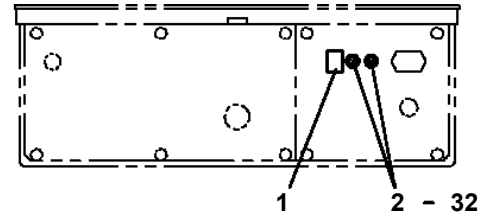
AT-110-4 42084400054 UPPER  
 PO5050004-00 OPE.ASSY,BUCKET



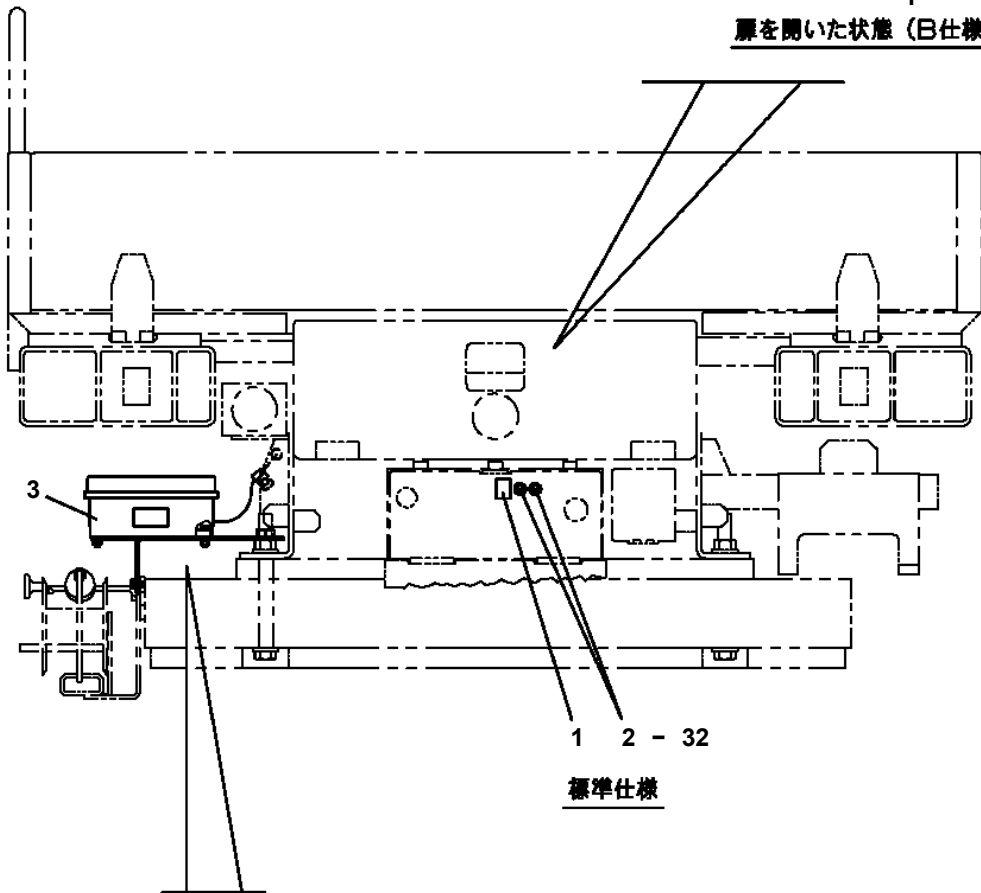
AT-110-4 42084400054 UPPER  
 PO5050027-00 OPE.ASSY,BUCKET



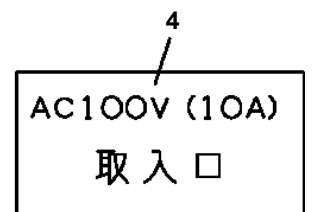
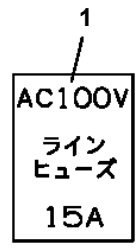
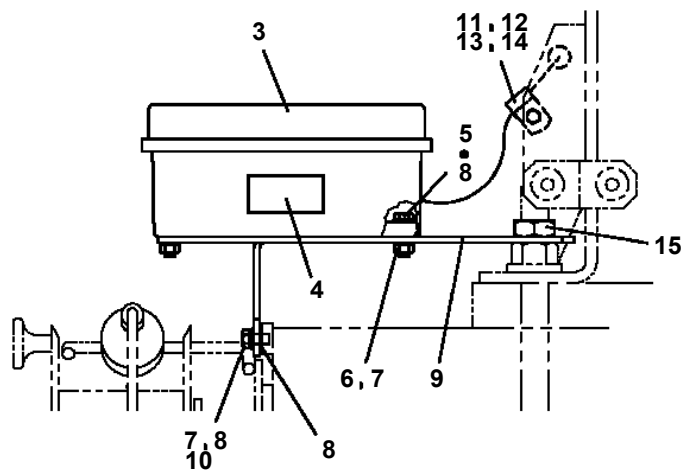
AT-110-4 42084400054 UPPER  
 PP5340001-01 POWER SUPPLY ASSY,ELECTRICITY(LOWER/W/ CABLE 2POLES,B,



扉を開いた状態 (B仕様)



標準仕様



# AT-110-4 42084400054 UPPER

Pos No.	Parts No	Parts Name	Qty	Unit	Technical Data	Serial No (Start)	Serial No (End)	Remarks	Pa
1	37000711010	CLAMP ASSY	3		18X1				
2	37000300750	SLEEVE	1		18-15				
3	91002801100	O-RING	4		1B P11				
4	37002472360	HOSE	1		L=650				
5	81408000210	PIPE,STEEL	1	M	15X2.0T				
6	91002801400	O-RING	2		1B P14				
7	37000711410	CLAMP ASSY	2		12-4				
8	80302090161	FITTING	2		KCO12-030N				
9	37000711080	CLAMP ASSY	7		12-2				
10	81408000160	PIPE,STEEL	2	M	12X1.4T				
11	81408000160	PIPE,STEEL	2	M	12X1.4T				
12	81408000160	PIPE,STEEL	2	M	12X1.4T				
13	81408000160	PIPE,STEEL	2	M	12X1.4T				
14	37000601630	CLAMP	1		65				
15	90101208016	BOLT	1		M8X16				
16	90302040801	WASHER,SPRING	1		8				
17	81408000241	PIPE,STEEL	1	M	18X1.9T				
21	81408000160	PIPE,STEEL	1	M	12X1.4T				
22	81408000160	PIPE,STEEL	2	M	12X1.4T				
23	81408000160	PIPE,STEEL	1	M	12X1.4T				
24	81408000160	PIPE,STEEL	1	M	12X1.4T				
25	81408000160	PIPE,STEEL	2	M	12X1.4T				
26	81408000160	PIPE,STEEL	2	M	12X1.4T				
27	81408000160	PIPE,STEEL	3	M	12X1.4T				
28	81408000160	PIPE,STEEL	3	M	12X1.4T				
29	81408000160	PIPE,STEEL	3	M	12X1.4T				
30	81408000160	PIPE,STEEL	3	M	12X1.4T				
31	80301010100	FITTING	4		KUA12-000N				
33	81408000241	PIPE,STEEL	1	M	18X1.9T				
34	80309010105	SLEEVE	4		KK012-000E				
35	80306010105	NUT	4		KKN12-000E				
36	37002486390	HOSE	4		L=430				
37	37000924410	JOINT	2		PF1/4-PF1/4				
38	42645290500	ORIFICE	2		1.6				
39	80400160127	JOINT	2						
41	82100001804	TUBE,CORRUGATE	1	M	15				
43	36672630000	FILTER (WITH O-RING)	2						
45	37002462370	HOSE	1		L=450				
61	42648911100	JOINT	1						
62	80302090201	FITTING	1		KCO15-040N				
63	91002801800	O-RING	4		1B P18				
64	80430620400	JOINT	1						
65	37000908720	JOINT (WITH O-RING)	1		PF1/2-PF3/8				
66	80302090241	FITTING	1		KCO18-040N				
67	80316030060	PLUG	1		PT3/8				
68	80316070080	PLUG	1		PF1/2				
81	91002801100	O-RING	3		1B P11				

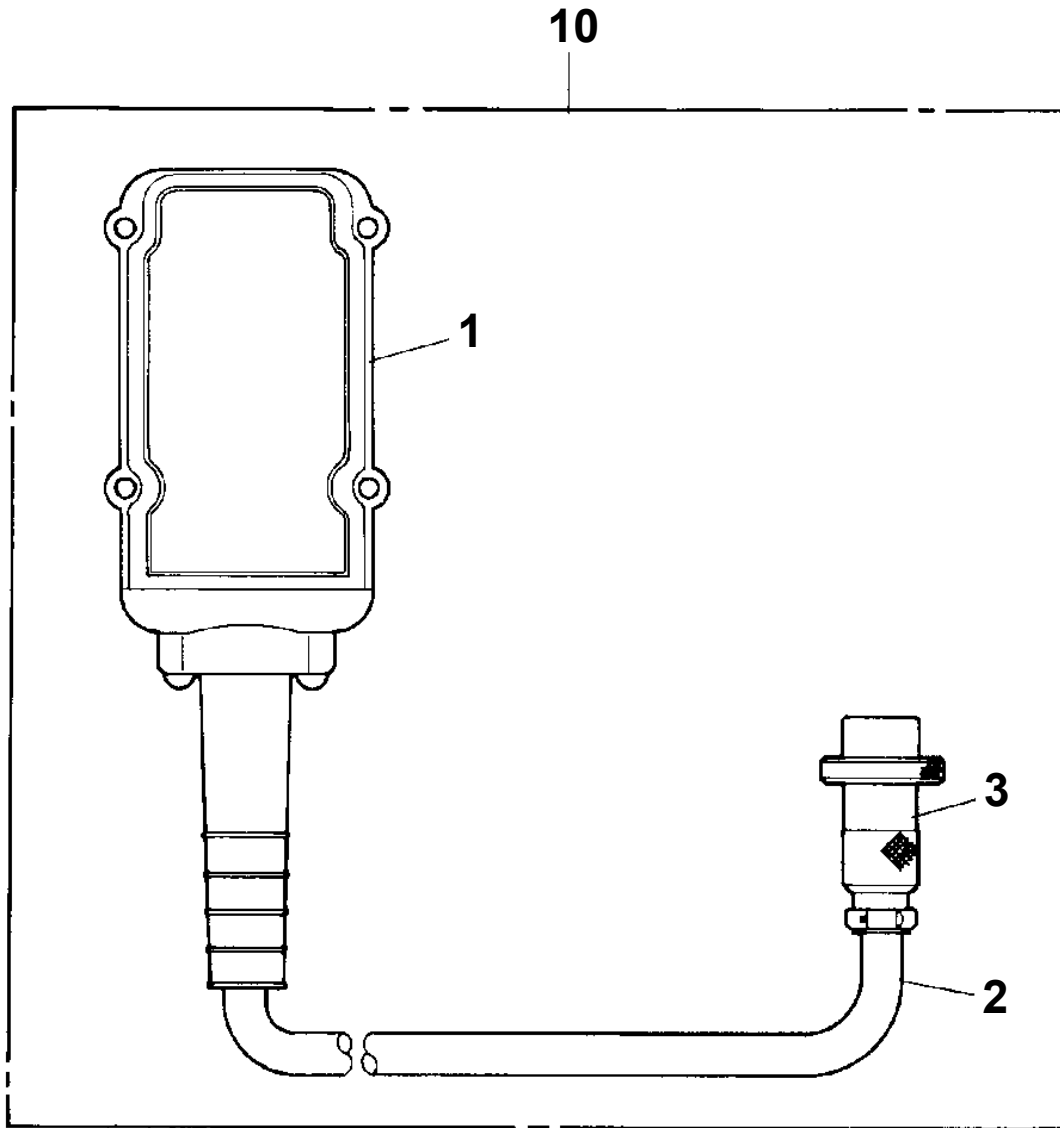
# AT-110-4 42084400054 UPPER

Pos No.	Parts No	Parts Name	Qty	Unit	Technical Data	Serial No (Start)	Serial No (End)
1	82105900060	SWITCH,TOGGLE	1				
2	82105220193	SWITCH,TOGGLE	1				
3	82105900010	SWITCH,TOGGLE	1				
50	42332531301	SWITCH ASSY (WITH HARNESS,3 SW)	1				

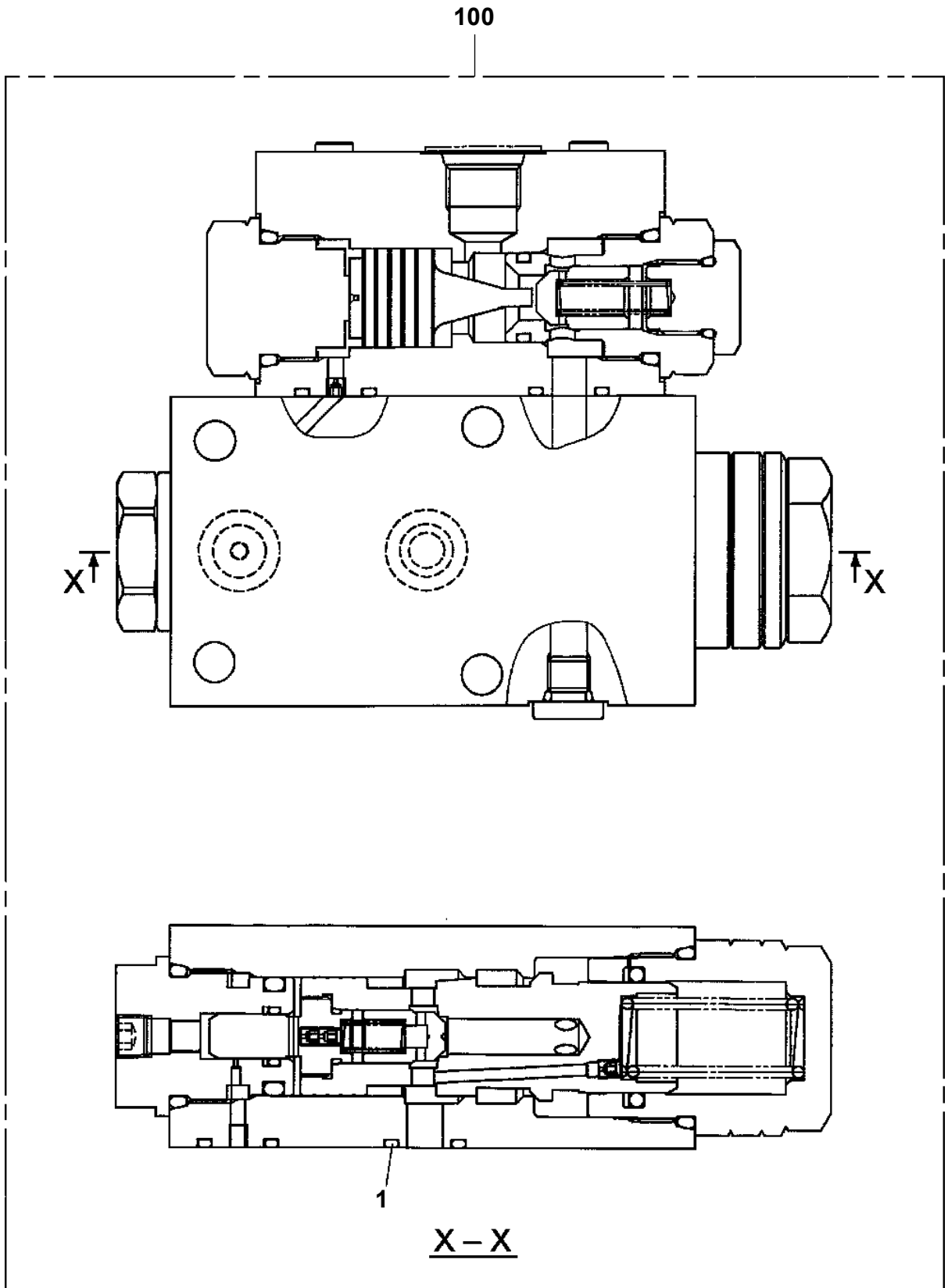
# AT-110-4 42084400054 UPPER

Pos No.	Parts No	Parts Name	Qty	Unit	Technical Data	Serial No (Start)	Serial No (End)	Remarks	Page
1	82109113022	SWITCH,EMITTER	1						
	82109113022	SWITCH,EMITTER	1						
2	82109103022	SWITCH,RECEIVER	1						
	82109103022	SWITCH,RECEIVER	1						
100	42505633301	SWITCH ASSY	1						
	42505633301	SWITCH ASSY	1						

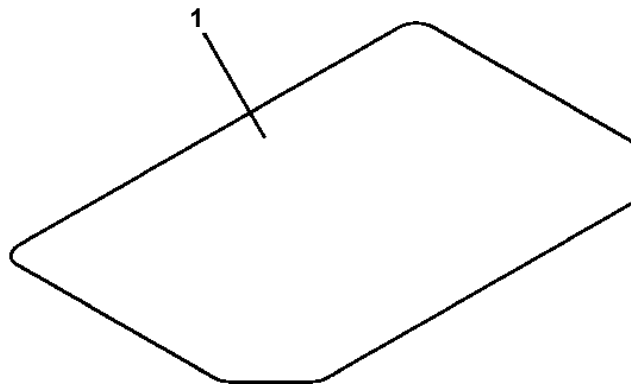
**AT-110-4 42084400054 UPPER  
PV1030001-00 SWITCH BOX (FOR BOOSTER)**



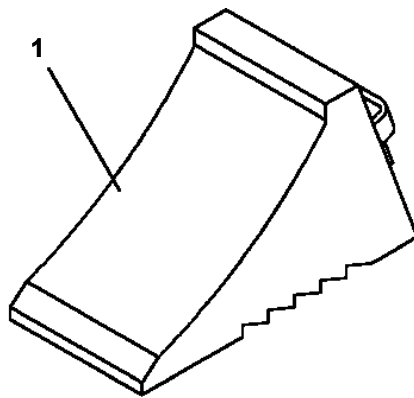
AT-110-4 42084400054 UPPER  
PV5070007-00 VALVE ASSY,COUNTERBALANCE



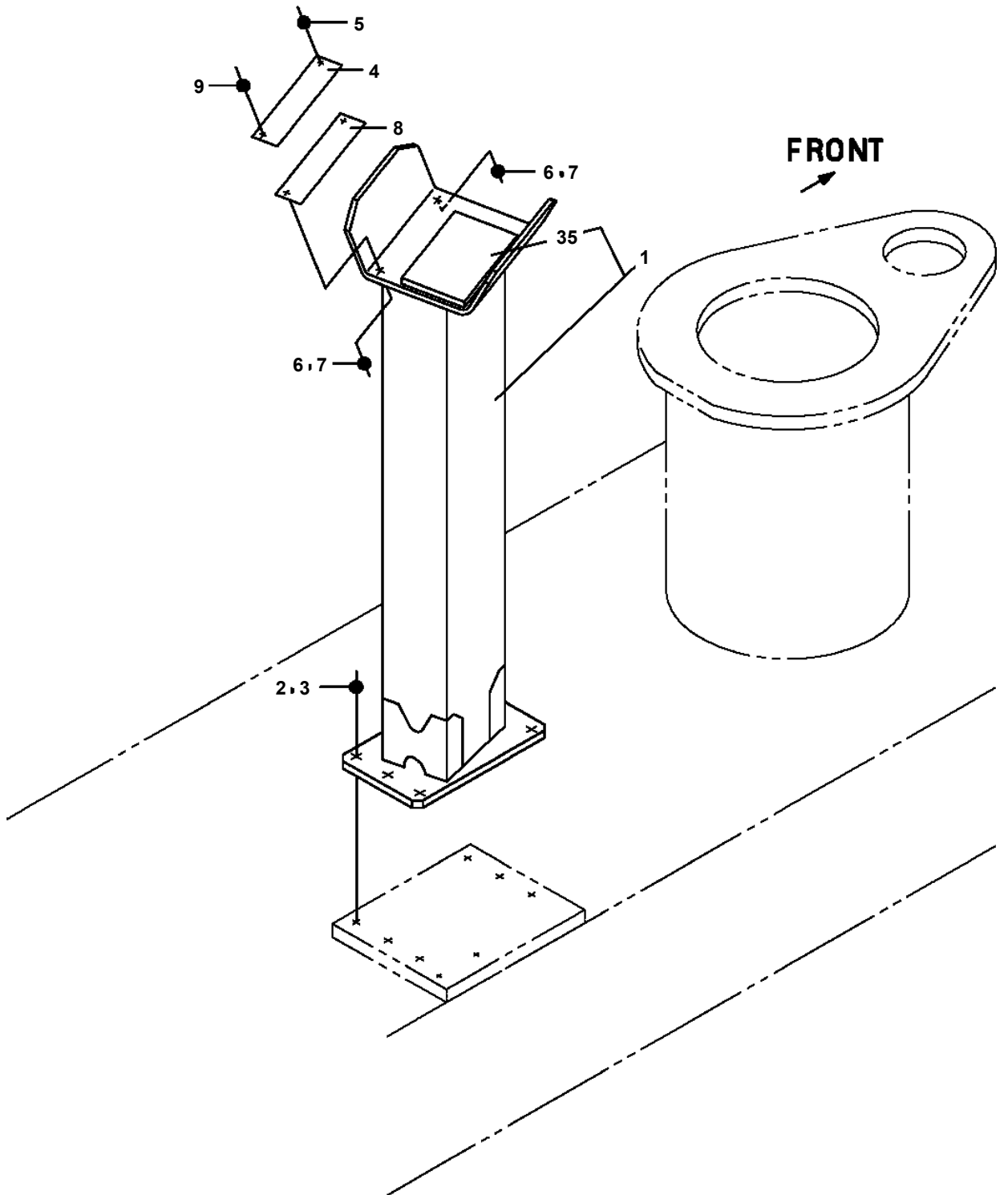
**AT-110-4 42084400054 UPPER  
PW1010427-00 ACCESSORIES (MAT)**



**AT-110-4 42084400054 UPPER  
PW5110002-00 WEDGE (STOPPER FOR TIRE/WAZUMI)**

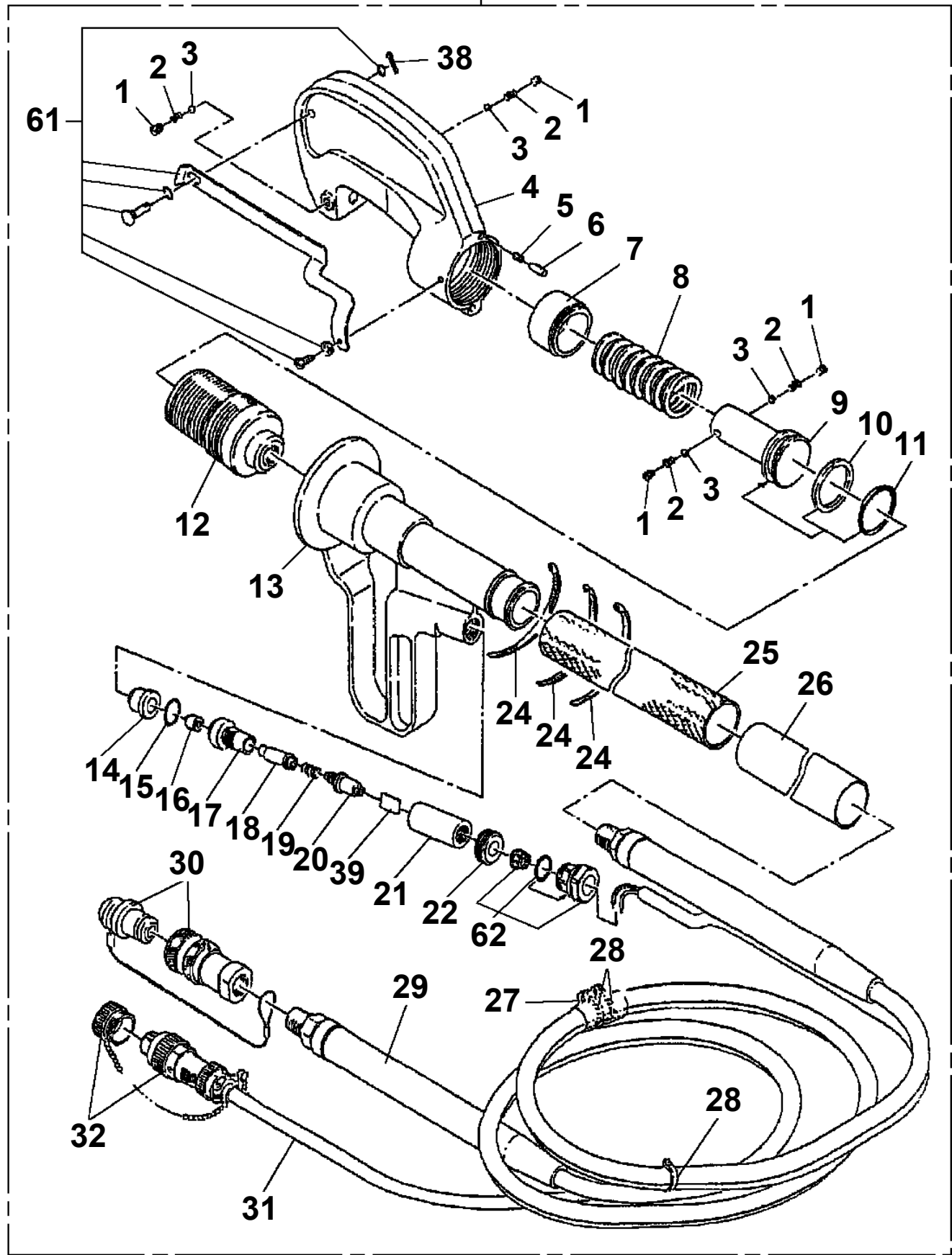


**AT-110-4 42084400054 UPPER  
PX1120619-01 BOOM REST**

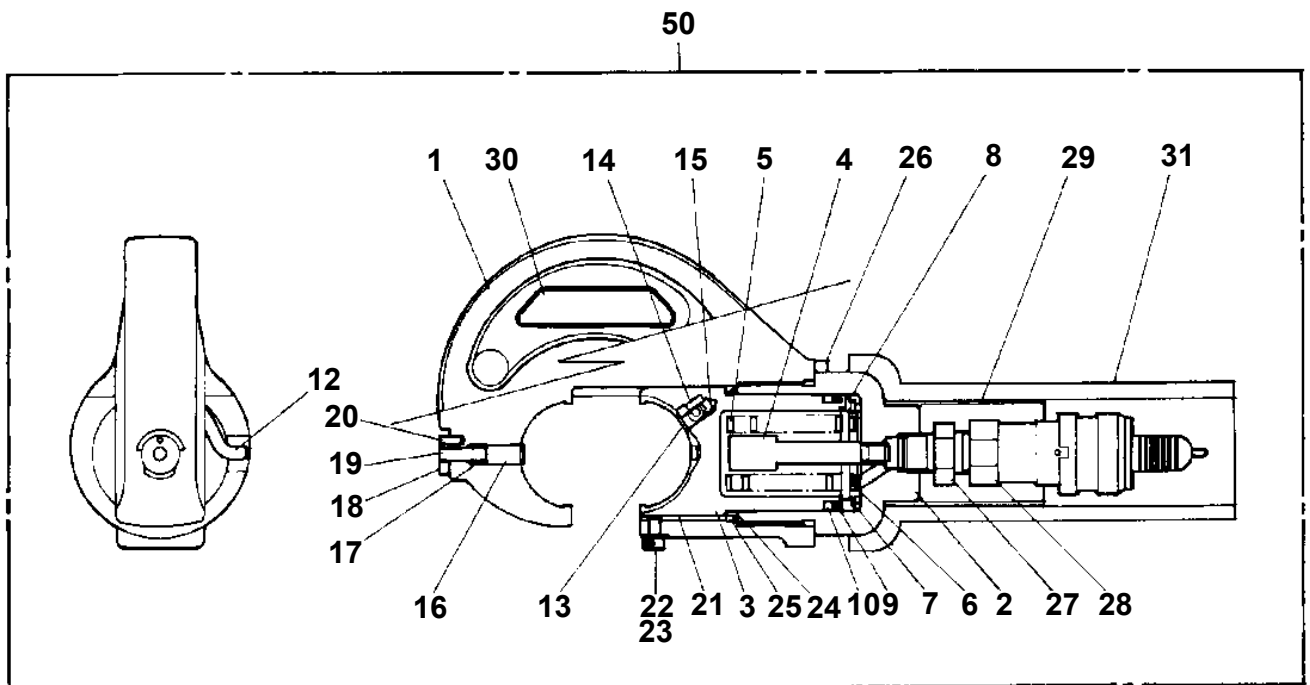


AT-110-4 42084400054 UPPER  
PY1050001-01 CLAMP HEAD (IZUMI 8TON,2.5M)

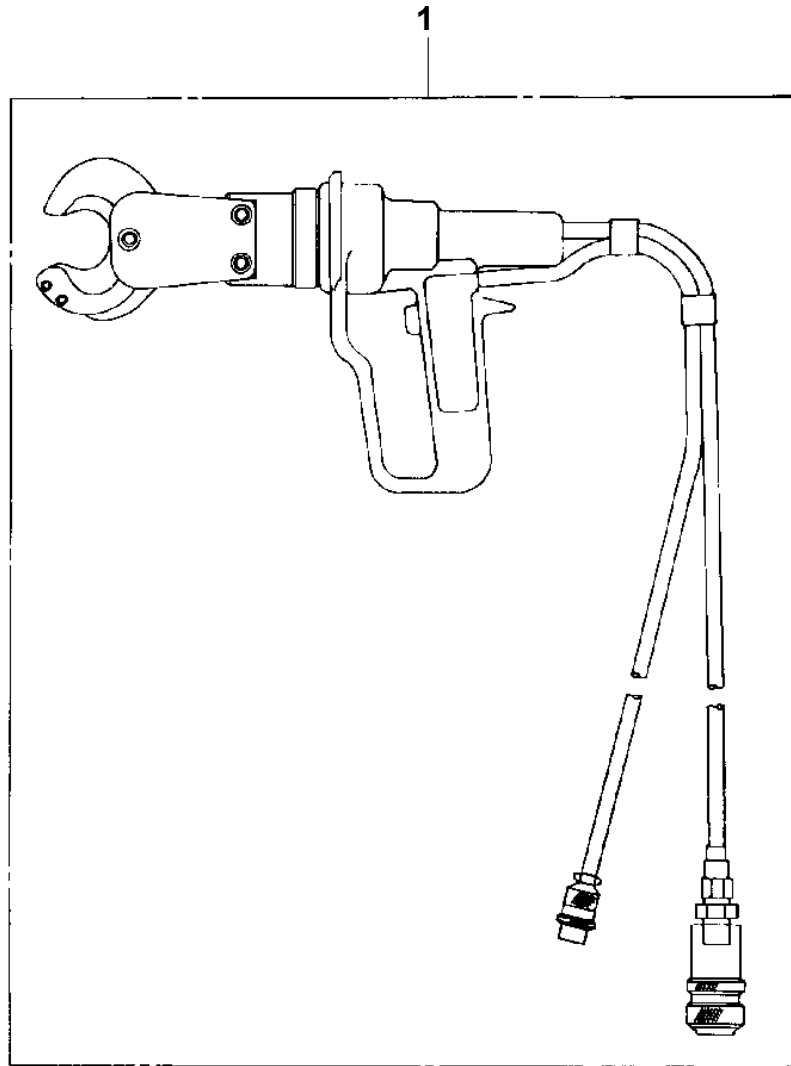
100



AT-110-4 42084400054 UPPER  
PY1050007-00 CLAMP HEAD (SANWA,12TON)

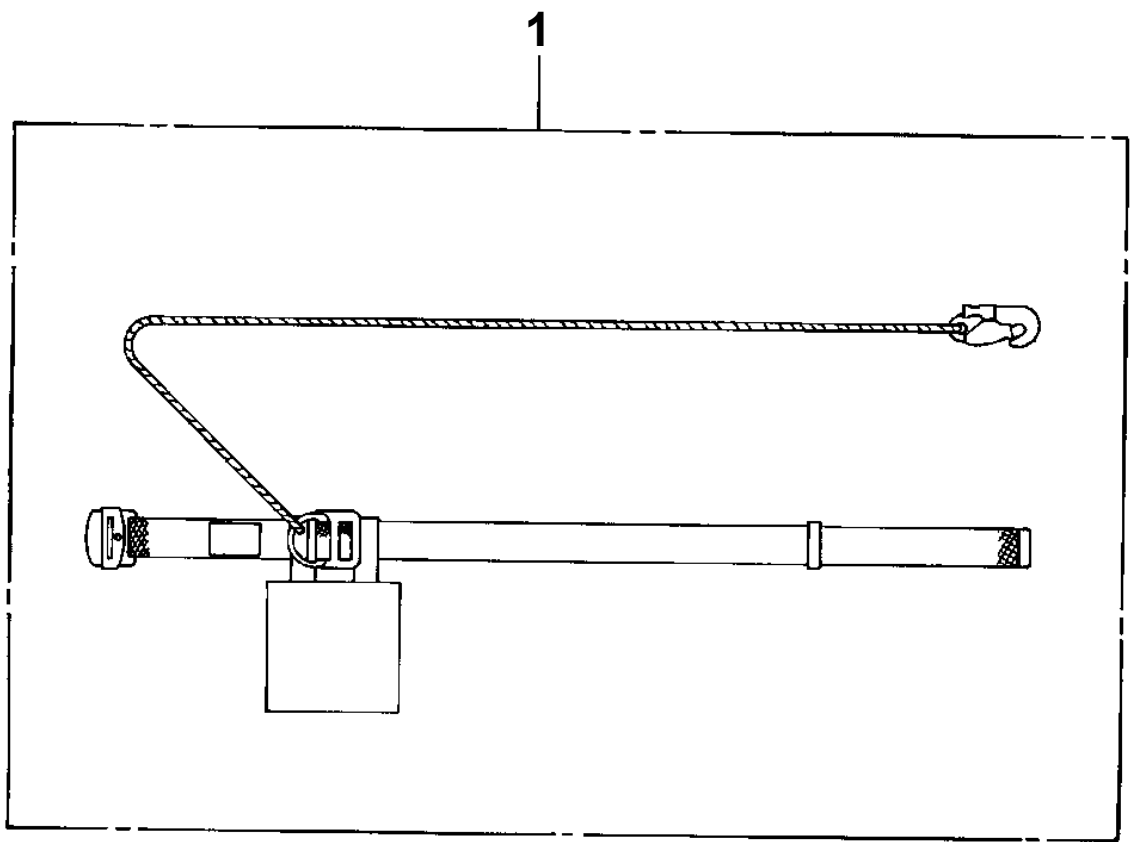


**AT-110-4 42084400054 UPPER  
PY1060001-00 CUTTER HEAD (IZUMI 6.4TON 2.5M ELECTRIC)**



AT-110-4 42084400054 UPPER  
PY1090001-00 BELT, SAFETY

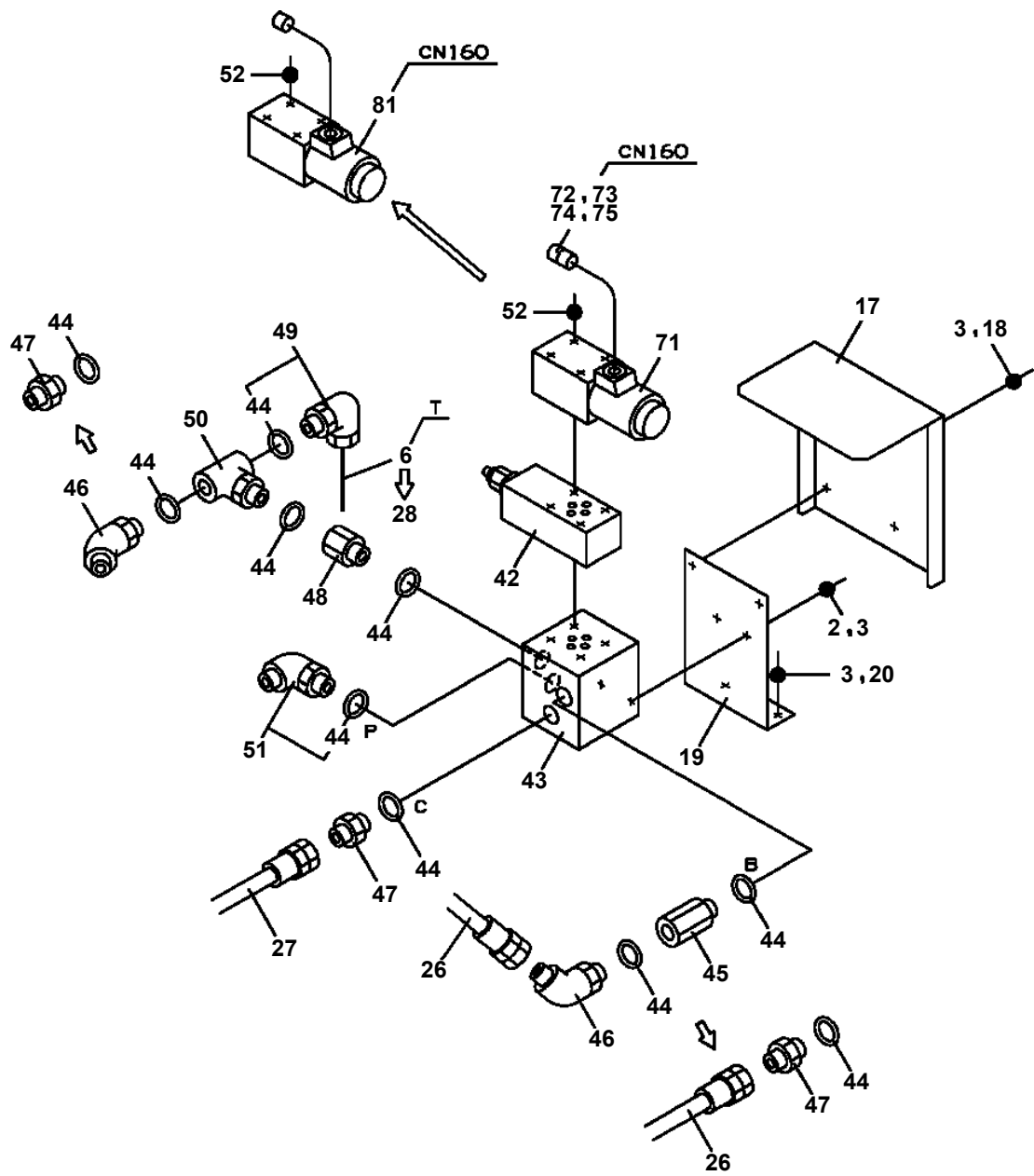
---



# AT-110-4 42084400054 UPPER

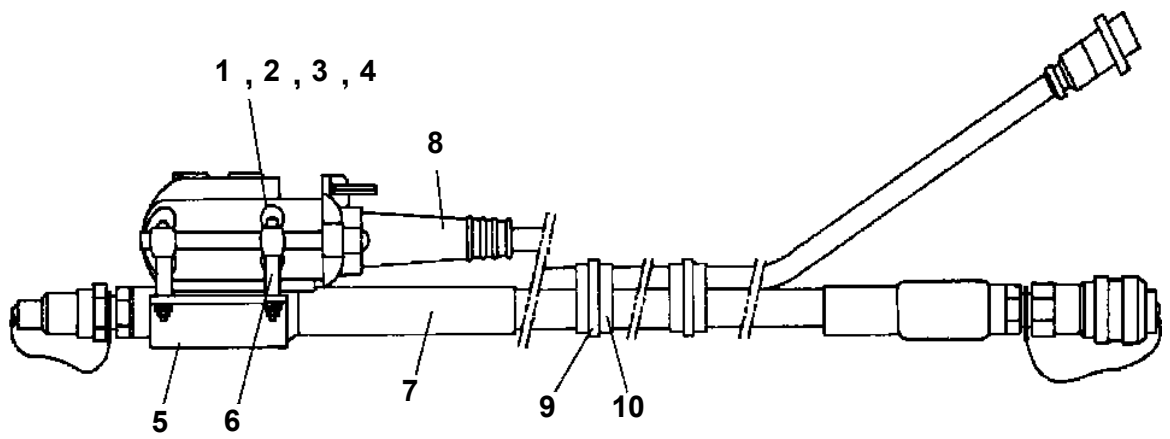
Pos No.	Parts No	Parts Name	Qty	Unit	Technical Data	Serial No (Start)	Serial No (End)	Remarks
1	(*****)	BOOSTER (40TON AIR & ELEC.)	1					
2	(*****)	PLATE ASSY,NAME (BOOSTER)	1					
3	(*****)	PIPING,OUTLET (UPPER)	1					
4	(*****)	PIPING,OUTLET (LOWER)	1					
5	(*****)	SWITCH,BOOSTER	1					
9	(*****)	SWITCH PANEL	1					
10	(*****)	SWITCH ASSY (THERMO)	1					

**AT-110-4 42084400054 UPPER  
PY1210129-02 PIPING,OUTLET (LOWER)**

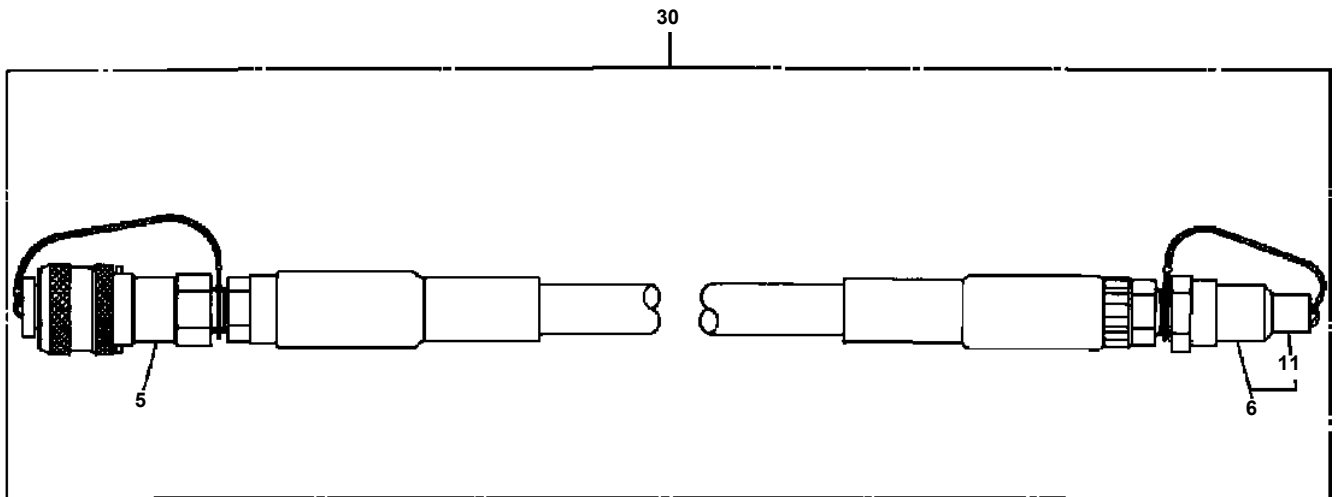


**B**

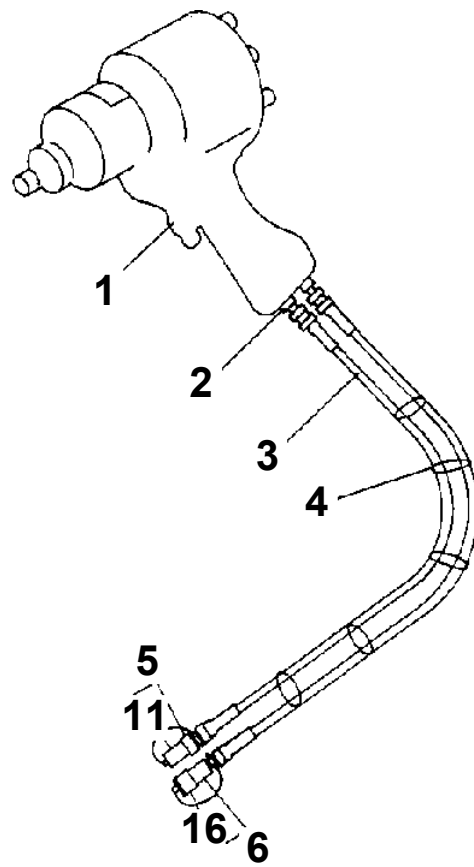
**AT-110-4 42084400054 UPPER  
PY1590003-01 HOSE,BOOSTER (3M)**



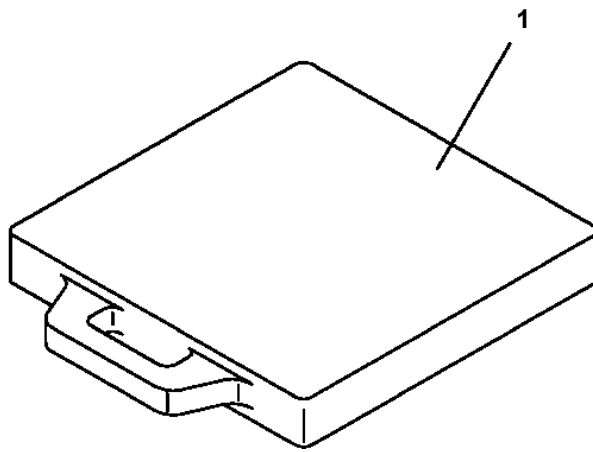
**AT-110-4 42084400054 UPPER  
PY1590009-00 HOSE,BOOSTER (MALE-FEMALE,8M)**



**AT-110-4 42084400054 UPPER  
PY1680000-02 WRENCH,IMPACT (HYDRAULIC)**

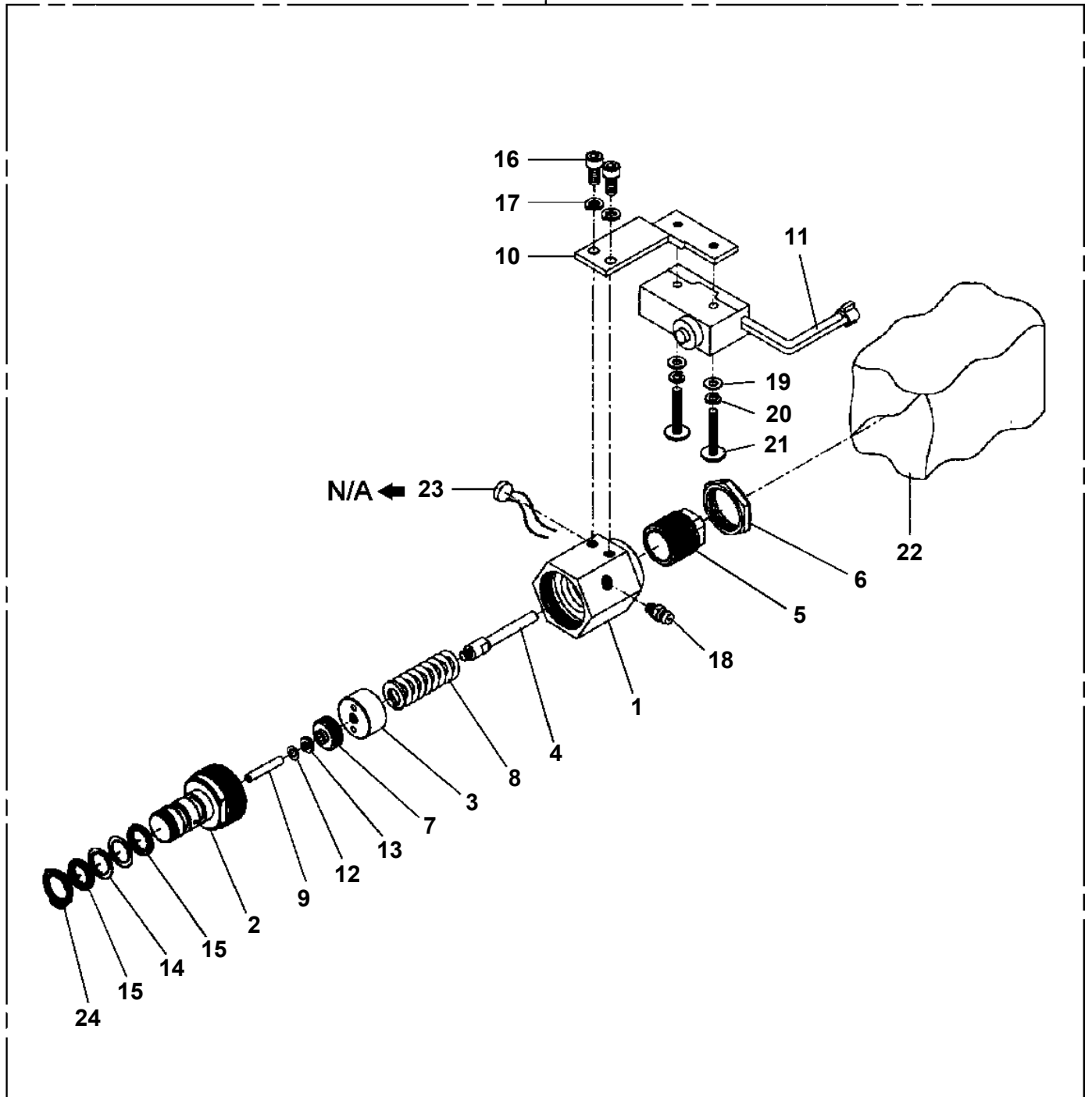


**AT-110-4 42084400054 UPPER  
PY1930004-00 BLOCK,RUBBER (WAZUMI)**



AT-110-4 42084400054 UPPER  
PY2350004-01 SWITCH,BOOSTER

50



CLICK HERE TO **DOWNLOAD** THE COMPLETE MANUAL

- Thank you very much for reading the preview of the manual.
- You can download the complete manual from: [www.heydownloads.com](http://www.heydownloads.com) by clicking the link below



- Please note: If there is no response to CLICKING the link, please download this PDF first and then click on it.

CLICK HERE TO **DOWNLOAD** THE COMPLETE MANUAL