

AT-110-4 42084400001 UPPER

PD2000134-01 SWING UNIT

PG2000249-00 BOOM UNIT

PH1000550-00 SAFETY DEVICES (MOTION CONTROLLER)

PJ3000400-01 BUCKET SYSTEM

PK2000629-02 FRAME UNIT

PO1000149-00 INDICATION PLATES

PW1000118-00 ACCESSORIES & TOOLS

PY1000963-13 OPTIONS,1

PY2000288-01 OPTION UNIT,2 (UPPER)

ASSEMBLY

CLICK HERE TO **DOWNLOAD** THE COMPLETE MANUAL

- Thank you very much for reading the preview of the manual.
- You can download the complete manual from: www.heydownloads.com by clicking the link below



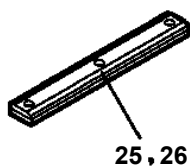
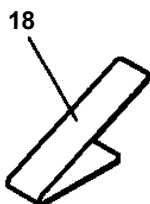
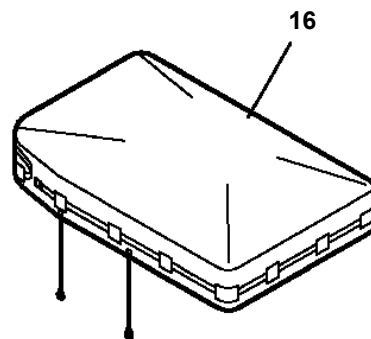
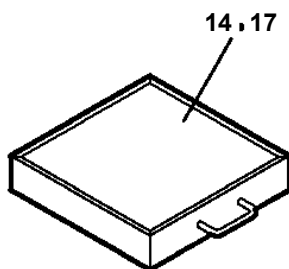
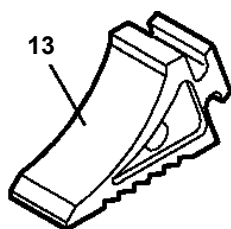
- Please note: If there is no response to CLICKING the link, please download this PDF first and then click on it.

CLICK HERE TO **DOWNLOAD** THE COMPLETE MANUAL

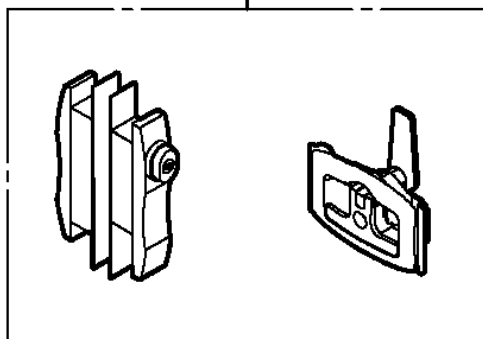
AT-110-4 4208440001 UPPER

Pos No.	Parts No	Parts Name	Qty	Unit	Technical Data	Serial No (Start)	Serial No (End)	Re
1	(*****)	FRAME	1				218751	
	(*****)	FRAME	1			218752	219119	
	(*****)	FRAME	1			219120	219326	
	(*****)	FRAME	1			219327	219610	
	(*****)	FRAME ASSY	1			219611		
2	(*****)	OUTRIGGER	1				219119	
	(*****)	OUTRIGGER	1			219120	219917	
	(*****)	OUTRIGGER ASSY	1			219918		
3	(*****)	PIPING,OUTRIGGER	1				219119	
	(*****)	PIPING,OUTRIGGER	1			219120	219326	
	(*****)	PIPING,OUTRIGGER	1			219327	219917	
	(*****)	PIPING ASSY,FRAME (OUTRIGGER)	1			219918		
5	(*****)	OPE.ASSY,CONT.VALVE	1				218751	
	(*****)	OPE.ASSY,CONT.VALVE	1			218752		
6	(*****)	ELEC.ASSY (FRAME)	1				218751	
	(*****)	ELEC.ASSY (FRAME)	1			218752	219119	
	(*****)	ELEC.ASSY (FRAME)	1			219120		
8	(*****)	ELEC.ASSY	1				218751	
10	(*****)	BOOM REST	1				219119	
	(*****)	BOOM REST	1			219120		
11	(*****)	TANK SUPPORT	1					
12	(*****)	ELEC.ASSY (LOWER CONTROLS)	1					

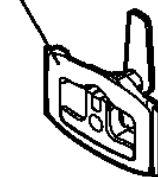
**AT-110-4 42084400001 UPPER
PY2000288-01 OPTION UNIT,2 (UPPER)**



27, 28, 29, 30, 31
32, 33, 34, 35, 36



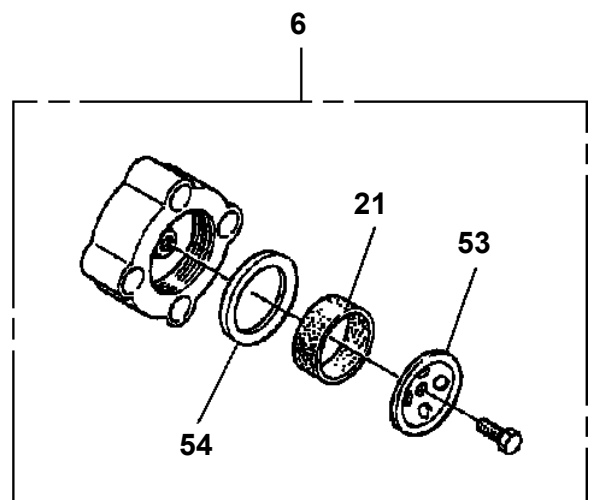
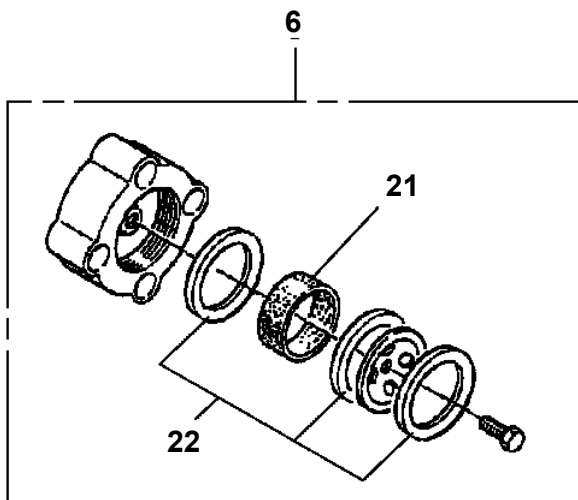
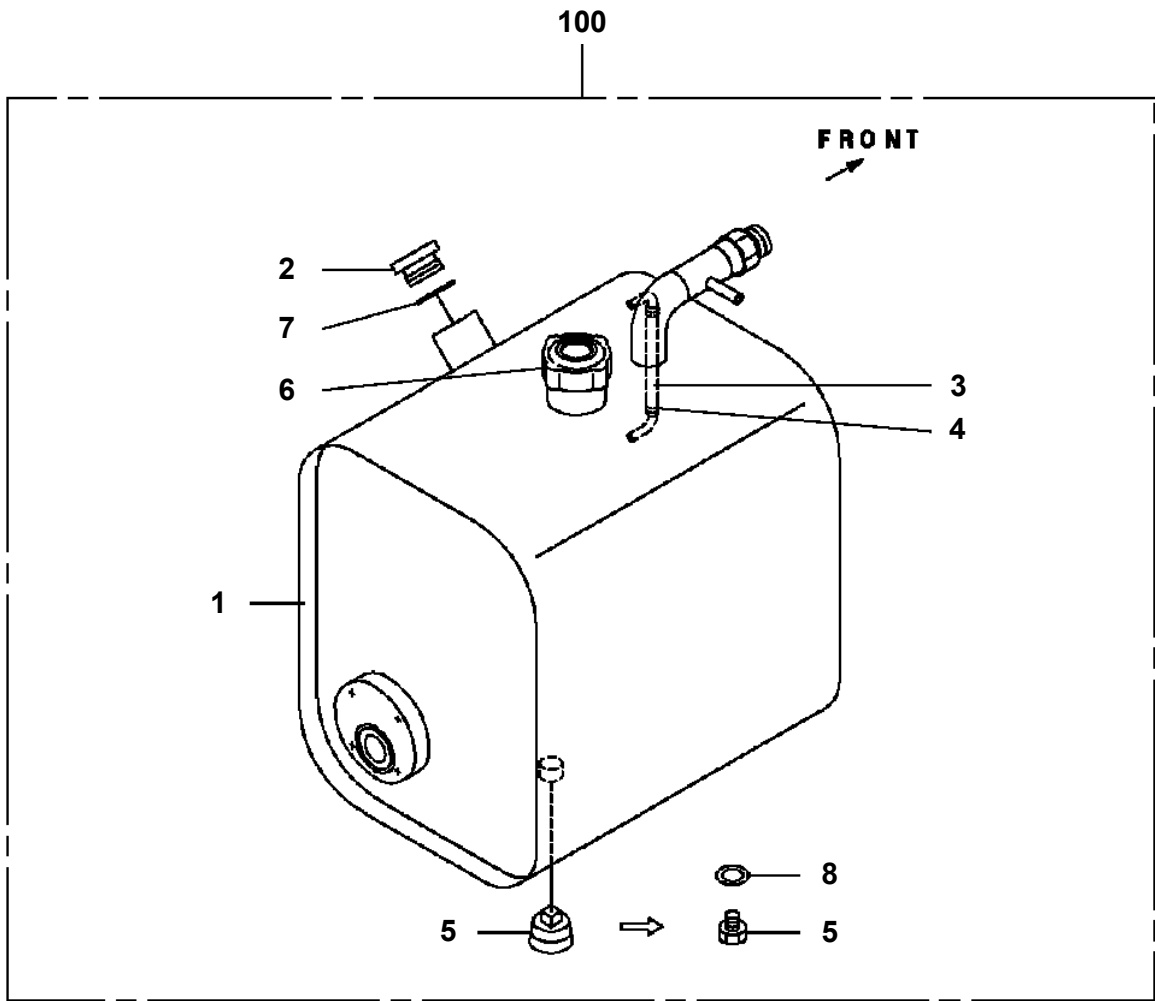
37, 38, 39, 40, 41
42, 43, 44, 45, 46



適用製造番号によっては取り付けがないものもあります。

MACHINES OF SOME SERIAL NO. ARE NOT EQUIPPED WITH THESE PARTS.

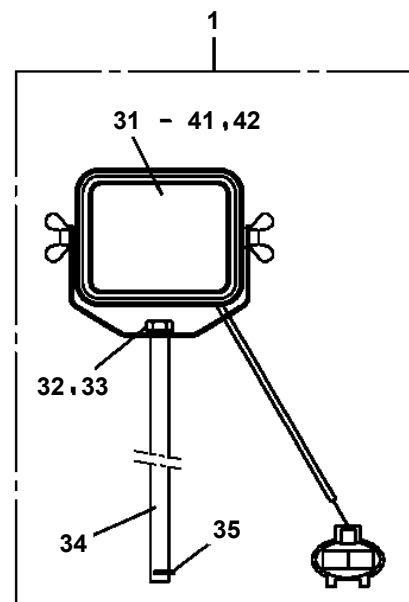
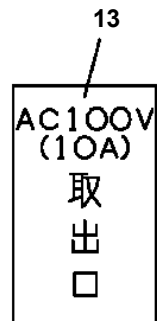
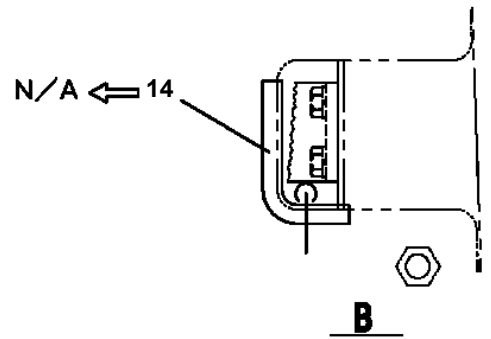
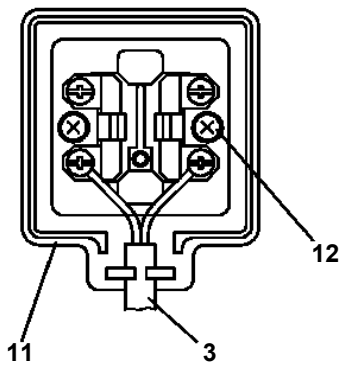
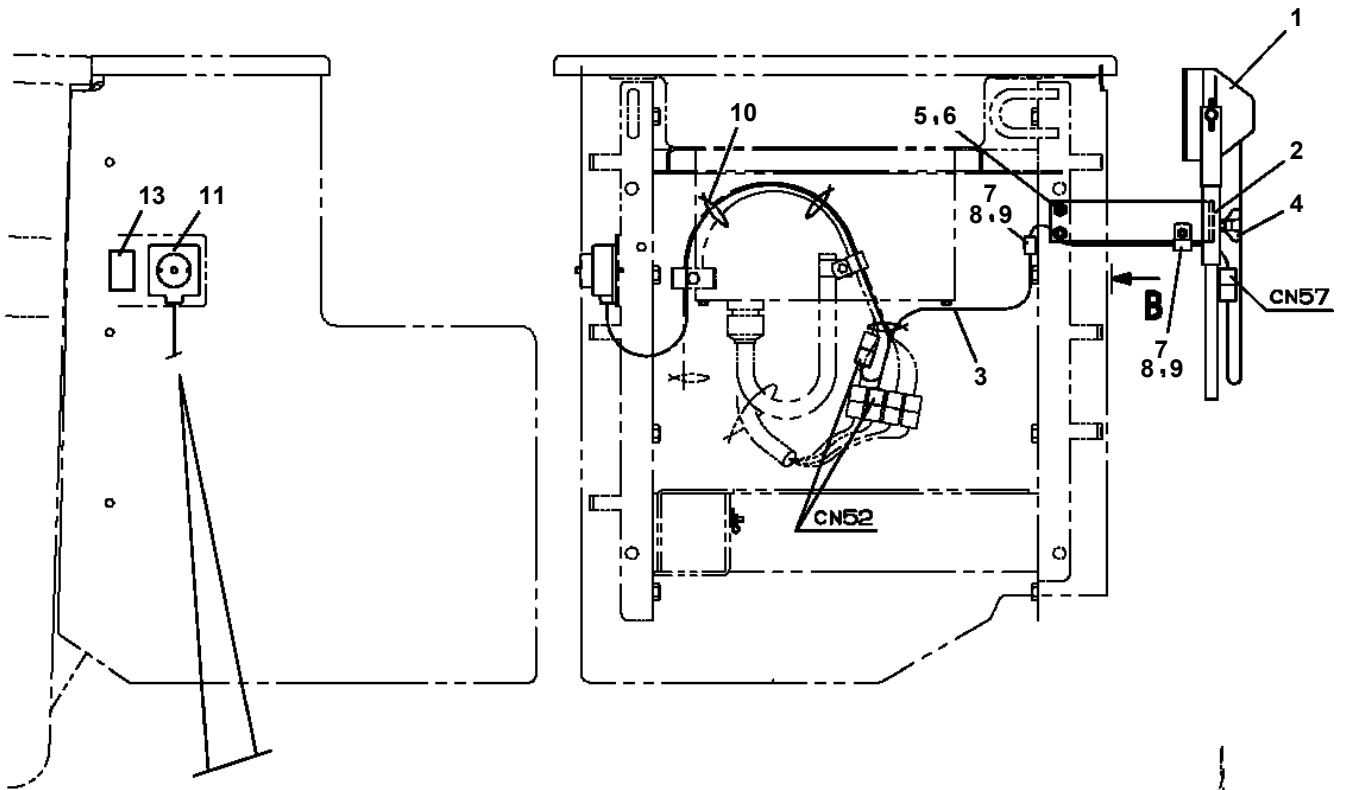
AT-110-4 42084400001 UPPER
PB1130208-02 TANK,OIL



AT-110-4 42084400001 UPPER

Pos No.	Parts No	Parts Name	Qty	Unit	Technical Data	Serial No (Start)	Serial No (End)	Remarks
1	90101208016	BOLT	2		M8X16			
2	90302040801	WASHER,SPRING	2		8			
3	36630910060	NEEDLE	1					
4	36630910030	HOLDER	1					
5	91002801000	O-RING	1		1B P10			
6	91410001000	RING,BACKUP	1		P10			
8	36630910050	POPPET	1					
9	52255101000	SPRING	1					
10	91002801400	O-RING	1		1B P14			
11	36620030050	PLUG	1					
12	82400000350	KNOB	1					
13	37000508510	PLATE	1					
14	80172303006	SCREW,MACHINE	1		M3X6			
100	36636340000	VALVE,MANUAL CONTROL	1					

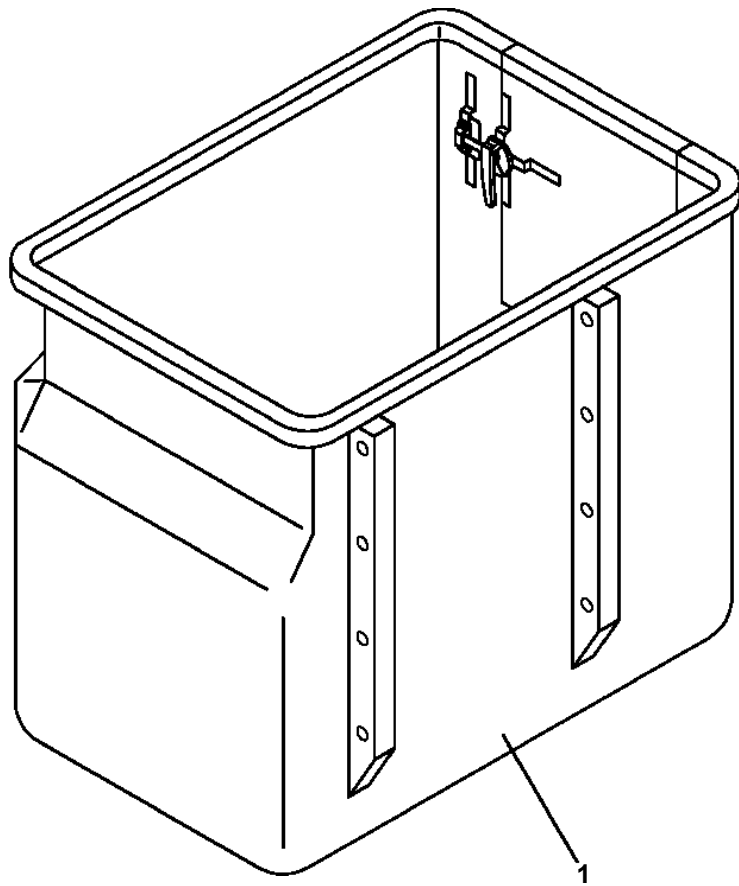
**AT-110-4 42084400001 UPPER
PB1380255-03 POWER SUPPLY (100V2POLES & WORKING LAMP)**



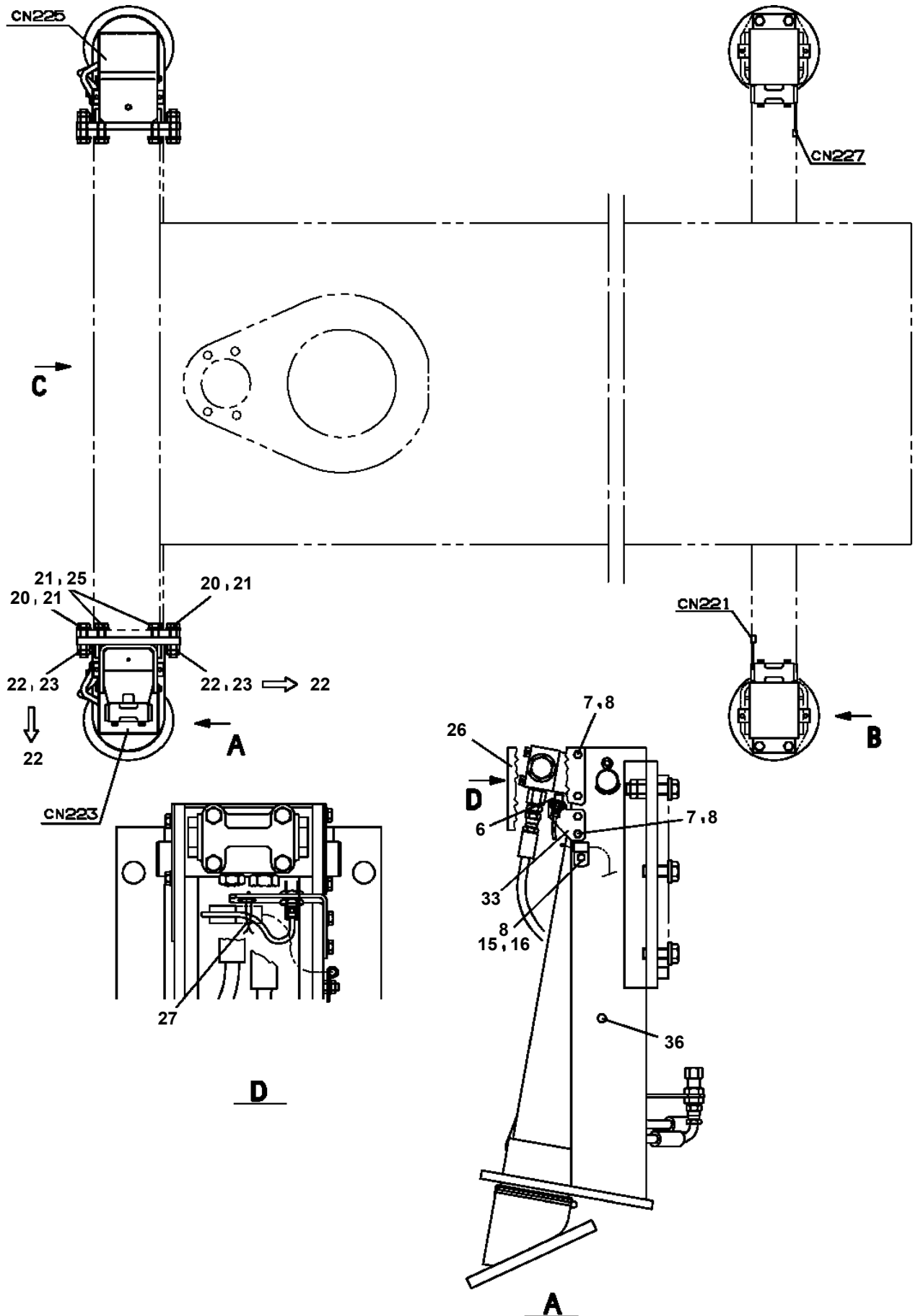
AT-110-4 42084400001 UPPER
 PB1380352-01 POWER SUPPLY (HYBRID SYSTEM:11M,#219120-219450)

指示番号 KEY NO.	パワサプライ (ハイブリットシステム:11Mシヨウ, テキヨウコウキ#219120-219450) POWER SUPPLY (HYBRID SYSTEM:11M,#219120-219450)
1	パイピング PIPING
2	ハイセンASSY ELEC.ASSY
3	ハイセンASSY (バケツ) ELEC.ASSY (BUCKET)
4	プレートASSY,ネーム PLATE ASSY,NAME
5	プレートASSY,ネーム (AMCデータ) PLATE ASSY,NAME (AMC DATA)
6	マウントASSY MOUNT ASSY
8	ハーネス HARNESS

**AT-110-4 42084400001 UPPER
PB5340001-00 BUCKET (WITH DOOR,WHITE/NIPPON POLYESTER)**

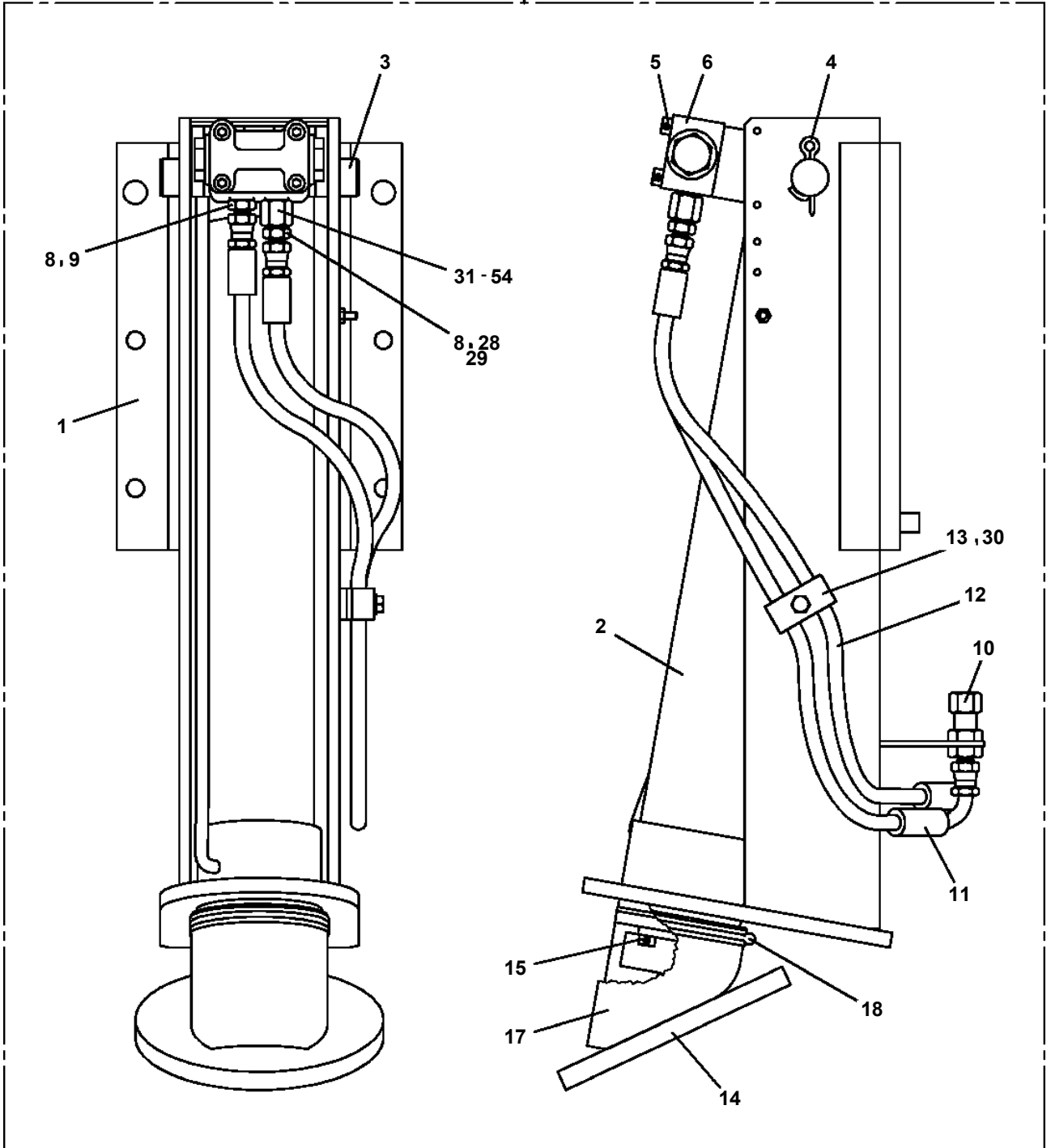


**AT-110-4 42084400001 UPPER
PC1011197-01 OUTRIGGER**

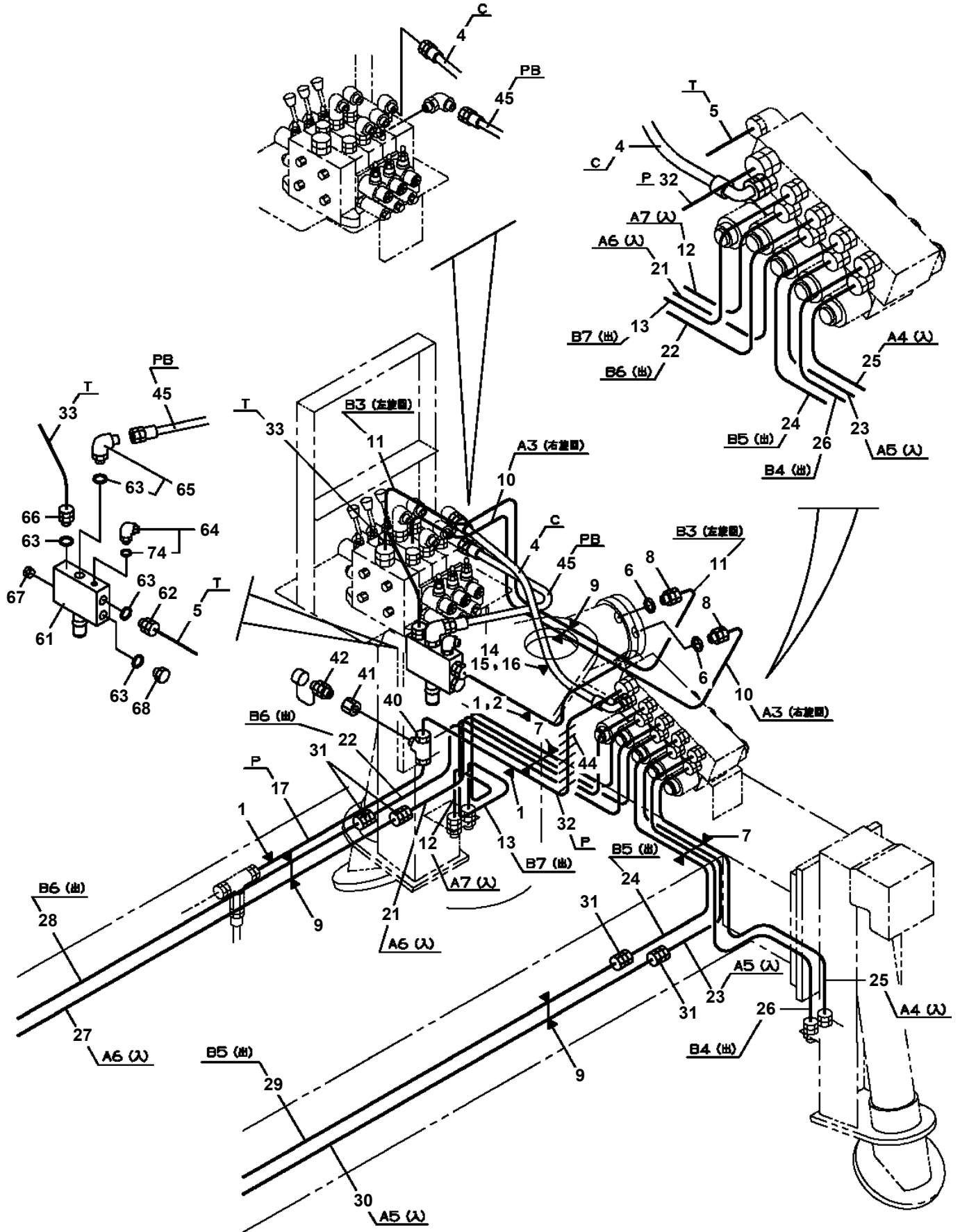


AT-110-4 42084400001 UPPER
PC1011420-00 OUTRIGGER

100



**AT-110-4 4208440001 UPPER
PC1200577-00 PIPING,OUTRIGGER**



FRONT SIDE

AT-110-4 42084400001 UPPER

Pos No.	Parts No	Parts Name	Qty	Unit	Technical Data	Serial No (Star
1	(*****)	COVER ASSY (REAR COVER,WITH INDICATOR T-HANDLE)	1			
2	(*****)	MODIFICATION ASSY (SUB FRAME REAR SUPPORT)	1			
3	(*****)	MOUNT (CHAIN FOR TRUCK BED)	1			

AT-110-4 42084400001 UPPER

Pos No.	Parts No	Parts Name	Qty	Unit	Technical Data	Serial No (Start)	Serial No (End)	Remarks	Pages
1	42267480100	COVER	1						

AT-110-4 42084400001 UPPER

Pos No.	Parts No	Parts Name	Qty	Unit	Technical Data	Serial No (Start)	Serial No (End)	Remarks	Pages
10	42267480200	COVER	1						

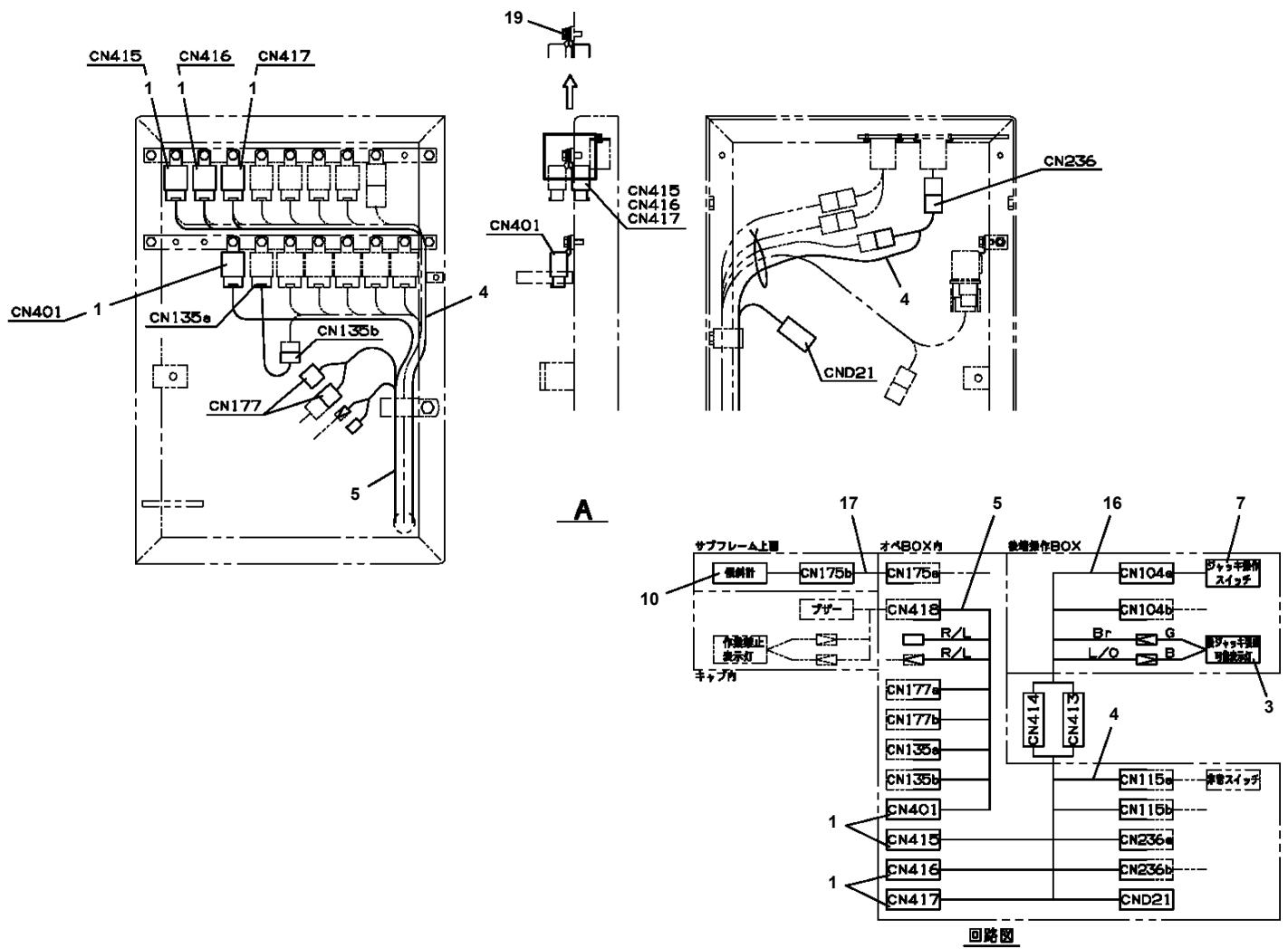
AT-110-4 42084400001 UPPER

Pos No.	Parts No	Parts Name	Qty	Unit	Technical Data	Serial No (Start)	Ser
1	36081325090	RING,SNAP	1				
2	36081325010	SPACER	1				
3	36081325080	SHIM SET	1				
4	36081325110	BEARING,TAPER ROLLER	1				
5	36081325020	WORM	1				
6	36081325120	BEARING,TAPER ROLLER	1				
7	36080755040	GAUGE,OIL	1				
8	36080235080	WASHER,SEAL	1		M16		
9	80316090060	PLUG	1		KKT PT3/8		
12	91280431931	SEAL,OIL	1				
13	36081325050	CASE,GEAR	1				
14	36081325130	BEARING,BALL(METAL SHIELD TYPE 6210ZZC3)	1				
15	36081325140	BEARING,BALL (RUBBER SEAL TYPE 6210LLU)	1				
16	36080495050	BOLT,SEMS (M10X25,WITH WASHER)	9				
17	36080505080	KEY	1				
18	36081325060	WHEEL,WORM	1				
19	36081325070	CASE,GEAR	1				
20	80500006209	BEARING,BALL	1				
21	80601110450	RING,RITAINING	1		S45		
22	36080015000	PIN	2				
23	82400000478	BREATHER	1				
31	36081325500	GEAR,SPUR	1				
50	36081320000	REDUCER,SWING SPEED	1				

AT-110-4 42084400001 UPPER

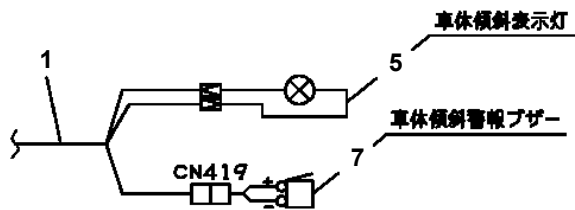
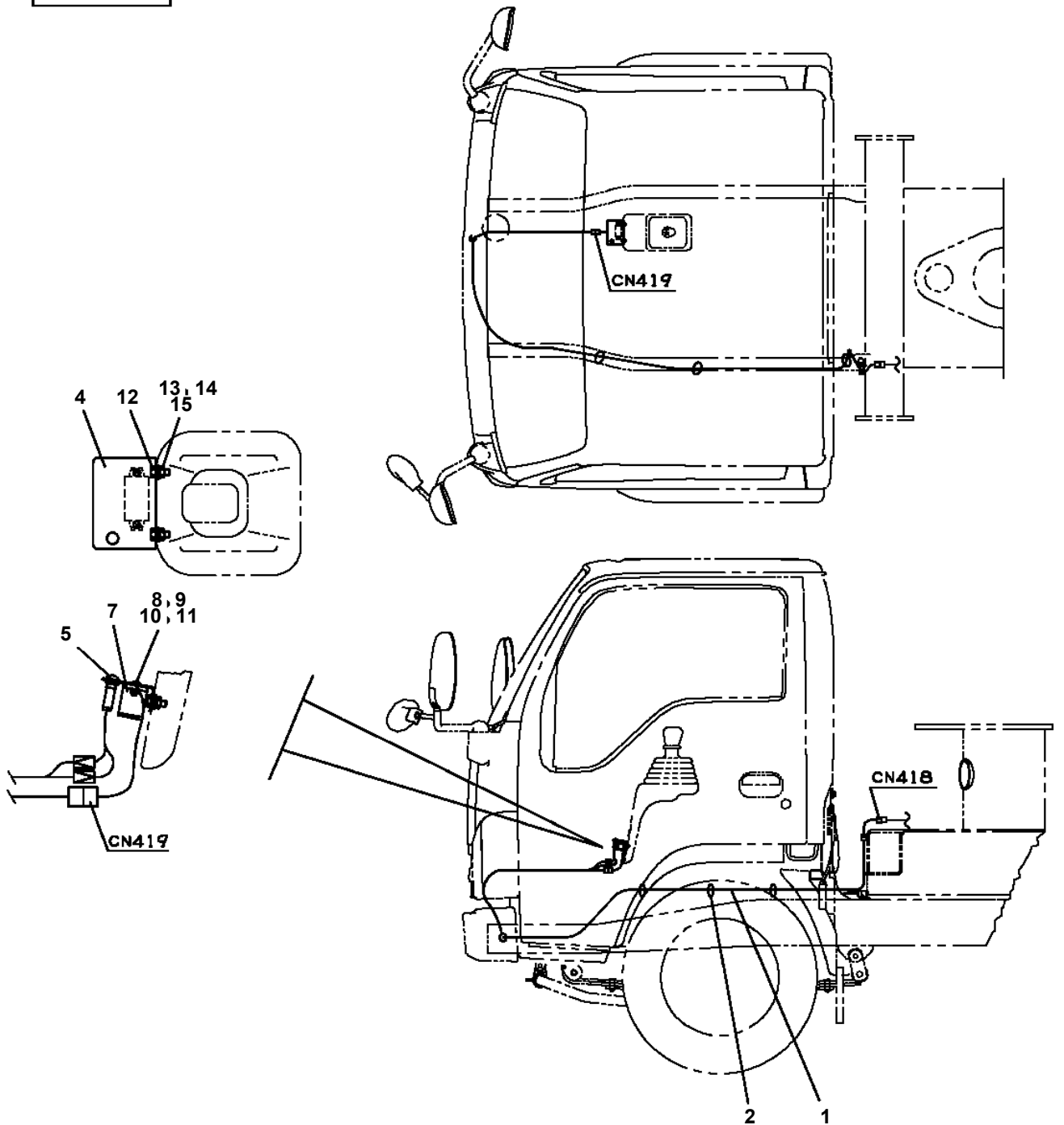
Pos No.	Parts No	Parts Name	Qty	Unit	Technical Data	Serial No (Start)	Serial No (End)	Remarks	P
1	82456101000	NIPPLE,GREASE	1		A-PT1/8		HK0228		
	82455106000	NIPPLE,GREASE	1		A-M6F FE	HK0229			
2	80728105040	PIN,SPRING	1				HK0021		
3	91302209000	BEARING,PLAIN	2						
4	91684009001	PACKING	2						
5	91411207502	RING,BACKUP	2						
6	91002903500	O-RING	1		1B G35				
7	36026894000	PISTON	1				HK0021		
	36027802000	PISTON	1			HK0022			
8	36027539510	ROD ASSY	1				HK0021		
	36027809520	ROD ASSY	1			HK0022			
9	36027809510	CYLINDER ASSY	1				219898		
	36027809511	CYLINDER ASSY	1			219899	HK0228		
10	80612110720	RING,RITAINING	1		AR72				
11	37000403650	BEARING,PLAIN	1						
12	36026899530	COVER,ROD	1						
13	91002909500	O-RING	1		1B G95				
14	91694106500	PACKING	1						
15	91410206503	RING,BACKUP	1						
16	91660006500	SEAL,DUST	1						
17	80622000650	RING,RITAINING	1		SP65				
18	80530000114	BEARING,SPHERICAL	1						
19	80820004040	BEARING,PLAIN	2						
21	91002910500	O-RING	1		1B G105				
22	82400000459	CAP	1				HK0228		
23	36027809512	CYLINDER ASSY	1			HK0229			
24	90730008120	SCREW,SET	1		M8X12	HK0022			
50	36026899900	PACKING SET	1		65X90				
100	36027800000	CYLINDER,ELEVATING	1						

AT-110-4 42084400001 UPPER PE5020516-02 ELEC.ASSY (FRAME)



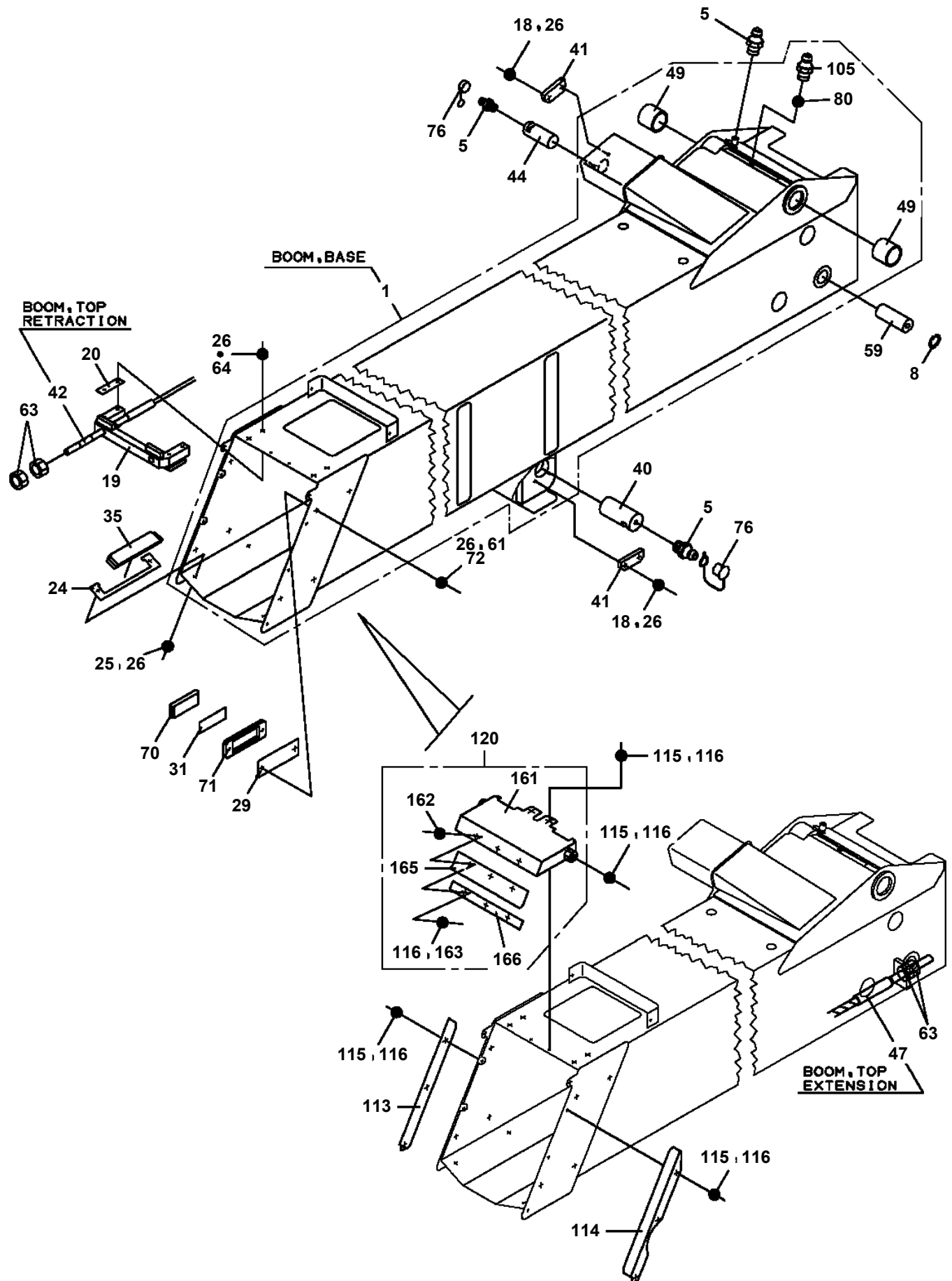
AT-110-4 4208440001 UPPER
 PE5070053-00 ELEC.ASSY,CARRIER

イスズ

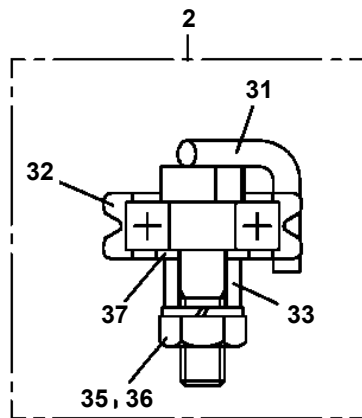
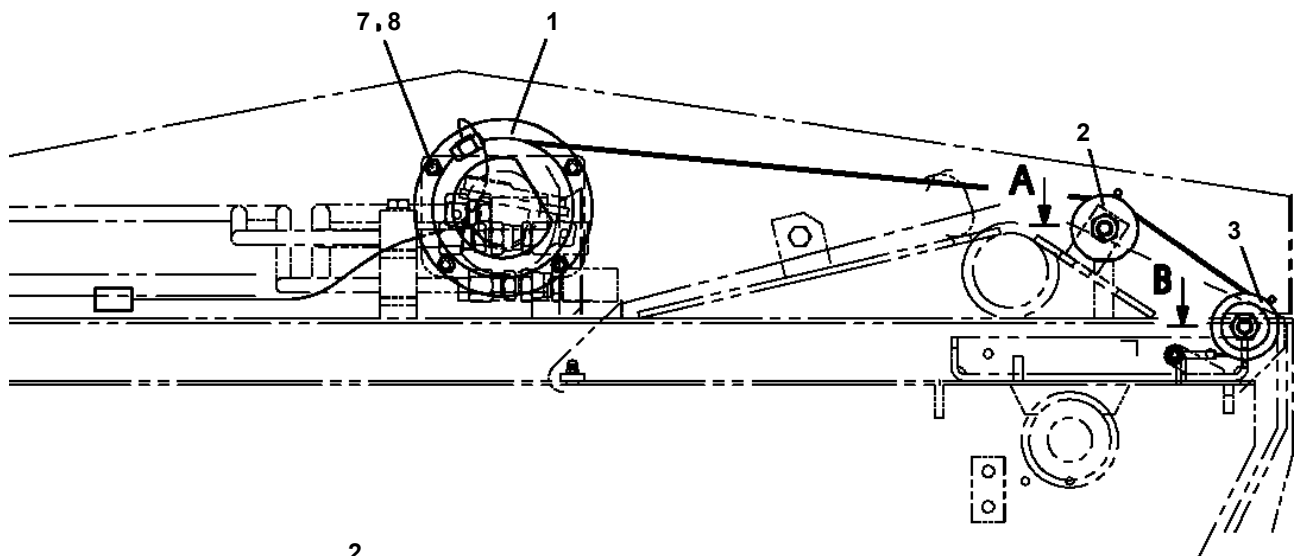
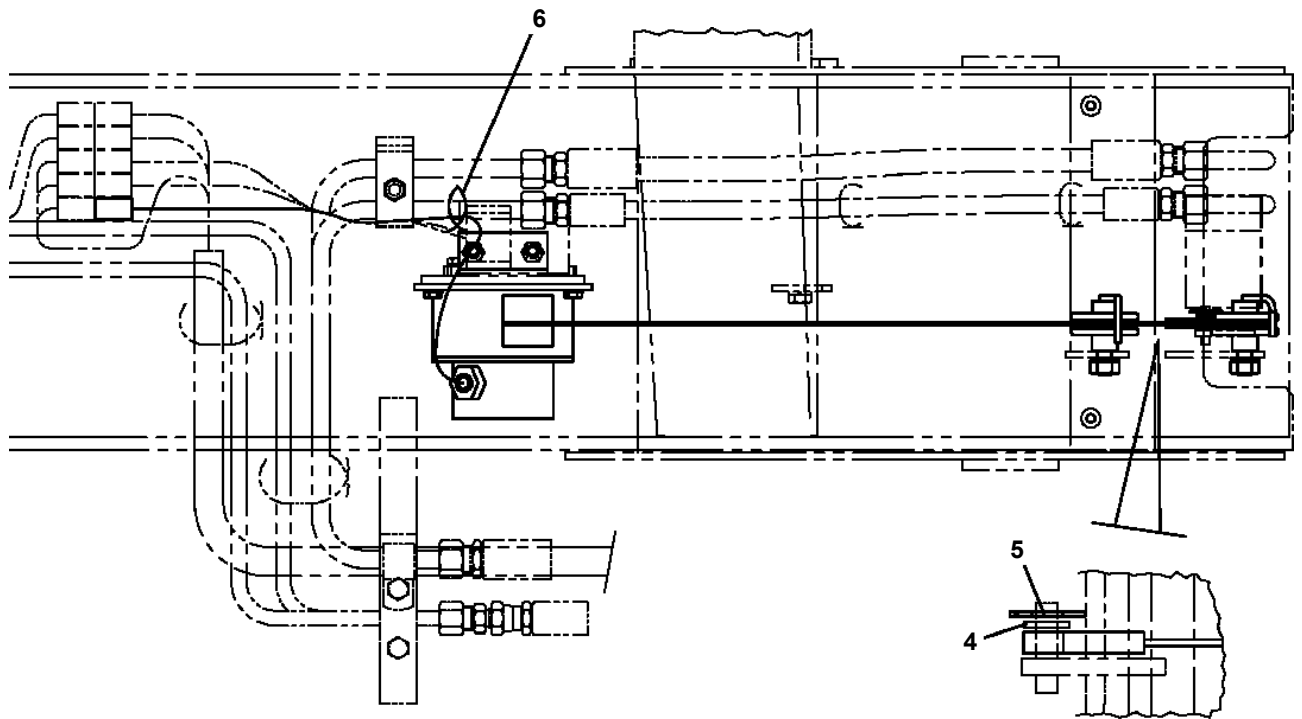


ブザー、表示灯接続図

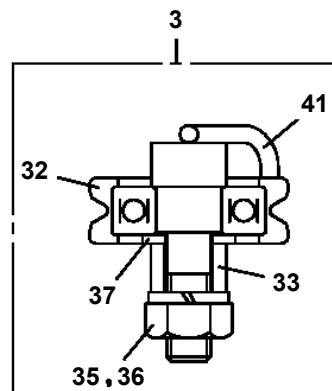
AT-110-4 42084400001 UPPER
PG1010912-03 BOOM



**AT-110-4 4208440001 UPPER
PG1120223-00 DETECTOR,BOOM LENGTH**

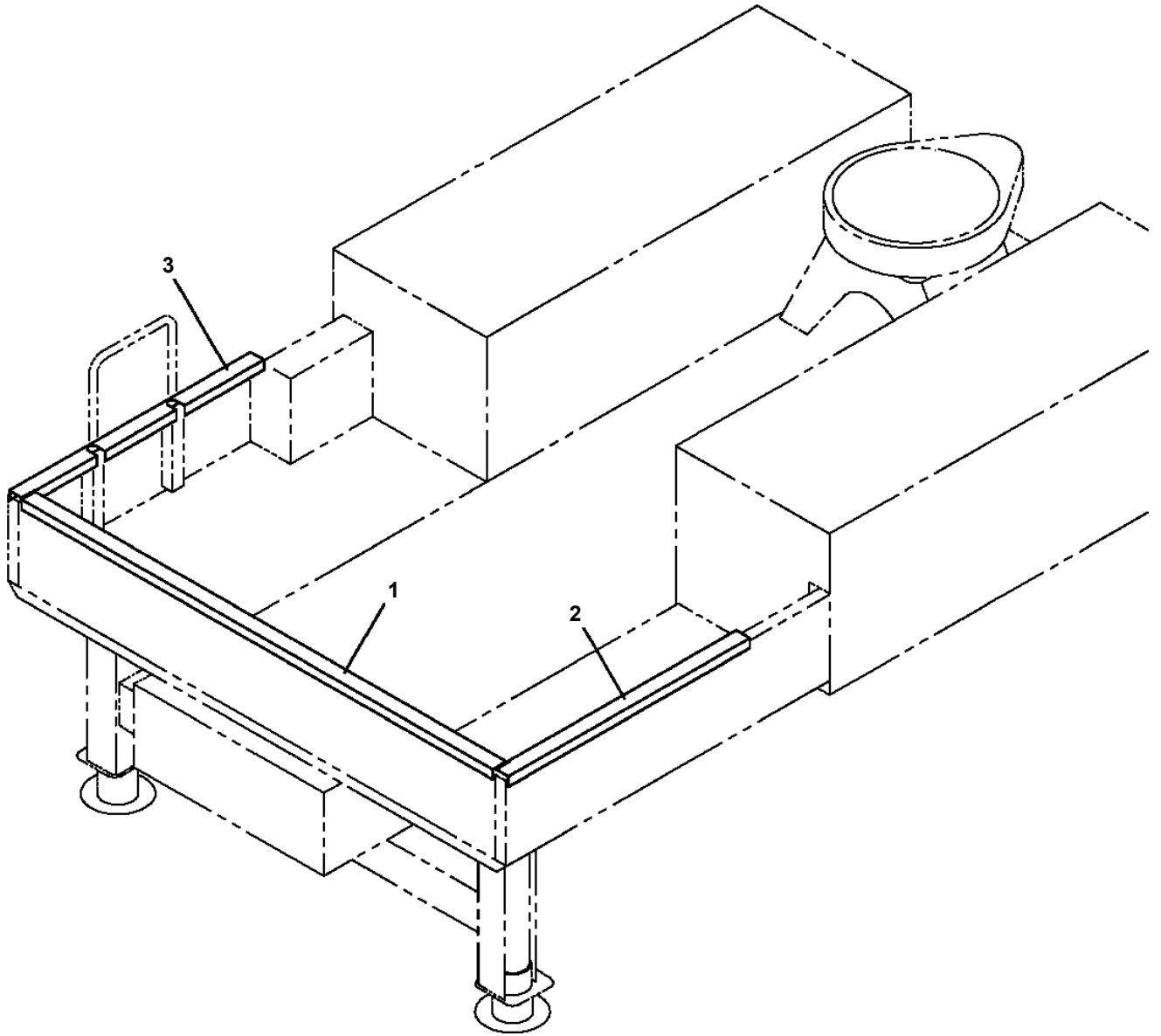


A



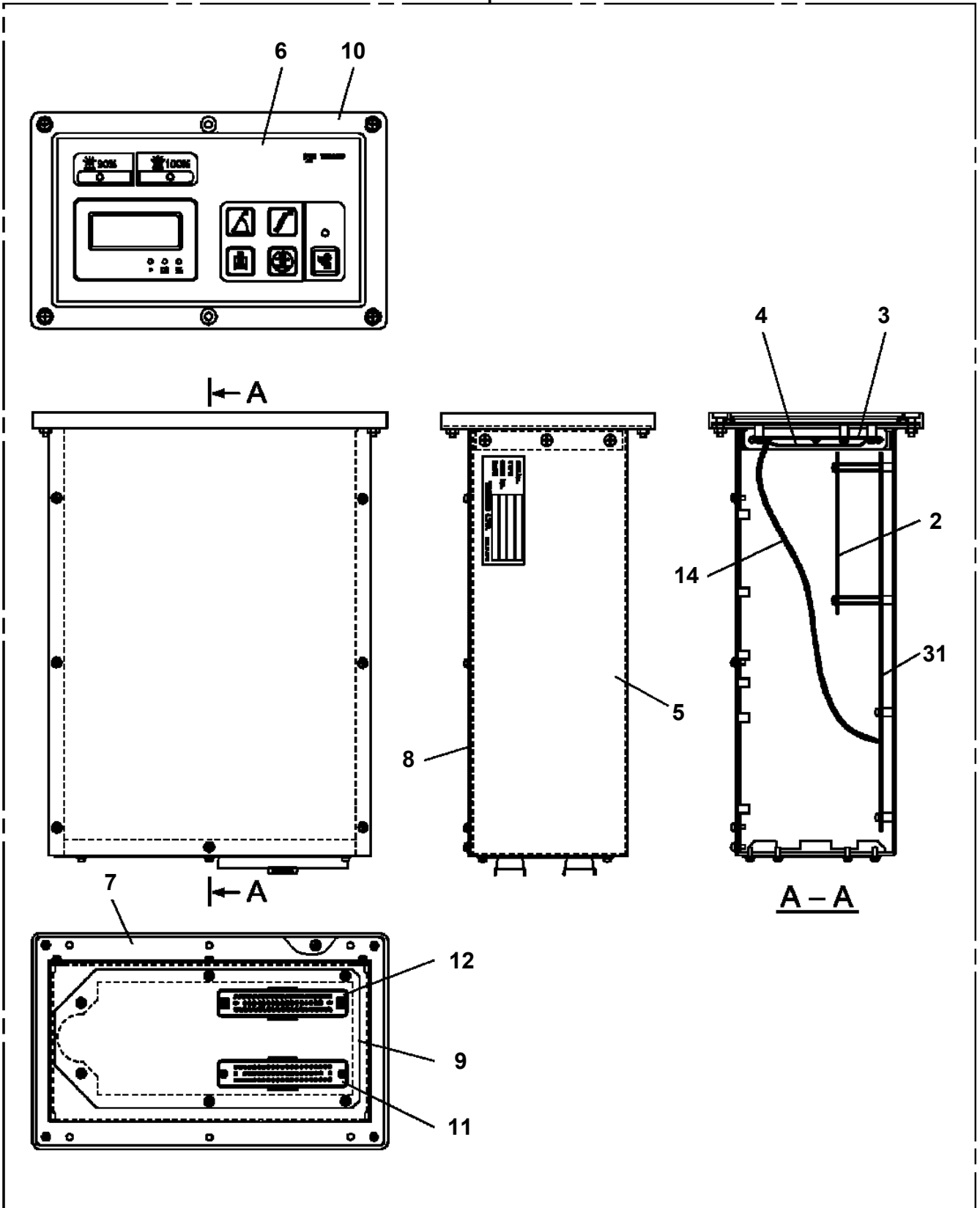
B

**AT-110-4 42084400001 UPPER
PG5200048-00 GUARD ASSY (GATE PROTECTOR/AT-100TT,TTE,AT-110TTE-5)**



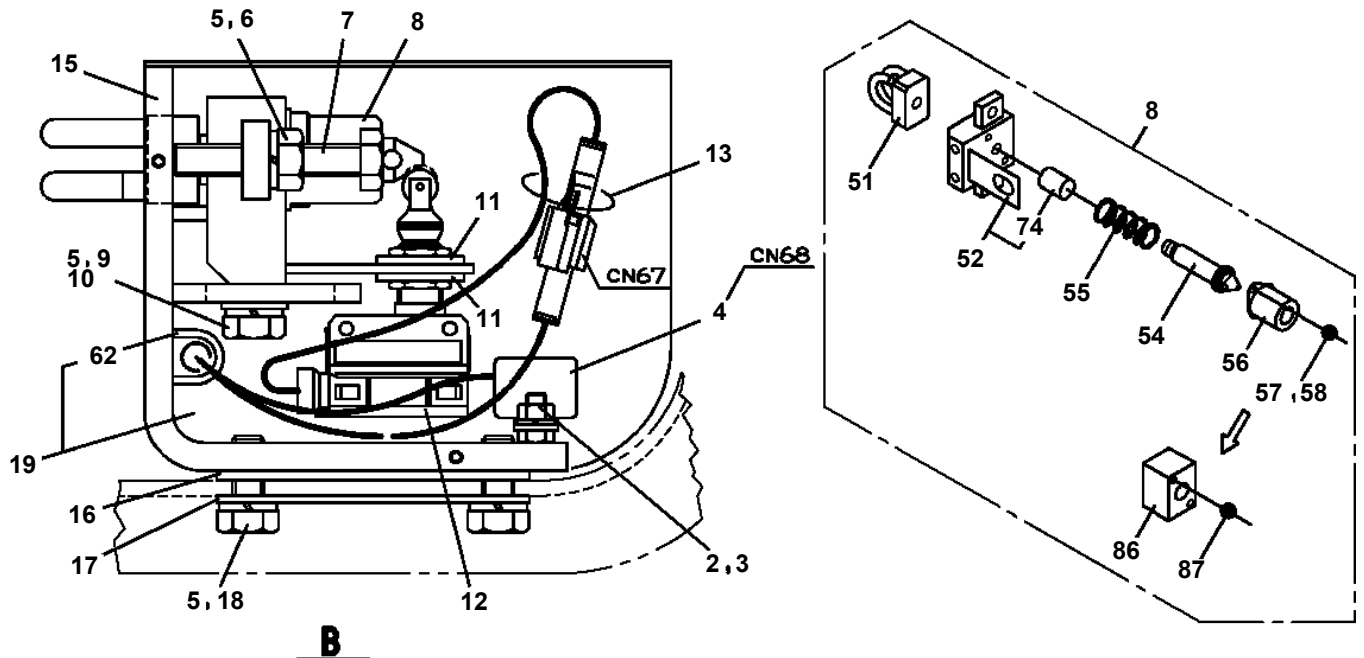
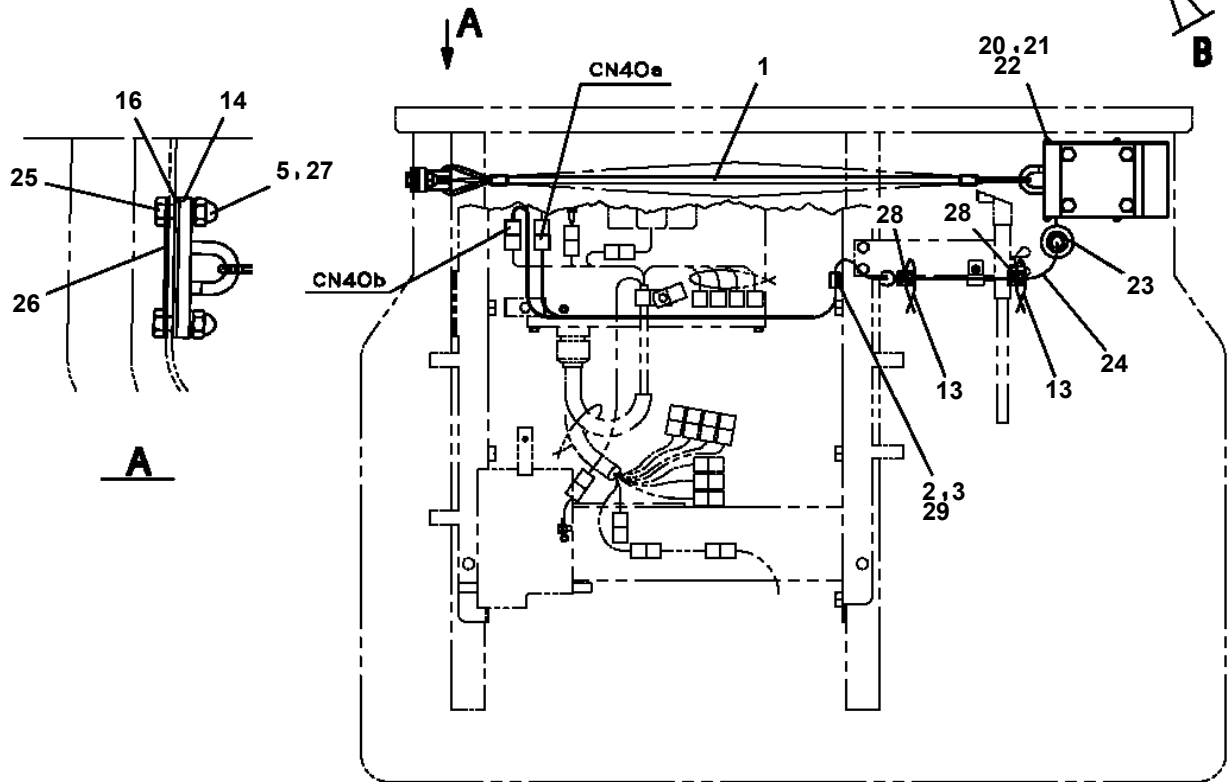
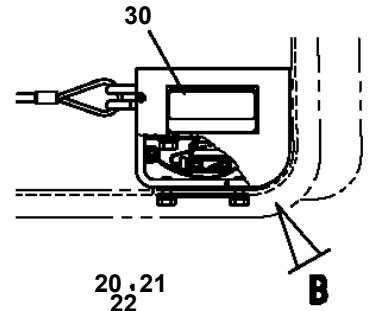
AT-110-4 42084400001 UPPER
PH1480045-00 MOTION CONTROLLER (AMC)

100



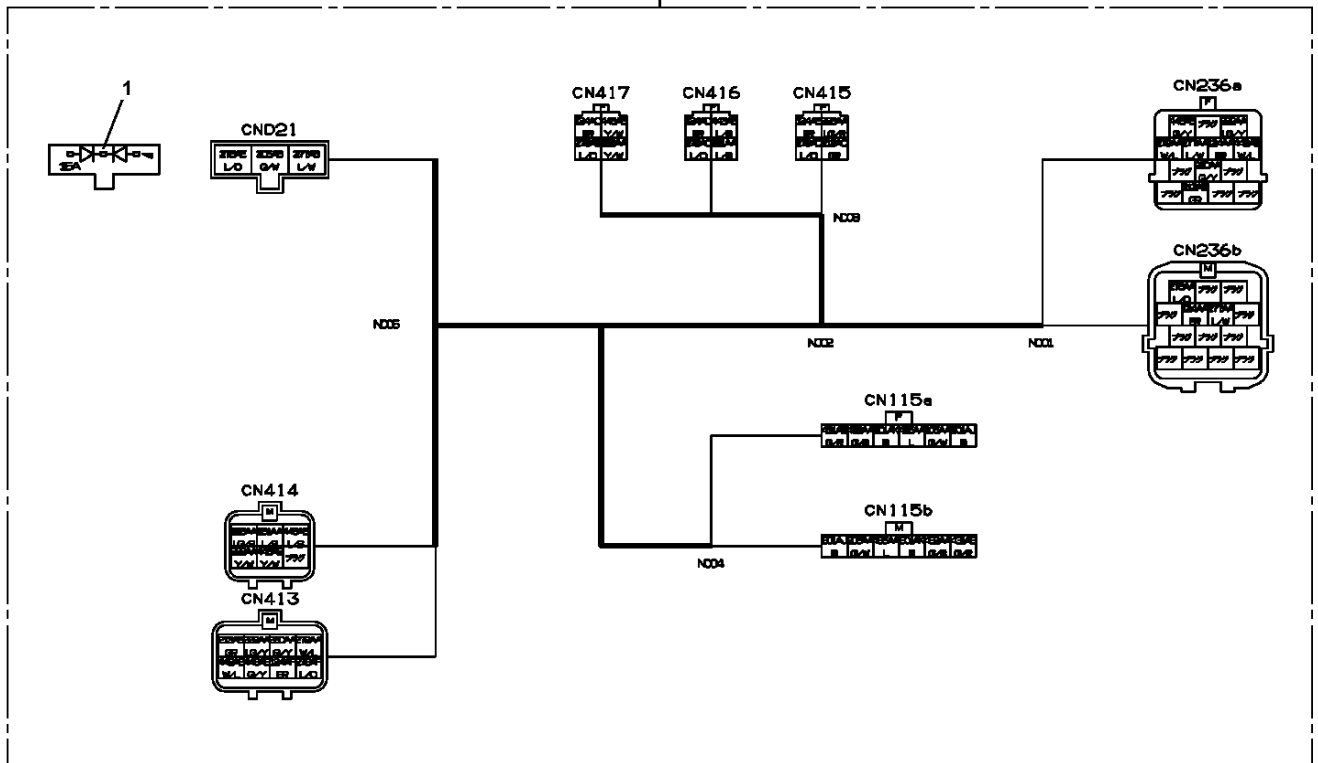
AT-110-4 4208440001 UPPER
PH1550026-01 TOUCH SWITCH (FOR NIKKEN)

30
タッチスイッチ
ワイヤーが押されてスイッチが作動すると、作業車の作動とエンジンが停止します。



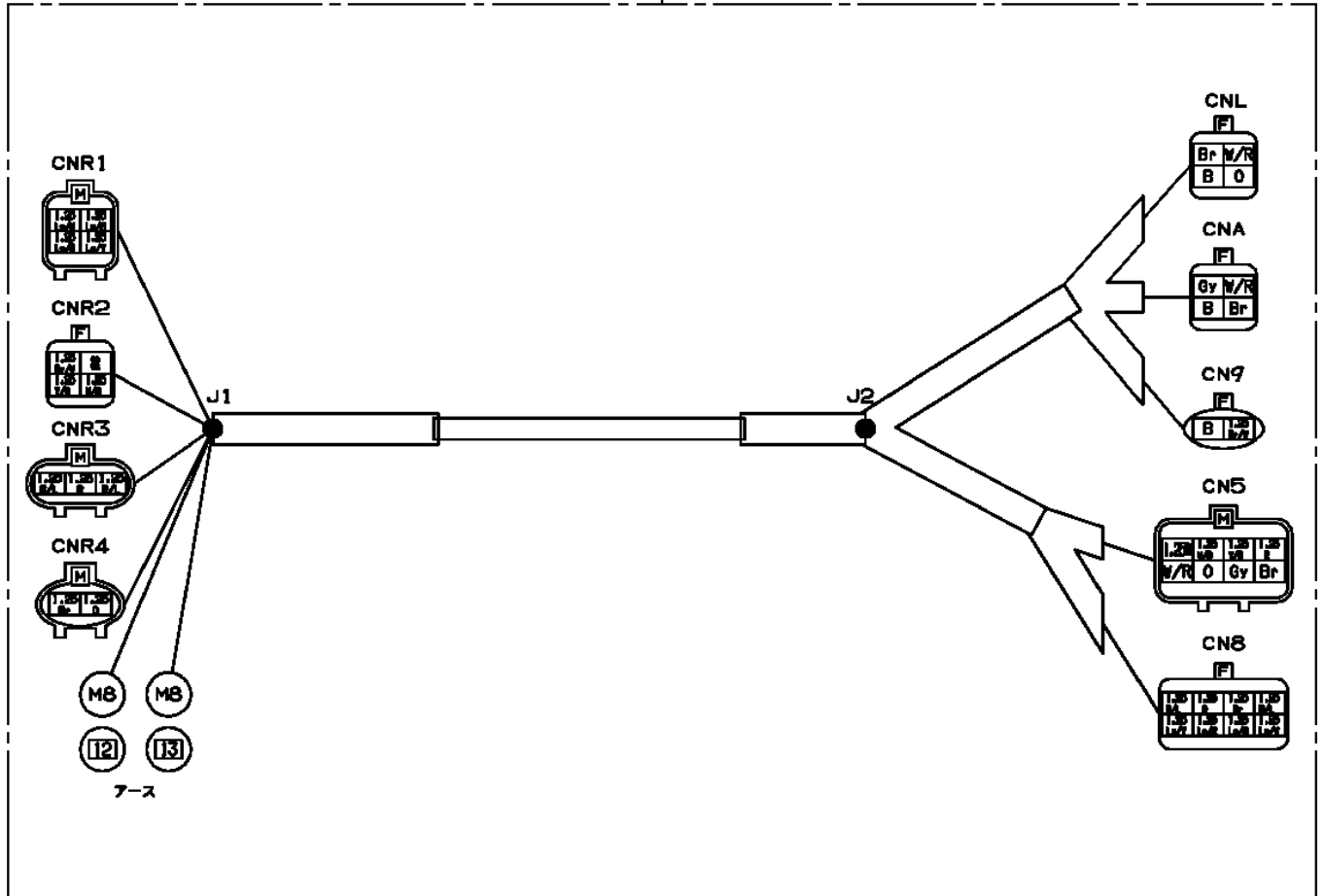
AT-110-4 42084400001 UPPER PH5030577-01 HARNESS

10

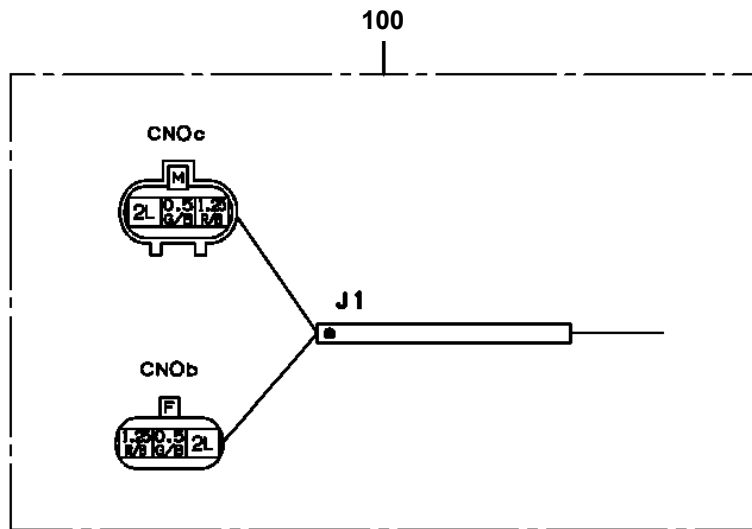


AT-110-4 42084400001 UPPER
PH5030975-00 HARNESS

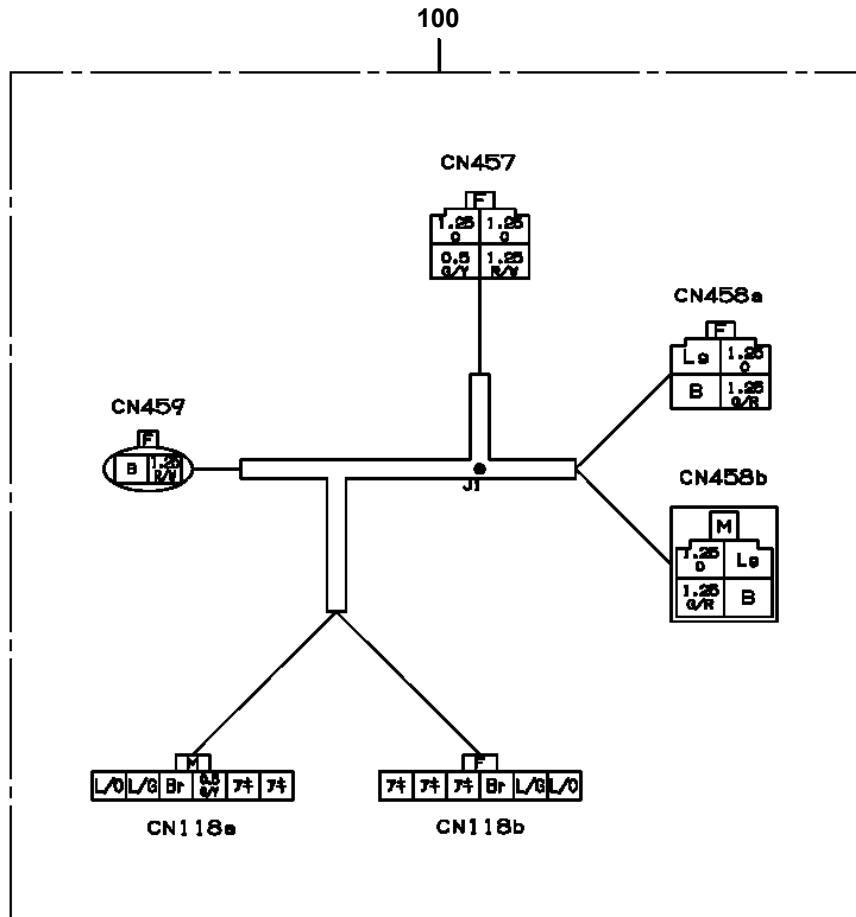
100



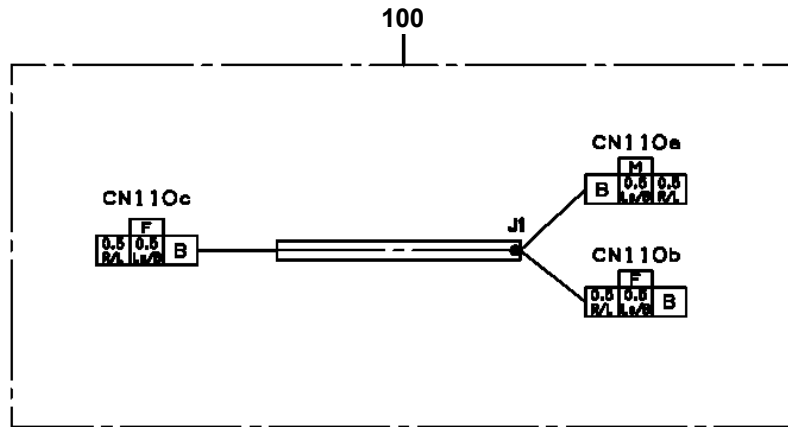
AT-110-4 42084400001 UPPER
PH5031004-00 HARNESS



AT-110-4 42084400001 UPPER
PH5031010-00 HARNESS

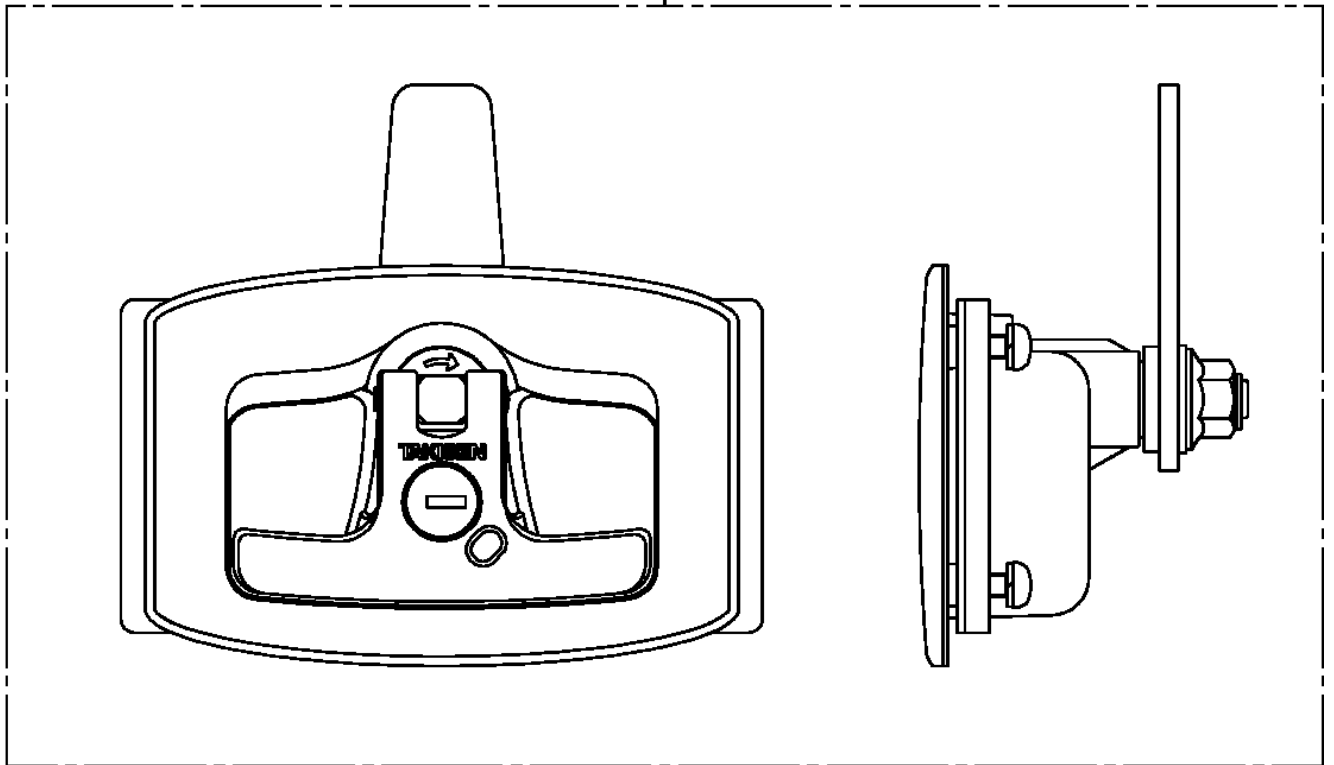


AT-110-4 42084400001 UPPER
PH5032670-00 HARNESS



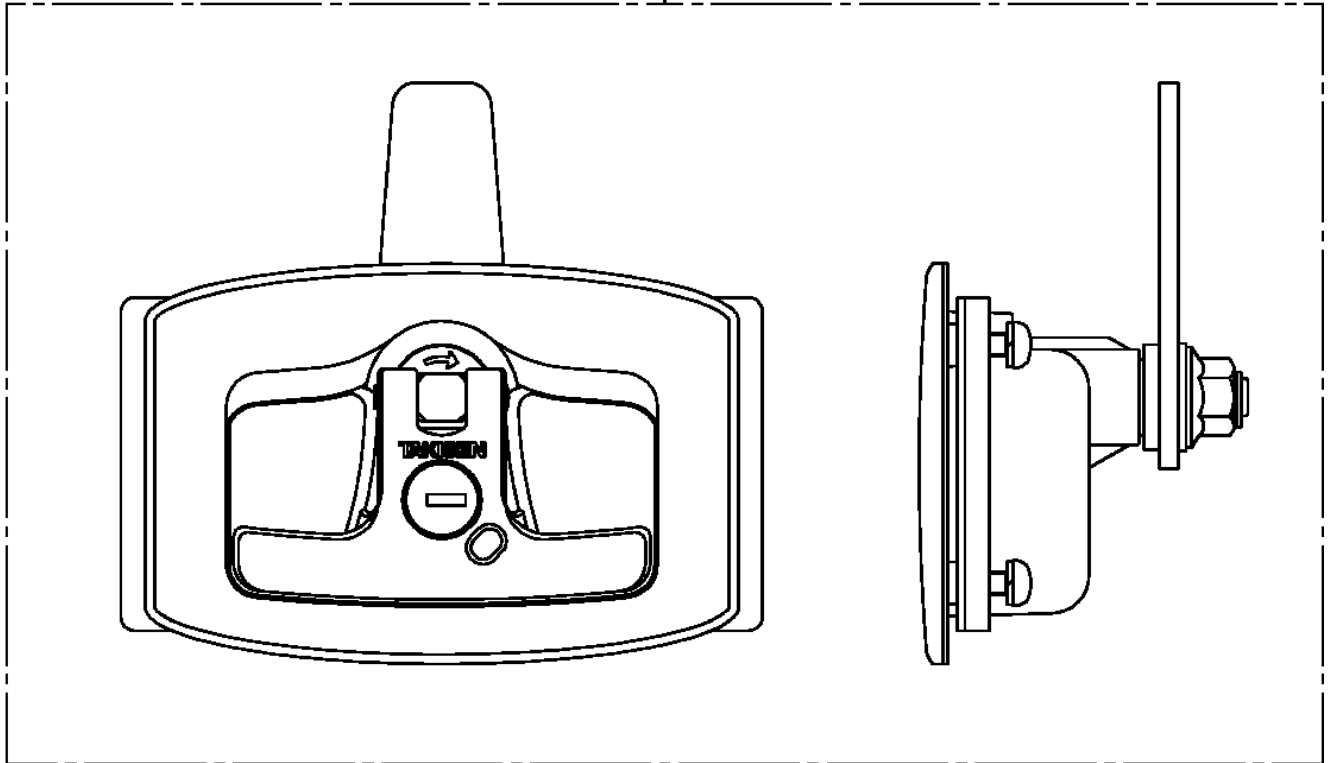
**AT-110-4 42084400001 UPPER
PH5190001-00 HANDLE**

1

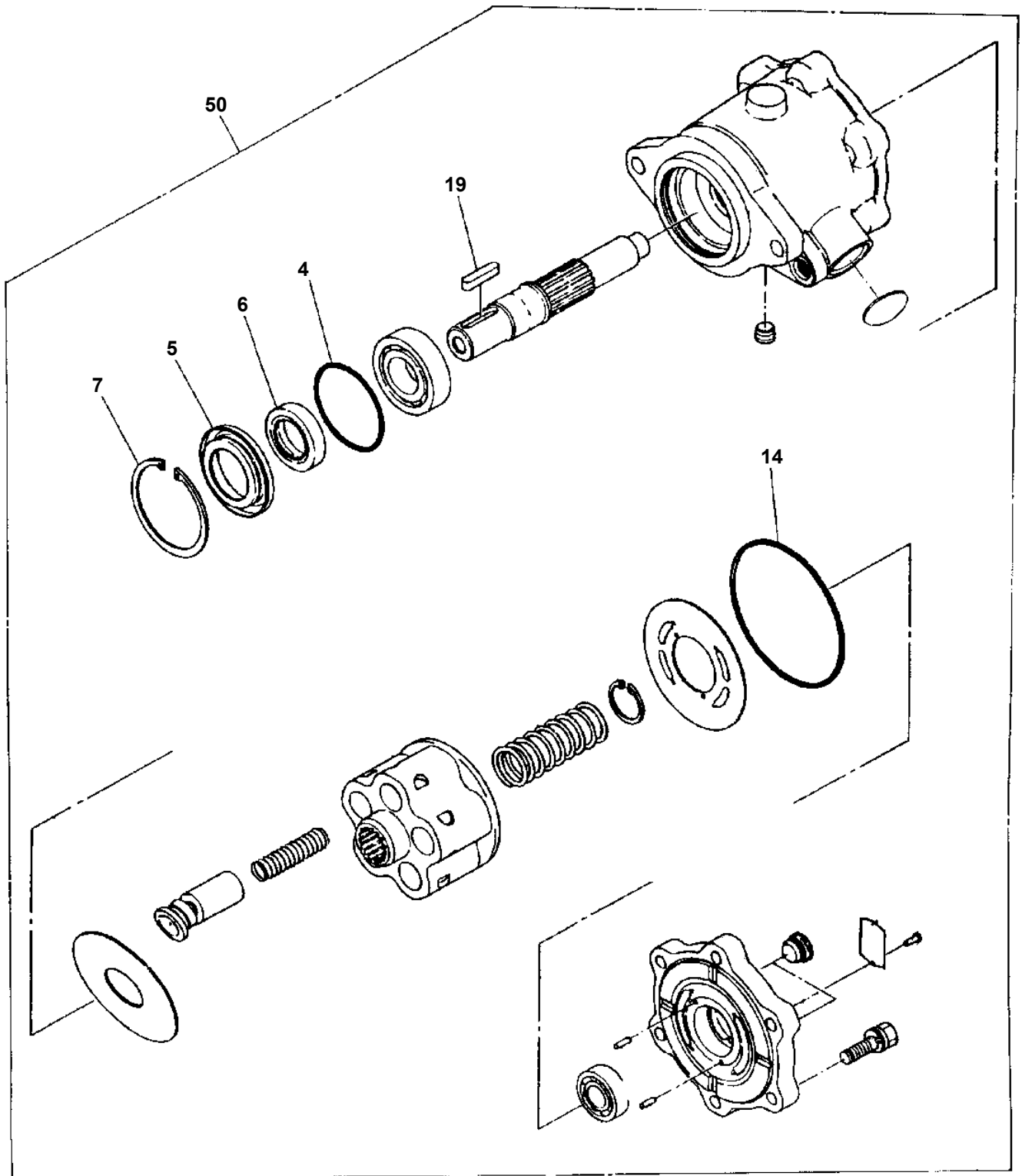


**AT-110-4 42084400001 UPPER
PH5190001-00 HANDLE**

1

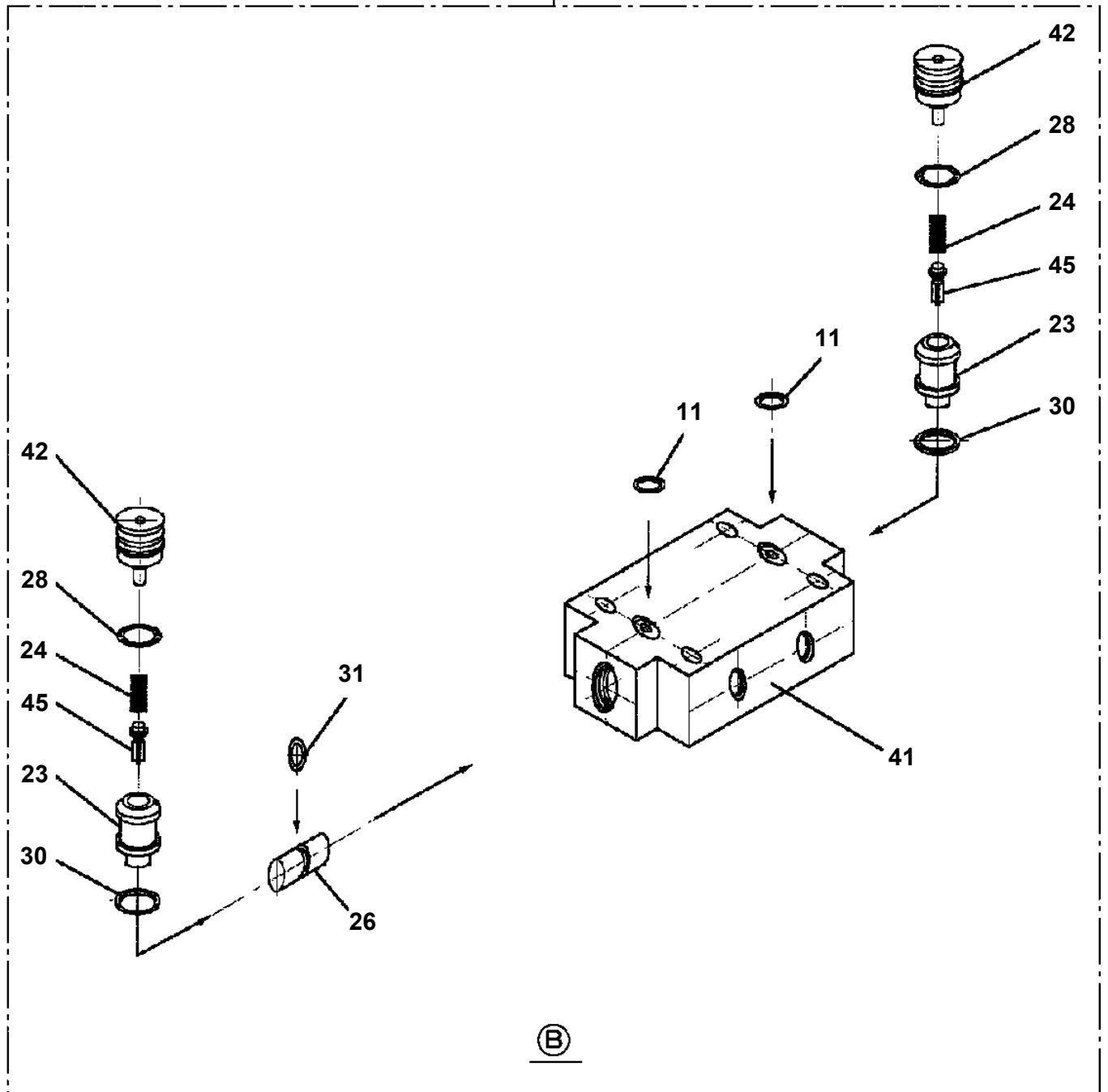


AT-110-4 42084400001 UPPER
PI1010074-00 MOTOR, HYDRAULIC (SWING)



AT-110-4 42084400001 UPPER
PI1140133-01 VALVE,CHECK

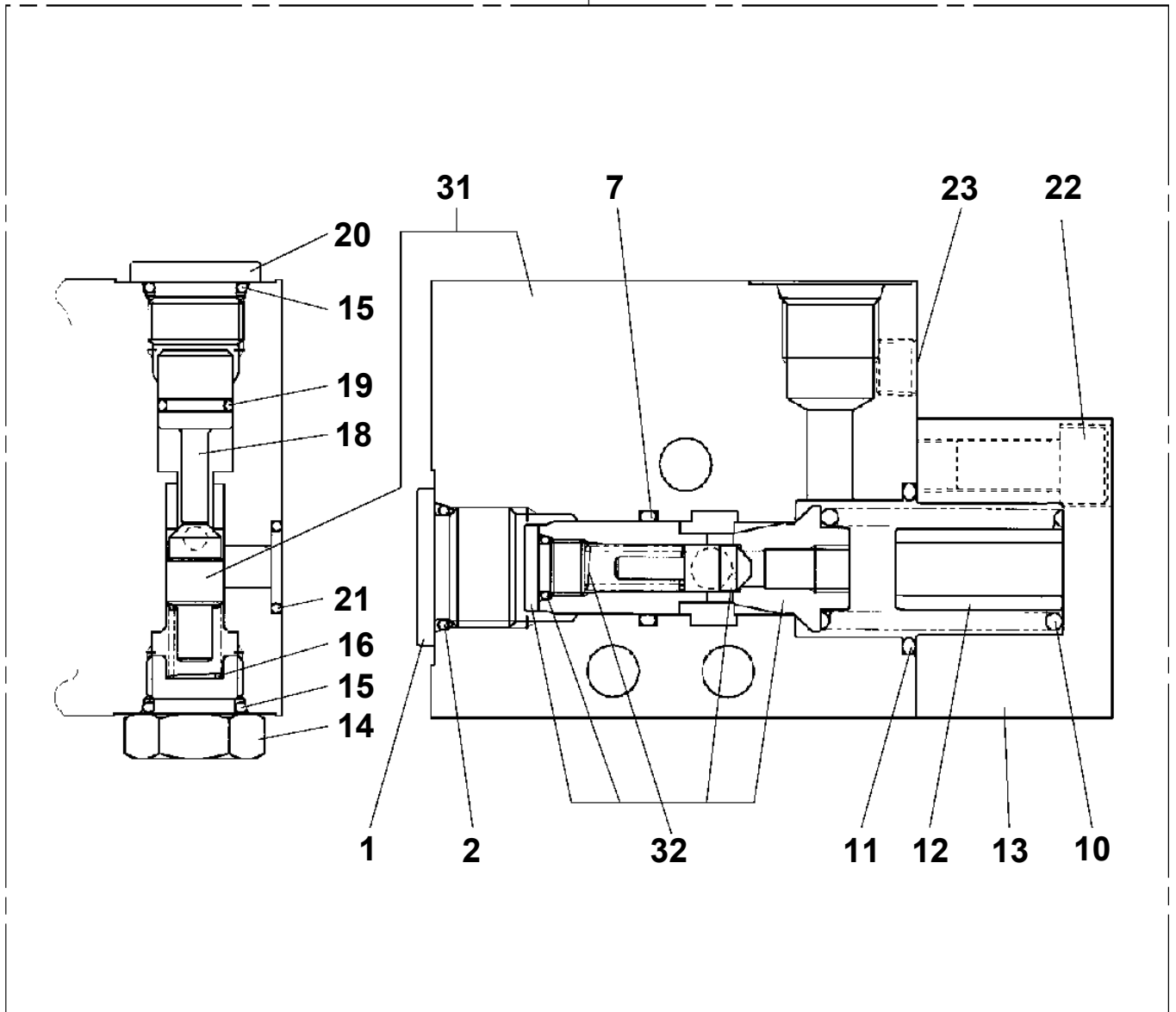
100



Ⓑ

**AT-110-4 42084400001 UPPER
PI1250137-00 VALVE,COUNTERBALANCE**

50

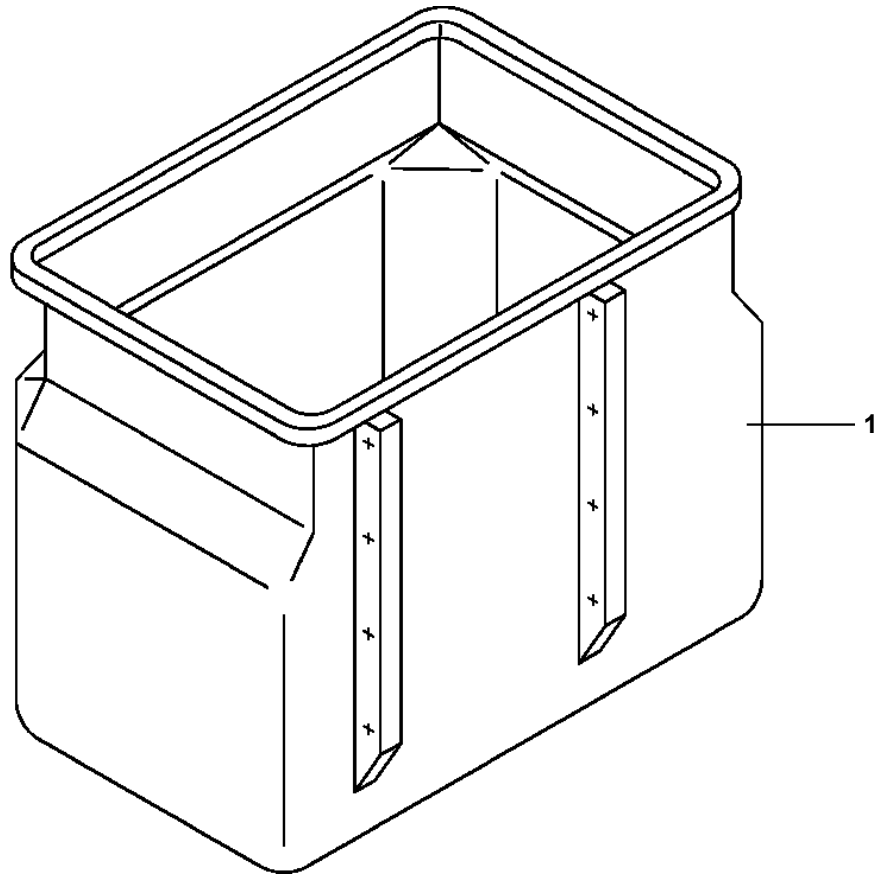


**AT-110-4 42084400001 UPPER
PI5170025-00 INTERLOCK ASSY (11M:RUNAWAY PREVENTION)**

インターロックASSY (11M:イツソウホ ウシ)
INTERLOCK ASSY (11M:RUNAWAY PREVENTION)

【組立名称一覧】より選択してください。
SEE THE CORRESPONDING "ASSEMBLY NAME" LIST.

**AT-110-4 42084400001 UPPER
PJ3010317-00 BUCKET (WHITE/WITHOUT BOSS)**



**AT-110-4 42084400001 UPPER
PJ3010382-00 BUCKET (WHITE/FOR HARTEC, SINGLE STRAIGHT BUCKET)**

指示番号 KEY NO.	ハ ^ク ケツト (シロ/ハ ^テ ツクムケ, ヒトリノリストレートハ ^ク ケツト) BUCKET (WHITE/FOR HARTEC, 1-MAN STRAIGHT BUCKET)
1	ハ ^ク ケツト BUCKET
2	マツト MAT
3	マウ ^ン ト (コウク ^ハ コウエエンチヨウステツフ ^ク) MOUNT
4	フ ^ク レートASSY, ネーム (ノンスリツフ ^ク /コウク ^ハ コウエエンチヨウステツフ ^ク) PLATE ASSY, NAME

AT-110-4 42084400001 UPPER

Pos No.	Parts No	Parts Name	Qty	Unit	Technical Data	Serial No (Start)	Serial No (End)	Remarks
1	42624601002	FRAME ASSY	1			218752		
3	42624600102	COVER ASSY	1			218621		
4	42624600300	BELT	1			218752		
6	90302040801	WASHER,SPRING	4		8	218752		
7	90303070801	WASHER,PLAIN	1		8	218752		
8	42624600010	PLATE,SLIDE	1					
9	90172108020	BOLT,HEXAGON SOCKET	3		M8X20			
10	90201200800	NUT	4		M8	218752		
11	82464107814	HINGE	2					
12	90190205012	BOLT	6		M5X12			
13	90201500500	NUT	12		M5			
14	90302510501	WASHER,SPRING	12		5			
15	37000526010	PLATE	6					
16	80172805014	SCREW,MACHINE	6		M5X14			
20	90302040401	WASHER,SPRING	2		4			
21	90303070401	WASHER,PLAIN	2		4			
23	90101208020	BOLT	1		M8X20	218752	218770	
	90101208018	BOLT	1		M8X18	218771		
24	42653672450	INSULATOR	2			218621		
25	80172804016	SCREW,MACHINE	2		M4X16	218621		
26	42624600030	PLATE,NAME	2					
41	42624600201	COVER	1			218621		
47	82460015181	CATCH (WITH KEY)	1					
48	80172805012	SCREW,MACHINE	2		M5X12			
49	90302510501	WASHER,SPRING	2		5			
51	80175805010	SCREW,MACHINE	2		M5X10			

CLICK HERE TO **DOWNLOAD** THE COMPLETE MANUAL

- Thank you very much for reading the preview of the manual.
- You can download the complete manual from: www.heydownloads.com by clicking the link below



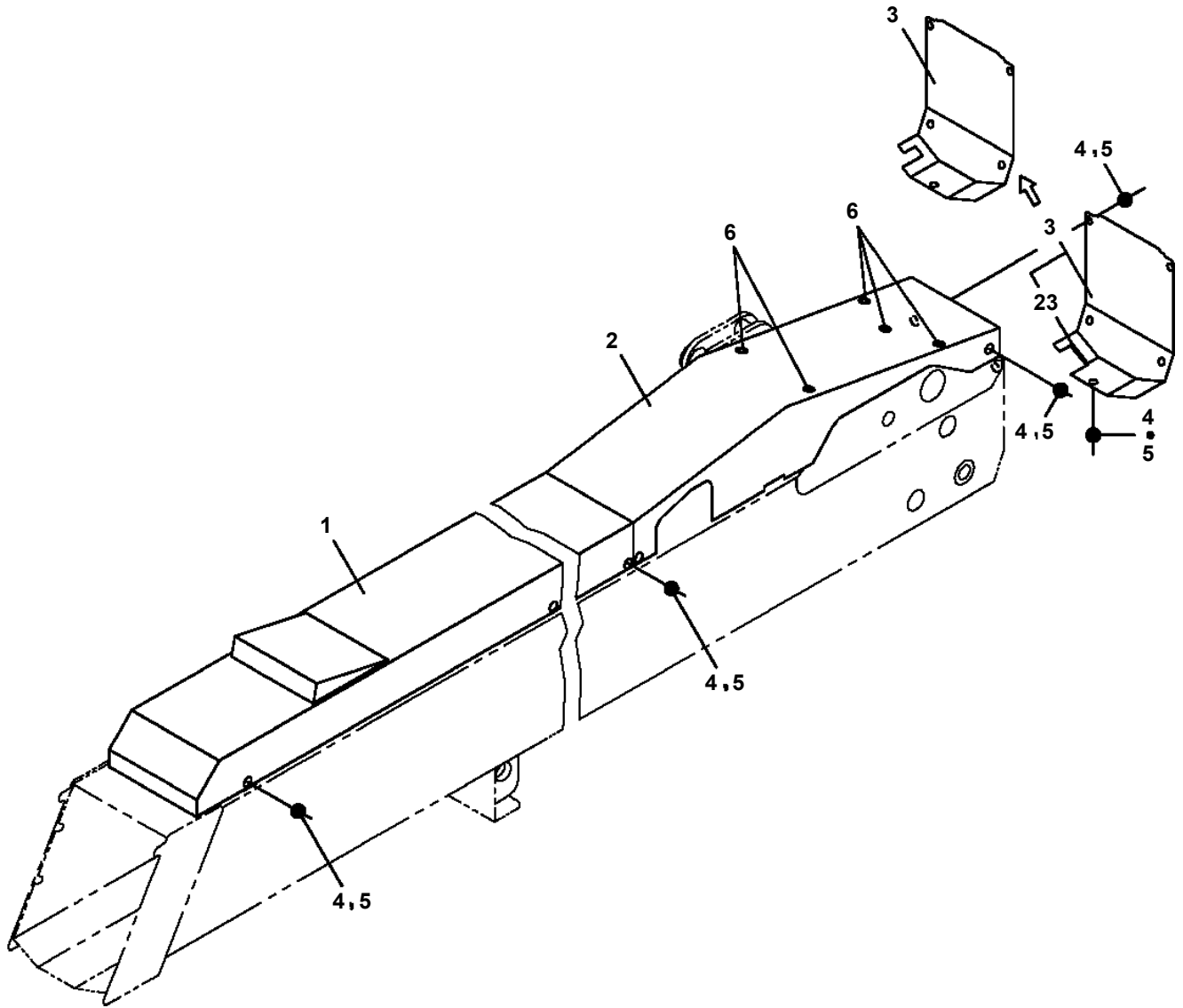
- Please note: If there is no response to CLICKING the link, please download this PDF first and then click on it.

CLICK HERE TO **DOWNLOAD** THE COMPLETE MANUAL

AT-110-4 42084400001 UPPER

Pos No.	Parts No	Parts Name	Qty	Unit	Technical Data	Serial No (Start)	Serial No (End)	Remarks	Pages
1	42321112100	COVER	1				219085		
2	42321112200	COVER	1				219085		
3	82464122900	HINGE	2						
4	90190204010	BOLT	8		M4X10				
5	90303520401	WASHER,PLAIN	8		4				
6	90302510401	WASHER,SPRING	8		4				
7	90201500400	NUT	8		M4				
8	82460025402	CATCH	1						
9	90302040501	WASHER,SPRING	4		5				
10	80175805010	SCREW,MACHINE	4		M5X10				
11	90201200500	NUT	4		M5				
13	80172304008	SCREW,MACHINE	2		M4X8				
14	90201200400	NUT	1		M4				
15	90240200400	NUT,CAP	1		M4				
16	90303070401	WASHER,PLAIN	2		4				
17	42321112010	CHAIN	1						
100	42321112000	COVER	1						

AT-110-4 42084400001 UPPER
PK1330379-01 COVER (BOOM)



AT-110-4 42084400001 UPPER

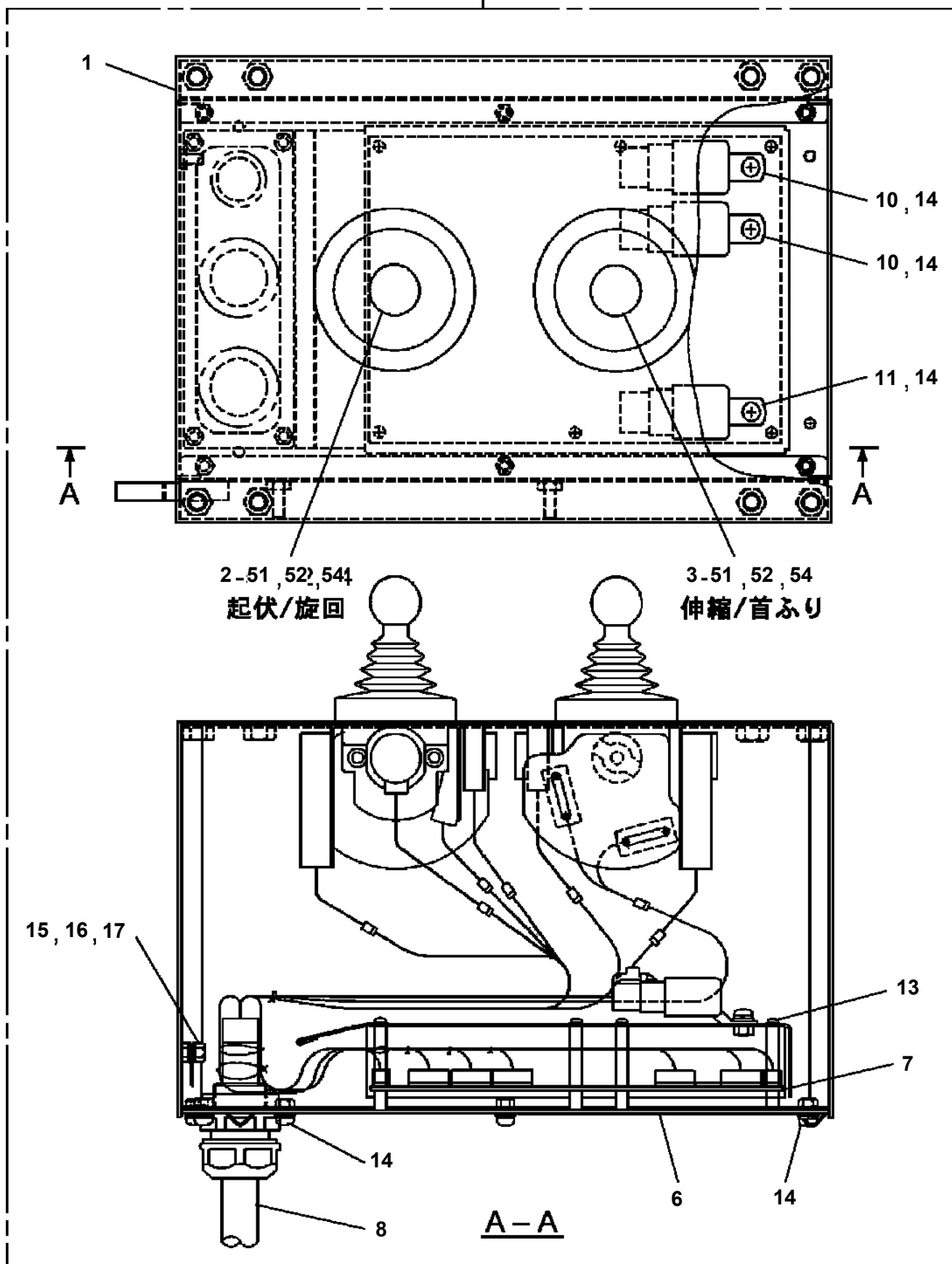
Pos No.	Parts No	Parts Name	Qty	Unit	Technical Data	Serial No (Start)	Serial No (End)	Remarks	Pages
1	42625233040	SUPPORT	1						
	42625233040	SUPPORT	1						

AT-110-4 42084400001 UPPER

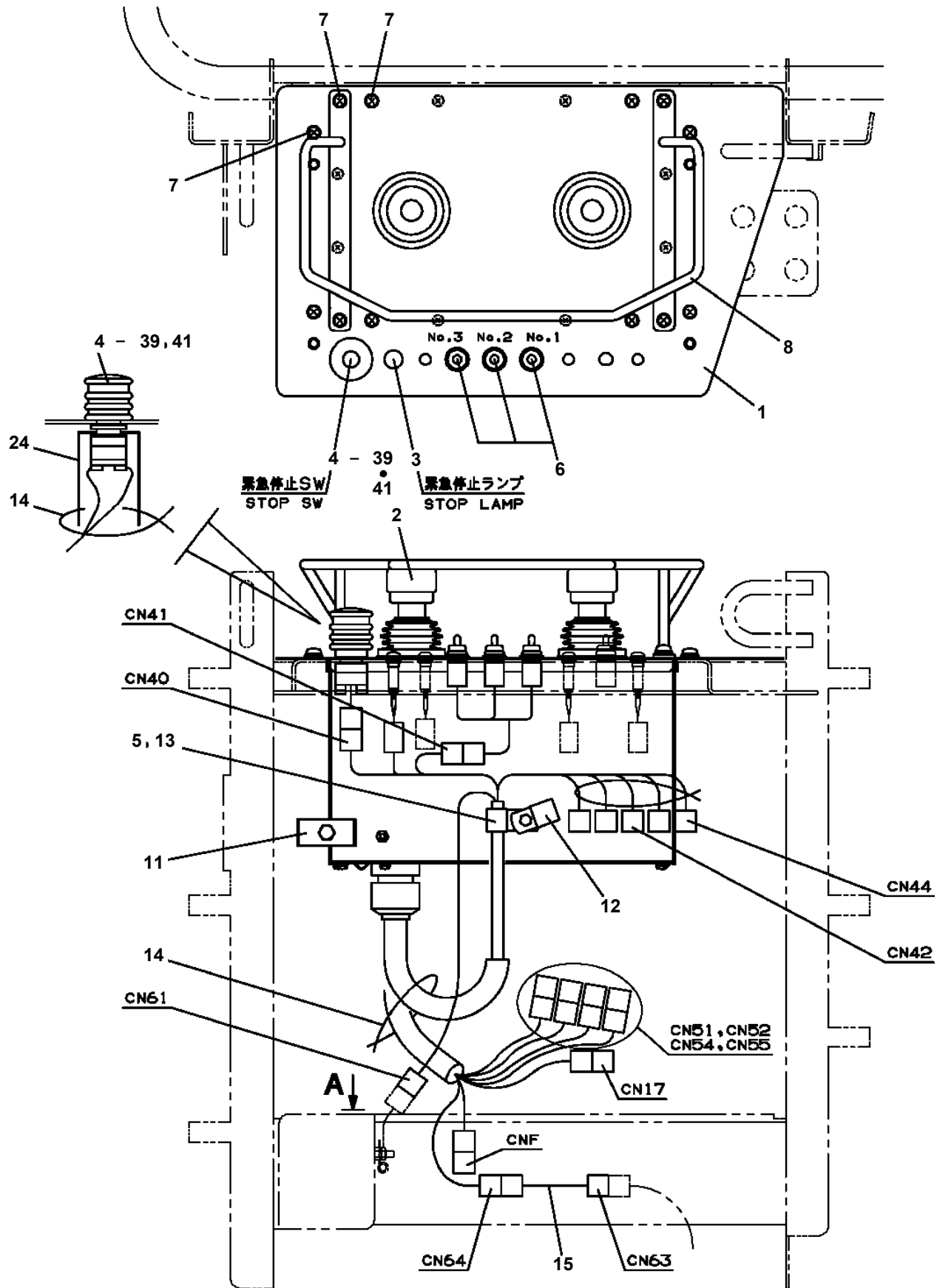
Pos No.	Parts No	Parts Name	Qty	Unit	Technical Data	Serial No (Start)	Serial No (End)	Remarks
1	36641710000	VALVE,REMOTE CONTROL	1					
2	80430620600	JOINT (WITH O-RING)	2		L,G3/8-G3/8			
3	37000925870	JOINT	4		PF1/2-PF3/8			
4	91002801800	O-RING	6		1B P18			
5	80302090151	FITTING	2		KCO12-040N			
6	37000925660	JOINT	1		S,G3/4-G1/2			
7	80302090251	FITTING	1		KCO018-060N			
8	91002802400	O-RING	2		1B P24			
9	37000908720	JOINT (WITH O-RING)	2		PF1/2-PF3/8			
10	80491303030	JOINT (WITH O-RING)	2		L,PF3/8-PF3/8			
31	91002801400	O-RING	4		1B P14			
41	91002801800	O-RING	2		1B P18			

AT-110-4 42084400001 UPPER
 PL1920062-03 OPE.ASSY

100



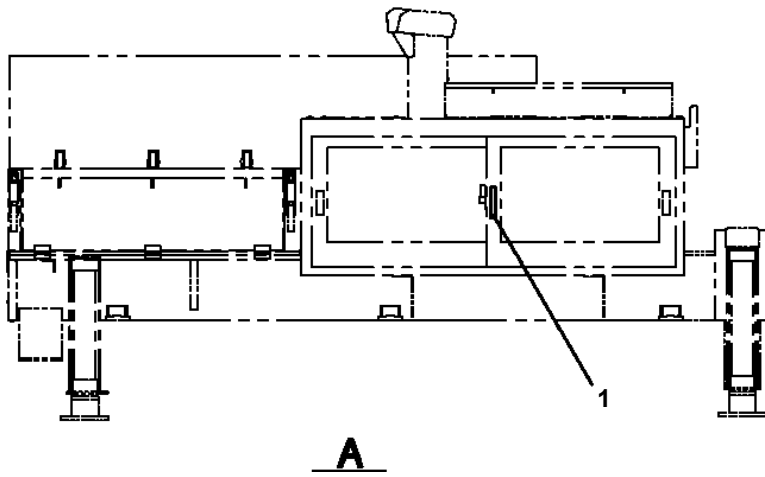
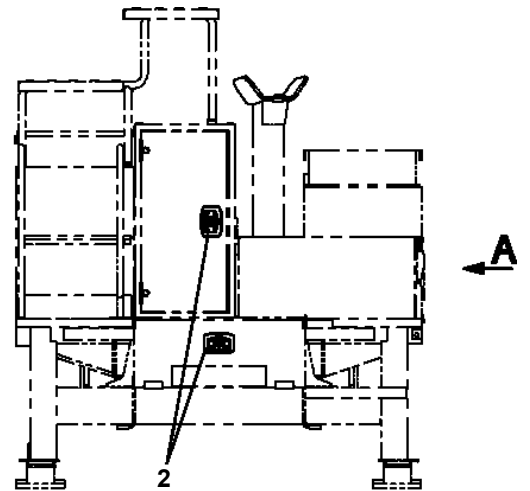
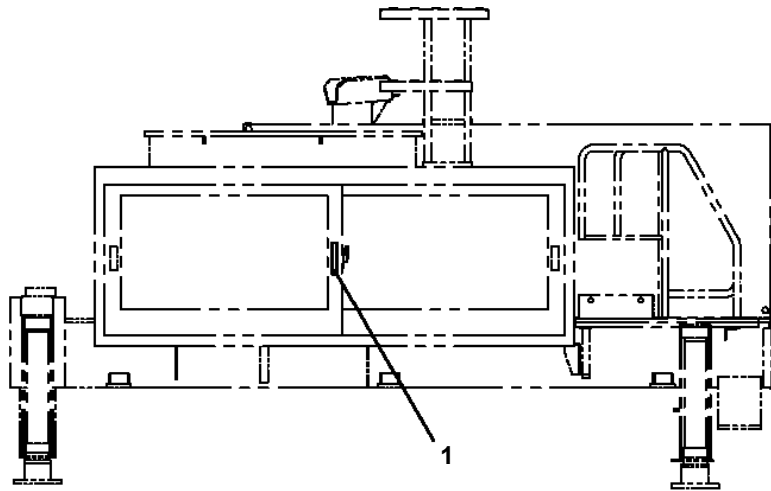
**AT-110-4 42084400001 UPPER
PL1920082-02 OPE.ASSY (BUCKET)**



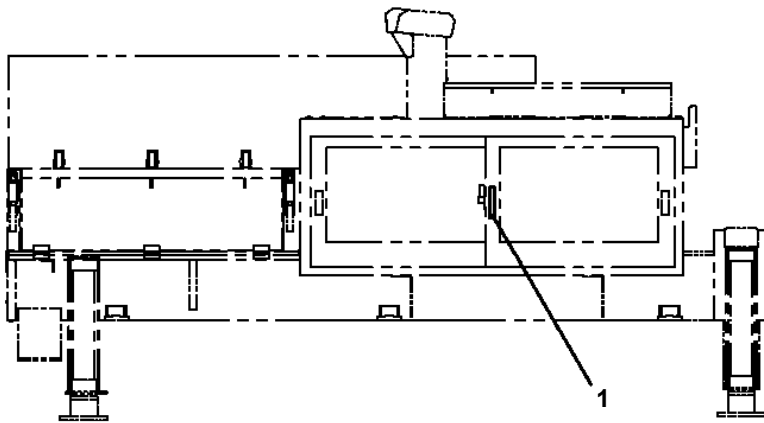
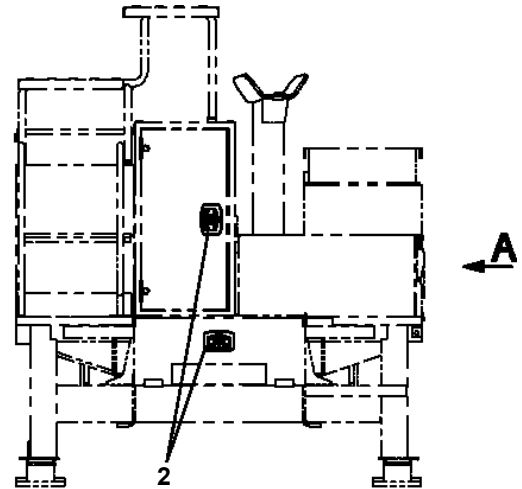
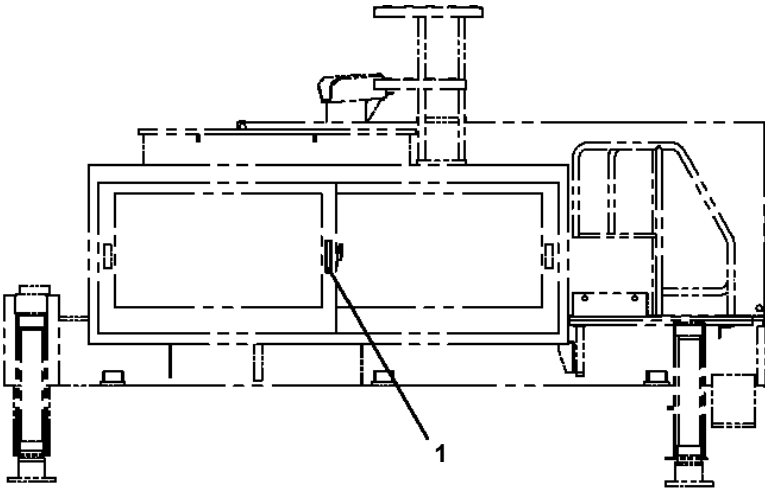
AT-110-4 42084400001 UPPER
PL1920091-01 OPE.ASSY (W/ 2-AXIS ENABLE SW)

指示番号 KEY NO.	オペ .ASSY (2ジク イネーフ ルSWツキ) OPE.ASSY (WITH 2-AXIS ENABLE SW)
1	オペ .ASSY OPE.ASSY
2	プレートASSY,ネーム (バケツトソウサブ) PLATE ASSY,NAME (BUCKET CONTROL)
3	プレートASSY,ネーム (バケツトナイメン) PLATE ASSY,NAME (INSIDE BUCKET)

AT-110-4 42084400001 UPPER
PL5270044-00 LOCK ASSY (KEY NO.2)



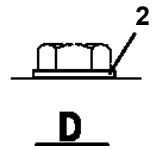
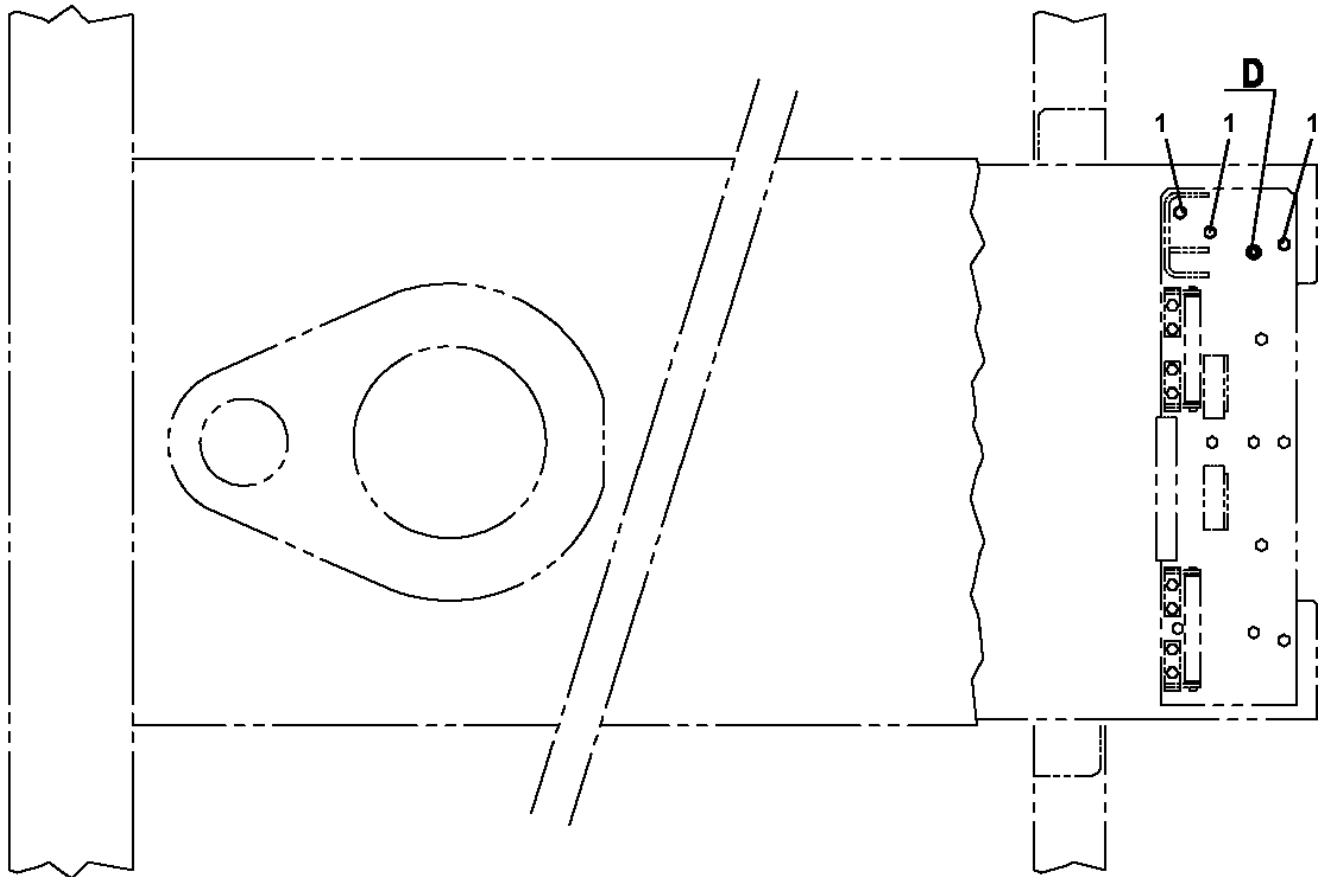
AT-110-4 42084400001 UPPER
PL5270049-00 LOCK ASSY (KEY NO.7)



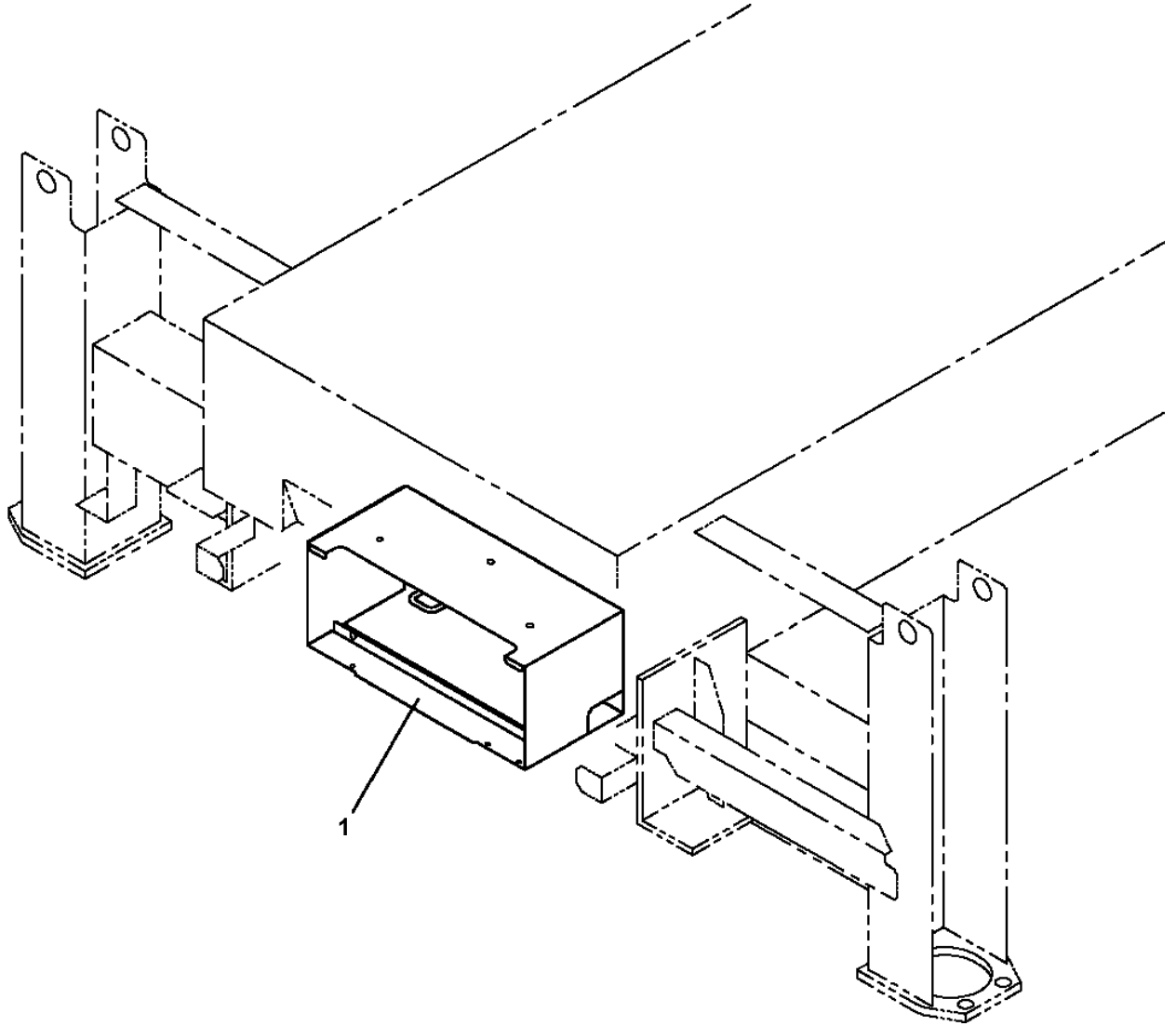
A

AT-110-4 42084400001 UPPER
PM5150288-00 MODIFICATION ASSY (SUB FRAME,HOLE PROCESSING)

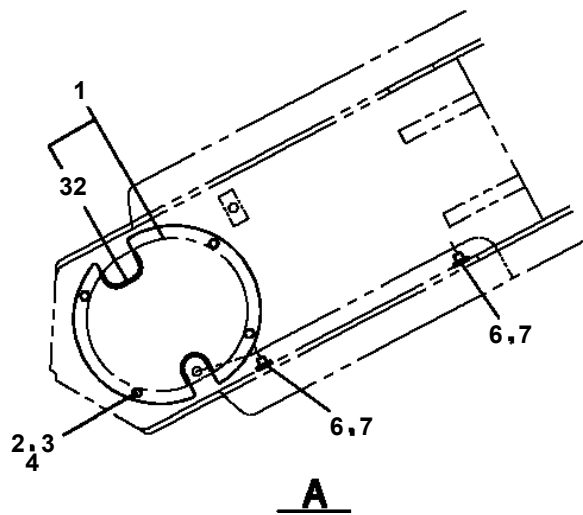
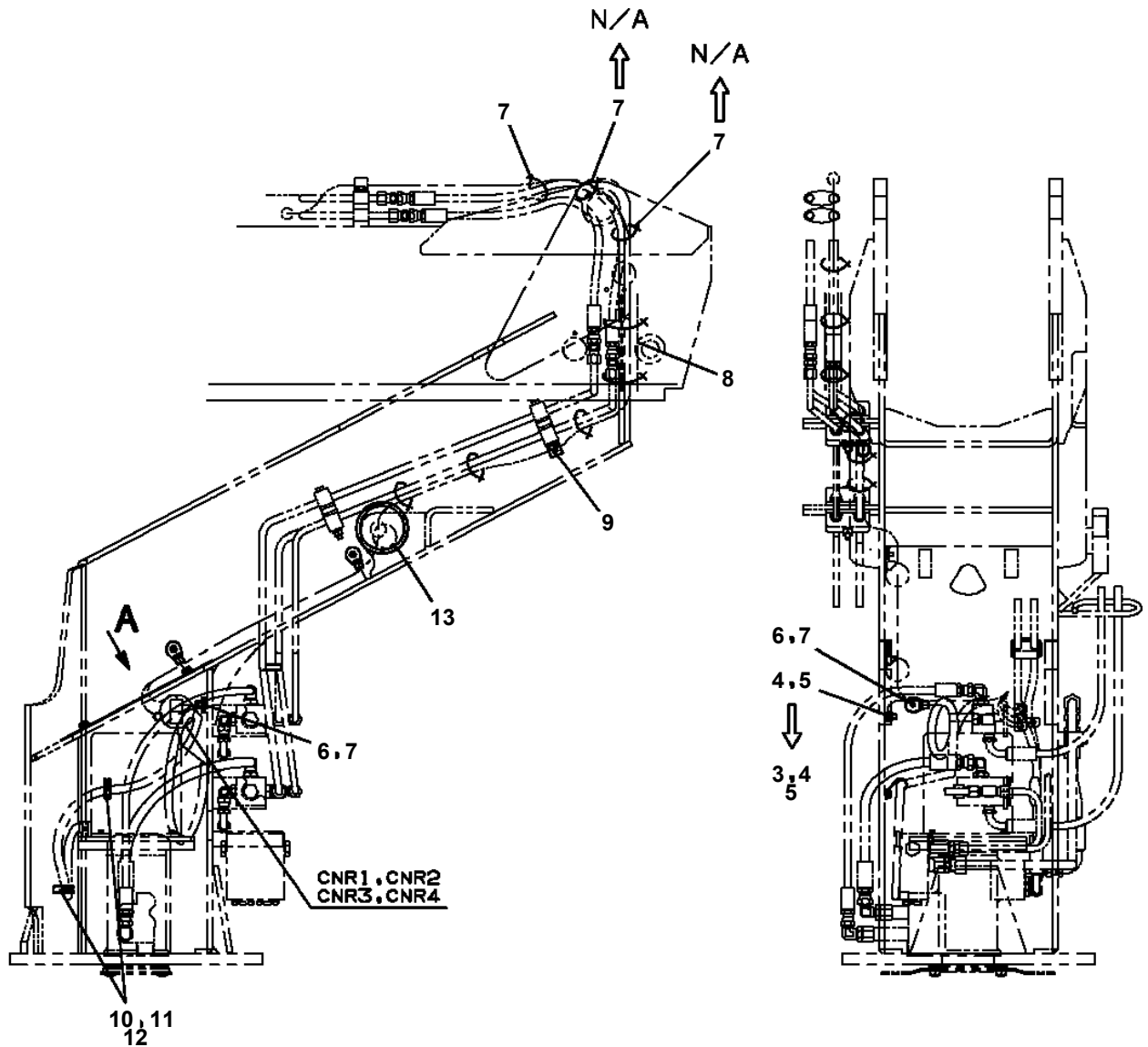
FRONT ←



**AT-110-4 42084400001 UPPER
PM5150359-00 MODIFICATION ASSY**



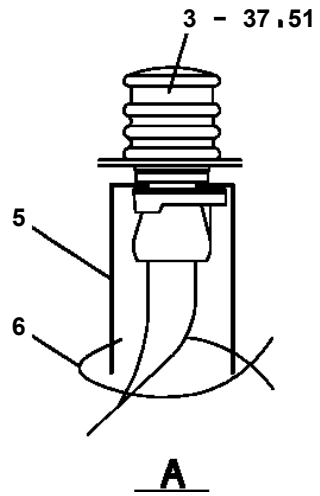
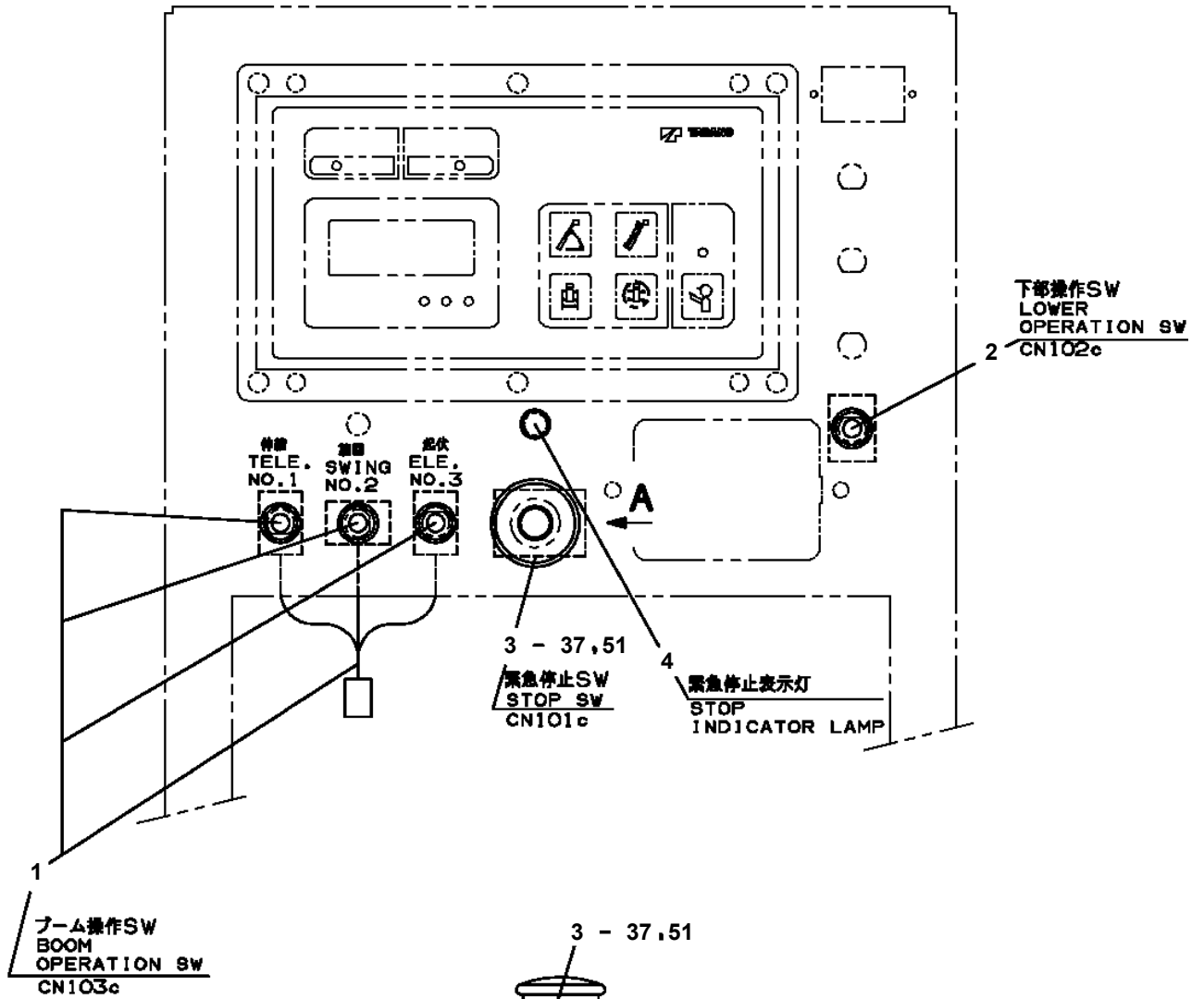
AT-110-4 42084400001 UPPER
PN1013974-01 ELEC.ASSY (SWING FRAME)



AT-110-4 42084400001 UPPER

Pos No.	Parts No	Parts Name	Qty	Unit	Technical Data	Serial No (Start)	Serial No (End)	Remarks
1	36140510000	DETECTOR ASSY,ANGLE	1					
2	42652480010	PLATE	1					
3	42651620400	COVER	1					
4	90101208016	BOLT	6		M8X16			
5	90302040801	WASHER,SPRING	6		8			
6	90101206014	BOLT	2		M6X14			
7	90302040601	WASHER,SPRING	2		6			
8	91810130240	FASTENER	8					
9	37000500060	PLATE	2					
10	42501120101	HARNES	1		L=400	218751		
32	82400000201	GROMMET	1		KG-016			

AT-110-4 42084400001 UPPER
 PN1014335-04 ELEC.ASSY (LOWER CONTROLS)



AT-110-4 42084400001 UPPER

Pos No.	Parts No	Parts Name	Qty	Unit	Technical Data	Serial No (Start)	Serial No (End)	Remarks	Pages
1	44350240100	SWITCH ASSY	1						000315
2	90101206028	BOLT	3		M6X28				
3	37000512320	PLATE	3						
4	90240200600	NUT,CAP	3		M6				
5	82400000095	GROMMET	1						
6	91810130240	FASTENER	10						
7	90303070601	WASHER,PLAIN	N		6				

AT-110-4 42084400001 UPPER

Pos No.	Parts No	Parts Name	Qty	Unit	Technical Data	Serial No (Start)	Serial No
1	42653362100	SWITCH ASSY	1				
2	42354541300	SWITCH ASSY (WITH HARNESS,1 SW)	1				
3	42354541200	SWITCH ASSY (WITH HARNESS,1 SW)	1				
4	42353952100	SWITCH ASSY (WITH HARNESS)	1				
5	42354541400	SWITCH ASSY (WITH HARNESS,3 SWITCH)	1				
6	42355641100	SWITCH ASSY	1				
7	42801710200	LAMP ASSY (RED)	1				
31	82100005004	LENS (RED)	1				
41	42355641210	BUTTON	1				
77	42355641010	COVER	1				

AT-110-4 42084400001 UPPER

Pos No.	Parts No	Parts Name	Qty	Unit	Technical Data	Serial No (Start)	Serial No (End)	Re
1	82100002253	LAMP	1					
2	80175304020	SCREW,MACHINE	2		M4X20			
3	90302040401	WASHER,SPRING	2		4			
4	90303070401	WASHER,PLAIN	2		4			
5	90201200400	NUT	2		M4			
6	42736070100	SWITCH ASSY (WITH HARNESS)	1					
7	42475560010	PLATE,NAME	1					
31	82100000783	BULB,LAMP	1		24V 12W			

AT-110-4 42084400001 UPPER

Pos No.	Parts No	Parts Name	Qty	Unit	Technical Data	Serial No (Start)	Serial No (End)	Remarks	Pages
1	42653361100	PLATE	2						
2	82161202010	RELAY	1						
3	82100002597	RELAY	2						
4	82161201010	RELAY	5						
5	82100002596	RELAY	5						
6	90186206010	BOLT,FLANGE	18		M6X10				
7	82161300010	RELAY	1						
8	42651091100	RELAY ASSY	1						
9	42653901100	SUPPORT	1				HK0007		
	42654052200	SUPPORT	1			HK0008			
10	90101206025	BOLT	1		M6X25		219959		
	90102206025	BOLT	1		M6X25	219960			
11	80192483010	SCREW,MACHINE	4		M3X10				
12	42950564100	RELAY ASSY	1						
13	91810132530	FASTENER	3						
14	90302040601	WASHER,SPRING	2		6				
15	90201200600	NUT	1		M6				

AT-110-4 42084400001 UPPER

Pos No.	Parts No	Parts Name	Qty	Unit	Technical Data	Serial No (Start)	Serial No (End)
1	82105220286	SWITCH,TOGGLE	1				
2	82105220193	SWITCH,TOGGLE	1				
3	82105220183	SWITCH,TOGGLE	1				
10	42332531300	SWITCH ASSY (WITH HARNESS,3 SW)	1				

AT-110-4 42084400001 UPPER

Pos No.	Parts No	Parts Name	Qty	Unit	Technical Data	Serial No (Start)	Serial No (End)	Remarks	Pages
2	82100001839	FUSE	10		10A.RED				
3	82100001841	FUSE	4		20A,YELLOW				
10	34351562510	BOX,FUSE	1						
19	82182809623	DIODE	1						
30	42653670300	HARNESS	1						

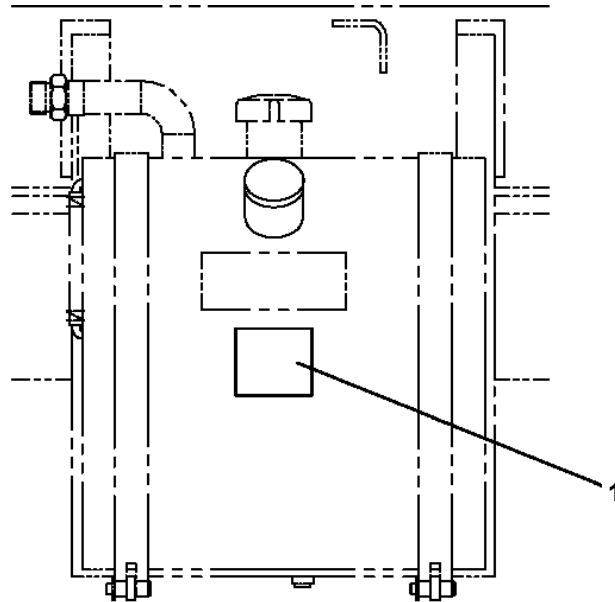
AT-110-4 42084400001 UPPER

Pos No.	Parts No	Parts Name	Qty	Unit	Technical Data	Serial No (Start)	Serial No (End)	Remarks	Page
1	42505901100	HARNESS	1		L=1200				
2	82112102005	SLEEVE	1						
3	82100001801	TUBE,CORRUGATE	2	M	7				


AT-110-4 42084400001 UPPER

Pos No.	Parts No	Parts Name	Qty	Unit	Technical Data	Serial No (Start)	Serial No (End)	Remarks	Pages
1	42393312020	PLATE (NON-SLIP)	2						

AT-110-4 42084400001 UPPER
PO1013121-01 PLATE ASSY,NAME (HYDRAULIC OIL)



1

 注 意
<ul style="list-style-type: none">• ポンプの換付等により重大な故障の原因となるので、 "作動油"または"油圧ポンプ"を交換したときは、 必ず油圧ポンプのエア抜きを行ってください。• 油量は、必ず全行表筒で確認してください。
純正作動油
タダノハイドロリックオイル LL
<small>370-022-17330-2</small>

AT-110-4 42084400001 UPPER

Pos No.	Parts No	Parts Name	Qty	Unit	Technical Data	Serial No (Start)	Serial No
1	42397402010	PLATE,NAME (AT-110TT)	1				
2	42397402040	PLATE,NAME (LOADING CAPACITY 120KG)	2				
3	42394441040	PLATE,CAUTION	2				
4	42397402020	PLATE,NAME	1				
5	42397402030	PLATE,NAME	2				
6	42396162170	PLATE,NAME (AMC)	1				
7	42397402050	PLATE,NAME (DARK GLAY)	1				
8	42397401070	PLATE,NAME	1				

AT-110-4 42084400001 UPPER
 PO1014831-01 PLATE ASSY,NAME (SPECIFICATION)

1

AT-110TT
 423-974-02010

2

積載荷重 **120kg**
 (2人乗り禁止)
 423-974-02040

3

△警告 / 使用上の注意

- 本機の運転は高所作業車技能講習修了者に限られます。
- 取扱説明書をよく読み、操作および取扱い方法を理解してから使用してください。
- 作業開始前点検を実施してください。
- ヘルメット・安全帯を着用してください。
- 積載荷重を守ってください。
- 作業床以外で作業しないでください。
- 強風・雷などの悪天候時には作業しないでください。

警告

取扱い説明書を読み

安全帯を着用して

4

作業範囲図

作業床最大上高	11.0m
最大作業半径	8.8m
定員	1名
積載荷重	人員を含め120kg

地上高 (m)

作業半径 (m)

図説

1. 作業範囲は水平面上に及びるもので、ブームのたわみは含んでいません。(バケットをスイングさせた時の状態を表しています)
2. 作業範囲は全周円です。

423-974-02030

5

非常用ポンプの使用方法

- エンジンの故障時には、非常用ポンプスイッチを押しながら、格納操作をしてください。
- 非常用ポンプの連続使用時間は30秒以内とし、次の使用まで30秒以上の休みを取ってください。

ブーム格納方法

バケットを格納し、ブームを全縮にしてください。
 ブームを水平以上に起こした後、ブーム格納スイッチをONに保持してください。
 ブームが格納位置まで復帰します。
 ブーム復帰作業にて格納して下さい。
 (水平以下ではブーム格納スイッチが働きません。)

6

AMC作業開始前点検

点検開始

- フットリフトを提出し、水平位置に設置する。
- ブーム全縮、格納状態でバケットを確認し、点検完了とする。

点検完了

ブーム全縮、格納状態にする。

○スイッチを同時に押し、その後の表示が「Good」を連続表示すること。

○スイッチを押しながら、格納の動作をした後作動しないこと。
 (下降動作スイッチの場合は不可です。)

異常な場合

ブーム全縮、格納状態にする。

○スイッチを同時に押し、その後の表示が「Good」を連続表示すること。

ブーム全縮、格納状態にする。

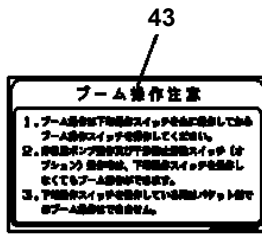
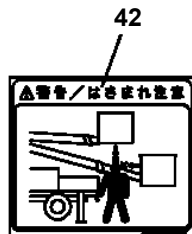
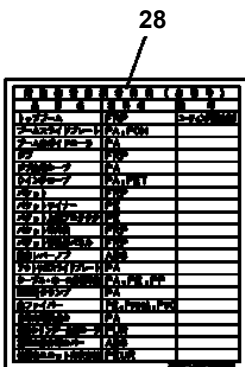
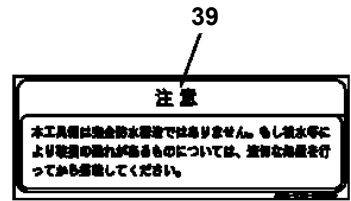
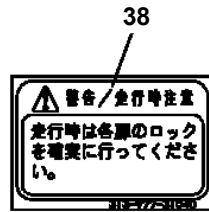
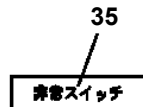
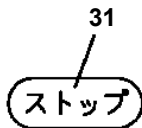
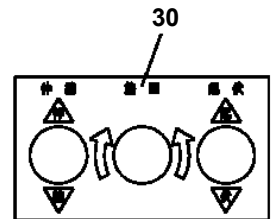
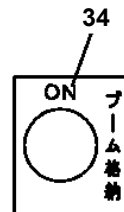
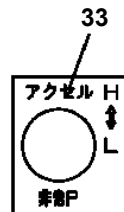
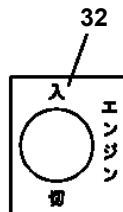
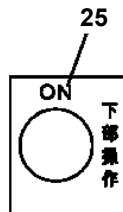
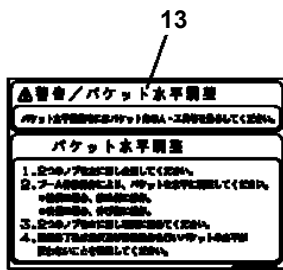
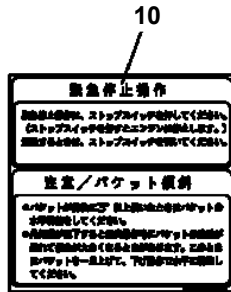
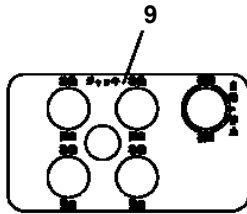
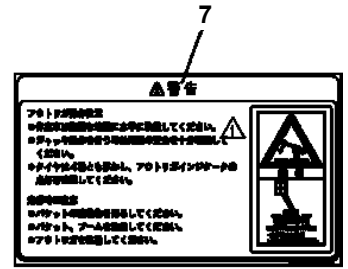
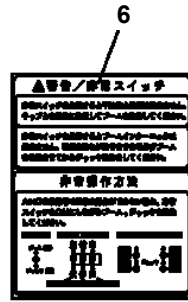
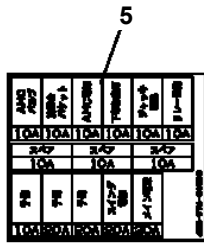
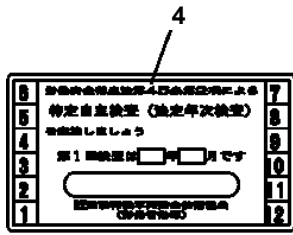
○スイッチを同時に押し、その後の表示が「Good」を連続表示すること。

ブーム全縮、格納状態にする。

ブーム全縮、格納状態にする。

ブーム全縮、格納状態にする。

AT-110-4 42084400001 UPPER
 PO1015407-01 PLATE ASSY,NAME (VEHICLE)



AT-110-4 42084400001 UPPER

Pos No.	Parts No	Parts Name	Qty	Unit	Technical Data	Serial No (Start)	Serial No (End)	Rema
1	36194972910	PLATE,NAME (361-949-72000)	1					

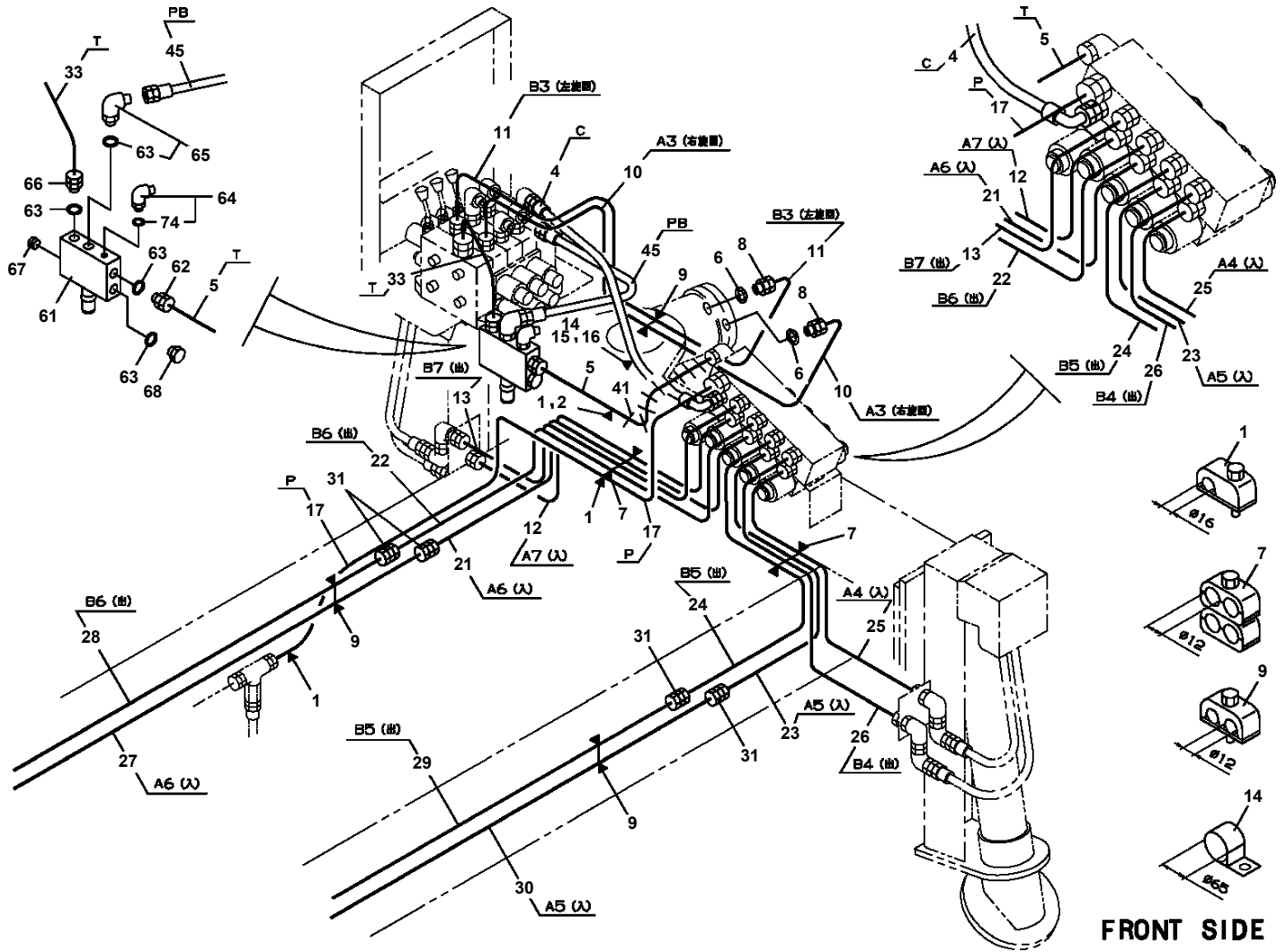
AT-110-4 42084400001 UPPER

Pos No.	Parts No	Parts Name	Qty	Unit	Technical Data	Serial No (Start)	Serial No
1	42332897600	CASE	1				
2	42332892500	OPE.ASSY	1				HK0495
	42332892501	OPE.ASSY	1			HK0496	
3	42332897610	SPACER (L=30 6PIECES 1SET ASF-330E)	1				
4	42332897620	CASE (BOTTOM)	1				
6	42332897630	HARNESS ASSY	1				HK1017
	42332897740	HARNESS ASSY	1			HK1018	
7	42332897640	COVER (BOARD)	1				HK0668
	42332897641	COVER (BOARD)	1			HK0669	
8	82161161125	RELAY	3				HK1017
	82161324080	RELAY	3			HK1018	
9	90280200600	NUT,FLANGE	4		M6		HK1017
	90280200600	NUT,FLANGE	3		M6	HK1018	
10	42332897650	SPACER (L=30 6PIECES 1SET BSF-330E)	1				
11	42332897660	SCREW,MACHINE (M3X8-3P 12PIECES 1SET)	1				
12	42332897570	SCREW,MACHINE	6				
13	90201200500	NUT	2		M5		
14	90304110501	WASHER (LOCK)	2		5		
15	90302040501	WASHER,SPRING	2		5		
16	82100002017	CLAMP	1		WR30		
17	90186206014	BOLT,FLANGE	1		M6X14		
18	80175805014	SCREW,MACHINE	8		M5X14		
19	42332897670	NUT (M5 WITH SERRATION)	8				HK1017
20	82100000956	GROMMET	1		SG-36A		
21	90280200600	NUT,FLANGE	1		M6	HK1018	
105	42332507571	BOARD,CIRCUIT (WITH DATA)	1				HK1056
	42332507572	BOARD,CIRCUIT (WITH DATA)	1			HK1057	HK1912
	42332507573	BOARD,CIRCUIT (WITH DATA)	1			HK1913	
200	42332892002	OPE.ASSY	1				

AT-110-4 42084400001 UPPER

Pos No.	Parts No	Parts Name	Qty	Unit	Technical Data	Serial No (Start)	Serial No (End)
1	42332511120	PANEL	1				
2	42332503001	OPE.ASSY	1				
3	42809631200	LAMP ASSY (RED,WITH HARNESS)	1				
4	42332521300	SWITCH ASSY (WITH HARNESS)	1				
5	82100002009	CLAMP	1		WRC12		
6	42332531301	SWITCH ASSY (WITH HARNESS,3 SW)	1				
7	80192488020	SCREW,MACHINE	12		M8X20		
8	42332511400	GUARD	1				
9	82199514013	CAP	3				
10	82199504017	NUT	3		AT-401N		
11	37000714020	CLAMP ASSY	1		12X2		
12	82100002012	CLAMP	1		WR18		
13	90280200600	NUT,FLANGE	1		M6		
14	91810130240	FASTENER	10				
15	42333081100	HARNESS	1				
16	42900001200	COVER	1				
17	42350250150	PLUG (6 POLES,MALE)	1				
18	42350250090	PLUG (4 POLES,MALE)	1				
19	42350250080	PLUG (3 POLES,MALE)	2				
49	42355641010	COVER	1				
61	42355641210	BUTTON	1				

**AT-110-4 42084400001 UPPER
PP6130011-00 PIPING ASSY,FRAME (OUTRIGGER)**



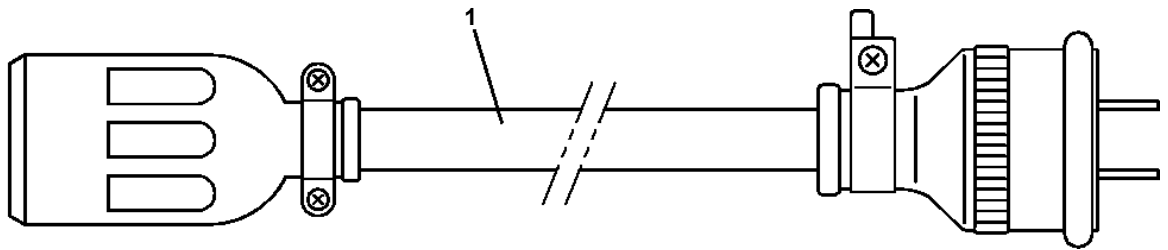
AT-110-4 42084400001 UPPER

Pos No.	Parts No	Parts Name	Qty	Unit	Technical Data	Serial No (Start)	Serial No (End)
1	42653673402	PANEL	1				
2	42651591300	SWITCH ASSY (WITH HARNESS,3 SW)	1				
3	42332521300	SWITCH ASSY (WITH HARNESS)	1				
4	42809631200	LAMP ASSY (RED,WITH HARNESS)	1				
5	42651593400	SWITCH ASSY (WITH HARNESS,1 SW)	1				
6	42433932200	SWITCH ASSY (WITH HARNESS,1 SW)	1				
7	42332062500	SWITCH ASSY (WITH HARNESS,1 SW)	1				
8	42433932100	SWITCH ASSY (WITH HARNESS,1 SW)	1				
9	42653673600	SWITCH ASSY (WITH HARNESS,5 SW)	1				
10	42653673700	LAMP ASSY (WITH HARNESS)	1				
39	42355641010	COVER	1				
51	42355641210	BUTTON	1				
61	82100005005	LENS (GREEN)	1				
100	42653673502	SWITCH ASSY	1				

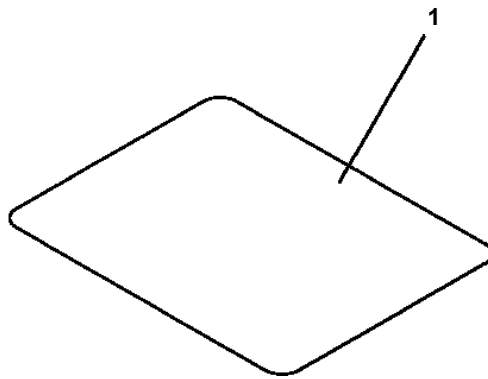
AT-110-4 42084400001 UPPER

Pos No.	Parts No	Parts Name	Qty	Unit	Technical Data	Serial No (Start)	Serial No (End)	Remarks	Page
1	42503062102	CONNECTOR ASSY	1				HK0213		
	42503062103	CONNECTOR ASSY	1			HK0214			
2	42503062200	SWITCH	1						
100	42503062002	SWITCH ASSY	1						

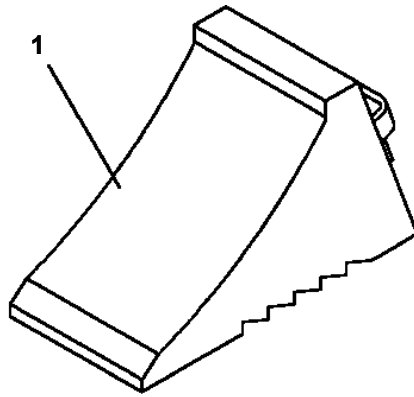
AT-110-4 42084400001 UPPER
PV1300019-00 CABLE



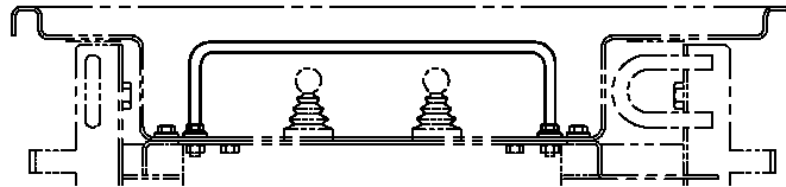
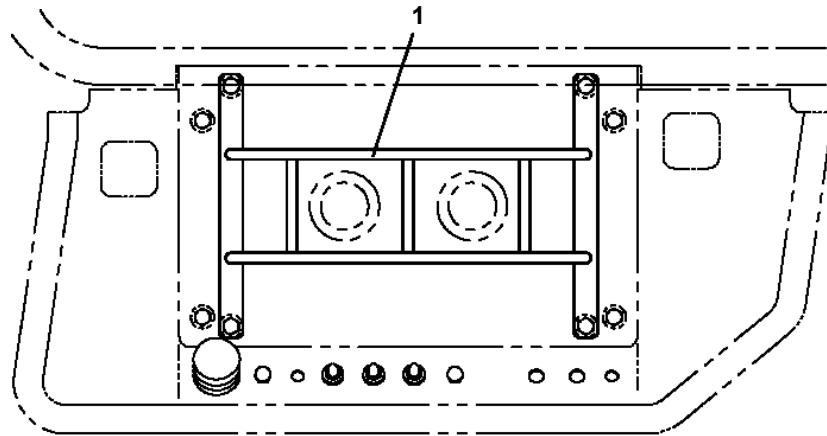
**AT-110-4 42084400001 UPPER
PW1010251-00 ACCESSORIES (MAT/FOR SI BUCKET)**



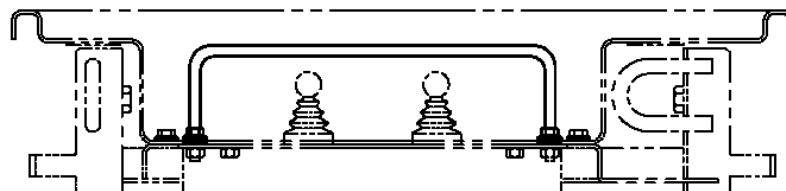
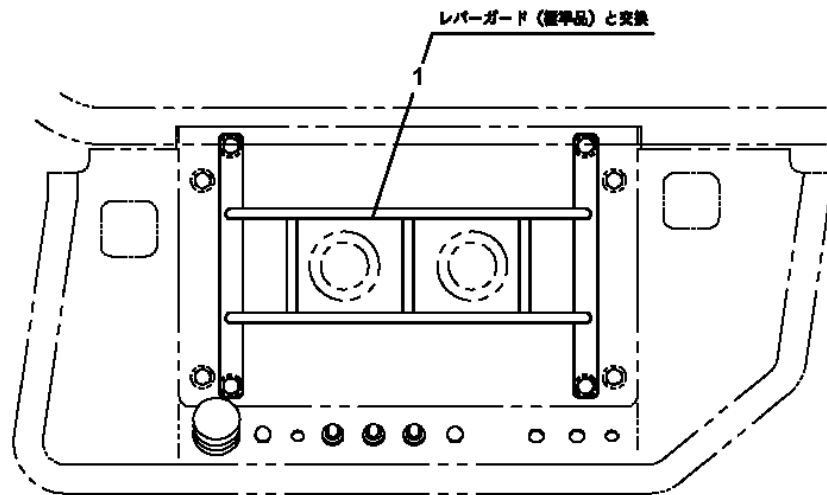
**AT-110-4 42084400001 UPPER
PW5110003-00 WEDGE (STOPPER FOR TIRE/NAKAMURA KIKI)**



AT-110-4 42084400001 UPPER
PX1210172-00 GUARD (CONTROL LEVER)

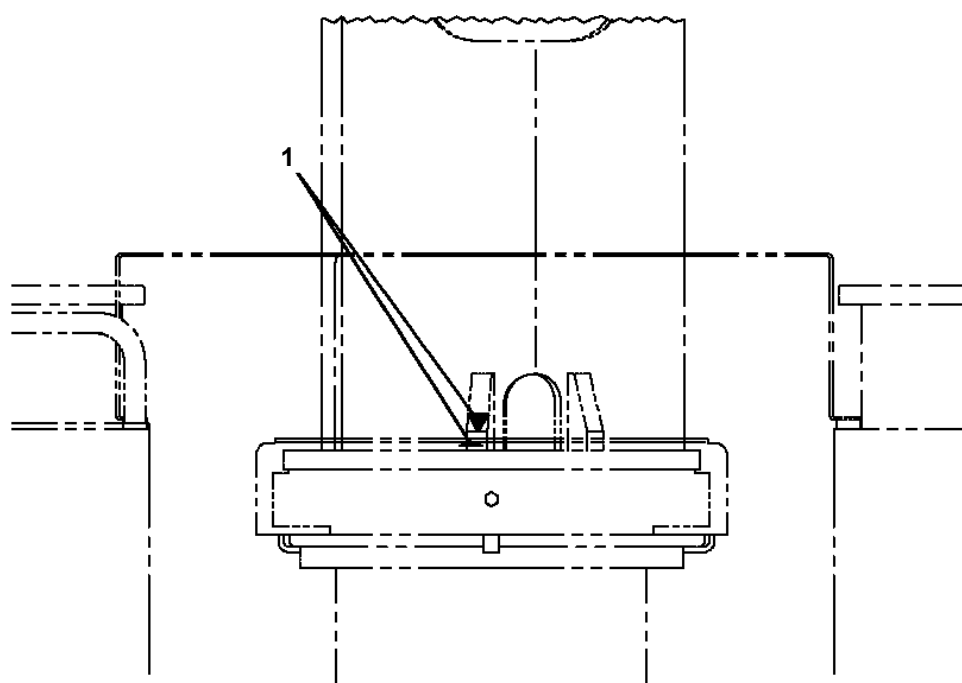


FRPパネルの場合



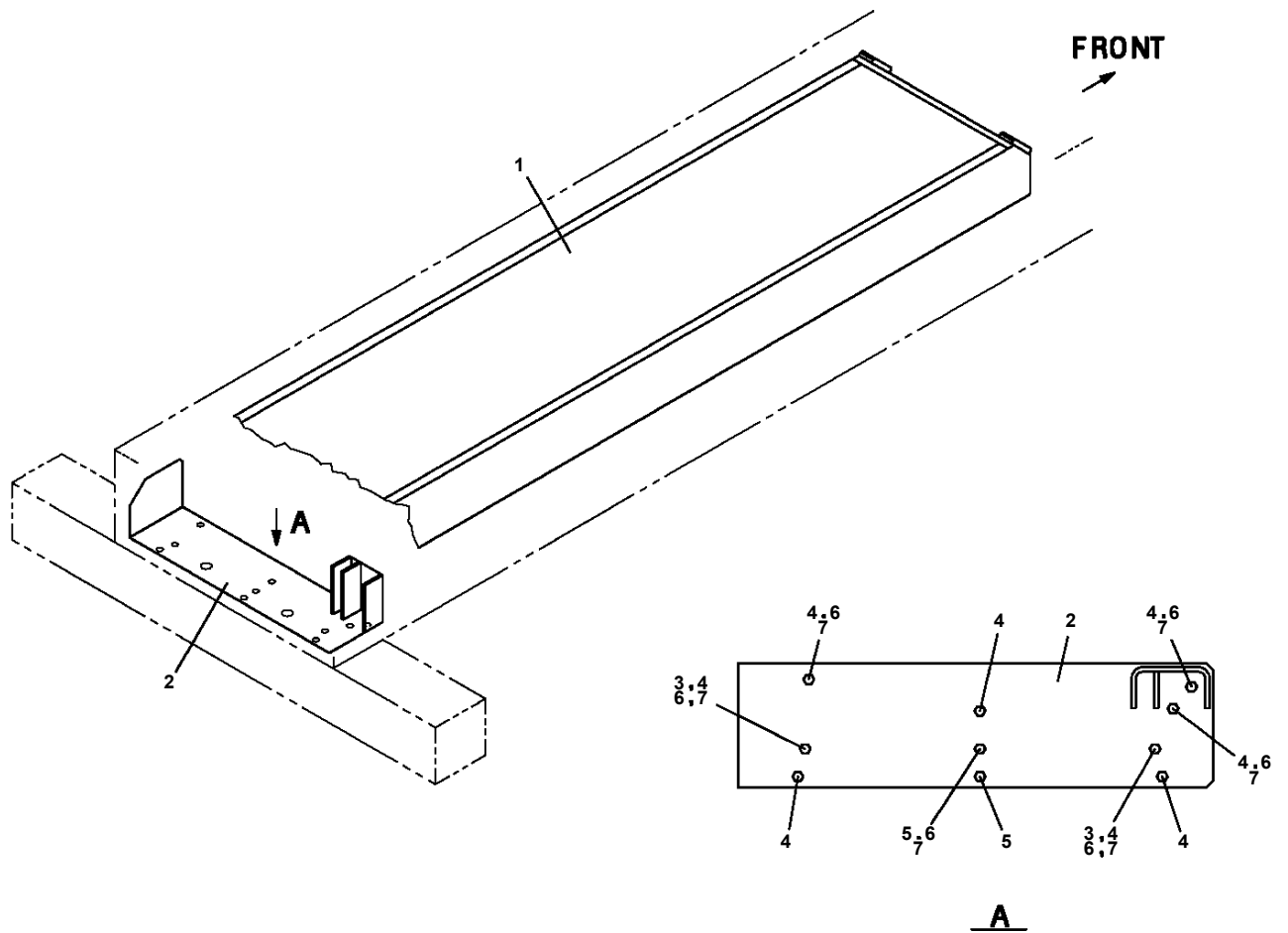
鉄パネルの場合

AT-110-4 42084400001 UPPER
PX1360072-00 REFLECTOR (SWING ALIGNMENT MARK)



車両後方より見る

AT-110-4 42084400001 UPPER
PX5780018-00 MOUNT ASSY, TOOL BOX



CLICK HERE TO **DOWNLOAD** THE COMPLETE MANUAL

- Thank you very much for reading the preview of the manual.
- You can download the complete manual from: www.heydownloads.com by clicking the link below



- Please note: If there is no response to CLICKING the link, please download this PDF first and then click on it.

CLICK HERE TO **DOWNLOAD** THE COMPLETE MANUAL