

**AT-110-5 42084530442 UPPER,LOWER,HINO TKG-XZU675M-TQMQC3**

**PB0000275-02 UPPER STRUCTURE SYSTEM**

**PB0000500-02 LOWER STRUCTURE SYSTEM**

**ASSEMBLY**

CLICK HERE TO **DOWNLOAD** THE COMPLETE MANUAL

- Thank you very much for reading the preview of the manual.
- You can download the complete manual from: [www.heydownloads.com](http://www.heydownloads.com) by clicking the link below



- Please note: If there is no response to CLICKING the link, please download this PDF first and then click on it.

CLICK HERE TO **DOWNLOAD** THE COMPLETE MANUAL

# AT-110-5 42084530442 UPPER,LOWER,HINO TKG-XZU675M-TQMQC3

PN5010840-01 NAME PLATE ASSY (RUNAWAY PREVENTION)  
PN5010957-00 NAME PLATE ASSY (MAXIMUM LOADING CAPACITY:300KG)  
PN5010958-00 NAME PLATE ASSY (MAXIMUM LOADING CAPACITY:400KG)  
PN5010959-00 NAME PLATE ASSY (MAXIMUM LOADING CAPACITY:450KG)  
PN5011063-00 NAME PLATE ASSY (TOOL BOX CENTRAL LOCK)  
PN5011167-00 NAME PLATE ASSY (JACK HORIZONTAL)  
PN5011168-00 NAME PLATE ASSY (VEHICLE HEIGHT)  
PN5011170-00 NAME PLATE ASSY (WEDGE INTERLOCK)  
PN5011171-00 NAME PLATE ASSY (VOICE ALARM)  
PN5011172-00 NAME PLATE ASSY (SPECIFICATION)  
PN5011255-00 NAME PLATE ASSY (NON-SLIP)  
PN5011267-01 NAME PLATE ASSY (JACK HORIZONTAL)  
PN5011326-00 NAME PLATE ASSY (3RD BRAKE INTERLOCK)  
PN5011597-00 NAME PLATE ASSY (MAXIMUM LOADING CAPACITY:250KG)  
PN5011598-00 NAME PLATE ASSY (MAXIMUM LOADING CAPACITY:350KG)  
PN5011666-00 NAME PLATE ASSY (HEIGHT,CAPACITY,AIR/MITSUBISHI)  
PO1000182-00 INDICATION PLATES (UPPER)  
PO1000183-00 INDICATION PLATES (LOWER)  
PO1013121-01 PLATE ASSY,NAME (HYDRAULIC OIL)  
PO1014484-00 PLATE ASSY,NAME (NTT-NEOMEIT)  
PO1014634-01 PLATE ASSY,NAME (OIL/COLD DISTRICT)  
PO1090061-00 NON-SLIP PLATE (NTT SHIKOKU)  
PO5010015-01 OPE.ASSY  
PO5010027-02 OPE.ASSY (LEVER,CONTROL)  
PO5010029-00 OPE.ASSY  
PO5050038-01 OPE.ASSY,BUCKET (WITH 2-AXIS ENABLE SW)  
PO5050039-01 OPE.ASSY,BUCKET (WITH 3-AXIS ENABLE SW)  
PO5050041-01 OPE.ASSY,BUCKET  
PO5050042-01 OPE.ASSY,BUCKET  
PO5080088-02 OPE.ASSY,CONT.VALVE  
PO5270125-00 OUTRIGGER ASSY (VERTICAL JACK)  
PO5270161-00 OUTRIGGER ASSY  
PO5270162-00 OUTRIGGER ASSY  
PO5270219-00 OUTRIGGER ASSY (VERTICAL JACK)  
PO5270220-00 OUTRIGGER ASSY  
PP5330009-00 POWER SUPPLY ASSY (HYBRID SYSTEM)  
PP5330015-00 POWER SUPPLY ASSY (HYBRID SYSTEM,3 MODE,WITH FAN)  
PP5330019-00 POWER SUPPLY ASSY (HYBRID SYSTEM,3 MODE,WITH FAN)  
PP5330025-00 POWER SUPPLY ASSY (HYBRID SYSTEM,3 MODE,WITH FAN)  
PP5340009-01 POWER SUPPLY ASSY,ELECTRICITY (LOWER,2POLES OUTLET)  
PP5340013-00 POWER SUPPLY ASSY,ELECTRICITY (HYBRID/2-POLES OUTLET)  
PP5340019-00 POWER SUPPLY ASSY,ELECTRICITY (BUCKET/100V 3POLES)  
PP5340024-00 POWER SUPPLY ASSY,ELECTRICITY (LOWER,3POLES OUTLET)  
PP5340025-00 POWER SUPPLY ASSY,ELECTRICITY (HYBRID/3-POLES OUTLET)  
PP5340028-00 POWER SUPPLY ASSY,ELECTRICITY  
PP5340029-01 POWER SUPPLY ASSY,ELECTRICITY (LOWER/INVERTER)  
PP5340030-01 POWER SUPPLY ASSY,ELECTRICITY (LOWER/POWER TAKEOUT)  
PP5340034-00 POWER SUPPLY ASSY,ELECTRICITY (LOWER,3POLES OUTLET)  
PP5340036-00 POWER SUPPLY ASSY,ELECTRICITY (LOWER,3POLES OUTLET)  
PP5420012-02 PUMP ASSY,OIL  
PP5450004-00 PUMP,GREASE (400CC)  
PP6010236-01 PIPING ASSY  
PP6010255-01 PIPING ASSY  
PP6060007-01 PIPING ASSY,BOOM  
PP6130021-00 PIPING ASSY,FRAME  
PP6130040-00 PIPING ASSY,FRAME  
PP6210016-03 PIPING ASSY,MOUNTING  
PP6330005-03 PIPING ASSY,SWING FRAME  
PR5090141-01 RELAY ASSY  
PR5090142-00 RELAY ASSY  
PR5100062-00 RELAY BOX ASSY  
PR5210001-00 RELAY (WITH HARNESS)  
PR5210002-00 RELAY  
PR5210003-00 RELAY

# AT-110-5 42084530442 UPPER,LOWER,HINO TKG-XZU675M-TQMQC3

Pos No.	Parts No	Parts Name	Qty	Unit	Technical Data	Serial No (Start)	Serial No (End)	Remarks
1	36654115010	MOTOR ASSY	1					
3	36652625020	CAP (TERMINAL)	1					
5	36654115030	BOLT,HEXAGON SOCKET	2		M8X40			
6	36654205020	WASHER	2					
7	36654205030	NUT	2					
8	36652025040	O-RING	1		S55			
9	36652625030	VALVE,CHECK	1					
10	36652625040	PUMP ASSY	1					
12	44550417800	WASHER,SPRING (M8)	2					
20	36654115040	CABLE ASSY	1					
27	36652665060	O-RING	1		P8			
29	36652665050	O-RING	1		P14			
33	19215105160	SEAL,OIL	1					
34	36652665020	RING,RETAINING	1					
41	36654115020	CONTACTOR	1					
100	36654110000	PUMP,HYDRAULIC	1					

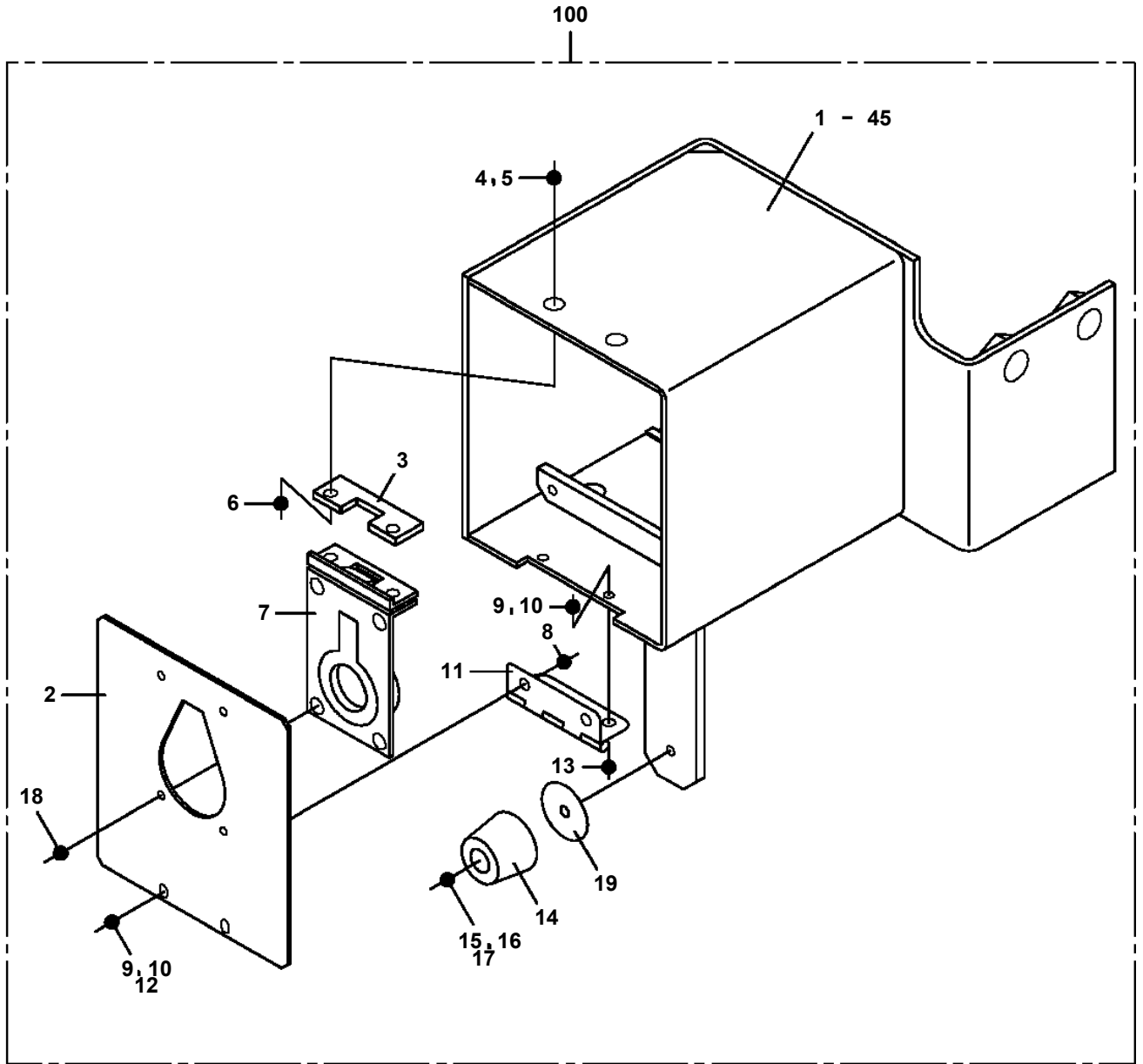
# AT-110-5 42084530442 UPPER,LOWER,HINO TKG-XZU675M-TQMQC3

Pos No.	Parts No	Parts Name	Qty	Unit	Technical Data	Serial No (Start)	Serial No (End)	Remarks	P
1	82119434100	CONNECTOR	1						
2	42356280010	HARNESS	1						
3	91810130240	FASTENER	5						
4	42477640080	PLATE,NAME	1						
5	42350250070	PLUG (2 POLES,MALE)	1						
6	80175304016	SCREW,MACHINE	2		M4X16				

# AT-110-5 42084530442 UPPER,LOWER,HINO TKG-XZU675M-TQMQC3

Pos No.	Parts No	Parts Name	Qty	Unit	Technical Data	Serial No (Start)	Serial No (End)
1	42203049510	BOOM,BASE	1				
2	42203062000	BOOM,2ND	1				
3	42203061000	BOOM, TOP	1				
5	42200484100	PLATE	N		T=0.8		
6	42200810020	PIN	1				
7	42202400010	SUPPORT	1				
8	42202400060	ROLLER	2				
9	42202400070	PLATE	2				
11	42202400090	PLATE	N		T=0.5		
13	42202400130	PLATE	N		T=0.5		
14	42202400140	PLATE	12		T=0.8		
15	42202400160	PLATE	N		T=0.8		
17	42202980200	SHEAVE ASSY	1				
18	31630302000	PLATE	N		T=1.5		
19	31631222000	CAP	4				
20	37000118960	PIN	2				
21	37000136510	PIN	4				
22	37000136530	PIN	2				
23	37000155030	PIN	2				
24	37000181820	PIN	1				
25	37000187050	PIN	1				
26	37000187080	PIN	2				
27	37000401810	BEARING,PLAIN	2				
28	37000558530	PLATE	1		T=9		
29	37000573190	PLATE	N		T=1.0		
31	37000584990	PLATE	N		T=0.8		
32	37001924210	ROPE,WIRE (TESAC)	2		8X6.21M		
	37001924240	ROPE,WIRE (J-WITEX)	2		8X6.21M		
33	37001924220	ROPE,WIRE (TESAC)	2		7X3.36M		
	37001924270	ROPE,WIRE (J-WITEX) 7X3.36M>	2				
34	37002016220	PLATE,SLIDE	2		T=12		HK1784
	37002018500	PLATE,SLIDE	2			HK1785	
35	37002018260	PLATE,SLIDE	2				
36	37002018460	PLATE,SLIDE	2		T=12		
38	37002018510	PLATE,SLIDE	4				
39	37002018540	PLATE,SLIDE	4				HK1784
	37002005260	PLATE,SLIDE	4			HK1785	
40	37002018970	PLATE,SLIDE	4		T=10		
41	37002018980	PLATE,SLIDE	2		T=12		
42	37002018530	PLATE,SLIDE	2		T=25		
43	37010101720	PIN	1				
44	80136363056	PIN,SPLIT	1		6.3X56		
45	80184306012	SCREW,MACHINE	6		M6X12		
46	80601110200	RING,RITAINING	6		S20		
47	80602110300	RING,RITAINING	7		R30		
48	80801003025	BEARING,PLAIN	1				
49	82455106000	NIPPLE,GREASE	4		A-M6F FE		
51	90171108020	BOLT	12		M8X20		
52	90171110022	BOLT	4		M10X22		
53	90171110025	BOLT	12		M10X25		
54	90171208030	BOLT	8		M8X30		
55	90172110020	BOLT,HEXAGON SOCKET	2		M10X20		
56	90202481200	NUT	8		M12		
57	90238403008	NUT,CASTLE	1		M30X2		
59	90302040801	WASHER,SPRING	20		8		
60	90302041001	WASHER,SPRING	14		10		
61	90303071001	WASHER,PLAIN	12		10		
62	90303073001	WASHER,PLAIN	1		30		
63	90171110020	BOLT	4		M10X20		
64	37002018480	PLATE,SLIDE	2				
65	37000584970	PLATE	N		T=0.8		
66	90101206016	BOLT	4		M6X16		HK2522
	90172106016	BOLT,HEXAGON SOCKET	4		M6X16	HK2523	

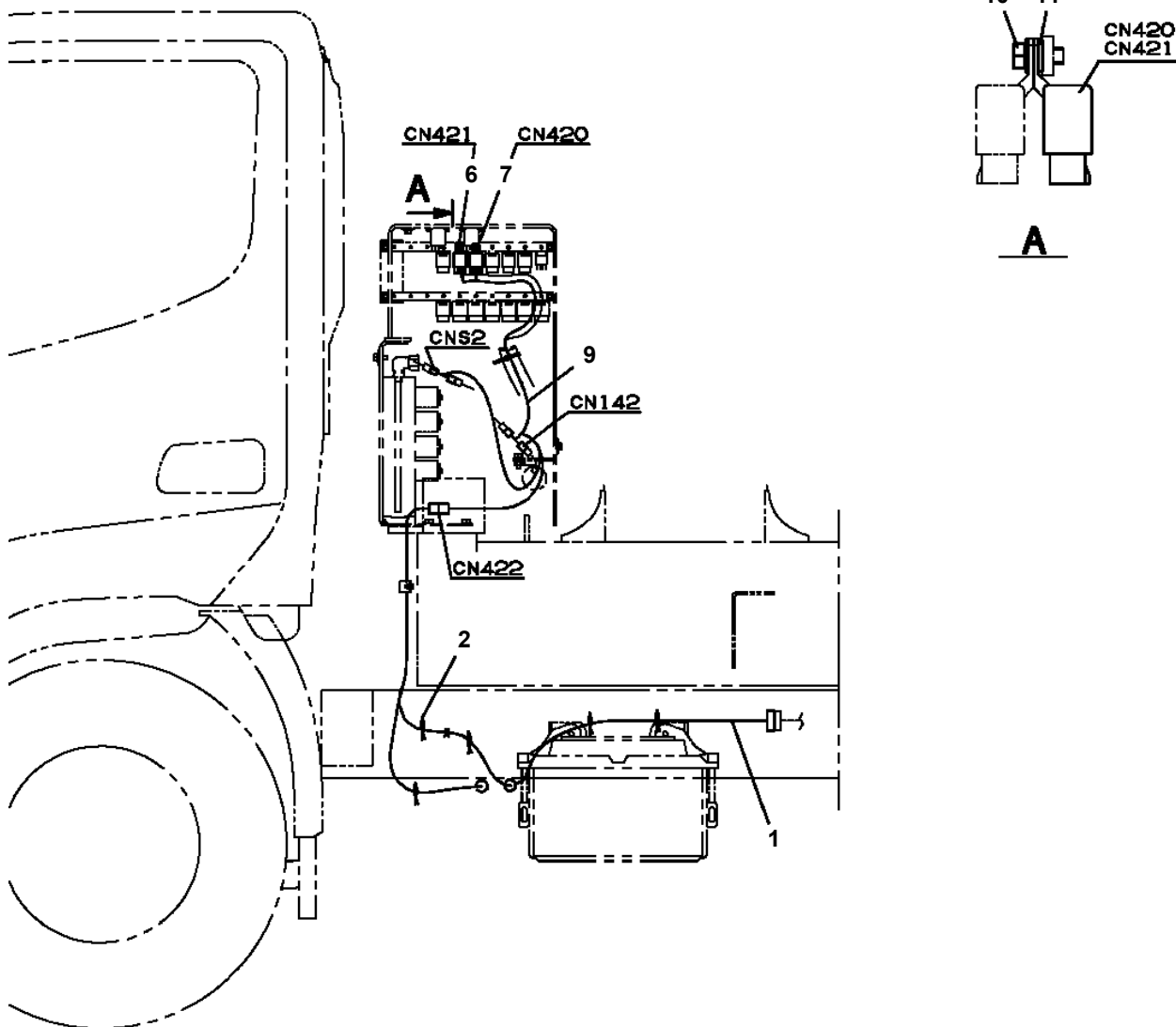
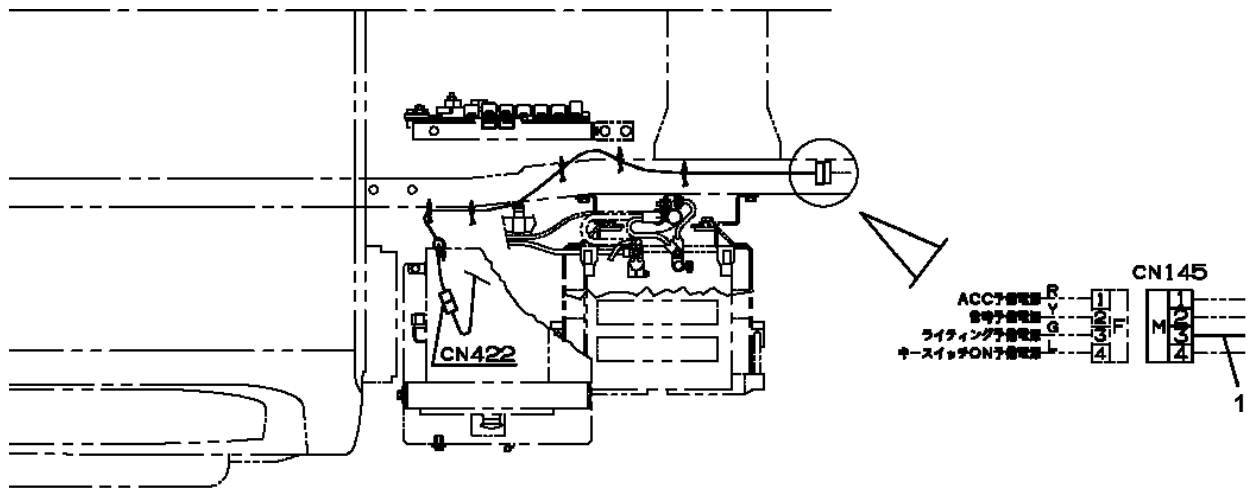
AT-110-5 42084530442 UPPER,LOWER,HINO TKG-XZU675M-TQMQC3  
PB5260063-01 BOX ASSY



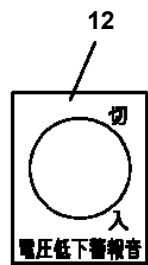
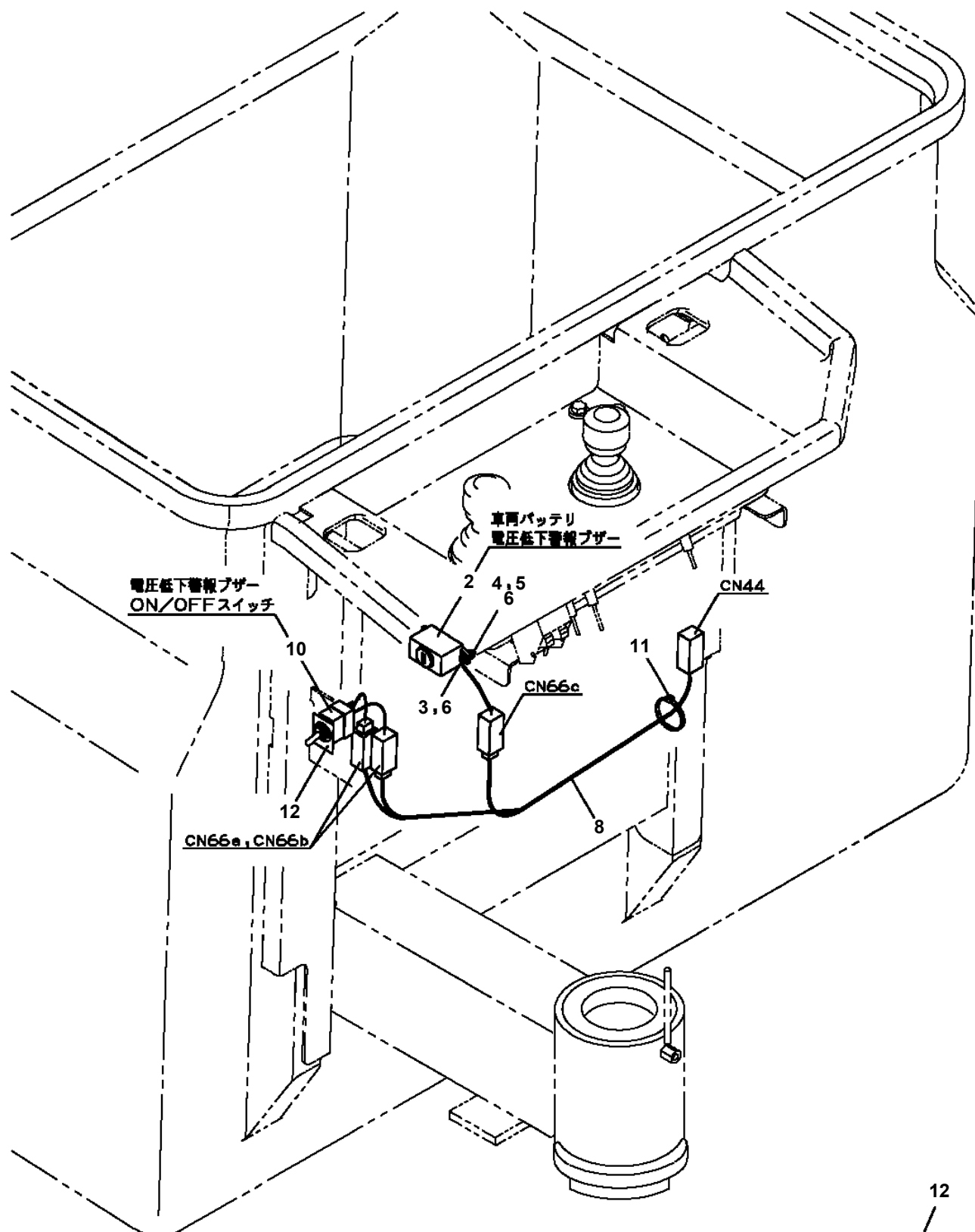
**AT-110-5 42084530442 UPPER,LOWER,HINO TKG-XZU675M-TQMQC3  
PB5350008-00 BUCKET ASSY (WHITE/STRAIGHT)**

指示番号 KEY NO.	バケツASSY (シロ/ストレート) BUCKET ASSY (WHITE/STRAIGHT)
1	バケツ BUCKET
2	マット MAT
3	ネームプレートASSY NAME PLATE ASSY
4	カバーASSY COVER ASSY

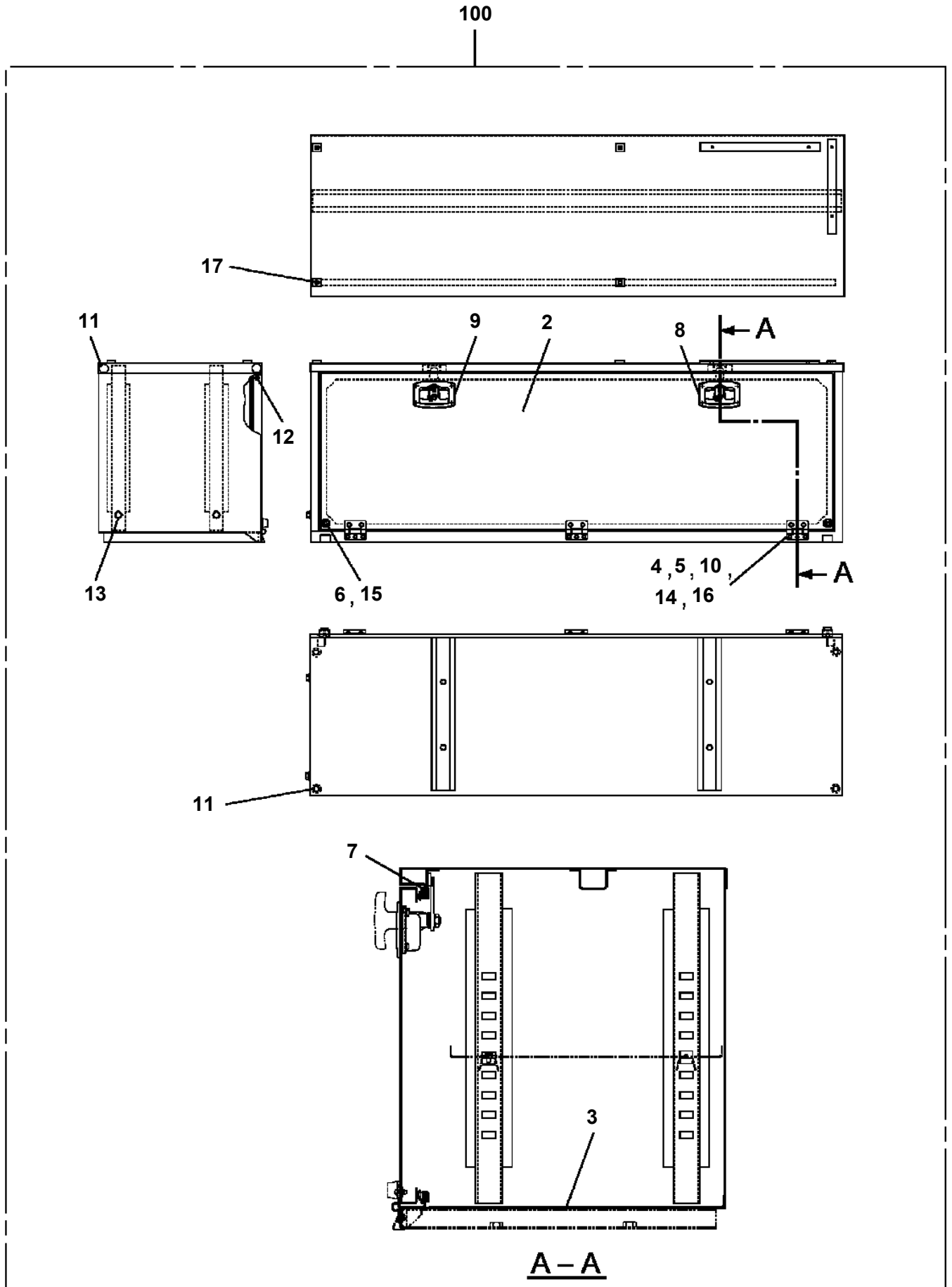
AT-110-5 42084530442 UPPER,LOWER,HINO TKG-XZU675M-TQMQC3  
 PB5390002-00 BUZZER ASSY (JACK CONTROL ALARM)



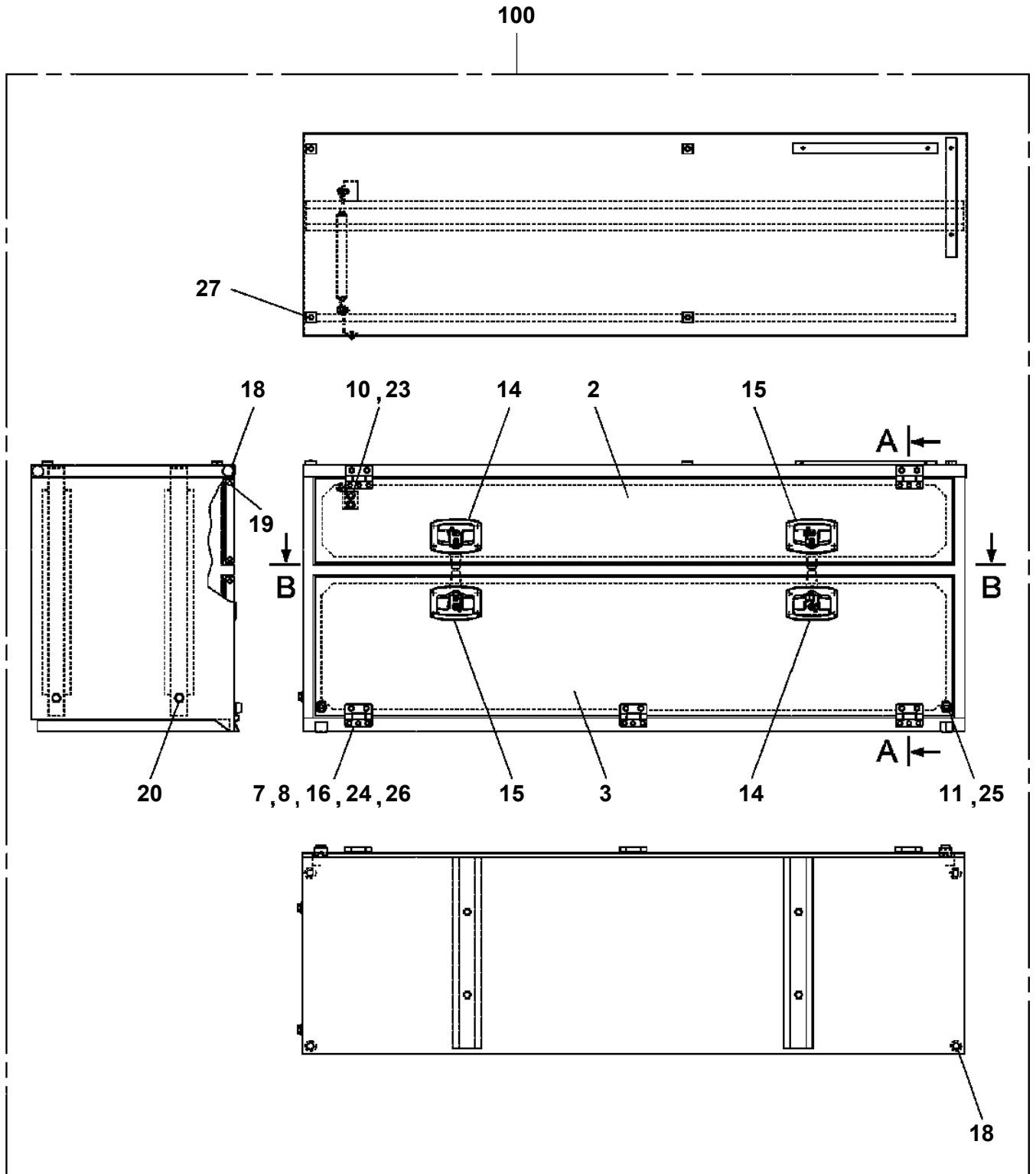
AT-110-5 42084530442 UPPER,LOWER,HINO TKG-XZU675M-TQMQC3  
PB5390011-00 BUZZER ASSY



AT-110-5 42084530442 UPPER,LOWER,HINO TKG-XZU675M-TQMQC3  
PB5410075-00 BOX,TOOL



AT-110-5 42084530442 UPPER,LOWER,HINO TKG-XZU675M-TQMQC3  
PB5410110-01 BOX,TOOL



# AT-110-5 42084530442 UPPER,LOWER,HINO TKG-XZU675M-TQMQC3

Pos No.	Parts No	Parts Name	Qty	Unit	Technical Data	Serial No (Start)	Serial No (End)	Rem
2	42839507510	DOOR ASSY (SLIDE)	1					
	42839507510	DOOR ASSY (SLIDE)	1					
3	42837377520	LOCK ASSY	1					
	42837377520	LOCK ASSY	1					
4	42839507520	SHELF	1					
	42839507520	SHELF	1					
5	42839507530	STOPPER (DOOR)	2					
	42839507530	STOPPER (DOOR)	2					
6	42839507540	GUARD	1					
	42839507540	GUARD	1					
7	42835257620	PLATE	4					
	42835257620	PLATE	4					
8	42839117630	SUPPORT	4					
	42839117630	SUPPORT	4					
9	42835467570	RAIL	1					
	42835467570	RAIL	1					
10	42839127510	MAT	1					
	42839127510	MAT	1					
11	42835767580	STOPPER	1					
	42835767580	STOPPER	1					
12	42835797550	SEAL	1					
	42835797550	SEAL	1					
13	42833077610	BUSH	8					
	42833077610	BUSH	8					
14	42836317940	SEAL (TAPE)	3	M				
	42836317940	SEAL (TAPE)	3	M				
15	42837157510	MOHAIR	1	M				
	42837157510	MOHAIR	1	M				
16	42837377830	COVER (HARNESS)	3	M				
	42837377830	COVER (HARNESS)	3	M				
17	42835867840	GROMMET	1					
	42835867840	GROMMET	1					
18	42839507560	BOLT (SUS WITH W,SW)	2		M10X16			
	42839507560	BOLT (SUS WITH W,SW)	2		M10X16			
19	99164804010	BOLT (M4X10,WITH WASHER)	3					
	99164804010	BOLT (M4X10,WITH WASHER)	3					
20	42500577560	SCREW,MACHINE (SEMS)	5		M4X8			
	42500577560	SCREW,MACHINE (SEMS)	5		M4X8			
21	42835467840	SCREW,MACHINE (WITH W,SW)	2		M5X22			
	42835467840	SCREW,MACHINE (WITH W,SW)	2		M5X22			
22	42834707555	SCREW,MACHINE (WITH W,SW)	2		M6X14			
	42834707555	SCREW,MACHINE (WITH W,SW)	2		M6X14			
23	42835257660	SCREW,MACHINE	8		M4X18			
	42835257660	SCREW,MACHINE	8		M4X18			
24	42835257680	SCREW,MACHINE (WITH SW,N)	6		M5X10			
	42835257680	SCREW,MACHINE (WITH SW,N)	6		M5X10			
25	82401800080	PLUG (FOR M8)	5					
	82401800080	PLUG (FOR M8)	5					
26	82401800100	PLUG (FOR M10)	2					
	82401800100	PLUG (FOR M10)	2					
100	42839731100	BOX,TOOL	1					
	42839731100	BOX,TOOL	1					

# AT-110-5 42084530442 UPPER,LOWER,HINO TKG-XZU675M-TQMQC3

Pos No.	Parts No	Parts Name	Qty	Unit	Technical Data	Serial No (Start)	Serial No (End)	Remarks	Pages
1	(*****)	ELEC.ASSY	1						000090
2	(*****)	PIPING ASSY	1						000375

# AT-110-5 42084530442 UPPER,LOWER,HINO TKG-XZU675M-TQMQC3

Pos No.	Parts No	Parts Name	Qty	Unit	Technical Data	Serial No (Start)	Serial No (End)	Re
1	(*****)	ELEC.ASSY (GRADIENT WARNING)	1					
4	(*****)	PIPING ASSY	1					

**AT-110-5 42084530442 UPPER,LOWER,HINO TKG-XZU675M-TQMQC3**

Pos No.	Parts No	Parts Name	Qty	Unit	Technical Data	Serial No (Start)	Serial No (End)	Remarks	Pages
1	42507960100	COVER	1						
2	42500160201	COVER	1						
3	90101208080	BOLT	2		M8X80				
4	37000506550	PLATE	2		T=1.6				
5	91810130270	FASTENER	10						

# AT-110-5 42084530442 UPPER,LOWER,HINO TKG-XZU675M-TQMQC3

Pos No.	Parts No	Parts Name	Qty	Unit	Technical Data	Serial No (Start)	Serial No (End)
1	42509510000	COVER ASSY (BUCKET/CLOTH:WHITE)	1				

**AT-110-5 42084530442 UPPER,LOWER,HINO TKG-XZU675M-TQMQC3**

Pos No.	Parts No	Parts Name	Qty	Unit	Technical Data	Serial No (Start)	Ser
1	42507430200	CABLE (FOR CHARGE EXTENSION/HYBRID,10M)	1				

# AT-110-5 42084530442 UPPER,LOWER,HINO TKG-XZU675M-TQMQC3

Pos No.	Parts No	Parts Name	Qty	Unit	Technical Data	Serial No (Start)	Serial No (End)
2	90302042401	WASHER,SPRING	1		24		
3	90209402400	NUT	1		M24		
4	36028370010	PISTON	1				
5	91350207500	BEARING,PLAIN (WITH PACKINGX2)	1				
6	91002802000	O-RING	1		1B P20		
7	36027519520	ROD ASSY	1				
8	36026159530	COVER,ROD	1				
9	80612110400	RING,RITAINING	1		AR40		
10	91002907000	O-RING	1		1B G70		
11	80801003525	BEARING,PLAIN	1				
12	91694003500	PACKING	1				
13	91410203501	RING,BACKUP	1				
14	91660003501	SEAL,DUST	1				
15	82455106000	NIPPLE,GREASE	1		A-M6F FE		
17	80820003020	BEARING,PLAIN	4				
18	91002907500	O-RING	1		1B G75		
20	90303072401	WASHER,PLAIN	1		24		
21	36027519512	CYLINDER ASSY	1				
41	36026489900	PACKING SET	1		35X75		
100	36027510000	CYLINDER ASSY,LEVELING	1				

**AT-110-5 42084530442 UPPER,LOWER,HINO TKG-XZU675M-TQMQC3**

Pos No.	Parts No	Parts Name	Qty	Unit	Technical Data	Serial No (Start)	Serial No (End)	R
1	36028430000	CYLINDER ASSY,DERRICK	1					
2	36606450000	VALVE ASSY,COUNTERBALANCE	1					
3	90302040801	WASHER,SPRING	4		8			
4	90171108060	BOLT	4		M8X70			

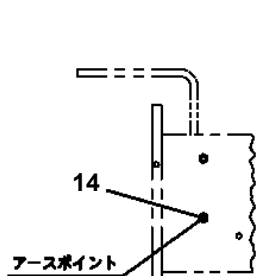
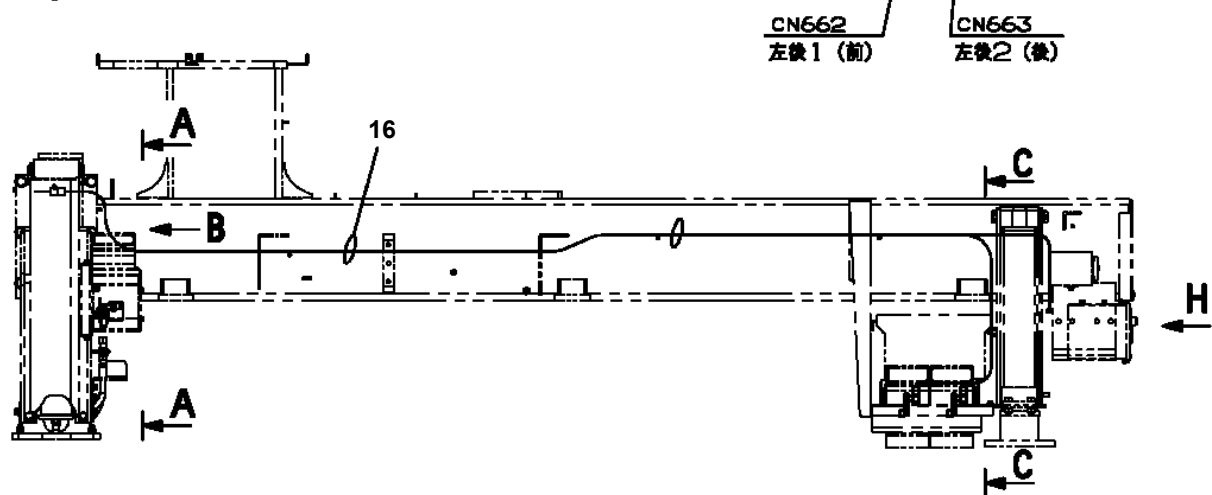
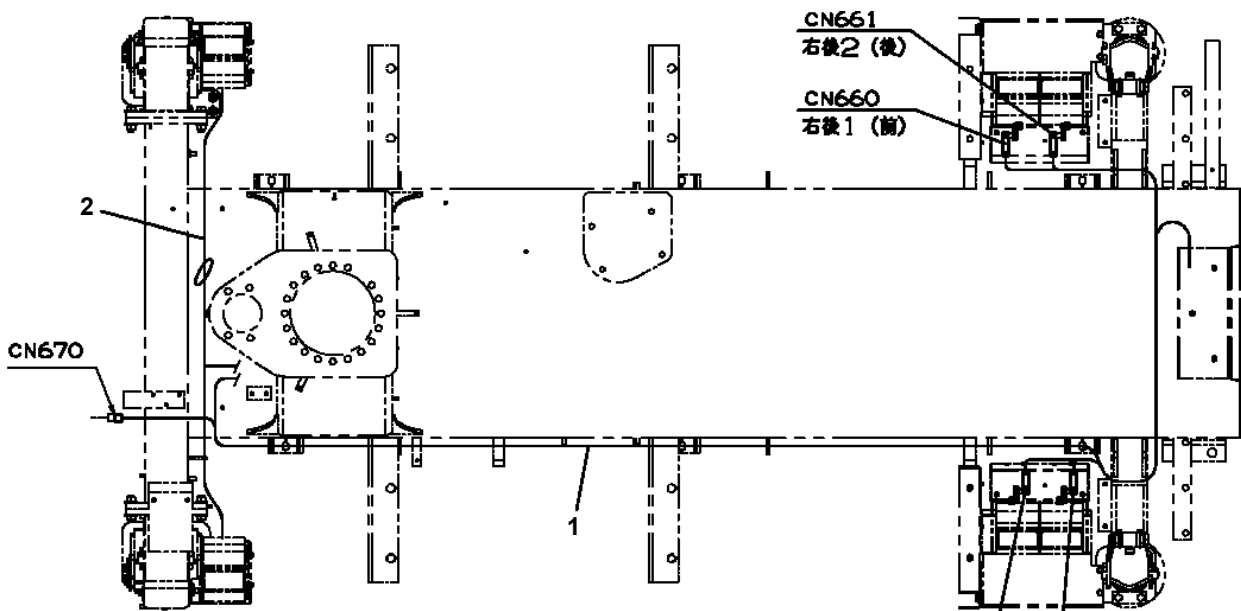
**AT-110-5 42084530442 UPPER,LOWER,HINO TKG-XZU675M-TQMQC3**

Pos No.	Parts No	Parts Name	Qty	Unit	Technical Data	Serial No (Start)	Serial No (End)	Remarks	Pages
1	42509351100	HARNESS	1						000178
2	82100002596	RELAY	5						
3	90303070601	WASHER,PLAIN	5		6		HK0730		
4	90186206014	BOLT,FLANGE	5		M6X14				

# AT-110-5 42084530442 UPPER,LOWER,HINO TKG-XZU675M-TQMQC3

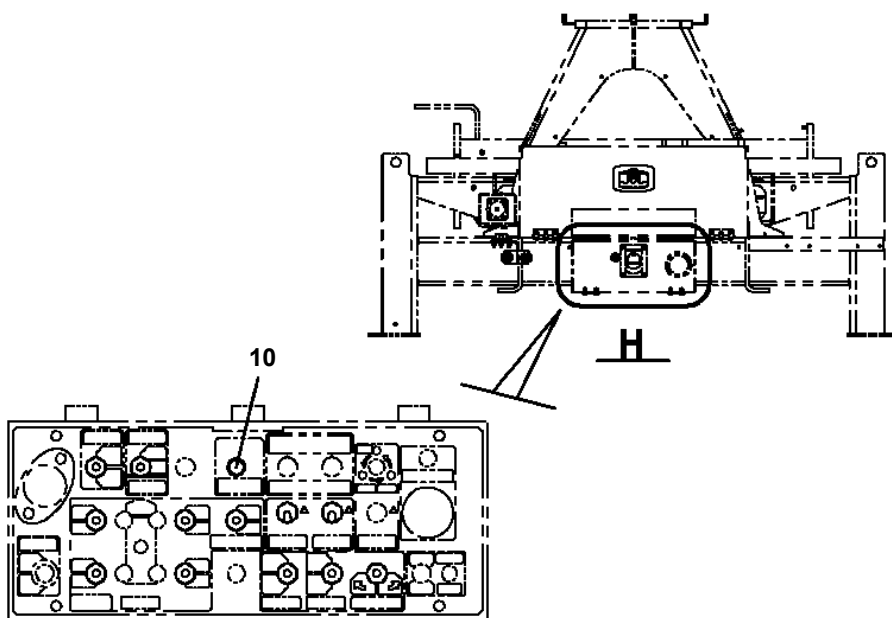
Pos No.	Parts No	Parts Name	Qty	Unit	Technical Data	Serial No (Start)	Serial No (End)	Remarks
1	36140510000	DETECTOR ASSY,ANGLE	1					
2	42652480010	PLATE	1					
3	42651620400	COVER	1					
4	90101208016	BOLT	6		M8X16			
5	90302040801	WASHER,SPRING	6		8			
6	90101206014	BOLT	2		M6X14			
7	90302040601	WASHER,SPRING	2		6			
8	91810130240	FASTENER	8					
9	37000500060	PLATE	2					
11	42509460100	HARNES	1					
12	82100002596	RELAY	1					
13	90186206014	BOLT,FLANGE	1		M6X14			
31	82400000201	GROMMET	1		KG-016			

AT-110-5 42084530442 UPPER,LOWER,HINO TKG-XZU675M-TQMQC3  
PE5020629-00 ELEC.ASSY (FRAME)



**B**

音声警報オプション付きの場合は  
どちらか片方のみで可



後端操作BOX扉を開けた状態

# AT-110-5 42084530442 UPPER,LOWER,HINO TKG-XZU675M-TQMQC3

Pos No.	Parts No	Parts Name	Qty	Unit	Technical Data	Serial No (Start)	Serial No (End)	Re
1	42973362100	HARNESS	1					
2	91810132530	FASTENER	20					
3	42973362200	HARNESS	1					
4	82100002645	SOCKET	1					
5	82199603010	SUPPORT	2					
6	42736070100	SWITCH ASSY (WITH HARNESS)	1					
7	82193101050	TIMER	1					
8	80172304014	SCREW,MACHINE	2		M4X14			
9	90240200400	NUT,CAP	2		M4			
10	90303070401	WASHER,PLAIN	2		4			
11	90302040401	WASHER,SPRING	2		4			
12	90101206014	BOLT	1		M6X14			
13	90302040601	WASHER,SPRING	1		6			
14	90303070601	WASHER,PLAIN	1		6			
15	90201200600	NUT	1		M6			
16	82100002596	RELAY	1					
17	32652540300	SUPPORT	1					
18	82100000191	TERMINAL	1					
19	82100000183	INSULATOR	1					
20	82100000192	TERMINAL	1					
21	82100000182	INSULATOR	1					
22	82115001002	CONNECTOR	4					
23	90101208018	BOLT	1		M8X18			
24	90302040801	WASHER,SPRING	1		8			
25	90303070801	WASHER,PLAIN	1		8			
26	90201200800	NUT	1		M8			

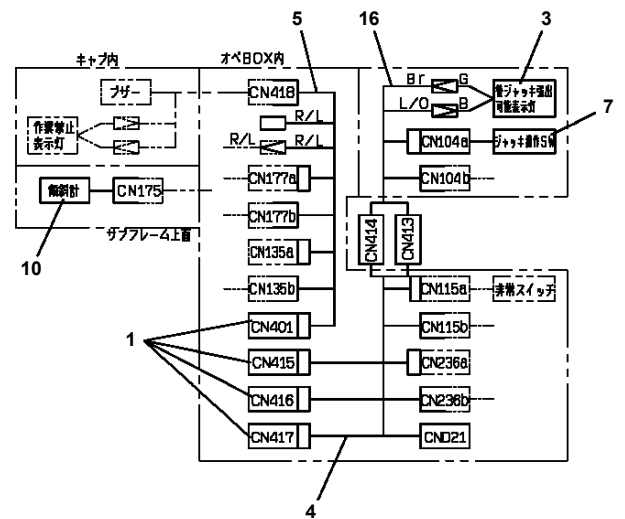
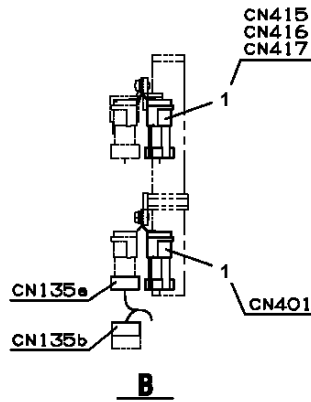
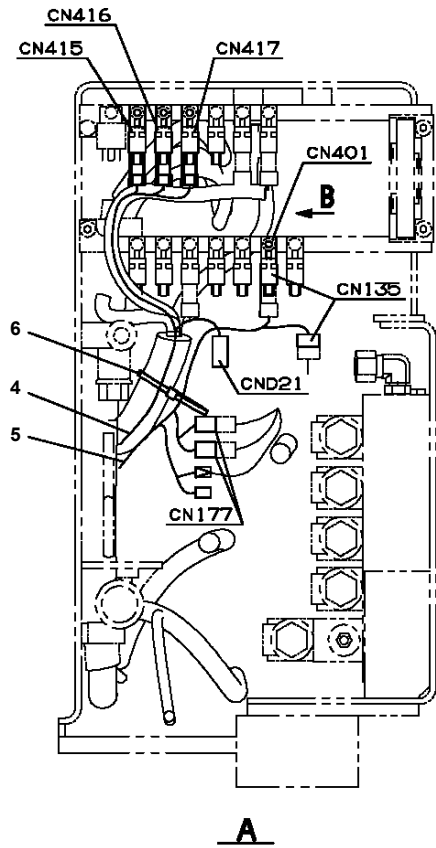
**AT-110-5 42084530442 UPPER,LOWER,HINO TKG-XZU675M-TQMQC3**

Pos No.	Parts No	Parts Name	Qty	Unit	Technical Data	Serial No (Start)	Serial No (End)
1	42809631200	LAMP ASSY (RED,WITH HARNESS)	1				
2	42444140100	HARNESS	1				
3	91810130240	FASTENER	2				

**AT-110-5 42084530442 UPPER,LOWER,HINO TKG-XZU675M-TQMQC3**

Pos No.	Parts No	Parts Name	Qty	Unit	Technical Data	Serial No (Start)	Serial No (End)	Remarks
1	42839124200	HARNESS	1					
2	90101206016	BOLT	1		M6X16			
3	90303070801	WASHER,PLAIN	1		8			
4	90201200600	NUT	1		M6			
5	90302040601	WASHER,SPRING	1		6			
6	34354781710	RELAY (WITH BRACKET)	1					
7	90101208020	BOLT	1		M8X20			
8	90201200800	NUT	1		M8			
9	90302040801	WASHER,SPRING	1		8			
10	82115001002	CONNECTOR	4					
11	91810130250	FASTENER	5					

**AT-110-5 42084530442 UPPER,LOWER,HINO TKG-XZU675M-TQMQC3  
PE5020732-00 ELEC.ASSY (FRAME)**

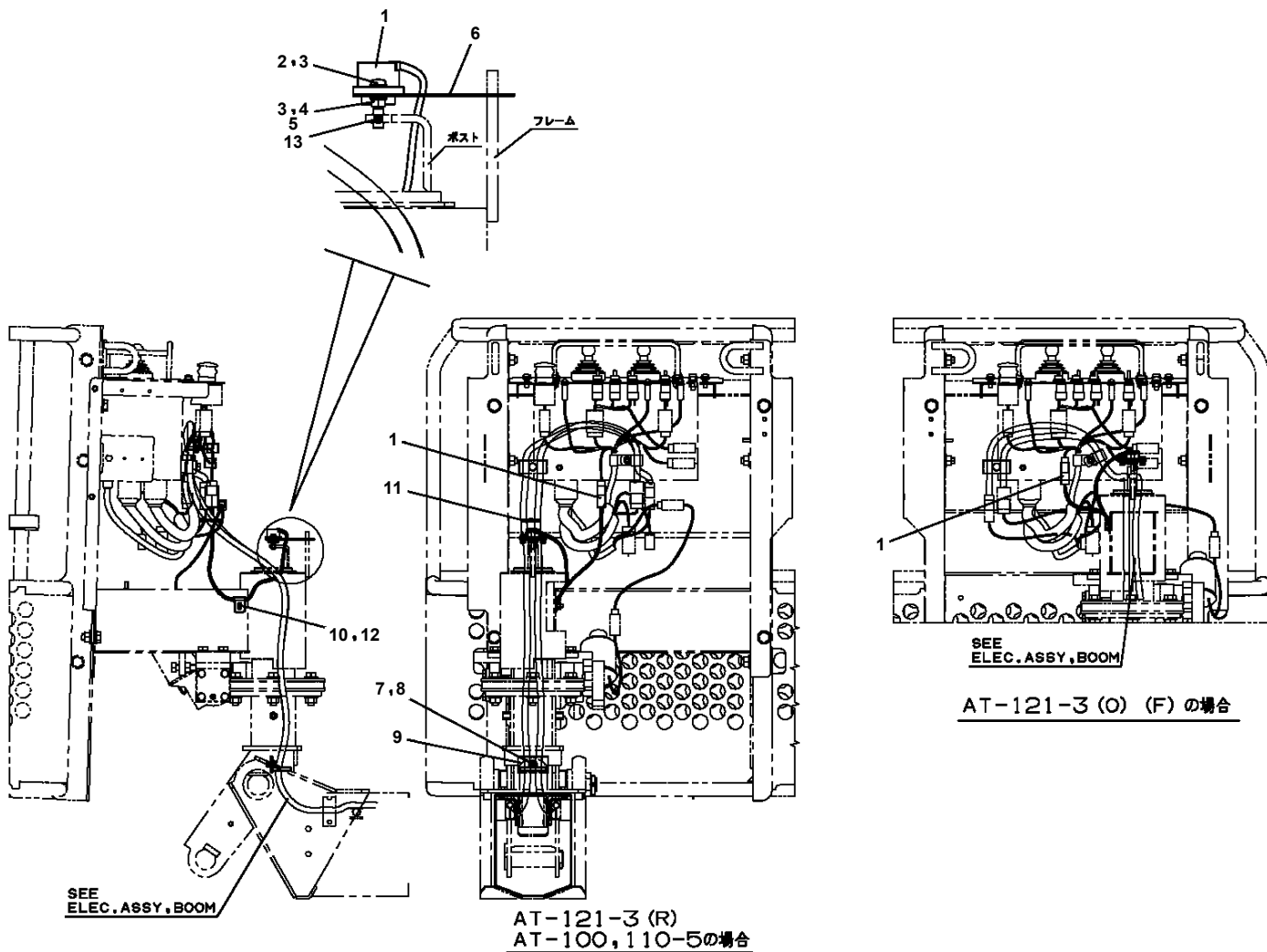


回路図

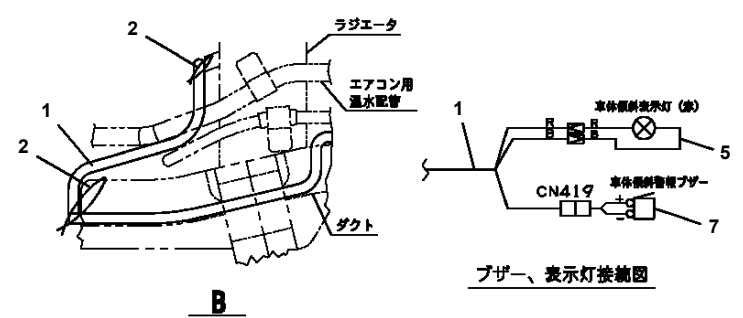
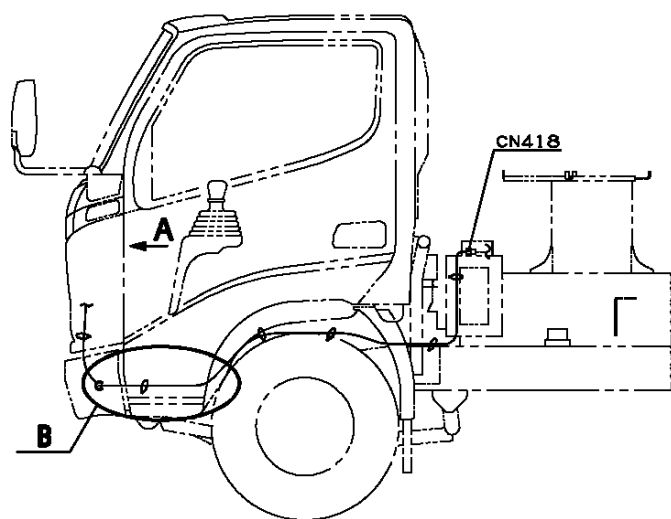
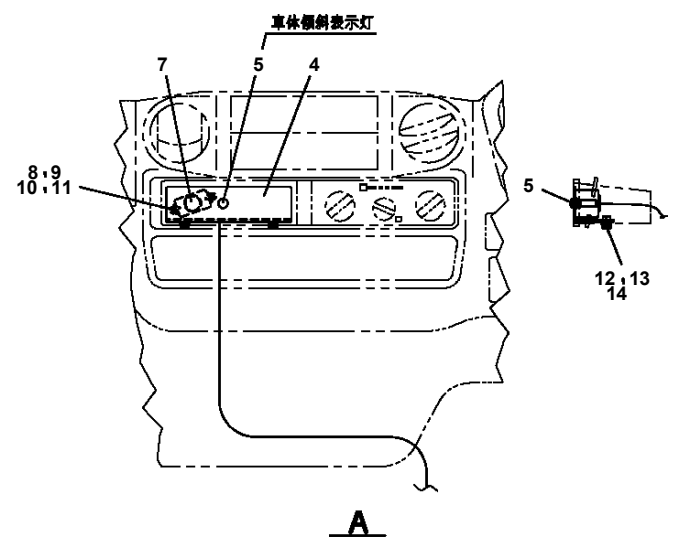
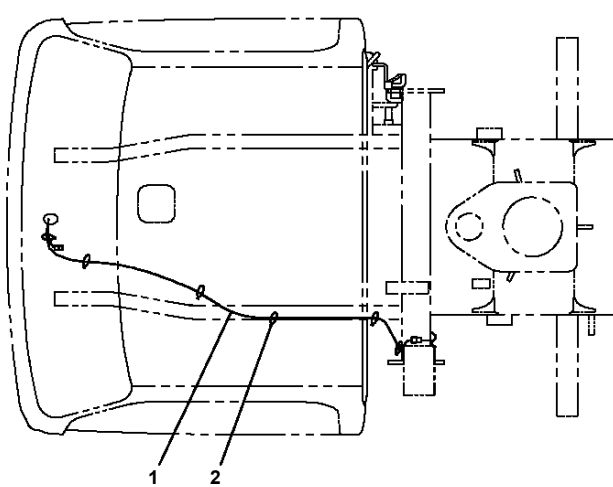
# AT-110-5 42084530442 UPPER,LOWER,HINO TKG-XZU675M-TQMQC3

Pos No.	Parts No	Parts Name	Qty	Unit	Technical Data	Serial No (Start)	Serial No (End)	Re
1	42973362101	HARNESS (OUTSIDE CAB)	1					
2	91810132530	FASTENER	30					
3	42973362201	HARNESS (INSIDE CAB)	1					
4	82100002645	SOCKET	1					
5	82199603010	SUPPORT	2					
6	42736070100	SWITCH ASSY (WITH HARNESS)	1					
7	82193101050	TIMER	1					
8	80172304014	SCREW,MACHINE	2		M4X14			
9	90240200400	NUT,CAP	2		M4			
10	90303070401	WASHER,PLAIN	2		4			
11	90302040401	WASHER,SPRING	2		4			
12	90101206014	BOLT	3		M6X14		HK1037	
	90101206014	BOLT	4		M6X14	HK1038		
13	90302040601	WASHER,SPRING	3		6		HK1037	
	90302040601	WASHER,SPRING	4		6	HK1038		
14	90303070601	WASHER,PLAIN	2		6			
15	90201200600	NUT	1		M6		HK1037	
	90201200600	NUT	2		M6	HK1038		
16	34354781710	RELAY (WITH BRACKET)	2					
17	32652540300	SUPPORT	1					
18	82100000191	TERMINAL	1					
19	82100000183	INSULATOR	1					
20	82100000192	TERMINAL	1					
21	82100000182	INSULATOR	1					
22	82115001002	CONNECTOR	4					
23	90101210020	BOLT	1		M10X20			
24	90302041001	WASHER,SPRING	1		10			
25	90201201000	NUT	1		M10			
26	42973100200	HARNESS	1					
27	42973362300	SUPPORT	1					

**AT-110-5 42084530442 UPPER,LOWER,HINO TKG-XZU675M-TQMQC3  
PE5060027-01 ELEC.ASSY,BUCKET**



AT-110-5 42084530442 UPPER,LOWER,HINO TKG-XZU675M-TQMQC3  
 PE5070047-01 ELEC.ASSY,CARRIER



ブザー、表示灯接続図

# AT-110-5 42084530442 UPPER,LOWER,HINO TKG-XZU675M-TQMQC3

Pos No.	Parts No	Parts Name	Qty	Unit	Technical Data	Serial No (Start)	Serial No
8	82100002016	CLAMP	4		WR25		
10	91850400601	CLAMP	12				HK0881
	91850400601	CLAMP	10			HK0882	
11	42654873003	SWITCH ASSY	1				HK0881
	42654873004	SWITCH ASSY	1			HK0882	
13	80192486014	SCREW,MACHINE (WITH WASHER)	6		M6X14		
14	44430680200	BUZZER ASSY (WITH HARNESS)	1				
15	(***** *****)	RELAY ASSY	1				HK0900
	(***** *****)	RELAY ASSY	1			HK0901	
16	80192484016	SCREW,MACHINE	6		M4X16		
17	80175304014	SCREW,MACHINE	4		M4X14		
18	82100002019	CLAMP	2		WR40		
19	90101208014	BOLT	1		M8X14		
21	82100002009	CLAMP	1		WRC12		
22	42654870100	HARNESS (MAIN)	1				HK0900
	42654870101	HARNESS (MAIN)	1			HK0901	
23	82100002007	CLAMP	1		WRC10		
24	90303070801	WASHER,PLAIN	1		8		
25	90302040801	WASHER,SPRING	13		8		
26	90201200800	NUT	9		M8		
27	82100002006	CLAMP	2		WR10		
28	82108501140	SWITCH	1				
29	90280200600	NUT,FLANGE	2		M6		
33	90101208025	BOLT	1		M8X25		
34	91810132530	FASTENER	30				
35	90101208018	BOLT	4		M8X18		
36	42654872002	BOX ASSY	1				
37	42654870200	COVER	1			HK0882	
38	90201200600	NUT	2		M6	HK0882	
39	90302040601	WASHER,SPRING	2		6	HK0882	
40	90303070601	WASHER,PLAIN	2		6	HK0882	
51	42900001200	COVER	1				
52	91810130240	FASTENER	1				
53	82467300104	PLUG	3				
54	42353952100	SWITCH ASSY (WITH HARNESS)	1				
55	42354541400	SWITCH ASSY (WITH HARNESS,3 SWITCH)	1				
56	90303070301	WASHER,PLAIN	2		3		
57	42809631200	LAMP ASSY (RED,WITH HARNESS)	1				
58	42353950100	SWITCH ASSY (WITH HARNESS)	1				
59	82154201010	METER,HOUR	1				
60	80172303010	SCREW,MACHINE	2		M3X10		
61	90302040301	WASHER,SPRING	2		3		
62	42355641100	SWITCH ASSY	1				
91	42355641010	COVER	1				
101	42355641210	BUTTON	1				
122	82400000309	GROMMET	1		L=1000	HK0882	

# AT-110-5 42084530442 UPPER,LOWER,HINO TKG-XZU675M-TQMQC3

Pos No.	Parts No	Parts Name	Qty	Unit	Technical Data	Serial No (Start)	Serial No (End)
1	(*****)	BOOM ASSY	1				
2	(*****)	TELESCOPE ASSY	1				
3	(*****)	PIPING ASSY,BOOM	1				
4	(*****)	CYLINDER,LEVELING (UPPER)	1				
5	(*****)	MOUNT ASSY,COVER	1				
6	(*****)	ELEC.ASSY,BOOM	1				
	(*****)	ELEC.ASSY,BOOM	1			HK1146	HK1145
7	(*****)	DETECTOR,BOOM LENGTH	1				
8	(*****)	COVER ASSY (BOOM TOP FRP COVER)	1				

**AT-110-5 42084530442 UPPER,LOWER,HINO TKG-XZU675M-TQMQC3**

Pos No.	Parts No	Parts Name	Qty	Unit	Technical Data	Serial No (Start)	Serial No (End)	Remarks	Pages
1	42974320100	GUARD	1						
2	42974320200	GUARD	1						
3	42974320300	GUARD	1						

**AT-110-5 42084530442 UPPER,LOWER,HINO TKG-XZU675M-TQMQC3**

Pos No.	Parts No	Parts Name	Qty	Unit	Technical Data	Serial No (Start)	Serial No (End)	Remarks	Pages
1	42652990200	BUZZER ASSY	1						
2	42501110020	HARNESS	1						000226
3	80172304016	SCREW,MACHINE	2		M4X16				
4	90201200400	NUT	2		M4				
5	90302040401	WASHER,SPRING	2		4				
6	90303070401	WASHER,PLAIN	4		4				

**AT-110-5 42084530442 UPPER,LOWER,HINO TKG-XZU675M-TQMQC3**

Pos No.	Parts No	Parts Name	Qty	Unit	Technical Data	Serial No (Start)	Serial No (End)	Remarks	I
1	(*****)	VIEW SYSTEM (MONITOR)	1						0
2	(*****)	VIEW SYSTEM (CAMERA)	1						0

**AT-110-5 42084530442 UPPER,LOWER,HINO TKG-XZU675M-TQMQC3**

Pos No.	Parts No	Parts Name	Qty	Unit	Technical Data	Serial No (Start)	Serial No (End)	Remarks	Pages
2	42739937510	BRACKET	1				HK1028		
3	42739937520	HOOD	1				HK1028		
10	42739937530	BRACKET ASSY	1				HK1028		
21	42739937511	BRACKET	1			HK1029			
31	42739937521	HOOD	1			HK1029			
100	42739931150	CAMERA	1						

**AT-110-5 42084530442 UPPER,LOWER,HINO TKG-XZU675M-TQMQC3**

Pos No.	Parts No	Parts Name	Qty	Unit	Technical Data	Serial No (Start)	Serial No (End)	Remarks	Pages
100	42509460100	HARNESS	1						

**AT-110-5 42084530442 UPPER,LOWER,HINO TKG-XZU675M-TQMQC3**

Pos No.	Parts No	Parts Name	Qty	Unit	Technical Data	Serial No (Start)	Serial No (End)	Rema
100	42837372200	HARNESS (RIGHT TOOL BOX)	1					
	42837372200	HARNESS (RIGHT TOOL BOX)	1					

# AT-110-5 42084530442 UPPER,LOWER,HINO TKG-XZU675M-TQMQC3

Pos No.	Parts No	Parts Name	Qty	Unit	Technical Data	Serial No (Start)	Serial No (End)	Remarks	Pages
100	42509572100	HARNESS	1						

**AT-110-5 42084530442 UPPER,LOWER,HINO TKG-XZU675M-TQMQC3**

Pos No.	Parts No	Parts Name	Qty	Unit	Technical Data	Serial No (Start)	Serial No (End)	Remarks	Pages
100	42839073100	HARNESS	1						

**AT-110-5 42084530442 UPPER,LOWER,HINO TKG-XZU675M-TQMQC3**

Pos No.	Parts No	Parts Name	Qty	Unit	Technical Data	Serial No (Start)	Serial No (End)	Remarks	Pages
9	82100001839	FUSE	1		10A.RED				
100	42508702200	HARNESS	1						

# AT-110-5 42084530442 UPPER,LOWER,HINO TKG-XZU675M-TQMQC3

Pos No.	Parts No	Parts Name	Qty	Unit	Technical Data	Serial No (Start)	Serial No (End)	Remarks	Pages
1	42973362200	HARNESS	1						

# AT-110-5 42084530442 UPPER,LOWER,HINO TKG-XZU675M-TQMQC3

Pos No.	Parts No	Parts Name	Qty	Unit	Technical Data	Serial No (Start)	Serial No (End)	Remarks	Pages
100	42654980100	HARNESS	1						

**AT-110-5 42084530442 UPPER,LOWER,HINO TKG-XZU675M-TQMQC3**

Pos No.	Parts No	Parts Name	Qty	Unit	Technical Data	Serial No (Start)	Serial No (End)	Remarks	Pages
16	82182819823	DIODE	9		1.5A				
	82182819823	DIODE	9		1.5A				
26	82182809623	DIODE	4						
	82182809623	DIODE	4						
100	42839122101	HARNESS	1						
	42839122101	HARNESS	1						

**AT-110-5 42084530442 UPPER,LOWER,HINO TKG-XZU675M-TQMQC3**

Pos No.	Parts No	Parts Name	Qty	Unit	Technical Data	Serial No (Start)	Serial No (End)	Remarks	Pages
1	82182809623	DIODE	1						
2	82182819823	DIODE	2		1.5A				
100	42509351101	HARNESS	1						

# AT-110-5 42084530442 UPPER,LOWER,HINO TKG-XZU675M-TQMQC3

Pos No.	Parts No	Parts Name	Qty	Unit	Technical Data	Serial No (Start)	Serial No (End)	Remarks	Pages
100	42509460101	HARNESS	1						

**AT-110-5 42084530442 UPPER,LOWER,HINO TKG-XZU675M-TQMQC3**

Pos No.	Parts No	Parts Name	Qty	Unit	Technical Data	Serial No (Start)	Serial No (End)	Remarks	
15	82182819823	DIODE	2		1.5A				
100	42973362201	HARNESS (INSIDE CAB)	1						

# AT-110-5 42084530442 UPPER,LOWER,HINO TKG-XZU675M-TQMQC3

Pos No.	Parts No	Parts Name	Qty	Unit	Technical Data	Serial No (Start)	Serial No (End)	Remarks	Pages
100	42654790311	HARNESS	1						

# AT-110-5 42084530442 UPPER,LOWER,HINO TKG-XZU675M-TQMQC3

Pos No.	Parts No	Parts Name	Qty	Unit	Technical Data	Serial No (Start)	Serial No (End)	Remarks	Pages
100	42332521500	HARNESS	1						

# AT-110-5 42084530442 UPPER,LOWER,HINO TKG-XZU675M-TQMQC3

Pos No.	Parts No	Parts Name	Qty	Unit	Technical Data	Serial No (Start)	Serial No (End)	Remarks	Pages
100	42510601100	HARNESS	1						

**AT-110-5 42084530442 UPPER,LOWER,HINO TKG-XZU675M-TQMQC3**

Pos No.	Parts No	Parts Name	Qty	Unit	Technical Data	Serial No (Start)	Serial No (End)	Remarks	Pages
100	42973100200	HARNESS	1						

CLICK HERE TO **DOWNLOAD** THE COMPLETE MANUAL

- Thank you very much for reading the preview of the manual.
- You can download the complete manual from: [www.heydownloads.com](http://www.heydownloads.com) by clicking the link below



- Please note: If there is no response to CLICKING the link, please download this PDF first and then click on it.

CLICK HERE TO **DOWNLOAD** THE COMPLETE MANUAL

**AT-110-5 42084530442 UPPER,LOWER,HINO TKG-XZU675M-TQMQC3**

Pos No.	Parts No	Parts Name	Qty	Unit	Technical Data	Serial No (Start)	Serial No (End)	Remarks	Pages
1	82460027206	HANDLE	1						

# AT-110-5 42084530442 UPPER,LOWER,HINO TKG-XZU675M-TQMQC3

Pos No.	Parts No	Parts Name	Qty	Unit	Technical Data	Serial No (Start)	Serial No (End)	Remarks	Pages
1	82460027211	HANDLE	1						

**AT-110-5 42084530442 UPPER,LOWER,HINO TKG-XZU675M-TQMQC3**

Pos No.	Parts No	Parts Name	Qty	Unit	Technical Data	Serial No (Start)	Serial No (End)	Remarks	Pages
12	91002801400	O-RING	2		1B P14				
100	36625740001	VALVE,CHECK	1						

**AT-110-5 42084530442 UPPER,LOWER,HINO TKG-XZU675M-TQMQC3**

Pos No.	Parts No	Parts Name	Qty	Unit	Technical Data	Serial No (Start)	Serial No
1	(*****)	ELEC.ASSY (FRAME)	1				
2	(*****)	ELEC.ASSY,CARRIER	1				
3	(*****)	NAME PLATE ASSY (RUNAWAY PREVENTION)	1				

# AT-110-5 42084530442 UPPER,LOWER,HINO TKG-XZU675M-TQMQC3

Pos No.	Parts No	Parts Name	Qty	Unit	Technical Data	Serial No (Start)	Serial No
1	(*****)	ELEC.ASSY	1				
2	(*****)	NAME PLATE ASSY (3RD BRAKE INTERLOCK)	1				

**AT-110-5 42084530442 UPPER,LOWER,HINO TKG-XZU675M-TQMQC3**

Pos No.	Parts No	Parts Name	Qty	Unit	Technical Data	Serial No (Start)	Serial No (End)	Remarks	Pages
1	42262250300	BUCKET	1						

**AT-110-5 42084530442 UPPER,LOWER,HINO TKG-XZU675M-TQMQC3**

Pos No.	Parts No	Parts Name	Qty	Unit	Technical Data	Serial No (Start)	Serial No (End)	R
1	42266920101	BUCKET (WHITE/WITHOUT BOSS)	1					

**AT-110-5 42084530442 UPPER,LOWER,HINO TKG-XZU675M-TQMQC3**

Pos No.	Parts No	Parts Name	Qty	Unit	Technical Data	Serial No (Start)	Serial No (End)	Rem
1	42266640101	BUCKET (WHITE/DRAIN HOLE)	1					
2	42477661000	MAT	1					

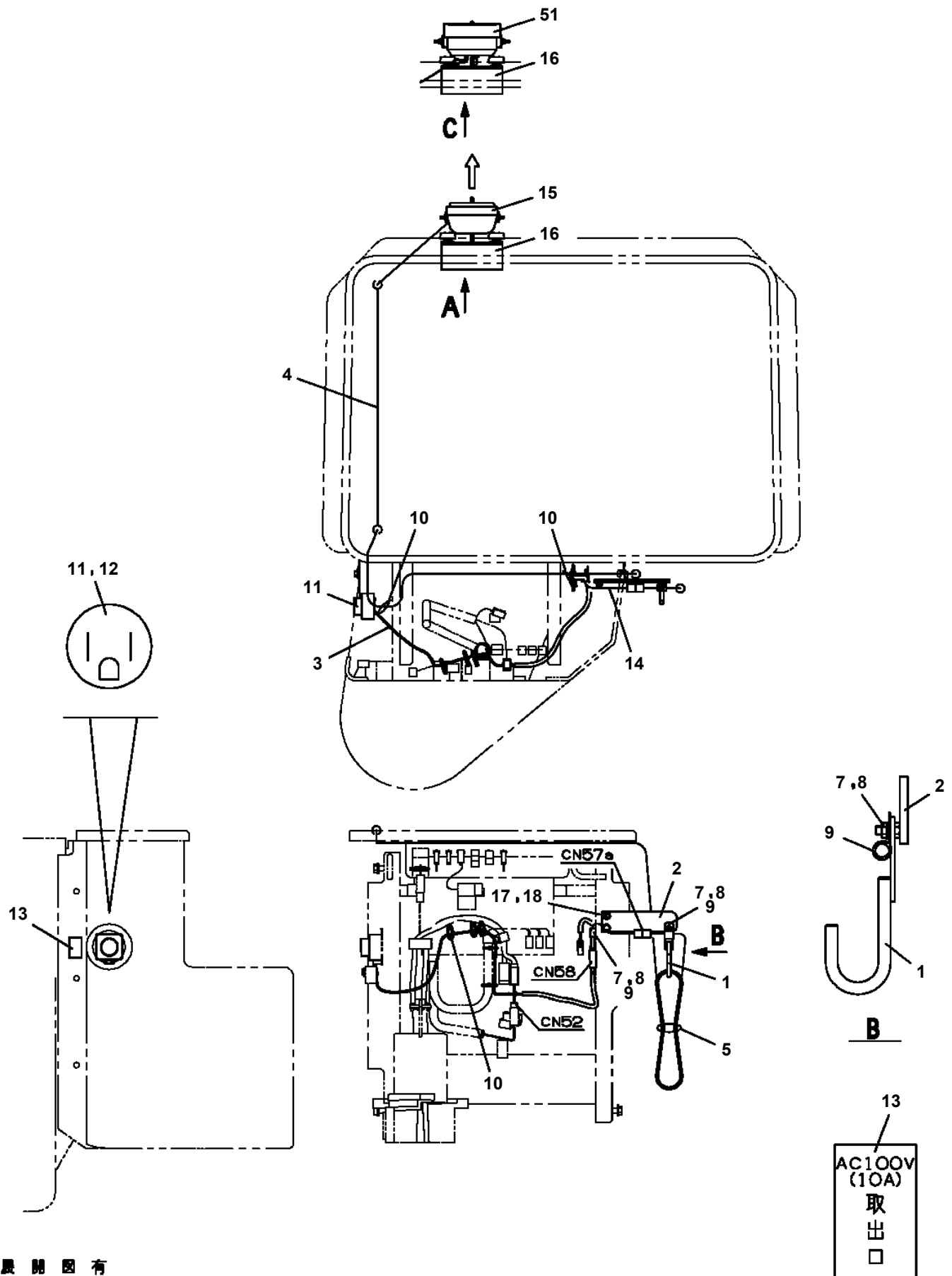
**AT-110-5 42084530442 UPPER,LOWER,HINO TKG-XZU675M-TQMQC3**

Pos No.	Parts No	Parts Name	Qty	Unit	Technical Data	Serial No (Start)	Serial No (End)	Remarks	Pages
1	42502360000	COVER	1						

**AT-110-5 42084530442 UPPER,LOWER,HINO TKG-XZU675M-TQMQC3**

Pos No.	Parts No	Parts Name	Qty	Unit	Technical Data	Serial No (Start)	Serial No (End)	Re
1	82100002253	LAMP	1					
2	42736070100	SWITCH ASSY (WITH HARNESS)	1					
3	80175304020	SCREW,MACHINE	2		M4X20			
4	90302040401	WASHER,SPRING	2		4			
5	90303070401	WASHER,PLAIN	2		4			
6	90201200400	NUT	2		M4			
7	42509700010	PLATE,NAME	1					
21	82100000783	BULB,LAMP	1		24V 12W			

AT-110-5 42084530442 UPPER,LOWER,HINO TKG-XZU675M-TQMQC3  
 PL5140016-02 LAMP ASSY,WORKING (BUCKET/100V,3POLES,LED)



展開図有  
 ILLUSTRATED BREAKDOWN NO. 15, 16

**AT-110-5 42084530442 UPPER,LOWER,HINO TKG-XZU675M-TQMQC3**

Pos No.	Parts No	Parts Name	Qty	Unit	Technical Data	Serial No (Start)	Serial No (End)
1	42839551020	LOCK ASSY (U9SL99-2,ASSY ONLY)	2				
2	82460027203	HANDLE	2				

**AT-110-5 42084530442 UPPER,LOWER,HINO TKG-XZU675M-TQMQC3**

Pos No.	Parts No	Parts Name	Qty	Unit	Technical Data	Serial No (Start)	Serial No (End)
1	42839551070	LOCK ASSY (U9SL99-2,ASSY ONLY)	2				
2	82460027208	HANDLE	2				

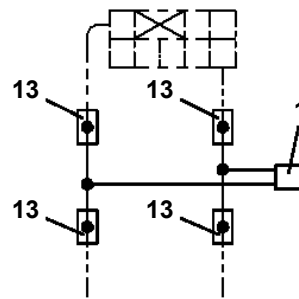
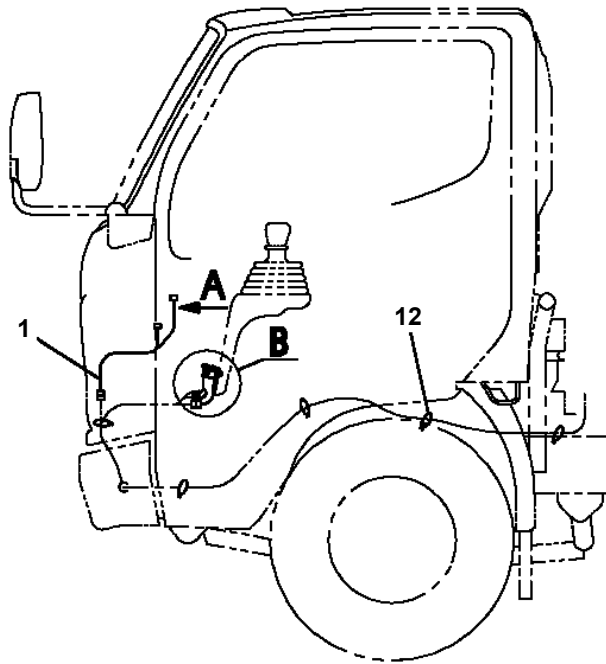
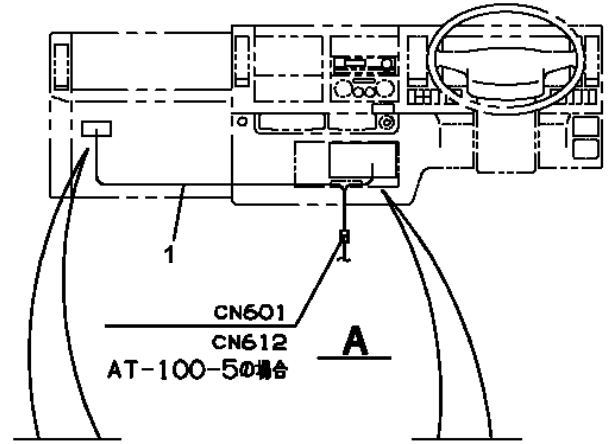
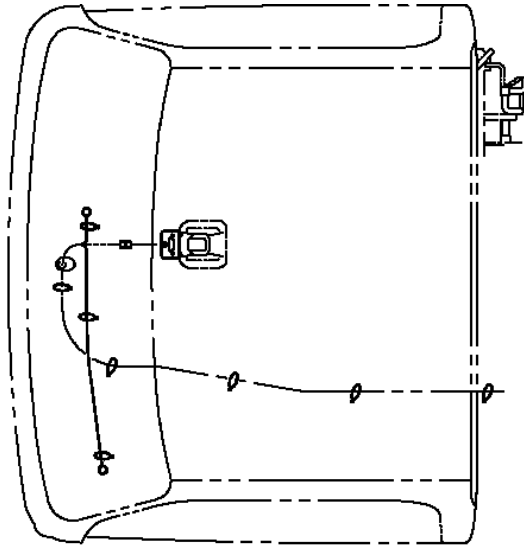
**AT-110-5 42084530442 UPPER,LOWER,HINO TKG-XZU675M-TQMQC3**

Pos No.	Parts No	Parts Name	Qty	Unit	Technical Data	Serial No (Start)	Serial No (End)	Remarks	Pages
1	42837370510	SUPPORT	3						
	42837370510	SUPPORT	3						
2	90101208020	BOLT	1		M8X20				
	90101208020	BOLT	1		M8X20				

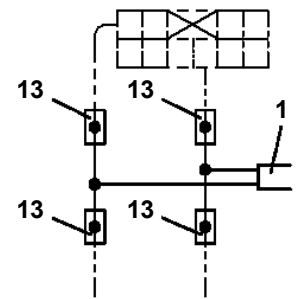
# AT-110-5 42084530442 UPPER,LOWER,HINO TKG-XZU675M-TQMQC3

Pos No.	Parts No	Parts Name	Qty	Unit	Technical Data	Serial No (Start)	Serial No (End)	Remarks	Pages
1	82197518113	CAP (RED)	1						

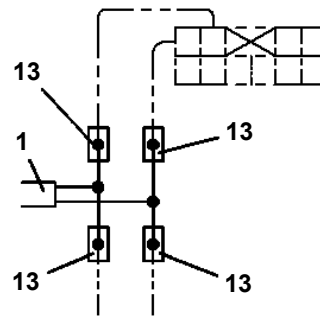
AT-110-5 42084530442 UPPER,LOWER,HINO TKG-XZU675M-TQMQC3  
 PN1014813-01 ELEC.ASSY (CARRIER)



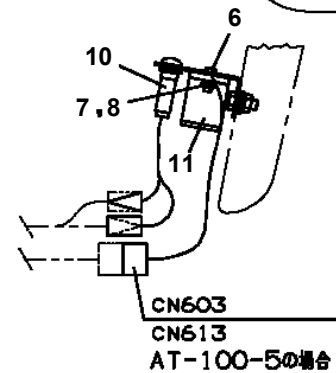
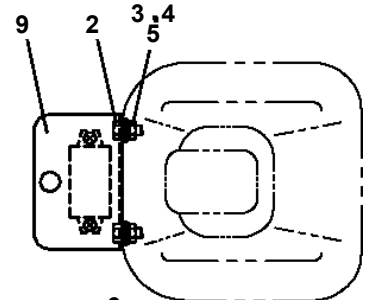
H9コネクタ (8極黄色)  
 (07.0型車の場合)



B21コネクタ (白色)

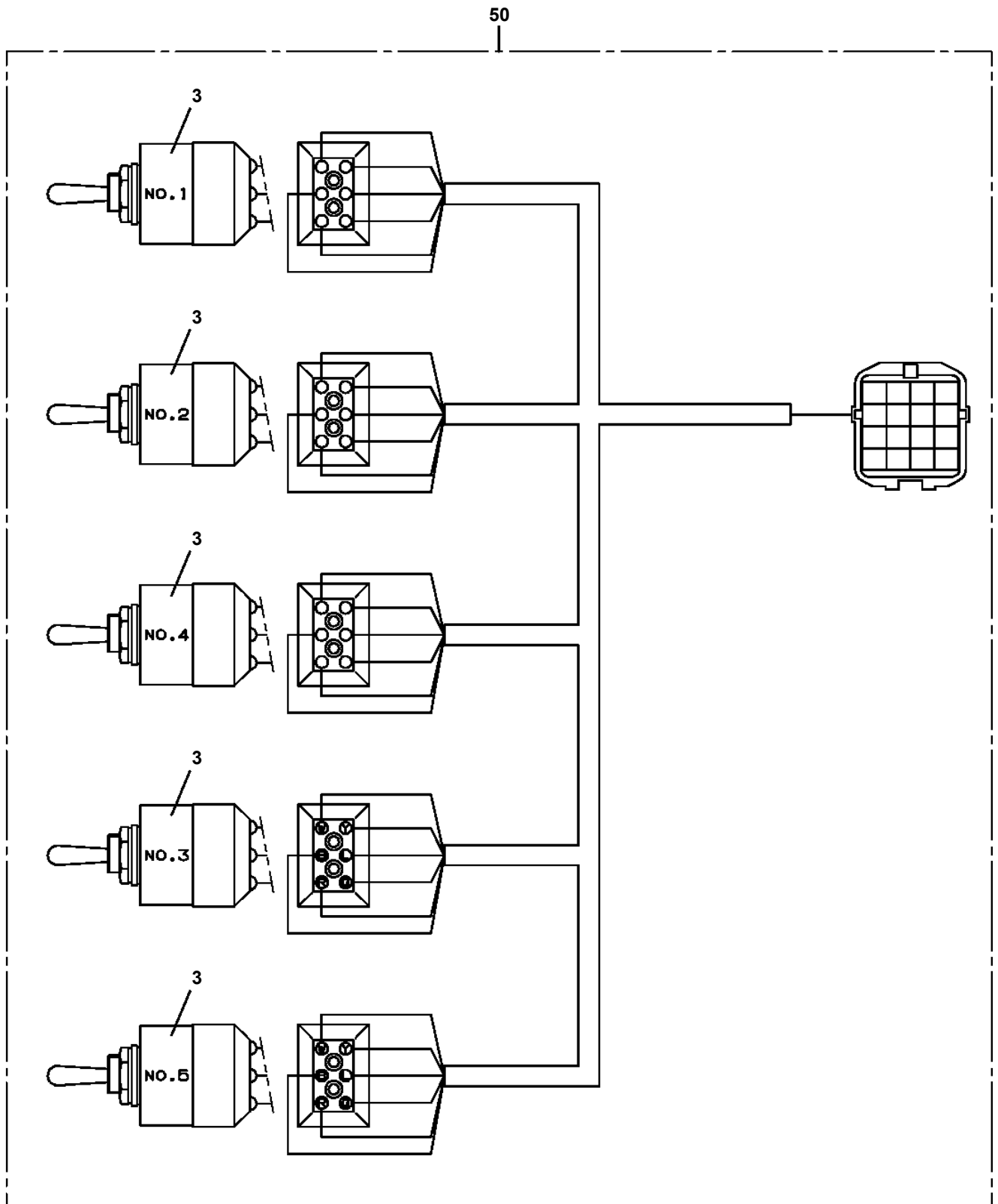


H9コネクタ (10極緑色)  
 (09.0型車の場合)

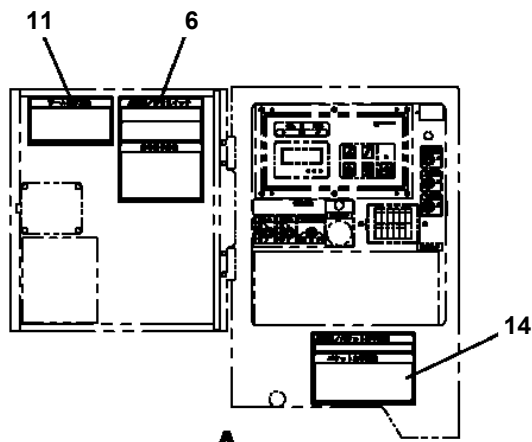
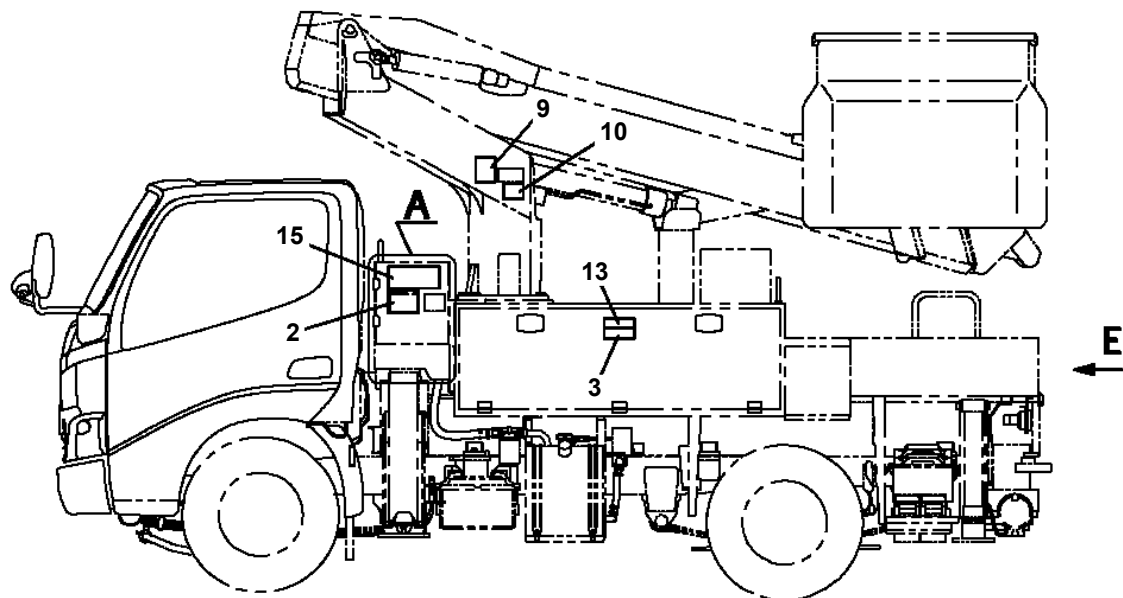
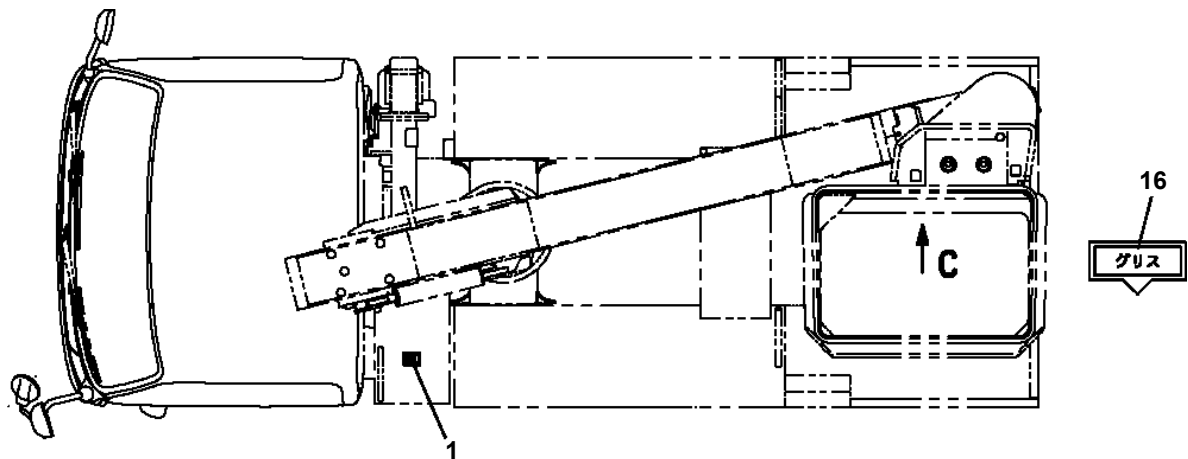


**B**

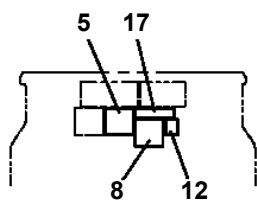
AT-110-5 42084530442 UPPER,LOWER,HINO TKG-XZU675M-TQMQC3  
PN1140167-00 SWITCH ASSY (WITH HARNESS,5 SW)



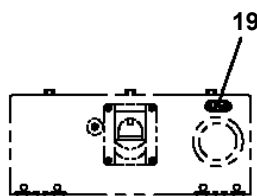
AT-110-5 42084530442 UPPER,LOWER,HINO TKG-XZU675M-TQMQC3  
 PN5010698-00 NAME PLATE ASSY (VEHICLE)



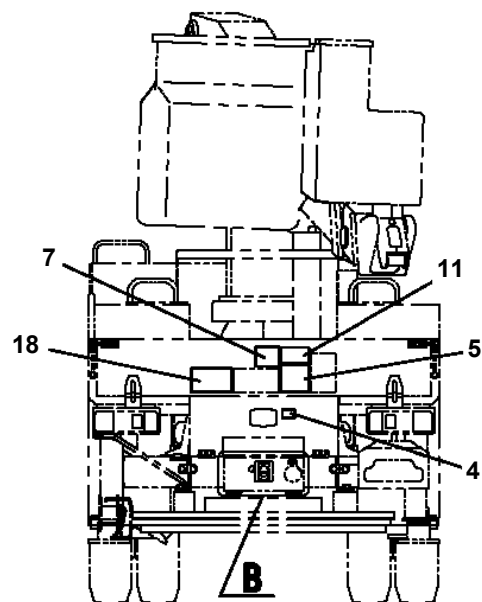
**A**  
 扉を開いた状態



**C**

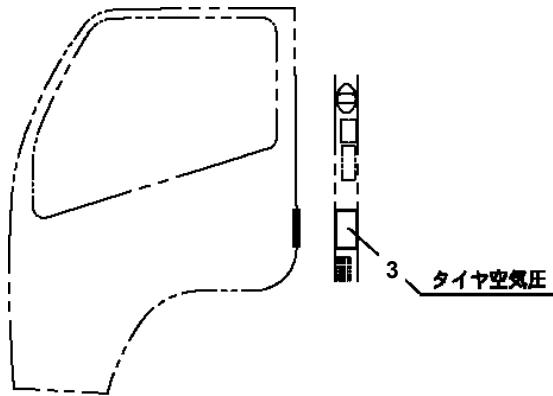


**B**

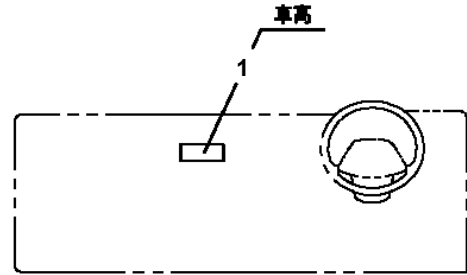


**E**

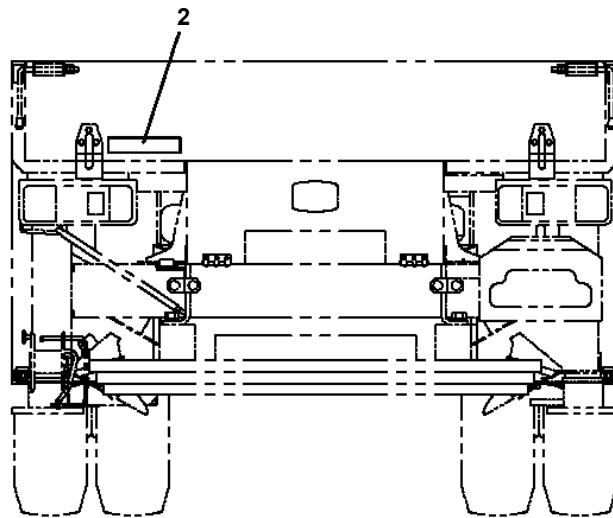
AT-110-5 42084530442 UPPER,LOWER,HINO TKG-XZU675M-TQMQC3  
 PN5010707-00 NAME PLATE ASSY (VEHICLE HEIGHT, CAPACITY,AIR PRESSURE)



ドア内側参考貼付位置



インパネ部参考貼付位置



車高 2.8 m

最大積載量 500Kg

3

タイヤサイズ	前輪	後輪
195/85R16	600	600
114/112L	(6.00)	(6.00)
205/80R17.5	600	600
120/118L	(6.00)	(6.00)
205/85R16	600	600
117/115L	(6.00)	(6.00)
215/70R17.5	775	775
123/121J	(7.75)	(7.75)
215/85R16	600	600
120/118L	(6.00)	(6.00)
225/75R16	600	600
118/116L	(6.00)	(6.00)
225/85R16	600	600
121/119L	(6.00)	(6.00)
225/80R17.5	700	700
123/122L (14PRL)	(7.00)	(7.00)
7.00-16-12PRL	575	575
	(5.75)	(5.75)
7.50-16-10PRL	525	525
	(5.25)	(5.25)
7.50-16-12PRL	600	600
	(6.00)	(6.00)
7.50-16-14PRL	650	650
	(6.50)	(6.50)
7.50R16-12PRL	650	650
	(6.50)	(6.50)
7.50R16-14PRL	700	700
	(7.00)	(7.00)

0以上の値を維持してください。  
 370-022-24480

**AT-110-5 42084530442 UPPER,LOWER,HINO TKG-XZU675M-TQMQC3**

Pos No.	Parts No	Parts Name	Qty	Unit	Technical Data	Serial No (Start)	Serial No (End)	Remark
1	42392350070	PLATE,CAUTION	1					
2	42391163120	PLATE,NAME	3					
3	42508786010	PLATE,NAME	1					
4	42504804040	PLATE,NAME	1					
5	42507126010	PLATE,NAME	2					
6	42900750300	PLATE,NAME	1					
7	42392655030	PLATE,CAUTION	1					
8	42393400080	PLATE,CAUTION	1					
9	42394925030	PLATE,NAME	1					
10	42393204010	PLATE,NAME	1					
11	42394581010	PLATE,NAME	1					
12	42508786030	PLATE,NAME	1					
13	42508786020	PLATE,NAME	1					
14	42507126050	PLATE,NAME	1					
15	42507126060	PLATE,NAME	1					
16	42507126070	PLATE,NAME (AUTO MODE)	1					

AT-110-5 42084530442 UPPER,LOWER,HINO TKG-XZU675M-TQMQC3  
 PN5011063-00 NAME PLATE ASSY (TOOL BOX CENTRAL LOCK)

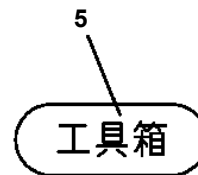
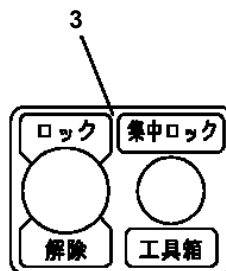
1

TOA	予備	2-47	TOA	AMC バルブ
20A	予備	10A	TOA	盗難金 バゲット
10A	オプション 電燈	2-47	TOA	盗難電燈
20A	スイング 電燈	10A	TOA	下等作業者灯
20A	メイン電燈	2-47	TOA	ジャッキ 制御
		10A	TOA	リレー制御

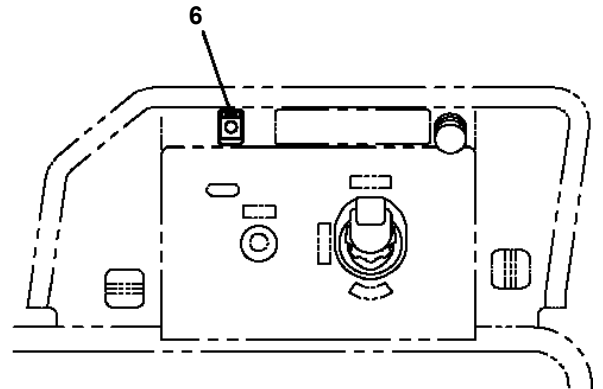
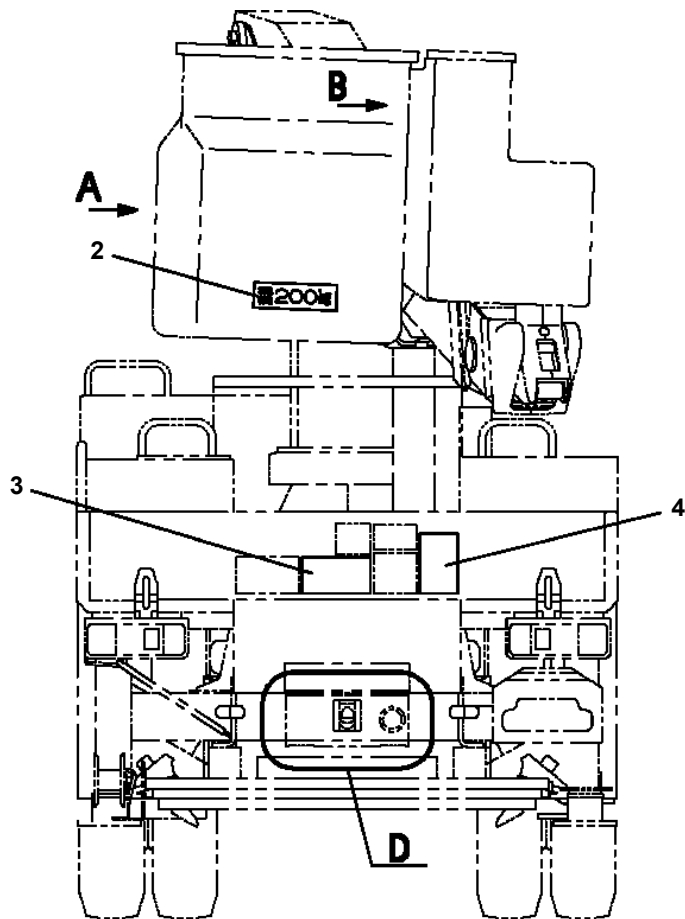
2

**△警告 / 走行時注意**

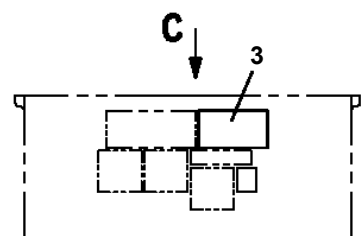
走行時は、車中央のクレセント錠等で車のロックおよび  
 盗難を確実に行ってください。鍵が濡れ恐れがあります。



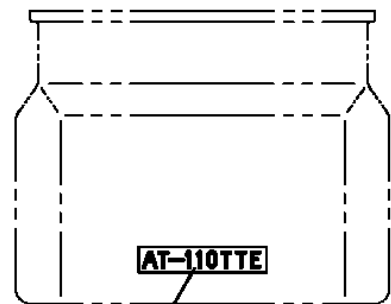
AT-110-5 42084530442 UPPER,LOWER,HINO TKG-XZU675M-TQMQC3  
 PN5011172-00 NAME PLATE ASSY (SPECIFICATION)



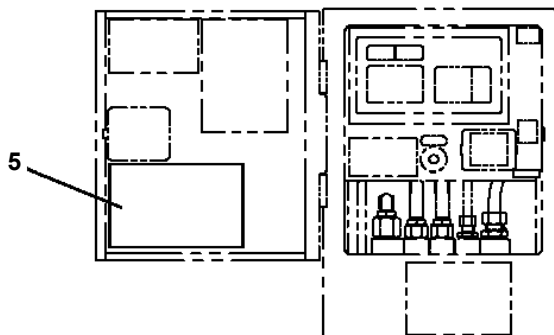
C



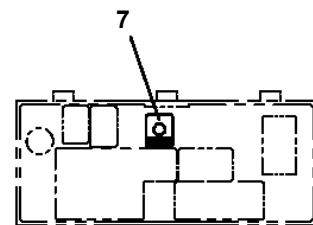
B



A



キャブ左後方操作部  
 扉を開いた状態



D  
 扉を開いた状態

**AT-110-5 42084530442 UPPER,LOWER,HINO TKG-XZU675M-TQMQC3**

Pos No.	Parts No	Parts Name	Qty	Unit	Technical Data	Serial No (Start)	Serial No (End)	Remarks	Pages
1	82444100250	PLATE,NAME	1						

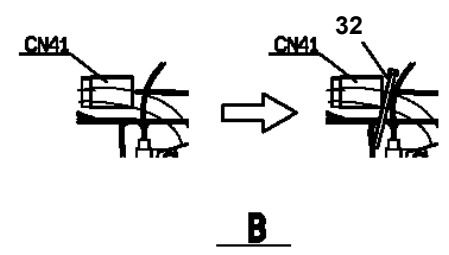
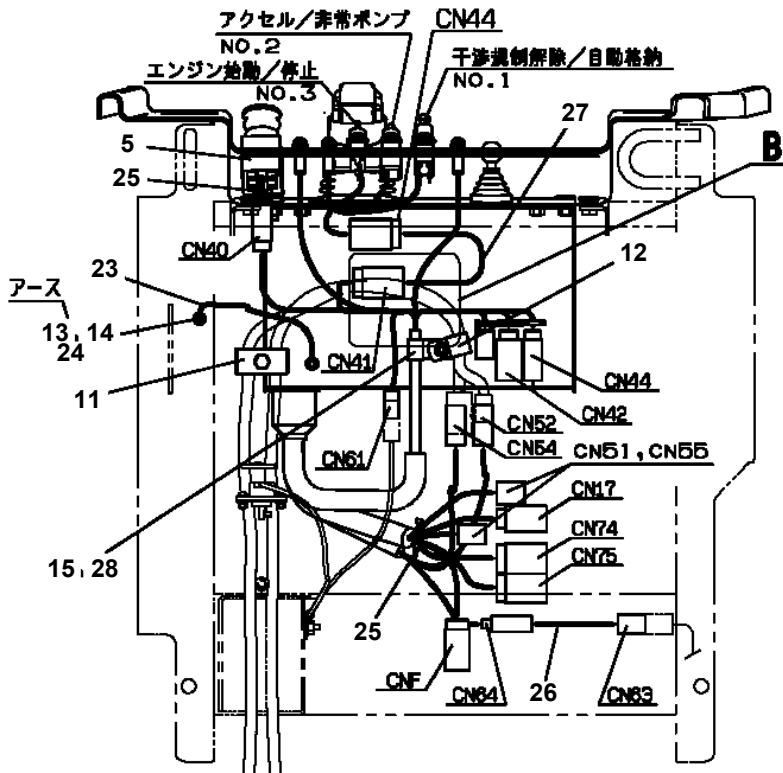
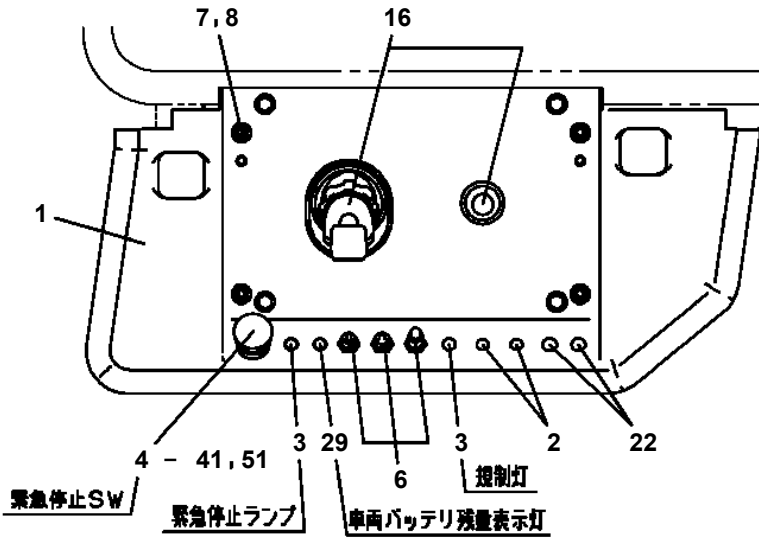
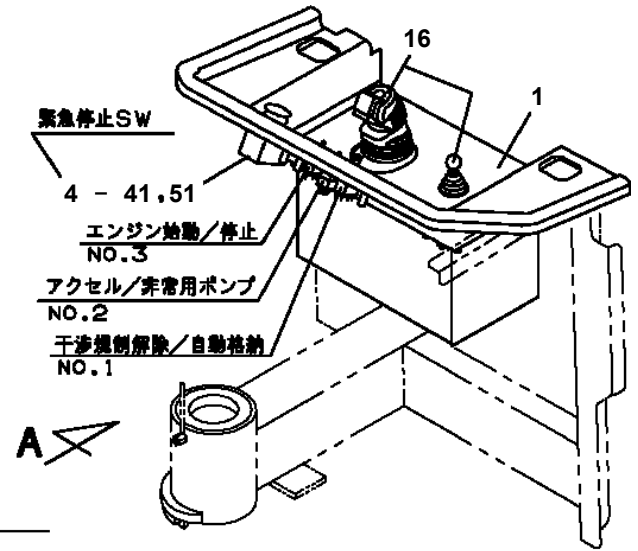
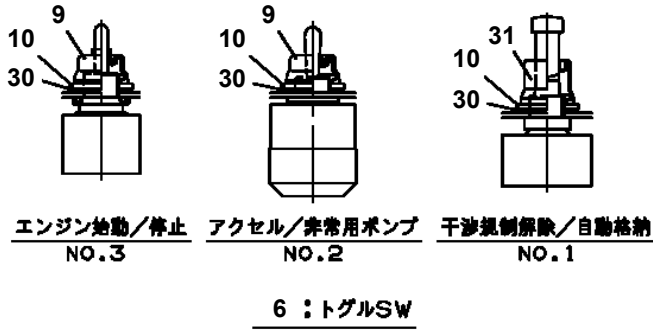
# AT-110-5 42084530442 UPPER,LOWER,HINO TKG-XZU675M-TQMQC3

Pos No.	Parts No	Parts Name	Qty	Unit	Technical Data	Serial No (Start)	Serial No (E
1	37002217330	PLATE,CAUTION (TADANO HYDRAULIC)	1				

**AT-110-5 42084530442 UPPER,LOWER,HINO TKG-XZU675M-TQMQC3**

Pos No.	Parts No	Parts Name	Qty	Unit	Technical Data	Serial No (Start)	Serial No (End)	Rema
20	42332677560	SPRING	1					
25	42332677520	PLUG	1					
26	42332677530	BOOT	1					
36	42332677590	STOPPER	1					
41	42332677600	SPRING	2					
45	42332677610	COVER	1					
46	42332677620	CAP	1					
53	42332677630	BEARING	2					
54	42332677540	SPRING	1					
55	42332677650	SPRING	2					
61	42332677660	WASHER	1					
100	42332672003	OPE.ASSY (LEVER,CONTROL)	1					

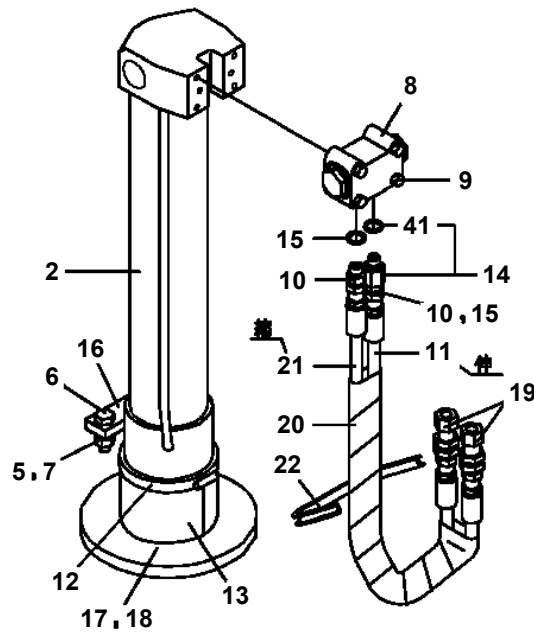
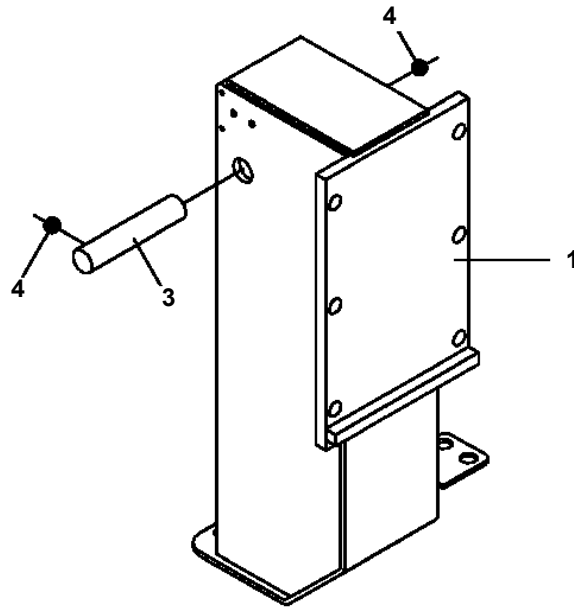
AT-110-5 42084530442 UPPER,LOWER,HINO TKG-XZU675M-TQMQC3  
PO5050042-01 OPE.ASSY,BUCKET



VIEW A

AT-110-5 42084530442 UPPER,LOWER,HINO TKG-XZU675M-TQMQC3  
PO5270162-00 OUTRIGGER ASSY

100



**AT-110-5 42084530442 UPPER,LOWER,HINO TKG-XZU675M-TQMQC3  
PP5330019-00 POWER SUPPLY ASSY (HYBRID SYSTEM,3 MODE,WITH FAN)**

パワーサプライASSY (ハイブリッドシステム,3モード,ファン付き)  
POWER SUPPLY ASSY (HYBRID SYSTEM,3 MODE,WITH FAN)

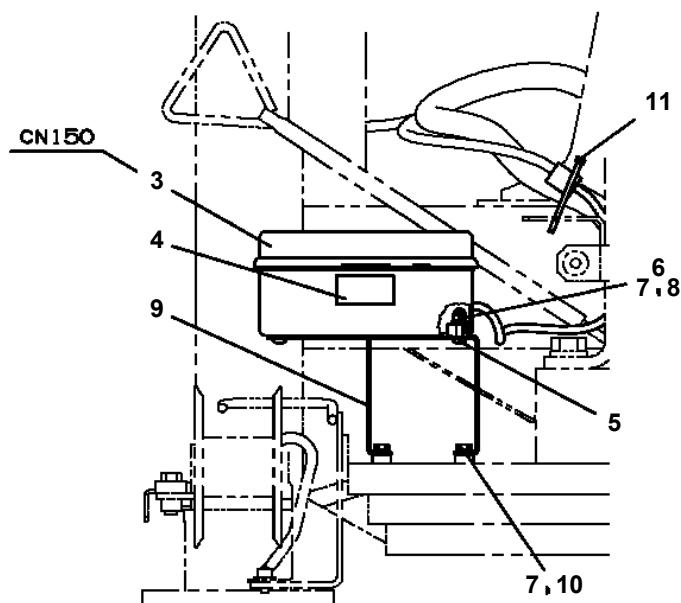
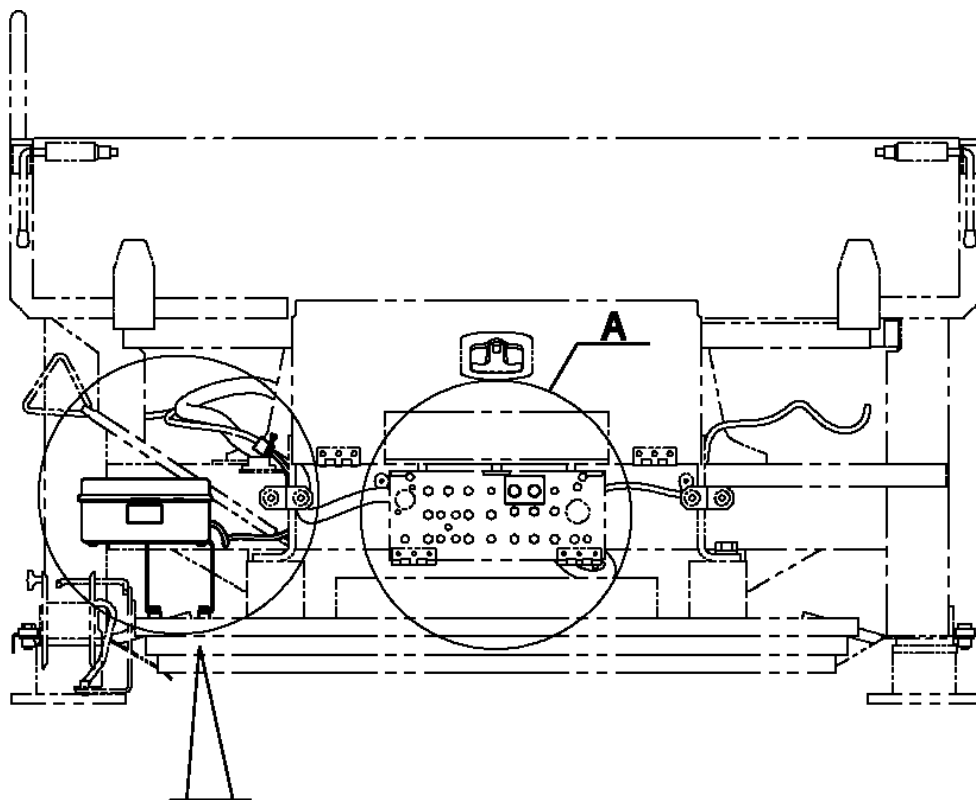
後端ウエイト391kg仕様用ハイブリッドシステム

指示番号 KEY NO.	部品名称 PART NAME	備考 REMARK
1	ハイカンASSY PIPING ASSY	
2	ハイセンASSY ELEC.ASSY	
3	ハイセンASSY,バケツ ELEC.ASSY,BUCKET	
4	マウントASSY MOUNT ASSY	
5	バッテリーチャージャー BATTERY CHARGER	充電器GSユアサ ZLC24-30A
6	ネームプレートASSY NAME PLATE ASSY	
7	カイゾウASSY MODIFICATION ASSY	フェンダ交換
8	マウントASSY,ウエイト MOUNT ASSY,WEIGHT	後端ウエイト交換 391kg→300kg

適用製造番号によっては取り付けがないものもあります。

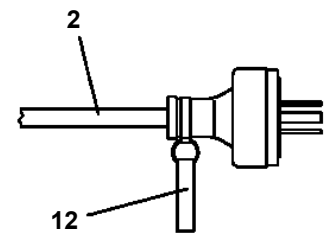
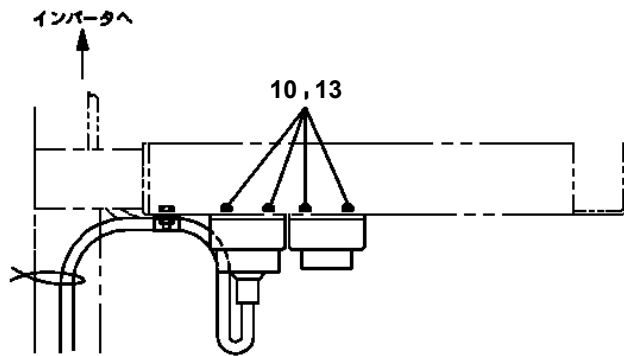
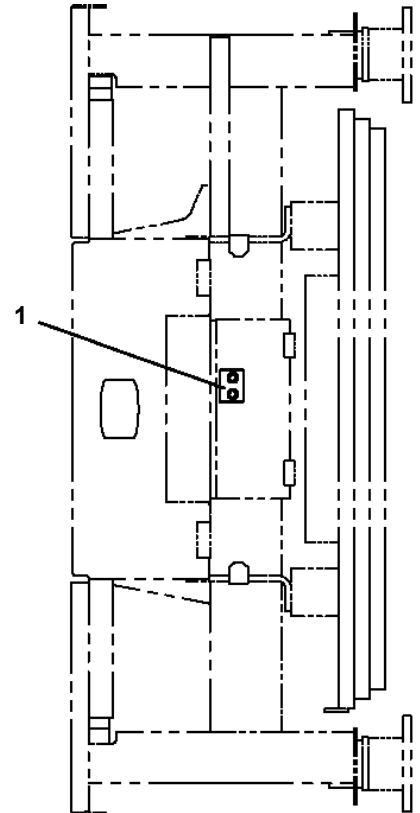
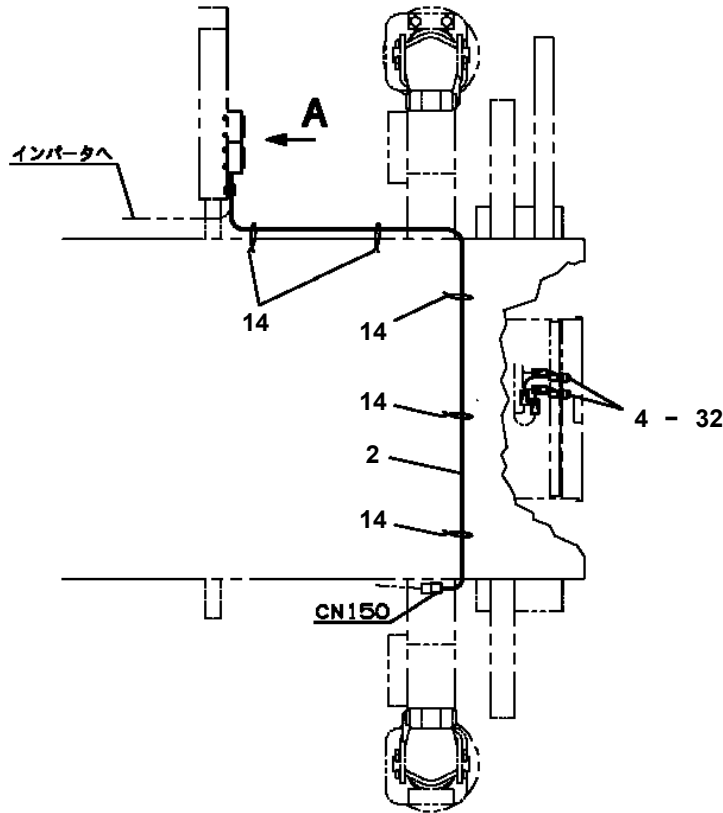
MACHINES OF SOME SERIAL NO. ARE NOT EQUIPPED WITH THESE PARTS.

AT-110-5 42084530442 UPPER,LOWER,HINO TKG-XZU675M-TQMQC3  
PP5340024-00 POWER SUPPLY ASSY,ELECTRICITY (LOWER,3POLES OUTLET)

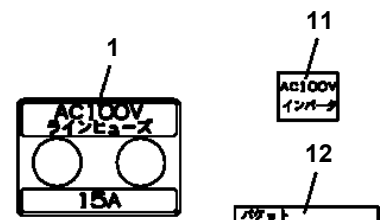
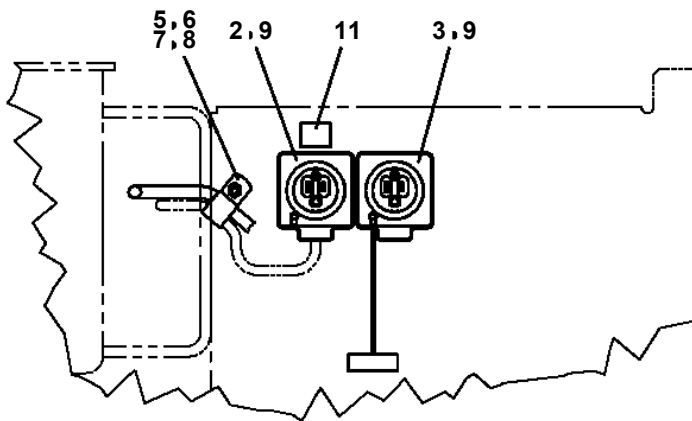


4  
AC100V (10A)  
取入口

AT-110-5 42084530442 UPPER,LOWER,HINO TKG-XZU675M-TQMQC3  
 PP5340030-01 POWER SUPPLY ASSY,ELECTRICITY (LOWER/POWER TAKEOUT)

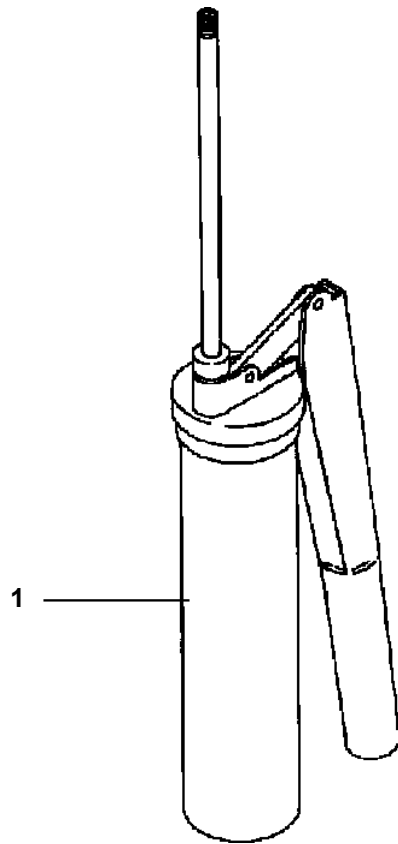


12材取付詳細 (バケット側)



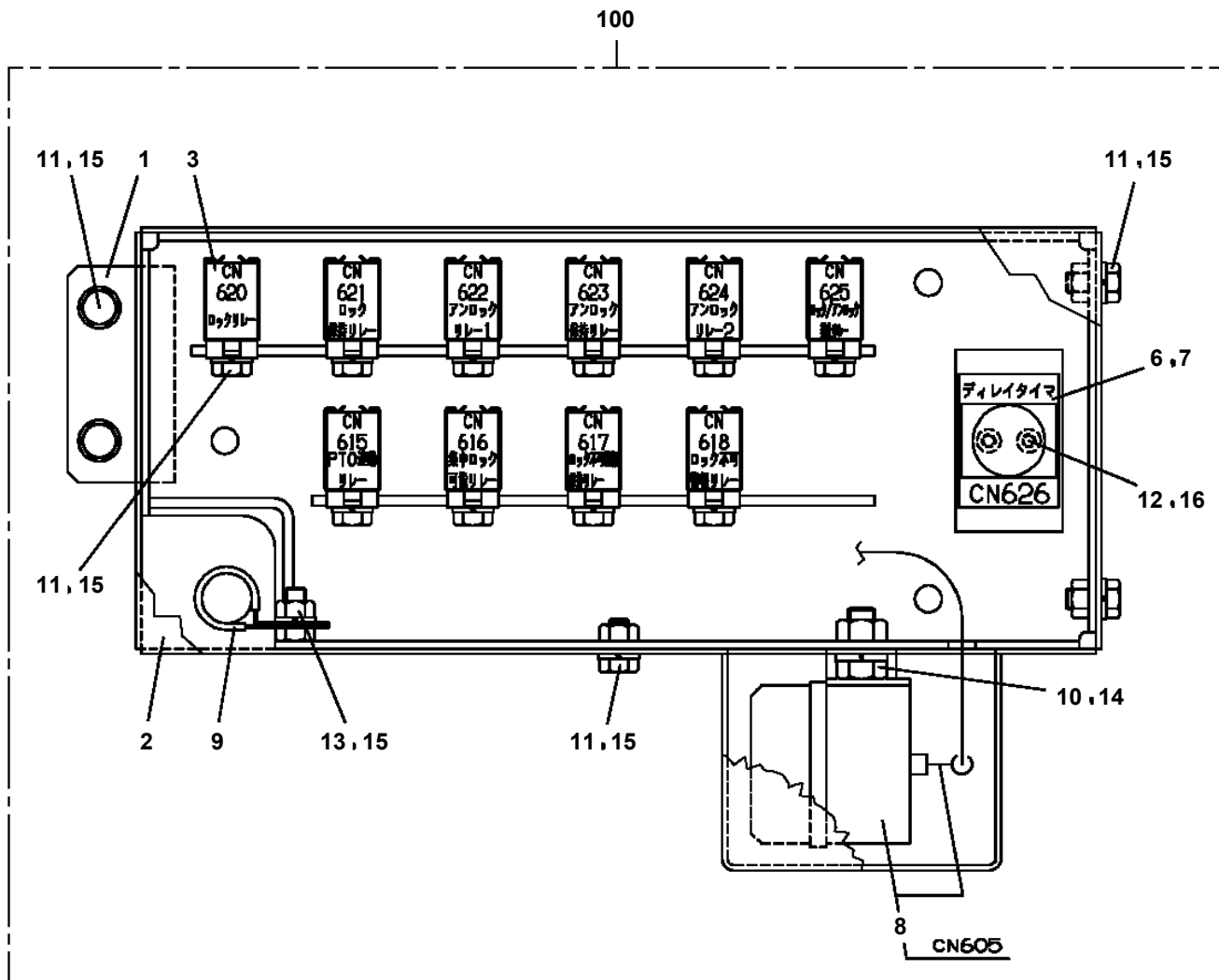
**A**

AT-110-5 42084530442 UPPER,LOWER,HINO TKG-XZU675M-TQMQC3  
PP5450004-00 PUMP, GREASE (400CC)

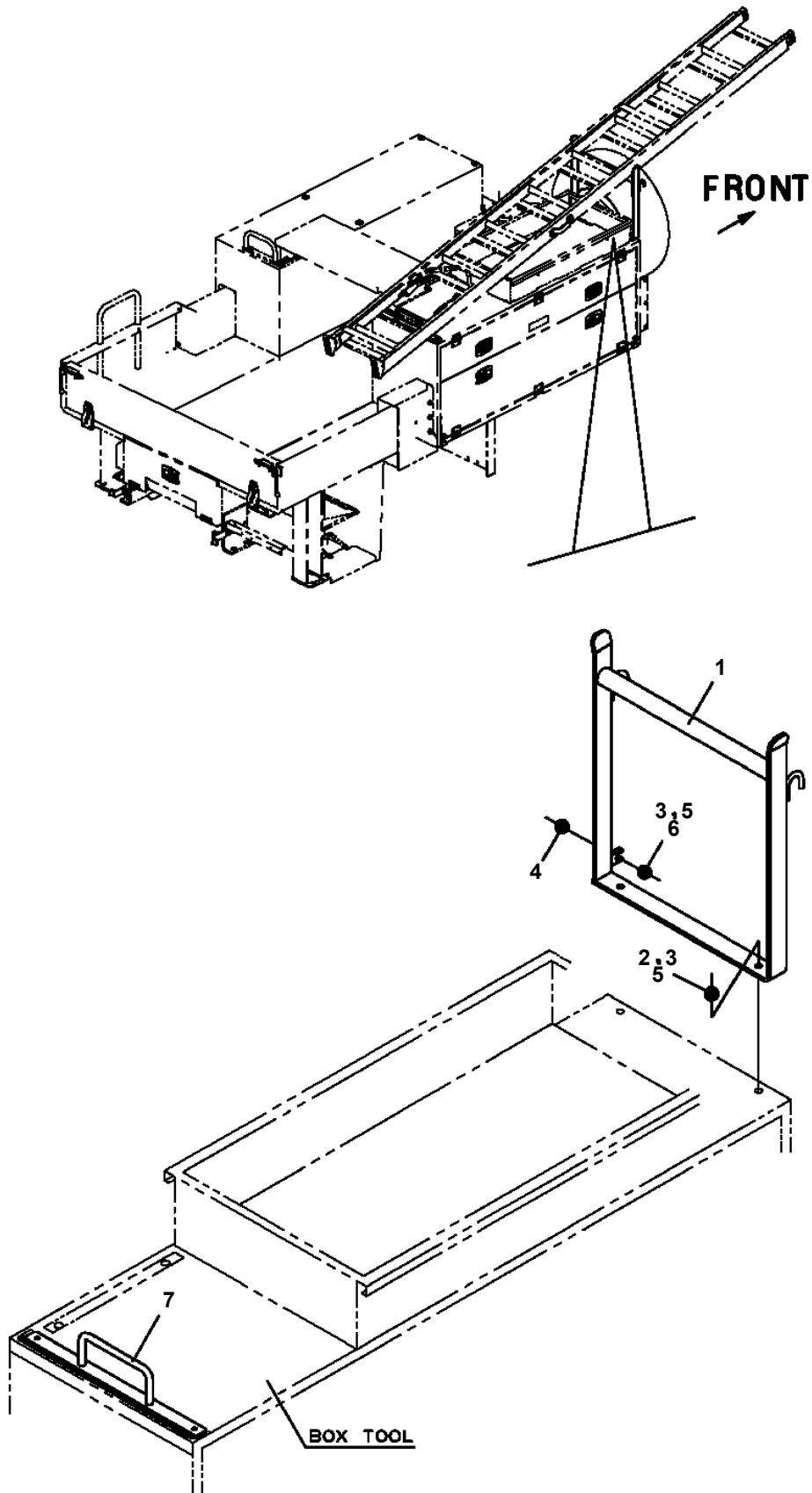




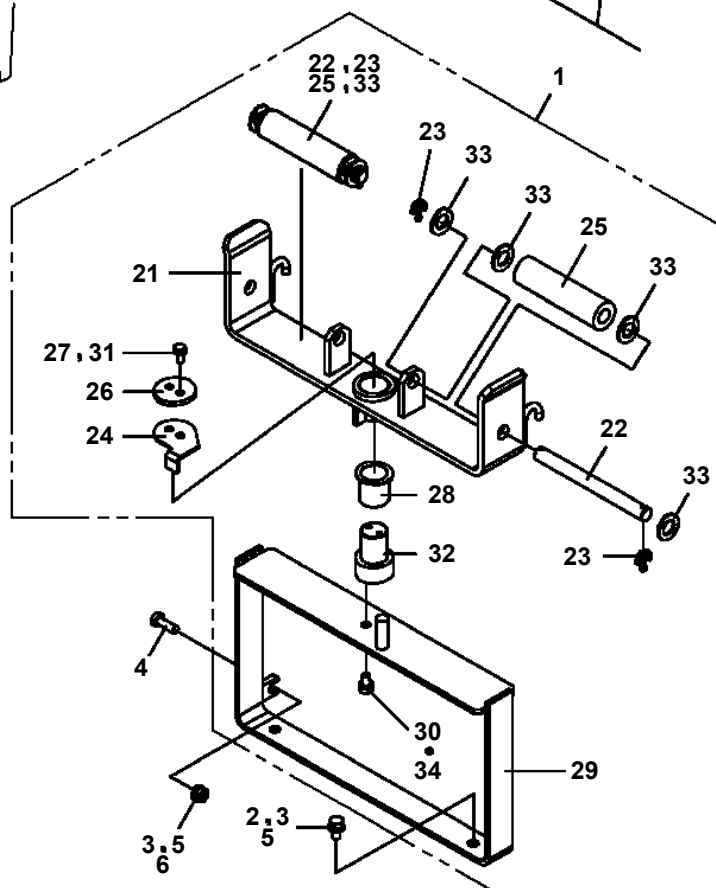
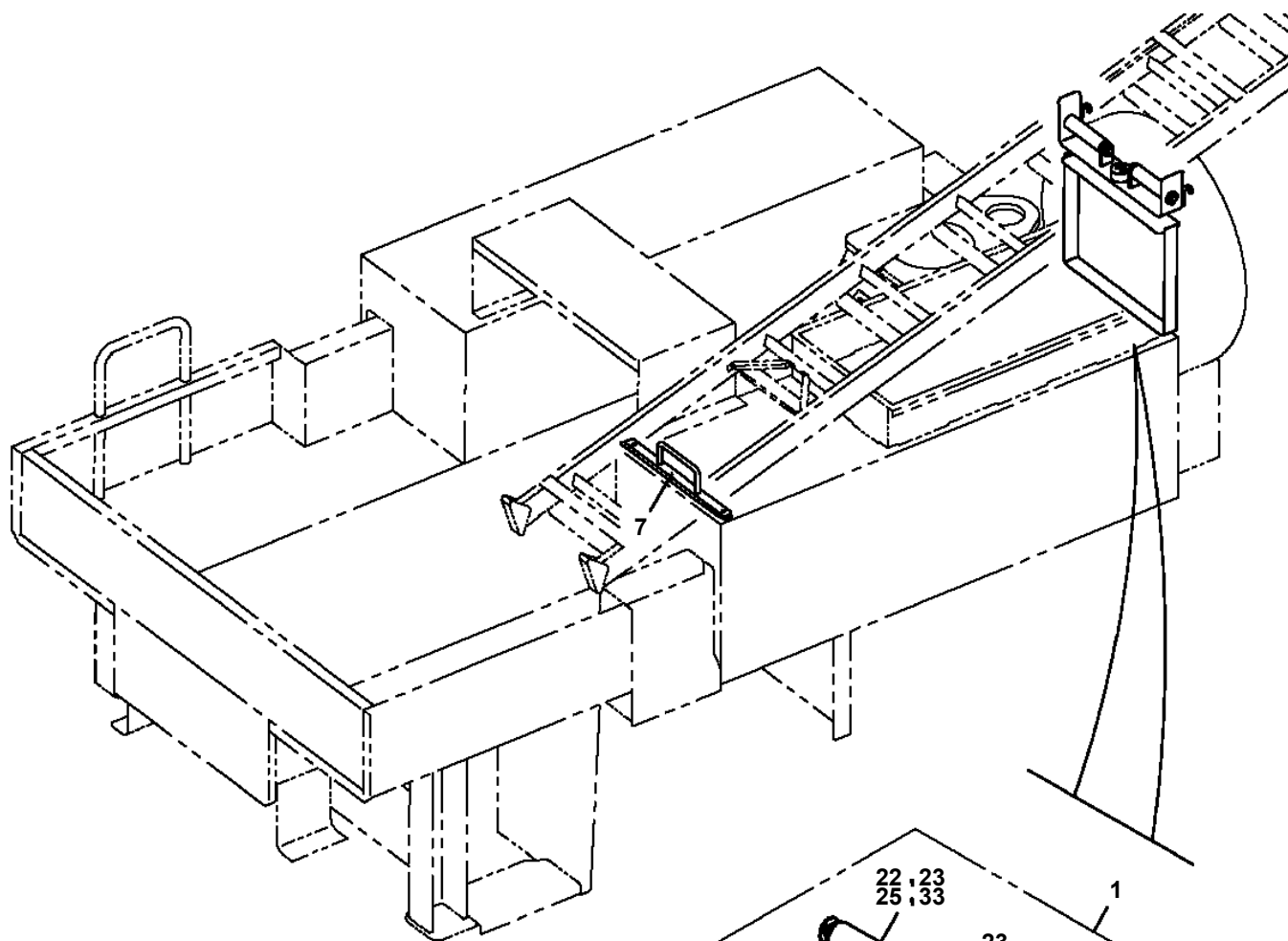
AT-110-5 42084530442 UPPER,LOWER,HINO TKG-XZU675M-TQMQC3  
 PR5100062-00 RELAY BOX ASSY



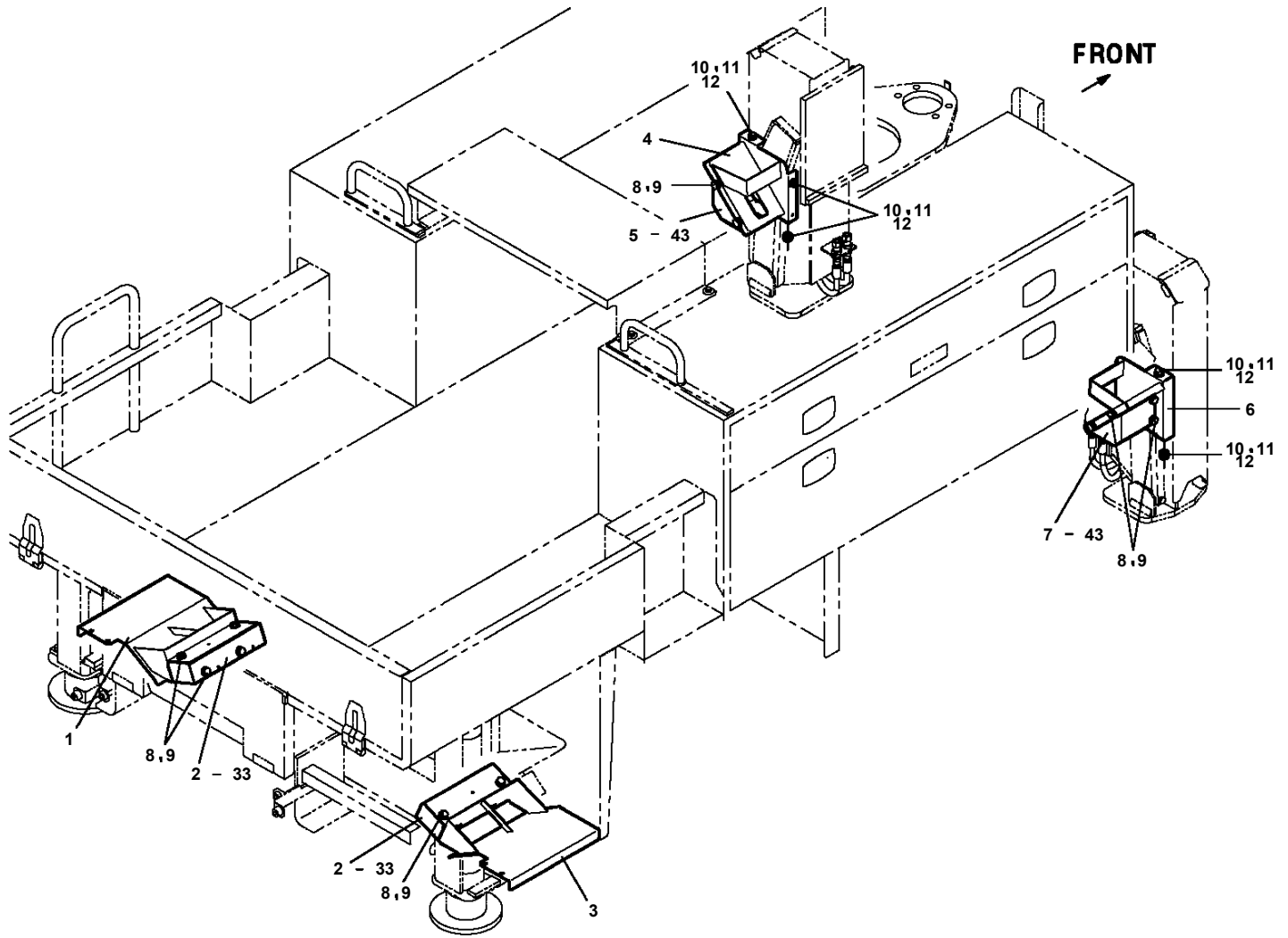
AT-110-5 42084530442 UPPER,LOWER,HINO TKG-XZU675M-TQMQC3  
PS5420229-00 SUPPORT ASSY (2-DECK TOOL BOX: FIXED LADDER REST)



AT-110-5 42084530442 UPPER,LOWER,HINO TKG-XZU675M-TQMQC3  
PS5420267-00 SUPPORT ASSY (2-DECKER:ROTARY RADDER REST)

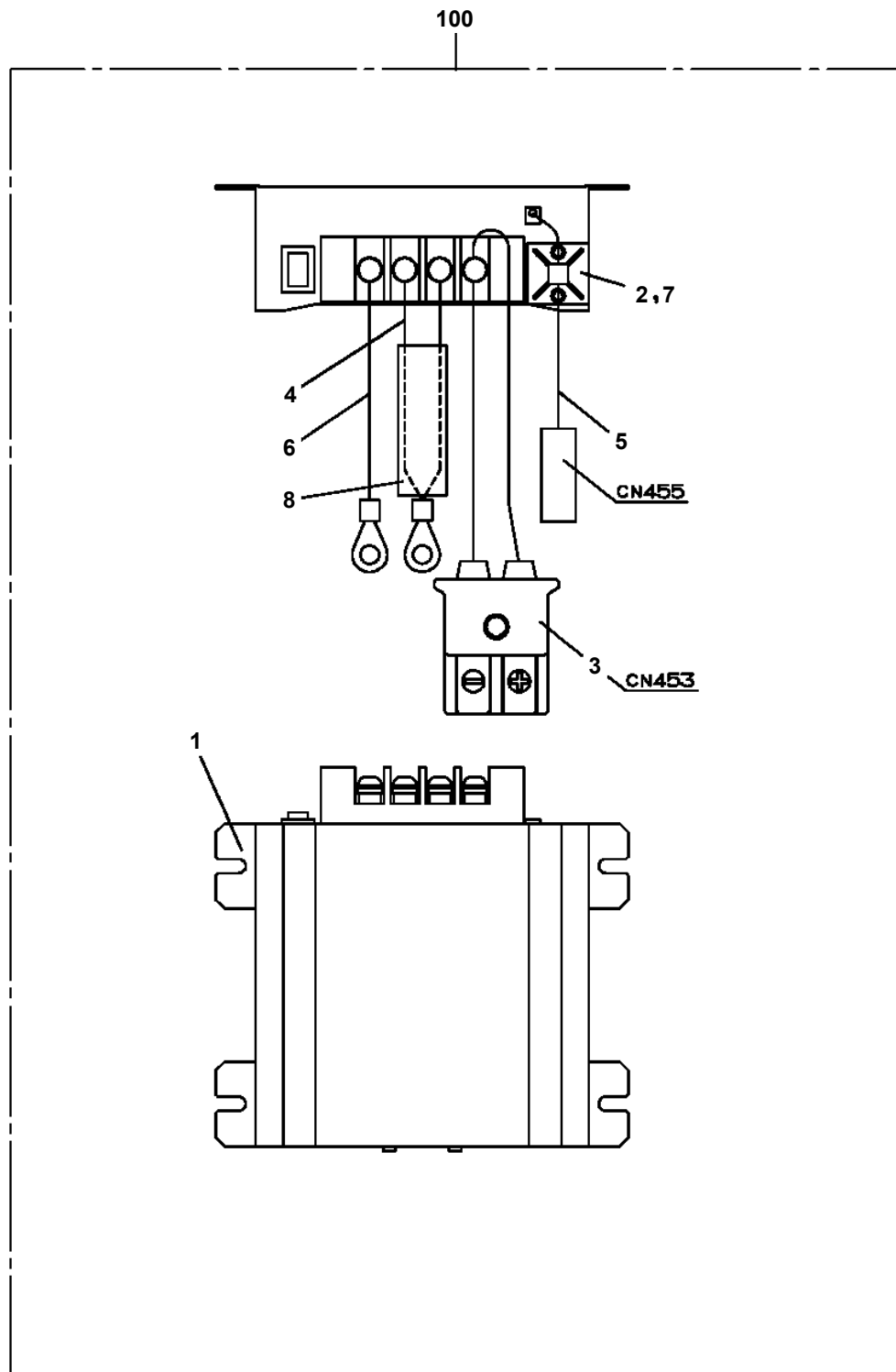


**AT-110-5 42084530442 UPPER,LOWER,HINO TKG-XZU675M-TQMQC3  
PS5420400-00 SUPPORT ASSY**

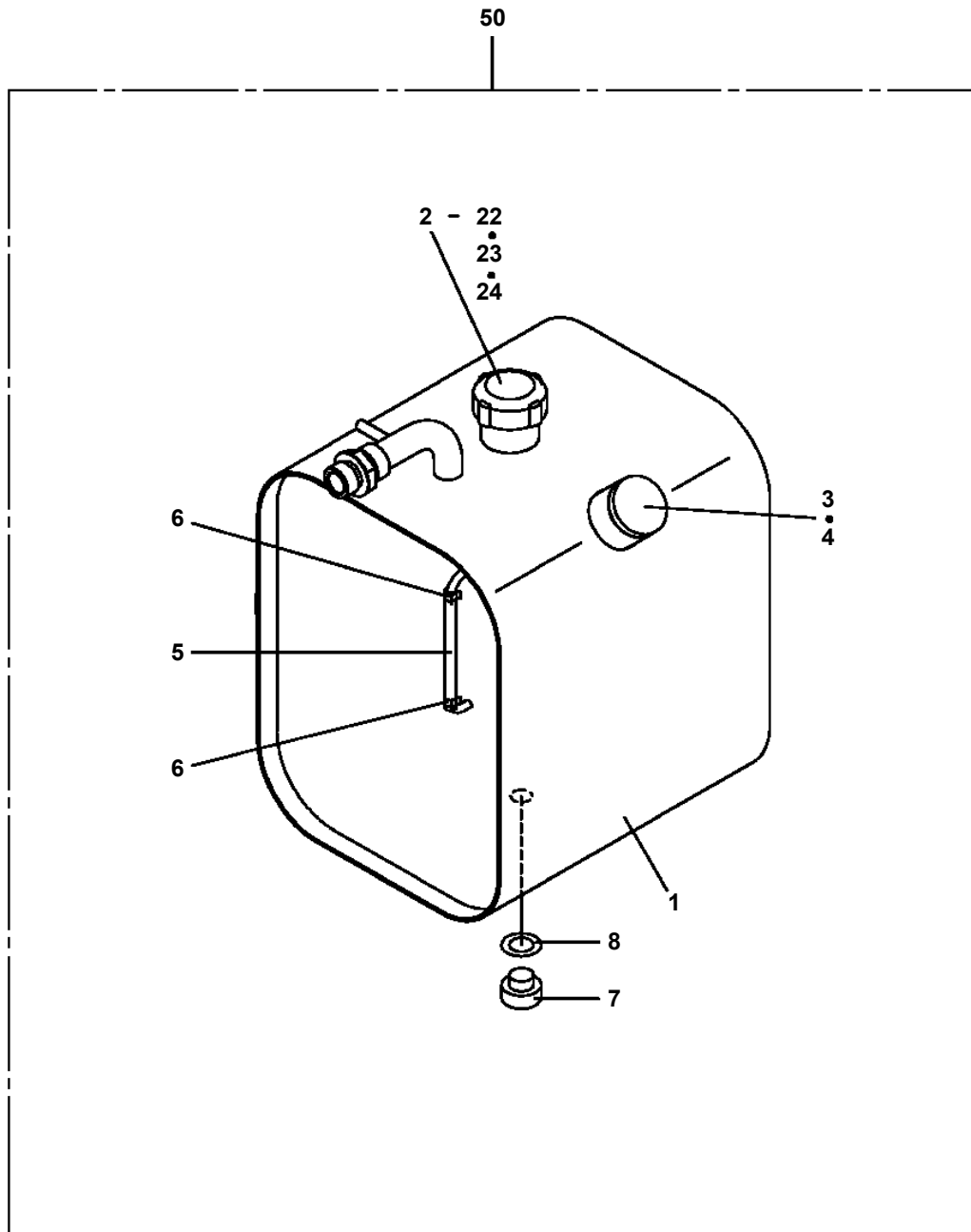




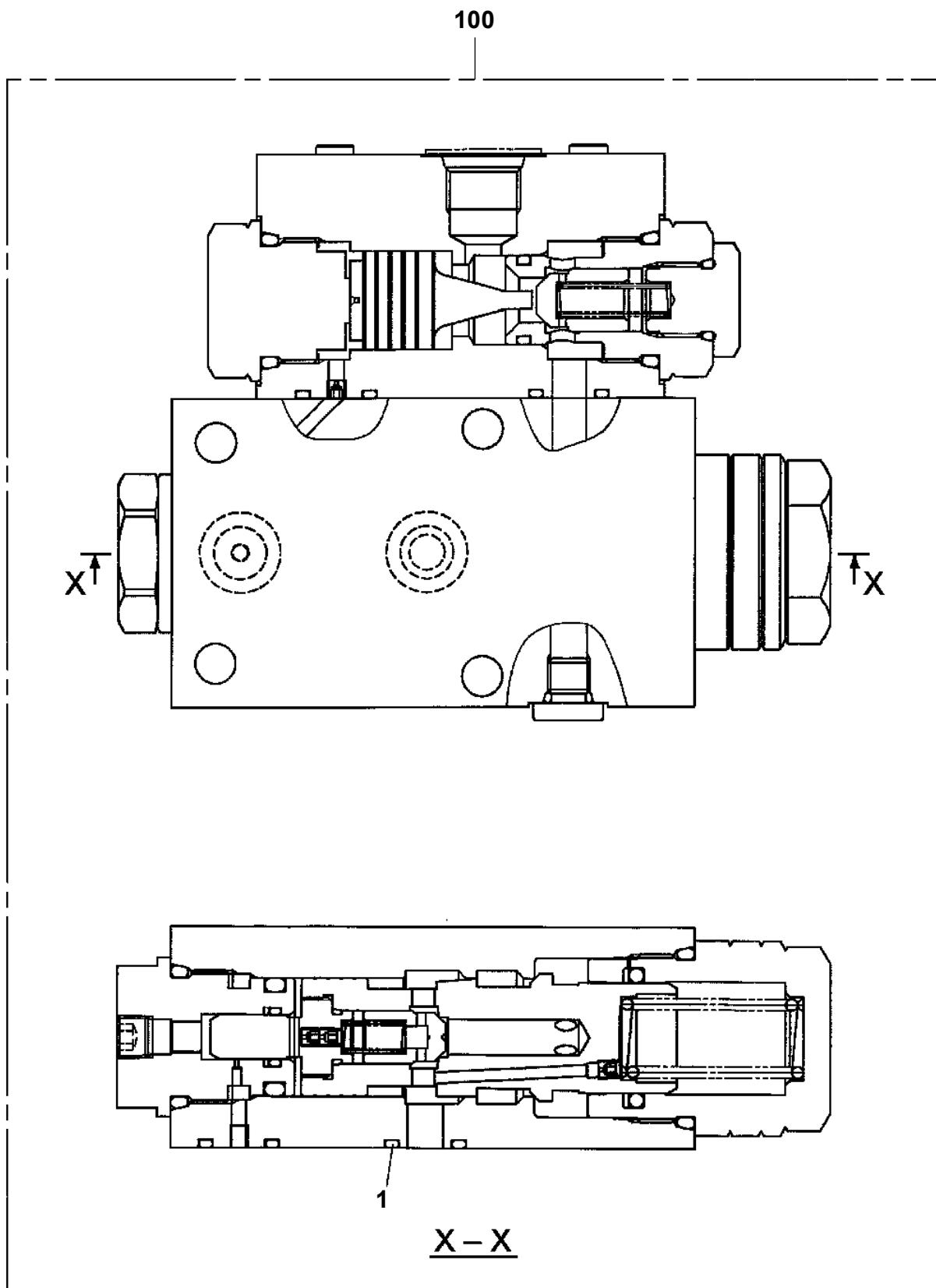
AT-110-5 42084530442 UPPER,LOWER,HINO TKG-XZU675M-TQMQC3  
PS5530195-00 SWITCH ASSY



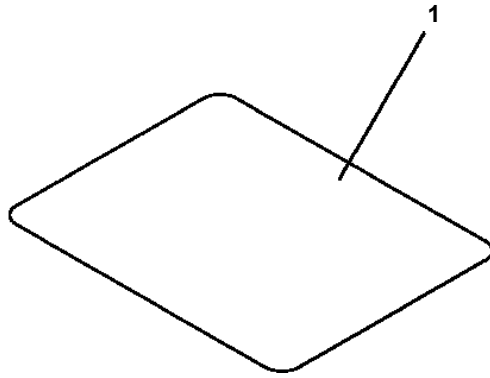
AT-110-5 42084530442 UPPER,LOWER,HINO TKG-XZU675M-TQMQC3  
PT5090008-00 TANK ASSY,OIL



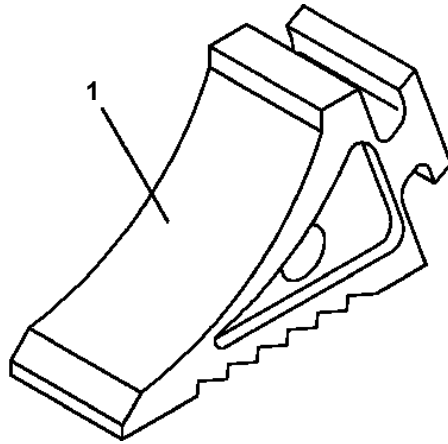
AT-110-5 42084530442 UPPER,LOWER,HINO TKG-XZU675M-TQMQC3  
PV5070007-00 VALVE ASSY,COUNTERBALANCE



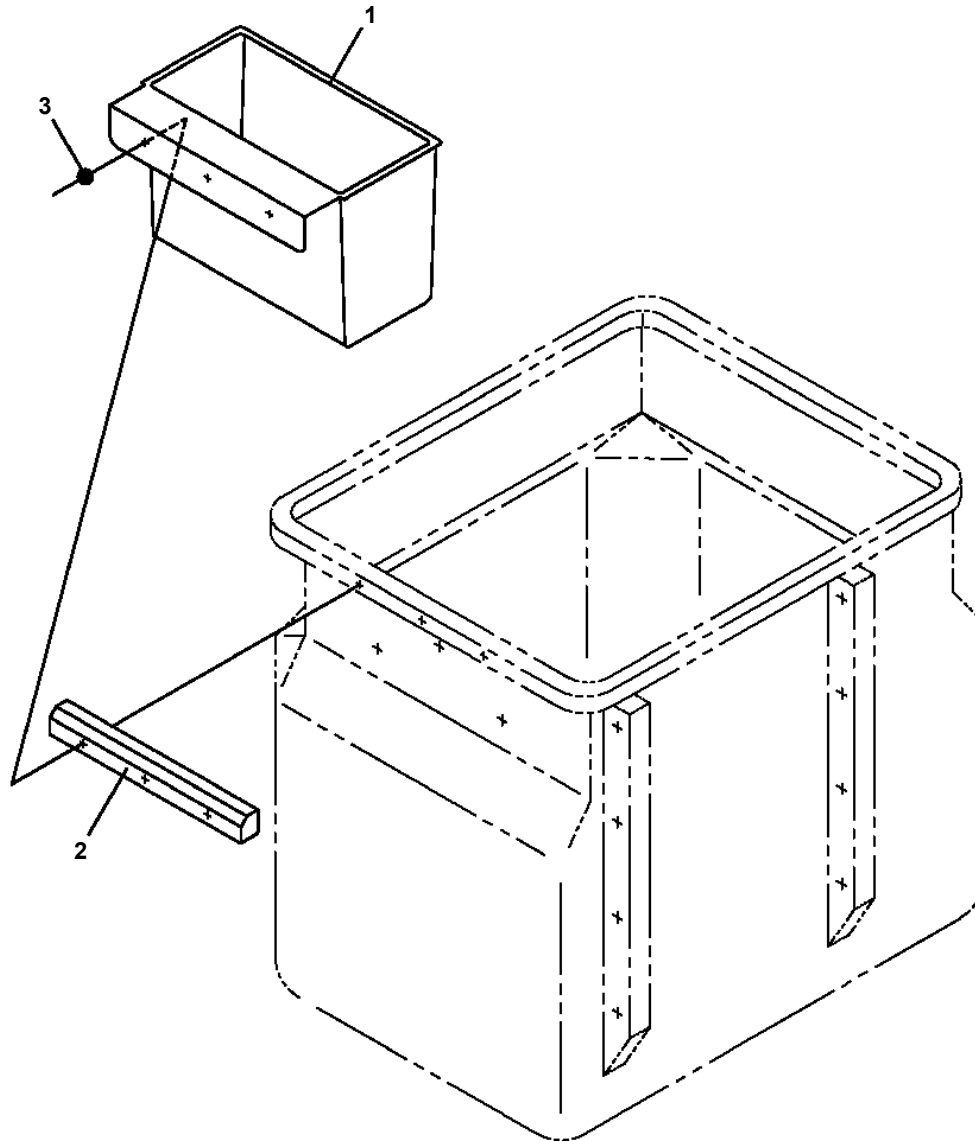
**AT-110-5 42084530442 UPPER,LOWER,HINO TKG-XZU675M-TQMQC3  
PW1010251-00 ACCESSORIES (MAT/FOR SI BUCKET)**



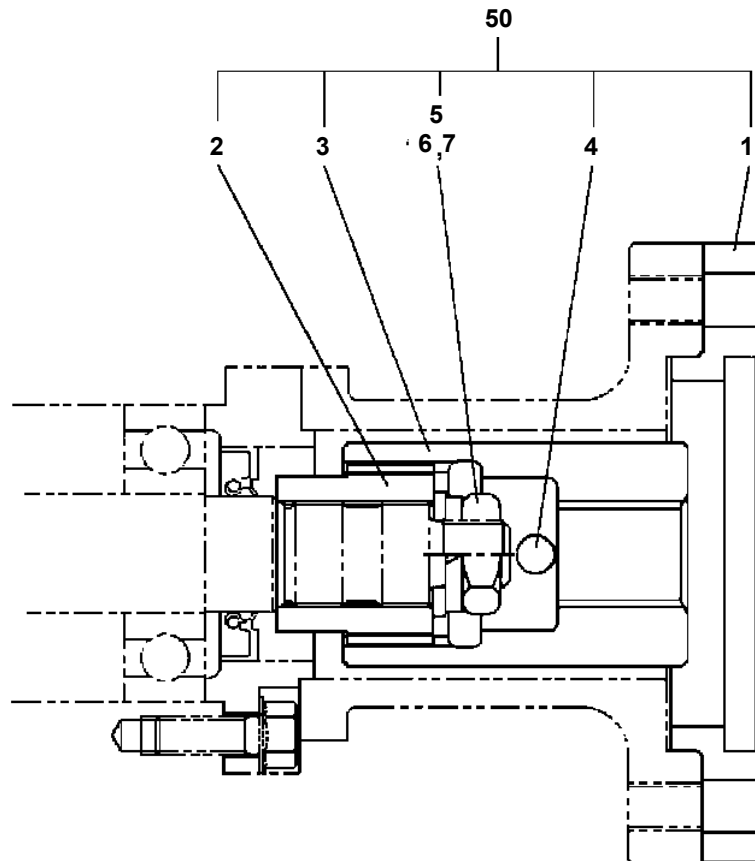
**AT-110-5 42084530442 UPPER,LOWER,HINO TKG-XZU675M-TQMQC3  
PW1050018-01 WEDGE (STOPPER FOR TIRE/JUSTIN)**



AT-110-5 42084530442 UPPER,LOWER,HINO TKG-XZU675M-TQMQC3  
PX1350803-00 BOX,TOOL (NEO KANSAI/BUCKET)

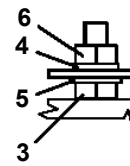
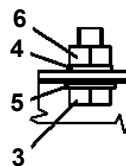
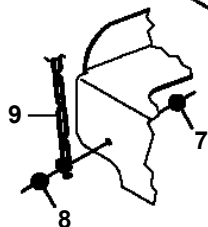
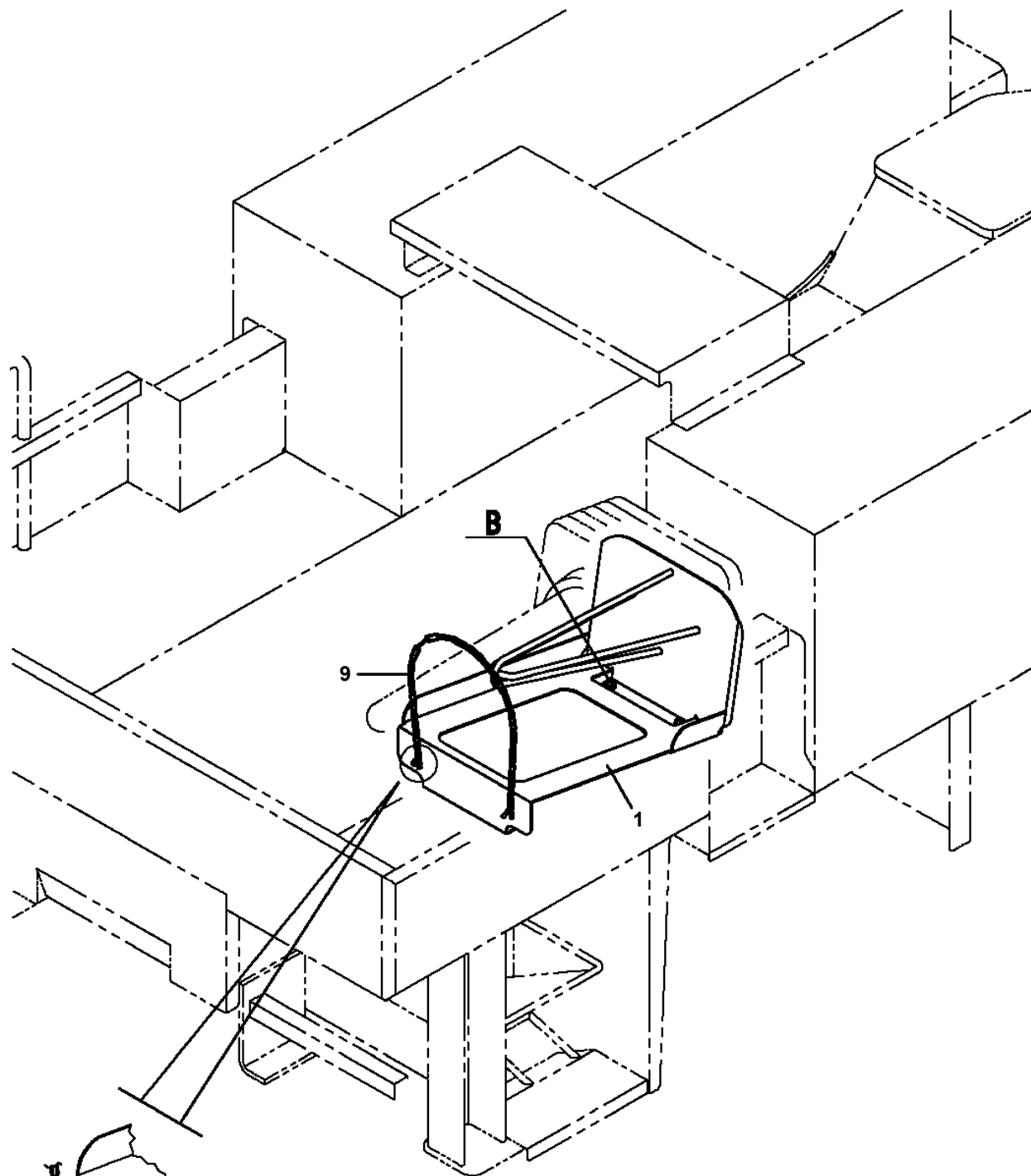


AT-110-5 42084530442 UPPER,LOWER,HINO TKG-XZU675M-TQMQC3  
PX1830012-01 COUPLING



PTO

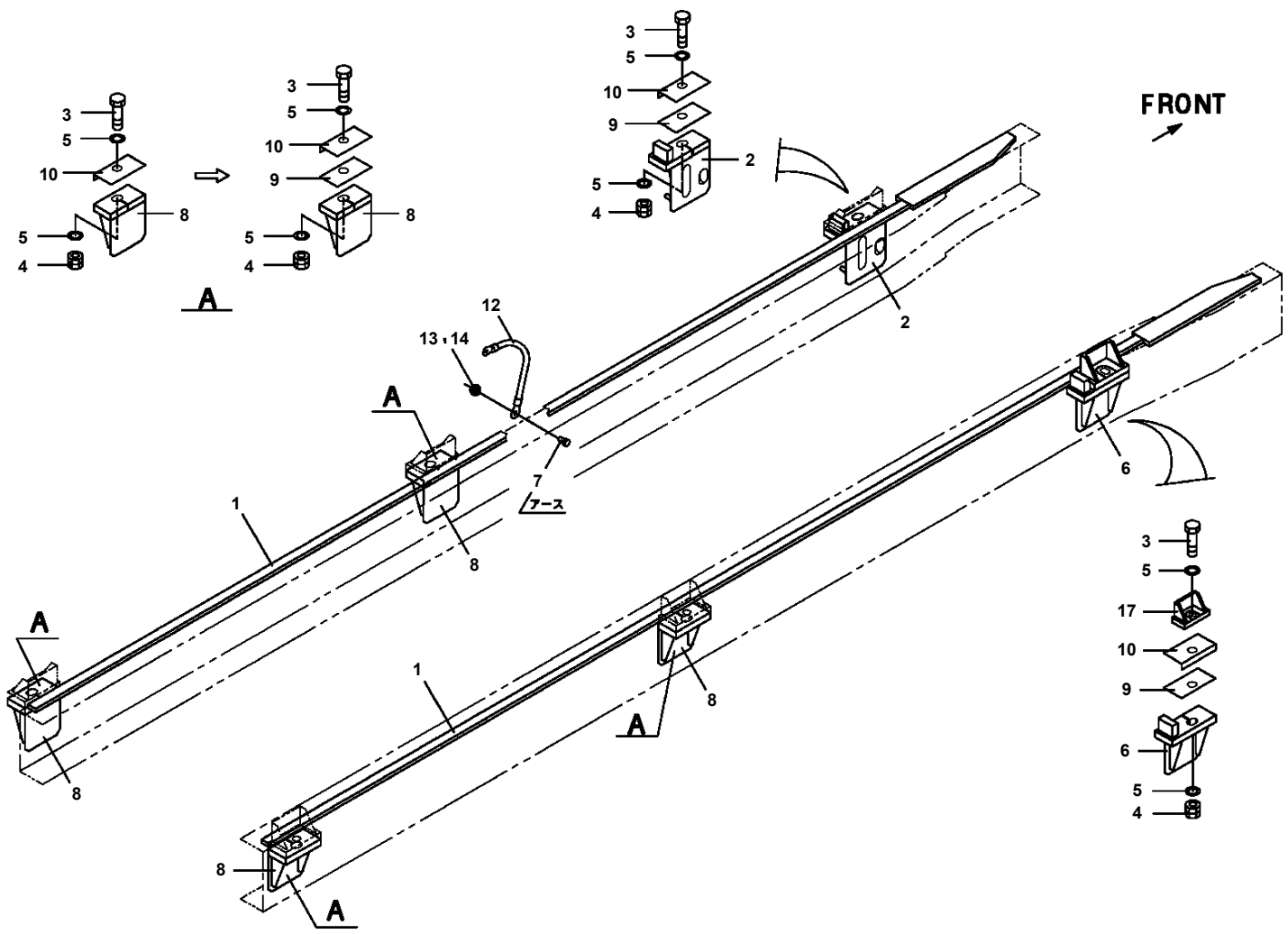
AT-110-5 42084530442 UPPER,LOWER,HINO TKG-XZU675M-TQMQC3  
PX5010569-00 MOUNT ASSY (SAFETY CONE SUPPORT)



ハイブリッドオプション  
選択時

**B**

AT-110-5 42084530442 UPPER,LOWER,HINO TKG-XZU675M-TQMQC3  
PX5360102-01 MOUNT ASSY,FRAME



# AT-110-5 42084530442 UPPER,LOWER,HINO TKG-XZU675M-TQMQC3

Pos No.	Parts No	Parts Name	Qty	Unit	Technical Data	Serial No (Start)	Serial No (End)	Remarks	Pages
1	42393891100	PLATE (NON-SLIP)	1						
2	42508730030	SUPPORT	1						
3	90101210016	BOLT	3		M10X16				
4	90302041001	WASHER,SPRING	3		10				

**AT-110-5 42084530442 UPPER,LOWER,HINO TKG-XZU675M-TQMQC3**

Pos No.	Parts No	Parts Name	Qty	Unit	Technical Data	Serial No (Start)	Serial No (End)	Remarks	Page
1	42443811000	JOINT ASSY,SWIVEL	1						000
2	90171112028	BOLT	2		M12X28				
3	90302041201	WASHER,SPRING	2		12				
4	42442800100	PLATE	1						

# AT-110-5 42084530442 UPPER,LOWER,HINO TKG-XZU675M-TQMQC3

Pos No.	Parts No	Parts Name	Qty	Unit	Technical Data	Serial No (Start)	Serial No (End)	Remarks	Pages
2	90101210025	BOLT	8		M10X25				
3	90302041001	WASHER,SPRING	8		10				
4	37000506590	PLATE	8		T=1.6		HK0751		
	37000505950	PLATE	8		T=3.2	HK0752			
6	42839100100	SUPPORT	1						
7	90101208014	BOLT	8		M8X14				
9	42839110100	SUPPORT	2						
11	90302040801	WASHER,SPRING	8		8				
12	42839101002	BOX,TOOL	1						000037
13	42839103002	BOX,TOOL	1				HK0751		000040
	42839103003	BOX,TOOL	1			HK0752			000046
14	37000547660	PLATE	4		T=2.3				

# AT-110-5 42084530442 UPPER,LOWER,HINO TKG-XZU675M-TQMQC3

Pos No.	Parts No	Parts Name	Qty	Unit	Technical Data	Serial No (Start)	Serial No (End)	Remarks	Pages
1	42839503000	BOX,TOOL	1				HK0751		000041
	42839503001	BOX,TOOL	1			HK0752			000044
2	42839501000	BOX,TOOL	1						000042
3	90101210025	BOLT	8		M10X25				
4	90302041001	WASHER,SPRING	8		10				
5	37000506590	PLATE	8		T=1.6		HK0751		
	37000505950	PLATE	8		T=3.2	HK0752			
6	42839110200	SUPPORT	1						
7	90101208014	BOLT	8		M8X14				
8	42839110100	SUPPORT	2						
11	90302040801	WASHER,SPRING	8		8				
13	90302040801	WASHER,SPRING	4		8				

CLICK HERE TO **DOWNLOAD** THE COMPLETE MANUAL

- Thank you very much for reading the preview of the manual.
- You can download the complete manual from: [www.heydownloads.com](http://www.heydownloads.com) by clicking the link below



- Please note: If there is no response to CLICKING the link, please download this PDF first and then click on it.

CLICK HERE TO **DOWNLOAD** THE COMPLETE MANUAL