

AT-100S-1 42080100001 UPPER

PB1000410-01 HYDRAULIC PRESSURE GENERATING SYSTEM
PC1000327-01 OUTRIGGER SYSTEM
PD1000159-01 SWING SYSTEM
PE1000380-01 ELEVATING SYSTEM
PG1000343-02 TELESCOPING SYSTEM
PH1000342-00 SAFETY DEVICES
PJ3000085-02 PLATFORM SYSTEM
PK1000391-00 FRAME
PL1000400-01 CONTROL DEVICES
PN1000132-02 ELECTRIC EQUIPMENT
PO1000131-03 INDICATION PLATES
PW1000118-00 ACCESSORIES & TOOLS
PX1000421-00 MOUNTING PARTS
PY1000359-05 OPTIONS
ASSEMBLY

CLICK HERE TO **DOWNLOAD** THE COMPLETE MANUAL

- Thank you very much for reading the preview of the manual.
- You can download the complete manual from: www.heydownloads.com by clicking the link below



- Please note: If there is no response to CLICKING the link, please download this PDF first and then click on it.

CLICK HERE TO **DOWNLOAD** THE COMPLETE MANUAL

AT-100S-1 42080100001 UPPER

Pos No.	Parts No	Parts Name	Qty	Unit	Technical Data	Serial No (Start)	Serial No (End)	Remarks	P
1	(*****)	BOOM	1						0
2	(*****)	CYLINDER,TELESCOPING	1						0
3	(*****)	PIPING,BOOM	1						0

AT-100S-1 42080100001 UPPER

Pos No.	Parts No	Parts Name	Qty	Unit	Technical Data	Serial No (Start)	Serial No (End)	Remarks
1	(*****)	ELEC.ASSY (BOOM)	1				HF0063	
	(*****)	ELEC.ASSY (BOOM)	1			HF0064		
2	(*****)	ELEC.ASSY (DETECTOR)	1					
3	(*****)	ELEC.ASSY (PLATFORM)	1					
4	(*****)	ELEC.ASSY (SWING FRAME)	1					
5	(*****)	ELEC.ASSY (FRAME)	1				HF0060	
	(*****)	ELEC.ASSY (FRAME)	1			HF0061		

AT-100S-1 42080100001 UPPER

PJ3110018-00 PIPING,PLATFORM
PJ3170003-00 REDUCER,PLATFORM SWING SPEED
PJ3170005-00 REDUCER,PLATFORM SWING SPEED
PJ3180004-03 OPE.ASSY,PLATFORM
PJ3220006-00 JOINT,ROTARY INSTALLATION
PK1010577-00 FRAME
PK1100295-00 SWING FRAME
PK1200336-01 COVER,SWING FRAME
PL1100193-08 BOX,OPERATION
PL1250022-01 VALVE,CONTROL
PM5230001-01 MOTOR,OIL
PN1011679-03 ELEC.ASSY (POWER SOURCE, UPPER,3.3/2.5M)
PN1011944-02 ELEC.ASSY (POWER SOURCE,LOWER)
PN1012313-01 ELEC.ASSY (DETECTOR)
PN1012314-01 ELEC.ASSY (PLATFORM)
PN1012315-02 ELEC.ASSY (SWING FRAME)
PN1012327-00 ELEC.ASSY (BOOM)
PN1012328-00 ELEC.ASSY (FRAME)
PN1012794-00 ELEC.ASSY (BOOM)
PN1012845-00 ELEC.ASSY (POWER SOURCE,LOWER/FOR TIKEN)
PN1012848-01 ELEC.ASSY (FRAME)
PN1013100-01 ELEC.ASSY
PN1013101-01 ELEC.ASSY
PN1060086-05 SWITCH PANEL
PN1080129-01 LAMP (FLICKER/ROLLER JACK)
PN1080304-00 LAMP (HALOGEN LIGHT/AC120V 500W)
PN1110235-01 RELAY ASSY (BOX)
PN1110285-01 RELAY
PN1430036-01 GENERATOR
PO1012868-00 PLATE ASSY,NAME (BOX,OPERATION)
PO1013026-01 PLATE ASSY,NAME (UPPER)
PO1013698-01 PLATE ASSY,NAME
PP5450004-00 PUMP,GREASE (400CC)
PS5530449-00 SWITCH ASSY
PW1010235-04 ACCESSORIES
PW1030049-01 TOOLS
PW1050018-01 WEDGE (STOPPER FOR TIRE/JUSTIN)
PW5110002-00 WEDGE (STOPPER FOR TIRE/WAZUMI)
PW5110003-00 WEDGE (STOPPER FOR TIRE/NAKAMURA KIKI)
PX1260144-01 STEP (SWING FRAME)
PX1260146-00 STEP (BOOM)
PX1350519-00 BOX,TOOL
PY1090001-00 BELT,SAFETY
PY1180265-01 LAMP (2.5M DECK)
PY1180266-01 LAMP (FLICKER)
PY1910021-00 HOSE (FOR GREASE PUMP)
PY1930004-00 BLOCK,RUBBER (WAZUMI)
PY1930005-00 BLOCK,RUBBER (NAKAMURA)

AT-100S-1 42080100001 UPPER

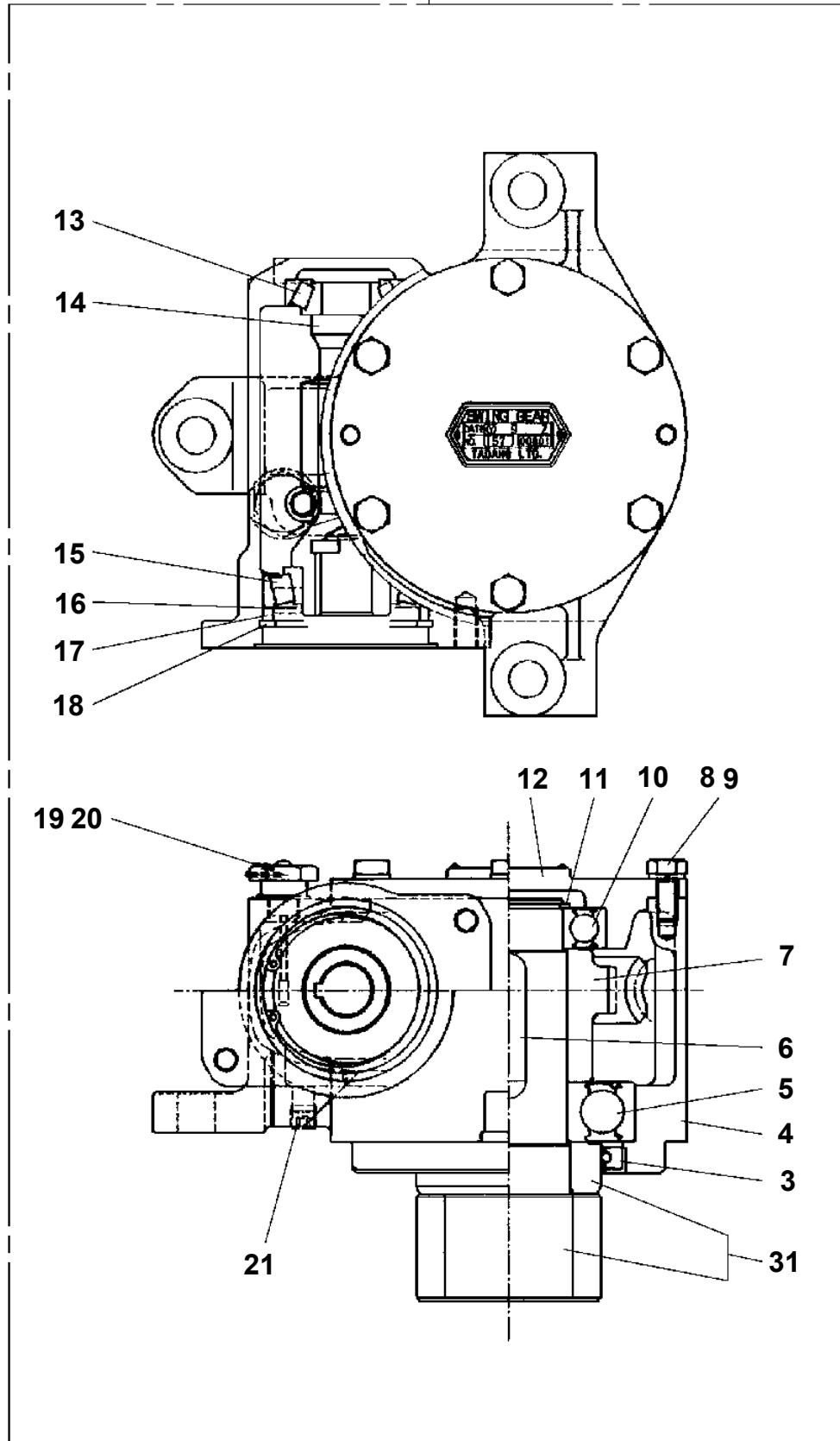
Pos No.	Parts No	Parts Name	Qty	Unit	Technical Data	Serial No (Start)	Serial No (End)	Remarks	P
1	91660003001	SEAL,DUST	1						
2	91694003000	PACKING	1						
3	91002904000	O-RING	1		1B G40				
4	36040335021	COVER,ROD	1						
5	36042715100	CYLINDER	1						
6	36042715200	ROD	1				HF0027		
7	36042405300	PISTON	1				HF0027		
8	91100104500	SEAL,RING	1				HF0027		
9	90272401800	NUT	1		M18		HF0027		
10	80316090010	PLUG	2		KKT PT1/16				
11	91002802000	O-RING	1		1B P20				
12	91411203501	RING,BACKUP	2			HF0028			
13	90302041801	WASHER,SPRING	1		18	HF0028			
14	36042405301	PISTON	1			HF0028			
15	91684004500	PACKING	2			HF0028			
16	90209201800	NUT	1		M18	HF0028			
22	36042715010	ROD ASSY	1			HF0028			
30	36042419901	PACKING SET	1				HF0027		
40	36042419902	PACKING SET	1		30X45	HF0028			
100	36042710000	CYLINDER,EXTENSION	1						

AT-100S-1 42080100001 UPPER

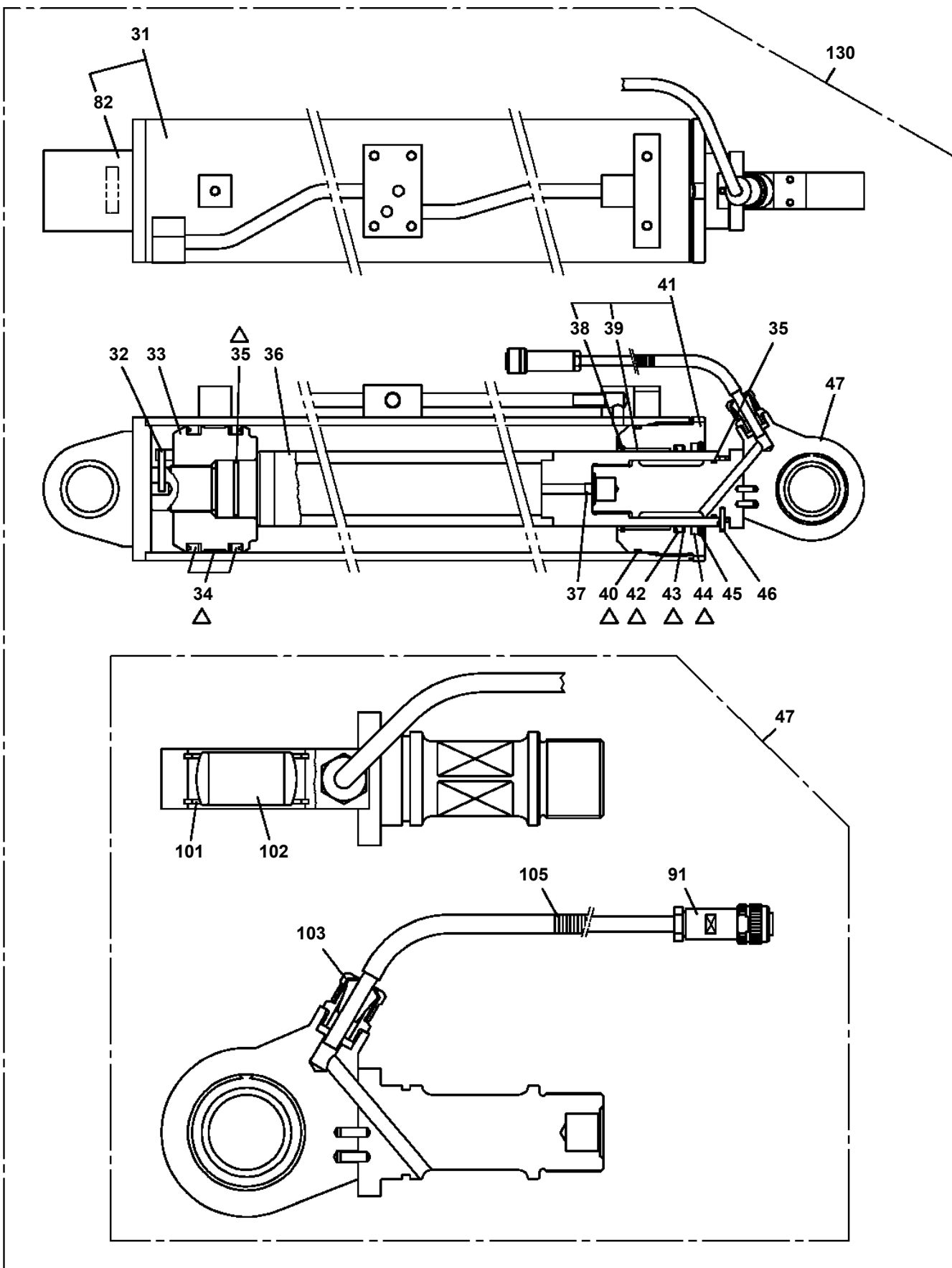
Pos No.	Parts No	Parts Name	Qty	Unit	Technical Data	Serial No (Start)	Serial No (End)	Remarks	Pa
1	80430620400	JOINT	8						
2	37002413180	HOSE	6		L=500				
3	80320010075	FITTING	12		KUD12-020N				
4	37000711170	CLAMP ASSY	4		12X3				
5	81408000160	PIPE,STEEL	1	M	12X1.4T				
6	81408000160	PIPE,STEEL	1	M	12X1.4T				
7	81408000160	PIPE,STEEL	1	M	12X1.4T				
8	80301010100	FITTING	11		KUA12-000N				
9	81408000160	PIPE,STEEL	2	M	12X1.4T				
10	90186208050	BOLT,FLANGE	8		M8X50				
11	37005700030	CLAMP	8		12X2				
12	81408000160	PIPE,STEEL	1	M	12X1.4T				
13	81408000160	PIPE,STEEL	1	M	12X1.4T				
14	80481302025	JOINT	4		L,G1/4-G1/4				
15	91002801100	O-RING	8		1B P11				
16	81408000160	PIPE,STEEL	1	M	12X1.4T				
17	81408000160	PIPE,STEEL	1	M	12X1.4T				
18	81408000160	PIPE,STEEL	1	M	12X1.4T				
19	81408000160	PIPE,STEEL	2	M	12X1.4T				
20	81408000160	PIPE,STEEL	2	M	12X1.4T				
21	81408000160	PIPE,STEEL	1	M	12X1.4T				
22	37002454690	HOSE	2		L=390				
24	91810130240	FASTENER	2						
	91810130240	FASTENER	4			HF0007	HF0006		
25	90101208016	BOLT	3		M8X16				
26	90302040801	WASHER,SPRING	3		8				
27	37000925950	JOINT	1		S,G1/4-G1/4				
28	37000922070	JOINT	3		S,G1/4-G1/4				
29	80305010100	FITTING,TEE	3		KTA12-000N				
30	37002415100	HOSE	4		L=450				
31	81408000341	PIPE,STEEL	2	M	28X3.1T				
32	81408000241	PIPE,STEEL	2	M	18X1.9T				
34	80301010160	FITTING	1		KUA18-000N				
35	80301010241	FITTING	1		KUA28-000N				
36	81408000241	PIPE,STEEL	2	M	18X1.9T				
37	81408000160	PIPE,STEEL	1	M	12X1.4T				
38	37000923490	JOINT	1						
	80481003037	JOINT	1			HF0007	HF0006		
39	91002801400	O-RING	11		1B P14				
40	37000924110	JOINT	1		S,G1/2-G1/2				
41	91002801800	O-RING	6		1B P18				
42	80430620800	JOINT	2						
43	37000925800	JOINT	1		S,G1/2				
44	37000711090	CLAMP ASSY	1		18X2				
	37000714040	CLAMP ASSY	1		18X2	HF0034	HF0033		
45	81408000160	PIPE,STEEL	1	M	12X1.4T				
46	81408000160	PIPE,STEEL	1	M	12X1.4T				
47	81408000160	PIPE,STEEL	2	M	12X1.4T				
48	81408000160	PIPE,STEEL	1	M	12X1.4T				
49	31982590010	HOSE	1						
							HF0006		
50	80320030080	FITTING,ELBOW	1		KLE12-030N				
51	81408000160	PIPE,STEEL	1	M	12X1.4T				
52	81408000160	PIPE,STEEL	1	M	12X1.4T				
53	81408000210	PIPE,STEEL	1	M	15X2.0T				
54	80302090181	FITTING	2		KCO15-030N				
55	80316070080	PLUG	1		PF1/2				
56	81408000160	PIPE,STEEL	1	M	12X1.4T				
57	81408000341	PIPE,STEEL	1	M	28X3.1T				
58	80302090161	FITTING	8		KCO12-030N				
59	80302090322	FITTING	1		KCO28-080N				
60	91002802900	O-RING	1		1B P29				
61	80303130241	FITTING,ELBOW	2		KLO18-040E				
62	42643761020	JOINT	1						

AT-100S-1 42080100001 UPPER
PD1010160-00 REDUCER, SWING SPEED

50

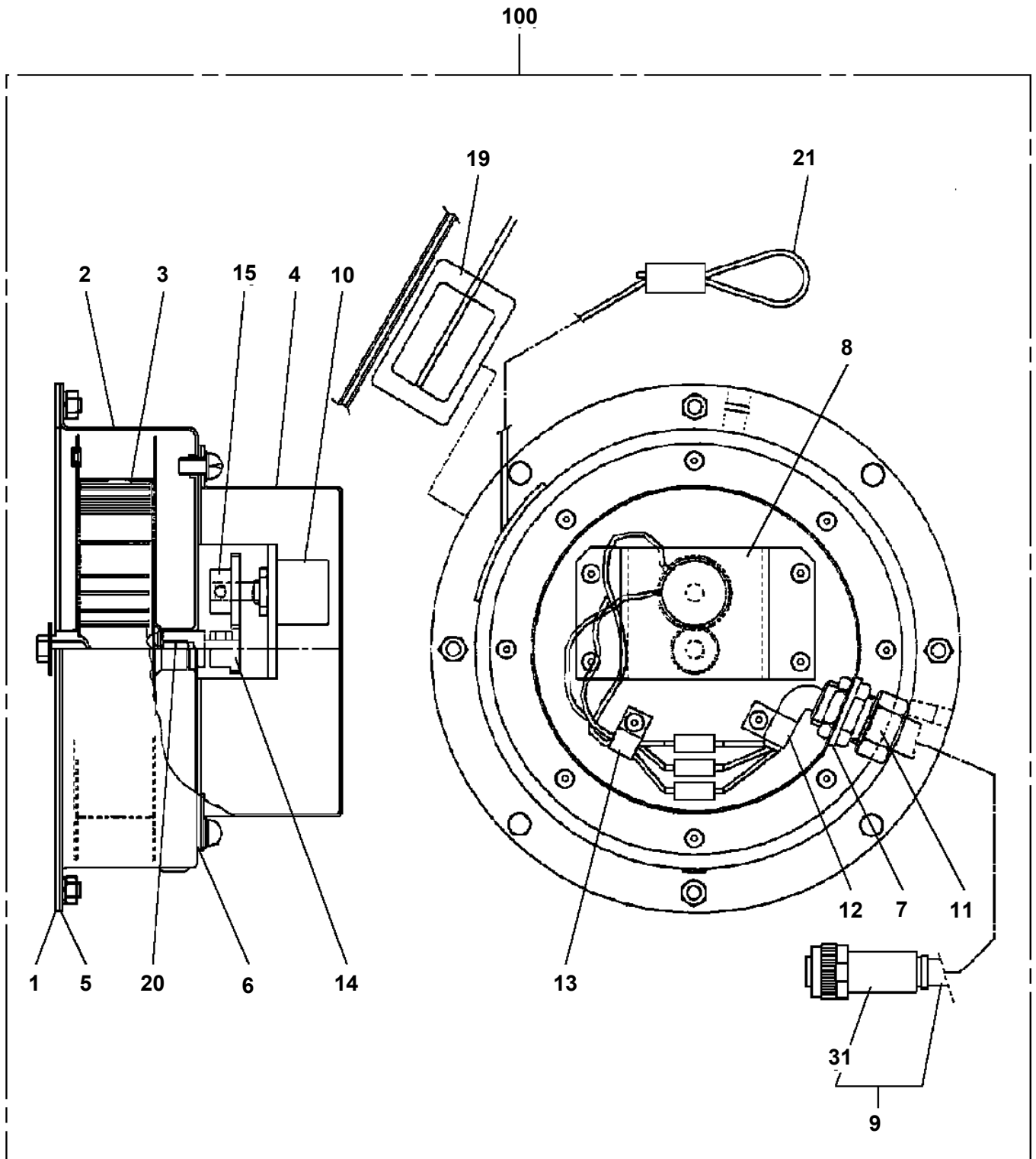


**AT-100S-1 42080100001 UPPER
PE1050097-06 CYLINDER,LEVELING**

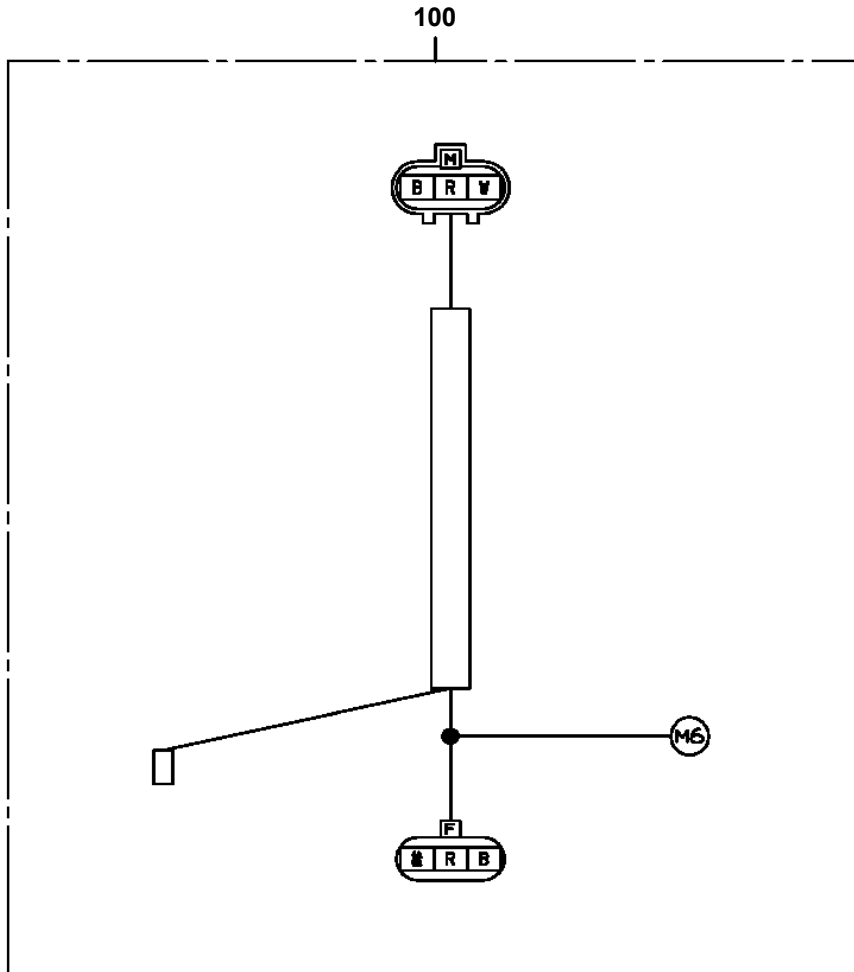


△:PACKING SET KEY NO.120 (KEY NO.34,35,40,42,43,44)

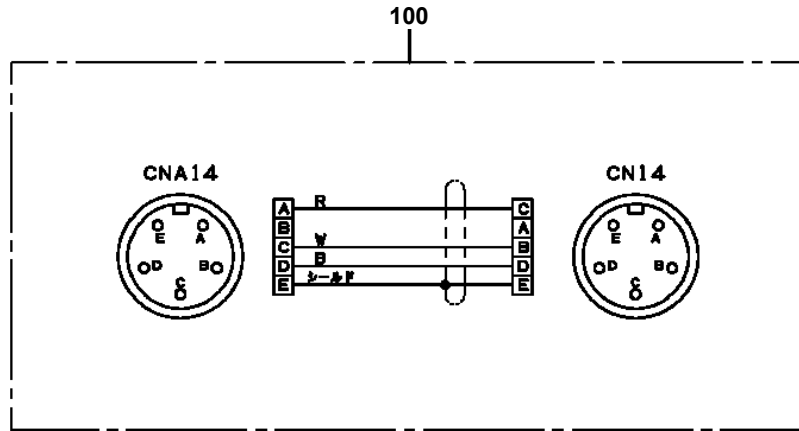
AT-100S-1 42080100001 UPPER
PG1130130-00 DETECTOR,BOOM LENGTH



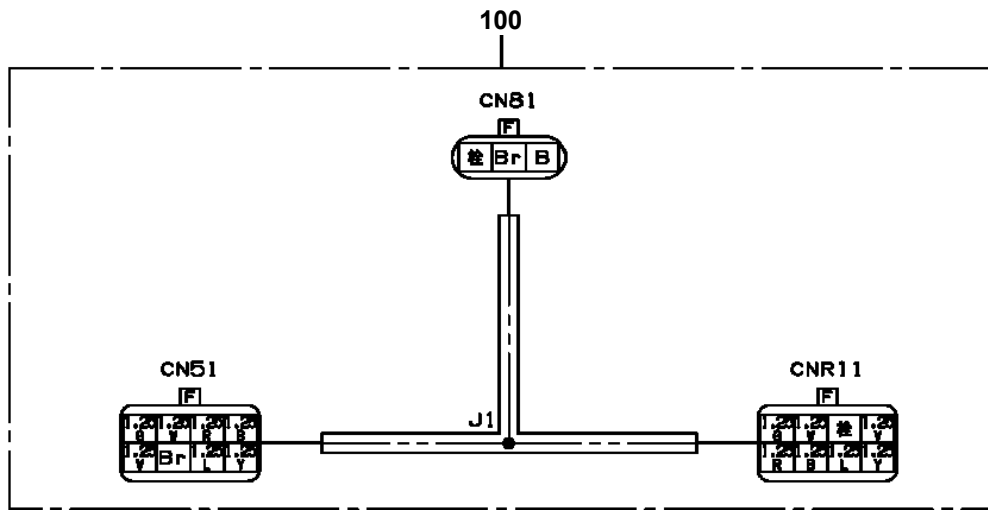
AT-100S-1 42080100001 UPPER
PH5032784-00 HARNESS



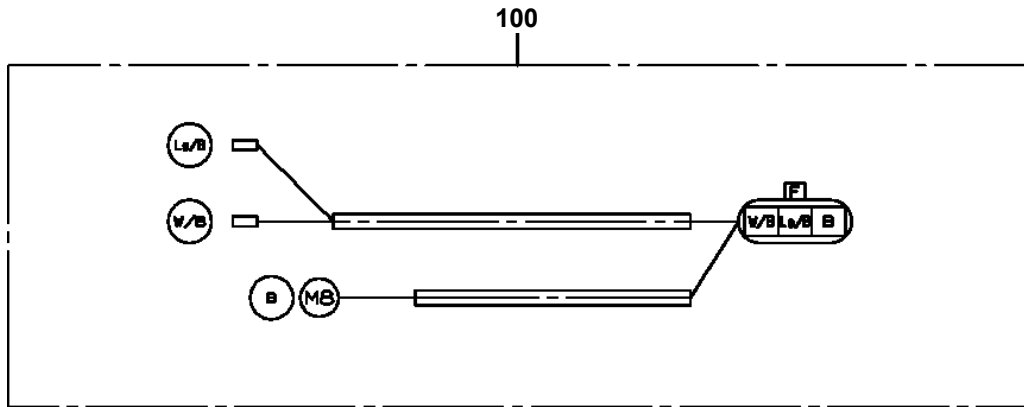
AT-100S-1 42080100001 UPPER
PH5033134-00 HARNESS



AT-100S-1 42080100001 UPPER
PH5033140-00 HARNESS



AT-100S-1 42080100001 UPPER
PH5033148-00 HARNESS



CLICK HERE TO **DOWNLOAD** THE COMPLETE MANUAL

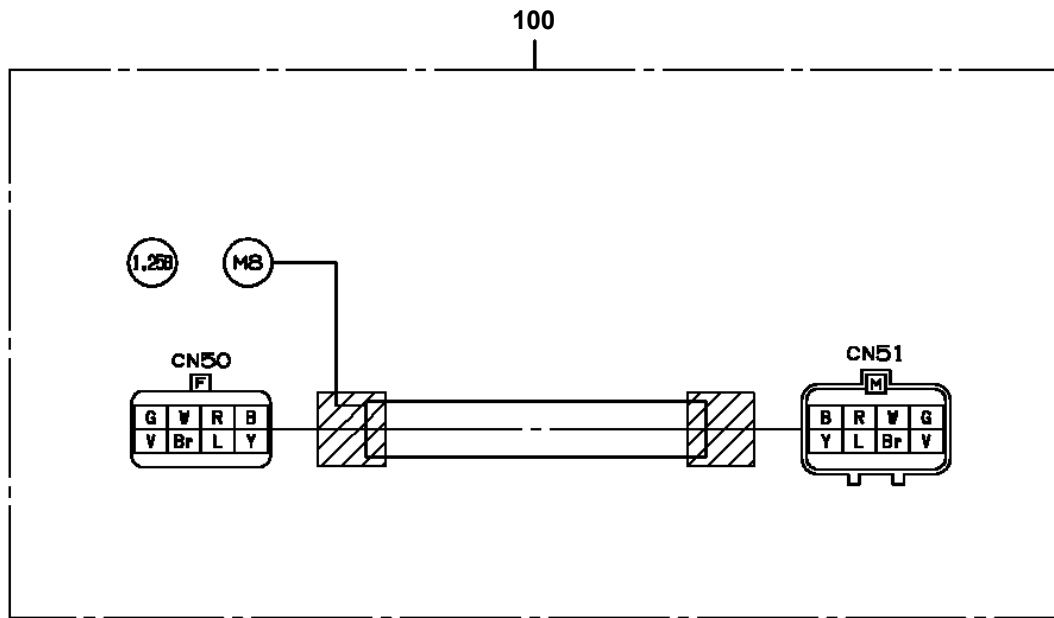
- Thank you very much for reading the preview of the manual.
- You can download the complete manual from: www.heydownloads.com by clicking the link below



- Please note: If there is no response to CLICKING the link, please download this PDF first and then click on it.

CLICK HERE TO **DOWNLOAD** THE COMPLETE MANUAL

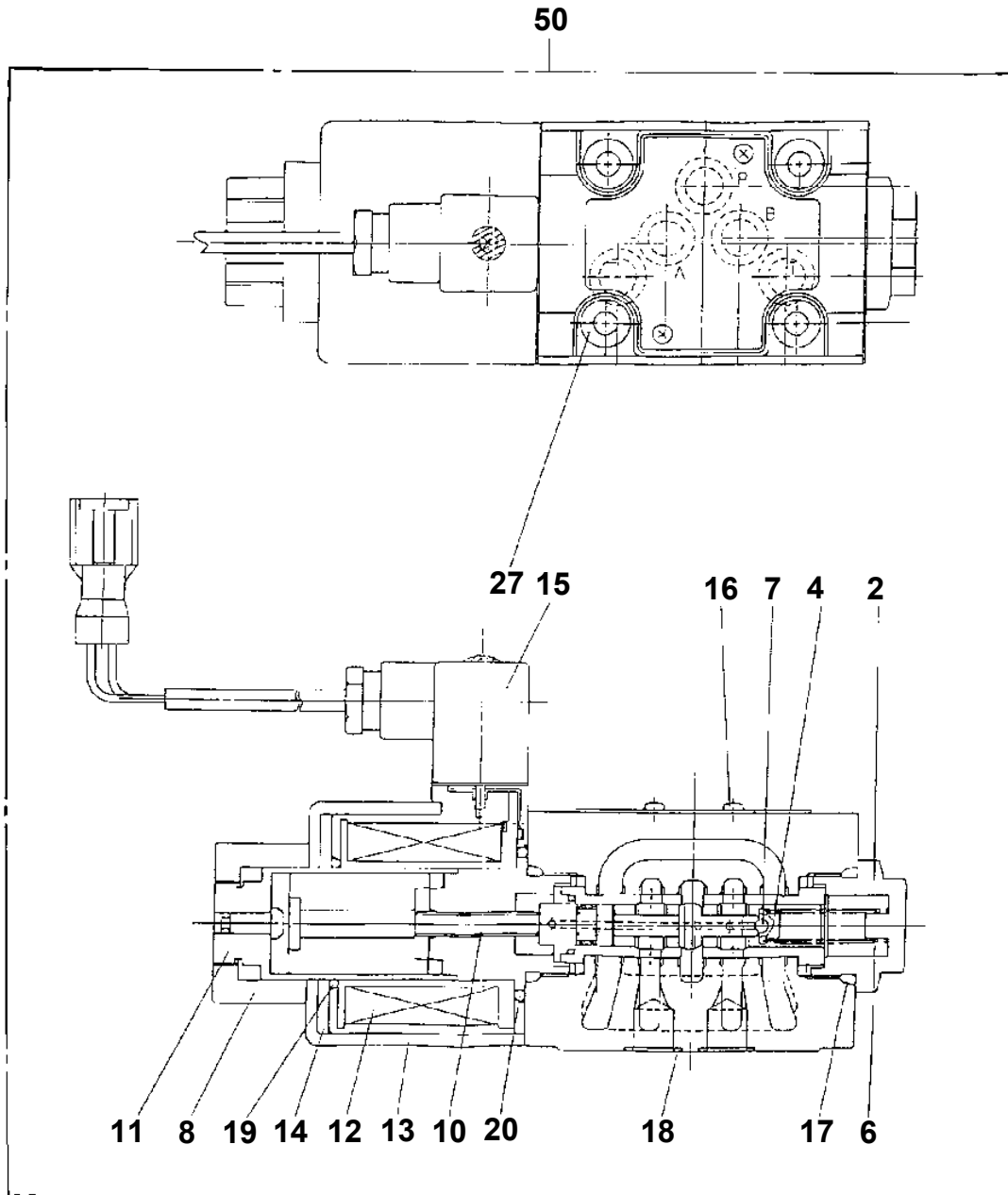
AT-100S-1 42080100001 UPPER
PH5034345-00 HARNESS



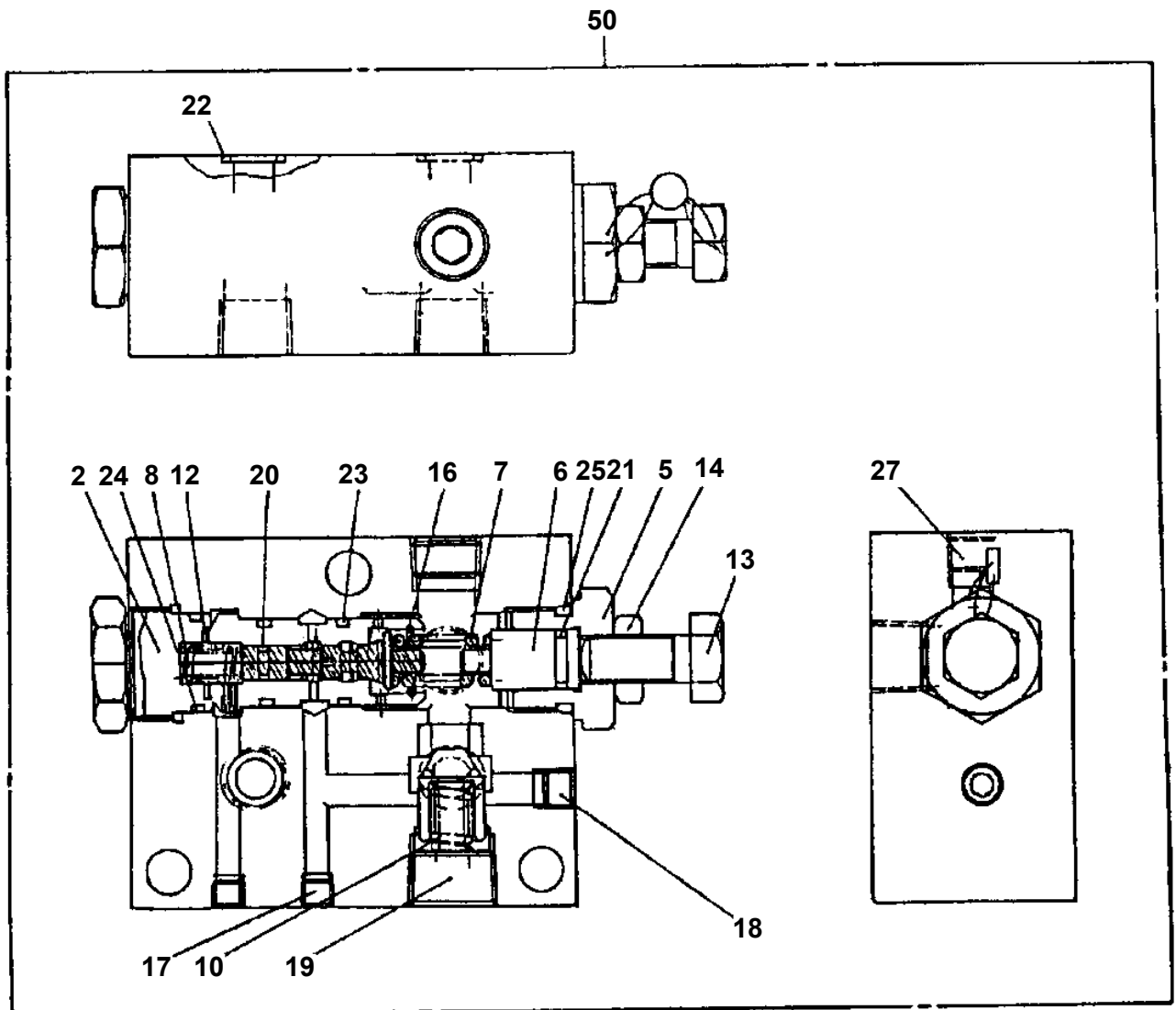
**AT-100S-1 42080100001 UPPER
PI1120183-00 VALVE, SOLENOID**

Assembly Name VALVE, SOLENOID

PI1120183-00



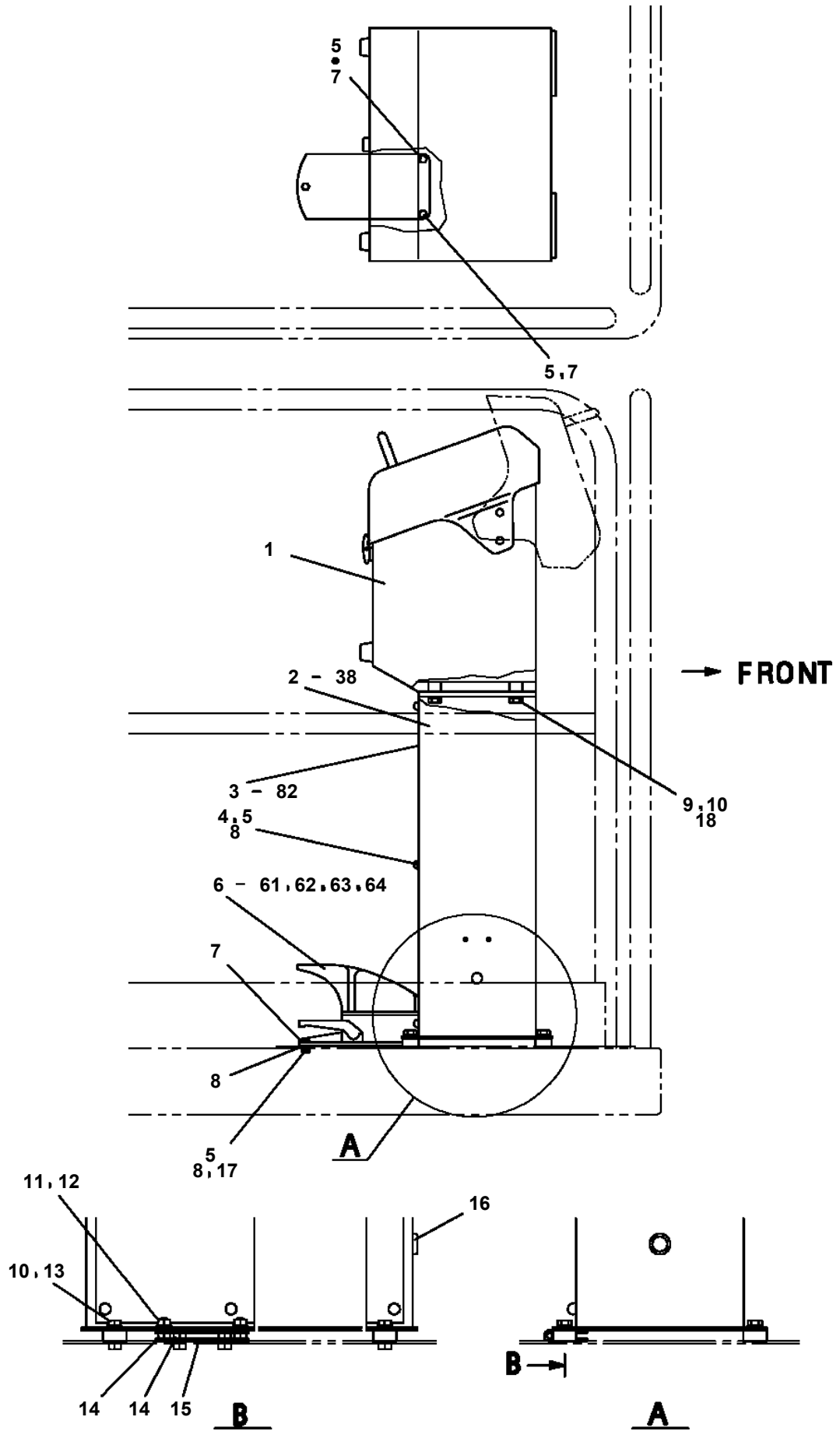
AT-100S-1 42080100001 UPPER
PI1250039-00 VALVE,COUNTERBALANCE



AT-100S-1 42080100001 UPPER

Pos No.	Parts No	Parts Name	Qty	Unit	Technical Data	Serial No (Start)	Serial No (End)	Remarks	Page
1	42263931000	PLATFORM ASSY	1						
2	42263930100	GUARD	1						
3	42263930200	GUARD	1						
4	42263930300	GUARD	1						
5	42263930400	GUARD	1						
6	42263930500	GUARD ASSY	1						
7	42263930800	PLATE	1						
8	80182808014	SCREW,MACHINE	4						
9	80176804008	SCREW,MACHINE	66		M4X8				
10	82400000389	LOCK	11						
12	90302510801	WASHER,SPRING (8)	4						
31	42263930600	GUARD	1						
32	42262730700	GUARD	1						
33	82400000392	HINGE (RIGHT TYPE)	1						
34	82464156301	HINGE (LEFT TYPE)	1						
41	16715401000	NIPPLE	2						
42	16715403000	SLEEVE	2						
43	16715404000	NIPPLE	2						
44	82456201000	NIPPLE,GREASE	1		A-TYPE PT1/8				
45	42263939510	PIPE ASSY	1						
51	42263933100	FLOOR	1						
52	42263933201	FLOOR	1						
53	42263933300	FLOOR	1						
54	42263933400	FLOOR	1						
55	42263933500	FLOOR	1						
56	42263933600	FLOOR	1						
57	42263933701	FLOOR	1						
58	80147377540	RIVET	20						

AT-100S-1 42080100001 UPPER
PJ3180004-03 OPE.ASSY,PLATFORM



AT-100S-1 42080100001 UPPER

Pos No.	Parts No	Parts Name	Qty	Unit	Technical Data	Serial No (Start)	Serial No (End)	Remarks	Pages
1	42271591000	COVER	1						
2	90101208018	BOLT	6		M8X18				
3	90302040801	WASHER,SPRING	11		8				
4	37000547660	PLATE	8		T=2.3				
5	90101208025	BOLT	5		M8X25				
6	42270480020	COVER	1						
7	42270480030	COVER	1						
8	90101206014	BOLT	6		M6X14				
9	90302040601	WASHER,SPRING	6		6				
10	37000512320	PLATE	6						
11	90303070801	WASHER,PLAIN	2		8				
31	42271591101	COVER	1						
32	42271301200	COVER	1						
33	42271301300	COVER	1						
34	90101206012	BOLT	18		M6X12				
35	90302040601	WASHER,SPRING	18		6				
36	42271591300	COVER	1						
37	42271301800	COVER	1						
38	82464105902	HINGE	2						
39	80175804010	SCREW,MACHINE	20		M4X10				
40	90302510401	WASHER,SPRING	18		4				
41	90201500400	NUT	18		M4				
42	82400000370	CATCH	2						
43	42271301950	SUPPORT	1						
52	82400000200	GROMMET	1		KG-012,L=250				

AT-100S-1 42080100001 UPPER

Pos No.	Parts No	Parts Name	Qty	Unit	Technical Data	Serial No (Start)	Serial No (End)	Remarks
1	42475391100	HARNESS	1					
2	91810130240	FASTENER	6					
3	82119422100	CONNECTOR	1					
4	42391620400	PLATE,NAME (100V OUTLET)	1					
5	90201200400	NUT	2		M4			
6	80175304020	SCREW,MACHINE	2		M4X20			
7	90302040401	WASHER,SPRING	2		4			

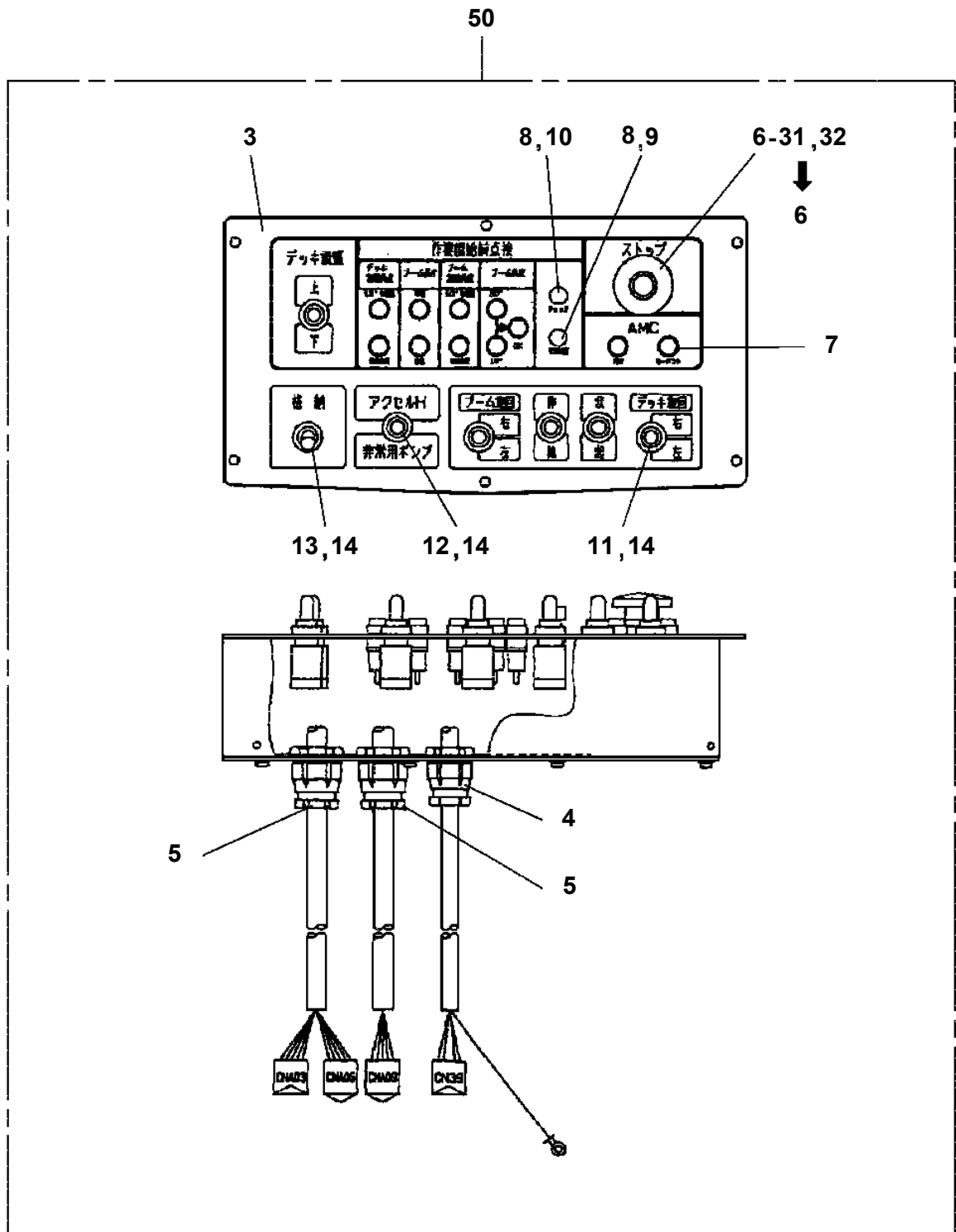
AT-100S-1 42080100001 UPPER

Pos No.	Parts No	Parts Name	Qty	Unit	Technical Data	Serial No (Start)	Serial No (End)
1	42351640200	RELAY ASSY	1				
2	90101210020	BOLT	4		M10X20		
3	90302040801	WASHER,SPRING	7		8		
4	42651305300	SWITCH ASSY (WITH CONNECTOR)	1				
5	82197518119	CAP (PLUS ONE MFG./BLACK)	1				
	82197518114	CAP (MATSUSHITA/BLACK)	1				
6	42352750100	HARNESS	1				
7	42351640500	HARNESS	1				
8	42351640600	HARNESS	1				
9	42351640100	SWITCH PANEL	1				
10	80192485014	SCREW,MACHINE (WITH WASHER)	6		M5X14		
11	42351611100	SWITCH ASSY	1				
12	42432561100	CAM	2				
13	90101210018	BOLT	4		M10X18		
14	90302041001	WASHER,SPRING	8		10		
15	90303071001	WASHER,PLAIN	4		10		
16	42432561400	SUPPORT	1				
17	90101208020	BOLT	4		M8X20		
18	90303070801	WASHER,PLAIN	4		8		
19	42351640701	HARNESS	1				
20	90201200600	NUT	7		M6		
21	90302040601	WASHER,SPRING	7		6		
22	82100002006	CLAMP	3		WR10		
23	82100002016	CLAMP	3		WR25		
24	91810132530	FASTENER	20				
25	90201200800	NUT	3		M8		
26	90101206020	BOLT	4		M6X20		
27	44350230400	PLUG (8 POLES,MALE)	1				
28	44430820010	PLUG	1				
29	82100002017	CLAMP	1		WR30		
30	44320516500	PLUG (12 POLES,FEMALE)	1				
31	90201201000	NUT	4		M10		
51	82100002596	RELAY	2				HF0063
	82100002596	RELAY	3			HF0064	
52	90101206014	BOLT	4		M6X14		
	90101206014	BOLT	4		M6X14		HF0063
	90101206014	BOLT	5		M6X14	HF0064	
53	90303070601	WASHER,PLAIN	4		6		
	90303070601	WASHER,PLAIN	3		6		HF0063
	90303070601	WASHER,PLAIN	4		6	HF0064	
54	90302040601	WASHER,SPRING	5		6		HF0063
	90302040601	WASHER,SPRING	4		6		
	90302040601	WASHER,SPRING	6		6	HF0064	
55	90201200600	NUT	3		M6		HF0063
	90201200600	NUT	4		M6	HF0064	
56	42351640350	BOX ASSY (FUSE)	1				
58	42351640301	HARNESS	1				
59	82100002014	CLAMP	1		WR20		
71	42351611200	SUPPORT	1				
72	82104501200	SWITCH,LIMIT	2				
81	42351640220	BOX	1				
82	82400000201	GROMMET	1		KG-016		
83	80175804010	SCREW,MACHINE	7		M4X10		
84	90302510401	WASHER,SPRING	8		4		
85	90201500400	NUT	8		M4		
86	82464105902	HINGE	1				
87	80172804008	SCREW,MACHINE	3		M4X8		
89	82400000370	CATCH	1				
90	42351640250	COVER	1				
91	42351640270	SUPPORT	1				
101	34351562510	BOX,FUSE	1				
102	82100001839	FUSE	8		10A,RED		
103	82100001841	FUSE	2		20A,YELLOW		

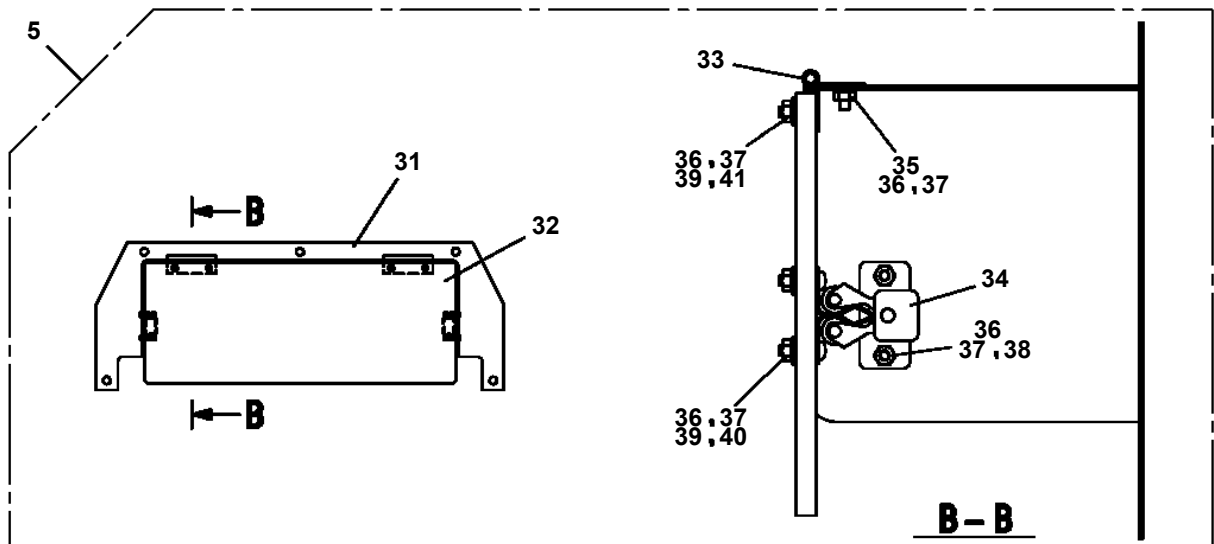
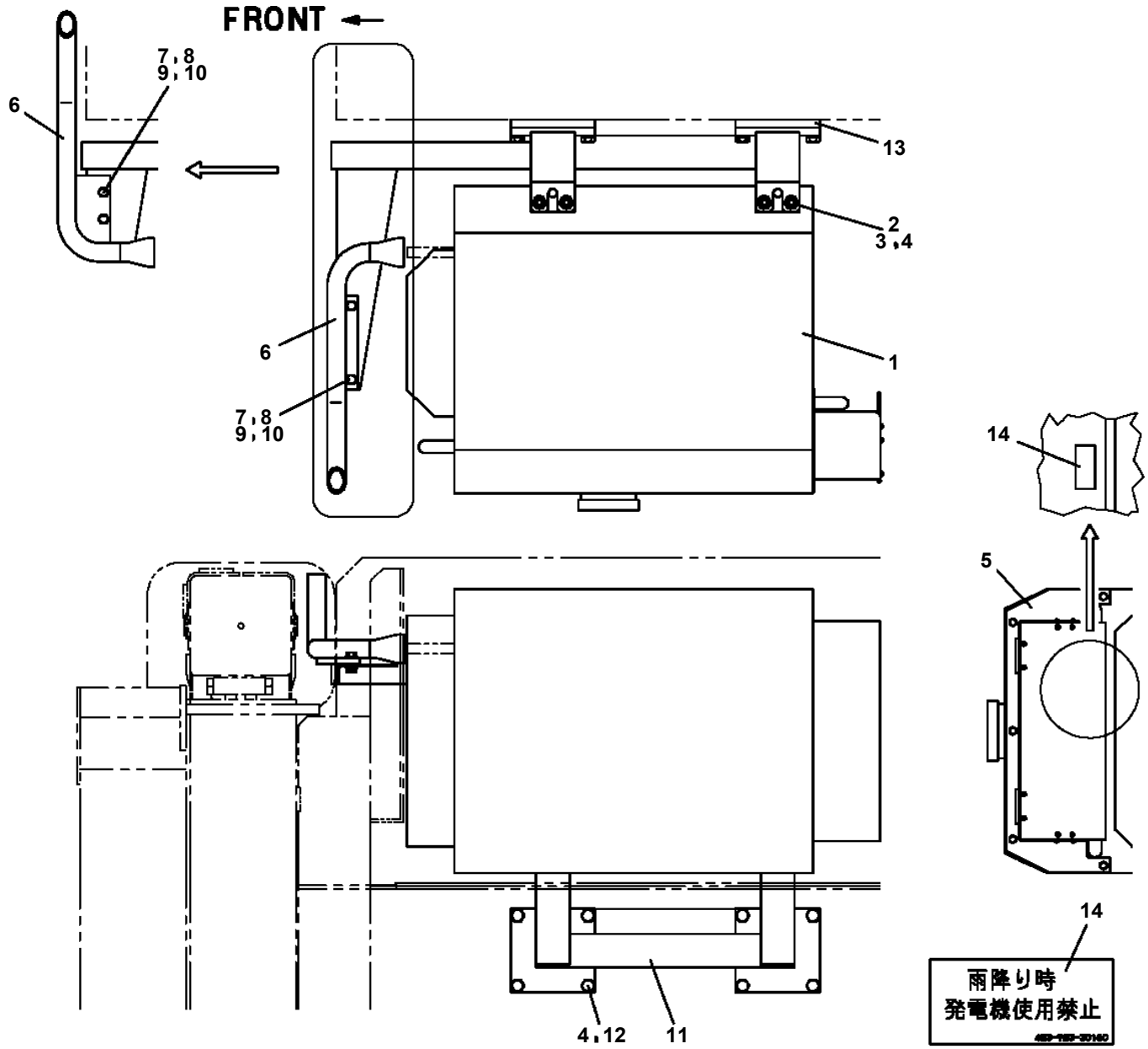
AT-100S-1 42080100001 UPPER

Pos No.	Parts No	Parts Name	Qty	Unit	Technical Data	Serial No (Start)	Serial No (End)
1	42354201100	HARNESS	1				
2	42354201200	HARNESS	1				
3	42352851300	HARNESS (L=11300)	1				
4	42351621100	CLAMP ASSY	1		12X1		
5	42351621200	CLAMP ASSY	1		12X2		
6	42650600300	SWITCH ASSY (WITH HARNESS,1 SW)	1				
7	91810130230	FASTENER	20				
8	37000714010	CLAMP ASSY	1		12X1		
9	37000714020	CLAMP ASSY	1		12X2		
10	82100002039	CLAMP	2				
11	90101208016	BOLT	7		M8X16		
12	90201200800	NUT	1		M8		
13	90302040801	WASHER,SPRING	7		8		
14	37000300720	SLEEVE	5		12-10		
15	82100002008	CLAMP	5		WR12		
16	90101206014	BOLT	4		M6X14		
17	90302040601	WASHER,SPRING	11		6		
18	42354201300	HARNESS	1				
19	37000714030	CLAMP ASSY	1		18X1		
20	90201200600	NUT	8		M6		
21	82100002006	CLAMP	3		WR10		
22	82100002004	CLAMP	2		WR8		
23	42352851010	SUPPORT	2				
24	90303070801	WASHER,PLAIN	4		8		
25	42352851020	PLATE	1				
26	90131505020	BOLT,HEXAGON SOCKET	2		M5X20		
27	90201200500	NUT	2		M5		
28	90302040501	WASHER,SPRING	2		5		
29	90303070601	WASHER,PLAIN	1		6		
30	37000300710	SLEEVE	1		12-8		
31	42354201400	HARNESS	1		L=100		
32	42354201500	HARNESS	1		L=200		
33	42354201600	HARNESS	1				
34	44431000010	PLUG	1				
51	82100001996	SWITCH,LIMIT	1				

AT-100S-1 42080100001 UPPER
 PN1060086-05 SWITCH PANEL



**AT-100S-1 42080100001 UPPER
PN1430036-01 GENERATOR**



AT-100S-1 42080100001 UPPER

Pos No.	Parts No	Parts Name	Qty	Unit	Technical Data	Serial No (Start)	Serial No (End)	Remark
1	37004100040	PUMP,GREASE (DOMESTIC)	1					

AT-100S-1 42080100001 UPPER

Pos No.	Parts No	Parts Name	Qty	Unit	Technical Data	Serial No (Start)	Serial No (End)
1	42460012530	WEDGE (STOPPER FOR TIRE/WAZUMI)	1				

AT-100S-1 42080100001 UPPER

Pos No.	Parts No	Parts Name	Qty	Unit	Technical Data	Serial No (Start)	Serial No (End)	Remarks	Pages
1	42460021000	BELT,SAFETY	1						

CLICK HERE TO **DOWNLOAD** THE COMPLETE MANUAL

- Thank you very much for reading the preview of the manual.
- You can download the complete manual from: www.heydownloads.com by clicking the link below



- Please note: If there is no response to CLICKING the link, please download this PDF first and then click on it.

CLICK HERE TO **DOWNLOAD** THE COMPLETE MANUAL