

AT-100S-1 42080100010 UPPER

**PB1000410-01 HYDRAULIC PRESSURE GENERATING SYSTEM
PC1000327-01 OUTRIGGER SYSTEM
PD1000159-01 SWING SYSTEM
PE1000380-01 ELEVATING SYSTEM
PG1000343-02 TELESCOPING SYSTEM
PH1000342-00 SAFETY DEVICES
PJ3000085-02 PLATFORM SYSTEM
PK1000391-00 FRAME
PL1000400-01 CONTROL DEVICES
PN1000132-02 ELECTRIC EQUIPMENT
PO1000131-03 INDICATION PLATES
PW1000118-00 ACCESSORIES & TOOLS
PX1000564-00 MOUNTING PARTS
PY1001088-01 OPTIONS
ASSEMBLY**

CLICK HERE TO **DOWNLOAD** THE COMPLETE MANUAL

- Thank you very much for reading the preview of the manual.
- You can download the complete manual from: www.heydownloads.com by clicking the link below



- Please note: If there is no response to CLICKING the link, please download this PDF first and then click on it.

CLICK HERE TO **DOWNLOAD** THE COMPLETE MANUAL

AT-100S-1 42080100010 UPPER

Pos No.	Parts No	Parts Name	Qty	Unit	Technical Data	Serial No (Start)	Serial No (End)	Remarks	P
1	(*****)	BOOM	1						0
2	(*****)	CYLINDER,TELESCOPING	1						0
3	(*****)	PIPING,BOOM	1						0

AT-100S-1 42080100010 UPPER

Pos No.	Parts No	Parts Name	Qty	Unit	Technical Data	Serial No (Start)	Serial No (End)	Remarks
1	(*****)	ELEC.ASSY (BOOM)	1					
2	(*****)	ELEC.ASSY (DETECTOR)	1					
3	(*****)	ELEC.ASSY (PLATFORM)	1					
4	(*****)	ELEC.ASSY (SWING FRAME)	1					
5	(*****)	ELEC.ASSY (FRAME)	1					
8	(*****)	ELEC.ASSY (INTERPHONE)	1					

AT-100S-1 42080100010 UPPER

PL1920007-02 OPE.ASSY (PLATFORM)
PM5230001-01 MOTOR,OIL
PN1012313-01 ELEC.ASSY (DETECTOR)
PN1012327-00 ELEC.ASSY (BOOM)
PN1012842-01 ELEC.ASSY (SWING FRAME)
PN1012843-00 ELEC.ASSY (INTERPHONE)
PN1012844-00 ELEC.ASSY (PLATFORM)
PN1012849-00 ELEC.ASSY (FRAME)
PN1013100-01 ELEC.ASSY
PN1013101-01 ELEC.ASSY
PN1014099-02 ELEC.ASSY (FLICKER LAMP)
PN1020032-00 POWER SOURCE (UPPER)
PN1060086-05 SWITCH PANEL
PN1080128-01 LAMP (PLATFORM)
PN1080129-01 LAMP (FLICKER/ROLLER JACK)
PN1080130-00 LAMP (TAIL LAMP,RIGHT)
PN1080131-00 LAMP (TAIL LAMP,LEFT)
PN1110283-00 RELAY
PN1430043-00 GENERATOR
PN1430044-00 GENERATOR (60HZ)
PO1012868-00 PLATE ASSY,NAME (BOX,OPERATION)
PO1013511-02 PLATE ASSY,NAME (UPPER)
PO1013698-01 PLATE ASSY,NAME
PO1013797-02 PLATE ASSY,NAME
PP5450004-00 PUMP,GREASE (400CC)
PS5530449-00 SWITCH ASSY
PW1010303-01 ACCESSORIES
PW1030049-01 TOOLS
PW1050018-01 WEDGE (STOPPER FOR TIRE/JUSTIN)
PW5110002-00 WEDGE (STOPPER FOR TIRE/WAZUMI)
PW5110003-00 WEDGE (STOPPER FOR TIRE/NAKAMURA KIKI)
PX1260144-01 STEP (SWING FRAME)
PX1260146-00 STEP (BOOM)
PX1350520-00 BOX,TOOL
PY1090001-00 BELT,SAFETY
PY1180266-01 LAMP (FLICKER)
PY1240026-02 CONTROL UNIT (VOICE)
PY1910021-00 HOSE (FOR GREASE PUMP)
PY1930003-00 BLOCK,RUBBER

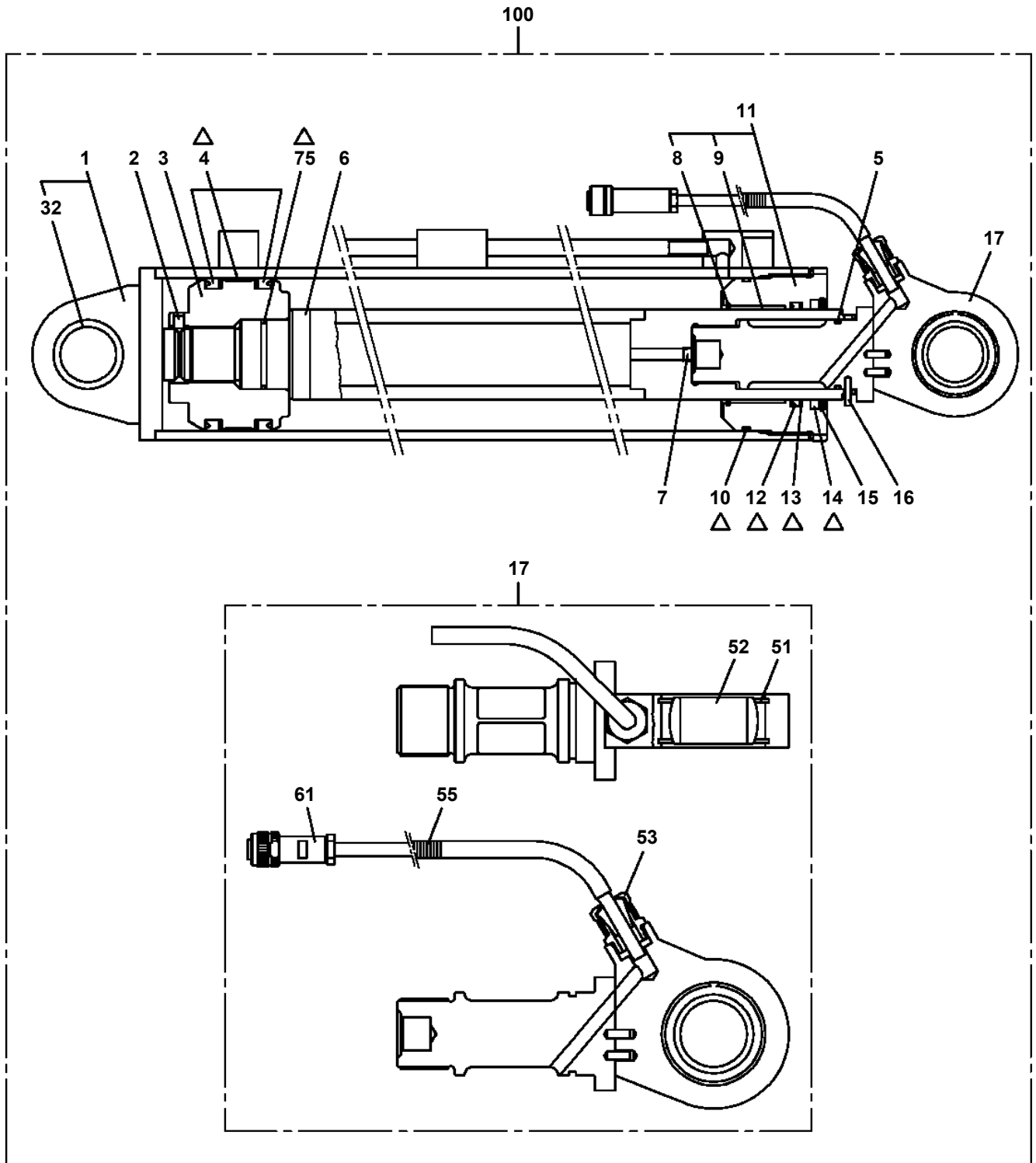
AT-100S-1 42080100010 UPPER

Pos No.	Parts No	Parts Name	Qty	Unit	Technical Data	Serial No (Start)	Serial No (End)
1	42613051000	OUTRIGGER (INNER CASE/FRONT)	2				
2	42614090100	SUPPORT	2				
3	37002009220	PLATE,SLIDE	4				
4	37002011920	PLATE,SLIDE	4		T=9		
5	42613060200	RETAINER	2				
6	90171108018	BOLT	6		M8X18		
7	90302040801	WASHER,SPRING	6		8		
8	90171110022	BOLT	4		M10X22		
9	90302041001	WASHER,SPRING	4		10		
10	42611865002	TIRE ASSY	2				
11	42611860201	PLATE	4				
12	42611860301	PIN	2				
13	90236204201	NUT,CASTLE	2		M42		
14	90303074201	WASHER,PLAIN	2		42		
15	80136380071	PIN,SPLIT	2		8X71		
16	90303071001	WASHER,PLAIN	4		10		
17	42613060300	PLATE	N				
18	42613060400	SHIM	N				
31	42611865102	TIRE ASSY	2				
32	80513006312	BEARING,BALL	4				

AT-100S-1 42080100010 UPPER

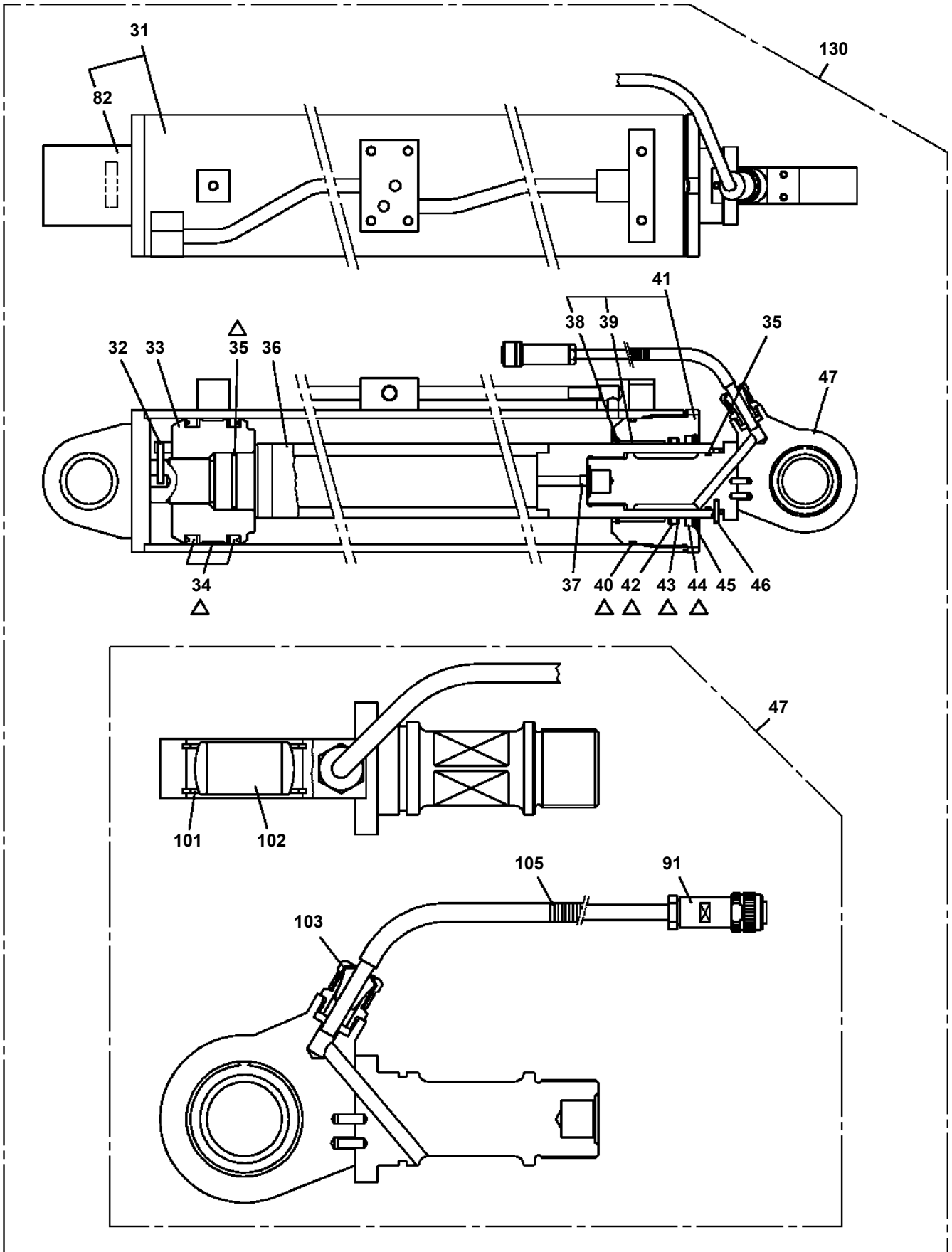
Pos No.	Parts No	Parts Name	Qty	Unit	Technical Data	Serial No (Start)	Serial No (End)	Rema
1	42651097510	CASE ASSY (WITH HARENSS)	1					
2	42651097520	PACKING (COVER)	1					
3	42651097530	COVER (CASE)	1					
4	42651133600	BOARD,CIRCUIT	1					
5	42651097560	BUSHING	2					
8	42651133580	PLATE,NAME	1					
9	42651133590	PLATE,NAME	1					
20	42651097570	CAP	34					
31	(*****)	P-ROM	1					
50	42651133500	INDICATOR,OUTRIGGER	1					

**AT-100S-1 42080100010 UPPER
PC6400014-01 CYLINDER ASSY,LEVELING**



Δ:PACKING SET KEY NO.90 (KEY NO.4,10,12,13,14,75)

**AT-100S-1 42080100010 UPPER
PE1050097-06 CYLINDER,LEVELING**



△:PACKING SET KEY NO.120 (KEY NO.34,35,40,42,43,44)

AT-100S-1 42080100010 UPPER

Pos No.	Parts No	Parts Name	Qty	Unit	Technical Data	Serial No (Start)	Serial No (End)	F
1	36130235010	PLATE (BASE)	1					
2	36131255010	CASE	1					
3	36131255020	DRUM ASSY	1					
4	36131345010	COVER	1					
5	31370105030	PACKING	1					
6	31370005030	PACKING	1					
7	36130235090	WASHER,SEAL	1					
8	36130435040	BRACKET	1					
9	36130235110	CABLE ASSY (WITH CONNECTOR)	1		L=710			
10	36131195030	POTENTIOMETER	1					
11	36130235100	CLAMP (CORD)	1					
12	36130045090	CLIP (NYLON)	1					
13	32360005150	CLIP (NYLON)	1					
14	36130885040	GEAR	1		20T			
15	36131255030	GEAR	1		32T			
19	31370005080	GUIDE (CORD)	1					
20	36160435100	COLLAR	1					
21	36131705010	CORD ASSY	1					
31	82100001155	CONNECTOR	1					
100	36131700000	DETECTOR,BOOM LENGTH	1					

AT-100S-1 42080100010 UPPER

Pos No.	Parts No	Parts Name	Qty	Unit	Technical Data	Serial No (Start)	Serial No (End)	Remarks	Pages
100	44340563800	HARNESS	1						

AT-100S-1 42080100010 UPPER

Pos No.	Parts No	Parts Name	Qty	Unit	Technical Data	Serial No (Start)	Serial No (End)	Remarks	Pages
100	42351640701	HARNESS	1						

AT-100S-1 42080100010 UPPER

Pos No.	Parts No	Parts Name	Qty	Unit	Technical Data	Serial No (Start)	Serial No (End)	Remarks	Pages
100	42477641400	HARNESS	1						

CLICK HERE TO **DOWNLOAD** THE COMPLETE MANUAL

- Thank you very much for reading the preview of the manual.
- You can download the complete manual from: www.heydownloads.com by clicking the link below



- Please note: If there is no response to CLICKING the link, please download this PDF first and then click on it.

CLICK HERE TO **DOWNLOAD** THE COMPLETE MANUAL

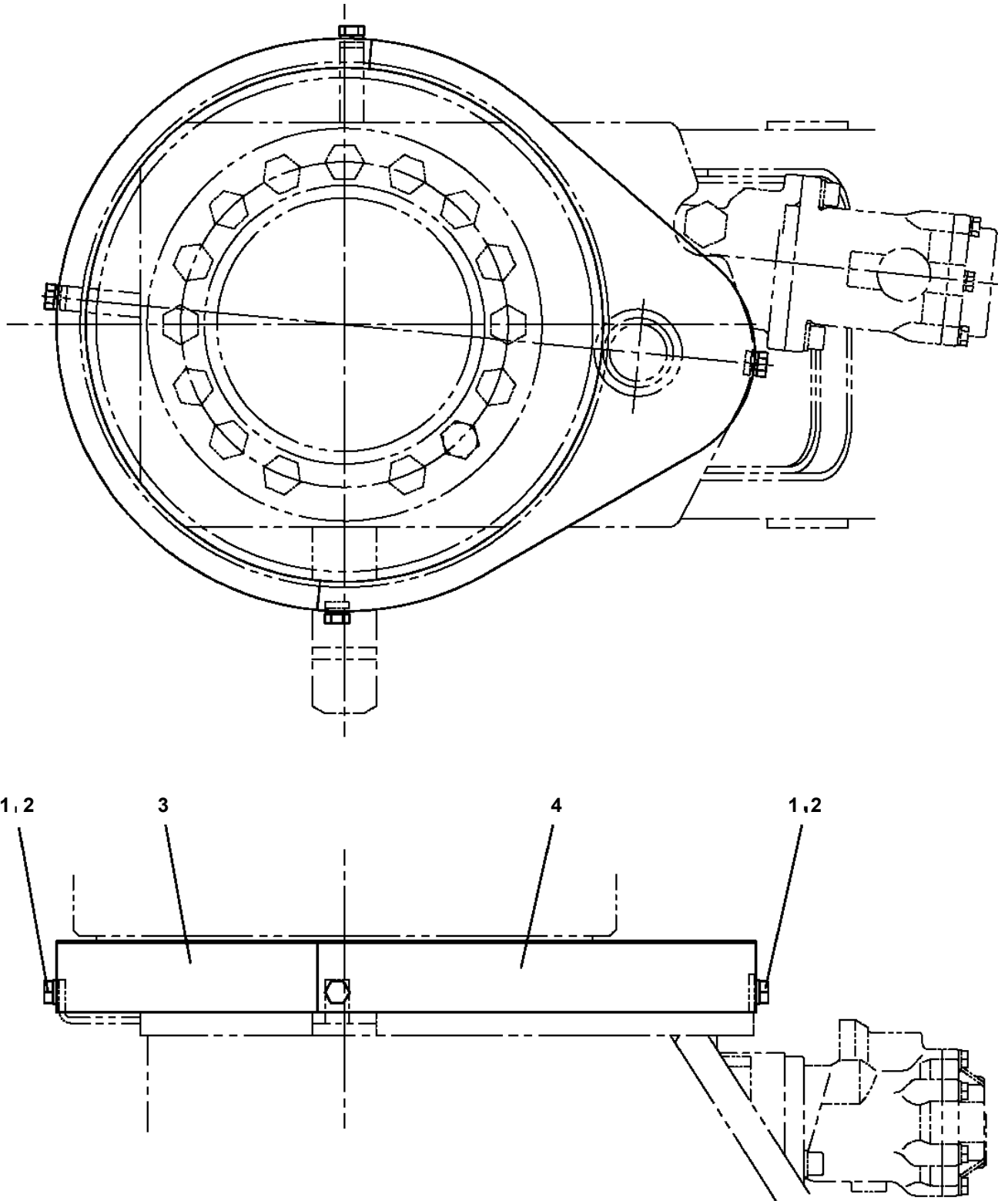
AT-100S-1 42080100010 UPPER

Pos No.	Parts No	Parts Name	Qty	Unit	Technical Data	Serial No (Start)	Serial No (End)	Remarks	Page
2	36645265010	PLUG	1						
4	36645265020	RETAINER	1						
6	36645265030	SPRING	1						
7	80560055000	BALL,STEEL	1		3/16				
8	36643615010	NUT	1						
10	36645265040	ROD	1						
11	36645265050	GUIDE (SOLENOID)	1						
12	36645265060	COIL,SOLENOID	1						
13	36643615040	CASE (COIL)	1						
14	36643615050	YOKE (COIL)	1						
15	36645735010	CONNECTOR	1						
16	36645265090	SCREW	2						
17	91002802800	O-RING	2		1B P28				
18	36643615060	O-RING	5						
19	36643615070	O-RING	1						
20	36645265070	O-RING	1						
27	36645265100	SPACER	4						
50	36645260000	VALVE,SOLENOID	1						

AT-100S-1 42080100010 UPPER

Pos No.	Parts No	Parts Name	Qty	Unit	Technical Data	Serial No (Start)	Serial No (End)	Remark
2	36600915010	PLUG	1					
5	36600915020	BUSH	1					
6	36600915030	GUIDE,SPRING	1					
7	36600915110	SPRING	1					
8	36600915050	SPRING	1					
10	36600915060	SPRING	1					
12	36600915070	PACKING	1					
13	36600915080	BOLT (ADJUSTING)	1					
14	36600915090	NUT	1					
16	36600915100	RING,RETAINING	1					
17	80316030010	PLUG	2		NPTF1-16			
18	80316030020	PLUG	1		PT1/8			
19	80316030080	PLUG	1		PT1/2			
20	91001100600	O-RING	1		1A P6			
21	91002801100	O-RING	1		1B P11			
22	91002801200	O-RING	2		1B P12			
23	91002801800	O-RING	2		1B P18			
24	91002802100	O-RING	1		1B P21			
25	91002802201	O-RING	1		1B P22A			
27	80316030060	PLUG	1		PT3/8			
50	36604150000	VALVE,COUNTERBALANCE	1					

**AT-100S-1 42080100010 UPPER
PJ3060001-00 COVER,BEARING (PLATFORM)**

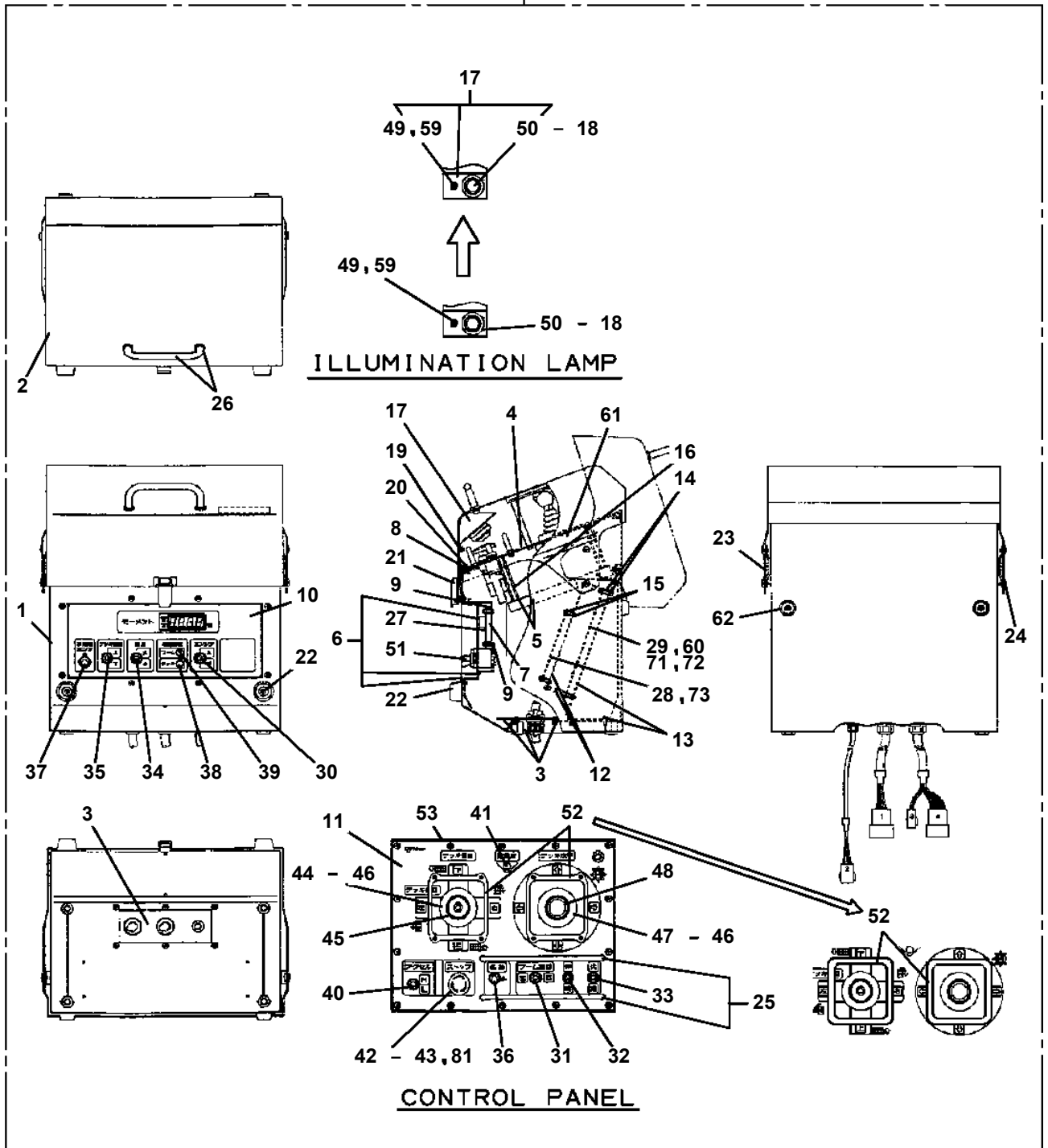


AT-100S-1 42080100010 UPPER

Pos No.	Parts No	Parts Name	Qty	Unit	Technical Data	Serial No (Start)	Serial No (End)
1	37002304560	BEARING,SWING (NIHON MONORACE)	1				
2	37001504630	BOLT	15		M18X70		
3	37001500240	BOLT	8		M16X50		
4	90171114040	BOLT	4		M14X40		
5	90302041401	WASHER,SPRING	4		14		
6	36080970000	REDUCER,PLATFORM SWING SPEED	1				
7	91001209000	O-RING	1		1A G90		
8	90172112035	BOLT,HEXAGON SOCKET	2		M12X35		
9	90302041201	WASHER,SPRING	2		12		
10	90303501601	WASHER,PLAIN	8		16		
11	36624610000	VALVE,SHUTTLE	1				
12	90101208055	BOLT	4		M8X55		
13	36662490000	MOTOR,HYDRAULIC (PLATFORM)	1				
14	90302040801	WASHER,SPRING	4		8		
17	42262580010	ORIFICE	2				
18	37000914090	JOINT	1				
19	37000910830	JOINT	1				

AT-100S-1 42080100010 UPPER
PL1100193-08 BOX, OPERATION

100



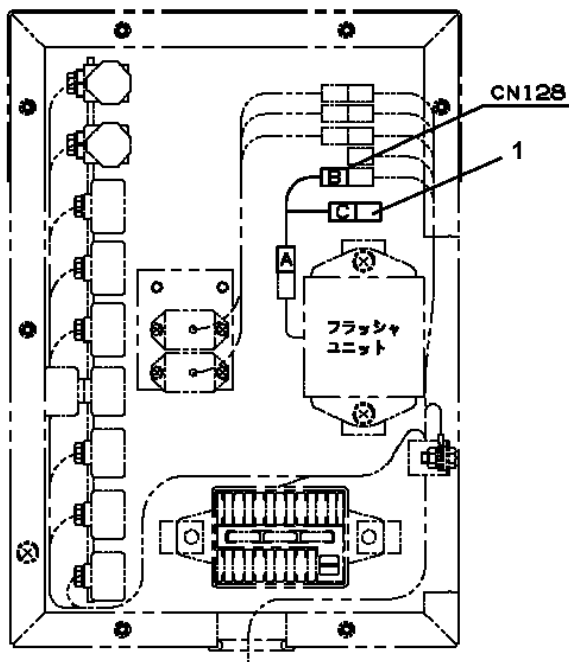
AT-100S-1 42080100010 UPPER

Pos No.	Parts No	Parts Name	Qty	Unit	Technical Data	Serial No (Start)	Serial No (End)	Remark
1	36131700000	DETECTOR,BOOM LENGTH	1					
2	90101206014	BOLT	4		M6X14			
3	90302040601	WASHER,SPRING	14		6			
4	90201200600	NUT	14		M6			
5	36140120000	DETECTOR,ANGLE	1					
6	90101208012	BOLT	7		M8X12			
7	90302040801	WASHER,SPRING	14		8			
8	42354862400	SUPPORT	1					
9	80175304010	SCREW,MACHINE	1		M4X10			
11	42360030060	WASHER	1					
13	42433521000	ROLLER ASSY	1					
14	82100002006	CLAMP	5		WR10			
15	82100002012	CLAMP	4		WR18			
16	42352852400	COVER	1					
17	91810130230	FASTENER	3					
18	90303070801	WASHER,PLAIN	4		8			
19	82100002010	CLAMP	1		WR15			
20	90101208020	BOLT	6		M8X20			
21	90201200800	NUT	4		M8			
22	42352852200	SUPPORT	1					
23	42352852500	ROLLER ASSY	1					
24	42354862500	COVER	1					
41	42433521100	SUPPORT	1					
42	37001102350	ROLLER	1					
43	37000302060	SPACER	1		L=11.2			
44	90303071001	WASHER,PLAIN	1		10			
45	90201201000	NUT	1		M10			
46	90302041001	WASHER,SPRING	1		10			
61	42352852600	SUPPORT	1					
62	37001004170	SHEAVE ASSY	2					
63	37000540570	PLATE	2					
64	90101206012	BOLT	2		M6X12			
65	90302040801	WASHER,SPRING	2		8			
72	80516006002	BEARING,BALL	2					
73	80602110320	RING,RITAINING	2		R32			

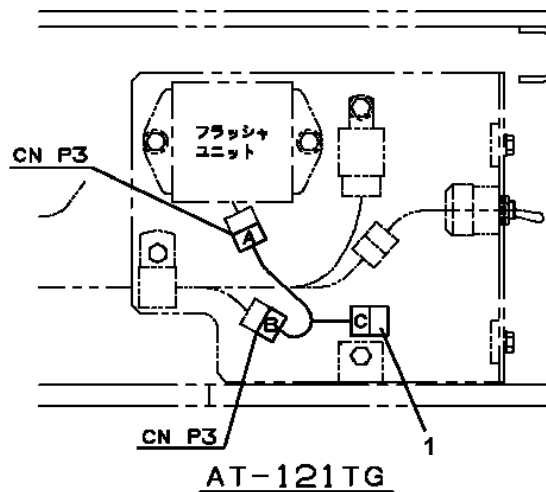
AT-100S-1 42080100010 UPPER

Pos No.	Parts No	Parts Name	Qty	Unit	Technical Data	Serial No (Start)	Serial No (End)	Re
1	42354100100	HARNESS	1					
2	44430820010	PLUG	1					
3	91810130240	FASTENER	10					
4	82100002010	CLAMP	3		WR15			
5	90302040601	WASHER,SPRING	5		6			
6	90201200600	NUT	3		M6			
7	90101210018	BOLT	1		M10X18			
8	90302041001	WASHER,SPRING	1		10			
9	42350591000	DETECTOR ASSY	1					
10	42352991000	ALARM ASSY	1					
11	90101206016	BOLT	3		M6X16			
12	42804790010	PLUG	1					
13	42354100300	HARNESS	1					
14	42264776100	HARNESS	1					
15	44430680200	BUZZER ASSY (WITH HARNESS)	1					
16	90101208016	BOLT	1		M8X16			
17	90201200800	NUT	1		M8			
18	90302040801	WASHER,SPRING	1		8			
19	42354100200	HARNESS	1					
20	82119422100	CONNECTOR	1					
21	42391620400	PLATE,NAME (100V OUTLET)	1					
22	90201200400	NUT	2		M4			
23	80175304020	SCREW,MACHINE	2		M4X20			
24	90302040401	WASHER,SPRING	2		4			
25	91850400601	CLAMP	5					
44	44960012000	BUZZER ASSY	1					

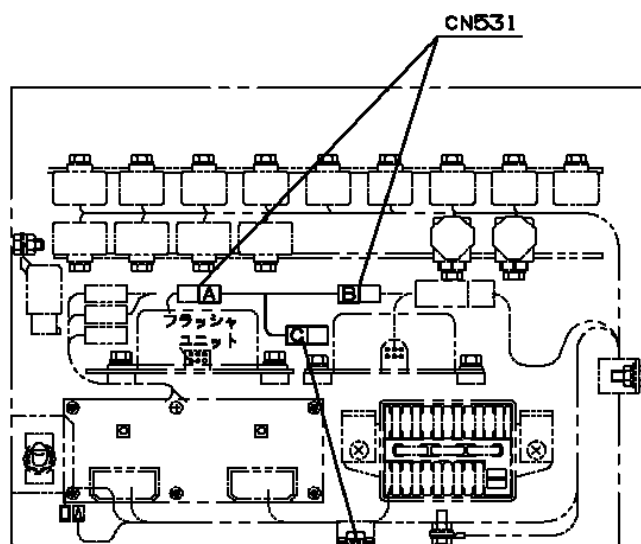
**AT-100S-1 42080100010 UPPER
PN1014099-02 ELEC.ASSY (FLICKER LAMP)**



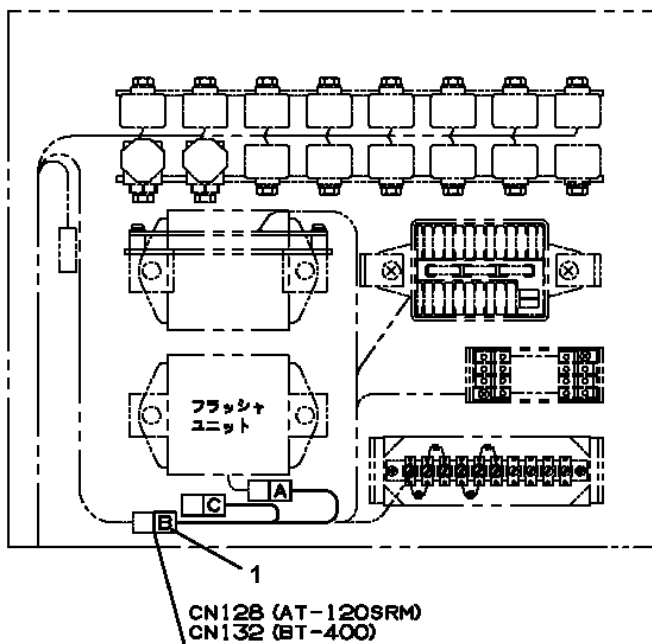
特配以外の機種



AT-121TG

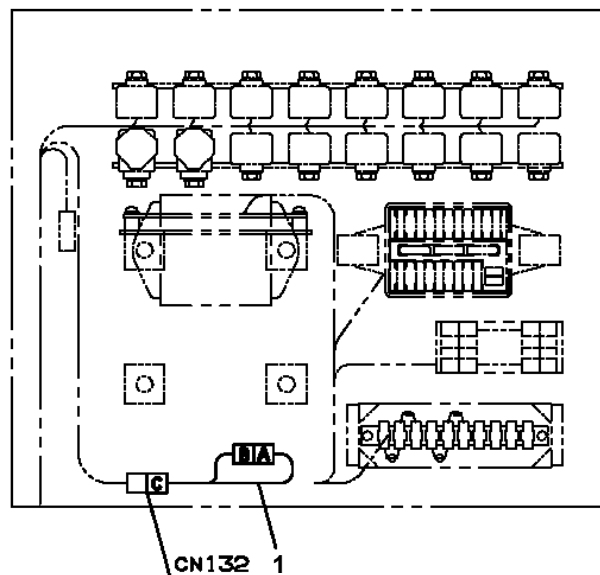


AT-100Sモバイル, BT-110



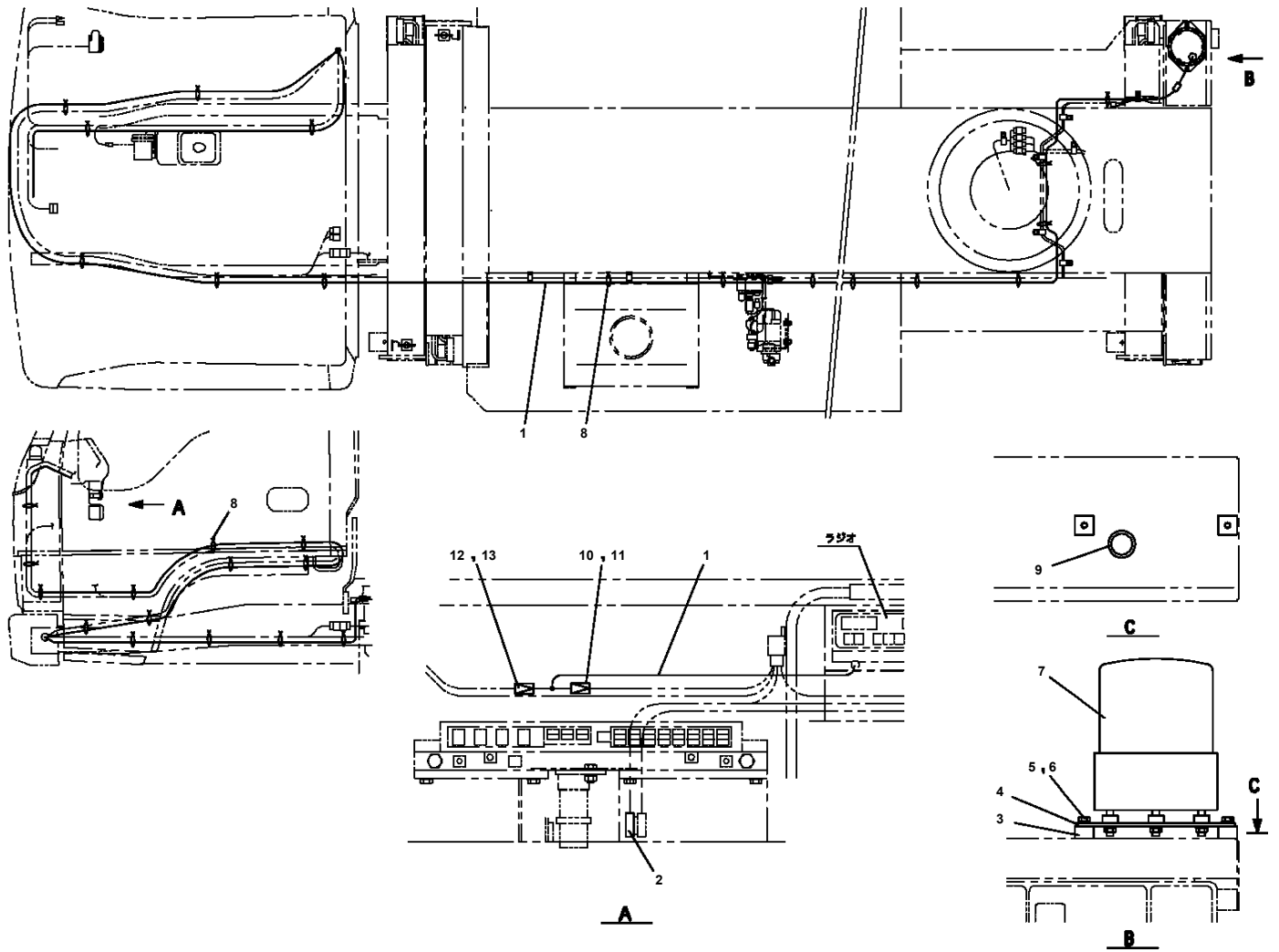
CN128 (AT-120SRM)
CN132 (BT-400)

AT-120SRM (後方格納モバイル仕様)
BT-400 (~#HB5374)



BT-400 (#HB5375~)

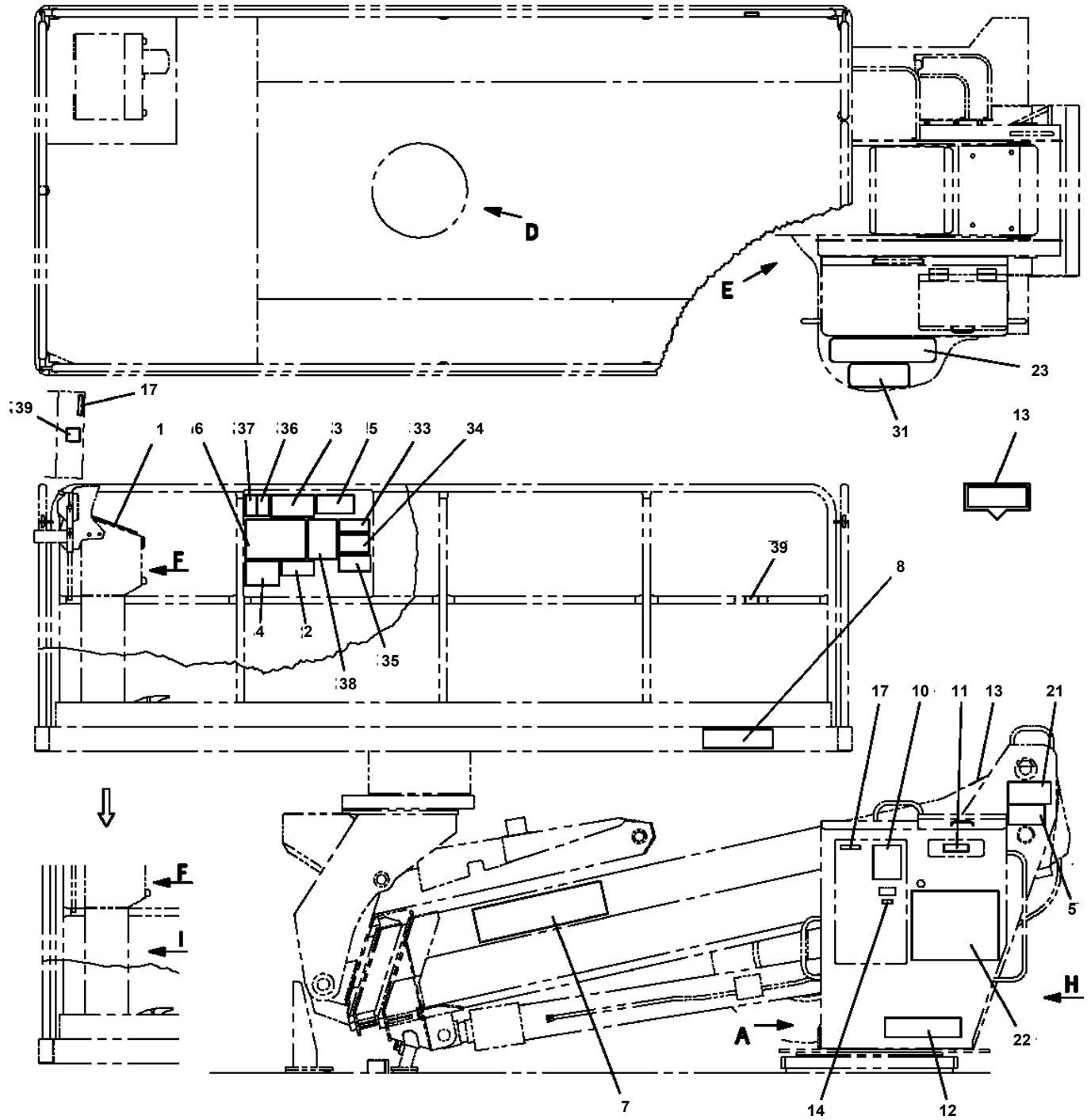
**AT-100S-1 42080100010 UPPER
PN1080130-00 LAMP (TAIL LAMP,RIGHT)**



AT-100S-1 42080100010 UPPER

Pos No.	Parts No	Parts Name	Qty	Unit	Technical Data	Serial No (Start)	Serial No (End)	Remarks	Pages
114	42500677565	CIRCUIT ASSY	1						
115	42500677566	BOLT	2						
116	42500677567	ROTOR	1						
117	42500677568	BEARING	1						
118	42500677569	BOLT	1						
119	42500677570	WASHER	1						
120	42500677571	STATOR	1						
201	42500677572	PANEL	1						
202	42500677573	PLATE,NAME	1						
203	42500677574	SCREW	6						
204	42500677575	LAMP (OIL)	1						
205	42500677576	VOLTMETER	1						
206	42500677577	NUT	2						
207	42500677578	HARNESS	1						
208	42500677579	HARNESS	1						
209	42500677580	HARNESS	1						
210	42500677581	HARNESS	1						
211	42500677582	CABLE,CONTROL	1						
214	42500677583	CONTROLLER	1						
215	42500677584	DIAL (KNOB)	1						
216	42500677585	SWITCH	1						
217	42500677586	SOCKET	2						
218	42500677587	SCREW	4						
219	42500677588	WASHER,SPRING	2						
500	42500671000	GENERATOR	1						

AT-100S-1 42080100010 UPPER
PO1013797-02 PLATE ASSY,NAME



AT-100S-1 42080100010 UPPER

Pos No.	Parts No	Parts Name	Qty	Unit	Technical Data	Serial No (Start)	Serial No (End)	Rem
1	42460015010	BAG,TOOL	1					
2	91991510003	HEXAGON BARWRENCH (G3)	1					
3	91991510004	HEXAGON BARWRENCH (G4)	1					
4	91991510005	HEXAGON BARWRENCH (G5)	1					
5	91991510006	HEXAGON BARWRENCH (G6)	1					
6	91991510008	HEXAGON BARWRENCH (G8)	1					
7	91991510010	HEXAGON BARWRENCH (G10)	1					
8	91991441311	SPANNER	1		13X11			
50	42473931000	TOOLS	1					

AT-100S-1 42080100010 UPPER

Pos No.	Parts No	Parts Name	Qty	Unit	Technical Data	Serial No (Start)	Serial No (End)	Remarks	Pages
1	42811190100	STEP	1						
2	90101210016	BOLT	8		M10X16				
3	90302041001	WASHER,SPRING	8		10				
4	42811190200	STEP	1						

CLICK HERE TO **DOWNLOAD** THE COMPLETE MANUAL

- Thank you very much for reading the preview of the manual.
- You can download the complete manual from: www.heydownloads.com by clicking the link below



- Please note: If there is no response to CLICKING the link, please download this PDF first and then click on it.

CLICK HERE TO **DOWNLOAD** THE COMPLETE MANUAL