

AT-100-4 42063400001 UPPER

PD2000135-01 SWING UNIT

PG2000243-00 BOOM UNIT

PH1000550-00 SAFETY DEVICES (MOTION CONTROLLER)

PJ3000402-01 BUCKET SYSTEM

PK2000631-01 FRAME UNIT

PO1000182-00 INDICATION PLATES (UPPER)

PW1000118-00 ACCESSORIES & TOOLS

PY1001149-08 OPTIONS,1

PY2000288-01 OPTION UNIT,2 (UPPER)

ASSEMBLY

CLICK HERE TO **DOWNLOAD** THE COMPLETE MANUAL

- Thank you very much for reading the preview of the manual.
- You can download the complete manual from: www.heydownloads.com by clicking the link below



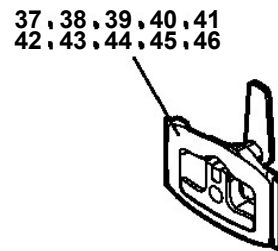
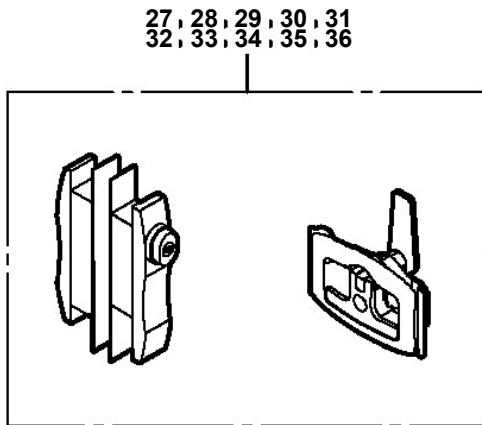
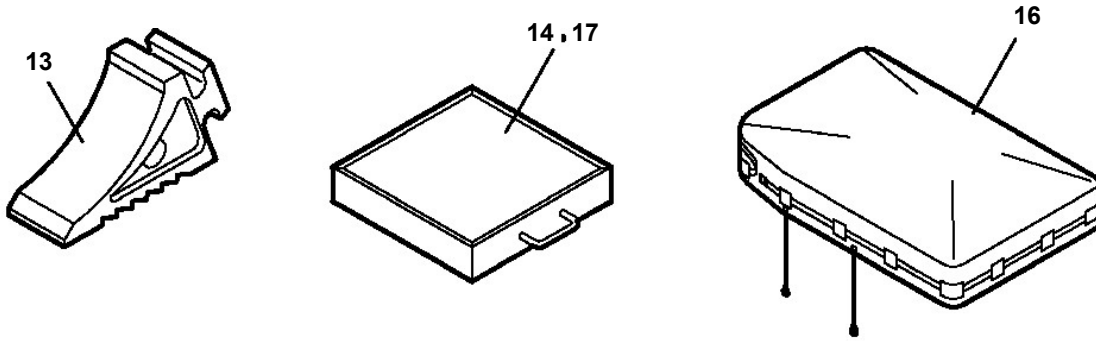
- Please note: If there is no response to CLICKING the link, please download this PDF first and then click on it.

CLICK HERE TO **DOWNLOAD** THE COMPLETE MANUAL

AT-100-4 42063400001 UPPER

Pos No.	Parts No	Parts Name	Qty	Unit	Technical Data	Serial No (Start)	Serial No (End)	Re
1	(*****)	FRAME	1				218751	
	(*****)	FRAME	1			218752	219119	
	(*****)	FRAME	1			219120	219326	
	(*****)	FRAME	1			219327	219610	
	(*****)	FRAME ASSY	1			219611		
2	(*****)	OUTRIGGER	1				219119	
	(*****)	OUTRIGGER	1			219120	219917	
	(*****)	OUTRIGGER ASSY	1			219918		
3	(*****)	OPE.ASSY,CONT.VALVE	1				218751	
	(*****)	OPE.ASSY,CONT.VALVE	1			218752		
4	(*****)	PIPING,OUTRIGGER	1				219119	
	(*****)	PIPING,OUTRIGGER	1			219120	219326	
	(*****)	PIPING,OUTRIGGER	1			219327	219917	
	(*****)	PIPING ASSY,FRAME (OUTRIGGER)	1			219918		
5	(*****)	ELEC.ASSY (FRAME)	1				218751	
	(*****)	ELEC.ASSY (FRAME)	1			218752	219119	
	(*****)	ELEC.ASSY (FRAME)	1			219120		
6	(*****)	BOOM REST	1				219119	
	(*****)	BOOM REST	1			219120		
7	(*****)	TANK SUPPORT	1					
8	(*****)	ELEC.ASSY	1				218751	
9	(*****)	ELEC.ASSY (LOWER CONTROLS)	1			218752		

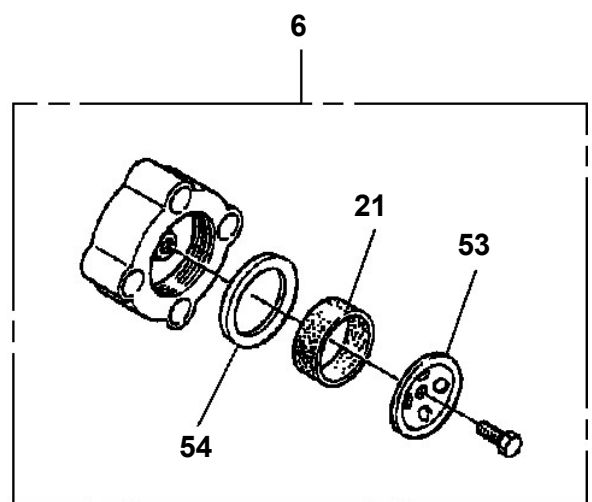
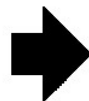
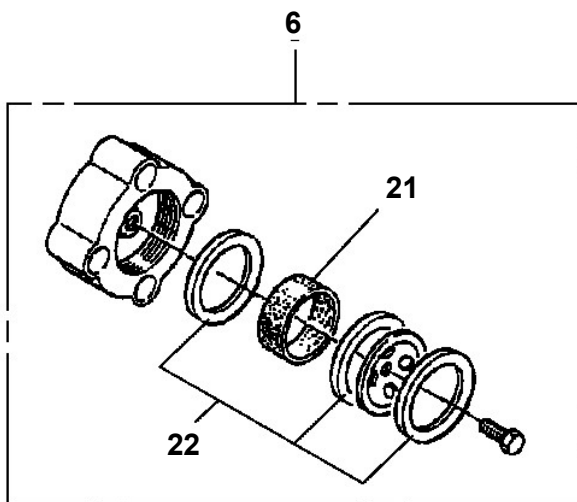
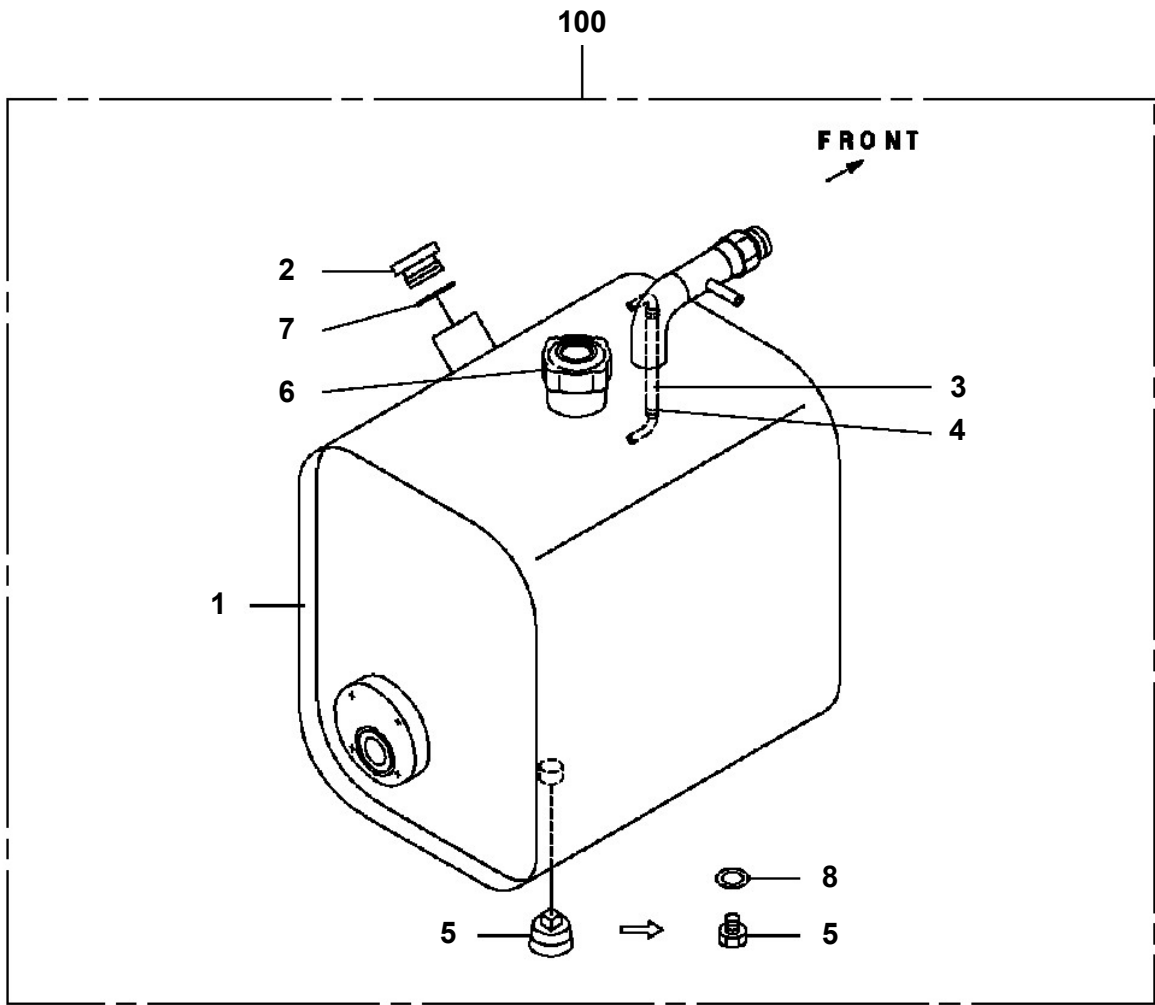
**AT-100-4 42063400001 UPPER
PY2000288-01 OPTION UNIT,2 (UPPER)**



適用製造番号によっては取り付けがないものもあります。

MACHINES OF SOME SERIAL NO. ARE NOT EQUIPPED WITH THESE PARTS.

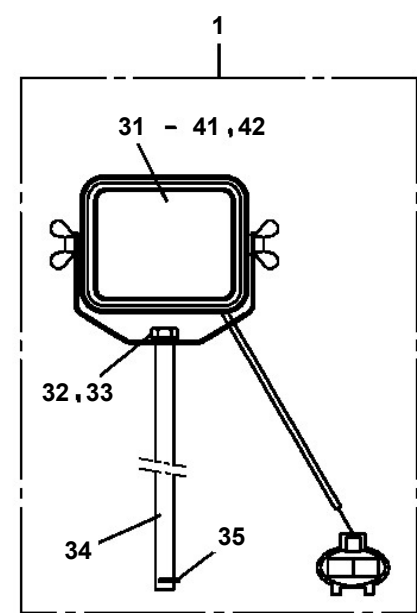
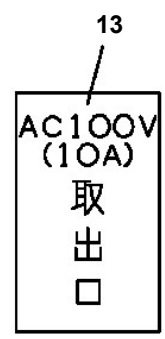
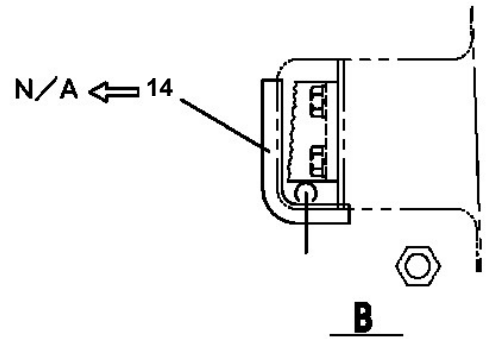
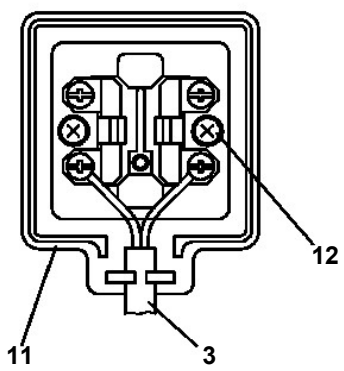
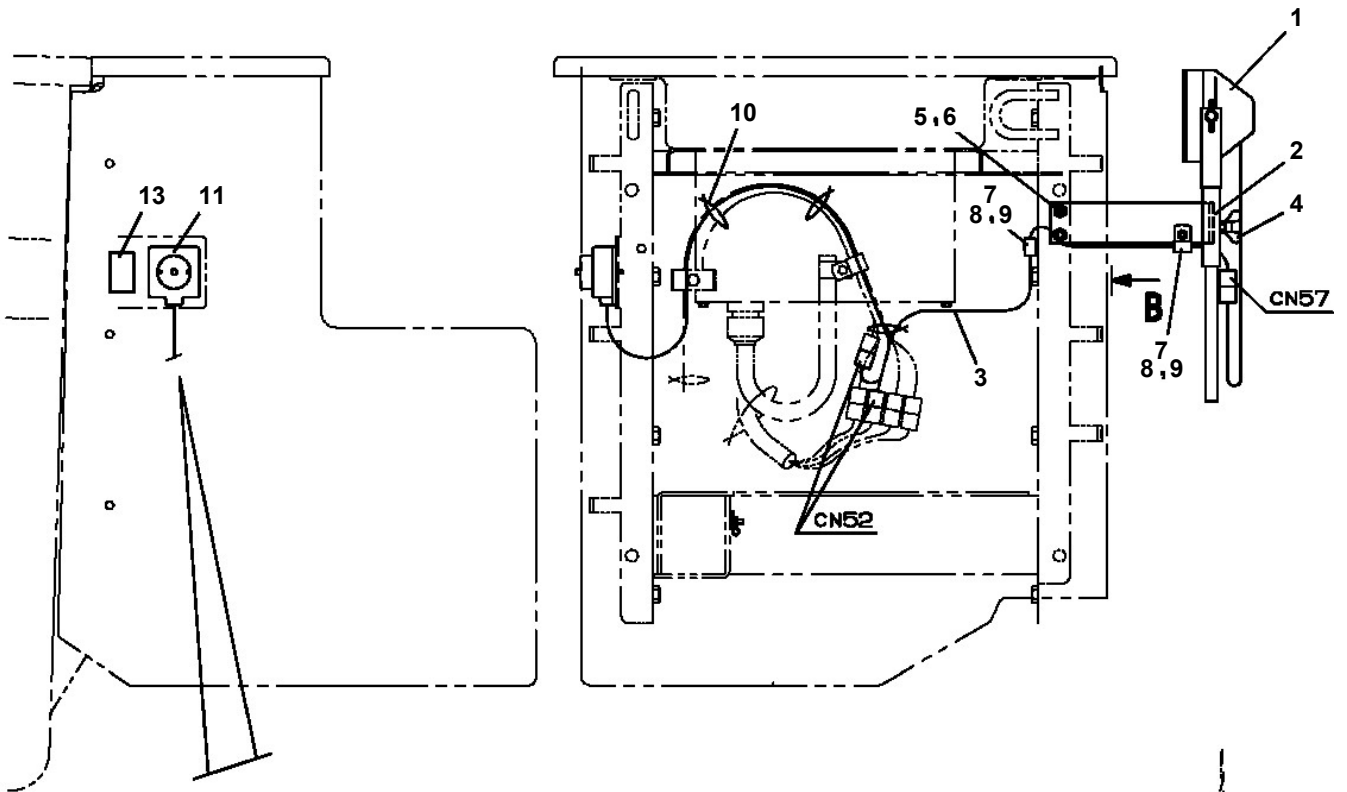
AT-100-4 42063400001 UPPER
PB1130208-02 TANK,OIL



AT-100-4 42063400001 UPPER

Pos No.	Parts No	Parts Name	Qty	Unit	Technical Data	Serial No (Start)	Serial No (End)	Remarks
1	90101208016	BOLT	2		M8X16			
2	90302040801	WASHER,SPRING	2		8			
3	36630910060	NEEDLE	1					
4	36630910030	HOLDER	1					
5	91002801000	O-RING	1		1B P10			
6	91410001000	RING,BACKUP	1		P10			
8	36630910050	POPPET	1					
9	52255101000	SPRING	1					
10	91002801400	O-RING	1		1B P14			
11	36620030050	PLUG	1					
12	82400000350	KNOB	1					
13	37000508510	PLATE	1					
14	80172303006	SCREW,MACHINE	1		M3X6			
100	36636340000	VALVE,MANUAL CONTROL	1					

**AT-100-4 42063400001 UPPER
PB1380255-03 POWER SUPPLY (100V2POLES & WORKING LAMP)**

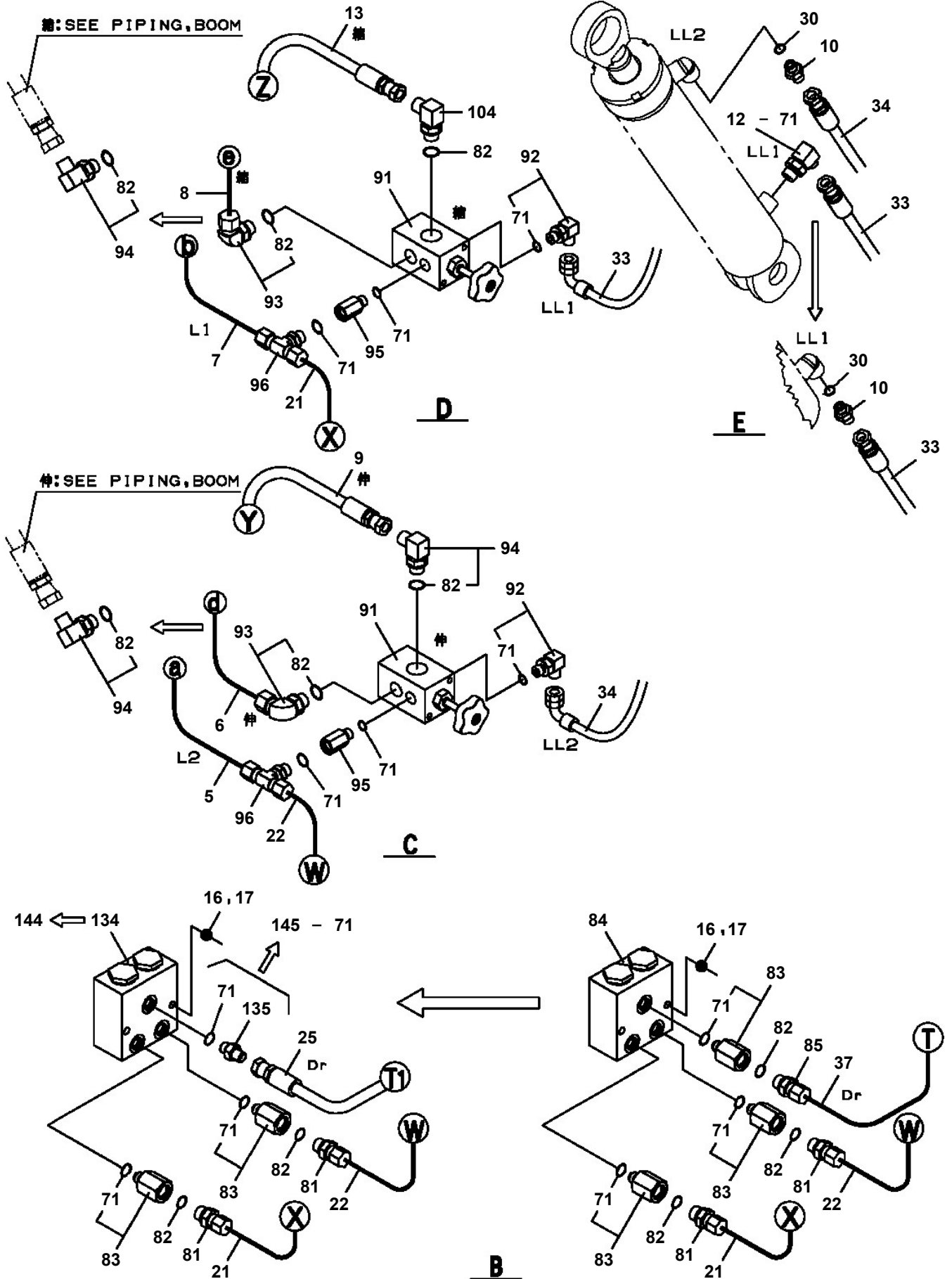


AT-100-4 42063400001 UPPER

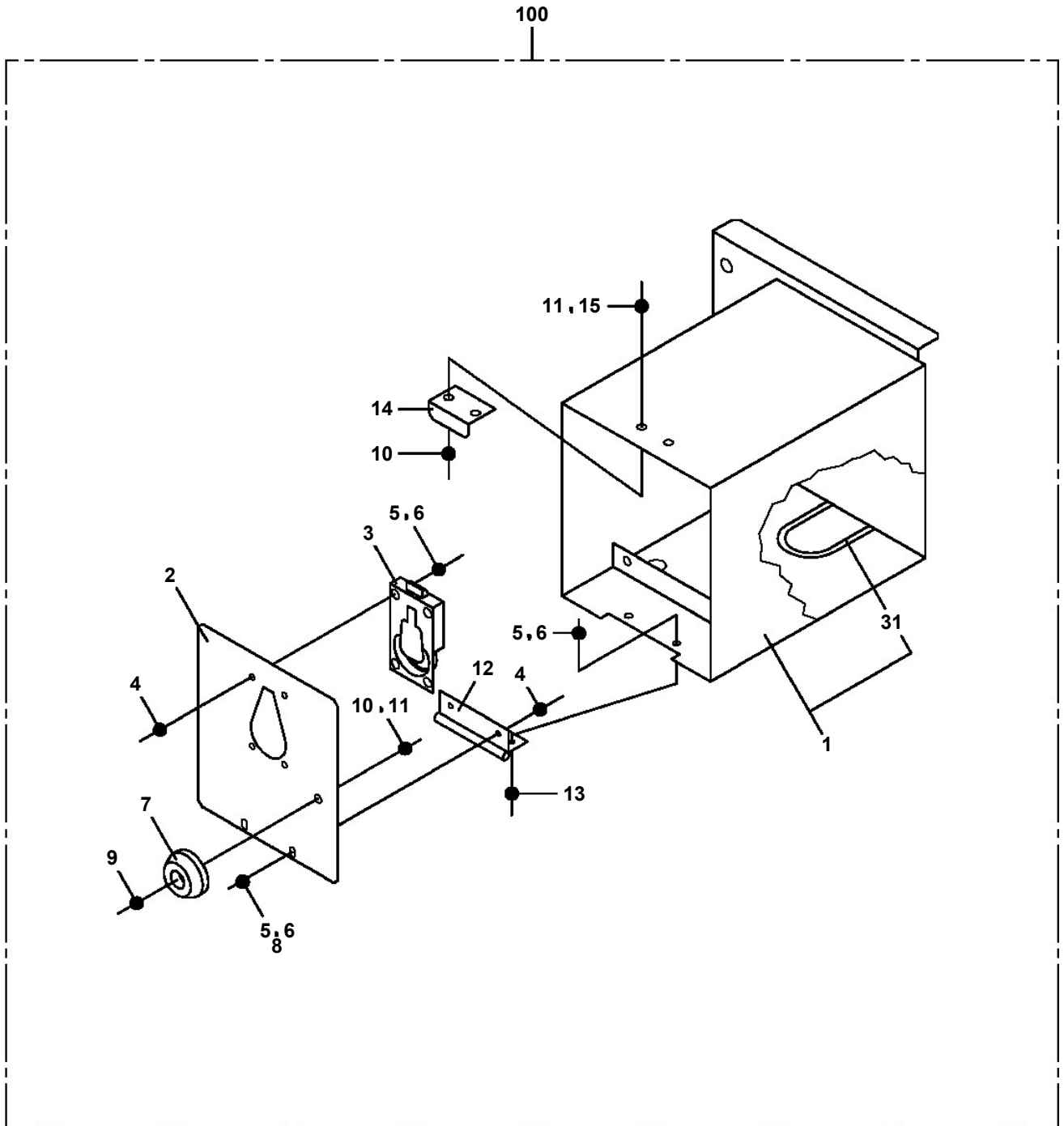
PB1380351-00 POWER SUPPLY (HYBRID SYSTEM:10M, #219120-219450)

指示番号 KEY NO.	ハ [○] ワーサフ [○] ライ (ハイブ [○] リツト [○] システム:10Mシヨウ, テキヨウコ [○] ウキ#219120-219450) POWER SUPPLY (HYBRID SYSTEM:10M, #219120-219450)
1	ハ [○] イビ [○] ング [○] PIPING
2	ハイセンASSY ELEC.ASSY
3	ハイセンASSY (ハ [○] ケツト) ELEC.ASSY (BUCKET)
4	フ [○] レートASSY, ネーム PLATE ASSY, NAME
5	フ [○] レートASSY, ネーム (AT-100TT, TTEヨウAMCデ [○] ータ) PLATE ASSY, NAME (FOR AT-100TT, TTE/AMC DATA)
6	マウントASSY MOUNT ASSY
8	ハーネス HARNESS

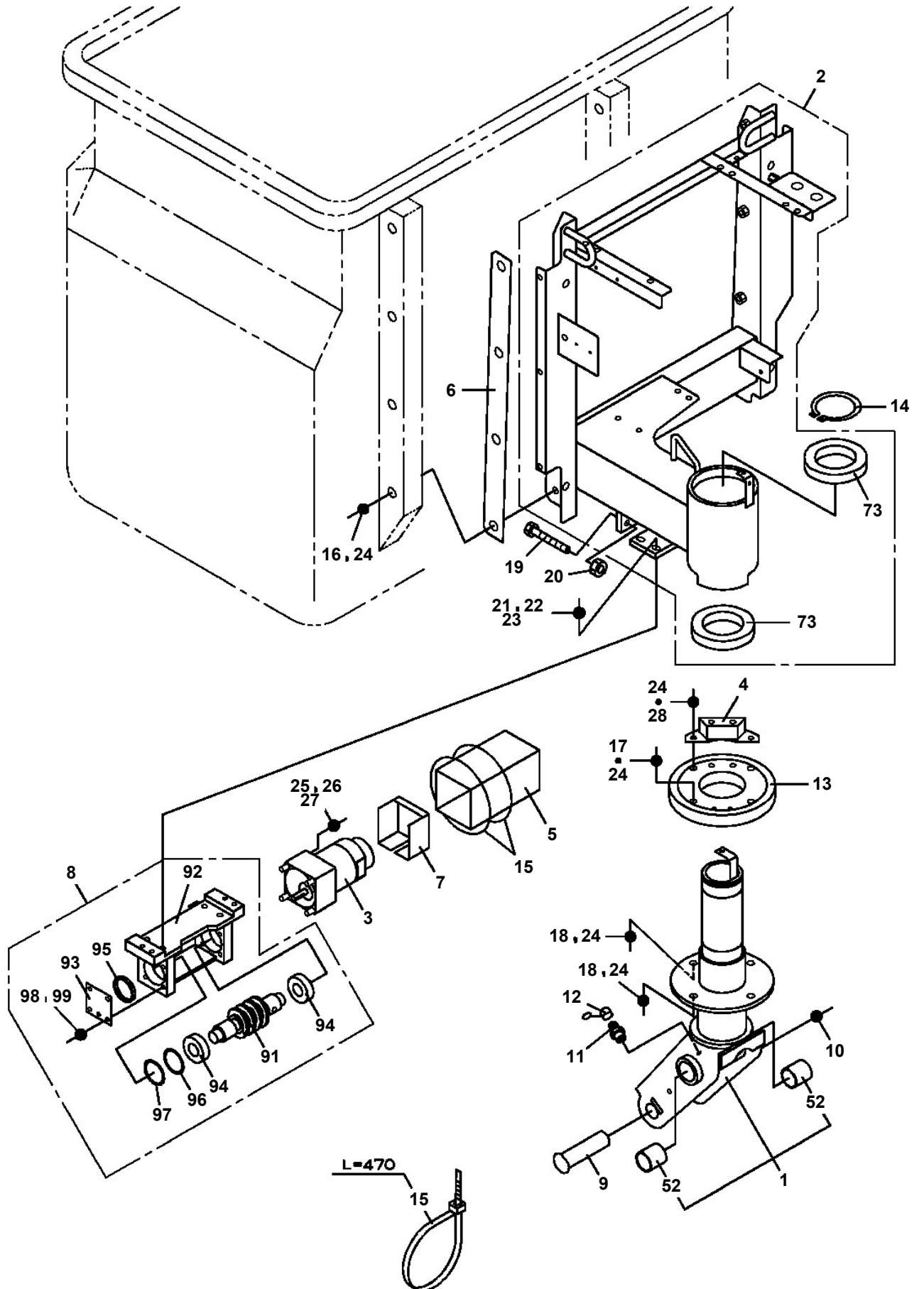
**AT-100-4 4206340001 UPPER
PB1400431-07 PIPING,UPPER**



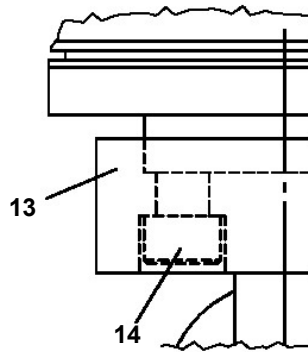
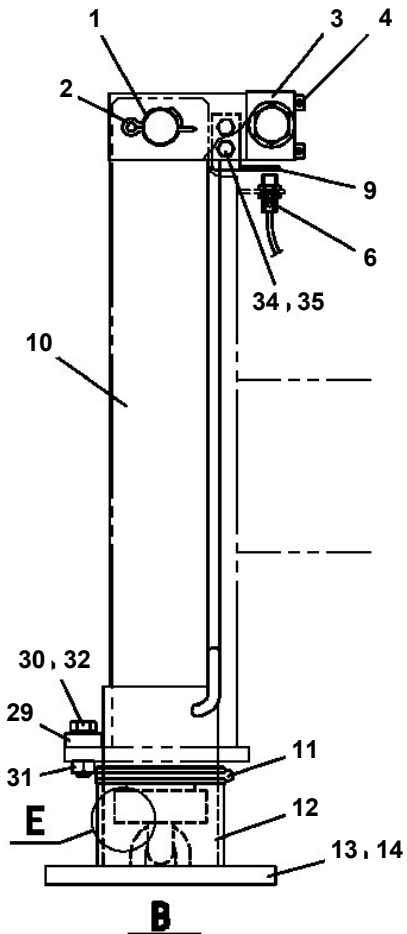
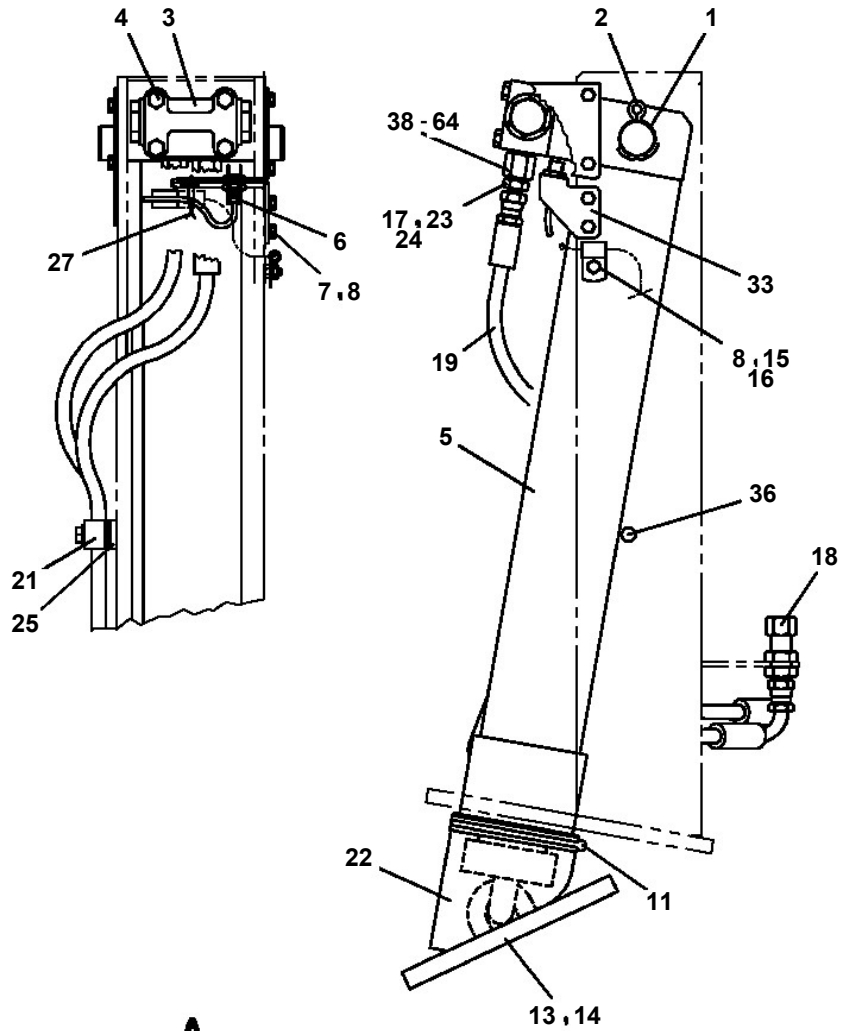
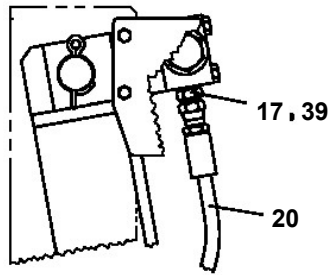
AT-100-4 42063400001 UPPER
PB5260024-00 BOX ASSY



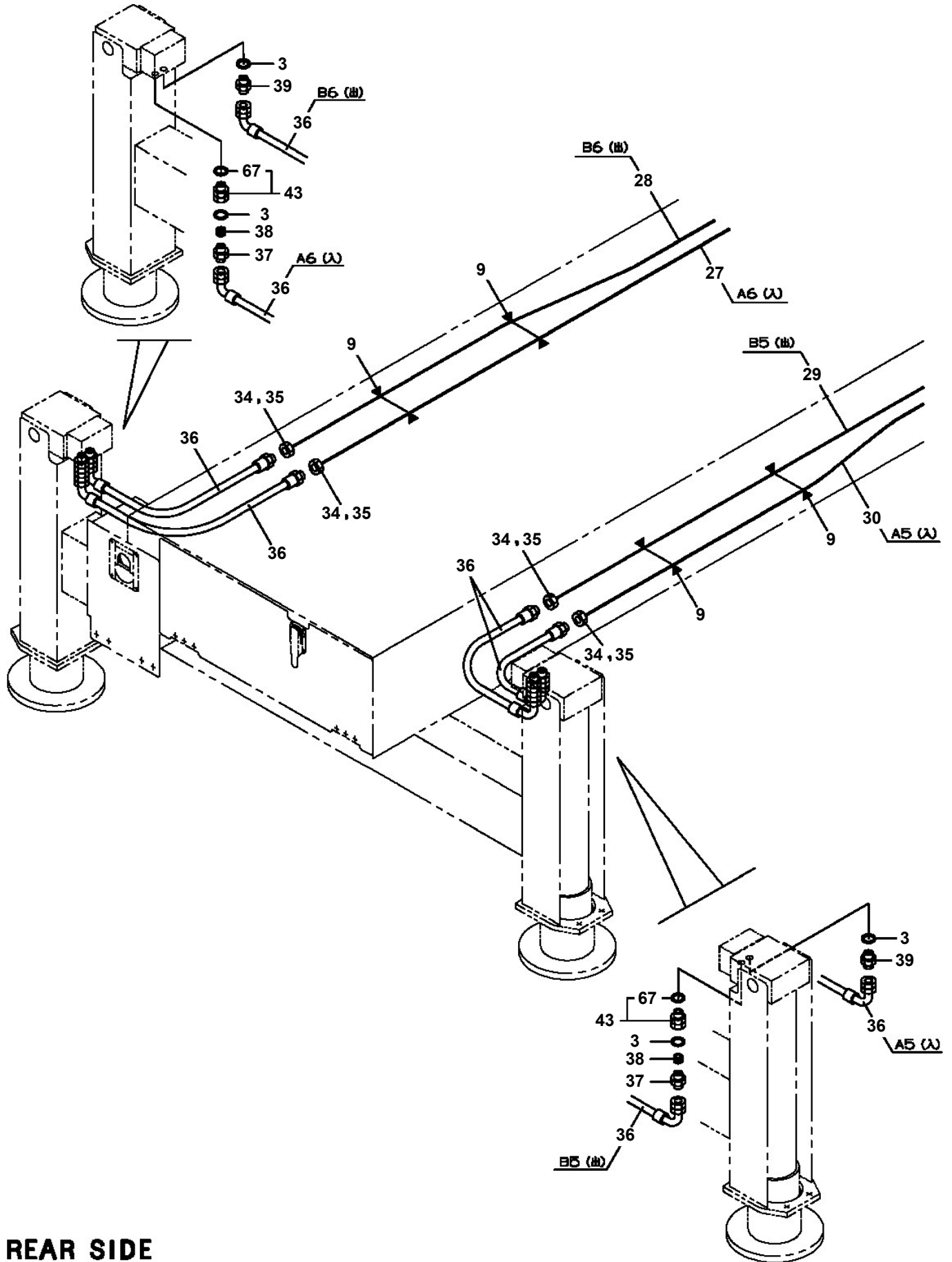
**AT-100-4 42063400001 UPPER
PB5370004-00 BUCKET FRAME ASSY**



**AT-100-4 42063400001 UPPER
PC1011319-01 OUTRIGGER**



**AT-100-4 42063400001 UPPER
PC1200543-00 PIPING,OUTRIGGER**



REAR SIDE

AT-100-4 42063400001 UPPER

Pos No.	Parts No	Parts Name	Qty	Unit	Technical Data	Serial No (Start)	Serial No (End)	Remarks	Pages
2	42501162200	SUPPORT	1						
3	42501162120	CONNECTOR	1						
4	82100000950	GROMMET	1						
10	42501162100	CABLE ASSY	1						

AT-100-4 42063400001 UPPER

Pos No.	Parts No	Parts Name	Qty	Unit	Technical Data	Serial No (Start)	Serial No (End)	Remarks	Pages
1	42321151102	COVER	1						
2	42321112201	COVER	1						
3	82464122900	HINGE	2						
4	90190204010	BOLT	8		M4X10				
5	90303520401	WASHER,PLAIN	8		4		HK0761		
	90303520401	WASHER,PLAIN	12		4	HK0762			
6	90302510401	WASHER,SPRING	8		4				
7	90201500400	NUT	8		M4				
8	82460025402	CATCH	1						
9	90302040501	WASHER,SPRING	4		5				
10	80175805010	SCREW,MACHINE	4		M5X10				
11	90201200500	NUT	4		M5				
12	42875640010	PLATE	4		T=0.5	HK0762			
13	80172304008	SCREW,MACHINE	2		M4X8				
14	90201200400	NUT	1		M4				
15	90240200400	NUT,CAP	1		M4				
16	90303070401	WASHER,PLAIN	2		4				
17	42321112010	CHAIN	1						
100	42321151001	COVER ASSY	1						

AT-100-4 42063400001 UPPER

Pos No.	Parts No	Parts Name	Qty	Unit	Technical Data	Serial No (Start)	Serial No (End)	Remarks	Pages
1	42974350100	COVER	1						
2	42974350200	COVER	1						

AT-100-4 42063400001 UPPER

Pos No.	Parts No	Parts Name	Qty	Unit	Technical Data	Serial No (Start)	Serial No (End)
1	36027519510	CYLINDER ASSY	1				219828
	36027519511	CYLINDER ASSY	1			219829	HK0141
2	90302042401	WASHER,SPRING	1		24		
	90302042401	WASHER,SPRING	1		24		
3	90209402400	NUT	1		M24		
	90209402400	NUT	1		M24		
4	36024260020	PISTON	1				HK0141
	36028370010	PISTON	1			HK0142	
	36028370010	PISTON	1			HK0142	
5	91350207500	BEARING,PLAIN (WITH PACKINGX2)	1				
	91350207500	BEARING,PLAIN (WITH PACKINGX2)	1				
6	91002802000	O-RING	1		1B P20		
	91002802000	O-RING	1		1B P20		
7	36027519520	ROD ASSY	1				
	36027519520	ROD ASSY	1				
8	36026159530	COVER,ROD	1				
	36026159530	COVER,ROD	1				
9	80612110400	RING,RITAINING	1		AR40		
	80612110400	RING,RITAINING	1		AR40		
10	91002907000	O-RING	1		1B G70		
	91002907000	O-RING	1		1B G70		
11	80801003525	BEARING,PLAIN	1				
	80801003525	BEARING,PLAIN	1				
12	91694003500	PACKING	1				
	91694003500	PACKING	1				
13	91410203501	RING,BACKUP	1				
	91410203501	RING,BACKUP	1				
14	91660003501	SEAL,DUST	1				
	91660003501	SEAL,DUST	1				
15	82455106000	NIPPLE,GREASE	1		A-M6F FE		
	82455106000	NIPPLE,GREASE	1		A-M6F FE		
	82455106000	NIPPLE,GREASE	1		A-M6F FE		
16	82400000459	CAP	1				HK0141
17	80820003030	BEARING,PLAIN	2				HK0141
	80820003030	BEARING,PLAIN	2				219828
	80820003030	BEARING,PLAIN	2			219829	HK0141
	80820003020	BEARING,PLAIN	4			HK0142	HK0141
	80820003020	BEARING,PLAIN	4			HK0142	
18	91002907500	O-RING	1		1B G75		
	91002907500	O-RING	1		1B G75		
20	90303072401	WASHER,PLAIN	1		24	HK0142	
	90303072401	WASHER,PLAIN	1		24	HK0142	
21	36027519512	CYLINDER ASSY	1			HK0142	
	36027519512	CYLINDER ASSY	1			HK0142	
41	36026489900	PACKING SET	1		35X75		
	36026489900	PACKING SET	1		35X75		
100	36027510000	CYLINDER ASSY,LEVELING	1				
	36027510000	CYLINDER ASSY,LEVELING	1				

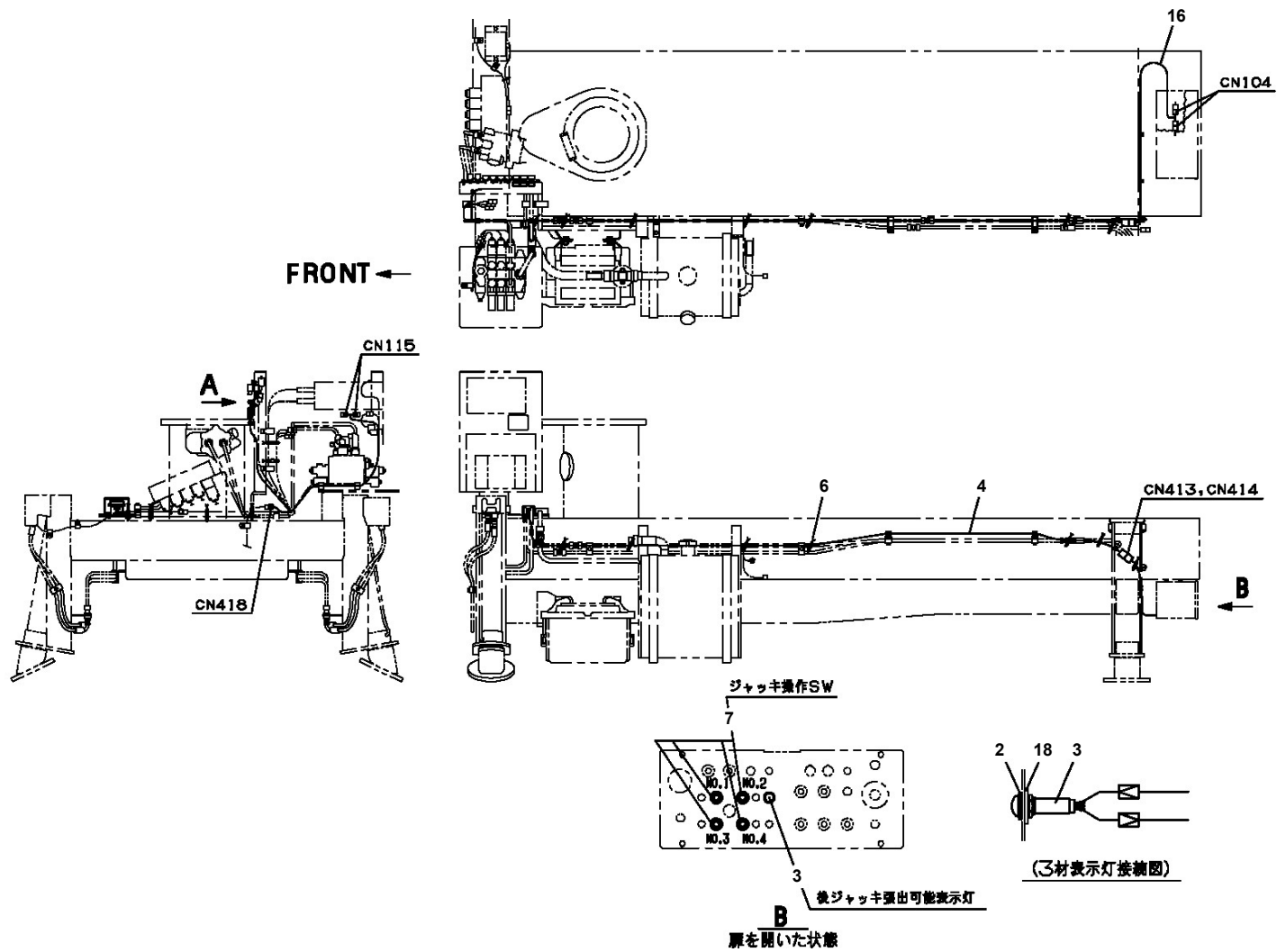
AT-100-4 4206340001 UPPER

Pos No.	Parts No	Parts Name	Qty	Unit	Technical Data	Serial No (Start)	Serial No (End)	Remark
1	82456101000	NIPPLE,GREASE	1		A-PT1/8			
2	80728105040	PIN,SPRING	1					
3	91302209000	BEARING,PLAIN	2					
4	91684009001	PACKING	2					
5	91411207502	RING,BACKUP	2					
6	91002903500	O-RING	1		1B G35			
7	36026894000	PISTON	1					
8	36027539510	ROD ASSY	1					
9	36027539520	CYLINDER ASSY	1					
10	80612110720	RING,RITAINING	1		AR72			
11	37000403650	BEARING,PLAIN	1					
12	36026899530	COVER,ROD	1					
13	91002909500	O-RING	1		1B G95			
14	91694106500	PACKING	1					
15	91410206503	RING,BACKUP	1					
16	91660006500	SEAL,DUST	1					
17	80622000650	RING,RITAINING	1		SP65			
18	80530000114	BEARING,SPHERICAL	1					
19	80820004040	BEARING,PLAIN	2					
20	80316030020	PLUG	1		PT1/8			
21	91002910500	O-RING	1		1B G105			
22	82400000459	CAP	1					
41	36026899900	PACKING SET	1		65X90			
101	36027530000	CYLINDER,ELEVATING	1					
102	36605570000	VALVE,COUNTERBALANCE	1					
103	90101208060	BOLT	4		M8X60			
104	90302040801	WASHER,SPRING	4		8			

AT-100-4 42063400001 UPPER

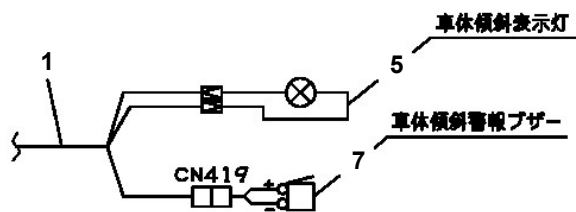
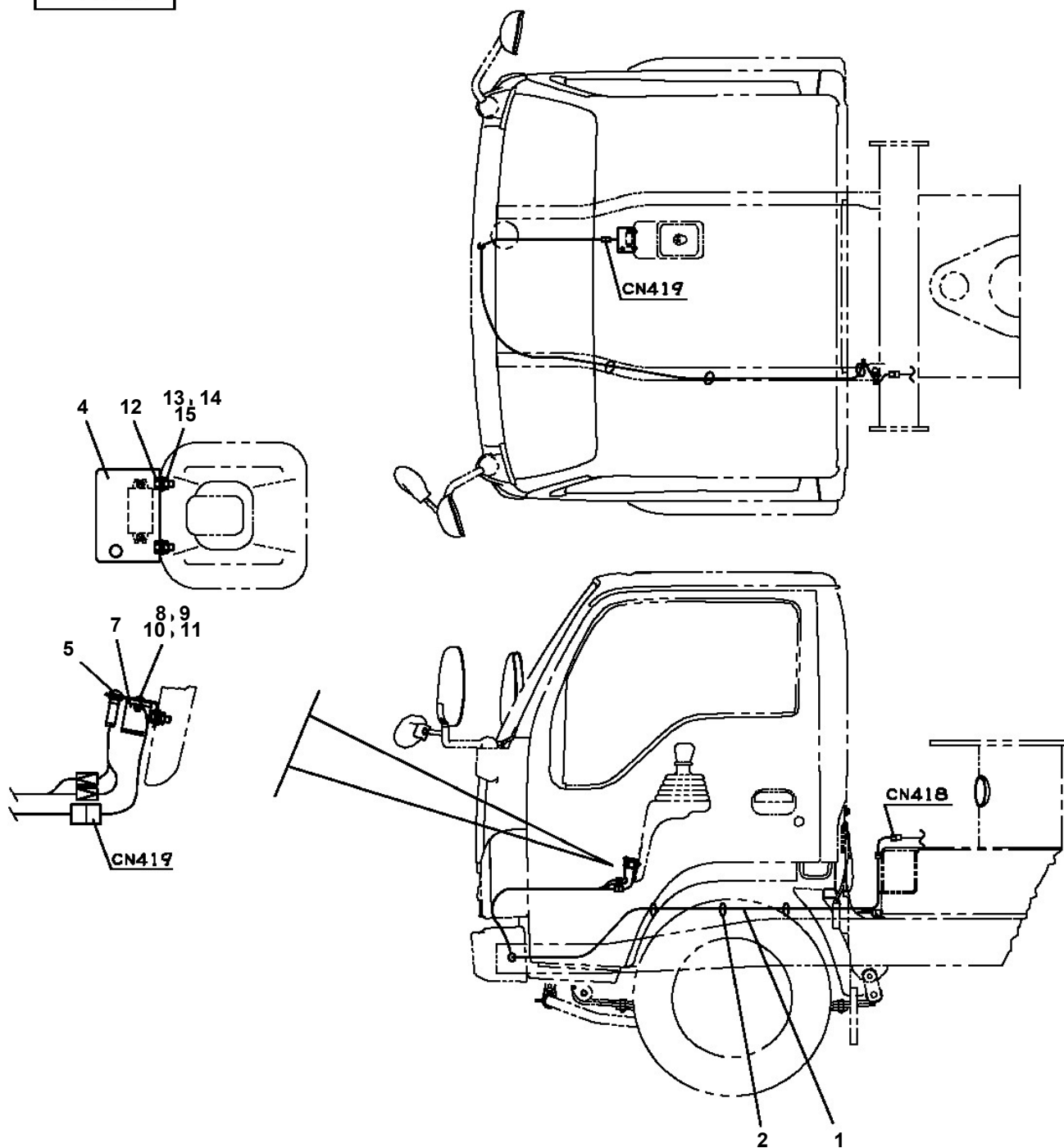
Pos No.	Parts No	Parts Name	Qty	Unit	Technical Data	Serial No (Start)	Serial No (End)
1	36027861000	CYLINDER	1				219933
	36027861001	CYLINDER	1			219934	
	36027861001	CYLINDER	1			219934	
2	90302042401	WASHER,SPRING	1		24		
	90302042401	WASHER,SPRING	1		24		
3	90209402400	NUT	1		M24		
	90209402400	NUT	1		M24		
4	36024260020	PISTON	1				HK0294
5	91350207500	BEARING,PLAIN (WITH PACKINGX2)	1				
	91350207500	BEARING,PLAIN (WITH PACKINGX2)	1				
6	91002802000	O-RING	1		1B P20		
	91002802000	O-RING	1		1B P20		
7	36027549510	ROD ASSY	1				
	36027549510	ROD ASSY	1				
8	36026159530	COVER,ROD	1				
	36026159530	COVER,ROD	1				
9	80612110400	RING,RITAINING	1		AR40		
	80612110400	RING,RITAINING	1		AR40		
10	91002907000	O-RING	1		1B G70		
	91002907000	O-RING	1		1B G70		
11	80801003525	BEARING,PLAIN	1				
	80801003525	BEARING,PLAIN	1				
12	91694003500	PACKING	1				
	91694003500	PACKING	1				
13	91410203501	RING,BACKUP	1				
	91410203501	RING,BACKUP	1				
14	91660003501	SEAL,DUST	1				
	91660003501	SEAL,DUST	1				
15	91002907500	O-RING	1		1B G75		
	91002907500	O-RING	1		1B G75		
16	80541700030	BEARING,SPHERICAL (NTN)	1		SA4-30B		
	80541700030	BEARING,SPHERICAL (NTN)	1		SA4-30B		
17	90303072401	WASHER,PLAIN	1		24	HK0295	
30	36026489900	PACKING SET	1		35X75		
	36026489900	PACKING SET	1		35X75		
34	36028370010	PISTON	1			HK0295	
100	36027860000	CYLINDER,LEVELING (LOWER)	1				
	36027860000	CYLINDER,LEVELING (LOWER)	1				

AT-100-4 4206340001 UPPER
PE5020517-01 ELEC.ASSY (FRAME)



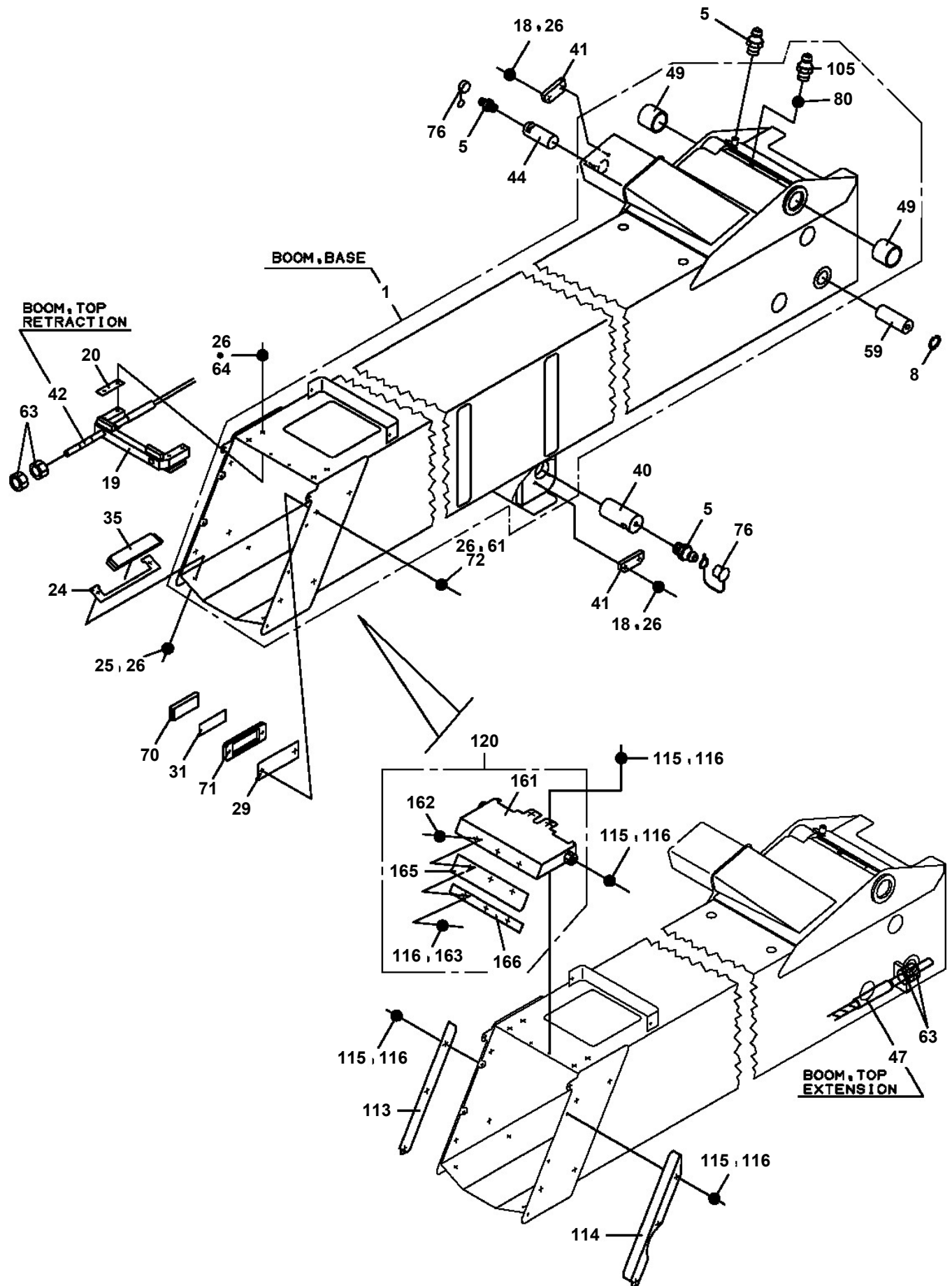
AT-100-4 4206340001 UPPER
 PE5070053-00 ELEC.ASSY,CARRIER

イスズ

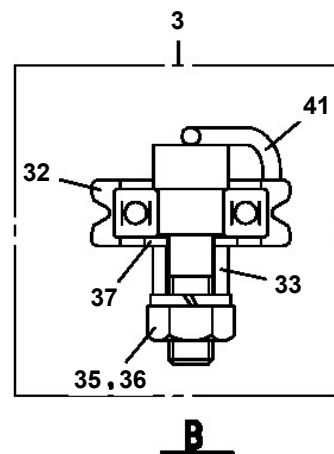
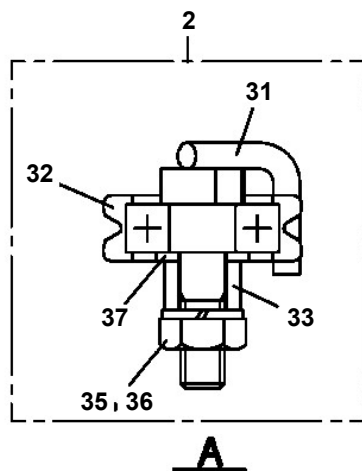
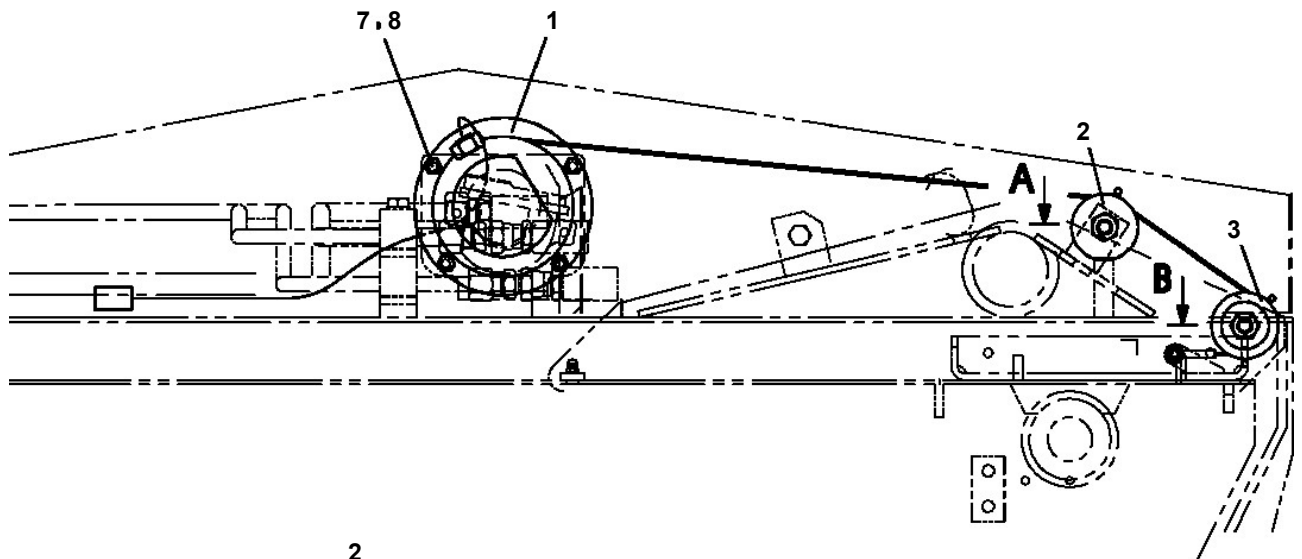
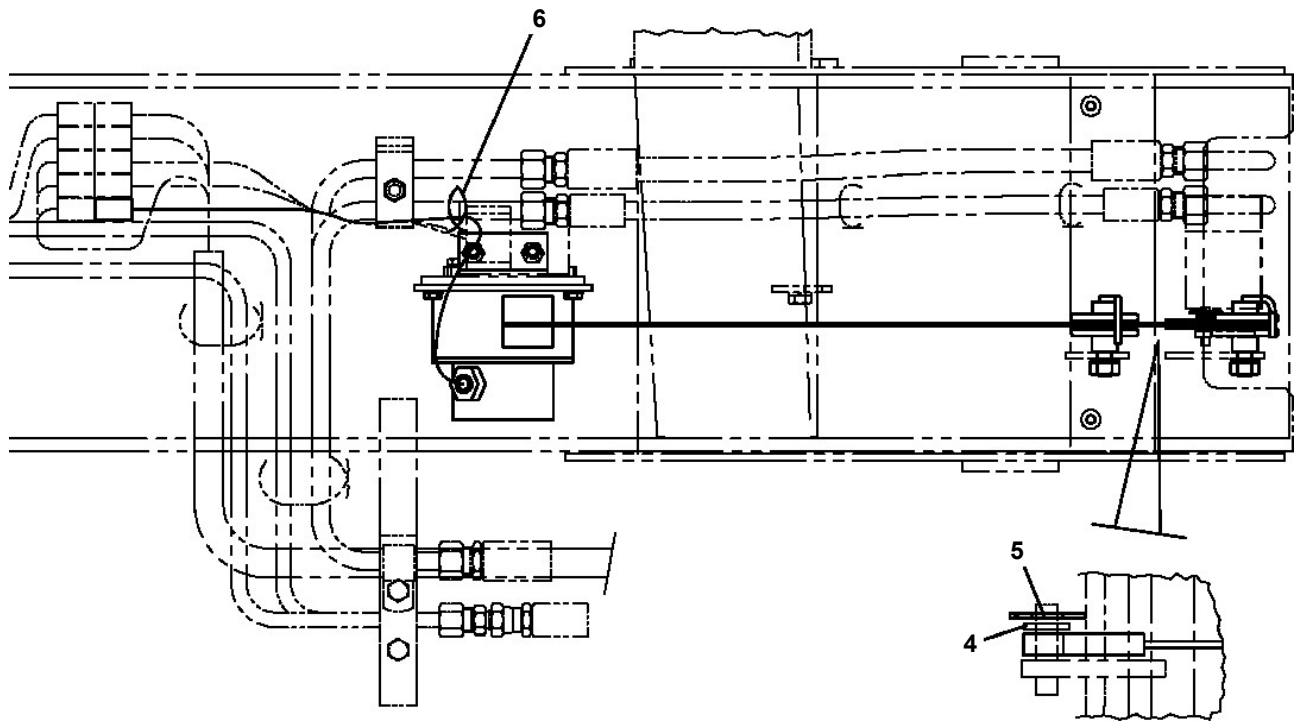


ブザー、表示灯接続図

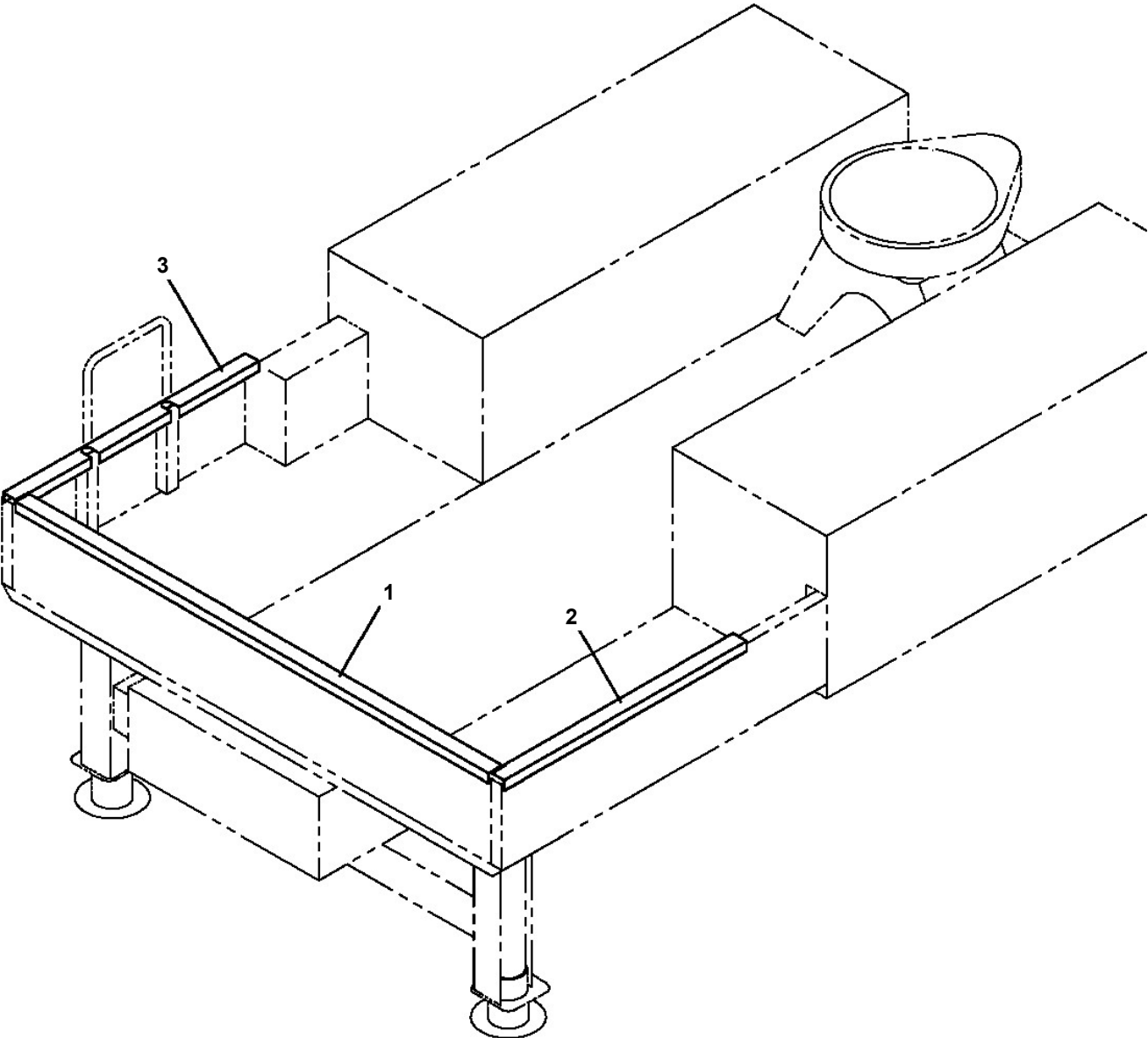
AT-100-4 4206340001 UPPER
PG1010912-03 BOOM



**AT-100-4 4206340001 UPPER
PG1120223-00 DETECTOR,BOOM LENGTH**

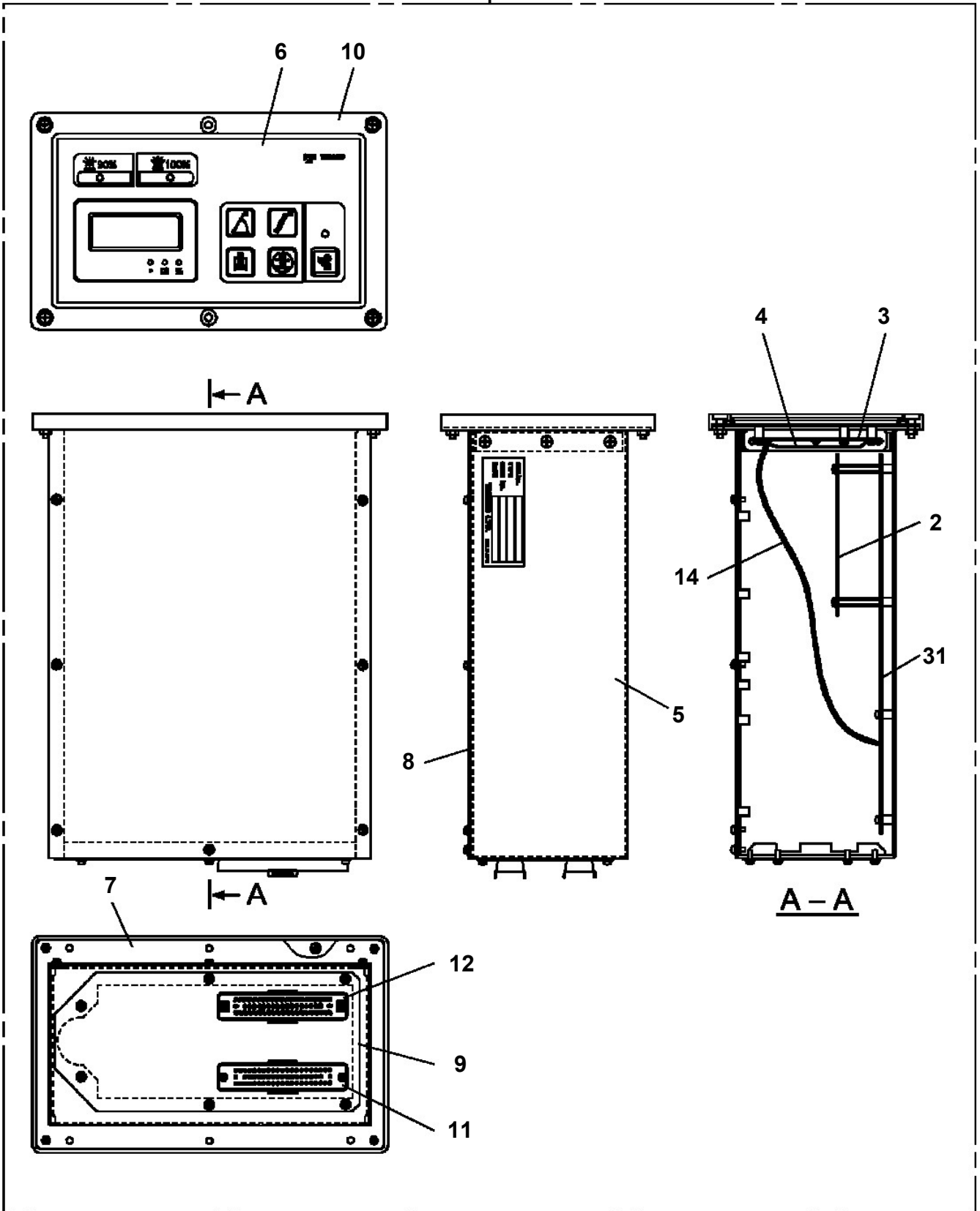


**AT-100-4 42063400001 UPPER
PG5200048-00 GUARD ASSY (GATE PROTECTOR/AT-100TT,TTE,AT-110TTE-5)**



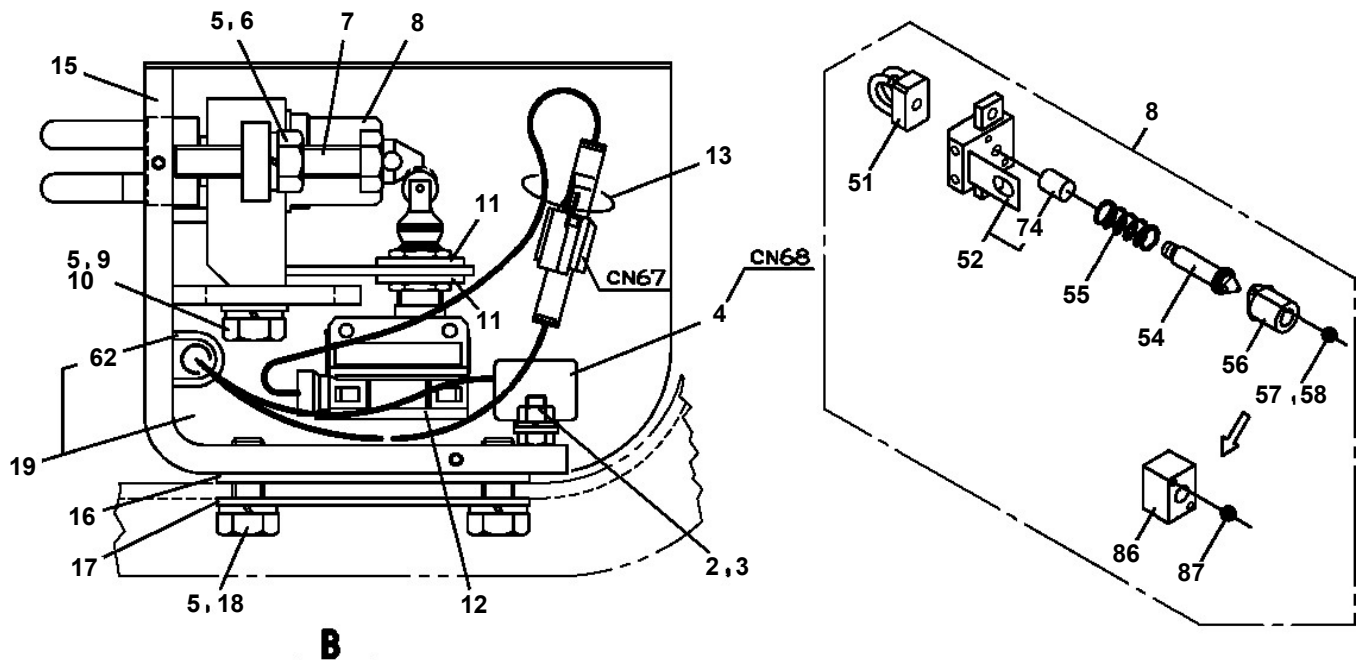
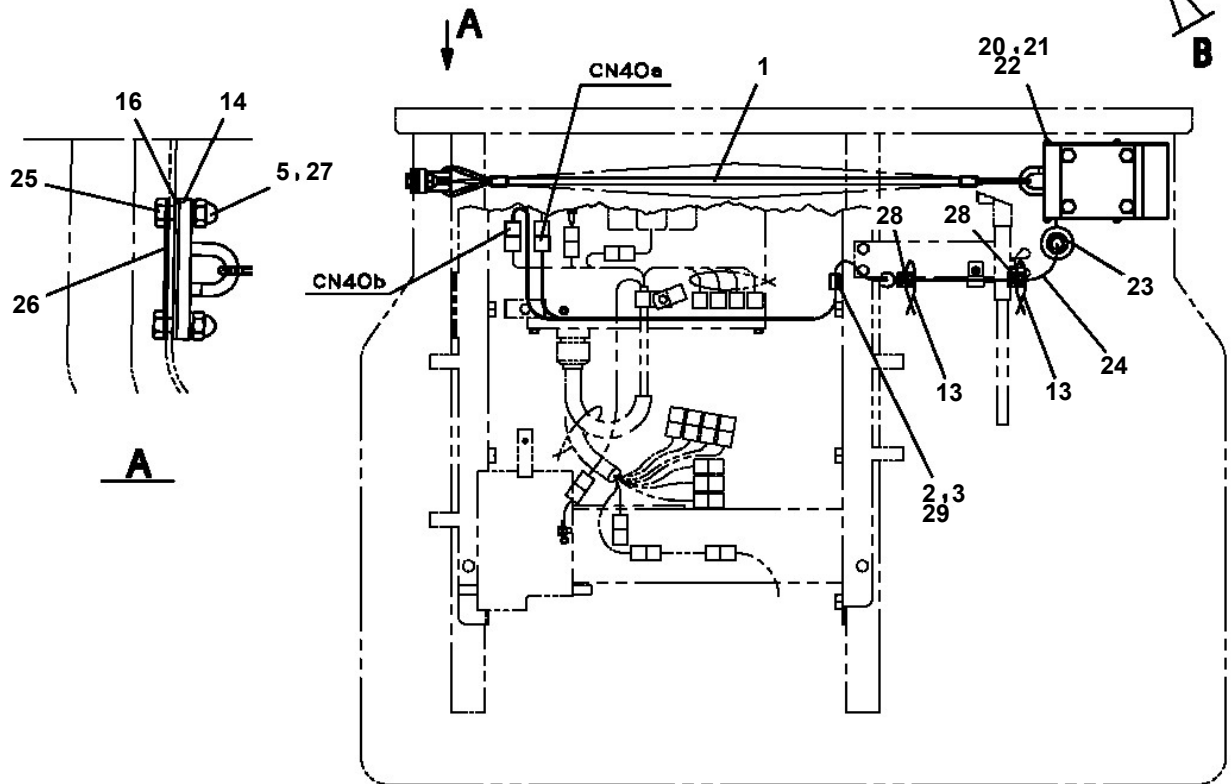
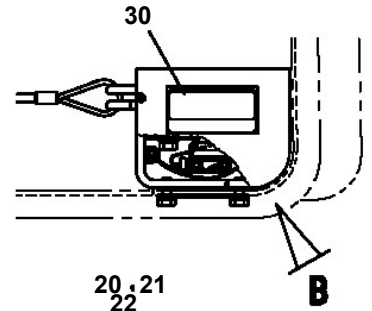
AT-100-4 4206340001 UPPER
PH1480045-00 MOTION CONTROLLER (AMC)

100



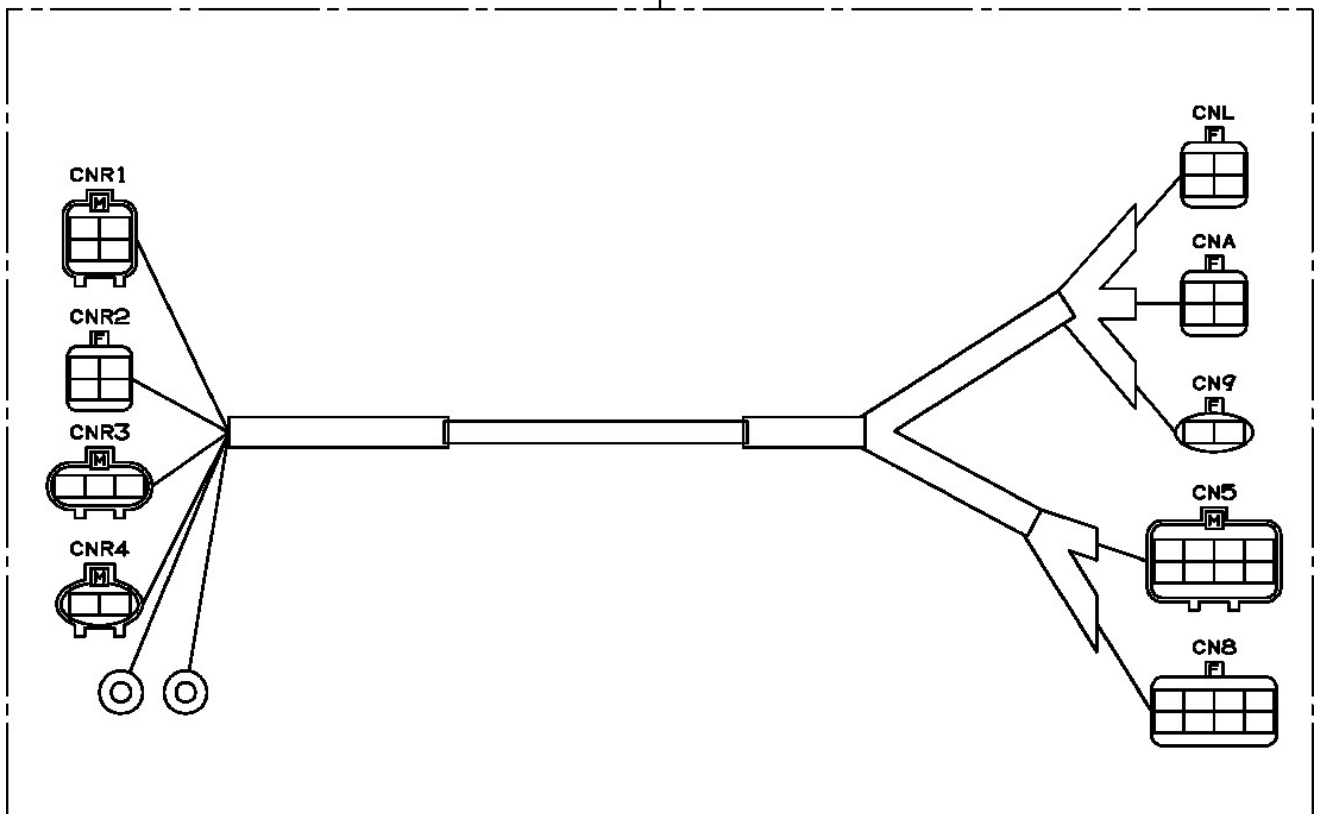
AT-100-4 4206340001 UPPER
PH1550026-01 TOUCH SWITCH (FOR NIKKEN)

30
タッチスイッチ
ワイヤーが押されてスイッチが作動すると、作業車の作動とエンジンが停止します。

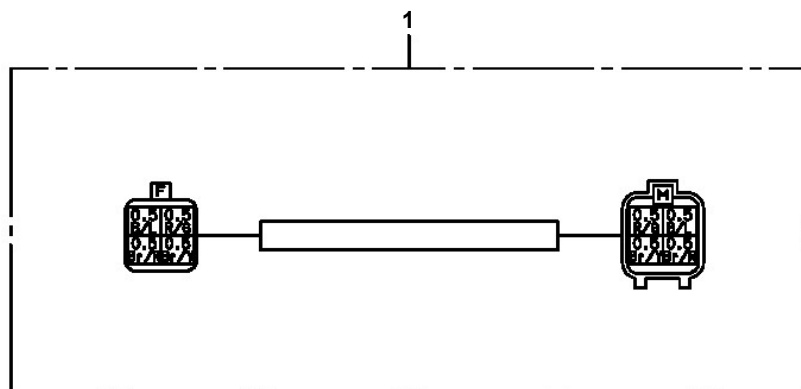


**AT-100-4 42063400001 UPPER
PH5030430-00 HARNESS**

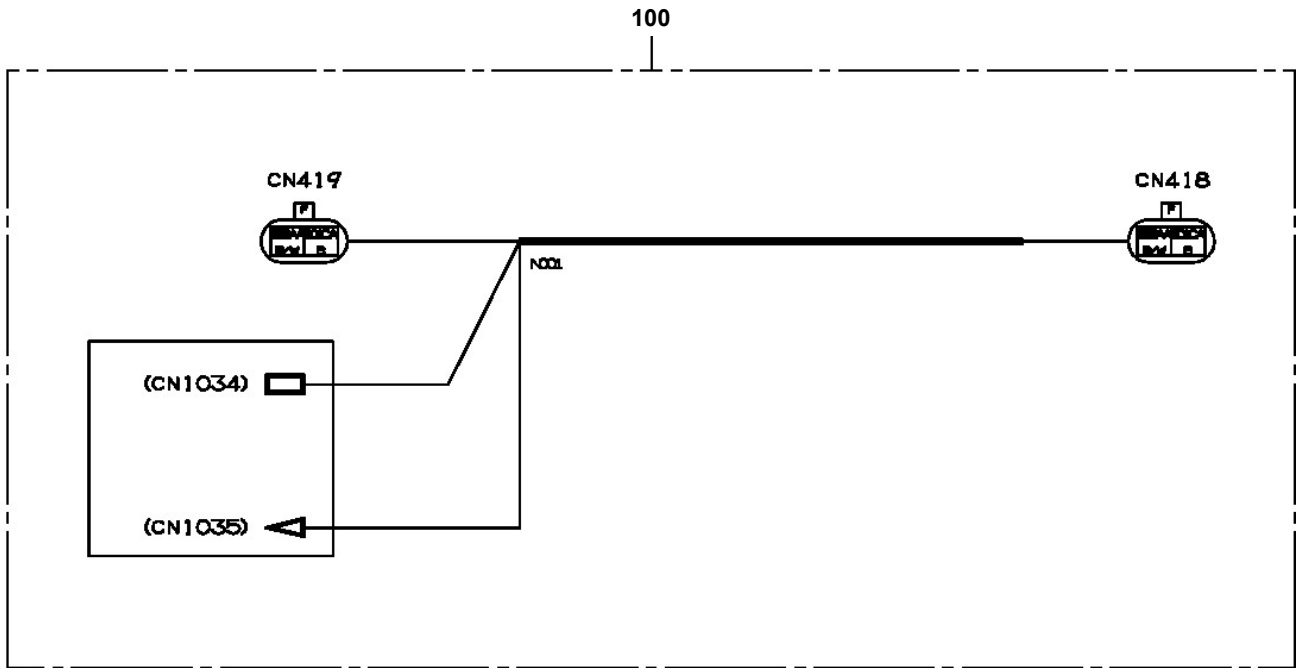
100



**AT-100-4 4206340001 UPPER
PH5030759-00 HARNESS**

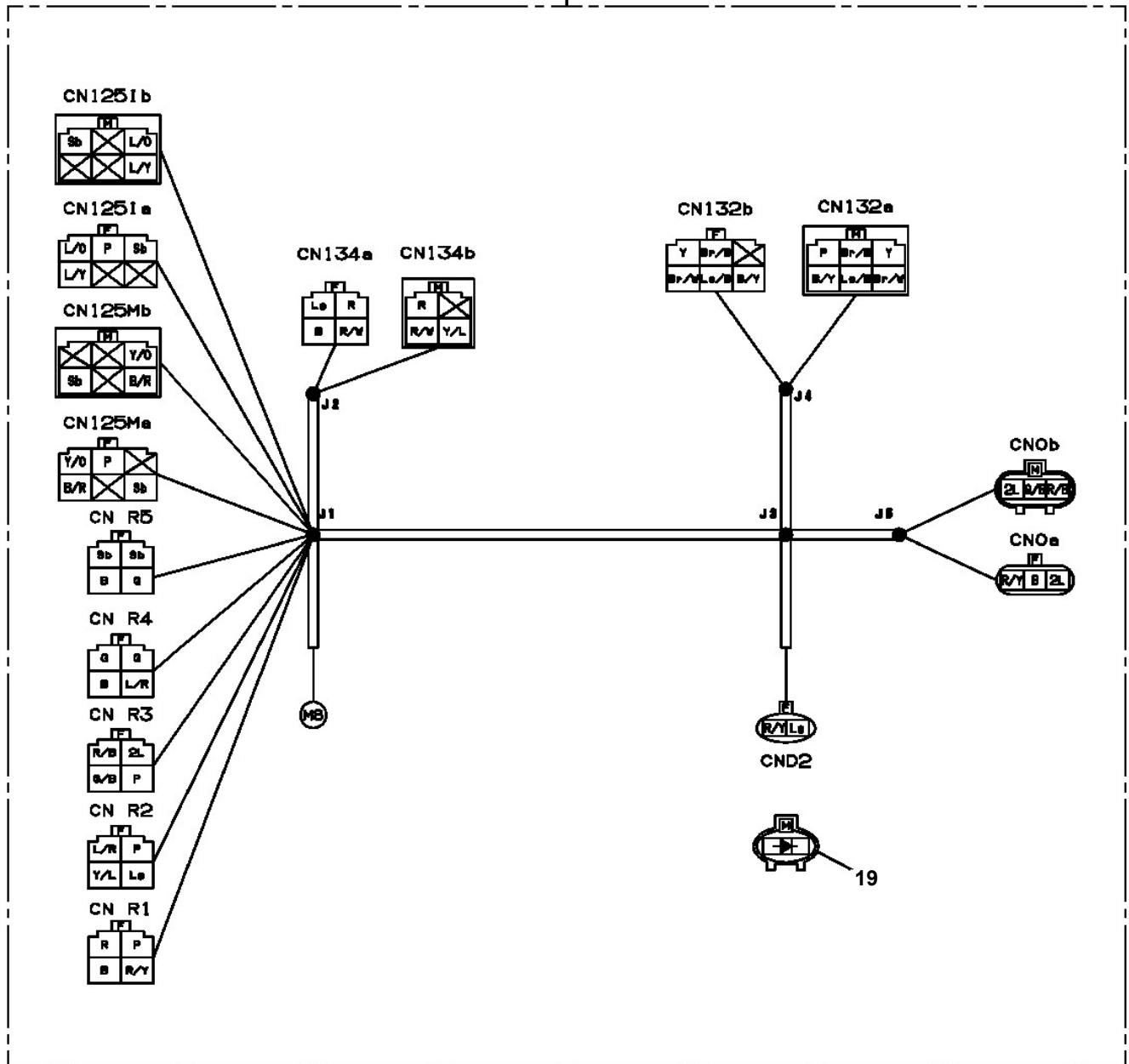


AT-100-4 42063400001 UPPER
PH5030978-00 HARNESS

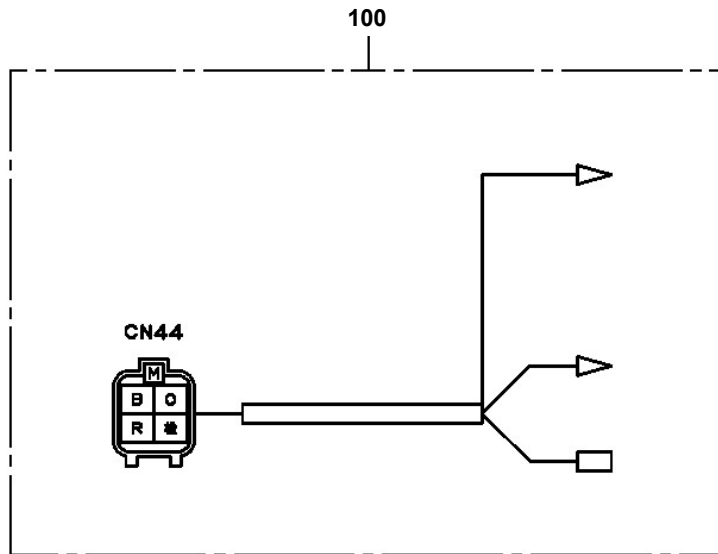


AT-100-4 4206340001 UPPER
PH5031007-00 HARNESS

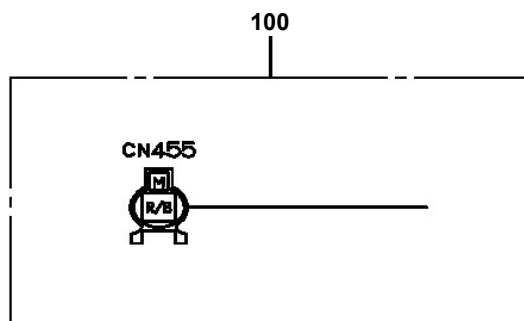
100



**AT-100-4 42063400001 UPPER
PH5031025-00 HARNESS**

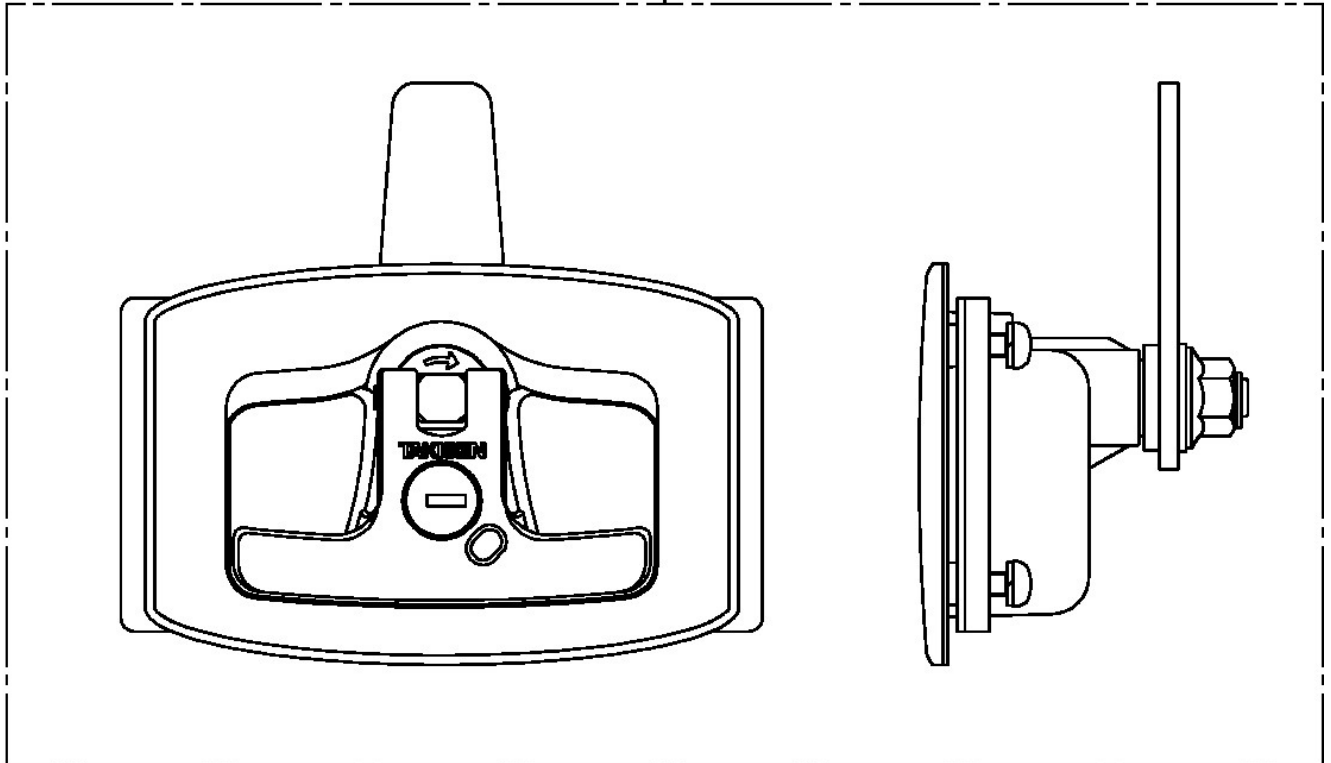


**AT-100-4 42063400001 UPPER
PH5034165-00 HARNESS**



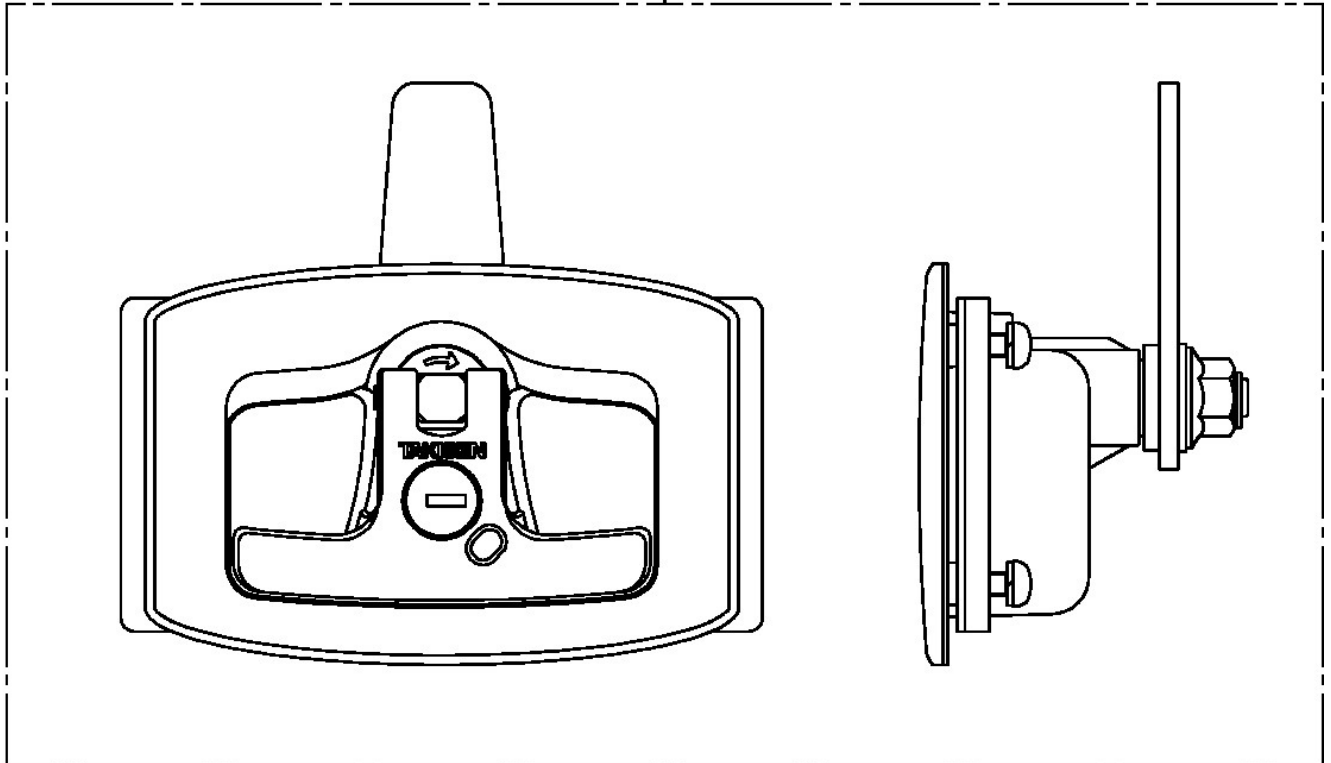
**AT-100-4 42063400001 UPPER
PH5190001-00 HANDLE**

1

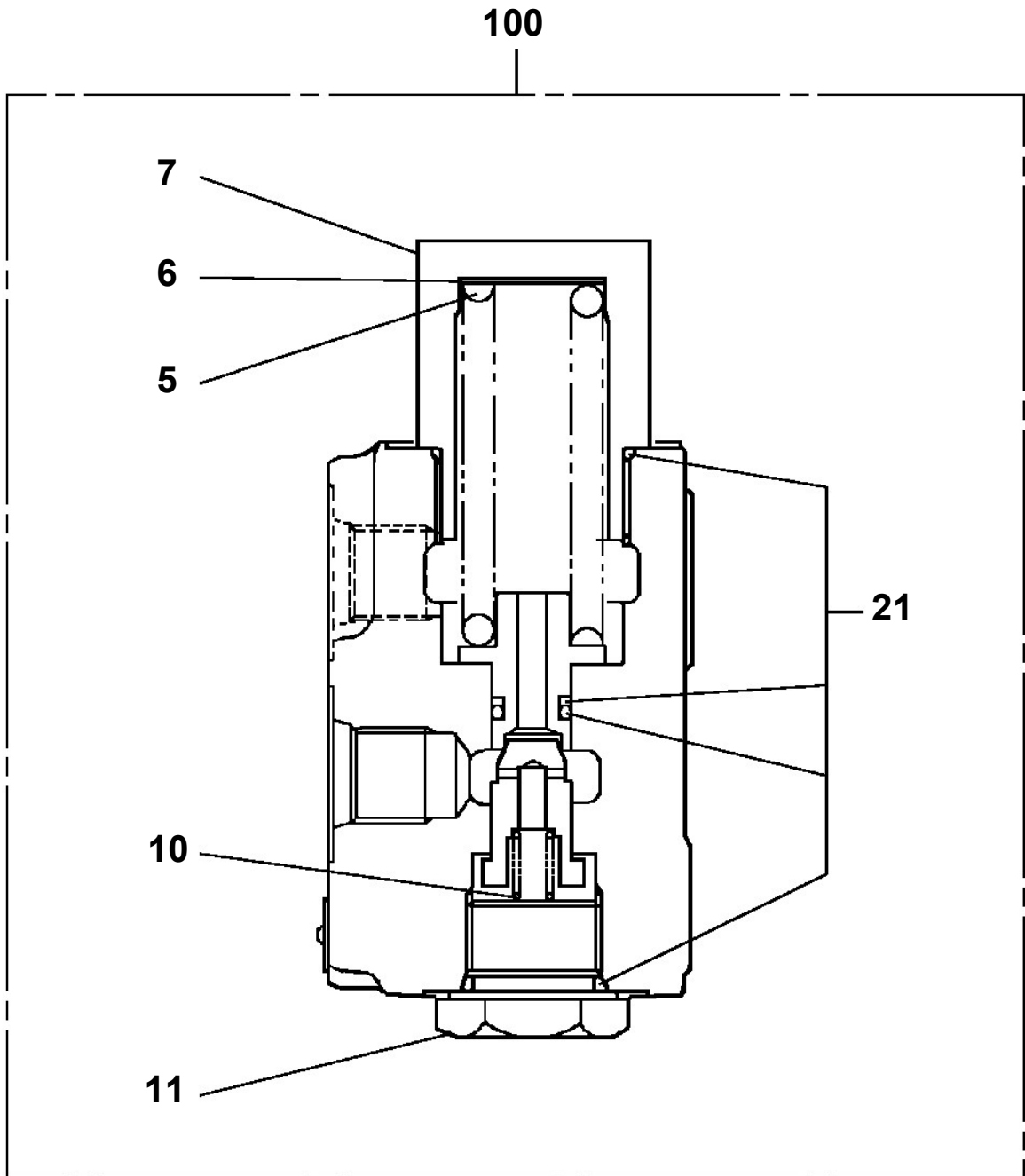


**AT-100-4 42063400001 UPPER
PH5190001-00 HANDLE**

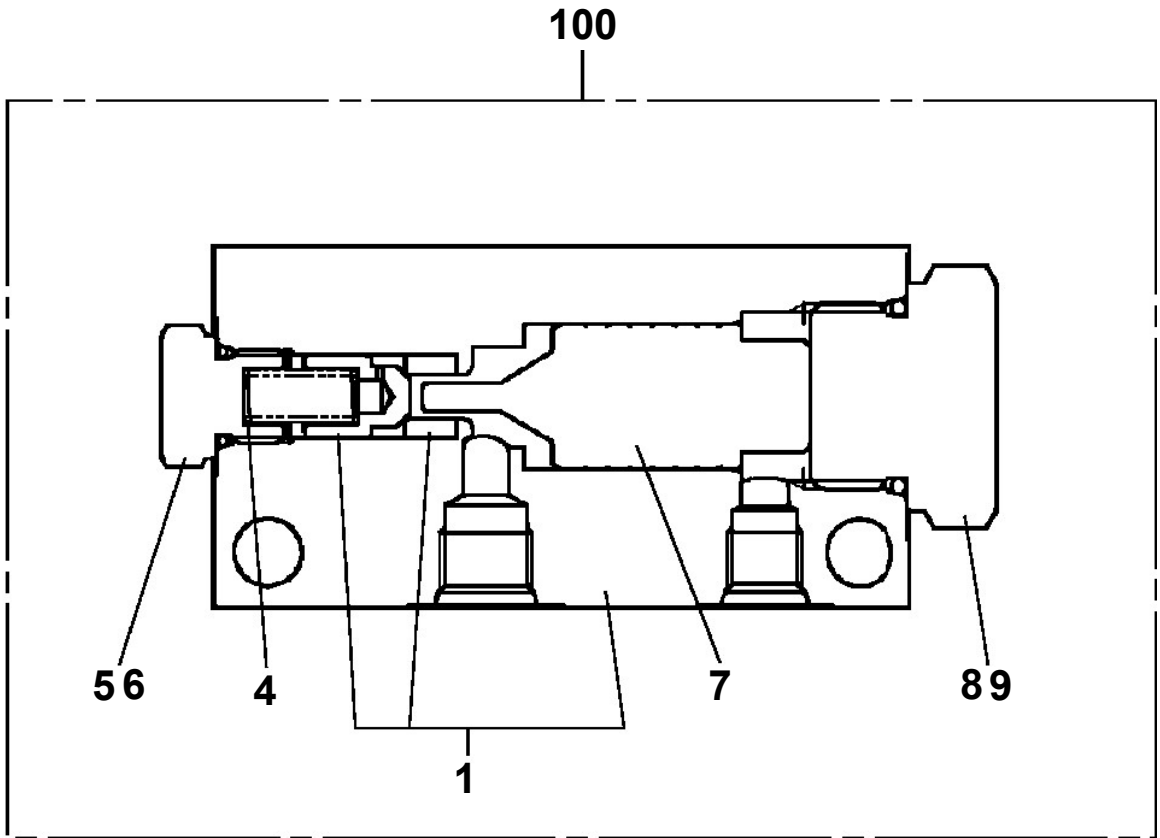
1



AT-100-4 42063400001 UPPER
PI1100124-00 VALVE,RELIEF

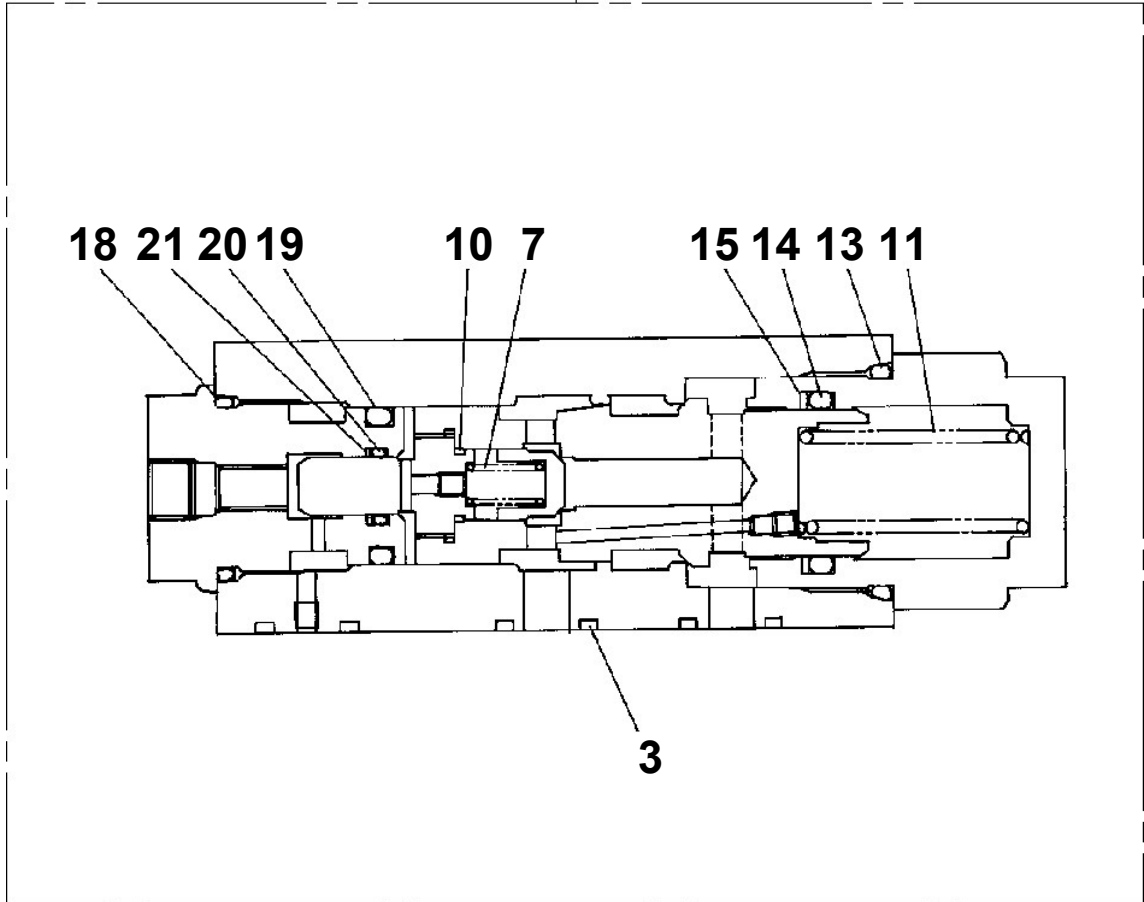


**AT-100-4 42063400001 UPPER
PI1140212-00 VALVE,CHECK**

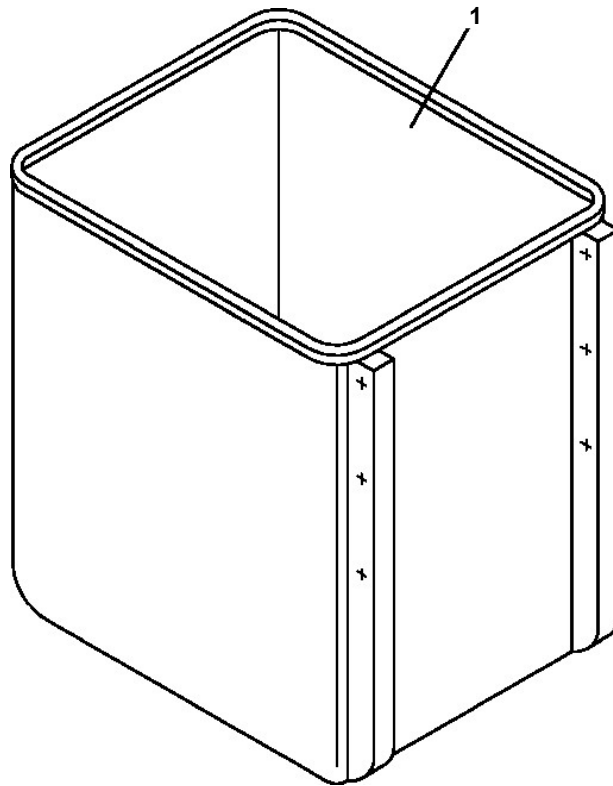


**AT-100-4 42063400001 UPPER
PI1250141-00 VALVE,COUNTERBALANCE**

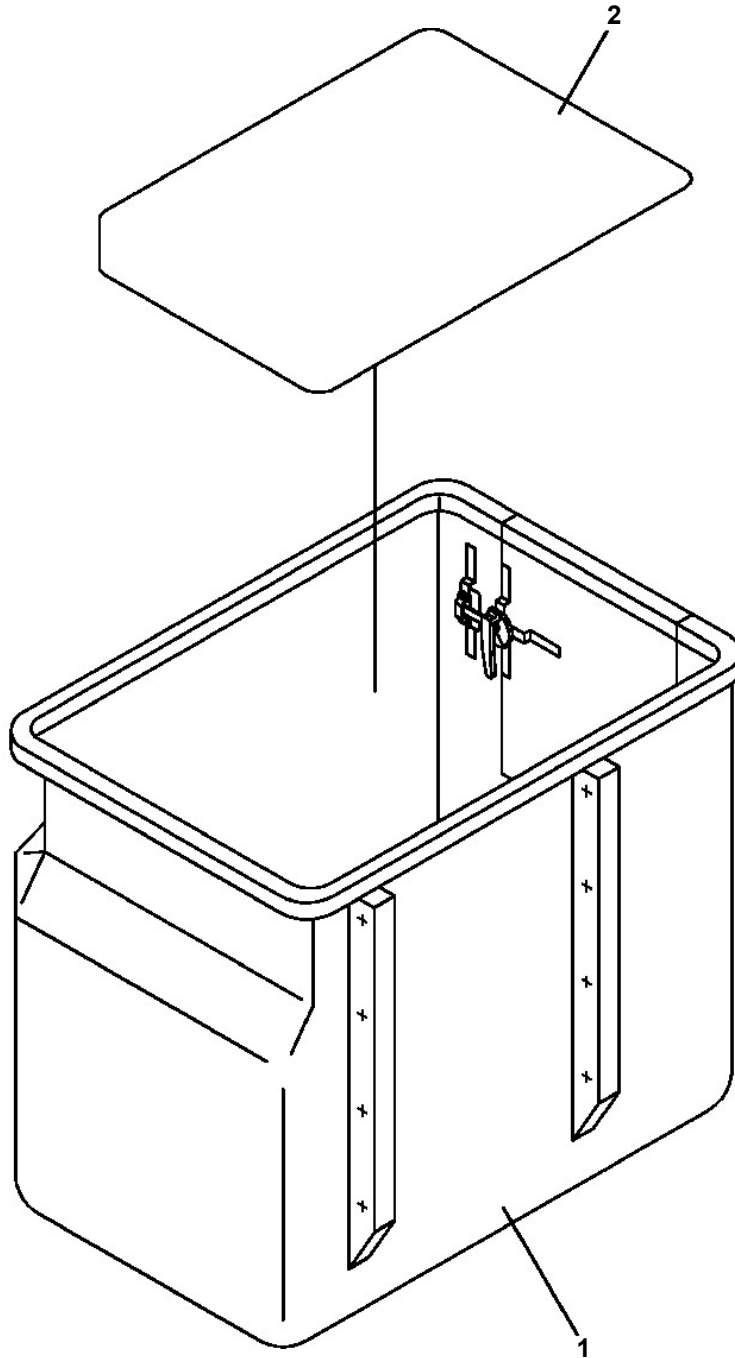
50



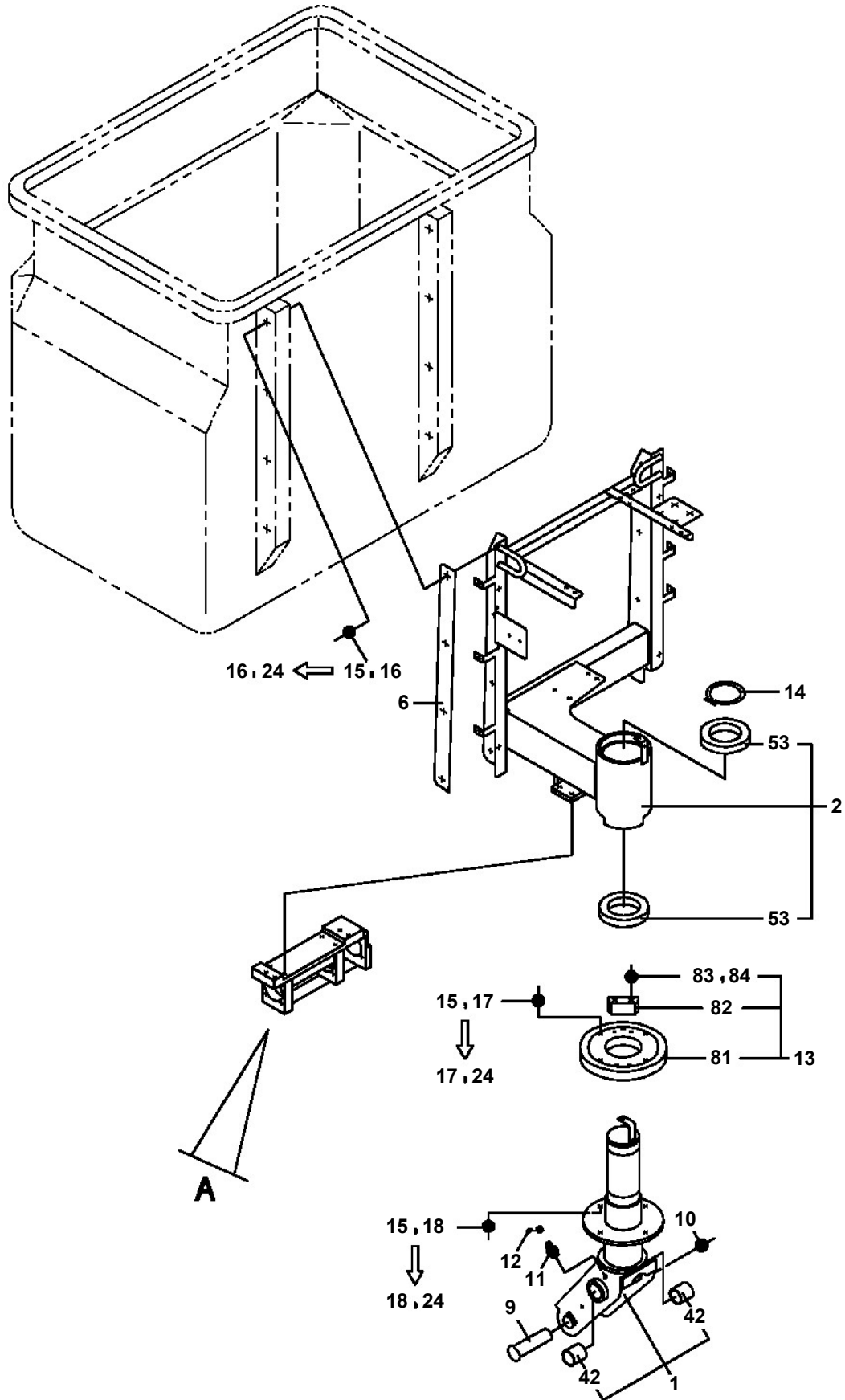
AT-100-4 42063400001 UPPER
PJ3010217-00 BUCKET (SI,WHITE/WITH INNER)



**AT-100-4 42063400001 UPPER
PJ3010364-00 BUCKET (WHITE/WITH DOOR)**



**AT-100-4 42063400001 UPPER
PK1011060-02 FRAME (BUCKET)**



AT-100-4 42063400001 UPPER

Pos No.	Parts No	Parts Name	Qty	Unit	Technical Data	Serial No (Start)	Serial No (End)	Remarks
1	42624911000	FRAME ASSY	1				219129	
	42624911001	FRAME ASSY	1			219130		
2	42625260100	COVER ASSY	1			219120		
3	42624600030	PLATE,NAME	2					
4	42624600300	BELT	1					
5	80172804016	SCREW,MACHINE	2		M4X16			
6	90302040801	WASHER,SPRING	4		8			
7	90303070801	WASHER,PLAIN	1		8			
8	42625260010	PLATE,SLIDE	1			219120		
9	90172108020	BOLT,HEXAGON SOCKET	3		M8X20			
10	90201200800	NUT	4		M8			
11	82464107814	HINGE	2					
12	90190205012	BOLT	6		M5X12			
13	90201500500	NUT	12		M5			
14	90302510501	WASHER,SPRING	12		5			
15	90303520501	WASHER,PLAIN	6		5	219120		
16	80172805014	SCREW,MACHINE	6		M5X14			
17	42653672450	INSULATOR	2					
18	90101208020	BOLT	1		M8X20			
19	90303070401	WASHER,PLAIN	2		4			
20	90302040401	WASHER,SPRING	2		4			
41	42625260200	COVER	1			219120		
42	82460015181	CATCH (WITH KEY)	1					
43	80175805010	SCREW,MACHINE	2		M5X10			
44	80172805012	SCREW,MACHINE	2		M5X12			
45	90302510501	WASHER,SPRING	2		5			

CLICK HERE TO **DOWNLOAD** THE COMPLETE MANUAL

- Thank you very much for reading the preview of the manual.
- You can download the complete manual from: www.heydownloads.com by clicking the link below



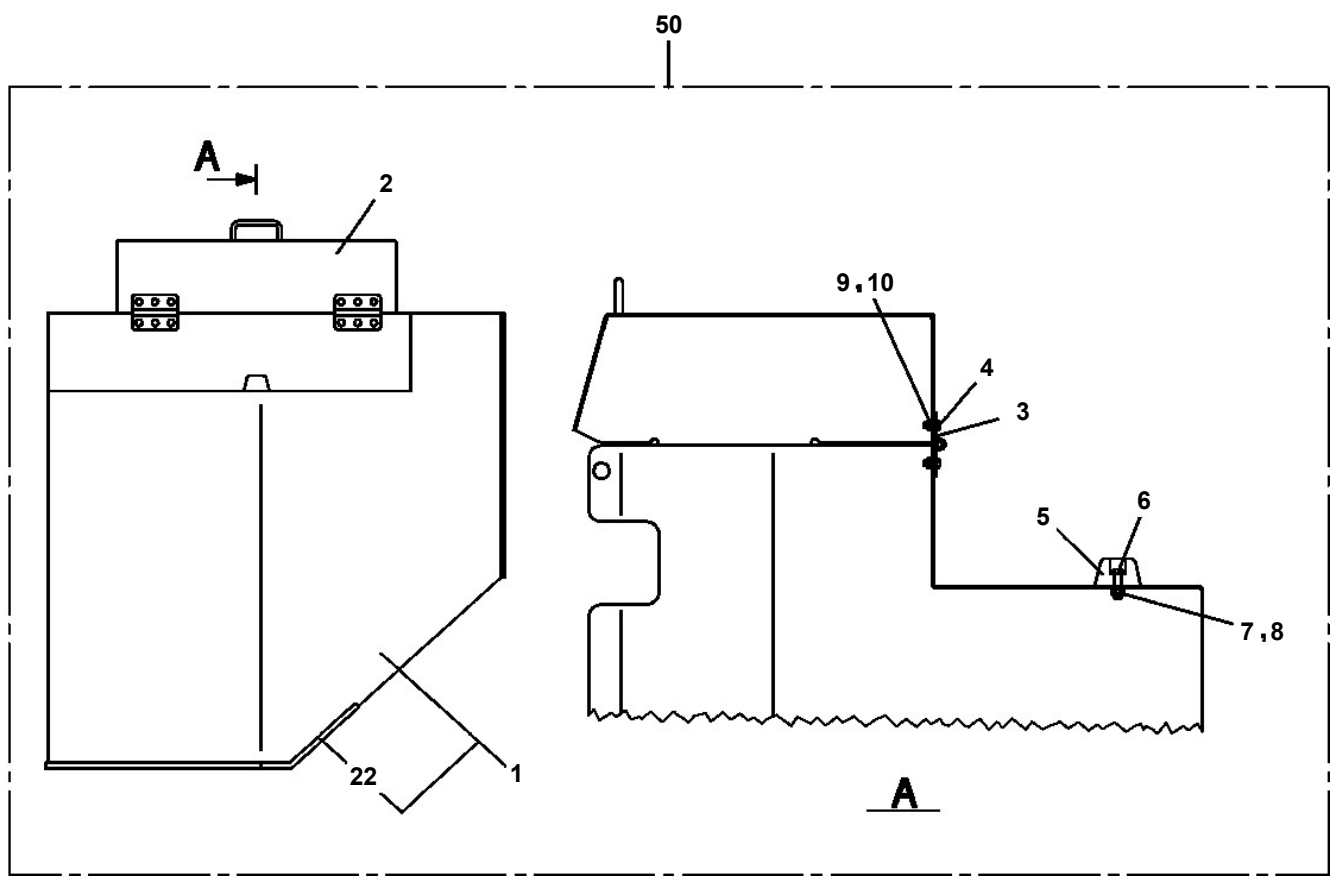
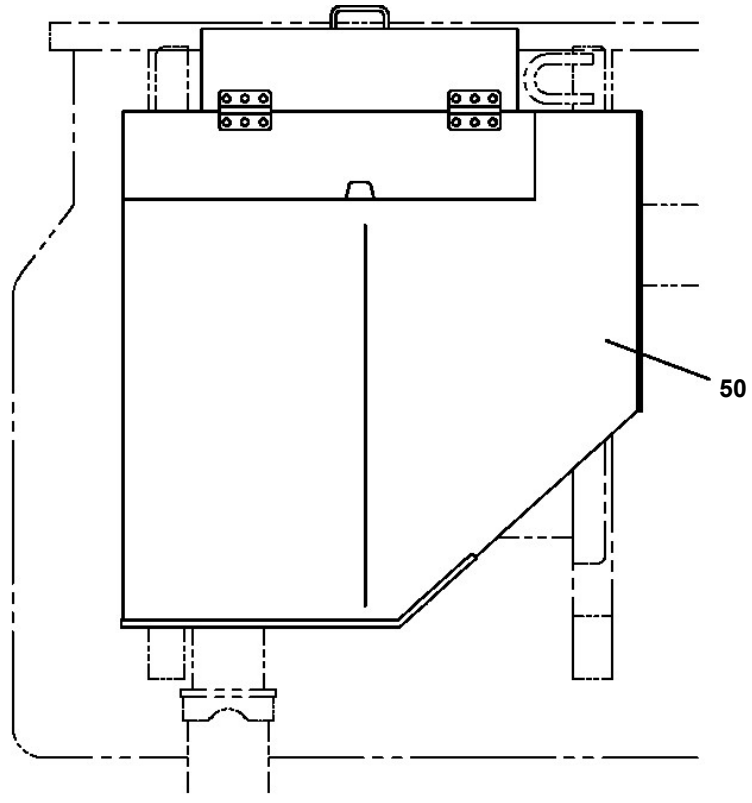
- Please note: If there is no response to CLICKING the link, please download this PDF first and then click on it.

CLICK HERE TO **DOWNLOAD** THE COMPLETE MANUAL

AT-100-4 42063400001 UPPER

Pos No.	Parts No	Parts Name	Qty	Unit	Technical Data	Serial No (Start)	Serial No (End)	Remarks	Pages
1	42442550100	COVER (IP)	1						
	42442720100	COVER	1						
2	42442790100	COVER	1				218427		
	42442790500	COVER	1			218428			
4	90101208012	BOLT	20		M8X12				
5	90302040801	WASHER,SPRING	20		8				
6	90303070801	WASHER,PLAIN	20		8				
7	82100000952	GROMMET	5						
8	42442790400	COVER	1				217946		
	42442790401	COVER	1			217947			
32	82400000200	GROMMET	1		KG-012,L=250				

**AT-100-4 4206340001 UPPER
PK1330416-00 COVER (BUCKET)**



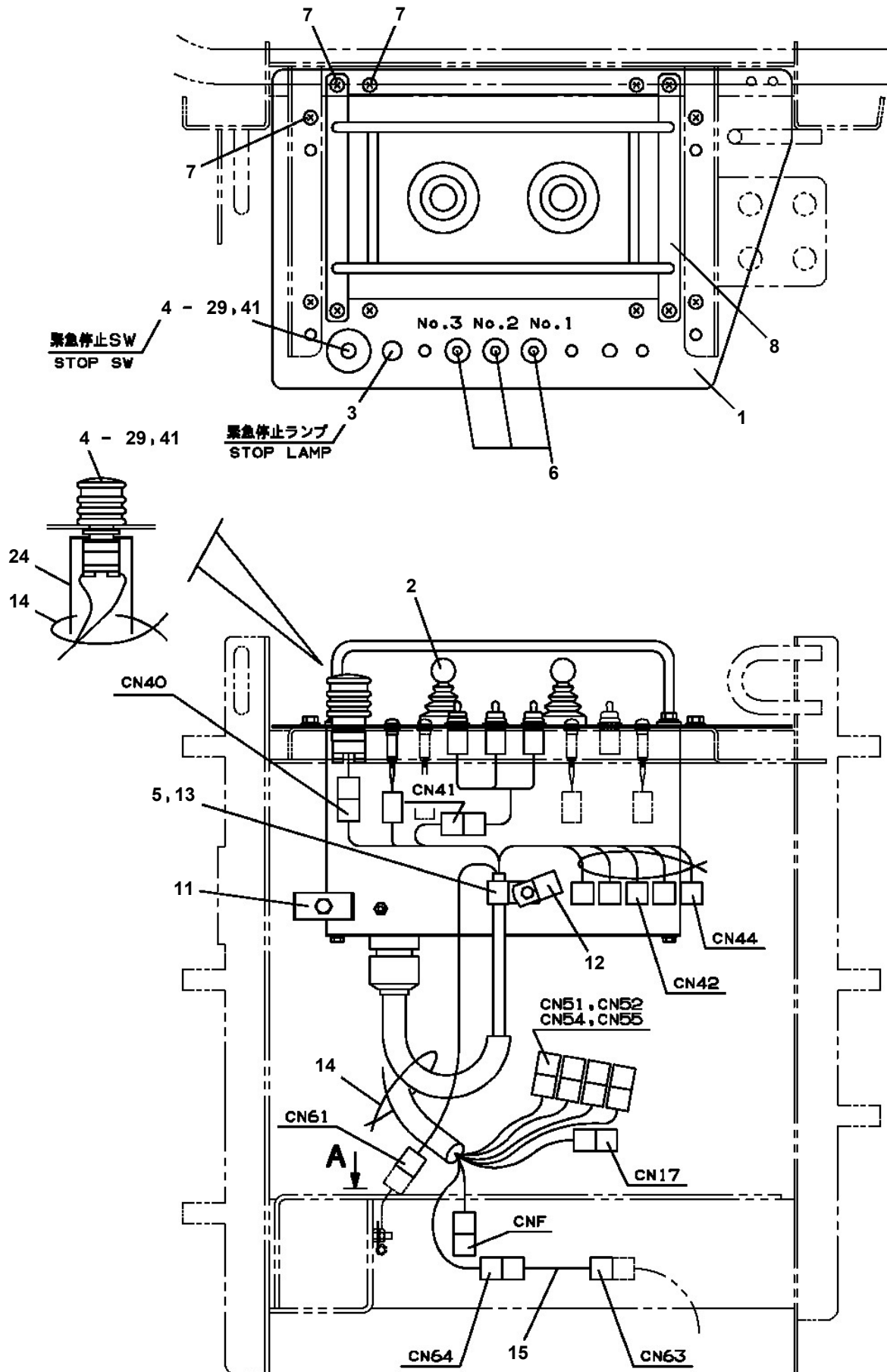
AT-100-4 42063400001 UPPER

Pos No.	Parts No	Parts Name	Qty	Unit	Technical Data	Serial No (Start)	Serial No (End)	Remarks	Pages
1	42506121101	COVER ASSY	1			219120			
21	42506121201	COVER	1			219120			
22	82460021300	HANDLE	1						
23	42506121110	PLATE	1						

AT-100-4 42063400001 UPPER

Pos No.	Parts No	Parts Name	Qty	Unit	Technical Data	Serial No (Start)	Serial No (End)	Remarks
2	36740995010	VALVE,SOLENOID	1					
3	36740995020	VALVE,RELIEF	1					
4	36740995030	VALVE,SOLENOID	4					
5	36648435040	BOLT,HEXAGON SOCKET	4		M5X90			
6	36648435050	BOLT,HEXAGON SOCKET	16		M5X50			
9	36649725030	PLUG	2					
10	36649725040	O-RING	2					
11	36649725050	PLUG	1					
12	36649725060	O-RING	1					
100	36740990000	VALVE,CONTROL	1					

**AT-100-4 4206340001 UPPER
PL1920063-02 OPE.ASSY (BUCKET)**



AT-100-4 4206340001 UPPER

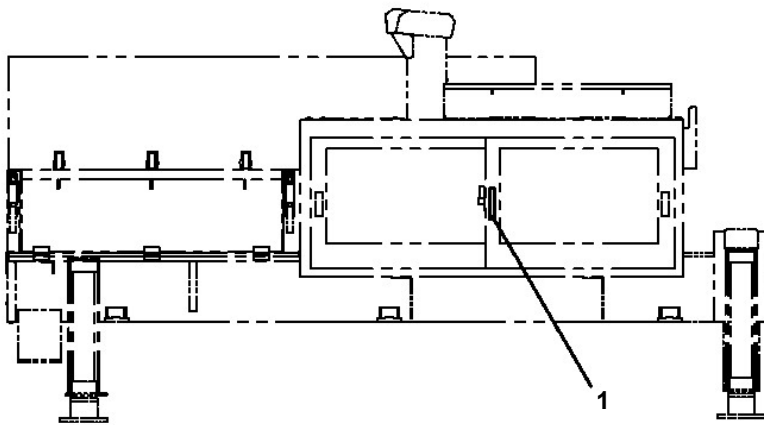
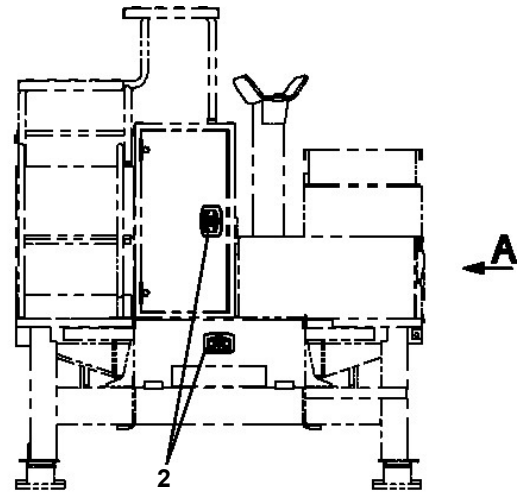
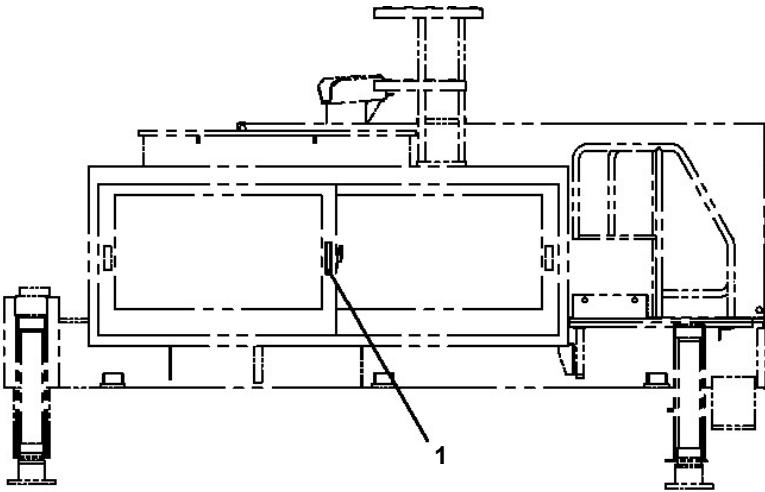
Pos No.	Parts No	Parts Name	Qty	Unit	Technical Data	Serial No (Start)	Serial No (End)
1	42332891100	PANEL	1				
2	42332892000	OPE.ASSY	1				219663
	42332892001	OPE.ASSY	1			219664	HK0031
	42332892002	OPE.ASSY	1			HK0032	
3	42809631200	LAMP ASSY (RED,WITH HARNESS)	1				
4	42332521300	SWITCH ASSY (WITH HARNESS)	1				
5	82100002009	CLAMP	1		WRC12		HK0031
	82100002014	CLAMP	3		WR20	HK0032	
6	42332531300	SWITCH ASSY (WITH HARNESS,3 SW)	1				HK0072
7	80192488020	SCREW,MACHINE	12		M8X20		
8	42332891200	GUARD	1				
9	82199514013	CAP	3				
10	82199504017	NUT	3		AT-401N		
11	37000714020	CLAMP ASSY	1		12X2		
12	82100002012	CLAMP	1		WR18		
13	90280200600	NUT,FLANGE	1		M6		
14	91810130240	FASTENER	N				
15	42332521400	HARNESS	1				
16	90303070601	WASHER,PLAIN	1		6		
17	42350250150	PLUG (6 POLES,MALE)	1				
18	42350250090	PLUG (4 POLES,MALE)	1				
19	42350250080	PLUG (3 POLES,MALE)	2				
20	82100002010	CLAMP	1		WR15		HK0031
21	90101206016	BOLT	1		M6X16		HK0031
	90101206020	BOLT	1		M6X20	HK0032	
22	90302040601	WASHER,SPRING	1		6		
23	90201200600	NUT	1		M6		
24	42900001200	COVER	1				
39	42355641010	COVER	1				
41	42355641210	BUTTON	1				

AT-100-4 42063400001 UPPER

PL1920095-00 OPE.ASSY (BUCKET/10M:1-LEVER, 2OPE.WITHENABLE SW)

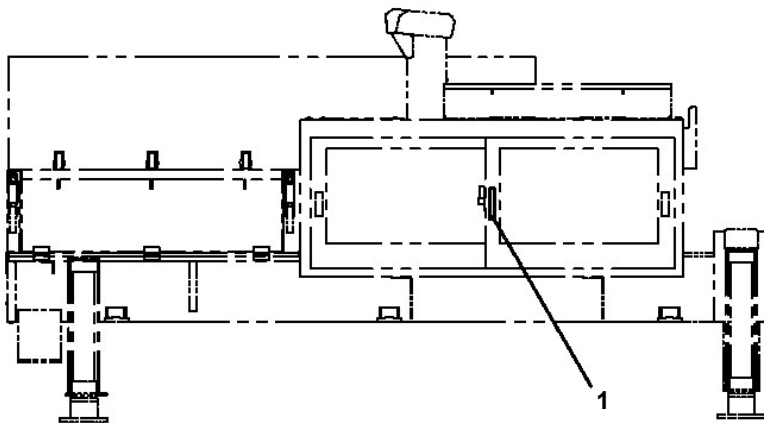
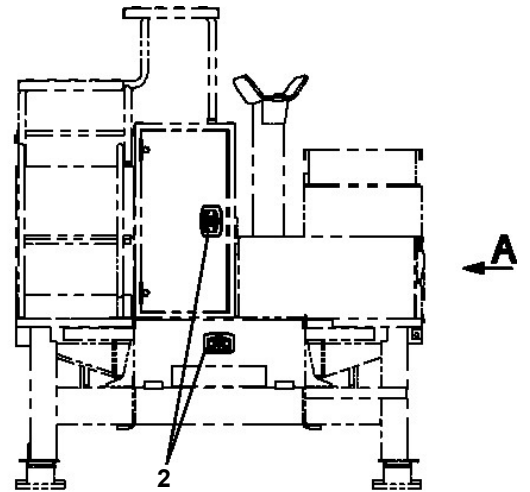
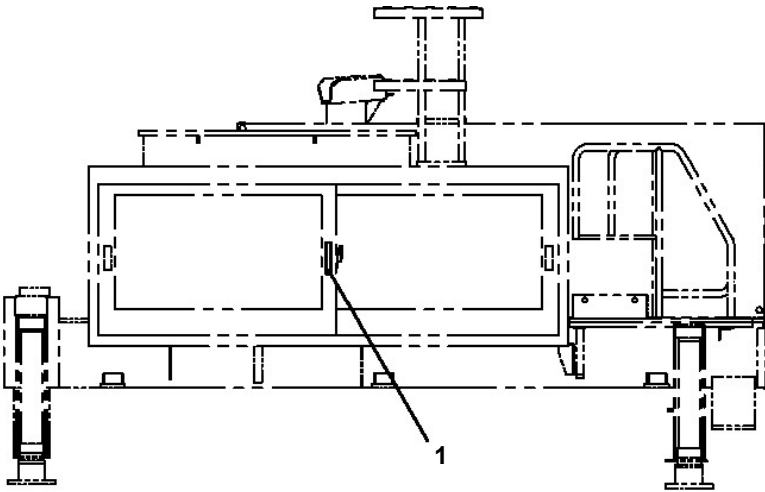
指示番号 KEY NO.	オペ .ASSY (バケット/10M:1レバー, 2ソウサ イネーフ ルSWツキ, テキヨウコウキ#219519マテ) OPE.ASSY (BUCKET/10M:1-LEVER, 2-OPE.WITH ENABLE SW, -#219519)
1	オペ .ASSY OPE.ASSY
2	プレートASSY, ネーム (10M:2ジクイネーフ ルSWツキレバータイオウAMCデータ) PLATE ASSY, NAME (10M:2-OPE.WITH ENABLE SW AMC DATA)
3	プレートASSY, ネーム (バケット) PLATE ASSY, NAME (BUCKET)
4	カバー COVER

AT-100-4 42063400001 UPPER
PL5270045-00 LOCK ASSY (KEY NO.3)



A

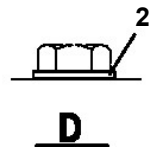
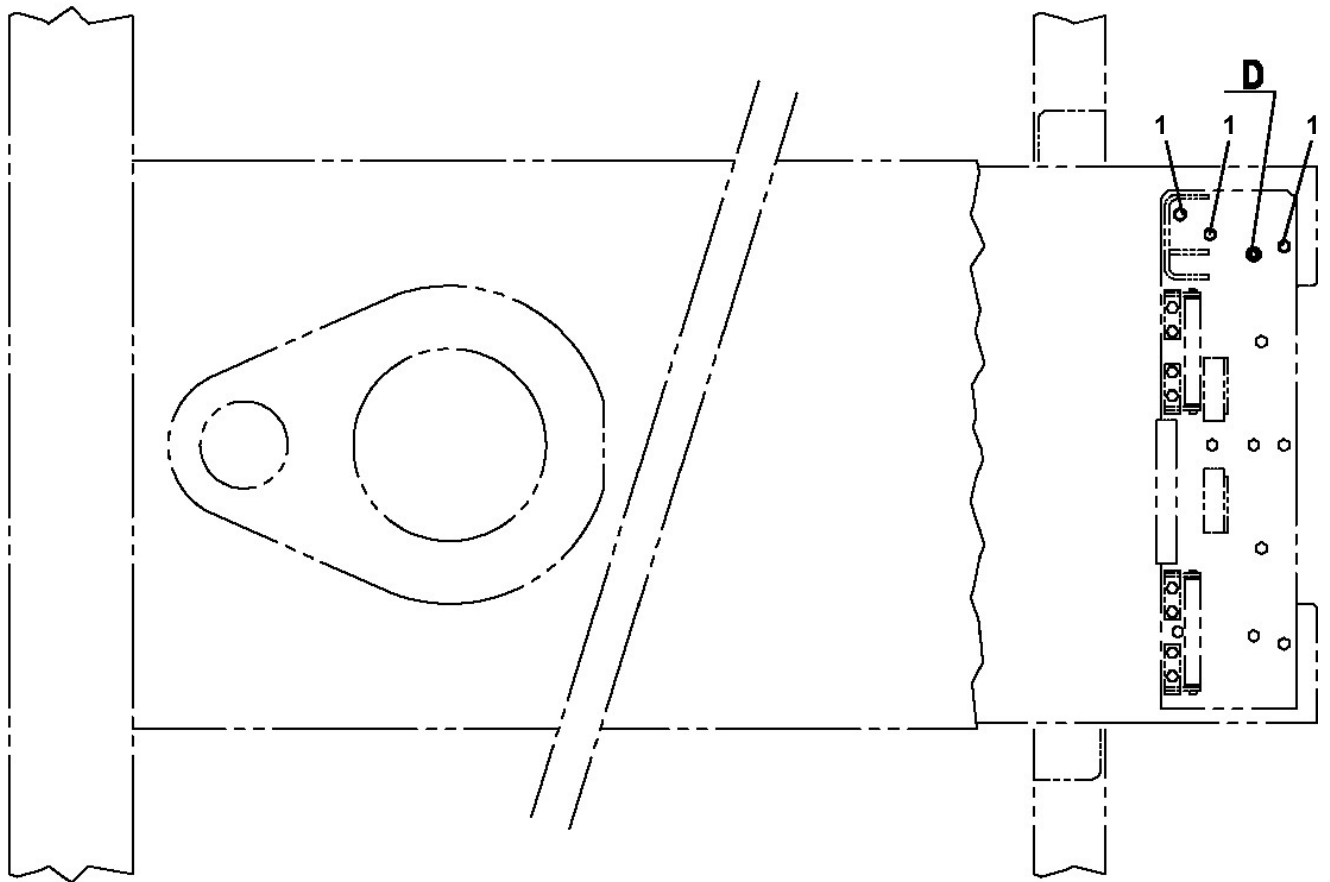
AT-100-4 42063400001 UPPER
PL5270050-00 LOCK ASSY (KEY NO.8)



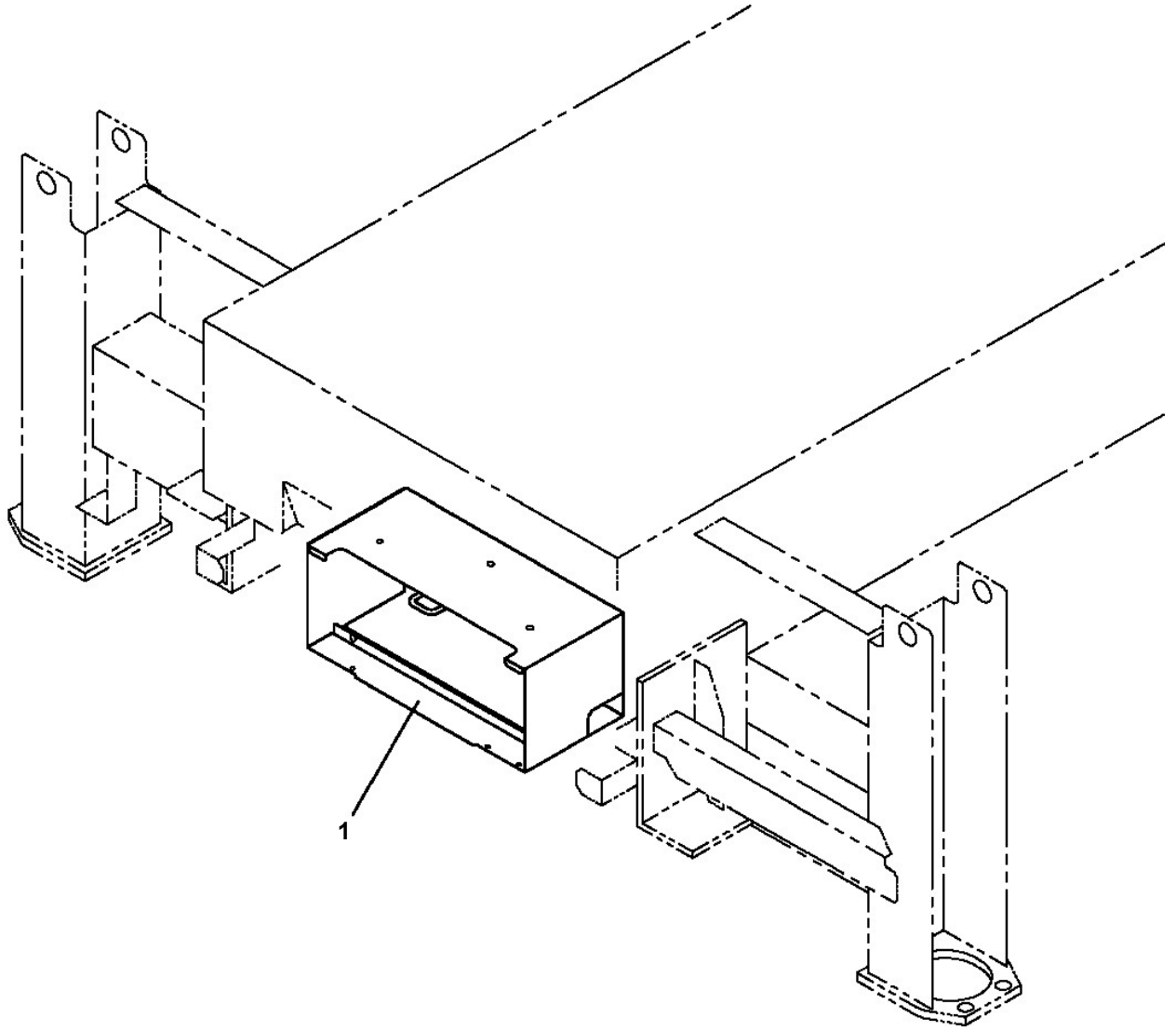
A

**AT-100-4 42063400001 UPPER
PM5150288-00 MODIFICATION ASSY (SUB FRAME,HOLE PROCESSING)**

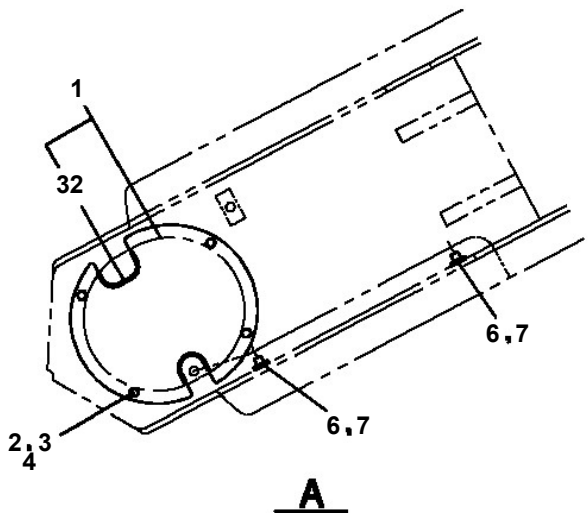
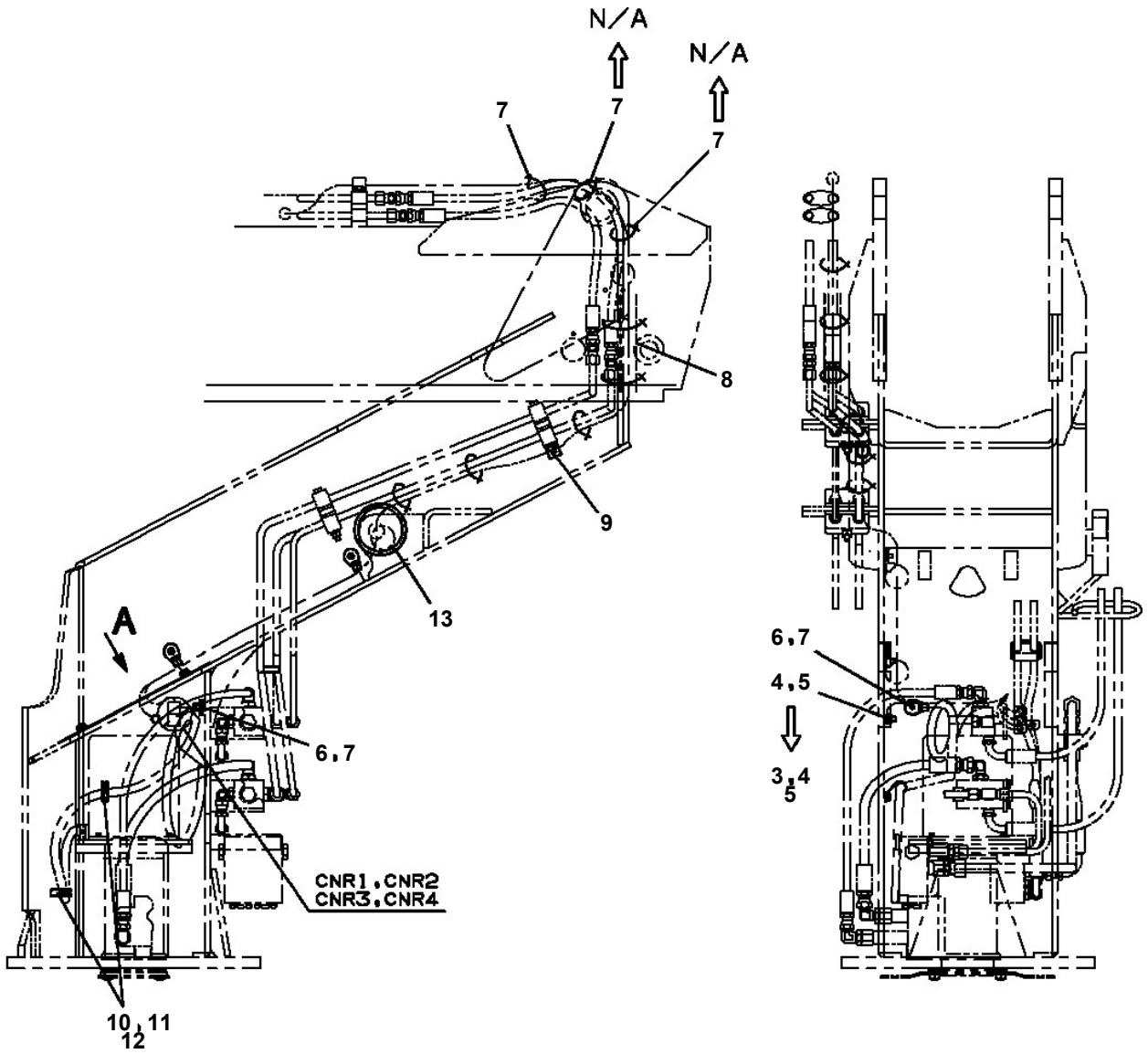
FRONT ←



**AT-100-4 42063400001 UPPER
PM5150359-00 MODIFICATION ASSY**



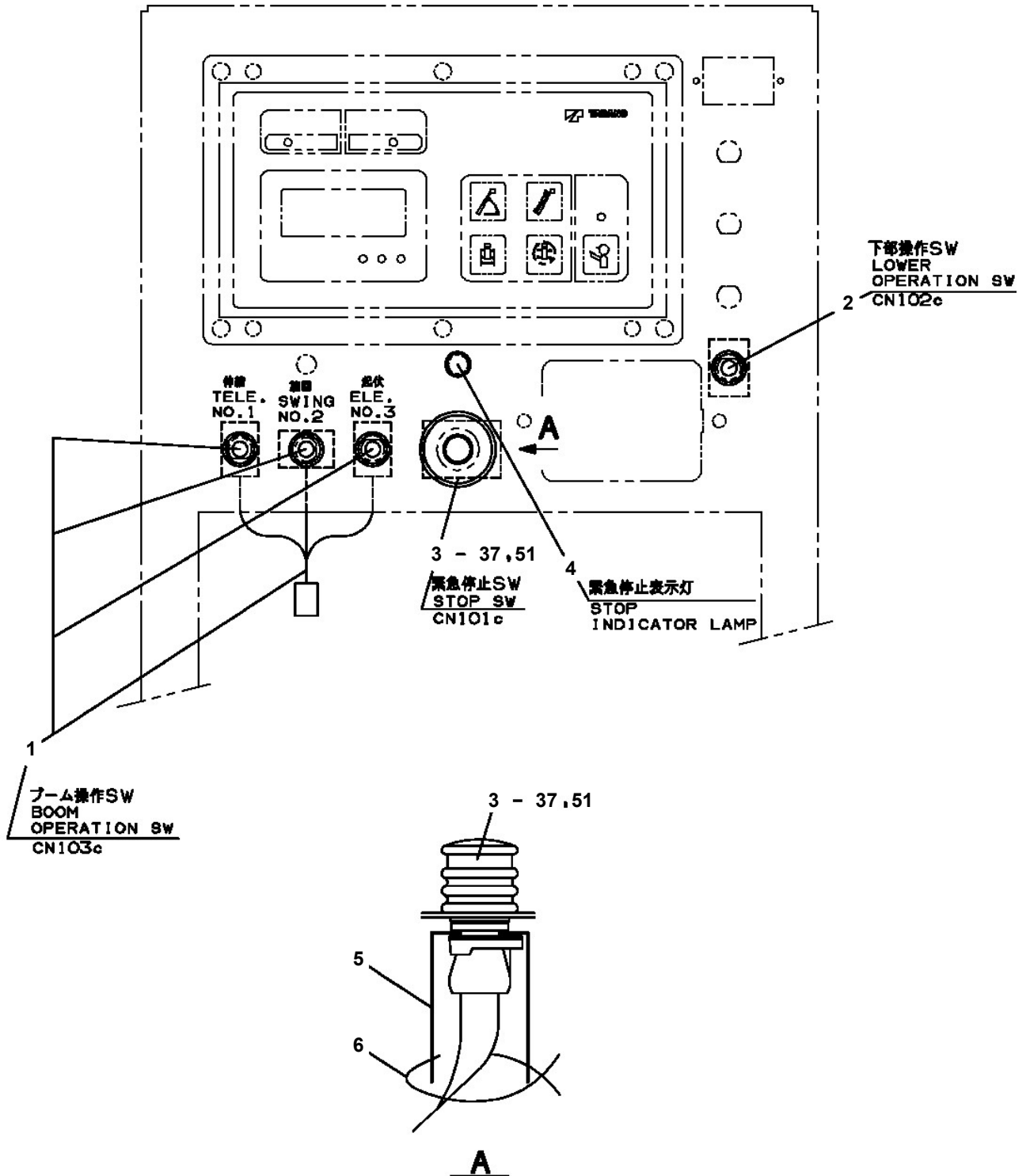
AT-100-4 42063400001 UPPER
PN1013974-01 ELEC.ASSY (SWING FRAME)



AT-100-4 42063400001 UPPER

Pos No.	Parts No	Parts Name	Qty	Unit	Technical Data	Serial No (Start)	Serial No (End)	Remarks
1	36140510000	DETECTOR ASSY,ANGLE	1					
2	42652480010	PLATE	1					
3	42651620400	COVER	1					
4	90101208016	BOLT	6		M8X16			
5	90302040801	WASHER,SPRING	6		8			
6	90101206014	BOLT	2		M6X14			
7	90302040601	WASHER,SPRING	2		6			
8	91810130240	FASTENER	8					
9	37000500060	PLATE	2					
10	42501120101	HARNES	1		L=400	218751		
32	82400000201	GROMMET	1		KG-016			

AT-100-4 4206340001 UPPER
 PN1014335-04 ELEC.ASSY (LOWER CONTROLS)



AT-100-4 42063400001 UPPER

Pos No.	Parts No	Parts Name	Qty	Unit	Technical Data	Serial No (Start)	Serial No (End)	Remarks	Pages
1	44350240100	SWITCH ASSY	1						000330
2	90101206028	BOLT	3		M6X28				
3	37000512320	PLATE	3						
4	90240200600	NUT,CAP	3		M6				
5	82400000095	GROMMET	1						
6	91810130240	FASTENER	10						
7	90303070601	WASHER,PLAIN	N		6				

AT-100-4 42063400001 UPPER

Pos No.	Parts No	Parts Name	Qty	Unit	Technical Data	Serial No (Start)	Serial No
1	42653362100	SWITCH ASSY	1				
2	42354541300	SWITCH ASSY (WITH HARNESS,1 SW)	1				
3	42354541200	SWITCH ASSY (WITH HARNESS,1 SW)	1				
4	42353952100	SWITCH ASSY (WITH HARNESS)	1				
5	42354541400	SWITCH ASSY (WITH HARNESS,3 SWITCH)	1				
6	42355641100	SWITCH ASSY	1				
7	42801710200	LAMP ASSY (RED)	1				
31	82100005004	LENS (RED)	1				
41	42355641210	BUTTON	1				
77	42355641010	COVER	1				

AT-100-4 42063400001 UPPER

Pos No.	Parts No	Parts Name	Qty	Unit	Technical Data	Serial No (Start)	Serial No (End)	Re
1	82100002253	LAMP	1					
2	80175304020	SCREW,MACHINE	2		M4X20			
3	90302040401	WASHER,SPRING	2		4			
4	90303070401	WASHER,PLAIN	2		4			
5	90201200400	NUT	2		M4			
6	42736070100	SWITCH ASSY (WITH HARNESS)	1					
7	42475560010	PLATE,NAME	1					
31	82100000783	BULB,LAMP	1		24V 12W			

AT-100-4 42063400001 UPPER

Pos No.	Parts No	Parts Name	Qty	Unit	Technical Data	Serial No (Start)	Serial No (End)	Remarks	Pages
1	42653361100	PLATE	2						
2	82161202010	RELAY	1						
3	82100002597	RELAY	2						
4	82161201010	RELAY	5						
5	82100002596	RELAY	5						
6	90186206010	BOLT,FLANGE	18		M6X10				
7	82161300010	RELAY	1						
8	42651091100	RELAY ASSY	1						
9	42653901100	SUPPORT	1				HK0007		
	42654052200	SUPPORT	1			HK0008			
10	90101206025	BOLT	1		M6X25		219959		
	90102206025	BOLT	1		M6X25	219960			
11	80192483010	SCREW,MACHINE	4		M3X10				
12	42950564100	RELAY ASSY	1						
13	91810132530	FASTENER	3						
14	90302040601	WASHER,SPRING	2		6				
15	90201200600	NUT	1		M6				

AT-100-4 42063400001 UPPER

Pos No.	Parts No	Parts Name	Qty	Unit	Technical Data	Serial No (Start)	Serial No (End)
1	82105220286	SWITCH,TOGGLE	1				
2	82105220193	SWITCH,TOGGLE	1				
3	82105220183	SWITCH,TOGGLE	1				
10	42332531300	SWITCH ASSY (WITH HARNESS,3 SW)	1				

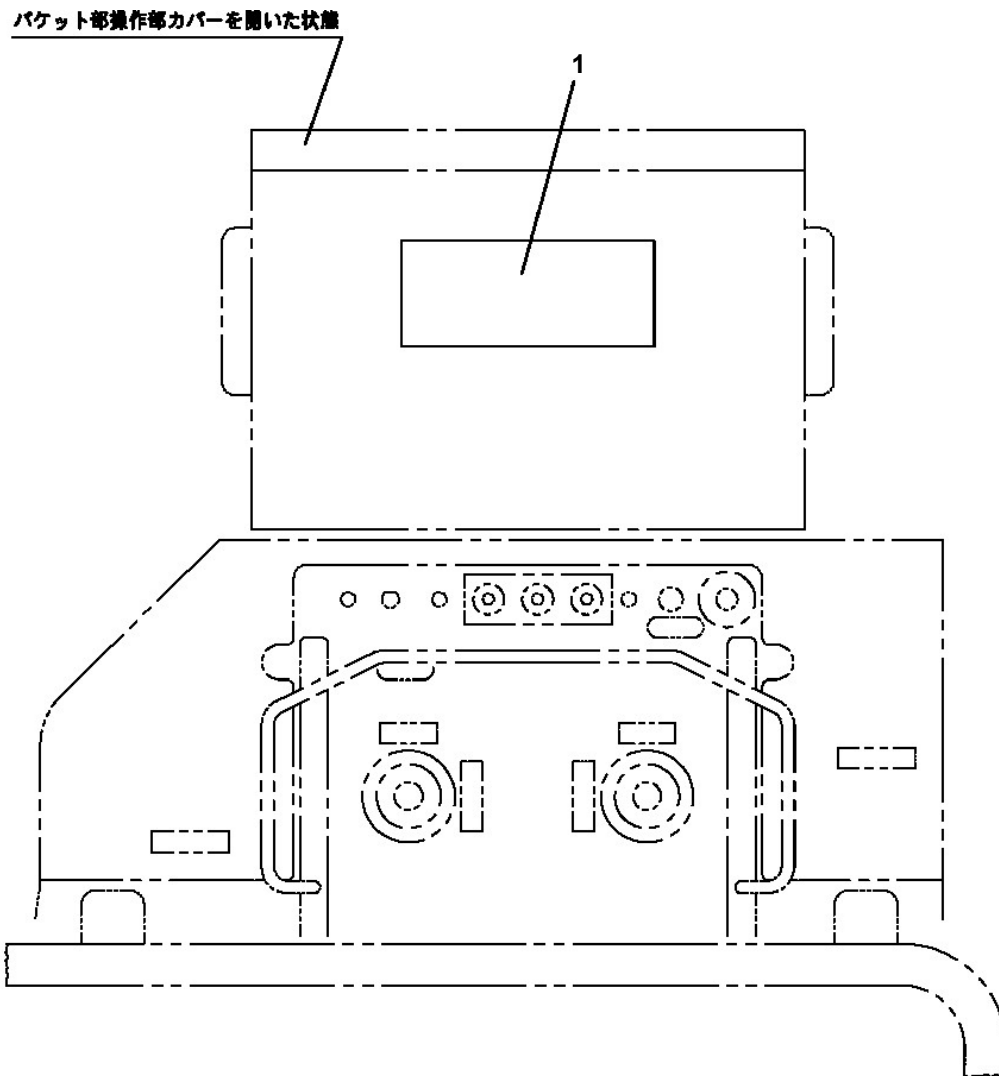
AT-100-4 42063400001 UPPER

Pos No.	Parts No	Parts Name	Qty	Unit	Technical Data	Serial No (Start)	Serial No (End)	Remarks	Pages
2	82100001839	FUSE	10		10A.RED				
3	82100001841	FUSE	4		20A,YELLOW				
10	34351562510	BOX,FUSE	1						
19	82182809623	DIODE	1						
30	42653670300	HARNESS	1						

AT-100-4 42063400001 UPPER

Pos No.	Parts No	Parts Name	Qty	Unit	Technical Data	Serial No (Start)	Serial No (End)	Remarks	Page
1	42505901100	HARNESS	1		L=1200				
2	82112102005	SLEEVE	1						
3	82100001801	TUBE,CORRUGATE	2	M	7				

AT-100-4 42063400001 UPPER
PN5010421-00 NAME PLATE ASSY (FOR RENTAL,BOOM OPERATION)



1

ブーム操作注意

- ブーム操作・管ふり操作は操作レバーのイネーブルスイッチを引き上げながら、操作してください。
- ブーム旋回スイッチは左右どちらかのイネーブルスイッチを引き上げながら、操作してください。

イネーブルスイッチ

イネーブルスイッチ

イネーブルスイッチ

イネーブルスイッチ

AT-100-4 42063400001 UPPER

Pos No.	Parts No	Parts Name	Qty	Unit	Technical Data	Serial No (Start)	Serial No (E
1	42509842510	PLATE,NAME	1				
	42509842510	PLATE,NAME	1				
2	42509573020	PLATE,NAME	1				
	42509573020	PLATE,NAME	1				
3	42509573030	PLATE,NAME (OUTRIGGER OPERATION)	1				
	42509573030	PLATE,NAME (OUTRIGGER OPERATION)	1				
4	42475910010	PLATE,NAME	1				
	42475910010	PLATE,NAME	1				

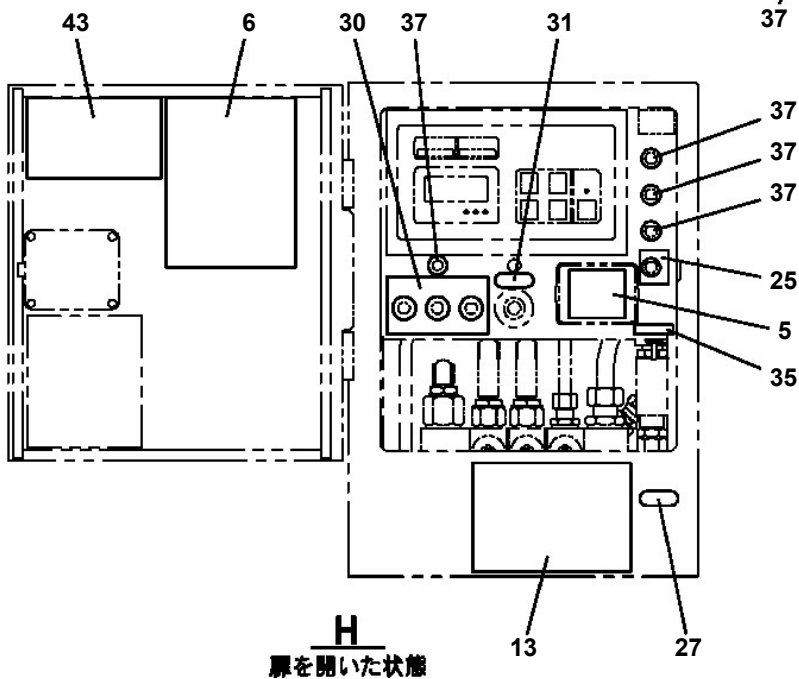
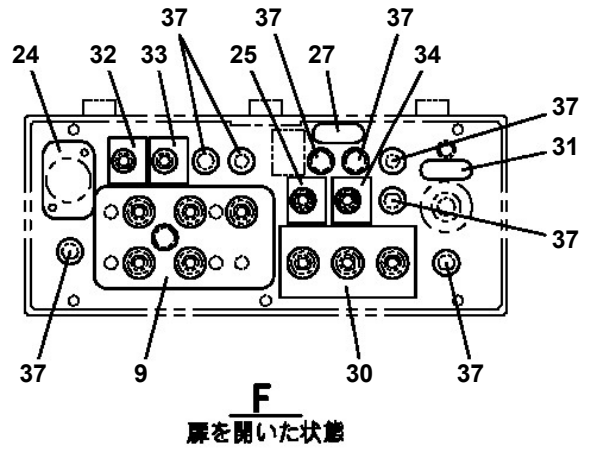
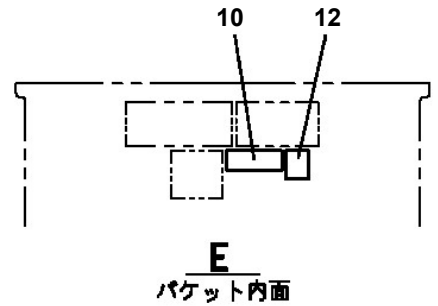
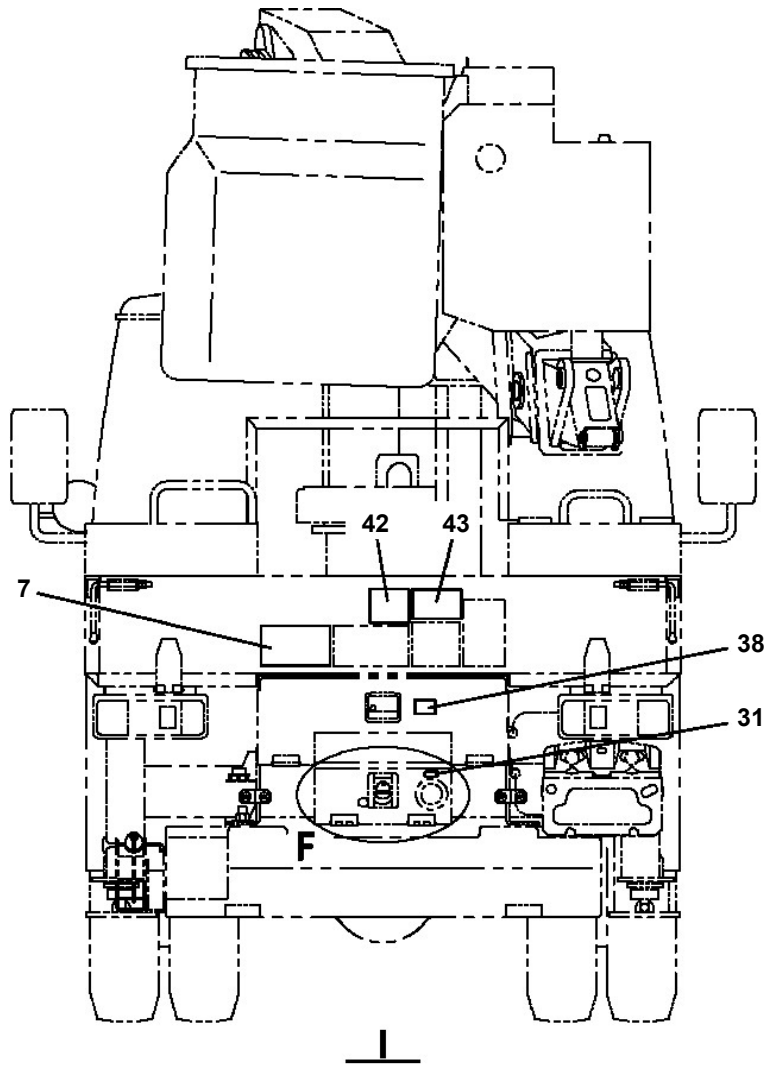
AT-100-4 42063400001 UPPER

Pos No.	Parts No	Parts Name	Qty	Unit	Technical Data	Serial No (Start)	S
1	37002209540	PLATE,NAME (TADANO)	2				
3	90451700100	SCREW,TAPPING	4		M4X6.4		
4	37002212700	PLATE,NAME	1				
5	42397401010	PLATE,NAME (FUSE)	1				
6	42397401020	PLATE,CAUTION (EMERGENCY SWITCH)	1				
7	42394441050	PLATE,CAUTION	1				
8	42397401030	PLATE,CAUTION	1				
9	42397401040	PLATE,NAME	1				
10	42397401050	PLATE,NAME (EMERGENCY STOP OPERATION)	1				
11	42397401200	PLATE,NAME (CAUTION FOR TRAVELING)	2				
12	42391720040	PLATE,CAUTION	1				
13	42397401060	PLATE,CAUTION (BUCKET HORIZONTAL ADJUST)	1				
14	34393926530	PLATE (NON-SLIP)	1				
15	42394271100	PLATE (NON-SLIP)	1				
16	34393926540	PLATE (NON-SLIP)	2				
17	42393891070	PLATE (NON-SLIP)	1				
18	42393312020	PLATE (NON-SLIP)	2				
19	42397401080	PLATE,CAUTION (PREOPERATION CHECK)	1				
20	34393926550	PLATE (NON-SLIP)	1				
21	42834433300	PLATE (NON-SLIP)	2				
22	12117140000	PLATE,NAME (GREASE)	19				
	12117140000	PLATE,NAME (GREASE)	11			218114	
23	42392350070	PLATE,CAUTION	1				
26	37002216230	PLATE,NAME (HIGH/LOW)	1				
27	42391163120	PLATE,NAME	2				
28	37002226530	PLATE,NAME	1				
29	42396111040	PLATE (NON-SLIP)	1				
30	42396162020	PLATE,NAME	1				
	42398131030	PLATE,NAME	1			218487	
31	42331782100	PLATE,NAME	1				
32	42331782090	PLATE,NAME	1				
33	42331782080	PLATE,NAME	1				
34	42397401090	PLATE,NAME	1				
35	42396162040	PLATE,NAME	1				
37	42475910010	PLATE,NAME	5				
38	31397731040	PLATE,CAUTION	1				
39	42397401210	PLATE,NAME (TOOL BOX)	2				
40	42393891100	PLATE (NON-SLIP)	1				
41	42392000150	PLATE (NON-SLIP)	1			218114	

AT-100-4 42063400001 UPPER

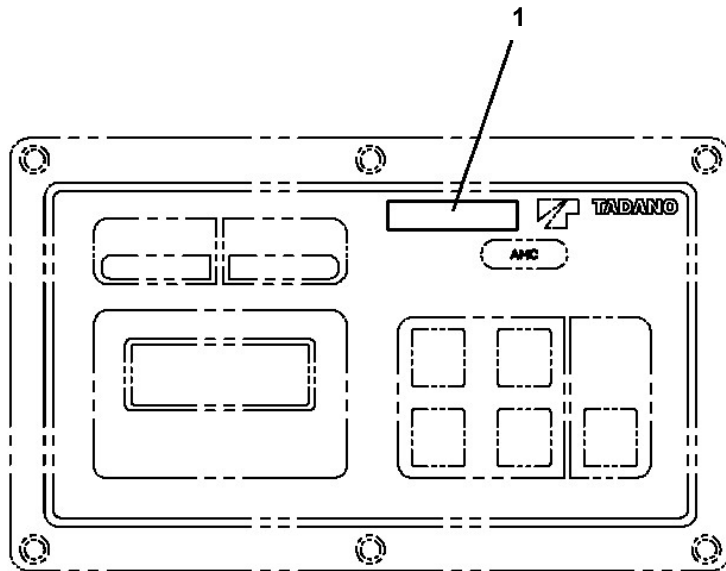
Pos No.	Parts No	Parts Name	Qty	Unit	Technical Data	Serial No (Start)	Serial No (End)
1	37002209540	PLATE,NAME (TADANO)	2				
3	90451700100	SCREW,TAPPING	4		M4X6.4		
4	37002212700	PLATE,NAME	1				
5	42397401010	PLATE,NAME (FUSE)	1				
6	42397401020	PLATE,CAUTION (EMERGENCY SWITCH)	1				
7	42394441050	PLATE,CAUTION	1				
8	42398131060	PLATE,CAUTION (CHECK BEFORE WORK START)	1				
9	42398131010	PLATE,NAME	1				
10	42397401050	PLATE,NAME (EMERGENCY STOP OPERATION)	1				
11	42397401200	PLATE,NAME (CAUTION FOR TRAVELING)	2				
12	42391720040	PLATE,CAUTION	1				
13	42397401060	PLATE,CAUTION (BUCKET HORIZONTAL ADJUST)	1				
14	34393926530	PLATE (NON-SLIP)	1				
15	42394271100	PLATE (NON-SLIP)	1				
16	34393926540	PLATE (NON-SLIP)	2				
17	42393891070	PLATE (NON-SLIP)	1				
18	42393312020	PLATE (NON-SLIP)	2				
19	42397401080	PLATE,CAUTION (PREOPERATION CHECK)	1				
20	34393926550	PLATE (NON-SLIP)	1				
	42835714010	PLATE (NON-SLIP)	2			219034	
21	42834433300	PLATE (NON-SLIP)	2				
22	12117140000	PLATE,NAME (GREASE)	11				
23	42392350070	PLATE,CAUTION	1				
24	42398131020	PLATE,NAME	1				
25	42502392020	PLATE,NAME	2				
26	37002216230	PLATE,NAME (HIGH/LOW)	1				
27	42391163120	PLATE,NAME	2				
28	37002226530	PLATE,NAME	1				
29	42396111040	PLATE (NON-SLIP)	2				
30	42398131030	PLATE,NAME	2				
31	42331782100	PLATE,NAME	3				
32	42331782090	PLATE,NAME	1				
33	42331782080	PLATE,NAME	1				
34	42397401090	PLATE,NAME	1				
35	42396162040	PLATE,NAME	1				
37	42475910010	PLATE,NAME	12				
38	31397731040	PLATE,CAUTION	1				
39	42397401210	PLATE,NAME (TOOL BOX)	2				
40	42393891100	PLATE (NON-SLIP)	1				
41	42392000150	PLATE (NON-SLIP)	1				
42	42393891090	PLATE,CAUTION	1				
43	42398131050	PLATE,NAME	2				
61	37002228460	PLATE,NAME (BLUE & BLACK)	2			219447	
62	37002228470	PLATE,NAME (WHITE & WHITE)	2			219447	

**AT-100-4 4206340001 UPPER
PO1015407-01 PLATE ASSY,NAME (VEHICLE)**



AT-100-4 42063400001 UPPER

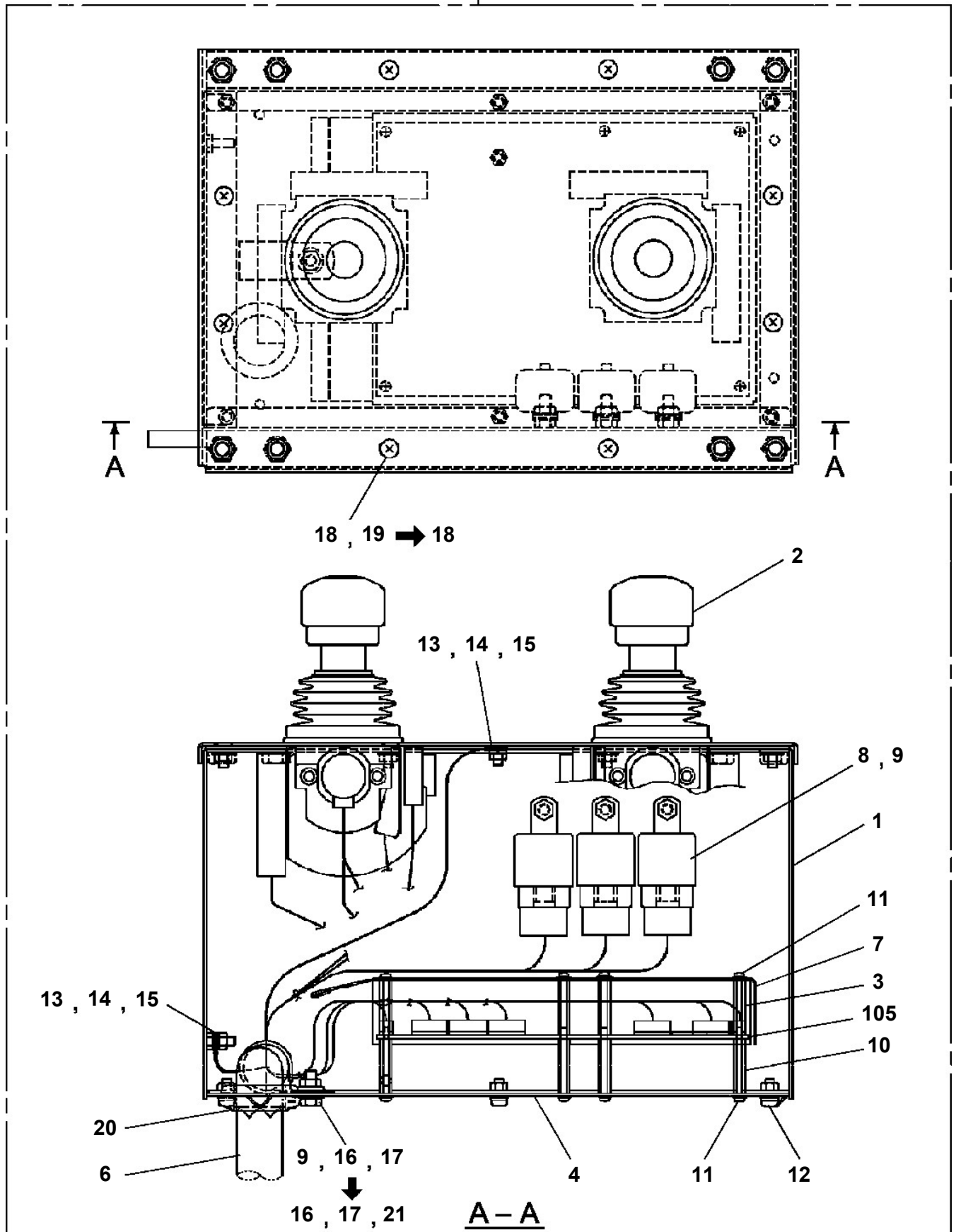
PO1015532-00 PLATE ASSY,NAME (10M:2-OPE.ENABLE SW AMC DATA)



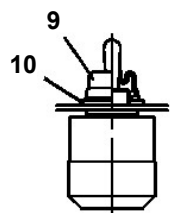
AMC前面パネル

AT-100-4 42063400001 UPPER
PO5010015-01 OPE.ASSY

200

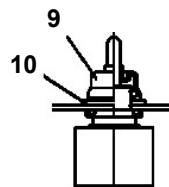


AT-100-4 42063400001 UPPER PO5050022-00 OPE.ASSY,BUCKET



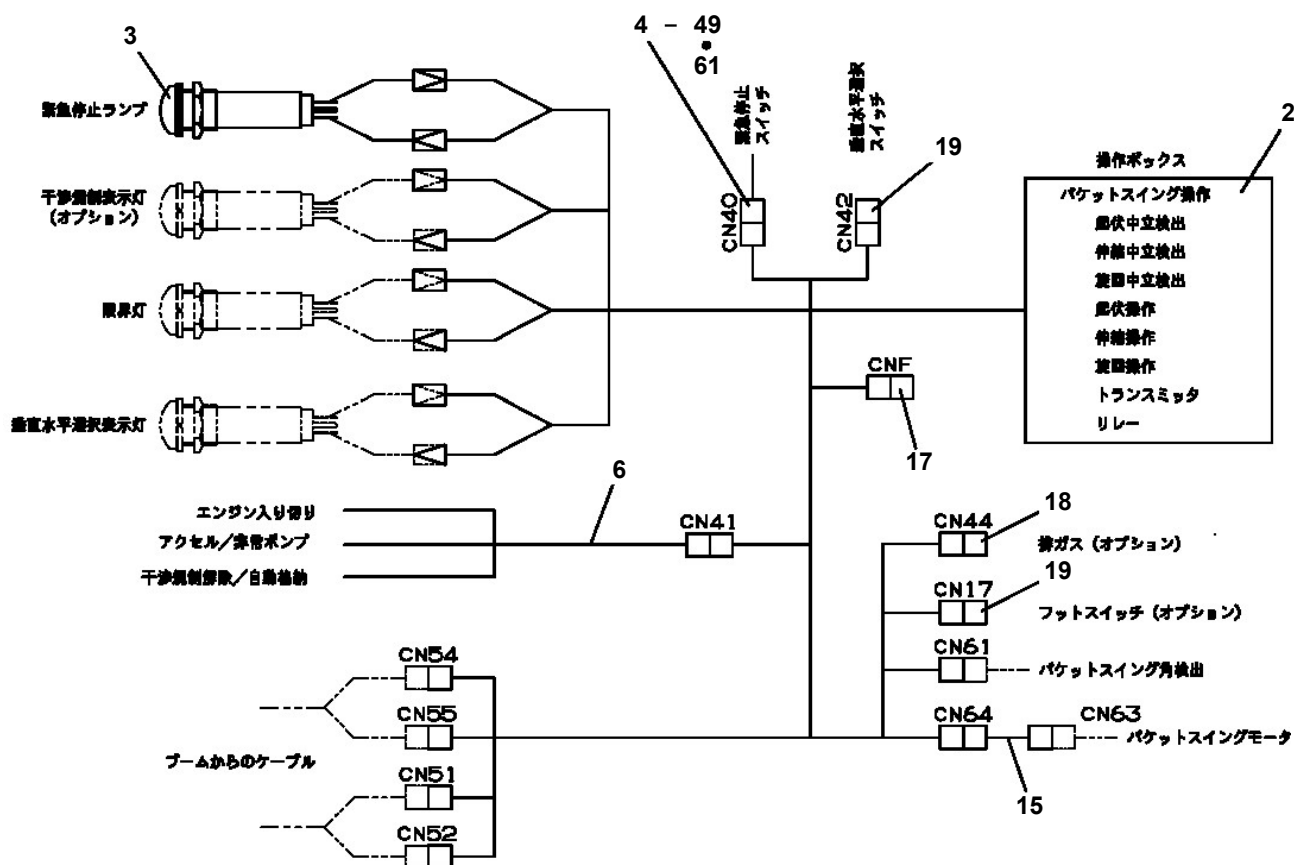
トグルSW

6 : アクセル/非常ポンプ (NO.2)



トグルSW

6 : 干渉規制解除/自動格納 (NO.1)
エンジン (NO.3)

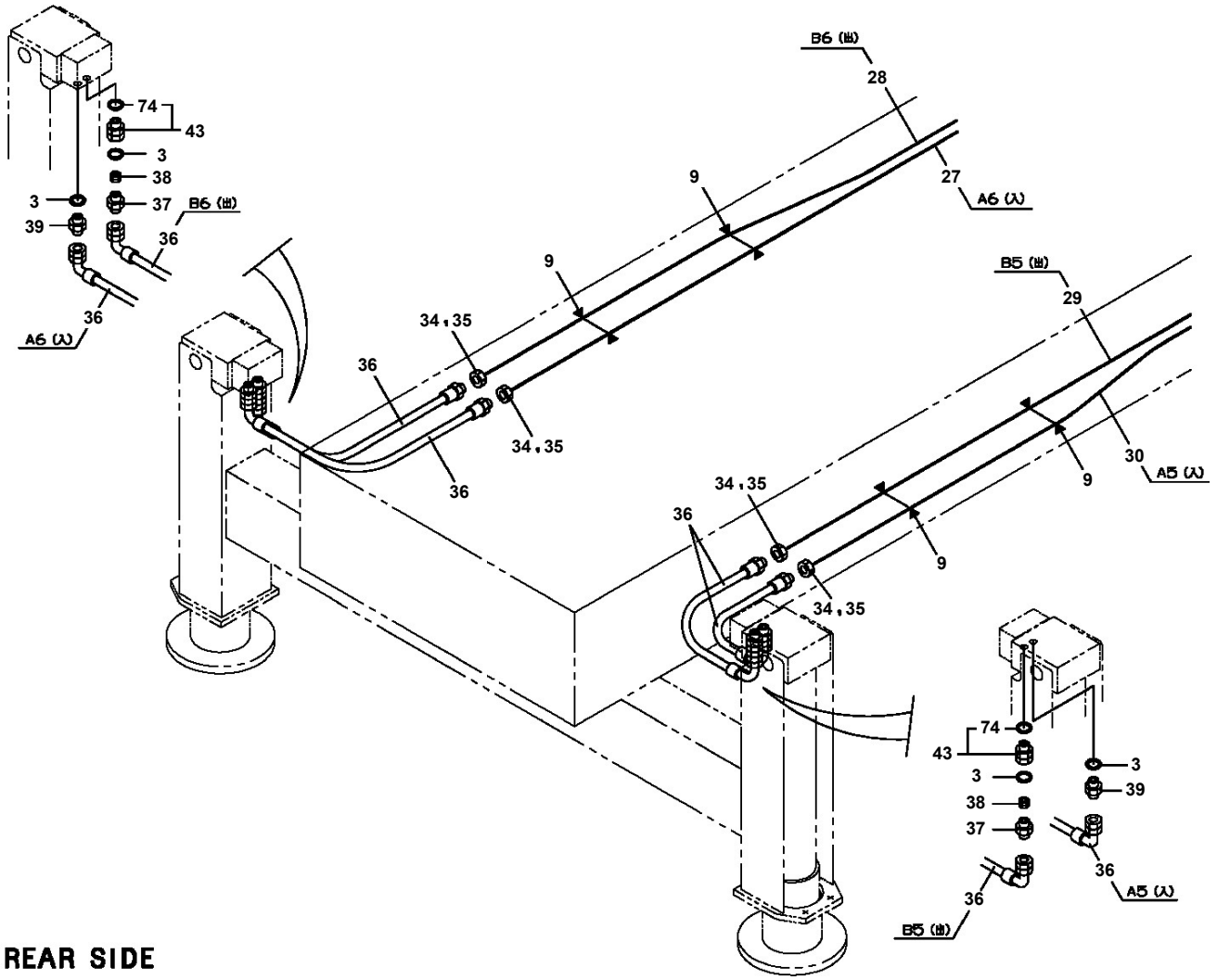


配線接続詳細

AT-100-4 4206340001 UPPER

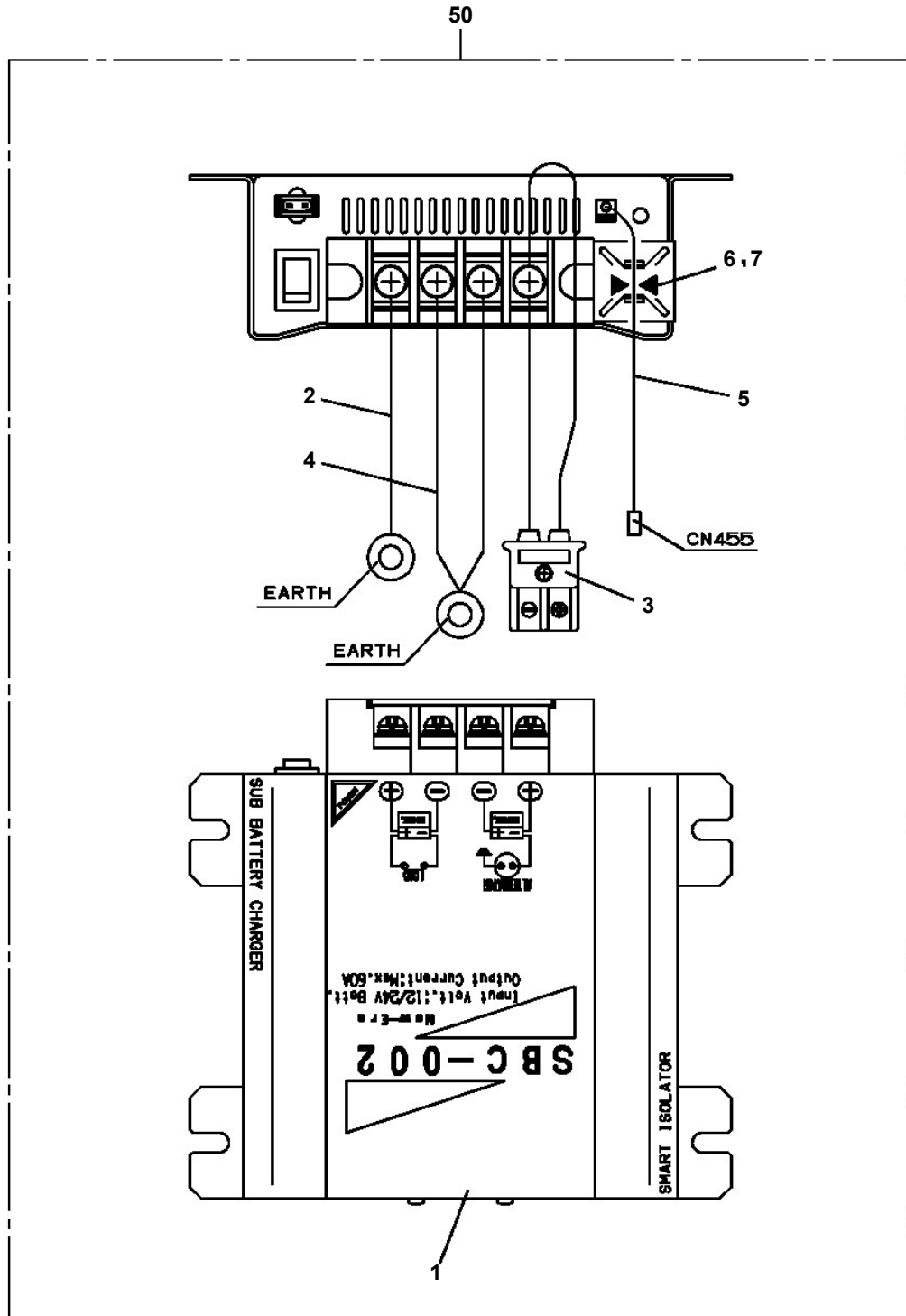
Pos No.	Parts No	Parts Name	Qty	Unit	Technical Data	Serial No (Start)	Serial No (End)
1	42477762010	PLATE,NAME	1				
2	42474471150	HOLDER ASSY(FUSE,WITH HARNESS)	2				
3	42503472100	BOX	1				
4	42477640090	PLATE,NAME (AC100V)	1				
5	90101208030	BOLT	2		M8X30		
6	90201200800	NUT	2		M8		
7	90302040801	WASHER,SPRING	4		8		
8	90303070801	WASHER,PLAIN	N		8		
9	42506831010	SUPPORT	1				
10	90101208016	BOLT	2		M8X16		
11	82100002006	CLAMP	1		WR10		
12	90201200600	NUT	1		M6		
13	90302040601	WASHER,SPRING	1		6		
14	90101206020	BOLT	1		M6X20		
15	90203252200	NUT	1		M22		
32	82100001348	FUSE	2		15A,6.5X30		

**AT-100-4 42063400001 UPPER
PP6130011-00 PIPING ASSY,FRAME (OUTRIGGER)**

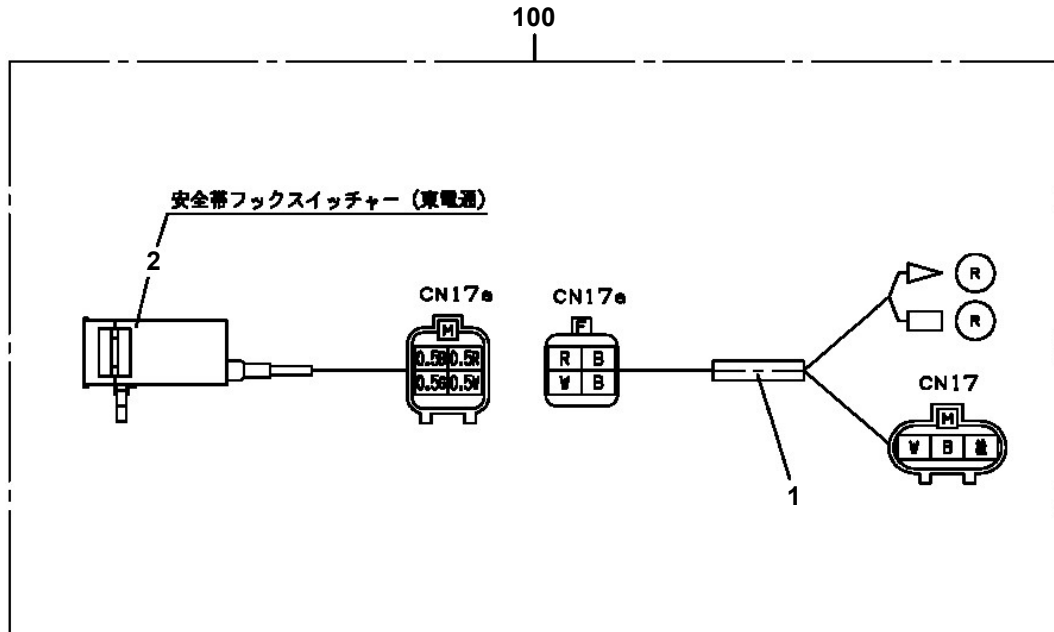


REAR SIDE

**AT-100-4 42063400001 UPPER
PS5530087-00 SWITCH ASSY (SUB BATTERY CHARGER)**



AT-100-4 4206340001 UPPER
PS5530411-00 SWITCH ASSY



AT-100-4 42063400001 UPPER

Pos No.	Parts No	Parts Name	Qty	Unit	Technical Data	Serial No (Start)	Serial No (End)
72	90302041001	WASHER,SPRING	4		10		HK0363
75	36648785030	VALVE,REDUCING	6				HK0363
	36742265020	VALVE,REDUCING	6			HK0364	
90	36648355460	FILTER ASSY (WITH HOLDER,O-RING)	1				
200	36641710000	VALVE,REMOTE CONTROL	1				

AT-100-4 42063400001 UPPER

Pos No.	Parts No	Parts Name	Qty	Unit	Technical Data	Serial No (Start)	Serial No (End)	Remarks	Page
5	91002902500	O-RING	4		1B G25				
8	80316090020	PLUG	4		KKT PT1/8				
9	36606975020	PLUG	1						
10	91002801400	O-RING	1		1B P14				
12	16066241000	SPRING	1						
100	36606970000	VALVE ASSY,RELIEF	1						

AT-100-4 42063400001 UPPER

Pos No.	Parts No	Parts Name	Qty	Unit	Technical Data	Serial No (Start)	Serial No (End)
1	42460012530	WEDGE (STOPPER FOR TIRE/WAZUMI)	1				

AT-100-4 42063400001 UPPER

Pos No.	Parts No	Parts Name	Qty	Unit	Technical Data	Serial No (Start)	Serial No (End)	Remarks	Pages
1	42875250101	SUPPORT	1			219120			
2	90171116035	BOLT	4		M16X35				
3	90303071601	WASHER,PLAIN	4		16				
4	42875250201	PLATE	1			219120			
5	90101208030	BOLT	1		M8X30	219120			
6	90302040801	WASHER,SPRING	2		8				
7	90201200800	NUT	2		M8				
8	42875250010	SHIM	N		T=2.3				
9	80185308030	SCREW,MACHINE	1		M8X30	219120			
25	42875250140	PLATE	1						

AT-100-4 42063400001 UPPER

Pos No.	Parts No	Parts Name	Qty	Unit	Technical Data	Serial No (Start)	Serial No (End)	Remarks	Pages
1	42501680100	BOX,TOOL	1						
2	42501680200	PLATE	1						
3	90183112025	BOLT	3		M12X25				

AT-100-4 42063400001 UPPER

Pos No.	Parts No	Parts Name	Qty	Unit	Technical Data	Serial No (Start)	Serial No (End)	Remarks	Pages
2	37000501090	PLATE	2						
3	42507125100	SUPPORT	1						
5	42624924020	PLATE	1						

AT-100-4 42063400001 UPPER

Pos No.	Parts No	Parts Name	Qty	Unit	Technical Data	Serial No (Start)	Serial No (End)	Remarks	Pages
1	42473340000	STEP,BUCKET	1						

CLICK HERE TO **DOWNLOAD** THE COMPLETE MANUAL

- Thank you very much for reading the preview of the manual.
- You can download the complete manual from: www.heydownloads.com by clicking the link below



- Please note: If there is no response to CLICKING the link, please download this PDF first and then click on it.

CLICK HERE TO **DOWNLOAD** THE COMPLETE MANUAL