

# KRYPTON 80

## ACCESSORIES

### GENERAL

6-WAY AUXILIARY DISTRIBUTOR.....	0E.00.1
6-WAY AUXILIARY DISTRIBUTOR.....	0E.00.2
PLATES- FOR 6-WAY DISTRIBUTOR.....	0E.00.3
10-WAY AUXILIARY DISTRIBUTOR.....	0E.00.4
10-WAY AUXILIARY DISTRIBUTOR.....	0E.00.5
PLATES- FOR 10-WAY DISTRIBUTOR.....	0E.00.6
3 POINT HITCH.....	0E.00.7
FRONT TOWING HITCH.....	0E.00.8
TOWING BAR mm 1603.5.....	0E.00.9
CURVED CROSS MEMBER FOR DRAWBAR.....	0E.00.11
FRONT BALLAST n. 8.....	0E.00.12
FRONT BALLAST n. 4.....	0E.00.13
FRONT WEIGHT CARRIER.....	0E.00.14
SIDE BALLASTS kg 100.....	0E.00.15
SIDE BALLASTS kg 200.....	0E.00.16
PLATE FOR FRONT CARRIER.....	0E.00.17
P.T.O. GUARD.....	0E.00.18
TOOL POUCH.....	0E.00.19
LUBRICATOR.....	0E.00.20

CLICK HERE TO **DOWNLOAD** THE COMPLETE MANUAL

- Thank you very much for reading the preview of the manual.
- You can download the complete manual from: [www.heydownloads.com](http://www.heydownloads.com) by clicking the link below

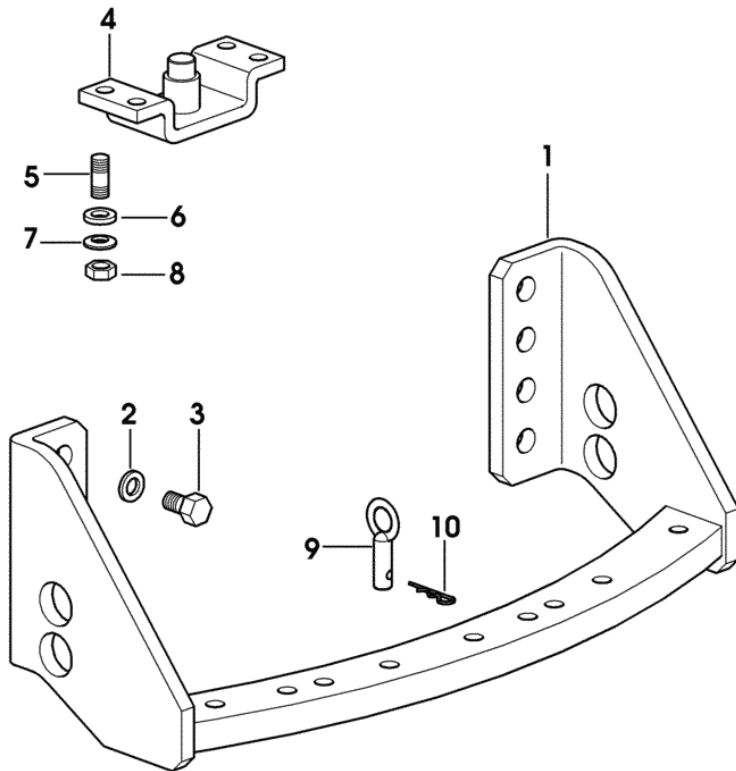


- Please note: If there is no response to CLICKING the link, please download this PDF first and then click on it.

CLICK HERE TO **DOWNLOAD** THE COMPLETE MANUAL

**CURVED CROSS MEMBER FOR DRAWBAR**

Fig.	Code	QTY	Name
1	0.012.5809.2	1	crosspiece
2	2.1475.108.2	6	spring washer 20
3	2.0112.815.2	6	screw m 20 p.2.5x40
4	0.012.5810.3	1	bracket
5	2.0432.513.7	4	stud bolt m 18 p.1.5 x 45
6	2.1599.030.0	4	snoulder 19x35x6
7	2.1499.018.6	4	conical washer 18 x 35.5
8	2.1019.060.6	4	nut m 18 p.1.5
9	0.96716.59.0	2	pin
10	2.1699.053.0	2	roll pin m 4



9\_18731\_36\_0\_0

# KRYPTON 80

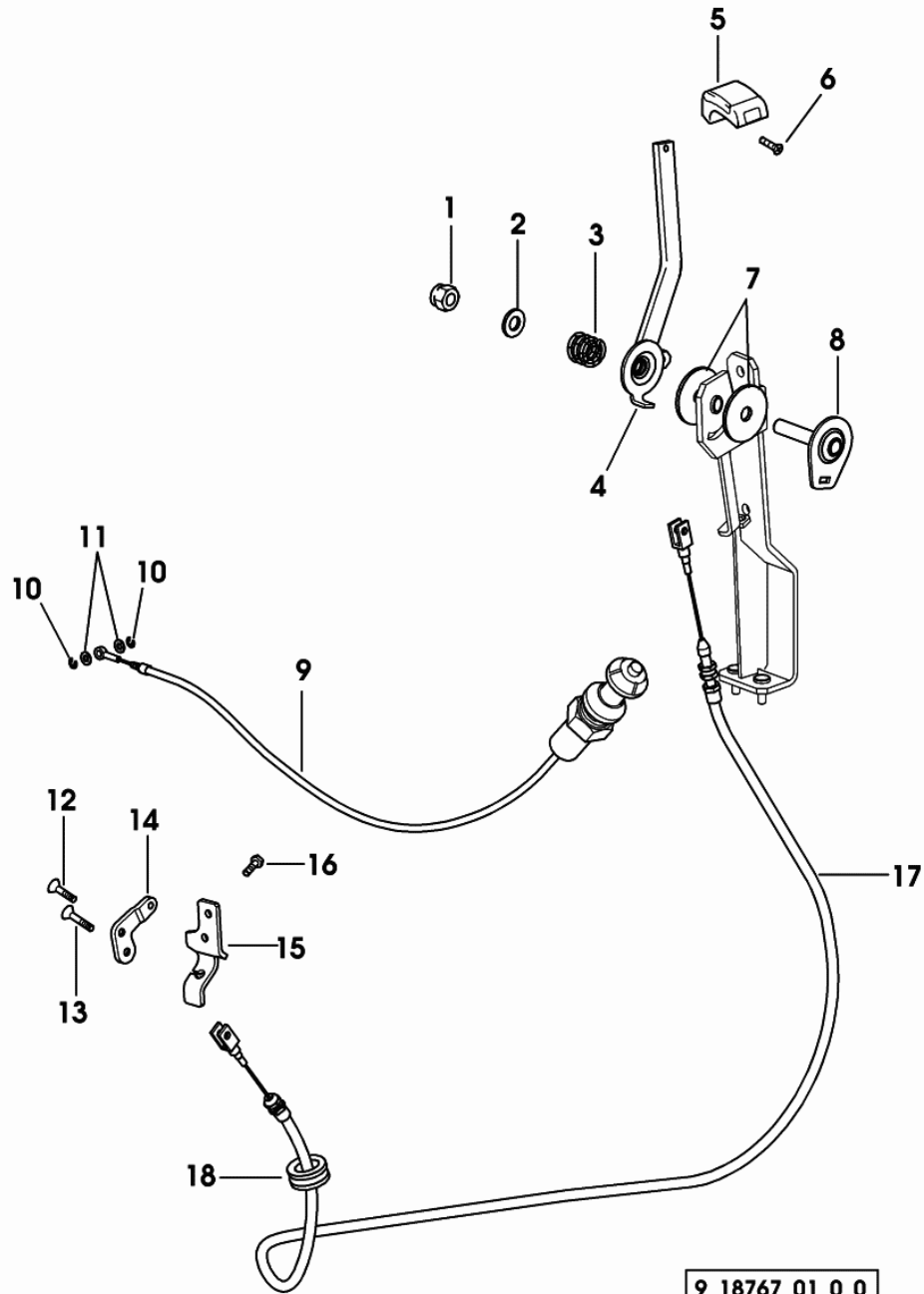
## BODY WORK

### GENERAL

HOOD.....	07.00.1
PLUG.....	07.00.2
PRODUCT PLATE.....	07.00.3
HOOD SUPPORT.....	07.00.6
DEFLECTORS AND SUPPORTS.....	07.00.7
BATTERY HOUSING AND TOOL KIT.....	07.00.10
DASHBOARD.....	07.00.11
MECHANICAL ACCELERATOR CONTROL WITH DECELERATOR.....	07.00.12
MECHANICAL ACCELERATOR CONTROL WITHOUT DECELERATOR.....	07.00.13
FRONT GRIP.....	07.00.14
PEDALS ASSEMBLY AND STEERING LEVERS.....	07.00.15
FENDERS AND PLATFORM.....	07.00.16
SAFETY ARCH.....	07.00.17
SPEED LABEL - 15 KM/H - REFLEX.....	07.00.18
FUEL TANK.....	07.00.19
TANK FLOAT.....	07.00.20
PLUG.....	07.00.21
FUEL TANKS - ARMRESTS AND COVERS.....	07.00.22
FUEL PIPES.....	07.00.23
FUEL PIPES.....	07.00.24
AIR FILTER 8".....	07.00.25
AIR CLEANER HOSE.....	07.00.27
CYCLONE AIR CLEANER EXTENSION.....	07.00.29
AIR CLEANER EXTENSION.....	07.00.30
SEAT.....	07.00.31
SAFETY BELT.....	07.00.32
SEAT WITH MECHANICAL SPRINGING AND SEATBELTS.....	07.00.33
DRIVER'S SEAT - PNEUMATIC SPRINGING.....	07.00.34
PLATES OCDE.....	07.00.35
PLATES.....	07.00.36
INFORMATION PLATE.....	07.00.37
PLATES.....	07.00.38
PLATES.....	07.00.39
PLATES.....	07.00.40

Section: BODY WORK

**MECHANICAL ACCELERATOR CONTROL WITHOUT DECELERATOR**

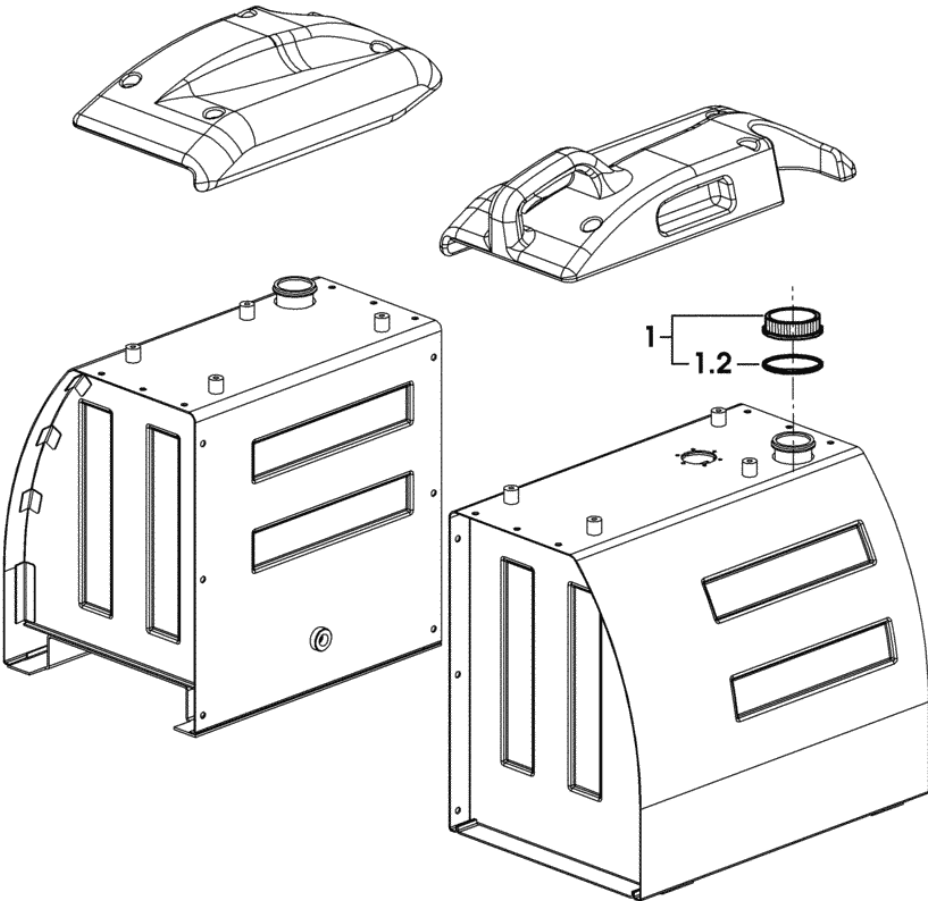


9\_18767\_01\_0\_0

Fig.	Code	QTY	Name
1	2.1120.007.2	1	nut m 12 p.1.75
2	2.1310.007.2	1	flat washer 13.5
3	2.4019.022.2	1	spring 23x20x4.5
4	0.012.3675.3/20	1	lever
5	0.008.9911.0/20	1	knob
6	2.0342.205.3	1	screw m 6 p.1 x 20
7	2.1569.044.0	2	gasket 17.5x50x3
8	0.010.1155.3	1	pin
9	0.012.6729.3/10	1	cable
10	2.1430.004.7	2	circlip 3.2
11	2.1310.001.2	2	flat washer 5.3
12	2.0342.201.3	1	screw m 6 p.1 x 10
13	2.0342.203.3	1	screw m 6 p.1.0 x 16
14	0.008.8145.0	1	lever
15	0.008.8146.0	1	bracket
16	2.0112.005.2	2	screw m 6 p.1 x 16
17	0.012.3647.3/30	1	cable
18	2.6560.017.0	1	wire guide 22x2.5

**PLUG**

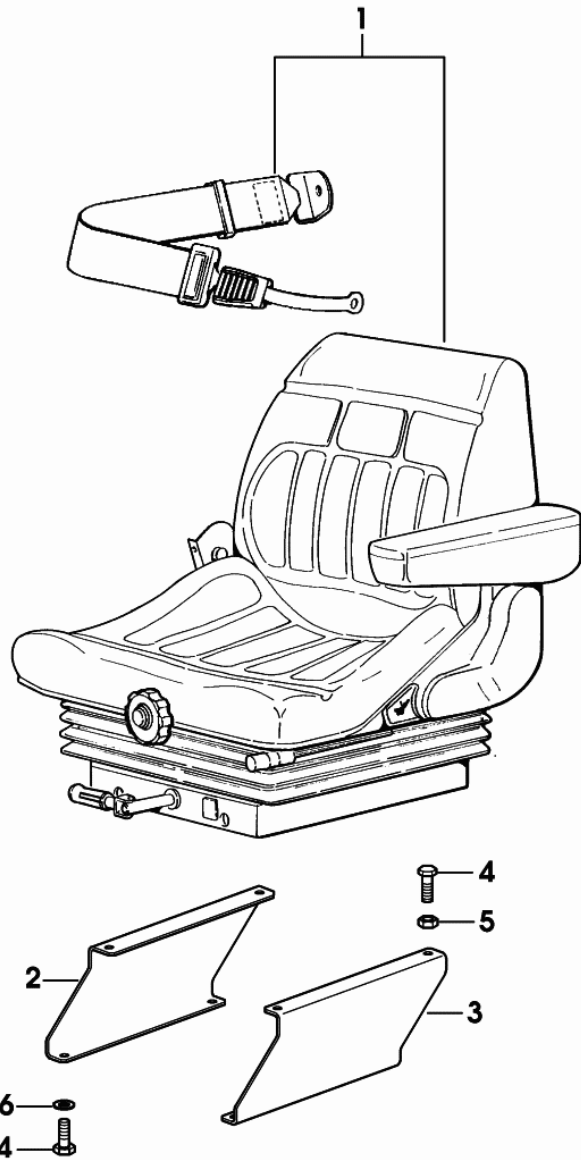
Fig.	Code	QTY	Name
1	0.177.8116.3/30	2	plug
1.2	2.1569.157.0	1	gasket 37.8x59.8x3



9\_18781\_05\_0\_0

**SEAT WITH MECHANICAL SPRINGING AND SEATBELTS**

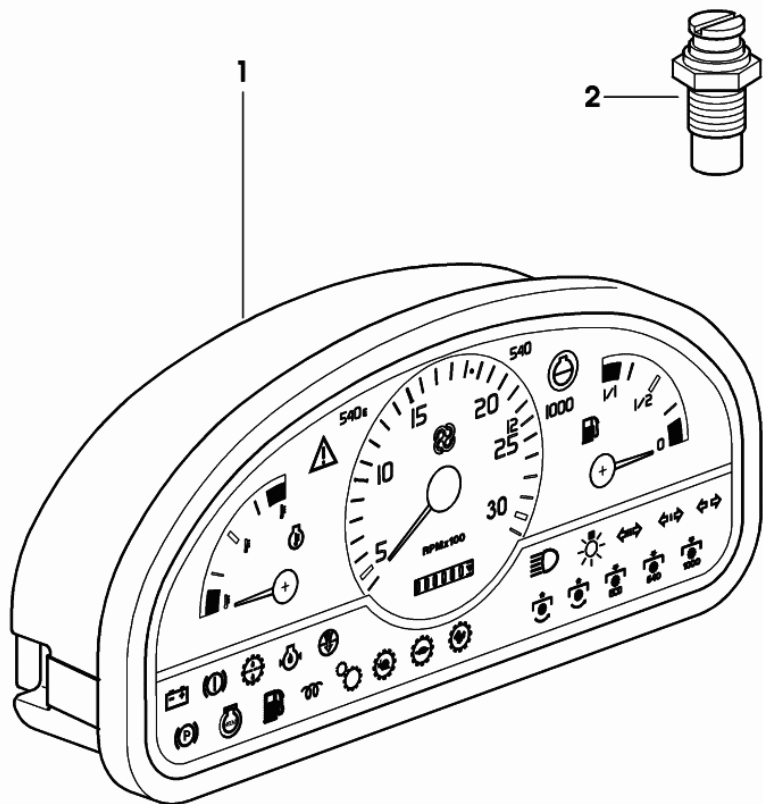
Fig.	Code	QTY	Name
1	0.012.5808.4	1	seat ☞ 0.012.5808.4 ☞ 07.00.19
2	0.012.5816.0	1	spacer dx/rh/re
3	0.012.5817.0	1	spacer sx/lh/li
4	2.0119.164.3	8	screw m 8 p.1.25 x 20
5	2.1011.105.2	8	nut m 8 p.1.25
6	2.1499.096.3	8	washer 8



9\_18775\_03\_0\_0

**MECHANIC HEY-HOUR RECORDER TACHOMETER**

Fig.	Code	QTY	Name
1	2.8339.227.0	1	combi-instrument ☞ 2.8339.227.0 ☞ 08.00.23
2	2.7099.830.0	1	tempe guage



9\_18784\_20\_0\_0

# KRYPTON 80

## ENGINE

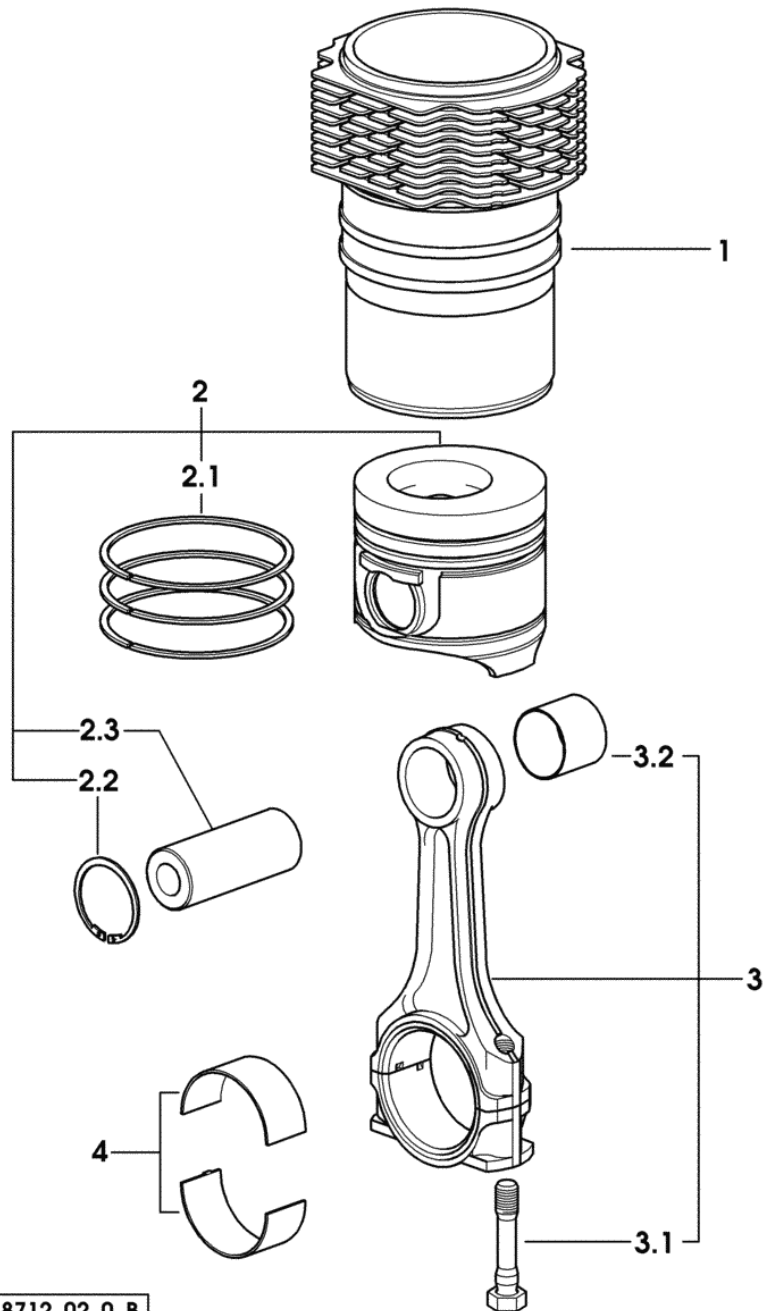
### GENERAL

CRANKCASE.....	01.00.1
SIDE PLUG FOR CYLINDER BLOCK.....	01.00.2
FLANGE.....	01.00.3
GUARD PLATE.....	01.00.4
TIMING CASE.....	01.00.5
CRANKSHAFT.....	01.00.6
CRANKSHAFT PULLEY.....	01.00.7
PULSE WHEEL.....	01.00.8
CYLINDER - PISTON - CONNECTING ROD.....	01.00.9
FLYWHEEL.....	01.00.11
COUNTERWEIGHTS.....	01.00.13
CAMSHAFT.....	01.00.14
CYLINDER HEAD.....	01.00.16
INLET AND EXHAUST VALVES.....	01.00.18
INLET AND EXHAUST VALVE SPRINGS.....	01.00.20
OIL PAN.....	01.00.21
LUBRICATION.....	01.00.22
OIL PUMP.....	01.00.23
LUBRICATION.....	01.00.24
LUBRICATION.....	01.00.25
LUBRIC. OIL FILTER.....	01.00.26
FITTING FOR ENGINE OIL PRESSURE SWITCH.....	01.00.28
LUBRICATION.....	01.00.29
FITTING FOR ENGINE OIL PRESSURE SWITCH.....	01.00.30
LUBRIC. OIL COOLER.....	01.00.31
LUBRICANT OIL SUCTION PIPE.....	01.00.32
LUBRICATION - EXPORT U.S.A.....	01.00.35
FUEL FEED PUMP.....	01.00.38
INJECTION PUMP - INJECTOR.....	01.00.39
INJECTION LINES.....	01.00.40
INJECTION LINES.....	01.00.41
MECHANICAL ENGINE GOVERNOR 2500 g/1'.....	01.00.42
PLUG FOR MECHANICAL REGULATOR.....	01.00.44
ELECTRONIC MOTOR CONTROLLER.....	01.00.45
FUEL SUPPLY SYSTEM.....	01.00.46
THERMO STARTER.....	01.00.47
COOLING.....	01.00.49
COOLING.....	01.00.50
COOLING.....	01.00.52
AIR INTAKE MANIFOLD - EXHAUST MANIFOLD.....	01.00.54

Section: ENGINE

**CYLINDER - PISTON - CONNECTING ROD**

Fig.	Code	QTY	Name
1	0.007.0762.0/50	4	engine cylinder
2	0.379.0060.6/10	4	complete piston
2.1	0.086.0052.6/10	1	piston ring set
2.2	2.1411.014.1	2	circlip 35
2.3	0.078.1236.0	1	piston pin
3	0.078.1220.3/30	4	engine connect.rod
3.1	2.0399.213.0	2	screw m 12 p.1.25x61.5
3.2	2.1559.114.0/10	1	bushing 35x39x35
4	0.065.1225.0	8	con.rod half bushing STANDARD
4	0.065.1225.7	8	con.rod half bushing - mm 0.25
4	0.065.1225.8	8	con.rod half bushing - mm 0.50



9\_38712\_02\_0\_B

Section: ENGINE  
LUBRICATION

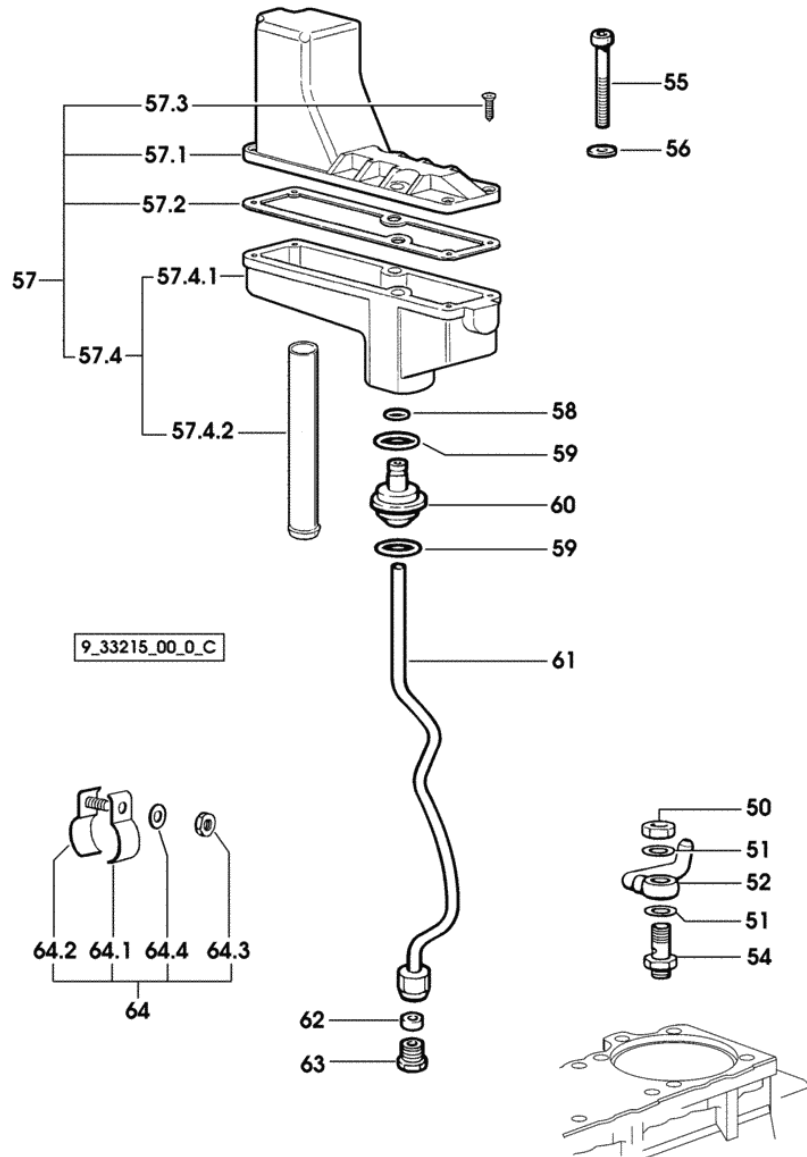


Fig.	Code	QTY	Name
50	2.1099.108.2	4	special nut m 10 p.1
51	2.1560.006.0	8	gasket 10.2 x 16
52	0.086.1550.2	4	cooling nozze
54	0.065.1160.3/20	4	valve
55	2.0312.221.2	2	screw m 8 p.1.25x75
56	2.1480.014.1	2	washer 8
57	0.066.1552.4/10	1	sediment bowl
57.1	0.066.1553.0	1	cover
57.2	0.066.1554.0/10	1	gasket
57.3	2.0351.203.6	4	screw 3.5x9.5
57.4	0.000.0000.1	0	not serviceable
57.4.1	0.066.1552.0	1	sediment bowl
57.4.2	0.066.1555.0	1	tube
58	2.1532.014.0	1	'o' ring 7.65 x 1.78
59	2.1539.072.0	2	'o' ring 23.52 x 1.78
60	0.066.1558.0	1	sleeve
61	0.066.1557.2	1	tube
62	2.3350.003.1	1	nosepiece 8
63	2.3339.418.1	1	pipe fitting m 12 p.1
64	0.000.0000.1	0	not serviceable
64.1	0.075.1552.0	1	bracket
64.2	0.075.1552.2	1	bracket
64.3	2.1011.103.2	1	nut m 6 p.1
64.4	2.1470.002.2	1	washer 6, d128

CLICK HERE TO **DOWNLOAD** THE COMPLETE MANUAL

- Thank you very much for reading the preview of the manual.
- You can download the complete manual from: [www.heydownloads.com](http://www.heydownloads.com) by clicking the link below



- Please note: If there is no response to CLICKING the link, please download this PDF first and then click on it.

CLICK HERE TO **DOWNLOAD** THE COMPLETE MANUAL

Section: ENGINE

**INJECTION PUMP - INJECTOR**

9\_35516\_02\_0\_0

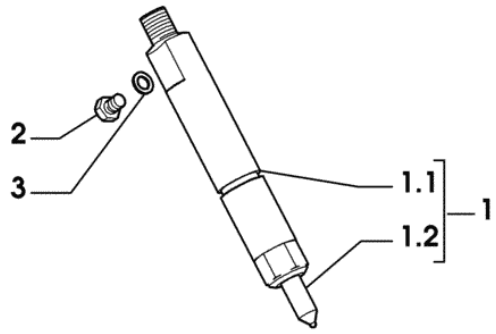
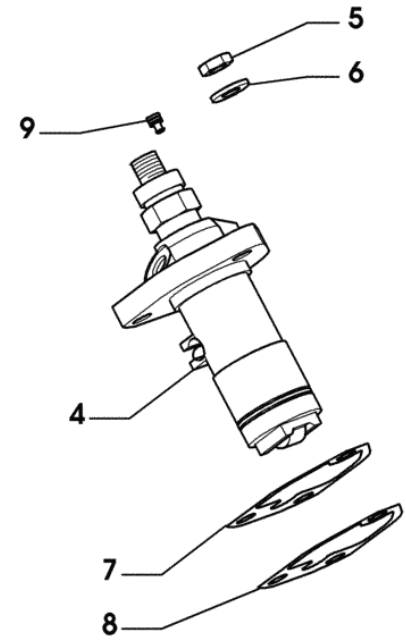


Fig.	Code	QTY	Name
1	2.4719.320.0/10	4	injector BOSCH
1.1	2.4719.190.0	1	nozzle holder BOSCH ☞ 2.4719.190.0 ☞ 01.00.2
1.2	2.4729.170.0/10	1	nozzle BOSCH
2	2.3119.024.2	4	plug m 6
3	2.1560.001.0	4	gasket 6.2x10
4	2.4619.030.0/30	4	injector pump - 555 - BOSCH ☞ 2.4619.030.0/30 ☞ 01.00.3
5	2.1011.405.2	12	nut m 8 p.1
6	2.1599.458.0/10	12	snoulder 8.4x18x2
7	0.065.1655.0/10	8	shim mm 0.1
8	0.065.1656.0/10	12	shim mm 0.20
9	2.3199.270.0	4	plug 5.9x7.8



Section: ENGINE  
**COOLING**

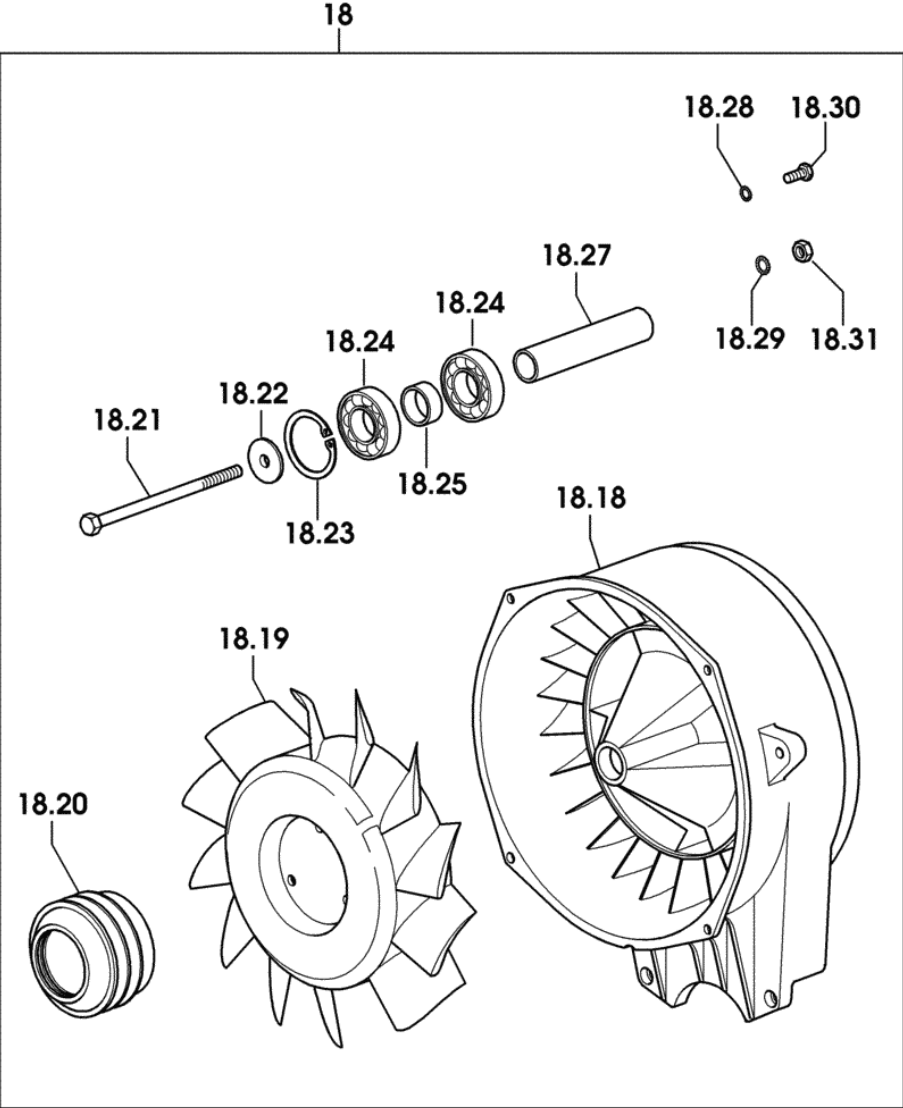
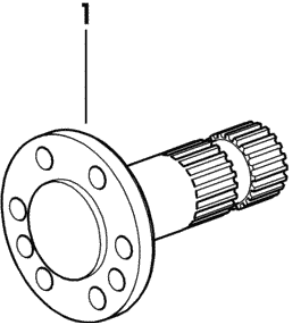


Fig.	Code	QTY	Name
18	0.000.0000.1	0	not serviceable
18.18	0.006.5400.0/40	1	sump
18.19	0.006.5401.0	1	impeller
18.20	0.006.5410.0/10	1	pulley
18.21	2.0112.344.2	1	screw m 10 p.1.5 x 180
18.22	0.006.5408.0	2	washer
18.23	2.1411.025.1	2	circlip 62
18.24	2.2041.012.0	2	ball bearing 30x62x16
18.25	0.006.5407.0	1	spacer
18.27	0.006.5406.0	1	shaft
18.28	2.1470.004.2	3	washer 8
18.29	2.1470.006.2	1	lock washer 10
18.30	2.0112.207.2	3	screw m 8 p 1.25 x 20
18.31	2.1011.106.2	1	nut m 10 p.1.5

9\_32317\_01\_0\_B

**P.T.O. - WITH INSERTED END SHAFTS**

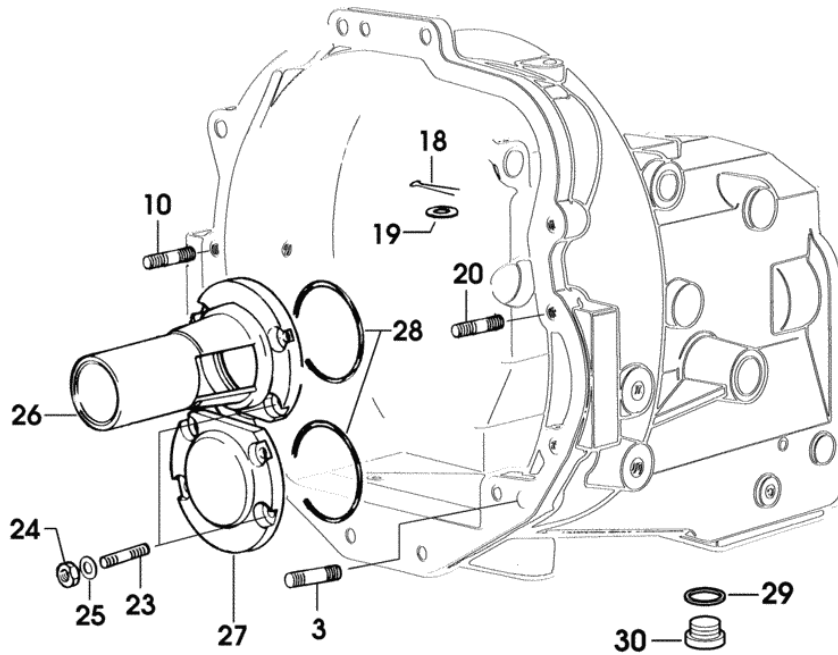
Fig.	Code	QTY	Name
1	0.163.3671.0/40	1	p.t.o.shaft 1" 3/8, Z = 21



9\_58236\_01\_0\_0

Section: FRONT AXEL  
**GEARBOX - WEARING PARTS**

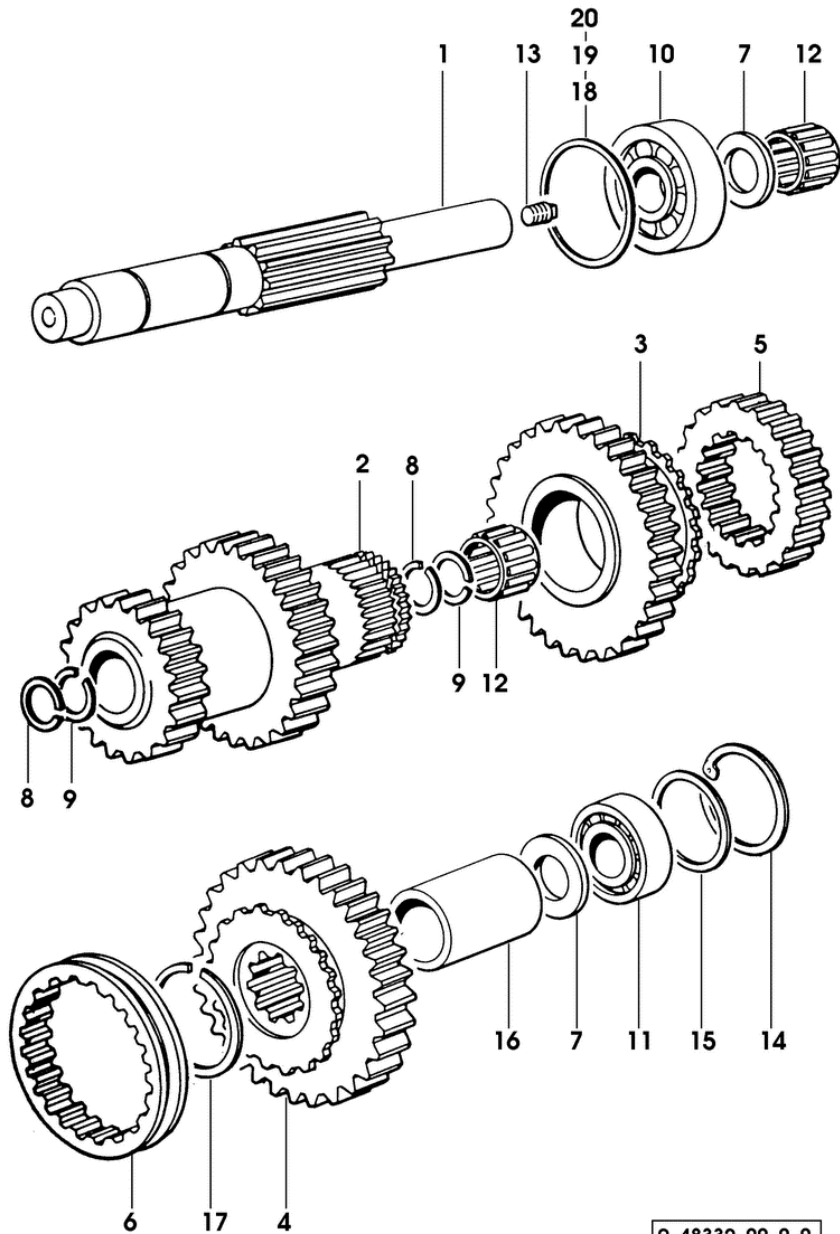
Fig.	Code	QTY	Name
3	2.0432.265.2	2	stud bolt m 12 p.1.75-1.25x50
10	2.0432.307.7	1	stud bolt m 14 p.2-1.5x30
18	2.1690.512.2	1	split pin 5 x 30
19	2.1310.004.2	2	flat washer 8.5
20	2.0432.307.7	1	stud bolt m 14 p.2-1.5x30
23	2.0432.005.7	8	stud bolt m 8 p.1.25 / p.1 x 25
24	2.1011.305.2	8	nut m 8 p.1 x 8
25	2.1470.004.2	8	washer 8
26	0.007.9296.2/10	1	cover
27	0.007.9293.0/10	1	cover
28	2.1539.025.0/10	2	'o' ring 88.57 x 2.62
29	2.1560.017.0	1	gasket 22.2 x 27
30	2.3199.001.2	1	plug 1/2" gas



9\_48352\_01\_0\_0

Section: GEAR  
**MAIN SHAFT**

Fig.	Code	QTY	Name
1	0.292.3211.0/10	1	main shaft
2	0.292.3220.0	1	gear Z=24 / Z=28
3	0.292.3221.0	1	gear Z = 32
4	0.292.3223.0	1	gear Z = 37
5	0.292.3250.0	1	sleeve
6	0.292.3251.0	1	sleeve
7	0.292.3252.0	2	shim
8	2.1589.165.0/20	3	shim 40.2x44.5x0.5
9	2.1422.029.7	3	circlip 40 x 1.5
10	2.2530.007.0	1	roller bearing 30x72x20.75
11	2.2540.001.0	1	roller bearing
12	2.2770.072.0	2	roller cage 40x45x27
13	2.3199.526.0	1	plug m 10 p.1x8
14	2.1411.025.1	1	circlip 62
15	2.1579.779.0	1	spacer 52X61.5X4
16	2.1579.782.0	1	spacer 45X52X60
17	2.1422.036.7	1	circlip
18	2.1580.213.0	2	shim 60,5x70x0,15
19	2.1580.225.0	2	shim 60x71.5x0.2
20	2.1580.226.0	4	shim 60x71.5x0.5

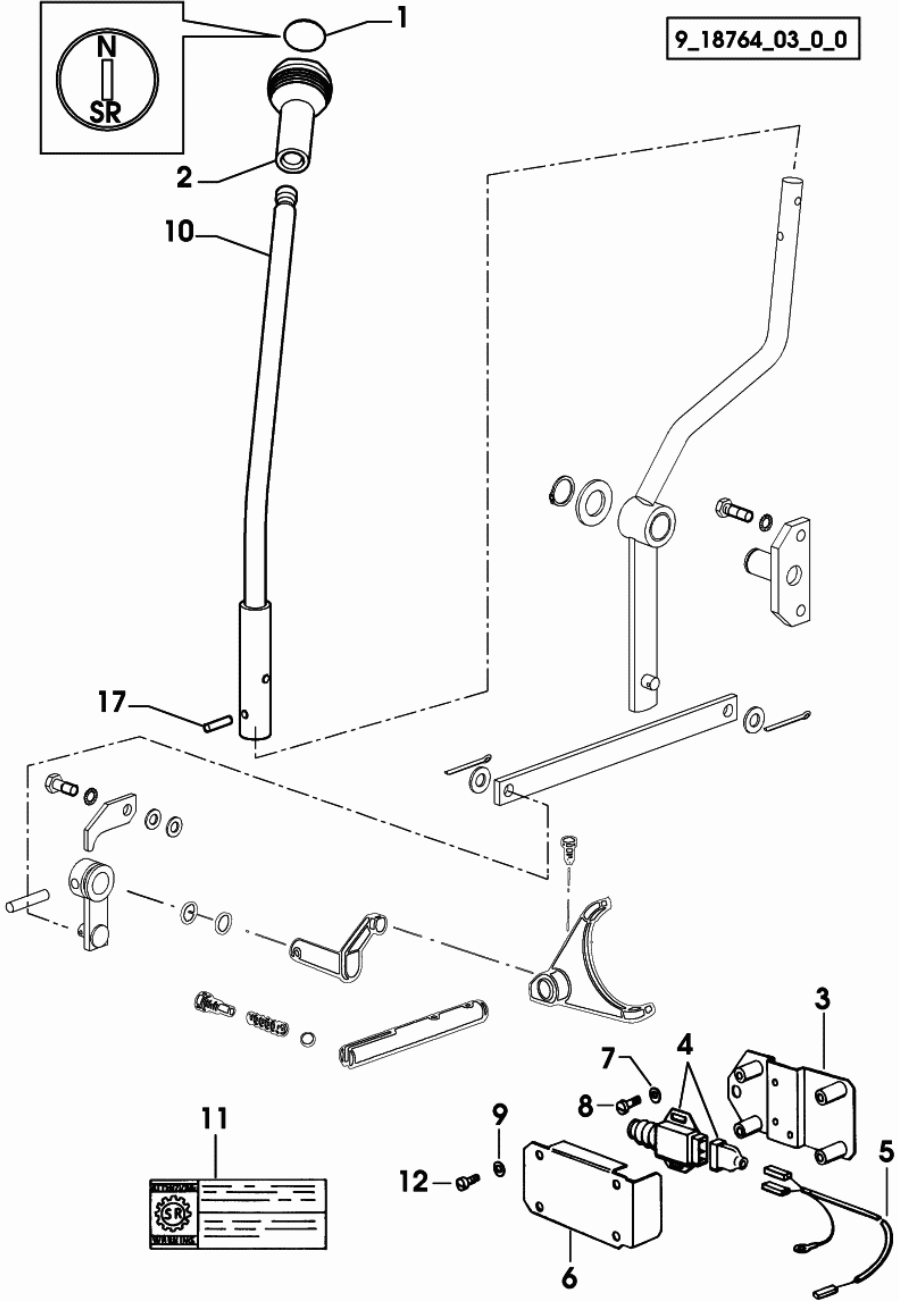


9\_48332\_00\_0\_0

Section: GEAR  
**CONTROLS-SUPER REDUCTION**

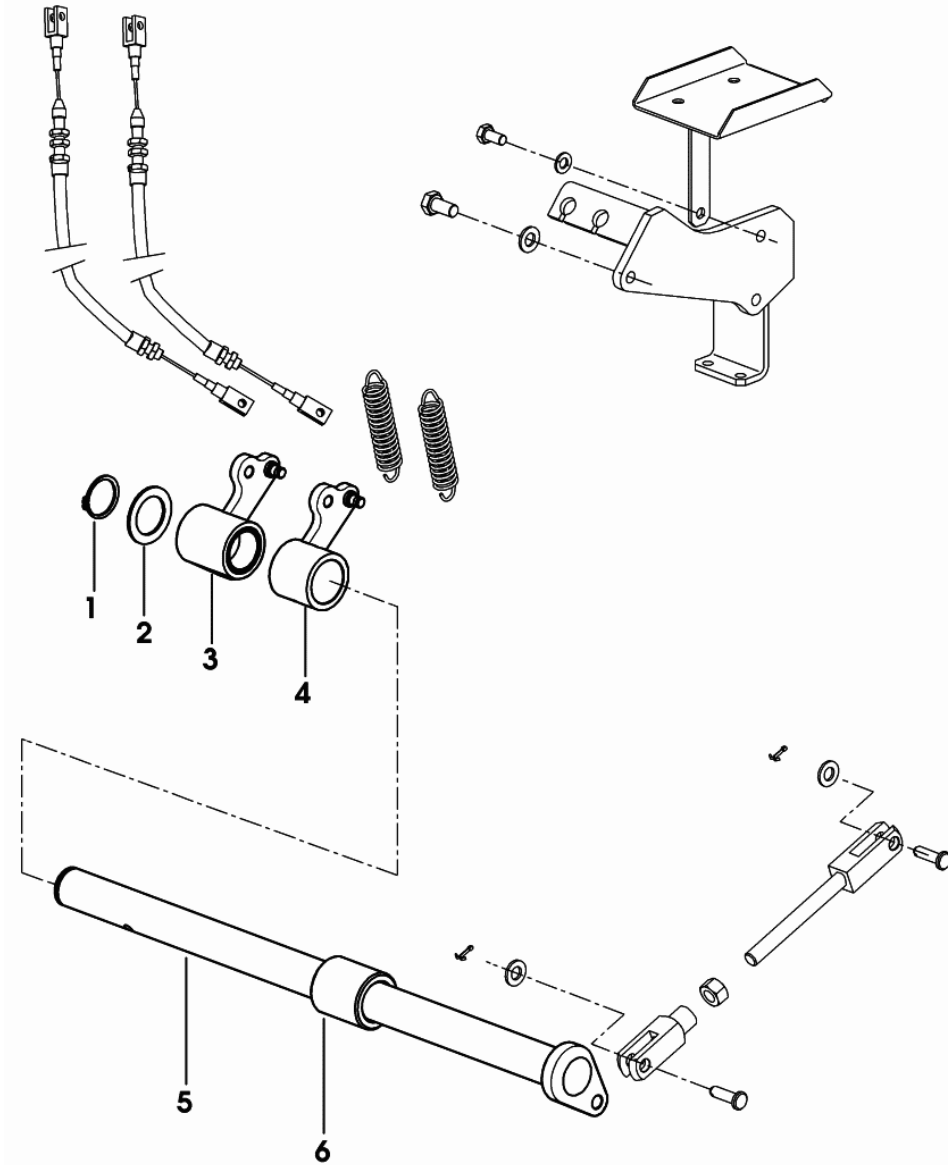
9\_18764\_03\_0\_0

Fig.	Code	QTY	Name
1	0.007.9332.0	1	cap
2	0.467.6413.0	1	knob
3	0.007.9493.2	1	support
4	2.7649.050.0/10	1	switch
5	0.007.9523.4	1	wire
6	0.007.9521.0	1	guard
7	2.1310.028.2	2	flat washer 4
8	2.0332.203.2	3	screw m 4 x 10
9	2.1310.001.2	4	flat washer 5.3
10	0.012.5799.2/20	1	lever
11	2.9929.445.0	1	plate
12	2.0332.303.2	4	screw m 5 p.0.8 x 10
17	2.1631.512.0	2	roll pin 6x25



Section: REAR AXLE  
**BRAKE CONTROLS**

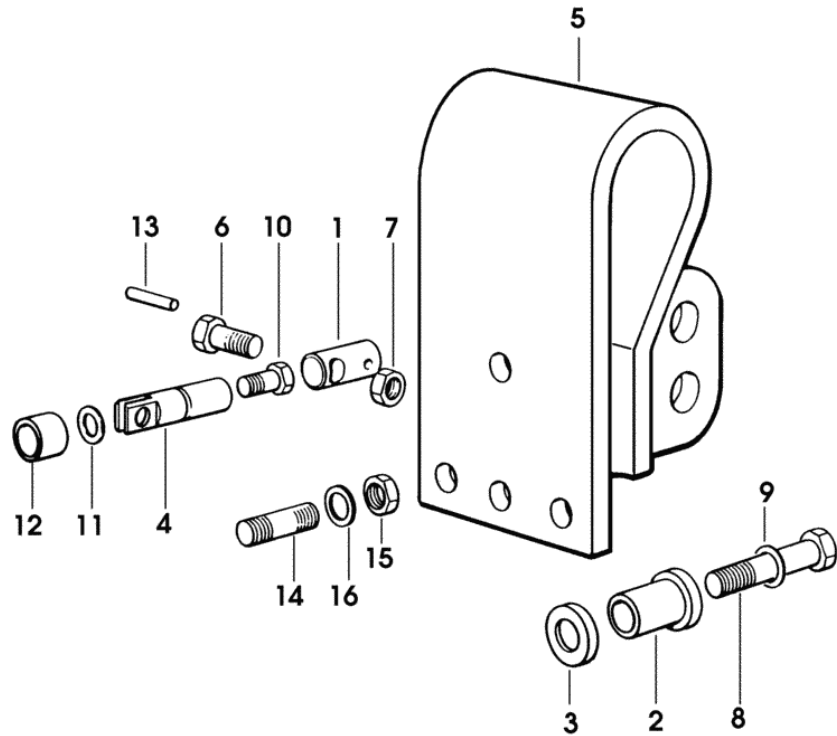
Fig.	Code	QTY	Name
1	2.1410.012.1	1	circlip 30
2	2.1599.511.2	1	snoulder 30.5x45x2
3	0.012.5663.3	1	lever dx/rh/re
4	0.012.5660.3	1	lever sx/lh/li
5	0.007.8524.2	1	pin
6	0.012.3572.0	1	hub



9\_18766\_01\_0\_0

**SENSITIVE ELEMENTS**

Fig.	Code	QTY	Name
1	0.700.3656.0	1	pin
2	0.9108.751.0	1	spacer
3	0.9108.752.0	1	spacer
4	0.9108.754.0	1	rod
5	0.9121.750.2	1	spring
6	2.0122.370.2	1	screw m 10 p.1.25 x 55
7	2.1011.421.2	1	nut m 10 p.1.25
8	2.0122.527.2	1	screw m 14 p.1.5x85
9	2.1470.008.2	1	lock washer 14
10	2.0399.533.1	1	screw
11	2.1530.024.0	1	'o' ring 10.78 x 2.62
12	2.1579.515.0	1	spacer
13	2.1630.509.0	1	pin 5x18
14	2.0439.534.1	3	stud bolt
15	2.1011.407.2	3	nut m 12 p.1.5
16	2.1474.011.2	3	spring washer 12



9\_48359\_61\_0\_0

Section: TRACK  
**TRACK FRAME BODY**

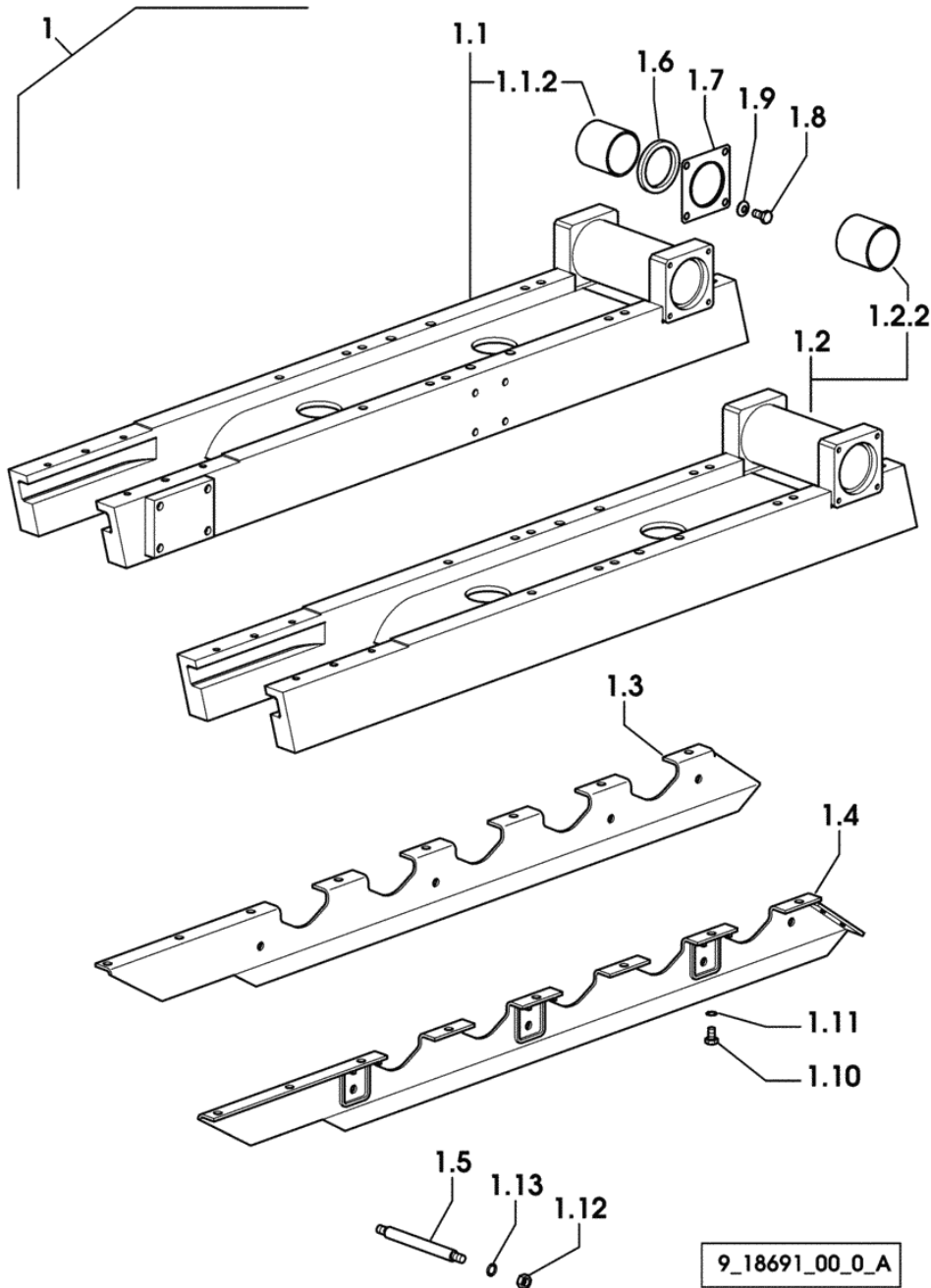
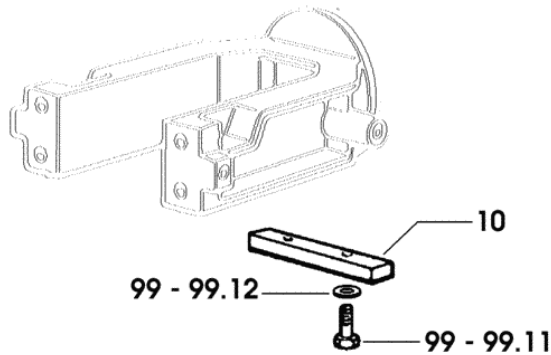
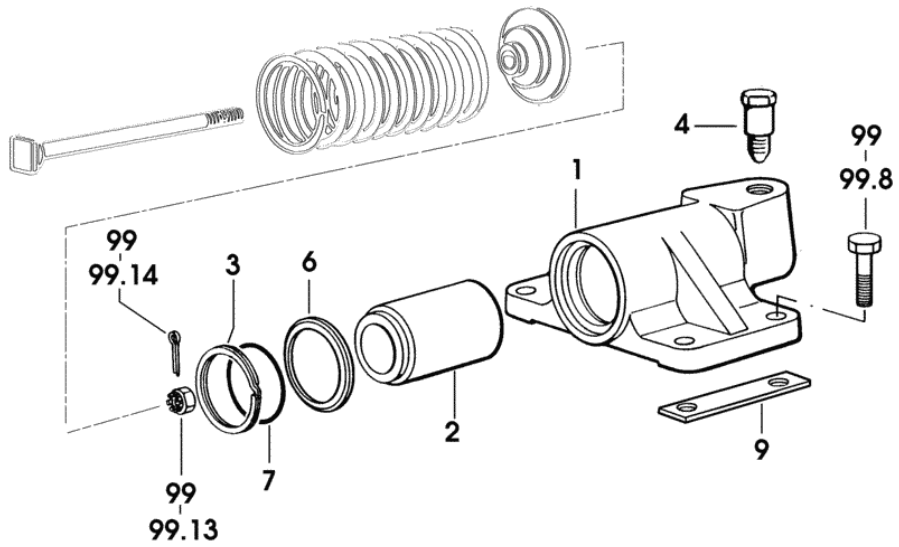


Fig.	Code	QTY	Name
1	0.000.0000.1	0	not serviceable
1.1	0.012.2768.3/10	1	chassis frame dx/rh/re
1.1.2	2.1559.148.0/10	2	bushing
1.2	0.012.2767.3/10	1	chassis frame sx/lh/li
1.2.2	2.1559.148.0/10	2	bushing
1.3	0.294.9130.0/40	2	shield dx/rh/re
1.4	0.294.9131.0/40	2	shield sx/lh/li
1.5	0.160.9154.0	8	small column
1.6	2.1529.150.0	2	'o' ring
1.7	0.011.7880.0	2	guard
1.8	2.0112.409.2	8	screw m 12 p.1.75 x 25
1.9	2.1480.016.2	8	washer 12
1.10	2.0112.407.2	32	screw m 12 p.1.75 x 20
1.11	2.1470.007.2	32	lock washer 12
1.12	2.1011.408.2	16	nut m 14 p.1.5
1.13	2.1470.008.2	16	lock washer 14

9\_18691\_00\_0\_A

Section: TRACK  
IDLER

Fig.	Code	QTY	Name
1	0.007.9078.0/10	2	support
2	0.007.9079.0/10	2	piston
3	0.007.9002.0/10	2	ring
4	0.216.9353.4/10	2	valve
6	0.007.9001.0	2	ring
7	2.1530.179.0	2	'o' ring 78.97x3.53
9	0.011.7990.0	4	small plate
10	0.011.8005.0	2	plate
99	0.000.0000.1	0	not serviceable
99.8	2.0112.621.2	8	screw m 16 p.2 x 60
99.11	2.0112.419.2	4	screw m 12 p.1.75 x 50
99.12	2.1470.007.2	4	lock washer 12
99.13	2.1021.310.2	2	castellated nut m 24
99.14	2.1690.314.2	2	split pin 3.2x40



9\_18793\_00\_0\_0

CLICK HERE TO **DOWNLOAD** THE COMPLETE MANUAL

- Thank you very much for reading the preview of the manual.
- You can download the complete manual from: [www.heydownloads.com](http://www.heydownloads.com) by clicking the link below



- Please note: If there is no response to CLICKING the link, please download this PDF first and then click on it.

CLICK HERE TO **DOWNLOAD** THE COMPLETE MANUAL