

## TIGER 60 ->S10S523WTE1001

### V0 - BALLAST, TOWING HITCHES

#### FRONT HITCHES

FRONT TOWING HITCH..... V0.01.0 (1)

#### REAR HITCHES

REAR TOWING HITCH.....V0.02.0 (1)

REAR TOWING HITCH CAT: "C".....V0.02.1 (1)

DRAWBAR COUPLING AUTOM. Ø 31 CEE.....V0.02.2 (1)

REAR TOWING HITCH CEE.....V0.02.3 (1)

REAR GEARBOX BRACKETS.....V0.02.4 (1)

REAR TOWING HITCH BRACKET.....V0.02.5 (1)

REAR OSCILLATING HITCH.....V0.02.6 (1)

REAR TOWING HITCH CAT: "C".....0.014.4450.3/10.A

TRAILER STAND - DRAWBAR COUPLING.....0.014.4483.3/30.A

SLIDE mm 320.....0.014.4485.3.A

DRAWBAR COUPLING Ø 31, kpl.....0.014.8208.3.A

#### FRONT BALLAST WEIGHTS

FRONT WEIGHT CARRIER.....V0.03.0 (1)

FRONT BALLAST.....V0.03.1 (1)

FRONT BALLAST.....V0.03.2 (1)

FRONT BALLAST.....V0.03.3 (1)

#### WHEEL BALLAST

WHEEL BALLAST REAR 172 Kg.....V0.05.0 (1)

WHEEL BALLAST REAR 344 Kg.....V0.05.1 (1)

CLICK HERE TO **DOWNLOAD** THE COMPLETE MANUAL

- Thank you very much for reading the preview of the manual.
- You can download the complete manual from: [www.heydownloads.com](http://www.heydownloads.com) by clicking the link below

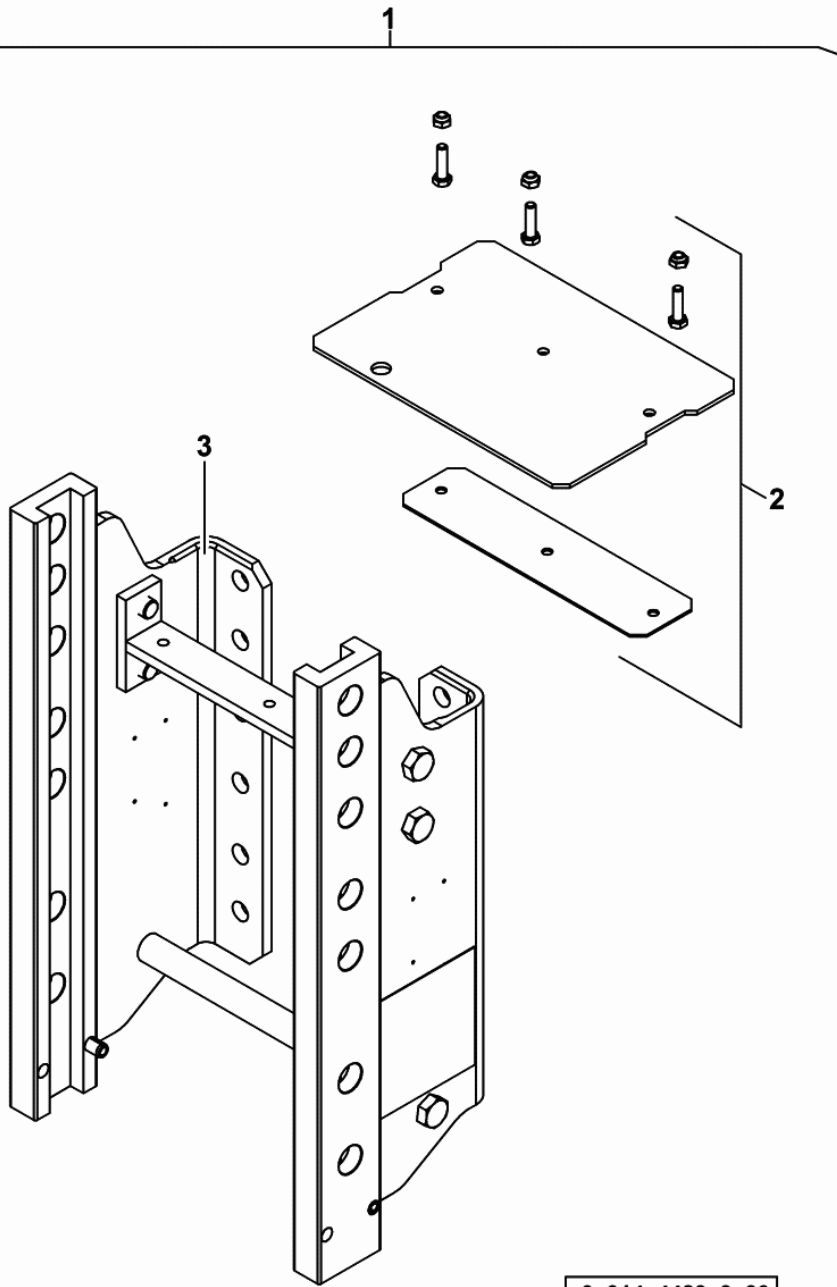


- Please note: If there is no response to CLICKING the link, please download this PDF first and then click on it.

CLICK HERE TO **DOWNLOAD** THE COMPLETE MANUAL

**TRAILER STAND - DRAWBAR COUPLING**

Fig.	Code	QTY	Name
1	0.014.4483.3/30	1	chassis frame - V.ORLANDI -
2	0.900.0458.6	1	shield
3	0.000.0000.1	0	not serviceable



RANGE CONTROL IDENTIFICATION PLATE.....	G0.02.32 (1)
DIFFERENTIAL LOCK IDENTIFICATION PLATE.....	G0.02.33 (1)
DIFFERENTIAL LOCK IDENTIFICATION PLATE.....	G0.02.34 (1)
GEAR LEVER KNOB CAP.....	G0.02.35 (1)
GEAR LEVER KNOB CAP.....	G0.02.36 (1)
GEAR LEVER KNOB CAP.....	G0.02.37 (1)
RANGE CONTROL LEVER.....	G0.02.38 (1)
4WD ENGAGEMENT COVER.....	G0.02.39 (1)
4WD ENGAGEMENT COVER.....	G0.02.39 (2)
REAR LIFT DECAL.....	G0.02.41 (1)
REAR LIFT DECAL.....	G0.02.42 (1)
SPEED LABEL - 40 KM/H.....	G0.02.43 (1)
SPEED LABEL - 40 KM/H - REFLEX.....	G0.02.44 (1)
SPEED LABEL.....	G0.02.45 (1)
IDENTIFICATION PLATE.....	G0.02.47 (1)
IDENTIFICATION PLATE.....	G0.02.49 (1)
<b>CAB STRUCTURE - PLATFORM -SUSPENSION</b>	
DEFLECTOR.....	G0.03.0 (1)
DEFLECTOR.....	G0.03.0 (2)
STEP.....	G0.03.1 (1)
STEP.....	G0.03.2 (1)
<b>FENDERS - FOOTSTEPS - EXTENSIONS</b>	
REAR MUDGUARDS A: mm 668.....	G0.04.5 (1)
REAR MUDGUARDS A: mm 718.....	G0.04.6 (1)
REAR MUDGUARDS A: mm 753.....	G0.04.8 (1)
REAR MUDGUARDS A: mm 668.....	G0.04.9 (1)
REAR MUDGUARDS A: mm 753.....	G0.04.11 (1)
REAR MUDGUARDS A: mm 718.....	G0.04.14 (1)
MUDGUARDS EXTENSIONS.....	G0.04.18 (1)
4WD - FRONT MUDGUARDS.....	G0.04.19 (1)
STONE GUARD.....	G0.04.21 (1)
REAR FENDER ANCILLARY PARTS KIT.....	G0.04.23 (1)
REAR FENDER ANCILLARY PARTS KIT.....	G0.04.24 (1)
FOOT PLATES AND PLATFORM.....	G0.04.25 (1)
FOOT PLATES AND PLATFORM.....	G0.04.26 (1)
REFLECTOR SUPPORT.....	G0.04.27 (1)
<b>INTERIOR TRIM</b>	
DASHBOARD.....	G0.06.0 (1)
DASHBOARD.....	G0.06.1 (1)
INSTRUMENT PANEL AND SUPPORTS.....	G0.06.2 (1)
CONVEYOR.....	G0.06.3 (1)
<b>EXTERIOR TRIM - ROOF</b>	
REARVIEW MIRROR.....	G0.07.0 (1)
REARVIEW MIRROR.....	G0.07.1 (1)

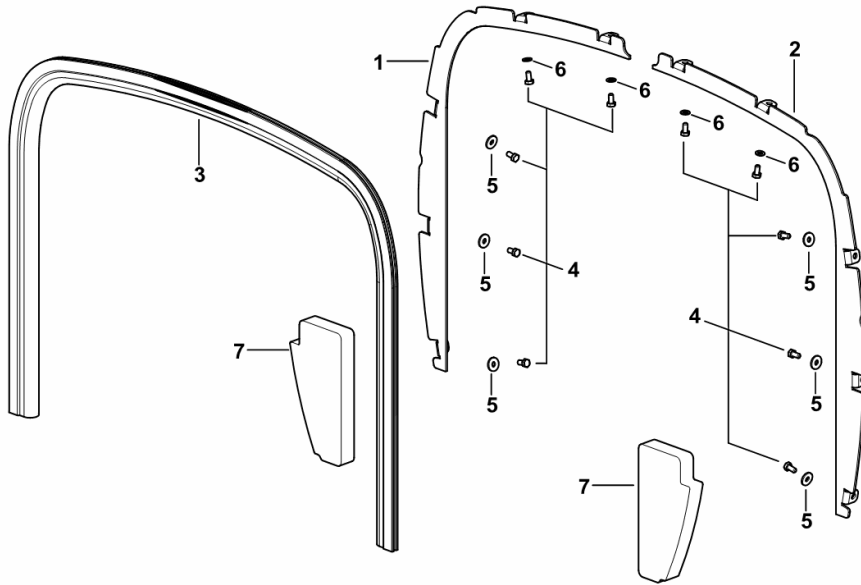
**ENGINE HOOD GASKETS**

Fig.	Code	QTY	Name
------	------	-----	------

**Notes:**

[TIGER 60 2WD ->S10S523WXE1001] -> 1412 [TIGER 60 4WD ->S10S523WTE1001] -> 1412

1	0.015.3956.0/10	1	frame dx/rh/re
2	0.015.3096.0/10	1	frame sx/lh/li
3	0.015.3314.0	1.4	gasket
4	2.0114.102.2	10	screw m 5x10
5	2.1312.002.2	6	washer 5
6	2.1310.001.2	4	flat washer 5.3
7	0.015.4247.0/20	2	stopper



19\_J1272\_05\_0-A-001

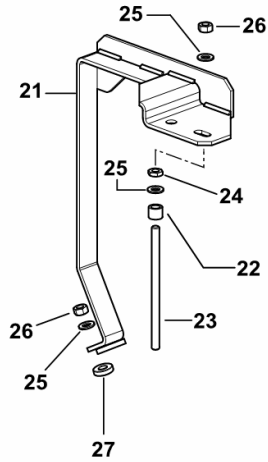
**BRACKET**

Fig.	Code	QTY	Name
------	------	-----	------

**Notes:**

- EXPORT U.S.A. [TIGER 60 2WD ->S10S523WXE1001] 1413 <- [TIGER 60 2WD ->S10S523WXE1001] 1411 <- -  
 EXPORT U.S.A. [TIGER 60 4WD ->S10S523WTE1001] 1413 <- [TIGER 60 4WD ->S10S523WTE1001] 1411 <-

21	0.015.5883.2	1	bracket
22	2.1549.454.2	1	spacer
23	2.0432.027.7	1	stud bolt m 8 p 1.25 - 1.00 x 120
24	2.1011.505.2	1	nut m 8 p.1 x 8
25	2.1310.004.2	3	flat washer 8.5
26	2.1011.105.2	1	nut m 8 p.1.25
27	2.1579.854.2	1	spacer 8.5x20x5



TIGER 60 ->S10S523WTE1001

Section: G0 - BODYWORK - CAB

Ref.: G0.02.17 (1)

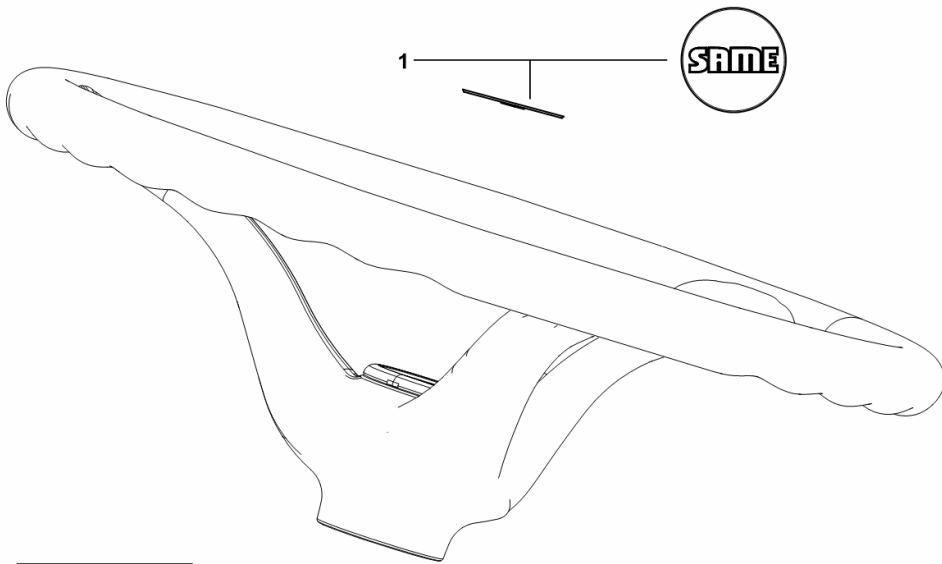
**STEERING WHEEL PRODUCT IDENTIFICATION PLATE**

Fig.	Code	QTY	Name
------	------	-----	------

**Notes:**

[TIGER 60 2WD ->S10S523WXE1001] [TIGER 60 4WD ->S10S523WTE1001]

1	0.014.4292.0	1	plate SAME
---	--------------	---	------------



19\_J1272\_16\_0-A-001

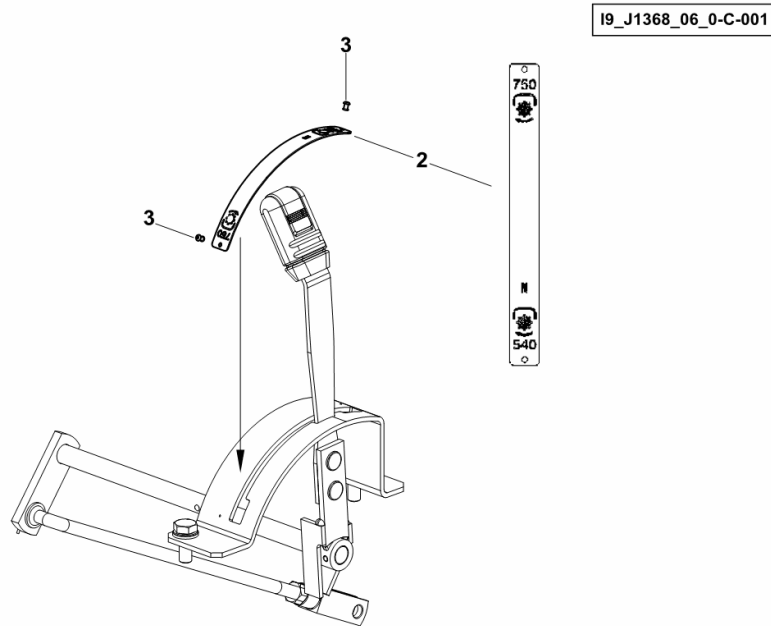
**PTO DATA PLATE - 2 SPEED**

Fig.	Code	QTY	Name
------	------	-----	------

**Notes:**

- FOR TYPES WITH 2-SPEED P.T.O. [TIGER 60 2WD ->S10S523WXE1001] - FOR TYPES WITH 2-SPEED P.T.O. [TIGER 60 4WD ->S10S523WTE1001]

2	2.9939.314.0/10	1	plate
3	2.1858.002.0	2	rivet



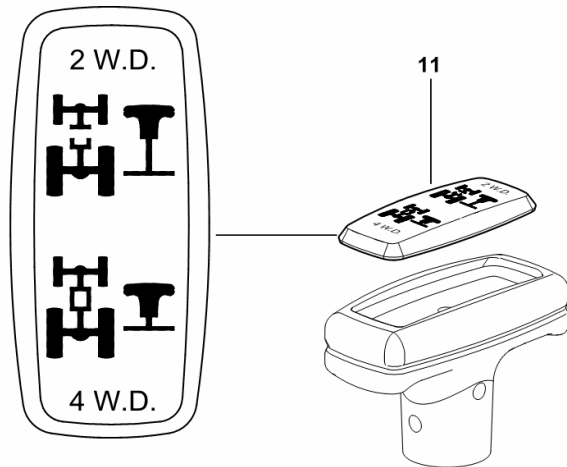
**4WD ENGAGEMENT COVER**

Fig.	Code	QTY	Name
------	------	-----	------

**Notes:**

[TIGER 60 4WD ->S10S523WTE1001] -> 1413

11	0.012.8186.0	1	cap
----	--------------	---	-----



19\_D1026\_01\_0-B-002

**STEP**

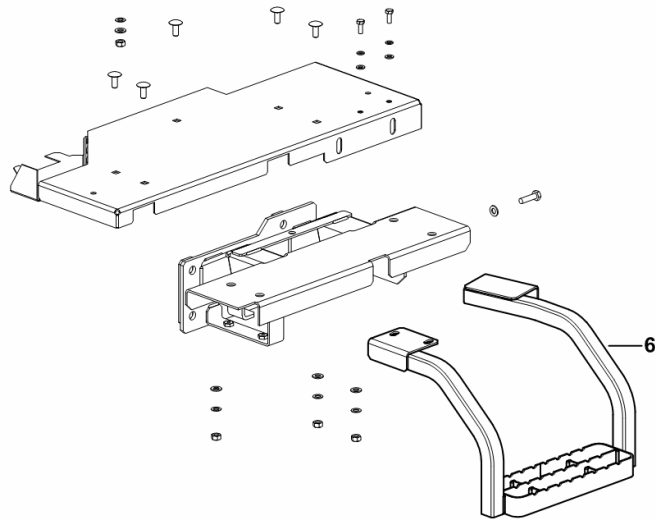
Fig.	Code	QTY	Name
------	------	-----	------

**Notes:**

[TIGER 60 2WD ->S10S523WXE1001] [TIGER 60 4WD ->S10S523WTE1001]

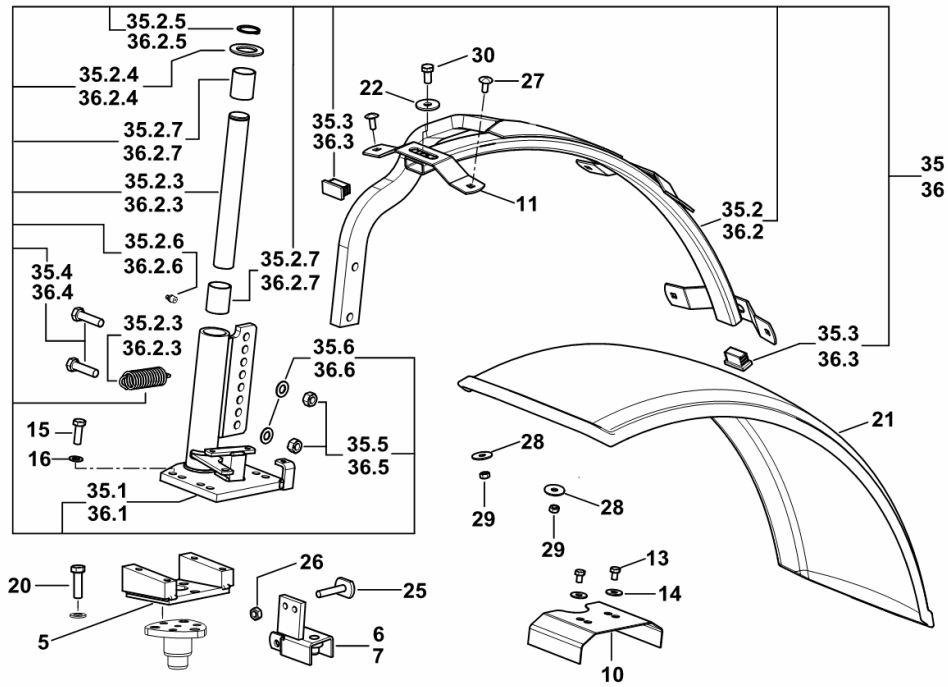
6	0.015.5665.2	1	climbing steps
---	--------------	---	----------------

19\_J1276\_04\_0-C-001



Section: G0 - BODYWORK - CAB  
**4WD - FRONT MUDGUARDS**

Fig.	Code	QTY	Name
36.6	2.1475.004.2	2	washer 12



TIGER 60 ->S10S523WTE1001

Section: G0 - BODYWORK - CAB

Ref.: G0.06.3 (1)

CONVEYOR

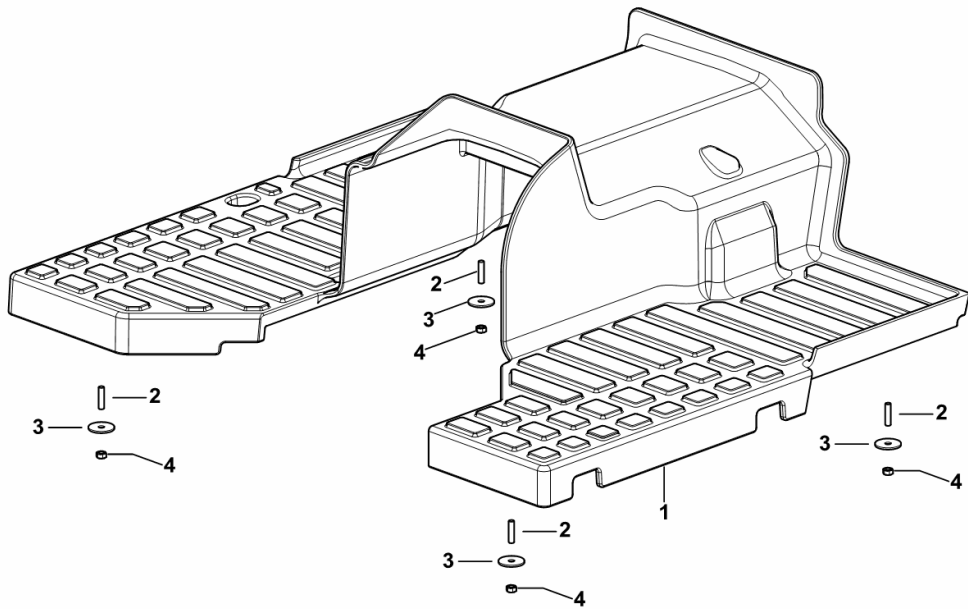
Fig.	Code	QTY	Name
------	------	-----	------

Notes:

[TIGER 60 2WD ->S10S523WXE1001] [TIGER 60 4WD ->S10S523WTE1001]

1	0.015.6373.2	1	small carpet
2	2.0422.001.2	5	stud bolt m 6 p.1.0 x 16
3	2.1599.545.2	5	washer 6.5x28x2
4	2.1011.103.2	5	nut m 6 p.1

19\_J1276\_03\_0-A-001



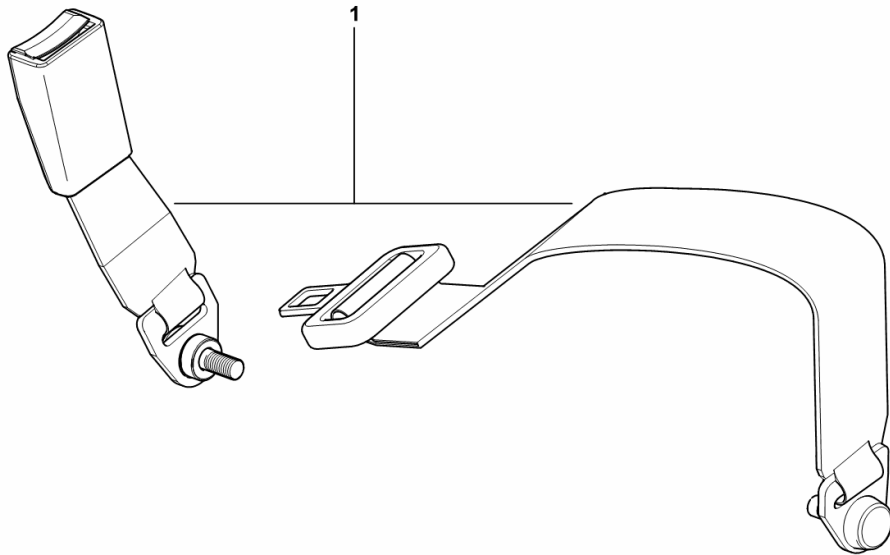
**SAFETY BELT**

Fig.	Code	QTY	Name
------	------	-----	------

**Notes:**

[TIGER 60 2WD ->S10S523WXE1001] [TIGER 60 4WD ->S10S523WTE1001]

1	0.014.4448.4	1	safety belt
---	--------------	---	-------------



I9\_B6175\_09\_0-A-001

TIGER 60 ->S10S523WTE1001

Section: G0 - BODYWORK - CAB

Ref.: G0.11.5 (1)

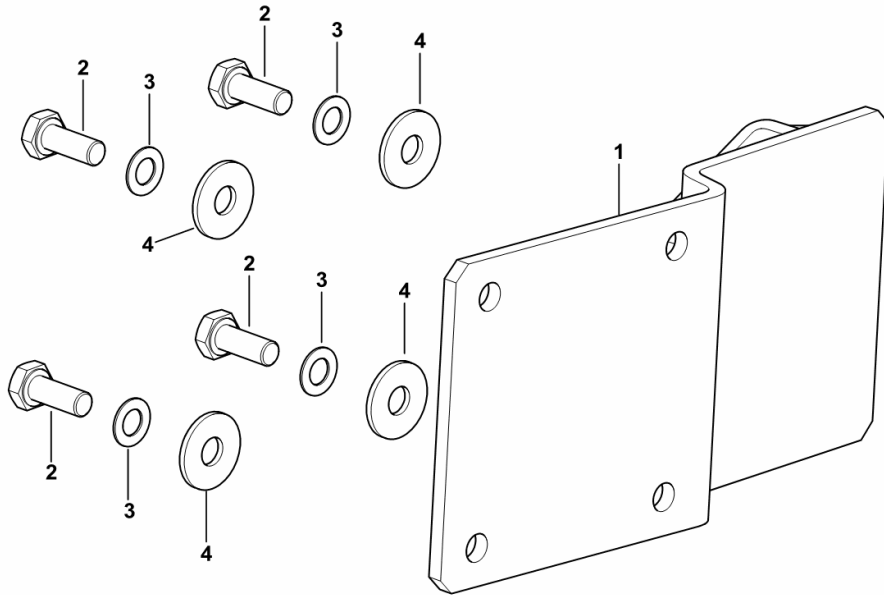
**HANDBRAKE BRACKET FOR TRAILER**

Fig.	Code	QTY	Name
------	------	-----	------

**Notes:**

- ITALY [TIGER 60 2WD ->S10S523WXE1001] - ITALY [TIGER 60 4WD ->S10S523WTE1001]

1	0.016.0194.2	1	bracket
2	2.0112.207.2	4	screw m 8 p 1.25 x 20
3	2.1470.004.2	4	washer 8
4	2.1312.004.2	4	washer 8.4



19\_J1244\_00\_0-A-001

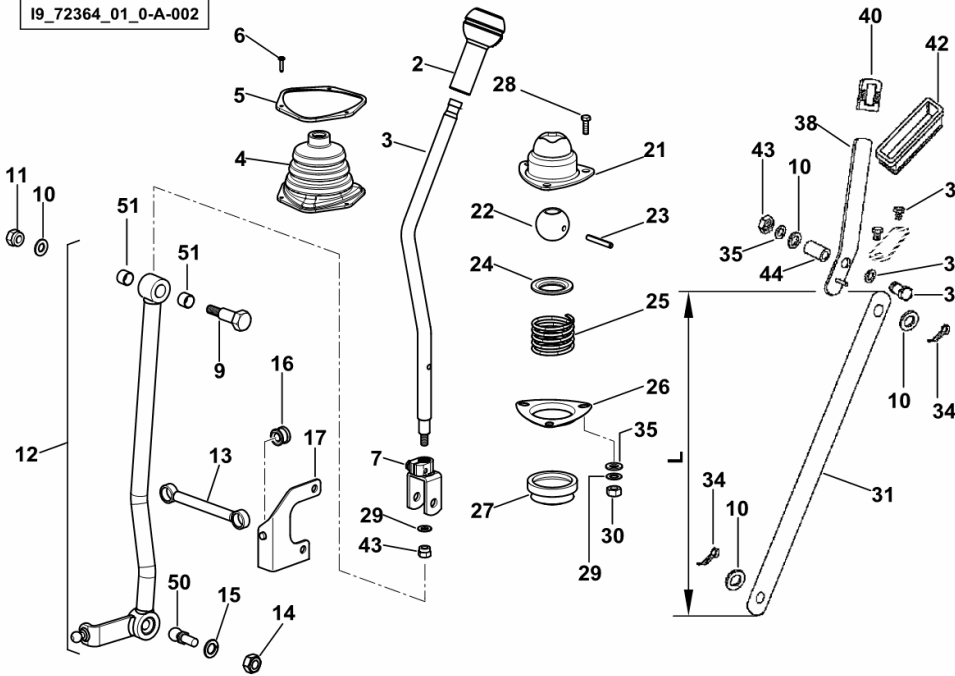
**GEARSHIFT LEVER**

Fig.	Code	QTY	Name
------	------	-----	------

**Notes:**

- EXPORT U.S.A. [TIGER 60 2WD ->S10S523WXE1001] - EXPORT U.S.A. [TIGER 60 4WD ->S10S523WTE1001]

I9\_72364\_01\_0-A-002



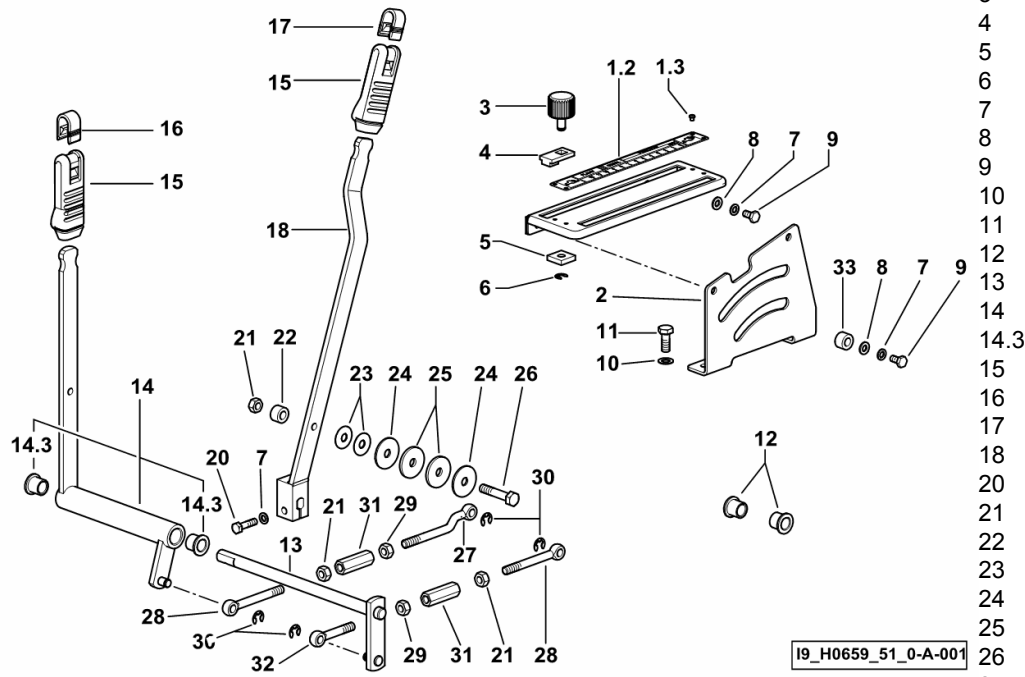
2	0.016.4657.0	1	knob
3	0.014.6275.0	1	lever
4	0.010.1536.0	1	guard
5	0.010.1535.0	1	support
6	2.0350.255.3	3	screw m 3.5 x 16 -AB-
7	0.012.0936.2/30	1	fork
9	0.014.6291.0	1	bolt
10	2.1310.006.2	4	flat washer 10.5
11	2.1120.006.2	1	nut m 10 p.1.5
12	0.012.7888.4/10	1	lever
13	0.010.1587.2/30	1	rod
14	2.1011.106.2	1	nut m 10 p.1.5
15	2.1474.010.2	1	washer 10
16	0.255.6454.0	2	pin seat
17	0.010.1544.3/10	1	bracket
21	0.012.7591.2/10	1	guard
22	0.255.6452.0	1	ball
23	2.1630.615.0	1	roll pin 6x40
24	0.255.6465.0	1	cup
25	2.4019.309.1/10	1	spring 51x40x4
26	0.012.7593.0	1	support
27	0.255.6451.0/10	1	bellows
28	2.0112.209.2	3	screw m 8 p 1.25 x 25
29	2.1470.004.2	3	washer 8
30	2.1011.105.2	3	nut m 8 p.1.25
31	0.012.7871.0/10	1	bracket L = 325 mm
34	2.1690.410.2	2	split pin 4 x 25
35	2.1310.004.2	6	flat washer 8.5
36	2.0112.217.2	1	screw m 8 p.1.25 x 45
38	0.012.0957.0/10	1	lever
39	2.1855.010.0	2	rivet 3.4
40	0.012.0961.0	1	knob
42	0.012.8275.0/10	1	frame
43	2.1120.005.2	2	nut m 8 p.1.25
44	0.012.7571.0	1	spacer
50	0.255.6453.0/10	1	bushing
51	2.1555.107.0	2	bushing 14x16x12

**REAR LIFT CONTROL**

Fig.	Code	QTY	Name
------	------	-----	------

**Notes:**

[TIGER 60 2WD ->S10S523WXE1001] 1097 <- [TIGER 60 4WD ->S10S523WTE1001] 1097 <-



1.2	0.010.1663.0	1	plate
1.3	2.1857.105.0	4	rivet 3.17x6.35
2	0.010.1589.0	1	sector
3	0.007.3086.2	2	knob
4	0.9107.668.0	2	stop
5	0.007.3085.0	2	controle panel
6	2.1430.007.7	2	circlip 6, d128
7	2.1470.002.2	3	washer 6, d128
8	2.1310.002.2	2	washer 6.6, d125
9	2.0112.003.2	2	screw m 6 p.1 x 12
10	2.1470.004.2	2	washer 8
11	2.0112.207.2	2	screw m 8 p 1.25 x 20
12	2.1559.243.0	2	bushing 12x16x15
13	0.010.5016.2	1	shaft
14	0.012.7794.3	1	lever
14.3	2.1559.243.0	2	bushing 12x16x15
15	0.009.0137.0	2	knob
16	0.008.8384.0	1	coupling
17	0.008.8384.0	1	coupling
18	0.012.7795.2	1	lever
20	2.0112.009.2	1	screw m 6 p.1 x 25
21	2.1011.105.2	4	nut m 8 p.1.25
22	2.1579.766.2	1	spacer 8.5x16x10
23	2.4099.053.7	4	spring 8.2 x 23 x 0.7
24	2.1599.245.0	4	snoulder 8.5 x 32 x 2.0
25	0.9030.672.0	4	ring 8.5 x 32 x 3.0
26	2.0112.215.2	2	screw m 8 p.1.25 x 40
27	0.010.1591.0/10	1	rod
28	0.010.1590.0/10	2	lever
29	2.1019.127.2	2	nut m 8 p.1.25 x 6.8, sx/lh/li
30	2.1430.008.2	4	circlip 7
31	2.1099.139.2/10	2	nut m 8
32	0.010.4186.0	1	tip m 8
33	2.1549.601.2	1	spacer

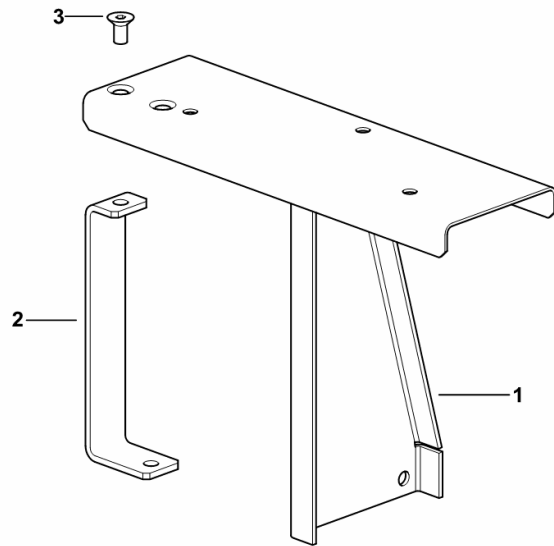
**TOOLBOX SUPPORT**

Fig.	Code	QTY	Name
------	------	-----	------

**Notes:**

[TIGER 60 2WD ->S10S523WXE1001] 1413 <- [TIGER 60 4WD ->S10S523WTE1001] 1413 <-

1	0.015.8054.3	1	support
2	0.015.8081.3	1	support
3	2.0342.303.6	1	screw m 8 p. 1.25x16



19\_J1273\_30\_0-A-001

**ALTERNATOR**

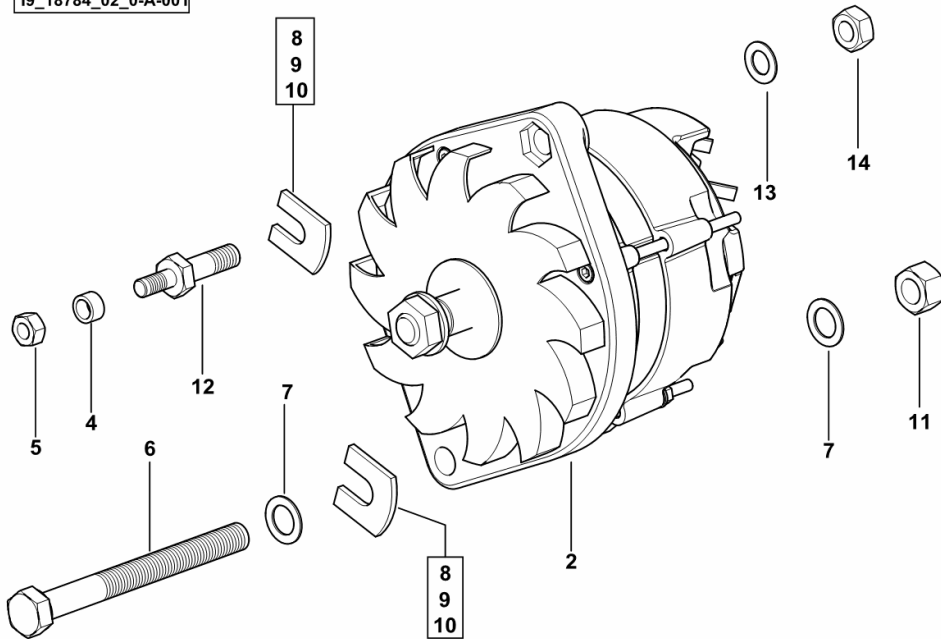
Fig.	Code	QTY	Name
------	------	-----	------

**Notes:**

[TIGER 60 2WD ->S10S523WXE1001] 1413 <- [TIGER 60 4WD ->S10S523WTE1001] 1413 <-

2	2.9439.420.0/10	1	alternator 14V - 65A - ISKRA ☞ 2.9439.420.0/10
4	2.1579.774.2	1	spacer 8.4x12x6.5
5	2.1011.105.2	1	nut m 8 p.1.25
6	2.0122.483.2	1	screw m 12 x 120
7	2.1470.007.2	2	lock washer 12
8	0.167.8460.0	2	small plate mm 3.00
9	0.167.8461.0	2	small plate mm 1.00
10	0.167.8462.0	2	small plate mm 2.00
11	2.1011.422.2	1	nut m 12 p.1.25
12	2.0439.211.2/10	1	stud bolt m 10 x 20
13	2.1470.006.2	1	lock washer 10
14	2.1011.106.2	1	nut m 10 p.1.5

19\_18784\_02\_0-A-001



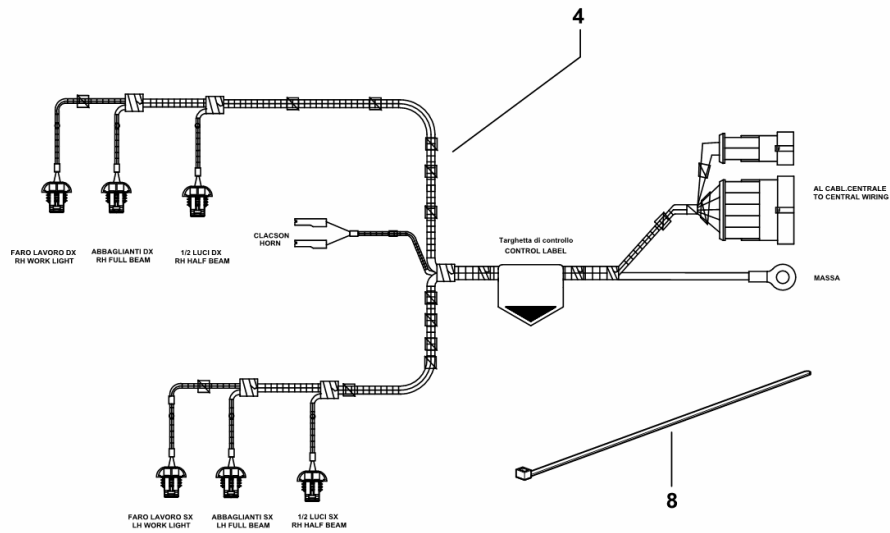
**HEADLIGHTS / HORN WIRING**

Fig.	Code	QTY	Name
------	------	-----	------

**Notes:**

- FOR LEFT-HAND DRIVE [TIGER 60 2WD ->S10S523WXE1001] - FOR LEFT-HAND DRIVE [TIGER 60 4WD ->S10S523WTE1001]

4	0.015.3645.4	1	electrical system
8	2.6852.203.0	14	clamp 292 x 4.8



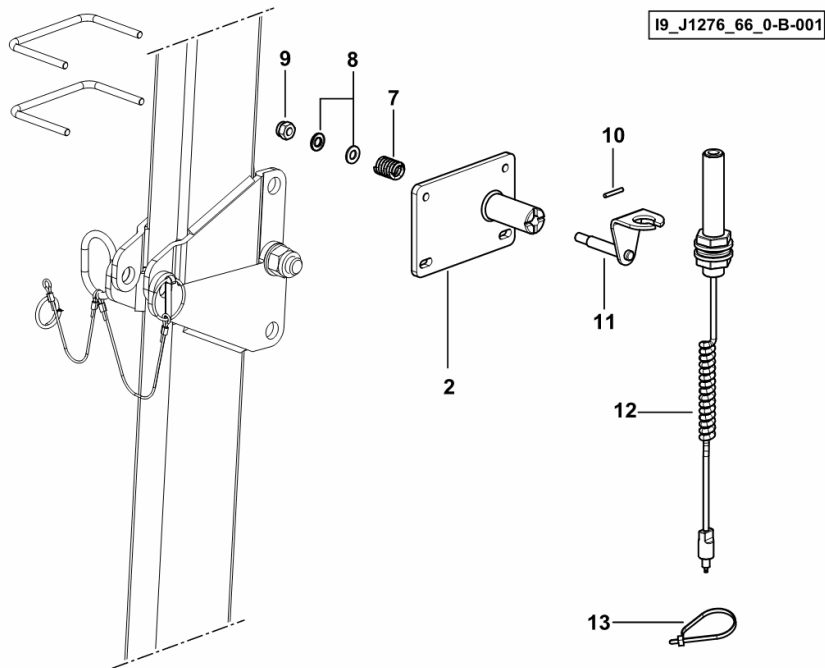
**PREARRANGEMENT FOR WARNING BEACON**

Fig.	Code	QTY	Name
------	------	-----	------

**Notes:**

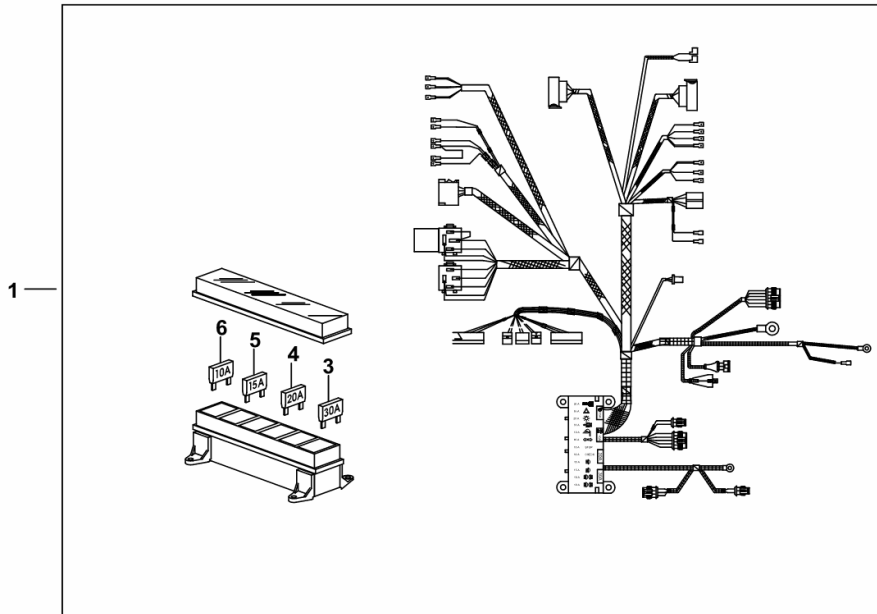
- FOR LEFT-HAND DRIVE [TIGER 60 2WD ->S10S523WXE1001] - FOR LEFT-HAND DRIVE [TIGER 60 4WD ->S10S523WTE1001]

2	0.015.4786.2/10	1	bracket
7	2.4019.611.2	1	spring
8	2.1310.006.2	2	flat washer 10.5
9	2.1120.006.2	1	nut m 10 p.1.5
10	2.1651.312.2	1	pin 4x28
11	0.014.0492.2/10	1	support
12	0.011.7840.4	1	wire
13	2.6852.203.0	3	0.011.7840.4 clamp 292 x 4.8



**CENTRAL WIRING LOOM**

Fig.	Code	QTY	Name
1	0.015.3656.4/30	1	electrical system
3	0.010.2088.2	3	fuse 30 A unival
4	0.010.2088.1	1	fuse 20 A unival
5	0.010.2088.0	4	fuse 15 A unival
6	0.010.2087.2	7	fuse 10 A unival



0\_015\_3656\_4\_30

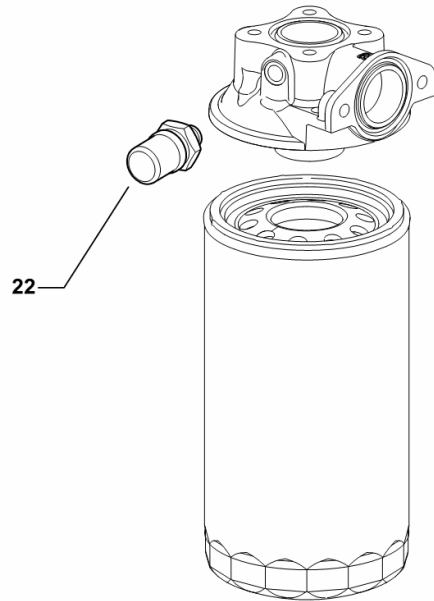
**OIL FILTER CLOGGING SENSOR**

Fig.	Code	QTY	Name
------	------	-----	------

**Notes:**

[TIGER 60 2WD ->S10S523WXE1001] [TIGER 60 4WD ->S10S523WTE1001]

22	2.7099.180.0/10	1	pressure switch
----	-----------------	---	-----------------



19\_J1282\_00\_0-B-001

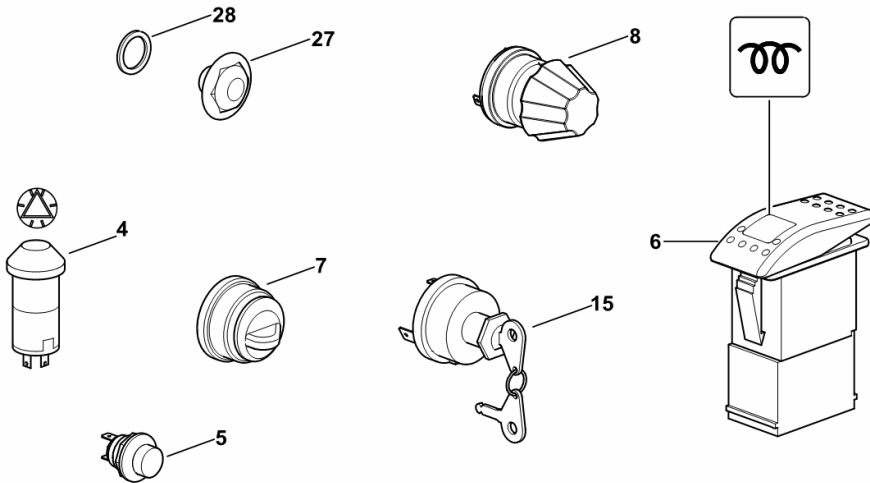
**ELECTRICAL CONTROLS**

Fig.	Code	QTY	Name
------	------	-----	------

**Notes:**

- EXPORT U.S.A. [TIGER 60 2WD ->S10S523WXE1001] - EXPORT U.S.A. [TIGER 60 4WD ->S10S523WTE1001]

4	2.7659.196.0	1	switch
5	2.7659.200.0	1	button
6	2.7659.282.0	1	push-button
7	2.7659.199.0/10	1	switch
8	2.7659.249.0	1	switch
15	2.7659.147.0/10	1	switch
			☞ 2.7659.147.0/10
27	2.3110.510.1	1	plug 1/8" gas
28	2.1560.051.0	1	gasket 10x13.5



I9\_I2984\_00\_0-C-001

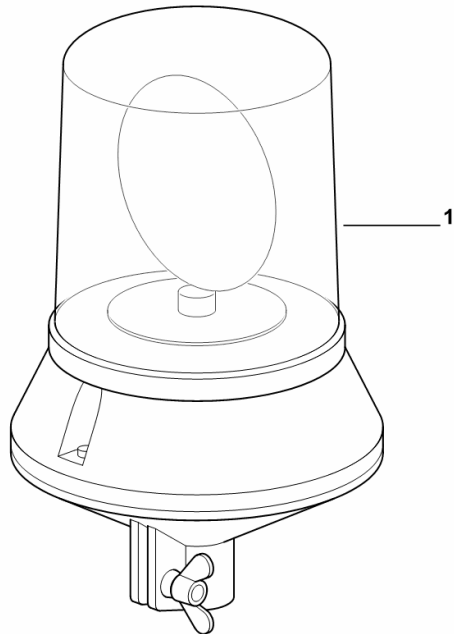
**WARNING BEACON**

Fig.	Code	QTY	Name
------	------	-----	------

**Notes:**

[TIGER 60 2WD ->S10S523WXE1001] [TIGER 60 4WD ->S10S523WTE1001]

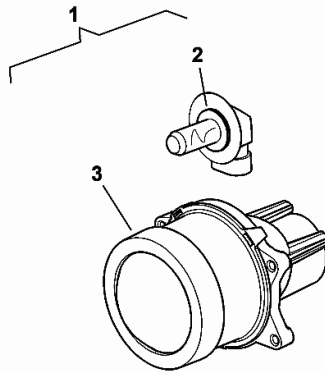
1	0.017.7434.4	1	blinker
---	--------------	---	---------



19\_62085\_24\_0-A-001

**HEADLAMP COMPONENTS**

Fig.	Code	QTY	Name
1	2.8039.008.0	1	headlight
2	0.900.1539.2	1	lamp
3	0.000.0000.1	1	not serviceable



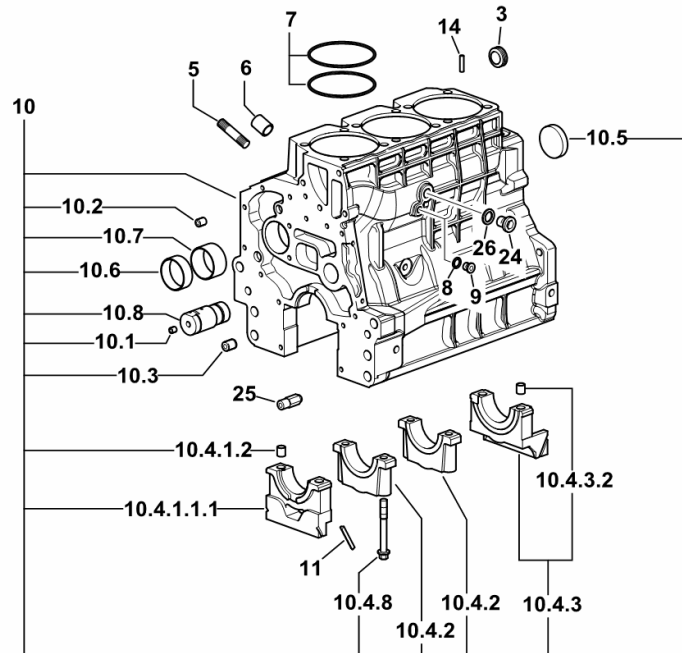
2\_8039\_008\_0

**CRANKCASE**

Fig.	Code	QTY	Name
------	------	-----	------

**Notes:**

- EXPORT U.S.A. [TIGER 60 2WD ->S10S523WXE1001] - EXPORT U.S.A. [TIGER 60 4WD ->S10S523WTE1001]



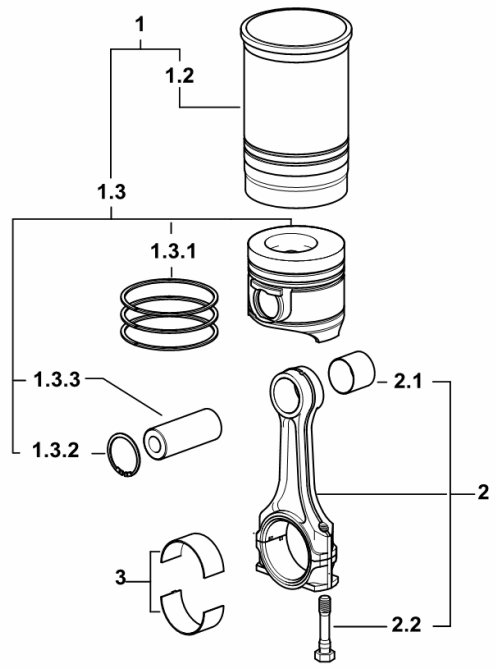
3	2.3199.312.2/20	1	plug m 35x1.5x9.5
5	2.0439.279.7	6	stud bolt m 8 p.1 x 25
6	2.1559.188.2	3	sleeve 11.4 x 14 x16
7	2.1539.259.0	6	'o' ring 107.62x2.62
8	2.1560.010.0	1	gasket 14.2 x 20 x 1.5
9	2.3199.292.0	1	plug 1/4" gas
10	0.014.9911.4/30	1	crankcase
10.1	2.3130.001.1	12	plug 1/8" gas
10.2	2.3130.002.1	4	plug 1/4" gas
10.3	2.3130.003.1	2	plug 3/8" gas
10.4.1.1.1	0.065.1112.7/10	1	support
10.4.1.2	2.1699.165.0	1	sleeve 12.3x15x16
10.4.2	0.065.1114.0/10	2	support
10.4.3	0.065.1116.3	1	support
10.4.3.2	2.1699.165.0	1	sleeve 12.3x15x16
10.4.8	0.065.1117.0	8	screw m 12 x 100
10.5	2.3179.012.0	1	plug 60
10.6	0.065.1140.0	3	bushing 59X55X20
10.7	0.065.1141.0	1	bushing 59X55X30
10.8	0.014.1340.0/10	1	pin
11	0.066.1152.0/10	4	gasket
14	2.1549.154.2	3	sleeve 4.8x5.8x16
24	2.3120.101.0	1	plug m 18 p.1.5
25	0.013.4946.0/10	1	cooling nozze
26	2.1560.014.0	1	gasket 18.2 x 24 x 1.5

**CYLINDER - PISTON - CONNECTING ROD**

Fig.	Code	QTY	Name
------	------	-----	------

**Notes:**

[TIGER 60 2WD ->S10S523WXE1001] [TIGER 60 4WD ->S10S523WTE1001]



9\_M6512\_01\_M-A-001

1	0.082.0065.A	3	piston cyl.assembly "A" - CLASS A
1	0.082.0065.B	3	piston cyl.assembly "B" - CLASS B
1.2	0.A12.2675.0	1	engine cylinder "A" - CLASS A
1.2	0.B12.2675.0	1	engine cylinder "B" - CLASS B
1.3	0.082.0060.A	1	complete piston "A" - CLASS A
1.3	0.082.0060.B	1	complete piston "B" - CLASS B
1.3.1	0.086.0052.6/10	1	piston ring set
1.3.2	2.1411.014.1	2	circlip 35
1.3.3	0.078.1236.0	1	piston pin
2	0.078.1220.3/30	3	engine connect.rod
2.1	2.1559.114.0/10	1	bushing 35x39x35
2.2	2.0399.213.0	2	screw m 12 p.1.25x61.5
3	0.065.1225.0	6	con.rod half bushing STANDARD
3	0.065.1225.7	6	con.rod half bushing - mm 0.25
3	0.065.1225.8	6	con.rod half bushing - mm 0.50

Section: B0 - ENGINE  
CYLINDER HEAD

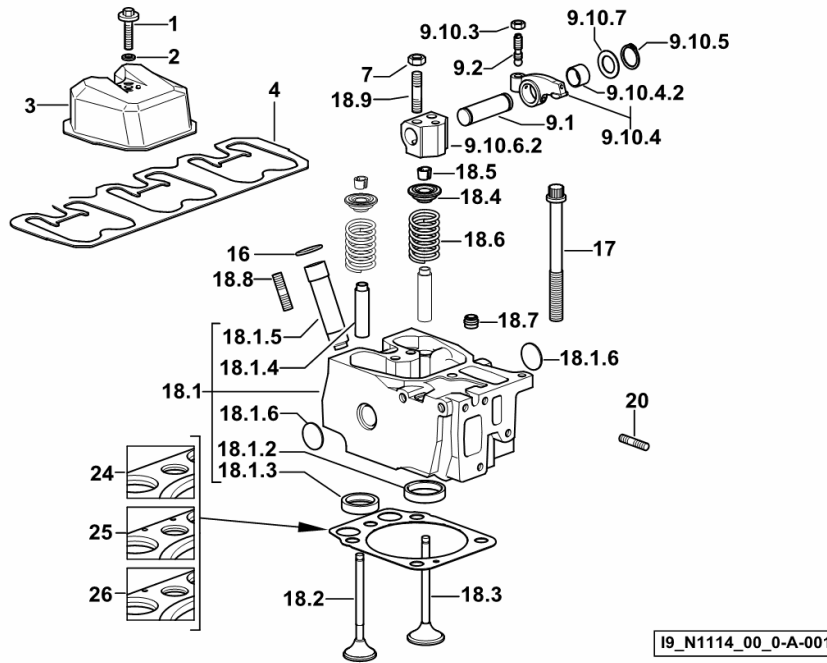


Fig.	Code	QTY	Name
<b>Notes:</b>			
[TIGER 60 2WD ->S10S523WXE1001] -> 1414 [TIGER 60 4WD ->S10S523WTE1001] -> 1414			
1	2.0399.288.2/10	3	screw m 8x36x46
2	2.1539.151.0	3	'o' ring 9.19 x 2.62
3	0.007.1139.0/10	3	small cap
4	0.069.1450.0/30	1	gasket
7	2.1011.421.2	6	nut m 10 p.1.25
9.1	0.066.1431.0	1	pin
9.2	0.021.1434.0	2	screw m 8 p.1 x 8
9.10.3	2.1011.405.2	2	nut m 8 p.1
9.10.4	0.066.1432.3	2	rocker
9.10.4.2	2.1559.021.0/40	1	bushing 19x22x14
9.10.5	2.1410.055.7	2	circlip 19
9.10.6.2	0.066.1430.0/10	1	support
9.10.7	2.1599.432.0	2	snoulder 19.5x31x1.5
16	2.1532.507.0	3	'o' ring 17x3.53
17	0.012.2673.0	12	screw m 14 p.2x141
18.1	0.017.0867.3	1	engine head
18.1.2	0.078.1426.0	1	valve seat mm 45.118
18.1.3	0.066.1427.0	1	valve seat mm 40.653
18.1.4	0.007.1779.0/20	2	valve guide
18.1.5	0.012.9984.0/20	1	sleeve
18.1.6	2.3170.012.2	2	expansion plug Ø 30
18.2	0.066.1421.0	1	exhaust valve mm 39.1 / Ø mm 9
18.3	0.010.6016.0	1	inlet valve mm 43.63 / Ø mm 9
18.4	0.066.1425.0	2	cup
18.5	0.074.1423.0	4	conical valve cotter
18.6	2.4019.287.0	2	spring 35.5x53.6x3.9
18.7	2.1519.117.0	2	'o' ring
18.8	2.0432.161.7	1	stud bolt m 10 p.1.5 / p.1.25 x 40
18.9	2.0432.163.7	2	stud bolt m 10 p.1.5 / p.1.25 x 45
20	2.0432.011.7	3	stud bolt m 8 p.1.25 / p.1 x 40
24	0.015.9190.0	0.5	gasket mm 1.2
25	0.015.9191.0	2	gasket mm 1.4
26	0.015.9192.0	0.5	gasket mm 1.6

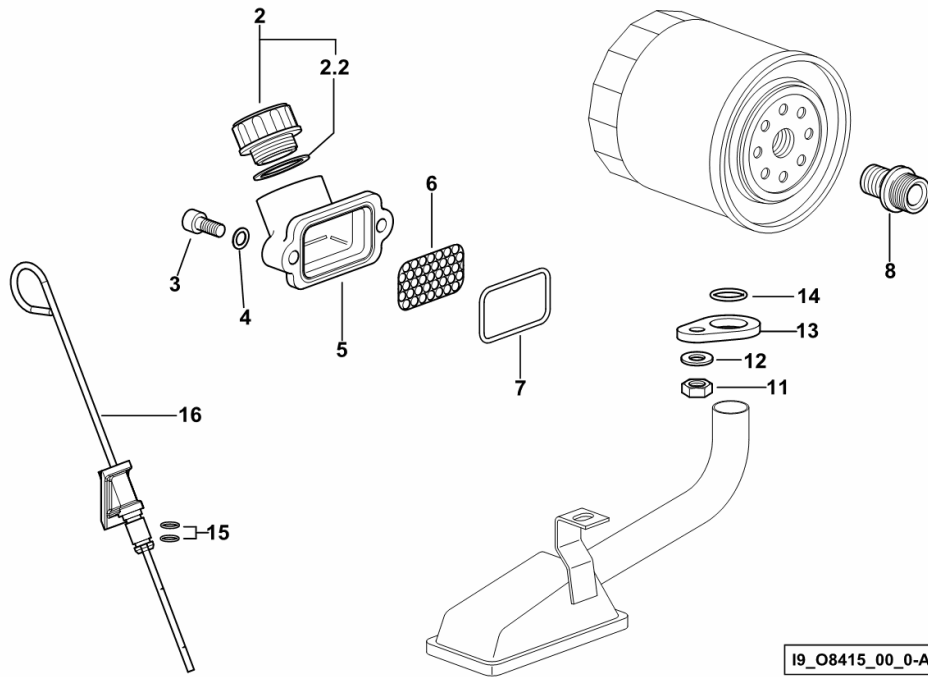
**LUBRICATION**

Fig.	Code	QTY	Name
------	------	-----	------

**Notes:**

[TIGER 60 2WD ->S10S523WXE1001] -> 1414 [TIGER 60 4WD ->S10S523WTE1001] -> 1414

2	0.041.1135.4	1	plug 1" gas
2.2	2.1569.072.0	1	gasket 32 x 39.5 x 2
3	2.0312.205.2	2	screw m 8 p.1.25 x 18
4	2.1480.014.1	2	washer 8
5	0.013.0942.0/10	1	pipe union
6	0.013.1387.0	1	small mesh
7	2.1532.515.0	1	rubber ring 1.78 x 53.70
8	2.3339.307.0	1	pipe fitting m 22 p.1.5-3/4"
11	2.1011.105.2	1	nut m 8 p.1.25
12	2.1470.004.2	1	washer 8
13	0.065.1538.0	1	flange
14	2.1539.040.0	1	'o' ring 21.82 x 3.53
15	2.1539.065.0	2	'o' ring 8.73 x 1.78
16	0.007.1624.2	1	dipstick



19\_08415\_00\_0-A-001

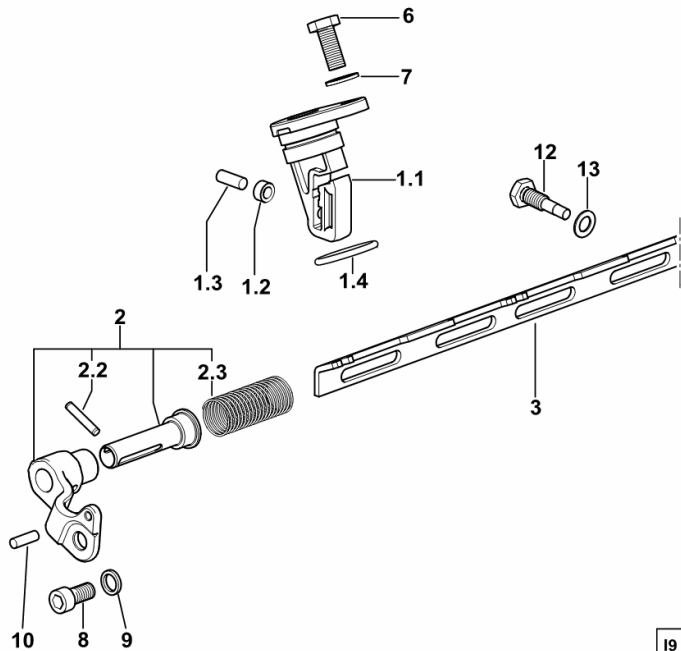
**INJECTION PUMP DRIVE**

Fig.	Code	QTY	Name
------	------	-----	------

**Notes:**

[TIGER 60 2WD ->S10S523WXE1001] -> 1414 [TIGER 60 4WD ->S10S523WTE1001] -> 1414

1.1	0.012.5618.0/20	1	support
1.2	0.065.1660.0	1	roller
1.3	2.1651.507.0	1	pin 6 x 16
1.4	2.1530.072.0	1	'o' ring 26.70x1.78
2	0.013.4057.4	1	bracket
2.2	2.1631.310.0	1	pin 4x22
2.3	2.4019.761.1	1	spring
3	0.014.9284.3	1	rod
6	2.0112.207.2	2	screw m 8 p 1.25 x 20
7	2.1310.004.2	2	flat washer 8.5
8	2.0312.204.2	1	screw m 8 p.1.25 x 16
9	2.1475.202.2	1	spring washer 8.4 x 16
10	2.1631.305.0	1	roll pin 4 x 12
12	0.014.9232.0	1	screw
13	2.1560.004.0	1	gasket 8.2 x 14



19\_O0816\_00\_0-A-001

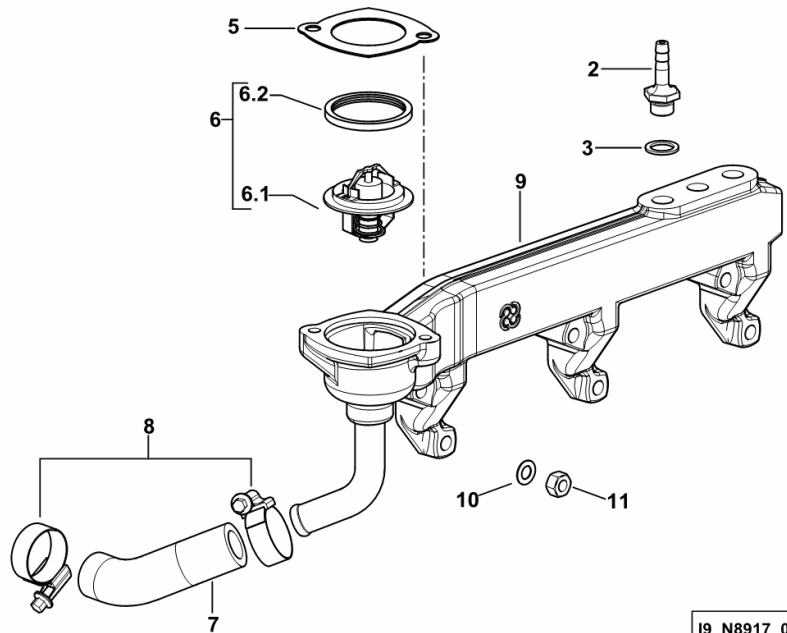
**COOLING SYSTEM MANIFOLD**

Fig.	Code	QTY	Name
------	------	-----	------

**Notes:**

[TIGER 60 2WD ->S10S523WXE1001] -> 1414 [TIGER 60 4WD ->S10S523WTE1001] -> 1414

2	2.3120.109.0	1	plug m 14
3	2.1560.010.0	3	gasket 14.2 x 20 x 1.5
5	0.066.1757.0/40	1	gasket
6	0.007.1258.3/20	1	thermostat
6.1	2.7099.400.0/10	1	tempe guage
6.2	0.007.1258.0	1	gasket
7	0.066.1758.0/10	1	sleeve
8	2.6851.003.0	2	clamp Ø 25/40
9	0.013.4505.3/10	1	manifold
10	2.1470.004.2	6	washer 8
11	2.1011.305.2	6	nut m 8 p.1 x 8



19\_N8917\_00\_0-A-001

CLICK HERE TO **DOWNLOAD** THE COMPLETE MANUAL

- Thank you very much for reading the preview of the manual.
- You can download the complete manual from: [www.heydownloads.com](http://www.heydownloads.com) by clicking the link below



- Please note: If there is no response to CLICKING the link, please download this PDF first and then click on it.

CLICK HERE TO **DOWNLOAD** THE COMPLETE MANUAL

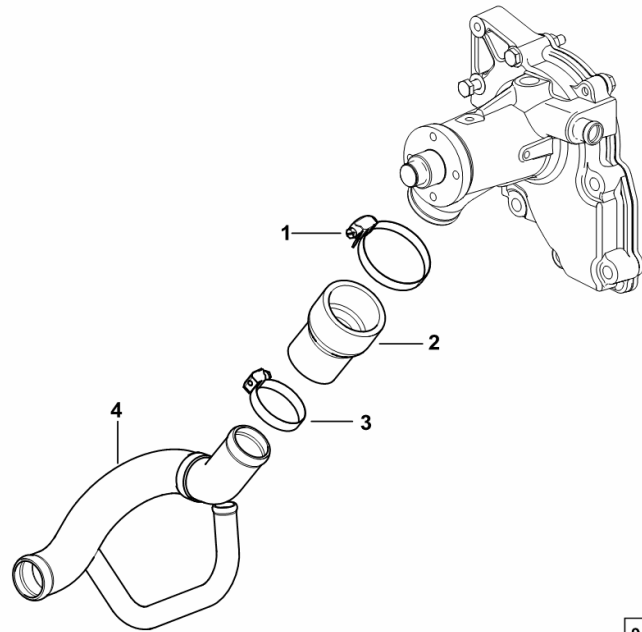
**COOLANT PIPE**

Fig.	Code	QTY	Name
------	------	-----	------

**Notes:**

[TIGER 60 2WD ->S10S523WXE1001] 1411 <- [TIGER 60 4WD ->S10S523WTE1001] 1411 <-

1	2.6851.006.0	1	clamp Ø 50/70
2	0.066.1754.0/10	1	sleeve
3	2.6851.004.0	1	clamp Ø 32/50
4	0.013.7367.2	1	tube



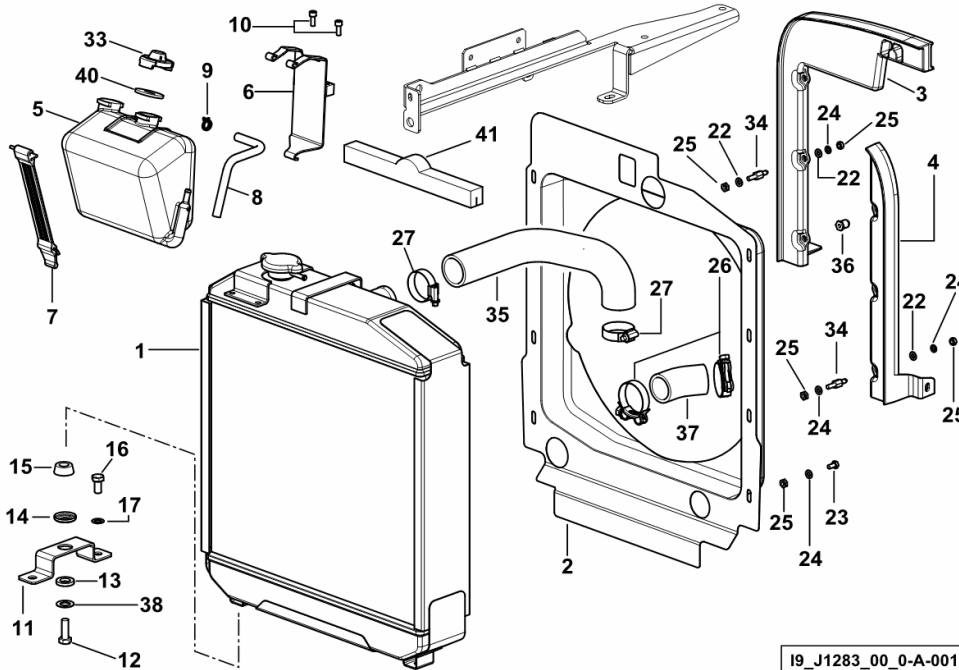
9\_M4017\_02\_0-A-001

**WATER COOLER**

Fig.	Code	QTY	Name
------	------	-----	------

**Notes:**

[TIGER 60 2WD ->S10S523WXE1001] [TIGER 60 4WD ->S10S523WTE1001]



1	0.015.6288.2/10	1	radiator
2	0.015.6289.0/20	1	duct
3	0.015.4552.2/10	1	frame dx/rh/re
4	0.015.4553.2/10	1	frame sx/lh/li
5	0.017.7888.0/10	1	cup
6	0.015.5521.2/10	1	support
7	0.261.8367.2/30	1	rod
8	0.014.6285.0	1	tube
9	2.6859.083.2	1	clamp
10	2.0312.104.2	2	screw m 6 p.1 x 16
11	0.010.0437.0	2	support
12	2.0112.311.2	2	screw m 10 p.1.5 x 30
13	0.136.7387.0	2	rubber plug 15x27x5
14	0.136.7384.0	2	cup
15	0.136.7385.0	2	rubber plug
16	2.0112.307.2	4	screw m 10 p.1.5 x 20
17	2.1470.006.2	4	lock washer 10
22	2.1310.002.2	20	washer 6.6, d125
23	2.0112.003.2	2	screw m 6 p.1 x 12
24	2.1470.002.2	9	washer 6, d128
25	2.1011.103.2	5	nut m 6 p.1
26	2.6859.132.2	2	clamp
27	2.6851.005.0	2	clamp Ø 40/60
33	0.261.8363.0/10	1	plug
34	0.015.3324.0	6	pin
35	0.010.4545.0	1	sleeve
36	0.011.0070.0	1	pin
37	0.010.4544.0	1	sleeve
38	2.1599.044.2	2	snoulder 10.5x25.5x1.5
40	2.1569.237.0	1	gasket
41	0.016.7024.0	1	gasket

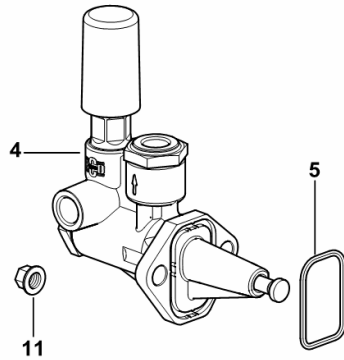
**FUEL FEED PUMP**

Fig.	Code	QTY	Name
------	------	-----	------

**Notes:**

[TIGER 60 2WD ->S10S523WXE1001] -> 1414 [TIGER 60 4WD ->S10S523WTE1001] -> 1414

4	2.4519.330.0/50	1	feed pump ☞ 2.4519.330.0/50
5	2.1539.045.0	1	'o' ring 37.77x2.62
11	2.1099.159.2/10	2	nut m 8



19\_O0816\_00\_0-B-001

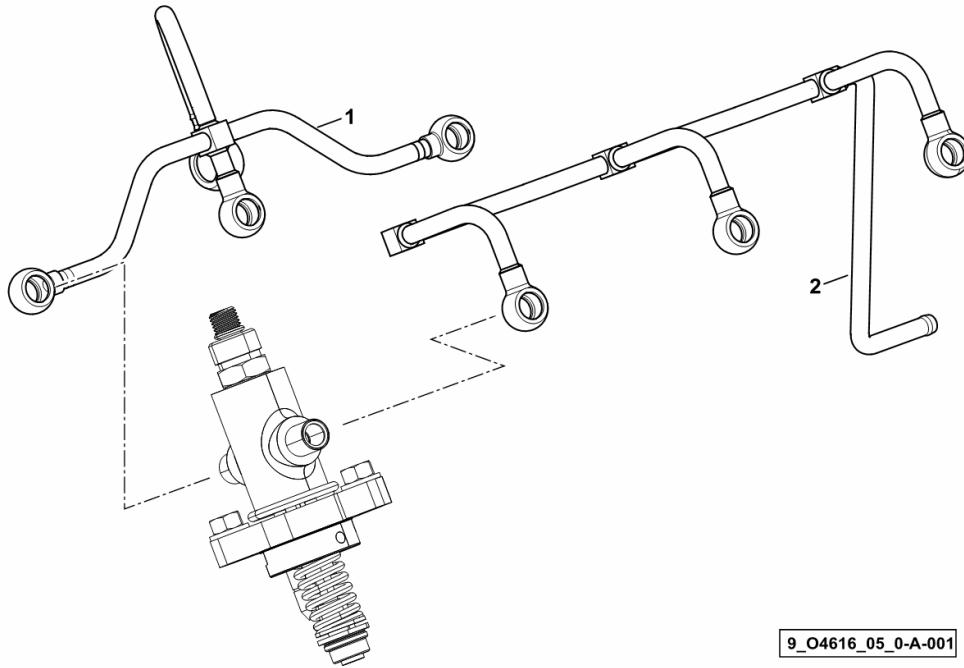
**FUEL PIPES**

Fig.	Code	QTY	Name
------	------	-----	------

**Notes:**

- EXPORT U.S.A. [TIGER 60 2WD ->S10S523WXE1001] - EXPORT U.S.A. [TIGER 60 4WD ->S10S523WTE1001]

1	0.015.7411.3	1	tube
2	0.016.3285.3	1	tube



9\_O4616\_05\_0-A-001

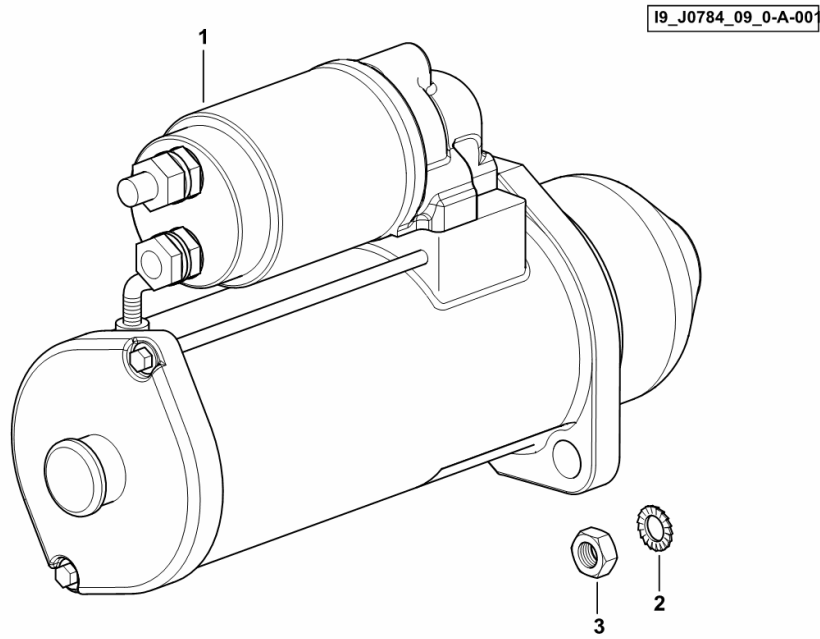
**STARTER**

Fig.	Code	QTY	Name
------	------	-----	------

**Notes:**

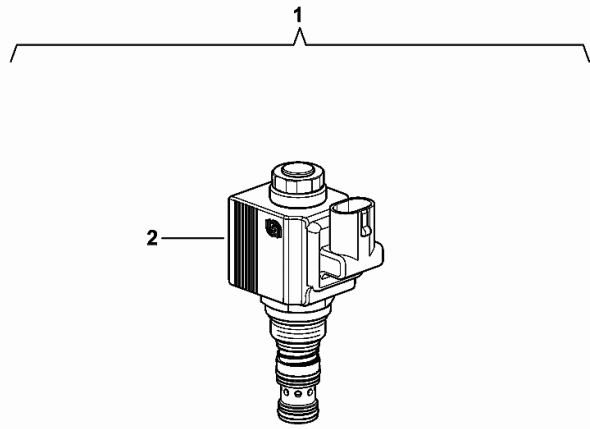
[TIGER 60 2WD ->S10S523WXE1001] [TIGER 60 4WD ->S10S523WTE1001]

1	2.9619.562.0	1	starter motor 12V - 3.5KW - Z = 11
2	2.1470.007.2	2	lock washer 12
3	2.1011.422.2	2	nut m 12 p.1.25



**SOLENOID VALVE 13 V - 20 W, ON/OFF 3/2**

Fig.	Code	QTY	Name
1	2.3729.697.0/20	1	electro valve 13V - 20W
2	0.900.1130.7	1	coil



2.3729.697.0\_20

**2WD - STEERING LEVERS**

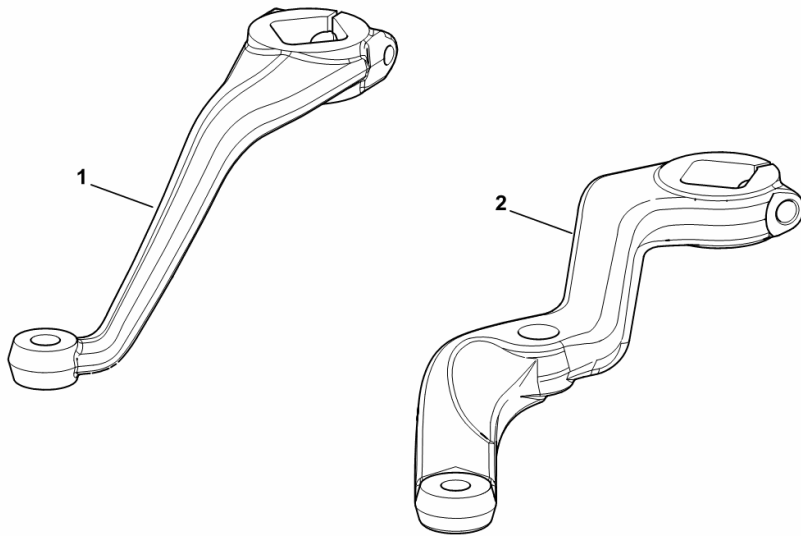
Fig.	Code	QTY	Name
------	------	-----	------

**Notes:**

- FOR TYPES WITH FIXED AXLE [TIGER 60 2WD ->S10S523WXE1001]

1	0.014.7999.0	1	lever dx/rh/re
2	0.014.8016.0	1	lever sx/lh/li

19\_S4442\_09\_0-A-001



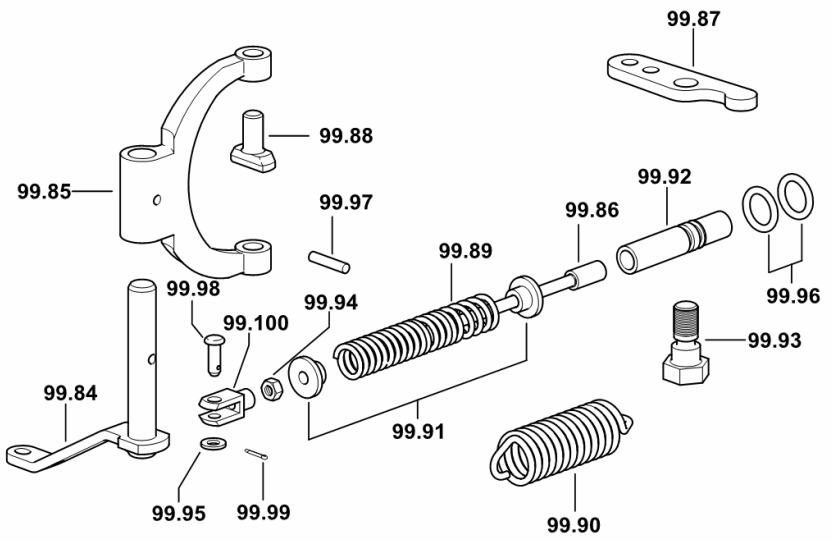
**4WD - DIFFERENTIAL LOCK CONTROL-FRONT**

Fig.	Code	QTY	Name
------	------	-----	------

**Notes:**

[TIGER 60 4WD ->S10S523WTE1001]

99.84	0.007.2705.2/10	1	lever ( -> 1003 )
99.85	0.467.4657.0/10	1	fork
99.86	0.467.4659.0/10	1	ferrule
99.87	0.467.4658.0/20	1	clutch lever
99.88	0.467.4660.0	2	shoe
99.89	2.4019.397.2	1	spring
99.90	2.4049.164.2	1	spring
99.91	0.272.4651.0	2	spacer
99.92	2.1699.276.0	1	pin
99.93	2.0399.120.2/10	1	screw m 10x32
99.94	2.1011.103.2	1	nut m 6 p.1
99.95	2.1310.002.2	1	washer 6.6, d125
99.96	2.1530.024.0	2	'o' ring 10.78 x 2.62
99.97	2.1630.511.0	1	roll pin 5x24
99.98	2.1671.103.2	1	pin 6x18
99.99	2.1690.205.2	1	split pin 2x12
99.100	2.3510.003.2	1	fork m 6



9\_D1046\_00\_0-C-001

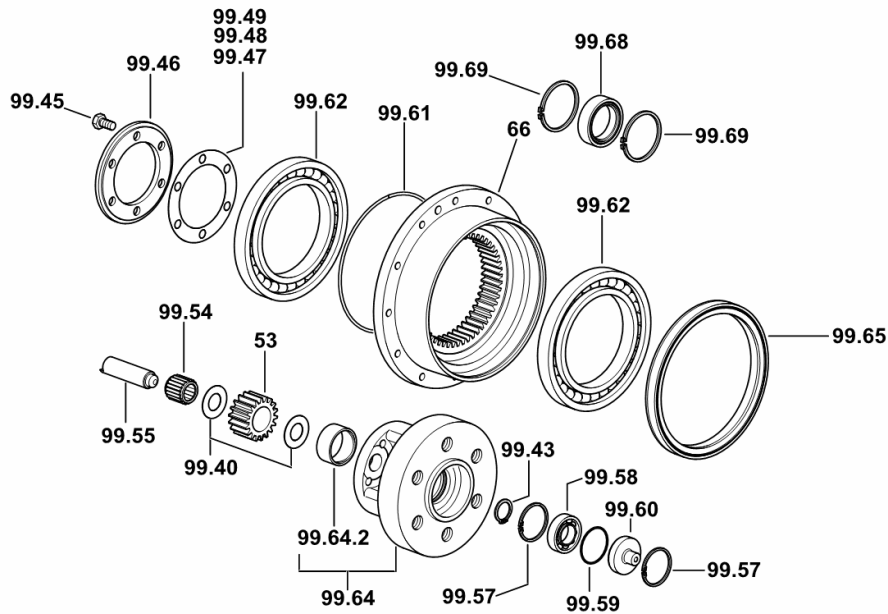
**4WD - FRONT REDUCTION GEARBOX**

Fig.	Code	QTY	Name
------	------	-----	------

**Notes:**

[TIGER 60 4WD ->S10S523WTE1001]

53	0.146.4644.0	6	planet gear Z = 18
66	0.008.5345.0	2	crown wheel
99.40	2.1589.552.0	12	shoulder 22x42x1
99.43	2.1419.029.7	2	circlip 25
99.45	2.0139.042.2	12	screw m 10 p.1.5 x 20
99.46	0.008.5401.0/20	2	spider
99.47	0.467.4653.0/10	4	shim 82x119x0.2
99.48	0.467.4654.0/10	4	ring 82x119x0.5
99.49	0.467.4655.0/10	4	ring 82x119x0.15
99.54	2.2999.030.0	6	roller cage 22 x 32 x 30
99.55	0.146.4643.0	6	pin
99.57	2.1411.019.1	4	circlip 47
99.58	2.2030.006.0	2	ball bearing 25 x 47 x 12
99.59	2.1530.118.0	2	'o' ring 46.04x3.53
99.60	0.270.4652.0	2	small cover
99.61	2.1530.276.0	2	'o' ring 177.4x3.53
99.62	2.2020.022.0	4	ball bearing 120x180x19
99.64	0.016.9260.3	2	spider
99.64.2	2.1559.309.0	1	bushing
99.65	2.1529.177.0/10	2	'o' ring 170x200x15
99.68	2.2999.325.0	1	bearing 43.8x62x18
99.69	2.1411.025.1	4	circlip 62



9\_D1046\_00\_0-B-003

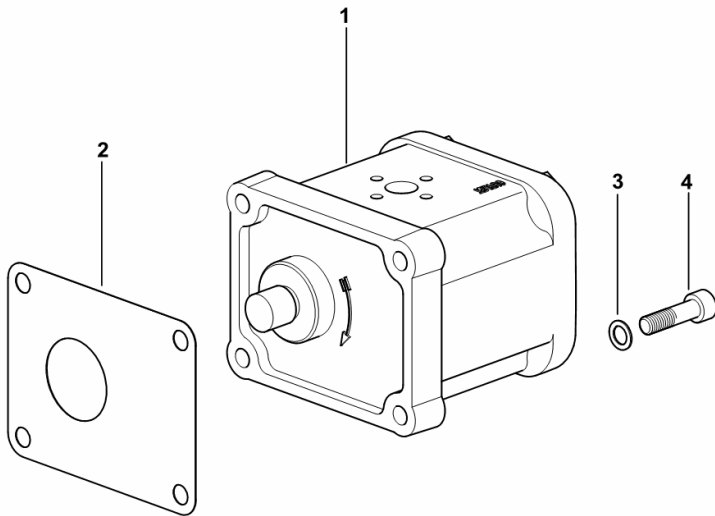
**HYDRAULIC PUMP 14 cc dx/rh/re**

Fig.	Code	QTY	Name
------	------	-----	------

**Notes:**

[TIGER 60 2WD ->S10S523WXE1001] [TIGER 60 4WD ->S10S523WTE1001]

1	2.4539.200.0/10	1	hydraulic pump 14 cc dx/rh/re
2	0.163.6350.0	1	gasket
3	2.1480.014.1	4	washer 8
4	2.0312.210.2	4	screw m 8 p 1.25 x 30



19\_N8019\_11\_0-A-001

**TIGER 60 ->S10S523WTE1001**

Section: H0 - HYDRAULIC AND PNEUMATIC SYSTEM|

Ref.: H0.01.10 (1)

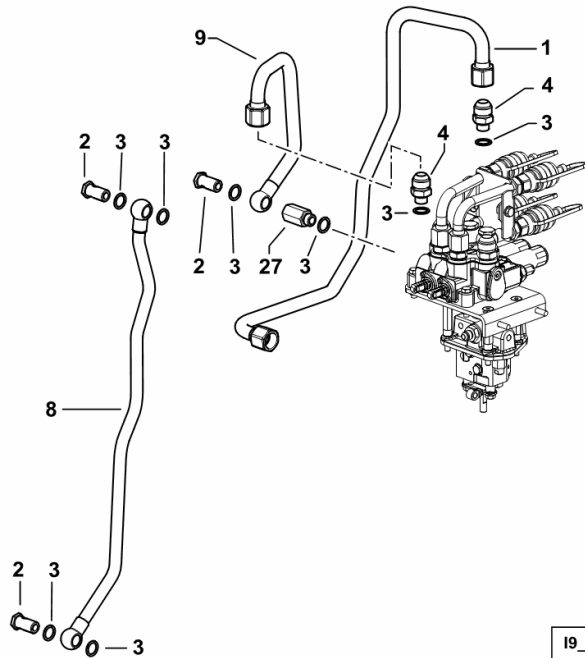
**HYDRAULIC SYSTEM - FOR 4-WAY DISTRIBUTOR**

Fig.	Code	QTY	Name
------	------	-----	------

**Notes:**

BUCHER [TIGER 60 2WD ->S10S523WXE1001] BUCHER [TIGER 60 4WD ->S10S523WTE1001]

1	0.015.6153.3/10	1	tube
2	2.3339.295.2/10	5	pipe union m 18 p.1.5 x 35
3	2.1560.014.0	15	gasket 18.2 x 24 x 1.5
4	2.3339.235.2	2	pipe fitting M 18 x 1" 1/16-12jic
8	0.015.6155.3/10	1	tube
9	0.015.6154.3	1	tube
27	2.3339.341.2/10	1	pipe fitting m 18 p.1.5



I9\_J1388\_15\_0-B-001

**TIGER 60 ->S10S523WTE1001**

Section: H0 - HYDRAULIC AND PNEUMATIC SYSTEM|

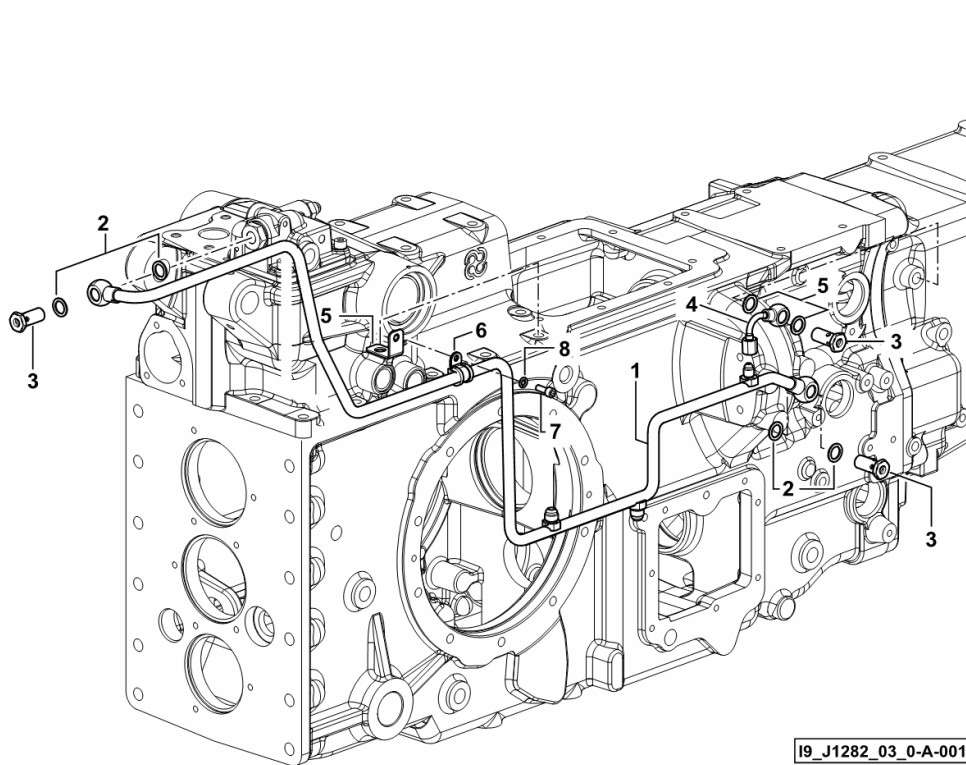
Ref.: H0.01.19 (1)

**LUBRICAT. OIL LINE**

Fig.	Code	QTY	Name
------	------	-----	------

**Notes:**

- FOR TYPES WITHOUT REAR CONTROL VALVE [TIGER 60 2WD ->S10S523WXE1001] - FOR TYPES WITHOUT REAR CONTROL VALVE [TIGER 60 4WD ->S10S523WTE1001]



1	0.017.0644.3	1	tube
2	2.1560.010.0	6	gasket 14.2 x 20 x 1.5
3	2.3335.053.2	3	pipe union m 14 p.1.5x30
4	0.016.7817.3	1	tube
5	0.016.9526.3	1	bracket
6	2.6839.059.0	1	clamp Ø 12 / 15
7	2.0312.104.2	1	screw m 6 p.1 x 16
8	2.1470.002.2	1	washer 6, d128

19\_J1282\_03\_0-A-001

**TIGER 60 ->S10S523WTE1001**

Section: H0 - HYDRAULIC AND PNEUMATIC SYSTEM|

Ref.: H0.01.20000 (1)

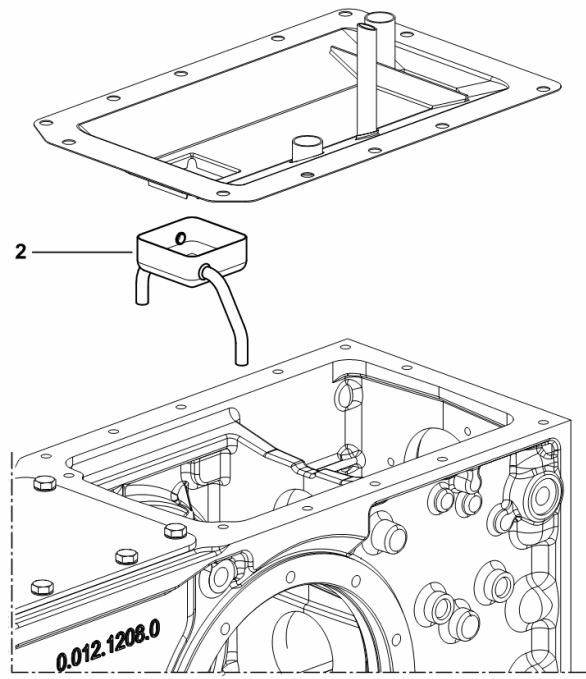
**BRAKE COOLING VESSEL**

Fig.	Code	QTY	Name
------	------	-----	------

**Notes:**

- VERSION WITH 1 BRAKE DISC [TIGER 60 2WD ->S10S523WXE1001] 1411 <- - VERSION WITH 1 BRAKE DISC [TIGER 60 4WD ->S10S523WTE1001] 1411 <-

2	0.015.5402.2	1	cup
---	--------------	---	-----



19\_J1131\_01\_0-B-001

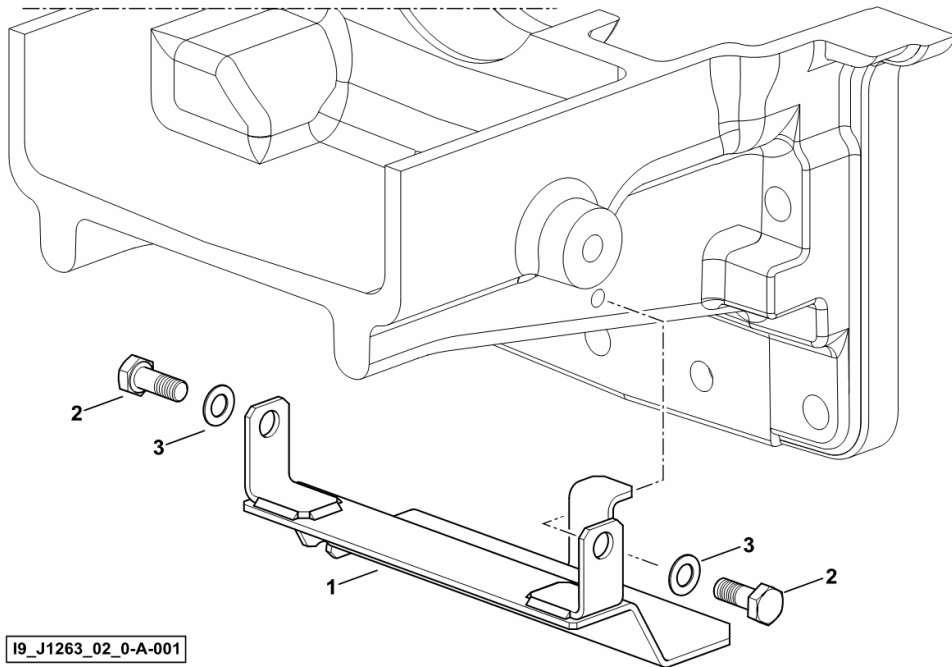
**GUARD PLATE**

Fig.	Code	QTY	Name
------	------	-----	------

**Notes:**

- 2WD [TIGER 60 2WD ->S10S523WXE1001]

1	0.016.5351.2	1	bracket
2	2.0112.207.2	2	screw m 8 p 1.25 x 20
3	2.1470.004.2	2	washer 8



TIGER 60 ->S10S523WTE1001

Section: H0 - HYDRAULIC AND PNEUMATIC SYSTEM|

Ref.: H0.07.2 (2)

4-WAY AUXILIARY DISTRIBUTOR

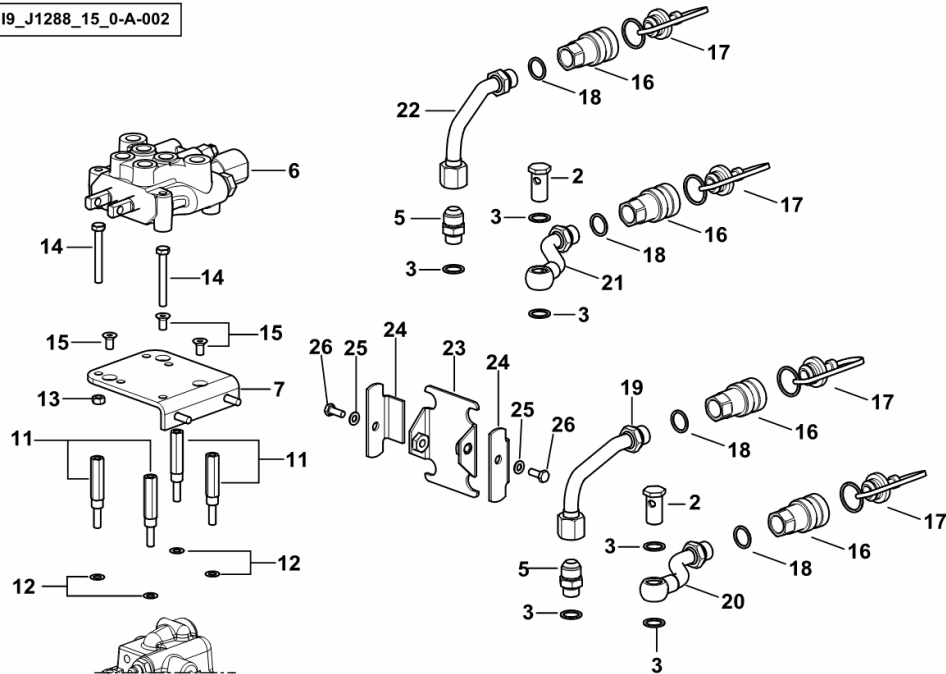
Fig.	Code	QTY	Name
------	------	-----	------

Notes:

SALAMI [TIGER 60 2WD ->S10S523WXE1001] -> 1037 SALAMI [TIGER 60 4WD ->S10S523WTE1001] -> 1037

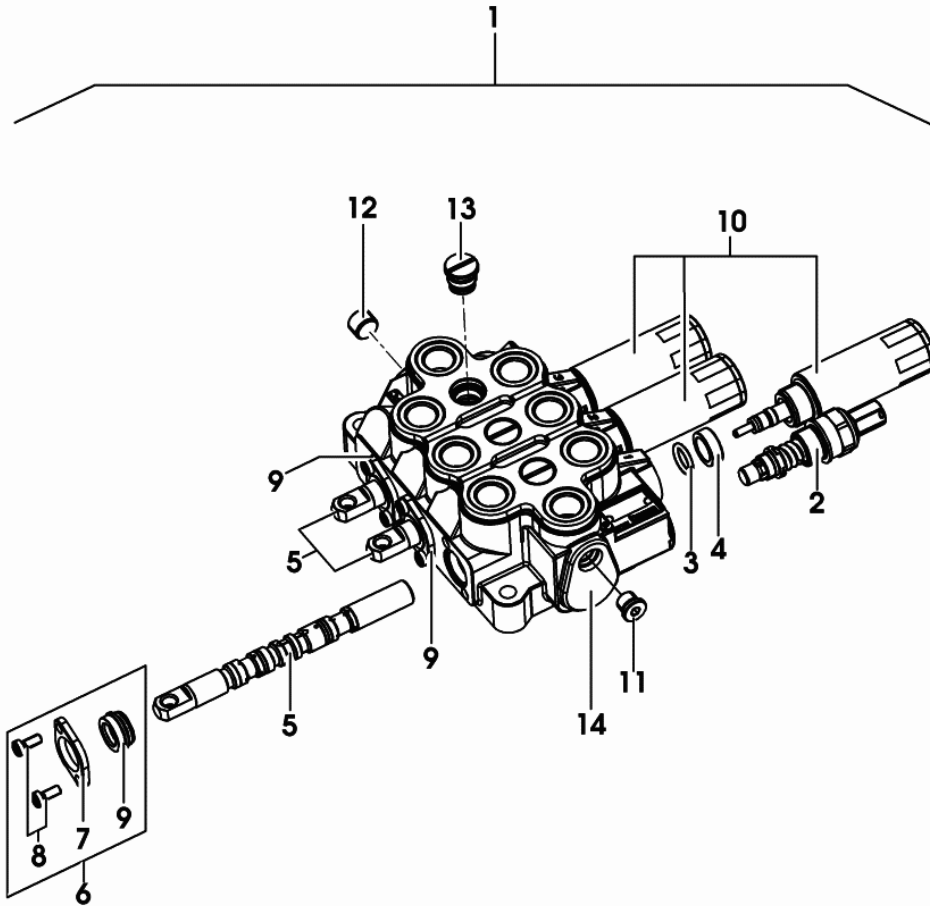
2	2.3339.295.2/10	5	pipe union m 18 p.1.5 x 35
3	2.1560.014.0	16	gasket 18.2 x 24 x 1.5
5	2.3261.010.2	2	pipe fitting m 18 p.1.5 - 7/8" 14
6	0.009.2006.4	1	distributor ☞ 0.009.2006.4
7	0.015.6151.3	1	support
11	2.0399.318.2	4	pipe fitting
12	2.1480.014.2	4	washer 8
13	2.1011.105.2	3	nut m 8 p.1.25
14	2.0112.222.2	2	screw m 8 p.1.25x65
15	2.0342.303.6	3	screw m 8 p. 1.25x16
16	0.98308.50.3/10	4	coupling ☞ 0.98308.50.3/10
17	0.013.7997.0	4	plug
18	2.1560.054.0	4	gasket 21 x 26
19	0.015.6145.3/10	1	tube
20	0.015.6146.3/20	1	tube
21	0.016.0124.3/10	1	tube
22	0.015.6148.3/10	1	tube
23	0.015.6351.0/10	1	bracket
24	0.008.8618.0	2	clamp
25	2.1310.004.2	2	flat washer 8.5
26	2.0112.207.2	2	screw m 8 p 1.25 x 20

19\_J1288\_15\_0-A-002



**DISTRIBUTOR**

Fig.	Code	QTY	Name
1	2.3729.694.0	1	distributor - BUCHER
2	0.010.3601.2	1	valve
3	0.010.3605.2	3	'o' ring
4	0.010.3609.0	3	spacer
5	0.900.0071.3	3	slider
6	0.900.0071.5	3	small cap
7	0.900.0071.6	3	small plate
8	0.900.0020.2	6	screw
9	0.900.0071.4	3	spacer
10	0.900.0071.7	3	connection
11	0.900.0020.4	1	plug
12	0.900.0020.5	1	plug
13	0.010.3615.1	3	valve
14	0.000.0000.1	0	not serviceable



2\_3729\_694\_0

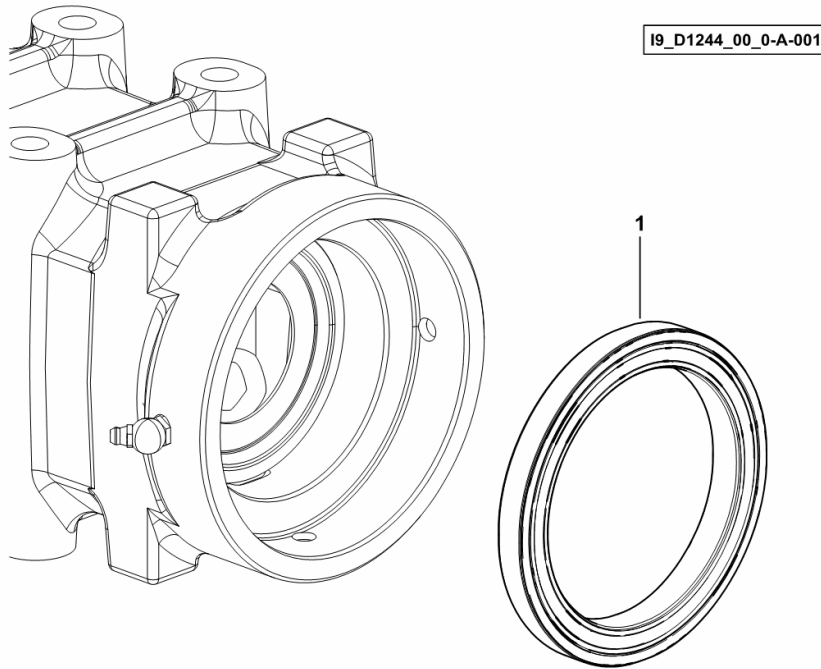
**PARTS SET FOR REAR AXLE - WATERPROOF SEAL**

Fig.	Code	QTY	Name
------	------	-----	------

**Notes:**

[TIGER 60 2WD ->S10S523WXE1001] [TIGER 60 4WD ->S10S523WTE1001]

1	2.1529.169.0	2	'o' ring
---	--------------	---	----------

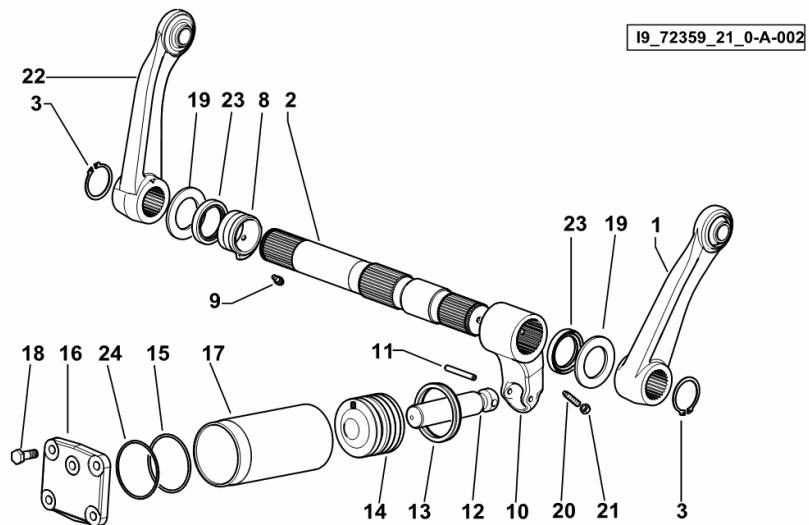


**LIFTING**

Fig.	Code	QTY	Name
------	------	-----	------

**Notes:**

[TIGER 60 2WD ->S10S523WXE1001] -> 1035 [TIGER 60 4WD ->S10S523WTE1001] -> 1035



1	0.009.2846.3/10	1	lever sx/lh/li
2	0.009.2374.0/30	1	shaft L = mm 445
3	2.1410.020.1	2	circlip 50
8	0.009.2377.0/30	1	spacer
9	0.009.2378.0/30	1	pin
10	0.009.2379.0/70	1	lever
11	2.1631.721.0	1	roll pin 8 x 60
12	0.009.2380.0	1	connecting rod
13	2.1518.105.0	1	'o' ring 75 x 90
14	0.9002.311.0/20	1	piston
15	2.1531.184.0	1	'o' ring 82.14 x 3.53
16	0.009.2381.0/20	1	flange
17	0.009.2382.0/20	1	cylinder
18	2.0122.463.2	4	screw m 12 p.1.25 x 35
19	2.1599.609.2	2	snoulder
20	2.0522.216.7	1	grain m 8 p.1.25 x 40
21	2.1011.105.2	1	nut m 8 p.1.25
22	0.009.2847.3/10	1	lever dx/rh/re
23	2.1520.026.0	2	oil seal 50 x 68 x 10
24	2.1539.156.0	1	'o' ring 82 x 88 x 1.27

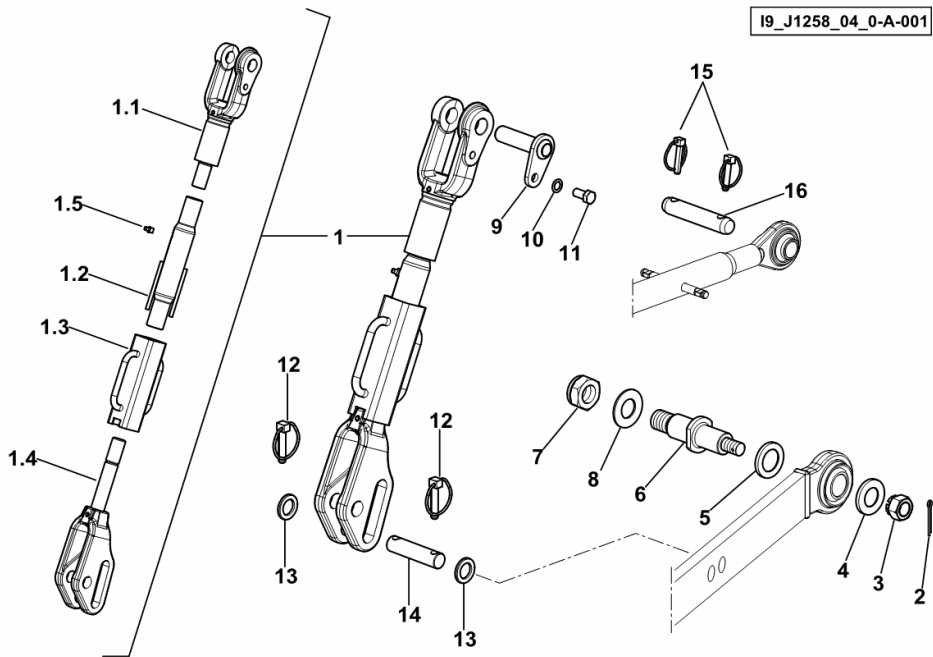
**THREE-POINT COUPLING**

Fig.	Code	QTY	Name
------	------	-----	------

**Notes:**

[TIGER 60 2WD ->S10S523WXE1001] 1413 <- [TIGER 60 4WD ->S10S523WTE1001] 1413 <-

1	0.010.5596.4/20	2	adjustable tensioner
1.1	0.010.4076.3/20	1	rod dx/rh/re
1.2	0.010.4080.2	1	tube
1.3	0.010.4363.2/10	1	grip
1.4	0.010.5596.3	1	rod
1.5	2.3820.105.2	1	lubricator m 10 p.1 x 7
2	2.1690.413.2	2	split pin 4 x 36
3	2.1021.209.2	2	castellated nut m 20 p.1.5
4	0.96001.65.0/10	2	snoulder 21x45x6
5	0.96001.64.0/10	2	snoulder 35 x 55 x 6.0
6	0.009.8983.0/40	2	pin m 20 p.1.5 / m 30 p.2
7	2.1120.315.2	2	nut m 30 p.2
8	2.4099.114.7	2	spring
9	0.008.8469.2/10	2	pin
10	2.1470.007.2	2	lock washer 12
11	2.0112.409.2	2	screw m 12 p.1.75 x 25
12	0.010.9322.4	4	pin Ø 11
13	2.1311.014.2	4	flat washer Ø 25
14	2.1669.014.2/10	2	pin 24 x 103
15	0.010.9322.4	4	pin Ø 11
16	2.1669.024.2	2	pin 25.4 x 133



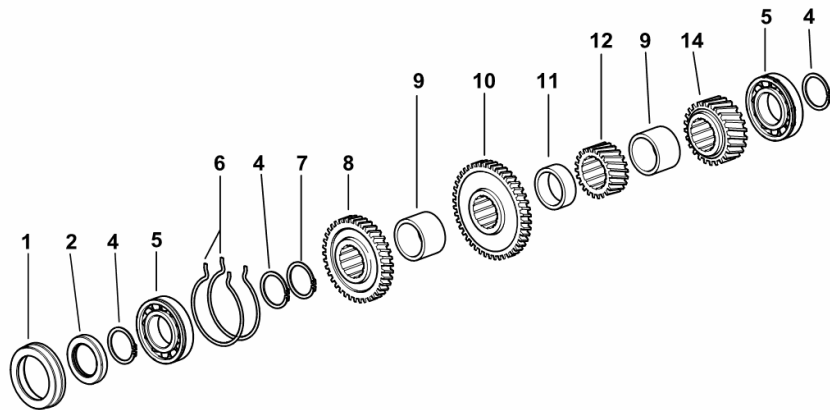
REVERSE GEAR INTERMEDIATE SHAFT.....	D0.20.2 (1)
REVERSE GEAR INTERMEDIATE SHAFT.....	D0.20.3 (1)
REVERSE GEAR INTERMEDIATE SHAFT.....	D0.20.4 (1)
REVERSE GEAR INTERMEDIATE SHAFT.....	D0.20.5 (1)

**MAIN SHAFT**

Fig.	Code	QTY	Name
------	------	-----	------

**Notes:**

- FOR NON SYNCHRONISED GEARBOX - WITH 10 KPH REVERSE [TIGER 60 2WD ->S10S523WXE1001] - FOR NON SYNCHRONISED GEARBOX - WITH 10 KPH REVERSE [TIGER 60 4WD ->S10S523WTE1001]



1	0.008.5148.0/10	1	ring
2	2.1529.109.0	1	'o' ring 40 x 60 x10
4	2.1410.016.1	3	circlip 40
5	2.2042.012.9	2	ball bearing 40 x 80 x 18
6	2.1499.052.1/10	2	circlip 80
7	2.1419.092.0	10	circlip
8	0.010.1003.0	1	gear Z = 37
9	2.1549.310.0	2	spacer
10	0.010.1004.0	1	gear Z = 44
11	2.1549.312.0	1	spacer
12	0.010.1001.0	1	gear Z = 22
14	0.010.1002.0	1	gear Z = 28

I9\_72333\_00\_0-B-001

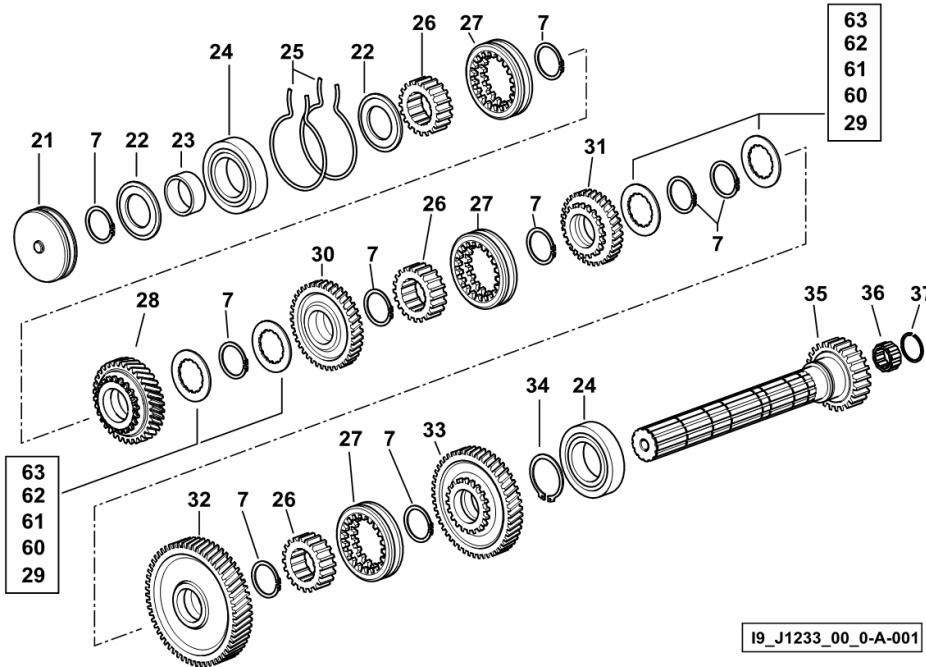
**TRANSMISSION SHAFT**

Fig.	Code	QTY	Name
------	------	-----	------

**Notes:**

- FOR NON SYNCHRONISED GEARBOX - WITH 30 KPH REVERSE [TIGER 60 2WD ->S10S523WXE1001] - FOR NON SYNCHRONISED GEARBOX - WITH 30 KPH REVERSE [TIGER 60 4WD ->S10S523WTE1001]

7	2.1419.092.0	10	circlip
21	0.008.5724.0/20	1	flange
22	2.1599.768.0	2	ring
23	2.1559.313.0/10	1	sleeve 42x50x19.5
24	2.2042.014.9	2	ball bearing 50 x 90 x 20
25	2.1499.123.1/10	2	circlip 86 x 2.46
26	0.010.1060.0	3	hub Z = 20
27	0.010.1059.0	3	hub Z = 20
28	0.015.7297.0	1	gear z=34
29	0.008.0251.0	0.8	shim 39 x 64 x 2.65
30	0.010.1016.0	1	gear z=39
31	0.010.1017.0/10	1	gear z = 33
32	0.010.1014.0	1	gear Z = 59
33	0.010.1015.0/10	1	gear Z = 39
34	2.1410.020.1	1	circlip 50
35	0.010.1269.0/20	1	countershaft
36	2.2999.173.0	1	roller cage 23 x 35 x 16.2
37	2.1423.026.7	1	circlip 35 x 1.5
60	0.010.0629.0	0.8	shim 39 x 64 x 2.85
61	0.010.0630.0	0.8	shim 39 x 64 x 3.05
62	0.010.0631.0	0.8	shim 39 x 64 x 3.25
63	0.010.0632.0	0.8	shim 39 x 64 x 3.45



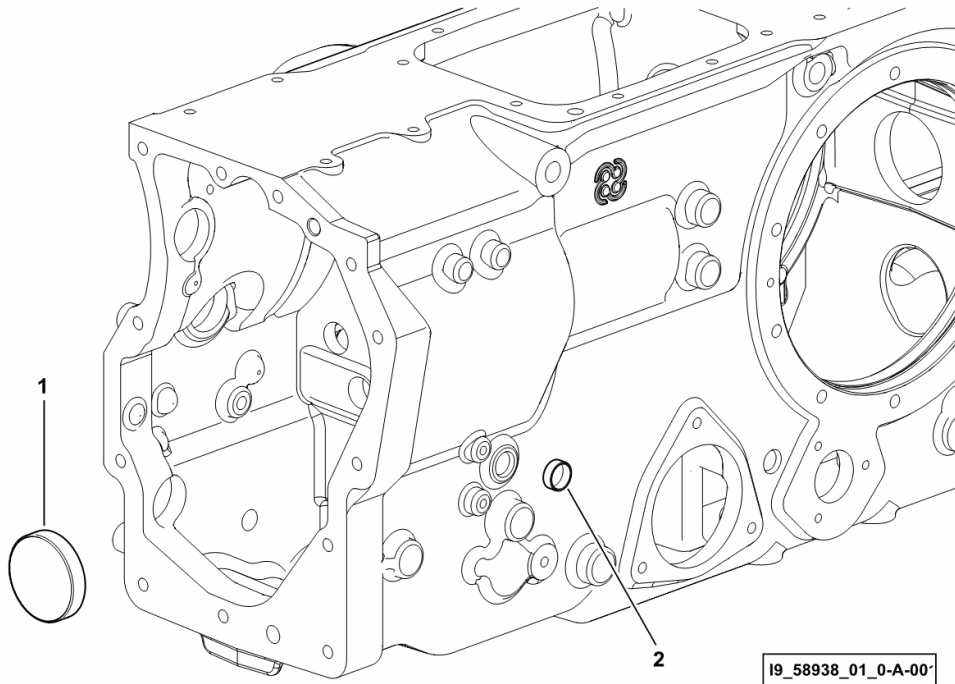
**2WD - COMPLETION**

Fig.	Code	QTY	Name
------	------	-----	------

**Notes:**

[TIGER 60 2WD ->S10S523WXE1001]

1	2.3199.095.0	1	plug 55x10
2	2.3171.007.4	1	plug Ø 18



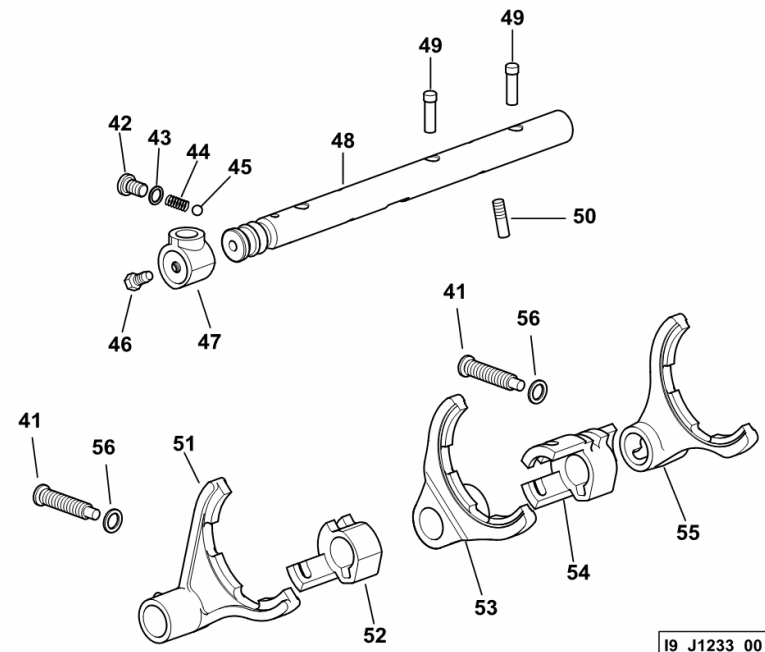
**INTERNAL CONTROLS**

Fig.	Code	QTY	Name
------	------	-----	------

**Notes:**

- FOR NON SYNCHRONISED GEARBOX - WITH 30 KPH REVERSE [TIGER 60 2WD ->S10S523WXE1001] - FOR NON SYNCHRONISED GEARBOX - WITH 30 KPH REVERSE [TIGER 60 4WD ->S10S523WTE1001]

41	2.0399.206.2	2	screw m 12 p.1.75 x 56.5
42	2.3199.238.2	1	plug m 10
43	2.1560.005.0	1	gasket 10.2 x 14
44	2.4019.670.1	1	spring 5 x 8 x 1.5 x 22.5
45	2.2810.004.0	1	ball 5/16"
46	2.0399.019.1	1	screw m 8 p.1 x 16
47	0.008.5226.0/20	1	hub
48	0.008.5130.0/70	1	rod
49	0.008.5994.0/10	3	pin
50	2.0399.286.0/10	2	grain m 8 p.1.25 x 28
51	0.014.6201.0	1	fork
52	0.008.5198.0/40	1	hub
53	0.014.6202.0	1	fork
54	0.010.4945.0	1	sleeve
55	0.014.6203.0/10	1	fork
56	2.1560.008.0	2	gasket 12.2 x 18



19\_J1233\_00\_0-C-001

**BEVEL WHEEL GEAR**

Fig.	Code	QTY	Name
------	------	-----	------

**Notes:**

- EXPORT U.S.A. [TIGER 60 2WD ->S10S523WXE1001] - EXPORT U.S.A. [TIGER 60 4WD ->S10S523WTE1001]

1	0.014.6235.3/10	1	bevel gear Z = 10 / Z = 34
---	-----------------	---	----------------------------

19\_72335\_03\_0-A-001

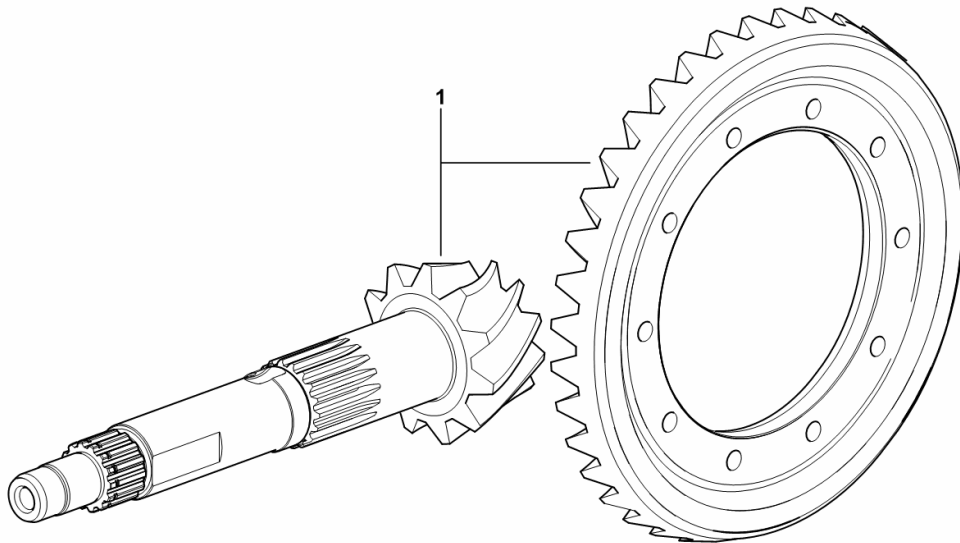
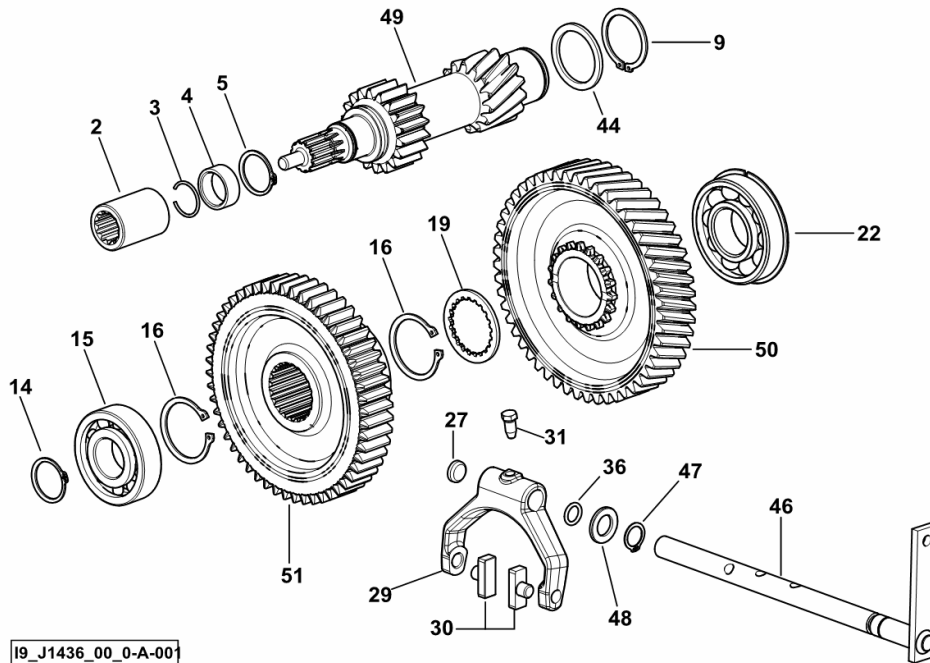


Fig.	Code	QTY	Name
------	------	-----	------

**Notes:**

[TIGER 60 2WD ->S10S523WXE1001] [TIGER 60 4WD ->S10S523WTE1001]



2	0.010.7696.0	1	sleeve Z = 11
3	2.1421.010.7	1	circlip 25
4	2.1549.172.0	1	spacer 24.7 x 31 x 12
5	2.1410.012.1	1	circlip 30
9	2.1410.016.1	1	circlip 40
14	2.1410.012.1	1	circlip 30
15	2.2060.009.9	1	bearing 30 x 72 x 19
16	2.1410.018.7	2	circlip 45
19	2.1599.828.0/10	1	thrust plate 41 x 55 x 3
22	2.2999.235.0	1	bearing 35 x 80 x 21
27	2.3171.006.4	5	plug Ø 16
29	0.010.0468.0	1	fork
30	0.255.6463.0	2	shoe
31	2.0399.019.1	1	screw m 8 p.1 x 16
36	2.1530.028.0	1	'o' ring 11.91 x 2.62
44	2.1599.414.0	1	snoulder 40 x 50 x 3.0
46	0.012.4365.2/10	1	lever
47	2.1410.004.2	1	circlip 16
48	2.1311.010.2	1	flat washer 16
49	0.011.9829.0/10	1	shaft Z = 11 / Z = 18 / Z = 14
50	0.012.0074.0	1	gear Z = 51
51	0.012.0103.0	1	gear Z = 52

I9\_J1436\_00\_0-A-001

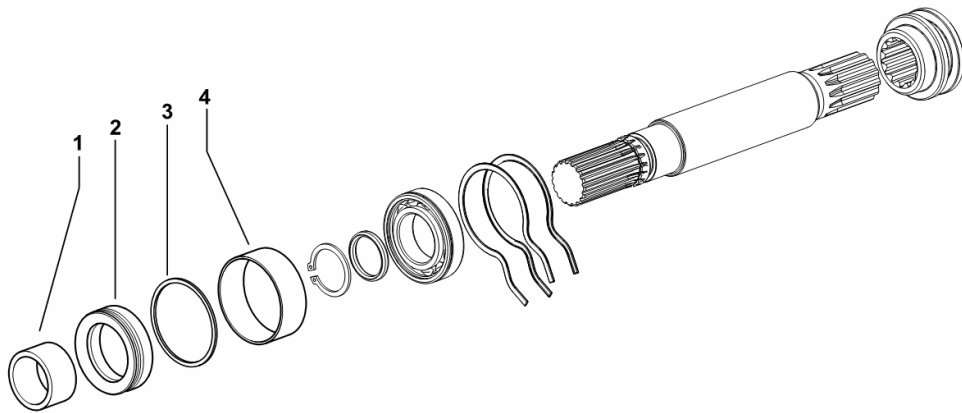
**4WD - ENGAGEMENT CONTROL - WATERPROOF SEALS**

Fig.	Code	QTY	Name
------	------	-----	------

**Notes:**

[TIGER 60 4WD ->S10S523WTE1001]

1	2.1549.216.0	1	spacer 30x37x20.5
2	2.1529.117.0	1	'o' ring 37x52x16
3	2.1559.340.0	1	bushing 52x55x20
4	2.1589.247.0/20	1	thrust plate 50x55x1.5



I9\_D1038\_02\_0-A-001

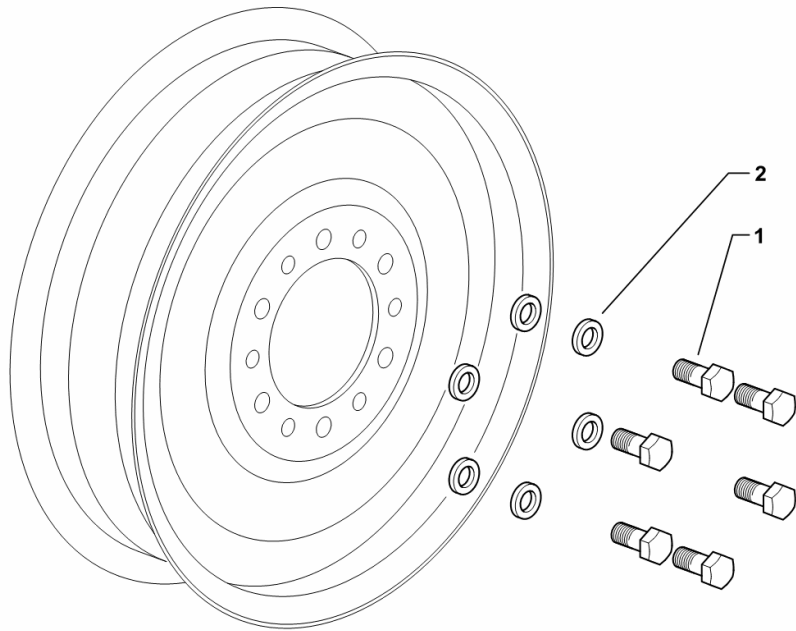
**2WD - FRONT WHEEL MOUNTING**

Fig.	Code	QTY	Name
------	------	-----	------

**Notes:**

- FOR TYPES WITH EXTENDIBLE AXLE SHAFT [TIGER 60 2WD ->S10S523WXE1001]

1	2.0112.615.2	12	screw m 16 p.2 x 40
2	2.1475.206.2	12	washer 16



I9\_72355\_03\_0-A-001

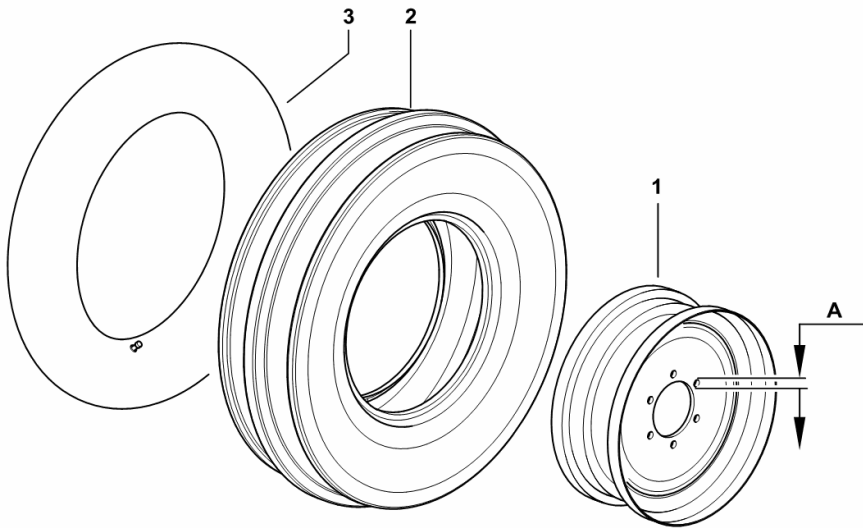
**2WD - FRONT WHEELS 7.50 x 16" pr 8**

Fig.	Code	QTY	Name
------	------	-----	------

**Notes:**

[TIGER 60 2WD ->S10S523WXE1001]

1	0.012.7538.2	2	rim 5.50Fx16" ( 1328 <- ) A=15,5 MM.
1	0.012.7538.2/10	2	rim 5.50Fx16" ( -> 1319 ) A=17,5 MM.
2	2.4810.029.0	2	tyre 7.50 x 16" pr 8
3	2.4820.017.0	2	air chamber x 7.50-16



I9\_J1255\_11\_0-A-001

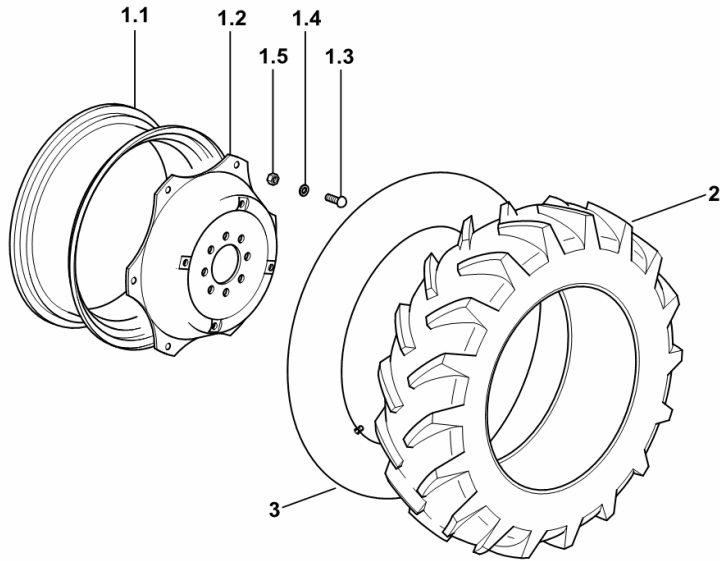
**WHEELS 9.5-24"**

Fig.	Code	QTY	Name
------	------	-----	------

**Notes:**

[TIGER 60 4WD ->S10S523WTE1001]

1.1	0.016.5385.3	1	rim W 8x24"
1.2	0.016.5385.0	1	rim center flange
1.3	2.0099.005.6	6	screw m 16 p.1.5 x 38
1.4	2.1499.019.6	6	washer 16.3 x 31.5
1.5	2.1019.059.6	6	nut m 16 p.1.5 x 16
2	2.4811.266.0	2	tyre 9.5-24"
3	2.4820.022.0	2	air chamber



I9\_I4655\_22\_0-A-001

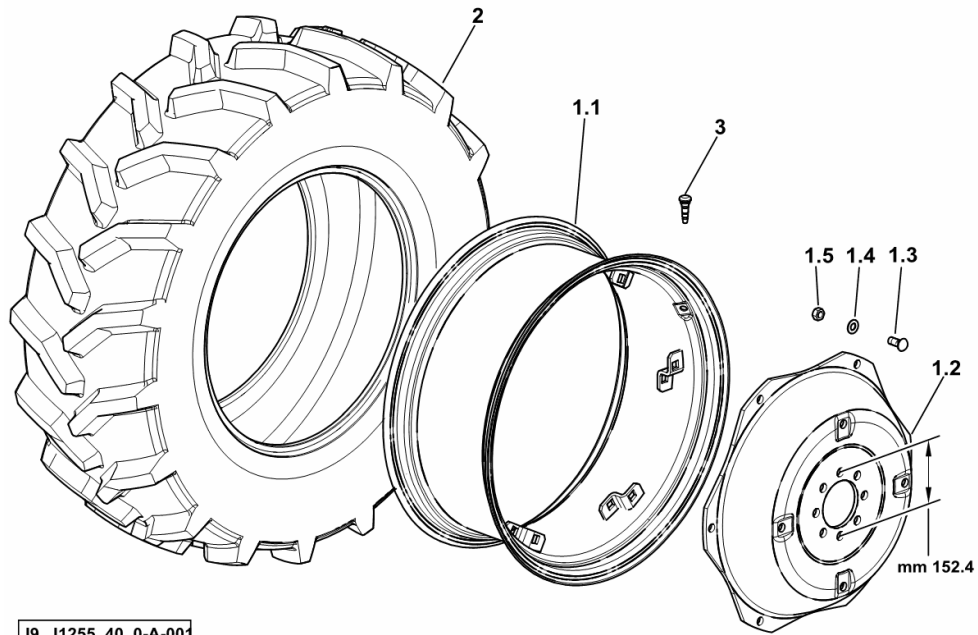
**WHEELS 340/85R28"(13.6R28")**

Fig.	Code	QTY	Name
------	------	-----	------

**Notes:**

[TIGER 60 2WD ->S10S523WXE1001] [TIGER 60 4WD ->S10S523WTE1001]

1.1	0.012.2912.3	1	rim W 12x28" C/ST.
1.2	0.255.5559.0/20	1	rim center flange 28"
1.3	2.0399.030.6	6	screw m 18 p.1.5 x 45
1.4	2.1499.018.6	6	conical washer 18 x 35.5
1.5	2.1011.310.6	6	nut m 18 p.1.5
2	2.4811.047.0	2	tyre 340/85R28"(13.6R28")
3	0.012.6364.0	2	valve



CLICK HERE TO **DOWNLOAD** THE COMPLETE MANUAL

- Thank you very much for reading the preview of the manual.
- You can download the complete manual from: [www.heydownloads.com](http://www.heydownloads.com) by clicking the link below



- Please note: If there is no response to CLICKING the link, please download this PDF first and then click on it.

CLICK HERE TO **DOWNLOAD** THE COMPLETE MANUAL