

TIGER 60 E ->S10S553WT1E1001

V0 - BALLAST, TOWING HITCHES

FRONT HITCHES

FRONT TOWING HITCH..... V0.01.0 (1)

REAR HITCHES

REAR TOWING HITCH..... V0.02.0 (1)

REAR TOWING HITCH..... V0.02.1 (1)

REAR GEARBOX BRACKETS..... V0.02.2 (1)

REAR OSCILLATING HITCH..... V0.02.3 (1)

FRONT BALLAST WEIGHTS

FRONT WEIGHT CARRIER..... V0.03.0 (1)

FRONT BALLAST..... V0.03.1 (1)

FRONT BALLAST..... V0.03.2 (1)

FRONT BALLAST..... V0.03.3 (1)

WHEEL BALLAST

WHEEL BALLAST REAR 172 Kg..... V0.05.0 (1)

WHEEL BALLAST 172 Kg..... V0.05.1 (1)

WHEEL BALLAST REAR 344 Kg..... V0.05.2 (1)

WHEEL BALLAST 344 Kg..... V0.05.3 (1)

CLICK HERE TO **DOWNLOAD** THE COMPLETE MANUAL

- Thank you very much for reading the preview of the manual.
- You can download the complete manual from: www.heydownloads.com by clicking the link below



- Please note: If there is no response to CLICKING the link, please download this PDF first and then click on it.

CLICK HERE TO **DOWNLOAD** THE COMPLETE MANUAL

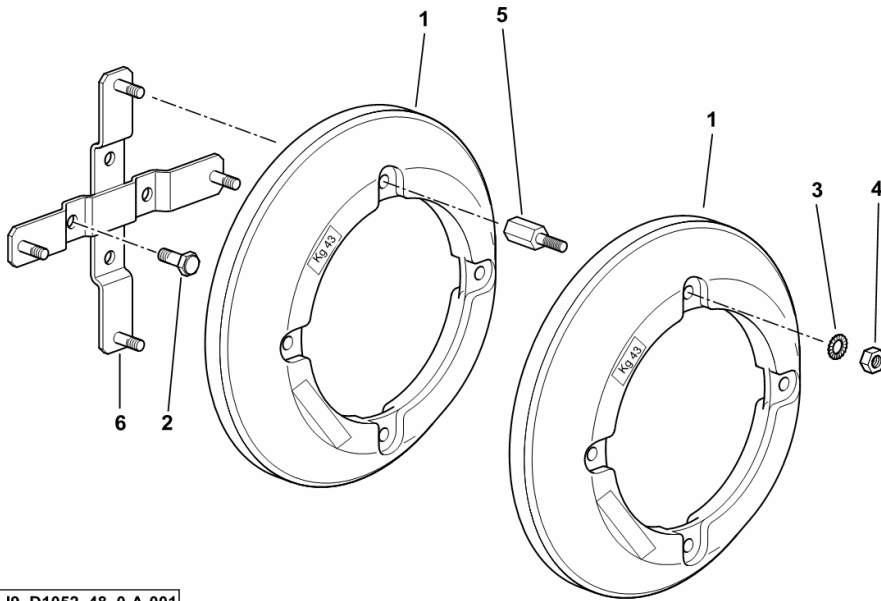
WHEEL BALLAST REAR 172 Kg

Fig.	Code	QTY	Name
------	------	-----	------

Notes:

- FOR TYPES WITH STANDARD AND LONG SEALED REAR AXLE [TIGER 60 E 2WD ->S10S553WX1E1001] -
 FOR TYPES WITH STANDARD AND LONG SEALED REAR AXLE [TIGER 60 E 4WD ->S10S553WT1E1001]

1	0.135.5540.0/10	4	ballast 43 Kg
2	2.0399.258.6	8	screw
3	2.1470.009.2	4	lock washer 16
4	2.1011.309.2	8	nut m 16 p.1.5
5	0.001.8527.0	8	small column
6	0.011.3903.3/10	2	support



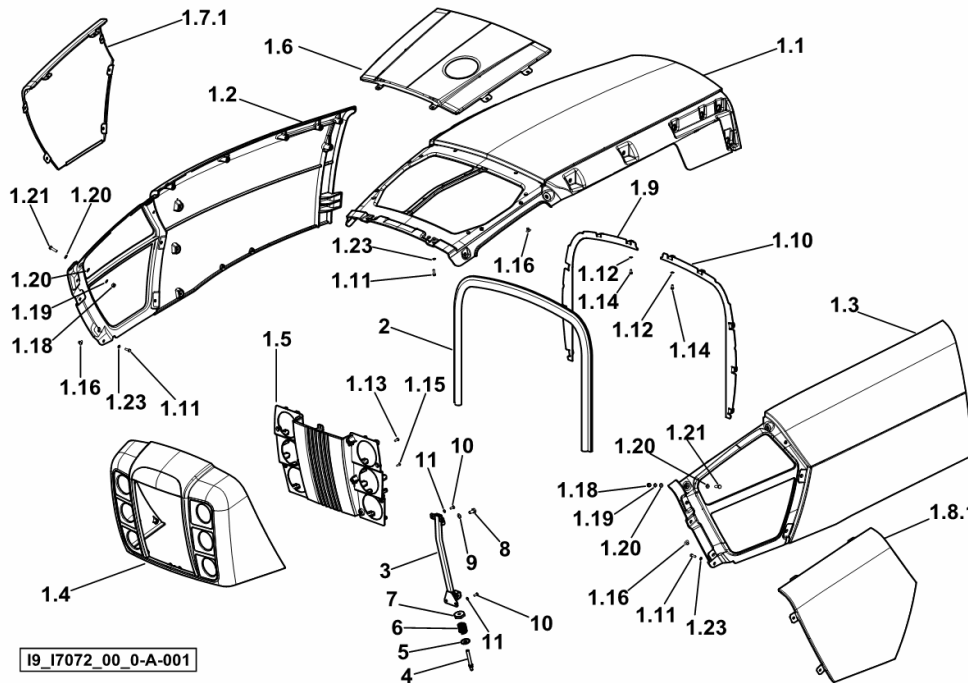
19_D1052_48_0-A-001

HOOD

Fig.	Code	QTY	Name
------	------	-----	------

Notes:

- FOR TYPES WITH AIR PRE-FILTER EXTENSION [TIGER 60 E 2WD ->S10S553WX1E1001] 1011 <- - FOR TYPES WITH AIR PRE-FILTER EXTENSION [TIGER 60 E 4WD ->S10S553WT1E1001] 1011 <-



1.1	0.015.2926.2/10	1	bonnet
1.2	0.015.2927.2/10	1	right h.side panel
1.3	0.015.2928.2/10	1	lift hand side panel
1.4	0.014.8478.7/10	1	grille/grid
1.5	0.014.8479.2	1	grille
1.6	0.015.3315.7	1	grille
1.7.1	0.014.8475.0/10	1	grille dx/rh/re
1.8.1	0.014.8471.0/10	1	grille sx/lh/li
1.9	0.015.3956.0/10	1	frame dx/rh/re
1.10	0.015.3096.0/10	1	frame sx/lh/li
1.11	2.0114.105.2	6	screw m 5 x 16
1.12	2.1310.001.2	10	flat washer 5.3
1.13	2.0332.304.3	8	screw m 5 x 12
1.14	2.0114.102.2	10	screw m 5x10
1.15	2.0350.454.3	3	screw m 4.2 x 13 -AB-
1.16	2.1899.074.0	22	rivet 4.7
1.18	2.1120.003.2	4	nut m 6
1.19	2.1470.002.2	4	washer 6, d128
1.20	2.1310.002.2	8	washer 6.6, d125
1.21	2.0112.008.2	4	screw m 6 p.1x22
1.22	2.1312.002.2	6	washer 5
2	0.015.3314.0	1	gasket
3	0.014.9449.3	1	support
4	0.009.7868.0/30	1	pin
5	0.009.7867.0	1	bottom
6	2.4019.804.2	1	spring
7	0.010.0849.0	1	ring nut
8	2.0112.205.2	1	screw m 8 p.1.25 x 16
9	2.1470.004.2	1	washer 8
10	2.0332.304.3	4	screw m 5 x 12
11	2.1470.001.2	4	lock washer 5

19_17072_00_0-A-001

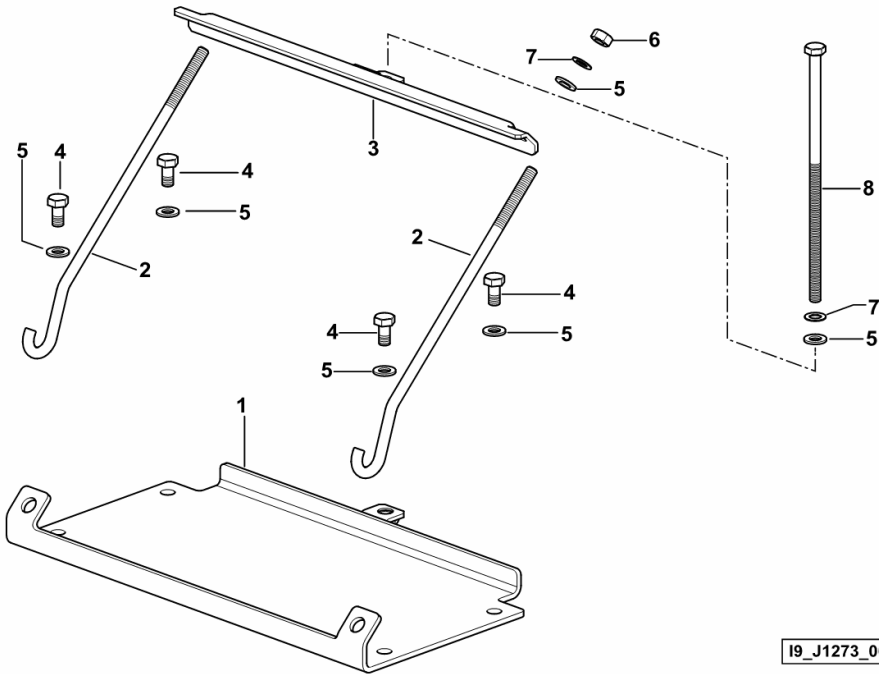
BATTERY SUPPORT

Fig.	Code	QTY	Name
------	------	-----	------

Notes:

[TIGER 60 E 2WD ->S10S553WX1E1001] [TIGER 60 E 4WD ->S10S553WT1E1001]

1	0.015.2942.3/30	1	plate
2	0.015.2944.0	2	rod
3	0.016.3619.2	1	crosspiece
4	2.0112.205.2	4	screw m 8 p.1.25 x 16
5	2.1310.004.2	7	flat washer 8.5
6	2.1012.005.7	2	nut m 8
7	2.1470.004.2	3	washer 8
8	2.0119.303.2	1	screw



19_J1273_00_0-A-001

TIGER 60 E ->S10S553WT1E1001

Section: G0 - BODYWORK - CAB

Ref.: G0.02.28 (1)

GEAR LEVER KNOB CAP

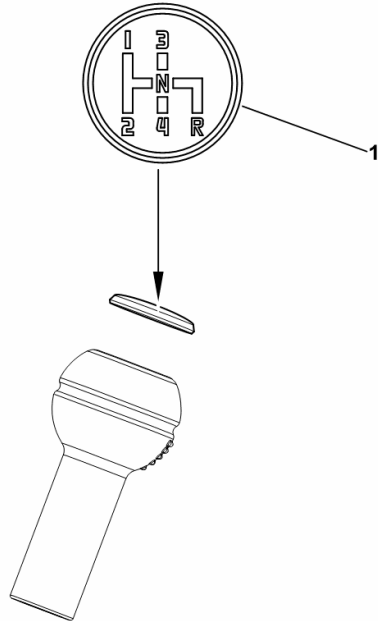
Fig.	Code	QTY	Name
------	------	-----	------

Notes:

- FOR TYPES WITH 4 SPEED 2 RANGE GEARBOX [TIGER 60 E 2WD ->S10S553WX1E1001] - FOR TYPES WITH 4 SPEED 2 RANGE GEARBOX [TIGER 60 E 4WD ->S10S553WT1E1001]

1	0.010.1671.0/30	1	cap
---	-----------------	---	-----

I9_72364_01_0-C-001



TIGER 60 E ->S10S553WT1E1001

Section: G0 - BODYWORK - CAB

Ref.: G0.02.41 (1)

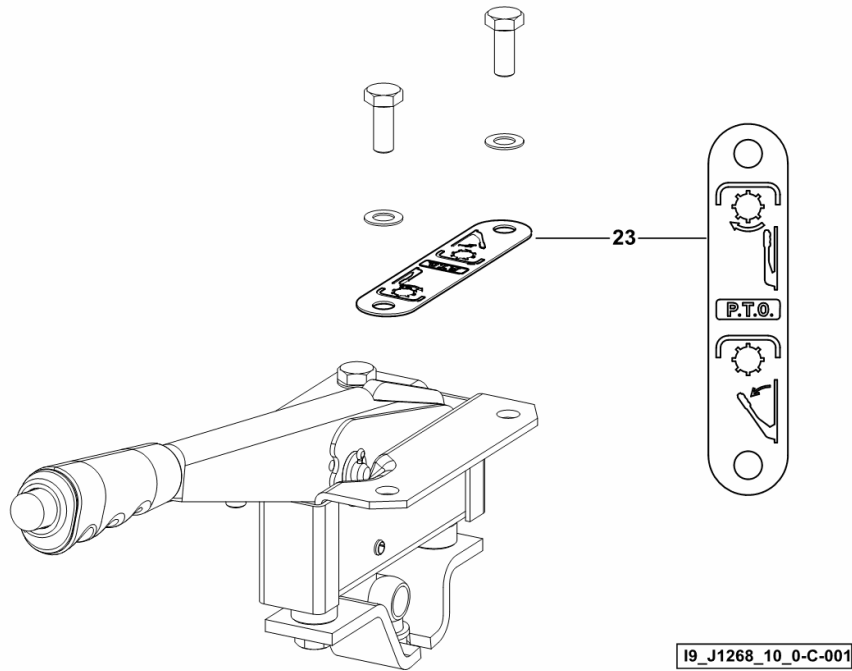
PTO DATA PLATE

Fig.	Code	QTY	Name
------	------	-----	------

Notes:

- FOR TYPES WITH DOUBLE CLUTCH [TIGER 60 E 2WD ->S10S553WX1E1001] - FOR TYPES WITH DOUBLE CLUTCH [TIGER 60 E 4WD ->S10S553WT1E1001]

23	2.9929.437.0/10	1	plate P.T.O.
----	-----------------	---	--------------



DIFFERENTIAL LOCK IDENTIFICATION PLATE

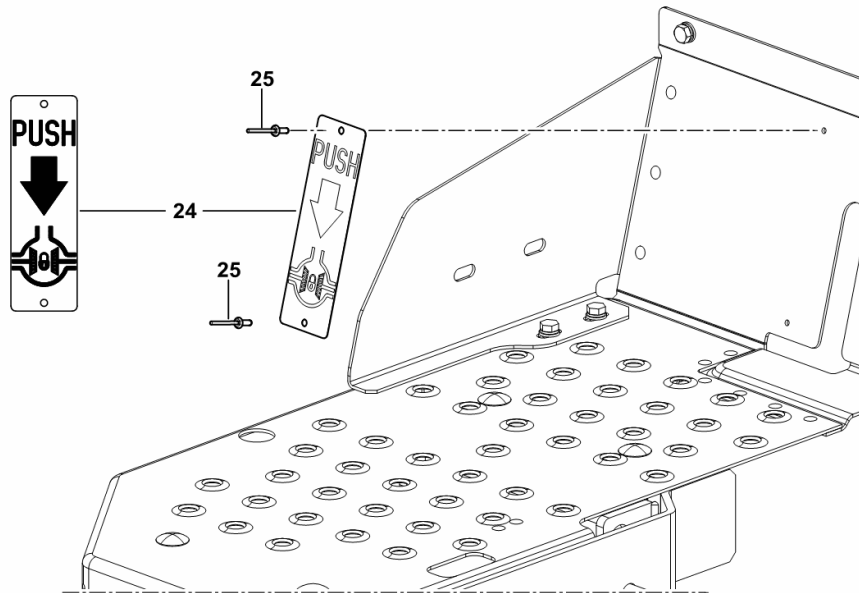
Fig.	Code	QTY	Name
------	------	-----	------

Notes:

- PER TIPI CON CAMBIO A 4 MARCE E 2 GAMME E SENZA TAPPETO PEDANA [TIGER 60 E 2WD ->S10S553WX1E1001] - PER TIPI CON CAMBIO A 4 MARCE E 2 GAMME E SENZA TAPPETO PEDANA [TIGER 60 E 4WD ->S10S553WT1E1001]

24	2.9929.573.0	1	plate
25	2.1855.010.0	2	rivet 3.4

I9_17076_02_0-B-001



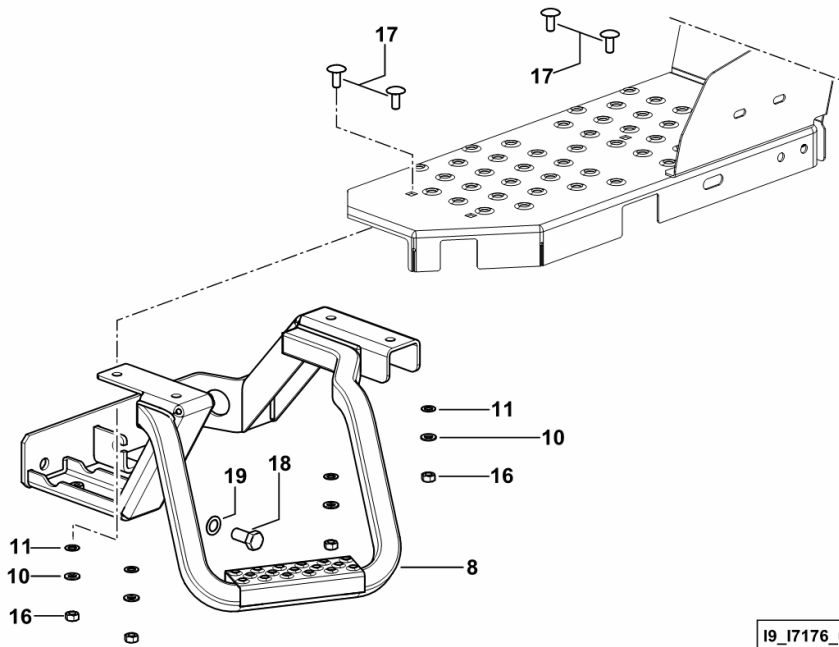
LADDER

Fig.	Code	QTY	Name
------	------	-----	------

Notes:

- PER TIPI CON CAMBIO A 4 MARCE E 3 GAMME E SENZA TAPPETO PEDANA [TIGER 60 E 2WD ->S10S553WX1E1001] - PER TIPI CON CAMBIO A 4 MARCE E 3 GAMME E SENZA TAPPETO PEDANA [TIGER 60 E 4WD ->S10S553WT1E1001]

8	0.016.0443.3/10	1	support sx/lh/li
10	2.1470.004.2	11	washer 8
11	2.1310.004.2	11	flat washer 8.5
16	2.1011.105.2	11	nut m 8 p.1.25
17	2.0020.205.2	8	screw m 8 p.1.25 x 20
18	2.0112.409.2	4	screw m 12 p.1.75 x 25
19	2.1470.007.2	4	lock washer 12



MUDGUARDS EXTENSIONS

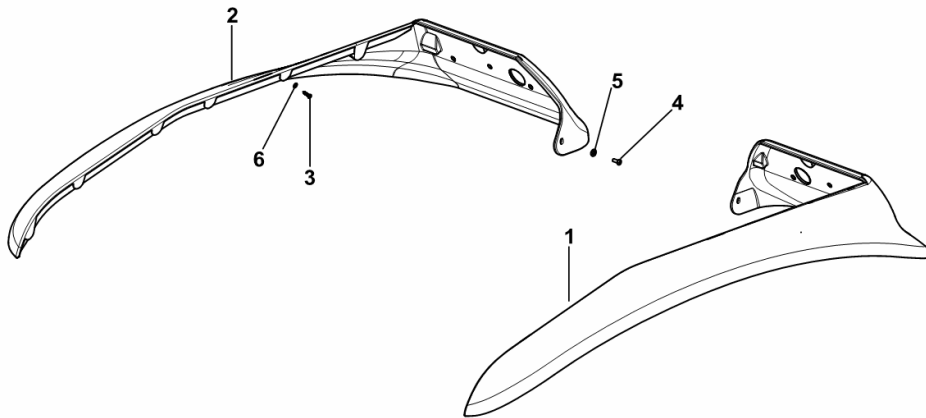
Fig.	Code	QTY	Name
------	------	-----	------

Notes:

- WITH FOLD-DOWN ROPS [TIGER 60 E 2WD ->S10S553WX1E1001] - WITH FOLD-DOWN ROPS [TIGER 60 E 4WD ->S10S553WT1E1001]

1	0.016.0465.0/30	1	extension sx/lh/li
2	0.016.0469.0/30	1	extension dx/rh/re
3	2.0350.456.3	18	screw m 4.2 x 19 -AB-
4	2.0332.406.2	2	screw m 6 p.1.0 x 16
5	2.1310.003.2	2	flat washer 7.4x14
6	2.1310.001.2	18	flat washer 5.3

19_J1276_25_0-A-001



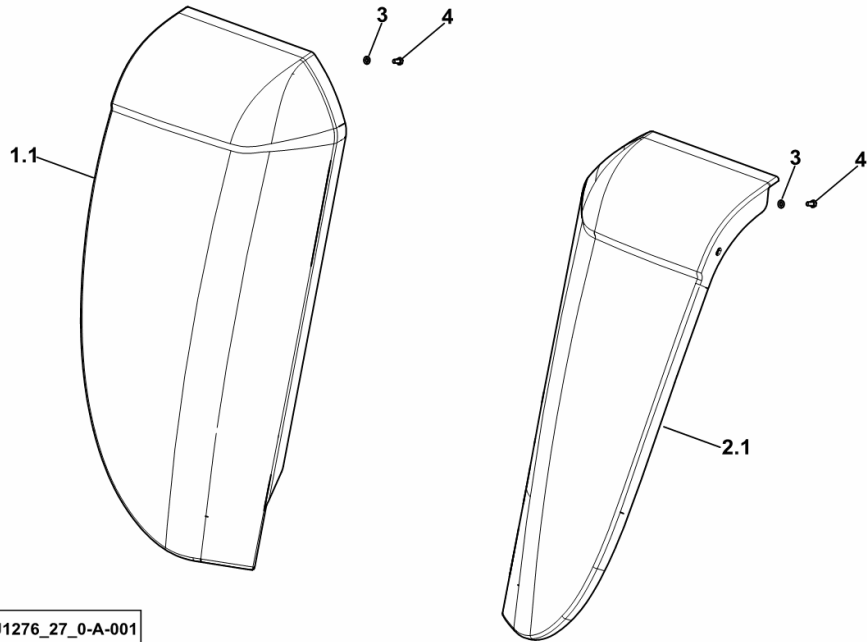
STONE GUARD

Fig.	Code	QTY	Name
------	------	-----	------

Notes:

[TIGER 60 E 2WD ->S10S553WX1E1001] [TIGER 60 E 4WD ->S10S553WT1E1001]

1.1	0.016.0468.3/30	1	stone guard dx/rh/re
2.1	0.016.0464.3/30	1	stone guard sx/lh/li
3	2.1310.002.2	14	washer 6.6, d125
4	2.0112.003.2	14	screw m 6 p.1 x 12



I9_J1276_27_0-A-001

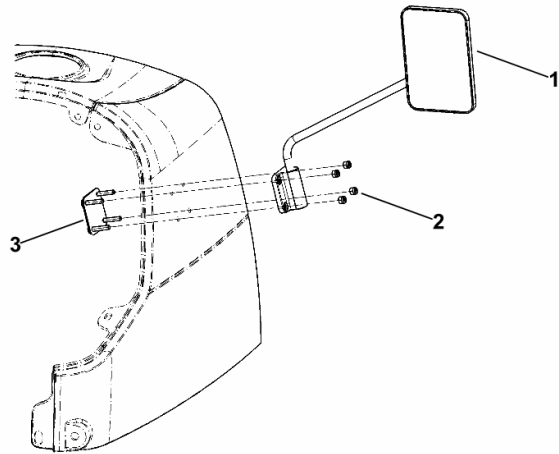
REARVIEW MIRROR

Fig.	Code	QTY	Name
------	------	-----	------

Notes:

- FOR TYPES WITHOUT COLLAPSIBLE ROPS AND LH DRIVE [TIGER 60 E 2WD ->S10S553WX1E1001] - FOR TYPES WITHOUT COLLAPSIBLE ROPS AND LH DRIVE [TIGER 60 E 4WD ->S10S553WT1E1001]

1	0.012.8063.4	1	rear view mirror
2	2.1120.003.2	4	nut m 6
3	0.015.9883.3	1	small plate



19_I7076_66_0-A-001

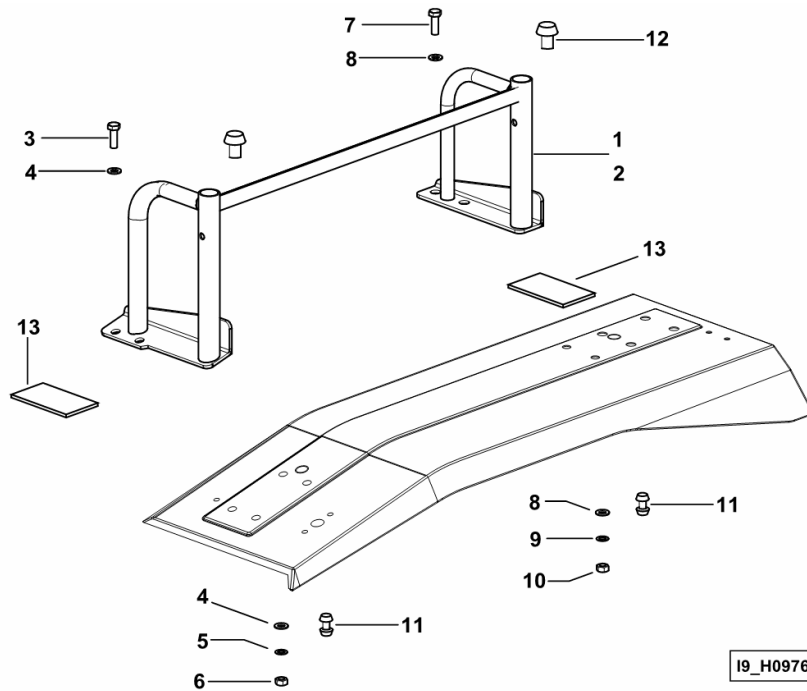
PASSENGER SEAT BACK FRAME

Fig.	Code	QTY	Name
------	------	-----	------

Notes:

[TIGER 60 E 2WD ->S10S553WX1E1001] [TIGER 60 E 4WD ->S10S553WT1E1001]

1	0.012.7581.2	1	chassis frame dx/rh/re
2	0.012.7582.2	1	chassis frame sx/lh/li
3	2.0112.311.2	4	screw m 10 p.1.5 x 30
4	2.1310.006.2	8	flat washer 10.5
5	2.1470.006.2	4	lock washer 10
6	2.1011.106.2	4	nut m 10 p.1.5
7	2.0112.413.2	8	screw m 12 p.1.75x35
8	2.1310.007.2	16	flat washer 13.5
9	2.1470.007.2	8	lock washer 12
10	2.1011.107.2	8	nut m 12 p.1.75
11	0.012.7676.0	8	plug
12	0.012.7583.0	4	none
13	0.012.7584.0	4	block



TIGER 60 E ->S10S553WT1E1001

Section: G0 - BODYWORK - CAB

Ref.: G0.12.1 (1)

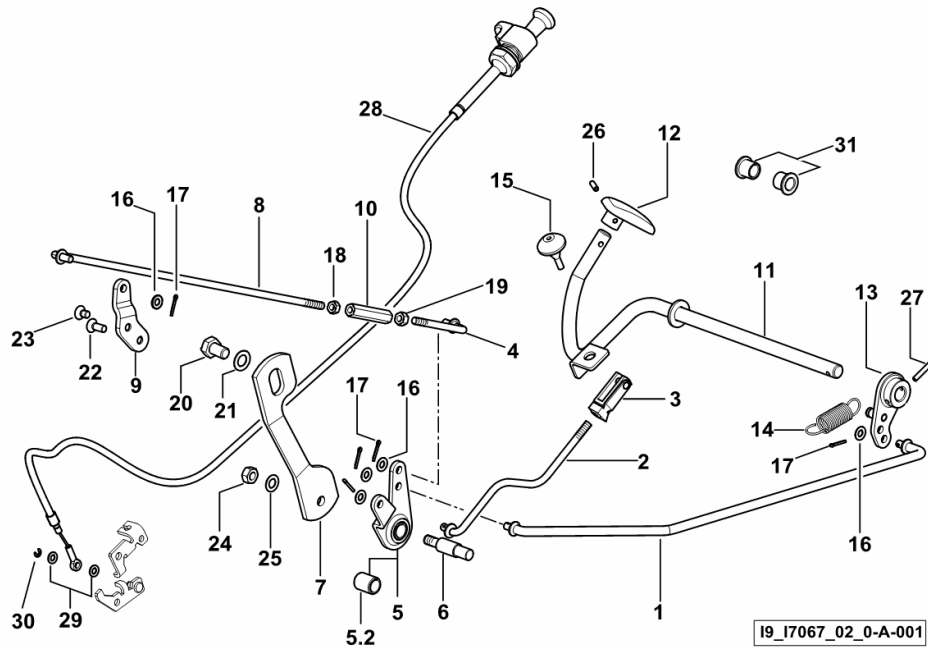
MECHANICAL ACCELERATOR CONTROL AND ENGINE STOP

Fig.	Code	QTY	Name
------	------	-----	------

Notes:

[TIGER 60 E 2WD ->S10S553WX1E1001] 1034 <- [TIGER 60 E 4WD ->S10S553WT1E1001] -> 1012 - 1034 <-

1	0.016.0135.3/10	1	rod
2	0.015.5295.3/10	1	rod
3	2.3519.054.2/10	1	fork
4	0.290.6712.2	1	rod
5	0.011.4836.3	1	small lever
5.2	2.1559.192.0/10	1	bushing
6	2.1699.560.0	1	pin
7	0.012.7447.0/20	1	square
8	0.015.5294.3	1	rod
9	0.015.4791.0	1	small lever
10	2.1099.011.2	1	special nut
11	0.010.1747.2/20	1	pedal
12	0.009.6962.2/10	1	accel. pedal
13	0.010.1754.3	1	lever
14	2.4049.160.2	1	spring
15	0.255.7265.0	1	block
16	2.1311.004.2	5	flat washer 6, d128
17	2.1690.205.2	5	split pin 2x12
18	2.1011.103.2	1	nut m 6 p.1
19	2.1019.007.1	1	special nut m 6 p.1 sx/lh/li
20	2.0112.305.2	1	screw m 10 p.1.5 x 16
21	2.1470.006.2	1	lock washer 10
22	2.0342.203.6	1	screw m 6 p.1.0 x 16
23	2.0342.201.3	1	screw m 6 p.1 x 10
24	2.1011.105.2	1	nut m 8 p.1.25
25	2.1470.004.2	1	washer 8
26	2.1630.409.9	1	roll pin 4x18
27	2.1630.412.9	1	roll pin 4x28
28	0.012.7896.3/10	1	cable
29	2.1310.001.3	2	washer 5.3 x 10
30	2.1430.004.7	1	circlip 3.2
31	2.1559.243.0	2	bushing 12x16x15



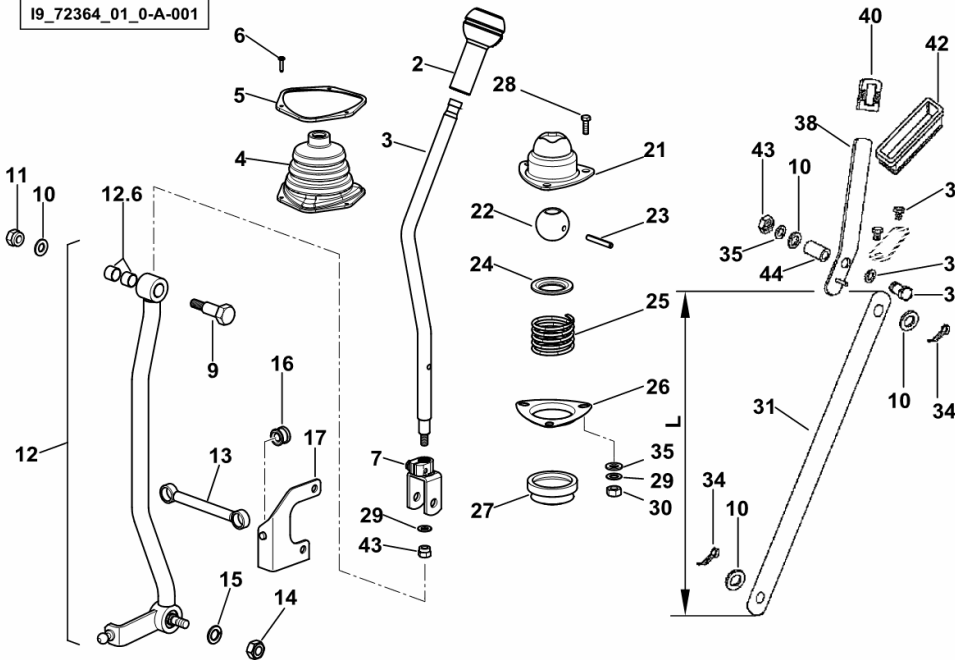
GEARSHIFT LEVER

Fig.	Code	QTY	Name
------	------	-----	------

Notes:

- FOR TYPES WITH 4 SPEED 2 RANGE GEARBOX [TIGER 60 E 2WD ->S10S553WX1E1001] - FOR TYPES WITH 4 SPEED 2 RANGE GEARBOX [TIGER 60 E 4WD ->S10S553WT1E1001]

I9_72364_01_0-A-001



2	0.467.6413.0	1	knob
3	0.012.0937.0/20	1	lever
4	0.010.1536.0	1	guard
5	0.010.1535.0	1	support
6	2.0350.255.3	3	screw m 3.5 x 16 -AB-
7	0.012.0936.2/20	1	fork
8	2.1560.006.0	2	gasket 10.2 x 16
9	2.0112.320.2	1	screw m 10 p.1.5 x 55
10	2.1310.006.2	4	flat washer 10.5
11	2.1120.006.2	1	nut m 10 p.1.5
12	0.012.7888.4	1	lever
12.6	2.1555.107.0	2	bushing 14x16x12
12.7	2.1549.357.0	1	spacer
13	0.010.1587.2/30	1	rod
14	2.1011.106.2	1	nut m 10 p.1.5
15	2.1474.010.2	2	washer 10
16	0.255.6454.0	2	pin seat
17	0.010.1544.3/10	1	bracket
18	2.0112.305.2	2	screw m 10 p.1.5 x 16
21	0.012.7591.2	1	guard
22	0.255.6452.0	1	ball
23	2.1630.615.0	1	roll pin 6x40
24	0.255.6465.0	1	cup
25	2.4019.309.1/10	1	spring 51x40x4
26	0.012.7593.0	1	support
27	0.255.6451.0/10	1	bellows
28	2.0112.209.2	3	screw m 8 p 1.25 x 25
29	2.1470.004.2	3	washer 8
30	2.1011.105.2	3	nut m 8 p.1.25
31	0.012.7871.0	1	bracket
34	2.1690.410.2	2	split pin 4 x 25
35	2.1310.004.2	6	flat washer 8.5
36	2.0112.217.2	1	screw m 8 p.1.25 x 45
38	0.012.0957.0/10	1	lever
39	2.1855.010.0	2	rivet 3.4
40	0.012.0961.0	1	knob
42	0.012.8275.0	1	small plate
43	2.1120.005.2	2	nut m 8 p.1.25
44	0.012.7571.0	1	spacer

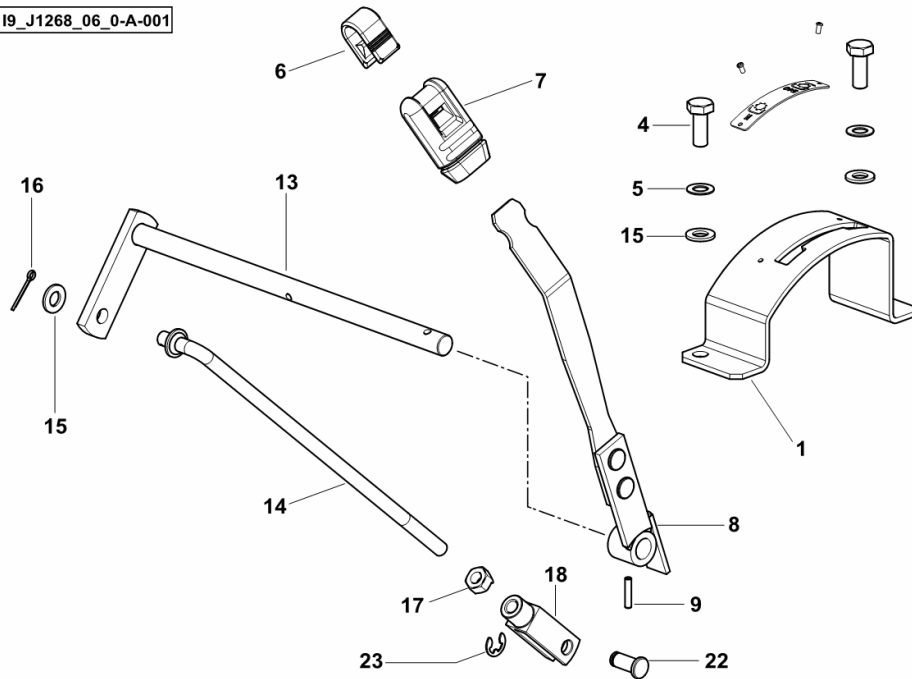
P.T.O. SHAFT DRIVE

Fig.	Code	QTY	Name
------	------	-----	------

Notes:

- FOR TYPES WITH 540 RPM PTO [TIGER 60 E 2WD ->S10S553WX1E1001] - FOR TYPES WITH 540 RPM PTO [TIGER 60 E 4WD ->S10S553WT1E1001]

19_J1268_06_0-A-001



1	0.012.8117.2/10	1	sector
4	2.0112.207.2	2	screw m 8 p 1.25 x 20
5	2.1470.004.2	2	washer 8
6	0.008.8383.0	1	coupling
7	0.008.8388.0	1	knob
8	0.012.8274.3/10	1	lever
9	2.1630.410.0	1	roll pin 4 x 20
13	0.010.1888.3/10	1	lever
14	0.012.7767.2	1	stay
15	2.1310.004.2	3	flat washer 8.5
16	2.1690.106.2	1	split pin 1.6x16
17	2.1011.105.2	1	nut m 8 p.1.25
18	2.3510.014.2	1	fork
22	2.1699.443.2	1	pin
23	2.1430.008.2	1	circlip 7

TIGER 60 E ->S10S553WT1E1001

Section: G0 - BODYWORK - CAB

Ref.: G0.19.0 (1)

METAL TOOLBOX

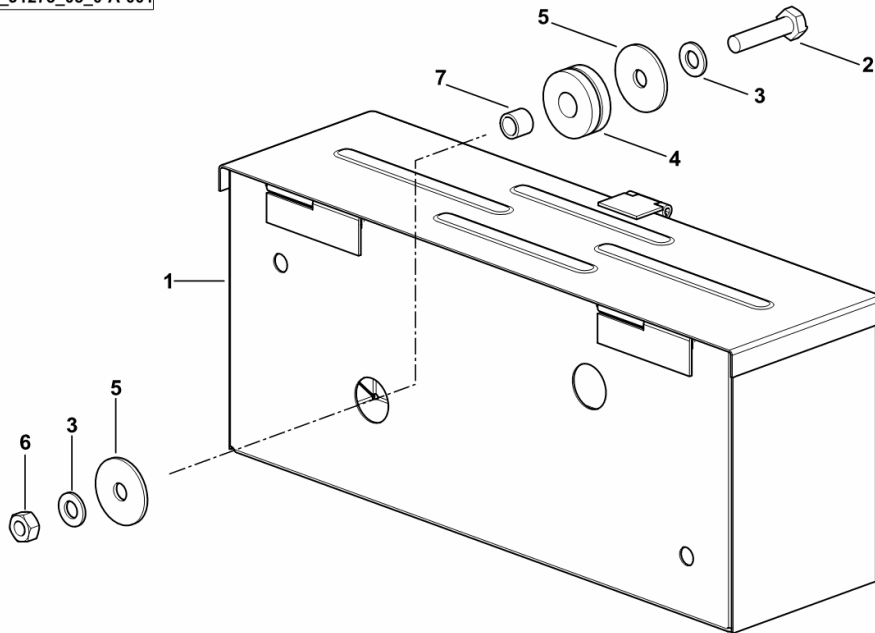
Fig.	Code	QTY	Name
------	------	-----	------

Notes:

- FOR TYPES WITHOUT COLLAPSIBLE ROPS [TIGER 60 E 2WD ->S10S553WX1E1001] 1046 <- - FOR TYPES WITHOUT COLLAPSIBLE ROPS [TIGER 60 E 4WD ->S10S553WT1E1001] 1046 <-

1	0.012.1026.3/10	1	metal toolbox
2	2.0112.213.2	2	screw m 8 p.1.25 x 35
3	2.1310.004.2	3	flat washer 8.5
4	0.157.7693.0	2	rubber plug
5	2.1599.245.0	4	snoulder 8.5 x 32 x 2.0
6	2.1011.105.2	1	nut m 8 p.1.25
7	2.1579.120.0	2	spacer 8.8x12x9.5

19_J1273_05_0-A-001



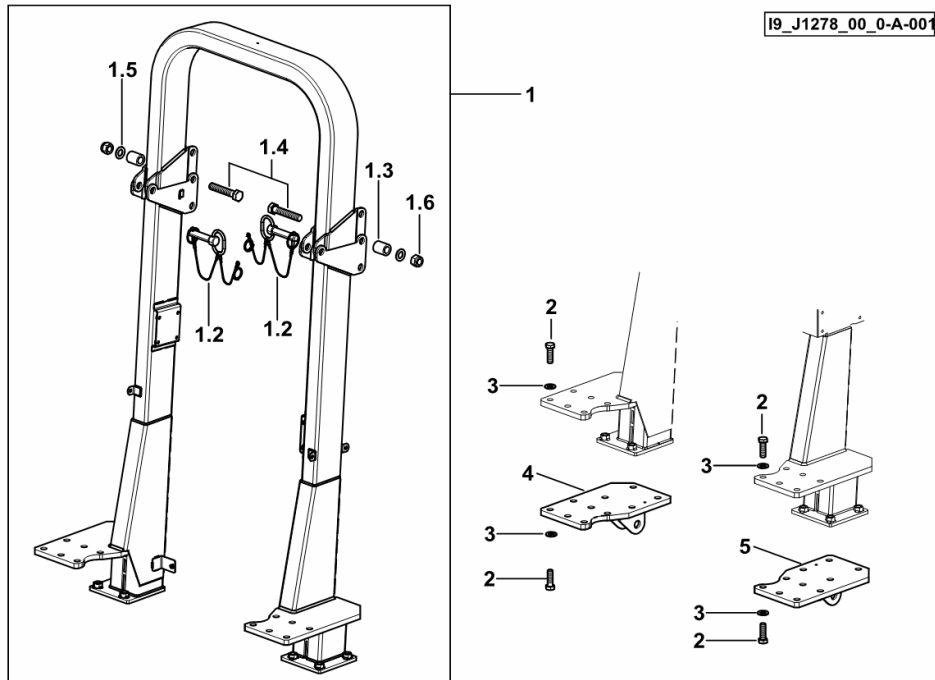
SAFETY ARCH FOLDING

Fig.	Code	QTY	Name
------	------	-----	------

Notes:

- FOR TYPES WITH FOLDING ROLL BAR [TIGER 60 E 2WD ->S10S553WX1E1001] - FOR TYPES WITH FOLDING ROLL BAR [TIGER 60 E 4WD ->S10S553WT1E1001]

1	0.015.4596.4/70	1	safety frame
1.2	0.010.4049.4	2	pin
1.3	2.1549.332.2/10	2	spacer 20.8x35x42.5
1.4	2.0119.216.2	2	screw m 20 p.2.5 x 110
1.5	2.1310.013.2	2	flat washer 21x37
1.6	2.1120.011.2	2	nut m 20 p.2.5
2	2.0113.619.2	32	screw m 16 p.2x50
3	2.1475.006.2	30	washer 16
4	0.015.4625.2/30	1	plate dx/rh/re
5	0.015.4624.2/30	1	plate sx/lh/li



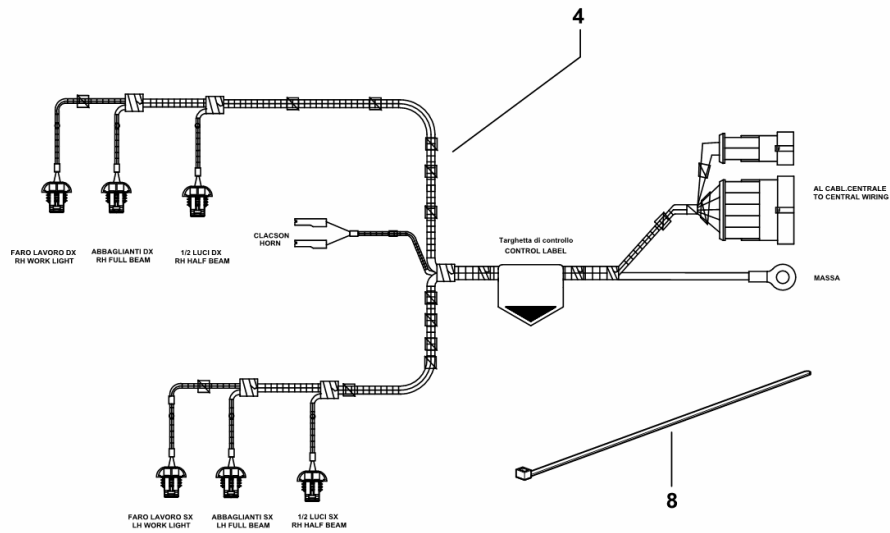
HEADLIGHTS / HORN WIRING

Fig.	Code	QTY	Name
------	------	-----	------

Notes:

- FOR RIGHT-HAND DRIVE [TIGER 60 E 2WD ->S10S553WX1E1001] - FOR RIGHT-HAND DRIVE [TIGER 60 E 4WD ->S10S553WT1E1001]

4	0.015.3645.4	1	electrical system
8	2.6852.203.0	14	clamp 292 x 4.8



I9_J1285_01_0-B-001

TIGER 60 E ->S10S553WT1E1001

Section: L0 - ELECTRIC AL SYSTEM

Ref.: L0.02.21 (1)

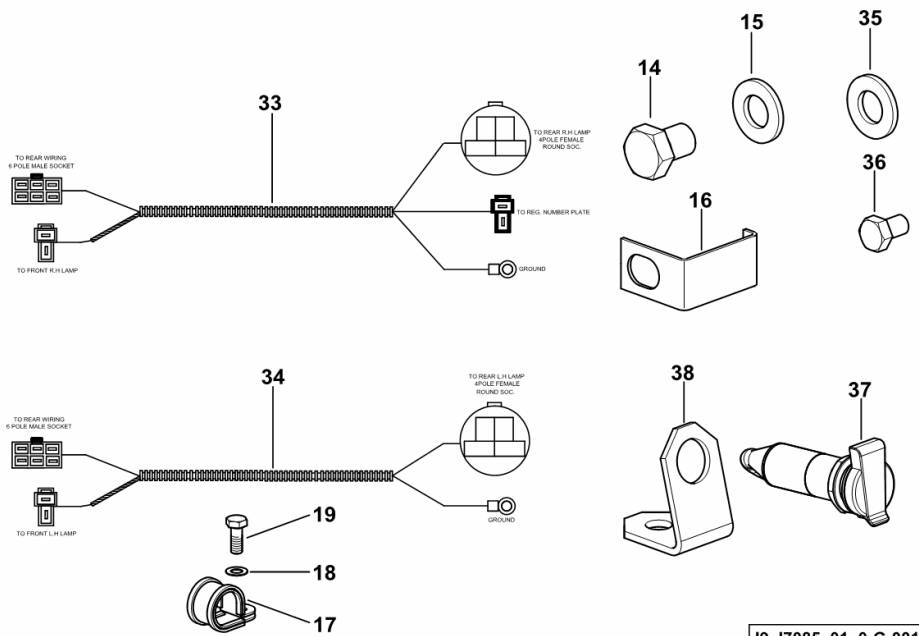
REAR LIGHTS ELECTRICAL SYSTEM - SINGLE POLE SOCKET

Fig.	Code	QTY	Name
------	------	-----	------

Notes:

[TIGER 60 E 2WD ->S10S553WX1E1001] 1013 <- [TIGER 60 E 4WD ->S10S553WT1E1001] 1013 <-

14	2.0112.607.2	2	screw m 16 p.2x20
15	2.1310.010.2	2	flat washer 16
16	0.010.6074.0	1	bracket
17	2.6859.065.2	1	clamp Ø 18
18	2.1310.006.2	1	flat washer 10.5
19	2.0112.305.2	1	screw m 10 p.1.5 x 16
33	0.012.8134.0	1	wire dx/rh/re
34	0.012.8133.0	1	wire sx/lh/li
35	2.1475.006.7	1	washer 17x32
36	2.0112.305.2	2	screw m 10 p.1.5 x 16
37	0.008.1550.0	1	socket
38	0.014.6299.0	1	bracket



TIGER 60 E ->S10S553WT1E1001

Section: L0 - ELECTRIC AL SYSTEM

Ref.: L0.04.1 (1)

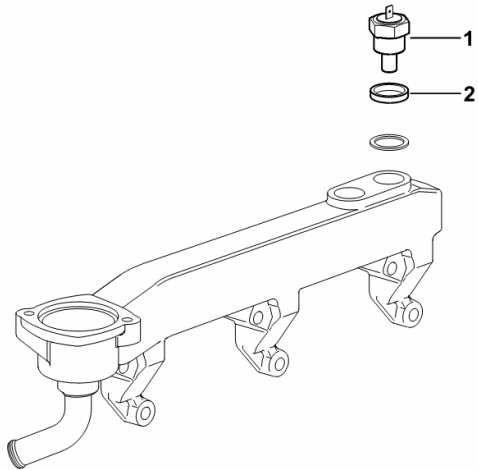
COOLING SYSTEM MANIFOLD SENSOR

Fig.	Code	QTY	Name
------	------	-----	------

Notes:

[TIGER 60 E 2WD ->S10S553WX1E1001] 1022 <- [TIGER 60 E 4WD ->S10S553WT1E1001] 1022 <-

1	2.7099.100.0/10	1	sensor
2	2.1569.167.0	1	gasket 22.2x27x4.5



I9_O2917_03_0-A-001

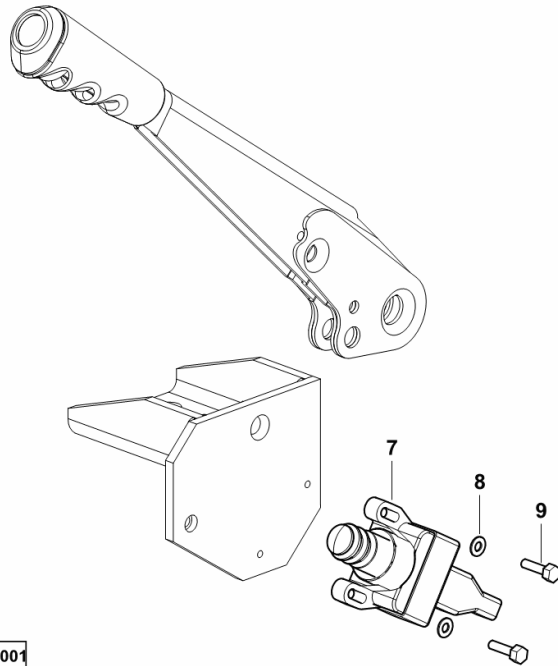
HAND BRAKE SWITCHES

Fig.	Code	QTY	Name
------	------	-----	------

Notes:

[TIGER 60 E 2WD ->S10S553WX1E1001] [TIGER 60 E 4WD ->S10S553WT1E1001]

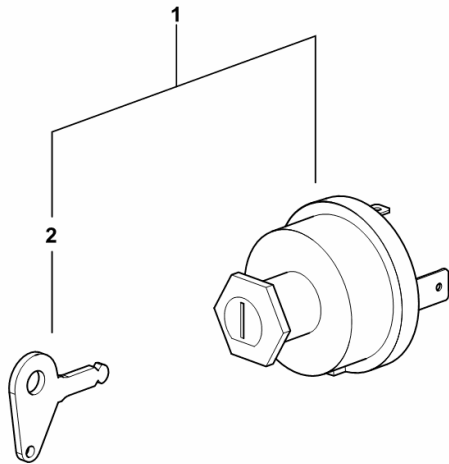
7	2.7659.097.0	1	switch
8	2.1310.028.2	2	flat washer 4
9	2.0119.070.6	2	screw m 4 p.0.7 x 16



19_J1266_01_0-B-001

IGNITION BLOCK

Fig.	Code	QTY	Name
1	2.7659.147.0/10	1	switch
2	0.900.1403.2	1	ignition key



2_7659_147_0-10

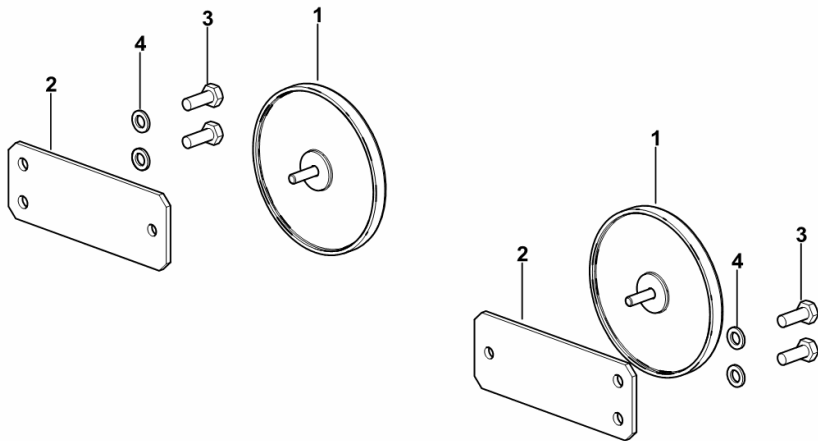
REAR REFLECTORS

Fig.	Code	QTY	Name
------	------	-----	------

Notes:

[TIGER 60 E 2WD ->S10S553WX1E1001] [TIGER 60 E 4WD ->S10S553WT1E1001]

1	2.8349.002.2/30	2	reflector Ø 86 mm
2	0.015.9533.0	2	plate
3	2.0112.005.2	4	screw m 6 p.1 x 16
4	2.1470.002.2	4	washer 6, d128



I9_J1285_04_0-A-001

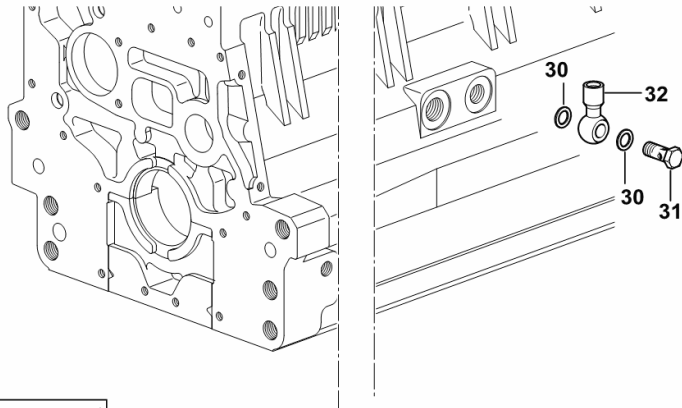
FITTING FOR ENGINE OIL PRESSURE SWITCH

Fig.	Code	QTY	Name
------	------	-----	------

Notes:

[TIGER 60 E 2WD ->S10S553WX1E1001] [TIGER 60 E 4WD ->S10S553WT1E1001]

30	2.1560.008.0	2	gasket 12.2 x 18
31	2.3339.448.2	1	pipe union m 12 p.1.75
32	2.3249.014.2	1	pipe fitting m 12 p.1.5



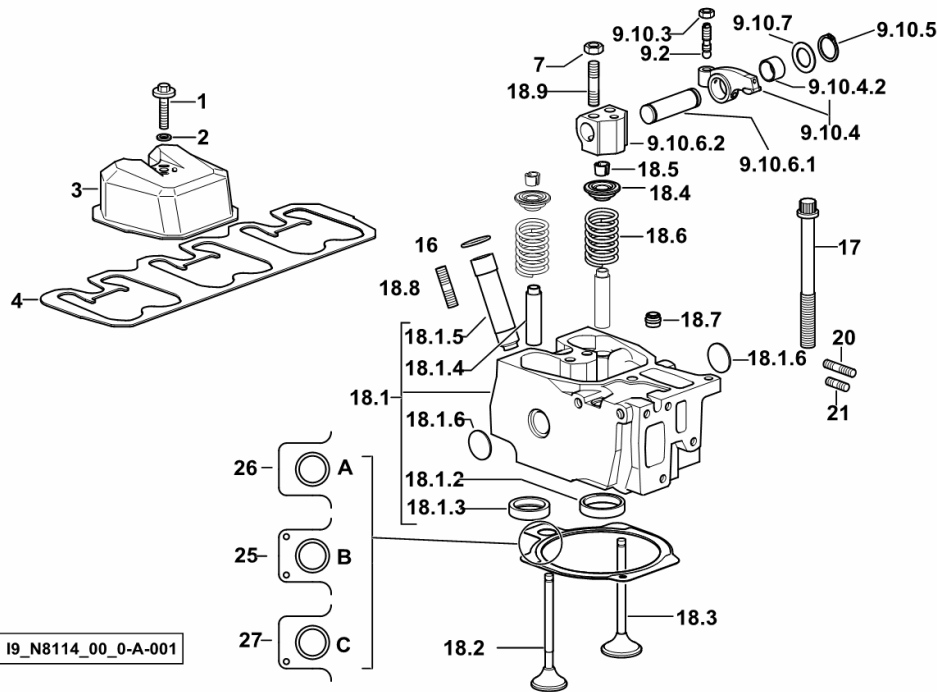
19_36215_07_0-A-001

Section: B0 - ENGINE
CYLINDER HEAD

Fig.	Code	QTY	Name
------	------	-----	------

Notes:

[TIGER 60 E 2WD ->S10S553WX1E1001] [TIGER 60 E 4WD ->S10S553WT1E1001]



I9_N8114_00_0-A-001

1	2.0399.130.2/10	3	screw m 8x36x44
2	2.1569.170.0/10	3	gasket 8.2 x 14
3	0.016.0291.0	3	small cap
4	0.069.1450.0/30	1	gasket
7	2.1011.421.2	6	nut m 10 p.1.25
9.2	0.021.1434.0	2	screw m 8 p.1 x 8
9.10.3	2.1011.405.2	2	nut m 8 p.1
9.10.4	0.066.1432.3	2	rocker
9.10.4.2	2.1559.021.0/40	1	bushing 19x22x14
9.10.5	2.1410.055.7	2	circlip 19
9.10.6.1	0.066.1431.0	1	pin
9.10.6.2	0.066.1430.0/10	1	support
9.10.7	2.1599.432.0	2	snoulder 19.5x31x1.5
16	2.1530.051.0	3	'o' ring 20.22x3.53
17	0.012.2673.0	12	screw m 14 p.2x141
18.1	0.014.8945.3/10	1	head
18.1.2	0.014.8942.0	1	valve seat mm 45.118
18.1.3	0.014.8941.0	1	valve seat mm 40.653
18.1.4	0.007.1779.0/20	2	valve guide
18.1.5	0.010.6041.0/10	1	sleeve
18.1.6	2.3170.012.2	2	expansion plug Ø 30
18.2	0.066.1421.0	1	exhaust valve mm 39.1 / Ø mm 9
18.3	0.010.6016.0	1	inlet valve mm 43.63 / Ø mm 9
18.4	0.066.1425.0	2	cup
18.5	0.074.1423.0	4	conical valve cotter
18.6	2.4019.287.0	2	spring 35.5x53.6x3.9
18.7	2.1519.117.0	2	'o' ring
18.8	2.0432.161.7	1	stud bolt m 10 p.1.5 / p.1.25 x 40
18.9	2.0432.163.7	2	stud bolt m 10 p.1.5 / p.1.25 x 45
20	2.0432.011.7	3	stud bolt m 8 p.1.25 / p.1 x 40
21	2.0432.005.7	3	stud bolt m 8 p.1.25 / p.1 x 25
25	0.014.5260.0/10	0.5	gasket - A - mm 1.4
26	0.014.5259.0/10	2	gasket - B - mm 1.2
27	0.014.5261.0/10	0.5	gasket - C - mm 1.6

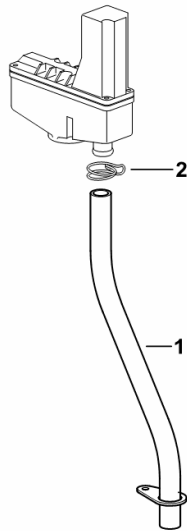
SEDIMENTER BOWL BREATHER PIPE

Fig.	Code	QTY	Name
------	------	-----	------

Notes:

[TIGER 60 E 2WD ->S10S553WX1E1001] [TIGER 60 E 4WD ->S10S553WT1E1001] -> 1002

1	0.066.1559.0	1	tube
2	2.6859.073.2	1	clamp



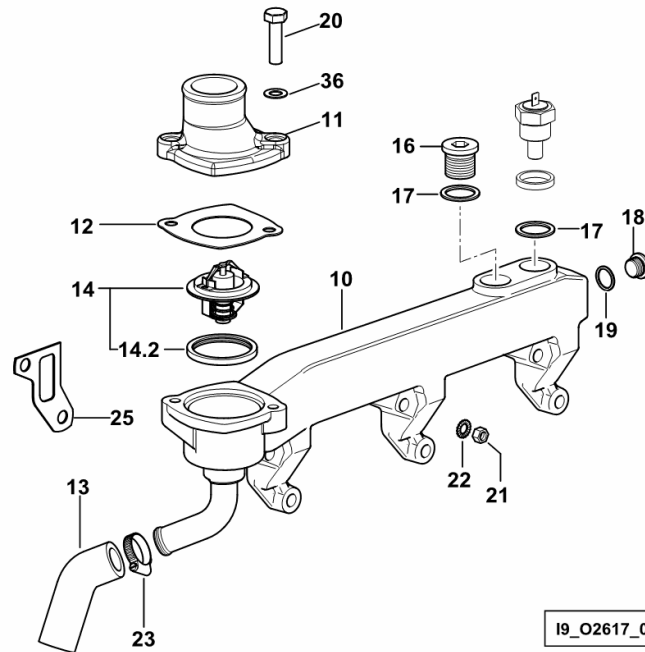
I9_I7019_10_0-A-001

CYLINDER HEAD WATER OUTLET MANIFOLD

Fig.	Code	QTY	Name
------	------	-----	------

Notes:

[TIGER 60 E 2WD ->S10S553WX1E1001] [TIGER 60 E 4WD ->S10S553WT1E1001]



10	0.070.1745.3/40	1	manifold
11	0.007.1421.0	1	cover
12	0.066.1757.0/40	1	gasket
13	0.066.1758.0/10	1	sleeve
14	0.007.1258.3/20	1	thermostat
14.2	0.007.1258.0	1	gasket
16	2.3120.002.4	1	plug m 22 x 1.5
17	2.1560.018.0	2	gasket 22.2 x 29
18	2.3199.001.2	1	plug 1/2" gas
19	2.1560.054.0	1	gasket 21 x 26
20	2.0312.208.2	2	screw m 8 p.1.25 x 25
21	2.1011.405.2	10	nut m 8 p.1
22	2.1310.004.2	6	flat washer 8.5
23	2.6890.007.2	2	clamp
25	0.066.1759.0/40	3	gasket
36	2.1480.014.1	2	washer 8

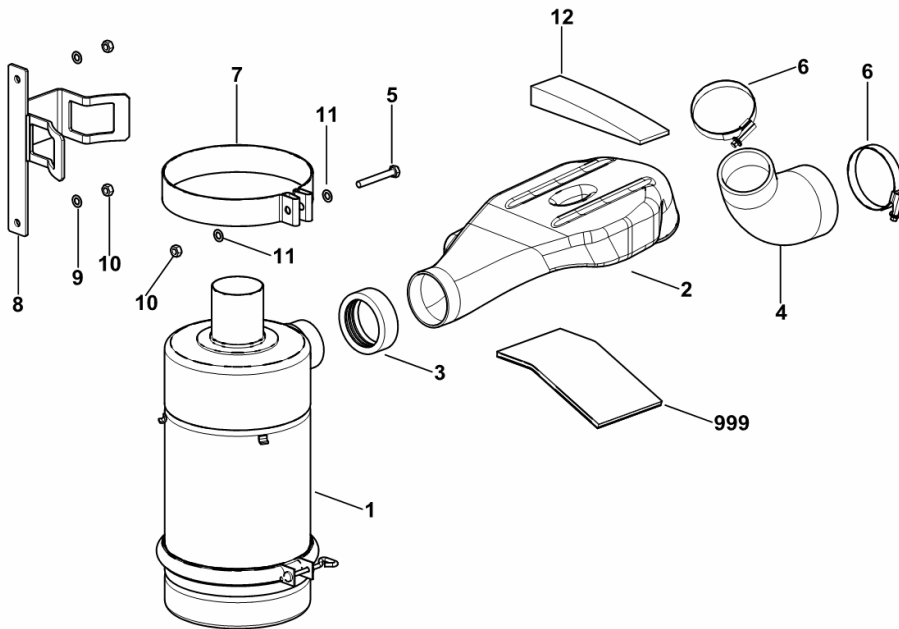
OIL-BATH AIR FILTER

Fig.	Code	QTY	Name
------	------	-----	------

Notes:

[TIGER 60 E 2WD ->S10S553WX1E1001] [TIGER 60 E 4WD ->S10S553WT1E1001]

1	2.4219.270.0	1	air filter ☞ 2.4219.270.0
2	0.015.2954.2	1	sleeve
3	0.010.4646.0	1	rubber ring
4	0.010.4645.0	1	sleeve
5	2.0114.219.2	1	screw m 8 p.1.25 x 60
6	2.6851.008.0	2	clamp Ø 70/90
7	0.010.0473.0/10	1	clamp
8	0.015.2947.2	1	bracket
9	2.1470.004.2	3	washer 8
10	2.1011.105.2	3	nut m 8 p.1.25
11	2.1310.004.2	1	flat washer 8.5
12	0.015.9838.0	1	stopper
999	0.015.0980.0	1	panel



19_17081_10_0-A-001

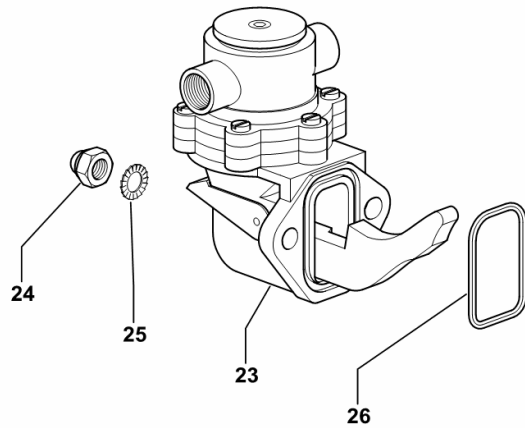
FUEL SUPPLY PUMP

Fig.	Code	QTY	Name
------	------	-----	------

Notes:

[TIGER 60 E 2WD ->S10S553WX1E1001] [TIGER 60 E 4WD ->S10S553WT1E1001]

23	2.4519.350.0	1	feed pump
24	2.1011.405.2	2	nut m 8 p.1
25	2.1470.004.2	2	washer 8
26	2.1539.045.0	1	'o' ring 37.77x2.62



I9_38516_00_0-B-001

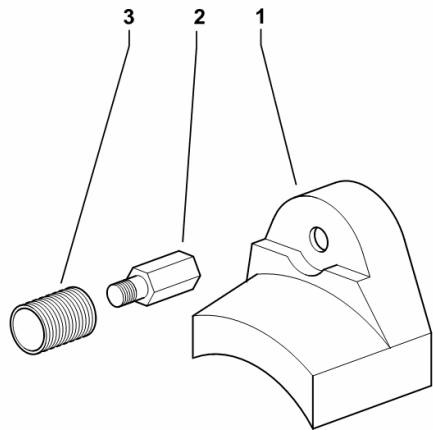
STARTER MOTOR COVER

Fig.	Code	QTY	Name
------	------	-----	------

Notes:

[TIGER 60 E 2WD ->S10S553WX1E1001] [TIGER 60 E 4WD ->S10S553WT1E1001]

1	0.008.0391.0	1	cover
2	0.008.0616.0	1	pipe fitting
3	0.008.0378.0	1	cover



I9_J1284_10_0-A-001

CLICK HERE TO **DOWNLOAD** THE COMPLETE MANUAL

- Thank you very much for reading the preview of the manual.
- You can download the complete manual from: www.heydownloads.com by clicking the link below



- Please note: If there is no response to CLICKING the link, please download this PDF first and then click on it.

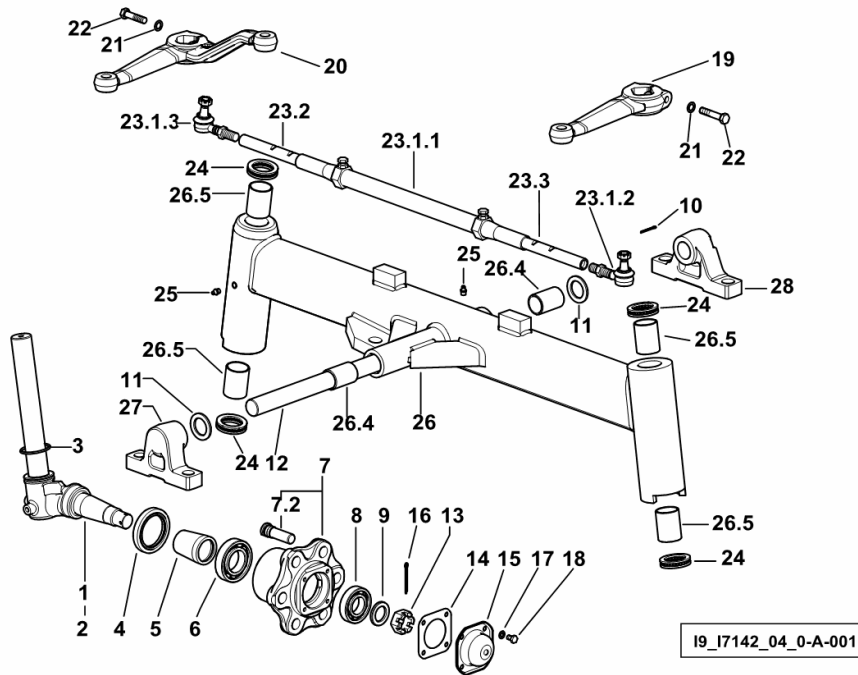
CLICK HERE TO **DOWNLOAD** THE COMPLETE MANUAL

Section: F0 - FRONT AXLE
2WD - AXLE

Fig.	Code	QTY	Name
------	------	-----	------

Notes:

- FOR TYPES WITH MANUAL STEERING [TIGER 60 E 2WD ->S10S553WX1E1001]



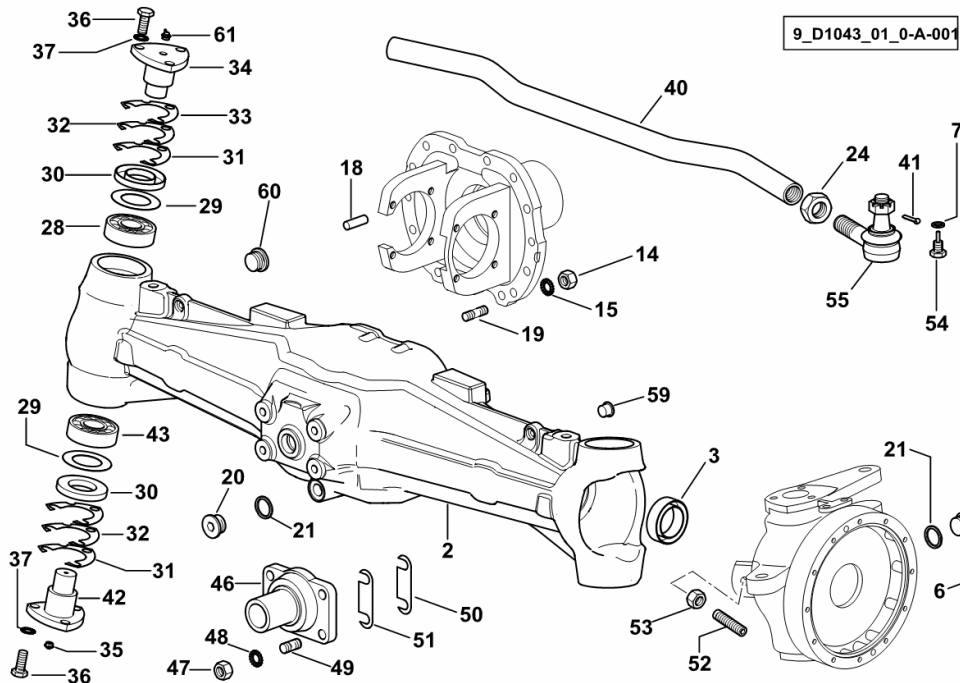
1	0.014.8117.3/10	1	wheel spindle dx/rh/re
2	0.014.8063.3/10	1	wheel spindle sx/lh/li
3	2.1530.134.0	2	'o' ring 53.98x3.53
4	2.1529.024.0	2	'o' ring 65x90x13
5	0.154.4257.0	2	spacer
6	2.2045.013.0	2	bearing 45 x 85 x 19
7	0.154.4224.3/30	2	wheel hub
7.2	0.148.4737.0/20	6	small column m 20x68
8	2.2045.011.0	2	ball bearing 35 x 72 x 17
9	2.1599.094.0	2	snoulder 32x48x5
10	2.1690.312.2	2	split pin 3.2x30
11	2.1599.062.0	2	snoulder 36x54x4
12	0.007.5384.0	1	pin
13	2.1029.001.1	2	nut m 30 p.1.5
14	0.001.2921.0	2	gasket
15	0.001.2920.0	2	small cover
16	2.1690.516.2	2	split pin 5x50
17	2.1470.004.2	8	washer 8
18	2.0112.204.2	8	screw m 8 p.1.25x14
19	0.014.4137.0	1	lever dx/rh/re
20	0.014.4136.0	1	lever sx/lh/li
21	2.1470.007.2	2	lock washer 12
22	2.0112.421.2	2	screw m 12 p.1.75 x 60
23.1.1	0.012.7670.0	1	rod
23.1.2	0.012.7671.4	1	joint sx/lh/li
23.1.3	0.012.7672.4	1	joint dx/rh/re
23.2	0.012.7667.0	1	rod dx/rh/re
23.3	0.012.7666.0	1	rod sx/lh/li
24	2.2610.009.0	2	thrust bearing 40x60x13
25	2.3820.105.2	3	lubricator m 10 p.1 x 7
26	0.015.7233.3/20	1	complete axle
26.4	2.1559.078.0	2	bushing 35x41x60
26.5	2.1559.077.0	4	bushing 40 x 46 x 60
27	0.467.5232.0	1	support
28	0.467.5233.0/20	1	support

Section: F0 - FRONT AXLE
4WD - FRONT DRIVE AXLE

Fig.	Code	QTY	Name
------	------	-----	------

Notes:

[TIGER 60 E 4WD ->S10S553WT1E1001]



2	0.008.5332.0/90	1	front axle
3	2.1529.112.0	2	'o' ring 45 x 65 x 18.5
6	2.3199.001.2	3	plug 1/2" gas
7	2.1560.008.0	2	gasket 12.2 x 18
14	2.1011.322.2	13	nut m 12 p.1.25
15	2.1475.004.2	13	washer 12
18	2.0432.257.7	13	stud bolt m 12 p.1.75 - 1.25 x 30
19	2.1651.915.0	2	pin 12x35
20	2.3199.021.2	1	plug 1/2" gas
21	2.1560.054.0	3	gasket 21 x 26
24	2.1099.020.1	2	special nut m 24 p.1.5
28	2.2530.007.0	2	roller bearing 30x72x20.75
29	2.1599.260.0	4	snoulder 43x71x1
30	2.1519.045.0	4	'o' ring 41x73x9
31	0.463.4352.0	4	shim mm 0.15
32	0.463.4351.0	4	shim mm 0.50
33	0.463.4350.0	4	shim mm 0.20
34	0.169.4336.0	2	pin
35	2.3820.105.2	2	lubricator m 10 p.1 x 7
36	2.0112.411.2	12	screw m 12 p.1.75 x 30
37	2.1470.007.2	12	lock washer 12
40	0.008.5389.0/10	1	rod
41	2.1690.412.2	2	split pin 4 x 30
42	0.169.4337.0/10	2	pin
43	2.2550.007.0	2	roller bearing 30x72x28.75
46	0.146.4320.0/20	1	pin
47	2.1011.408.2	4	nut m 14 p.1.5
48	2.1470.008.2	4	lock washer 14
49	2.0432.307.7	4	stud bolt m 14 p.2-1.5x30
50	2.1379.003.0/10	4	small plate 15x15x62x0.12
51	2.1379.004.0/10	4	small plate 15x15x62x1.5
52	2.0599.094.2/10	2	screw m 14 p.2 x 60
53	2.1011.108.2	2	nut m 14 p.2
54	2.3199.065.2	2	plug m 12 p.1.75 x 36
55	0.010.0488.4/10	2	joint
	☞ 0.010.0488.4/10		
59	2.3199.537.0	4	plug Ø 11
60	2.3199.125.0	3	plug 1/8" gas
61	2.3821.103.2	2	lubricator m 10 p.1

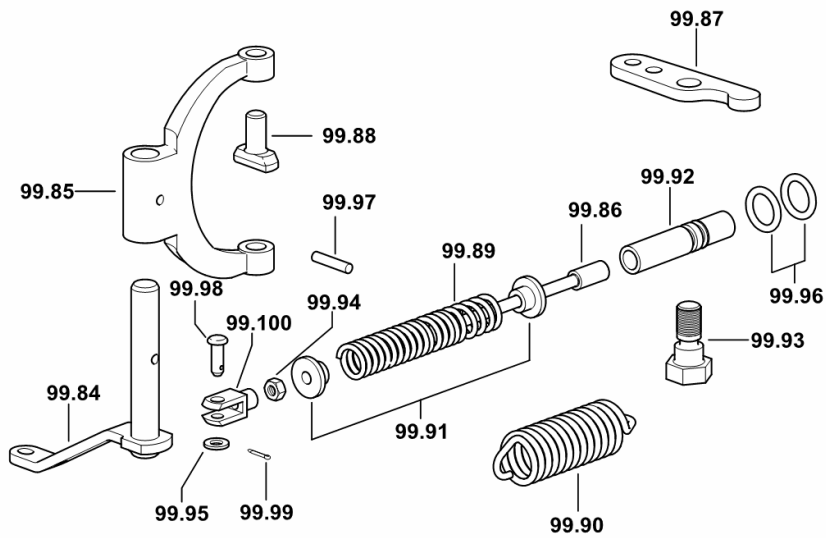
4WD - DIFFERENTIAL LOCK CONTROL-FRONT

Fig.	Code	QTY	Name
------	------	-----	------

Notes:

[TIGER 60 E 4WD ->S10S553WT1E1001]

99.84	0.007.2705.2/10	1	lever (-> 1001)
99.85	0.467.4657.0/10	1	fork
99.86	0.467.4659.0/10	1	ferrule
99.87	0.467.4658.0/20	1	clutch lever
99.88	0.467.4660.0	2	shoe
99.89	2.4019.397.2	1	spring
99.90	2.4049.164.2	1	spring
99.91	0.272.4651.0	2	spacer
99.92	2.1699.276.0	1	pin
99.93	2.0399.120.2/10	1	screw m 10x32
99.94	2.1011.103.2	1	nut m 6 p.1
99.95	2.1310.002.2	1	washer 6.6, d125
99.96	2.1530.024.0	2	'o' ring 10.78 x 2.62
99.97	2.1630.511.0	1	roll pin 5x24
99.98	2.1671.103.2	1	pin 6x18
99.99	2.1690.205.2	1	split pin 2x12
99.100	2.3510.003.2	1	fork m 6



9_D1046_00_0-C-001

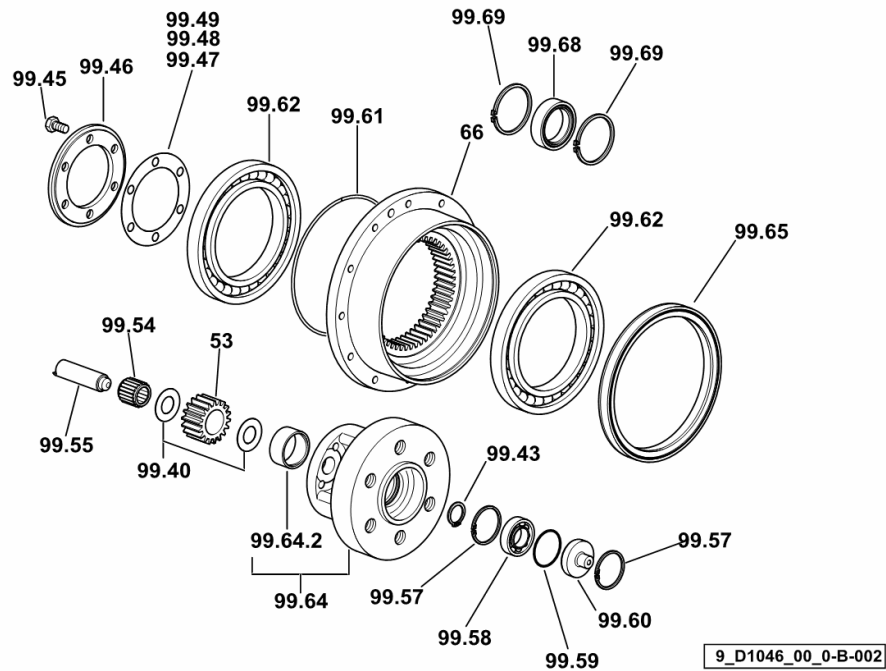
4WD - FRONT REDUCTION GEARBOX

Fig.	Code	QTY	Name
------	------	-----	------

Notes:

[TIGER 60 E 4WD ->S10S553WT1E1001] 1011 <-

53	0.146.4644.0	6	planet gear Z = 18
66	0.008.5345.0	2	crown wheel
99.40	2.1589.552.0	12	shoulder 22x42x1
99.43	2.1419.029.7	2	circlip 25
99.45	2.0113.307.2	12	screw m 10 p 1.5 x 20
99.46	0.008.5401.0/20	2	spider
99.47	0.467.4653.0/10	4	shim 82x119x0.2
99.48	0.467.4654.0/10	4	ring 82x119x0.5
99.49	0.467.4655.0/10	4	ring 82x119x0.15
99.54	2.2999.030.0	6	roller cage 22 x 32 x 30
99.55	0.146.4643.0	6	pin
99.57	2.1411.019.1	4	circlip 47
99.58	2.2030.006.0	2	ball bearing 25 x 47 x 12
99.59	2.1530.118.0	2	'o' ring 46.04x3.53
99.60	0.270.4652.0	2	small cover
99.61	2.1530.276.0	2	'o' ring 177.4x3.53
99.62	2.2020.022.0	4	ball bearing 120x180x19
99.64	0.008.5344.3/50	2	spider
99.64.2	2.1559.309.0	1	bushing
99.65	2.1529.124.0/30	1	'o' ring 173 x 200 x 17
99.68	2.2999.325.0	1	bearing 43.8x62x18
99.69	2.1411.025.1	4	circlip 62



HYDRAULIC SYSTEM

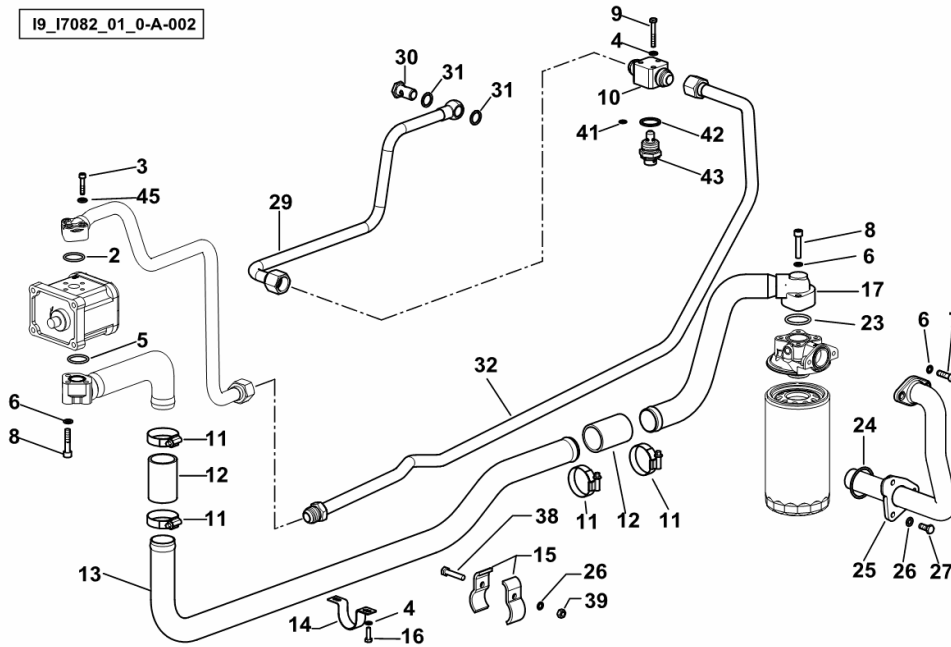
Fig.	Code	QTY	Name
------	------	-----	------

Notes:

- FOR TYPES WITHOUT REAR CONTROL VALVE [TIGER 60 E 2WD ->S10S553WX1E1001] - FOR TYPES WITHOUT REAR CONTROL VALVE [TIGER 60 E 4WD ->S10S553WT1E1001] -> 1022

2	2.1539.233.0	1	'o' ring
3	2.0312.110.2	3	screw m 6 p.1x30
4	2.1470.002.2	5	washer 6, d128
5	2.1539.234.0	1	'o' ring
6	2.1480.014.1	7	washer 8
7	2.0312.210.2	2	screw m 8 p 1.25 x 30
8	2.0312.214.2	5	screw m 8 p.1.25 x 40
9	2.0112.017.2	3	screw m 6 p.1x45
10	0.010.7369.0	1	pipe fitting
11	2.6890.012.2	4	hose clip
12	2.3213.240.0	2	sleeve
13	0.010.1935.0	1	tube
14	0.012.0905.0	1	bracket
15	0.9087.260.0	2	terminal
16	2.0112.007.2	2	screw m 6 p.1 x 20
17	0.012.8046.2	1	tube
23	2.1530.091.0	2	'o' ring 34.60 x 2.62
24	2.1530.120.0	1	'o' ring 47.30x2.62
25	0.012.7545.3	1	tube
26	2.1470.004.2	5	washer 8
27	2.0112.207.2	3	screw m 8 p 1.25 x 20
29	0.010.1936.3/10	1	tube
30	2.3335.008.2	1	pipe union m 18 p.1.5 x 32
30	2.3249.458.2	1	pipe union m 18 p.1.5
31	2.1560.014.0	2	gasket 18.2 x 24 x 1.5
32	0.015.6166.3	1	tube
38	2.0112.215.2	2	screw m 8 p.1.25 x 40
39	2.1011.105.2	2	nut m 8 p.1.25
41	2.1531.016.0	1	ring 8.74 x 1.78
42	2.1560.021.0	1	gasket 28.3x34
43	0.010.7166.3/10	1	valve
45	2.1480.012.2	3	washer 6, d128

I9_I7082_01_0-A-002



TIGER 60 E ->S10S553WT1E1001

Section: H0 - HYDRAULIC AND PNEUMATIC SYSTEM|

Ref.: H0.01.13 (1)

LUBRIC. OIL FILTER

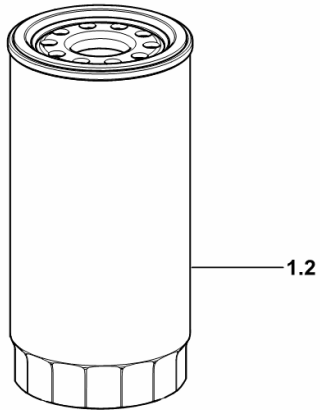
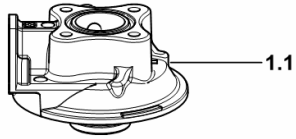
Fig.	Code	QTY	Name
------	------	-----	------

Notes:

- EXPORT IND [TIGER 60 E 2WD ->S10S553WX1E1001] - EXPORT IND [TIGER 60 E 4WD ->S10S553WT1E1001]
-> 1022

1.1	2.4419.350.1/40	1	head
1.2	2.4419.797.0	1	oil filter

I9_I7082_10_0-A-001



TIGER 60 E ->S10S553WT1E1001

Section: H0 - HYDRAULIC AND PNEUMATIC SYSTEM|

Ref.: H0.01.22 (2)

HYDRAULIC SYSTEM - FOR 2-WAY AUXILIARY CONTROL VALVE

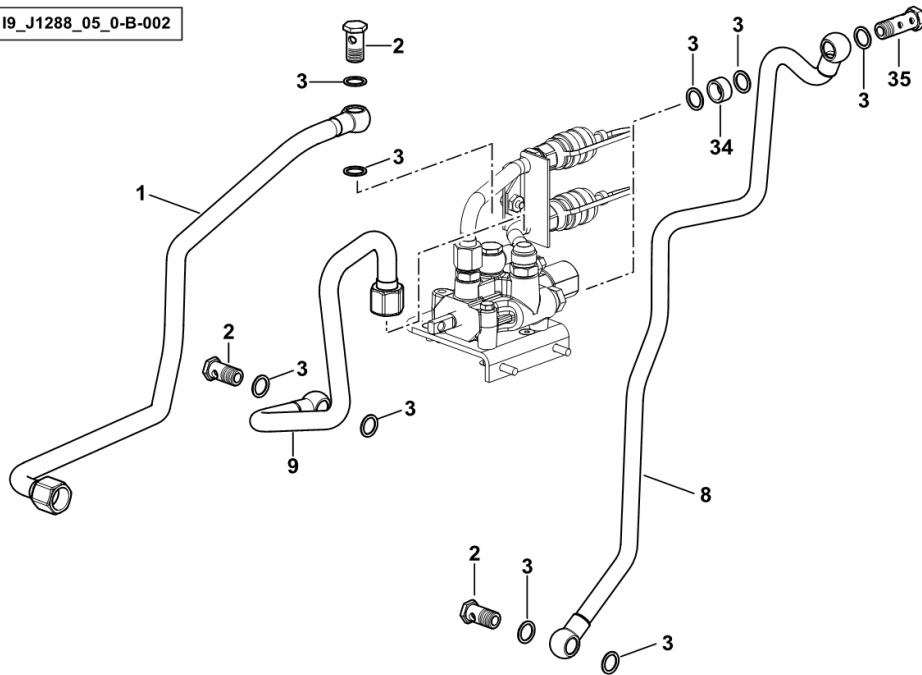
Fig.	Code	QTY	Name
------	------	-----	------

Notes:

- FOR TYPES WITH 2 WAY REAR CONTROL VALVE [TIGER 60 E 2WD ->S10S553WX1E1001] 1013 <- - FOR TYPES WITH 2 WAY REAR CONTROL VALVE [TIGER 60 E 4WD ->S10S553WT1E1001] -> 1012 - 1013 <-

1	0.015.6142.3/10	1	tube
2	2.3339.295.2/10	4	pipe union m 18 p.1.5 x 35
3	2.1560.014.0	13	gasket 18.2 x 24 x 1.5
8	0.015.6144.3/30	1	tube
9	0.015.6143.3	1	tube
34	2.1549.385.2	1	spacer 18.6 x 25 x 13
35	2.3339.115.2	1	pipe union

19_J1288_05_0-B-002



TIGER 60 E ->S10S553WT1E1001

Section: H0 - HYDRAULIC AND PNEUMATIC SYSTEM|

Ref.: H0.01.37 (1)

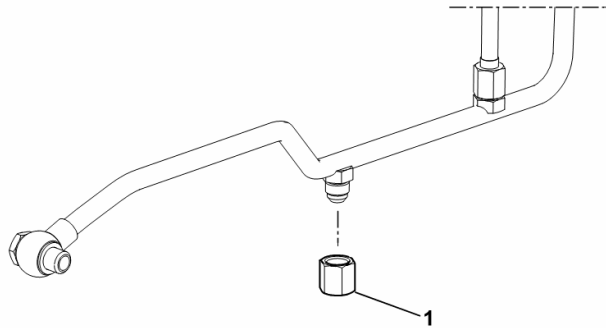
PLUG

Fig.	Code	QTY	Name
------	------	-----	------

Notes:

[TIGER 60 E 2WD ->S10S553WX1E1001]

1	2.3199.343.2	1	plug 9/16-18
---	--------------	---	--------------



19_I7082_03_0-A-001

TIGER 60 E ->S10S553WT1E1001

Section: H0 - HYDRAULIC AND PNEUMATIC SYSTEM|

Ref.: H0.02.4 (1)

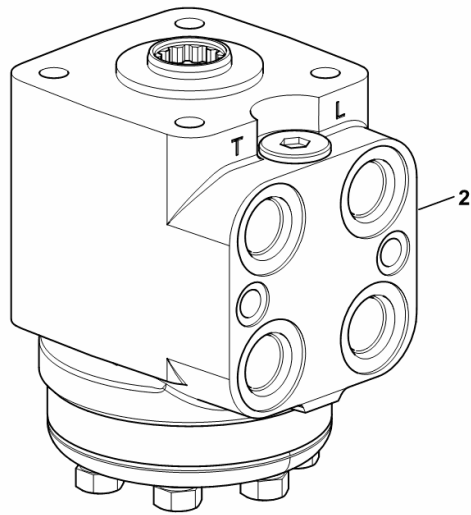
HYDRAULIC STEERING GEAR - 4WD

Fig.	Code	QTY	Name
------	------	-----	------

Notes:

[TIGER 60 E 4WD ->S10S553WT1E1001] -> 1049

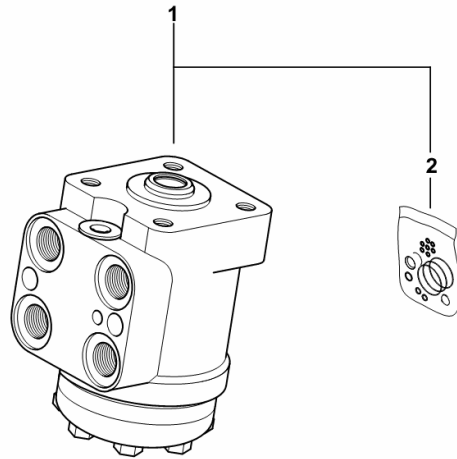
2	2.4569.004.0	1	hydrosteering OGNIBENE - 80 CC ☞ 2.4569.004.0
---	--------------	---	--------------------------------------------------



19_E6163_00_0-A-001

POWER STEERING

Fig.	Code	QTY	Name
1	2.4569.001.0	1	hydrosteering ST Z OR 80 M 100 -LNV-
2	0.010.3698.1	1	seal ring kit



2_4569_001_0

TIGER 60 E ->S10S553WT1E1001

Section: H0 - HYDRAULIC AND PNEUMATIC SYSTEM|

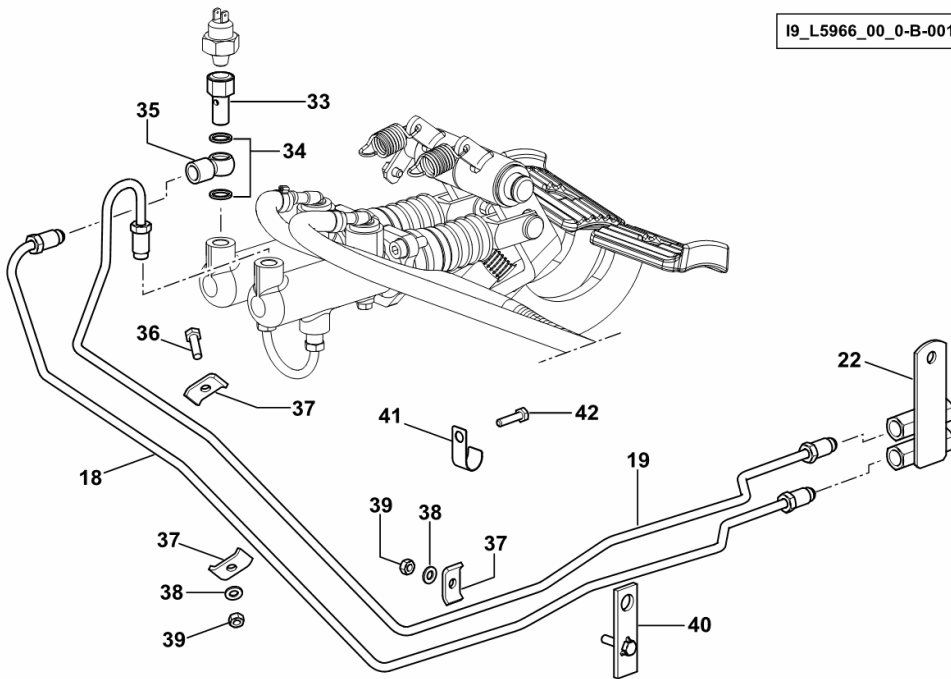
Ref.: H0.09.1 (1)

BRAKING SYSTEM

Fig.	Code	QTY	Name
------	------	-----	------

Notes:

[TIGER 60 E 2WD ->S10S553WX1E1001] -> 1022 [TIGER 60 E 4WD ->S10S553WT1E1001] -> 1022



18	0.010.1937.3	1	tube
19	0.010.4191.3	1	tube
22	0.010.4197.3/10	1	bracket
33	2.3339.904.2	1	pipe fitting
34	2.1560.007.0	2	gasket 12.2x16
35	2.3339.374.2	1	pipe fitting m 12 p.1.25
36	2.0112.007.2	4	screw m 6 p.1 x 20
37	0.200.8152.0	6	small plate
38	2.1310.002.2	3	washer 6.6, d125
39	2.1011.103.2	3	nut m 6 p.1
40	0.226.6658.2	1	small plate
41	2.6819.004.2	1	clamp Ø 17
42	2.0112.009.2	1	screw m 6 p.1 x 25

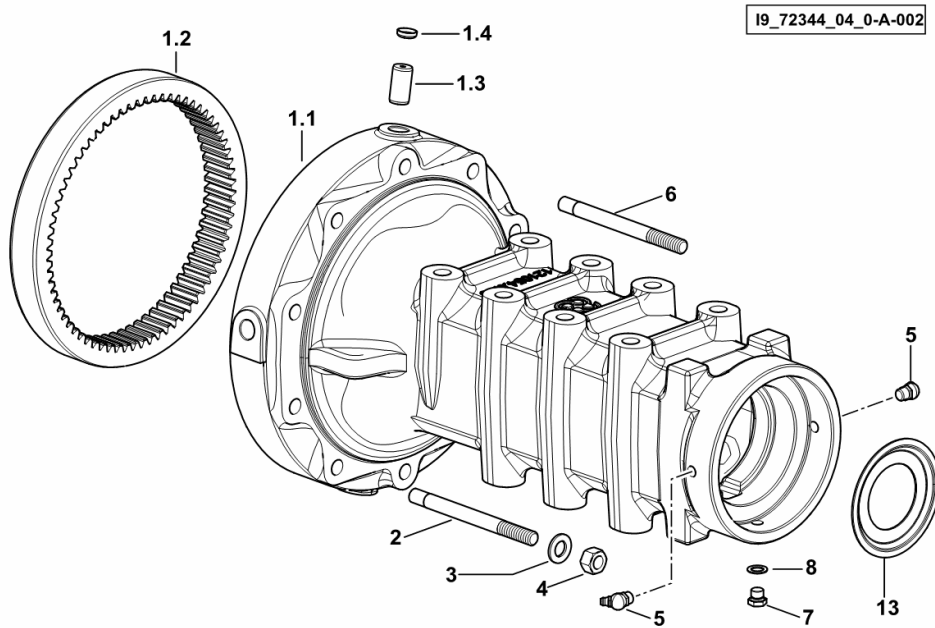
REAR AXLE

Fig.	Code	QTY	Name
------	------	-----	------

Notes:

- FOR TYPES WITH LONG SEALED REAR AXLE [TIGER 60 E 2WD ->S10S553WX1E1001] - FOR TYPES WITH LONG SEALED REAR AXLE [TIGER 60 E 4WD ->S10S553WT1E1001]

1.1	0.012.1054.0/30	1	support
1.2	0.008.5266.0	1	bevel ring gear
1.3	2.1699.259.0	4	pin 16x30
1.4	2.3171.006.4	4	plug Ø 16
2	2.1475.004.7	20	washer 13 x 24
3	2.0432.277.7	19	stud bolt m 12 p.1.75 - 1.25 x 120
4	2.1011.422.2	20	nut m 12 p.1.25
5	2.3821.103.2	4	lubricator m 10 p.1
6	2.0432.278.7	1	stud bolt m 12 p.1.75 - 1.25 x 130
7	2.3110.401.7	2	plug
8	2.1560.006.0	2	gasket 10.2 x 16
13	0.255.4451.0	2	cup

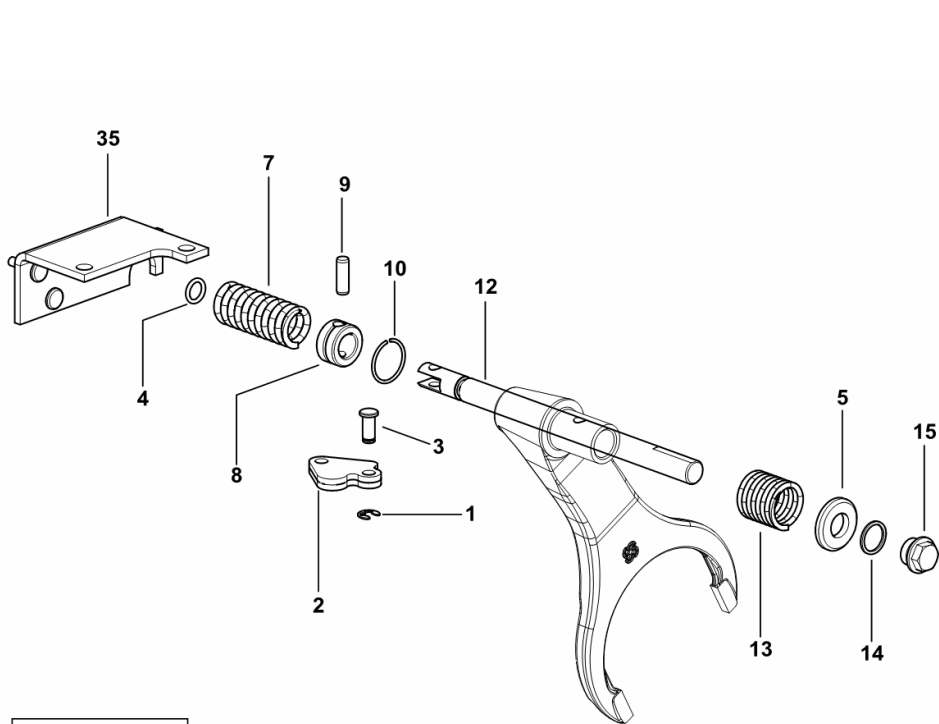


DIFFERENTIAL LOCK CONTROL

Fig.	Code	QTY	Name
------	------	-----	------

Notes:

- 2WD - FOR TYPES WITH LONG SEALED REAR AXLE [TIGER 60 E 2WD ->S10S553WX1E1001] - 4WD - FOR TYPES WITH LONG SEALED REAR AXLE [TIGER 60 E 4WD ->S10S553WT1E1001]



1	2.1430.008.7	1	circlip 7
2	0.178.6813.2	1	transmission
3	2.1699.443.2	1	pin
4	2.1530.028.0	1	'o' ring 11.91 x 2.62
5	2.1549.119.0/10	1	spacer
7	2.4019.339.1	1	spring 32x56.5x3.5
8	0.008.5281.0	1	stop
9	2.1651.711.0	1	pin 8 x 14
10	2.1420.011.1	1	circlip Ø 28
12	0.010.1279.0	1	rod
13	2.4019.225.1	1	spring 28 x 79 x 4.5
14	2.1560.013.0	1	gasket 18.2x22
15	2.3110.405.1	1	plug m 18 p.1.5 x 15
35	0.010.1275.3	1	flange

I9_72335_00_0-A-001

TIGER 60 E ->S10S553WT1E1001

R0 - REAR LIFT

LIFT COVER

S.A.C. CASE.....	R0.01.0 (1)
LUBRIC. OIL FILTER.....	R0.01.1 (1)

LIFT ASSEMBLY

LIFTING.....	R0.02.0 (1)
LIFTING.....	R0.02.0 (2)
PLUG.....	R0.02.2 (1)

LIFT CONTROL VALVE

FLOW CONTROL VALVE WITH MECHANICAL CONTROL.....	R0.03.0 (1)
FLOW CONTROL VALVE WITH MECHANICAL CONTROL.....	R0.03.1 (1)

IN-CAB CONTROLS

INTERNAL AND EXTERNAL CONTROLS.....	R0.04.0 (1)
-------------------------------------	-------------

SENSOR

SENSITIVE ELEMENTS.....	R0.05.0 (1)
SENSITIVE ELEMENTS.....	R0.05.0 (2)
SENSITIVE ELEMENTS.....	R0.05.1 (1)

THREE-POINT LINKAGE - LINK ARMS

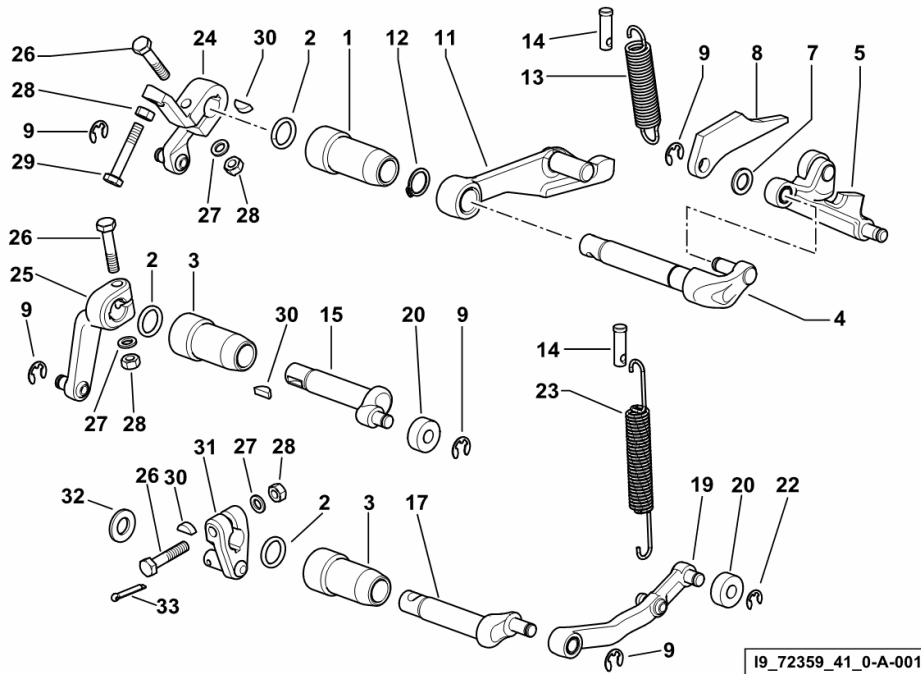
3 POINT HITCH.....	R0.06.0 (1)
THREE-POINT COUPLING.....	R0.06.1 (1)
THREE-POINT COUPLING.....	R0.06.2 (1)
THREE-POINT COUPLING.....	R0.06.2 (2)
THREE-POINT HITCH COMPLEMENT.....	R0.06.7 (1)
3-POINT HITCH - SIDE STABILIZERS.....	R0.06.8 (1)
3-POINT HITCH - SIDE STABILIZERS.....	R0.06.9 (1)
3-POINT HITCH - SIDE STABILIZERS.....	R0.06.10 (1)
TOP LINK COUPLING SPRING.....	R0.06.14 (1)
TOP LINK COUPLING SPRING.....	R0.06.15 (1)
TOP LINK LOCK - FOR 2-WAY CONTROL VALVE.....	R0.06.16 (1)
TOP LINK LOCK - FOR 4-WAY CONTROL VALVE.....	R0.06.17 (1)
TOWING BAR.....	R0.06.20 (1)

INTERNAL AND EXTERNAL CONTROLS

Fig.	Code	QTY	Name
------	------	-----	------

Notes:

[TIGER 60 E 2WD ->S10S553WX1E1001] [TIGER 60 E 4WD ->S10S553WT1E1001]



1	0.001.3659.0	1	bushing
2	2.1530.034.0	3	'o' ring 13.95x2.62
3	0.9104.425.0	2	bushing
4	0.009.2389.3/10	1	pin
5	0.009.2390.3/20	1	lever
7	2.1310.004.2	1	flat washer 8.5
8	0.009.2391.0/10	1	lever
9	2.1430.008.7	5	circlip 7
11	0.009.2392.3	1	lever
12	2.1410.003.1	1	circlip 14
13	2.4049.178.1/10	1	spring
14	0.9000.562.0	1	pin
15	0.9104.441.0/10	1	lever
17	0.009.2393.0/20	1	pin
19	0.009.2848.3	1	lever
20	0.001.3702.0	2	roller
22	2.1430.007.7	1	circlip 6, d128
23	2.4049.183.1	1	spring
24	0.009.2394.3/10	1	lever
25	0.009.2395.3/20	1	lever
26	2.0112.011.2	3	screw m 6 p.1x30
27	2.1470.002.2	3	washer 6, d128
28	2.1011.103.2	4	nut m 6 p.1
29	2.0112.013.2	1	screw m 6 p.1 x 35
30	2.1720.005.0	3	key 4x5
31	0.012.8282.3	1	lever (1011 <-)
31	0.012.8282.3/10	1	lever (-> 1012)
32	2.1310.006.2	1	flat washer 10.5
33	2.1690.307.2	1	split pin 3.2x18

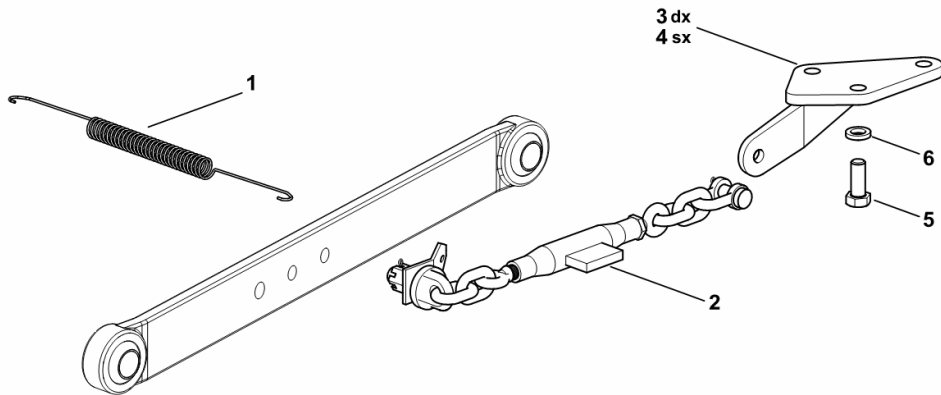
3-POINT HITCH - SIDE STABILIZERS

Fig.	Code	QTY	Name
------	------	-----	------

Notes:

[TIGER 60 E 2WD ->S10S553WX1E1001] 1011 <- [TIGER 60 E 4WD ->S10S553WT1E1001] 1011 <-

1	2.4049.111.2	1	spring
2	0.012.8073.4/10	2	stop control
3	0.017.2304.2	1	plate dx/rh/re
4	0.017.2303.2	1	plate sx/lh/li
5	2.0112.615.2	6	screw m 16 p.2 x 40
6	2.1474.013.2	6	washer 16



19_14858_02_0-A-001

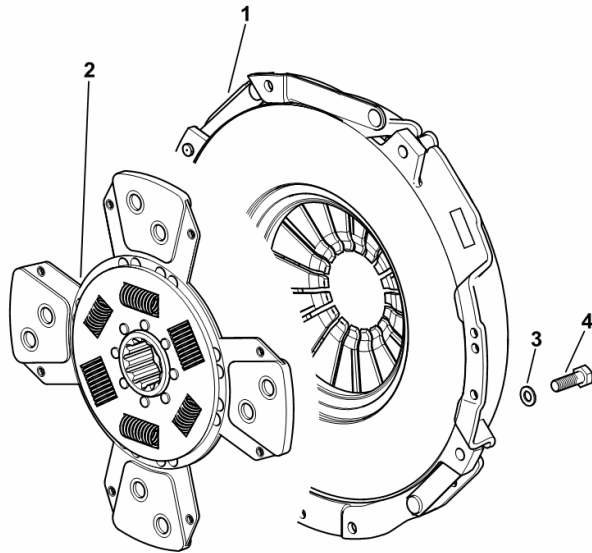
CLUTCH

Fig.	Code	QTY	Name
------	------	-----	------

Notes:

- FOR TYPES WITH SINGLE CLUTCH [TIGER 60 E 2WD ->S10S553WX1E1001] - FOR TYPES WITH SINGLE CLUTCH [TIGER 60 E 4WD ->S10S553WT1E1001]

1	0.012.1186.3	1	clutch assy
2	0.012.1187.3/10	1	clutch disc
3	2.1474.009.2	6	spring washer 8
4	0.012.1004.0	6	screw m8x25



19_72323_05_0-A-001

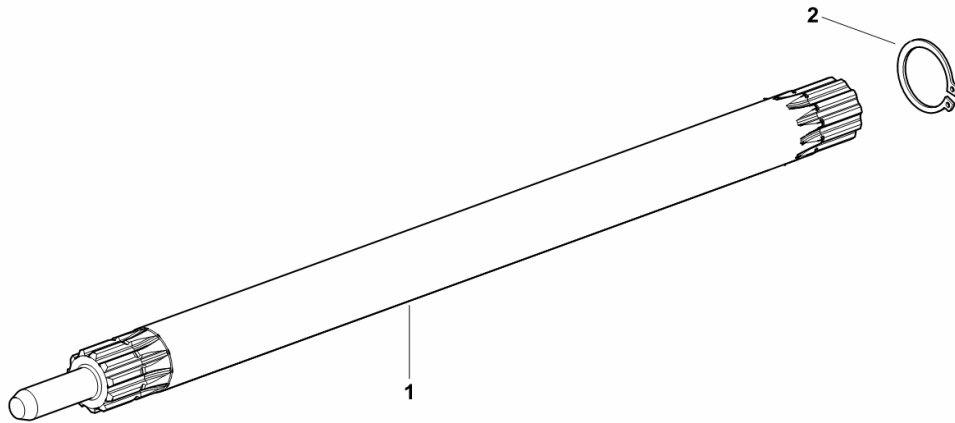
DRIVE SHAFT - P.T.O. SHAFT REAR

Fig.	Code	QTY	Name
------	------	-----	------

Notes:

- FOR TYPES WITH REAR PTO 540/750 RPM [TIGER 60 E 2WD ->S10S553WX1E1001] - FOR TYPES WITH REAR PTO 540/750 RPM [TIGER 60 E 4WD ->S10S553WT1E1001]

1	0.015.6208.0/10	1	shaft
2	2.1410.010.7	1	ring 25



19_J1436_02_0-A-001

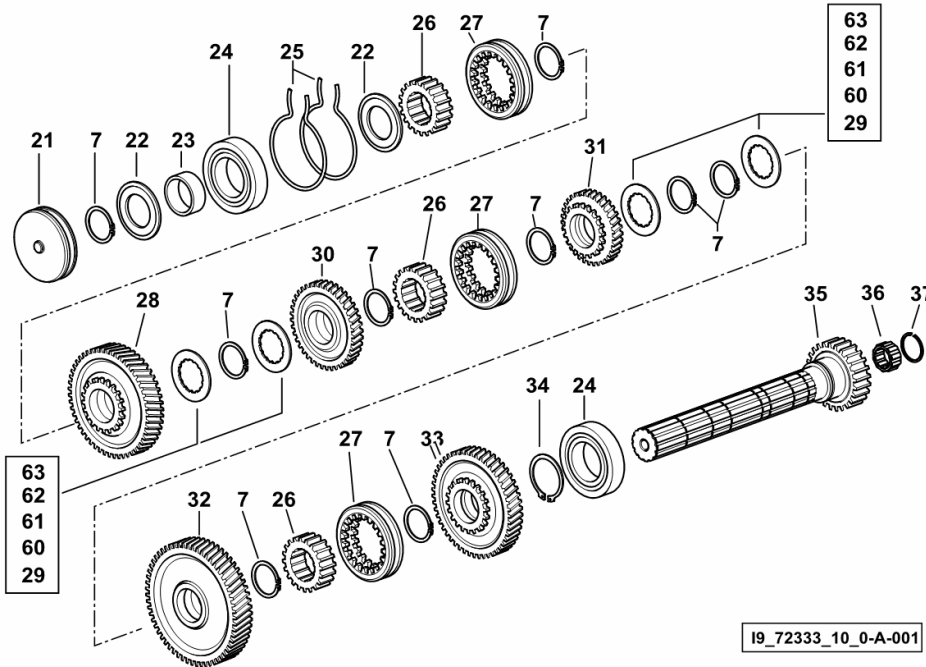
TRANSMISSION SHAFT

Fig.	Code	QTY	Name
------	------	-----	------

Notes:

- FOR NON-SYNCHRONISED GEARBOX - WITH 14 KPH REVERSE [TIGER 60 E 2WD ->S10S553WX1E1001] -
 FOR NON-SYNCHRONISED GEARBOX - WITH 14 KPH REVERSE [TIGER 60 E 4WD ->S10S553WT1E1001]

7	2.1419.092.0	10	circlip
21	0.008.5724.0/20	1	flange
22	2.1599.768.0	2	ring
23	2.1559.313.0/10	1	sleeve 42x50x19.5
24	2.2042.014.9	2	ball bearing 50 x 90 x 20
25	2.1499.123.1/10	2	circlip 86 x 2.46
26	0.010.1060.0	3	hub Z = 20
27	0.010.1059.0	3	hub Z = 20
28	0.012.1535.0/10	1	gear Z = 51
29	0.008.0251.0	0.8	shim 39 x 64 x 2.65
30	0.010.1016.0	1	gear z=39
31	0.010.1017.0/10	1	gear z = 33
32	0.010.1014.0	1	gear Z = 59
33	0.010.1015.0/10	1	gear Z = 39
34	2.1410.020.1	1	circlip 50
35	0.010.1269.0/20	1	countershaft
36	2.2999.173.0	1	roller cage 23 x 35 x 16.2
37	2.1423.026.7	1	circlip 35 x 1.5
60	0.010.0629.0	0.8	shim 39 x 64 x 2.85
61	0.010.0630.0	0.8	shim 39 x 64 x 3.05
62	0.010.0631.0	0.8	shim 39 x 64 x 3.25
63	0.010.0632.0	0.8	shim 39 x 64 x 3.45



Section: D0 - TRANSMISSION
GEARBOX UPPER COVER

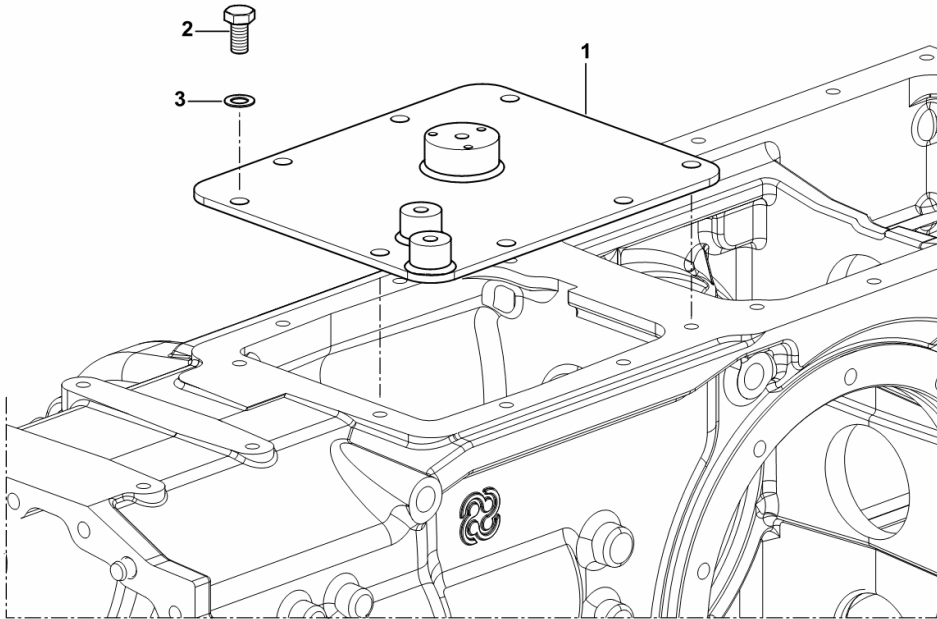
Fig.	Code	QTY	Name
------	------	-----	------

Notes:

- FOR TYPES WITHOUT REAR CONTROL VALVE [TIGER 60 E 2WD ->S10S553WX1E1001] - FOR TYPES WITHOUT REAR CONTROL VALVE [TIGER 60 E 4WD ->S10S553WT1E1001] -> 1022

1	0.010.1403.2/10	1	cover
2	2.0112.307.2	8	screw m 10 p.1.5 x 20
3	2.1470.006.2	8	lock washer 10

19_17031_05_0-A-001

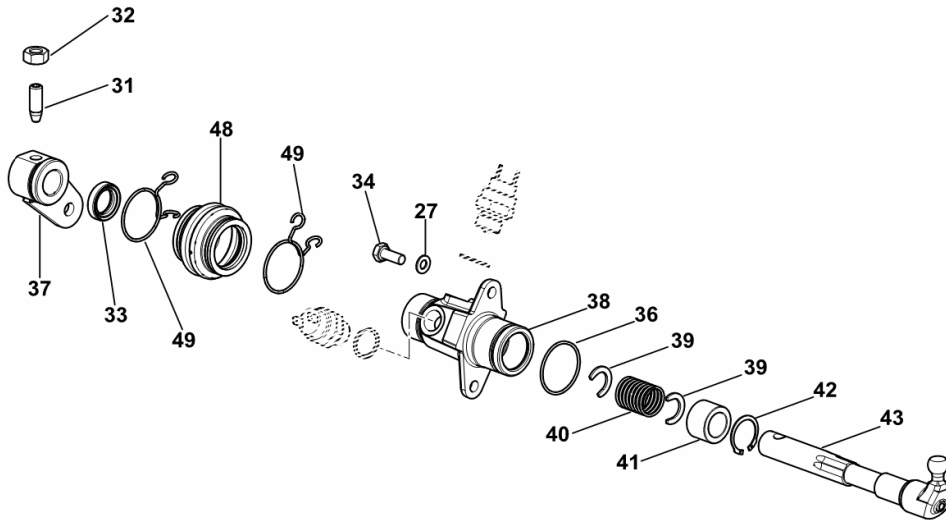


Section: D0 - TRANSMISSION
IN-CAB GEAR CONTROLS

Fig.	Code	QTY	Name
------	------	-----	------

Notes:

- FOR TYPES WITH 4 SPEED 3 RANGE GEARBOX [TIGER 60 E 2WD ->S10S553WX1E1001] - FOR TYPES WITH 4 SPEED 3 RANGE GEARBOX [TIGER 60 E 4WD ->S10S553WT1E1001] -> 1002



27	2.1470.004.2	5	washer 8
31	2.0399.050.2	1	screw m 10 p.1 x 30
32	2.1011.406.2	1	nut m 10 p.1
33	2.1520.006.0	1	oil seal 20 x 30 x 7
34	2.0112.207.2	2	screw m 8 p 1.25 x 20
36	2.1530.091.0	1	'o' ring 34.60 x 2.62
37	0.012.7586.2	1	lever
38	0.012.7587.0/10	1	support
39	0.008.5405.0	2	ring
40	2.4019.565.1/10	1	spring
41	2.1559.311.0	1	bushing 20x30x20
42	2.1419.073.0	1	circlip 30x1.2
43	0.010.1409.0/30	1	lever
48	0.012.7585.0/10	1	guard
49	2.6859.107.2	2	spring

19_D1064_10_0-B-002

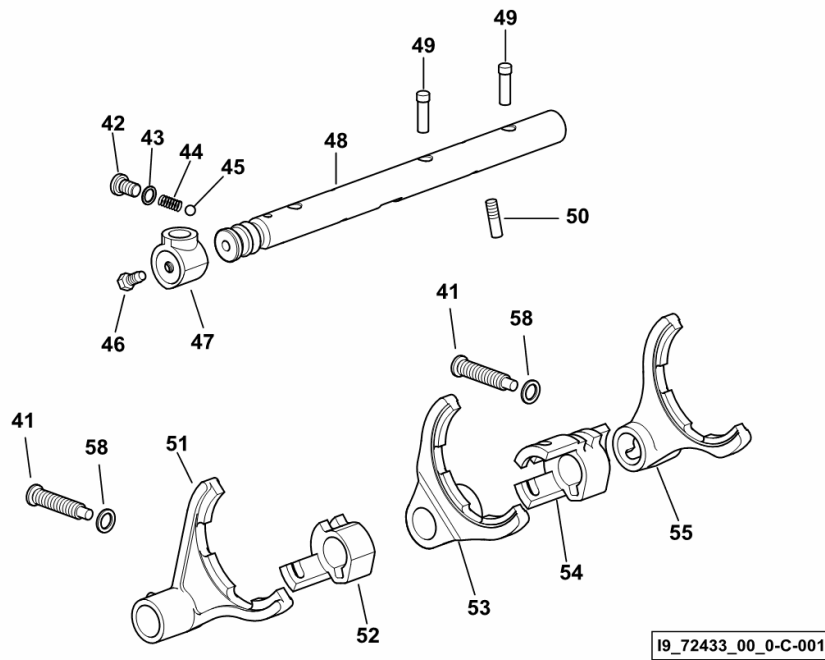
INTERNAL CONTROLS

Fig.	Code	QTY	Name
------	------	-----	------

Notes:

- FOR SYNCHRONISED GEARBOX - WITH 14 KPH ERVERSE [TIGER 60 E 2WD ->S10S553WX1E1001] - FOR SYNCHRONISED GEARBOX - WITH 14 KPH ERVERSE [TIGER 60 E 4WD ->S10S553WT1E1001]

41	2.0399.206.2	2	screw m 12 p.1.75 x 56.5
42	2.3199.238.2	1	plug m 10
43	2.1560.005.0	1	gasket 10.2 x 14
44	2.4019.670.1	1	spring 5 x 8 x 1.5 x 22.5
45	2.2810.004.0	1	ball 5/16"
46	2.0399.019.1	1	screw m 8 p.1 x 16
47	0.008.5226.0/20	1	hub
48	0.008.5130.0/70	1	rod
49	0.008.5994.0/10	3	pin
50	2.0399.286.0/10	2	grain m 8 p.1.25 x 28
51	0.014.6201.0	1	fork
52	0.008.5198.0/40	1	hub
53	0.014.6202.0	1	fork
54	0.010.4945.0	1	sleeve
55	0.014.6203.0/10	1	fork
58	2.1560.008.0	2	gasket 12.2 x 18



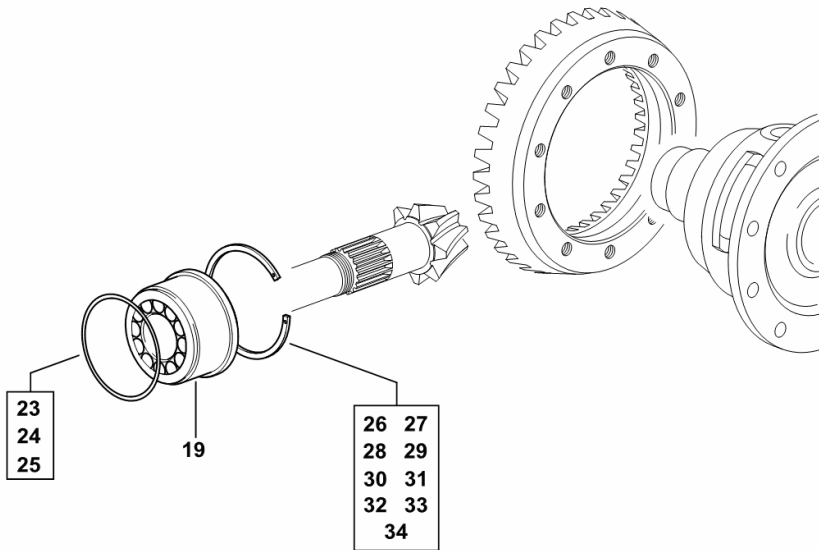
BEVEL DRIVE PINION BEARING

Fig.	Code	QTY	Name
------	------	-----	------

Notes:

- FOR TYPES WITHOUT REAR DIFFERENTIAL CONTROL AND LONG SEALED REAR AXLE [TIGER 60 E 2WD ->S10S553WX1E1001]

19	2.2999.233.0	1	bearing 40 x 85 x 54
23	2.1589.225.0	2	snoulder mm 0.15
24	2.1589.226.0	2	snoulder mm 0.20
25	2.1589.227.0	2	snoulder mm 0.50
26	2.1419.056.0/10	1	circlip 99 x 2.8
27	2.1419.057.0/10	1	circlip 99 x 2.9
28	2.1419.058.0/10	1	circlip 99 x 3.0
29	2.1419.059.0/10	1	circlip 99 x 3.1
30	2.1419.060.0/10	1	circlip 99 x 3.2
31	2.1419.061.0/10	1	circlip 99 x 3.3
32	2.1419.062.0/10	1	circlip 99x3.4
33	2.1419.063.0/10	1	circlip 99x3.5
34	2.1419.064.0/10	1	circlip 99x3.6



I9_72335_06_0-A-001

TIGER 60 E ->S10S553WT1E1001

Section: D0 - TRANSMISSION

Ref.: D0.14.1 (1)

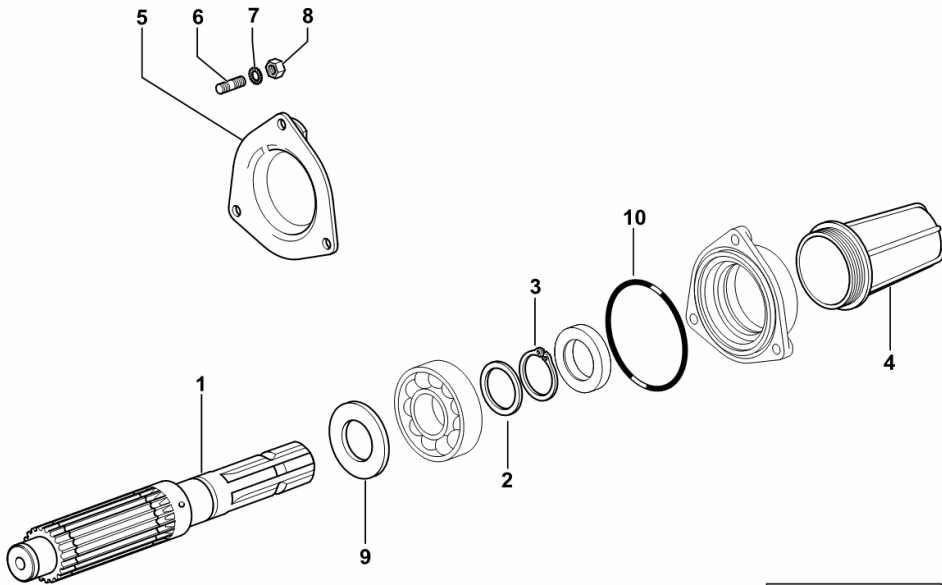
P.T.O. - 2 SPEED TYPE - FIXED END SHAFT 540/750

Fig.	Code	QTY	Name
------	------	-----	------

Notes:

[TIGER 60 E 2WD ->S10S553WX1E1001] [TIGER 60 E 4WD ->S10S553WT1E1001]

1	0.012.0098.0/30	1	shaft
2	2.1599.421.0	1	snoulder 35 x 45 x 3.0
3	2.1412.013.7	1	ring Ø 35
4	0.154.3655.0/10	1	guard
5	0.008.5181.3/30	1	complete cover
6	2.0422.203.7	9	stud bolt m 8 p.1.25 x 20
7	2.1470.004.2	9	washer 8
8	2.1011.105.2	9	nut m 8 p.1.25
9	2.1599.792.0	1	shoulder
10	2.1539.025.0/10	1	'o' ring 88.57 x 2.62



19_C1236_04_0-A-001

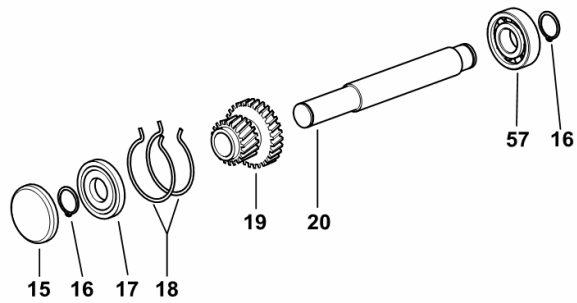
REVERSE GEAR INTERMEDIATE SHAFT

Fig.	Code	QTY	Name
------	------	-----	------

Notes:

- FOR NON SYNCHRONISED GEARBOX - WITH 10 KPH REVERSE [TIGER 60 E 2WD ->S10S553WX1E1001] -
 FOR NON SYNCHRONISED GEARBOX - WITH 10 KPH REVERSE [TIGER 60 E 4WD ->S10S553WT1E1001]

15	2.3179.016.0	1	expansion plug Ø 72
16	2.1410.012.1	2	circlip 30
17	2.2063.009.9	1	ball bearing 30 x 72 x 19
18	2.1499.124.1/10	2	circlip 68 x 1.7
19	0.010.1000.0	1	gear z=20 z=29
20	0.010.0999.0	1	shaft
57	2.2060.009.9	1	bearing 30 x 72 x 19



I9_72333_00_0-D-001

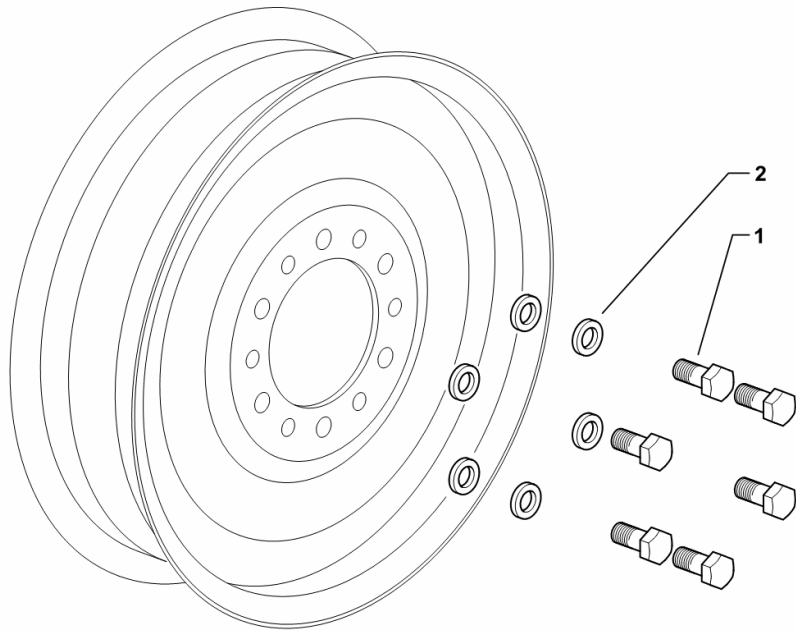
2WD - FRONT WHEEL MOUNTING

Fig.	Code	QTY	Name
------	------	-----	------

Notes:

[TIGER 60 E 2WD ->S10S553WX1E1001]

1	2.0112.615.2	12	screw m 16 p.2 x 40
2	2.1475.206.2	12	washer 16



I9_72355_03_0-A-001

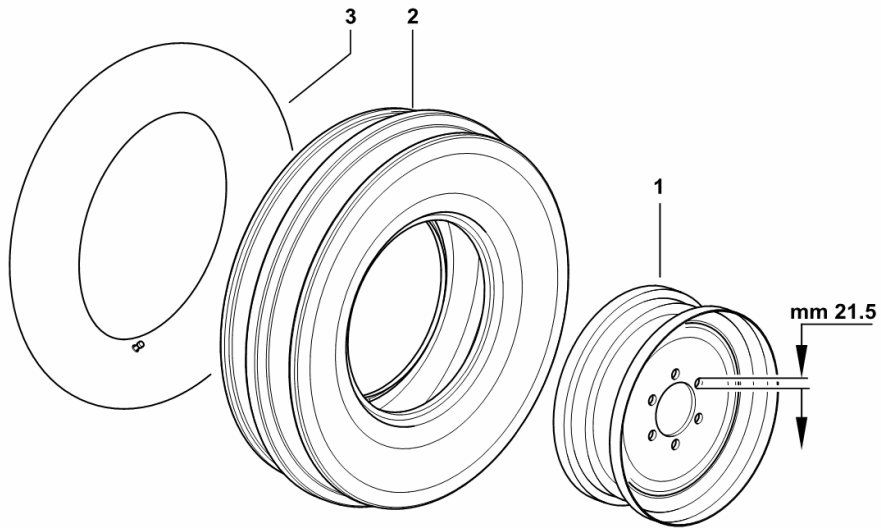
2WD - FRONT WHEELS 7.50 x 16" pr 8

Fig.	Code	QTY	Name
------	------	-----	------

Notes:

[TIGER 60 E 2WD ->S10S553WX1E1001]

1	0.012.8309.2	2	rim 5.50Fx16"
2	2.4810.029.0	2	tyre 7.50 x 16" pr 8
3	2.4820.017.0	2	air chamber x 7.50-16



I9_J1255_11_0-A-001

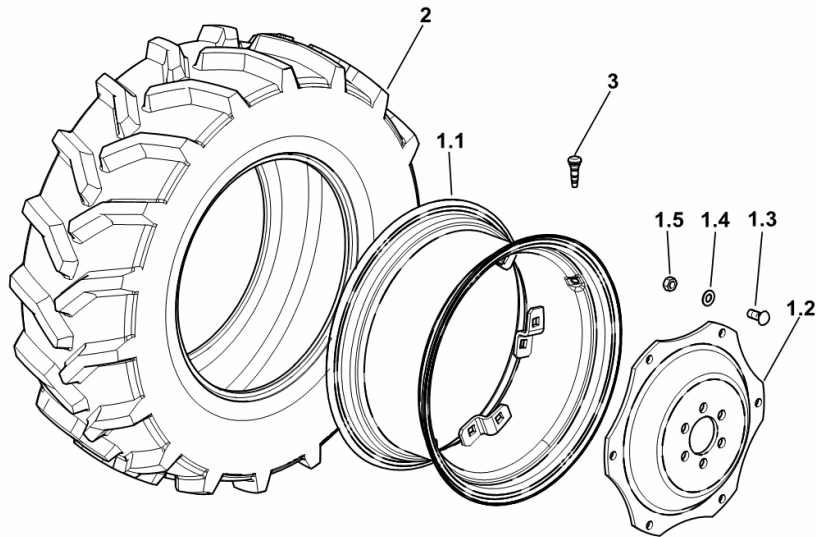
WHEELS 280/85R20" (11.2R20")

Fig.	Code	QTY	Name
------	------	-----	------

Notes:

[TIGER 60 E 4WD ->S10S553WT1E1001]

1.1	0.013.4310.3	1	rim W 10x20" C/ST
1.2	0.010.4301.0	1	rim center flange
1.3	2.0099.005.6	6	screw m 16 p.1.5 x 38
1.4	2.1499.019.6	6	washer 16.3 x 31.5
1.5	2.1019.059.6	6	nut m 16 p.1.5 x 16
2	2.4811.226.0	2	tyre 280/85R20" (11.2R20")
3	0.012.6364.0	2	valve



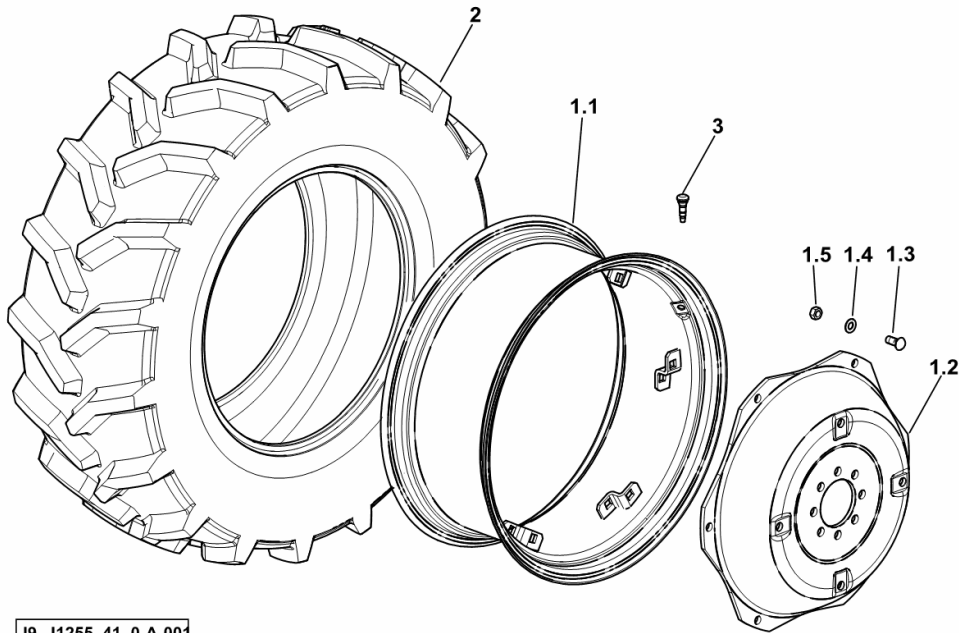
WHEELS 320/85R28"(12.4R28")

Fig.	Code	QTY	Name
------	------	-----	------

Notes:

[TIGER 60 E 2WD ->S10S553WX1E1001] [TIGER 60 E 4WD ->S10S553WT1E1001]

1.1	0.012.3010.3	1	rim W 11X28" C/ST.
1.2	0.255.5559.0/20	1	rim center flange 28"
1.3	2.0399.030.6	6	screw m 18 p.1.5 x 45
1.4	2.1499.018.6	6	conical washer 18 x 35.5
1.5	2.1011.310.6	6	nut m 18 p.1.5
2	2.4811.060.0	2	tyre 320/85R28"(12.4R28")
3	0.012.6364.0	2	valve



19_J1255_41_0-A-001

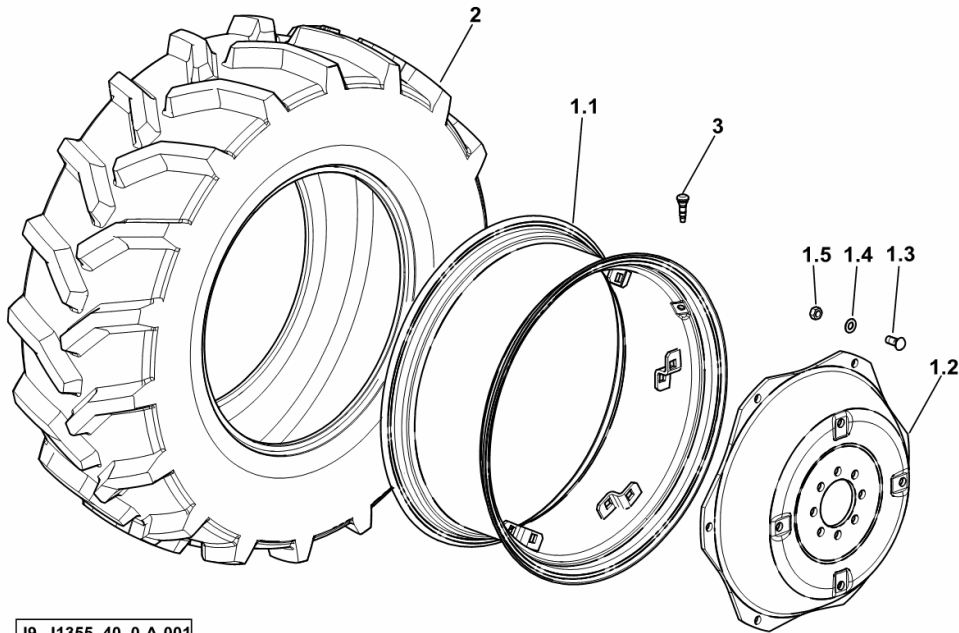
WHEELS 380/85R28"(14.9R28")

Fig.	Code	QTY	Name
------	------	-----	------

Notes:

[TIGER 60 E 2WD ->S10S553WX1E1001] [TIGER 60 E 4WD ->S10S553WT1E1001]

1.1	0.012.2912.3	1	rim W 12x28" C/ST.
1.2	0.258.5551.0	1	rim center flange
1.3	2.0399.030.6	6	screw m 18 p.1.5 x 45
1.4	2.1499.018.6	6	conical washer 18 x 35.5
1.5	2.1011.310.6	6	nut m 18 p.1.5
2	2.4811.048.0	2	tyre 380/85R28"(14.9R28")
3	0.012.6364.0	2	valve



19_J1355_40_0-A-001

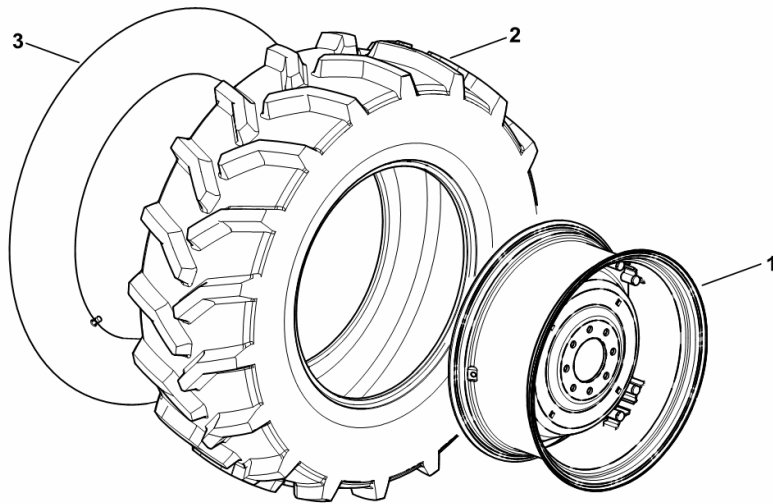
WHEELS 16.9-28"

Fig.	Code	QTY	Name
------	------	-----	------

Notes:

[TIGER 60 E 2WD ->S10S553WX1E1001] [TIGER 60 E 4WD ->S10S553WT1E1001]

1	0.014.6204.4	2	rim W15Lx28"
2	2.4811.223.0	2	tyre 16.9-28"
3	2.4820.039.0	2	air chamber



19_R9755_45_0-A-001

CLICK HERE TO **DOWNLOAD** THE COMPLETE MANUAL

- Thank you very much for reading the preview of the manual.
- You can download the complete manual from: www.heydownloads.com by clicking the link below



- Please note: If there is no response to CLICKING the link, please download this PDF first and then click on it.

CLICK HERE TO **DOWNLOAD** THE COMPLETE MANUAL