

# SUPERTITAN

## ACCESSORIES

### GENERAL

REXROTH 6-WAY AUXILIARY CONTROL VALVE.....	0E.00.1
REXROTH 6-WAY AUXILIARY CONTROL VALVE.....	0E.00.2
6-WAY AUXILIARY DISTRIBUTOR.....	0E.00.3
6-WAY AUXILIARY DISTRIBUTOR.....	0E.00.4
DISTRIBUTOR PARTS.....	0E.00.5
HYDRAULIC DISTRIBUTOR-PARTS.....	0E.00.6
REXROTH 8-WAY AUXILIARY CONTROL VALVE.....	0E.00.7
REXROTH 8-WAY AUXILIARY CONTROL VALVE.....	0E.00.8
8-WAY AUXILIARY DISTRIBUTOR.....	0E.00.9
8-WAY DISTRIBUTOR EQUIPMENT.....	0E.00.10
DISTRIBUTOR PARTS.....	0E.00.11
HYDRAULIC DISTRIBUTOR-PARTS.....	0E.00.12
3 POINT HITCH.....	0E.00.13
3 POINT HITCH.....	0E.00.14
3 POINT HITCH.....	0E.00.15
ADJUSTABLE LIFT ROD PARTS.....	0E.00.16
TOWING BAR.....	0E.00.17
REAR TOWING HITCH.....	0E.00.18
REAR TOWING HITCH.....	0E.00.19
REAR TOWING HITCH.....	0E.00.20
REAR OSCILLATING HITCH.....	0E.00.21
REAR TOWING HITCH.....	0E.00.22
FRONT TOWING HITCH.....	0E.00.23
TOWING HOOK WITH FRONT POWER-LIFT.....	0E.00.24
REAR TOWING HITCH.....	0E.00.25
FRONT BALLAST.....	0E.00.26
FRONT BALLAST.....	0E.00.27
BALLAST.....	0E.00.28
HYDRAULIC BREAKING FOR TRAILER.....	0E.00.29
HYDRAULIC BREAKING FOR TRAILER - EXPORT F.....	0E.00.30
EQUIPMENT WITHOUT TRAILER BRAKING SYSTEM.....	0E.00.31
TOOL POUCH.....	0E.00.32
CYLINDER PARTS.....	0.007.7334.4/10.A
REAR TOWING HITCH.....	0.008.8805.3/20.A
REAR TOWING HITCH.....	0.009.1964.3/20.A
DRAWBAR COUPLING CRAMER.....	0.009.3298.4/30.A
DRAWBAR COUPLING CRAMER.....	0.009.3299.4/30.A
3 POINT HITCH.....	0.009.3533.4.A
ENGAGEMENT.....	0.010.0408.4.A
TOWING HITCH.....	0.010.1703.3.A

CLICK HERE TO **DOWNLOAD** THE COMPLETE MANUAL

- Thank you very much for reading the preview of the manual.
- You can download the complete manual from: [www.heydownloads.com](http://www.heydownloads.com) by clicking the link below



- Please note: If there is no response to CLICKING the link, please download this PDF first and then click on it.

CLICK HERE TO **DOWNLOAD** THE COMPLETE MANUAL

**HYDRAULIC DISTRIBUTOR-PARTS**

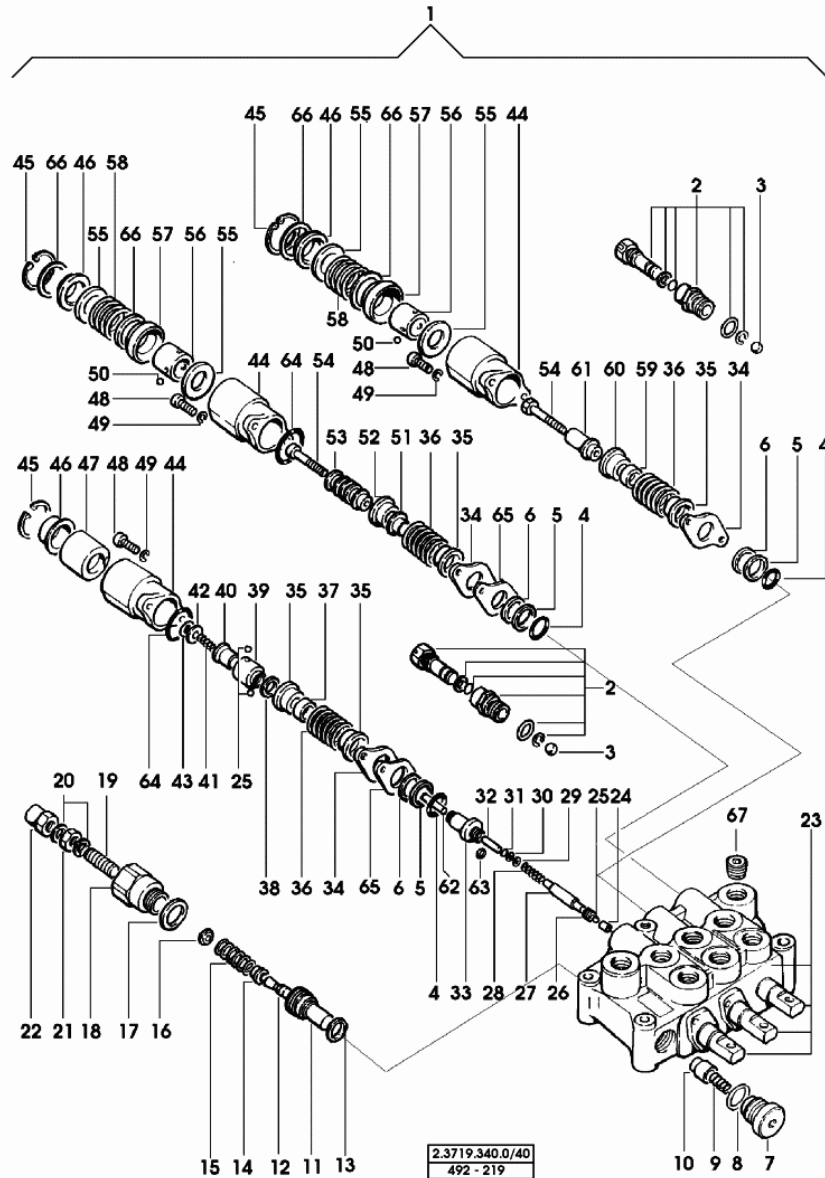
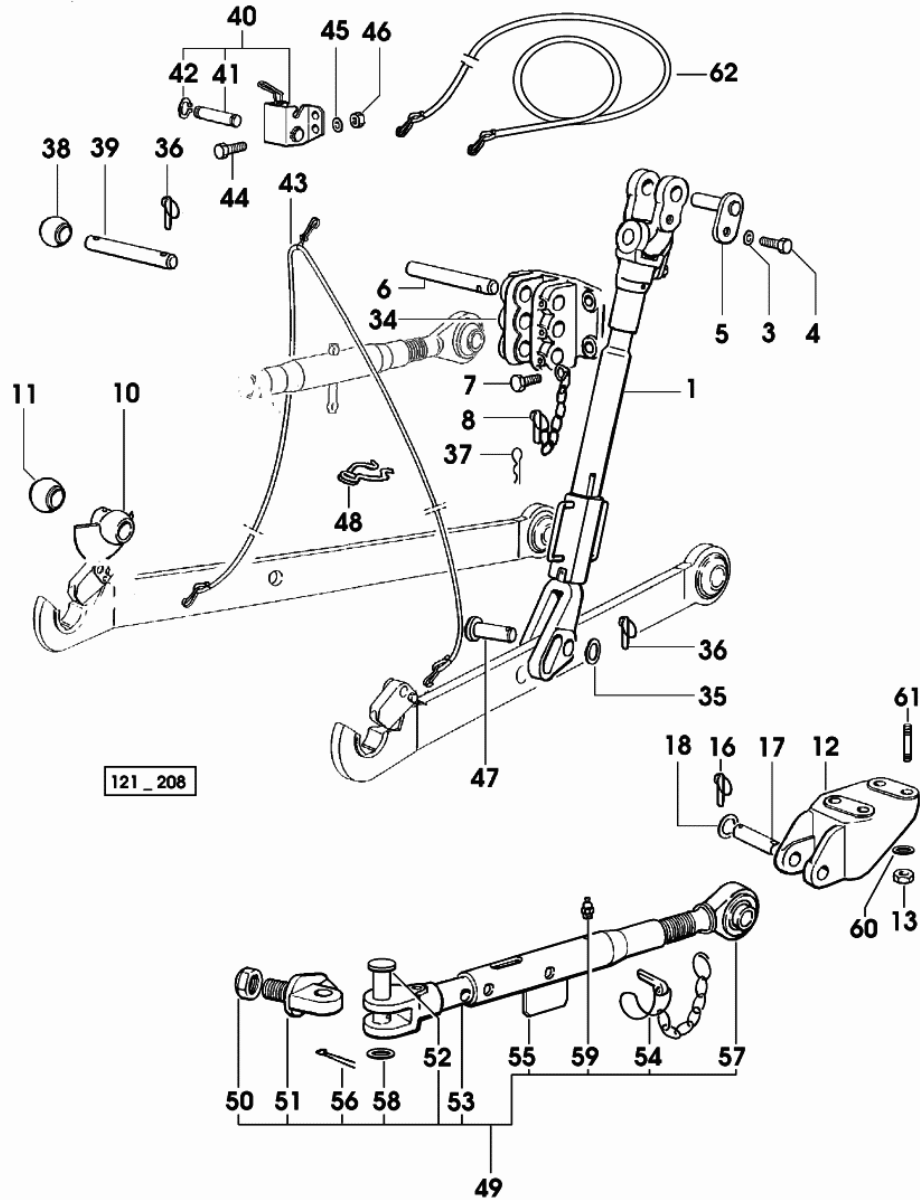


Fig.	Code	QTY	Name
43	0.009.4400.0	1	'o' ring
44	0.009.4400.1	3	sleeve
45	0.98282.60.0	3	circlip
46	0.98281.94.0	3	cup
47	0.009.4400.2	1	sleeve
48	2.0312.006.1	6	screw m 5 p.0.8 x 20
49	2.1470.001.2	6	lock washer 5
50	2.2899.507.0	12	ball 3/16"
51	0.009.4401.0	1	spacer
52	0.009.4401.1	1	cup
53	0.009.4401.2	1	sleeve
54	0.009.4402.0	2	screw m 7x45
55	0.98281.96.0	2	washer
56	0.98281.85.0	2	sleeve
57	0.98281.92.0	2	guide
58	0.009.4402.1	2	spring
59	0.009.4402.2	1	washer
60	0.009.4403.0	1	cup
61	0.009.4403.1	1	sleeve
62	0.009.4403.2	1	roller 5x29.8
63	0.009.4404.0	1	gasket 8.2x1.5
64	0.009.4404.1	2	gasket 20.70x1.78
65	0.009.4404.2	2	shim
66	0.009.4405.0	4	shim mm 0.3
67	0.009.4387.0	1	plug

3 POINT HITCH

Fig.	Code	QTY	Name
1	0.010.5305.4	1	adjustable tensioner ☞ 0.010.1703.3 ☞ 0E.00.16
3	2.1470.007.2	2	lock washer 12
4	2.0112.413.2	2	screw m 12 p.1.75x35
5	0.009.3144.2	2	pin
6	2.1669.059.2	1	pin 32x152
7	2.0112.617.2	4	screw m 16 p.2x45
7	2.0112.613.2	2	screw m 16 p.2x35
8	0.760.2257.3	1	pin
10	0.760.5951.3	2	pin 2 cat.
10	0.760.3953.3	2	pin 3 cat.
11	0.760.4552.0	2	cap 2 cat.
11	0.760.3954.0	2	cap 3 cat.
12	0.010.6426.0	1	bracket dx/rh/re
12	0.010.6427.0	1	bracket sx/lh/li
13	2.1012.310.7	8	nut m 18 x 1,5
16	0.010.9322.4	4	pin Ø 11
17	2.1679.031.2/10	2	pin mm 25.4 x 143
18	2.1311.015.2	4	flat washer 28
34	0.009.3164.0	1	flange
35	2.1311.015.2	2	flat washer 28
36	0.010.9322.4	4	pin Ø 11
37	2.1699.084.2	1	pin Ø 27
38	0.009.2300.0	1	cap Ø 60 mm
39	2.1669.036.2	1	pin 32x133
40	0.009.3492.4/30	1	stop
41	2.1699.386.2	1	pin 12x42
42	2.1410.002.1	2	circlip 12
43	0.009.2670.3	1	cable
44	2.0112.207.2	4	screw m 8 p 1.25 x 20
45	2.1474.009.2	4	spring washer 8
46	2.1011.105.2	2	nut m 8 p.1.25
47	2.1679.082.2	2	pin
48	0.760.2262.0	2	spring
49	0.010.5222.4/10	2	stabiliser
50	2.1011.412.2	2	nut m 24 p.2
51	0.96063.52.0/10	2	pin
52	2.1679.085.2	2	pin
53	0.010.5217.3	2	rod
54	0.009.7076.4	2	small chain
55	0.010.5228.2	2	tube
56	2.1690.513.2	2	split pin 5 x 36
57	0.010.5226.3/10	2	rod dx/rh/re



Section: ACCESSORIES  
**REAR TOWING HITCH**

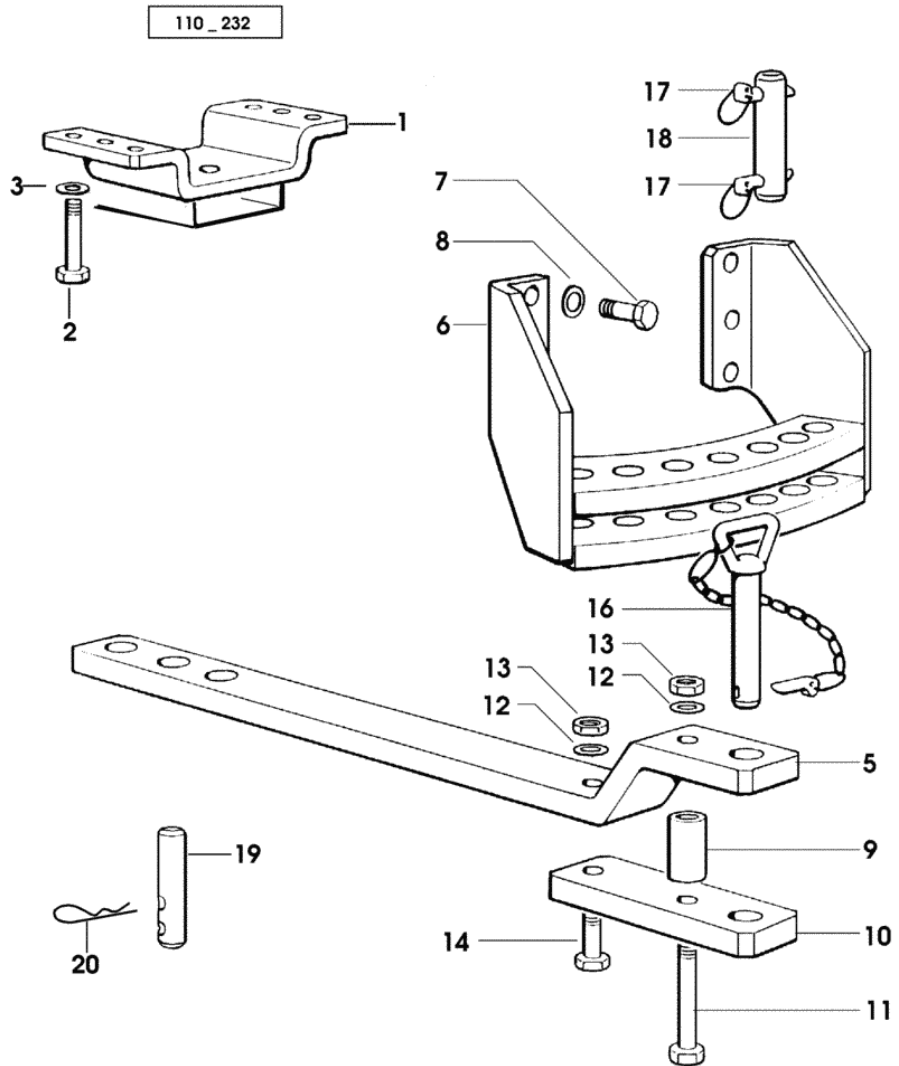
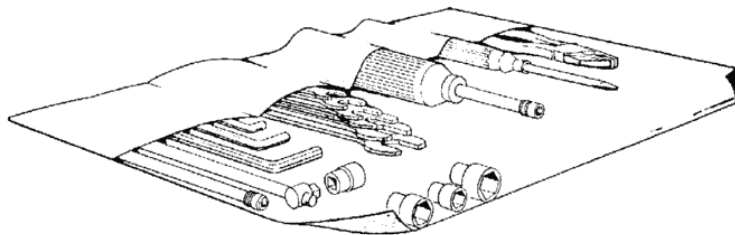
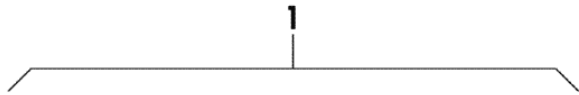
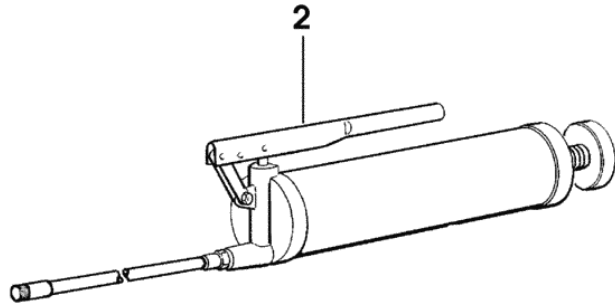


Fig.	Code	QTY	Name
1	0.008.0769.2/10	1	support
2	2.0112.615.2	6	screw m 16 p.2 x 40
3	2.1499.019.6	6	washer 16.3 x 31.5
5	0.97308.20.0	1	draw bar
6	0.97318.10.2	1	sector
7	2.0112.620.2	6	screw m 16 p.2x55
8	2.1499.019.6	6	washer 16.3 x 31.5
9	2.1579.233.2	1	spacer 18x35x75
10	0.97308.52.0	1	plate
11	2.0112.641.2	1	screw m 16 p.2x160
12	2.1499.019.6	2	washer 16.3 x 31.5
13	2.1011.109.2	2	nut m 16 p.2
14	2.0112.626.2	1	screw m 16 p.2x85
16	0.97306.30.3	1	pin
17	0.010.9322.4	4	pin Ø 11
18	2.1669.031.2	2	pin
19	2.1679.090.2	1	pin
20	2.1699.072.2	1	pin

**TOOL POUCH**

Fig.	Code	QTY	Name
1	9.62073.11.0	1	small tool box
2	0.011.6506.3	1	lubricator



4 728 \_ 295

Section: ACCESSORIES  
**REAR TOWING HITCH CAT: "D3"**

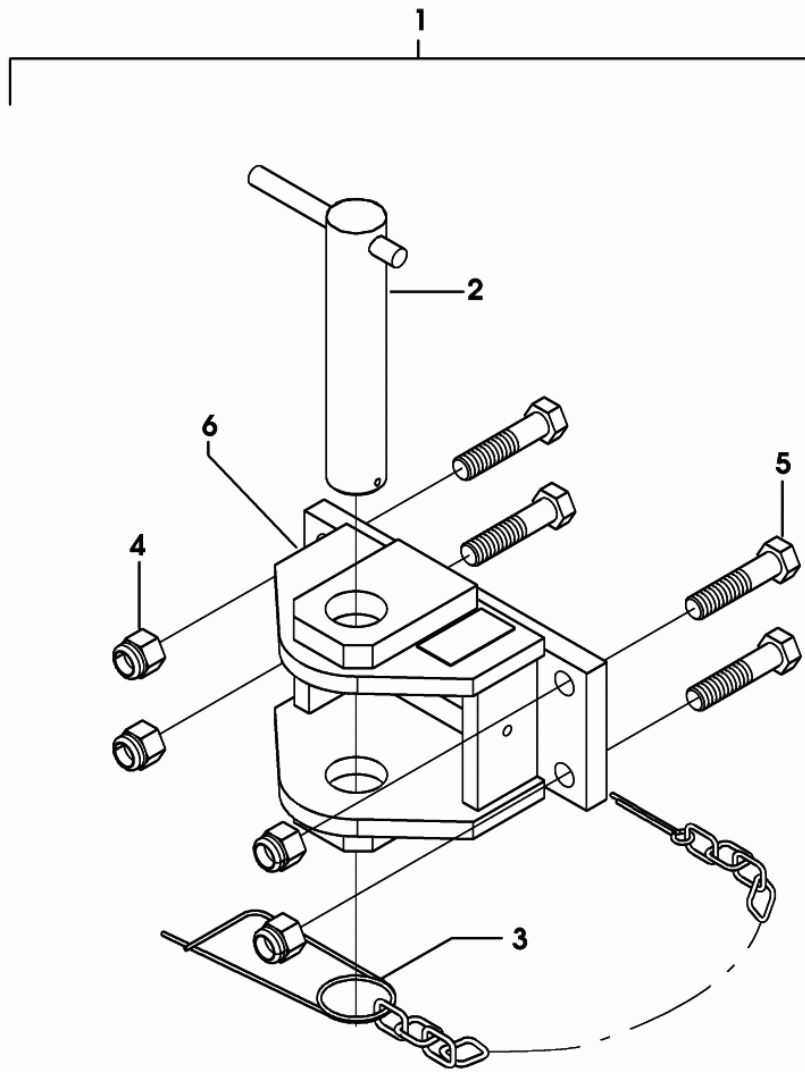
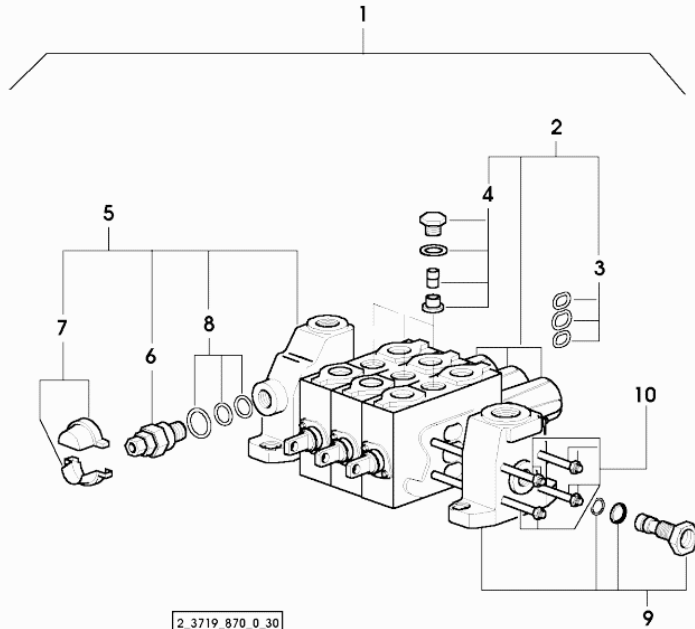


Fig.	Code	QTY	Name
1	0.011.1999.4/10	1	clevis GRASSI CAT. " D3 "
2	0.010.2996.0	1	pin
3	0.010.2985.1	1	piston pin
4	0.010.2842.1	4	nut m 18
5	0.010.2842.0	4	screw m 18x80
6	0.010.2996.1	1	clevis

011\_1999\_4\_10

Section: ACCESSORIES  
**DISTRIBUTOR PARTS**

Fig.	Code	QTY	Name
1	2.3719.870.0/30	1	distributor
2	0.010.2508.0	4	distributor
3	0.010.2508.1	1	seal ring kit
4	0.010.2508.2	1	valve
5	0.010.2509.0	1	pipe union
6	0.010.2509.1	1	valve
7	0.010.2509.2	1	small cover
8	0.010.2510.0	1	seal ring kit
9	0.010.2510.1	1	pipe union
10	0.010.2511.0	1	accessories



Section: BODY WORK  
HOOD

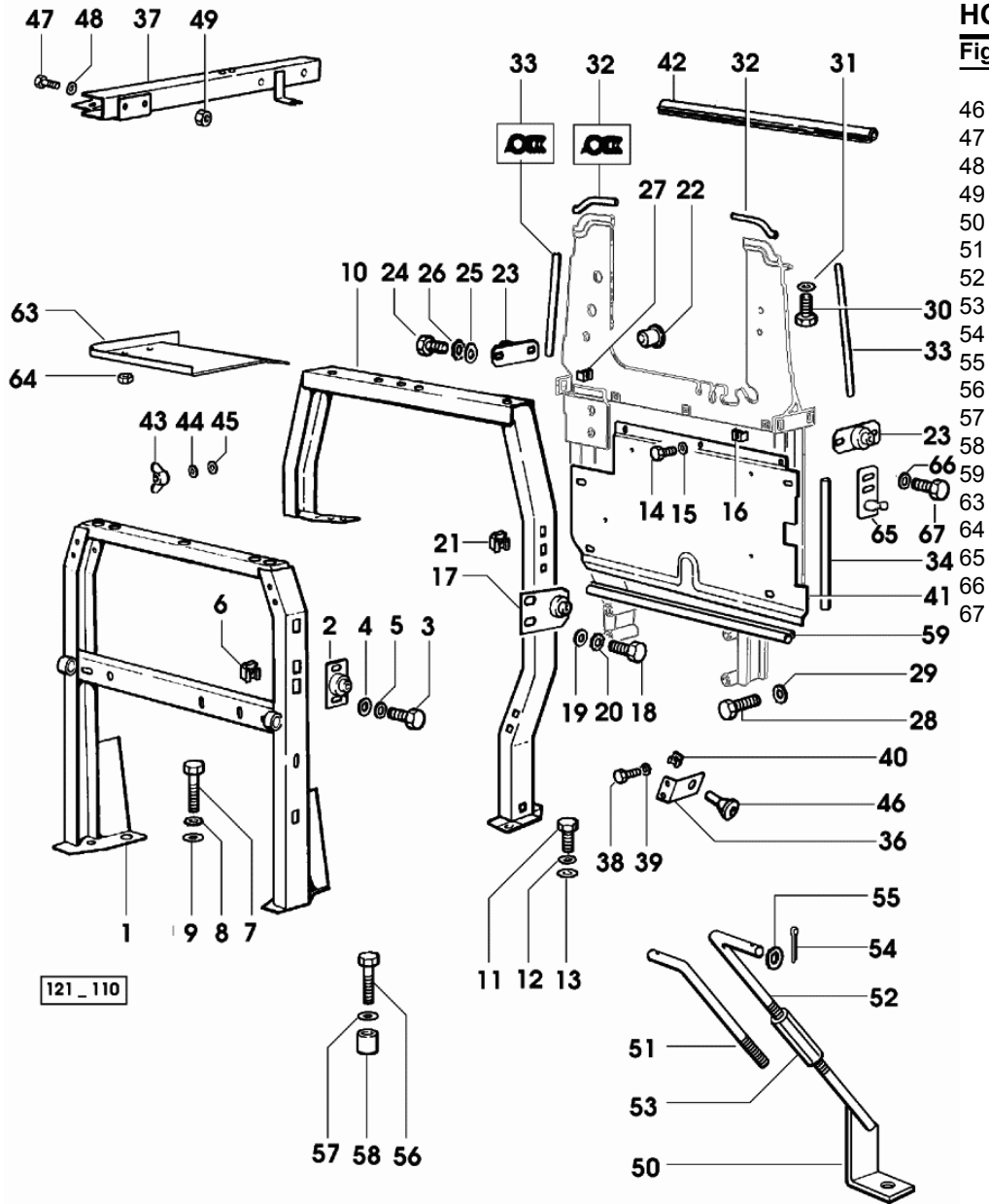


Fig.	Code	QTY	Name
46	0.255.7265.0	2	block
47	2.0112.007.2	2	screw m 6 p.1 x 20
48	2.1470.002.2	2	washer 6, d128
49	2.1011.103.2	2	nut m 6 p.1
50	0.009.1966.2	1	rod dx/rh/re
51	0.009.1968.0	1	rod sx/lh/li
52	0.009.1969.0	1	rod dx/rh/re
53	2.1099.134.2	2	nut
54	2.1690.408.2	2	split pin 4 x 20
55	2.1310.007.2	2	flat washer 13.5
56	2.0112.529.2	1	screw m 14 p.2x100
57	2.1470.008.2	1	lock washer 14
58	2.1549.126.2	1	spacer 15x30x60
59	0.009.0797.0/10	1	gasket
63	0.009.2866.0	1	shield
64	2.1011.102.2	2	nut m 5 p.0.7
65	0.011.5718.2	1	ferrule
66	2.1480.011.2	2	washer 5
67	2.0312.002.2	2	screw

**DASHBOARD - STEERING COVER**

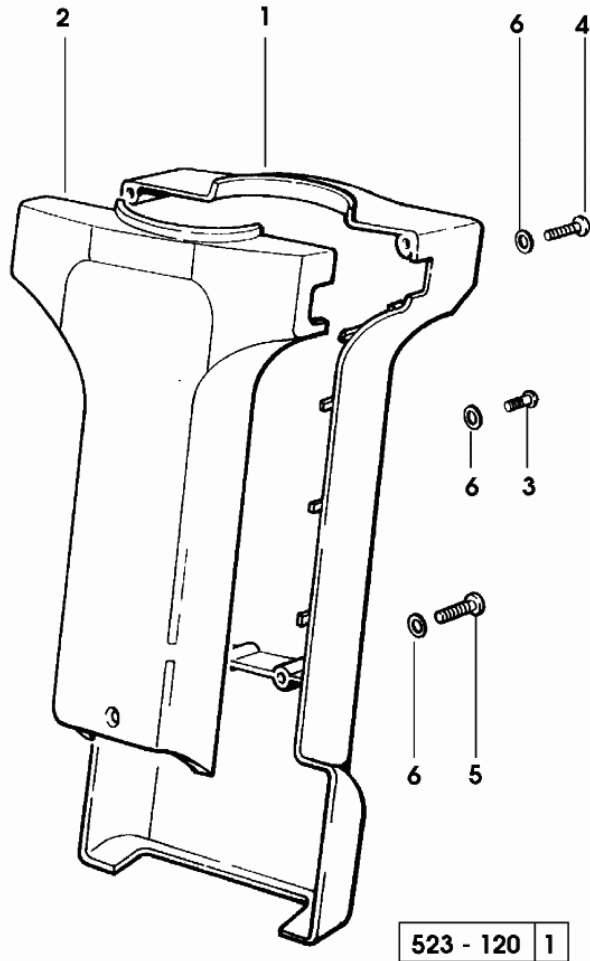
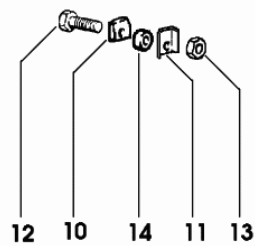
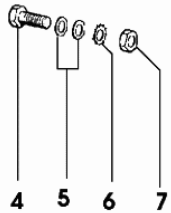
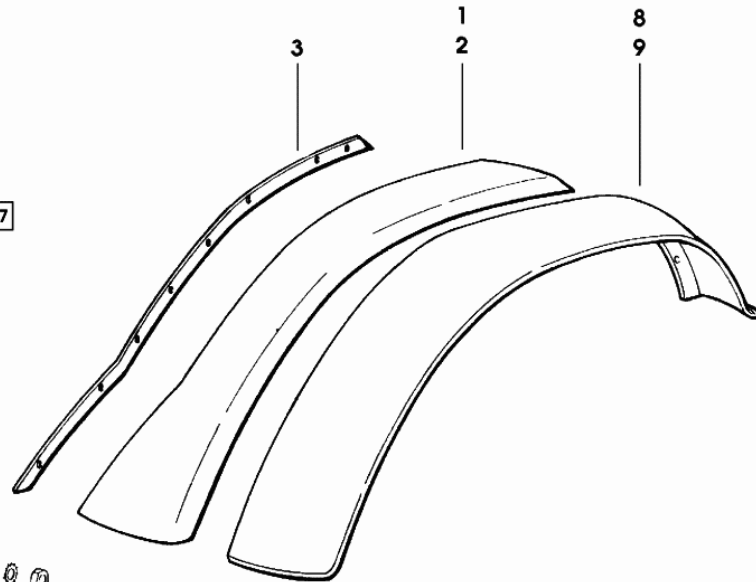


Fig.	Code	QTY	Name
1	0.009.0759.0/20	1	cover
2	0.009.0758.2/10	1	cover
3	2.0332.306.3	2	screw m 5 p.0.8 x 16
4	2.0339.007.3	2	screw m 5 x 40
5	2.0339.008.3	2	screw m 5x50
6	2.1499.095.3	6	washer 5

Section: BODY WORK  
**REAR MUDGUARDS**

Fig.	Code	QTY	Name
1	0.009.0336.0/10	1	fender dx/rh/re
1	0.009.0588.0/10	1	fender dx/rh/re - EXPORT D
2	0.009.0337.0/10	1	fender sx/lh/li
2	0.009.0587.0/10	1	fender sx/lh/li - EXPORT D
3	0.012.6424.0	1	gasket dx/rh/re
3	0.012.6439.0	1	gasket sx/lh/li
4	2.0112.209.2	16	screw m 8 p 1.25 x 25
5	2.1310.004.2	32	flat washer 8.5
6	2.1470.004.2	16	washer 8
7	2.1011.105.2	16	nut m 8 p.1.25
8	0.009.0678.0/10	1	extension sx/lh/li
9	0.009.0679.0/10	1	extension dx/rh/re
10	0.009.0676.0	12	small block
11	0.009.0677.0/10	12	brace
12	2.0112.209.2	12	screw m 8 p 1.25 x 25
13	2.1011.105.2	12	nut m 8 p.1.25
14	2.1579.774.2	12	spacer 8.4x12x6.5

121 \_ 127



Section: BODY WORK  
SEAT-COMPONENTS

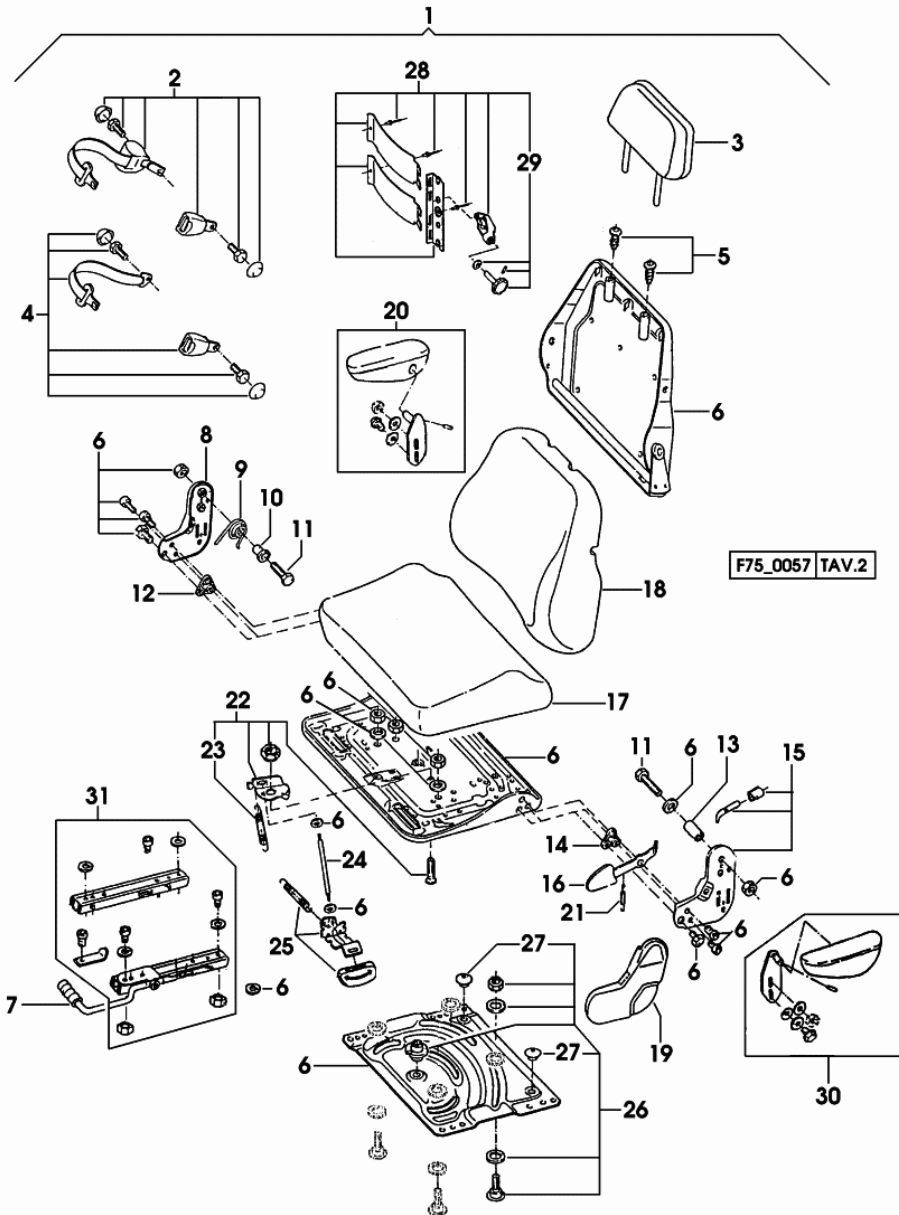
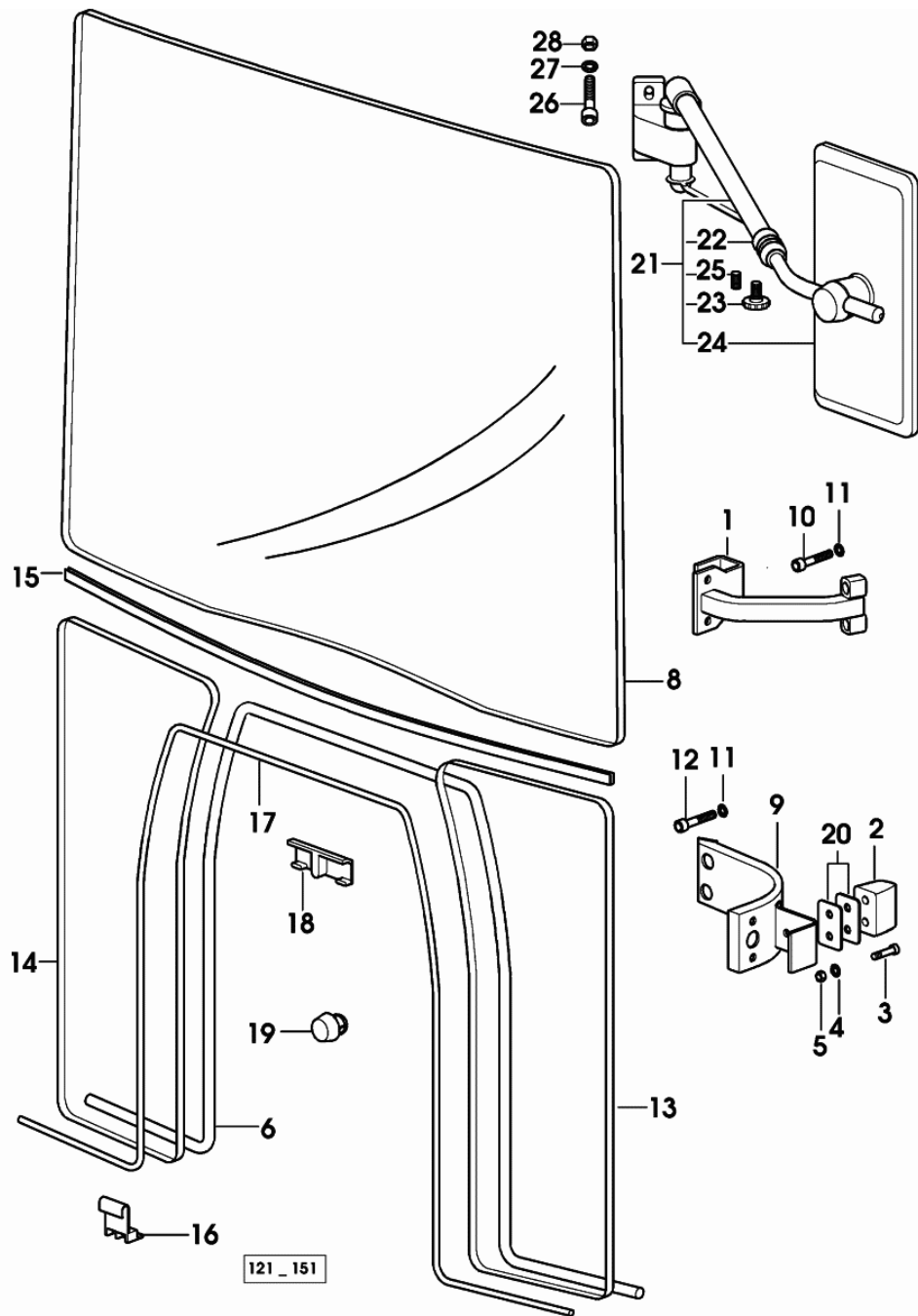


Fig.	Code	QTY	Name
1	0.000.0000.1	0	not serviceable
2	0.010.2268.0	1	safety belt
3	0.009.4722.0	1	embroiderhead
4	0.010.2268.1	1	safety belt
5	0.009.4361.2	2	bushing
6	0.000.0000.1	0	not serviceable
7	0.010.2268.2	1	knob
8	0.009.4363.0	1	plate
9	0.009.4363.1	1	spring
10	0.010.2269.0	1	bushing
11	0.009.4711.1	2	screw
12	0.009.4712.0	1	spacer
13	0.010.2269.1	1	spacer
14	0.009.4712.1	1	spacer
15	0.009.4712.2	1	plate
16	0.010.2076.0	1	lever
17	0.010.2075.1	1	cushion
18	0.010.2075.2	1	cushion
19	0.009.4366.2	1	cover
20	0.009.4371.0	1	small arm dx/rh/re
21	0.009.4367.2	1	spring
22	0.009.4713.1	1	support
23	0.009.4370.0	1	spring
24	0.009.4370.1	1	pin
25	0.009.4370.2	1	lever
26	0.009.4713.2	1	sub-assy parts
27	0.009.4372.0	2	shim
28	0.010.2080.1	1	pin
29	0.010.2080.2	1	pin
30	0.009.4371.1	1	small arm sx/lh/li
31	0.010.2269.2	1	seat guide

Section: CAB

**GLASSES AND SEALS**

Fig.	Code	QTY	Name
1	0.010.0585.3/10	1	lamp support
2	0.010.0219.2/10	2	rubber plug
3	2.0312.208.2	4	screw m 8 p.1.25 x 25
4	2.1474.009.2	4	spring washer 8
5	2.1011.105.2	4	nut m 8 p.1.25
6	0.008.2478.0/10	1	gasket
8	0.009.0300.0	1	tempered glass - OUGHENED GLASS
8	0.007.5161.0	1	glass - LAMINATED GLASS
9	0.011.0112.2/10	1	lamp support sx/lh/li
10	2.0312.314.2	2	screw m 10 p.1.5 x 40
11	2.1480.015.1	4	washer 10
12	2.0312.306.2	2	screw m 10 p.1.5 x 20
13	0.007.5180.0/10	1	glass sx/lh/li
14	0.007.5179.0/10	1	glass dx/rh/re
15	0.008.2480.0	1	gasket
16	0.009.1166.0	2	spacer
17	0.008.8064.0	1	gasket
18	0.009.1167.0	2	stop
19	0.008.8063.0	4	spacer
20	0.010.1339.0	4	spacer
21	0.011.0032.4	1	rear view mirror sx/lh/li ☞ 0.011.0032.4
21	0.011.0031.4	1	rear view mirror dx/rh/re ☞ 0.011.0031.4
22	0.010.2141.1	1	guard
23	0.010.2141.2	1	knob
24	0.010.2260.0	1	rear view mirror
25	0.010.2142.0	1	grain m 6 p.1 x 10
26	2.0362.307.3	4	screw m 8 p.1.25 x 20
27	2.1310.004.2	4	flat washer 8.5
28	2.1011.105.2	4	nut m 8 p.1.25



Section: CAB  
**INTERIOR TRIM**

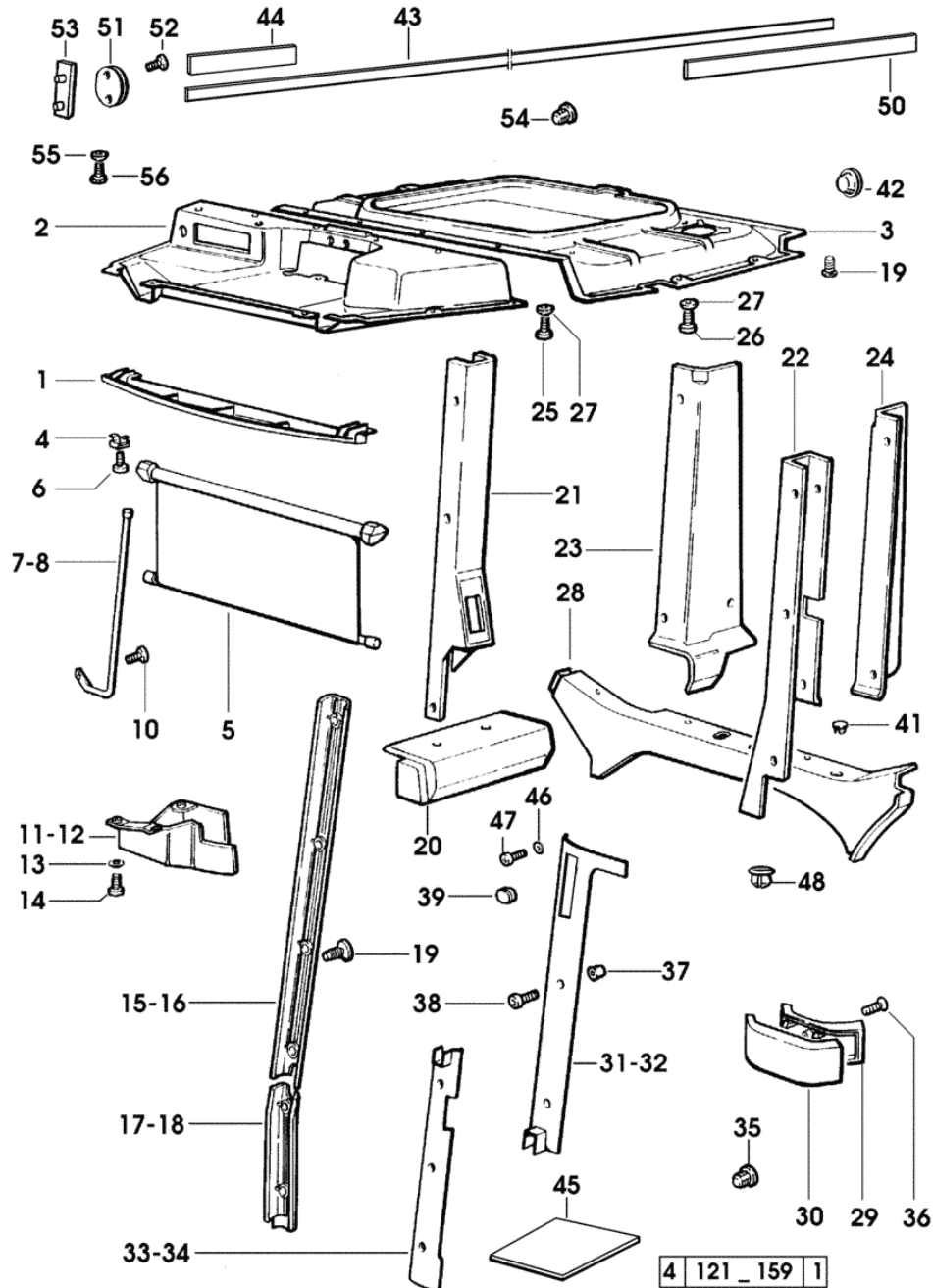
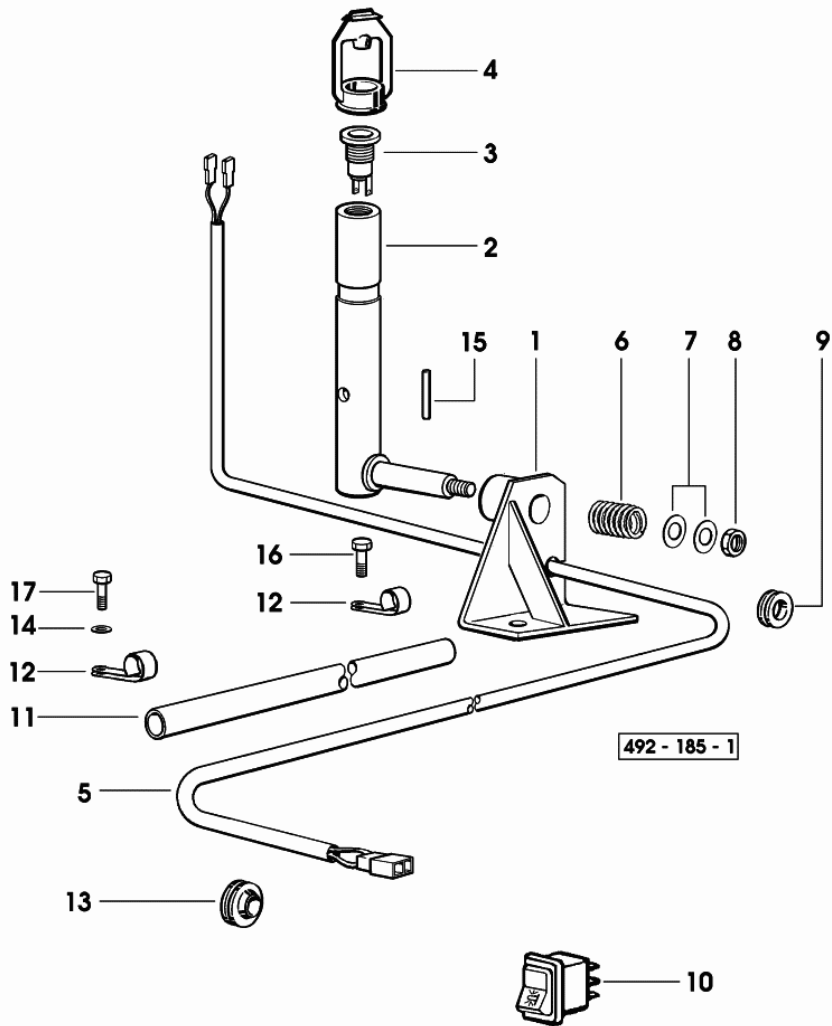


Fig.	Code	QTY	Name
44	0.011.0715.0	1	gasket 250x30x7
45	0.009.3195.0	1	plug
46	0.010.1292.0	2	small disc
47	2.0332.206.3	2	screw m 4 p.0.5x16
48	0.9241.563.0	1	plug 30x35x13.5
50	0.011.3281.0	1	gasket 400x30x7
51	0.011.2218.0	1	small plate
52	2.0332.306.3	2	screw m 5 p.0.8 x 16
53	0.011.2617.3	1	bracket
54	2.3199.126.0/10	2	plug mm 15
55	2.1470.002.2	2	washer 6, d128
56	2.0112.007.2	2	screw m 6 p.1 x 20

**ELECTRICAL SYSTEM**

Fig.	Code	QTY	Name
1	0.009.7127.3/10	1	square
2	0.009.7131.3	1	coupling
3	2.6039.017.0	1	socket
4	0.009.6650.0	1	cap
5	0.007.6169.3	1	wire
6	2.4019.611.2	1	spring
7	2.1310.006.2	2	flat washer 10.5
8	2.1120.006.2	1	nut m 10 p.1.5
9	0.154.6761.0	1	rubber plug
10	2.7659.126.0	1	switch
11	0.009.7132.0	1	tube
12	2.6819.025.2	2	bracket
13	2.6569.042.0	1	wire guide 20x10x15
14	2.1310.006.2	1	flat washer 10.5
15	2.1651.312.2	1	pin 4x28
16	2.0112.413.2	1	screw m 12 p.1.75x35
17	2.0112.215.2	1	screw m 8 p.1.25 x 40



**VENTILATION-AIR CONDITIONING**

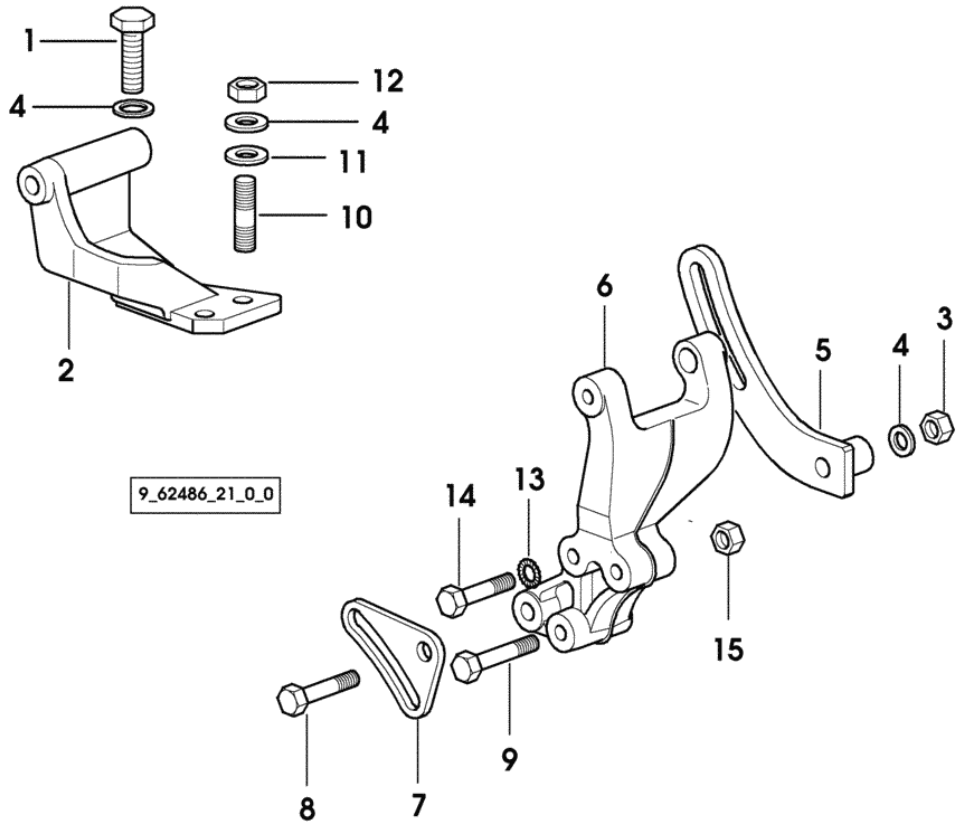
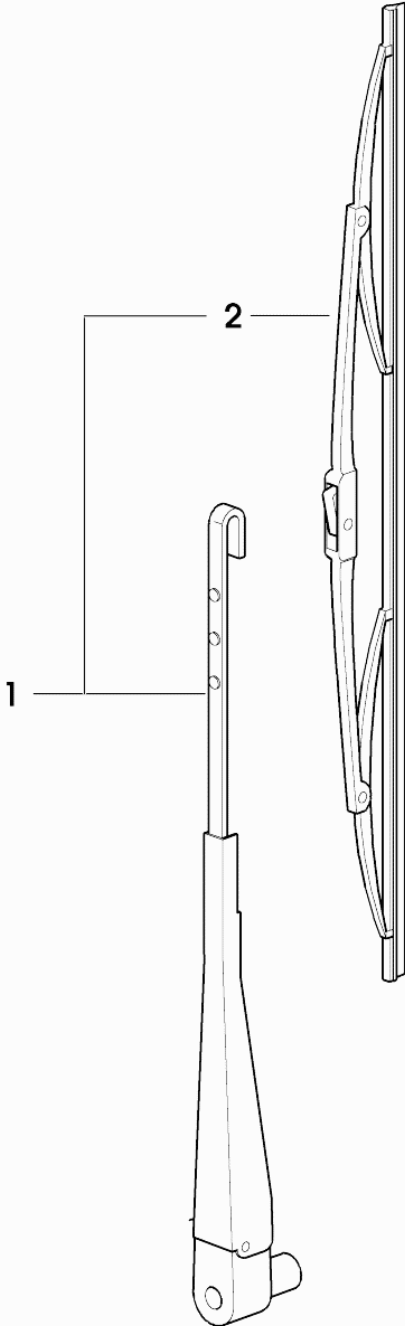


Fig.	Code	QTY	Name
1	2.0112.311.2	1	screw m 10 p.1.5 x 30
2	0.98538.50.0/30	1	support
3	2.1011.106.2	1	nut m 10 p.1.5
4	2.1470.006.2	4	lock washer 10
5	0.009.7966.0	1	tensioner
6	0.009.7947.0/10	1	support
7	0.98538.54.0/10	1	tensioner
8	2.0112.322.2	1	screw m 10 p.1.5x65
9	2.0112.226.2	2	screw m 8 p.1.25 x 85
10	2.0432.155.7	2	stud bolt m 10 p.1.5 / p. 1.25 x 25
11	2.1599.560.2	2	washer 10.5x22x3
12	2.1011.421.2	2	nut m 10 p.1.25
13	2.1470.004.2	1	washer 8
14	2.0112.226.2	1	screw m 8 p.1.25 x 85
15	2.1011.105.2	1	nut m 8 p.1.25

Section: CAB  
**WINDSCREEN WIPER BLADE**

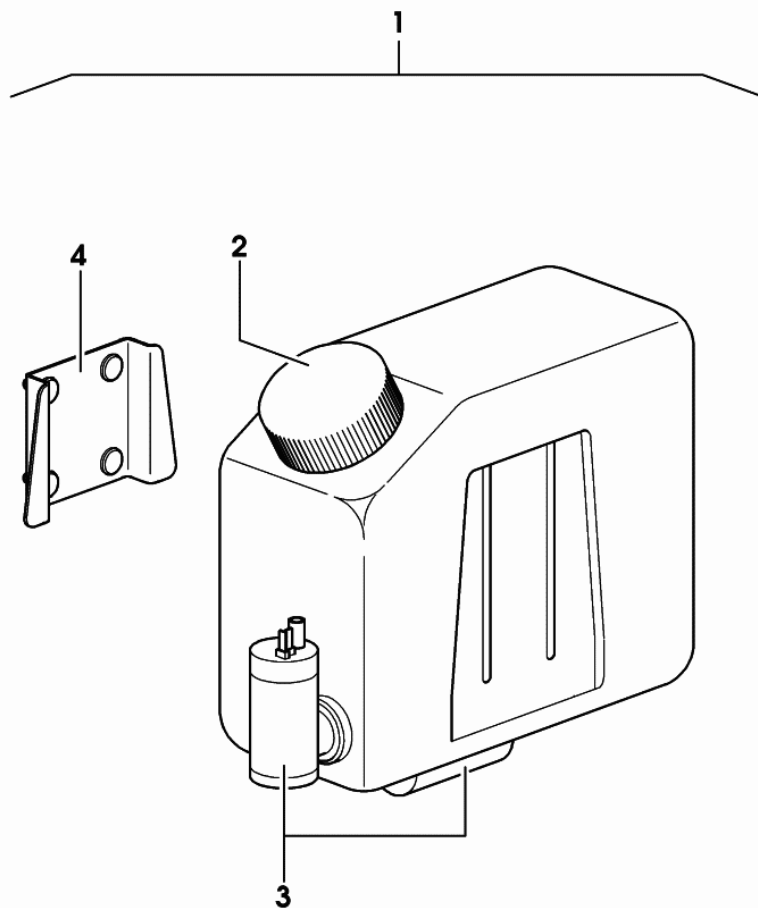
Fig.	Code	QTY	Name
1	0.008.3834.4	1	arm
2	0.9233.585.3	1	wiper blade



008\_3834\_4

Section: CAB  
**WATER TANK**

Fig.	Code	QTY	Name
1	0.9241.565.4	1	container
2	0.900.0070.3	1	plug
3	0.900.0070.4	2	electropump 12V
4	0.9234.559.2	1	bracket



0\_9241\_565\_4

CLICK HERE TO **DOWNLOAD** THE COMPLETE MANUAL

- Thank you very much for reading the preview of the manual.
- You can download the complete manual from: [www.heydownloads.com](http://www.heydownloads.com) by clicking the link below



- Please note: If there is no response to CLICKING the link, please download this PDF first and then click on it.

CLICK HERE TO **DOWNLOAD** THE COMPLETE MANUAL

Section: ELECTRIC AL SYSTEM  
**ELECTRIC STARTING SYSTEM**

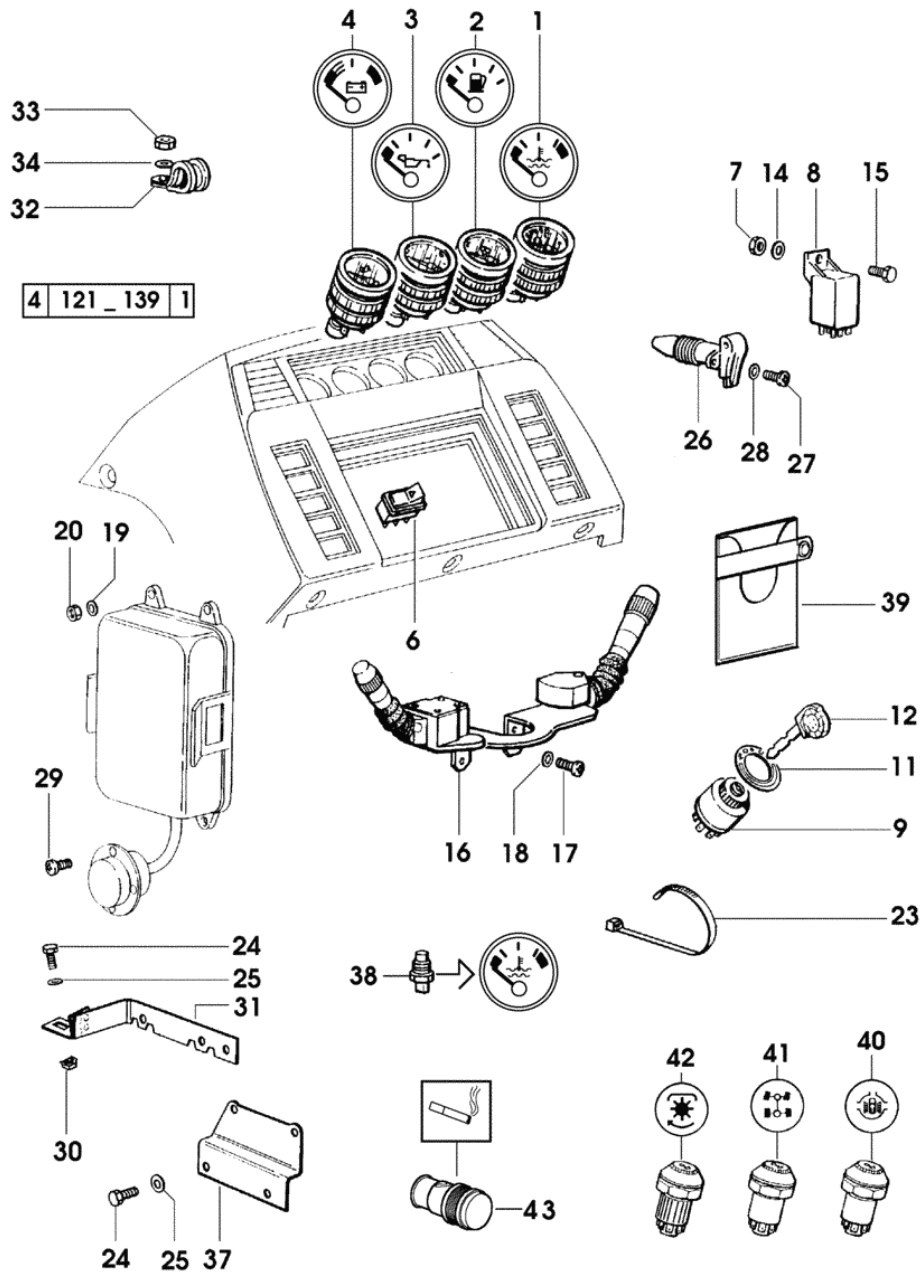
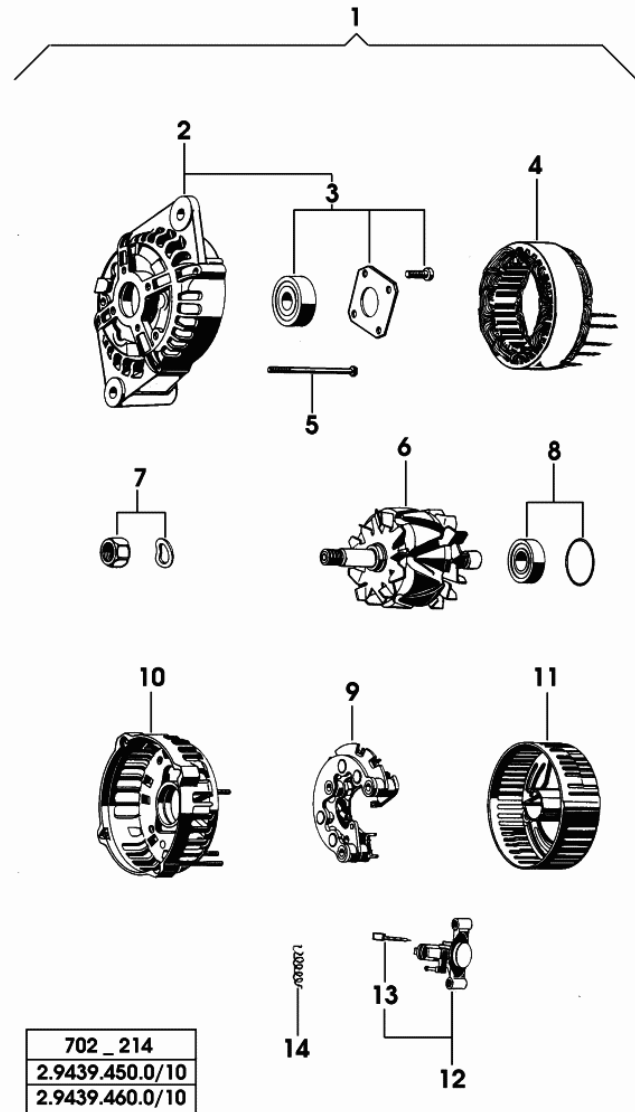


Fig.	Code	QTY	Name
1	0.008.1309.0	1	tempe guage ☞ 0.008.1309.0
2	0.008.1305.0	1	level indicator ☞ 0.008.1305.0
3	0.008.1307.0	1	tempe guage ☞ 0.008.1307.0
4	0.008.1306.0	1	voltmeter ☞ 0.008.1306.0
6	2.7659.080.0	1	switch
7	2.1011.103.2	1	nut m 6 p.1
8	2.8639.007.0	1	intermitent switch
9	2.7659.071.0/30	1	switch
11	0.009.0982.0/10	1	plate
12	2.7439.017.0/10	2	key
14	2.1470.002.2	1	washer 6, d128
15	2.0112.005.2	1	screw m 6 p.1 x 16
16	0.011.1196.4/10	1	switch
17	2.0119.160.3	2	screw m 6 p.1 x 14
18	2.1499.097.3	2	washer 6, d128
19	2.1310.002.2	4	washer 6.6, d125
20	2.1011.103.2	4	nut m 6 p.1
23	0.98503.67.0	10	clamp
24	2.0112.005.2	3	screw m 6 p.1 x 16
25	2.1310.002.2	3	washer 6.6, d125
26	2.6032.011.0	1	socket ☞ 2.6032.011.0
27	2.0399.167.3	2	screw m 5 p.0.8 x 14
28	2.1310.001.3	2	washer 5.3 x 10
29	2.0399.175.3	4	screw m 4.2 x 19 -AB-
30	2.6999.031.2	1	special nut m 6
31	0.009.1906.2/10	1	bracket
32	2.6839.051.0	1	clamp 20/20
33	2.1011.103.2	1	nut m 6 p.1
34	2.1310.002.2	1	washer 6.6, d125
37	0.009.1905.2	1	bracket
38	2.7099.100.0/10	1	sensor
39	0.008.0385.0	1	plastic bag
40	0.008.1335.0	1	switch
41	0.007.5945.0/20	1	switch 4 WD
42	2.7659.108.0/10	2	switch P.T.O.
43	2.7099.770.0	1	cigar lighter

**ALTERNATOR PARTS**

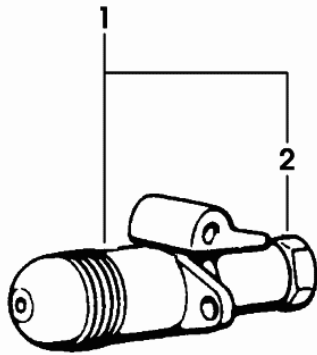


702_214
2.9439.450.0/10
2.9439.460.0/10

Fig.	Code	QTY	Name
1	2.9439.460.0/10	1	alternator 14V - 85A - ISKRA ☞ 2.9439.460.0/10
2	0.010.2069.0	1	cover
3	0.010.2069.1	1	bearing
4	0.010.2069.2	4	field winding
5	0.010.2070.0	1	screw
6	0.010.2226.1	1	armature
7	0.010.2226.2	1	accessories
8	0.010.2070.2	1	bearing
9	0.010.2071.0	1	rectifier
10	0.010.2071.1	1	cover
11	0.010.2071.2	1	guard
12	0.010.2227.0	1	regulator
13	0.009.4335.1	2	brush set
14	0.000.0000.1	0	not serviceable

Section: ELECTRIC AL SYSTEM  
**POWER OUTLET SOCKET**

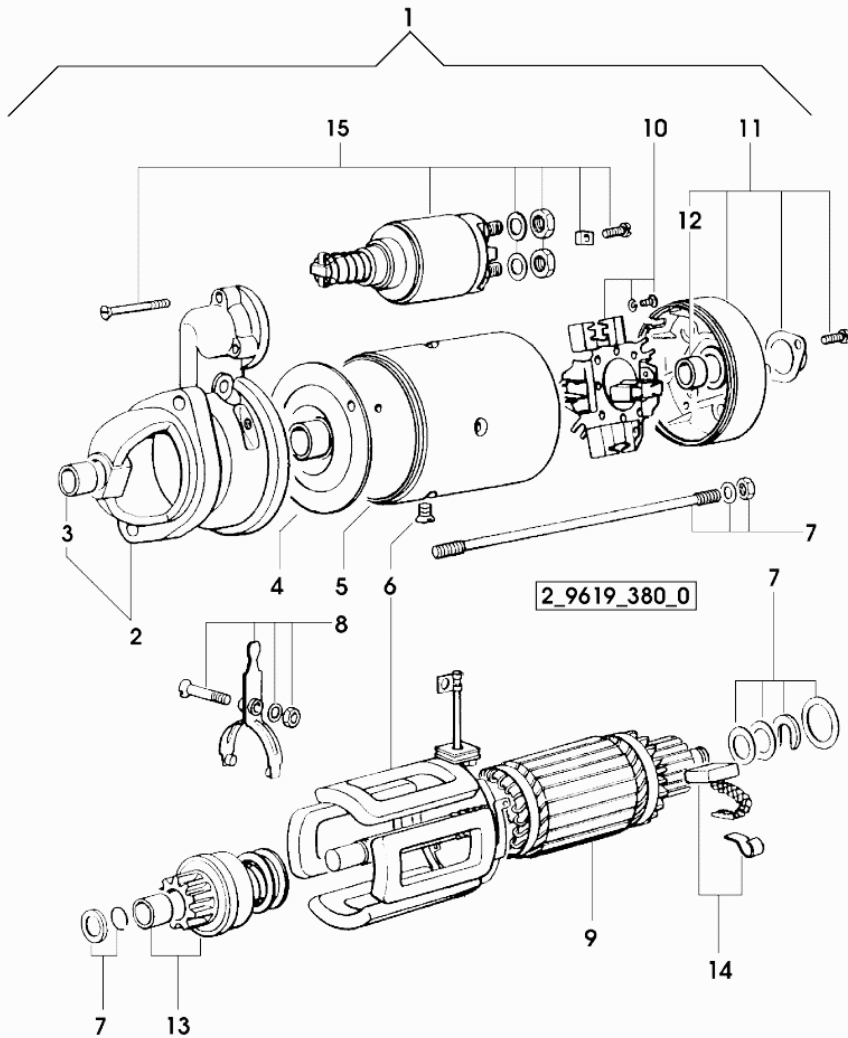
Fig.	Code	QTY	Name
1	2.6032.011.0	1	socket
2	2.6032.021.0	1	socket



2\_6032\_011\_0

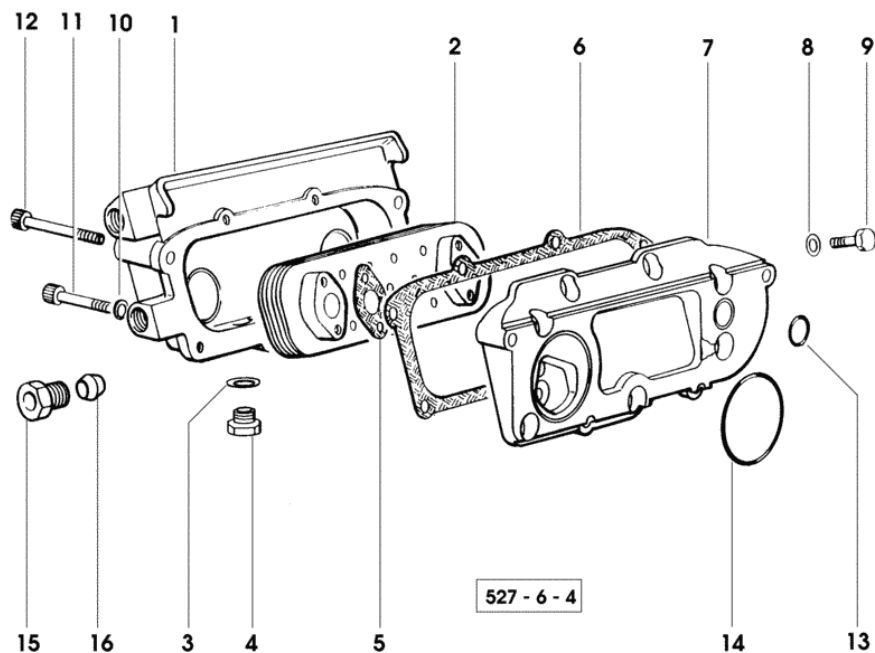
**STARTER PARTS**

Fig.	Code	QTY	Name
1	2.9619.380.0	1	starter motor ISKRA
2	0.009.4260.1	1	support
3	0.010.2576.1	1	bushing
4	0.009.4257.0	1	support
5	0.000.0000.1	0	not serviceable
6	0.010.2576.2	1	field winding
7	0.010.2577.2	1	accessories
8	0.009.4258.0	1	lever
9	0.009.4262.0	1	armature
10	0.010.2577.0	1	brush holder
11	0.009.4749.0	1	support
12	0.009.4884.2	1	bushing
13	0.009.4263.0	1	pinion z = 9
14	0.010.2577.1	1	brush set
15	0.010.2576.0	1	switch



Section: ENGINE  
LUBRICATION

Fig.	Code	QTY	Name
1	0.007.0703.0/10	1	box
2	0.007.1239.3	1	radiator
3	2.1560.014.0	1	gasket 18.2 x 24 x 1.5
4	2.3120.101.0	1	plug m 18 p.1.5
5	0.078.1557.0/10	2	gasket
6	0.078.1556.0/10	1	gasket
7	0.078.1555.0/10	1	plate
8	2.1310.004.2	8	flat washer 8.5
9	2.0112.205.2	8	screw m 8 p.1.25 x 16
10	2.1480.014.1	4	washer 8
11	2.0312.220.2	2	screw m 8 p.1.25x70
12	2.0312.222.2	2	screw m 8 p.1.25 x 80
13	2.1539.048.0	1	'o' ring 20.35x1.78
14	2.1539.050.0	1	'o' ring 69.57x1.78
15	2.3249.023.1	2	pipe fitting m 24 p.2
16	2.3350.008.1	2	nosepiece 18



Section: ENGINE  
**THERMO STARTER**

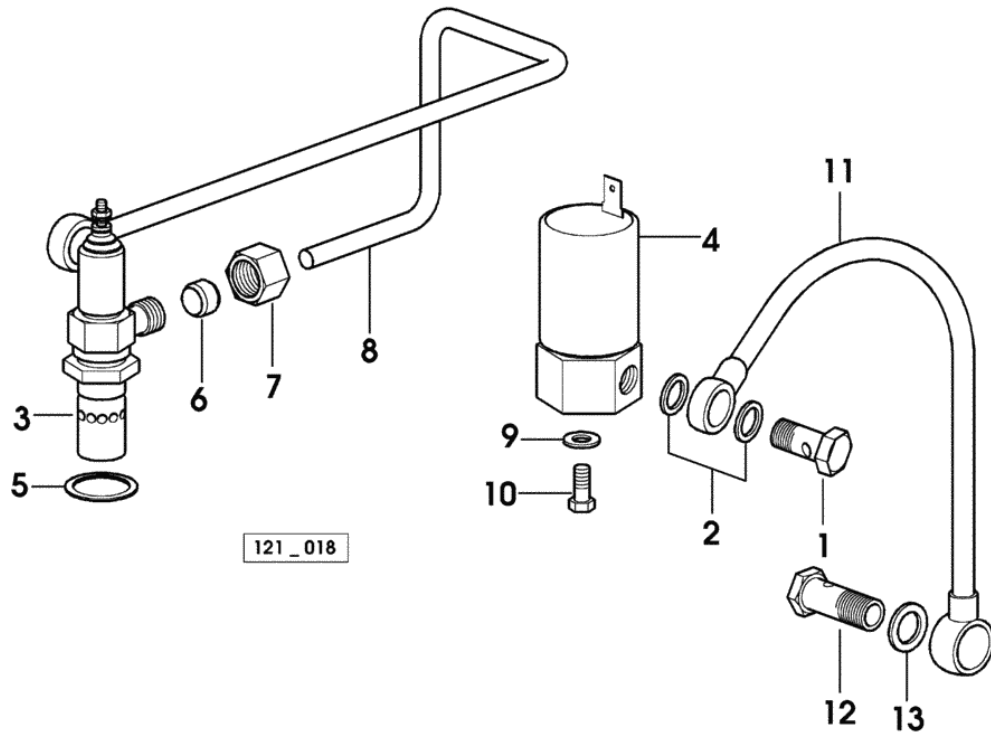


Fig.	Code	QTY	Name
1	2.3339.074.1	2	pipe union m 10 p.1x19
2	2.1560.005.0	4	gasket 10.2 x 14
3	2.7659.103.0/10	1	thermo-start
4	2.9219.130.0	1	electro valve 12 V
5	2.1560.016.0	1	gasket 20.2 x 26
6	2.3350.002.1	1	nosepiece 6, d128
7	2.3360.002.2	1	nut m 10
8	0.007.0934.3/20	1	tube
9	2.1470.002.2	2	washer 6, d128
10	2.0112.002.2	2	screw m 6 p.1 x 10
11	0.007.1402.3	1	tube
12	2.3332.004.1	1	pipe union m 14 p.1.5 x 27
13	2.1560.010.0	2	gasket 14.2 x 20 x 1.5

Section: ENGINE  
**INTERCOOLER**

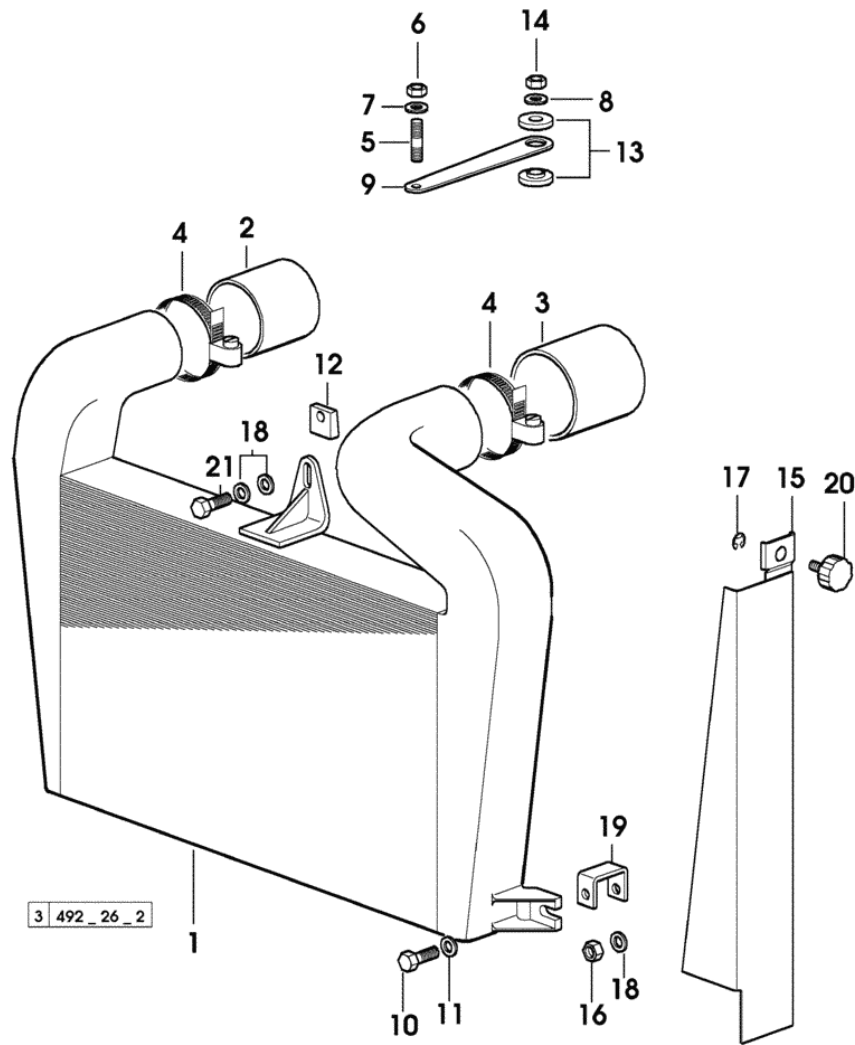
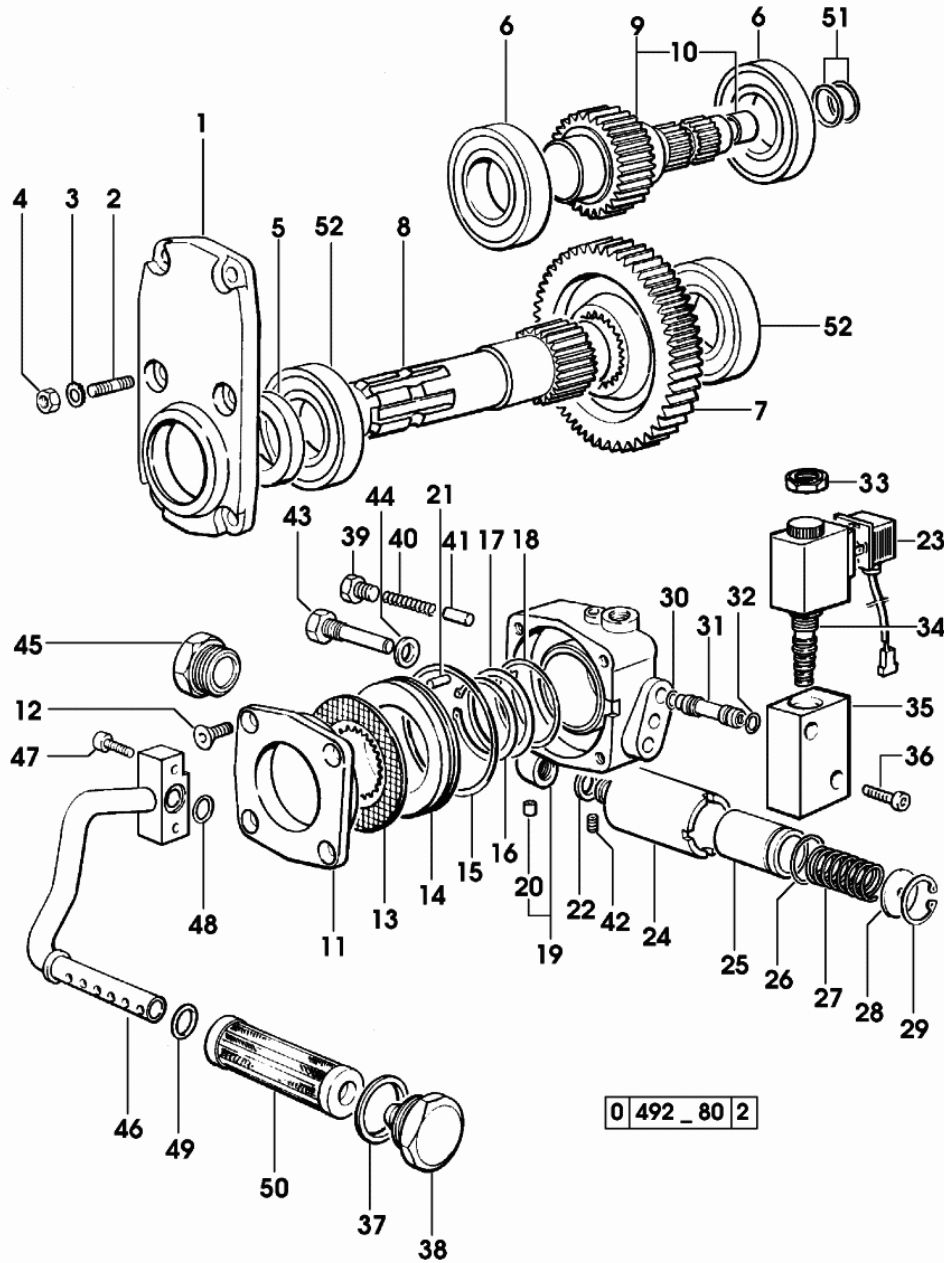


Fig.	Code	QTY	Name
1	0.007.0636.2/10	1	intercooler
2	0.007.0824.0	1	sleeve
3	0.074.1856.0	1	sleeve
4	2.6851.007.0	4	clamp Ø 60/80
5	2.0422.001.7	1	stud bolt m 6 p.1.0 x 16
6	2.1011.403.2	1	nut m 6
7	2.1310.002.2	1	washer 6.6, d125
8	2.1599.584.2	1	snoulder 9 x 30 x 2
9	0.007.0825.0	1	bracket
10	2.0112.207.2	2	screw m 8 p 1.25 x 20
11	2.1474.009.2	2	spring washer 8
12	0.010.8635.0	1	shim
13	0.021.1560.0	2	rubber plug
14	2.1011.405.2	1	nut m 8 p.1
15	0.010.8581.2	1	division sx/lh/li
15	0.010.8580.2	1	division dx/rh/re
16	2.1011.105.2	2	nut m 8 p.1.25
17	2.1430.008.2	2	circlip 7
18	2.1474.009.2	4	spring washer 8
19	0.010.8582.3	2	support
20	0.010.8644.2	2	knob
21	2.0112.211.2	1	screw m 8 p.1.25 x 30

P.T.O. FRONT

Fig.	Code	QTY	Name
1	0.007.5325.0/10	1	cover
2	2.0432.001.7	6	stud bolt m 8 p.1.25 - 1.00 x 16
3	2.1470.004.2	6	washer 8
4	2.1011.405.2	6	nut m 8 p.1
5	2.1520.220.0	1	oil seal 40x60x10
6	2.2040.012.0	2	ball bearing iso 40 bc 02
7	0.007.5327.0/10	1	gear Z = 36
8	0.007.5328.0/20	1	p.t.o.shaft
9	0.007.5343.3/20	1	shaft Z = 15 / Z = 17
10	2.1559.023.0/10	1	bushing 15.8x19x20
11	0.255.3926.0/10	1	cover
12	2.0342.305.2	4	screw m 8 p.1.25 x 20
13	0.255.3924.2	1	disc
14	0.255.3922.0/20	1	piston
15	2.1532.503.0	1	'o' ring 82.14x2.62
16	2.1419.027.1	1	circlip 48
17	2.1599.416.0	1	snoulder 50x58x1
18	2.1532.133.0	1	'o' ring 53.64x2.62
19	0.007.5329.3/30	1	distributor
20	2.3199.179.0	2	plug
21	2.1652.506.0	1	cylindrical plug 6 x 14
22	2.1560.010.0	1	gasket 14.2 x 20 x 1.5
23	0.008.0913.3	1	wire
24	0.164.8274.0/10	1	cylinder
25	0.164.8275.0/10	1	piston
26	2.1530.072.0	1	'o' ring 26.70x1.78
27	2.4019.174.1	1	spring 23.5x90x3.5
28	2.1599.241.0	1	snoulder 6.0 x 31 x 2.0
29	2.1411.013.1	1	circlip 32
30	2.1530.014.0	3	'o' ring 7.66 x 1.78
31	0.007.5340.0/10	3	tube
32	2.1530.019.0	3	'o' ring 9.25x1.78
33	2.1219.028.2	1	ring nut 1/8" gas
34	2.3729.400.0	1	electro valve ☞ 2.3729.400.0
35	0.007.5338.0/20	1	body
36	2.0312.112.2	2	screw m 6 p.1 x 35
37	2.1560.027.0	1	gasket 38.3x44
38	2.3199.182.2	1	plug
39	2.3110.401.1	2	plug m 10 p.1x8
40	2.4019.321.0	2	spring 7.3x54.5x1.2
41	0.241.8254.0/10	2	ferrule
42	2.0599.061.0	1	grain m 6 x 6
43	2.0119.154.2	2	screw m 12 p.1.75x58



# SUPERTITAN

## FRONT AXEL

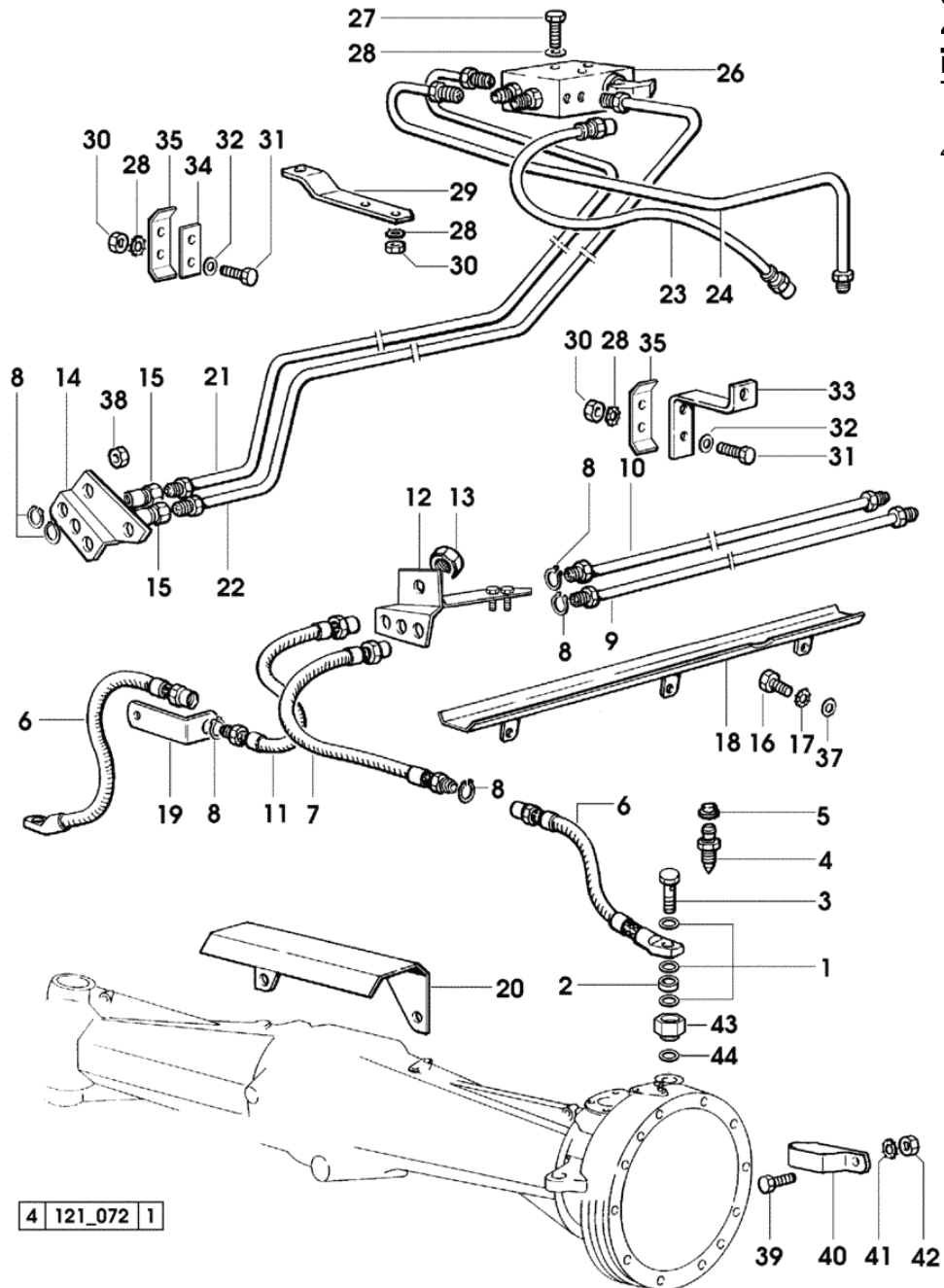
### GENERAL

FRONT SUPPORT.....	04.00.1
4WD - FRONT DRIVE AXLE.....	04.00.2
4WD-ENGAGEMENT CONTROL - S.B.A. MODEL.....	04.00.3
4WD - FRONT DIFFERENTIAL LOCK.....	04.00.4
4WD - AXLESHAFTS.....	04.00.5
4WD - FRONT DRIVE AXLE.....	04.00.6
4WD - FRONT BRAKING SYSTEM.....	04.00.7
4WD - POWER STEERING CYLINDER.....	04.00.8
4WD - POWER STEERING CYLINDER - COMPONENTS.....	04.00.9
4WD - TRANSMISSION SHAFT.....	04.00.10
4WD-P.T.O.....	04.00.12
4WD - INDEPENDENT HAND BRAKE.....	04.00.13
CYLINDER PARTS.....	0.264.6342.4/10.A

Section: FRONT AXEL  
**4WD - FRONT BRAKING SYSTEM**

Fig.	Code	QTY	Name
------	------	-----	------

44	2.1560.008.0	1	- X S.B.A. gasket 12.2 x 18
----	--------------	---	--------------------------------



4 121\_072 1

Section: FRONT HYDRAULIC POWER-LIFT  
**FRONT HYDRAULIC POWER-LIFT**

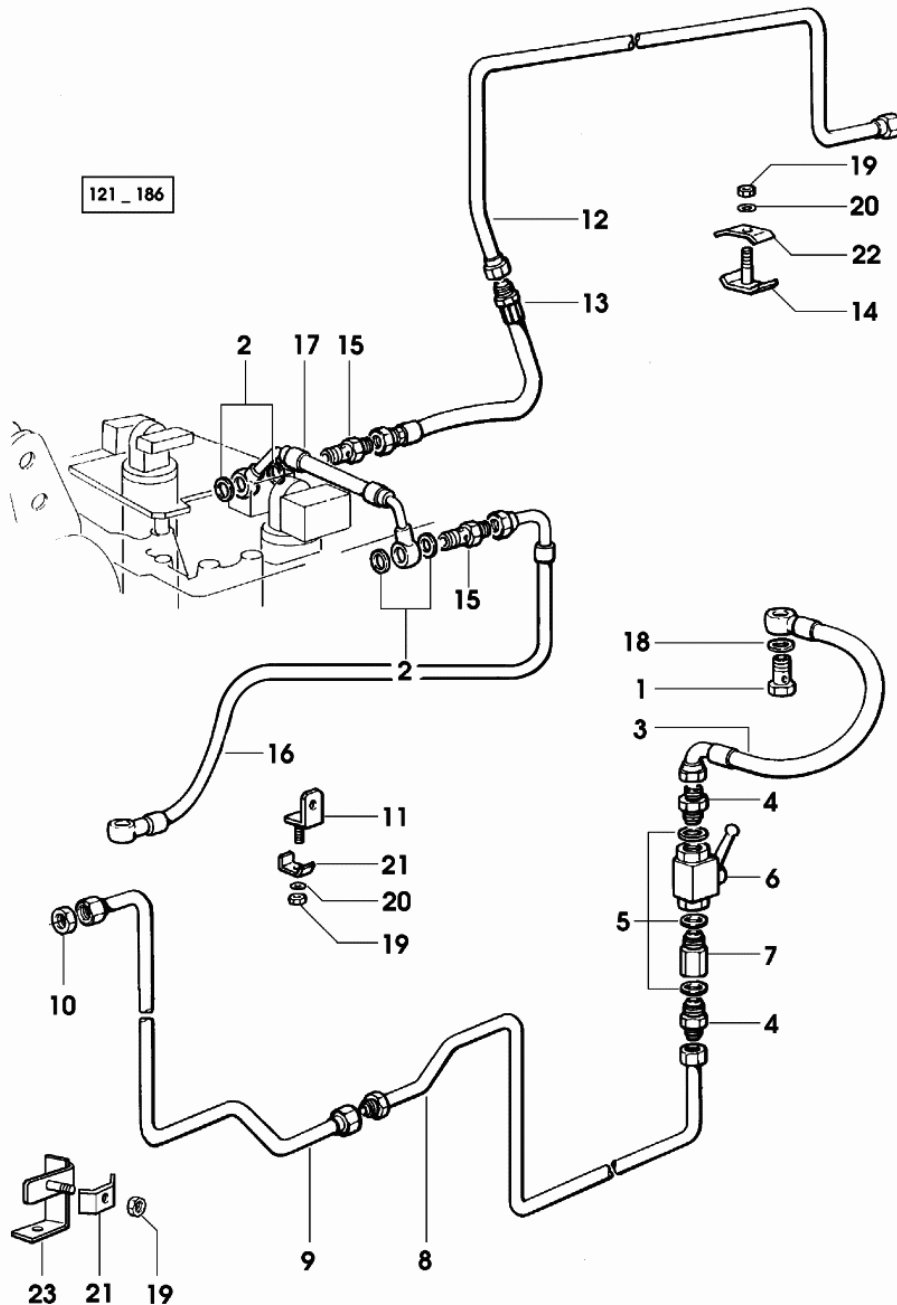
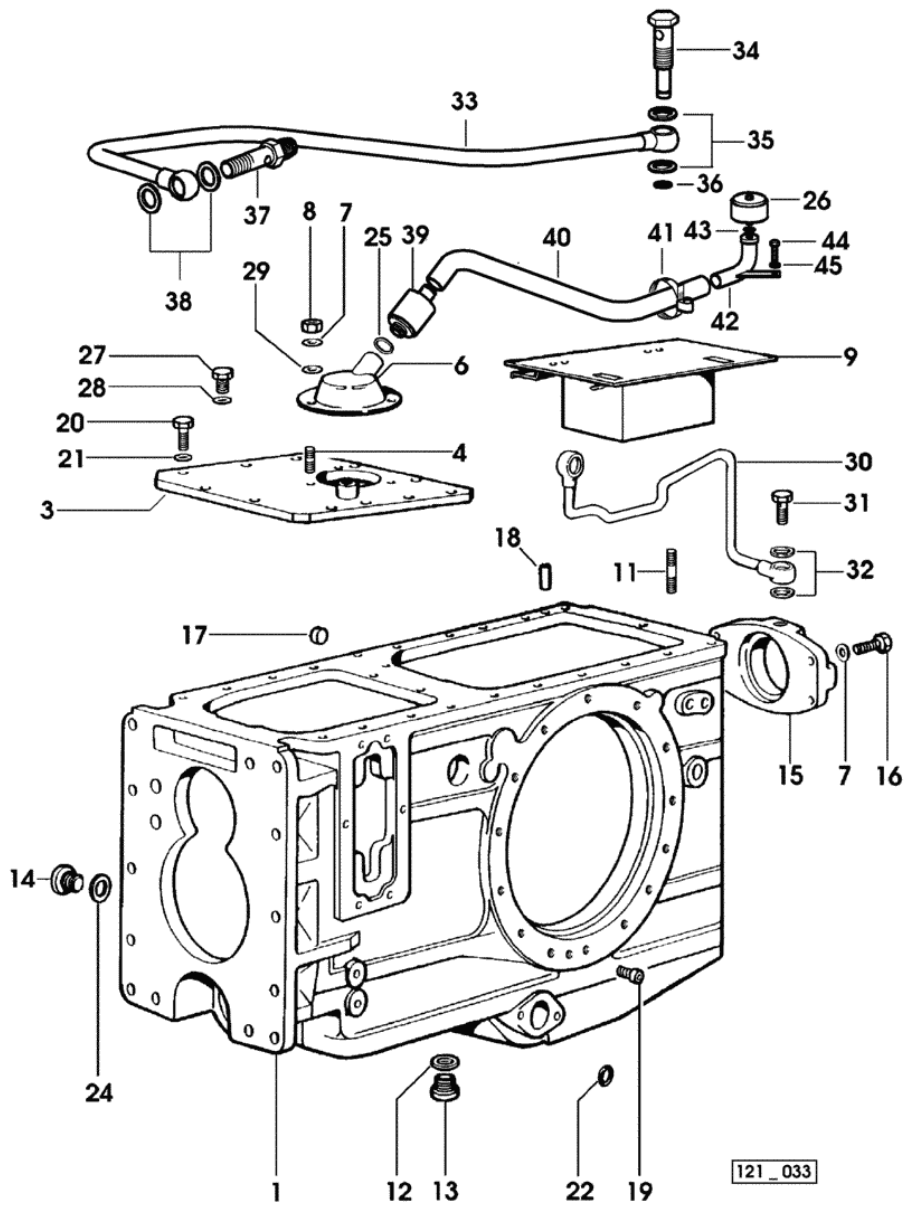


Fig.	Code	QTY	Name
1	2.3339.485.2	1	pipe union m 18 p.1.5x55
1	2.3339.660.2	1	pipe union - FOR TYPES WITH REXROTH CONTROL VALVE
2	2.1560.014.0	5	gasket 18.2 x 24 x 1.5
3	0.009.2993.3/10	1	tube
3	0.011.3934.3	1	tube - FOR TYPES WITH REXROTH CONTROL VALVE
4	2.3261.112.2	2	pipe fitting 3/8 gas-3/4"
5	2.1560.053.0	3	gasket 17 x 21
6	0.009.0375.4/10	1	valve
7	0.009.3152.3/10	1	valve
8	0.009.1585.3/30	1	tube
9	0.009.1813.3/10	1	tube
10	2.1019.099.2	1	nut 3/4" - 16JICMX8
11	0.009.1836.2	1	bracket
12	0.009.2054.3/10	1	tube
13	0.009.1811.3/30	1	tube
14	0.154.6377.3	2	terminal
15	0.009.0853.0	2	pipe fitting 3/4 m 18 p.1.5
16	0.011.0946.3/10	1	tube
17	0.009.1812.3/20	1	tube
18	2.1569.160.0	1	gasket 18.2x22x3.5
18	2.1569.172.0	1	gasket 29x22.2x5 - FOR TYPES WITH REXROTH CONTROL VALVE
19	2.1011.103.2	4	nut m 6 p.1
20	2.1310.002.2	3	washer 6.6, d125
21	0.176.6359.0	3	clamp
22	0.154.6377.0	2	terminal
23	0.009.3105.2	1	bracket

Section: GEAR  
**REAR GEARBOX CASE**

Fig.	Code	QTY	Name
43	2.1560.010.0	1	gasket 14.2 x 20 x 1.5
44	2.0112.407.2	1	screw m 12 p.1.75 x 20
45	2.1470.007.2	1	lock washer 12



121\_033

Section: GEAR  
**CLUTCH CONTROL VALVES**

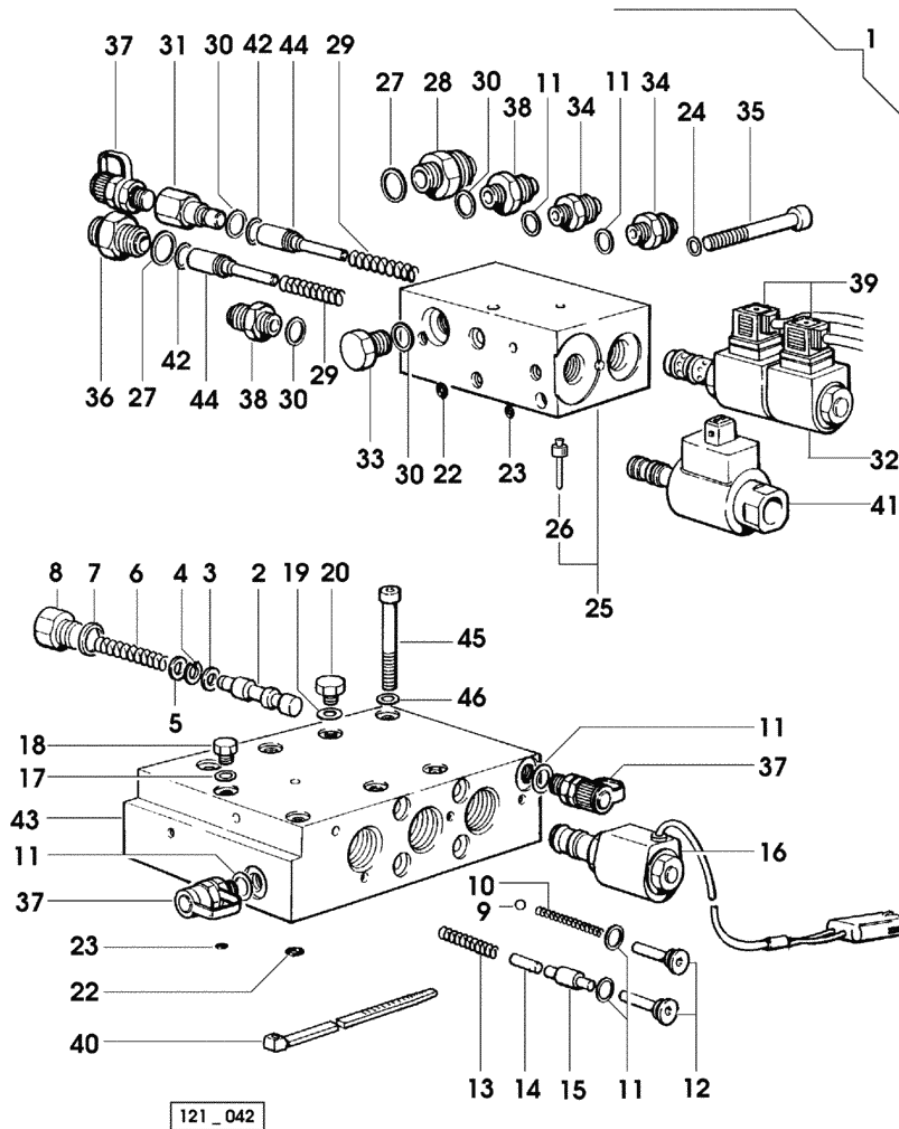
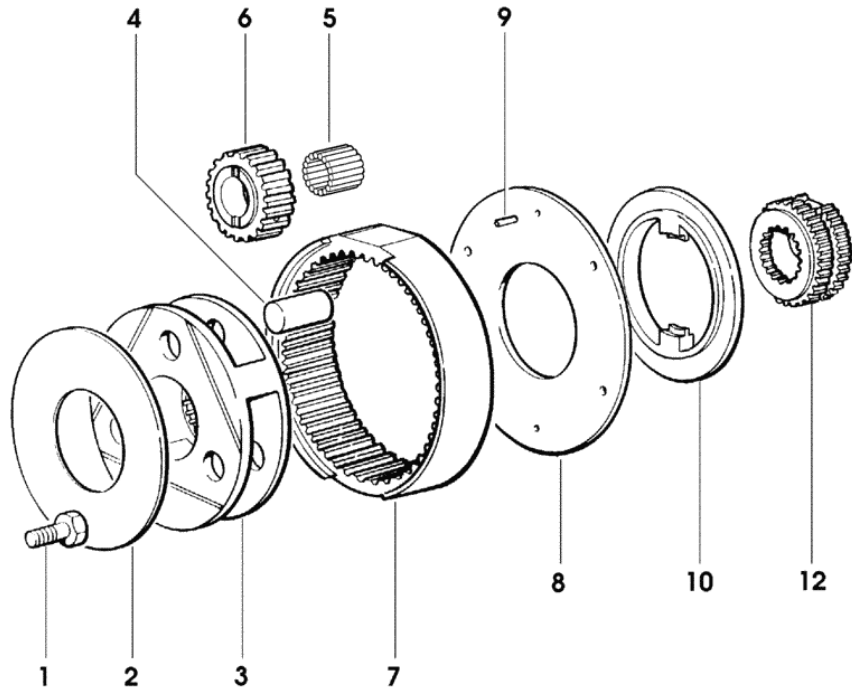


Fig.	Code	QTY	Name
1	0.009.2835.4/60	1	valve
2	0.009.0626.0	1	stem
3	2.1599.593.2	1	snoulder 9x14x2
4	2.1420.002.0	1	circlip a 8
5	2.1599.592.2	1	snoulder 9x14x3
6	2.4019.433.1/10	1	spring 8.1x10.5x1.2x52
7	2.1560.011.0	1	gasket 16.2x20
8	2.3199.193.2	1	plug m 16 p.1.5x29
9	2.2810.004.0	5	ball 5/16"
10	2.4019.432.1/10	5	spring 5.4x6.2x0.4x59
11	2.1560.008.0	12	gasket 12.2 x 18
12	2.3199.196.2	10	plug m 12 p.1.25x43
13	2.4019.451.1/20	5	spring 6.1x9.3x1.6x51
14	2.1650.411.0	5	pin 5x25
15	0.009.2159.0	5	valve
16	2.3729.260.0/10	6	electro valve 12V - 21W ☞ 2.3729.260.0/10
17	2.1560.001.0	1	gasket 6.2x10
18	2.3110.427.1	1	plug m 6 p.1 x 10
19	2.1560.003.0	5	gasket 8.2 x 12
20	2.3110.428.1	5	plug m 8 p.1 x 10
22	2.1531.025.0	8	'o' ring 10.82x1.78
23	2.1531.012.0	11	'o' ring 6.75 x 1.78
24	2.1480.014.1	2	washer 8
25	0.009.2835.3/30	1	valve body
26	2.1890.007.2	1	plug
27	2.1560.014.0	1	gasket 18.2 x 24 x 1.5
28	2.3199.221.2/10	1	pipe fitting m 14 p.1.5
29	2.4019.431.1/30	2	spring 6.9x11.3x2.2x64
30	2.1560.010.0	4	gasket 14.2 x 20 x 1.5
31	2.3199.221.2/10	1	pipe fitting m 14 p.1.5
32	2.3719.750.0/10	1	electro valve 12 V - 21 W, ON/OFF 4/3 ☞ 2.3719.750.0/10
33	2.3119.032.2	1	plug m 14 p.1.5
34	2.3339.595.2	2	pipe fitting m 12
35	2.0312.224.2	2	screw m 8 p.1.25 x 90
36	2.3339.642.2	1	pipe fitting
37	0.009.2923.4	3	socket
38	2.3339.594.2	2	pipe fitting m 14 p.1.5-3/4
39	0.008.0931.3	2	wire
40	0.008.0925.0	1	clamp
41	2.3719.510.0/10	1	electro valve EVP ☞ 2.3719.510.0/10
42	2.1531.016.0	2	ring 8.74 x 1.78

**SUPER REDUCTION GEAR UNIT**

Fig.	Code	QTY	Name
1	2.0133.507.2	6	screw
2	2.1589.216.0	1	snoulder 70x135x1.2
3	0.009.6729.0	1	spider
4	2.1699.300.0/10	3	pin 19.4x41
5	2.2999.242.0	54	roller 4x25.8 (...) <-
5	2.2999.404.0	3	roller cage -> (...)
6	0.009.6731.0	3	planet gear
7	0.007.7511.0/10	1	crown wheel
8	0.007.7510.0/10	1	snoulder
9	2.1630.406.0	2	roll pin 4 x 12
10	0.008.0248.0	1	ring
12	0.009.6706.0/20	1	sleeve

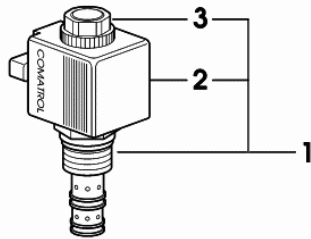


121\_051

Section: GEAR

**SOLENOID VALVE 12V - 21W**

Fig.	Code	QTY	Name
1	2.3729.260.0/10	1	electro valve 12V - 21W
2	0.010.3582.0	1	coil 12V - 21W
3	0.010.3140.1	1	ring nut



2\_3729\_260\_0\_10

**CONTROL CONSOLE FOR POWER-LIFT**

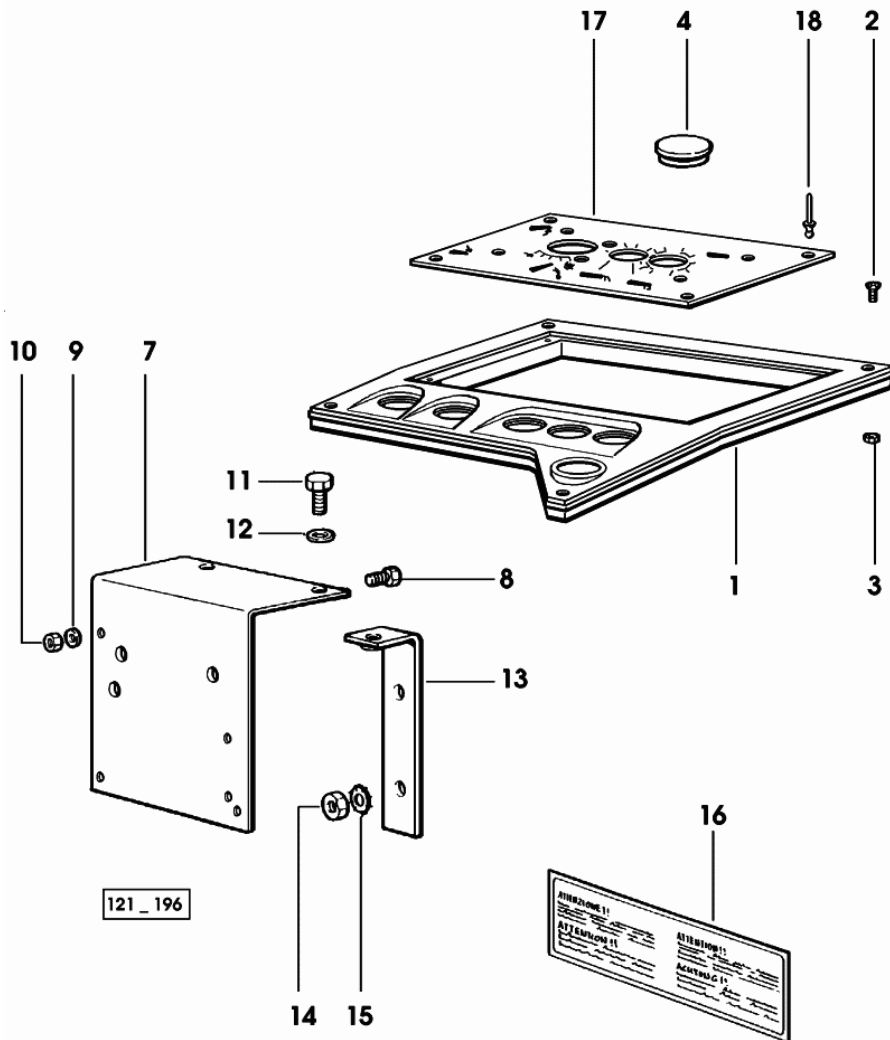
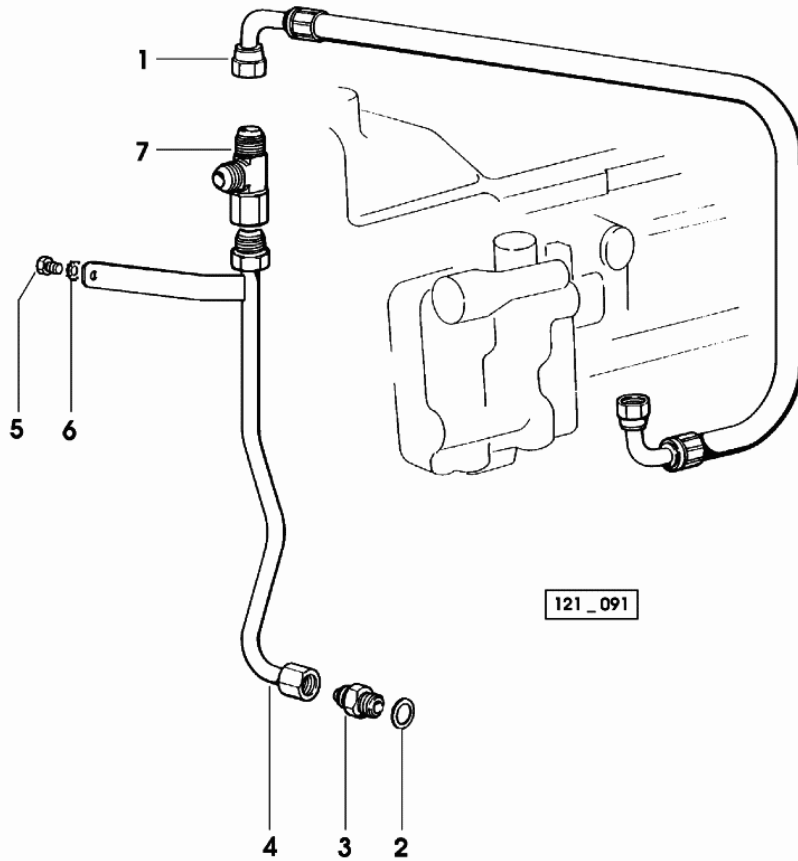


Fig.	Code	QTY	Name
1	0.008.9804.0/30	1	panel
2	2.0342.003.3	4	screw m 4 p.0.7 x 16
3	2.1120.001.2	4	selflock nut m 4 p.0.7
4	0.009.0210.0/10	2	plug 30 x 38 x 9.0
7	0.009.0844.0/10	1	support
8	2.0332.306.2	3	screw m 5x0.8x16
9	2.1310.001.2	3	flat washer 5.3
10	2.1011.102.2	3	nut m 5 p.0.7
11	2.0122.205.2	2	screw m 8 p.1 x 16
12	2.1310.004.2	2	flat washer 8.5
13	0.009.0660.2	2	support
14	2.1011.105.2	4	nut m 8 p.1.25
15	2.1470.004.2	4	washer 8
16	2.9929.276.0	1	plate
17	0.007.6368.3/10	1	plate
18	2.1899.083.0	4	rivet

**POWER STEERING**

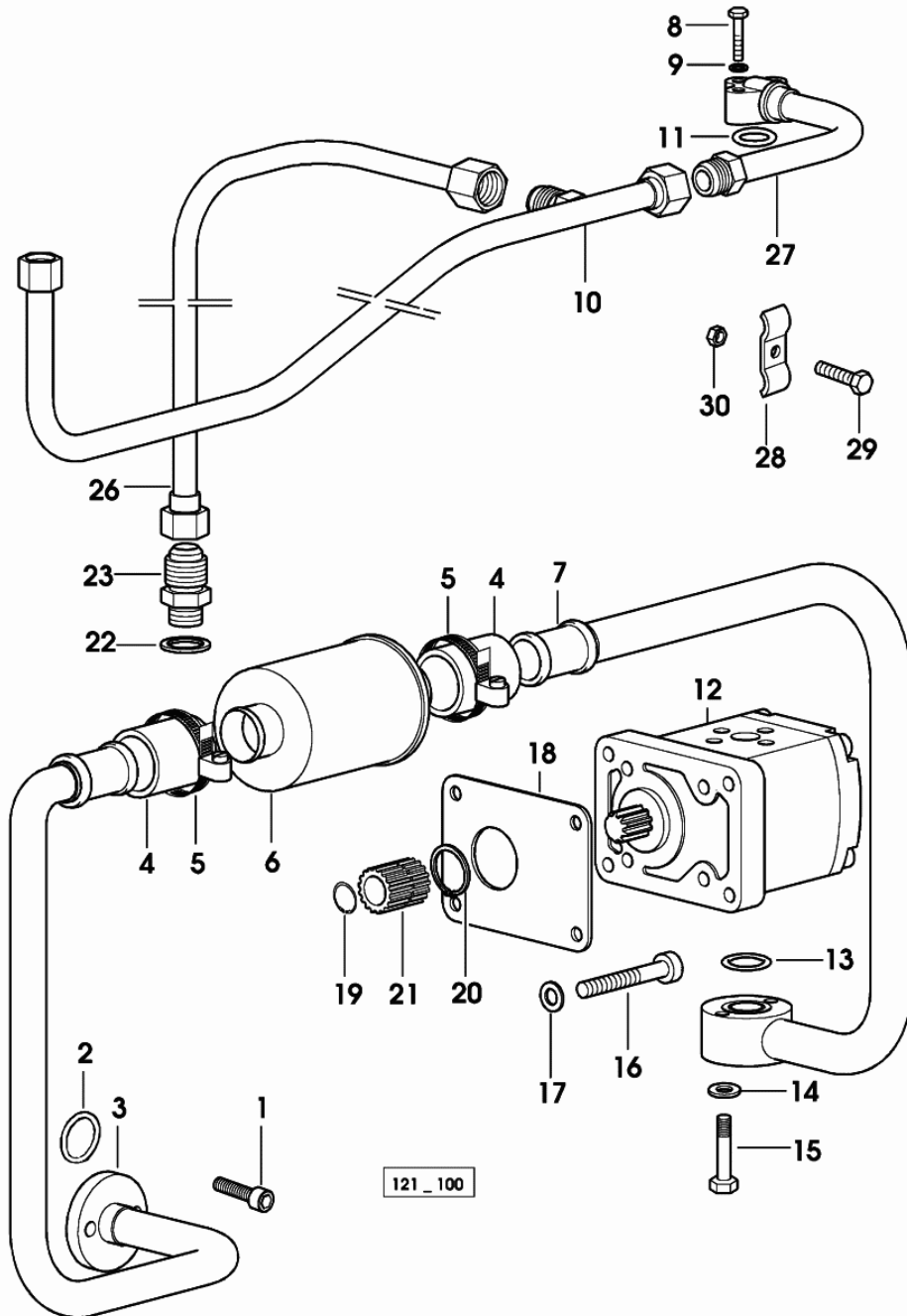
Fig.	Code	QTY	Name
1	0.009.2875.3/20	1	tube
2	2.1560.014.0	2	gasket 18.2 x 24 x 1.5
3	0.009.2467.4/20	1	valve
4	0.009.2452.3	1	exhaust
5	2.0112.205.2	1	screw m 8 p.1.25 x 16
6	2.1470.004.2	1	washer 8
7	2.3339.598.2	1	pipe union t 7/8



**PUMP FILTER SUCTION**

Fig.	Code	QTY	Name
------	------	-----	------

1	2.0312.206.2	2	screw m 8 p 1.25 x 20
2	2.1531.071.0	1	'o' ring 26,64x2,62
3	0.011.3652.3	1	tube
4	0.011.3336.0	2	sleeve
5	2.6850.009.0	4	clamp 32-50
6	2.4419.640.0	1	hydr.oil filter elem
7	0.011.3234.3	1	tube
8	2.0112.011.2	3	screw m 6 p.1x30
9	2.1470.002.2	3	washer 6, d128
10	0.011.2821.3/10	1	tube
11	2.1531.037.0	1	'o' ring 15.08x2.62
12	2.4539.270.0	1	hydraulic pump 11 cc dx/rh/re ☞ 2.4539.270.0 ☞ 06.00.20
13	2.1531.503.0	1	'o' ring 21.89x2.62
14	2.1470.004.2	2	washer 8
15	2.0112.215.2	2	screw m 8 p.1.25 x 40
16	2.0312.210.2	4	screw m 8 p 1.25 x 30
17	2.1480.014.1	4	washer 8
18	0.163.6350.0	1	gasket
19	2.1411.003.1	1	circlip 14
20	2.1410.011.1	1	circlip 28
21	0.008.4464.0/30	1	sleeve Z = 9 / Z = 17
22	2.1560.014.0	2	gasket 18.2 x 24 x 1.5
23	0.009.2467.4/20	1	valve
26	0.011.2819.3/10	1	tube
27	0.011.3232.3	1	tube
28	0.9032.255.0	2	bracket
29	2.0112.215.2	1	screw m 8 p.1.25 x 40
30	2.1011.105.2	1	nut m 8 p.1.25



CLICK HERE TO **DOWNLOAD** THE COMPLETE MANUAL

- Thank you very much for reading the preview of the manual.
- You can download the complete manual from: [www.heydownloads.com](http://www.heydownloads.com) by clicking the link below



- Please note: If there is no response to CLICKING the link, please download this PDF first and then click on it.

CLICK HERE TO **DOWNLOAD** THE COMPLETE MANUAL