

## SILVER 85

### V0 - BALLAST, TOWING HITCHES

#### FRONT HITCHES

FRONT TOWING HITCH.....	V0.01.0 (1)
FRONT TOWING HITCH.....	V0.01.1 (1)
FRONT TOWING HITCH.....	V0.01.2 (1)
TRAILER STAND - DRAWBAR COUPLING.....	V0.01.3 (1)

#### REAR HITCHES

REAR GEARBOX BRACKETS.....	V0.02.0 (1)
REAR TOWING HITCH.....	V0.02.1 (1)
REAR SWINGING TOWING-HITCH.....	V0.02.8 (1)
REAR TOWING HITCH.....	V0.02.13 (1)
REAR TOWING HITCH.....	V0.02.13 (2)
REAR TOWING HITCH CUNA - cat. C.....	V0.02.14 (1)
REAR TOWING HITCH.....	V0.02.15 (2)
REAR TOWING HITCH.....	V0.02.15 (3)
REAR TOWING HITCH CAT. " D ".....	V0.02.23 (1)
REAR TOWING HITCH CAT: "D2".....	V0.02.25 (1)
REAR TOWING HITCH CAT: "D3".....	V0.02.28 (1)
MECHANICAL PICK-UP-HITCH.....	V0.02.30 (1)
REAR TOWING HITCH CAT: "D3".....	0.011.1999.4/10.A
TOWING HITCH GRASSI.....	0.011.2006.4/20.A
DRAWBAR COUPLING.....	0.011.3090.4.A
REAR TOWING HITCH CAT: "D".....	0.011.3676.4.A
REAR TOWING HITCH CAT: "C".....	0.011.6480.4/10.A
PICK-UP-HITCH.....	0.012.6020.4/20.A
DRAWBAR COUPLING.....	0.013.1047.4.A
DRAWBAR COUPLING mm 38.....	0.014.4449.3/20.A
DRAWBAR COUPLING mm 38.....	0.014.4449.3/30.A
DRAWBAR COUPLING - V.ORLANDI -.....	0.014.4476.4.A
TRAILER STAND - DRAWBAR COUPLING.....	0.014.4483.3/10.A
CHASSIS.....	0.014.4484.3/10.A

#### FRONT BALLAST WEIGHTS

FRONT WEIGHT CARRIER.....	V0.03.0 (1)
FRONT BALLAST 320 Kg.....	V0.03.3 (1)
BALLAST LOCK BAR mm 30x640.....	V0.03.4 (1)
FRONT BALLAST 400 Kg.....	V0.03.6 (1)

#### WHEEL BALLAST

WHEEL BALLAST 172 Kg.....	V0.05.1 (1)
---------------------------	-------------

CLICK HERE TO **DOWNLOAD** THE COMPLETE MANUAL

- Thank you very much for reading the preview of the manual.
- You can download the complete manual from: [www.heydownloads.com](http://www.heydownloads.com) by clicking the link below



- Please note: If there is no response to CLICKING the link, please download this PDF first and then click on it.

CLICK HERE TO **DOWNLOAD** THE COMPLETE MANUAL

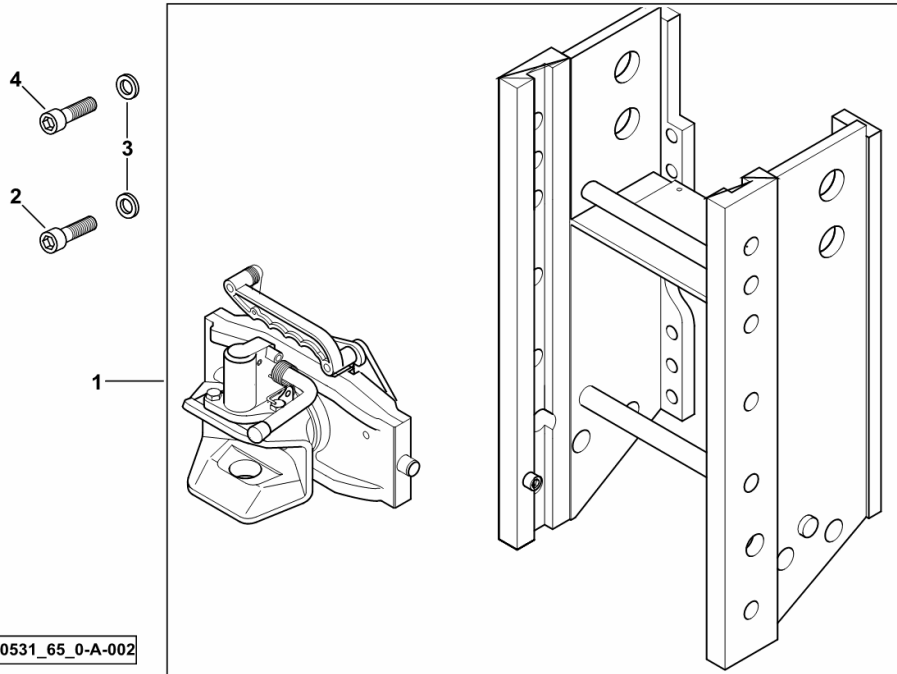
**REAR TOWING HITCH**

Fig.	Code	QTY	Name
------	------	-----	------

**Notes:**

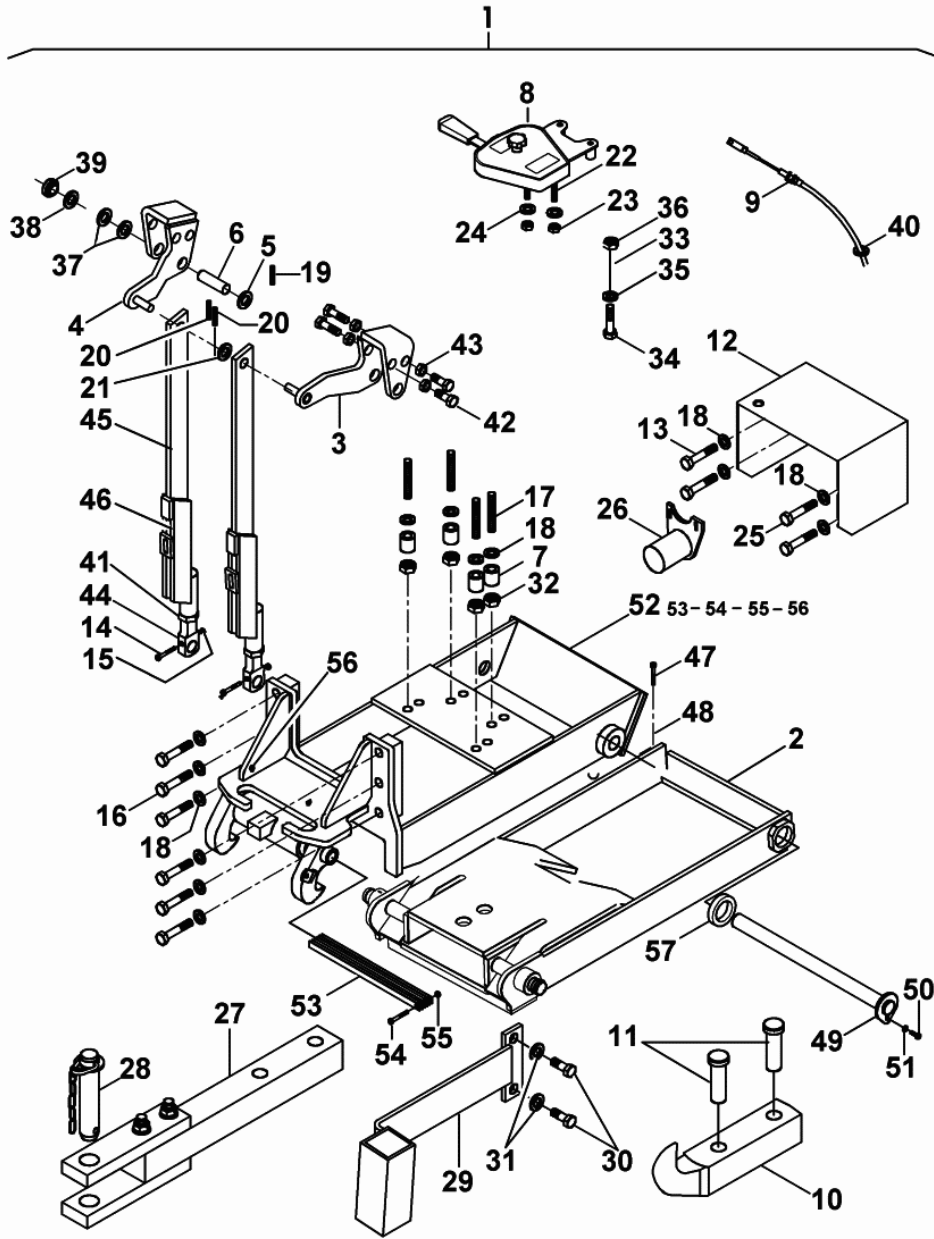
EXPORT D - PER TIPI SENZA P.T.O. SINCRONIZZATA [SILVER 85] 1126 <-

1	0.013.1047.4	1	tow hook ☞ 0.013.1047.4
2	2.0314.616.2	10	screw m 16 p.2x50
3	2.1474.013.2	12	washer 16
4	2.0314.614.2	2	screw m 16 p.2 x 40



9\_40531\_65\_0-A-002

Section: V0 - BALLAST, TOWING HITCHES  
**PICK-UP-HITCH**



0\_012\_6020\_4\_20

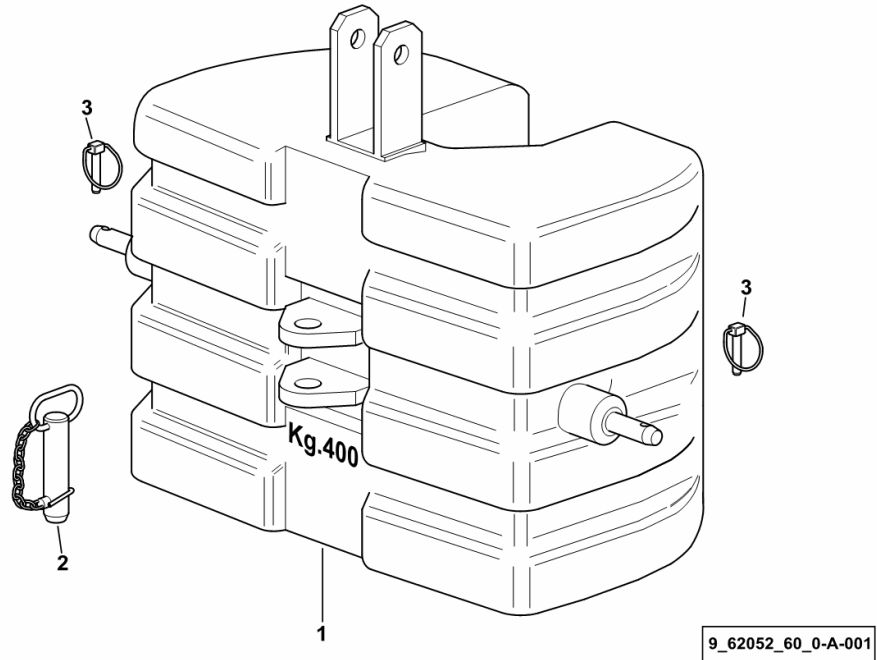
Fig.	Code	QTY	Name
1	0.012.6020.4/20	1	clevis
2	0.010.3153.0	1	chassis frame
3	0.010.3153.1	1	bracket dx/rh/re
4	0.010.3153.2	1	bracket sx/lh/li
5	0.010.3112.0	2	washer
6	0.010.3154.0	2	pin
7	0.010.3121.2	4	spacer
8	0.010.3122.0	1	lever
9	0.010.3122.1	1	cable
10	0.010.3105.2	1	clevis
11	0.010.3122.2	2	pin
12	0.010.3121.1	1	guard
13	0.010.3107.1	3	screw m 16 x 30
14	0.010.3108.1	2	screw m 6 x 50
15	0.010.3108.2	2	nut m 6
16	0.010.3123.0	6	screw m 16 x 50
17	0.010.3123.1	4	stud bolt m 16 x 50
18	0.010.3108.0	14	washer 17x30
19	0.010.3112.1	2	split pin
20	0.010.3123.2	2	roll pin
21	0.010.3124.0	2	washer
22	0.010.3124.1	2	screw m 8 x 25
23	0.010.3124.2	2	nut m 8
24	0.010.3125.0	2	washer
25	0.010.3125.1	1	screw m 16 x 45
26	0.010.3154.1	1	guard
27	0.010.3113.1	1	rod
28	0.010.3113.2	1	pin
29	0.010.3126.0	1	bracket
30	0.010.3126.1	2	screw m 12 x 35
31	0.010.3110.1	2	washer
32	0.010.3115.0	4	nut m 16
33	0.010.3126.2	1	bracket
34	0.010.3127.0	2	screw m 10 x 55
35	0.010.3105.0	2	washer
36	0.010.3114.2	2	nut m 10
37	0.010.3111.2	4	spacer
			- VERSION WITH AUXILIARY LIFT CYLINDER
38	0.010.3113.0	2	spacer
			- VERSION WITHOUT AUXILIARY LIFT CYLINDER
39	0.010.3112.2	2	spacer

**FRONT BALLAST 400 Kg**

Fig.	Code	QTY	Name
------	------	-----	------

Notes:  
[SILVER 85]

1	0.008.9173.3/30	1	ballast 400 Kg
2	0.96309.51.3	1	pin Ø 32
3	0.010.9322.4	2	pin Ø 11

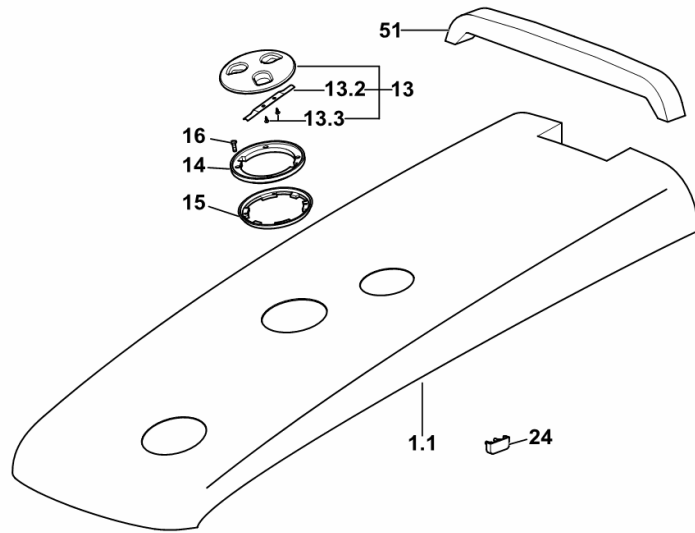


**HOOD UPPER PART**

Fig.	Code	QTY	Name
------	------	-----	------

Notes:  
[SILVER 85]

1.1	0.008.9335.3/40	1	bonnet
13	0.007.3072.3/10	1	plug
13.2	0.008.8015.0	1	spring
13.3	2.0350.404.6	2	screw M 4.2x13B
14	0.008.8013.0	1	ring
15	0.008.8014.0	1	ring
16	2.0351.405.6	4	screw m 4.2x16B
24	0.007.6083.0/10	2	rubber plug
51	0.008.9648.0/10	1	gasket



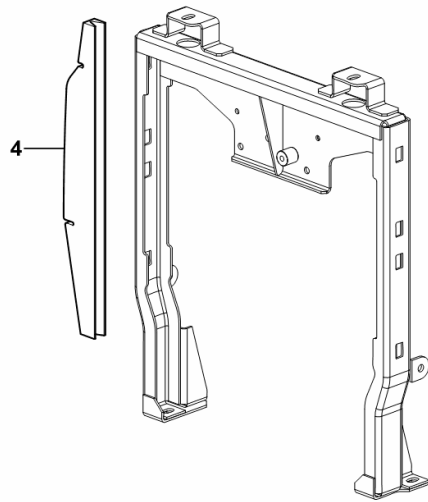
9\_B8672\_10\_0-A-001

Section: G0 - BODYWORK - CAB  
**HOOD - GUARDS dx/rh/re**

Fig.	Code	QTY	Name
------	------	-----	------

Notes:  
[SILVER 85] 1152 <-

4	0.010.0644.0/20	1	gasket
---	-----------------	---	--------



9\_62072\_25\_0-A-001

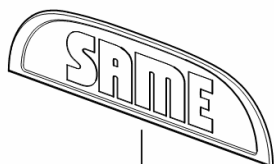
**FRONT HOOD PRODUCT IDENTIFICATION PLATE**

Fig.	Code	QTY	Name
------	------	-----	------

**Notes:**

[SILVER 85] -> 1153

2	0.014.5103.2	1	plate SAME
---	--------------	---	------------



2

9\_B8672\_10\_0-B-001

**WARNING PLATE**

Fig.	Code	QTY	Name
------	------	-----	------

**Notes:**

- PER TIPI CON REGOLATORE ELETTRONICO CON CABINA CON INVERSOIRE IDRAULICO [SILVER 85] -> 1029

101.1	0.009.2644.0/20	1	plate ITALY
101.2	0.009.2646.0/20	1	plate EXPORT F
101.3	0.009.2647.0/20	1	plate EXPORT D
101.4	0.009.2645.0/20	1	plate EXPORT GB

PRIMA DI SCENDERE DAL TRATTORE AZIONARE  
SEMPRE IL FRENO DI STAZIONAMENTO

101.1

AVANT DE DESCENDRE DU TRACTEUR  
TOUJOURS SERRER LE FREIN A MAIN

101.2

VOR DEM VERLASSEN DES TRAKTORS  
MUSS DIE HANDBREMSE GEZOGEN SEIN

101.3

BEFORE LEAVING THE TRACTOR  
ALWAYS APPLY THE PARKING BRAKE

101.4

9\_B8674\_00\_0-C-001

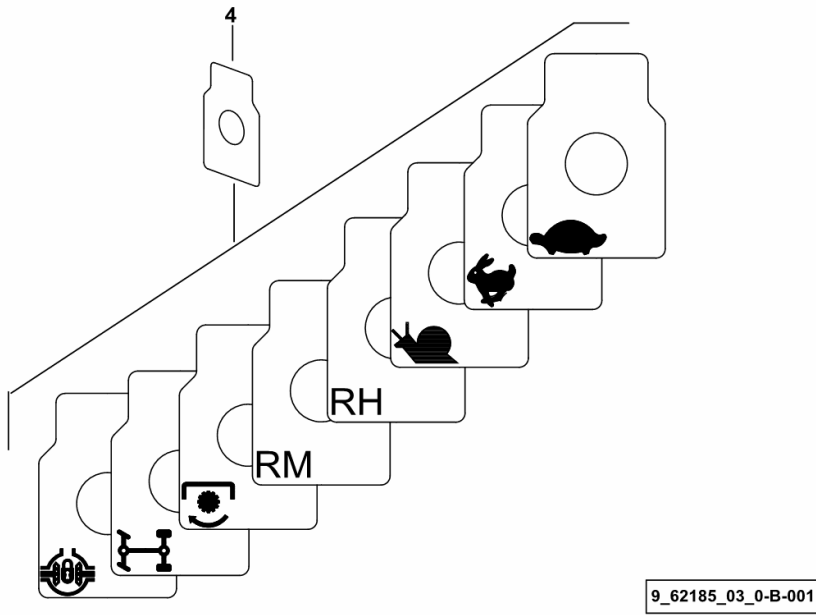
**SOLENOID VALVE IDENTIFICATION PLATES**

Fig.	Code	QTY	Name
------	------	-----	------

**Notes:**

- FOR TYPES WITH PLATFORM AND HYDRAULIC SHUTTLE [SILVER 85]

4	0.011.7710.0	1	plate
---	--------------	---	-------

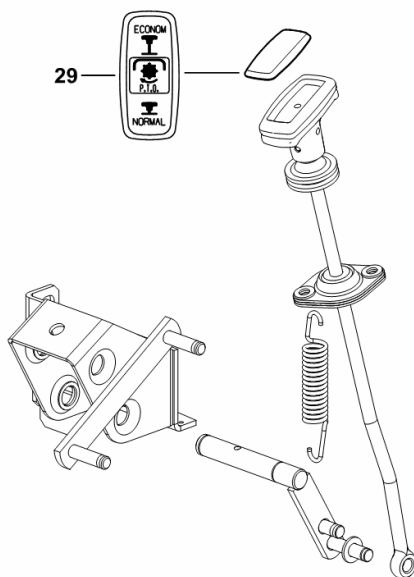


**ECONOMY P.T.O. COVER**

Fig.	Code	QTY	Name
------	------	-----	------

Notes:  
[SILVER 85]

29	0.007.6147.0/20	1	cap
----	-----------------	---	-----



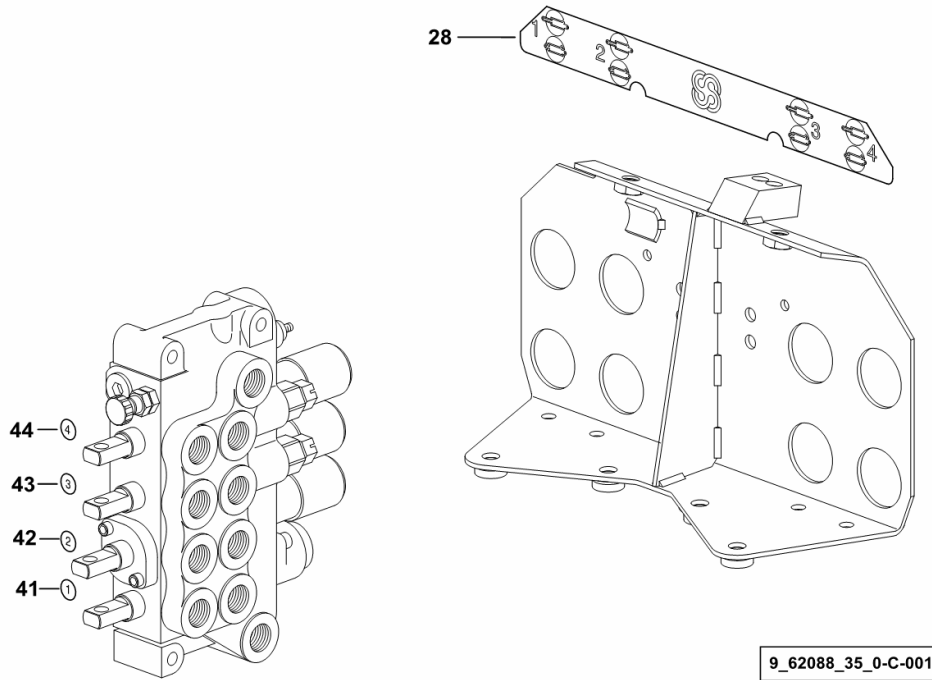
9\_62068\_00\_0-C-001

**DECALS WITH 8 WAY AUXILIARY CONTROL VALVE**

Fig.	Code	QTY	Name
------	------	-----	------

Notes:  
[SILVER 85]

28	2.9929.388.0/20	1	plate
41	2.9929.412.0	1	plate 1
42	2.9929.413.0	1	plate 2
43	2.9929.414.0	1	plate 3
44	2.9929.415.0	1	plate 4



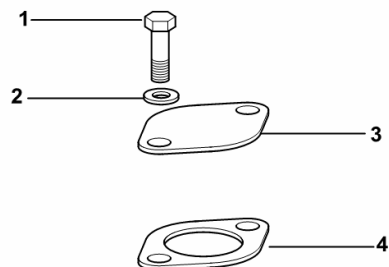
**FLOOR PLUG**

Fig.	Code	QTY	Name
------	------	-----	------

**Notes:**

- FOR TYPES WITHOUT SYNCHRONIZED P.T.O. [SILVER 85]

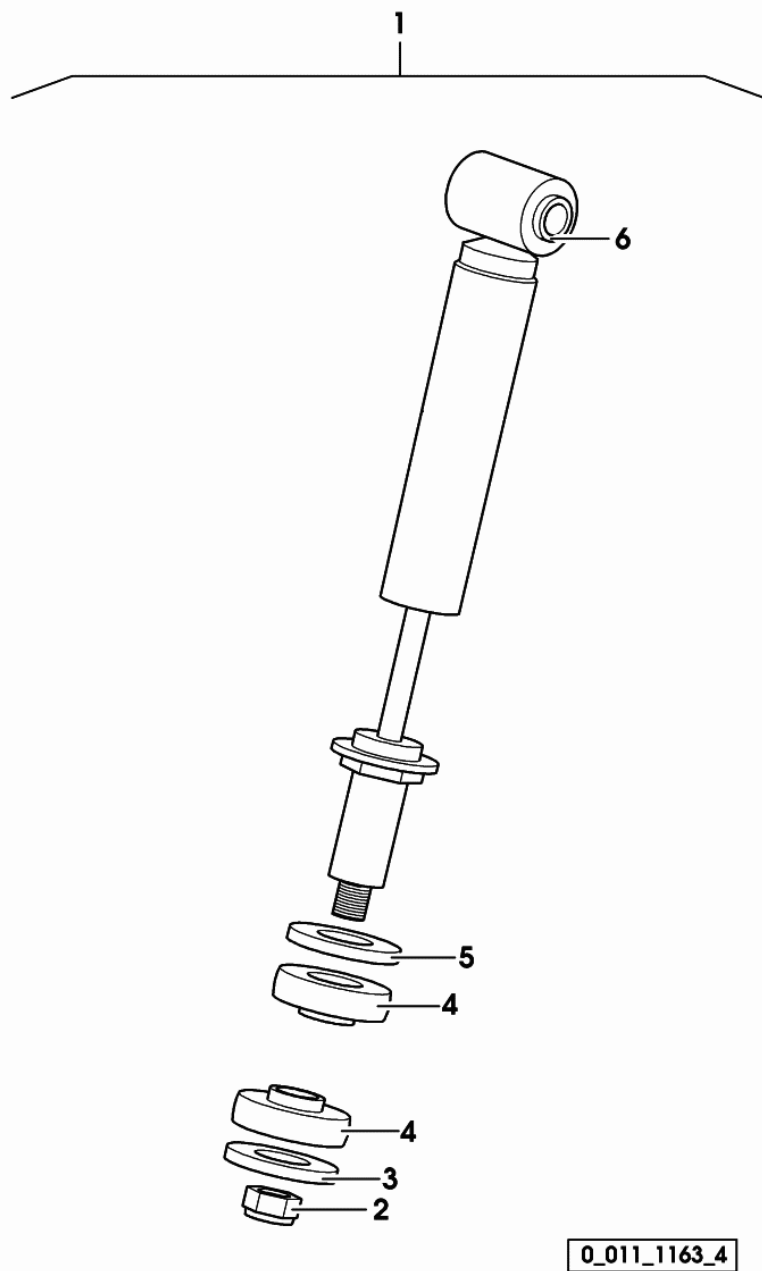
1	2.0112.205.2	2	screw m 8 p.1.25 x 16
2	2.1310.004.2	2	flat washer 8.5
3	0.009.0481.0	1	plate
4	0.009.0480.0	1	gasket



9\_C8668\_03\_0-A-001

**DAMPER**

Fig.	Code	QTY	Name
1	0.011.1163.4	1	shoch.absorber
2	0.900.0136.6	1	nut
3	0.900.0136.7	1	washer
4	0.900.0136.8	2	stopper
5	0.900.0137.1	1	washer
6	0.900.0137.4	1	silent-block

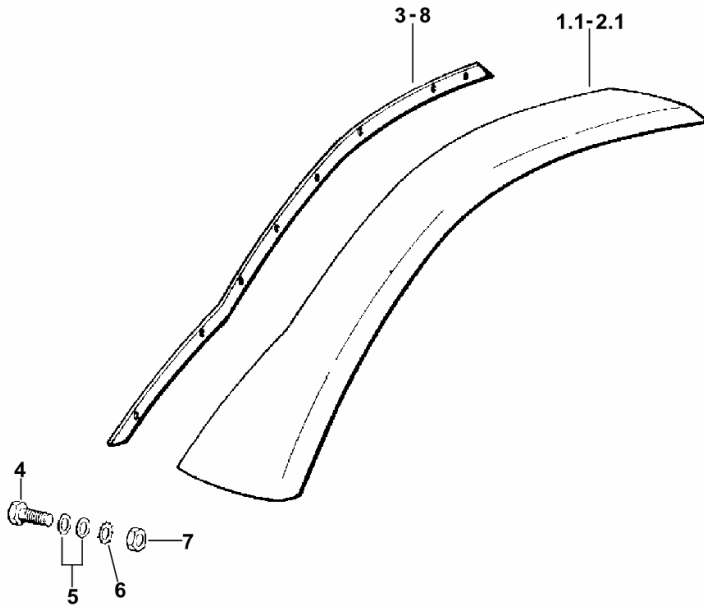


**REAR MUDGUARDS**

Fig.	Code	QTY	Name
------	------	-----	------

Notes:  
[SILVER 85]

1.1	0.009.0336.0/10	1	fender dx/rh/re
2.1	0.009.0337.0/10	1	fender sx/lh/li
3	0.012.6424.0	1	gasket dx/rh/re
4	2.0112.209.2	16	screw m 8 p 1.25 x 25
5	2.1310.004.2	32	flat washer 8.5
6	2.1470.004.2	16	washer 8
7	2.1011.105.2	16	nut m 8 p.1.25
8	0.012.6439.0	1	gasket sx/lh/li



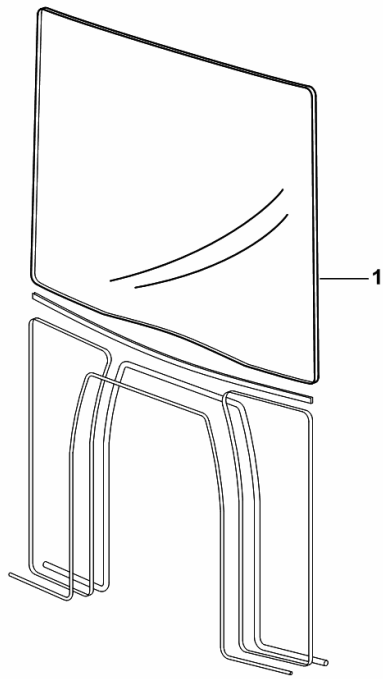
9\_52676\_20\_0-A-001

**WINDSCREEN**

Fig.	Code	QTY	Name
------	------	-----	------

Notes:  
- LAMINATED GLASS [SILVER 85]

1	0.009.0300.0	1	tempered glass
---	--------------	---	----------------



9\_52671\_12\_0-A-001

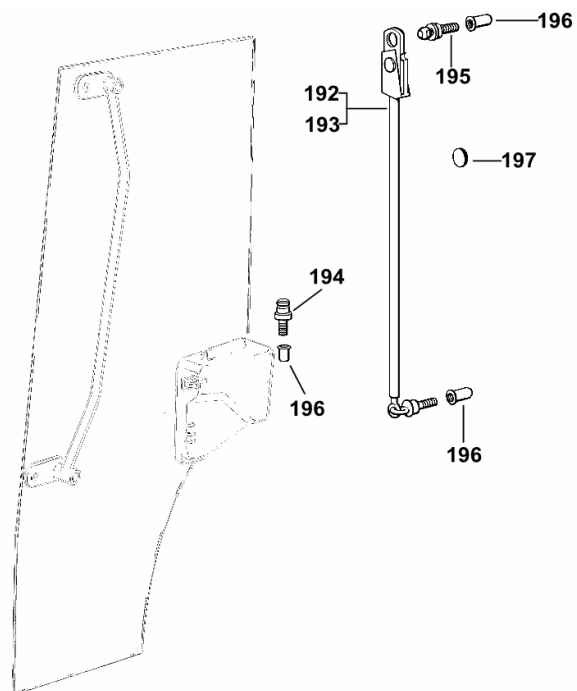
**DOOR LOCK - CAB DOOR - RIGHT/LEFT**

Fig.	Code	QTY	Name
------	------	-----	------

**Notes:**

- PER TIPI CON CABINA SENZA "HIGH VISIBILITY" [SILVER 85]

192	0.007.6660.3/10	1	rod sx/lh/li
193	0.007.6661.3/10	1	rod dx/rh/re
194	2.1699.425.3/10	2	pin m 6 p.1 x 35
195	2.1699.426.3/20	2	pin m 6x35.5
196	2.1142.010.2	6	insert m 6
197	0.007.6884.0	2	gasket Ø 12x5



9\_62071\_10\_0-E-001

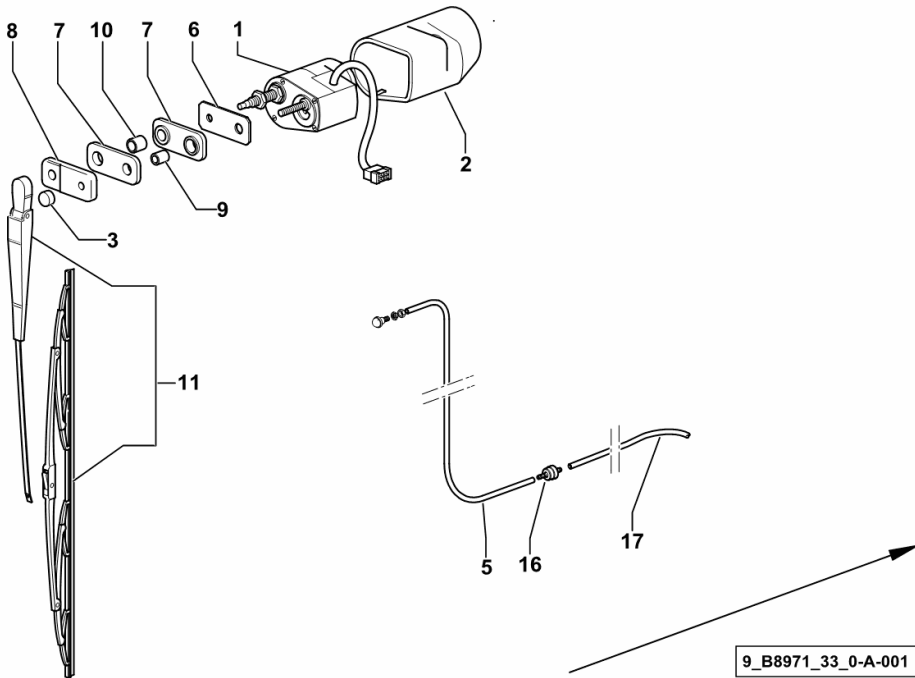
**SCREEN WIPER REAR**

Fig.	Code	QTY	Name
------	------	-----	------

**Notes:**

- FOR MODELS WITH CAB - "HIGH VISIBILITY" [SILVER 85]

1	2.9019.190.0	1	wiper motor
2	0.013.8822.0/10	1	cover
3	0.9200.177.0	1	guard
5	0.011.3963.0	1	tube
6	0.9241.560.0	1	small plate
7	0.9241.561.0	2	rubber plug
8	0.9241.562.0	1	spacer
9	2.1579.826.2	1	spacer 9x14x17
10	2.1579.909.2	1	spacer 12.6x17x17
11	0.008.3834.4	1	arm
	☞ 0.008.3834.4		
16	0.9231.559.0	1	pipe fitting
17	0.011.3963.0	1	tube



9\_B8971\_33\_0-A-001

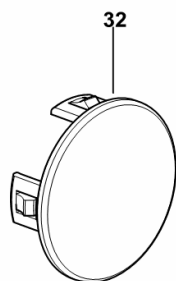
**INSTRUMENT PANEL PLUG**

Fig.	Code	QTY	Name
------	------	-----	------

**Notes:**

- FOR TYPES WITH CAB AND HYDRAULIC SHUTTLE [SILVER 85] -> 1015

32	0.269.8454.0/20	1	plug Ø 52 mm
----	-----------------	---	--------------



9\_B8684\_03\_0-A-001

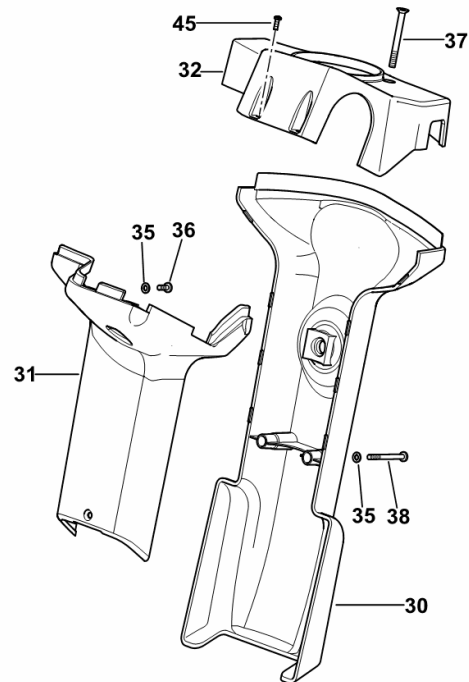
Section: G0 - BODYWORK - CAB  
**DASHBOARD - STEERING COVER**

Fig.	Code	QTY	Name
------	------	-----	------

**Notes:**

- PER TIPI CON REGOLATORE MECCANICO CON CABINA E INVERSORE IDRAULICO [SILVER 85] -> 1015

30	0.013.0071.0/20	1	cover
31	0.013.0072.2/20	1	cover
32	0.013.0073.0/30	1	cover
35	2.1499.095.3	6	washer 5
36	2.0332.304.2	2	screw m 5 p.0.8 x 12
37	2.0342.214.3	2	screw m 6 x 60
38	2.0339.008.3	2	screw m 5x50
45	2.0350.254.3	2	screw m 3.5x13



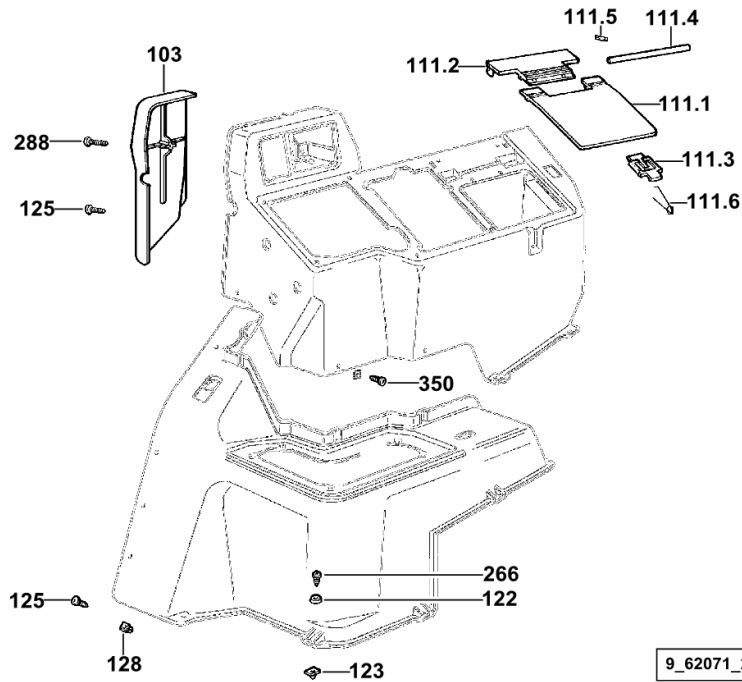
9\_B8674\_01\_0-B-001

**INTERNAL CAB LININGS - DX/RH/RE**

Fig.	Code	QTY	Name
------	------	-----	------

**Notes:**

- PER TIPI CON CABINA SENZA "HIGH VISIBILITY" [SILVER 85]



103	0.009.0273.0/10	1	cover
111.1	0.009.0219.0	1	panel
111.2	0.009.0218.0	1	support
111.3	0.009.0226.0/10	1	push-button
111.4	2.1699.256.0	1	pin
111.5	2.1630.006.0	1	roll pin 2x12
111.6	0.009.0285.0/10	1	spring
122	0.257.7653.0	5	washer
123	2.6999.039.0/10	5	special nut 6.3
125	2.0352.407.3	7	screw m 4.2 x 22
128	2.6999.038.0	4	special nut 4.2
266	2.0350.757.6	5	screw m6.3x22xAB
288	2.0332.210.3	1	screw m 4x35
350	2.0351.556.3	3	screw 4.8x19

9\_62071\_20\_0-E-001

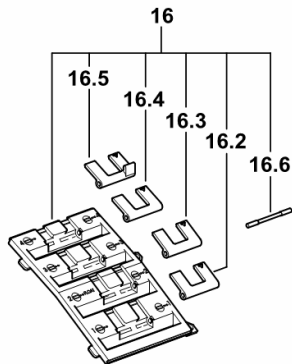
**CONTROL CONSOLE FOR 6-WAY REMOTE VALVE**

Fig.	Code	QTY	Name
------	------	-----	------

**Notes:**

[SILVER 85] -&gt; 1068

16	0.010.0698.4/10	1	panel
16.2	0.009.0216.0	1	stop 1
16.3	0.009.0215.0	1	stop 2
16.4	0.009.0214.0	1	stop 3
16.5	0.009.0213.0	1	stop 4
16.6	2.1699.561.0/10	4	pin



9\_B8688\_16\_0-B-001

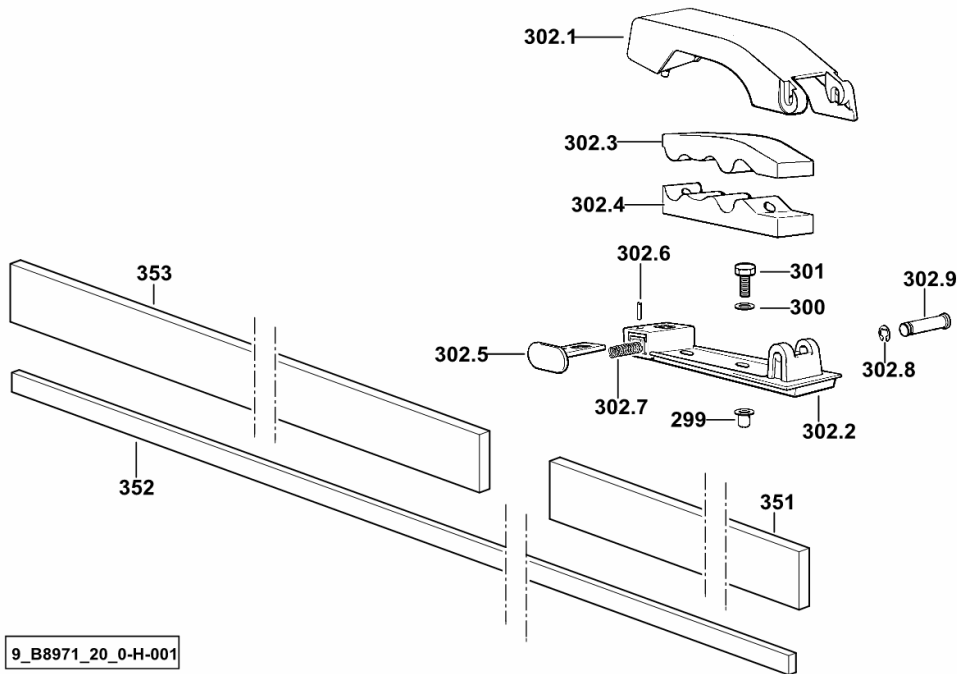
**INTERNAL CAB LININGS**

Fig.	Code	QTY	Name
------	------	-----	------

**Notes:**

- FOR MODELS WITH CAB - "HIGH VISIBILITY" [SILVER 85]

299	2.1142.010.2	2	insert m 6
300	2.1470.002.2	2	washer 6, d128
301	2.0112.007.2	2	screw m 6 p.1 x 20
302.1	0.010.0148.0/20	1	cover
302.2	0.010.0147.0/10	1	support
302.3	0.010.0150.0/20	1	lining
302.4	0.010.0149.0/20	1	lining
302.5	0.010.0151.0/10	1	push-button
302.6	2.1630.106.1	1	pin 2.5x12
302.7	2.4019.631.2	1	spring
302.8	2.1430.006.2	1	circlip 5
302.9	2.1699.438.3/10	1	pin Ø 6
351	0.011.0715.0	1	gasket 250x30x7
352	0.010.5174.0/10	1	gasket 2000x10x5
353	0.011.3281.0	1	gasket 400x30x7



9\_B8971\_20\_0-H-001

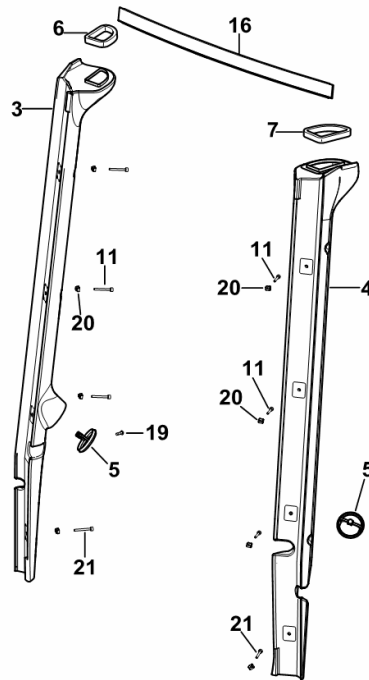
**FRONT UPRIGHT COVER SX/LH/LI - DX/RH/RE**

Fig.	Code	QTY	Name
------	------	-----	------

**Notes:**

- FOR "HIGH VISIBILITY" CAB [SILVER 85]

3	0.013.8140.2	1	tube dx/rh/re
4	0.013.8141.2	1	tube sx/lh/li
5	0.011.4330.2/10	2	tongue mm 68
6	0.013.9205.0	1	gasket dx/rh/re
7	0.013.9206.0	1	gasket sx/lh/li
11	2.0312.115.3	4	screw m 6 x 45
16	0.013.9746.0/20	1	frame
19	2.0312.106.2	2	screw m 6 p.1 x 20
20	2.6999.031.2	8	special nut m 6
21	2.0312.112.3	2	screw m 6x1x35



9\_B8971\_22\_0-A-001



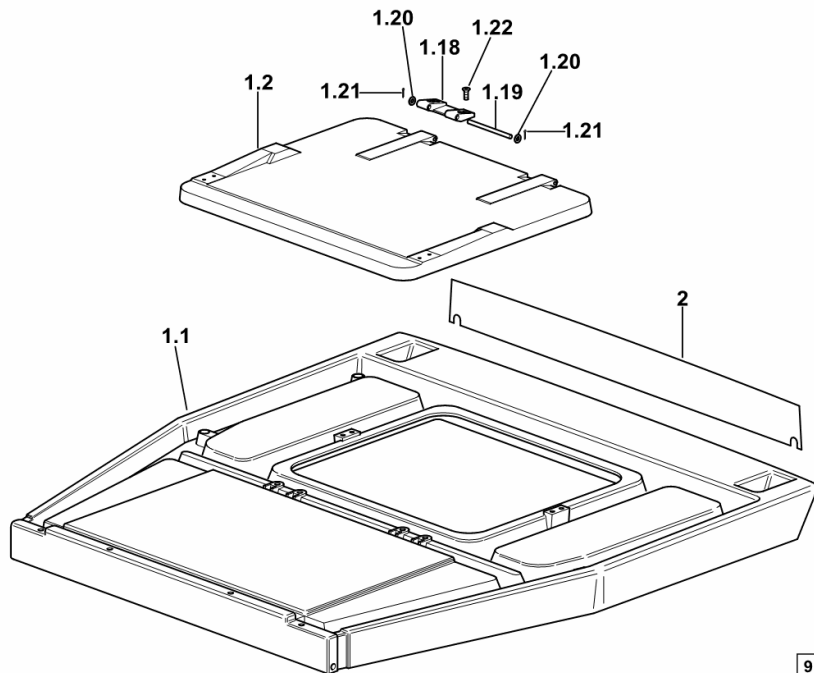
**ROOF WITH SKYLIGHT**

Fig.	Code	QTY	Name
------	------	-----	------

**Notes:**

- PER TIPI CON CABINA SENZA "HIGH VISIBILITY" [SILVER 85]

1.1	0.012.8897.3	1	roof
1.2	0.012.8898.3	1	cover
1.18	0.9234.370.0	2	hinge peg
1.19	2.1660.324.2	2	pin 8x125x119
1.20	2.1310.004.2	4	flat washer 8.5
1.21	2.1690.206.2	4	split pin 2x16
1.22	2.0342.308.3	4	screw m 8 p.1.25 x 30
2	0.009.0845.0/10	1	hose clip



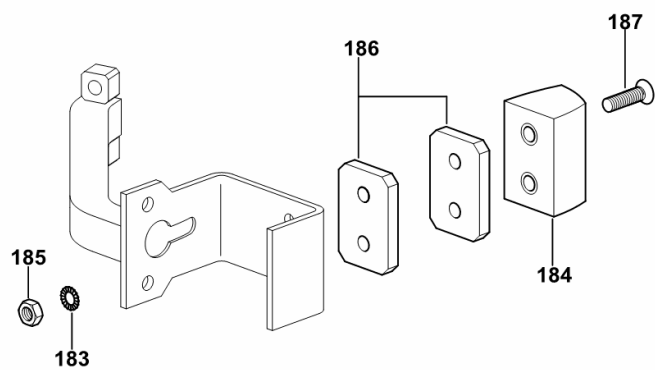
**DOOR LOCK - CAB DOOR - RIGHT/LEFT**

Fig.	Code	QTY	Name
------	------	-----	------

**Notes:**

- FOR "HIGH VISIBILITY" CAB [SILVER 85]

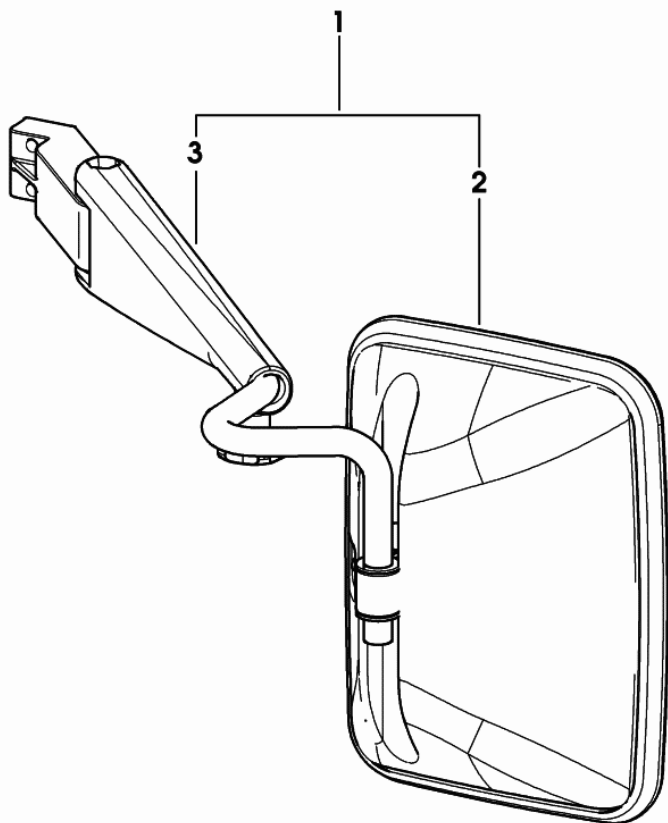
183	2.1474.009.2	4	spring washer 8
184	0.010.0219.2/10	2	rubber plug
185	2.1011.105.2	4	nut m 8 p.1.25
186	0.010.1339.0	4	spacer
187	2.0312.214.2	4	screw m 8 p.1.25 x 40



9\_B8971\_10\_0-F-001

**REARVIEW MIRROR**

Fig.	Code	QTY	Name
1	0.013.9363.4/10	1	rear view mirror sx/lh/li
2	0.010.3564.0	1	rear view mirror
3	0.900.0127.9	1	arm



0\_013\_9363\_4\_10

**SEAT-COMPONENTS**

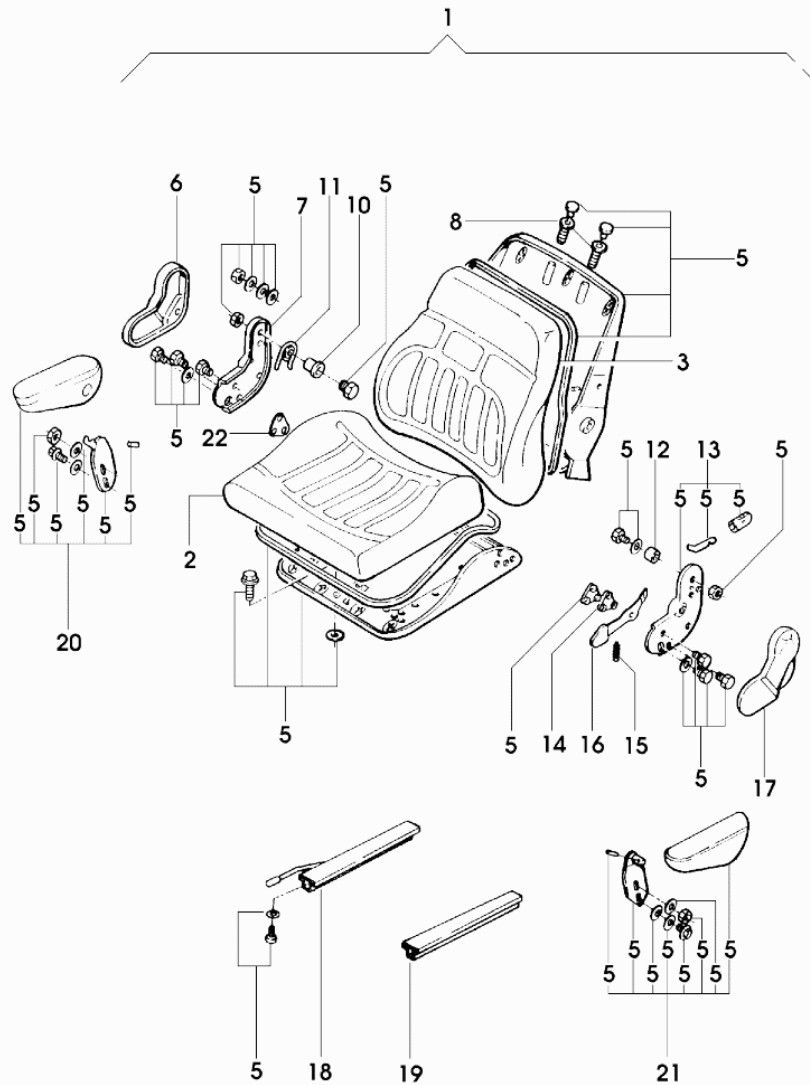


Fig.	Code	QTY	Name
1	0.010.2076.2	1	seat
2	0.010.2077.0	1	cushion
3	0.010.2077.1	1	cushion
5	0.000.0000.1	0	not serviceable
6	0.009.4362.2	1	cover
7	0.009.4363.0	1	plate
8	0.009.4361.2	2	bushing
10	0.009.4711.0	1	bushing
11	0.009.4363.1	1	spring
12	0.009.4711.2	1	bushing
13	0.009.4712.2	1	plate
14	0.009.4712.1	1	spacer
15	0.009.4367.2	1	spring
16	0.010.2076.0	1	lever
17	0.009.4366.2	1	cover
18	0.010.2074.0	1	seat guide
19	0.009.4723.0	1	seat guide
20	0.009.4371.0	1	small arm dx/rh/re
21	0.009.4371.1	1	small arm sx/lh/li
22	0.009.4712.0	1	spacer

009\_3762\_4\_B

Section: G0 - BODYWORK - CAB  
**SEAT-COMPONENTS**

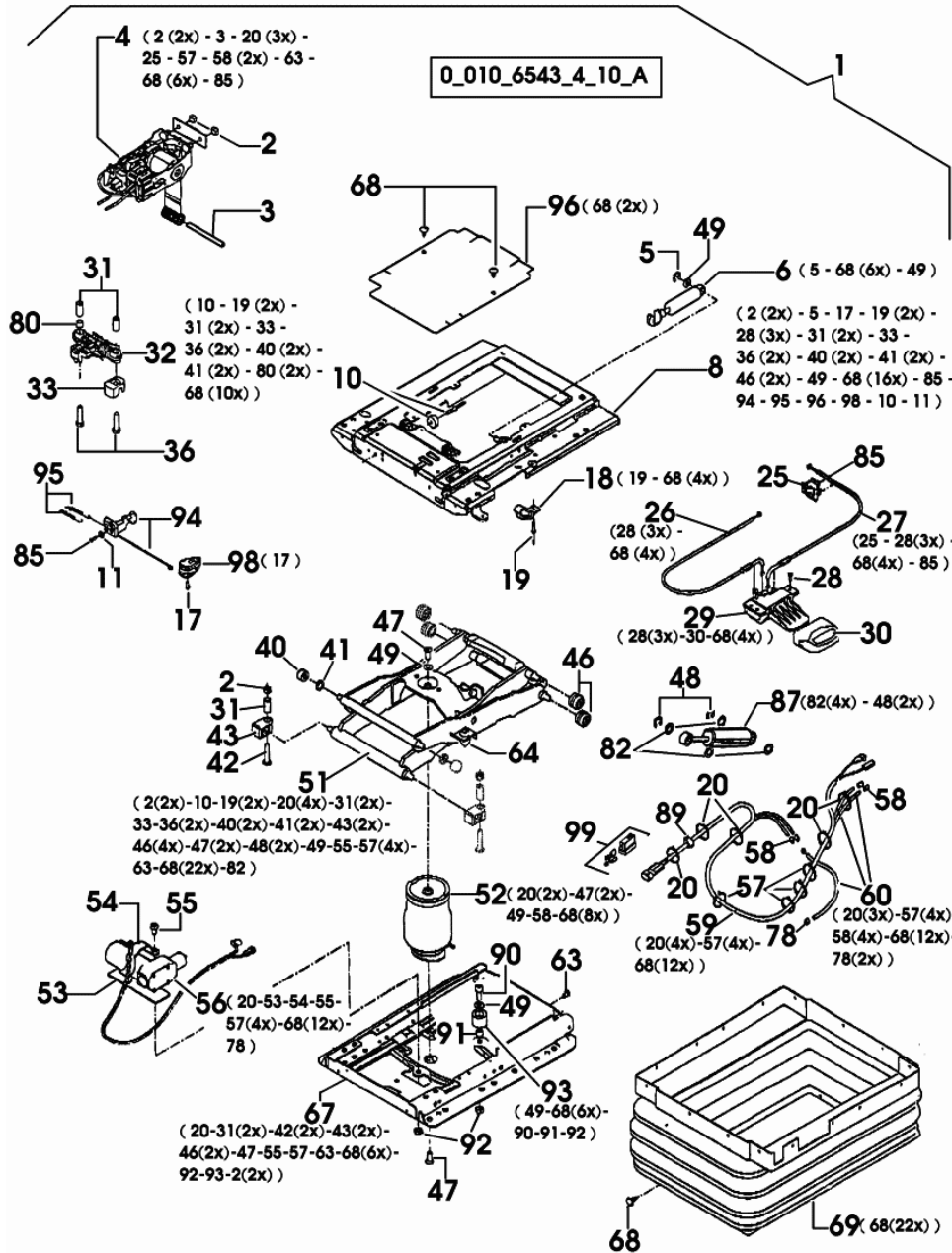


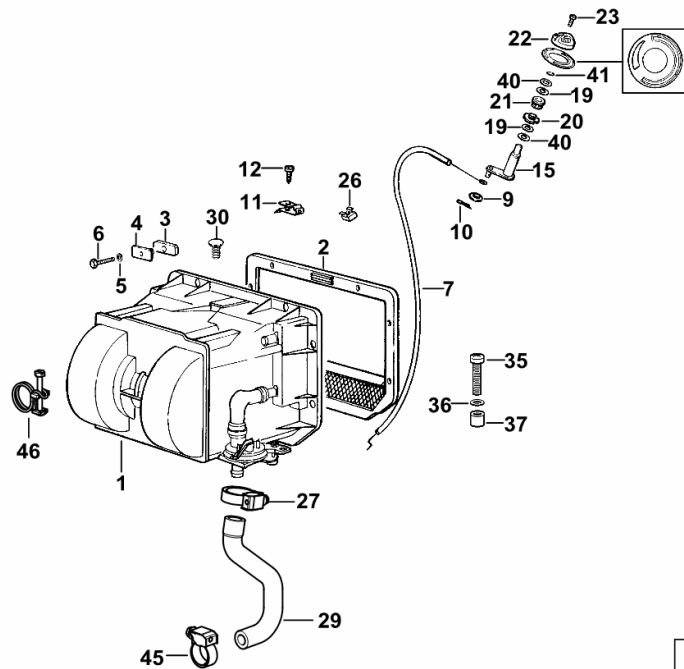
Fig.	Code	QTY	Name
1	0.010.2270.0	1	seat springs
2	0.000.0000.1	0	not serviceable
3	0.000.0000.1	0	not serviceable
4	0.010.2270.1	1	lever
5	0.000.0000.1	0	not serviceable
6	0.010.2270.2	1	shoch.absorber
8	0.010.2271.0	1	plate
10	0.010.2271.1	1	ring
11	0.000.0000.1	0	not serviceable
17	0.000.0000.1	0	not serviceable
18	0.010.2271.2	2	ring
19	0.000.0000.1	0	not serviceable
20	0.000.0000.1	0	not serviceable
25	0.000.0000.1	0	not serviceable
26	0.010.2272.0	1	wire
27	0.010.2272.1	1	wire
28	0.000.0000.1	0	not serviceable
29	0.010.2272.2	1	lever
30	0.000.0000.1	0	not serviceable
31	0.000.0000.1	0	not serviceable
32	0.010.2273.0	1	support
33	0.000.0000.1	0	not serviceable
36	0.009.4711.1	2	screw
40	0.000.0000.1	0	not serviceable
41	0.000.0000.1	0	not serviceable
42	0.000.0000.1	0	not serviceable
43	0.000.0000.1	0	not serviceable
46	0.000.0000.1	0	not serviceable
47	0.000.0000.1	0	not serviceable
48	0.000.0000.1	0	not serviceable
49	0.000.0000.1	0	not serviceable
51	0.010.2273.1	1	arm
52	0.010.2273.2	1	spring
53	0.009.4382.2	1	shim
54	0.010.2274.0	1	support
55	0.000.0000.1	0	not serviceable
56	0.010.2274.1	1	gear compressor
57	0.000.0000.1	0	not serviceable
58	0.000.0000.1	0	not serviceable
59	0.010.2274.2	1	wire
60	0.010.2275.0	1	wire
63	0.000.0000.1	0	not serviceable
64	0.010.2275.1	2	stop
67	0.010.2275.2	1	plate

**HEATING SYSTEM**

Fig.	Code	QTY	Name
------	------	-----	------

**Notes:**

- PER TIPI CON CABINA SENZA "HIGH VISIBILITY" [SILVER 85]

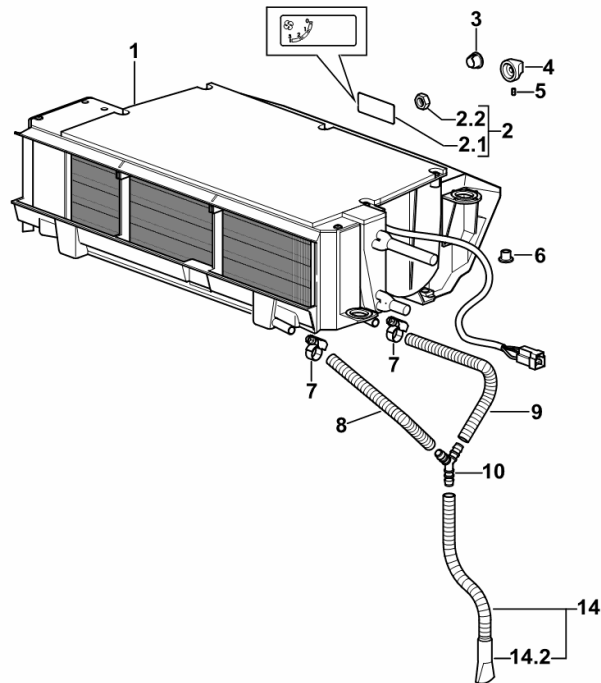


1	0.98708.51.4/40	1	cab heating ☞ 0.98708.51.4/40
2	0.98707.62.2/20	1	gasket
3	0.98707.55.0	9	block
4	0.98707.56.0/10	9	small plate
5	2.1470.002.2	9	washer 6, d128
6	2.0112.015.2	9	screw m 6 p.1x40
7	0.009.0482.0/20	1	rod
9	2.1310.001.2	1	flat washer 5.3
10	2.1690.106.2	1	split pin 1.6x16
11	0.98551.51.0	1	small spring
12	2.0350.454.6	1	screw m 4.2 x 13 -AB-
15	0.009.9818.3	1	pin
19	2.1599.526.0	2	washer
20	2.1220.005.2	1	ring nut 20 p.1
21	2.1559.216.2/10	1	bushing
22	0.009.0964.0	1	knob
23	2.0332.103.2	1	screw m 3x10
23	2.0332.103.2	1	screw m 3x10
26	2.6999.003.2	9	special nut m 6
27	2.6851.002.0	1	clamp Ø 20/32
29	0.008.9650.0	1	tube
30	2.3199.126.0/10	2	plug mm 15
35	2.0350.761.6	1	screw
36	2.1310.002.2	1	washer 6.6, d125
37	2.1579.879.2	1	spacer 12x20x19
40	2.1499.139.0	2	washer 10
41	2.1410.001.1	1	circlip 10
45	2.6851.001.0	1	clamp Ø 16/25
46	2.6859.102.0	1	clamp Ø 18.5/22

Fig.	Code	QTY	Name
------	------	-----	------

**Notes:**

- PER CLIMI FREDDI CON CABINA SENZA "HIGH VISIBILITY" [SILVER 85]

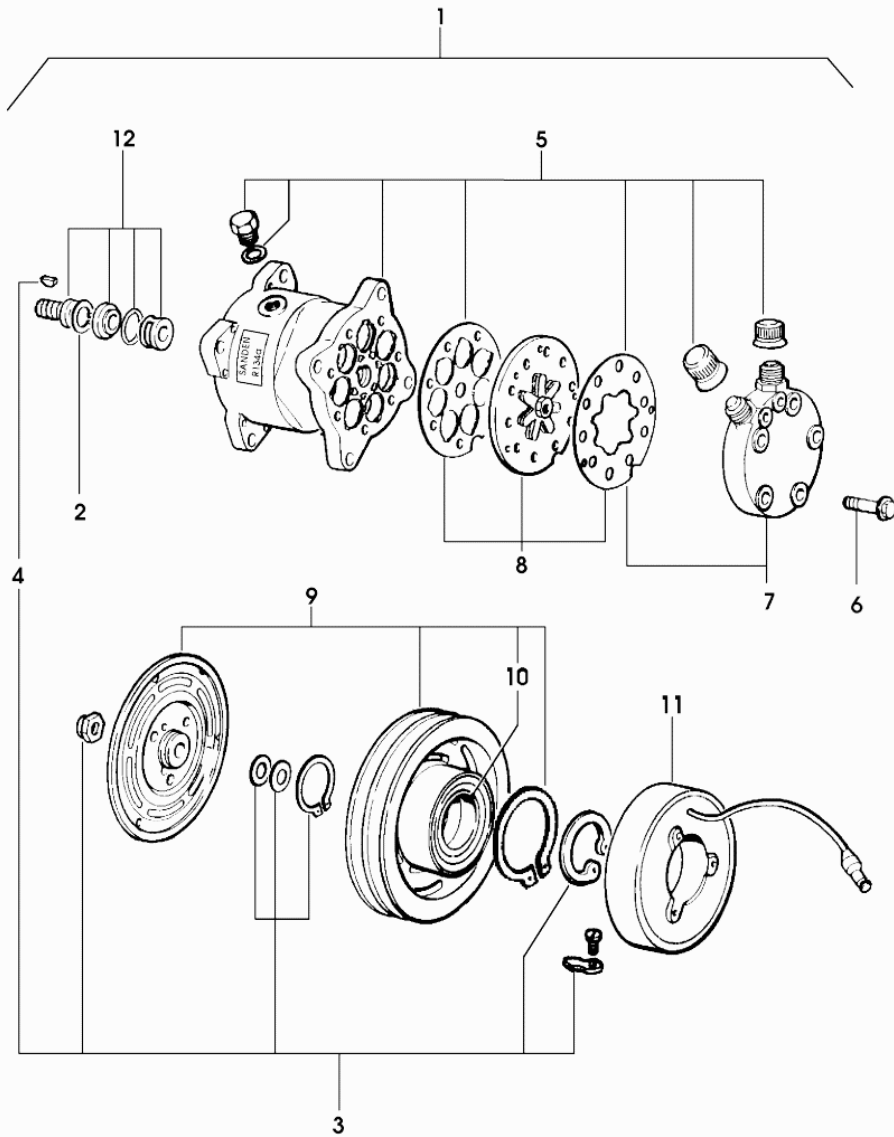


9\_62086\_31\_0-A-001

1	0.011.2336.4	1	cab heating
2	0.009.0456.4/10	1	control grp.
2.1	0.009.0698.0/10	1	plate
2.2	2.1019.081.0	1	nut m 11 p.1.25
3	2.3199.107.0	1	plug 14x12.5
4	0.009.0950.0/10	1	knob
5	2.0599.073.1	1	screw m 4 x 8
6	2.1142.005.2	2	insert m 8
7	2.6851.019.0	4	clamp Ø 13/20
8	0.011.6180.0	2	tube mm 205
9	0.011.6179.0	2	tube mm 235
10	0.011.6181.0	2	pipe fitting
14	0.011.6177.3	2	exhaust
14.2	0.009.0890.0	1	terminal

**COMPRESSOR-PARTS**

Fig.	Code	QTY	Name
1	0.009.7660.4	1	gear compressor R 134a
2	0.010.2132.0	1	circlip
3	0.010.2132.1	1	accessories
4	0.010.2132.2	1	key
5	0.000.0000.1	0	not serviceable
6	0.010.2133.0	6	screw
7	0.010.2133.1	1	head
8	0.010.2133.2	1	valve
9	0.010.2134.0	1	pulley
10	0.010.2134.1	1	bearing
11	0.010.2134.2	1	electromagnet
12	0.010.2135.0	1	gasket set



009\_7660\_4


**CLUTCH CONTROL**

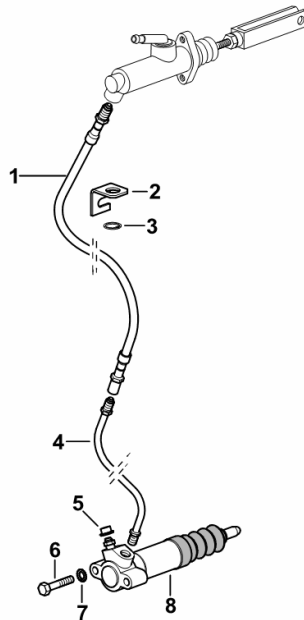
Fig.	Code	QTY	Name
------	------	-----	------

**Notes:**

- FOR TYPES WITHOUT HYDRAULIC SHUTTLE [SILVER 85]

1	0.273.6650.3	1	tube
2	0.255.6556.0/10	1	square
3	2.1410.004.1	1	circlip 16
4	0.008.9724.3	1	tube
5	2.3199.039.0	1	plug 6.50 x 7.25
6	2.0112.215.2	2	screw m 8 p.1.25 x 40
7	2.1470.004.2	4	washer 8
8	0.255.6537.4/60	1	cylinder

 0.255.6537.4/60



9\_62365\_00\_0-A-001

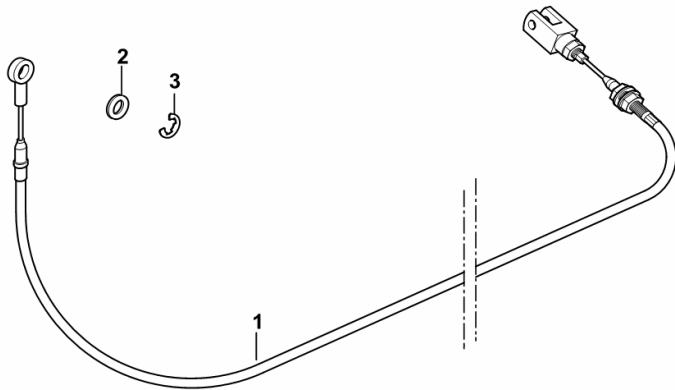
**BOWDEN CABLE FOR TRAILER PNEUMATIC BRAKING**

Fig.	Code	QTY	Name
------	------	-----	------

**Notes:**

[SILVER 85]

1	0.011.8218.3/10	1	cable mm 1082
2	2.1310.004.2	1	flat washer 8.5
3	2.1430.007.7	1	circlip 6, d128



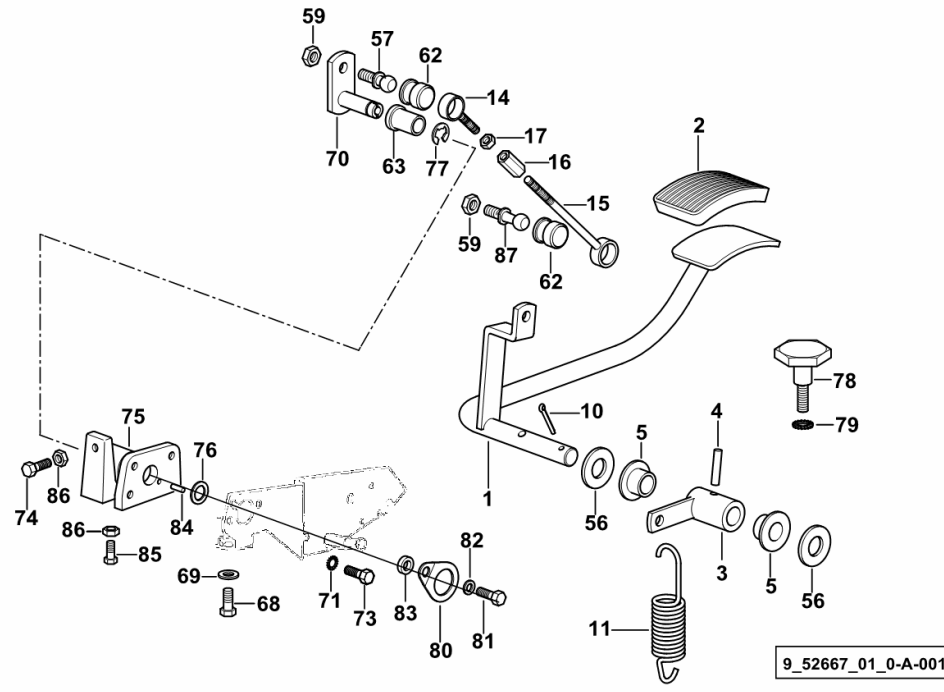
9\_C8689\_22\_0-A-001

**CONTROL PEDAL FOR ELECTRONIC THROTTLE**

Fig.	Code	QTY	Name
------	------	-----	------

Notes:  
[SILVER 85]

1	0.008.2082.2/10	1	accel. pedal
2	0.008.2080.0/10	1	cover
3	0.008.2081.2/10	1	lever
4	2.1630.612.0	1	roll pin 6 x 28
5	2.1559.213.0	2	bushing 15.2 x 20 x 15
10	2.1690.410.2	1	split pin 4 x 25
11	2.4049.079.2	1.00	spring
14	0.008.2193.2/20	1	rod
15	0.008.2192.2/20	1	rod
16	2.1099.011.2	1	special nut
17	2.1011.103.2	1	nut m 6 p.1
56	2.1311.010.2	2.00	flat washer 16
57	0.255.6456.0/10	1	pin mm 13
59	2.1120.005.2	2	nut m 8 p.1.25
62	0.255.6454.0	2	pin seat
63	2.1559.214.0/20	1	bushing
68	2.0112.205.2	1	screw m 8 p.1.25 x 16
69	2.1310.004.2	1	flat washer 8.5
70	0.009.0602.2/30	1.00	lever
71	2.1470.002.2	2	washer 6, d128
73	2.0112.007.2	2	screw m 6 p.1 x 20
74	2.0119.141.2	1	screw m 6 p.1 x 35
75	0.009.1250.0/20	1	support
76	2.1311.008.2	1	flat washer 12
77	2.1430.010.7	1.00	circlip 9
78	0.009.0643.0/10	1	stop
79	2.1470.004.2	1	washer 8
80	0.009.0702.0/10	1	small plate
81	2.0112.009.2	1	screw m 6 p.1 x 25
82	2.1470.002.2	1	washer 6, d128
83	2.1579.938.2/10	1	spacer 7x12x3.5
84	2.1630.206.0	1	roll pin 3x12
85	2.0112.006.2	1	screw m 6 p.1 x 18
86	2.1011.203.2	2	nut m 6 p.1
87	0.009.2679.0	1	pin



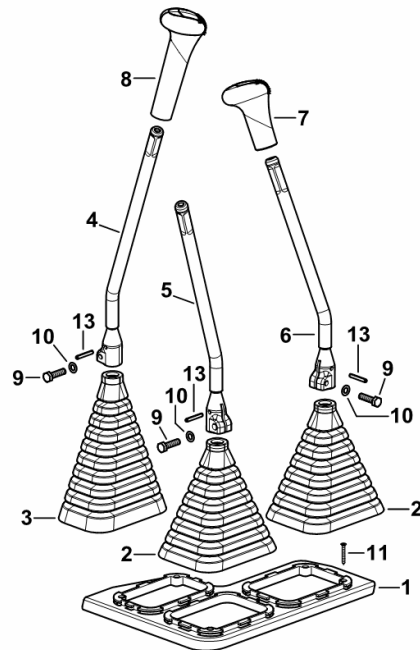
**TRANSMISSION CONTROL LEVERS**

Fig.	Code	QTY	Name
------	------	-----	------

**Notes:**

- FOR TYPES WITHOUT HYDRAULIC SHUTTLE [SILVER 85]

1	0.008.2975.0	1	cover
2	0.008.2826.0	2	guard
3	0.008.2912.0	1	guard
4	0.009.0239.3/10	1	lever
5	0.009.0237.3/20	1	lever
6	0.009.0235.3/10	1	lever
7	0.009.0241.0	1	knob
8	0.008.2837.0/10	1	knob
9	2.0112.211.2	3	screw m 8 p.1.25 x 30
10	2.1470.004.2	3	washer 8
11	2.0351.459.3	5	screw 4.2x32
13	2.1631.415.2	3	pin 5x32



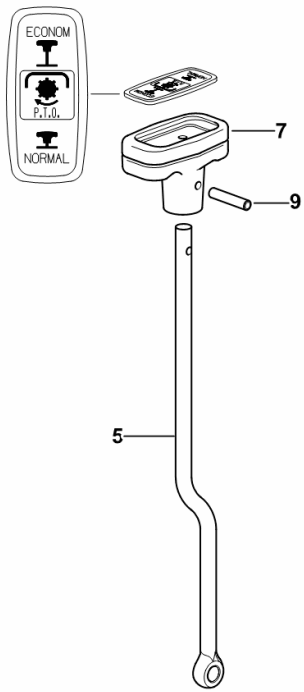
9\_52664\_07\_0-A-001

Section: G0 - BODYWORK - CAB  
**P.T.O. - ECONOMICAL CONTROL**

Fig.	Code	QTY	Name
------	------	-----	------

Notes:  
 [SILVER 85]

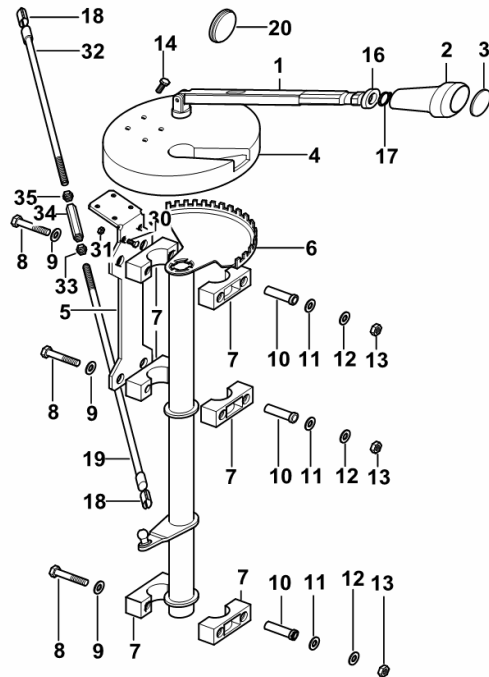
5	0.008.9035.0/20	1	rod
7	0.009.9885.0/10	1	knob
9	2.1630.511.0	1	roll pin 5x24



9\_62068\_10\_0-A-001

Fig.	Code	QTY	Name
------	------	-----	------

Notes:  
 [SILVER 85]



1	0.011.7416.4	1	lever
2	0.257.6413.0	1	grip
3	0.008.2919.0/10	1	cap
4	0.011.7454.0/10	1	cover
5	0.011.7500.0/30	1	brace
6	0.011.7436.3/10	1	hydraulic controles
7	0.008.2619.0/10	6	small block
8	2.0112.222.2	6	screw m 8 p.1.25x65
9	2.1312.004.2	6	washer 8.4
10	2.1559.237.2	6	sleeve
11	2.1310.004.2	6	flat washer 8.5
12	2.1470.004.2	6	washer 8
13	2.1011.105.2	6	nut m 8 p.1.25
14	2.0332.405.3	4	screw m 6 p.1 x 14
16	0.136.7387.0	1	rubber plug 15x27x5
17	2.1419.042.0	1	circlip 18
18	0.257.6757.0	2	spring
19	0.011.7672.0/10	1	rod
20	0.009.0210.0/10	4	plug 30 x 38 x 9.0
30	2.0112.005.2	1	screw m 6 p.1 x 16
31	2.1011.103.2	1	nut m 6 p.1
32	0.017.9422.0	1	rod
33	2.1011.106.2	1	nut m 10 p.1.5
34	0.467.6663.2	1	sleeve m 10 p 1.5x70
35	2.1019.018.2	1	special nut m 10 speciale

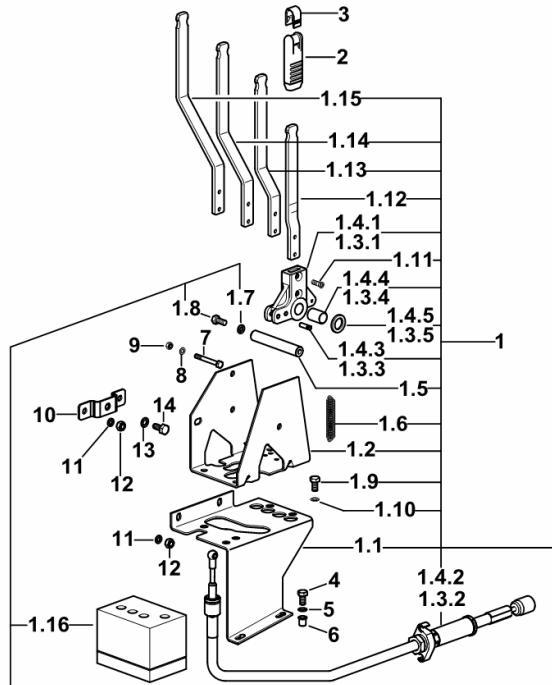
9\_16459\_70\_0-A-001

**CONTROLS FOR 8-WAY AUXILIARY SERVICES CONTROL VALVE**

Fig.	Code	QTY	Name
------	------	-----	------

**Notes:**

[SILVER 85] -> 1089 - 1137 <-



9\_B8688\_15\_0-A-001

1	0.013.8338.4/10	1	lever
1.1	0.013.6261.3/20	1	support
1.2	0.013.6260.0/20	1	support
1.3.1	0.013.6307.0/10	1	support
1.3.2	0.013.8244.3	1	wire
1.3.3	0.013.6309.0/10	1	pin
1.3.4	0.013.6310.0/10	1	sleeve
1.3.5	0.013.6311.0/10	2	thrust plate
1.4.1	0.013.6307.0/10	3	support
1.4.2	0.013.8244.3	3	wire
1.4.3	0.013.6309.0/10	3	pin
1.4.4	0.013.6310.0/10	3	sleeve
1.4.5	0.013.6311.0/10	6	thrust plate
1.5	0.013.6262.0/10	1	pin
1.6	2.4049.160.2	4	spring
1.7	2.1475.102.2	2	washer 8.4 x 16
1.8	2.0112.207.2	2	screw m 8 p 1.25 x 20
1.9	2.0112.205.2	4	screw m 8 p.1.25 x 16
1.10	2.1310.004.2	4	flat washer 8.5
1.11	2.0399.239.6	8	screw m 6 x 12
1.12	0.013.6256.0/10	1	lever
1.13	0.013.6257.0/10	1	lever
1.14	0.013.6258.0/10	1	lever
1.15	0.013.6259.0/10	1	lever
1.16	0.011.0722.0/10	1	sound deadening
2	0.009.0137.0	4	knob
3	0.009.0140.0	4	coupling
4	2.0112.205.2	2	screw m 8 p.1.25 x 16
5	2.1470.004.2	2	washer 8
6	2.1142.005.2	2	insert m 8
7	2.0112.019.2	1	screw m 6 p.1 x 50
8	2.1470.002.2	1	washer 6, d128
9	2.1011.103.2	1	nut m 6 p.1
10	0.009.1866.2	1	bracket
11	2.1470.004.2	4	washer 8
12	2.1011.105.2	4	nut m 8 p.1.25
13	2.1470.004.2	1	washer 8
14	2.0364.307.2	1	screw m 8 p.1.25 x 20

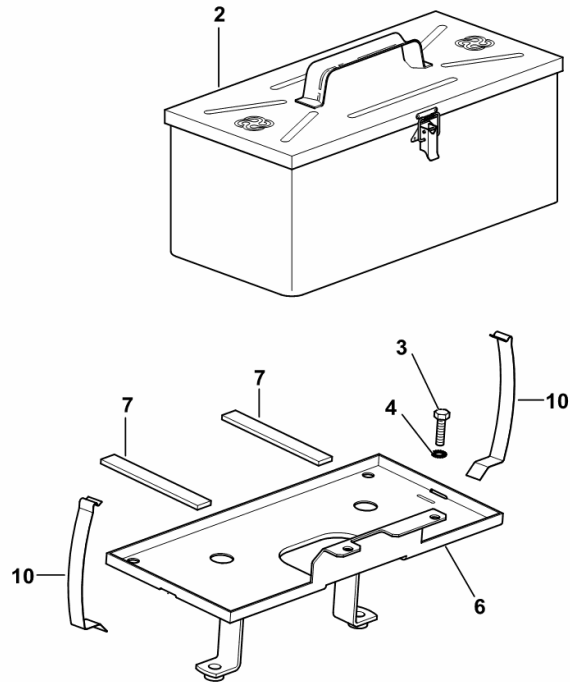
**METAL TOOLBOX**

Fig.	Code	QTY	Name
------	------	-----	------

**Notes:**

- FOR TYPES WITHOUT REXROTH AUXILIARY CONTROL VALVE AND PNEUMATIC CAB SUSPENSION [SILVER 85]

2	0.009.6878.3/30	1	metal toolbox
3	2.0112.203.2	2	screw m 8 p.1.25 x 12
4	2.1470.004.2	2	washer 8
6	0.009.6879.2/20	1	support
7	0.007.7975.0	2	gasket 145x20x5
10	0.007.6104.0/10	2	spring



9\_62073\_04\_0-A-001

HEADLAMP COMPONENTS.....	2.8029.770.0/30.A
HEADLAMP COMPONENTS.....	2.8039.120.0.A
HEADLAMP COMPONENTS.....	2.8039.130.0.A
HEADLAMP COMPONENTS.....	2.8039.160.0.A
HEADLAMP COMPONENTS.....	2.8039.299.0.A
LICENCE PLATE LIGHT.....	2.8059.526.0.A
INTERIOR LIGHT.....	2.8339.231.0.A

**ACCESSORIES**

LOUDSPEAKERS.....	L0.09.0 (1)
DIGITAL CLOCK - LOUD SPEAKERS.....	L0.09.1 (1)
DIGITAL CLOCK.....	L0.09.2 (1)
RADIO ANTENNA.....	L0.09.3 (1)
CIGAR LIGHTER.....	L0.09.4 (1)
CIGAR LIGHTER.....	L0.09.5 (1)

**ALTERNATOR PARTS**

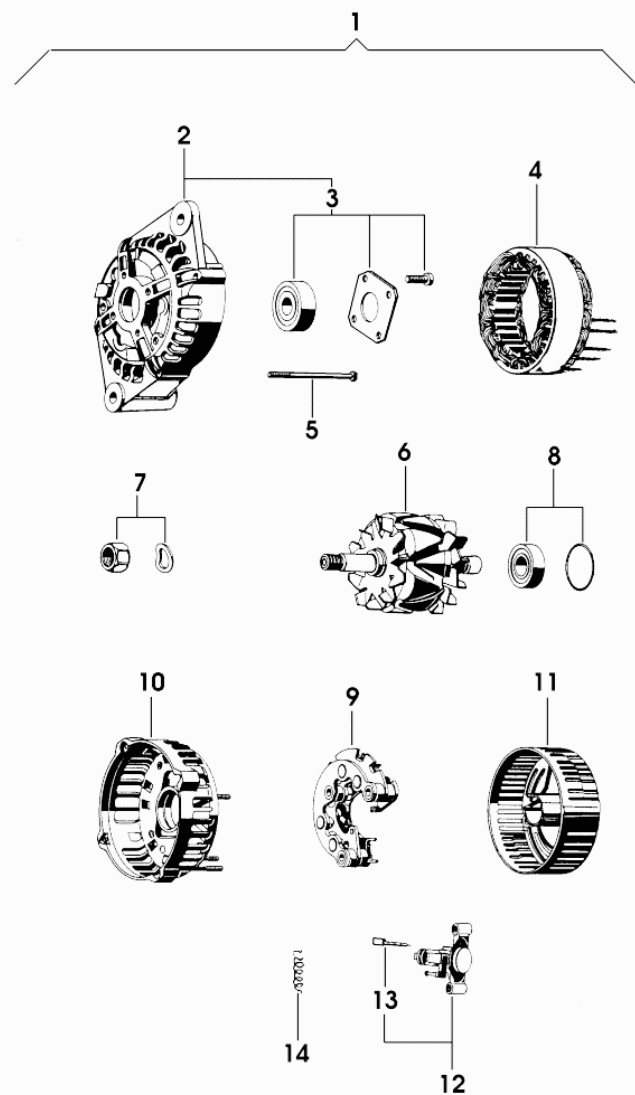


Fig.	Code	QTY	Name
1	2.9439.460.0/10	1	alternator 14V - 85A - ISKRA
2	0.010.2069.0	1	cover
3	0.010.2069.1	1	bearing
4	0.010.2069.2	1	field winding
5	0.010.2070.0	4	screw
6	0.010.2226.1	1	armature
7	0.010.2226.2	1	accessories
8	0.010.2070.2	1	bearing
9	0.010.2071.0	1	rectifier
10	0.010.2071.1	1	cover
11	0.010.2071.2	1	guard
12	0.010.2227.0	1	regulator
13	0.009.4335.1	2	brush set
14	0.000.0000.1	0	not serviceable

2\_9439\_460\_0\_10



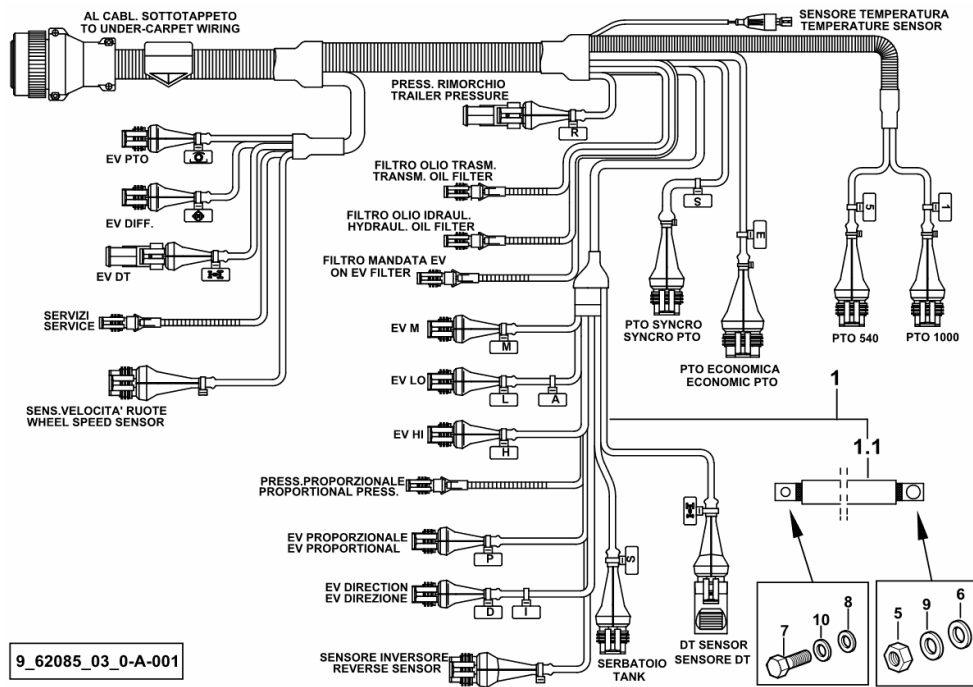
Section: L0 - ELECTRIC AL SYSTEM  
**ELECTRICAL EQUIPMENT REAR**

Fig.	Code	QTY	Name
------	------	-----	------

**Notes:**

- FOR TYPES WITH CAB AND HYDRAULIC SHUTTLE [SILVER 85]

1	0.010.5254.4/30	1	electrical system
1.1	0.010.4758.0	1	wire mm 300
5	2.1011.508.2	1	nut m 14 p.1.5
6	2.1310.009.2	1	flat washer 14
7	2.0112.309.2	1	screw m 10 p.1.5 x 25
8	2.1310.006.2	1	flat washer 10.5
9	2.1474.012.2	1	washer 14
10	2.1474.010.2	1	washer 10



9\_62085\_03\_0-A-001

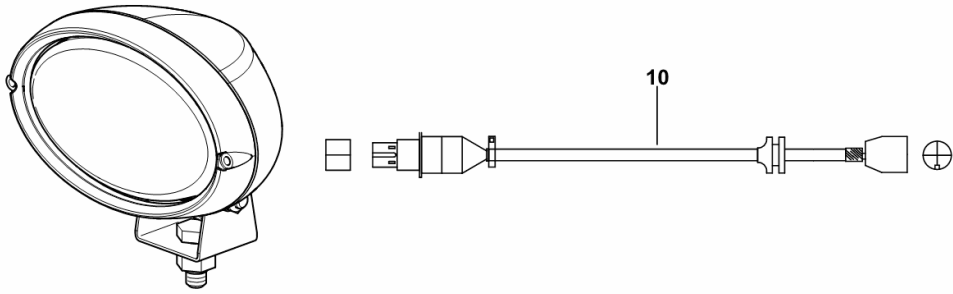
**CABLE WORKING SPOTLIGHT FRONT**

Fig.	Code	QTY	Name
------	------	-----	------

**Notes:**

- FOR "HIGH VISIBILITY" CAB [SILVER 85]

10	0.014.3927.4/40	2	wire
----	-----------------	---	------



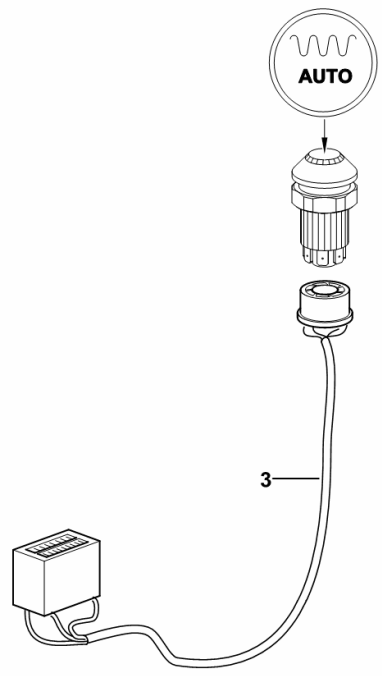
9\_B8971\_34\_0-B-001

Section: L0 - ELECTRIC AL SYSTEM  
**WIRING FOR SBA/ASM SWITCH**

Fig.	Code	QTY	Name
------	------	-----	------

**Notes:**  
- FOR TYPES WITH ELECTRONIC REAR LIFT AND SBA/ASM [SILVER 85]

3	0.007.6830.3/10	1	wire
---	-----------------	---	------



9\_62084\_67\_0-D-001

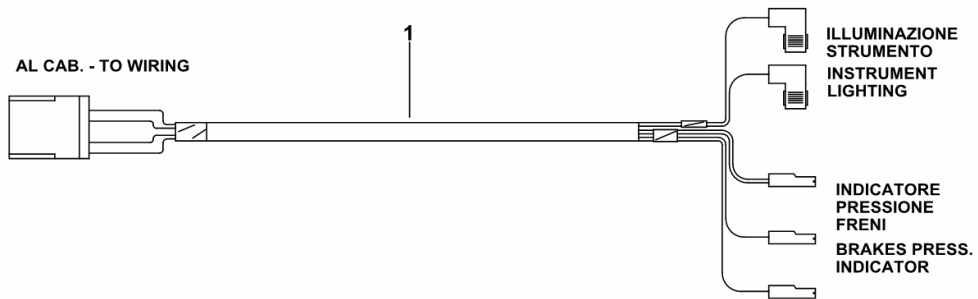
**PRESSURE GAUGE ELECTRICAL LEAD**

Fig.	Code	QTY	Name
------	------	-----	------

**Notes:**

- FOR TYPES WITH TRAILER AIR BRAKING [SILVER 85]

1	0.013.0515.4	1	wire
---	--------------	---	------



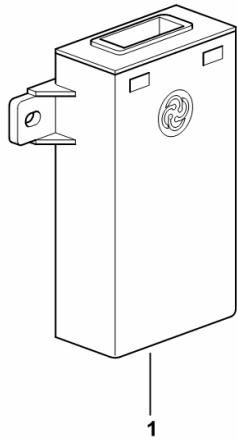
9\_62284\_22\_0-A-001

**ELECTRONIC CONTROL UNIT - ENGINE 40 KM/H**

Fig.	Code	QTY	Name
------	------	-----	------

Notes:  
[SILVER 85]

1	2.8519.052.0/50	1	central device
---	-----------------	---	----------------



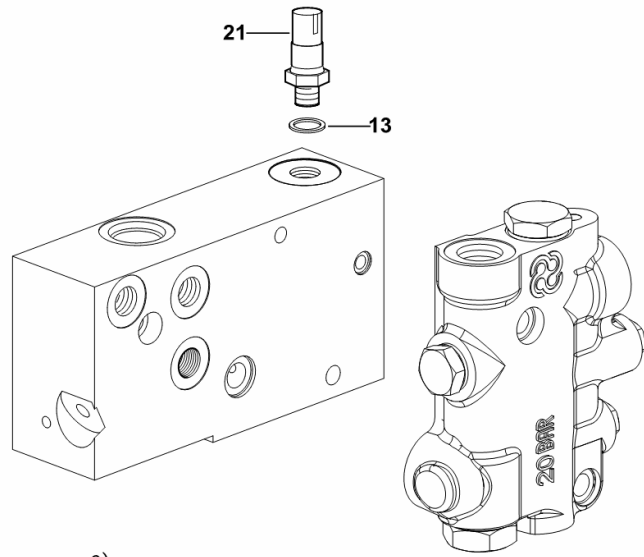
9\_B8667\_06\_0-A-001

**OIL CONTROL VALVES HOUSING PRESSURE SWITCH**

Fig.	Code	QTY	Name
------	------	-----	------

Notes:  
[SILVER 85]

13	2.1560.008.0	1	gasket 12.2 x 18
21	2.7099.750.0/10	1	pressure switch 11 Bar



9\_61482\_03\_0-C-001

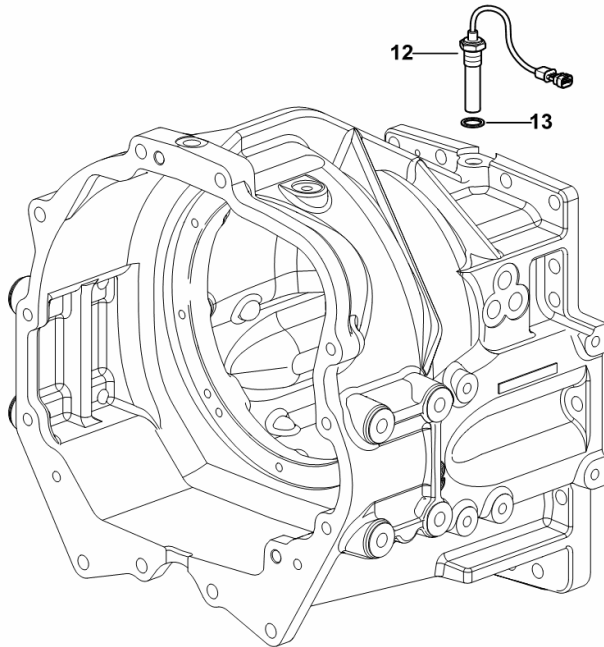
**SPEED SENSOR**

Fig.	Code	QTY	Name
------	------	-----	------

**Notes:**

- FOR TYPES WITH HYDRAULIC SHUTTLE [SILVER 85]

12	2.7099.996.0	1	sensor
13	2.1560.014.0	1	gasket 18.2 x 24 x 1.5



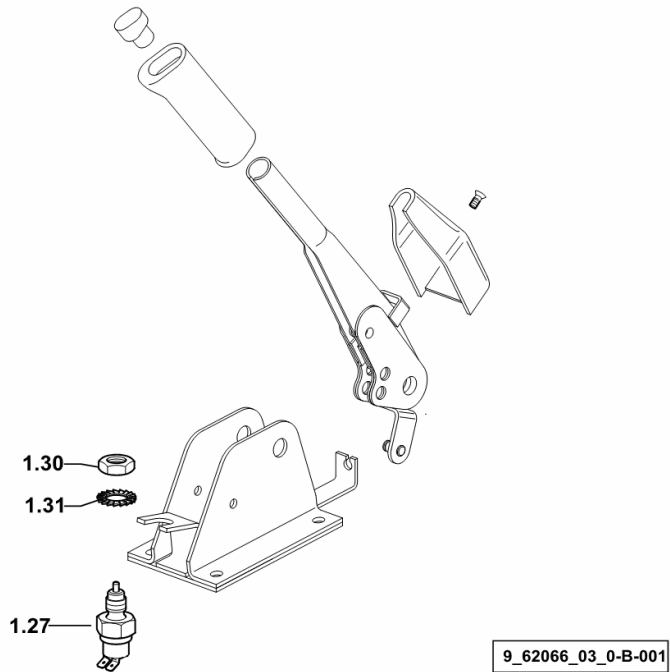
9\_62032\_11\_0-B-001

Section: L0 - ELECTRIC AL SYSTEM  
**HAND BRAKE SWITCHES**

Fig.	Code	QTY	Name
------	------	-----	------

Notes:  
 [SILVER 85]

1.27	2.7659.133.0	1	switch
1.30	2.1011.108.2	1	nut m 14 p.2
1.31	2.1470.008.2	1	lock washer 14



CLICK HERE TO **DOWNLOAD** THE COMPLETE MANUAL

- Thank you very much for reading the preview of the manual.
- You can download the complete manual from: [www.heydownloads.com](http://www.heydownloads.com) by clicking the link below



- Please note: If there is no response to CLICKING the link, please download this PDF first and then click on it.

CLICK HERE TO **DOWNLOAD** THE COMPLETE MANUAL

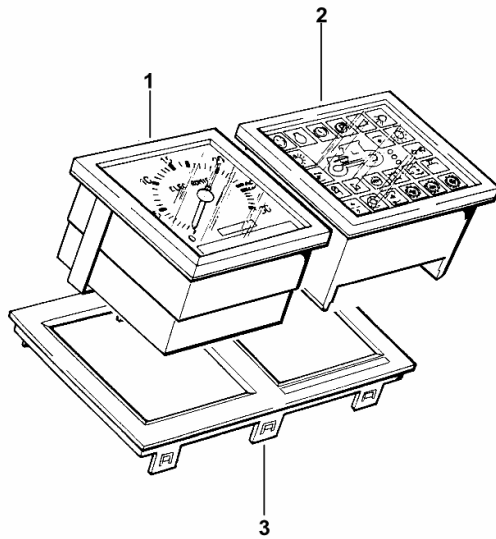
**DASHBOARD BOX INSTRUMENT PANEL - 40 Km/h**

Fig.	Code	QTY	Name
------	------	-----	------

**Notes:**

- FOR MODELS WITH CAB [SILVER 85]

1	2.7049.985.0/10	1	multimeter - 40 Km/h ( 1157 <- ) ☞ 2.7049.985.0/10
1	2.7049.986.0/10	1	multimeter - 40 Km/h ☞ 2.7049.986.0/10
2	2.8339.104.0/20	1	panel
3	0.008.9575.0/10	1	frame



9\_B8674\_06\_0-A-001

**STEERING COLUM SWITCH AND EMERGENCY SWITCH**

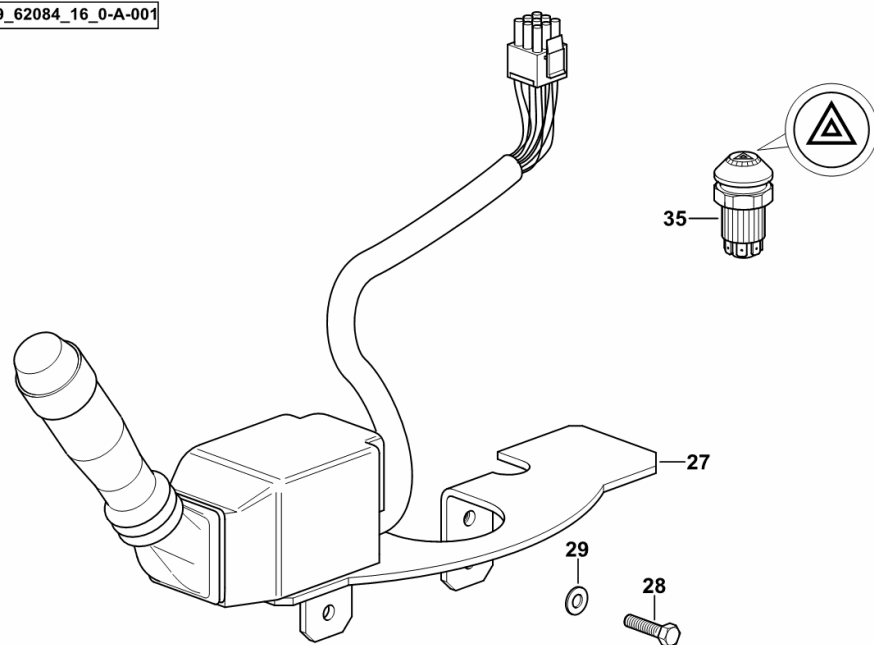
Fig.	Code	QTY	Name
------	------	-----	------

**Notes:**

- PER TIPI CON PIATTAFORMA SENZA INVERSORE IDRAULICO [SILVER 85] -> 1017 - FOR MODELS WITH PLATFORM [SILVER 85] 1024 <-

27	0.009.7621.3	1	switch
28	2.0119.160.3	2	screw m 6 p.1 x 14
29	2.1499.097.3	2	washer 6, d128
35	2.7659.110.0	1	push-button

9\_62084\_16\_0-A-001



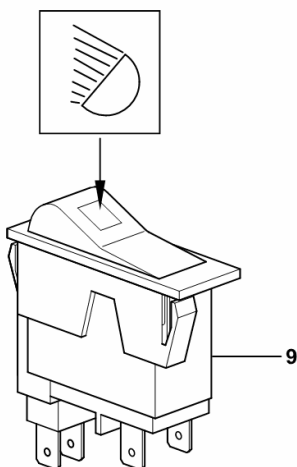
**SWITCH - WORKING SPOTLIGHT FRONT**

Fig.	Code	QTY	Name
------	------	-----	------

**Notes:**

- PER TIPI CON CABINA SENZA "HIGH VISIBILITY" [SILVER 85]

9	2.7659.132.0	1	push-button
---	--------------	---	-------------



9\_62071\_33\_0-B-001

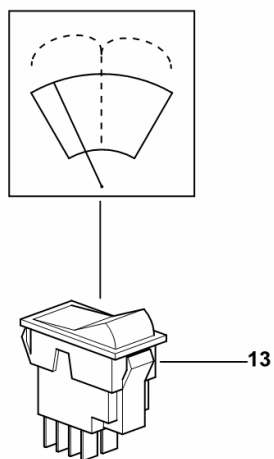
Section: L0 - ELECTRIC AL SYSTEM  
**REAR WINDOW WIPER SWITCH**

Fig.	Code	QTY	Name
------	------	-----	------

**Notes:**

- FOR MODELS WITH CAB - "HIGH VISIBILITY" [SILVER 85]

13	2.7659.072.0	1	push-button
----	--------------	---	-------------



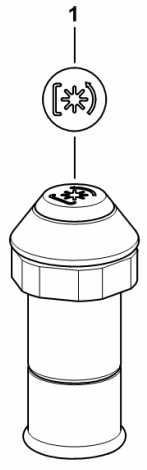
9\_B8971\_33\_0-B-001

Section: L0 - ELECTRIC AL SYSTEM  
**P.T.O. SHAFT DRIVE - REAR**

Fig.	Code	QTY	Name
------	------	-----	------

Notes:  
[SILVER 85] 1067 <-

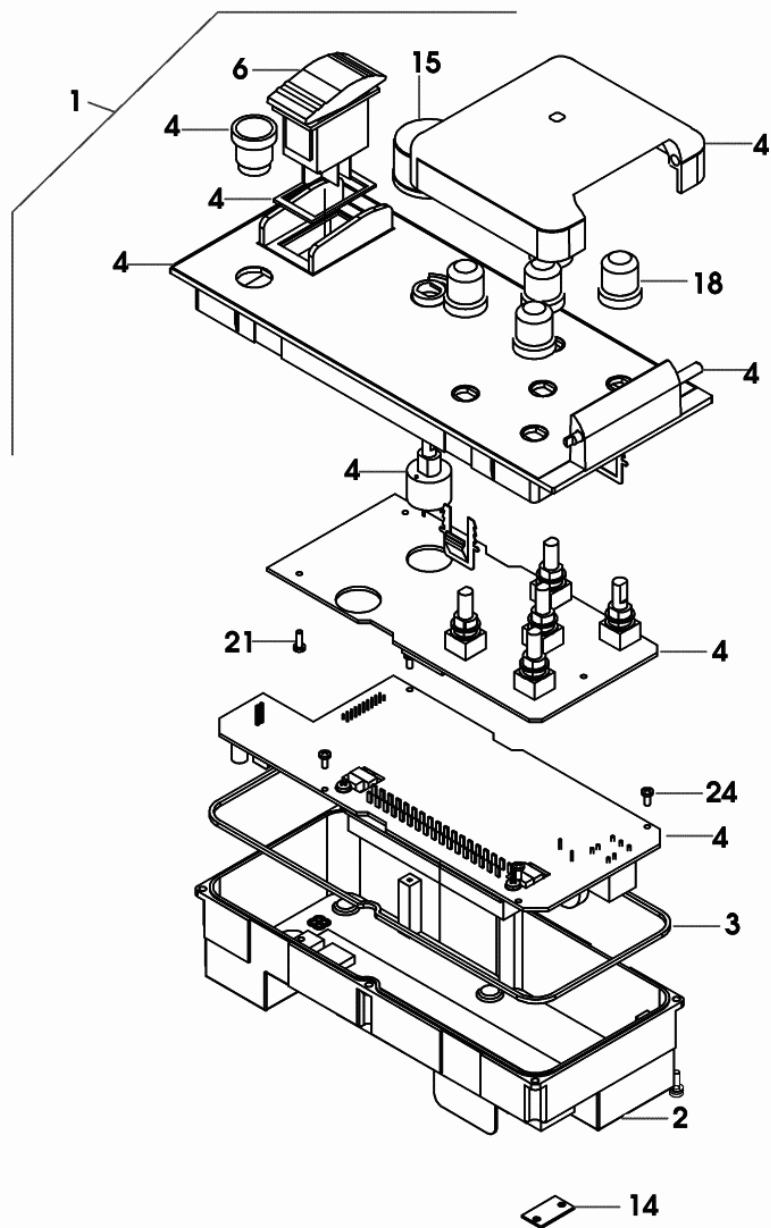
1	2.7659.108.0/10	1	switch P.T.O.
---	-----------------	---	---------------



9\_62084\_02\_0-A-001

**ELECTRONICS BOX**

Fig.	Code	QTY	Name
1	2.8519.006.0/10	1	central device
2	0.010.3158.0	1	box
3	0.010.3158.1	1	gasket
4	0.000.0000.1	0	not serviceable
6	0.900.0300.6	1	push-button UP/DW
14	0.010.3162.0	1	small plate
15	0.010.3165.2	1	knob
18	0.010.3166.0	5	knob
21	0.010.3164.0	1	screw
24	0.010.3160.1	1	screw



2\_8519\_006\_0\_10

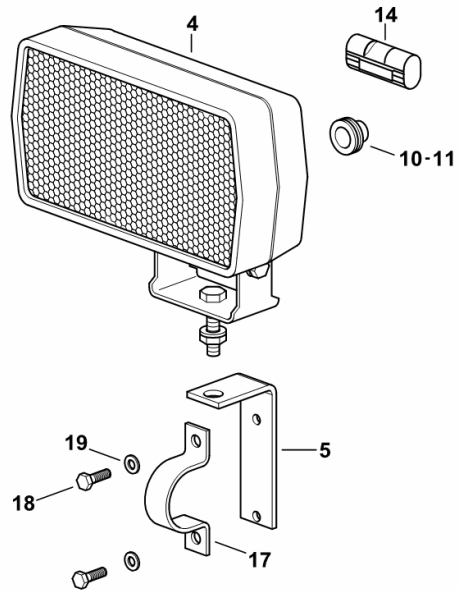
**WORKING SPOTLIGHT REAR**

Fig.	Code	QTY	Name
------	------	-----	------

**Notes:**

- FOR TYPES WITH SAFETY FRAME [SILVER 85]

4	2.8029.730.0	2	headlight ☞ 2.8029.730.0
5	0.009.9381.0	2	bracket
10	2.6569.004.0	1	grommet 18x5
11	2.6560.024.0	1	rubber plug 28x5
14	2.6039.010.0	2	guard
17	0.009.9382.2	2	clamp
18	2.0112.007.2	4	screw m 6 p.1 x 20
19	2.1310.002.2	4	washer 6.6, d125



9\_62085\_23\_0-B-001

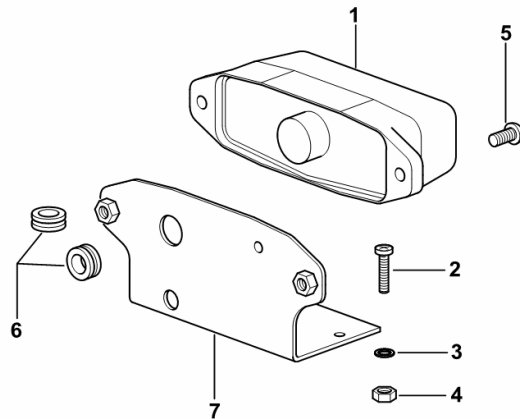
**LICENCE PLATE LIGHT**

Fig.	Code	QTY	Name
------	------	-----	------

**Notes:**

- PER TIPI CON PIATTAFORMA O CABINA SENZA "HIGH VISIBILITY" [SILVER 85] 1001 <-

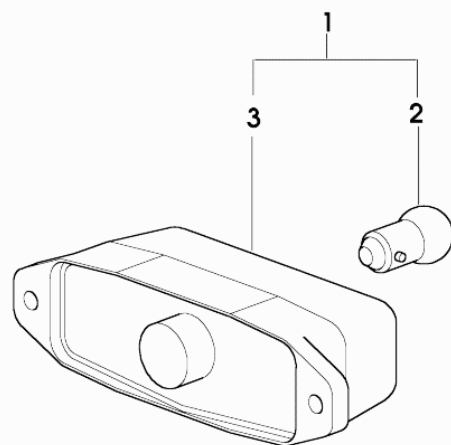
1	2.8029.240.0/10	1	side lamp ☞ 2.8029.240.0/10
2	2.0332.207.3	2	screw m 4 x 20
3	2.1310.028.2	2	flat washer 4
4	2.1011.101.2	2	nut m 4 p.0.7
5	2.0332.304.3	2	screw m 5 x 12
6	2.6569.015.0	2	wire guide 8x20x10
7	0.008.0760.0/10	1	lamp support



9\_40585\_31\_0-A-001

**HEADLAMP COMPONENTS**

Fig.	Code	QTY	Name
1	2.8029.240.0/10	1	side lamp
2	2.8313.005.0	1	lamp 12 V, 5 W
3	0.000.0000.1	0	not serviceable



2\_8029\_240\_0\_10

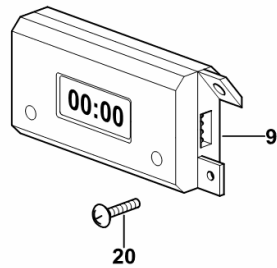
**DIGITAL CLOCK**

Fig.	Code	QTY	Name
------	------	-----	------

**Notes:**

- PER TIPI CON CABINA SENZA "HIGH VISIBILITY" [SILVER 85]

9	2.9389.002.0	1	digital chronometers
20	2.0350.154.6	2	screw m 2.9x13AB



9\_B8671\_32\_0-A-001

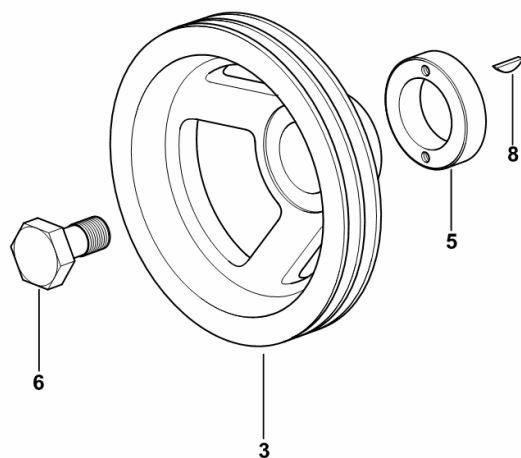
Section: B0 - ENGINE  
**CRANKSHAFT PULLEY**

Fig.	Code	QTY	Name
------	------	-----	------

**Notes:**

- FOR TYPES WITH AIR CONDITIONING [SILVER 85]

3	0.007.1458.0/40	1	pulley
5	0.085.1248.0/20	1	hub
6	2.0399.144.7/10	1	screw m 20 p.1.5x51
8	2.1720.006.0	1	key 4x6.5



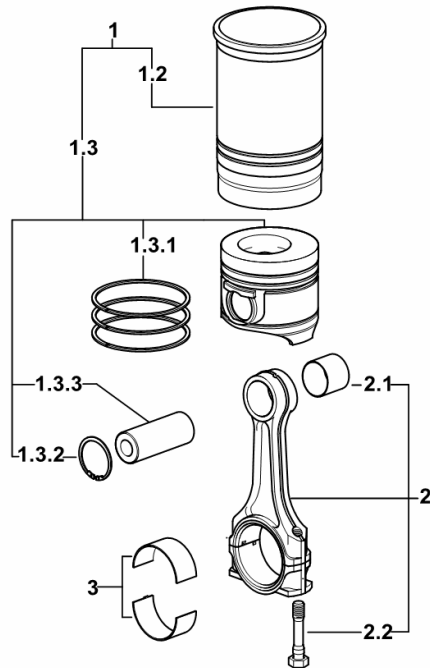
9\_34512\_06\_0-A-001

**CYLINDER - PISTON - CONNECTING ROD**

Fig.	Code	QTY	Name
------	------	-----	------

Notes:  
[SILVER 85]

1	0.099.0065.A	4	piston cyl.assembly "A" - CLASS A
1	0.099.0065.B	4	piston cyl.assembly "B" - CLASS B
1.2	0.A12.2675.0	1	engine cylinder "A" - CLASS A
1.2	0.B12.2675.0	1	engine cylinder "B" - CLASS B
1.3	0.099.0060.A	1	complete piston "A" - CLASS A
1.3	0.099.0060.B	1	complete piston "B" - CLASS B
1.3.1	0.081.0090.6/10	1	piston ring set
1.3.2	2.1411.014.1	2	circlip 35
1.3.3	0.078.1236.0	1	piston pin
2	0.078.1220.3/30	4	engine connect.rod
2.1	2.1559.114.0/10	1	bushing 35x39x35
2.2	2.0399.213.0	2	screw m 12 p.1.25x61.5
3	0.065.1225.0	8	con.rod half bushing STANDARD
3	0.065.1225.7	8	con.rod half bushing - mm 0.25
3	0.065.1225.8	8	con.rod half bushing - mm 0.50



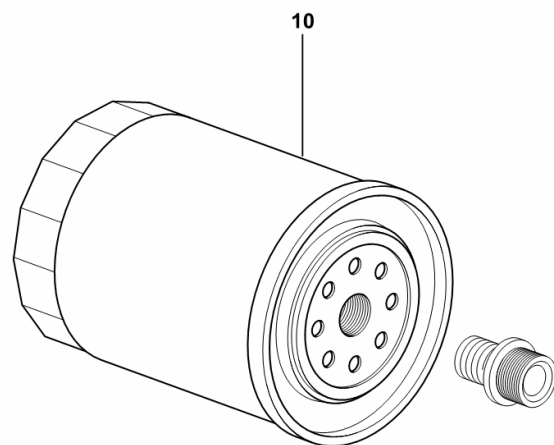
9\_M5212\_01\_M-A-001

Section: B0 - ENGINE  
**ENGINE OIL FILTER**

Fig.	Code	QTY	Name
------	------	-----	------

Notes:  
[SILVER 85]

10	2.4419.340.0/10	1	oil filter element R 369 FILTERING SURFACE: 4140 cm <sup>3</sup>
----	-----------------	---	---



9\_34415\_04\_0-A-001

Section: B0 - ENGINE  
GOVERNOR PARTS

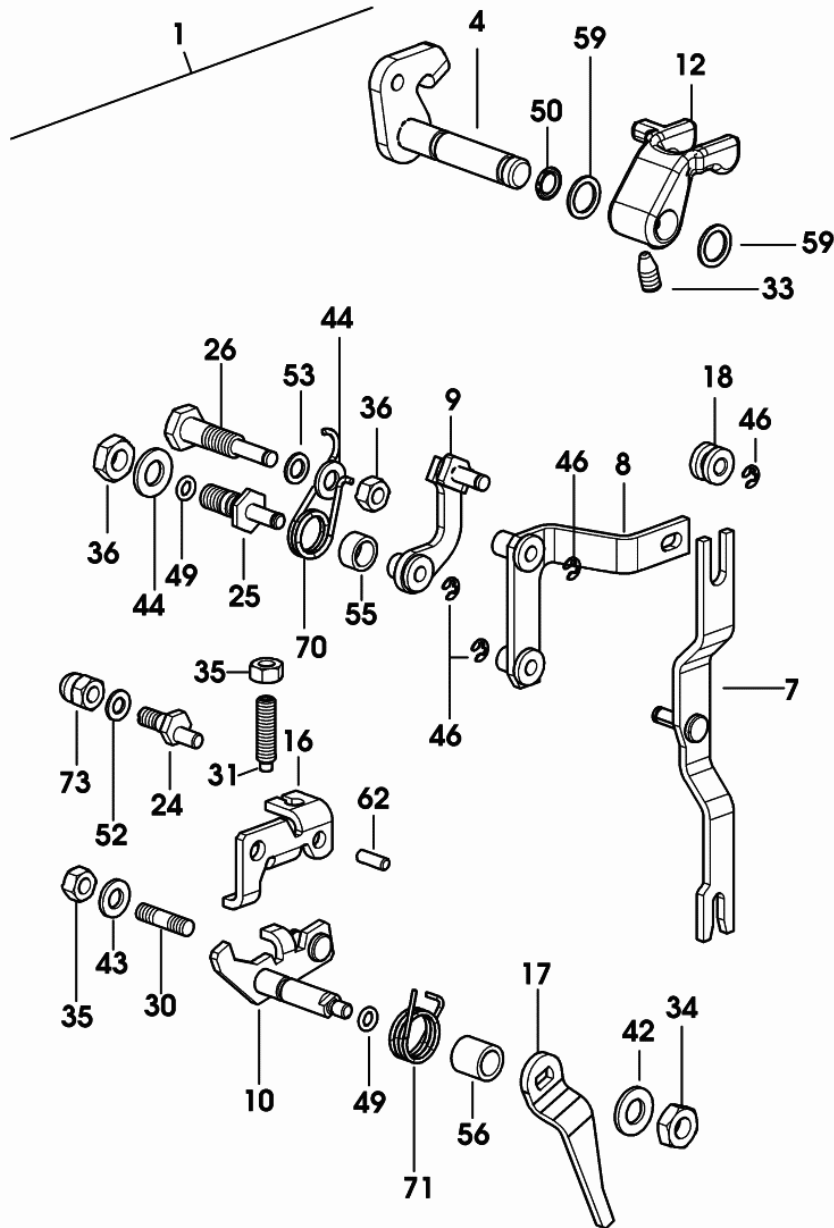


Fig.	Code	QTY	Name
1	0.013.5695.4/20	1	regulator
4	0.066.1622.2	1	lever
7	0.065.1664.2/10	1	lever
8	0.065.1665.2/20	1	lever
9	0.007.0760.2	1	lever
10	0.065.1667.2	1	lever
12	0.065.1669.0	1	lever
16	0.065.1675.0	1	bracket
17	0.065.1679.0/10	1	lever
18	0.065.1680.0	1	bushing
24	0.065.1686.0/20	1	eccentric
25	0.065.1687.0	1	pin
26	2.0399.300.7	1	pin m 8 p.1x38.5
30	2.0439.158.2	1	screw m 8 p.1.25 x 15, d933
31	2.0522.110.7	1	screw m 6 p.1x25
33	2.0599.057.2/10	1	screw
34	2.1011.102.2	1	nut m 5 p.0.7
35	2.1011.103.2	3	nut m 6 p.1
36	2.1011.505.2	3	nut m 8 p.1 x 8
42	2.1310.001.2	1	flat washer 5.3
43	2.1310.002.2	1	washer 6.6, d125
44	2.1310.004.2	2	flat washer 8.5
46	2.1430.004.7	5	circlip 3.2
49	2.1530.007.0	2	'o' ring 4.48x1.78
50	2.1530.012.0	2	'o' ring 6.75 x 1.78
52	2.1560.001.0	2	gasket 6.2x10
53	2.1560.003.0	3	gasket 8.2 x 12
55	2.1579.726.2/10	1	spacer 8.4x11.5x6
56	2.1579.730.2	1	spacer 8.4x12x12
59	2.1599.456.2/10	2	snoulder 10.2x14x1
62	2.1651.305.0	1	pin 4 x 12
70	2.4099.062.2	1	spring
71	2.4099.034.2	1	spring
73	2.1030.001.7	1	nut m 6

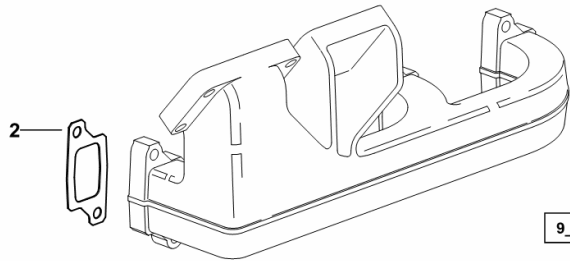
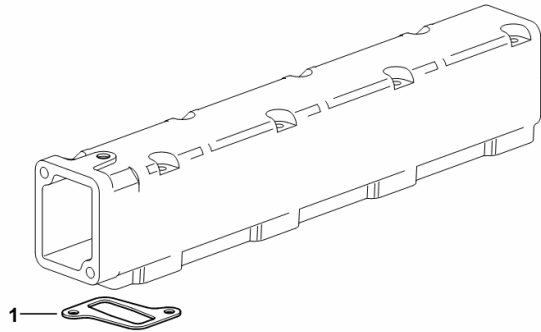
0\_013\_5695\_4\_20\_C

**INTAKE AND EXHAUST MANIFOLD GASKETS**

Fig.	Code	QTY	Name
------	------	-----	------

Notes:  
[SILVER 85]

1	0.011.1304.0/10	4	gasket
2	0.007.1445.0	4	gasket



9\_33218\_00\_0-A-001

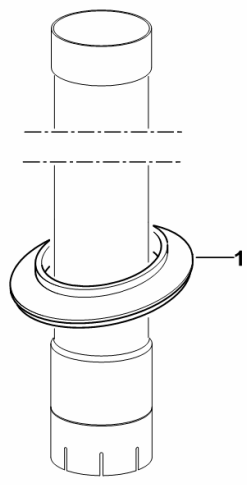
**AIR CLEANER EXTENSION GASKET**

Fig.	Code	QTY	Name
------	------	-----	------

**Notes:**

[SILVER 85] 1132 <-

1	0.008.9487.0	1	gasket
---	--------------	---	--------



9\_62081\_11\_0-A-001

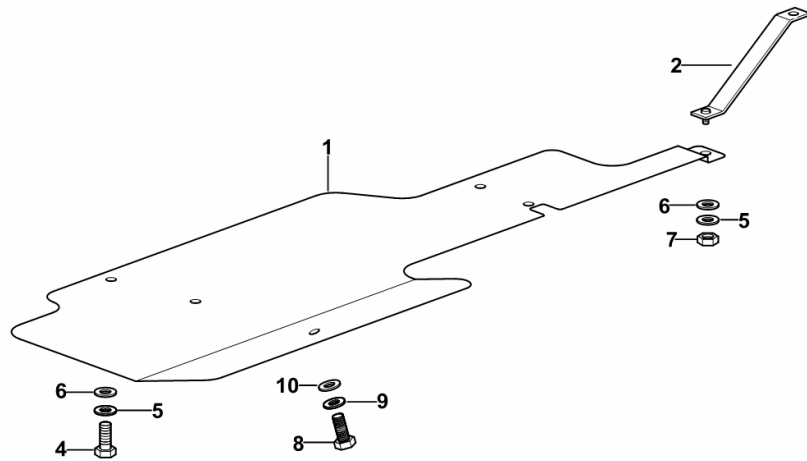
**TANK GUARDS**

Fig.	Code	QTY	Name
------	------	-----	------

**Notes:**

- EXPORT D [SILVER 85]

1	0.008.9212.0/10	1	shield
2	0.008.9611.2/20	1	bracket
4	2.0112.204.2	4	screw m 8 p.1.25x14
5	2.1470.004.2	5	washer 8
6	2.1599.352.2	5	washer 8.5x28x2
7	2.1011.105.2	1	nut m 8 p.1.25
8	2.0112.309.2	1	screw m 10 p.1.5 x 25
9	2.1470.006.2	1	lock washer 10
10	2.1310.006.2	1	flat washer 10.5



9\_61781\_00\_0-A-001

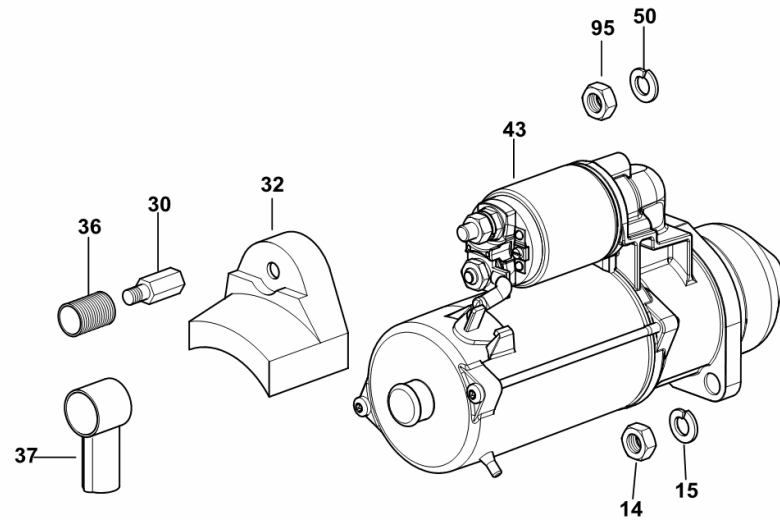
**STARTER**

Fig.	Code	QTY	Name
------	------	-----	------

**Notes:**

[SILVER 85]

14	2.1011.422.2	1	nut m 12 p.1.25
15	2.1474.011.2	1	spring washer 12
30	0.008.0616.0	1	pipe fitting
32	0.008.0391.0	1	cover
36	0.008.0378.0	1	cover
37	2.6519.033.0	1	cap
43	2.9619.390.0	1	starter motor 12 V, 3 kW, Z = 9 ( 1157 <- )
			☞ 2.9619.390.0
43	2.9619.560.0	1	starter motor 12 V, 3.5 kW, Z = 9
50	2.1470.006.2	1	lock washer 10
95	2.1011.106.2	1	nut m 10 p.1.5



9\_62084\_00\_0-A-001

## SILVER 85

### F0 - FRONT AXLE

#### FRONT SUPPORT

FRONT SUPPORT.....	F0.01.1 (1)
FRONT SUPPORT.....	F0.01.3 (1)
FRONT SUPPORT MOUNTING FOR TYPES WITH FRONT LIFT.....	F0.01.5 (1)
FRONT SUPPORT.....	F0.01.8 (1)
PLUG FOR TYPES WITH FRONT LIFT.....	F0.01.9 (1)
4WD - FRONT SUPPORT.....	F0.01.12 (1)

#### 4WD FRONT AXLE

4WD - FRONT DRIVE AXLE.....	F0.03.0 (1)
4WD - FRONT DRIVE AXLE.....	F0.03.1 (1)
4WD - FRONT AXLE FORKS FOR TYPES WITH BRAKES.....	F0.03.3 (1)
4WD - FRONT AXLE FORKS FOR TYPES WITH BRAKES.....	F0.03.4 (1)
PIN.....	F0.03.5 (1)
STEERING SENSOR SUPPORT SBA/ASM.....	F0.03.6 (1)
AIR BREATHER AND STEERING STOP - 4WD.....	F0.03.7 (1)
AIR BREATHER AND STEERING STOP - 4WD.....	F0.03.8 (1)
BREATHER - 4WD.....	F0.03.9 (1)
STEERING ROD - MECH. STEERING - TELESCOPIC AXLE.....	0.010.0488.4/10.A

#### FRONT DIFFERENTIAL

4WD - FLANGE.....	F0.04.0 (1)
FLANGE FASTENERS.....	F0.04.1 (1)
4WD - FLANGE.....	F0.04.2 (1)
4WD - BEVEL WHEEL GEAR - 40 Km\h.....	F0.04.4 (1)
4WD - FRONT DIFFERENTIAL.....	F0.04.6 (1)
4WD - FRONT DIFFERENTIAL.....	F0.04.7 (2)
4WD - FRONT DIFFERENTIAL.....	F0.04.8 (1)
4WD - FRONT DIFFERENTIAL.....	F0.04.10 (1)
4WD - FRONT DIFFERENTIAL.....	F0.04.10 (2)
DIFFERENTIAL SEAL RINGS.....	F0.04.13 (1)
4WD - TRANSMISSION SHAFT.....	F0.04.14 (1)
4WD - TRANSMISSION SHAFT.....	F0.04.15 (1)
4WD - TRANSMISSION SHAFT - BEARING COVER.....	F0.04.17 (1)
4WD - TRANSMISSION SHAFT.....	F0.04.18 (1)
4WD - TRANSMISSION SHAFT.....	F0.04.19 (1)
4WD - TRANSMISSION SHAFT.....	F0.04.21 (1)
4WD - TRANSMISSION SHAFT - STANDARD SEALS.....	F0.04.24 (1)

#### STEERING CYLINDER

4WD - POWER STEERING CYLINDER.....	F0.05.2 (1)
4WD - POWER STEERING CYLINDER.....	F0.05.3 (1)
CYLINDER PARTS.....	0.010.6110.4/20.A
CYLINDER PARTS.....	0.448.6342.4.A

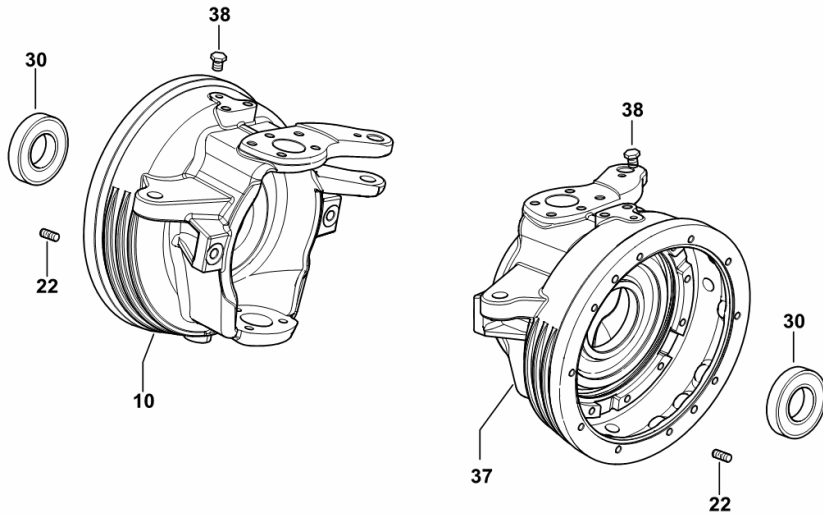
**4WD - FRONT AXLE FORKS FOR TYPES WITH BRAKES**

Fig.	Code	QTY	Name
------	------	-----	------

**Notes:**

- WITH STANDARD SEALS [SILVER 85] -> 1153 - FOR DOUBLE-ACTING CYLINDER [SILVER 85] -> 1153

10	0.010.6123.0/70	1	fork dx/rh/re
22	2.0433.155.7	20	stud bolt m 10 p.1.25 x 25
30	2.1529.134.0	2	'o' ring 65x90x17.5
37	0.010.6124.0/60	1	fork sx/lh/li
38	2.3199.125.0	2	plug 1/8" gas



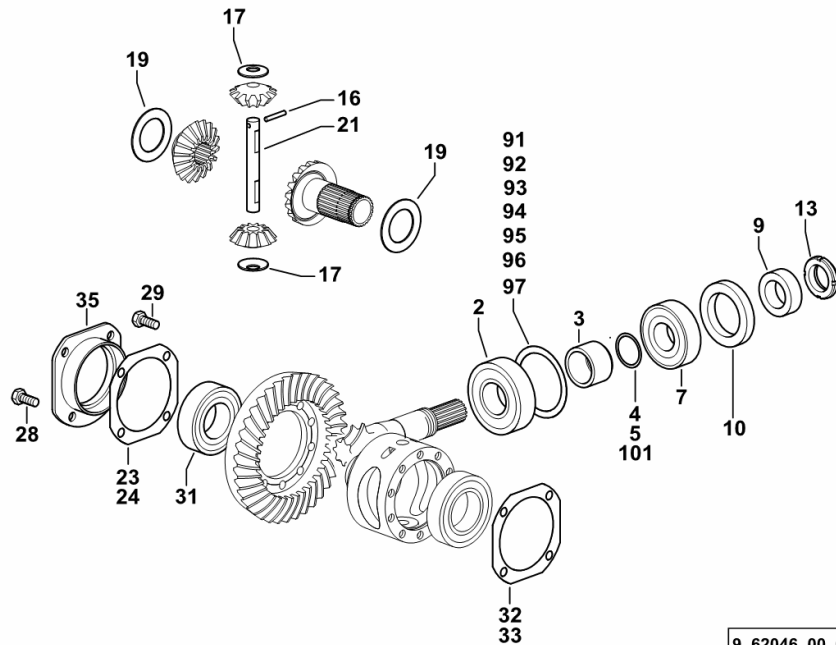
9\_77843\_02\_0-C-001

Section: F0 - FRONT AXLE  
**4WD - FRONT DIFFERENTIAL**

Fig.	Code	QTY	Name
------	------	-----	------

**Notes:**

- CON TENUTE STANDARD SENZA SBA / ASM [SILVER 85] 1108 <-



9\_62046\_00\_0-A-001

2	2.2560.006.0	1	roller bearing 40 x 90 x 25.25
3	0.010.1045.0	1	spacer mm 37
4	2.1580.101.0	2	shim 36 x 43 x 0.2
5	2.1580.102.0	3	shim 36 x 43 x 0.5
7	2.2560.005.0	1	roller bearing 35 x 80 x 22.75
9	0.255.4650.0	1	spacer 35 x 58 x 19
10	2.1529.007.0/10	1	'o' ring 58 x 80 x 13
13	2.1214.108.7	1	ring nut m 35 p.1.5
16	2.1631.415.2	1	pin 5x32 ( 1024 <- )
16	2.1631.418.0	1	pin 5 x 45 ( -> 1014 )
17	0.255.4629.0	2	snoulder 15.5x36x2
19	2.1599.431.0	2	snoulder 42x66x2
21	0.010.0856.0/10	1	pin ( 1024 <- )
21	0.010.0856.0/20	1	pin ( -> 1014 )
23	0.445.4656.0/10	2	shim 92x127x0.2
24	0.445.4655.0/10	2	shim 92x127x0.5
28	2.0132.207.2	8	screw m 10 p.1 x 25
29	2.0139.025.1	10	screw m 10 p.1.25 x 25
31	2.2540.005.0	1	roller bearing 45 x 85 x 24.75
32	0.146.4653.0/10	4	shim 96x127x0.2
33	0.146.4654.0/10	4	shim 96x127x0.5
35	0.255.4652.0/20	1	flange
91	2.1589.356.0	1	snoulder 73x89.5x0.6
92	2.1589.357.0	0.3	snoulder 73x89.5x0.7
93	2.1589.358.0	0.3	snoulder 73x89.5x0.8
94	2.1589.359.0	0.3	snoulder 73x89.5x0.9
95	2.1589.360.0	0.3	snoulder 73x89.5x1.65
96	2.1589.361.0	0.3	snoulder 73x89.5x1.75
97	2.1589.362.0	0.3	snoulder 73x89.5x1.85
101	2.1580.109.0	2	shim 36x43x0.15

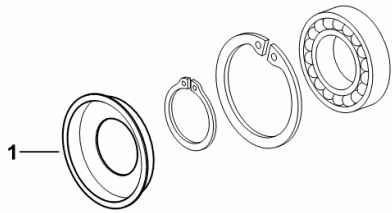
**4WD - TRANSMISSION SHAFT - BEARING COVER**

Fig.	Code	QTY	Name
------	------	-----	------

**Notes:**

- FOR TYPES WITHOUT HYDRAULIC SHUTTLE [SILVER 85]

1	0.011.1310.0	1	ring
---	--------------	---	------



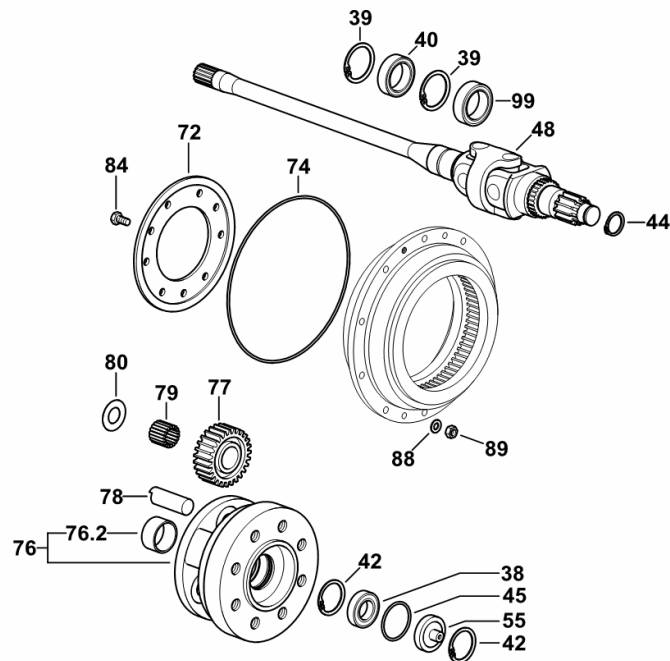
9\_B8626\_01\_0-A-001

**4 WD - FRONT REDUCTION UNIT AND HALFSHAFTS**

Fig.	Code	QTY	Name
------	------	-----	------

**Notes:**

- FOR SINGLE-ACTING CYLINDER - FOR TYPES WITH SBA / ASM [SILVER 85] 1146 <-



38	2.2030.007.0	2	ball bearing 30x55x13
39	2.1411.025.1	4	circlip 62
40	2.2999.415.0	2	bearing 43.8 x 62 x 17
42	2.1411.022.1	4	circlip 55
44	2.1499.528.1	2	circlip 30
45	2.1530.134.0	2	'o' ring 53.98x3.53
48	0.010.5413.4/10	2	half-shaft ☞ 0.010.5413.4/10
55	0.275.4653.0	2	small cover
72	0.275.4650.0/10	2	flange
74	2.1530.308.0	2	'o' ring 253.6x3.53
76	0.275.4642.3/40	2	spider
76.2	2.1559.067.0	1	bushing 44.1x50.1x25
77	0.255.4644.0/20	6	planet gear z=27
78	0.198.4643.0	6	pin
79	2.2999.002.0	6	roller cage 25x35x30
80	2.1599.871.0	12	thrust plate 25x48x1
84	2.0139.002.1	18	screw m 10 p.1.25 x 20
88	2.1475.203.7	20	washer 10.5
89	2.1012.421.7	20	nut m 10 p.1.25
99	2.1529.112.0	2	'o' ring 45 x 65 x 18.5

9\_62346\_00\_0-B-002

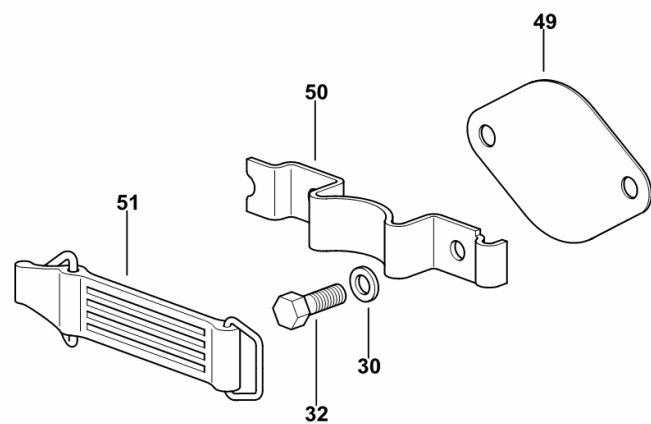
**TOP LINK LOCK**

Fig.	Code	QTY	Name
------	------	-----	------

**Notes:**

- FOR MODELS WITHOUT FRONT P.T.O. [SILVER 85]

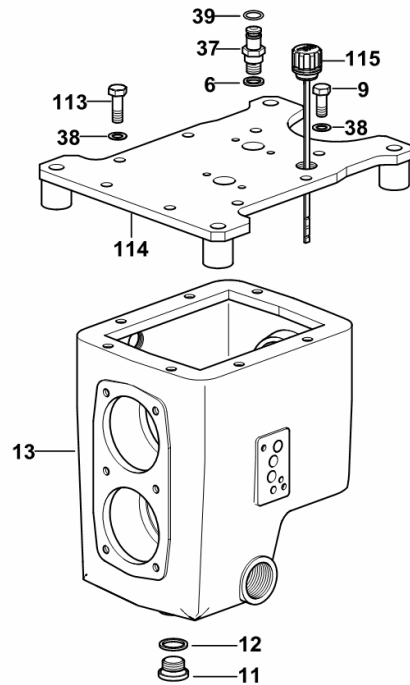
30	2.1470.004.2	6	washer 8
32	2.0112.206.2	4	screw m 8 p.1.25 x 18
49	0.010.0085.0	1	small cover
50	0.010.0086.0	1	bracket
51	0.008.8133.2/10	1	rod



9\_62059\_83\_0-C-001

Section: M0 - FRONT PTO  
**P.T.O. FRONT**

Fig.	Code	QTY	Name
6	2.1560.010.0	2	gasket 14.2 x 20 x 1.5
9	2.0112.309.2	1	screw m 10 p.1.5 x 25
11	2.3120.002.4	2	plug m 22 x 1.5
12	2.1560.017.0	2	gasket 22.2 x 27
13	0.007.5317.0/50	1	box
37	2.3339.537.2	2	pipe fitting m 14 p.1.5
38	2.1470.006.2	8	lock washer 10
39	2.1530.024.0	2	'o' ring 10.78 x 2.62
113	2.0112.311.2	7	screw m 10 p.1.5 x 30
114	0.008.9616.2	1	cover
115	0.009.0315.0	1	plug



0\_016\_0701\_4\_30\_A

**SILVER 85**

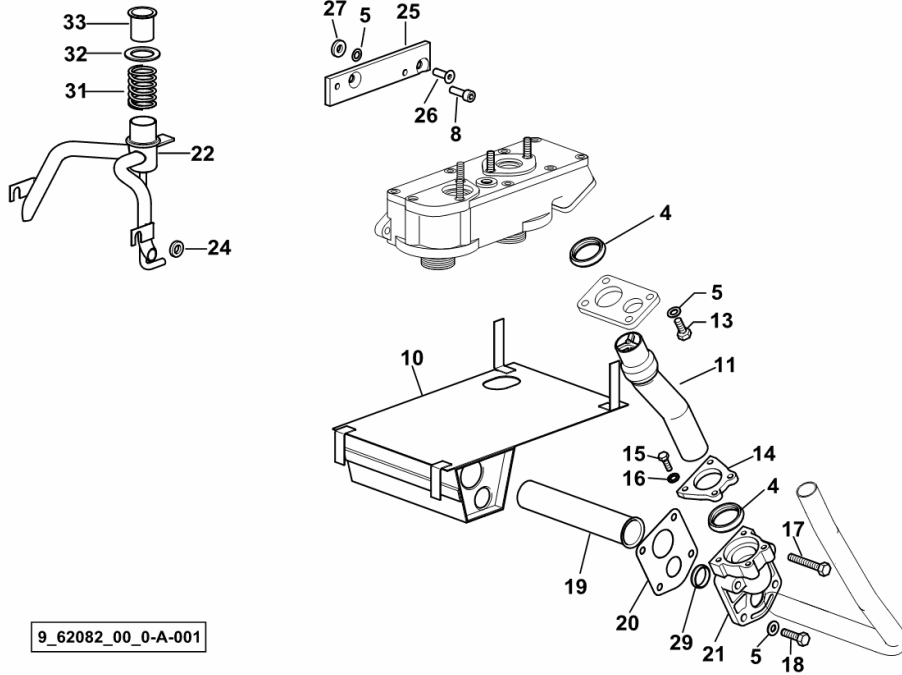
Section: H0 - HYDRAULIC AND PNEUMATIC SYSTEM|

Ref.: H0.01.3 (1)

**OIL SUCTION**

Fig.	Code	QTY	Name
------	------	-----	------

Notes:  
[SILVER 85]



4	0.255.8255.0/60	2	ring 32.5x8.5x5.9
5	2.1481.007.1	6	washer 8
8	2.0312.208.2	2	screw m 8 p.1.25 x 25
10	0.008.5758.2/20	1	division
11	0.010.1007.4	1	tube
13	2.0112.208.2	4	screw m 8 p.1.25 x 22
14	0.008.4713.0	1	flange
15	2.0112.007.2	4	screw m 6 p.1 x 20
16	2.1470.002.2	4	washer 6, d128
17	2.0112.217.2	2	screw m 8 p.1.25 x 45
18	2.0112.209.2	2	screw m 8 p 1.25 x 25
19	0.255.8260.0	1	tube
20	0.255.8262.0/20	1	gasket
21	0.255.8257.0/20	1	support
22	0.009.6670.2/20	1	tube ( 1157 <- )
22	0.007.7035.2	1	tube
24	2.1599.210.0/10	4	spacer 10.5x19x4
25	0.008.4375.0/30	1	plate
26	2.0342.307.6	2	screw m 8 p 1.25 x 25
27	2.1579.931.2	2	spacer
29	0.255.8253.0/60	1	ring 22.8x6.3x4.7
31	2.4019.609.2	1	spring 33x38x2.5x40
32	2.1549.231.2	1	spacer
33	0.009.6671.0	1	tube

9\_62082\_00\_0-A-001

**SILVER 85**

Section: H0 - HYDRAULIC AND PNEUMATIC SYSTEM|

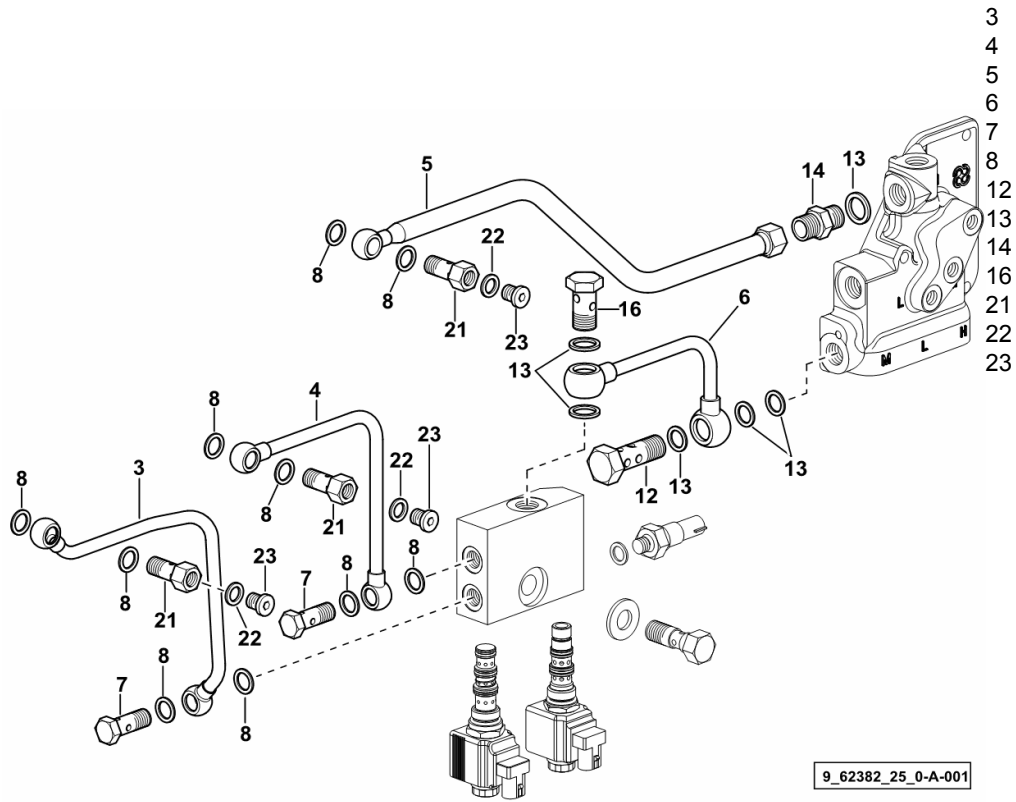
Ref.: H0.01.21 (1)

**HYDRAULIC SHUTTLE CONTROL**

Fig.	Code	QTY	Name
------	------	-----	------

**Notes:**

- PER TIPI CON INVERSORE IDRAULICO CON H-M-L (POWERSHIFT) [SILVER 85]



3	0.010.4260.3/20	1	tube
4	0.010.4261.3/20	1	tube
5	0.010.4262.3/20	1	tube
6	0.010.4259.3/30	1	tube
7	2.3335.006.2	2	pipe union m 14 p.1.5x24
8	2.1560.010.0	10	gasket 14.2 x 20 x 1.5
12	2.3339.487.2/10	1	pipe union m 18 p.1.5x55
13	2.1560.014.0	6	gasket 18.2 x 24 x 1.5
14	2.3261.010.2	1	pipe fitting m 18 p.1.5 - 7/8" 14
16	2.3335.008.2	1	pipe union m 18 p.1.5 x 32
21	2.3339.860.2/20	3	pipe union m 14 p.1.5
22	2.1560.008.0	3	gasket 12.2 x 18
23	2.3199.164.2/20	3	plug m 12 p.1.5

**SILVER 85****Section: H0 - HYDRAULIC AND PNEUMATIC SYSTEM|  
COUPLINGS FOR AUXILIARY CONTROL VALVE**

Ref.: H0.01.48 (1)

Fig.	Code	QTY	Name
------	------	-----	------

Notes:  
[SILVER 85]

7	2.3335.008.2	4	pipe union m 18 p.1.5 x 32
8	2.1560.014.0	9	gasket 18.2 x 24 x 1.5
12	2.3335.055.2	1	pipe union m 18 p.1.5
13	2.1569.158.0/10	1	gasket 18.2 x 24 x 6.5

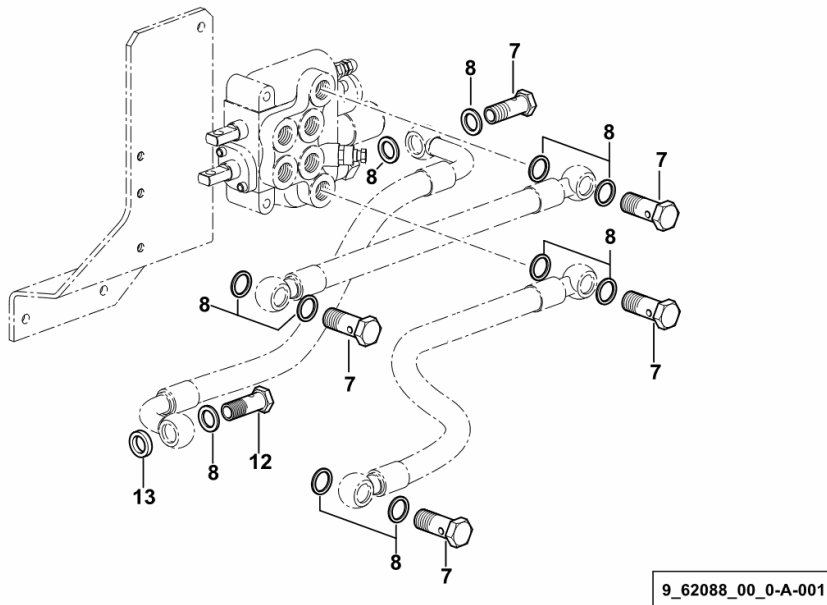
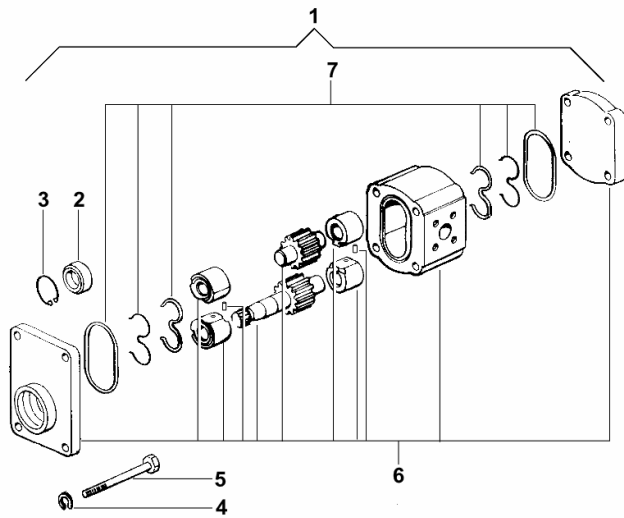


Fig.	Code	QTY	Name
1	2.4529.950.0	1	hydraulic pump 11 cc sx/lh/li - BOSCH -
2	0.009.4046.1	1	'o' ring
3	2.1411.012.1	1	circlip 30x1.2, din 472
4	0.000.0000.1	0	not serviceable
5	0.000.0000.1	0	not serviceable
6	0.000.0000.1	0	not serviceable
7	2.4529.330.1/10	0	seal ring kit



2\_4529\_950\_0

**SILVER 85**

Section: H0 - HYDRAULIC AND PNEUMATIC SYSTEM|  
**4WD - POWER STEERING**

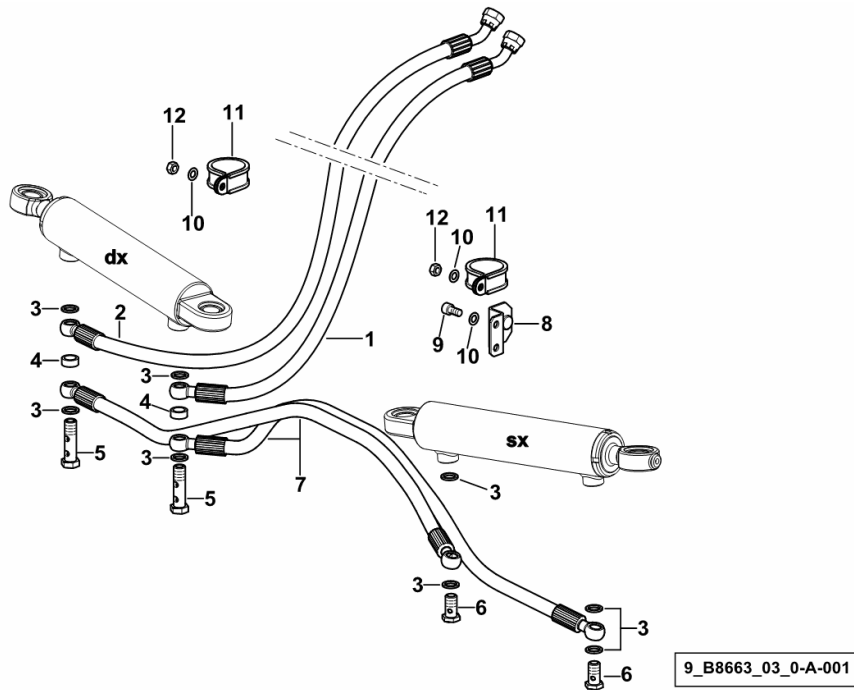
Ref.: H0.02.8 (1)

Fig.	Code	QTY	Name
------	------	-----	------

**Notes:**

- FOR DOUBLE-ACTING CYLINDER [SILVER 85] -> 1153

1	0.014.4897.3/10	1	tube mm 2455
2	0.014.4898.3/10	1	tube mm 2480
3	2.1560.010.0	8	gasket 14.2 x 20 x 1.5
4	2.1569.190.0	2	gasket 14x20x8
5	2.3339.551.2/10	2	pipe union m 14 p.1.5x51
6	2.3335.006.2	2	pipe union m 14 p.1.5x24
7	0.011.2936.3	2	tube mm 760
8	0.014.4171.3	1	bracket
9	2.0312.204.2	2	screw m 8 p.1.25 x 16
10	2.1470.004.2	4	washer 8
11	2.6839.069.0	2	clamp 40/20
12	2.1011.105.2	2	nut m 8 p.1.25



**SILVER 85**

Section: H0 - HYDRAULIC AND PNEUMATIC SYSTEM|

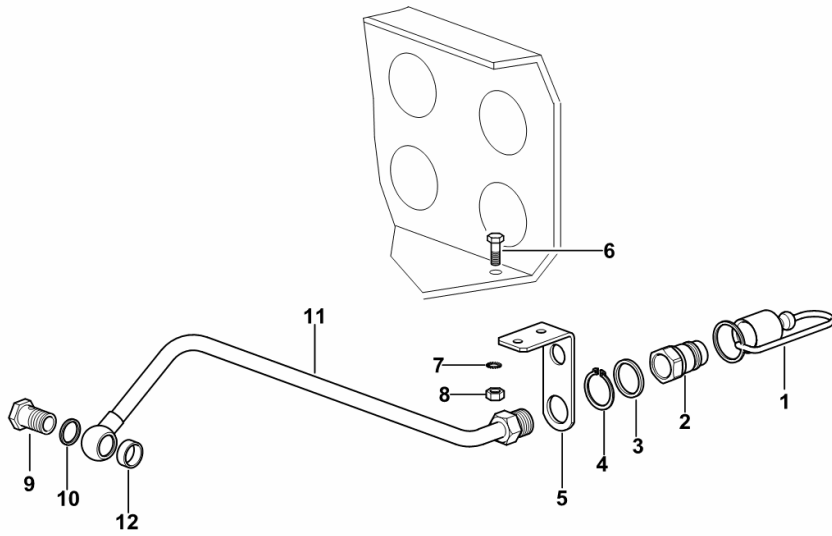
Ref.: H0.07.0 (1)

**FREE OIL RETURN**

Fig.	Code	QTY	Name
------	------	-----	------

Notes:  
[SILVER 85]

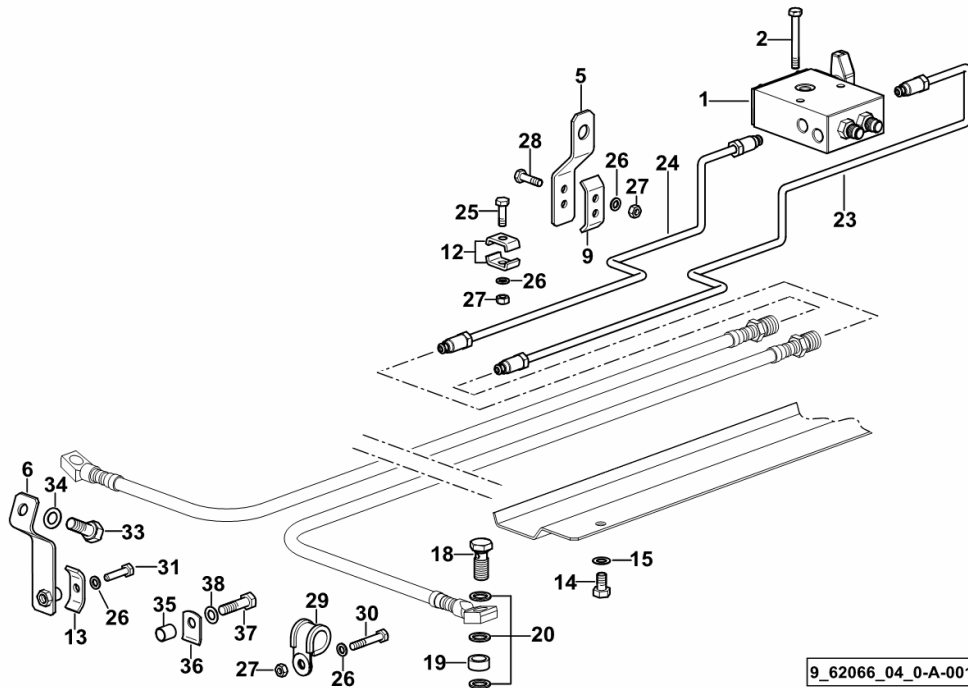
1	0.009.3149.0	1	plug
2	0.98309.51.3/10	1	coupling 1/2
3	2.1560.054.0	1	gasket 21 x 26
4	2.1410.011.7	1	circlip 28
5	0.011.4487.0/10	1	bracket
6	2.0112.205.2	1	screw m 8 p.1.25 x 16
7	2.1470.004.2	1	washer 8
8	2.1011.105.2	1	nut m 8 p.1.25
9	2.3335.055.2	1	pipe union m 18 p.1.5
10	2.1560.014.0	1	gasket 18.2 x 24 x 1.5
11	0.011.4488.3	1	tube
12	2.1569.158.0/10	1	gasket 18.2 x 24 x 6.5



9\_61488\_80\_0-A-001

Fig.	Code	QTY	Name
------	------	-----	------

Notes:  
 [SILVER 85]



1	0.445.4351.4/30	1	valve
2	2.0112.019.2	2	screw m 6 p.1 x 50
5	0.008.9729.0	1	square
6	0.014.0925.3	1	bracket
9	0.009.3100.0	1	small plate
12	0.002.8816.0	2	small plate
13	0.154.6377.0	1	terminal
14	2.0112.204.2	3	screw m 8 p.1.25x14
15	2.1470.004.2	5	washer 8
18	2.3339.361.2/10	2	pipe union m 12 p.1.25 x 28
19	2.1579.765.2/10	2	spacer 12.5 x 18 x 8.0
20	2.1560.008.0	6	gasket 12.2 x 18
23	0.008.9728.3	1	tube sx/lh/li
24	0.007.6741.3	1	tube dx/rh/re
25	2.0112.007.2	1	screw m 6 p.1 x 20
26	2.1470.002.2	5	washer 6, d128
27	2.1011.103.2	5	nut m 6 p.1
28	2.0112.008.2	2	screw m 6 p.1x22
29	2.6839.058.0	2	clamp Ø 17/20
30	2.0112.013.2	2	screw m 6 p.1 x 35
31	2.0112.009.2	1	screw m 6 p.1 x 25
33	2.0112.307.2	1	screw m 10 p.1.5 x 20
34	2.1470.006.2	1	lock washer 10
35	2.1579.840.2	2	spacer 10x12x13
36	0.008.9854.0	2	bracket
37	2.0112.211.2	2	screw m 8 p.1.25 x 30
38	2.1470.004.2	2	washer 8

**SILVER 85**

Section: H0 - HYDRAULIC AND PNEUMATIC SYSTEM|  
**VALVE BRACKET AND REAR BRAKE PIPE**

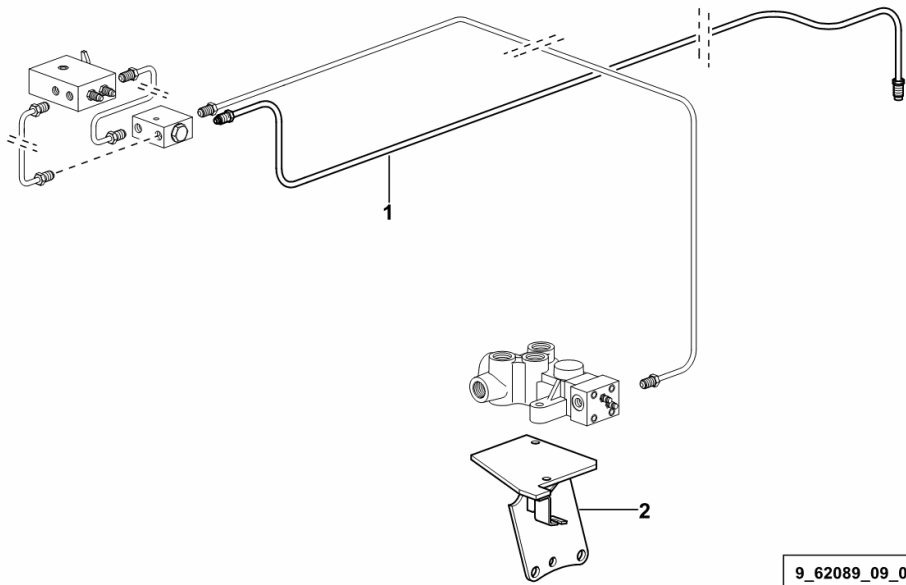
Ref.: H0.09.28 (1)

Fig.	Code	QTY	Name
------	------	-----	------

**Notes:**

- FOR TYPES WITH HYDRAULIC TRAILER BRAKING (FRANCE) [SILVER 85]

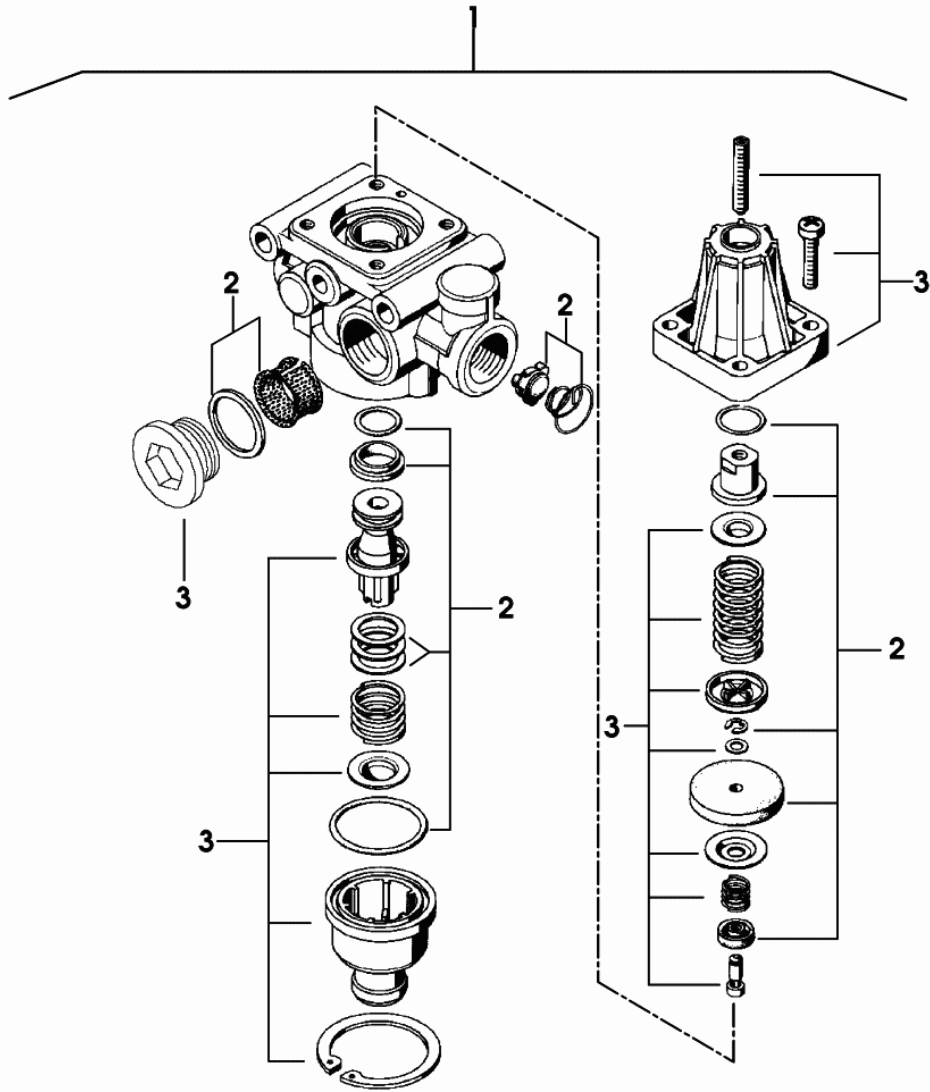
1	0.008.9519.3/10	1	tube sx/lh/li ( 1085 <- )
1	0.007.6736.3	1	tube sx/lh/li ( -> 1087 )
2	0.008.9681.2/20	1	bracket



9\_62089\_09\_0-A-001

**VALVE PARTS**

Fig.	Code	QTY	Name
1	0.012.3381.0	1	valve
2	0.010.3985.2	1	accessories
3	0.000.0000.1	0	not serviceable



0\_012\_3381\_0

**SILVER 85**

Section: H0 - HYDRAULIC AND PNEUMATIC SYSTEM|

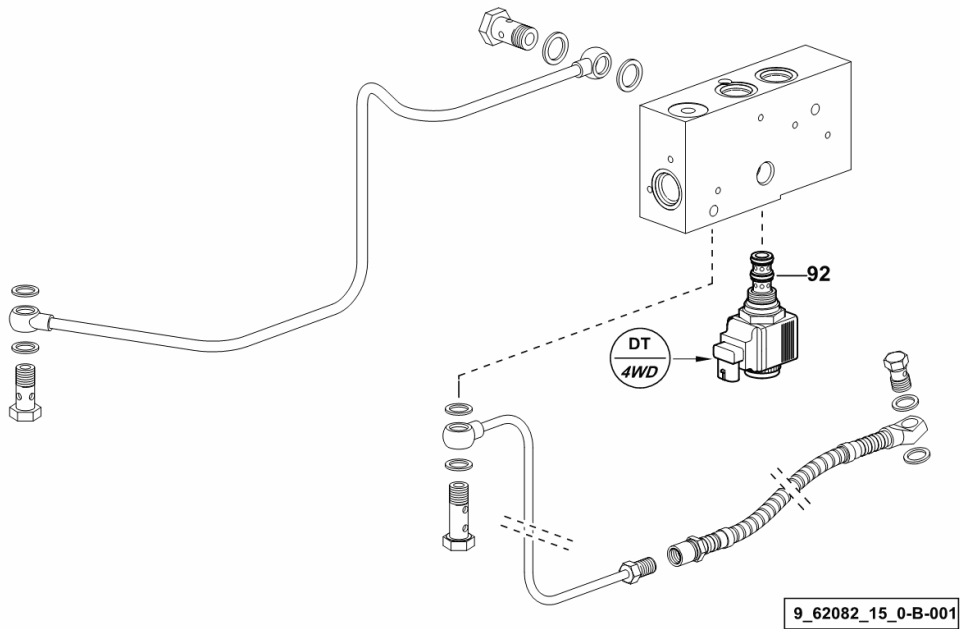
Ref.: H0.10.16 (1)

**4WD - FRONT DIFFERENTIAL LOCK - FOR TYPES WITH SBA / ASM**

Fig.	Code	QTY	Name
------	------	-----	------

Notes:  
[SILVER 85]

92	2.3729.270.0/40	1	electro valve 13V - 20W ☞ 2.3729.270.0/40
----	-----------------	---	--



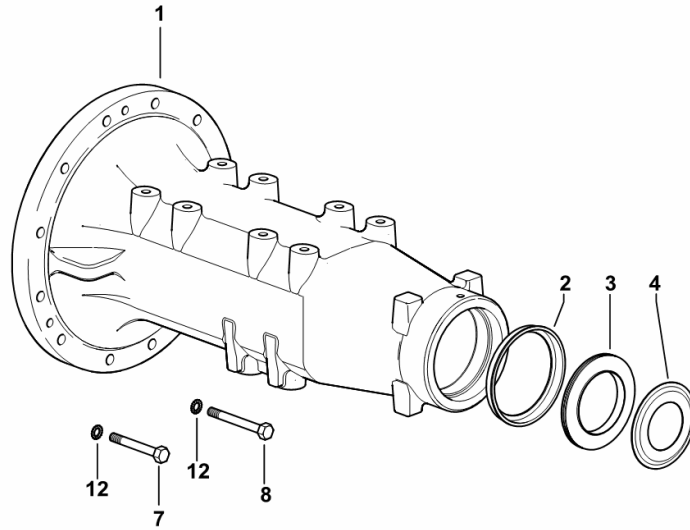
**REAR AXLE**

Fig.	Code	QTY	Name
------	------	-----	------

**Notes:**

- WITH STANDARD SEALS [SILVER 85]

1	0.445.4410.0/60	2	wheel support
2	0.255.4450.0/10	2	cup
3	2.1569.104.0	2	'o' ring 80 x 118.2 x 12
4	0.445.4450.0	2	cup
7	2.0112.325.2	5	screw m 10 p.1.5 x 80
8	2.0112.327.2	1	screw m 10 p.1.5 x 90
12	2.1470.006.2	6	lock washer 10



9\_40544\_10\_0-A-001

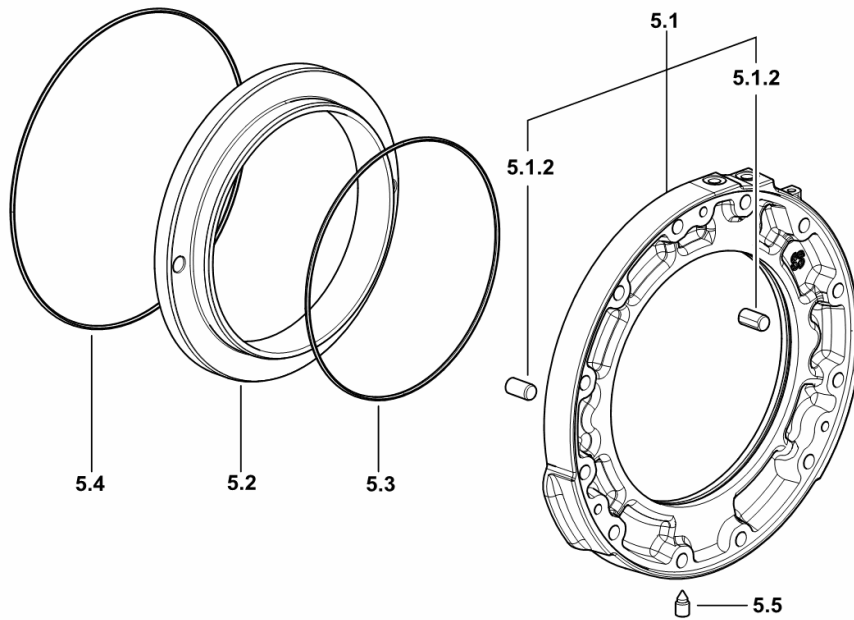
**REAR BRAKES**

Fig.	Code	QTY	Name
------	------	-----	------

**Notes:**

[SILVER 85] -&gt; 1153

5.1	0.008.5031.3/60	1	box
5.1.2	2.1699.190.0	2	pin 14x28
5.2	0.255.5448.0/20	1	piston
5.3	2.1539.180.0	1	'o' ring 228x3.53
5.4	2.1539.179.0	1	'o' ring 279x3.53
5.5	2.3139.013.7	1	plug m12x1,25



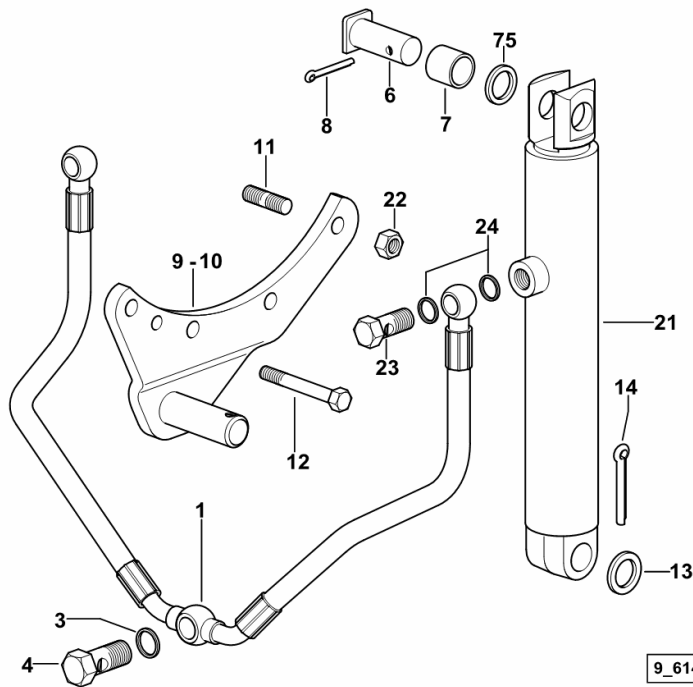
9\_40554\_10\_0-A-002


Section: R0 - REAR LIFT  
**HYDRAULIC CYLINDERS**

Fig.	Code	QTY	Name
------	------	-----	------

**Notes:**

- FOR TYPES WITH MECHANICAL REAR LIFT [SILVER 85]



1	0.009.3536.3/10	1	tube
3	2.1560.014.0	1	gasket 18.2 x 24 x 1.5
4	2.3335.008.2	1	pipe union m 18 p.1.5 x 32
6	2.1699.372.0/30	2	pin 22x59
7	2.1559.076.0	2	bushing 22.05x26.05x23
8	2.1690.616.2	2	split pin 6.3 x 50
9	0.98614.51.3/10	1	bracket dx/rh/re
10	0.98614.50.3/10	1	bracket sx/lh/li
11	2.0422.427.7	8	stud bolt m 12 x 120
12	2.0112.327.2	2	screw m 10 p.1.5 x 90
13	2.1311.013.2	4	flat washer 22
14	2.1690.713.2	2	split pin 8x36
21	0.009.3535.4	2	jack  0.009.3535.4
22	2.1011.107.2	8	nut m 12 p.1.75
23	2.3332.005.2	2	pipe fitting m 16 p.1.5
24	2.1560.011.0	4	gasket 16.2x20
75	2.1599.656.2	2	washer 22 x 30 x 3.0

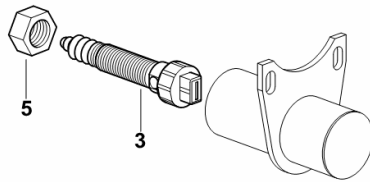
**DRAFT SENSOR**

Fig.	Code	QTY	Name
------	------	-----	------

**Notes:**

- FOR TYPES WITH ELECTRONIC REAR LIFT [SILVER 85]

3	0.009.2194.4/20	1	sensor
5	2.1019.106.1	1	nut m 24 p.1.5 x 10



9\_62084\_65\_0-A-001

## Section: R0 - REAR LIFT

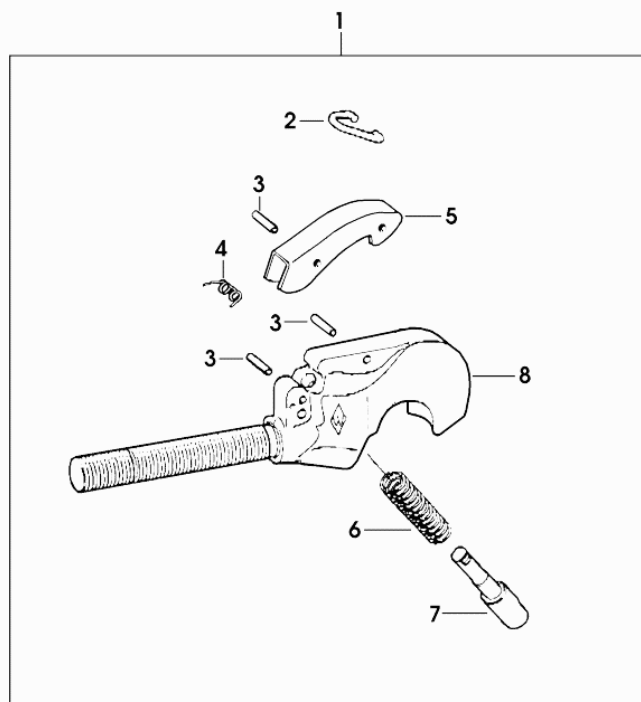
**3-POINT HITCH - ADJUSTABLE RH RODS**

Fig.	Code	QTY	Name
1	0.010.1959.3	1	rod 2 cat.- WALTERSCHEID
2	0.009.4731.1	1	spring
3	0.009.4677.2	3	pin 6 x 28
4	0.009.4731.2	1	lever
5	0.010.2786.2	1	lever
6	0.010.2787.0	1	spring
7	0.010.2787.1	1	pin
8	0.000.0000.1	0	not serviceable

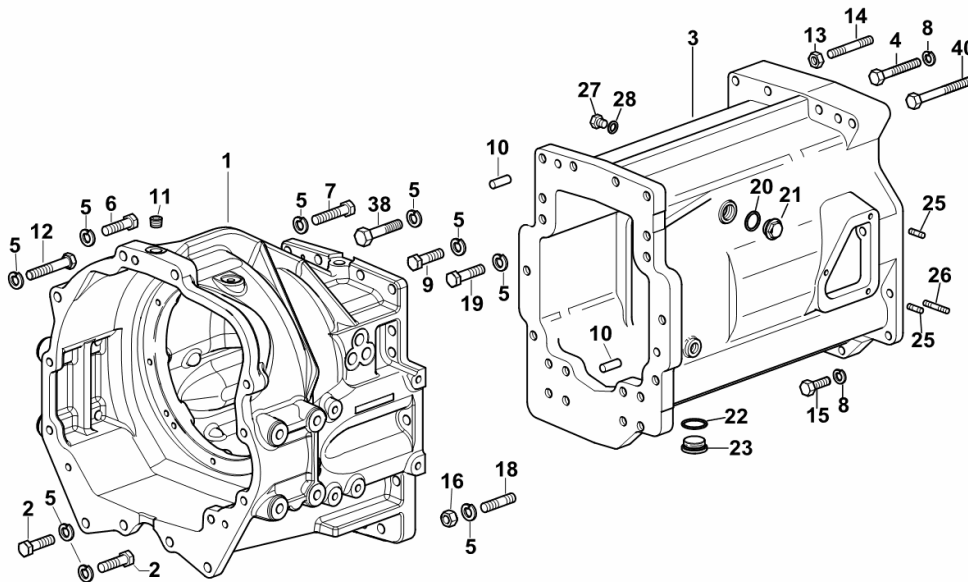
010\_1959\_3

**JUNCTION CASE**

Fig.	Code	QTY	Name
------	------	-----	------

**Notes:**

- FOR TYPES WITH HYDRAULIC SHUTTLE [SILVER 85]



1	0.010.4161.0/80	1	clutch housing
2	2.0112.519.2	6	screw m 14 p.2x50
3	0.011.8605.0/20	1	clutch housing
4	2.0112.427.2	7	screw m 12 p.1.75 x 90
5	2.1475.005.7	30	washer 14
6	2.0112.519.2	11	screw m 14 p.2x50
7	2.0112.522.2	2	screw m 14 p.2x65
8	2.1475.004.7	12	washer 13 x 24
9	2.0112.519.2	6	screw m 14 p.2x50
10	2.1651.911.0	2	cylindrical plug 12 x 24
11	2.3131.003.2	1	plug m 16 p.1.5
12	2.0112.525.2	1	screw m 14 p.2x80
13	2.1011.422.2	1	nut m 12 p.1.25
14	2.0432.272.7	1	stud bolt m 12 p.1.75-1.25x85
15	2.0112.421.2	4	screw m 12 p.1.75 x 60
16	2.1011.408.2	2	nut m 14 p.1.5
18	2.0432.311.7	2	stud bolt m14 x 40
19	2.0112.520.2	6	screw m 14 p.2 x 55
20	2.1560.019.0	1	gasket 24.3x30
21	2.3110.423.2	2	plug m 24 p.1.5x18.5
22	2.1560.025.0	1	gasket
23	2.3120.004.4	1	plug m 32
25	2.0422.202.7	2	stud bolt m 8 p.1.25 x 18
26	2.0422.213.7	1	stud bolt m 8 p.1.25 x 45
27	2.3110.302.2	1	plug m 12 p.1.75 x 10
28	2.1560.008.0	1	gasket 12.2 x 18
38	2.0114.521.2	2	screw m 14 p.2x70
40	2.0112.431.2	1	screw m 12 p.1.75 x 110

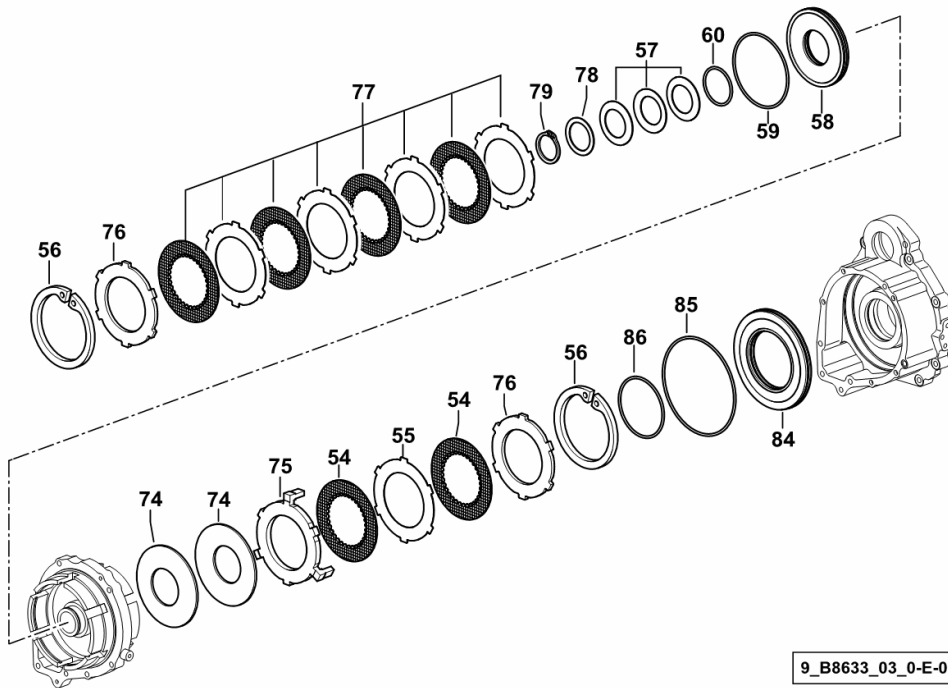
**H-M-L UNIT**

Fig.	Code	QTY	Name
------	------	-----	------

**Notes:**

(POWERSHIFT) - PER TIPI SENZA INVERSORE IDRAULICO [SILVER 85]

54	0.008.5632.2/10	4	friction ring mm 2.5
55	0.007.7714.0	3	disc mm 1.4
56	2.1411.046.7	3	circlip 130
57	2.1499.133.0	8	spring 45.5 x 70
58	0.008.5670.0/30	2	piston
59	2.1532.215.0	2	'o' ring 113.89x3.53
60	2.1532.138.0	2	'o' ring 55.56x3.53
74	2.1499.127.0	2	spring
75	0.009.7650.0/10	1	spacer
76	0.008.0209.0/20	2	disc mm 6
77	0.008.5634.3/10	1	clutch assy
78	2.1599.568.0/10	1	shim 45.5x60x2
79	2.1410.016.1	4	circlip 40
84	0.008.5669.0/30	1	piston
85	2.1532.256.0	1	'o' ring 152x3.53
86	2.1532.194.0	1	'o' ring 91.67 x 3.53



9\_B8633\_03\_0-E-001

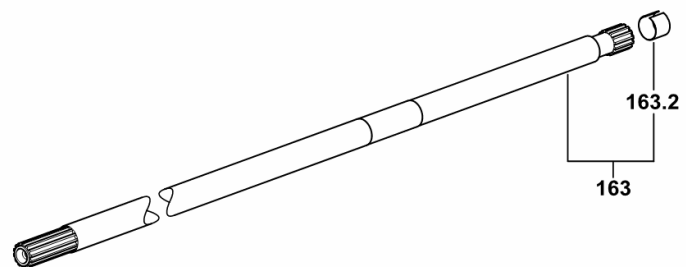
**P.T.O. - CLUTCH TRANSMISSION SHAFT**

Fig.	Code	QTY	Name
------	------	-----	------

**Notes:**

PER TIPI CON INVERSOE IDRAULICO SENZA H-M-L (POWERSHIFT) [SILVER 85]

163	0.010.8526.3/10	1	shaft
163.2	0.255.2550.0	1	ring



9\_B8633\_02\_0-A-001

**SECONDARY SHAFT FOR 5 SPEED GEARBOX WITH H-M-L**

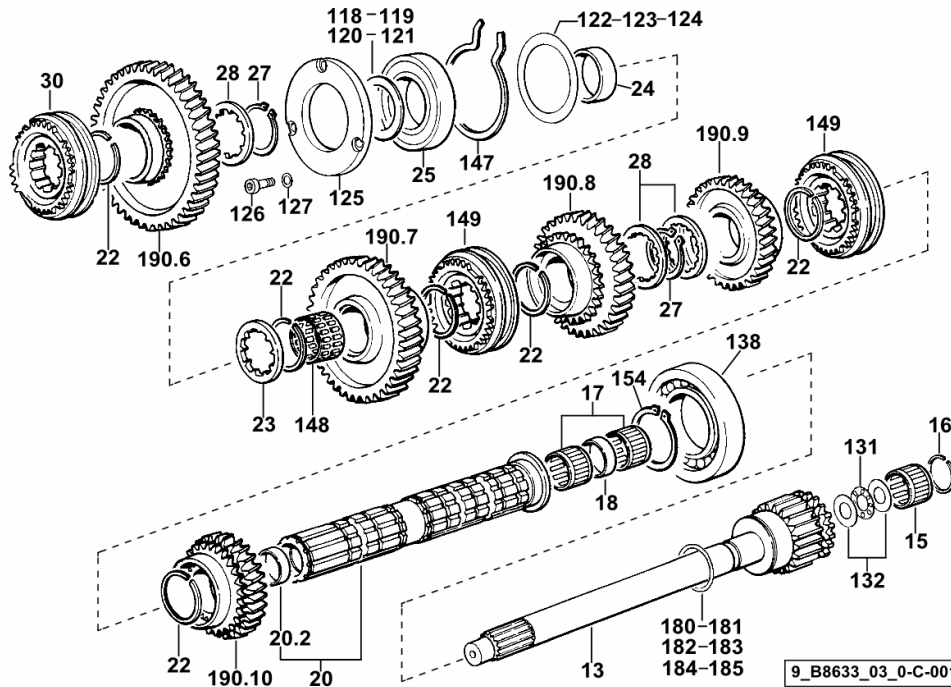


Fig.	Code	QTY	Name
------	------	-----	------

**Notes:**

(POWERSHIFT) - PER TIPI SENZA INVERSOE IDRAULICO [SILVER 85]

13	0.010.9175.0/20	1	reduction shaft
15	2.2999.282.0	1	roller cage 28 x 38 x 25.5
16	2.1423.028.7	1	circlip 38x1.5
17	2.2999.308.0	2	roller cage 30 x 35 x 27
18	2.1579.948.0	1	spacer 31.5 x 34.9 x 10
20	0.009.7643.3/30	1	shaft
20.2	2.1559.365.0	1	bushing 27.6 x 32 x 25
22	2.1499.153.7	7	circlip 41 x 1.5
23	2.1599.571.0/10	1	thrust plate 42 x 60 x 3.5
24	2.1559.333.0	1	bushing 44.7 x 50 x 19
25	2.2999.203.0	1	bearing 50 x 90 x 20
27	2.1419.034.1	3	circlip 44
28	0.255.3372.0	4	shoulder
30	0.007.7647.4	1	lock synchronizer Ø 68 mm 0.007.7647.4
118	2.1599.901.0	0.25	thrust plate 42 x 60 x 2.15
119	2.1599.902.0	0.25	thrust plate 42 x 60 x 2.30
120	2.1599.903.0	0.25	thrust plate 42 x 60 x 2.45
121	2.1599.904.0	0.25	thrust plate 42 x 60 x 2.6
122	2.1580.304.0	1	shim 78x89x0.5
123	2.1580.303.0	1	shim 78x89x0.2
124	2.1580.310.0	1	shim 78x89x0.05
125	0.007.7308.0	1	small cover
126	2.0312.208.2	3	screw m 8 p.1.25 x 25
127	2.1480.014.1	3	washer 8
131	0.008.4356.0	1	roller cage
132	2.1599.574.0	2	thrust plate 17x30x1
138	2.2999.125.0	1	bearing 55 x 100 x 21
147	2.1499.037.1	2	circlip 90
148	2.2999.218.0	1	roller cage 40 x 45 x 30
149	0.007.7646.4/10	2	lock synchronizer Ø 68 mm 0.007.7646.4/10
154	2.1410.022.1	1	circlip 55
180	2.1589.393.0	0.17	snoulder 30x45x1.3
181	2.1589.394.0	0.17	snoulder 30x45x1.8
182	2.1589.395.0	0.17	snoulder 30x45x2.3
183	2.1589.396.0	0.17	snoulder 30x45x2.8
184	2.1589.397.0	0.17	snoulder 30x45x3.3
185	2.1589.398.0	0.17	snoulder 30x45x3.8
190.6	0.011.3869.3	1	gear Z = 46
190.7	0.445.3358.0/20	1	gear Z = 54

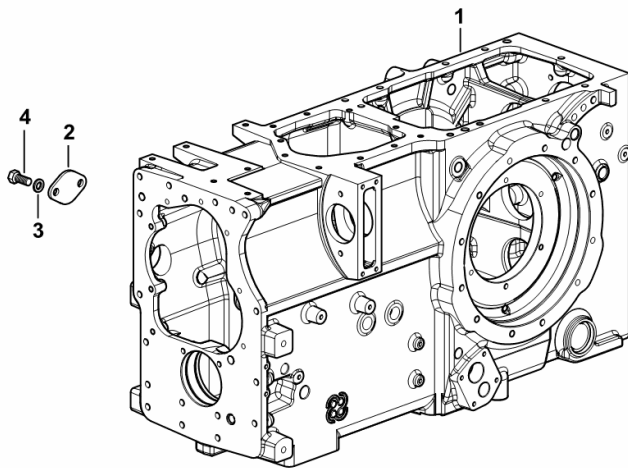
**REAR GEARBOX CASE**

Fig.	Code	QTY	Name
------	------	-----	------

**Notes:**

- PER TIPI SENZA INVERSOIRE IDRAULICO CON SOLLEVATORE ELETTRONICO [SILVER 85] -> 1028

1	0.010.7938.0/50	1	gear box ( 1095 <- )
1	0.016.6203.0	1	gear box
2	0.010.5124.0/10	1	small plate
3	2.1470.006.2	2	lock washer 10
4	2.0112.307.2	2	screw m 10 p.1.5 x 20



9\_77831\_01\_0-A-002

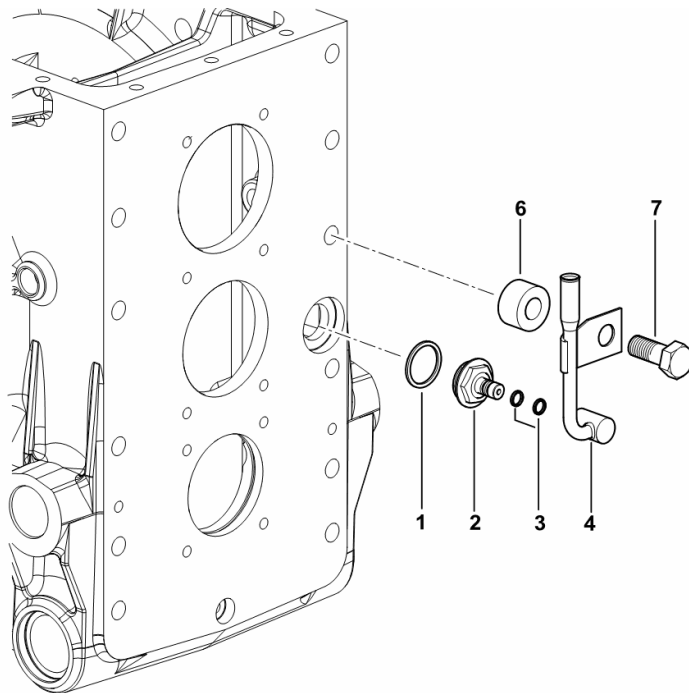
**DIPSTICK**

Fig.	Code	QTY	Name
------	------	-----	------

**Notes:**

- FOR TYPES WITHOUT HYDRAULIC SHUTTLE [SILVER 85]

1	2.1560.023.0	1	gasket 30.3 x 36
2	0.009.7894.0	1	plug
3	2.1530.016.0	2	'o' ring 8.73 x 1.78
4	0.010.4361.2	1	tube
6	2.1549.262.0	1	spacer 17x35x20
7	2.0112.615.2	1	screw m 16 p.2 x 40



9\_62331\_01\_0-A-001

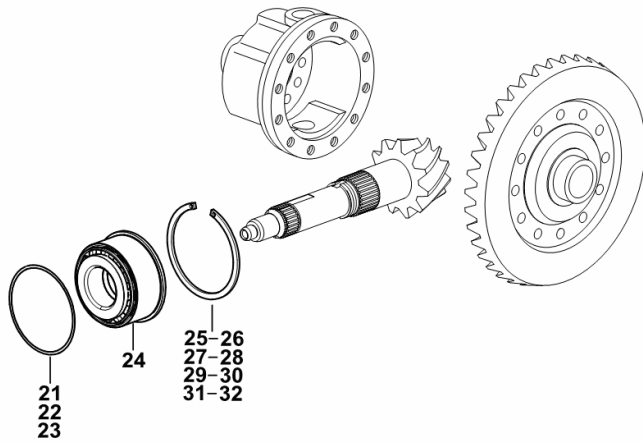
**BEVEL DRIVE PINION BEARING**

Fig.	Code	QTY	Name
------	------	-----	------

**Notes:**

- FOR TYPES WITHOUT SBA / ASM [SILVER 85] 1032 <-

21	2.1589.167.0	1	snoulder 105 x 112 x 0.15
22	2.1589.168.0	1	snoulder 105 x 112 x 0.1
23	2.1589.169.0	1	snoulder 105 x 112 x 0.5
24	2.2999.196.0	1	bearing
25	2.1499.061.1	0.12	circlip 120x3.4
26	2.1499.062.1	0.12	circlip 120x3.5
27	2.1499.063.1	0.12	circlip 120x3.6
28	2.1499.064.1	0.12	circlip 120x3.7
29	2.1499.065.1	0.12	circlip 120x3.8
30	2.1499.066.1	0.12	circlip 120x3.9
31	2.1499.067.1	0.12	circlip 120x4
32	2.1499.068.1	0.12 </td <td>circlip 120x4.1</td>	circlip 120x4.1





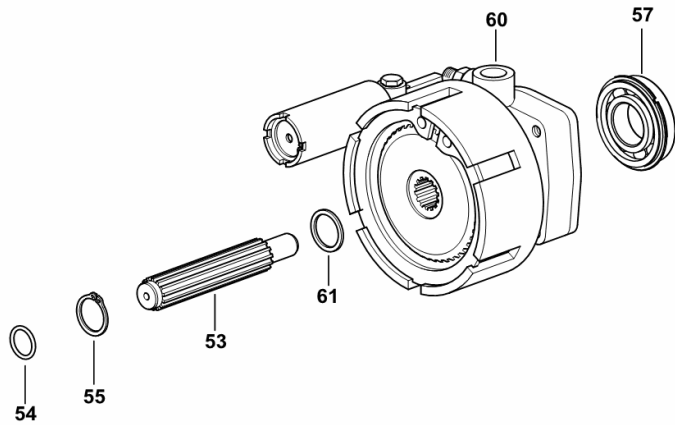
9\_61435\_00\_0-B-001

Section: D0 - TRANSMISSION  
**P.T.O. - HYDRAULIC CLUTCH**

Fig.	Code	QTY	Name
------	------	-----	------

Notes:  
 [SILVER 85]

53	0.445.3930.0	1	shaft
54	2.1530.048.0	1	'o' ring 18.72x2.62
55	2.1410.009.1	1	circlip 24
57	2.2043.009.0	1	ball bearing 30x62x16
60	0.012.7103.4/20	1	hydraulic pto clutch ( 1157 <- )  0.012.7103.4/20
60	0.012.7103.4/50	1	hydraulic pto clutch  0.012.7103.4/50
61	2.1599.761.0	1	thrust plate 24x30x2



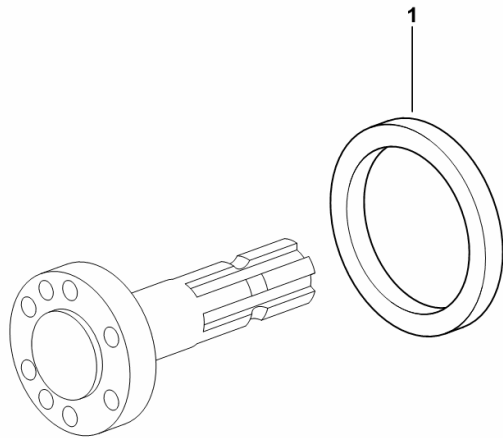
9\_54639\_02\_0-A-001

**PTO - SEAL RING FOR INSERTED END SHAFT - STANDARD VERSION**

Fig.	Code	QTY	Name
------	------	-----	------

Notes:  
[SILVER 85]

1	2.1520.043.0	1	oil seal 85 x 110 x 12
---	--------------	---	------------------------



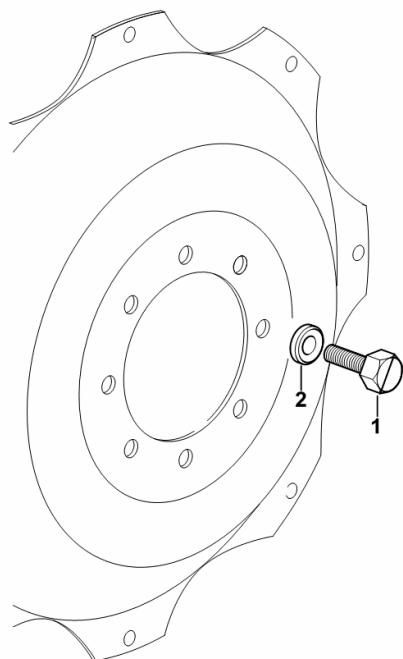
9\_52636\_03\_0-A-001

**4WD - FRONT WHEEL MOUNTING**

Fig.	Code	QTY	Name
------	------	-----	------

Notes:  
[SILVER 85]

1	2.0399.129.6	16	screw m 18 p.1.5 x 38
2	2.1599.501.6/10	16	washer 19 x 40 x 7.5



9\_40555\_02\_0-A-001

CLICK HERE TO **DOWNLOAD** THE COMPLETE MANUAL

- Thank you very much for reading the preview of the manual.
- You can download the complete manual from: [www.heydownloads.com](http://www.heydownloads.com) by clicking the link below



- Please note: If there is no response to CLICKING the link, please download this PDF first and then click on it.

CLICK HERE TO **DOWNLOAD** THE COMPLETE MANUAL