

LASER 100 -> 5001

V0 - BALLAST, TOWING HITCHES

FRONT HITCHES

FRONT TOWING HITCH.....	V0.01.0 (1)
TRAILER STAND - DRAWBAR COUPLING.....	V0.01.1 (1)

REAR HITCHES

REAR GEARBOX BRACKETS.....	V0.02.0 (1)
REAR TOWING HITCH.....	V0.02.1 (1)
REAR TOWING HITCH BRACKET.....	V0.02.2 (3)
REAR TOWING HITCH BRACKET.....	V0.02.3 (1)
REAR TOWING HITCH PITON FIX.....	V0.02.4 (1)
REAR SWINGING TOWING-HITCH.....	V0.02.7 (1)
REAR SWINGING TOWING-HITCH.....	V0.02.8 (1)
REAR TOWING HITCH CEE.....	V0.02.11 (3)
DRAWBAR COUPLING AUTOM. Ø 38.....	V0.02.12 (2)
DRAWBAR COUPLING.....	0.014.4453.3/20.A
DRAWBAR COUPLING.....	0.014.4454.3/20.A
CHASSIS.....	0.014.4459.4/10.A
CHASSIS.....	0.014.4484.3/10.A
SLIDE mm 320.....	0.014.4485.3.A

FRONT BALLAST WEIGHTS

FRONT WEIGHT CARRIER.....	V0.03.0 (1)
FRONT BALLAST 320 Kg.....	V0.03.1 (1)

CLICK HERE TO **DOWNLOAD** THE COMPLETE MANUAL

- Thank you very much for reading the preview of the manual.
- You can download the complete manual from: www.heydownloads.com by clicking the link below



- Please note: If there is no response to CLICKING the link, please download this PDF first and then click on it.

CLICK HERE TO **DOWNLOAD** THE COMPLETE MANUAL

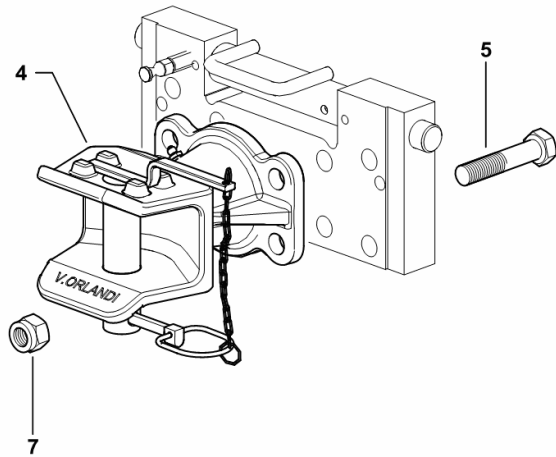
REAR TOWING HITCH CEE

Fig.	Code	QTY	Name
------	------	-----	------

Notes:

[LASER 100 -> 5001]

4	0.014.4453.3/20	1	tow hook - V.ORLANDI - ☞ 0.014.4453.3/20
5	2.0112.727.2	4	screw m 18 p.2.5 x 90
7	2.1129.014.2	4	nut m 18 p.2.5



9_21631_65_0-A-003

PLATFORM.....	G0.03.0 (1)
CAB STRUCTURE.....	G0.03.1 (1)
PEDAL SUPPORT.....	G0.03.2 (1)
DEFLECTOR.....	G0.03.3 (1)
FLOOR PLUG.....	G0.03.4 (1)
FLOOR PLUG.....	G0.03.5 (1)
FLOOR PLUG.....	G0.03.6 (1)
LADDER.....	G0.03.7 (1)
ENTRY STEPS AND SUPPORTS.....	G0.03.8 (1)
SUPPORTS.....	G0.03.9 (1)
FENDERS - FOOTSTEPS - EXTENSIONS	
4WD - SELF-ADJUSTING FRONT FENDERS mm 355.....	G0.04.0 (1)
4WD - SELF-ADJUSTING FRONT FENDERS mm 410.....	G0.04.2 (1)
4WD - SELF-ADJUSTING FRONT FENDERS mm 470.....	G0.04.3 (1)
REAR MUDGUARDS.....	G0.04.5 (1)
REAR MUDGUARDS.....	G0.04.6 (1)
EXTENSION FOR WING mm 130.....	G0.04.11 (1)
REAR SPLASHGUARDS SX/LH/LI - DX/RH/RE.....	G0.04.12 (1)
REAR SPLASHGUARDS SX/LH/LI - DX/RH/RE.....	G0.04.13 (1)
DOORS - WINDOWS - WIPERS	
WINDSCREEN.....	G0.05.0 (1)
GLASSES AND SEALS SX/LH/LI - DX/RH/RE.....	G0.05.1 (1)
GLASSES AND SEALS SX/LH/LI - DX/RH/RE.....	G0.05.2 (1)
DOOR HANDLE SX/LH/LI - DX/RH/RE.....	G0.05.3 (1)
DOOR LOCK - CAB DOOR - RIGHT/LEFT.....	G0.05.4 (1)
GLASSES AND SEALS.....	G0.05.5 (1)
REAR WINDOW.....	G0.05.6 (1)
LOWER REAR WINDOW GLASS.....	G0.05.7 (1)
FRONT WINDSHIELD WIPER SYSTEM.....	G0.05.8 (1)
SCREEN WIPER REAR.....	G0.05.9 (1)
WATER TANK.....	G0.05.10 (1)
SCREEN WASH SYSTEM.....	G0.05.11 (1)
FRONT SCREEN WASH SYSTEM.....	G0.05.12 (1)
SCREEN WASHER UNIT REAR.....	G0.05.13 (1)
WINDSCREEN WIPER BLADE.....	0.008.3834.4.A
FRONT WINDSHIELD WIPER SYSTEM.....	0.009.0277.4/40.A
INTERIOR TRIM	
DASHBOARD CONSOLE.....	G0.06.0 (1)
DASHBOARD CONSOLE.....	G0.06.1 (1)
INSTRUMENT PANEL PLUG.....	G0.06.2 (1)
DASHBOARD.....	G0.06.3 (2)
DASHBOARD.....	G0.06.4 (1)
INSTRUMENT PANEL - BLANKING PLUGS.....	G0.06.5 (1)
STEERING COLUMN SHROUD.....	G0.06.6 (1)

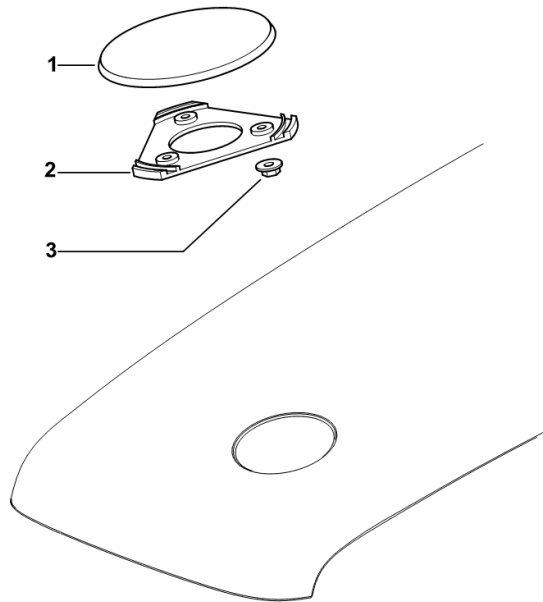
HOOD PLUG

Fig.	Code	QTY	Name
------	------	-----	------

Notes:

[LASER 100 -> 5001]

1	0.007.2881.2/20	1	plug
2	0.007.2882.0/10	1	plate
3	2.1129.004.0	3	selflock nut m 4



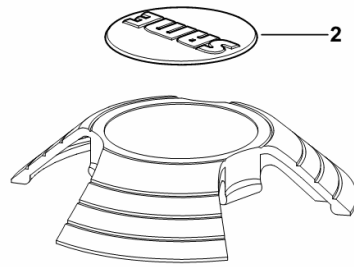
9_B8872_04_0-A-001

STEERING WHEEL PRODUCT IDENTIFICATION PLATE

Fig.	Code	QTY	Name
------	------	-----	------

Notes:
[LASER 100 -> 5001]

2	0.014.4292.0	1	plate SAME
---	--------------	---	------------



9_C1261_00_0-B-001

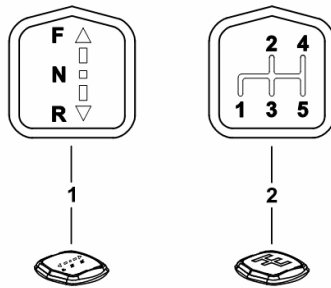
CAP FOR SHUTTLE AND 5-SPEED GEARBOX

Fig.	Code	QTY	Name
------	------	-----	------

Notes:

[LASER 100 -> 5001]

1	0.014.2100.0	1	cap
2	0.014.2219.0	1	cap



9_62064_03_0-B-001

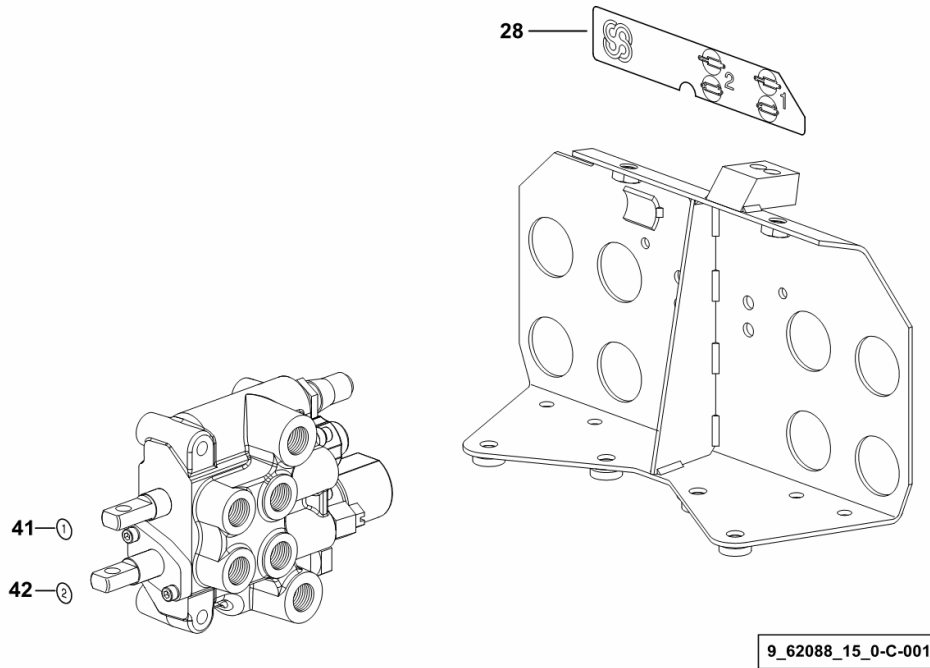
DECALS WITH 4 WAY AUXILIARY CONTROL VALVE

Fig.	Code	QTY	Name
------	------	-----	------

Notes:

[LASER 100 -> 5001]

28	2.9929.390.0/20	1	plate
41	2.9929.412.0	1	plate 1
42	2.9929.413.0	1	plate 2



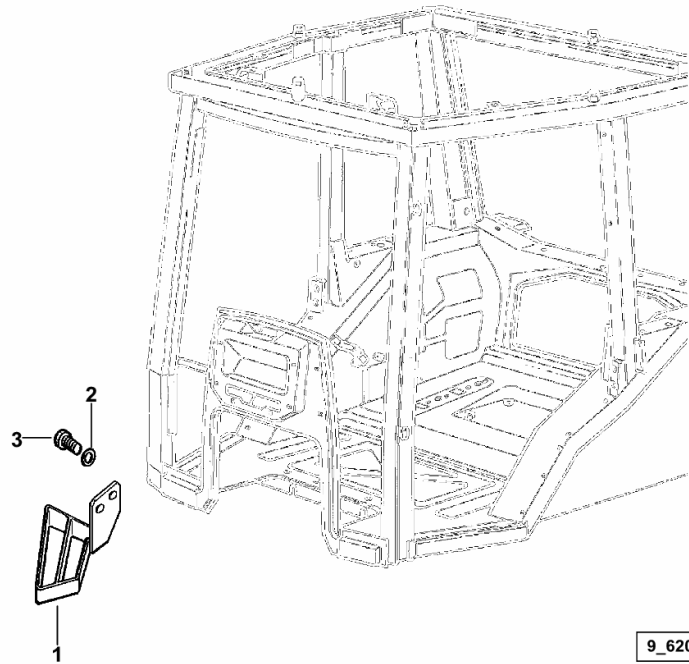
LADDER

Fig.	Code	QTY	Name
------	------	-----	------

Notes:

[LASER 100 -> 5001]

1	0.008.9744.2	1	climbing steps
2	2.1470.009.2	2	lock washer 16
3	2.0112.611.2	2	screw m 16 p.2x30



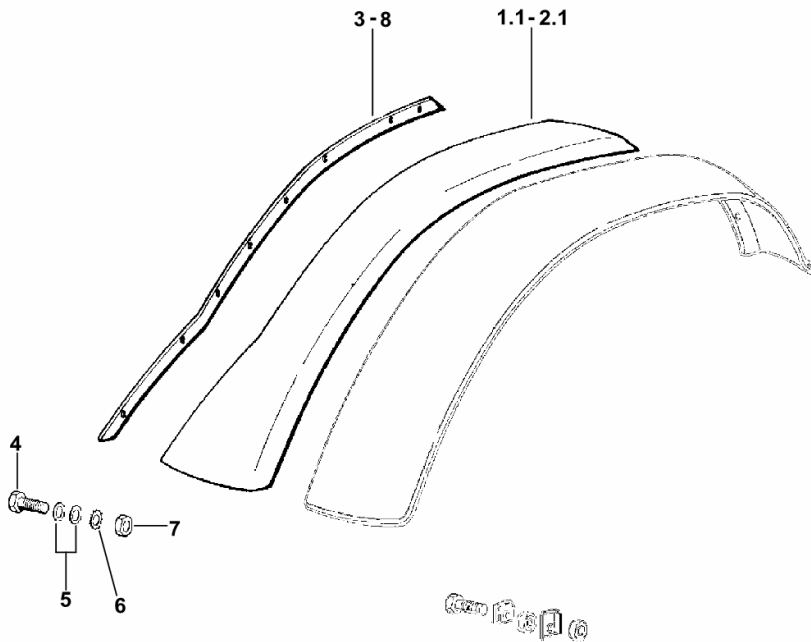
REAR MUDGUARDS

Fig.	Code	QTY	Name
------	------	-----	------

Notes:

- FOR VERSIONS WITH ENTEN. [LASER 100 -> 5001]

1.1	0.009.0588.0/10	1	fender dx/rh/re
2.1	0.009.0587.0/10	1	fender sx/lh/li
3	0.012.6424.0	1	gasket dx/rh/re
4	2.0112.209.2	16	screw m 8 p 1.25 x 25
5	2.1310.004.2	32	flat washer 8.5
6	2.1470.004.2	16	washer 8
7	2.1011.105.2	16	nut m 8 p.1.25
8	0.012.6439.0	1	gasket sx/lh/li

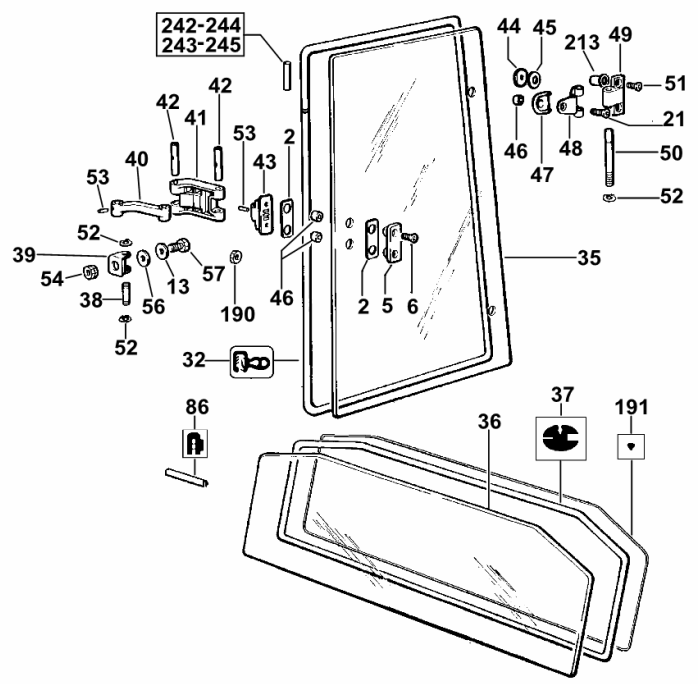


9_52676_21_0-A-001

GLASSES AND SEALS

Fig.	Code	QTY	Name
------	------	-----	------

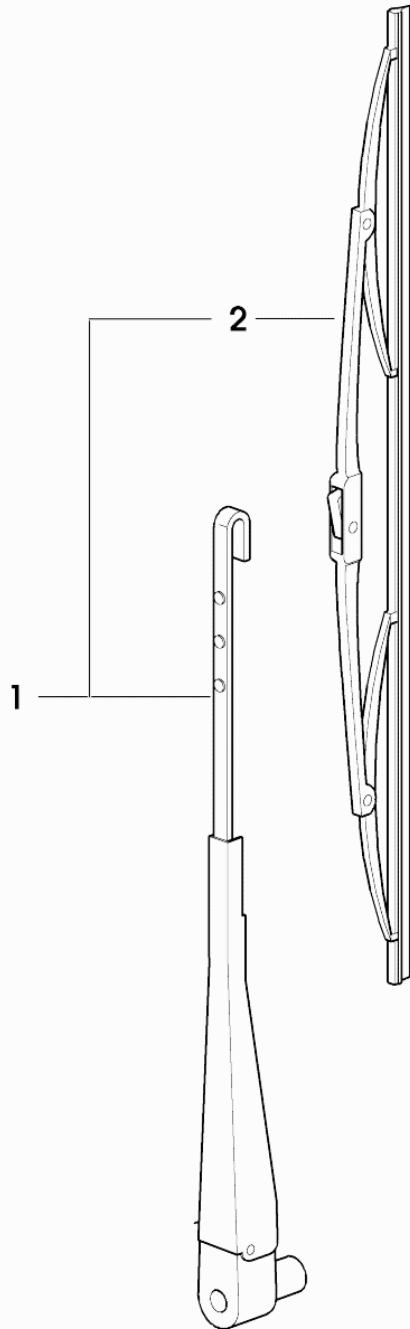
Notes:
[LASER 100 -> 5001]



2	0.007.2858.0	4	gasket
5	0.007.2857.0	2	small plate
6	2.0342.207.3	4	screw m 6 p.1 x 25
13	2.1499.096.3	4	washer 8
21	2.0342.307.3	4	screw m 8 p.1.25 x 25
32	0.015.4671.0	18	gasket
35	0.007.7337.0/10	2	glass
36	0.007.5312.0/20	1	glass
37	0.007.5311.0	1	profile
38	2.1699.270.0	2	pin 8x39
39	0.007.5815.0	2	fork
40	0.007.5816.0/20	2	hinge
41	0.007.5817.0/20	2	hinge
42	2.1699.269.0	4	pin 8x58
43	0.007.5842.0	2	hinge
44	0.007.5843.0	4	ring nut
45	2.1569.143.0	4	gasket
46	2.1579.450.2	4	spacer 8.5 x 14 x 12
47	0.007.5845.0/10	4	gasket
48	0.007.5846.0/10	4	hinge
49	0.9231.257.0/20	4	hinge
50	2.1699.169.2	4	pin 8x65
51	2.0342.305.2	8	screw m 8 p.1.25 x 20
52	2.1430.007.2	12	circlip 6, d128
53	2.1630.107.0	4	pin 2.5x14
54	2.1140.024.2	2	special nut m 8 p.1.25
56	2.1399.006.3	2	washer 9.4
57	2.0119.156.3	2	screw m 8 p.1.25 x 25
86	0.009.3198.0/10	1	gasket
190	2.1011.103.2	4	nut m 6 p.1
191	0.9234.246.0/10	1	profile
213	2.1142.011.2	8	insert m 8
242	0.010.1502.0/10	0.04	sheath
243	0.010.1502.0/10	0.04	sheath
244	0.010.1502.0/10	0.04	sheath
245	0.010.1502.0/10	0.04	sheath

Section: G0 - BODYWORK - CAB
WINDSCREEN WIPER BLADE

Fig.	Code	QTY	Name
1	0.008.3834.4	1	arm
2	0.9233.585.3	1	wiper blade



008_3834_4

CONTROL CONSOLE - UPPER PART DX/RH/RE

9_62076_05_0-C-001

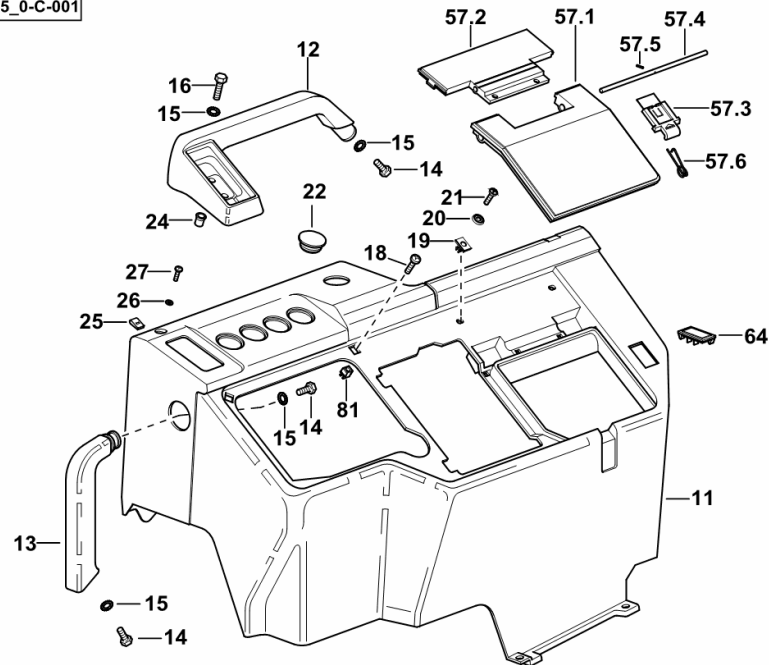


Fig.	Code	QTY	Name
------	------	-----	------

Notes:

- FOR MODELS WITH PLATFORM [LASER 100 -> 5001]

11	0.009.3701.3/20	1	console
12	0.009.9980.3/10	1	handle
13	0.009.9976.3/10	1	handle dx/rh/re
14	2.0112.207.2	3	screw m 8 p 1.25 x 20
15	2.1470.004.2	5	washer 8
16	2.0112.211.2	2	screw m 8 p.1.25 x 30
18	2.0342.107.3	8	screw m 5 p.0.8 x 25
19	2.6999.039.0/10	3	special nut 6.3
20	0.257.7653.0	3	washer
21	2.0350.757.6	3	screw m6.3x22xAB
22	0.009.0210.0/10	1	plug 30 x 38 x 9.0
24	2.1142.005.2	2	insert m 8
25	2.6999.041.0	2	small spring
26	2.0350.455.6	1	screw 4.2x16
27	2.1310.028.2	1	flat washer 4
57.1	0.009.0219.0	1	panel
57.2	0.009.0218.0	1	support
57.3	0.009.0226.0/10	1	push-button
57.4	2.1699.256.0	1	pin
57.5	2.1630.006.0	1	roll pin 2x12
57.6	0.009.0285.0/10	1	spring
64	0.009.0500.0	1	plug 50x26
81	2.6999.040.0	8	special nut m 5

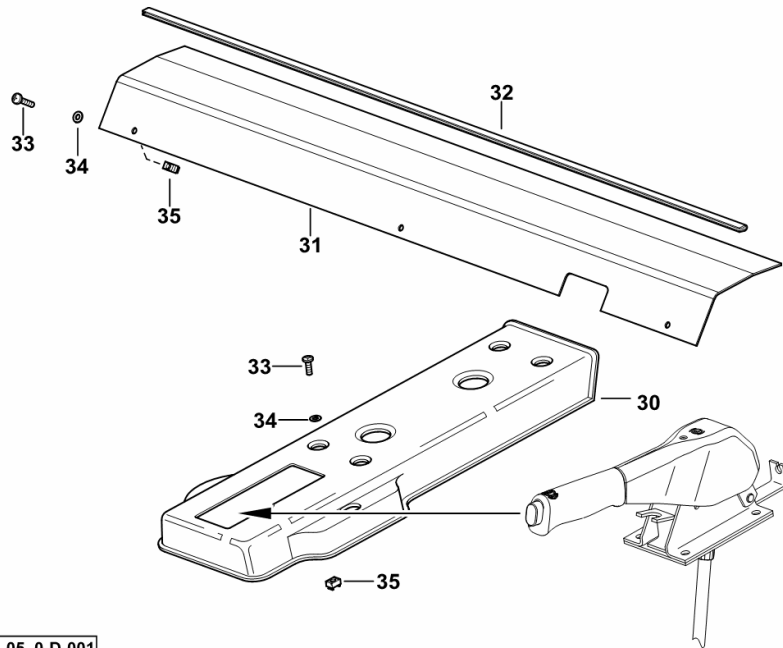
INTERIOR TRIM

Fig.	Code	QTY	Name
------	------	-----	------

Notes:

- FOR MODELS WITH PLATFORM [LASER 100 -> 5001]

30	0.009.3834.0/10	1	cover
31	0.009.3837.0	1	channel
32	0.009.3838.0	1	gasket
33	2.0332.306.2	7	screw m 5x0.8x16
34	2.1310.001.3	7	washer 5.3 x 10
35	2.6999.033.2	7	special nut m 5



9_62076_05_0-D-001

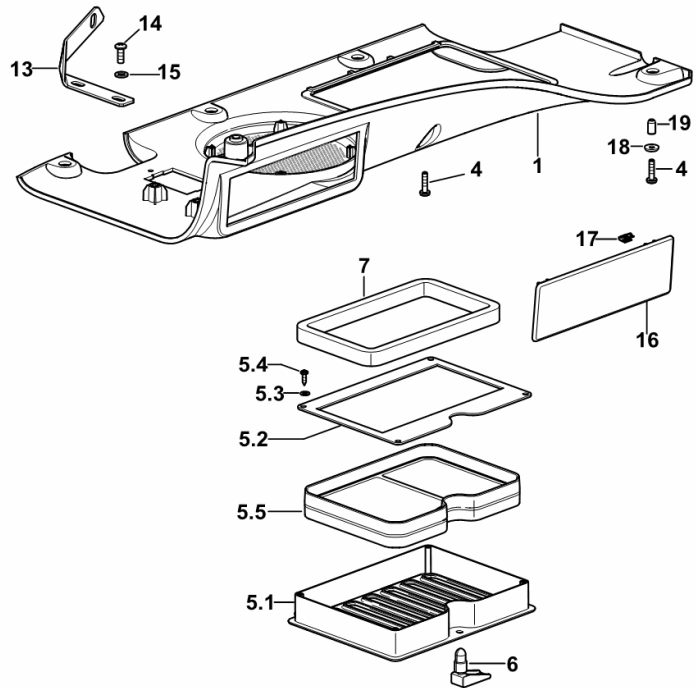
RADIO FASCIA

Fig.	Code	QTY	Name
------	------	-----	------

Notes:

[LASER 100 -> 5001]

1	0.013.8133.2	1	front grille
4	2.0332.408.3	6	screw m 6 p.1 x 25
5.1	0.013.8137.0	1	shutter
5.2	0.013.8816.0	1	bracket
5.3	2.1310.028.2	4	flat washer 4
5.4	2.0350.254.3	4	screw m 3.5x13
5.5	0.013.8814.0	1	filter
6	0.013.8817.0	1	catch
7	0.013.8812.0	1	gasket
13	0.013.9161.0	1	bracket
14	2.0332.406.2	2	screw m 6 p.1.0 x 16
15	2.1310.002.2	2	washer 6.6, d125
16	0.013.7536.0/10	1	plug
17	0.013.4283.0	4	small spring
18	0.9125.662.0	4	washer 6.4 x 12.5
19	2.1142.010.2	4	insert m 6



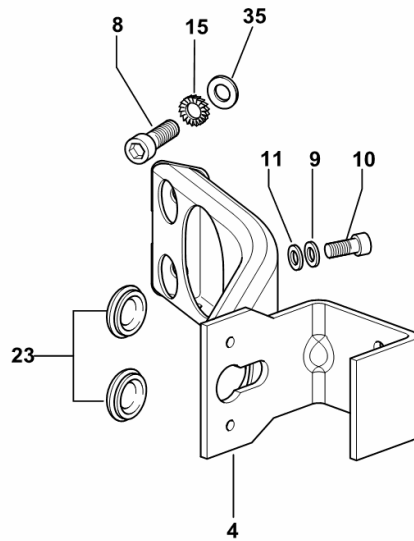
LIGHT SUPPORT sx/lh/li

Fig.	Code	QTY	Name
------	------	-----	------

Notes:

- FOR TYPES WITH UPRIGHT EXHAUST SILENCER ON CAB PILLAR [LASER 100 -> 5001]

4	0.010.1180.3/30	1	lamp support sx/lh/li
8	2.0312.306.3	2	screw m 10 p.1.5 x 20
9	2.1480.014.1	1	washer 8
10	2.0312.202.3	1	screw m 8 p.1.25 x 12
11	2.1312.004.3	1	washer 8,4x24x2
15	2.1480.015.1	2	washer 10
23	0.010.1453.0	2	plug 22
35	2.1310.006.3	1	flat washer 10.5x21x2



9_62071_39_0-A-001

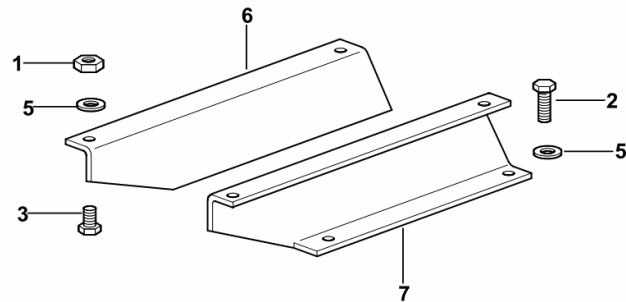
SEAT MOUNTING

Fig.	Code	QTY	Name
------	------	-----	------

Notes:

- FOR GRAMMER SEAT MSG85/721 [LASER 100 -> 5001]

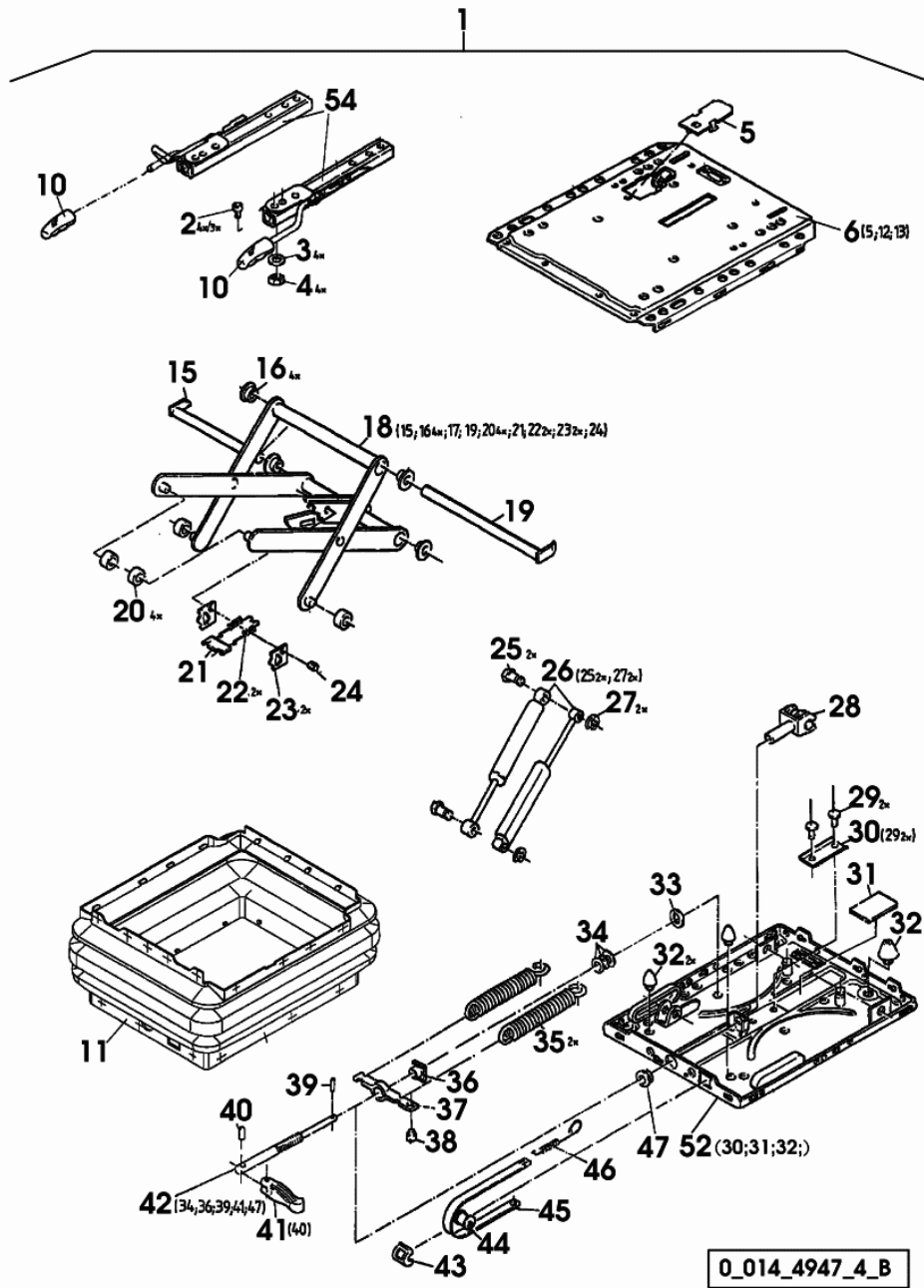
1	2.1011.105.2	4	nut m 8 p.1.25
2	2.0365.311.3	4	screw m 8 x 40
3	2.0119.164.3	4	screw m 8 p.1.25 x 20
5	2.1499.096.3	4	washer 8
6	0.008.9653.0/10	1	bracket dx/rh/re
7	0.008.9654.0/10	1	bracket sx/lh/li



9_C8675_02_0-A-001

SEAT-COMPONENTS

Fig.	Code	QTY	Name
1	0.000.0000.1	0	not serviceable
2	0.010.2405.0	4	pin m 8 x 16
3	0.010.2945.0	4	washer 8.4
4	0.010.2401.0	4	nut m 8
5	0.010.2982.0	1	small cover
6	0.010.3079.0	1	plate
10	0.010.2943.2	1	knob
11	0.010.3079.1	1	bellows
15	0.009.4726.2	1	pin
16	0.009.4715.1	4	spacer
18	0.010.3079.2	1	arm
19	0.010.2074.1	1	pin
20	0.009.4726.1	4	roller
21	04311718	1	plate
22	04418338	2	spring
23	04311719	2	clutch.pres plate
24	04311720	1	pin
25	0.010.2966.2	2	screw
26	0.009.4725.0	1	shoch.absorber
27	01126001	2	pin
28	0.009.4725.1	1	fork
29	04418339	2	rivet
30	0.010.2982.1	1	small plate
31	04311699	1	rubber plate
32	0.010.2982.2	1	sub-assy parts
33	04311692	1	disc
34	0.010.2983.0	1	sub-assy parts
35	0.009.4728.0	2	spring
36	0.009.4495.0	1	special nut
37	0.009.4727.2	1	support
38	04311748	1	plug
39	0.010.3876.0	1	pin 3x16
40	0.010.3874.1	1	pin 4x28
41	0.010.2074.2	1	fork
42	0.010.2075.0	1	register
43	0.009.4496.0	1	bracket
44	0.009.4496.1	1	roller
45	0.009.4728.1	1	rod
46	0.009.4498.2	1	spring
47	0.010.2983.1	1	bushing
52	0.009.4725.2	1	plate
54	0.010.2954.0	1	seat guide



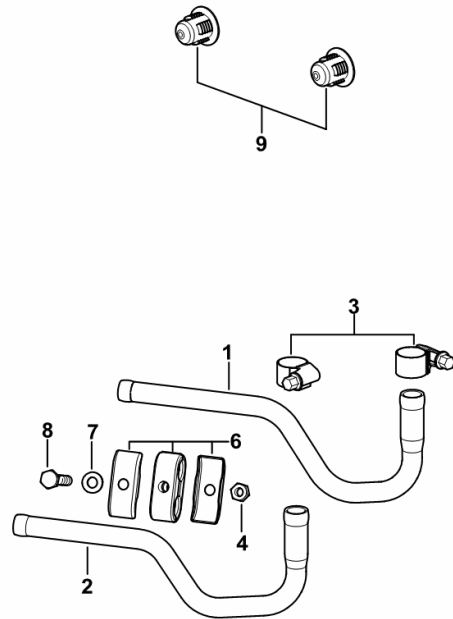
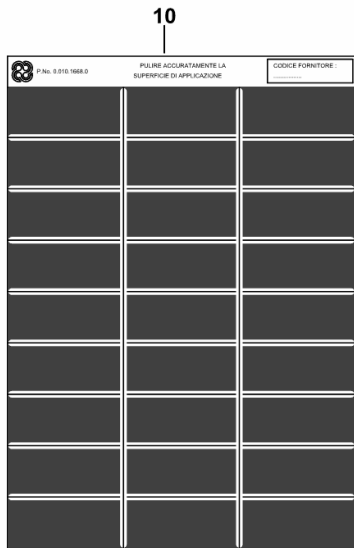
PIPING - HEATING

Fig.	Code	QTY	Name
------	------	-----	------

Notes:

[LASER 100 -> 5001]

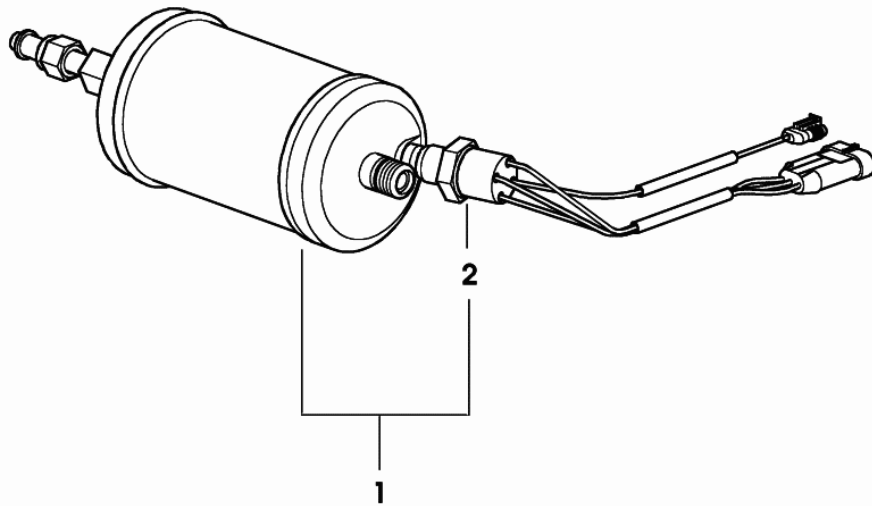
1	0.014.3703.0/10	1	tube
2	0.014.3701.0/10	1	tube
3	2.6851.001.0	2	clamp Ø 16/25
4	2.1011.103.2	1	nut m 6 p.1
6	2.3321.010.0	1	collar Ø 12/12
7	2.1310.002.2	1	washer 6.6, d125
8	2.0114.013.2	1	screw m 6 p.1 x 35
9	2.3199.126.0/10	2	plug mm 15
10	0.010.1668.0	1	plate



9_B8986_12_0-A-001

SPIN-ON FILTER

Fig.	Code	QTY	Name
1	0.008.9604.4/10	0	filter R 134a
2	0.010.2140.0	1	pressure switch



008_9604_4_10

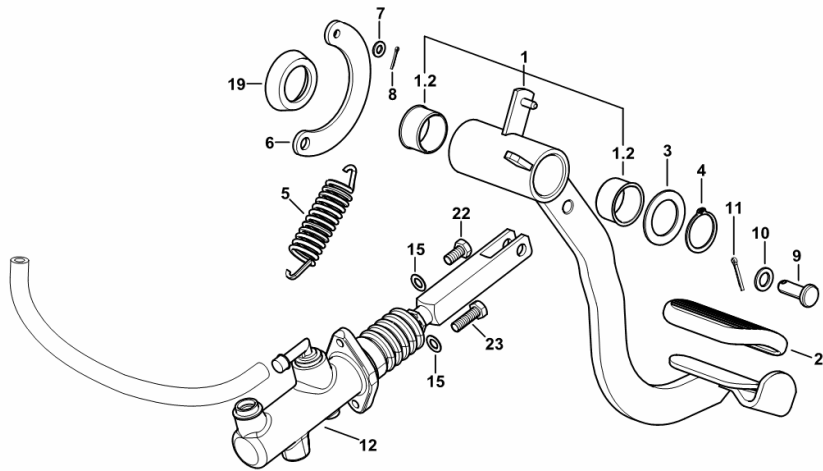
CLUTCH CONTROL

Fig.	Code	QTY	Name
------	------	-----	------

Notes:

[LASER 100 -> 5001]

1	0.008.9831.3/10	1	pedal
1.2	2.1559.117.0/20	2	bushing 30x34x20
2	0.169.6557.0	1	cover
3	2.1599.268.0	1	snoulder 30.2x45x2
4	2.1410.012.1	1	circlip 30
5	2.4049.093.2	1	spring
6	0.008.2754.0	1	small plate
7	2.1310.002.2	1	washer 6.6, d125
8	2.1690.205.2	1	split pin 2x12
9	2.1671.408.2	1	pin 10x30
10	2.1310.006.2	1	flat washer 10.5
11	2.1690.307.2	1	split pin 3.2x18
12	0.008.2753.4/10	1	pump ☞ 0.008.2753.4/10
15	2.1470.004.2	2	washer 8
19	2.1599.546.0	1	washer 30.5
22	2.0112.205.2	1	screw m 8 p.1.25 x 16
23	2.0112.211.2	1	screw m 8 p.1.25 x 30



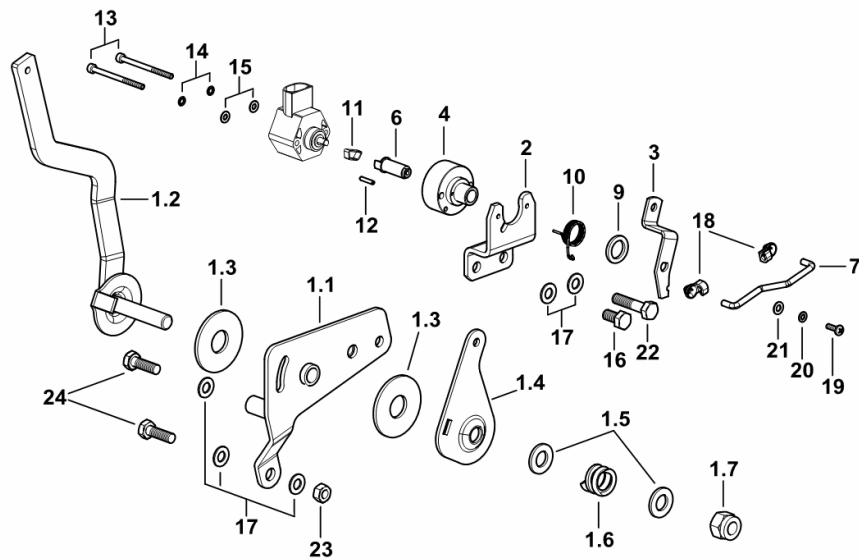
9_62065_01_0-A-001

HAND CONTROL FOR ELECTRONIC THROTTLE

Fig.	Code	QTY	Name
------	------	-----	------

Notes:

- FOR MODELS WITH PLATFORM [LASER 100 -> 5001]



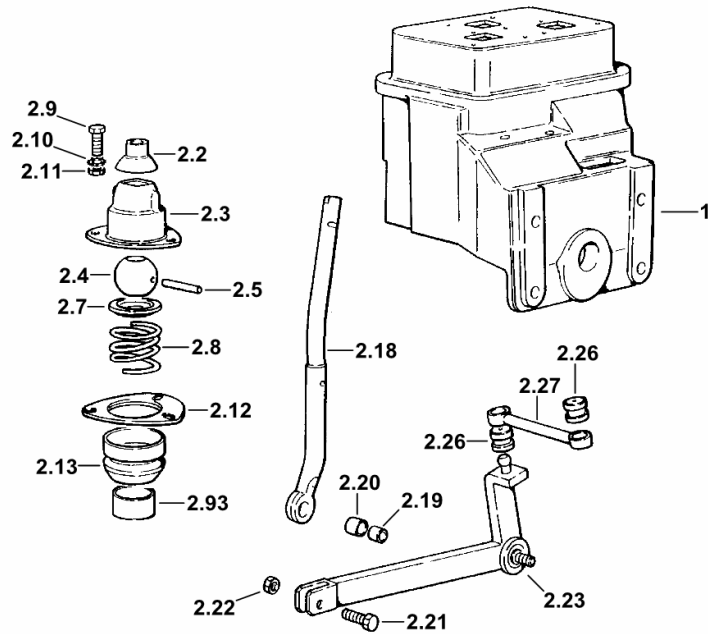
1.1	0.017.1764.3	1	support
1.2	0.017.2118.3	1	lever
1.3	2.1569.058.0	2	gasket 18.5x50x3
1.4	0.014.8751.0/10	1	cap-washer
1.5	2.1310.007.2	2	flat washer 13.5
1.6	2.4019.022.2	1	spring 23x20x4.5
1.7	2.1120.007.2	1	nut m 12 p.1.75
2	0.015.5830.0	1	bracket
3	0.017.6252.0	1	small lever
4	0.011.3789.0	1	bushing
6	2.1699.520.2	1	pin
7	0.015.5849.0	1	rod
9	2.1549.436.2	1	spacer
10	2.4099.124.2	1	spring
11	0.011.3791.0	1	small spring
12	2.1630.207.9	1	pin 3x14
13	2.0312.717.2	2	screw m 4 p.0.4 x 55
14	2.1480.010.2	2	washer 4
15	2.1310.028.2	2	flat washer 4
16	2.0112.205.2	1	screw m 8 p.1.25 x 16
17	2.1475.002.2	5	conical washer 8
18	0.009.1165.0	2	spring
19	2.0332.204.3	1	screw m 4 p.0.7 x 12
20	2.1470.052.2	1	lock washer 4
21	2.1310.001.2	1	flat washer 5.3
22	2.0112.213.2	1	screw m 8 p.1.25 x 35
23	2.1011.105.2	1	nut m 8 p.1.25
24	2.0112.209.2	2	screw m 8 p 1.25 x 25

9_P0267_00_0-A-001

GEARSHIFT LEVER

Fig.	Code	QTY	Name
------	------	-----	------

Notes:
[LASER 100 -> 5001]



1	0.008.9112.0/60	1	support
2.2	0.255.6466.0/10	3	guard
2.3	0.467.6412.0	3	support
2.4	0.008.4446.0	3	ball
2.5	2.1699.184.0	3	pin 6x52
2.7	0.255.6465.0	3	cup
2.8	2.4019.309.1/10	3	spring 51x40x4
2.9	2.0112.209.2	9	screw m 8 p 1.25 x 25
2.10	2.1470.004.2	14	washer 8
2.11	2.1011.105.2	9	nut m 8 p.1.25
2.12	0.159.6450.0	3	support
2.13	0.255.6451.0/10	3	bellows
2.18	0.009.9958.0/20	1	lever
2.19	2.1579.965.2	2	spacer 8.5x14x12.5
2.20	2.1555.107.0	2	bushing 14x16x12
2.21	2.0112.213.2	2	screw m 8 p.1.25 x 35
2.22	2.1120.005.2	2	nut m 8 p.1.25
2.23	0.009.9857.3/30	1	rod
2.26	0.255.6454.0	4	pin seat
2.27	0.009.9856.2/10	2	connecting rod
2.93	2.1579.964.2/10	3	spacer 38x42x19.5

9_62064_10_0-A-001

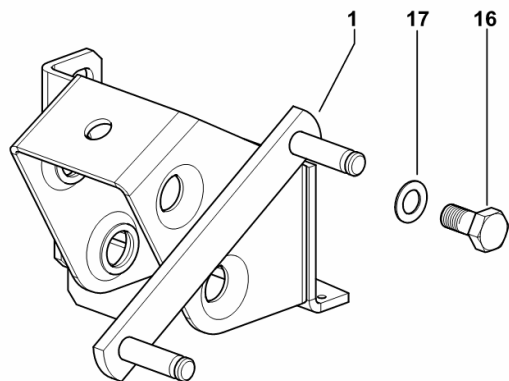
P.T.O. LEVERS SUPPORT

Fig.	Code	QTY	Name
------	------	-----	------

Notes:

[LASER 100 -> 5001]

1	0.008.9472.3/20	1	support
16	2.0112.307.2	2	screw m 10 p.1.5 x 20
17	2.1470.006.2	2	lock washer 10



9_B8668_00_0-A-001

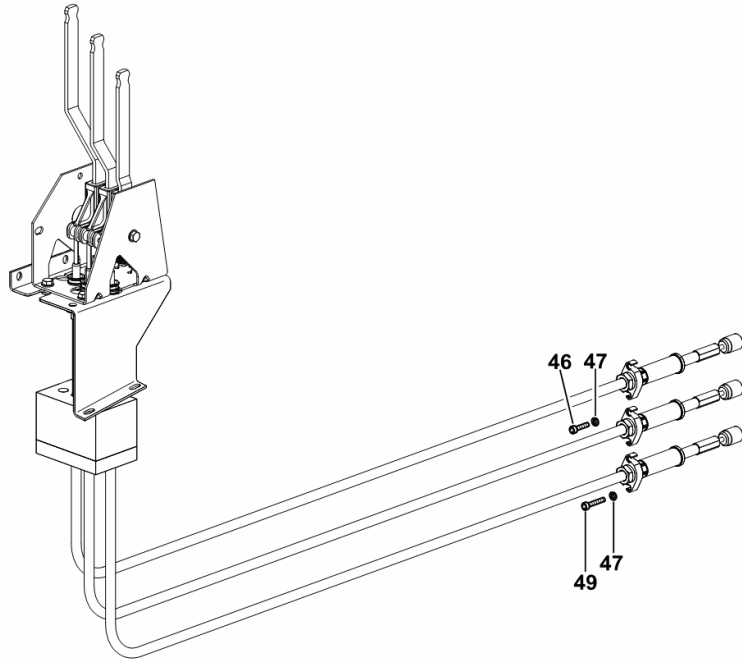
BOWDEN CABLE FASTENERS FOR 6 WAY AUXILIARY CONTROL VALVE

Fig.	Code	QTY	Name
------	------	-----	------

Notes:

[LASER 100 -> 5001]

46	2.0312.006.2	2	screw m 5 p.0.8 x 20
47	2.1474.006.2	6	spring washer 5
49	2.0312.010.2	4	screw m 5 p.0.8x30



9_62088_25_0-D-001

INTERIOR LIGHT.....	2.8339.231.0.A
ACCESSORIES	
LOUDSPEAKERS.....	L0.09.0 (1)
DIGITAL CLOCK - LOUD SPEAKERS.....	L0.09.1 (1)
RADIO ANTENNA.....	L0.09.2 (1)
CIGAR LIGHTER.....	L0.09.3 (1)

ALTERNATOR PARTS

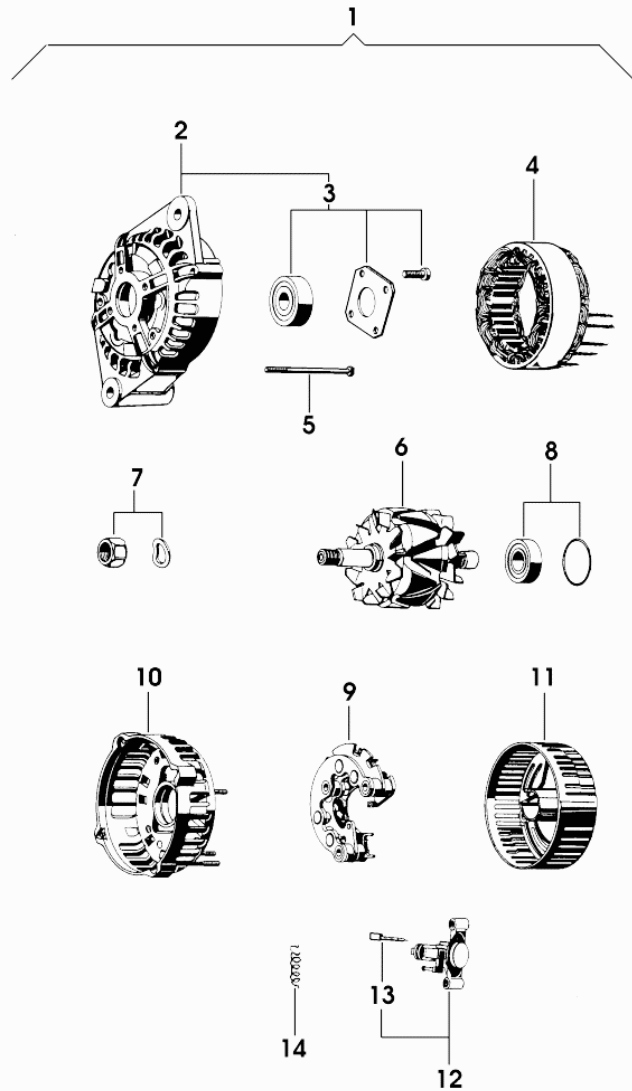


Fig.	Code	QTY	Name
1	2.9439.460.0/10	1	alternator 14V - 85A - ISKRA
2	0.010.2069.0	1	cover
3	0.010.2069.1	1	bearing
4	0.010.2069.2	1	field winding
5	0.010.2070.0	4	screw
6	0.010.2226.1	1	armature
7	0.010.2226.2	1	accessories
8	0.010.2070.2	1	bearing
9	0.010.2071.0	1	rectifier
10	0.010.2071.1	1	cover
11	0.010.2071.2	1	guard
12	0.010.2227.0	1	regulator
13	0.009.4335.1	2	brush set
14	0.000.0000.1	0	not serviceable

2_9439_460_0_10

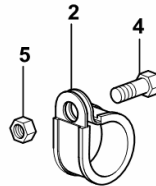
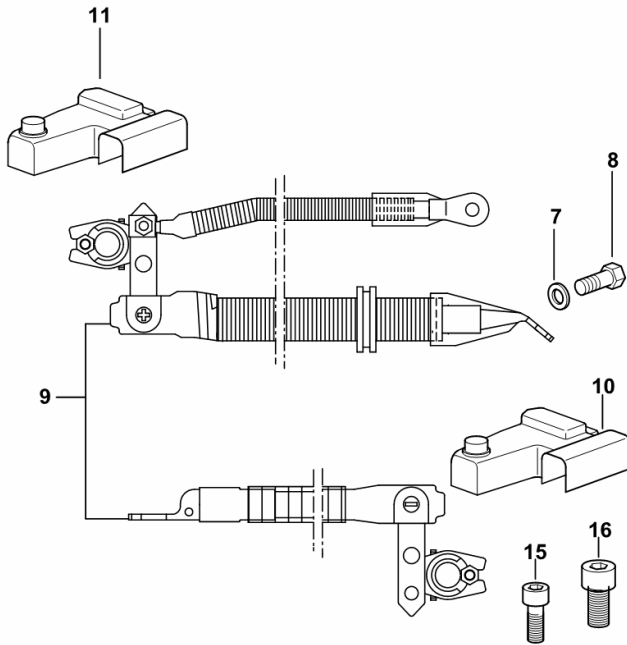
BATTERY LEADS

Fig.	Code	QTY	Name
------	------	-----	------

Notes:

[LASER 100 -> 5001]

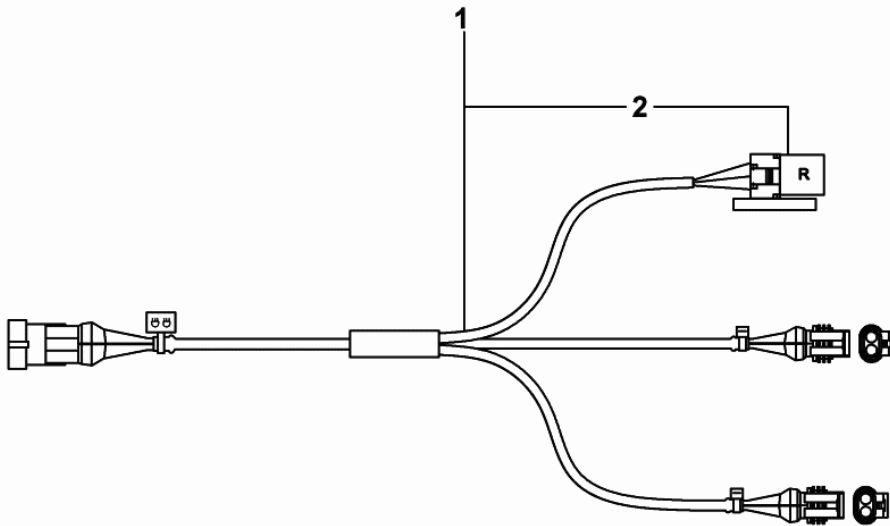
2	2.6839.053.0	1	clamp Ø 17/15
4	2.0112.007.2	1	screw m 6 p.1 x 20
5	2.1011.103.2	1	nut m 6 p.1
7	2.1310.007.2	1	flat washer 13.5
8	2.0112.407.2	1	screw m 12 p.1.75 x 20
9	0.013.4996.4	1	wire ☞ 0.013.4996.4
10	0.011.9018.0	1	cap -
11	0.011.9017.0	1	cap +
15	2.0312.104.2	1	screw m 6 p.1 x 16
16	2.0312.204.2	1	screw m 8 p.1.25 x 16



9_B8684_12_0-A-001

ELECTRICAL SYSTEM

Fig.	Code	QTY	Name
1	0.014.4803.4	1	electrical system
2	0.010.2089.2	1	relay 12V-30A



0_014_4803_4

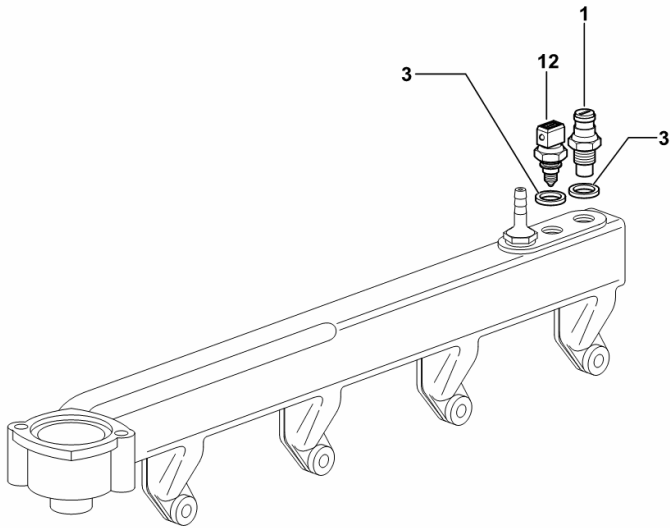
COOLING SYSTEM MANIFOLD SENSORS

Fig.	Code	QTY	Name
------	------	-----	------

Notes:

[LASER 100 -> 5001]

1	2.7099.640.0/10	1	tempe guage
3	2.1560.010.0	3	gasket 14.2 x 20 x 1.5
12	2.7099.800.0	1	sensor



9_M5217_00_0-B-001

CLICK HERE TO **DOWNLOAD** THE COMPLETE MANUAL

- Thank you very much for reading the preview of the manual.
- You can download the complete manual from: www.heydownloads.com by clicking the link below



- Please note: If there is no response to CLICKING the link, please download this PDF first and then click on it.

CLICK HERE TO **DOWNLOAD** THE COMPLETE MANUAL

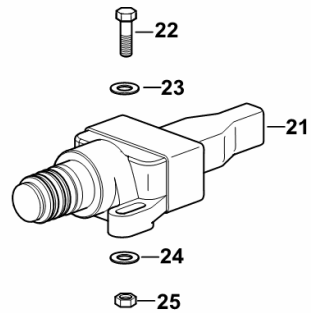
CLUTCH AND BRAKE PEDAL SWITCH

Fig.	Code	QTY	Name
------	------	-----	------

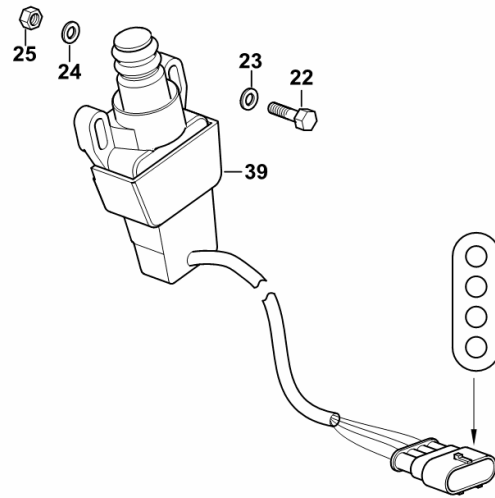
Notes:

- FOR MODELS WITH PLATFORM [LASER 100 -> 5001]

21	2.7659.097.0	1	switch
22	2.0332.207.2	4	screw m 4 p.0.7 x 20
23	2.1310.001.2	4	flat washer 5.3
24	2.1470.052.2	4	lock washer 4
25	2.1011.101.2	2	nut m 4 p.0.7
39	2.7659.202.0	1	switch



INTERRUPTORE PEDALE FRENO
SWITCH PEDAL BRAKE



INTERRUPTORE PEDALE FRIZIONE
SWITCH PEDAL CLUTCH

9_62084_16_0-D-001

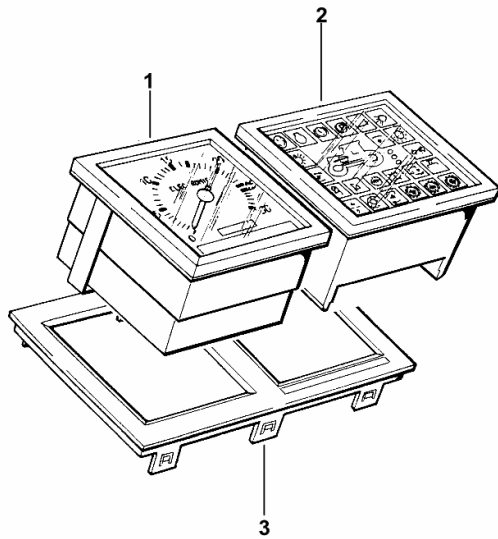
DASHBOARD BOX INSTRUMENT PANEL - 40 Km/h

Fig.	Code	QTY	Name
------	------	-----	------

Notes:

- FOR MODELS WITH CAB [LASER 100 -> 5001]

1	2.7049.986.0/10	1	multimeter - 40 Km\h (-> 5001) ☞ 2.7049.986.0/10
2	2.8339.104.0/20	1	panel
3	0.008.9575.0/10	1	frame



9_B8674_06_0-A-001

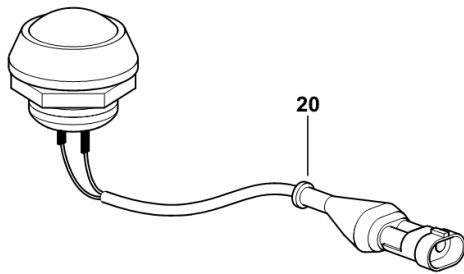
ELECTRONIC ACCELERATOR MEMORY PUSHBUTTON

Fig.	Code	QTY	Name
------	------	-----	------

Notes:

- FOR MODELS WITH PLATFORM [LASER 100 -> 5001]

20	2.7659.203.0/10	1	push-button
----	-----------------	---	-------------



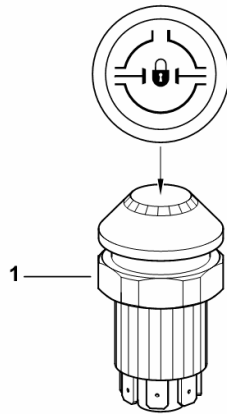
9_Q0567_05_0-B-002

DIFFERENTIAL LOCK

Fig.	Code	QTY	Name
------	------	-----	------

Notes:
[LASER 100 -> 5001]

1	0.008.1335.0/10	1	switch
---	-----------------	---	--------



9_B8684_04_0-A-001

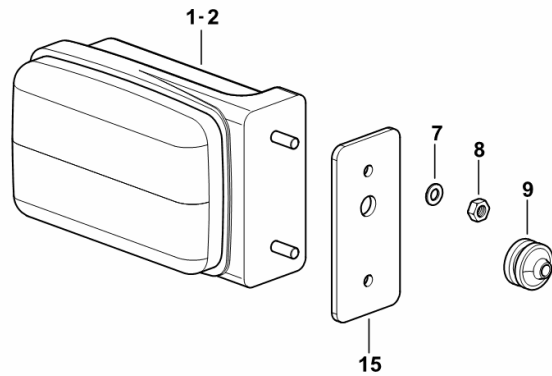
FRONT SIDELIGHTS AND TURN INDICATORS

Fig.	Code	QTY	Name
------	------	-----	------

Notes:

- FOR MODELS WITH PLATFORM [LASER 100 -> 5001]

1	2.8019.970.0	1	side lamp dx/rh/re ☞ 2.8019.970.0
2	2.8019.960.0	1	side lamp sx/lh/li ☞ 2.8019.960.0
7	2.1470.001.2	4	lock washer 5
8	2.1011.102.2	4	nut m 5 p.0.7
9	2.6569.018.0	2	wire guide 20 x 8 x 15
15	0.009.7474.0	2	gasket



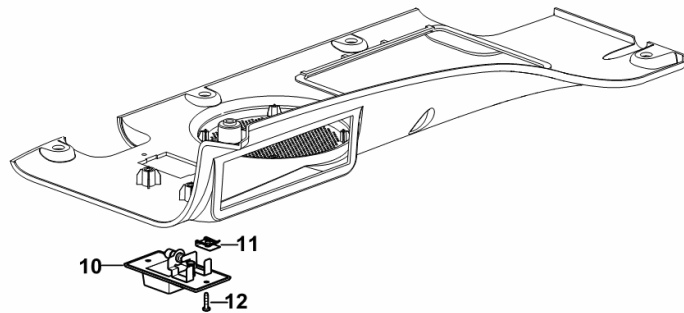
9_62085_23_0-C-001

INTERIOR LIGHT

Fig.	Code	QTY	Name
------	------	-----	------

Notes:
[LASER 100 -> 5001]

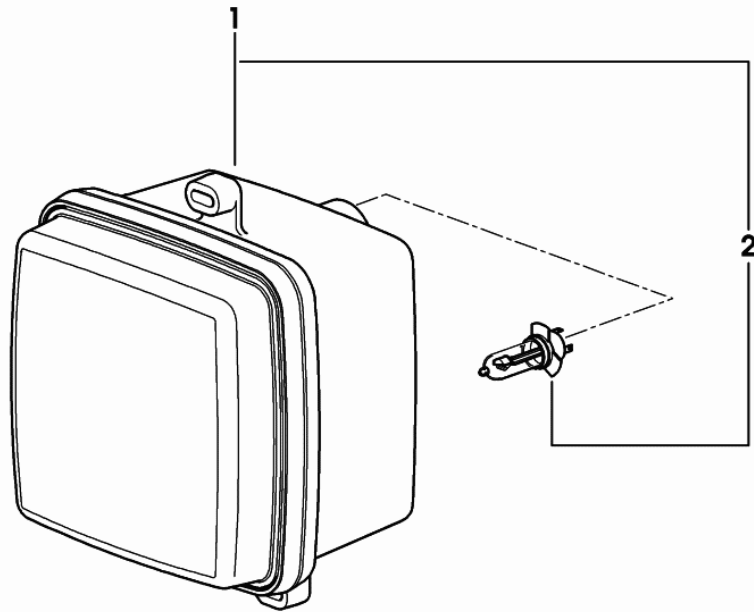
10	04412616	1	light
11	2.6999.052.0	2	small spring m 3.5
12	2.0350.255.3	2	screw m 3.5 x 16 -AB-



9_B8971_26_0-C-001

HEADLAMP COMPONENTS

Fig.	Code	QTY	Name
1	2.8039.160.0	1	worklamp
2	0.900.0063.0	1	lamp H3 12V 55W



2_8039_160_0

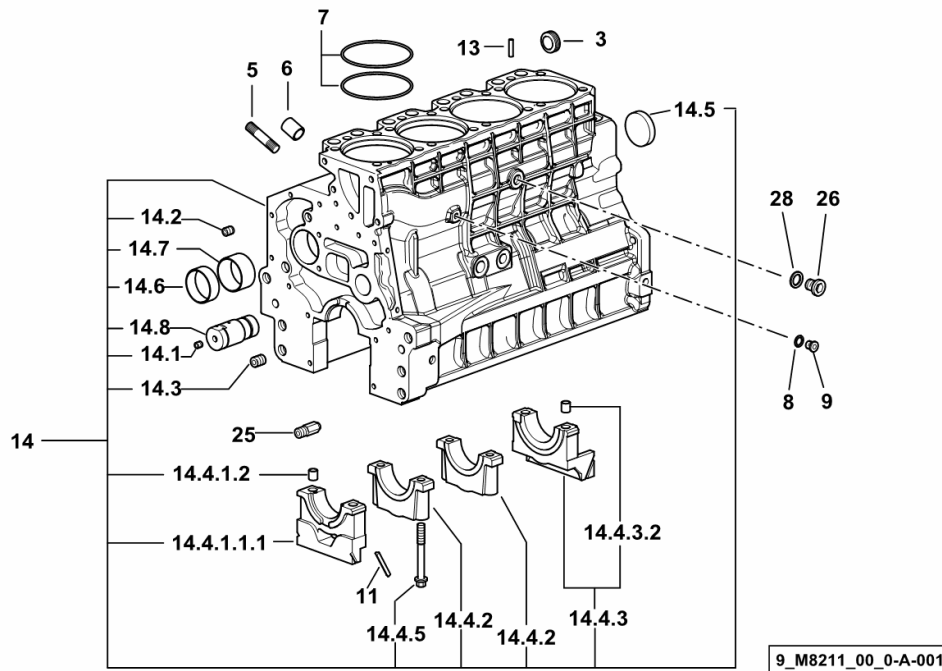
CRANKCASE

Fig.	Code	QTY	Name
------	------	-----	------

Notes:

[LASER 100 -> 5001]

3	2.3199.312.2/20	1	plug m 35x1.5x9.5
5	2.0439.273.7	8	stud bolt m 8
6	2.1559.188.2	4	sleeve 11.4 x 14 x16
7	2.1539.259.0	8	'o' ring 107.62x2.62
8	2.1560.010.0	1	gasket 14.2 x 20 x 1.5
9	2.3199.292.0	1	plug 1/4" gas
11	0.066.1152.0/10	4	gasket
13	2.1549.154.2	4	sleeve 4.8x5.8x16
14	0.015.2988.4/10	1	crankcase
14.1	2.3130.001.1	10	plug 1/8" gas
14.2	2.3130.002.1	2	plug 1/4" gas
14.3	2.3130.003.1	6	plug 3/8" gas
14.4.1.1.1	0.065.1112.7/10	1	support
14.4.1.2	2.1699.165.0	1	sleeve 12.3x15x16
14.4.2	0.065.1114.0/10	3	support
14.4.3	0.065.1116.3	1	support
14.4.3.2	2.1699.165.0	1	sleeve 12.3x15x16
14.4.5	0.065.1117.0	10	screw m 12 x 100
14.5	2.3179.012.0	1	plug 60
14.6	0.065.1140.0	4	bushing 59X55X20
14.7	0.065.1141.0	1	bushing 59X55X30
14.8	0.014.1340.0/10	1	pin
25	0.013.4946.0/10	1	cooling nozzle
26	2.3120.101.0	1	plug m 18 p.1.5
28	2.1560.014.0	1	gasket 18.2 x 24 x 1.5



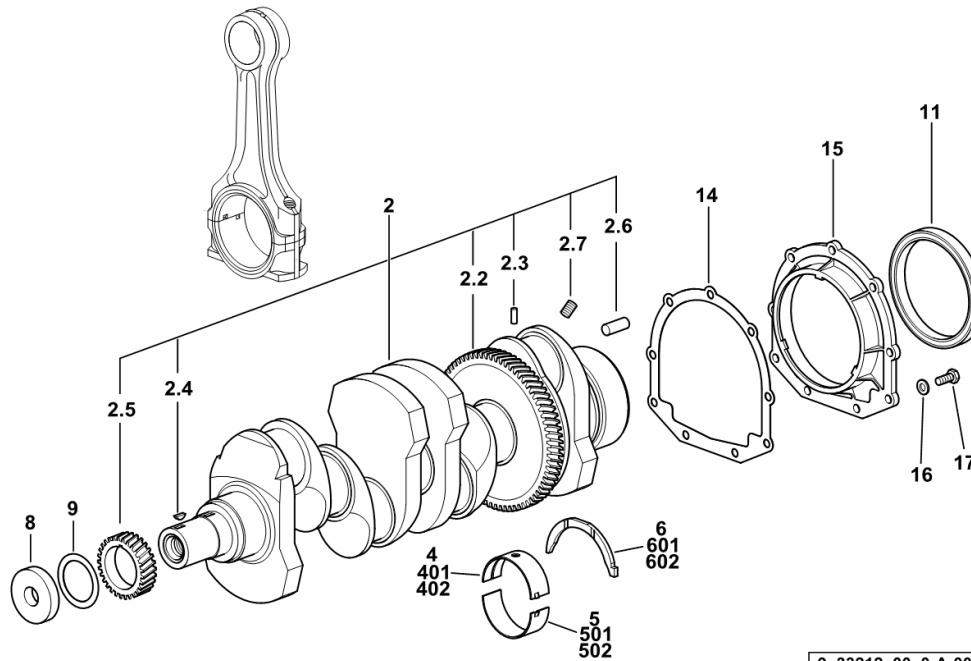
9_M8211_00_0-A-001

CRANKSHAFT

Fig.	Code	QTY	Name
------	------	-----	------

Notes:

[LASER 100 -> 5001]



2	0.086.1210.3/40	1	crank shaft
2.2	0.065.1211.0/10	1	crown wheel
2.3	2.1630.608.0	1	pin 6x16
2.4	2.1720.006.0	1	key 4x6.5
2.5	0.065.1323.0/30	1	gear Z = 29
2.6	2.1651.915.0	1	pin 12x35
2.7	2.3130.001.1	4	plug 1/8" gas
4	0.065.1215.0/10	5	main half bushing STANDARD
5	0.065.1216.0/10	5	main half bushing STANDARD
6	0.065.1218.0	4	shim STANDARD
8	2.1599.524.7	1	washer 21x60x12
9	2.1589.189.0	2	snoulder mm 1.00
11	2.1529.073.0	1	'o' ring 110x130x13
14	0.065.1254.0/20	1	gasket
15	0.007.1711.0/10	1	cover
16	2.1475.002.2	9	conical washer 8
17	2.0112.207.2	9	screw m 8 p 1.25 x 20
401	0.065.1215.7	0	main half bushing - mm 0.25
402	0.065.1215.8	0	main half bushing - mm 0.50
501	0.065.1216.7	0	main half bushing - mm 0.25
502	0.065.1216.8	0	main half bushing - mm 0.50
601	0.065.1218.7	0	shim + mm 0.10
602	0.065.1218.8	0	shim + mm 0.15

9_33212_00_0-A-001

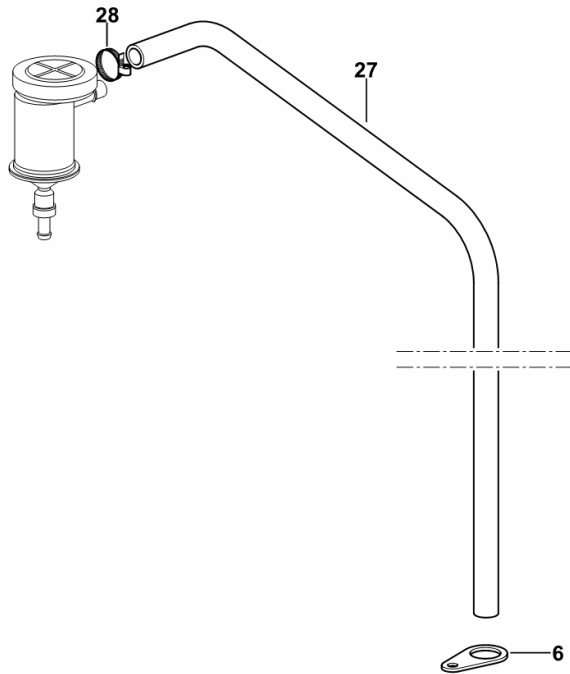
LUBRICATION

Fig.	Code	QTY	Name
------	------	-----	------

Notes:

[LASER 100 -> 5001]

6	0.075.1151.0	1	bracket
27	0.013.5653.0	1	tube
28	2.6851.002.0	1	clamp Ø 20/32



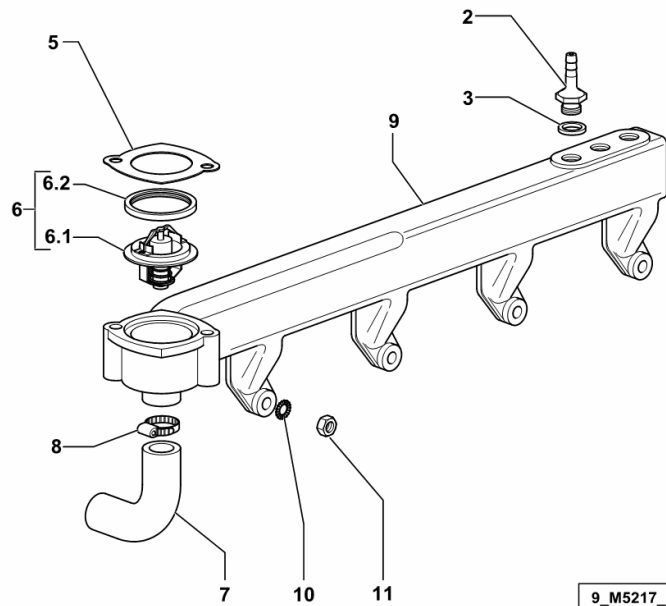
9_M5019_00_0-D-001

Section: B0 - ENGINE
COOLING SYSTEM MANIFOLD

Fig.	Code	QTY	Name
------	------	-----	------

Notes:
 [LASER 100 -> 5001]

2	0.013.4540.0	1	pipe fitting
3	2.1560.010.0	3	gasket 14.2 x 20 x 1.5
5	0.066.1757.0/40	1	gasket
6	0.007.1258.3/20	1	thermostat
6.1	2.7099.400.0/10	1	tempe guage
6.2	0.007.1258.0	1	gasket
7	0.007.1852.0	1	sleeve
8	2.6851.003.0	2	clamp Ø 25/40
9	0.013.4501.3/10	1	manifold
10	2.1470.004.2	8	washer 8
11	2.1011.305.2	8	nut m 8 p.1 x 8



9_M5217_00_0-A-001

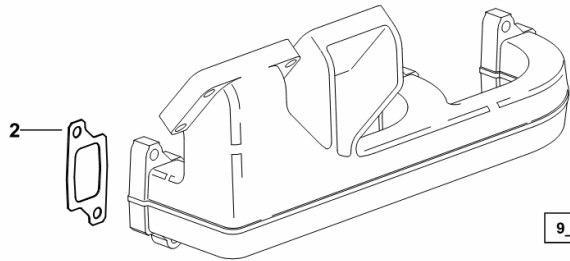
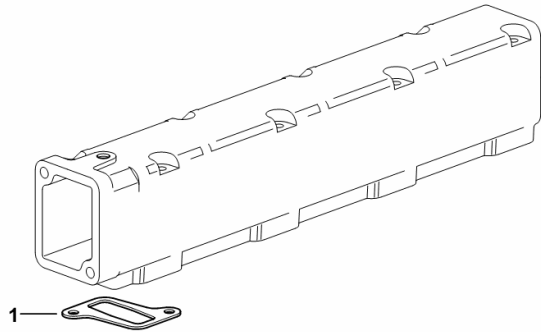
INTAKE AND EXHAUST MANIFOLD GASKETS

Fig.	Code	QTY	Name
------	------	-----	------

Notes:

[LASER 100 -> 5001]

1	0.011.1304.0/10	4	gasket
2	0.007.1445.0	4	gasket



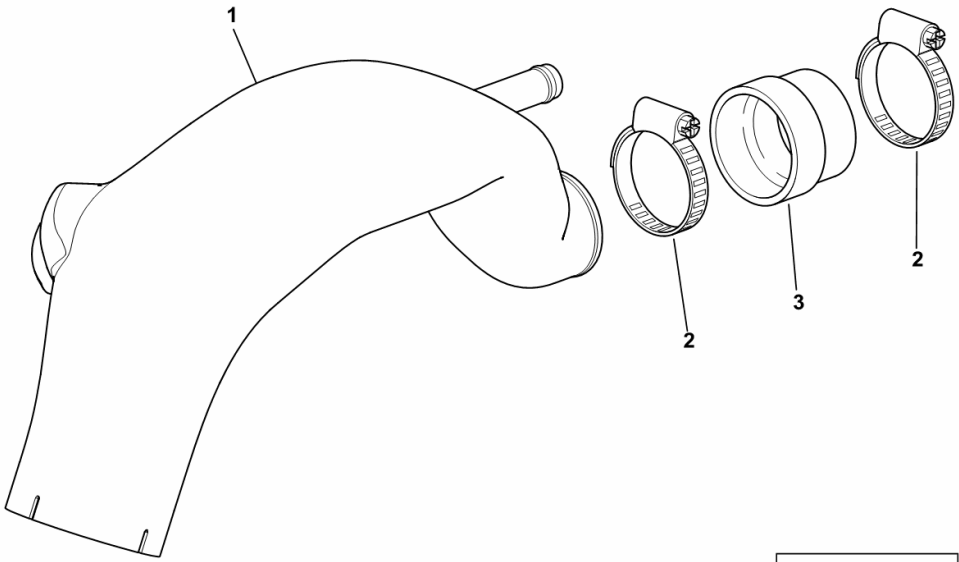
9_33218_00_0-A-001

AIR CLEANER HOSE

Fig.	Code	QTY	Name
------	------	-----	------

Notes:
[LASER 100 -> 5001]

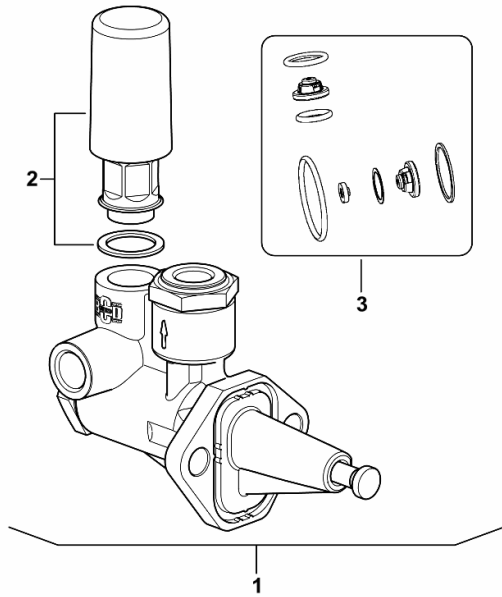
1	0.014.3872.2/10	1	sleeve
2	2.6851.007.0	2	clamp Ø 60/80
3	0.013.2909.0	1	sleeve



9_B8681_01_0-A-002

FUEL FEED PUMP

Fig.	Code	QTY	Name
1	2.4519.330.0/50	1	feed pump
2	0.010.3888.0	1	primer
3	0.010.3888.1	1	accessories

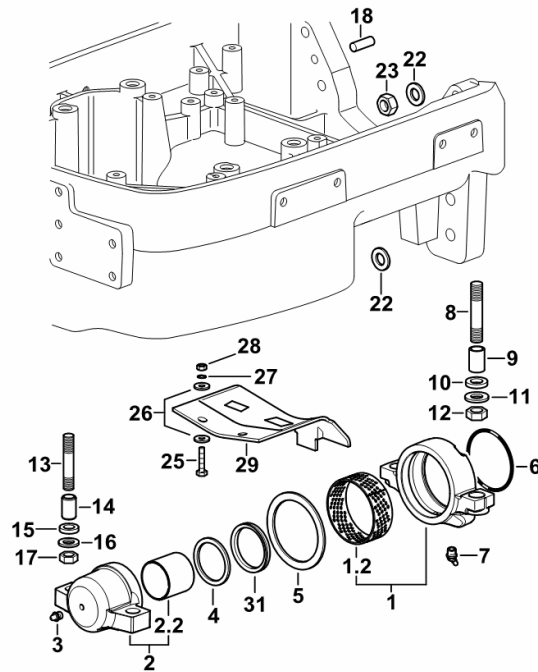


2_4519_330_0_50

Section: F0 - FRONT AXLE
4WD - FRONT SUPPORT

Fig.	Code	QTY	Name
------	------	-----	------

Notes:
 [LASER 100 -> 5001]



9_62052_03_0-A-001

1	0.146.5233.3/40	1	support
1.2	2.1559.455.0	1	bushing 100x106x40
2	0.010.4723.3/50	1	support
2.2	2.1559.456.0	1	bushing
3	2.3820.105.2	1	lubricator m 10 p.1 x 7
4	2.1599.825.0	1	snoulder 63x77x4
5	2.1599.004.0	1	snoulder 101x125x4
6	2.1530.205.0	1	'o' ring 101.2x5.34
7	2.3821.103.2	1	lubricator m 10 p.1
8	2.0439.174.7	2	stud bolt m 18 p.1.5x70
9	2.1559.010.0	2	bushing 18.5x24x35
10	2.1599.030.2	2	snoulder 19x35x6
11	2.1475.107.7	2	washer 18x36
12	2.1019.060.2	2	special nut m 18 p.1.5
13	2.0433.419.7	2	stud bolt m 16 p.2-1.5x70
14	2.1559.030.0	2	bushing 16.5x22x35
15	2.1599.029.0	2	snoulder 17x30x6
16	2.1475.206.7	2	washer 17x32
17	2.1012.309.7	2	nut m 16 p.1.5
18	2.1699.035.0	2	cylindrical plug 14 x 35
22	2.1475.007.7	7	washer 18
23	2.1019.060.2	3	special nut m 18 p.1.5
25	2.0112.215.2	2	screw m 8 p.1.25 x 40
26	2.1312.004.2	4	washer 8.4
27	2.1470.004.2	2	washer 8
28	2.1011.105.2	2	nut m 8 p.1.25
29	0.008.9062.0/20	1	sump
31	2.1535.028.0	1	'o' ring 67x11

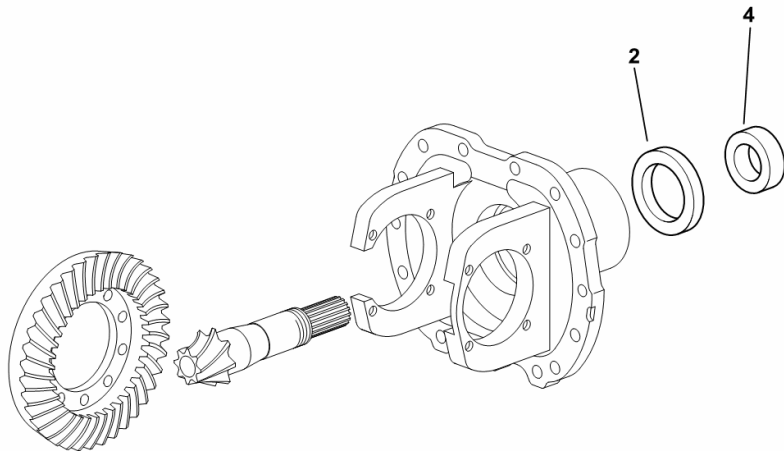
DIFFERENTIAL SEAL RINGS

Fig.	Code	QTY	Name
------	------	-----	------

Notes:

[LASER 100 -> 5001]

2	2.1529.007.0/10	1	'o' ring 58 x 80 x 13
4	0.255.4650.0	1	spacer 35 x 58 x 19



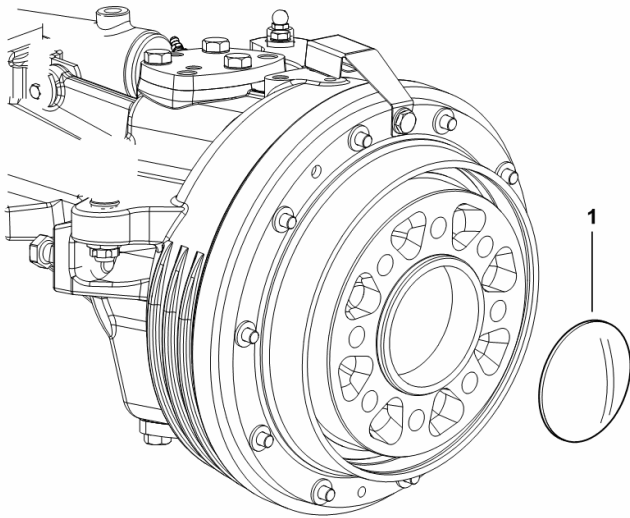
9_62346_01_0-A-001

Section: F0 - FRONT AXLE
FRONT WHEEL HUB COVER

Fig.	Code	QTY	Name
------	------	-----	------

Notes:
[LASER 100 -> 5001]

1	0.012.7082.3/10	2	cover
---	-----------------	---	-------



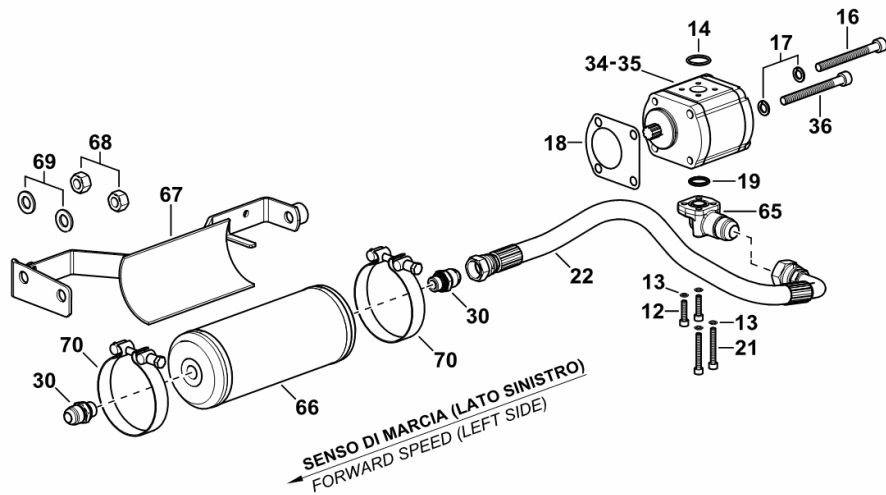
9_40546_10_0-A-001

POWER STEERING OIL FEED HYDRAULIC SYSTEM

Fig.	Code	QTY	Name
------	------	-----	------

Notes:

[LASER 100 -> 5001]



12	2.0312.108.2	2	screw m 6 p.1 x 25
13	2.1480.012.1	4	washer 6, d128
14	2.1530.062.0	1	'o' ring 23.81 x 2.62
16	2.0312.326.2	1.4	screw m 10 p.1.5x100
17	2.1474.010.2	2	washer 10
18	0.9104.250.0/10	1	gasket
19	2.1530.052.0	1	'o' ring 20.24x2.62
21	2.0312.115.2	2	screw m 6 p.1x45
22	0.010.9041.3	1	tube
30	2.3249.141.2	2	pipe fitting 7/8 JIC-M18
34	2.4529.950.0	1	hydraulic pump 11 cc sx/lh/li - BOSCH - ☞ 2.4529.950.0
35	2.4529.960.0	0	hydraulic pump 11 cc sx/lh/li - SAUER ☞ 2.4529.960.0
36	2.0312.327.2	0.6	screw m 10 p.1.5x110
65	0.012.7294.0/10	1	flange
66	0.010.8872.0/20	1	filter
67	0.015.0291.3/20	1	bracket
68	2.1011.108.2	2	nut m 14 p.2
69	2.1475.005.7	2	washer 14
70	0.164.8157.3/20	2	hose clip Ø 97

9_62082_01_0-A-001

LASER 100 -> 5001

Section: H0 - HYDRAULIC AND PNEUMATIC SYSTEM|

Ref.: H0.01.27 (1)

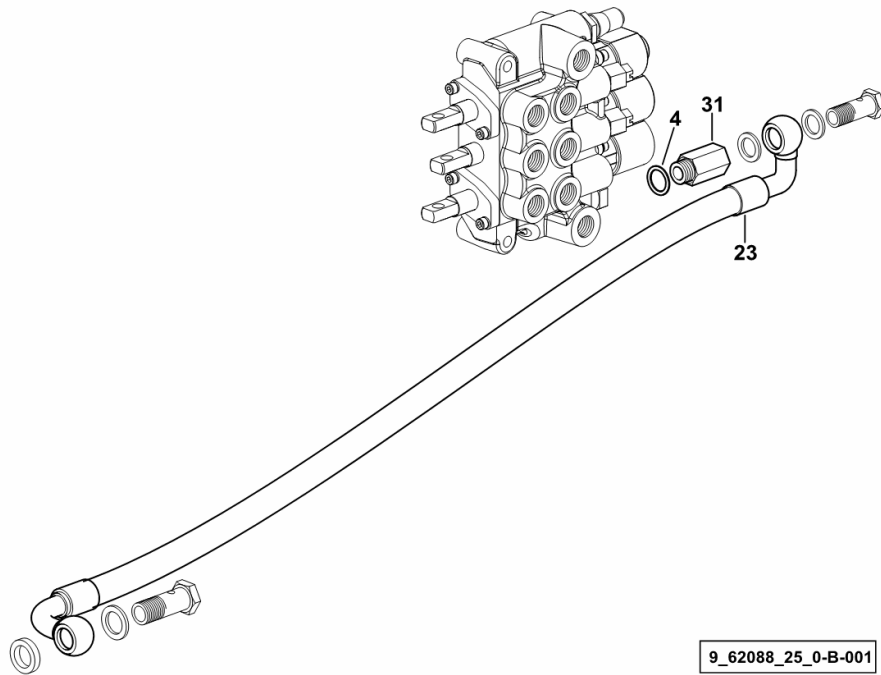
PIPE FROM 6 WAY AUXILIARY CONTROL VALVE TO ACS

Fig.	Code	QTY	Name
------	------	-----	------

Notes:

[LASER 100 -> 5001]

4	2.1560.014.0	16	gasket 18.2 x 24 x 1.5
23	0.008.9703.3/20	1	tube mm 565
31	2.3339.341.2/10	1	pipe fitting m 18 p.1.5

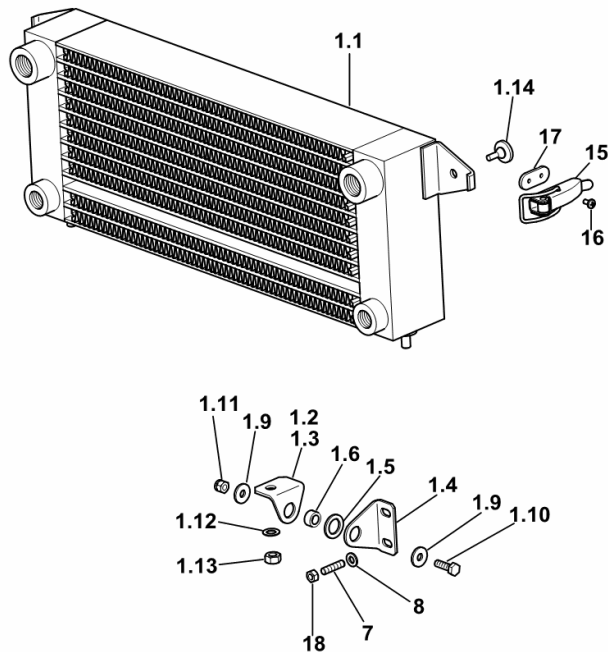


GEARBOX OIL COOLER

Fig.	Code	QTY	Name
------	------	-----	------

Notes:

[LASER 100 -> 5001]



1.1	0.014.8949.2	1	oil cooler
1.2	0.008.9599.0	1	bracket dx/rh/re
1.3	0.008.9600.0	1	bracket sx/lh/li
1.4	0.008.9598.0	2	bracket
1.5	2.1549.169.0	2	spacer 14.5x22x2
1.6	2.1579.994.2	2	spacer 8.5x14x7
1.9	2.1312.003.2	4	washer 6
1.10	2.0112.007.2	2	screw m 6 p.1 x 20
1.11	2.1120.003.2	2	nut m 6
1.12	2.1470.004.2	2	washer 8
1.13	2.1011.105.2	2	nut m 8 p.1.25
1.14	0.467.7693.0	2	block
7	2.0422.001.2	4	stud bolt m 6 p.1.0 x 16
8	2.1310.002.2	4	washer 6.6, d125
15	0.008.9632.0	2	clevis
16	2.0332.202.2	4	screw m 4 x 8
17	0.008.9726.0	2	small plate
18	2.1011.103.2	1	nut m 6 p.1

9_62182_13_0-A-002

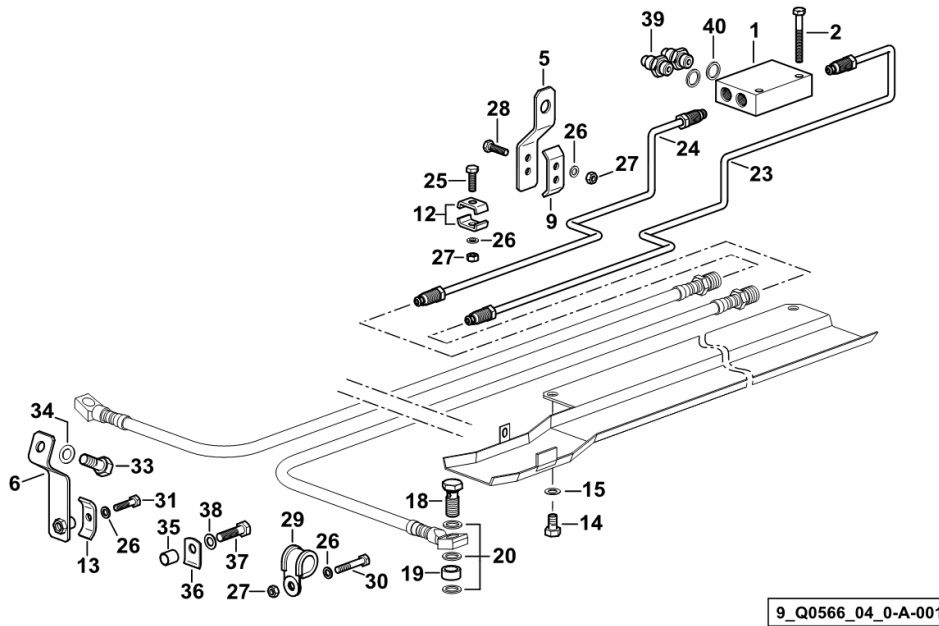
BRAKING SYSTEM

Fig.	Code	QTY	Name
------	------	-----	------

Notes:

[LASER 100 -> 5001]

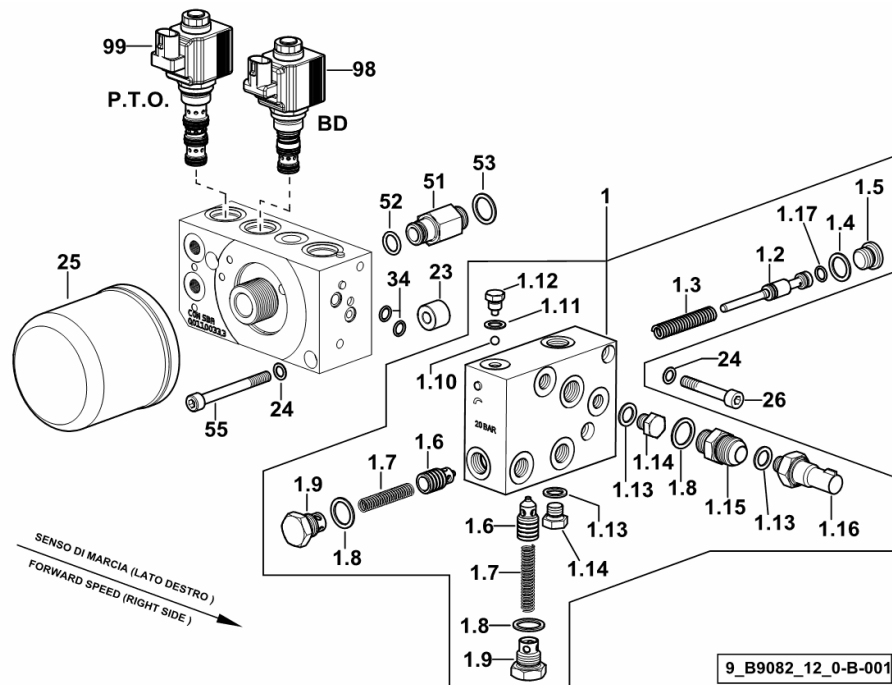
1	0.015.7686.0	1	small block
2	2.0112.013.2	2	screw m 6 p.1 x 35
5	0.008.9729.0	1	square
6	0.014.0925.3	1	bracket
9	0.009.3100.0	1	small plate
12	0.002.8816.0	2	small plate
13	0.154.6377.0	1	terminal
14	2.0112.204.2	3	screw m 8 p.1.25x14
15	2.1470.004.2	5	washer 8
18	2.3339.361.2/10	2	pipe union m 12 p.1.25 x 28
19	2.1579.765.2/10	2	spacer 12.5 x 18 x 8.0
20	2.1560.008.0	6	gasket 12.2 x 18
23	0.008.9728.3	1	tube sx/lh/li
24	0.007.6741.3	1	tube dx/rh/re
25	2.0112.007.2	1	screw m 6 p.1 x 20
26	2.1470.002.2	5	washer 6, d128
27	2.1011.103.2	5	nut m 6 p.1
28	2.0112.008.2	2	screw m 6 p.1x22
29	2.6839.058.0	2	clamp Ø 17/20
30	2.0112.013.2	2	screw m 6 p.1 x 35
31	2.0112.009.2	1	screw m 6 p.1 x 25
33	2.0112.307.2	1	screw m 10 p.1.5 x 20
34	2.1470.006.2	1	lock washer 10
35	2.1579.840.2	2	spacer 10x12x13
36	0.008.9854.0	2	bracket
37	2.0112.211.2	2	screw m 8 p.1.25 x 30
38	2.1470.004.2	2	washer 8
39	2.3339.447.2/10	2	pipe fitting m 12 p.1.25
40	2.1560.007.0	2	gasket 12.2x16



OIL FLOW CONTROL VALVE CASING

Fig.	Code	QTY	Name
------	------	-----	------

Notes:
[LASER 100 -> 5001]



1	0.011.0035.4/40	1	valve
1.2	0.013.6733.0	1	slider (-> 5001)
1.3	2.4019.431.1/30	1	spring 6.9x11.3x2.2x64
1.4	2.1560.012.0	1	gasket 16.2 x 22 x 1.5 (-> 5001)
1.5	2.3120.010.4	1	plug m 16 p.1.5 (-> 5001)
1.6	0.008.3365.0/10	2	valve
1.7	0.008.3371.0	2	spring
1.8	2.1560.014.0	3	gasket 18.2 x 24 x 1.5
1.9	2.3199.251.2/10	2	plug
1.10	2.2810.002.0	1	ball mm 6.350
1.11	2.1560.006.0	1	gasket 10.2 x 16
1.12	2.3199.252.2	1	plug m 10 p.1.5
1.13	2.1560.008.0	3	gasket 12.2 x 18
1.14	2.3110.402.1	2	plug m 12 p.1.5x10
1.15	2.3261.010.2	1	pipe fitting m 18 p.1.5 - 7/8" 14
1.16	2.7099.750.0/10	1	pressure switch 11 Bar
1.17	2.1531.016.0	1	ring 8.74 x 1.78 (-> 5001)
23	2.1579.959.2	2	spacer 8.5x20x16
24	2.1480.014.1	4	washer 8
25	2.4419.750.0	1	hydr.oil filter elem
26	2.0312.216.2	2	screw m 8 p.1.25x50
34	2.1531.016.0	2	ring 8.74 x 1.78
51	2.3339.656.2/10	1	pipe fitting
52	2.1531.033.0	1	'o' ring 13.11x2.62
53	2.1560.014.0	6	gasket 18.2 x 24 x 1.5
55	2.0312.221.2	2	screw m 8 p.1.25x75
98	2.3729.697.0/20	1	electro valve 13V - 20W ☞ 2.3729.697.0/20
99	2.3729.250.0/60	1	electro valve 13V - 20W

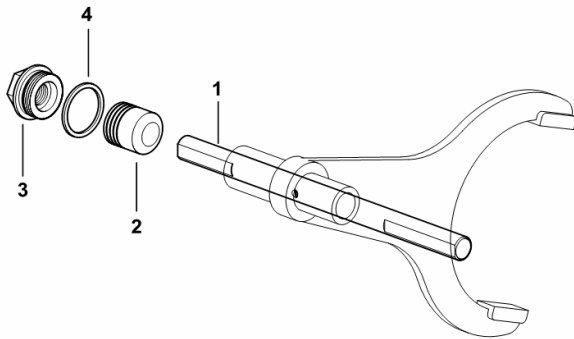
DIFFERENTIAL LOCK CONTROL - ELECTROHYDRAUDLIC

Fig.	Code	QTY	Name
------	------	-----	------

Notes:

[LASER 100 -> 5001]

1	0.008.5636.0	1	rod
2	0.008.5650.0/20	1	piston
3	2.3199.176.0/10	1	plug m 30 p.1.5 / m 14 p.1.5
4	2.1560.023.0	1	gasket 30.3 x 36

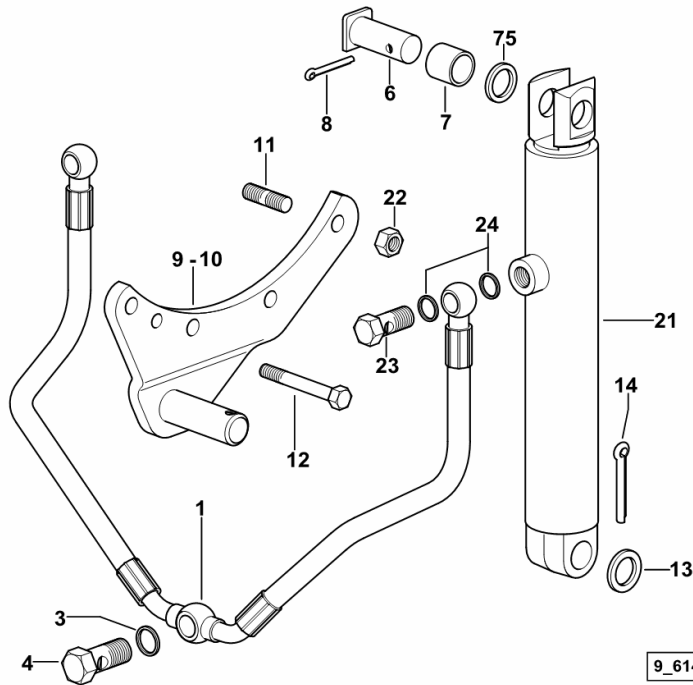


9_61435_02_0-A-001

Section: R0 - REAR LIFT
HYDRAULIC CYLINDERS

Fig.	Code	QTY	Name
------	------	-----	------

Notes:
 [LASER 100 -> 5001]



9_61459_23_0-A-001

1	0.009.3536.3/10	1	tube
3	2.1560.014.0	1	gasket 18.2 x 24 x 1.5
4	2.3335.008.2	1	pipe union m 18 p.1.5 x 32
6	2.1699.372.0/30	2	pin 22x59
7	2.1559.076.0	2	bushing 22.05x26.05x23
8	2.1690.616.2	2	split pin 6.3 x 50
9	0.98614.51.3/10	1	bracket dx/rh/re
10	0.98614.50.3/10	1	bracket sx/lh/li
11	2.0422.427.7	8	stud bolt m 12 x 120
12	2.0112.327.2	2	screw m 10 p.1.5 x 90
13	2.1311.013.2	4	flat washer 22
14	2.1690.713.2	2	split pin 8x36
21	0.009.3535.4	2	jack ☞ 0.009.3535.4
22	2.1011.107.2	8	nut m 12 p.1.75
23	2.3332.005.2	2	pipe fitting m 16 p.1.5
24	2.1560.011.0	4	gasket 16.2x20
75	2.1599.656.2	2	washer 22 x 30 x 3.0

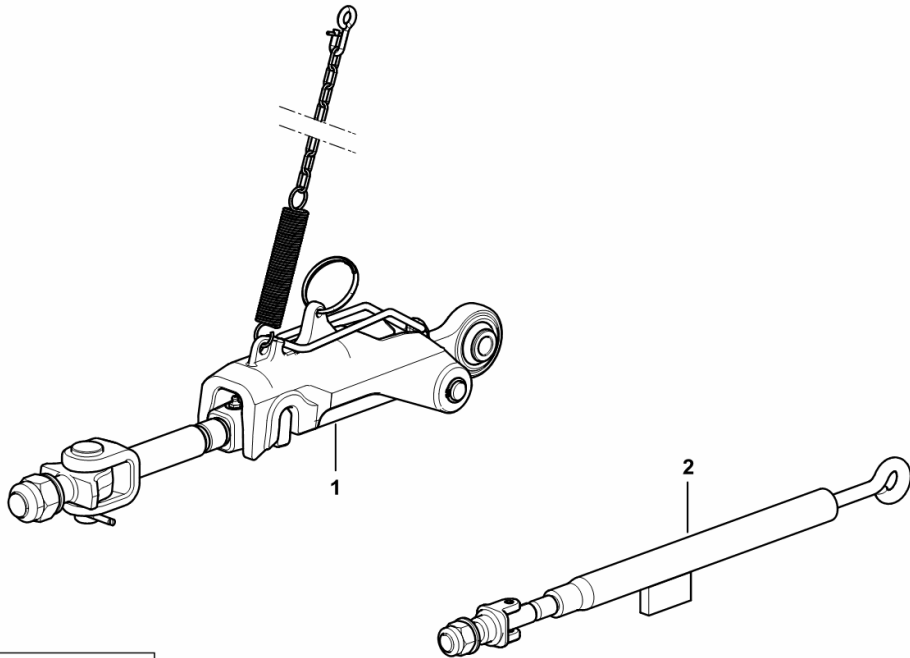
AUTOMATIC LATERAL STABILIZERS

Fig.	Code	QTY	Name
------	------	-----	------

Notes:

[LASER 100 -> 5001]

1	0.015.4194.4/10	1	stabiliser ☞ 0.015.4194.4/10
2	0.015.4193.4	1	stabiliser



9_78058_01_0-A-002

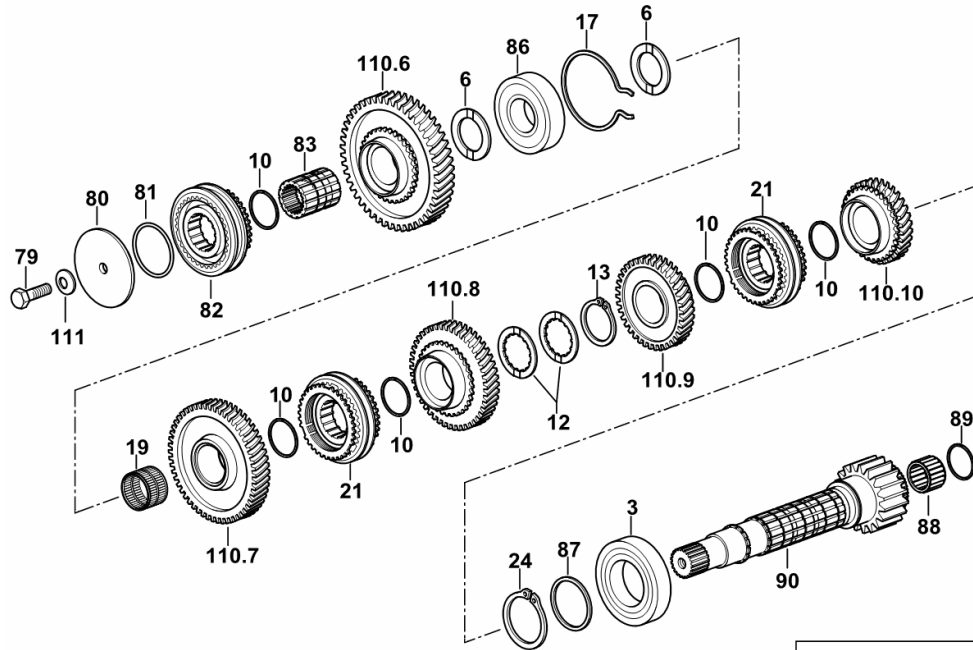
P.T.O. - CLUTCH-PARTS.....	0.012.7103.4/20.A
P.T.O. - CLUTCH-PARTS.....	0.012.7103.4/50.A
HYDRAULIC PUMP DRIVE	
P.T.O. - PUMP CONTROL.....	D0.13.0 (1)
PTO/GROUNDPSPEED DRIVE	
P.T.O. - 2 SPEED TYPE 540/1000.....	D0.14.0 (1)
P.T.O. - ECONOMICAL 4 SPEED.....	D0.14.2 (1)
4 SPEED P.T.O.....	D0.14.5 (1)
P.T.O. - FIXED END SHAFT - FOR 2-SPEED STANDARD SEALS.....	D0.14.8 (1)
P.T.O. - FIXED END SHAFT - FOR 4-SPEED STANDARD SEALS.....	D0.14.9 (1)
P.T.O. - SYNCHRONIZED.....	D0.14.11 (1)
P.T.O. - SYNCHRONIZED - WITH STANDARD SEALS.....	D0.14.13 (1)
P.T.O. SHAFT PROTECTOR REAR.....	D0.14.14 (1)
P.T.O. SHAFT PROTECTOR REAR.....	D0.14.15 (1)
4WD ENGAGEMENT POWER TAKE-OFF - 4WD PARKING BRAKE	
4WD - ENGAGEMENT CONTROL.....	D0.15.0 (2)
INDEPENDENT HAND BRAKE.....	D0.15.4 (1)
HANDBRAKE PROTECTION COVER.....	D0.15.5 (1)

5-SPEED GEARBOX SECONDARY SHAFT

Fig.	Code	QTY	Name
------	------	-----	------

Notes:

[LASER 100 -> 5001]



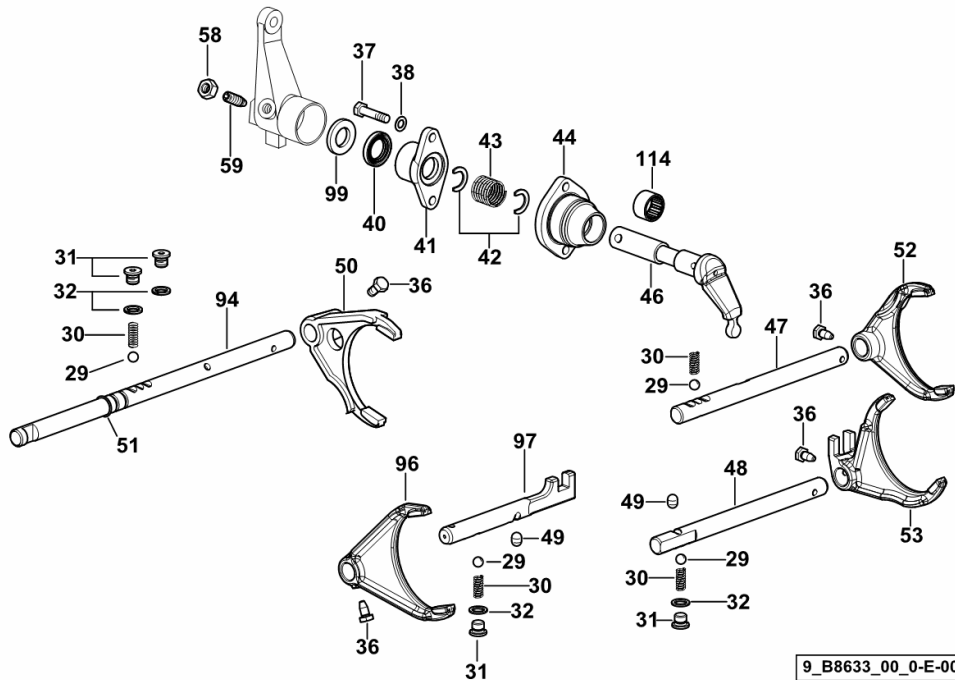
3	2.2999.125.0	1	bearing 55 x 100 x 21
6	0.255.3450.0	3	snoulder 40 x 60 x 3.5
10	2.1499.153.7	6	circlip 41 x 1.5
12	0.255.3372.0	3	shoulder
13	2.1419.034.1	2	circlip 44
17	2.1499.037.1	1	circlip 90
19	2.2999.218.0	1	roller cage 40 x 45 x 30
21	0.007.7646.4/10	2	lock synchronizer Ø 68 mm ☞ 0.007.7646.4/10
24	2.1410.022.1	1	circlip 55
79	2.0132.408.7	1	screw m 12 p.1.25 x 30
80	0.255.3369.0/20	1	snoulder
81	2.1530.141.0	1	'o' ring 57.15 x 3.53
82	0.007.7647.4	1	lock synchronizer Ø 68 mm ☞ 0.007.7647.4
83	0.255.3368.0/10	1	bushing
86	2.2063.012.0	1	ball bearing 40 x 90 x 23
87	2.1599.422.0	1	snoulder 44
88	2.2999.282.0	1	roller cage 28 x 38 x 25.5
89	2.1423.028.7	1	circlip 38x1.5
90	0.010.9180.0	1	countershaft
110.6	0.011.3869.3	1	gear Z = 46
110.7	0.445.3358.0/20	1	gear Z = 54
110.8	0.010.0006.0/20	1	gear Z = 46
110.9	0.011.3866.0	1	gear Z = 38
110.10	0.013.1442.3	1	gear Z = 31
111	2.1475.004.2	1	washer 12

9_B8633_00_0-D-001

5-SPEED GEARBOX INTERNAL CONTROLS

Fig.	Code	QTY	Name
------	------	-----	------

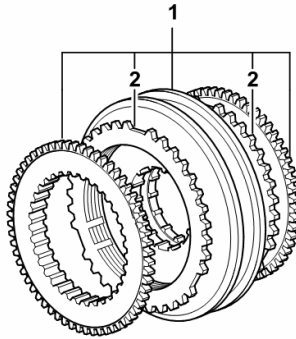
Notes:
[LASER 100 -> 5001]



29	2.2999.156.0	4	ball Ø 10
30	2.4019.622.1	4	spring 6.3 x 9.5 x 1.6 x 22.4
31	2.3199.164.2/20	4	plug m 12 p.1.5
32	2.1560.008.0	4	gasket 12.2 x 18
36	2.0399.019.1	4	screw m 8 p.1 x 16
37	2.0112.213.2	2	screw m 8 p.1.25 x 35
38	2.1470.004.2	2	washer 8
40	2.1519.075.0	1	'o' ring 22 x 35 x 6
41	0.011.5530.0	1	support
42	0.008.5405.0	2	ring
43	2.4019.698.1/10	1	spring 21 x 25 x 46
44	0.011.7127.0/20	1	support
46	0.011.5541.0/10	1	lever
47	0.445.6421.0/10	1	rod
48	0.445.6420.0/10	1	rod
49	2.1699.159.0	2	cap 10 x 14.1
50	0.011.8530.0/10	1	fork
			- FOR SHUTTLE
51	2.1530.033.0	2	'o' ring 13.10x2.62
52	0.010.0205.0/20	1	fork
53	0.010.0191.0/20	1	fork
58	2.1011.406.2	1	nut m 10 p.1
59	2.0399.050.2	1	screw m 10 p.1 x 30
94	0.445.3457.0/20	1	rod
			- FOR SHUTTLE
96	0.010.0209.0/20	1	fork
97	0.445.6454.0/30	1	rod
99	2.1549.117.0/10	2	spacer 20.1 x 36 x 4.6
114	2.2725.030.0	2	roller cage 22 x 28 x 16

Section: D0 - TRANSMISSION
SYNCHRONIZER PARTS

Fig.	Code	QTY	Name
1	0.011.3781.4	1	lock synchronizer Ø 82 mm
2	0.009.4324.0	2	ring



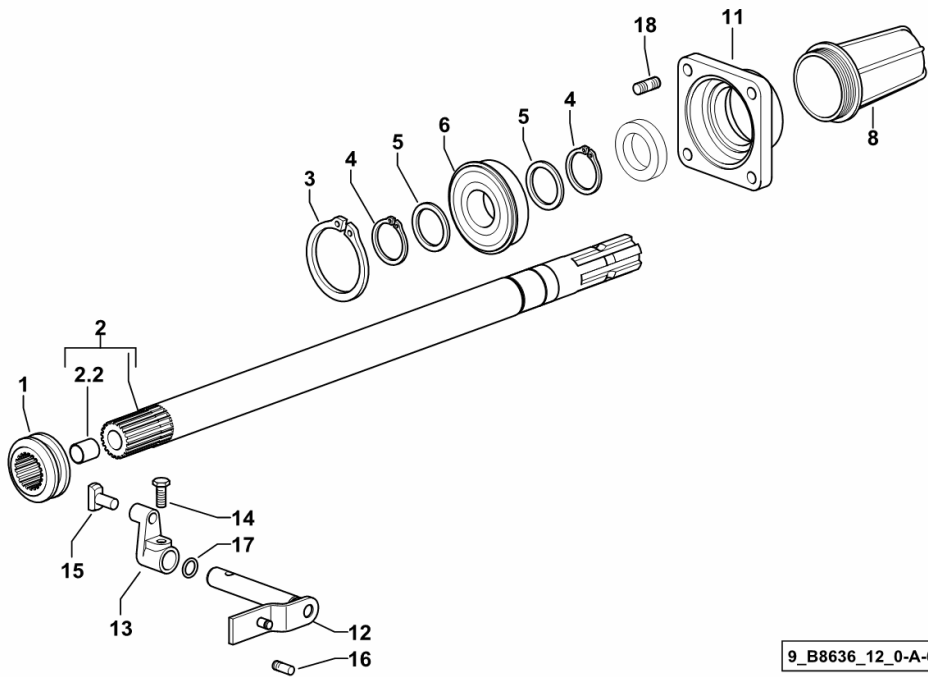
0_011_3781_4

Section: D0 - TRANSMISSION
P.T.O. - SYNCHRONIZED

Fig.	Code	QTY	Name
------	------	-----	------

Notes:
 [LASER 100 -> 5001]

1	0.255.3469.0	1	sleeve
2	0.445.3458.3/30	1	p.t.o.shaft mm 578
2.2	2.1559.023.0/10	1	bushing 15.8x19x20
3	2.1411.032.1	1	circlip 80 x 2.5
4	2.1410.014.1	2	circlip 35
5	2.1599.874.0	2	washer 35 x 45 x 3.0
6	2.2060.011.0	1	ball bearing 35 x 80 x 21
8	0.154.3655.0/10	1	guard
11	0.255.3150.0/20	1	cover
12	0.255.3468.2/20	1	lever
13	0.255.3470.0	1	lever
14	2.0399.019.1	1	screw m 8 p.1 x 16
15	0.001.5945.0/10	1	shoe
16	2.0439.002.1	2	stud bolt m 8 p.1.25 x 20
17	2.1530.033.0	1	'o' ring 13.10x2.62
18	2.0432.155.7	4	stud bolt m 10 p.1.5 / p. 1.25 x 25



CLICK HERE TO **DOWNLOAD** THE COMPLETE MANUAL

- Thank you very much for reading the preview of the manual.
- You can download the complete manual from: www.heydownloads.com by clicking the link below



- Please note: If there is no response to CLICKING the link, please download this PDF first and then click on it.

CLICK HERE TO **DOWNLOAD** THE COMPLETE MANUAL