

KRYPTON F 90 M-N-C

V0 - BALLAST, TOWING HITCHES

FRONT HITCHES

FRONT TOWING HITCH..... V0.01.0 (1)

REAR HITCHES

TOWING BAR mm 1431..... V0.02.0 (1)

TOWING BAR mm 1394..... V0.02.1 (1)

TOWING BAR mm 1603.5..... V0.02.2 (1)

TOWING BAR mm 1519..... V0.02.3 (1)

CURVED CROSS MEMBER FOR DRAWBAR..... V0.02.4 (1)

CURVED CROSS MEMBER FOR DRAWBAR..... V0.02.5 (1)

CURVED CROSS MEMBER FOR DRAWBAR..... V0.02.6 (1)

CURVED CROSS MEMBER FOR DRAWBAR..... V0.02.7 (1)

FRONT BALLAST WEIGHTS

PLATE FOR FRONT CARRIER..... V0.03.0 (1)

FRONT WEIGHT CARRIER..... V0.03.1 (1)

FRONT BALLAST Kg 160..... V0.03.2 (1)

FRONT BALLAST 320 Kg..... V0.03.3 (1)

SIDE BALLASTS..... V0.03.4 (1)

CLICK HERE TO **DOWNLOAD** THE COMPLETE MANUAL

- Thank you very much for reading the preview of the manual.
- You can download the complete manual from: www.heydownloads.com by clicking the link below



- Please note: If there is no response to CLICKING the link, please download this PDF first and then click on it.

CLICK HERE TO **DOWNLOAD** THE COMPLETE MANUAL

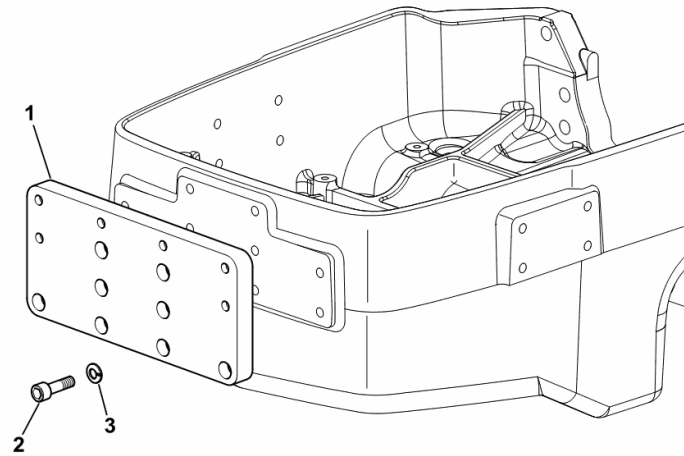
PLATE FOR FRONT CARRIER

Fig.	Code	QTY	Name
------	------	-----	------

Notes:

[KRYPTON F 90 M] [KRYPTON F 90 N] [KRYPTON F 90 C]

1	0.012.2637.0/30	1	plate
2	2.0312.516.2	6	screw m 14 x 50
3	2.1474.012.2	6	washer 14



9_18752_41_0-A-001

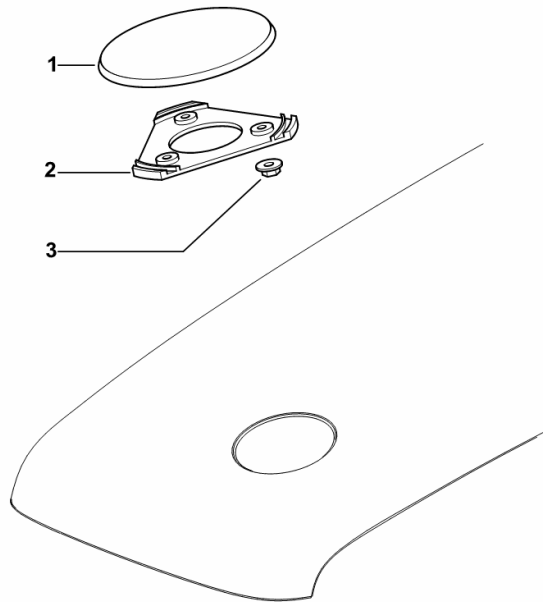
HOOD PLUG

Fig.	Code	QTY	Name
------	------	-----	------

Notes:

[KRYPTON F 90 M] [KRYPTON F 90 N] [KRYPTON F 90 C]

1	0.007.2881.2/20	1	plug
2	0.007.2882.0/10	1	plate
3	2.1129.004.0	3	selflock nut m 4



9_B8872_04_0-A-001

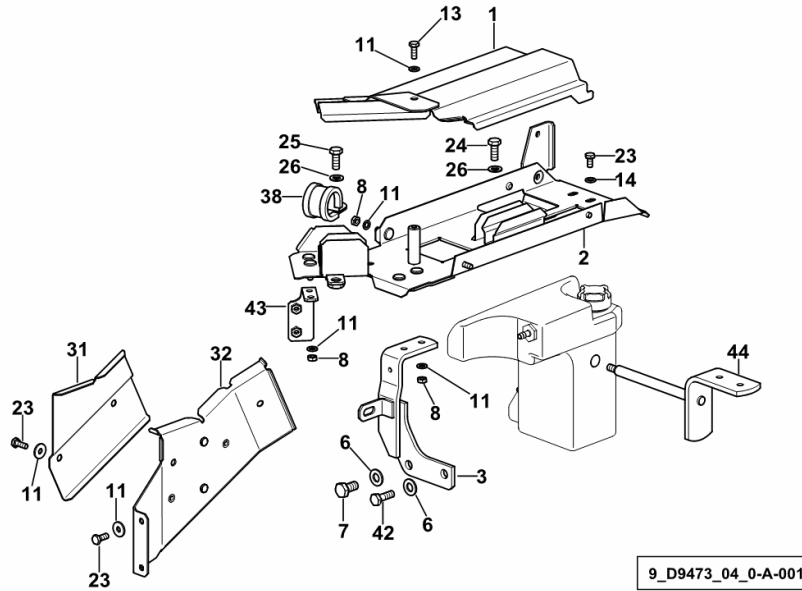
HOOD - SUPPORTS

Fig.	Code	QTY	Name
------	------	-----	------

Notes:

[KRYPTON F 90 M] [KRYPTON F 90 N] [KRYPTON F 90 C]

1	0.013.7201.2	1	cover
2	0.013.7200.3/10	1	channel
3	0.013.3595.2/10	1	bracket
6	2.1310.006.2	2	flat washer 10.5
7	2.0112.307.2	1	screw m 10 p.1.5 x 20
8	2.1011.103.2	5	nut m 6 p.1
11	2.1310.002.2	10	washer 6.6, d125
13	2.0112.005.2	1	screw m 6 p.1 x 16
14	2.1310.004.2	2	flat washer 8.5
23	2.0112.003.2	5	screw m 6 p.1 x 12
24	2.0112.205.2	2	screw m 8 p.1.25 x 16
25	2.0112.207.2	1	screw m 8 p.1.25 x 20
26	2.1310.004.2	3	flat washer 8.5
31	0.013.3264.0	1	cover
32	0.013.3168.2/10	1	channel
38	2.6839.057.0	1	clamp 30/25
42	2.0112.309.2	1	screw m 10 p.1.5 x 25
43	0.013.6394.3	1	bracket
44	0.013.8462.2	1	support



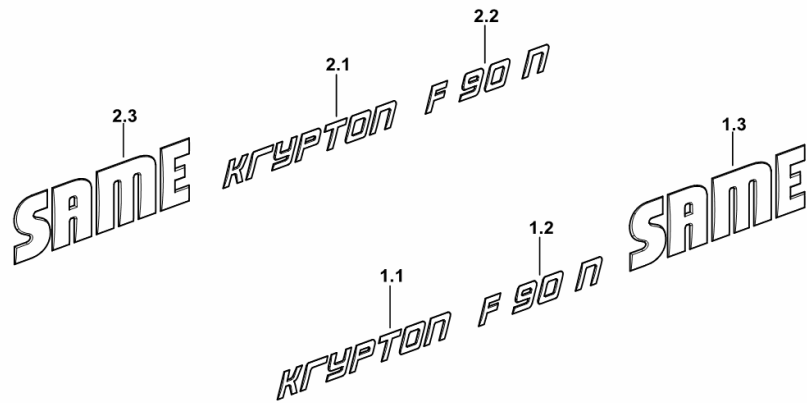
PRODUCT PLATE

Fig.	Code	QTY	Name
------	------	-----	------

Notes:

[KRYPTON F 90 N] -> 1031 - 1080 <-

1.1	0.014.5066.0	1	plate KRYPTON
1.2	0.014.5077.0	1	plate
1.3	0.014.4298.2	1	plate SAME
2.1	0.014.5066.0	1	plate KRYPTON
2.2	0.014.5077.0	1	plate
2.3	0.014.4298.2	1	plate SAME



9_G0272_02_0-A-002

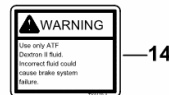
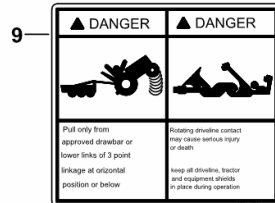
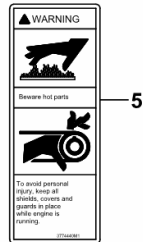
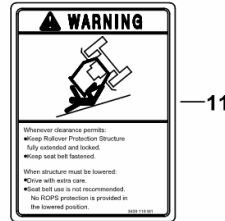
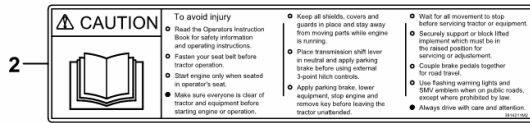
WARNING PLATES

Fig.	Code	QTY	Name
------	------	-----	------

Notes:

[KRYPTON F 90 M] [KRYPTON F 90 N] [KRYPTON F 90 C]

2	2.9929.848.0/10	1	plate
4	2.9929.792.0	1	plate
5	2.9929.791.0	2	plate
6	2.9929.794.0	2	plate
8	2.9929.854.0	1	plate
9	2.9929.856.0	1	plate
11	2.9929.858.0	1	plate
14	2.9929.861.0	1	plate



9_D8974_27_0-A-003

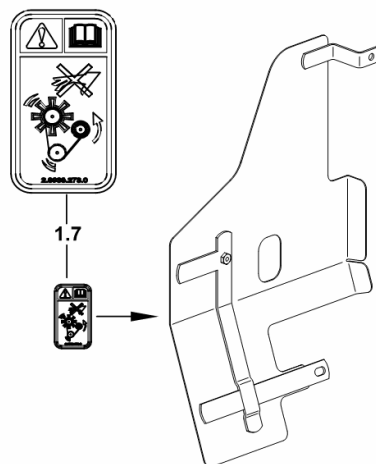
WARNING PLATE

Fig.	Code	QTY	Name
------	------	-----	------

Notes:

[KRYPTON F 90 M] -> 1072 [KRYPTON F 90 N] -> 1072 [KRYPTON F 90 C] -> 1072

1.7	2.9939.273.0	1	plate
-----	--------------	---	-------



9_G0273_00_0-B-001

FENDERS AND PLATFORM

Fig.	Code	QTY	Name
40	0.013.4645.0	2	gasket
41	0.013.4643.0/10	2	gasket
42	2.0599.094.2/10	2	screw m 14 p.2 x 60
43	2.1011.208.2	2	nut m 14 p.2
44	2.0422.303.2	4	stud bolt m 10 p.1.5 x 20
45	2.1011.106.2	4	nut m 10 p.1.5

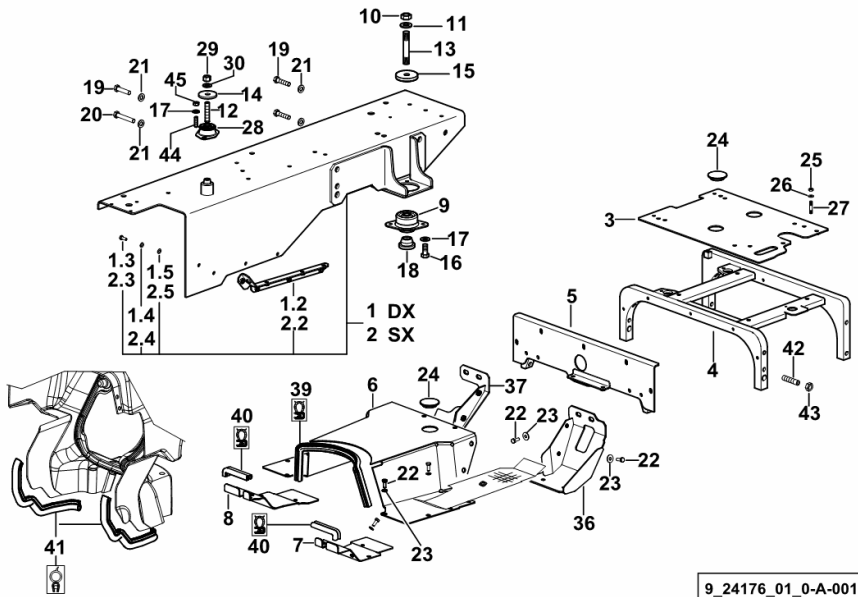


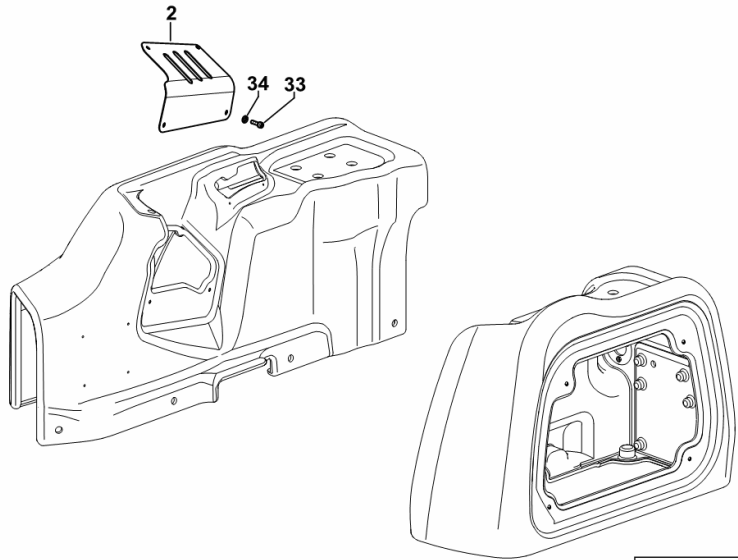
PLATE FOR CONTROL LEVERS FOR THE 6-WAY REMOTE VALVE

Fig.	Code	QTY	Name
------	------	-----	------

Notes:

[KRYPTON F 90 M] [KRYPTON F 90 N] [KRYPTON F 90 C]

2	0.013.3944.0	1	plate
33	2.0332.404.3	4	screw m 6 x 12
34	0.9125.662.0	4	washer 6.4 x 12.5



9_24188_25_0-D-001

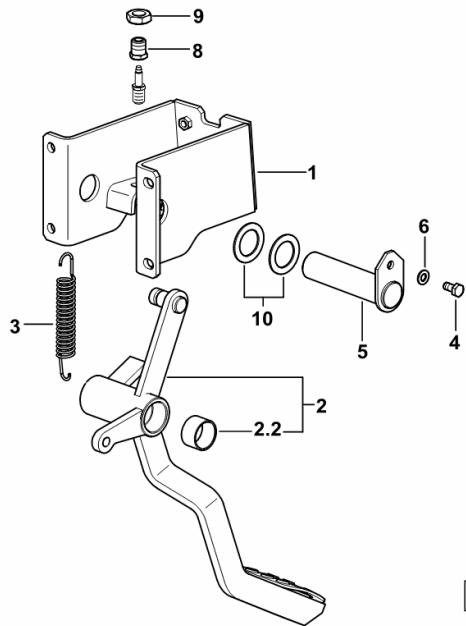
CLUTCH CONTROL

Fig.	Code	QTY	Name
------	------	-----	------

Notes:

[KRYPTON F 90 M] [KRYPTON F 90 N] [KRYPTON F 90 C]

1	0.013.1939.3/50	1	support
2	0.013.1964.3/10	1	pedal
2.2	2.1555.315.0	2	bushing 30x34x20
3	2.4049.059.2	1	spring
4	2.0112.205.2	1	screw m 8 p.1.25 x 16
5	0.013.1940.2	1	pin
6	2.1310.004.2	1	flat washer 8.5
8	0.012.5596.0/20	1	bushing
9	2.1011.509.2	1	nut m 16 p.1.5
10	2.1599.268.0	2	snoulder 30.2x45x2



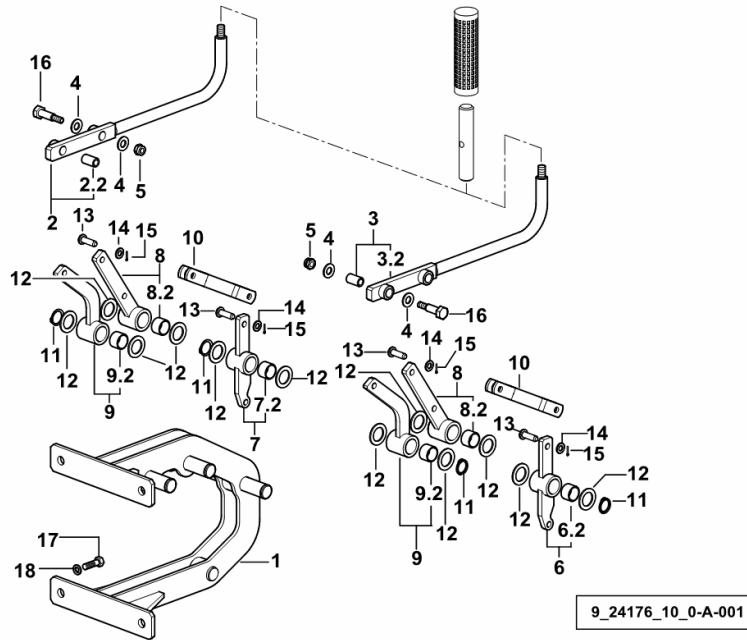
9_24165_10_0-A-001

STEERING CONTROL

Fig.	Code	QTY	Name
------	------	-----	------

Notes:

[KRYPTON F 90 M] [KRYPTON F 90 N] [KRYPTON F 90 C]



1	0.013.1952.3/10	1	support
2	0.013.3083.3	1	rod dx/rh/re
2.2	2.1555.005.0	4	bushing 10x12x10
3	0.013.3082.3	1	rod sx/lh/li
3.2	2.1555.005.0	4	bushing 10x12x10
4	2.1599.526.0	8	washer
5	2.1120.105.2	4	selflock nut m 8 p.1.25
6	0.013.1957.3/10	1	lever sx/lh/li
6.2	2.1555.211.0	2	bushing 20x23x15
7	0.013.1958.3	1	lever dx/rh/re
7.2	2.1555.211.0	2	bushing 20x23x15
8	0.013.1956.3	2	lever
8.2	2.1555.211.0	2	bushing 20x23x15
9	0.013.1955.3/10	2	lever
9.2	2.1555.211.0	2	bushing 20x23x15
10	0.013.3111.2	2	rod
11	2.1410.006.1	6	circlip 20
12	2.1599.399.0	12	washer 20.5x31x2
13	2.1671.306.2	4	pin 8x25
14	2.1311.006.2	4	flat washer 8
15	2.1690.207.2	4	split pin 2x18
16	2.0119.256.2	4	screw m 8 x 25
17	2.0112.409.2	4	screw m 12 p.1.75 x 25
18	2.1310.007.2	4	flat washer 13.5

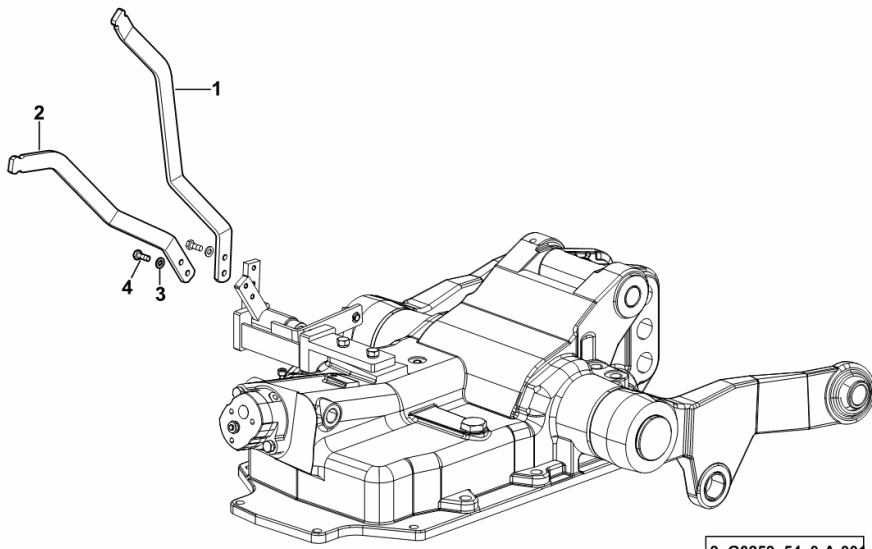
LIFT CONTROL LEVERS

Fig.	Code	QTY	Name
------	------	-----	------

Notes:

[KRYPTON F 90 M] [KRYPTON F 90 M] -> 1090 [KRYPTON F 90 N] [KRYPTON F 90 N] -> 1090 [KRYPTON F 90 C] [KRYPTON F 90 C] -> 1090

1	0.015.1786.0/50	1	lever
2	0.015.1785.0/40	1	lever
3	2.1310.002.2	4	washer 6.6, d125
4	2.0112.005.2	4	screw m 6 p.1 x 16



9_G0259_54_0-A-001

KRYPTON F 90 M-N-C

T0 - CRAWLER TRACKS

CRAWLER SPRING

FRONT SUSPENSION COMMON PARTS.....	T0.01.0 (1)
FRONT SUSPENSION.....	T0.01.1 (1)
FRONT SUSPENSION.....	T0.01.2 (1)
FRONT SUSPENSION.....	T0.01.3 (1)

STEERING CLUTCH|

STEERING CLUTCH.....	T0.02.0 (1)
STEERING CLUTCH.....	T0.02.0 (2)

DRIVING SPROCKETS

DRIVING SPROCKET mm 1050.....	T0.03.0 (1)
DRIVING SPROCKET mm 1050.....	T0.03.1 (1)
DRIVING SPROCKET mm 1100-1350.....	T0.03.2 (1)
DRIVING SPROCKET mm 1100-1350.....	T0.03.3 (1)

TRACK FRAME - FRONT IDLER

IDLER WHEEL.....	T0.04.0 (1)
IDLER WHEEL.....	T0.04.1 (1)
TRACK FRAME BODY.....	T0.04.2 (1)
TRACK FRAME BODY.....	T0.04.3 (1)
CROSS BAR WITH TRACK WIDTH 1050 MM.....	T0.04.4 (1)
CROSS BAR WITH TRACK WIDTH 1100 MM.....	T0.04.5 (1)
CROSS BAR - WITH 1350 mm TRACK.....	T0.04.6 (1)
TRACK HOLDER ROLLER.....	T0.04.7 (1)
TRACK HOLDER ROLLER.....	T0.04.8 (1)
IDLER.....	T0.04.9 (1)
TRACK HOLDER ROLLER.....	0.007.8857.4/10.A
TRACK HOLDER ROLLER.....	0.007.9445.4/20.A

TRACK FRAME COVER

UNDERCARRIAGE STEEL COVER PANEL.....	T0.05.0 (1)
--------------------------------------	-------------

TRACK CHAINS

SELF-LUBRICATING TRACK AND LINKS mm 450.....	T0.06.0 (1)
TRACK "FL4" mm 400.....	T0.06.1 (1)
TRACK "FL4" mm 360.....	T0.06.2 (1)
TRACK "FL4" mm 310.....	T0.06.3 (1)
TRACK mm 450.....	T0.06.4 (1)
SELF-LUBRICATING TRACK AND LINKS "MF200" mm 310.....	T0.06.5 (1)
TRACK "MF200" mm 310.....	T0.06.6 (1)
SELF-LUBRICATING TRACK AND LINKS "MF200" mm 360.....	T0.06.7 (1)
TRACK "MF200" mm 360.....	T0.06.8 (1)
TRACK mm 360.....	0.012.2513.4/10.A
SELF-LUBRICATING TRACK AND LINKS mm 450.....	0.012.6746.4/20.A
SELF-LUBRICATING TRACK AND LINKS mm 360.....	0.012.7300.4/20.A

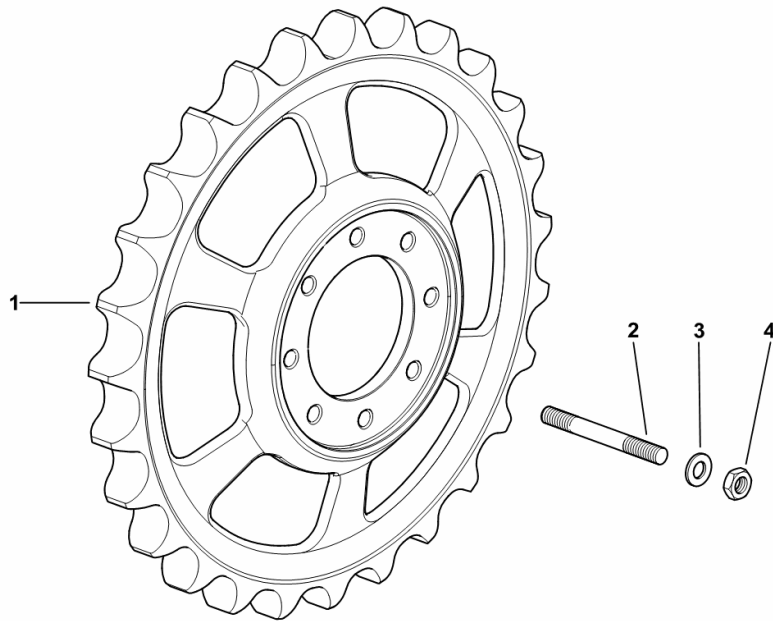
DRIVING SPROCKET mm 1100-1350

Fig.	Code	QTY	Name
------	------	-----	------

Notes:

- WITH "MF200" TRACK CHAIN [KRYPTON F 90 M] - WITH "MF200" TRACK CHAIN [KRYPTON F 90 N]

1	0.294.9210.0/40	2	drive sprocket
2	2.0439.095.2	16	stud bolt m 16 p.1.5x28
3	2.1475.006.2	16	washer 16
4	2.1011.309.2	16	nut m 16 p.1.5



9_48592_03_0-A-001

CROSS BAR - WITH 1350 mm TRACK

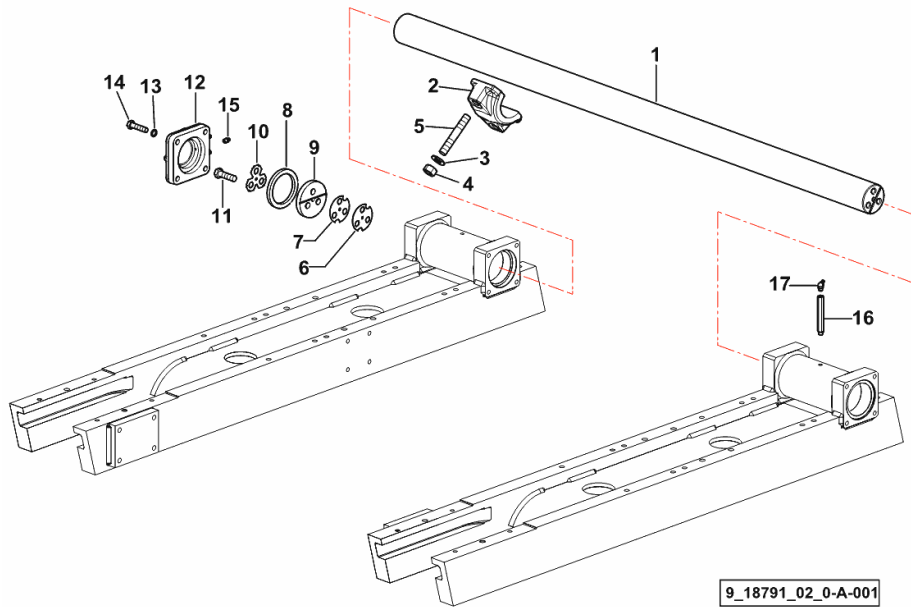


Fig.	Code	QTY	Name
------	------	-----	------

Notes:
[KRYPTON F 90 M]

1	0.011.7921.0/30	1	rod mm 1630
2	0.011.7949.0/10	2	support
3	2.1499.018.2	4	spring washer 18.3x35.5x3.8
4	2.1011.310.2	4	nut m 18 p.1.5
5	2.0439.253.7	4	stud bolt m 18 p.1.5x115
6	0.012.6624.0	4	shim 1.5
7	0.012.6625.0	8	shim 0.5
8	0.012.2100.0	2	spacer
9	0.011.7948.0/20	2	spacer
10	0.012.6620.0	2	small plate
11	2.0112.519.2	6	screw m 14 p.2x50
12	0.011.7854.0/40	2	cover
13	2.1480.016.2	8	washer 12
14	2.0112.419.2	8	screw m 12 p.1.75 x 50
15	2.3820.105.2	2	lubricator m 10 p.1 x 7
16	0.473.9153.0	2	extension
17	2.3821.103.2	2	lubricator m 10 p.1

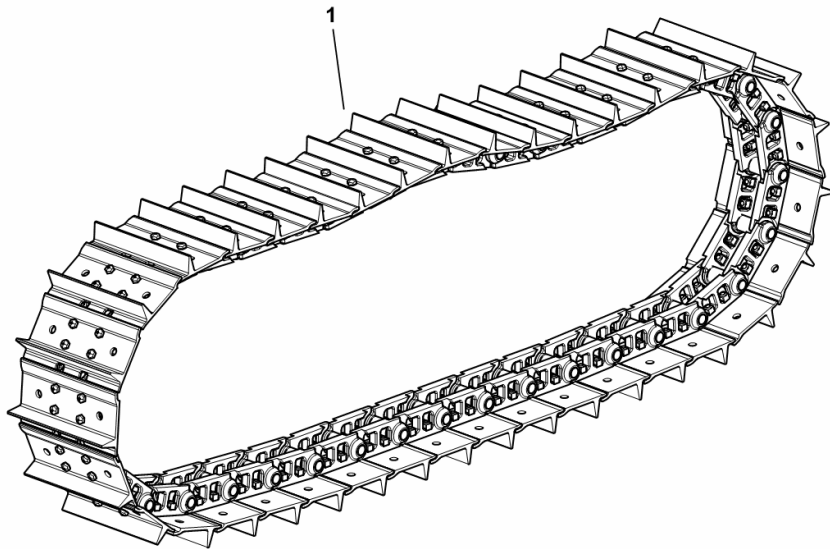
Section: T0 - CRAWLER TRACKS
TRACK "FL4" mm 310

Fig.	Code	QTY	Name
------	------	-----	------

Notes:

- SEMILUBRICATED [KRYPTON F 90 N] - SEMILUBRICATED [KRYPTON F 90 C]

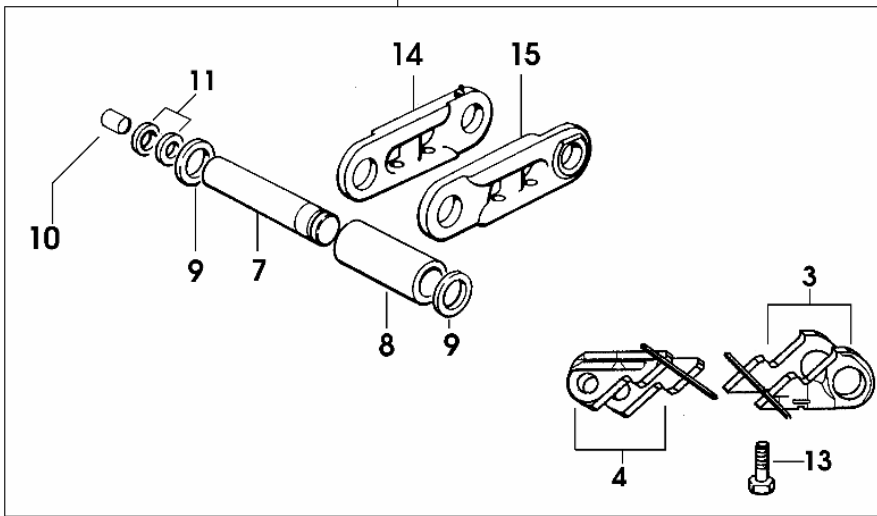
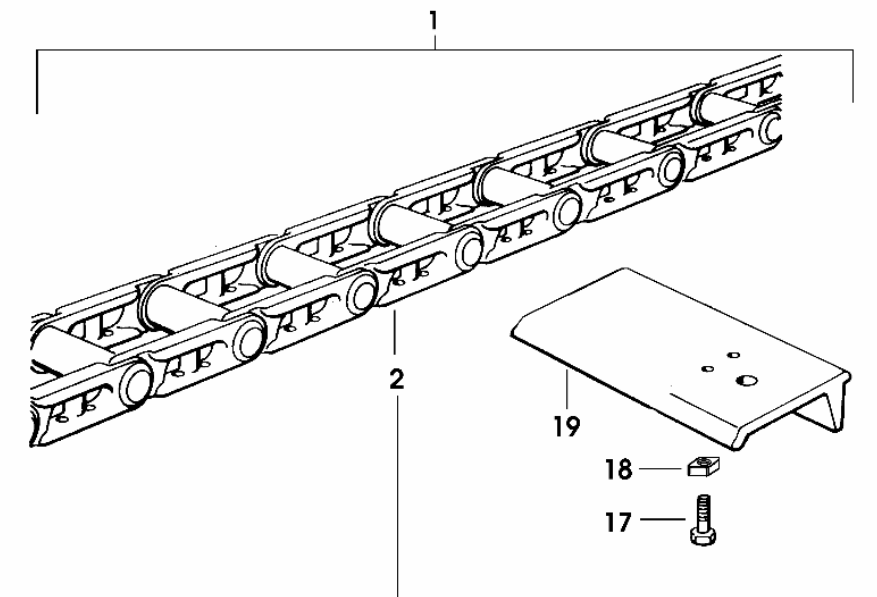
1	0.014.7912.4	2	track  0.014.7912.4
---	--------------	---	---



9_G0194_01_0-A-001

SELF-LUBRICATING TRACK AND LINKS mm 310

Fig.	Code	QTY	Name
1	0.000.0000.1	1	not serviceable
2	0.010.3312.0	1	track mm 140 - n. 37
3	0.010.3476.1	1	chain link sx/lh/li
4	0.010.3476.2	1	chain link dx/rh/re
7	0.010.3313.2	37	pin
8	0.010.3314.0	37	bushing
9	0.010.3314.1	74	spacer
10	0.010.3314.2	37	plug
11	0.010.3919.0	1	'o' ring
13	0.010.3315.2	4	screw
14	0.010.3316.0	36	chain link dx/rh/re
15	0.010.3316.1	36	chain link sx/lh/li
17	2.0119.031.2	148	screw
18	2.1099.042.2	148	nut
19	0.010.3638.0	37	shoe mm 310



0_013_2631_4

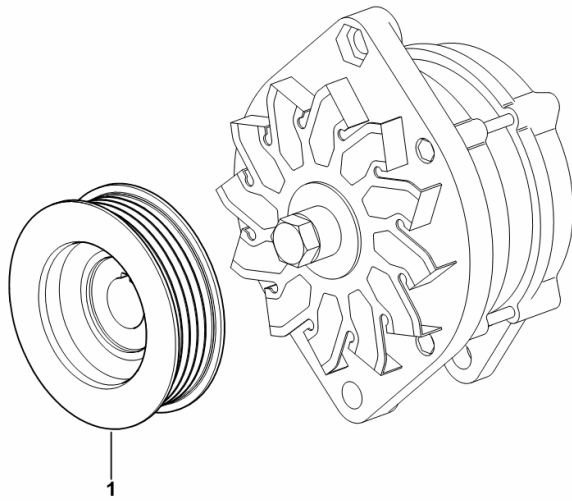
ALTERNATOR PULLEY

Fig.	Code	QTY	Name
------	------	-----	------

Notes:

[KRYPTON F 90 M] [KRYPTON F 90 N] [KRYPTON F 90 C]

1	0.013.7207.0	1	pulley
---	--------------	---	--------



9_D8984_01_0-A-001

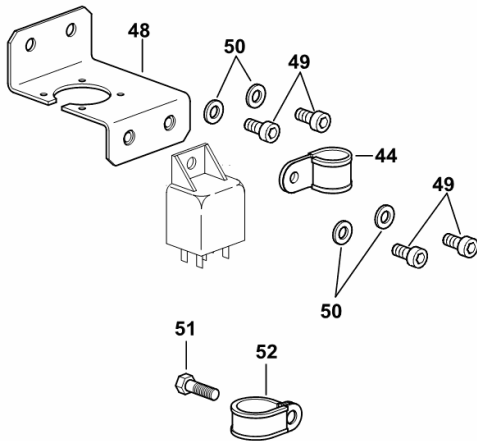
BRACKET FOR DIAGNOSTIC SOCKET

Fig.	Code	QTY	Name
------	------	-----	------

Notes:

[KRYPTON F 90 M] [KRYPTON F 90 N] [KRYPTON F 90 C]

44	2.6839.051.0	1	clamp 20/20
48	0.012.9207.3/10	1	bracket
49	2.0312.104.2	4	screw m 6 p.1 x 16
50	2.1480.012.2	4	washer 6, d128
51	2.0112.209.2	1	screw m 8 p 1.25 x 25
52	2.6839.054.0	1	clamp Ø 20/25



9_G0284_00_0-D-001

CLICK HERE TO **DOWNLOAD** THE COMPLETE MANUAL

- Thank you very much for reading the preview of the manual.
- You can download the complete manual from: www.heydownloads.com by clicking the link below



- Please note: If there is no response to CLICKING the link, please download this PDF first and then click on it.

CLICK HERE TO **DOWNLOAD** THE COMPLETE MANUAL

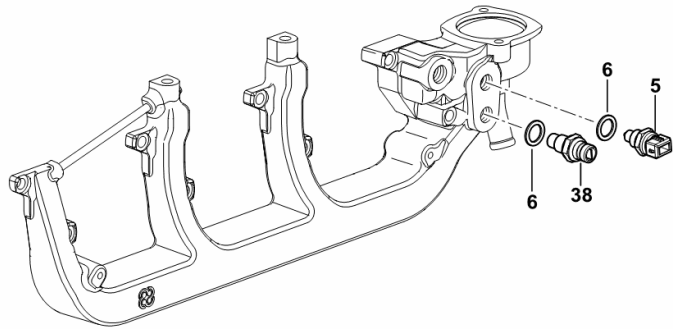
COOLING SYSTEM MANIFOLD SENSORS

Fig.	Code	QTY	Name
------	------	-----	------

Notes:

[KRYPTON F 90 M] [KRYPTON F 90 N] [KRYPTON F 90 C]

5	2.7099.640.0/10	1	tempe guage
6	2.1560.010.0	2	gasket 14.2 x 20 x 1.5
38	2.7099.800.0	1	sensor



9_N1417_00_0-B-001

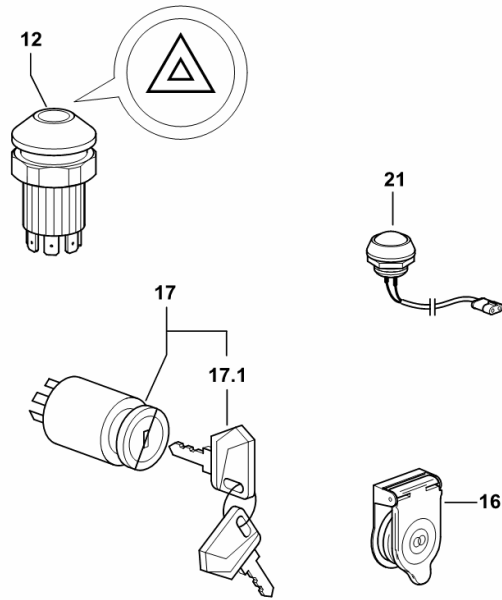
KEYSWITCH BLOCK AND PUSHBUTTONS

Fig.	Code	QTY	Name
------	------	-----	------

Notes:

[KRYPTON F 90 M] 1097 <- [KRYPTON F 90 N] 1097 <- [KRYPTON F 90 C] 1097 <-

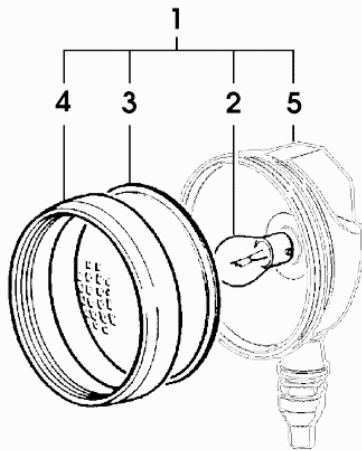
12	2.7659.110.0	1	push-button
16	0.012.2056.2	1	small cover
17	04411512.4	1	start device
17.1	04418435	1.000	key
21	2.7659.203.0/10	1	push-button



9_G0284_00_0-E-001

HEADLAMP COMPONENTS

Fig.	Code	QTY	Name
1	2.8029.300.0	1	headlight
2	2.8210.004.0	1	lamp 12V-35W
3	2.8029.120.1	1	light body
4	2.8029.120.2	1	gasket
5	0.000.0000.1	0	not serviceable



2_8029_300_0

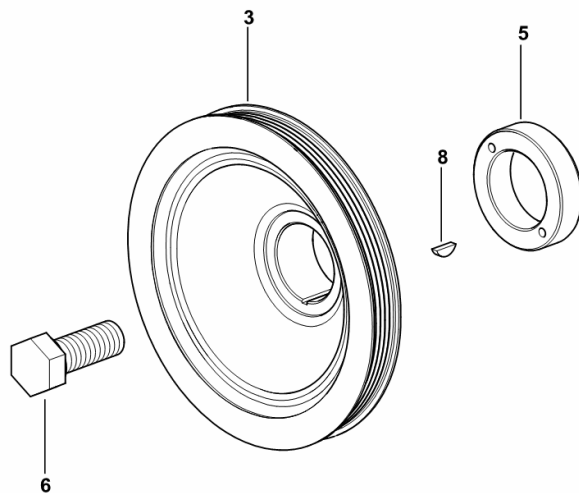
CRANKSHAFT PULLEY

Fig.	Code	QTY	Name
------	------	-----	------

Notes:

[KRYPTON F 90 M] [KRYPTON F 90 N] [KRYPTON F 90 C]

3	0.013.7208.0/10	1	pulley
5	0.085.1248.0/20	1	hub
6	2.0399.144.7/10	1	screw m 20 p.1.5x51
8	2.1720.006.0	1	key 4x6.5



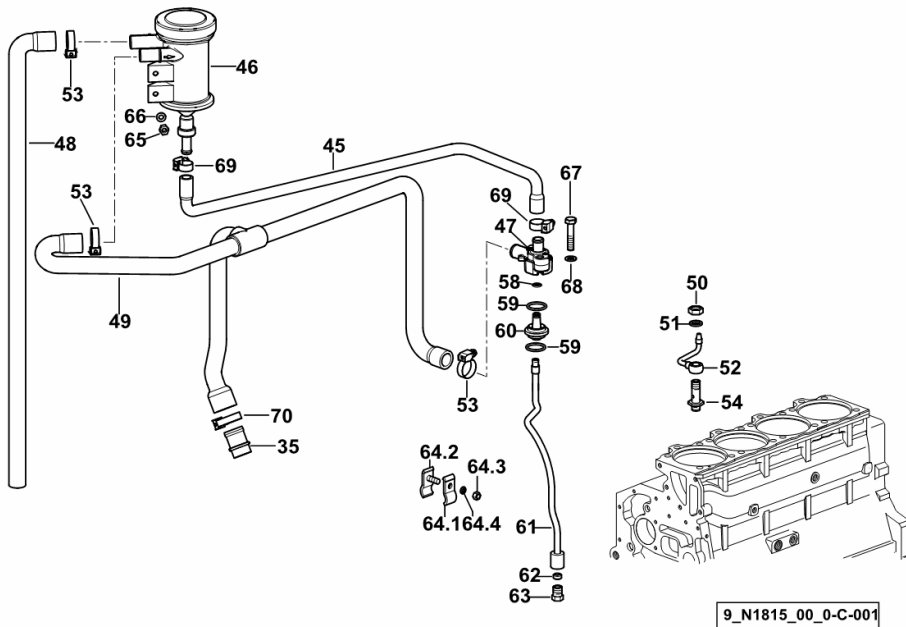
9_N4612_01_0-A-001

LUBRICATION

Fig.	Code	QTY	Name
------	------	-----	------

Notes:

[KRYPTON F 90 M] [KRYPTON F 90 N] [KRYPTON F 90 C]



35	0.011.5918.0/10	1	tube
45	0.013.6895.0	1	tube
46	0.013.5023.0	1	sediment bowl
47	0.013.5525.2/10	1	flange (1064 <-)
47	0.013.5291.0	1	flange (-> 1065)
48	0.013.8200.0	1	tube
49	0.013.6921.0	1	tube
50	2.1099.108.2	4	special nut m 10 p.1
51	2.1560.006.0	8	gasket 10.2 x 16
52	0.086.1550.2	4	cooling nozze
53	2.6851.002.0	3	clamp Ø 20/32
54	0.065.1160.3/20	4	valve
58	2.1532.012.0	1	'o' ring 6.75 x 1.78
59	2.1539.072.0	2	'o' ring 23.52 x 1.78
60	0.066.1558.0	1	sleeve
61	0.066.1557.2	1	tube
62	2.3350.003.1	1	nosepiece 8
63	2.3339.418.1	1	pipe fitting m 12 p.1
64.1	0.075.1552.0	1	bracket
64.2	0.075.1552.2	1	bracket
64.3	2.1011.103.2	1	nut m 6 p.1
64.4	2.1470.002.2	1	washer 6, d128
65	2.1120.103.2	2	nut m 6
66	2.1310.002.2	2	washer 6.6, d125
67	2.0112.215.2	2	screw m 8 p.1.25 x 40
68	2.1474.009.2	2	spring washer 8
69	2.6851.001.0	3	clamp Ø 16/25
70	2.6851.003.0	1	clamp Ø 25/40

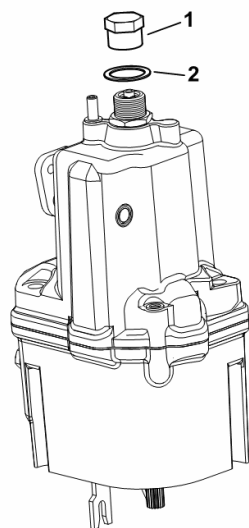
PLUG FOR MECHANICAL REGULATOR

Fig.	Code	QTY	Name
------	------	-----	------

Notes:

[KRYPTON F 90 M] [KRYPTON F 90 N] [KRYPTON F 90 C]

1	2.3119.025.2	1	plug m 18 p.1.5
2	2.1560.016.0	1	gasket 20.2 x 26



9_33016_09_0-A-001

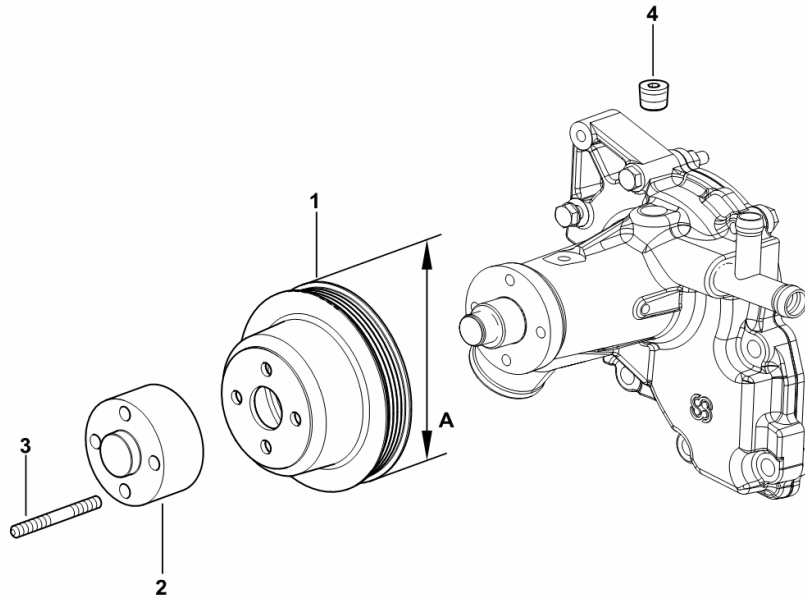
COOLANT PUMP PULLEY

Fig.	Code	QTY	Name
------	------	-----	------

Notes:

[KRYPTON F 90 M] [KRYPTON F 90 N] [KRYPTON F 90 C]

1	0.013.7327.0	1	pulley A = mm 131
2	0.007.1342.0/10	1	spacer
3	2.0432.018.7	4	stud bolt m 8 p.1.25 / p.1 x 65
4	2.3130.003.1	1	plug 3/8" gas



9_N1817_01_0-A-001

KRYPTON F 90 M-N-C

Section: C0 - ENGINE ACCESSORIES
COOLING - COOLANT RADIATOR

Ref.: C0.01.1 (1)

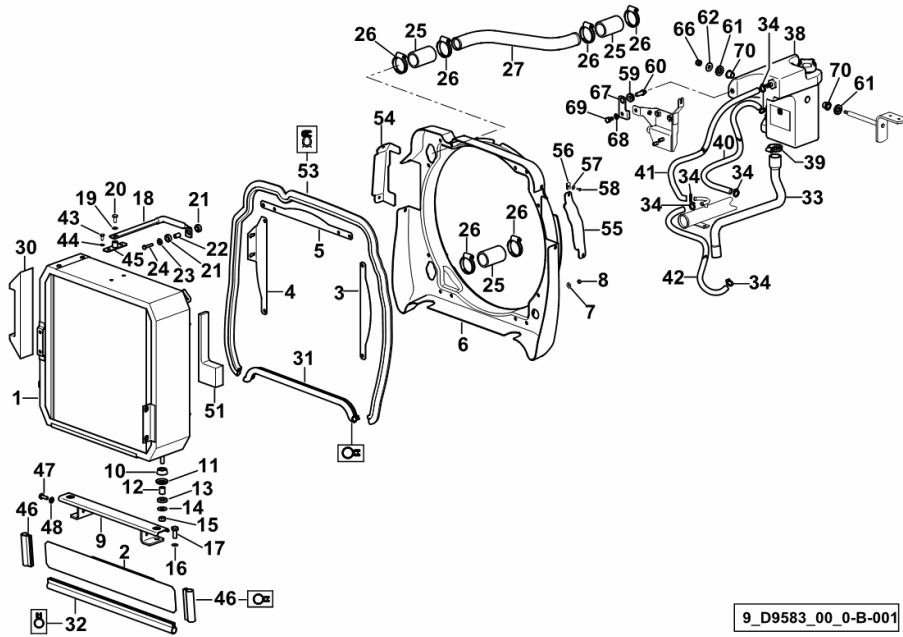


Fig.	Code	QTY	Name
Notes:			
[KRYPTON F 90 M] 1070 <- [KRYPTON F 90 N] 1070 <- [KRYPTON F 90 C] 1070 <-			
1	0.013.0847.3/20	1	water cooler
2	0.013.5625.3/10	1	division
3	0.013.0864.0	1	guard sx/lh/li
4	0.013.3136.0	1	guard dx/rh/re
5	0.013.0863.0/10	1	guard
6	0.013.5496.0/30	1	duct
7	2.1310.002.2	12	washer 6.6, d125
8	2.1011.103.2	12	nut m 6 p.1
9	0.013.5624.2/10	1	support
10	0.136.7385.0	2	rubber plug
11	0.136.7384.0	2	cup
12	2.1579.090.2	2	spacer 10.1x15x18
13	0.136.7387.0	2	rubber plug 15x27x5
14	2.1599.044.2	2	snoulder 10.5x25.5x1.5
15	2.1011.106.2	2	nut m 10 p.1.5
16	2.1470.006.2	2	lock washer 10
17	2.0112.309.2	2	screw m 10 p.1.5 x 25
18	0.013.5623.0/20	1	rod
19	2.1310.004.2	1	flat washer 8.5
20	2.0112.205.2	1	screw m 8 p.1.25 x 16
21	0.035.8459.0	2	rubber plug
22	2.1579.322.0	1	spacer 10.5x6.5x17
23	2.1312.003.2	1	washer 6
24	2.0112.011.2	1	screw m 6 p.1x30
25	0.014.1882.0	3	sleeve
26	2.6851.004.0	6	clamp Ø 32/50
27	0.013.3395.0/10	1	tube
30	0.013.4026.0/20	1	gasket dx/rh/re
31	0.013.5630.0	1	gasket mm 565
32	0.013.5634.0	1	gasket mm 505
33	0.013.6882.0	1	tube
34	2.6851.018.0	6	clamp 11/17
38	0.013.6322.4/20	1	cup
			☞ 0.013.6322.4/20
39	2.6851.003.0	1	clamp Ø 25/40
40	0.012.6457.0	0.45	tube
41	0.012.6457.0	0.45	tube
42	0.012.6457.0	0.4	tube
43	2.0112.004.2	2	screw m 6 p.1 x 14
44	2.1310.002.2	2	washer 6.6, d125
45	0.013.5622.2	1	bracket

FUEL SYSTEM - TANK

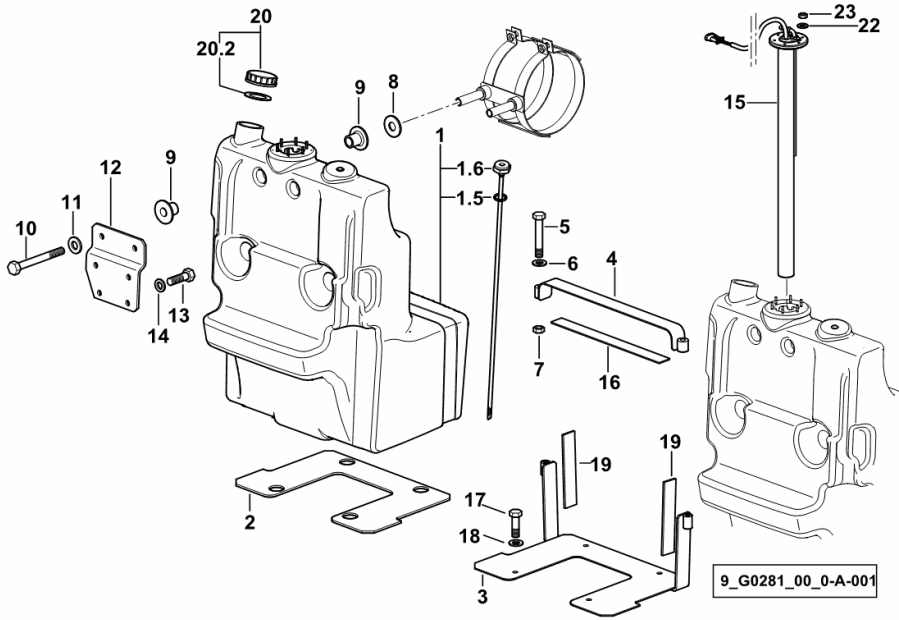


Fig.	Code	QTY	Name
------	------	-----	------

Notes:

[KRYPTON F 90 M] [KRYPTON F 90 N] [KRYPTON F 90 C]

1	0.013.0900.3/60	1	fueltank
1.5	2.1530.056.0	1	'o' ring 21.82 x 3.53
1.6	0.013.0901.3/20	1	tube
2	0.013.0907.0	1	gasket
3	0.013.0897.2	1	plate
4	0.013.0895.2	1	hose clip
5	2.0114.321.2	2	screw m 10 p.1.5x70
6	2.1310.006.2	2	flat washer 10.5
7	2.1011.206.2	2	nut m 10 p.1.5
8	2.1599.869.2	2	washer
9	0.013.0903.0	4	rubber plug
10	2.0112.325.2	2	screw m 10 p.1.5 x 80
11	2.1310.006.2	2	flat washer 10.5
12	0.014.2983.0	1	bracket
13	2.0112.309.2	4	screw m 10 p.1.5 x 25
14	2.1310.006.2	4	flat washer 10.5
15	2.7059.812.0/20	1	float level
16	0.013.0896.0	1	gasket
17	2.0112.309.2	4	screw m 10 p.1.5 x 25
18	2.1310.006.2	4	flat washer 10.5
19	0.013.0898.0	1	gasket
20	0.012.3914.3	1	plug
20.2	2.1569.157.0	1	gasket 37.8x59.8x3
22	2.1311.002.2	6	flat washer 4
23	2.1011.101.2	6	nut m 4 p.0.7

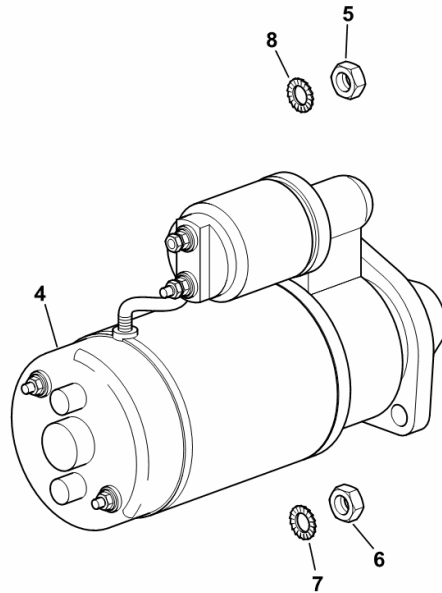
STARTER

Fig.	Code	QTY	Name
------	------	-----	------

Notes:

[KRYPTON F 90 M] [KRYPTON F 90 N] [KRYPTON F 90 C]

4	2.9619.390.0	1	starter motor 12 V, 3 kW, Z = 9 (1170 <-) ☞ 2.9619.390.0
4	2.9619.560.0	1	starter motor 12 V, 3.5 kW, Z = 9
5	2.1011.106.2	1	nut m 10 p.1.5
6	2.1011.522.2	1	nut m 12 p.1.25
7	2.1470.007.2	1	lock washer 12
8	2.1470.006.2	1	lock washer 10



9_52784_09_0-A-001

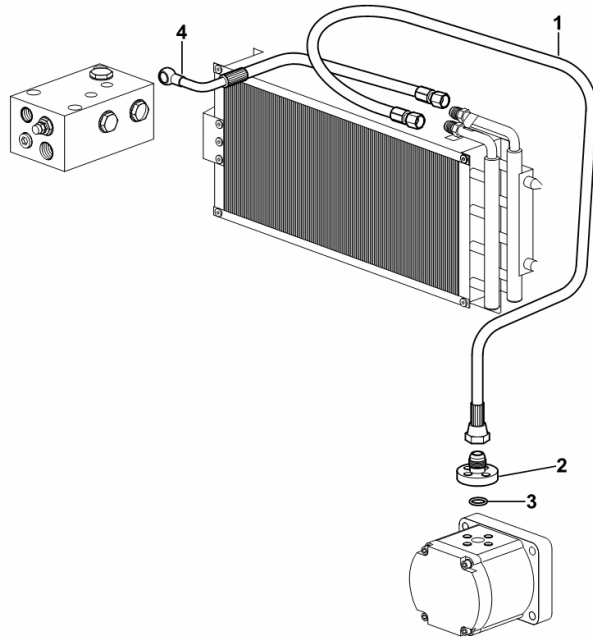
GEAR BOX OIL RADIATOR TUBES

Fig.	Code	QTY	Name
------	------	-----	------

Notes:

[KRYPTON F 90 M] [KRYPTON F 90 N] [KRYPTON F 90 C]

1	0.013.2511.3/20	1	tube
2	0.012.6681.0	1	flange
3	2.1530.037.0	1	'o' ring 15.08x2.62
4	0.013.2512.3/10	1	tube



9_24161_10_0-A-001

KRYPTON F 90 M-N-C

Section: H0 - HYDRAULIC AND PNEUMATIC SYSTEM|

Ref.: 0.012.9821.4.A

CONTROL VALVE FOR STEERING

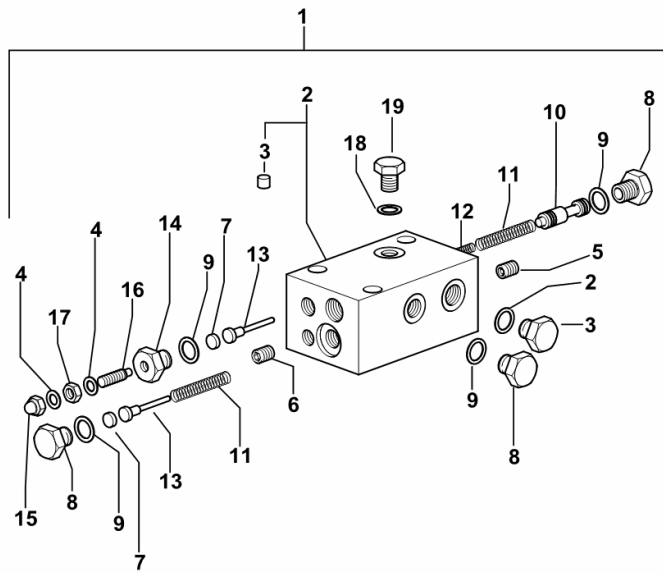


Fig.	Code	QTY	Name
1	0.012.9821.4	1	valve
2	0.000.0000.1	0	not serviceable
3	2.1890.007.2	3	plug
4	2.1560.004.0	2	gasket 8.2 x 14
5	2.0599.119.1	1	grain
6	2.0599.120.1	1	grain
7	0.011.8566.0/10	2	shim
8	2.3110.403.2	4	plug m 14
9	2.1560.010.0	5	gasket 14.2 x 20 x 1.5
10	0.011.8662.0/10	2	slider
11	2.4019.716.2	2	spring
12	2.4019.715.2	1	spring
13	0.011.8664.0/10	2	ferrule
14	2.3199.301.0	1	plug
15	2.1031.002.7	1	plug m 8
16	2.0599.109.0	1	screw
17	2.1011.205.2	1	nut m 8 p.1.25
18	2.1560.008.0	3	gasket 12.2 x 18
19	2.3110.402.2	3	plug m 12 p.1.5

0_012_9821_4

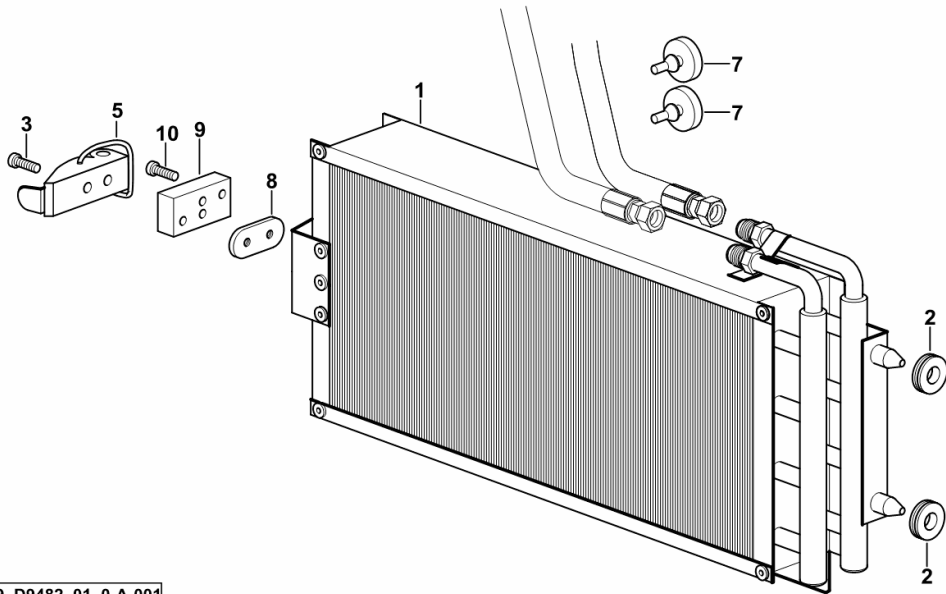
GEARBOX OIL COOLER

Fig.	Code	QTY	Name
------	------	-----	------

Notes:

[KRYPTON F 90 M] [KRYPTON F 90 N] [KRYPTON F 90 C]

1	0.010.9570.2/10	1	oil cooler
2	2.6560.004.0	2	wire guide 10x2.5
3	2.0332.204.2	2	screw m 4x0.7x12
5	0.008.9632.0	1	clevis
7	0.292.6157.0	2	rubber plug
8	0.008.9726.0	1	small plate
9	0.012.2788.0/10	1	small block
10	2.0312.702.2	2	screw m 4.0 x 12



9_D9482_01_0-A-001

KRYPTON F 90 M-N-C

E0 - REAR AXLE

REAR AXLE

REAR AXLE..... E0.01.0 (1)

REAR AXLE..... E0.01.1 (1)

REAR DIFFERENTIAL / HALF-SHAFTS

INPUT SHAFT..... E0.02.0 (1)

REAR REDUCTION GEARS AND AXLE SHAFTS..... E0.02.1 (1)

REAR REDUCTION GEARS AND AXLE SHAFTS..... E0.02.2 (1)

REAR BRAKES

REAR BRAKES..... E0.03.0 (1)

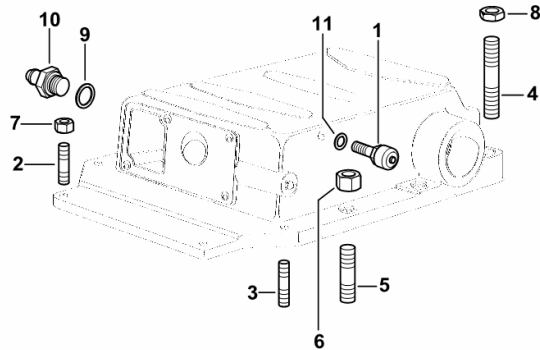
LIFT FIXING COMPONENTS - SAFER

Fig.	Code	QTY	Name
------	------	-----	------

Notes:

[KRYPTON F 90 M] 1089 <- [KRYPTON F 90 N] 1089 <- [KRYPTON F 90 C] 1089 <-

1	0.001.6587.3	1	screw m 12 x 30
2	2.0432.155.7	2	stud bolt m 10 p.1.5 / p. 1.25 x 25
3	2.0432.157.7	2.00	stud bolt m 10 p.1.5 / p.1.25 x 30
4	2.0439.099.7	4	stud bolt m 14 p.1.5 x 60
5	2.0439.577.7	4	stud bolt m 14 p.1.5x35
6	2.1011.308.2	6	nut m 14 p.1.5
7	2.1011.321.2	4	nut m 10 p.1.25
8	2.1011.508.2	2	nut m 14 p.1.5
9	2.1560.014.0	1	gasket 18.2 x 24 x 1.5
10	2.3339.156.2	1	pipe fitting
11	2.1560.006.0	1	gasket 10.2 x 16



9_48359_02_0-A-001

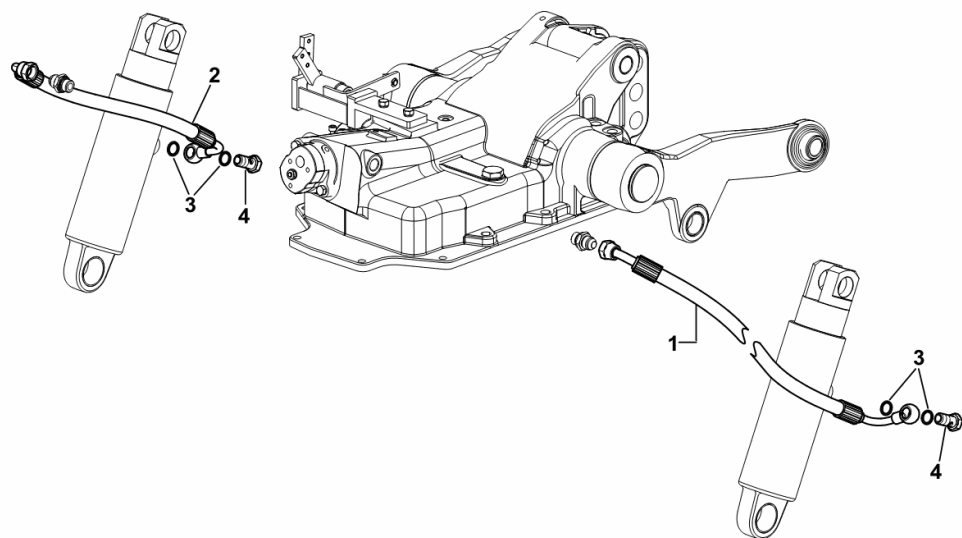
REAR LIFT CYLINDER BARREL - MITA

Fig.	Code	QTY	Name
------	------	-----	------

Notes:

[KRYPTON F 90 M] -> 1091 [KRYPTON F 90 N] -> 1091 [KRYPTON F 90 C] -> 1091

1	0.015.3021.3/10	1	tube sx/lh/li
2	0.015.3022.3	1	tube dx/rh/re
3	2.1560.011.0	4	gasket 16.2x20
4	2.3332.005.2	2	pipe fitting m 16 p.1.5



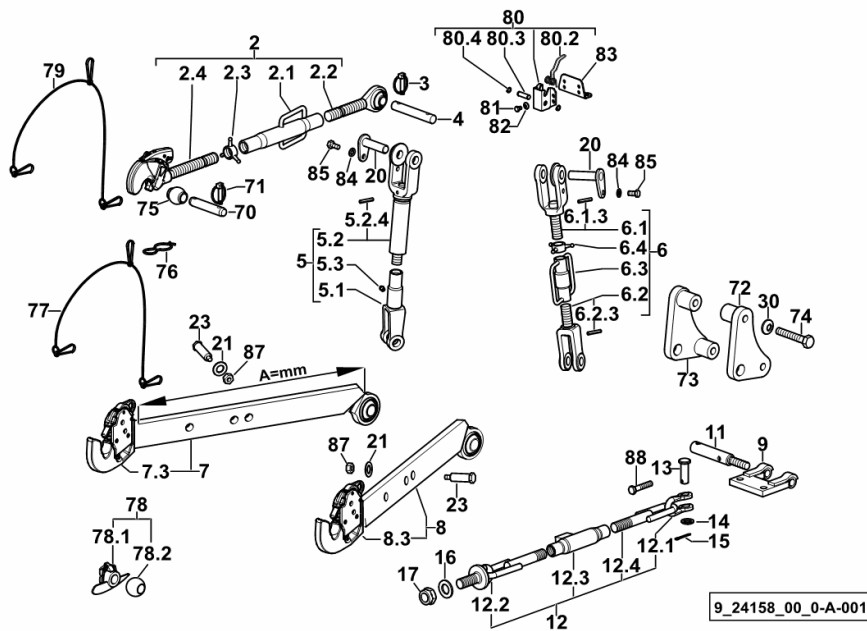
9_G0282_01_0-A-001

3-POINT LINKAGE WITH AUTOMATIC COUPLERS A = mm 726

Fig.	Code	QTY	Name
------	------	-----	------

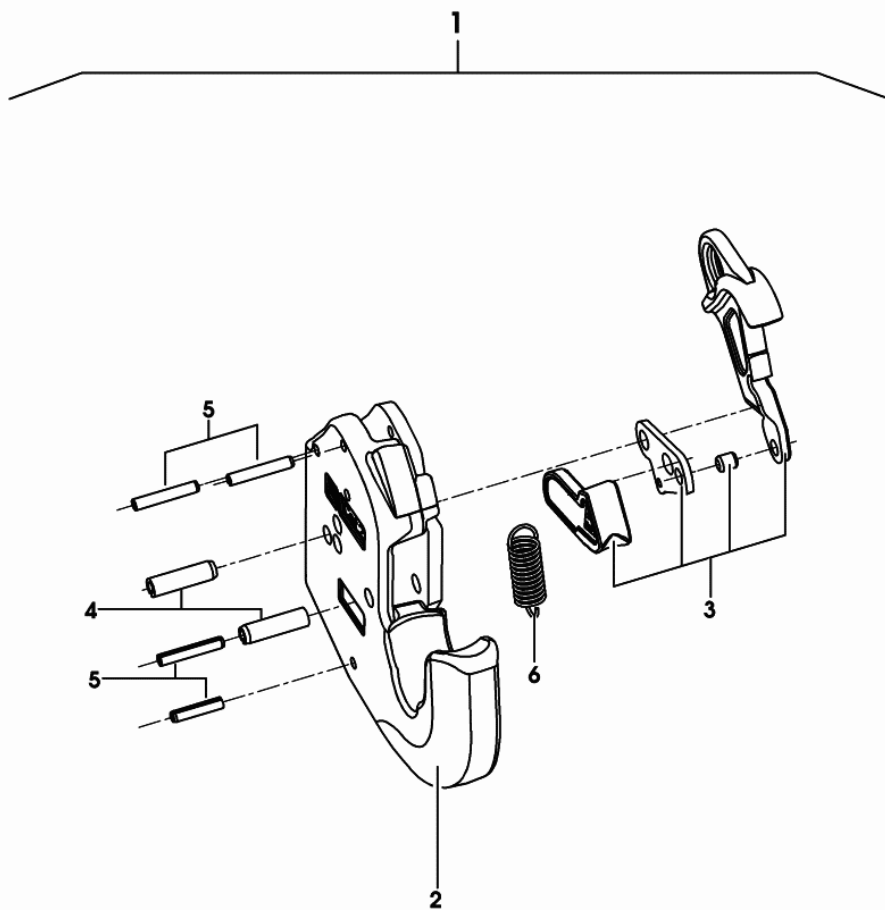
Notes:
[KRYPTON F 90 M]

2	0.014.1411.4/10	1	3 point hitch
2.1	0.013.2784.3/20	1	top link
2.2	0.013.2786.3	1	rod sx/lh/li
2.3	0.001.5059.0	1	nut
2.4	0.014.1410.3	1	automatic hook ☞ 0.014.1410.3
3	0.010.9322.4	2	pin Ø 11
4	0.760.0451.0	1	pin
5	0.013.4433.4	1	rod
5.1	0.760.5436.3/20	1	rod sx/lh/li
5.2	0.013.4433.3	1	rod
5.2.4	2.1630.717.2	1	roll pin 8 x 50
5.3	2.3820.105.2	1	lubricator m 10 p.1 x 7
6	0.013.4434.4	1	adjustable tensioner
6.1	0.013.4434.3	1	rod
6.1.3	2.1630.717.2	1	roll pin 8 x 50
6.2	0.760.5452.3/20	1	rod sx/lh/li
6.2.3	2.1630.717.2	1	roll pin 8 x 50
6.3	0.760.5453.2/10	1	sleeve
6.4	0.007.6990.0	1	wing nut
7	0.013.2614.4/10	1	left hand arm sx/lh/li
7.3	0.010.1702.3	1	automatic hook 2 cat. - WALTERSCHEID ☞ 0.010.1702.3
8	0.013.2613.4/10	1	right hand arm dx/rh/re
8.3	0.010.1702.3	1	automatic hook 2 cat. - WALTERSCHEID ☞ 0.010.1702.3
9	0.760.5440.2/30	1	plate
11	0.760.5451.0/10	2	pin
12	0.007.9384.4	2	stop control
12.1	0.007.9388.0	2	fork
12.2	0.007.9387.3	2	tensioner
12.3	0.007.9386.2	2	sleeve
12.4	0.007.9385.2	2	tensioner
13	2.1671.815.2	2	pin 18x55
14	2.1311.011.2	2	flat washer 18
15	2.1690.513.2	2	split pin 5 x 36
16	2.1310.015.2	2	washer 25X44x4
17	2.1120.313.2	2	nut m 24 p.2
20	0.008.8469.2	2	pin
21	2.1475.007.7	2	washer 18
23	0.479.5868.0/10	4	pin mm 24



Section: R0 - REAR LIFT
TOWING HITCH

Fig.	Code	QTY	Name
1	0.014.1420.3	1	automatic hook 2 cat.-CBM-
2	0.000.0000.1	1	not serviceable
3	0.900.0270.5	1	accessories
4	0.900.0270.6	1	accessories
5	0.900.0270.7	1	accessories
6	0.900.0270.8	1	spring



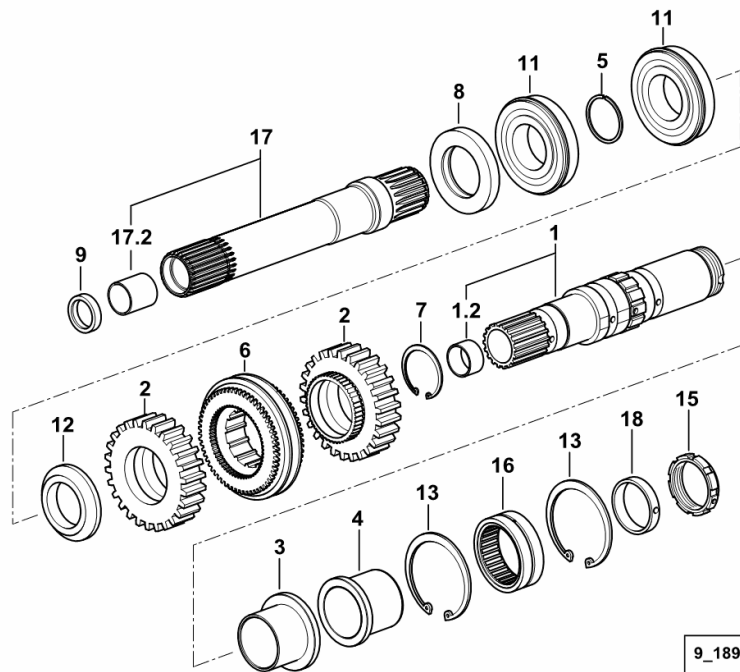
0_014_1420_3

Section: D0 - TRANSMISSION
GEARBOX TO CLUTCH SHAFT


Fig.	Code	QTY	Name
------	------	-----	------

Notes:

[KRYPTON F 90 M] -> 1079 [KRYPTON F 90 N] -> 1079 [KRYPTON F 90 C] -> 1079



9_18937_00_0-A-002

1	0.012.9420.3/20	1	shaft
1.2	2.1555.214.0	1	bushing 25 x 28 x 15
2	0.012.9224.0	2	gear z = 26
3	2.1559.434.0/20	1	bushing
4	2.1559.435.0/20	1	bushing
5	2.1422.028.7	1	circlip 38x1.5
6	0.011.8378.4/10	1	lock synchronizer ø 71/76  0.011.8378.4/10
7	2.1410.016.1	1	circlip 40
8	2.1529.051.0	1	'o' ring
9	2.1529.125.0/10	1	'o' ring 25 x 32 x 7
11	2.2043.012.0	2	ball bearing 40 x 80 x 18
12	2.1549.558.0	1	spacer
13	2.1411.026.7	2	circlip 65x2.5
15	2.1219.067.7/10	1	ring nut m 42x1.5
16	2.2999.457.0	1	roller cage
17	0.014.0010.3	1	shaft
17.2	2.1555.514.0	1	bushing 25 x 28 x 30
18	2.1549.559.0/20	1	spacer

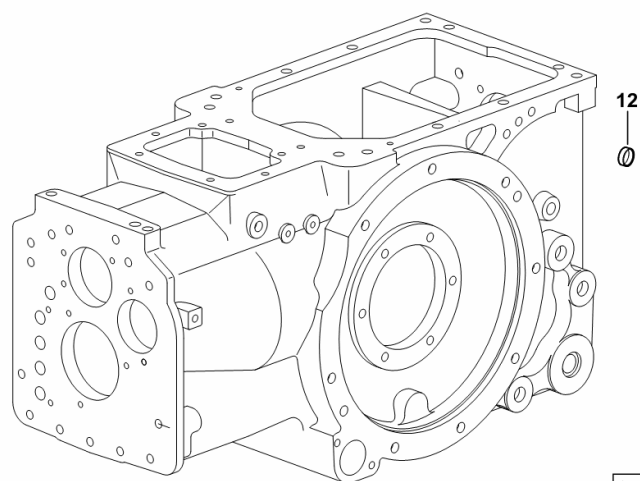
REAR GEARBOX PLUG

Fig.	Code	QTY	Name
------	------	-----	------

Notes:

[KRYPTON F 90 M] [KRYPTON F 90 N] [KRYPTON F 90 C]

12	2.3171.006.4	2	plug Ø 16
----	--------------	---	-----------



9_24139_01_0-B-001

CLICK HERE TO **DOWNLOAD** THE COMPLETE MANUAL

- Thank you very much for reading the preview of the manual.
- You can download the complete manual from: www.heydownloads.com by clicking the link below



- Please note: If there is no response to CLICKING the link, please download this PDF first and then click on it.

CLICK HERE TO **DOWNLOAD** THE COMPLETE MANUAL