

# KRYPTON F 78 N -> 2001

## ACCESSORIES

### GENERAL

6-WAY AUXILIARY DISTRIBUTOR.....	0E.00.1
6-WAY AUXILIARY DISTRIBUTOR.....	0E.00.2
10-WAY AUXILIARY DISTRIBUTOR.....	0E.00.3
10-WAY AUXILIARY DISTRIBUTOR.....	0E.00.4
REINFORCED 3-POINT LINKAGE.....	0E.00.5
REINFORCED 3-POINT LINKAGE.....	0E.00.6
3-POINT LINKAGE WITH AUTOMATIC COUPLERS A = mm 580.....	0E.00.9
3-POINT LINKAGE WITH AUTOMATIC COUPLERS A = mm 580.....	0E.00.10
FRONT TOWING HITCH.....	0E.00.11
TOWING BAR mm 1431.....	0E.00.12
TOWING BAR mm 1603.5.....	0E.00.13
CURVED CROSS MEMBER FOR DRAWBAR.....	0E.00.15
FRONT BALLAST n. 4.....	0E.00.16
FRONT WEIGHT CARRIER.....	0E.00.18
SIDE BALLASTS n. 2.....	0E.00.19
SIDE BALLASTS n.4.....	0E.00.20
PLATE FOR FRONT CARRIER.....	0E.00.21
P.T.O. GUARD.....	0E.00.22
LUBRICATOR.....	0E.00.23
TOOL POUCH.....	0E.00.24
TOWING HITCH.....	0.010.1702.3.A
DISTRIBUTOR CONTROL.....	0.013.1989.4.A
ADJUSTABLE LIFT ROD PARTS.....	0.013.2770.3.A
ENGAGEMENT.....	0.98309.50.3/10.A
DISTRIBUTOR.....	2.3729.688.0.A
DISTRIBUTOR.....	2.3729.695.0.A

CLICK HERE TO **DOWNLOAD** THE COMPLETE MANUAL

- Thank you very much for reading the preview of the manual.
- You can download the complete manual from: [www.heydownloads.com](http://www.heydownloads.com) by clicking the link below



- Please note: If there is no response to CLICKING the link, please download this PDF first and then click on it.

CLICK HERE TO **DOWNLOAD** THE COMPLETE MANUAL

**3-POINT LINKAGE WITH AUTOMATIC COUPLERS A = mm 580**

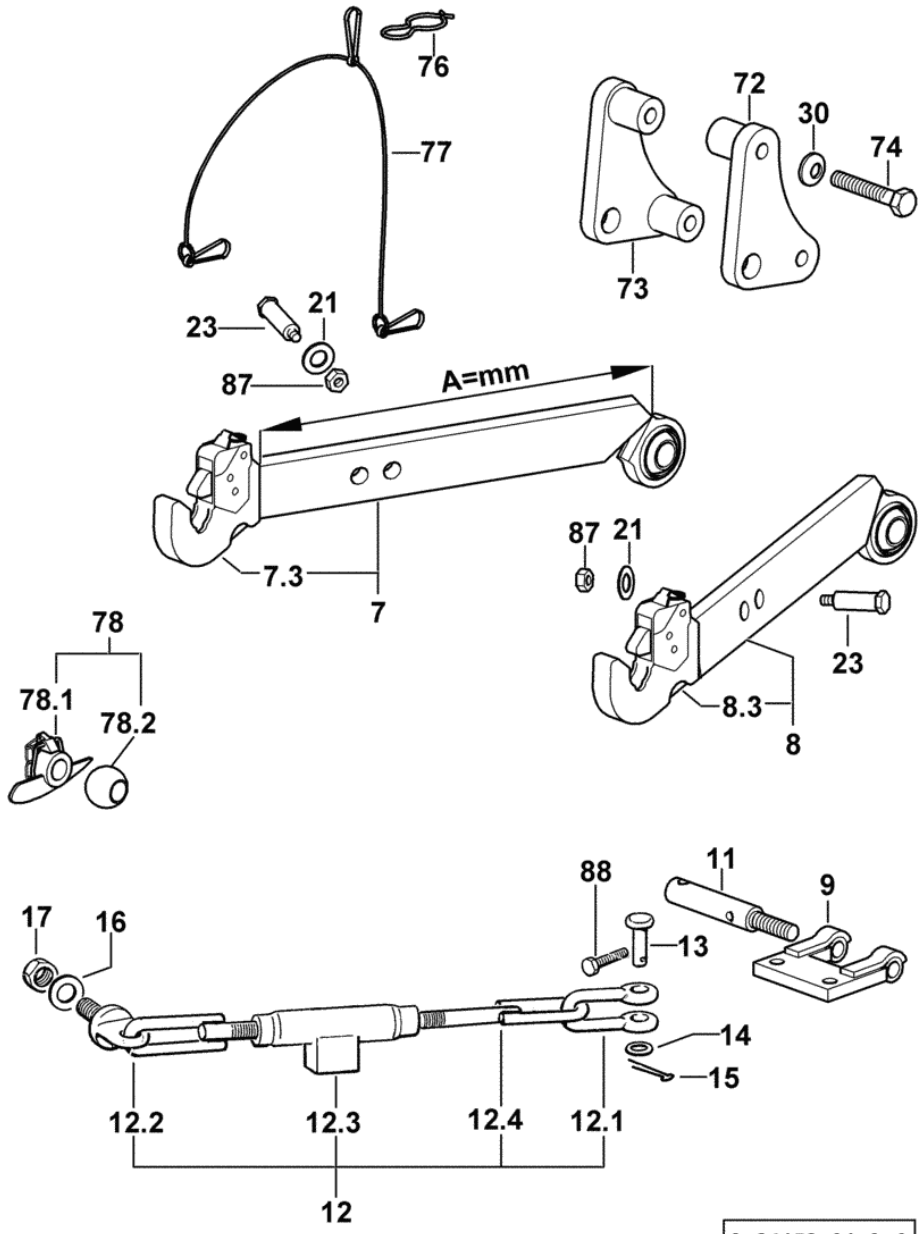
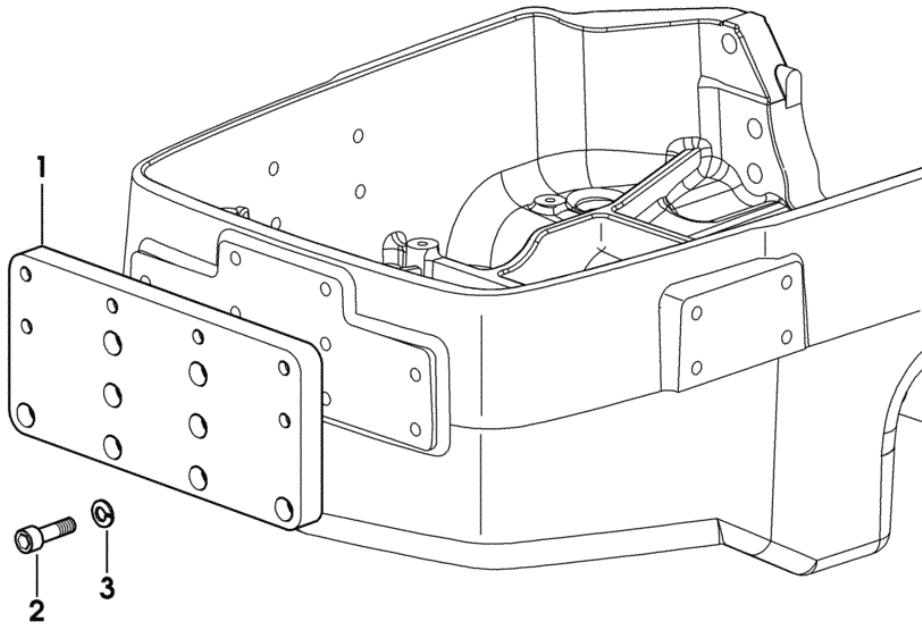


Fig.	Code	QTY	Name
7	0.013.2612.4	1	left hand arm sx/lh/li
7.3	0.010.1702.3	1	automatic hook 2 cat.- WALTERSCHEID COMPONENT PARTS SEE COMPONENTS LIST ☞ 0.010.1702.3 ☞ 0E.00.47
8	0.013.2611.4	1	right hand arm dx/rh/re
8.3	0.010.1702.3	1	automatic hook 2 cat.- WALTERSCHEID COMPONENT PARTS SEE COMPONENTS LIST ☞ 0.010.1702.3 ☞ 0E.00.47
9	0.760.5440.2/30	1	plate
11	0.760.5451.0/10	2	pin
12	0.007.9384.4	2	stop control
12.1	0.007.9388.0	2	fork
12.2	0.007.9387.3	2	tensioner
12.3	0.007.9386.2	2	sleeve
12.4	0.007.9385.2	2	tensioner
13	2.1671.815.2	2	pin 18x55
14	2.1311.011.2	2	flat washer 18
15	2.1690.513.2	2	split pin 5 x 36
16	2.1310.015.2	2	washer 25X44x4
17	2.1120.313.2	2	nut m 24 p.2
21	2.1475.007.7	2	washer 18
23	0.479.5868.0/10	4	pin mm 24
30	2.1475.108.2	4	spring washer 20
72	0.007.9243.2	1	brace dx/rh/re
73	0.007.9244.2	1	brace sx/lh/li
74	2.0112.829.2	4	screw m 20x100
76	0.760.2262.0	2	spring
77	0.760.2258.3	1	cable
78	0.96066.53.4	2	old part
78.1	0.760.5951.3	1	pin 2 cat.
78.2	0.760.5952.0	1	cap Ø 56
87	2.1120.210.2	2	selflock nut m 18 p.1.5
88	2.0129.053.2	2	screw m 12 p.1.25x60

9\_24158\_01\_0\_A

**PLATE FOR FRONT CARRIER**

Fig.	Code	QTY	Name
1	0.012.2637.0/20	1	plate
2	2.0312.516.2	6	screw m 14 x 50
3	2.1474.012.2	6	washer 14



9\_18752\_41\_0\_0

Section: ACCESSORIES  
**DISTRIBUTOR**

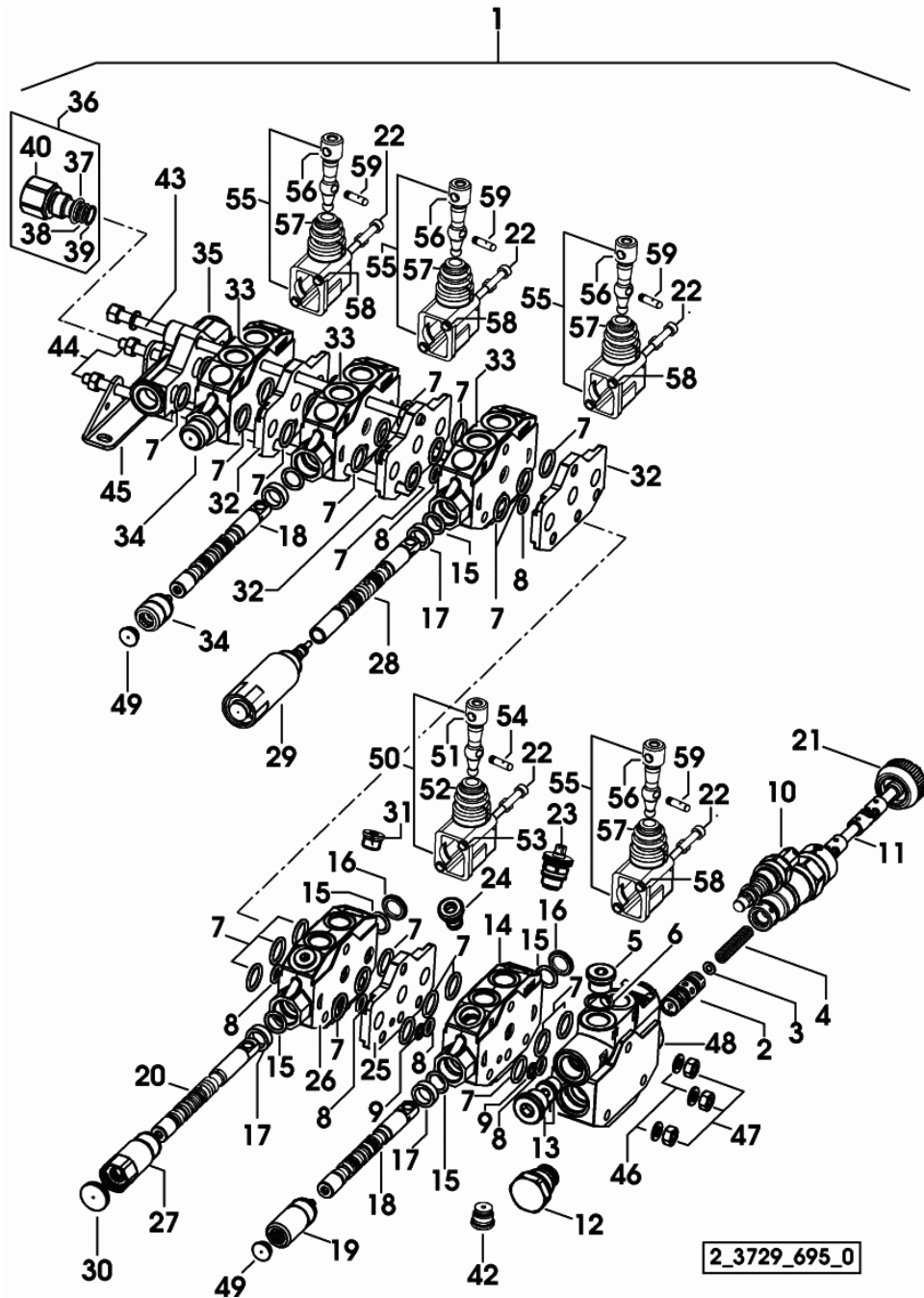
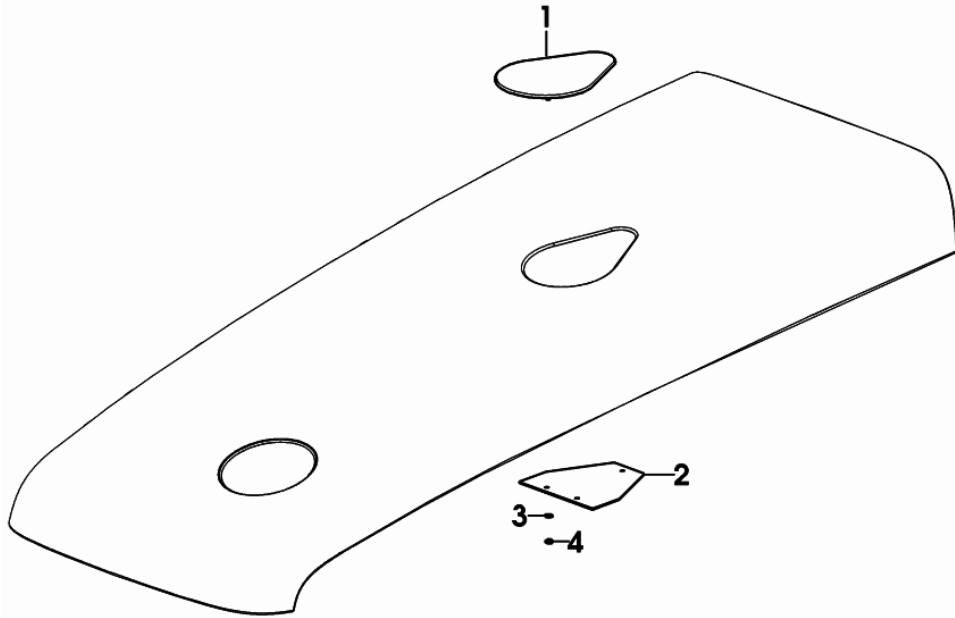


Fig.	Code	QTY	Name
46	0.010.3607.1	4	washer
47	0.010.3606.2	3	selflock nut
48	0.010.3617.1	1	body
49	0.010.3610.0	3	plug
50	0.900.0020.8	1	cover
51	0.900.0026.5	1	lever
52	0.900.0026.3	1	guard
53	0.900.0026.6	2	bushing
54	0.900.0026.4	1	piston pin
55	0.010.3611.0	4	joint
56	0.900.0026.5	4	lever
57	0.900.0026.3	4	guard
58	0.900.0026.6	8	bushing
59	0.900.0026.4	4	piston pin

Section: BODY WORK

**HOOD PLUG - FOR TYPES WITH SIDE EXHAUST**

Fig.	Code	QTY	Name
1	0.013.4617.3	1	plug
2	0.013.4621.0	1	plate
3	2.1310.028.2	3	flat washer 4
4	2.1011.101.2	3	nut m 4 p.0.7



9\_24172\_10\_0\_0

Section: BODY WORK  
**COOLING - COOLANT RADIATOR**

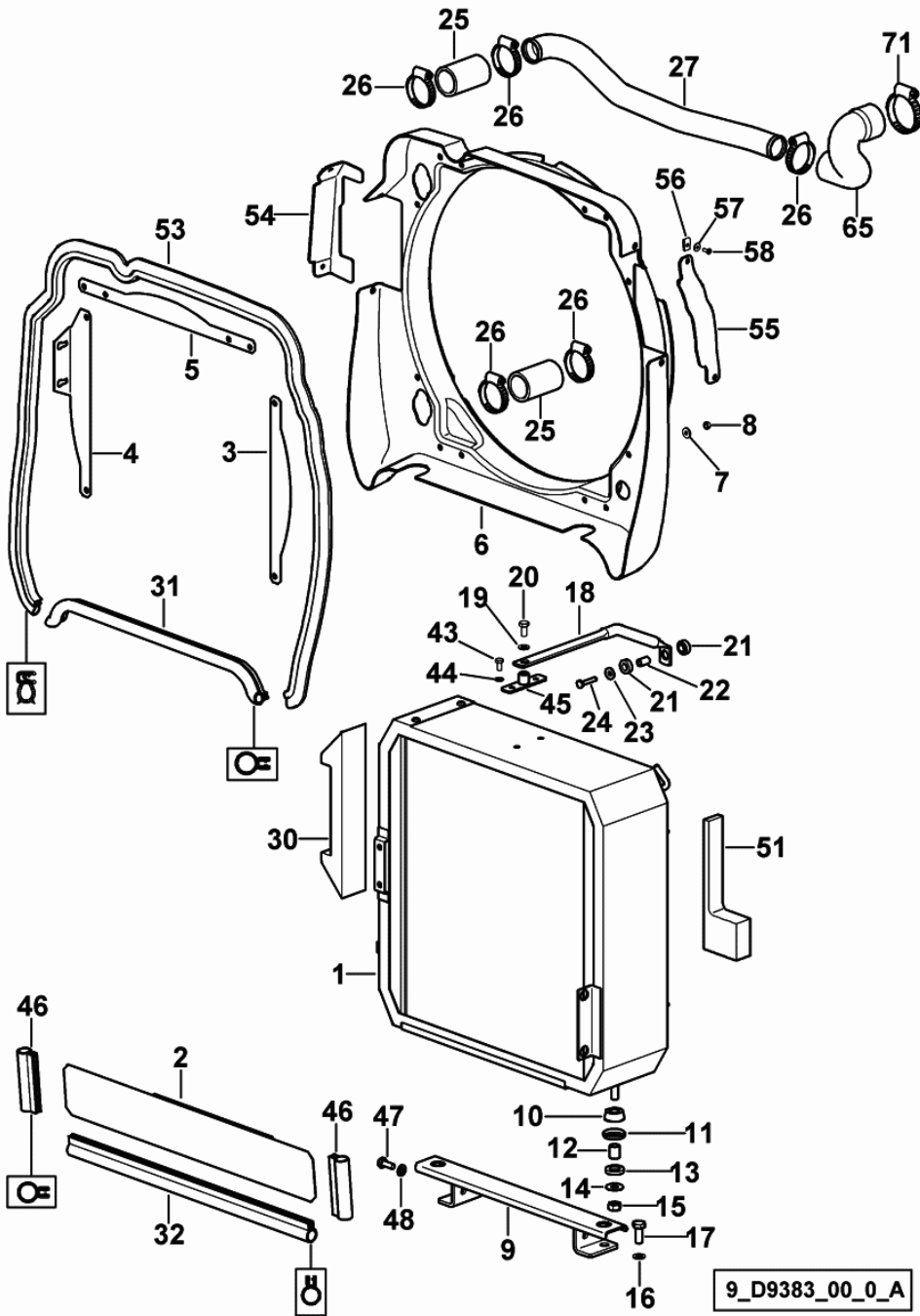


Fig.	Code	QTY	Name
71	2.6851.006.0	1	clamp Ø 50/70

**ELECTRONIC ACCELERATOR CONTROL**

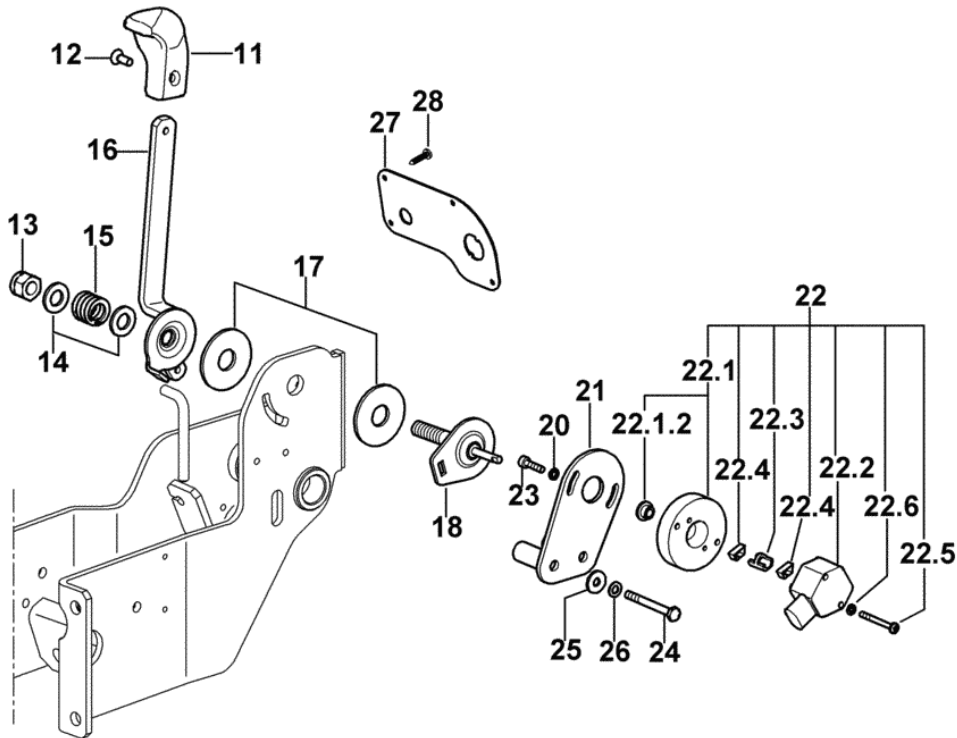
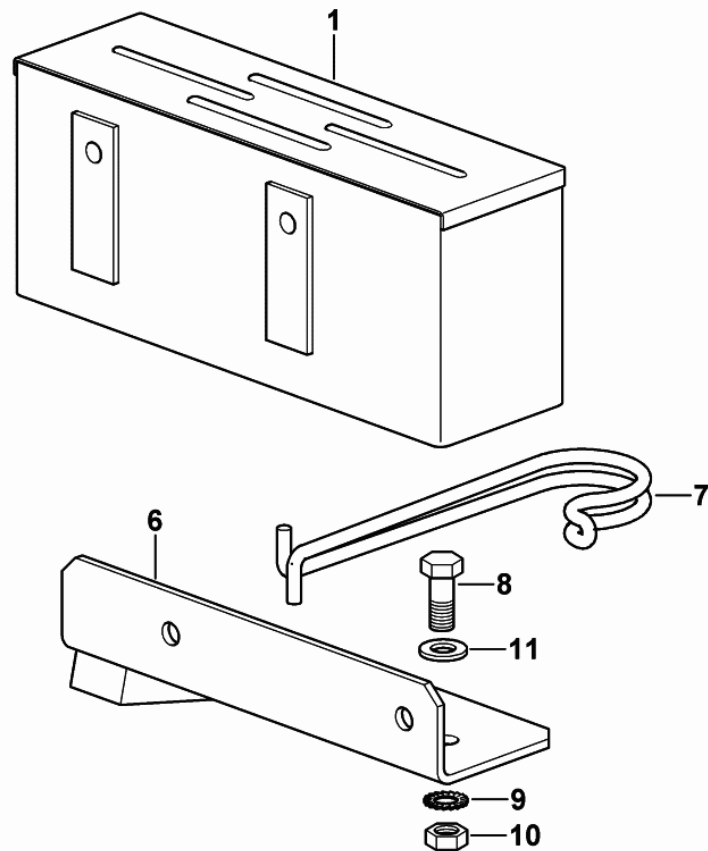


Fig.	Code	QTY	Name
11	0.011.6605.0/10	1	knob
12	2.0342.203.3	1	screw m 6 p.1.0 x 16
13	2.1120.007.2	1	nut m 12 p.1.75
14	2.1310.007.2	2	flat washer 13.5
15	2.4019.022.2	1	spring 23x20x4.5
16	0.013.2601.3/10	1	lever
17	2.1569.044.0	2	gasket 17.5x50x3
18	0.013.3009.3/10	1	pin
20	2.1480.011.2	2	washer 5
21	0.013.5943.2/10	1	support
22	0.013.2998.4/20	1	support
22.1	0.000.0000.1	0	not serviceable
22.1.2	2.1559.273.0	1	bushing
22.2	2.7099.740.0/10	1	sensor
22.3	0.011.6675.0	1	sleeve
22.4	0.011.3791.0	2	small spring
22.5	2.0332.211.3	2	screw m 4 x 40
22.6	2.1470.052.2	2	lock washer 4
23	2.0312.006.2	2	screw m 5 p.0.8 x 20
24	2.0112.020.2	2	screw m 6 p.1 x 55
25	2.1312.003.2	2	washer 6
26	2.1475.201.2	2	washer 6.4x12
27	0.013.7617.0/10	1	small plate
27	0.013.7617.0/20	1	2023 <- X KRYPTON F 78 M 2023 <- X KRYPTON F 78 N 2023 <- X KRYPTON F 78 C 2047 <- X KRYPTON F 88 M 2047 <- X KRYPTON F 88 N 2047 <- X KRYPTON F 88 C 2031 <- X KRYPTON F 98 M 2031 <- X KRYPTON F 98 N 2031 <- X KRYPTON F 98 C small plate -> 2024 X KRYPTON F 78M -> 2024 X KRYPTON F 78N -> 2024 X KRYPTON F 78C -> 2048 X KRYPTON F 88M -> 2048 X KRYPTON F 88N -> 2048 X KRYPTON F 88C -> 2032 X KRYPTON F 98M -> 2032 X KRYPTON F 98N -> 2032 X KRYPTON F 98C
28	2.0350.456.3	4	screw m 4.2 x 19 -AB-

9\_24167\_01\_0\_A

Section: BODY WORK  
**METAL TOOLBOX**

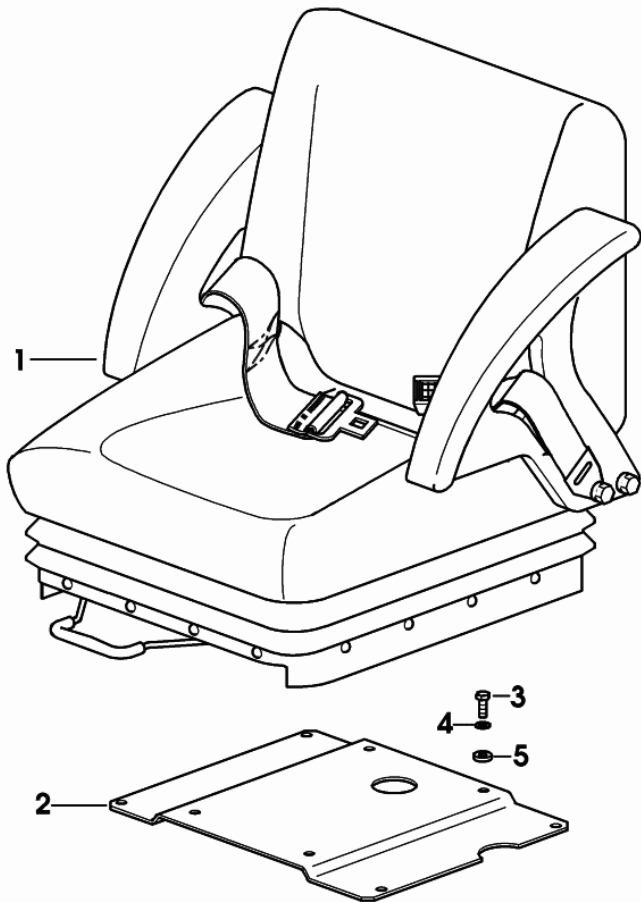
Fig.	Code	QTY	Name
1	0.135.7317.3/30	1	metal toolbox
6	0.013.5836.2	1	support
7	0.467.5857.0	1	spring
8	2.0112.309.2	2	screw m 10 p.1.5 x 25
9	2.1475.203.2	2	spring washer 10
10	2.1011.106.2	2	nut m 10 p.1.5
11	2.1310.006.2	2	flat washer 10.5



9\_24173\_02\_0\_0

**DRIVER'S SEAT PNEUMATIC SPRINGING**

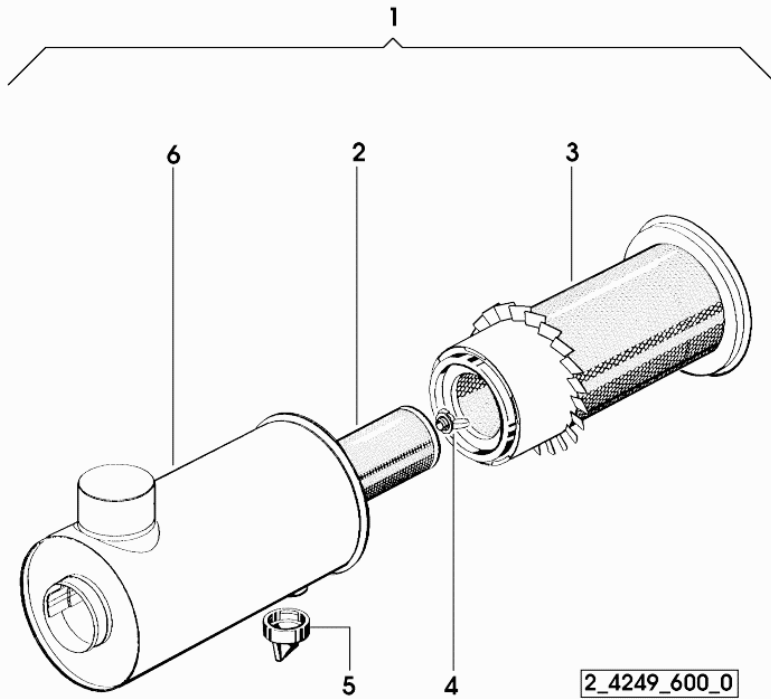
Fig.	Code	QTY	Name
1	0.013.2052.4/10	1	seat COMPONENT PARTS SEE COMPONENTS LIST ☞ 0.013.2052.4/10 ☞ 07.00.20
2	0.013.2855.3/30	1	plate
3	2.0112.208.2	4	screw m 8 p.1.25 x 22
4	2.1470.004.2	4	washer 8
5	2.1579.854.2	4	spacer 8.5x20x5



9\_24175\_02\_0\_0

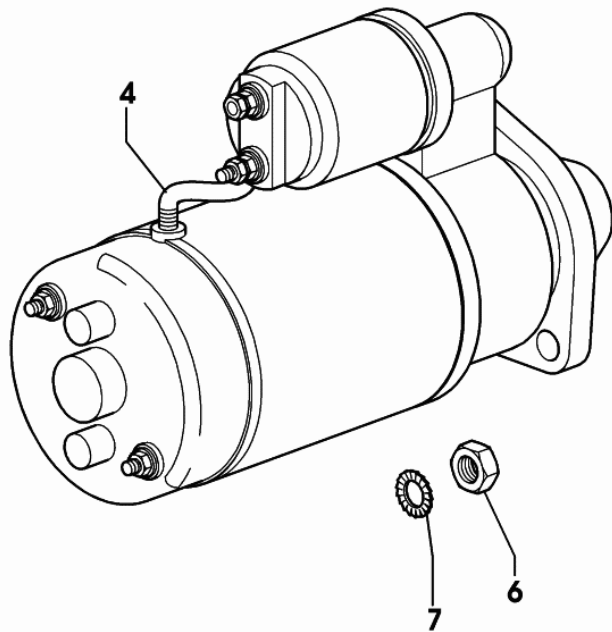
Section: BODY WORK  
**AIR FILTER PARTS**

Fig.	Code	QTY	Name
1	2.4249.600.0	1	air filter 8 "
2	2.4249.130.7	1	internal air filter element
3	2.4249.131.0	1	external air filter element
4	2.4249.320.1	1	wing nut
5	0.009.4109.0	1	valve
6	0.000.0000.1	0	not serviceable



**STARTER**

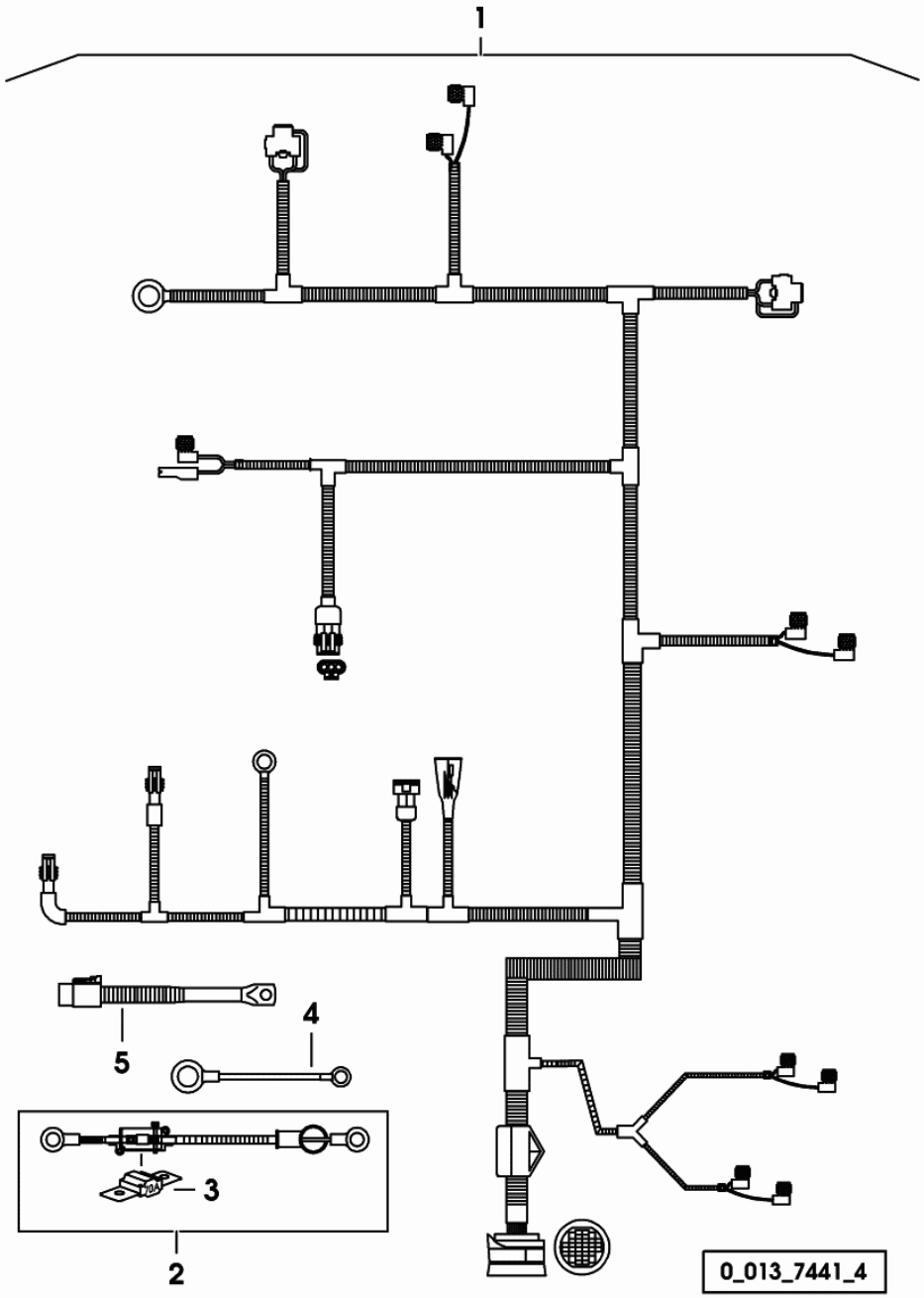
Fig.	Code	QTY	Name
4	2.9619.390.0	1	starter motor 12 V, 3 kW, Z = 9 COMPONENT PARTS SEE COMPONENTS LIST ☞ 2.9619.390.0 ☞ 08.00.31
5	2.1011.106.2	1	nut m 10 p.1.5
6	2.1011.522.2	1	nut m 12 p.1.25
7	2.1470.007.2	1	lock washer 12
8	2.1470.006.2	1	lock washer 10



9\_52784\_09\_0\_A

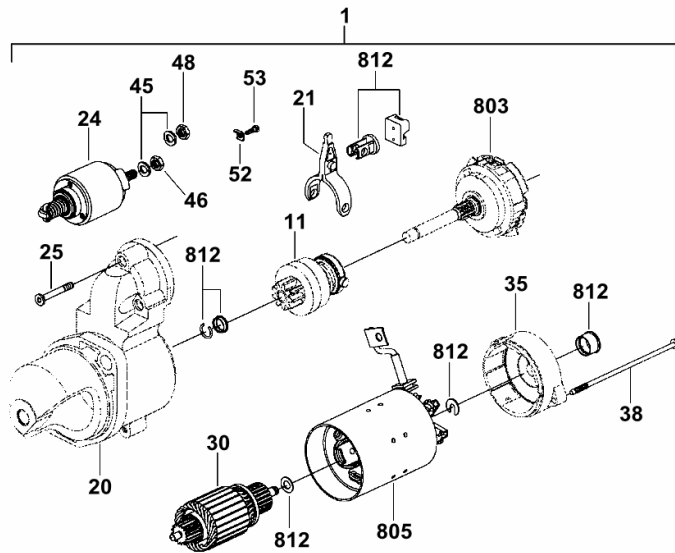
**ELECTRICAL SYSTEM**

Fig.	Code	QTY	Name
1	0.013.7441.4	1	electrical system
2	0.900.0055.3	1	wire
3	0.010.3579.2	1	fuse 70 A
4	0.900.0055.4	1	wire
5	0.900.0055.5	1	wire



**STARTER PARTS**

Fig.	Code	QTY	Name
1	2.9619.390.0	1	starter motor 12 V, 3 kW, Z = 9
11	0.010.3566.1	1	pinion
20	0.010.3566.0	1	support
21	0.010.3566.2	1	lever
24	0.010.3567.0	1	switch
25	0.010.3567.1	3	screw
30	0.010.3567.2	1	armature
35	0.010.3568.0	1	support
38	0.010.3568.1	2	screw
45	0.010.3568.2	0	washer
46	0.000.0000.1	0	not serviceable
48	0.000.0000.1	0	not serviceable
52	2.9619.090.6	1	small plate
53	0.010.3569.0	1	screw
803	0.010.3569.1	1	gear
805	0.010.3569.2	1	brush holder
812	0.010.3570.0	1	accessories



2\_9619\_390\_0

CLICK HERE TO **DOWNLOAD** THE COMPLETE MANUAL

- Thank you very much for reading the preview of the manual.
- You can download the complete manual from: [www.heydownloads.com](http://www.heydownloads.com) by clicking the link below



- Please note: If there is no response to CLICKING the link, please download this PDF first and then click on it.

CLICK HERE TO **DOWNLOAD** THE COMPLETE MANUAL

Section: ENGINE

**CYLINDER - PISTON - CONNECTING ROD**

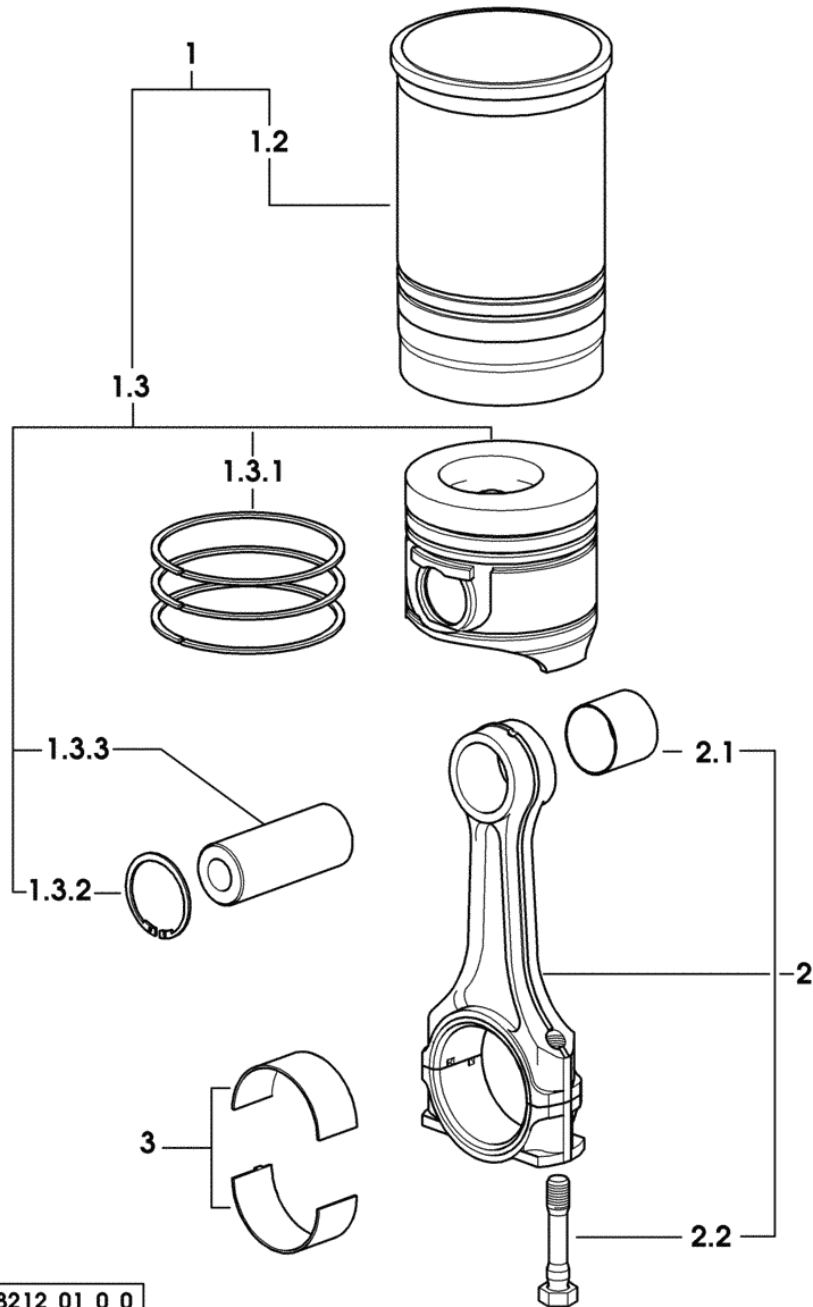
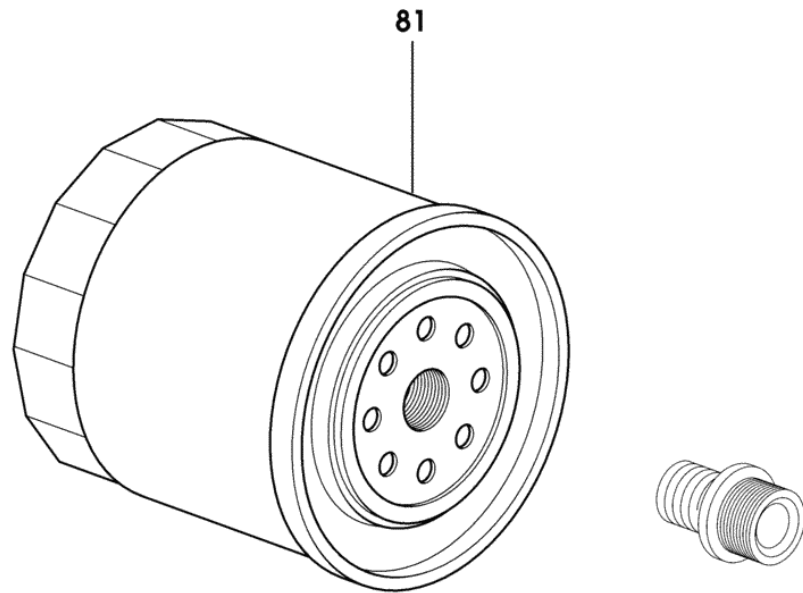


Fig.	Code	QTY	Name
1	0.082.0065.A	4	piston cyl.assembly "A" - CLASS A
1	0.082.0065.B	4	piston cyl.assembly "B" - CLASS B
1.2	0.A12.2675.0	1	engine cylinder "A" - CLASS A
1.2	0.B12.2675.0	1	engine cylinder "B" - CLASS B
1.3	0.082.0060.A	1	complete piston "A" - CLASS A
1.3	0.082.0060.B	1	complete piston "B" - CLASS B
1.3.1	0.086.0052.6/10	1	piston ring set
1.3.2	2.1411.014.1	2	circlip 35
1.3.3	0.078.1236.0	1	piston pin
2	0.078.1220.3/30	4	engine connect.rod
2.1	2.1559.114.0/10	1	bushing 35x39x35
2.2	2.0399.213.0	2	screw m 12 p.1.25x61.5
3	0.065.1225.0	8	con.rod half bushing STANDARD
3	0.065.1225.7	8	con.rod half bushing - mm 0.25
3	0.065.1225.8	8	con.rod half bushing - mm 0.50

9\_M8212\_01\_0\_0

Section: ENGINE  
**LUBRIC. OIL FILTER**

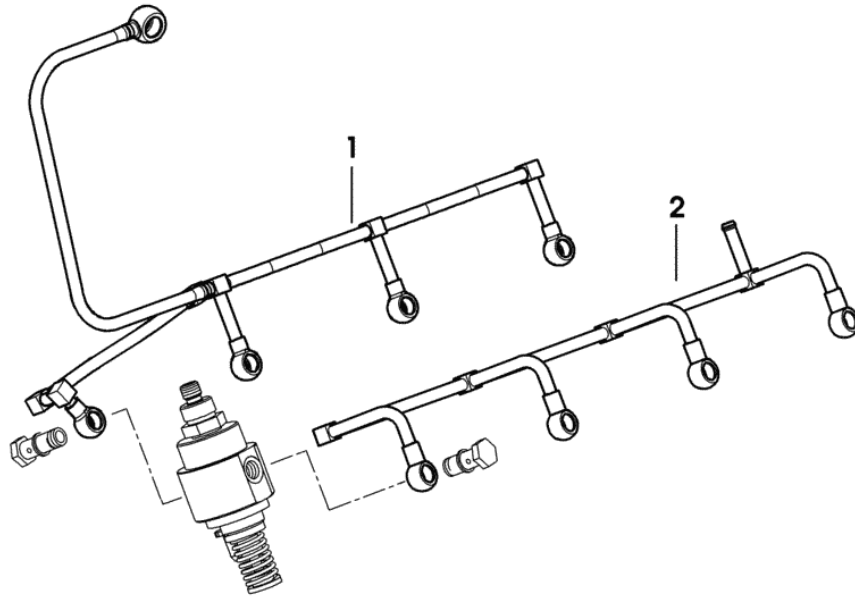
Fig.	Code	QTY	Name
81	0.044.1567.0	1	oil filter element



9\_33015\_04\_0\_0

**FUEL PIPES**

Fig.	Code	QTY	Name
1	0.013.6551.4	1	tube
2	0.013.1491.3	1	tube



9\_M8216\_02\_0\_0

**COOLING SYSTEM MANIFOLD**

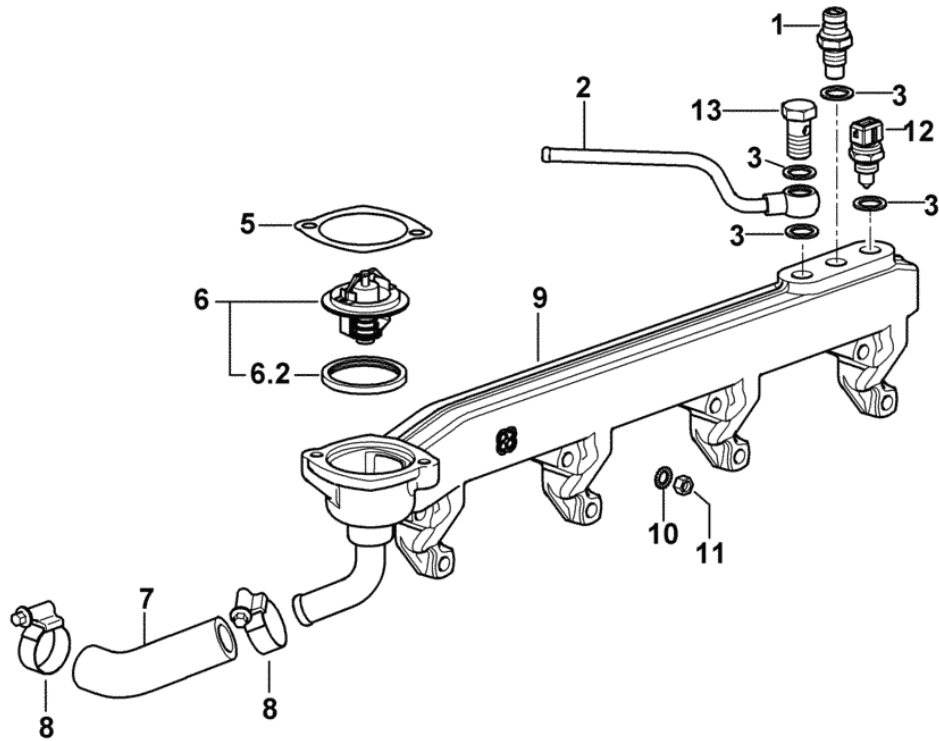


Fig.	Code	QTY	Name
1	2.7099.640.0/10	1	tempe guage
2	0.013.9158.3	1	breather
3	2.1560.010.0	4	gasket 14.2 x 20 x 1.5
5	0.066.1757.0/30	1	gasket
6	0.007.1258.3/20	1	thermostat
6.2	0.007.1258.0	1	gasket
7	0.066.1758.0/10	1	sleeve
8	2.6851.003.0	2	clamp Ø 25/40
9	0.013.4504.3/10	1	manifold
10	2.1470.004.2	8	washer 8
11	2.1011.305.2	8	nut m 8 p.1 x 8
12	2.7099.800.0	1	sensor
13	2.3332.004.1	1	pipe union m 14 p.1.5 x 27

9\_N1317\_00\_0\_0

Section: ENGINE  
GOVERNOR PARTS

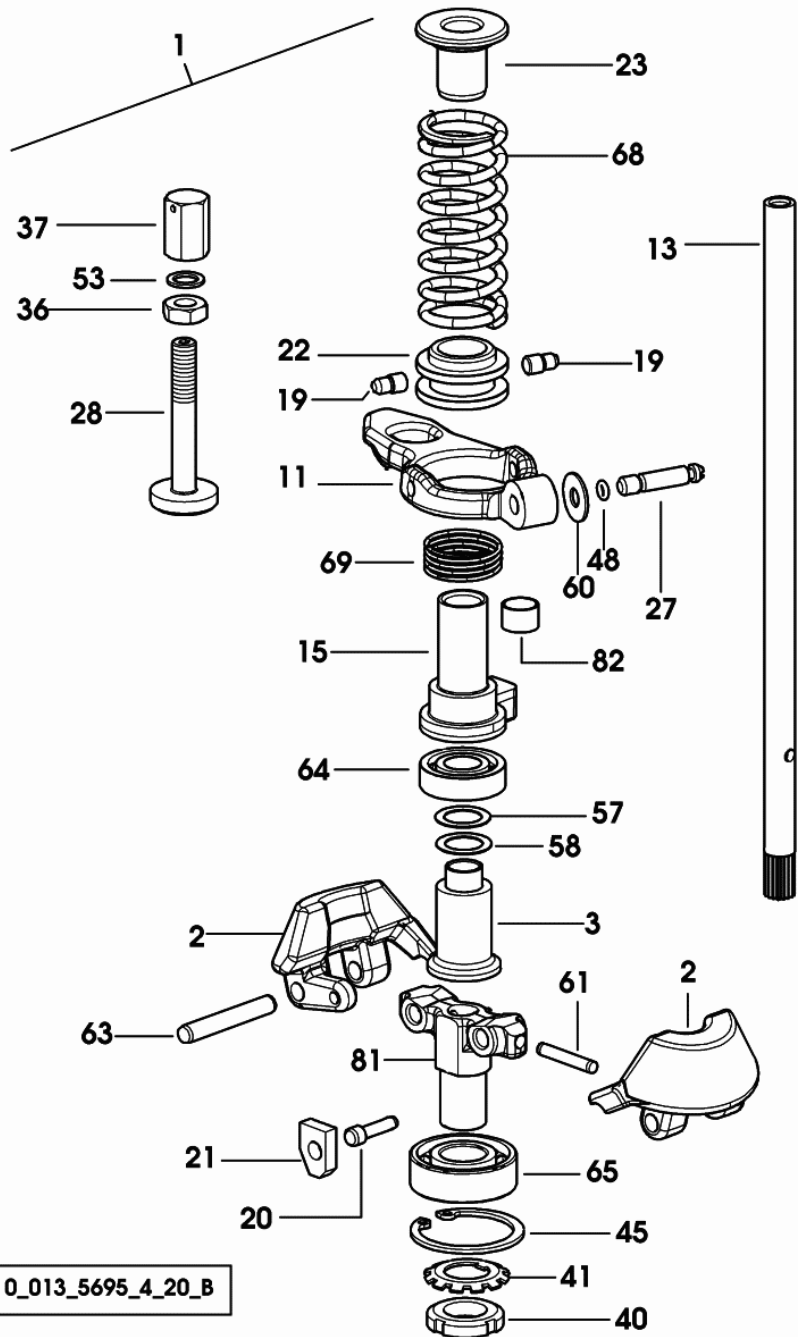


Fig.	Code	QTY	Name
1	0.013.5695.4/20	1	regulator
2	0.065.1616.0	2	adjust.rocker
3	0.065.1618.0	1	sleeve
11	0.066.1664.0	1	lever
13	0.065.1671.3/10	1	shaft
15	0.065.1670.0/10	1	sleeve
19	0.065.1681.0/10	2	pin
20	0.065.1682.0	1	pin
21	0.065.1683.0	2	tube
22	0.065.1684.0/10	1	sleeve
23	0.065.1685.0/10	1	sleeve
27	2.0399.101.7	1	screw m 6 x 30
28	2.0399.147.2	1	screw m 8 p.1x58
36	2.1011.505.2	3	nut m 8 p.1 x 8
37	2.1099.121.2/10	1	cap nut m 8 p.1 x 8
40	2.1211.003.2	1	ring nut 15 mc
41	2.1241.003.1	1	lock-nut 15
45	2.1411.014.1	1	circlip 35
48	2.1530.003.0	1	'o' ring 2.90x1.78
53	2.1560.003.0	3	gasket 8.2 x 12
57	2.1589.160.0	2	snoulder 12.5x18x0.5
58	2.1589.161.0	2	snoulder 12.5x18x0.2
60	2.1599.457.2	2	snoulder 6.2x16x1
61	2.1631.311.0	1	roll pin 3x24
63	2.1655.312.0	2	pin a 6x40
64	2.2030.002.0	1	ball bearing 12 x 28 x 8
65	2.2040.003.0	1	ball bearing iso 15 bc 02
68	2.4019.762.7	1	spring 29x68x3.4
69	2.4019.317.0	1	spring 25.4x24.5x1.4
81	0.065.1615.0/10	1	support
82	2.1555.005.0	2	bushing 10x12x10

0\_013\_5695\_4\_20\_B

**PTO CLUTCH PIPES**

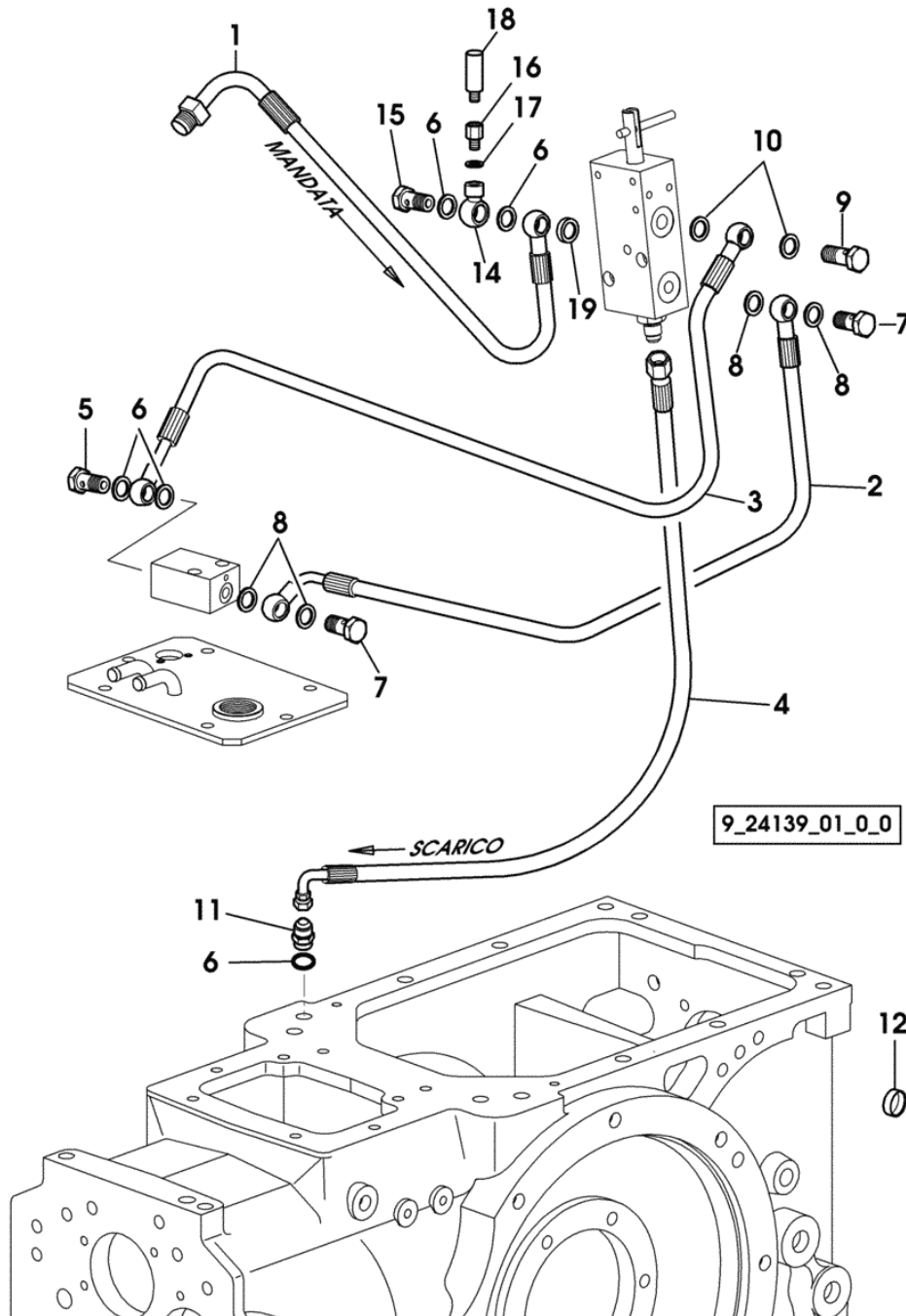


Fig.	Code	QTY	Name
1	0.013.2494.3/20	1	tube
2	0.012.6514.3/40	1	tube
3	0.013.5508.3	1	tube
4	0.013.2505.3/10	1	tube
5	2.3335.006.2	1	pipe union m 14 p.1.5x24
6	2.1560.010.0	5	gasket 14.2 x 20 x 1.5
7	2.3335.004.2	2	pipe union m 10 p.1
8	2.1560.006.0	4	gasket 10.2 x 16
9	2.3332.003.2	1	pipe union m 12 p.1.25 x 23
10	2.1560.008.0	2	gasket 12.2 x 18
11	2.3261.006.2	1	pipe fitting m 14 p.1.5-9/16"
12	2.3171.006.4	2	plug Ø 16
14	2.3339.897.2	1	pipe fitting
15	2.3339.040.2	1	pipe union m 14 p.1.5x45
16	2.3249.094.2	1	pipe fitting M12x1.5-1/8"-27
17	2.1560.008.0	1	gasket 12.2 x 18
18	2.7099.970.0	1	pressure switch 7.5 BAR N.C
19	2.1569.171.0	1	gasket 14.2 x 20 x 3

Section: FRONT AXEL  
**FRONT SUSPENSION**

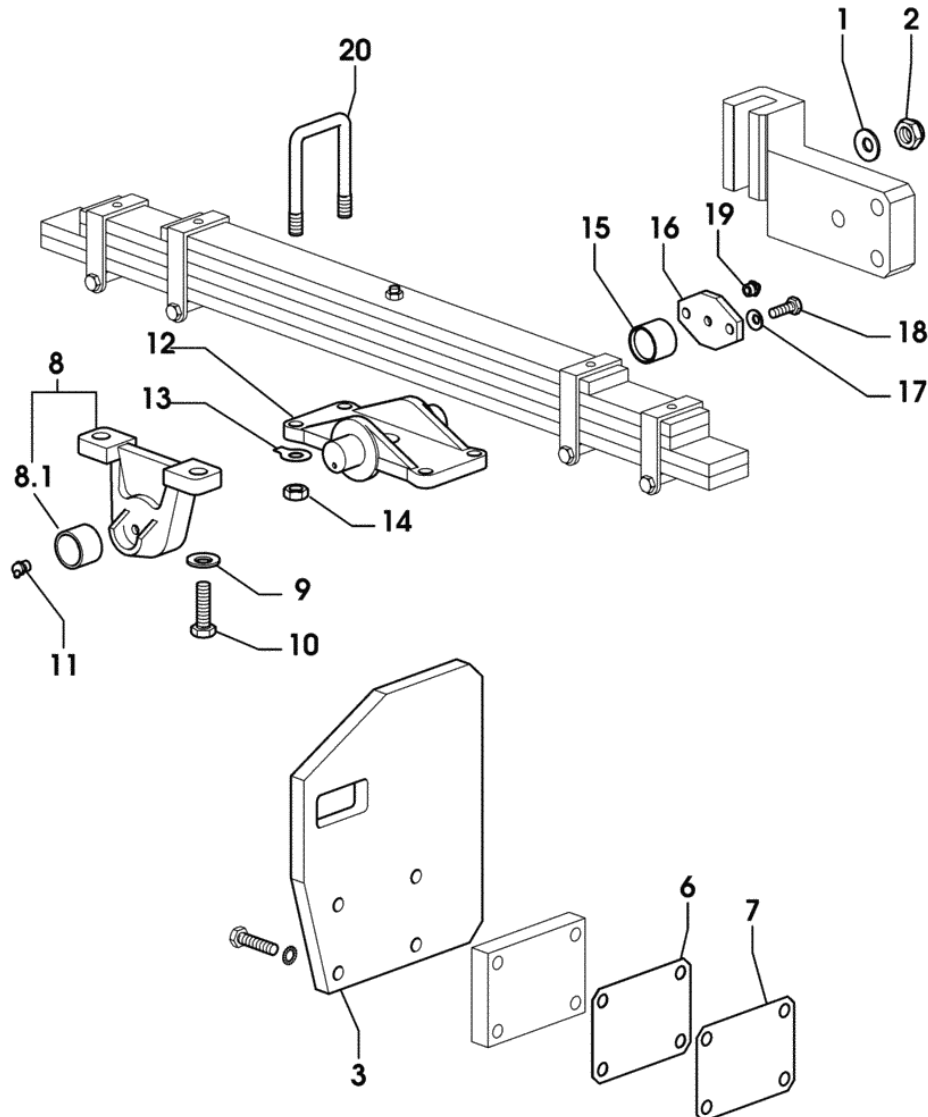


Fig.	Code	QTY	Name
1	2.1475.205.7	8	washer 15x35
2	2.1120.210.2	6	selflock nut m 18 p.1.5
3	0.012.1957.0/10	2	plate
6	0.012.2057.0	4	shim mm 1.5
7	0.012.2058.0	4	shim mm 0.50
8	0.292.5127.3	1	support
8.1	0.191.5154.0	1	bushing 35x42x30
9	2.1499.018.2	2	spring washer 18.3x35.5x3.8
10	2.0112.724.2	2	screw m 18 p.2.5 x 75
11	2.3821.103.2	1	lubricator m 10 p.1
12	0.191.5123.0	1	bracket
13	2.1330.009.0	4	lock-tab 15
14	2.1011.408.2	4	nut m 14 p.1.5
15	2.1549.521.0	1	spacer
16	0.012.2027.0	1	plate
17	2.1475.003.2	2	washer 10
18	2.0112.311.2	2	screw m 10 p.1.5 x 30
19	2.3820.105.2	1	lubricator m 10 p.1 x 7
20	0.294.5122.0/10	2	u bolt

9\_24151\_00\_0\_0

Section: GEAR  
**TRANSMISSION SHAFT**

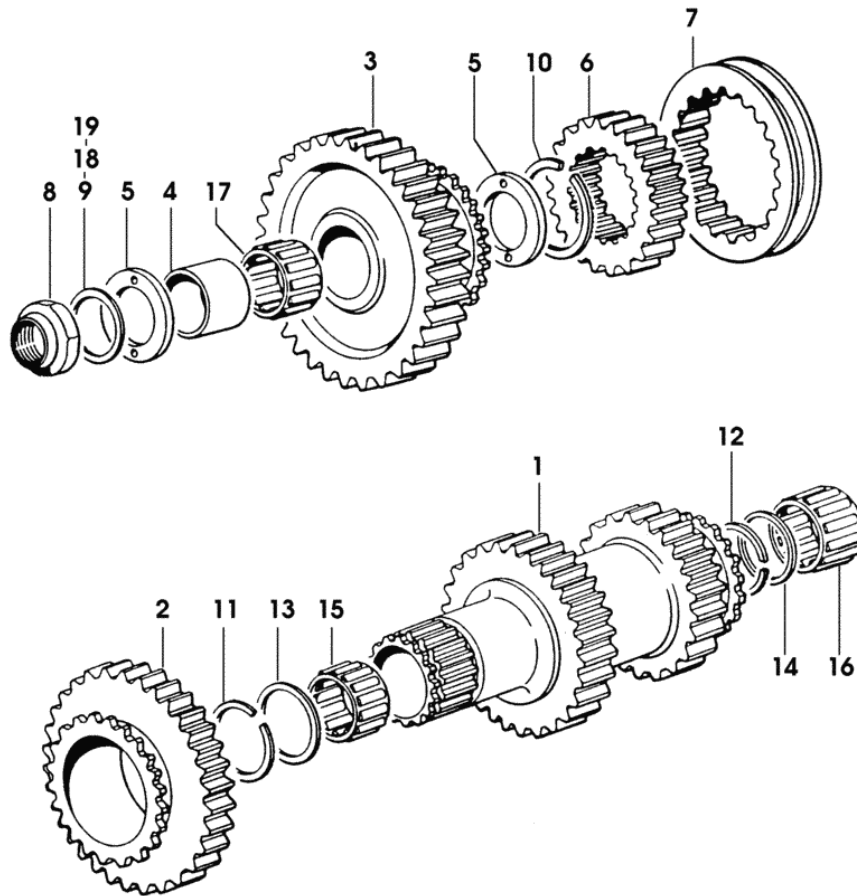
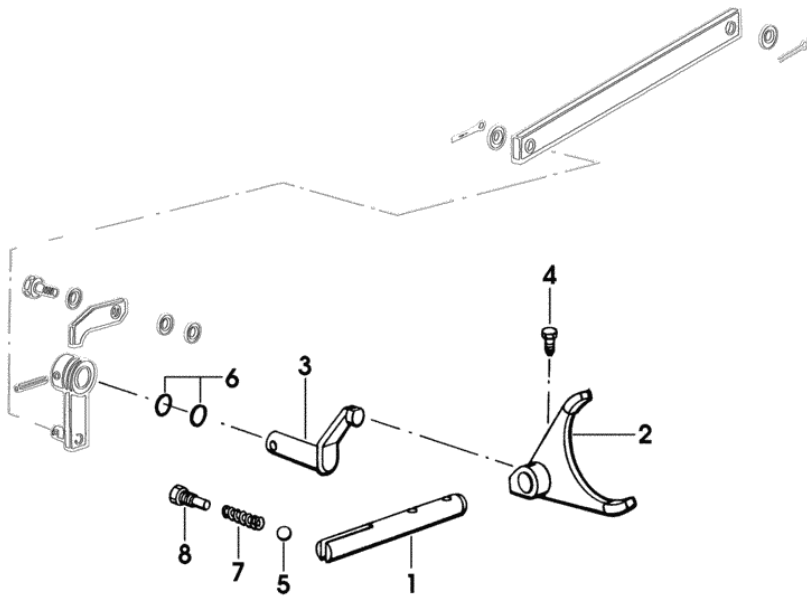


Fig.	Code	QTY	Name
1	0.292.3333.0	1	gear Z = 26 / 31
2	0.292.3334.0	1	gear Z = 35
3	0.292.3335.0	1	gear z=39
4	0.292.3350.0	1	bushing
5	0.292.3351.0/10	2	shim
6	0.292.3250.0	1	sleeve
7	0.292.3251.0	1	sleeve
8	2.1099.040.2/10	1	special nut m 34
9	2.1589.250.0/20	3	snoulder 36x47x0.2
10	2.1422.036.7	1	circlip
11	2.1423.034.7	1	circlip 45 x 1.5
12	2.1423.036.7	1	circlip
13	2.1589.165.0/20	1	shim 40.2x44.5x0.5
14	2.1589.166.0	2	snoulder
15	2.2770.072.0	1	roller cage 40x45x27
16	2.2770.076.0	1	roller cage 42x47x27
17	2.2770.082.0	1	roller cage 45x50x27
18	2.1589.248.0/20	4	shim 36x47x0.5
19	2.1589.249.0/20	3	shim 36x47x0.15

9\_48333\_00\_0\_0

**INTERNAL CONTROLS FOR SUPER- AND MINI-REDUCTION**

Fig.	Code	QTY	Name
1	0.007.9301.0	1	rod
2	0.007.9298.0	1	fork
3	0.007.9300.0	1	lever
4	2.0399.019.1	1	screw m 8 p.1 x 16
5	2.2810.007.0	1	ball 13/32"
6	2.1530.045.0	2	'o' ring 17.86x2.62
7	2.4019.277.1	1	spring
8	2.0119.188.2	1	screw



9\_48334\_02\_0\_0

Section: REAR AXLE

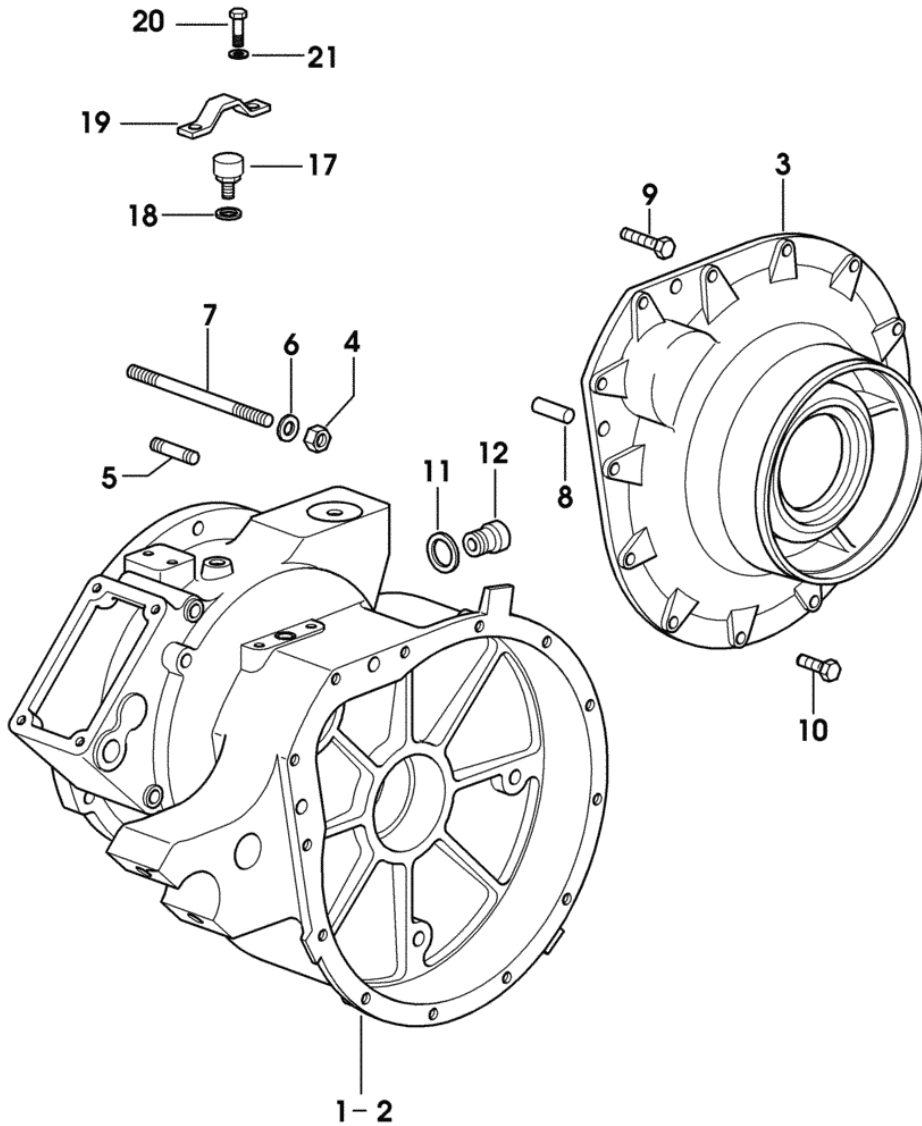
**REAR AXLE - WITH 1050-1100 mm TRACK**

Fig.	Code	QTY	Name
------	------	-----	------

**Notes:**

-> 2015 X KRYPTON F 78N -> 2015 X KRYPTON F 78C -> 2019 X KRYPTON F 88N -> 2019 X KRYPTON F 88C -> 2016 X KRYPTON F 98N -> 2016 X KRYPTON F 98C

1	0.013.1068.0/60	1	reduction box dx/rh/re
2	0.013.1069.0/60	1	reduction box sx/lh/li
3	0.013.1059.0/10	2	cover
4	2.1011.408.2	16	nut m 14 p.1.5
5	2.0432.311.7	12	stud bolt m14 x 40
6	2.1499.024.6	16	washer 14
7	2.0432.334.2	4	stud bolt m 14x190
8	2.1659.507.0	4	pin
9	2.0112.419.2	4	screw m 12 p.1.75 x 50
10	2.0112.415.2	22	screw m 12 p.1.75 x 40
11	2.1560.017.0	6	gasket 22.2 x 27
12	2.3120.002.4	6	plug m 22 x 1.5
17	0.278.3150.3	2	screw
18	2.1560.010.0	2	gasket 14.2 x 20 x 1.5
19	0.007.9658.0	2	shield
20	2.0112.307.2	4	screw m 10 p.1.5 x 20
21	2.1310.006.2	4	flat washer 10.5



9\_D9444\_00\_0\_0

# KRYPTON F 78 N -> 2001

## S.A.C.

### GENERAL

S.A.C. CASE.....	0D.00.1
S.A.C. CASE.....	0D.00.2
LIFTING.....	0D.00.3
REGULATING DISTRIBUTOR.....	0D.00.4
INTERNAL CONTROLS.....	0D.00.5
INTERNAL AND EXTERNAL CONTROLS.....	0D.00.6
CONTROL KNOBS FOR EXTERNAL POWER LIFT CONTROLS.....	0D.00.7
SENSITIVE ELEMENTS.....	0D.00.8

**STEERING CLUTCH**

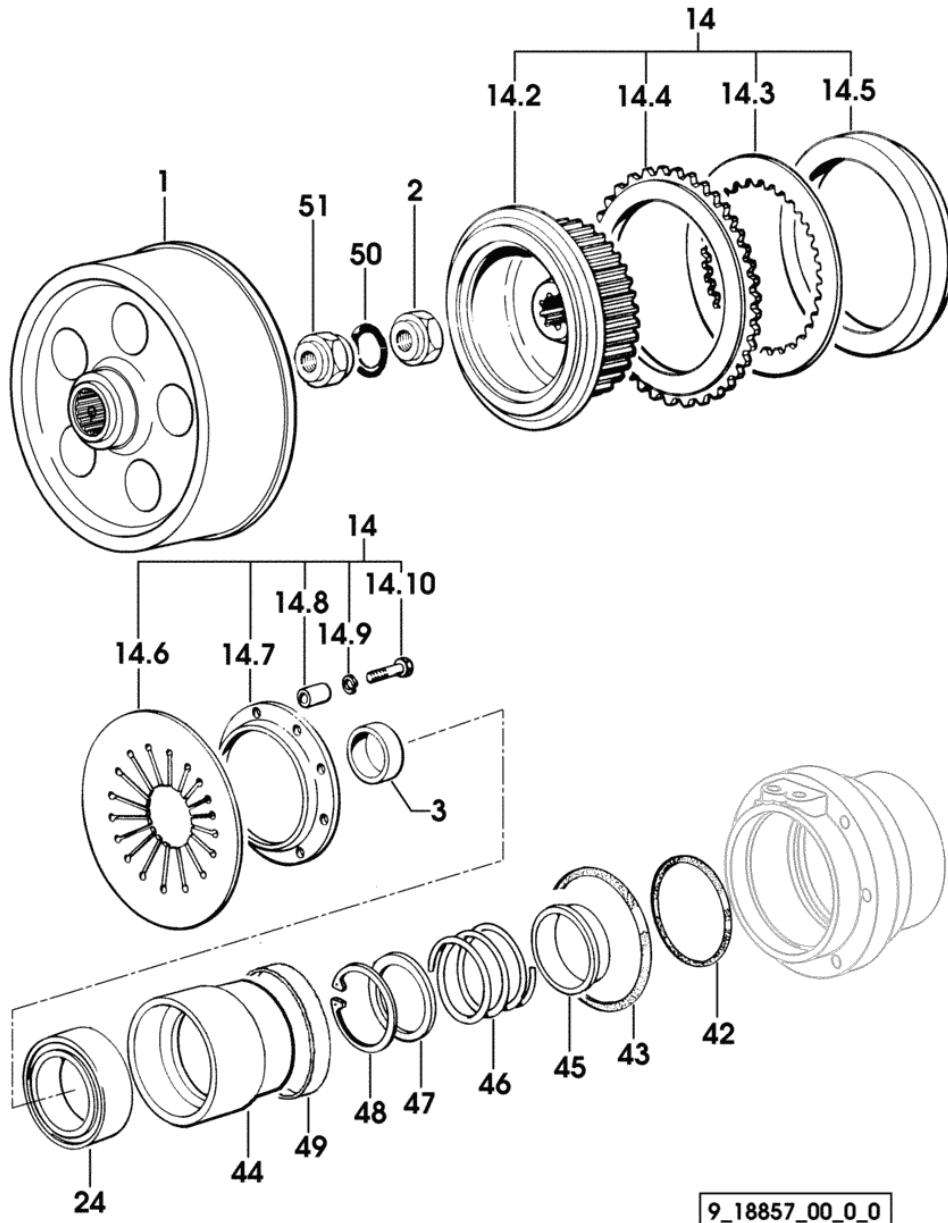


Fig.	Code	QTY	Name
1	0.011.7591.0/10	2	drum
2	2.1099.040.2/10	2	special nut m 34
3	2.1579.797.0	2	spacer 45x58x24.5
14	0.294.5711.4/20	2	steering clutch comp
14.2	0.292.5711.0	1	drum Ø 256, Z = 16/62
14.3	0.292.5715.0	10	disc
14.4	0.292.5714.0/10	10	friction ring
14.5	0.294.5713.0/10	1	pressure plate
14.6	0.292.5750.0/10	1	spring
14.7	0.292.5751.0/10	1	ring
14.8	0.292.5760.0	9	spacer
14.9	2.1470.002.2	9	washer 6, d128
14.10	2.0112.011.2	9	screw m 6 p.1x30
24	2.2999.201.0	2	bearing
42	2.1539.059.0	2	'o' ring 88.5x3.53
43	2.1539.058.0	2	'o' ring 107.5x3.53
44	0.292.6160.0/40	2	piston
45	0.292.6161.0	2	ring
46	2.4019.340.1	2	spring
47	2.1580.207.0	2	shim 66x79x0.5
48	2.1411.032.1	2	circlip 80 x 2.5
49	2.1539.203.0	2	'o' ring
50	2.1530.097.0	2	'o' ring 37.47x5.34
51	2.1219.063.7	2	ring nut

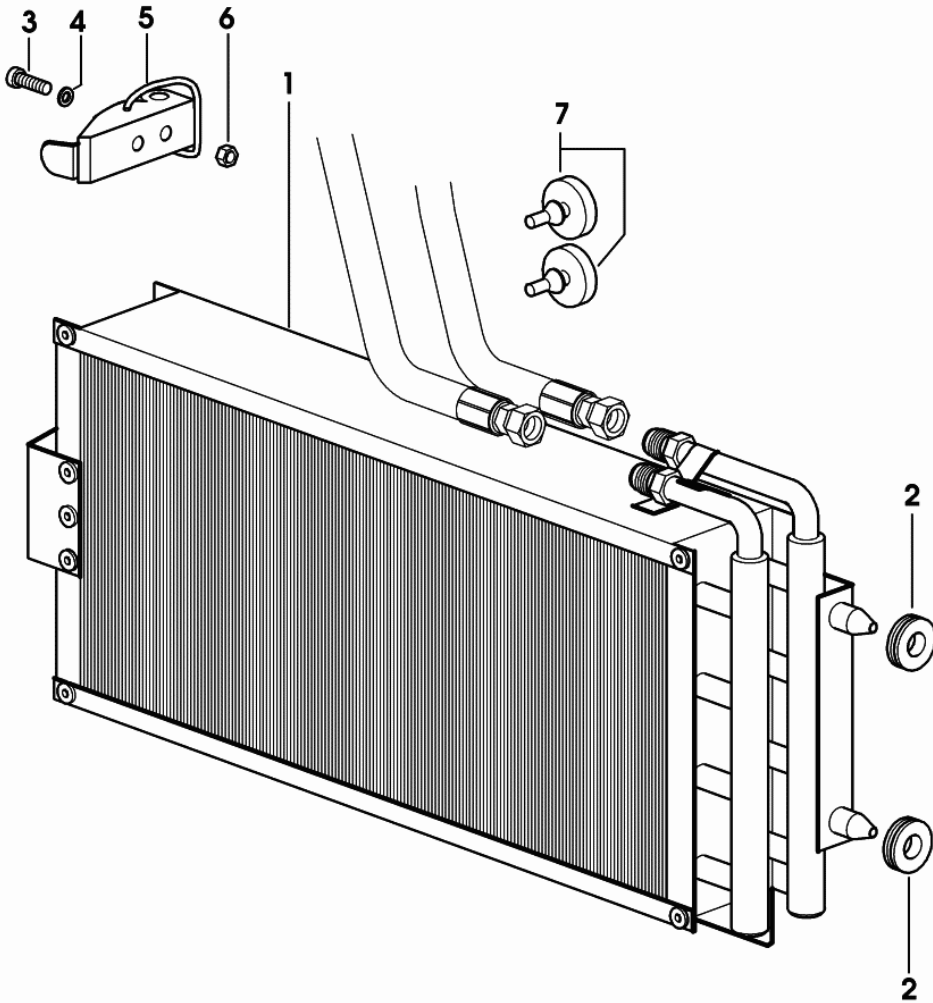
9\_18857\_00\_0\_0

**GEARBOX OIL COOLER**

Fig.	Code	QTY	Name
------	------	-----	------

**Notes:**

-> 2024 X KRYPTON F 78M -> 2024 X KRYPTON F 78N -> 2024 X KRYPTON F 78C -> 2048 X KRYPTON F 88M -> 2048 X KRYPTON F 88N -> 2048 X KRYPTON F 88C -> 2032 X KRYPTON F 98M -> 2032 X KRYPTON F 98N -> 2032 X KRYPTON F 98C



1	0.010.9570.2/10	1	oil cooler
2	2.6560.004.0	2	wire guide 10x2.5
3	2.0332.204.2	2	screw m 4x0.7x12
4	2.1470.052.2	2	lock washer 4
5	0.008.9632.0	1	clevis
6	2.1011.101.2	2	nut m 4 p.0.7
7	0.292.6157.0	2	rubber plug

9\_24191\_03\_0\_B

Section: TRACK

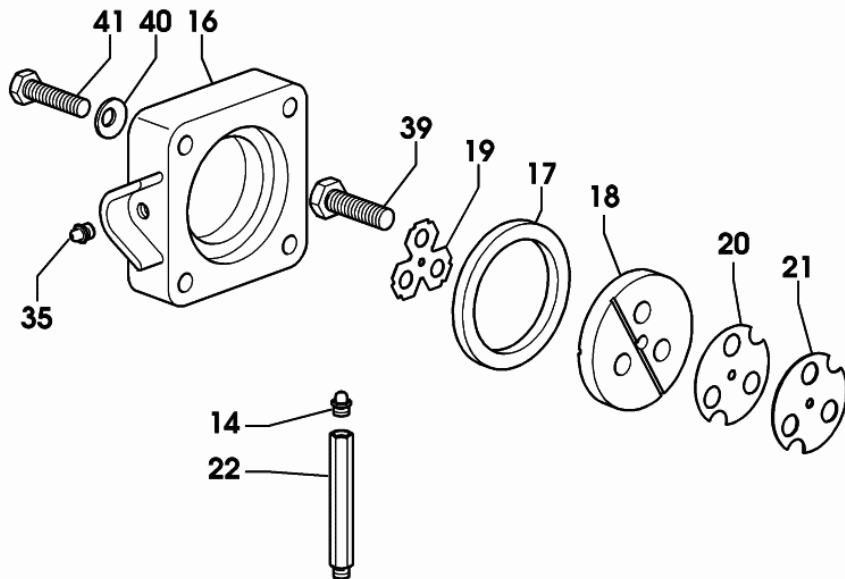
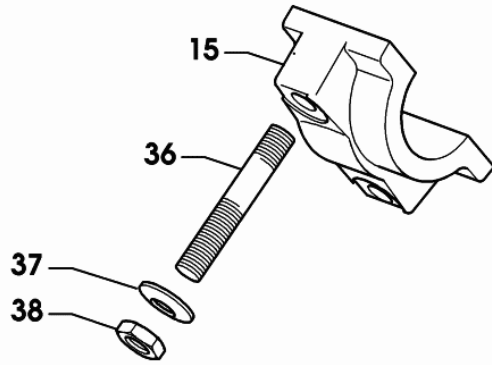
**TRACK FRAME BODY - WITH 1050-1100-1300 mm TRACK**

Fig.	Code	QTY	Name
------	------	-----	------

**Notes:**

2014 <- X KRYPTON F 78M 2018 <- X KRYPTON F 88M 2015 <- X KRYPTON F 98M

14	2.3821.103.2	2	lubricator m 10 p.1
15	0.011.7949.0	2	support
16	0.011.7854.0/30	2	cover
17	0.012.2100.0	2	spacer
18	0.011.7948.0/20	2	spacer
19	0.012.6620.0	2	small plate
20	0.012.6625.0	8	shim 0.5
21	0.012.6624.0	4	shim 1.5
22	0.473.9153.0	2	extension
35	2.3820.105.2	2	lubricator m 10 p.1 x 7
36	2.0439.253.7	4	stud bolt m 18 p.1.5x115
37	2.1499.018.2	4	spring washer 18.3x35.5x3.8
38	2.1011.310.2	4	nut m 18 p.1.5
39	2.0112.519.2	4	screw m 14 p.2x50
40	2.1480.016.2	8	washer 12
41	2.0312.418.2	8	screw m 12 x 60



CLICK HERE TO **DOWNLOAD** THE COMPLETE MANUAL

- Thank you very much for reading the preview of the manual.
- You can download the complete manual from: [www.heydownloads.com](http://www.heydownloads.com) by clicking the link below



- Please note: If there is no response to CLICKING the link, please download this PDF first and then click on it.

CLICK HERE TO **DOWNLOAD** THE COMPLETE MANUAL