

## KRYPTON F 100 M-N

### V0 - BALLAST, TOWING HITCHES

#### FRONT HITCHES

FRONT TOWING HITCH..... V0.01.0 (1)

#### REAR HITCHES

TOWING BAR mm 1431..... V0.02.0 (1)

TOWING BAR mm 1394..... V0.02.1 (1)

TOWING BAR mm 1603.5..... V0.02.2 (1)

TOWING BAR mm 1519..... V0.02.3 (1)

CURVED CROSS MEMBER FOR DRAWBAR..... V0.02.4 (1)

CURVED CROSS MEMBER FOR DRAWBAR..... V0.02.5 (1)

CURVED CROSS MEMBER FOR DRAWBAR..... V0.02.6 (1)

CURVED CROSS MEMBER FOR DRAWBAR..... V0.02.7 (1)

#### FRONT BALLAST WEIGHTS

PLATE FOR FRONT CARRIER..... V0.03.0 (1)

FRONT WEIGHT CARRIER..... V0.03.1 (1)

FRONT BALLAST Kg 160..... V0.03.2 (1)

FRONT BALLAST 320 Kg..... V0.03.3 (1)

SIDE BALLASTS..... V0.03.4 (1)

CLICK HERE TO **DOWNLOAD** THE COMPLETE MANUAL

- Thank you very much for reading the preview of the manual.
- You can download the complete manual from: [www.heydownloads.com](http://www.heydownloads.com) by clicking the link below



- Please note: If there is no response to CLICKING the link, please download this PDF first and then click on it.

CLICK HERE TO **DOWNLOAD** THE COMPLETE MANUAL

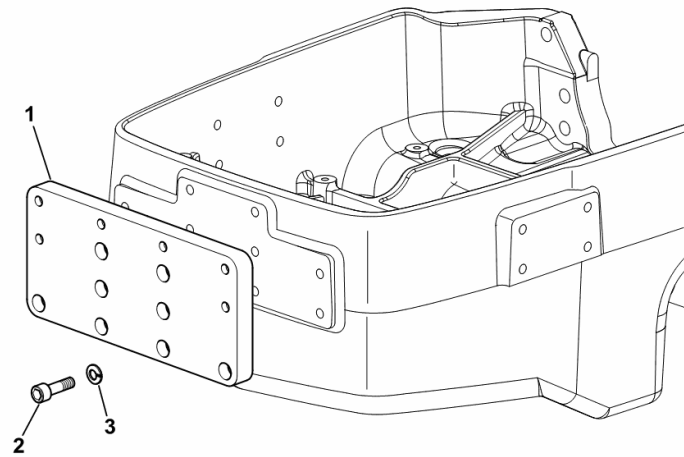
**PLATE FOR FRONT CARRIER**

Fig.	Code	QTY	Name
------	------	-----	------

**Notes:**

[KRYPTON F 100 M] [KRYPTON F 100 N]

1	0.012.2637.0/30	1	plate
2	2.0312.516.2	6	screw m 14 x 50
3	2.1474.012.2	6	washer 14



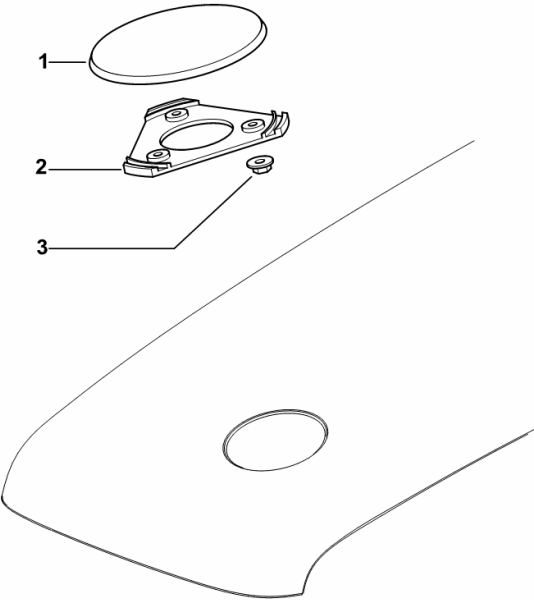
9\_18752\_41\_0-A-001

**HOOD PLUG**

Fig.	Code	QTY	Name
------	------	-----	------

Notes:  
[KRYPTON F 100 M] [KRYPTON F 100 N]

1	0.007.2881.2/20	1	plug
2	0.007.2882.0/10	1	plate
3	2.1129.004.0	3	selflock nut m 4



9\_B8872\_04\_0-A-001

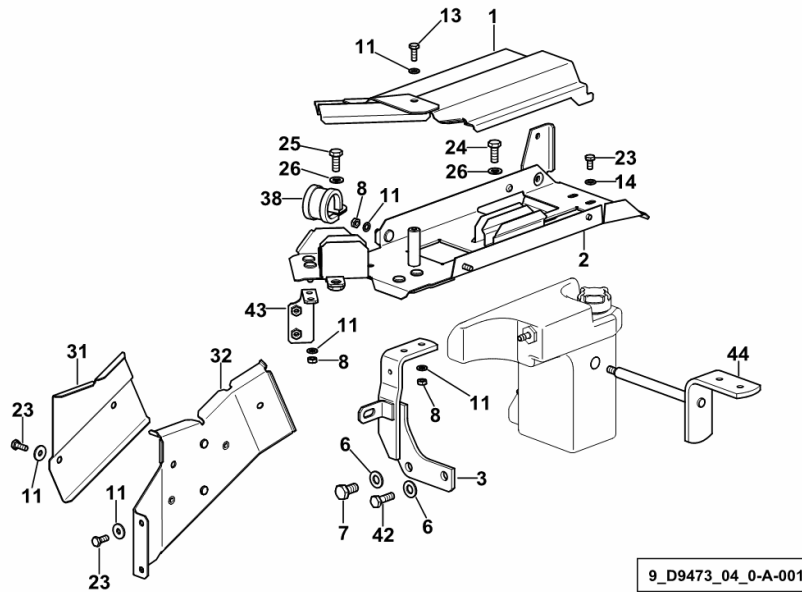
**HOOD - SUPPORTS**

Fig.	Code	QTY	Name
------	------	-----	------

**Notes:**

[KRYPTON F 100 M] [KRYPTON F 100 N]

1	0.013.7201.2	1	cover
2	0.013.7200.3/10	1	channel
3	0.013.3595.2/10	1	bracket
6	2.1310.006.2	2	flat washer 10.5
7	2.0112.307.2	1	screw m 10 p.1.5 x 20
8	2.1011.103.2	5	nut m 6 p.1
11	2.1310.002.2	10	washer 6.6, d125
13	2.0112.005.2	1	screw m 6 p.1 x 16
14	2.1310.004.2	2	flat washer 8.5
23	2.0112.003.2	5	screw m 6 p.1 x 12
24	2.0112.205.2	2	screw m 8 p.1.25 x 16
25	2.0112.207.2	1	screw m 8 p.1.25 x 20
26	2.1310.004.2	3	flat washer 8.5
31	0.013.3264.0	1	cover
32	0.013.3168.2/10	1	channel
38	2.6839.057.0	1	clamp 30/25
42	2.0112.309.2	1	screw m 10 p.1.5 x 25
43	0.013.6394.3	1	bracket
44	0.013.8462.2	1	support



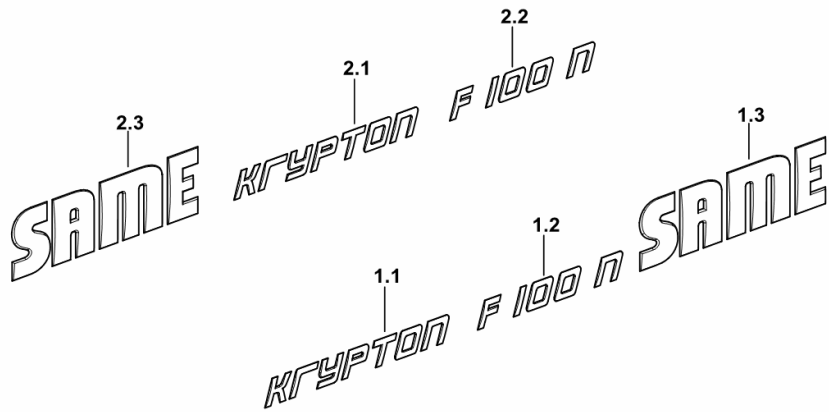
**PRODUCT PLATE**

Fig.	Code	QTY	Name
------	------	-----	------

**Notes:**

[KRYPTON F 100 N] -> 1035 - 1075 <-

1.1	0.014.5066.0	1	plate KRYPTON
1.2	0.014.5083.0	1	plate
1.3	0.014.4298.2	1	plate SAME
2.1	0.014.5066.0	1	plate KRYPTON
2.2	0.014.5083.0	1	plate
2.3	0.014.4298.2	1	plate SAME



9\_G0372\_03\_0-A-002

**WATER COOLER IDENTIFICATION PLATE**

Fig.	Code	QTY	Name
------	------	-----	------

**Notes:**

[KRYPTON F 100 M] -> 1121 [KRYPTON F 100 N] -> 1121

1	2.9939.329.0	1	plate
---	--------------	---	-------



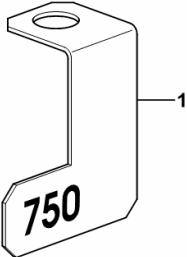
9\_H1274\_29\_0-A-001

**PTO DATA PLATE**

Fig.	Code	QTY	Name
------	------	-----	------

**Notes:**  
- 540/750 [KRYPTON F 100 M] 1090 <- - 540/750 [KRYPTON F 100 N] 1090 <-

1	0.012.6780.0/10	1	plate P.T.O. 750
---	-----------------	---	------------------



9\_18736\_01\_0-A-001

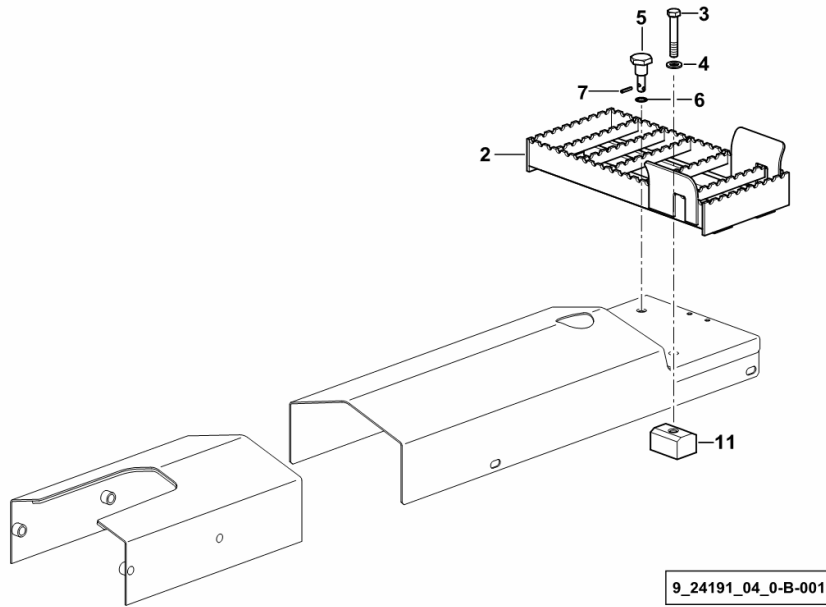
**SHEET STEEL ACCESS LADDER FOR TRUCK COVER**

Fig.	Code	QTY	Name
------	------	-----	------

**Notes:**

[KRYPTON F 100 M] [KRYPTON F 100 N]

2	0.013.4159.2	1	climbing steps
3	2.0114.421.2	1	screw
4	2.1310.007.2	1	flat washer 13.5
5	2.1699.568.2	1	pin
6	2.1589.160.0	1	snoulder 12.5x18x0.5
7	2.1630.450.2	1	pin 4x22
11	0.013.4161.0	1	small block



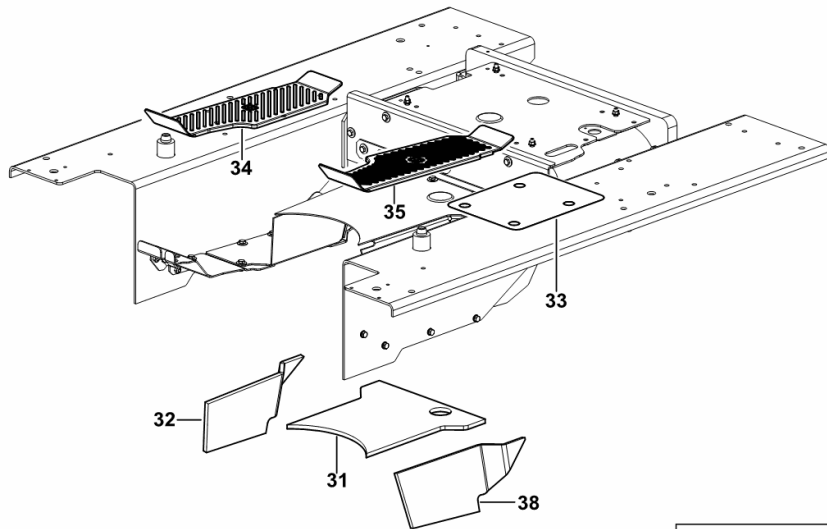
**SOUND INSULATION AND CARPETS**

Fig.	Code	QTY	Name
------	------	-----	------

**Notes:**

[KRYPTON F 100 M] -> 1091 [KRYPTON F 100 N] -> 1091

31	0.013.4305.0	1	guard
32	0.013.4306.0	1	guard dx/rh/re
33	0.278.7654.0/30	1	foot board
34	0.013.4542.0/20	1	small carpet dx/rh/re
35	0.013.4543.0/20	1	small carpet sx/lh/li
38	0.013.5357.0	1	shield sx/lh/li



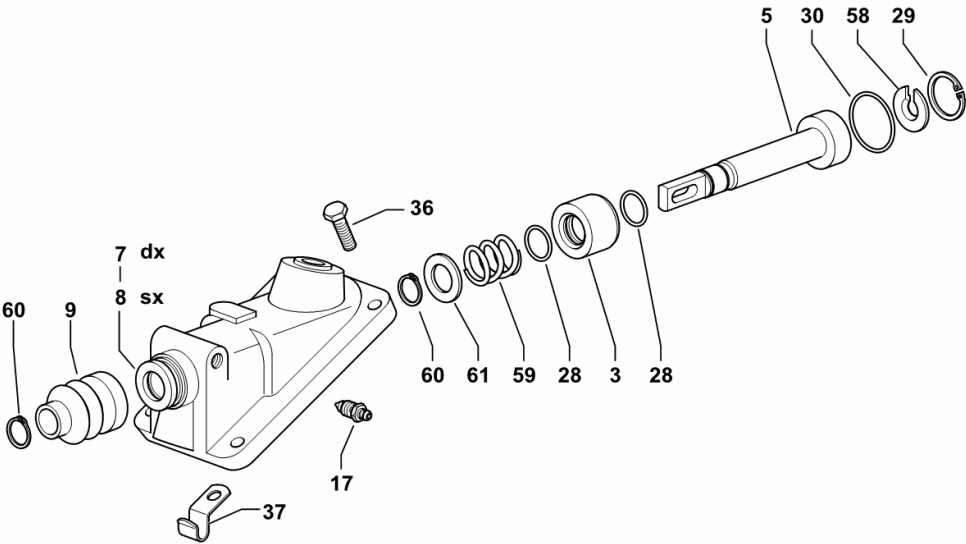
9\_G0276\_00\_0-B-001

Section: G0 - BODYWORK - CAB  
**BRAKE CONTROLS**

Fig.	Code	QTY	Name
------	------	-----	------

Notes:  
 [KRYPTON F 100 M] [KRYPTON F 100 N]

3	0.007.8495.0	2	piston
5	0.007.8496.0/10	2	top link
7	0.013.1638.0/10	1	cylinder dx/rh/re
8	0.013.1637.0/10	1	cylinder sx/lh/li
9	0.292.6656.0/20	2	cap
17	0.170.5455.0	2	valve
28	2.1539.524.0	4	'o' ring
29	2.1411.057.1	2	circlip 37
30	2.1539.052.0	2	'o' ring
36	2.0112.313.2	8	screw m 10 p.1.5 x 35
37	0.013.4969.0	2	small plate
58	0.292.6674.0/10	2	washer
59	2.4019.418.1	2	spring
60	2.1419.043.1	4	circlip 16.5x1.2
61	2.1311.013.2	2	flat washer 22



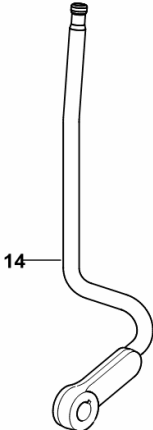
9\_24166\_03\_0-A-001

Section: G0 - BODYWORK - CAB  
**REDUCTION GEAR CONTROL**

Fig.	Code	QTY	Name
------	------	-----	------

Notes:  
[KRYPTON F 100 M] [KRYPTON F 100 N]

14	0.013.4234.2/10	1	lever
----	-----------------	---	-------



9\_24164\_00\_0-D-001

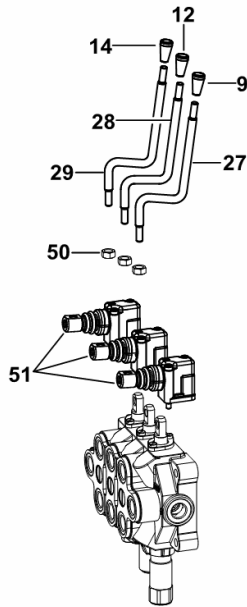
**CONTROLS FOR 6-WAY AUXILIARY SERVICES CONTROL VALVE**

Fig.	Code	QTY	Name
------	------	-----	------

**Notes:**

[KRYPTON F 100 M] [KRYPTON F 100 N]

9	0.013.2865.0/10	1	knob - BLUE COLOUR
12	0.013.3413.0/10	1	knob - RED COLOUR
14	0.011.0474.0	1	grip - BLACK
27	0.013.5429.0/20	1	lever
28	0.013.5428.0/20	1	lever
29	0.013.5429.0/20	1	lever
50	2.1011.105.2	3	nut m 8 p.1.25
51	0.013.1989.4	3	transmission ☞ 0.013.1989.4



9\_24188\_25\_0-C-001

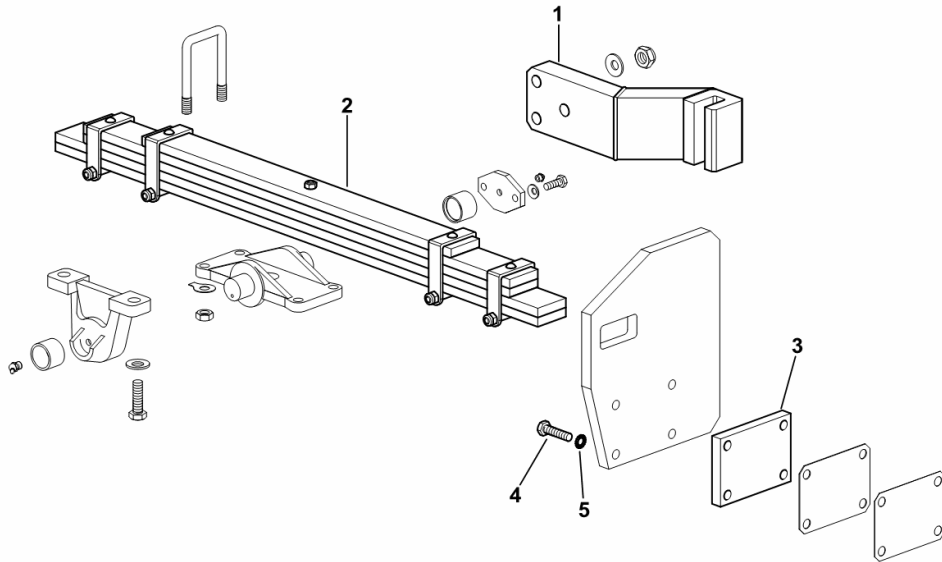
**FRONT SUSPENSION**

Fig.	Code	QTY	Name
------	------	-----	------

**Notes:**

- WITH 1350 mm TRACK [KRYPTON F 100 M]

1	0.012.5983.0/20	2	crosspiece
2	0.294.5120.4/50	1	leaf spring
3	0.012.5962.0/10	2	spacer
4	2.0112.523.2	8	screw m 14 p.2x70
5	2.1470.008.2	8	lock washer 14



9\_24151\_01\_0-A-001

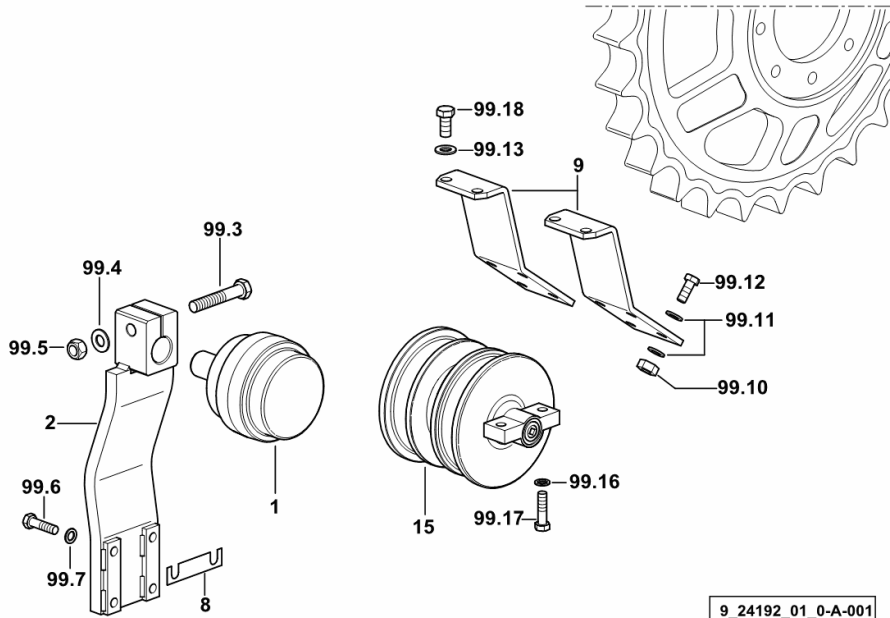
**TRACK HOLDER ROLLER**

Fig.	Code	QTY	Name
------	------	-----	------

**Notes:**

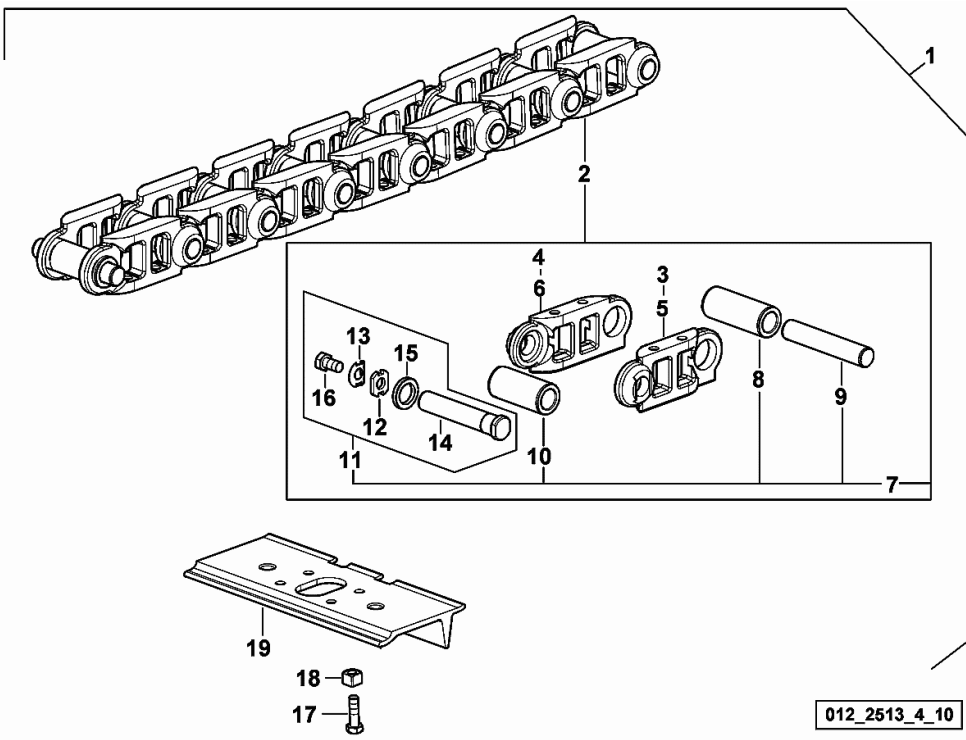
- WITH "MF200" TRACK CHAIN [KRYPTON F 100 M] - WITH "MF200" TRACK CHAIN [KRYPTON F 100 N]

1	0.007.8857.4/10	2	roller ☞ 0.007.8857.4/10
2	0.012.1915.2	2	support
8	0.425.9250.0	8	shim
9	0.294.9212.0/10	4	shield
15	0.007.9358.4/10	10	roller BD
99.3	2.0122.627.2	2	screw m 16 p.1.5x90
99.4	2.1475.006.2	2	washer 16
99.5	2.1011.409.2	2	nut m 16 p.1.5
99.6	2.0112.417.2	8	screw m 12 p.1.75 x 45
99.7	2.1470.007.2	8	lock washer 12
99.10	2.1011.107.2	8	nut m 12 p.1.75
99.11	2.1310.007.2	16	flat washer 13.5
99.12	2.0112.411.2	8	screw m 12 p.1.75 x 30
99.13	2.1310.009.2	4	flat washer 14
99.16	2.1470.007.2	40	lock washer 12
99.17	2.0112.417.2	40	screw m 12 p.1.75 x 45
99.18	2.0112.511.2	4	screw m 14 p.2 x 30



**TRACK mm 360**

Fig.	Code	QTY	Name
1	0.000.0000.1	1	not serviceable
2	0.007.8946.4	1	track mm 140 - n. 37
3	0.216.9432.0	36	chain link dx/rh/re
4	0.216.9433.0	36	chain link sx/lh/li
5	0.007.9006.0	1	chain link dx/rh/re
6	0.007.9007.0	1	pipe union sx/lh/li
7	0.010.3310.0	1	accessories
8	0.007.9008.0	36	bushing
9	0.216.9437.0	36	pin
10	0.216.9435.0	1	bushing
11	0.007.9011.4	1	pin
12	0.007.9475.0	1	washer
13	2.1599.206.0	1	snoulder
14	0.010.3636.1	1	pin
15	0.010.3310.1	2	spacer
16	2.0132.907.1	1	screw
17	2.0119.031.2	148	screw
18	2.1099.042.2	148	nut
19	0.216.9412.0	37	shoe mm 360



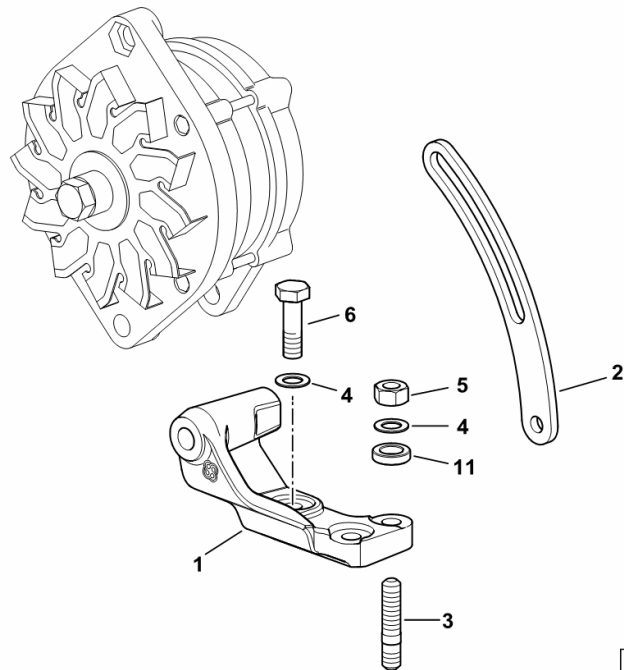
**ALTERNATOR AND BELT TENSIONER SUPPORT**

Fig.	Code	QTY	Name
------	------	-----	------

**Notes:**

[KRYPTON F 100 M] [KRYPTON F 100 N]

1	0.261.8441.0/10	1	support
2	0.261.8442.0	1	bracket
3	2.0432.159.7	2	stud bolt m 10 p.1.5 / p.1.25 x 35
4	2.1470.006.2	3	lock washer 10
5	2.1011.421.2	2	nut m 10 p.1.25
6	2.0112.313.2	1	screw m 10 p.1.5 x 35 ( 1110 <- )
6	2.0112.311.2	1	screw m 10 p.1.5 x 30 ( -> 1111 )
11	2.1579.901.2	2	spacer 12x20x5



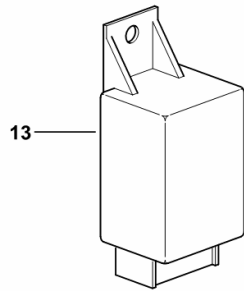
**LIGHT FLASHER RELAY**

Fig.	Code	QTY	Name
------	------	-----	------

**Notes:**

[KRYPTON F 100 M] [KRYPTON F 100 N]

13	2.8639.007.0/10	1	blinker 12V, 21W ( 2+1+1 )
----	-----------------	---	----------------------------



9\_G0284\_00\_0-B-001

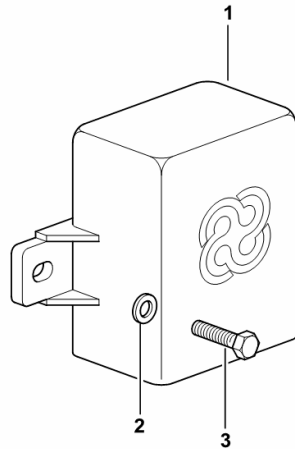
**PREHEATING ELECTRONIC CONTROL UNIT**

Fig.	Code	QTY	Name
------	------	-----	------

**Notes:**

[KRYPTON F 100 M] -> 1036 [KRYPTON F 100 N] -> 1036

1	2.8519.023.0/30	1	central device
2	2.1310.002.2	2	washer 6.6, d125
3	2.0112.003.2	1	screw m 6 p.1 x 12



9\_B6184\_30\_0-A-001

CLICK HERE TO **DOWNLOAD** THE COMPLETE MANUAL

- Thank you very much for reading the preview of the manual.
- You can download the complete manual from: [www.heydownloads.com](http://www.heydownloads.com) by clicking the link below

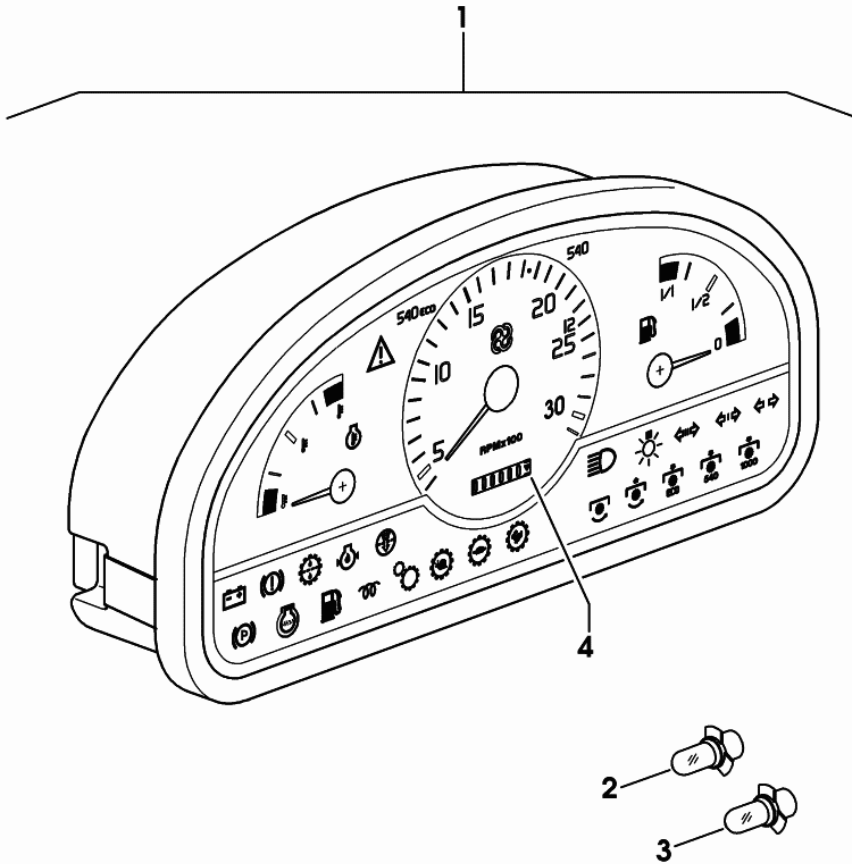


- Please note: If there is no response to CLICKING the link, please download this PDF first and then click on it.

CLICK HERE TO **DOWNLOAD** THE COMPLETE MANUAL

**DASHBOARD BOX**

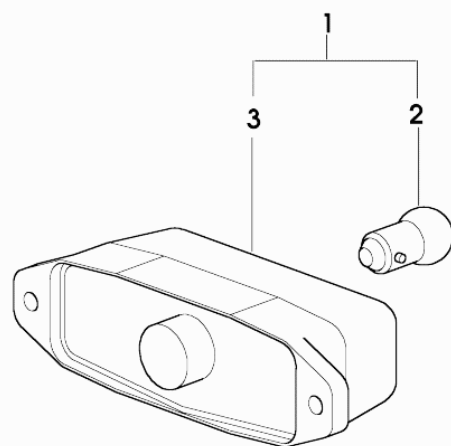
Fig.	Code	QTY	Name
1	2.8339.236.0/10	1	multimeter
2	0.900.0018.9	1	lamp 12v - 1.2W - GREEN COLOUR
3	0.900.0018.8	1	lamp 12V - 2W - ORANGE
4	0.010.3119.0	1	multimeter



2\_8339\_236\_0\_10

**HEADLAMP COMPONENTS**

Fig.	Code	QTY	Name
1	2.8029.240.0/10	1	side lamp
2	2.8313.005.0	1	lamp 12 V, 5 W
3	0.000.0000.1	0	not serviceable



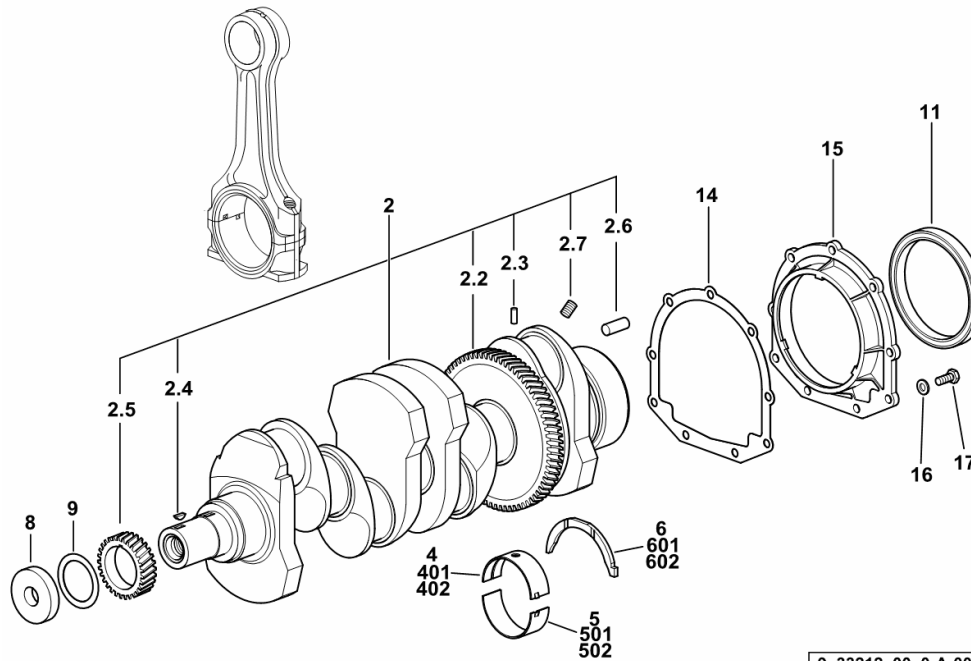
2\_8029\_240\_0\_10

**CRANKSHAFT**

Fig.	Code	QTY	Name
------	------	-----	------

**Notes:**

[KRYPTON F 100 M] [KRYPTON F 100 N]



2	0.086.1210.3/40	1	crank shaft
2.2	0.065.1211.0/10	1	crown wheel
2.3	2.1630.608.0	1	pin 6x16
2.4	2.1720.006.0	1	key 4x6.5
2.5	0.065.1323.0/30	1	gear Z = 29
2.6	2.1651.915.0	1	pin 12x35
2.7	2.3130.001.1	4	plug 1/8" gas
4	0.065.1215.0/10	5	main half bushing STANDARD
5	0.065.1216.0/10	5	main half bushing STANDARD
6	0.065.1218.0	4	shim STANDARD
8	2.1599.524.7	1	washer 21x60x12
9	2.1589.189.0	2	snoulder mm 1.00
11	2.1529.073.0	1	'o' ring 110x130x13
14	0.065.1254.0/20	1	gasket
15	0.007.1711.0/10	1	cover
16	2.1475.002.2	9	conical washer 8
17	2.0112.207.2	9	screw m 8 p 1.25 x 20
401	0.065.1215.7	0	main half bushing - mm 0.25
402	0.065.1215.8	0	main half bushing - mm 0.50
501	0.065.1216.7	0	main half bushing - mm 0.25
502	0.065.1216.8	0	main half bushing - mm 0.50
601	0.065.1218.7	0	shim + mm 0.10
602	0.065.1218.8	0	shim + mm 0.15

9\_33212\_00\_0-A-001

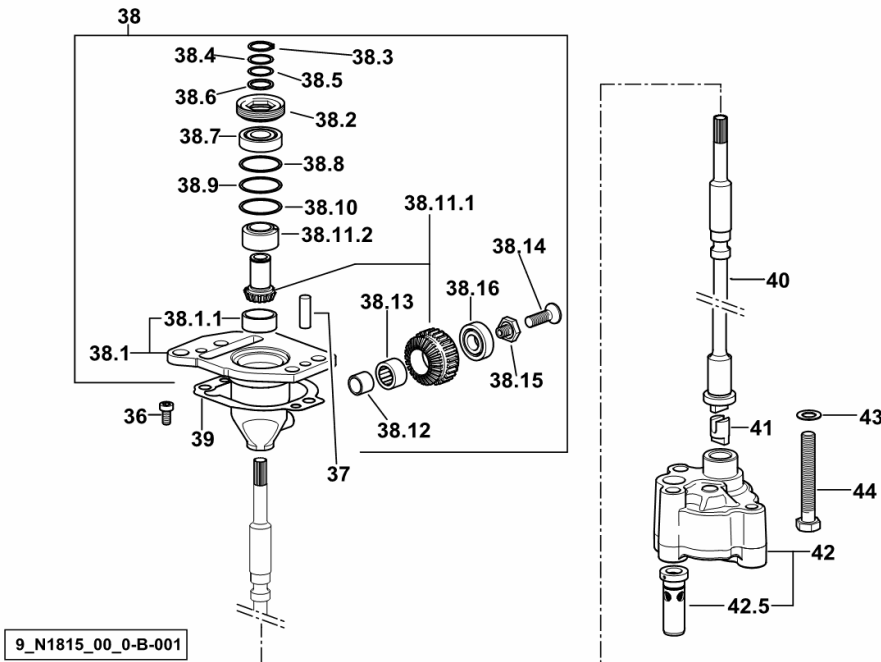
Section: B0 - ENGINE  
**OIL PUMP**

Fig.	Code	QTY	Name
------	------	-----	------

**Notes:**

[KRYPTON F 100 M] [KRYPTON F 100 N]

36	2.0169.005.2	2	screw m 6 p.1 x 12
37	2.1651.711.0	2	pin 8 x 14
38	0.013.1629.4/20	1	support
38.1	0.013.1629.3/10	1	support
38.1.1	2.1559.186.0	1	bushing 26 x 31.5 x 35
38.2	2.1219.025.2/10	1	ring nut m 36 p.1.5
38.3	2.1410.057.1	1	circlip 15
38.4	2.1589.153.0	1	snoulder 15.2 x 19 x 1.00
38.5	2.1589.146.0	2	snoulder 15.2 x 19 x 0.15
38.6	2.1589.147.0	2	snoulder 15.2 x 19 x 0.10
38.7	2.2020.001.0	1	ball bearing 15 x 32 x 8.00
38.8	2.1589.148.0	1	snoulder 28.2 x 31.8 x 0.5
38.9	2.1589.150.0	2	snoulder 28.2 x 31.8 x 0.1
38.10	2.1589.151.0	2	snoulder 28.2 x 31.8 x 0.15
38.11.1	0.065.1558.6/10	1	bevel gear
38.11.2	0.065.1559.0	1	sleeve
38.12	2.2680.020.0	1	ring 12 x 15 x 12
38.13	2.2725.016.0	1	roller cage 15 x 21 x 12
38.14	2.0342.007.6	1	screw m 4 p.0.7 x 30
38.15	2.0399.128.2/10	1	screw m 8 p.1 x 8
38.16	2.2030.002.0	1	ball bearing 12 x 28 x 8
39	0.065.1560.0/30	2	gasket
40	0.065.1569.0/40	1	shaft
41	0.065.1562.0/10	1	joint
42	0.010.5441.4/10	1	oil pump
42.5	0.065.1552.3/60	1	valve
43	2.1470.006.2	2	lock washer 10
44	2.0112.325.2	2	screw m 10 p.1.5 x 80



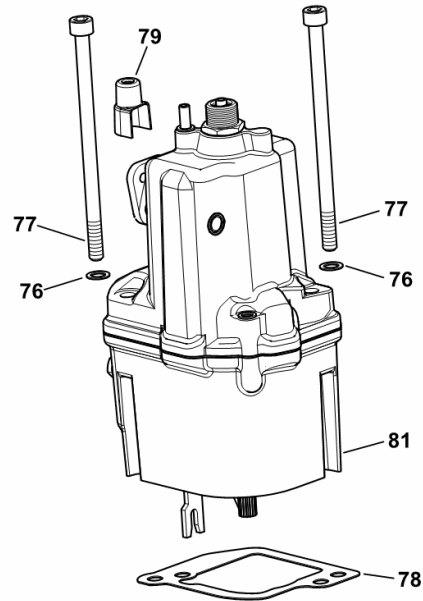
**MECHANICAL ENGINE GOVERNOR**

Fig.	Code	QTY	Name
------	------	-----	------

**Notes:**

[KRYPTON F 100 M] [KRYPTON F 100 N]

76	2.1480.014.1	2	washer 8
77	2.0399.103.2	2	screw m 8 p 1.25 x 135
78	0.009.3880.0/20	1	gasket
79	0.070.1655.0	1	cap
81	0.013.5695.4/20	1	regulator
			☞ 0.013.5695.4/20
			☞ 0.013.5695.4/20
			☞ 0.013.5695.4/20



9\_M5116\_01\_0-A-001

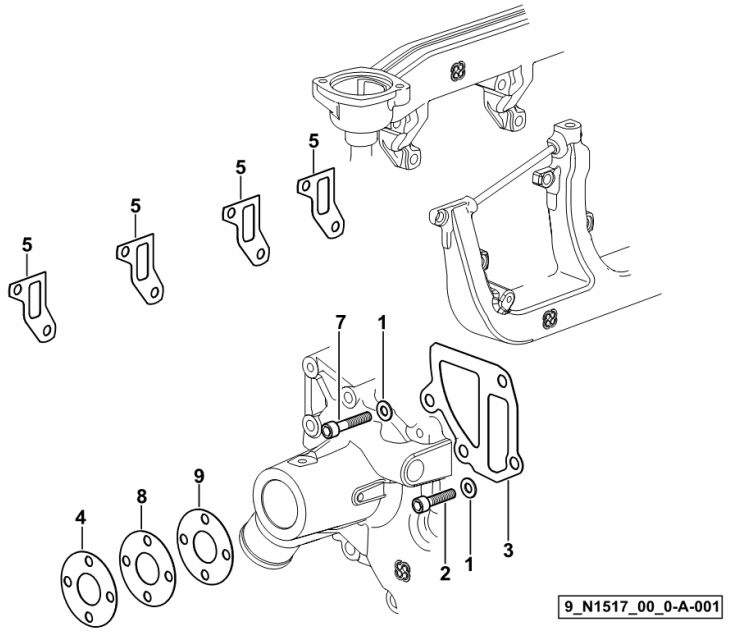
**WATER COOLING -SEALING**

Fig.	Code	QTY	Name
------	------	-----	------

**Notes:**

[KRYPTON F 100 M] [KRYPTON F 100 N]

1	2.1480.015.1	4	washer 10
2	2.0313.312.7	3	screw m 10 p 1.5x35
3	0.066.1753.0/30	1	gasket
4	2.1589.130.0	1	snoulder 29 x 68 x 0.5
5	0.066.1759.0/40	4	gasket
7	2.0313.315.7	1	screw m 10 p.1.5 x 45
8	2.1589.131.0	1	snoulder 29 x 68 x 1.0
9	2.1589.131.0	2	snoulder 29 x 68 x 1.0



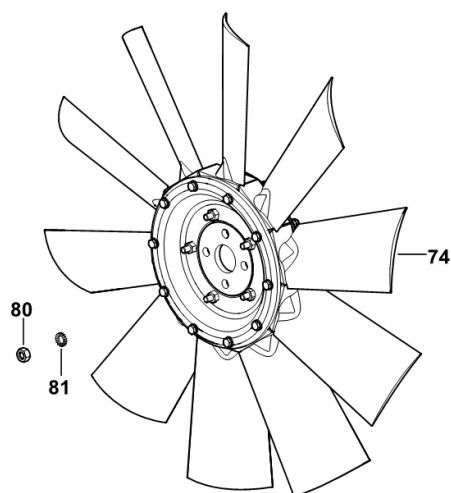
**BLOWER**

Fig.	Code	QTY	Name
------	------	-----	------

**Notes:**

[KRYPTON F 100 N] [KRYPTON F 100 M]

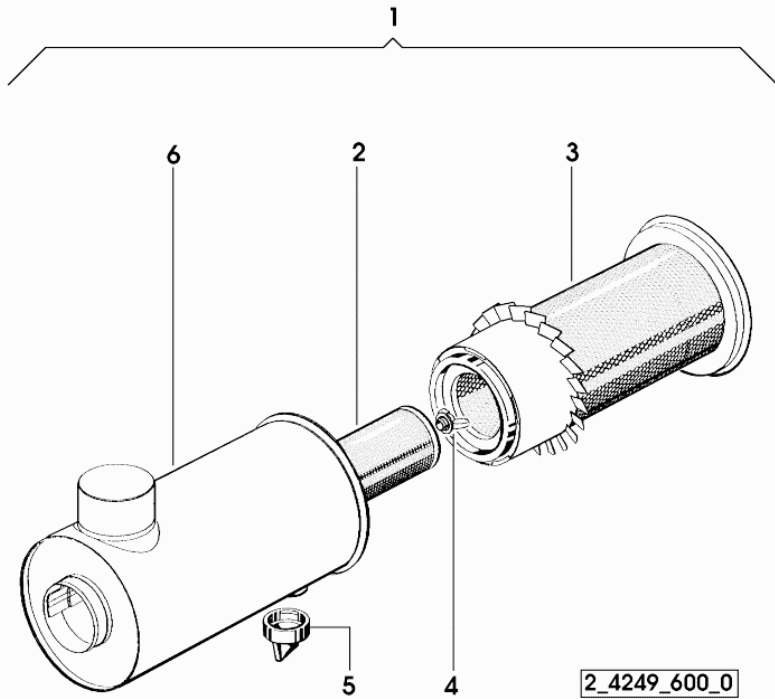
74	0.013.8707.0	1	rotor blade Ø 480 mm
80	2.1011.305.2	4	nut m 8 p.1 x 8
81	2.1470.004.2	4	washer 8



9\_M4319\_10\_0\_0

**AIR FILTER PARTS**

Fig.	Code	QTY	Name
1	2.4249.600.0	1	air filter 8 "
2	2.4249.130.7	1	internal air filter element
3	2.4249.131.0	1	external air filter element
4	2.4249.320.1	1	wing nut
5	0.009.4109.0	1	valve
6	0.000.0000.1	0	not serviceable



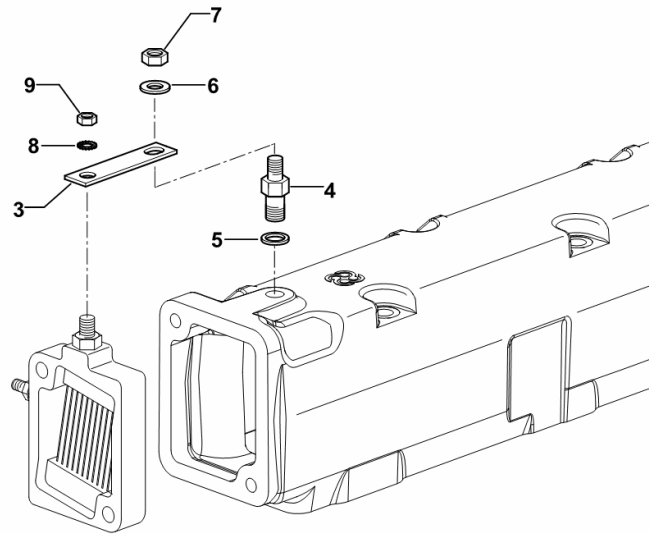
**HEATING ELEMENT EARTH**

Fig.	Code	QTY	Name
------	------	-----	------

**Notes:**

[KRYPTON F 100 M] -> 1036 [KRYPTON F 100 N] -> 1036

3	0.013.4451.0	1	bracket
4	0.013.4450.0	1	stud bolt m 8 / m 10
5	2.1560.006.0	1	gasket 10.2 x 16
6	2.1475.002.2	1	conical washer 8
7	2.1011.105.2	1	nut m 8 p.1.25
8	2.1470.002.2	1	washer 6, d128
9	2.1011.103.2	1	nut m 6 p.1



9\_G0284\_19\_0-B-001

# KRYPTON F 100 M-N

## H0 - HYDRAULIC AND PNEUMATIC SYSTEM|

### HYDRAULIC SYSTEM

GEAR BOX OIL RADIATOR TUBES.....	H0.01.0 (1)
HYDRAULIC PUMP 11 cc.....	H0.01.1 (1)
HYDRAULIC PUMP 22.5 cm <sup>3</sup> .....	H0.01.2 (1)
OIL SUCTION PIPE.....	H0.01.3 (1)
PTO CLUTCH PIPES.....	H0.01.4 (1)
LATERAL CLUTCH CONTROL.....	H0.01.5 (1)
6 WAY AUXILIARY HYDRAULIC SYSTEM.....	H0.01.6 (1)
6 WAY AUXILIARY HYDRAULIC SYSTEM.....	H0.01.6 (2)
10 WAY AUXILIARY HYDRAULIC SYSTEM.....	H0.01.7 (1)
10 WAY AUXILIARY HYDRAULIC SYSTEM.....	H0.01.7 (2)
CONTROL VALVE FOR STEERING.....	0.012.9821.4.A
HYDRAULIC PUMP PARTS.....	2.4539.640.0.A
HYDRAULIC PUMP PARTS.....	2.4539.883.0.A

### STEERING SYSTEM

STEERING HYDRAULIC.....	H0.02.0 (1)
STEERING PUMP MOUNTINGS.....	H0.02.1 (1)
HYDRAULIC SYSTEM PARTS KIT.....	H0.02.2 (1)
HYDRAULIC SYSTEM PARTS KIT.....	H0.02.2 (2)
HYDRAULIC PUMP PARTS.....	0.012.3580.4/40.A
HYDRAULIC PUMP PARTS.....	0.012.3580.4/50.A

### TRANSMISSION - PTO COOLERS

GEARBOX OIL COOLER.....	H0.03.0 (1)
-------------------------	-------------

### REAR REMOTE CONTROL VALVES

6-WAY HYDRAULIC CONTROL VALVE.....	H0.07.0 (1)
10-WAY AUXILIARY DISTRIBUTOR.....	H0.07.1 (1)
10-WAY AUXILIARY DISTRIBUTOR.....	H0.07.1 (2)
ENGAGEMENT.....	0.98309.50.3/10.A
DISTRIBUTOR.....	2.3729.688.0.A
DISTRIBUTOR.....	2.3729.695.0.A

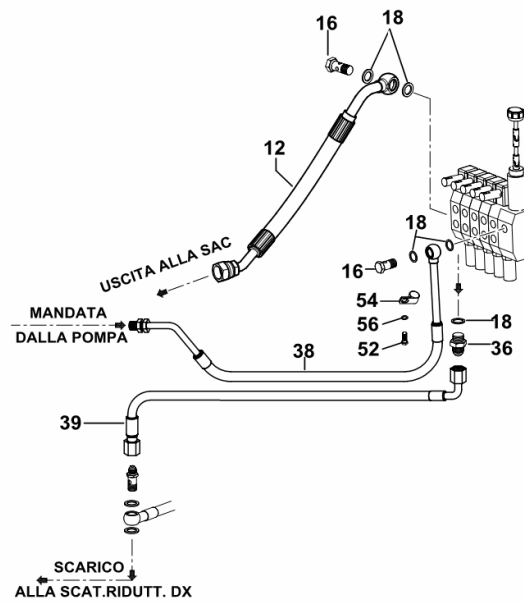
**10 WAY AUXILIARY HYDRAULIC SYSTEM**

Fig.	Code	QTY	Name
------	------	-----	------

**Notes:**

[KRYPTON F 100 M] -> 1092 [KRYPTON F 100 N] -> 1092

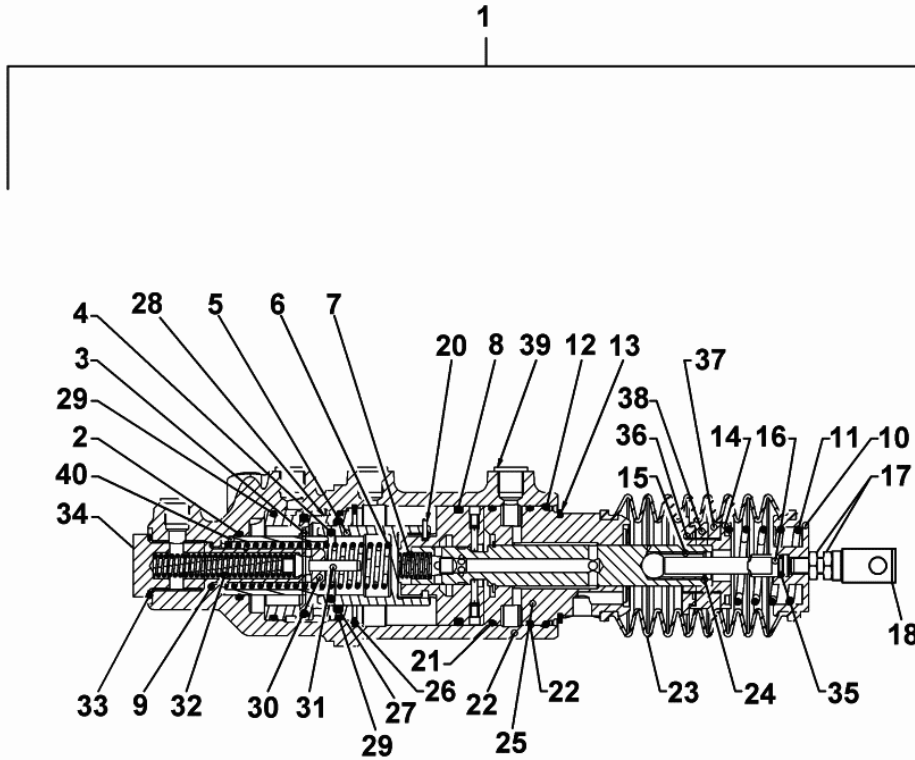
12	0.015.3930.3/10	1	tube
16	2.3339.295.2/10	2	pipe union m 18 p.1.5 x 35
18	2.1560.014.0	25	gasket 18.2 x 24 x 1.5
36	2.3261.010.2	1	pipe fitting m 18 p.1.5 - 7/8" 14
38	0.013.5324.3	1	tube
39	0.013.5315.3	1	tube 1/2"
52	2.0112.003.2	3	screw m 6 p.1 x 12
54	2.6839.058.0	1	clamp Ø 17/20
56	2.1310.004.2	3	flat washer 8.5



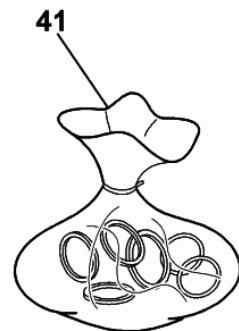
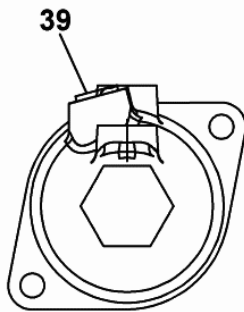
9\_24188\_35\_0-B-002

**HYDRAULIC PUMP PARTS**

Fig.	Code	QTY	Name
1	0.012.3580.4/50	1	pump
2	2.1532.075.0	1	ring
3	0.013.0601.0	1	'o' ring
4	2.1532.074.0	1	ring
5	0.013.0603.0	1	piston
6	2.4019.690.1	1	spring
7	2.4019.768.1	1	spring
8	2.1532.508.0	1	'o' ring
9	2.1560.013.0	1	gasket 18.2x22
10	0.013.2331.0	1	flange
11	2.4019.769.1	1	spring
12	2.1421.021.7	1	circlip
13	2.1499.183.1	1	circlip
14	0.013.2332.0	1	register
15	0.013.2350.0	1	tube
16	0.013.2348.0	1	cap
17	2.1011.205.2	2	nut m 8 p.1.25
18	0.292.6153.0/10	1	fork
20	2.1631.004.0	3	pin 2x10
21	2.1530.129.0	2	'o' ring 52.07x2.62
22	0.000.0000.1	1	not serviceable
23	0.013.0609.0	1	boot
24	2.1421.005.7	1	circlip
25	0.013.2333.3	1	top link
26	2.1411.022.1	1	circlip 55
27	2.1532.098.0	1	'o' ring 37.70x3.53
28	0.013.2335.0	1	bushing
29	2.1532.120.0	2	'o' ring 47.29x2.62
30	0.015.1379.0	1	sleeve
31	0.015.1245.0	1	cap
32	2.4019.691.1	1	spring
33	2.1560.019.0	1	gasket 24.3x30
34	2.3199.302.2	1	plug
35	2.1532.012.0	1	'o' ring 6.75 x 1.78
36	0.013.2339.0	1	spacer
37	0.013.2340.0	1	ring nut
38	0.013.2341.0	1	ring nut
39	0.000.0000.1	0	not serviceable
40	0.011.3811.0/10	1	guide
41	0.012.3580.6	1	seal ring kit



- 30 34 MANTARE CON "LOCTITE 542".  
Block with "LOCTITE 542".
- 30 CONIARE LA SEDE DI TENUTA CON SFERA POSIZ. 19.  
Coined the seat tightness with ball ITEM 19.



0\_012\_3580\_4\_50

KRYPTON F 100 M-N

Section: H0 - HYDRAULIC AND PNEUMATIC SYSTEM|  
**DISTRIBUTOR**

Ref.: 2.3729.695.0.A

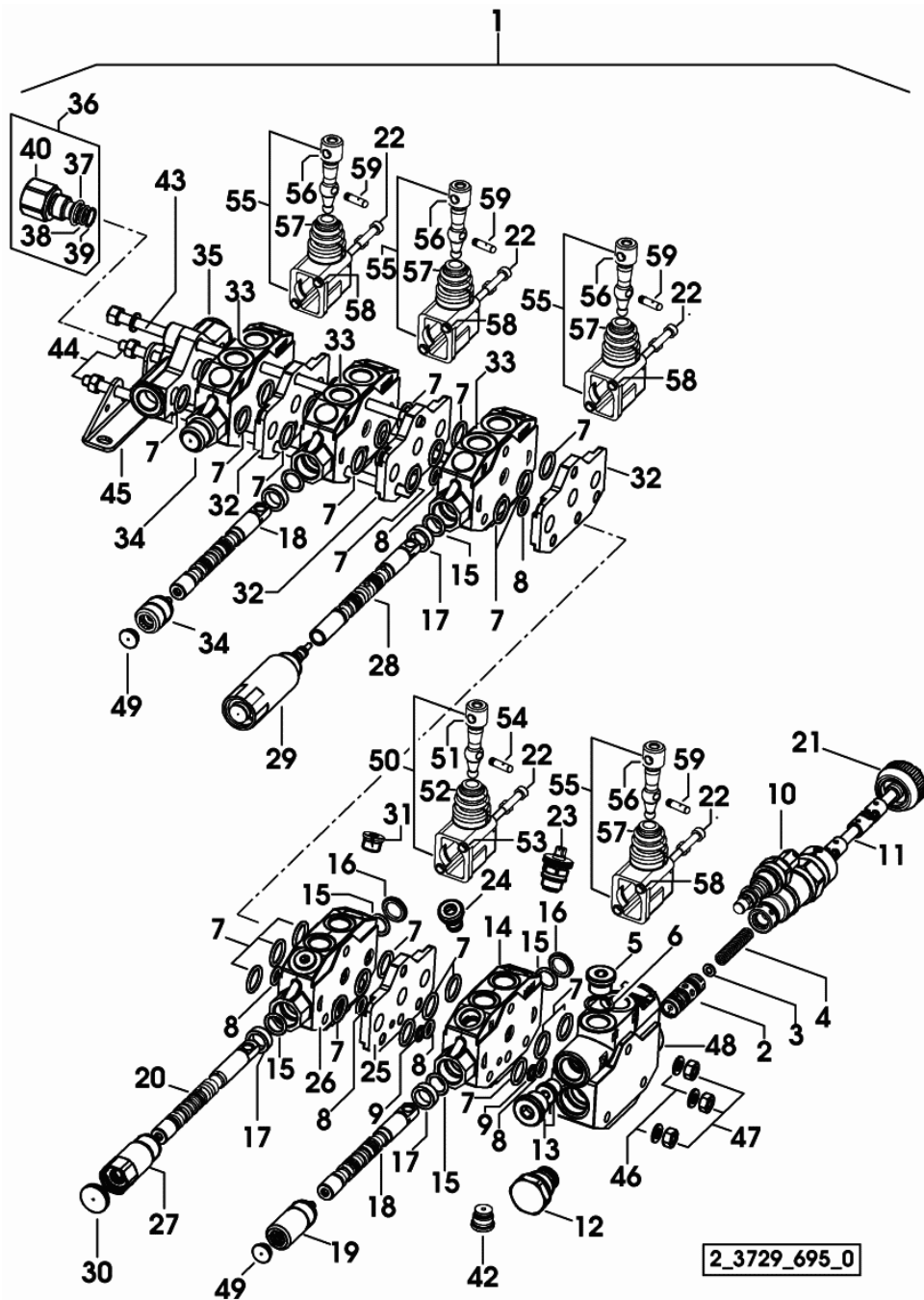


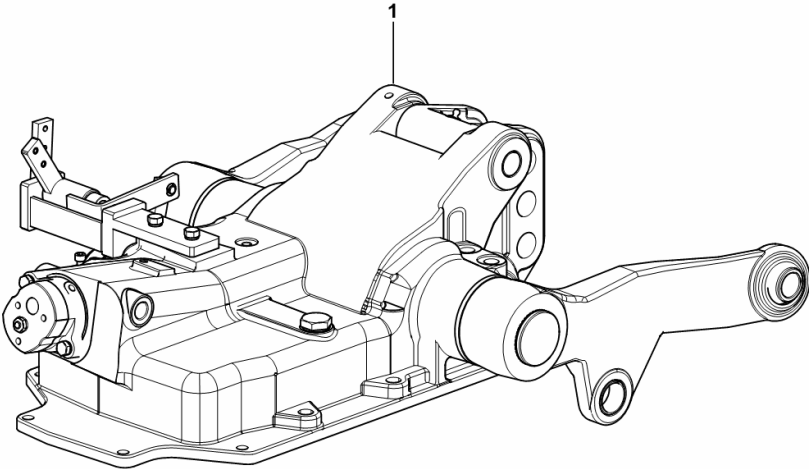
Fig.	Code	QTY	Name
46	0.010.3607.1	4	washer
47	0.010.3606.2	3	selflock nut
48	0.010.3617.1	1	body
49	0.010.3610.0	3	plug
50	0.900.0020.8	1	cover
51	0.900.0026.5	1	lever
52	0.900.0026.3	1	guard
53	0.900.0026.6	2	bushing
54	0.900.0026.4	1	piston pin
55	0.010.3611.0	4	joint
56	0.900.0026.5	4	lever
57	0.900.0026.3	4	guard
58	0.900.0026.6	8	bushing
59	0.900.0026.4	4	piston pin

Section: R0 - REAR LIFT  
**POWER LIFT - MITA**

Fig.	Code	QTY	Name
------	------	-----	------

Notes:  
[KRYPTON F 100 M] -> 1091 [KRYPTON F 100 N] -> 1091

1	0.014.0393.4	1	hydraulics housing ☞ 0.014.0393.4 ☞ 0.014.0393.4 ☞ 0.014.0393.4 ☞ 0.014.0393.4 ☞ 0.014.0393.4 ☞ 0.014.0393.4
---	--------------	---	--



9\_G0259\_00\_0-A-001

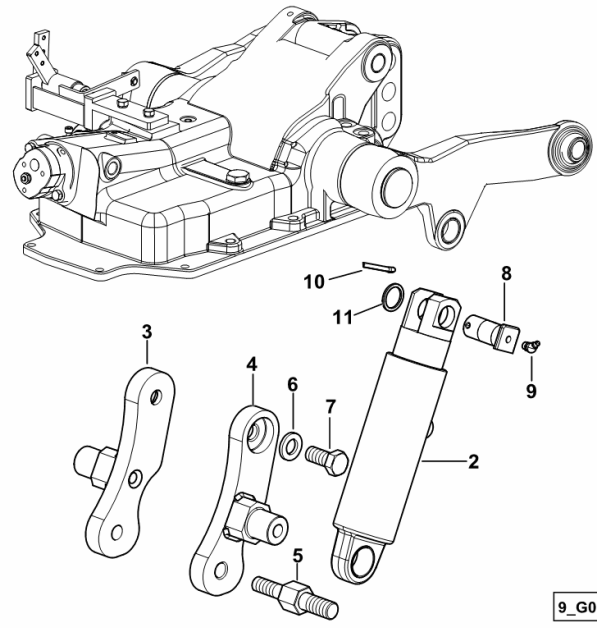
**POWER LIFT - HYDRAULIC CYLINDER - MITA**

Fig.	Code	QTY	Name
------	------	-----	------

**Notes:**

[KRYPTON F 100 M] -> 1091 [KRYPTON F 100 N] -> 1091

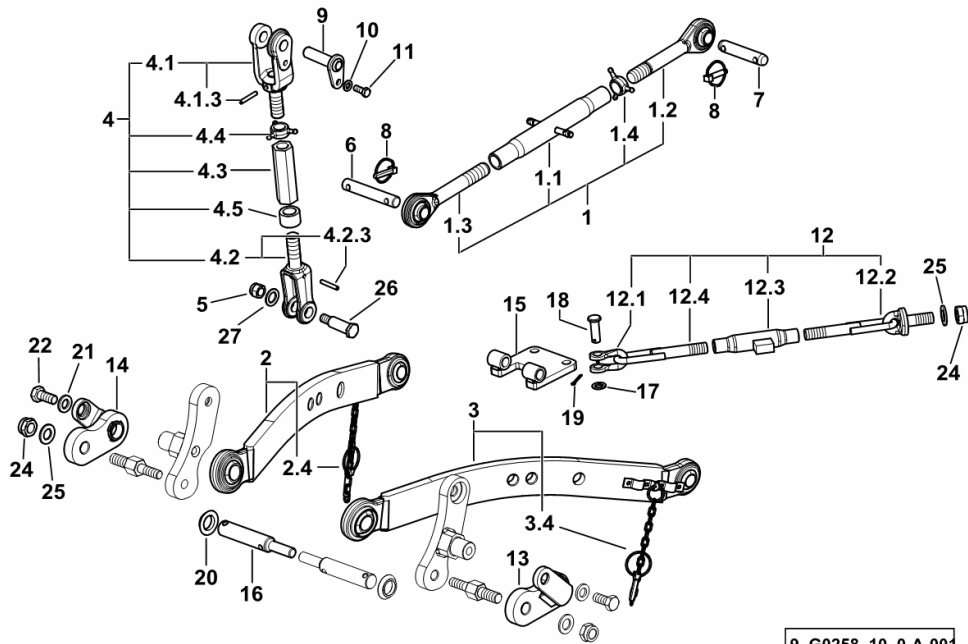
2	0.014.0387.4	2	cylinder ☞ 0.014.0387.4
3	0.013.9681.2/10	1	support dx/rh/re
4	0.013.9680.2/10	1	support sx/lh/li
5	2.0399.298.2/10	2	screw
6	2.1475.108.2	2	spring washer 20
7	2.0112.817.2	2	screw m 20 p.2.5 x 45
8	0.013.9226.0	2	pin
9	2.3821.103.2	2	lubricator m 10 p.1
10	2.1690.616.2	2	split pin 6.3 x 50
11	2.1599.657.2	2	washer 30x38x3



9\_G0259\_00\_0-C-001

Section: R0 - REAR LIFT  
**THREE-POINT COUPLING**

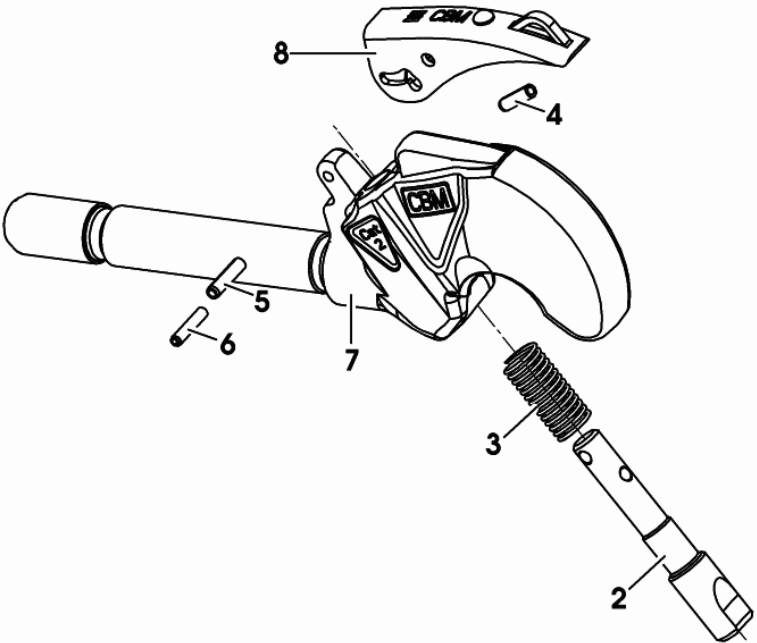
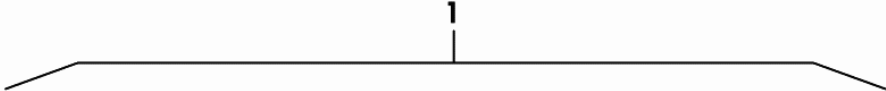
Fig.	Code	QTY	Name
26	0.479.5868.0/10	2	pin mm 24
27	2.1311.014.2	2	flat washer Ø 25



9\_G0258\_10\_0-A-001

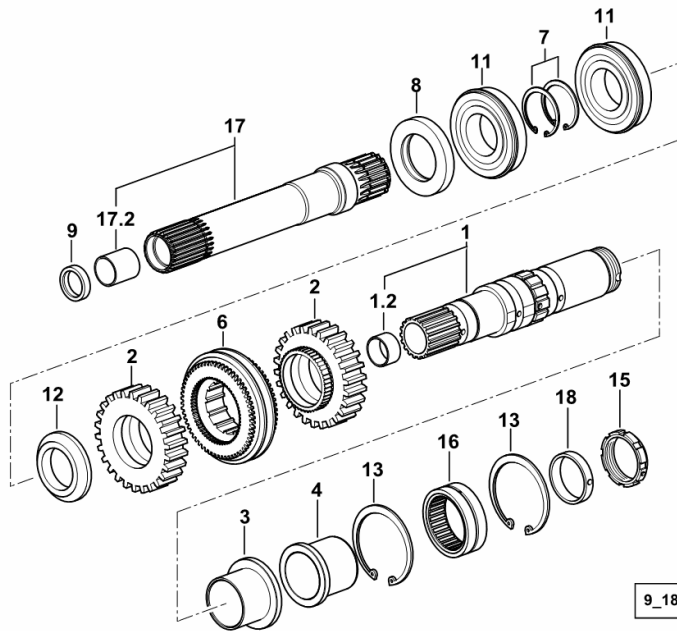
Section: R0 - REAR LIFT  
**LINKAGE**

Fig.	Code	QTY	Name
1	0.014.1410.3	1	automatic hook
2	04397651	1	pin
3	0.900.0070.6	1	spring
4	0.900.0070.7	1	roll pin
5	0.900.0070.8	1	pin
6	0.900.0070.9	1	roll pin
7	0.000.0000.1	0	not serviceable
8	04397652	1	lever



0\_014\_1410\_3

Section: D0 - TRANSMISSION  
**GEARBOX TO CLUTCH SHAFT**



9\_18937\_00\_0-A-001

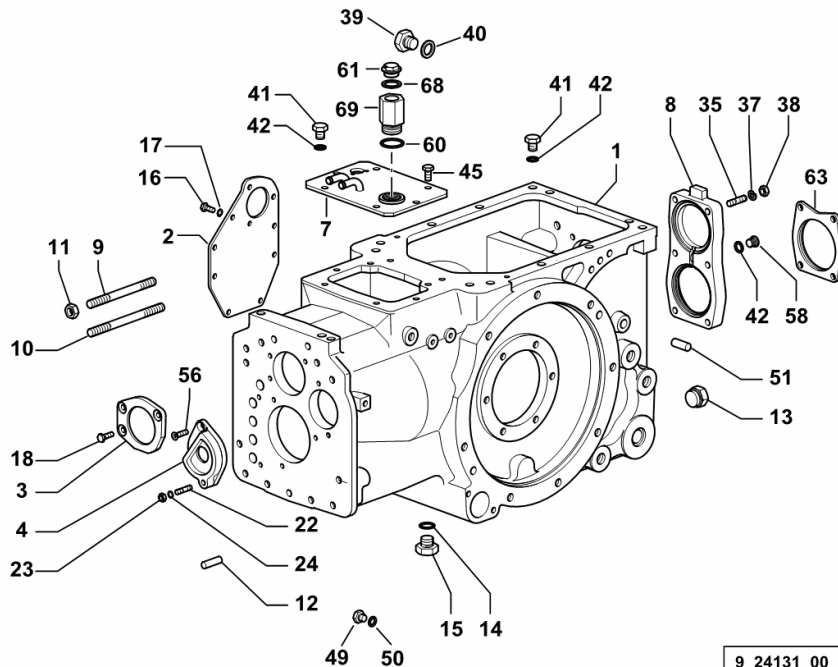
Fig.	Code	QTY	Name
<b>Notes:</b>			
[KRYPTON F 100 M] 1076 <- [KRYPTON F 100 N] 1076 <-			
1	0.012.9420.3/20	1	shaft
1.2	2.1555.214.0	1	bushing 25 x 28 x 15
2	0.012.9224.0	2	gear z = 26
3	2.1559.434.0/20	1	bushing
4	2.1559.435.0/20	1	bushing
6	0.011.8378.4/10	1	lock synchronizer ø 71/76 <small>☞ 0.011.8378.4/10</small>
7	2.1410.016.1	2	circlip 40
8	2.1529.051.0	1	'o' ring
9	2.1529.125.0/10	1	'o' ring 25 x 32 x 7
11	2.2043.012.0	2	ball bearing 40 x 80 x 18
12	2.1549.558.0	1	spacer
13	2.1411.026.7	2	circlip 65x2.5
15	2.1219.067.7/10	1	ring nut m 42x1.5
16	2.2999.457.0	1	roller cage
17	0.007.9306.3	1	shaft
17.2	2.1555.514.0	1	bushing 25 x 28 x 30
18	2.1549.559.0/20	1	spacer

Section: D0 - TRANSMISSION  
**GEARBOX**

Fig.	Code	QTY	Name
------	------	-----	------

**Notes:**

[KRYPTON F 100 M] -> 1099 [KRYPTON F 100 N] -> 1099



1	0.013.0177.0/50	1	gear box
2	0.012.7201.0	1	cover
3	0.007.9299.0/20	1	flange
4	0.292.3152.0/30	1	cover
7	0.012.9808.3	1	cover
8	0.255.3153.0/10	1	cover
9	2.0432.331.7	6	stud bolt m 14 p.1.5 x 160
10	2.0432.333.7	5	stud bolt m 14 p.2-1.5x180
11	2.1011.308.2	11	nut m 14 p.1.5
12	2.1651.917.0	2	cylindrical plug 12x40
13	2.3199.250.0	1	plug m 30 p.1
14	2.1560.017.0	1	gasket 22.2 x 27
15	2.3199.001.2	1	plug 1/2" gas
16	2.0112.207.2	8	screw m 8 p 1.25 x 20
17	2.1470.004.2	7	washer 8
18	2.0112.209.2	3	screw m 8 p 1.25 x 25
22	2.0422.209.2	1	screw m 8 x 35
23	2.1011.105.2	1	nut m 8 p.1.25
24	2.1470.004.2	1	washer 8
35	2.0432.161.7	6	stud bolt m 10 p.1.5 / p.1.25 x 40
37	2.1499.033.1	6	spring washer
38	2.1011.421.2	6	nut m 10 p.1.25
39	2.3110.425.2	1	plug m 30
40	2.1560.023.0	1	gasket 30.3 x 36
41	2.3110.403.1	2	plug m 14 p.1.5
42	2.1560.010.0	3	gasket 14.2 x 20 x 1.5
45	2.0112.307.2	6	screw m 10 p.1.5 x 20
49	2.3110.422.1	3	plug m 12 p.1.25 x 10
50	2.1560.008.0	1	gasket 12.2 x 18
51	2.1699.035.0	4	cylindrical plug 14 x 35
56	2.0349.002.3	1	screw m 8 p.1.25 x 30
58	2.3120.009.4	1	plug m 14 p.1.5
60	2.1560.056.0	1	gasket 33x39
61	2.3110.423.2	1	plug m 24 p.1.5x18.5
63	0.445.3151.0	1	flange
68	2.1560.020.0	1	gasket 24.3x32
69	0.015.8172.0	1	small column

CLICK HERE TO **DOWNLOAD** THE COMPLETE MANUAL

- Thank you very much for reading the preview of the manual.
- You can download the complete manual from: [www.heydownloads.com](http://www.heydownloads.com) by clicking the link below



- Please note: If there is no response to CLICKING the link, please download this PDF first and then click on it.

CLICK HERE TO **DOWNLOAD** THE COMPLETE MANUAL