

IRON 185 DCR -> 20001

V0 - BALLAST, TOWING HITCHES

FRONT HITCHES

FRONT TOWING HITCH.....	V0.01.0 (2)
CATCHING MOUTH.....	V0.01.1 (1)

REAR HITCHES

FRAME HOOK HOLDER.....	V0.02.0 (1)
FRAME HOOK HOLDER.....	V0.02.1 (1)
FRAME HOOK HOLDER.....	V0.02.2 (1)
FRAME HOOK HOLDER.....	V0.02.3 (1)
FRAME HOOK HOLDER.....	V0.02.4 (2)
REAR TOWING HITCH BRACKET.....	V0.02.5 (1)
TOWING FRAME - WITH PITON-FIX.....	V0.02.6 (1)
TOWING FRAME - WITH PITON-FIX.....	V0.02.7 (1)
TRAILER STAND - DRAWBAR COUPLING Ø mm 80.....	V0.02.8 (1)
TRAILER STAND - DRAWBAR COUPLING Ø mm 80.....	V0.02.9 (1)
DRAWBAR COUPLING MECH.....	V0.02.10 (2)
REAR TOWING HITCH.....	V0.02.11 (1)
REAR TOWING HITCH CEE.....	V0.02.12 (1)
DRAWBAR COUPLING CEE.....	V0.02.13 (1)
REAR TOWING HITCH Ø mm 80.....	V0.02.14 (1)
REAR TOWING HITCH Ø mm 80.....	V0.02.15 (1)
REAR TOWING HITCH CAT: "C".....	V0.02.16 (1)
REAR TOWING HITCH CAT: "C".....	V0.02.17 (1)
REAR TOWING HITCH CAT: "D2".....	V0.02.18 (1)
REAR TOWING HITCH CAT: "D2".....	V0.02.19 (1)
REAR TOWING HITCH CAT: "D3".....	V0.02.20 (1)
REAR TOWING HITCH CAT: "D3".....	V0.02.21 (1)
AUTOMATIC TOWING HITCH MM 31 - TOWING EYE MM 52.....	V0.02.22 (1)
AUTOMATIC TOWING HITCH MM 31 - TOWING EYE MM 52.....	V0.02.23 (1)
TOWING COUPLING AUTOM. MM 38 - DRAWBAR EYE MM 52.....	V0.02.24 (1)
TOWING COUPLING AUTOM. MM 38 - DRAWBAR EYE MM 52.....	V0.02.25 (1)
TOWING COUPLING AUTOM. MM 38 - DRAWBAR EYE MM 63.....	V0.02.26 (1)
TOWING COUPLING AUTOM. MM 38 - DRAWBAR EYE MM 63.....	V0.02.27 (1)
REMOTE CONTROL FOR AUTOMATIC REAR TOWING HITCH.....	V0.02.28 (1)
HYDRAULIC PICK-UP-HITCH.....	V0.02.29 (3)
PICK-UP-HITCH - MECHANICAL.....	V0.02.30 (1)
SWINGING DRAWBAR SUPPORT.....	V0.02.31 (1)
SWINGING DRAWBAR SUPPORT.....	V0.02.32 (1)
SWINGING DRAWBAR SUPPORT.....	V0.02.33 (1)
SWINGING DRAWBAR SUPPORT.....	V0.02.34 (1)
SWINGING DRAWBAR SUPPORT.....	V0.02.35 (1)
SWINGING DRAWBAR SUPPORT.....	V0.02.36 (1)

CLICK HERE TO **DOWNLOAD** THE COMPLETE MANUAL

- Thank you very much for reading the preview of the manual.
- You can download the complete manual from: www.heydownloads.com by clicking the link below



- Please note: If there is no response to CLICKING the link, please download this PDF first and then click on it.

CLICK HERE TO **DOWNLOAD** THE COMPLETE MANUAL

REAR TOWING HITCH BRACKET

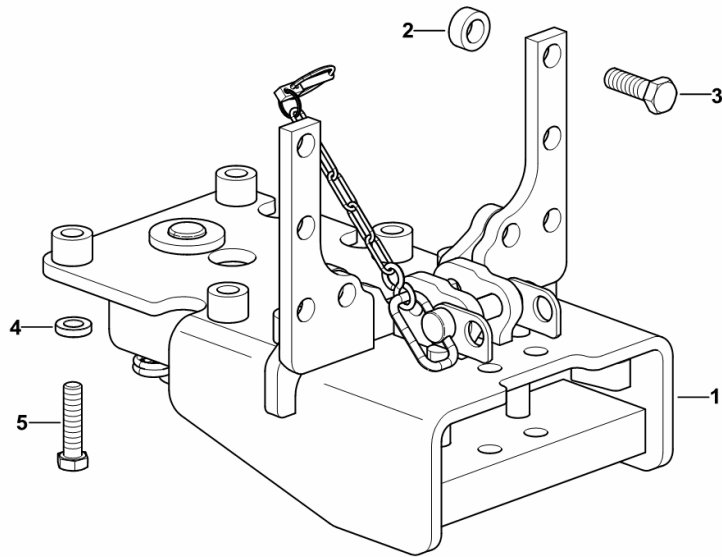
Fig.	Code	QTY	Name
------	------	-----	------

Notes:

- EXPORT U.S.A. [IRON 185 DCR -> 20001]

1	0.017.8556.3	1	chassis frame SAUERMANN ☞ 0.017.8556.3
2	2.1549.656.2	6	spacer 21x35x15
3	2.0123.720.2	8	screw m 18 p.1.5x55
4	01174740	6	washer 16.5
5	2.0113.622.2	6	screw m 16 x 65, d933

K9_L9431_60_0-A-001



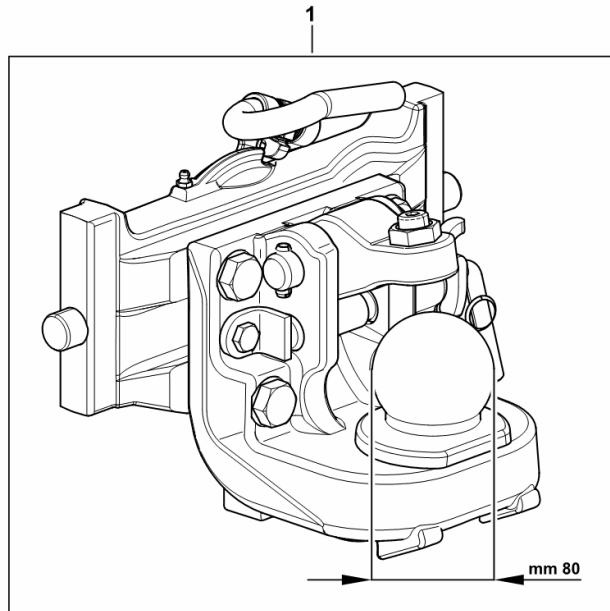
REAR TOWING HITCH Ø mm 80

Fig.	Code	QTY	Name
------	------	-----	------

Notes:
[IRON 185 DCR -> 20001]

1	0.017.8571.3	1	tow hook SAUERMANN ☞ 0.017.8571.3
---	--------------	---	--------------------------------------

K9_J9931_63_0-A-001



IRON 185 DCR -> 20001

Section: V0 - BALLAST, TOWING HITCHES

Ref.: V0.02.25 (1)

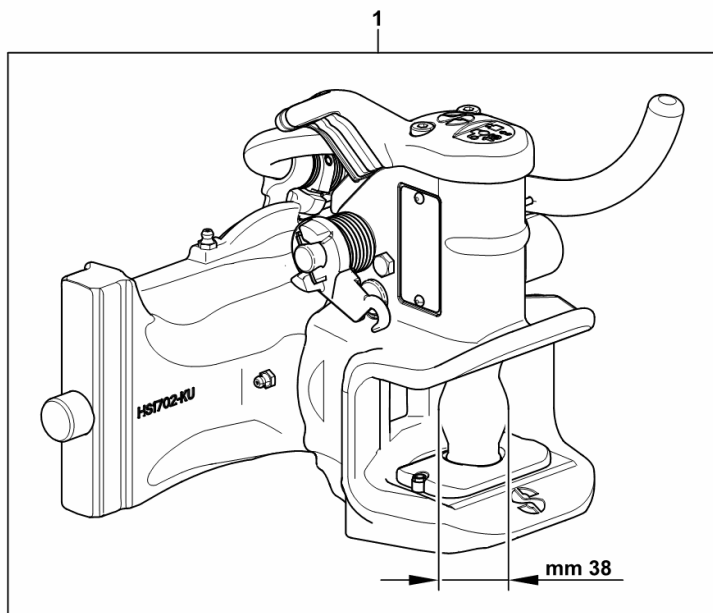
TOWING COUPLING AUTOM. MM 38 - DRAWBAR EYE MM 52

Fig.	Code	QTY	Name
------	------	-----	------

Notes:

[IRON 185 DCR -> 20001]

1	0.017.8569.3	1	automatic hook SAUERMANN ☞ 0.017.8569.3
---	--------------	---	--



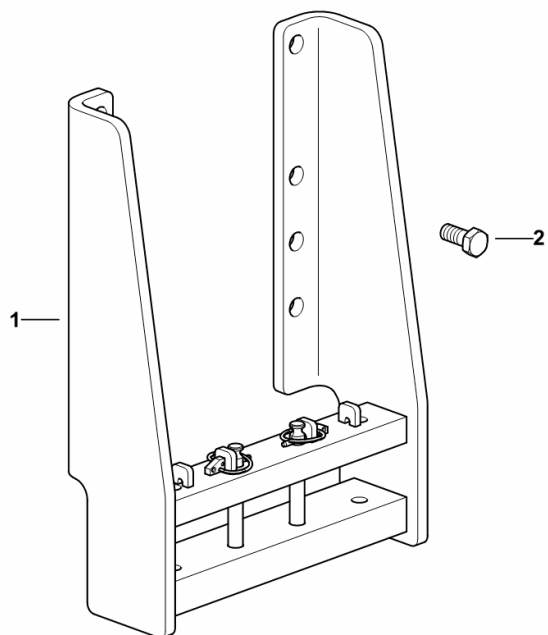
K9_L0131_65_0-A-001

SWINGING DRAWBAR SUPPORT

Fig.	Code	QTY	Name
------	------	-----	------

Notes:
[IRON 185 DCR -> 20001]

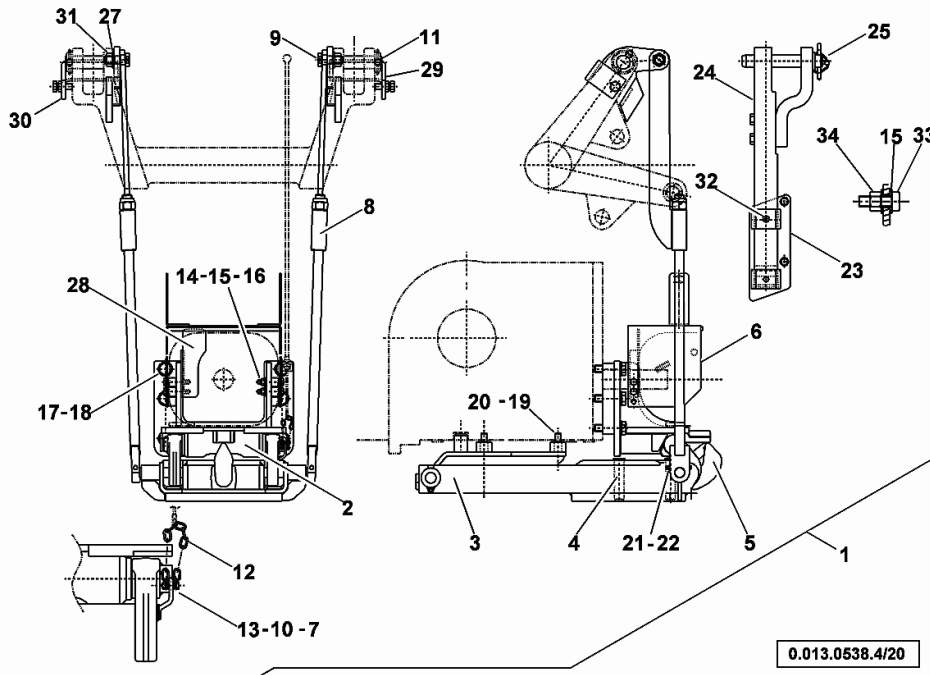
1	0.017.8601.3	1	support SAUERMANN ☞ 0.017.8601.3
2	2.0129.071.6	8	screw m 18 p.1.5x40



K9_L0231_66_0-A-001

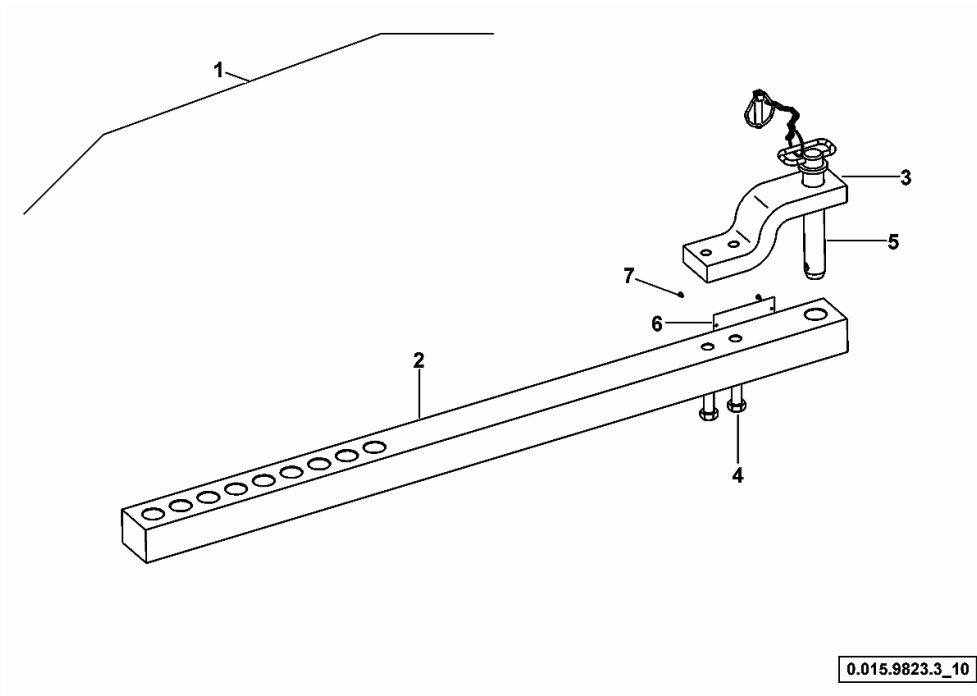
PICK-UP-HITCH

Fig.	Code	QTY	Name
1	0.013.0538.4/20	1	pick-up CBM
2	0.900.1387.4	1	chassis frame
3	0.900.1387.5	1	chassis frame
4	0.010.3106.0	2	pin
5	0.010.3105.2	1	clevis
6	0.900.0506.9	1	guard
7	0.010.3716.1	2	washer
8	0.900.1387.6	2	rod
9	0.900.0004.7	2	pin
10	0.010.3716.0	1	nut
11	0.900.0004.8	2	pin
12	0.010.3715.2	1	small chain
13	0.010.3716.2	1	screw
14	0.010.3945.2	4	screw m 10 x 60
15	0.010.3105.0	4	washer
16	0.96093.70.0	4	nut m 10 p.1.5
17	0.010.3946.0	6	screw m 18x70
18	0.010.3946.1	6	washer 19x34
19	0.900.1387.7	4	screw
20	0.010.3108.0	4	washer 17x30
21	0.900.0511.4	2	screw m 6 x 60
22	0.010.3108.2	2	nut m 6
23	0.900.1418.6	1	support
24	0.900.1364.6	1	draw bar
25	0.900.1364.7	1	pin
26	04418501	2	washer
27	0.010.3947.0	1	guard
28	0.900.0005.5	1	bracket dx/rh/re
29	0.900.0005.4	1	bracket sx/lh/li
30	0.900.0005.6	2	nut
31	0.010.3114.1	2	screw m 10 x 25
32	0.010.3157.1	2	screw m 10 x 30
33	0.900.0509.1	2	nut m 10



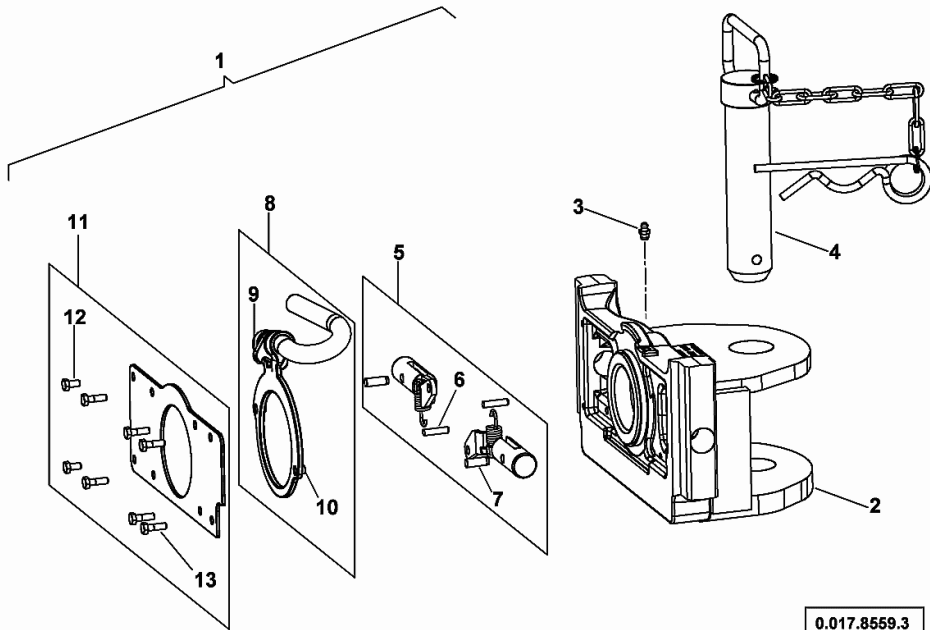
TOWING BAR

Fig.	Code	QTY	Name
1	0.015.9823.3/10	1	draw bar CBM
2	0.900.1439.4	1	rod
3	0.900.1283.9	1	bracket
4	0.900.1284.0	2	screw m 16x90
5	0.900.1367.8	1	pin
6	0.900.1439.5	1	plate
7	0.900.0510.2	2	rivet Ø 3.5 / L = 6.5



DRAWBAR COUPLING

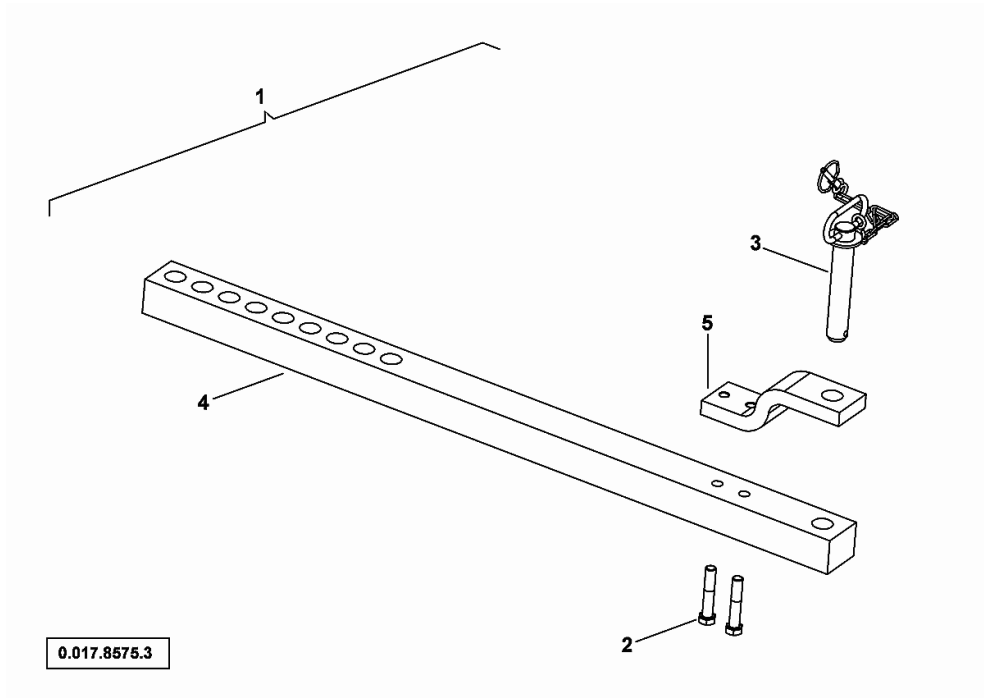
Fig.	Code	QTY	Name
1	0.017.8559.3	1	clevis SAUERMANN
2	0.900.1424.4	1	clevis
3	0.000.0000.1	1	not serviceable DIN 71412 - A M8x1
4	0.900.1424.5	1	pin
5	0.900.0384.2	1	accessories
6	0.000.0000.1	2	not serviceable ISO 2338-6 M6x26
7	0.000.0000.1	2	not serviceable ISO 2338-8 M6x24
8	0.900.1424.6	1	parts set
9	0.000.0000.1	1	not serviceable ISO 8752 - 6x28
10	0.000.0000.1	2	not serviceable ISO 2338-8 M6x10
11	0.900.1424.7	1	parts set
12	0.000.0000.1	2	not serviceable ISO 4017 M6x12
13	0.000.0000.1	6	not serviceable ISO 4017 M6x20



0.017.8559.3

TOWING BAR

Fig.	Code	QTY	Name
1	0.017.8575.3	1	draw bar SAUERMANN
2	0.000.0000.1	2	not serviceable ISO 4014 M16x85 - 10.9 M16x85
3	0.900.1427.7	1	pin
4	0.000.0000.1	1	not serviceable
5	0.900.1427.8	1	interlock



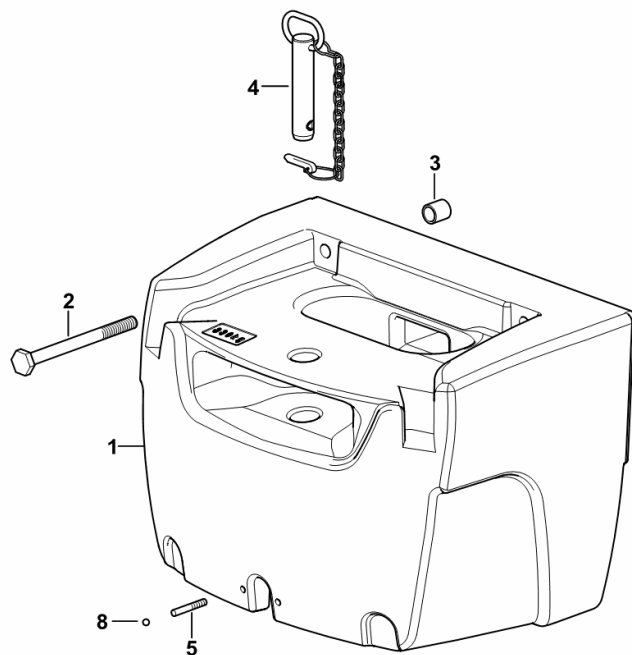
FRONT BALLAST 330 Kg

Fig.	Code	QTY	Name
------	------	-----	------

Notes:

[IRON 185 DCR -> 20001]

1	04432782/30	1	ballast 330 Kg
2	2.0119.282.6	4	screw m 16 x 120
3	2.2680.047.0	2	ring 17x22x23
4	0.014.9894.4	1	pin
5	2.1630.719.2	2	pin 8 x 60
8	01167310	2	bottom



K9_95052_45_0-A-002

OPERATION.....	0.017.6491.4.00
ACCESSORIES	
SUN BLIND FRONT WINDSCREEN.....	G0.19.0 (2)
SUN BLIND REAR WINDOW.....	G0.19.1 (2)
METAL TOOLBOX.....	G0.19.2 (2)
LICENCE PLATE HOLDER.....	G0.19.3 (1)
CHOCK.....	G0.19.4 (1)

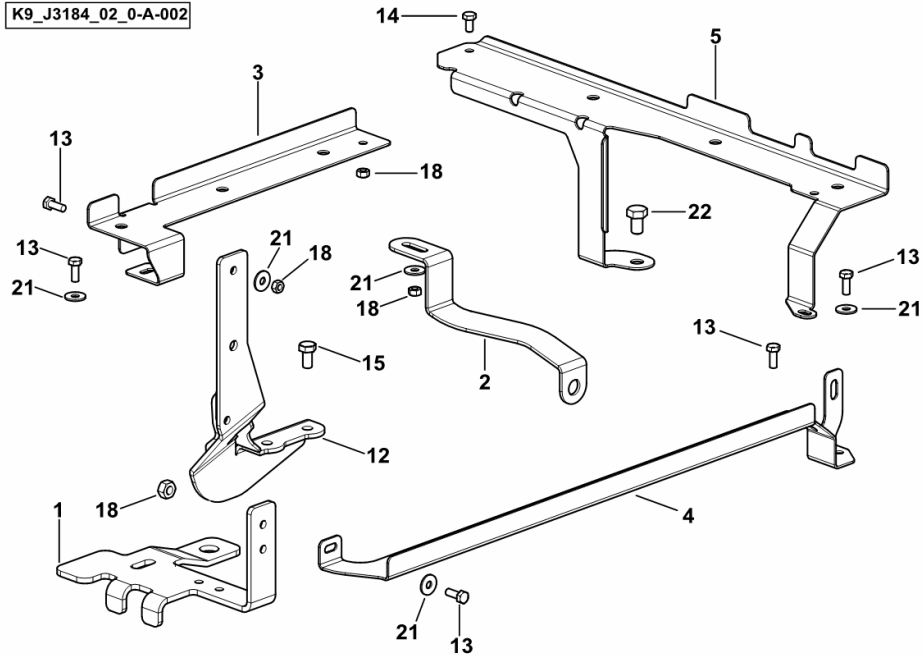
WIRING SUPPORT BRACKETS

Fig.	Code	QTY	Name
------	------	-----	------

Notes:
[IRON 185 DCR -> 20001]

1	0.017.9179.0	1	support
2	0.017.2833.0	1	bracket
3	0.017.7345.0/10	1	channel
4	0.017.7973.0/10	1	channel
5	0.017.8797.0/10	1	channel
12	0.017.6698.3	1	support
13	2.0112.005.2	5	screw m 6 p.1 x 16
14	2.0112.003.2	1	screw m 6 p.1 x 12
15	2.0112.205.2	2	screw m 8 p.1.25 x 16
18	2.1011.103.2	4	nut m 6 p.1
21	2.1312.003.2	5	washer 6
22	2.0112.305.2	1	screw m 10 p.1.5 x 16

K9_J3184_02_0-A-002

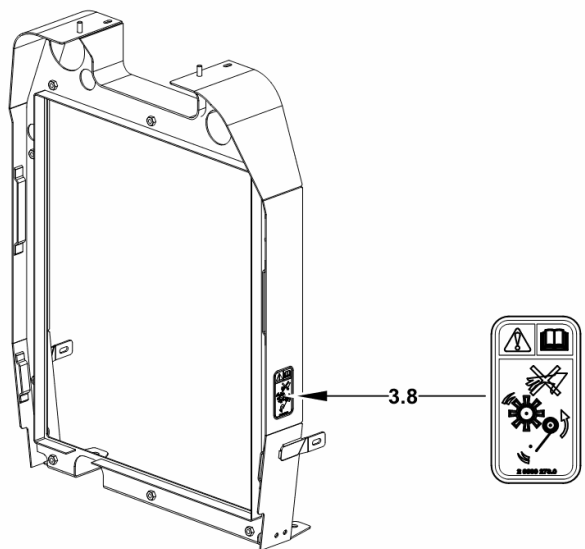


WARNING PLATE

Fig.	Code	QTY	Name
------	------	-----	------

Notes:
[IRON 185 DCR -> 20001]

3.8	2.9939.273.0	2	plate
-----	--------------	---	-------



K9_J3183_00_0-E-001

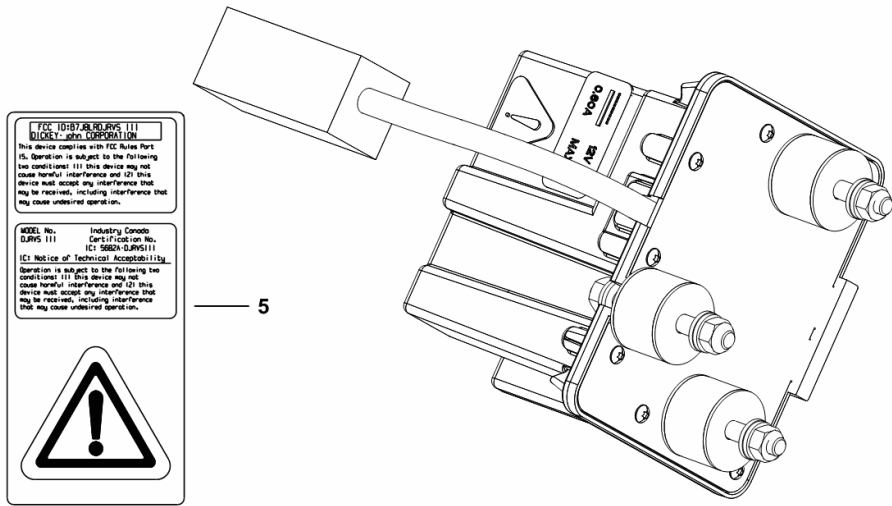
WARNING DECAL - RADAR

Fig.	Code	QTY	Name
------	------	-----	------

Notes:

- EXPORT U.S.A. [IRON 185 DCR -> 20001]

5	0.015.4670.0	1	plate
---	--------------	---	-------



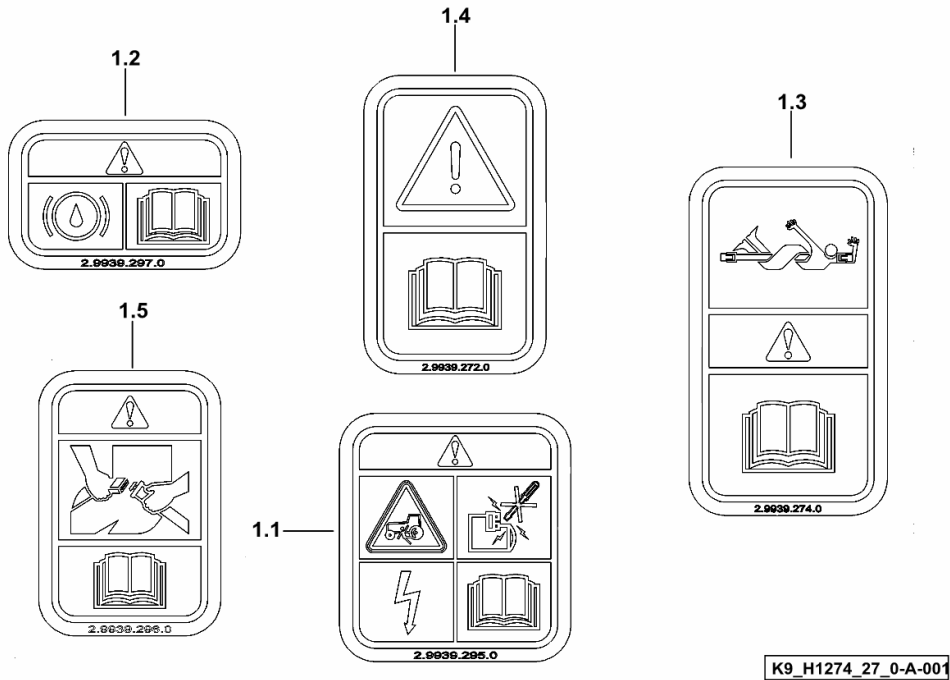
K9_J3184_64_0-B-001

WARNING PLATES

Fig.	Code	QTY	Name
------	------	-----	------

Notes:
[IRON 185 DCR -> 20001]

1.1	2.9939.295.0	1	plate - STARTER MOTOR
1.2	2.9939.297.0	1	plate - BRAKE FLUID
1.3	2.9939.274.0	1	plate - P.T.O.
1.4	2.9939.272.0	1	plate - USE AND MAINTENANCE HANDBOOK
1.5	2.9939.296.0	1	plate - SAFETY BELT

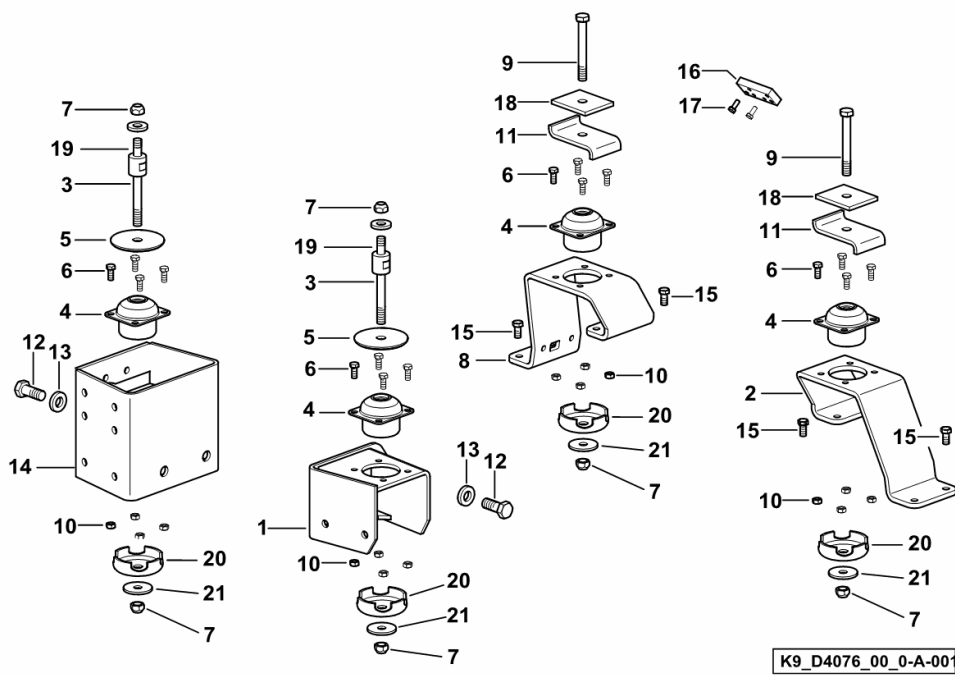


CAB BEARING RUBBER SPRINGING

Fig.	Code	QTY	Name
------	------	-----	------

Notes:
[IRON 185 DCR -> 20001]

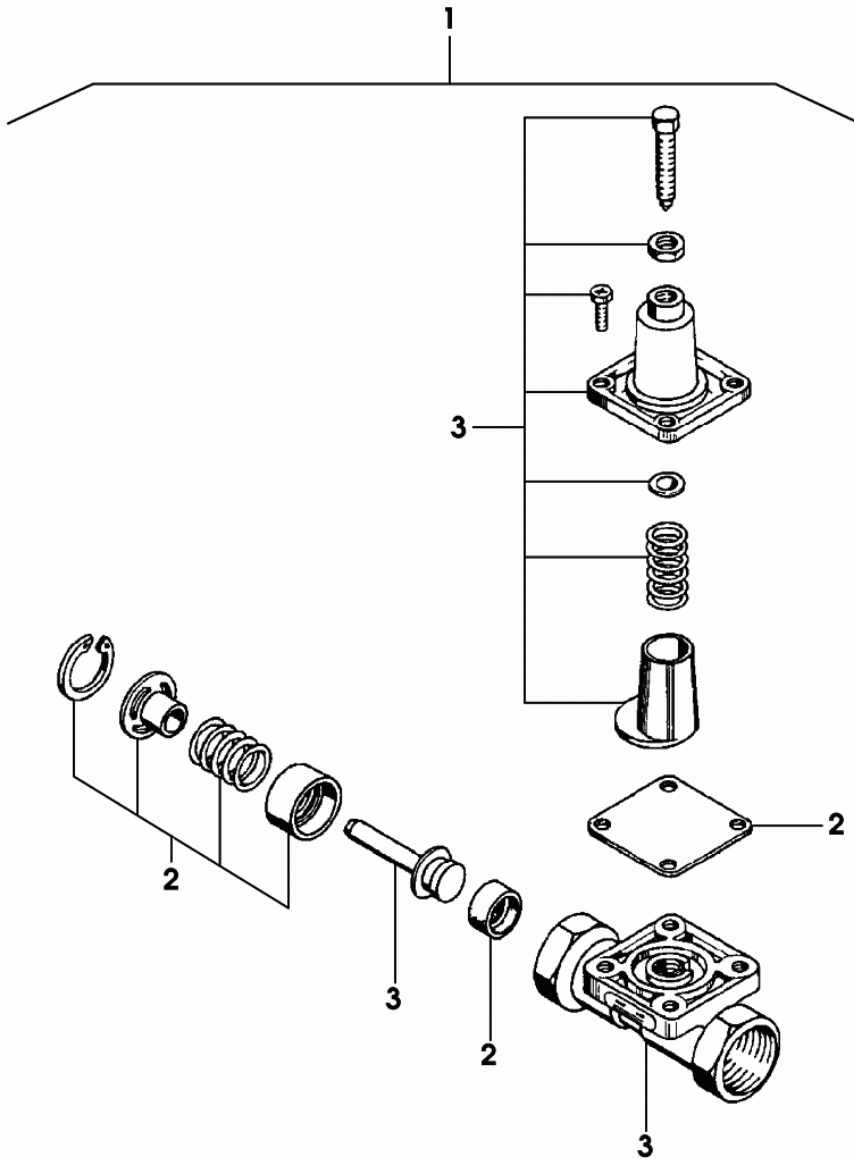
1	0.013.7607.3	1	support sx/lh/li
2	0.013.7413.0	1	support sx/lh/li
3	0.013.6204.0	2	pin
4	0.013.1022.0/10	4	silent-block
5	04450233	2	small disc
6	2.0112.309.2	16	screw m 10 p.1.5 x 25
7	2.1121.011.2	6	nut m 16
8	0.013.7414.0	1	support dx/rh/re
9	2.0113.635.2	2	screw m 16x130
10	2.1011.106.2	16	nut m 10 p.1.5
11	0.013.7411.0/10	2	bracket
12	2.0129.073.6	4	screw m 20 p.2x50
13	01167055	4	washer 20.5x40
14	0.013.7560.3/30	1	support dx/rh/re
15	2.0112.409.2	8	screw m 12 p.1.75 x 25
16	04426734	1	small block
17	2.0114.207.2	2	screw m 8 p.1.25 x 20
18	0.013.7412.0	2	plate
19	01139580	2	washer 17
20	0.013.1847.0	4	shim
21	2.1549.579.2	4	disc



K9_D4076_00_0-A-001

PRESSURE CONTROL VALVE

Fig.	Code	QTY	Name
1	04432192	1	valve
2	0.900.0460.1	1	parts set
3	0.000.0000.1	0	not serviceable



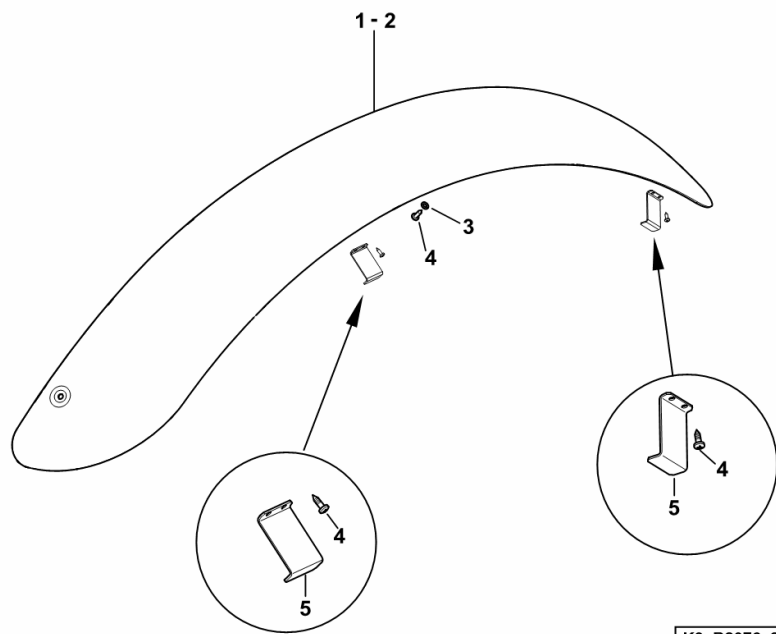
04432192

MUDGUARDS EXTENSIONS

Fig.	Code	QTY	Name
------	------	-----	------

Notes:
[IRON 185 DCR -> 20001]

1	0.013.1711.0/30	1	fender
2	0.013.1712.0/30	1	fender
3	2.1310.001.2	12	flat washer 5.3
4	2.0350.555.6	20	screw 4.8x16
5	0.013.5532.0	4	bracket



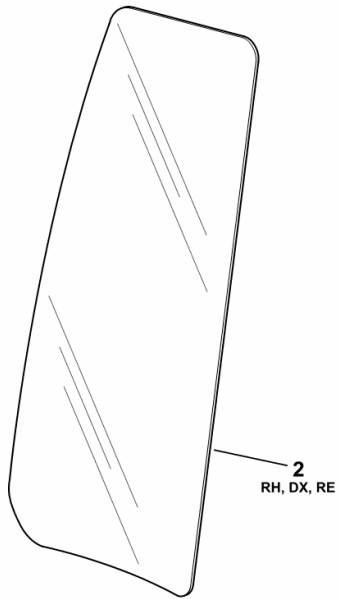
K9_B2076_25_0-A-001

Section: G0 - BODYWORK - CAB
SIDE PANEL FIXED DX/RH/RE

Fig.	Code	QTY	Name
------	------	-----	------

Notes:
[IRON 185 DCR -> 20001]

2	04424511	1	glass dx/rh/re
---	----------	---	----------------



K9_95071_17_0-A-001

Section: G0 - BODYWORK - CAB
WINDSCREEN WIPER BLADE

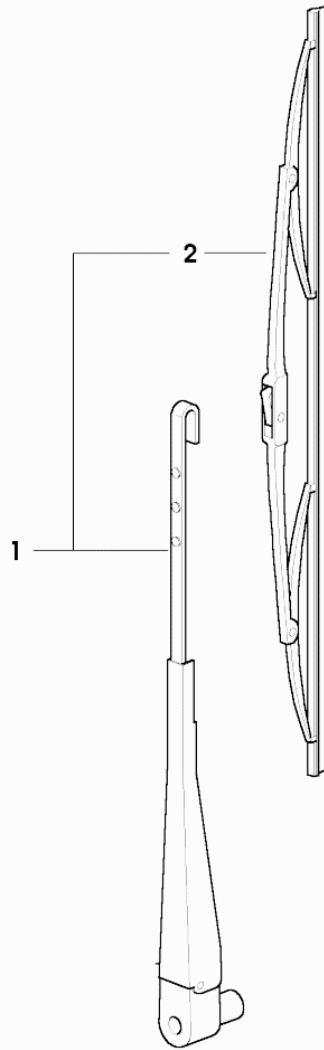


Fig.	Code	QTY	Name
1	0.011.5529.4	1	windscreen wiper
2	0.010.2524.0	1	wiper blade

011_5529_4

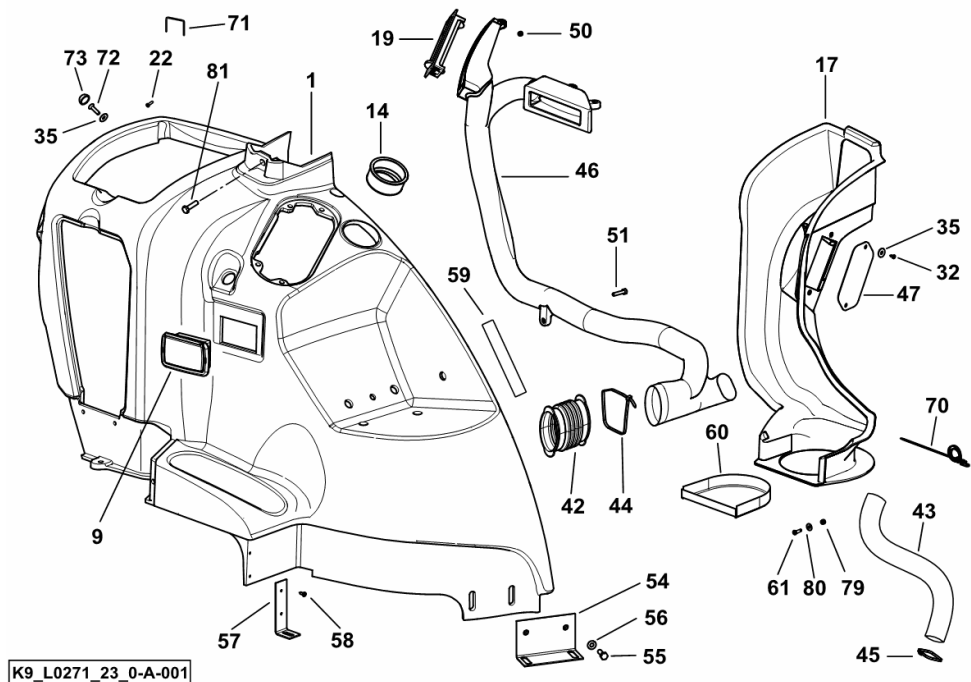
CONTROL CONSOLE LEFT

Fig.	Code	QTY	Name
------	------	-----	------

Notes:

[IRON 185 DCR -> 20001]

1	0.016.7006.2/10	1	console
9	04412336	1	ash-try
14	04431564	1	pipe fitting
17	04451226	1	channel
19	04411423	1	blower
22	04426906	9	screw 4.2x16
32	2.0350.253.3	9	screw m 3.5 x 9.5 AB
35	01119810	9	washer 6.4
42	0.011.5581.0	1	boot
43	04431843	1	flexible hose
44	2.6852.203.0	1	clamp 292 x 4.8
45	01137413	1	hose clip Ø 32/50
46	04429710/10	1	air shaft
47	0.011.3788.0	1	plate
50	2.1120.003.2	3	nut m 6
51	2.0114.011.2	1	screw m 6 p,1x30
54	04429870	1	support
55	2.0114.209.2	2	screw m 8 x 25
56	01138374	2	washer 8,4x21x4
57	04429758	1	support
58	01127683	2	screw m 4.2x13
59	04418723	1	profile
60	0.011.5949.0	1	protective mesh
61	2.0114.007.2	2	screw m 6 p.1 x 25
70	01171694	2	clamp 172X4.6
71	04450845	20	brace
72	2.0342.207.6	1	screw m 6 p.1 x 25
73	04419538	1	guard
79	2.1120.003.2	2	nut m 6
80	06214189	2	washer 6.4
81	2.0114.211.2	1	screw m 8 x 30

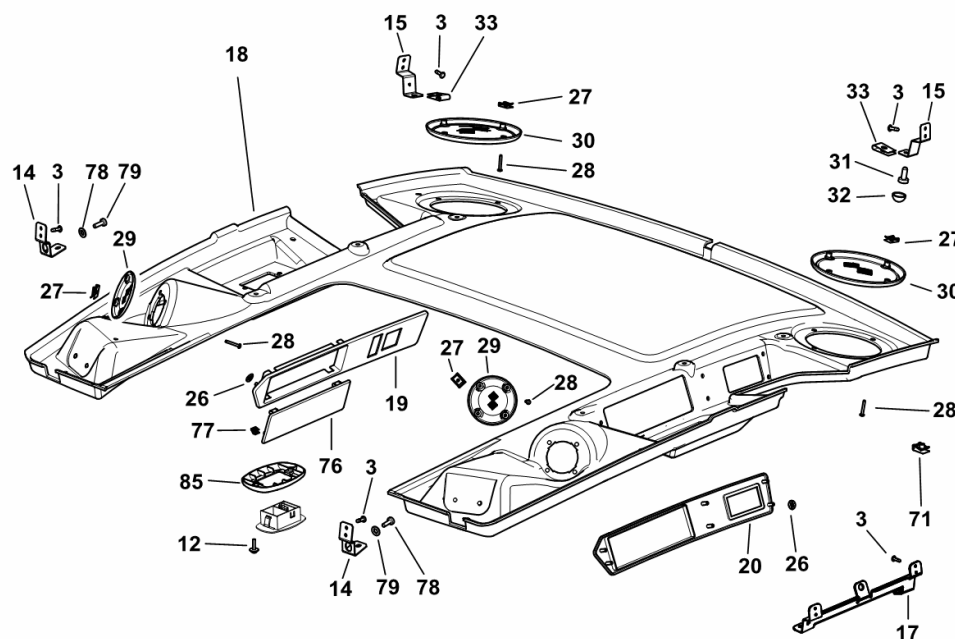


INTERIOR TRIM

Fig.	Code	QTY	Name
------	------	-----	------

Notes:

[IRON 185 DCR -> 20001]



3	2.1856.307.0	20	rivet 4.8x12
12	2.0363.306.3	15	screw m 6x18
14	0.016.1365.0/10	2	bracket
15	0.011.3831.0	2	bracket
17	0.011.3828.0/10	1	bracket sx/lh/li
18	0.016.4223.0/10	1	inner cab roof panel
19	0.016.2828.0/10	1	front grille dx/rh/re
20	0.016.7603.0	1	front grille
26	2.6999.053.0	12	small spring
27	2.6999.052.0	18	small spring m 3.5
28	2.0350.258.3	18	screw m 3.5 x 25
29	0.012.1723.0	2	grille
30	0.012.1724.0	2	grille
31	04428727	14	screw
32	04419538	14	guard
33	2.6999.047.0	10	small spring
71	2.6999.064.6	2	special nut m 6
76	0.013.7536.0/10	1	plug
77	0.013.4283.0	4	small spring
78	2.0362.206.2	2	screw
79	2.1310.004.2	2	flat washer 8.5
85	0.016.2826.0/10	1	frame

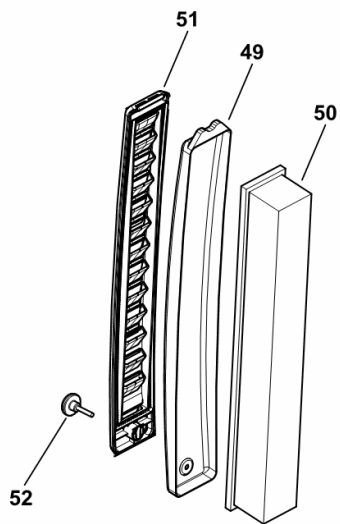
K9_L0271_26_0-D-001

AIR CLEANER

Fig.	Code	QTY	Name
------	------	-----	------

Notes:
[IRON 185 DCR -> 20001]

49	0.017.2975.0	2	frame
50	0.017.2976.2	2	filter
51	0.017.2974.0/10	2	guard
52	04411229	2	screw

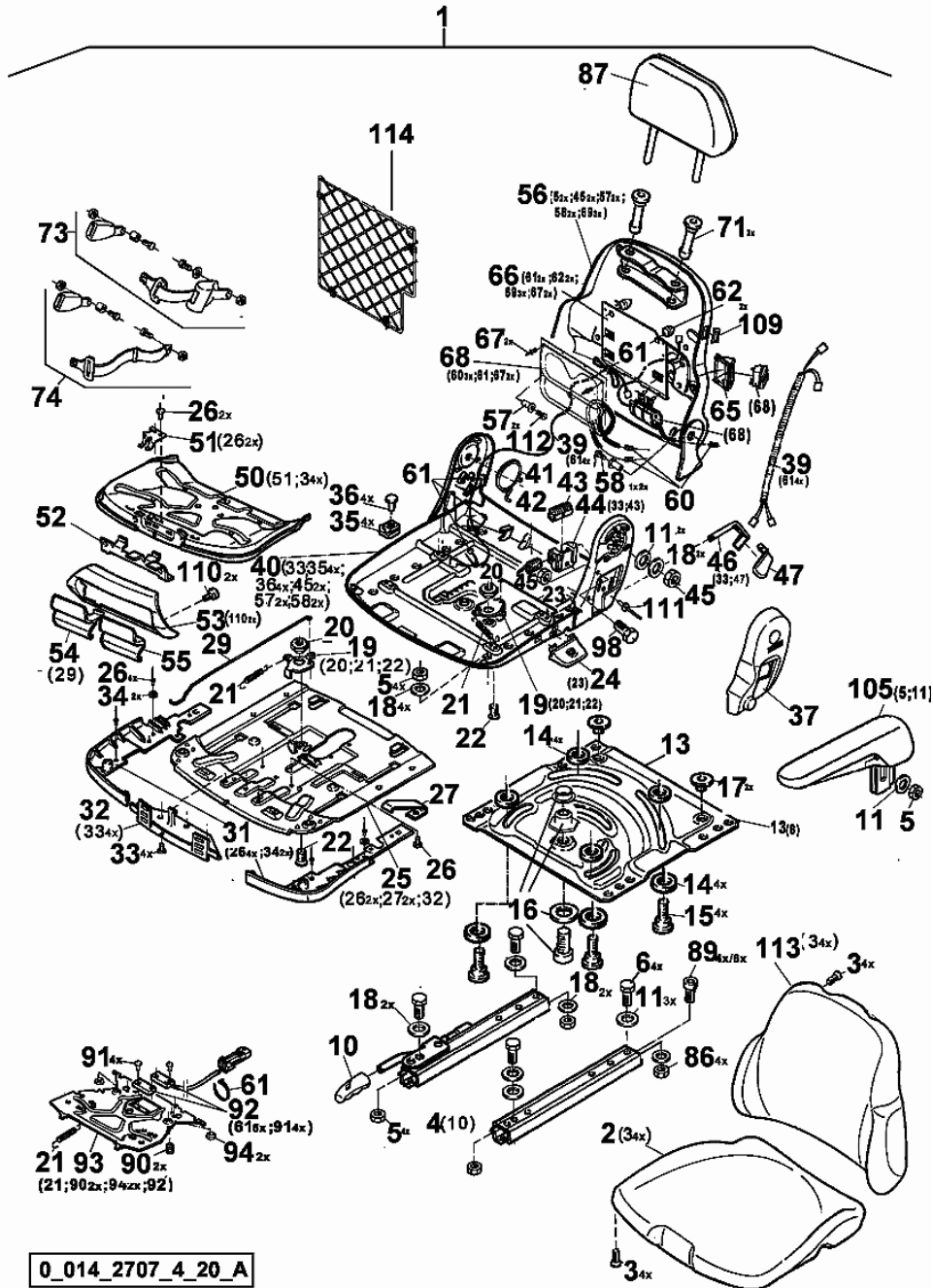


K9_L0286_20_0-B-002

Section: G0 - BODYWORK - CAB

SEAT-COMPONENTS

Fig.	Code	QTY	Name
54	0.010.3071.0	1	handle dx/rh/re
55	0.010.3071.1	1	handle sx/lh/li
56	0.900.0376.1	1	chassis frame
57	0.010.2953.1	2	bushing
58	0.010.2948.0	1	screw m 8 x 40
60	0.010.3510.2	3	guard
61	0.900.0298.5	10	cable
62	02310080	2	shoch.absorber
65	0.010.3066.1	1	body
66	0.010.3067.1	1	plate
67	0.010.3510.1	1	rivet
68	0.010.3067.0	2	support
71	0.000.0000.1	2	not serviceable
73	0.000.0000.1	1	not serviceable
74	0.000.0000.1	1	not serviceable
86	0.000.0000.1	0	not serviceable
87	0.000.0000.1	0	not serviceable
89	0.000.0000.1	0	not serviceable
90	0.010.3553.1	2	spring
91	0.010.3474.0	4	rivet
92	0.010.3473.2	1	switch
93	0.010.3553.2	1	plate
94	04370999	2	shoch.absorber
98	0.000.0000.1	0	not serviceable
105	0.900.0298.6	1	small arm sx/lh/li
109	0.000.0000.1	0	not serviceable
110	0.010.2943.1	2	screw
111	0.900.0298.8	1	rivet
112	0.900.0376.2	1	screw m 8
113	0.900.0297.4	1	backrest
114	0.900.1420.2	1	net mesh



0_014_2707_4_20_A

AIR CONDITIONER PARTS

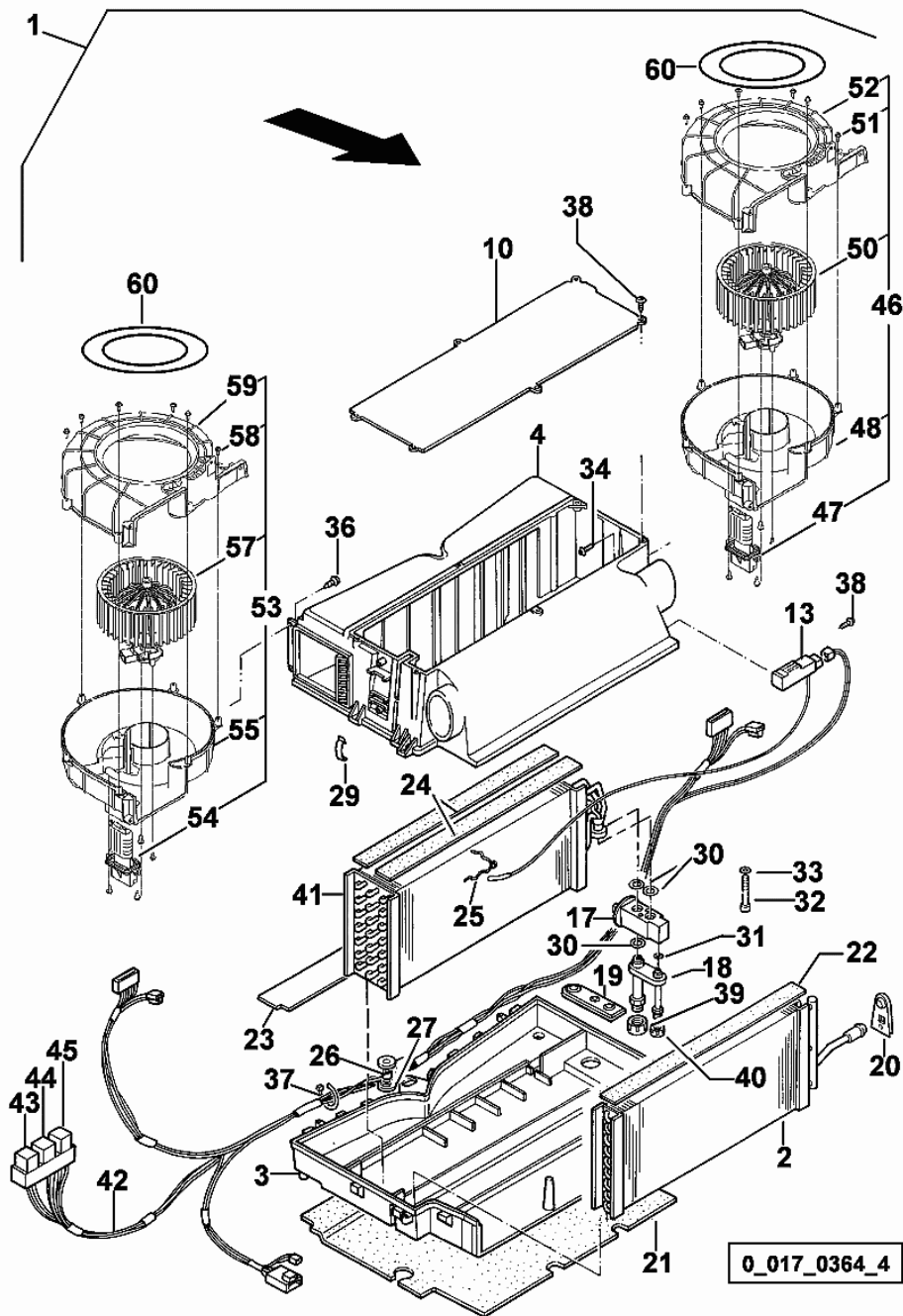


Fig.	Code	QTY	Name
1	0.017.0364.4	1	air condition.system
2	0.900.0784.0	1	radiator
3	0.010.2534.1	1	box
4	0.010.2534.2	1	box
10	0.010.2536.2	1	cover
13	0.900.0793.4	1	thermostat
17	0.010.2091.0	1	valve R 134
18	0.010.2538.2	1	pipe fitting
19	0.010.2539.0	1	gasket
20	0.010.2539.1	1	gasket
21	0.010.2539.2	1	gasket
22	0.010.2540.0	1	gasket
23	0.010.2540.1	1	division
24	0.010.2540.0	2	gasket
25	0.010.2540.2	1	small spring
26	0.98538.71.1	1	spacer
27	0.010.2541.0	2	rubber plug
29	0.010.2541.2	11	small spring
30	0.010.2128.1	3	gasket
31	0.010.2542.0	1	'o' ring
32	0.010.2542.1	2	screw m 6 x 50
33	0.010.2542.2	2	washer 6, d128
34	0.010.2543.0	2	screw m 3.5x16
36	0.010.2543.2	14	screw m 3.5x12
37	0.010.2544.0	3	clamp
38	0.010.2543.2	5	screw m 3.5x12
39	0.010.2544.1	1	plug
40	0.010.2544.2	1	plug
41	0.900.0783.9	1	radiator
42	0.900.1421.0	1	wire
43	0.010.3317.2	1	relay 15A NA BROWN
44	0.010.3318.0	1	relay 20A NA WHITE
45	0.900.0049.4	1	relay 20A NA BLACK
46	0.900.0781.8	1	fan dx/rh/re
47	0.010.2535.1	1	resistance
48	0.900.0782.1	1	screw conveyor
50	0.900.0035.3	1	rotor blade dx/rh/re WHITE
51	0.900.0782.2	10	screw 4 x 12
52	0.900.0782.0	1	screw conveyor
53	0.900.0782.3	1	fan sx/lh/li

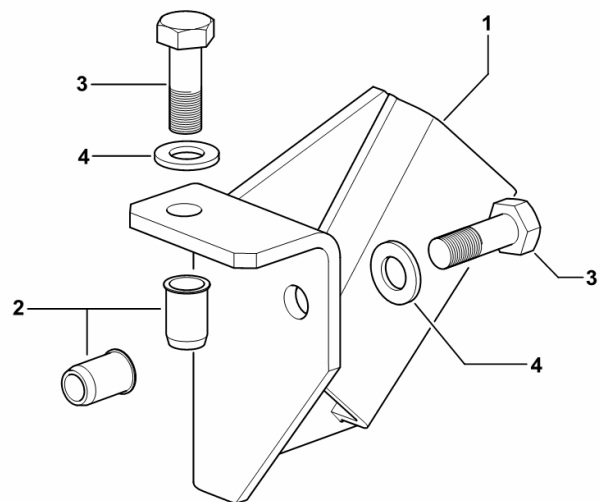
HANDBRAKE SUPPORT FOR TRAILER

Fig.	Code	QTY	Name
------	------	-----	------

Notes:

[IRON 185 DCR -> 20001]

1	0.011.4447.2	1	support
2	2.1142.012.2	2	insert m10
3	2.0112.311.2	2	screw m 10 p.1.5 x 30
4	2.1475.003.2	2	washer 10



K9_11344_20_0-A-001

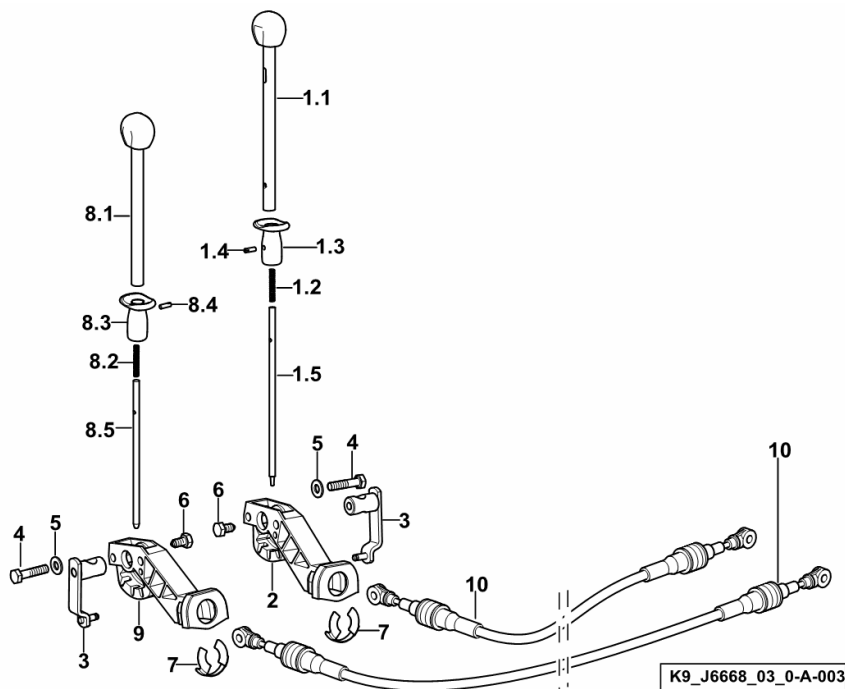
OPERATION - P.T.O. SHAFT REAR

Fig.	Code	QTY	Name
------	------	-----	------

Notes:

[IRON 185 DCR -> 20001]

1.1	0.015.9113.2	1	lever
1.2	04426194	1	spring
1.3	04411645	1	support
1.4	01144807	1	screw
1.5	04429555	1	rod
2	04425448/10	1	support
3	04423032.4	2	lever
4	2.0114.213.2	4	screw m 8 x 35
5	01138374	4	washer 8,4x21x4
6	04423712	2	screw
7	04418159	2	circlip
8.1	0.015.9114.2	1	lever
8.2	04426194	1	spring
8.3	04411645	1	support
8.4	01144807	1	screw
8.5	04414328	1	rod
9	04425449/10	1	support
10	0.016.2060.3	2	rod mm 2520



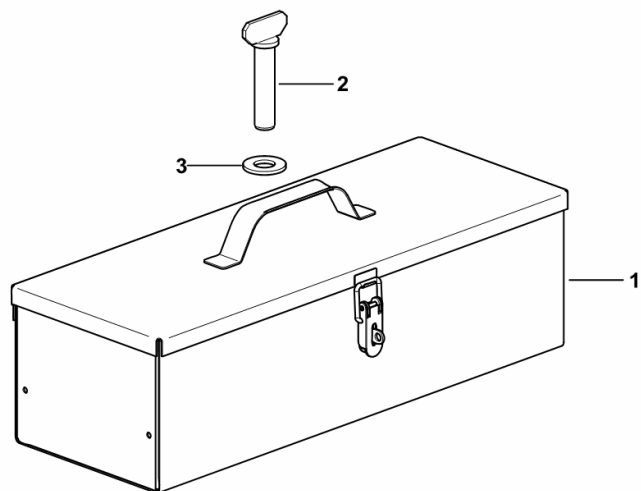
METAL TOOLBOX

Fig.	Code	QTY	Name
------	------	-----	------

Notes:
[IRON 185 DCR -> 20001]

1	04436068.4/20	1	metal toolbox
2	04436546/10	1	wing nut
3	2.1310.011.2	1	flat washer 19x34

K9_95373_06_0-A-002

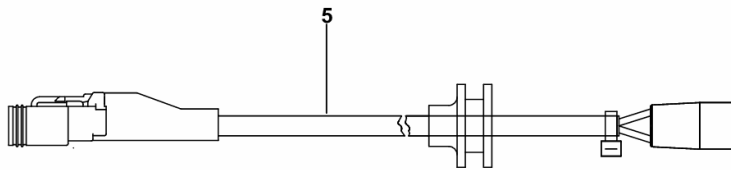


BOTTOM FRONT WORK LIGHTS WIRING XENON

Fig.	Code	QTY	Name
------	------	-----	------

Notes:
[IRON 185 DCR -> 20001]

5	0.016.0650.4/10	2	electrical system
---	-----------------	---	-------------------



K9_R5184_42_0-C-001

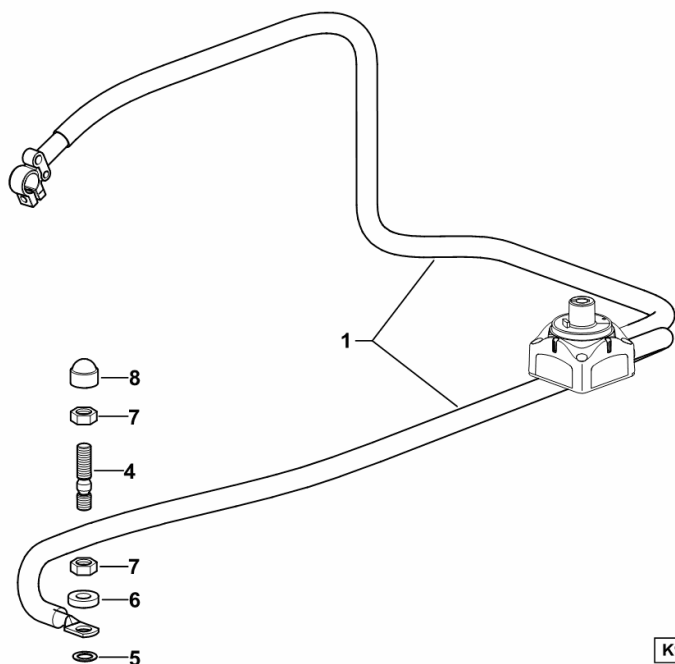
ELECTRICAL LEAD (-)

Fig.	Code	QTY	Name
------	------	-----	------

Notes:

[IRON 185 DCR -> 20001]

1	0.018.0281.4	1	wire (-)
4	2.0422.411.2	1	stud bolt m 12 x 40
5	2.1470.007.2	1	lock washer 12
6	01174738	1	flat washer 12.5x26x6
7	2.1011.107.2	2	nut m 12 p.1.75
8	01174048	1	nut m 12 p.1,75



K9_L0284_18_0-A-001

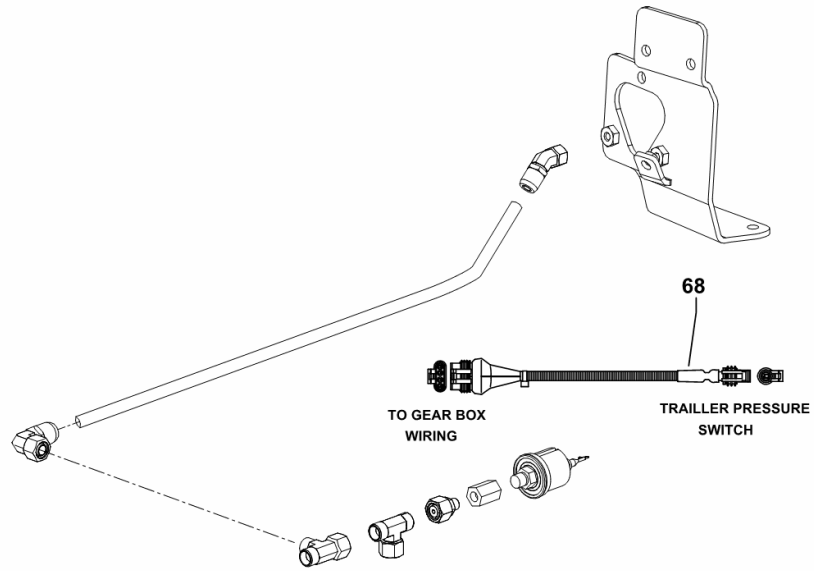
PRESSURE SWITCH WIRING FOR AIR BRAKING SYSTEM

Fig.	Code	QTY	Name
------	------	-----	------

Notes:

- ITALY [IRON 185 DCR -> 20001]

68	04437355.4/10	1	wire
----	---------------	---	------



K9_J3189_16_0-F-001

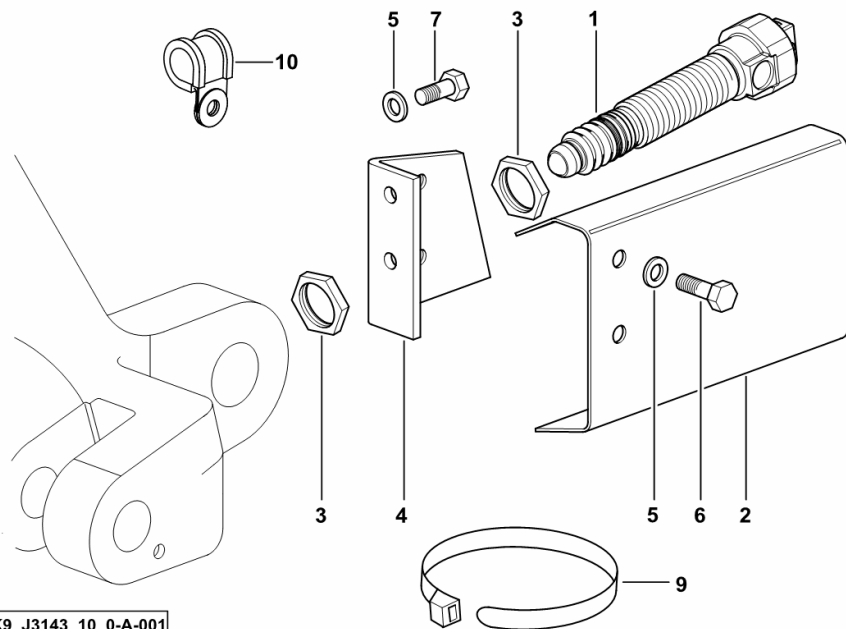
FRONT SUSPENSION POSITION SENSOR

Fig.	Code	QTY	Name
------	------	-----	------

Notes:

[IRON 185 DCR -> 20001]

1	0.009.2194.4/20	1	sensor
2	04422564	1	square
3	01127817	2	nut
4	04426199.4	1	console
5	01138374	4	washer 8,4x21x4
6	2.0114.209.2	2	screw m 8 x 25
7	2.0114.203.2	2	screw m 8 x 12
9	2.6852.203.0	10	clamp 292 x 4.8
10	2.6839.055.0	1	clamp Ø 11 / 20



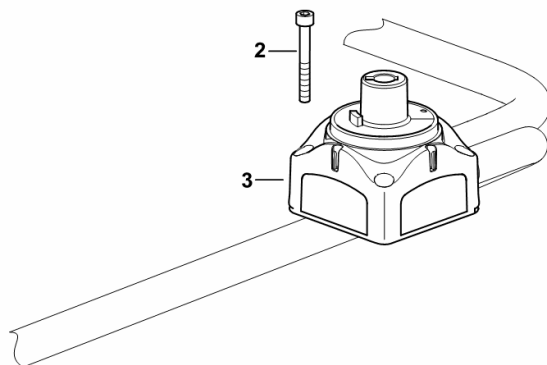
K9_J3143_10_0-A-001

BATTERY DISCONNECT SWITCH

Fig.	Code	QTY	Name
------	------	-----	------

Notes:
[IRON 185 DCR -> 20001]

2	2.0312.014.2	4	screw m 5 p.0.8 x 40
3	2.7659.351.0	1	switch



K9_L0284_18_0-B-001

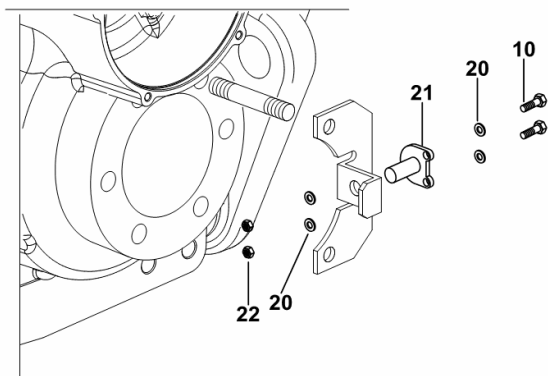
SENSOR P.T.O. SHAFT

Fig.	Code	QTY	Name
------	------	-----	------

Notes:

- EXPORT U.S.A. [IRON 185 DCR -> 20001]

10	2.0312.004.2	2	screw m 5 p.0.8 x 10
20	2.1480.011.2	4	washer 5
21	0.010.1214.4	1	sensor
22	2.1011.102.2	2	nut m 5 p.0.7



K9_R5184_07_0-B-001

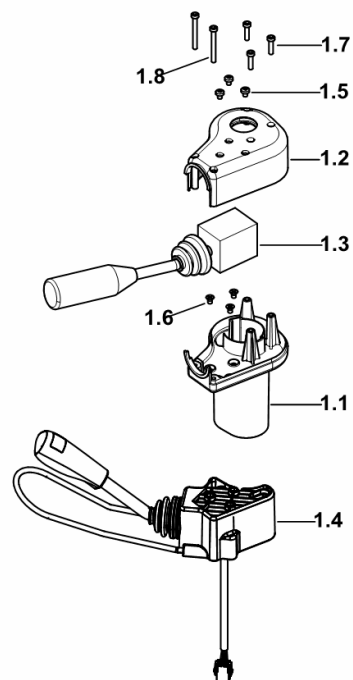
STEERING COLUMN SWITCH UNIT - REVERSING GEAR UNIT CONTROL

Fig.	Code	QTY	Name
------	------	-----	------

Notes:

[IRON 185 DCR -> 20001]

1.1	0.014.1170.0	1	half box
1.2	04436511	1	cover
1.3	0.014.0007.4/10	1	lever
1.4	0.012.7076.4	1	reverse gear ☞ 0.012.7076.4
1.5	04412779	3	screw m 5x6.5
1.6	01145177	3	screw m 5 x 8, d965
1.7	04426679	3	screw m 5 x 20
1.8	04426681	2	screw m 5 x 45



K9_J3384_05_0-A-001

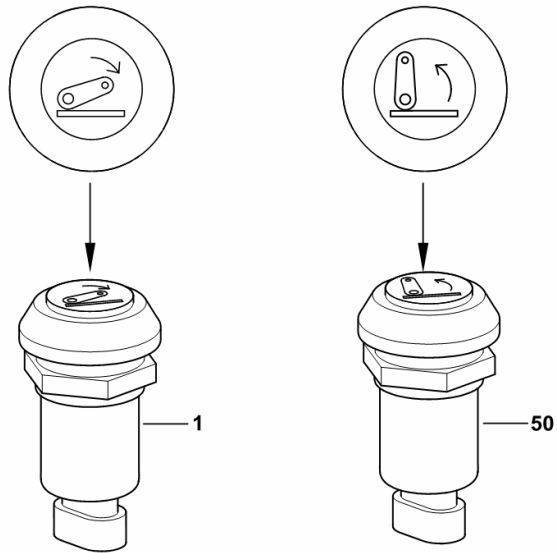
REAR LIFT GROUND CONTROL SWITCH

Fig.	Code	QTY	Name
------	------	-----	------

Notes:

[IRON 185 DCR -> 20001] -> 20012

1	2.7659.347.0	2	push-button
50	2.7659.348.0	2	push-button



K9_94659_70_0-A-002

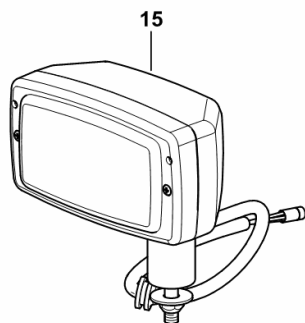
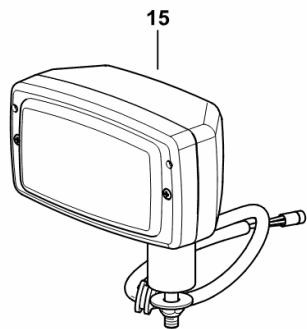
WORKING SPOTLIGHT FRONT

Fig.	Code	QTY	Name
------	------	-----	------

Notes:

- FOR RIGHT-HAND DRIVE [IRON 185 DCR -> 20001]

15	04414087.4	2	lamp ☞ 04414087.4
----	------------	---	----------------------



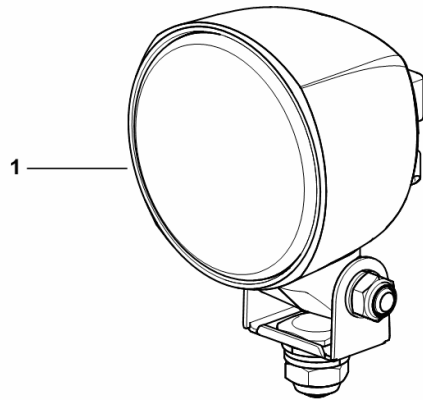
K9_A0171_37_0-A-001

LOWER REAR WORKLIGHTS

Fig.	Code	QTY	Name
------	------	-----	------

Notes:
[IRON 185 DCR -> 20001]

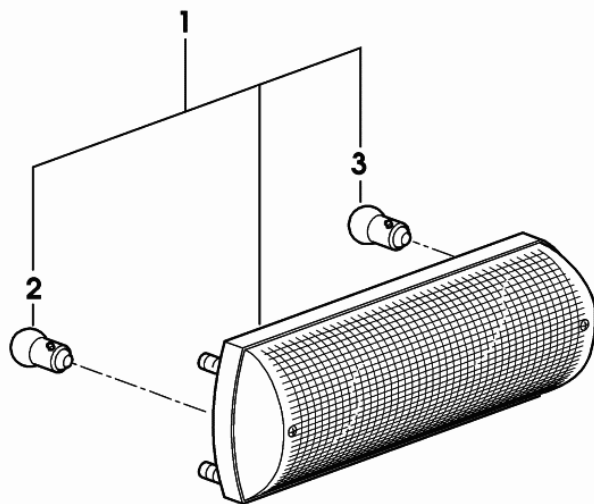
1	2.8039.023.0	2	worklamp
---	--------------	---	----------



K9_L0271_40_0-A-001

HEADLAMP COMPONENTS

Fig.	Code	QTY	Name
1	2.8029.880.0/10	1	side lamp
2	0.900.0063.2	1	lamp 12V 21/5W
3	0.900.0063.3	1	lamp 12V 21W



2_8029_880_0_10

INTAKE - EXHAUST MANIFOLDS

EXHAUST PIPE.....	B0.10.1011
ACCESSORIES.....	B0.10.1113
PIPING.....	B0.10.1146

TURBOCHARGER

TURBOCHARGER.....	B0.11.1020
OIL LUBRICATION PIPE.....	B0.11.1073

Electrical accessories

COVER PLATE.....	B0.12.1004
FASTENINGS.....	B0.12.1010
FASTENINGS.....	B0.12.1021
FASTENINGS.....	B0.12.1030
FASTENINGS.....	B0.12.1046
IMPULSE TRANSMITTER.....	B0.12.1052
GENERATOR.....	B0.12.1068
GENERATOR.....	B0.12.1073
ENGINE ELECTRICAL SYSTEM.....	B0.12.1107
STARTER.....	B0.12.1133
ACCESSORIES.....	B0.12.1145
ACCESSORIES.....	B0.12.1166
ACCESSORIES.....	B0.12.1173
DRIVING PARTS.....	B0.12.1190
OIL PRESSURE SWITCH.....	B0.12.1196
TEMPERATURE TRANSMITTER.....	B0.12.1222

CLICK HERE TO **DOWNLOAD** THE COMPLETE MANUAL

- Thank you very much for reading the preview of the manual.
- You can download the complete manual from: www.heydownloads.com by clicking the link below

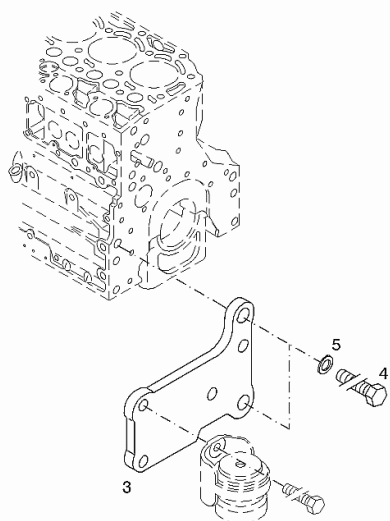
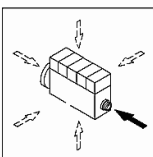


- Please note: If there is no response to CLICKING the link, please download this PDF first and then click on it.

CLICK HERE TO **DOWNLOAD** THE COMPLETE MANUAL

ACCESSORIES

Fig.	Code	QTY	Name
Engine Serial Numbers: 10975367 10982004 10982005			
3	04288660	1	support
4	01148261	2	screw ISO 4017 -M16X40-10.9-ZNAL-A
5	01181400	2	washer H 2308 -18X25X1,5-A4C



003 ©

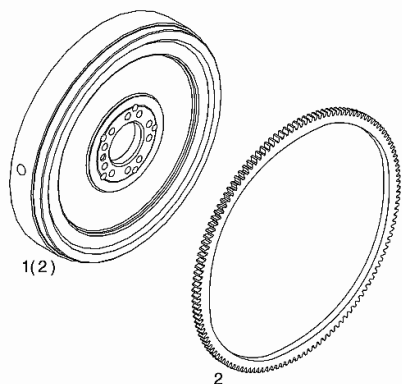
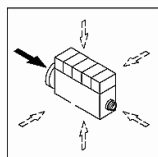
FLYWHEEL

Fig.	Code	QTY	Name
------	------	-----	------

Engine Serial Numbers:

10975367 10982004 10982005

1	04297215	1	flywheel WITH POS.... (2)
2	04905390	1	crown wheel



000 ©

Section: B0 - ENGINE

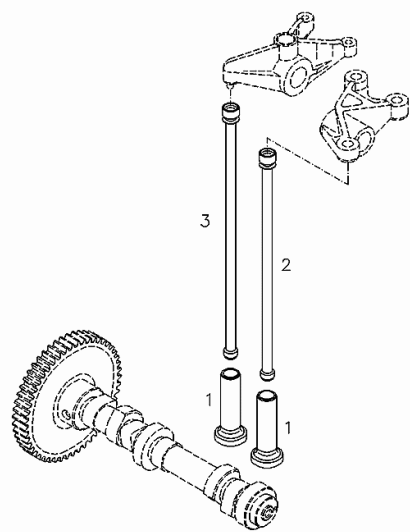
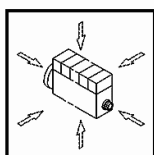
BUMPER

Fig.	Code	QTY	Name
------	------	-----	------

Engine Serial Numbers:

10975367 10982004 10982005

1	04283150	2	cap
2	04250660	1	tappets
3	04250661	1	tappets

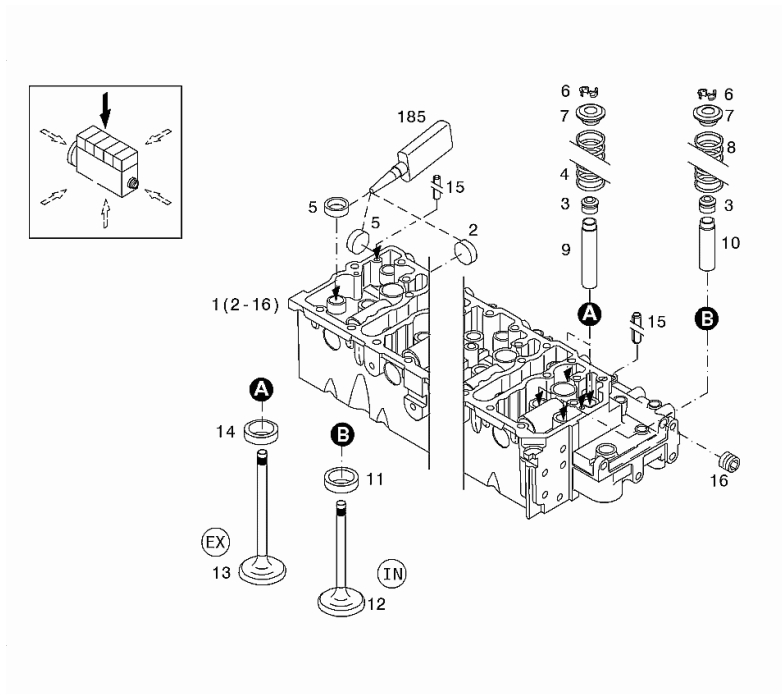


000 ©

0507 8702

Section: B0 - ENGINE
CYLINDER HEAD

Fig.	Code	QTY	Name
1	04281520	1	engine head WITH POS.... (2-16)
2	01165830	5	plug H 711 -B25
3	04153728	24	gasket
4	04250028	12	spring
5	01165828	15	stop H 711 -B20
6	02108102	48	half shell H 7020 -MK8
000 © 7	04250029	24	cup
8	04250396	12	spring
9	04250074	12	rod
10	04250073	12	valve guide
11	04293334	12	valve seat
12	04287664	12	inlet valve
13	04289801	12	exhaust valve
14	04289455	12	ring
15	01125637	2	pin ISO 8752 -5X14-ST
16	01180889	1	screw H 2812 -906-M12X1,5-ST-A4C-PRE80
185	01016125	1	guard H 0699 -DEUTZDW72-250ML



Section: B0 - ENGINE

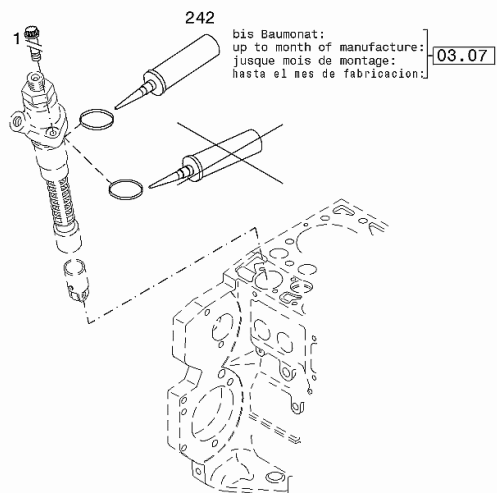
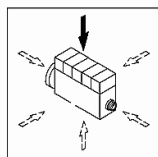
FASTENINGS

Fig.	Code	QTY	Name
------	------	-----	------

Engine Serial Numbers:

10975367 10982004 10982005

1	01182132	4	screw 10 Nm, 50 Nm
242	01016105	1	sealing compound FINO AL MESE DI MONTAGGIO - FINO AL MESE DI MONTAGGIO 03.2007 0116 4138 NON RIVESTITE CON FILM LUBRIFICANTE 0118 3004 RIVESTITE CON FILM LUBRIFICANTE 04.2007



002 ©

Section: B0 - ENGINE
DISTRIBUTOR

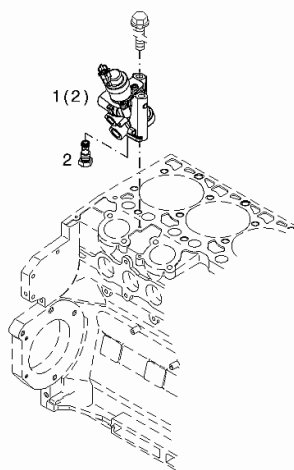
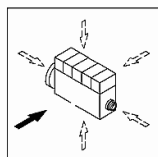
Fig.	Code	QTY	Name
------	------	-----	------

Engine Serial Numbers:

10975367 10982004 10982005

1	02113724	1	distributor EMR 3 WITH POS.... (2-6)
2	01340591	1	plug 33 Nm
3	01340600	1	none
4	01340599	1	none
5	01340601	3	screw 4,5 Nm
6	01340622	1	-

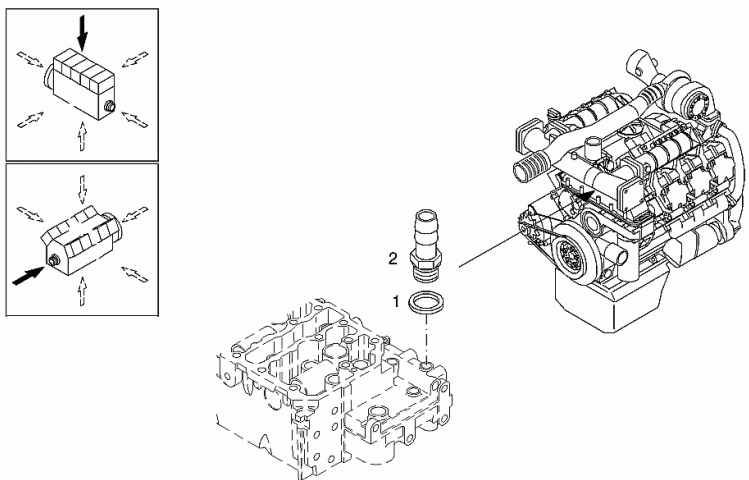
001 ©



Section: B0 - ENGINE
HOSE CONNECTION

Fig.	Code	QTY	Name
Engine Serial Numbers: 10975367 10982004 10982005			
1	01118687	1	'o' ring DIN 7603 -A14X18-AL
2	01180088	1	pipe fitting H 3452 -G8/M14X1,5

001 ©



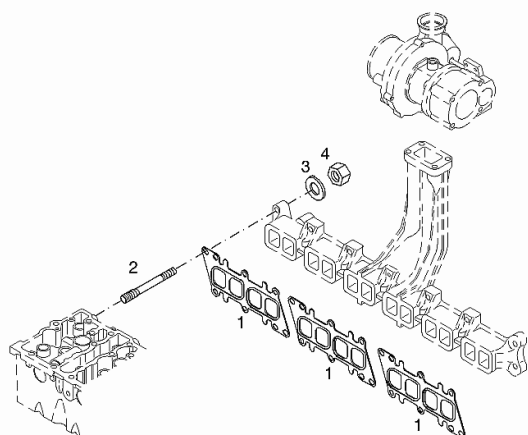
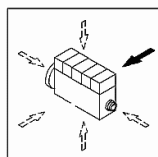
ACCESSORIES

Fig.	Code	QTY	Name
------	------	-----	------

Engine Serial Numbers:

10975367 10982004 10982005

1	04292563	3	gasket
2	04284637	14	screw
3	04285665	14	washer
4	01182036	14	nut

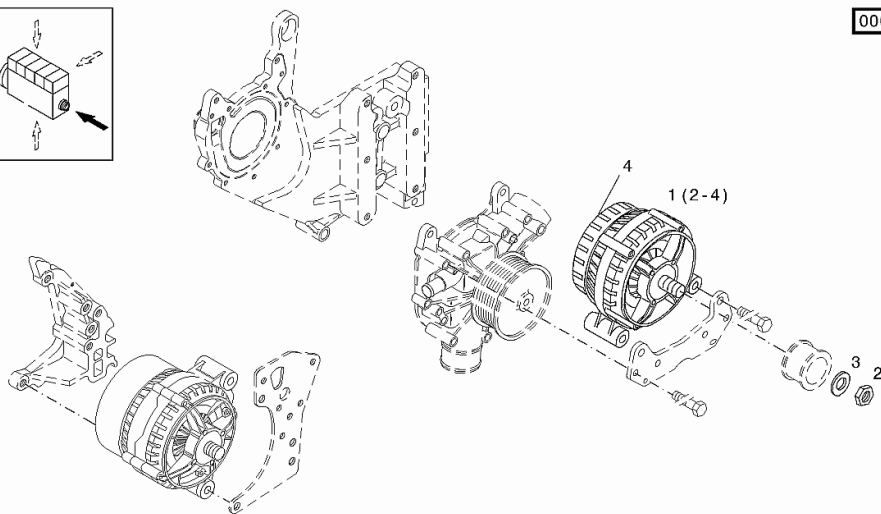
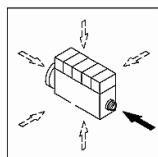


000 ©

GENERATOR

Fig.	Code	QTY	Name
1	01183187	1	alternator WITH POS.... (2-4) H 821170-CIR14X90/200VBWST- TRISSWOB
2	01131115	1	nut ISO 8675 -M16X1,5-05-A4C
3	01107117	1	washer 17 DIN 125 -A17-140HV-A4C
4	01183201	1	potentiometer H 822111-CI-14V150/ 200ATRISREP.SATZ:RE

000 ©



IRON 185 DCR -> 20001

C0 - ENGINE ACCESSORIES

RADIATORS - FANS

COOLING SYSTEM.....	C0.01.0 (4)
COOLING SYSTEM.....	C0.01.1 (4)
COOLING SYSTEM.....	C0.01.2 (3)
WATER TANK.....	0.015.3493.4/30.A

INTERCOOLER - AIR CLEANER

FUEL SUPPLY - AIR FILTER.....	C0.02.0 (1)
INTERCOOLER - GEARBOX OIL RADIATOR - FUEL RADIATOR.....	C0.02.1 (2)
INTERCOOLER.....	0.015.2736.2/20.A
AIR CLEANER.....	2.4249.722.0.A

FUEL SYSTEM

FUEL FILTER - PIPES.....	C0.03.0 (4)
FUEL SYSTEM - TANK.....	C0.03.1 (3)
SCREW PLUG.....	0.016.0151.4.A
PRE-FILTER - COMPONENTS.....	2.4319.300.0/10.A

EXHAUST SILENCER

EXHAUST SILENCER.....	C0.06.0 (6)
COMPLETION.....	C0.06.1 (1)

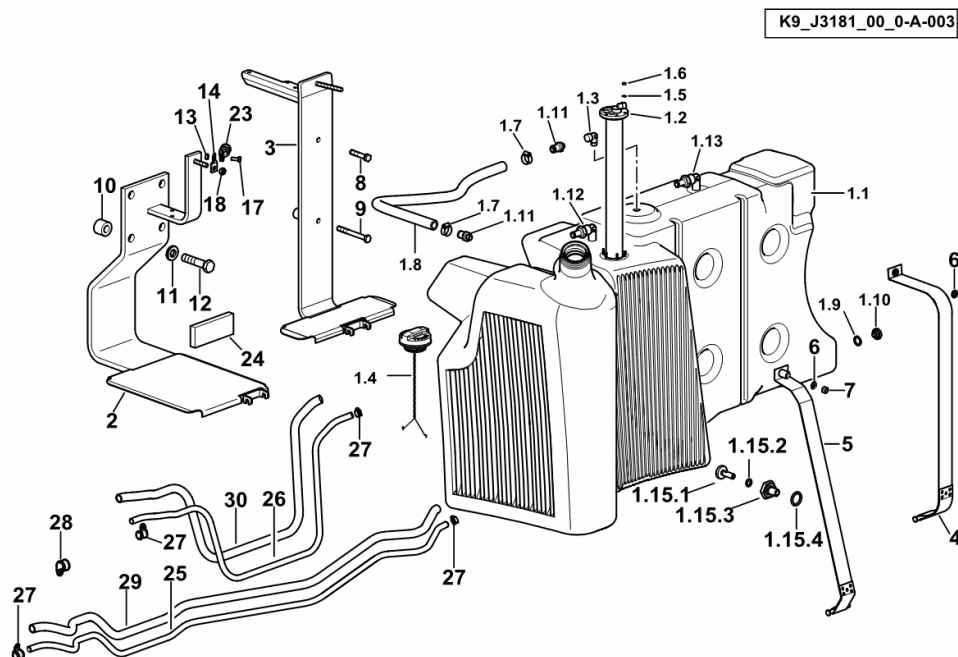
AIR COMPRESSOR

AIR COMPRESSOR 229 cm ³	C0.07.0 (2)
AIR COMPRESSOR 229 cm ³	C0.07.1 (2)
AIR COMPRESSOR 229 cm ³	C0.07.2 (2)
COMPRESSOR-PARTS.....	04428408.4.A

FUEL SYSTEM - TANK

Fig.	Code	QTY	Name
------	------	-----	------

Notes:
[IRON 185 DCR -> 20001]



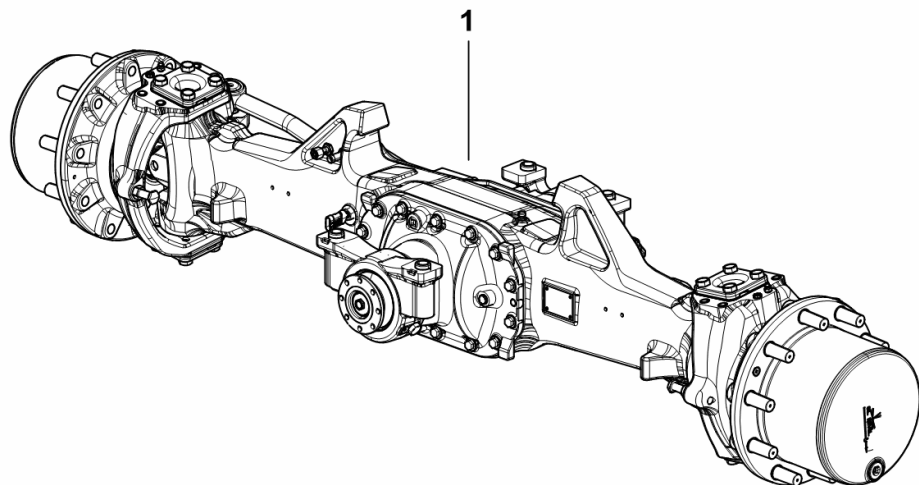
1.1	0.014.0702.3/40	1	fueltank lt. 300
1.2	2.7059.844.0	1	float level
1.3	2.3249.224.0	1	pipe fitting Ø 22 / 3/8" GAS
1.4	0.016.0151.4	1	plug ☞ 0.016.0151.4
1.5	2.1310.028.2	6	flat washer 4
1.6	2.1011.101.2	6	nut m 4 p.0.7
1.7	01173962	2	clamp Ø 20/32
1.8	0.016.9302.0	1	tube
1.9	2.1539.040.0	1	'o' ring 21.82 x 3.53
1.10	2.3199.332.0	1	plug m 12
1.11	2.3249.245.0	2	pipe fitting Ø 12 / 3/8" GAS
1.12	0.015.9459.3/10	1	tube
1.13	0.016.7518.3	1	tube
1.15.1	0.016.9607.0	1	plug
1.15.2	2.1560.006.0	1	gasket 10.2 x 16
1.15.3	0.016.9605.0	1	plug
1.15.4	2.1539.040.0	1	'o' ring 21.82 x 3.53
2	0.014.0711.3/20	1	tank support
3	0.014.8104.3/30	1	tank support
4	04438108/10	1	hose clip
5	04436122/10	1	hose clip
6	2.1310.006.2	2	flat washer 10.5
7	01136453	2	nut m 10
8	2.0112.421.2	1	screw m 12 p.1.75 x 60
9	2.0112.431.2	1	screw m 12 p.1.75 x 110
10	04427061	4	bushing 20.5x40x30
11	01167055	4	washer 20.5x40
12	01114097	4	screw m 20 p.1x90
13	01122477	1	nut m 8 p.1.25
14	04438416	1	bracket
17	2.0114.207.2	1	screw m 8 p.1.25 x 20
18	2.1011.106.2	1	nut m 10 p.1.5
23	01213283	1	clamp Ø 20/28
24	0.015.7103.0	1	gasket 60x150x18
25	0.015.8178.0/10	1	tube
26	0.015.8179.0	1	tube
27	2.6851.018.0	4	clamp 11/17
28	2.6839.054.0	1	clamp Ø 20/25
29	0.016.7110.0	1	flexible hose
30	0.015.8206.0/10	1	flexible hose L=1291.5

Section: F0 - FRONT AXLE
4WD - FRONT DRIVE AXLE

Fig.	Code	QTY	Name
------	------	-----	------

Notes:
 [IRON 185 DCR -> 20001]

1	0.015.3567.4	1	axle
			☞ 0.015.3567.4
			☞ 0.015.3567.4
			☞ 0.015.3567.4
			☞ 0.015.3567.4
			☞ 0.015.3567.4
			☞ 0.015.3567.4
			☞ 0.015.3567.4



K9_J3143_00_0-A-001

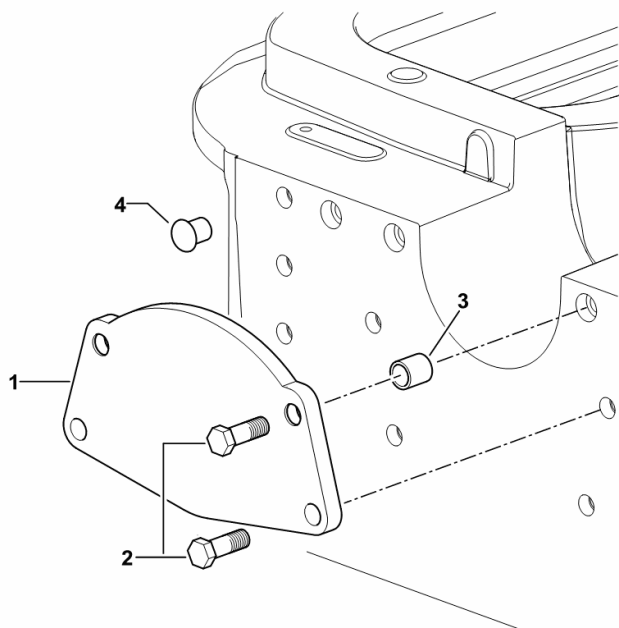
FRONT COVER WITHOUT FRONT HOOK

Fig.	Code	QTY	Name
------	------	-----	------

Notes:

[IRON 185 DCR -> 20001]

1	04422634/10	1	plate
2	2.0112.615.2	4	screw m 16 p.2 x 40
3	2.2680.047.0	2	ring 17x22x23
4	01167317	12	plug 14.5X11.5X21



K9_95052_31_0-A-001

IRON 185 DCR -> 20001

M0 - FRONT PTO

GENERAL

P.T.O. FRONT.....	M0.00.0 (1)
P.T.O. FRONT.....	0.015.8224.4.A
P.T.O. FRONT.....	0.015.8224.4.B
P.T.O. FRONT.....	0.015.8224.4.C
ELECTRICAL SYSTEM.....	0.015.8224.4.D

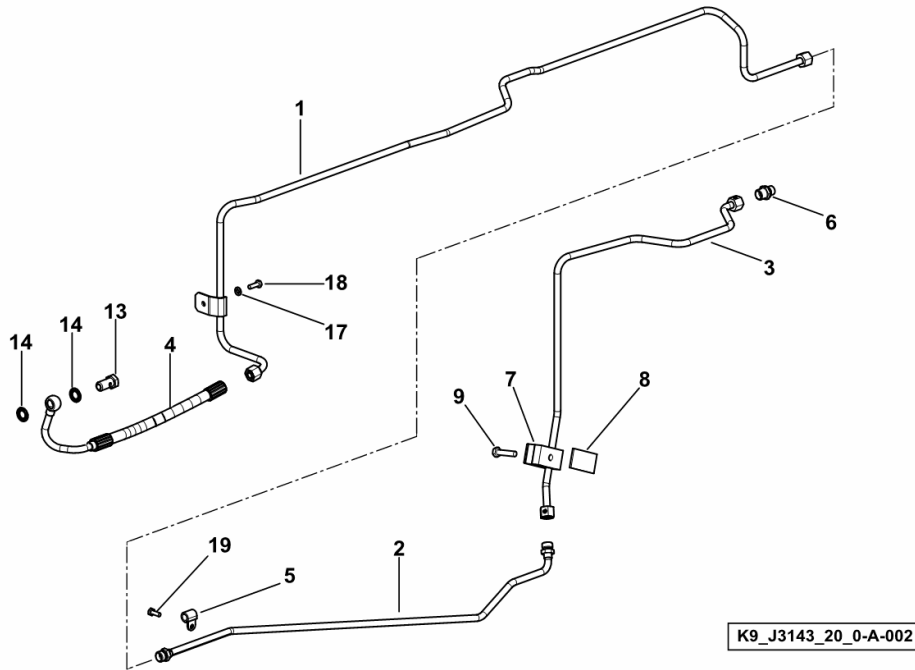
FRONT DIFFERENTIAL LOCK CONTROL LINES

Fig.	Code	QTY	Name
------	------	-----	------

Notes:

[IRON 185 DCR -> 20001]

1	0.015.4109.3/20	1	tube
2	04454297/10	1	pipng
3	04454272/10	1	pipng
4	0.015.4642.3/10	1	tube
5	01212670	1	hose clip B10X15
6	01179243	1	pipe fitting M 14X1.5X10
7	04453993	1	hose clip 18-10
8	01180338	1	small plate
9	2.0112.213.2	1	screw m 8 p.1.25 x 35
13	2.3332.004.2	1	pipe union m 14 p.1.5 x 27
14	2.1561.107.0	2	'o' ring Ø 14 -B-
17	2.1310.002.2	1	washer 6.6, d125
18	2.0112.006.2	1	screw m 6 p.1 x 18
19	2.0114.005.2	1	screw m 6 p.1.0 x 16



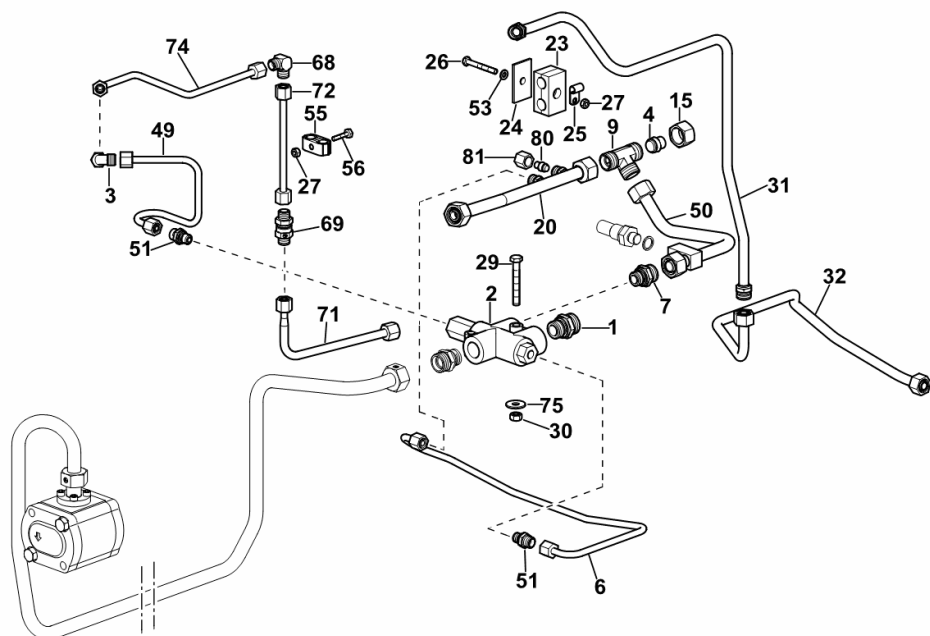
HYDRAULIC SYSTEM OPEN CENTER

Fig.	Code	QTY	Name
------	------	-----	------

Notes:

- FOR TYPES WITHOUT PNEUMATIC BRAKE [IRON 185 DCR -> 20001]

1	01177450	2	pipe fitting m 22 p.1.5x18
2	04450326	1	flow divider ☞ 04450326
3	04416020	1	pipe fitting T
4	01180617	1	cone
6	04450321/40	1	tube
7	01177226	1	pipe fitting m 18 p.1.5 x 15
9	01127372	1	pipe fitting I 15 d3908
15	2.3369.022.2	1	nut
20	04454793	1	pipng
23	01175671	2	terminal 12-15
24	01175670	1	small plate
25	01172129	1	terminal B8X15
26	2.0112.019.2	1	screw m 6 p.1 x 50
27	2.1011.103.2	2	nut m 6 p.1
29	2.0112.220.2	1	screw m 8 p.1.25x55
30	2.1011.105.2	3	nut m 8 p.1.25
31	04454477/10	1	tube
32	04454478/10	1	tube
49	04454601/20	1	tube
50	04450545/20	1	pipng
51	01180557	2	pipe fitting m 12 p.1.5x8
53	2.1310.002.2	2	washer 6.6, d125
55	04454482	1	hose clip
56	2.0114.009.2	1	screw m 6 x 25, d933
68	04450567	1	tongue
69	04450563	1	valve
71	04450550/20	1	tube
72	04450554/20	1	tube
74	04450568/10	1	tongue
75	2.1312.004.2	3	washer 8.4
80	01180564	1	plug
81	2.3369.018.2	1	nut



K9_J6663_06_0-B-002

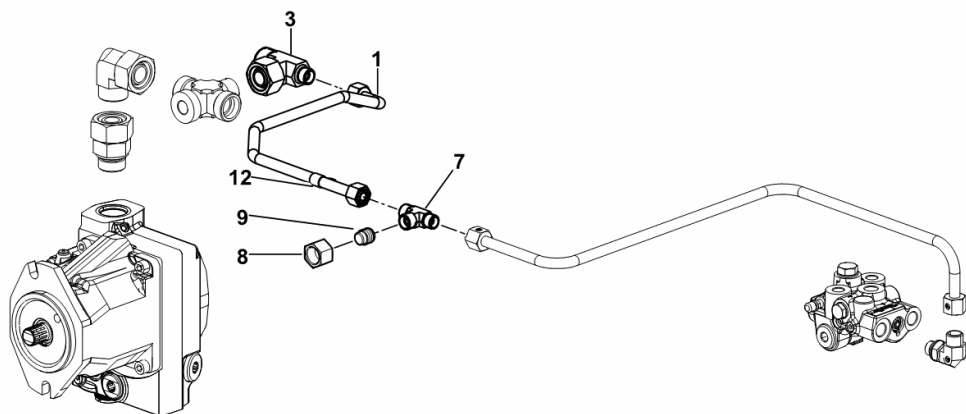
HYDRAULIC SYSTEM

Fig.	Code	QTY	Name
------	------	-----	------

Notes:

- FOR TYPES WITHOUT FRONT BRAKES [IRON 185 DCR -> 20001]

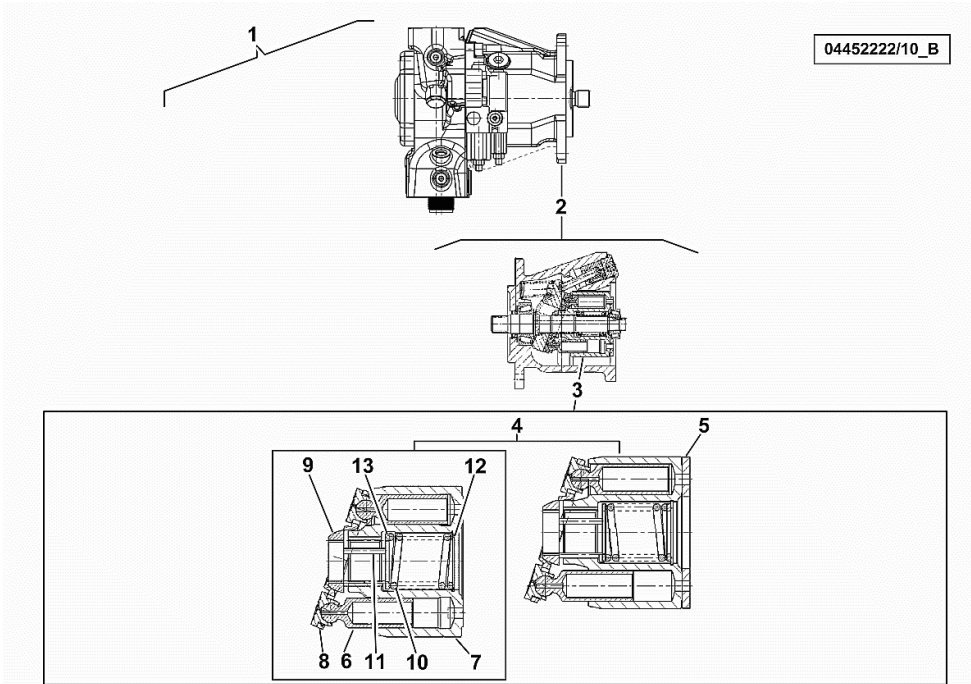
1	0.015.9783.3	1	tube
3	04454457/10	1	tongue
7	0.015.9782.0	1	pipe fitting
8	2.3369.019.2	1	nut m 18 x 1,5
9	01180565	1	plug h 310
12	2.6839.055.0	1	clamp Ø 11 / 20



K9_L9482_10_0-B-001

OIL PUMP

Fig.	Code	QTY	Name
1	04452222/10	1	hydraulic pump 45 / 52 R
2	0.900.0045.3	1	oil pump
3	0.900.1264.7	1	rotor
4	0.900.1266.1	1	rotor
5	0.900.1266.2	1	plate
6	0.900.0047.4	9	complete piston
7	0.900.0047.8	1	cylinder
8	0.900.0047.3	1	plate
9	0.900.1266.3	1	closure
10	0.900.0047.7	1	spring
11	0.900.1266.4	3	pin
12	0.900.0047.9	1	'o' ring
13	0.900.0047.6	1	disc

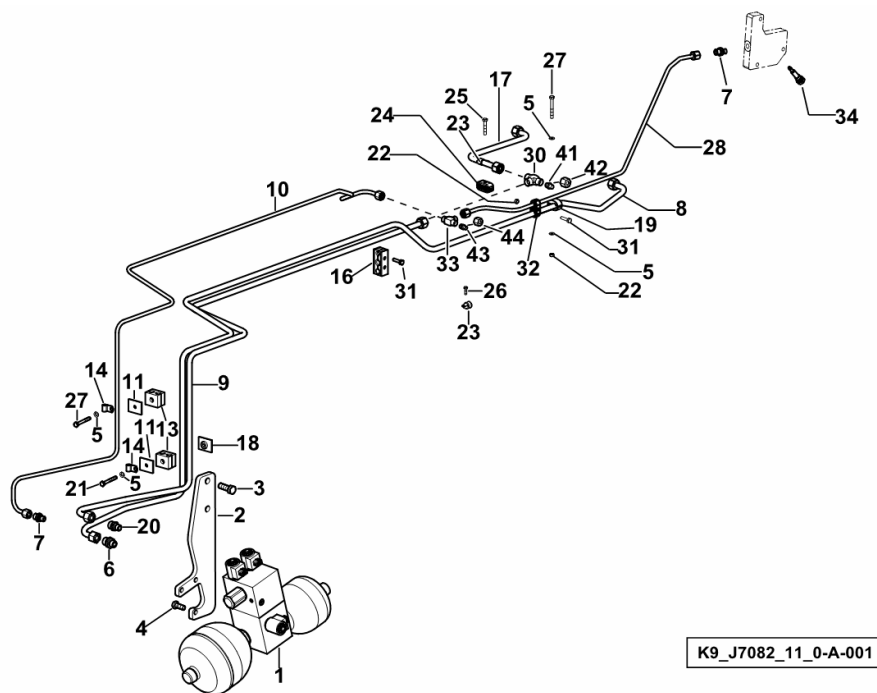


HYDRAULIC SYSTEM FOR SUSPENDED AXLE OPEN CENTER

Fig.	Code	QTY	Name
------	------	-----	------

Notes:

[IRON 185 DCR -> 20001]



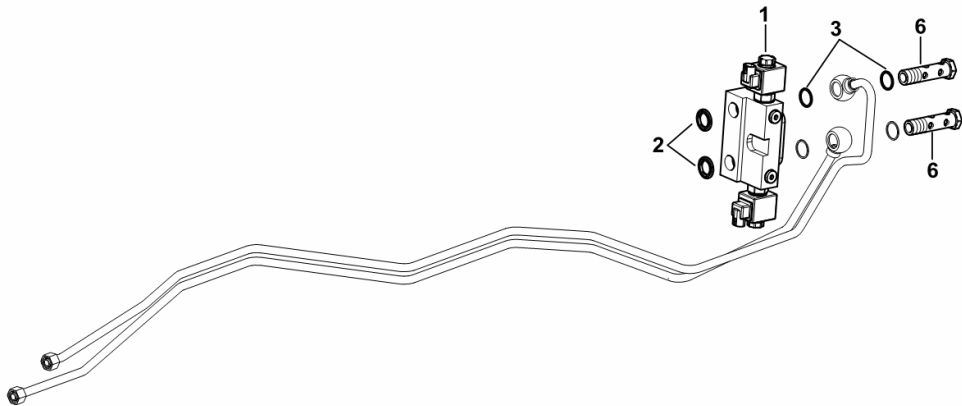
1	04455149/40	1	accumulator kpl. ☞ 04455149/40
2	0.015.3776.0	1	bracket
3	2.0112.413.2	2	screw m 12 p.1.75x35
4	2.0112.309.2	3	screw m 10 p.1.5 x 25
5	2.1310.002.2	4	washer 6.6, d125
6	01180559	1	pipe fitting
7	01180557	2	pipe fitting m 12 p.1.5x8
8	04455698.3/10	1	piping
9	0.015.9784.3	1	piping
10	04455693.3/10	1	piping
11	01175616	2	small plate
13	01180439	4	terminal
14	01172129	2	terminal B8X15
16	04454113	1	hose clip Ø12 / Ø12 / Ø8
17	04455700.3/10	1	tube
18	01177274	1	small plate
19	01141607	1	clamp 12
20	04453868	1	pipe fitting m 14 p.1.5
21	2.0112.015.2	1	screw m 6 p.1x40
22	2.1011.103.2	2	nut m 6 p.1
23	2.6839.055.0	2	clamp Ø 11 / 20
24	01141548	1	clamp Ø 8/8
25	2.0112.013.2	1	screw m 6 p.1 x 35
26	2.0112.005.2	1	screw m 6 p.1 x 16
27	2.0112.019.2	2	screw m 6 p.1 x 50
28	04454460	1	piping
30	0.015.9782.0	1	pipe fitting
31	2.0112.009.2	3	screw m 6 p.1 x 25
32	04454482	1	hose clip
33	04427045	1	pipe fitting T
34	04454514.4	1	screw
41	04431440	1	nut
42	2.3369.026.2	1	nut m16x1,5
43	01180564	1	plug
44	2.3369.018.2	1	nut

SOLENOID VALVE FOR VERSIONS WITH FRONT LIFT

Fig.	Code	QTY	Name
------	------	-----	------

Notes:
[IRON 185 DCR -> 20001]

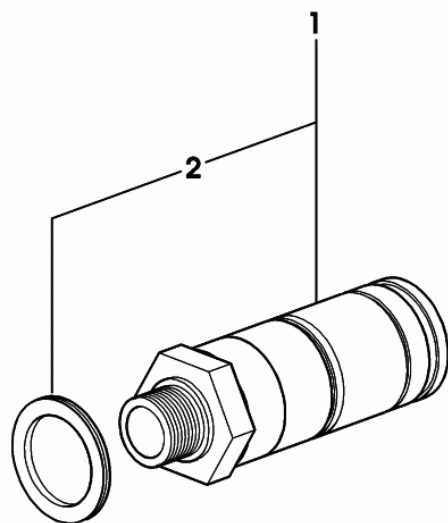
1	0.017.0343.4	1	electro valve
2	04454693	2	'o' ring
3	2.1561.112.0	4	gasket Ø 22 -B-
6	2.3249.521.2	2	pipe union m 22



K9_L9459_79_0-B-001

ENGAGEMENT

Fig.	Code	QTY	Name
1	04412157/10	1	coupling
2	0.900.0389.2	1	'o' ring



04412157_10

FRONT BRAKING SYSTEM

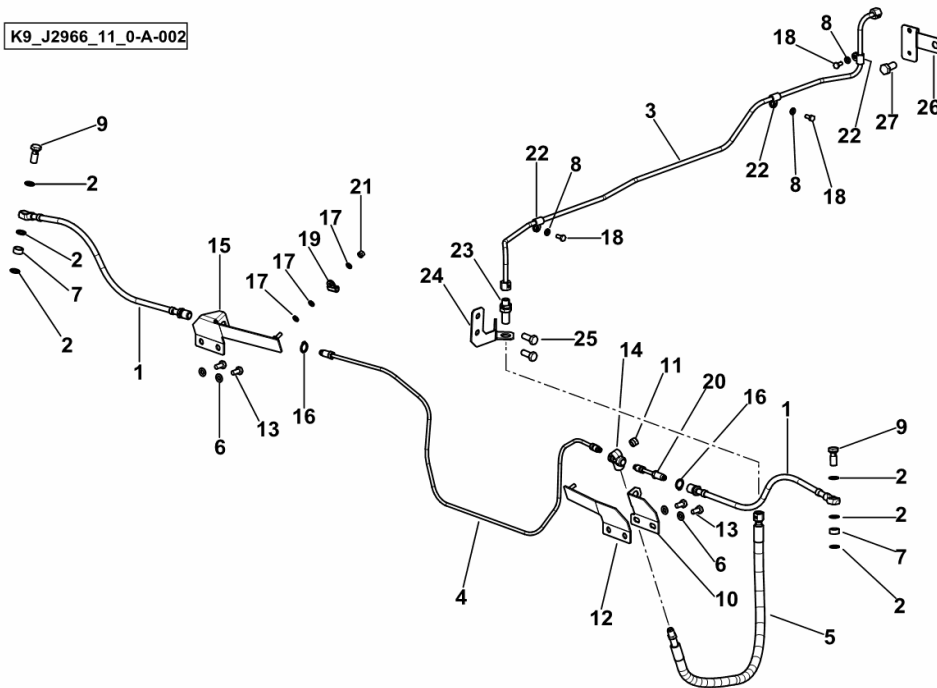
Fig.	Code	QTY	Name
------	------	-----	------

Notes:

WITHOUT SUSPENDED AXLE [IRON 185 DCR -> 20001]

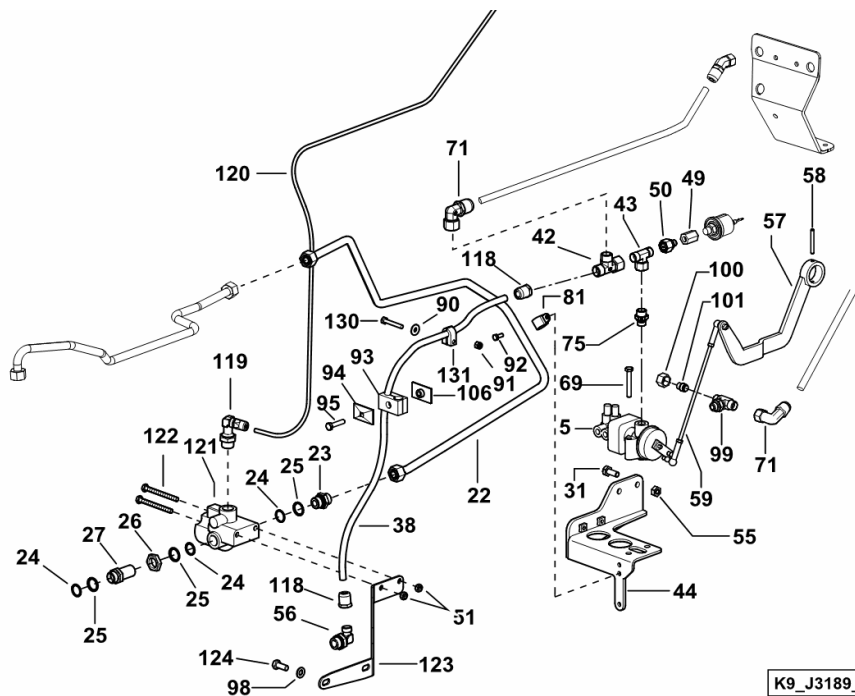
1	0.016.0256.3	2	tube
2	2.1560.008.0	6	gasket 12.2 x 18
3	0.015.9492.3/10	1	tube
4	0.015.7388.3/20	1	tube
5	0.015.9493.3/10	1	pipng
6	2.1310.004.2	4	flat washer 8.5
7	2.1579.765.2/10	2	spacer 12.5 x 18 x 8.0
8	2.1310.002.2	3	washer 6.6, d125
9	2.3339.361.2/10	2	pipe union m 12 p.1.25 x 28
10	04453773	1	support sx/lh/li
11	2.1120.005.2	1	nut m 8 p.1.25
12	04453771.3	1	support sx/lh/li
13	2.0112.205.2	4	screw m 8 p.1.25 x 16
14	03499196	1	pipe fitting T
15	04454722.2	1	support dx/rh/re
16	2.1410.004.2	2	circlip 16
17	2.1311.004.2	3	flat washer 6, d128
18	2.0112.004.2	3	screw m 6 p.1 x 14
19	01171262	1	hose clip b 6x15 h3223
20	04453781	1	tube
21	2.1120.003.2	1	nut m 6
22	01175559	3	hose clip
23	2.3249.223.2	1	pipe fitting
24	0.015.9498.0	1	bracket
25	2.0114.309.2	2	screw m 10 p 1.25 x 25
26	0.016.2938.3	1	link
27	2.0114.409.2	1	screw m 12 x 25

K9_J2966_11_0-A-002



AIR BRAKING

Fig.	Code	QTY	Name
122	2.0112.226.2	2	screw m 8 p.1.25 x 85
123	0.017.7724.0	1	support
124	2.0112.309.2	2	screw m 10 p.1.5 x 25
130	2.0112.015.2	1	screw m 6 p.1x40
131	01141607	1	clamp 12



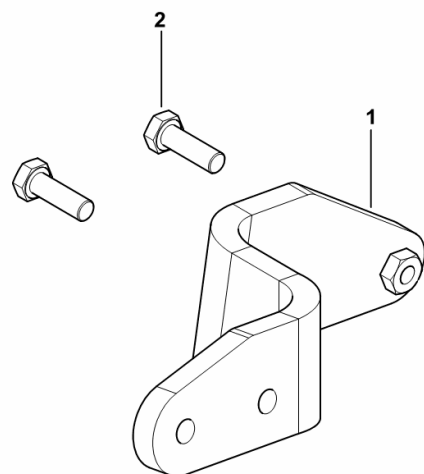
K9_J3189_15_0-B-004

BRACKET FOR PNEUMATIC BRAKING SYSTEM

Fig.	Code	QTY	Name
------	------	-----	------

Notes:
[IRON 185 DCR -> 20001]

1	0.016.2958.3	1	bracket
2	2.0114.311.2	2	screw m 10 p.1.25 x 30



K9_J3189_18_0-A-001

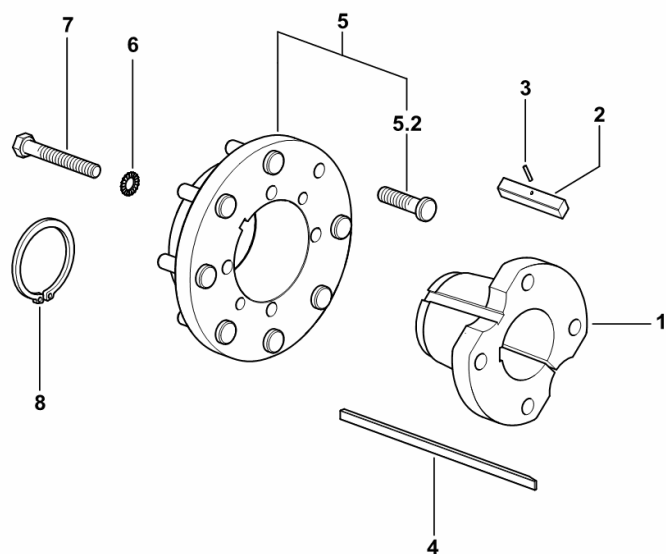
FLANGE

Fig.	Code	QTY	Name
------	------	-----	------

Notes:

[IRON 185 DCR -> 20001]

1	04453371	2	flange
2	2.1799.020.2	2	dowel 13x16x108
3	2.1630.211.0	2	roll pin 3x24
4	04455000	2	dowel
5	0.009.3540.3/10	2	flange
5.2	0.009.3541.0	8	small column m 22 p1.5x85
6	2.1470.011.2	8	washer 20
7	2.0119.080.2	8	screw m20x2x140
8	2.1410.040.7	2	ring 100



K9_D4031_03_0-A-001

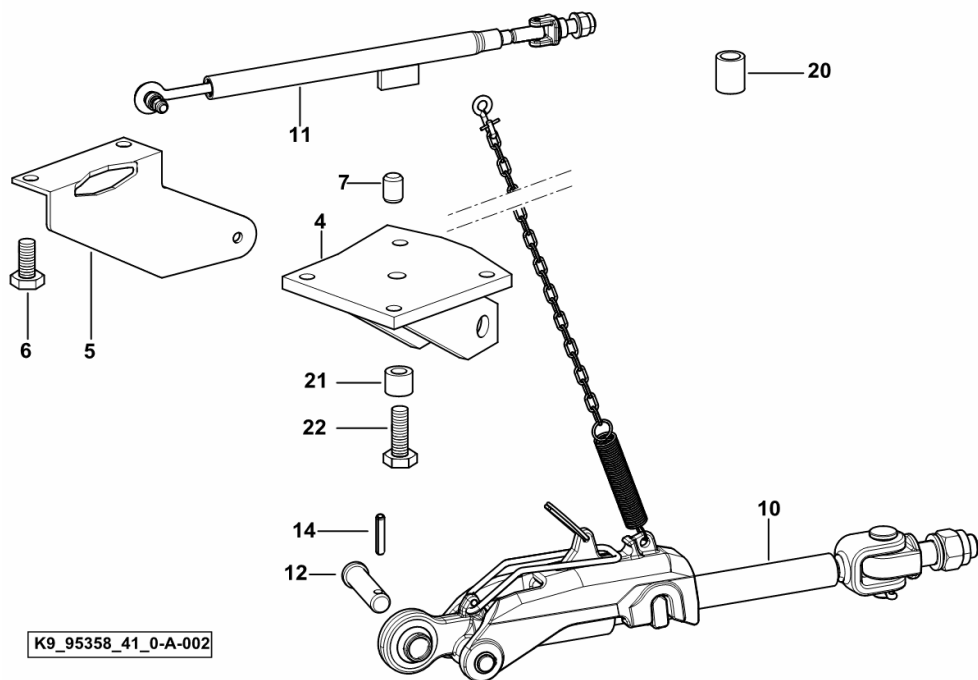
THREE-POINT HITCH - AUTOMATIC LATERAL STABILIZERS

Fig.	Code	QTY	Name
------	------	-----	------

Notes:

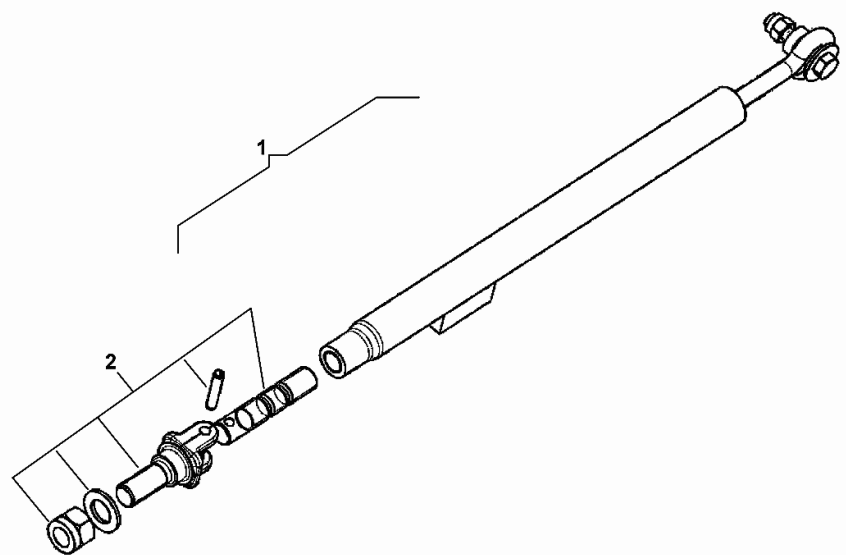
- FOR TYPES W/O PICK-UP HITCH AND ADJUSTABLE ON LH SIDE [IRON 185 DCR -> 20001]

4	04411063/20	1	end bracket sx/lh/li
5	04416256	1	plate
6	01112683	2	screw m 16 x 40
7	2.1659.526.6	1	cylindrical plug 20x24
10	0.015.4023.4	1	stabiliser kpl. ☞ 0.015.4023.4
11	0.015.7687.4	1	stabiliser ☞ 0.015.7687.4
12	04414819	1	pin
14	2.1630.818.2	1	pin 10x55
20	04355272	1	bushing 9x13x16
21	04422335	4	spacer 17x30.5x24
22	2.0119.283.6	4	screw m 16 x 70



STABILIZER

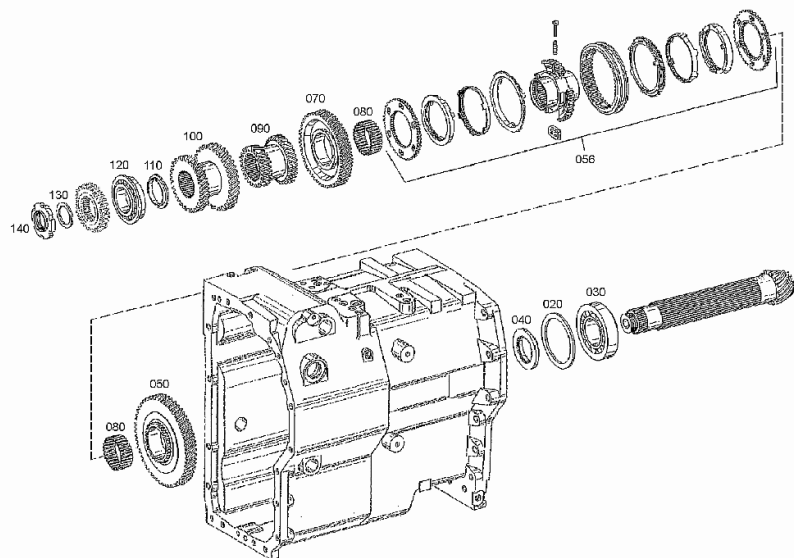
Fig.	Code	QTY	Name
1	0.015.7687.4	1	stabiliser
2	0.900.1268.6	1	parts set



0.015.7687.4

MAIN SHAFT - [2093 009 102]

Fig.	Code	QTY	Name
130	04424443	1	shim s = 3.00
130	0.010.2859.2	1	shim s = 3.75
130	0.010.2860.0	1	shim s = 3.80
130	0.010.2860.1	1	shim s = 3.85
130	0.010.2860.2	1	shim s = 3.90
130	0.010.2861.0	1	shim s = 3.95
130	0.010.2861.1	1	shim s = 4.00
140	04415763	1	ring nut



FRONT TRANSMISSION - [2093 009 102]

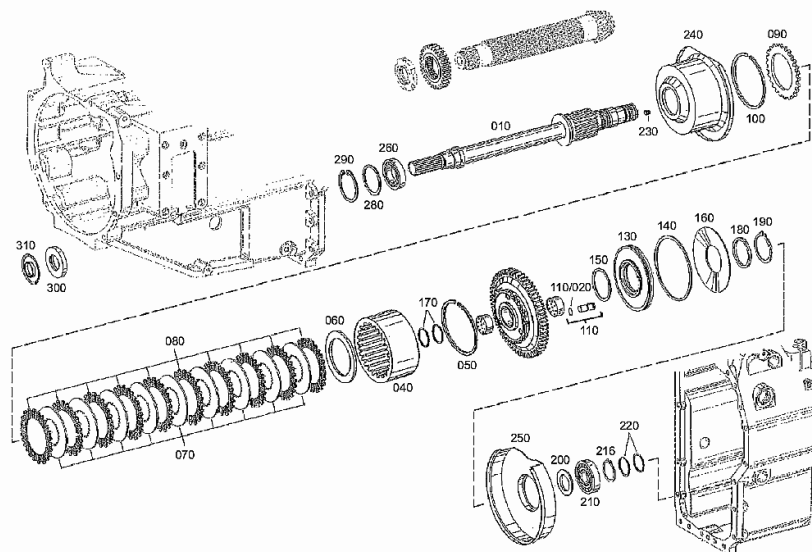
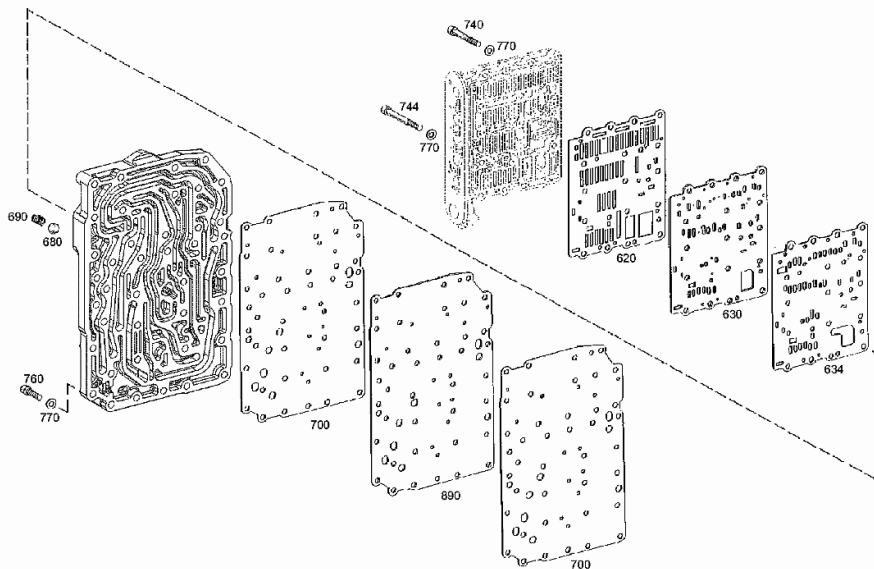


Fig.	Code	QTY	Name
10	0.900.0121.9	1	shaft Z = 32 (...) <-
10	0.900.1284.7	1	transmission shaft -> (...)
40	04416804	1	support z = 27 (...) <-
40	0.900.1284.6	1	plate carrier -> (...)
50	04415928	1	ring (...) <-
50	0.900.0985.1	1	circlip -> (...)
60	0.900.1378.3	1	shim
60	04416588	1	shim mm 5.5
60	04416589	1	shim mm 5.7
60	04416590	1	shim mm 5.9
60	04416591	1	shim mm 6.1
60	04416592	1	shim mm 6.3
60	04416593	1	shim mm 6.5
60	04416594	1	shim mm 6.7
60	04416595	1	shim mm 6.9
60	04416596	1	shim mm 7.1
60	0.010.2875.2	1	shim mm 7.3
60	04416598	1	shim mm 7.5
60	04416599	1	shim mm 7.7
60	04416600	1	shim mm 7.9
60	04416601	1	shim mm 8.1
60	04416602	1	shim mm 8.3
60	04416603	1	shim mm 8.5
60	04416604	1	shim mm 8.7
70	04415930	12	disc
80	04416412	13	disc
90	04415932	1	disc
100	04415933	1	circlip mm 2.5
110	0.010.2876.0	3	pin
110.20	0.010.3258.2	1	'o' ring 12x2.5
130	04427572	1	piston
140	04415936	1	ring
150	04415937	1	ring
160	04415938	1	spring
170	04415939	2	ring 45x2
180	04436290	1	washer
190	0.010.2876.1	1	circlip 68x2.5
200	04415941	1	washer

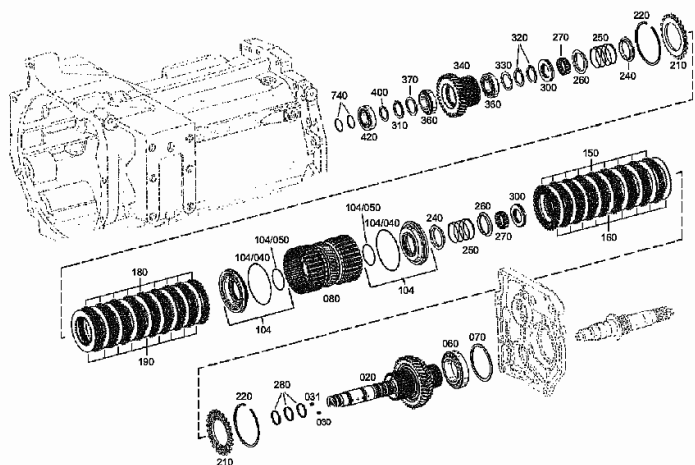
HYDRAULIC CONTROL - [2093 009 102]

Fig.	Code	QTY	Name
620	04416853	1	gasket
630	0.010.2884.0	1	plate
634	04416855	1	gasket
680	04416839	1	ball
690	04416942	1	spring
700	04427608	2	gasket
740	04416701	16	screw m 8 x 65
744	04416702	1	screw m 8 x 90
760	04416703	10	screw m 8 x 35
770	04416940	27	washer 8.4
890	04427609	1	plate



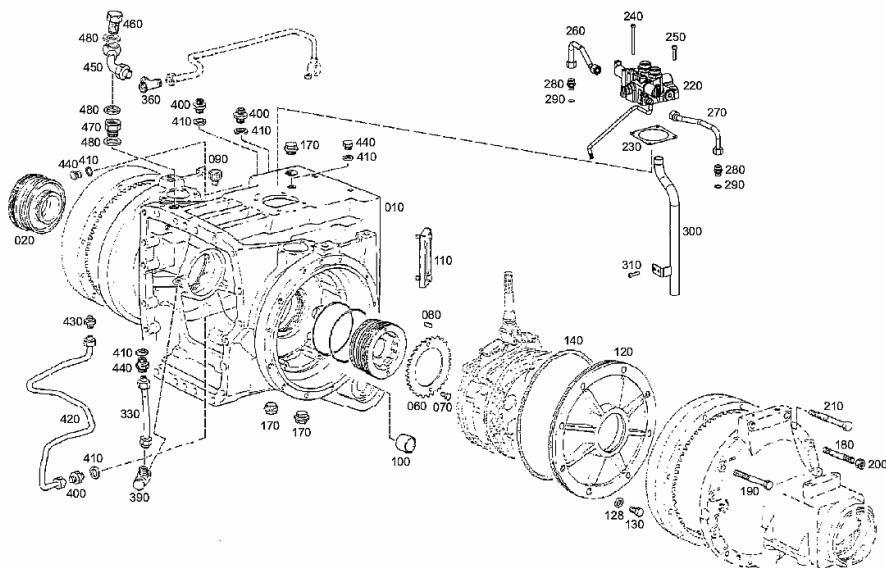
Section: D0 - TRANSMISSION
SPLITTER - [2093 009 102]

Fig.	Code	QTY	Name
420	04416358	1	roller bearing
510	0.900.1385.6	1	shaft
510	0.900.0122.2	1	shaft Z = 29
550	0.900.0885.2	1	gear
550	0.900.0955.6	1	gear wheel (...) <- > (...)
560	0.900.0883.7	1	support
580	04416760	9	clutch disc AV 35
590	04416967	9	clutch disc
600	04416760	9	clutch disc AV 35
620	04416967	9	clutch disc
630	04416364	4	ring 40x2
660	0.010.3256.1	1	roller bearing (...) <- > (...)
660	0.900.1378.0	1	roller bearing > (...)
700	04416975	1	'o' ring
710	0.900.0885.0	1	gear z=47
720	04416110	1	roller bearing
730	0.900.1379.4	1	washer
730	04417077	1	washer mm 1.7
730	04417078	1	washer mm 1.75
730	04417079	1	washer mm 1.80
730	04417080	1	washer mm 1.85
730	04417081	1	washer mm 1.90
730	04417082	1	washer mm 1.95
730	04417083	1	washer mm 2.00
730	04417084	1	washer mm 2.05
730	04417085	1	washer mm 2.10
730	04417086	1	washer mm 2.15
730	04417087	1	washer mm 2.20
730	04417088	1	washer mm 2.25
730	04417089	1	washer mm 2.30
730	04417090	1	washer mm 2.35
730	04417091	1	washer mm 2.40
730	04417092	1	washer mm 2.45
730	04417093	1	washer mm 2.50
730	0.010.3822.0	1	washer mm 2.55
730	0.010.3822.1	1	washer mm 2.60
730	0.010.3822.2	1	washer mm 2.65
730	0.010.3823.0	1	washer mm 2.70
730	0.010.3823.1	1	washer mm 2.75
730	0.010.3823.2	1	washer mm 2.80



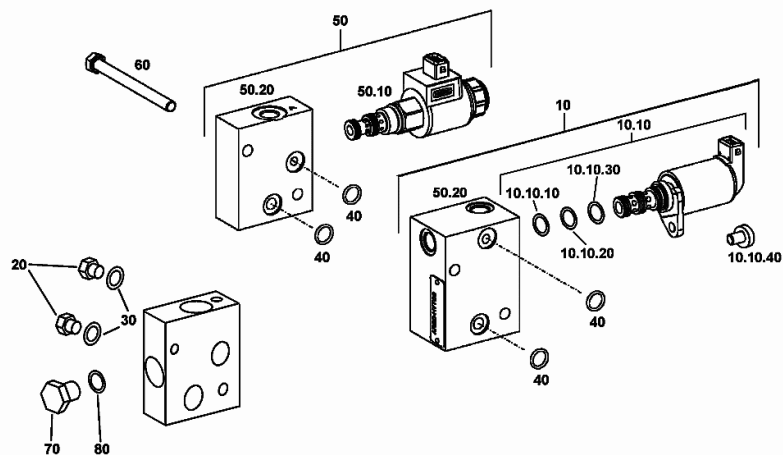
REAR GEARBOX CASE - [2093 009 102]

Fig.	Code	QTY	Name
330	0.010.2973.0	1	pipng
360	04435710	1	tongue
390	04417707	1	pipe fitting
400	04417466	4	pipe fitting
410	04423731	6	'o' ring 14 x 18
420	0.010.2899.2	1	tube
430	04417705	1	tongue
440	0.900.0281.0	2	plug m 14 p.1.5
450	0.010.3826.0	1	pipng
460	04415923	1	pipe union 18 DIN 7643
470	0.010.3826.2	1	pipe fitting
480	01118737	3	'o' ring 22 x 27



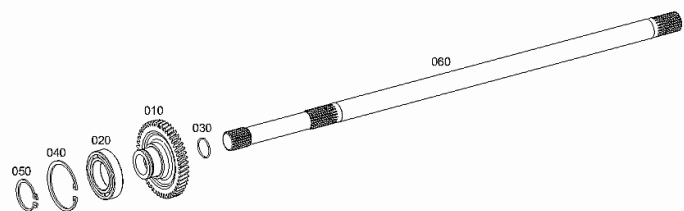
DRIVE FOR GEAR CHANGE BOX - [2093 009 102]

Fig.	Code	QTY	Name
10	04423824	1	distributor (...) <-
10	0.900.0952.1	1	controller -> (...)
10.10	0.900.0952.8	1	electro valve -> (...)
10.10.10	0.900.1377.5	1	gasket 12,4 x 1,78 -> (...)
10.10.20	0.900.1377.6	1	gasket 13 x 1.5 -> (...)
10.10.30	0.900.1377.7	1	gasket 14x1.78 -> (...)
10.10.40	0.900.1377.8	1	screw m 8 x 16 -> (...)
40	0.900.0801.4	4	ring 11,3 x 2,4 NBR-70-10
50	0.010.2628.2	1	controller (...) <-
50	0.900.1363.3	1	small block -> (...)
50.10	0.900.1384.6	1	electro valve -> (...)
60	0.900.0279.5	2	screw (...) <-
60	0.900.1363.4	2	screw -> (...)
70	0.900.0281.0	1	plug m 14 p.1.5 (...) <-
80	04423731	1	'o' ring 14 x 18 (...) <-



P.T.O. - POWER TAKE OFF - [2093 009 107]

Fig.	Code	QTY	Name
10	0.900.0884.3	1	gear Z = 49 (...) <-
10	0.900.0985.6	1	gear -> (...)
20	04415799	1	ball bearing
30	0.010.2863.1	1	circlip 30
40	0.010.2618.0	1	circlip 75x2.5
50	0.010.2863.2	1	circlip 45x2.5
60	04431732	1	shaft (...) <-
60	0.900.1432.1	1	shaft z= 22 -> (...)



HYDRAULIC CONTROL - [2093 009 107]

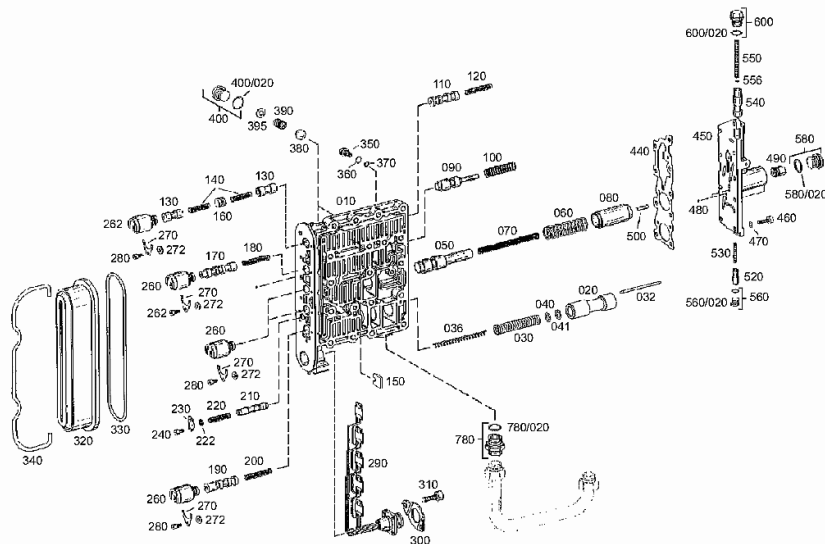


Fig.	Code	QTY	Name
10	04416824	1	distributor
20	04423298	1	piston
30	04416657	1	spring
32	04434330	1	pin
36	04434331	1	spring
40	0.900.1378.2	1	shim
40	02371798	1	shim mm 10x16x0.2
40	04416658	1	shim mm 10x16x0.3
40	04416659	1	shim mm 10x16x0.4
40	04416660	1	shim mm 10x16x0.5
40	04416661	1	shim mm 10x16x1
41	04416661	3	shim mm 10x16x1
50	04416664	1	piston
60	04416665	1	spring
70	04416666	1	spring
80	04416825	1	piston
90	04417095	1	piston
100	04416669	1	spring
110	04416826	1	piston
120	04416671	1	spring
130	04423374	2	piston
140	04416828	2	spring
150	04416829	1	small plate
160	04416830	1	contact surface
170	04416831	1	piston
180	04416671	1	spring
190	04416833	1	piston
200	04416671	1	spring
210	04416681	1	valve
220	04416682	1	spring
222	04416832	1	ring
230	04416836	1	lamination
240	04434505	2	screw m 5x10
250	04416684	10	ball
260	04416685	3	electro valve
262	04436315	2	electro valve
270	04416677	5	stop
272	04359458	5	washer mm 2.00
280	04434506	5	screw m 5 x 12
280	0.900.1362.8	5	(...) <- screw m 5 x 12 >- (...)
290	04416837	1	electrical system
300	04416687	1	lamination

Section: D0 - TRANSMISSION
SPLITTER - [2093 009 107]

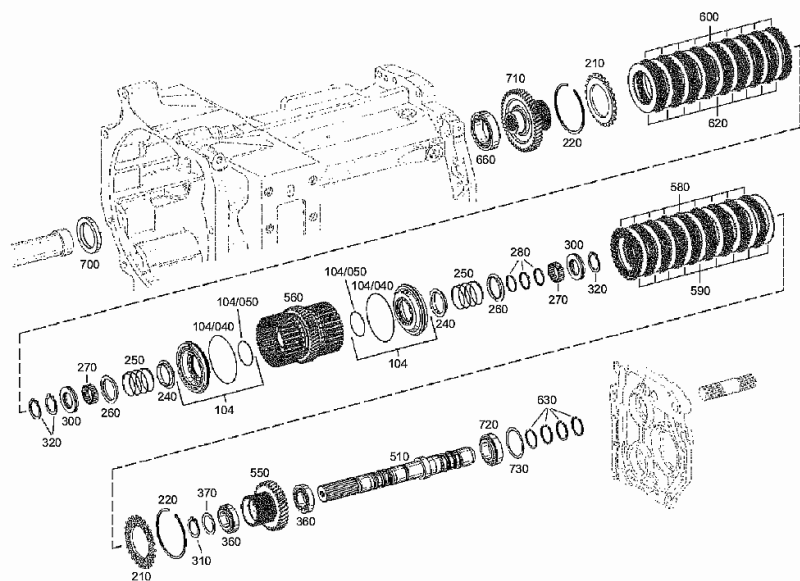


Fig.	Code	QTY	Name
20	0.900.0883.6	1	shaft (...) <-
20	0.900.0954.6	1	transmission shaft -> (...)
30	04416947	1	grain m 8x8 (...) <-
31	0.900.0067.3	2	plug
60	04415989	1	bearing
70	0.900.1379.3	1	washer
70	04417057	1	washer mm 2.70
70	04417058	1	washer mm 2.65
70	04417059	1	washer mm 2.60
70	04417060	1	washer mm 2.55
70	04417061	1	washer mm 2.50
70	04417062	1	washer mm 2.45
70	04417063	1	washer mm 2.40
70	04417064	1	washer mm 2.35
70	04417065	1	washer mm 2.30
70	04417066	1	washer mm 2.25
70	04417067	1	washer mm 2.20
70	04417068	1	washer mm 2.15
70	04417069	1	washer mm 2.10
70	04417070	1	washer mm 2.05
70	04417071	1	washer mm 2.0
70	04417072	1	washer mm 1.95
70	04417073	1	washer mm 1.9
70	04417074	1	washer mm 1.85
70	04417075	1	washer mm 1.80
80	0.900.0883.8	1	support
104	04431746	4	piston
104.40	04419762	1	'o' ring 104x3
104.50	04419763	1	'o' ring 50x3
150	04416760	9	clutch disc AV 35
160	04416967	9	clutch disc
180	04416760	9	clutch disc AV 35
190	04416967	9	clutch disc
210	04416763	4	disc
220	0.900.1380.3	4	circlip
220	04416765	4	circlip A = 2.0
220	04416766	4	circlip A = 2.5
220	04416767	4	circlip A = 3.0
220	04416768	4	circlip A = 3.5
220	0.900.0801.9	4	circlip A=2,75
220	0.900.0802.0	4	circlip A=3,25

CLUTCH - [2093 009 107]

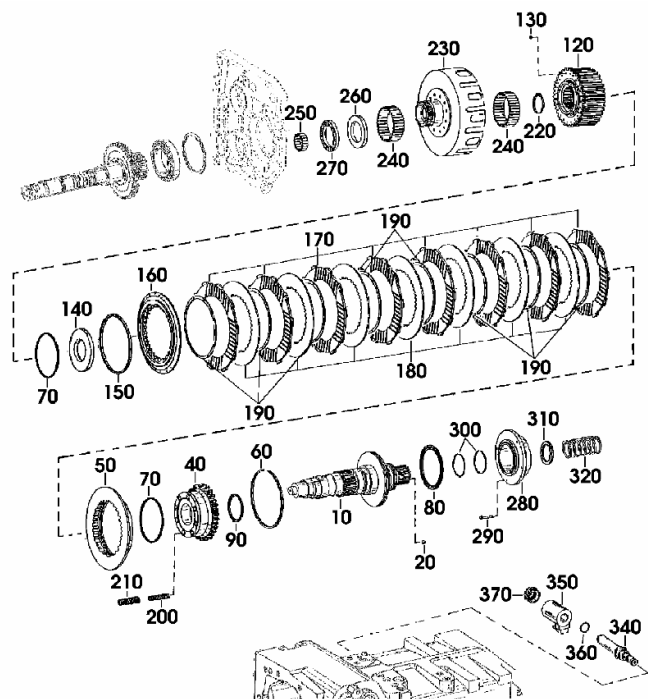
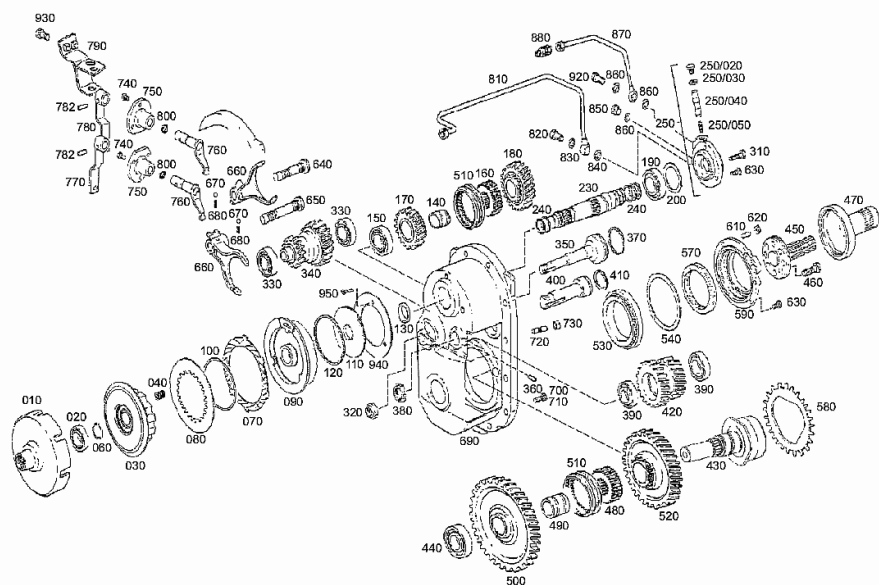


Fig.	Code	QTY	Name
10	0.010.2909.2	1	shaft Z = 38
20	04416947	2	grain m 8x8
40	0.010.2910.0	1	piston Z = 48
50	0.010.2910.1	1	plate
60	04431758	1	circlip SB 143
70	04431759	2	'o' ring 106x3
80	04431755	1	'o' ring
90	04431760	1	'o' ring
120	0.010.2910.2	1	plate carrier
130	04431762	31	cover
140	04431763	1	lamination
150	04417004	1	washer
150	04417205	1	washer mm 2.60
150	04417206	1	washer mm 2.70
150	04417207	1	washer mm 2.80
150	04417208	1	washer mm 2.90
150	04417209	1	washer mm 3.00
150	04417210	1	washer mm 3.10
150	04417211	1	washer mm 3.20
150	04417212	1	washer mm 3.30
150	04417213	1	washer mm 3.40
150	04417214	1	washer mm 3.50
150	04417215	1	washer mm 3.6
150	04417216	1	washer mm 3.70
150	04417217	1	washer mm 3.80
150	04417218	1	washer mm 3.90
150	04417219	1	washer mm 4.00
150	04417220	1	washer mm 4.10
150	04417221	1	washer mm 4.20
150	04417222	1	washer mm 4.30
150	04417223	1	washer mm 4.40
150	04417224	1	washer mm 4.50
150	04417225	1	washer mm 4.60
150	04417226	1	washer mm 4.70
150	04417227	1	washer mm 4.80
150	04417228	1	washer mm 4.90
150	04417229	1	washer mm 5.00
150	04416748	1	washer mm 5.10
150	04434490	1	washer mm 5.20
150	04434491	1	washer mm 5.30
150	04423191	1	washer mm 5.60
150	04427550	1	washer mm 5.5
150	04427551	1	washer mm 5.40
150	04439012	1	washer mm 2.30

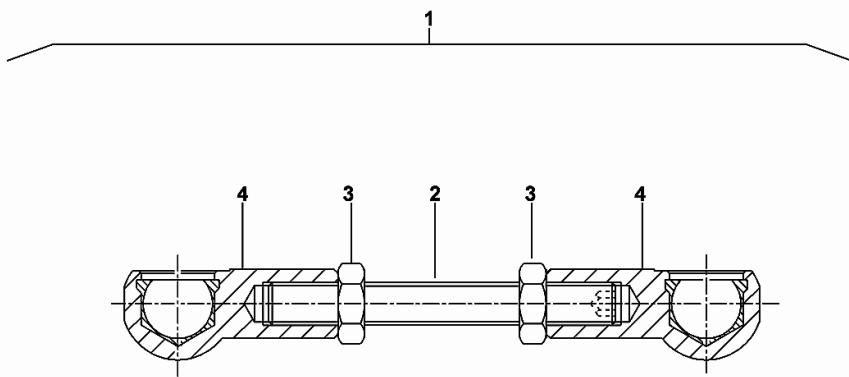
P.T.O. - POWER TAKE OFF - [2093 009 107]

Fig.	Code	QTY	Name
440	0.900.1385.0	1	(...) <- bearing > (...)
450	04417388	1	shaft
460	0.010.3293.0	8	screw m 12 x 50
470	04417440	1	guard
480	04417680	1	support
490	04417681	1	bushing
500	0.900.0884.4	1	gear z=66
510	04431727	2	sleeve
520	0.900.0877.3	1	gear z=56
530	0.900.0282.9	1	roller bearing
540	0.900.1380.2	1	shim
540	04417391	1	shim
540	04417392	1	shim
540	04417393	1	shim
570	04417395	1	'o' ring 94x118x12
580	04439236	1	gear (...) <- > (...)
580	0.900.1432.0	1	gear > (...)
590	04417438	1	cover
610	0.900.0281.3	4	stud bolt m 8 x 35
620	0.900.0281.5	4	nut m 8
630	0.900.0291.0	4	screw (...) <- > (...)
630	04434498	4	screw m 8 x 25 > (...)
640	04428570	1	rod (...) <- > (...)
640	0.900.1432.6	1	rod > (...)
650	04428571	1	rod (...) <- > (...)
650	0.900.1432.7	1	rod > (...)
652	0.900.1377.9	0	adhesive
660	0.010.3848.1	2	fork
670	04415909	2	ball
680	04417378	2	spring
690	0.900.0490.3	1	box
700	0.010.2893.2	1	screw m 10 x 40
710	0.900.0307.8	9	screw m10x35
720	0.900.0281.2	2	stud bolt m 10 x 45



LINKAGE

Fig.	Code	QTY	Name
1	0.016.3969.4/10	1	rod
2	0.900.1389.8	1	rod
3	0.900.1389.9	2	nut
4	0.900.1390.0	2	tip



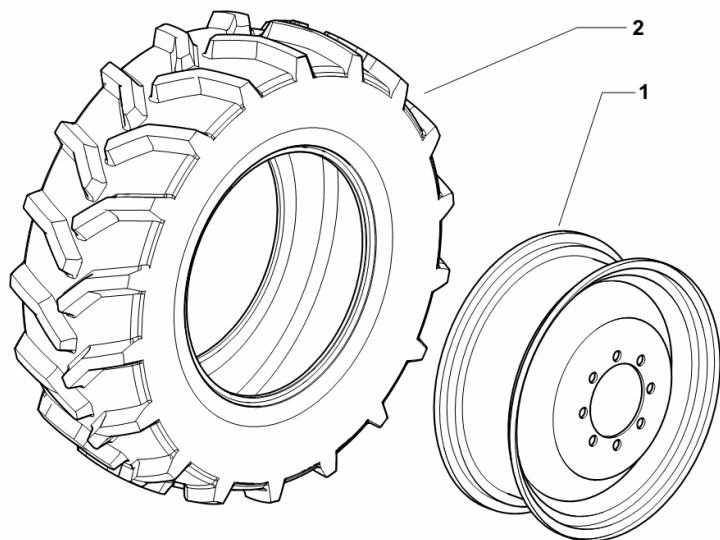
0.016.3969.4/10

WHEELS 480/70R30" a8

Fig.	Code	QTY	Name
------	------	-----	------

Notes:
[IRON 185 DCR -> 20001]

1	04437965	2	rim
2	2.4811.075.0	2	tyre 480/70R30" a8



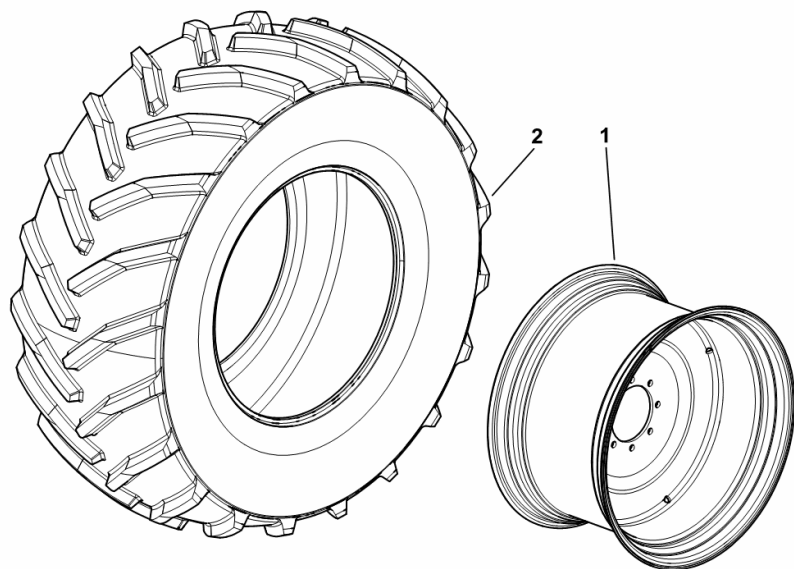
K9_J3155_21_0-A-001

Section: S0 - WHEELS
WHEELS 710/70R38"

Fig.	Code	QTY	Name
------	------	-----	------

Notes:
 [IRON 185 DCR -> 20001]

1	0.017.4551.3	2	rim
2	2.4811.103.0	2	tyre 710/70R38"



K9_L9455_44_0-A-001

CLICK HERE TO **DOWNLOAD** THE COMPLETE MANUAL

- Thank you very much for reading the preview of the manual.
- You can download the complete manual from: www.heydownloads.com by clicking the link below



- Please note: If there is no response to CLICKING the link, please download this PDF first and then click on it.

CLICK HERE TO **DOWNLOAD** THE COMPLETE MANUAL