

IRON 160 DCR -> 20001

V0 - BALLAST, TOWING HITCHES

FRONT HITCHES

FRONT TOWING HITCH.....	V0.01.0 (1)
CATCHING MOUTH.....	V0.01.1 (1)

REAR HITCHES

TRAILER STAND - DRAWBAR COUPLING.....	V0.02.0 (1)
FRAME HOOK HOLDER.....	V0.02.1 (1)
FRAME HOOK HOLDER.....	V0.02.2 (1)
FRAME HOOK HOLDER.....	V0.02.3 (1)
TOWING FRAME - WITH PITON-FIX.....	V0.02.4 (1)
TOWING FRAME - WITH PITON-FIX.....	V0.02.5 (1)
TRAILER STAND - DRAWBAR COUPLING Ø mm 80.....	V0.02.6 (2)
TRAILER STAND - DRAWBAR COUPLING Ø mm 80.....	V0.02.6 (3)
TRAILER STAND - DRAWBAR COUPLING Ø mm 80.....	V0.02.7 (1)
REAR TOWING HITCH BRACKET.....	V0.02.10 (1)
REAR TOWING HITCH BRACKET.....	V0.02.11 (1)
DRAWBAR COUPLING MECH.....	V0.02.12 (1)
DRAWBAR COUPLING MECH.....	V0.02.13 (1)
REAR TOWING HITCH CAT: "C".....	V0.02.14 (1)
REAR TOWING HITCH CAT: "C".....	V0.02.15 (1)
REAR TOWING HITCH CAT: "D2".....	V0.02.16 (1)
REAR TOWING HITCH CAT: "D2".....	V0.02.17 (1)
REAR TOWING HITCH CAT: "D3".....	V0.02.18 (1)
REAR TOWING HITCH CAT: "D3".....	V0.02.19 (1)
REAR TOWING HITCH CEE.....	V0.02.20 (1)
DRAWBAR COUPLING CEE.....	V0.02.21 (1)
REAR TOWING HITCH Ø mm 80.....	V0.02.22 (1)
REAR TOWING HITCH Ø mm 80.....	V0.02.23 (1)
AUTOMATIC TOWING HITCH MM 31 - TOWING EYE MM 52.....	V0.02.24 (1)
AUTOMATIC TOWING HITCH 31 MM - TOWING EYE 51 MM.....	V0.02.25 (1)
TOWING COUPLING AUTOM. MM 38 - DRAWBAR EYE MM 52.....	V0.02.26 (1)
TOWING COUPLING AUTOM. MM 38 - DRAWBAR EYE MM 52.....	V0.02.27 (1)
TOWING COUPLING AUTOM. MM 38 - DRAWBAR EYE MM 63.....	V0.02.28 (1)
TOWING COUPLING AUTOM. MM 38 - DRAWBAR EYE MM 63.....	V0.02.29 (1)
PIN FOR REAR TOW HOOK.....	V0.02.30 (1)
PICK-UP-HITCH - MECHANICAL.....	V0.02.31 (1)
PICK-UP-HITCH - HYDRAULIC.....	V0.02.32 (1)
REMOTE CONTROL FOR AUTOMATIC REAR TOWING HITCH.....	V0.02.34 (1)
SWINGING DRAWBAR SUPPORT.....	V0.02.35 (1)
SWINGING DRAWBAR SUPPORT.....	V0.02.36 (1)
SWINGING DRAWBAR SUPPORT.....	V0.02.37 (1)
SWINGING DRAWBAR SUPPORT.....	V0.02.38 (1)

CLICK HERE TO **DOWNLOAD** THE COMPLETE MANUAL

- Thank you very much for reading the preview of the manual.
- You can download the complete manual from: www.heydownloads.com by clicking the link below



- Please note: If there is no response to CLICKING the link, please download this PDF first and then click on it.

CLICK HERE TO **DOWNLOAD** THE COMPLETE MANUAL

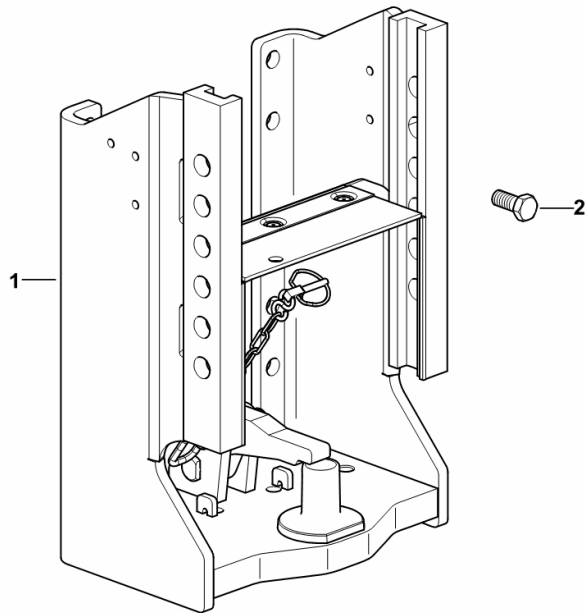
TOWING FRAME - WITH PITON-FIX

Fig.	Code	QTY	Name
------	------	-----	------

Notes:
[IRON 160 DCR -> 20001]

1	0.017.8590.3	1	chassis frame SAUERMANN ☞ 0.017.8590.3
2	2.0129.071.6	10	screw m 18 p.1.5x40

9_J9931_68_0-A-001

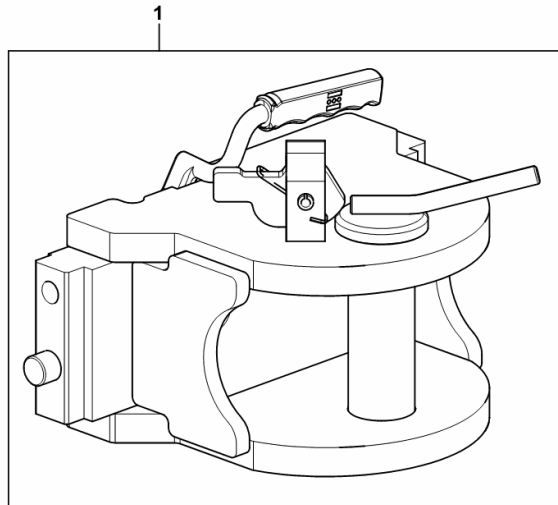


REAR TOWING HITCH CAT: "D2"

Fig.	Code	QTY	Name
------	------	-----	------

Notes:
[IRON 160 DCR -> 20001]

1	0.015.9802.3/10	1	tow hook CBM CUNA - CAT. D2 ☞ 0.015.9802.3/10
---	-----------------	---	--



9_L3331_75_0-A-001

IRON 160 DCR -> 20001

Section: V0 - BALLAST, TOWING HITCHES

Ref.: V0.02.26 (1)

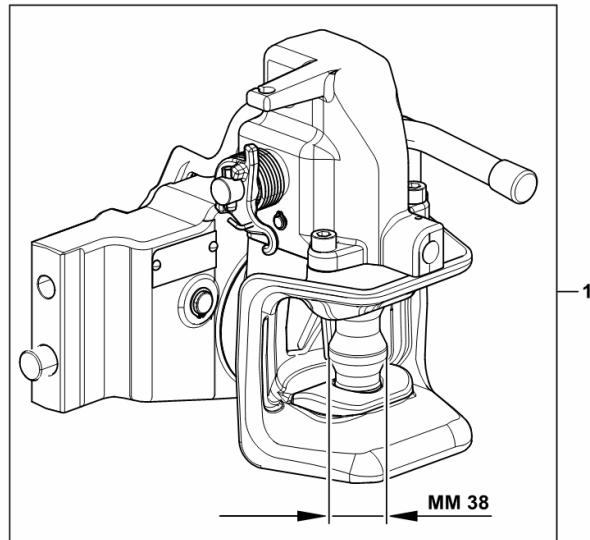
TOWING COUPLING AUTOM. MM 38 - DRAWBAR EYE MM 52

Fig.	Code	QTY	Name
------	------	-----	------

Notes:

[IRON 160 DCR -> 20001]

1	0.015.9811.3/10	1	tow hook CBM (20016 <-) ☞ 0.015.9811.3/10
1	0.017.9614.3	1	tow hook - CBM - (-> 20025)



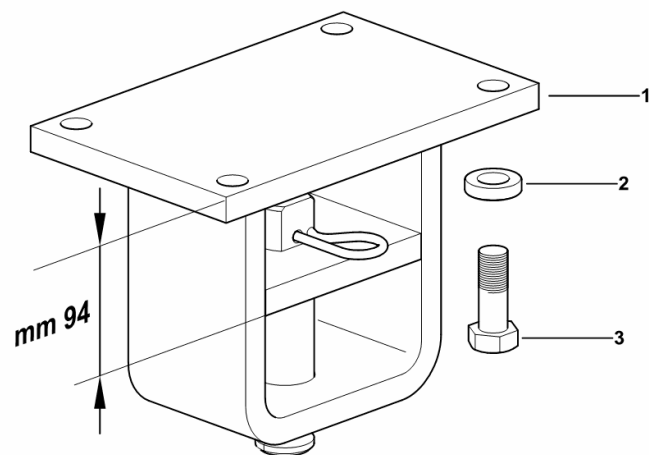
9_L3831_65_0-A-001

SWINGING DRAWBAR SUPPORT

Fig.	Code	QTY	Name
------	------	-----	------

Notes:
[IRON 160 DCR -> 20001]

1	0.015.9832.3/10	1	support CBM ☞ 0.015.9832.3/10
2	01174740	4	washer 16.5
3	2.0112.617.2	4	screw m 16 p.2x45



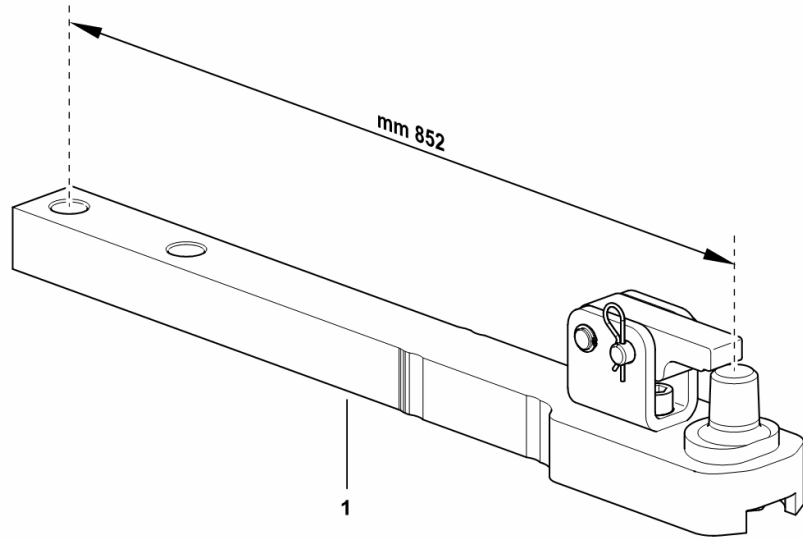
9_J3031_67_0-A-001

SWINGING DRAWBAR WITH PITON-FIX

Fig.	Code	QTY	Name
------	------	-----	------

Notes:
[IRON 160 DCR -> 20001]

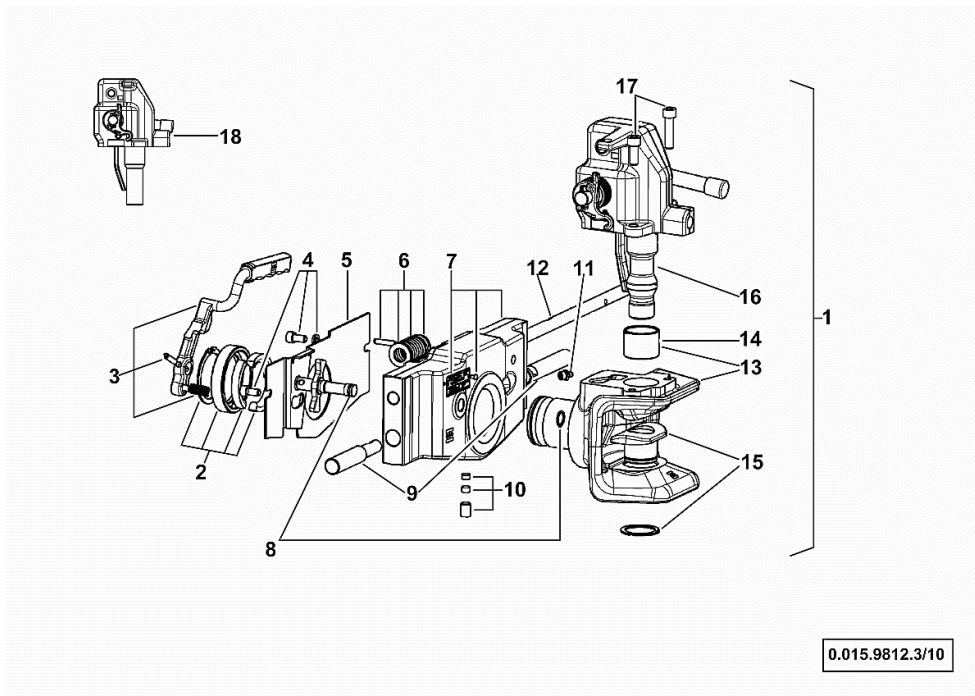
1	0.015.9825.3/10	1	draw bar CBM ☞ 0.015.9825.3/10
---	-----------------	---	-----------------------------------



9_L3631_67_0-A-001

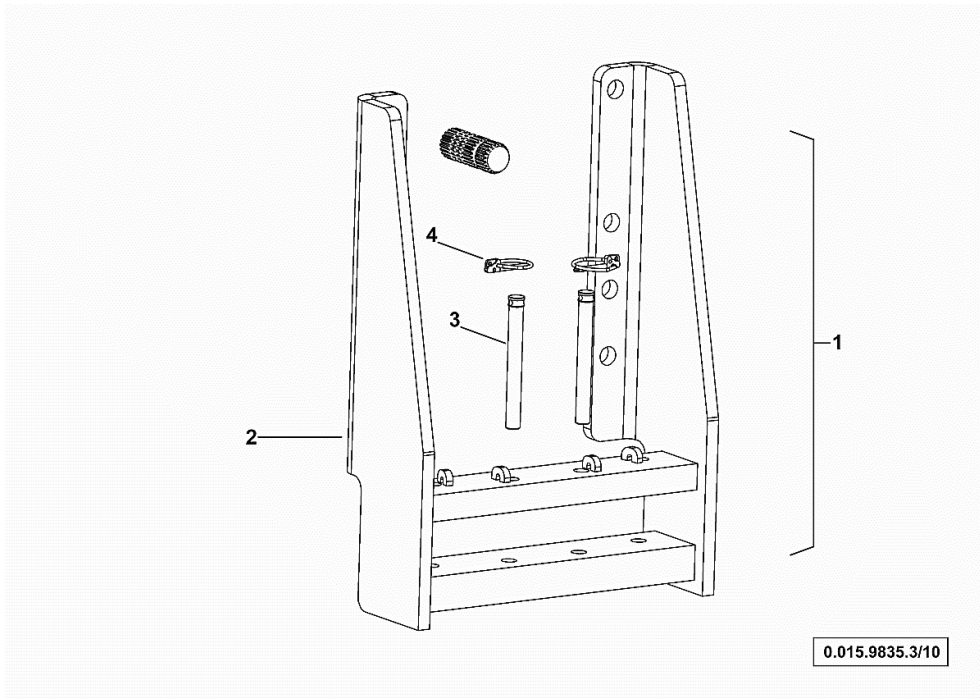
DRAWBAR COUPLING AUTOM.

Fig.	Code	QTY	Name
1	0.015.9812.3/10	1	tow hook CBM
2	0.900.1270.0	1	parts set
3	0.900.1270.1	1	parts set
4	0.900.1270.2	1	screw kit
5	0.900.1270.3	1	plate
6	0.900.1270.4	1	parts set
7	0.900.1274.6	1	support
8	0.900.1270.6	1	parts set
9	0.900.1272.8	1	pin kit
10	0.900.1270.8	1	parts set
11	0.900.1178.7	1	lubricator m 10 p.1
12	0.900.1178.9	1	pin
13	0.900.1274.7	1	clevis
14	0.900.1180.8	1	bushing
15	0.900.1274.8	1	parts set
16	0.900.1274.9	1	pin Ø mm 31
17	0.900.1273.1	1	screw kit
18	0.900.1275.0	1	parts set



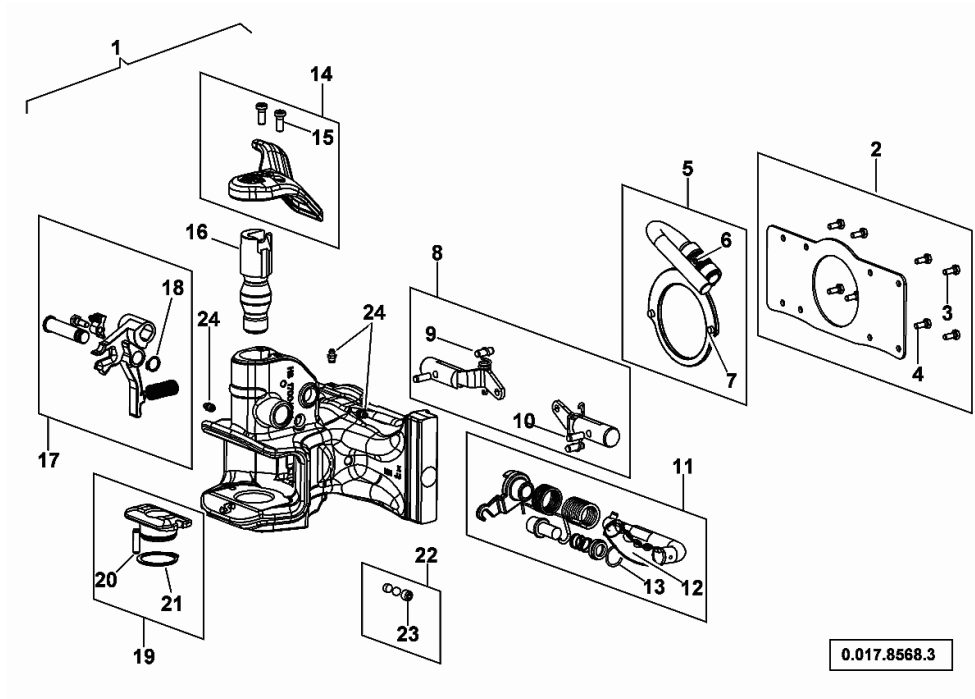
CHASSIS

Fig.	Code	QTY	Name
1	0.015.9835.3/10	1	support CBM
2	0.900.1275.8	1	support
3	0.900.1275.9	1	pin
4	0.900.1275.3	1	pin



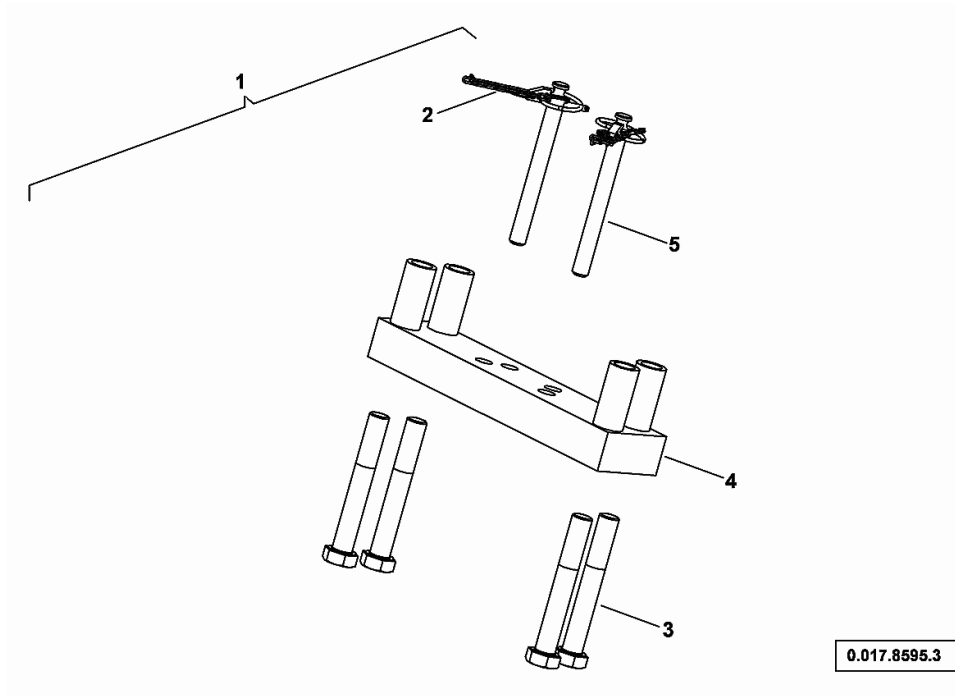
DRAWBAR COUPLING

Fig.	Code	QTY	Name
22	0.900.1425.2	1	45x1.75 parts set
23	0.000.0000.1	1	not serviceable DIN 000913-M10 X 10 M10X10
24	0.000.0000.1	3	not serviceable DIN 71414-A M8x1 M8X1



SUPPORT

Fig.	Code	QTY	Name
1	0.017.8595.3	1	support SAUERMANN
2	0.000.0000.1	2	not serviceable D = 6 M20x140
3	0.000.0000.1	4	not serviceable ISO 4014 M20x140 - 10.9 d=6
4	0.900.1427.9	1	support
5	0.900.0386.0	2	pin

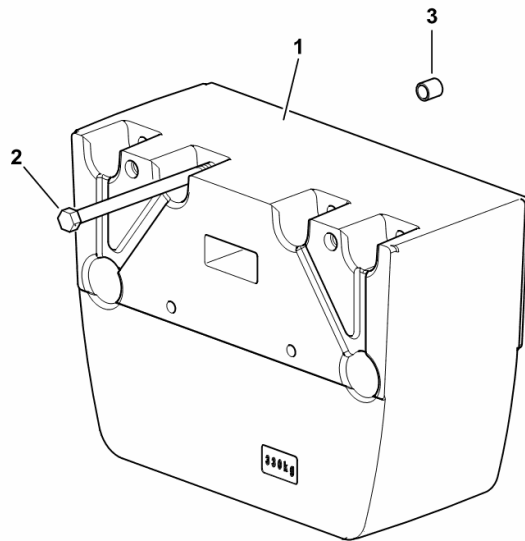


FRONT BALLAST 330 Kg

Fig.	Code	QTY	Name
------	------	-----	------

Notes:
[IRON 160 DCR -> 20001]

1	04413291/10	1	ballast 330 Kg
2	2.0119.281.6	6	screw m 16x200
3	2.2680.047.0	2	ring 17x22x23



9_95052_46_0-A-001

REAR LIFT CONTROL.....	G0.17.0 (1)
REAR LIFT CONTROL.....	G0.17.1 (1)
CONTROL CONSOLE.....	0.015.7749.4.A

REMOTE VALVE CONTROLS

DISTRIBUTOR CONTROL.....	G0.18.0 (1)
DISTRIBUTOR CONTROL.....	G0.18.1 (1)
REMOTE VALVE CROSS-GATE CONTROL.....	G0.18.2 (1)
FLOW CONTROL.....	G0.18.3 (2)
FLOW CONTROL.....	G0.18.4 (2)
OPERATION.....	0.017.6491.4.00

ACCESSORIES

SUN BLIND REAR WINDOW.....	G0.19.0 (1)
SUN BLIND FRONT WINDSCREEN.....	G0.19.1 (1)
LICENCE PLATE HOLDER.....	G0.19.2 (1)
LICENCE PLATE HOLDER.....	G0.19.3 (1)
METAL TOOLBOX.....	G0.19.4 (1)
METAL TOOLBOX.....	G0.19.5 (1)
CHOCK.....	G0.19.6 (1)

HOOD - SUPPORTS

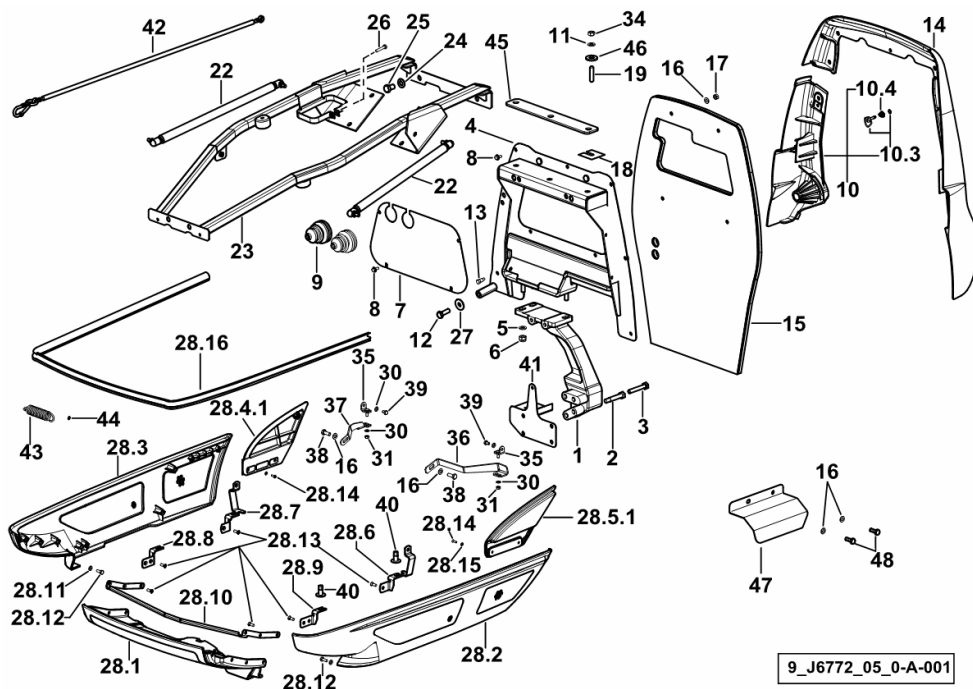


Fig.	Code	QTY	Name
28.15	2.1310.028.2	4	flat washer 4
28.16	0.015.8927.0	1	gasket
30	2.1310.002.2	4	washer 6.6, d125
31	2.1011.103.2	2	nut m 6 p.1
34	2.1011.106.2	3	nut m 10 p.1.5
35	0.016.2093.3/10	2	bracket
36	0.016.2091.0	1	bracket sx/lh/li
37	0.016.2092.0	1	bracket dx/rh/re
38	2.0112.207.2	2	screw m 8 p 1.25 x 20
39	2.0112.002.2	2	screw m 6 p.1 x 10
40	2.1039.509.2/10	4	nut
41	0.015.2530.2	1	support
42	0.016.3391.4/10	1	crate
43	04431563	1	spring
44	2.6999.049.0	1	small spring
45	0.016.1129.0/10	1	plate
46	2.1549.647.2	3	spacer 10.1x26x6
47	0.017.5955.0	1	bracket
48	2.0112.208.2	2	screw m 8 p.1.25 x 22

9_J6772_05_0-A-001

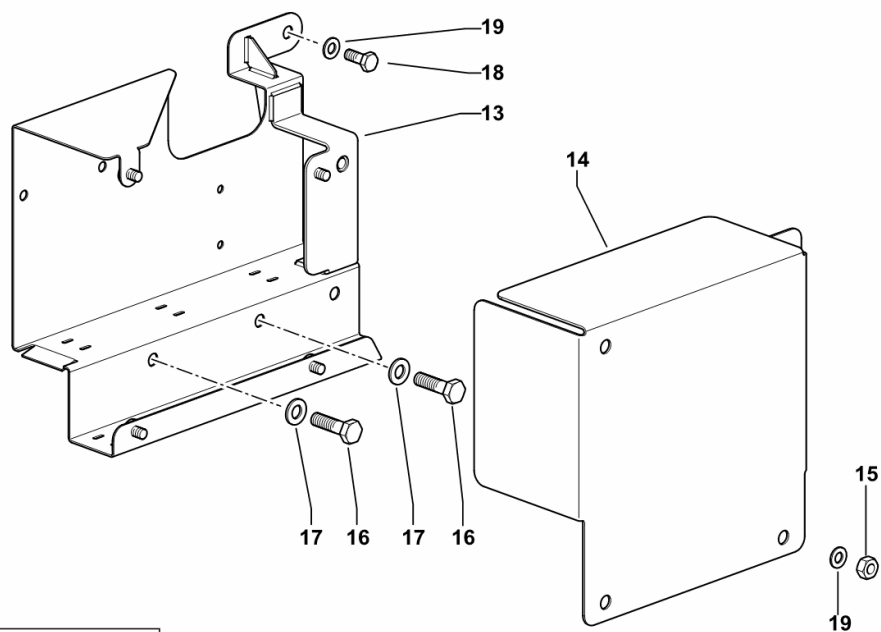
RELAY PROTECTION

Fig.	Code	QTY	Name
------	------	-----	------

Notes:

[IRON 160 DCR -> 20001]

13	0.015.6115.3/10	1	support
14	0.015.6120.0	1	cover
15	2.1011.405.2	4	nut m 8 p.1
16	2.0112.313.2	2	screw m 10 p.1.5 x 35
17	2.1310.006.2	2	flat washer 10.5
18	2.0112.207.2	1	screw m 8 p 1.25 x 20
19	2.1310.004.2	5	flat washer 8.5



9_J3184_06_0-A-001

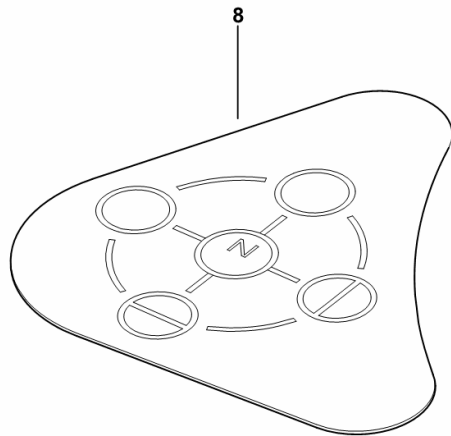
REMOTE VALVE CROSS-GATE CONTROL NAMEPLATE

Fig.	Code	QTY	Name
------	------	-----	------

Notes:

- FOR TYPES WITH 8-WAY AUXILIARY SERVICES CONTROL VALVE [IRON 160 DCR -> 20001]

8	0.016.3267.0	1	plate
---	--------------	---	-------



9_J6664_03_0-C-001

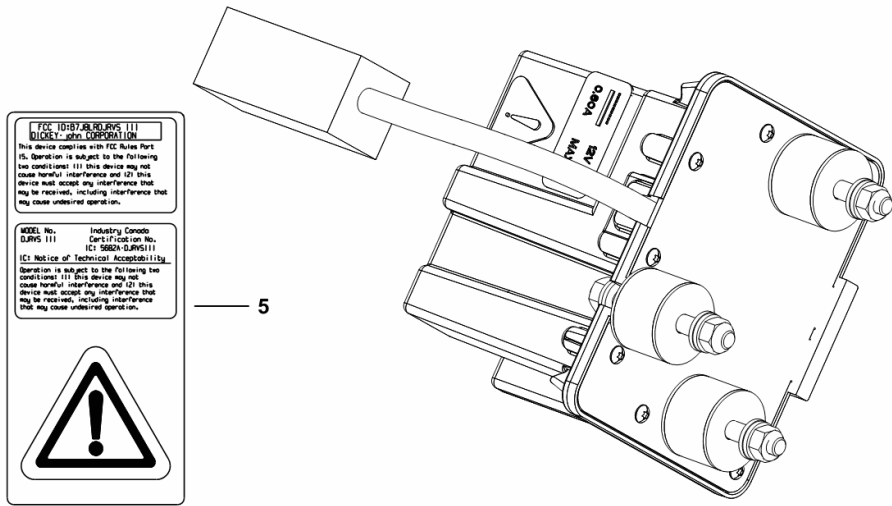
WARNING DECAL - RADAR

Fig.	Code	QTY	Name
------	------	-----	------

Notes:

- EXPORT U.S.A. [IRON 160 DCR -> 20001]

5	0.015.4670.0	1	plate
---	--------------	---	-------



9_J3184_64_0-B-001

SPEED LABEL - 40 KM/H

Fig.	Code	QTY	Name
------	------	-----	------

Notes:

- EXPORT D [IRON 160 DCR -> 20001]

1	04382527	1	plate 40 KM/H
---	----------	---	---------------



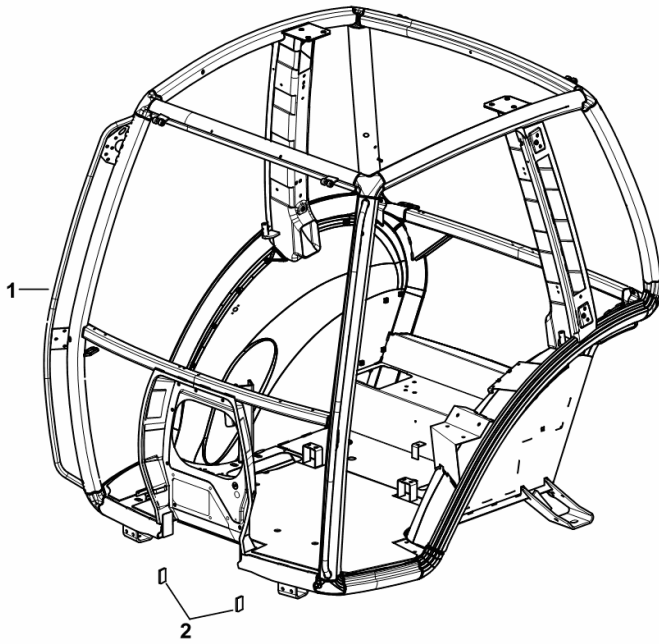
9_95074_32_0-A-001

Section: G0 - BODYWORK - CAB
SINGLE-STRUCTURE CAB

Fig.	Code	QTY	Name
------	------	-----	------

Notes:
 [IRON 160 DCR -> 20001]

1	0.017.9492.3/40	1	cab frame
2	0.016.2235.0	2	gasket



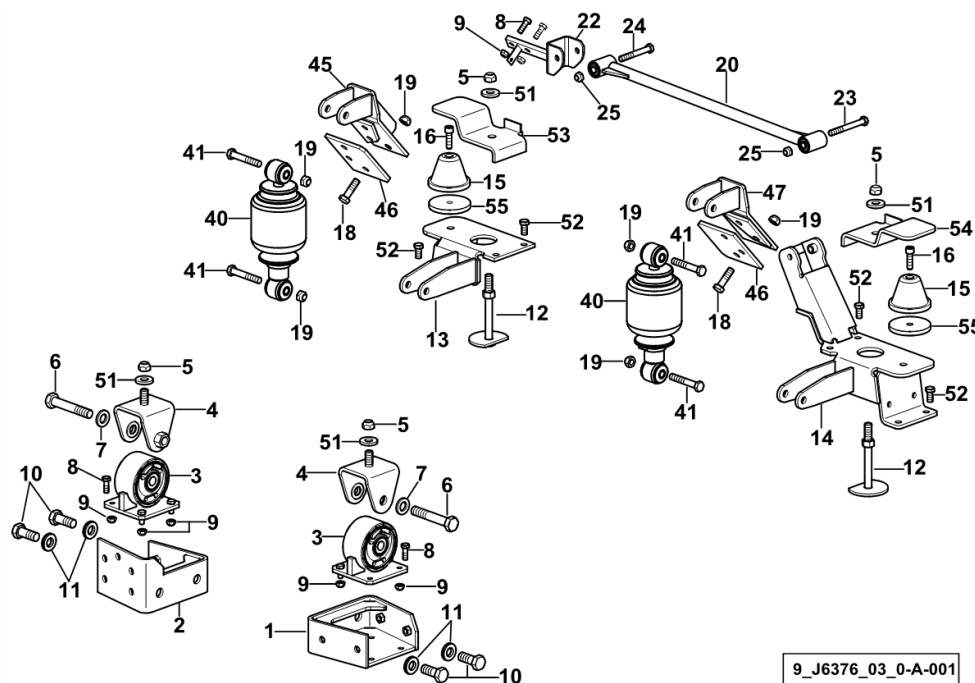
9_S4871_00_0-A-001

CAB BEARING PNEUMATIC SPRINGING

Fig.	Code	QTY	Name
------	------	-----	------

Notes:

- FOR TYPES WITHOUT PNEUMATIC BRAKE [IRON 160 DCR -> 20001] 20012 <-



1	0.013.4924.3/20	1	bracket sx/lh/li
2	0.013.5475.3/10	1	bracket dx/rh/re
3	0.013.4925.4/10	2	silent-block
4	0.013.4926.3/10	2	fork
5	2.1121.011.2	4	nut m 16
6	2.0113.832.2	2	screw m 16 x 45
7	2.1475.108.2	2	spring washer 20
8	2.0112.311.2	6	screw m 10 p.1.5 x 30
9	2.1121.007.2	10	nut m 10 p.1.5
10	2.0129.073.6	4	screw m 20 p.2x50
11	01167055	4	washer 20.5x40
12	0.015.6970.4	2	rod
13	0.015.6933.3	1	bracket dx/rh/re
14	0.015.6926.4/30	1	bracket sx/lh/li
15	0.011.3290.2/10	2	stopper
16	2.0312.414.2	2	screw m 12 x 40
18	2.0114.517.2	6	screw m 14 x 50
19	2.1121.010.2	10	nut m 14 p.2
20	04426843.4/10	1	stabiliser
22	04427785	1	joint
23	2.0112.430.2	1	screw m 12x105
24	2.0112.427.2	1	screw m 12 p.1.75 x 90
25	2.1121.008.2	6	nut m 12
40	0.015.1240.4	2	shoch.absorber Ø 125, 10 bar
41	2.0112.526.2	4	screw m 14 p.2x85
45	0.015.6929.2	1	bracket dx/rh/re
46	0.013.5006.0	2	plate
47	0.015.6912.2	1	bracket sx/lh/li
51	01139580	4	washer 17
52	2.0112.409.2	8	screw m 12 p.1.75 x 25
53	0.015.7129.2	1	bracket dx/rh/re
54	0.015.7118.2/10	1	bracket sx/lh/li
55	0.012.3165.0	2	washer Ø 95 / 12.5

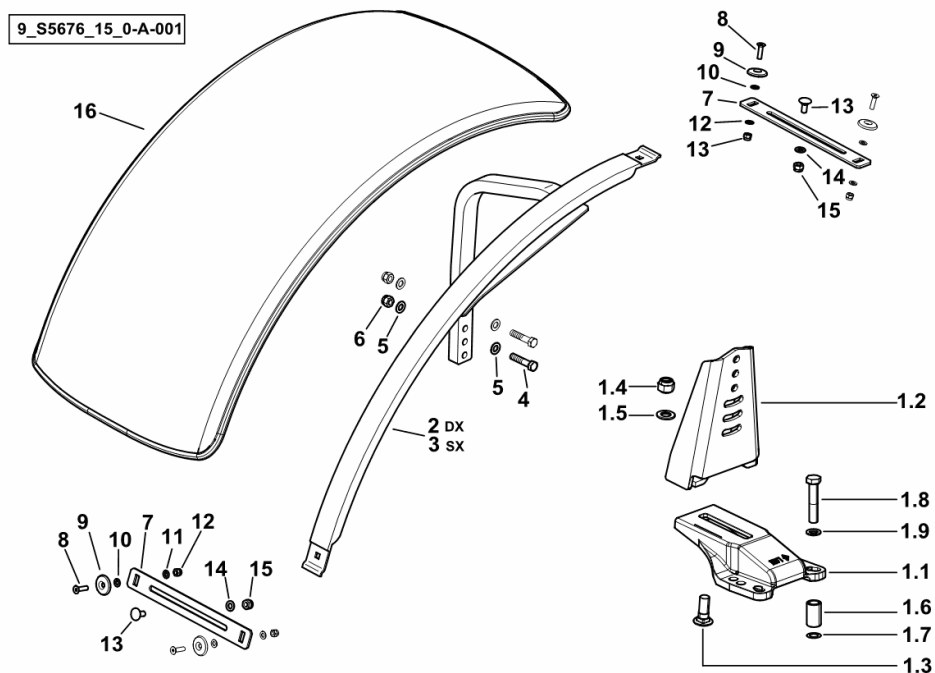
ADJUSTABLE FRONT FENDERS mm 470

Fig.	Code	QTY	Name
------	------	-----	------

Notes:

[IRON 160 DCR -> 20001]

1.1	0.014.7120.0/10	1	bracket
1.2	0.015.6837.3	1	support
1.3	2.0029.510.2	1	screw m18x50
1.4	2.1120.210.2	1	selflock nut m 18 p.1.5
1.5	2.1310.011.2	1	flat washer 19x34
1.6	2.1549.697.2	4	distance bar 19x27x45
1.7	2.1530.033.0	4	'o' ring 13.10x2.62
1.8	2.0112.625.2	4	screw m 16 p.2x80
1.9	2.1310.010.2	4	flat washer 16
2	0.016.7326.3	1	chassis frame dx/rh/re
3	0.016.7327.3	1	chassis frame sx/lh/li
4	2.0112.420.2	4	screw m 12 p.1.75x55
5	2.1475.004.2	8	washer 12
6	2.1120.007.2	4	nut m 12 p.1.75
7	0.014.7167.0	4	support
8	2.0349.004.0	8	screw m 8 p.1.25 x 30
9	2.1399.020.0/10	8	washer
10	2.1310.004.2	8	flat washer 8.5
11	2.1475.002.2	8	conical washer 8
12	2.1120.005.2	8	nut m 8 p.1.25
13	2.0020.306.2	4	screw m 10 x 25
14	2.1475.003.2	4	washer 10
15	2.1120.006.2	4	nut m 10 p.1.5
16	0.010.1729.0	2	fender mm 470



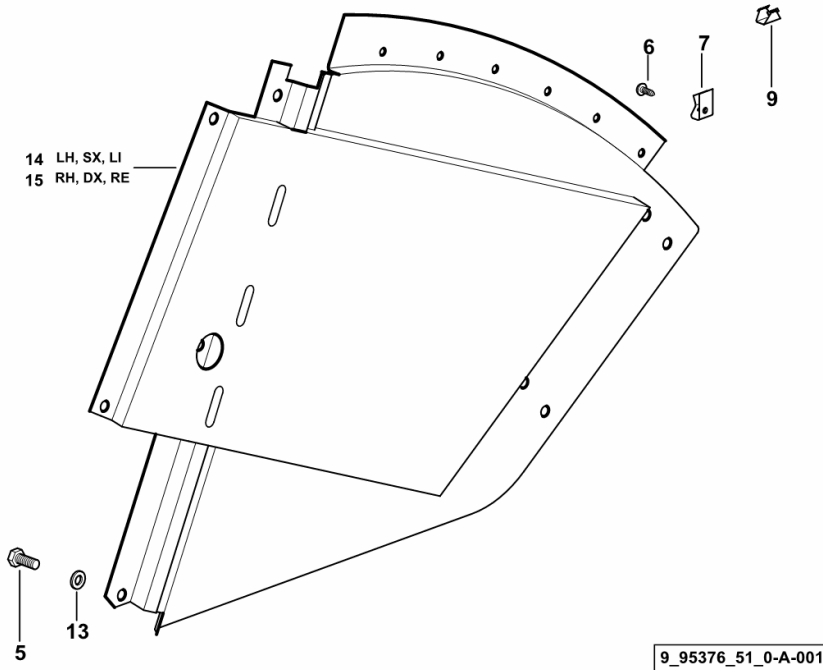
REINFORCED FENDER

Fig.	Code	QTY	Name
------	------	-----	------

Notes:

[IRON 160 DCR -> 20001]

5	04426352	8	screw m 8 p.1.25 x 20
6	04413745	1	screw 4.8x13
7	04413338	12	stop
9	04418149/10	10	small spring
13	2.1310.004.2	10	flat washer 8.5
14	04429862.4	1	division sx/lh/li
15	04429863.4/10	1	division dx/rh/re



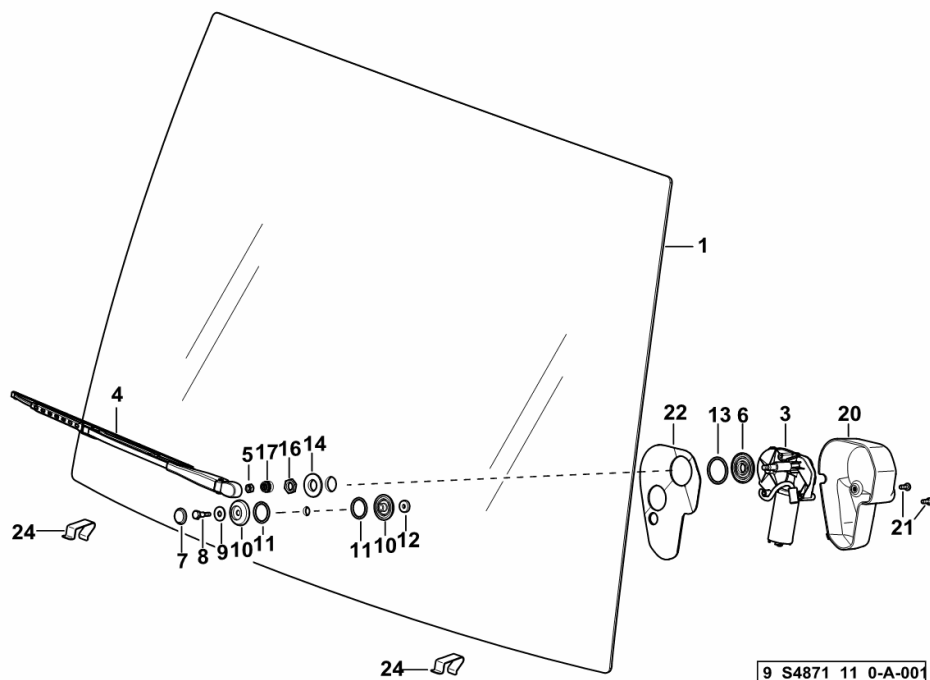
FIXED SCREEN WITH WIPER

Fig.	Code	QTY	Name
------	------	-----	------

Notes:

[IRON 160 DCR -> 20001] -> 20013

1	0.010.5209.0/20	1	windshield
3	04413192	1	wiper motor
4	0.011.5529.4	1	windscreen wiper ☞ 0.011.5529.4
5	2.1011.105.2	1	nut m 8 p.1.25
6	04413223	1	washer
7	04413793	1	cap
8	04413809	1	screw
9	2.1312.004.2	1	washer 8.4
10	04429423	2	washer
11	2.1530.078.0	2	'o' ring 29.74x3.53
12	04413808	1	washer 6.5x20x5
13	2.1530.103.0	9	'o' ring 39.69x3.53
14	2.1569.176.0	1	gasket 20x40x6
16	04413207	1	nut
17	04413210	1	cap
20	04412044	1	cover
21	2.0330.406.2	2	screw m 6 p.1.0 x 16
22	04414610	1	gasket
24	0.016.5623.0	2	bracket

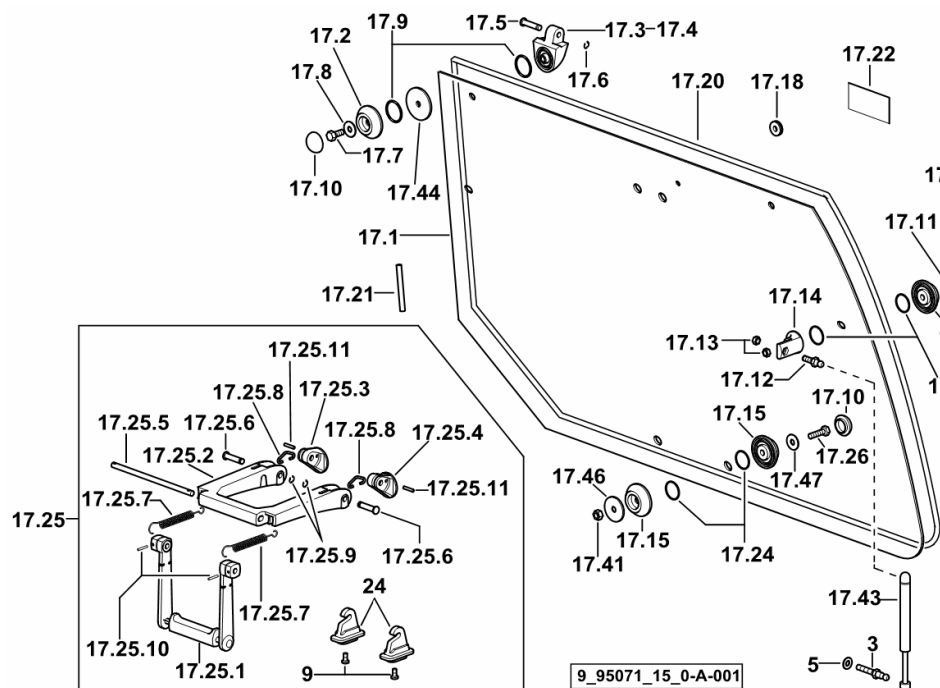


REAR HATCH WITH WIPER

Fig.	Code	QTY	Name
------	------	-----	------

Notes:

[IRON 160 DCR -> 20001]



3	04418838	2	ball joint
5	2.1310.007.2	2	flat washer 13.5
9	04413811	6	screw m 6 p.1.0 x 16
17.1	04429137	1	glass
17.2	04429423	4	washer
17.3	04411248/10	1	hinge sx/lh/li
17.4	04411247/10	1	hinge dx/rh/re
17.5	04413797	2	pin
17.6	01155120	2	washer
17.7	04438410	2	screw m 8 x 25
17.8	2.1310.004.2	3	flat washer 8.5
17.9	2.1530.078.0	4	'o' ring 29.74x3.53
17.10	04413793	7	cap
17.11	2.0112.217.2	2	screw m 8 p.1.25 x 45
17.12	04399070	2	ball joint
17.13	2.1120.105.2	5	selflock nut m 8 p.1.25
17.14	0.010.7738.0/10	2	support
17.15	04412814	4	washer
17.18	01167414	1	rubber bushing
17.20	04419141	1	gasket
17.21	01388794	1	parting 9x4,5
17.22	01016121	1	sealing compound
17.24	01166059	6	'o' ring 40x3
17.25	0.009.0711.4/30	1	handle
17.25.1	0.009.0710.3/10	1	grip
17.25.2	0.009.0712.0/10	1	handle
17.25.3	0.009.0713.0	1	support dx/rh/re
17.25.4	0.009.0705.0	1	support sx/lh/li
17.25.5	2.1669.041.2/10	1	pin 8 x 174 x 164
17.25.6	2.1699.240.2	2	pin 8 x 35
17.25.7	2.4049.170.2	2	spring
17.25.8	0.009.0689.0	2	clevis
17.25.9	2.1430.007.7	2	circlip 6, d128
17.25.10	2.1630.210.9	2	pin 3 x 20
17.25.11	2.1650.309.0	2	pin 4 x 20
17.26	01112356	2	screw m 8 x 40
17.41	2.1040.105.7	2	nut m 8
17.43	04415239	2	shoch.absorber
17.44	2.1499.197.0	4	gasket 16x44x3
17.46	04415548	2	washer
17.47	01136363	6	washer 8.4

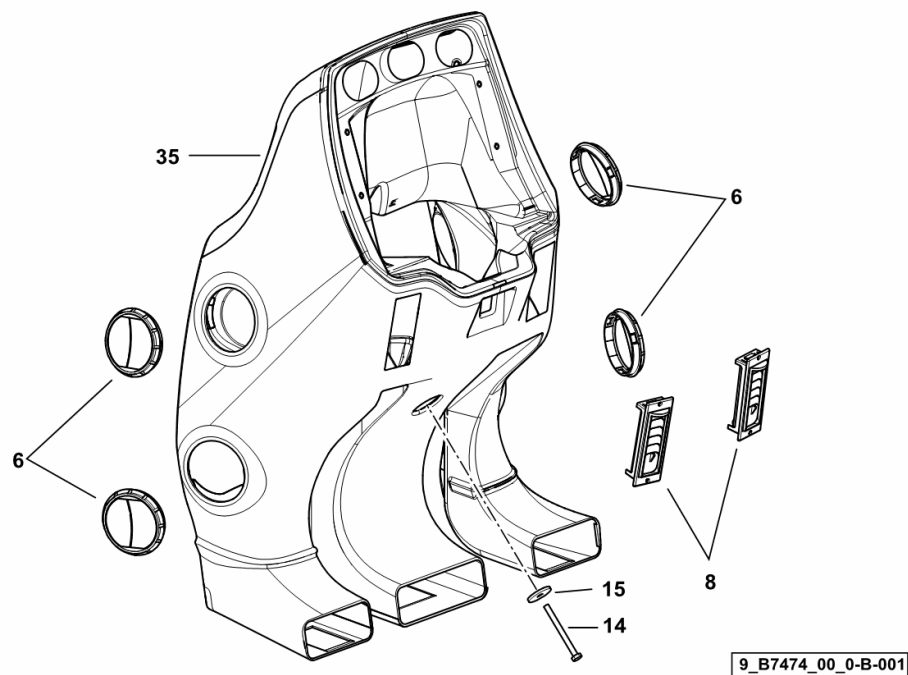
DASHBOARD - STEERING COVER

Fig.	Code	QTY	Name
------	------	-----	------

Notes:

[IRON 160 DCR -> 20001]

6	04348879	4	blower
8	04429734	2	blower
14	2.0112.227.2	1	screw m 8 p.1.25 x 90
15	2.1312.004.2	4	washer 8.4
35	0.012.4472.3/10	1	dashboard (-> 20002)

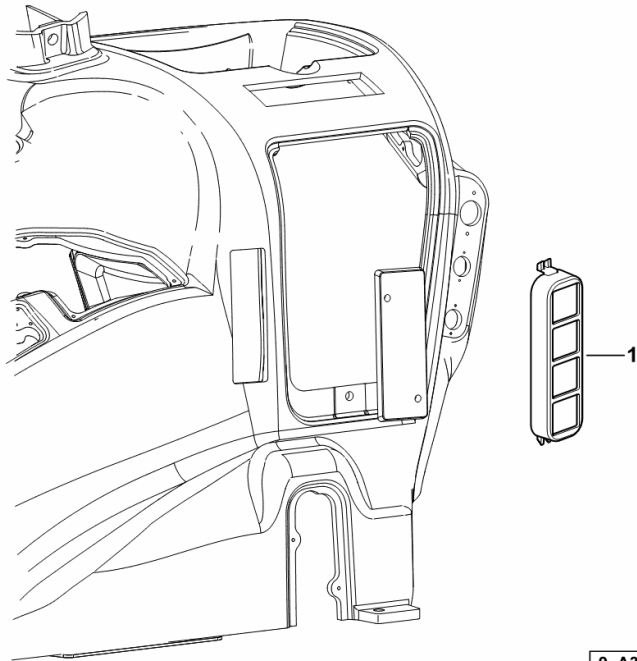


OUTLET VENT

Fig.	Code	QTY	Name
------	------	-----	------

Notes:
[IRON 160 DCR -> 20001]

1	0.013.3494.3	2	blower
---	--------------	---	--------



9_A3971_28_0-A-001

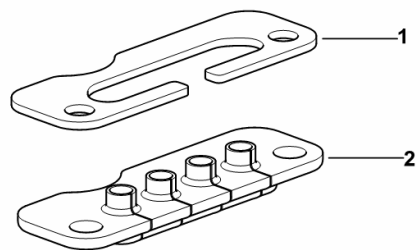
CABLE GROMMET

Fig.	Code	QTY	Name
------	------	-----	------

Notes:

- FOR TYPES WITH FRONT LOADER [IRON 160 DCR -> 20001]

1	04455320/10	1	bracket
2	04455321	1	gasket



9_F5171_43_0-A-001

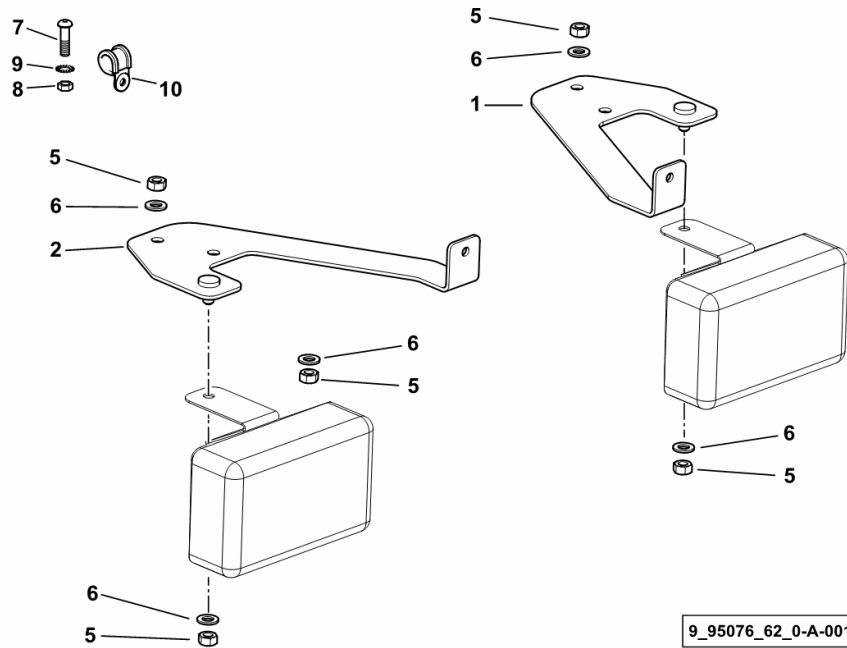
FRONT NUMBER PLATE BRACKET

Fig.	Code	QTY	Name
------	------	-----	------

Notes:

[IRON 160 DCR -> 20001]

1	04452051	1	support sx/lh/li
2	04452050	1	support dx/rh/re
5	2.1011.105.2	4	nut m 8 p.1.25
6	01126330	4	washer
7	2.0114.005.2	2	screw m 6 p.1.0 x 16
8	2.1011.103.2	2	nut m 6 p.1
9	2.1474.007.2	2	washer 6, d128
10	2.6852.203.0	2	clamp 292 x 4.8

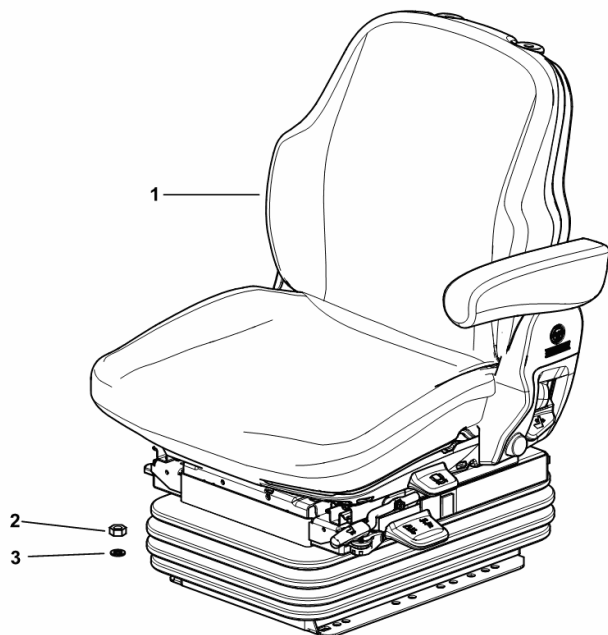


DRIVER'S SEAT - PNEUMATIC SPRINGING

Fig.	Code	QTY	Name
------	------	-----	------

Notes:
[IRON 160 DCR -> 20001]

1	0.015.6206.4/10	1	seat GRAMMER MSG95G/721 ☞ 0.015.6206.4/10 ☞ 0.015.6206.4/10
2	2.1011.105.2	4	nut m 8 p.1.25
3	2.1310.004.2	4	flat washer 8.5



9_J6675_00_0-A-001

Section: G0 - BODYWORK - CAB

SEAT-COMPONENTS

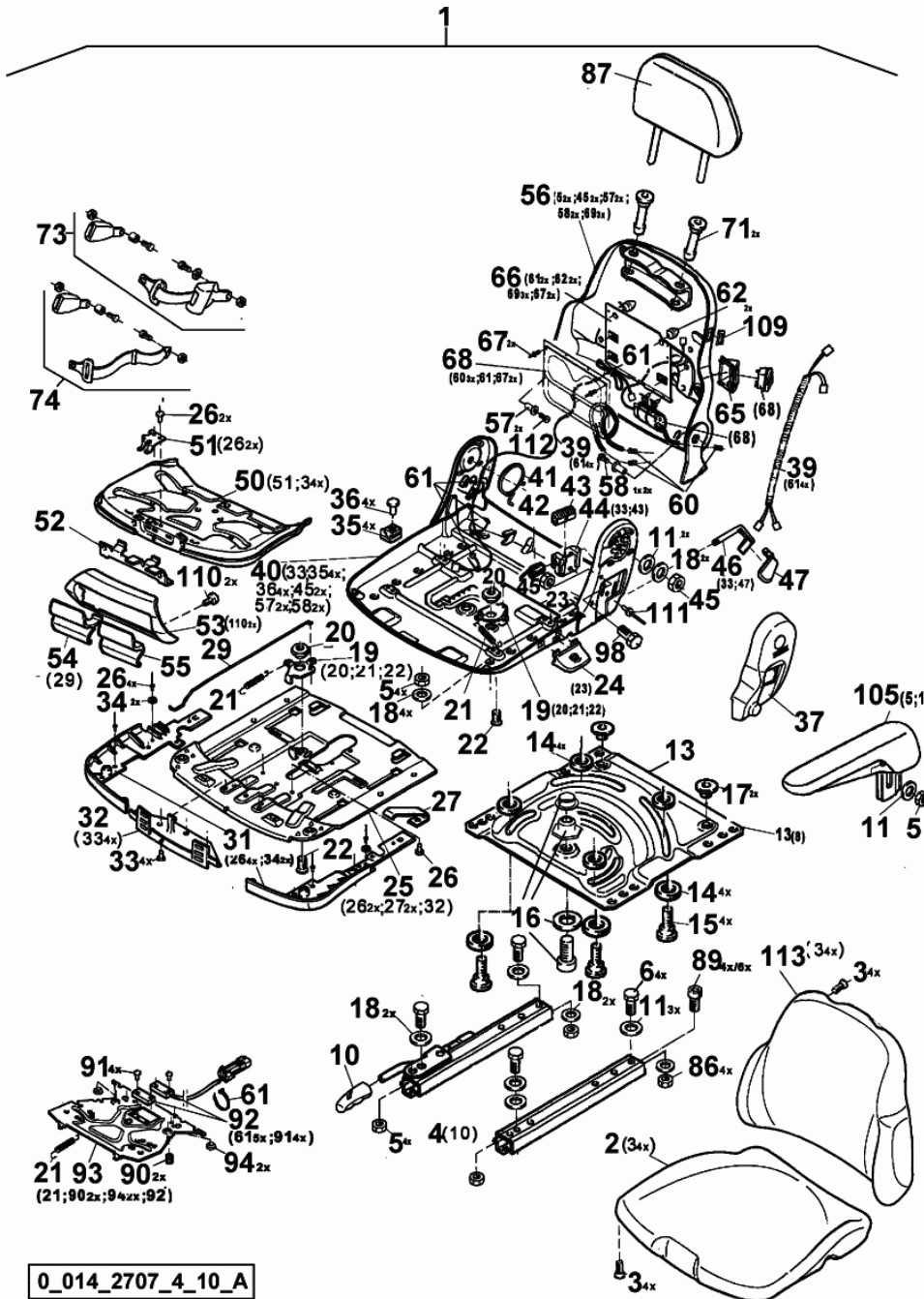


Fig.	Code	QTY	Name
1	0.000.0000.1	0	not serviceable
2	0.900.0297.5	1	cushion
3	0.010.3500.2	8	screw m 5
4	0.010.2954.0	1	seat guide
5	0.010.2401.0	10	nut m 8
6	0.010.2405.0	4	pin m 8 x 16
10	0.010.2943.2	1	knob
11	0.010.2945.0	7	washer 8.4
13	0.010.3072.2	1	plate
14	0.009.4371.2	8	shim
15	04418310	4	pin
16	0.010.3517.0	1	screw
17	0.010.3073.0	2	sleeve
18	0.010.3152.0	8	gasket
19	0.010.3071.2	2	lever
20	0.010.3072.1	2	sleeve
21	04350966	3	spring
22	0.010.3509.1	2	screw
23	0.010.3073.2	1	rod
24	0.010.3074.0	1	handle
25	0.010.3068.0	1	plate
26	04418973	7	rivet
27	0.010.3068.1	1	super reduction gear
29	0.010.3072.0	1	rod
31	0.010.3069.0	1	hood
32	0.010.3069.1	1	console
33	0.010.3511.0	4	rivet
34	0.010.3151.1	2	washer
35	0.010.3068.2	4	support
36	0.010.3540.0	4	rivet
37	0.900.0297.7	1	cover sx/lh/li
39	0.900.0297.8	1	wire
40	0.010.3544.0	1	chassis frame
41	0.900.0370.8	1	small spring
42	0.900.0297.9	1	spring
43	0.900.0298.0	1	stop
44	0.900.0298.1	1	accessories
45	0.010.2948.1	2	nut m 8
46	0.900.0298.2	1	lever
47	0.900.0298.3	1	lever
50	0.010.3069.2	1	plate
51	0.010.3070.0	1	lamination
52	0.010.3070.1	1	grille
53	0.010.3070.2	1	cover

0_014_2707_4_10_A

Section: G0 - BODYWORK - CAB
SEAT-COMPONENTS

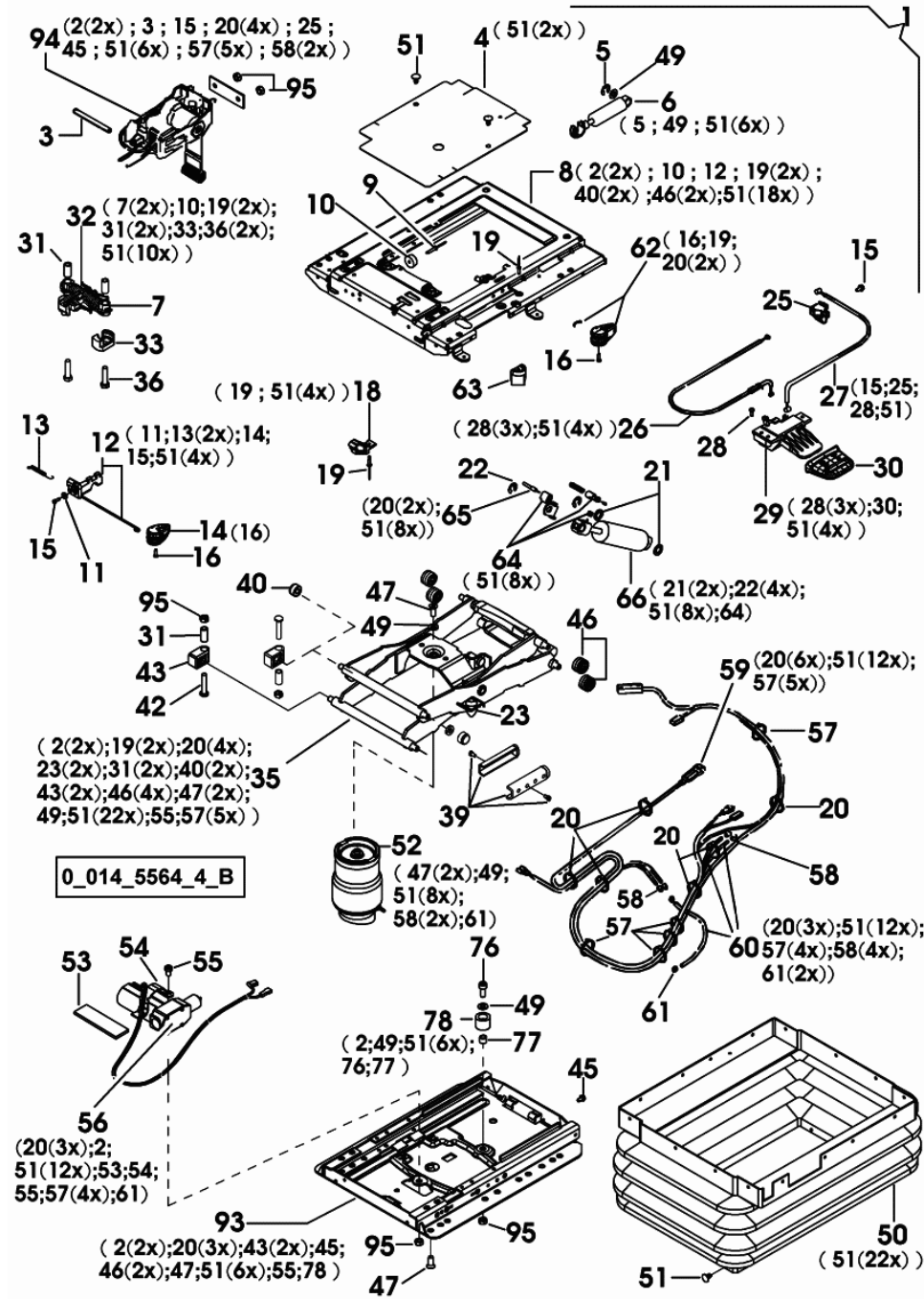


Fig.	Code	QTY	Name
1	0.010.3076.0	1	seat springs
3	0.000.0000.1	1	not serviceable
4	0.010.2277.1	1	cover
5	0.010.3523.0	1	circlip
6	0.900.0133.6	1	shoch.absorber
7	0.010.2956.0	2	bushing
8	0.900.0134.4	1	casing
9	0.010.3523.1	1	rivet
10	0.900.0133.7	1	stop
11	0.010.3151.1	1	washer
12	0.900.0133.9	1	lever
13	0.900.0133.8	2	spring
14	0.010.2077.2	1	knob
15	0.010.3523.2	2	screw
16	04402564	2	screw
18	0.010.2271.2	2	ring
19	04418256	3	rivet
20	04418251	9	metal strap
21	0.000.0000.1	2	not serviceable
22	0.010.3526.0	2	circlip
23	0.010.2275.1	2	stop
25	04402582	1	support
26	0.010.2272.0	1	wire
27	0.010.3077.0	1	wire
28	0.010.2943.1	3	screw
29	0.010.2272.2	1	lever
30	0.010.3526.1	1	grip
31	0.010.2955.2	4	tube
32	0.900.0134.0	1	seat support
33	0.010.2956.1	1	support
35	0.900.0131.5	1	chassis frame
36	0.900.0131.4	2	screw
39	0.900.0134.3	1	accessories
40	0.010.3526.2	2	roller
42	0.000.0000.1	2	not serviceable
43	0.010.2959.1	2	support
45	0.000.0000.1	1	not serviceable
46	04402577	4	roller
47	0.000.0000.1	2	not serviceable
49	0.000.0000.1	3	not serviceable
50	0.010.3907.2	1	guard
51	0.000.0000.1	24	not serviceable
52	0.900.0131.6	1	spring
53	0.000.0000.1	1	not serviceable

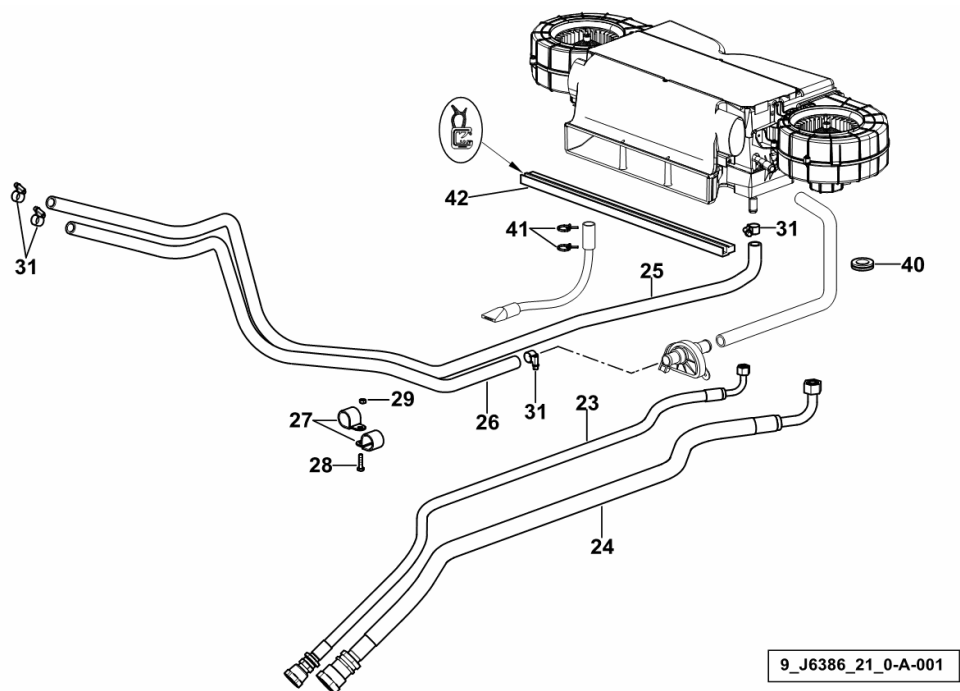
AIR CONDITIONING UNIT - LINES

Fig.	Code	QTY	Name
------	------	-----	------

Notes:

[IRON 160 DCR -> 20001] 20016 <-

23	0.016.0182.3	1	tube mm 1400
24	0.016.0183.3	1	tube mm 1440
25	0.016.0959.0	1	tube
26	0.016.0958.0	1	tube
27	01173053	2	clamp b 25x20
28	2.0114.009.2	1	screw m 6 x 25, d933
29	2.1011.103.2	1	nut m 6 p.1
31	2.6851.001.0	4	clamp Ø 16/25
40	2.6560.016.0	1	wire guide Ø 22
41	04429943	4	clamp
42	04419141	0.5	gasket



9_J6386_21_0-A-001

AIR CONDITIONER PARTS

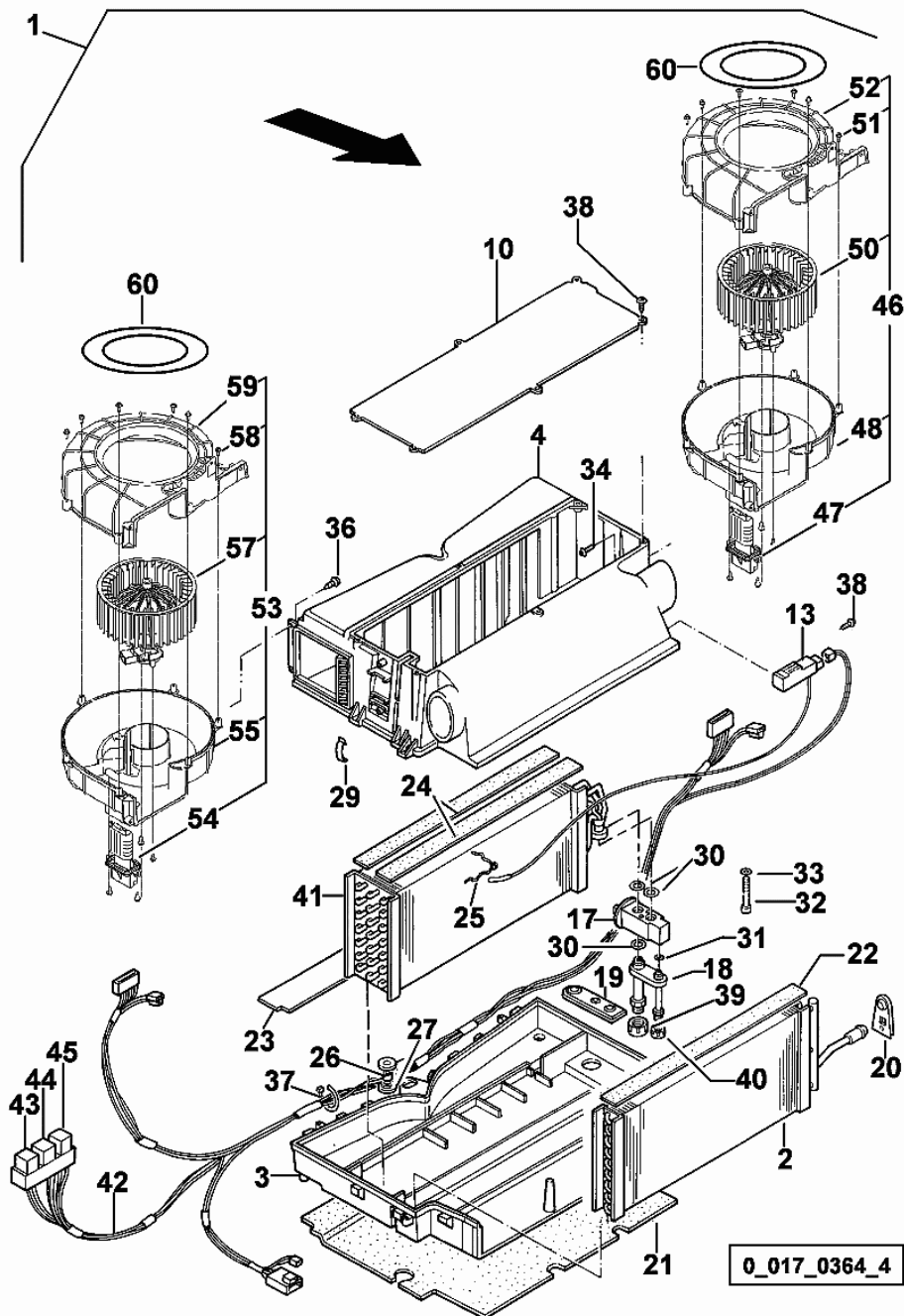


Fig.	Code	QTY	Name
54	0.900.0782.4	1	resistance
55	0.900.0967.7	1	screw conveyor
57	0.900.0035.4	1	rotor blade sx/lh/li GREEN
58	0.900.0782.2	10	screw 4 x 12
59	0.900.0967.9	1	screw conveyor
60	0.900.0783.4	1	gasket

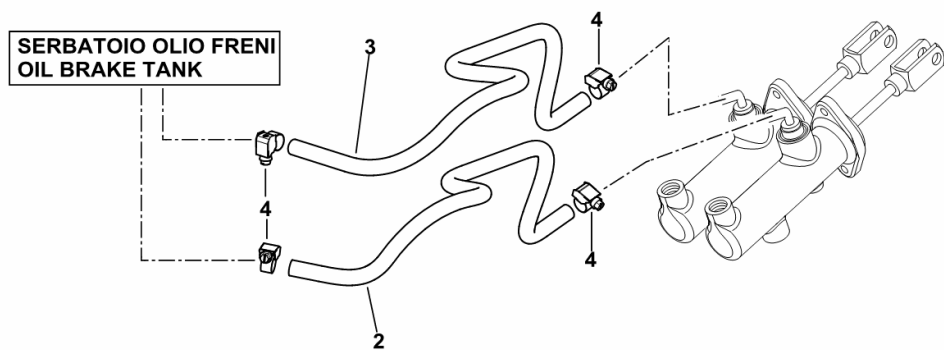
TUBES FOR BRAKE OIL TANK

Fig.	Code	QTY	Name
------	------	-----	------

Notes:

- FOR TYPES WITH FRONT BRAKES [IRON 160 DCR -> 20001]

2	0.012.6343.0	1	tube
3	0.012.6343.0	1	tube
4	2.6851.018.0	4	clamp 11/17



9_J6766_11_0-A-001

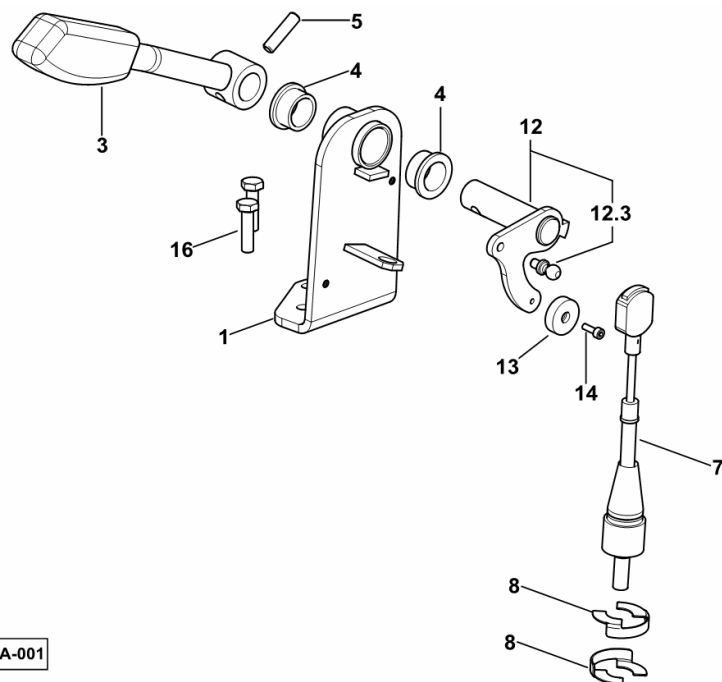
SUPER-REDUCTION CONTROL

Fig.	Code	QTY	Name
------	------	-----	------

Notes:

[IRON 160 DCR -> 20001] 20021 <-

1	04429344.4	1	bearing block
3	04429606.4	1	lever
4	04413063	2	bushing
5	01144806	1	pin
7	0.016.2062.3	1	rod
8	04418159	2	circlip
12	04429855.4	1	lever
12.3	01120977	1	cap
13	04365126	1	magneto
14	01105512	1	screw am 4x12 d84
16	2.0114.211.2	2	screw m 8 x 30



9_J6364_01_0-A-001

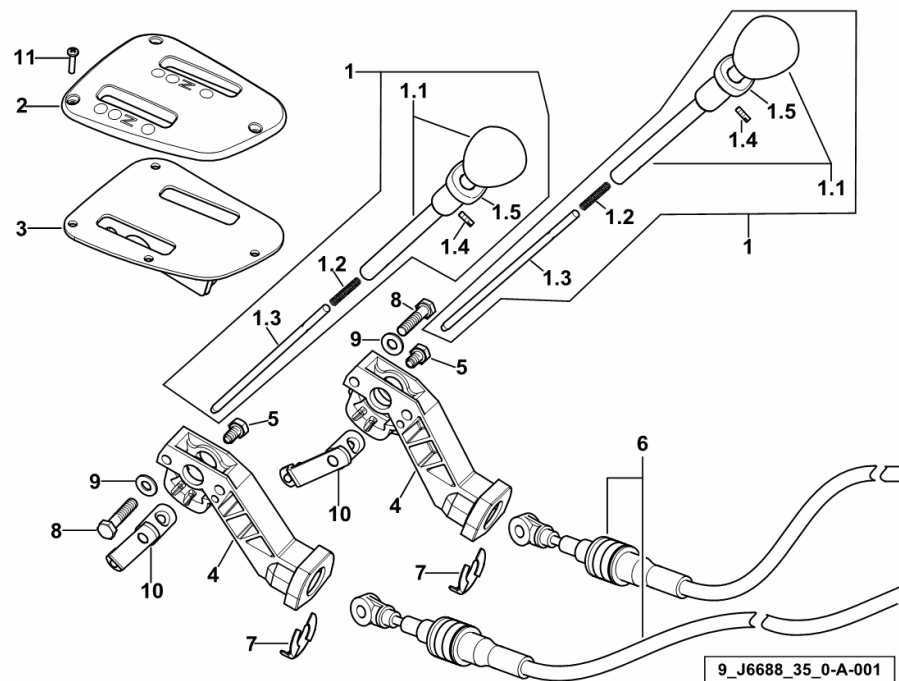
DISTRIBUTOR CONTROL

Fig.	Code	QTY	Name
------	------	-----	------

Notes:

[IRON 160 DCR -> 20001] 20058 <-

1	04423028.4	2	lever
1.1	04423023.4	1	gear lever
1.2	04426194	1	spring
1.3	04425215	1	rod
1.4	01144807	1	screw
1.5	04411645	1	support
2	0.015.7671.0	1	screen
3	0.015.7672.3	1	plate
4	04425445/10	2	support
5	04423712	2	screw
6	0.016.2061.3	2	rod
7	04418159	2	circlip
8	2.0114.213.2	4	screw m 8 x 35
9	01138374	4	washer 8,4x21x4
10	04423032.4	2	lever
11	04424184	3	screw

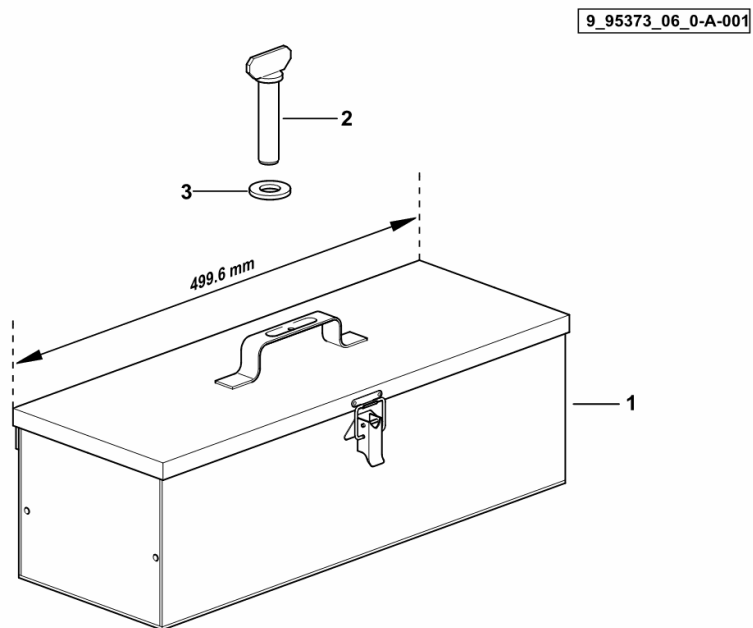


METAL TOOLBOX

Fig.	Code	QTY	Name
------	------	-----	------

Notes:
[IRON 160 DCR -> 20001]

1	04436068.4/20	1	metal toolbox
2	04436546/10	1	wing nut
3	2.1310.011.2	1	flat washer 19x34



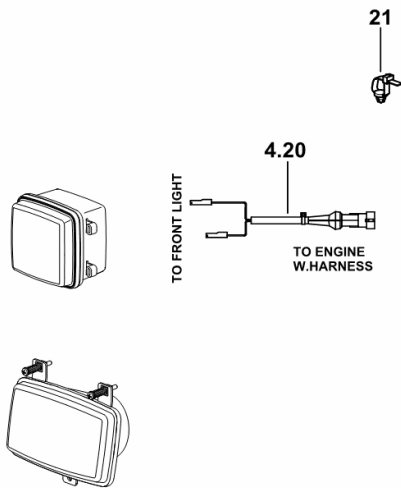
WIRING FOR HEADLIGHTS

Fig.	Code	QTY	Name
------	------	-----	------

Notes:

- FOR RIGHT-HAND DRIVE [IRON 160 DCR -> 20001]

4.20	0.013.4085.4/20	6	electrical system
21	2.6859.108.0	8	clamp



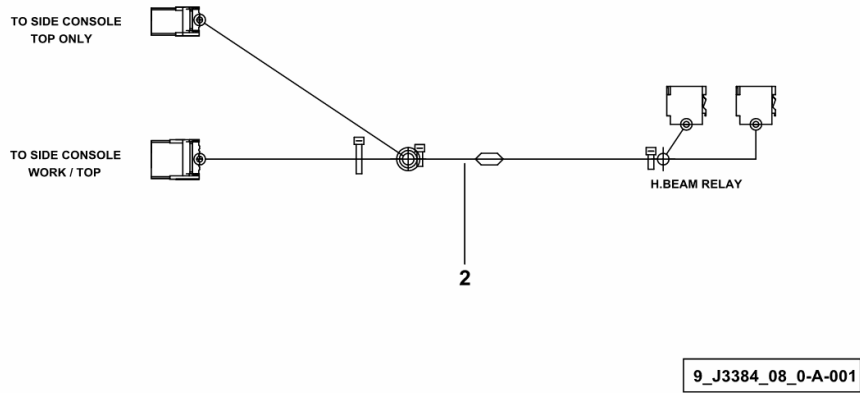
9_J6772_00_0-D-001

TOP LIGHTS WIRING

Fig.	Code	QTY	Name
------	------	-----	------

Notes:
[IRON 160 DCR -> 20001]

2	0.017.5493.4	1	wire
---	--------------	---	------



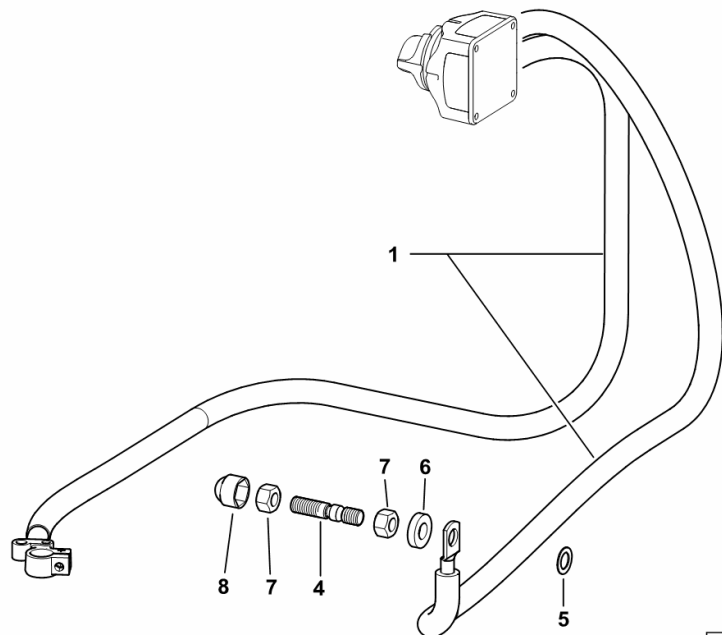
BATTERY LEADS

Fig.	Code	QTY	Name
------	------	-----	------

Notes:

[IRON 160 DCR -> 20001] -> 20017

1	0.018.0281.4	1	wire (-)
4	2.0422.411.2	1	stud bolt m 12 x 40
5	2.1470.007.2	1	lock washer 12
6	01174738	1	flat washer 12.5x26x6
7	2.1011.107.2	2	nut m 12 p.1.75
8	01174048	1	nut m 12 p.1,75



9_L0284_18_0-B-001

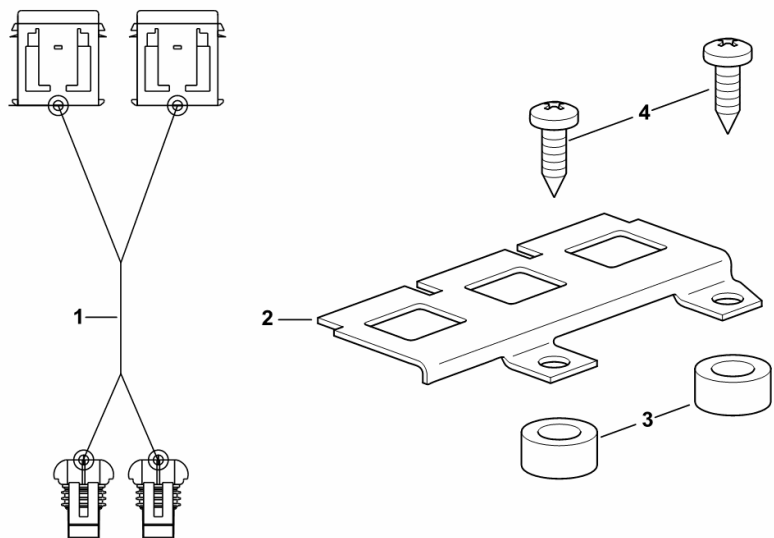
ELECTRICAL CLIMATE CONTROL SYSTEM

Fig.	Code	QTY	Name
------	------	-----	------

Notes:

[IRON 160 DCR -> 20001] -> 20025

1	0.017.3382.4	1	electrical system
2	0.012.5981.0	1	small plate
3	2.1549.632.2	2	spacer
4	2.0350.555.6	2	screw 4.8x16



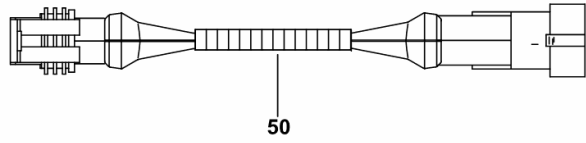
9_S4884_05_0-A-001

WIRING FOR A/C CONDENSER PRESSURE SWITCH

Fig.	Code	QTY	Name
------	------	-----	------

Notes:
[IRON 160 DCR -> 20001] -> 20013

50	0.017.3486.4	1	electrical system
----	--------------	---	-------------------



9_J6386_22_0-E-001

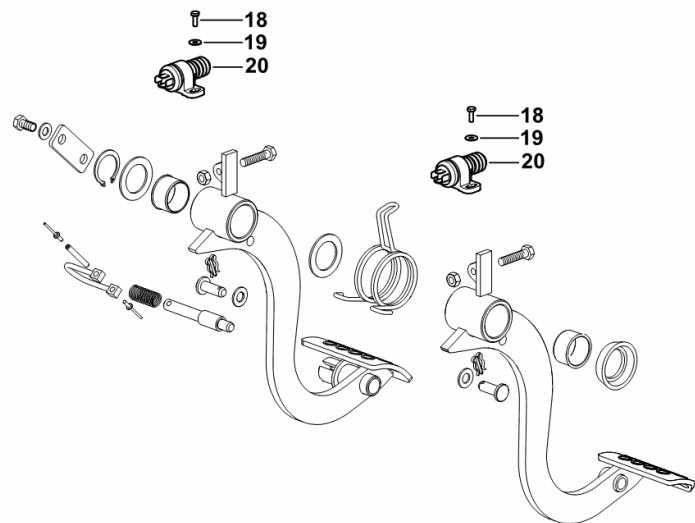
BRAKE CONTROL SWITCH

Fig.	Code	QTY	Name
------	------	-----	------

Notes:

- WITH FIXED FRONT AXLE AND FRONT BRAKES [IRON 160 DCR -> 20001] - WITH SUSPENDED FRONT AXLE AND FRONT BARKES [IRON 160 DCR -> 20001]

18	01127017	4	screw m 4.0 x 12
19	2.1312.001.2	4	washer 4
20	2.7649.100.0	2	switch



9_F5266_00_0-B-001

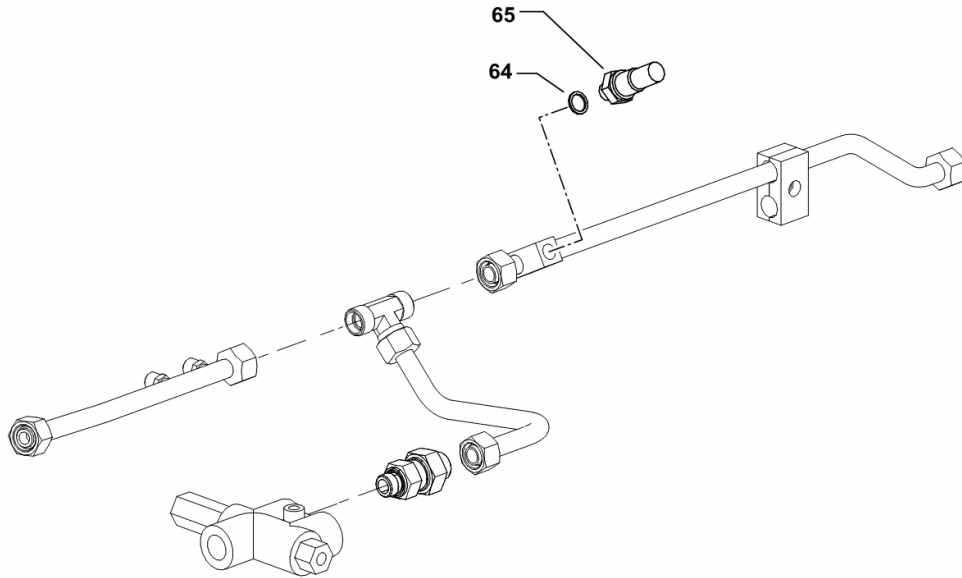
LOAD SENSING HYDRAULIC SYSTEM PRESSURE SWITCH

Fig.	Code	QTY	Name
------	------	-----	------

Notes:

- FOR TYPES WITHOUT PNEUMATIC BRAKE [IRON 160 DCR -> 20001]

64	2.1560.009.0	1	gasket 14.2x18
65	0.012.4371.0	1	pressure switch 5 BAR



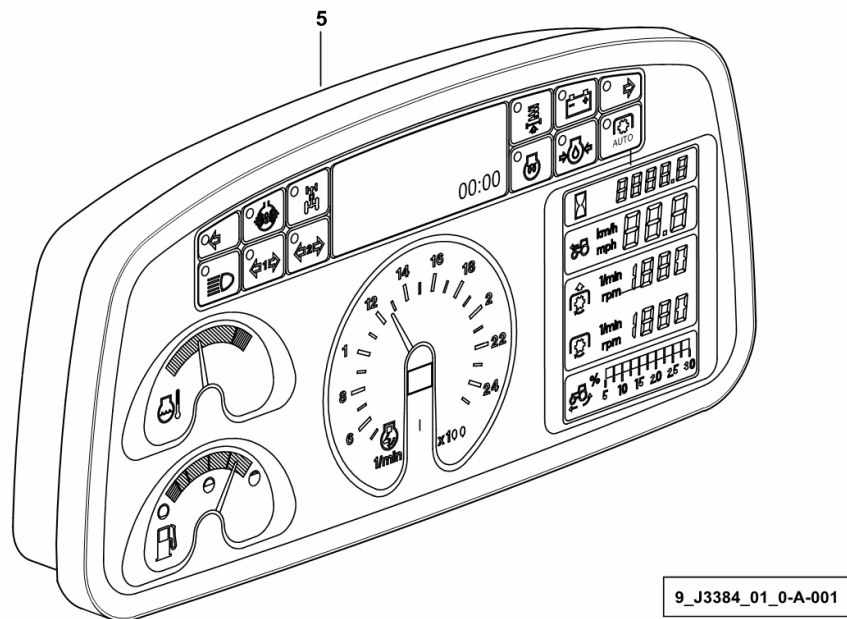
9_J6363_04_0-C-001

DASHBOARD BOX

Fig.	Code	QTY	Name
------	------	-----	------

Notes:
[IRON 160 DCR -> 20001]

5	04433422.4/60	1	instrument holder ☞ 04433422.4/60
---	---------------	---	--------------------------------------



9_J3384_01_0-A-001

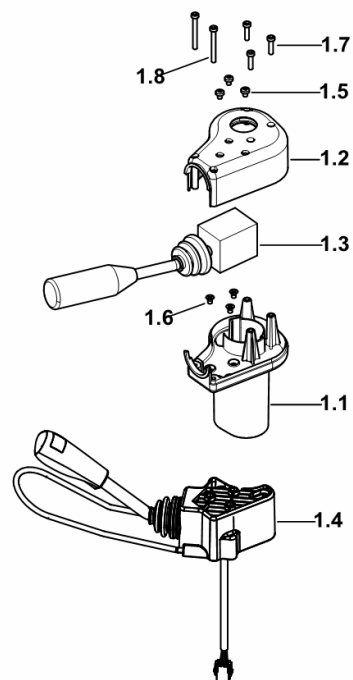
STEERING COLUMN SWITCH UNIT - REVERSING GEAR UNIT CONTROL

Fig.	Code	QTY	Name
------	------	-----	------

Notes:

[IRON 160 DCR -> 20001]

1.1	0.014.1170.0	1	half box
1.2	04436511	1	cover
1.3	0.014.0007.4/10	1	lever
1.4	0.012.7076.4	1	reverse gear ☞ 0.012.7076.4
1.5	04412779	3	screw m 5x6.5
1.6	01145177	3	screw m 5 x 8, d965
1.7	04426679	3	screw m 5 x 20
1.8	04426681	2	screw m 5 x 45



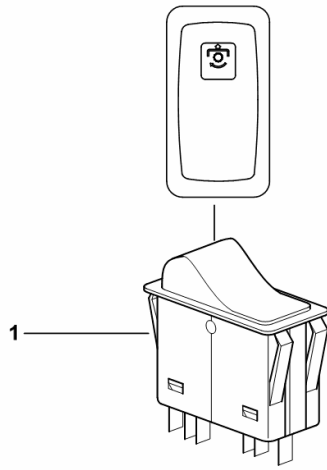
9_J3384_05_0-A-001

SWITCH - FOR P.T.O. FRONT

Fig.	Code	QTY	Name
------	------	-----	------

Notes:
[IRON 160 DCR -> 20001]

1	0.012.5951.4/10	1	switch
---	-----------------	---	--------



9_B7584_22_0-A-001

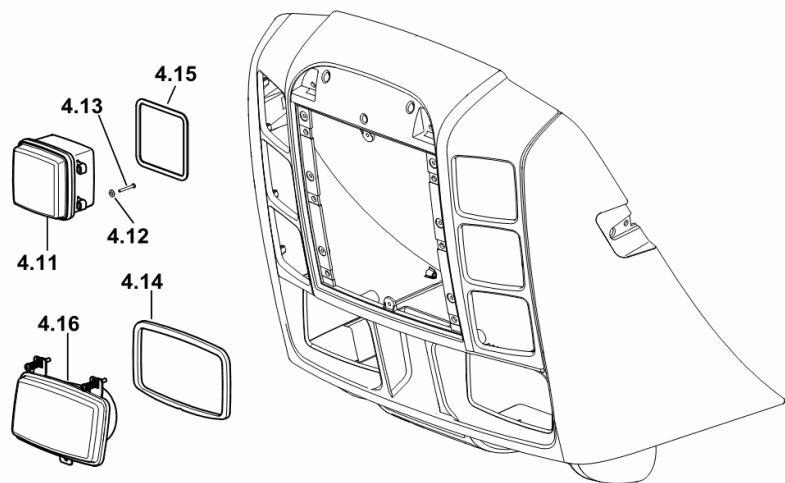
FRONT LIGHTS

Fig.	Code	QTY	Name
------	------	-----	------

Notes:

- FOR LEFT-HAND DRIVE [IRON 160 DCR -> 20001]

4.11	2.8039.160.0	6	worklamp ☞ 2.8039.160.0
4.12	2.1310.028.2	18	flat washer 4
4.13	2.0332.108.2	18	screw m 3x25
4.14	0.013.0097.0	2	gasket
4.15	04436715	6	gasket
4.16	2.8039.250.0	2	headlight ☞ 2.8039.250.0



9_J6772_02_0-E-001

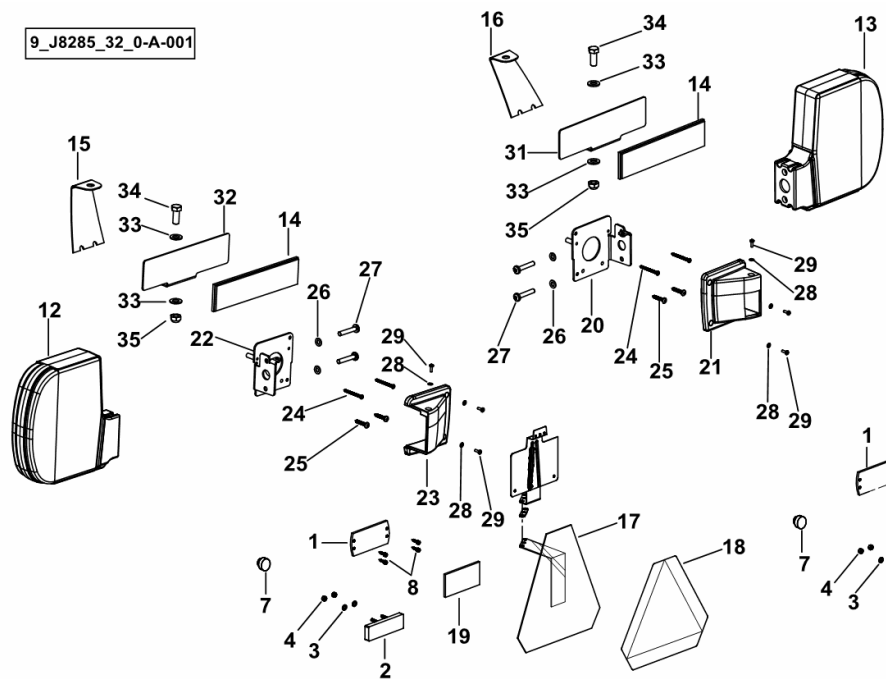
REAR LIGHTING SYSTEM

Fig.	Code	QTY	Name
------	------	-----	------

Notes:

- SENZA PROLUNGHE PER PARAFANGHI - EXPORT U.S.A. [IRON 160 DCR -> 20001]

1	0.012.9499.0	2	small plate
2	2.8349.012.0	2	reflector
3	2.1310.001.2	4	flat washer 5.3
4	2.1011.102.2	4	nut m 5 p.0.7
7	01172220	2	bottom
8	2.0350.454.3	8	screw m 4.2 x 13 -AB-
12	2.8059.029.0	1	lamp
13	2.8059.031.0	1	lamp
14	2.8349.013.0	2	reflector
15	04419696	1	lamination sx/lh/li
16	04419697	1	lamination dx/rh/re
17	04455095.3	1	support
18	0.013.4584.0	1	plate SMV
19	0.012.9978.0	2	diaphragm
20	0.017.1012.2	1	support
21	0.017.1014.0	1	front grille
22	0.017.1013.2	1	support
23	0.017.1015.0	1	screen
24	04414116	4	screw 4.2x50
25	2.0350.659.6	4	screw
26	2.1310.004.2	4	flat washer 8.5
27	2.0330.512.2	4	screw m8x45
28	2.1310.028.2	6	flat washer 4
29	2.0330.204.2	6	screw m 4.0 x 12
31	0.017.0976.0	1	lamp support
32	0.017.0978.0	1	support
33	2.1310.007.2	4	flat washer 13.5
34	2.0112.411.2	2	screw m 12 p.1.75 x 30
35	2.1121.009.2	2	selflock nut m 12 p.1.5

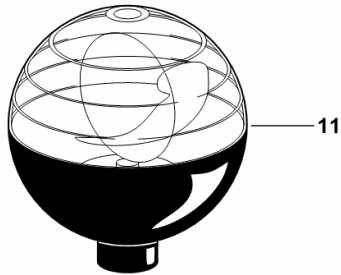


WARNING BEACON

Fig.	Code	QTY	Name
------	------	-----	------

Notes:
[IRON 160 DCR -> 20001]

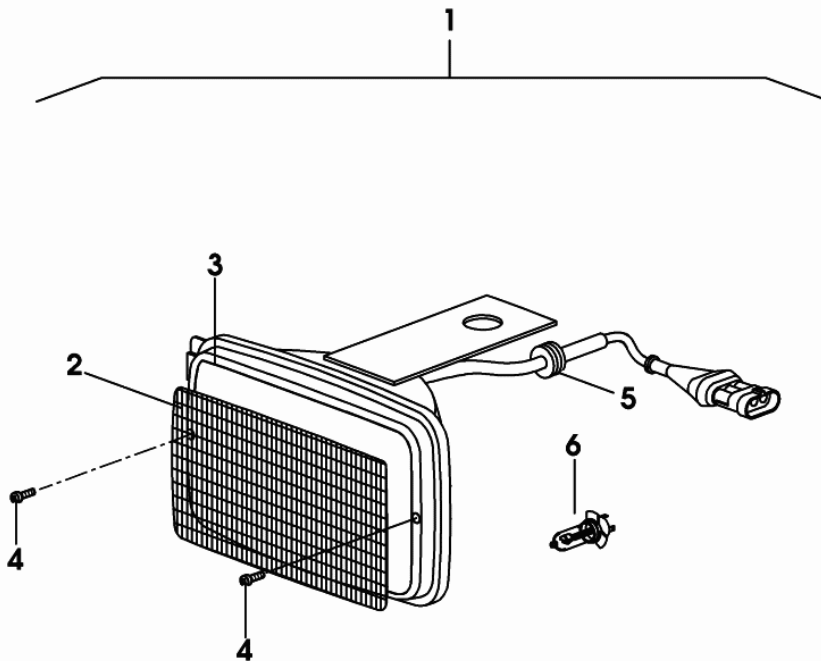
11	04414773	1	blinker ☞ 04414773
----	----------	---	-----------------------



9_B7485_24_0-A-001

HEADLAMP COMPONENTS

Fig.	Code	QTY	Name
1	04450666	1	headlight
2	0.010.3915.2	1	window glass
3	0.010.3916.0	1	gasket
4	0.010.3916.1	2	screw B3.5x38
5	0.010.3916.2	1	wire guide
6	0.010.3917.0	1	lamp H3 12V 55W



04450666

CLICK HERE TO **DOWNLOAD** THE COMPLETE MANUAL

- Thank you very much for reading the preview of the manual.
- You can download the complete manual from: www.heydownloads.com by clicking the link below



- Please note: If there is no response to CLICKING the link, please download this PDF first and then click on it.

CLICK HERE TO **DOWNLOAD** THE COMPLETE MANUAL

IRON 160 DCR -> 20001

B0 - ENGINE

GENERAL

MOTOR..... B0.00.2 (1)

CYLINDER BLOCK

FASTENINGS..... B0.01.1007

GASKET SET..... B0.01.1029

BLEEDING TUBE..... B0.01.1045

CRANKCASE BREATHER..... B0.01.1055

CRANKCASE..... B0.01.1078

OIL FILLER NECK..... B0.01.1088

PLUG..... B0.01.1113

CLOSING COMPONENTS..... B0.01.1125

ACCESSORIES..... B0.01.1134

ACCESSORIES..... B0.01.1135

ACCESSORIES..... B0.01.1137

FILLER CAP..... B0.01.1144

PISTON COOL.NOZZLE..... B0.01.1160

OIL RETURN..... B0.01.1162

FLANGE..... B0.01.1167

FLANGE..... B0.01.1170

CRANKSHAFT

V-BELT - FOR MODELS WITH COMPRESSOR..... B0.02.0 (1)

FASTENINGS..... B0.02.1002

FASTENINGS..... B0.02.1008

CRANKSHAFT..... B0.02.1048

FLYWHEEL..... B0.02.1073

PLUG..... B0.02.1077

ACCESSORIES..... B0.02.1079

MAIN BEARINGS..... B0.02.1084

CRANKSHAFT PULLEY..... B0.02.1090

CYLINDERS - PISTONS - CONNECTING RODS

PISTON..... B0.03.1011

CONNECTING ROD..... B0.03.1025

TIMING

FASTENINGS..... B0.04.1011

BUSH..... B0.04.1023

ROCKER ARM BRACKET..... B0.04.1052

ROCKER ARM BRACKET..... B0.04.1053

ROCKER ARM BRACKET..... B0.04.1054

ROCKER ARM BRACKET..... B0.04.1057

CAMSHAFT..... B0.04.1079

VALVE DRIVE..... B0.04.1091

PLUG

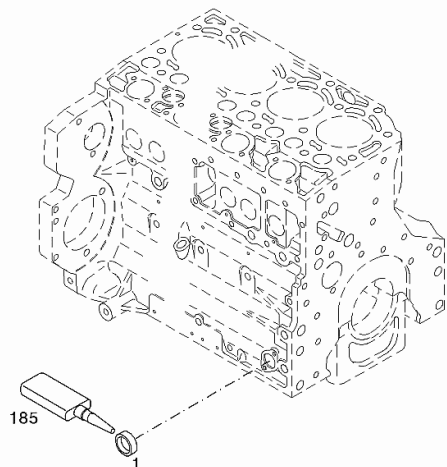
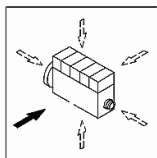
Fig.	Code	QTY	Name
------	------	-----	------

Engine Serial Numbers:

10861760 10863408 10872003 10875751 10875755 10875760 10877398 10877399 10877401 10877404 10892931
 10902616 10902622 10902626 10902631 10902649 10905609 10905610 10909950 10918614 10923152 10923186
 10923918 10923922 10926996 10932244 10953295 10956794 10957923 10957924 10959302 10959380 10959387
 10960461 10960463 10961594 10961596 10962162 10963518 10963884 10965512 10965514 10965516 10970855
 10970857 10971376 10986603 10988464 10988466 10988467 10993125 10994414 10994603 11024191

1	01179634	1	plug
185	01016127	1	H 2860 -A36-ST-FE/ZNPHR sealing compound ml. 50 H 0699 -DEUTZDW72-50ML

002 ©

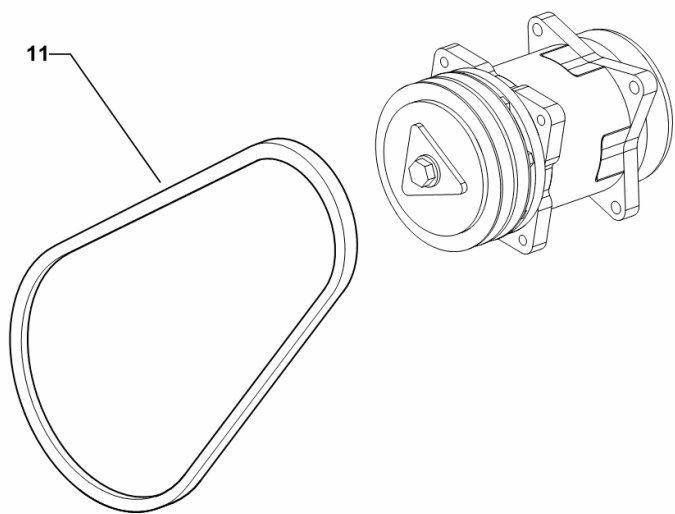


V-BELT - FOR MODELS WITH COMPRESSOR

Fig.	Code	QTY	Name
------	------	-----	------

Notes:
[IRON 160 DCR -> 20001]

11	04452801	1	belt AV 13x1000 mm
----	----------	---	--------------------



9_J6386_22_0-C-001

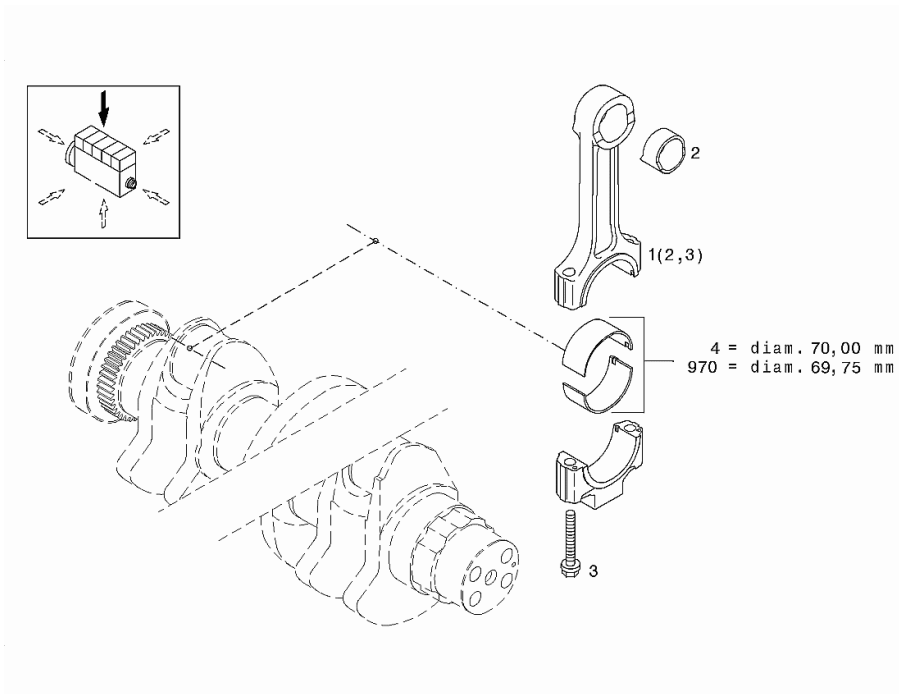
Section: B0 - ENGINE
CONNECTING ROD

Fig.	Code	QTY	Name
------	------	-----	------

Engine Serial Numbers:

10861760 10863408 10872003 10875751 10875755 10875760 10877398 10877399 10877401 10877404 10892931
 10902616 10902622 10902626 10902631 10902649 10905609 10905610 10909950 10918614 10923152 10923186
 10923918 10923922 10926996 10932244 10953295 10956794 10957923 10957924 10959302 10959380 10959387
 10960461 10960463 10961594 10961596 10962162 10963518 10963884 10965512 10965514 10965516 10970855
 10970857 10971376 10986603 10988464 10988466 10988467 10993125 10994414 10994603 11024191

1	04293425	1	connecting rod WITH POS.... (2,3)
2	04288314	1	bushing
002 © 3	04284184	2	screw 30 Nm , 60° , 60°
4	02931578	1	conrod.bearing STANDARD STANDARD (A) MM RD, UNDERSIZE SEE POS. (B) A = 70.00 MM
970	02931579	1	conrod.bearing - mm 0.25 1st UNDERSIZE N A = 69.75 MM



GEARCASE

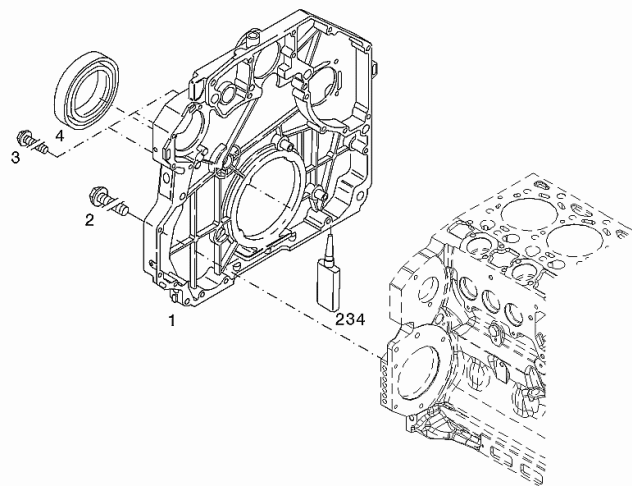
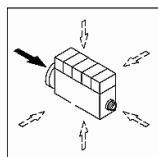
Fig.	Code	QTY	Name
------	------	-----	------

Engine Serial Numbers:

10986603 10988464 10988466 10988467 10993125 10994414 10994603 11024191

1	04291431	1	plate
2	01143362	12	screw 30 Nm EN 1662 -F-M8X35-10.9-A4C
3	01181437	3	screw 30 Nm EN 1662 -F-M8X45-10.9-ZNAL-A
4	04502203	1	ring
234	01016024	1	gasket H 0699 -DEUTZDW67-50ML

000 ©



CLOSING COMPONENTS

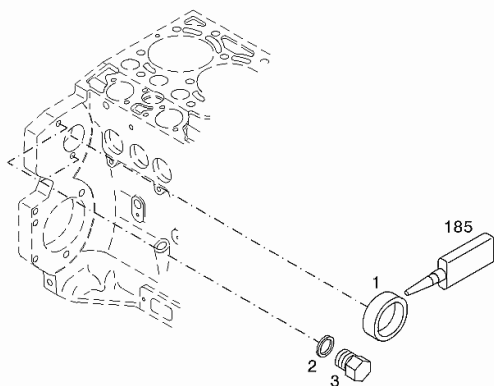
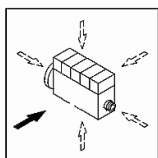
Fig.	Code	QTY	Name
------	------	-----	------

Engine Serial Numbers:

10861760 10863408 10872003 10875751 10875755 10875760 10877398 10877399 10877401 10877404 10892931
 10902616 10902622 10902626 10902631 10902649 10905609 10905610 10909950 10918614 10923152 10923186
 10923918 10923922 10926996 10932244 10953295 10956794 10957923 10957924 10959302 10959380 10959387
 10960461 10960463 10961594 10961596 10962162 10963518 10963884 10965512 10965514 10965516 10970855
 10970857 10971376 10986603 10988464 10988466 10988467 10993125 10994414 10994603 11024191

1	01165839	1	stop H 711 -B50
2	01118659	2	'o' ring DIN 7603 -A10X13,5-CU
3	01181401	2	screw 30 Nm
185	01016127	1	sealing compound ml. 50 H 0699 -DEUTZDW72-50ML

003 ©



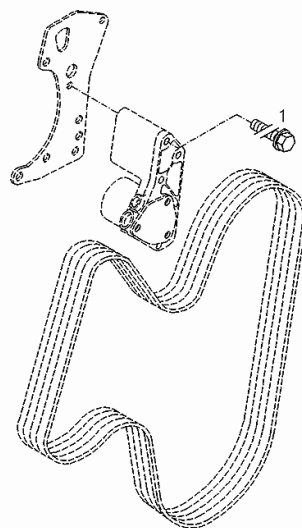
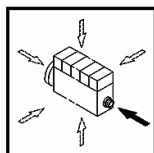
FASTENINGS

Fig.	Code	QTY	Name
------	------	-----	------

Engine Serial Numbers:

10861760 10863408 10872003 10875751 10875755 10875760 10877398 10877399 10877401 10877404 10892931
 10902616 10902622 10902626 10902631 10902649 10905609 10905610 10909950 10918614 10923152 10923186
 10923918 10923922 10926996 10932244 10953295 10956794 10957923 10957924 10959302 10959380 10959387
 10960461 10960463 10961594 10961596 10962162 10963518 10963884 10965512 10965514 10965516 10970855
 10970857 10971376 10986603 10988464 10988466 10988467 10993125 10994414 10994603 11024191

1	01181459	3	screw 30 Nm EN 1662 -F-M8X105-10.9-ZNAL-A*
---	----------	---	--

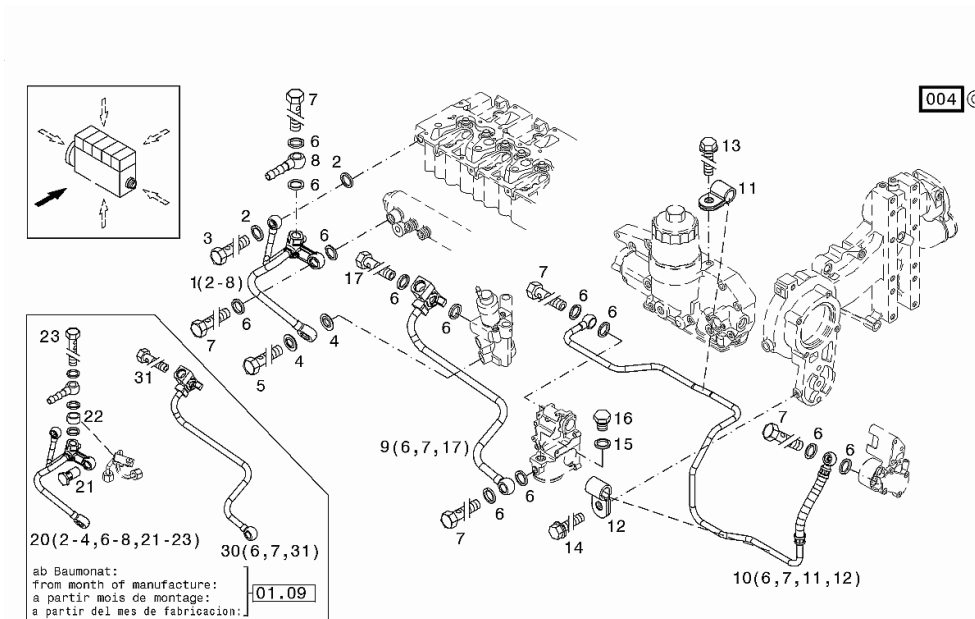


000 ©

Section: B0 - ENGINE

FUEL LINE

Fig.	Code	QTY	Name
			- UP TO MONTH OF ASSEMBLY (A) - FROM MONTH OF ASSEMBLY SEE POS. (B) A = UP TO 10/2007 FOR 0429 6 B = POS. 953 H 3102 -D10M-ST-A4C
20	04503184	1	pipng WITH POS.... (2-4,6-8,21-23) FOR 0429 8582 + 0211 3 POS. 1, (10.2007) <-
21	04500995	1	screw - FROM MONTH OF ASSEMBLY SEE POS. (B) - UP TO MONTH OF ASSEMBLY (A) FROM MONTH OF ASSEMBLY A = 11.2007 (for TN 0211 3724) B = POS.5
22	04501589	1	ring
23	01178626	1	pipe union H 3103 -A10M-A4C
30	04500098	1	pipe fitting kit WITH POS.... (6,7,31) FOR 0429 8582 + 0211 3 POS.9 SEE UP TO 10.2007
31	01180412	1	pipe union - FROM MONTH OF ASSEMBLY SEE POS. (B) - UP TO MONTH OF ASSEMBLY (A) FROM MONTH OF ASSEMBLY A = UP TO 11/2007 FOR 0211 37 B = 7 H 3102 -E10M-ST-A4C



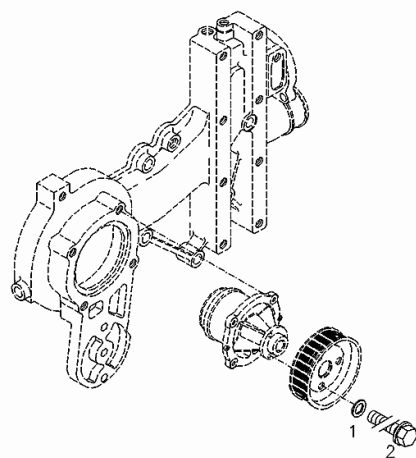
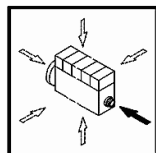
FASTENINGS

Fig.	Code	QTY	Name
------	------	-----	------

Engine Serial Numbers:

10861760 10863408 10872003 10875751 10875755 10875760 10877398 10877399 10877401 10877404 10892931
 10902616 10902622 10902626 10902631 10902649 10905609 10905610 10909950 10918614 10923152 10923186
 10923918 10923922 10926996 10932244 10953295 10956794 10957923 10957924 10959302 10959380 10959387
 10960461 10960463 10961594 10961596 10962162 10963518 10963884 10965512 10965514 10965516 10970855
 10970857 10971376 10986603 10988464 10988466 10988467 10993125 10994414 10994603 11024191

1	01172303	3	washer H 2308 -8,4X15X3
2	01181436	3	screw EN 1662 -F-M8X16-LG2,5-10.9-ZNAL-A



000 ©

0507 4993

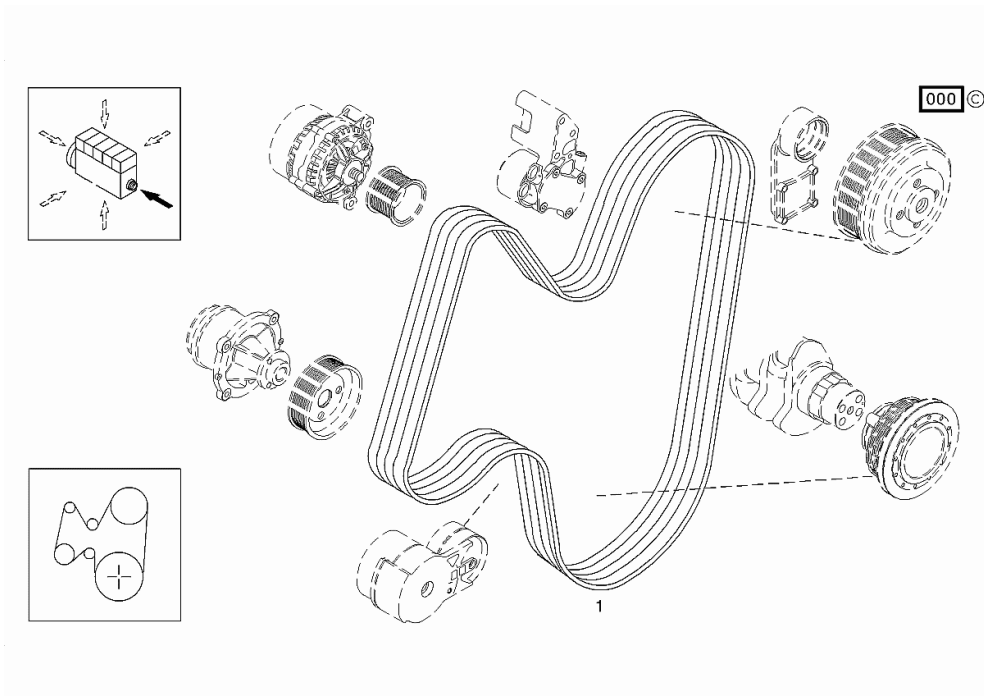
V-BELT

Fig.	Code	QTY	Name
------	------	-----	------

Engine Serial Numbers:

10861760 10863408 10872003 10875751 10875755 10875760 10877398 10877399 10877401 10877404 10892931
 10902616 10902622 10902626 10902631 10902649 10905609 10905610 10909950 10918614 10923152 10923186
 10923918 10923922 10926996 10932244 10953295 10956794 10957923 10957924 10959302 10959380 10959387
 10960461 10960463 10961594 10961596 10962162 10963518 10963884 10965512 10965514 10965516 10970855
 10970857 10971376 10986603 10988464 10988466 10988467 10993125 10994414 10994603 11024191

1	01183387	1	belt H 3709 -PK10X1720LB-05CG
---	----------	---	----------------------------------



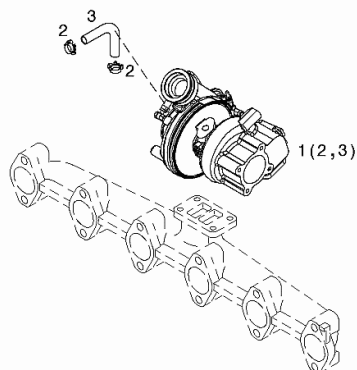
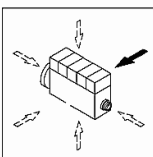
Section: B0 - ENGINE
TURBOCHARGER

Fig.	Code	QTY	Name
------	------	-----	------

Engine Serial Numbers:

10861760 10863408 10872003 10875751 10875755 10875760 10877398 10877399 10877401 10877404 10892931
 10902616 10902622 10902626 10902631 10902649 10905609 10905610 10909950 10918614 10923152 10923186
 10923918 10923922 10926996 10932244 10953295 10956794 10957923 10957924 10959302 10959380 10959387
 10960461 10960463 10961594 10961596 10962162 10963518 10963884 10965512 10965514 10965516 10970855
 10970857 10971376 10986603 10988464 10988466 10988467 10993125 10994414 10994603 11024191

1	04502805	1	turbo charger WITH POS.... (2,3)
2	01180071	2	hose clip H 3461 -F-14,0/8
3	01183269	1	rubber tube H 3407 -G6X14X1000-OL



000 ©

STARTER

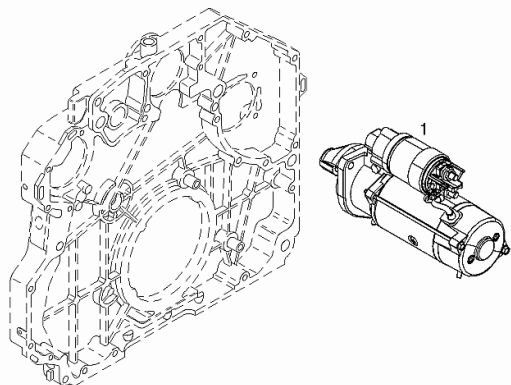
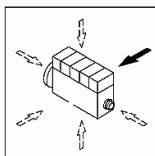
Fig.	Code	QTY	Name
------	------	-----	------

Engine Serial Numbers:

10861760 10863408 10872003 10875751 10875755 10875760 10877398 10877399 10877401 10877404 10892931
 10902616 10902622 10902626 10902631 10902649 10905609 10905610 10909950 10918614 10923152 10923186
 10923918 10923922 10926996 10932244 10953295 10956794 10957923 10957924 10959302 10959380 10959387
 10960461 10960463 10961594 10961596 10962162 10963518 10963884 10965512 10965514 10965516 10970855
 10970857 10971376 10986603 10988464 10988466 10988467 10993125 10994414 10994603 11024191

1	01183235	1	starter motor H 821970-VIR12VX4,0KWSTAU/WAS/ GESGLEIT
---	----------	---	---

000 ©



IRON 160 DCR -> 20001

C0 - ENGINE ACCESSORIES

RADIATORS - FANS

BLOWER.....	C0.01.0 (1)
COOLING SYSTEM.....	C0.01.1 (1)
COOLING SYSTEM.....	C0.01.1 (2)
COOLING SYSTEM EXPANSION TANK.....	0.015.4531.4/10.A

INTERCOOLER - AIR CLEANER

INTERCOOLER.....	C0.02.0 (1)
AIR INTAKE TUBE.....	C0.02.1 (1)
DRY AIR FILTER.....	C0.02.2 (1)
AIR FILTER.....	0.013.9314.4.A

FUEL SYSTEM

FUEL TANKS.....	C0.03.0 (1)
FUEL TANKS.....	C0.03.0 (2)
FUEL PRELIMINARY FILTER.....	C0.03.1 (1)
FUEL PRELIMINARY FILTER.....	C0.03.1 (2)
FUEL PRELIMINARY FILTER.....	C0.03.1 (3)
FUEL PRELIMINARY FILTER.....	C0.03.1 (4)
SUPPORT.....	C0.03.2 (1)
FUEL COOLER.....	C0.03.3 (1)
PRE-FILTER - COMPONENTS.....	2.4319.300.0/10.A

EXHAUST SILENCER

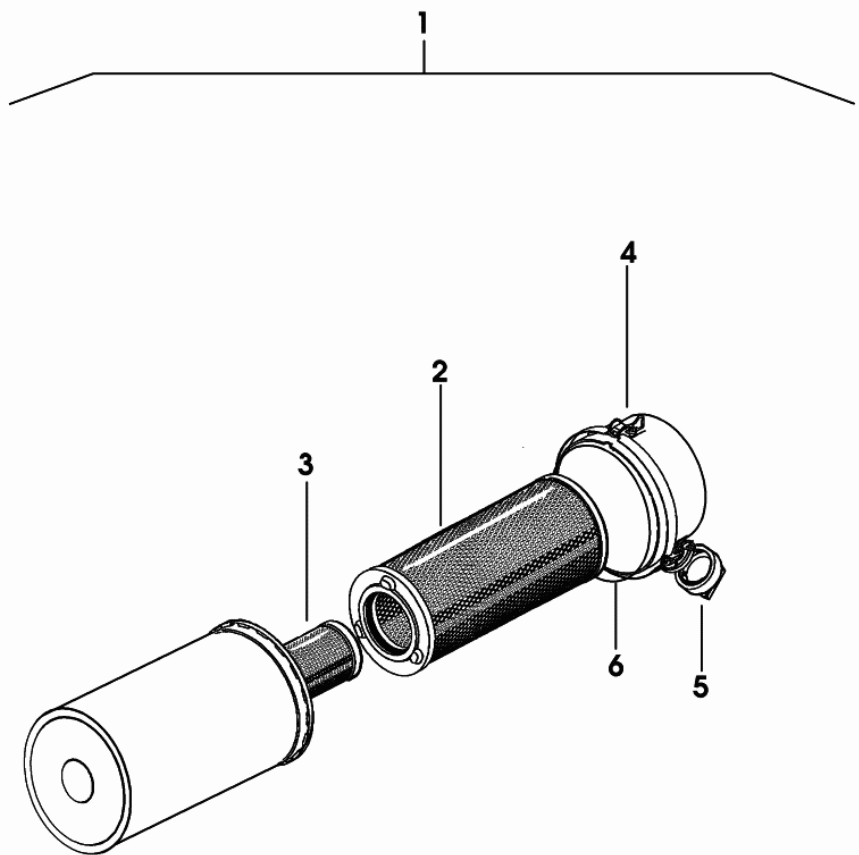
EXHAUST SILENCER.....	C0.06.0 (1)
EXHAUST SILENCER.....	C0.06.0 (2)
EXHAUST SILENCER WITH DUST EJECTOR.....	C0.06.1 (1)
EXHAUST SILENCER WITH DUST EJECTOR.....	C0.06.1 (2)
EXHAUST SILENCER.....	04455380.4/10.A
EXHAUST SILENCER.....	04455802.4/10.A

AIR COMPRESSOR

AIR COMPRESSOR.....	C0.07.0 (1)
AIR COMPRESSOR.....	C0.07.1 (1)
AIR COMPRESSOR ITALY.....	C0.07.2 (1)
COMPRESSOR-PARTS.....	04428408.4.A

AIR FILTER

Fig.	Code	QTY	Name
1	0.013.9314.4	1	air filter
2	0.900.0059.1	1	external air filter element
3	0.900.0059.2	1	internal air filter element
4	0.900.0061.1	1	cap
5	0.009.4109.0	1	valve
6	0.900.0530.8	1	gasket



0_013_9314_4

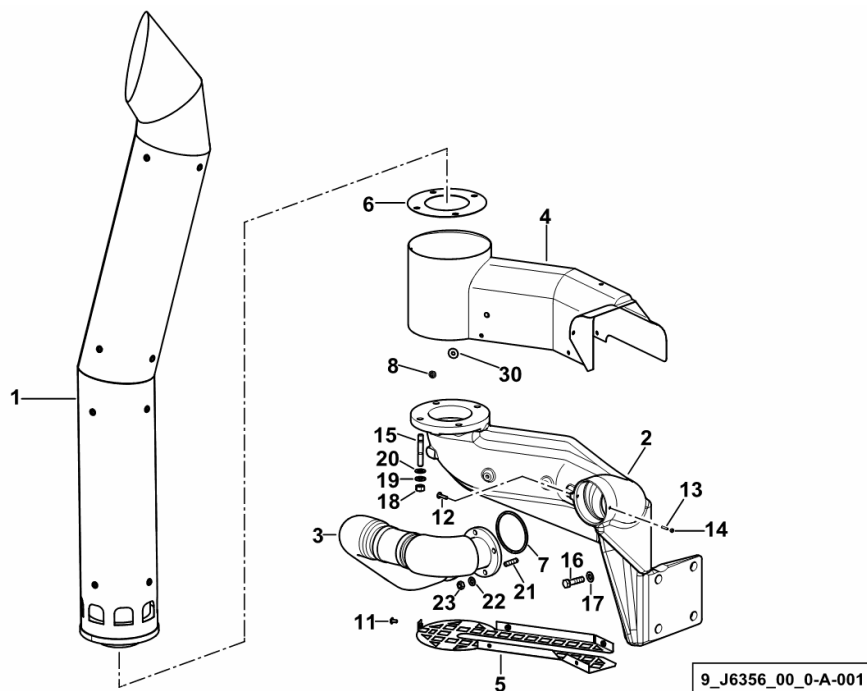
EXHAUST SILENCER

Fig.	Code	QTY	Name
------	------	-----	------

Notes:

[IRON 160 DCR -> 20001]

1	04455380.4/10	1	exhaust silencer ☞ 04455380.4/10
2	0.015.7235.0/50	1	exhaust
3	0.016.1036.2/10	1	tube
4	0.015.7276.3/30	1	guard
5	0.015.7277.3/10	1	guard
6	0.015.7465.0	1	gasket
7	0.011.4890.0	1	circlip
8	2.0339.021.0/10	4	screw m8x12
11	2.0339.020.0/10	5	screw M6x12
12	2.0339.023.0/10	1	screw m 6 x 25
13	2.0522.008.7	1	grain m 5 x 20
14	2.1011.102.2	1	nut m 5 p.0.7
15	2.0422.411.2	4	stud bolt m 12 x 40
16	2.0112.417.2	2	screw m 12 p.1.75 x 45
17	2.1475.004.2	2	washer 12
18	2.1012.107.7	4	nut m 12
19	2.1475.204.6	4	washer 12
20	2.1310.007.2	4	flat washer 13.5
21	2.0422.305.7	4	stud bolt m 10 p. 1.5 x 25
22	2.1475.003.7	4	washer 10.5
23	2.1011.106.2	4	nut m 10 p.1.5
30	2.1399.034.0/10	4	washer 8



IRON 160 DCR -> 20001

F0 - FRONT AXLE

GENERAL

4WD - FRONT DRIVE AXLE.....	F0.00.1 (1)
4WD - FRONT DRIVE AXLE.....	F0.00.2 (1)
4WD - FRONT DRIVE AXLE.....	F0.00.5 (1)
DRIVEN FRONT AXLE - [359578].....	0.014.0329.4/40.A
STEERING CYLINDER - [359578].....	0.014.0329.4/40.B
BEVEL WHEEL GEAR - [359578].....	0.014.0329.4/40.C
DIFFERENTIAL - [359578].....	0.014.0329.4/40.D
DOUBLE COUPLING - [359578].....	0.014.0329.4/40.E
WHEEL HUB - WITH FRONT BRAKES - [359578].....	0.014.0329.4/40.F
PLANETARY GEAR - [359578].....	0.014.0329.4/40.G
DRIVEN FRONT AXLE - [359579].....	0.014.0331.4/40.A
STEERING CYLINDER - [359579].....	0.014.0331.4/40.B
BEVEL WHEEL GEAR - [359579].....	0.014.0331.4/40.C
DIFFERENTIAL - [359579].....	0.014.0331.4/40.D
DOUBLE COUPLING - [359579].....	0.014.0331.4/40.E
WHEEL HUB - [359579].....	0.014.0331.4/40.F
PLANETARY GEAR - [359579].....	0.014.0331.4/40.G
DRIVEN FRONT AXLE - [370485].....	0.015.8676.4/20.A
STEERING CYLINDER - [370485].....	0.015.8676.4/20.B
BEVEL WHEEL GEAR - [370485].....	0.015.8676.4/20.C
DIFFERENTIAL - [370485].....	0.015.8676.4/20.D
DOUBLE COUPLING - [370485].....	0.015.8676.4/20.E
WHEEL HUB - [370485].....	0.015.8676.4/20.F
PLANETARY GEAR - [370485].....	0.015.8676.4/20.G

FRONT SUPPORT

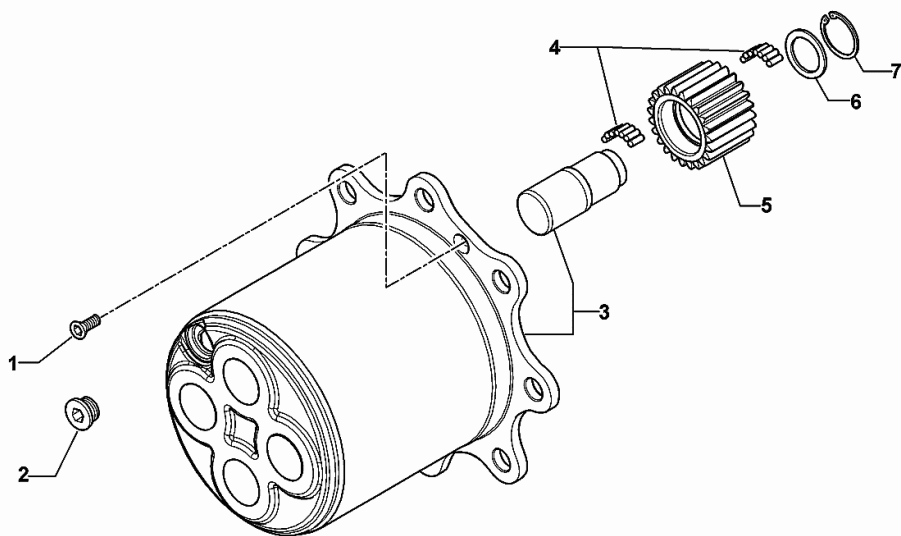
4WD - FRONT SUPPORT.....	F0.01.0 (1)
4WD - FRONT CARRIER WITH SUSPENSION.....	F0.01.1 (1)
FRONT COVER WITHOUT FRONT HOOK.....	F0.01.2 (1)
HYDRAULIC CYLINDER.....	04455060/10.A
HYDRAULIC CYLINDER.....	04455061/10.A

FRONT DIFFERENTIAL

4WD - PROPELLER SHAFT.....	F0.04.0 (1)
4WD - PROPELLER SHAFT.....	F0.04.0 (2)
4WD - PROPELLER SHAFT.....	F0.04.1 (1)
4WD - PROPELLER SHAFT.....	F0.04.1 (2)

PLANETARY GEAR - [359578]

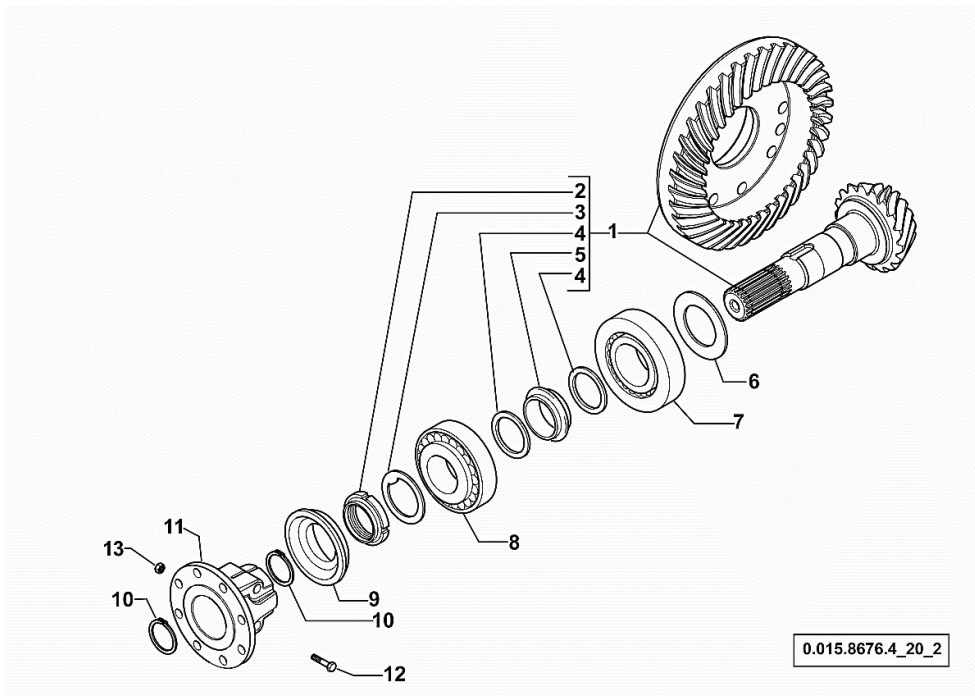
Fig.	Code	QTY	Name
1	0.900.0092.0	4	screw m 8 p.1.25 x 20
2	0.900.0092.1	2	plug m 30 p.2
3	0.900.1360.8	2	spider
4	0.900.0117.2	45	roller
5	0.900.1212.1	8	gear Z = 23
6	0.900.0092.5	8	thrust plate
7	0.900.0092.6	8	circlip



0.014.0329.4_40_6

BEVEL WHEEL GEAR - [370485]

Fig.	Code	QTY	Name
1	0.900.0108.0	1	bevel gear Z = 14/37
2	0.900.0085.5	1	ring nut m 40 p.1.5
3	0.900.0085.6	1	washer
4	0.900.0085.7	2	washer
5	0.900.0108.1	1	spacer
6	0.900.0108.2	0	shim 2.50
6	0.900.0108.3	0	shim 2.60
6	0.900.0108.4	0	shim 2.70
6	0.900.0108.5	0	shim 2.80
6	0.900.0108.7	0	shim 2.90
6	0.900.0108.6	0	shim 3.00
6	0.900.0108.8	0	shim 3.10
6	0.900.0108.9	0	shim 3.20
6	0.900.0109.0	0	shim 3.30
6	0.900.0109.1	0	shim 3.40
7	0.900.0109.2	1	bearing
8	0.900.0086.9	1	bearing
9	0.900.0087.0	1	'o' ring
10	0.900.0087.1	2	circlip d = 35
11	0.900.0960.5	1	flange
12	0.900.0960.9	2	screw
13	0.900.0961.0	2	nut



Section: F0 - FRONT AXLE
4WD - PROPELLER SHAFT

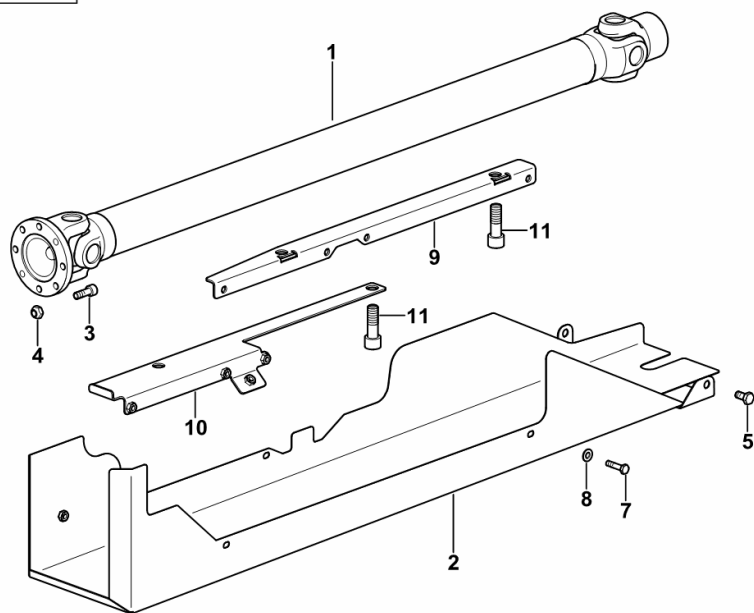
Fig.	Code	QTY	Name
------	------	-----	------

Notes:

- FOR TYPES WITHOUT FRONT SUSPENSION [IRON 160 DCR -> 20001] 20011 <-

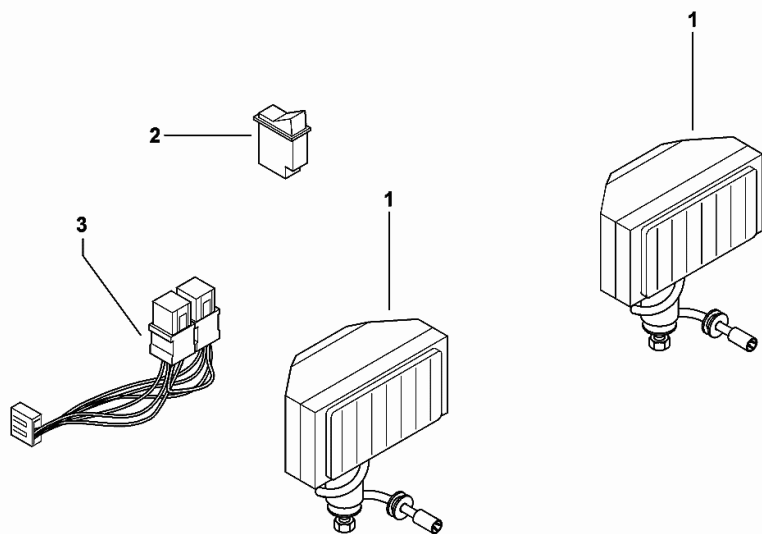
1	04411490.4	1	transmission shaft
2	0.016.4860.3	1	guard
3	2.0319.023.6/10	8	screw m 10 p.1x29
4	01136456	8	nut m 10
5	2.0114.307.2	4	screw m 10 x 20, d933
7	2.0114.205.2	4	screw m 8 p.1.25 x 16
8	2.1310.004.2	4	flat washer 8.5
9	04455852	1	support
10	04455863	1	support
11	2.0314.616.2	4	screw m 16 p.2x50

9_J6326_00_0-A-001



FRONT LIGHTS

Fig.	Code	QTY	Name
1	0.900.0811.7	2	lamp
2	0.900.0833.2	1	switch
3	0.900.0902.7	1	wire



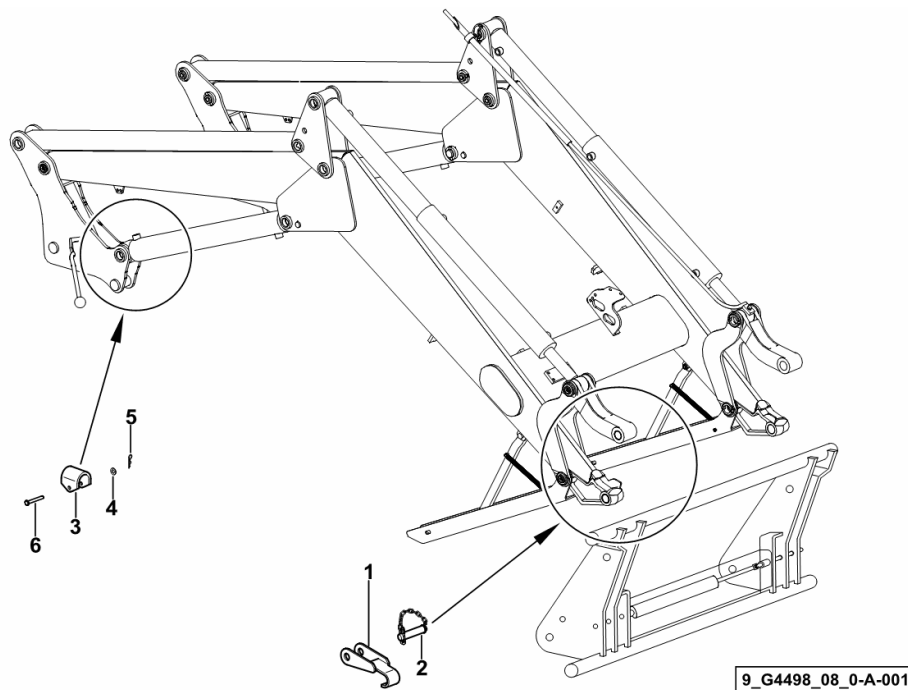
04455892.4_2

LOCKING SYSTEM

Fig.	Code	QTY	Name
------	------	-----	------

Notes:
[IRON 160 DCR -> 20001]

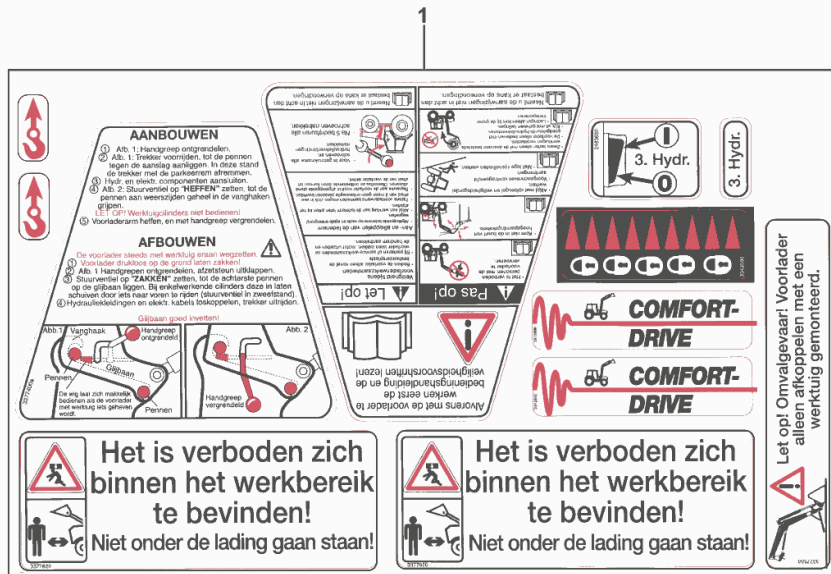
1	0.014.5952.2/10	1	bracket
2	0.014.5963.3	1	pin
3	0.014.5950.0	2	bracket
4	2.1310.004.2	2	flat washer 8.5
5	2.1699.180.2	2	pin
6	2.1671.420.2	2	pin 10x80



Section: P0 - FRONT LOADER
SIGN SET EXPORT NL

Fig.	Code	QTY	Name
1	2.9939.188.0/20	1	stickers

Notes:
[IRON 160 DCR -> 20001]



9_G4698_07_0-A-001

WARNING PLATE

Fig.	Code	QTY	Name
1	2.9939.236.0	1	plate

Notes:
[IRON 160 DCR -> 20001]


1

TOGLIERE PRESSIONE PRIMA DI SGANCIARE
per evitare sovrappressione in fase di riaccoppiamento

RELEASE PRESSURE BEFORE DISCONNECTION
to eliminate the over-pressure at the reconnection

DRUCKLOS SCHALTEN VOR DEM ENTKUPPELN
um zu hohe Drücke beim wieder Einkuppeln zu vermeiden

CHUTER LA PRESSION AVANT LE DECROCHAGE
pour éviter surpression à l'accrochage

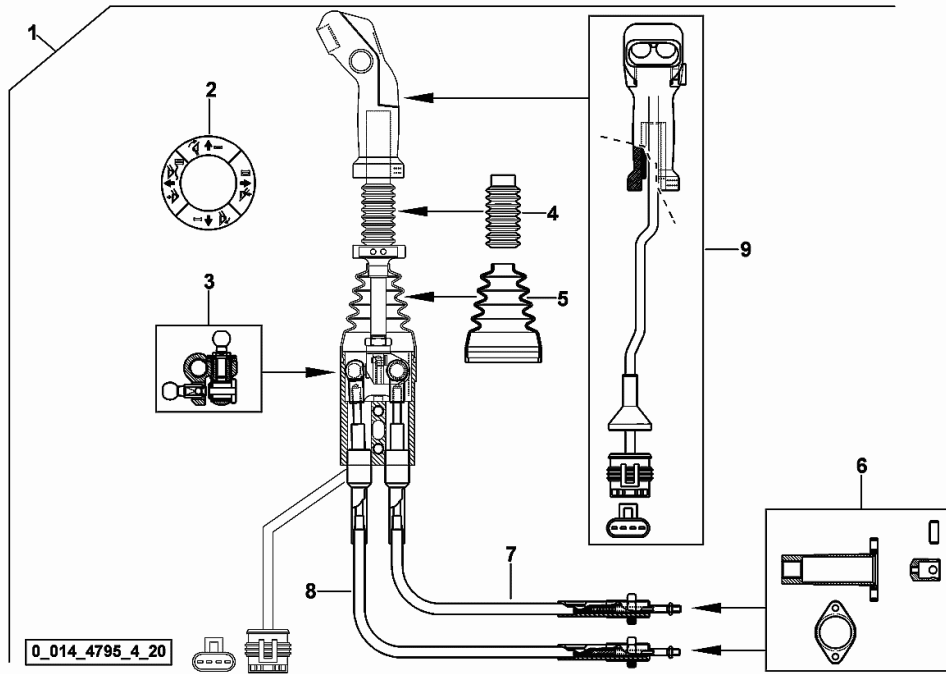


ET007.indd 1

9_G4498_48_0-A-001

Section: P0 - FRONT LOADER
DRIVE

Fig.	Code	QTY	Name
1	0.014.4795.4/20	1	controller
2	0.900.0994.9	1	stickers
3	0.900.0995.0	1	control grp.
4	0.900.0995.1	1	bellows 30.5x80
5	0.900.0995.2	1	boot
6	0.900.0995.3	2	parts set
7	0.900.0995.4	1	rod mm 2300
			- YELLOW COLOUR
8	0.900.0995.5	1	rod mm 2300
			- RED COLOUR
9	0.900.0995.6	1	controller

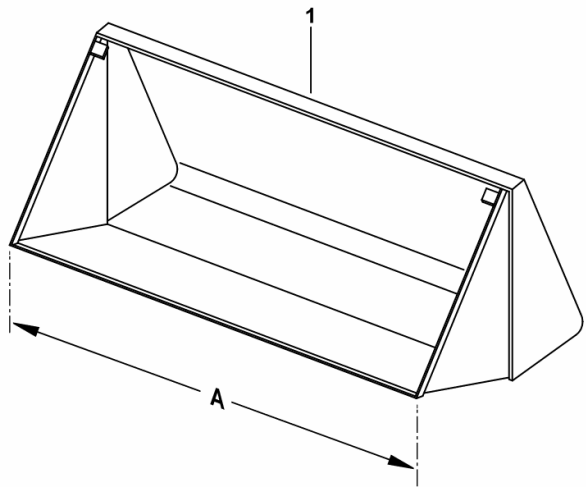


BUCKET - FIOB 200 H

Fig.	Code	QTY	Name
------	------	-----	------

Notes:
[IRON 160 DCR -> 20001]

1	0.014.4620.4	1	bucket - FIOB 200 H A = mm 2000
---	--------------	---	------------------------------------



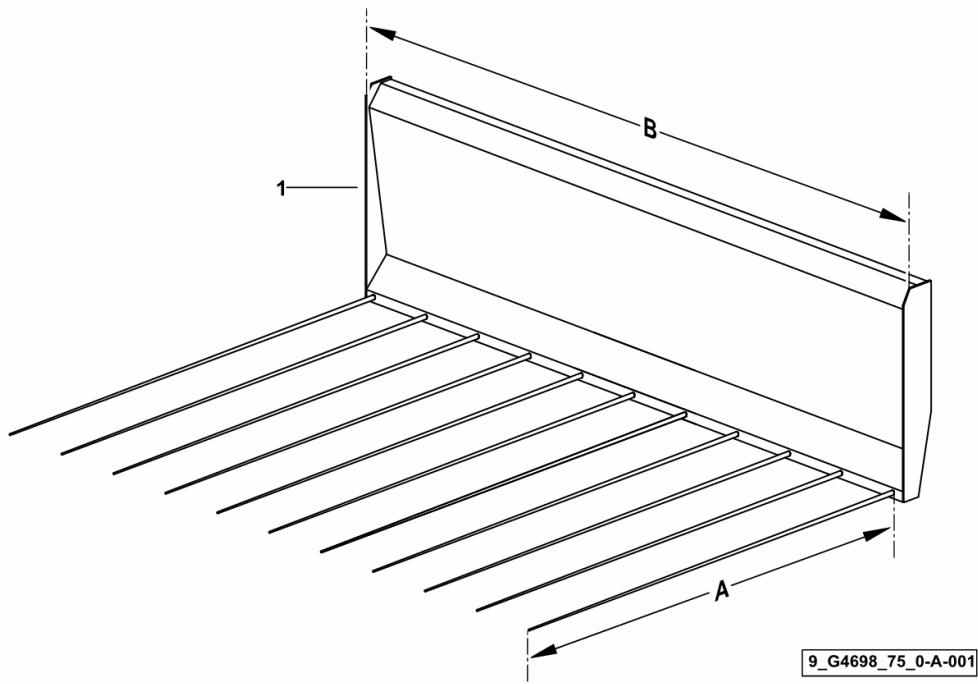
9_G4498_73_0-A-001

FORK-LIFT FOR MANURE - MAFO 200 H

Fig.	Code	QTY	Name
------	------	-----	------

Notes:
[IRON 160 DCR -> 20001]

1	0.014.4606.4	1	fork-lift - MAFO 200 H A = mm 1100 / B = mm 2000
---	--------------	---	---

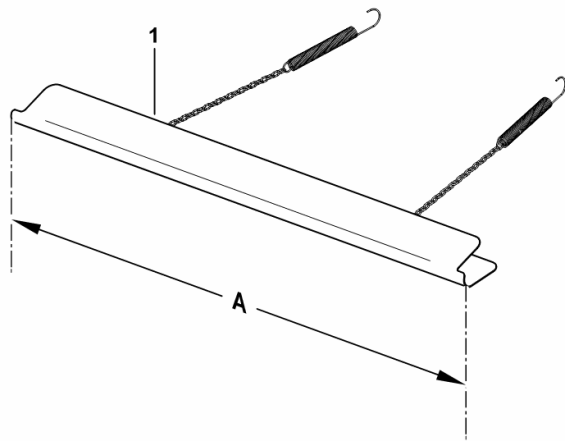


SHOVEL AND FORK PROTECTION A = mm 1710

Fig.	Code	QTY	Name
------	------	-----	------

Notes:
[IRON 160 DCR -> 20001]

1	0.014.9819.3/10	1	guard A = mm 1710
---	-----------------	---	-------------------



9_G4598_89_0-A-001

IRON 160 DCR -> 20001

M0 - FRONT PTO

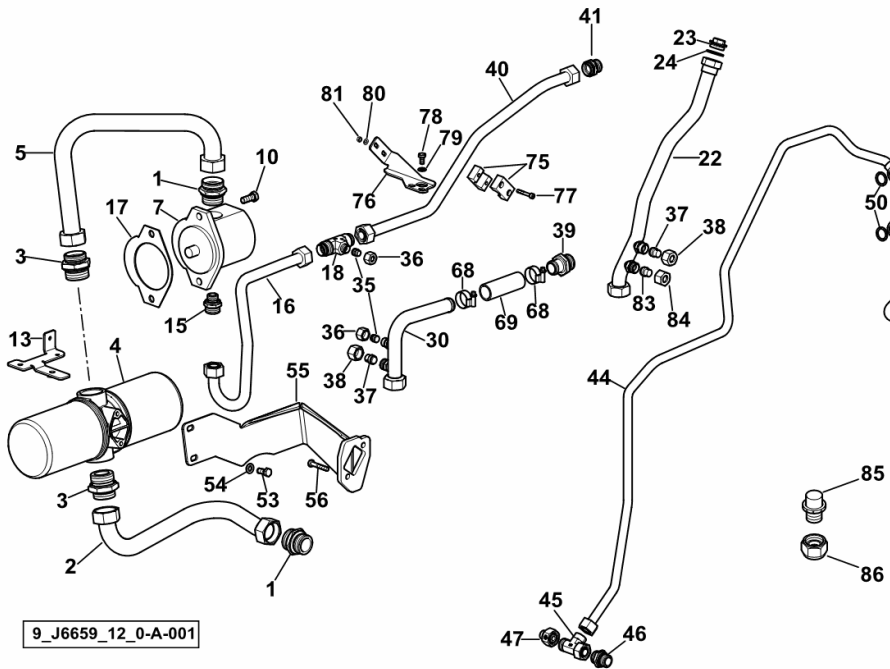
GENERAL

P.T.O. FRONT.....	M0.00.0 (1)
P.T.O. FRONT.....	04455860.4.A
P.T.O. FRONT.....	04455860.4.B
P.T.O. FRONT.....	04455860.4.C
ELECTRICAL SYSTEM P.T.O.....	04455860.4.D

HYDRAULIC SYSTEM OPEN CENTER

Fig.	Code	QTY	Name
------	------	-----	------

Notes:
[IRON 160 DCR -> 20001]



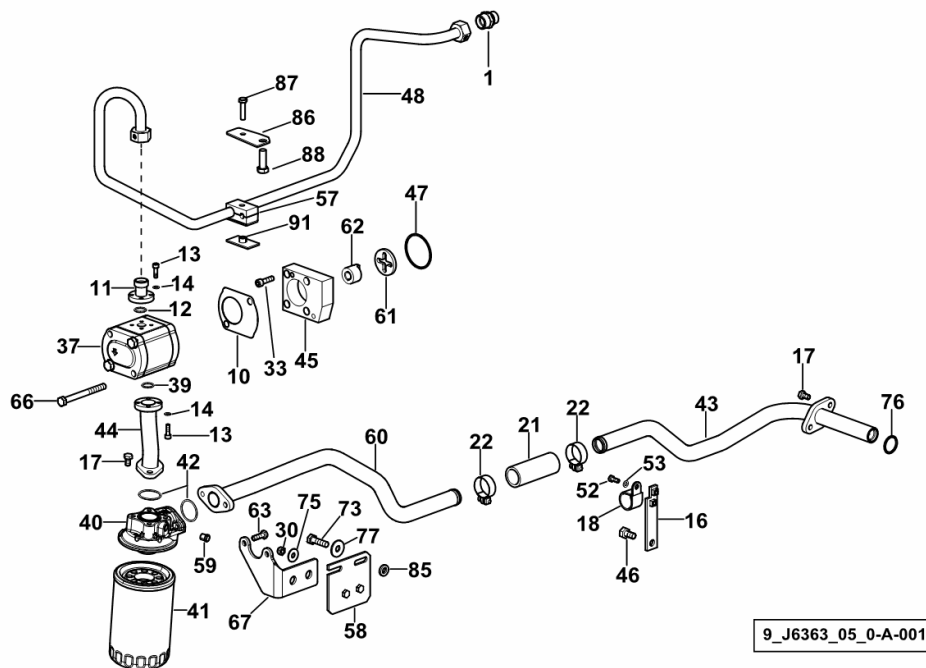
1	01180563	2	tongue m 42x2
2	04451870/10	1	pipng
3	04451889	2	pipe fitting
4	04451877	1	filter
			☞ 04451877
5	04451871	1	primer
7	04450516	1	hydraulic pump 32 cc
			☞ 04450516
10	2.0114.411.2	2	screw m 12 p.1.75 x 30
13	04450542	1	support
15	04422764	1	pipe fitting m 22 p.1.5x22
16	04455664	1	pipng
17	04412251	1	gasket S = 0.30
18	04452758/10	1	reduction
22	04455884.3/10	1	tube
23	01118989	1	plug
24	2.1560.023.0	1	gasket 30.3 x 36
30	04455643.3/20	1	tube
35	01180565	2	plug h 310
36	01179539	2	nut CL 12 H310
37	01180617	2	cone
38	01179540	2	nut cl 15 h3105
39	04455642	1	tongue
40	04455663	1	pipng
41	04452347	1	threaded joint
42	04455708	1	pipng
43	01127372	1	pipe fitting l 15 d3908
44	04455660/10	1	pipng
45	01144815	1	tongue
46	04455063	1	pipe fitting
47	04419612	1	reduction
50	2.1560.018.0	4	gasket 22.2 x 29
51	2.3335.009.2	2	pipe union m 22 p.1.5 x 39
53	2.0112.309.2	2	screw m 10 p.1.5 x 25
54	2.1310.006.2	2	flat washer 10.5
55	04451797.4	1	support
56	2.0112.217.2	2	screw m 8 p.1.25 x 45
68	2.6851.004.0	2	clamp Ø 32/50
69	0.016.2948.0	1	tube
75	06238807	1	terminal Ø 22
76	0.016.0057.0	1	link

HYDRAULIC SYSTEM OPEN CENTER

Fig.	Code	QTY	Name
------	------	-----	------

Notes:

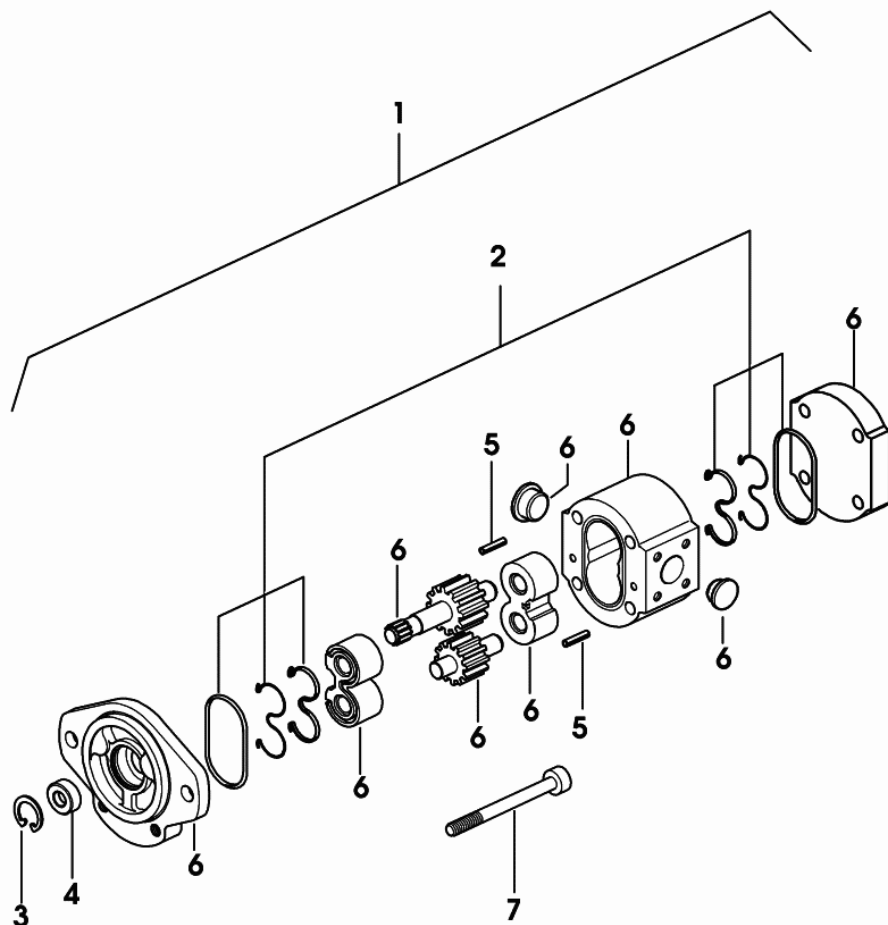
- FOR TYPES WITH PNEUMATIC BRAKE [IRON 160 DCR -> 20001]



1	01177450	2	pipe fitting m 22 p.1.5x18
10	04455342	1	gasket
11	04450491	1	flange
12	06214809	1	'o' ring 18x2,5
13	2.0312.106.2	8	screw m 6 p.1 x 20
14	2.1474.007.2	8	washer 6, d128
16	04453484.2	1	bracket
17	2.0114.209.2	4	screw m 8 x 25
18	01213283	1	clamp Ø 20/28
21	0.016.2948.0	1	tube
22	2.6859.154.0	2	hose clip
30	2.1011.105.2	3	nut m 8 p.1.25
33	2.0312.210.2	4	screw m 8 p.1.25 x 30
37	2.4539.310.0/10	1	hydraulic pump 16cc sx/lh/li - BOSCH ☞ 2.4539.310.0/10
39	2.1530.066.0	1	'o' ring 25.07x2.62
40	2.4419.350.1/40	1	head
41	2.4419.350.0/10	1	hydr.oil filter elem Ø 107.7
42	2.1530.095.0	2	'o' ring 36.14x2.62
43	04450573/10	1	tube
44	0.016.1811.3/10	1	tube
45	04450541	1	power control
46	2.0114.307.2	1	screw m 10 x 20, d933
47	04450506	1	'o' ring
48	04455972.2	1	pipng
52	2.0112.005.2	1	screw m 6 p.1 x 16
53	2.1310.002.2	2	washer 6.6, d125
57	04453993	1	hose clip 18-10
58	0.015.5417.3	1	link
59	04450524	1	plug
60	04455971.2	1	tube
61	04450538	1	coupling
62	04450539	1	hub
63	2.0112.211.2	2	screw m 8 p.1.25 x 30
66	2.0113.330.2	2	screw m 10x105
67	04455126	1	support
73	2.0112.313.2	2	screw m 10 p.1.5 x 35
75	2.1312.004.2	3	washer 8.4
76	04450572	1	'o' ring 28x2
77	2.1310.006.2	2	flat washer 10.5
85	04455348	2	spacer

HYDRAULIC PUMP PARTS

Fig.	Code	QTY	Name
1	04450516	1	hydraulic pump 32 cc
2	04417976	1	gasket set
3	0.010.3524.2	1	circlip
4	04417973	1	repair seal set
5	0.010.3545.1	2	cylindrical plug
6	0.000.0000.1	0	not serviceable
7	0.010.3545.0	4	screw



04450516

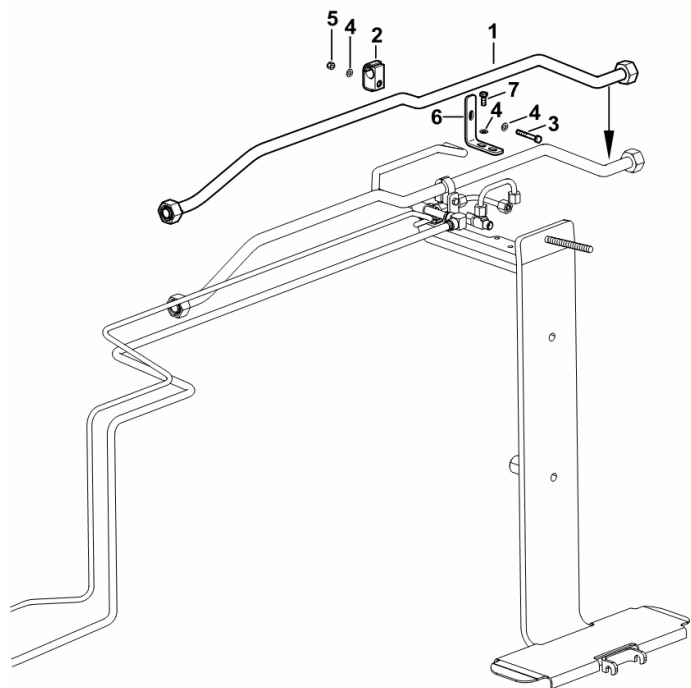
GUIDE PIPE

Fig.	Code	QTY	Name
------	------	-----	------

Notes:

[IRON 160 DCR -> 20001] -> 20029

1	0.016.3096.3	1	tube
2	2.3320.109.0	1	terminal Ø 18 -B-
3	2.0112.017.2	1	screw m 6 p.1x45
4	2.1310.002.2	4	washer 6.6, d125
5	2.1120.003.2	1	nut m 6
6	0.017.9178.0	1	bracket
7	2.0112.005.2	2	screw m 6 p.1 x 16

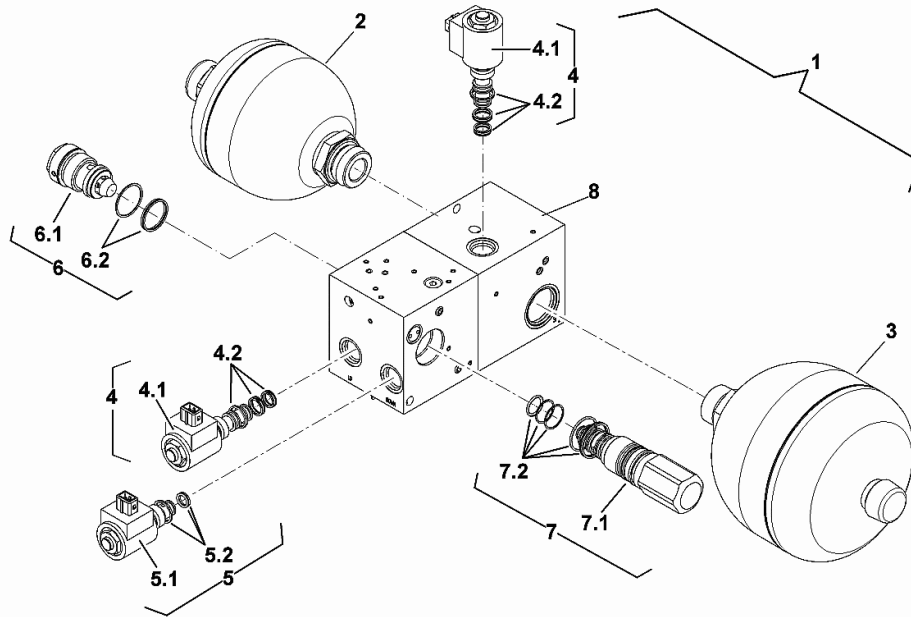


9_J6663_07_0-A-002

ACCUMULATOR

Fig.	Code	QTY	Name
1	04455149/40	1	accumulator kpl.
2	0.900.1132.2	1	accumulator
3	0.900.1132.3	1	accumulator
4	0.900.1132.4	2	electro valve
4.1	0.900.1132.5	2	coil
4.2	0.900.1359.4	2	seal ring kit
5	0.900.1132.6	1	electro valve
5.1	0.900.1132.5	1	coil
5.2	0.900.1359.5	1	seal ring kit
6	0.900.1132.7	1	valve
6.1	0.000.0000.1	1	not serviceable
6.2	0.900.1359.6	1	seal ring kit
7	0.900.1132.8	1	valve
7.1	0.000.0000.1	1	not serviceable
7.2	0.900.1359.7	1	seal ring kit
8	0.000.0000.1	1	not serviceable
9	0.900.1359.8	1	seal ring kit

04455149/40



8-WAY HYDRAULIC CONTROL VALVE LOAD SENSING

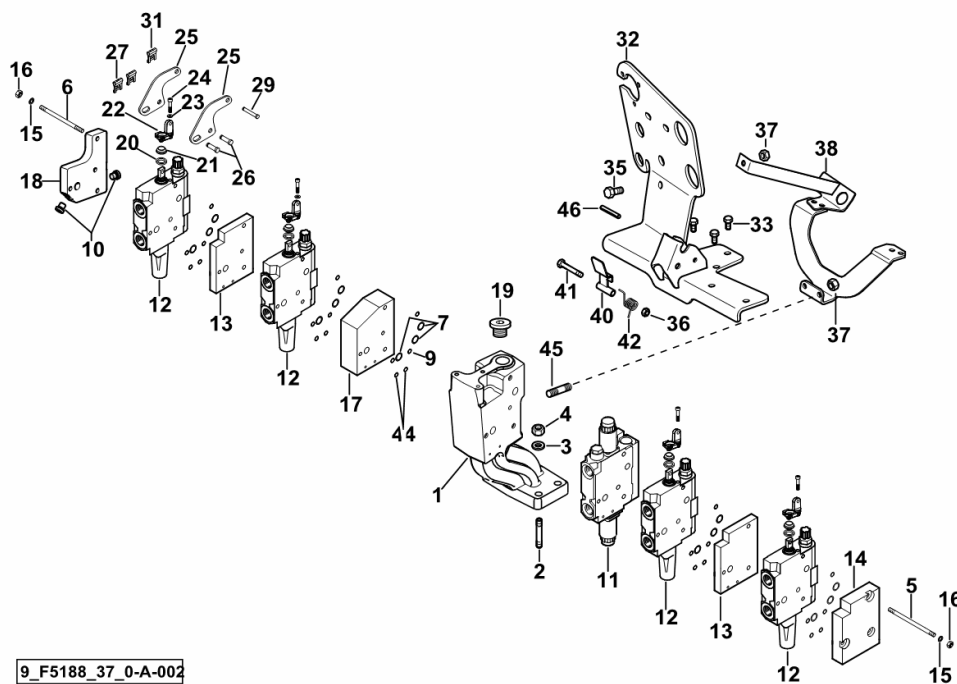


Fig.	Code	QTY	Name
------	------	-----	------

Notes:

[IRON 160 DCR -> 20001] 20050 <-

1	0.017.1367.0	1	support
2	2.0432.261.7	4	stud bolt m 12 p.1.75-1.25x40
3	2.1475.004.2	4	washer 12
4	2.1011.422.2	4	nut m 12 p.1.25
5	2.0433.031.7	3	stud bolt m 8 p.1x160
6	2.0433.032.7	3	stud bolt m 8x1x170
7	2.1531.048.0	15	'o' ring 18.72x2.62
9	2.1589.471.0	15	shim 8.1x11.8x0.04
10	04454628	2	screw
11	04428917.4	1	valve ☞ 04428917.4
12	2.3729.480.0	4	element ☞ 2.3729.480.0
13	0.012.2329.0/10	2	plate 13 mm
14	04451514/20	1	tip
15	2.1475.102.2	6	washer 8.4 x 16
16	2.1012.305.7	6	nut m 8 p.1 x 8
17	04451057	1	plate 40 mm
18	04454512	1	plate
19	04451879	1	plug
20	0.011.9918.0	4	spacer 18.6 x 25 x 4.3
21	0.011.9929.0	4	ring
22	0.010.8533.0/10	4	support
23	2.1474.007.2	8	washer 6, d128
24	2.0319.017.6	8	screw m 6 p.1.0 x 16
25	04438354	8	lever
26	04402646	8	pin 8x25
27	01176237	8	guard
29	2.1699.497.2/20	4	pin
31	01175725	4	small spring 6, d128
32	0.017.6688.3	1	support
33	2.0114.207.2	3	screw m 8 p.1.25 x 20
35	2.0112.201.2	1	screw m 8 p.1.25 x 10
36	2.1121.005.2	1	nut m 8 p.1.25
37	2.1011.105.2	3	nut m 8 p.1.25
38	0.017.8974.3/10	1	support
40	04451512.4	1	lever
41	2.0112.220.2	1	screw m 8 p.1.25x55
42	04315063	1	spring
44	2.1531.012.0	10	'o' ring 6.75 x 1.78
45	2.0422.201.2	2	stud bolt M8X16

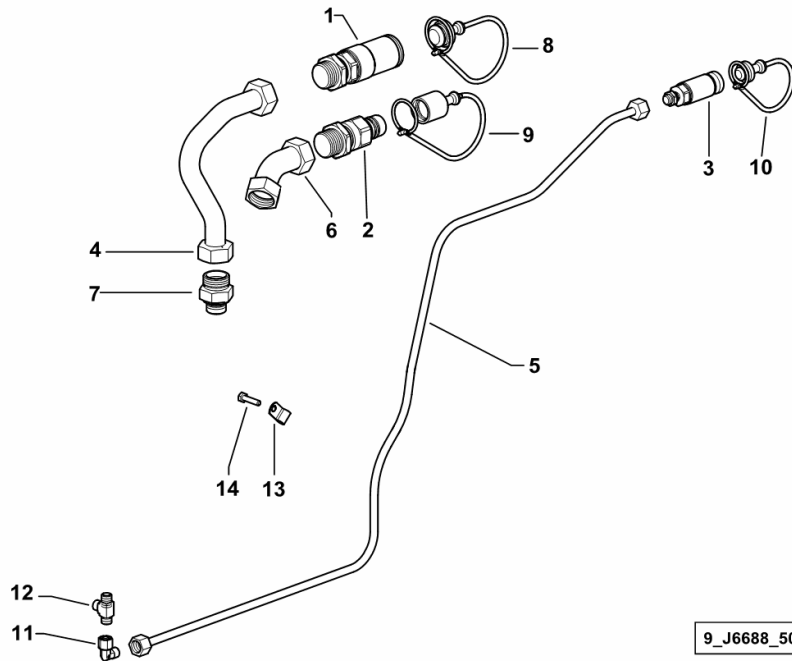
PUSH-PULL QUICK COUPLERS FOR "POWER BEYOND"

Fig.	Code	QTY	Name
------	------	-----	------

Notes:

[IRON 160 DCR -> 20001]

1	04450416	1	coupling m 36 p.2 ☞ 04450416
2	04451532	1	coupling m 36 p.2
3	04450417	1	coupling m 14 p.1.5 ☞ 04450417
4	04452308	1	pipng
5	04455697	1	pipng
6	04455720	1	pipng
7	04451725/10	1	shaped part
8	0.012.2603.0	1	plug 3/4 M
9	0.012.2604.0	1	plug 3/4 F
10	0.012.2605.0	1	plug 3/8 M
11	16040269	1	shaped part 90°
12	04427045	1	pipe fitting T
13	01172129	1	terminal B8X15
14	2.0112.009.2	1	screw m 6 p.1 x 25



9_J6688_50_0-A-001

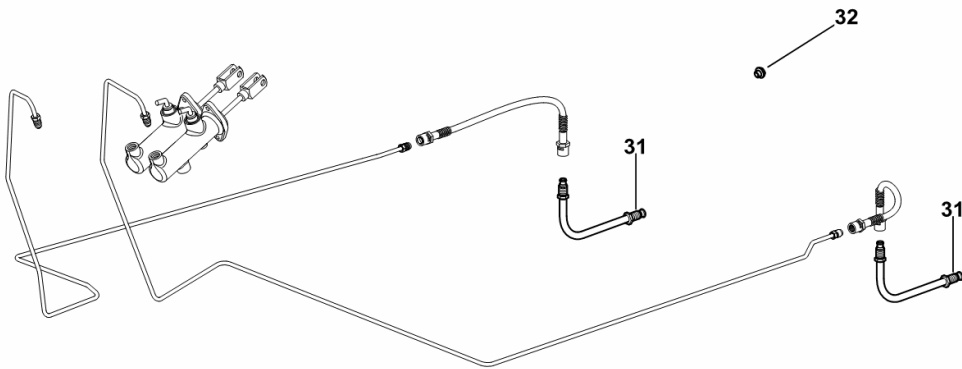
BRAKING SYSTEM

Fig.	Code	QTY	Name
------	------	-----	------

Notes:

- FOR TYPES WITHOUT FRONT BRAKES [IRON 160 DCR -> 20001]

31	04453338/10	2	tube
32	04387074	1	plug



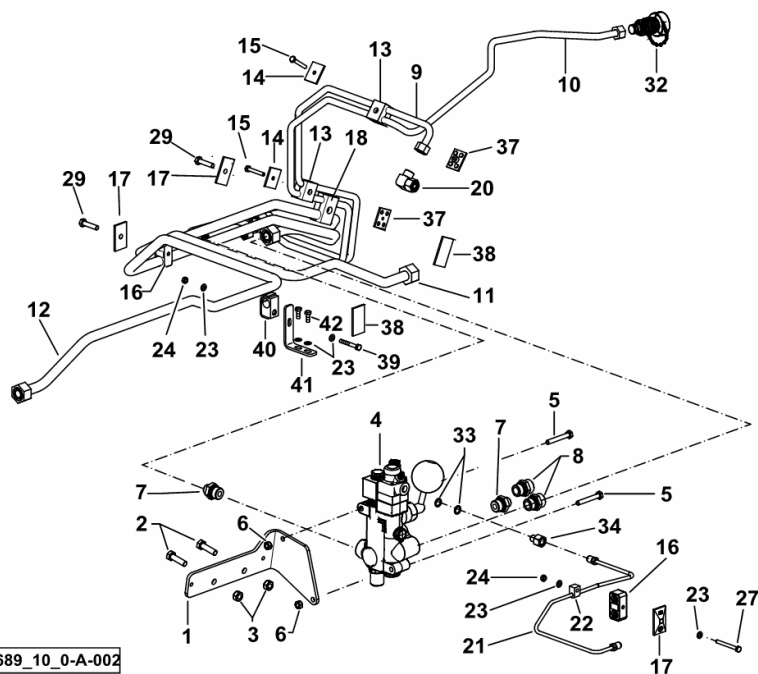
9_J6766_10_0-B-001

HYDRAULIC BREAKING FOR TRAILER - ITALY -

Fig.	Code	QTY	Name
------	------	-----	------

Notes:

- FOR TYPES WITHOUT PNEUMATIC BRAKE [IRON 160 DCR -> 20001] -> 20033



1	04455749	1	support
2	2.0112.313.2	2	screw m 10 p.1.5 x 35
3	2.1011.106.2	2	nut m 10 p.1.5
4	04424805	1	valve ☞ 04424805
5	2.0112.220.2	2	screw m 8 p.1.25x55
6	2.1011.105.2	2	nut m 8 p.1.25
7	04428400	2	pipe fitting
8	04419602	2	pipe fitting
9	04455681/10	1	pipng
10	04455682/10	1	tube
11	04455705.3/10	1	tube
12	0.016.3104.3	1	tube
13	01180439	4	terminal
14	01175616	2	small plate
15	2.0112.015.2	2	screw m 6 p.1x40
16	01178214	4	terminal
17	01175670	3	small plate
18	04454610	2	terminal Ø 12/18
20	01144832	1	pipe fitting
21	04455685	1	pipng
22	01141501	1	clamp Ø 6
23	2.1310.002.2	6	washer 6.6, d125
24	2.1120.003.2	2	nut m 6
27	2.0112.020.2	1	screw m 6 p.1 x 55
29	2.0112.213.2	2	screw m 8 p.1.25 x 35
32	04307317	1	coupling
33	2.1560.007.0	2	gasket 12.2x16
34	04419604	1	power control
37	01177274	2	small plate
38	01180338	2	small plate
39	2.0112.017.2	1	screw m 6 p.1x45
40	2.3320.109.0	1	terminal Ø 18 -B-
41	0.017.9178.0	1	bracket
42	2.0112.005.2	2	screw m 6 p.1 x 16

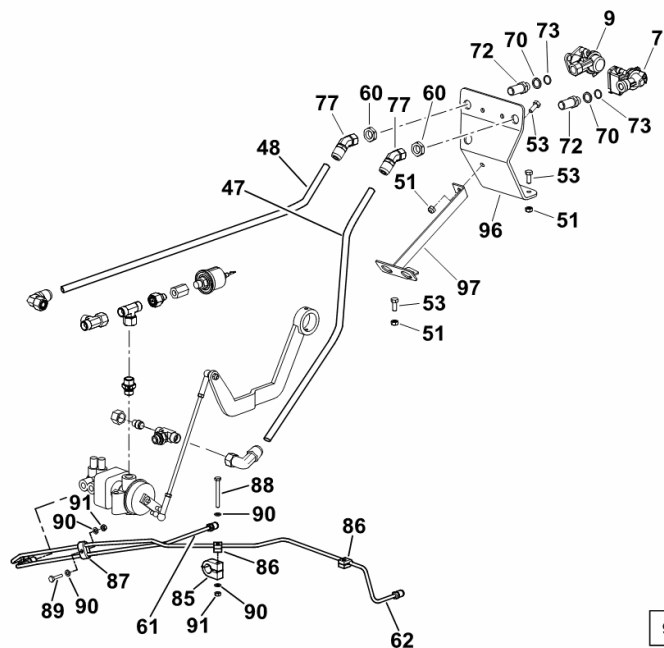
9_J6689_10_0-A-002

AIR BRAKING

Fig.	Code	QTY	Name
------	------	-----	------

Notes:

- FOR TYPES WITH PNEUMATIC BRAKE [IRON 160 DCR -> 20001]

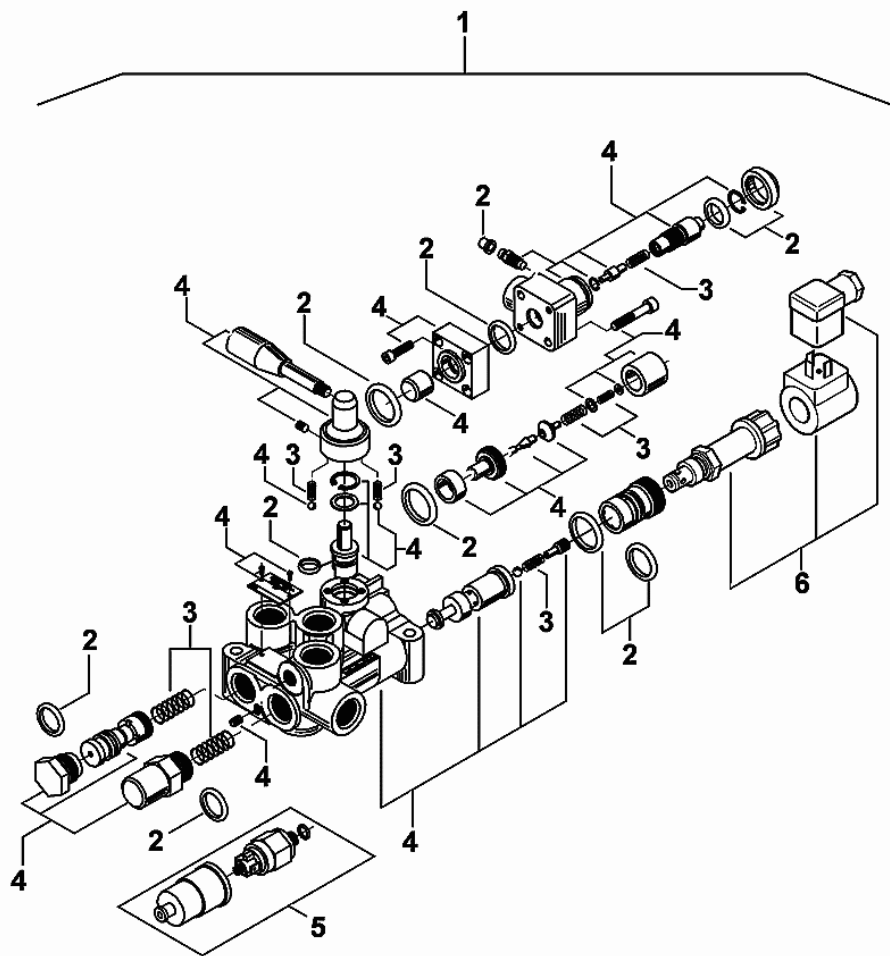


9_J6389_15_0-D-001

7	04323303	1	socket
9	04323302	1	socket
47	04452329	1	pipng Ø 12 / L = mm 1070
48	04452328	1	pipng Ø 12 / L = mm 1080
51	2.1011.105.2	5	nut m 8 p.1.25
53	2.0112.207.2	7	screw m 8 p 1.25 x 20
60	2.1012.510.7	2	nut m 18 p.1.5
61	04454276	1	tube
62	04454275/10	1	tube
70	04389868	2	ring
72	01143566	2	pipe fitting a12 m16x1,5
73	04389869	2	ring
77	04437700	2	plug
85	04454609	1	terminal Ø 18
86	01141501	2	clamp Ø 6
87	2.3321.002.0	1	terminal Ø 6.35 / 6.35
88	2.0112.020.2	1	screw m 6 p.1 x 55
89	2.0112.009.2	1	screw m 6 p.1 x 25
90	2.1312.003.2	2	washer 6
91	2.1120.003.2	3	nut m 6
96	04452551/30	1	support
97	04452306.4	1	support

TRAILER BRAKE VALVE

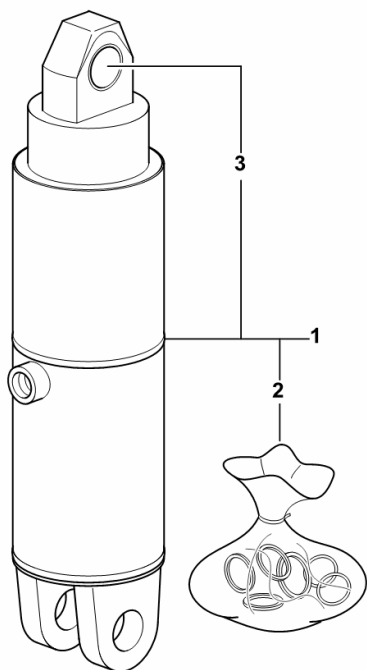
Fig.	Code	QTY	Name
1	04424805	1	valve
2	0.010.3493.2	1	seal ring kit
3	0.010.3494.0	1	spring
4	0.000.0000.1	0	not serviceable
5	0.900.0064.4	1	pressure switch
6	0.900.0939.9	1	electro valve



04424805

CYLINDER PARTS

Fig.	Code	QTY	Name
1	04411182.4/20	1	roller OGNIBENE - TS80x222
2	04417821.4	1	gasket set OGNIBENE
2	04439554	1	gasket set BURNSIDE
3	0.900.0128.9	1	bushing



04411182_4_20

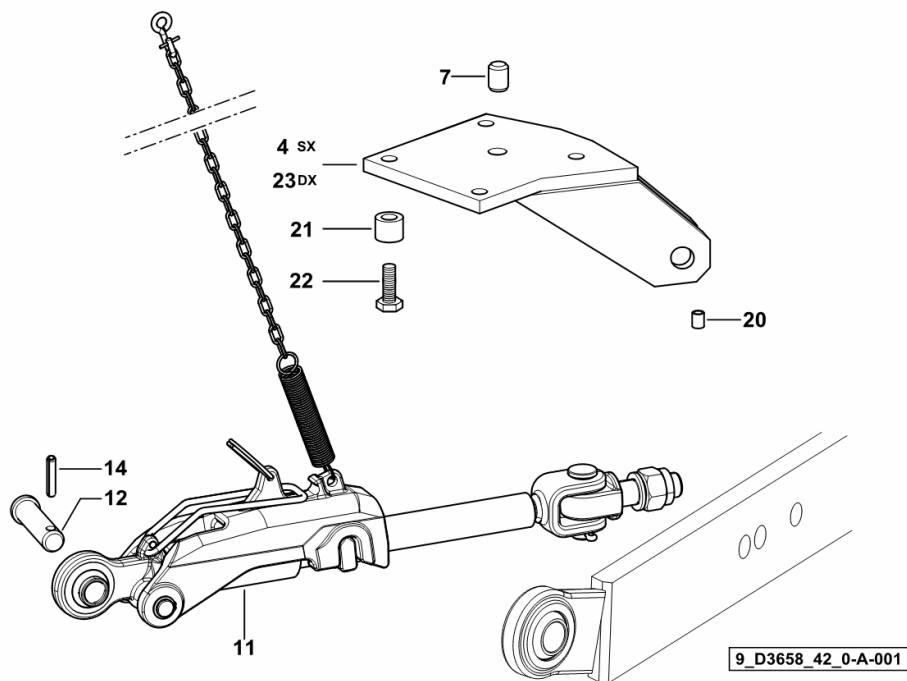
3-POINT HITCH - SIDE STABILIZERS

Fig.	Code	QTY	Name
------	------	-----	------

Notes:

- FOR PICK-UP-HITCH TYPES [IRON 160 DCR -> 20001]

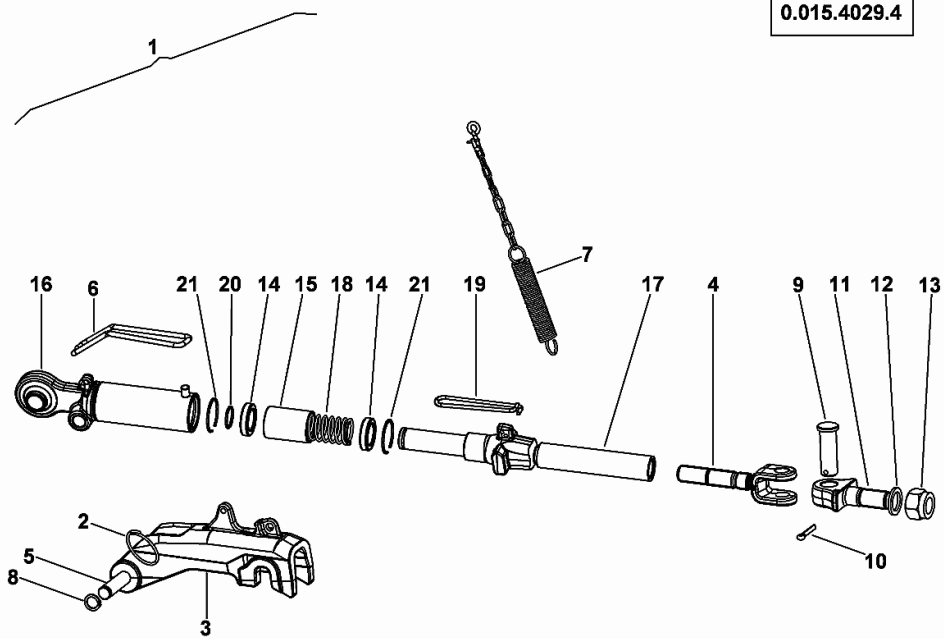
4	04411063/20	1	end bracket sx/lh/li
7	2.1659.526.6	2	cylindrical plug 20x24
11	0.015.4029.4	2	stabiliser ☞ 0.015.4029.4
12	04414819	2	pin
14	2.1630.818.2	2	pin 10x55
20	04355272	2	bushing 9x13x16
21	04422335	8	spacer 17x30.5x24
22	2.0119.283.6	8	screw m 16 x 70
23	04411062/20	1	end bracket dx/rh/re



Section: R0 - REAR LIFT
STABILIZER

Fig.	Code	QTY	Name
1	0.015.4029.4	1	stabiliser
2	0.900.0987.2	1	ring
3	0.900.0987.3	1	body
4	0.900.0987.4	1	fork
5	0.900.0987.5	1	pin
6	0.900.0987.6	1	spring
7	0.900.0987.7	1	chain
8	0.900.0987.8	2	circlip
9	0.900.0987.9	1	pin
10	0.900.0988.0	1	split pin
11	0.900.0988.1	1	smau pin
12	0.900.1268.5	1	washer
13	04418505	1	nut
14	0.900.1413.9	2	spacer
15	0.900.1415.4	1	spacer
16	0.900.1414.1	1	tip
17	0.900.1415.3	1	stem
18	0.900.1414.2	1	spring
19	0.900.1414.3	1	spring
20	0.900.1414.4	1	circlip
21	0.900.1414.5	2	circlip

0.015.4029.4



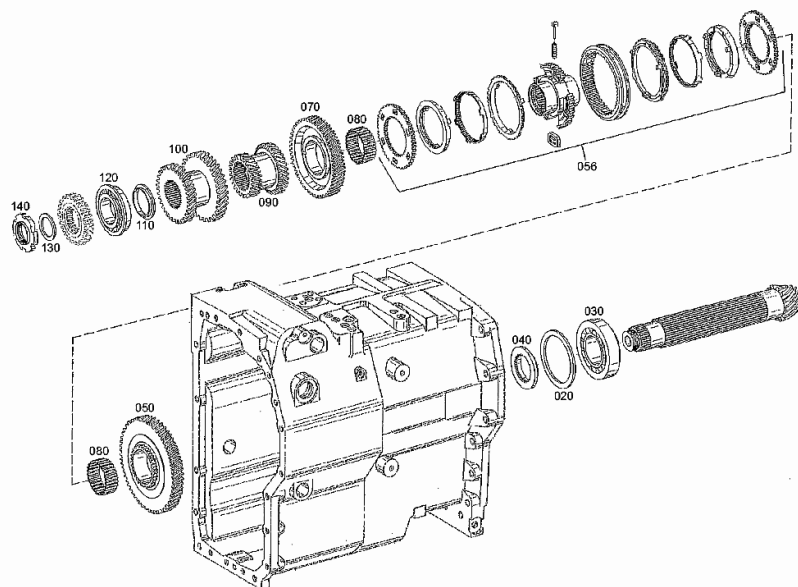
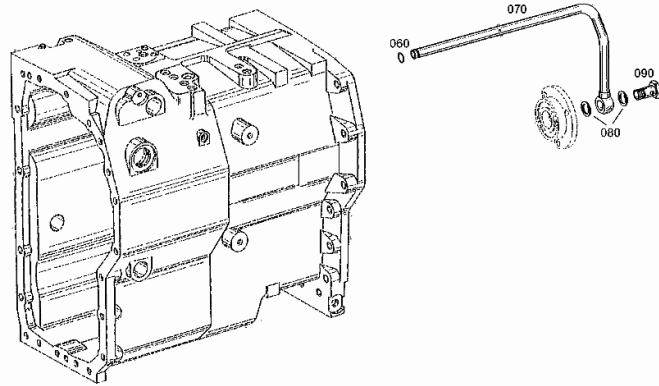
MAIN SHAFT - [2093 009 100]

Fig.	Code	QTY	Name
90	0.010.3258.1	1	gear Z = 25 (...) <-
90	0.900.1381.2	1	gear Z = 31 -> (...)
100	04427571	1	gear wheel z=39/41 (...) <-
100	0.900.1381.0	1	gear z=39/41 -> (...)
110	0.900.1378.7	1	shim
110	04417159	1	shim s = 10.4
110	04417160	1	shim s = 10.3
110	04417161	1	shim s = 10.2
110	04417162	1	shim s = 10.1
110	04417163	1	shim s = 10.0
110	04417164	1	shim s = 9.9
110	04417165	1	shim s = 9.8
110	04417166	1	shim s = 9.7
110	04417167	1	shim s = 9.6
110	04424444	1	shim s = 9.85
110	04424445	1	shim s = 9.95
110	04424446	1	shim s = 10.05
110	04424447	1	shim s = 10.15
110	04435222	1	shim s = 10.35
110	0.010.2858.0	1	shim s = 10.25
110	0.010.2858.1	1	shim s = 10.45
110	0.010.2858.2	1	shim s = 10.50
110	0.010.2859.0	1	shim s = 10.55
110	0.010.2859.1	1	shim s = 10.60
120	04416082	1	roller bearing
130	0.900.1378.8	1	shim
130	04417146	1	shim s = 3.4
130	04417147	1	shim s = 3.35
130	04417148	1	shim s = 3.3
130	04417149	1	shim s = 3.25
130	04417150	1	shim s = 3.2
130	04417151	1	shim s = 3.15
130	04417152	1	shim s = 3.1
130	04417153	1	shim s = 3.45
130	04417154	1	shim s = 3.50
130	04417155	1	shim s = 3.55
130	04417156	1	shim s = 3.60
130	04417157	1	shim s = 3.65
130	04417158	1	shim s = 3.70
130	04424442	1	shim s = 2.90

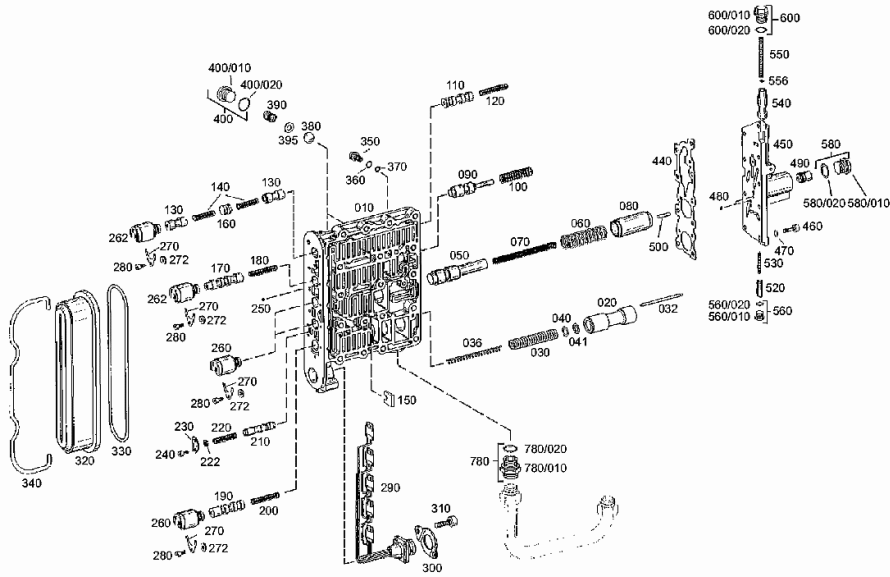
LUBRICANT OIL SUPPLY - [2093 009 100]

Fig.	Code	QTY	Name
60	02968175	1	'o' ring 15x2
70	04415922	1	tube
80	0.010.2622.0	2	gasket 22 x 27
90	04415923	1	pipe union 18 DIN 7643



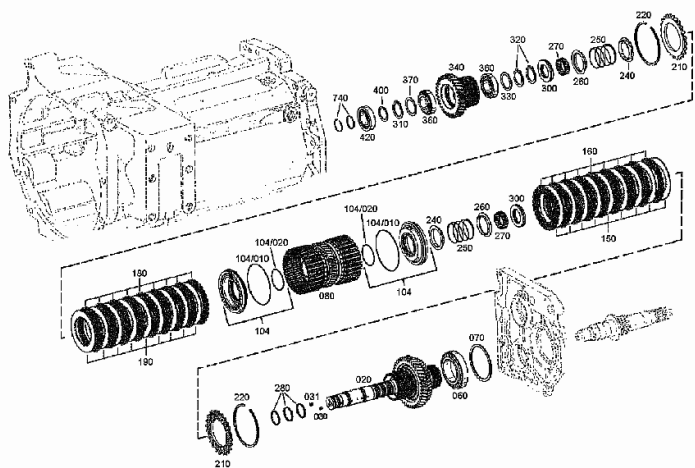
ADJUSTER INSTRUMENT - [2093 009 100]

Fig.	Code	QTY	Name
580.20	0.010.2619.1	1	'o' ring 17x2
600	04434337	1	plug
600.10	04416852	1	screw
600.20	02968175	1	'o' ring 15x2
640	0.900.0803.3	1	plate
644	04416857	1	diaphragm
650	04416858	1	washer
652	04416859	1	gasket 7x1.5
660	04416941	1	ball
780	04434339	1	tongue
780.10	04416944	1	tongue
780.20	04416021	1	'o' ring 27x2.5



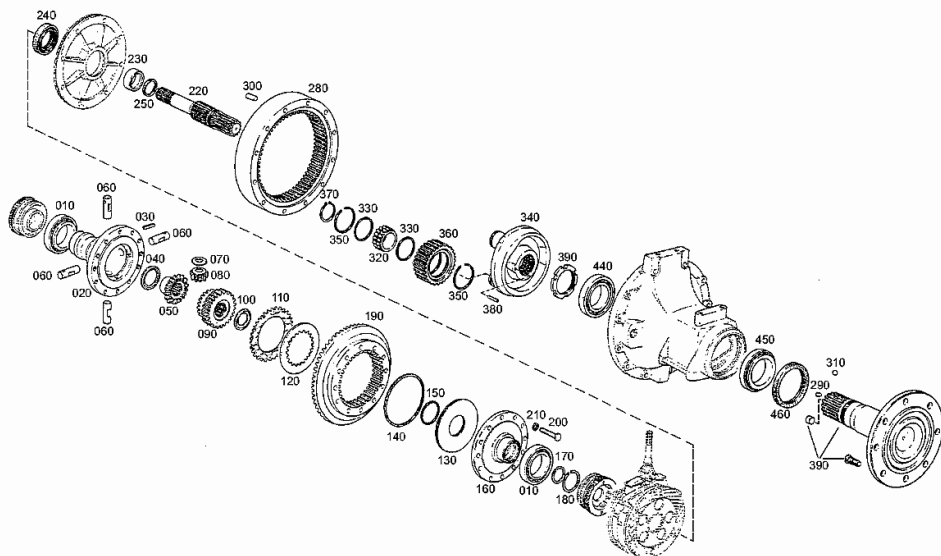
Section: D0 - TRANSMISSION
SPLITTER - [2093 009 100]

Fig.	Code	QTY	Name
590	04416967	8	clutch disc
600	04416760	8	clutch disc AV 35
620	04416967	8	clutch disc
630	04416364	4	ring 40x2
660	0.010.3256.1	1	roller bearing (...) <-
660	0.900.1378.0	1	roller bearing -> (...)
700	04416975	1	'o' ring
710	0.900.0885.0	1	gear z=47
720	04416110	1	roller bearing
730	0.900.1379.4	1	washer
730	04417077	1	washer mm 1.7
730	04417078	1	washer mm 1.75
730	04417079	1	washer mm 1.80
730	04417080	1	washer mm 1.85
730	04417081	1	washer mm 1.90
730	04417082	1	washer mm 1.95
730	04417083	1	washer mm 2.00
730	04417084	1	washer mm 2.05
730	04417085	1	washer mm 2.10
730	04417086	1	washer mm 2.15
730	04417087	1	washer mm 2.20
730	04417088	1	washer mm 2.25
730	04417089	1	washer mm 2.30
730	04417090	1	washer mm 2.35
730	04417091	1	washer mm 2.40
730	04417092	1	washer mm 2.45
730	04417093	1	washer mm 2.50
730	0.010.3822.0	1	washer mm 2.55
730	0.010.3822.1	1	washer mm 2.60
730	0.010.3822.2	1	washer mm 2.65
730	0.010.3823.0	1	washer mm 2.70
730	0.010.3823.1	1	washer mm 2.75
730	0.010.3823.2	1	washer mm 2.80
740	04415761	2	ring 35x2



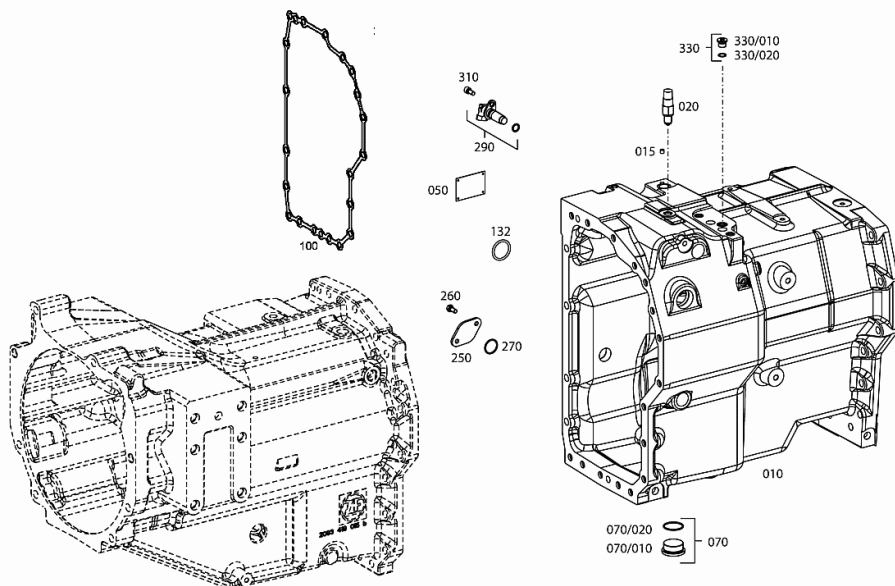
Section: D0 - TRANSMISSION
DIFFERENTIAL - [2093 009 100]

Fig.	Code	QTY	Name
10	0.010.3580.1	2	roller bearing
20	0.010.2889.1	1	differential carrier
30	0.900.0498.1	1	roll pin
40	0.900.0498.2	1	slewing ring
50	0.010.2942.2	1	crown wheel
60	0.010.2890.1	1	pin
70	0.010.3845.2	1	thrust plate
80	0.010.3846.0	1	planet gear
90	0.010.2891.1	1	crown wheel Z = 18
100	0.900.0124.3	1	slewing ring
110	0.010.3848.2	6	disc (...) <- disc Z = 46 -> (...)
120	0.900.1377.2	5	disc Z = 41
130	0.010.3846.1	1	piston
140	0.900.0451.5	1	'o' ring
150	0.900.0268.5	1	'o' ring
160	04417604	1	box
170	0.900.0800.7	1	ring 55 x 2.5
180	0.900.0800.8	1	ring 70 x 3.0
190	04423724	1	crown wheel z = 63
200	0.010.3729.2	12	screw m 12 x 80
210	0.900.0277.9	12	washer
220	0.010.2889.0	2	shaft Z = 16
230	04417315	2	bushing
240	04417316	2	oil seal
250	0.900.0278.9	2	ring
280	04419745	2	crown wheel (...) <- crown wheel -> (...)
280	0.900.1363.9	2	crown wheel -> (...)
290	0.010.3588.2	2	grain
300	0.900.0278.2	4	pin 12 x 24
310	04417322	2	ball
320	0.900.0282.8	6	roller bearing
330	0.900.0282.6	12	thrust plate 72x80.8x1
340	0.900.0954.9	2	spider
350	0.900.0278.1	12	circlip
360	04419747	6	planet gear Z = 49 (...) <- planet gear -> (...)
360	0.900.1364.0	6	planet gear -> (...)
370	0.900.0289.5	6	circlip



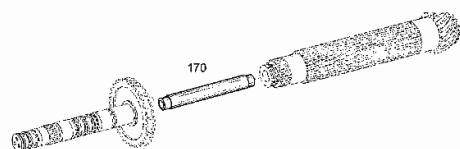
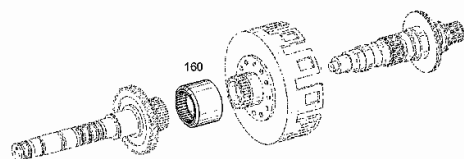
Section: D0 - TRANSMISSION
GEARBOX - [2093 009 105]

Fig.	Code	QTY	Name
10	0.900.0985.3	1	gear box (...) <-
10	0.900.0985.4	1	gear box -> (...) - (...) <-
10	0.900.0954.7	1	gear box -> (...)
15	0.900.0952.5	1	plug
20	04416066	1	switch
50	04415260	1	plate
70	04435197	1	plug
70.10	04438472	1	plug m 42 p.1.5
70.20	02315144	1	'o' ring 38x2.5
100	04415679	1	gasket (...) <-
132	0.010.2845.2	1	'o' ring 38x4
250	0.010.3257.1	1	flange
260	04434497	2	screw m 8 x 18
270	0.010.3257.2	1	gasket 28x2.5
290	04438450	1	speed sensor
290.10	04417747	1	'o' ring 15.54x2.62
310	0.010.2875.0	1	screw m 8 x 18
330	04435199	1	screw
330.10	04436330	1	screw m 16 p.1.5
330.20	02315162	1	'o' ring 13x2



SUPER REDUCTION GEAR UNIT - [2093 009 105]

Fig.	Code	QTY	Name
160	04416816	1	bushing
170	04423259	1	tube



CLICK HERE TO **DOWNLOAD** THE COMPLETE MANUAL

- Thank you very much for reading the preview of the manual.
- You can download the complete manual from: www.heydownloads.com by clicking the link below



- Please note: If there is no response to CLICKING the link, please download this PDF first and then click on it.

CLICK HERE TO **DOWNLOAD** THE COMPLETE MANUAL