

EXPLORER 95

ACCESSORIES

GENERAL

AUXILIARY SERVICE CONTROL VALVE FEED BOSCH.....	0E.00.1
AUXILIARY SERVICE CONTROL VALVE FEED SALAMI.....	0E.00.2
4-WAY AUXILIARY DISTRIBUTOR BOSCH.....	0E.00.3
4-WAY HYDRAULIC CONTROL VALVE BOSCH.....	0E.00.4
4/8-WAY AUXILIARY DISTRIBUTOR SALAMI.....	0E.00.5
4-WAY AUXILIARY DISTRIBUTOR SALAMI.....	0E.00.6
4-WAY HYDRAULIC CONTROL VALVE SALAMI.....	0E.00.7
8-WAY AUXILIARY DISTRIBUTOR BOSCH.....	0E.00.8
8-WAY AUXILIARY DISTRIBUTOR BOSCH.....	0E.00.9
8-WAY AUXILIARY DISTRIBUTOR SALAMI.....	0E.00.10
8-WAY AUXILIARY DISTRIBUTOR SALAMI.....	0E.00.11
BRACKET.....	0E.00.12
4-WAY QUICK COUPLERS.....	0E.00.13
8-WAY QUICK COUPLERS.....	0E.00.14
8-WAY QUICK COUPLERS.....	0E.00.15
4-WAY CONTROL VALVES - OIL RECOVERY.....	0E.00.16
8-WAY CONTROL VALVES - OIL RECOVERY.....	0E.00.17
OIL REGULATOR CONTROL.....	0E.00.18
3-POINT LINKAGE WITH AUTOMATIC COUPLERS A = mm 30.....	0E.00.19
3-POINT LINKAGE WITH AUTOMATIC COUPLERS A = mm 34.....	0E.00.20
3 POINT HITCH.....	0E.00.21
3 POINT HITCH.....	0E.00.22
3-POINT HITCH - ADJUSTABLE RH LIFT RODS.....	0E.00.23
THREE-POINT HITCH - MANUAL LATERAL STABILIZERS.....	0E.00.24
BRACKET FOR TOP LINK SUPPORT SPRING.....	0E.00.25
3 POINT HITCH.....	0E.00.26
3 POINT HITCH.....	0E.00.27
3-POINT HITCH WITH HYDRAULIC LIFT ROD dx/rh/re.....	0E.00.28
THREE-POINT HITCH - AUTOMATIC LATERAL STABILIZERS.....	0E.00.29
TOWING BAR.....	0E.00.30
FRONT TOWING HITCH.....	0E.00.31
FRONT TOWING HITCH.....	0E.00.32
FRONT TOWING HITCH.....	0E.00.33
REAR TOWING HITCH.....	0E.00.34
DRAWBAR COUPLING CAT: "D" - ITALY.....	0E.00.35
REAR TOWING HITCH CAT: "D".....	0E.00.36
REAR TOWING HITCH CAT: "D2" GRASSI.....	0E.00.37
REAR TOWING HITCH CAT: "D2".....	0E.00.38
REAR TOWING HITCH CAT: "D2".....	0E.00.39
REAR TOWING HITCH CAT. " D2 ".....	0E.00.40

CLICK HERE TO **DOWNLOAD** THE COMPLETE MANUAL

- Thank you very much for reading the preview of the manual.
- You can download the complete manual from: www.heydownloads.com by clicking the link below



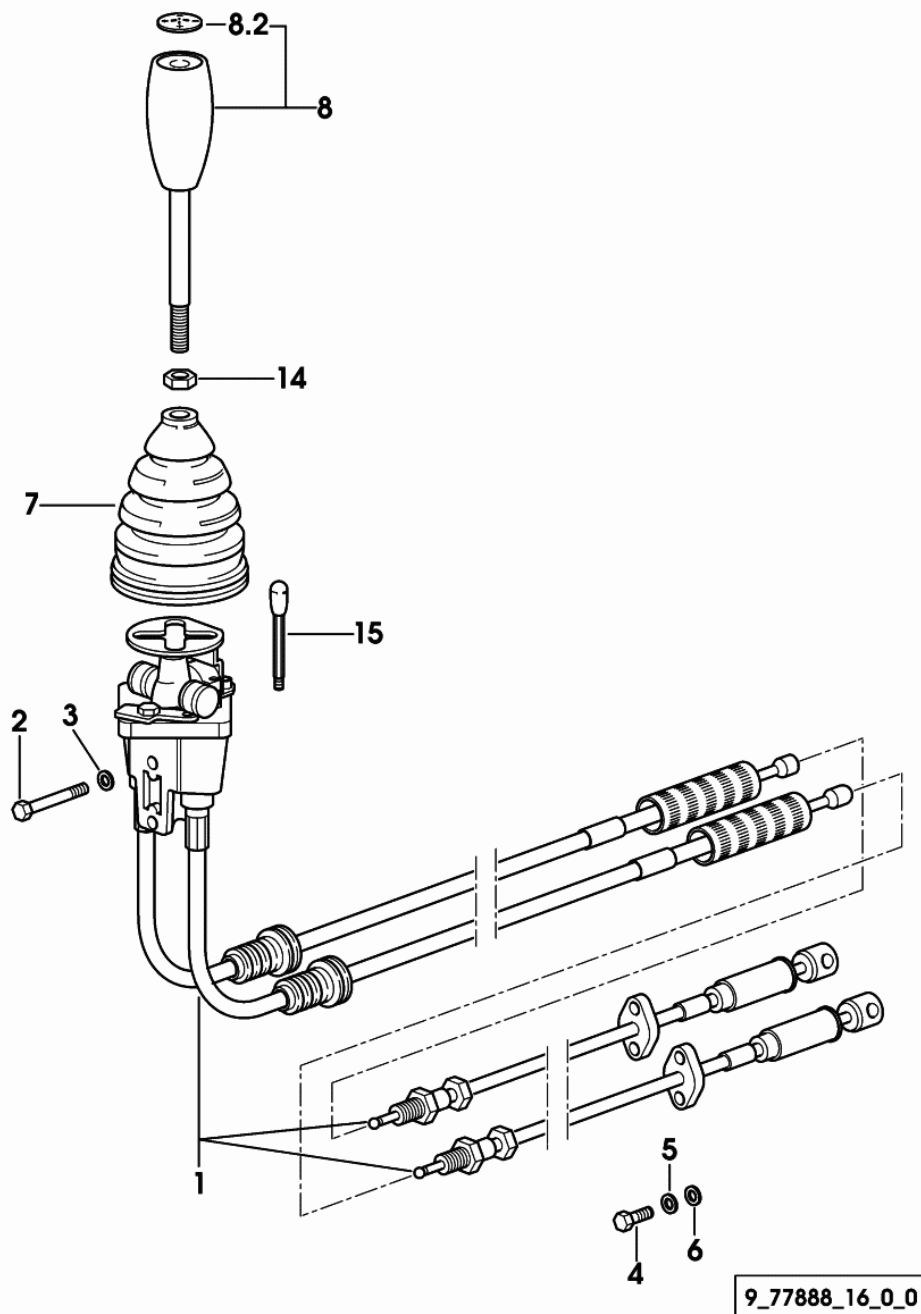
- Please note: If there is no response to CLICKING the link, please download this PDF first and then click on it.

CLICK HERE TO **DOWNLOAD** THE COMPLETE MANUAL

Section: ACCESSORIES

4-WAY HYDRAULIC CONTROL VALVE SALAMI

Fig.	Code	QTY	Name
1	0.010.8216.4/40	1	lever COMPONENT PARTS SEE COMPONENTS LIST ☞ 0.010.8216.4/40 ☞ 0E.00.128
2	2.0112.219.2	2	screw m 8 p.1.25x50
3	2.1470.004.2	2	washer 8
4	2.0312.006.2	4	screw m 5 p.0.8 x 20
5	2.1474.006.2	4	spring washer 5
6	2.1310.001.2	4	flat washer 5.3
7	0.010.8917.0	1	boot
8	0.011.1306.3/10	1	lever
8.2	0.011.1303.0/10	1	cap
14	2.1011.106.2	1	nut m 10 p.1.5
15	0.010.8919.2/10	1	stop



Section: ACCESSORIES

8-WAY CONTROL VALVES - OIL RECOVERY

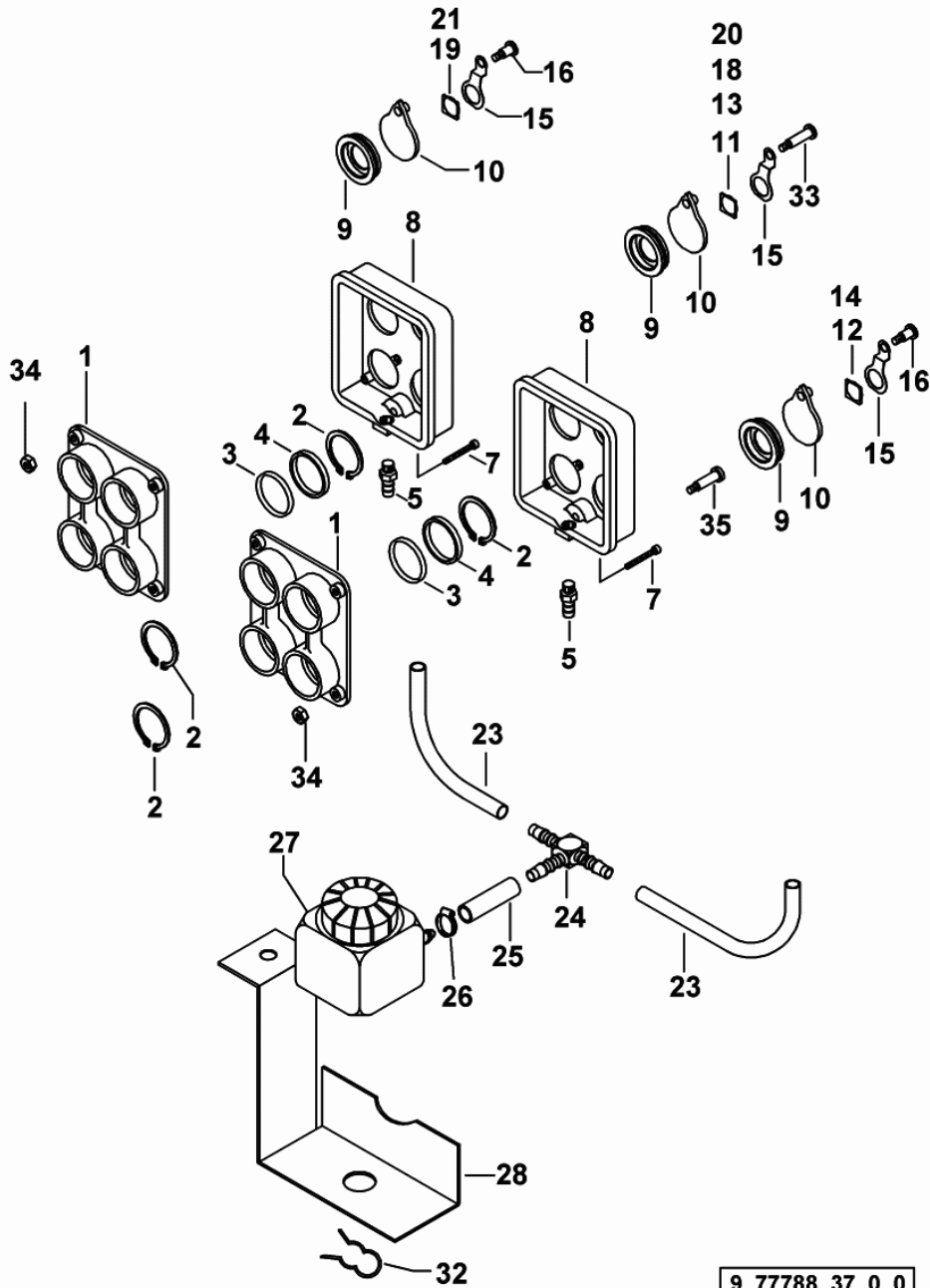


Fig.	Code	QTY	Name
1	0.011.6242.0	2	flange
2	2.1410.015.2	16	circlip 38
3	2.1531.095.0	8	ring 36.17x 2.62
4	2.1549.462.2	8	spacer 38x47,5x5
5	2.3249.031.2	2	pipe fitting m 10
7	2.0312.112.2	2	screw m 6 p.1 x 35
8	0.011.6241.0	2	cover
9	0.010.8475.0/10	8	dust guard
10	0.011.6303.0	8	small cover
11	0.010.8481.0	1	warning light + BLUE
12	0.010.8482.0	1	warning light - BLUE
13	0.010.8483.0	1	warning light + YELLOW
14	0.010.8484.0	1	warning light - YELLOW
15	0.011.6304.0/10	8	small leaf spring
16	2.0399.264.3	4	screw m 6 x 20
18	0.010.8477.0	1	warning light + RED
19	0.010.8478.0	1	warning light - RED
20	0.010.8479.0	1	warning light + GREEN
21	0.010.8480.0	1	warning light - GREEN
23	0.012.9660.0	0	tube
24	2.3249.012.0	1	pipe fitting T
25	0.012.9660.0	0	tube
26	2.6851.019.0	1	clamp Ø 13/20
27	0.011.0212.3	1	tank
			COMPONENT PARTS SEE COMPONENTS LIST
			☞ 0.011.0212.3
			☞ 0E.00.126
28	0.011.3192.0	1	bracket
32	0.171.6656.0	1	small spring
33	2.0399.261.3	4	screw m 5 x 35
34	2.1011.102.2	8	nut m 5 p.0.7
35	2.0399.265.3	4	screw m5x42

Section: ACCESSORIES

3 POINT HITCH

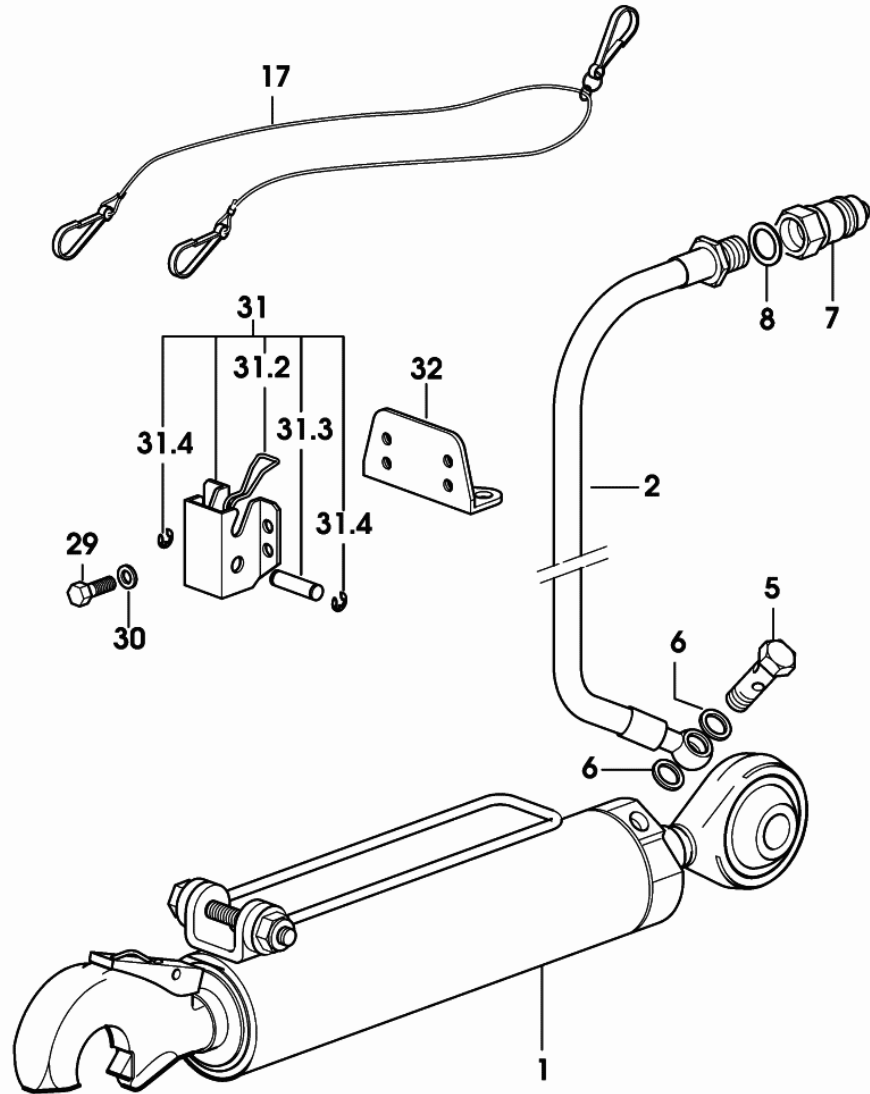


Fig.	Code	QTY	Name
1	0.010.0883.4/20	1	cylinder COMPONENT PARTS SEE COMPONENTS LIST ☞ 0.010.0883.4/20 ☞ 0E.00.136
2	0.010.9143.3	2	tube
5	2.3335.007.2	2	pipe union m 16 p.1.5
6	2.1560.012.0	4	gasket 16.2 x 22 x 1.5
7	0.98309.51.3/10	2	coupling 1/2
8	2.1560.054.0	2	gasket 21 x 26
17	0.009.3534.0	1	cable
29	2.0112.203.2	4	screw m 8 p.1.25 x 12
30	2.1474.009.2	4	spring washer 8
31	0.009.3492.4/40	1	stop
31.2	2.4099.088.2/10	1	spring
31.3	2.1699.386.2	1	pin 12x42
31.4	2.1410.002.1	2	circlip 12
32	0.011.2809.0	1	bracket

9_77858_10_0_0

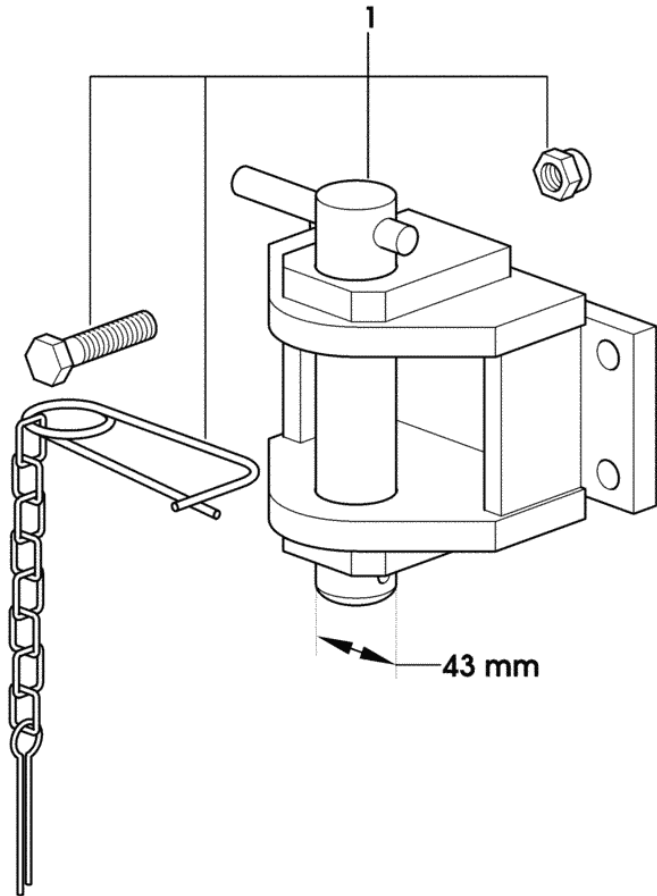
REAR TOWING HITCH CAT: "D2" GRASSI

Fig.	Code	QTY	Name
------	------	-----	------

Notes:

1013 <- X EXPLORER 75 1184 <- X EXPLORER 85 1716 <- X EXPLORER 95

1	0.011.5643.4	1	clevis CAT. " D2 " COMPONENT PARTS SEE COMPONENTS LIST ☞ 0.011.5643.4 ☞ 0E.00.142
---	--------------	---	---



9_77831_72_0_0

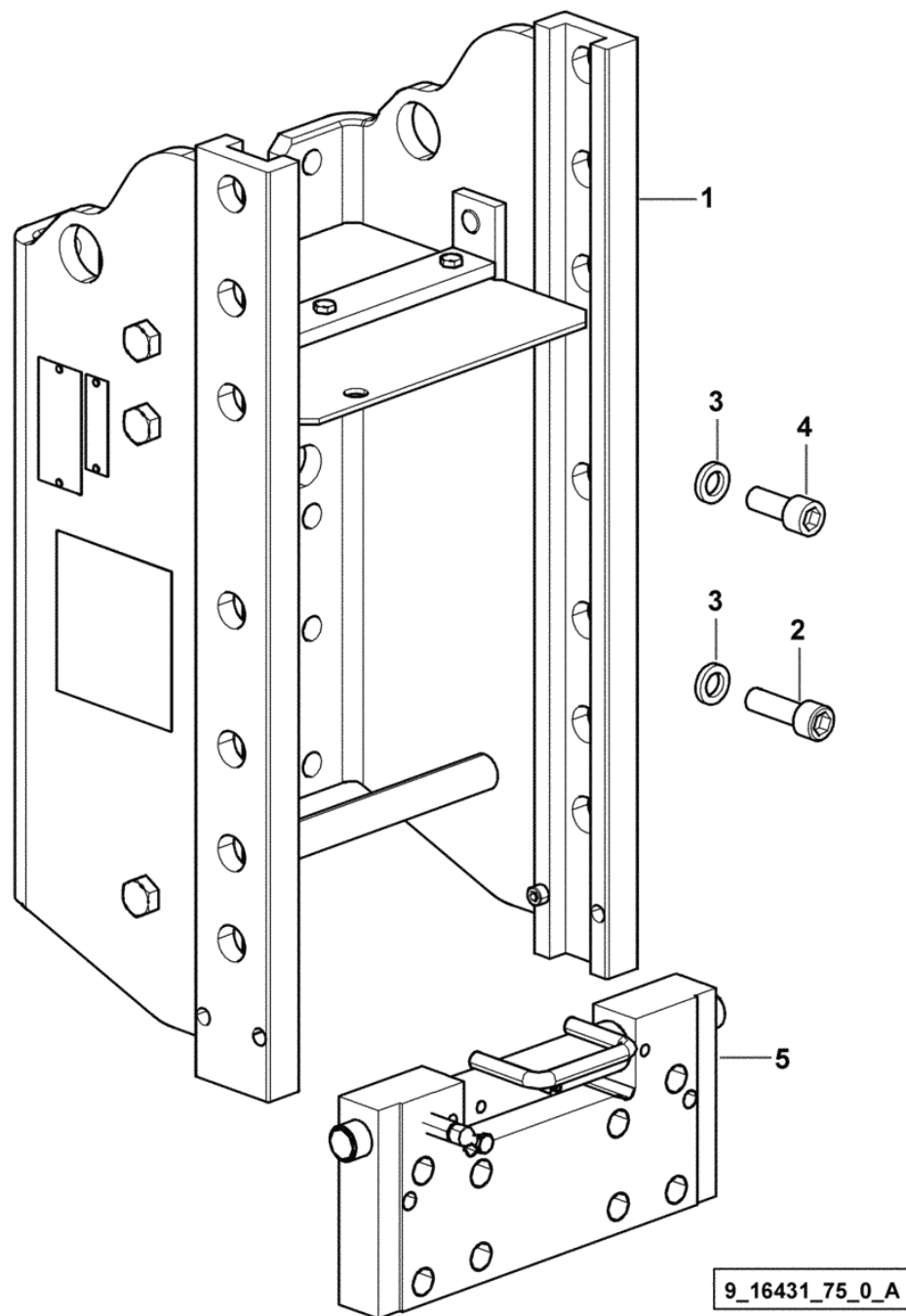
Section: ACCESSORIES
REAR TOWING HITCH CEE


Fig.	Code	QTY	Name
------	------	-----	------

Notes:

-> 1014 X EXPLORER 75 -> 1185 X EXPLORER 85 -> 1717 X EXPLORER 95

1	0.014.4484.3/10	1	chassis frame - V.ORLANDI - COMPONENT PARTS SEE COMPONENTS LIST ☞ 0.014.4484.3/10 ☞ 0E.00.154
2	2.0313.616.2	10	screw m 16 p.2x50
3	2.1474.013.2	12	washer 16
4	2.0314.614.2	2	screw m 16 p.2 x 40
5	0.014.4485.3	1	plate - V.ORLANDI - COMPONENT PARTS SEE COMPONENTS LIST ☞ 0.014.4485.3 ☞ 0E.00.155

Section: ACCESSORIES
PICK-UP-HITCH

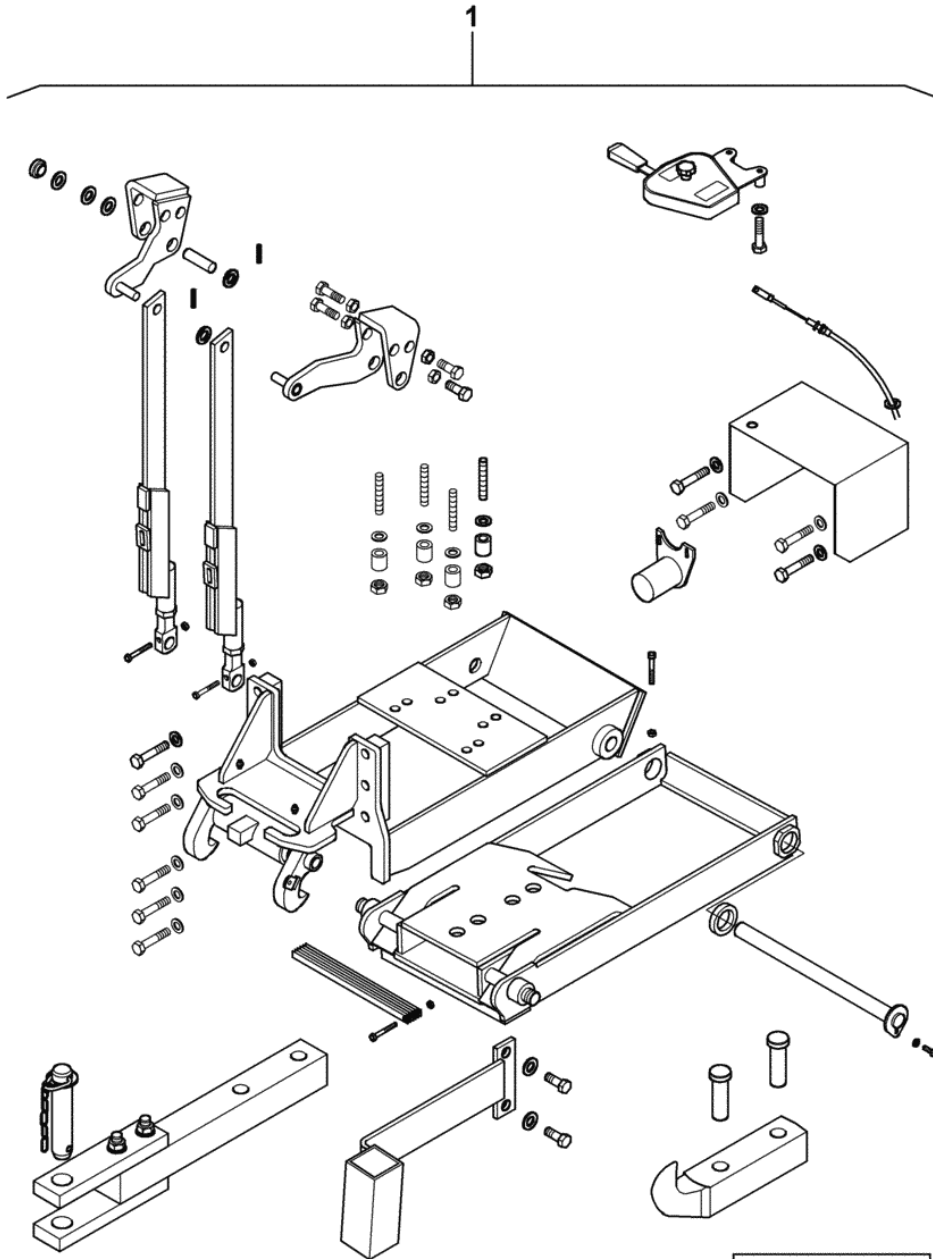


Fig.	Code	QTY	Name
1	0.012.3998.4/20	1	clevis 1013 <- X EXPLORER 75 1188 <- X EXPLORER 85 1739 <- X EXPLORER 95 COMPONENT PARTS SEE COMPONENTS LIST ☞ 0.012.3998.4/20 ☞ 0E.00.164
1	0.012.3998.4/30	1	clevis -> 1014 X EXPLORER 75 -> 1189 X EXPLORER 85 -> 1740 X EXPLORER 95 COMPONENT PARTS SEE COMPONENTS LIST ☞ 0.012.3998.4/30 ☞ 0E.00.165

9_77831_60_0_0

Section: ACCESSORIES
HYDRAULIC BREAKING FOR TRAILER - ITALY -

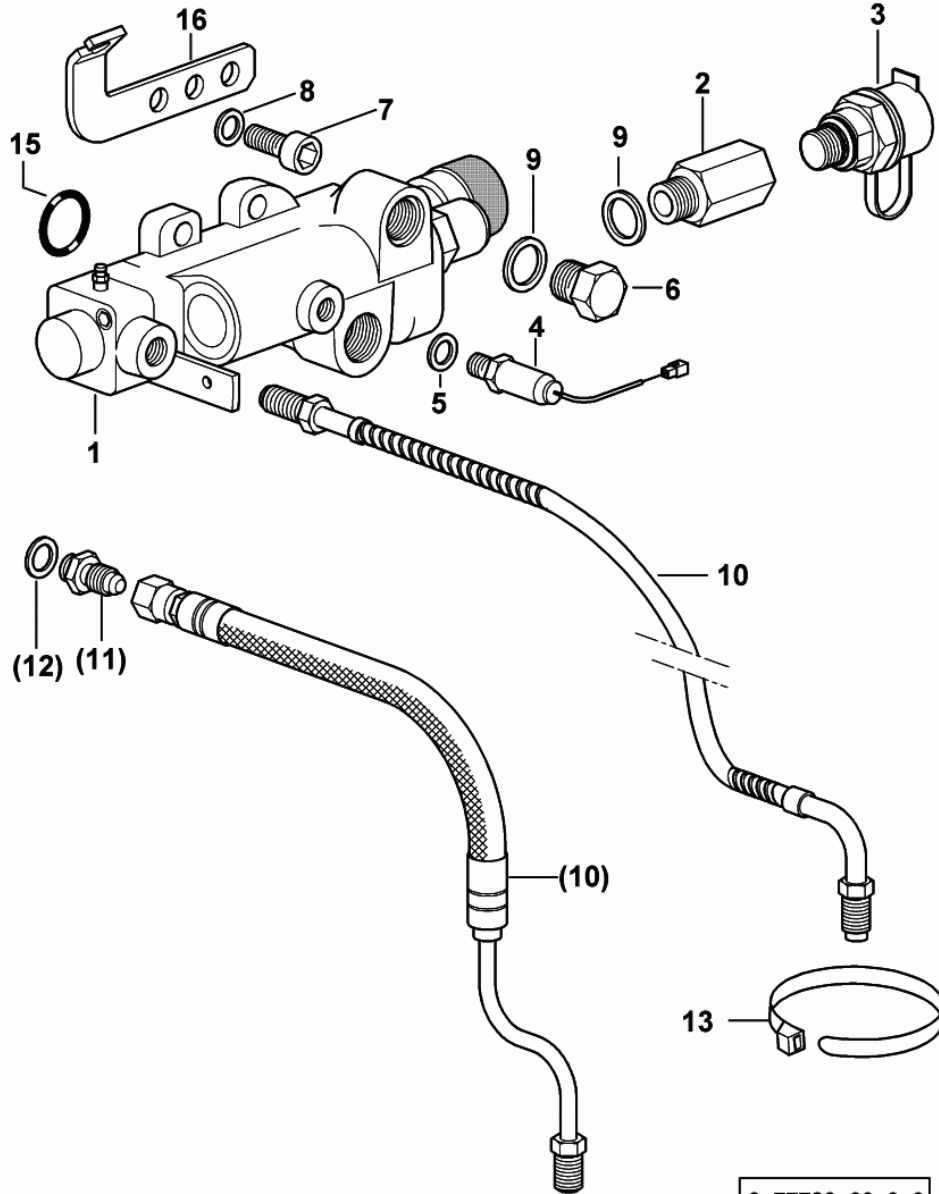


Fig.	Code	QTY	Name
1	2.3729.210.0/20	1	valve COMPONENT PARTS SEE COMPONENTS LIST ☞ 2.3729.210.0/20 ☞ 0E.00.167
2	2.3249.064.2	1	pipe fitting m 18
3	0.011.0433.4/10	1	coupling
4	2.7099.960.0	1	pressure switch 11 Bar
5	2.1560.006.0	1	gasket 10.2 x 16
6	2.3110.405.2	1	plug m 18 p.1.5 x 15
7	2.0312.308.2	3	screw m 10 p.1.5 x 25
8	2.1480.015.1	3	washer 10
9	2.1560.014.0	2	gasket 18.2 x 24 x 1.5
10	0.011.1982.3/10	1	tube 1007 <- X EXPLORER 75 1043 <- X EXPLORER 85 1044 <- X EXPLORER 95
10	0.014.0408.3/20	1	tube -> 1008 X EXPLORER 75 -> 1044 X EXPLORER 85 -> 1045 X EXPLORER 95
11	2.3339.447.2/10	1	pipe fitting m 12 p.1.25
12	2.1560.008.0	1	gasket 12.2 x 18
13	2.6852.203.0	1	clamp 292 x 4.8
15	2.1531.062.0	2	'o' ring 23.81 x 2.62
16	0.011.2368.0/20	1	bracket

9_77789_00_0_0

Section: ACCESSORIES

AIR BRAKING FOR 'ITALY' TRAILER

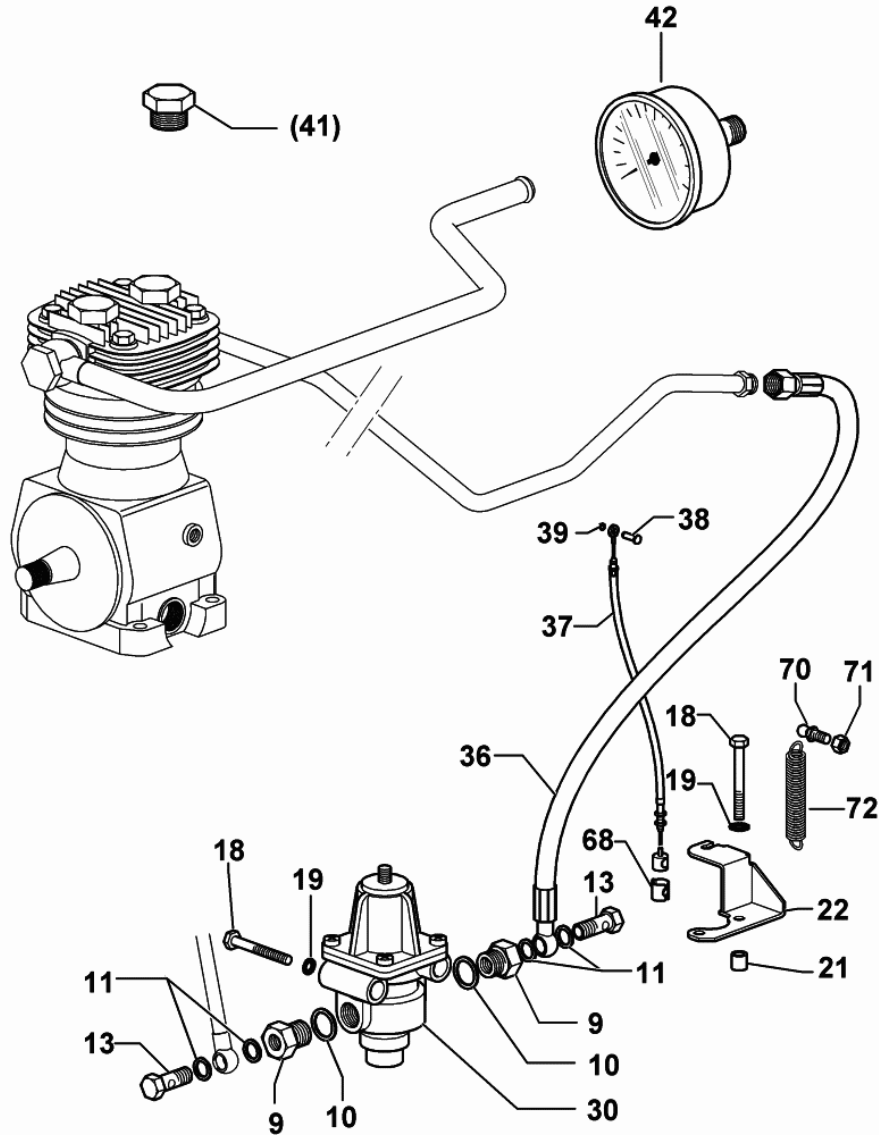


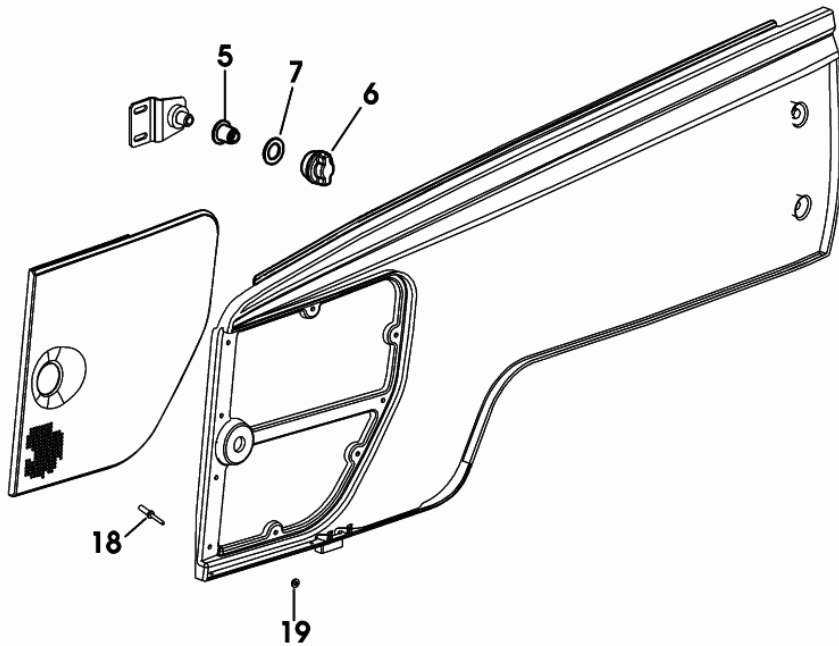
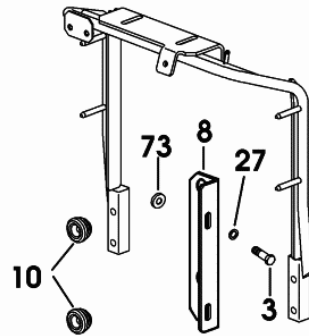
Fig.	Code	QTY	Name
9	2.3339.766.2	5	reduction m 22 p.1.5/m 14 p.1.5
10	2.1560.017.0	5	gasket 22.2 x 27
11	2.1560.010.0	12	gasket 14.2 x 20 x 1.5
13	2.3332.004.2	3	pipe union m 14 p.1.5 x 27
18	2.0112.223.2	4	screw m 8 p.1.25x70
19	2.1470.004.2	4	washer 8
21	2.1579.825.0	2	spacer
22	0.011.3979.2/10	1	bracket
30	04398756	1	valve
COMPONENT PARTS SEE COMPONENTS LIST			
☞ 04398756			
☞ 0E.00.173			
36	0.011.4045.3	1	tube
37	0.011.4121.3	1	cable
38	2.1699.307.2	1	pin 23x27.5x12
39	2.1430.008.7	1	circlip 7
42	0.011.9433.0	1	air gauge 10 bar
68	0.257.6757.0	1	spring
70	0.009.8760.0	1	ball joint
71	2.1120.005.2	1	nut m 8 p.1.25
72	2.4049.149.0	1	spring

9_77889_20_0_B

4WD - SELF-ADJUSTING FRONT FENDERS - FOR TYPES WITH "S.B.A. SYSTEM" mm 410.....	07.00.47
4WD - SELF-ADJUSTING FRONT FENDERS mm 470.....	07.00.48
4WD - SELF-ADJUSTING FRONT FENDERS - FOR TYPES WITH "S.B.A. SYSTEM" mm 470.....	07.00.49
SUPPORTS.....	07.00.50
PLATFORM.....	07.00.51
MUDGUARDS EXTENSIONS - L = mm 180.....	07.00.52
MUDGUARDS EXTENSIONS - L = mm 240.....	07.00.53
FENDERS - FOR MODELS WITH PLATFORM.....	07.00.54
FENDERS - FOR MODELS WITH CAB.....	07.00.55
FLOOR PLUG.....	07.00.56
LICENCE PLATE HOLDER.....	07.00.57
MAT FOR PLATOFRM.....	07.00.58
TRIANGLE SUPPORT.....	07.00.59
HOLDING DEVICE - WHEEL CHOCK EXPORT CH.....	07.00.60
CHOCK.....	07.00.61
HOLDING DEVICE - WHEEL CHOCK - FOR MODELS WITH PLATFORM.....	07.00.62
HOLDING DEVICE - WHEEL CHOCK - FOR MODELS WITH CAB.....	07.00.63
LICENCE PLATE HOLDER EXPORT D.....	07.00.64
LICENCE PLATE HOLDER EXPORT D.....	07.00.65
LADDER.....	07.00.66
BATTERY SUPPORT.....	07.00.67
SAFETY ARCH.....	07.00.68
REARVIEW MIRROR dx/rh/re.....	07.00.69
REARVIEW MIRROR sx/lh/li.....	07.00.70
SPEED LABEL - 40 KM/H.....	07.00.71
SPEED LABEL - 40 KM/H - REFLEX.....	07.00.72
PLATES.....	07.00.73
PLATES.....	07.00.74
INFORMATION PLATE.....	07.00.75
PLATES.....	07.00.76
SPEED LABEL 30 Km/h.....	07.00.78
SPEED LABEL 40 Km/h.....	07.00.80
SPEED DATA PLATES 30 Km/h.....	07.00.81
SPEED DATA PLATES 40 Km/h.....	07.00.82
SPEED DATA PLATES 40 Km/h EXPORT U.K.....	07.00.83
AIR CLEANER EXTENSION.....	07.00.84
CYCLONE AIR CLEANER EXTENSION.....	07.00.85
ENGINE HOOD GASKETS.....	07.00.86
AIR CLEANER HOSE.....	07.00.88
DRY AIR FILTER 8 ".....	07.00.89
FUEL TANK.....	07.00.90
TANK SUPPORTS.....	07.00.91
SEAT SUPPORT PLATE.....	07.00.92
SEAT SPRINGING.....	07.00.93

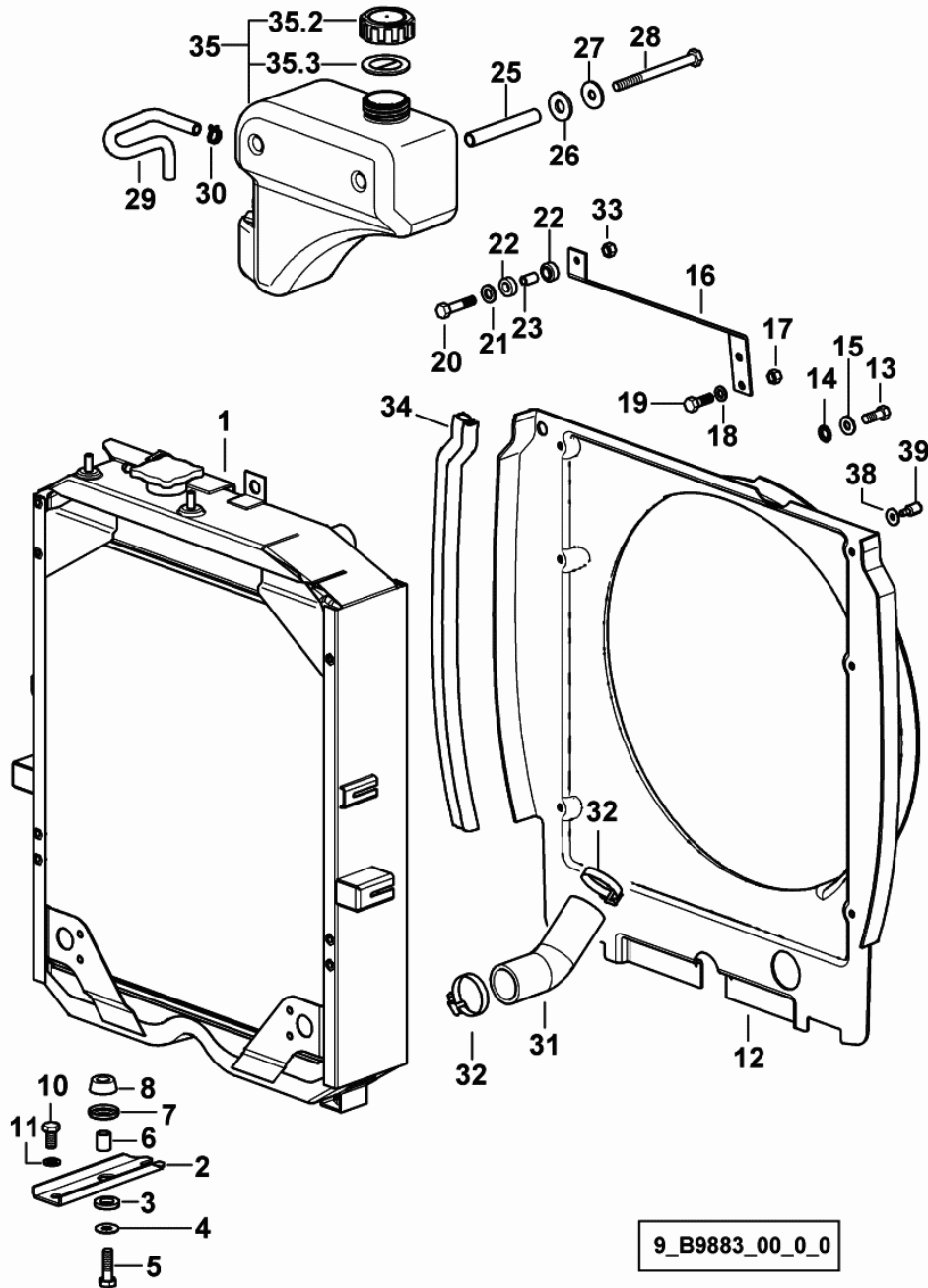
Section: BODY WORK
HOOD - SUPPORTS

Fig.	Code	QTY	Name
3	2.0112.206.2	2	screw m 8 p.1.25 x 18
5	2.1559.337.0	1	bushing
6	0.008.3426.2/30	1	knob
7	2.1599.658.0	1	washer
8	0.012.5612.0/20	1	bracket sx/lh/li
10	0.009.6531.0/30	2	block
18	2.1899.074.0	9	rivet 4.7
19	2.1310.001.2	9	flat washer 5.3
27	2.1470.004.2	2	washer 8
73	2.1579.837.2	2	spacer 8 x 25 x 3 1013 <- X EXPLORER 75 1104 <- X EXPLORER 85 1269 <- X EXPLORER 95



9_D8972_16_0_0

Section: BODY WORK
WATER COOLER



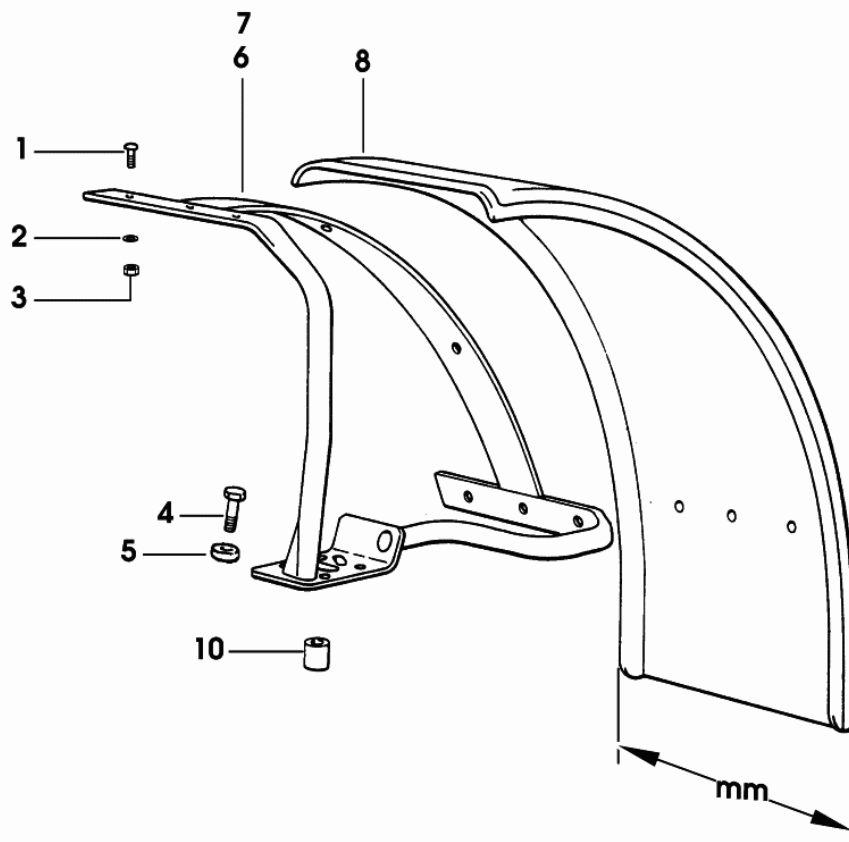
9_B9883_00_0_0

Fig.	Code	QTY	Name
1	0.013.3793.4/20	1	water cooler COMPONENT PARTS SEE COMPONENTS LIST ☞ 0.013.3793.4/20 ☞ 07.00.49
2	0.295.8313.0/20	2	support
3	0.136.7387.0	2	rubber plug 15x27x5
4	2.1599.044.2	2	snoulder 10.5x25.5x1.5
5	2.0112.313.2	2	screw m 10 p.1.5 x 35
6	2.1579.090.2	2	spacer 10.1x15x18
7	0.136.7384.0	2	cup
8	0.136.7385.0	2	rubber plug
10	2.0112.307.2	4	screw m 10 p.1.5 x 20
11	2.1470.006.2	4	lock washer 10
12	0.013.5823.0/10	1	duct
13	2.0112.004.2	2	screw m 6 p.1 x 14
14	2.1470.002.2	2	washer 6, d128
15	2.1310.002.2	2	washer 6.6, d125
16	0.013.5317.0	1	bracket
17	2.1011.105.2	2	nut m 8 p.1.25
18	2.1470.004.2	2	washer 8
19	2.0112.207.2	2	screw m 8 p 1.25 x 20
20	2.0112.011.2	1	screw m 6 p.1x30
21	2.1312.003.2	1	washer 6
22	0.035.8459.0	2	rubber plug
23	2.1579.322.0	1	spacer 10.5x6.5x17
25	2.1549.429.2	2	spacer
26	2.1569.143.0	2	gasket
27	2.1312.005.2	2	washer 10.2
28	2.0112.333.2	2	screw m 10 p.1.5x120
29	0.013.5827.0	1	tube
30	2.6859.083.2	2	clamp
31	0.013.5760.0	1	sleeve
32	2.6851.004.0	2	clamp Ø 32/50
33	2.1011.003.2	1	nut m 6 p.1, d934
34	0.013.9207.0	2	gasket
35	0.013.6102.4/20	1	cup
35.2	0.013.7584.0	1	plug
35.3	2.1569.533.0	1	gasket
38	2.1312.003.2	4	washer 6
39	0.467.7250.0/10	4	pin

Section: BODY WORK

4WD - FRONT MUDGUARDS mm 355

Fig.	Code	QTY	Name
1	2.0029.503.6	16	screw m 8 x 25
2	2.1470.004.2	16	washer 8
3	2.1011.105.2	16	nut m 8 p.1.25
4	2.0112.423.2	8	screw m 12 p.1.75 x 70
5	2.1599.484.2	8	spacer 13x26x4
6	0.290.7665.2	1	support sx/lh/li
7	0.290.7664.2	1	support dx/rh/re
8	0.255.7632.0/10	2	fender mm 355
10	2.1579.984.2	8	spacer 13x30x25

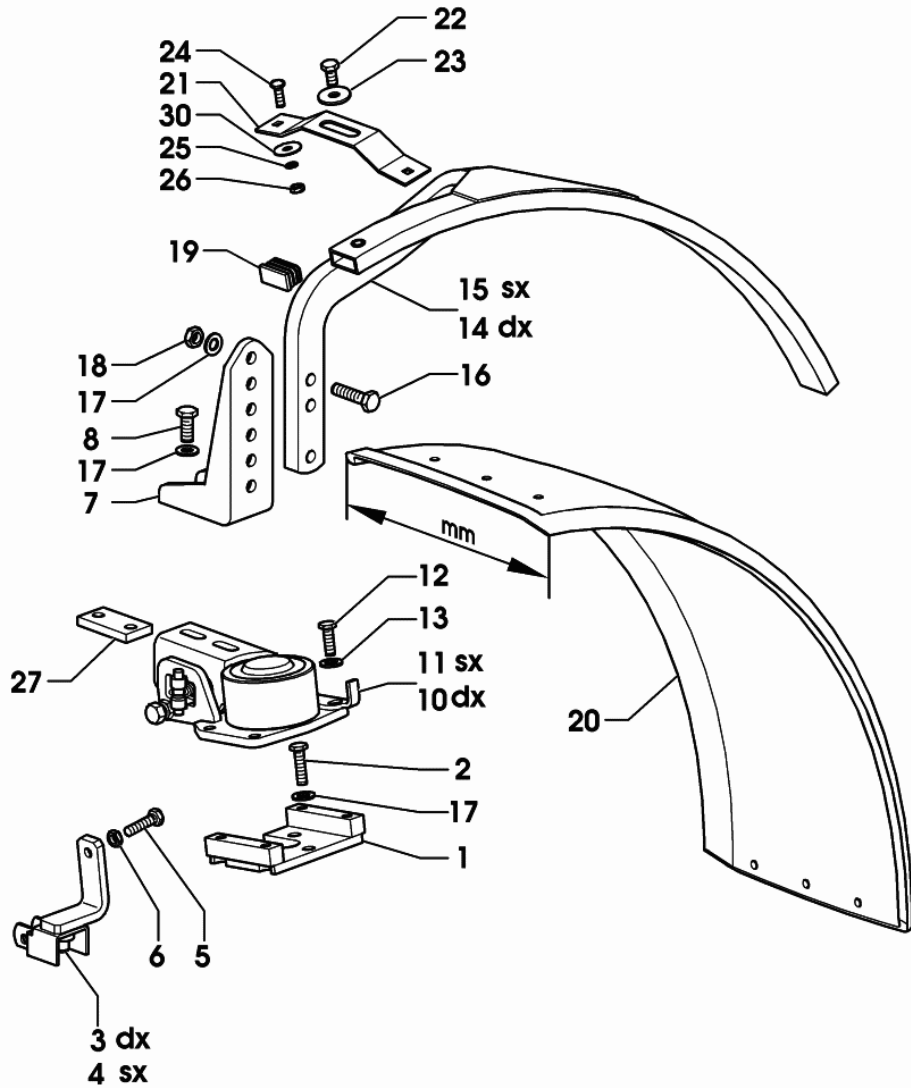


9_40576_15_0_0

Section: BODY WORK

4WD - SELF-ADJUSTING FRONT FENDERS mm 355

Fig.	Code	QTY	Name
1	0.011.3341.2/10	2	plate dx/rh/re
2	2.0112.415.2	6	screw m 12 p.1.75 x 40
3	0.011.1416.3/10	1	bracket dx/rh/re
4	0.011.1428.3/10	1	bracket sx/lh/li
5	2.0112.313.2	2	screw m 10 p.1.5 x 35
6	2.1011.006.2	2	nut m 10 p.1.5
7	0.011.3409.0	2	bracket
8	2.0112.411.2	4	screw m 12 p.1.75 x 30
10	0.011.3452.4/10	1	support dx/rh/re COMPONENT PARTS SEE COMPONENTS LIST ☞ 0.011.3452.4/10 ☞ 07.00.50
11	0.011.3457.4/10	1	support sx/lh/li COMPONENT PARTS SEE COMPONENTS LIST ☞ 0.011.3457.4/10 ☞ 07.00.51
12	2.0112.311.2	8	screw m 10 p.1.5 x 30
13	2.1475.003.2	8	washer 10
14	0.011.3459.2/10	1	chassis frame dx/rh/re
15	0.011.3460.2/10	1	chassis frame sx/lh/li
16	2.0112.417.2	1	screw m 12 p.1.75 x 45
17	2.1475.004.2	8	washer 12
18	2.1011.107.2	4	nut m 12 p.1.75
19	0.010.9844.0	4	plug
20	0.255.7632.0/10	2	fender mm 355
21	0.011.1295.0/10	6	plate
22	2.0112.307.2	6	screw m 10 p.1.5 x 20
23	2.1599.082.0	6	washer 11 x 35 x 3
24	2.0020.205.2	12	screw m 8 p.1.25 x 20
25	2.1470.004.2	12	washer 8
26	2.1011.105.2	12	nut m 8 p.1.25
27	0.011.3407.0/10	2	small plate
30	2.1599.584.2	12	shoulder 9 x 30 x 2



9_77876_22_0_0

Section: BODY WORK

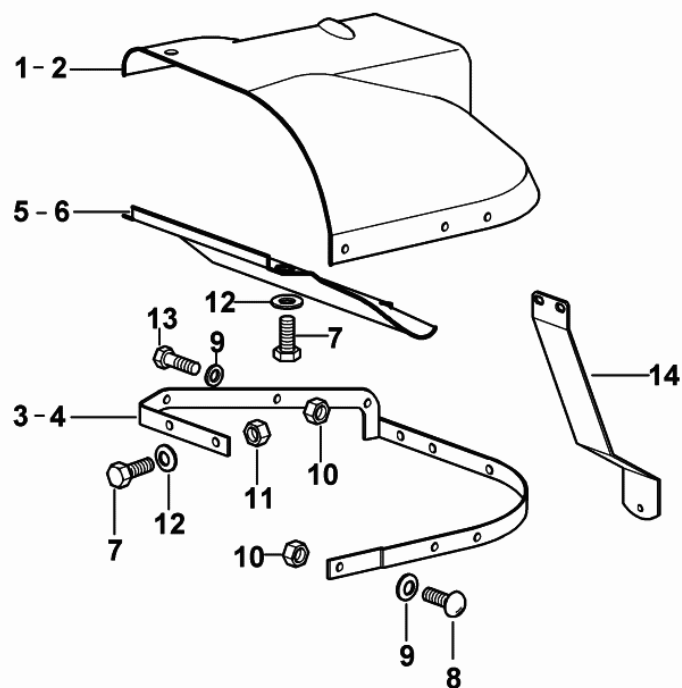
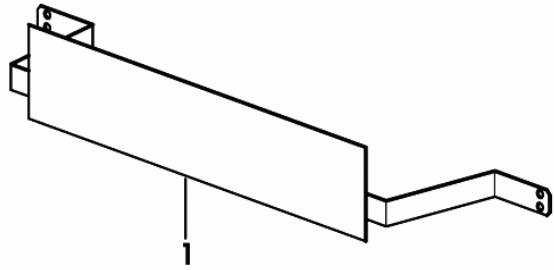
FENDERS - FOR MODELS WITH PLATFORM

Fig.	Code	QTY	Name
1	0.010.7562.3/10	1	splash-guards dx/rh/re
2	0.010.7563.3/10	1	splash-guards sx/lh/li
3	0.010.7560.2	1	support dx/rh/re
4	0.010.7561.2	1	support sx/lh/li
5	0.010.7559.0/20	1	shield sx/lh/li
6	0.010.9045.0/20	1	shield dx/rh/re
7	2.0112.207.2	8	screw m 8 p 1.25 x 20
8	2.0099.014.0/20	14	screw m 6 x 25
9	2.1310.002.2	20	washer 6.6, d125
10	2.1011.103.2	20	nut m 6 p.1
11	2.1011.105.2	4	nut m 8 p.1.25
12	2.1310.004.2	8	flat washer 8.5
13	2.0112.009.2	6	screw m 6 p.1 x 25
14	0.011.0698.0	2	support

9_77876_05_0_0

LICENCE PLATE HOLDER EXPORT D

Fig.	Code	QTY	Name
1	0.011.5501.2	1	plate holder

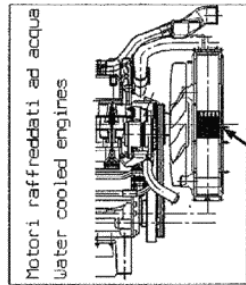


9_77876_65_0_0

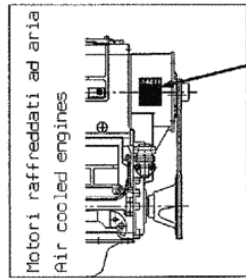
Section: BODY WORK
PLATES

Fig.	Code	QTY	Name
100	0.000.0000.1	0	not serviceable
100.4	2.9929.869.0	1	plate AKROS MULTI
100.5	2.9929.870.0	1	plate AKROS MULTI FCT
100.6	2.9929.684.0	1	plate

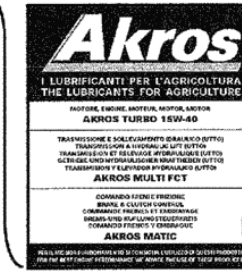
100



Schema montaggio
 Assembly scheme



100.4



100.5

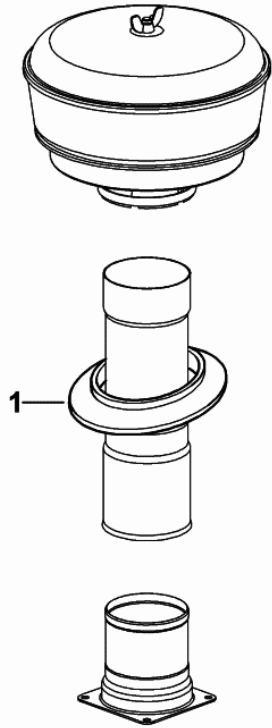
BRAKES OIL
 USE ATF DEXRON II
 OIL ONLY

OLIO FRENI
 USARE SOLO OLIO
 TIPO ATF DEXRON II

100.6

Section: BODY WORK
ENGINE HOOD GASKETS

Fig.	Code	QTY	Name
1	0.010.4713.0	1	gasket

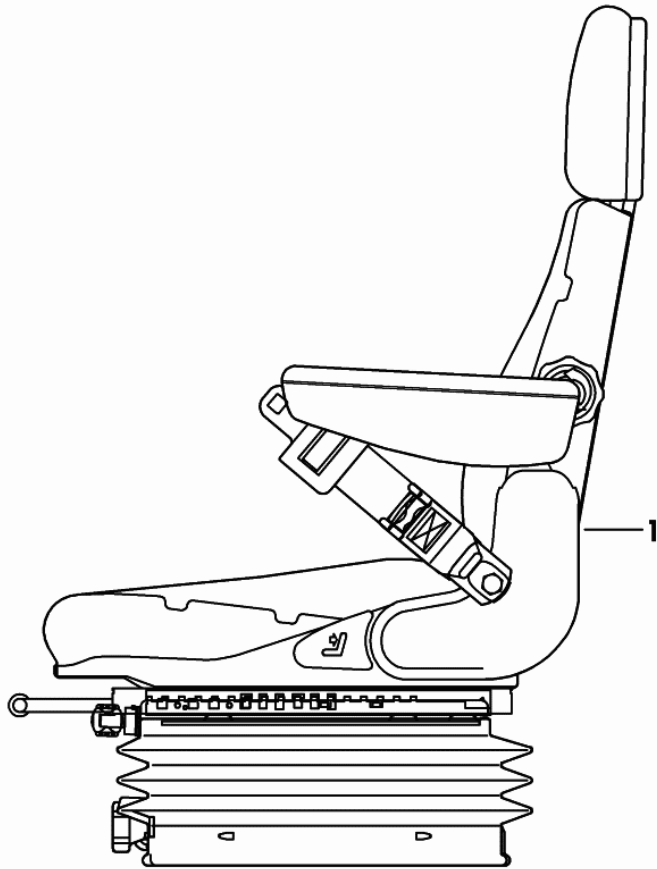


9_B9881_12_0_0

Section: BODY WORK

DRIVER'S SEAT GRAMMER MSG83/20

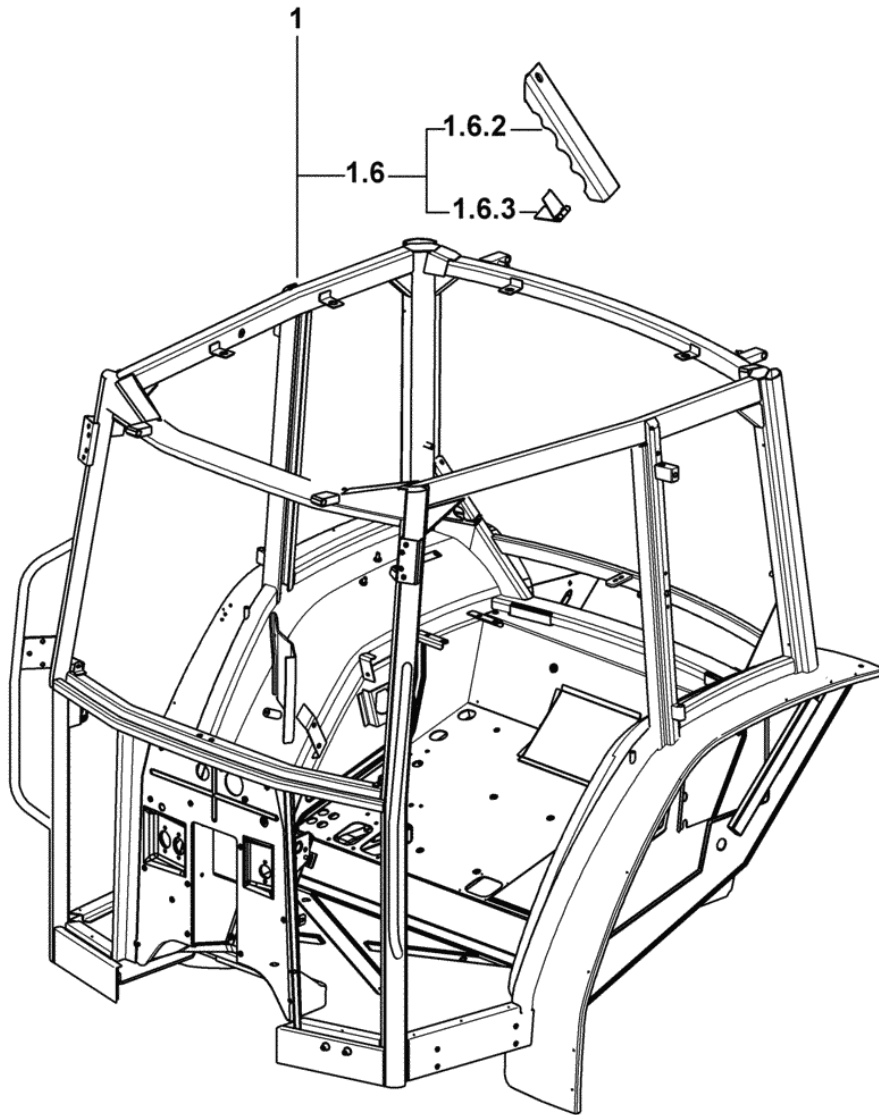
Fig.	Code	QTY	Name
1	0.007.5977.4/10	1	sprung seat GRAMMER MSG83/20 COMPONENT PARTS SEE COMPONENTS LIST ☞ 0.007.5977.4/10 ☞ 0.007.5977.4/10 ☞ 07.00.63 ☞ 07.00.62



9_50875_05_0_0

Section: CAB
SINGLE-STRUCTURE CAB

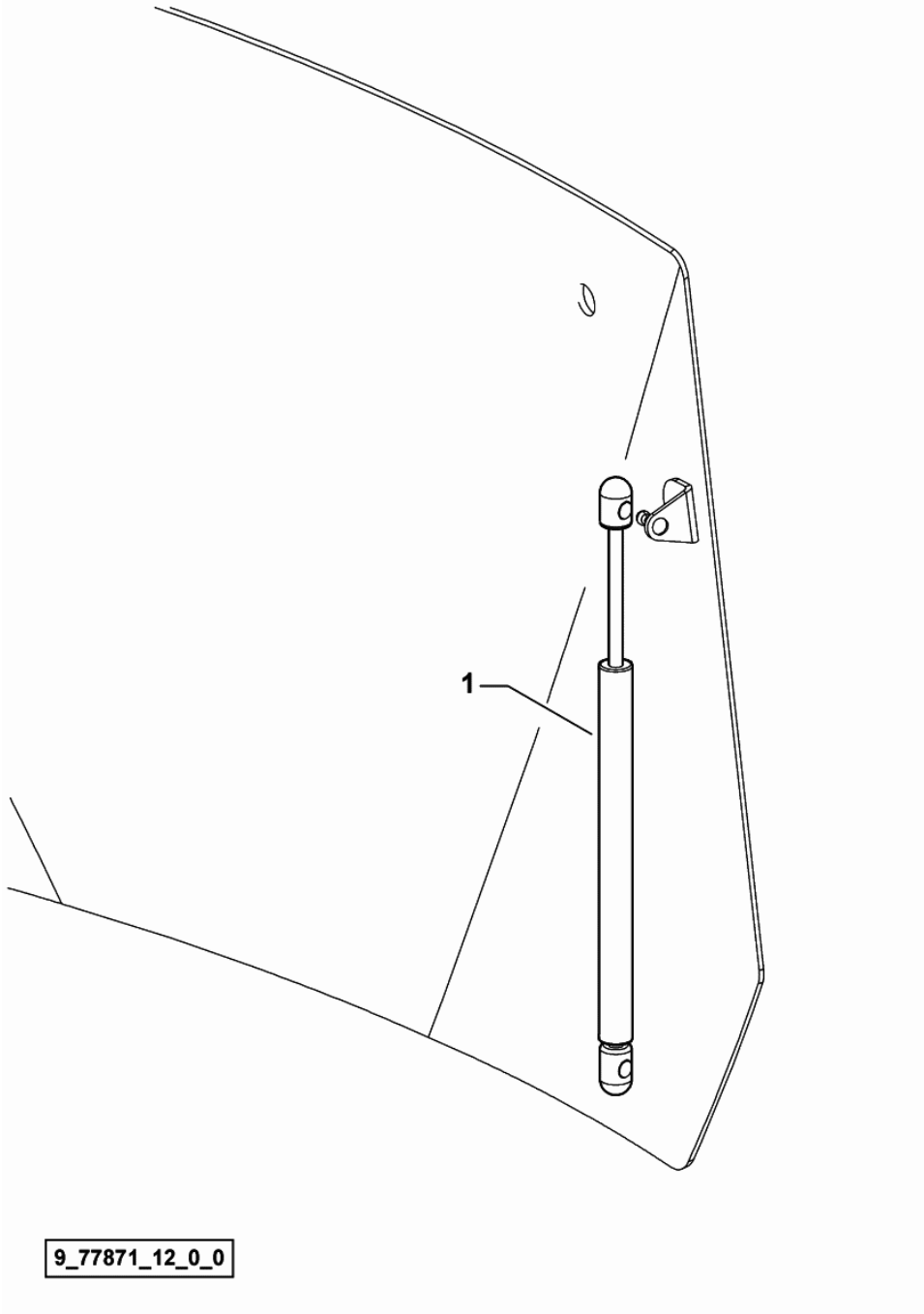
Fig.	Code	QTY	Name
1	0.011.9299.4/70	1	cab
1.6	0.000.0000.1	0	not serviceable
1.6.2	0.011.3401.0	1	crosspiece
1.6.3	0.009.7612.4/10	1	hinge



9_77871_01_0_0

DAMPER FOR REAR WINDOW HATCH - FOR TYPES WITH "HIGH VISIBILITY"

Fig.	Code	QTY	Name
1	0.010.6267.0	2	shoch.absorber



9_77871_12_0_0

EXPLORER 95

Section: CAB

Ref.: 0B.00.21

INTERIOR TRIM "HIGHT VISIBILITY" - FOR TRACTORS WITH AIR HEATING

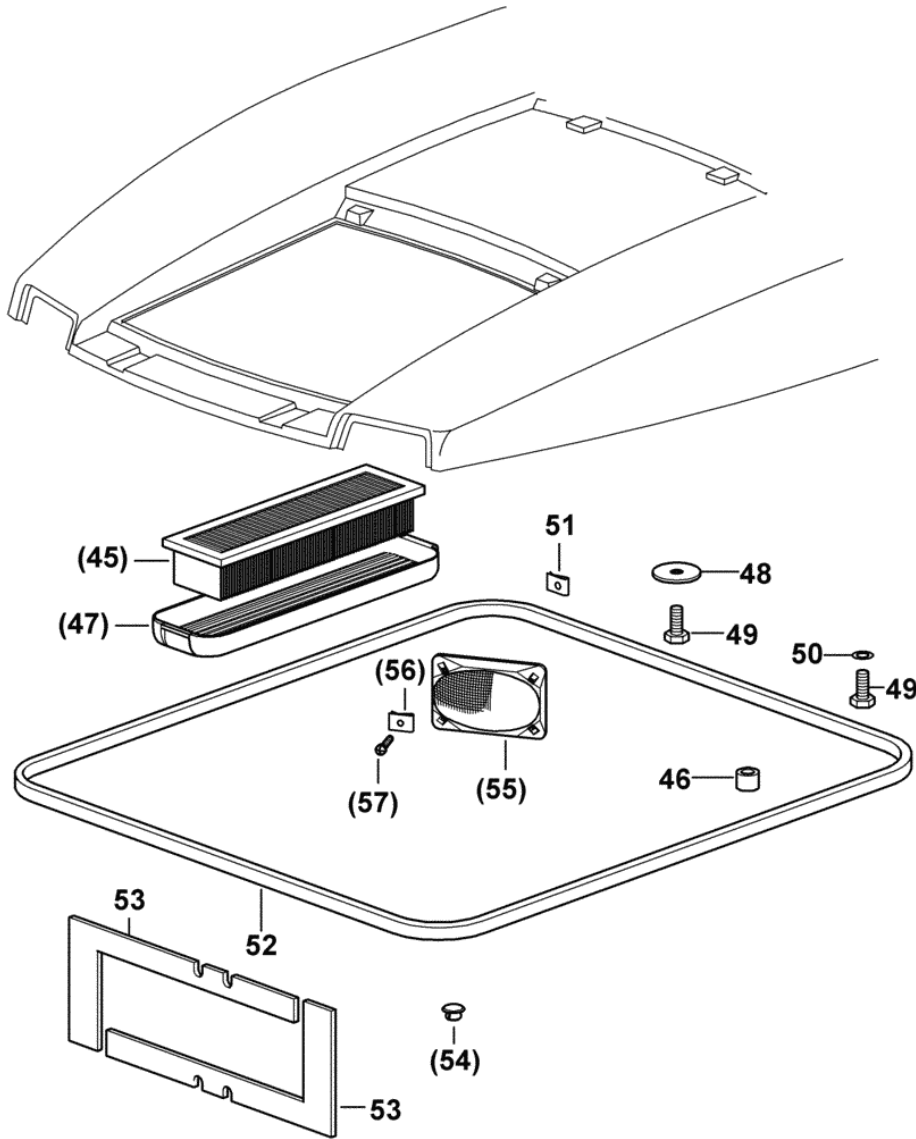
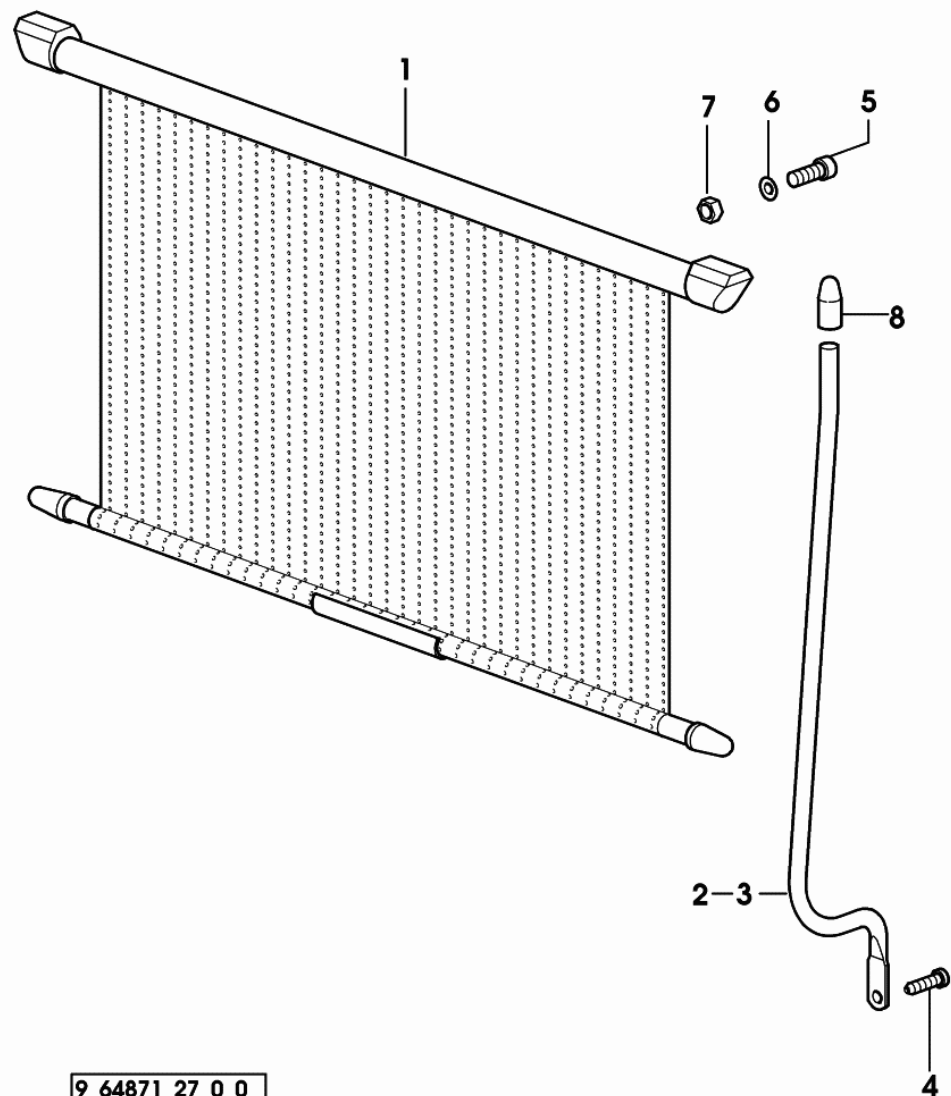


Fig.	Code	QTY	Name
45	0.010.5365.2	2	air filter element 1007 <- X EXPLORER 75 1013 <- X EXPLORER 85 1044 <- X EXPLORER 95
46	2.1579.450.2	2	spacer 8.5 x 14 x 12
47	0.010.5293.0/10	2	front grille 1007 <- X EXPLORER 75 1013 <- X EXPLORER 85 1044 <- X EXPLORER 95
48	2.1599.584.2	6	snoulder 9 x 30 x 2
49	2.0112.205.2	8	screw m 8 p.1.25 x 16
50	2.1312.004.2	2	washer 8.4
51	2.6999.041.0	1	small spring
52	0.013.4027.0	0	gasket
53	0.010.0756.0/10	2	gasket
54	2.3199.107.0	2	plug 14x12.5 1007 <- X EXPLORER 75 1013 <- X EXPLORER 85 1044 <- X EXPLORER 95
55	0.010.0716.4/10	2	grille 1007 <- X EXPLORER 75 1013 <- X EXPLORER 85 1044 <- X EXPLORER 95
56	2.6999.041.0	8	small spring 1007 <- X EXPLORER 75 1013 <- X EXPLORER 85 1044 <- X EXPLORER 95
57	2.0399.177.3	8	screw 4.2x25 1007 <- X EXPLORER 75 1013 <- X EXPLORER 85 1044 <- X EXPLORER 95

9_18471_70_0_C

Section: CAB

SUN BLIND - FOR TRACTORS WITHOUT AIR CONDITIONING

9_64871_27_0_0

Fig.	Code	QTY	Name
1	0.9237.343.4/10	1	roll-up sun-shade
2	0.010.1082.0	1	rod dx/rh/re
3	0.010.1083.0	1	rod sx/lh/li
4	2.0350.454.3	2	screw m 4.2 x 13 -AB-
5	2.0299.004.3	2	screw m 4x22
6	2.1310.028.2	2	flat washer 4
7	2.1011.101.2	2	nut m 4 p.0.7
8	0.010.1367.0	2	cap

Section: CAB

CONDENSER - AIR CONDITIONING UNIT

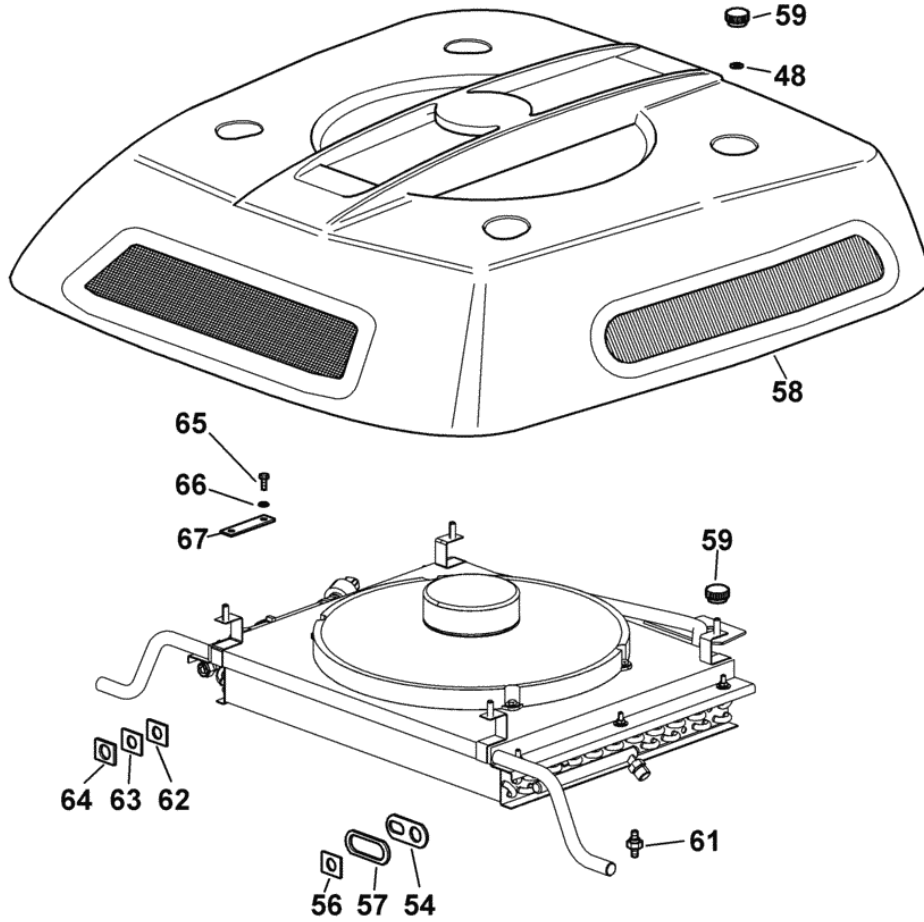
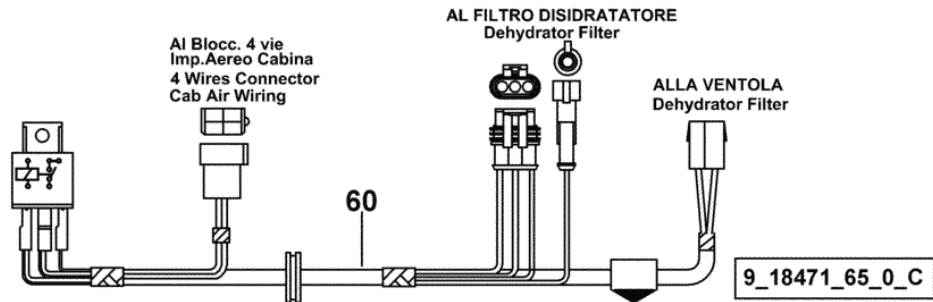
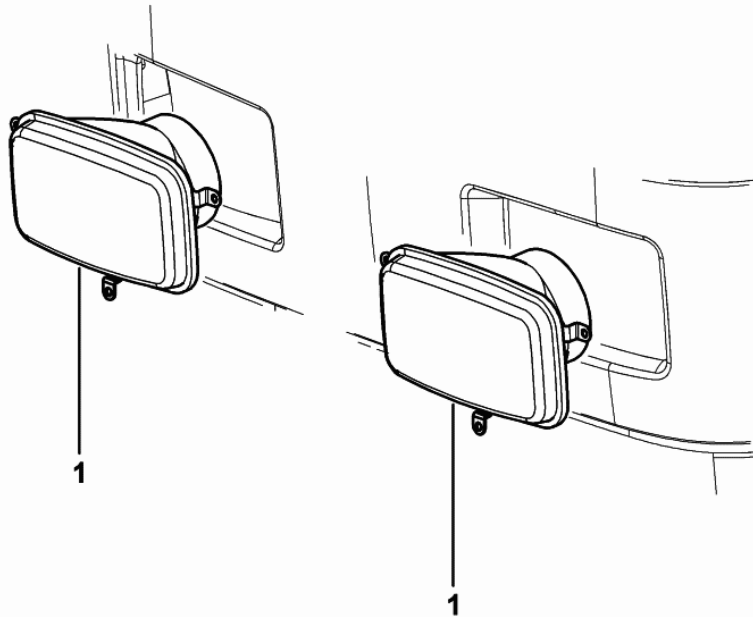


Fig.	Code	QTY	Name
48	2.1310.004.2	4	flat washer 8.5
54	0.007.6976.0	1	small plate
56	0.007.6975.0/20	1	small plate
57	0.007.6974.0/20	1	gasket
58	0.013.6584.3	1	cover
59	0.012.9389.2	5	knob m 8
60	0.009.7853.3/20	1	electrical system
			COMPONENT PARTS SEE COMPONENTS LIST
			☞ 0.009.7853.3/20
			☞ 0B.00.107
61	0.010.0662.0/10	1	pin
62	0.007.7779.0	1	small plate
63	0.007.7781.0/10	3	gasket
64	0.007.7780.0/10	1	small plate
65	2.0112.004.2	4	screw m 6 p.1 x 14
66	2.1310.002.2	4	washer 6.6, d125
67	0.007.7783.0/10	2	small plate



Section: ELECTRIC AL SYSTEM
HEADLAMP FOR LEFT-HAND DRIVE

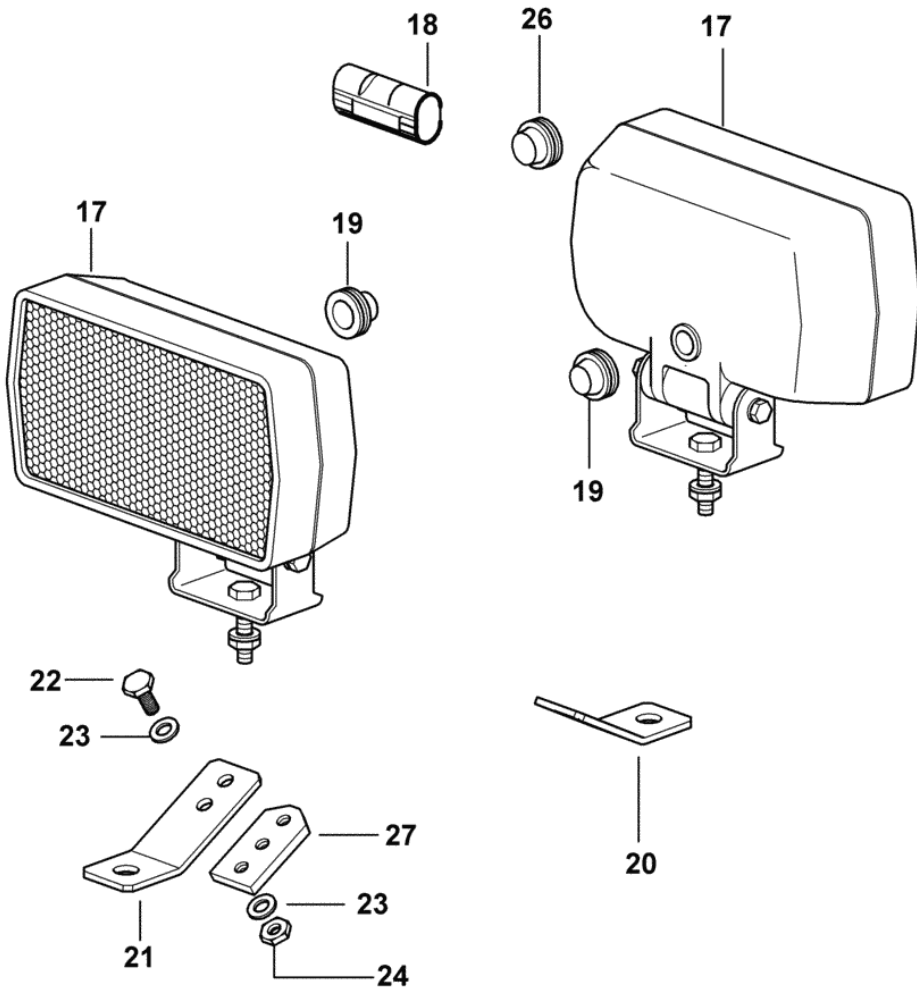
Fig.	Code	QTY	Name
1	2.8039.130.0	2	lamp COMPONENT PARTS SEE COMPONENTS LIST ☞ 2.8039.130.0 ☞ 08.00.69



9_15485_22_0_A

WORKING SPOTLIGHT - FOR TRACTORS WITH AIR HEATING

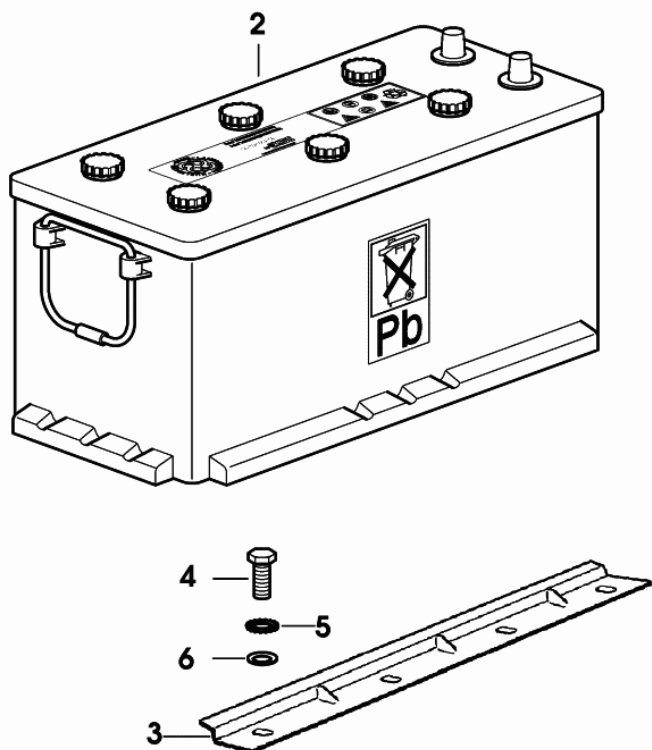
Fig.	Code	QTY	Name
17	2.8029.730.0	4	headlight COMPONENT PARTS SEE COMPONENTS LIST ☞ 2.8029.730.0 ☞ 08.00.78
18	2.6039.010.0	4	guard
19	2.6569.018.0	3	wire guide 20 x 8 x 15
20	0.010.0259.0/20	2	bracket
21	0.010.0260.0	2	bracket
22	2.0332.406.3	8	screw m 6 p.1.0 x 16
23	2.1310.002.3	20	flat washer 6.4 x 12 x 1.6
24	2.1120.003.2	8	nut m 6
26	2.6569.042.0	1	wire guide 20x10x15
27	0.010.6338.0/10	2	small plate



9_18471_60_0_D

BATTERY 12V 120Ah 520A

Fig.	Code	QTY	Name
2	2.9559.049.0	1	battery 12V 120Ah 520A
3	0.008.3436.0/10	1	crosspiece
4	2.0112.207.2	4	screw m 8 p 1.25 x 20
5	2.1470.004.2	4	washer 8
6	2.1310.004.2	4	flat washer 8.5



9_77884_10_0_0

Section: ELECTRIC AL SYSTEM
ELECTRIC STARTING SYSTEM

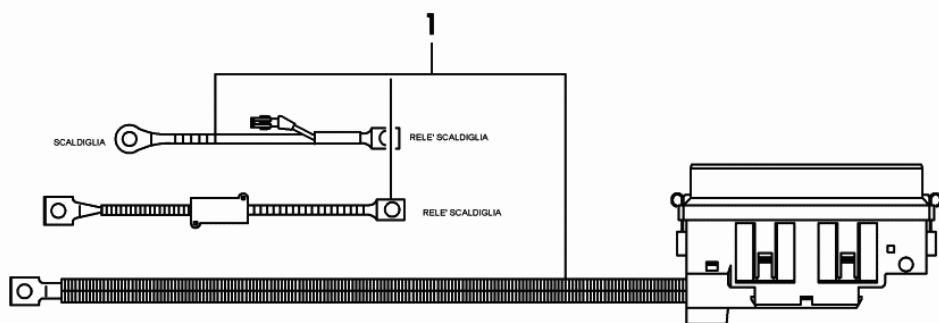
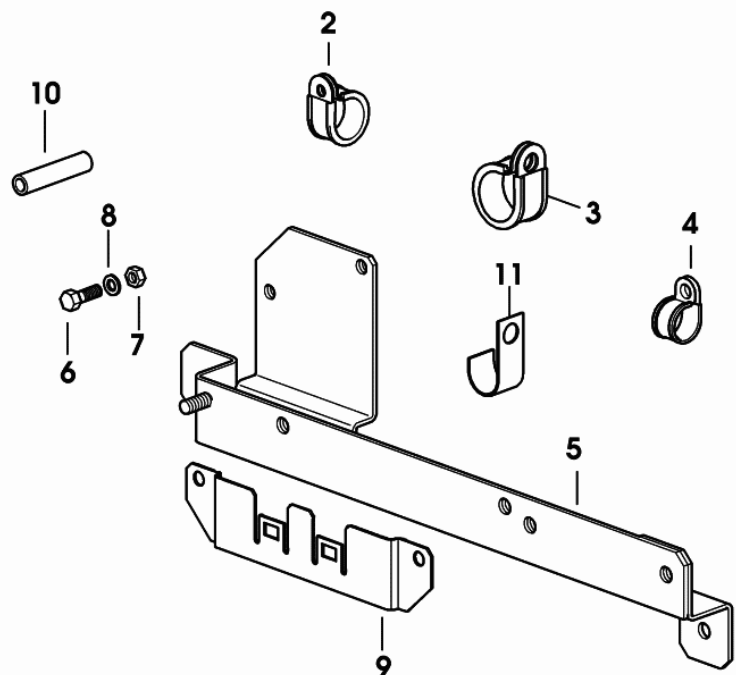


Fig.	Code	QTY	Name
1	0.013.8209.4/10	1	electrical system COMPONENT PARTS SEE COMPONENTS LIST ☞ 0.013.8209.4/10 ☞ 08.00.87
2	2.6839.064.0	1	clamp 27/20
3	2.6839.052.0	1	clamp 30/20
4	2.6839.058.0	1	clamp Ø 17/20
5	0.013.8256.3	1	bracket
6	2.0112.021.2	2	screw m 6 p.1 x 60
7	2.1011.103.2	3	nut m 6 p.1
8	2.1310.002.2	3	washer 6.6, d125
9	0.013.7478.0	1	support
10	2.1579.758.2	2	spacer
11	2.6819.004.2	1	clamp Ø 17



9_B9884_05_0_0

Section: ELECTRIC AL SYSTEM

ELECTRICAL SYSTEM FOR TYPE WITH CAB "HIGHT VISIBILITY" - FOR TRACTORS WITH AIR HEATING

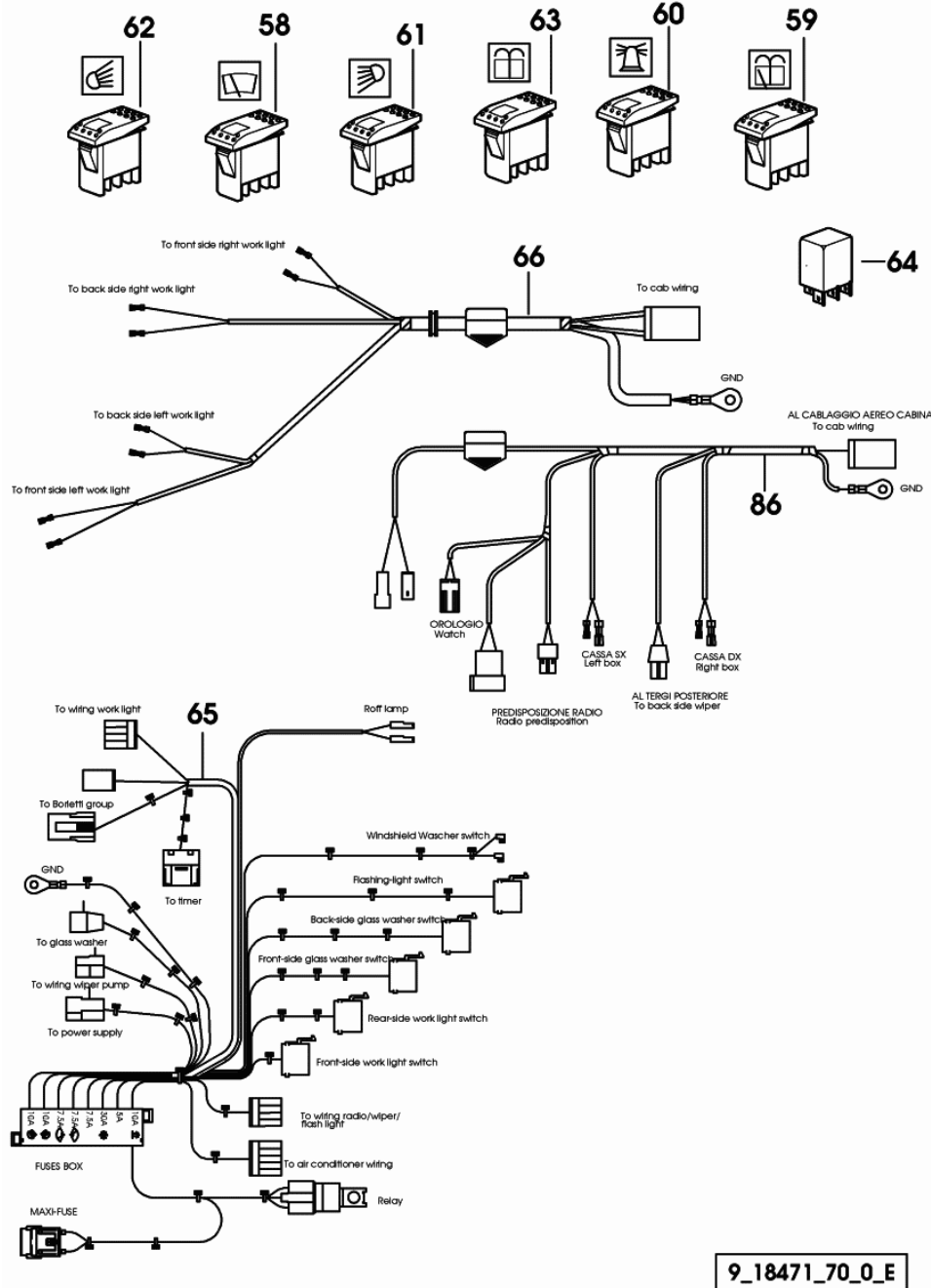


Fig.	Code	QTY	Name
58	2.7659.224.0	1	switch
59	2.7659.192.0	1	switch
60	2.7659.159.0	1	switch
61	2.7659.154.0	1	switch
62	2.7659.155.0	1	switch
63	2.7659.223.0	1	push-button
64	2.8639.008.0	1	intermitent switch HG4121, 12V
65	0.011.3606.4/50	1	electrical system
COMPONENT PARTS SEE COMPONENTS LIST			
			☞ 0.011.3606.4/50
			☞ 08.00.91
66	0.011.3595.3/10	1	electrical system
86	0.011.3596.3/40	1	electrical system

9_18471_70_0_E

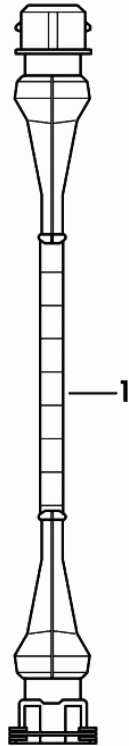
ELECTRICAL WIRING - FOR TYPES WITH ELECTRONIC LIFTER

Fig.	Code	QTY	Name
------	------	-----	------

Notes:

1013 <- X EXPLORER 75 1166 <- X EXPLORER 85 1629 <- X EXPLORER 95

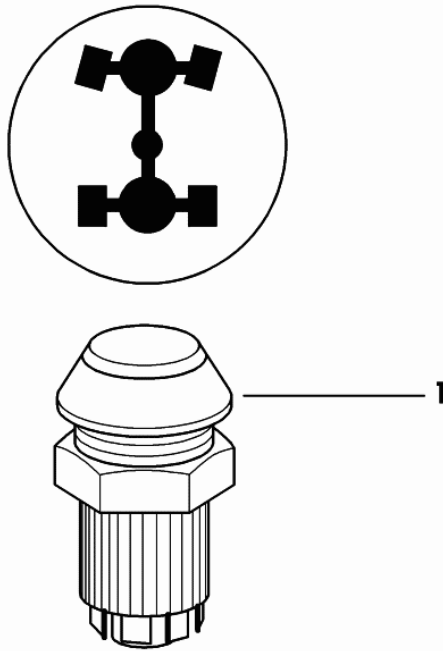
1	0.012.6731.4	2	wire
---	--------------	---	------



9_77859_33_0_0

Section: ELECTRIC AL SYSTEM
4WD - ENGAGEMENT CONTROL

Fig.	Code	QTY	Name
1	0.007.5945.0/20	1	switch 4 WD



9_52684_04_0_0

COOLING.....	01.00.54
COOLANT PIPE.....	01.00.55
COOLING WATER PUMP.....	01.00.57
PARTS SET - ENGINE MOUNTING.....	01.00.58
COOLANT PUMP PULLEY.....	01.00.59
PULLEY FOR ACCESSORIES.....	01.00.60
COOLANT PUMP DRIVEBELT - FOR TRACTORS WITHOUT AIR CONDITIONING.....	01.00.61
COOLANT PUMP DRIVEBELT - FOR TRACTORS WITH AIR CONDITIONING.....	01.00.62
INTAKE AND EXHAUST.....	01.00.64
INTAKE AND EXHAUST MANIFOLD GASKETS.....	01.00.65
INLET MANIFOLD PLUG.....	01.00.66
INLET MANIFOLD PLUG - FOR MODELS WITH MECHANICAL ENGINE GOVERNOR.....	01.00.67
TURBOCHARGER.....	01.00.68
COMPRESSOR 150 cc.....	01.00.69
COMPRESSOR 110 cc.....	01.00.70
EXHAUST SILENCER.....	01.00.74
SIDE EXHAUST SILENCER.....	01.00.75
SIDE EXHAUST SILENCER.....	01.00.76
SIDE EXHAUST SILENCER.....	01.00.77
GASKET SET FOR ENGINE ASSEMBLY.....	01.00.78

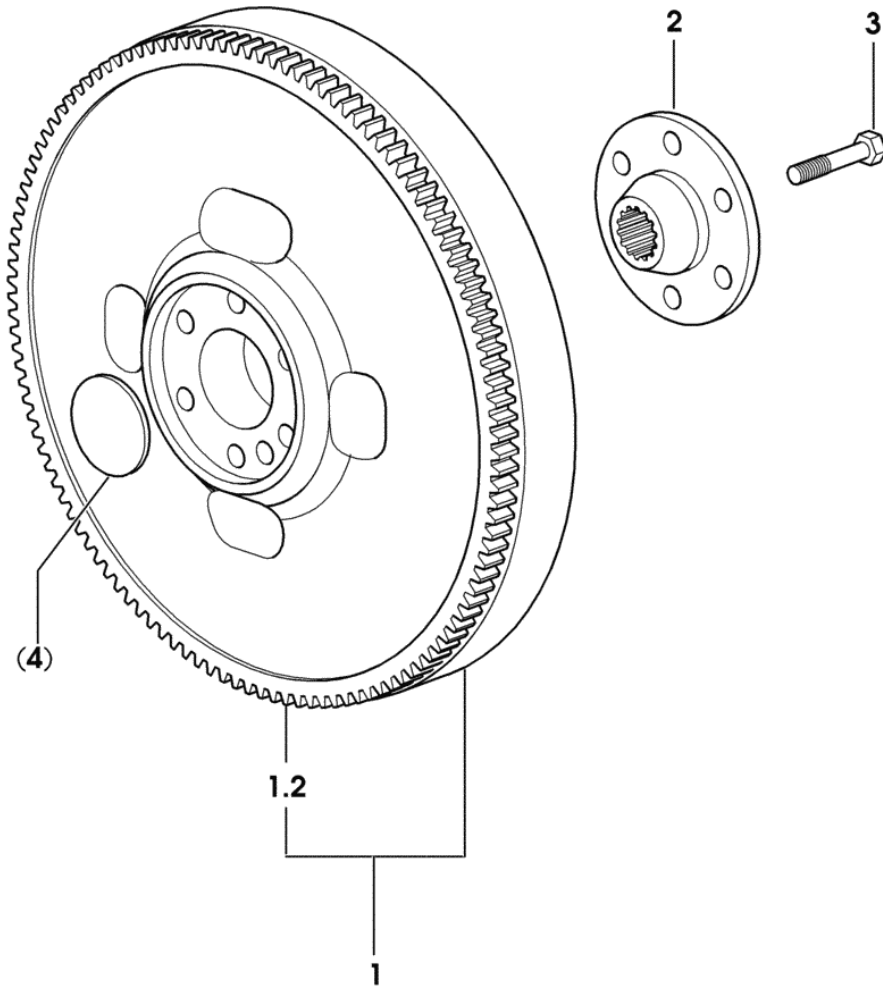
ENGINE FLYWHEEL - FOR TYPES WITHOUT HYDRAULIC SHUTTLE

Fig.	Code	QTY	Name
------	------	-----	------

Notes:

-> 1014 X EXPLORER 75 -> 1182 X EXPLORER 85 -> 1702 X EXPLORER 95

1	0.012.2626.3	1	flywheel
1.2	0.065.1242.0	1	crown wheel Z = 123
2	0.255.2525.0/10	1	flange
3	2.0139.022.2	6	screw m 12 p.1.25x55



9_32212_04_0_0

CLICK HERE TO **DOWNLOAD** THE COMPLETE MANUAL

- Thank you very much for reading the preview of the manual.
- You can download the complete manual from: www.heydownloads.com by clicking the link below

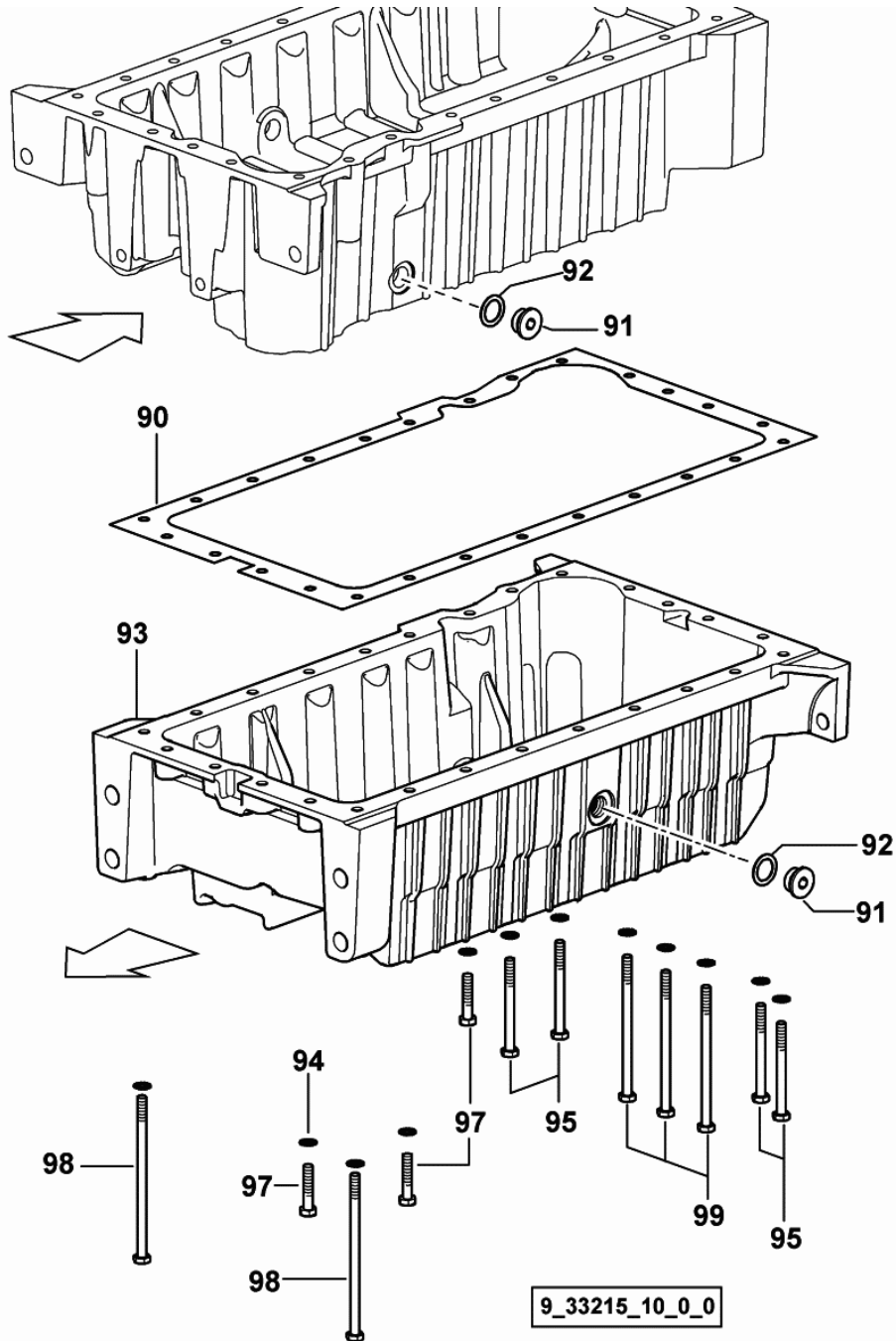


- Please note: If there is no response to CLICKING the link, please download this PDF first and then click on it.

CLICK HERE TO **DOWNLOAD** THE COMPLETE MANUAL

Section: ENGINE
OIL PAN

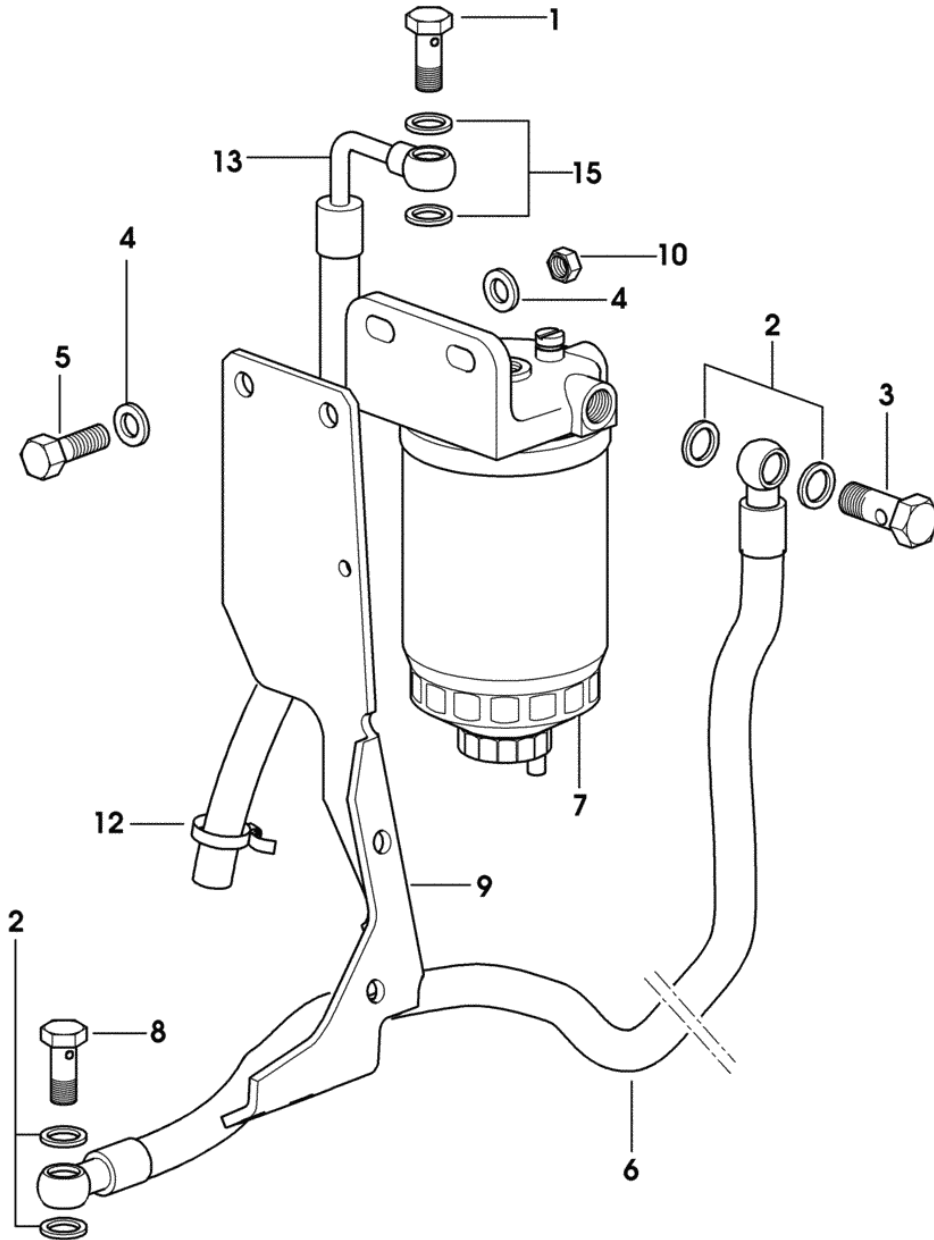
Fig.	Code	QTY	Name
90	0.065.1550.0/10	1	gasket
91	2.3199.001.2	2	plug 1/2" gas
92	2.1560.054.0	2	gasket 21 x 26
93	0.007.1277.0/40	1	oil pan
94	2.1470.004.2	26	washer 8
95	2.0112.226.2	4	screw m 8 p.1.25 x 85
97	2.0112.215.2	17	screw m 8 p.1.25 x 40
98	2.0112.239.2	2	screw m 8 p.1.25 x 150
99	2.0112.235.2	3	screw m 8 p.1.25 x 130



Section: ENGINE

FUEL FILTER

Fig.	Code	QTY	Name
1	2.3332.004.1	1	pipe union m 14 p.1.5 x 27
2	2.1560.010.0	5	gasket 14.2 x 20 x 1.5
3	2.3339.040.2	2	pipe union m 14 p.1.5x45
4	2.1310.006.2	2	flat washer 10.5
5	2.0112.313.2	2	screw m 10 p.1.5 x 35
6	0.010.9530.3	1	tube
7	2.4319.230.0	1	fuel filter
COMPONENT PARTS SEE COMPONENTS LIST			
☞ 2.4319.230.0			
☞ 01.00.2			
8	2.3339.357.2/10	1	pipe union m 14 p.1.5x28
9	0.013.3162.2/20	1	bracket
10	2.1011.106.2	2	nut m 10 p.1.5
12	2.6851.001.0	2	clamp Ø 16/25
13	0.013.2822.3	1	tube
15	2.1561.007.0	2	gasket 14,8x22.2



9_M5216_03_0_0

Section: ENGINE

HEATING

Fig.	Code	QTY	Name
1	2.3249.103.2	1	pipe fitting
2	2.3339.636.2	1	pipe fitting 3/8" gas
3	2.6851.001.0	2	clamp Ø 16/25
4	2.1560.054.0	1	gasket 21 x 26

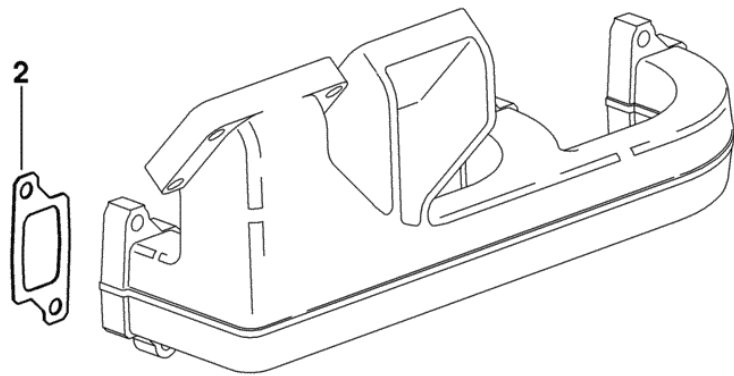
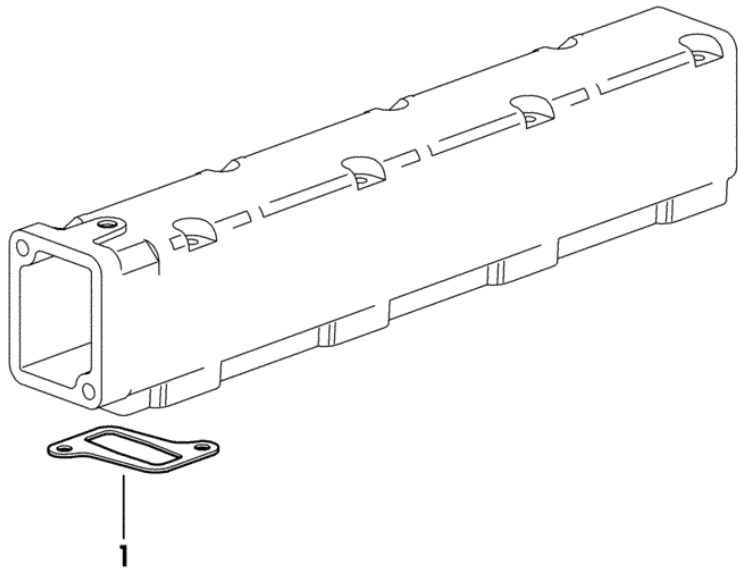


9_B9886_16_0_0

INTAKE AND EXHAUST MANIFOLD GASKETS

9_33218_00_0_0

Fig.	Code	QTY	Name
1	0.011.1304.0/10	4	gasket
2	0.007.1445.0	4	gasket



Section: ENGINE

GASKET SET FOR ENGINE ASSEMBLY

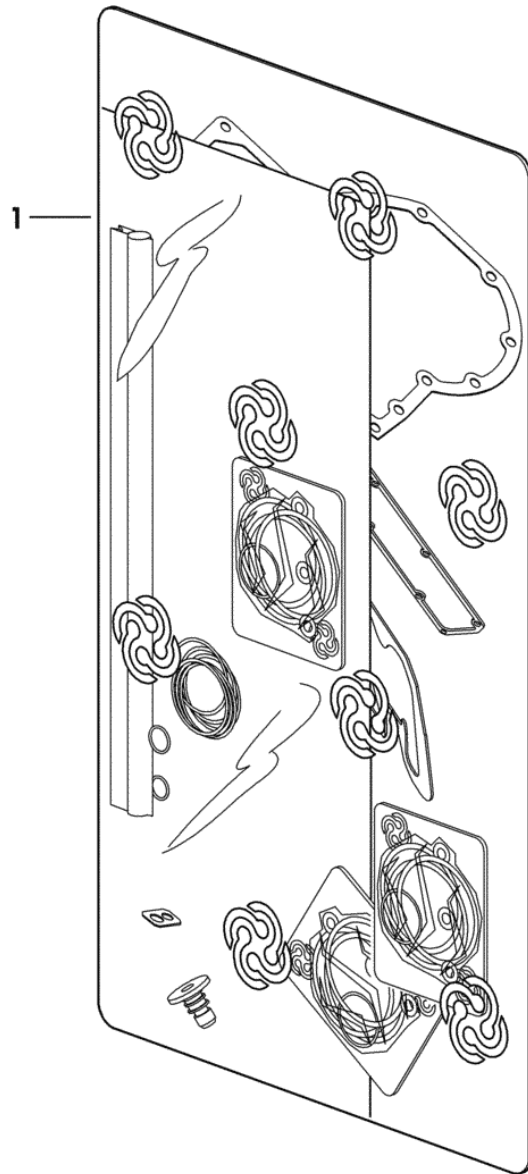


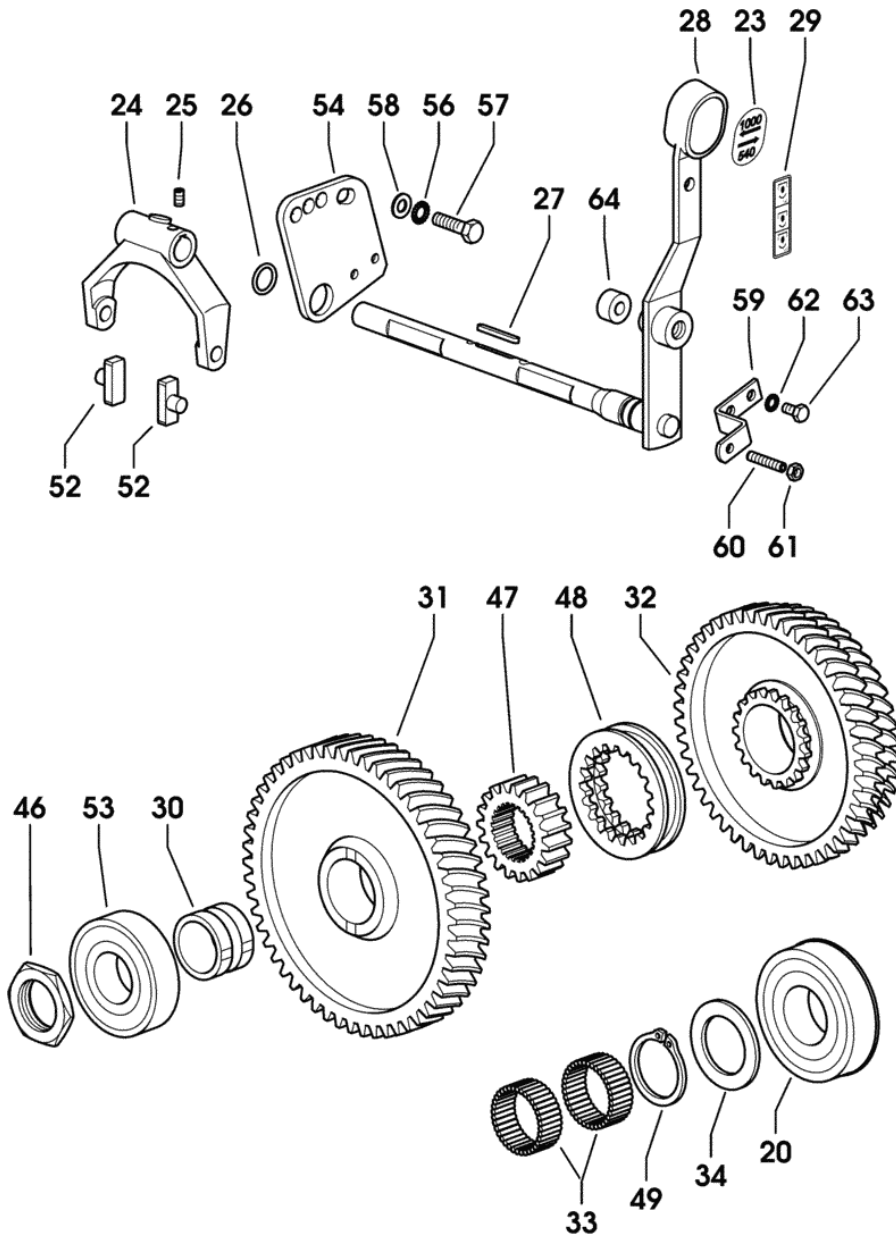
Fig.	Code	QTY	Name
1	0.051.0050.6	1	gasket set X EXPLORER 75 85
1	0.330.0050.6	1	gasket set X EPLORER 95

9_STAB97_00_0_0

4 SPEED P.T.O.

9_77836_00_0_B

Fig.	Code	QTY	Name
20	2.2062.012.0	2	ball bearing 40 x 90 x 23
23	0.007.3555.0	1	plate
24	0.007.3487.0	1	fork
25	2.0512.109.7	1	screw
26	2.1530.038.0	1	'o' ring 15.54x2.62
27	2.1711.011.0	1	dowel 5x3x36
28	0.011.0630.3/10	1	lever
29	2.9929.704.0	1	plate
30	0.007.3471.0/10	1	bushing
31	0.010.5366.0/10	1	gear Z = 54
32	0.009.6904.0/20	1	gear z = 48 - z = 43
33	2.2770.073.0	2	roller cage 40x47x18
34	0.255.3450.0	1	snoulder 40 x 60 x 3.5
46	0.255.3661.0	1	ring nut m 35x1.5
47	0.013.1306.0	1	hub Z = 19
48	0.255.3438.0/20	1	sleeve Z = 19
49	2.1412.015.7	1	circlip 40x2.5
52	0.255.6463.0	2	shoe
53	2.2060.011.0	1	ball bearing 35 x 80 x 21
54	0.011.2159.0	1	small plate
56	2.1470.004.2	1	washer 8
57	2.0112.211.2	1	screw m 8 p.1.25 x 30
58	2.1310.004.2	1	flat washer 8.5
59	0.011.2163.0/10	1	bracket
60	2.0532.108.7	1	grain m6x1x20
61	2.1011.203.2	1	nut m 6 p.1
62	2.1470.002.2	2	washer 6, d128
63	2.0112.003.2	2	screw m 6 p.1 x 12
64	2.1579.358.0	1	spacer 8.5x20x11

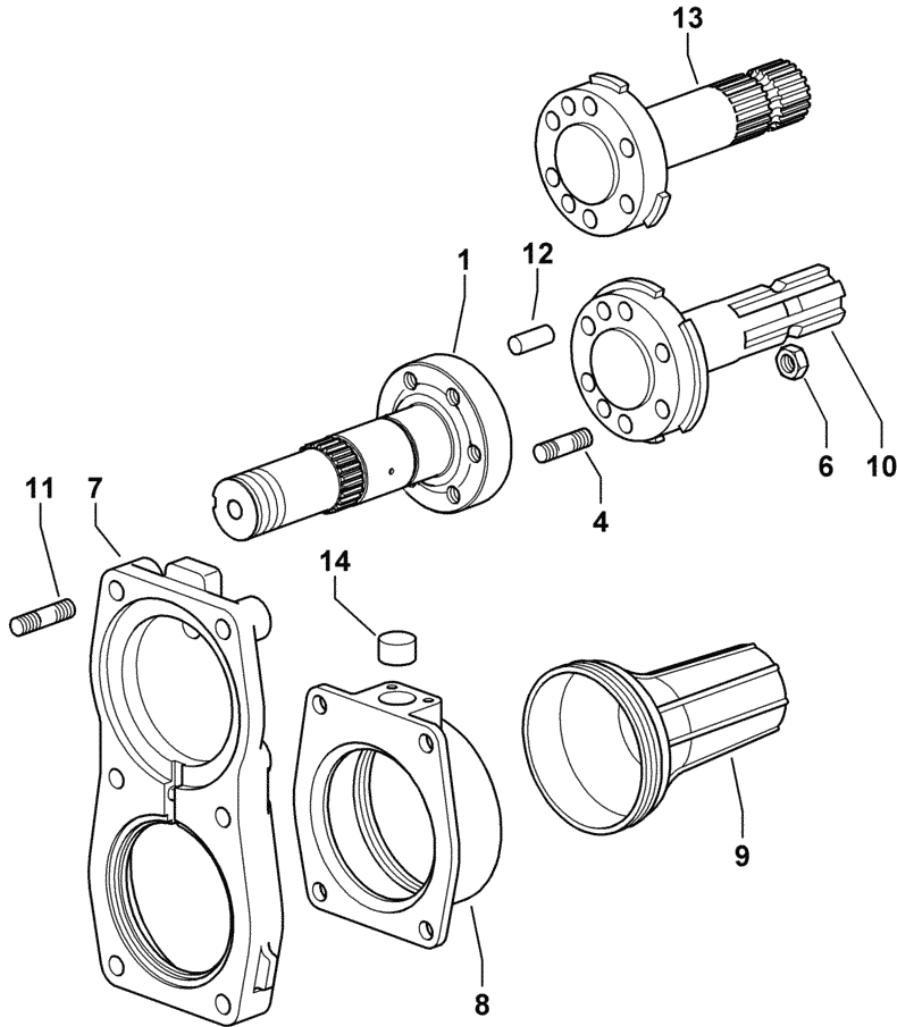


Section: FRONT AND REAR P.T.O.

P.T.O - 4-SPEED WITH INSERTED END SHAFT

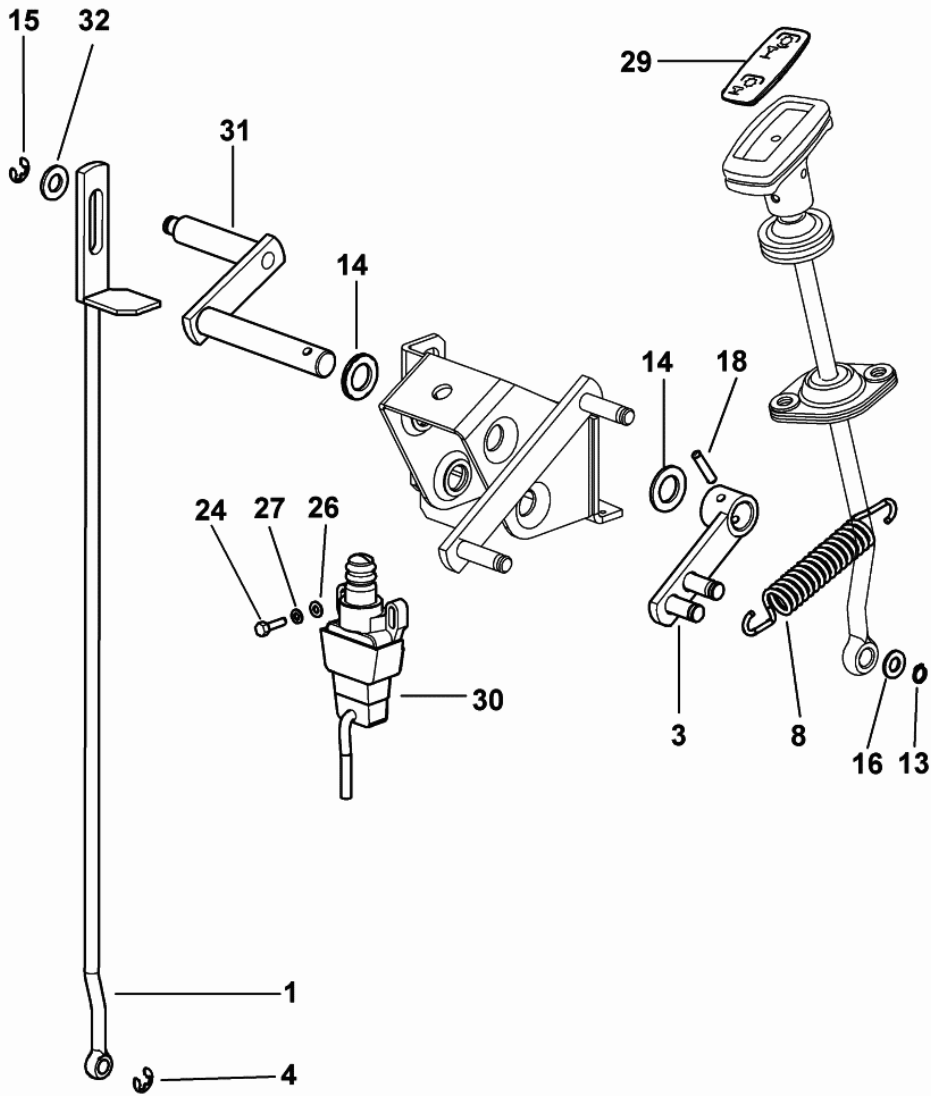
9_77836_01_0_0

Fig.	Code	QTY	Name
1	0.007.3474.0/20	1	p.t.o.shaft
4	2.0432.159.7	6	stud bolt m 10 p.1.5 / p.1.25 x 35
6	2.1011.421.2	6	nut m 10 p.1.25
7	0.009.6901.0	1	cover
8	0.011.0795.0	1	flange
9	0.008.0757.0	1	guard
10	0.013.0259.0	1	p.t.o.shaft z = 6
11	2.0432.161.7	6	stud bolt m 10 p.1.5 / p.1.25 x 40
12	2.1651.811.0	2	cylindrical plug 10x24
13	0.013.0258.0	1	p.t.o.shaft Z = 21
14	2.3171.008.4	1	plug 20



P.T.O. - SYNCHRONIZED CONTROL

Fig.	Code	QTY	Name
1	0.008.9486.2/20	1	rod
3	0.008.3656.3	1	lever
4	2.1439.003.0	1	circlip 6, d128
8	2.4049.139.1/10	1	spring
13	2.1410.001.1	1	circlip 10
14	2.1311.010.2	2	flat washer 16
15	2.1430.008.7	1	circlip 7
16	2.1310.006.2	1	flat washer 10.5
18	2.1631.412.0	1	roll pin 5x26
24	2.0119.070.6	2	screw m 4 p.0.7 x 16
26	2.1310.028.2	2	flat washer 4
27	2.1470.052.2	2	lock washer 4
29	0.014.2116.0	1	plate
30	2.7659.096.0/10	1	switch
31	0.008.9474.2/10	1	lever
32	2.1310.006.2	1	flat washer 10.5



9_62068_01_0_0

4WD - MECHANICAL ENGAGEMENT CONTROL.....	04.00.41
4WD - ELECTROHYDRAULIC ENGAGEMENT CONTROL.....	04.00.42
DRIVE SHAFT - FOR TYPES WITHOUT HYDRAULIC SHUTTLE.....	04.00.43
DRIVE SHAFT - FOR TYPES WITH HYDRAULIC SHUTTLE.....	04.00.44
4WD - TRANSMISSION SHAFT.....	04.00.45
4WD - TRANSMISSION SHAFT - WITH STANDARD SEALS.....	04.00.46
4WD - TRANSMISSION SHAFT - FOR TYPES WITH HYDRAULIC SHUTTLE.....	04.00.47
4WD - TRANSMISSION SHAFT - WITH WATERPROOF SEALS.....	04.00.48
DIFFERENTIAL LOCK - FOR TYPES WITHOUT "S.B.A. SYSTEM".....	04.00.49
DIFFERENTIAL LOCK - FOR TYPES WITH "S.B.A. SYSTEM".....	04.00.50

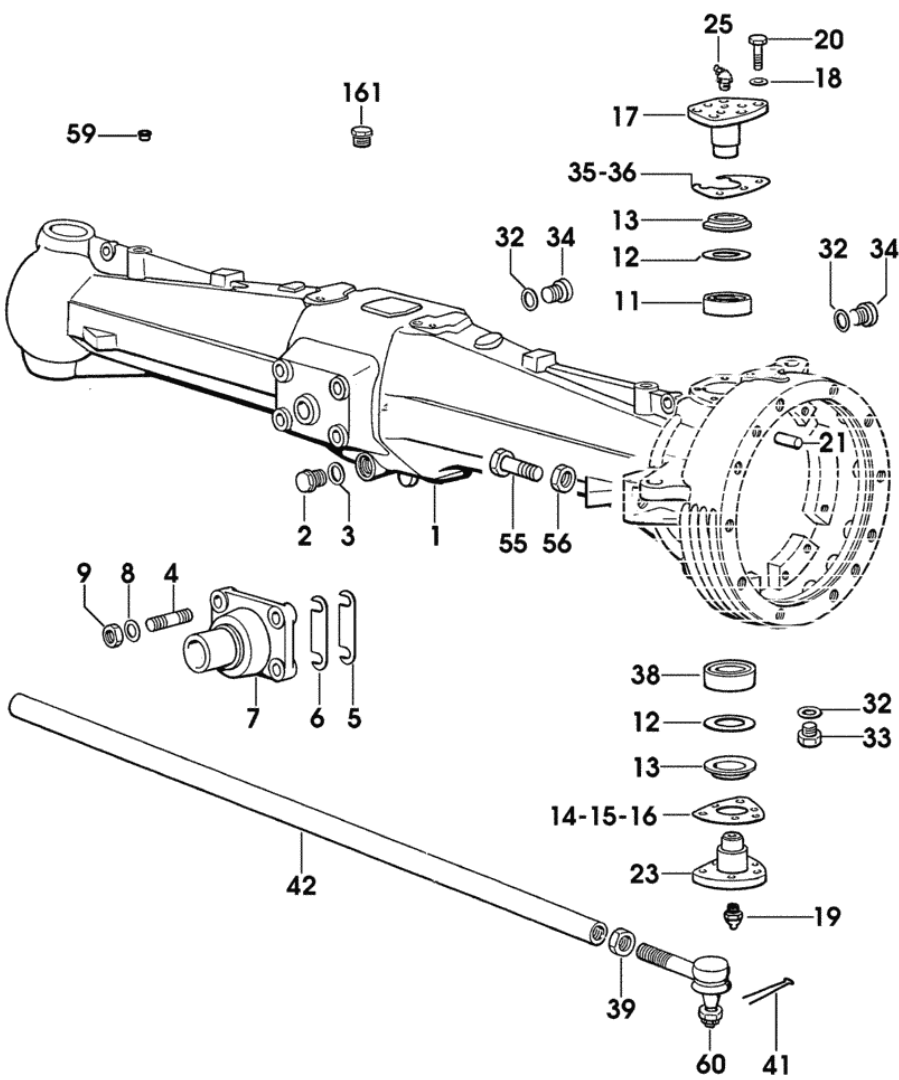
4WD - FRONT DRIVE AXLE - FOR SINGLE-ACTING CYLINDER

Fig.	Code	QTY	Name
------	------	-----	------

1	0.275.4356.0/80	1	front axle
2	2.3199.021.2	1	plug 1/2" gas
3	2.1560.054.0	1	gasket 21 x 26
4	2.0433.309.7	4	stud bolt m 14 p.1.5x35
5	2.1379.004.0/10	4	small plate 15x15x62x1.5
6	2.1379.003.0/10	4	small plate 15x15x62x0.12
7	0.010.4724.0/20	1	pin
8	2.1475.005.2	4	washer 14
9	2.1011.308.2	4	nut m 14 p.1.5
11	2.2530.007.0	1	roller bearing 30x72x20.75
12	2.1599.260.0	4	snoulder 43x71x1
13	2.1519.045.0	4	'o' ring 41x73x9
14	0.463.4351.0	8	shim mm 0.50
15	0.463.4350.0	8	shim mm 0.20
16	0.463.4352.0	8	shim mm 0.15
17	0.255.4335.0/10	1	pin
18	2.1470.007.2	9	lock washer 12
19	2.3820.105.2	2	lubricator m 10 p.1 x 7
20	2.0112.411.2	9	screw m 12 p.1.75 x 30
21	2.1651.811.0	4	cylindrical plug 10x24
23	0.169.4337.0/10	2	pin
25	2.3821.102.2	1	lubricator m 8 p.1 x 8
32	2.1560.054.0	5	gasket 21 x 26
33	2.3199.021.2	2	plug 1/2" gas
34	2.3199.001.2	3	plug 1/2" gas
35	2.1589.124.0	8	snoulder mm 0.20
36	2.1589.126.0	8	snoulder mm 0.15
38	2.2550.007.0	2	roller bearing 30x72x28.75
39	2.1099.020.1	2	special nut m 24 p.1.5
41	2.1690.412.2	2	split pin 4 x 30
42	0.275.4344.0/20	1	rod
55	2.0119.213.2	4	screw m 14 p.2 x 60
56	2.1011.208.2	4	nut m 14 p.2
59	2.3199.537.0	4	plug Ø 11
60	0.010.0488.4/10	2	joint

COMPONENT PARTS SEE
COMPONENTS LIST
☞ 0.010.0488.4/10
☞ 04.00.30
☞ plug 1/8" gas

161	2.3199.125.0	3	plug 1/8" gas
-----	--------------	---	---------------



9_62043_00_0_0

Section: FRONT AXEL
STEERING SENSOR SUPPORT

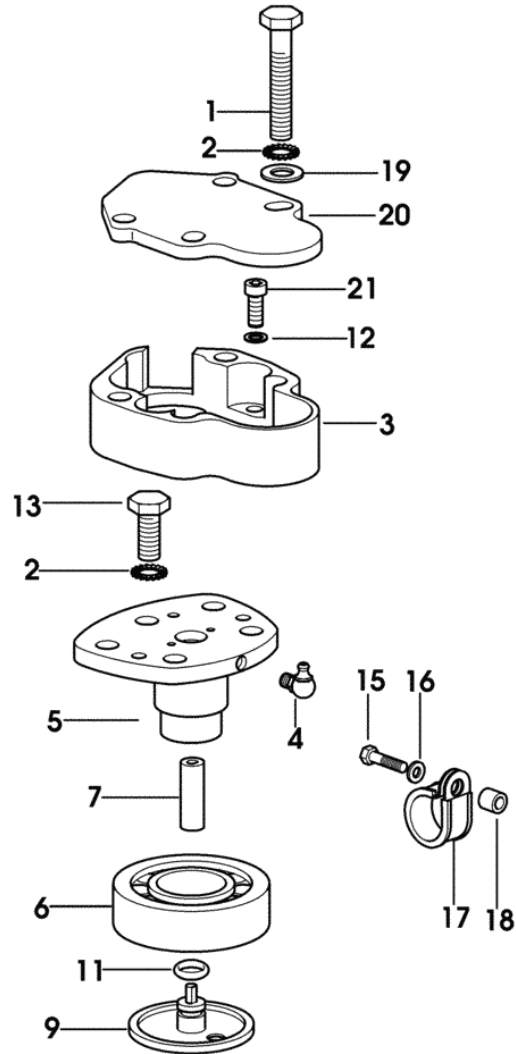


Fig.	Code	QTY	Name
1	2.0112.423.2	4	screw m 12 p.1.75 x 70
2	2.1470.007.2	5	lock washer 12
3	0.010.4627.0/10	1	guard
4	2.3821.102.2	1	lubricator m 8 p.1 x 8
5	0.011.2308.0/10	1	pin
6	2.2520.008.0	1	roller bearing 35x72x18,25
7	0.010.0008.2	1	joint
9	0.011.2252.0	1	cap-washer
11	2.1530.024.0	1	'o' ring 10.78 x 2.62
12	2.1470.004.2	2	washer 8
13	2.0112.411.2	1	screw m 12 p.1.75 x 30
15	2.0112.009.2	1	screw m 6 p.1 x 25
16	2.1470.002.2	1	washer 6, d128
17	2.6839.066.0/10	1	clamp 16
18	2.1549.341.2	1	spacer 6.5x11x11
19	2.1310.007.2	2	flat washer 13.5
20	0.010.4355.0/10	1	cover
21	2.0312.206.2	2	screw m 8 p 1.25 x 20

9_77843_01_0_0

Section: FRONT AXEL

4WD - FRONT DIFFERENTIAL LOCK - FOR TYPES WITH "S.B.A. SYSTEM"

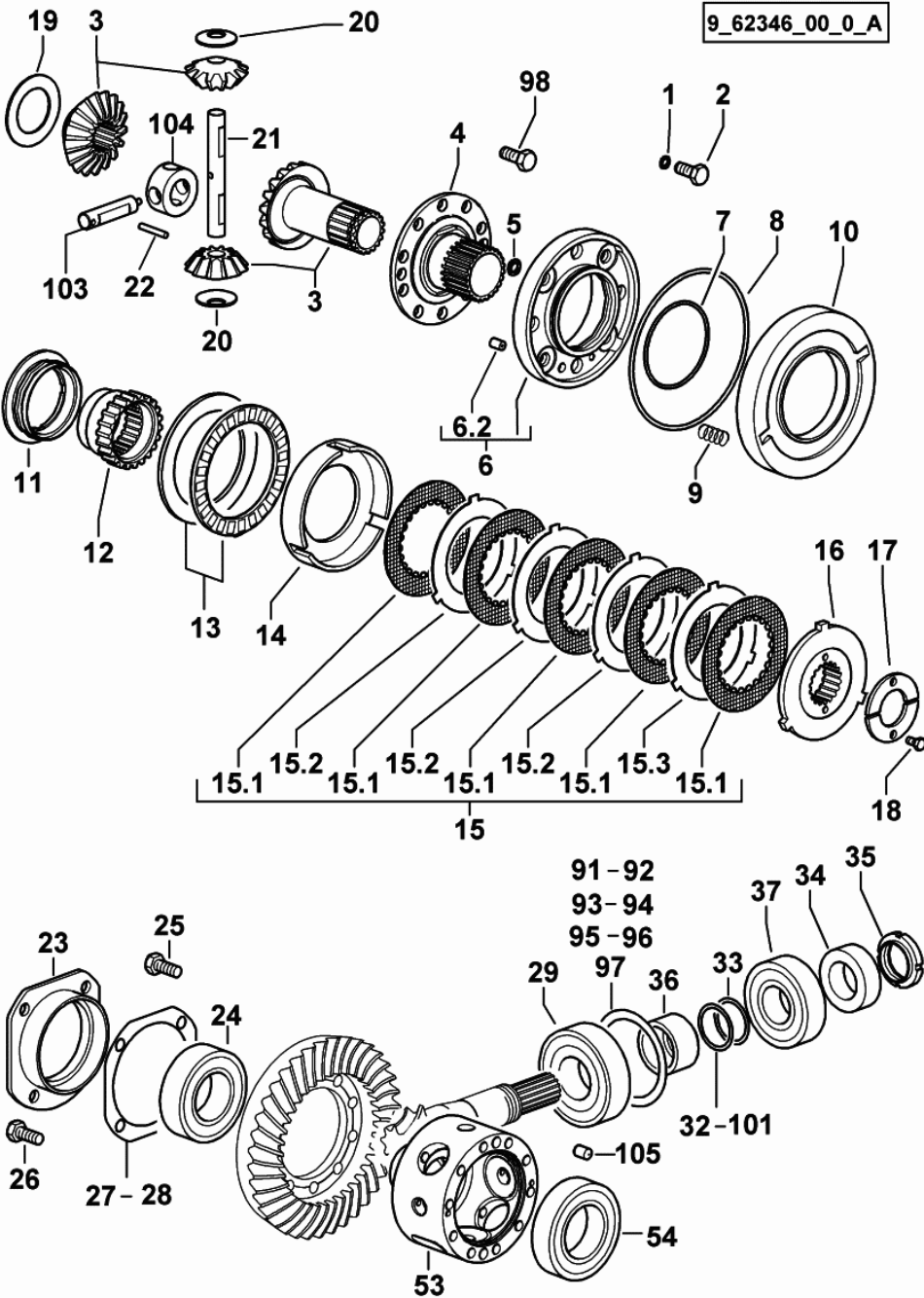


Fig.	Code	QTY	Name
------	------	-----	------

Notes:
- FOR SINGLE-ACTING CYLINDER

1	2.1532.014.0	4	'o' ring 7.65 x 1.78
2	2.0119.199.2	4	screw
3	0.009.7641.3/30	1	crown wheel 1013 <- X EXPLORER 75 1077 <- X EXPLORER 85 1123 <- X EXPLORER 95
3	0.013.6073.3	1	crown wheel -> 1014 X EXPLORER 75 -> 1078 X EXPLORER 85 -> 1124 X EXPLORER 95
4	0.009.7642.0/40	1	flange
5	2.1530.018.0	1	'o' ring 9.19 x 2.62
6	0.009.7633.3/10	1	flange
6.2	2.1699.250.0/20	1	pin 8 x 12
7	2.1539.171.0	1	'o' ring 75.87 x 2.62
8	2.1532.246.0	1	'o' ring 142.47x3.53
9	2.4019.614.1	4	spring
10	0.009.7630.0/40	1	piston
11	0.009.7635.0/40	1	ring nut
12	0.009.7632.0/30	1	hub
13	2.2999.335.0/10	1	bearing
14	0.009.7637.0/10	1	box
15	0.010.4526.3	1	hydraulic pto clutch
15.1	0.010.4525.2	5	friction ring
15.2	0.007.7102.0	3	disc mm 1.5
15.3	0.007.7103.0	1	disc mm 1.7
16	0.009.7631.0/10	1	hub
17	0.009.7634.0/10	2	thrust plate
18	2.0312.102.2	2	screw m 6 p.1 x 12
19	2.1599.431.0	1	snoulder 42x66x2
20	0.255.4629.0	4	snoulder 15.5x36x2 -> 1014 X EXPLORER 75 -> 1078 X EXPLORER 85 -> 1124 X EXPLORER 95
21	0.010.0856.0/20	1	pin 1013 <- X EXPLORER 75 1077 <- X EXPLORER 85 1123 <- X EXPLORER 95
21	0.013.6067.0	1	pin -> 1014 X EXPLORER 75 -> 1078 X EXPLORER 85

Section: FRONT AXEL

4WD - FRONT DIFFERENTIAL LOCK - FOR TYPES WITH "S.B.A. SYSTEM"

9_62346_00_0_B

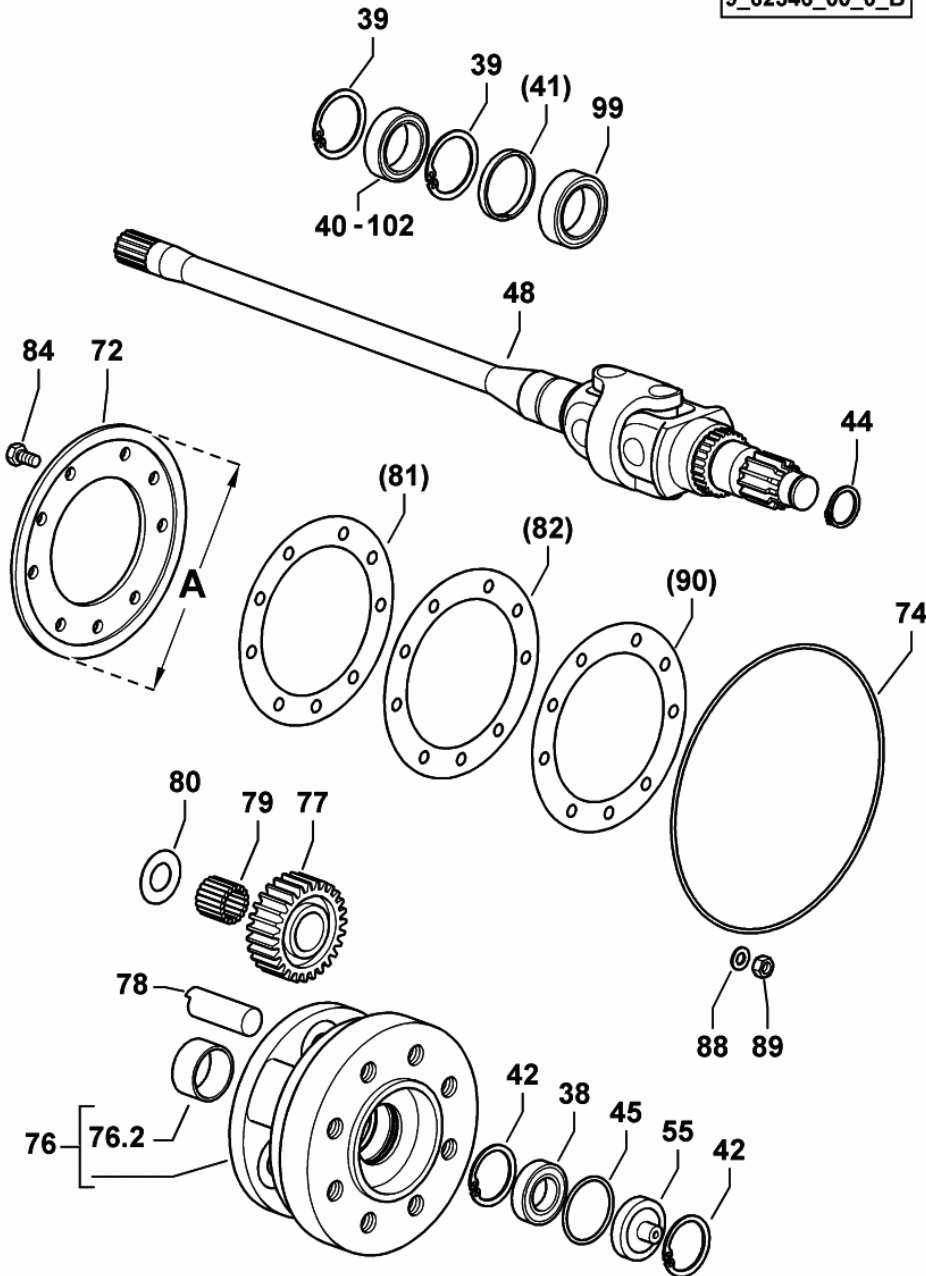


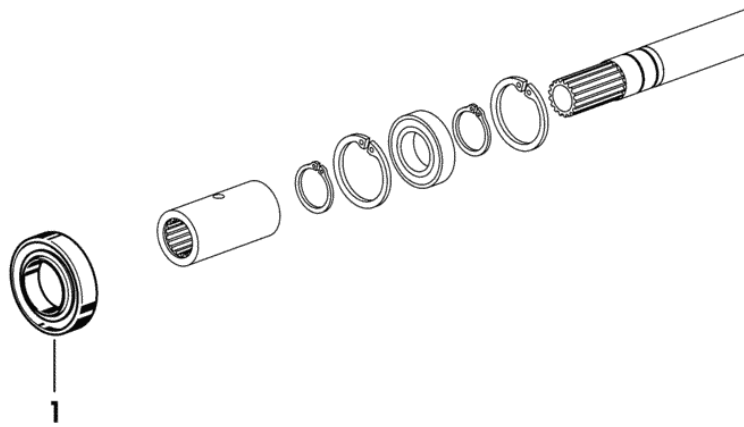
Fig.	Code	QTY	Name
------	------	-----	------

Notes:
- FOR SINGLE-ACTING CYLINDER

38	2.2030.007.0	2	ball bearing 30x55x13
39	2.1411.025.1	4	circlip 62
40	2.2999.415.0	1	bearing 43.8 x 62 x 17
42	2.1411.022.1	4	circlip 55
44	2.1499.528.1	2	circlip 30
45	2.1530.134.0	2	'o' ring 53.98x3.53
48	0.010.5413.4/10	2	half-shaft
			COMPONENT PARTS SEE COMPONENTS LIST
			☞ 0.010.5413.4/10
			☞ 04.00.33
55	0.275.4653.0	2	small cover
72	0.275.4650.0/10	2	flange
			A = 210mm
74	2.1530.308.0	2	'o' ring 253.6x3.53
76	0.275.4642.3/40	2	spider
76.2	2.1559.067.0	1	bushing 44.1x50.1x25
77	0.255.4644.0/20	6	planet gear z=27
78	0.198.4643.0	6	pin
79	2.2999.002.0	6	roller cage 25x35x30
80	2.1599.871.0	12	thrust plate 25x48x1
84	2.0139.002.1	18	screw m 10 p.1.25 x 20
88	2.1475.203.7	20	washer 10.5
89	2.1012.421.7	20	nut m 10 p.1.25
99	2.1529.112.0	2	'o' ring 45 x 65 x 18.5
102	2.2999.415.0	1	bearing 43.8 x 62 x 17

4WD - TRANSMISSION SHAFT - WITH STANDARD SEALS

Fig.	Code	QTY	Name
1	2.1529.068.0	1	'o' ring 30x55x10



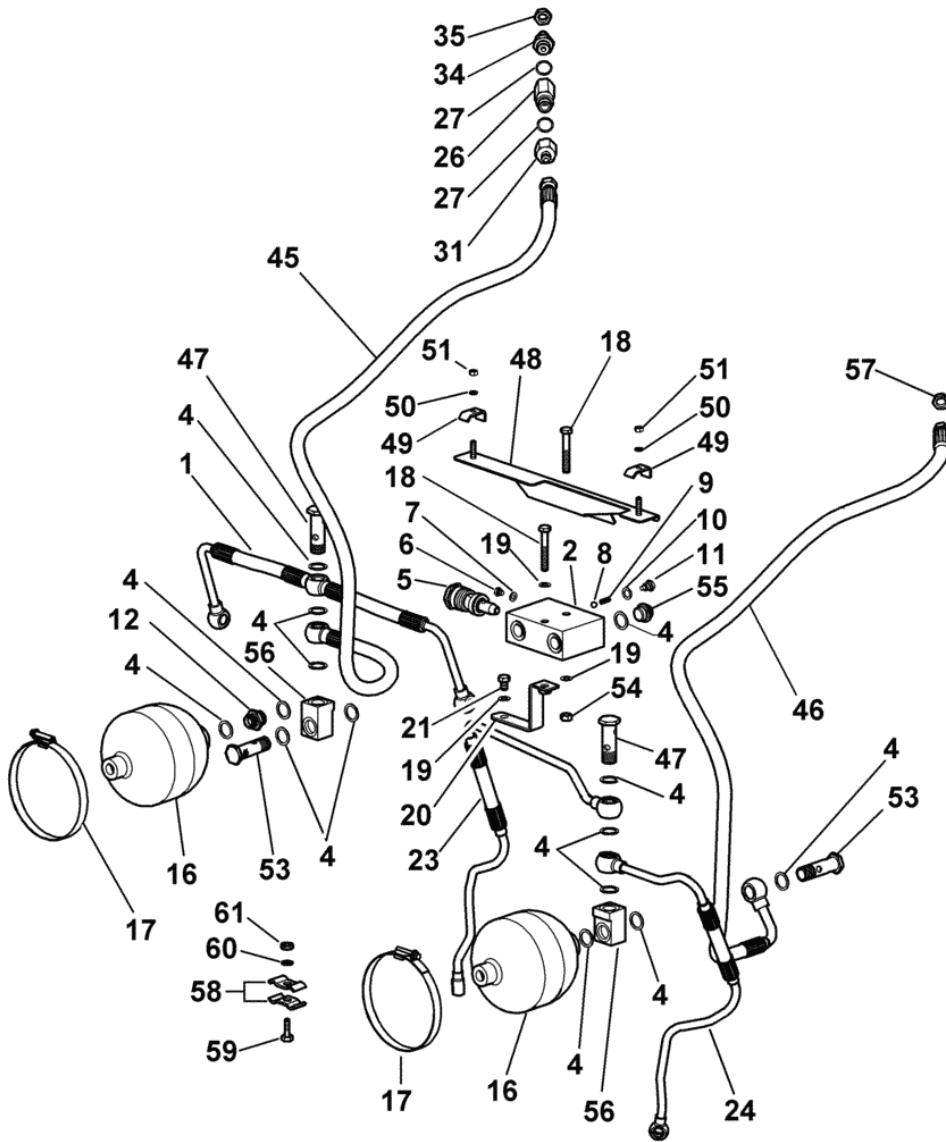
9_77826_01_0_0

EXPLORER 95

Section: FRONT HYDRAULIC POWER-LIFT

Ref.: 0C.00.3

FRONT HYDRAULIC POWER-LIFT - FOR MODELS EQUIPPED WITH FRONT P.T.O.



9_B9859_81_0_A

Fig.	Code	QTY	Name
1	0.013.8515.3/10	1	tube
2	0.009.2022.0/30	1	valve body
4	2.1560.014.0	16	gasket 18.2 x 24 x 1.5
5	0.009.2038.4/10	1	valve
COMPONENT PARTS SEE COMPONENTS LIST			
	☞ 0.009.2038.4/10		
	☞ 0C.00.116		
6	2.3110.427.1	1	plug m 6 p.1 x 10
7	2.1560.002.0	1	gasket 6.12x12
8	2.2810.003.0	1	ball mm 7.144
9	2.4019.378.1	1	spring 7.1x15x0.4
10	2.1560.006.0	1	gasket 10.2 x 16
11	2.3199.151.2	1	plug m10x1.5x13
12	2.3313.007.1	1	pipe fitting m 18 p.1.5-3/4 jic
16	0.010.0427.0/10	2	accumulator
17	2.6851.013.0	2	clamp 120-140
18	2.0112.220.2	2	screw m 8 p.1.25x55
19	2.1470.004.2	3	washer 8
20	0.010.9893.3	1	square
21	2.0112.203.2	1	screw m 8 p.1.25 x 12
23	0.013.8516.3/10	1	tube
24	0.013.8517.3/10	1	tube
26	2.3729.380.0	1	valve
27	2.1560.053.0	8	gasket 17 x 21
31	2.3339.819.2	1	pipe fitting
34	2.3339.612.2/20	3	pipe fitting
35	2.1019.093.2	3	nut 1/2 - 20 UNF-2B
45	0.013.7349.3/20	1	tube
46	0.013.7348.3/20	1	tube
47	2.3339.485.2/10	2	pipe union m 18 p.1.5x55
48	0.013.8844.3	1	bracket
49	0.176.6359.0	2	clamp
50	2.1470.002.2	2	washer 6, d128
51	2.1011.103.2	2	nut m 6 p.1
53	2.3339.932.2/10	2	pipe union m 18 p.1.5 x 60
54	2.1011.105.2	1	nut m 8 p.1.25
55	2.3110.405.1	1	plug m 18 p.1.5 x 15
56	0.013.8518.0	2	small block
57	2.1019.096.2	1	nut 9/16" - 18 JIC
58	0.154.6381.0	2	terminal
59	2.0112.006.2	1	screw m 6 p.1 x 18

Section: GEAR

5 SPEED GEARBOX - WITH HML

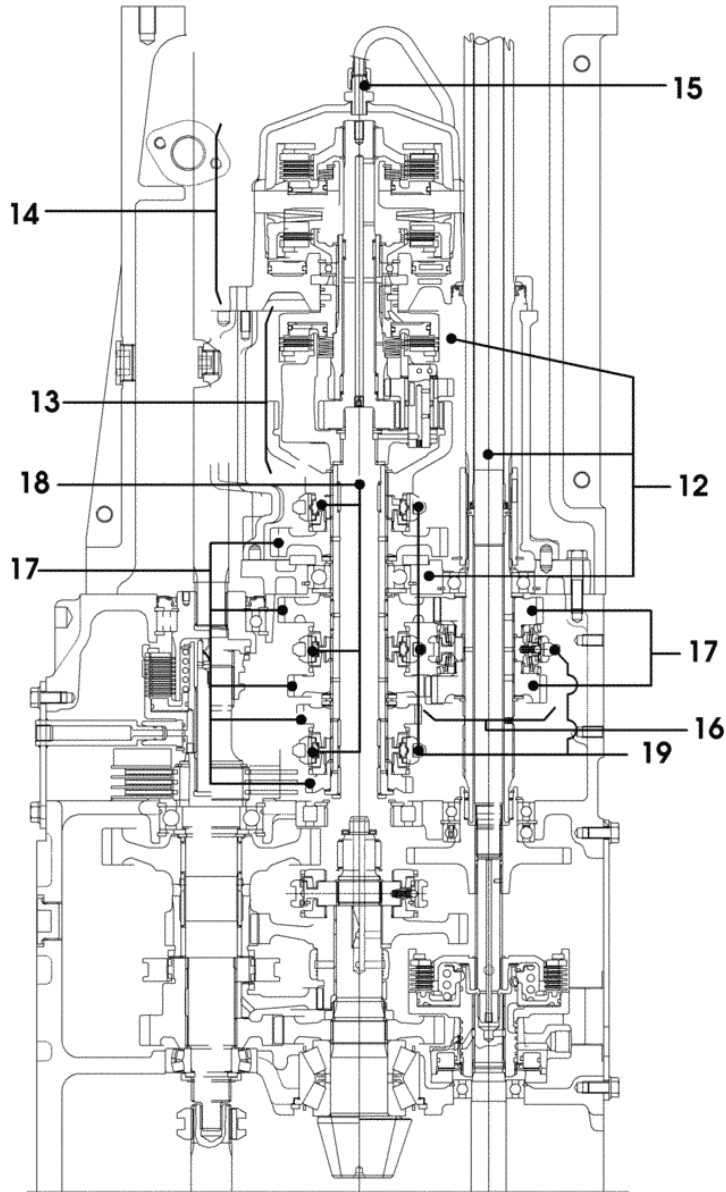
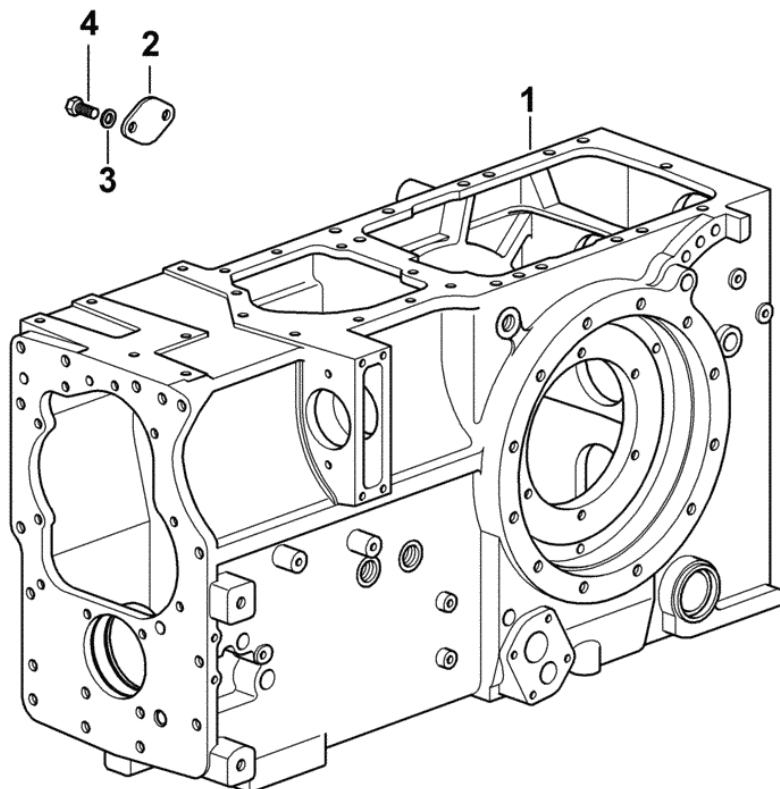


Fig.	Code	QTY	Name
12	0.000.0000.1	0	not serviceable COMPONENT PARTS SEE COMPONENTS LIST ☞ 02.00.37
13	0.000.0000.1	0	not serviceable COMPONENT PARTS SEE COMPONENTS LIST ☞ 02.00.38
14	0.000.0000.1	0	not serviceable COMPONENT PARTS SEE COMPONENTS LIST ☞ 02.00.39
15	0.000.0000.1	0	not serviceable COMPONENT PARTS SEE COMPONENTS LIST ☞ 02.00.40
16	0.000.0000.1	0	not serviceable COMPONENT PARTS SEE COMPONENTS LIST ☞ 0.011.8631.4 ☞ 02.00.41
17	0.000.0000.1	0	not serviceable COMPONENT PARTS SEE COMPONENTS LIST ☞ 02.00.42
18	0.000.0000.1	0	not serviceable COMPONENT PARTS SEE COMPONENTS LIST ☞ 0.007.7647.4 ☞ 0.007.7646.4/10 ☞ 02.00.43
19	0.000.0000.1	0	not serviceable COMPONENT PARTS SEE COMPONENTS LIST ☞ 02.00.44

Section: GEAR

GEARBOX - FOR TYPES WITH ELECTRONIC LIFTER

Fig.	Code	QTY	Name
1	0.010.7938.0/80	1	gear box
2	0.010.5124.0	1	small plate
3	2.1470.006.2	2	lock washer 10
4	2.0112.307.2	2	screw m 10 p.1.5 x 20



9_77831_01_0_0

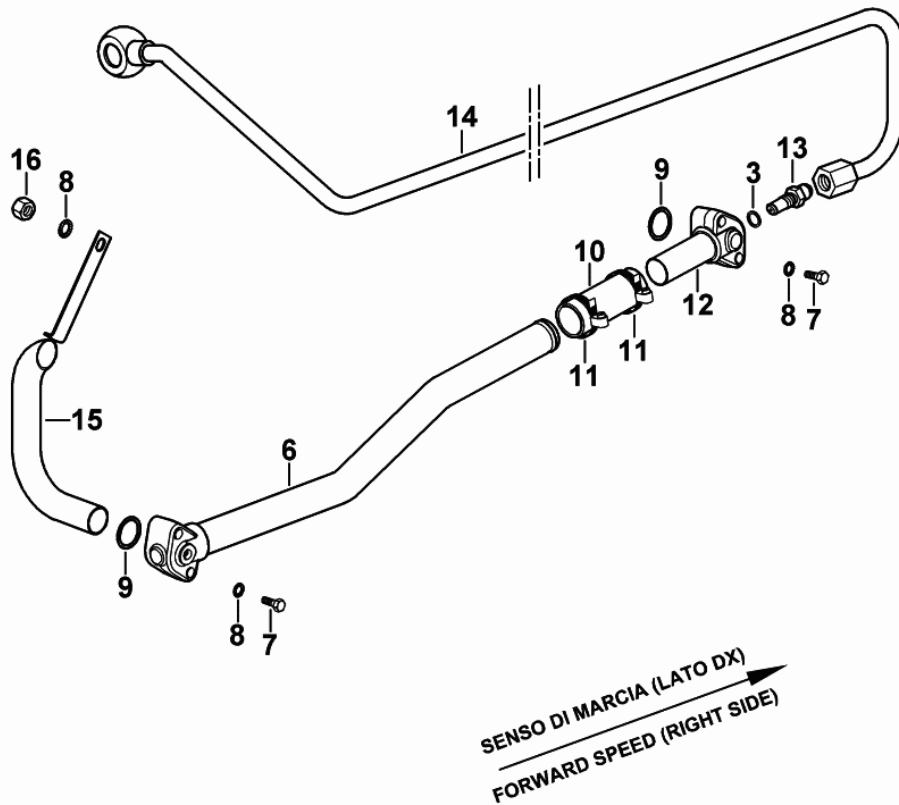
Section: GEAR
GEAR BOX OIL FEED PIPES

Fig.	Code	QTY	Name
------	------	-----	------

Notes:

-> 1183 X EXPLORER 85 -> 1713 X EXPLORER 95

3	2.1560.008.0	1	gasket 12.2 x 18
6	0.010.5083.3/20	1	tube
7	2.0112.319.2	4	screw m 10 p.1.5 x 50
8	2.1470.006.2	4	lock washer 10
9	2.1530.091.0	2	'o' ring 34.60 x 2.62
10	0.010.7476.0	1	sleeve
11	2.6851.004.0	2	clamp Ø 32/50
12	0.010.5079.3	1	tube
13	2.3339.999.2	1	pipe fitting m 12 p.1.25-1/2"-20JIC
14	0.011.0302.3/10	1	tube
15	0.011.9936.2/10	1	tube
16	2.1011.106.2	1	nut m 10 p.1.5



9_78082_30_0_0

Section: GEAR

GEAR CHANGE BOX 5 SPEED - FOR TYPES WITH HYDRAULIC SHUTTLE

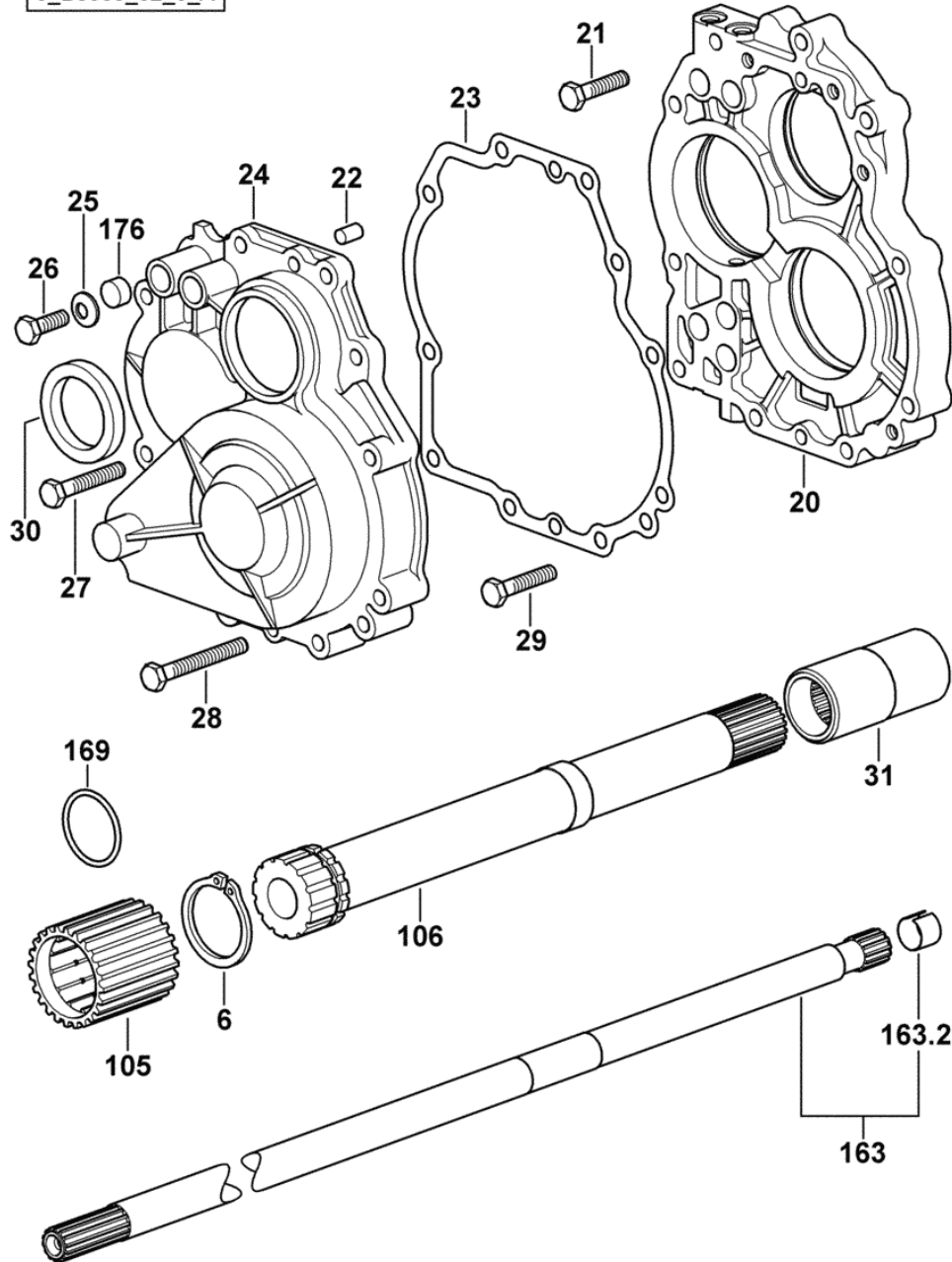
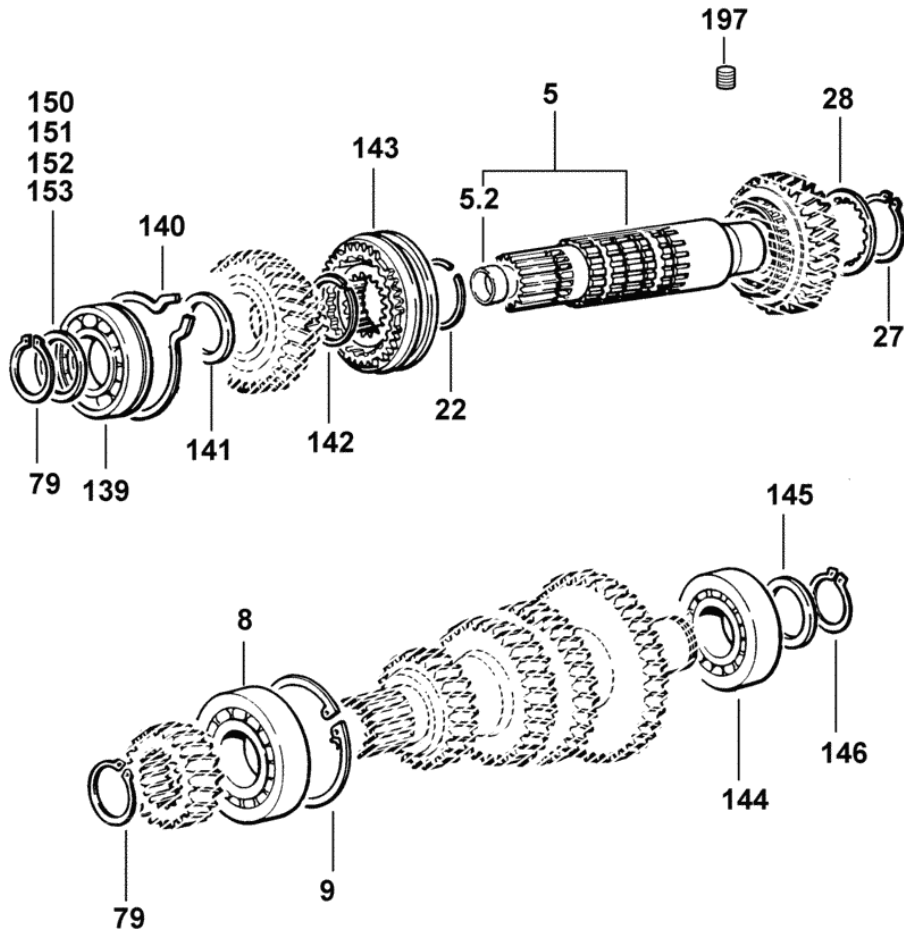


Fig.	Code	QTY	Name
6	2.1411.020.1	1	circlip 50
20	0.007.3461.0/60	1	flange
21	2.0112.317.2	2	screw m 10 p.1.5 x 45
22	2.1651.807.0	2	pin 10 x 16
23	0.255.3356.0/10	1	gasket
24	0.255.3357.0/30	1	cover
25	2.1481.058.1	11	washer 10
26	2.0112.311.2	3	screw m 10 p.1.5 x 30
27	2.0112.321.2	4	screw m 10 p.1.5 x 60
28	2.0112.325.2	3	screw m 10 p.1.5 x 80
29	2.0112.319.2	1	screw m 10 p.1.5 x 50
30	2.1529.079.0	1	'o' ring 50 x 68 x 10
31	0.255.2515.0	1	sleeve
105	0.010.8423.0	1	sleeve
106	0.010.8681.0/10	1	shaft
163	0.010.8526.3/10	1	shaft
163.2	0.255.2550.0	1	ring
169	2.1531.123.0	2	'o' ring 49.20x3.53
176	2.3171.007.4	1	plug Ø 18

Section: GEAR

5 SPEED GEARBOX - WITH HML

Fig.	Code	QTY	Name
5	0.012.9651.3	1	shaft
5.2	2.1555.214.0	1	bushing 25 x 28 x 15
8	2.2999.367.0	1	bearing 40 x 90 x 23
9	2.1411.036.1	1	circlip 90
22	2.1499.153.7	7	circlip 41 x 1.5
27	2.1419.034.1	3	circlip 44
28	0.255.3372.0	4	shoulder
79	2.1410.016.1	4	circlip 40
139	2.2042.012.0	1	ball bearing 40 x 80 x 18
140	2.1499.052.1/10	1	circlip 80
141	0.255.3450.0	1	snoulder 40 x 60 x 3.5
142	2.1499.152.7	1	circlip 41 x 1.8
143	0.011.8631.4	1	lock synchronizer \varnothing 71/76
			COMPONENT PARTS SEE COMPONENTS LIST
			0.011.8631.4
			02.00.16
144	2.2060.011.0	1	ball bearing 35 x 80 x 21
145	2.1599.874.0	1	washer 35 x 45 x 3.0
146	2.1410.014.1	1	circlip 35
150	2.1599.414.0	2	snoulder 40 x 50 x 3.0
151	2.1599.423.0	1	snoulder 40 x 50 x 2.9
152	2.1599.424.0	2	snoulder 40 x 50 x 2.8
153	2.1599.425.0	1	snoulder 40 x 50 x 2.7
197	2.0599.089.7	1	grain m 5 p.0.8 x 50



Section: GEAR

5 SPEED GEARBOX - WITH HML (AGROSHIFT)- FOR TYPES WITH HYDRAULIC SHUTTLE

9_B8633_04_0_E

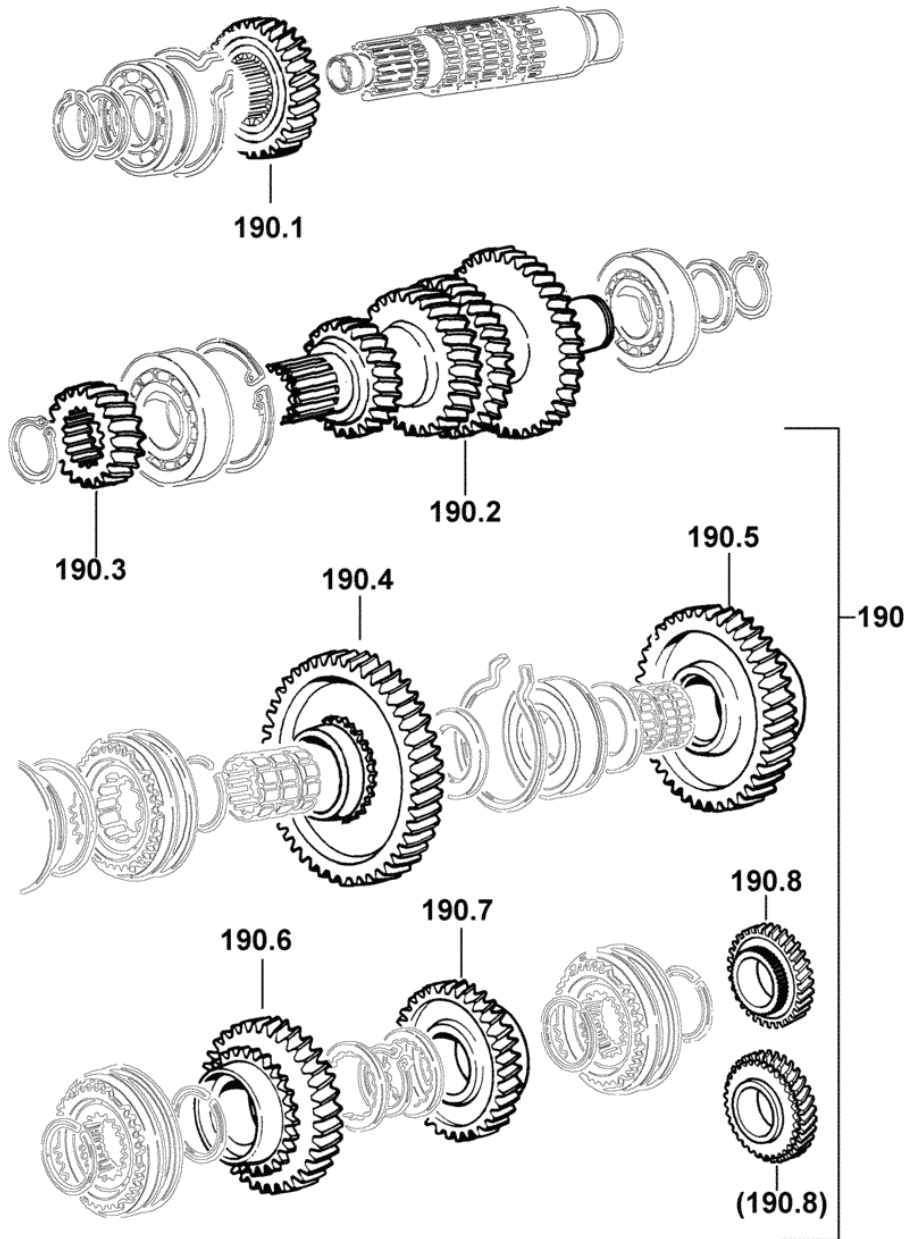
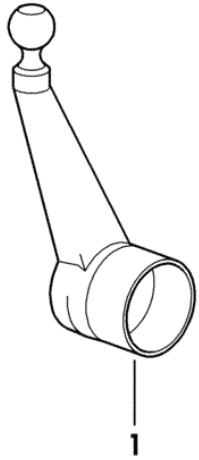


Fig.	Code	QTY	Name
190	0.000.0000.1	0	not serviceable
190.1	0.007.7457.0/10	1	gear Z = 37
190.2	0.013.1424.0	1	main shaft Z = 30 / 34 / 40 / 44
190.3	0.011.3867.0	1	gear Z = 19
190.4	0.011.3868.0/20	1	gear Z = 46
190.5	0.010.9395.0/10	1	gear Z = 54
190.6	0.010.9396.0/20	1	gear Z = 46
190.7	0.011.3886.0/10	1	gear Z = 38
190.8	0.013.1439.3	1	gear Z = 31
			1206 <- X EXPLORER 85
			1886 <- X EXPLORER 95
190.8	0.014.5899.0	1	gear Z = 31
			-> 1207 X EXPLORER 85
			-> 1887 X EXPLORER 95

Section: GEAR
HAND LEVER

Fig.	Code	QTY	Name
1	0.011.7915.3	1	lever



9_B7833_01_0_0

GEARSHIFT LEVER - FOR TYPES WITH HYDRAULIC SHUTTLE

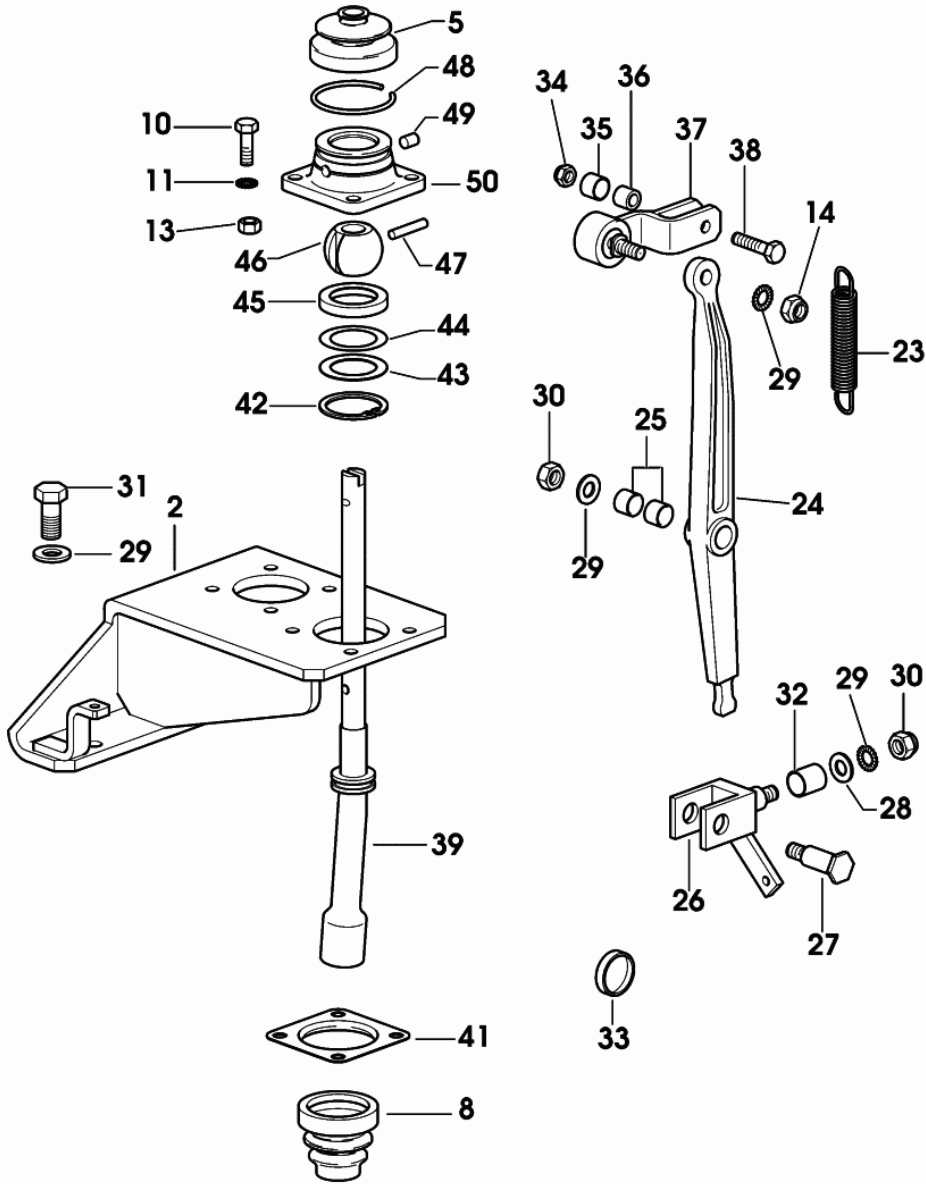


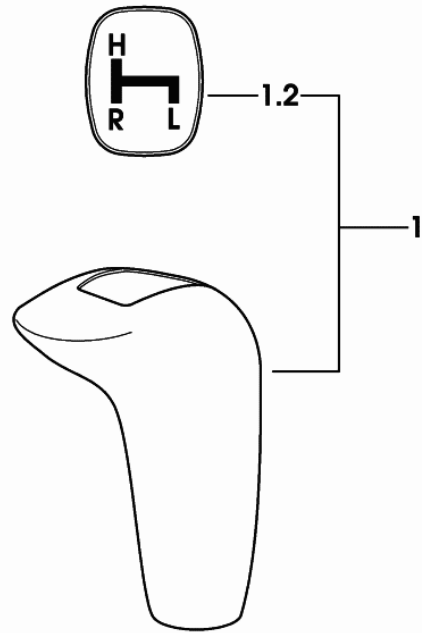
Fig.	Code	QTY	Name
2	0.011.5604.2	1	support
5	0.008.5961.0	1	guard
8	0.008.5558.0	1	cap
10	2.0112.209.2	4	screw m 8 p.1.25 x 25
11	2.1470.004.2	4	washer 8
13	2.1011.105.2	4	nut m 8 p.1.25
14	2.1120.106.2	1	nut m 10 p.1.25
23	2.4049.025.1	1	spring 17.1x116x2.1
24	0.010.8613.0/30	1	lever
25	2.1555.107.0	2	bushing 14x16x12
26	0.009.9858.2/10	1	fork
27	0.009.9957.0	1	pin
28	2.1579.520.2	1	washer 10.5x30x3
29	2.1470.006.2	4	lock washer 10
30	2.1011.106.2	2	nut m 10 p.1.5
31	2.0112.309.2	2	screw m 10 p.1.5 x 25
32	2.1555.309.0	1	bushing 16x18x20
33	2.3171.020.4	1	plug Ø 56 mm
34	2.1120.005.2	1	nut m 8 p.1.25
35	2.1555.107.0	1	bushing 14x16x12
36	2.1579.965.2	1	spacer 8.5x14x12.5
37	0.011.1151.3/30	1	rod
38	2.0112.213.2	1	screw m 8 p.1.25 x 35
39	0.011.5585.2	1	lever
41	0.008.5404.0	1	spacer
42	2.1499.122.0	1	circlip 47
43	2.1589.302.0	1	snoulder 32x46.5x1
44	2.1589.251.0	5	snoulder 32x46.5x0.2
45	0.008.5395.0/10	1	ring
46	0.008.0305.0	1	ball mm 40
47	2.1651.511.0	1	pin
48	2.1420.021.7	1	circlip a 55
49	2.1699.395.0	2	pin 8x10.5
50	0.008.5410.0/60	1	support

9_77864_02_0_A

Section: GEAR

KNOB FOR MECHANICAL SHUTTLE - FOR TYPES WITH MINREDUCTION

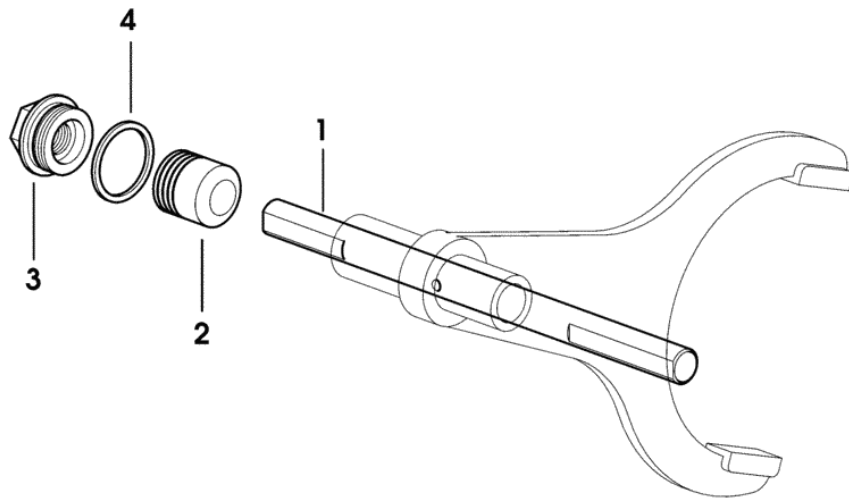
Fig.	Code	QTY	Name
1	0.010.5591.3/10	1	knob
1.2	0.010.5545.3/10	1	cap



9_77864_12_0_0

DIFFERENTIAL LOCK CONTROL - ELECTROHYDRAUDLIC

Fig.	Code	QTY	Name
1	0.008.5636.0	1	rod
2	0.008.5650.0/20	1	piston
3	2.3199.176.0	1	plug m 30 p.1.5 / m 14 p.1.5
4	2.1560.023.0	1	gasket 30.3 x 36



9_61435_02_0_0

Section: REAR AXLE

REAR REDUCTION GEARS AND AXLE SHAFTS

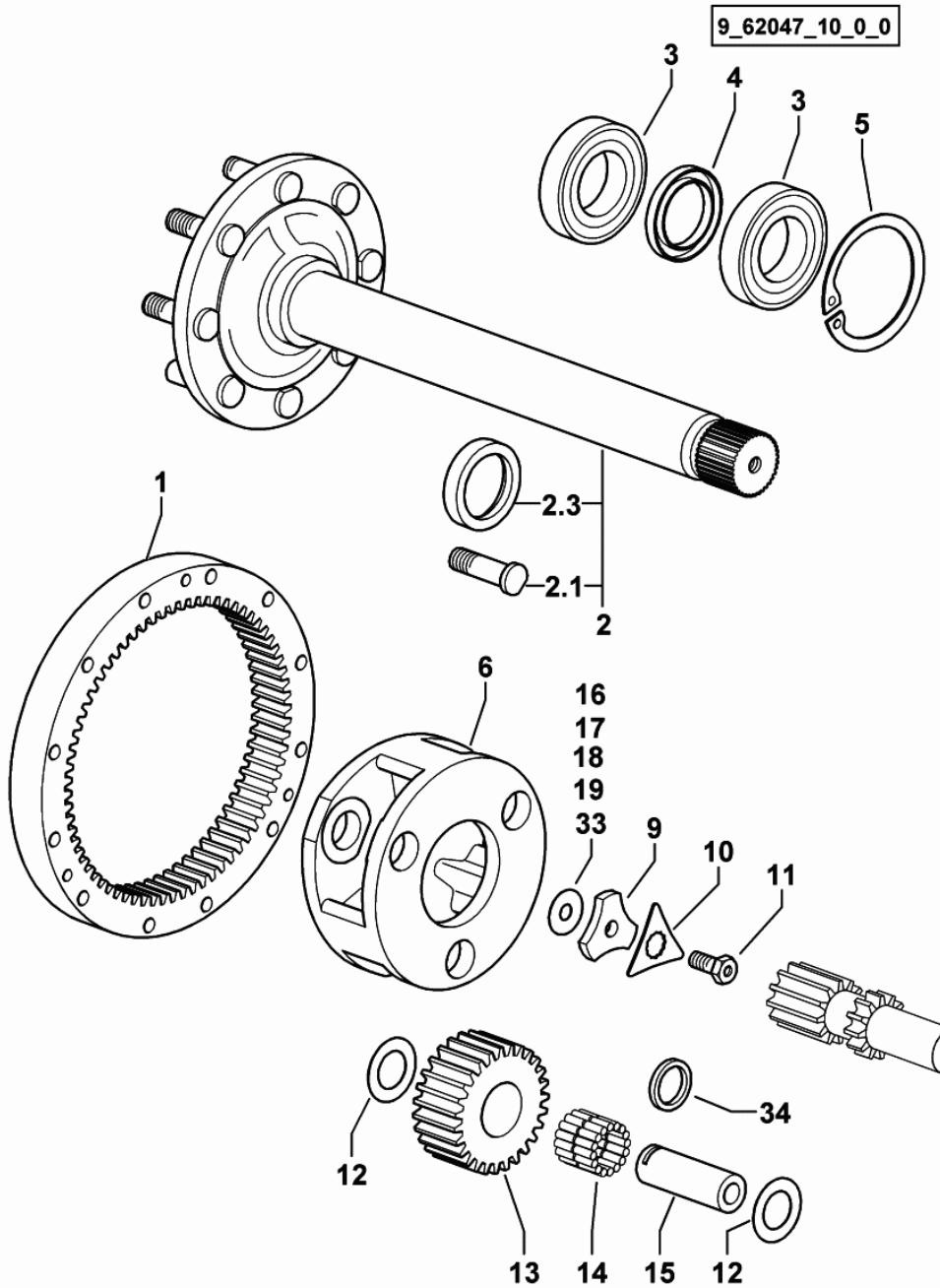
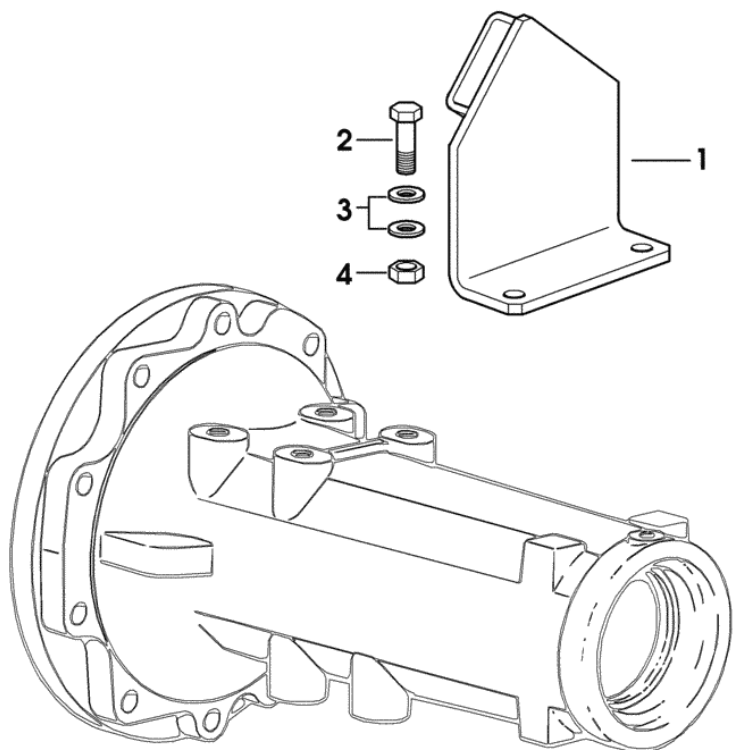


Fig.	Code	QTY	Name
1	0.445.4440.0	2	crown wheel
2	0.445.4734.3/30	2	half-shaft
2.1	0.148.4737.0/20	8	small column m 20x68
2.3	0.445.4750.0	1	spacer
3	2.2520.013.0	4	roller bearing 60x110x23.75
4	2.1510.331.0	2	oil seal 60x85x10
5	2.1410.045.1	2	circlip 125
6	0.008.5581.0	2	differential carrier
9	0.255.4745.0	2	spacer
10	0.255.4750.0/10	2	washer
11	2.0139.014.1	2	screw m 14 p.1.5 x 33
12	2.1589.170.0	12	snoulder 35x58x1
13	0.008.5582.0	6	planet gear
14	2.2999.197.0	6	roller cage
15	0.445.4725.0	6	pin
16	2.1589.106.0	6	snoulder 14.5 x 41 x 1.0
17	2.1589.107.0	2	snoulder 14.5 x 41 x 0.5
18	2.1589.108.0	2	snoulder 14.5 x 41 x 0.2
19	2.1589.109.0	2	snoulder 14.5 x 41 x 0.1
33	2.1589.246.0	2	snoulder 14.5 x 41 x 0.15
34	2.1549.138.0	6	spacer

Section: REAR AXLE

HANDBRAKE BRACKET FOR TRAILER

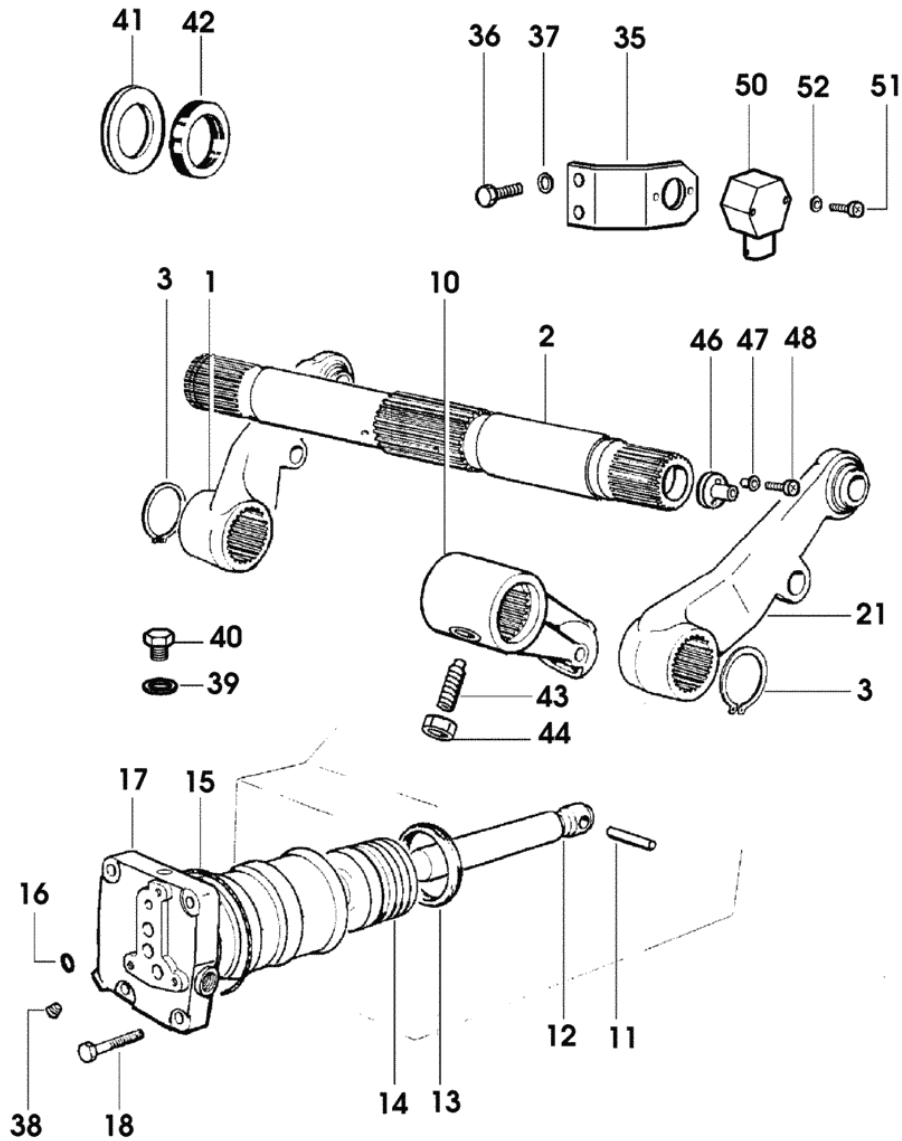
Fig.	Code	QTY	Name
1	0.014.5699.2	1	support
2	2.0112.307.2	2	screw m 10 p.1.5 x 20
3	2.1310.006.2	4	flat washer 10.5
4	2.1011.106.2	2	nut m 10 p.1.5



9_64844_20_0_0

LIFTING WITH ELECTRONIC CONTROL

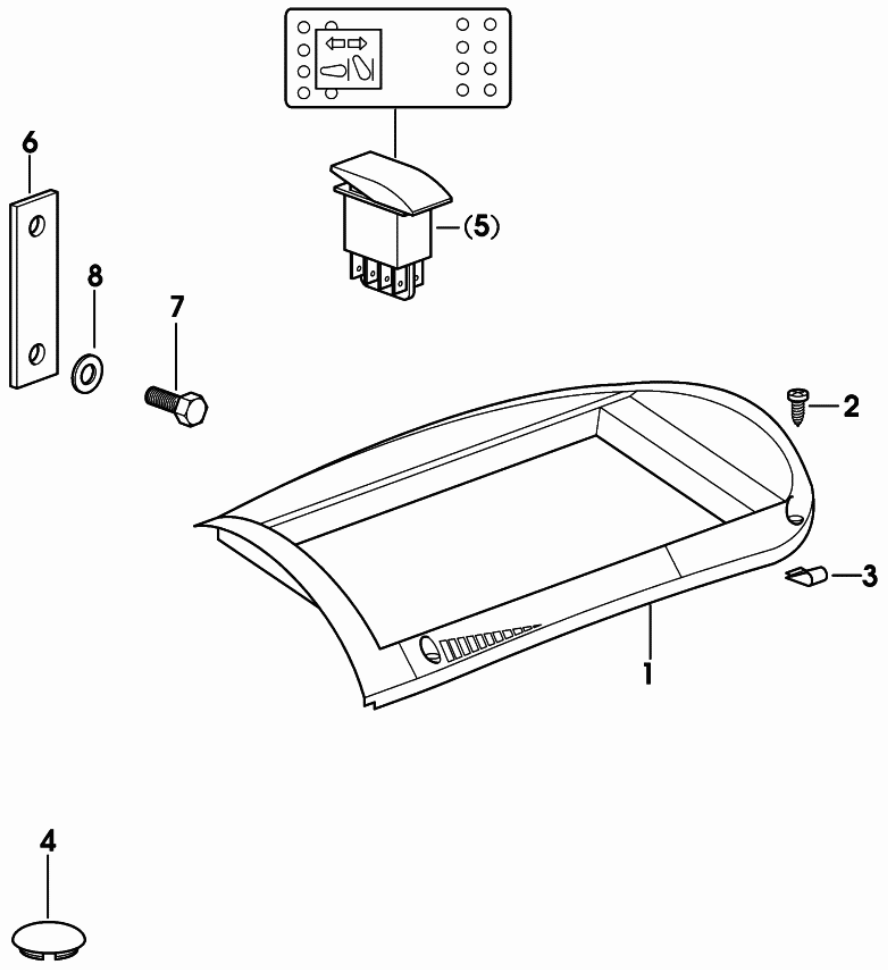
Fig.	Code	QTY	Name
1	0.007.1954.3/10	1	lift lever dx/rh/re
2	0.009.3679.0/30	1	shaft
3	2.1410.022.1	2	circlip 55
10	0.007.1952.0/10	1	lever
11	2.1631.922.0	1	roll pin 12x65
12	0.9131.313.0	1	connecting rod
13	2.1518.125.0	1	'o' ring 90x110x12.5
14	0.9131.311.0/10	1	piston
15	2.1530.256.0	1	'o' ring 152x3.5
16	2.1531.037.0	2	'o' ring 15.08x2.62
17	0.010.8394.0	1	cylinder
18	2.0122.620.2	4	screw m 16 p.1.5x55
21	0.007.1953.3/10	1	lift lever sx/lh/li
35	0.011.3853.3/10	1	bracket
36	2.0112.207.2	2	screw m 8 p 1.25 x 20
37	2.1310.004.2	2	flat washer 8.5
38	2.3131.002.2	3	plug m 14 p.1.5
39	2.1560.014.0	1	gasket 18.2 x 24 x 1.5
40	2.3110.405.1	1	plug m 18 p.1.5 x 15
41	2.1599.696.2	2	snoulder 55x88x5
42	2.1520.329.0	2	oil seal 55x72x10
43	2.0522.312.7	1	screw m 10 p.1.5 x 30
44	2.1011.106.2	1	nut m 10 p.1.5
46	0.007.6992.0/10	1	joint
47	2.1559.363.2	2	sleeve
48	2.0332.305.2	2	screw m 5 p.0.8 x 14
50	2.7099.740.0/10	1	sensor
51	2.0332.210.3	2	screw m 4x35
52	2.1310.028.2	2	flat washer 4



9_77959_21_0_0

ELECTRONIC LIFT LEVER PANEL WITH GUIDE SLOTS

Fig.	Code	QTY	Name
1	0.011.0953.0/10	1	frame
2	2.0352.407.3	2	screw m 4.2 x 22
3	2.6999.022.0	2	small spring
4	2.3199.113.0	2	plug 31.5x8.5
6	0.011.3583.0	1	small plate
7	2.0112.207.2	2	screw m 8 p 1.25 x 20
8	2.1310.004.2	2	flat washer 8.5



9_77859_55_0_0

EXPLORER 95

Section: POWER STEERING - HYDRAULIC SYSTEM

Ref.: 06.00.6

STEERING CONTROL WITH ADJUSTABLE STEERING WHEEL - FOR TYPES WITH HYDRAULIC SHUTTLE

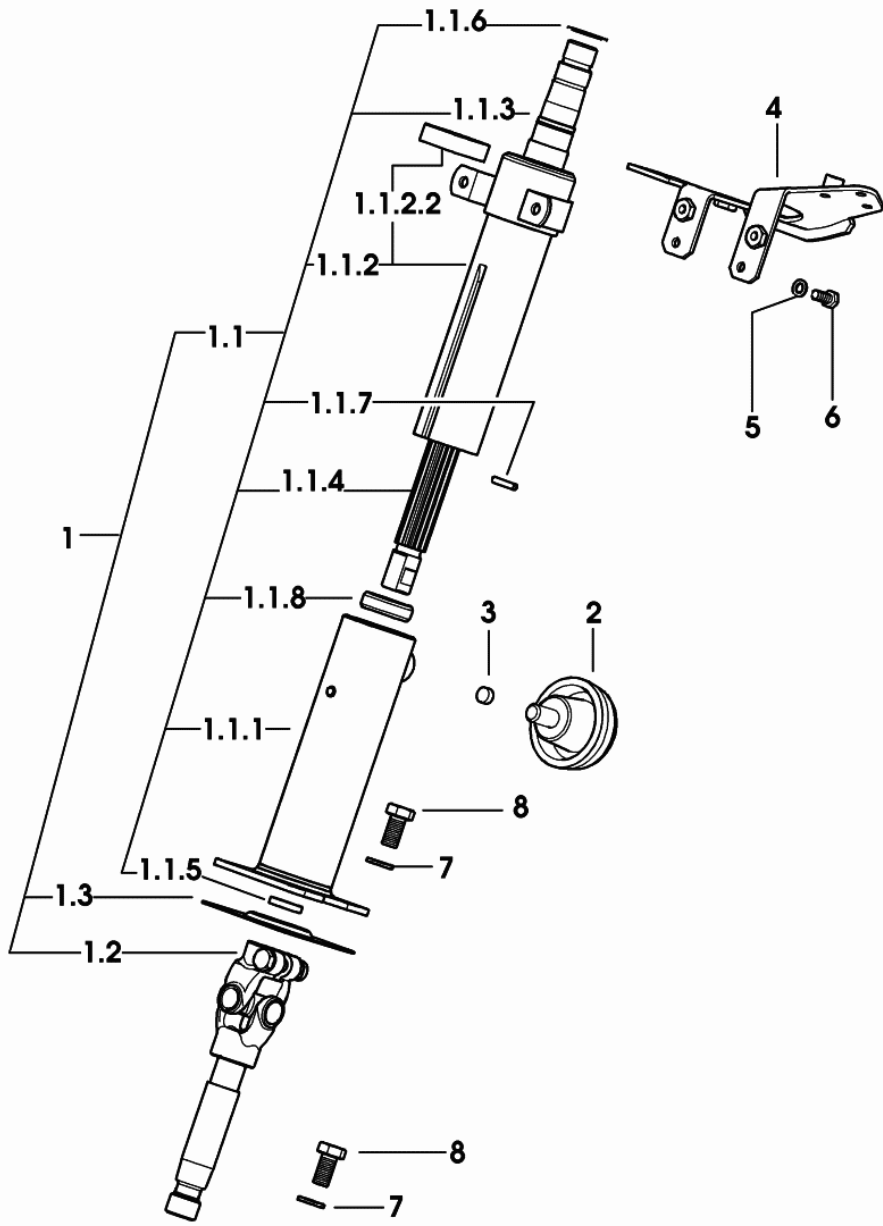


Fig.	Code	QTY	Name
1	0.013.6955.4	1	steering column
1.1	0.000.0000.1	0	not serviceable
1.1.1	0.009.9555.2/30	1	steering column
1.1.2	0.013.6954.3	1	steering column
1.1.2.2	2.2021.009.0	1	ball bearing 25 x 47 x 12
1.1.3	0.007.5626.3/40	1	shaft
1.1.4	0.011.0814.0/10	1	shaft
1.1.5	2.1599.566.2	2	thrust plate 16.5 x 34 x 5
1.1.6	2.1410.010.7	1	ring 25
1.1.7	2.1630.410.0	1	roll pin 4 x 20
1.1.8	2.1549.390.0	1	spacer
1.2	0.011.0815.3	1	shaft
1.3	0.011.0937.0	1	cap-washer
2	0.007.6087.2	1	knob
3	2.1579.883.0	1	spacer 10x5
4	0.013.7010.3/10	1	bracket
5	2.1499.097.3	2	washer 6, d128
6	2.0119.160.3	2	screw m 6 p.1 x 14
7	2.1470.006.2	8	lock washer 10
8	2.0112.307.2	8	screw m 10 p.1.5 x 20

9_B9863_03_0_0

EXPLORER 95

Section: POWER STEERING - HYDRAULIC SYSTEM

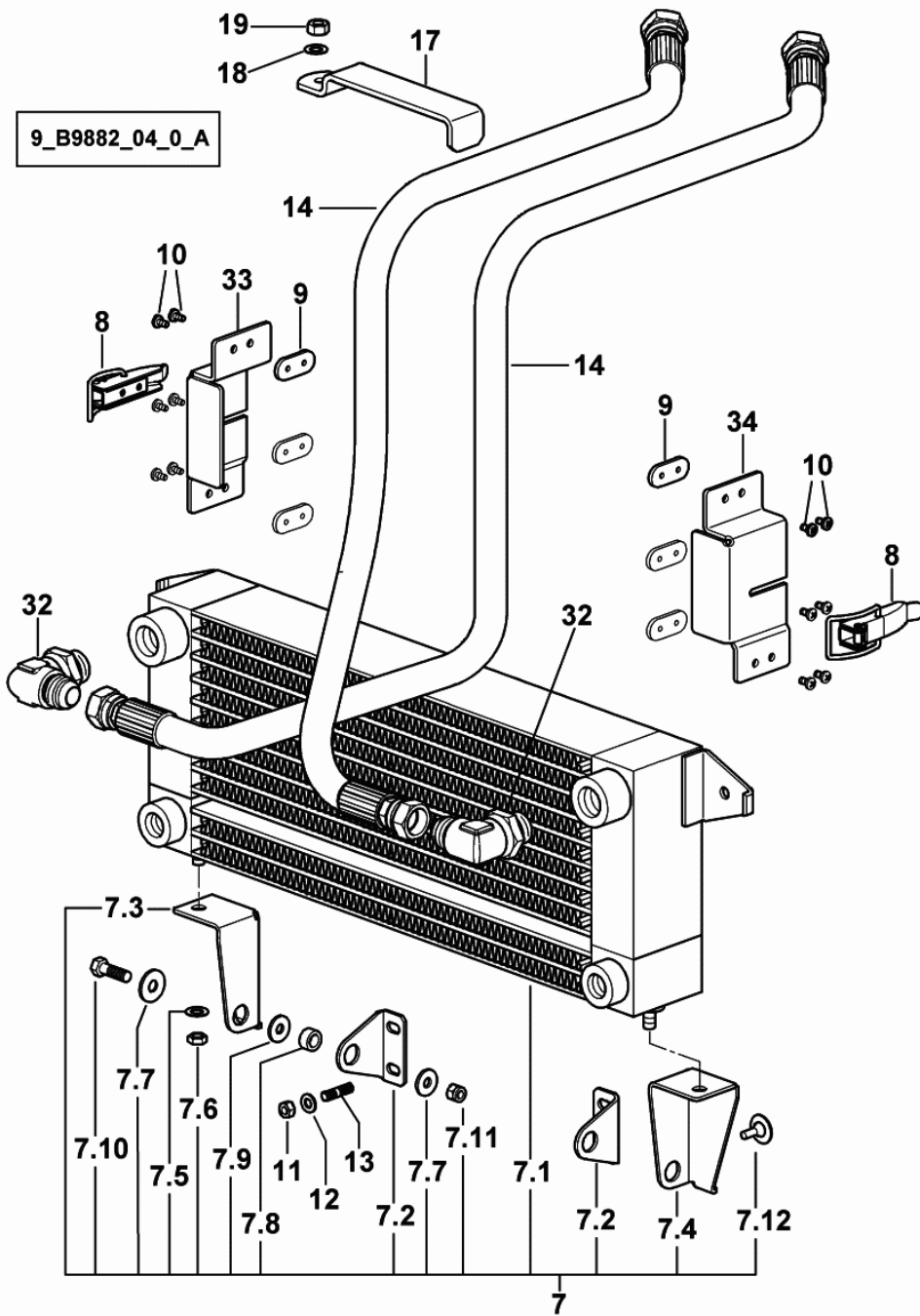
Ref.: 06.00.16

GEARBOX OIL COOLER - FOR TYPES WITH HYDRAULIC SHUTTLE

Fig.	Code	QTY	Name
------	------	-----	------

Notes:

-> 1182 X EXPLORER 85 -> 1706 X EXPLORER 95



7	0.000.0000.1	0	not serviceable
7.1	0.014.8949.2	1	oil cooler
7.2	0.008.9598.0	2	bracket
7.3	0.014.9038.0	1	bracket dx/rh/re
7.4	0.014.9037.0	1	bracket sx/lh/li
7.5	2.1470.004.2	2	washer 8
7.6	2.1011.105.2	2	nut m 8 p.1.25
7.7	2.1312.003.2	4	washer 6
7.8	2.1579.994.2	2	spacer 8.5x14x7
7.9	2.1549.169.0	2	spacer 14.5x22x2
7.10	2.0112.007.2	2	screw m 6 p.1 x 20
7.11	2.1120.003.2	2	nut m 6
7.12	0.467.7693.0	2	block
8	0.008.9632.0	2	clevis
9	0.008.9726.0	6	small plate
10	2.0332.202.2	12	screw m 4 x 8
11	2.1011.103.2	5	nut m 6 p.1
12	2.1310.002.2	4	washer 6.6, d125
13	2.0422.001.2	4	stud bolt m 6 p.1.0 x 16
14	0.014.9032.3	2	tube
17	0.013.7453.0	1	bracket
18	2.1470.004.2	3	washer 8
19	2.1011.105.2	1	nut m 8 p.1.25
32	2.3264.020.2	2	pipe fitting m 22 p.1.5 - 7/8
33	0.014.9033.0	1	bracket dx/rh/re
34	0.014.9034.0	1	bracket sx/lh/li

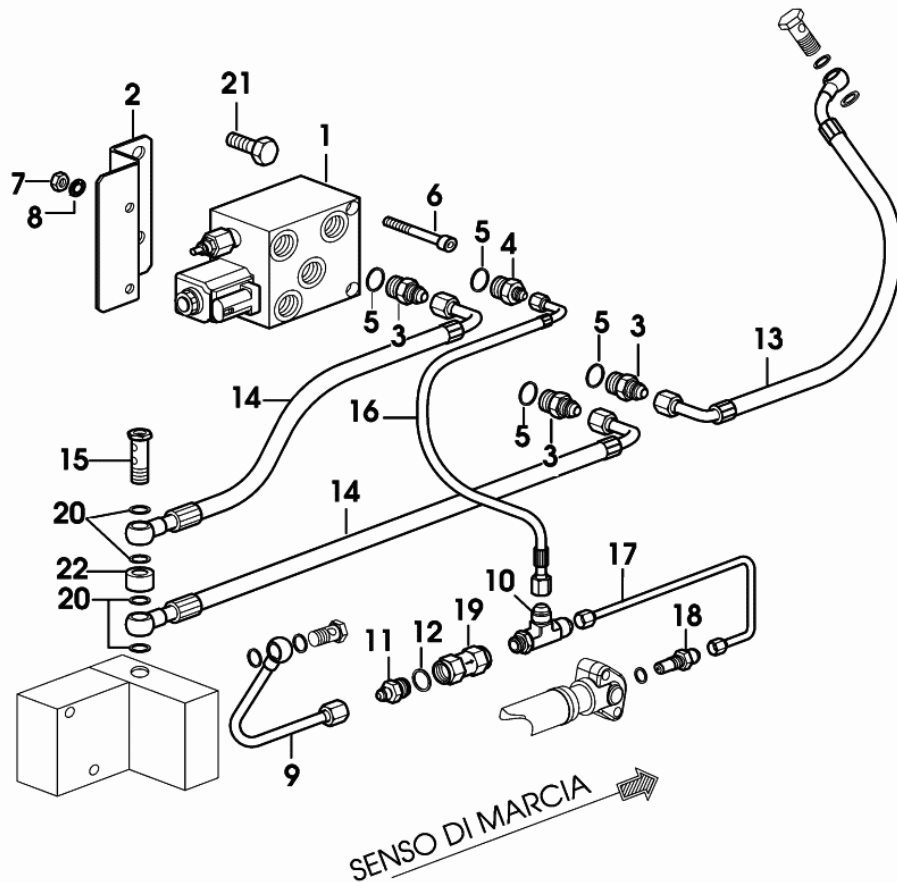


Fig.	Code	QTY	Name
1	2.3729.640.0	1	valve 45 bar COMPONENT PARTS SEE COMPONENTS LIST ☞ 2.3729.640.0 ☞ 06.00.48
2	0.012.5626.0	1	bracket
3	2.3261.116.2	3	pipe fitting 1/2 gas-7/8"
4	2.3261.110.2	1	pipe fitting 1/2 gas-9/16"
5	2.1560.054.0	4	gasket 21 x 26
6	2.0312.220.2	2	screw m 8 p.1.25x70
7	2.1011.105.2	2	nut m 8 p.1.25
8	2.1470.004.2	2	washer 8
9	0.012.9162.3	1	tube
10	2.3339.957.2	1	pipe fitting
11	2.3261.107.2	1	pipe fitting 3/8 gas-1/2"
12	2.1560.053.0	1	gasket 17 x 21
13	0.012.9159.3	1	tube
14	0.012.9160.3	2	tube
15	2.3339.820.2/10	1	pipe union m 18 p.1.5 x 68
16	0.012.5785.3	1	tube
17	0.012.9161.3	1	tube
18	2.3339.999.2	1	pipe fitting m 12 p.1.25-1/2"-20JIC
19	0.445.6388.3/10	1	valve
20	2.1560.014.0	3	gasket 18.2 x 24 x 1.5
21	2.0112.415.2	2	screw m 12 p.1.75 x 40
22	2.1549.385.2	1	spacer 18.6 x 25 x 13

9_77882_31_0_0

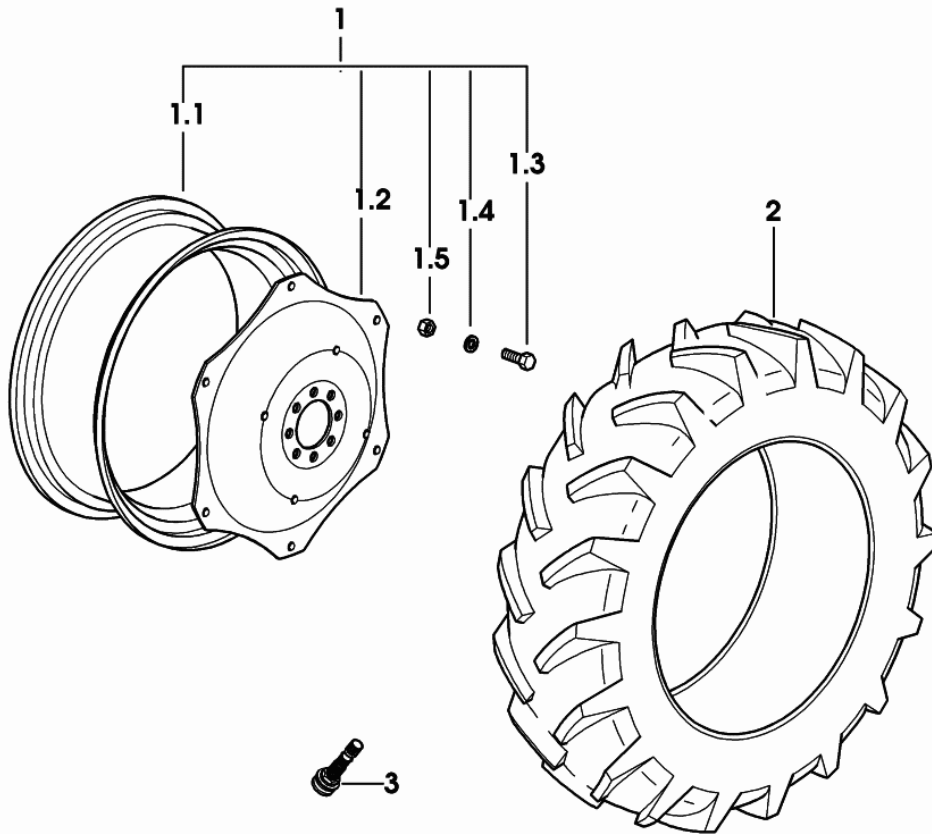
Section: WHEELS
WHEELS 420/70 R24" A8

Fig.	Code	QTY	Name
------	------	-----	------

Notes:

1166 <- X EXPLORER 85 1629 <- X EXPLORER 95

1	0.000.0000.1	0	not serviceable
1.1	0.012.8987.3	1	rim W 13x24" C/ST.
1.2	0.010.9752.0	1	flange 24"
1.3	2.0099.005.6	6	screw m 16 p.1.5 x 38
1.4	2.1499.019.6	6	washer 16.3 x 31.5
1.5	2.1019.059.6	6	nut m 16 p.1.5 x 16
2	2.4819.124.0	2	tyre 420/70 R24" A8
3	0.012.6364.0	2	valve



9_B9855_21_0_0

CLICK HERE TO **DOWNLOAD** THE COMPLETE MANUAL

- Thank you very much for reading the preview of the manual.
- You can download the complete manual from: www.heydownloads.com by clicking the link below



- Please note: If there is no response to CLICKING the link, please download this PDF first and then click on it.

CLICK HERE TO **DOWNLOAD** THE COMPLETE MANUAL