

# EXPLORER 85

## ACCESSORIES

### GENERAL

AUXILIARY SERVICE CONTROL VALVE FEED BOSCH.....	0E.00.1
AUXILIARY SERVICE CONTROL VALVE FEED SALAMI.....	0E.00.2
4-WAY AUXILIARY DISTRIBUTOR BOSCH.....	0E.00.3
4-WAY HYDRAULIC CONTROL VALVE BOSCH.....	0E.00.4
4/8-WAY AUXILIARY DISTRIBUTOR SALAMI.....	0E.00.5
4-WAY AUXILIARY DISTRIBUTOR SALAMI.....	0E.00.6
4-WAY HYDRAULIC CONTROL VALVE SALAMI.....	0E.00.7
8-WAY AUXILIARY DISTRIBUTOR BOSCH.....	0E.00.8
8-WAY AUXILIARY DISTRIBUTOR BOSCH.....	0E.00.9
8-WAY AUXILIARY DISTRIBUTOR SALAMI.....	0E.00.10
8-WAY AUXILIARY DISTRIBUTOR SALAMI.....	0E.00.11
BRACKET.....	0E.00.12
4-WAY QUICK COUPLERS.....	0E.00.13
8-WAY QUICK COUPLERS.....	0E.00.14
8-WAY QUICK COUPLERS.....	0E.00.15
4-WAY CONTROL VALVES - OIL RECOVERY.....	0E.00.16
8-WAY CONTROL VALVES - OIL RECOVERY.....	0E.00.17
OIL REGULATOR CONTROL.....	0E.00.18
3-POINT LINKAGE WITH AUTOMATIC COUPLERS A = mm 30.....	0E.00.19
3-POINT LINKAGE WITH AUTOMATIC COUPLERS A = mm 34.....	0E.00.20
3 POINT HITCH.....	0E.00.21
3 POINT HITCH.....	0E.00.22
3-POINT HITCH - ADJUSTABLE RH LIFT RODS.....	0E.00.23
THREE-POINT HITCH - MANUAL LATERAL STABILIZERS.....	0E.00.24
BRACKET FOR TOP LINK SUPPORT SPRING.....	0E.00.25
3 POINT HITCH.....	0E.00.26
3 POINT HITCH.....	0E.00.27
3-POINT HITCH WITH HYDRAULIC LIFT ROD dx/rh/re.....	0E.00.28
THREE-POINT HITCH - AUTOMATIC LATERAL STABILIZERS.....	0E.00.29
TOWING BAR.....	0E.00.30
FRONT TOWING HITCH.....	0E.00.31
FRONT TOWING HITCH.....	0E.00.32
FRONT TOWING HITCH.....	0E.00.33
REAR TOWING HITCH.....	0E.00.34
DRAWBAR COUPLING CAT: "D" - ITALY.....	0E.00.35
REAR TOWING HITCH CAT: "D".....	0E.00.36
REAR TOWING HITCH CAT: "D2" GRASSI.....	0E.00.37
REAR TOWING HITCH CAT: "D2".....	0E.00.38
REAR TOWING HITCH CAT: "D2".....	0E.00.39
REAR TOWING HITCH CAT. " D2 ".....	0E.00.40

CLICK HERE TO **DOWNLOAD** THE COMPLETE MANUAL

- Thank you very much for reading the preview of the manual.
- You can download the complete manual from: [www.heydownloads.com](http://www.heydownloads.com) by clicking the link below

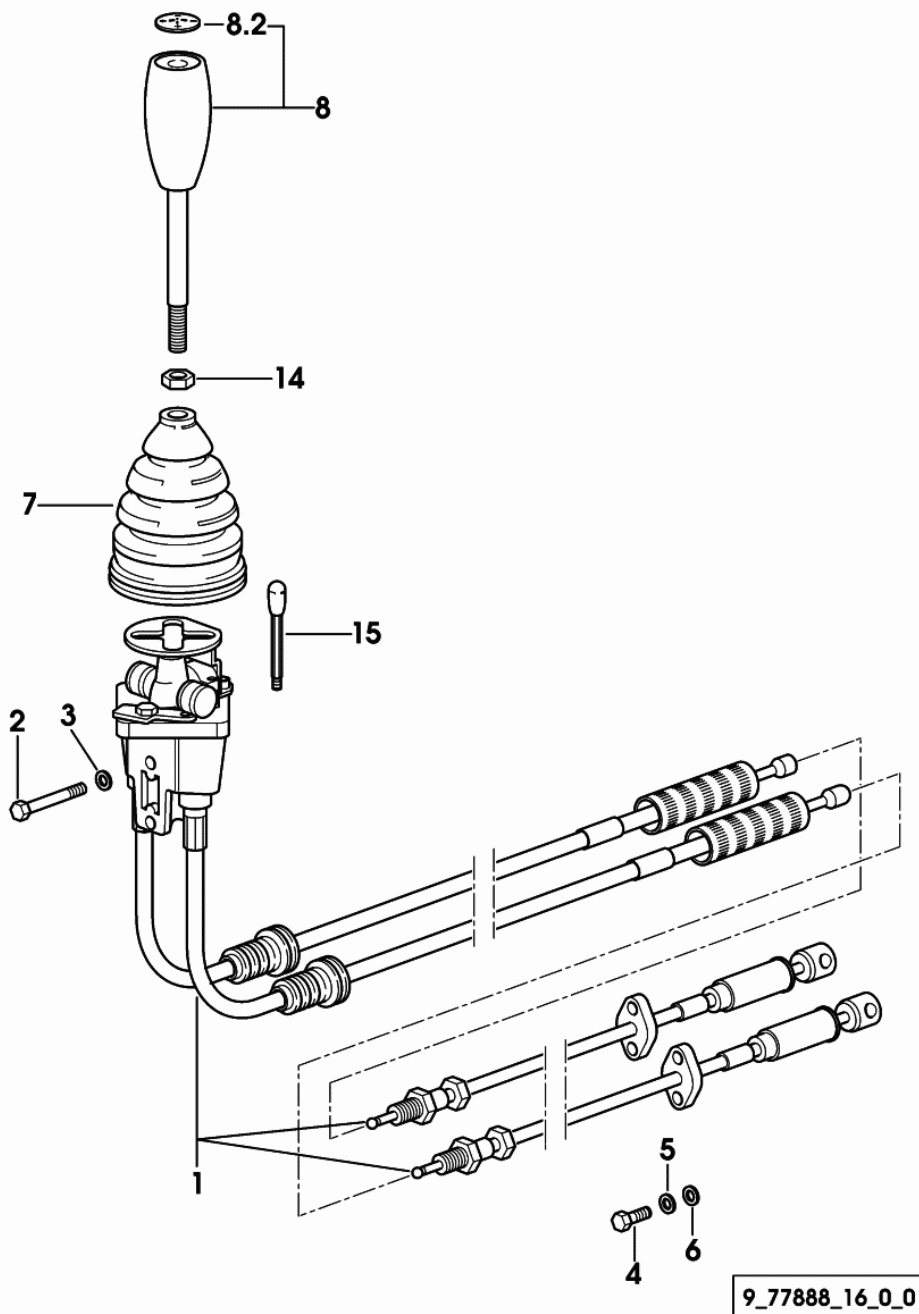


- Please note: If there is no response to CLICKING the link, please download this PDF first and then click on it.

CLICK HERE TO **DOWNLOAD** THE COMPLETE MANUAL

**4-WAY HYDRAULIC CONTROL VALVE SALAMI**

Fig.	Code	QTY	Name
1	0.010.8216.4/40	1	lever COMPONENT PARTS SEE COMPONENTS LIST ☞ 0.010.8216.4/40 ☞ 0E.00.128
2	2.0112.219.2	2	screw m 8 p.1.25x50
3	2.1470.004.2	2	washer 8
4	2.0312.006.2	4	screw m 5 p.0.8 x 20
5	2.1474.006.2	4	spring washer 5
6	2.1310.001.2	4	flat washer 5.3
7	0.010.8917.0	1	boot
8	0.011.1306.3/10	1	lever
8.2	0.011.1303.0/10	1	cap
14	2.1011.106.2	1	nut m 10 p.1.5
15	0.010.8919.2/10	1	stop



Section: ACCESSORIES

8-WAY CONTROL VALVES - OIL RECOVERY

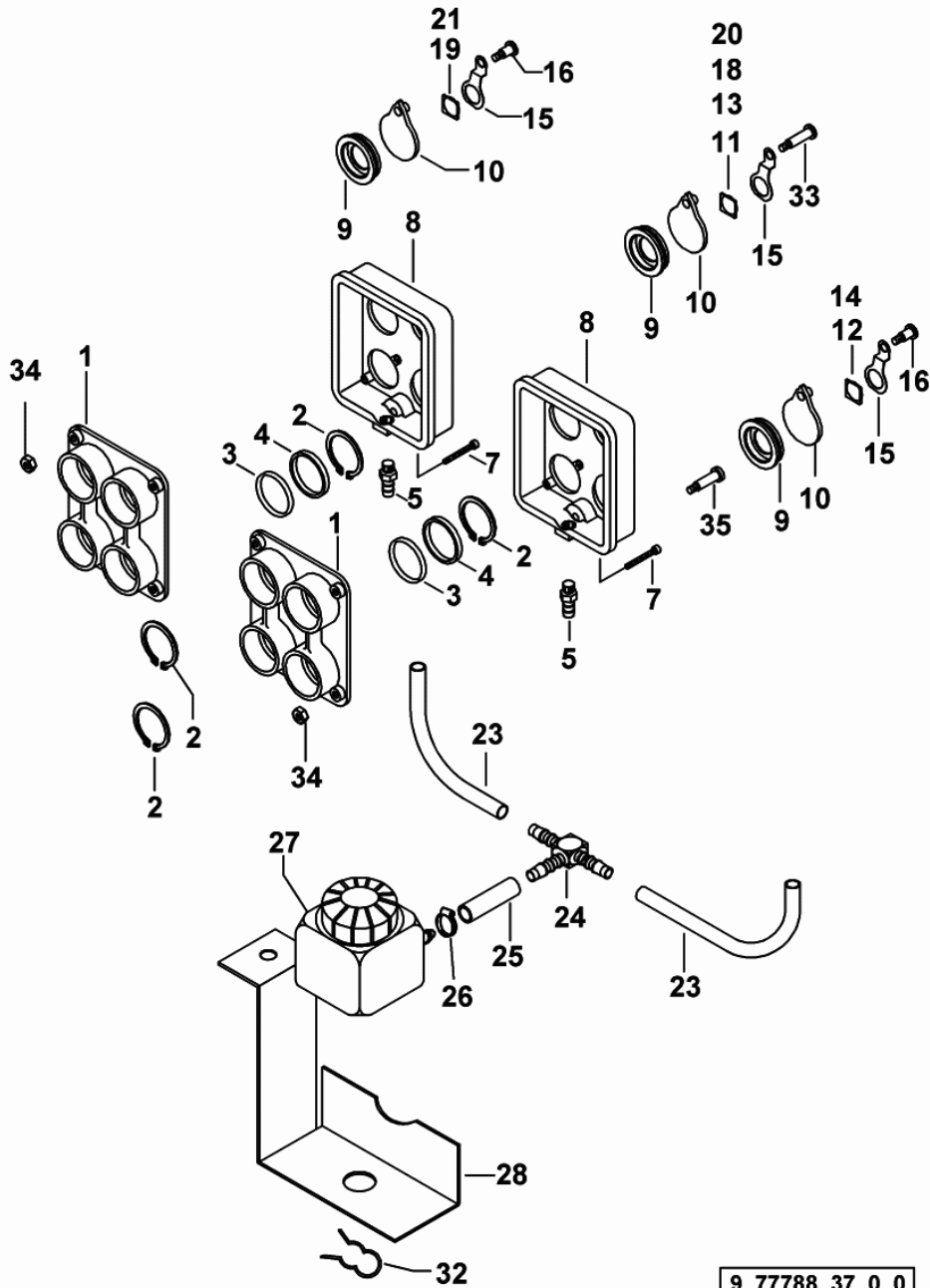


Fig.	Code	QTY	Name
1	0.011.6242.0	2	flange
2	2.1410.015.2	16	circlip 38
3	2.1531.095.0	8	ring 36.17x 2.62
4	2.1549.462.2	8	spacer 38x47,5x5
5	2.3249.031.2	2	pipe fitting m 10
7	2.0312.112.2	2	screw m 6 p.1 x 35
8	0.011.6241.0	2	cover
9	0.010.8475.0/10	8	dust guard
10	0.011.6303.0	8	small cover
11	0.010.8481.0	1	warning light + BLUE
12	0.010.8482.0	1	warning light - BLUE
13	0.010.8483.0	1	warning light + YELLOW
14	0.010.8484.0	1	warning light - YELLOW
15	0.011.6304.0/10	8	small leaf spring
16	2.0399.264.3	4	screw m 6 x 20
18	0.010.8477.0	1	warning light + RED
19	0.010.8478.0	1	warning light - RED
20	0.010.8479.0	1	warning light + GREEN
21	0.010.8480.0	1	warning light - GREEN
23	0.012.9660.0	0	tube
24	2.3249.012.0	1	pipe fitting T
25	0.012.9660.0	0	tube
26	2.6851.019.0	1	clamp Ø 13/20
27	0.011.0212.3	1	tank
			COMPONENT PARTS SEE COMPONENTS LIST
			☞ 0.011.0212.3
			☞ 0E.00.126
28	0.011.3192.0	1	bracket
32	0.171.6656.0	1	small spring
33	2.0399.261.3	4	screw m 5 x 35
34	2.1011.102.2	8	nut m 5 p.0.7
35	2.0399.265.3	4	screw m5x42

**3 POINT HITCH**

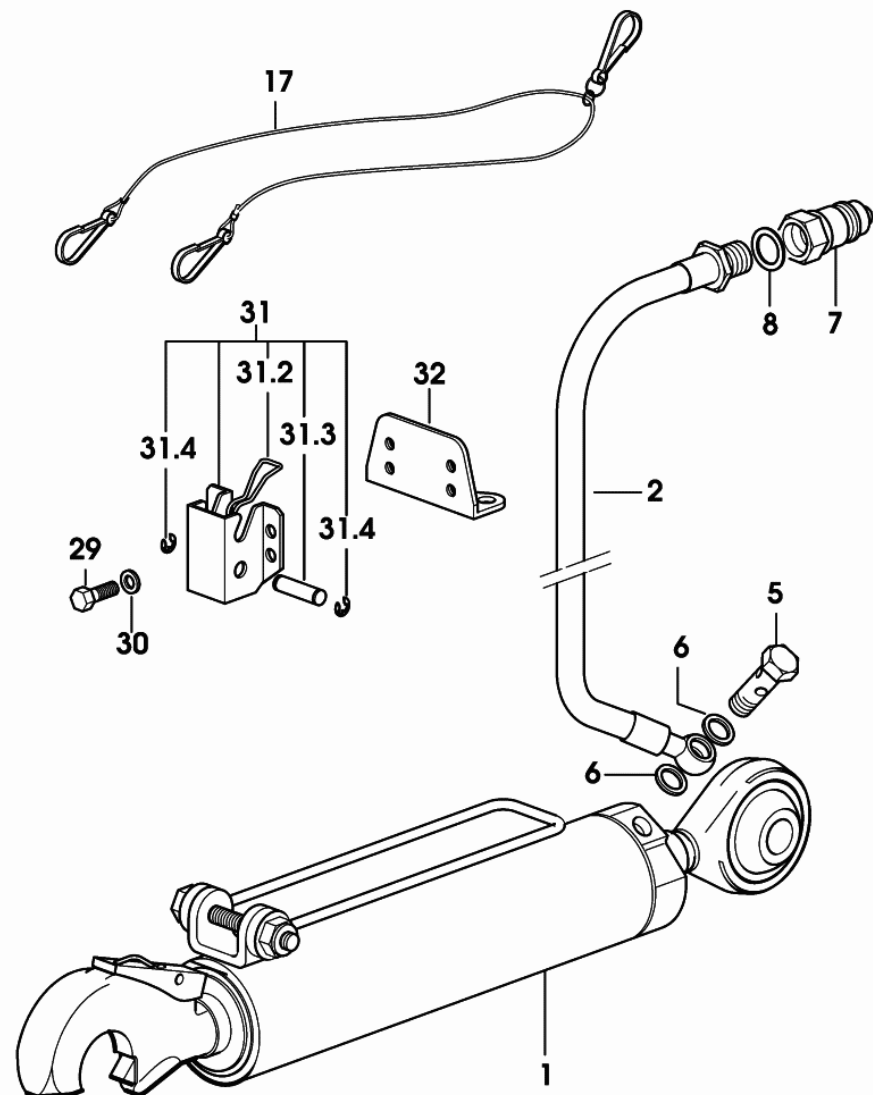


Fig.	Code	QTY	Name
1	0.010.0883.4/20	1	cylinder COMPONENT PARTS SEE COMPONENTS LIST ☞ 0.010.0883.4/20 ☞ 0E.00.136
2	0.010.9143.3	2	tube
5	2.3335.007.2	2	pipe union m 16 p.1.5
6	2.1560.012.0	4	gasket 16.2 x 22 x 1.5
7	0.98309.51.3/10	2	coupling 1/2
8	2.1560.054.0	2	gasket 21 x 26
17	0.009.3534.0	1	cable
29	2.0112.203.2	4	screw m 8 p.1.25 x 12
30	2.1474.009.2	4	spring washer 8
31	0.009.3492.4/40	1	stop
31.2	2.4099.088.2/10	1	spring
31.3	2.1699.386.2	1	pin 12x42
31.4	2.1410.002.1	2	circlip 12
32	0.011.2809.0	1	bracket

9\_77858\_10\_0\_0

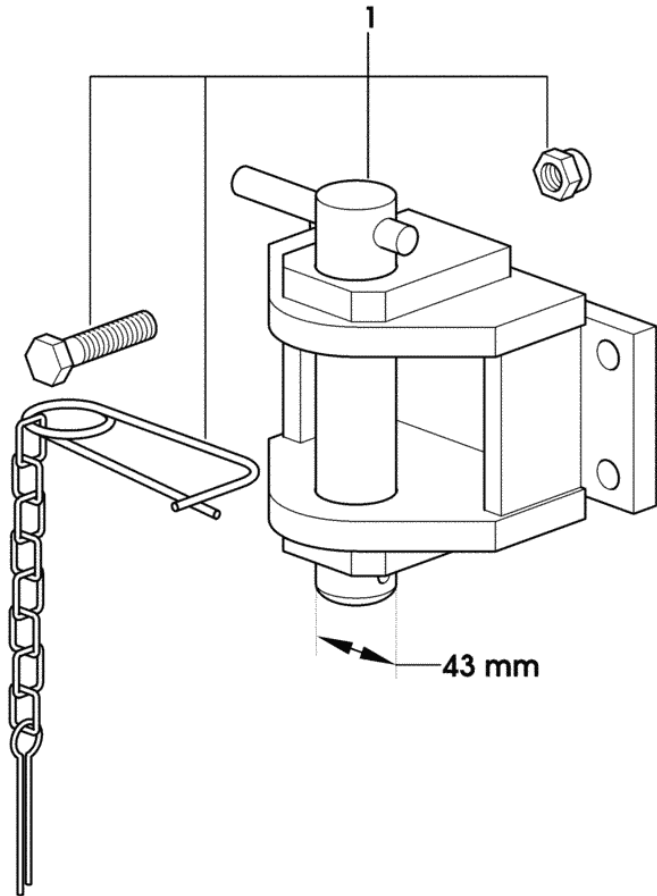
**REAR TOWING HITCH CAT: "D2" GRASSI**

Fig.	Code	QTY	Name
------	------	-----	------

**Notes:**

1013 <- X EXPLORER 75 1184 <- X EXPLORER 85 1716 <- X EXPLORER 95

1	0.011.5643.4	1	clevis CAT. " D2 " COMPONENT PARTS SEE COMPONENTS LIST ☞ 0.011.5643.4 ☞ 0E.00.142
---	--------------	---	---



9\_77831\_72\_0\_0

Section: ACCESSORIES  
**REAR TOWING HITCH CEE**

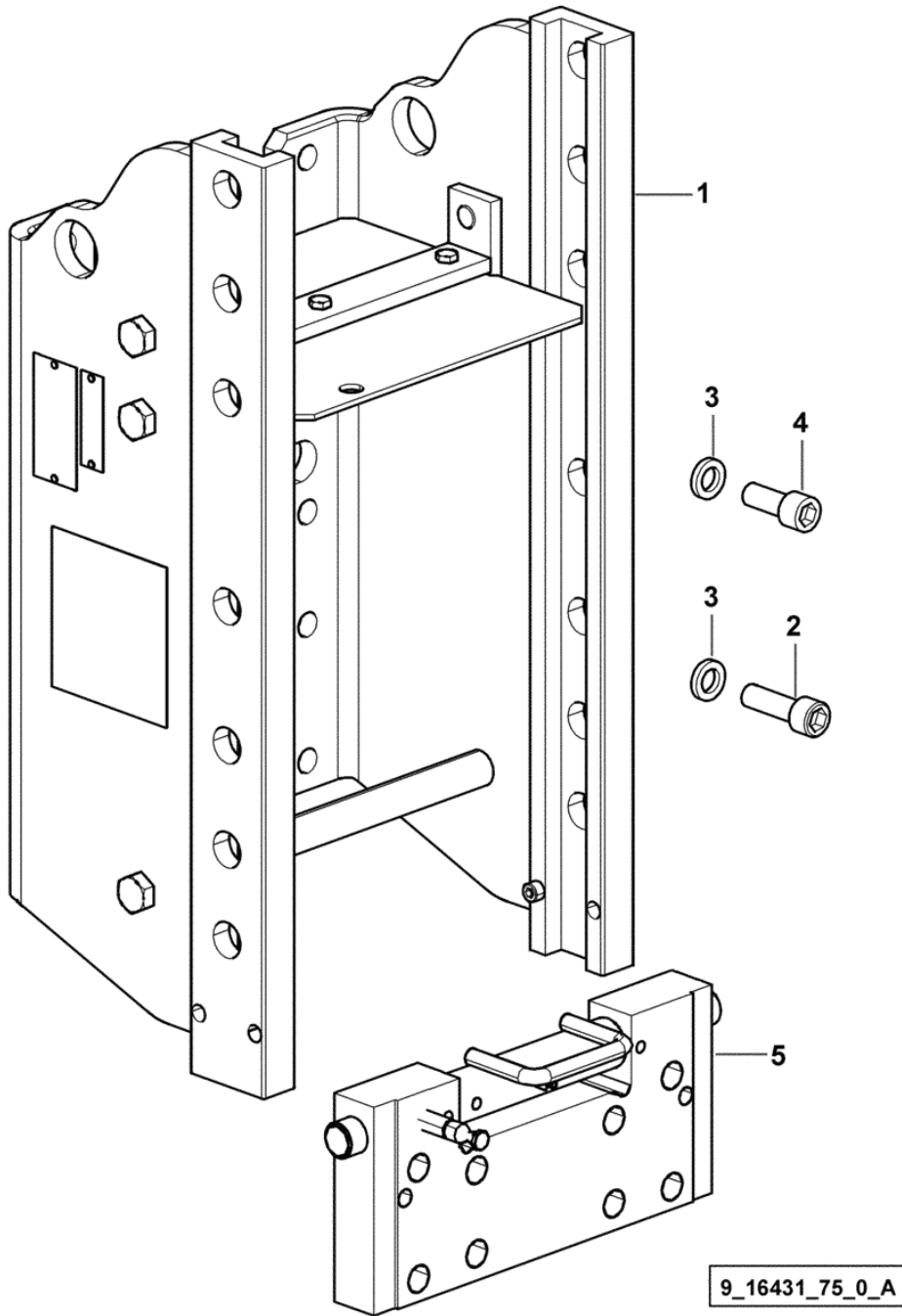


Fig.	Code	QTY	Name
------	------	-----	------

Notes:

-> 1014 X EXPLORER 75 -> 1185 X EXPLORER 85 -> 1717 X EXPLORER 95

1	0.014.4484.3/10	1	chassis frame - V.ORLANDI - COMPONENT PARTS SEE COMPONENTS LIST ☞ 0.014.4484.3/10 ☞ 0E.00.154
2	2.0313.616.2	10	screw m 16 p.2x50
3	2.1474.013.2	12	washer 16
4	2.0314.614.2	2	screw m 16 p.2 x 40
5	0.014.4485.3	1	plate - V.ORLANDI - COMPONENT PARTS SEE COMPONENTS LIST ☞ 0.014.4485.3 ☞ 0E.00.155

Section: ACCESSORIES  
**PICK-UP-HITCH**

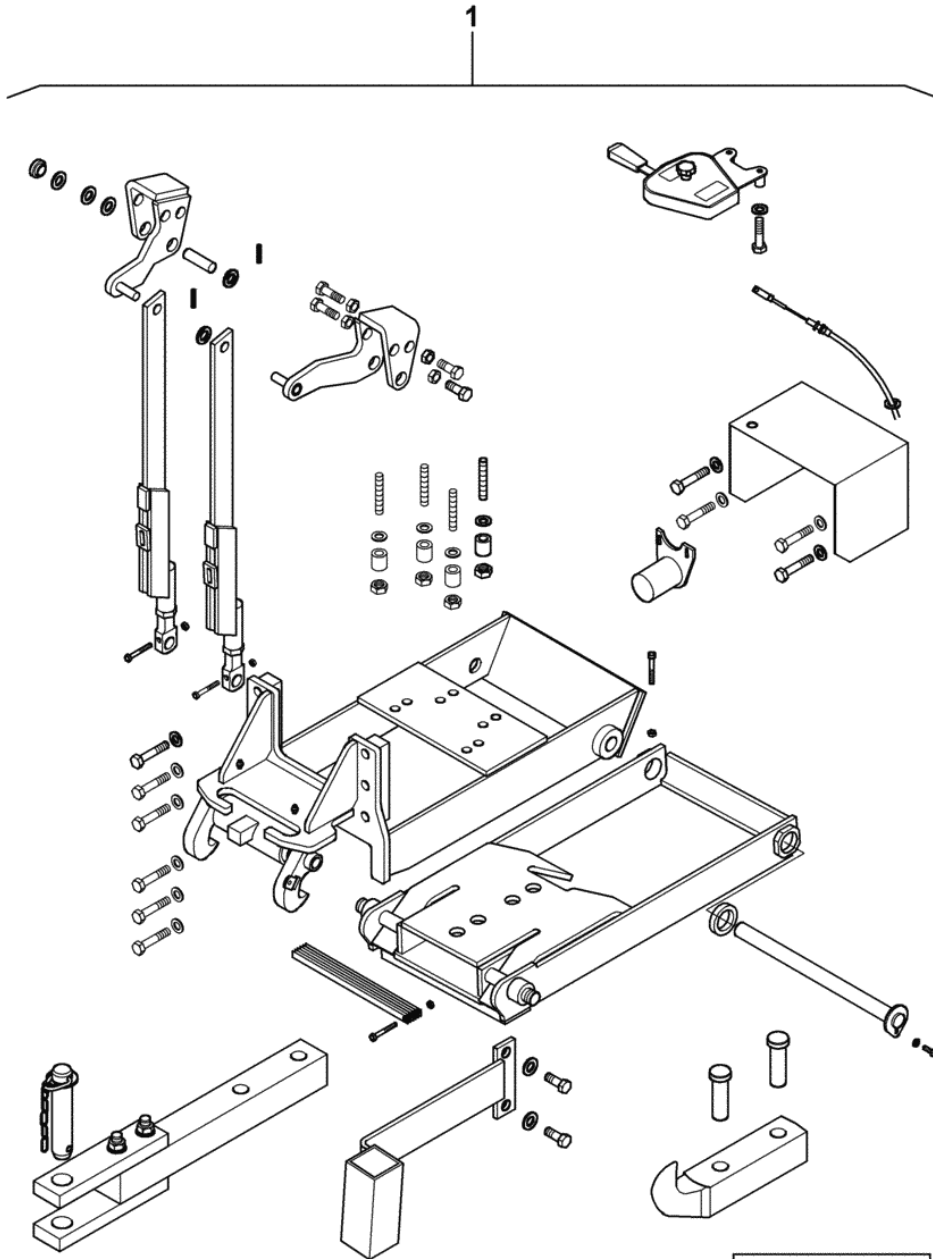


Fig.	Code	QTY	Name
1	0.012.3998.4/20	1	clevis 1013 <- X EXPLORER 75 1188 <- X EXPLORER 85 1739 <- X EXPLORER 95 COMPONENT PARTS SEE COMPONENTS LIST ☞ 0.012.3998.4/20 ☞ 0E.00.164
1	0.012.3998.4/30	1	clevis -> 1014 X EXPLORER 75 -> 1189 X EXPLORER 85 -> 1740 X EXPLORER 95 COMPONENT PARTS SEE COMPONENTS LIST ☞ 0.012.3998.4/30 ☞ 0E.00.165

9\_77831\_60\_0\_0

Section: ACCESSORIES  
**HYDRAULIC BREAKING FOR TRAILER - ITALY -**

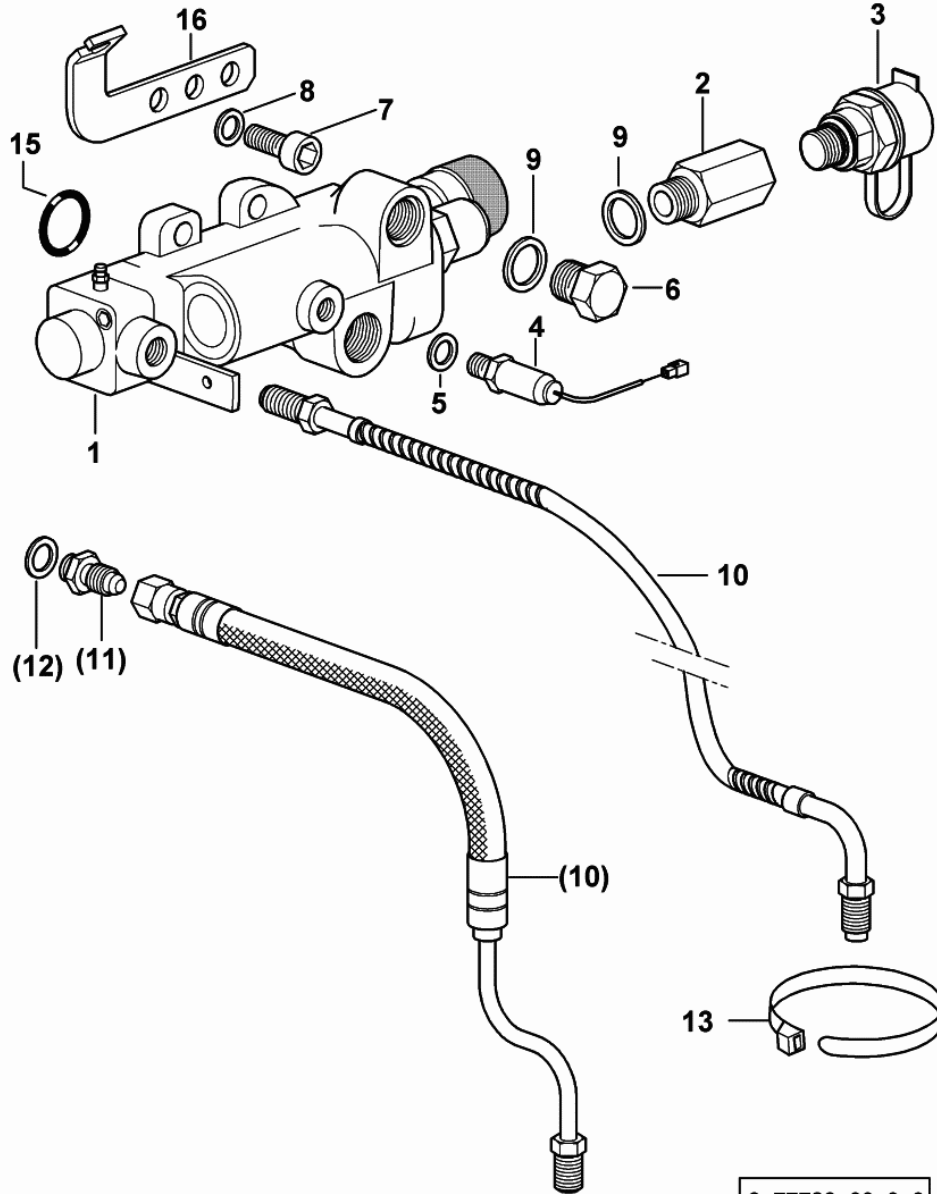


Fig.	Code	QTY	Name
1	2.3729.210.0/20	1	valve COMPONENT PARTS SEE COMPONENTS LIST ☞ 2.3729.210.0/20 ☞ 0E.00.167
2	2.3249.064.2	1	pipe fitting m 18
3	0.011.0433.4/10	1	coupling
4	2.7099.960.0	1	pressure switch 11 Bar
5	2.1560.006.0	1	gasket 10.2 x 16
6	2.3110.405.2	1	plug m 18 p.1.5 x 15
7	2.0312.308.2	3	screw m 10 p.1.5 x 25
8	2.1480.015.1	3	washer 10
9	2.1560.014.0	2	gasket 18.2 x 24 x 1.5
10	0.011.1982.3/10	1	tube 1007 <- X EXPLORER 75 1043 <- X EXPLORER 85 1044 <- X EXPLORER 95
10	0.014.0408.3/20	1	tube -> 1008 X EXPLORER 75 -> 1044 X EXPLORER 85 -> 1045 X EXPLORER 95
11	2.3339.447.2/10	1	pipe fitting m 12 p.1.25
12	2.1560.008.0	1	gasket 12.2 x 18
13	2.6852.203.0	1	clamp 292 x 4.8
15	2.1531.062.0	2	'o' ring 23.81 x 2.62
16	0.011.2368.0/20	1	bracket

Section: ACCESSORIES

**AIR BRAKING FOR 'ITALY' TRAILER**

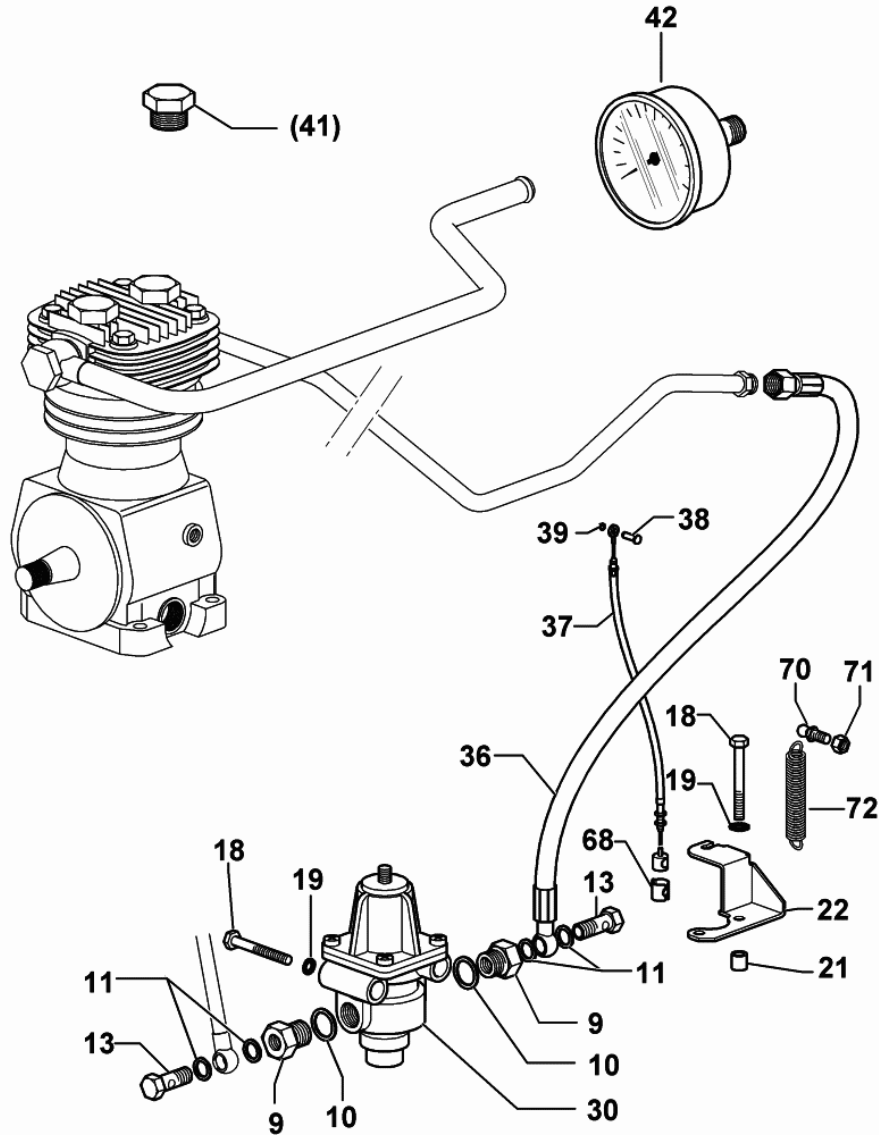


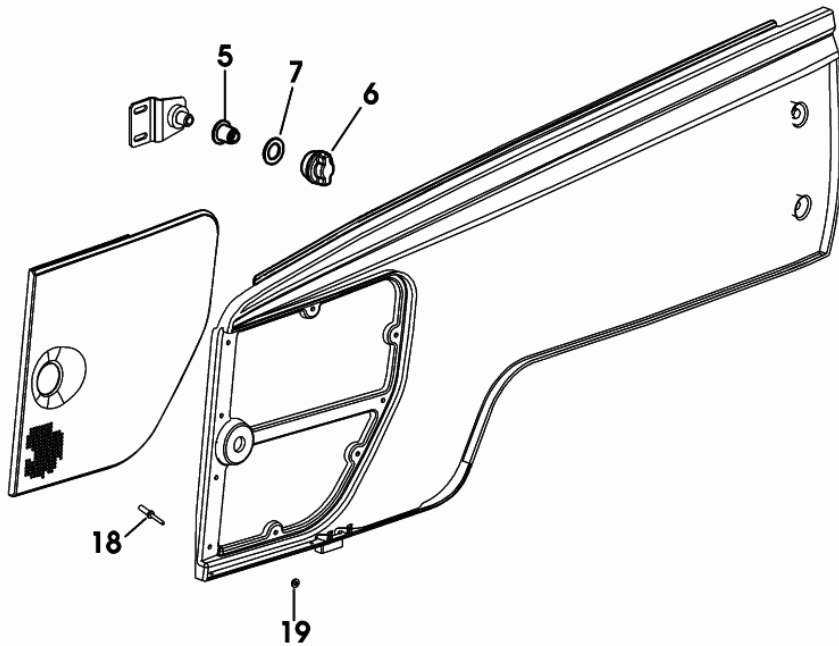
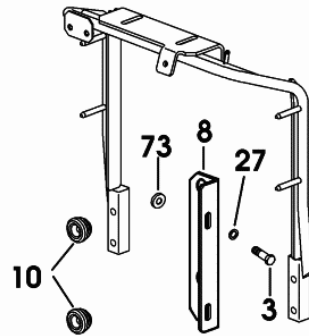
Fig.	Code	QTY	Name
9	2.3339.766.2	5	reduction m 22 p.1.5/m 14 p.1.5
10	2.1560.017.0	5	gasket 22.2 x 27
11	2.1560.010.0	12	gasket 14.2 x 20 x 1.5
13	2.3332.004.2	3	pipe union m 14 p.1.5 x 27
18	2.0112.223.2	4	screw m 8 p.1.25x70
19	2.1470.004.2	4	washer 8
21	2.1579.825.0	2	spacer
22	0.011.3979.2/10	1	bracket
30	04398756	1	valve
COMPONENT PARTS SEE COMPONENTS LIST			
☞ 04398756			
☞ 0E.00.173			
36	0.011.4045.3	1	tube
37	0.011.4121.3	1	cable
38	2.1699.307.2	1	pin 23x27.5x12
39	2.1430.008.7	1	circlip 7
42	0.011.9433.0	1	air gauge 10 bar
68	0.257.6757.0	1	spring
70	0.009.8760.0	1	ball joint
71	2.1120.005.2	1	nut m 8 p.1.25
72	2.4049.149.0	1	spring

9\_77889\_20\_0\_B

4WD - SELF-ADJUSTING FRONT FENDERS - FOR TYPES WITH "S.B.A. SYSTEM" mm 410.....	07.00.47
4WD - SELF-ADJUSTING FRONT FENDERS mm 470.....	07.00.48
4WD - SELF-ADJUSTING FRONT FENDERS - FOR TYPES WITH "S.B.A. SYSTEM" mm 470.....	07.00.49
SUPPORTS.....	07.00.50
PLATFORM.....	07.00.51
MUDGUARDS EXTENSIONS - L = mm 180.....	07.00.52
MUDGUARDS EXTENSIONS - L = mm 240.....	07.00.53
FENDERS - FOR MODELS WITH PLATFORM.....	07.00.54
FENDERS - FOR MODELS WITH CAB.....	07.00.55
FLOOR PLUG.....	07.00.56
LICENCE PLATE HOLDER.....	07.00.57
MAT FOR PLATOFRM.....	07.00.58
TRIANGLE SUPPORT.....	07.00.59
HOLDING DEVICE - WHEEL CHOCK EXPORT CH.....	07.00.60
CHOCK.....	07.00.61
HOLDING DEVICE - WHEEL CHOCK - FOR MODELS WITH PLATFORM.....	07.00.62
HOLDING DEVICE - WHEEL CHOCK - FOR MODELS WITH CAB.....	07.00.63
LICENCE PLATE HOLDER EXPORT D.....	07.00.64
LICENCE PLATE HOLDER EXPORT D.....	07.00.65
LADDER.....	07.00.66
BATTERY SUPPORT.....	07.00.67
SAFETY ARCH.....	07.00.68
REARVIEW MIRROR dx/rh/re.....	07.00.69
REARVIEW MIRROR sx/lh/li.....	07.00.70
SPEED LABEL - 40 KM/H.....	07.00.71
SPEED LABEL - 40 KM/H - REFLEX.....	07.00.72
PLATES.....	07.00.73
PLATES.....	07.00.74
INFORMATION PLATE.....	07.00.75
PLATES.....	07.00.76
SPEED LABEL 30 Km/h.....	07.00.78
SPEED LABEL 40 Km/h.....	07.00.80
SPEED DATA PLATES 30 Km/h.....	07.00.81
SPEED DATA PLATES 40 Km/h.....	07.00.82
SPEED DATA PLATES 40 Km/h EXPORT U.K.....	07.00.83
AIR CLEANER EXTENSION.....	07.00.84
CYCLONE AIR CLEANER EXTENSION.....	07.00.85
ENGINE HOOD GASKETS.....	07.00.86
AIR CLEANER HOSE.....	07.00.88
DRY AIR FILTER 8 ".....	07.00.89
FUEL TANK.....	07.00.90
TANK SUPPORTS.....	07.00.91
SEAT SUPPORT PLATE.....	07.00.92
SEAT SPRINGING.....	07.00.93

Section: BODY WORK  
HOOD - SUPPORTS

Fig.	Code	QTY	Name
3	2.0112.206.2	2	screw m 8 p.1.25 x 18
5	2.1559.337.0	1	bushing
6	0.008.3426.2/30	1	knob
7	2.1599.658.0	1	washer
8	0.012.5612.0/20	1	bracket sx/lh/li
10	0.009.6531.0/30	2	block
18	2.1899.074.0	9	rivet 4.7
19	2.1310.001.2	9	flat washer 5.3
27	2.1470.004.2	2	washer 8
73	2.1579.837.2	2	spacer 8 x 25 x 3 1013 <- X EXPLORER 75 1104 <- X EXPLORER 85 1269 <- X EXPLORER 95



9\_D8972\_16\_0\_0

Section: BODY WORK  
**WATER COOLER**

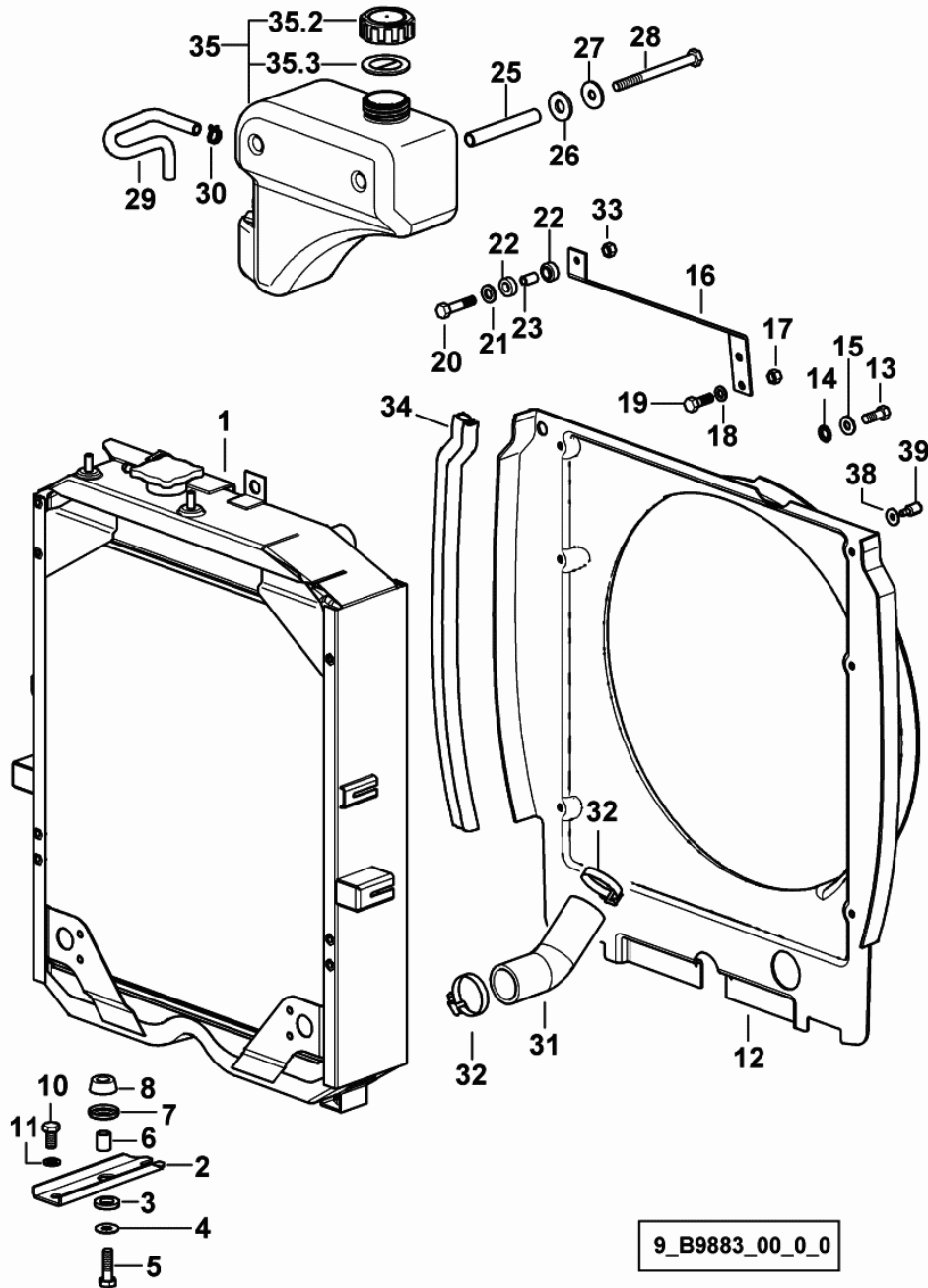
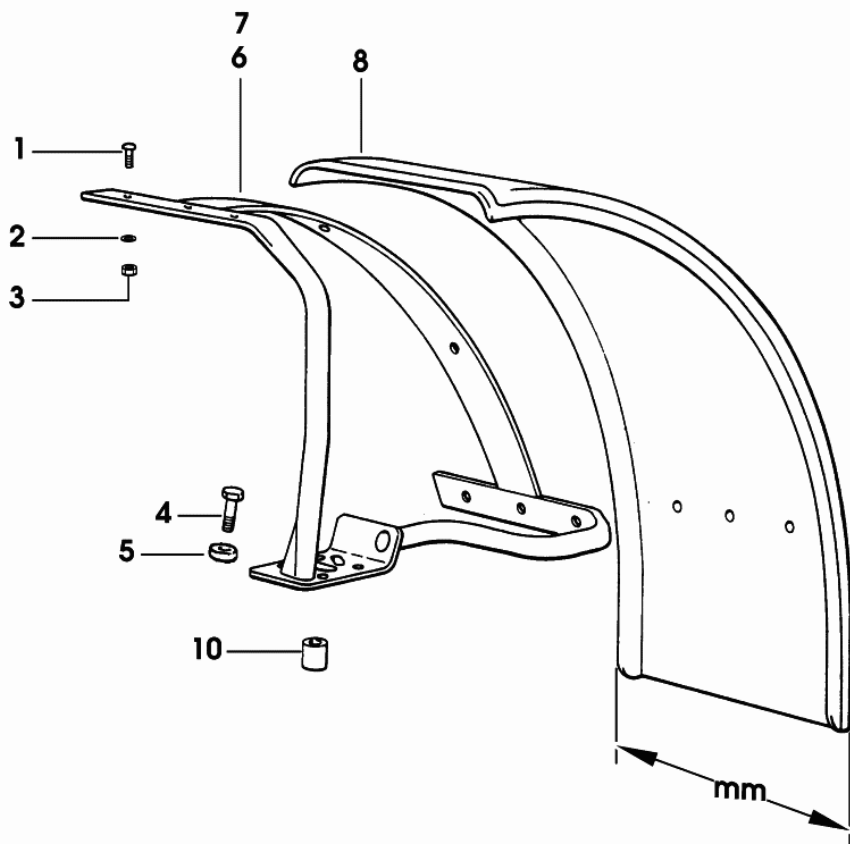


Fig.	Code	QTY	Name
1	0.013.3793.4/20	1	water cooler COMPONENT PARTS SEE COMPONENTS LIST ☞ 0.013.3793.4/20 ☞ 07.00.49
2	0.295.8313.0/20	2	support
3	0.136.7387.0	2	rubber plug 15x27x5
4	2.1599.044.2	2	snoulder 10.5x25.5x1.5
5	2.0112.313.2	2	screw m 10 p.1.5 x 35
6	2.1579.090.2	2	spacer 10.1x15x18
7	0.136.7384.0	2	cup
8	0.136.7385.0	2	rubber plug
10	2.0112.307.2	4	screw m 10 p.1.5 x 20
11	2.1470.006.2	4	lock washer 10
12	0.013.5823.0/10	1	duct
13	2.0112.004.2	2	screw m 6 p.1 x 14
14	2.1470.002.2	2	washer 6, d128
15	2.1310.002.2	2	washer 6.6, d125
16	0.013.5317.0	1	bracket
17	2.1011.105.2	2	nut m 8 p.1.25
18	2.1470.004.2	2	washer 8
19	2.0112.207.2	2	screw m 8 p 1.25 x 20
20	2.0112.011.2	1	screw m 6 p.1x30
21	2.1312.003.2	1	washer 6
22	0.035.8459.0	2	rubber plug
23	2.1579.322.0	1	spacer 10.5x6.5x17
25	2.1549.429.2	2	spacer
26	2.1569.143.0	2	gasket
27	2.1312.005.2	2	washer 10.2
28	2.0112.333.2	2	screw m 10 p.1.5x120
29	0.013.5827.0	1	tube
30	2.6859.083.2	2	clamp
31	0.013.5760.0	1	sleeve
32	2.6851.004.0	2	clamp Ø 32/50
33	2.1011.003.2	1	nut m 6 p.1, d934
34	0.013.9207.0	2	gasket
35	0.013.6102.4/20	1	cup
35.2	0.013.7584.0	1	plug
35.3	2.1569.533.0	1	gasket
38	2.1312.003.2	4	washer 6
39	0.467.7250.0/10	4	pin

Section: BODY WORK

4WD - FRONT MUDGUARDS mm 355

Fig.	Code	QTY	Name
1	2.0029.503.6	16	screw m 8 x 25
2	2.1470.004.2	16	washer 8
3	2.1011.105.2	16	nut m 8 p.1.25
4	2.0112.423.2	8	screw m 12 p.1.75 x 70
5	2.1599.484.2	8	spacer 13x26x4
6	0.290.7665.2	1	support sx/lh/li
7	0.290.7664.2	1	support dx/rh/re
8	0.255.7632.0/10	2	fender mm 355
10	2.1579.984.2	8	spacer 13x30x25

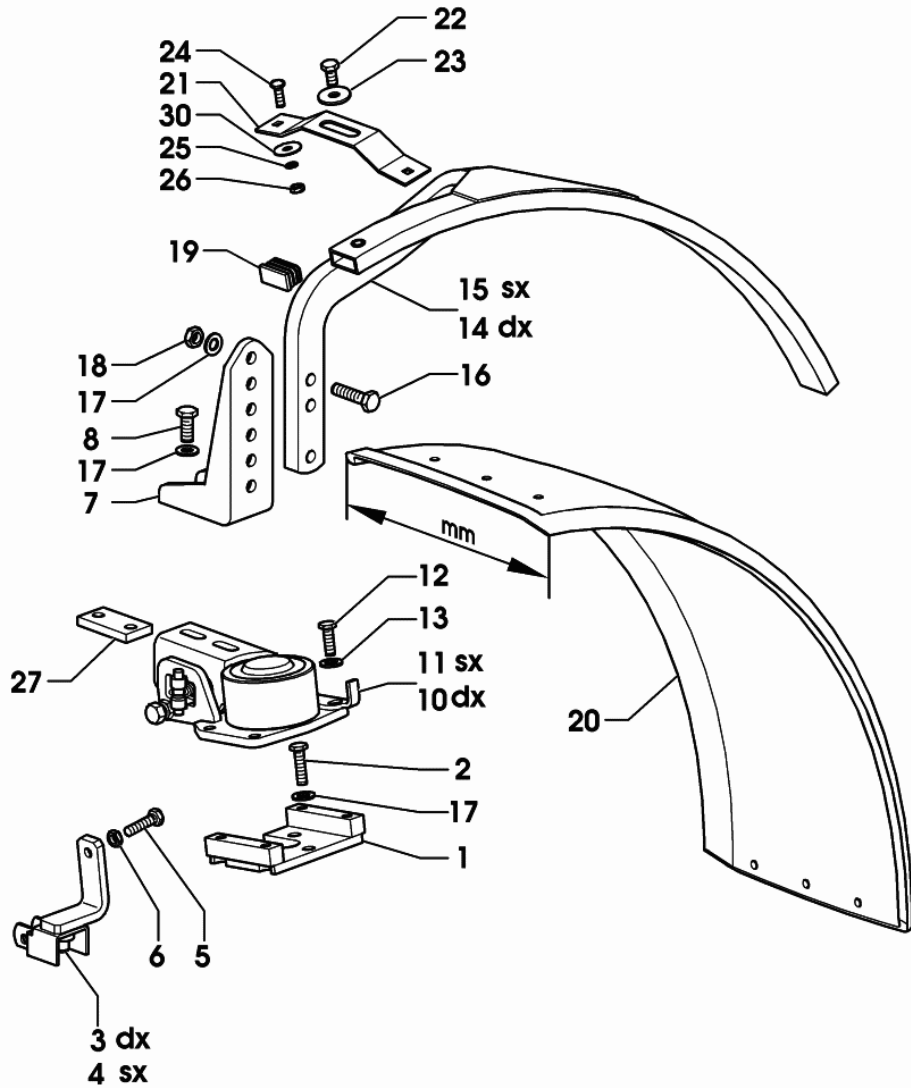


9\_40576\_15\_0\_0

Section: BODY WORK

**4WD - SELF-ADJUSTING FRONT FENDERS mm 355**

Fig.	Code	QTY	Name
1	0.011.3341.2/10	2	plate dx/rh/re
2	2.0112.415.2	6	screw m 12 p.1.75 x 40
3	0.011.1416.3/10	1	bracket dx/rh/re
4	0.011.1428.3/10	1	bracket sx/lh/li
5	2.0112.313.2	2	screw m 10 p.1.5 x 35
6	2.1011.006.2	2	nut m 10 p.1.5
7	0.011.3409.0	2	bracket
8	2.0112.411.2	4	screw m 12 p.1.75 x 30
10	0.011.3452.4/10	1	support dx/rh/re COMPONENT PARTS SEE COMPONENTS LIST ☞ 0.011.3452.4/10 ☞ 07.00.50
11	0.011.3457.4/10	1	support sx/lh/li COMPONENT PARTS SEE COMPONENTS LIST ☞ 0.011.3457.4/10 ☞ 07.00.51
12	2.0112.311.2	8	screw m 10 p.1.5 x 30
13	2.1475.003.2	8	washer 10
14	0.011.3459.2/10	1	chassis frame dx/rh/re
15	0.011.3460.2/10	1	chassis frame sx/lh/li
16	2.0112.417.2	8	screw m 12 p.1.75 x 45
17	2.1475.004.2	14	washer 12
18	2.1011.107.2	4	nut m 12 p.1.75
19	0.010.9844.0	4	plug
20	0.255.7632.0/10	2	fender mm 355
21	0.011.1295.0/10	6	plate
22	2.0112.307.2	6	screw m 10 p.1.5 x 20
23	2.1599.082.0	6	washer 11 x 35 x 3
24	2.0020.205.2	12	screw m 8 p.1.25 x 20
25	2.1470.004.2	12	washer 8
26	2.1011.105.2	12	nut m 8 p.1.25
27	0.011.3407.0/10	2	small plate
30	2.1599.584.2	12	shoulder 9 x 30 x 2



9\_77876\_22\_0\_0

Section: BODY WORK

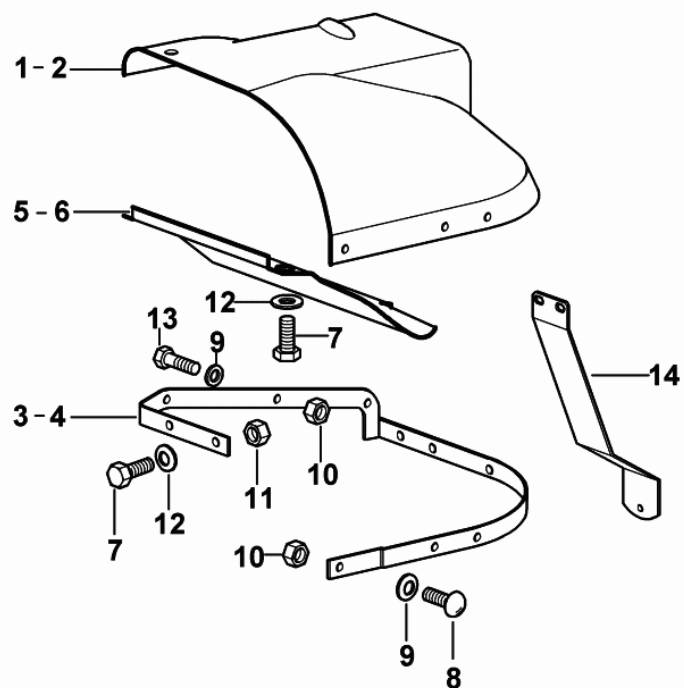
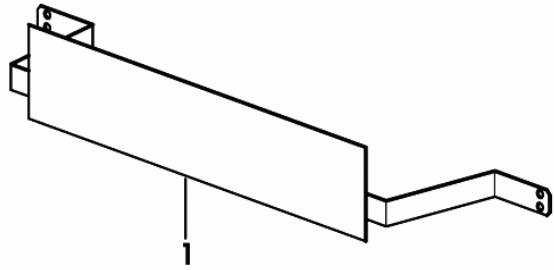
**FENDERS - FOR MODELS WITH PLATFORM**

Fig.	Code	QTY	Name
1	0.010.7562.3/10	1	splash-guards dx/rh/re
2	0.010.7563.3/10	1	splash-guards sx/lh/li
3	0.010.7560.2	1	support dx/rh/re
4	0.010.7561.2	1	support sx/lh/li
5	0.010.7559.0/20	1	shield sx/lh/li
6	0.010.9045.0/20	1	shield dx/rh/re
7	2.0112.207.2	8	screw m 8 p 1.25 x 20
8	2.0099.014.0/20	14	screw m 6 x 25
9	2.1310.002.2	20	washer 6.6, d125
10	2.1011.103.2	20	nut m 6 p.1
11	2.1011.105.2	4	nut m 8 p.1.25
12	2.1310.004.2	8	flat washer 8.5
13	2.0112.009.2	6	screw m 6 p.1 x 25
14	0.011.0698.0	2	support

9\_77876\_05\_0\_0

**LICENCE PLATE HOLDER EXPORT D**

Fig.	Code	QTY	Name
1	0.011.5501.2	1	plate holder

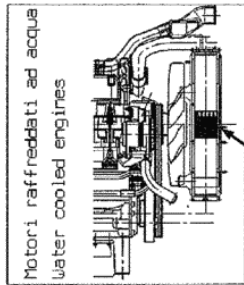


9\_77876\_65\_0\_0

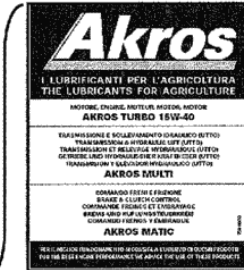
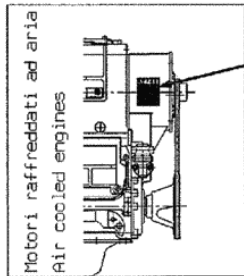
**PLATES**

Fig.	Code	QTY	Name
100	0.000.0000.1	0	not serviceable
100.4	2.9929.869.0	1	plate AKROS MULTI
100.5	2.9929.870.0	1	plate AKROS MULTI FCT
100.6	2.9929.684.0	1	plate

100



Schema montaggio  
Assembly scheme



100.4



100.5

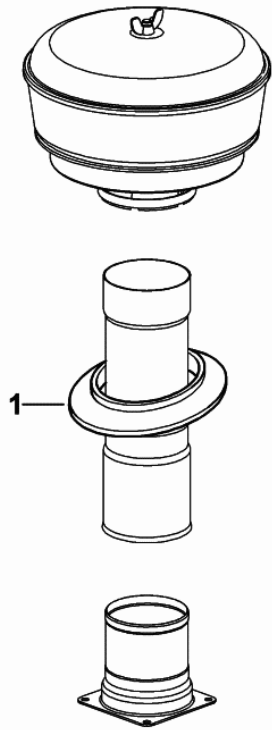
BRAKES OIL  
USE ATF DEXRON II  
OIL ONLY

OLIO FRENI  
USARE SOLO OLIO  
TIPO ATF DEXRON II

100.6

Section: BODY WORK  
**ENGINE HOOD GASKETS**

Fig.	Code	QTY	Name
1	0.010.4713.0	1	gasket

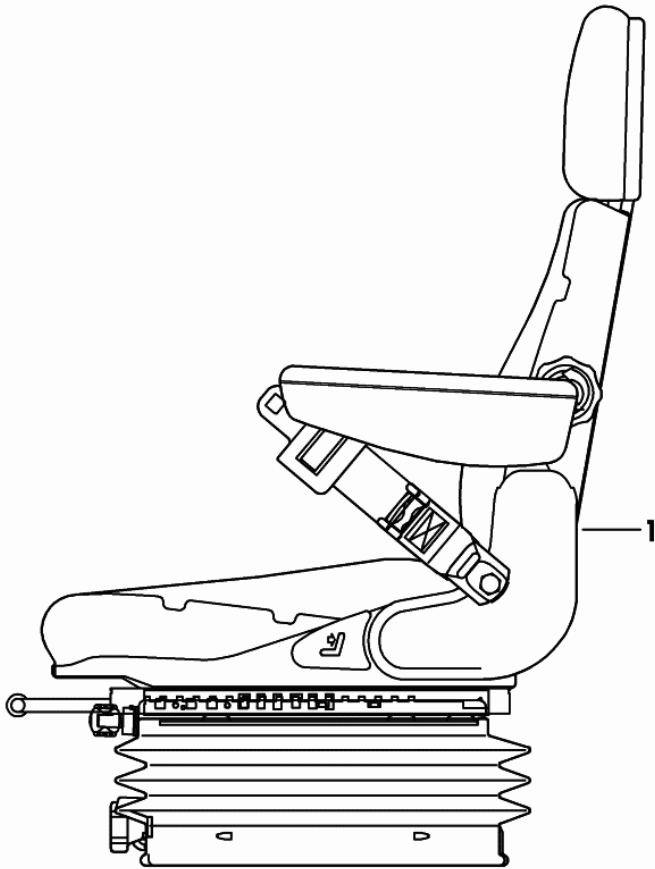


9\_B9881\_12\_0\_0

Section: BODY WORK

**DRIVER'S SEAT GRAMMER MSG83/20**

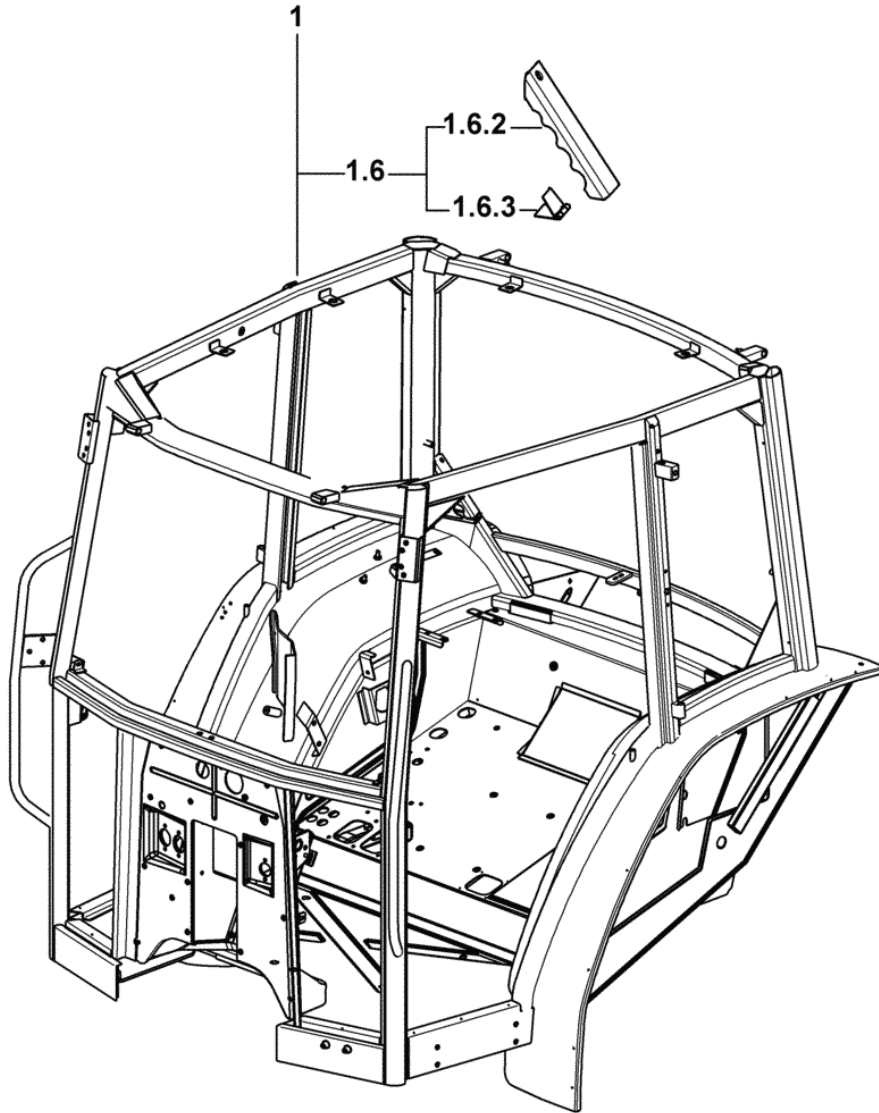
Fig.	Code	QTY	Name
1	0.007.5977.4/10	1	sprung seat GRAMMER MSG83/20 COMPONENT PARTS SEE COMPONENTS LIST ☞ 0.007.5977.4/10 ☞ 0.007.5977.4/10 ☞ 07.00.63 ☞ 07.00.62



9\_50875\_05\_0\_0

Section: CAB  
**SINGLE-STRUCTURE CAB**

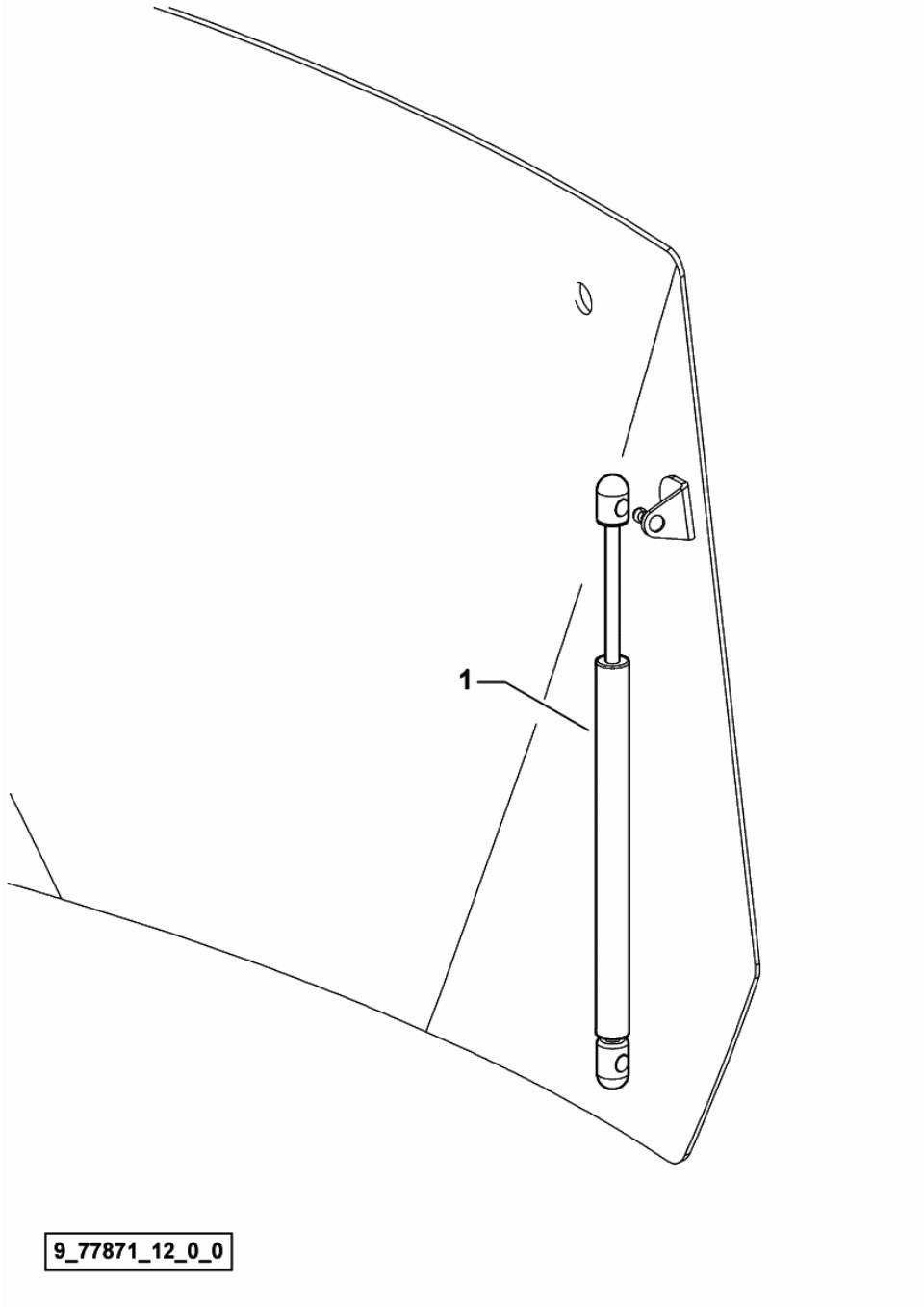
Fig.	Code	QTY	Name
1	0.011.9299.4/70	1	cab
1.6	0.000.0000.1	0	not serviceable
1.6.2	0.011.3401.0	1	crosspiece
1.6.3	0.009.7612.4/10	1	hinge



9\_77871\_01\_0\_0

Section: CAB

**DAMPER FOR REAR WINDOW HATCH - FOR TYPES WITH "HIGH VISIBILITY"**



9\_77871\_12\_0\_0

Fig.	Code	QTY	Name
1	0.010.6267.0	2	shoch.absorber

EXPLORER 85

Section: CAB

Ref.: 0B.00.21

**INTERIOR TRIM "HIGHT VISIBILITY" - FOR TRACTORS WITH AIR HEATING**

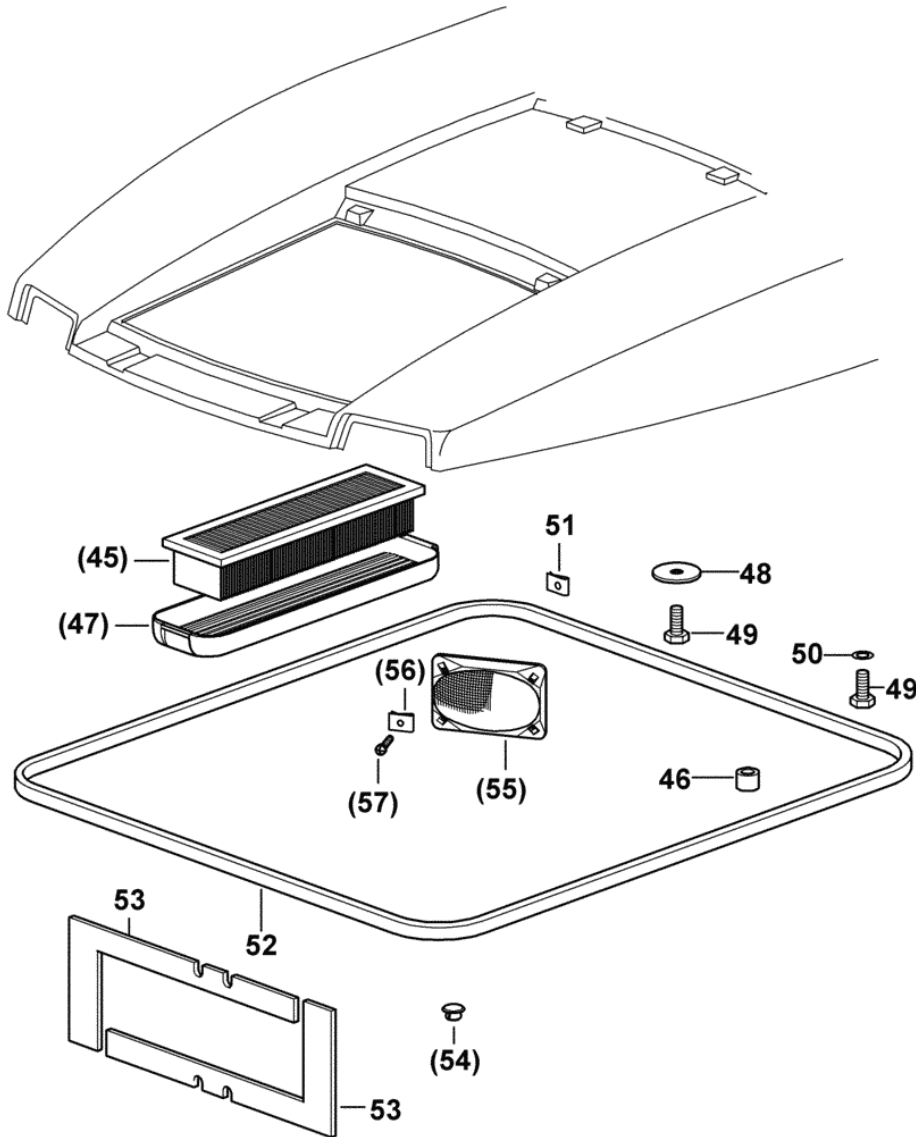


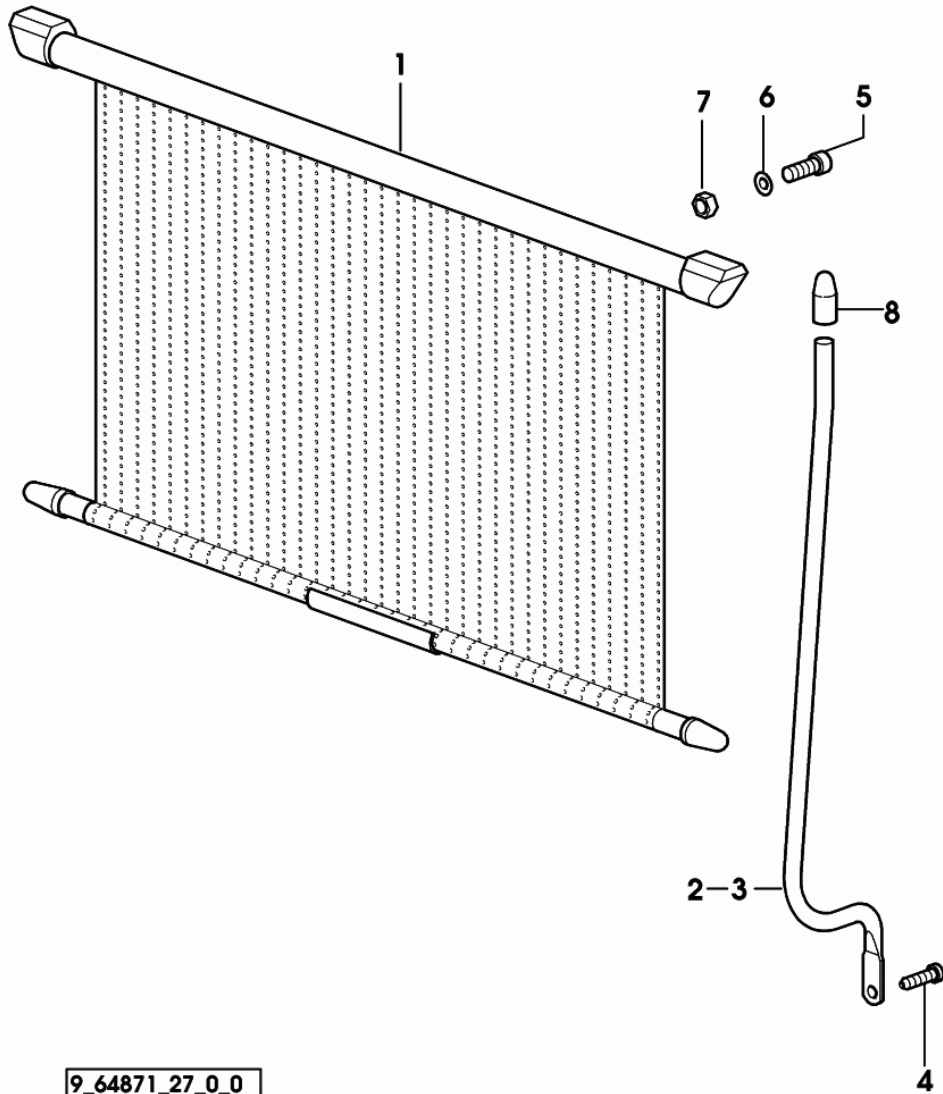
Fig.	Code	QTY	Name
45	0.010.5365.2	2	air filter element 1007 <- X EXPLORER 75 1013 <- X EXPLORER 85 1044 <- X EXPLORER 95
46	2.1579.450.2	2	spacer 8.5 x 14 x 12
47	0.010.5293.0/10	2	front grille 1007 <- X EXPLORER 75 1013 <- X EXPLORER 85 1044 <- X EXPLORER 95
48	2.1599.584.2	6	snoulder 9 x 30 x 2
49	2.0112.205.2	8	screw m 8 p.1.25 x 16
50	2.1312.004.2	2	washer 8.4
51	2.6999.041.0	1	small spring
52	0.013.4027.0	0	gasket
53	0.010.0756.0/10	2	gasket
54	2.3199.107.0	2	plug 14x12.5 1007 <- X EXPLORER 75 1013 <- X EXPLORER 85 1044 <- X EXPLORER 95
55	0.010.0716.4/10	2	grille 1007 <- X EXPLORER 75 1013 <- X EXPLORER 85 1044 <- X EXPLORER 95
56	2.6999.041.0	8	small spring 1007 <- X EXPLORER 75 1013 <- X EXPLORER 85 1044 <- X EXPLORER 95
57	2.0399.177.3	8	screw 4.2x25 1007 <- X EXPLORER 75 1013 <- X EXPLORER 85 1044 <- X EXPLORER 95

9\_18471\_70\_0\_C



Section: CAB

**SUN BLIND - FOR TRACTORS WITHOUT AIR CONDITIONING**



9\_64871\_27\_0\_0

Fig.	Code	QTY	Name
1	0.9237.343.4/10	1	roll-up sun-shade
2	0.010.1082.0	1	rod dx/rh/re
3	0.010.1083.0	1	rod sx/lh/li
4	2.0350.454.3	2	screw m 4.2 x 13 -AB-
5	2.0299.004.3	2	screw m 4x22
6	2.1310.028.2	2	flat washer 4
7	2.1011.101.2	2	nut m 4 p.0.7
8	0.010.1367.0	2	cap

Section: CAB

**CONDENSER - AIR CONDITIONING UNIT**

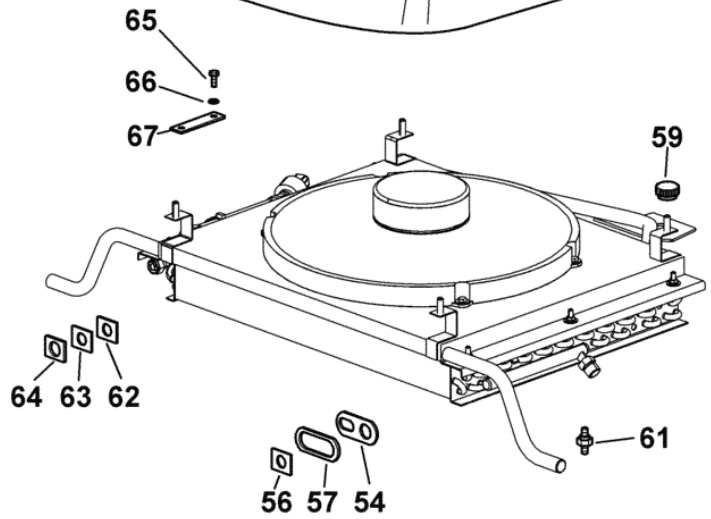
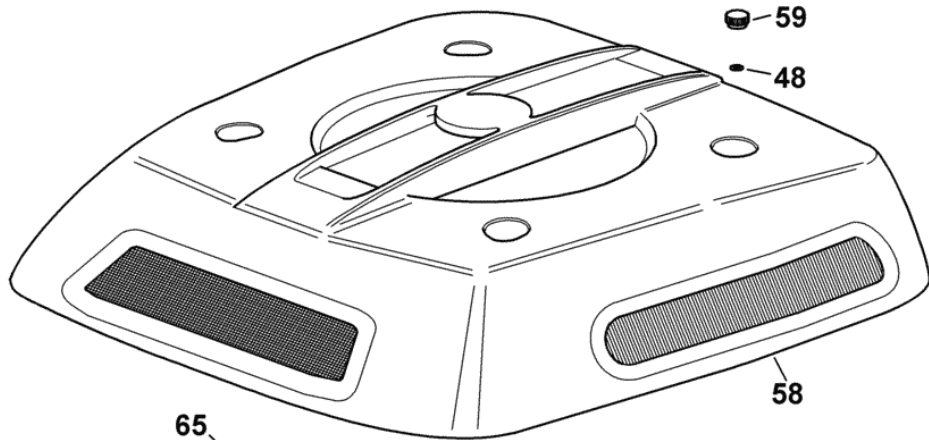
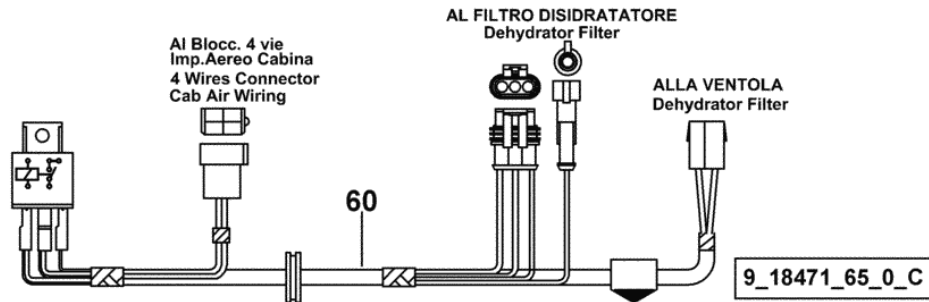
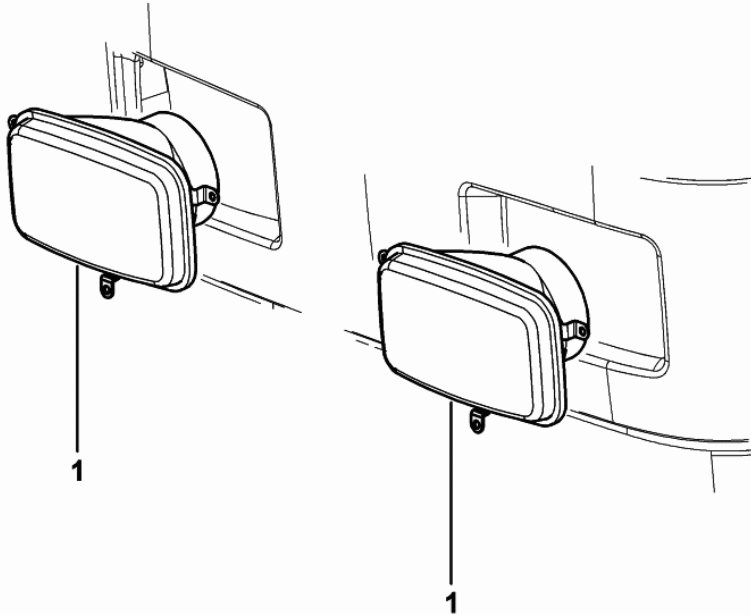


Fig.	Code	QTY	Name
48	2.1310.004.2	4	flat washer 8.5
54	0.007.6976.0	1	small plate
56	0.007.6975.0/20	1	small plate
57	0.007.6974.0/20	1	gasket
58	0.013.6584.3	1	cover
59	0.012.9389.2	5	knob m 8
60	0.009.7853.3/20	1	electrical system
			COMPONENT PARTS SEE
			COMPONENTS LIST
			☞ 0.009.7853.3/20
			☞ 0B.00.107
61	0.010.0662.0/10	1	pin
62	0.007.7779.0	1	small plate
63	0.007.7781.0/10	3	gasket
64	0.007.7780.0/10	1	small plate
65	2.0112.004.2	4	screw m 6 p.1 x 14
66	2.1310.002.2	4	washer 6.6, d125
67	0.007.7783.0/10	2	small plate



Section: ELECTRIC AL SYSTEM  
**HEADLAMP FOR LEFT-HAND DRIVE**

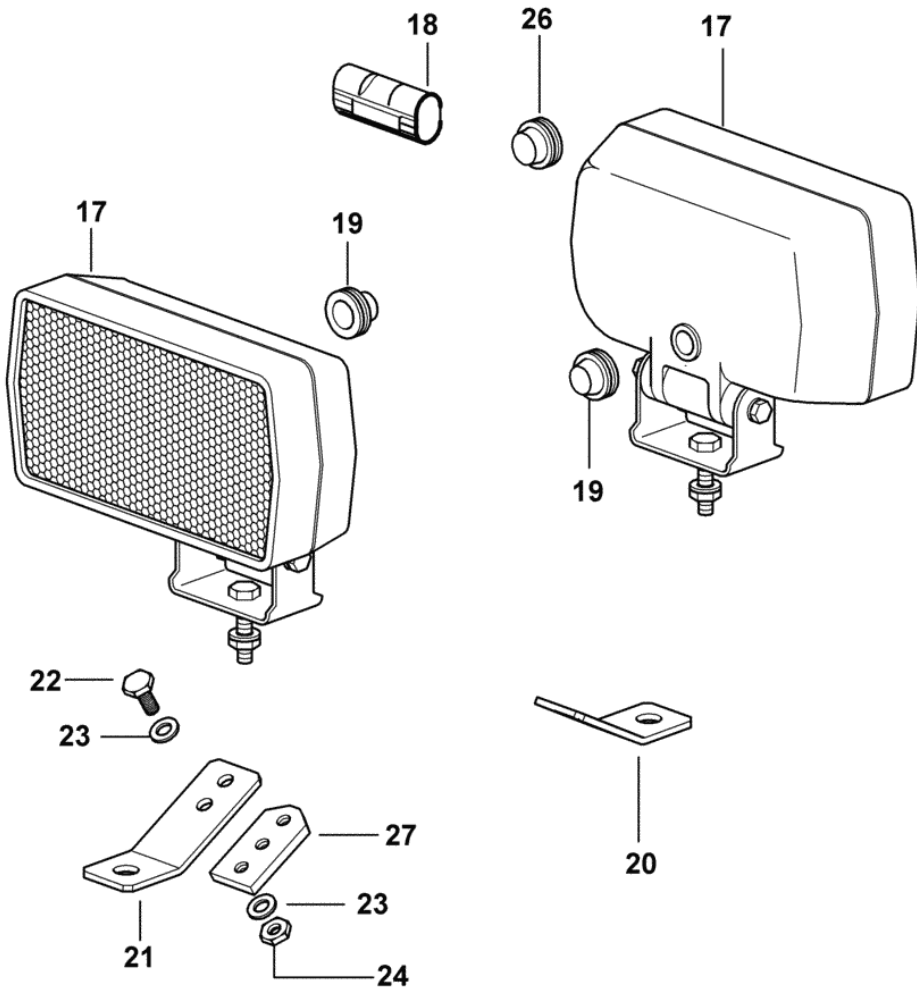
Fig.	Code	QTY	Name
1	2.8039.130.0	2	lamp COMPONENT PARTS SEE COMPONENTS LIST ☞ 2.8039.130.0 ☞ 08.00.69



9\_15485\_22\_0\_A

**WORKING SPOTLIGHT - FOR TRACTORS WITH AIR HEATING**

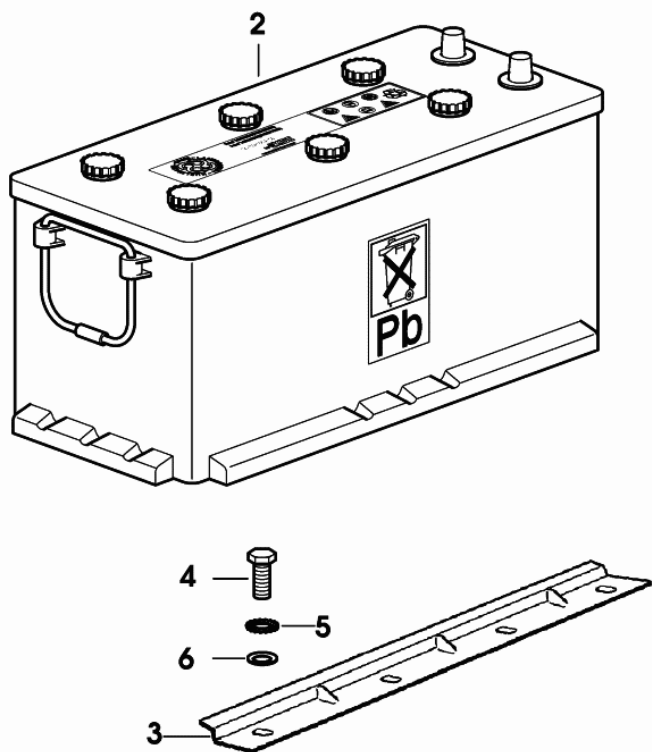
Fig.	Code	QTY	Name
17	2.8029.730.0	4	headlight COMPONENT PARTS SEE COMPONENTS LIST ☞ 2.8029.730.0 ☞ 08.00.78
18	2.6039.010.0	4	guard
19	2.6569.018.0	3	wire guide 20 x 8 x 15
20	0.010.0259.0/20	2	bracket
21	0.010.0260.0	2	bracket
22	2.0332.406.3	8	screw m 6 p.1.0 x 16
23	2.1310.002.3	20	flat washer 6.4 x 12 x 1.6
24	2.1120.003.2	8	nut m 6
26	2.6569.042.0	1	wire guide 20x10x15
27	0.010.6338.0/10	2	small plate



9\_18471\_60\_0\_D

**BATTERY 12V 120Ah 520A**

Fig.	Code	QTY	Name
2	2.9559.049.0	1	battery 12V 120Ah 520A
3	0.008.3436.0/10	1	crosspiece
4	2.0112.207.2	4	screw m 8 p 1.25 x 20
5	2.1470.004.2	4	washer 8
6	2.1310.004.2	4	flat washer 8.5



9\_77884\_10\_0\_0

Section: ELECTRIC AL SYSTEM  
**ELECTRIC STARTING SYSTEM**

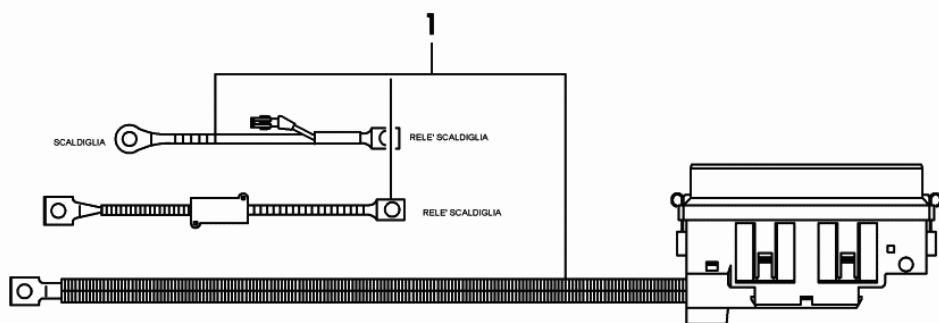
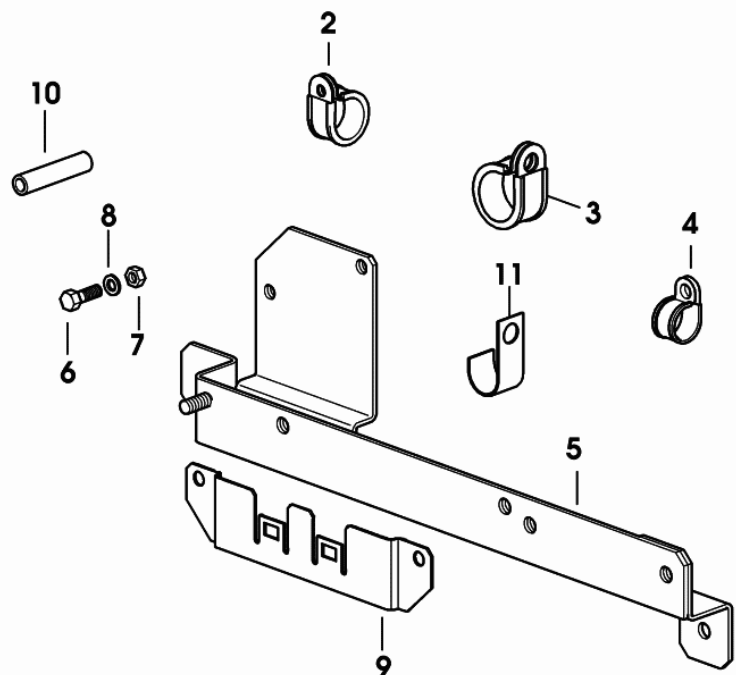


Fig.	Code	QTY	Name
1	0.013.8209.4/10	1	electrical system COMPONENT PARTS SEE COMPONENTS LIST ☞ 0.013.8209.4/10 ☞ 08.00.87
2	2.6839.064.0	1	clamp 27/20
3	2.6839.052.0	1	clamp 30/20
4	2.6839.058.0	1	clamp Ø 17/20
5	0.013.8256.3	1	bracket
6	2.0112.021.2	2	screw m 6 p.1 x 60
7	2.1011.103.2	3	nut m 6 p.1
8	2.1310.002.2	3	washer 6.6, d125
9	0.013.7478.0	1	support
10	2.1579.758.2	2	spacer
11	2.6819.004.2	1	clamp Ø 17



9\_B9884\_05\_0\_0

Section: ELECTRIC AL SYSTEM

**ELECTRICAL SYSTEM FOR TYPE WITH CAB "HIGHT VISIBILITY" - FOR TRACTORS WITH AIR HEATING**

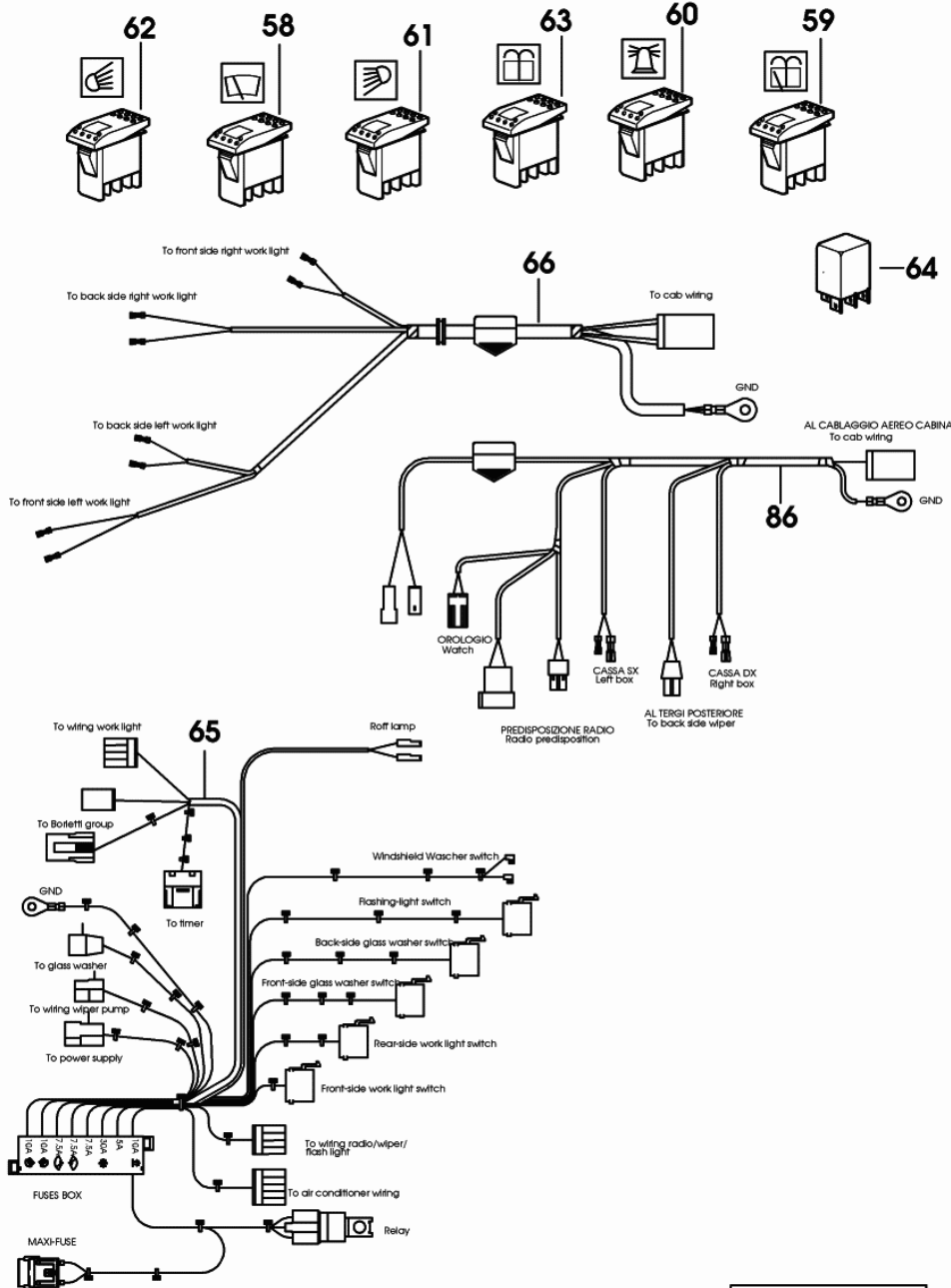


Fig.	Code	QTY	Name
58	2.7659.224.0	1	switch
59	2.7659.192.0	1	switch
60	2.7659.159.0	1	switch
61	2.7659.154.0	1	switch
62	2.7659.155.0	1	switch
63	2.7659.223.0	1	push-button
64	2.8639.008.0	1	intermitent switch HG4121, 12V
65	0.011.3606.4/50	1	electrical system
COMPONENT PARTS SEE COMPONENTS LIST			
			☞ 0.011.3606.4/50
			☞ 08.00.91
66	0.011.3595.3/10	1	electrical system
86	0.011.3596.3/40	1	electrical system

9\_18471\_70\_0\_E

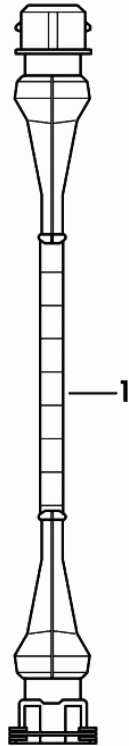
**ELECTRICAL WIRING - FOR TYPES WITH ELECTRONIC LIFTER**

Fig.	Code	QTY	Name
------	------	-----	------

**Notes:**

1013 <- X EXPLORER 75    1166 <- X EXPLORER 85    1629 <- X EXPLORER 95

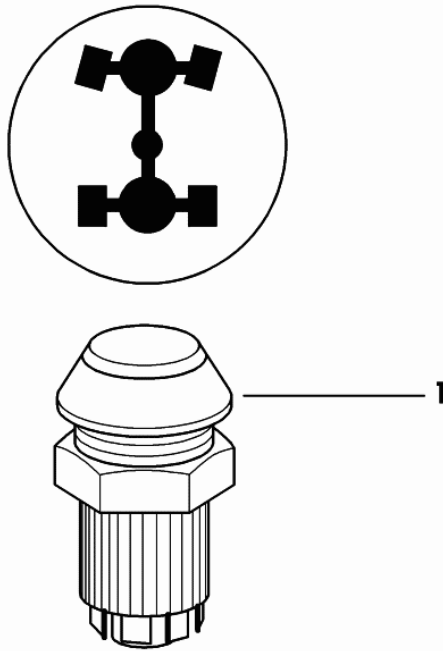
1	0.012.6731.4	2	wire
---	--------------	---	------



9\_77859\_33\_0\_0

Section: ELECTRIC AL SYSTEM  
**4WD - ENGAGEMENT CONTROL**

Fig.	Code	QTY	Name
1	0.007.5945.0/20	1	switch 4 WD



9\_52684\_04\_0\_0

COOLING.....	01.00.54
COOLANT PIPE.....	01.00.55
COOLING WATER PUMP.....	01.00.57
PARTS SET - ENGINE MOUNTING.....	01.00.58
COOLANT PUMP PULLEY.....	01.00.59
PULLEY FOR ACCESSORIES.....	01.00.60
COOLANT PUMP DRIVEBELT - FOR TRACTORS WITHOUT AIR CONDITIONING.....	01.00.61
COOLANT PUMP DRIVEBELT - FOR TRACTORS WITH AIR CONDITIONING.....	01.00.62
INTAKE AND EXHAUST.....	01.00.64
INTAKE AND EXHAUST MANIFOLD GASKETS.....	01.00.65
INLET MANIFOLD PLUG.....	01.00.66
TURBOCHARGER.....	01.00.68
COMPRESSOR 150 cc.....	01.00.69
COMPRESSOR 110 cc.....	01.00.70
EXHAUST SILENCER.....	01.00.74
SIDE EXHAUST SILENCER.....	01.00.75
SIDE EXHAUST SILENCER.....	01.00.76
SIDE EXHAUST SILENCER.....	01.00.77
GASKET SET FOR ENGINE ASSEMBLY.....	01.00.78

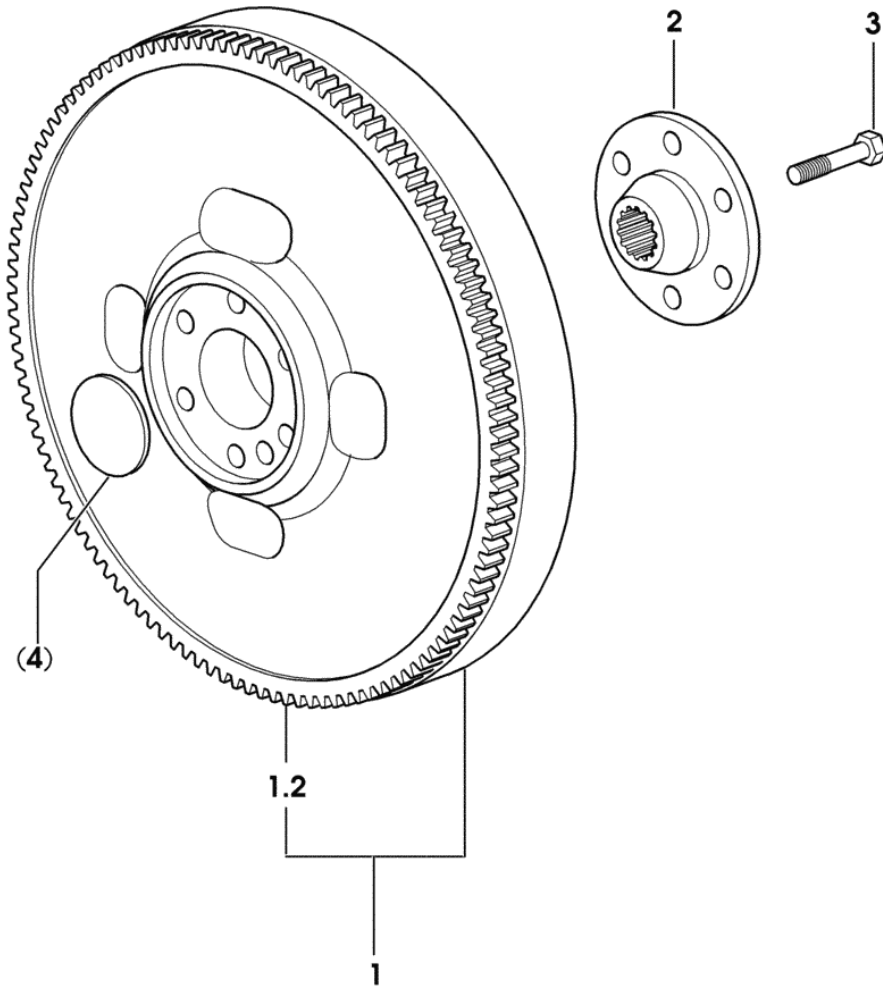
**ENGINE FLYWHEEL - FOR TYPES WITHOUT HYDRAULIC SHUTTLE**

Fig.	Code	QTY	Name
------	------	-----	------

**Notes:**

-> 1014 X EXPLORER 75    -> 1182 X EXPLORER 85    -> 1702 X EXPLORER 95

1	0.012.2626.3	1	flywheel
1.2	0.065.1242.0	1	crown wheel Z = 123
2	0.255.2525.0/10	1	flange
3	2.0139.022.2	6	screw m 12 p.1.25x55



9\_32212\_04\_0\_0

CLICK HERE TO **DOWNLOAD** THE COMPLETE MANUAL

- Thank you very much for reading the preview of the manual.
- You can download the complete manual from: [www.heydownloads.com](http://www.heydownloads.com) by clicking the link below

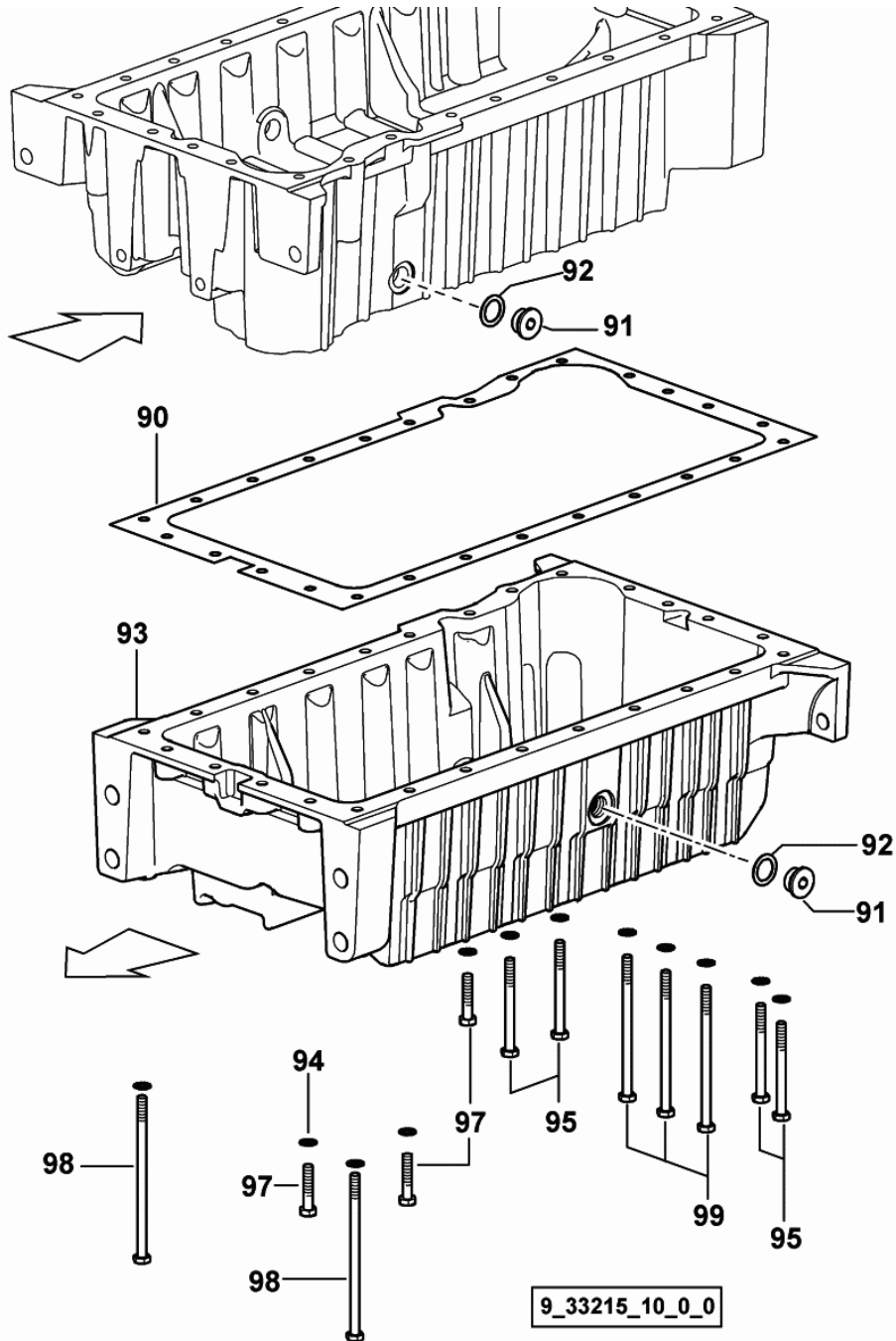


- Please note: If there is no response to CLICKING the link, please download this PDF first and then click on it.

CLICK HERE TO **DOWNLOAD** THE COMPLETE MANUAL

**OIL PAN**

Fig.	Code	QTY	Name
90	0.065.1550.0/10	1	gasket
91	2.3199.001.2	2	plug 1/2" gas
92	2.1560.054.0	2	gasket 21 x 26
93	0.007.1277.0/40	1	oil pan
94	2.1470.004.2	26	washer 8
95	2.0112.226.2	4	screw m 8 p.1.25 x 85
97	2.0112.215.2	17	screw m 8 p.1.25 x 40
98	2.0112.239.2	2	screw m 8 p.1.25 x 150
99	2.0112.235.2	3	screw m 8 p.1.25 x 130



Section: ENGINE

**FUEL FILTER**

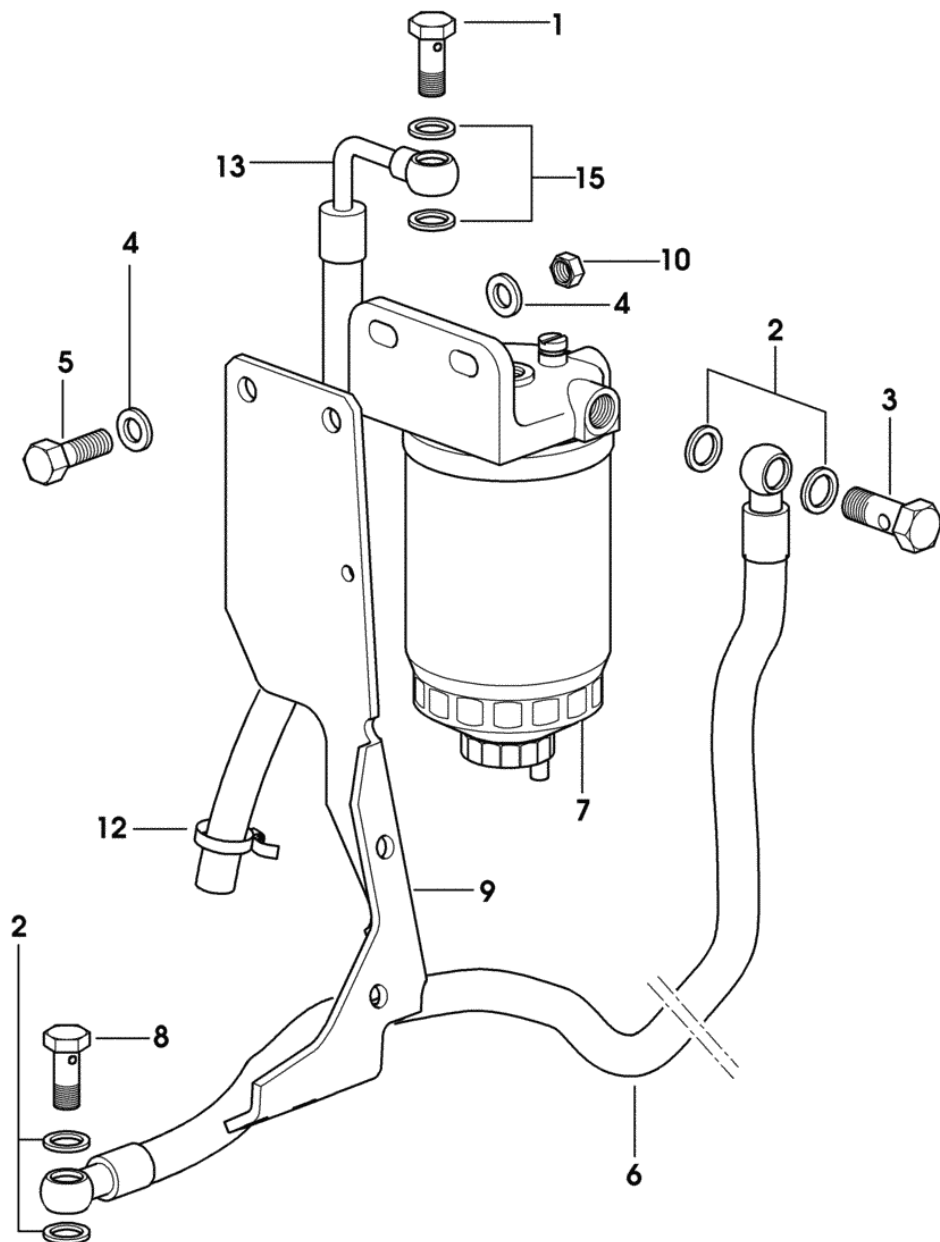


Fig.	Code	QTY	Name
1	2.3332.004.1	1	pipe union m 14 p.1.5 x 27
2	2.1560.010.0	5	gasket 14.2 x 20 x 1.5
3	2.3339.040.2	2	pipe union m 14 p.1.5x45
4	2.1310.006.2	2	flat washer 10.5
5	2.0112.313.2	2	screw m 10 p.1.5 x 35
6	0.010.9530.3	1	tube
7	2.4319.230.0	1	fuel filter
COMPONENT PARTS SEE COMPONENTS LIST			
☞ 2.4319.230.0			
☞ 01.00.2			
8	2.3339.357.2/10	1	pipe union m 14 p.1.5x28
9	0.013.3162.2/20	1	bracket
10	2.1011.106.2	2	nut m 10 p.1.5
12	2.6851.001.0	2	clamp Ø 16/25
13	0.013.2822.3	1	tube
15	2.1561.007.0	2	gasket 14,8x22.2

9\_M5216\_03\_0\_0

Section: ENGINE

**HEATING**

Fig.	Code	QTY	Name
1	2.3249.103.2	1	pipe fitting
2	2.3339.636.2	1	pipe fitting 3/8" gas
3	2.6851.001.0	2	clamp Ø 16/25
4	2.1560.054.0	1	gasket 21 x 26

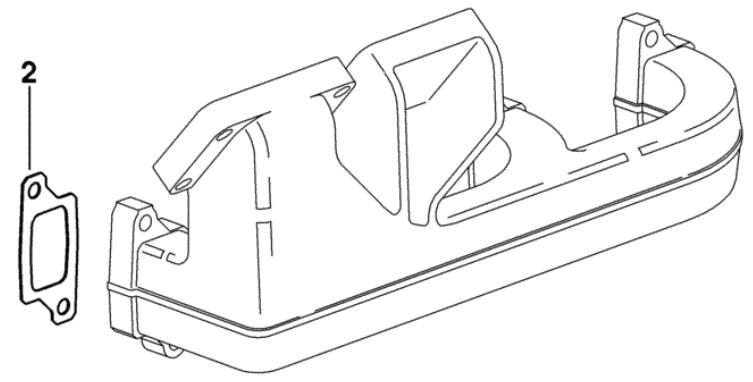
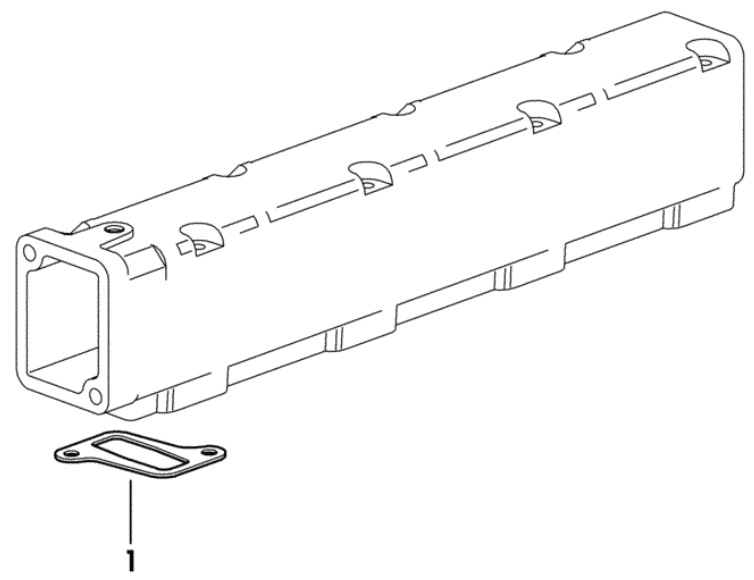


9\_B9886\_16\_0\_0

**INTAKE AND EXHAUST MANIFOLD GASKETS**

9\_33218\_00\_0\_0

Fig.	Code	QTY	Name
1	0.011.1304.0/10	4	gasket
2	0.007.1445.0	4	gasket



## EXPLORER 85

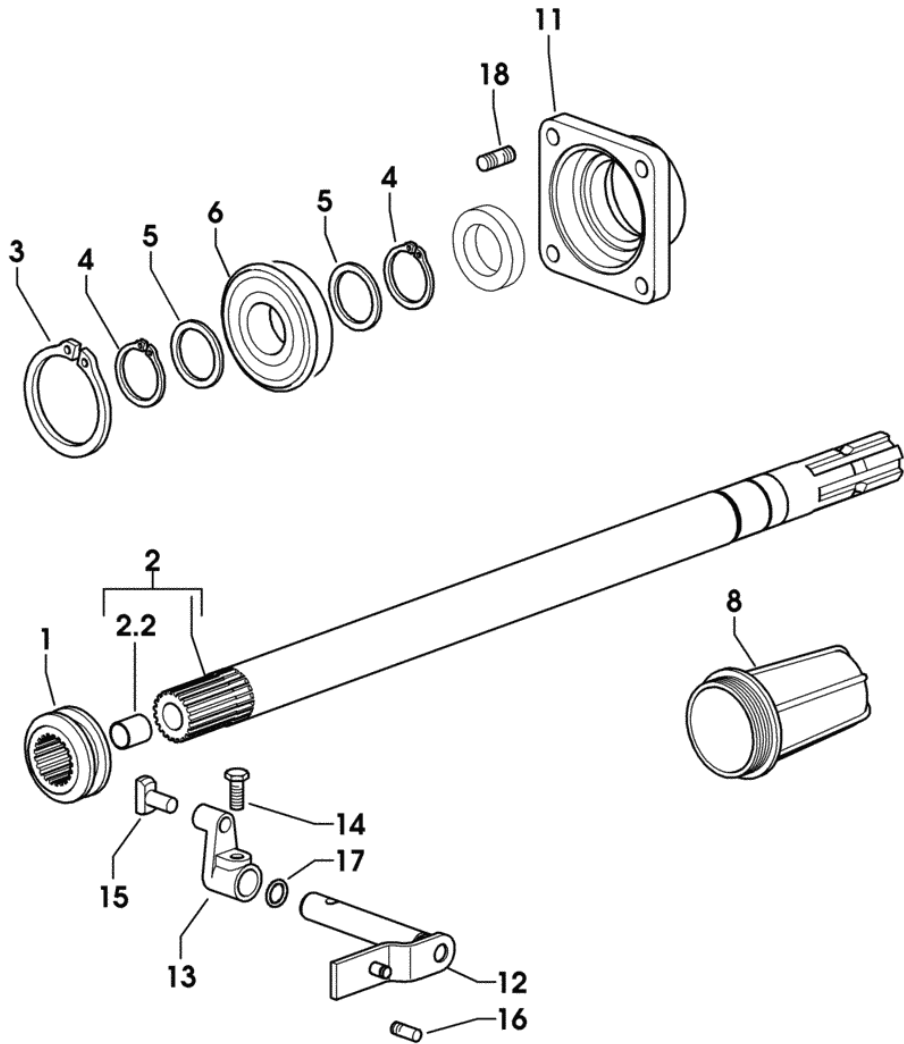
### FRONT AND REAR P.T.O.

#### GENERAL

P.T.O. FRONT.....	05.00.1
P.T.O. FRONT.....	05.00.2
P.T.O. - CLUTCH TRANSMISSION SHAFT.....	05.00.3
P.T.O. - HYDRAULIC CLUTCH - FOR ELECTROHYDRAULIC CONTROLS.....	05.00.4
P.T.O. - 2 SPEED TYPE.....	05.00.5
4 SPEED P.T.O.....	05.00.6
4 SPEED P.T.O.....	05.00.7
ROAD P.T.O. SHAFT.....	05.00.8
P.T.O. - SYNCHRONIZED.....	05.00.9
P.T.O. - FIXED END SHAFT - FOR 2-SPEED STANDARD SEALS.....	05.00.10
P.T.O. - FIXED END SHAFT - FOR 2-SPEED WATERPROOF SEALS.....	05.00.11
P.T.O. - FIXED END SHAFT - FOR 4-SPEED STANDARD SEALS.....	05.00.12
P.T.O. - FIXED END SHAFT - FOR 4-SPEED WATERPROOF SEALS.....	05.00.13
PTO - 2-SPEED WITH INSERTED END SHAFT.....	05.00.14
PTO - 2-SPEED WITH INSERTED END SHAFT.....	05.00.15
P.T.O - 4-SPEED WITH INSERTED END SHAFT.....	05.00.16
P.T.O - 4-SPEED WITH INSERTED END SHAFT.....	05.00.17
PTO - PARTS SET WITH STANDARD SEALS.....	05.00.18
PTO - PARTS SET WITH WATER PROOF SEALS.....	05.00.19
PTO - SEAL RING FOR INSERTED END SHAFT - STANDARD VERSION.....	05.00.20
PTO - SEAL RING FOR INSERTED END SHAFT - WATER PROOF VERSION.....	05.00.21
P.T.O. ENGAGEMENT CONTROL 540 - 1000.....	05.00.22
P.T.O. ENGAGEMENT CONTROL 540 - 1000.....	05.00.23
SUPPORT.....	05.00.24
P.T.O. - ECONOMICAL CONTROL.....	05.00.25
P.T.O. - ECONOMICAL CONTROL.....	05.00.26
P.T.O. - SYNCHRONIZED CONTROL.....	05.00.27
P.T.O. - SYNCHRONIZED CONTROL.....	05.00.28
PTO DATA PLATE 540 - 1000.....	05.00.29
PTO DATA PLATE 540 - 1000.....	05.00.30
COMPLETION.....	05.00.31
COVER FOR TYPES WITHOUT SYNCHRO PTO.....	05.00.32
P.T.O. SHAFT PROTECTOR REAR.....	05.00.33
P.T.O. SHAFT PROTECTOR REAR EXPORT GB.....	05.00.34
P.T.O. SHAFT PROTECTOR REAR - WITH OSCILLATING REAR TWO HOOK CAT. A EXPORT GB.....	05.00.35

**ROAD P.T.O. SHAFT**

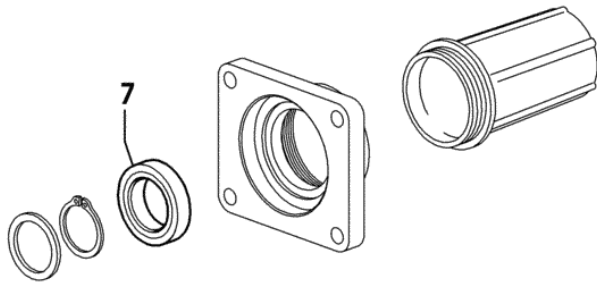
Fig.	Code	QTY	Name
1	0.255.3469.0	1	sleeve
2	0.445.3458.3/30	1	p.t.o.shaft mm 578
2.2	2.1559.023.0/10	1	bushing 15.8x19x20
3	2.1411.032.1	1	circlip 80 x 2.5
4	2.1410.014.1	2	circlip 35
5	2.1599.874.0	2	washer 35 x 45 x 3.0
6	2.2060.011.0	1	ball bearing 35 x 80 x 21
8	0.154.3655.0/10	1	guard
11	0.255.3150.0/10	1	cover
12	0.255.3468.2/10	1	lever
13	0.255.3470.0	1	lever
14	2.0399.019.1	1	screw m 8 p.1 x 16
15	0.001.5945.0/10	1	shoe
16	2.0439.002.1	2	stud bolt m 8 p.1.25 x 20
17	2.1530.033.0	1	'o' ring 13.10x2.62
18	2.0432.155.7	4	stud bolt m 10 p.1.5 / p. 1.25 x 25



9\_B8636\_12\_0\_0

**PTO - PARTS SET WITH STANDARD SEALS**

Fig.	Code	QTY	Name
7	2.1520.017.0	1	oil seal 35x55x11



9\_52636\_04\_0\_0

Section: FRONT AND REAR P.T.O.

**P.T.O. - SYNCHRONIZED CONTROL**

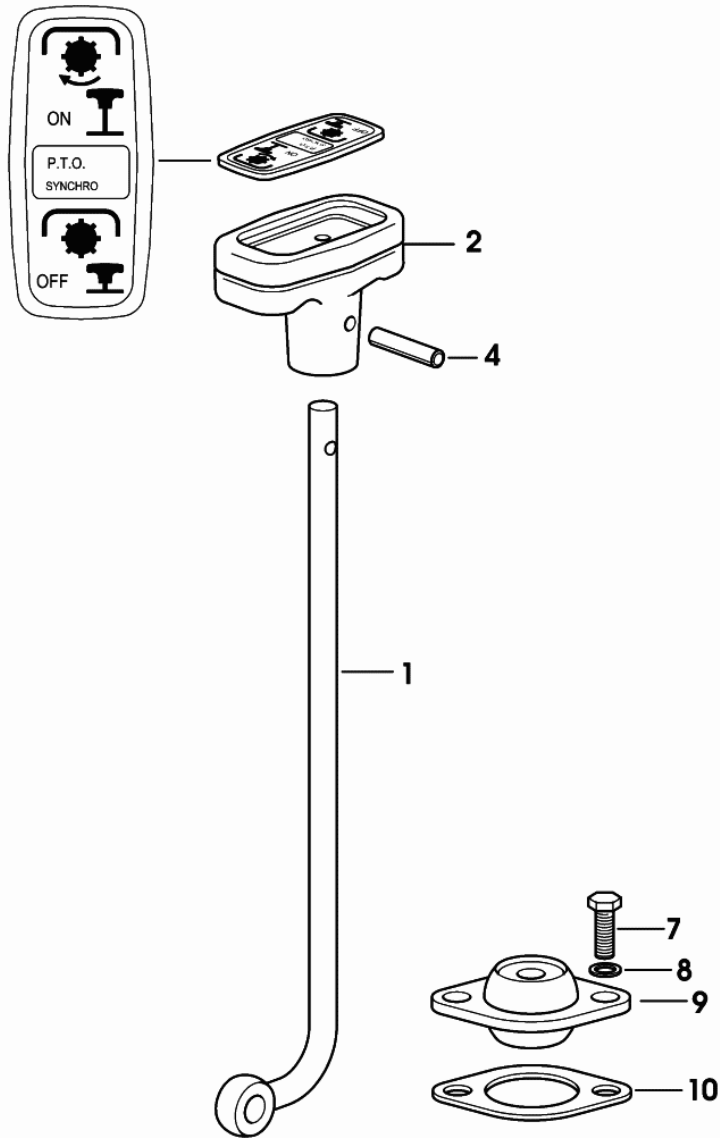
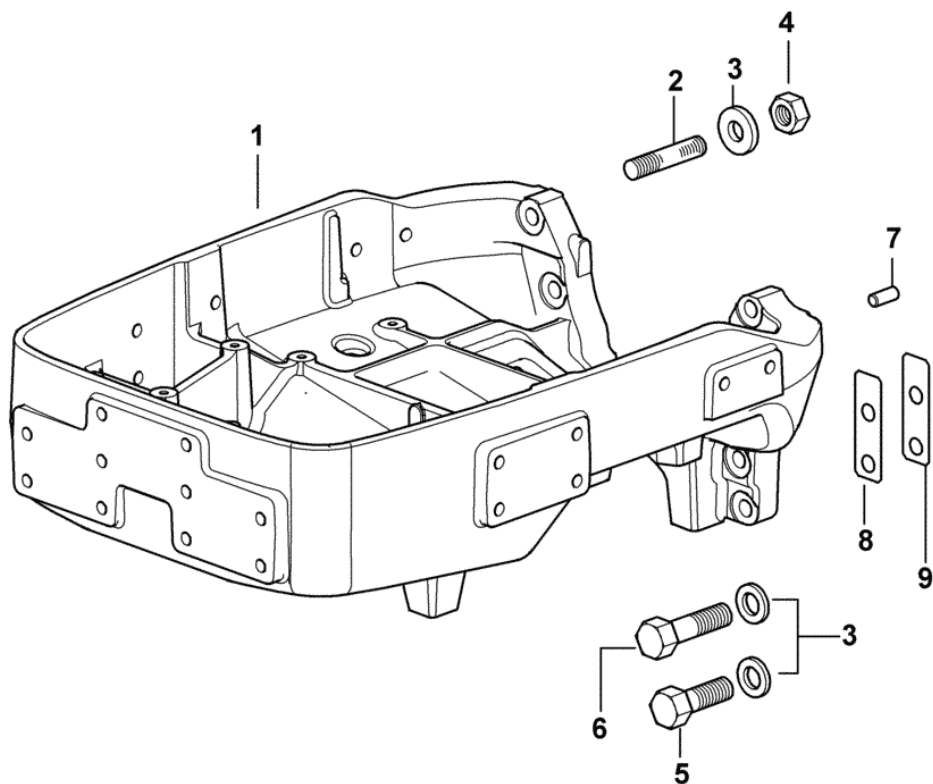


Fig.	Code	QTY	Name
1	0.010.7336.0	1	rod
2	0.009.9885.0/10	1	knob
4	2.1631.511.0	1	pin 6 x 24
7	2.0112.205.2	2	screw m 8 p.1.25 x 16
8	2.1310.004.2	2	flat washer 8.5
9	0.009.1618.3	1	support
10	0.009.0480.0	1	gasket

9\_77868\_01\_0\_0

Section: FRONT AXEL  
**4WD - FRONT DRIVE AXLE**

Fig.	Code	QTY	Name
1	0.013.6992.0/20	1	support
2	2.0439.174.7	4	stud bolt m 18 p.1.5x70
3	2.1475.007.7	8	washer 18
4	2.1019.060.2	4	special nut m 18 p.1.5
5	2.0112.722.2	2	screw m 18 p.2.5 x 65
6	2.0112.724.2	2	screw m 18 p.2.5 x 75
7	2.1699.035.0	2	cylindrical plug 14 x 35
8	0.008.8586.0/10	4	shim mm 0.20
9	0.008.8587.0/10	8	shim mm 0.50



Section: FRONT AXEL

4WD - FRONT DRIVE AXLE - FOR DOUBLE-ACTING CYLINDER

9\_77843\_00\_0\_0

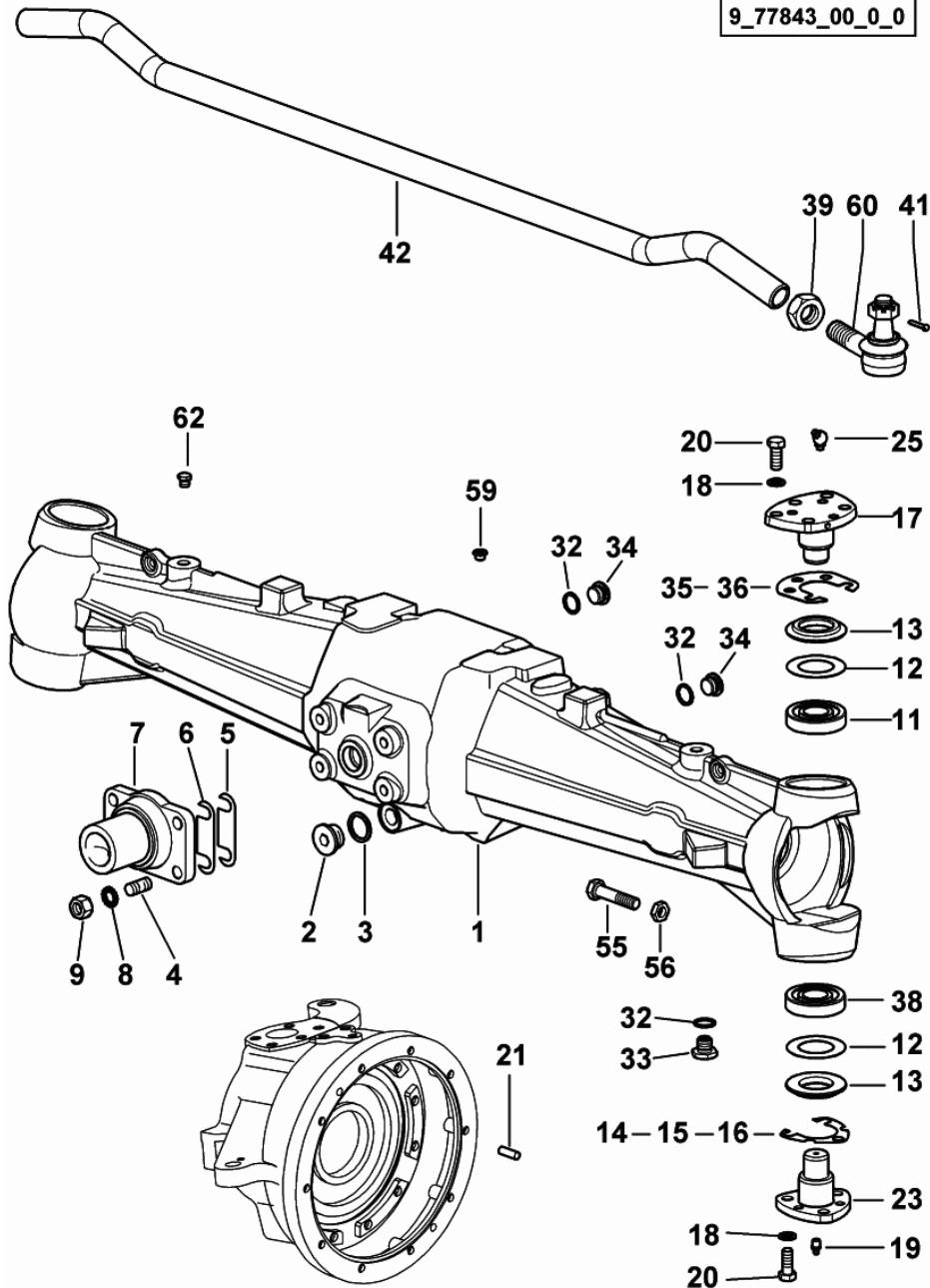
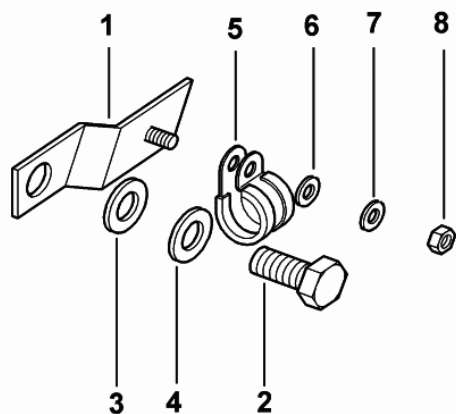


Fig.	Code	QTY	Name
1	0.010.6083.0/50	1	front axle
2	2.3199.021.2	1	plug 1/2" gas
3	2.1560.054.0	1	gasket 21 x 26
4	2.0433.309.7	4	stud bolt m 14 p.1.5x35
5	2.1379.004.0/10	4	small plate 15x15x62x1.5
6	2.1379.003.0/10	4	small plate 15x15x62x0.12
7	0.010.4724.0/20	1	pin
8	2.1475.005.2	4	washer 14
9	2.1011.308.2	4	nut m 14 p.1.5
11	2.2530.007.0	1	roller bearing 30x72x20.75
12	2.1599.260.0	4	snoulder 43x71x1
13	2.1519.045.0	4	'o' ring 41x73x9
14	0.463.4351.0	8	shim mm 0.50
15	0.463.4350.0	8	shim mm 0.20
16	0.463.4352.0	8	shim mm 0.15
17	0.255.4335.0/10	1	pin
18	2.1470.007.2	9	lock washer 12
19	2.3820.105.2	2	lubricator m 10 p.1 x 7
20	2.0112.411.2	9	screw m 12 p.1.75 x 30
21	2.1651.811.0	4	cylindrical plug 10x24
23	0.169.4337.0/10	2	pin
25	2.3821.102.2	1	lubricator m 8 p.1 x 8
32	2.1560.054.0	5	gasket 21 x 26
33	2.3199.021.2	2	plug 1/2" gas
34	2.3199.001.2	3	plug 1/2" gas
35	2.1589.124.0	8	snoulder mm 0.20
36	2.1589.126.0	8	snoulder mm 0.15
38	2.2550.007.0	2	roller bearing 30x72x28.75
39	2.1099.020.1	2	special nut m 24 p.1.5
41	2.1690.412.2	2	split pin 4 x 30
42	0.010.5537.0/10	1	rod
55	2.0119.213.2	4	screw m 14 p.2 x 60
56	2.1011.208.2	4	nut m 14 p.2
59	2.3199.537.0	5	plug Ø 11
60	0.010.0488.4/10	2	joint
			COMPONENT PARTS SEE COMPONENTS LIST
			☞ 0.010.0488.4/10
			☞ 04.00.30
62	2.3199.125.0	1	plug 1/8" gas

Section: FRONT AXEL

**PIPE MOUNTING BRACKET - FOR TYPES WITH "S.B.A. SYSTEM"**

Fig.	Code	QTY	Name
1	0.007.7659.3	1	bracket
2	2.0122.507.2	1	screw m 12 p.1.25 x 20
3	2.1310.009.2	1	flat washer 14
4	2.1470.008.2	1	lock washer 14
5	2.6839.059.0	1	clamp Ø 12 / 15
6	2.1310.002.2	1	washer 6.6, d125
7	2.1470.002.2	1	washer 6, d128
8	2.1011.103.2	1	nut m 6 p.1



9\_B8682\_12\_0\_0

EXPLORER 85

Section: FRONT AXEL

Ref.: 04.00.29

4WD - FRONT DIFFERENTIAL LOCK - FOR TYPES WITH "S.B.A. SYSTEM"

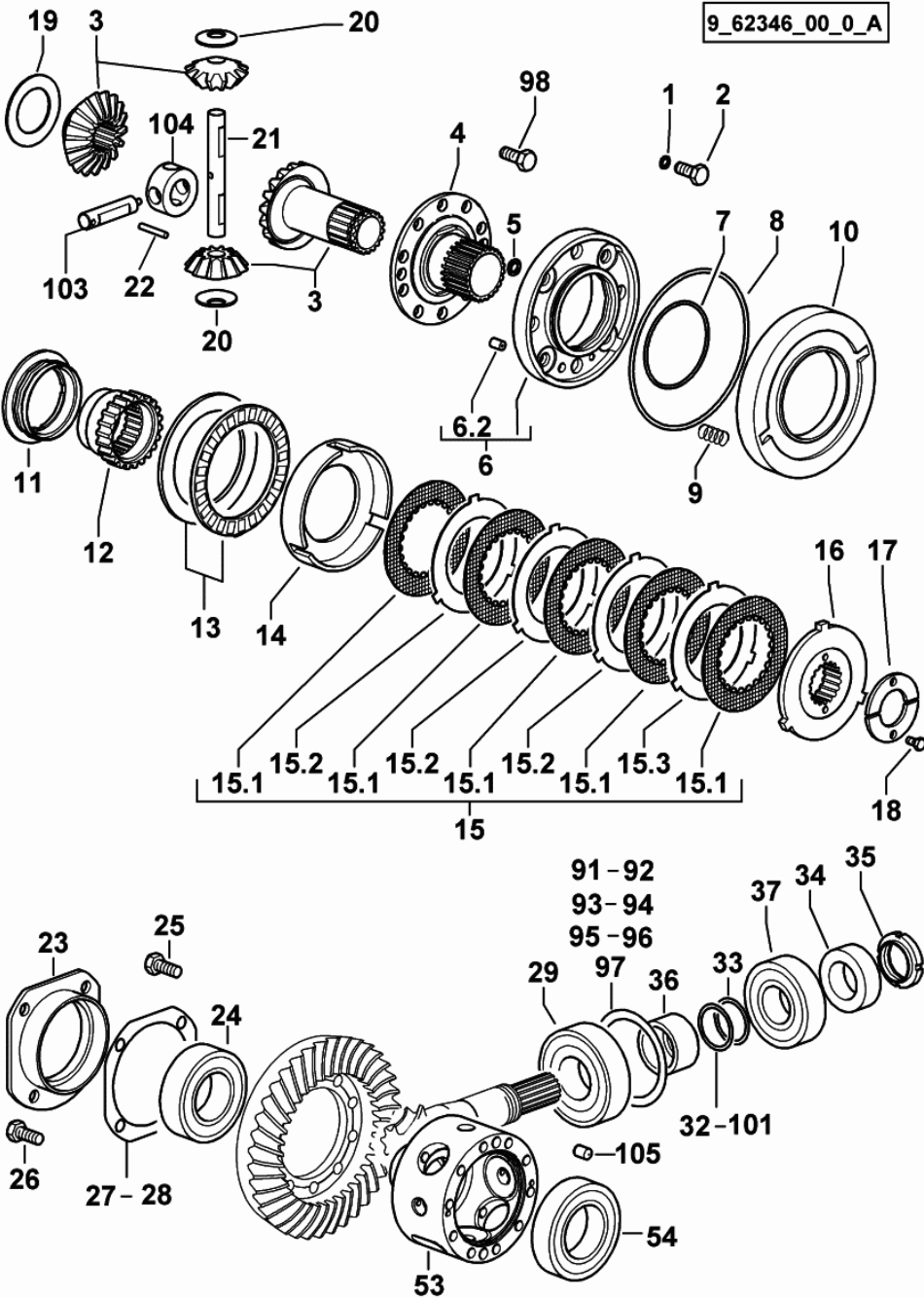


Fig.	Code	QTY	Name
22	2.1631.418.0	2	-> 1124 X EXPLORER 95 pin 5 x 45 -> 1014 X EXPLORER 75 -> 1078 X EXPLORER 85 -> 1124 X EXPLORER 95
23	0.255.4652.0/20	1	flange
24	2.2540.005.0	1	roller bearing 45 x 85 x 24.75
25	2.0139.025.1	10	screw m 10 p.1.25 x 25
26	2.0132.207.2	4	screw m 10 p.1 x 25
27	0.146.4654.0/10	4	shim 96x127x0.5
28	0.146.4653.0/10	4	shim 96x127x0.2
29	2.2560.006.0	1	roller bearing 40 x 90 x 25.25
32	2.1580.101.0	2	shim 36 x 43 x 0.2
33	2.1580.102.0	3	shim 36 x 43 x 0.5
34	0.255.4650.0	1	spacer 35 x 58 x 19
35	2.1214.108.7	1	ring nut m 35 p.1.5
36	0.010.1045.0	1	spacer mm 37
37	2.2560.005.0	1	roller bearing 35 x 80 x 22.75
53	0.275.4610.0/10	1	differential carrier 1013 <- X EXPLORER 75 1077 <- X EXPLORER 85 1123 <- X EXPLORER 95
53	0.013.6062.0/30	1	differential carrier -> 1014 X EXPLORER 75 -> 1078 X EXPLORER 85 -> 1124 X EXPLORER 95
54	2.2999.315.0	1	bearing
91	2.1589.356.0	1	snoulder 73x89.5x0.6
92	2.1589.357.0	0	snoulder 73x89.5x0.7
93	2.1589.358.0	0	snoulder 73x89.5x0.8
94	2.1589.359.0	0	snoulder 73x89.5x0.9
95	2.1589.360.0	0	snoulder 73x89.5x1.65
96	2.1589.361.0	0	snoulder 73x89.5x1.75
97	2.1589.362.0	0	snoulder 73x89.5x1.85
98	2.0139.002.1	10	screw m 10 p.1.25 x 20
101	2.1580.109.0	2	shim 36x43x0.15
103	0.013.6068.0	2	pin -> 1014 X EXPLORER 75 -> 1078 X EXPLORER 85 -> 1124 X EXPLORER 95
104	0.013.6070.0	1	ring -> 1014 X EXPLORER 75 -> 1078 X EXPLORER 85 -> 1124 X EXPLORER 95

Section: FRONT AXEL

4WD - FRONT DIFFERENTIAL LOCK - FOR TYPES WITH "S.B.A. SYSTEM"

9\_77846\_01\_0\_B

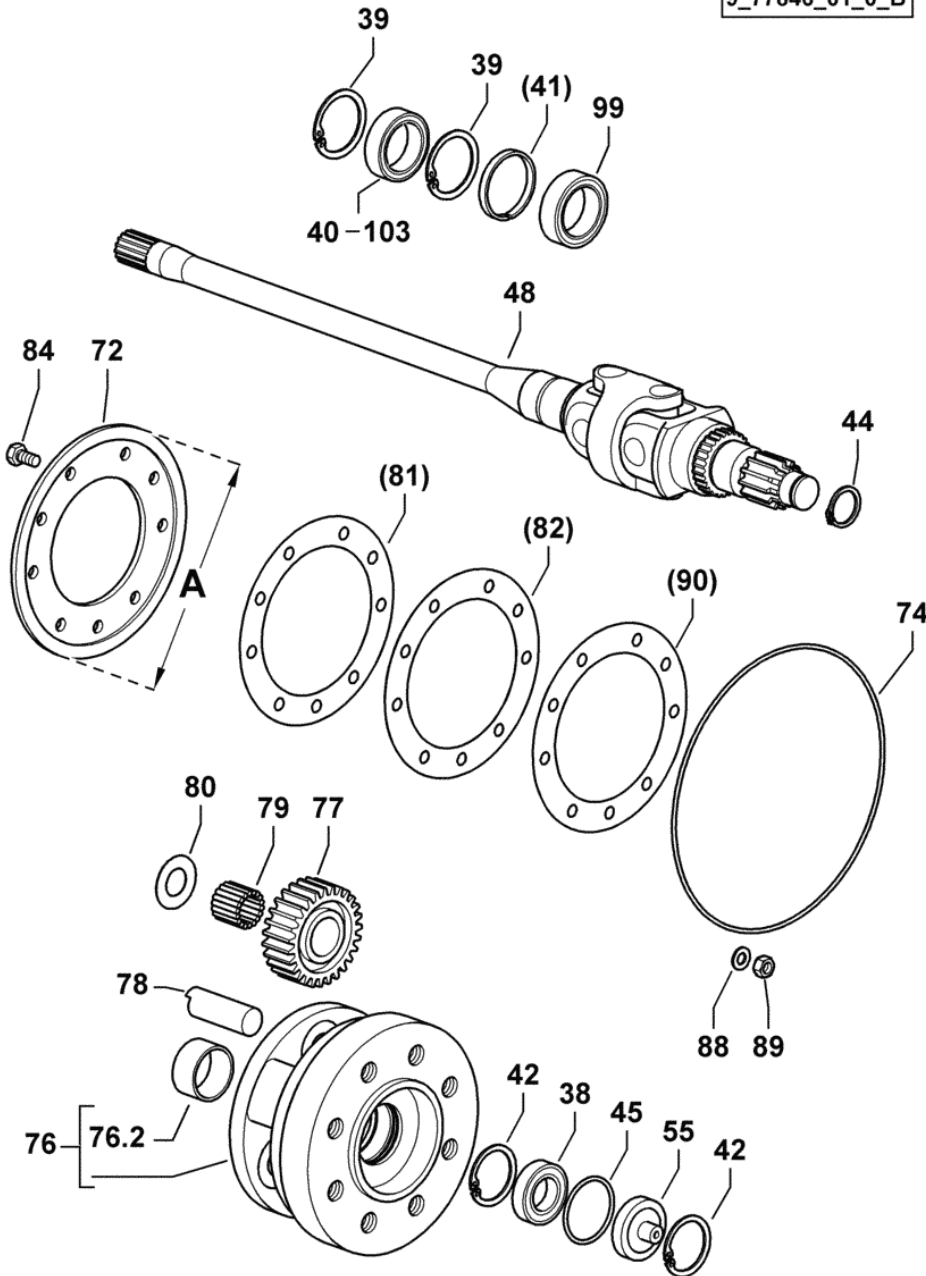


Fig.	Code	QTY	Name
------	------	-----	------

Notes:  
- FOR DOUBLE-ACTING CYLINDER

38	2.2030.007.0	2	ball bearing 30x55x13
39	2.1411.025.1	4	circlip 62
40	2.2999.415.0	1	bearing 43.8 x 62 x 17
42	2.1411.022.1	4	circlip 55
44	2.1499.528.1	2	circlip 30
45	2.1530.134.0	2	'o' ring 53.98x3.53
48	0.010.5413.4/10	2	half-shaft
			COMPONENT PARTS SEE COMPONENTS LIST
			☞ 0.010.5413.4/10
			☞ 04.00.33
55	0.275.4653.0	2	small cover
72	0.275.4650.0/10	2	flange
			A = 210mm
74	2.1530.308.0	2	'o' ring 253.6x3.53
76	0.275.4642.3/40	2	spider
76.2	2.1559.067.0	1	bushing 44.1x50.1x25
77	0.255.4644.0/20	6	planet gear z=27
78	0.198.4643.0	6	pin
79	2.2999.002.0	6	roller cage 25x35x30
80	2.1599.871.0	12	thrust plate 25x48x1
84	2.0139.002.1	18	screw m 10 p.1.25 x 20
88	2.1475.203.7	20	washer 10.5
89	2.1012.421.7	20	nut m 10 p.1.25
99	2.1529.112.0	2	'o' ring 45 x 65 x 18.5
103	2.2999.415.0	1	bearing 43.8 x 62 x 17

**4WD - TRANSMISSION SHAFT - FOR TYPES WITH HYDRAULIC SHUTTLE**

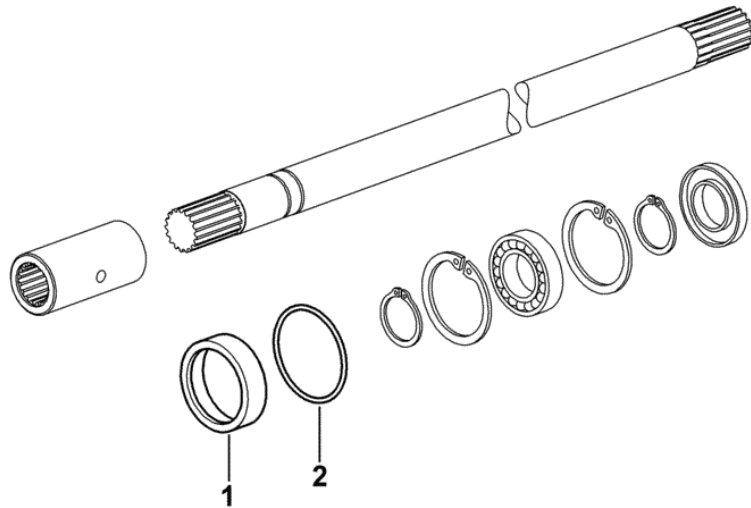
9\_B7826\_01\_0\_0

Fig.	Code	QTY	Name
------	------	-----	------

**Notes:**

- WITH STANDARD SEALS

1	0.012.7114.0/10	1	spacer
2	2.1532.155.0	1	'o' ring 3.53x63.50



EXPLORER 85

Section: FRONT HYDRAULIC POWER-LIFT

Ref.: 0C.00.3

FRONT HYDRAULIC POWER-LIFT - FOR MODELS EQUIPPED WITH FRONT P.T.O.

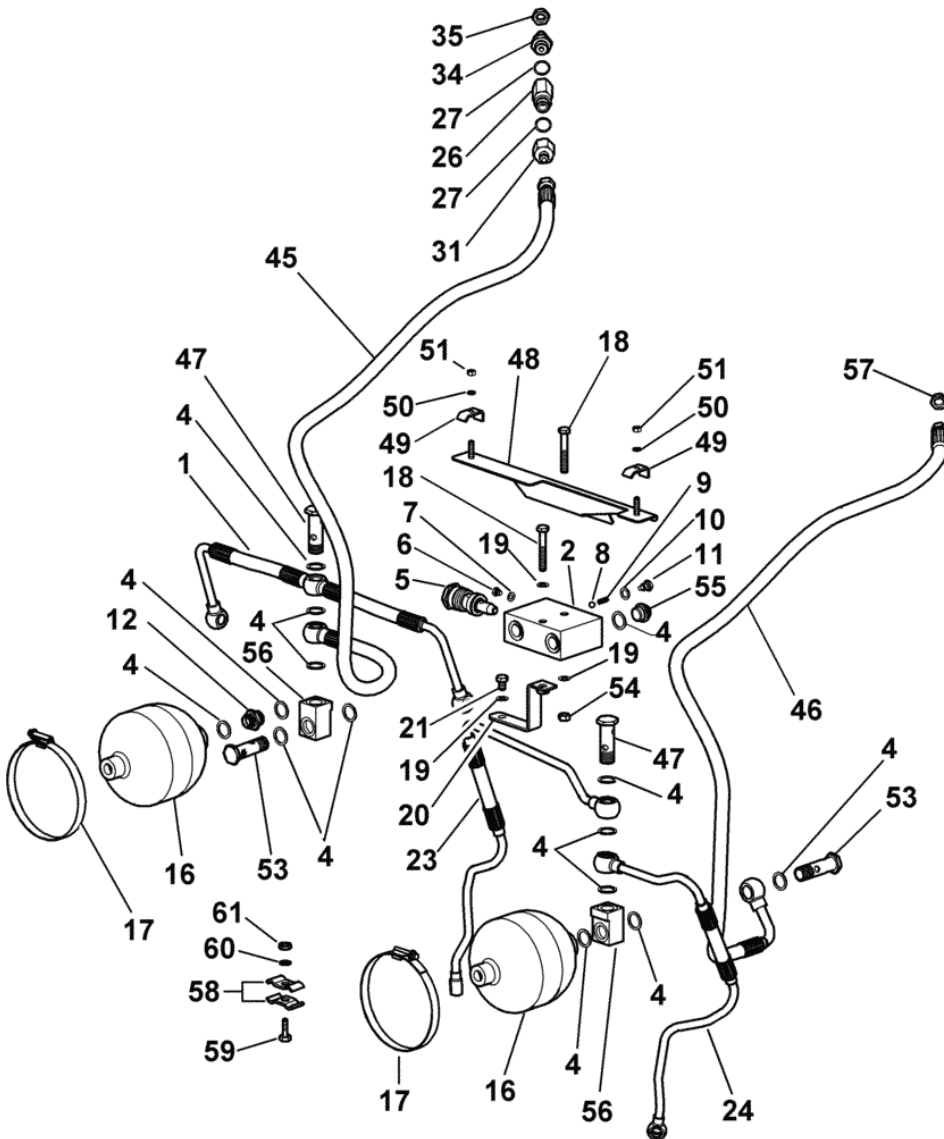


Fig.	Code	QTY	Name
60	2.1470.002.2	1	washer 6, d128
61	2.1011.103.2	1	nut m 6 p.1

9\_B9859\_81\_0\_A

Section: GEAR

**5 SPEED GEARBOX - WITH HML (AGROSHIFT)- FOR TYPES WITH HYDRAULIC SHUTTLE**

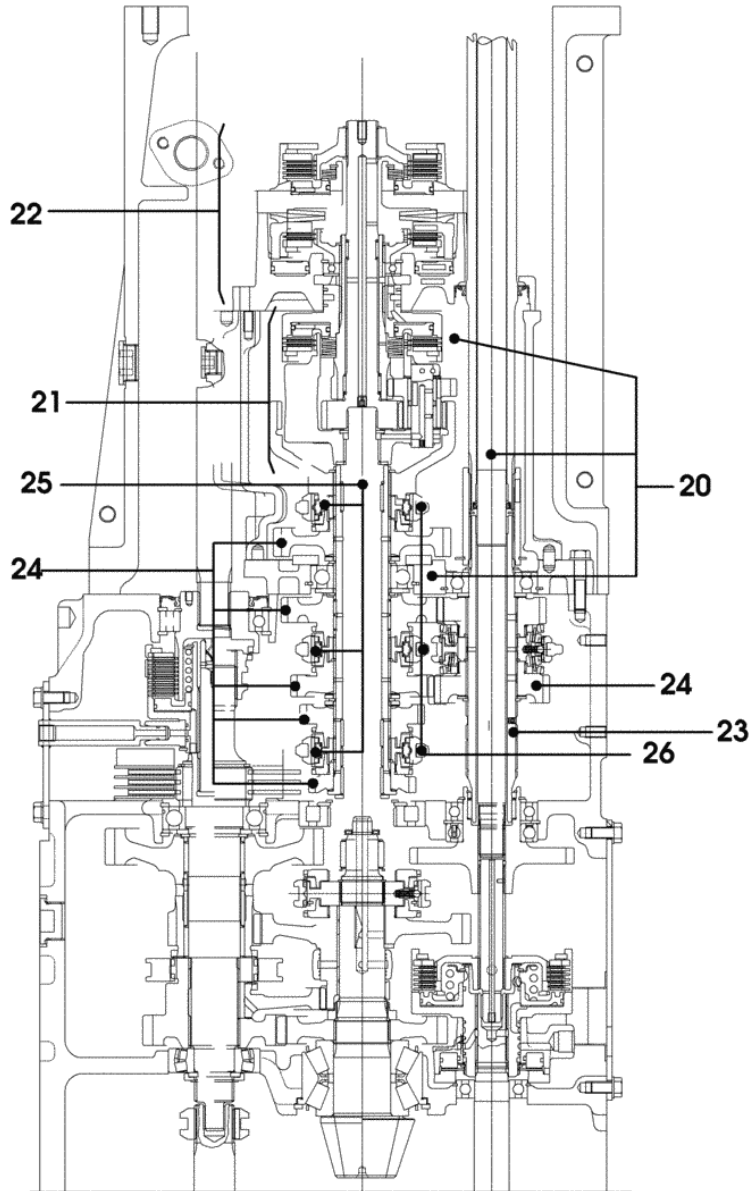
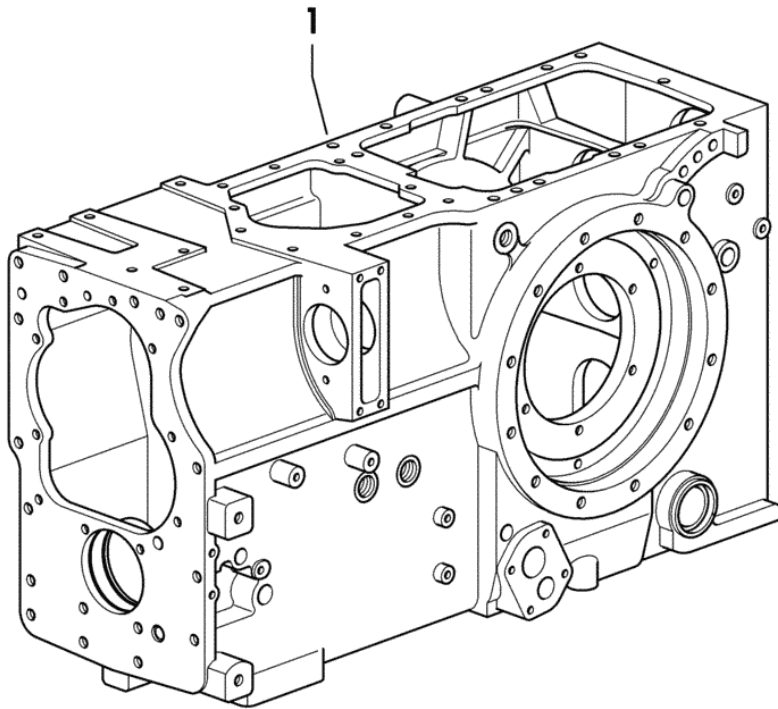


Fig.	Code	QTY	Name
20	0.000.0000.1	0	not serviceable COMPONENT PARTS SEE COMPONENTS LIST ☞ 02.00.45
21	0.000.0000.1	0	not serviceable COMPONENT PARTS SEE COMPONENTS LIST ☞ 02.00.46
22	0.000.0000.1	0	not serviceable COMPONENT PARTS SEE COMPONENTS LIST ☞ 02.00.47
23	0.000.0000.1	0	not serviceable COMPONENT PARTS SEE COMPONENTS LIST ☞ 02.00.48
24	0.000.0000.1	0	not serviceable COMPONENT PARTS SEE COMPONENTS LIST ☞ 02.00.49
25	0.000.0000.1	0	not serviceable COMPONENT PARTS SEE COMPONENTS LIST ☞ 0.010.8863.4/10 ☞ 0.014.5896.4 ☞ 0.010.8862.4/10 ☞ 0.014.5894.4 ☞ 0.010.8861.4 ☞ 02.00.50
26	0.000.0000.1	0	not serviceable COMPONENT PARTS SEE COMPONENTS LIST ☞ 02.00.51

Section: GEAR

**GEARBOX WITH HYDRAULIC SHUTTLE - FOR TYPES WITH MECHANICAL LIFTER**

Fig.	Code	QTY	Name
1	0.010.7939.0/80	1	gear box



Section: GEAR  
**HYDRAULIC SHUTTLE**

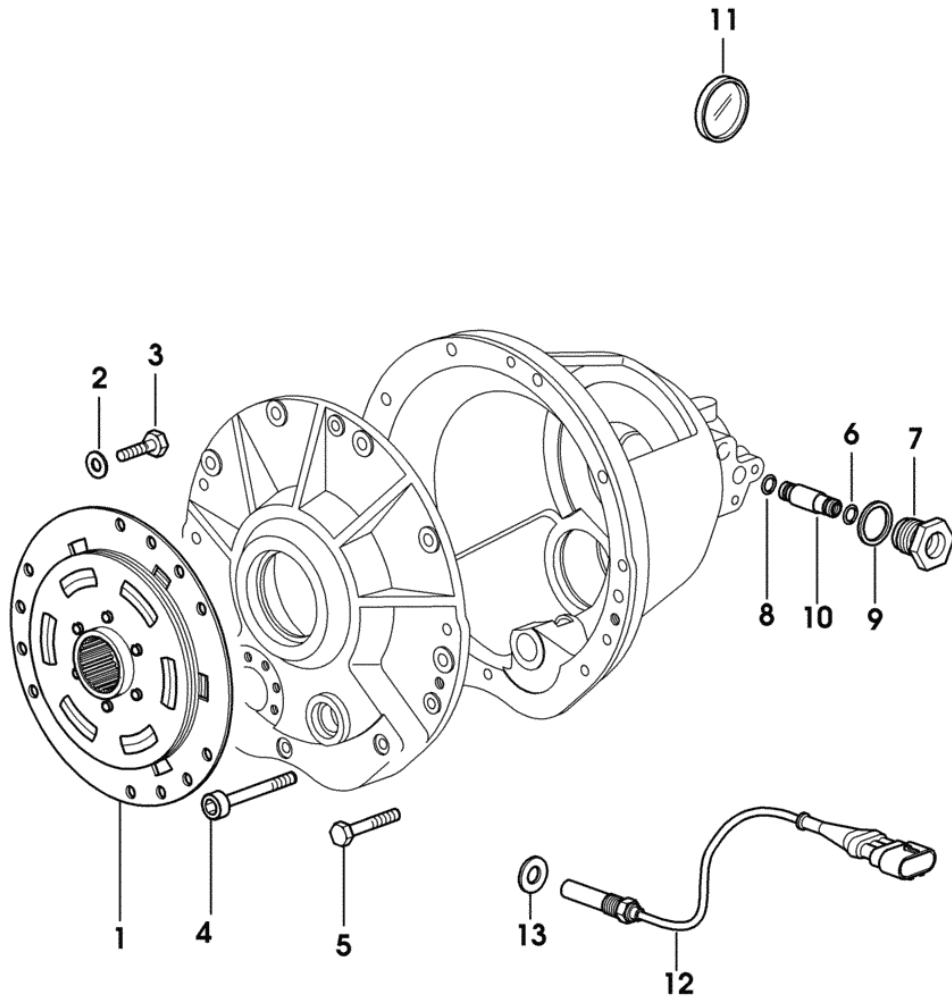


Fig.	Code	QTY	Name
1	0.011.3942.4	1	dumper
2	2.1475.003.7	18	washer 10.5
3	2.0112.309.2	12	screw m 10 p.1.5 x 25
4	2.0312.320.2	3	screw m 10 x 70
5	2.0112.320.2	6	screw m 10 p.1.5 x 55
6	2.1532.024.0	3	'o' ring 10.77x2.62
7	0.010.4864.0/20	3	bushing
8	2.1532.026.0	3	'o' ring 11.10x1.78
9	2.1560.016.0	3	gasket 20.2 x 26
10	0.010.8525.0	3	tube
11	2.3171.020.4	3	plug Ø 56 mm
12	2.7099.996.0	1	sensor
13	2.1560.014.0	1	gasket 18.2 x 24 x 1.5

9\_62032\_11\_0\_0

**GEAR CHANGE BOX 5 SPEED - FOR TYPES WITH HYDRAULIC SHUTTLE**

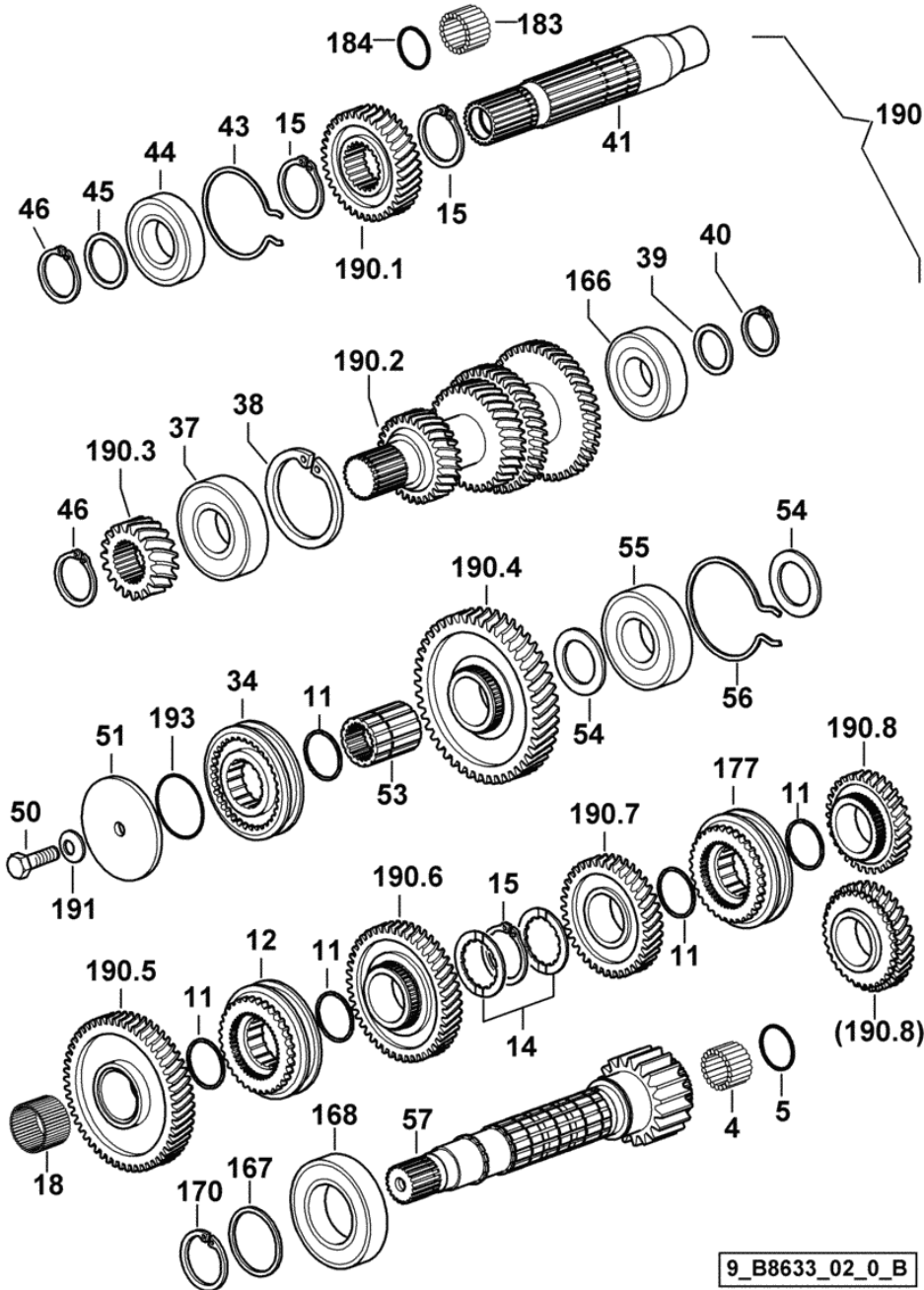


Fig.	Code	QTY	Name
4	2.2999.282.0	1	roller cage 28 x 38 x 25.5
5	2.1423.028.7	1	circlip 38x1.5
11	2.1499.153.7	5	circlip 41 x 1.5
12	0.010.8861.4	1	lock synchronizer 68/72.5 1206 <- X EXPLORER 85 1886 <- X EXPLORER 95 FOR THE PARTS SEE THE SPARE PARTS LIST ☞ 0.010.8861.4 ☞ 02.00.19
12	0.014.5894.4	1	lock synchronizer 71/76 -> 1207 X EXPLORER 85 -> 1887 X EXPLORER 95 FOR THE PARTS SEE THE SPARE PARTS LIST ☞ 0.014.5894.4 ☞ 02.00.20
14	0.255.3372.0	2	shoulder
15	2.1419.034.1	3	circlip 44
18	2.2999.218.0	1	roller cage 40 x 45 x 30
34	0.010.8862.4/10	1	lock synchronizer 68/72.5 1206 <- X EXPLORER 85 1886 <- X EXPLORER 95 FOR THE PARTS SEE THE SPARE PARTS LIST ☞ 0.010.8862.4/10 ☞ 02.00.21
34	0.014.5896.4	1	lock synchronizer 71/76 -> 1207 X EXPLORER 85 -> 1887 X EXPLORER 95 FOR THE PARTS SEE THE SPARE PARTS LIST ☞ 0.014.5896.4 ☞ 02.00.22
37	2.2999.367.0	1	bearing 40 x 90 x 23
38	2.1411.036.1	1	circlip 90
39	2.1599.874.0	1	washer 35 x 45 x 3.0
40	2.1410.014.1	1	circlip 35
41	0.010.7442.0/30	1	shaft
43	2.1499.052.1/10	1	circlip 80
44	2.2042.012.0	1	ball bearing 40 x 80 x 18
45	2.1599.425.0	0	snoulder 40 x 50 x 2.7
46	2.1410.016.1	2	circlip 40
50	2.0132.408.7	1	screw m 12 p.1.25 x 30

**5 SPEED GEARBOX - WITH HML**

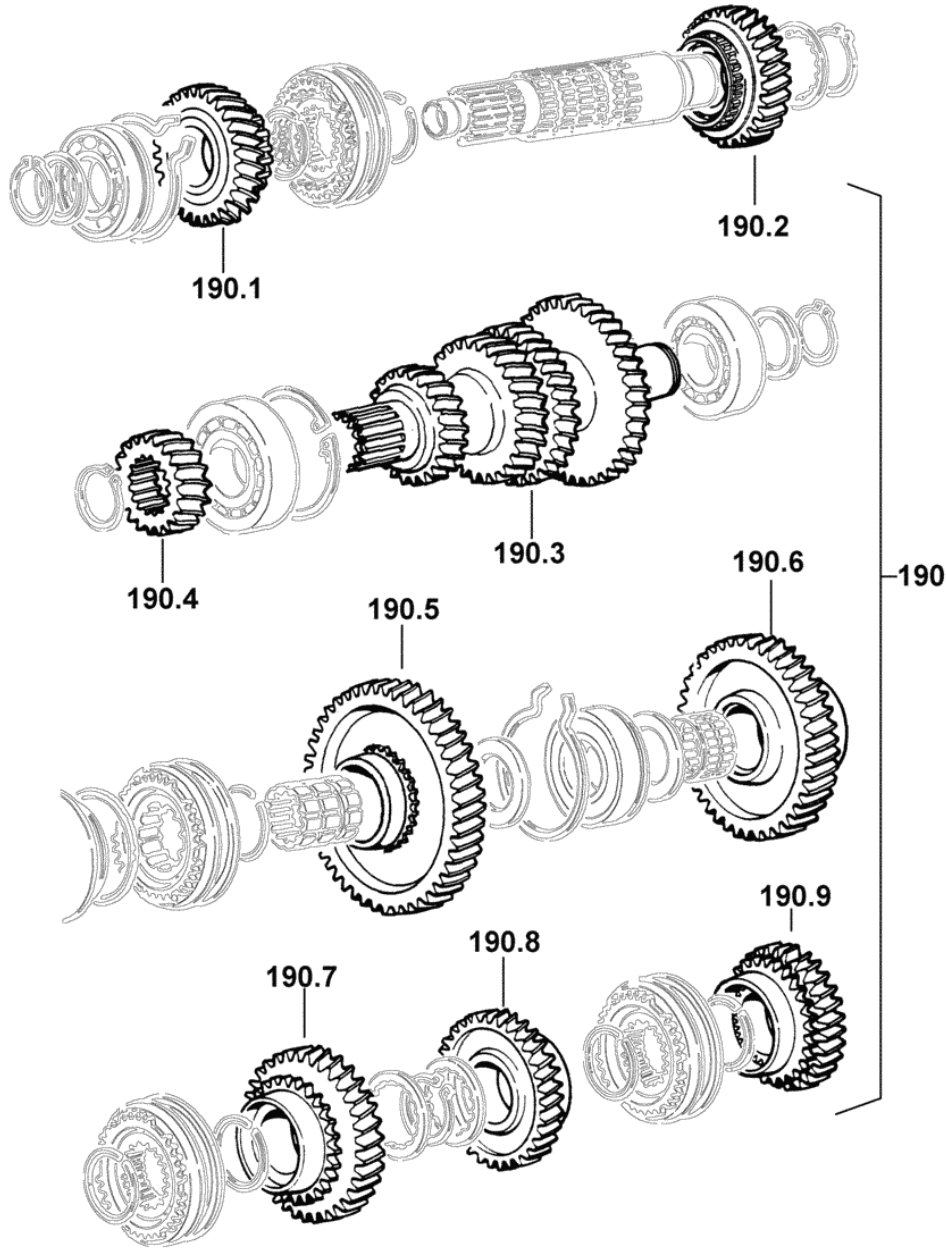


Fig.	Code	QTY	Name
190	0.000.0000.1	0	not serviceable
190.1	0.011.8384.0	1	gear Z = 34
190.2	0.011.8381.0	1	gear Z = 37
190.3	0.013.1424.0	1	main shaft Z = 30 / 34 / 40 / 44
190.4	0.011.3867.0	1	gear Z = 19
190.5	0.011.3869.3	1	gear Z = 46
190.6	0.445.3358.0/20	1	gear Z = 54
190.7	0.010.0006.0/20	1	gear Z = 46
190.8	0.011.3866.0	1	gear Z = 38
190.9	0.013.1442.3	1	gear Z = 31

9\_B8633\_03\_0\_F

**5 SPEED GEARBOX - WITH HML (AGROSHIFT)- FOR TYPES WITH HYDRAULIC SHUTTLE**

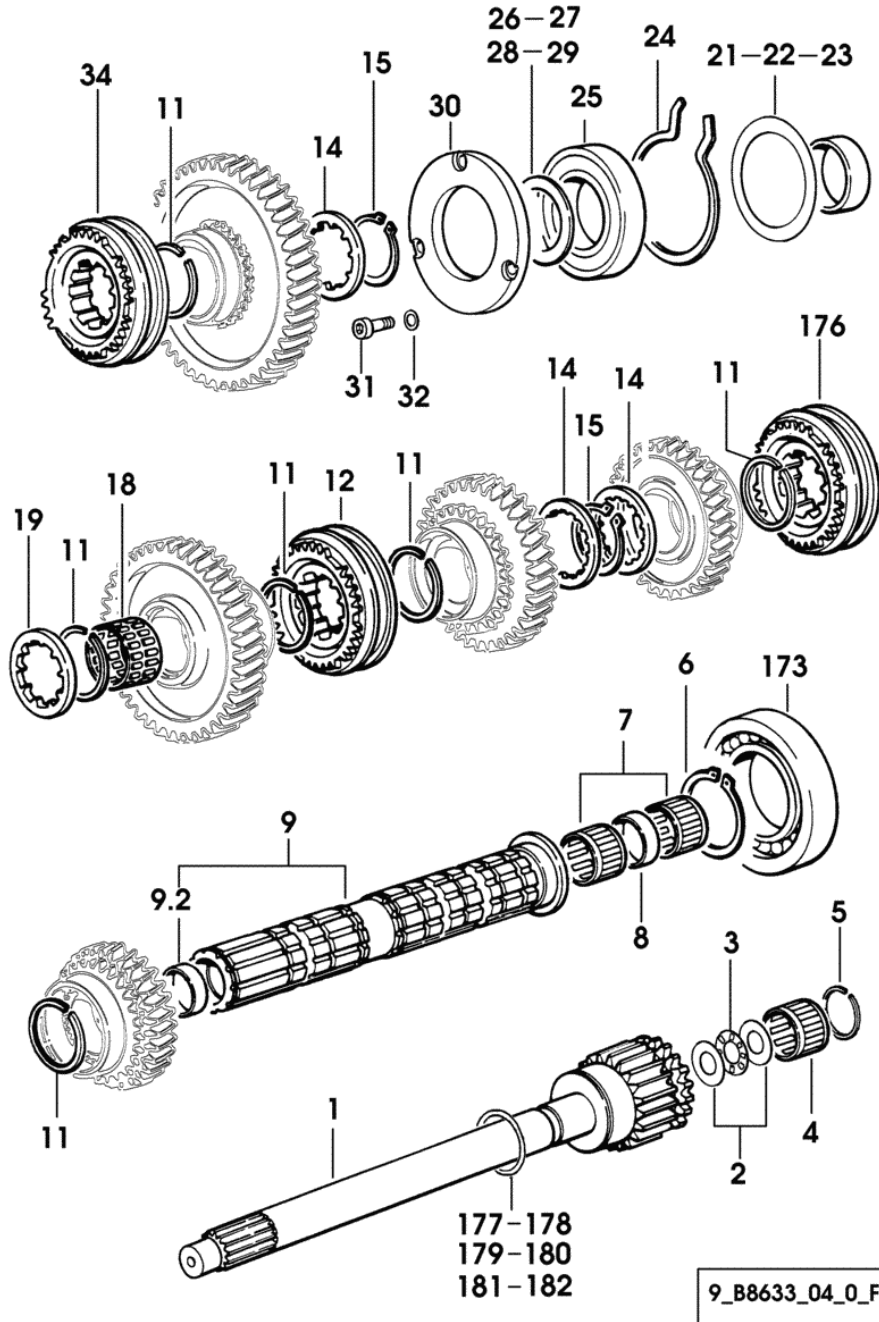
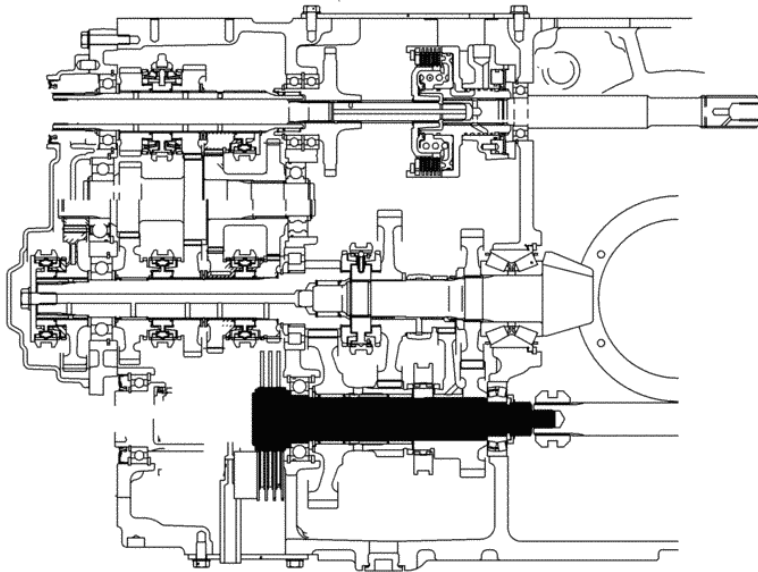
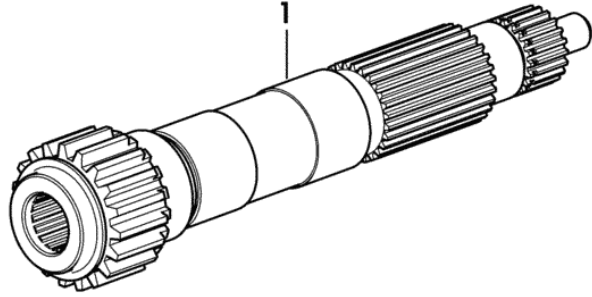


Fig.	Code	QTY	Name
1	0.010.9175.0/20	1	reduction shaft
2	2.1599.574.0	2	thrust plate 17x30x1
3	0.008.4356.0	1	roller cage
4	2.2999.282.0	1	roller cage 28 x 38 x 25.5
5	2.1423.028.7	1	circlip 38x1.5
6	2.1410.022.1	1	circlip 55
7	2.2999.308.0	2	roller cage 30 x 35 x 27
8	2.1579.948.0	1	spacer 31.5 x 34.9 x 10
9	0.009.7643.3/30	1	shaft
9.2	2.1559.365.0	1	bushing 27.6 x 32 x 25
11	2.1499.153.7	6	circlip 41 x 1.5
12	0.010.8861.4	1	lock synchronizer 68/72.5 1206 <- X EXPLORER 85 1886 <- X EXPLORER 95 FOR THE PARTS SEE THE SPARE PARTS LIST ☞ 0.010.8861.4 ☞ 02.00.19
12	0.014.5894.4	1	lock synchronizer 71/76 -> 1207 X EXPLORER 85 -> 1887 X EXPLORER 95 FOR THE PARTS SEE THE SPARE PARTS LIST ☞ 0.014.5894.4 ☞ 02.00.20
14	0.255.3372.0	3	shoulder
15	2.1419.034.1	5	circlip 44
18	2.2999.218.0	1	roller cage 40 x 45 x 30
19	2.1599.787.0	1	thrust plate
21	2.1580.304.0	1	shim 78x89x0.5
22	2.1580.303.0	1	shim 78x89x0.2
23	2.1580.310.0	1	shim 78x89x0.05
24	2.1499.037.1	1	circlip 90
25	2.2999.203.0	1	bearing 50 x 90 x 20
26	2.1599.737.0	0	snooulder 45.5x60x2.15
27	2.1599.738.0	0	snooulder 45.5x60x2.3
28	2.1599.739.0	0	snooulder 45.5x60x2.45
29	2.1599.740.0	0	snooulder 45.5x60x2.6
30	0.007.7308.0	1	small cover
31	2.0312.208.2	3	screw m 8 p.1.25 x 25
32	2.1480.014.1	3	washer 8
34	0.010.8862.4/10	1	lock synchronizer 68/72.5

Section: GEAR

**SPEED RANGE REDUCTION GEAR SHAFT - FOR MECHANICAL LOCKING TYPES**

Fig.	Code	QTY	Name
1	0.010.8997.0/10	1	reduction shaft



9\_62034\_10\_0\_0

Section: GEAR

DRIVE

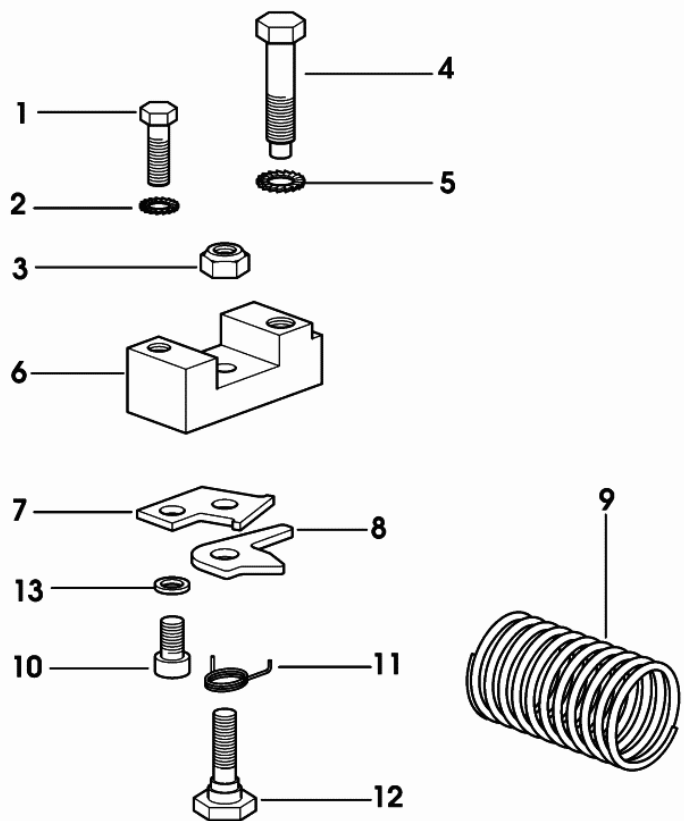


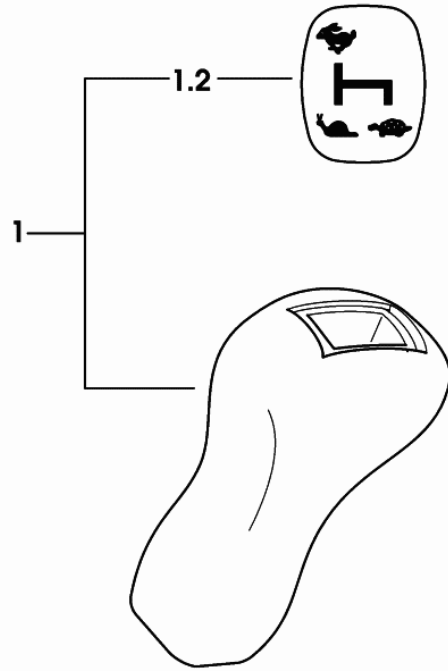
Fig.	Code	QTY	Name
1	2.0112.207.2	1	screw m 8 p 1.25 x 20
2	2.1470.004.2	1	washer 8
3	2.1121.005.2	1	nut m 8 p.1.25
4	2.0119.111.2	1	screw m 10 x 40
5	2.1470.006.2	1	lock washer 10
6	0.255.3467.0/20	1	small block
7	0.255.3464.0/10	1	plate
8	0.255.3465.0	1	cam
9	2.4019.566.1/10	1	spring
10	2.0312.202.2	1	screw m 8 p.1.25 x 12
11	2.4099.035.1/10	1	spring
12	2.0119.112.2/20	1	screw m 8x33
13	2.1480.014.1	1	washer 8

9\_77864\_01\_0\_0

Section: GEAR

**KNOB FOR 3-RANGE GEARBOX**

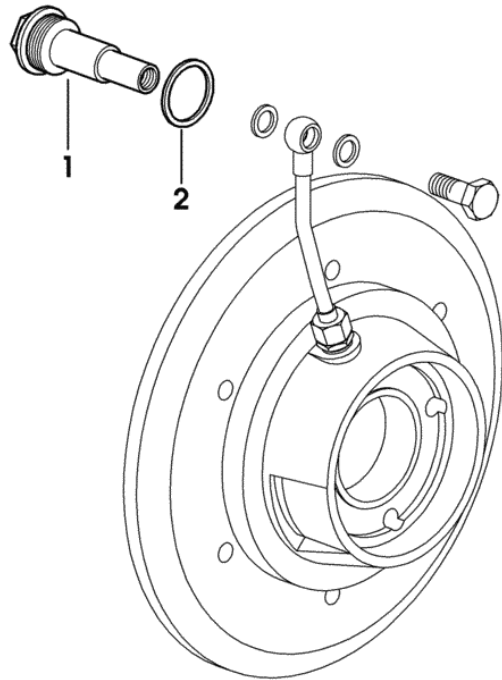
Fig.	Code	QTY	Name
1	0.011.0056.3/30	1	knob
1.2	0.011.0055.3/20	1	cap



9\_77864\_07\_0\_0

**DIFFERENTIAL LOCK - FOR TYPES WITH "S.B.A. SYSTEM"**

Fig.	Code	QTY	Name
1	2.3339.488.2/10	1	pipe fitting
2	2.1560.023.0	1	gasket 30.3 x 36



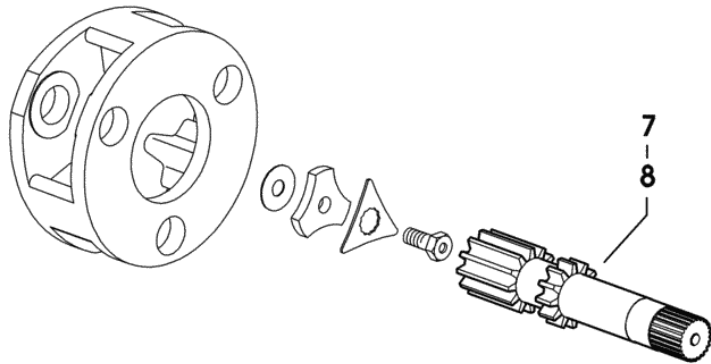
9\_52635\_06\_0\_0

9\_62047\_00\_0\_0

Section: REAR AXLE

**REAR REDUCTION GEARS AND AXLE SHAFTS**

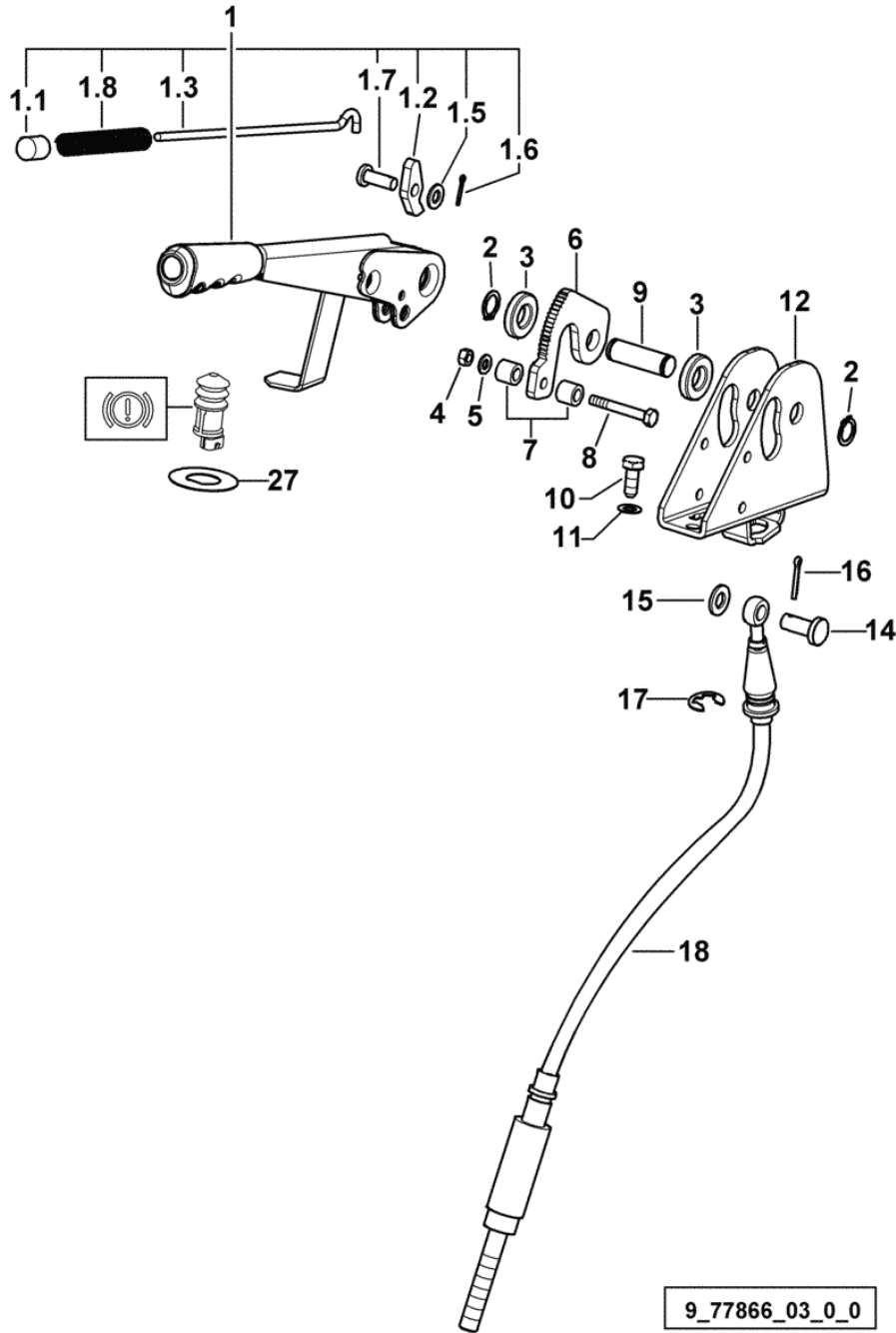
Fig.	Code	QTY	Name
7	0.445.4730.0/10	1	half-shaft dx/rh/re
8	0.445.4731.0	1	half-shaft sx/lh/li



Section: REAR AXLE

**HAND BRAKE**

Fig.	Code	QTY	Name
1	0.014.3191.4	1	brake lever
1.1	0.171.6622.0	1	push-button
1.2	0.200.6623.0/20	1	ratchet
1.3	0.467.6621.0/20	1	rod
1.5	2.1310.004.2	1	flat washer 8.5
1.6	2.1690.206.2	1	split pin 2x16
1.7	2.1671.305.2	1	pin 8x22
1.8	2.4019.555.2	1	spring 14x130x1.3
2	2.1410.003.1	2	circlip 14
3	2.1599.565.2	2	shim 15 x 30 x 6
4	2.1011.103.2	1	nut m 6 p.1
5	2.1310.002.2	1	washer 6.6, d125
6	0.257.6624.0	1	sector
7	2.1579.996.2	2	spacer 8x14x12
8	2.0112.017.2	1	screw m 6 p.1x45
9	2.1699.265.2	1	pin
10	2.0364.307.2	2	screw m 8 p.1.25 x 20
11	2.1470.004.2	2	washer 8
12	0.007.6870.2/30	1	support
14	2.1671.406.2	1	pin
15	2.1310.006.2	1	flat washer 10.5
16	2.1690.308.2	1	split pin 3.2 x 20
17	2.1430.012.2	1	circlip 12
18	0.010.7338.4/20	1	rod
27	0.012.9897.0	1	lamination



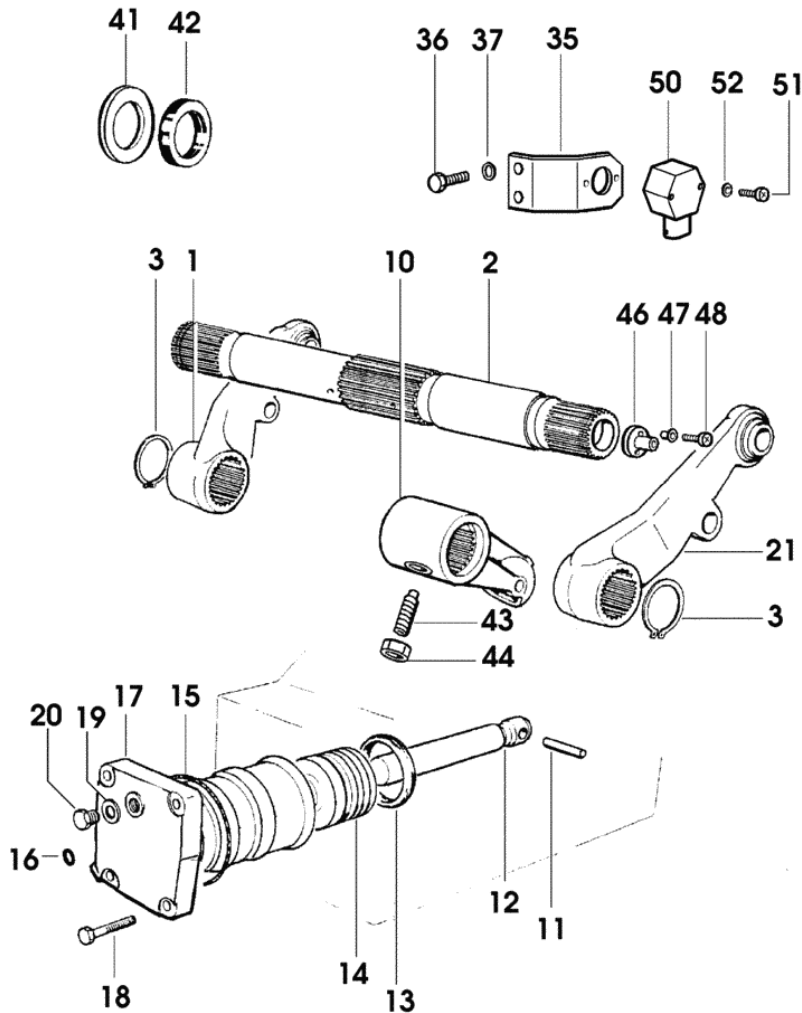
9\_77866\_03\_0\_0

**LIFTING WITH ELECTRONIC CONTROL**

Fig.	Code	QTY	Name
------	------	-----	------

**Notes:**

- FOR TYPES WITH BOSCH AUXILIARY SERVICE CONTROL VALVE. 1013 <- X EXPLORER 75 1166 <- X EXPLORER 85 1629 <- X EXPLORER 95



1	0.007.1954.3/10	1	lift lever dx/rh/re
2	0.009.3679.0/30	1	shaft
3	2.1410.022.1	2	circlip 55
10	0.007.1952.0/10	1	lever
11	2.1631.922.0	1	roll pin 12x65
12	0.9131.313.0	1	connecting rod
13	2.1518.125.0	1	'o' ring 90x110x12.5
14	0.9131.311.0/10	1	piston
15	2.1530.256.0	1	'o' ring 152x3.5
16	2.1531.037.0	1	'o' ring 15.08x2.62
17	0.012.1560.0	1	cylinder
18	2.0122.620.2	4	screw m 16 p.1.5x55
19	2.1560.008.0	1	gasket 12.2 x 18
20	2.3110.422.1	1	plug m 12 p.1.25 x 10
21	0.007.1953.3/10	1	lift lever sx/lh/li
35	0.011.3853.3/10	1	bracket
36	2.0112.207.2	2	screw m 8 p 1.25 x 20
37	2.1310.004.2	2	flat washer 8.5
41	2.1599.696.2	2	snoulder 55x88x5
42	2.1520.329.0	2	oil seal 55x72x10
43	2.0522.312.7	1	screw m 10 p.1.5 x 30
44	2.1011.106.2	1	nut m 10 p.1.5
46	0.007.6992.0/10	1	joint
47	2.1559.363.2	2	sleeve
48	2.0332.305.2	2	screw m 5 p.0.8 x 14
50	2.7099.740.0/10	1	sensor
51	2.0332.210.3	2	screw m 4x35
52	2.1310.028.2	2	flat washer 4

9\_77959\_22\_0\_0

Section: S.A.C.

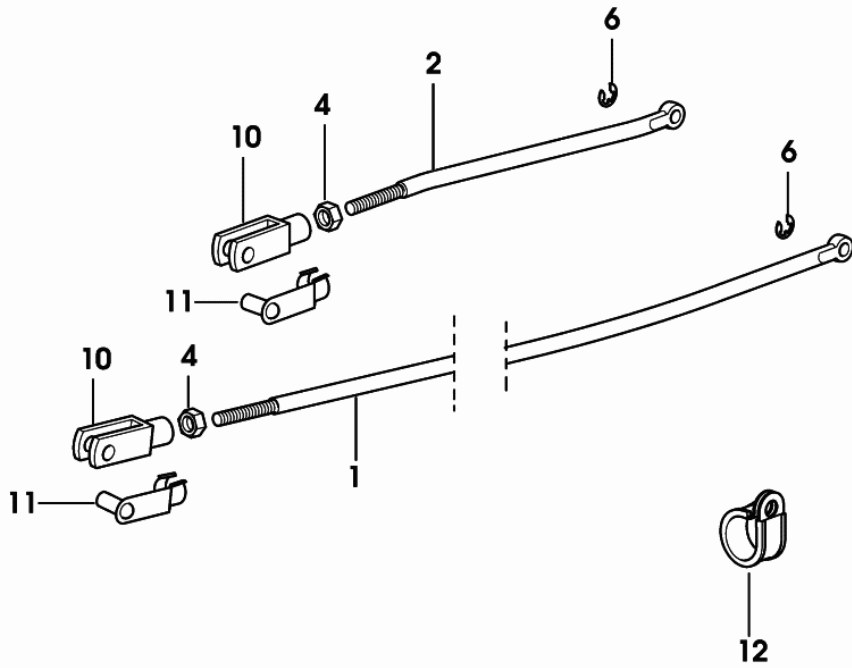
**CONTROL TIE RODS AND LEVERS**

Fig.	Code	QTY	Name
------	------	-----	------

**Notes:**

1013 <- X EXPLORER 75    1176 <- X EXPLORER 85    1689 <- X EXPLORER 95

1	0.011.1237.0	1	rod
2	0.011.1238.0	1	rod
4	2.1011.105.2	2	nut m 8 p.1.25
6	2.1430.008.2	2	circlip 7
10	2.3510.014.2	2	fork
11	2.1673.007.2	2	pin
12	2.6839.039.2	1	clamp Ø 20/25



9\_77859\_53\_0\_A

Section: S.A.C.

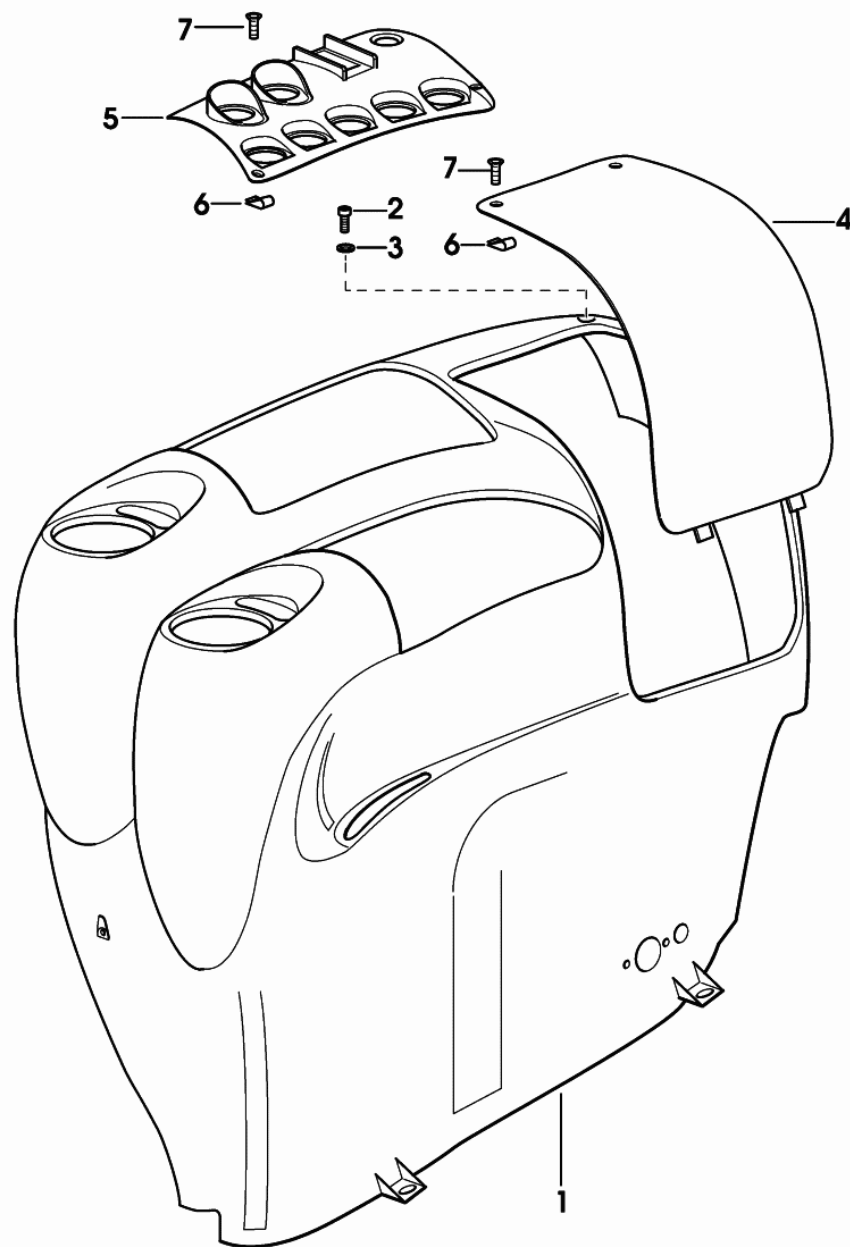
**CONTROL CONSOLE FOR POWER-LIFT - FOR TYPES WITH GREY ROOF**

Fig.	Code	QTY	Name
1	0.010.9471.0/40	1	console
2	2.0332.408.3	4	screw m 6 p.1 x 25
3	2.1310.002.3	4	flat washer 6.4 x 12 x 1.6
4	0.011.0950.0/30	1	cover
5	0.011.0948.0/10	1	push-button
6	2.6999.022.0	4	small spring
7	2.0352.407.3	4	screw m 4.2 x 22

9\_77859\_54\_0\_A

**STEERING CONTROL**

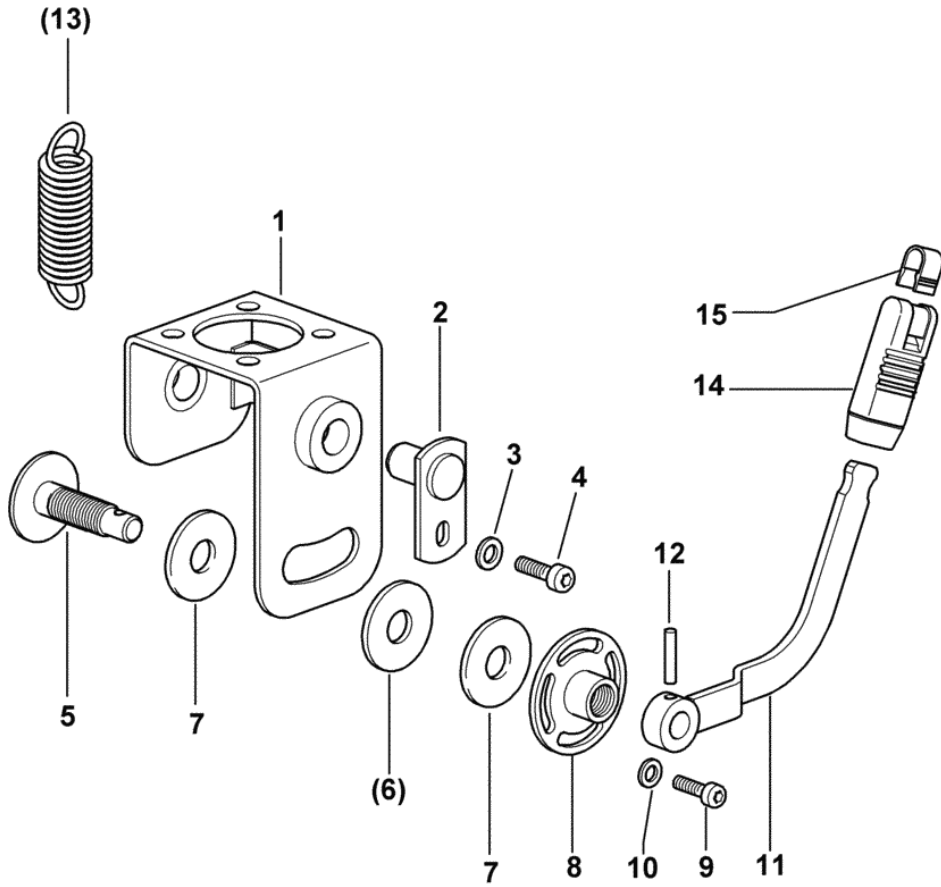
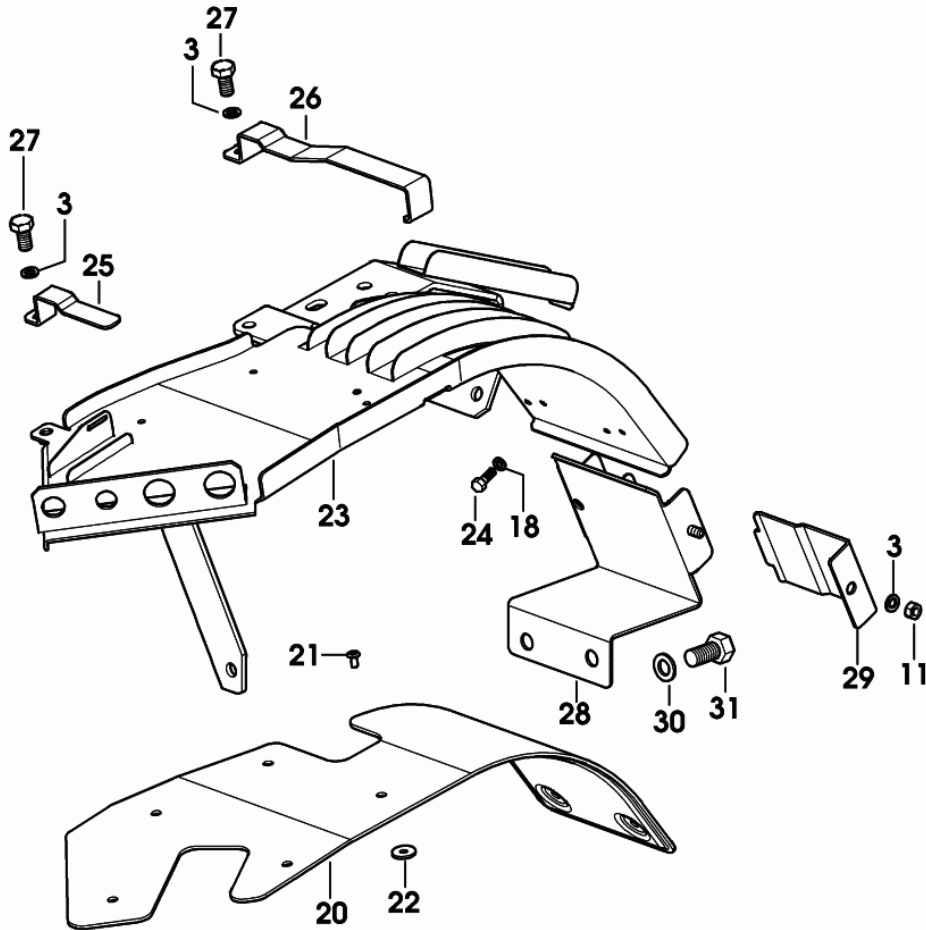


Fig.	Code	QTY	Name
1	0.011.0830.3/10	1	support
2	0.009.9558.2/10	2	pin
3	2.1310.004.2	2	flat washer 8.5
4	2.0364.307.2	2	screw m 8 p.1.25 x 20
5	0.011.4408.3	1	pin
7	0.011.3774.0	2	gasket
8	0.011.0819.2/10	1	ring nut
9	2.0362.206.2	2	screw
10	2.1310.002.2	2	washer 6.6, d125
11	0.011.4411.2	1	small pedal
12	2.1630.613.0	1	roll pin 6 x 30
14	0.009.0137.0	1	knob
15	0.009.0140.0	1	coupling

9\_77863\_07\_0\_0

**GUARD - FOR TYPES WITHOUT HYDRAULIC SHUTTLE**

Fig.	Code	QTY	Name
3	2.1470.002.2	3	washer 6, d128
11	2.1011.103.2	5	nut m 6 p.1
18	2.1470.004.2	4	washer 8
20	0.013.8294.0/10	1	shield
21	2.1855.110.0	5	rivet 4.2
22	2.1312.001.2	5	washer 4
23	0.013.8239.3/10	1	channel
24	2.0112.207.2	2	screw m 8 p 1.25 x 20
25	0.013.8249.0	1	bracket
26	0.013.8248.0	1	bracket
27	2.0112.205.2	2	screw m 8 p.1.25 x 16
28	0.013.8328.3	1	bracket
29	0.013.8331.0	1	cover
30	2.1470.006.2	2	lock washer 10
31	2.0112.305.2	2	screw m 10 p.1.5 x 16



9\_B9882\_03\_0\_B

# EXPLORER 85

## WHEELS

### GENERAL

4WD - FRONT WHEEL MOUNTING.....	09.00.1
REAR WHEEL BOLTS.....	09.00.2
FLANGE.....	09.00.3
WHEELS 12.4 R24" A8.....	09.00.4
WHEELS 13.6R-24" a8.....	09.00.5
WHEELS 14.9R-24" a8.....	09.00.6
WHEELS 16.9R-24" a8.....	09.00.7
WHEELS 360/70 R24".....	09.00.8
WHEELS 420/70 R24" A8.....	09.00.9
WHEELS 480/65R-24" a8.....	09.00.10
WHEELS 12.4 R28" A8.....	09.00.11
WHEELS 13.6R-28" a8.....	09.00.12
WHEELS 16.9R-30" a8.....	09.00.13
WHEELS 18.4R-30" a8.....	09.00.14
WHEELS 480/70R30" a8.....	09.00.15
WHEELS 16.9R-34" a8.....	09.00.16
WHEELS 18.4r34" a8.....	09.00.17
WHEELS 480/70R34".....	09.00.18
WHEELS 540/65R34".....	09.00.19
WHEELS 13.6R-38" a8.....	09.00.20
WHEELS 14.9R-38".....	09.00.21
WHEELS 16.9r38" a8.....	09.00.22

## Section: WHEELS

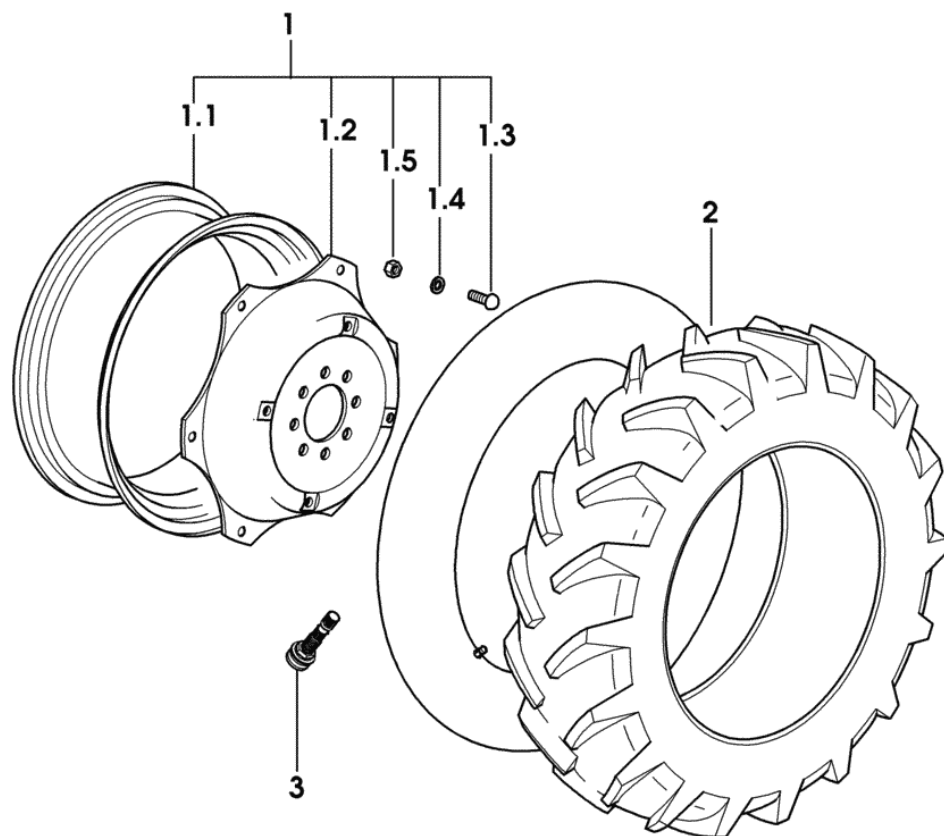
**WHEELS 480/65R-24" a8**

Fig.	Code	QTY	Name
1	0.000.0000.1	0	not serviceable
1.1	0.012.3061.3	1	rim W 14Lx24" C/ST
1.2	0.010.9752.0	1	flange 24"
1.3	2.0099.005.6	6	screw m 16 p.1.5 x 38
1.4	2.1499.019.6	6	washer 16.3 x 31.5
1.5	2.1019.059.6	6	nut m 16 p.1.5 x 16
2	2.4811.154.0	2	tyre 480/65R-24"
3	0.012.6364.0	2	valve

9\_78055\_22\_0\_0

CLICK HERE TO **DOWNLOAD** THE COMPLETE MANUAL

- Thank you very much for reading the preview of the manual.
- You can download the complete manual from: [www.heydownloads.com](http://www.heydownloads.com) by clicking the link below



- Please note: If there is no response to CLICKING the link, please download this PDF first and then click on it.

CLICK HERE TO **DOWNLOAD** THE COMPLETE MANUAL