

EXPLORER³ 100 -> 20001

V1 - AFTERMARKET KITS

HYDRAULIC DISTRIBUTORS

UPGRADE KIT FROM 4 TO 6 WAY..... V1.02.1000

SWIVELLING FENDERS

FRONT SELF-STEERING FENDERS..... V1.09.1000

KIT OF SELF-STEERING FRONT FENDERS L=410mm..... V1.09.1000

KIT OF SELF-STEERING FRONT FENDERS L=470mm..... V1.09.1000

REAR FENDER EXTENSIONS

KIT PROLUNGHE PARAFANGHI L = 240 mm..... V1.10.1000

KIT PROLUNGHE PARAFANGHI L = 180 mm..... V1.10.1000

CLICK HERE TO **DOWNLOAD** THE COMPLETE MANUAL

- Thank you very much for reading the preview of the manual.
- You can download the complete manual from: www.heydownloads.com by clicking the link below



- Please note: If there is no response to CLICKING the link, please download this PDF first and then click on it.

CLICK HERE TO **DOWNLOAD** THE COMPLETE MANUAL

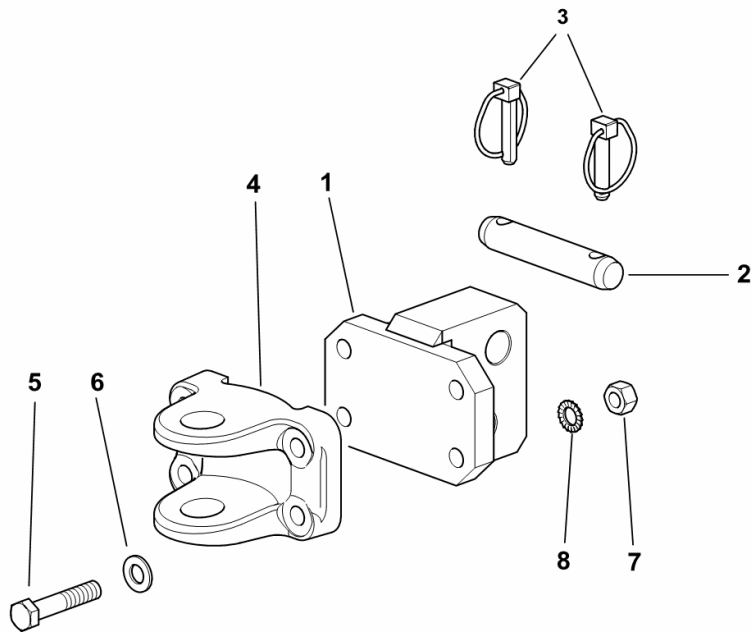
FRONT TOWING HITCH

Fig.	Code	QTY	Name
------	------	-----	------

Notes:

- FOR MODELS WITH FRONT LIFT [Explorer³ 100 4WD -> 20001]

1	0.009.3108.2/20	1	plate
2	2.1669.024.2	1	pin 25.4 x 133
3	0.010.9322.4	2	pin Ø 11
4	0.96309.20.0/30	1	tow hook
5	2.0112.523.2	4	screw m 14 p.2x70
6	2.1310.009.2	4	flat washer 14
7	2.1011.108.2	4	nut m 14 p.2
8	2.1470.008.2	4	lock washer 14



9_52652_30_0-A-001

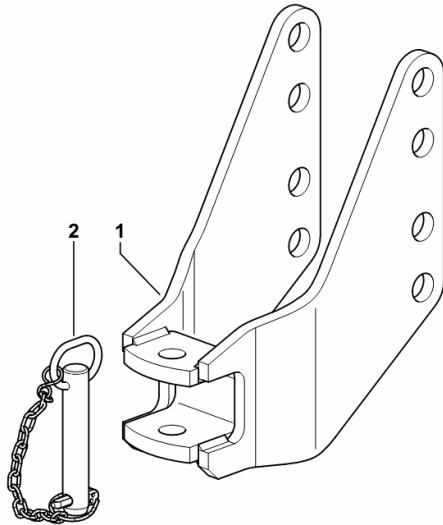
REAR TOWING HITCH

Fig.	Code	QTY	Name
------	------	-----	------

Notes:

[Explorer³ 100 2WD -> 20001] [Explorer³ 100 4WD -> 20001]

1	0.009.1980.2/10	1	clevis
2	0.96112.30.3/10	1	pin



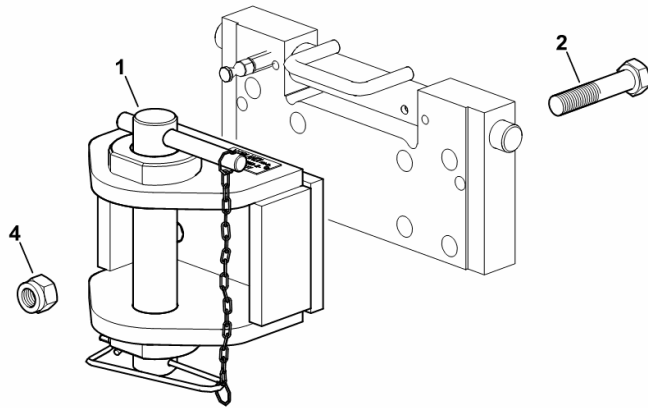
9_52631_30_0-A-001

REAR TOWING HITCH CAT. " D "

Fig.	Code	QTY	Name
------	------	-----	------

Notes:[Explorer³ 100 2WD -> 20001] [Explorer³ 100 4WD -> 20001]

1	0.014.4451.3	1	tow hook V.ORLANDI CAT. " D " ☞ 0.014.4451.3
2	2.0112.727.2	4	screw m 18 p.2.5 x 90
4	2.1129.014.2	4	nut m 18 p.2.5



9_64831_71_0-A-002

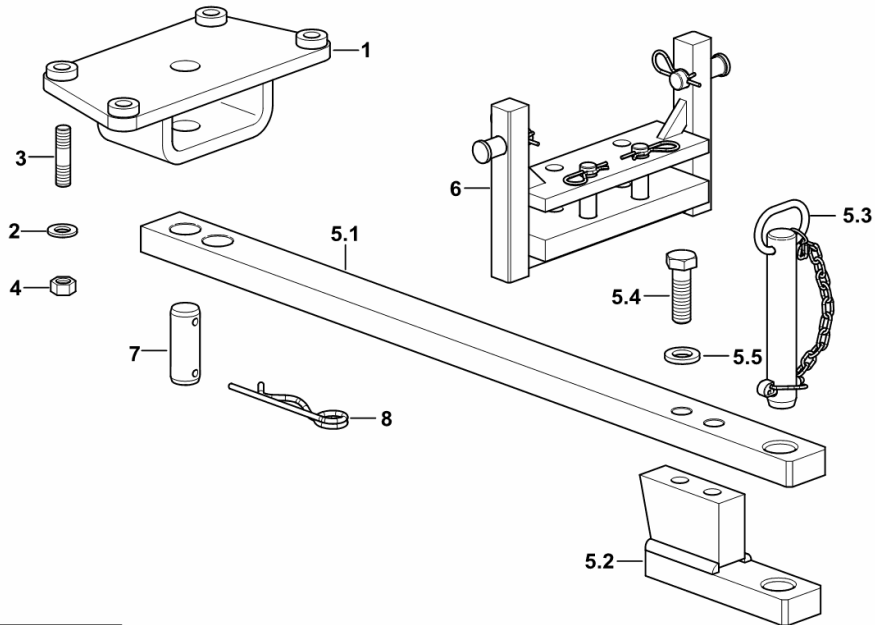
REAR SWINGING TOWING-HITCH

Fig.	Code	QTY	Name
------	------	-----	------

Notes:

- SAE CATEGORY [Explorer³ 100 2WD -> 20001] - SAE CATEGORY [Explorer³ 100 4WD -> 20001]

1	0.008.0780.2/10	1	support
2	2.1475.006.2	4	washer 16
3	2.0432.413.7	4	stud bolt m 16 p.2-1.5x45
4	2.1011.409.2	4	nut m 16 p.1.5
5.1	0.008.0782.0/50	1	draw bar mm 1000
5.2	0.015.2492.3	1	plate
5.3	0.014.9401.3	1	pin
5.4	2.0122.822.2	2	screw m 20 p.1.5x65
5.5	2.1475.108.2	2	spring washer 20
6	0.016.5186.3	1	support
7	2.1679.067.2	1	pin 32x85
8	2.1699.072.2	1	pin



9_L2031_74_0-A-001

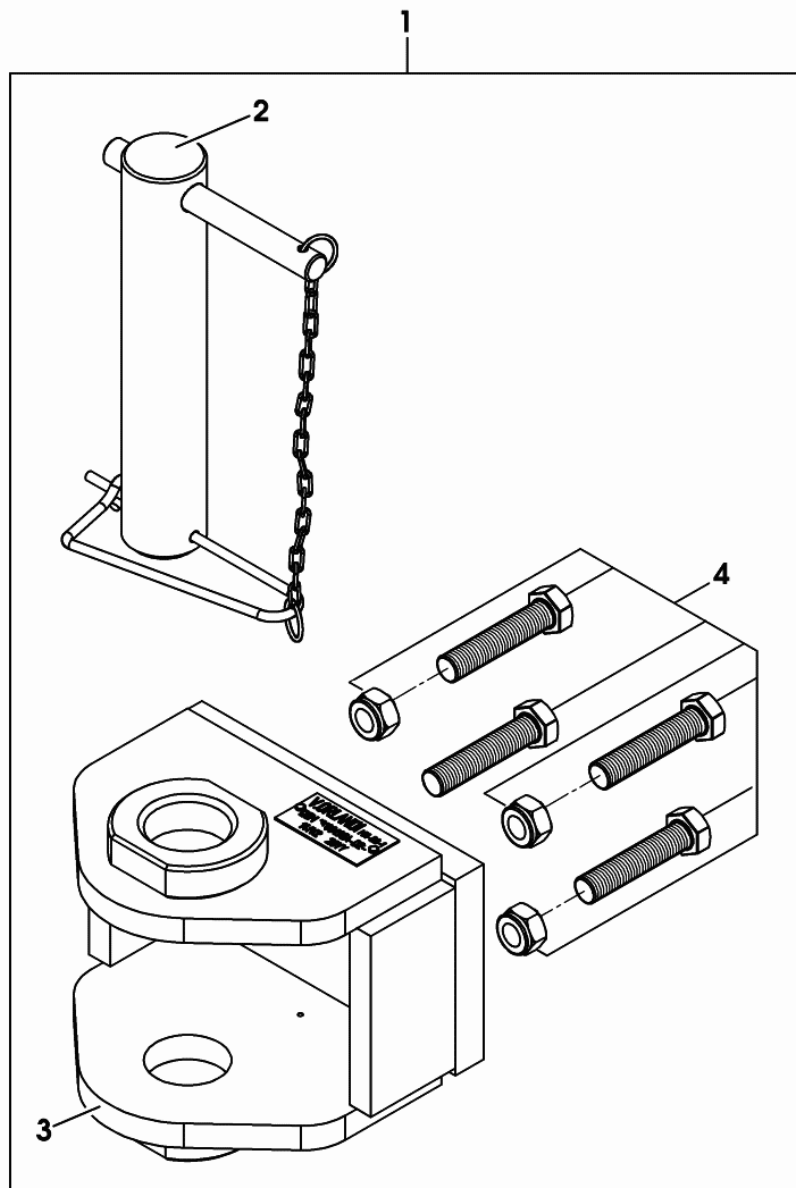
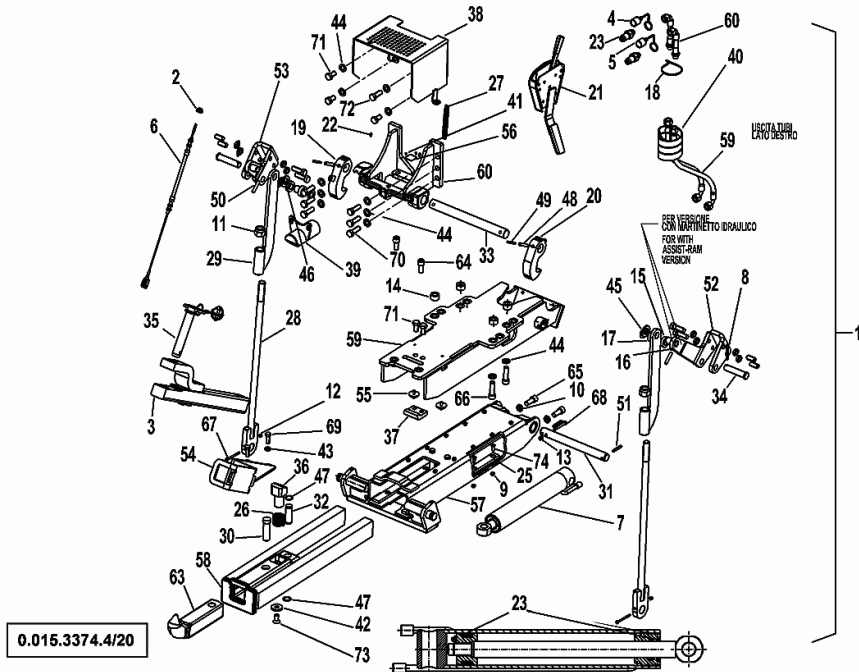
REAR TOWING HITCH CAT: "D"

Fig.	Code	QTY	Name
1	0.014.4451.3	1	tow hook V.ORLANDI CAT. " D "
2	0.900.0458.1	1	pin
3	0.000.0000.1	0	not serviceable
4	0.900.0458.0	1	screw m 18, kit

0_014_4451_3

Section: V0 - BALLAST, TOWING HITCHES
HYDRAULIC PICK-UP-HITCH

Fig.	Code	QTY	Name
1	0.015.3374.4/20	1	tow hook
2	0.010.3115.1	1	grommet
3	0.900.1364.6	1	draw bar
4	0.010.3327.2	1	cap
5	0.010.3327.1	1	cap
6	0.010.3560.0	1	cable
7	0.900.0803.4	1	roller Ø 23 x 63 x 309
8	0.010.3112.1	2	split pin
9	0.900.0803.5	20	nut m 8
10	0.010.3128.1	2	nut m 16
11	04418497	2	nut
12	0.010.3108.2	2	nut m 6
13	0.010.3116.1	1	nut m 8
14	0.010.3121.2	4	spacer
15	0.010.3113.0	2	spacer
16	0.010.3111.2	4	spacer
17	0.010.3112.2	2	spacer
18	0.900.0004.9	6	clamp
19	0.900.0803.6	1	clevis
20	0.900.0803.7	1	clevis sx/lh/li
21	0.900.1382.9	1	lever
22	04418473	2	lubricator m 6 p.1
23	0.900.0803.9	2	quick coupling
24	0.900.0804.0	1	gasket set
25	0.900.0804.1	4	rail
26	0.900.0804.2	1	spring
27	0.900.0509.6	1	spring
28	0.900.0804.3	2	rod
29	0.900.1421.5	2	rod
30	0.900.0804.5	1	pin
31	0.900.0804.6	1	pin
32	0.900.0804.7	1	pin
33	0.900.0804.8	1	pin
34	0.010.3154.0	1	pin
35	0.900.1364.7	1	pin
36	0.900.0804.9	1	pin
37	0.900.0805.0	1	plate
38	0.900.0805.1	1	guard
39	0.900.0529.5	1	guard
40	0.900.0805.2	1	guard
41	0.900.0510.2	2	rivet Ø 3.5 / L = 6.5
42	0.900.0805.3	1	washer
43	0.010.3110.1	2	washer
44	0.010.3108.0	14	washer 17x30

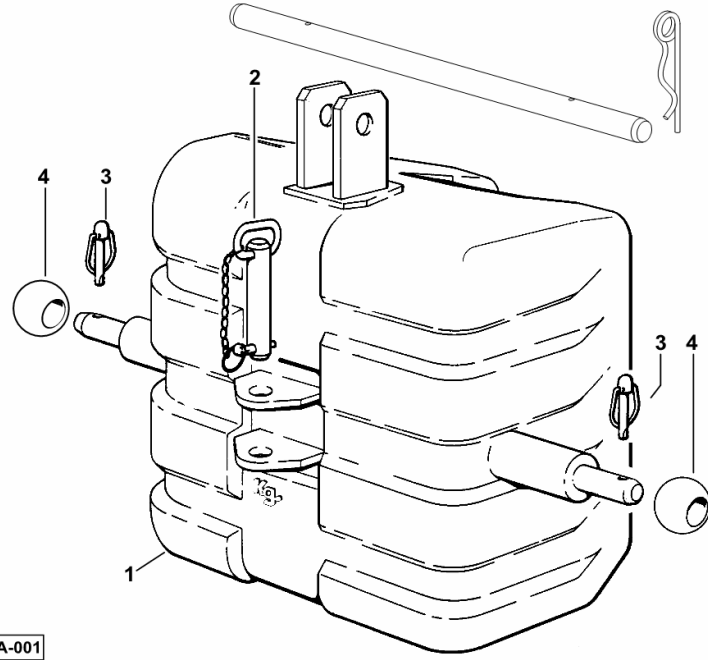


FRONT BALLAST 600 kg

Fig.	Code	QTY	Name
------	------	-----	------

Notes:
 [Explorer³ 100 4WD -> 20001]

1	0.010.9655.3/20	1	ballast Kg 600
2	0.96309.51.3	1	pin Ø 32
3	0.010.9322.4	2	pin Ø 11
4	0.760.5952.0	2	cap Ø 56



9_12152_60_0-A-001

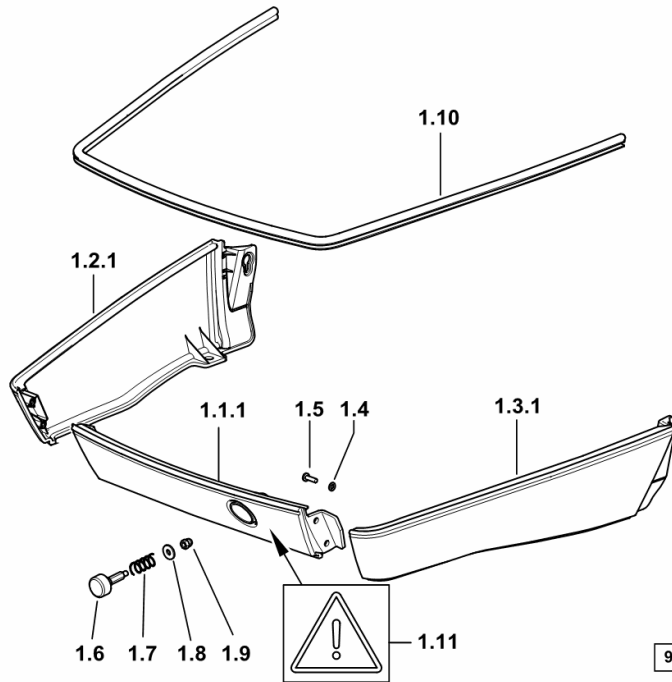
HOOD FRONT PART

Fig.	Code	QTY	Name
------	------	-----	------

Notes:

[Explorer³ 100 2WD -> 20001] [Explorer³ 100 4WD -> 20001]

1.1.1	0.014.8493.0/20	1	hose clip
1.2.1	0.014.8497.2/20	1	hose clip dx/rh/re
1.3.1	0.014.8496.2/20	1	hose clip sx/lh/li
1.4	2.1310.001.2	4	flat washer 5.3
1.5	2.0332.306.2	4	screw m 5x0.8x16
1.6	0.015.3441.2	1	push-button
1.7	2.4019.808.2	1	spring
1.8	2.1312.003.2	1	washer 6
1.9	2.1030.001.2	1	nut m 6
1.1.0	0.010.7094.0	1.3	gasket
1.1.1	2.9939.465.0	1	plate



9_H1572_04_0-A-002

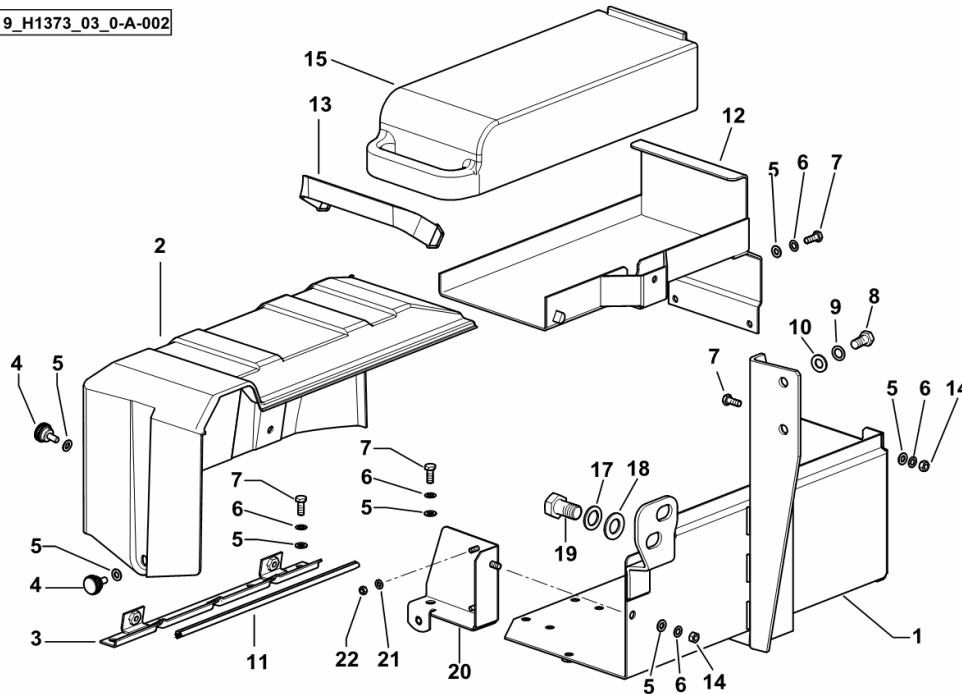
BATTERY SUPPORT

Fig.	Code	QTY	Name
------	------	-----	------

Notes:

- WITH UNDER STEP BATTERY [Explorer³ 100 4WD -> 20001] -> 20183

9_H1373_03_0-A-002



1	0.014.9379.3/10	1	battery support
2	0.014.9853.0	1	cover
3	0.008.9558.3	1	crosspiece
4	0.008.9024.2/10	3	knob
5	2.1310.004.2	12	flat washer 8.5
6	2.1470.004.2	9	washer 8
7	2.0112.207.2	8	screw m 8 p 1.25 x 20
8	2.0112.413.2	2	screw m 12 p.1.75x35
9	2.1470.007.2	2	lock washer 12
10	2.1310.007.2	2	flat washer 13.5
11	0.009.1354.0/10	1	gasket mm 360
12	0.011.0029.2	1	support
13	0.011.0073.2/10	1	rod
14	2.1011.105.2	2	nut m 8 p.1.25
15	04422635.4	1	metal toolbox
17	2.1470.011.2	1	washer 20
18	2.1310.013.2	1	flat washer 21x37
19	2.0112.813.2	1	screw m 20x35
20	0.014.9726.3/30	1	bracket
21	2.1310.002.2	2	washer 6.6, d125
22	2.1011.103.2	2	nut m 6 p.1

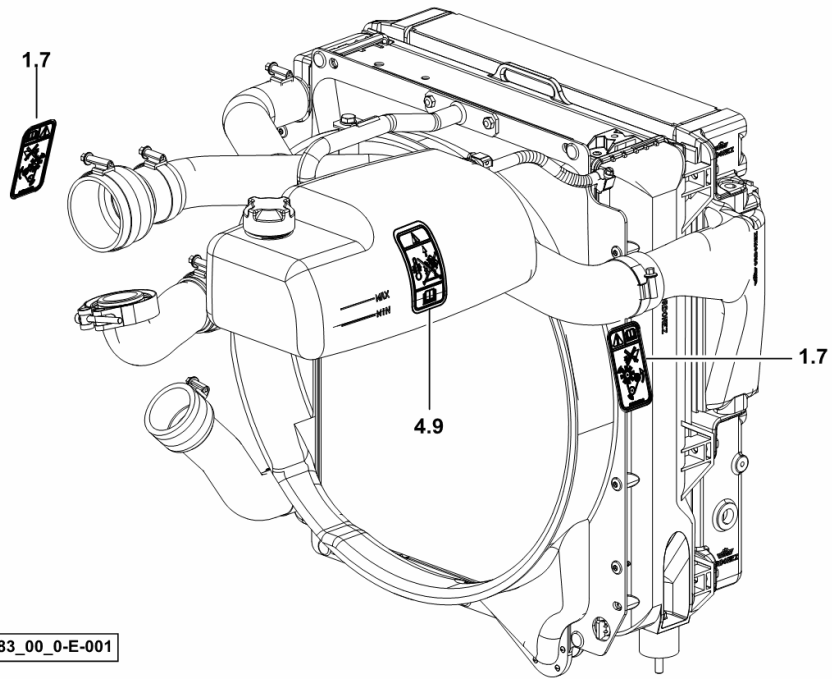
PLATES

Fig.	Code	QTY	Name
------	------	-----	------

Notes:

[Explorer³ 100 2WD -> 20001] [Explorer³ 100 4WD -> 20001]

1.7	2.9939.273.0	2	plate
4.9	2.9939.280.0	1	plate



9_L8083_00_0-E-001

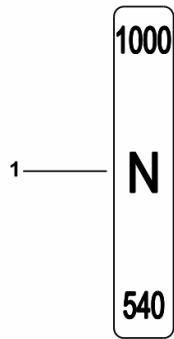
PTO DATA PLATE

Fig.	Code	QTY	Name
------	------	-----	------

Notes:

- 2 SPEED [Explorer³ 100 2WD -> 20001] - 2 SPEED [Explorer³ 100 4WD -> 20001]

1	2.9939.247.0	1	plate
---	--------------	---	-------



9_H1468_16_0-A-001

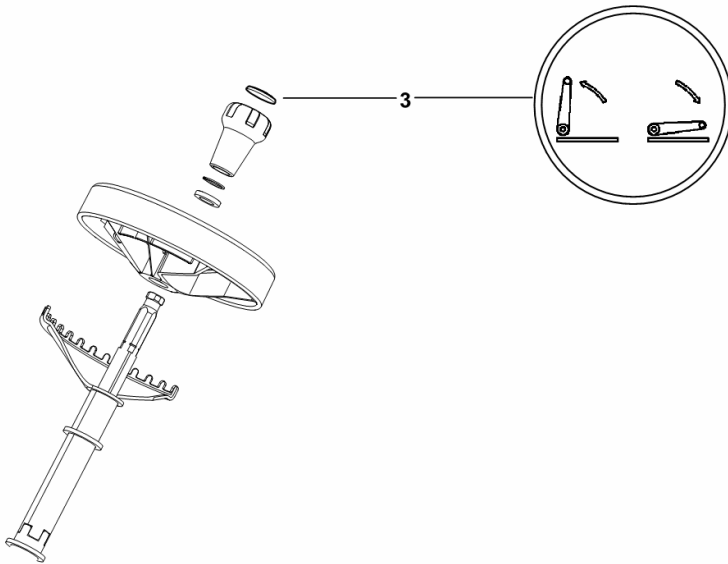
REAR LIFT GROUND CONTROL COVER

Fig.	Code	QTY	Name
------	------	-----	------

Notes:

- FOR TYPES WITH PLATFORM - EXPORT U.S.A. [Explorer³ 100 2WD -> 20001] - FOR TYPES WITH PLATFORM
- EXPORT U.S.A. [Explorer³ 100 4WD -> 20001]

3	0.008.2919.0/10	1	cap
---	-----------------	---	-----



9_L1959_70_0-B-001

SPEED LABEL - 40 KM/H - REFLEX

Fig.	Code	QTY	Name
------	------	-----	------

Notes:[Explorer³ 100 2WD -> 20001] [Explorer³ 100 4WD -> 20001]

1	0.010.9969.0	1	disc 40 KM/H
---	--------------	---	--------------



9_70576_04_0-A-001

4WD - FRONT MUDGUARDS mm 410

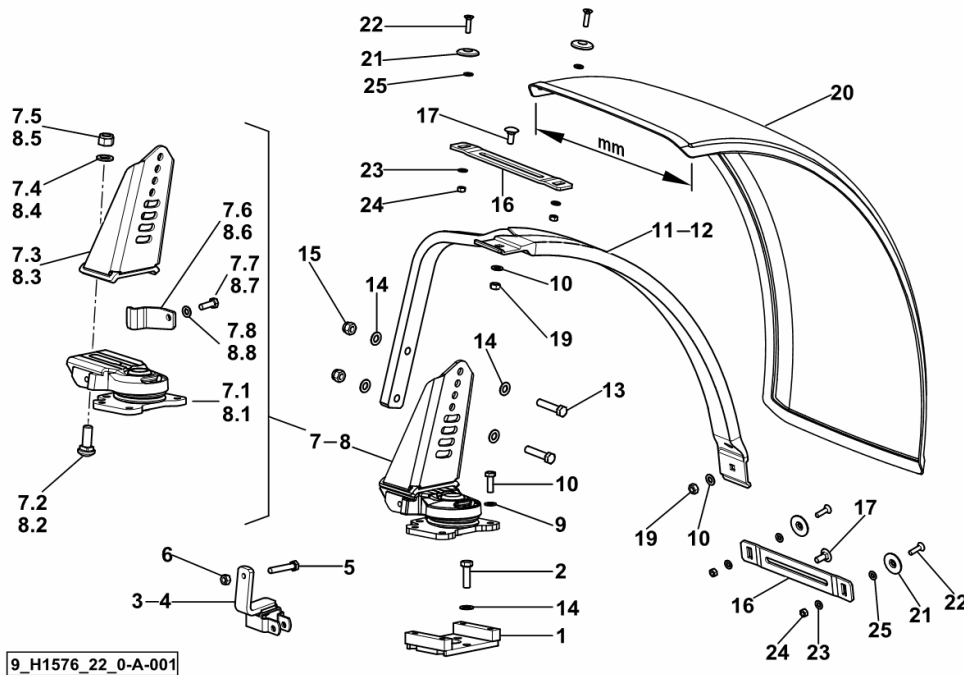


Fig.	Code	QTY	Name
Notes:			
[Explorer ³ 100 4WD -> 20001]			
1	0.011.3341.2/10	2	plate dx/rh/re
2	2.0112.415.2	6	screw m 12 p.1.75 x 40
3	0.011.1428.3/30	1	bracket sx/lh/li
4	0.011.1416.3/30	1	bracket dx/rh/re
5	2.0112.321.2	2	screw m 10 p.1.5 x 60
6	2.1011.006.2	2	nut m 10 p.1.5
7	0.015.4232.4/10	1	support sx/lh/li
7.1	0.015.4232.3	1	support sx/lh/li ☞ 0.015.4232.3
7.2	2.0029.511.2	1	screw m 16 p.1.5x45
7.3	0.015.3183.2/10	1	support sx/lh/li
7.4	2.1310.010.2	1	flat washer 16
7.5	2.1120.209.2	1	nut m 16 p.1.5
7.6	0.015.3234.0	1	plate
7.7	2.0122.361.2	1	screw m 10 p 1.25 x 30
7.8	2.1310.006.2	1	flat washer 10.5
8	0.015.4233.4/10	1	support dx/rh/re
8.1	0.015.4233.3	1	support dx/rh/re ☞ 0.015.4233.3
8.2	2.0029.511.2	1	screw m 16 p.1.5x45
8.3	0.015.3235.2/10	1	support
8.4	2.1310.010.2	1	flat washer 16
8.5	2.1120.209.2	1	nut m 16 p.1.5
8.6	0.015.3238.0	1	plate dx/rh/re
8.7	2.0122.361.2	1	screw m 10 p 1.25 x 30
8.8	2.1310.006.2	1	flat washer 10.5
9	2.0112.311.2	8	screw m 10 p.1.5 x 30
10	2.1475.003.2	12	washer 10
11	0.015.3220.2/10	1	chassis frame
12	0.015.3236.2/10	1	chassis frame
13	2.0112.420.2	4	screw m 12 p.1.75x55
14	2.1475.004.2	14	washer 12
15	2.1120.007.2	4	nut m 12 p.1.75
16	0.014.7124.0	4	plate
17	2.0020.306.2	4	screw m 10 x 25
19	2.1011.106.2	4	nut m 10 p.1.5
20	0.015.3415.0	2	fender mm 410
21	2.1399.020.0/10	8	washer
22	2.0349.002.3	8	screw m 8 p.1.25 x 30
23	2.1475.002.2	8	conical washer 8
24	2.1011.105.2	8	nut m 8 p.1.25

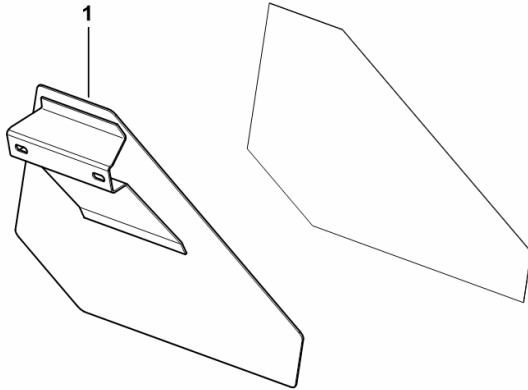
REFLECTOR SUPPORT

Fig.	Code	QTY	Name
------	------	-----	------

Notes:

- EXPORT U.S.A. [Explorer³ 100 2WD -> 20001] - EXPORT U.S.A. [Explorer³ 100 4WD -> 20001]

1	0.015.6353.2	1	plate
---	--------------	---	-------



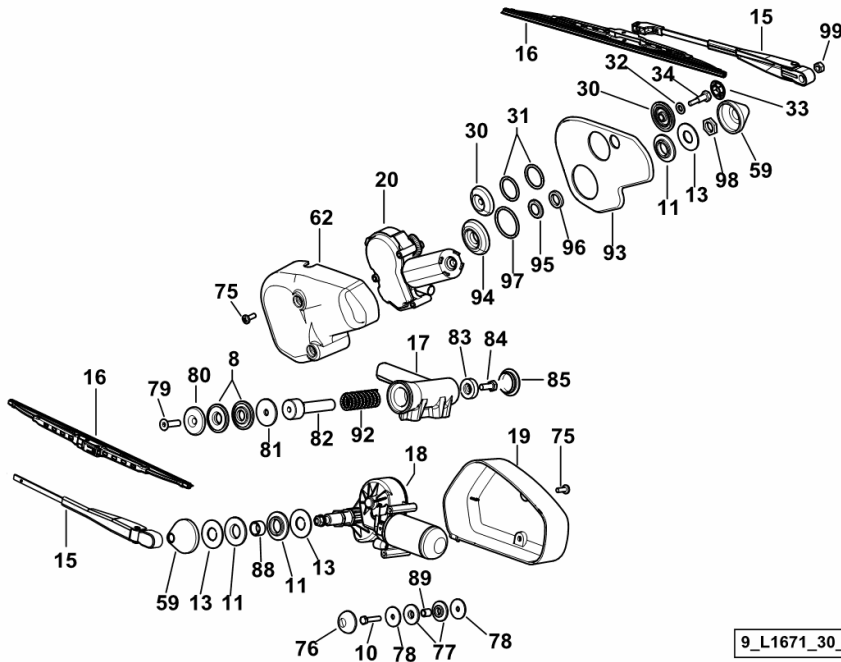
9_H1576_04_0-A-001

SCREEN WIPER FRONT / REAR

Fig.	Code	QTY	Name
------	------	-----	------

Notes:

- FOR TYPES WITH CAB W/O "HIGH VISIBILITY" [Explorer³ 100 2WD -> 20001] - FOR TYPES WITH CAB W/O "HIGH VISIBILITY" [Explorer³ 100 4WD -> 20001]



8	0.009.0422.0	2	gasket
10	2.0112.011.2	1	screw m 6 p.1x30
11	2.1569.176.0	3	gasket 20x40x6
13	2.1599.528.2	3	washer 18x40x2
15	0.010.1825.0	2	rod
16	0.015.0560.3	2	wiper blade
17	0.011.6170.2/20	1	handle
18	2.9019.200.0/10	1	wiper motor
19	0.013.4596.0	1	hood
20	04413192	1	wiper motor
30	04411716	2	washer
31	2.1530.078.0	2	'o' ring 29.74x3.53
32	2.1310.004.2	2	flat washer 8.5
33	04413809	1	screw
34	04413793	1	cap
59	0.010.4983.0	2	rubber plug
62	04412044	1	cover
75	2.0332.406.3	4	screw m 6 p.1.0 x 16
76	0.012.9760.0	1	tube
77	0.012.6609.0	2	rubber ring
78	2.1599.545.2	2	washer 6.5x28x2
79	2.0349.002.3	1	screw m 8 p.1.25 x 30
80	2.1499.093.0/10	1	washer 8.5
81	2.1599.495.2	1	washer 8.5
82	0.011.5986.4	1	pin
83	0.011.5989.0	1	block
84	2.0112.207.2	1	screw m 8 p 1.25 x 20
85	0.009.0210.0/10	5	plug 30 x 38 x 9.0
88	2.1549.566.2	1	spacer 16x20x11
89	2.1549.541.2	1	spacer 7x10x11
92	2.4019.517.1	1	spring
93	04414610	1	gasket
94	04413223	1	washer
95	04413208	1	bushing
96	04414586	1	spacer
97	2.1530.103.0	1	'o' ring 39.69x3.53
98	2.1019.135.3	1	nut m16x1
99	2.1011.105.2	1	nut m 8 p.1.25

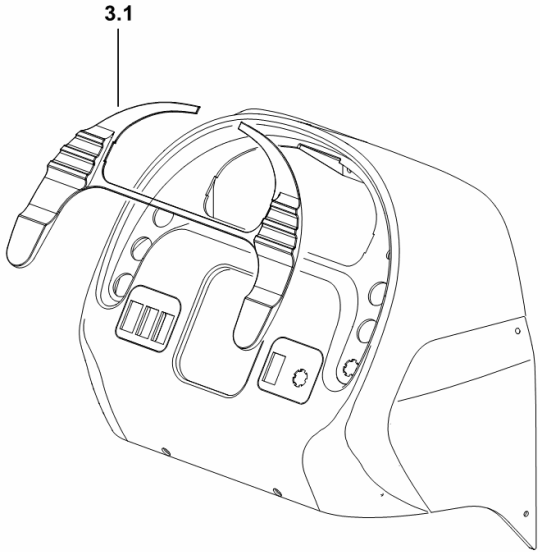
INSTRUMENT PANEL SURROUND

Fig.	Code	QTY	Name
------	------	-----	------

Notes:

[Explorer³ 100 2WD -> 20001] [Explorer³ 100 4WD -> 20001]

3.1	0.015.0117.0	1	frame
-----	--------------	---	-------



9_H1561_01_0-B-001

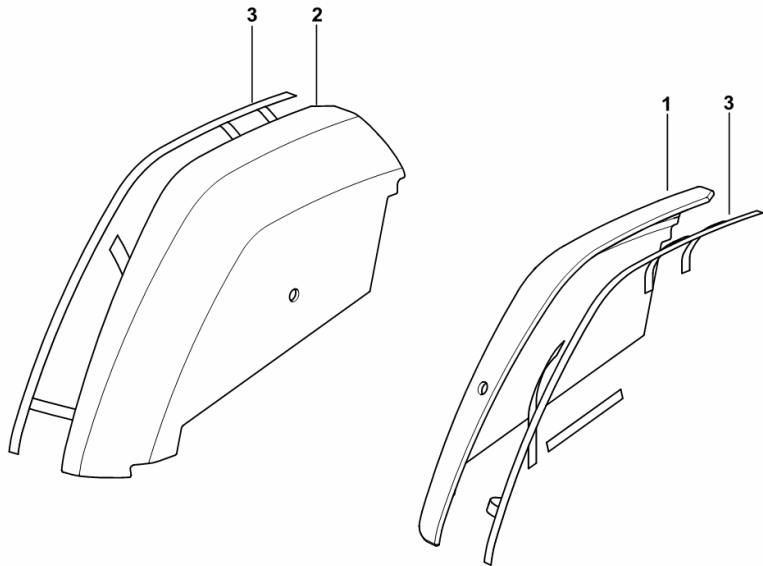
INTERIOR TRIM

Fig.	Code	QTY	Name
------	------	-----	------

Notes:

- FOR TYPES WITH SECOND DRIVER'S SEAT [Explorer³ 100 2WD -> 20001] - FOR TYPES WITH SECOND DRIVER'S SEAT [Explorer³ 100 4WD -> 20001]

1	0.016.5282.0	1	lining sx/lh/li
2	0.016.5281.0	1	lining dx/rh/re
3	0.010.1198.0	1	adhesive mm 4500



9_L1671_29_0-A-001

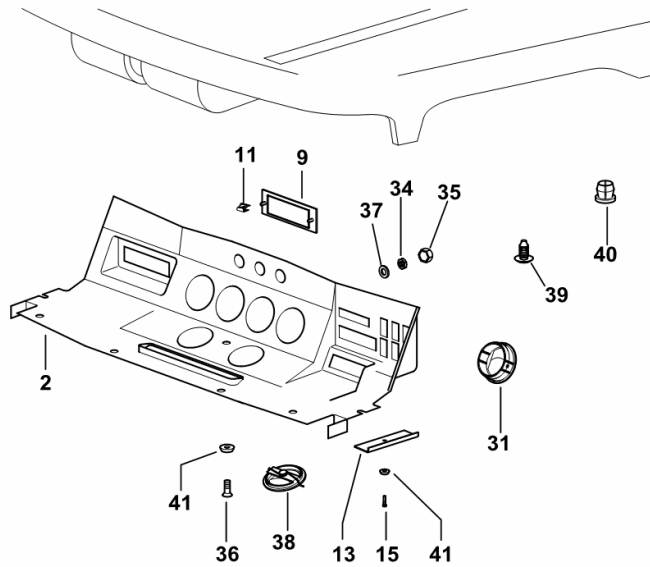
INTERIOR TRIM

Fig.	Code	QTY	Name
------	------	-----	------

Notes:

- FOR TYPES WITH CAB W/O "HIGH VISIBILITY" [Explorer³ 100 2WD -> 20001] -> 20322 - FOR TYPES WITH CAB W/O "HIGH VISIBILITY" [Explorer³ 100 4WD -> 20001] -> 20322

2	0.015.1000.0/10	1	front grille
9	0.013.7536.0/10	1	plug
11	0.013.4283.0	4	small spring
13	0.010.5114.0/10	2	bracket
15	2.0350.456.3	6	screw m 4.2 x 19 -AB-
31	0.009.8654.2	4	tongue mm 82.8
34	2.1011.103.2	2	nut m 6 p.1
35	01174041	2	cap
36	2.0350.556.3	1	screw m 4.8 x 19 - C
37	2.1312.003.3	2	washer 6.6 x 18
38	0.009.0455.4	2	tongue mm 67.5
39	04429415	12	plug
40	2.3199.107.0	2	plug 14x12.5
41	2.1310.001.3	7	washer 5.3 x 10



9_L1671_24_0-A-002

BRACKET

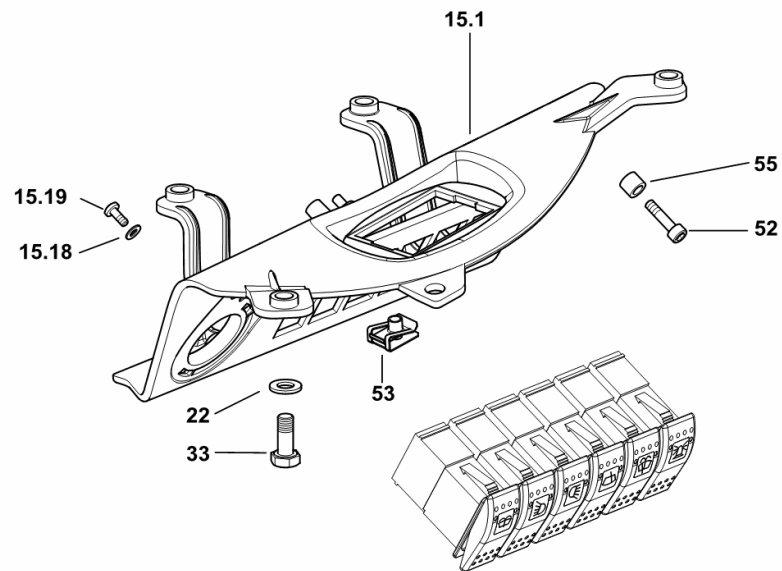
Fig.	Code	QTY	Name
------	------	-----	------

Notes:

HIGHT VISIBILITY - FOR TYPES WITH HEATING AND AIR CONDITIONING [Explorer³ 100 2WD -> 20001] -> 20309

HIGHT VISIBILITY - FOR TYPES WITH HEATING AND AIR CONDITIONING [Explorer³ 100 4WD -> 20001] -> 20309

15.1	0.015.1810.0/30	1	bracket
15.18	2.1310.028.2	3	flat washer 4
15.19	2.0332.203.2	3	screw m 4 x 10
22	2.1310.004.2	11	flat washer 8.5
33	2.0112.207.2	4	screw m 8 p 1.25 x 20
52	2.0312.006.2	2	screw m 5 p.0.8 x 20
53	2.6999.064.6	1	special nut m 6
55	2.1549.651.2	2	spacer



9_R8686_20_0-F-001

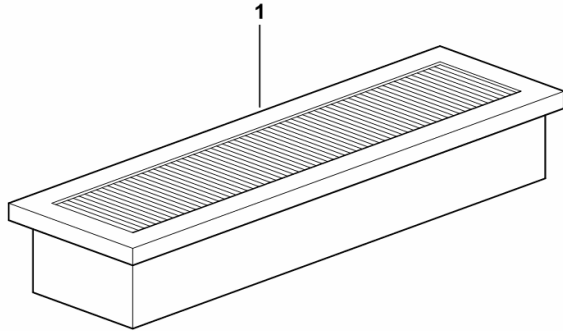
CARBON FILTER

Fig.	Code	QTY	Name
------	------	-----	------

Notes:

- FOR TYPES WITH CAB W/O "HIGH VISIBILITY" [Explorer³ 100 2WD -> 20001] - FOR TYPES WITH CAB W/O "HIGH VISIBILITY" [Explorer³ 100 4WD -> 20001]

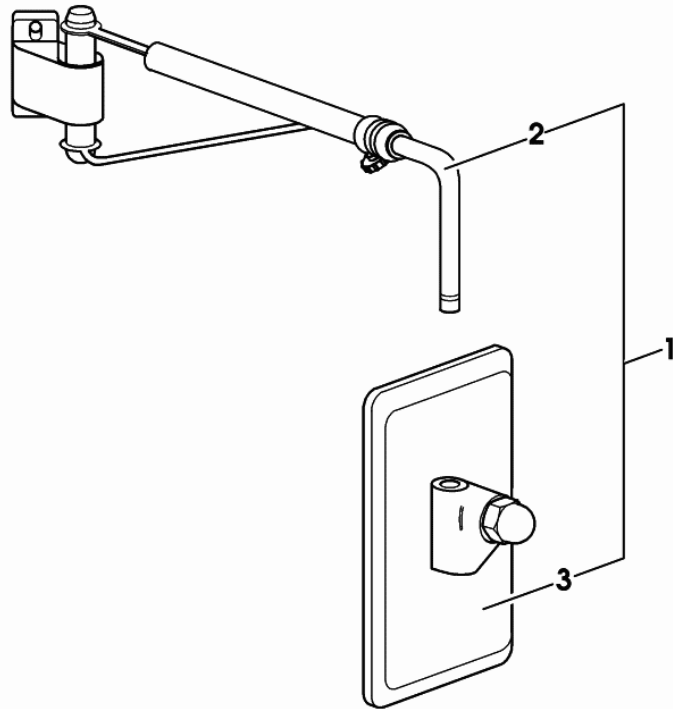
1	0.009.9423.2	1	air filter element
---	--------------	---	--------------------



9_56671_28_0-A-001

REARVIEW MIRROR

Fig.	Code	QTY	Name
1	0.010.1604.4/40	1	rear view mirror sx/lh/li
2	0.010.3096.2	1	rod
3	0.9233.183.3	1	rear view mirror



0_010_1604_4_40

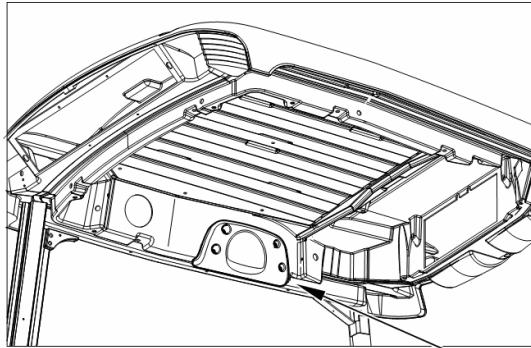
HEAD REST

Fig.	Code	QTY	Name
------	------	-----	------

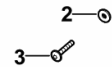
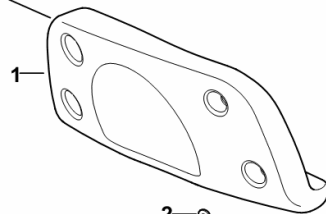
Notes:

- WITH "HIGH VISIBILITY" CAB [Explorer³ 100 2WD -> 20001] - WITH "HIGH VISIBILITY" CAB [Explorer³ 100 4WD -> 20001]

1	0.016.6878.2	1	embroiderhead
2	2.1312.001.3	4	washer 4
3	2.0363.108.3	4	screw



VISTA PER IL POSIZIONAMENTO
POSITIONING VIEW



9_L1678_04_0-A-001

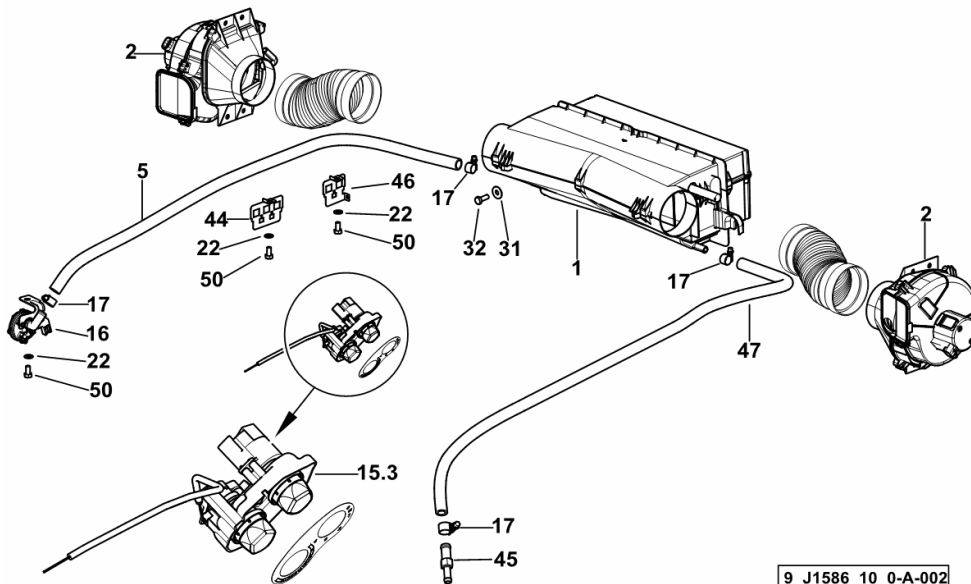
HEATING SYSTEM

Fig.	Code	QTY	Name
------	------	-----	------

Notes:

HIGHT VISIBILITY - FOR TRACTORS WITH AIR HEATING [Explorer³ 100 2WD -> 20001] -> 20271 HIGHT VISIBILITY - FOR TRACTORS WITH AIR HEATING [Explorer³ 100 4WD -> 20001] -> 20271

1	0.011.2066.4/10	1	cab heating
2	0.011.2047.4	2	rotor blade
5	0.012.9219.0/10	1.2	tube
15.3	0.015.5594.4/10	1	controller ☞ 0.015.5594.4/10
16	0.015.5524.4/10	1	cock or tap
17	2.6851.001.0	4	clamp Ø 16/25
22	2.1310.004.2	7	flat washer 8.5
31	2.1312.004.2	2	washer 8.4
32	2.0112.208.2	2	screw m 8 p.1.25 x 22
44	0.015.6795.0	1	bracket
45	0.015.2871.0	1	pipe fitting
46	0.015.7857.0	1	bracket
47	0.012.9219.0/10	1.3	tube
50	2.0112.205.2	3	screw m 8 p.1.25 x 16



9_J1586_10_0-A-002

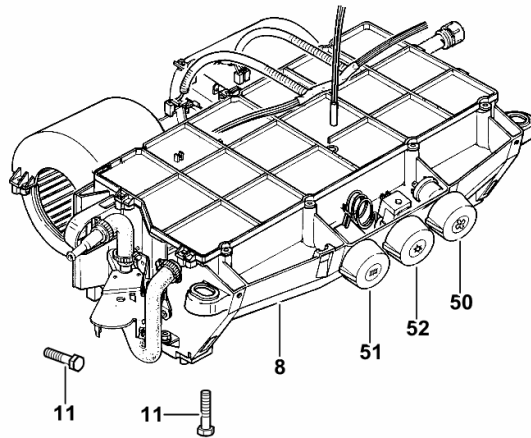
VENTILATION - AIR CONDITIONING - HEATING

Fig.	Code	QTY	Name
------	------	-----	------

Notes:

- FOR TYPES WITH HEATING AND AIR CONDITIONING [Explorer³ 100 2WD -> 20001] -> 20286 - FOR TYPES WITH HEATING AND AIR CONDITIONING [Explorer³ 100 4WD -> 20001] -> 20286

8	0.010.9215.4/30	1	conditioner ☞ 0.010.9215.4/30
11	2.0112.213.2	4	screw m 8 p.1.25 x 35
50	0.018.0506.2	1	knob
51	0.018.0507.2	1	knob
52	0.018.0508.2	1	knob



9_L1671_65_0-G-002

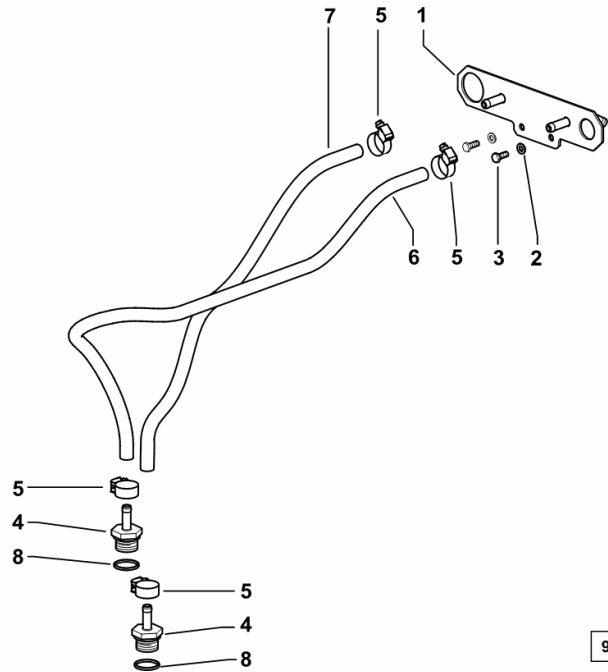
PIPES FOR HEATING SYSTEM

Fig.	Code	QTY	Name
------	------	-----	------

Notes:

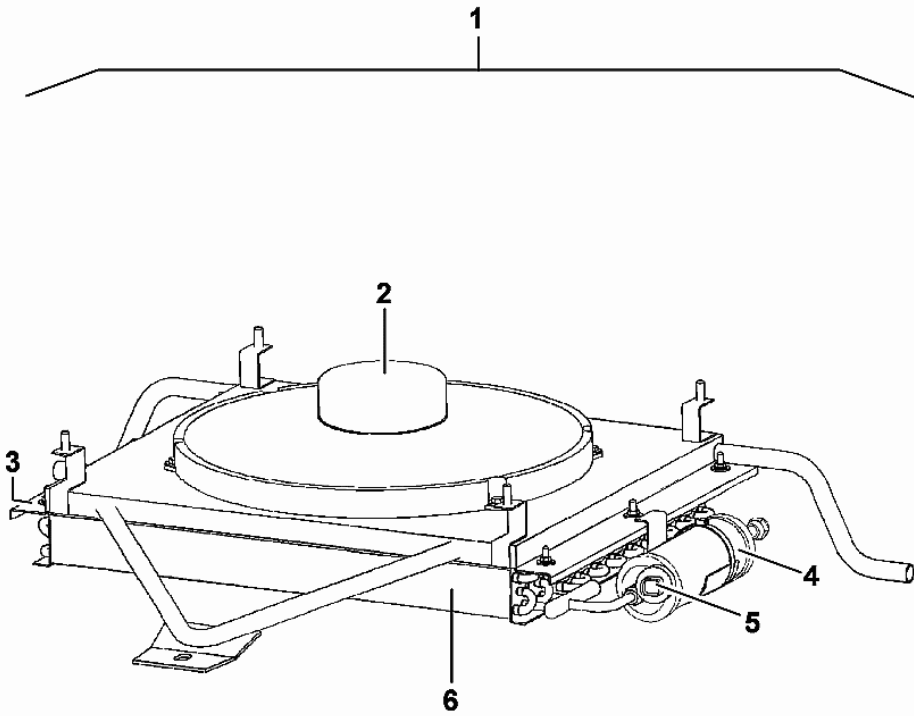
[Explorer³ 100 2WD -> 20001] [Explorer³ 100 4WD -> 20001]

1	0.014.8842.3	1	plate
2	2.1310.002.2	2	washer 6.6, d125
3	2.0112.005.2	2	screw m 6 p.1 x 16
4	2.3339.804.2/10	2	pipe fitting m 26 p.1.5
5	2.6851.019.0	4	clamp Ø 13/20
6	0.010.0812.0	1	tube 16x10x3850
7	0.010.0812.0	1	tube 16x10x3850
8	2.1569.186.0	2	gasket



CONDENSER

Fig.	Code	QTY	Name
1	0.014.8525.4	1	condenser
2	0.010.0618.4	1	fan Ø 414
3	0.900.0462.0	1	duct
4	0.010.2261.0	1	filter R 134a
5	0.900.0304.1	1	pressure switch
6	0.900.0950.3	1	radiator



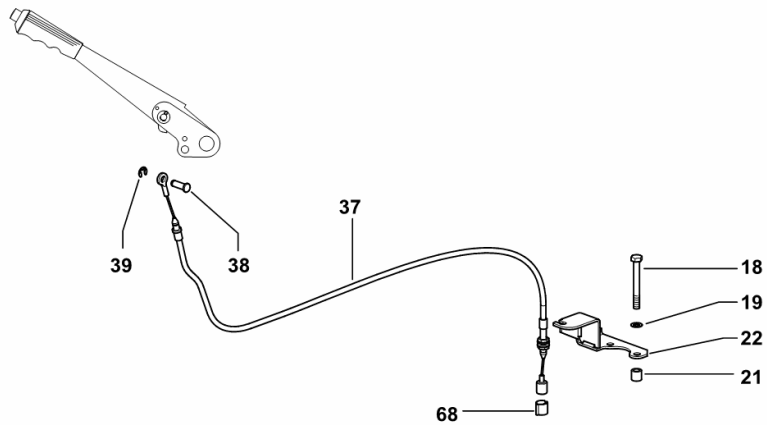
0_014_8525_4

AIR TRAILER BRAKING CONTROL CABLE ITALY

Fig.	Code	QTY	Name
------	------	-----	------

Notes:[Explorer³ 100 2WD -> 20001] [Explorer³ 100 4WD -> 20001]

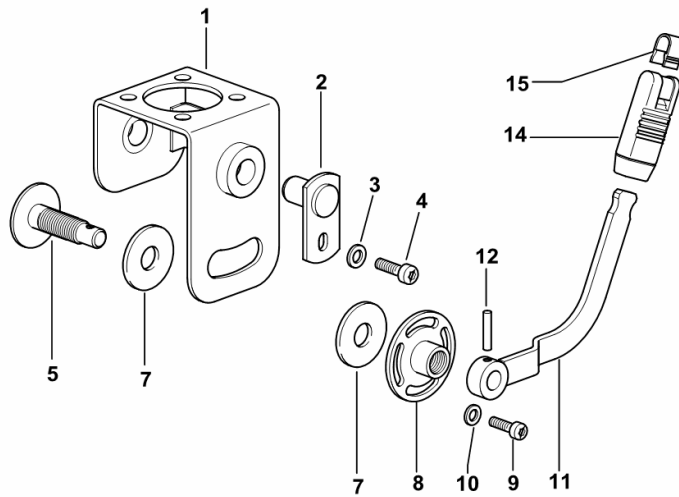
18	2.0112.223.2	4	screw m 8 p.1.25x70
19	2.1470.004.2	4	washer 8
21	2.1579.825.0	2	spacer
22	0.011.3979.2/20	1	bracket
37	0.011.4121.3	1	cable
38	2.1699.307.2	1	pin 23x27.5x12
39	2.1430.008.7	1	circlip 7
68	0.257.6757.0	1	spring



9_H1589_20_0-G-001

STEERING ADJUSTMENT

Fig.	Code	QTY	Name
------	------	-----	------

Notes:[Explorer³ 100 2WD -> 20001] [Explorer³ 100 4WD -> 20001]

1	0.011.0830.3/10	1	support
2	0.009.9558.2/10	2	pin
3	2.1310.004.2	2	flat washer 8.5
4	2.0364.307.2	2	screw m 8 p.1.25 x 20
5	0.011.4408.3	1	pin
7	0.011.3774.0	2	gasket
8	0.011.0819.2/10	1	ring nut
9	2.0362.206.2	2	screw
10	2.1310.002.2	2	washer 6.6, d125
11	0.011.4411.2/10	1	small pedal
12	2.1630.613.0	1	roll pin 6 x 30
14	0.009.0137.0	1	knob
15	0.009.0140.0	1	coupling

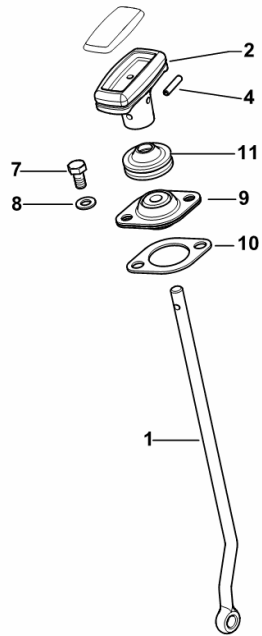
P.T.O. - SYNCHRONIZED CONTROL

Fig.	Code	QTY	Name
------	------	-----	------

Notes:

[Explorer³ 100 2WD -> 20001] [Explorer³ 100 4WD -> 20001]

1	0.014.8932.0	1	rod
2	0.009.9885.0/10	1	knob
4	2.1631.511.0	1	pin 6 x 24
7	2.0112.209.2	2	screw m 8 p 1.25 x 25
8	2.1310.004.2	2	flat washer 8.5
9	0.009.1618.3	1	support
10	0.009.0480.0	1	gasket
11	2.6569.069.0/10	1	rubber plug



9_H1568_11_0-A-001

S.A.C. GROUND CONTROL

Fig.	Code	QTY	Name
------	------	-----	------

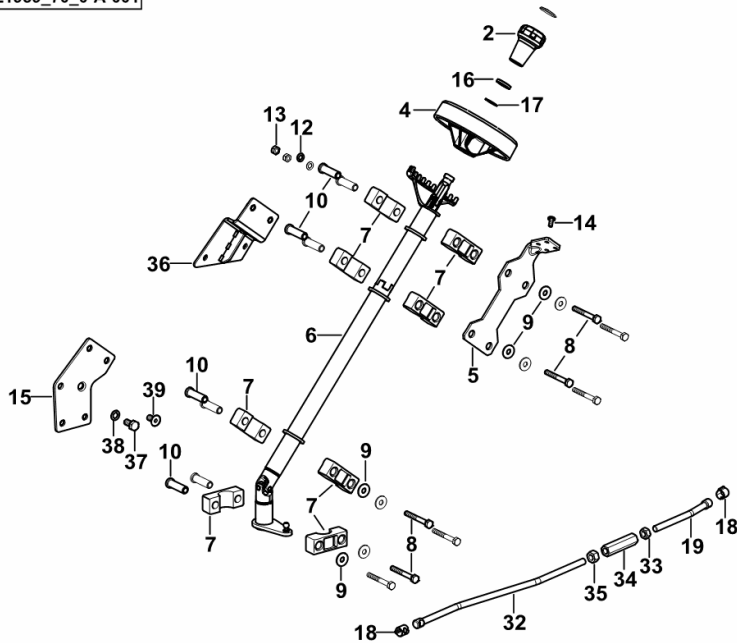
Notes:

- FOR TYPES WITH PLATFORM - EXPORT U.S.A. [Explorer³ 100 2WD -> 20001] - FOR TYPES WITH PLATFORM

- EXPORT U.S.A. [Explorer³ 100 4WD -> 20001]

2	0.257.6413.0	1	grip
4	0.016.3382.0/20	1	cover
5	0.016.6401.0	1	bracket
6	0.016.6400.4	1	hydraulic controles
7	0.008.2619.0/10	8	small block
8	2.0112.222.2	8	screw m 8 p.1.25x65
9	2.1312.004.2	8	washer 8.4
10	2.1559.237.2	8	sleeve
12	2.1470.004.2	2	washer 8
13	2.1011.105.2	2	nut m 8 p.1.25
14	2.0332.405.3	4	screw m 6 p.1 x 14
15	0.016.4675.3	1	plate
16	0.136.7387.0	1	rubber plug 15x27x5
17	2.1419.042.0	1	circlip 18
18	0.257.6757.0	2	spring
19	0.015.0629.0	1	rod
32	0.015.0600.0	1	rod
33	2.1011.106.2	1	nut m 10 p.1.5
34	0.467.6663.2	1	sleeve m 10 p 1.5x70
35	2.1019.018.2	1	special nut m 10 speciale
36	0.015.0621.3	1	bracket
37	2.0112.307.2	1	screw m 10 p.1.5 x 20
38	2.1470.006.2	1	lock washer 10
39	2.0342.405.6	1	screw m 10 p 1.5 x 20

9_L1959_70_0-A-001



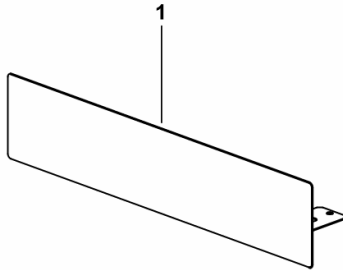
FRONT NUMBER PLATE BRACKET

Fig.	Code	QTY	Name
------	------	-----	------

Notes:

- FOR "HIGH VISIBILITY" CAB [Explorer³ 100 2WD -> 20001] - FOR "HIGH VISIBILITY" CAB [Explorer³ 100 4WD -> 20001]

1	0.011.3742.2/10	1	plate holder
---	-----------------	---	--------------



9_77876_51_0-A-001

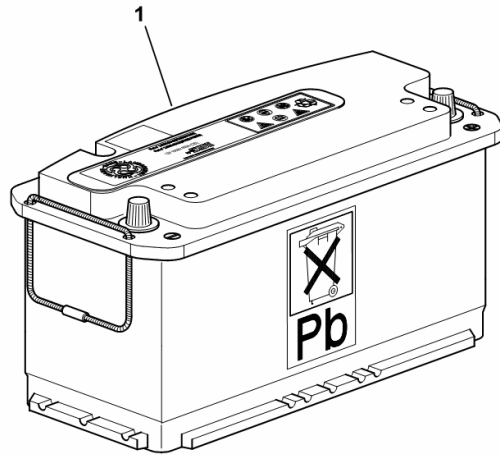
BATTERY 12V 100Ah 650A

Fig.	Code	QTY	Name
------	------	-----	------

Notes:

[Explorer³ 100 2WD -> 20001] [Explorer³ 100 4WD -> 20001]

1	2.9559.054.0	1	battery 100Ah - 650A
---	--------------	---	----------------------



9_70584_11_0-A-001

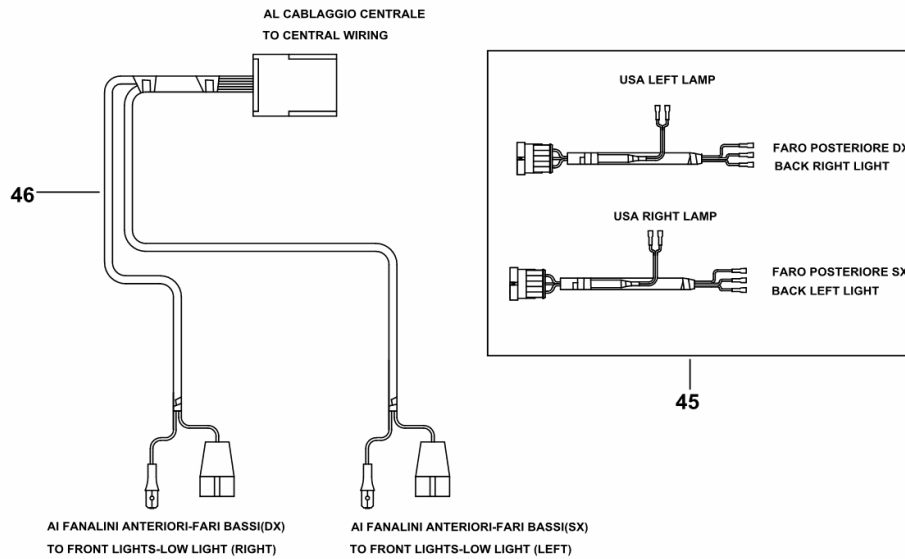
ELECTRICAL SYSTEM FOR REAR/FRONT LIGHTS

Fig.	Code	QTY	Name
------	------	-----	------

Notes:

- FOR MODELS WITH CAB - EXPORT U.S.A. [Explorer³ 100 2WD -> 20001] - FOR MODELS WITH CAB - EXPORT U.S.A. [Explorer³ 100 4WD -> 20001]

45	0.013.4909.4	2	wire
46	0.016.0664.4	1	wire



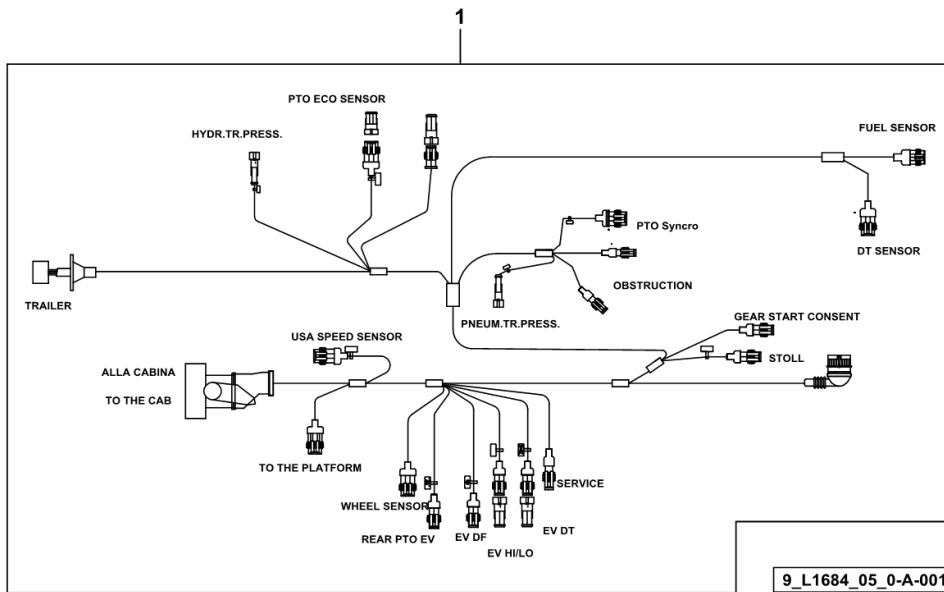
9_H1284_11_0-D-001

Fig.	Code	QTY	Name
------	------	-----	------

Notes:

[Explorer³ 100 2WD -> 20001] [Explorer³ 100 4WD -> 20001]

1	0.015.7023.4/30	1	electrical system
---	-----------------	---	-------------------



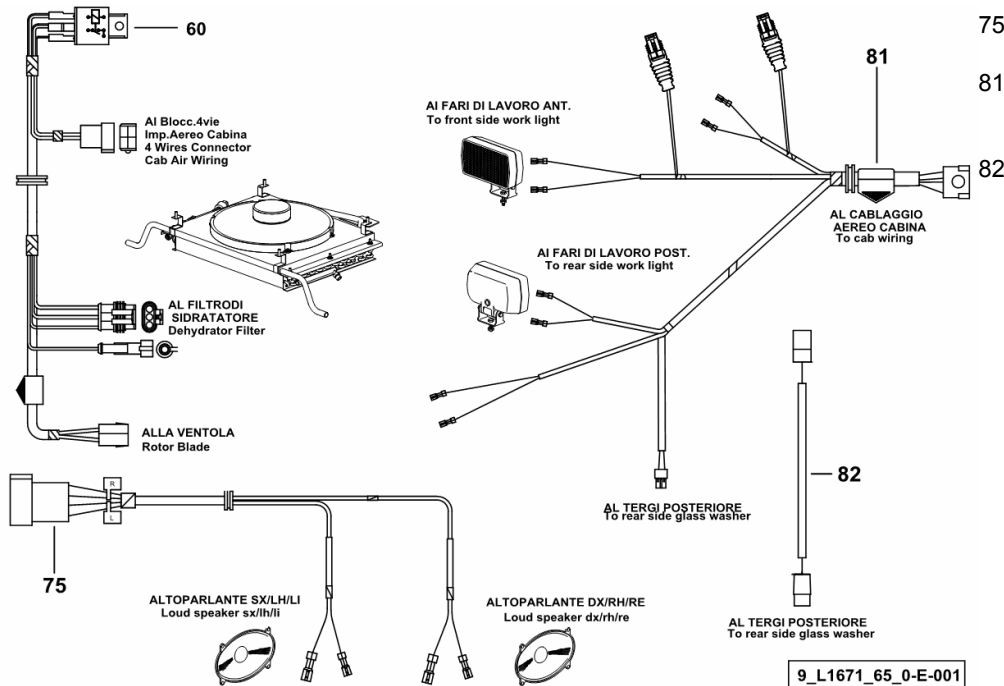
CAB ELECTRICAL SYSTEM

Fig.	Code	QTY	Name
------	------	-----	------

Notes:

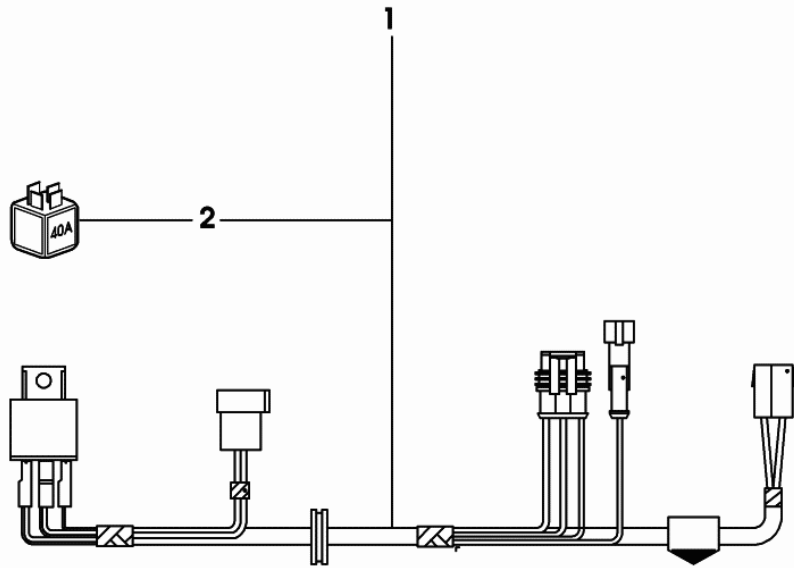
- FOR TYPES WITH HEATING AND AIR CONDITIONING [Explorer³ 100 2WD -> 20001] - FOR TYPES WITH HEATING AND AIR CONDITIONING [Explorer³ 100 4WD -> 20001]

60	0.009.7853.3/20	1	electrical system - FOR AIR CONDITIONING ☞ 0.009.7853.3/20
75	0.011.0729.4/10	1	wire - FOR LOUDSPEAKERS
81	0.016.0866.4/10	1	electrical system - FOR WORKLIGHTS AND REAR SCREEN WIPER
82	0.015.6123.4	1	wire FOR REAR SCREEN WIPER



ELECTRICAL SYSTEM

Fig.	Code	QTY	Name
1	0.009.7853.3/20	1	electrical system
2	2.7659.101.0	1	relay 12V-30A



0_009_7853_3_20

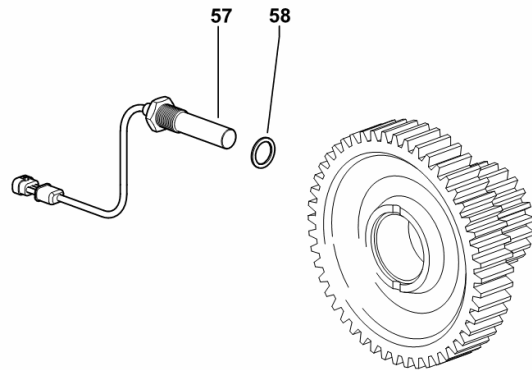
SPEED SENSOR

Fig.	Code	QTY	Name
------	------	-----	------

Notes:

[Explorer³ 100 2WD -> 20001] 20013 <- MECHANICAL ENGAGEMENT DT SHAFT [Explorer³ 100 4WD -> 20001]
20013 <- - FOR TYPES WITH EASY SHIFT [Explorer³ 100 4WD -> 20001] 20013 <-

57	2.7099.996.0	1	sensor
58	2.1560.014.0	1	gasket 18.2 x 24 x 1.5



9_H1334_00_0-C-001

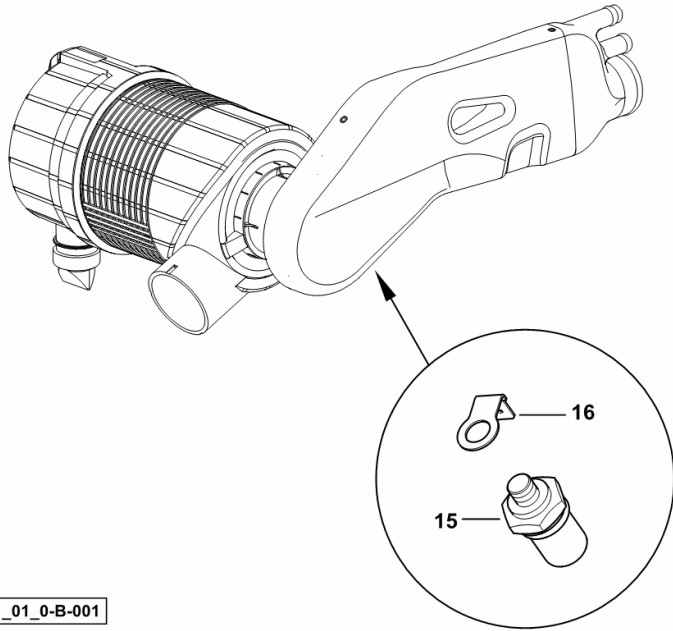
PRESSURE SWITCH FOR AIR CLEANER CLOGGED WARNING LIGHT

Fig.	Code	QTY	Name
------	------	-----	------

Notes:

[Explorer³ 100 4WD -> 20001]

15	2.7099.320.0/10	1	pressure switch
16	0.164.8450.0	1	terminal



9_H1581_01_0-B-001

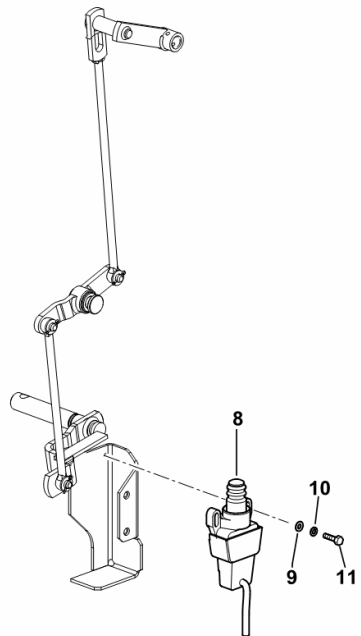
4WD CONTROL SWITCH

Fig.	Code	QTY	Name
------	------	-----	------

Notes:

[Explorer³ 100 4WD -> 20001]

8	2.7659.096.0/10	1	switch
9	2.1310.028.2	2	flat washer 4
10	2.1470.052.2	2	lock washer 4
11	2.0119.070.6	2	screw m 4 p.0.7 x 16



9_H1368_02_0-B-001

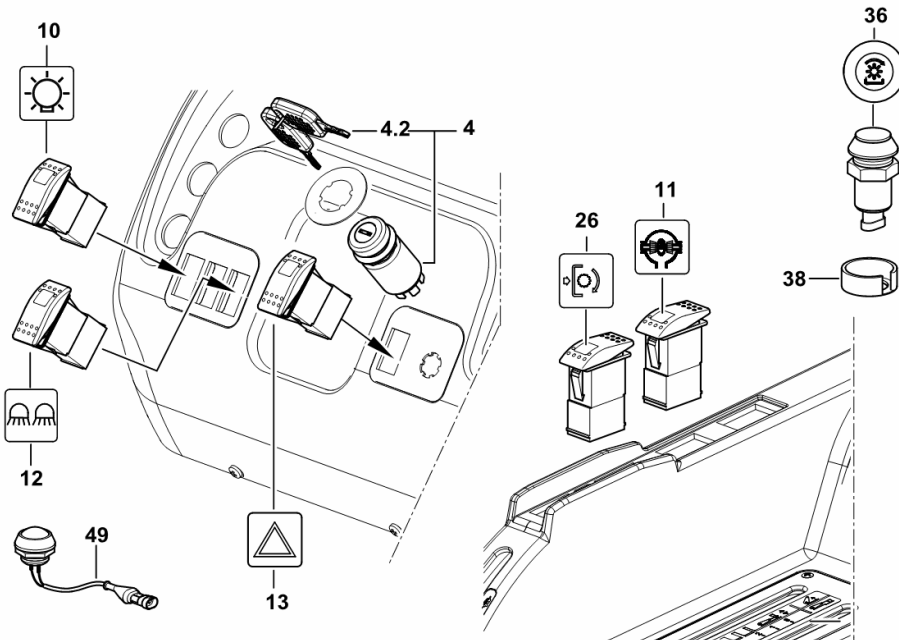
SWITCHES / IGNITION BLOCK

Fig.	Code	QTY	Name
------	------	-----	------

Notes:

[Explorer³ 100 2WD -> 20001] 20083 <- [Explorer³ 100 4WD -> 20001] 20083 <-

4	0.015.0485.4	1	start device
4.2	2.7439.023.0	2	key
10	2.7659.271.0	1	switch
11	2.7659.152.0/10	1	switch
12	2.7659.156.0	1	switch
13	2.7659.158.0	1	switch
26	2.7659.278.0	1	switch P.T.O.
36	2.7659.177.0/20	2	push-button P.T.O.
38	0.009.3987.0	2	guard
49	2.7659.203.0/10	1	push-button



9_L1684_00_0-B-001

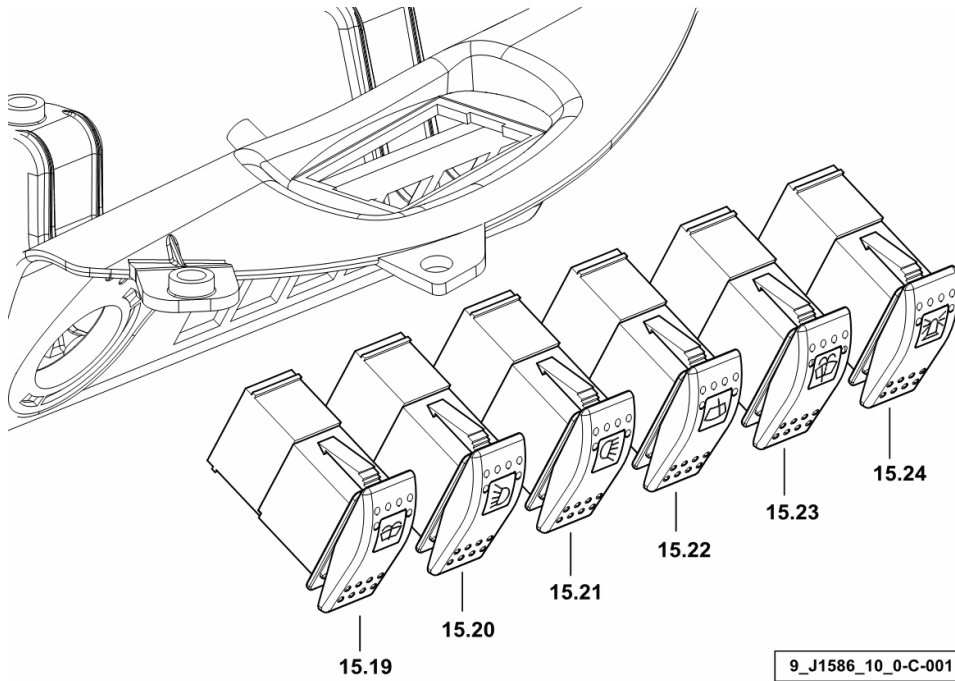
CAB TOP SWITCHES

Fig.	Code	QTY	Name
------	------	-----	------

Notes:

HIGHT VISIBILITY - FOR TRACTORS WITH AIR HEATING [Explorer³ 100 2WD -> 20001] HIGHT VISIBILITY - FOR TRACTORS WITH AIR HEATING [Explorer³ 100 4WD -> 20001]

15.19	2.7659.223.0/10	1	push-button
15.20	2.7659.154.0	1	switch
15.21	2.7659.155.0	1	switch
15.22	2.7659.224.0/10	1	switch
15.23	2.7659.192.0/10	1	switch
15.24	2.7659.159.0	1	switch

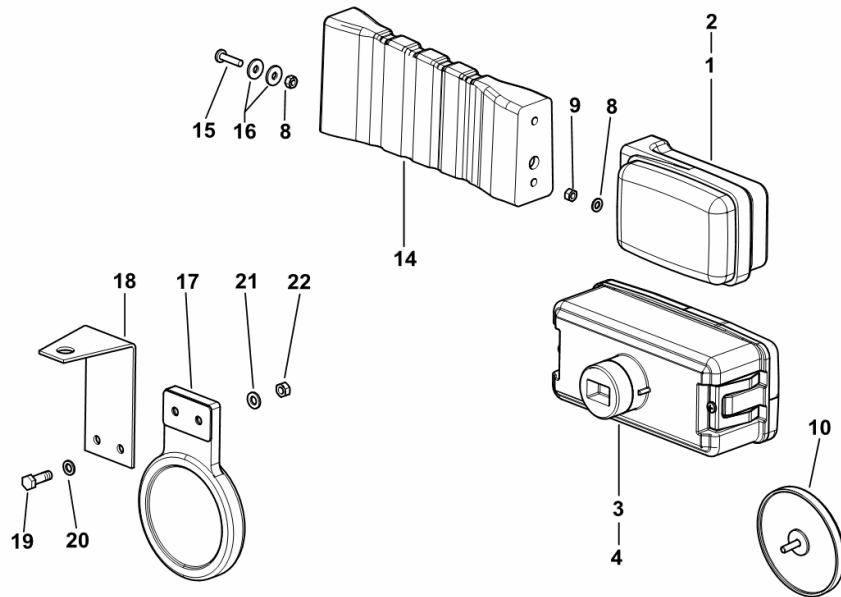


FRONT/REAR LIGHTS

Fig.	Code	QTY	Name
------	------	-----	------

Notes:

- FOR MODELS WITH PLATFORM [Explorer³ 100 2WD -> 20001] - FOR MODELS WITH PLATFORM [Explorer³ 100 4WD -> 20001]



1	2.8019.970.0	1	side lamp dx/rh/re ☞ 2.8019.970.0
2	2.8019.960.0	1	side lamp sx/lh/li ☞ 2.8019.960.0
3	2.8059.090.0	1	lamp dx/rh/re ☞ 2.8059.090.0
4	2.8059.080.0	1	lamp sx/lh/li ☞ 2.8059.080.0
8	2.1011.102.2	8	nut m 5 p.0.7
9	2.1470.001.2	4	lock washer 5
10	2.8349.002.2/30	2	reflector Ø 86 mm
14	0.015.2460.0	2	lamp support
15	2.0332.307.2	4	screw m 5 p.0.8 x 20
16	2.1312.002.2	8	washer 5
17	2.8349.008.0/30	2	reflector mm 80
18	0.007.7018.0	2	plate
19	2.0112.007.2	4	screw m 6 p.1 x 20
20	2.1470.002.2	4	washer 6, d128
21	2.1310.002.2	4	washer 6.6, d125
22	2.1011.103.2	4	nut m 6 p.1

9_L1685_00_0-A-001

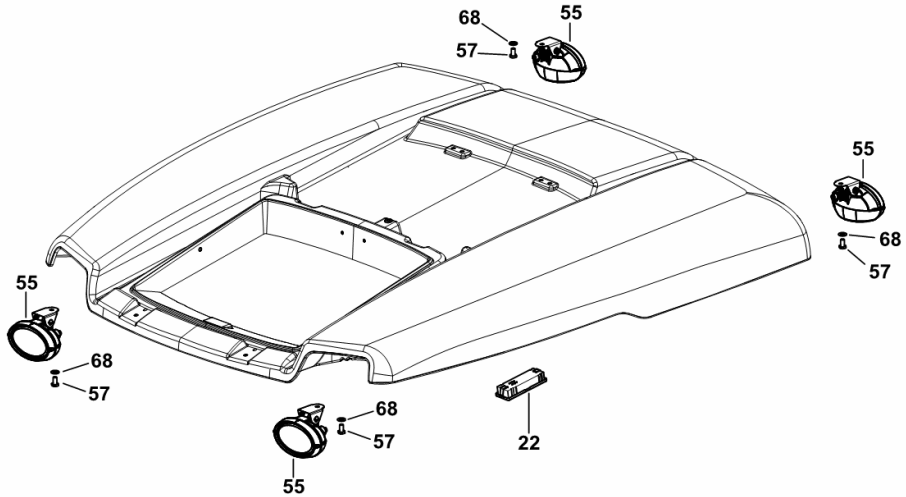
FRONT/REAR WORKLIGHTS AND INTERIOR ROOF LIGHT

Fig.	Code	QTY	Name
------	------	-----	------

Notes:

- FOR "HIGH VISIBILITY" CAB [Explorer³ 100 2WD -> 20001] - FOR "HIGH VISIBILITY" CAB [Explorer³ 100 4WD -> 20001]

22	2.8339.032.0	1	interior light ☞ 2.8339.032.0
55	2.8039.298.0/20	4	headlight
57	2.0112.306.2	4	screw m 10
68	2.1475.003.2	4	washer 10



9_J1571_21_0-B-001

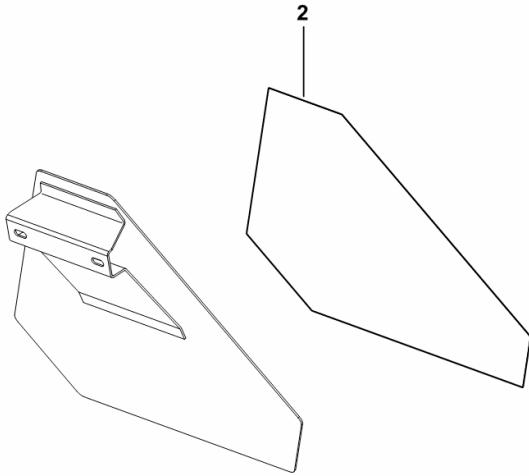
RETROREFLECTOR

Fig.	Code	QTY	Name
------	------	-----	------

Notes:

- EXPORT U.S.A. [Explorer³ 100 2WD -> 20001] - EXPORT U.S.A. [Explorer³ 100 4WD -> 20001]

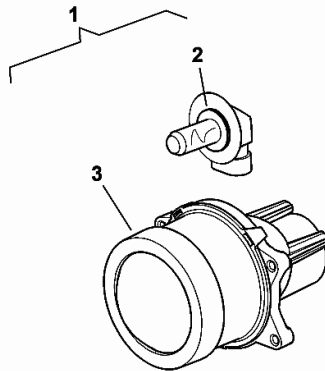
2	0.013.4584.0	1	plate SMV
---	--------------	---	-----------



9_H1576_04_0-B-001

HEADLAMP COMPONENTS

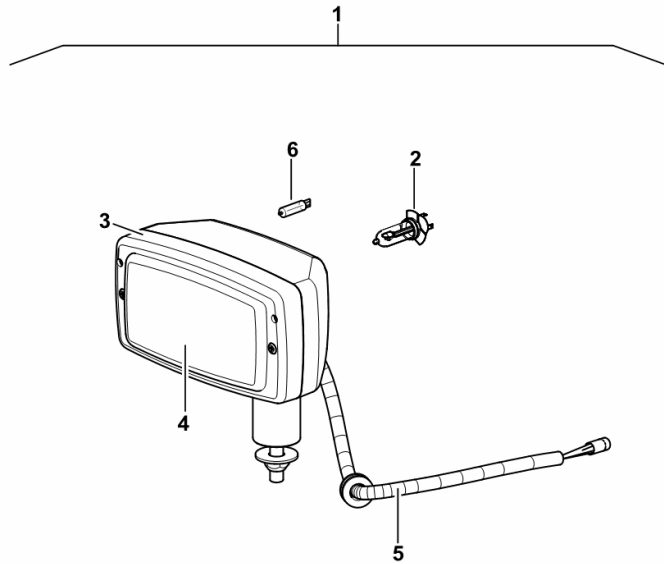
Fig.	Code	QTY	Name
1	2.8039.008.0	1	headlight
2	0.900.1539.2	1	lamp
3	0.000.0000.1	1	not serviceable



2_8039_008_0

WORKING SPOTLIGHT sx/lh/li

Fig.	Code	QTY	Name
1	2.8059.527.0	1	headlight
2	0.900.0063.1	1	lamp H4 12V 60/55W
3	0.900.0263.5	1	frame
4	0.900.0263.6	1	glass
5	0.900.0263.7	1	wire
6	0.900.1540.3	1	lamp T4W 12V 4W



2_8059_527_0

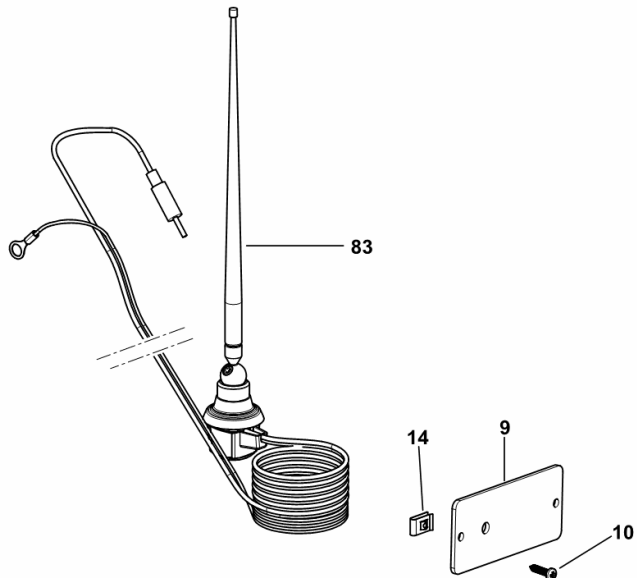
RADIO ANTENNA

Fig.	Code	QTY	Name
------	------	-----	------

Notes:

- FOR TYPES WITH HEATING AND AIR CONDITIONING [Explorer³ 100 2WD -> 20001] 20269 <- - FOR TYPES WITH HEATING AND AIR CONDITIONING [Explorer³ 100 4WD -> 20001] 20269 <-

9	0.016.0429.0/10	1	support
10	2.0350.456.3	2	screw m 4.2 x 19 -AB-
14	2.6999.061.0	2	small spring 4.2
83	0.011.5630.3/20	1	radio aereo



9_L1671_65_0-J-001

CLICK HERE TO **DOWNLOAD** THE COMPLETE MANUAL

- Thank you very much for reading the preview of the manual.
- You can download the complete manual from: www.heydownloads.com by clicking the link below



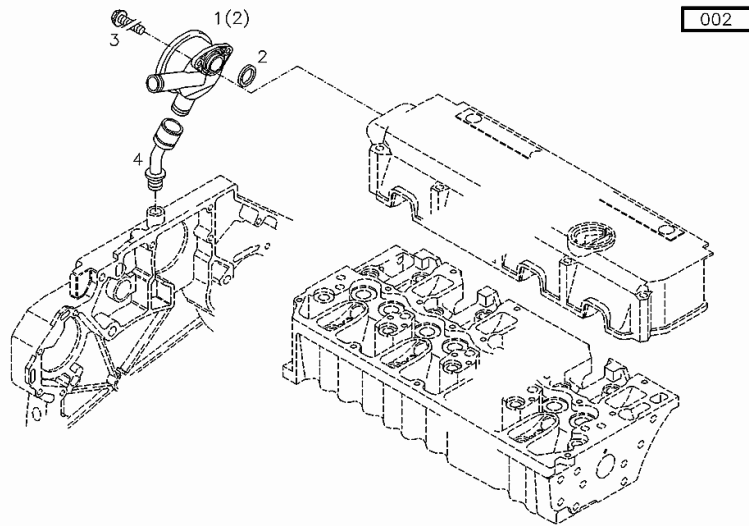
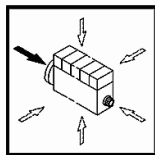
- Please note: If there is no response to CLICKING the link, please download this PDF first and then click on it.

CLICK HERE TO **DOWNLOAD** THE COMPLETE MANUAL

Section: B0 - ENGINE
CRANKCASE BREATHER

Fig.	Code	QTY	Name
------	------	-----	------

- UP TO MONTH OF ASSEMBLY (A)
 - FROM MONTH OF ASSEMBLY SEE
 POS. (B) A = 08.1995 B = POS. 3
 EN 1662 -F-M6X20-10.9-ZNAL-A



0507 1876

PISTON COOL.NOZZLE

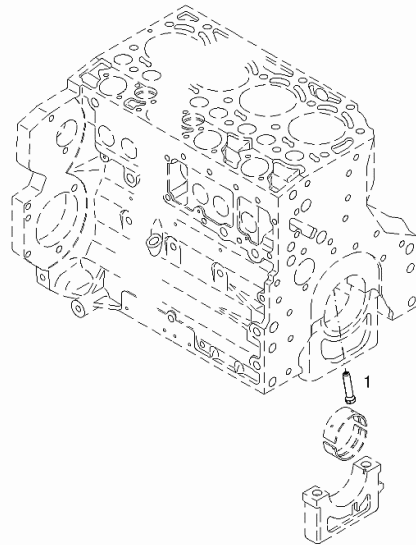
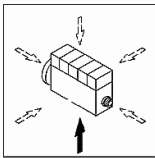
Fig.	Code	QTY	Name
------	------	-----	------

Engine Serial Numbers:

10765684 10765685 10765691 10770166 10770169 10770170 10770171 10770178 10775368 10775369 10775370
 10775371 10775374 10775375 10775377 10775391 10775392 10776047 10791143 10791144 10791145 10792396
 10792397 10792406 10792407 10792410 10792416 10792418 10792420 10793408 10793414 10793418 10795353
 10795355 10795356 10795357 10795360 10795364 10795365 10795366 10795368 10795369 10795370 10795371
 10795372 10795373 10795374 10795377 10795378 10795384 10795386 10795387 10795391 10795392 10798289
 10798292 10798295 10800779 10805871 10806331 10806335 10806336 10806337 10807762 10807763 10807764
 10807765 10807766 10807767 10807769 10807771 10807772 10807774 10807776 10807777 10807780 10812840
 10812841 10813147 10813150 10813152 10813153 10813154 10813156 10813157 10813158 10813159 10813161
 10813192 10813193 10813195 10813196 10813202 10813203 10813208 10815311 10815314 10817164 10819328
 10822009 10822013 10822015 10822021 10825284 10825285 10825286 10825289 10825290 10825291 10825303
 10825935 10825941 10827140 10827141 10827142 10827143 10827149 10827150 10827151 10827153 10827573
 10827574 10827575 10827576 10827578 10827582 10827585 10827586 10827592 10830681 10830684 10830685
 10830690 10830692 10830698 10831360 10831361 10831364 10831366 10831374 10831376 10831377 10832301
 10832303 10832304 10832306 10832308 10832313 10832315 10832316 10833050 10833053 10833065 10833066
 10835179 10835180 10835186 10835188 10835190 10836508 10836920 10836922 10836924 10836931 10837717
 10843913 10843914 10843915 10843916 10843917 10843918 10843919 10843922 10843924 10843925 10843930
 10844276 10844277 10844279 10844283 10860842 10860844 10860846 10860849 10861224 10861232 10861233
 10862775 10862776 10868172 10868173 10868174 10868176 10868179 10868181 10873034 10876200 10876204
 10876207 10876208 10876886 10876889 10876891 10876892 10876895 10876900 10876903 10877936 10877938
 10877940 10877943 10877944 10877947 10884888 10884889 10884890 10888700 10888701 10888702 10888705
 10888706 10888707 10891824 10891825 10891827 10891839 10891840 10891842 10891843 10893472 10893474
 10893475 10893506 10893509 10894699 10902226 10902229 10902233 10902234 10902235 10902236 10902238
 10902242 10902243 10902246 10903170 10903605 10903644 10912448 10912454 10913929 10913938 10913939
 10913940 10913967 10914573 10920282 10923170 10923177 10925118 10925122 10925126 10925131 10925132
 10927322 10927907 10927908 10927914 10927918 10928546 10929303 10930261 10930267 10930271 10931414
 10931418 10931420 10931422 10931495 10931501 10932259 10932503 10932504 10932505 10932506 10932512
 10942804 10942811 10942813 10943524 10953642 10953645 10955964 10955967 10956259 10961601 10961604
 10965082 10965083 10965085 10967938 10970639 10970641 10970642 10970643 10970648 10970649 10970651
 10973277 10973286 10973533 10982695 10982698 10982703 10982704 10983157 10985008 10985011 10985012
 10988436 10989318 11000983 11000984 11002613 11003778 11003779 11007494 11007497 11007529 11007532
 11007534 11011941 11012151 11015863 11018646 11020640 11021124 11021125 11021127 11021128 11021129
 11021709 11021713 11023558 11023560 11023561 11023946 11024027

001 ©

1	04207521	1	windscreen washer
---	----------	---	-------------------



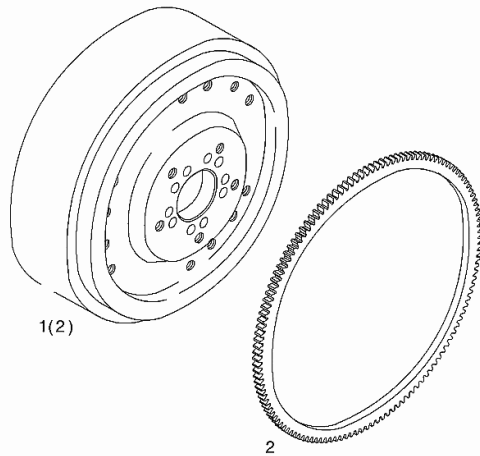
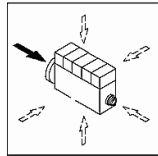
Section: B0 - ENGINE
FLYWHEEL

Fig.	Code	QTY	Name
------	------	-----	------

Engine Serial Numbers:

10765684 10765685 10765691 10770166 10770169 10770170 10770171 10770178 10775368 10775369 10775370
 10775371 10775374 10775375 10775377 10775391 10775392 10776047 10791143 10791144 10791145 10792396
 10792397 10792406 10792407 10792410 10792416 10792418 10792420 10793408 10793414 10793418 10795353
 10795355 10795356 10795357 10795360 10795364 10795365 10795366 10795368 10795369 10795370 10795371
 10795372 10795373 10795374 10795377 10795378 10795383 10795384 10795386 10795387 10795391 10798289
 10798292 10798295 10800779 10805871 10806331 10806335 10806336 10806337 10807762 10807763 10807764
 10807765 10807766 10807767 10807769 10807771 10807772 10807774 10807776 10807777 10807780 10812840
 10812841 10813147 10813150 10813152 10813153 10813154 10813156 10813157 10813158 10813159 10813161
 10813192 10813193 10813195 10813196 10813202 10813203 10813208 10815311 10815314 10817164 10819328
 10822009 10822013 10822015 10822021 10825284 10825285 10825286 10825289 10825290 10825291 10825303
 10825935 10825941 10827140 10827141 10827142 10827143 10827149 10827150 10827151 10827153 10827573
 10827574 10827575 10827576 10827578 10827582 10827585 10827586 10827592 10830681 10830684 10830685
 10830690 10830692 10830698 10831360 10831361 10831364 10831366 10831374 10831376 10831377 10832301
 10832303 10832304 10832306 10832308 10832313 10832315 10832316 10833050 10833053 10833065 10833066
 10835179 10835180 10835186 10835188 10835190 10836508 10836920 10836922 10836924 10836931 10837717
 10843913 10843914 10843915 10843916 10843917 10843918 10843919 10843922 10843924 10843925 10843930
 10844276 10844277 10844279 10844283 10860842 10860844 10860846 10860849 10861224 10861232 10861233
 10862775 10862776 10868172 10868173 10868174 10868176 10868179 10868181 10873034 10876200 10876204
 10876207 10876208 10876886 10876889 10876891 10876892 10876895 10876900 10876903 10877936 10877938
 10877940 10877943 10877944 10877947 10884888 10884889 10884890 10888700 10888701 10888702 10888705
 10888706 10888707 10891824 10891825 10891827 10891839 10891840 10891842 10891843 10893472 10893474
 10893475 10893506 10893509 10894699 10902226 10902229 10902233 10902234 10902235 10902236 10902238
 10902242 10902243 10902246 10903170 10903605 10903644 10912448 10912454 10913929 10913938 10913939
 10913940 10913967 10914573 10920282 10923170 10923177 10925118 10925122 10925126 10925131 10925132
 10927322 10927907 10927908 10927914 10927918 10928546 10929303 10930261 10930267 10930271 10931414
 10931418 10931420 10931422 10931495 10931501 10932259 10932503 10932504 10932505 10932506 10932512
 10942804 10942811 10942813 10943524 10953642 10953645 10955964 10955967 10956259 10961601 10961604
 10965082 10965083 10965085 10967938 10970639 10970641 10970642 10970643 10970648 10970649 10970651
 10973277 10973286 10973533 10982695 10982698 10982703 10982704 10983157 10985008 10985011 10985012
 10988436 10989318 11000983 11000984 11002613 11003778 11003779 11007494 11007497 11007529 11007532
 11007534 11011941 11012151 11015863 11018646 11020640 11021124 11021125 11021127 11021128 11021129
 11021709 11021713 11023558 11023560 11023561 11023946 11024027

000 ©



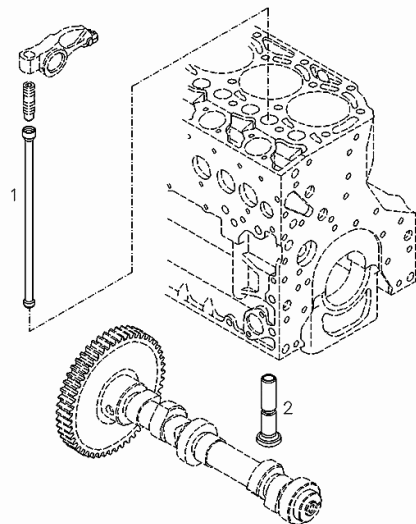
1	04297093	1	flywheel WITH POS.... (2)
2	04900286	1	crown wheel

Section: B0 - ENGINE
VALVE DRIVE

Fig.	Code	QTY	Name
------	------	-----	------

Engine Serial Numbers:

10765684 10765685 10765691 10770166 10770169 10770170 10770171 10770178 10775368 10775369 10775370
 10775371 10775374 10775375 10775377 10775391 10775392 10776047 10791143 10791144 10791145 10792396
 10792397 10792406 10792407 10792410 10792416 10792418 10792420 10793408 10793414 10793418 10795353
 10795355 10795356 10795357 10795360 10795364 10795365 10795366 10795368 10795369 10795370 10795371
 10795372 10795373 10795374 10795377 10795378 10795384 10795387 10795388 10795387 10795391 10798289
 10798292 10798295 10800779 10805871 10806331 10806335 10806336 10806337 10807762 10807763 10807764
 10807765 10807766 10807767 10807769 10807771 10807772 10807774 10807776 10807777 10807780 10812840
 10812841 10813147 10813150 10813152 10813153 10813154 10813156 10813157 10813158 10813159 10813161
 10813192 10813193 10813195 10813196 10813202 10813203 10813208 10815311 10815314 10817164 10819328
 10822009 10822013 10822015 10822021 10825284 10825285 10825286 10825289 10825290 10825291 10825303
 10825935 10825941 10827140 10827141 10827142 10827143 10827149 10827150 10827151 10827153 10827573
 10827574 10827575 10827576 10827578 10827582 10827585 10827586 10827592 10830681 10830684 10830685
 10830690 10830692 10830698 10831360 10831361 10831364 10831366 10831374 10831376 10831377 10832301
 10832303 10832304 10832306 10832308 10832313 10832315 10832316 10833050 10833053 10833065 10833066
 10835179 10835180 10835186 10835188 10835190 10836508 10836920 10836922 10836924 10836931 10837717
 10843913 10843914 10843915 10843916 10843917 10843918 10843919 10843922 10843924 10843925 10843930
 10844276 10844277 10844279 10844283 10860842 10860844 10860846 10860849 10861224 10861232 10861233
 10862775 10862776 10868172 10868173 10868174 10868176 10868179 10868181 10873034 10876200 10876204
 10876207 10876208 10876886 10876889 10876891 10876892 10876895 10876900 10876903 10877936 10877938
 10877940 10877943 10877944 10877947 10884888 10884889 10884890 10888700 10888701 10888702 10888705
 10888706 10888707 10891824 10891825 10891827 10891839 10891840 10891842 10891843 10893472 10893474
 10893475 10893506 10893509 10894699 10902226 10902229 10902233 10902234 10902235 10902236 10902238
 10902242 10902243 10902246 10903170 10903605 10903644 10912448 10912454 10913929 10913938 10913939
 10913940 10913967 10914573 10920282 10923170 10923177 10925118 10925122 10925126 10925131 10925132
 10927322 10927907 10927908 10927914 10927918 10928546 10929303 10930261 10930267 10930271 10931414
 10931418 10931420 10931422 10931495 10931501 10932259 10932503 10932504 10932505 10932506 10932512
 10942804 10942811 10942813 10943524 10953642 10953645 10955964 10955967 10956259 10961601 10961604
 10965082 10965083 10965085 10967938 10970639 10970641 10970642 10970643 10970648 10970649 10970651
 10973277 10973286 10973533 10982695 10982698 10982703 10982704 10983157 10985008 10985011 10985012
 10988436 10989318 11000983 11000984 11002613 11003778 11003779 11007494 11007497 11007529 11007532
 11007534 11011941 11012151 11015863 11018646 11020640 11021124 11021125 11021127 11021128 11021129
 11021709 11021713 11023558 11023560 11023561 11023946 11024027



000

0507 4436

1	04206377	2	rod
2	04251064	2	tappets

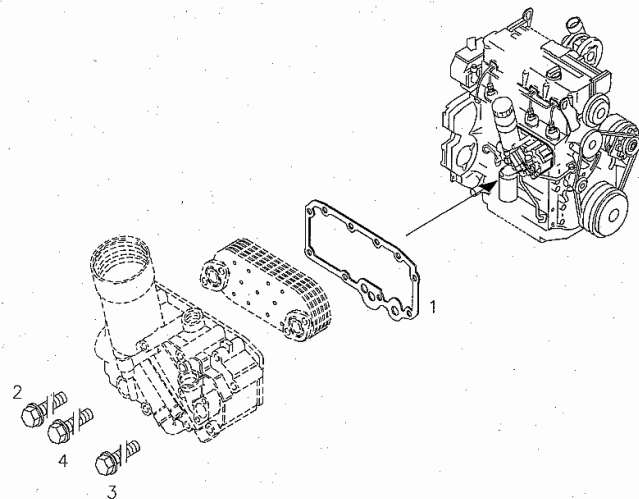
FASTENINGS

Fig.	Code	QTY	Name
------	------	-----	------

Engine Serial Numbers:

10765684 10765685 10765691 10770166 10770169 10770170 10770171 10770178 10775368 10775369 10775370
 10775371 10775374 10775375 10775377 10775391 10775392 10776047 10791143 10791144 10791145 10792396
 10792397 10792406 10792407 10792410 10792416 10792418 10792420 10793408 10793414 10793418 10795353
 10795355 10795356 10795357 10795360 10795364 10795365 10795366 10795368 10795369 10795370 10795371
 10795372 10795373 10795374 10795377 10795378 10795384 10795386 10795387 10795391 10795392 10798289
 10798292 10798295 10800779 10805871 10806331 10806335 10806336 10806337 10807762 10807763 10807764
 10807765 10807766 10807767 10807769 10807771 10807772 10807774 10807776 10807777 10807780 10812840
 10812841 10813147 10813150 10813152 10813153 10813154 10813156 10813157 10813158 10813159 10813161
 10813192 10813193 10813195 10813196 10813202 10813203 10813208 10815311 10815314 10817164 10819328
 10822009 10822013 10822015 10822021 10825284 10825285 10825286 10825289 10825290 10825291 10825303
 10825935 10825941 10827140 10827141 10827142 10827143 10827149 10827150 10827151 10827153 10827573
 10827574 10827575 10827576 10827578 10827582 10827585 10827586 10827592 10830681 10830684 10830685
 10830690 10830692 10830698 10831360 10831361 10831364 10831366 10831374 10831376 10831377 10832301
 10832303 10832304 10832306 10832308 10832313 10832315 10832316 10833050 10833053 10833065 10833066
 10835179 10835180 10835186 10835188 10835190 10836508 10836920 10836922 10836924 10836931 10837717
 10843913 10843914 10843915 10843916 10843917 10843918 10843919 10843922 10843924 10843925 10843930
 10844276 10844277 10844279 10844283 10860842 10860844 10860846 10860849 10861224 10861232 10861233
 10862775 10862776 10868172 10868173 10868174 10868176 10868179 10868181 10873034 10876200 10876204
 10876207 10876208 10876886 10876889 10876891 10876892 10876895 10876900 10876903 10877936 10877938
 10877940 10877943 10877944 10877947 10884888 10884889 10884890 10888700 10888701 10888702 10888705
 10888706 10888707 10891824 10891825 10891827 10891839 10891840 10891842 10891843 10893472 10893474
 10893475 10893506 10893509 10894699 10902226 10902229 10902233 10902234 10902235 10902236 10902238
 10902242 10902243 10902246 10903170 10903605 10903644 10912448 10912454 10913929 10913938 10913939
 10913940 10913967 10914573 10920282 10923170 10923177 10925118 10925122 10925126 10925131 10925132
 10927322 10927907 10927908 10927914 10927918 10928546 10929303 10930261 10930267 10930271 10931414
 10931418 10931420 10931422 10931495 10931501 10932259 10932503 10932504 10932505 10932506 10932512
 10942804 10942811 10942813 10943524 10953642 10953645 10955964 10955967 10956259 10961601 10961604
 10965082 10965083 10965085 10967938 10970639 10970641 10970642 10970643 10970648 10970649 10970651
 10973277 10973286 10973533 10982695 10982698 10982703 10982704 10983157 10985008 10985011 10985012
 10988436 10989318 11000983 11000984 11002613 11003778 11003779 11007494 11007497 11007529 11007532
 11007534 11011941 11012151 11015863 11018646 11020640 11021124 11021125 11021127 11021128 11021129
 11021709 11021713 11023558 11023560 11023561 11023946 11024027

000

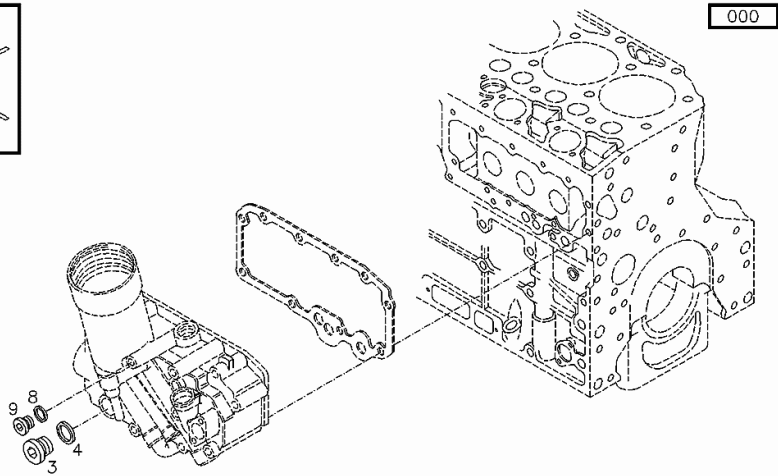
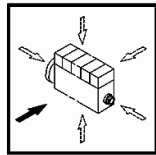


0507 1293

1	04208115	1	ring
2	01180364	3	stop UP TO THE MONTH OF ASSEMBLY 11/2006 EN 1662 -F-M8X110-10.9-GESCHW
3	01181438	5	screw UP TO THE MONTH OF ASSEMBLY 11/2006 EN 1662 -F-M8X55-10.9-ZNAL-A
4	01180365	2	stop UP TO THE MONTH OF ASSEMBLY 11/2006 EN 1662 -F-M8X90-10.9-GESCHW

CLOSING COMPONENTS

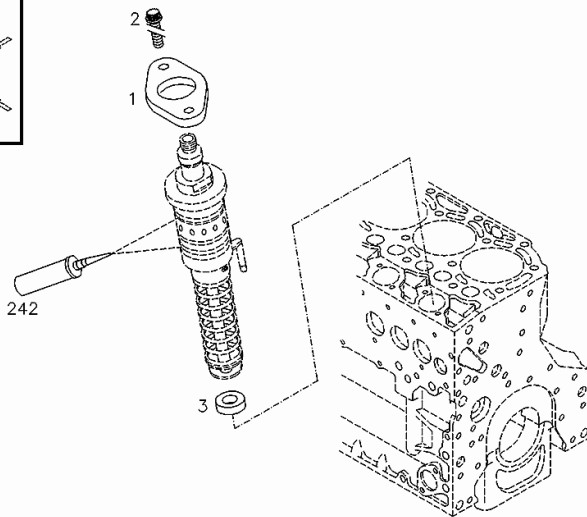
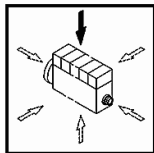
Fig.	Code	QTY	Name
950	01148766	1	DIN 908 -M10X1-ST-A4C* plug - FROM MONTH OF ASSEMBLY SEE POS. (B) - UP TO MONTH OF ASSEMBLY (A) FROM MONTH OF ASSEMBLY A = UP TO 02/2007 B = Pos.9 WITH GASKETS DIN 908 -M10X1-ST-A4C+DICHTRING*



0507 4576

Section: B0 - ENGINE
FASTENINGS

Fig.	Code	QTY	Name
951	02113024	1	disc DEPENDING ON THE MEASUREMENT, GASKET THICKNESS (A) = MM FOR OTHER THICKNESSES SEE POS. (B) A=4.75 MM B=950.952-984
952	02113025	1	disc DEPENDING ON THE MEASUREMENT, GASKET THICKNESS (A) = MM FOR OTHER THICKNESSES SEE POS. (B) A=4.80 MM B=951.953-984
953	02113026	1	disc DEPENDING ON THE MEASUREMENT, GASKET THICKNESS (A) = MM FOR OTHER THICKNESSES SEE POS. (B) A=4.85 MM B=951,952,954-984
954	02113027	1	disc DEPENDING ON THE MEASUREMENT, GASKET THICKNESS (A) = MM FOR OTHER THICKNESSES SEE POS. (B) A=4.90 MM B=950-953,955-984
955	02113028	1	disc DEPENDING ON THE MEASUREMENT, GASKET THICKNESS (A) = MM FOR OTHER THICKNESSES SEE POS. (B) A=4.95 MM B=950-954,956-984
956	02113029	1	disc DEPENDING ON THE MEASUREMENT, GASKET THICKNESS (A) = MM FOR OTHER THICKNESSES SEE POS. (B) A=5.00 MM B=950-955,957-984
957	02113030	1	disc DEPENDING ON THE MEASUREMENT, GASKET THICKNESS (A) = MM FOR OTHER THICKNESSES SEE POS. (B) A=5.05 MM B=950-956,958-984
958	02113031	1	disc DEPENDING ON THE MEASUREMENT, GASKET THICKNESS (A) = MM FOR OTHER THICKNESSES SEE POS. (B) A=5.10 MM B=950-957,959-984
959	02113032	1	disc

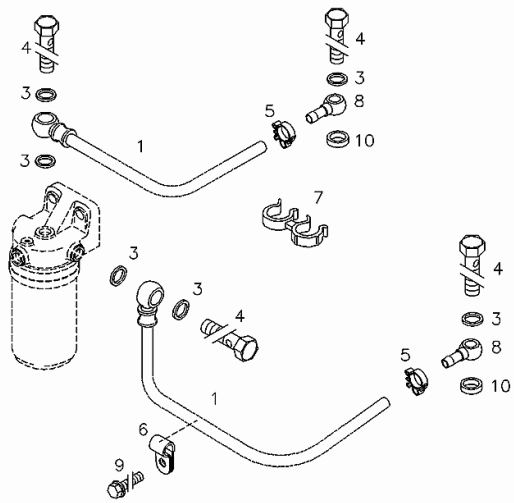


000 ©

0507 8695

FUEL LINE

Fig.	Code	QTY	Name
9	01181433	1	screw EN 1662 -F-M8X20-LG2,5-10.9-ZNAL-A
10	02111397	2	'o' ring



002

0507 1259

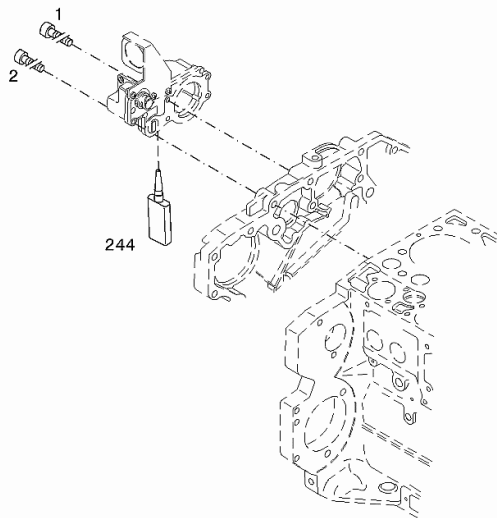
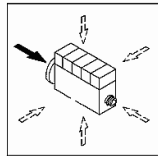
FASTENINGS

Fig.	Code	QTY	Name
------	------	-----	------

Engine Serial Numbers:

10765684 10765685 10765691 10770166 10770169 10770170 10770171 10770178 10775368 10775369 10775370
 10775371 10775374 10775375 10775377 10775391 10775392 10776047 10791143 10791144 10791145 10792396
 10792397 10792406 10792407 10792410 10792416 10792418 10792420 10793408 10793414 10793418 10795353
 10795355 10795356 10795357 10795360 10795364 10795365 10795366 10795368 10795369 10795370 10795371
 10795372 10795373 10795374 10795377 10795378 10795384 10795386 10795387 10795391 10798289
 10798292 10798295 10800779 10805871 10806331 10806335 10806336 10806337 10807762 10807763 10807764
 10807765 10807766 10807767 10807769 10807771 10807772 10807774 10807776 10807777 10807780 10812840
 10812841 10813147 10813150 10813152 10813153 10813154 10813156 10813157 10813158 10813159 10813161
 10813192 10813193 10813195 10813196 10813202 10813203 10813208 10815311 10815314 10817164 10819328
 10822009 10822013 10822015 10822021 10825284 10825285 10825286 10825289 10825290 10825291 10825303
 10825935 10825941 10827140 10827141 10827142 10827143 10827149 10827150 10827151 10827153 10827573
 10827574 10827575 10827576 10827578 10827582 10827585 10827586 10827592 10830681 10830684 10830685
 10830690 10830692 10830698 10831360 10831361 10831364 10831366 10831374 10831376 10831377 10832301
 10832303 10832304 10832306 10832308 10832313 10832315 10832316 10833050 10833053 10833065 10833066
 10835179 10835180 10835186 10835188 10835190 10836508 10836920 10836922 10836924 10836931 10837717
 10843913 10843914 10843915 10843916 10843917 10843918 10843919 10843922 10843924 10843925 10843930
 10844276 10844277 10844279 10844283 10860842 10860844 10860846 10860849 10861224 10861232 10861233
 10862775 10862776 10868172 10868173 10868174 10868176 10868179 10868181 10873034 10876200 10876204
 10876207 10876208 10876886 10876889 10876891 10876892 10876895 10876900 10876903 10877936 10877938
 10877940 10877943 10877944 10877947 10884888 10884889 10884890 10888700 10888701 10888702 10888705
 10888706 10888707 10891824 10891825 10891827 10891839 10891840 10891842 10891843 10893472 10893474
 10893475 10893506 10893509 10894699 10902226 10902229 10902233 10902234 10902235 10902236 10902238
 10902242 10902243 10902246 10903170 10903605 10903644 10912448 10912454 10913929 10913938 10913939
 10913940 10913967 10914573 10920282 10923170 10923177 10925118 10925122 10925126 10925131 10925132
 10927322 10927907 10927908 10927914 10927918 10928546 10929303 10930261 10930267 10930271 10931414
 10931418 10931420 10931422 10931495 10931501 10932259 10932503 10932504 10932505 10932506 10932512
 10942804 10942811 10942813 10943524 10953642 10953645 10955964 10955967 10956259 10961601 10961604
 10965082 10965083 10965085 10967938 10970639 10970641 10970642 10970643 10970648 10970649 10970651
 10973277 10973286 10973533 10982695 10982698 10982703 10982704 10983157 10985008 10985011 10985012
 10988436 10989318 11000983 11000984 11002613 11003778 11003779 11007494 11007497 11007529 11007532
 11007534 11011941 11012151 11015863 11018646 11020640 11021124 11021125 11021127 11021128 11021129
 11021709 11021713 11023558 11023560 11023561 11023946 11024027

003 ©



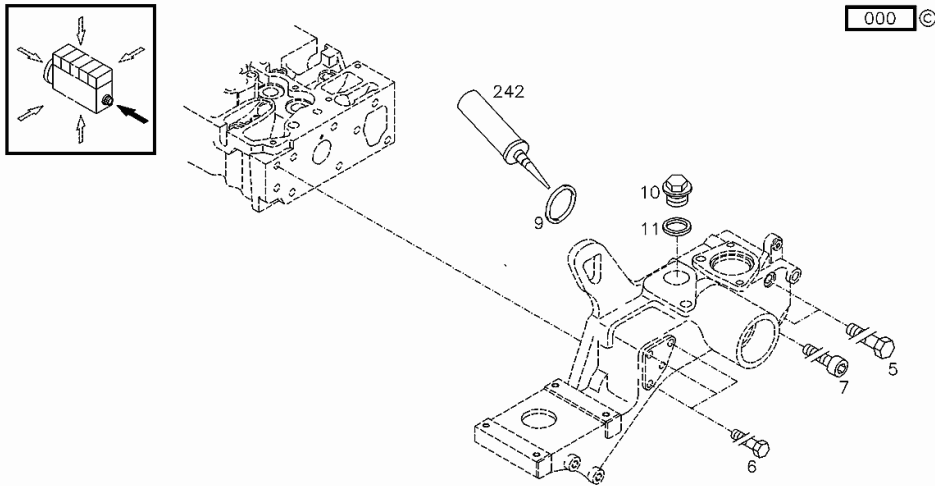
1	01103783	2	screw ISO 4762 -M8X70-10.9-A4C
2	01139441	3	screw ISO 4762 -M8X55-10.9-A4C
244	01016102	1	gasket H 0699 -DEUTZDW73-300ML

FASTENINGS

Fig.	Code	QTY	Name
------	------	-----	------

Engine Serial Numbers:

10765684 10765685 10765691 10770166 10770169 10770170 10770171 10770178 10775368 10775369 10775370
 10775371 10775374 10775375 10775377 10775391 10775392 10776047 10791143 10791144 10791145 10792396
 10792397 10792406 10792407 10792410 10792416 10792418 10792420 10793408 10793414 10793418 10795353
 10795355 10795356 10795357 10795360 10795364 10795365 10795366 10795368 10795369 10795370 10795371
 10795372 10795373 10795374 10795377 10795378 10795384 10795387 10795388 10795387 10795391 10798289
 10798292 10798295 10800779 10805871 10806331 10806335 10806336 10806337 10807762 10807763 10807764
 10807765 10807766 10807767 10807769 10807771 10807772 10807774 10807776 10807777 10807780 10812840
 10812841 10813147 10813150 10813152 10813153 10813154 10813156 10813157 10813158 10813159 10813161
 10813192 10813193 10813195 10813196 10813202 10813203 10813208 10815311 10815314 10817164 10819328
 10822009 10822013 10822015 10822021 10825284 10825285 10825286 10825289 10825290 10825291 10825303
 10825935 10825941 10827140 10827141 10827142 10827143 10827149 10827150 10827151 10827153 10827573
 10827574 10827575 10827576 10827578 10827582 10827585 10827586 10827592 10830681 10830684 10830685
 10830690 10830692 10830698 10831360 10831361 10831364 10831366 10831374 10831376 10831377 10832301
 10832303 10832304 10832306 10832308 10832313 10832315 10832316 10833050 10833053 10833065 10833066
 10835179 10835180 10835186 10835188 10835190 10836508 10836920 10836922 10836924 10836931 10837717
 10843913 10843914 10843915 10843916 10843917 10843918 10843919 10843922 10843924 10843925 10843930
 10844276 10844277 10844279 10844283 10860842 10860844 10860846 10860849 10861224 10861232 10861233
 10862775 10862776 10868172 10868173 10868174 10868176 10868179 10868181 10873034 10876200 10876204
 10876207 10876208 10876886 10876889 10876891 10876892 10876895 10876900 10876903 10877936 10877938
 10877940 10877943 10877944 10877947 10884888 10884889 10884890 10888700 10888701 10888702 10888705
 10888706 10888707 10891824 10891825 10891827 10891839 10891840 10891842 10891843 10893472 10893474
 10893475 10893506 10893509 10894699 10902226 10902229 10902233 10902234 10902235 10902236 10902238
 10902242 10902243 10902246 10903170 10903605 10903644 10912448 10912454 10913929 10913938 10913939
 10913940 10913967 10914573 10920282 10923170 10923177 10925118 10925122 10925126 10925131 10925132
 10927322 10927907 10927908 10927914 10927918 10928546 10929303 10930261 10930267 10930271 10931414
 10931418 10931420 10931422 10931495 10931501 10932259 10932503 10932504 10932505 10932506 10932512
 10942804 10942811 10942813 10943524 10953642 10953645 10955964 10955967 10956259 10961601 10961604
 10965082 10965083 10965085 10967938 10970639 10970641 10970642 10970643 10970648 10970649 10970651
 10973277 10973286 10973533 10982695 10982698 10982703 10982704 10983157 10985008 10985011 10985012
 10988436 10989318 11000983 11000984 11002613 11003778 11003779 11007494 11007497 11007529 11007532
 11007534 11011941 11012151 11015863 11018646 11020640 11021124 11021125 11021127 11021128 11021129
 11021709 11021713 11023558 11023560 11023561 11023946 11024027



0507 8814

5	01148450	2	screw DIN 931 -M10X110-10.9-A-ZNAL-A
6	01148451	3	screw DIN 931 -M10X120-8.8-A-ZNAL-A
7	01126140	1	screw ISO 4762 -M10X120-10.9-A4C
9	01176790	1	'o' ring H 2927 -108X5-FPM-1-70
10	01122964	1	plug m 26 p.1.5 DIN 7604 -AM26X1,5-ST-A4C
11	01118768	1	'o' ring a 26x34 d7603 DIN 7603 -A26X34-CU
242	01016105	1	sealing compound

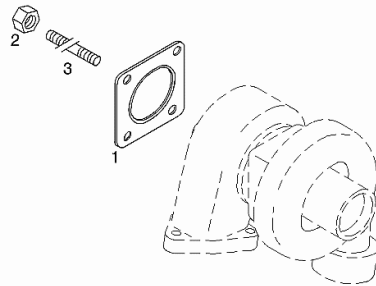
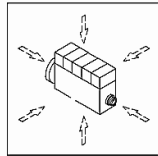
FASTENINGS

Fig.	Code	QTY	Name
------	------	-----	------

Engine Serial Numbers:

10765684 10765685 10765691 10770166 10770169 10770170 10770171 10770178 10775368 10775369 10775370
 10775371 10775374 10775375 10775377 10775391 10775392 10776047 10791143 10791144 10791145 10792396
 10792397 10792406 10792407 10792410 10792416 10792418 10792420 10793408 10793414 10793418 10795353
 10795355 10795356 10795357 10795360 10795364 10795365 10795366 10795368 10795369 10795370 10795371
 10795372 10795373 10795374 10795377 10795378 10795384 10795386 10795387 10795391 10798289
 10798292 10798295 10800779 10805871 10806331 10806335 10806336 10806337 10807762 10807763 10807764
 10807765 10807766 10807767 10807769 10807771 10807772 10807774 10807776 10807777 10807780 10812840
 10812841 10813147 10813150 10813152 10813153 10813154 10813156 10813157 10813158 10813159 10813161
 10813192 10813193 10813195 10813196 10813202 10813203 10813208 10815311 10815314 10817164 10819328
 10822009 10822013 10822015 10822021 10825284 10825285 10825286 10825289 10825290 10825291 10825303
 10825935 10825941 10827140 10827141 10827142 10827143 10827149 10827150 10827151 10827153 10827573
 10827574 10827575 10827576 10827578 10827582 10827585 10827586 10827592 10830681 10830684 10830685
 10830690 10830692 10830698 10831360 10831361 10831364 10831366 10831374 10831376 10831377 10832301
 10832303 10832304 10832306 10832308 10832313 10832315 10832316 10833050 10833053 10833065 10833066
 10835179 10835180 10835186 10835188 10835190 10836508 10836920 10836922 10836924 10836931 10837717
 10843913 10843914 10843915 10843916 10843917 10843918 10843919 10843922 10843924 10843925 10843930
 10844276 10844277 10844279 10844283 10860842 10860844 10860846 10860849 10861224 10861232 10861233
 10862775 10862776 10868172 10868173 10868174 10868176 10868179 10868181 10873034 10876200 10876204
 10876207 10876208 10876886 10876889 10876891 10876892 10876895 10876900 10876903 10877936 10877938
 10877940 10877943 10877944 10877947 10884888 10884889 10884890 10888700 10888701 10888702 10888705
 10888706 10888707 10891824 10891825 10891827 10891839 10891840 10891842 10891843 10893472 10893474
 10893475 10893506 10893509 10894699 10902226 10902229 10902233 10902234 10902235 10902236 10902238
 10902242 10902243 10902246 10903170 10903605 10903644 10912448 10912454 10913929 10913938 10913939
 10913940 10913967 10914573 10920282 10923170 10923177 10925118 10925122 10925126 10925131 10925132
 10927322 10927907 10927908 10927914 10927918 10928546 10929303 10930261 10930267 10930271 10931414
 10931418 10931420 10931422 10931495 10931501 10932259 10932503 10932504 10932505 10932506 10932512
 10942804 10942811 10942813 10943524 10953642 10953645 10955964 10955967 10956259 10961601 10961604
 10965082 10965083 10965085 10967938 10970639 10970641 10970642 10970643 10970648 10970649 10970651
 10973277 10973286 10973533 10982695 10982698 10982703 10982704 10983157 10985008 10985011 10985012
 10988436 10989318 11000983 11000984 11002613 11003778 11003779 11007494 11007497 11007529 11007532
 11007534 11011941 11012151 11015863 11018646 11020640 11021124 11021125 11021127 11021128 11021129
 11021709 11021713 11023558 11023560 11023561 11023946 11024027

000 ©



1	04903965	1	gasket
2	01138774	4	nut m 8 ISO 4032 -M8-24CRMO5V
3	01138776	4	screw DIN 939 -M8X25-21CRMOV57

RETURN LINE

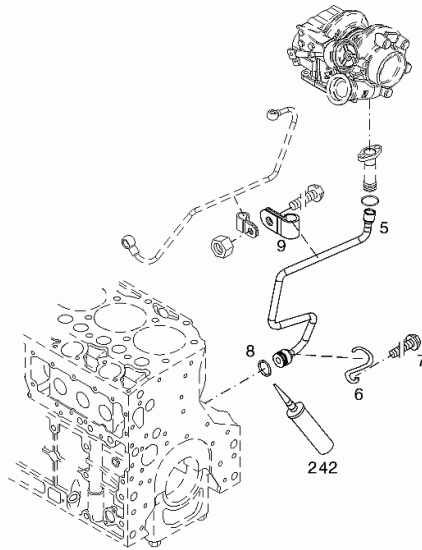
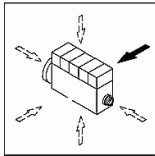
Fig.	Code	QTY	Name
------	------	-----	------

Engine Serial Numbers:

10765684	10765685	10765691	10770166	10770169	10770170	10770171	10770178	10775368	10775369	10775370
10775371	10775374	10775375	10775377	10775391	10775392	10776047	10791143	10791144	10791145	10792396
10792397	10792406	10792407	10792410	10792416	10792418	10792420	10793408	10793414	10793418	10795353
10795355	10795356	10795357	10795360	10795364	10795365	10795366	10795368	10795369	10795370	10795371
10795372	10795373	10795374	10795377	10795378	10795378	10795384	10795387	10795387	10795391	10798289
10798292	10798295	10800779	10805871	10806331	10806335	10806336	10806337	10807762	10807763	10807764
10807765	10807766	10807767	10807769	10807771	10807772	10807774	10807776	10807777	10807780	10812840
10812841	10813147	10813150	10813152	10813153	10813154	10813156	10813157	10813158	10813159	10813161
10813192	10813193	10813195	10813196	10813202	10813203	10813208	10815311	10815314	10817164	10819328
10822009	10822013	10822015	10822021	10825284	10825285	10825286	10825289	10825290	10825291	10825303
10825935	10825941	10827140	10827141	10827142	10827143	10827149	10827150	10827151	10827153	10827573
10827574	10827575	10827576	10827578	10827582	10827585	10827586	10827592	10830681	10830684	10830685
10830690	10830692	10830698	10831360	10831361	10831364	10831366	10831374	10831376	10831377	10832301
10832303	10832304	10832306	10832308	10832313	10832315	10832316	10833050	10833053	10833065	10833066
10835179	10835180	10835186	10835188	10835190	10836508	10836920	10836922	10836924	10836931	10837717
10843913	10843914	10843915	10843916	10843917	10843918	10843919	10843922	10843924	10843925	10843930
10844276	10844277	10844279	10844283	10860842	10860844	10860846	10860849	10861224	10861232	10861233
10862775	10862776	10868172	10868173	10868174	10868176	10868179	10868181	10873034	10876200	10876204
10876207	10876208	10876886	10876889	10876891	10876892	10876895	10876900	10876903	10877936	10877938
10877940	10877943	10877944	10877947	10884888	10884889	10884890	10888700	10888701	10888702	10888705
10888706	10888707	10891824	10891825	10891827	10891839	10891840	10891842	10891843	10893472	10893474
10893475	10893506	10893509	10894699	10902226	10902229	10902233	10902234	10902235	10902236	10902238
10902242	10902243	10902246	10903170	10903605	10903644	10912448	10912454	10913929	10913938	10913939
10913940	10913967	10914573	10920282	10923170	10923177	10925118	10925122	10925126	10925131	10925132
10927322	10927907	10927908	10927914	10927918	10928546	10929303	10930261	10930267	10930271	10931414
10931418	10931420	10931422	10931495	10931501	10932259	10932503	10932504	10932505	10932506	10932512
10942804	10942811	10942813	10943524	10953642	10953645	10955964	10955967	10956259	10961601	10961604
10965082	10965083	10965085	10967938	10970639	10970641	10970642	10970643	10970648	10970649	10970651
10973277	10973286	10973533	10982695	10982698	10982703	10982704	10983157	10985008	10985011	10985012
10988436	10989318	11000983	11000984	11002613	11003778	11003779	11007494	11007497	11007529	11007532
11007534	11011941	11012151	11015863	11018646	11020640	11021124	11021125	11021127	11021128	11021129
11021709	11021713	11023558	11023560	11023561	11023946	11024027				

000 ©

5	04297221	1	tube
6	04255857	1	bracket
7	01181436	1	screw
8	01180811	1	ring
			H 2927 -21,8X3,5-FPM-1-70
9	01174999	1	hose clip
			H 3223 -C12X15-ST/MVQ-1-70
242	01016105	1	sealing compound



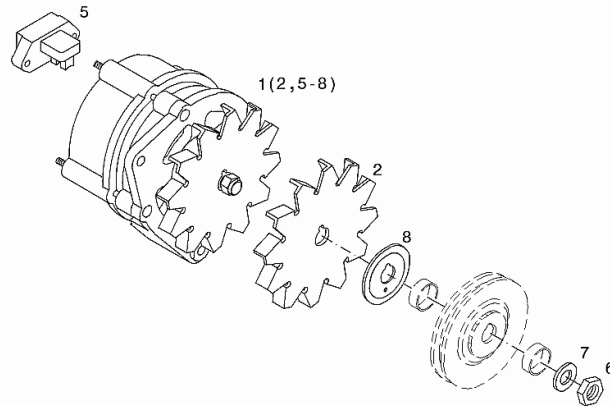
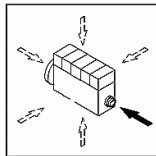
Section: B0 - ENGINE
GENERATOR

Fig.	Code	QTY	Name
------	------	-----	------

Engine Serial Numbers:

10765684 10765685 10765691 10770166 10770169 10770170 10770171 10770178 10775368 10775369 10775370
 10775371 10775374 10775375 10775377 10775391 10775392 10776047 10791143 10791144 10791145 10792396
 10792397 10792406 10792407 10792410 10792416 10792418 10792420 10793408 10793414 10793418 10795353
 10795355 10795356 10795357 10795360 10795364 10795365 10795366 10795368 10795369 10795370 10795371
 10795372 10795373 10795374 10795377 10795378 10795383 10795384 10795387 10795391 10795392 10798289
 10798292 10798295 10800779 10805871 10806331 10806335 10806336 10806337 10807762 10807763 10807764
 10807765 10807766 10807767 10807769 10807771 10807772 10807774 10807776 10807777 10807780 10812840
 10812841 10813147 10813150 10813152 10813153 10813154 10813156 10813157 10813158 10813159 10813161
 10813192 10813193 10813195 10813196 10813202 10813203 10813208 10815311 10815314 10817164 10819328
 10822009 10822013 10822015 10822021 10825284 10825285 10825286 10825289 10825290 10825291 10825303
 10825935 10825941 10827140 10827141 10827142 10827143 10827149 10827150 10827151 10827153 10827573
 10827574 10827575 10827576 10827578 10827582 10827585 10827586 10827592 10830681 10830684 10830685
 10830690 10830692 10830698 10831360 10831361 10831364 10831366 10831374 10831376 10831377 10832301
 10832303 10832304 10832306 10832308 10832313 10832315 10832316 10833050 10833053 10833065 10833066
 10835179 10835180 10835186 10835188 10835190 10836508 10836920 10836922 10836924 10836931 10837717
 10843913 10843914 10843915 10843916 10843917 10843918 10843919 10843922 10843924 10843925 10843930
 10844276 10844277 10844279 10844283 10860842 10860844 10860846 10860849 10861224 10861232 10861233
 10862775 10862776 10868172 10868173 10868174 10868176 10868179 10868181 10873034 10876200 10876204
 10876207 10876208 10876886 10876889 10876891 10876892 10876895 10876900 10876903 10877936 10877938
 10877940 10877943 10877944 10877947 10884888 10884889 10884890 10888700 10888701 10888702 10888705
 10888706 10888707 10891824 10891825 10891827 10891839 10891840 10891842 10891843 10893472 10893474
 10893475 10893506 10893509 10894699 10902226 10902229 10902233 10902234 10902235 10902236 10902238
 10902242 10902243 10902246 10903170 10903605 10903644 10912448 10912454 10913929 10913938 10913939
 10913940 10913967 10914573 10920282 10923170 10923177 10925118 10925122 10925126 10925131 10925132
 10927322 10927907 10927908 10927914 10927918 10928546 10929303 10930261 10930267 10930271 10931414
 10931418 10931420 10931422 10931495 10931501 10932259 10932503 10932504 10932505 10932506 10932512
 10942804 10942811 10942813 10943524 10953642 10953645 10955964 10955967 10956259 10961601 10961604
 10965082 10965083 10965085 10967938 10970639 10970641 10970642 10970643 10970648 10970649 10970651
 10973277 10973286 10973533 10982695 10982698 10982703 10982704 10983157

000 ©



1	01182961	1	alternator WITH POS.... (2,5-8) H 821170-TIR14X95ASWOPTOPF
2	01181859	1	rotor blade H 821177-EI138-TI-D-R12BLECH
5	01182906	1	regulator H 822111-TI-14,1V55/95/120A-1MF
6	01131115	1	nut ISO 8675 -M16X1,5-05-A4C
7	01107117	1	washer 17 DIN 125 -A17-140HV-A4C
8	01182010	1	washer

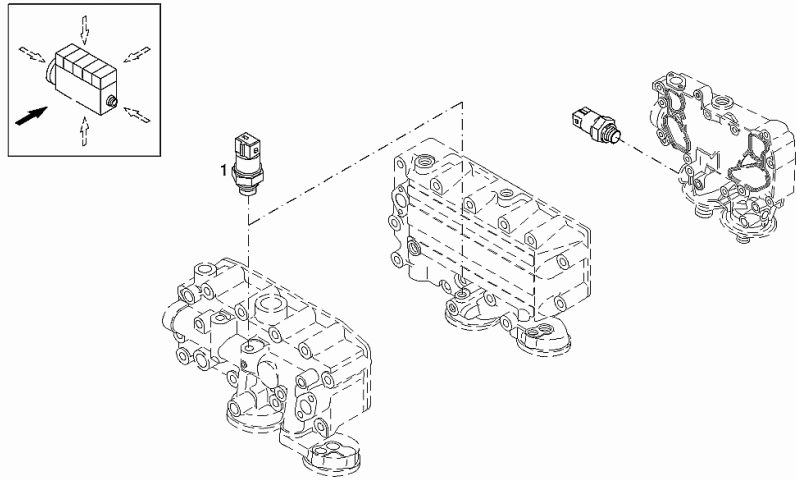
Section: B0 - ENGINE
OIL PRESSUR.SWITCH

Fig.	Code	QTY	Name
------	------	-----	------

Engine Serial Numbers:

10765684 10765685 10765691 10770166 10770169 10770170 10770171 10770178 10775368 10775369 10775370
 10775371 10775374 10775375 10775377 10775391 10775392 10776047 10791143 10791144 10791145 10792396
 10792397 10792406 10792407 10792410 10792416 10792418 10792420 10793408 10793414 10793418 10795353
 10795355 10795356 10795357 10795360 10795364 10795365 10795366 10795368 10795369 10795370 10795371
 10795372 10795373 10795374 10795377 10795378 10795384 10795387 10795388 10795387 10795391 10798289
 10798292 10798295 10800779 10805871 10806331 10806335 10806336 10806337 10807762 10807763 10807764
 10807765 10807766 10807767 10807769 10807771 10807772 10807774 10807776 10807777 10807780 10812840
 10812841 10813147 10813150 10813152 10813153 10813154 10813156 10813157 10813158 10813159 10813161
 10813192 10813193 10813195 10813196 10813202 10813203 10813208 10815311 10815314 10817164 10819328
 10822009 10822013 10822015 10822021 10825284 10825285 10825286 10825289 10825290 10825291 10825303
 10825935 10825941 10827140 10827141 10827142 10827143 10827149 10827150 10827151 10827153 10827573
 10827574 10827575 10827576 10827578 10827582 10827585 10827586 10827592 10830681 10830684 10830685
 10830690 10830692 10830698 10831360 10831361 10831364 10831366 10831374 10831376 10831377 10832301
 10832303 10832304 10832306 10832308 10832313 10832315 10832316 10833050 10833053 10833065 10833066
 10835179 10835180 10835186 10835188 10835190 10836508 10836920 10836922 10836924 10836931 10837717
 10843913 10843914 10843915 10843916 10843917 10843918 10843919 10843922 10843924 10843925 10843930
 10844276 10844277 10844279 10844283 10860842 10860844 10860846 10860849 10861224 10861232 10861233
 10862775 10862776 10868172 10868173 10868174 10868176 10868179 10868181 10873034 10876200 10876204
 10876207 10876208 10876886 10876889 10876891 10876892 10876895 10876900 10876903 10877936 10877938
 10877940 10877943 10877944 10877947 10884888 10884889 10884890 10888700 10888701 10888702 10888705
 10888706 10888707 10891824 10891825 10891827 10891839 10891840 10891842 10891843 10893472 10893474
 10893475 10893506 10893509 10894699 10902226 10902229 10902233 10902234 10902235 10902236 10902238
 10902242 10902243 10902246 10903170 10903605 10903644 10912448 10912454 10913929 10913938 10913939
 10913940 10913967 10914573 10920282 10923170 10923177 10925118 10925122 10925126 10925131 10925132
 10927322 10927907 10927908 10927914 10927918 10928546 10929303 10930261 10930267 10930271 10931414
 10931418 10931420 10931422 10931495 10931501 10932259 10932503 10932504 10932505 10932506 10932512
 10942804 10942811 10942813 10943524 10953642 10953645 10955964 10955967 10956259 10961601 10961604
 10965082 10965083 10965085 10967938 10970639 10970641 10970642 10970643 10970648 10970649 10970651
 10973277 10973286 10973533 10982695 10982698 10982703 10982704 10983157 10985008 10985011 10985012
 10988436 10989318 11000983 11000984 11002613 11003778 11003779 11007494 11007497 11007529 11007532
 11007534 11011941 11012151 11015863 11018646 11020640 11021124 11021125 11021127 11021128 11021129
 11021709 11021713 11023558 11023560 11023561 11023946 11024027

000 ©



1	01182792	1	pressure switch H 821021-RC2-0,5/0,3-0,9- GRAPHITSCHWAR
---	----------	---	---

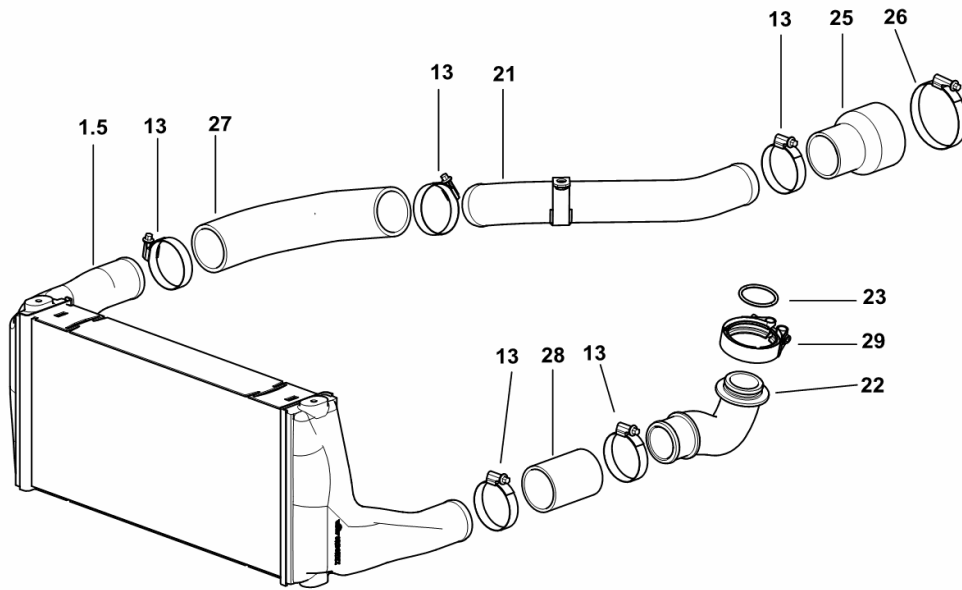
INTERCOOLER

Fig.	Code	QTY	Name
------	------	-----	------

Notes:

[Explorer³ 100 2WD -> 20001] [Explorer³ 100 4WD -> 20001]

1.5	0.014.8622.3	1	radiator
13	2.6851.006.0	7	clamp Ø 50/70
21	0.014.9366.3/10	1	tube
22	0.015.1779.0/10	1	flange
23	2.6859.112.0	1	clamp Ø 68 mm
25	0.014.9368.0/10	1	sleeve
26	2.6851.008.0	1	clamp Ø 70/90
27	0.014.9367.0/10	1	sleeve
28	0.015.5403.0	1	sleeve
29	2.1532.517.0	1	'o' ring



9_L8083_00_0-A-001

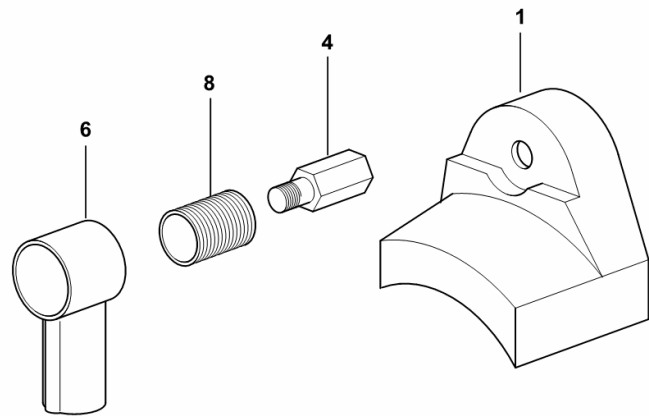
STARTER MOTOR COVER

Fig.	Code	QTY	Name
------	------	-----	------

Notes:

- WITH UNDER STEP BATTERY [Explorer³ 100 4WD -> 20001]

1	0.008.0391.0	1	cover
4	0.008.0616.0	1	pipe fitting
6	2.6519.033.0	1	cap
8	0.008.0378.0	1	cover



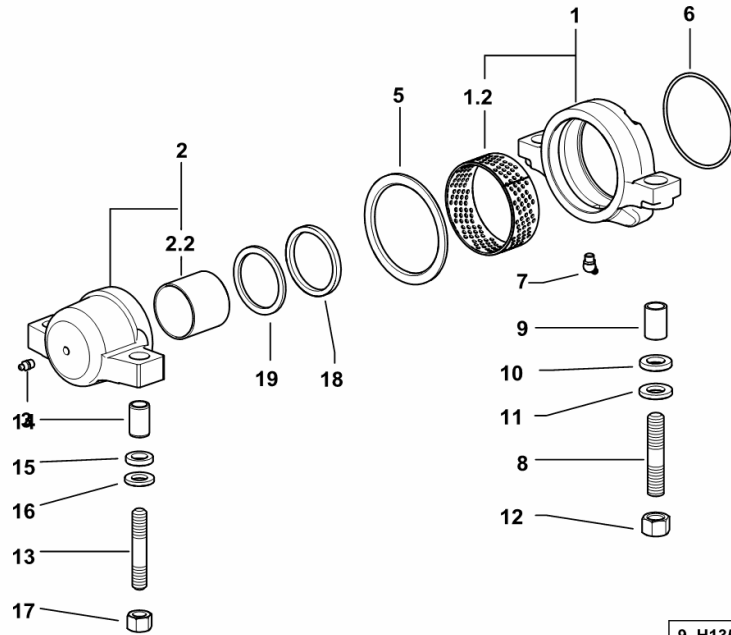
9_L1684_13_0-B-001

Section: F0 - FRONT AXLE
4WD - FRONT SUPPORT

Fig.	Code	QTY	Name
------	------	-----	------

Notes:

[Explorer³ 100 4WD -> 20001]

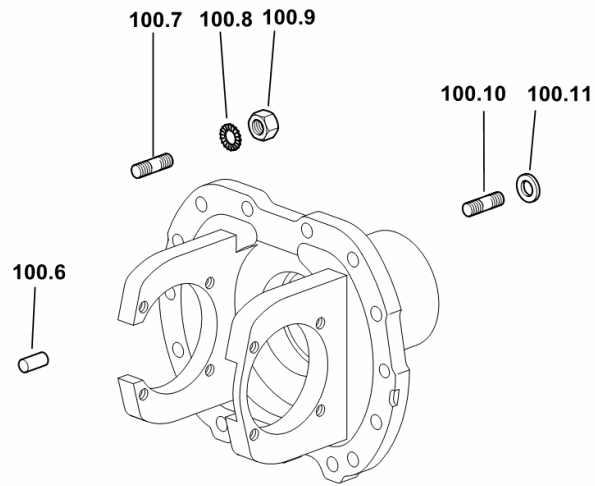


9_H1352_03_0-A-001

1	0.146.5233.3/40	1	support
1.2	2.1559.455.0	1	bushing 100x106x40
2	0.010.4723.3/50	1	support
2.2	2.1559.456.0	1	bushing
3	2.3820.105.2	1	lubricator m 10 p.1 x 7
5	2.1599.004.0	1	snoulder 101x125x4
6	2.1530.205.0	1	'o' ring 101.2x5.34
7	2.3821.103.2	1	lubricator m 10 p.1
8	2.0439.174.7	2	stud bolt m 18 p.1.5x70
9	2.1559.010.0	2	bushing 18.5x24x35
10	2.1599.030.2	2	snoulder 19x35x6
11	2.1475.107.2	2	washer 19.4x36
12	2.1019.060.2	2	special nut m 18 p.1.5
13	2.0433.419.7	2	stud bolt m 16 p.2-1.5x70
14	2.1559.030.0	2	bushing 16.5x22x35
15	2.1599.029.2	2	washer 17x30x6
16	2.1475.206.2	2	washer 16
17	2.1012.309.2	2	nut
18	2.1535.028.0	1	'o' ring 67x11
19	2.1599.825.0	1	snoulder 63x77x4

FLANGE FASTENERS

Fig.	Code	QTY	Name
Notes:			
[Explorer ³ 100 4WD -> 20001]			
100.6	2.1651.915.0	2	pin 12x35
100.7	2.0432.257.7	11	stud bolt m 12 p.1.75 - 1.25 x 30
100.8	2.1475.004.2	13	washer 12
100.9	2.1011.322.2	13	nut m 12 p.1.25
100.10	2.0432.259.7	2	stud bolt m 12 p.1.75-1.25x35
100.11	2.1579.147.2	2	spacer 12.5 x 22 x 3.0



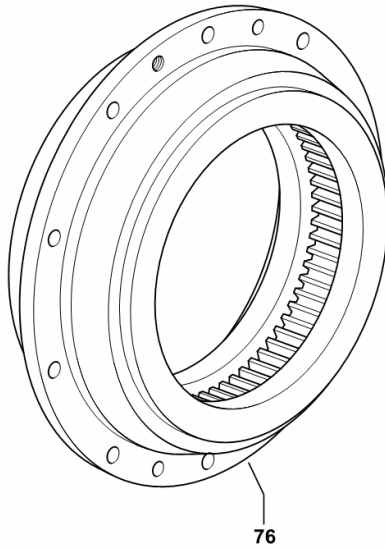
9_40543_05_0-B-001

4WD - FRONT REDUCTION UNIT FOR TYPES WITH BRAKES

Fig.	Code	QTY	Name
------	------	-----	------

Notes:[Explorer³ 100 4WD -> 20001]

76	0.011.0665.3	2	crown wheel
----	--------------	---	-------------

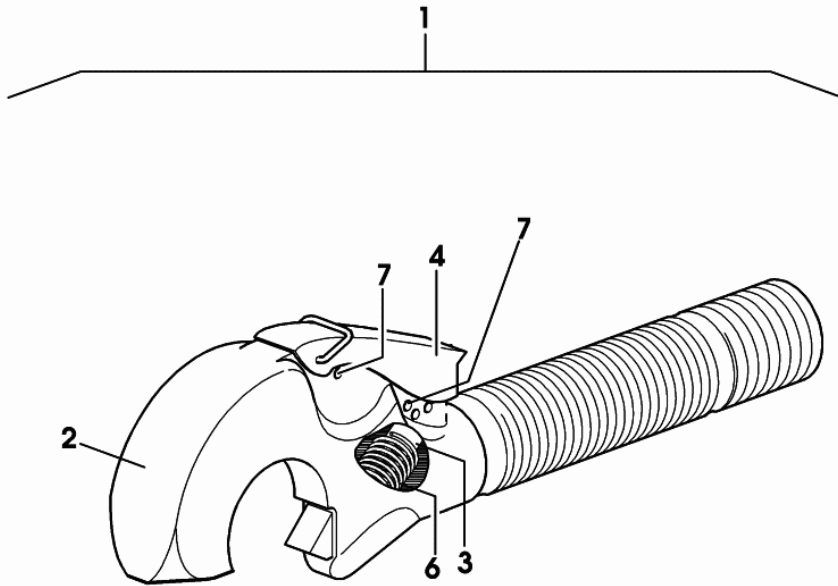


9_77843_02_0-B-001

Section: N0 - FRONT LIFT

ADJUSTABLE LIFT ROD PARTS

Fig.	Code	QTY	Name
1	0.013.2770.3	1	automatic hook dx/rh/re
2	0.000.0000.1	1	not serviceable
3	0.010.2787.1	1	pin
4	04323249	1	lever
6	0.010.2787.0	1	spring
7	0.009.4677.2	2	pin 6 x 28



0_013_2770_3

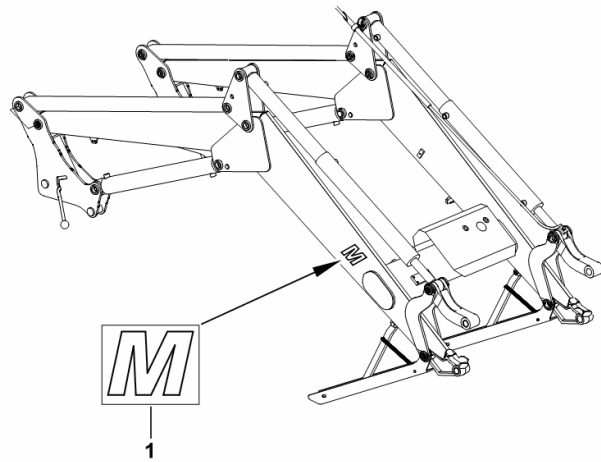
MODEL PLATE

Fig.	Code	QTY	Name
------	------	-----	------

Notes:

[Explorer³ 100 4WD -> 20001] 20149 <-

1	0.014.1870.0	2	plate
---	--------------	---	-------



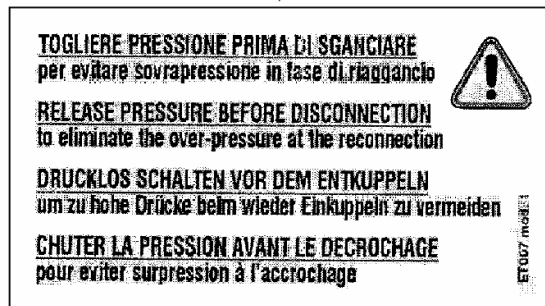
9_G4498_05_0-A-001

WARNING PLATE

Fig.	Code	QTY	Name
1	2.9939.236.0	1	plate

Notes:[Explorer³ 100 4WD -> 20001]

1



9_G4498_48_0-A-001

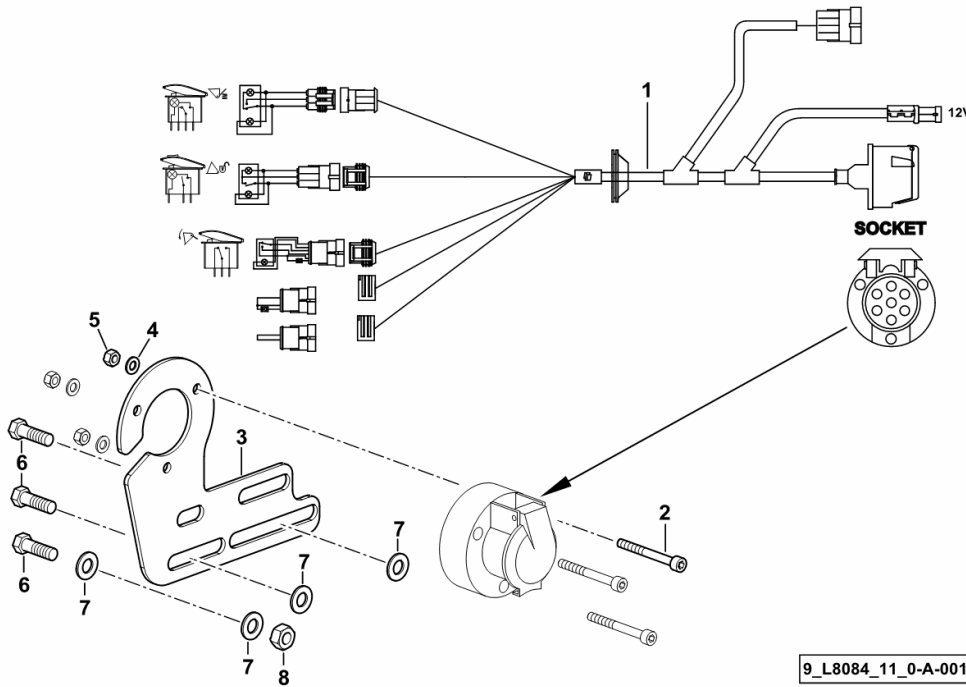
PROVISION FOR FRONT LOADER

Fig.	Code	QTY	Name
------	------	-----	------

Notes:

[Explorer³ 100 4WD -> 20001]

1	0.017.9311.4	1	electrical system ☞ 0.017.9311.4
2	2.0312.015.2	3	screw m 5 p.0.8x45
3	0.014.5183.0	1	bracket
4	2.1310.001.2	3	flat washer 5.3
5	2.1011.102.2	3	nut m 5 p.0.7
6	2.0112.209.2	3	screw m 8 p 1.25 x 25
7	2.1475.002.2	4	conical washer 8
8	2.1011.105.2	1	nut m 8 p.1.25

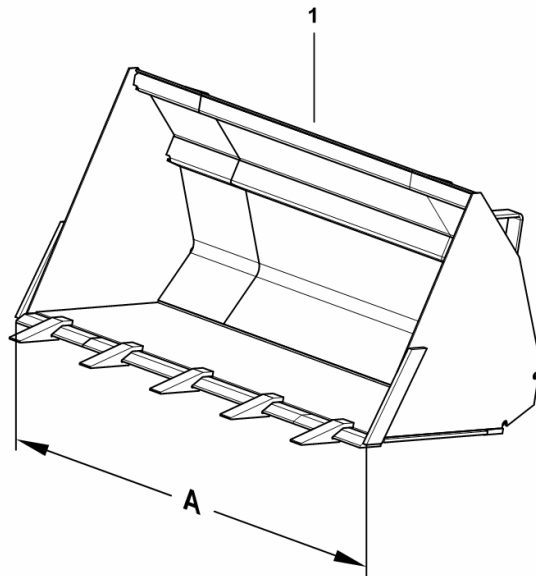


BUCKET EBWT 150 R

Fig.	Code	QTY	Name
------	------	-----	------

Notes:[Explorer³ 100 4WD -> 20001]

1	0.016.1611.4	1	bucket EBWT 150 R A = mm 1500
---	--------------	---	----------------------------------



9_18498_90_0-A-001

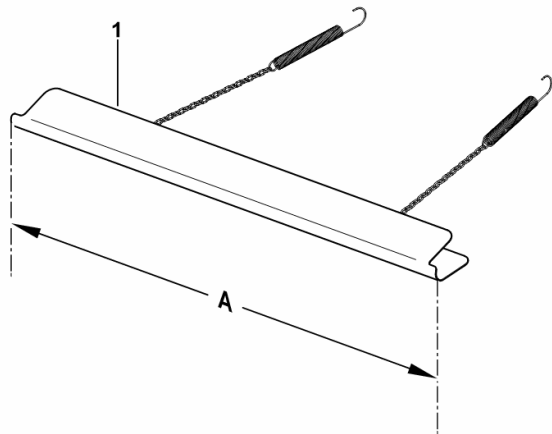
SHOVEL AND FORK PROTECTION A = mm 1510

Fig.	Code	QTY	Name
------	------	-----	------

Notes:

[Explorer³ 100 4WD -> 20001]

1	0.014.9824.3/10	1	guard A = mm 1510
---	-----------------	---	-------------------



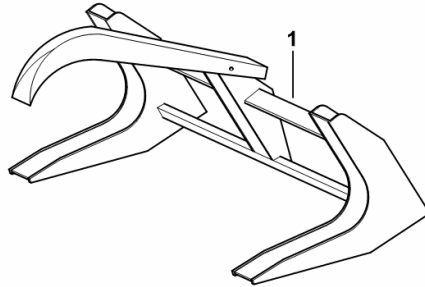
9_G4698_89_0-A-001

Section: P0 - FRONT LOADER
TRUNK FORK - STFH 104 N

Fig.	Code	QTY	Name
------	------	-----	------

Notes:[Explorer³ 100 4WD -> 20001]

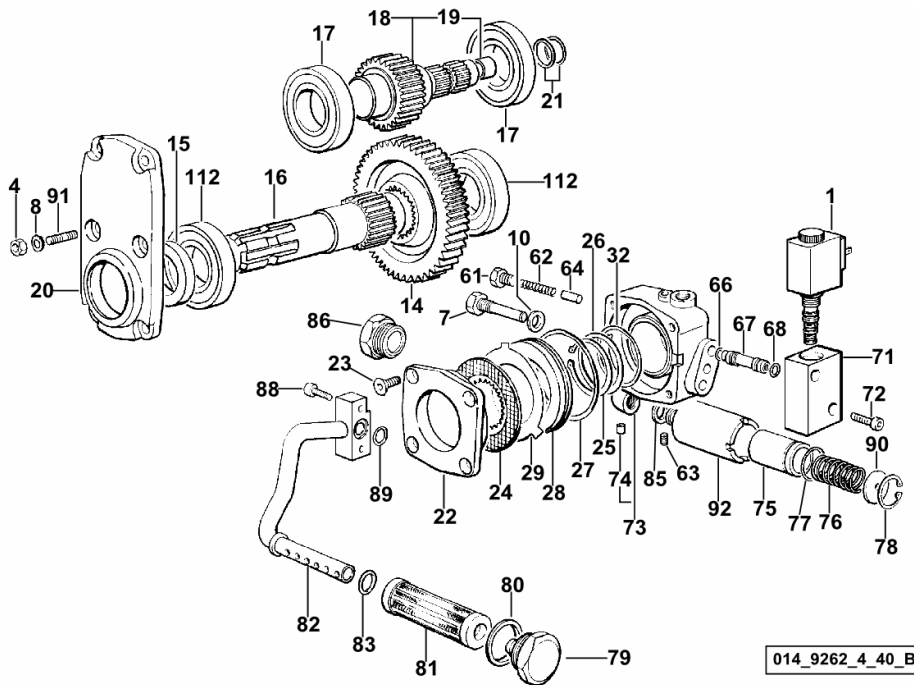
1	0.014.4931.4	1	fork-lift - STFH 104 N
---	--------------	---	------------------------



9_G4398_88_0-A-001

Section: M0 - FRONT PTO
P.T.O. FRONT

Fig.	Code	QTY	Name
1	2.3729.400.0/20	1	electro valve
4	2.1011.405.2	6	nut m 8 p.1
7	2.0119.154.2	2	screw m 12 p.1.75x58
8	2.1470.004.2	6	washer 8
10	2.1560.008.0	2	gasket 12.2 x 18
14	0.013.8804.0/10	1	gear Z = 41
15	2.1520.220.0	1	oil seal 40x60x10
16	0.007.5328.0/20	1	p.t.o.shaft
17	2.2040.012.0	2	ball bearing iso 40 bc 02
18	0.013.8802.3	1	shaft z = 18 z = 17
19	2.1559.023.0/10	1	bushing 15.8x19x20
20	0.007.5325.0/10	1	cover
21	2.1530.062.0	2	'o' ring 23.81 x 2.62
22	0.255.3926.0/10	1	cover
23	2.0342.305.2	4	screw m 8 p.1.25 x 20
24	0.014.0360.2	1	disc
25	2.1419.027.1	2	circlip 48
26	2.1599.416.0	1	snoulder 50x58x1
27	2.1532.505.0	1	'o' ring 77.50 x 2.62
28	0.255.3922.0/40	1	piston D 84
29	0.013.8983.0	1	disc
32	2.1539.067.0	1	'o' ring 44.12x2.72
61	2.3110.401.1	2	plug m 10 p.1x8
62	2.4019.321.0	2	spring 7.3x54.5x1.2
63	2.0599.061.0	1	grain m 6 x 6
64	0.241.8254.0/10	2	ferrule
66	2.1530.014.0	3	'o' ring 7.66 x 1.78
67	0.007.5340.0/10	3	tube
68	2.1530.019.0	3	'o' ring 9.25x1.78
71	0.007.5338.0/20	1	body
72	2.0312.112.2	2	screw m 6 p.1 x 35
73	0.007.5329.3/40	1	distributor
74	2.3199.179.0	2	plug
75	0.164.8275.0/10	1	piston
76	2.4019.174.1	1	spring 23.5x90x3.5
77	2.1530.072.0	1	'o' ring 26.70x1.78
78	2.1411.013.1	1	circlip 32
79	2.3199.182.2	1	plug
80	2.1560.027.0	1	gasket 38.3x44
81	0.9012.428.2	1	oil filter
82	0.007.5348.2/10	1	tube
83	2.1530.040.0	1	'o' ring 15.88x2.62
85	2.1560.010.0	1	gasket 14.2 x 20 x 1.5
86	2.3199.250.0	1	plug m 30 p.1



GEARBOX OIL COOLER PIPES

Fig.	Code	QTY	Name
------	------	-----	------

Notes:

[Explorer³ 100 2WD -> 20001] [Explorer³ 100 4WD -> 20001]

1	0.015.1369.3	1	tube
2	0.015.1368.3/10	1	tube
3	0.015.1367.3/10	1	tube
4	2.3249.148.2	1	pipe fitting m 18 - 1/16" JIC
5	2.0112.015.2	2	screw m 6 p.1x40
6	2.1310.002.2	2	washer 6.6, d125
9	2.3320.221.0	2	terminal Ø 20/20
10	0.014.0497.0	2	small plate
11	0.015.1914.3/10	1	bracket
12	2.1480.012.2	2	washer 6, d128
13	2.0312.102.2	2	screw m 6 p.1 x 12

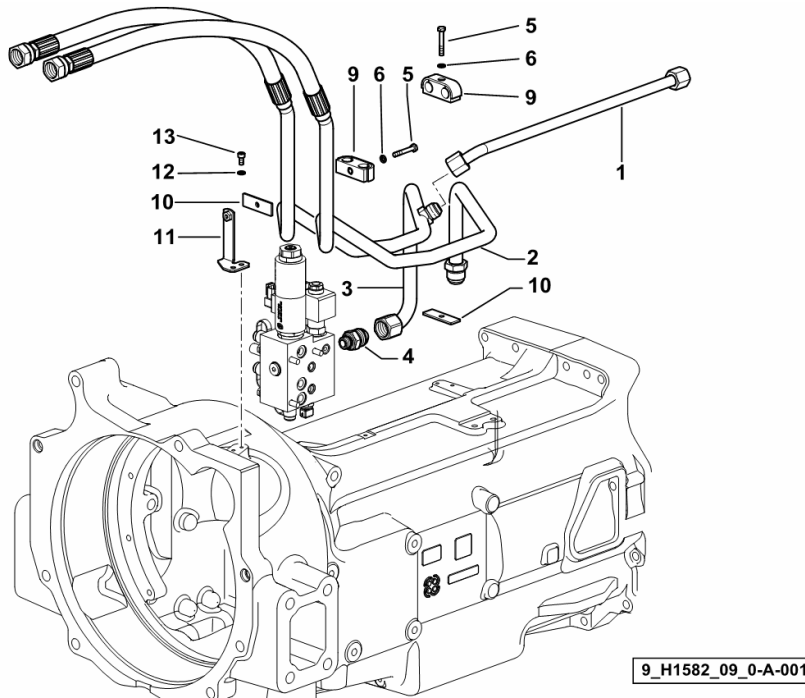
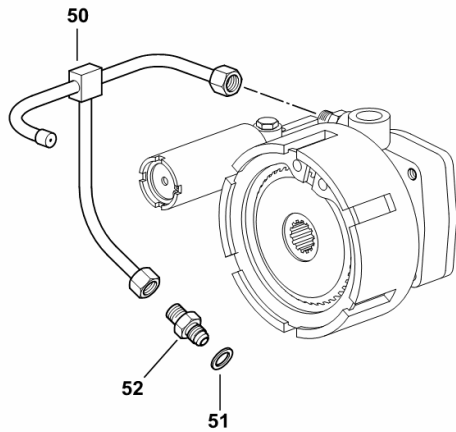


Fig.	Code	QTY	Name
------	------	-----	------

Notes:

[Explorer³ 100 2WD -> 20001] [Explorer³ 100 4WD -> 20001]

50	0.445.3953.2/10	1	tube
51	2.1560.008.0	1	gasket 12.2 x 18
52	2.3339.453.2	1	pipe fitting m 12 p.1.25-1/2"



9_54639_02_0-B-001

EXPLORER³ 100 -> 20001

Section: H0 - HYDRAULIC AND PNEUMATIC SYSTEM|

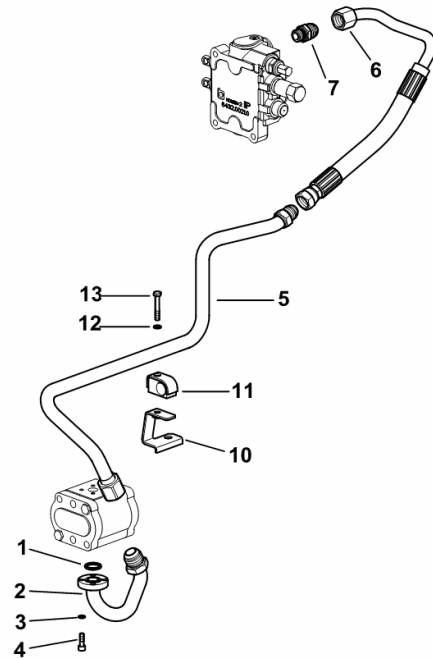
Ref.: H0.01.58 (2)

SYSTEM FROM HYDRAULIC PUMP TO 4-WAY DIRECTIONAL CONTROL VALVE

Fig.	Code	QTY	Name
------	------	-----	------

Notes:

- FOR TYPES WITHOUT HYDRAULIC TRAILER BRAKING [Explorer³ 100 2WD -> 20001] - FOR TYPES WITHOUT HYDRAULIC TRAILER BRAKING [Explorer³ 100 4WD -> 20001]



1	2.1531.052.0	1	'o' ring 20.29 x 2.62
2	0.015.1442.3	1	tube
3	2.1480.012.2	4	washer 6, d128
4	2.0312.106.2	4	screw m 6 p.1 x 20
5	0.015.1443.3/10	1	tube
6	0.014.9057.3	1	tube
7	2.3249.141.2	1	pipe fitting 7/8 JIC-M18
10	0.015.4754.3	1	bracket
11	2.3320.111.0	1	terminal
12	2.1470.002.2	1	washer 6, d128
13	2.0112.015.2	1	screw m 6 p.1x40

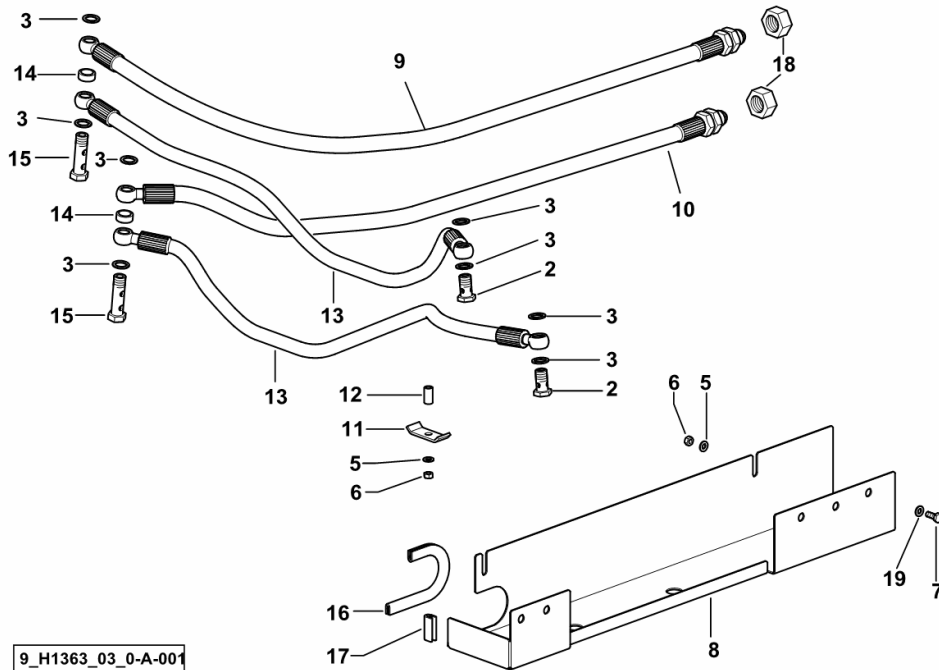
9_H1582_42_0-A-002

4WD - POWER STEERING

Fig.	Code	QTY	Name
------	------	-----	------

Notes:

[Explorer³ 100 4WD -> 20001]



2	2.3335.006.2	2	pipe union m 14 p.1.5x24
3	2.1560.010.0	8	gasket 14.2 x 20 x 1.5
5	2.1310.002.2	3	washer 6.6, d125
6	2.1011.103.2	3	nut m 6 p.1
7	2.0112.204.2	3	screw m 8 p.1.25x14
8	0.011.0313.0/30	1	shield
9	0.011.2929.3/20	1	tube dx/rh/re
10	0.011.2930.3/10	1	tube sx/lh/li
11	0.011.0326.0	1	square
12	2.1549.428.2	1	spacer 6.2x10.2x19.5
13	0.011.2936.3	2	tube mm 760
14	2.1569.190.0	2	gasket 14x20x8
15	2.3339.551.2/10	2	pipe union m 14 p.1.5x51
16	0.011.5369.0/10	1	gasket mm 170
17	0.010.1398.0/10	1	gasket mm 30
18	2.1099.077.2	2	special nut 3/4" - 16
19	2.1310.004.2	3	flat washer 8.5

9_H1363_03_0-A-001

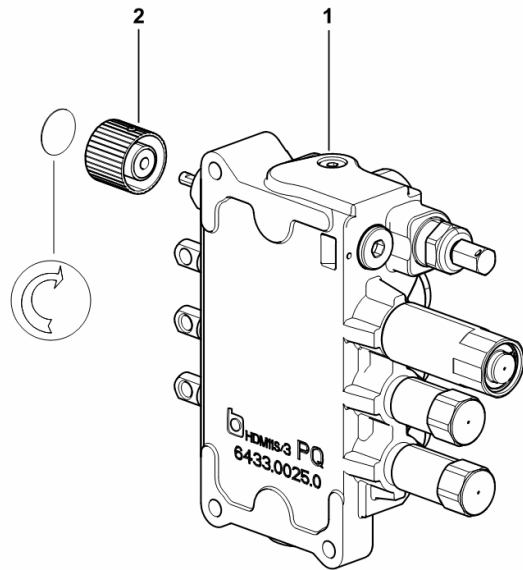
6-WAY AUXILIARY DISTRIBUTOR

Fig.	Code	QTY	Name
------	------	-----	------

Notes:

[Explorer³ 100 2WD -> 20001] [Explorer³ 100 4WD -> 20001]

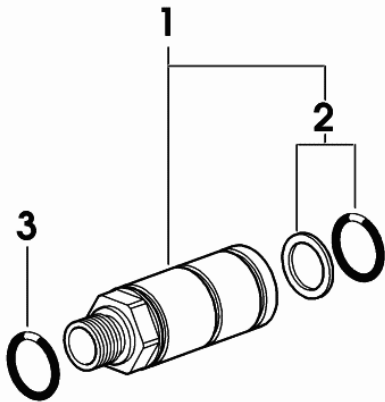
1	2.3729.720.0/20	1	distributor ☞ 2.3729.720.0/20
2	0.010.9864.0	1	knob



9_L8088_25_0-A-001

ENGAGEMENT

Fig.	Code	QTY	Name
1	0.010.8473.0	1	coupling m 22 p.1.5 / Ø 38
2	04438079	1	seal ring kit
3	0.900.0126.3	1	'o' ring



010_8473_0

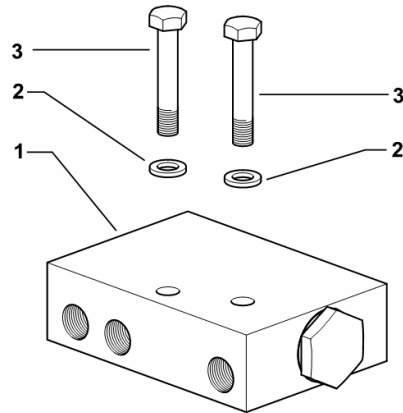
BLAKES BLOCK

Fig.	Code	QTY	Name
------	------	-----	------

Notes:

- FOR TYPES WITH HYDRAULIC TRAILER BRAKING (ITALY) [Explorer³ 100 2WD -> 20001] - FOR TYPES WITH HYDRAULIC TRAILER BRAKING (FRANCE) [Explorer³ 100 2WD -> 20001] - FOR TYPES WITH HYDRAULIC TRAILER BRAKING (ITALY) [Explorer³ 100 4WD -> 20001] - FOR TYPES WITH HYDRAULIC TRAILER BRAKING (FRANCE) [Explorer³ 100 4WD -> 20001]

1	0.015.8158.4	1	small block
2	2.1470.002.2	2	washer 6, d128
3	2.0112.013.2	2	screw m 6 p.1 x 35



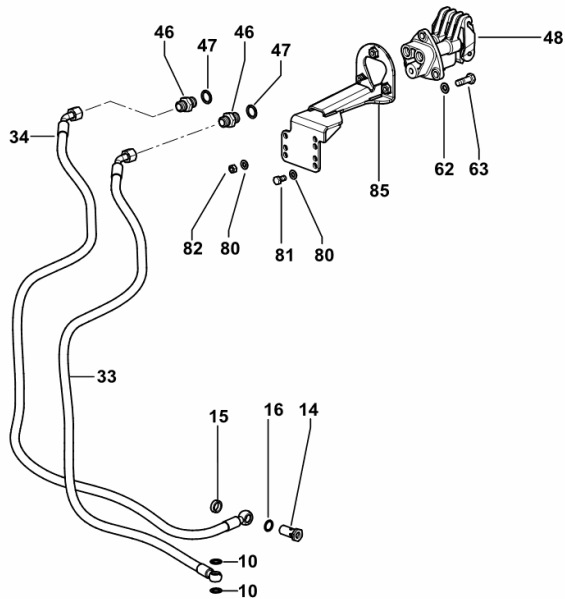
9_J1589_04_0-A-001

AIR BRAKING FOR 'ITALY' TRAILER

Fig.	Code	QTY	Name
------	------	-----	------

Notes:

[Explorer³ 100 2WD -> 20001] [Explorer³ 100 4WD -> 20001]

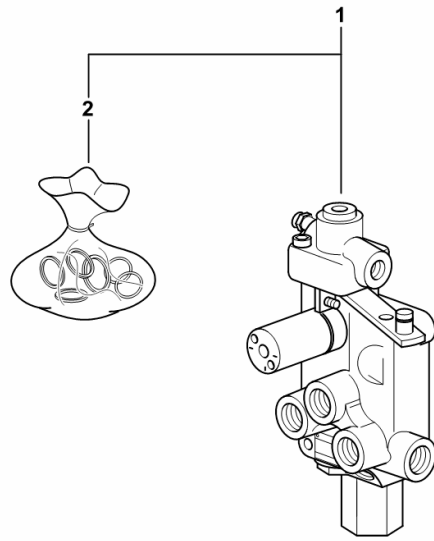


9_H1589_20_0-C-002

10	2.1560.017.0	5	gasket 22.2 x 27
14	2.3335.054.2	1	pipe union m 16 p.1.5
15	2.1569.154.0	1	gasket 16.2x22x6
16	2.1560.011.0	4	gasket 16.2x20
33	0.016.1488.3	1	tube
34	0.016.3931.3	1	tube
46	2.3339.735.2/10	2	pipe union
47	2.1560.014.0	2	gasket 18.2 x 24 x 1.5
48	0.010.4582.4	1	joint CUNA ☞ 0.010.4582.4
62	2.1311.007.2	6	flat washer 10
63	2.0112.311.2	3	screw m 10 p.1.5 x 30
80	2.1310.004.2	4	flat washer 8.5
81	2.0112.205.2	3	screw m 8 p.1.25 x 16
82	2.1011.105.2	1	nut m 8 p.1.25
85	0.015.9717.3/10	1	bracket

TRAILER BRAKE VALVE

Fig.	Code	QTY	Name
1	2.3719.550.0/50	1	valve
2	0.010.3493.1	1	seal ring kit
3	0.900.0040.2	1	spring
4	0.900.0040.3	1	small block



2_3719_810_0_20

EXPLORER³ 100 -> 20001

E0 - REAR AXLE

REAR AXLE

REAR AXLE.....	E0.01.1 (1)
REAR AXLE CROWN WHEEL.....	E0.01.3 (1)
REAR AXLE - MOUNTINGS.....	E0.01.6 (1)

REAR DIFFERENTIAL / HALF-SHAFTS

4-PLANET PINION DIFFERENTIAL.....	E0.02.0 (1)
DIFFERENTIAL LOCK CONTROL - ELECTROHYDRAUDLIC.....	E0.02.4 (1)
REAR REDUCTION GEARS AND AXLE SHAFTS.....	E0.02.7 (1)
HALF AXLES.....	E0.02.8 (1)

REAR BRAKES

REAR BRAKES.....	E0.03.1 (2)
REAR BRAKES.....	E0.03.4 (1)

EXPLORER³ 100 -> 20001

R0 - REAR LIFT

LIFT COVER

S.A.C. CASE.....	R0.01.0 (1)
LIFT FIXING COMPONENTS.....	R0.01.3 (1)

LIFT ASSEMBLY

LIFTING.....	R0.02.1 (1)
HYDRAULIC CYLINDERS.....	R0.02.4 (1)
CYLINDER SUPPORT BRACKETS.....	R0.02.5 (1)

LIFT CONTROL VALVE

REGULATING DISTRIBUTOR.....	R0.03.0 (1)
REGULATING DISTRIBUTOR.....	R0.03.1 (1)
DISTRIBUTOR.....	0.9087.420.4/30.A

IN-CAB CONTROLS

INTERNAL AND EXTERNAL CONTROLS.....	R0.04.1 (1)
INTERNAL AND EXTERNAL CONTROLS.....	R0.04.2 (1)
INTERNAL AND EXTERNAL CONTROLS.....	R0.04.5 (1)

SENSOR

SENSITIVE ELEMENTS.....	R0.05.1 (1)
-------------------------	-------------

THREE-POINT LINKAGE - LINK ARMS

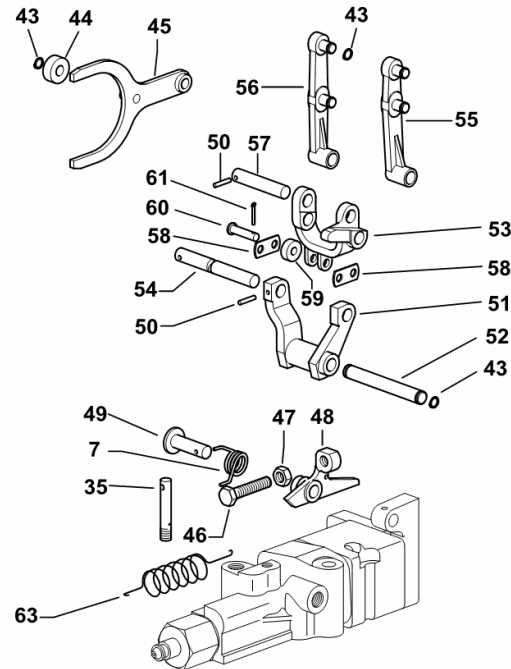
3 POINT HITCH.....	R0.06.1 (1)
3-POINT LINKAGE - ADJUSTABLE MECHANICAL TIE ROD.....	R0.06.3 (1)
3-POINT LINKAGE - ADJUSTABLE MECHANICAL TIE ROD.....	R0.06.3 (2)
3-POINT LINKAGE - ADJUSTABLE MECHANICAL TIE ROD dx/rh/re.....	R0.06.6 (1)
3 POINT HITCH.....	R0.06.10 (1)
3 POINT HITCH.....	R0.06.12 (1)
3-POINT LINKAGE WITH AUTOMATIC COUPLERS A = mm 34.....	R0.06.17 (1)
3-POINT LINKAGE WITH AUTOMATIC COUPLERS.....	R0.06.18 (1)
THREE-POINT HITCH - MANUAL LATERAL STABILIZERS.....	R0.06.20 (1)
AUTOMATIC LATERAL STABILIZERS.....	R0.06.21 (2)
TOWING BAR.....	R0.06.22 (1)
3-POINT HITCH - ADJUSTABLE RH RODS.....	0.010.1959.3.A
LINKAGE.....	0.014.1405.3.A
TOWING HITCH.....	0.014.1420.3.A
STABILIZER.....	0.015.4194.4/10.A

INTERNAL AND EXTERNAL CONTROLS

Fig.	Code	QTY	Name
------	------	-----	------

Notes:

[Explorer³ 100 2WD -> 20001] 20029 <- [Explorer³ 100 4WD -> 20001] 20029 <-



W9_40559_31_0-B-001

7	2.4099.032.1/10	1	spring
35	0.9087.460.0	1	pin
43	2.1430.008.7	5	circlip 7
44	0.001.3702.0	1	roller
45	0.9131.437.3	1	fork
46	2.0119.019.1	1	screw m 8 x 40
47	2.1011.405.2	1	nut m 8 p.1
48	0.9107.430.0/10	1	lever
49	0.9107.451.0	1	pin
50	2.1630.208.0	3	roll pin 3x16
51	0.9087.429.0	1	lever
52	0.9087.461.0	1	pin
53	0.9107.438.0	1	lever
54	0.9087.462.0	1	pin
55	0.9011.436.3	1	lever
56	0.9011.435.3/10	1	lever
57	0.9000.459.0	1	pin
58	0.9087.454.0	2	small plate
59	0.9087.459.0	1	roller
60	2.1671.105.2	1	pin
61	2.1690.206.2	1	split pin 2x16
63	2.4049.115.1/10	1	spring

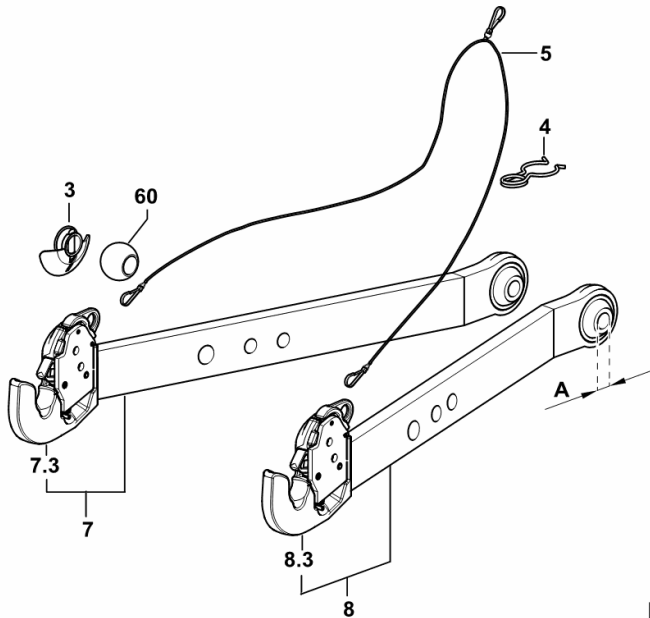
3-POINT LINKAGE WITH AUTOMATIC COUPLERS A = mm 34

Fig.	Code	QTY	Name
------	------	-----	------

Notes:

[Explorer³ 100 2WD -> 20001] [Explorer³ 100 4WD -> 20001]

3	0.016.7833.3	2	pin 2 cat.
4	0.760.2262.0	2	spring
5	0.760.2258.3	1	cable
7	0.014.1442.3/20	1	left hand arm
7.3	0.014.1420.3	1	automatic hook 2 cat.-CBM- ☞ 0.014.1420.3
8	0.014.1443.3/20	1	right hand arm
8.3	0.014.1420.3	1	automatic hook 2 cat.-CBM- ☞ 0.014.1420.3
60	0.760.5952.0	2	cap Ø 56



9_77858_04_0-A-001

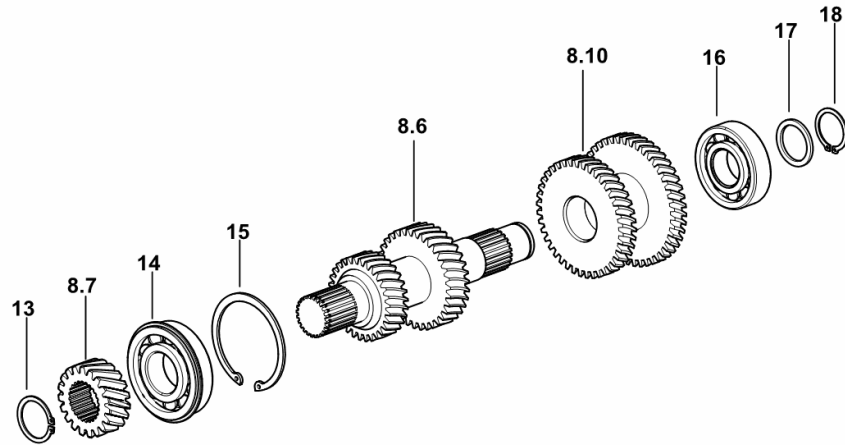
5-SPEED GEARBOX INTERNAL CONTROLS.....	D0.10.7 (2)
5-SPEED GEARBOX INTERNAL CONTROLS.....	D0.10.7 (3)
5-SPEED GEARBOX INTERNAL CONTROLS.....	D0.10.9 (1)
5-SPEED GEARBOX INTERNAL CONTROLS.....	D0.10.9 (2)
REDUCTION GEAR CONTROL.....	D0.10.14 (1)
BRACKET.....	D0.10.15 (1)
LOW SPEED RANGES	
BEVEL WHEEL GEAR - 40Km/h.....	D0.11.1 (1)
BEVEL DRIVE PINION BEARING.....	D0.11.4 (1)
SPEED RANGE REDUCTION GEAR UNIT.....	D0.11.8 (1)
COMPLETION FOR 4 SPEED RANGE REDUCTION GEAR UNIT.....	D0.11.13 (1)
SPEED RANGE REDUCTION GEAR SHAFT.....	D0.11.14 (1)
SPEED RANGE REDUCTION GEAR SHAFT.....	D0.11.15 (1)
BEARING FOR RANGE GEARBOX SHAFT.....	D0.11.16 (1)
HYDRAULIC REAR PTO CLUTCH	
P.T.O. - HYDRAULIC CLUTCH.....	D0.12.1 (1)
P.T.O. - CLUTCH-PARTS.....	0.012.7103.4/20.A
P.T.O. - CLUTCH-PARTS.....	0.012.7103.4/50.A
HYDRAULIC PUMP DRIVE	
P.T.O. - PUMP CONTROL.....	D0.13.3 (1)
OIL TRANSFER PUMP ASSY.....	D0.13.4 (1)
PTO/GROUNDSPPEED DRIVE	
P.T.O. - 2 SPEED TYPE.....	D0.14.2 (2)
4 SPEED P.T.O.....	D0.14.4 (1)
4 SPEED P.T.O.....	D0.14.5 (1)
PTO - 2-SPEED WITH INSERTED END SHAFT.....	D0.14.10 (1)
PTO - 2-SPEED WITH INSERTED END SHAFT.....	D0.14.11 (1)
P.T.O - 4-SPEED WITH INSERTED END SHAFT.....	D0.14.14 (1)
P.T.O - 4-SPEED WITH INSERTED END SHAFT.....	D0.14.15 (1)
PTO - SEAL RING FOR INSERTED END SHAFT - STANDARD VERSION.....	D0.14.16 (1)
P.T.O. - SYNCHRONIZED.....	D0.14.17 (1)
P.T.O. - SYNCHRONIZED.....	D0.14.21 (1)
P.T.O. - SYNCHRONIZED - WITH STANDARD SEALS.....	D0.14.23 (1)
P.T.O. SHAFT PROTECTOR REAR.....	D0.14.24 (1)
P.T.O. SHAFT PROTECTOR REAR.....	D0.14.26 (1)
P.T.O. SHAFT PROTECTOR REAR.....	D0.14.27 (1)
P.T.O. SHAFT PROTECTOR REAR.....	D0.14.28 (1)
4WD ENGAGEMENT POWER TAKE-OFF - 4WD PARKING BRAKE	
4WD - ENGAGEMENT CONTROL.....	D0.15.1 (1)
4WD - ELECTROHYDRAULIC ENGAGEMENT CONTROL.....	D0.15.2 (2)
INDEPENDENT HAND BRAKE.....	D0.15.4 (1)

5-SPEED GEARBOX PRIMARY SHAFT

Fig.	Code	QTY	Name
------	------	-----	------

Notes:[Explorer³ 100 2WD -> 20001] [Explorer³ 100 4WD -> 20001]

8.6	0.009.9599.0/50	1	main shaft
8.7	0.011.3867.0	1	gear Z = 19
8.10	0.013.1425.0	1	gear Z = 40 / Z = 44
13	2.1410.016.1	1	circlip 40
14	2.2999.367.0	1	bearing 40 x 90 x 23
15	2.1411.036.1	1	circlip 90
16	2.2999.235.0	1	bearing 35 x 80 x 21 (-> 20004)
17	2.1599.874.0	1	washer 35 x 45 x 3.0
18	2.1410.014.1	1	circlip 35



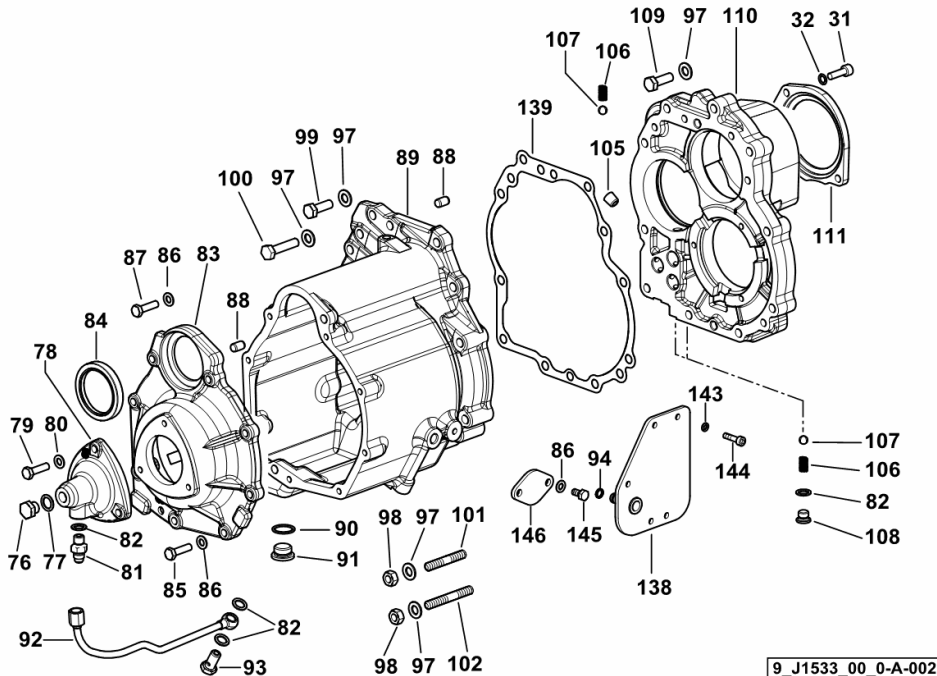
9_H1533_01_0-C-002

5-SPEED GEARBOX INTERNAL FLANGES

Fig.	Code	QTY	Name
------	------	-----	------

Notes:

- WITH HI - LO [Explorer³ 100 2WD -> 20001] -> 20158 - WITH HI - LO [Explorer³ 100 4WD -> 20001] -> 20158



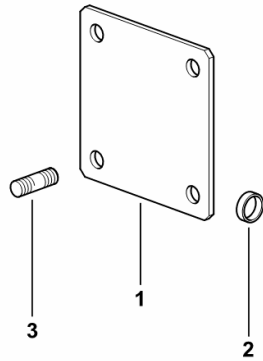
31	2.0312.208.2	6	screw m 8 p.1.25 x 25
32	2.1480.014.2	6	washer 8
76	2.3110.403.1	1	plug m 14 p.1.5
77	2.1560.010.0	1	gasket 14.2 x 20 x 1.5
78	0.007.3417.0/10	1	manifold
79	2.0112.209.2	3	screw m 8 p 1.25 x 25
80	2.1470.004.2	5	washer 8
81	2.3339.453.2	1	pipe fitting m 12 p.1.25-1/2"
82	2.1560.008.0	5	gasket 12.2 x 18
83	0.014.9205.0	1	cover
84	2.1520.329.0	1	oil seal 55x72x10
85	2.0112.211.2	6	screw m 8 p.1.25 x 30
86	2.1475.002.2	10	conical washer 8
87	2.0112.213.2	4	screw m 8 p.1.25 x 35
88	2.1651.807.0	4	pin 10 x 16
89	0.014.9206.0/40	1	box
90	2.1560.017.0	1	gasket 22.2 x 27
91	2.3199.001.2	1	plug 1/2" gas
92	0.007.3544.3	1	tube
93	2.3332.003.1	1	pipe union m 12 p.1.25
94	2.1530.014.0	1	'o' ring 7.66 x 1.78
97	2.1475.003.2	15	washer 10
98	2.1011.421.2	5	nut m 10 p.1.25
99	2.0112.311.2	4	screw m 10 p.1.5 x 30
100	2.0112.321.2	4	screw m 10 p.1.5 x 60
101	2.0432.165.7	1	stud bolt m 10 p.1.5-1.25x50
102	2.0432.171.7	4	stud bolt m 10 p.1.5-1.25x80
105	2.3131.001.4	1	plug m 12 p.1.5
106	2.4019.622.1	3	spring 6.3 x 9.5 x 1.6 x 22.4
107	2.2999.156.0	4	ball Ø 10
108	2.3199.164.2/20	2	plug m 12 p.1.5
109	2.0112.327.2	2	screw m 10 p.1.5 x 90
110	0.015.0087.0/40	1	flange
111	0.014.8340.0/10	1	cover
138	0.016.8966.2	1	cover
139	0.015.6286.0	1	gasket
143	2.1480.012.2	2	washer 6, d128
144	2.0312.104.2	5	screw m 6 p.1 x 16
145	2.0112.205.2	2	screw m 8 p.1.25 x 16
146	0.009.3446.0/10	1	flange

COVER FOR TYPES WITHOUT SYNCHRO PTO

Fig.	Code	QTY	Name
------	------	-----	------

Notes:[Explorer³ 100 2WD -> 20001] [Explorer³ 100 4WD -> 20001]

1	0.255.3131.0/10	1	flange
2	2.3171.007.4	1	plug Ø 18
3	2.0432.155.7	4	stud bolt m 10 p.1.5 / p. 1.25 x 25



9_40536_01_0-A-001

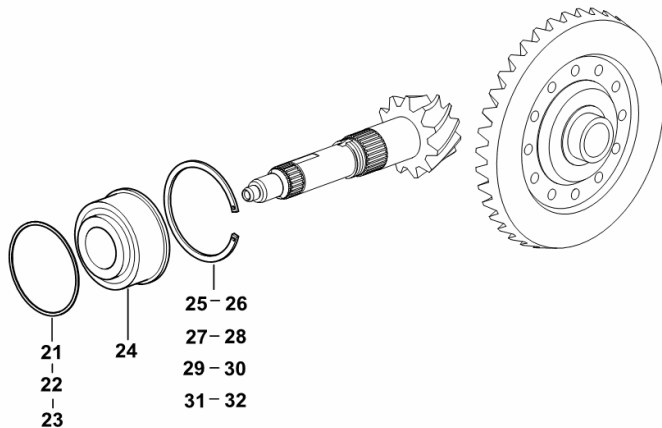
BEVEL DRIVE PINION BEARING

Fig.	Code	QTY	Name
------	------	-----	------

Notes:

[Explorer³ 100 2WD -> 20001] [Explorer³ 100 4WD -> 20001]

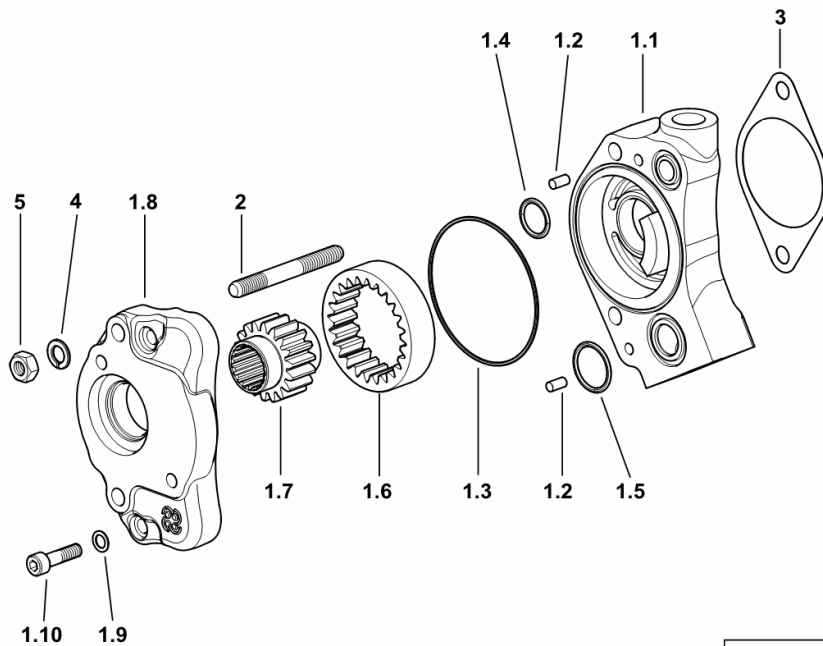
21	2.1589.167.0	1	snoulder 105 x 112 x 0.15
22	2.1589.168.0	1	snoulder 105 x 112 x 0.1
23	2.1589.169.0	1	snoulder 105 x 112 x 0.5
24	2.2999.502.0/10	1	bearing
25	2.1499.061.1	0.12	circlip 120x3.4
26	2.1499.062.1	0.12	circlip 120x3.5
27	2.1499.063.1	0.12	circlip 120x3.6
28	2.1499.064.1	0.12 <td circlip 120x3.7	
29	2.1499.065.1	0.12	circlip 120x3.8
30	2.1499.066.1	0.12	circlip 120x3.9
31	2.1499.067.1	0.12	circlip 120x4
32	2.1499.068.1	0.12	circlip 120x4.1



9_B8635_00_0-B-001

Section: D0 - TRANSMISSION
OIL TRANSFER PUMP ASSY.

Fig.	Code	QTY	Name
------	------	-----	------

Notes:[Explorer³ 100 2WD -> 20001] [Explorer³ 100 4WD -> 20001]

1.1	0.015.1087.0/20	1	pump casing
1.2	2.1659.525.0	2	pin
1.3	2.1532.510.0	1	'o' ring 88.62x1.78
1.4	2.1531.052.0	1	'o' ring 20.29 x 2.62
1.5	2.1531.066.0	1	'o' ring 25.07x2.62
1.6	0.015.1093.0/10	1	crown wheel
1.7	0.015.1092.0/10	1	gear
1.8	0.015.1068.0/20	1	flange
1.9	2.1480.014.2	2	washer 8
1.10	2.0312.210.2	2	screw m 8 p 1.25 x 30
2	2.0422.320.7	2	stud bolt m 10 p 1.5 x 15 / m 10 x 75
3	0.255.3953.0/10	1	gasket
4	2.1474.010.2	2	washer 10
5	2.1011.106.2	2	nut m 10 p.1.5

9_H1582_03_0-A-001

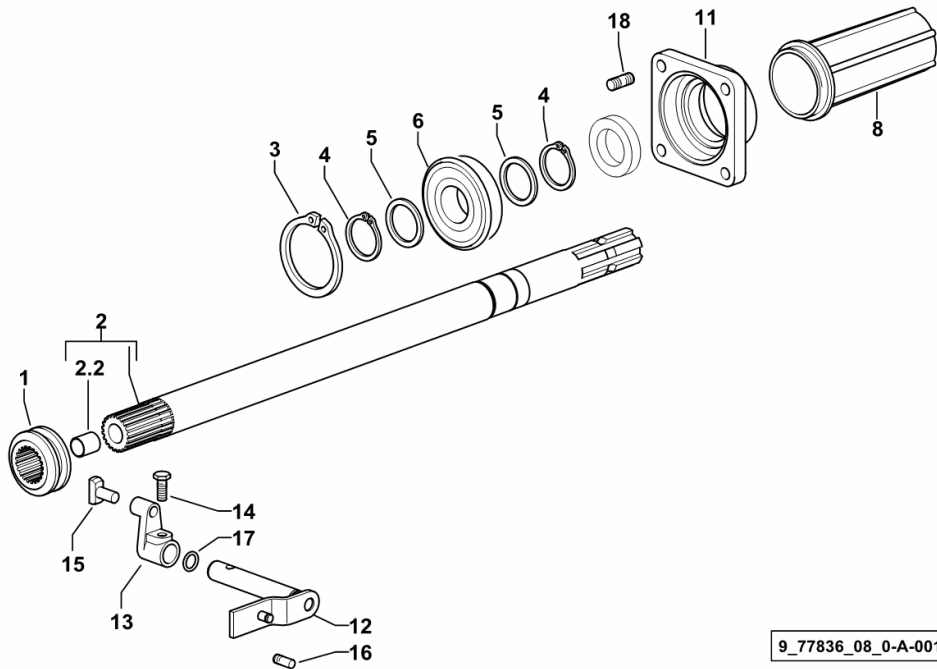
Section: D0 - TRANSMISSION
P.T.O. - SYNCHRONIZED

Fig.	Code	QTY	Name
------	------	-----	------

Notes:

- EXPORT U.S.A. [Explorer³ 100 2WD -> 20001] - EXPORT U.S.A. [Explorer³ 100 4WD -> 20001]

1	0.255.3469.0	1	sleeve
2	0.011.0790.3	1	p.t.o.shaft mm 613
2.2	2.1559.023.0/10	1	bushing 15.8x19x20
3	2.1411.032.1	1	circlip 80 x 2.5
4	2.1410.014.1	2	circlip 35
5	2.1599.874.0	2	washer 35 x 45 x 3.0
6	2.2060.011.0	1	ball bearing 35 x 80 x 21
8	0.011.0788.0	1	guard
11	0.255.3150.0/20	1	cover
12	0.255.3468.2/20	1	lever
13	0.255.3470.0	1	lever
14	2.0399.019.1	1	screw m 8 p.1 x 16
15	0.001.5945.0/10	1	shoe
16	2.0439.002.1	2	stud bolt m 8 p.1.25 x 20
17	2.1530.033.0	1	'o' ring 13.10x2.62
18	2.0432.163.7	4	stud bolt m 10 p.1.5 / p.1.25 x 45



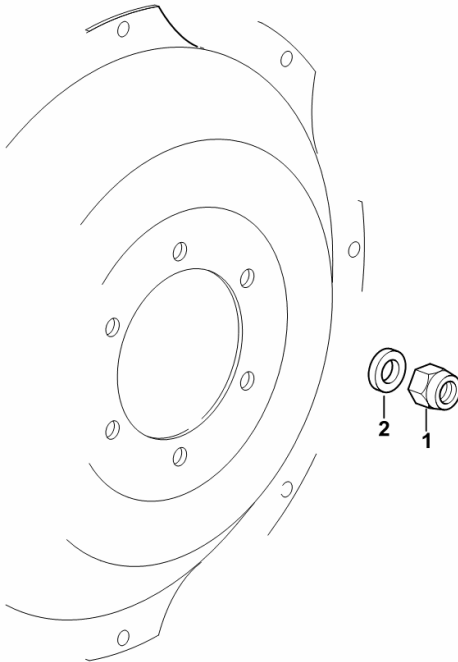
Section: S0 - WHEELS

2WD - FRONT WHEEL MOUNTING

Fig.	Code	QTY	Name
------	------	-----	------

Notes:[Explorer³ 100 2WD -> 20001]

1	2.1019.176.6	12	nut m 20 p.1.5
2	2.1310.013.2	12	flat washer 21x37



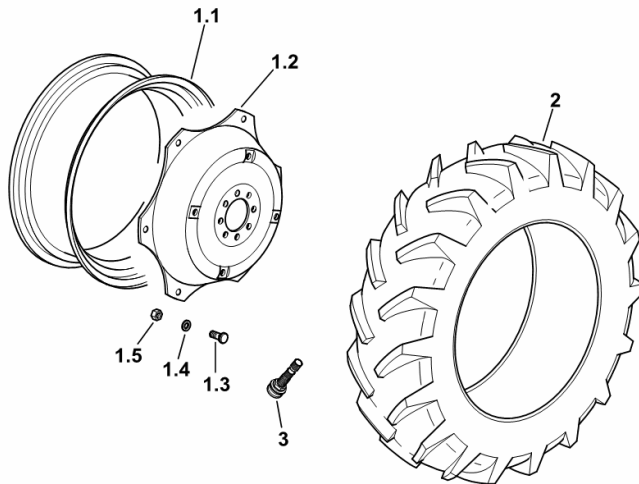
9_40555_01_0-A-001

WHEELS 280/85R28"(11.2R28")

Fig.	Code	QTY	Name
------	------	-----	------

Notes:[Explorer³ 100 4WD -> 20001]

1.1	0.012.3013.3	1	rim W 10x28" C/ST.
1.2	0.255.5559.0/20	1	rim center flange 28"
1.3	2.0399.030.6	6	screw m 18 p.1.5 x 45
1.4	2.1499.018.6	6	conical washer 18 x 35.5
1.5	2.1011.310.6	6	nut m 18 p.1.5
2	2.4811.059.0	2	tyre 280/85R28"(11.2R28")
3	0.012.6364.0	2	valve



9_L1455_20_0-A-001

CLICK HERE TO **DOWNLOAD** THE COMPLETE MANUAL

- Thank you very much for reading the preview of the manual.
- You can download the complete manual from: www.heydownloads.com by clicking the link below



- Please note: If there is no response to CLICKING the link, please download this PDF first and then click on it.

CLICK HERE TO **DOWNLOAD** THE COMPLETE MANUAL