

DORADO F 75 -> 6001

V0 - BALLAST, TOWING HITCHES

FRONT HITCHES

FRONT TOWING HITCH..... V0.01.0 (1)

REAR HITCHES

SPACER FOR TYPES WITH 2-SPEED P.T.O. WITH INSERTED END SHAFTS 540-750..... V0.02.0 (1)

SEPARATOR..... V0.02.1 (1)

SUPPORTS..... V0.02.2 (1)

SUPPORTS..... V0.02.3 (1)

PIN FOR REAR TOW HOOK..... V0.02.4 (1)

REAR TOWING HITCH..... V0.02.5 (1)

REAR SWINGING TOWING-HITCH..... V0.02.7 (1)

REAR TOWING HITCH BRACKET..... V0.02.8 (1)

REAR TOWING HITCH BRACKET..... V0.02.9 (1)

REAR TOWING HITCH CAT. " D "..... V0.02.10 (2)

REAR TOWING HITCH CAT. " D2 "..... V0.02.11 (1)

REAR TOWING HITCH CAT. " C "..... V0.02.12 (2)

REAR TOWING HITCH CEE..... V0.02.13 (2)

AUTOMATIC REAR TOWING HITCH CEE Ø 31..... V0.02.14 (1)

AUTOMATIC REAR TOWING HITCH CEE Ø 31..... V0.02.14 (2)

REAR TOWING HITCH CEE..... V0.02.15 (1)

REAR TOWING HITCH CEE..... V0.02.16 (1)

REAR TOWING HITCH CAT: "C"..... 0.014.4450.3.A

REAR TOWING HITCH CAT: "D"..... 0.014.4451.3.A

DRAWBAR COUPLING CAT: "D2"..... 0.014.4452.3/10.A

DRAWBAR COUPLING..... 0.014.4453.3/10.A

DRAWBAR COUPLING JH..... 0.014.4457.3.A

SLIDE..... 0.014.8203.3/20.A

DRAWBAR COUPLING Ø 31, kpl..... 0.014.8208.3.A

CHASSIS..... 0.014.8233.3.A

DRAWBAR COUPLING Ø 31, kpl..... 0.015.5754.3.A

SPACER FOR TYPES WITH PTO WITH INTERCHANGEABLE OUTPUT SHAFTS - 2 -SPEED + GROUNDSP. AND 3- SPEED..... V0.02.20000 (1)

FRONT BALLAST WEIGHTS

FRONT WEIGHT CARRIER..... V0.03.2 (1)

FRONT BALLAST KG. 70..... V0.03.4 (1)

FRONT BALLAST Kg 80..... V0.03.5 (1)

FRONT BALLAST Kg 160..... V0.03.6 (1)

FRONT BALLAST KG. 250..... V0.03.7 (1)

BALLAST LOCK BAR mm 30x780..... V0.03.8 (1)

CLICK HERE TO **DOWNLOAD** THE COMPLETE MANUAL

- Thank you very much for reading the preview of the manual.
- You can download the complete manual from: www.heydownloads.com by clicking the link below



- Please note: If there is no response to CLICKING the link, please download this PDF first and then click on it.

CLICK HERE TO **DOWNLOAD** THE COMPLETE MANUAL

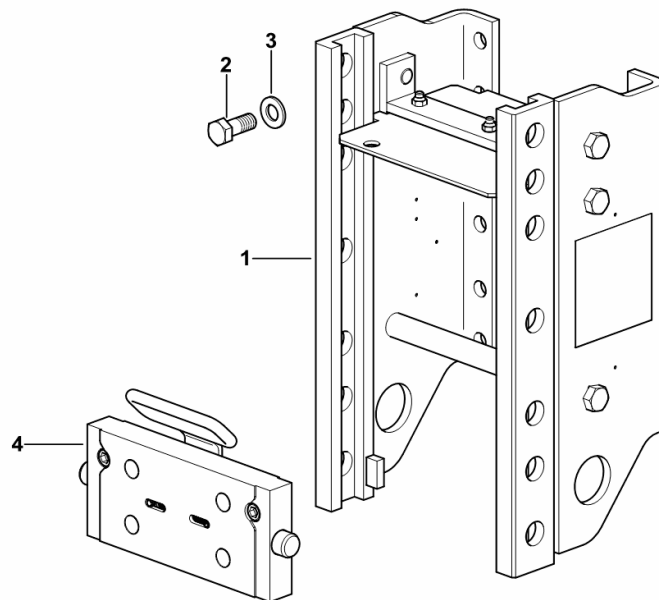
REAR TOWING HITCH BRACKET

Fig.	Code	QTY	Name
------	------	-----	------

Notes:

[DORADO F 75 -> 6001] -> 6062

1	0.015.5748.3/10	1	chassis frame V.ORLANDI
2	2.0113.615.2	12	screw m 16 p.2 x 40
3	2.1475.006.2	12	washer 16
4	0.015.5751.3/10	1	plate V.ORLANDI



9_H2831_70_0-A-001

REAR TOWING HITCH CAT: "D"

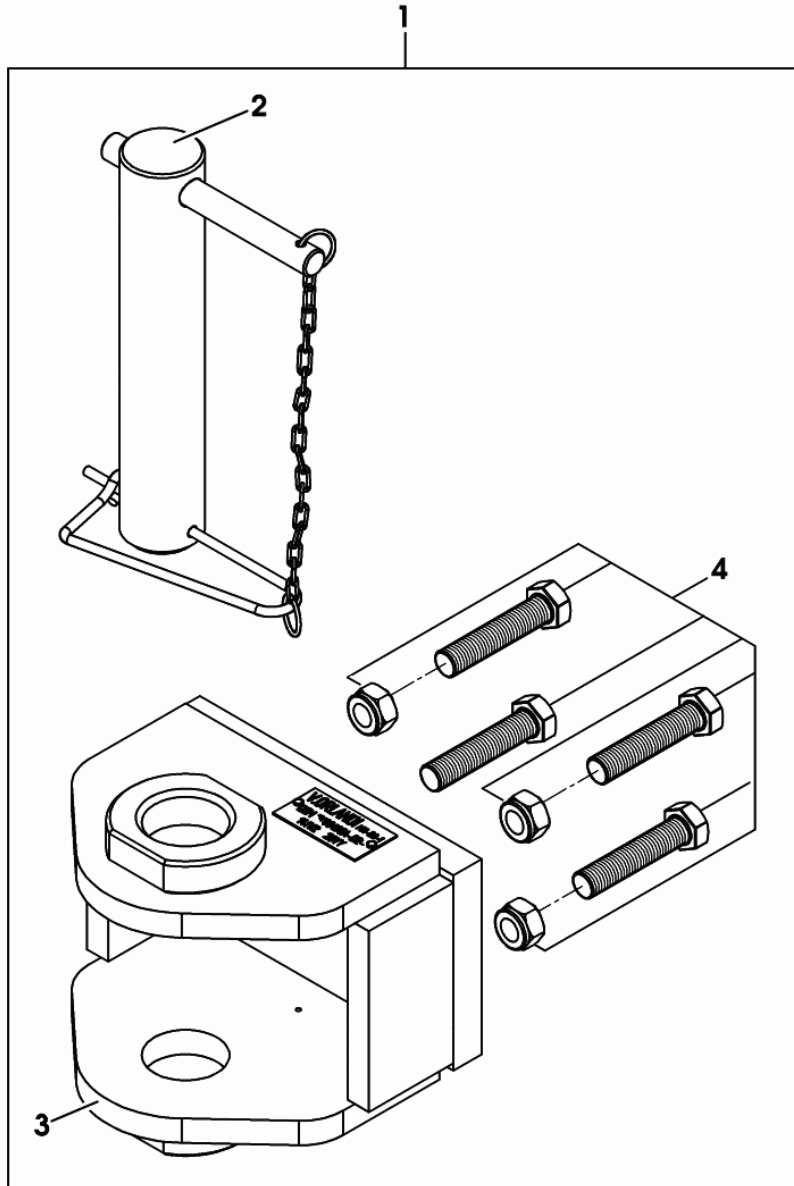


Fig.	Code	QTY	Name
1	0.014.4451.3	1	tow hook V.ORLANDI CAT. " D "
2	0.900.0458.1	1	pin
3	0.000.0000.1	0	not serviceable
4	0.900.0458.0	1	screw m 18, kit

0_014_4451_3

FRONT BALLAST KG. 70

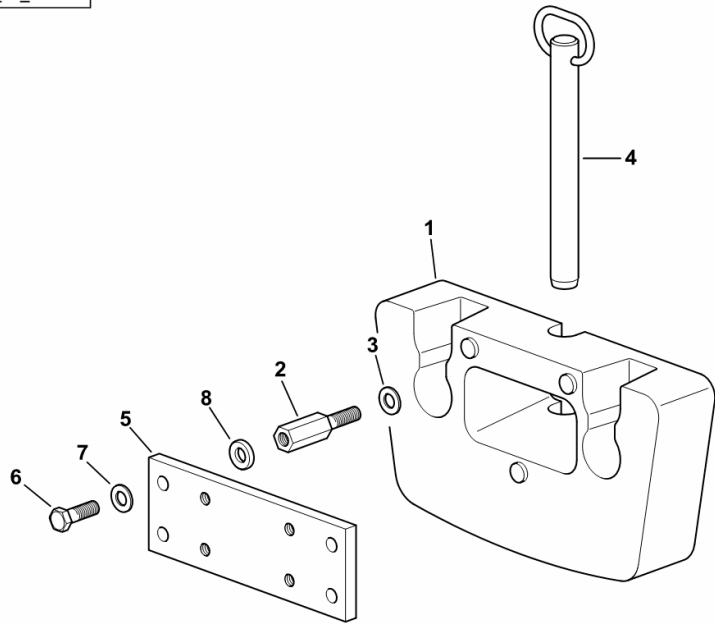
Fig.	Code	QTY	Name
------	------	-----	------

Notes:

[DORADO F 75 -> 6001]

1	0.96927.40.0/10	2	ballast KG. 35
2	0.96927.50.0/10	8	small column
3	2.1310.009.2	8	flat washer 14
4	0.96927.51.2	1	pin
5	0.010.9571.0/10	1	plate
6	2.0112.517.2	4	screw m 14 p.2 x 45
7	2.1310.009.2	4	flat washer 14
8	2.1599.565.2	4	shim 15 x 30 x 6

9_56652_50_0-A-00



4WD - ENGAGEMENT CONTROL.....	G0.15.0 (1)
PTO CONTROLS	
P.T.O. - EXTERNAL CONTROLS 540 - 750 + SYNCRO.....	G0.16.0 (1)
P.T.O. - EXTERNAL CONTROLS 540-750.....	G0.16.1 (1)
P.T.O. - EXTERNAL CONTROLS 540-750-1000.....	G0.16.2 (1)
P.T.O. - EXTERNAL CONTROLS 540/N.....	G0.16.3 (1)
P.T.O. SHAFT DRIVE.....	G0.16.4 (1)
P.T.O. SHAFT DRIVE.....	G0.16.5 (1)
P.T.O.-SYNCHRONIZED CONTROL.....	G0.16.6 (1)
LIFT CONTROLS	
LIFT CONTROL LEVERS.....	G0.17.0 (1)
LIFT CONTROL LEVERS.....	G0.17.1 (1)
TIE RODS FOR LIFT CONTROL LEVERS.....	G0.17.3 (1)
TIE RODS FOR LIFT CONTROL LEVERS.....	G0.17.4 (1)
TIE RODS FOR LIFT CONTROL LEVERS.....	G0.17.5 (1)
REMOTE VALVE CONTROLS	
CONTROLS FOR 4-WAY AUXILIARY SERVICES CONTROL VALVE.....	G0.18.0 (1)
CONTROLS FOR 4-WAY AUXILIARY SERVICES CONTROL VALVE.....	G0.18.1 (1)
CONTROLS FOR 4-WAY AUXILIARY SERVICES CONTROL VALVE.....	G0.18.2 (1)
CONTROLS FOR 4-WAY AUXILIARY SERVICES CONTROL VALVE.....	G0.18.3 (1)
CONTROLS FOR 4-WAY AUXILIARY SERVICES CONTROL VALVE.....	G0.18.4 (1)
CONTROLS FOR 6-WAY AUXILIARY SERVICES CONTROL VALVE.....	G0.18.5 (1)
CONTROLS FOR 6-WAY AUXILIARY SERVICES CONTROL VALVE.....	G0.18.7 (1)
CONTROLS FOR 6-WAY AUXILIARY SERVICES CONTROL VALVE.....	G0.18.8 (1)
CONTROLS FOR 6-WAY AUXILIARY SERVICES CONTROL VALVE.....	G0.18.9 (1)
CONTROLS FOR 6-WAY AUXILIARY SERVICES CONTROL VALVE.....	G0.18.10 (1)
OIL REGULATOR CONTROL.....	G0.18.14 (1)
ACCESSORIES	
SUN BLIND.....	G0.19.0 (1)
LICENCE PLATE HOLDER.....	G0.19.1 (1)
METAL TOOLBOX.....	G0.19.3 (1)
METAL TOOLBOX.....	G0.19.4 (1)
LUBRICATOR.....	G0.19.5 (1)
SAFETY ROLL BAR	
SAFETY ARCH.....	G0.20.0 (1)

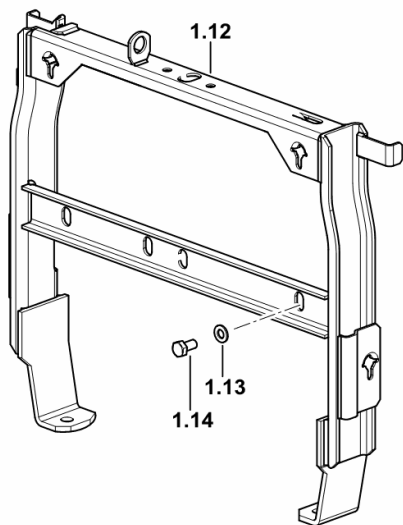
HOOD SUPPORT

Fig.	Code	QTY	Name
------	------	-----	------

Notes:

- WITH FRONT PTO AND LIFT [DORADO F 75 -> 6001]

1.12	0.013.9907.3/10	1	chassis frame
1.13	2.1310.004.2	5	flat washer 8.5
1.14	2.0112.205.2	5	screw m 8 p.1.25 x 16



9_F2081_12_0-C-001

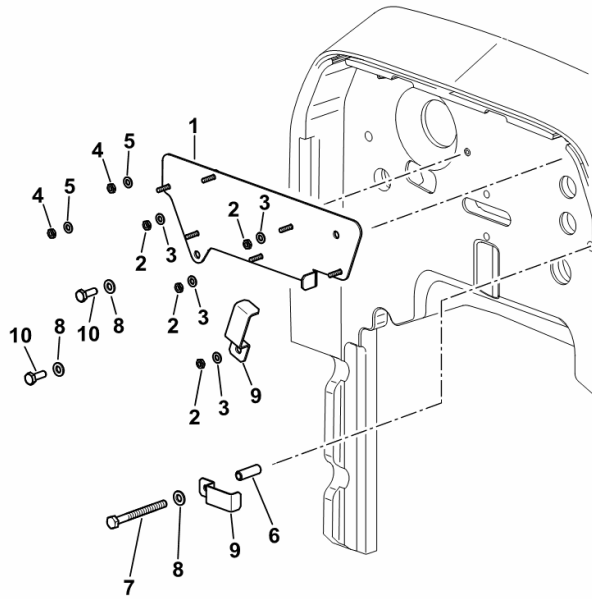
CONNECTION PLATE

Fig.	Code	QTY	Name
------	------	-----	------

Notes:

[DORADO F 75 -> 6001]

1	0.014.7069.3	1	plate
2	2.1011.202.2	4	nut m 5 p.0.8
3	2.1310.001.2	4	flat washer 5.3
4	2.1011.101.2	2	nut m 4 p.0.7
5	2.1310.028.2	2	flat washer 4
6	2.1549.001.2	1	spacer
7	2.0112.019.2	1	screw m 6 p.1 x 50
8	2.1310.002.2	3	washer 6.6, d125
9	0.013.9755.0	2	bracket
10	2.0114.005.2	2	screw m 6 p.1.0 x 16



9_F2084_32_0-A-001

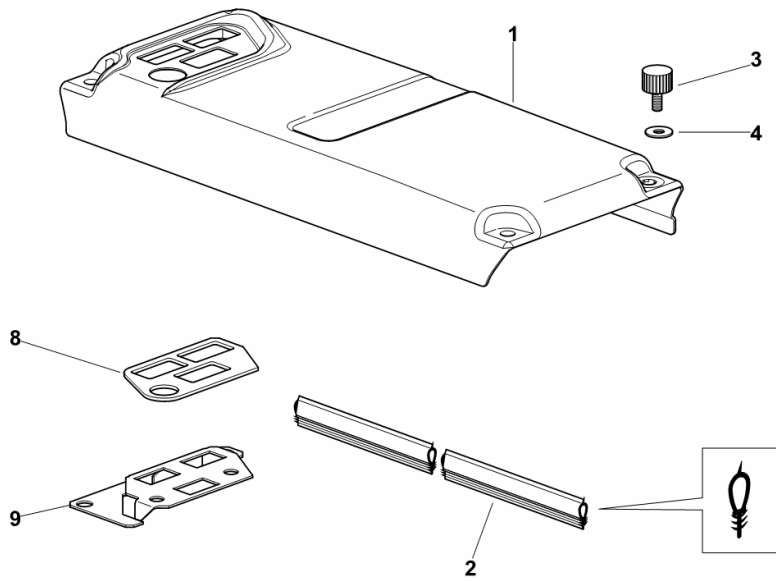
BATTERY COVER

Fig.	Code	QTY	Name
------	------	-----	------

Notes:

- WITH REAR 6-WAY CONTROL VALVE AND WITH ELECTROHYDRAULIC THREE-POINT HITCH [DORADO F 75 -> 6001]

1	0.010.7690.0/80	1	cover
2	0.010.8105.0	1	gasket mm 900
3	0.009.0133.3/10	4	knob
4	2.1312.004.3	4	washer 8,4x24x2
8	0.013.0018.0	1	gasket
9	0.013.0016.2/10	1	support (6190 <-)
9	0.016.6977.2	1	support (-> 6362)



9_70573_04_0-A-001

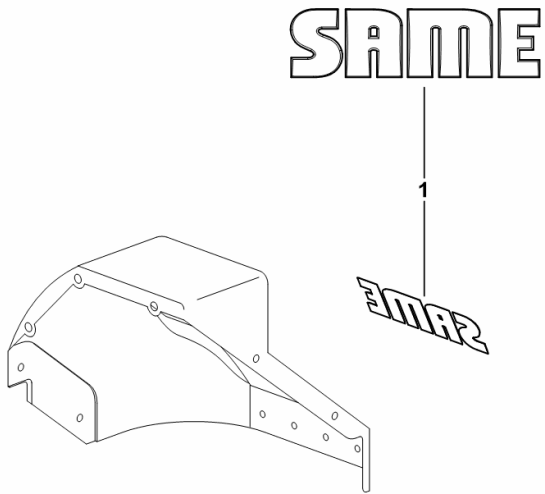
BADGE FOR SPLASH GUARDS SAME

Fig.	Code	QTY	Name
------	------	-----	------

Notes:
[DORADO F 75 -> 6001]

1	0.014.4295.2	2	plate SAME
---	--------------	---	------------

9_D6076_10_0-A-001



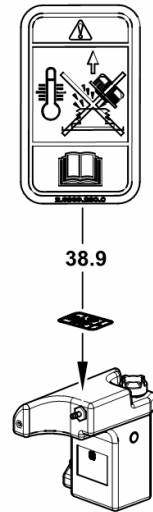
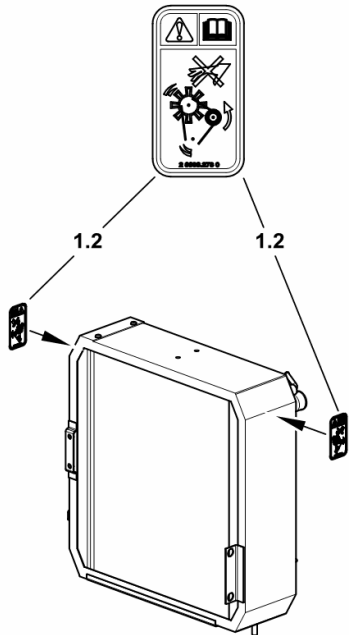
WARNING PLATES

Fig.	Code	QTY	Name
------	------	-----	------

Notes:

[DORADO F 75 -> 6001] -> 6068

1.2	2.9939.273.0	2	plate
38.9	2.9939.280.0	1	plate



9_F1583_00_0-C-001

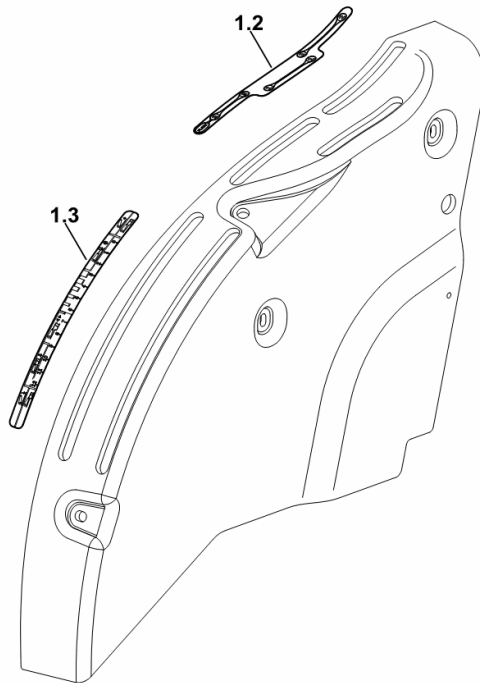
RH CONSOLE IDENTIFICATION PLATES

Fig.	Code	QTY	Name
------	------	-----	------

Notes:

- FOR TYPES WITH MECHANICAL LIFT AND 28" PLATFORM [DORADO F 75 -> 6001]

1.2	0.015.3713.0/10	1	plate
1.3	0.015.3784.0	1	plate



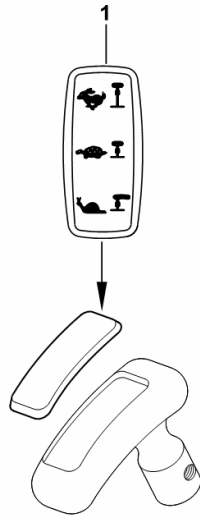
9_I7459_52_0-C-001

3-RANGE REDUCTION UNIT COVER

Fig.	Code	QTY	Name
------	------	-----	------

Notes:
[DORADO F 75 -> 6001]

1	0.014.5164.0	1	cap
---	--------------	---	-----



9_F2064_05_0-A-001

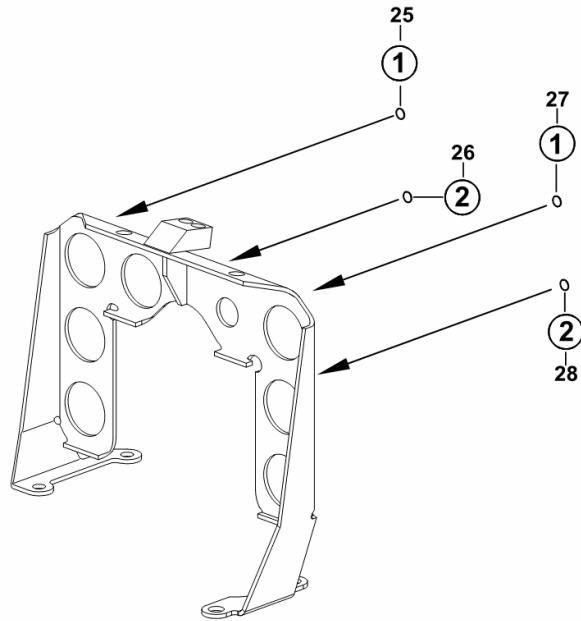
IDENTIFICATION PLATES FOR REAR CONNECTORS

Fig.	Code	QTY	Name
------	------	-----	------

Notes:

[DORADO F 75 -> 6001]

25	2.9929.412.0	1	plate 1 - YELLOW COLOUR
26	2.9929.413.0	1	plate 2 - YELLOW COLOUR
27	2.9929.739.0	1	plate 1 - RED COLOUR
28	2.9929.740.0	1	plate 2 - RED COLOUR



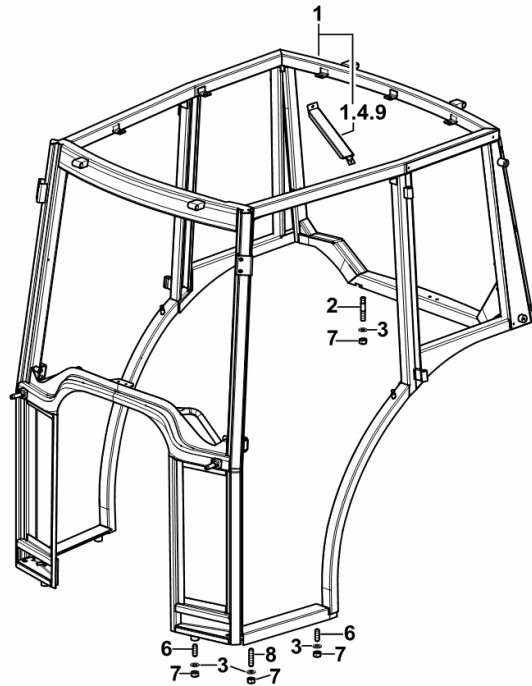
9_F2088_00_0-B-001

CAB

Fig.	Code	QTY	Name
------	------	-----	------

Notes:
[DORADO F 75 -> 6001]

1	0.015.0335.3/40	1	cab frame
1.4.9	0.009.8550.3	1	small frame
2	2.0422.517.7	2	stud bolt m 14 p.2x80
3	2.1310.009.2	8	flat washer 14
6	2.0422.503.7	4	screw
7	2.1011.108.2	8	nut m 14 p.2
8	2.0422.511.7	2	stud bolt m14 x 40



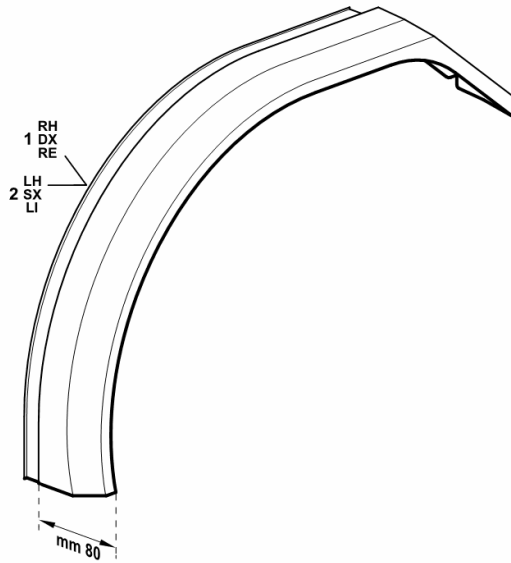
9_F1671_00_0-A-001

MUDGUARDS EXTENSIONS mm 80

Fig.	Code	QTY	Name
------	------	-----	------

Notes:
[DORADO F 75 -> 6001]

1	0.479.7663.0/40	1	extension dx/rh/re
2	0.479.7664.0/40	1	extension sx/lh/li

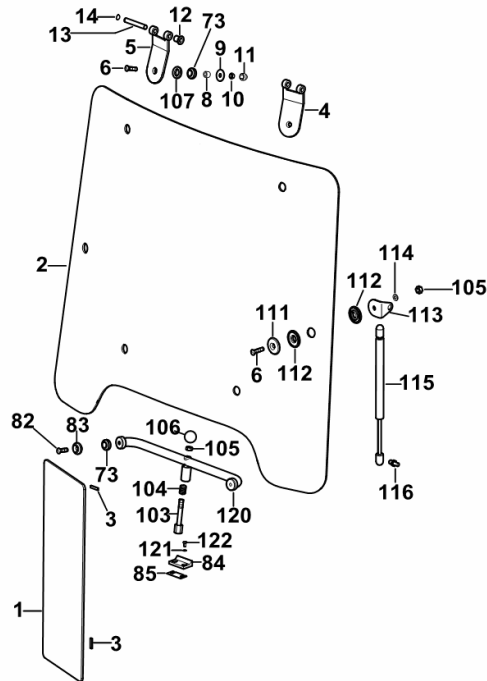


9_70576_25_0-A-001

GLASSES AND SEALS

Fig.	Code	QTY	Name
------	------	-----	------

Notes:
[DORADO F 75 -> 6001]



1	0.015.0192.0	2	window glass
2	0.015.0216.0/10	1	windshield
3	0.015.0489.0	8	spacer
4	0.009.8595.3/20	1	hinge sx/lh/li
5	0.009.8596.3/20	1	hinge dx/rh/re
6	2.0349.002.3	4	screw m 8 p.1.25 x 30
8	2.1579.450.2	2	spacer 8.5 x 14 x 12
9	2.1599.352.2	2	washer 8.5x28x2
10	2.1120.105.2	2	selflock nut m 8 p.1.25
11	0.163.7856.0	2	cap
12	2.1559.147.0	4	bushing 10 x 28 x 18
13	2.1699.428.2	2	pin 9.6 x 71.5
14	2.1410.001.1	4	circlip 10
73	2.6569.011.0	6	rubber plug
82	2.0342.307.6	4	screw m 8 p 1.25 x 25
83	0.009.8600.0	4	spacer
84	0.009.8952.0	2	small plate
85	0.009.8837.0	2	shim
103	2.1699.142.2	2	pin
104	2.4019.240.1	2	spring
105	2.1011.105.2	4	nut m 8 p.1.25
106	0.9215.268.0	2	knob
107	2.1549.155.0	4	washer
111	2.1499.093.0/10	2	washer 8.5
112	0.009.0422.0	4	gasket
113	0.007.6188.2	2	bracket
114	2.1310.004.2	2	flat washer 8.5
115	0.009.8629.2	2	shoch.absorber mm 405.5
116	04399070	2	ball joint
120	0.015.3564.3	1	handle
121	2.1310.001.2	2	flat washer 5.3
122	2.0312.001.2	2	screw m 5 p.0.8 x 10

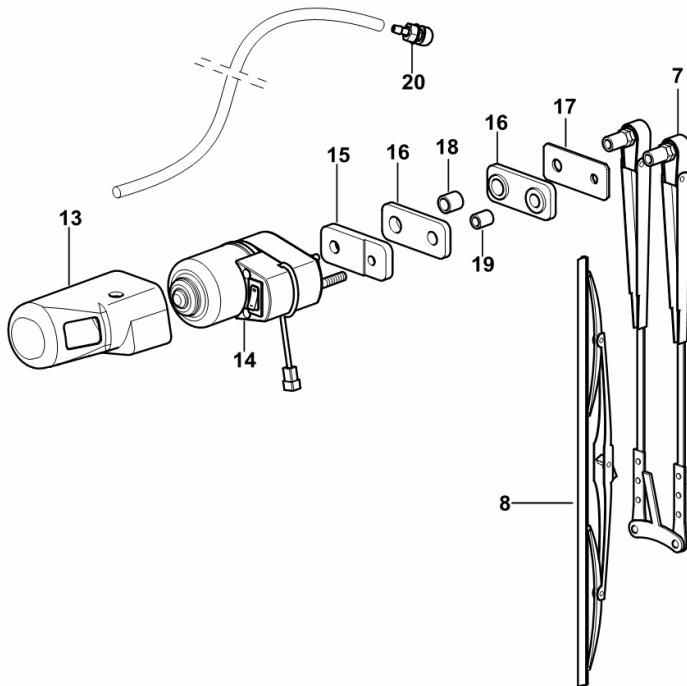
REAR WIPER WIRING SYSTEM

Fig.	Code	QTY	Name
------	------	-----	------

Notes:

[DORADO F 75 -> 6001]

7	0.009.8659.3	1	arm
8	0.009.8660.3	1	wiper blade
13	0.015.3290.0/10	1	cover
14	2.9019.100.0/20	1	wiper motor
15	0.9241.562.0	1	spacer
16	0.9241.561.0	2	rubber plug
17	0.9241.560.0	1	small plate
18	2.1579.909.2	1	spacer 12.6x17x17
19	2.1579.826.2	1	spacer 9x14x17
20	0.013.9974.4	1	cooling nozzle



9_F1671_31_0-A-001

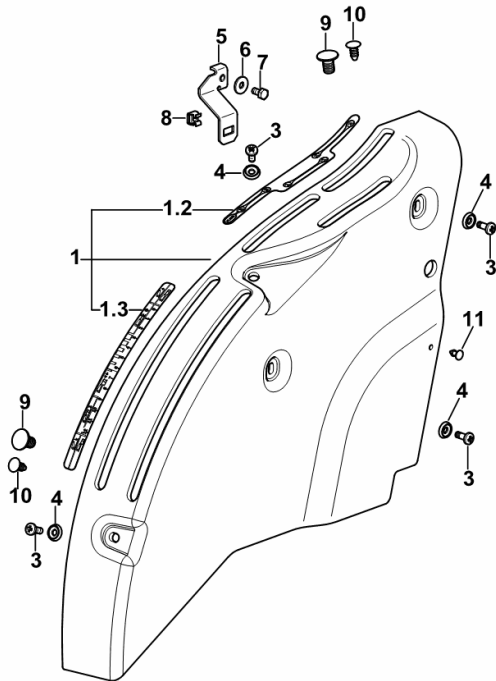
CONTROL CONSOLE DX/RH/RE

Fig.	Code	QTY	Name
------	------	-----	------

Notes:

- FOR TYPES WITH MECHANICAL LIFT AND 28" PLATFORM [DORADO F 75 -> 6001]

1	0.015.3778.4/10	1	consolle dx/rh/re
1.2	0.015.3713.0/10	1	plate
1.3	0.015.3784.0	1	plate
3	2.0332.406.3	4	screw m 6 p.1.0 x 16
4	0.9125.662.0	4	washer 6.4 x 12.5
5	0.015.3281.3	1	bracket
6	2.1312.003.2	1	washer 6
7	2.0112.003.2	1	screw m 6 p.1 x 12
8	2.6999.031.2	1	special nut m 6
9	2.3199.097.0	2	plug 10x20
10	2.1899.084.0	2	button 8 x 19
11	2.1899.075.0	1	button 6.5x14.5



9_i7459_52_0-A-001

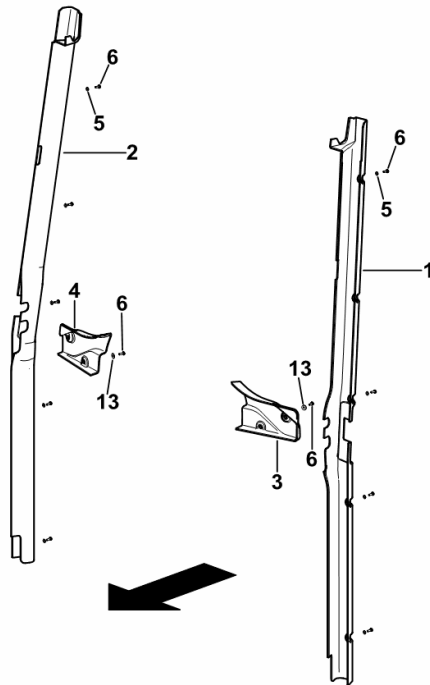
CAB INTERIOR TRIM

Fig.	Code	QTY	Name
------	------	-----	------

Notes:

[DORADO F 75 -> 6001] -> 6124

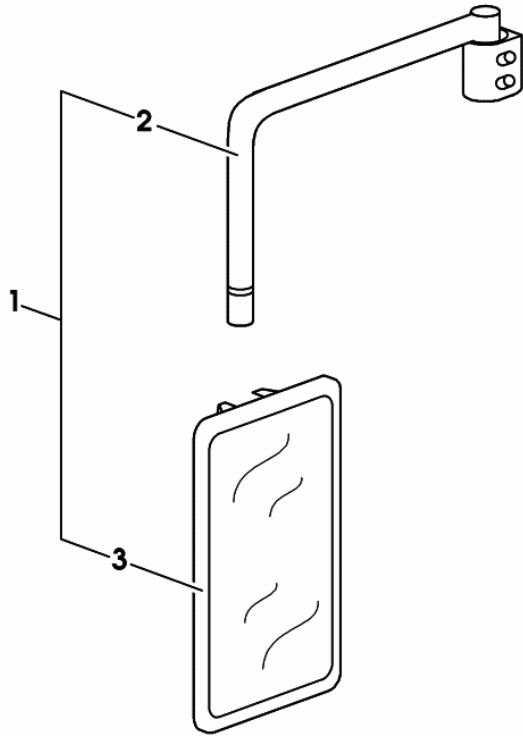
1	0.015.8284.0/20	1	cover sx/lh/li
2	0.015.8283.0/20	1	cover dx/rh/re
3	0.015.8282.0	1	cover sx/lh/li
4	0.015.8281.0/10	1	cover dx/rh/re
5	2.1310.028.3	10	washer 4
6	2.0332.204.3	14	screw m 4 p.0.7 x 12
13	2.1310.001.3	4	washer 5.3 x 10



9_F1671_26_0-A-001

REARVIEW MIRROR sx/lh/li

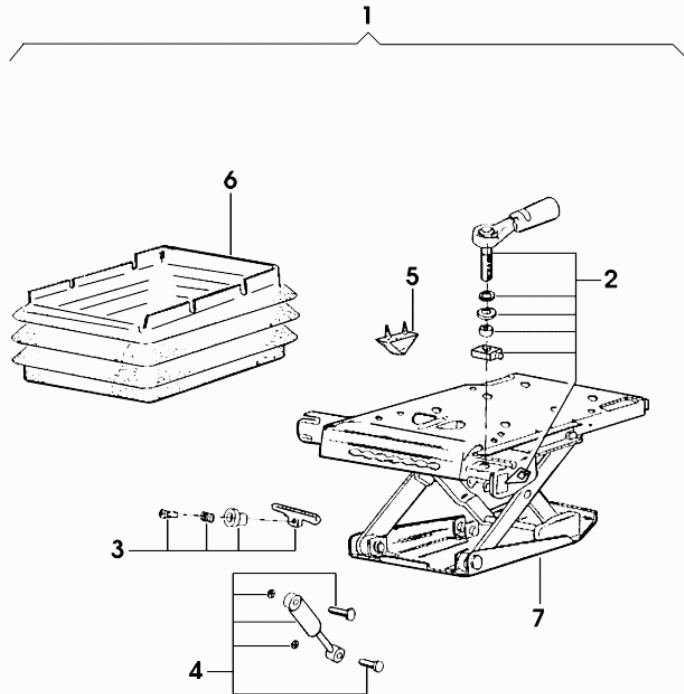
Fig.	Code	QTY	Name
1	0.009.8581.4	1	rear view mirror sx/lh/li
2	0.010.3563.0	1	rod
3	0.010.3563.1	1	rear view mirror



0_009_8581_4

SEAT SPRINGING

Fig.	Code	QTY	Name
1	0.010.5356.4	1	seat springs KAB XH2
2	0.010.2228.0	1	handle
3	0.010.2228.1	1	accessories
4	0.010.2228.2	1	shoch.absorber
5	0.010.2229.0	1	stopper
6	0.010.2229.1	1	guard
7	0.000.0000.1	0	not serviceable



010_5356_4

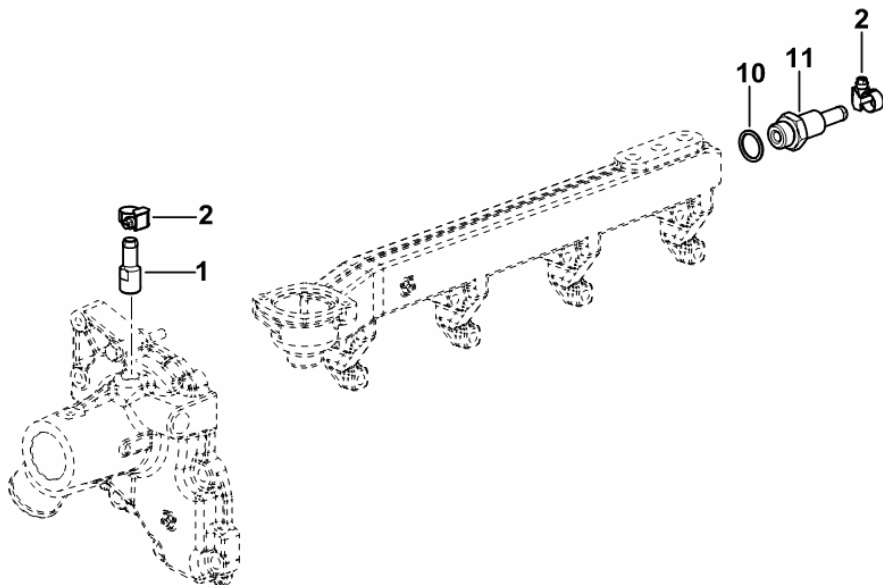
HEATING SYSTEM

Fig.	Code	QTY	Name
------	------	-----	------

Notes:

[DORADO F 75 -> 6001]

1	2.3339.636.2	1	pipe fitting 3/8" gas
2	2.6851.019.0	4	clamp Ø 13/20
10	2.1560.054.0	1	gasket 21 x 26
11	2.3339.718.2	1	pipe fitting 1/2" gas



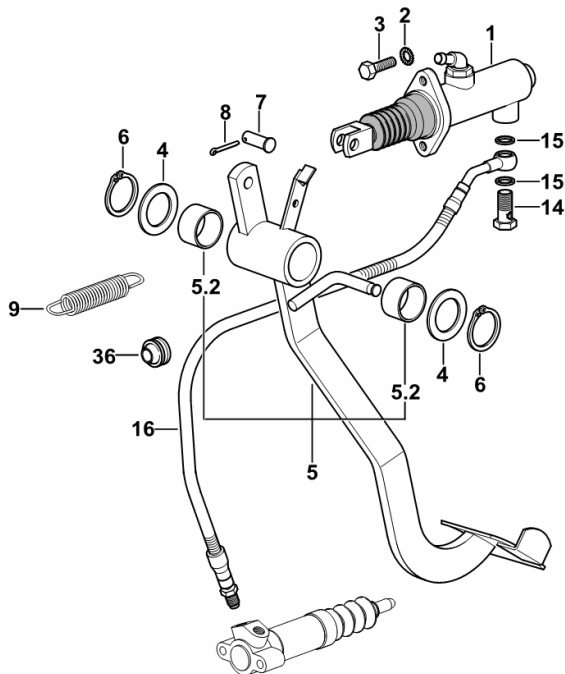
9_F1586_16_0-A-001

CLUTCH CONTROL

Fig.	Code	QTY	Name
------	------	-----	------

Notes:
[DORADO F 75 -> 6001]

1	0.010.1148.4/10	1	pump ☞ 0.010.1148.4/10
2	2.1470.004.2	2	washer 8
3	2.0312.206.2	2	screw m 8 p 1.25 x 20
4	2.1599.511.2	2	snoulder 30.5x45x2
5	0.010.1143.3/20	1	pedal
5.2	2.1559.117.0/20	2	bushing 30x34x20
6	2.1410.012.1	2	circlip 30
7	2.1671.406.2	1	pin
8	2.1690.308.2	1	split pin 3.2 x 20
9	2.4049.175.2	1	spring
14	2.3332.003.2	1	pipe union m 12 p.1.25 x 23
15	2.1560.008.0	2	gasket 12.2 x 18
16	0.010.9028.3	1	tube
36	2.6569.034.0	1	grommet 24x13x13.5



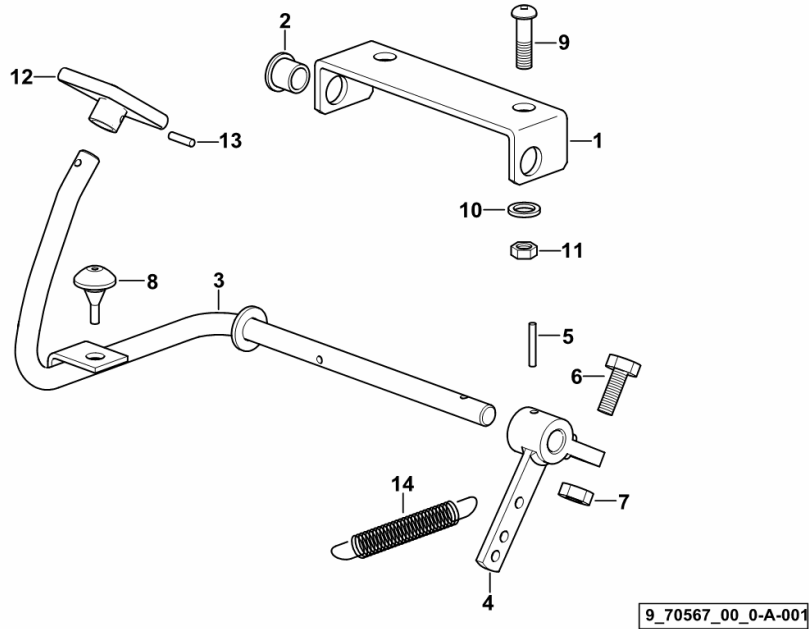
9_70565_01_0-A-001

THROTTLE

Fig.	Code	QTY	Name
------	------	-----	------

Notes:
[DORADO F 75 -> 6001]

1	0.010.1159.0/10	1	bracket
2	2.1559.243.0	2	bushing 12x16x15
3	0.010.1157.3/20	1	lever
4	0.010.1158.2/10	1	lever
5	2.1631.311.0	1	roll pin 3x24
6	2.0112.211.2	1	screw m 8 p.1.25 x 30
7	2.1011.105.2	1	nut m 8 p.1.25
8	0.255.7265.0	1	block
9	2.0020.205.2	2	screw m 8 p.1.25 x 20
10	2.1310.004.2	2	flat washer 8.5
11	2.1011.105.2	2	nut m 8 p.1.25
12	0.007.5575.2/20	1	accel. pedal
13	2.1899.091.0	1	rivet 4x22
14	2.4049.071.2	1	spring 19 x 52 x 2



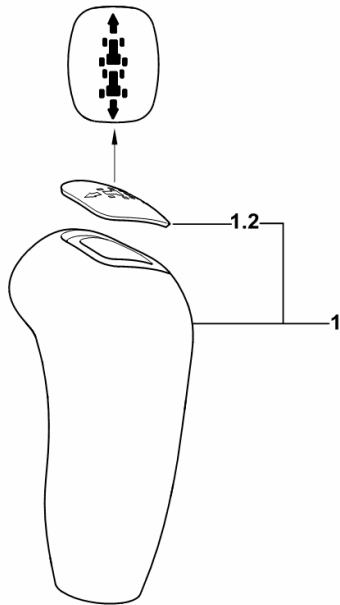
KNOB FOR MECHANICAL SHUTTLE

Fig.	Code	QTY	Name
------	------	-----	------

Notes:

- FOR TYPES WITH H-M-L- (POWERSHIFT) [DORADO F 75 -> 6001]

1	0.014.8801.3	1	knob
1.2	0.010.5546.3/10	1	cap



9_17564_09_0-A-001

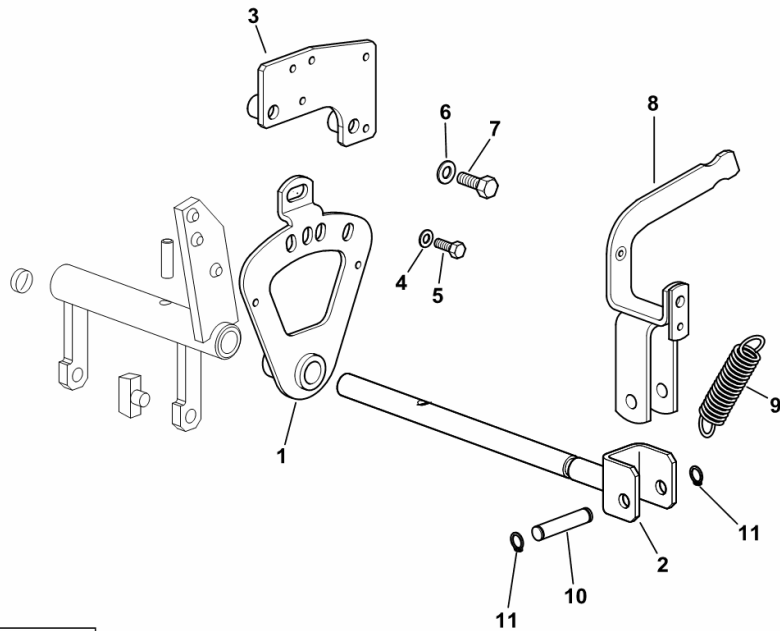
P.T.O. SHAFT DRIVE

Fig.	Code	QTY	Name
------	------	-----	------

Notes:

540/750 + SYNCRO [DORADO F 75 -> 6001] 540/750/1000 [DORADO F 75 -> 6001] 540/750/1000 - EXPORT U.S.A. [DORADO F 75 -> 6001]

1	0.010.5069.2/20	1	plate
2	0.011.6377.3	1	lever
3	0.012.0108.2	1	bracket
4	2.1312.003.2	1	washer 6
5	2.0112.005.2	1	screw m 6 p.1 x 16
6	2.1310.004.2	1	flat washer 8.5
7	2.0112.211.2	1	screw m 8 p.1.25 x 30
8	0.011.6374.3	1	lever
9	2.4049.071.2	1	spring 19 x 52 x 2
10	2.1699.488.2	1	pin
11	2.1410.001.1	2	circlip 10



9_B6136_02_0-A-001

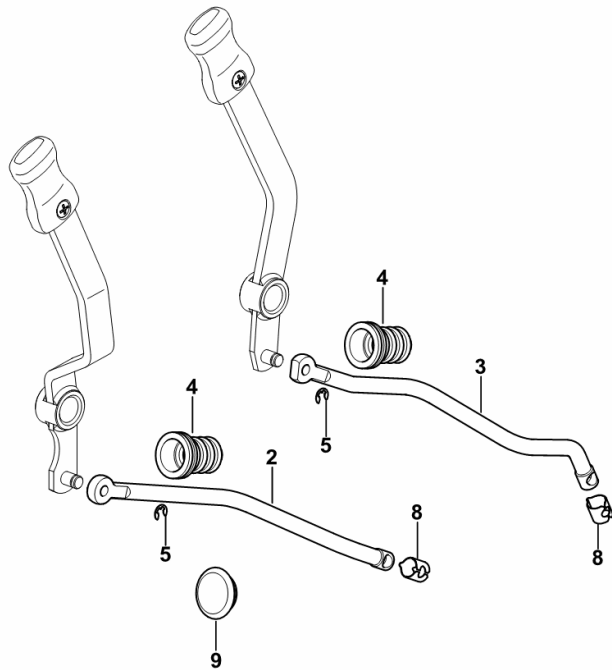
CONTROLS FOR 4-WAY AUXILIARY SERVICES CONTROL VALVE

Fig.	Code	QTY	Name
------	------	-----	------

Notes:

- FOR 24" PLATFORM [DORADO F 75 -> 6001]

2	0.015.3518.0	1	rod
3	0.013.5075.0	1	rod
4	0.013.3229.0	2	bellows
5	2.1430.007.7	2	circlip 6, d128
8	0.257.6757.0	2	spring
9	2.6070.052.0	1	plug Ø 30



9_17488_37_0-A-001

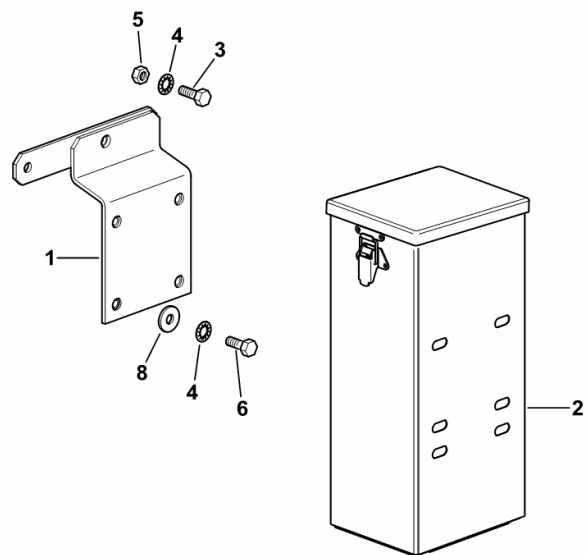
METAL TOOLBOX

Fig.	Code	QTY	Name
------	------	-----	------

Notes:

- FOR TYPES WITHOUT FRONT MUDGUARDS [DORADO F 75 -> 6001]

1	0.011.0928.3/10	1	spacer
2	0.467.7317.3/70	1	metal toolbox
3	2.0112.208.2	2	screw m 8 p.1.25 x 22
4	2.1470.004.2	4	washer 8
5	2.1011.105.2	2	nut m 8 p.1.25
6	2.0132.006.2	4	screw m 8 p.1.25 x 20
8	2.1312.004.2	2	washer 8.4



9_70273_06_0-A-001

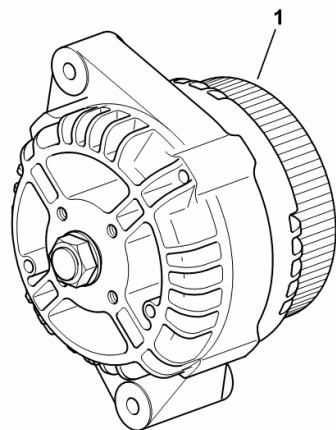
ALTERNATOR 85A

Fig.	Code	QTY	Name
------	------	-----	------

Notes:

- FOR TRACTORS WITH AIR CONDITIONING [DORADO F 75 -> 6001]

1	2.9439.460.0/10	1	alternator 14V - 85A - ISKRA ☞ 2.9439.460.0/10
---	-----------------	---	---



9_B6184_03_0-A-001

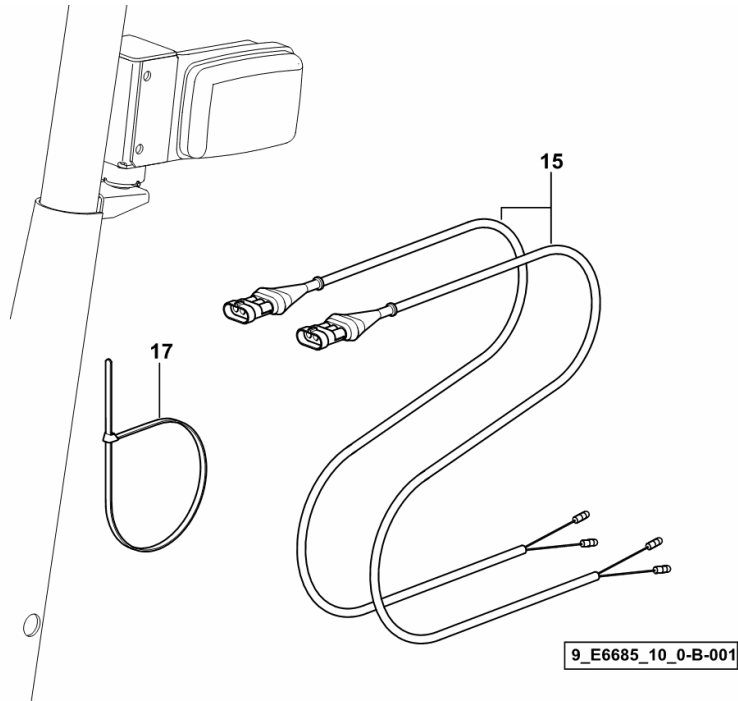
CABLES FOR ROTATING BEACONS ON ROPS

Fig.	Code	QTY	Name
------	------	-----	------

Notes:

- EXPORT U.S.A. [DORADO F 75 -> 6001]

15	0.012.3825.4	1	electrical system
17	2.6852.203.0	2	clamp 292 x 4.8



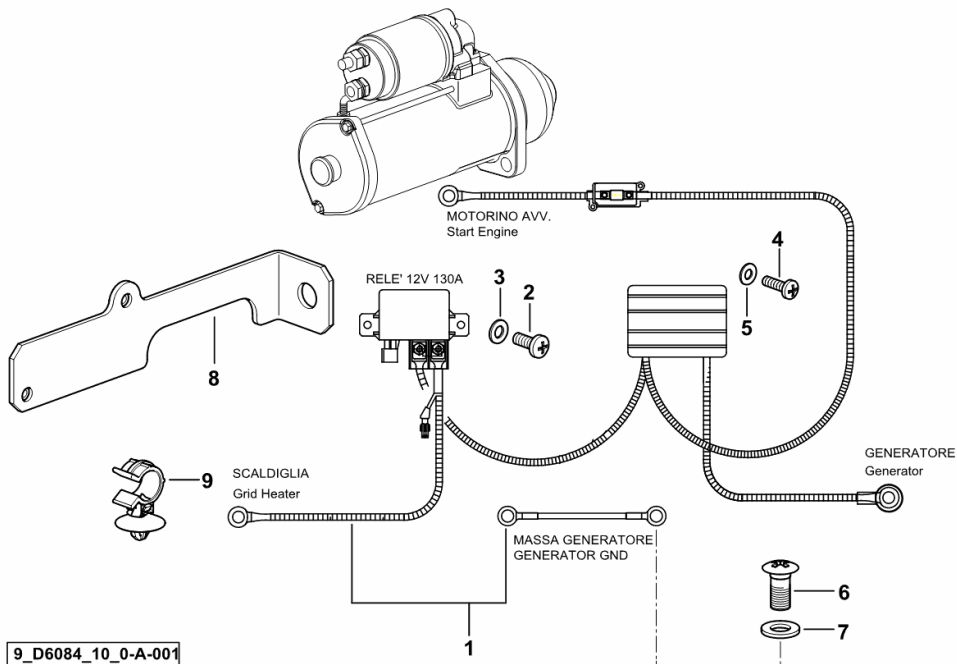
POWER SUPPLY ELECTRICAL SYSTEM

Fig.	Code	QTY	Name
------	------	-----	------

Notes:

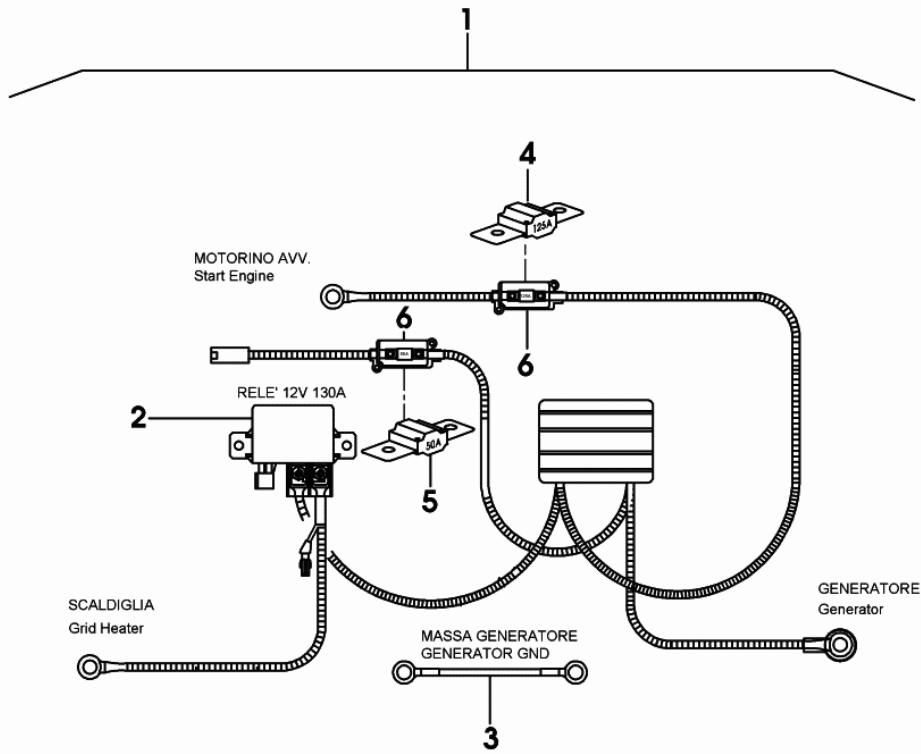
- FOR MODELS WITH PLATFORM [DORADO F 75 -> 6001]

1	0.013.8401.4	1	electrical system ☞ 0.013.8401.4
2	2.0332.304.2	3	screw m 5 p.0.8 x 12
3	2.1310.001.2	3	flat washer 5.3
4	2.0332.205.2	2	screw m 4x0.7x14
5	2.1310.028.2	2	flat washer 4
6	2.0332.506.2	1	screw m 8 x 16
7	2.1310.004.2	1	flat washer 8.5
8	0.013.4058.3/10	1	plate
9	0.013.5470.4	2	small spring



ELECTRICAL SYSTEM

Fig.	Code	QTY	Name
1	0.013.8399.4/10	1	electrical system
2	2.7659.240.0/10	1	relay 12 V 130A
3	0.900.0379.9	1	wire
4	0.900.0452.2	1	fuse 125 A midival
5	0.900.0057.7	1	fuse 50 A midival
6	0.900.0391.1	2	box



0_013_8399_4_10

Section: L0 - ELECTRIC AL SYSTEM
PARTS FOR ELECTRICAL SYSTEM

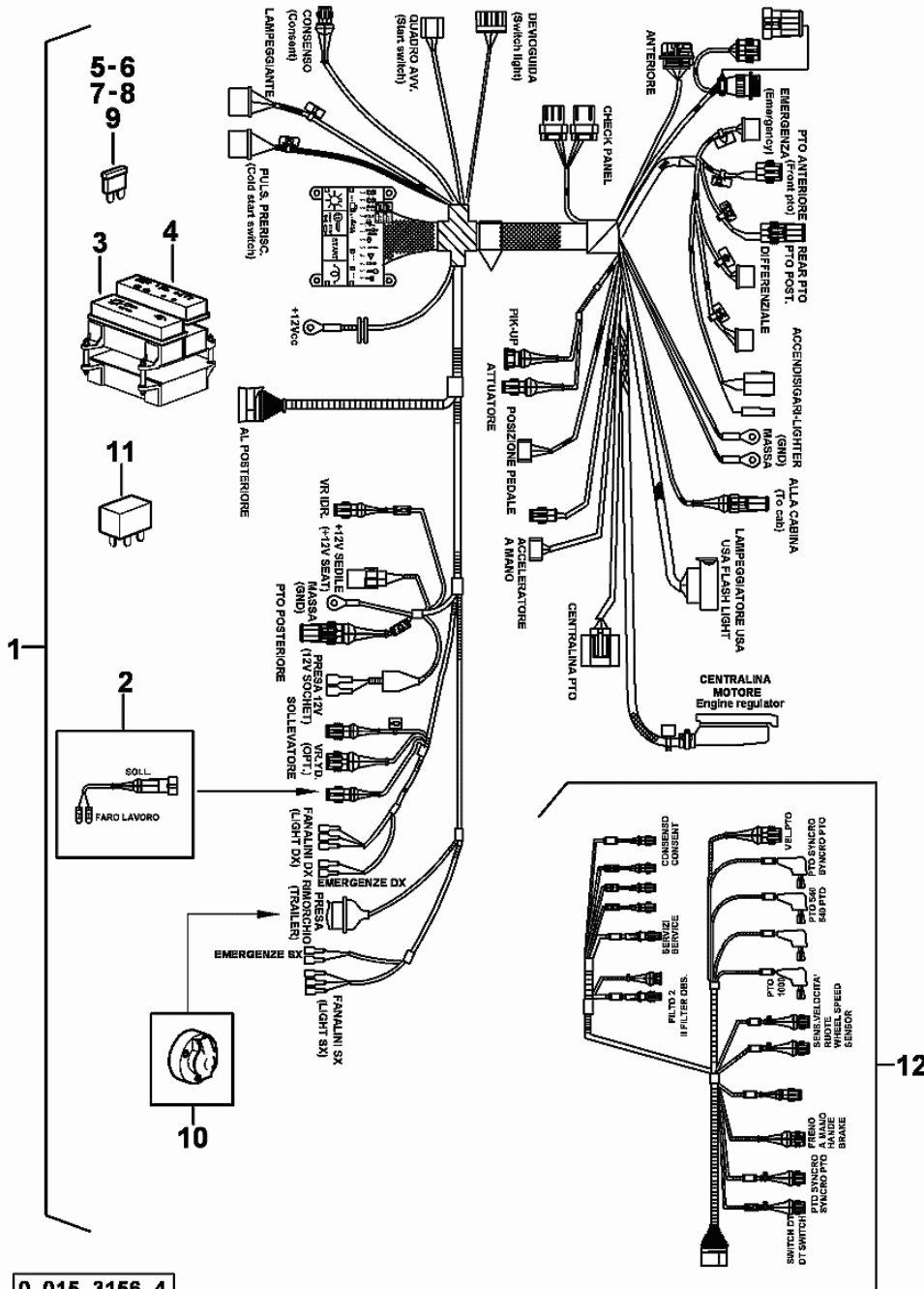


Fig.	Code	QTY	Name
1	0.015.3156.4	1	electrical system
2	0.900.0031.2	1	wire
3	0.900.0523.6	1	small cover
4	0.900.0877.5	1	small cover
5	0.010.2225.2	2	fuse 7.5 A unival
6	0.010.2087.2	5	fuse 10 A unival
7	0.010.2088.0	6	fuse 15 A unival
8	0.010.2088.1	3	fuse 20 A unival
9	0.010.2088.2	2	fuse 30 A unival
10	0.900.0017.0	1	socket
11	0.010.2089.2	4	relay 12V-30A
12	0.900.0877.6	1	electrical system

0_015_3156_4

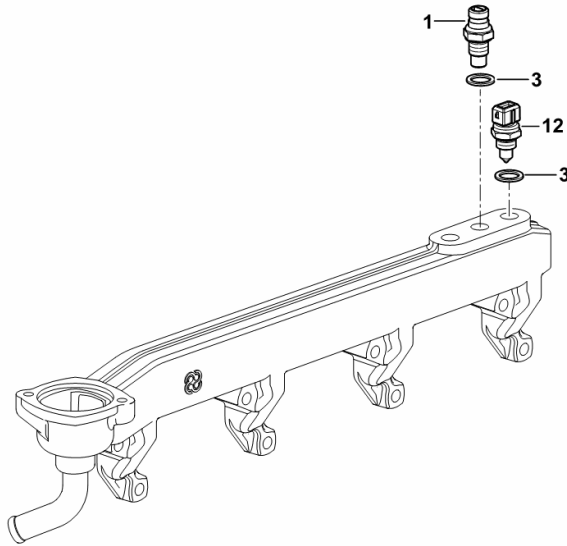
COOLING SYSTEM MANIFOLD SENSORS

Fig.	Code	QTY	Name
------	------	-----	------

Notes:

[DORADO F 75 -> 6001]

1	2.7099.640.0/10	1	tempe guage
3	2.1560.010.0	4	gasket 14.2 x 20 x 1.5
12	2.7099.800.0	1	sensor



9_N1317_00_0-B-001

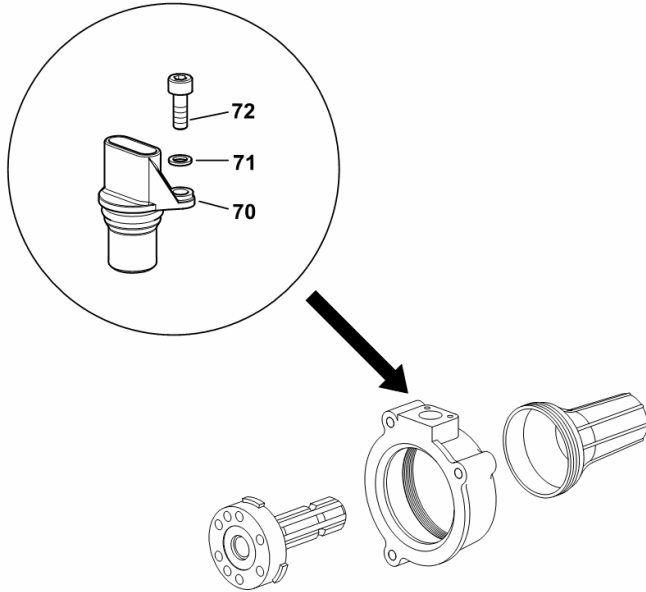
PTO SPEED SENSOR 540/N WITH INTERCHANGEABLE OUTPUT SHAFTS

Fig.	Code	QTY	Name
------	------	-----	------

Notes:

- EXPORT U.S.A. [DORADO F 75 -> 6001]

70	0.010.1214.4	1	sensor
71	2.1480.011.2	2	washer 5
72	2.0312.003.2	2	screw m 5 p.0.8 x 14



9_F8836_00_0-C-001

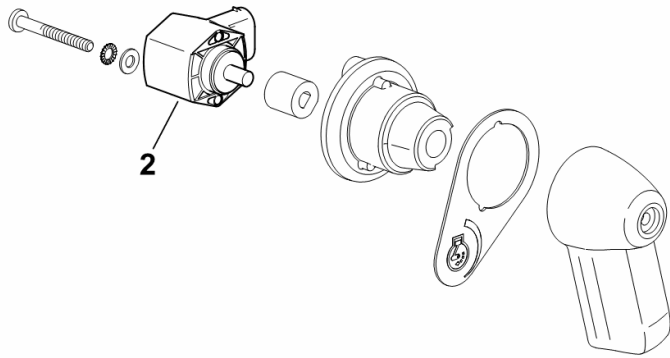
ELECTRONIC ACCELERATOR CONTROL SENSOR

Fig.	Code	QTY	Name
------	------	-----	------

Notes:

- EXPORT U.S.A. [DORADO F 75 -> 6001]

2	2.7099.740.0/10	1	sensor
---	-----------------	---	--------



9_18067_16_0-B-001

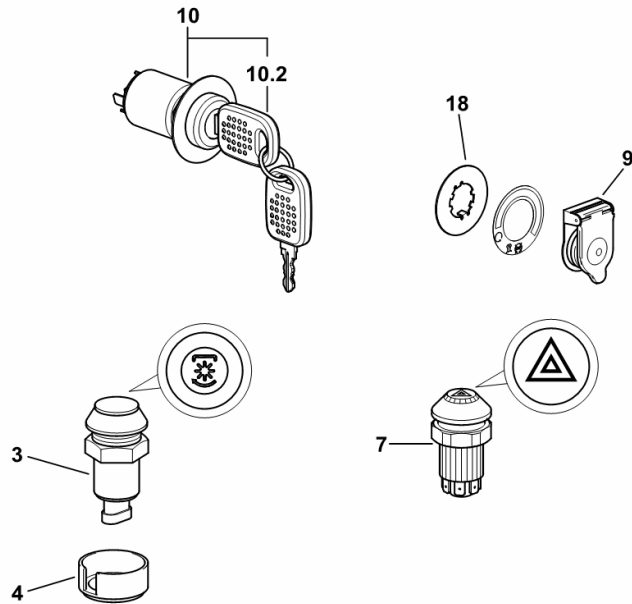
KEYSWITCH BLOCK AND PUSHBUTTONS

Fig.	Code	QTY	Name
------	------	-----	------

Notes:

[DORADO F 75 -> 6001] -> 6053 - 6268 <-

3	2.7659.177.0/20	1	push-button P.T.O.
4	0.009.3987.0	1	guard
7	2.7659.110.0	1	push-button
9	0.009.7140.2/10	1	small cover
10	0.015.0485.4	1	start device
10.2	2.7439.023.0	2	key
18	0.011.4625.0	1	washer



9_F1684_03_0-A-002

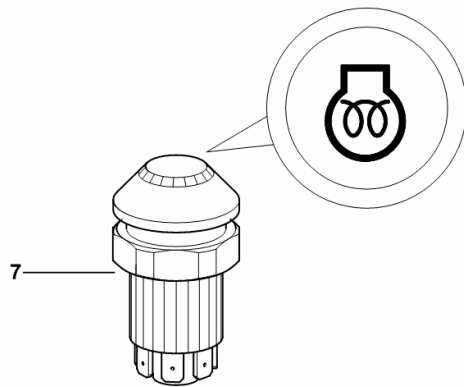
PRE-HEATER BUTTON

Fig.	Code	QTY	Name
------	------	-----	------

Notes:

- WITH ELECTRONIC ENGINE GOVERNOR WITHOUT HML (POWERSHIFT) [DORADO F 75 -> 6001]

7	2.7659.250.0/10	1	push-button
---	-----------------	---	-------------



9_17584_06_0-B-001

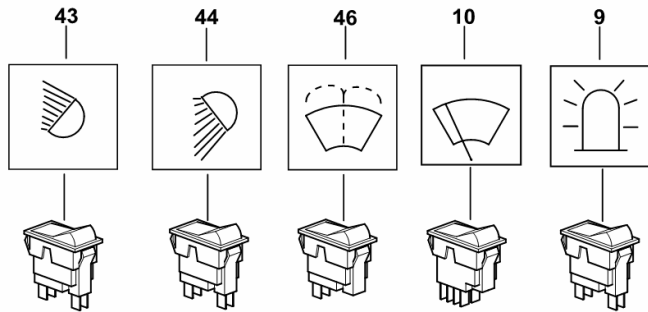
CAB TOP SWITCHES

Fig.	Code	QTY	Name
------	------	-----	------

Notes:

- FOR TRACTORS WITH AIR HEATING [DORADO F 75 -> 6001]

9	2.7659.126.0	1	switch
10	2.7659.092.0	1	switch
43	2.7659.078.0	1	switch
44	2.7659.079.0	1	switch
46	2.7659.091.0	1	push-button



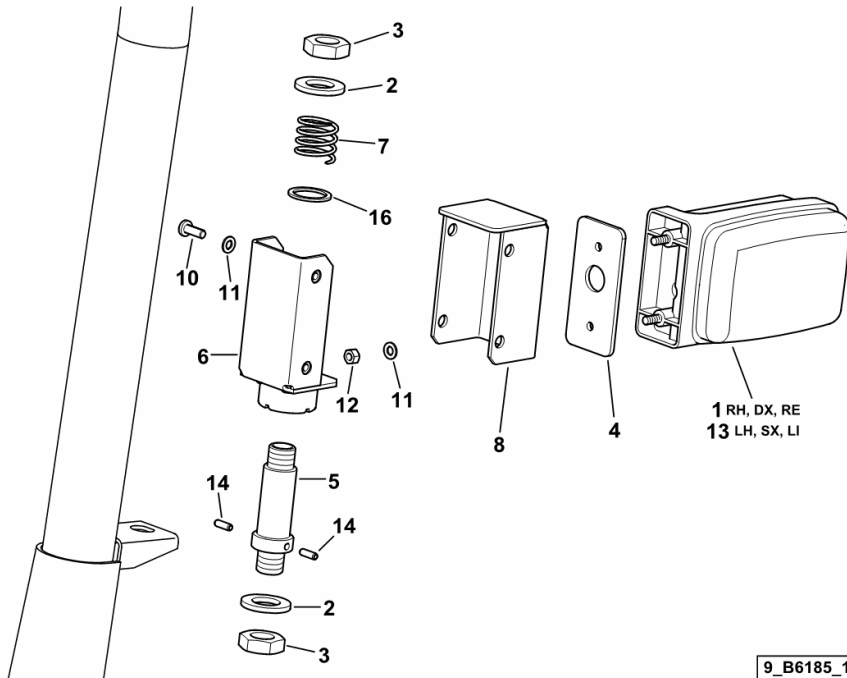
9_F1671_60_0-G-001

Section: L0 - ELECTRIC AL SYSTEM
ROTATING BEACONS ON ROPS

Fig.	Code	QTY	Name
------	------	-----	------

Notes:
 [DORADO F 75 -> 6001]

1	2.8019.970.0	1	side lamp dx/rh/re ☞ 2.8019.970.0
2	2.1310.010.2	4	flat washer 16
3	2.1011.509.2	4	nut m 16 p.1.5
4	0.467.8550.0	2	gasket
5	0.013.8803.0/10	2	pin
6	0.014.3063.3/10	2	support
7	2.4019.732.2/10	2	spring
8	0.013.8740.0/10	2	lamp support
10	2.0332.305.2	8	screw m 5 p.0.8 x 14
11	2.1310.001.2	12	flat washer 5.3
12	2.1011.102.2	4	nut m 5 p.0.7
13	2.8019.960.0	1	side lamp sx/lh/li ☞ 2.8019.960.0
14	2.1630.406.0	4	roll pin 4 x 12
16	2.1560.016.0	2	gasket 20.2 x 26



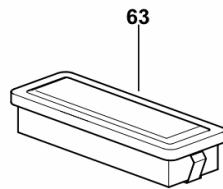
COURTESY LIGHT

Fig.	Code	QTY	Name
------	------	-----	------

Notes:

- FOR TYPES WITH HEATING AND AIR CONDITIONING [DORADO F 75 -> 6001]

63	2.8339.032.0	1	interior light ☞ 2.8339.032.0
----	--------------	---	----------------------------------



9_F1671_65_0-E-001

CLICK HERE TO **DOWNLOAD** THE COMPLETE MANUAL

- Thank you very much for reading the preview of the manual.
- You can download the complete manual from: www.heydownloads.com by clicking the link below

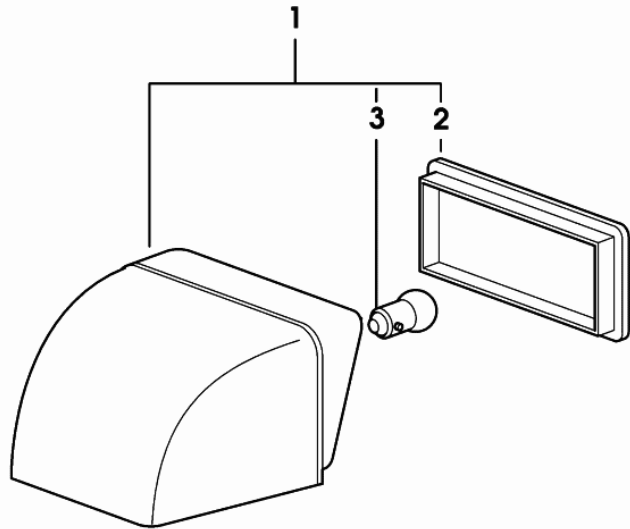


- Please note: If there is no response to CLICKING the link, please download this PDF first and then click on it.

CLICK HERE TO **DOWNLOAD** THE COMPLETE MANUAL

HEADLAMP COMPONENTS

Fig.	Code	QTY	Name
1	2.8059.440.0/10	1	lamp
2	0.010.3486.2	1	guard
3	0.010.3487.0	1	lamp 12V - 21W



2_8059_440_0_10

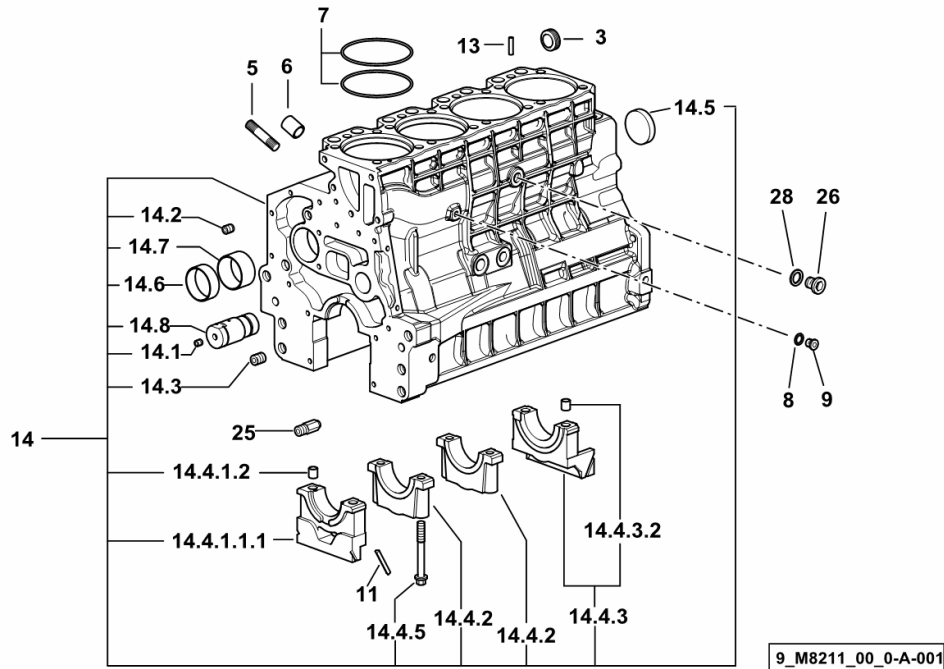
CRANKCASE

Fig.	Code	QTY	Name
------	------	-----	------

Notes:

[DORADO F 75 -> 6001]

3	2.3199.312.2/20	1	plug m 35x1.5x9.5
5	2.0439.273.7	8	stud bolt m 8
6	2.1559.188.2	4	sleeve 11.4 x 14 x16
7	2.1539.259.0	8	'o' ring 107.62x2.62
8	2.1560.010.0	1	gasket 14.2 x 20 x 1.5
9	2.3199.292.0	1	plug 1/4" gas
11	0.066.1152.0/10	4	gasket
13	2.1549.154.2	4	sleeve 4.8x5.8x16
14	0.015.2988.4/10	1	crankcase
14.1	2.3130.001.1	10	plug 1/8" gas
14.2	2.3130.002.1	2	plug 1/4" gas
14.3	2.3130.003.1	6	plug 3/8" gas
14.4.1.1.1	0.065.1112.7/10	1	support
14.4.1.2	2.1699.165.0	1	sleeve 12.3x15x16
14.4.2	0.065.1114.0/10	3	support
14.4.3	0.065.1116.3	1	support
14.4.3.2	2.1699.165.0	1	sleeve 12.3x15x16
14.4.5	0.065.1117.0	10	screw m 12 x 100
14.5	2.3179.012.0	1	plug 60
14.6	0.065.1140.0	4	bushing 59X55X20
14.7	0.065.1141.0	1	bushing 59X55X30
14.8	0.014.1340.0/10	1	pin
25	0.013.4946.0/10	1	cooling nozzle
26	2.3120.101.0	1	plug m 18 p.1.5
28	2.1560.014.0	1	gasket 18.2 x 24 x 1.5



9_M8211_00_0-A-001

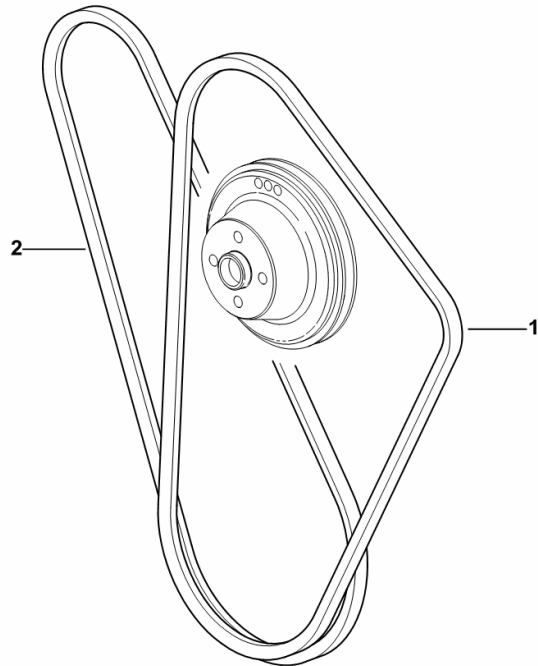
COOLANT PUMP AND ALTERNATOR DRIVEBELT

Fig.	Code	QTY	Name
------	------	-----	------

Notes:

- FOR MODELS WITH COMPRESSOR [DORADO F 75 -> 6001] -> 6308

1	2.4119.177.0	1	belt AV 12.7x1285 mm
2	2.4119.143.0	1	belt AV 12.7x1225 mm



9_N4917_04_0-A-001

Section: B0 - ENGINE
CYLINDER HEAD

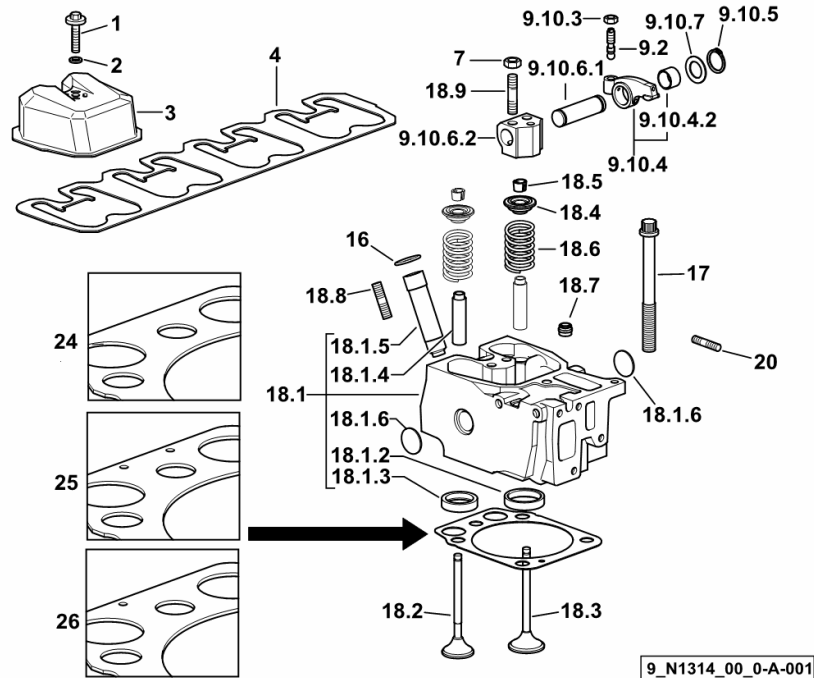
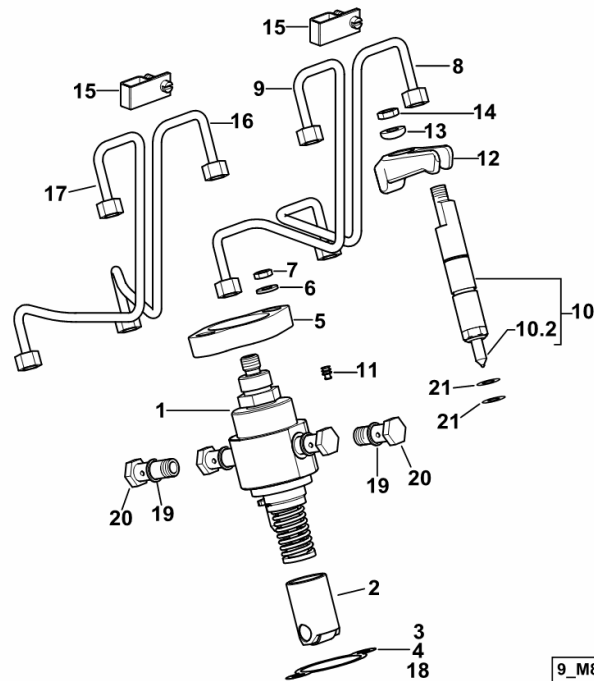


Fig.	Code	QTY	Name
Notes:			
[DORADO F 75 -> 6001]			
1	2.0399.288.2/10	4	screw m 8x36x46
2	2.1539.151.0	4	'o' ring 9.19 x 2.62
3	0.007.1139.0/10	4	small cap
4	0.065.1450.0/30	1	gasket
7	2.1011.421.2	8	nut m 10 p.1.25
9.2	0.021.1434.0	2	screw m 8 p.1 x 8
9.10.3	2.1011.405.2	2	nut m 8 p.1
9.10.4	0.066.1432.3	2	rocker
9.10.4.2	2.1559.021.0/40	1	bushing 19x22x14
9.10.5	2.1410.055.7	2	circlip 19
9.10.6.1	0.066.1431.0	1	pin
9.10.6.2	0.066.1430.0/10	1	support
9.10.7	2.1599.432.0	2	snoulder 19.5x31x1.5
16	2.1532.507.0	4	'o' ring 17x3.53
17	0.012.2673.0	16	screw m 14 p.2x141
18.1	0.017.0867.3	1	engine head
18.1.2	0.078.1426.0	1	valve seat mm 45.118
18.1.3	0.066.1427.0	1	valve seat mm 40.653
18.1.4	0.007.1779.0/20	2	valve guide
18.1.5	0.012.9984.0/20	1	sleeve
18.1.6	2.3170.012.2	2	expansion plug Ø 30
18.2	0.066.1421.0	1	exhaust valve mm 39.1 / Ø mm 9
18.3	0.010.6016.0	1	inlet valve mm 43.63 / Ø mm 9
18.4	0.066.1425.0	2	cup
18.5	0.074.1423.0	4	conical valve cotter
18.6	2.4019.287.0	2	spring 35.5x53.6x3.9
18.7	2.1519.117.0	2	'o' ring
18.8	2.0432.161.7	1	stud bolt m 10 p.1.5 / p.1.25 x 40
18.9	2.0432.163.7	2	stud bolt m 10 p.1.5 / p.1.25 x 45
20	2.0432.011.7	8	stud bolt m 8 p.1.25 / p.1 x 40
24	0.015.9190.0	0.5	gasket mm 1.2
25	0.015.9191.0	3	gasket mm 1.4
26	0.015.9192.0	0.5	gasket mm 1.6

INJECTION PUMP - INJECTOR

Fig.	Code	QTY	Name
------	------	-----	------

Notes:
[DORADO F 75 -> 6001]



1	2.4619.270.0/10	4	injector pump
2	2.4619.230.0	4	tappets
3	0.014.9668.0/10	12	shim mm 0.20
4	0.014.9679.0/10	8	shim mm 0.30
5	0.012.9348.0/20	4	bracket
6	2.1599.458.0/10	8	snoulder 8.4x18x2
7	2.1011.405.2	8	nut m 8 p.1
8	0.013.0021.3	1	tube Ø 6 / Ø 1.5
9	0.013.0363.3	1	tube Ø 6 / Ø 1.5
10	2.4719.630.0	4	injector
10.2	2.4729.620.0	1	nozzle
11	2.3199.270.0	4	plug 5.9x7.8
12	0.012.5977.0/20	4	bracket
13	2.1599.454.0	4	snoulder 10.5x17x7.5
14	2.1011.421.2	4	nut m 10 p.1.25
15	0.013.1014.3	2	terminal
16	0.013.3198.3	1	tube Ø 1,5 / m 12 p.1.5
17	0.013.3199.3	1	tube Ø 1,5 / m 12 p.1.5
18	0.015.1407.0/10	8	shim mm 0.05
19	2.1569.213.0	16	washer
20	2.3249.093.2	8	pipe fitting m 12 p.1
21	2.1499.224.0	8	washer 8x16x0.5

9_M8216_01_0-A-001

Section: B0 - ENGINE
GOVERNOR PARTS

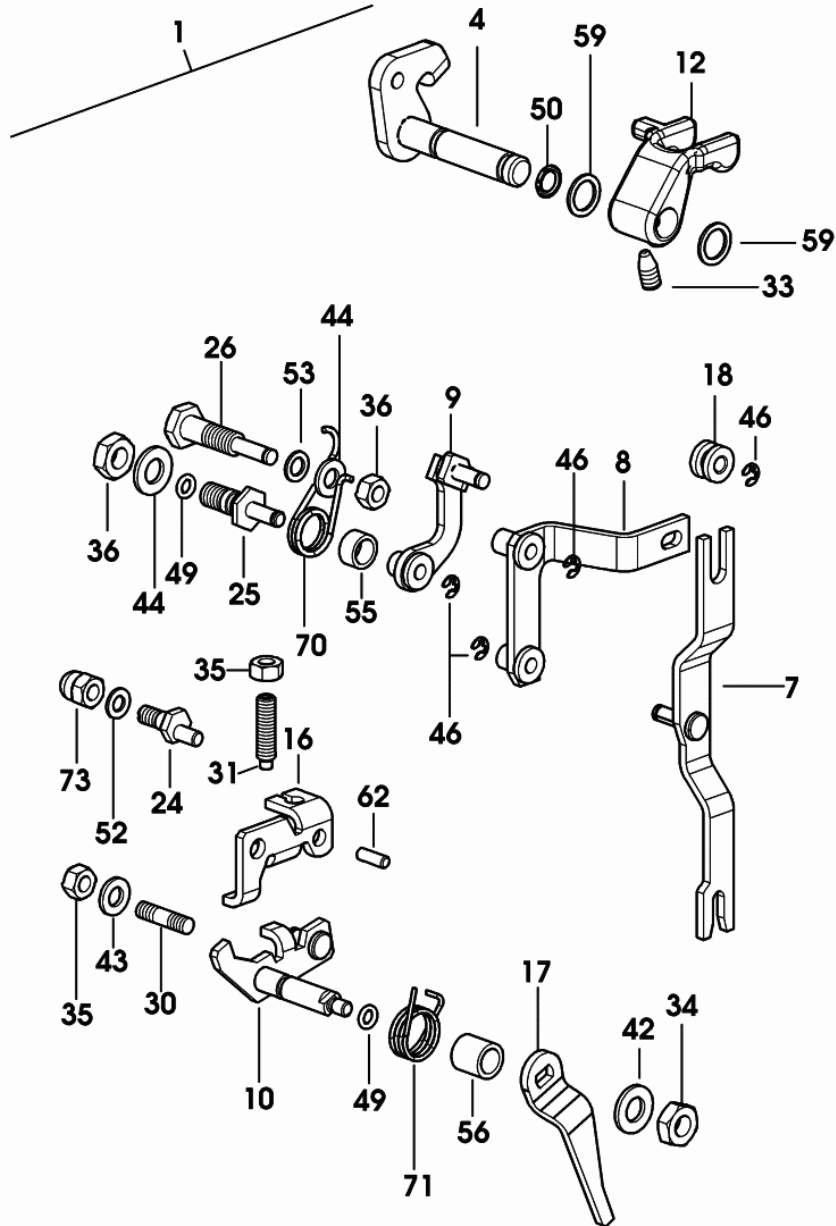


Fig.	Code	QTY	Name
1	0.013.5695.4/20	1	regulator
4	0.066.1622.2	1	lever
7	0.065.1664.2/10	1	lever
8	0.065.1665.2/20	1	lever
9	0.007.0760.2	1	lever
10	0.065.1667.2	1	lever
12	0.065.1669.0	1	lever
16	0.065.1675.0	1	bracket
17	0.065.1679.0/10	1	lever
18	0.065.1680.0	1	bushing
24	0.065.1686.0/20	1	eccentric
25	0.065.1687.0	1	pin
26	2.0399.300.7	1	pin m 8 p.1x38.5
30	2.0439.158.2	1	screw m 8 p.1.25 x 15, d933
31	2.0522.110.7	1	screw m 6 p.1x25
33	2.0599.057.2/10	1	screw
34	2.1011.102.2	1	nut m 5 p.0.7
35	2.1011.103.2	3	nut m 6 p.1
36	2.1011.505.2	3	nut m 8 p.1 x 8
42	2.1310.001.2	1	flat washer 5.3
43	2.1310.002.2	1	washer 6.6, d125
44	2.1310.004.2	2	flat washer 8.5
46	2.1430.004.7	5	circlip 3.2
49	2.1530.007.0	2	'o' ring 4.48x1.78
50	2.1530.012.0	2	'o' ring 6.75 x 1.78
52	2.1560.001.0	2	gasket 6.2x10
53	2.1560.003.0	3	gasket 8.2 x 12
55	2.1579.726.2/10	1	spacer 8.4x11.5x6
56	2.1579.730.2	1	spacer 8.4x12x12
59	2.1599.456.2/10	2	snoulder 10.2x14x1
62	2.1651.305.0	1	pin 4 x 12
70	2.4099.062.2	1	spring
71	2.4099.034.2	1	spring
73	2.1030.001.7	1	nut m 6

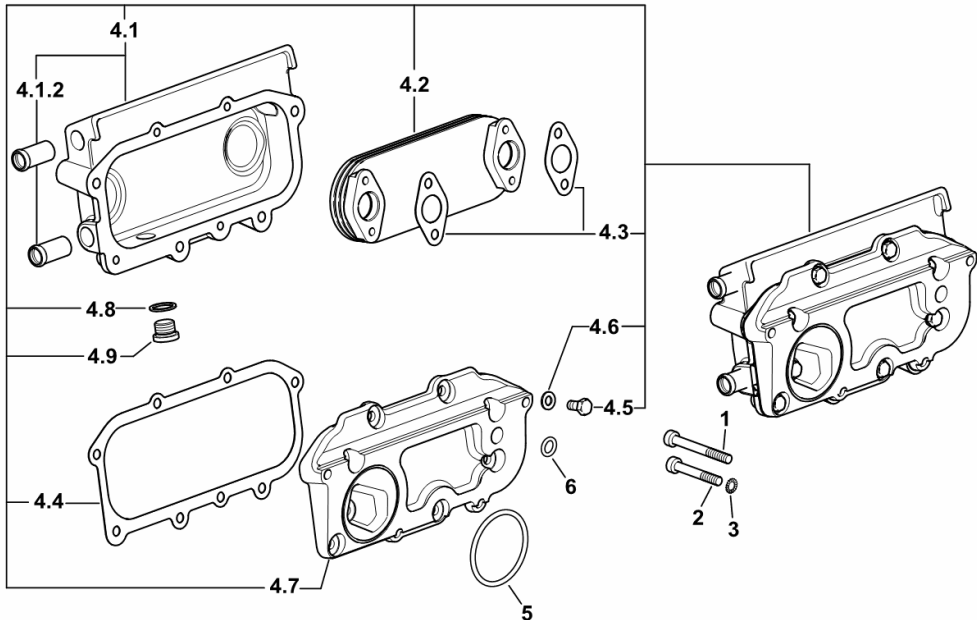
0_013_5695_4_20_C

Section: B0 - ENGINE
HEAT EXCHANGER

Fig.	Code	QTY	Name
------	------	-----	------

Notes:
 [DORADO F 75 -> 6001]

1	2.0312.220.2	2	screw m 8 p.1.25x70
2	2.0312.217.2	2	screw m 8 p.1.25x55
3	2.1480.014.1	4	washer 8
4.1	0.078.1554.3	1	box
4.1.2	0.066.1750.0	1	tube
4.2	0.078.1540.3	1	radiator
4.3	0.078.1557.0/10	2	gasket
4.4	0.078.1556.0/10	1	gasket
4.5	2.0112.205.2	8	screw m 8 p.1.25 x 16
4.6	2.1310.004.2	8	flat washer 8.5
4.7	0.078.1555.0/10	1	plate
4.8	2.1560.014.0	1	gasket 18.2 x 24 x 1.5
4.9	2.3120.101.0	1	plug m 18 p.1.5
5	2.1539.050.0	1	'o' ring 69.57x1.78
6	2.1539.048.0	1	'o' ring 20.35x1.78

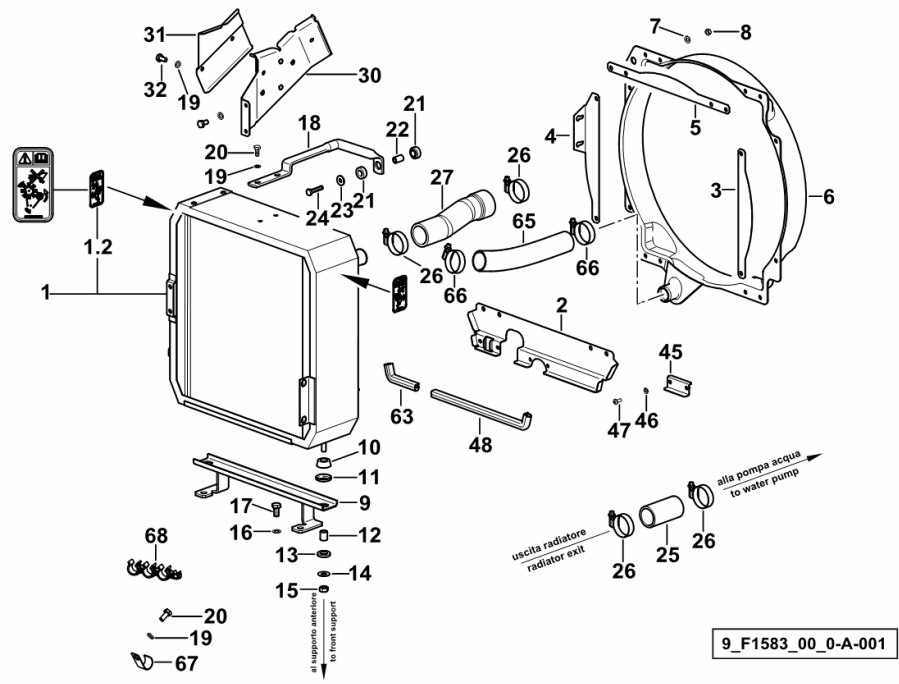


9_34315_03_0-A-001

Section: C0 - ENGINE ACCESSORIES
COOLING - COOLANT RADIATOR

Fig.	Code	QTY	Name
------	------	-----	------

Notes:
 [DORADO F 75 -> 6001] -> 6068



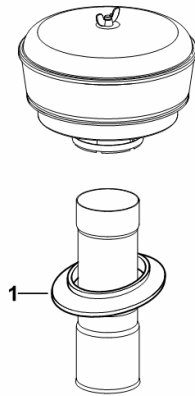
1	0.013.8431.3/40	1	water cooler
1.2	2.9939.273.0	2	plate
2	0.014.0396.0/10	1	shield
3	0.013.0864.0	1	guard sx/lh/li
4	0.013.3136.0	1	guard dx/rh/re
5	0.013.0863.0/10	1	guard
6	0.014.0385.2/10	1	air duct hood
7	2.1310.002.2	12	washer 6.6, d125
8	2.1011.103.2	12	nut m 6 p.1
9	0.013.0856.2/10	1	bracket
10	0.136.7385.0	2	rubber plug
11	0.136.7384.0	2	cup
12	2.1579.090.2	2	spacer 10.1x15x18
13	0.136.7387.0	4	rubber plug 15x27x5
14	2.1599.044.2	2	snoulder 10.5x25.5x1.5
15	2.1011.106.2	2	nut m 10 p.1.5
16	2.1470.006.2	2	lock washer 10
17	2.0112.307.2	2	screw m 10 p.1.5 x 20
18	0.013.3351.0/10	1	rod
19	2.1470.002.2	8	washer 6, d128
20	2.0112.004.2	4	screw m 6 p.1 x 14
21	0.035.8459.0	2	rubber plug
22	2.1579.322.0	2	spacer 10.5x6.5x17
23	2.1312.003.2	1	washer 6
24	2.0112.011.2	1	screw m 6 p.1x30
25	0.014.1882.0	1	sleeve
26	2.6851.004.0	4	clamp Ø 32/50
27	0.014.0587.0/10	1	tube
30	0.013.3168.2/10	1	channel
31	0.013.3264.0	1	cover
32	2.0112.003.2	4	screw m 6 p.1 x 12
45	0.013.4009.3	2	small plate
46	2.1470.001.2	4	lock washer 5
47	2.0332.304.2	4	screw m 5 p.0.8 x 12
48	0.013.4991.0	0.27	gasket
63	0.013.4991.0	0.09	gasket
65	0.014.0257.0/10	1	tube
66	2.6851.004.0	2	clamp Ø 32/50
67	2.6819.004.2	2	clamp Ø 17
68	0.013.5538.4	1	small spring

ENGINE HOOD GASKETS

Fig.	Code	QTY	Name
------	------	-----	------

Notes:
[DORADO F 75 -> 6001]

1	0.010.4713.0	1	gasket
---	--------------	---	--------



9_B9881_12_0-A-001

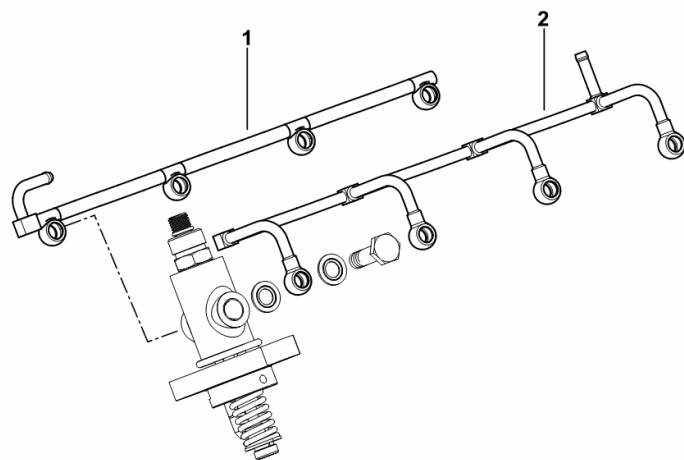
FUEL PIPES

Fig.	Code	QTY	Name
------	------	-----	------

Notes:

- EXPORT U.S.A. [DORADO F 75 -> 6001]

1	0.015.6801.3	1	tube
2	0.014.8592.3/10	1	tube



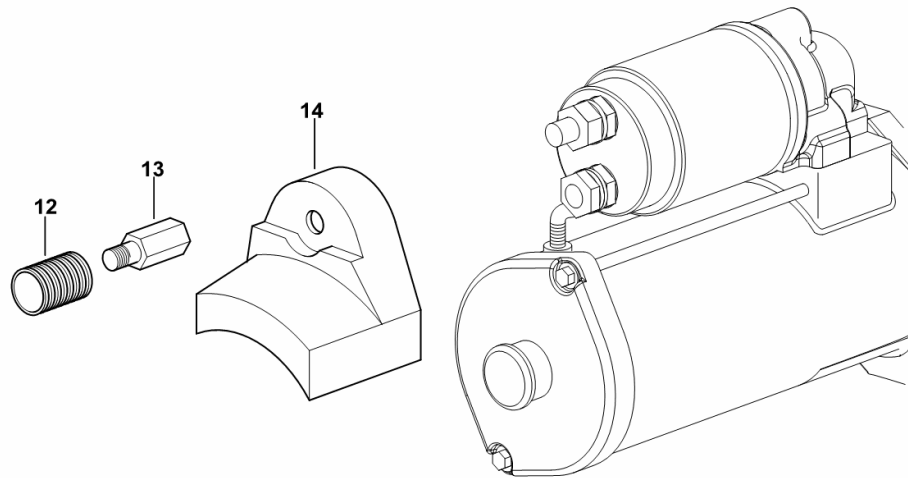
9_O0816_02_0-A-001

STARTER MOTOR COVER

Fig.	Code	QTY	Name
------	------	-----	------

Notes:
[DORADO F 75 -> 6001]

12	0.008.0378.0	1	cover
13	0.008.0616.0	1	pipe fitting
14	0.008.0391.0	1	cover



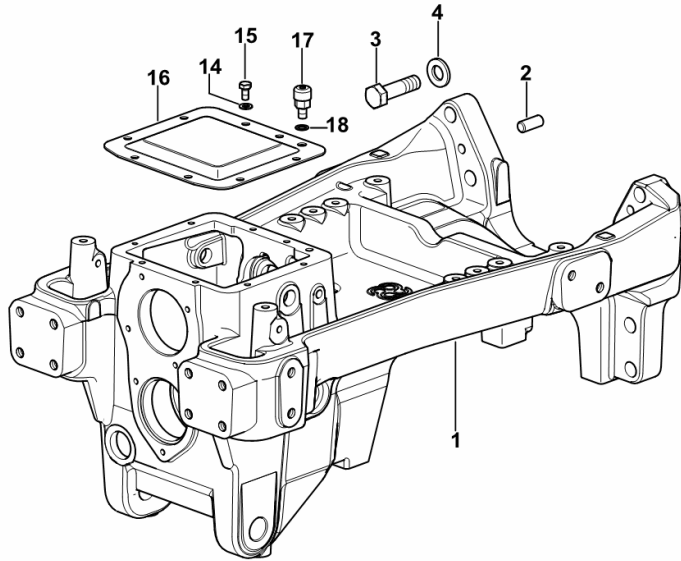
9_B6184_00_0-D-001

FRONT SUPPORT - WITH FRONT PTO AND LIFT

Fig.	Code	QTY	Name
------	------	-----	------

Notes:
[DORADO F 75 -> 6001]

1	0.014.7613.0	1	support
2	2.1699.035.0	2	cylindrical plug 14 x 35
3	2.0112.722.2	4	screw m 18 p.2.5 x 65
4	2.1475.007.7	4	washer 18
14	2.1310.004.2	8	flat washer 8.5
15	2.0112.205.2	8	screw m 8 p.1.25 x 16
16	0.010.1332.0	1	cover
17	0.001.6590.3	1	breather m 12x15
18	2.1560.006.0	1	gasket 10.2 x 16



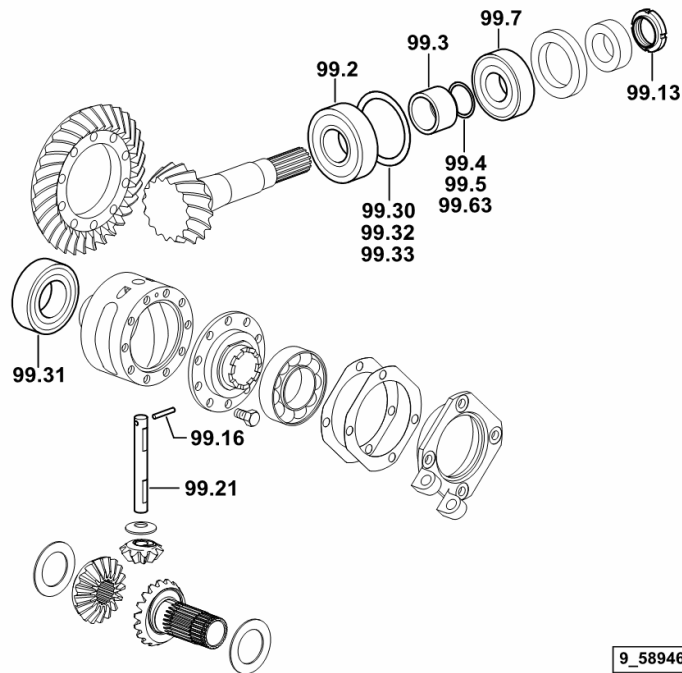
9_F1652_01_0-A-001

DIFFERENTIAL BEVEL GEAR PAIR

Fig.	Code	QTY	Name
------	------	-----	------

Notes:
[DORADO F 75 -> 6001]

99.2	2.2560.006.0	1	roller bearing 40 x 90 x 25.25
99.3	0.008.0389.0	1	spacer mm 37
99.4	2.1580.101.0	2	shim 36 x 43 x 0.2
99.5	2.1580.102.0	3	shim 36 x 43 x 0.5
99.7	2.2560.005.0	1	roller bearing 35 x 80 x 22.75
99.13	2.1214.108.7	1	ring nut m 35 p.1.5
99.16	2.1631.418.0	1	pin 5 x 45
99.21	0.010.0856.0/20	1	pin
99.30	2.1580.302.0	2	shim 76 x 89 x 0.5
99.31	2.2540.005.0	1	roller bearing 45 x 85 x 24.75
99.32	2.1580.301.0	2	shim 76 x 89 x 0.2
99.33	2.1580.309.0	2	shim 76 x 89 x 0.05
99.63	2.1580.109.0	2	shim 36x43x0.15

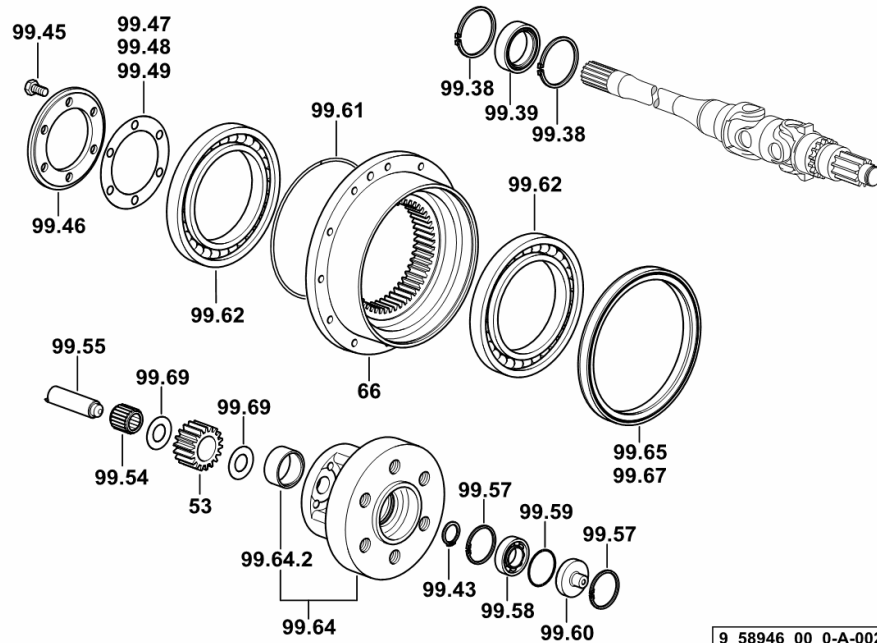


9_58946_00_0-B-001

Section: F0 - FRONT AXLE
4WD - FRONT REDUCTION GEARBOX

Fig.	Code	QTY	Name
------	------	-----	------

Notes:
 [DORADO F 75 -> 6001]



9_58946_00_0-A-002

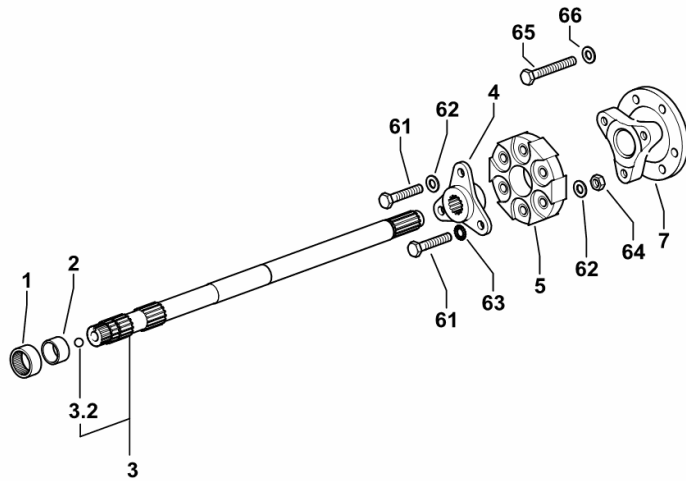
53	0.146.4644.0	6	planet gear Z = 18
66	0.008.5345.0	2	crown wheel
99.38	2.1411.025.1	4	circlip 62
99.39	2.2999.415.0	2	bearing 43.8 x 62 x 17
99.43	2.1419.029.7	2	circlip 25
99.45	2.0113.307.2	12	screw m 10 p 1.5 x 20
99.46	0.008.5401.0/20	2	spider
99.47	0.467.4653.0/10	4	shim 82x119x0.2
99.48	0.467.4654.0/10	4	ring 82x119x0.5
99.49	0.467.4655.0/10	4	ring 82x119x0.15
99.54	2.2999.030.0	6	roller cage 22 x 32 x 30
99.55	0.146.4643.0	6	pin
99.57	2.1411.019.1	4	circlip 47
99.58	2.2030.006.0	2	ball bearing 25 x 47 x 12
99.59	2.1530.118.0	2	'o' ring 46.04x3.53
99.60	0.270.4652.0	2	small cover
99.61	2.1530.276.0	2	'o' ring 177.4x3.53
99.62	2.2020.022.0	4	ball bearing 120x180x19
99.64	0.008.5344.3/50	2	spider
99.64.2	2.1559.309.0	1	bushing
99.65	2.1529.124.0/30	1	'o' ring 173 x 200 x 17
99.67	2.1529.124.0/30	1	'o' ring 173 x 200 x 17
99.69	2.1589.552.0	12	shoulder 22x42x1

Section: M0 - FRONT PTO
INPUT SHAFT

Fig.	Code	QTY	Name
------	------	-----	------

Notes:
 [DORADO F 75 -> 6001]

1	2.2725.040.0	1	roller cage 30 x 37 x 16
2	2.1559.374.0	1	bushing 25 x 30 x 17
3	0.013.7706.3/10	1	shaft P.T.O.
3.2	2.2810.007.0	1	ball 13/32"
4	0.010.1376.0/10	1	flange
5	0.008.8341.0/10	1	filex coupling
7	0.008.8342.0	1	flange
61	2.0112.320.2	6	screw m 10 p.1.5 x 55
62	2.1310.006.2	6	flat washer 10.5
63	2.1470.006.2	3	lock washer 10
64	2.1120.006.2	3	nut m 10 p.1.5
65	2.0312.321.2	6	screw m 10 p.1.5 x 75
66	2.1480.015.1	6	washer 10



9_F1659_85_0-A-001

HYDRAULIC TRAILER BRAKING SYSTEM.....	H0.09.13 (1)
HYDRAULIC TRAILER BRAKING SYSTEM.....	H0.09.14 (1)
TRAILER BRAKE VALVE.....	2.3729.708.0.A

ELECTROHYDRAULICS

BYPASS VALVE ASSEMBLY.....	H0.10.2 (1)
BYPASS VALVE ASSEMBLY.....	H0.10.3 (1)
SOLENOID VALVE ASSEMBLY FOR 3-POINT LINKAGE CONTROL.....	H0.10.4 (1)
OIL FLOW CONTROL VALVE CASING.....	H0.10.5 (1)
OIL FLOW CONTROL VALVE CASING.....	H0.10.5 (2)
SOLENOID VALVE - 4WD.....	H0.10.6 (1)
PLUGS FOR TYPES WITH MECHANICAL 4WD ENGAGEMENT.....	H0.10.7 (1)
SOLENOID VALVE.....	2.3729.330.0/50.A
SOLENOID VALVE.....	2.3729.340.0/50.A
SOLENOID VALVE 13 V - 20 W, ON/OFF 3/2.....	2.3729.697.0/10.A
SOLENOID VALVE 13 V - 20 W, ON/OFF 3/2.....	2.3729.697.0/20.A

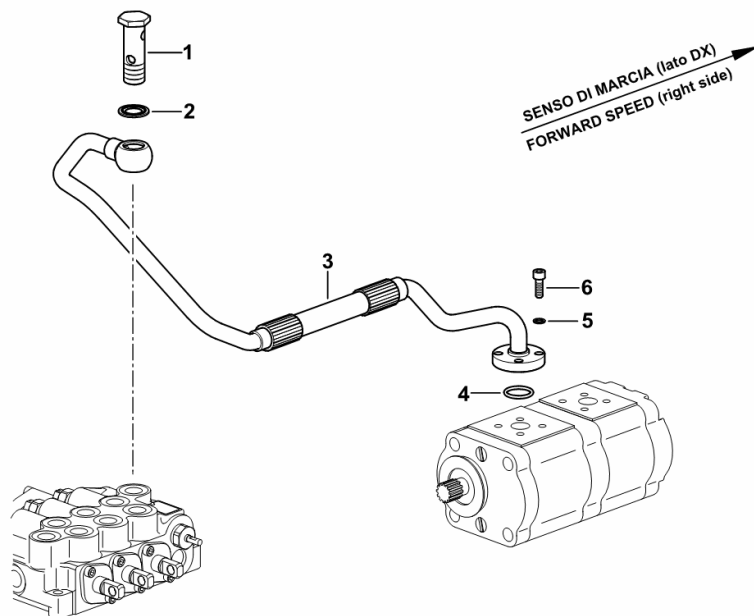
COMPLETING THE HYDRAULIC PUMP 14 + 11 cm³

Fig.	Code	QTY	Name
------	------	-----	------

Notes:

- FOR VERSIONS WITH FRONT CONTROL VALVE [DORADO F 75 -> 6001]

1	2.3339.485.2/10	1	pipe union m 18 p.1.5x55
2	2.1561.110.0	1	'o' ring Ø 18 -B-
3	0.014.4231.3	1	tube
4	2.1531.052.0	1	'o' ring 20.29 x 2.62
5	2.1480.012.2	4	washer 6, d128
6	2.0312.105.2	4	screw m 6 p.1 x 18



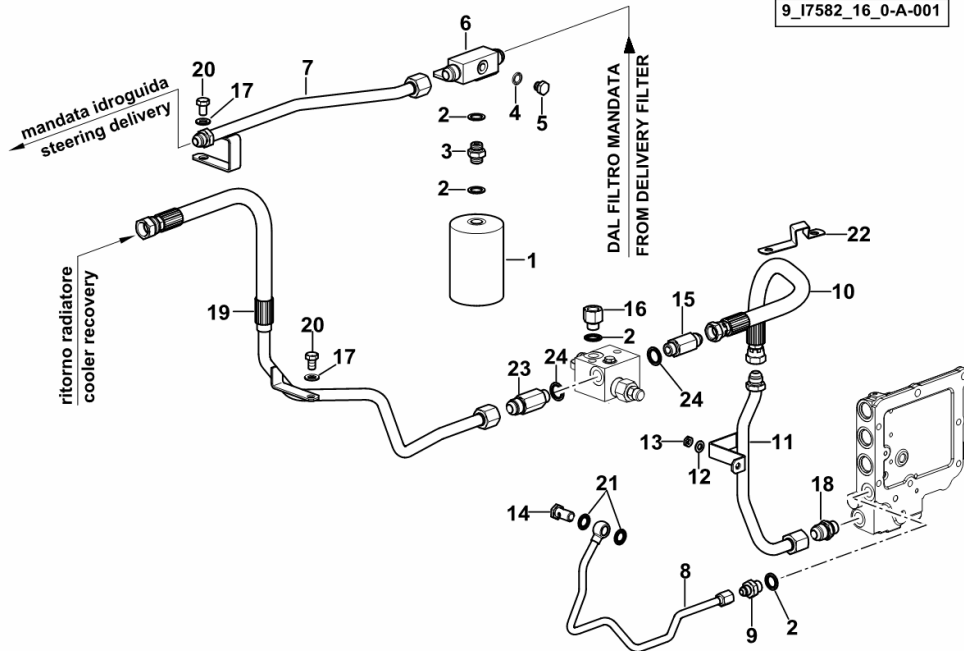
9_F2082_50_0-A-001

HYDRAULIC SYSTEM

Fig.	Code	QTY	Name
------	------	-----	------

Notes:

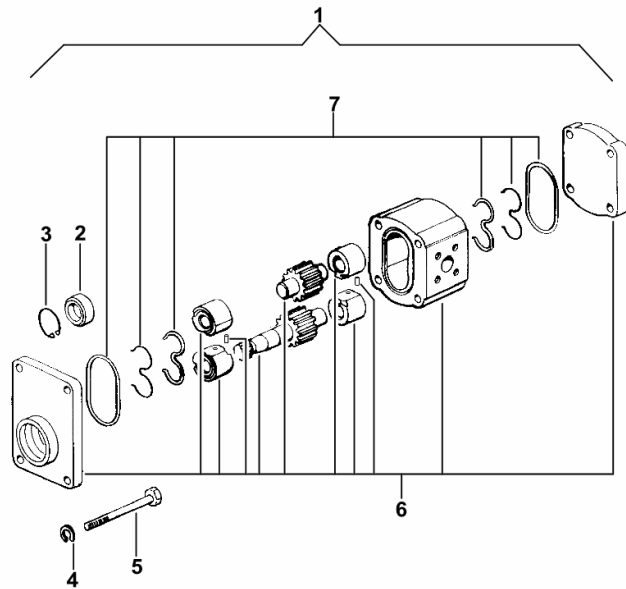
- FOR TYPES WITHOUT H-M-L (POWERSHIFT) [DORADO F 75 -> 6001]



1	0.011.4186.2	1	vibration damper 270 cc
2	2.1561.008.0	4	'o' ring 16
3	0.299.6358.0/10	1	pipe fitting M 16/M 16 Ø5
4	2.1561.006.0	1	'o' ring 12
5	2.3110.402.2	1	plug m 12 p.1.5
6	0.014.5636.3	1	body
7	0.014.5632.3/10	1	tube
8	0.015.2448.3	1	tube
9	2.3261.007.2	1	pipe fitting m 16 p.1.5-9/16"
10	0.014.5733.3	1	tube
11	0.014.5629.3	1	tube
12	2.1475.002.2	1	conical washer 8
13	2.1011.205.2	1	nut m 8 p.1.25
14	2.3335.006.2	1	pipe union m 14 p.1.5x24
15	2.3339.346.2/10	1	pipe fitting m 18 p.1.5-3/4"
16	2.3249.169.2	1	pipe fitting
17	2.1310.006.2	2	flat washer 10.5
18	2.3249.141.2	1	pipe fitting 7/8 JIC-M18
19	0.015.2475.3/10	1	tube
20	2.0112.305.2	2	screw m 10 p.1.5 x 16
21	2.1561.007.0	2	gasket 14,8x22.2
22	0.011.8415.0/10	1	bracket
23	2.3249.166.2	1	pipe fitting 7/8"-14 jic m 18
24	2.1561.010.0	2	'o' ring 18

HYDRAULIC PUMP PARTS

Fig.	Code	QTY	Name
1	2.4539.620.0/10	1	hydraulic pump 22.5 cc dx/rh/re - BOSCH
2	0.009.4046.1	1	'o' ring
3	2.1411.012.1	1	circlip 30x1.2, din 472
4	0.000.0000.1	0	not serviceable
5	0.000.0000.1	0	not serviceable
6	0.000.0000.1	0	not serviceable
7	2.4529.330.1/10	1	seal ring kit



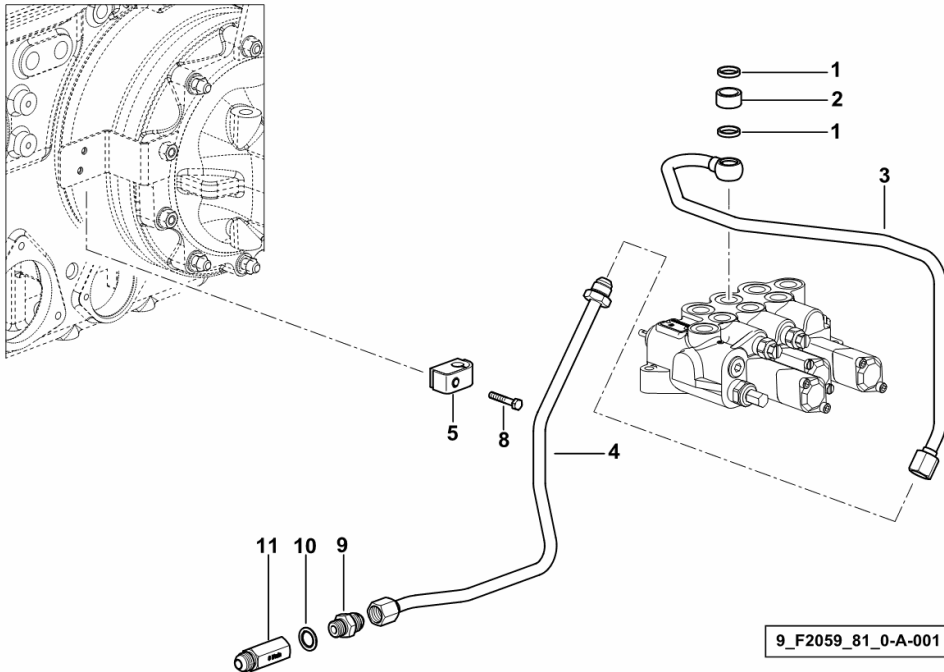
2_4539_620_0_10

FRONT LIFT - HYDRAULIC SYSTEM

Fig.	Code	QTY	Name
------	------	-----	------

Notes:
[DORADO F 75 -> 6001]

1	2.1569.160.0	2	gasket 18.2x22x3.5
2	2.1549.385.2	1	spacer 18.6 x 25 x 13
3	0.014.8624.3/10	1	tube
4	0.014.8601.3	1	tube
5	2.3320.105.0	1	collar
8	2.0112.013.2	1	screw m 6 p.1 x 35
9	2.3261.112.2	1	pipe fitting 3/8 gas-3/4"
10	2.1561.109.0	1	gasket
11	0.014.7203.3	1	valve

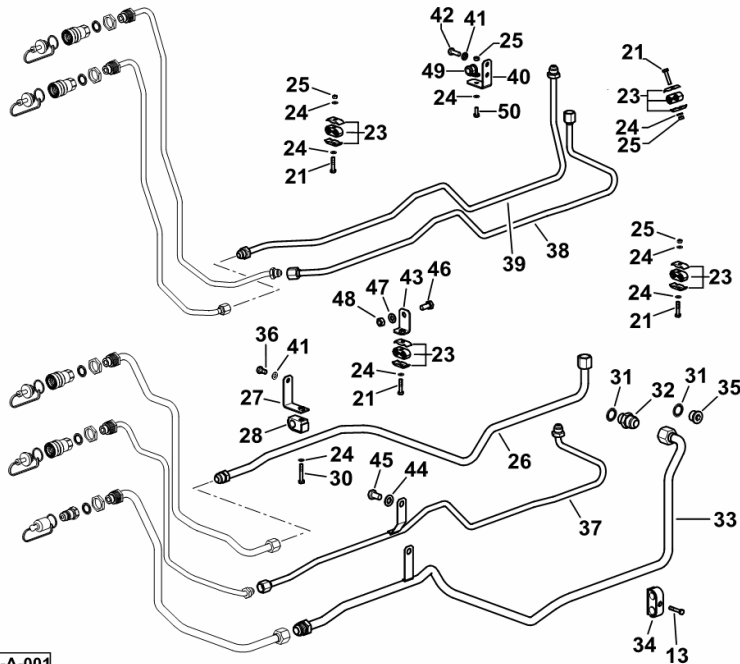


Section: H0 - HYDRAULIC AND PNEUMATIC SYSTEM|
4+1 MID-MOUNT HYDRAULIC COUPLERS - REAR

Fig.	Code	QTY	Name
------	------	-----	------

Notes:
 [DORADO F 75 -> 6001]

13	2.0112.013.2	2	screw m 6 p.1 x 35
21	2.0112.011.2	7	screw m 6 p.1x30
23	2.3321.010.0	7	collar Ø 12/12
24	2.1310.002.2	9	washer 6.6, d125
25	2.1011.103.2	7	nut m 6 p.1
26	0.014.7620.3/10	1	tube
27	0.014.7619.3	1	bracket
28	2.3320.108.0	1	terminal
30	2.0112.015.2	1	screw m 6 p.1x40
31	2.1561.112.0	2	gasket Ø 22 -B-
32	2.3261.013.2	1	pipe fitting m 22 p.1.5-1 1/16"
33	0.014.7575.3/10	1	tube
34	2.3320.217.0	1	terminal
35	2.3120.002.4	1	plug m 22 x 1.5
36	2.0112.205.2	1	screw m 8 p.1.25 x 16
37	0.014.7618.3	1	tube
38	0.014.7541.3	1	tube
39	0.014.7542.3/10	1	tube
40	0.014.7558.0	1	bracket
41	2.1310.004.2	3	flat washer 8.5
42	2.0112.208.2	2	screw m 8 p.1.25 x 22
43	0.014.7573.3	1	bracket
44	2.1310.007.2	1	flat washer 13.5
45	2.0112.407.2	1	screw m 12 p.1.75 x 20
46	2.0112.308.2	1	screw m 10 p.1.5x22
47	2.1310.006.2	1	flat washer 10.5
48	2.1011.106.2	1	nut m 10 p.1.5
49	2.6839.059.0	1	clamp Ø 12 / 15
50	2.0112.005.2	1	screw m 6 p.1 x 16



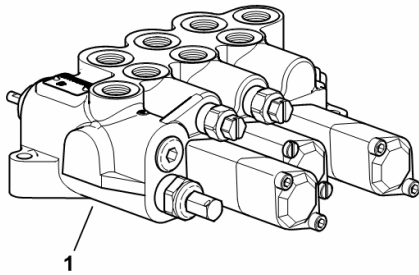
9_F7088_03_0-A-001

6-WAY AUXILIARY DISTRIBUTOR

Fig.	Code	QTY	Name
------	------	-----	------

Notes:
[DORADO F 75 -> 6001]

1	2.3719.740.0/20	1	distributor ☞ 2.3719.740.0/20
---	-----------------	---	----------------------------------



9_F2088_25_0-A-001

HYDRAULIC DISTRIBUTOR-PARTS

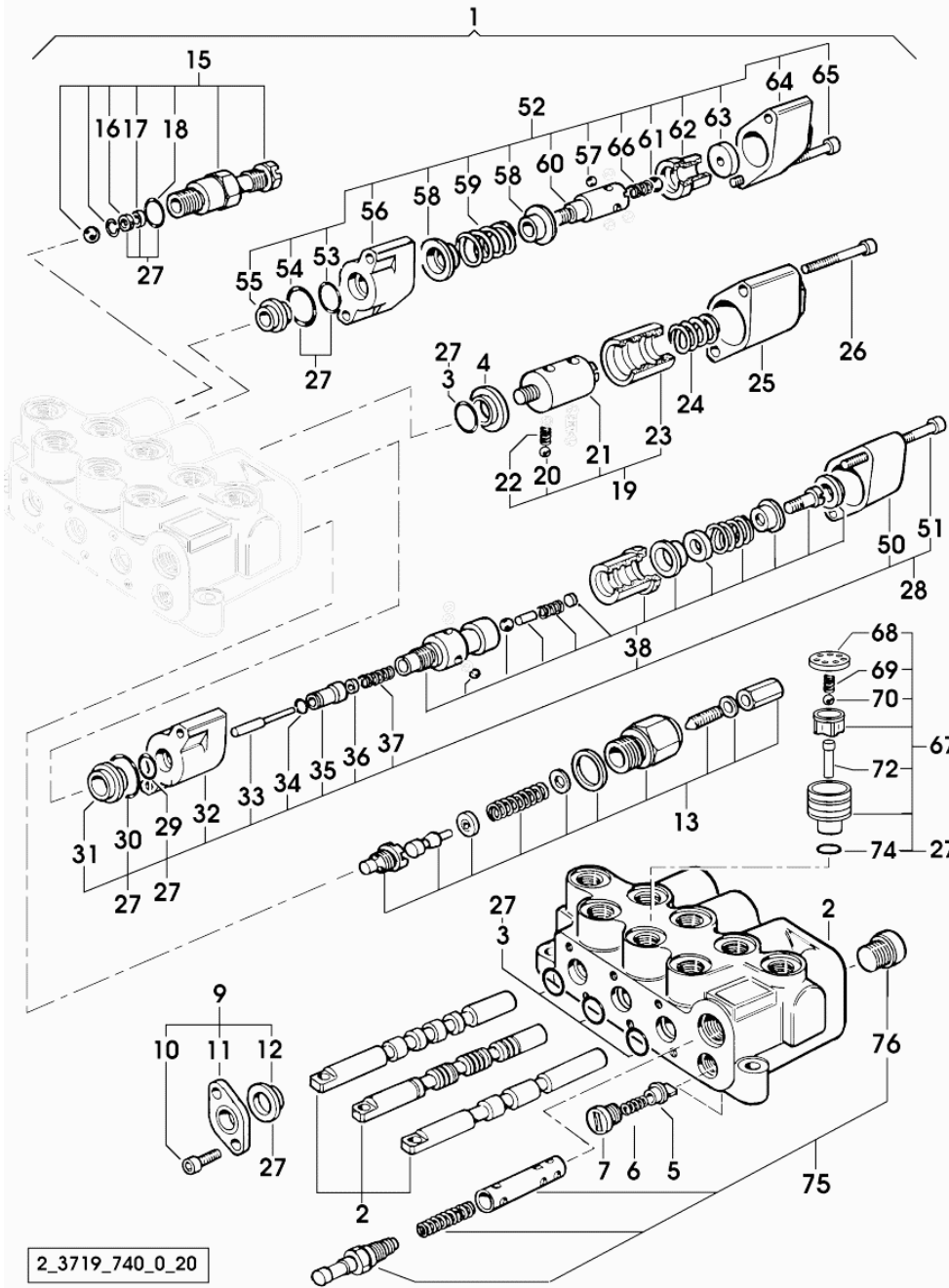


Fig.	Code	QTY	Name
1	2.3719.740.0/20	1	distributor
2	0.000.0000.1	0	not serviceable
3	0.010.2098.0	4	'o' ring
4	0.010.2102.0	1	spacer
5	0.010.2106.1	2	stop
6	0.010.2106.2	2	spring
7	0.010.2107.0	2	plug
9	0.010.2098.1	3	cap
10	0.010.2098.2	6	screw
11	0.010.2099.0	3	small plate
12	0.010.2099.1	3	cup
13	0.010.2100.0	1	valve
15	0.010.2104.2	2	valve
16	0.010.2105.0	2	'o' ring
17	0.010.2105.1	2	ring
18	0.010.2105.2	2	ring
19	0.010.2100.1	1	valve
20	0.010.2100.2	4	ball
21	0.010.2101.1	1	pin
22	0.010.2101.0	2	spring
23	0.010.2101.2	1	sleeve
24	0.010.2102.1	1	spring
25	0.010.2108.0	1	small cap
26	0.010.2103.0	2	screw
27	0.010.2283.1	1	seal ring kit
28	0.010.2108.1	1	accessories
29	0.010.2098.0	1	'o' ring
30	0.010.2108.2	1	'o' ring
31	0.010.2109.0	1	spacer
32	0.010.2109.1	1	small cap
33	0.010.2109.2	1	pin
34	0.010.2110.0	1	gasket
35	0.010.2110.1	1	sleeve
36	0.010.2283.2	1	spacer
37	0.010.2111.0	1	spring
38	0.010.3592.1	1	accessories
50	0.010.2104.0	1	small cap
51	0.010.2115.1	2	screw
52	0.010.2115.2	1	accessories
53	0.010.2098.0	1	'o' ring
54	0.010.2108.2	1	'o' ring
55	0.010.3621.2	1	spacer
56	0.010.2109.1	1	small cap
57	0.010.2111.2	4	ball

2_3719_740_0_20

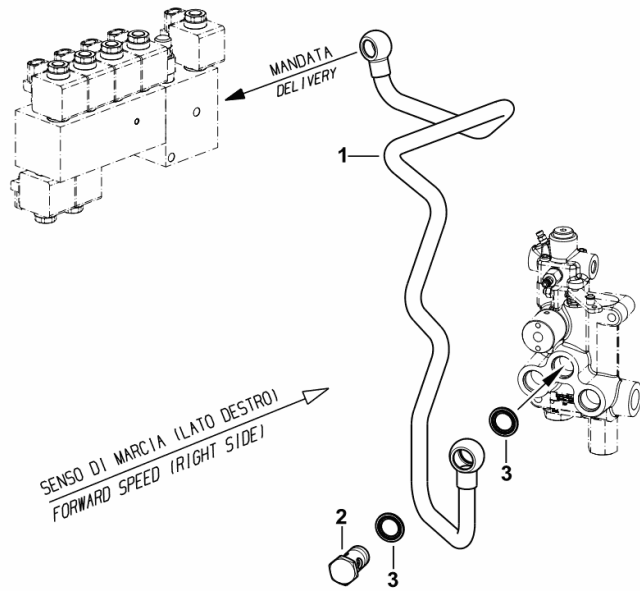
HYDRAULIC TRAILER BRAKING SYSTEM

Fig.	Code	QTY	Name
------	------	-----	------

Notes:

- WITH ELECTRO-HYDRAULIC 3-POINT HITCH [DORADO F 75 -> 6001]

1	0.015.2207.3	1	tube
2	2.3335.009.2	1	pipe union m 22 p.1.5 x 39
3	2.1561.112.0	2	gasket Ø 22 -B-



9_F1689_13_0-A-001

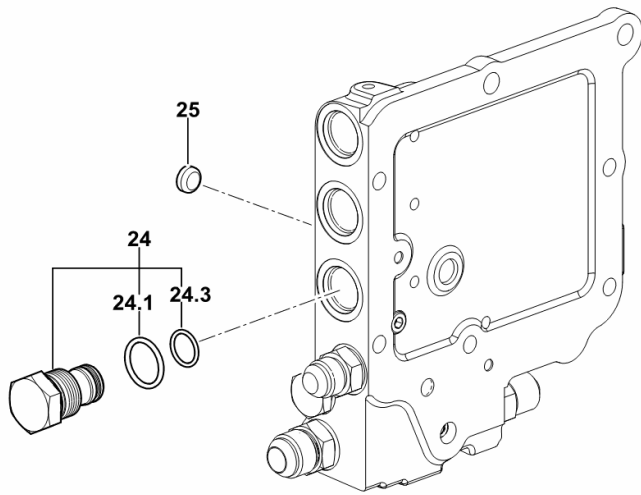
PLUGS FOR TYPES WITH MECHANICAL 4WD ENGAGEMENT

Fig.	Code	QTY	Name
------	------	-----	------

Notes:

[DORADO F 75 -> 6001]

24	0.006.6161.4/10	1	plug
24.1	2.1530.048.0	1	'o' ring 18.72x2.62
24.3	2.1530.035.0	1	'o' ring 14.00x1.78
25	2.3171.004.4	1	plug 12



9_I7438_00_0-D-001

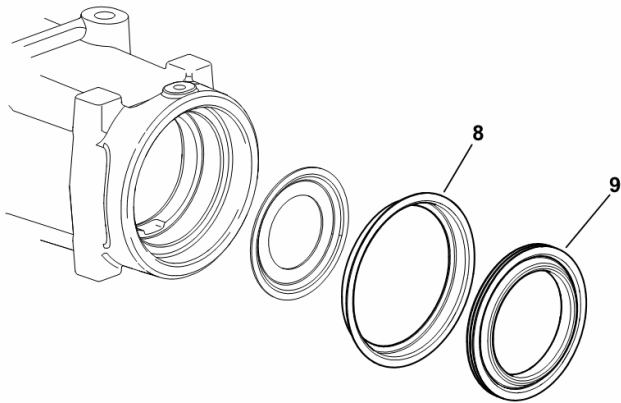
PARTS SET FOR REAR AXLE - STANDARD SEAL

Fig.	Code	QTY	Name
------	------	-----	------

Notes:

[DORADO F 75 -> 6001]

8	0.255.4450.0/10	2	cup
9	2.1569.104.0	2	'o' ring 80 x 118.2 x 12



9_64844_11_0-A-001

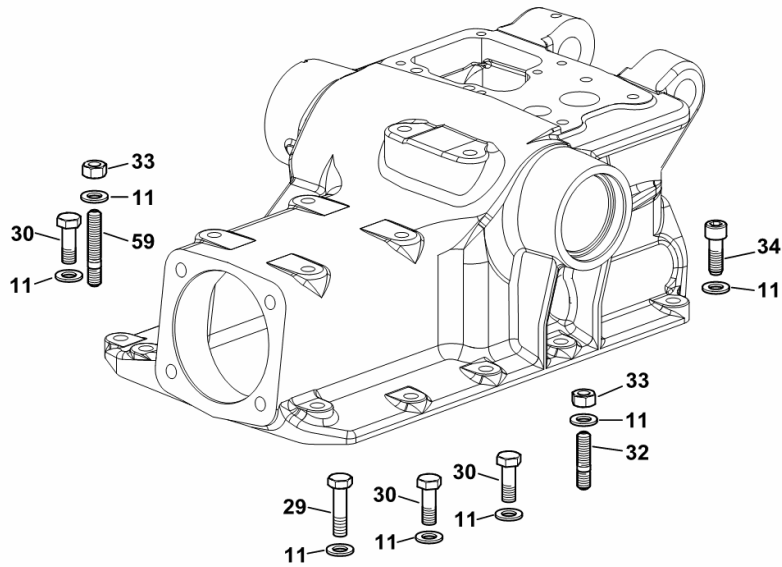
LIFT FIXING COMPONENTS

Fig.	Code	QTY	Name
------	------	-----	------

Notes:

[DORADO F 75 -> 6001]

11	2.1475.003.2	20	washer 10
29	2.0112.315.2	1	screw m 10 p.1.5 x 40
30	2.0112.311.2	6	screw m 10 p.1.5 x 30
32	2.0432.157.2	2	stud bolt m 10 p.1.5 / p.1.25 x 30
33	2.1011.421.2	4	nut m 10 p.1.25
34	2.0312.310.2	1	screw m 10 p.1.5 x 30
59	2.0432.163.7	2	stud bolt m 10 p.1.5 / p.1.25 x 45



9_17431_01_0-B-001

Section: R0 - REAR LIFT
THREE-POINT COUPLING

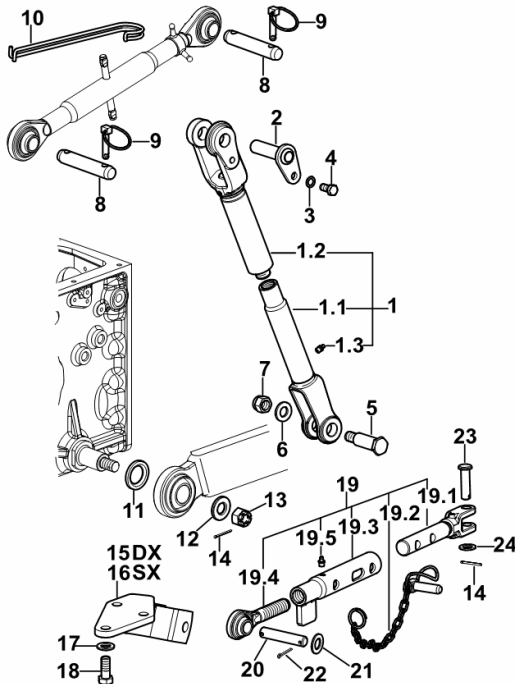


Fig.	Code	QTY	Name
Notes:			
[DORADO F 75 -> 6001]			
1	0.014.5281.4/10	1	adjustable tensioner
1.1	0.014.5281.3	1	rod
1.2	0.009.8008.3/20	1	rod
1.3	2.3820.105.2	1	lubricator m 10 p.1 x 7
2	0.008.8469.2/10	2	pin
3	2.1470.007.2	2	lock washer 12
4	2.0112.409.2	2	screw m 12 p.1.75 x 25
5	0.479.5868.0/10	2	pin mm 24
6	2.1475.007.7	2	washer 18
7	2.1120.210.2	2	selflock nut m 18 p.1.5
8	2.1669.024.2	2	pin 25.4 x 133
9	0.010.9322.4	4	pin Ø 11
10	0.010.9018.0	1	spring
11	0.96001.64.0/10	2	snoulder 35 x 55 x 6.0
12	0.96001.65.0/10	2	snoulder 21x45x6
13	2.1021.209.2	2	castellated nut m 20 p.1.5
14	2.1690.413.2	4	split pin 4 x 36
15	0.014.0715.2/10	1	bracket
16	0.014.0716.2/10	1	bracket
17	2.1475.006.2	6	washer 16
18	2.0112.615.2	6	screw m 16 p.2 x 40
19	0.014.5595.4	2	stabiliser
19.1	0.010.6073.3/10	1	rod
19.2	0.010.6245.4	1	chain
19.3	0.014.5595.2	1	tube
19.4	0.010.5224.3	1	rod
19.5	2.3820.105.2	1	lubricator m 10 p.1 x 7
20	2.1669.053.2	2	pin 19x95x83
21	2.1310.013.2	4	flat washer 21x37
22	2.1690.513.2	4	split pin 5 x 36
23	2.1671.716.2	2	pin 16x55x51
24	2.1310.010.2	2	flat washer 16

GEARBOX FRONT.....	D0.09.2 (2)
GEARBOX FRONT.....	D0.09.3 (1)
GEARBOX FRONT.....	D0.09.3 (2)
GEARBOX FRONT- FIXINGS.....	D0.09.4 (1)
FRONT GEARBOX PLUG.....	D0.09.6 (1)
FRONT GEARBOX PLUG.....	D0.09.7 (1)
GEARBOX UPPER COVER.....	D0.09.9 (1)
COVER AND PLUG FOR GEARBOX WITH H-M-L.....	D0.09.10 (1)
GEARBOX UPPER COVER.....	D0.09.11 (1)
PLUG FOR 4-WAY CONTROL VALVE VERSION.....	D0.09.12 (1)
GEARBOX UPPER COVER.....	D0.09.14 (1)
FRONT GEARBOX COVER PLUG.....	D0.09.15 (1)
FRONT GEARBOX PLUG.....	D0.09.16 (1)
PLUGS FOR GEARBOX.....	D0.09.17 (1)
SENSOR BRACKET.....	D0.09.18 (1)
PLUGS FOR REAR GEARBOX CASING.....	D0.09.19 (1)
REAR GEARBOX PLUG.....	D0.09.20 (1)
PLUG FOR TYPES WITH ELECTROHYDRAULIC 4WD ENGAGEMENT.....	D0.09.21 (1)
PLUGS FOR TYPES WITH MECHANICAL 4WD ENGAGEMENT.....	D0.09.22 (1)
REAR GEARBOX PLUG.....	D0.09.23 (1)
REAR GEARBOX PLUG.....	D0.09.24 (1)

INTERNAL AND EXTERNAL GEARBOX CONTROLS

INTERNAL CONTROLS OF 5-SPEED GEARBOX WITH UNDERDRIVE.....	D0.10.1 (2)
INTERNAL CONTROLS OF 5-SPEED GEARBOX WITH UNDERDRIVE.....	D0.10.2 (2)
5-SPEED GEARBOX INTERNAL CONTROLS.....	D0.10.4 (2)
GEARSHIFT AND REVERSE SHUTTLE CONTROL.....	D0.10.6 (1)
SPEED RANGE REDUCTION GEAR UNIT.....	D0.10.7 (1)
CONTROL FOR 3-RANGE GEARBOX.....	D0.10.8 (1)
GEARSHIFT AND REVERSE SHUTTLE CONTROL.....	D0.10.9 (1)
PARTS SET - 5-SPEED WITH UNDERDRIVE.....	D0.10.10 (1)
PARTS SET - 5-SPEED GEARBOX.....	D0.10.11 (1)
REDUCTION GEAR CONTROL.....	D0.10.14 (1)

LOW SPEED RANGES

BEVEL WHEEL GEAR $Z = 10 / Z = 34$	D0.11.0 (1)
BEVEL DRIVE PINION BEARING.....	D0.11.1 (1)
SPEED RANGE REDUCTION GEAR SHAFT.....	D0.11.2 (1)
SPEED RANGE REDUCTION GEAR SHAFT.....	D0.11.3 (1)
SPEED RANGE REDUCTION GEAR UNIT.....	D0.11.4 (1)
2-RANGE BOX - 40 Km/h.....	D0.11.5 (1)
2-RANGE BOX.....	D0.11.6 (1)
3-RANGE BOX - 40 Km/h.....	D0.11.7 (1)
PHONIC WHEEL FOR TYPES WITH MECHANICAL 4WD ENGAGEMENT.....	D0.11.8 (1)
PHONIC WHEEL FOR TYPES WITH ELECTROHYDRAULIC 4WD ENGAGEMENT.....	D0.11.9 (1)

HYDRAULIC REAR PTO CLUTCH

Section: D0 - TRANSMISSION
GEARBOX INPUT SHAFT

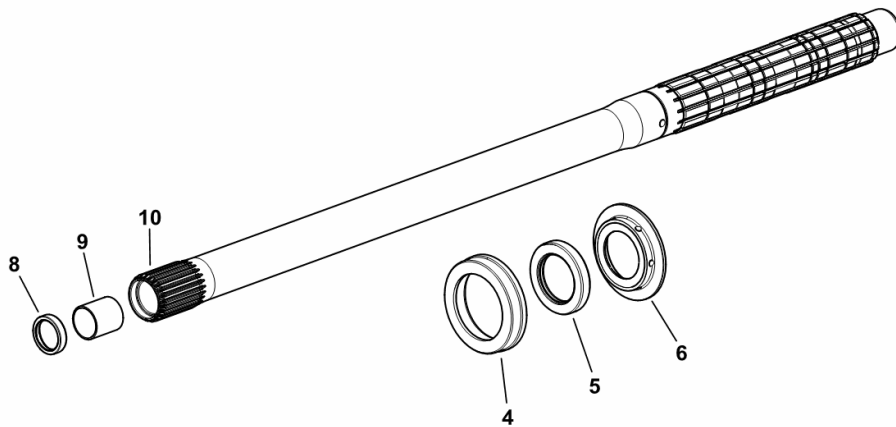
Fig.	Code	QTY	Name
------	------	-----	------

Notes:

- FOR TYPES WITHOUT H-M-L (POWERSHIFT) [DORADO F 75 -> 6001]

4	0.008.5148.0/10	1	ring
5	2.1529.109.0	1	'o' ring 40 x 60 x10
6	0.007.7790.0	1	spacer
8	2.1529.125.0/10	1	'o' ring 25 x 32 x 7
9	2.1555.514.0	1	bushing 25 x 28 x 30
10	0.013.1646.0	1	shaft

9_17425_00_0-A-001



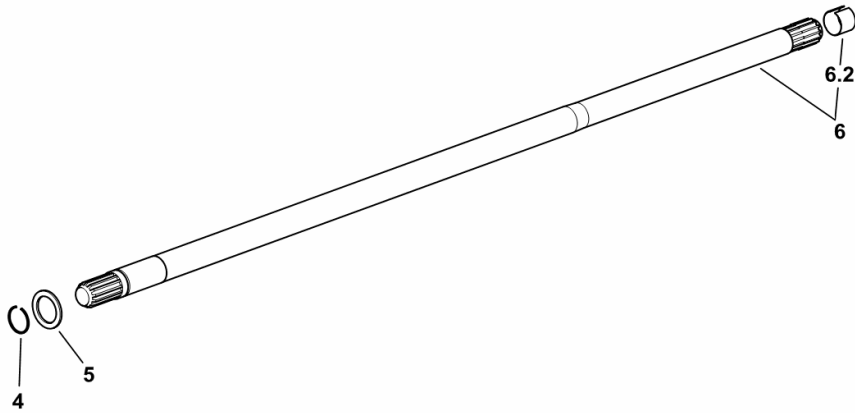
P.T.O. - CLUTCH TRANSMISSION SHAFT

Fig.	Code	QTY	Name
------	------	-----	------

Notes:

- FOR TYPES WITH H-M-L- (POWERSHIFT) [DORADO F 75 -> 6001]

4	2.1420.010.1	1	circlip a 25
5	2.1599.677.0	1	thrust plate 25x35x2
6	0.010.0551.3/40	1	p.t.o.shaft
6.2	0.255.2550.0	1	ring



9_70525_00_0-B-001

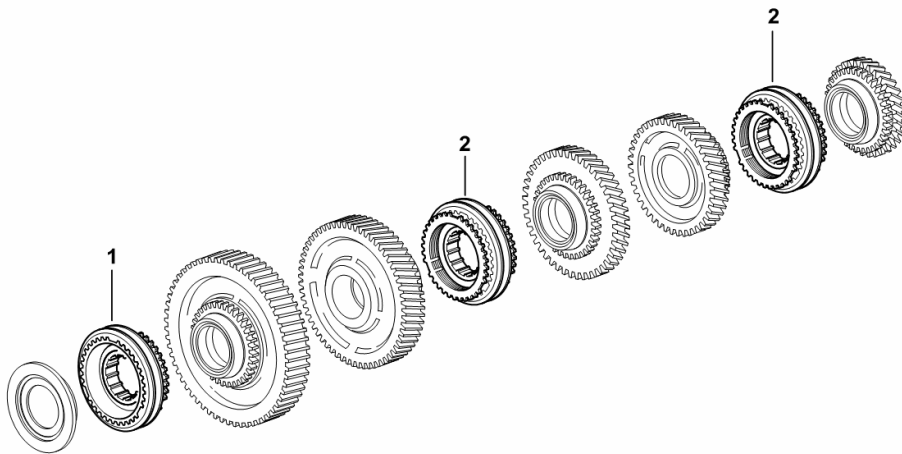
Section: D0 - TRANSMISSION
SYNCHRONISERS

Fig.	Code	QTY	Name
------	------	-----	------

Notes:

- FOR TYPES WITH H-M-L- (POWERSHIFT) [DORADO F 75 -> 6001]

1	0.007.7621.4	1	lock synchronizer 62  0.007.7621.4
2	0.007.7620.4/10	2	lock synchronizer 62  0.007.7620.4/10



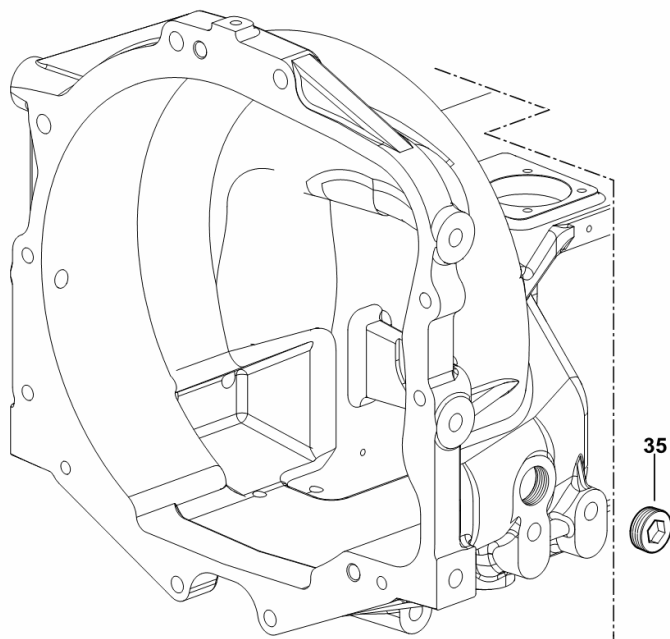
9_C1233_01_0-A-001

FRONT GEARBOX PLUG

Fig.	Code	QTY	Name
------	------	-----	------

Notes:
[DORADO F 75 -> 6001]

35	2.3131.052.2	1	plug m 32 p.1.5
----	--------------	---	-----------------



9_70565_01_0-C-001

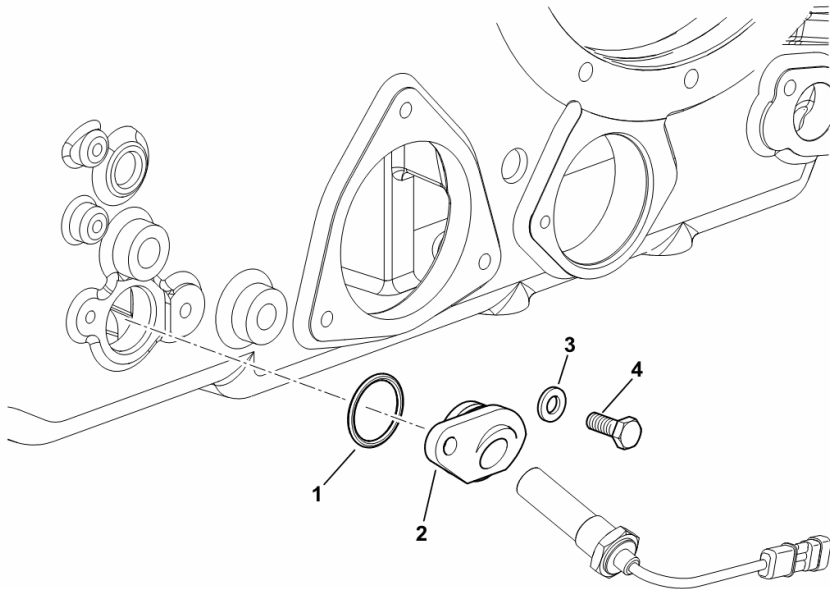
SENSOR BRACKET

Fig.	Code	QTY	Name
------	------	-----	------

Notes:

[DORADO F 75 -> 6001]

1	2.1530.079.0	1	'o' ring 29.82 x 2.62
2	0.013.8097.0	1	support
3	2.0112.207.2	1	screw m 8 p 1.25 x 20
4	2.1475.202.2	1	spring washer 8.4 x 16



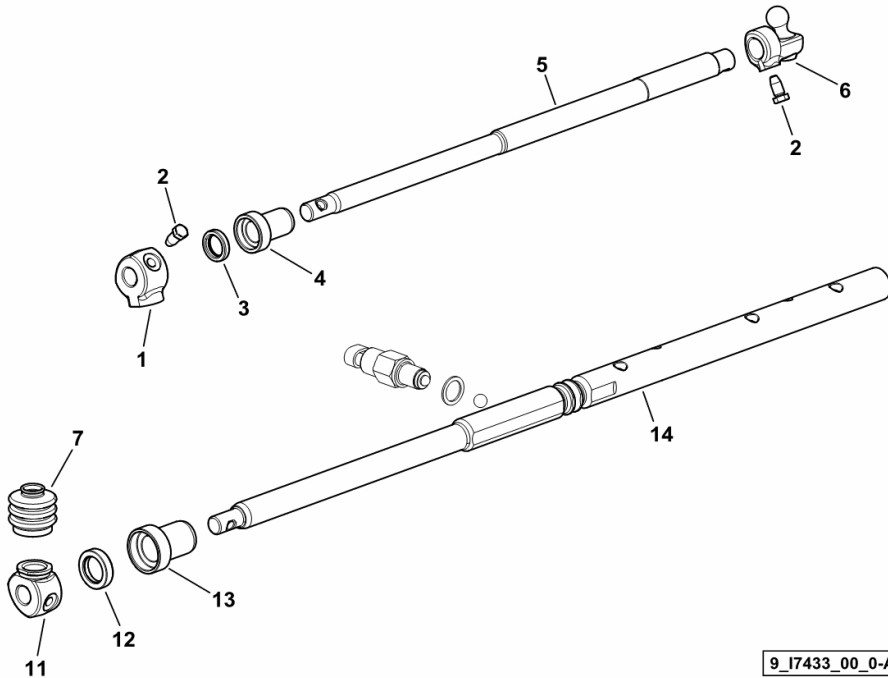
9_B6133_04_0-A-001

GEARSHIFT AND REVERSE SHUTTLE CONTROL

Fig.	Code	QTY	Name
------	------	-----	------

Notes:
[DORADO F 75 -> 6001]

1	0.010.0538.0	1	hub
2	2.0399.019.1	2	screw m 8 p.1 x 16
3	2.1519.078.0	1	'o' ring 16 x 24 x 6
4	0.010.0824.0/10	1	bushing 16 x 20 x 30 x 40
5	0.015.3023.0/20	1	rod
6	0.010.0833.3/20	1	REVERSING GEAR UNIT lever
7	0.010.5137.0	1	guard
11	0.010.0539.0/20	1	hub
12	2.1520.006.0	1	oil seal 20 x 30 x 7
13	0.010.0823.0/10	1	bushing 20 x 25 x 35 x 44
14	0.015.3033.0/20	1	rod



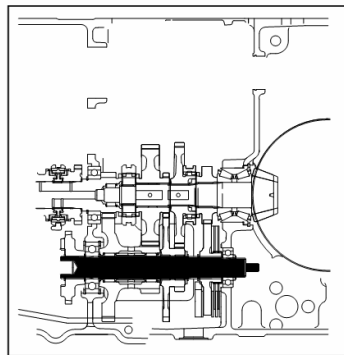
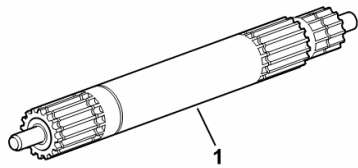
9_I7433_00_0-A-001

SPEED RANGE REDUCTION GEAR SHAFT

Fig.	Code	QTY	Name
------	------	-----	------

Notes:
[DORADO F 75 -> 6001]

1	0.015.2810.0	1	reduction shaft
---	--------------	---	-----------------



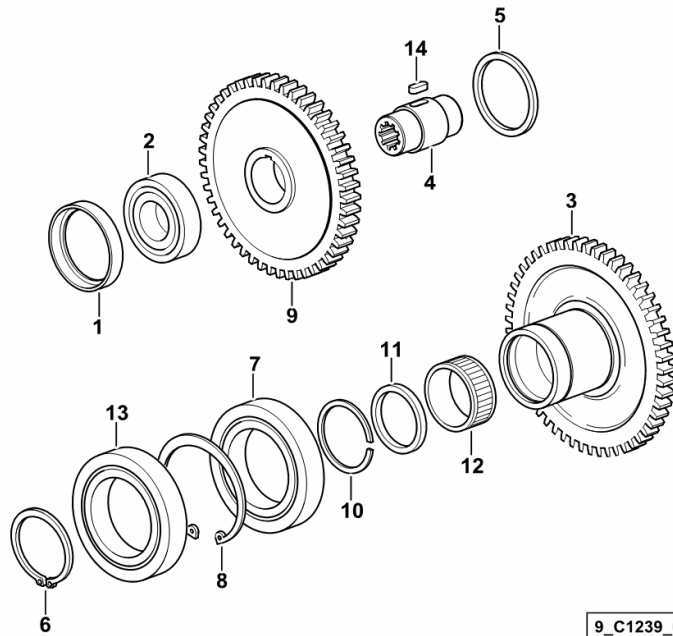
9_17434_01_0-A-001

Section: D0 - TRANSMISSION
P.T.O. - PUMP CONTROL

Fig.	Code	QTY	Name
------	------	-----	------

Notes:
 [DORADO F 75 -> 6001]

1	0.009.7026.0	1	spacer
2	2.2040.007.0	2	ball bearing 25x52x15
3	0.012.9604.0/10	1	gear z = 53
4	0.013.6552.0	1	sleeve
5	2.1549.200.0/10	1	spacer
6	2.1410.020.1	1	circlip 50
7	2.2030.011.0	1	ball bearing 50 x 80 x 16
8	2.1411.032.1	1	circlip 80 x 2.5
9	0.014.0480.0	1	gear Z = 49
10	2.1423.031.7	1	circlip 43.8x1.5
11	2.1549.372.0	1	spacer 42.5x35.15x5
12	2.2999.357.0	1	roller cage 42x35x17.8
13	2.2999.465.0	1	bearing 50 x 80 x 16
14	2.1710.203.0	1	key 8x7x16



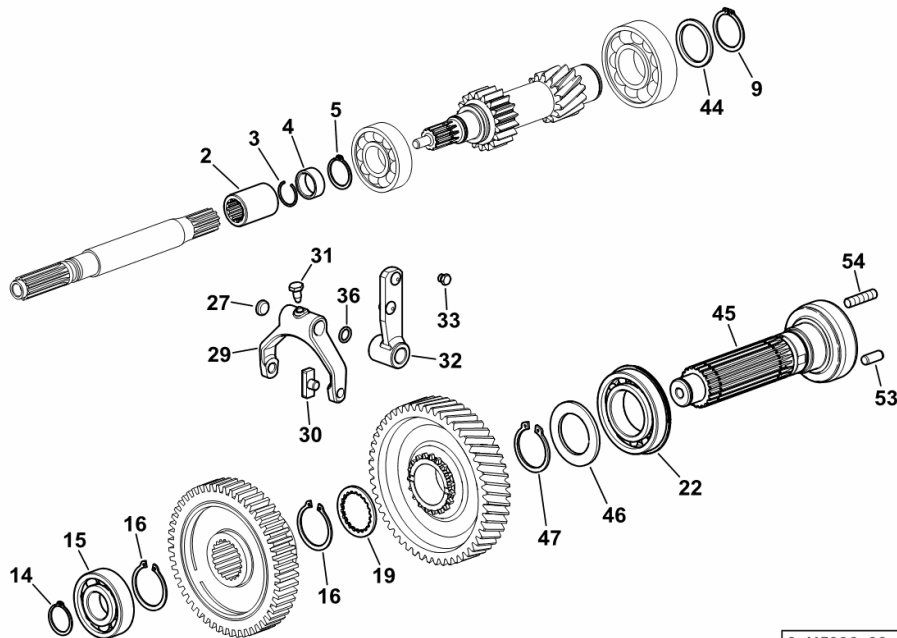
9_C1239_00_0-A-002

PTO - 2-SPEED WITH INSERTED END SHAFT 540-750

Fig.	Code	QTY	Name
------	------	-----	------

Notes:

[DORADO F 75 -> 6001]



2	0.010.7696.0	1	sleeve Z = 11
3	2.1421.010.7	1	circlip 25
4	2.1549.172.0	1	spacer 24.7 x 31 x 12
5	2.1410.012.1	1	circlip 30
9	2.1410.016.1	1	circlip 40
14	2.1410.012.1	1	circlip 30
15	2.2060.009.0	1	ball bearing 30 x 72 x 19
16	2.1410.018.7	2	circlip 45
19	2.1599.828.0/10	1	thrust plate 41 x 55 x 3
22	2.2999.204.0	1	bearing 50 x 90 x 20
27	2.3171.006.4	5	plug Ø 16
29	0.010.0468.0	1	fork
30	0.255.6463.0	2	shoe
31	2.0399.019.1	2	screw m 8 p.1 x 16
32	0.012.0107.3	1	lever
33	2.3110.428.1	1	plug m 8 p.1 x 10
36	2.1530.028.0	1	'o' ring 11.91 x 2.62
44	2.1599.414.0	1	snoulder 40 x 50 x 3.0
45	0.014.3735.0	1	shaft
46	2.1599.891.0	1	snoulder 45 x 70 x 4
47	2.1412.017.7	1	circlip 45
53	2.1651.811.0	2	cylindrical plug 10x24
54	2.0432.155.7	6	stud bolt m 10 p.1.5 / p. 1.25 x 25

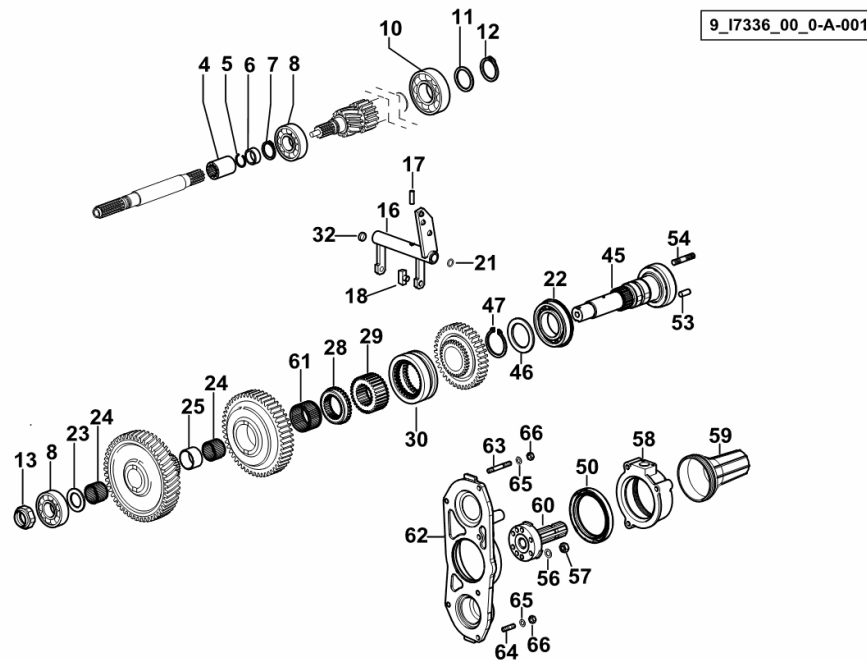
9_H5936_00_0-A-001

PTO - 3-SPEED WITH INSERTED END SHAFT 540-750-1000

Fig.	Code	QTY	Name
------	------	-----	------

Notes:

- EXPORT U.S.A. [DORADO F 75 -> 6001]



4	0.010.7696.0	1	sleeve Z = 11
5	2.1421.010.7	1	circlip 25
6	2.1549.172.0	1	spacer 24.7 x 31 x 12
7	2.1410.012.1	1	circlip 30
8	2.2999.300.0	2	bearing 30 x 72 x 19
10	2.2062.012.0	1	ball bearing 40 x 90 x 23
11	2.1599.414.0	1	snoulder 40 x 50 x 3.0
12	2.1410.016.1	1	circlip 40
13	2.1219.038.0/40	1	ring nut m 30 p.1.5
16	0.010.7710.3	1	fork
17	2.1631.712.0	1	pin 8x26
18	0.255.6463.0	2	shoe
21	2.1530.028.0	1	'o' ring 11.91 x 2.62
22	2.2999.204.0	1	bearing 50 x 90 x 20
23	2.1589.321.0	1	snoulder 30x47x3
24	2.2770.062.0	2	roller cage 35x40x27
25	0.010.7712.0	1	spacer
28	0.009.3830.3/10	1	gear Z = 32
29	0.010.7701.0	1	hub z=32 z=21
30	0.009.3822.0/20	1	sleeve Z = 32
32	2.3171.006.4	5	plug Ø 16
45	0.014.3780.0	1	shaft
46	2.1599.779.0	1	thrust plate 50x70x4
47	2.1412.019.7	1	circlip 50x3
50	2.1520.043.0	1	oil seal 85 x 110 x 12
53	2.1651.811.0	2	cylindrical plug 10x24
54	2.0432.161.7	6	stud bolt m 10 p.1.5 / p.1.25 x 40
56	2.1470.006.2	6	lock washer 10
57	2.1011.421.2	6	nut m 10 p.1.25
58	0.012.3831.0	1	flange
59	0.008.0757.0	1	guard
60	0.012.3833.0	1	p.t.o.shaft Z = 6
61	2.2999.363.0	1	roller cage
62	0.014.3683.0/10	1	cover
63	2.0422.215.7	2	stud bolt m 8 p.1.25 x 50
64	2.0422.203.7	5	stud bolt m 8 p.1.25 x 20
65	2.1470.004.2	7	washer 8
66	2.1011.105.2	7	nut m 8 p.1.25

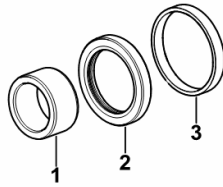
4WD - ENGAGEMENT CONTROL - STANDARD SEALS

Fig.	Code	QTY	Name
------	------	-----	------

Notes:

FOR TYPES WITH ELECTROHYDRAULIC CONTROLS [DORADO F 75 -> 6001]

1	2.1549.309.0	1	spacer 30x40x20.5
2	2.1520.120.0	1	oil seal 40 x 55 x 8.0
3	2.1589.363.0	1	thrust plate 50x55x7.5



9_70538_01_0-A-001

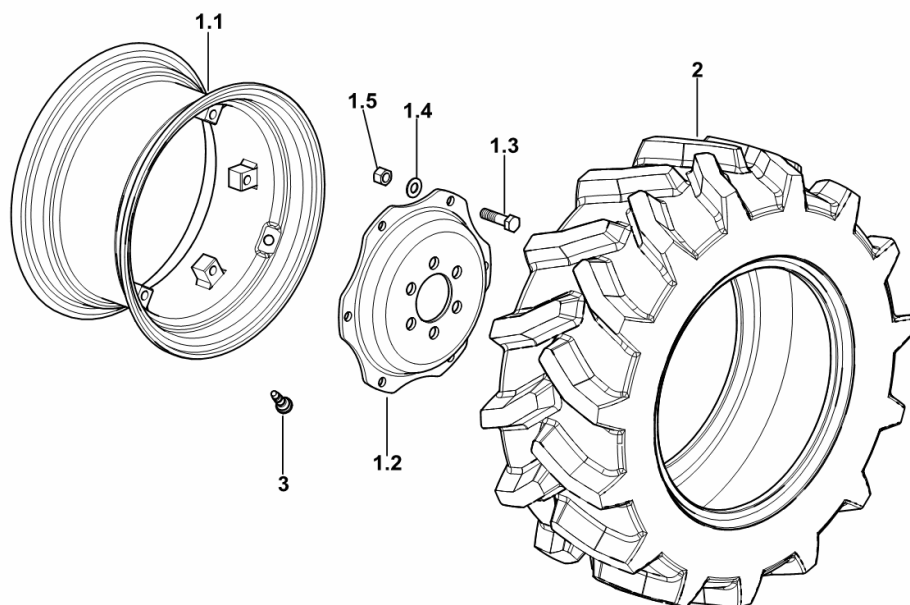
Section: S0 - WHEELS
WHEELS 240/70 R16"

Fig.	Code	QTY	Name
------	------	-----	------

Notes:

[DORADO F 75 -> 6001]

1.1	0.013.9184.3	1	rim W 9x16" C/BL
1.2	0.013.9184.0	1	rim center flange
1.3	2.0122.521.6	6	screw m 14 p.1.5 x 60
1.4	2.1475.105.6	6	conical washer 15 x 27
1.5	2.1011.308.6	6	nut m 14 p.1.5
2	2.4811.120.0	2	tyre 240/70 R16"
3	0.012.6364.0	2	valve



9_17555_20_0-A-001

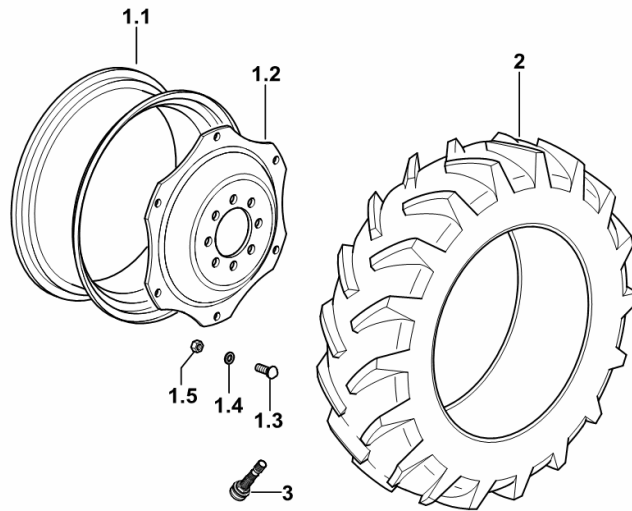
Section: S0 - WHEELS
WHEELS 380/70 R20"

Fig.	Code	QTY	Name
------	------	-----	------

Notes:

[DORADO F 75 -> 6001]

1.1	0.012.9306.3	1	rim W 11x20" C/ST
1.2	0.010.4806.0	1	flange
1.3	2.0099.005.6	6	screw m 16 p.1.5 x 38
1.4	2.1499.019.6	6	washer 16.3 x 31.5
1.5	2.1019.059.6	6	nut m 16 p.1.5 x 16
2	2.4811.077.0	2	tyre 380/70 R20" A8
3	0.012.6364.0	2	valve



9_B6255_40_0-A-001

CLICK HERE TO **DOWNLOAD** THE COMPLETE MANUAL

- Thank you very much for reading the preview of the manual.
- You can download the complete manual from: www.heydownloads.com by clicking the link below



- Please note: If there is no response to CLICKING the link, please download this PDF first and then click on it.

CLICK HERE TO **DOWNLOAD** THE COMPLETE MANUAL