

# ANTARES 110 II

## ACCESSORIES

### GENERAL

6-WAY AUXILIARY DISTRIBUTOR.....	0E.00.1
REXROTH 6-WAY AUXILIARY CONTROL VALVE.....	0E.00.2
DISTRIBUTEUR AUXILIAIRE A 6 VOIES - 8 VOIES.....	0E.00.3
8-WAY AUXILIARY DISTRIBUTOR.....	0E.00.4
REXROTH 8-WAY AUXILIARY CONTROL VALVE.....	0E.00.5
8-WAY DISTRIBUTOR EQUIPMENT.....	0E.00.6
QUICK COUPLING LINES.....	0E.00.7
HYDRAULIC DISTRIBUTOR-PARTS.....	0E.00.8
HYDRAULIC DISTRIBUTOR-PARTS.....	0E.00.9
DISTRIBUTOR PARTS.....	0E.00.10
DISTRIBUTOR PARTS.....	0E.00.11
3 POINT HITCH.....	0E.00.12
3 POINT HITCH.....	0E.00.13
3 POINT HITCH.....	0E.00.14
3 POINT HITCH.....	0E.00.18
TOWING BAR.....	0E.00.19
REAR TOWING HITCH.....	0E.00.20
REAR OSCILLATING HITCH.....	0E.00.21
REAR OSCILLATING HITCH.....	0E.00.22
REAR TOWING HITCH.....	0E.00.23
REAR TOWING HITCH.....	0E.00.24
REAR TOWING HITCH.....	0E.00.25
REAR TOWING HITCH.....	0E.00.26
FRONT TOWING HITCH.....	0E.00.27
FRONT TOWING HITCH.....	0E.00.28
BALLAST.....	0E.00.29
BALLAST.....	0E.00.30
BALLAST.....	0E.00.31
HYDRAULIC BREAKING FOR TRAILER - EXPORT F.....	0E.00.32
HYDRAULIC BREAKING FOR TRAILER - ITALY -.....	0E.00.33
HYDRAULIC BREAKING FOR TRAILER.....	0E.00.34
VALVE PARTS.....	0E.00.35
TOOL POUCH.....	0E.00.36
PLATES.....	0E.00.37
REAR TOWING HITCH.....	0.009.3150.2/10.A
REAR TOWING HITCH CAT: "D3".....	0.011.1999.4/10.A
REAR TOWING HITCH CAT: "D2".....	0.011.2006.4/10.A

CLICK HERE TO **DOWNLOAD** THE COMPLETE MANUAL

- Thank you very much for reading the preview of the manual.
- You can download the complete manual from: [www.heydownloads.com](http://www.heydownloads.com) by clicking the link below

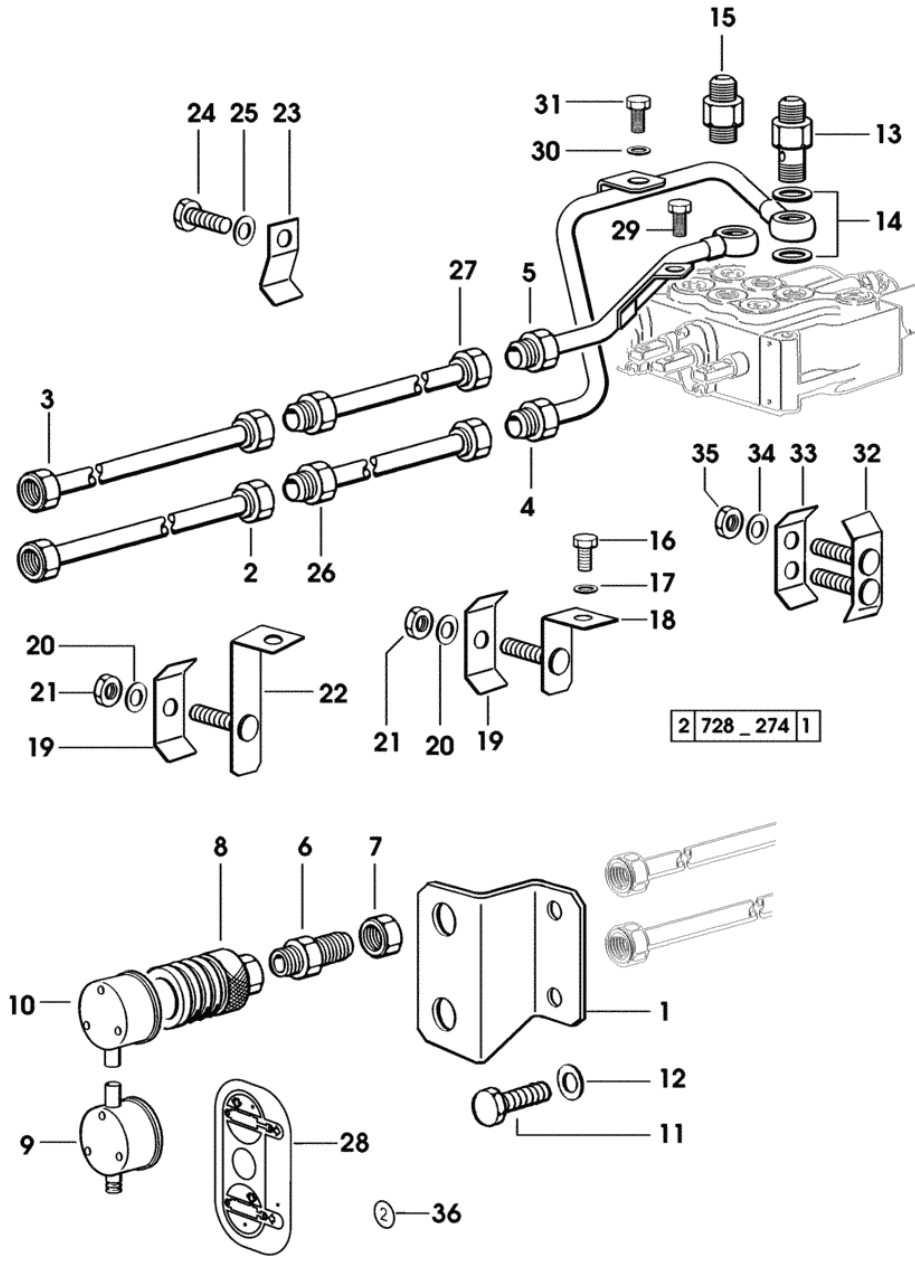


- Please note: If there is no response to CLICKING the link, please download this PDF first and then click on it.

CLICK HERE TO **DOWNLOAD** THE COMPLETE MANUAL

**QUICK COUPLING LINES**

Fig.	Code	QTY	Name
26	0.010.1344.3/10	1	tube
27	0.010.1345.3/10	1	tube
28	2.9929.500.0/10	1	plate
29	2.0112.226.2	1	screw m 8 p.1.25 x 85
30	2.1470.004.2	1	washer 8
31	2.0112.205.2	1	screw m 8 p.1.25 x 16
32	0.154.6379.3	1	terminal
33	0.135.6353.0	1	terminal
34	2.1470.002.2	2	washer 6, d128
35	2.1011.103.2	2	nut m 6 p.1
36	2.9929.413.0	1	plate 2



Section: ACCESSORIES  
3 POINT HITCH

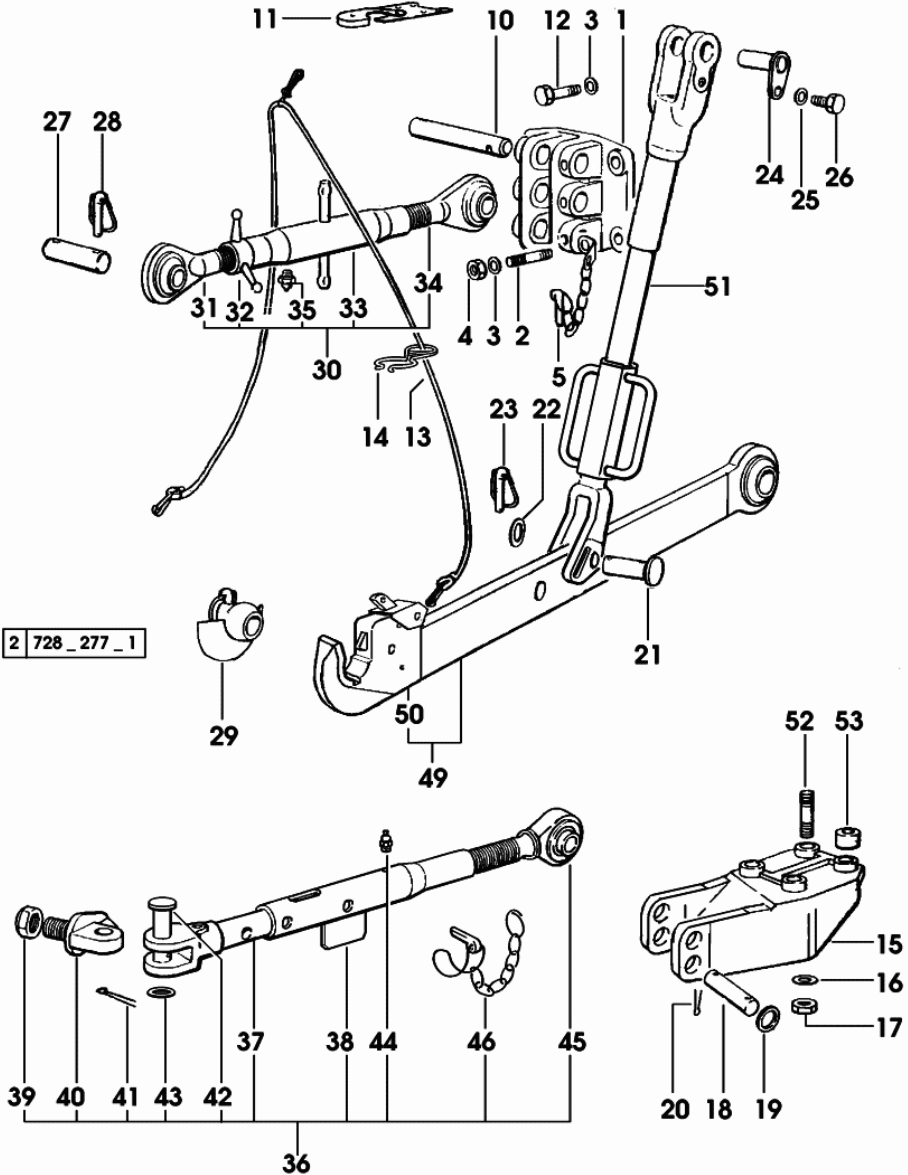
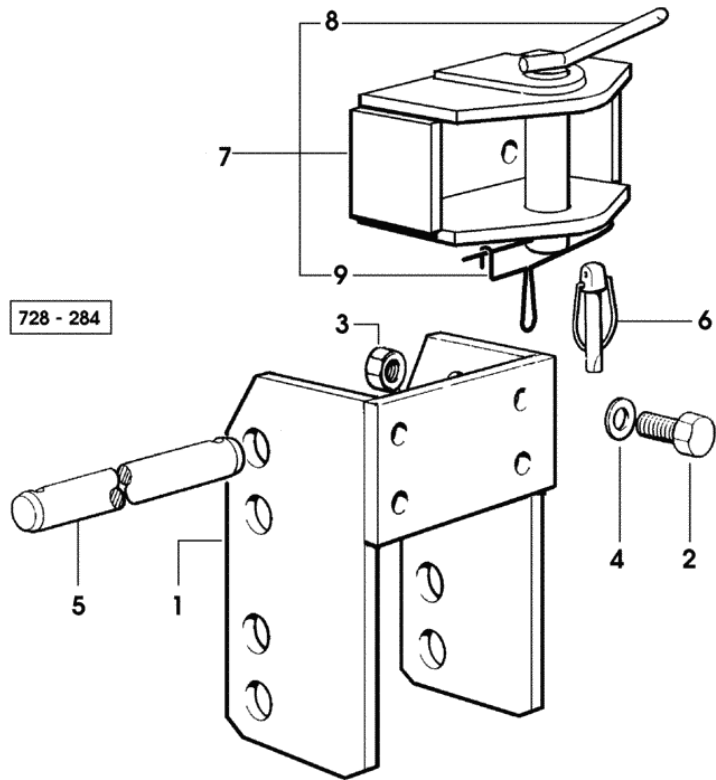


Fig.	Code	QTY	Name
33	0.760.3813.3	1	sleeve
34	0.96081.15.3/20	1	rod sx/lh/li
35	2.3820.105.2	1	lubricator m 10 p.1 x 7
36	0.010.5221.4/10	2	stabiliser
37	0.010.5217.3	2	rod
38	0.010.5227.2	2	tube
39	2.1011.412.2	2	nut m 24 p.2
40	0.96063.52.0/10	2	pin
41	2.1690.513.2	2	split pin 5 x 36
42	2.1679.085.2	2	pin
43	2.1311.014.2	2	flat washer Ø 25
44	2.3820.105.2	2	lubricator m 10 p.1 x 7
45	0.010.5226.3/10	2	rod dx/rh/re
46	0.009.7076.4	2	small chain
49	0.009.2770.3/20	1	right hand arm dx/rh/re
49	0.009.2771.3/20	1	left hand arm sx/lh/li
50	0.010.1703.3	2	automatic hook ☞ 0.010.1703.3 ☞ 0E.00.18
51	0.010.4798.4/10	2	adjustable tensioner ☞ 0.010.1703.3 ☞ 0E.00.18
52	2.0432.415.7	8	stud bolt m 16 p.2-1.5x50 (...) <-
52	2.0433.416.7	8	stud bolt m 16 p.1.5x55 -> (...)
53	2.1579.942.2	8	spacer 19x50x45

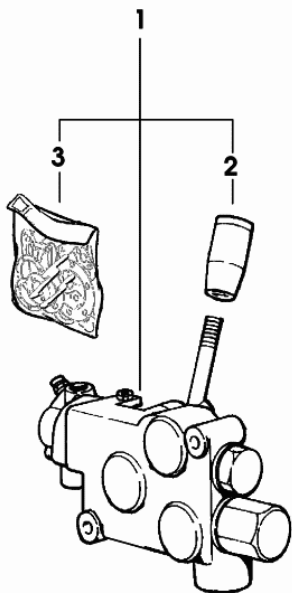
Section: ACCESSORIES  
**REAR TOWING HITCH**

Fig.	Code	QTY	Name
1	0.009.3150.2/10	1	chassis frame ☞ 0.009.3150.2/10
2	2.0112.722.1	4	screw m 18 p.2.5 x 65
3	2.1120.010.2	4	nut m 18 p.2.5
4	2.1310.011.2	4	flat washer 19x34
5	2.1669.058.2/10	2	pin 32x294
6	0.010.9322.4	4	pin Ø 11
7	0.008.8805.3/10	1	clevis D2 - CATEGORY "D2"
7	0.009.1964.3/10	1	clevis D3 - CATEGORY "D3"
8	0.009.4481.0	1	pin CAT. " D2 "
9	0.009.4480.1	1	pin



**VALVE PARTS**

Fig.	Code	QTY	Name
1	2.3719.400.0/30	1	valve ☞ 2.3719.400.0/30
2	0.009.4343.0	1	knob
3	0.009.4343.2	1	seal ring kit



F89\_0013

Section: BODY WORK  
HOOD

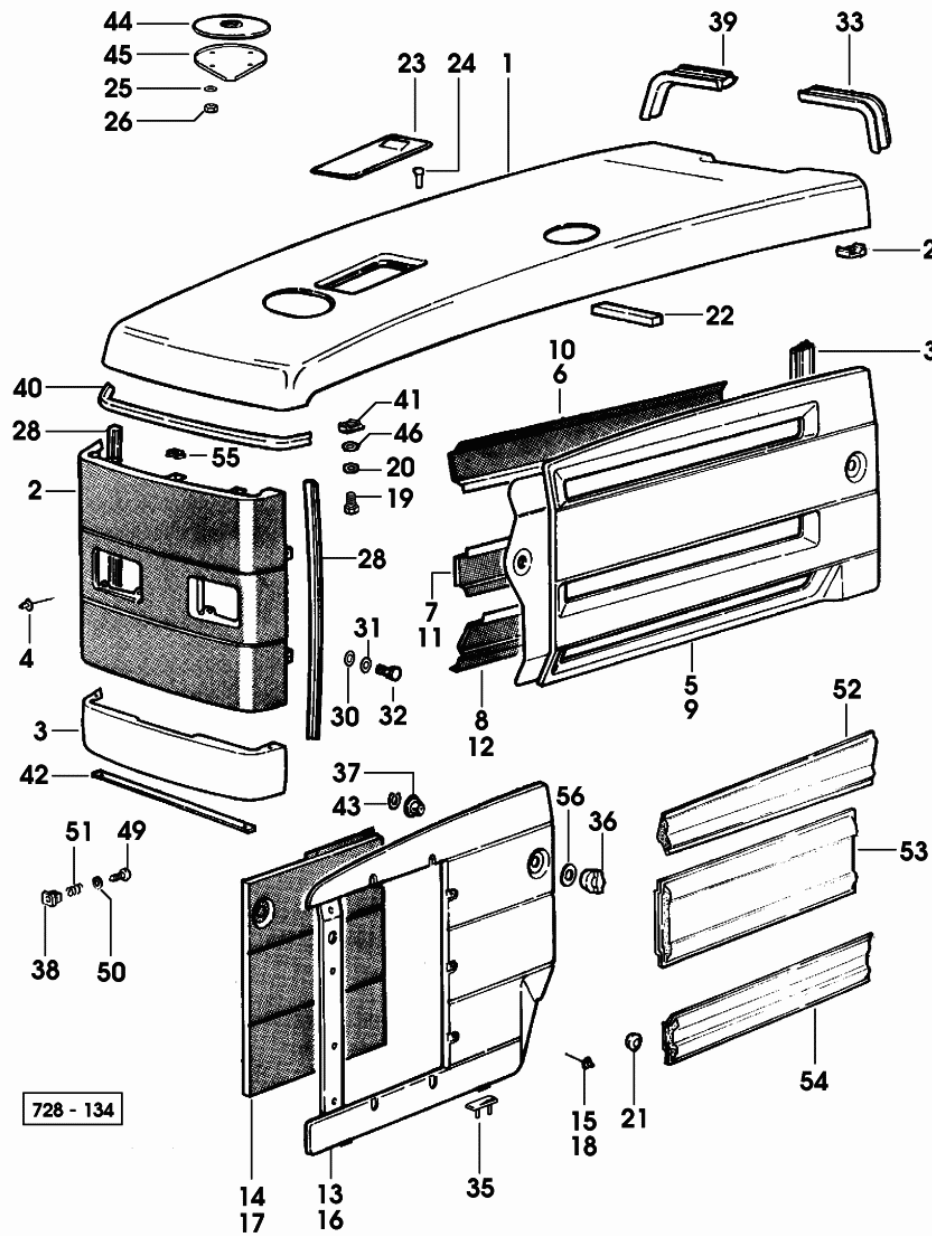
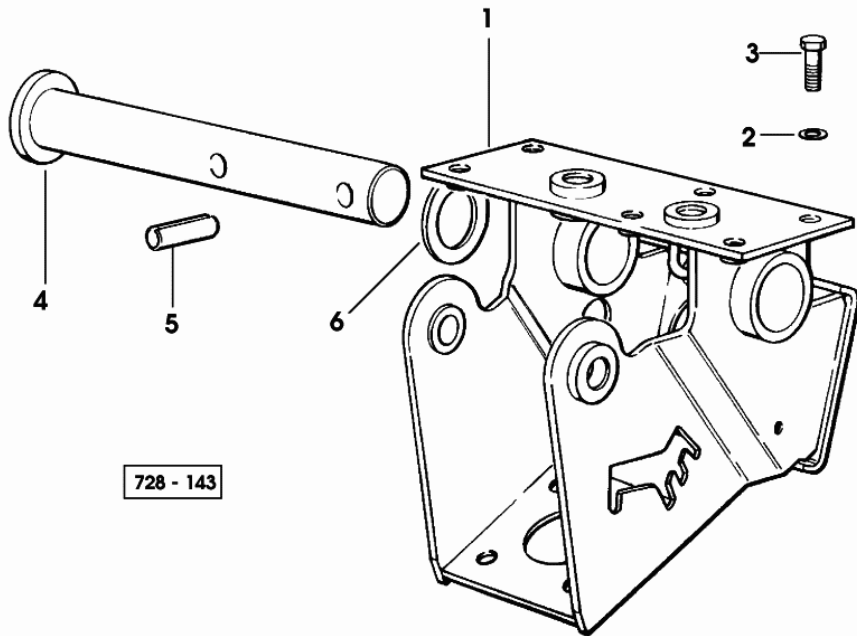


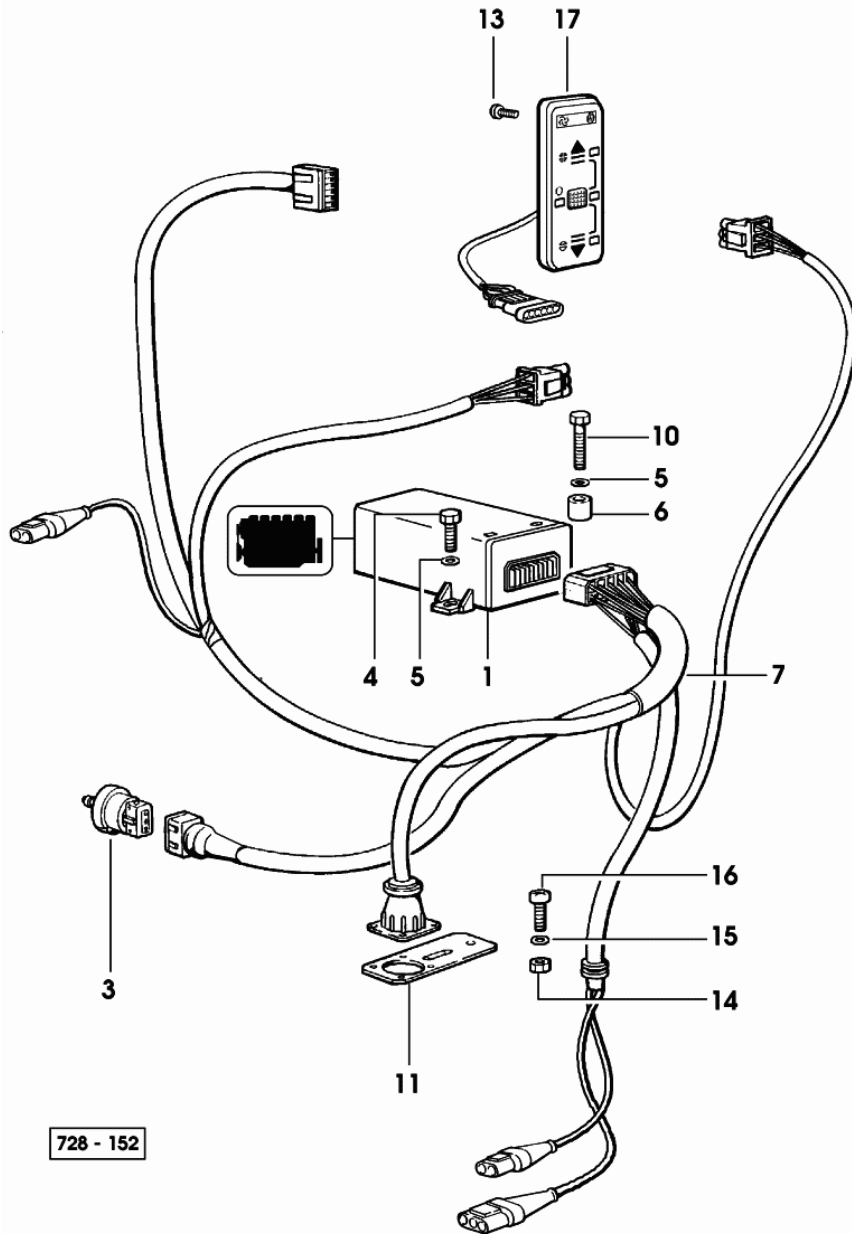
Fig.	Code	QTY	Name
44	0.008.3689.2/10	1	plug
45	0.009.3370.0	1	ring
46	2.1310.002.2	2	washer 6.6, d125
49	2.0350.408.2	6	screw 4.2x25
50	2.1310.001.2	12	flat washer 5.3
51	2.4019.080.1	6	spring 5x7x12
52	0.009.1372.0	1	sound deadening
53	0.009.1397.0	1	sound deadening
54	0.009.1398.0	1	sound deadening
55	2.6999.002.2	3	old part
56	2.1599.658.0	6	washer

**SUPPORTS FOR REVERSE DRIVING POSITION**

Fig.	Code	QTY	Name
1	0.009.2943.3	1	support
2	2.1474.009.2	6	spring washer 8
3	2.0112.207.2	6	screw m 8 p 1.25 x 20
4	0.009.1381.2	1	pin
5	2.1630.916.0	2	roll pin 12x45
6	2.1599.268.0	4	snoulder 30.2x45x2



**ELECTRONIC ACCELERATOR CONTROL**



728 - 152

Fig.	Code	QTY	Name
1	0.010.1069.4/80	1	electronic unit - 30 Km/h 4442 <- X 110HP 4824 <- X 130HP
1	0.011.3154.4/10	1	electronic unit - 30 Km/h - 30 Km/h -> 4443 X 110HP -> 4825 X 130HP
1	0.007.7969.4/80	1	electronic unit - 40 Km/h 4442 <- X 110HP 4824 <- X 130HP
1	0.011.3155.4/10	1	central device - 40 Km/h - 40 Km/h -> 4443 X 110HP -> 4825 X 130HP
3	0.008.8199.3	1	potentiometer
4	2.0112.007.2	1	screw m 6 p.1 x 20
5	2.1310.002.2	2	washer 6.6, d125
6	2.1579.996.2	1	spacer 8x14x12
7	0.010.0893.4/10	1	electrical system 4442 <- X 110HP 4824 <- X 130HP
7	0.011.3121.4	1	electrical system -> 4443 X 110HP -> 4825 X 130HP
7	0.010.0894.4/10	1	electrical system - WITH MULTIFUNCTION CONTROL UNIT 4442 <- X 110HP 4824 <- X 130HP
7	0.011.3123.4	1	electrical system - WITH MULTIFUNCTION CONTROL UNIT -> 4443 X 110HP -> 4825 X 130HP
7	0.010.5133.4	1	electrical system - FOR REVERSE DRIVE 4442 <- X 110HP 4824 <- X 130HP
7	0.011.3125.4	1	electrical system - FOR REVERSE DRIVE -> 4443 X 110HP -> 4825 X 130HP

Section: BODY WORK  
**FUEL SUPPLY SYSTEM**

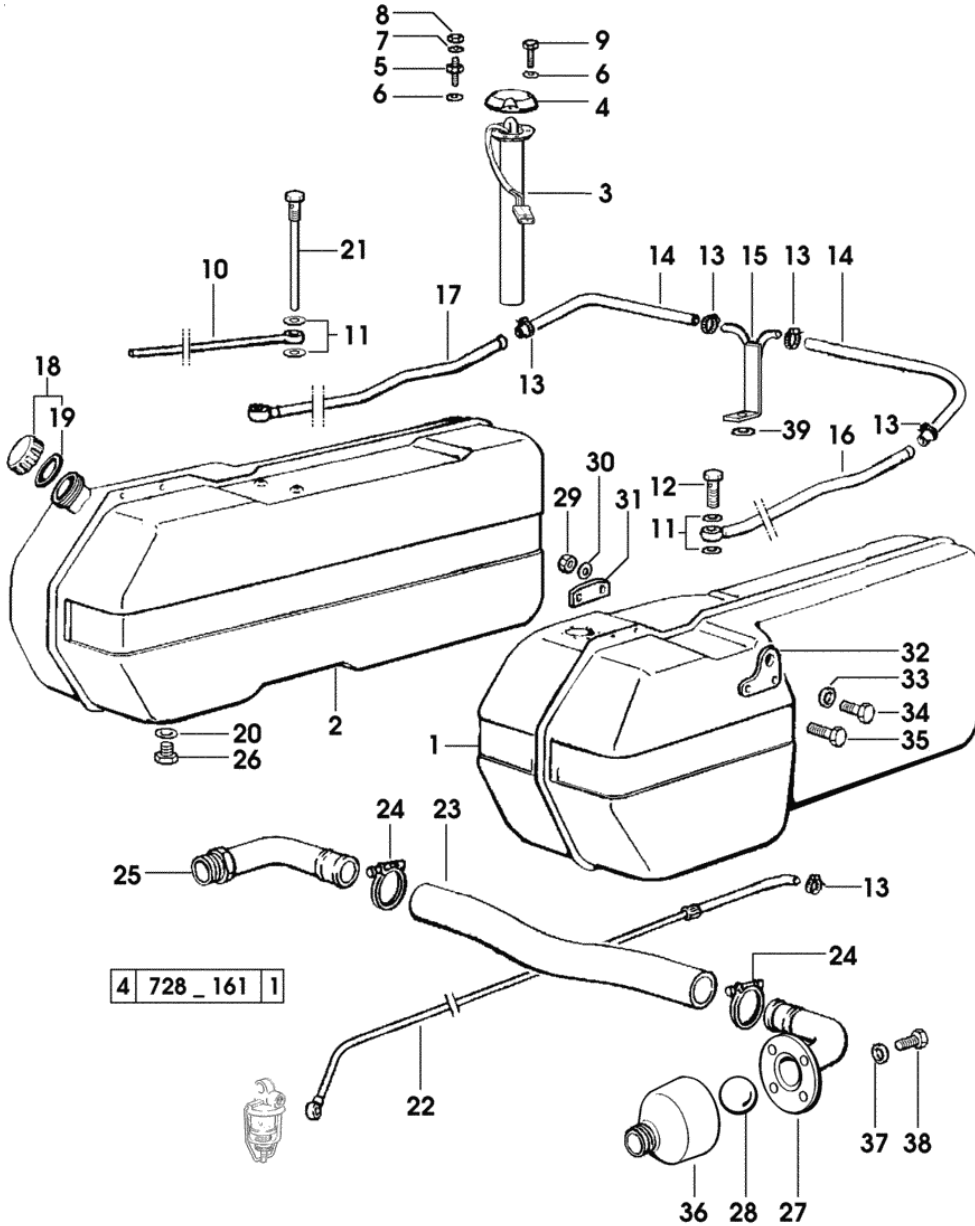


Fig.	Code	QTY	Name
			<b>Notes:</b>
			- STANDARD
1	0.009.6981.3/10	1	tank sx/lh/li
2	0.009.6978.3/10	1	tank dx/rh/re
3	2.7059.890.0	1	level indicator
4	0.190.8158.0/10	1	cover
5	2.0399.046.2	3	screw m 4
6	2.1569.081.0	6	gasket 4x9x1
7	2.1311.002.2	3	flat washer 4
8	2.1011.101.2	3	nut m 4 p.0.7
9	2.0119.070.6	3	screw m 4 p.0.7 x 16
10	0.285.8151.2/10	1	tube
11	2.1560.006.0	6	gasket 10.2 x 16
12	2.3335.004.2	2	pipe union m 10 p.1
13	2.6850.002.0	6	clamp 12-22
14	0.212.8171.0/50	2	tube
15	0.009.2869.2	1	tube
16	0.212.8195.2/10	1	tube
17	0.212.8194.2/10	1	tube
18	0.177.8116.3/30	2	plug
19	2.1569.157.0	2	gasket 37.8x59.8x3
20	2.1560.020.0	2	gasket 24.3x32
21	0.212.8193.2/10	1	pipe union
22	0.010.0182.3/10	1	tube
			4241 <- X 110HP
			4455 <- X 130HP
22	0.010.0182.3/20	1	tube
			-> 4242 X 110HP
			-> 4456 X 130HP
23	0.008.3509.0/10	1	tube
24	2.6851.005.0	2	clamp Ø 40/60
25	0.009.0893.2	1	pipe fitting
26	2.3119.008.2	2	plug m 24 p1.5x18
27	0.010.1110.3/10	1	tube
28	2.2819.006.0/10	1	ball
29	2.1011.106.2	4	nut m 10 p.1.5
30	2.1310.006.2	4	flat washer 10.5
31	0.264.7671.0	2	small plate
32	0.009.1145.0	2	small plate
33	2.1499.091.0	2	washer 10.5x30x12
34	2.0112.307.2	2	screw m 10 p.1.5 x 20
35	2.0112.309.2	4	screw m 10 p.1.5 x 25
36	0.010.1104.0	1	support

Section: BODY WORK  
SEAT

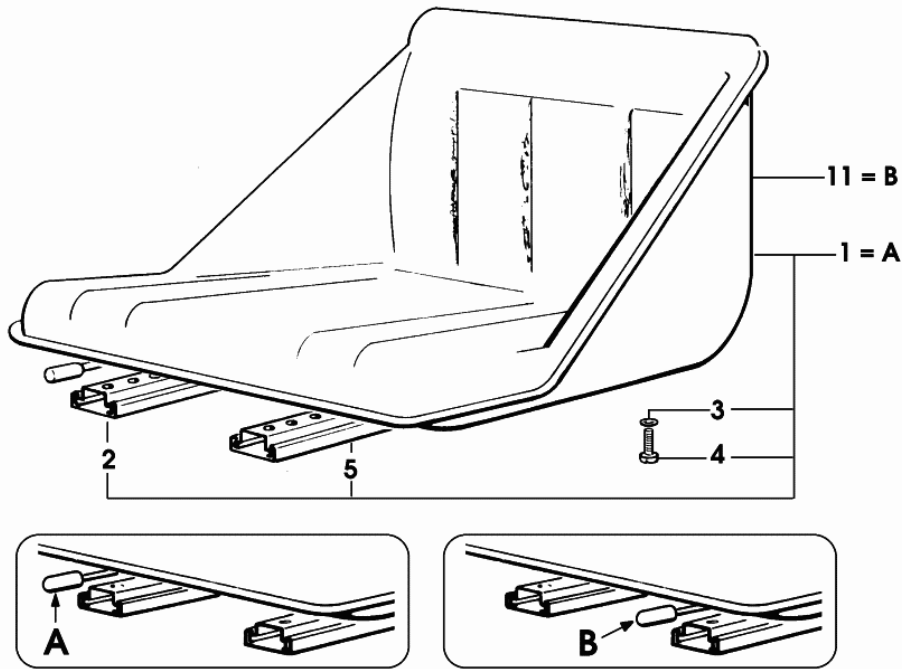
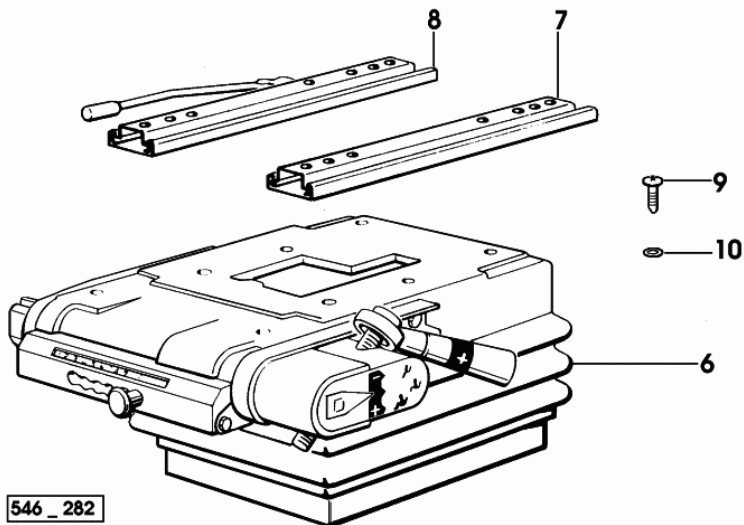
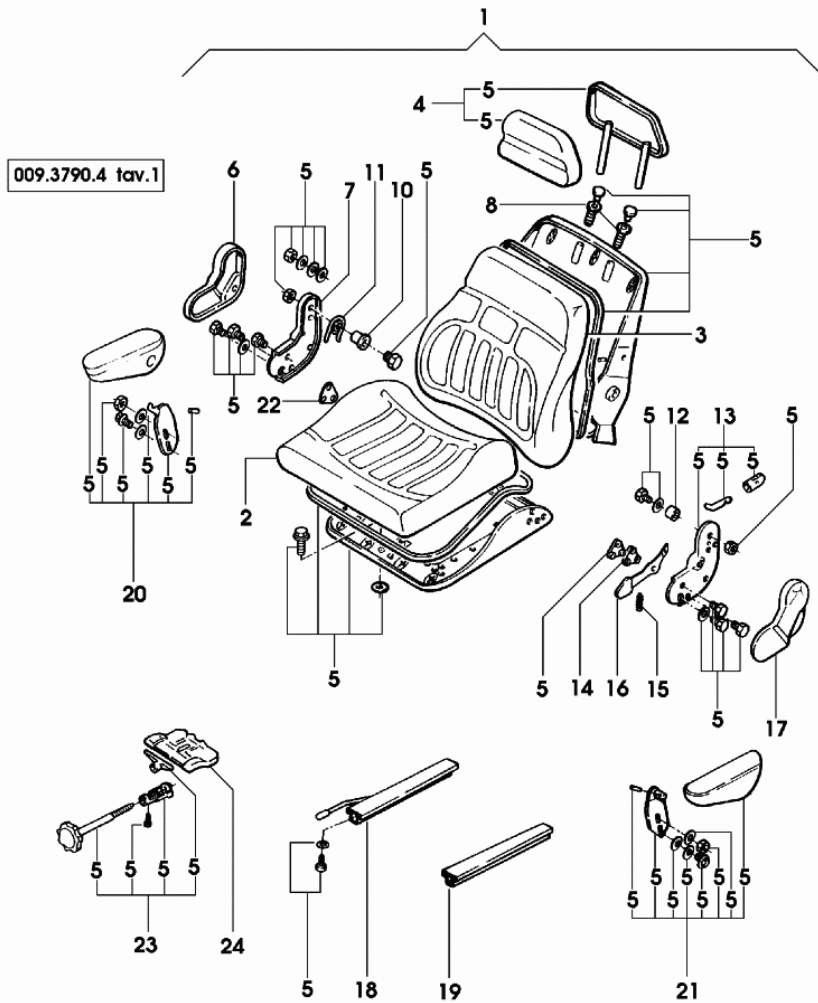


Fig.	Code	QTY	Name
1	0.154.7524.4/20	1	seat (...) <- = A
2	0.201.7550.3	1	seat guide dx/rh/re
3	2.1470.004.2	4	washer 8
4	2.0312.206.2	4	screw m 8 p 1.25 x 20
5	0.201.7551.3	1	seat guide sx/lh/li
6	0.164.7534.4/20	1	seat springs F 179 (...) <- X A ☞ 0.164.7534.4/20 ☞ 07.00.52
6	0.010.5356.4	1	seat springs KAB XH2 F 179/1 -> (...) X B ☞ 0.010.5356.4 ☞ 07.00.53
7	0.201.7551.3	1	seat guide sx/lh/li
8	0.201.7550.3	1	seat guide dx/rh/re
9	2.0332.406.2	4	screw m 6 p.1.0 x 16
10	2.1310.002.2	4	washer 6.6, d125
11	0.010.5358.4	1	seat -> (...) = B



Section: BODY WORK  
**SEAT-COMPONENTS**

Fig.	Code	QTY	Name
1	0.009.4721.0	1	seat
2	0.009.4721.1	1	cushion
3	0.009.4721.2	1	cushion
4	0.009.4722.0	1	embroiderhead
5	0.000.0000.1	0	not serviceable
6	0.009.4362.2	1	cover
7	0.009.4363.0	1	plate
8	0.009.4361.2	2	bushing
10	0.009.4711.0	1	bushing
11	0.009.4363.1	1	spring
12	0.009.4711.2	1	bushing
13	0.009.4712.2	1	plate
14	0.009.4712.1	1	spacer
15	0.009.4367.2	1	spring
16	0.009.4722.1	1	lever
17	0.009.4366.2	1	cover
18	0.009.4722.2	1	seat guide
19	0.009.4723.0	1	seat guide
20	0.009.4371.0	1	small arm dx/rh/re
21	0.009.4371.1	1	small arm sx/lh/li
22	0.009.4712.0	1	spacer
23	0.009.4723.1	1	register
24	0.009.4723.2	1	rocker

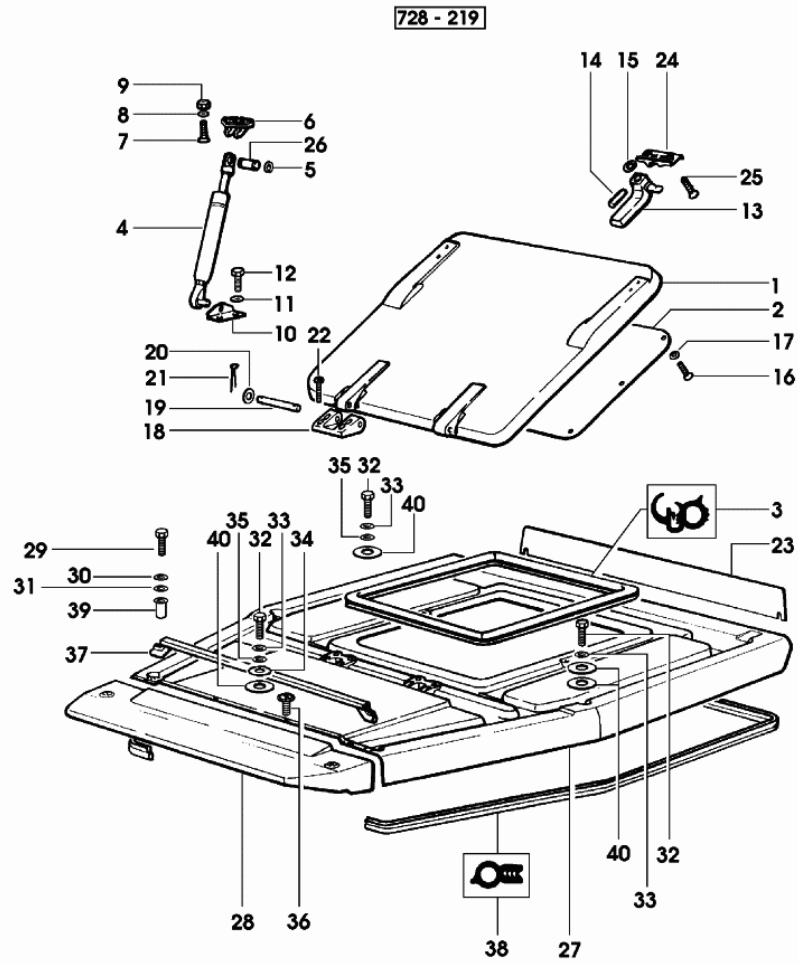


COMPRESSOR-PARTS.....	0B.00.41
COMPRESSOR-PARTS.....	0B.00.42
VENTILATION-AIR CONDITIONING.....	0B.00.43
VENTILATION-AIR CONDITIONING.....	0B.00.44
VENTILATION-AIR CONDITIONING.....	0B.00.45
FAN PARTS.....	0B.00.46
AIR CONDITIONER PARTS.....	0B.00.47
AIR-CONDITIONING HEATING.....	0B.00.48
VENTILATION-HEATING 85A.....	0B.00.49
VENTILATION-HEATING 100A.....	0B.00.50
HEATER PARTS.....	0B.00.51
ALTERNATOR PARTS.....	0B.00.52
FAN PARTS.....	0.98711.50.4/20.A



Section: CAB  
**INTERIOR TRIM**

Fig.	Code	QTY	Name
38	0.9237.354.0	1	gasket
39	2.1142.005.2	4	insert m 8
40	2.1599.706.0/10	4	washer 20x36x3



Section: CAB  
**CAB AIR LINES**

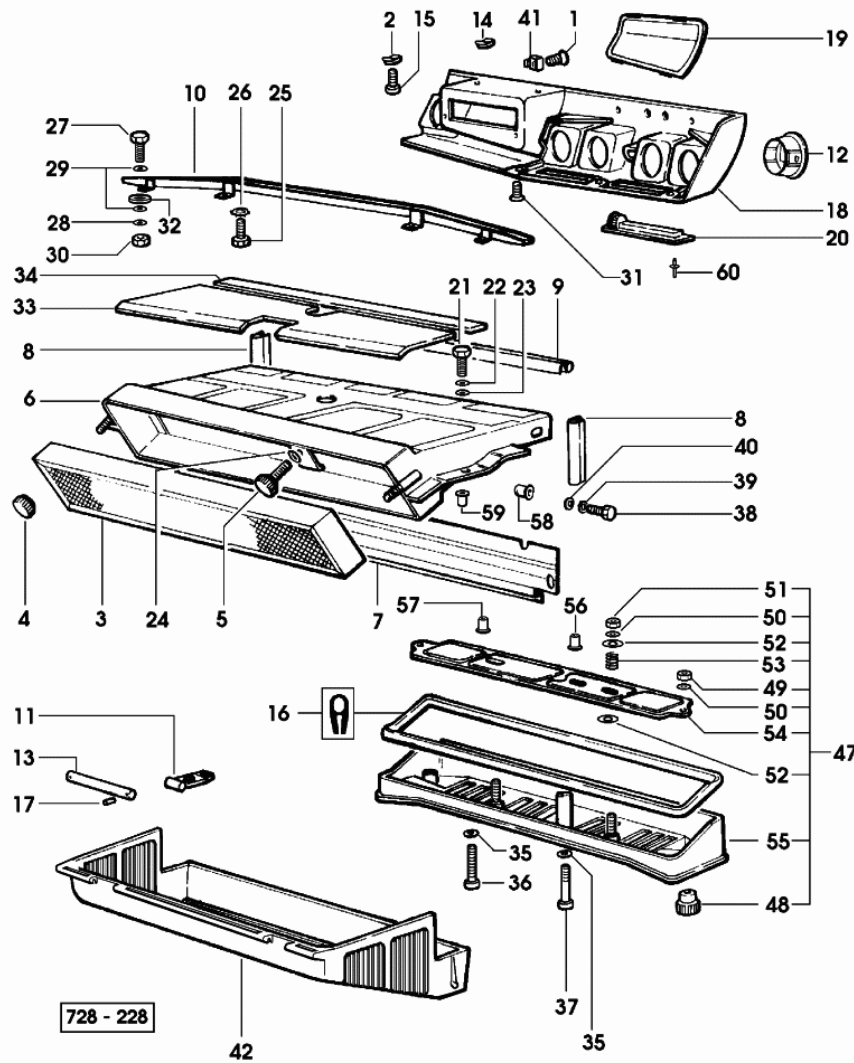


Fig.	Code	QTY	Name
49	2.1011.103.2	3	nut m 6 p.1
50	2.1310.002.2	5	washer 6.6, d125
51	2.1120.003.2	6	nut m 6
52	2.1599.283.0	4	snoulder 8.5x25x1.6
53	2.4019.318.2	2	spring
54	0.98706.80.2	1	air filter
55	0.98706.71.2/20	1	grille
56	2.1142.004.2	4	insert m 6
57	2.1142.010.2	1	insert m 6
58	2.1142.004.2	2	insert m 6
59	2.1142.011.2	6	insert m 8
60	2.1899.080.0	4	rivet 4x17.9

Section: CAB

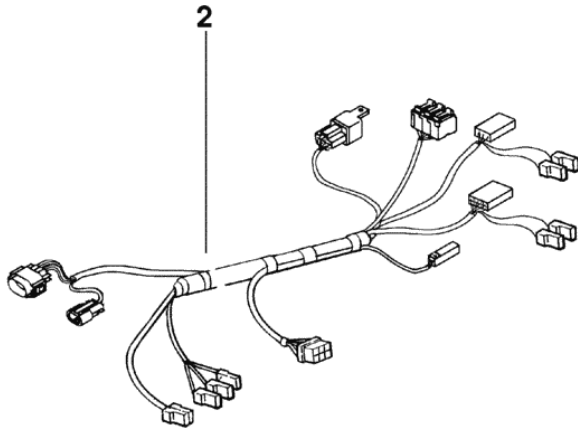
**AUXILIARY HEATING**

Fig.	Code	QTY	Name
------	------	-----	------

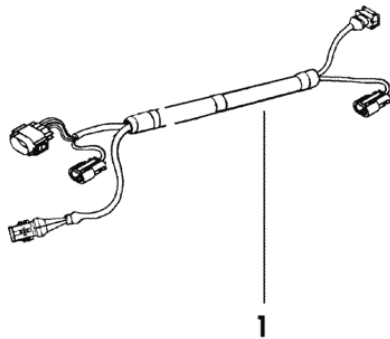
**Notes:**

- FOR COLD CLIMATES - FOR MACHINES WITH EXHAUST PIPE ABOVE HOOD

1	0.011.3806.4	1	electrical system
2	0.011.2023.4	1	electrical system
3	2.7659.189.0	1	switch



4 | 728\_232\_5



**COMPRESSOR-PARTS**

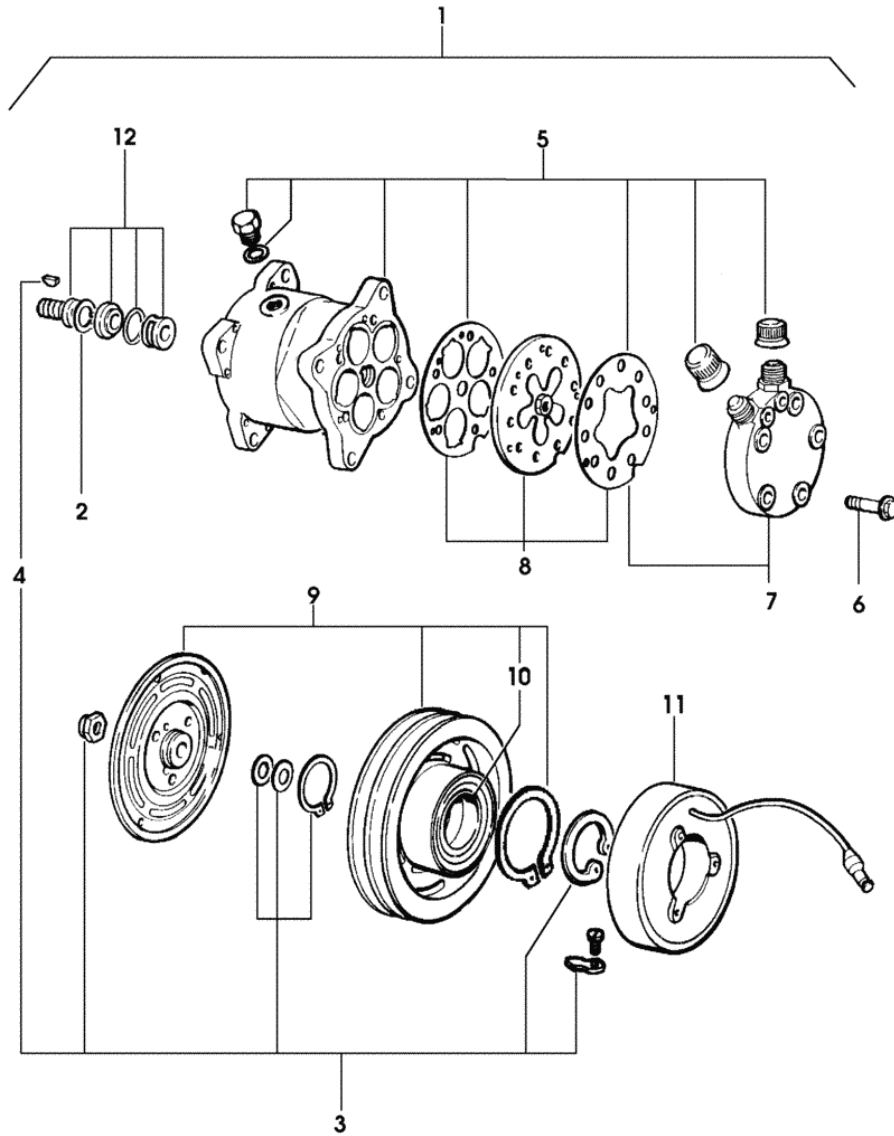


Fig.	Code	QTY	Name
1	0.010.1318.4	1	gear compressor R 134a ☞ 0.010.1318.4
2	0.010.2132.0	1	circlip
3	0.010.2580.0	1	accessories
4	0.010.2132.2	1	key
5	0.000.0000.1	0	not serviceable
6	0.010.2580.1	6	screw
7	0.010.2580.2	1	head
8	0.010.2581.0	1	valve
9	0.010.2581.1	1	pulley
10	0.010.2581.2	1	bearing
11	0.010.2582.0	1	electromagnet
12	0.010.2135.0	1	gasket set

F04\_0002

Section: CAB  
**VENTILATION-HEATING 100A**

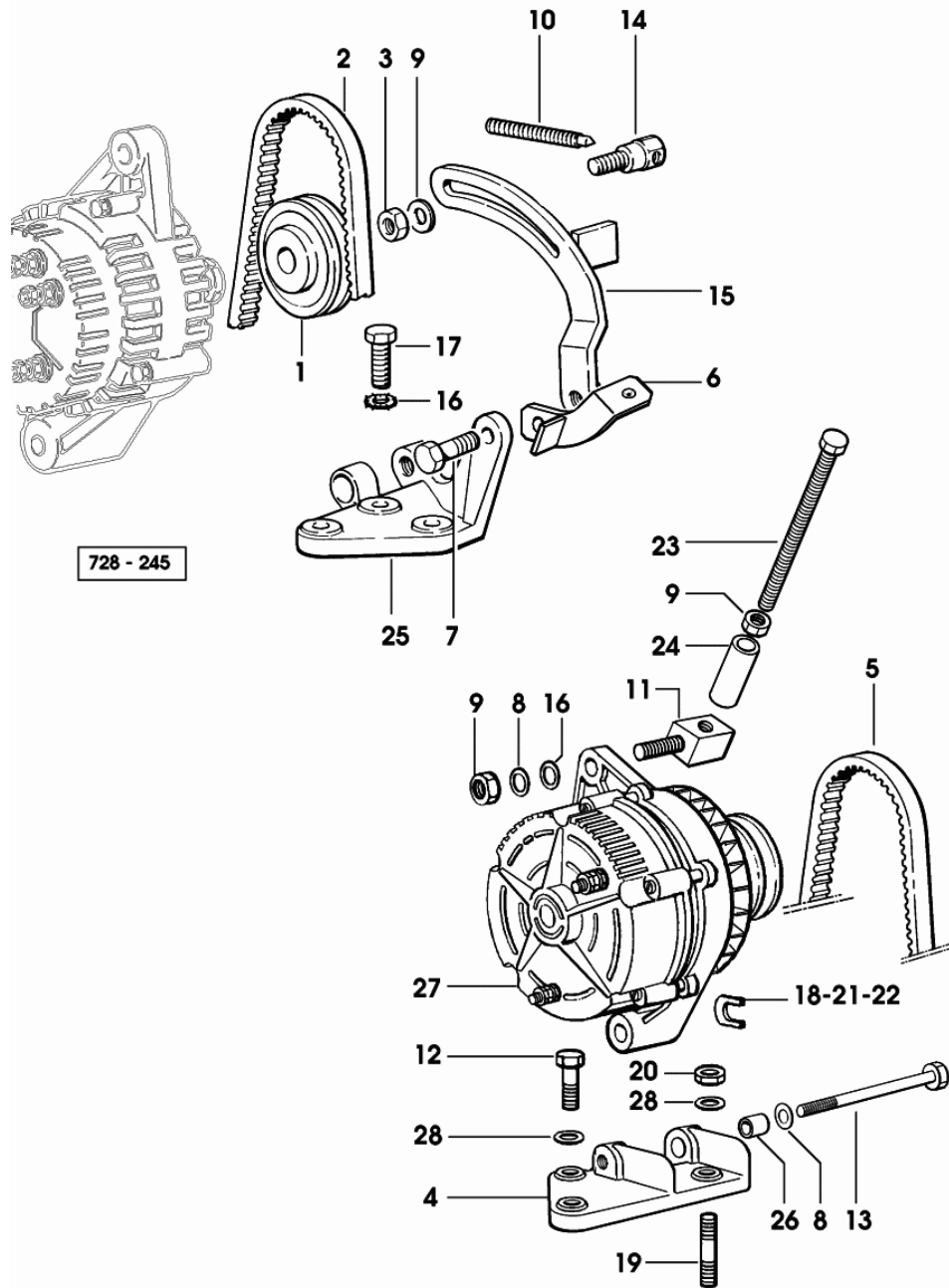


Fig.	Code	QTY	Name
1	0.007.6818.0/10	1	pulley
2	2.4119.152.0/20	1	belt AV 10.7x888 mm
3	2.1011.105.2	1	nut m 8 p.1.25
4	0.009.3323.0/10	1	support
5	2.4119.125.0/10	1	belt AV 13x835 mm
6	0.010.0926.2/10	1	bracket
7	2.0112.315.2	1	screw m 10 p.1.5 x 40
8	2.1310.007.2	3	flat washer 13.5
9	2.1011.107.2	2	nut m 12 p.1.75
10	2.0399.221.2	1	screw m 8 p.1.25 x 95
11	0.009.9936.0	1	screw
12	2.0112.313.2	2	screw m 10 p.1.5 x 35
13	2.0112.435.1	1	screw m 12x130
14	2.0399.216.2/10	1	screw m 8 p.1.25 x 50
15	0.007.6803.2/10	1	bracket
16	2.1310.006.2	3	flat washer 10.5
17	2.0112.311.2	3	screw m 10 p.1.5 x 30
18	0.98525.59.0	1	register mm 2.00
19	2.0422.313.1	1	stud bolt
20	2.1011.106.2	1	nut m 10 p.1.5
21	0.98525.60.0	1	register mm 3.00
22	0.98525.64.0	1	register mm 1.00
23	2.0114.437.2	1	screw
24	2.1579.935.2	1	spacer
25	0.010.0864.0/10	1	support
26	2.1549.239.2	1	spacer 12x18x28
27	2.9439.580.0/10	1	alternator 100A
28	2.1470.006.2	3	lock washer 10

STARTER PARTS

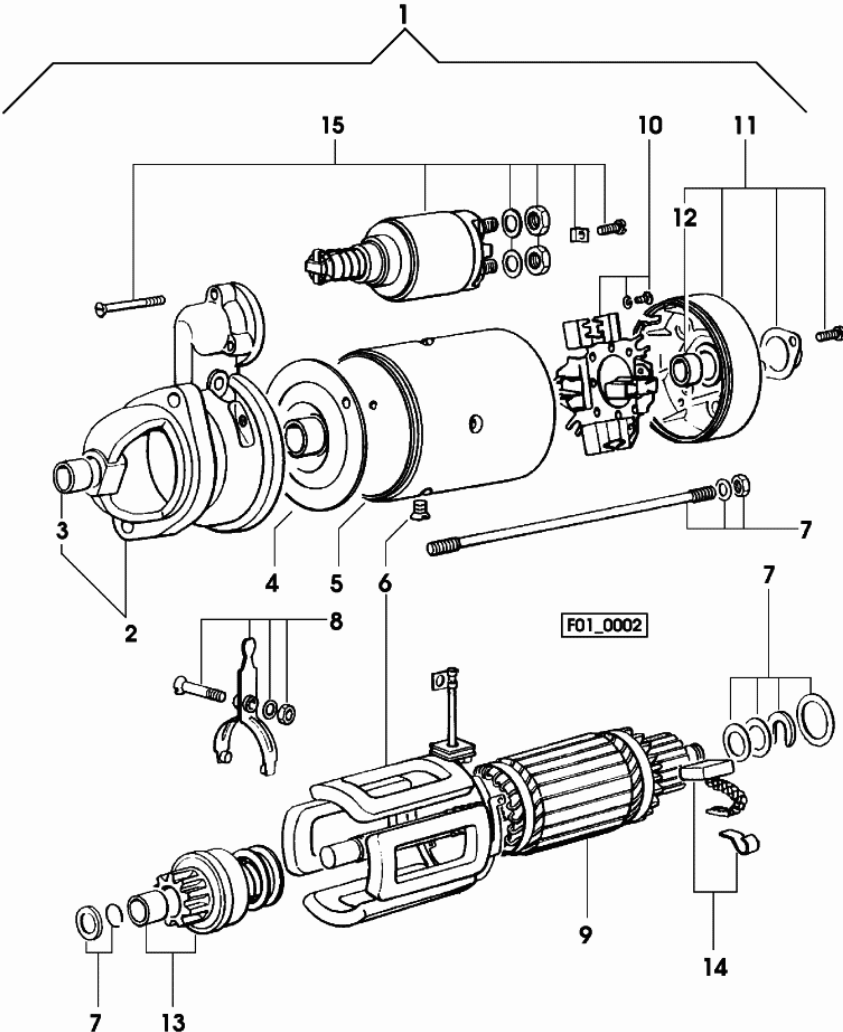
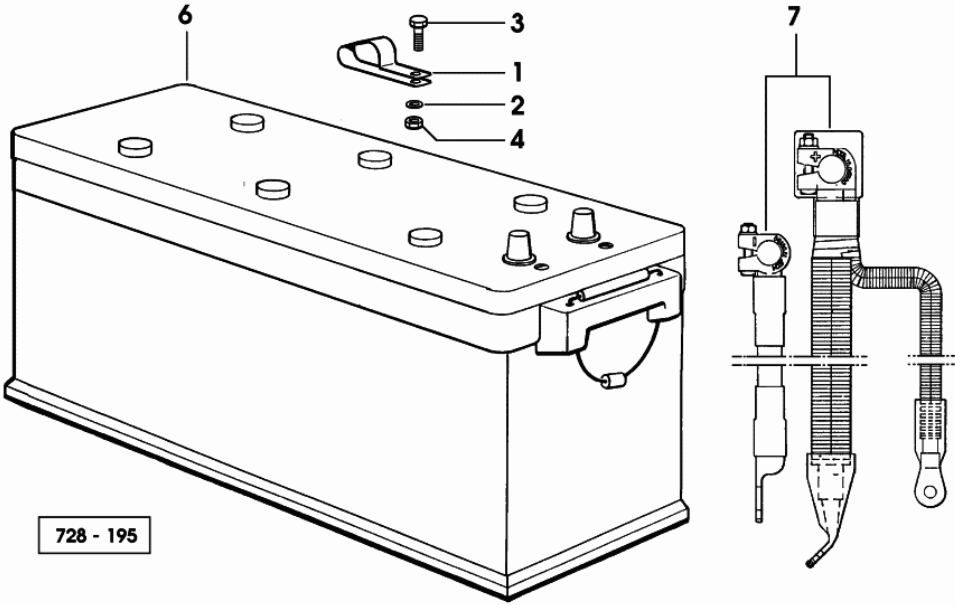
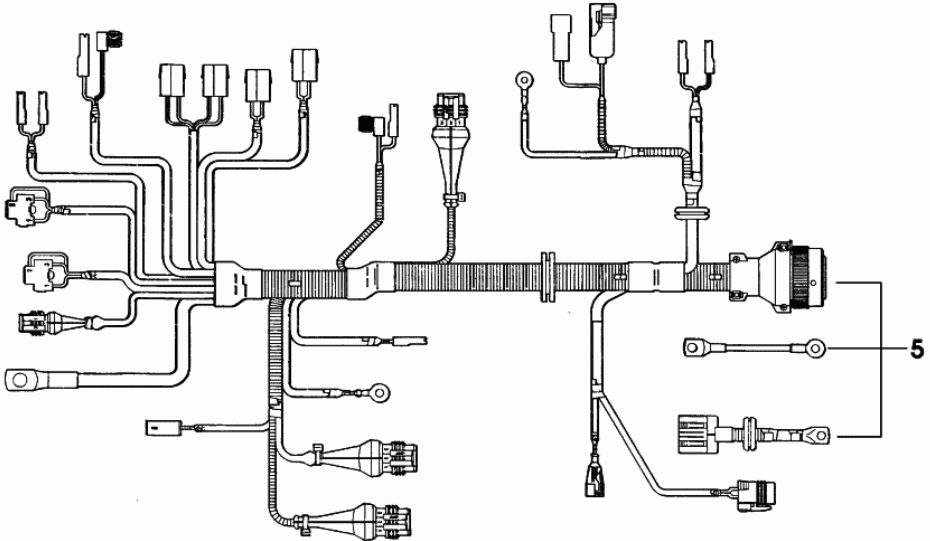


Fig.	Code	QTY	Name
1	2.9619.380.0	1	starter motor ISKRA ☞ 2.9619.380.0
2	0.009.4260.1	1	support
3	0.010.2576.1	1	bushing
4	0.009.4257.0	1	support
5	0.000.0000.1	0	not serviceable
6	0.010.2576.2	1	field winding
7	0.010.2577.2	1	accessories
8	0.009.4258.0	1	lever
9	0.009.4262.0	1	armature
10	0.010.2577.0	1	brush holder
11	0.009.4749.0	1	support
12	0.009.4884.2	1	bushing
13	0.009.4263.0	1	pinion z = 9
14	0.010.2577.1	1	brush set
15	0.010.2576.0	1	switch

Section: ELECTRIC AL SYSTEM  
**ELECTRIC STARTING SYSTEM**

Fig.	Code	QTY	Name
1	2.6839.054.0	4	clamp Ø 20/25
2	2.1310.004.2	2	flat washer 8.5
3	2.0112.207.2	3	screw m 8 p 1.25 x 20
4	2.1011.105.2	2	nut m 8 p.1.25
5	0.010.0668.4/30	1	electrical system * (...) <- - N.1 - 2.7099.680.0/10 - N.1 - 010.6802.3
6	2.9559.036.0	1	battery 12V 150Ah 650A
7	0.010.4010.3	1	wire - FOR TRACTORS WITH AIR HEATING 85A
7	0.010.1602.3	1	wire - FOR TRACTORS WITH AIR HEATING 100A



728 - 195

CLICK HERE TO **DOWNLOAD** THE COMPLETE MANUAL

- Thank you very much for reading the preview of the manual.
- You can download the complete manual from: [www.heydownloads.com](http://www.heydownloads.com) by clicking the link below



- Please note: If there is no response to CLICKING the link, please download this PDF first and then click on it.

CLICK HERE TO **DOWNLOAD** THE COMPLETE MANUAL

**TELEVISION CAMERA AND TUNER**

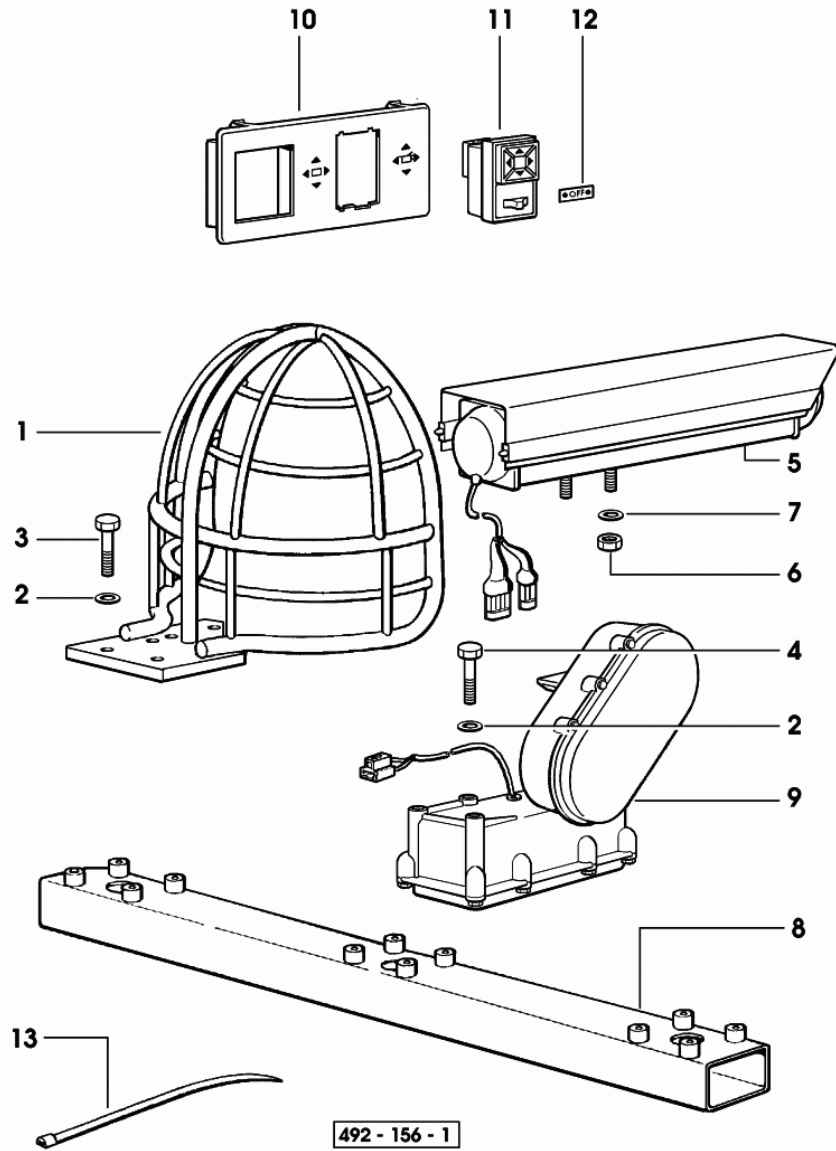
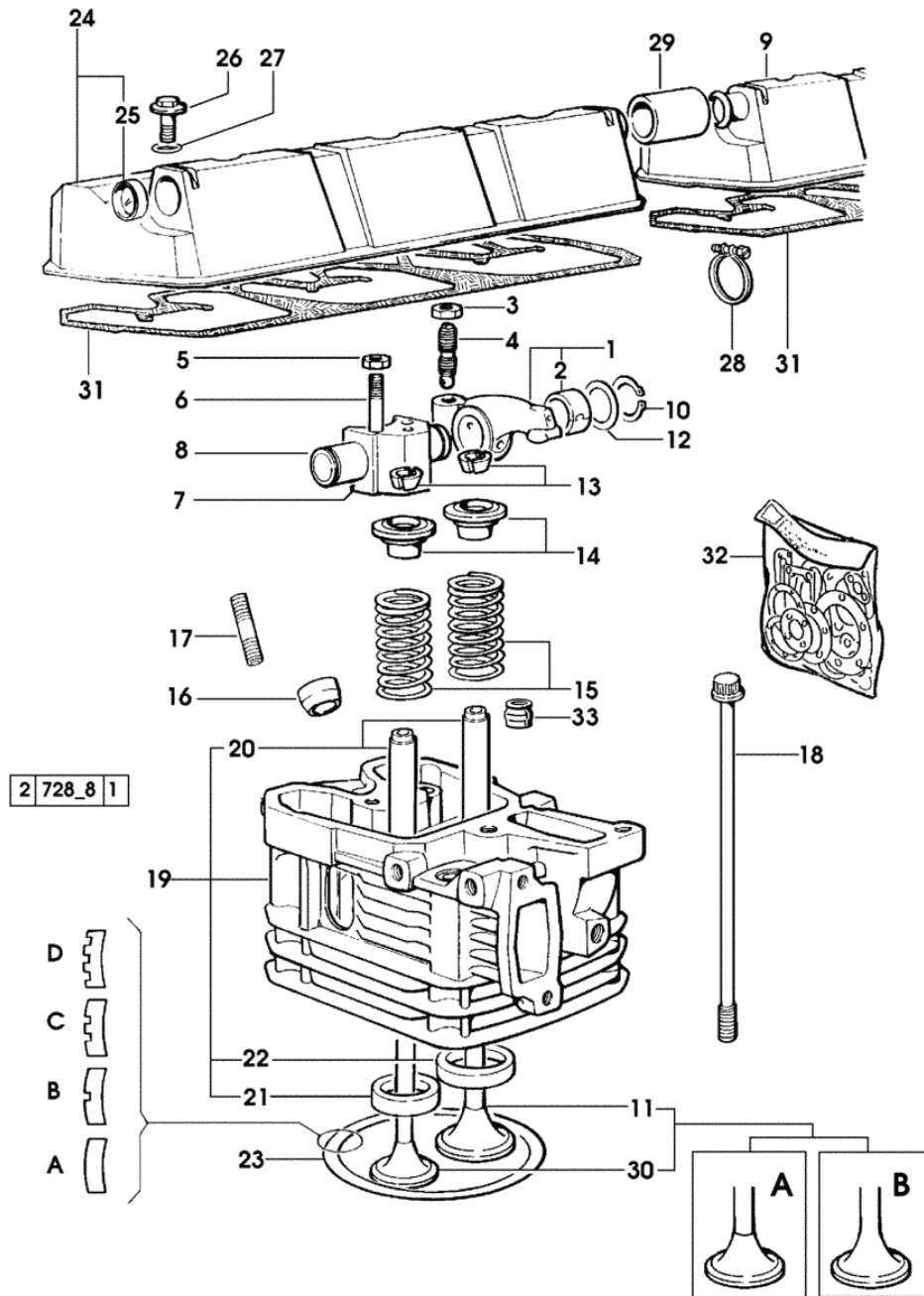


Fig.	Code	QTY	Name
1	0.009.0639.2/10	1	guard
2	2.1310.006.6	7	washer 10.5x21
3	2.0112.315.6	4	screw m 10 p.1.5 x 40
4	2.0112.333.6	3	screw m 10 p.1.5x120
5	0.009.3572.4/10	1	camera
6	2.1120.003.2	2	nut m 6
7	2.1470.002.2	2	washer 6, d128
8	0.009.1538.2/20	1	support
9	0.009.3568.4	1	support
10	0.007.1983.0	1	front grille
11	2.7659.117.0	1	switch
12	0.009.3864.0	1	plate
13	0.98503.67.0	10	clamp

Section: ENGINE  
CYLINDER HEAD

Fig.	Code	QTY	Name
1	0.066.1432.3	12	rocker
2	2.1559.021.0/40	12	bushing 19x22x14
3	2.1011.405.2	12	nut m 8 p.1
4	0.021.1434.0	12	screw m 8 p.1 x 8
5	2.1011.421.2	12	nut m 10 p.1.25
6	2.0432.163.7	12	stud bolt m 10 p.1.5 / p.1.25 x 45
7	0.066.1430.0/10	6	support
8	0.066.1431.0	6	pin
9	0.078.1450.3	1	cover
10	2.1410.055.1	12	circlip 19
11	0.010.6016.0	6	inlet valve mm 43.63 / Ø mm 9 - X 110HP
11	0.081.1420.0	6	inlet valve Ø mm 9 - X 130 HP (...) <- = A
11	0.010.6017.0	6	inlet valve mm 43.63 / Ø mm 9 - X 130 HP -> (...) = B
12	2.1599.432.0	12	snoulder 19.5x31x1.5
13	0.074.1423.0	24	conical valve cotter
14	0.066.1425.0	12	cup
15	2.4019.287.0	12	spring 35.5x53.6x3.9
16	0.007.1122.0/10	6	sleeve L = mm 6.4
17	2.0432.161.7	6	stud bolt m 10 p.1.5 / p.1.25 x 40
18	0.065.1443.0/20	24	screw
19	0.007.1110.3/50	6	engine head - X 110HP - X 130 HP (...) <- = A
19	0.007.1359.3/50	6	engine head - X 130 HP -> (...) = B
20	0.007.1779.0/10	12	valve guide
21	0.066.1427.0	6	valve seat mm 40.653
22	0.078.1426.0	6	valve seat mm 45.118
23	0.085.1450.0	1	gasket mm 0.5 -A-
23	0.085.1451.0	2	gasket mm 0.7 -B-
23	0.085.1452.0	1	gasket mm 1.0 -C-
23	0.085.1453.0	2	gasket mm 0.8 -D-
24	0.078.1440.3	1	cover
25	2.3171.008.4	1	plug 20
26	2.0399.130.2	6	screw m 8 x 30
27	2.1532.035.0	6	'o' ring 14x1.78
28	2.6859.052.2	2	clamp
29	0.075.1452.0/10	1	sleeve
30	0.066.1421.0	6	exhaust valve mm 39.1 / Ø mm 9 - X 110HP - X 130 HP (...) <- = A



Section: ENGINE  
**FUEL SUPPLY SYSTEM**

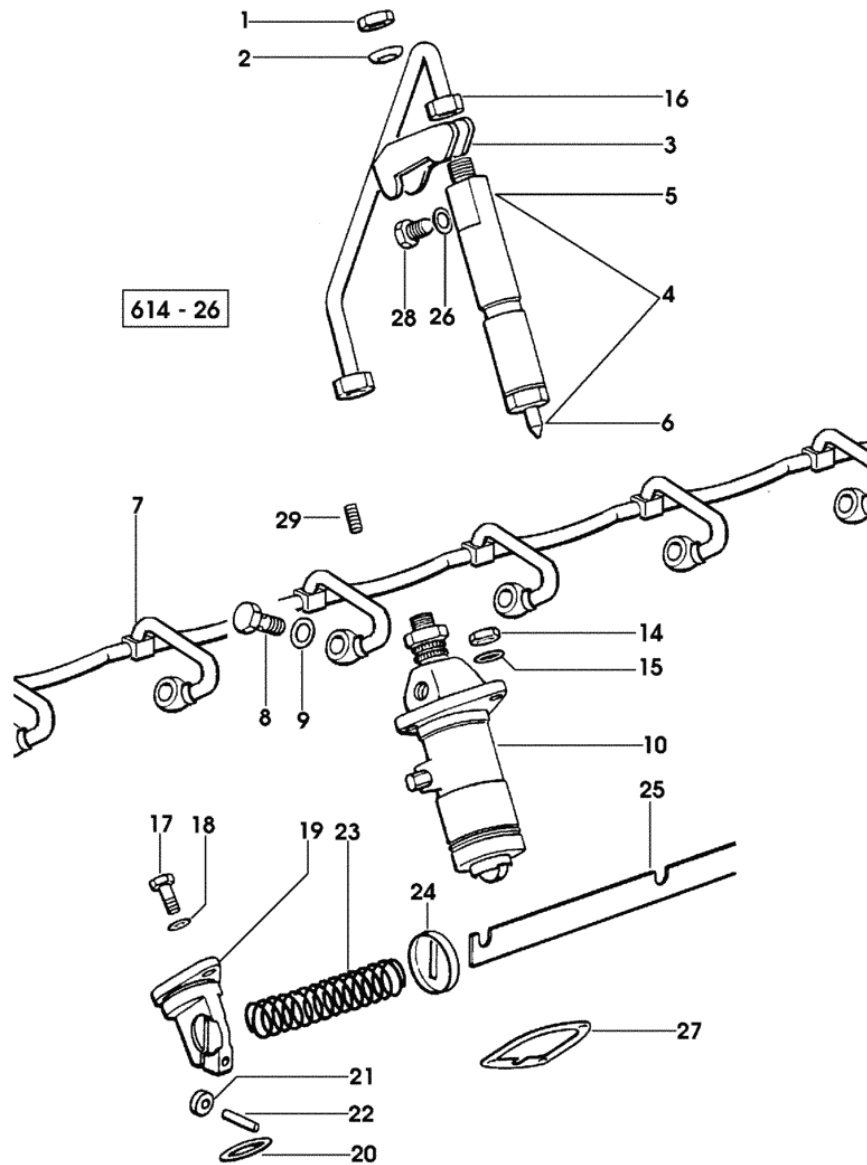


Fig.	Code	QTY	Name
1	2.1011.421.2	6	nut m 10 p.1.25
2	2.1599.454.0	6	snoulder 10.5x17x7.5
3	0.011.5275.0/20	6	bracket
4	2.4719.200.0/10	6	injector BOSCH
4	2.4719.320.0/10	6	injector BOSCH - EXPORT U.S.A.
5	2.4719.190.0	6	nozzle holder BOSCH ☞ 2.4719.190.0 ☞ 01.00.19
6	2.4729.100.0	6	nozzle BOSCH
6	2.4729.170.0/10	6	nozzle BOSCH - EXPORT U.S.A.
7	0.007.1789.3/10	1	tube
8	2.3339.001.2	6	pipe union
9	2.1560.005.0	12	gasket 10.2 x 14
10	2.4619.050.0/30	6	injector pump - 542 - BOSCH F 18 - 18/1 ☞ 2.4619.050.0/30
10	2.4619.030.0/10	1	injector pump - 555 - BOSCH - EXPORT U.S.A. F 18/2 ☞ 2.4619.030.0/10
14	2.1011.405.2	18	nut m 8 p.1
15	2.1599.458.0/10	18	snoulder 8.4x18x2
16	0.065.1650.3	6	tube
17	2.0112.207.2	3	screw m 8 p 1.25 x 20
18	2.1470.004.2	3	washer 8
19	0.065.1693.0/20	3	support
20	2.1530.072.0	3	'o' ring 26.70x1.78
21	0.065.1660.0	2	roller
22	2.1652.507.0	2	pin 6x16
23	2.4019.314.1/20	1	spring 21.5x76x1
24	0.065.1659.0	1	stop
25	0.075.1613.3/10	1	rod
26	2.1560.001.0	6	gasket 6.2x10
27	0.065.1655.0/10	6	shim mm 0.1
27	0.065.1656.0/10	16	shim mm 0.20
28	2.3119.024.2	6	plug m 6
29	2.0512.102.7	6	screw m 6 p.1 x 8

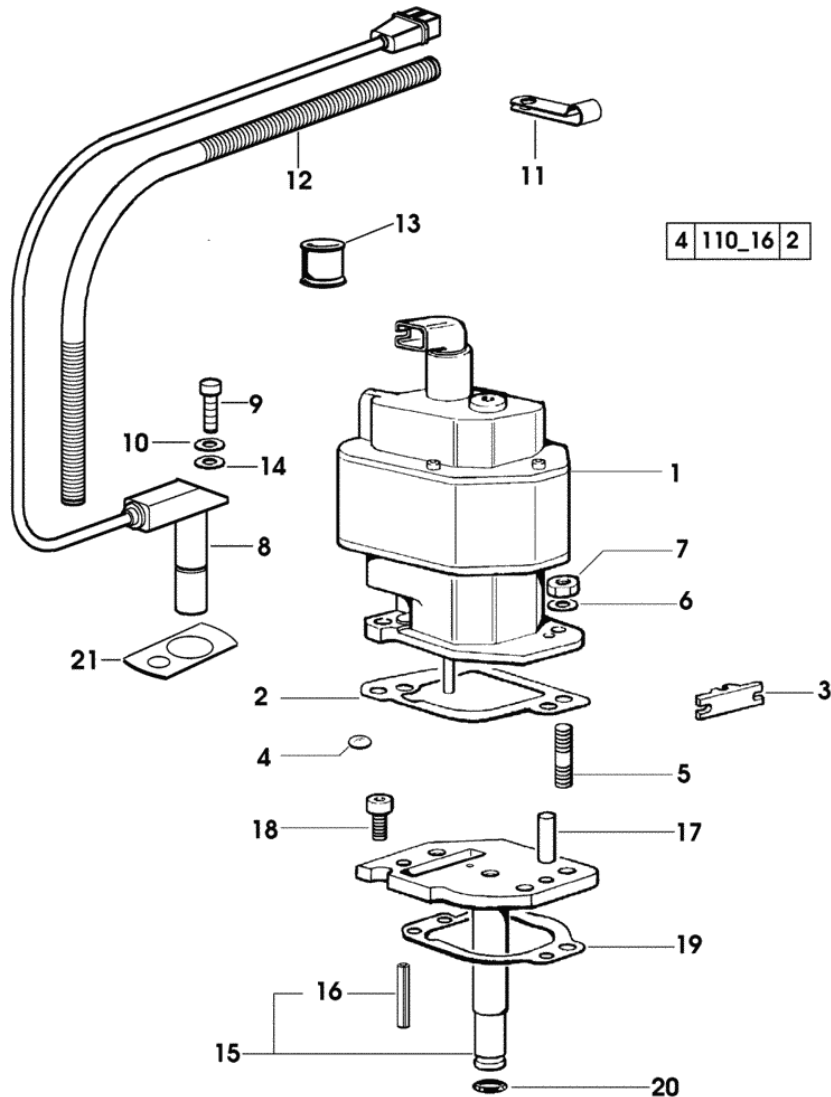
**FUEL SUPPLY ELECTRONIC GOVERNOR**

Fig.	Code	QTY	Name
------	------	-----	------

**Notes:**

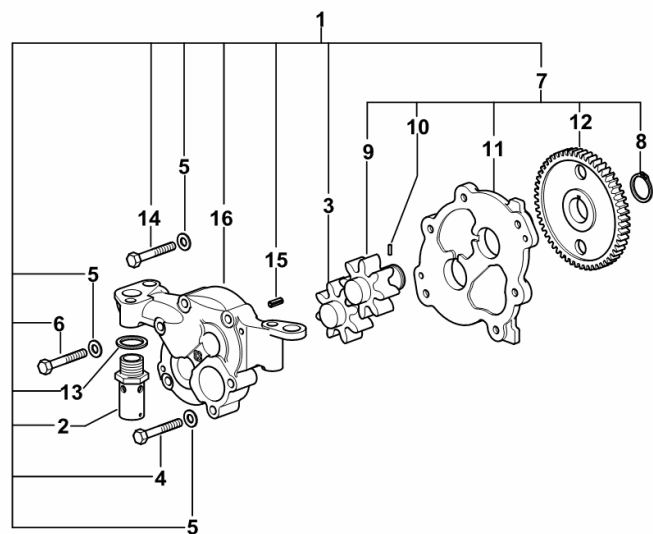
-> 4443 X 110HP -> 4825 X 130HP

1	0.007.0992.4/60	1	actuator 12V
2	0.009.3880.0/20	1	gasket
3	0.007.0870.0	1	small plate
4	2.3170.003.1	1	expansion plug 10
5	2.0432.007.2	2	stud bolt m 8 p.1.25 / p.1 x 30
6	2.1475.002.7	2	washer 8.4
7	2.1011.405.2	2	nut m 8 p.1
8	2.7099.790.0	1	pick-up
9	2.0312.004.2	1	screw m 5 p.0.8 x 10
10	2.1480.011.2	1	washer 5
11	2.6839.044.2	1	clamp
12	0.011.2030.0	1	tube
13	2.6569.001.0	1	rubber ring 12 x 20 x 21
14	2.1310.001.2	1	flat washer 5.3
15	0.007.1199.3/20	1	flange
16	2.1630.415.0	1	pin 4 x 40
17	2.1651.711.0	1	pin 8 x 14
18	2.0169.005.2	2	screw m 6 p.1 x 12
19	0.065.1560.0/20	2	gasket
20	2.1539.087.0	1	'o' ring 11.91 x 2.62
21	0.011.1207.0	1	shim mm 0.20



**OIL PUMP**

Fig.	Code	QTY	Name
1	0.010.0194.4/30	1	oil pump
2	0.007.0866.3/10	1	valve
3	0.010.1709.0	1	gear z=8
4	2.0112.220.2	2	screw m 8 p.1.25x55
5	2.1475.002.7	6	washer 8.4
6	2.0112.219.2	2	screw m 8 p.1.25x50
7	0.010.0195.3/20	1	cover
8	2.1410.064.7	1	circlip
9	0.010.1708.0/20	1	gear z=8
10	2.1651.204.0	1	pin 3x10
11	0.000.0000.1	0	not serviceable
12	0.000.0000.1	0	not serviceable
13	2.1560.020.0	1	gasket 24.3x32
14	2.0112.217.2	2	screw m 8 p.1.25 x 45
15	2.1630.608.0	2	pin 6x16
16	0.000.0000.1	0	not serviceable



0\_010\_0194\_4\_30

Section: FRONT AND REAR P.T.O.  
P.T.O. - HYDRAULIC CLUTCH

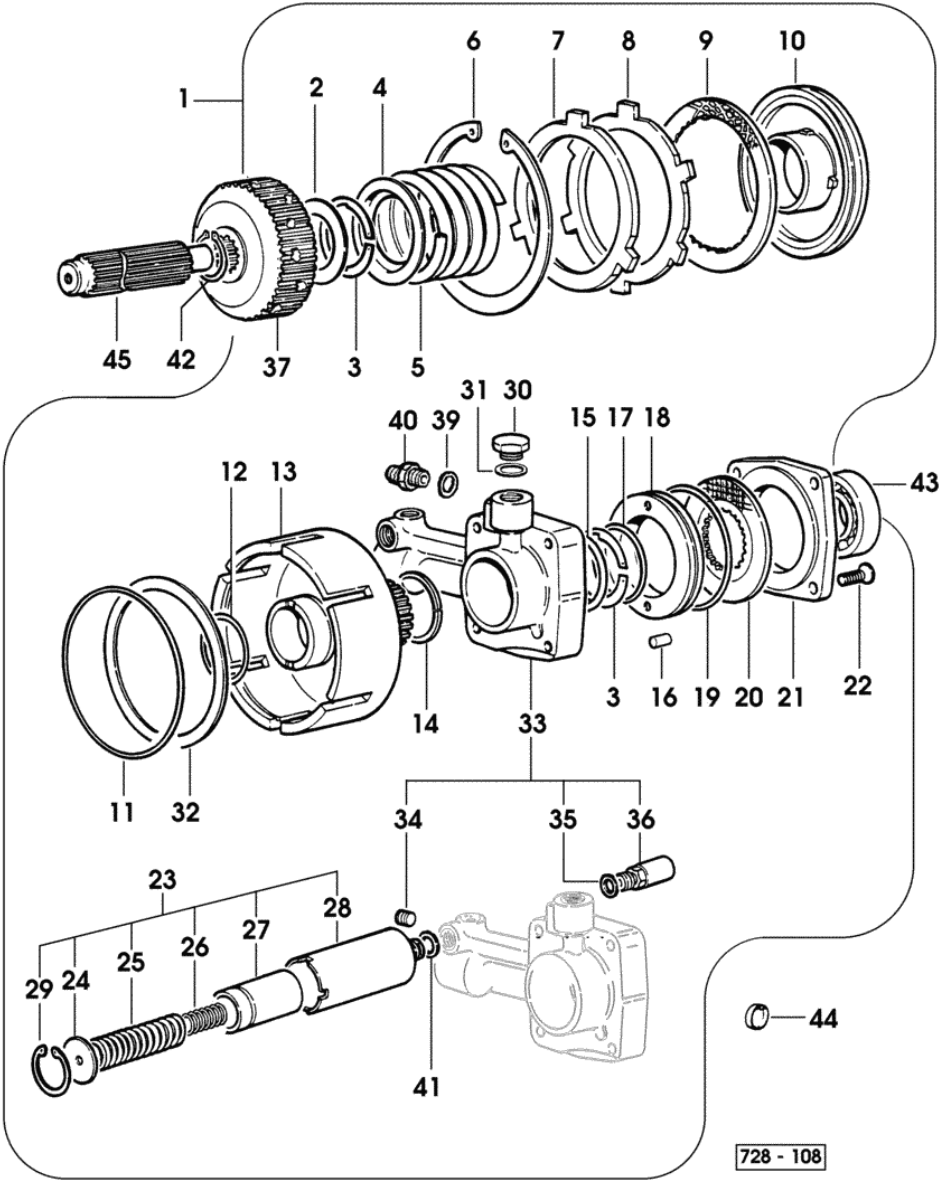
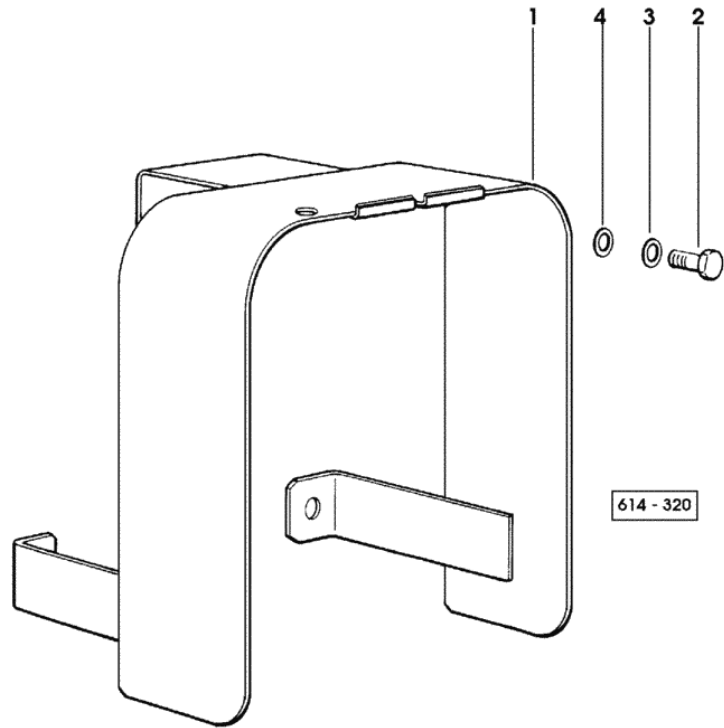


Fig.	Code	QTY	Name
1	0.008.4631.4/90	1	hydraulic pto clutch
2	2.1599.536.0	1	snoulder 40x60x10
3	2.1419.027.1	2	circlip 48
4	0.255.3933.0	1	disc
5	2.4019.373.1	1	spring 79.5x61.5x6.5
6	2.1419.035.1	1	circlip 127
7	0.255.3969.0/10	1	disc
8	0.255.3936.0	5	disc
9	0.255.3970.2	5	disc
10	0.255.3938.0/30	1	piston
11	2.1539.064.0	1	'o' ring 120.33x2.62
12	2.1539.067.0	1	'o' ring 44.12x2.72
13	0.008.4043.0/20	1	box
14	2.1569.109.0	3	gasket 46x50x2
15	2.1599.416.0	1	snoulder 50x58x1
16	2.1652.506.0	2	cylindrical plug 6 x 14
17	2.1532.133.0	1	'o' ring 53.64x2.62
18	0.255.3922.0/20	1	piston
19	2.1532.503.0	1	'o' ring 82.14x2.62
20	0.255.3924.2	1	disc
21	0.255.3926.0/10	1	cover
22	2.0342.305.2	4	screw m 8 p.1.25 x 20
23	0.010.0526.4	1	accumulator
24	2.1599.241.0	1	snoulder 6.0 x 31 x 2.0
25	2.4019.636.1	1	spring 20.8 x 27.2 x 3.2 x 86.5
26	2.4019.638.1	1	spring 14.2 x 19.4 x 2.6 x 58
27	0.010.0525.0	1	piston
28	0.010.0526.0	1	cylinder
29	2.1411.013.7	1	circlip Ø 32
30	2.3110.428.1	1	plug m 8 p.1 x 10
31	2.1560.003.0	1	gasket 8.2 x 12
32	2.1599.499.0	1	snoulder 110 x 126.5 x 1.2
33	0.008.3063.6/60	1	distributor
34	2.0512.202.1	1	screw m 8 p.1.25 x 8
35	2.1560.005.0	1	gasket 10.2 x 14
36	0.009.2445.4/10	1	valve
37	0.008.4044.0/20	1	hub
39	2.1560.008.0	1	gasket 12.2 x 18
40	2.3339.453.2	1	pipe fitting m 12 p.1.25-1/2"
41	2.1560.010.0	1	gasket 14.2 x 20 x 1.5
42	2.1410.011.1	1	circlip 28
43	2.2043.009.0	1	ball bearing 30x62x16
44	2.3171.006.4	1	plug Ø 16
45	0.008.4042.0/10	1	shaft

**P.T.O. GUARD**

Fig.	Code	QTY	Name
1	0.009.3274.2/10	1	small sump
2	2.0112.307.2	2	screw m 10 p.1.5 x 20
3	2.1470.006.2	2	lock washer 10
4	2.1310.006.2	2	flat washer 10.5



**4WD - POWER STEERING CYLINDER**

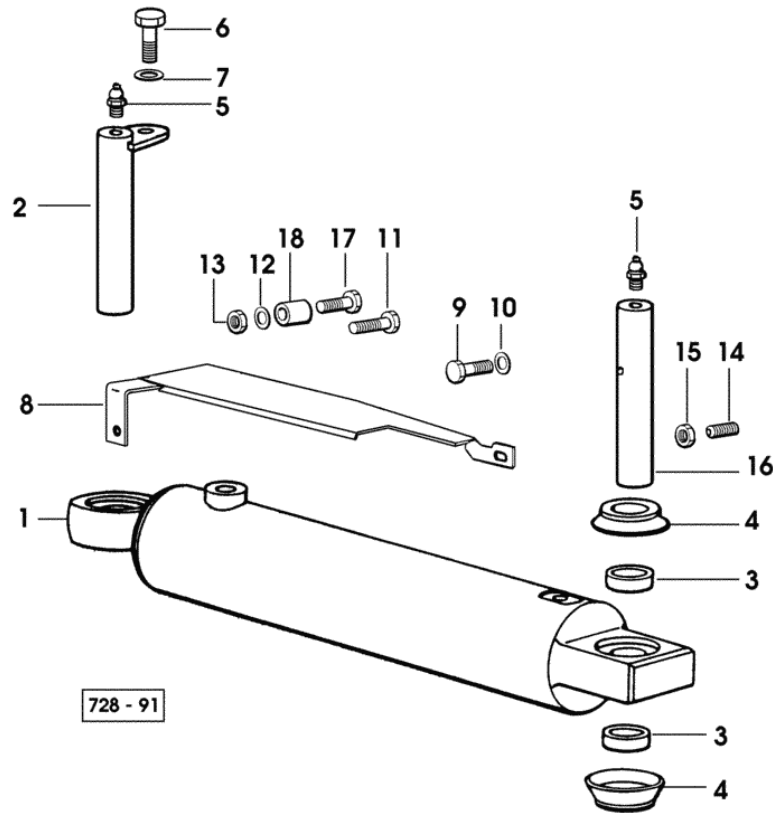


Fig.	Code	QTY	Name
1	0.264.6342.4/10	2	jack ☞ 0.264.6342.4/10 ☞ 04.00.8
2	0.270.6350.2/30	2	piston pin
3	2.1579.739.0	8	spacer 21x25x10
4	0.270.6351.0	8	guard
5	2.3820.105.2	4	lubricator m 10 p.1 x 7
6	2.0112.207.2	2	screw m 8 p 1.25 x 20
7	2.1470.004.2	2	washer 8
8	0.257.6373.2/40	1	guard dx/rh/re
8	0.257.6374.2/40	1	guard sx/lh/li
9	2.0112.205.2	2	screw m 8 p.1.25 x 16
10	2.1310.004.2	2	flat washer 8.5
11	2.0112.219.2	1	screw m 8 p.1.25x50
12	2.1470.004.2	2	washer 8
13	2.1011.105.2	2	nut m 8 p.1.25
14	2.0399.050.2	2	screw m 10 p.1 x 30
15	2.1011.406.1	2	nut m 10 p.1
16	0.008.5388.0/10	2	piston pin
17	2.0112.219.2	1	screw m 8 p.1.25x50
18	2.1549.189.2	2	spacer 12x1.5x16

Section: FRONT AXEL  
**4WD - TRANSMISSION SHAFT**

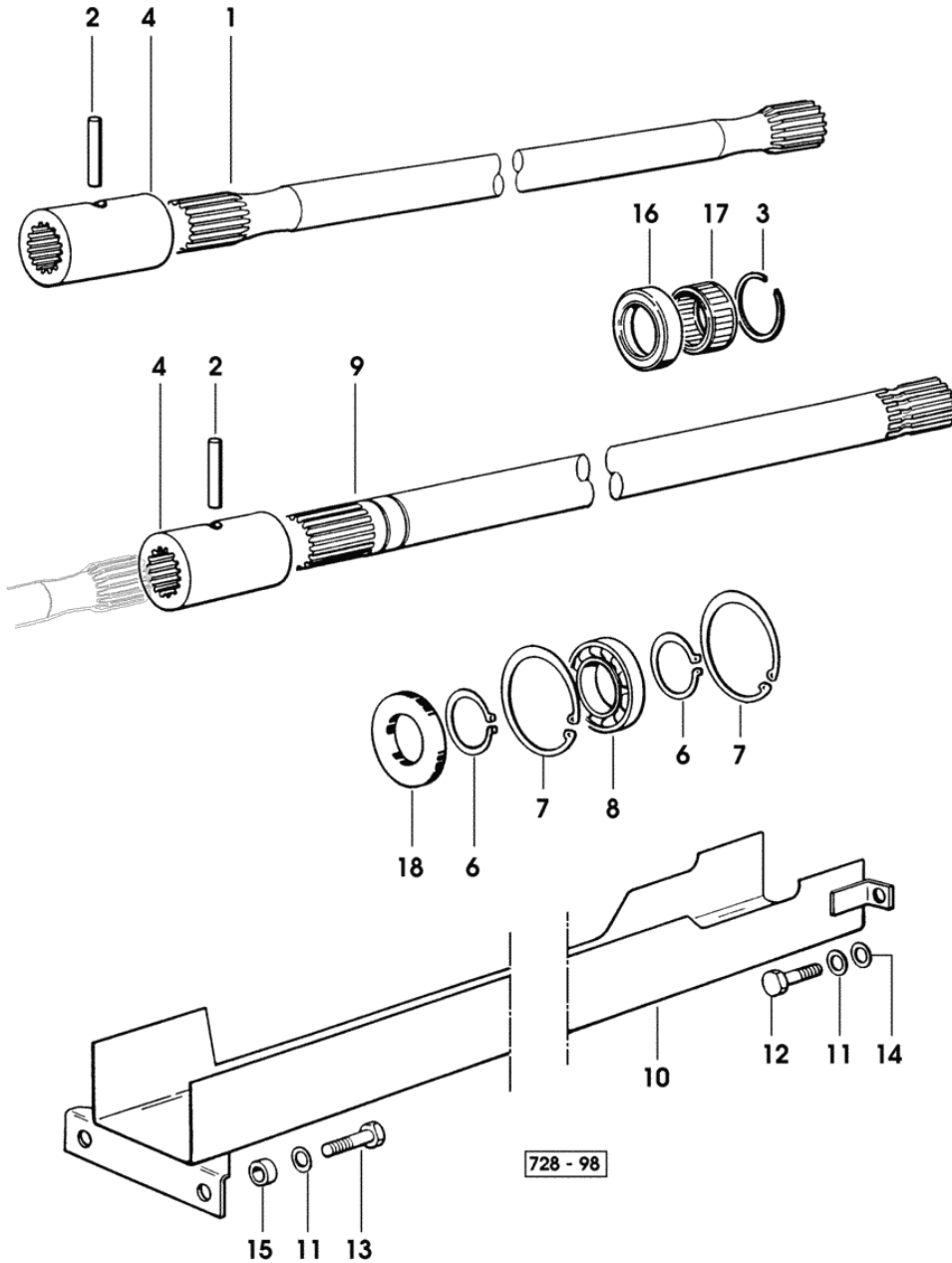
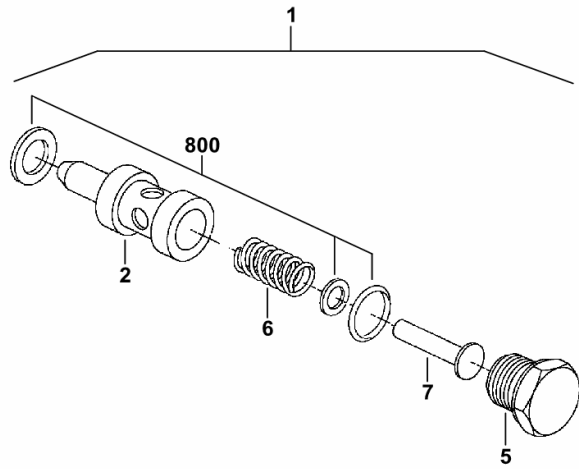


Fig.	Code	QTY	Name
1	0.008.4096.0/20	1	transmission shaft
2	2.1631.718.0	2	roll pin 8 x 45
3	2.1423.027.7	1	circlip 37x1.5
4	0.255.2617.0	2	sleeve
6	2.1410.012.1	2	circlip 30
7	2.1411.022.1	2	circlip 55
8	2.2021.010.0	1	ball bearing 30x55x13
9	0.008.4045.0/10	1	shaft
10	0.008.4260.2/10	1	guard
11	2.1470.004.2	4	washer 8
12	2.0112.205.2	2	screw m 8 p.1.25 x 16
13	2.0112.209.2	2	screw m 8 p 1.25 x 25
14	2.1310.004.2	2	flat washer 8.5
15	2.1579.987.2	2	spacer 8.5x16x8
16	2.1519.103.0	1	'o' ring
17	2.2999.223.0	1	roller cage
18	2.1529.106.0/10	1	'o' ring 30x55x12 - WATER PROOF

**PRESSURE CONTROL VALVE**

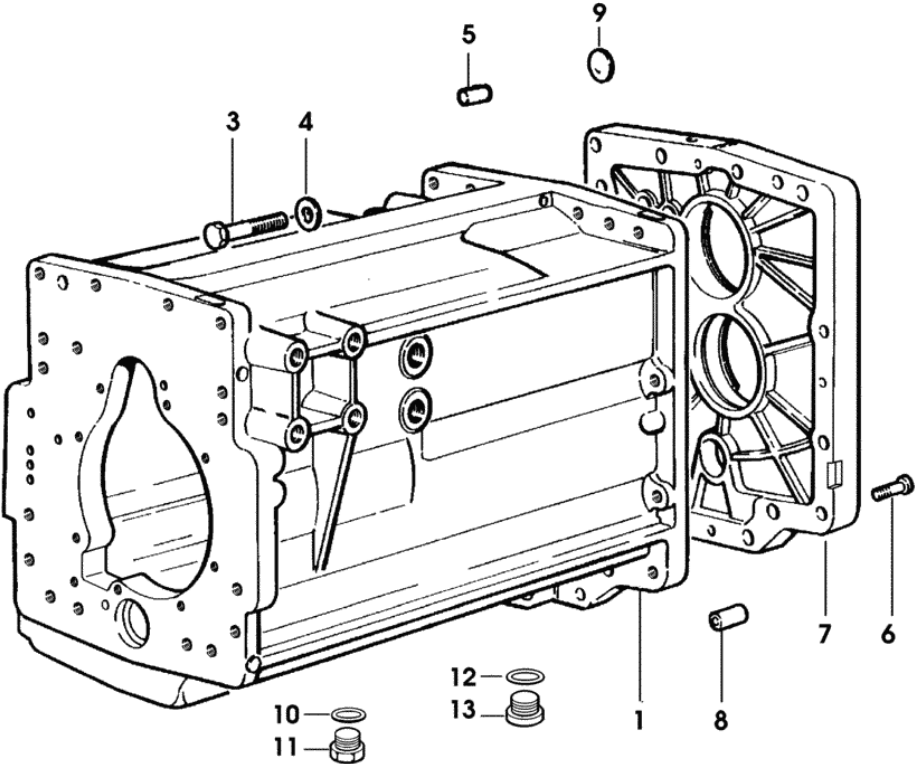
Fig.	Code	QTY	Name
1	0.009.2038.4/10	1	valve
2	04417983	1	valve
5	0.900.0039.0	1	plug
6	0.900.0051.7	1	spring
7	0.900.0039.1	1	pin
800	2.3719.020.1	1	shim



0\_009\_2038\_4\_10

Section: GEAR  
GEARBOX

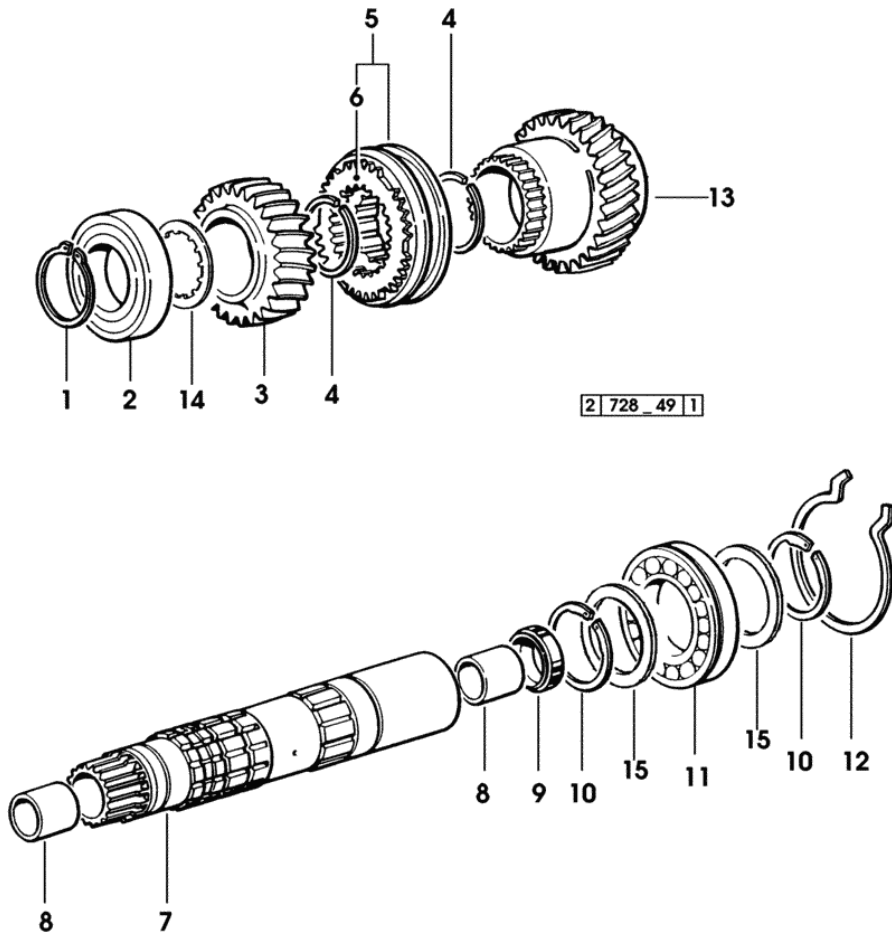
Fig.	Code	QTY	Name
1	0.007.6245.0/60	1	gear box * - N.1 - 2.1560.019.0 - 2.1560.025.0 - N.1 - 2.3110.423.2 - 2.3120.004.4
3	2.0113.427.2	14	screw
4	2.1475.004.7	14	washer 13 x 24
5	2.1653.911.0	1	cylindrical plug 12x25
6	2.0312.212.2	4	screw m 8 p.1.25 x 35
7	0.008.4981.0/20	1	plate
8	2.1699.260.1	1	warning light 15x30
9	2.3171.007.4	1	plug Ø 18 - FOR AGROSHIFT TYPES
10	2.1560.019.0	1	gasket 24.3x30
11	2.3110.423.2	1	plug m 24 p.1.5x18.5
12	2.1560.025.0	1	gasket
13	2.3120.004.4	1	plug m 32



4 728 \_ 41 3

**REVERSE GEAR WITHOUT MINI-REDUCER**

Fig.	Code	QTY	Name
1	2.1410.018.1	1	circlip 45
2	2.2423.013.0	1	roller bearing 45 x 85 x 19
3	0.008.4016.0	1	gear z = 27 4241 <- X 110HP 4455 <- X 130HP
3	0.008.4016.0/20	1	gear z = 27 -> 4242 X 110HP -> 4456 X 130HP
4	2.1499.086.0	2	circlip 45.2x1.8
5	0.008.0172.4/10	1	lock synchronizer ☞ 0.008.0172.4/10
6	0.009.4324.0	2	ring
7	0.008.4277.0/30	1	shaft 4241 <- X 110HP 4455 <- X 130HP
7	0.008.4277.0/40	1	shaft -> 4242 X 110HP -> 4456 X 130HP
8	2.1555.315.0	2	bushing 30x34x20
9	2.1529.129.0	1	'o' ring
10	2.1499.085.0	2	circlip 45.8
11	2.2999.203.0	1	bearing 50 x 90 x 20
12	2.1499.037.1	1	circlip 90
13	0.008.4015.0	1	gear Z = 30 4241 <- X 110HP 4455 <- X 130HP
13	0.008.4015.0/20	1	gear Z = 30 -> 4242 X 110HP -> 4456 X 130HP
14	0.010.4767.0	1	thrust plate -> 4242 X 110HP -> 4456 X 130HP
15	2.1599.779.0	2	thrust plate 50x70x4 -> 4242 X 110HP -> 4456 X 130HP



**COMPLETION FOR 4 SPEED RANGE REDUCTION GEAR UNIT**

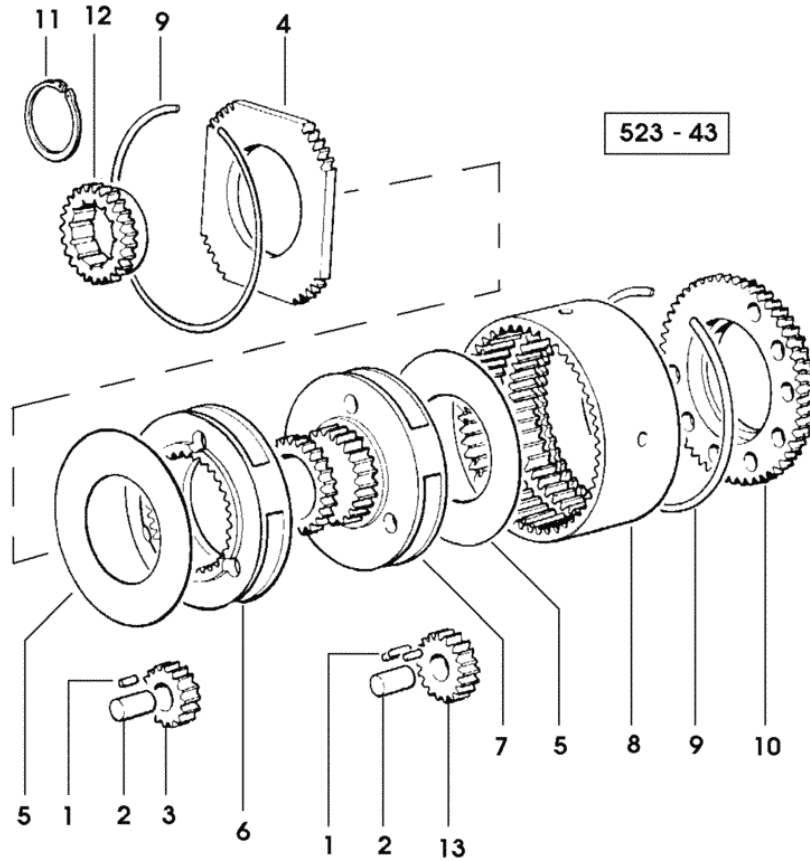


Fig.	Code	QTY	Name
1	2.2830.017.0	108	roller 3x15.8
2	0.254.3444.0	6	pin
3	0.422.3454.0/20	3	planet gear Z = 16
4	0.008.4154.0	1	shim
5	2.1579.528.0	2	spacer 82x139.5x1.2
6	0.008.4129.0	1	spider
7	0.008.4127.0	1	spider
8	0.422.3452.0/20	1	crown wheel
9	2.1429.033.1	2	circlip 155
10	0.008.4128.0	1	flange z = 64
11	2.1410.020.1	1	circlip 50
12	0.008.4183.0	1	hub
13	0.008.4152.0	3	planet gear Z = 19

Section: GEAR  
REVERSE GEAR CONTROL

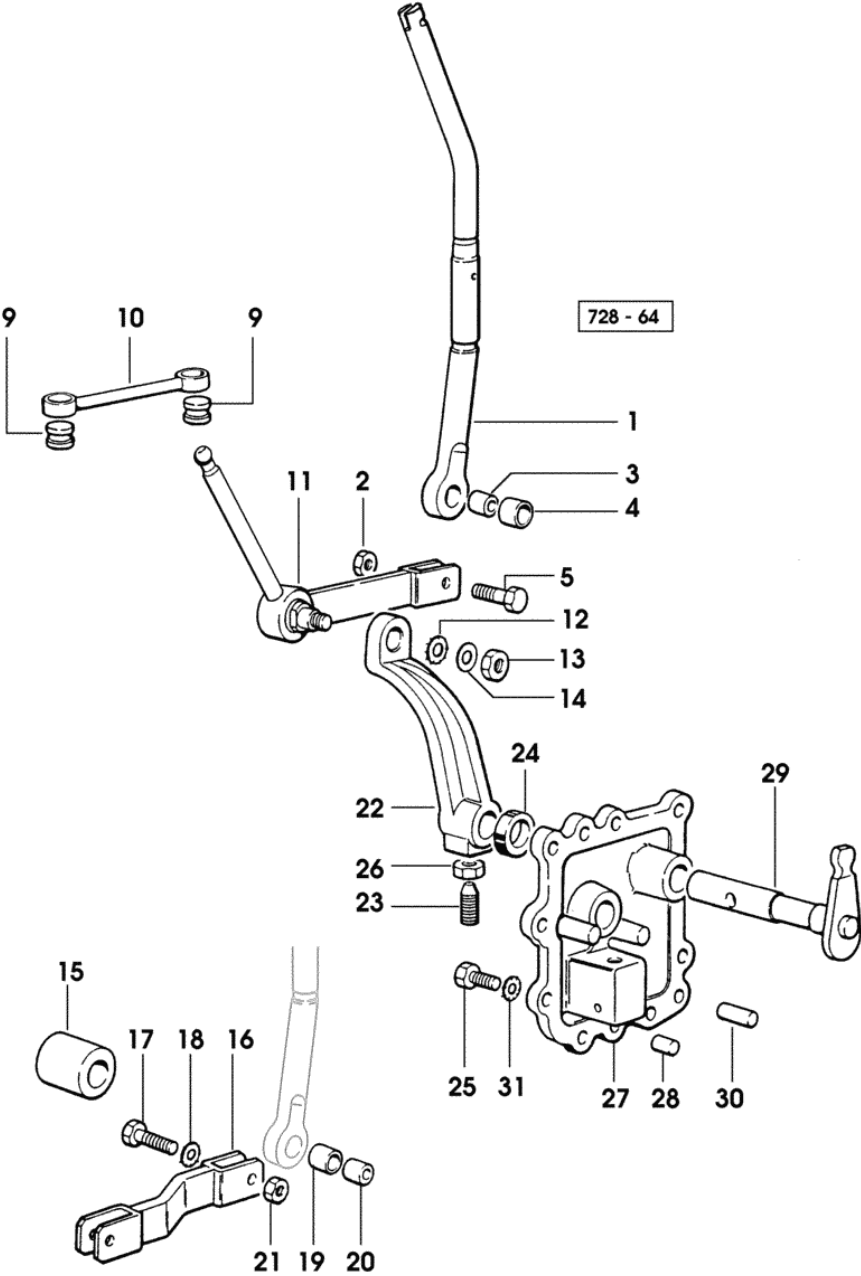


Fig.	Code	QTY	Name
1	0.008.4452.0/40	1	lever
2	2.1120.005.2	1	nut m 8 p.1.25
3	2.1579.965.2	1	spacer 8.5x14x12.5
4	2.1555.107.0	1	bushing 14x16x12
5	2.0112.215.2	1	screw m 8 p.1.25 x 40
9	0.255.6454.0	2	pin seat
10	0.008.4988.2	1	connecting rod
11	0.008.4987.3/10	1	rod
			- FOR TRANSMISSION EQUIPPED WITH MINI REDUCTION
12	2.1470.006.2	1	lock washer 10
13	2.1011.106.2	1	nut m 10 p.1.5
14	2.1310.006.2	1	flat washer 10.5
15	2.1579.963.2	1	spacer
16	0.008.4724.2	1	rod
			- FOR TRANSMISSION WITHOUT MINI REDUCTION GEAR
17	2.0112.215.2	1	screw m 8 p.1.25 x 40
18	2.1470.006.2	1	lock washer 10
19	2.1555.107.0	1	bushing 14x16x12
20	2.1579.965.2	1	spacer 8.5x14x12.5
21	2.1120.005.2	1	nut m 8 p.1.25
22	0.008.4420.0/20	1	lever
23	2.0399.050.2	1	screw m 10 p.1 x 30
24	2.1520.006.0	1	oil seal 20 x 30 x 7
25	2.0112.209.2	8	screw m 8 p 1.25 x 25
26	2.1011.406.2	1	nut m 10 p.1
27	0.008.4403.0	1	cover
28	2.1651.807.0	1	pin 10 x 16
29	0.008.4419.2	1	lever
30	2.1651.813.0	1	pin 10x30
31	2.1470.004.2	8	washer 8

**DIFFERENTIAL - S.B.A. MODEL**

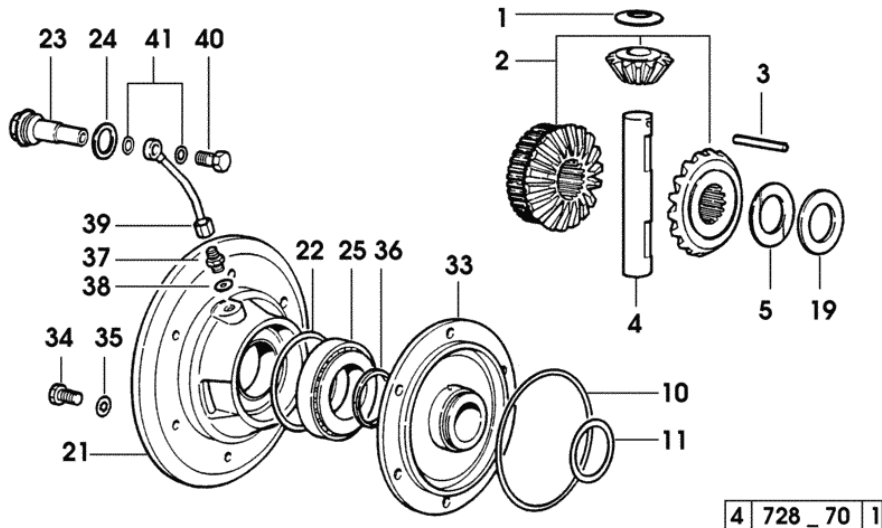
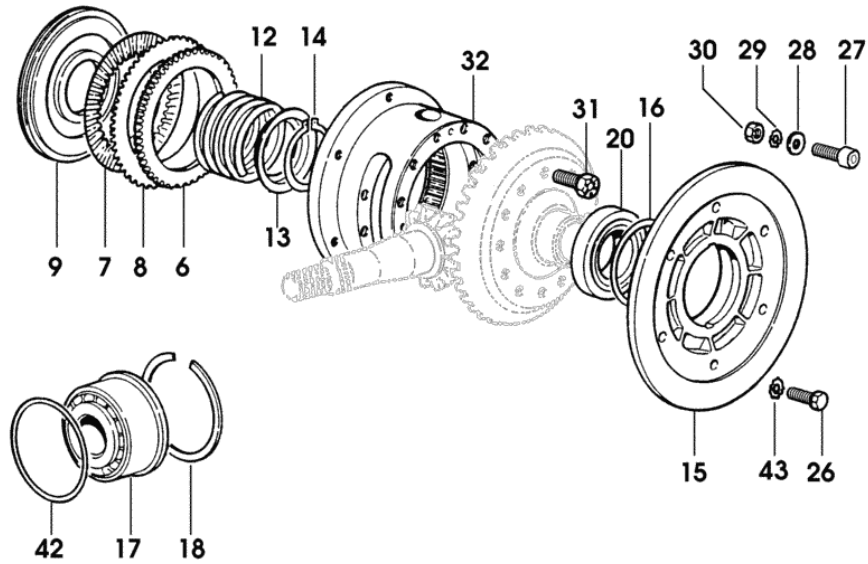


Fig.	Code	QTY	Name
40	2.3330.003.1	1	pipe union m 12 p.1.5
41	2.1560.008.0	2	gasket 12.2 x 18
42	2.1589.167.0	0	snoulder 105 x 112 x 0.15
42	2.1589.168.0	0	snoulder 105 x 112 x 0.1
42	2.1589.169.0	0	snoulder 105 x 112 x 0.5
43	2.1470.006.2	14	lock washer 10
			(...) <-



**REAR REDUCTION GEARS AND AXLE SHAFTS**

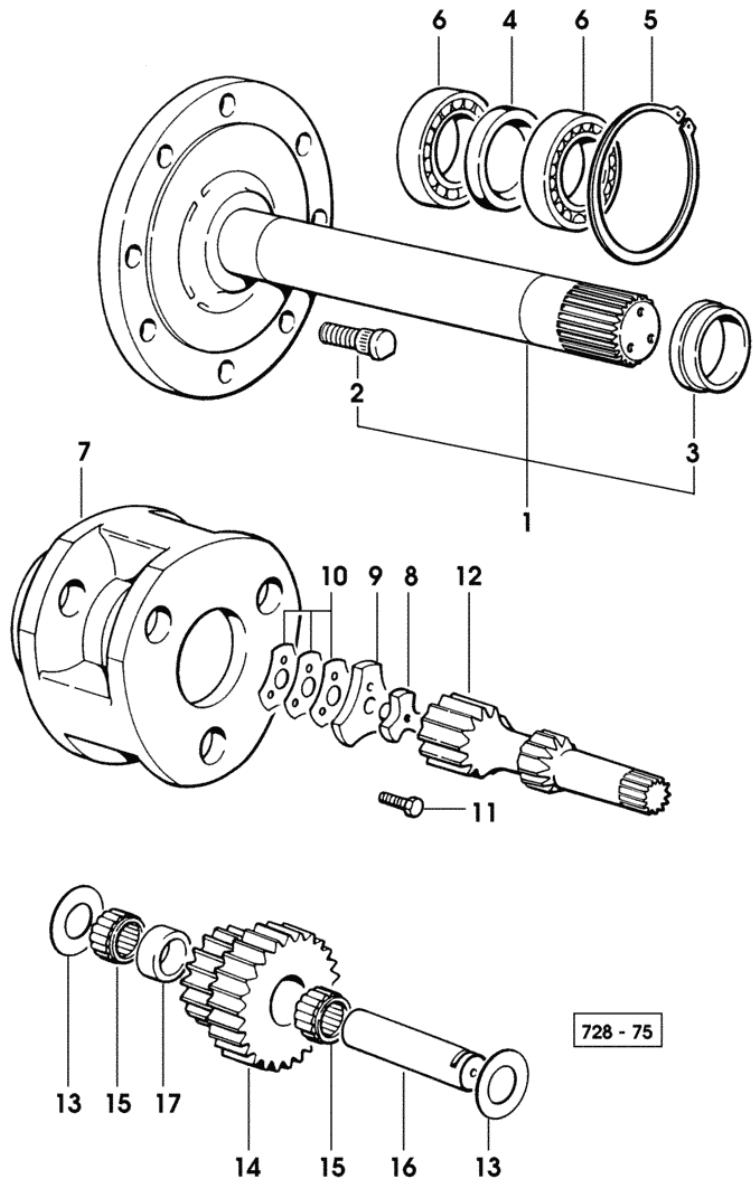


Fig.	Code	QTY	Name
11	2.0139.031.7	6	screw m 12 p.1.25x60 -> 4388 X 110HP -> 4761 X 130HP
12	0.008.4368.0/10	1	shaft sx/lh/li
12	0.008.4369.0/10	1	reduction shaft dx/rh/re
13	2.1599.218.0	12	snoulder 40.2x75x1.5
14	0.008.4370.3/20	2	planet gear
15	2.2999.052.0	12	roller cage 40x55x45
16	0.008.4004.0	6	pin
17	2.1579.966.2	6	spacer

Section: REAR AXLE

**HAND BRAKE FOR REVERSED DRIVING POSITION**

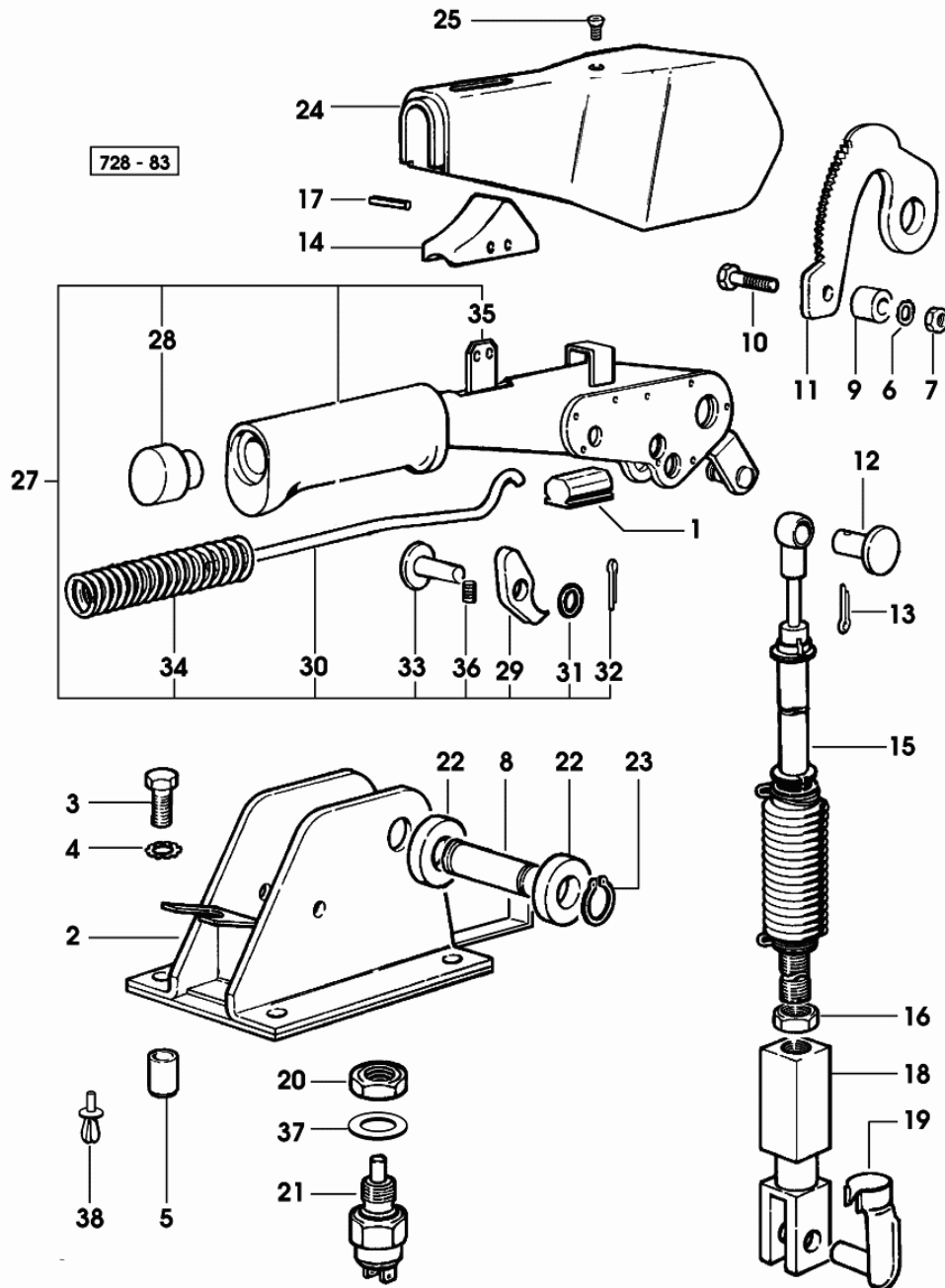
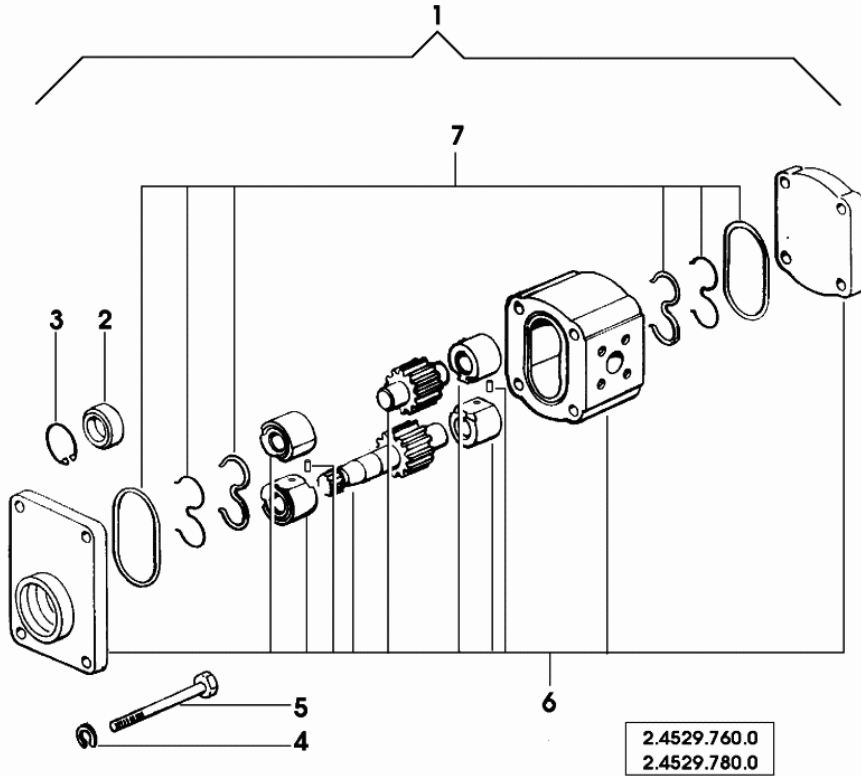


Fig.	Code	QTY	Name
1	0.264.6655.0/10	1	small block
2	0.008.3670.2/40	1	support
3	2.0112.207.2	4	screw m 8 p 1.25 x 20
4	2.1470.004.2	4	washer 8
5	2.1142.005.2	4	insert m 8
6	2.1470.002.2	1	washer 6, d128
7	2.1011.103.2	1	nut m 6 p.1
8	2.1699.265.2	1	pin
9	2.1579.972.2	1	spacer
10	2.0112.011.2	1	screw m 6 p.1x30
11	0.009.0141.0/10	1	toothed sector
12	2.1670.406.2	1	pin 10x25x21.5
13	2.1690.307.2	1	split pin 3.2x18
14	0.009.1744.0	1	push-button
15	0.009.3430.4	1	cable
16	2.1011.207.2	1	nut m 12 p.1.5
17	2.1630.411.0	2	roll pin 4x24
18	2.3519.091.2	1	fork m 12
19	2.1699.164.2	1	pin 10x23
20	2.1011.208.2	1	nut m 14 p.2
21	2.7659.133.0	1	switch
22	2.1579.973.2	2	spacer 15x30x7.5
23	2.1410.003.1	2	circlip 14
24	0.009.1741.0	1	lining
25	2.0399.181.3	1	screw 3.9x9.5
27	0.009.1745.4/10	1	h/brake lever
28	0.009.0668.0	1	push-button
29	0.200.6623.0	1	ratchet
30	0.009.1740.3	1	rod
31	2.1310.004.2	1	flat washer 8.5
32	2.1690.206.2	1	split pin 2x16
33	2.1670.305.2	1	pin 8x22x19
34	2.4019.555.2	1	spring 14x130x1.3
35	0.009.1739.2	1	clutch lever
36	2.0532.003.1	1	screw m 5x10
37	2.1470.008.2	1	lock washer 14
38	2.1899.070.0	1	rivet

Section: S.A.C.

**HYDRAULIC PUMP PARTS**

Fig.	Code	QTY	Name
1	2.4539.620.0	1	hydraulic pump 22.5 cc dx/rh/re - BOSCH - ☞ 2.4539.620.0
2	0.009.4046.1	1	'o' ring
3	2.1411.012.1	1	circlip 30x1.2, din 472
4	0.000.0000.1	0	not serviceable
5	0.000.0000.1	0	not serviceable
6	0.000.0000.1	0	not serviceable
7	2.4529.330.1/10	1	seal ring kit

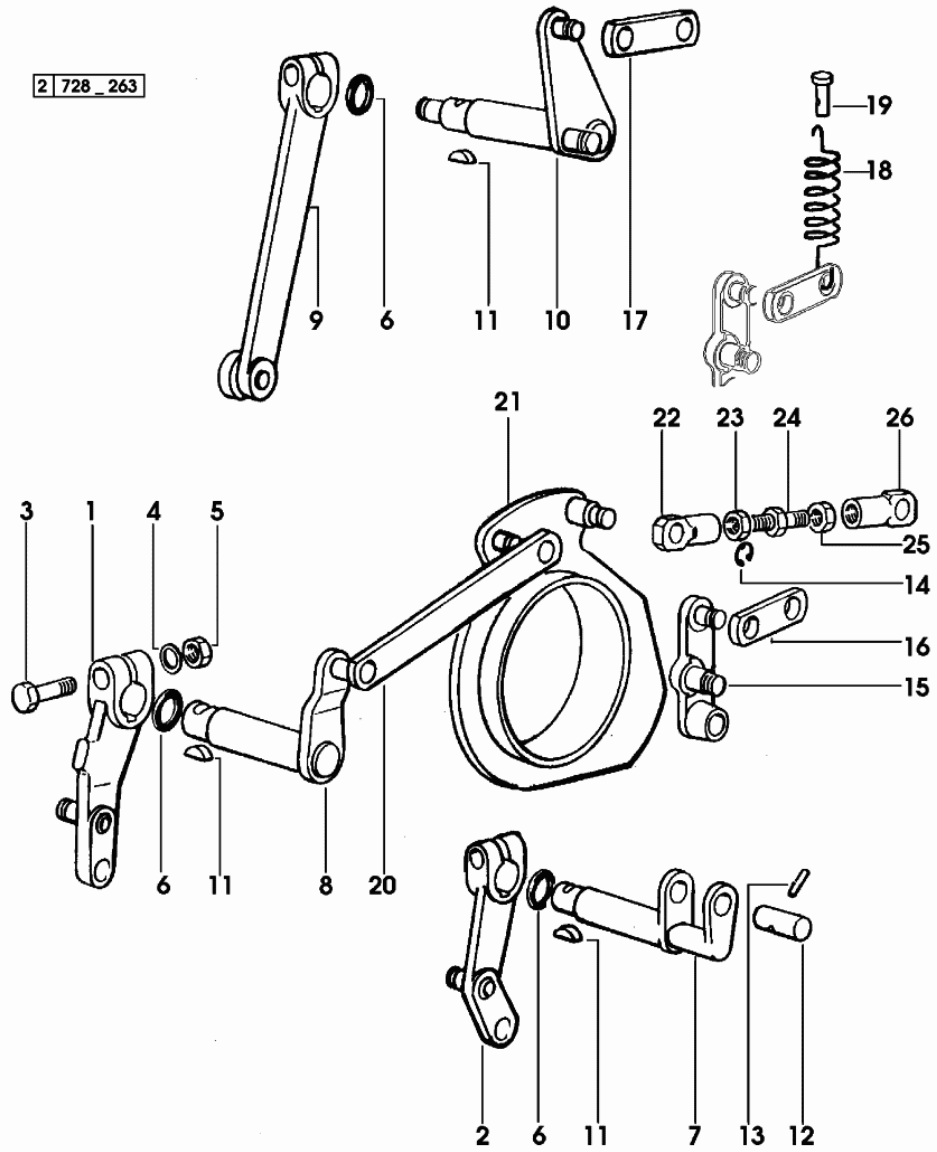


**INTERNAL AND EXTERNAL CONTROLS**

Fig.	Code	QTY	Name
------	------	-----	------

26	0.002.1484.0	1	tip
----	--------------	---	-----

2 | 728\_263



**STEERING CONTROL**

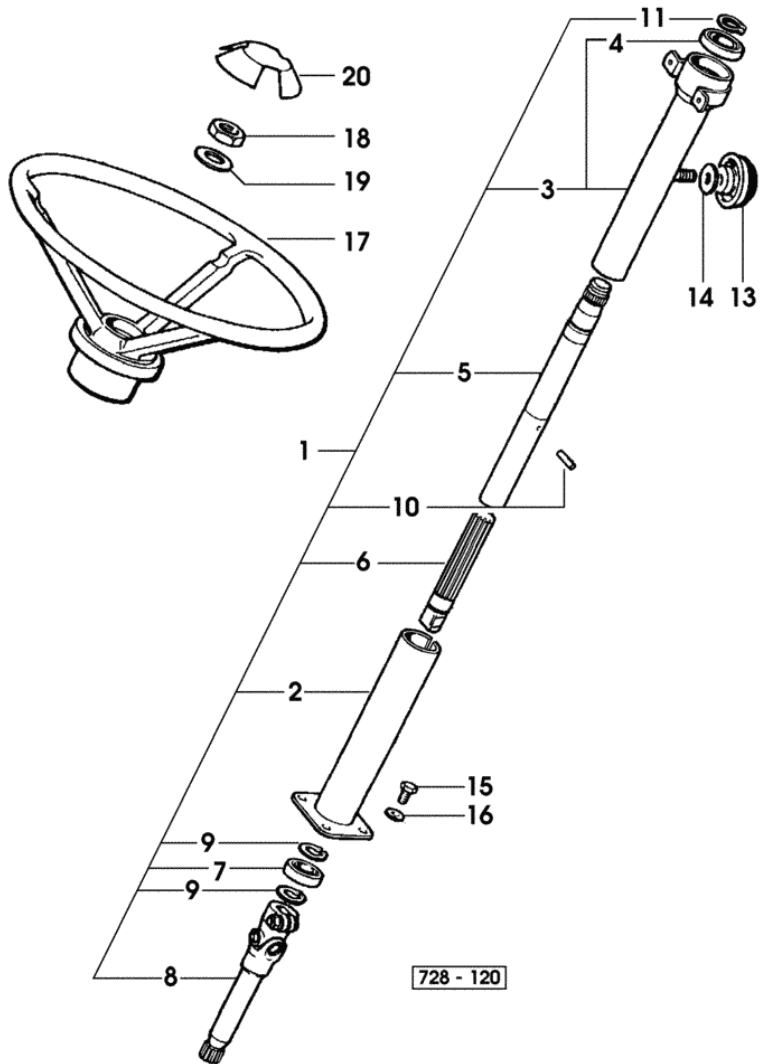


Fig.	Code	QTY	Name
1	0.008.2247.4/80	1	steering column
2	0.008.2248.2/50	1	column
3	0.008.2249.3/40	1	column
4	2.2021.009.0	1	ball bearing 25 x 47 x 12
5	0.008.2250.3/40	1	shaft
6	0.008.2251.0/20	1	shaft
7	2.2021.008.0	1	ball bearing 20x42x12
8	0.007.5051.3/40	1	shaft
9	2.1410.006.1	2	circlip 20
10	2.1630.410.0	1	roll pin 4 x 20
11	2.1410.010.1	1	circlip 25
13	0.009.0350.2	1	knob
14	2.1599.529.0	1	washer 12.5x32x3
15	2.0112.207.2	4	screw m 8 p 1.25 x 20
16	2.1470.004.2	4	washer 8
17	0.009.0486.2/30	1	steering wheel
18	2.1011.511.1	1	nut m 20 p.1.5
19	2.1470.011.2	1	washer 20
20	0.009.0539.3	1	plug SAME

**GEARBOX OIL COOLER**


Fig.	Code	QTY	Name
------	------	-----	------

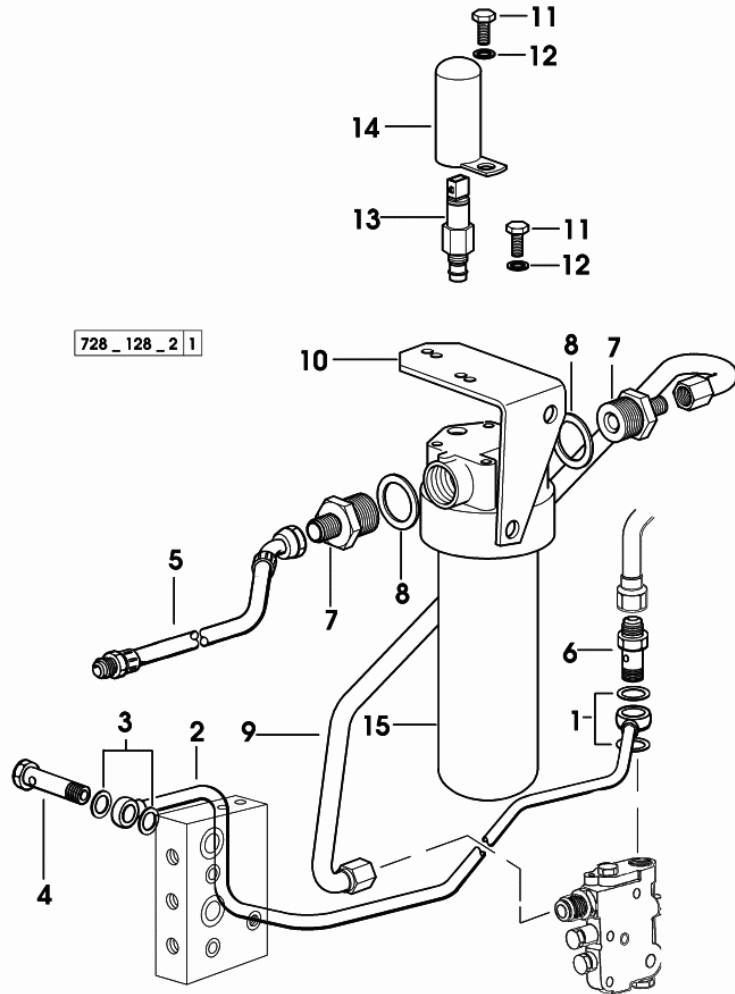
**Notes:**

-> 4443 X 110HP -> 4808 X 130HP

1	2.1560.014.0	2	gasket 18.2 x 24 x 1.5
2	0.010.1241.3	1	tube
3	2.1560.012.0	2	gasket 16.2 x 22 x 1.5
4	2.3339.725.2	1	pipe union
5	0.011.5459.3	1	tube
6	2.3339.556.2	1	pipe fitting
7	2.3339.816.2/10	2	pipe fitting 7/8"-14 jic / 1 Gas
8	2.1560.056.0	2	gasket 33x39
9	0.011.5422.3	1	tube
10	0.011.5421.2/10	1	bracket
11	2.0112.207.2	3	screw m 8 p 1.25 x 20
12	2.1470.004.2	3	washer 8
13	2.7099.700.0	1	pressure switch
14	0.011.0481.2/20	1	guard
15	2.4419.490.0/10	1	filter

F 127/2

 2.4419.490.0/10



CLICK HERE TO **DOWNLOAD** THE COMPLETE MANUAL

- Thank you very much for reading the preview of the manual.
- You can download the complete manual from: [www.heydownloads.com](http://www.heydownloads.com) by clicking the link below



- Please note: If there is no response to CLICKING the link, please download this PDF first and then click on it.

CLICK HERE TO **DOWNLOAD** THE COMPLETE MANUAL