

OCK10-M37902EN

CLICK HERE TO **DOWNLOAD** THE COMPLETE MANUAL

- Thank you very much for reading the preview of the manual.
- You can download the complete manual from: www.heydownloads.com by clicking the link below



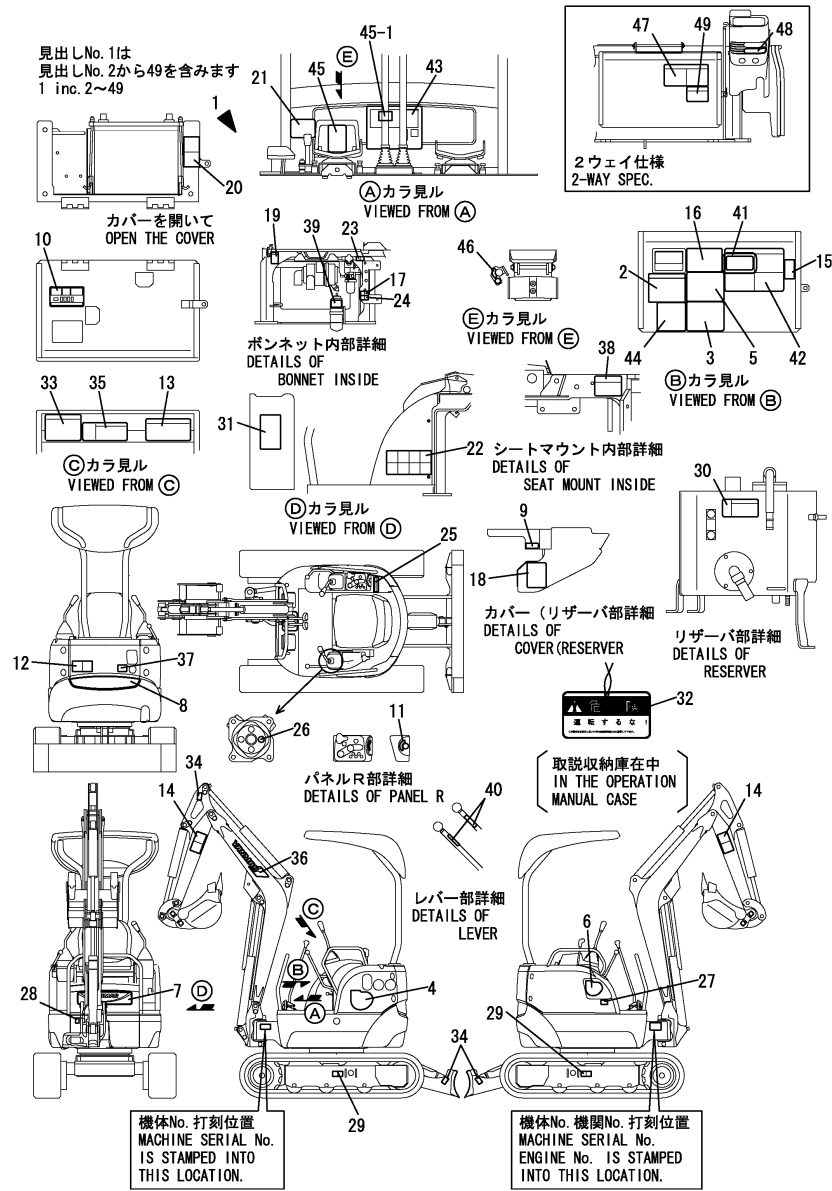
- Please note: If there is no response to CLICKING the link, please download this PDF first and then click on it.

CLICK HERE TO **DOWNLOAD** THE COMPLETE MANUAL

Fig.1. LABEL(JP)

(A)=VIO15-2(JP)
 (B)=VIO15-2(EX)
 (C)=

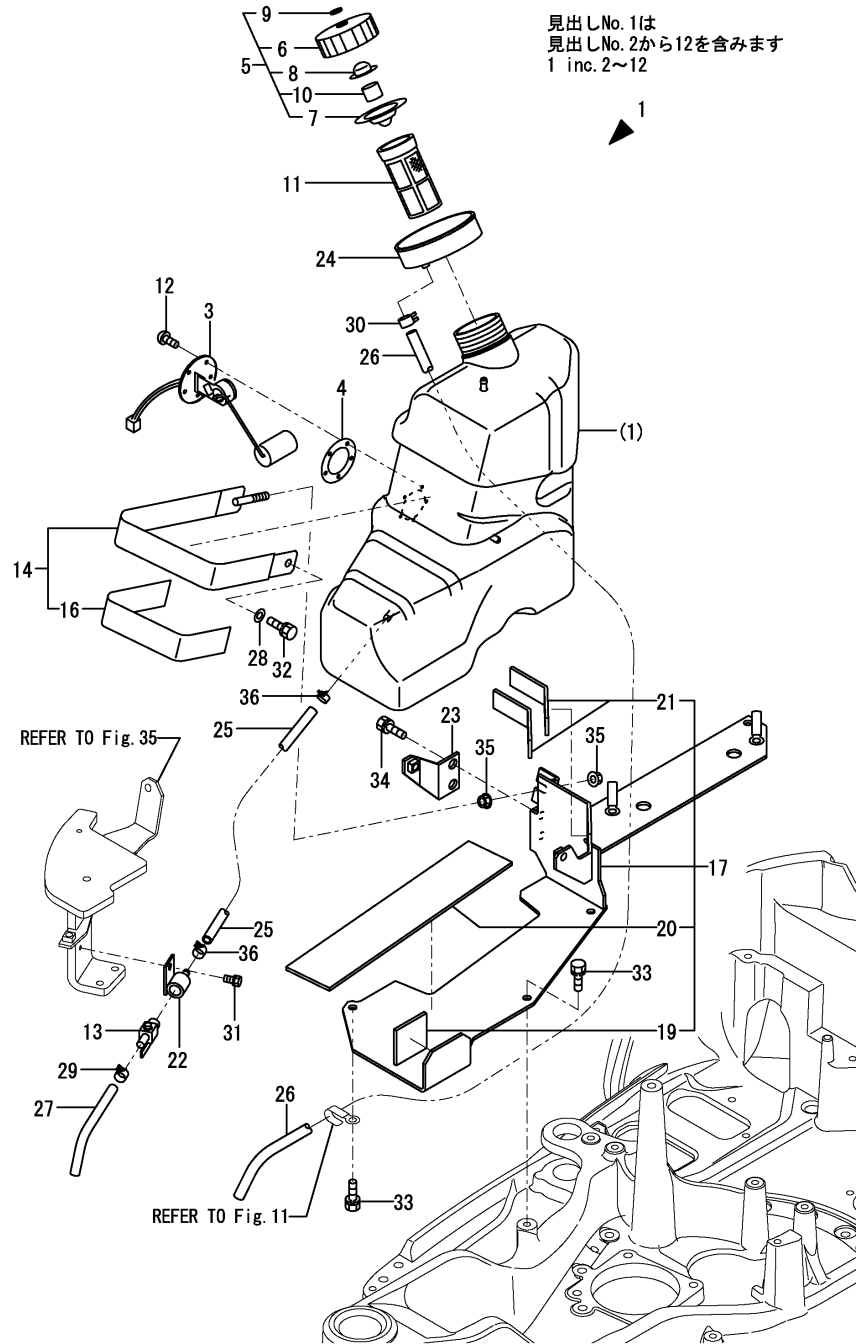
(D)=
 (E)=
 (F)=



No.	Lev.	Parts No.	Description	(A)	(B)	(C)	(D)	(E)	(F)	Q'ty	I	R
41	2	172444-03290	MAGNET	1								1
42	2	172151-03551	LABEL	1								1
43	2	172151-03540	LABEL,PATTERN A	1								
43-1	2	172490-03200	LABEL	1								N
(A=M/#21434)												
44	2	172165-03240	LABEL	1								2
45	2	172165-03231	LABEL, P.T.O.	1								3
45-1	2	172496-03250	LABEL, P.T.O.	1								N
(A=M/#21434)												
46	2	172458-03240	LABEL,LOCK	1								3
47	1	172458-03550	LABEL	1								4
48	1	172458-03560	LABEL	1								4
49	1	172458-03570	LABEL	1								4

Remarks
 (1)4-WAY SPEC.
 (2)RUBBER CRAWLER SPEC.
 (3)P.T.O. SPEC.
 (4)2-WAY SPEC.

Fig.10. FUEL TANK



(A)=VIO15-2(JP)
(B)=VIO15-2(EX)
(C)=

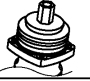

(D)=
(E)=
(F)=

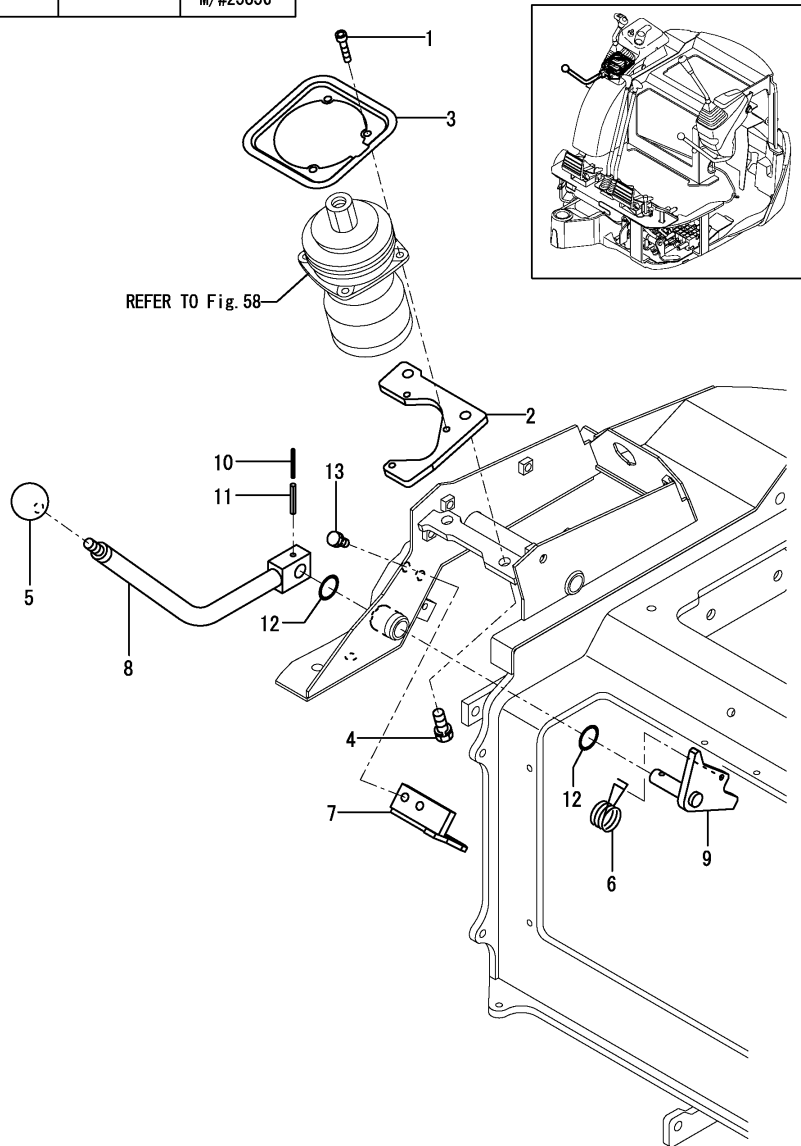
No.	Lev.	Parts No.	Description	Q'ty						I	R
				(A)	(B)	(C)	(D)	(E)	(F)		
1	1	772448-14100	TANK ASSY, FUEL	1	1						
3	2	172456-14150	GAUGE, FUEL	1	1						
3-1	2	172456-14151	GAUGE, FUEL	1	1						N
(A=M/#26233) (B=M/#26233)											
4	2	172162-14200	GASKET	1	1						
5	2	172444-14200	CAP, FUEL	1	1						
6	3	172444-14450	CAP	1	1						
7	3	172444-14460	GASKET	1	1						
8	3	172444-14470	GASKET	1	1						
9	3	172444-14480	WASHER	1	1						
10	3	172444-14490	SPONGE	1	1						
11	2	172183-14250	FILTER (FUEL	1	1						
12	2	26557-050122	SCREW, M5X12	5	5						
13	1	104200-11920	COCK, WATER	1	1						
14	1	172448-14150	CLAMP ASSY, FUEL	1	1						
16	2	172448-14180	RUBBER, CLAMP	1	1						
17	1	172448-14200	MOUNT ASSY, FUEL TANK	1	1						
19	2	172446-14250	RUBBER PLATE	1	1						
20	2	172448-14300	RUBBER PLATE A	1	1						
21	2	172458-14380	RUBBER PLATE D, FO	1							
21-1	2	172458-14380	RUBBER PLATE D, FO	2	2						K
(A=M/#20504)											
22	1	172444-14270	JOINT, DRAIN	1	1						
23	1	172448-14340	BRACKET ASSY, COVER	1	1						
24	1	172458-14370	SUMP, FUEL	1	1						
25	1	172444-14410	HOSE	1							
25-1	1	172448-14690	HOSE, FUEL 85	1	1						N
(A=M/#20504)											
26	1	172458-14510	HOSE 9.5 X 750	1	1						
27	1	172124-14620	HOSE L=300, FUEL	1							
27-1	1	172444-14410	HOSE	1	1						N
(A=M/#20504)											
28	1	22137-100000	WASHER, 10	1	1						
29	1	23080-013000	CLAMP, 13	1	1						
29-1	1	106990-44660	CLIP, HOSE 12.5	1	1						R
(A=M/#26118) (B=M/#26118)											
30	1	23080-013000	CLAMP, 13	1	1						
31	1	26013-080202	BOLT, M8X 20	1	1						
32	1	26013-100202	BOLT, M10X 20	1	1						
33	1	26013-100202	BOLT, M10X 20	4	4						
34	1	26013-100202	BOLT, M10X 20	2	2						
35	1	26367-100002	NUT, M10	2	2						
36	1	124766-59050	CLIP, HOSE 12	2	2						

Fig.19. CONTROL EQUIPMENT(LOCK LEVER & STAND)(RIGHT)A-SPEC.

(A)=VIO15-2(JP)
 (B)=VIO15-2(EX)
 (C)=

(D)=
 (E)=
 (F)=

リモコンバルブ REMOTE CONTROL V.	適用項目 REF. TO Fig.	適用号機 SERIAL No.
 A仕様 A SPEC.	19, 21, 57, 58, 70, 72, 73	~M/#25766 M/#25857~
 B仕様 B SPEC.	20, 22, 57, 59, 71, 72, 73	M/#25767 M/#25856

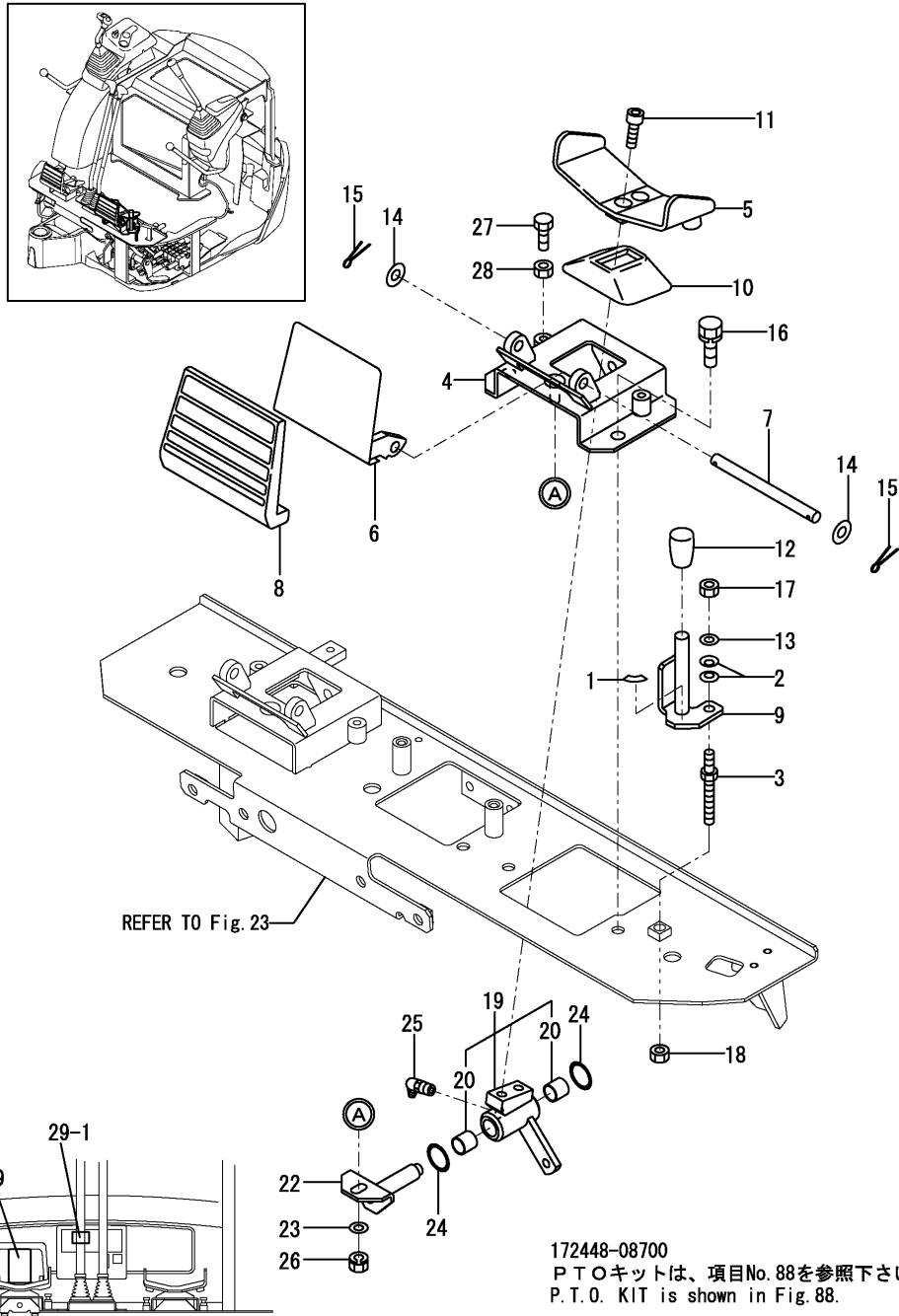


No.	Lev.	Parts No.	Description	Q'ty						I	R
				(A)	(B)	(C)	(D)	(E)	(F)		
1	1	172458-46730	BOLT N6X30	3	3						
2	1	172448-46790	PLATE R,REMOTE CON.	1	1						
3	1	172455-46941	PLATE R,BOOTS (73)	1	1						
4	1	26013-100202	BOLT, M10X 20	2	2						
5	1	1D4070-23580	GRIP	1	1						
6	1	172165-45970	SPRING	1	1						
7	1	172448-46960	BRACKET,SW	1	1						
8	1	172448-47680	LOCK LEVER R(GRAY:72)	1	1						
9	1	172448-47700	SHAFT ASSY, LEVER	1	1						
10	1	22351-030032	PIN, SPRING 3.0X32	1	1						
11	1	22351-050032	PIN, SPRING 5.0X32	1	1						
12	1	24311-000210	O-RING, 1AP21.0	2	2						
13	1	26013-080162	BOLT, M8X 16	2	2						

Fig.29. CONTROL EQUIPMENT(P.T.O. PEDAL)

(A)=VIO15-2(JP)
 (B)=VIO15-2(EX)
 (C)=

(D)=
 (E)=
 (F)=



No.	Lev.	Parts No.	Description	Q'ty						I	R
				(A)	(B)	(C)	(D)	(E)	(F)		
1	1	172458-03240	LABEL, LOCK	1	1						
2	1	172068-28490	SPRING	2	2						
3	1	172448-45300	BOLT 8X75	1	1						
4	1	172448-45380	BRACKET, PTO(BLACK:12	1	1						
5	1	172458-45521	PEDAL, SWING(GRAY:72)	1	1						
6	1	172458-45540	COVER, PEDAL	1	1						
7	1	172187-45650	SHAFT, COVER	1							
7-1	1	172187-45651 (A=M/#20941)	SHAFT	1	1						R
8	1	172187-45760	COVER PAD	1	1						
9	1	172472-45960	LOCK ASSY (GRAY:72)	1							
9-1	1	172448-45800 (A=M/#20503)	PLATE, LOCK(PTO (11)	1	1						N
10	1	172157-45990	BOOTS, PEDAL	1	1						
11	1	172165-46340	BOLT	2	2						
12	1	172116-46630 (A=M/#20503)	KNOB, LEVER	1							Z
13	1	22137-080000	WASHER, 8	1	1						
14	1	22137-100000	WASHER, 10	2							
14-1	1	22137-100000 (A=M/#20941)	WASHER, 10	1	1						K
15	1	22417-250200	PIN, COTTER 2.5X20	2							
15-1	1	22417-250200 (A=M/#20941)	PIN, COTTER 2.5X20	1	1						K
16	1	26013-100202	BOLT, M10X 20	2	2						
17	1	26347-080002	NUT, M8	1	1						
18	1	26716-080002	NUT, M8	1	1						
19	1	172448-45220	LINK ASSY, PTO	1	1						
20	2	172141-41360	BUSH 1415	2	2						
22	1	172187-45530	SHAFT ASSY	1	1						
23	1	22137-080000	WASHER, 8	1	1						
24	1	24311-000210	O-RING, 1AP21.0	2	2						
25	1	24761-040000	NIPPLE, GREASE B	1	1						
26	1	26051-080002	NUT, M8	1	1						
27	1	26116-080254	BOLT, M8X 25 PLATED	2	2						
28	1	26716-080002	NUT, M8	2	2						
29	1	172165-03231	LABEL, P.T.O.	1	1						
29-1	1	172496-03250 (A=M/#21434) (B=M/#21434)	LABEL, P.T.O.	1	1						N

CLICK HERE TO **DOWNLOAD** THE COMPLETE MANUAL

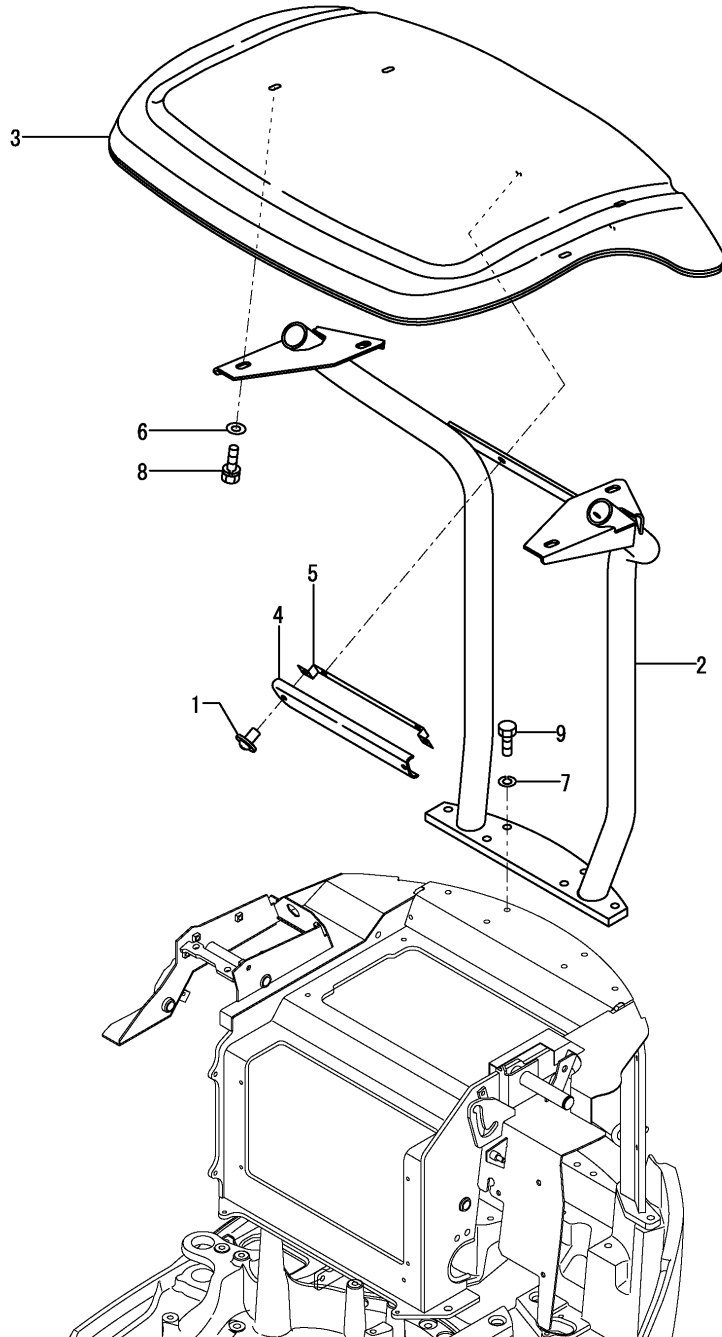
- Thank you very much for reading the preview of the manual.
- You can download the complete manual from: www.heydownloads.com by clicking the link below



- Please note: If there is no response to CLICKING the link, please download this PDF first and then click on it.

CLICK HERE TO **DOWNLOAD** THE COMPLETE MANUAL

Fig.39. CANOPY

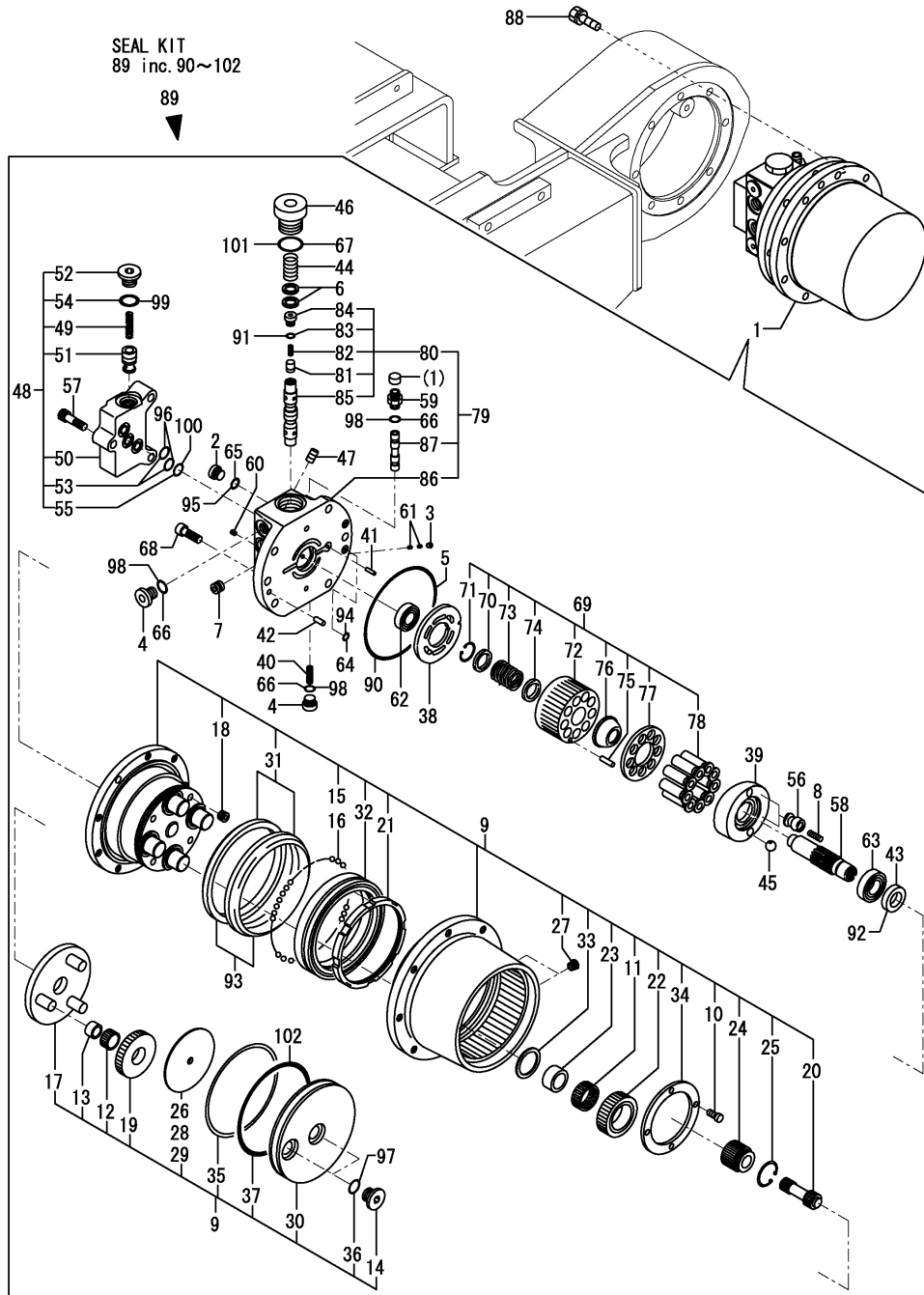


(A)=VIO15-2(JP)
 (B)=VIO15-2(EX)
 (C)=

(D)=
 (E)=
 (F)=

No.	Lev.	Parts No.	Description	Q'ty						I	R
				(A)	(B)	(C)	(D)	(E)	(F)		
1	1	172187-63160	CLIP	2	2						
2	1	172448-68100	CANOPY ASSY	1	1						
3	1	172449-68200	ROOF,CANOPY	1	1						
4	1	172449-68210	COVER, CANOPY	1	1						
5	1	172449-68220	STAY, COVER	1	1						
6	1	22137-120000	WASHER, 12	6							
6-1	1	172730-05250 (A=M/#20688)	WASHER 12	6	6						N
7	1	22217-120000	WASHER, SPRING 12	6	6						
8	1	26013-120252	BOLT, M12X 25	6	6						
9	1	26076-120352	BOLT, 10.912X 35	6	6						

Fig.47. TRAVEL MOTOR

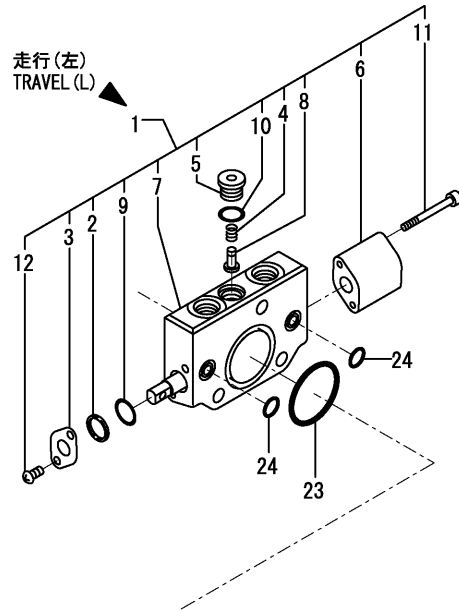


No.	Lev.	Parts No.	Description	Q'ty						I	R
				(A)	(B)	(C)	(D)	(E)	(F)		
48	2	172456-73540	VALVE ASSY	2	2						
49	3	172148-71580	SPRING	4	4						
50	3	172456-73550	BODY, VALVE	2	2						
51	3	172456-73560	CHECK VALVE	4	4						
52	3	172183-73770	PLUG	4	4						
53	3	24315-000100	O-RING, 1BP10.0	4	4						
54	3	24315-000110	O-RING, 1BP11.0	4	4						
55	3	24315-000120	O-RING, 1BP12.0	2	2						
56	2	172450-73550	PISTON ASSY	4	4						
57	2	172456-73570	BOLT, SOCKET HEAD	6	6						
58	2	172183-73670	SHAFT	2	2						
59	2	172183-73780	PLUG	2	2						
60	2	172183-73870	PLUG	4	4						
61	2	172312-74790	ORIFICE	8	8						
62	2	24101-060024	BEARING, BALL 6002	2	2						
63	2	24101-060044	BEARING, BALL 6004	2	2						
64	2	24315-000070	O-RING, 1BP7.0	6	6						
65	2	24315-000080	O-RING, 1BP8.0	4	4						
66	2	24315-000110	O-RING, 1BP11.0	8	8						
67	2	24315-000240	O-RING, 1BP24.0	4	4						
68	2	26450-080202	BOLT, M8X 20	12	12						
69	2	172448-73420	CYLINDER BLOCK KIT	2	2						
70	3	172141-70290	HOLDER, SPRING	2	2						
71	3	172141-70310	RING, SNAP	2	2						
72	3	172168-71880	BLOCK, CYLINDER	2	2						
73	3	172168-71890	SPRING	2	2						
74	3	172168-71900	SEAT, SPRING	2	2						
75	3	172168-71910	PIN	6	6						
76	3	172168-71920	HOLDER, RETAINER	2	2						
77	3	172450-73530	PLATE, RETAINER	2	2						
78	3	172450-73540	PISTON ASSY	18	18						
79	2	172448-73390	BASE PLATE KIT	2	2						
79-1	2	172448-73391	BASE PLATE KIT	1	1						N
				(A=XXX)	(B=XXX)						
80	3	172448-73370	SPOOL ASSY	2	2						
80-1	3	172448-73371	SPOOL ASSY	2	2						N
				(A=XXX)	(B=XXX)						
81	4	172141-70410	VALVE, CHECK	4	4						
82	4	172141-70420	SPRING	4	4						
83	4	172141-70440	O-RING	4	4						
84	4	172421-73380	PLUG	4	4						
85	4	172448-73380	SPOOL	2	2						
85-1	4	172448-73381	SPOOL	2	2						N
				(A=XXX)	(B=XXX)						
86	3	172456-73470	PLATE, BASE	2	2						
87	3	172456-73530	SPOOL	2	2						
88	1	26013-100252	BOLT, M10X 25	16	16						
89	1	172456-73320	SEAL SET	2	2						
90	2	172141-70370	O-RING	2	2						
91	2	172141-70440	O-RING	4	4						
92	2	172450-73490	SEAL, OIL	2	2						

Fig.55. CONTROL VALVE(6/7)

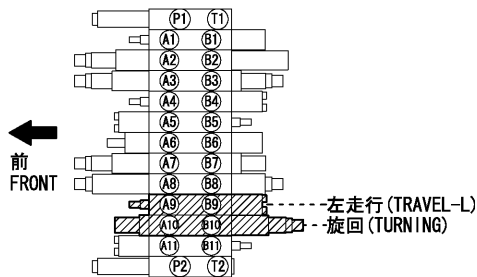
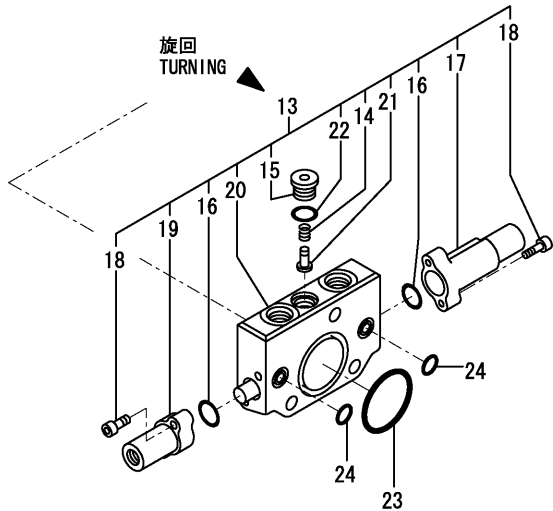
(A)=VIO15-2(JP)
(B)=VIO15-2(EX)
(C)=

(D)=
(E)=
(F)=



コントロールバルブASSY
CONTROL VALVE ASSY
172448-74100
項目No. 50の見出しNo. 1は
項目No. 50の見出しNo. 2~11と
項目No. 51の見出しNo. 1~31と
項目No. 52の見出しNo. 1~28と
項目No. 53の見出しNo. 1~30と
項目No. 54の見出しNo. 1~27と
項目No. 55の見出しNo. 1~24と
項目No. 56の見出しNo. 1~20を含みます

Fig. No. 50 Ref. No. 1
INC. Fig. 50 Ref. No. 2~11.
Fig. 51 Ref. No. 1~31.
Fig. 52 Fig. No. 1~28.
Fig. 53 Ref. No. 1~30.
Fig. 54 Fig. No. 1~27.
Fig. 55 Fig. No. 1~24.
Fig. 56 Fig. No. 1~20.

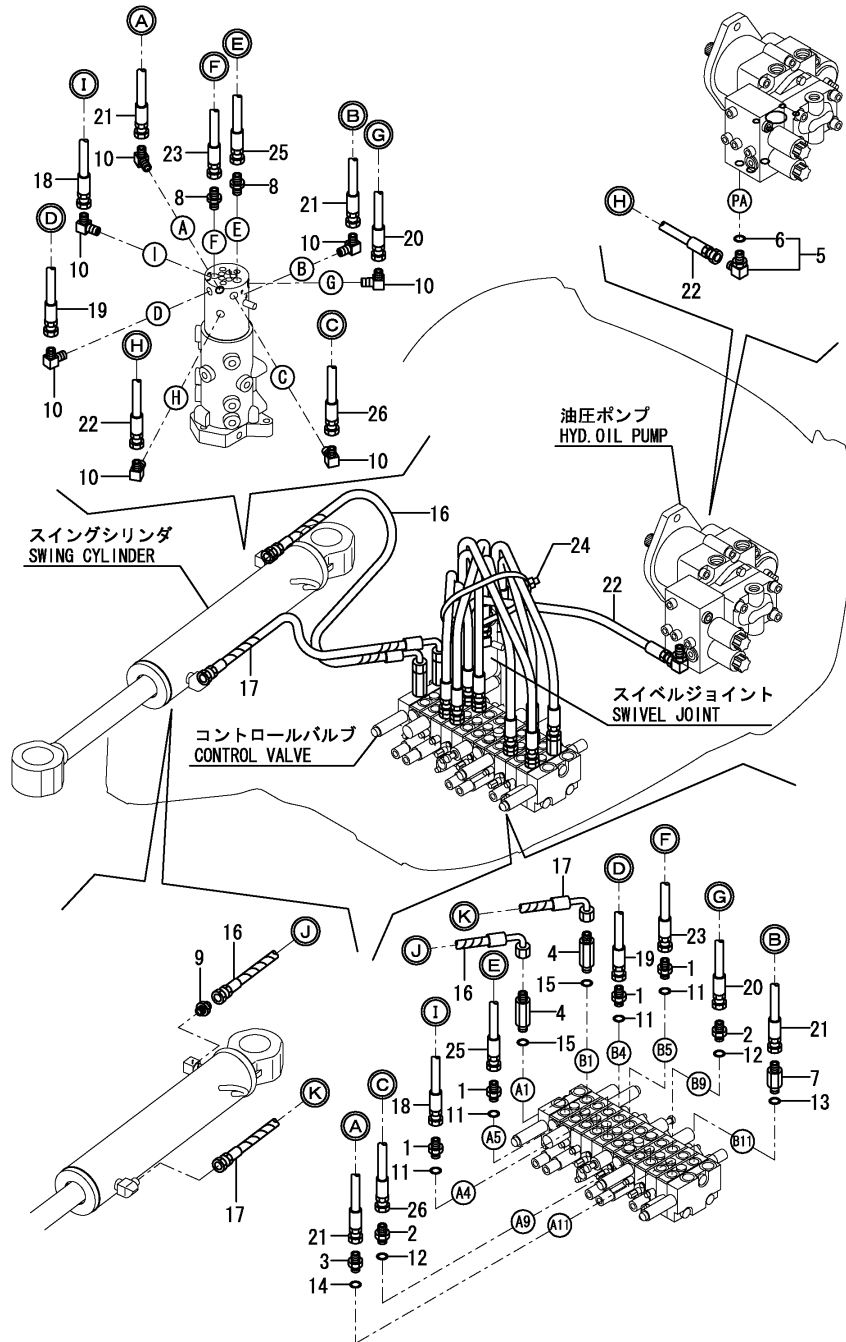


No.	Lev.	Parts No.	Description	Q'ty						I	R
				(A)	(B)	(C)	(D)	(E)	(F)		
1	2	172448-74300	SECTION ASSY, TRAVEL	1	1						
2	3	172157-70630	BAC UP RING	1	1						
3	3	172157-70640	PLATE, O-RING	1	1						
4	3	172157-70690	SPRING, VALVE	1	1						
5	3	172157-70700	STAY, VALVE	1	1						
6	3	172157-70820	CAP, SPRING	1	1						
7	3	172448-74310	SPOOL ASSY, TRAVEL	1	1						
8	3	172137-74520	VALVE, CHECK	1	1						
9	3	24311-240100	O-RING, 1AP10A	1	1						
10	3	24315-000110	O-RING, 1BP11.0	1	1						
11	3	26450-050452	BOLT, M5X 45	2	2						
12	3	26557-050102	SCREW, M5X10	2	2						
13	2	172448-74320	SECTION ASSY	1	1						
14	3	172157-70690	SPRING, VALVE	1	1						
15	3	172157-70700	STAY, VALVE	1	1						
16	3	172449-74220	O-RING, AS 1A016	2	2						
17	3	172449-74270	CAP	1	1						
18	3	172449-74280	BOLT, M5 X 20	4	4						
19	3	172449-74290	CAP	1	1						
20	3	172448-74330	SPOOL ASSY, SWING	1	1						
21	3	172137-74520	VALVE, CHECK	1	1						
22	3	24315-000110	O-RING, 1BP11.0	1	1						
23	2	172448-74380	O-RING, AS1B 127	2	2						
24	2	24315-000100	O-RING, 1BP10.0	4	4						

Fig.65. HYD.OIL PIPING(CONTROL VALVE - SWIVEL JOINT, SWING CYLINDER)

(A)=VIO15-2(JP)
 (B)=VIO15-2(EX)
 (C)=

(D)=
 (E)=
 (F)=

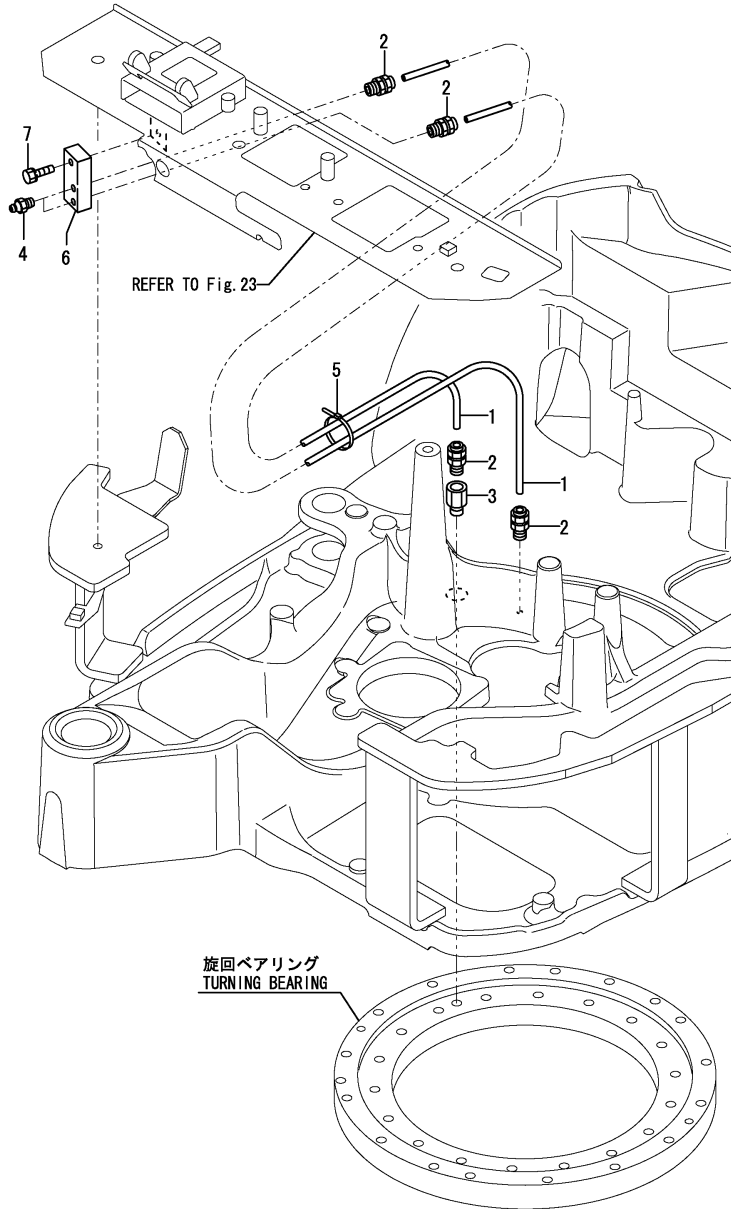


No.	Lev.	Parts No.	Description	Q'ty						I	R
				(A)	(B)	(C)	(D)	(E)	(F)		
1	1	172123-76121	ADAPTER	4	4						
2	1	172123-76121	ADAPTER	2	2						
3	1	172123-76121	ADAPTER	1	1						
4	1	172448-76130	CONNECTOR, PF1/4	2	2						
5	1	172141-76180	CONNECTOR ASSY	1	1						
6	2	24315-000110	O-RING, 1BP11.0	1	1						
7	1	172183-76200	CONNECTOR	1	1						
8	1	23391-020000	JOINT, RGI-1/4	2	2						
9	1	23391-020000	JOINT, RGI-1/4	1	1						
10	1	23393-020000	JOINT, 90RGI-1/4	7	7						
11	1	24315-000110	O-RING, 1BP11.0	4	4						
12	1	24315-000110	O-RING, 1BP11.0	2	2						
13	1	24315-000110	O-RING, 1BP11.0	1	1						
14	1	24315-000110	O-RING, 1BP11.0	1	1						
15	1	24315-000110	O-RING, 1BP11.0	2	2						
16	1	172448-78160	HOSE F203BC083S	1	1						
17	1	172448-78170	HOSE F203BC052S	1	1						
18	1	172448-78220	HOSE F204BBO52	3							
18-1	1	172448-78220	HOSE F204BBO52	2							K
(A=M/#20501)											
18-2	1	172448-78220	HOSE F204BBO52	1	1						K
(A=M/#20550)											
19	1	172448-78230	HOSE F204BB045	1	1						
20	1	172448-78280	HOSE F204BB054	1	1						
21	1	172448-78300	HOSE F203BB066	2	2						
22	1	172455-78610	HOSE F403BB054	1	1						
23	1	172448-78670	HOSE F204BB048	1	1						
24	1	172122-79930	CLAMP, HOSE	1	1						
25	1	172448-78220	HOSE F204BBO52	1							
25-1	1	172448-78830	HOSE F204BB050	1	1						N
(A=M/#20550)											
26	1	172448-78220	HOSE F204BBO52	1							
26-1	1	172448-78280	HOSE F204BB054	1	1						N
(A=M/#20501)											

Fig.75. GREASING

(A)=VIO15-2(JP)
 (B)=VIO15-2(EX)
 (C)=

(D)=
 (E)=
 (F)=



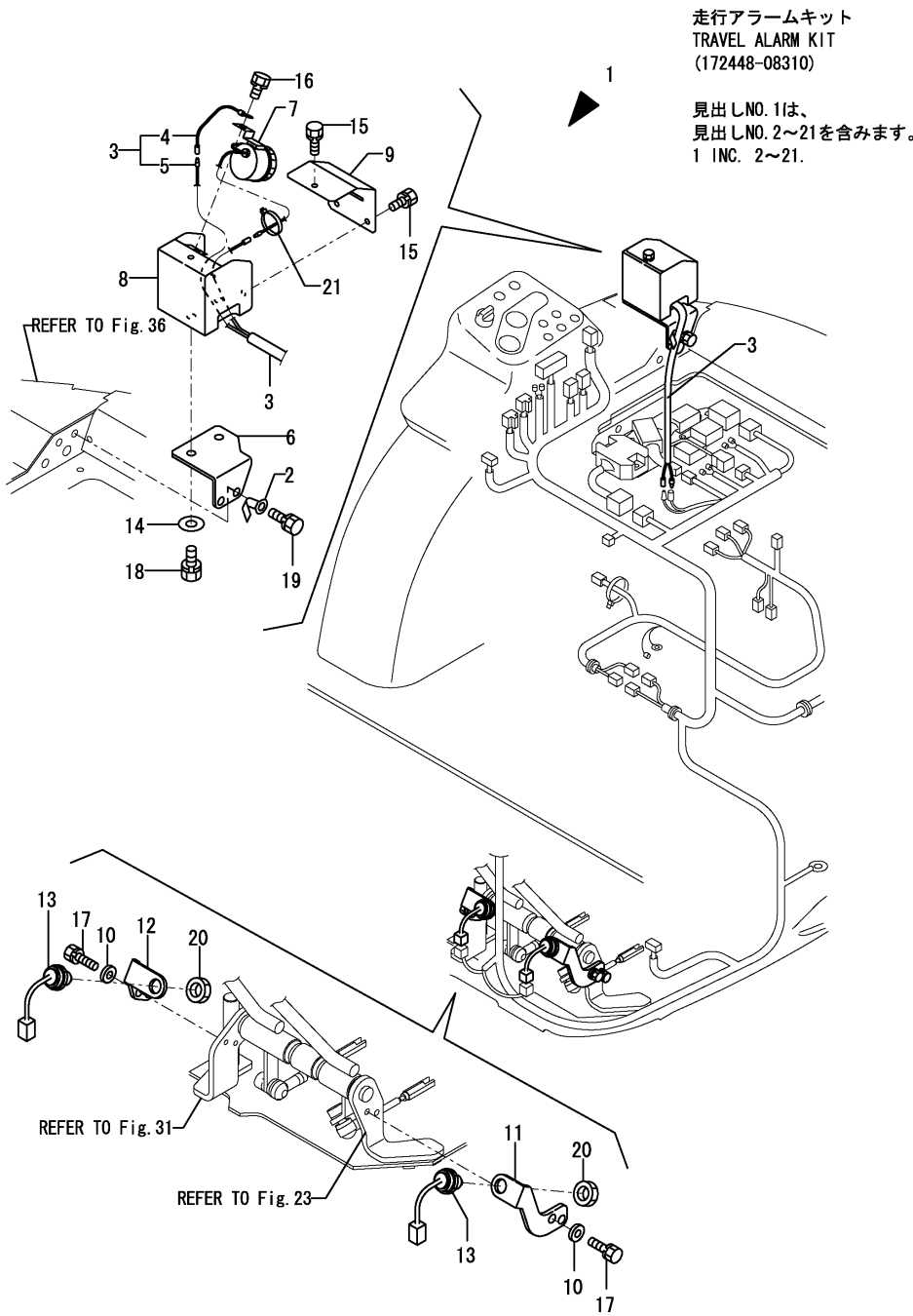
No.	Lev.	Parts No.	Description	Q'ty						I	R
				(A)	(B)	(C)	(D)	(E)	(F)		
1	1	172448-77100	HOSE P602YY068	2	2						
2	1	172141-77800	JOINT, GREASE	4	4						
3	1	172312-77820	FITTING, GREASE	1	1						
4	1	24761-020000	NIPPLE, GREASE PT1/8	2	2						
5	1	933168-55770	BAND 146	1	1						
6	1	172448-77110	SEAT, SCREW PT1/8	1	1					W	1
(A=M/#20550)											
7	1	26013-080352	BOLT, M8X 35	1	1					W	1
(A=M/#20550)											

Remarks
 (1)INTERCHANGEABLE BY SIMULTANEOUS
 REPLACEMENT WITH FIG.NO.22
 REF.NO.23-1.

Fig.85. TRAVEL ALARM KIT(OPTIONAL)

(A)=VIO15-2(JP)
 (B)=VIO15-2(EX)
 (C)=

(D)=
 (E)=
 (F)=



No.	Lev.	Parts No.	Description	Q'ty						I	R
				(A)	(B)	(C)	(D)	(E)	(F)		
1	1	172448-08310	ALARM KIT, TRAVEL	1							
2	2	172126-16540	CLAMP	1							
3	2	172448-16600	HARNESS D CMP	1							
4	3	172478-16580	HARNESS,ALARM	1							
5	3	172448-16590	HARNESS,D	1							
6	2	172448-17250	BRACKET, ALARM	1							
7	2	172511-17351	BUZZER, BACK	1							
8	2	172472-17400	CASE ASSY, ALARM	1							
9	2	172472-17470	COVER, ALARM CASE	1							
10	2	172157-45840	WASHER 8X18X4	4							
11	2	172448-45880	STAY	1							
12	2	172448-45890	STAY	1							
13	2	194464-52190	SWITCH, SAFETY START	2							
14	2	22137-100000	WASHER, 10	2							
15	2	26013-060122	BOLT, M6X 12	3							
16	2	26013-080122	BOLT, M8X 12	1							
17	2	26013-080252	BOLT, M8X 25	4							
18	2	26013-100252	BOLT, M10X 25	2							
19	2	26013-100252	BOLT, M10X 25	2							
20	2	26776-180002	NUT, LOCK M18	2							
21	2	933168-55770	BAND 146	1							

CLICK HERE TO **DOWNLOAD** THE COMPLETE MANUAL

- Thank you very much for reading the preview of the manual.
- You can download the complete manual from: www.heydownloads.com by clicking the link below



- Please note: If there is no response to CLICKING the link, please download this PDF first and then click on it.

CLICK HERE TO **DOWNLOAD** THE COMPLETE MANUAL