

## **DT-720-1-00002 UPPER**

**PB1000396-01 HYDRAULIC PRESSURE GENERATING SYSTEM**

**PD1000367-01 SWING SYSTEM**

**PE1000368-01 ELEVATING SYSTEM**

**PF1000338-01 WINCH SYSTEM**

**PG1000335-01 TELESCOPING SYSTEM**

**PH1000331-00 SAFETY DEVICES**

**PK1000377-00 FRAME**

**PO1000169-00 INDICATION PLATES**

**PP2000009-01 AUGER SYSTEM**

**PY1000608-08 OPTIONS**

**ASSEMBLY**

CLICK HERE TO **DOWNLOAD** THE COMPLETE MANUAL

- Thank you very much for reading the preview of the manual.
- You can download the complete manual from: [www.heydownloads.com](http://www.heydownloads.com) by clicking the link below



- Please note: If there is no response to CLICKING the link, please download this PDF first and then click on it.

CLICK HERE TO **DOWNLOAD** THE COMPLETE MANUAL

# DT-720-1-00002 UPPER

Pos No.	Parts No	Parts Name	Qty	Unit	Technical Data	Serial No (Start)	Serial No (End)	Remarks	P
1	(*****)	BOOM	1						0
2	(*****)	CYLINDER,TELESCOPING	1						0

# DT-720-1-00002 UPPER

Pos No.	Parts No	Parts Name	Qty	Unit	Technical Data	Serial
1	(*****)	VALVE,MANUAL CONTROL (RELIEF VALVE)	1			
3	(*****)	REEL,CORD (OPTION)	1			
4	(*****)	DRILL,AUGER (OPTION.450 R6)	1			
	(*****)	DRILL,AUGER (OPTION.200 R2)	1			
	(*****)	DRILL,AUGER (OPTION.450 R7)	1			
	(*****)	DRILL,AUGER (OPTION.450 R4)	1			
	32490103000	DRILL,AUGER (OPTION,450,L)	1			
	32490020100	DRILL,AUGER (450 S)	1			
5	(*****)	SHAFT,AUGER (OPTION,2M)	1			
	32470900000	SHAFT,AUGER (OPTION,4M)	1			
	32470900001	SHAFT ASSY (FOR EXTENSION)	1			3905
6	(*****)	SCREW,AUGER (400.R6)(OPTION)	1			
	(*****)	SCREW,AUGER (600.R6)(OPTION)	1			
	(*****)	SCREW,AUGER (PENGO,250)	1			
	(*****)	SCREW,AUGER (OPTION,800,DOUBLE TOOTH)	1			
	(*****)	SCREW,AUGER (PENGO,300)	1			
	32470480000	SCREW,AUGER (550/OPTION)	1			
	(*****)	SCREW,AUGER (PENGO,350)	1			
	(*****)	SCREW,AUGER (OPTION,1100,DOUBLE TOOTH)	1			
	(*****)	SCREW,AUGER (PENGO,400,P)	1			
7	(*****)	HEAD,AUGER (300.R4)	1			
	(*****)	HEAD,AUGER (PENGO,450.PH)	1			
	(*****)	HEAD,AUGER (550.R6/OPTION)	1			
	(*****)	HEAD,AUGER (450.F/OPTION)	1			
	(*****)	HEAD,AUGER (R4/OPTION)	1			
	(*****)	HEAD,AUGER (600.R6)	1			
	(*****)	HEAD,AUGER (400.R6)	1			
	(*****)	HEAD,AUGER (450.D)	1			
	32470650000	HEAD,AUGER (450.DW) (OPTION)	1			
8	(*****)	TOOTH (PENGO.PH/OPTION)	1			
	(*****)	TOOTH (PENGO,STD.P)/OPTION)	1			
9	(*****)	MOUNT	1			
10	(*****)	MOUNT ASSY (HOOK BLOCK FIXED)	1			
11	32470720200	BOLT ASSY	1			
12	(*****)	SUPPORT,POLE	1			
13	(*****)	COVER (WINCH)	1			
	(*****)	COVER (WINCH)	1			
	(*****)	COVER ASSY (NABTESCO WINCH)	1			3905
	(*****)	COVER ASSY (NABTESCO WINCH)	1			3907
14	(*****)	LAMP (BOOM FULL RETRACTION LAMP/SVC DLR)	1			
	(*****)	LAMP (BOOM FULL RETRACTION LAMP)	1			3904
15	(*****)	GUARD ASSY	1			
16	32490520020	COUPLING (AUGER/SHAFT)	1			3905
18	(*****)	SCREW ASSY (300)	1			3905
	32490738010	SCREW ASSY (450,W/O HEAD,AUGER)	1			3905
	(*****)	SCREW ASSY (450/WITH P TYPE AUGER HEAD)	1			3906
	(*****)	SCREW ASSY (350)	1			3906
	(*****)	SCREW ASSY (450/WITH S TYPE AUGER HEAD)	1			3906
19	(*****)	MOUNT ASSY,SWITCH (BOOM LOCK INTERLOCK/BOOM SIDE)	1			3906
20	(*****)	MODIFICATION ASSY (BOOM LOCK INTERLOCK/FRAME SIDE)	1			3906
21	(*****)	MODIFICATION ASSY (BOOM LOCK INTERLOCK #390586-)	1			
22	(*****)	MODIFICATION ASSY (BOOM LOCK INTERLOCK #390425-390563)	1			
23	(*****)	ALARM ASSY,SWING (BOOM SWING STOP DEVICE)	1			

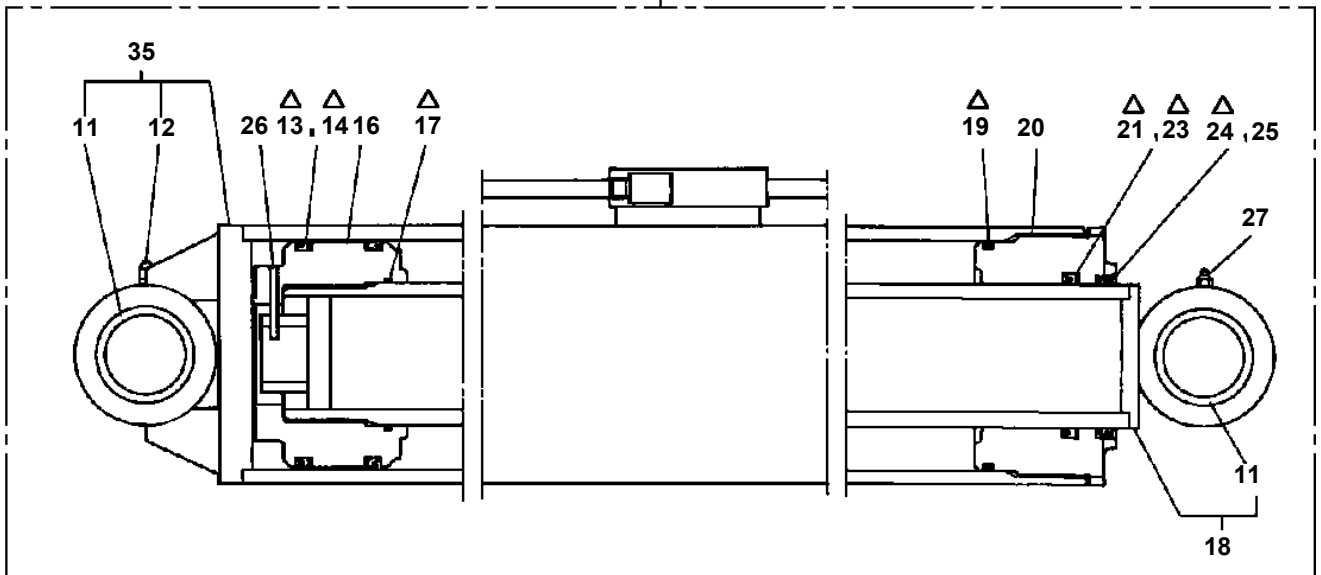
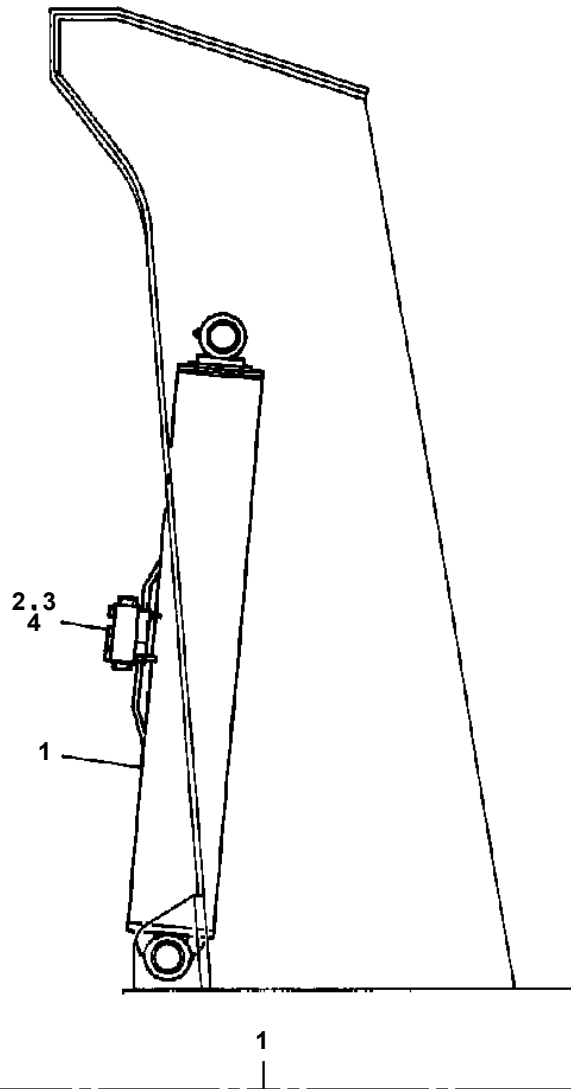
# DT-720-1-00002 UPPER

Pos No.	Parts No	Parts Name	Qty	Unit	Technical Data	Serial No (Start)	Serial No (End)	Remarks	Pages
1	36601760000	VALVE,RELIEF	1						000047

# DT-720-1-00002 UPPER

Pos No.	Parts No	Parts Name	Qty	Unit	Technical Data	Serial No (Start)	Serial No (End)	Remarks	Pages
1	36648570000	VALVE,SOLENOID	1						00004
2	37000927510	JOINT	1						
3	91002802400	O-RING	3		1B P24				
4	80305151804	FITTING,TEE	1		KTK018-040N				
5	91002801800	O-RING	1		1B P18				
6	80305010120	FITTING,TEE	1		ZKTA15-000N				
7	80302090181	FITTING	1		KCO15-030N				
8	91002801400	O-RING	1		1B P14				
9	81408000210	PIPE,STEEL	1	M	15X2.0T				
10	81408000210	PIPE,STEEL	1	M	15X2.0T				
11	81408000210	PIPE,STEEL	1	M	15X2.0T				
12	81408000241	PIPE,STEEL	1	M	18X1.9T				
14	90101210020	BOLT	2		M10X20				
15	90302041001	WASHER,SPRING	2		10				
16	81408000241	PIPE,STEEL	1	M	18X1.9T				
17	80302090251	FITTING	2		KCO018-060N				
18	32642231200	COVER	1			390434			

DT-720-1-00002 UPPER  
PE1010338-02 CYLINDER,ELEVATING



Δ:PACKING SET KEY NO.50 (KEY NO.13,14,17,19,21,23,24)

# DT-720-1-00002 UPPER

Pos No.	Parts No	Parts Name	Qty	Unit	Technical Data	Serial No (Start)	Serial No (End)	Remarks
1	32472980011	HARNESS	1					
2	32472980100	SUPPORT	1					
3	32472980200	LAMP ASSY	1					
4	82400000553	BOLT	1					
5	90101206012	BOLT	10		M6X12			
6	90302040601	WASHER,SPRING	10		6			
7	42354610100	BUZZER ASSY	1					
8	90101204012	BOLT	2		M4X12			
9	90303070401	WASHER,PLAIN	2		4			
10	90302040401	WASHER,SPRING	2		4			
11	90201200400	NUT	2		M4			
12	82400000076	GROMMET	1					
13	91850310305	CLAMP	1					
14	91810130240	FASTENER	20					
15	34354781710	RELAY (WITH BRACKET)	4					
18	42393621060	PLATE,NAME	1					
19	32472980020	PLATE,NAME	1					
20	42651091100	RELAY ASSY	1					
21	80172303008	SCREW,MACHINE	2		M3X8			
22	90302040301	WASHER,SPRING	2		3			
23	90303070301	WASHER,PLAIN	2		3			
24	32472980300	SUPPORT	1					
25	32472980400	HARNESS	1					
26	32472980030	PLATE,NAME	1					
41	32472980210	COVER	1					
42	42731721000	LAMP ASSY	2					
61	82100001940	BULB,LAMP	2		30V-1W			

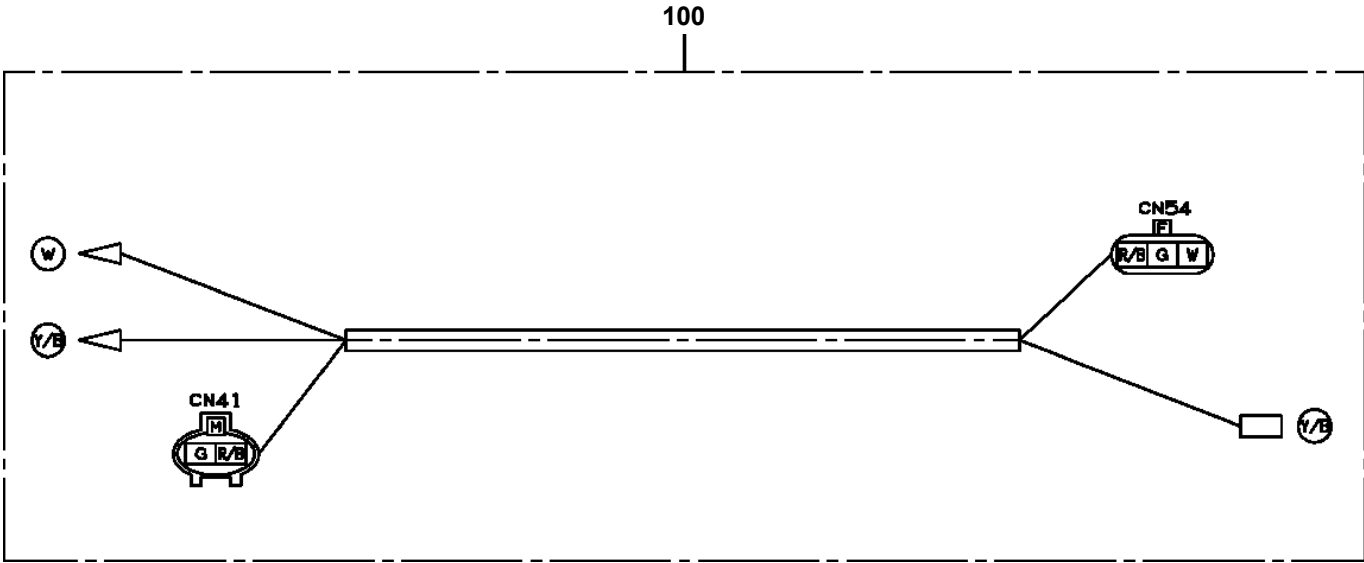
# DT-720-1-00002 UPPER

Pos No.	Parts No	Parts Name	Qty	Unit	Technical Data	Serial No (Start)	Serial No (End)	Remarks	Pages
1	37001801720	ROPE,WIRE	1						

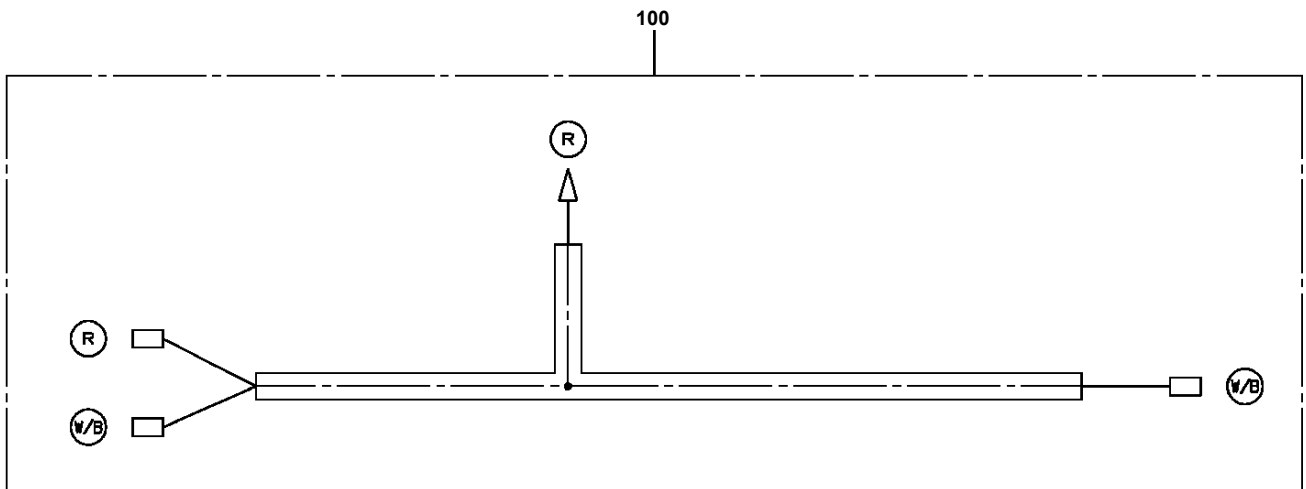
# DT-720-1-00002 UPPER

Pos No.	Parts No	Parts Name	Qty	Unit	Technical Data	Serial No (Start)	Serial No (End)	Remarks
59	37000512120	PLATE	2		T=1.0			
60	32200080120	COVER	1					
61	90101208010	BOLT	4		M8X10			
62	37000400640	BEARING,PLAIN	2					
63	90201251800	NUT	4		M18			
64	80601110350	RING,RITAINING	2		S35			
65	37000111690	PIN	1					
66	32230010020	PLATE	1					
67	32200080130	COVER	1					
68	37000507400	PLATE	1					
69	37000125800	PIN	1					
73	32200090130	SHEAVE ASSY	1					
74	90171110025	BOLT	2		M10X25			
75	80602110400	RING,RITAINING	2		R40			
76	37000115260	PIN	2					
77	37001003700	SHEAVE ASSY	2					
78	37000303980	SPACER	4		L=7			
79	80720105040	PIN,SPRING	2		5X40			
80	37000126140	PIN	1					
81	32200080160	GUARD	1				390439	
	32200080290	GUARD	1			390440		
82	32200080170	GUARD	1				390439	
	32200080300	GUARD	1			390440		
84	37000529980	PLATE	1					
87	90171108020	BOLT	4		M8X20			
88	37002003440	PLATE,SLIDE	2					
89	32200080180	SHIM	2		T=1			
90	32200080190	SHIM	2		T=0.5			
91	90101210014	BOLT	2		M10X14			
94	32200238110	SUPPORT ASSY	1					
96	90171110025	BOLT	4		M10X25			
97	37000308860	SPACER	1		L=220			
98	32200310050	PLATE	1					
99	32200090050	GUARD	1					
100	32200080240	GUARD	1					
101	90172110040	BOLT,HEXAGON SOCKET	2		M10X40			
104	90171106016	BOLT	2		M6X16	390578		
110	32200080091	SHEAVE ASSY	1			390591		
112	80602110720	RING,RITAINING	3		R72			
113	80515006207	BEARING,BALL	6					
122	80516006001	BEARING,BALL	2					
132	32200082030	SHEAVE	1				390590	
133	37001200550	SPRING	1					
142	80602111200	RING,RITAINING	2		R120			
143	80516006311	BEARING,BALL	2					
151	32200082080	BOLT	1					
152	37001004440	SHEAVE ASSY	1					
153	90303071201	WASHER,PLAIN	1		12			
154	90236201201	NUT,CASTLE	1		M12			
155	80136332025	PIN,SPLIT	1		3.2X25			
156	32200092050	SUPPORT	1					
162	80602110620	RING,RITAINING	2		R62			
163	80516006206	BEARING,BALL	2					
172	80604110720	RING,RETAINING	1					
173	80520314910	BEARING,ROLLER	1					
182	32440040020	SUPPORT	1					
183	32440040030	SUPPORT	1					
201	82456101000	NIPPLE,GREASE	1		A-PT1/8			
212	32200082031	SHEAVE	1			390591		

DT-720-1-00002 UPPER  
PH5032473-00 HARNESS

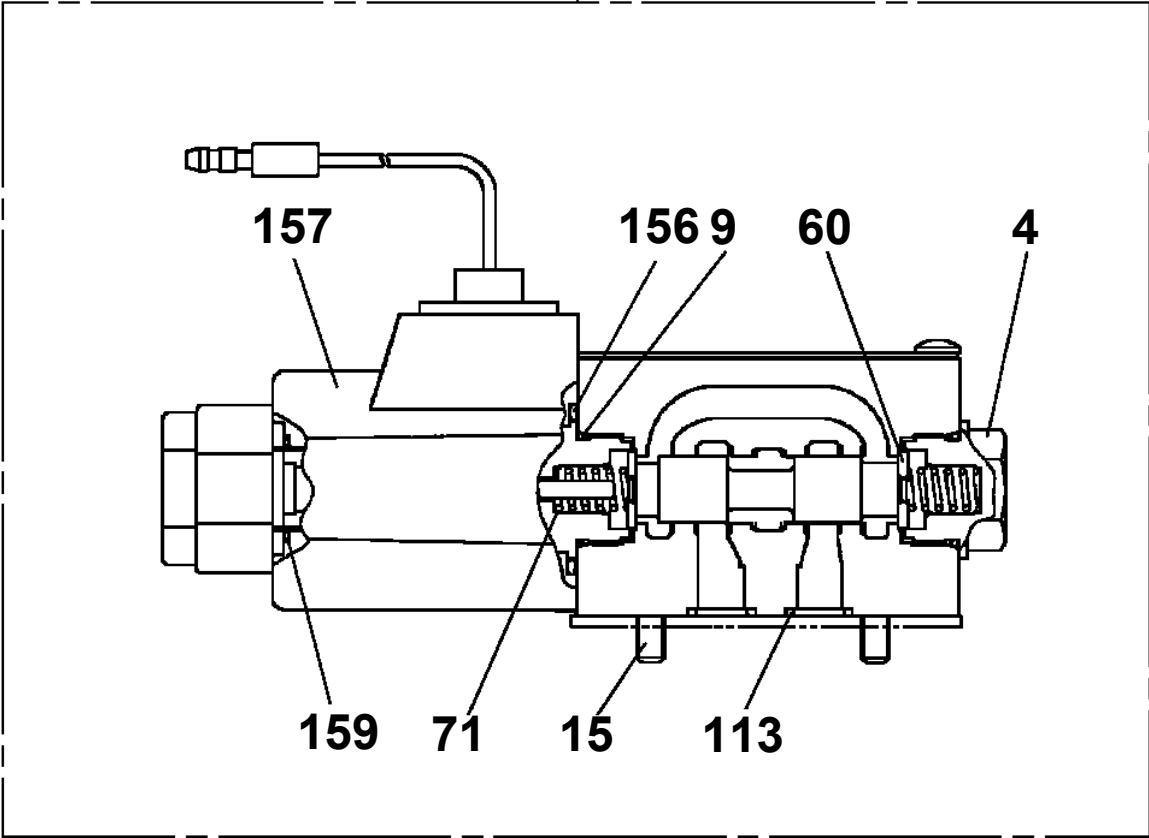


DT-720-1-00002 UPPER  
PH5034420-00 HARNESS

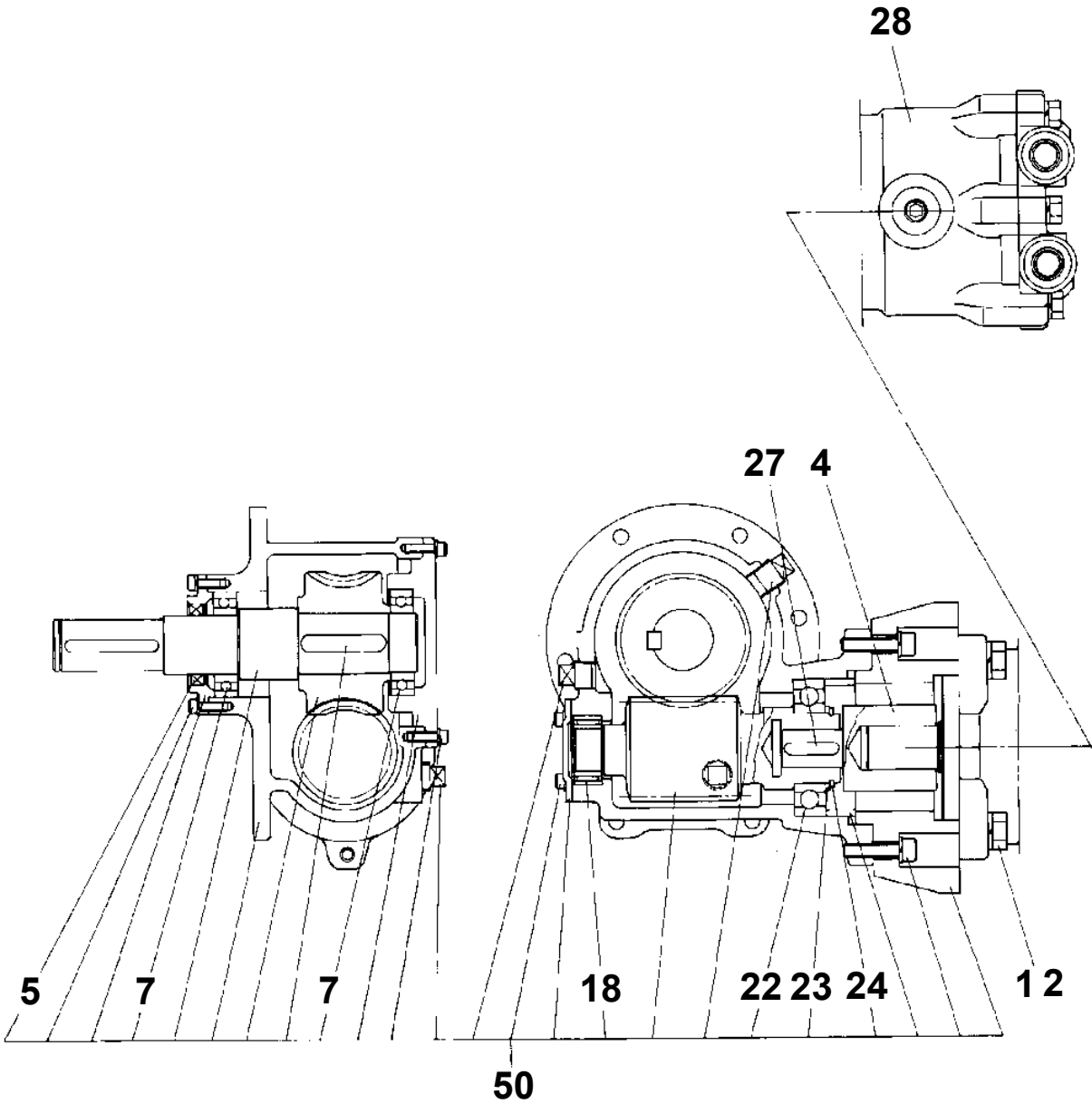


**DT-720-1-00002 UPPER  
PI1120326-00 VALVE,SOLENOID**

**200**



**DT-720-1-00002 UPPER  
PI1500000-00 REDUCER,SPEED**





CLICK HERE TO **DOWNLOAD** THE COMPLETE MANUAL

- Thank you very much for reading the preview of the manual.
- You can download the complete manual from: [www.heydownloads.com](http://www.heydownloads.com) by clicking the link below



- Please note: If there is no response to CLICKING the link, please download this PDF first and then click on it.

CLICK HERE TO **DOWNLOAD** THE COMPLETE MANUAL

# DT-720-1-00002 UPPER

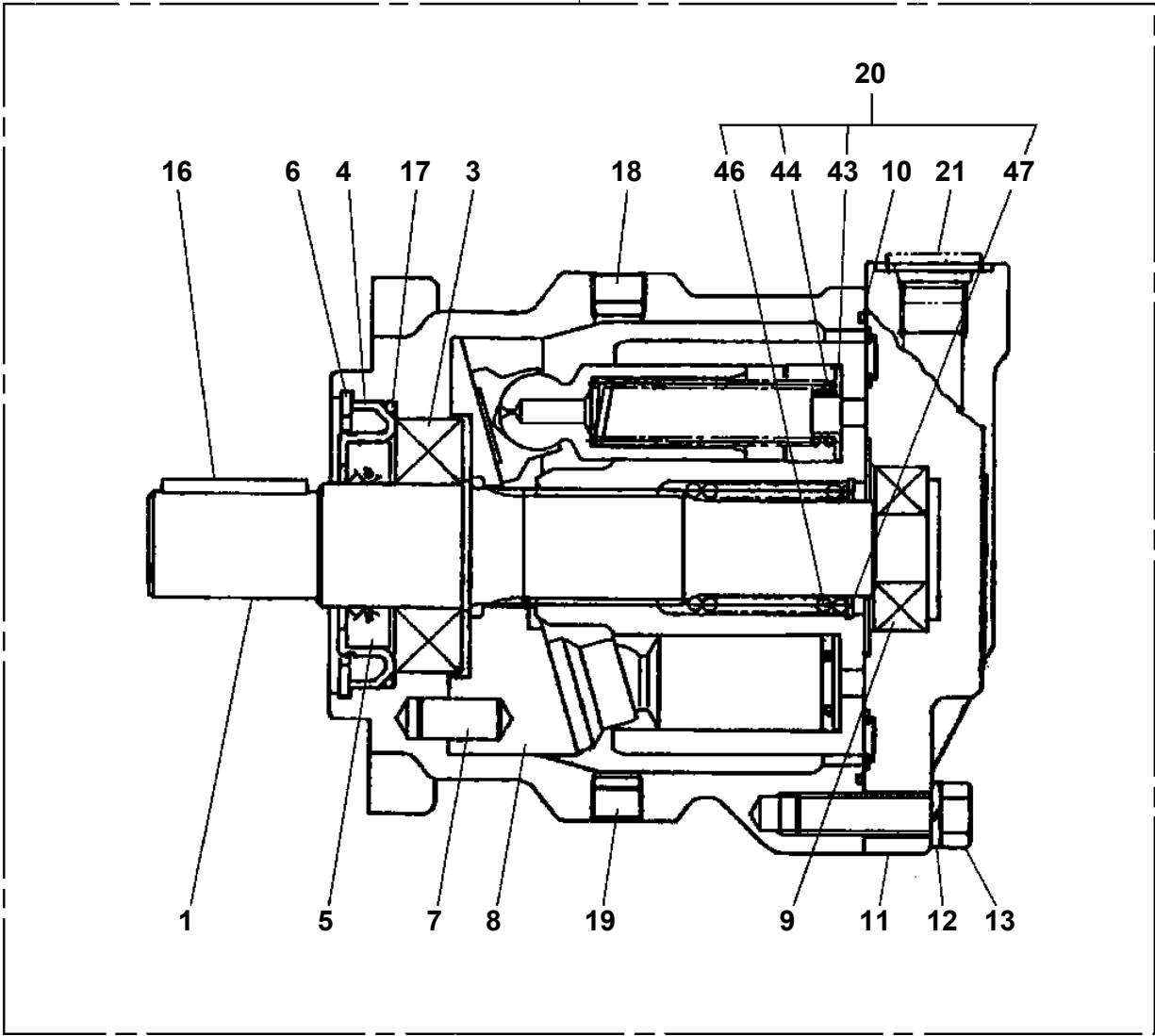
Pos No.	Parts No	Parts Name	Qty	Unit	Technical Data	Serial No (Start)	Serial No (End)	Remarks	Pages
1	32472993100	COVER	1						
2	42653740700	SWITCH ASSY	1						
3	82100000665	CAP (BLACK)	1						
4	32472966100	PLATE,NAME	1						
5	90101208012	BOLT	4		M8X12				
6	90302040801	WASHER,SPRING	4		8				
7	32472993200	SUPPORT	1						
8	32472993300	SUPPORT	1						
9	32472993400	SUPPORT	1						
10	32472963400	SUPPORT	1						
11	82108501270	SWITCH	1				390737		
	82108503270	SWITCH	1			390738			
12	90101206016	BOLT	2		M6X16				
13	90302040601	WASHER,SPRING	2		6				
14	90303070601	WASHER,PLAIN	2		6				
15	32472993500	SUPPORT	1						
16	32472993600	SUPPORT	1						
17	32642231100	SUPPORT	1						

## DT-720-1-00002 UPPER

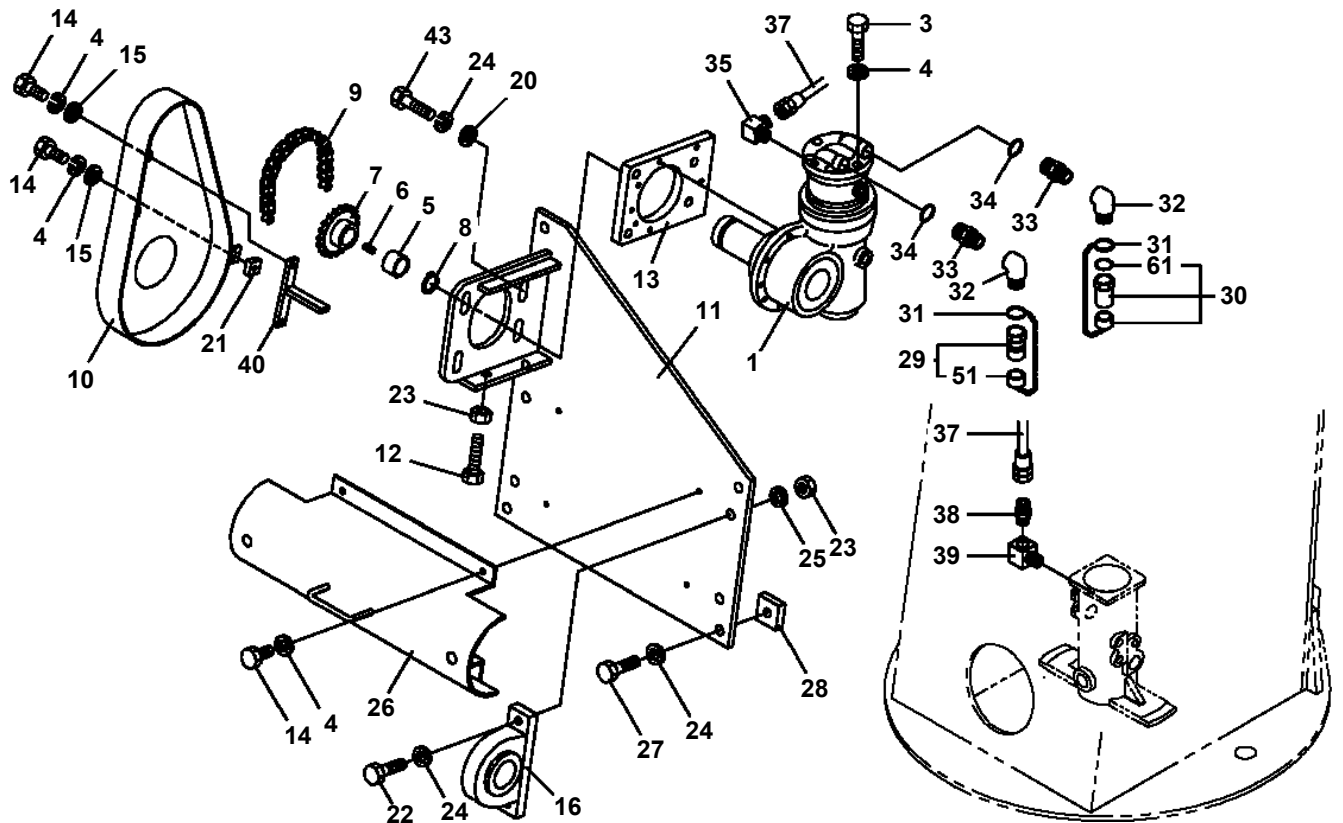
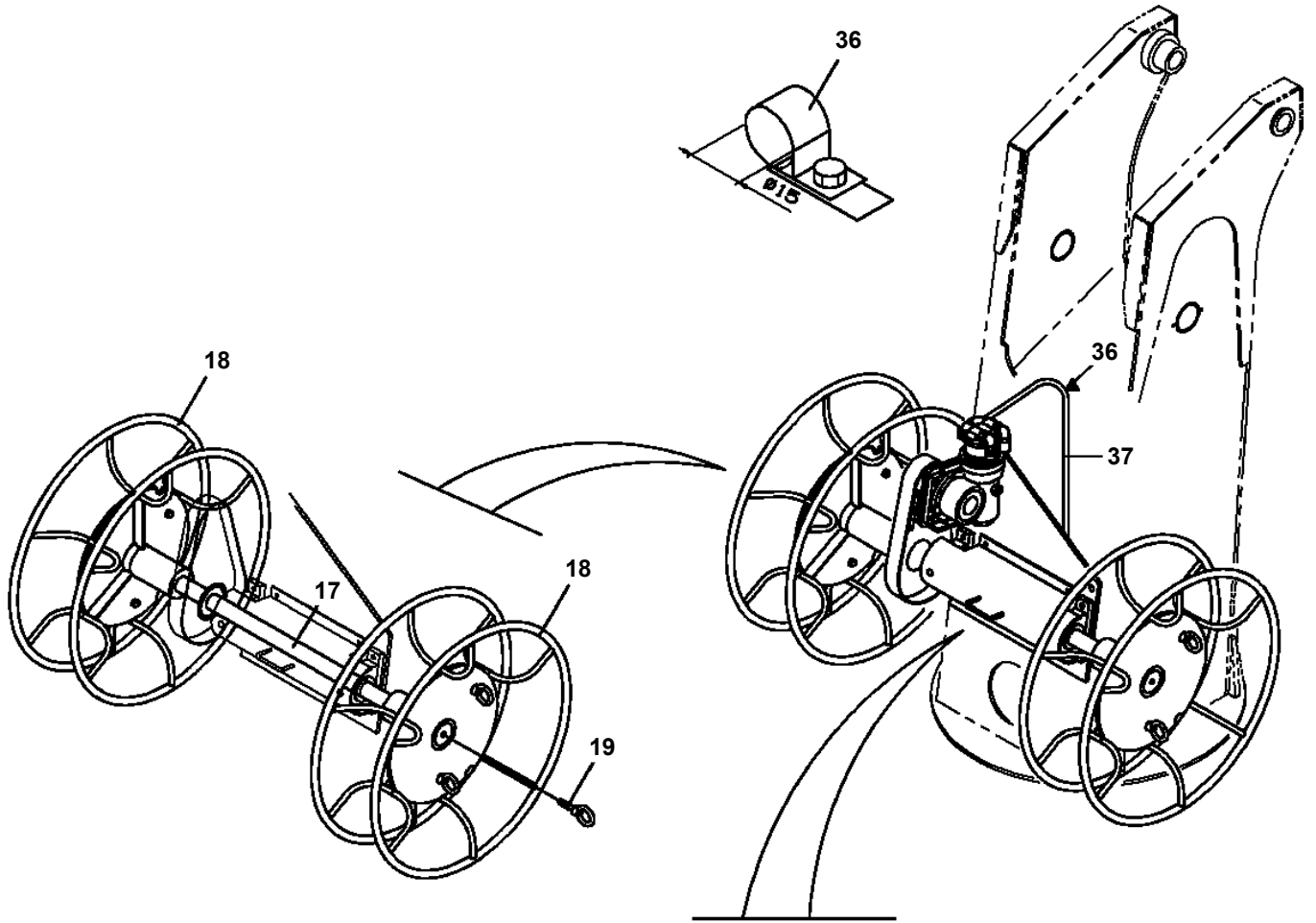
Pos No.	Parts No	Parts Name	Qty	Unit	Technical Data	Serial No (Start)	Serial No (End)	Remarks	Pages
1	32472971100	STOPPER	1						
2	32472970100	SUPPORT	1						
3	32472970200	STOPPER	1						
4	32472970300	SUPPORT	1						
5	80136325028	PIN,SPLIT	1		2.5X28				
23	80804025020	BEARING,PLAIN	1						
36	80804020010	BEARING,PLAIN	2						

DT-720-1-00002 UPPER  
PM5230010-00 MOTOR,OIL

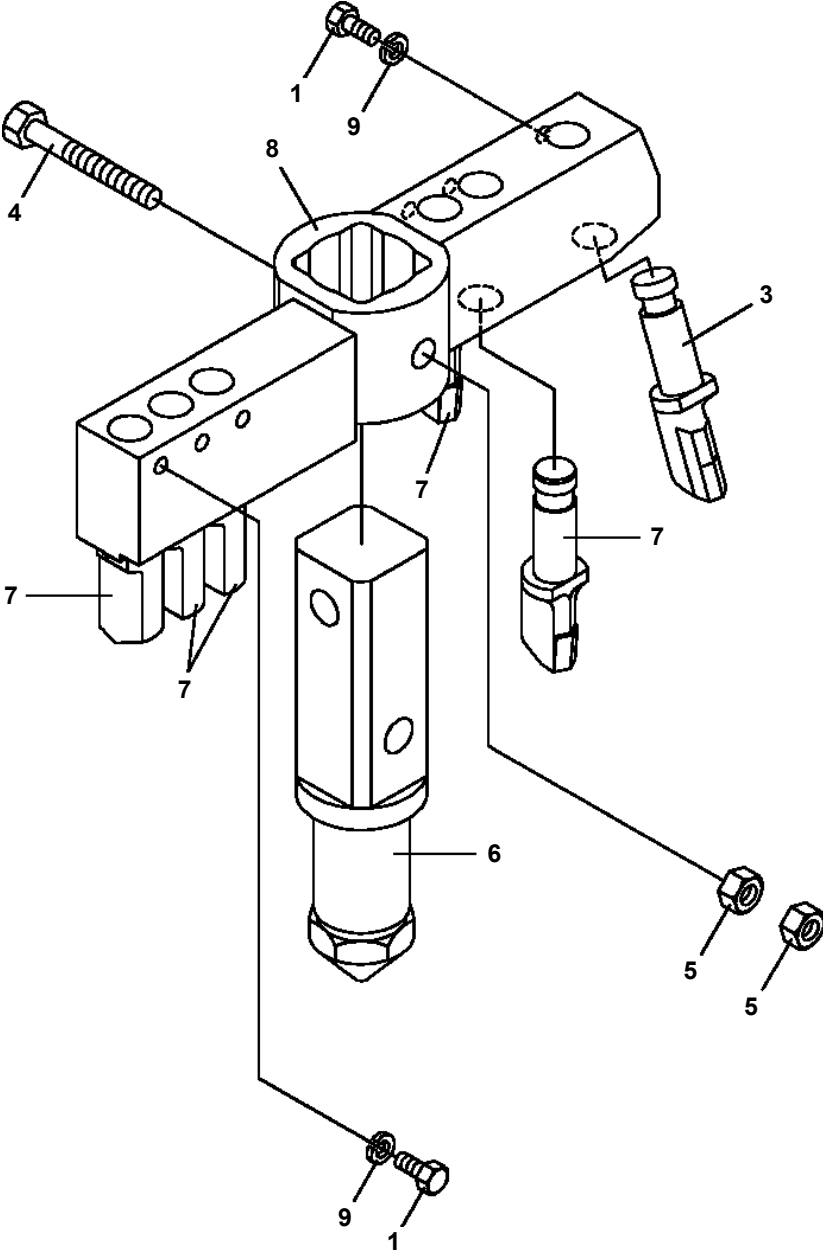
100



DT-720-1-00002 UPPER  
PN1330017-03 REEL, CORD (OPTION)

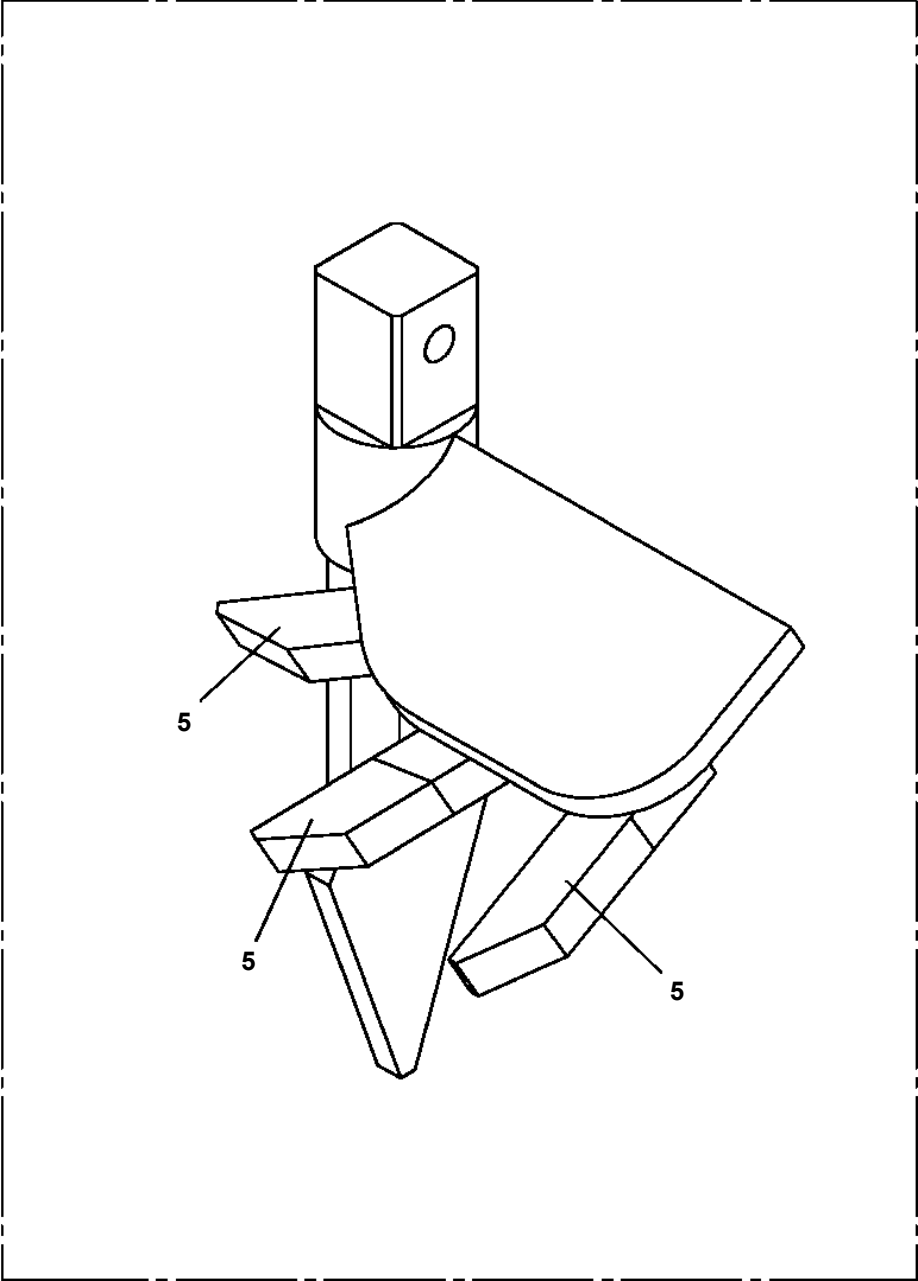


**DT-720-1-00002 UPPER**  
**PP2020005-02 DRILL,AUGER (OPTION.450 R6)**

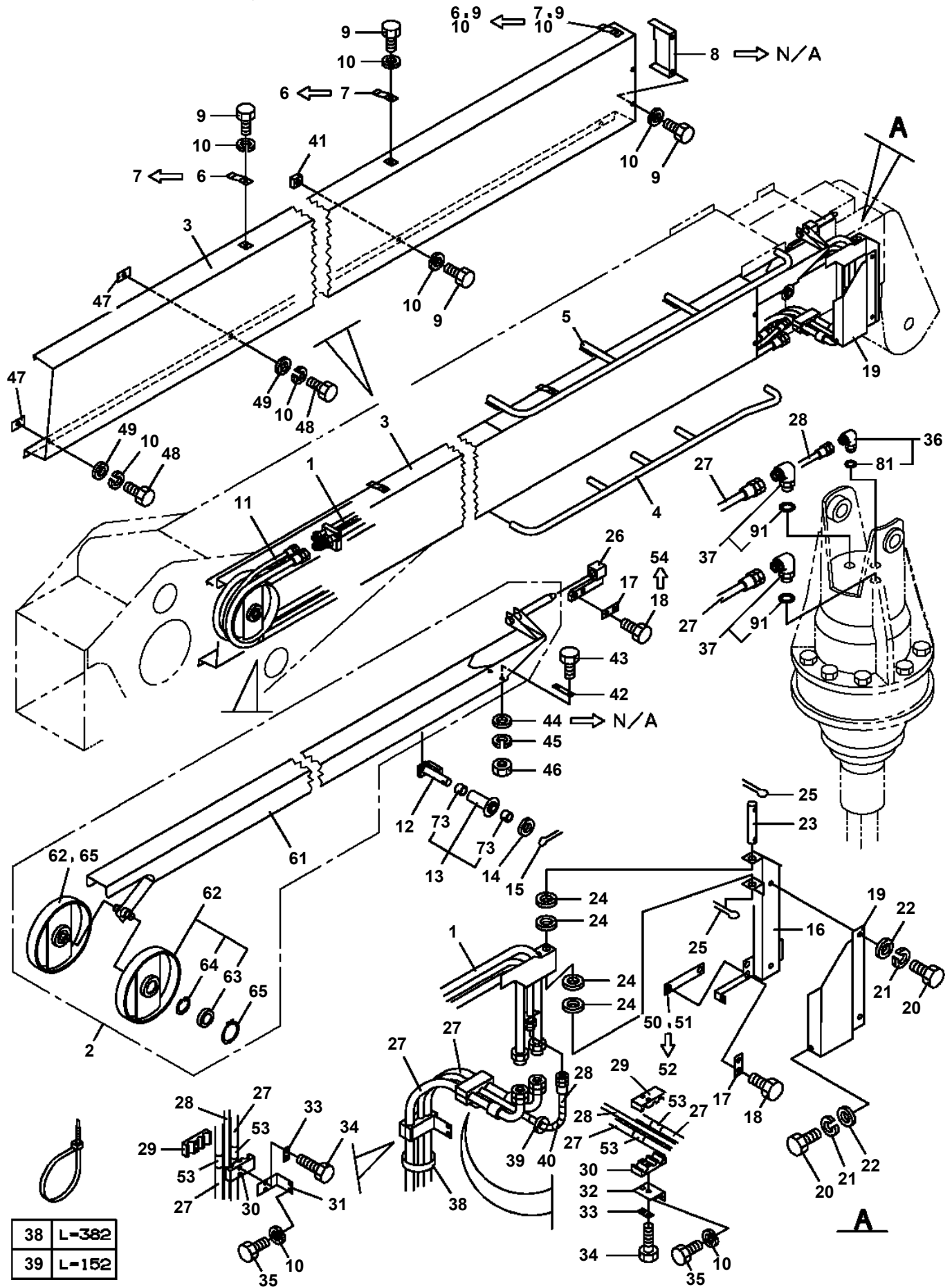


**DT-720-1-00002 UPPER**  
**PP2020010-00 DRILL,AUGER (OPTION,450,L)**

20

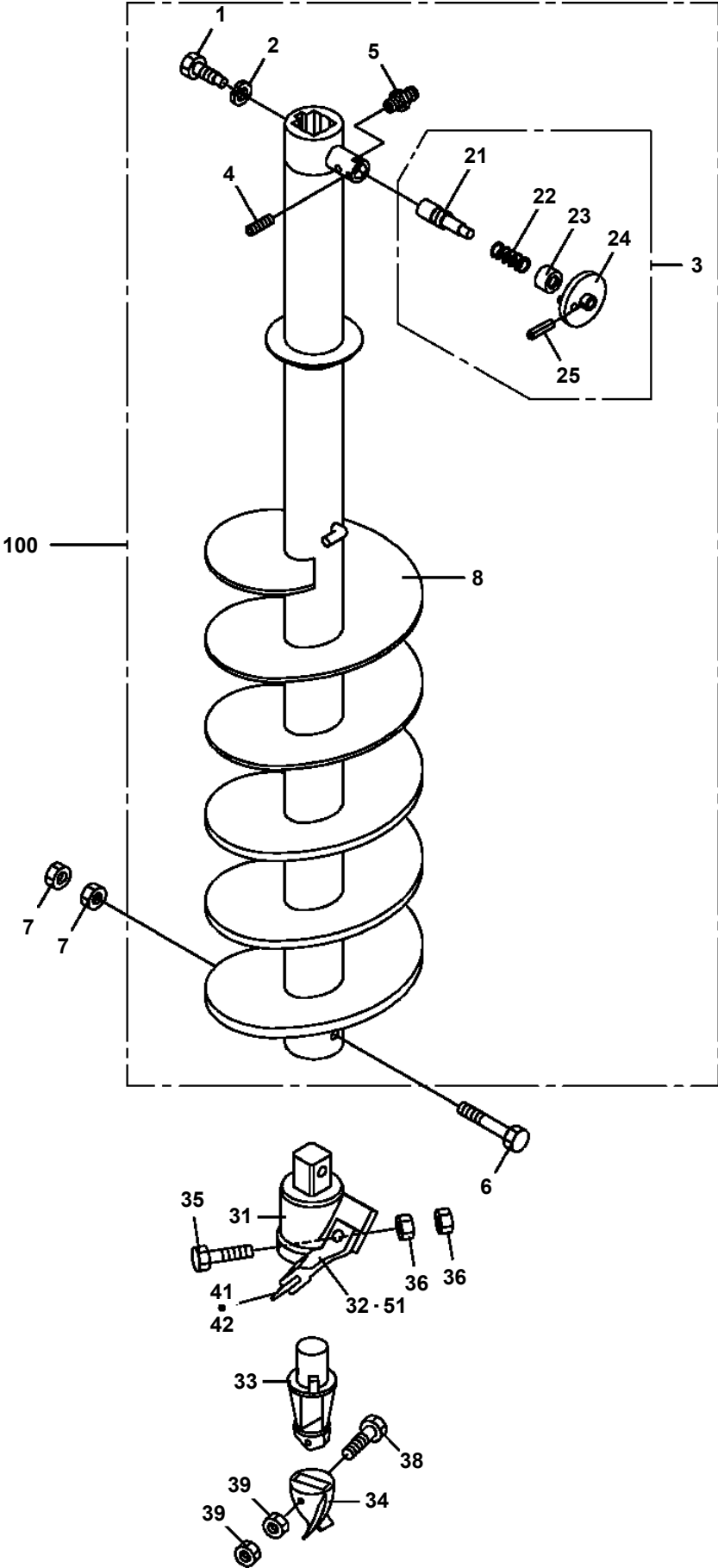


**DT-720-1-00002 UPPER  
PP2100008-04 PIPING,AUGER**

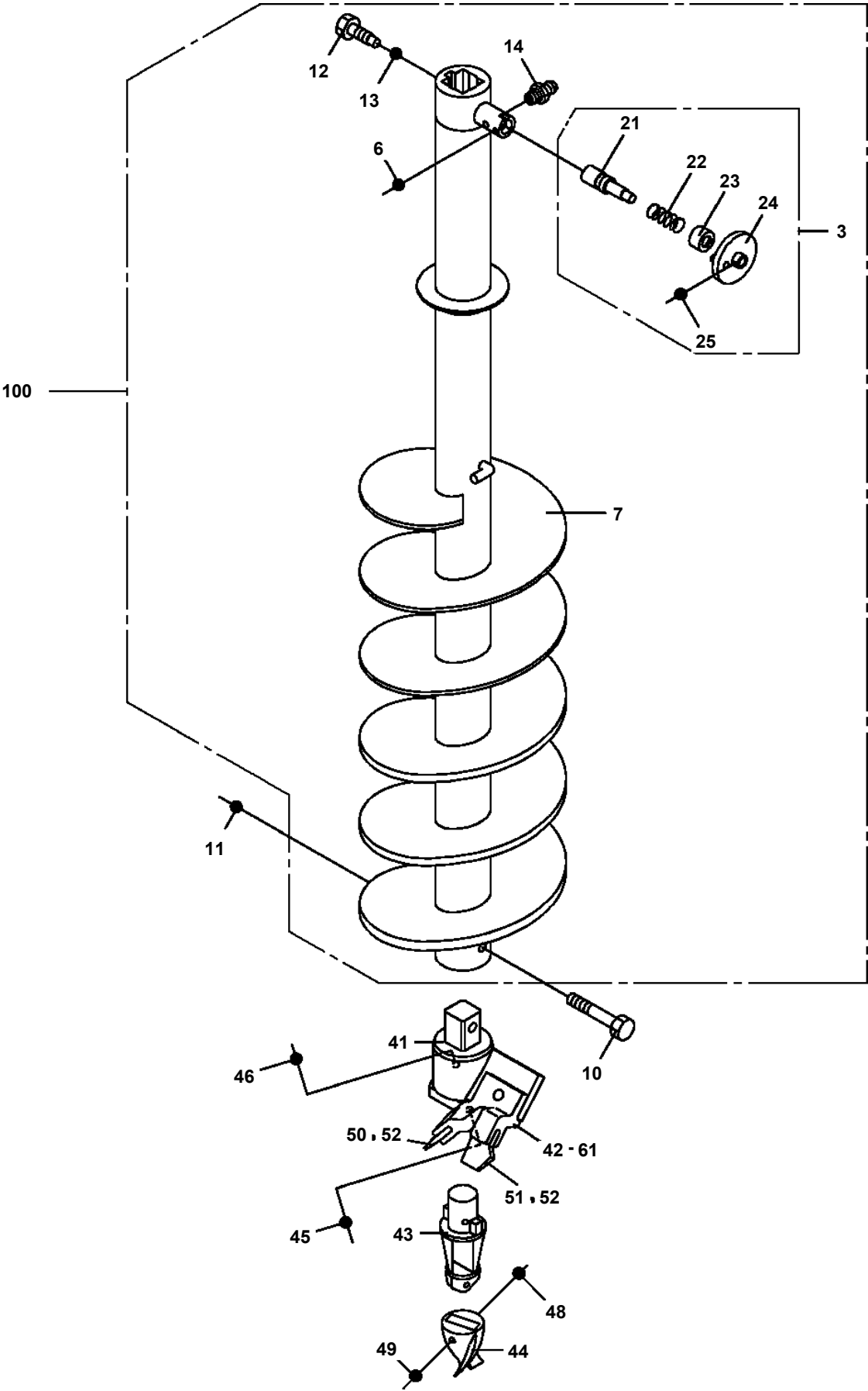


38	L-382
39	L-152

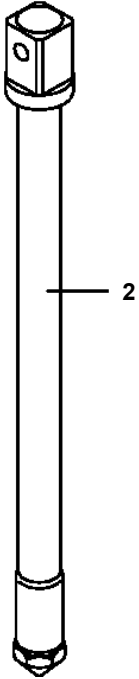
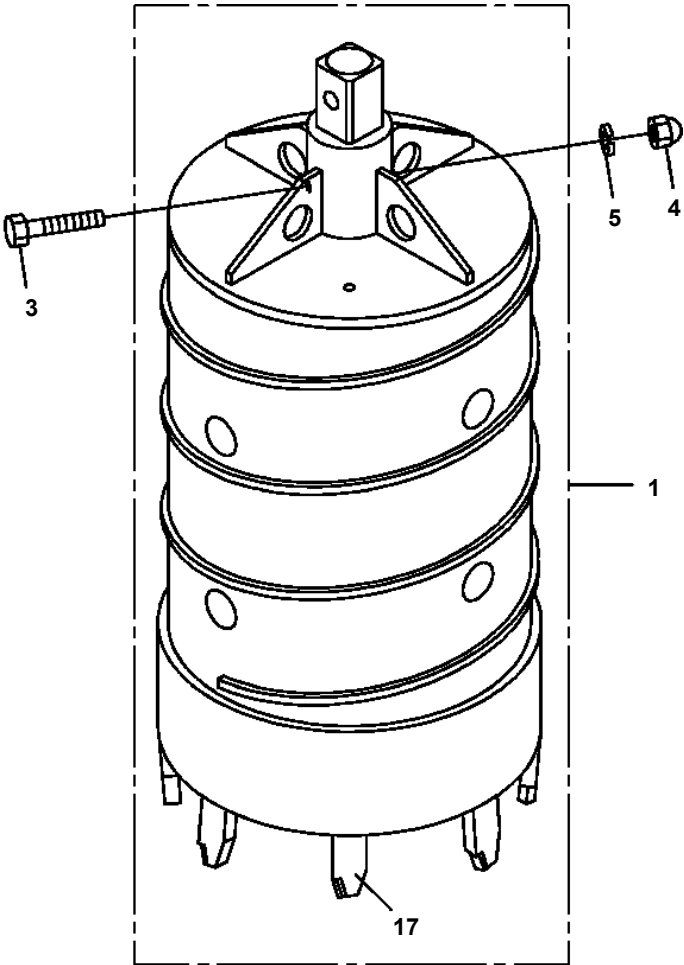
DT-720-1-00002 UPPER  
PP2160006-04 SCREW,AUGER (PENGO,250)



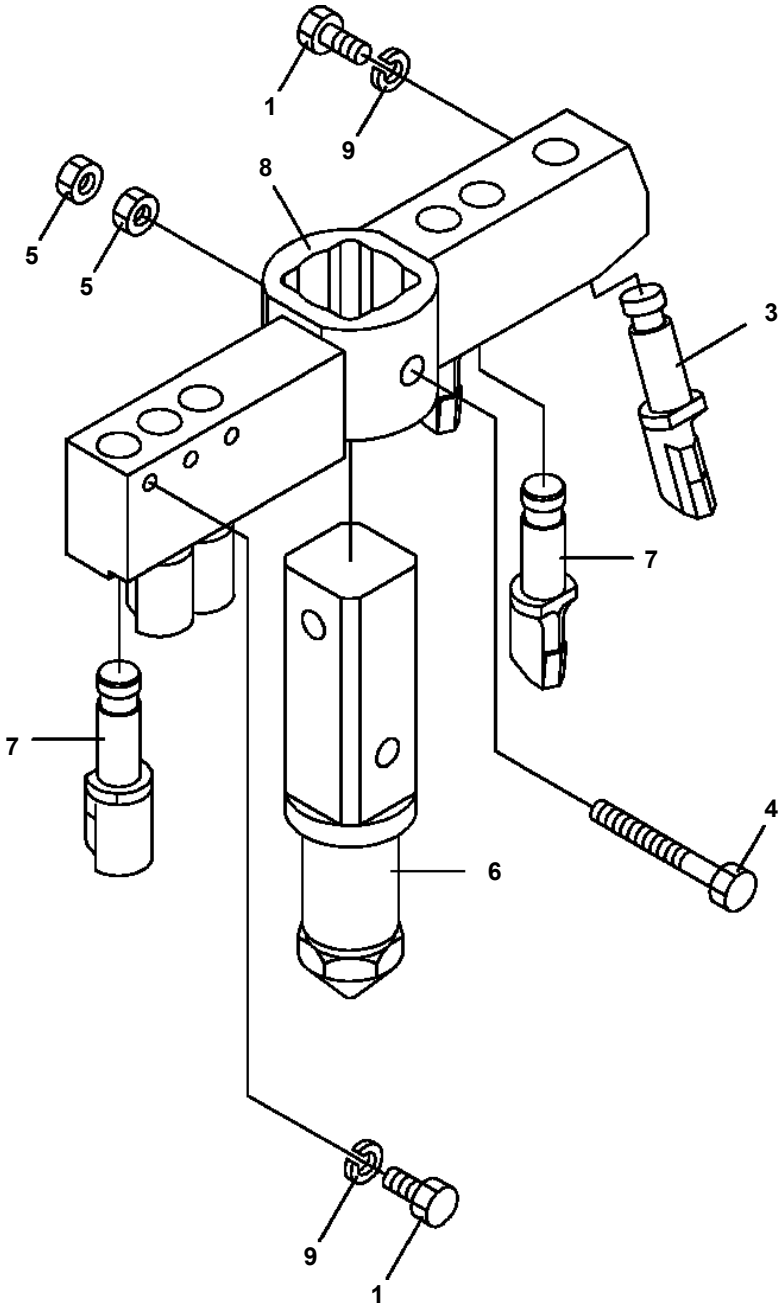
DT-720-1-00002 UPPER  
PP2160014-01 SCREW,AUGER (PENGO,300)



DT-720-1-00002 UPPER  
PP2170002-01 HEAD,AUGER (450.D)



**DT-720-1-00002 UPPER**  
**PP2170007-01 HEAD,AUGER (600.R6)**

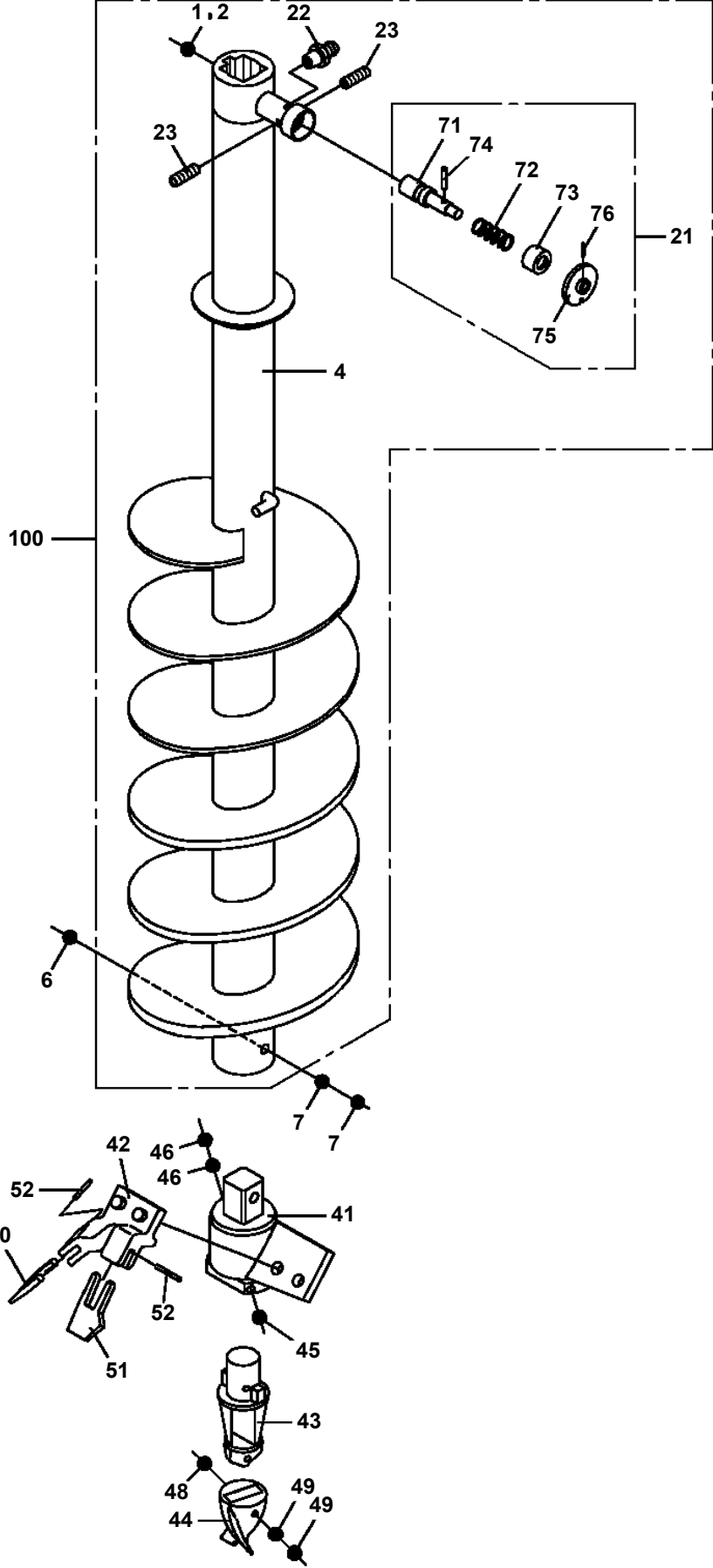


# DT-720-1-00002 UPPER

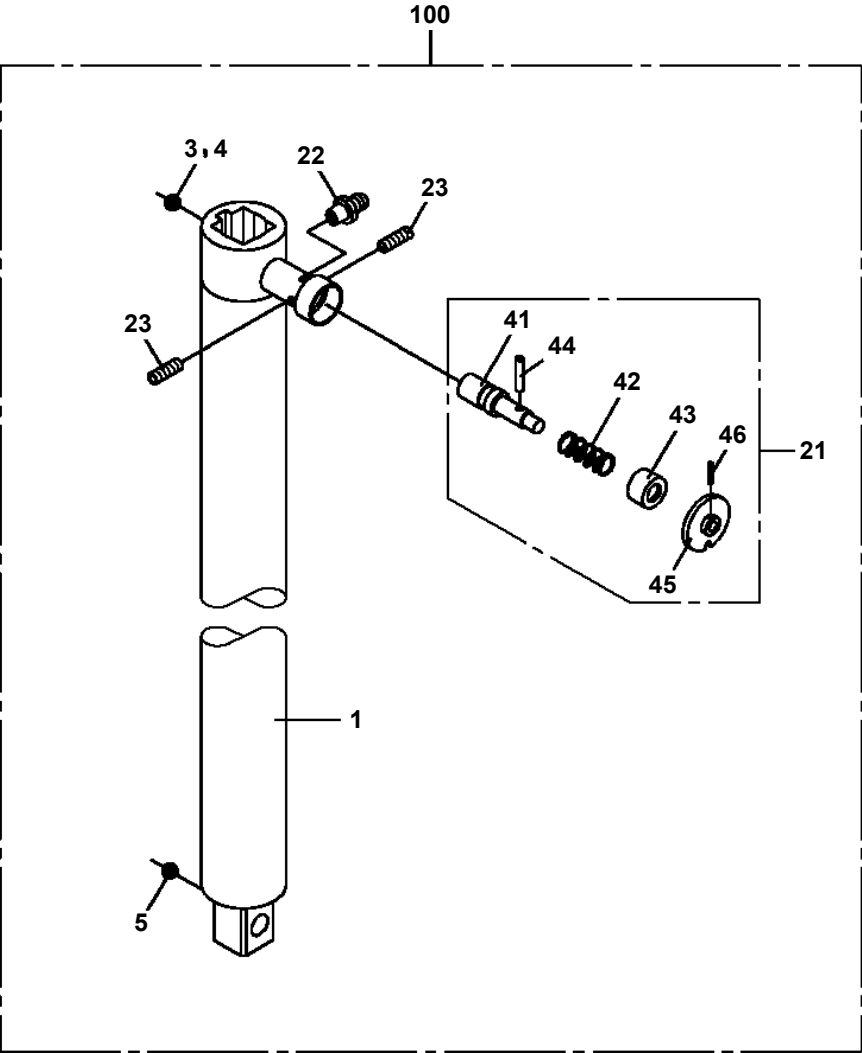
Pos No.	Parts No	Parts Name	Qty	Unit	Technical Data	Serial No (Start)	Serial No (End)	Remarks	Pages
1	37000908580	JOINT	2		L G3/4-28				
2	37000906810	JOINT	1						
3	32340170010	CLAMP ASSY	1		12X1,28X2				
4	80430451250	JOINT	1						
5	80430450650	JOINT	2						
6	32340210300	CLAMP ASSY	2						
7	32340210400	CLAMP ASSY	2						
8	36620710000	VALVE,CHECK	1						
9	90101210065	BOLT	2		M10X65				
10	90201201000	NUT	2		M10				
11	90302041001	WASHER,SPRING	2		10				
12	80303030310	FITTING,ELBOW	2		KL28-060N				
13	81408000160	PIPE,STEEL	2	M	12X1.4T				
14	81408000341	PIPE,STEEL	1	M	28X3.1T				
15	81408000341	PIPE,STEEL	1	M	28X3.1T				
16	80305010241	FITTING,TEE	2		KTA28-000N				
17	81408000341	PIPE,STEEL	2	M	28X3.1T				
18	81408000341	PIPE,STEEL	2	M	28X3.1T				
19	32341010200	CLAMP ASSY	2						
20	80303010100	FITTING,ELBOW	1		KLA12-000N				
21	81408000341	PIPE,STEEL	4	M	28X3.1T				
22	81408000341	PIPE,STEEL	4	M	28X3.1T				
23	81408000160	PIPE,STEEL	4	M	12X1.4T				
24	91002801800	O-RING	1		1B P18				
25	37000545780	PLATE	2						
26	32340170040	GUARD	5						
27	37002426520	HOSE	1		L=710				
28	37000912110	JOINT	1						
29	32340210200	SUPPORT	2						
30	37002426580	HOSE	1		L=825				
31	37000912100	JOINT	1						
32	37000912760	JOINT	2						
33	37002426630	HOSE	1		L=3500				
34	37002426640	HOSE	1		L=3650				
35	32340110040	CLAMP ASSY	1		21X2				
36	32340210020	CLAMP ASSY	1						
37	37002419810	HOSE	1		L=3200				
38	37002419820	HOSE	1		L=3300				
39	37002428060	HOSE	2		L=2800				
40	37000705960	CLAMP ASSY	1		12				
41	32340170070	GUARD	1						
42	80400160132	JOINT	2						
43	37002457850	HOSE	1		L=2750 TO 2730				
44	37000705410	CLAMP ASSY	1		28X2				
45	32340630100	GUARD	1						
46	82100001413	TUBE,SPIRAL	12	M	SE-15BK		390625		
	82100001413	TUBE,SPIRAL	14	M	SE-15BK	390626			
47	80430450750	JOINT	1						
48	37000912560	JOINT	1						
49	37000912640	JOINT	2						
51	32341010100	JOINT	1						
52	81408000160	PIPE,STEEL	1	M	12X1.4T				
53	80302090161	FITTING	1		KCO12-030N				
54	91002802400	O-RING	2		1B P24				
55	80302090151	FITTING	1		KCO12-040N				
56	80400160129	JOINT	1						
57	80303130161	FITTING,ELBOW	1		KLO12-030E				
58	91002801400	O-RING	2		1B P14				
59	90101208016	BOLT	2		M8X16				
60	90302040801	WASHER,SPRING	2		8				
62	32340630200	GUARD	1						
71	37000528330	PLATE	1						
72	37000600660	CLAMP	1		R=6				

00005

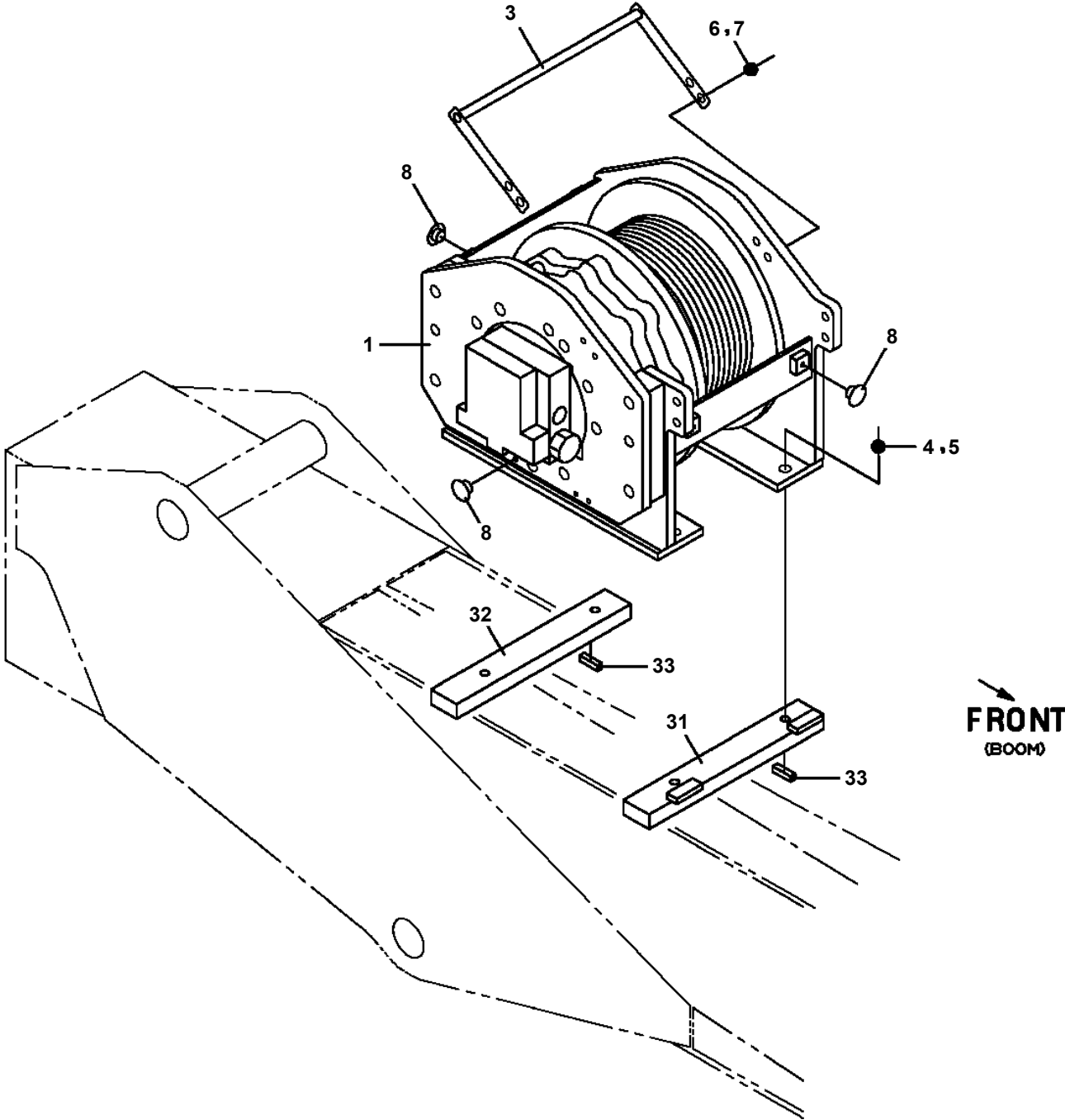
DT-720-1-00002 UPPER  
PS5040002-00 SCREW ASSY (350)



**DT-720-1-00002 UPPER  
PS5160001-00 SHAFT ASSY (FOR EXTENSION)**



**DT-720-1-00002 UPPER  
PW5070032-00 WINCH ASSY (MOUNT)**



CLICK HERE TO **DOWNLOAD** THE COMPLETE MANUAL

- Thank you very much for reading the preview of the manual.
- You can download the complete manual from: [www.heydownloads.com](http://www.heydownloads.com) by clicking the link below



- Please note: If there is no response to CLICKING the link, please download this PDF first and then click on it.

CLICK HERE TO **DOWNLOAD** THE COMPLETE MANUAL