

SOLARIS 45

ACCESSORIES

GENERAL

4-WAY AUXILIARY DISTRIBUTOR.....	0E.00.1
4-WAY AUXILIARY DISTRIBUTOR.....	0E.00.4
4-WAY AUXILIARY DISTRIBUTOR.....	0E.00.6
4-WAY AUXILIARY DISTRIBUTOR.....	0E.00.7
HYDRAULIC DISTRIBUTOR-PARTS.....	0E.00.9
HYDRAULIC DISTRIBUTOR-PARTS.....	0E.00.10
DISTRIBUTOR CONTROL.....	0E.00.11
DISTRIBUTOR CONTROL.....	0E.00.12
DISTRIBUTOR CONTROL.....	0E.00.13
3 POINT HITCH.....	0E.00.16
TOWING BAR.....	0E.00.19
REAR TOWING HITCH.....	0E.00.20
FRONT TOWING HITCH.....	0E.00.21
FRONT TOWING HITCH.....	0E.00.22
REAR OSCILLATING HITCH.....	0E.00.23
BALLAST.....	0E.00.24
BALLAST.....	0E.00.25
TOOL POUCH.....	0E.00.28
ENGAGEMENT.....	0.98308.50.3/10.A

CLICK HERE TO **DOWNLOAD** THE COMPLETE MANUAL

- Thank you very much for reading the preview of the manual.
- You can download the complete manual from: www.heydownloads.com by clicking the link below



- Please note: If there is no response to CLICKING the link, please download this PDF first and then click on it.

CLICK HERE TO **DOWNLOAD** THE COMPLETE MANUAL

Section: ACCESSORIES
DISTRIBUTOR CONTROL

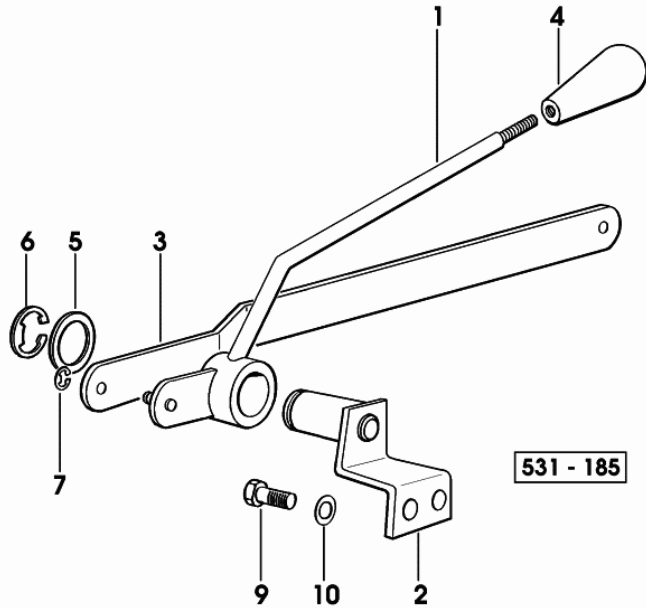


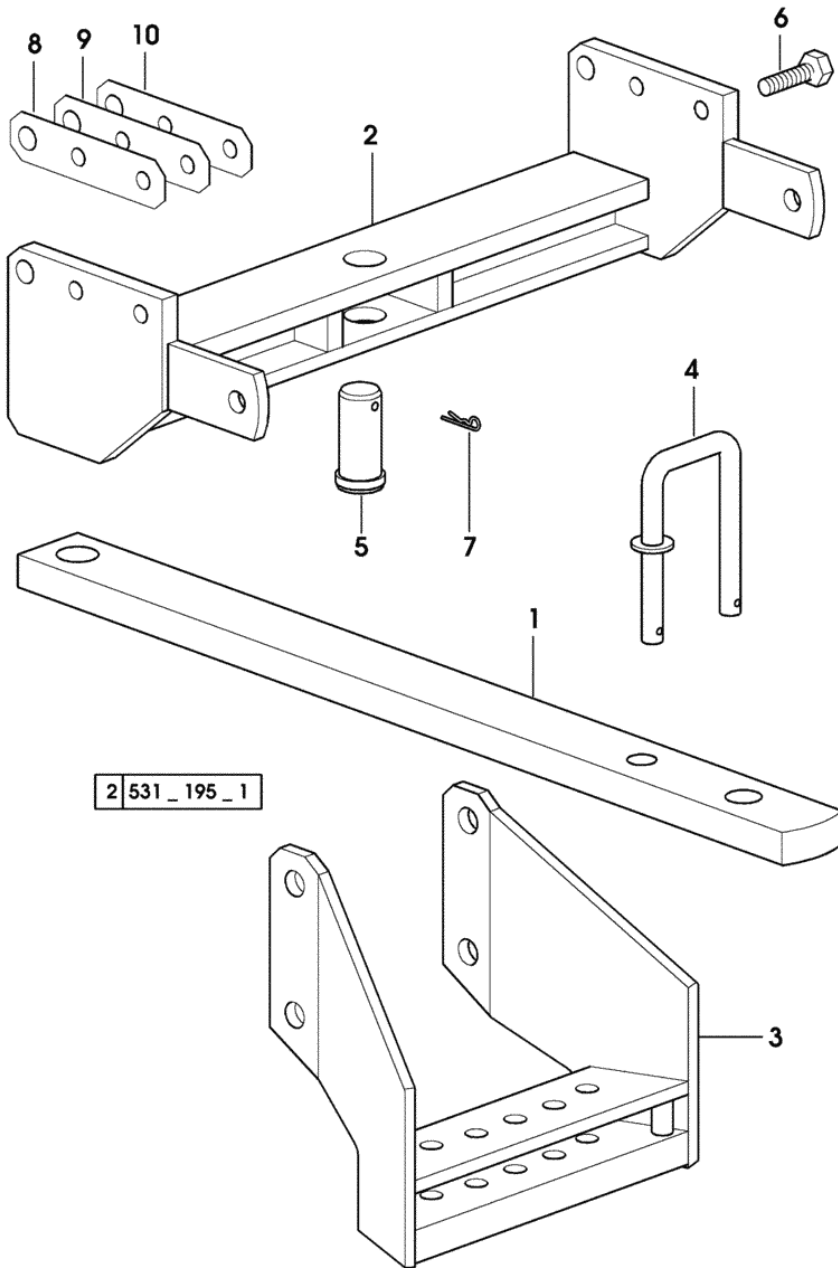
Fig.	Code	QTY	Name
------	------	-----	------

Notes:

1351 <- X 25HP 3004 <- X 35HP WATERCOOLED ENGINE 1864 <- X 35HP AIRCOOLED ENGINE 1626 <- X 42HP

1	0.008.7387.3/30	1	lever
2	0.008.7393.3/20	1	support
3	0.008.7398.0	1	rod
			- X 25HP - 35HP
3	0.008.7702.0	1	rod
			- X 42HP
4	0.008.7392.0	1	grip
5	2.1311.011.2	1	flat washer 18
6	2.1430.012.7	1	circlip 12
7	2.1430.007.7	2	circlip 6, d128
9	2.0112.207.2	2	screw m 8 p 1.25 x 20
10	2.1472.005.2	2	washer 8

Section: ACCESSORIES
REAR OSCILLATING HITCH



2 531_195_1

Fig.	Code	QTY	Name
1	0.010.9266.0/10	1	draw bar
2	0.010.9260.2/30	1	support
3	0.010.9261.2/10	1	support
4	0.010.9264.3	1	u bolt
5	2.1679.093.2	1	pin
6	2.0122.115.2	4	screw m 12 p.1.5x40
7	2.1692.003.2	1	split pin m 4
8	0.011.7513.0	1	shim mm 0.50
9	0.011.7512.0	1	shim mm 0.20
10	0.011.7511.0	1	shim mm 0.10

Section: BODY WORK
WATER COOLING

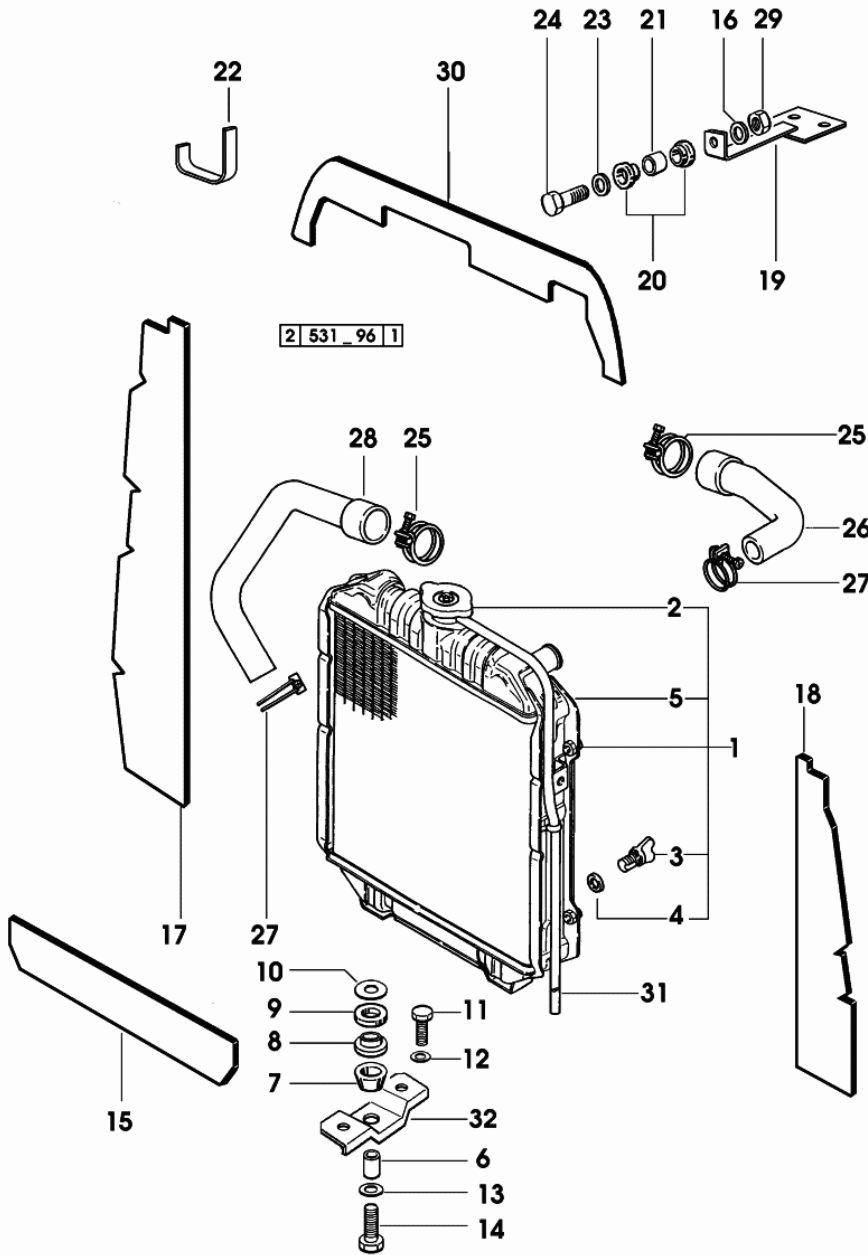
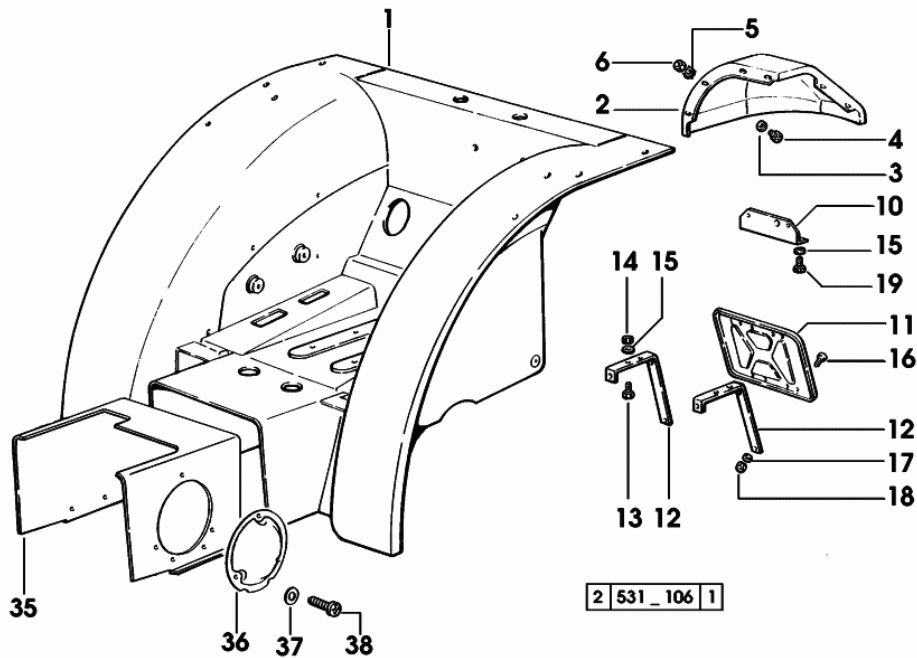
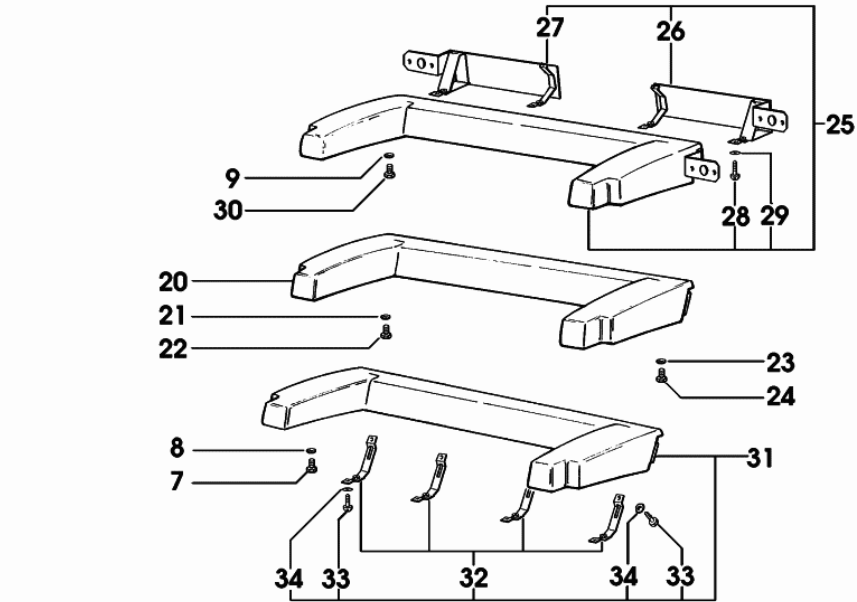


Fig.	Code	QTY	Name
1	0.008.7971.0	1	water cooler ☞ 0.008.7971.0
2	0.009.4642.1	1	plug
3	0.009.4753.0	1	plug
4	0.009.4753.1	1	gasket
5	0.010.2266.0	1	duct
6	2.1579.012.2	2	spacer
7	0.136.7385.0	2	rubber plug
8	0.136.7384.0	2	cup
9	0.136.7387.0	2	rubber plug 15x27x5
10	2.1599.044.2	2	snoulder 10.5x25.5x1.5
11	2.0112.307.2	4	screw m 10 p.1.5 x 20
12	2.1310.006.2	4	flat washer 10.5
13	2.1470.006.2	2	lock washer 10
14	2.0122.363.2	2	screw m 10 p.1.25 x 35
15	0.008.7587.0/10	1	gasket
16	2.1470.002.2	1	washer 6, d128
17	0.008.7914.0/10	1	gasket dx/rh/re
18	0.008.7915.0/10	1	gasket sx/lh/li
19	0.008.7900.2/10	1	bracket
20	0.035.8459.0	2	rubber plug
21	2.1579.322.0	1	spacer 10.5x6.5x17
22	0.011.5225.3	1	bracket
23	2.1599.153.0	1	snoulder 6.4x17x2
24	2.0112.011.2	1	screw m 6 p.1x30
25	2.6851.006.0	2	clamp Ø 50/70
26	0.008.6945.0/10	1	exhaust
27	2.6851.004.0	2	clamp Ø 32/50
28	0.008.6946.0/10	1	tube
29	2.1011.103.2	1	nut m 6 p.1
30	0.008.7913.0	1	gasket
31	0.009.2330.0/10	1	exhaust
32	0.009.6353.0	2	bracket

Section: BODY WORK
PLATFORM

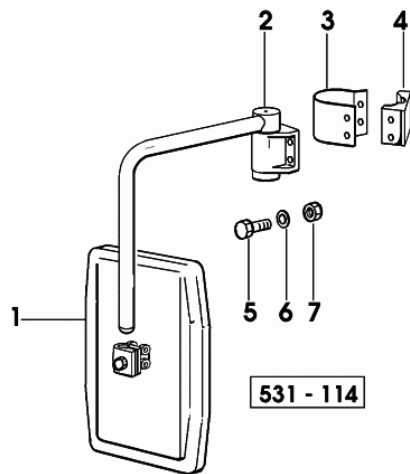


2 531_106 1

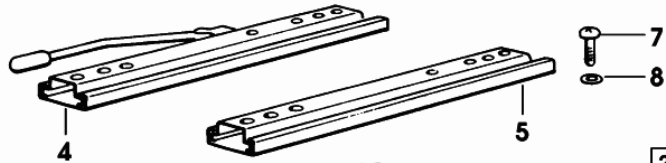
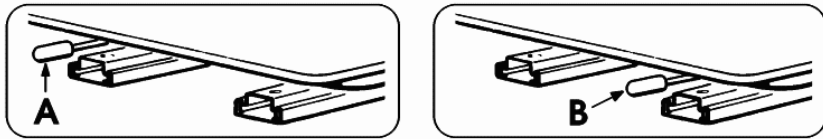
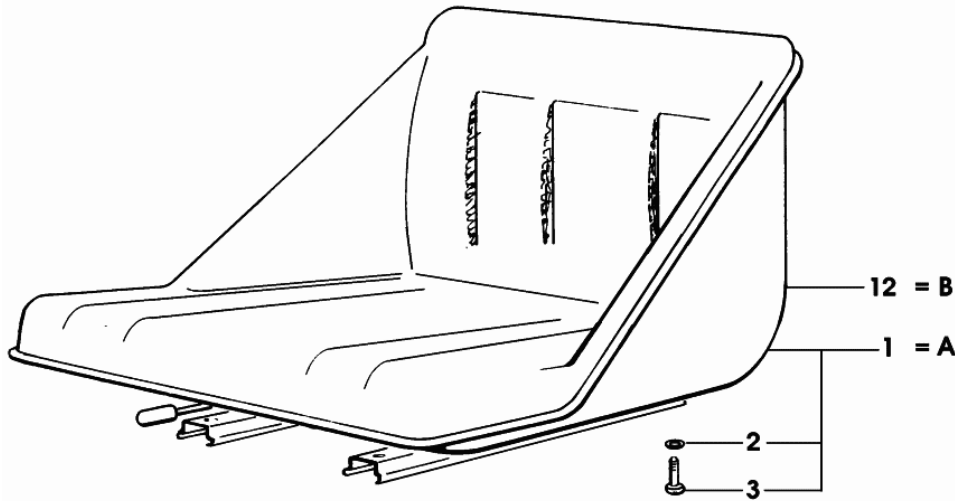
Fig.	Code	QTY	Name
1	0.011.8482.3/10	1	platform - X 25HP - X 35HP - FOR 25HP HYDRO WITHOUT CAB - X 42HP WITH TYRES 320/70 R20
1	0.011.8494.3/10	1	platform - X 42HP
2	0.008.7622.0/20	1	splash-guards dx/rh/re - X 25HP - X 35HP - X 42HP WITH TYRES 320/70 R20
2	0.008.7623.0/20	1	splash-guards sx/lh/li - X 25HP - X 35HP - X 42HP WITH TYRES 320/70 R20
3	2.1310.002.2	8	washer 6.6, d125
4	2.0112.005.2	8	screw m 6 p.1 x 16
5	2.1472.003.2	4	washer 6, d128
6	2.1011.103.2	8	nut m 6 p.1
7	2.0112.005.2	6	screw m 6 p.1 x 16
8	2.1312.003.3	6	washer 6.6 x 18
9	2.1310.002.2	6	washer 6.6, d125
10	0.008.7724.3	1	bracket 3215 <- X 35HP AIRCOOLED ENGINE
11	0.467.7696.3	1	plate holder 3215 <- X 35HP AIRCOOLED ENGINE
12	0.008.7461.0/10	2	square 3215 <- X 35HP AIRCOOLED ENGINE
13	2.0112.205.2	4	screw m 8 p.1.25 x 16 3215 <- X 35HP AIRCOOLED ENGINE
14	2.1011.105.2	4	nut m 8 p.1.25 3215 <- X 35HP AIRCOOLED ENGINE
15	2.1310.004.2	6	flat washer 8.5 3215 <- X 35HP AIRCOOLED ENGINE
16	2.0220.311.2	4	screw m 5x0.8x18 3215 <- X 35HP AIRCOOLED ENGINE
17	2.1310.001.2	4	flat washer 5.3 3215 <- X 35HP AIRCOOLED ENGINE
18	2.1011.102.2	4	nut m 5 p.0.7

Section: BODY WORK
REARVIEW MIRROR

Fig.	Code	QTY	Name
1	0.9233.183.3	1	rear view mirror
2	0.009.6317.4	1	arm
3	0.009.6171.0	1	lamination
4	0.009.6172.0	1	spacer
5	2.0112.225.2	2	screw m 8 p.1.25 x 80
6	2.1470.004.2	2	washer 8
7	2.1011.105.2	2	nut m 8 p.1.25



Section: BODY WORK
SEAT



2 531_125 | 1

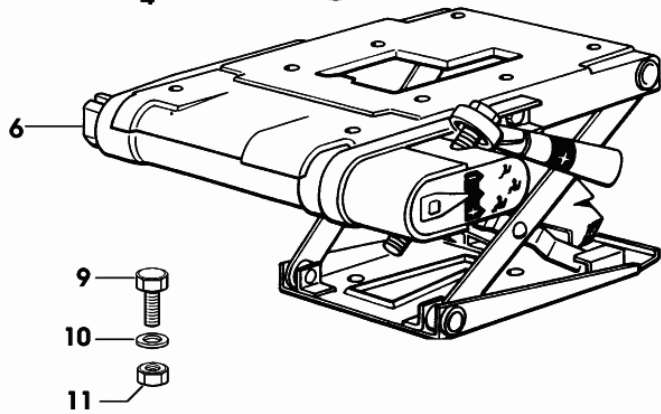


Fig.	Code	QTY	Name
1	0.198.7523.4/10	1	seat (...) <- = A
1	0.010.1179.4	1	seat - X 35HP AIRCOOLED ENGINE - EXPORT PL
2	2.1470.004.2	4	washer 8
3	2.0399.001.2	4	screw
4	0.201.7550.3	1	seat guide dx/rh/re
5	0.201.7551.3	1	seat guide sx/lh/li
6	0.154.7532.4/20	1	seat springs F 127 (...) <- X A ☞ 0.154.7532.4/20 ☞ 07.00.50
6	0.010.5357.4	1	seat springs KAB XL2 F 127/1 -> (...) X B ☞ 0.010.5357.4 ☞ 07.00.51
7	2.0332.406.6	4	screw m 6 p.1.0 x 16
8	2.1310.002.2	4	washer 6.6, d125
9	2.0112.205.2	4	screw m 8 p.1.25 x 16
10	2.1475.041.7	4	washer 8.2x16.2
11	2.1011.105.2	4	nut m 8 p.1.25
12	0.010.5362.4	1	seat -> (...) = B ☞ 0.010.5362.4

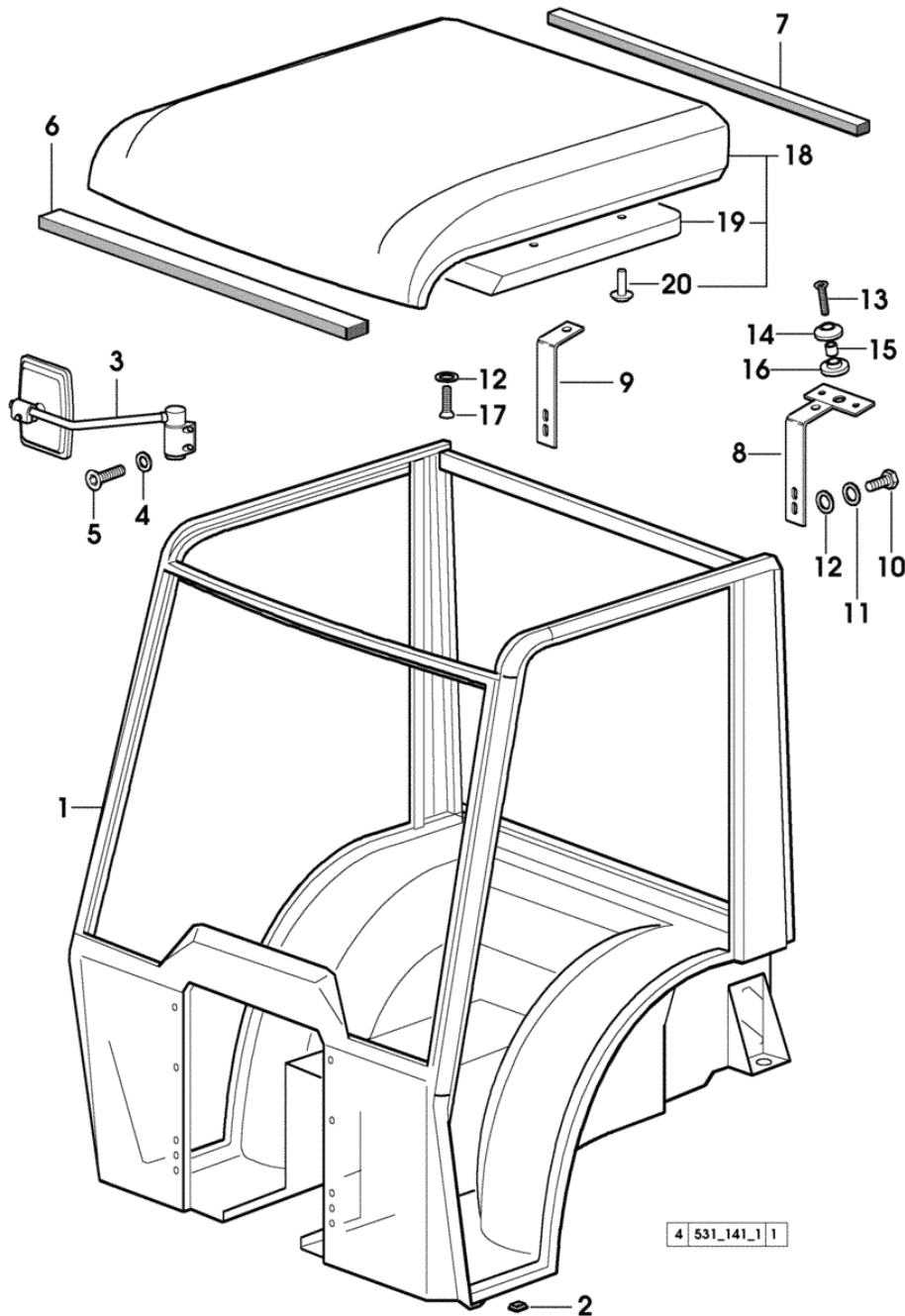
Section: CAB
METALLIC STRUCTURES

Fig.	Code	QTY	Name
------	------	-----	------

Notes:

- "DE LUXE" BRIEDA TYPE

1	0.010.8322.4/40	1	cab
2	0.011.3207.0/10	2	plug
3	0.010.9559.4	1	rear view mirror dx/rh/re
3	0.011.5392.4	1	rear view mirror sx/lh/li
4	2.1470.002.2	4	washer 6, d128
5	2.0332.407.2	4	screw m 6 x 20
6	0.011.5426.0	1	profile
7	0.011.5427.0	1	profile
8	0.010.7581.3	1	bracket sx/lh/li
9	0.010.8320.3	1	bracket dx/rh/re
10	2.0112.005.2	4	screw m 6 p.1 x 16
11	2.1310.002.2	4	washer 6.6, d125
12	2.1470.002.2	6	washer 6, d128
13	2.0342.309.6	2	screw m 8 p.1.25 x 35
14	0.010.9080.0	2	washer
15	2.1549.454.2	2	spacer
16	0.010.9077.0	2	rubber plug
17	2.0332.407.2	2	screw m 6 x 20
18	0.010.8655.4	1	roof
19	0.010.9123.0	1	lining
20	2.1899.085.0	4	plug

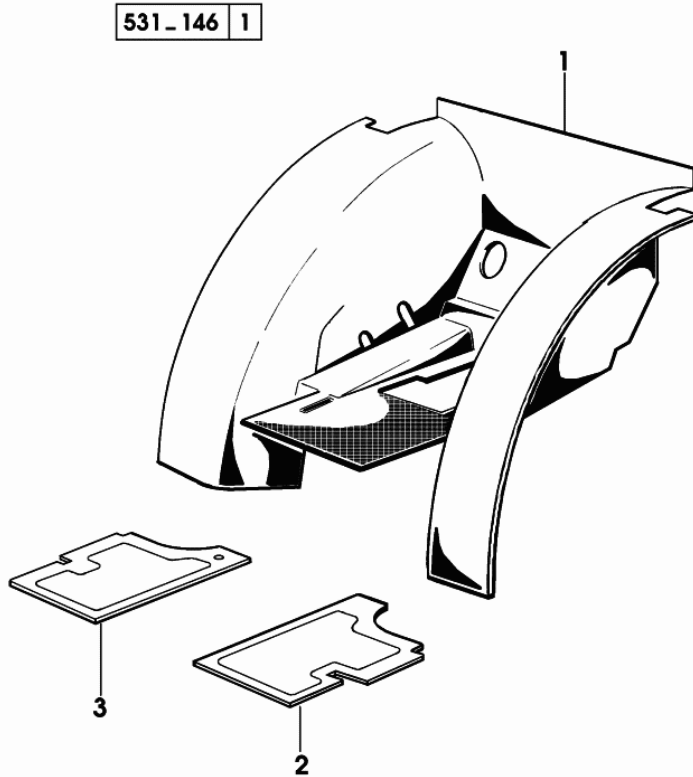


Section: CAB
INTERIOR TRIM

Fig.	Code	QTY	Name
------	------	-----	------

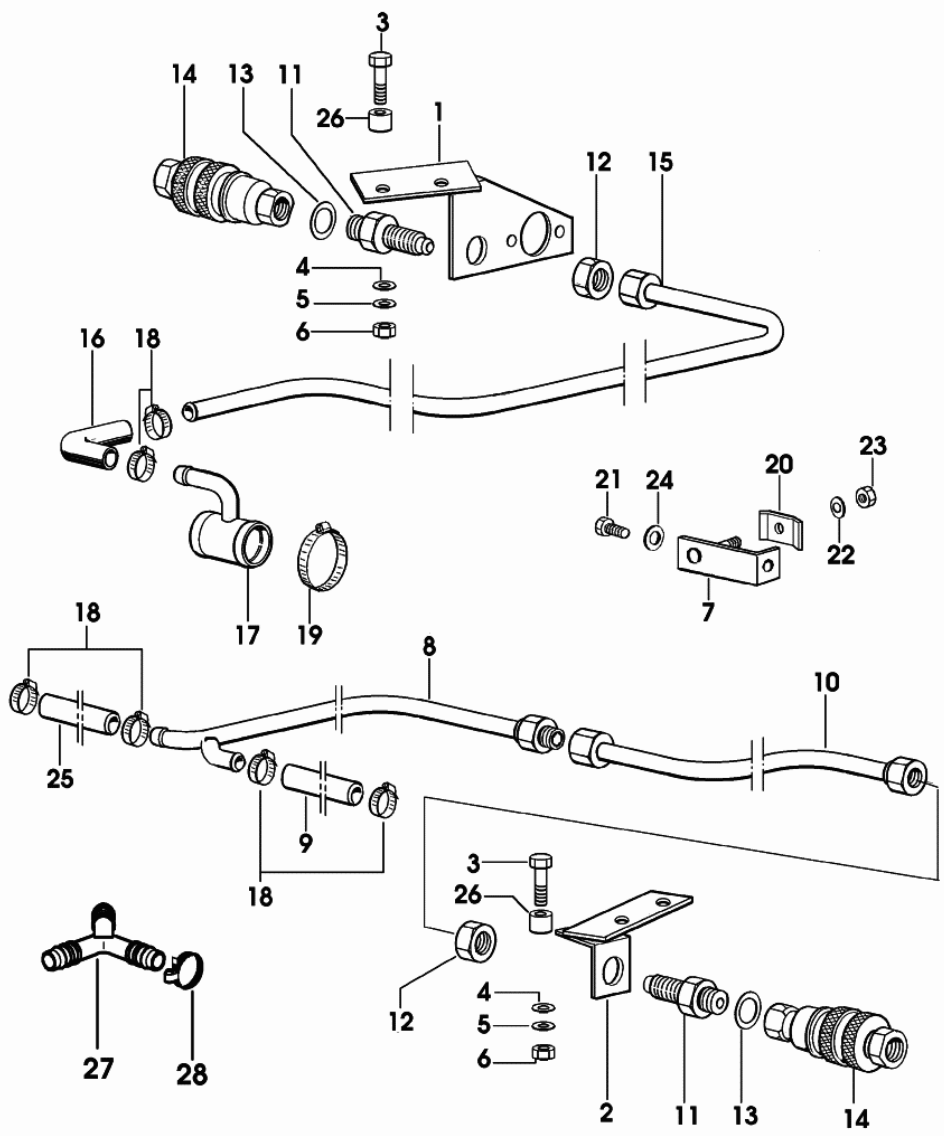
Notes:
 - "LOCHMANN" TYPE

1	0.007.6945.4	1	lining - X 25HP - 35HP - X 42HP - WITH TYRES 320/70 R20
1	0.010.0531.4	1	lining - X 42HP
2	0.007.7677.0	1	sound deadening sx/lh/li
3	0.007.7676.0/10	1	sound deadening



ARRANGEMENT FOR HEATING - FIXED CAB

Fig.	Code	QTY	Name
1	0.009.6422.2/10	1	support
2	0.010.0131.2	1	support
3	2.0112.311.2	4	screw m 10 p.1.5 x 30
4	2.1310.006.2	4	flat washer 10.5
5	2.1470.006.2	4	lock washer 10
6	2.1011.106.2	4	nut m 10 p.1.5
7	0.010.0156.3	1	bracket
8	0.010.0112.3	1	tube
9	0.010.0113.0	1	tube
10	0.010.0111.3	1	tube
11	2.3339.685.2	2	pipe fitting
12	2.1019.096.2	2	nut 9/16" - 18 JIC
13	2.1560.053.0	2	gasket 17 x 21
14	0.009.8799.4	2	connection
15	0.010.0115.3	1	tube
16	0.009.7786.0	1	tube
17	0.009.6420.2	1	tube
18	2.6850.002.0	6	clamp 12-22
19	2.6850.007.0	2	clamp 25-40
20	0.200.8152.0	1	small plate
21	2.0122.457.2	1	screw m 12 p.1.25 x 20
22	2.1470.001.2	1	lock washer 5
23	2.1011.102.2	1	nut m 5 p.0.7
24	2.1470.007.2	1	lock washer 12
25	0.010.0114.0	1	tube
26	2.1579.072.0	1	spacer
27	0.010.4196.0	1	pipe fitting
28	2.6850.002.0	4	clamp 12-22 - FOR TYPES WITH "DE LUXE" CAB



2 531_152_1 1

Section: ELECTRIC AL SYSTEM
ELECTRIC LIGHTING SYSTEM

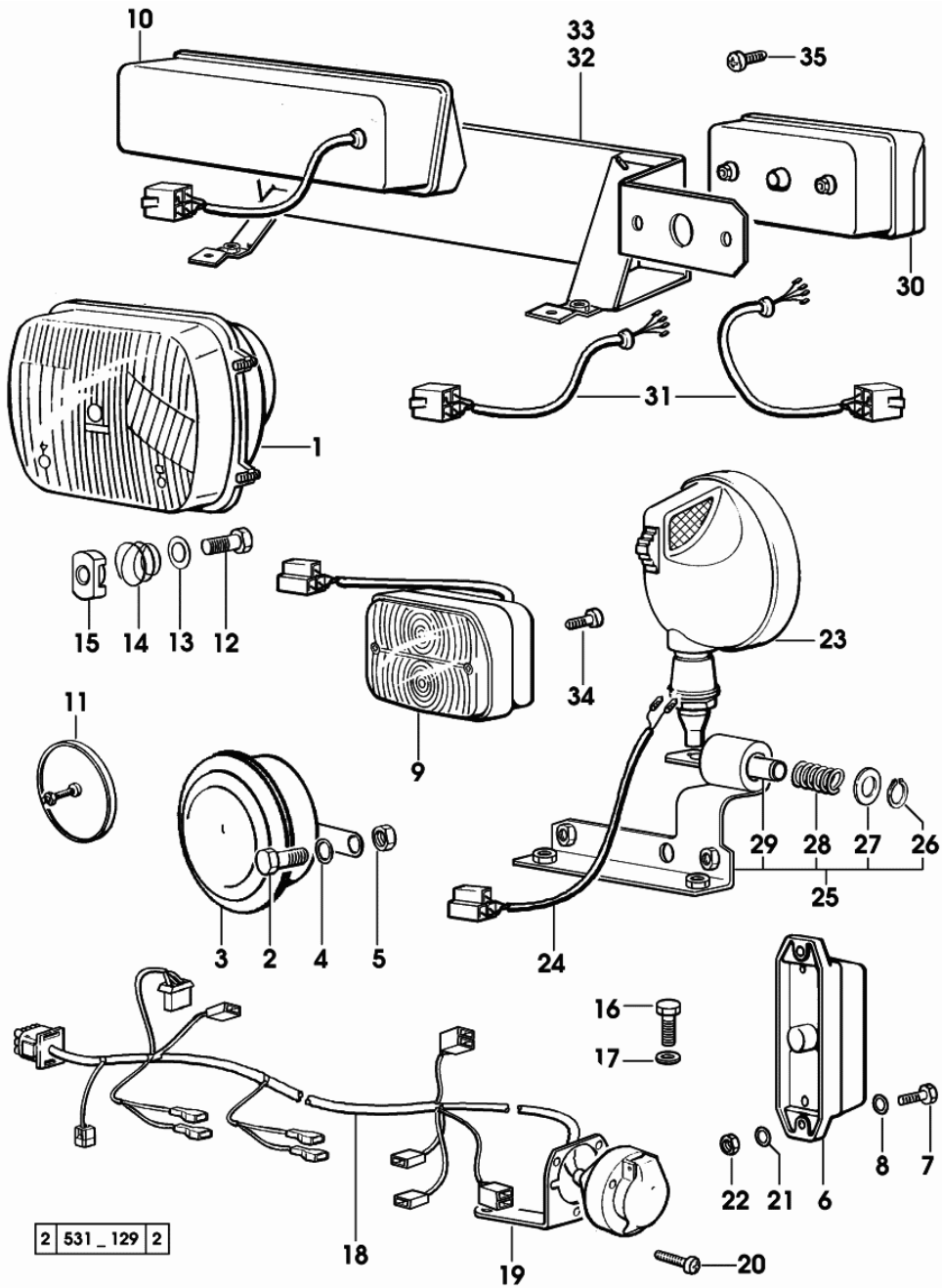


Fig.	Code	QTY	Name
33	0.007.7072.3	1	- WITH TYRES 31x13.50-15" - 44x18.00-20" bracket dx/rh/re
34	2.0332.406.0	4	- X 42HP
35	2.0332.306.2	4	- WITH TYRES 31x13.50-15" - 44x18.00-20" screw screw m 5x0.8x16

2 531_129 2

CLICK HERE TO **DOWNLOAD** THE COMPLETE MANUAL

- Thank you very much for reading the preview of the manual.
- You can download the complete manual from: www.heydownloads.com by clicking the link below



- Please note: If there is no response to CLICKING the link, please download this PDF first and then click on it.

CLICK HERE TO **DOWNLOAD** THE COMPLETE MANUAL

Section: ENGINE
CRANKCASE

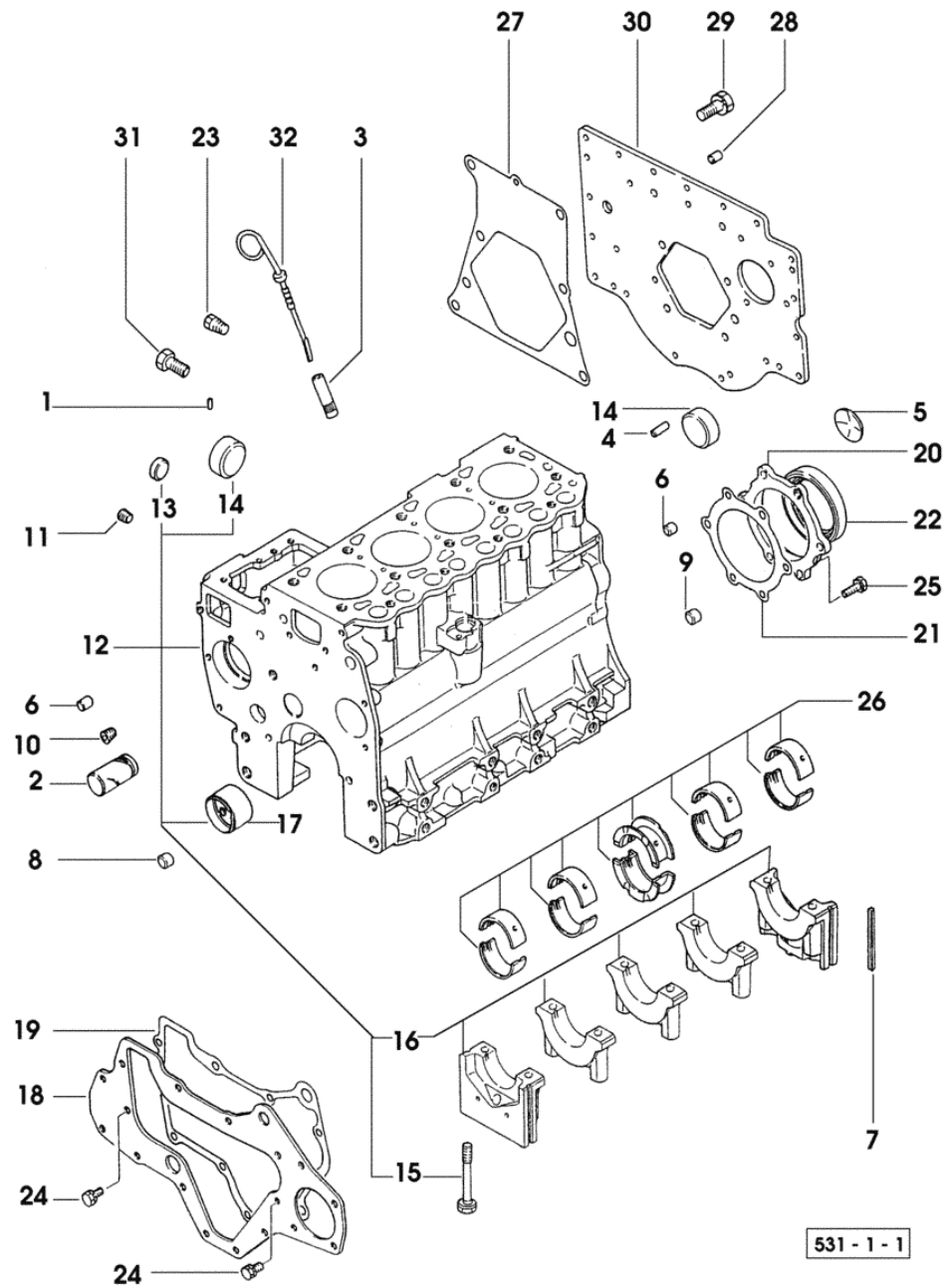


Fig.	Code	QTY	Name
1	0.009.4523.0	2	pin
2	0.009.4523.1	1	shaft
3	0.009.4523.2	1	guide
4	0.009.4524.0	1	pin
5	0.009.4524.1	1	expansion plug
6	0.009.4524.2	2	bushing
7	0.009.4525.0	4	gasket
8	0.009.4525.1	2	bushing
9	0.009.4525.2	1	bushing
10	0.009.4526.0	1	plug
11	0.009.4526.1	2	plug
12	0.009.4526.4	1	crankcase
12	0.009.4778.4	1	crankcase
13	0.009.4527.0	2	plug
14	0.009.4527.1	3	plug
15	0.009.4527.2	10	screw
16	0.000.0000.1	0	not serviceable
17	0.009.4528.0	1	bushing
18	0.009.4528.1	1	plate
19	0.009.4528.2	1	gasket
20	0.009.4529.0	1	flange
21	0.009.4529.1	1	gasket
22	0.009.4529.2	1	'o' ring
23	0.009.4530.0	1	plug
24	0.009.4530.1	3	screw
25	0.009.4530.2	6	screw
26	0.009.4531.0	1	main half bushing STANDARD
26	0.009.4531.1	1	main half bushing - mm 0.25
26	0.009.4531.2	1	main half bushing - mm 0.50
26	0.009.4532.0	1	main half bushing - mm 0.75
27	0.009.4532.1	1	gasket
28	0.009.4532.2	1	pin
29	0.009.4533.0	6	screw
30	0.008.6506.0/40	1	plate
31	0.009.4533.1	4	screw
32	0.009.4533.2	1	level indicator

531 - 1 - 1

INJECTOR NOZZLE HOLDER COMPONENTS

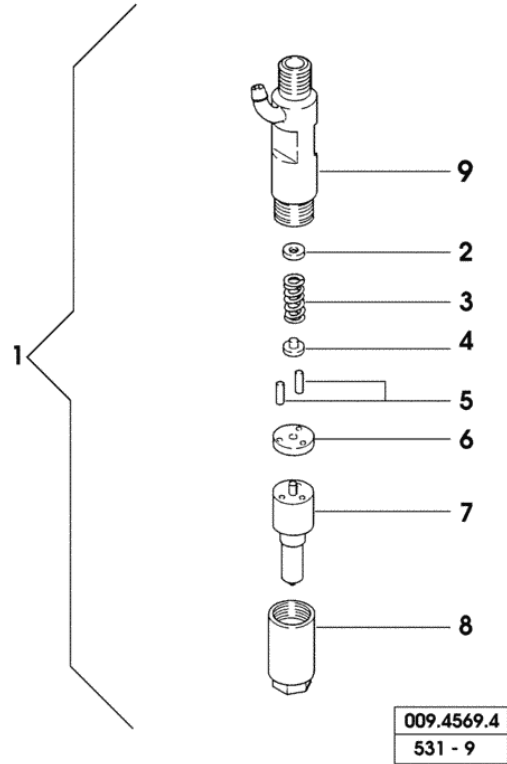


Fig.	Code	QTY	Name
1	0.009.4569.4	1	injector
2	0.009.4612.0	0	washer mm 0.95
2	0.009.4600.1	0	washer mm 1.00
2	0.009.4600.2	0	washer mm 1.05
2	0.009.4601.0	0	washer mm 1.10
2	0.009.4601.1	0	washer mm 1.15
2	0.009.4601.2	0	washer mm 1.20
2	0.009.4602.0	0	washer mm 1.25
2	0.009.4608.1	0	washer mm 1.275
2	0.009.4602.1	0	washer mm 1.30
2	0.009.4608.2	0	washer mm 1.325
2	0.009.4602.2	0	washer mm 1.35
2	0.009.4609.0	0	washer mm 1.375
2	0.009.4603.0	0	washer mm 1.40
2	0.009.4609.1	0	washer mm 1.425
2	0.009.4603.1	0	washer mm 1.45
2	0.009.4609.2	0	washer mm 1.475
2	0.009.4603.2	0	washer mm 1.50
2	0.009.4610.0	0	washer mm 1.525
2	0.009.4604.0	0	washer mm 1.55
2	0.009.4610.1	0	washer mm 1.575
2	0.009.4604.1	0	washer mm 1.60
2	0.009.4610.2	0	washer mm 1.625
2	0.009.4604.2	0	washer mm 1.65
2	0.009.4611.0	0	washer mm 1.675
2	0.009.4605.0	0	washer mm 1.70
2	0.009.4611.1	0	washer mm 1.725
2	0.009.4605.1	0	washer mm 1.75
2	0.009.4611.2	0	washer mm 1.775
2	0.009.4605.2	0	washer mm 1.80
2	0.009.4606.0	0	washer mm 1.85
2	0.009.4606.1	0	washer mm 1.90
2	0.009.4606.2	0	washer mm 1.95
2	0.009.4607.0	0	washer mm 2.00
2	0.009.4607.1	0	washer mm 2.05
2	0.009.4607.2	0	washer mm 2.10
2	0.009.4608.0	0	washer mm 2.15
3	0.009.4612.1	1	spring
4	0.009.4612.2	1	pin
5	0.009.4613.0	2	pin
6	0.009.4613.1	1	gasket
7	0.009.4613.2	1	nozzle
8	0.009.4614.0	1	nut
9	0.000.0000.1	0	not serviceable

P.T.O. FRONT

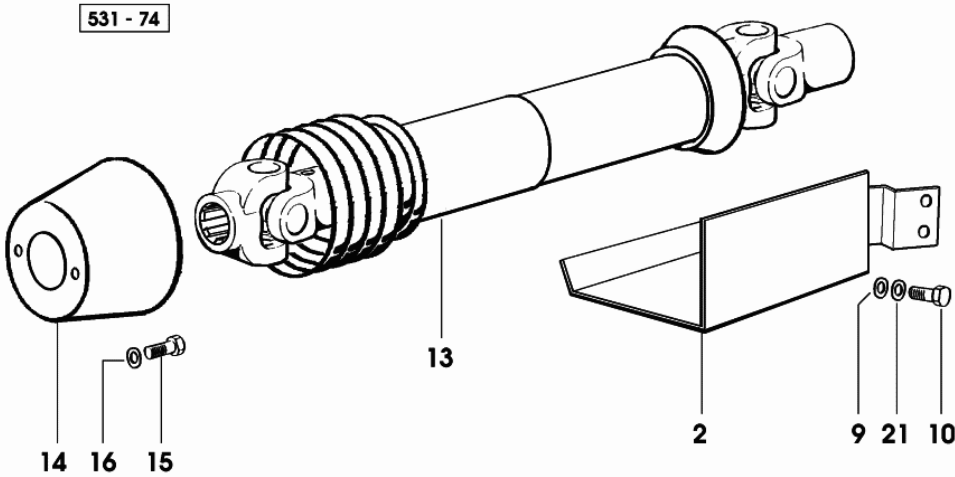
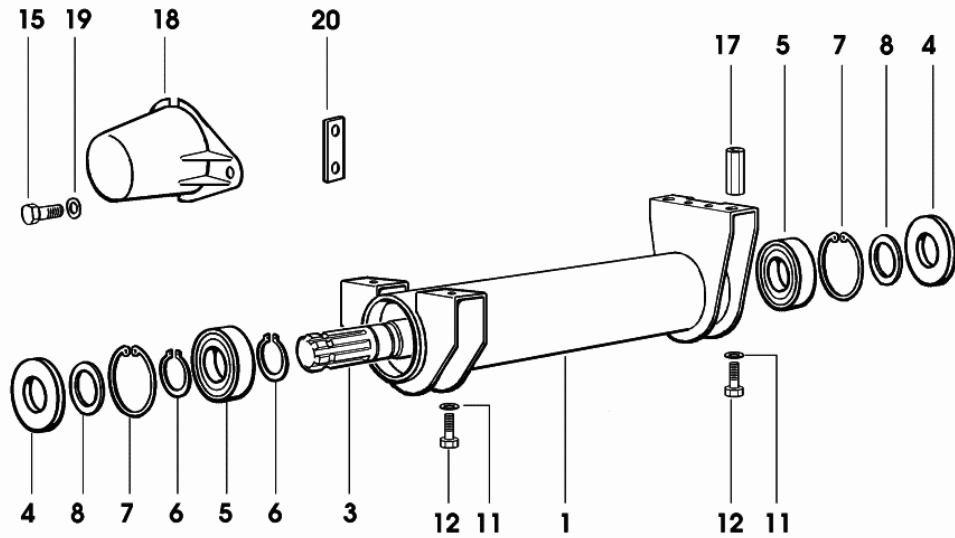


Fig.	Code	QTY	Name
1	0.008.7886.3/10	1	tube
2	0.008.7899.2/10	1	shield
3	0.008.7753.0/10	1	transmission shaft
4	2.1549.081.0	2	spacer
5	2.2999.255.0	2	bearing
6	2.1410.010.1	2	circlip 25
7	2.1411.021.1	2	circlip 52
8	2.1579.553.0	6	spacer 25x39x1
9	2.1475.041.7	2	washer 8.2x16.2
10	2.0112.205.2	2	screw m 8 p.1.25 x 16
11	2.1475.203.7	4	washer 10.5
12	2.0112.305.2	4	screw m 10 p.1.5 x 16
13	0.007.7094.4	1	p.t.o.shaft - X 25HP ☞ 0.007.7094.4
13	0.007.7095.4	1	p.t.o.shaft - X 35HP ☞ 0.007.7095.4
13	0.007.7096.4	1	p.t.o.shaft - X 42HP ☞ 0.007.7096.4
14	0.008.7904.0	1	guard
15	2.0112.205.2	3	screw m 8 p.1.25 x 16
16	2.1312.004.2	2	washer 8.4
17	0.008.7892.0/10	2	spacer
18	0.008.7891.0/10	1	guard P.T.O.
19	2.1475.041.7	1	washer 8.2x16.2
20	0.009.6263.0	1	small plate
21	2.1310.004.2	2	flat washer 8.5

4WD - STANDARD FRONT DRIVE AXLE

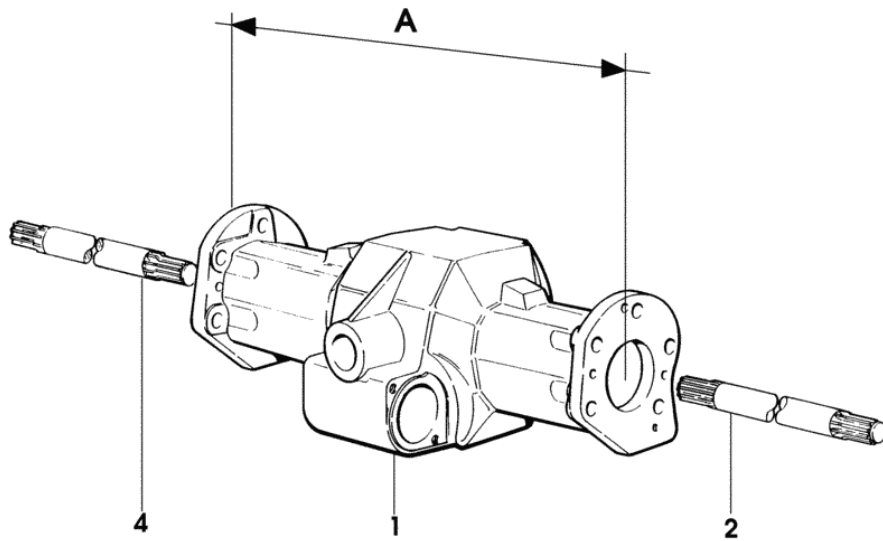
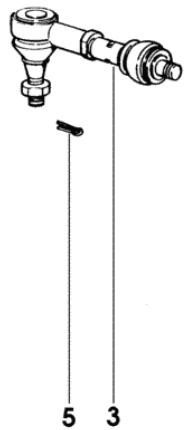
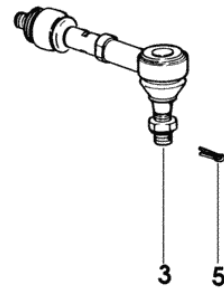


Fig.	Code	QTY	Name
1	0.008.7674.0/10	1	front axle A = mm 584
2	0.008.7719.0	1	half-shaft mm 320
3	0.008.7720.4/20	2	ball joint ☞ 0.008.7720.4/20
4	0.008.7719.0	1	half-shaft mm 320
4	0.008.7768.0/10	1	half-shaft mm 320 - WITHOUT DIFFERENTIAL LOCK
5	2.1690.310.2	2	split pin 3.2 x 25 - WITH DIFFERENTIAL LOCK



531 - 62



Section: FRONT AXEL
4WD - TRANSMISSION SHAFT

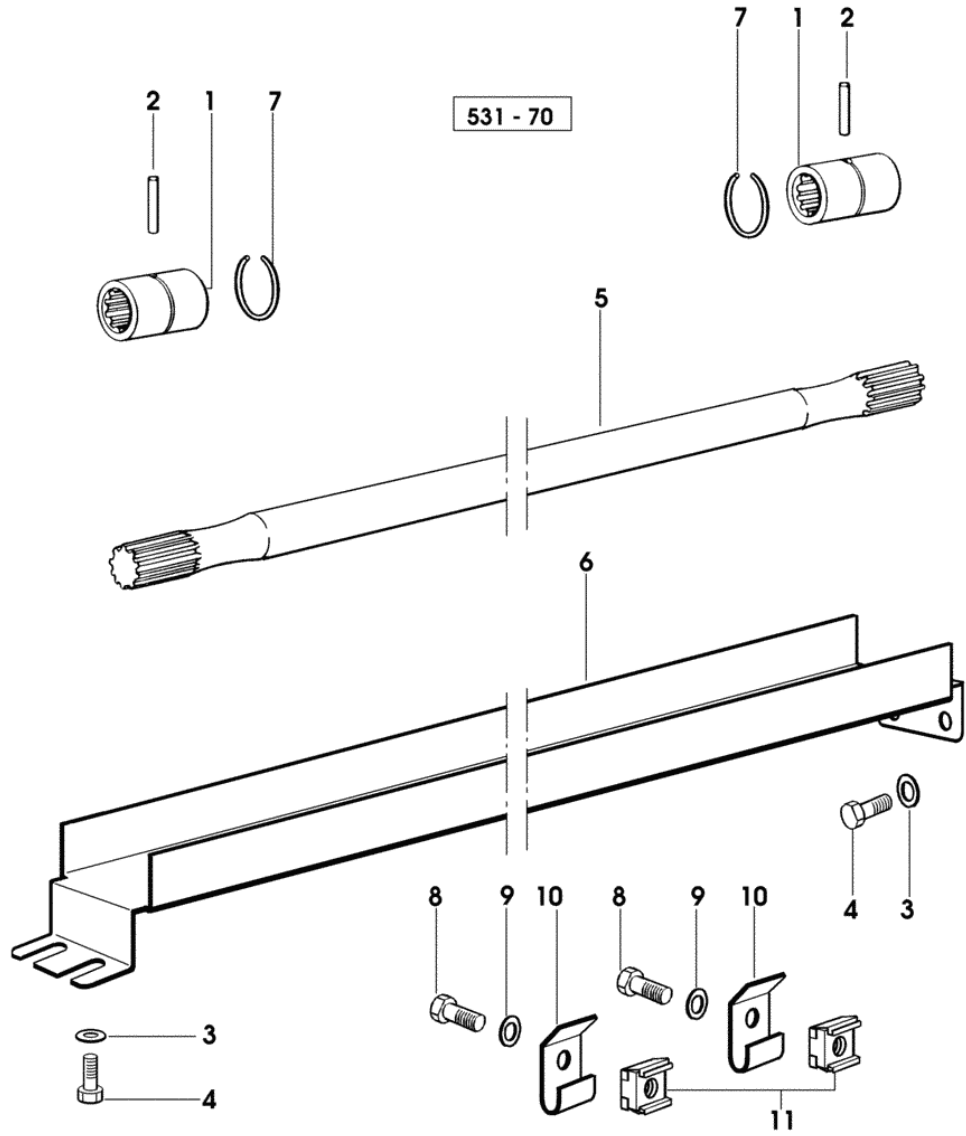


Fig.	Code	QTY	Name
8	2.0112.005.2	2	screw m 6 p.1 x 16
9	2.1472.003.2	4	washer 6, d128
10	0.261.6350.0	2	clamp
11	2.6999.003.2	2	special nut m 6
			- X 35HP AIRCOOLED ENGINE
			- X 35HP AIRCOOLED ENGINE

Section: FRONT HYDRAULIC POWER-LIFT
FRONT HYDRAULIC POWER-LIFT

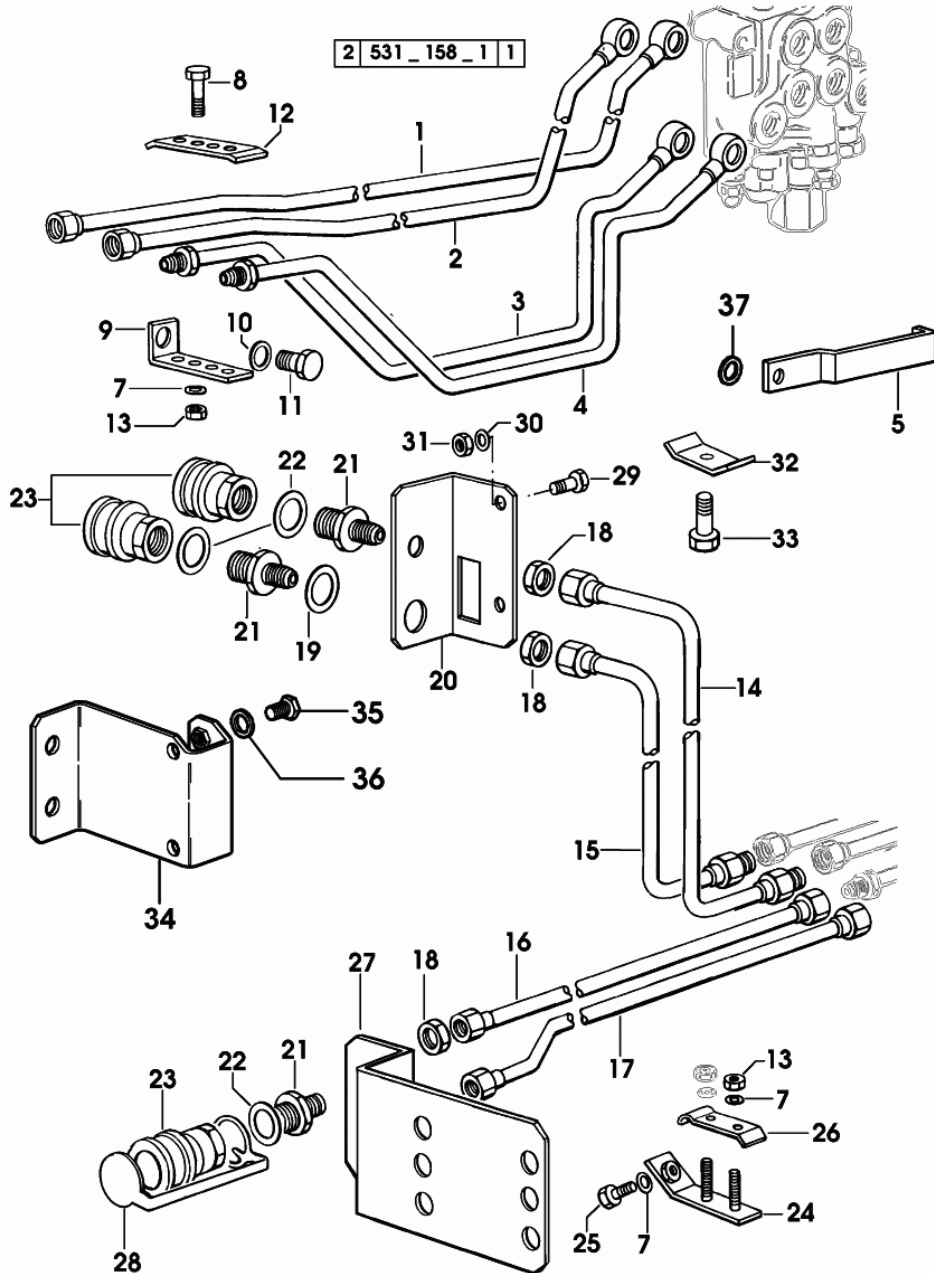


Fig.	Code	QTY	Name
------	------	-----	------

Notes:

-> 1352 X 25HP -> 3005 X 35HP WATERCOOLED ENGINE -> 1865 X 35HP AIRCOOLED ENGINE -> 1627 X 42HP

1	0.007.6223.3	1	tube (...) <- X 25HP - 35HP
1	0.010.5486.3	1	tube -> (...) X 25HP - 35HP
1	0.007.7440.3	1	tube (...) <- X 42HP
1	0.010.6699.3	1	tube -> (...) X 42HP
2	0.007.6225.3	1	tube (...) <- X 25HP - 35HP
2	0.010.5487.3	1	tube -> (...) X 25HP - 35HP
2	0.007.7441.3	1	tube (...) <- X 42HP
2	0.010.6698.3	1	tube -> (...) X 42HP
3	0.007.6227.3	1	tube (...) <- X 25HP - 35HP
3	0.010.5488.3	1	tube -> (...) X 25HP - 35HP
3	0.007.7442.3	1	tube (...) <- X 42HP
3	0.010.6700.3	1	tube -> (...) X 42HP
4	0.007.6229.3	1	tube (...) <- X 25HP - 35HP
4	0.010.5489.3	1	tube -> (...) X 25HP - 35HP
4	0.007.7443.3	1	tube (...) <- X 42HP
4	0.010.6701.3	1	tube -> (...) X 42HP
5	0.010.5453.0	1	bracket
7	2.1470.002.2	10	washer 6, d128
8	2.0112.009.2	8	screw m 6 p.1 x 25
9	0.009.6134.0	1	bracket
10	2.1475.004.7	1	washer 13 x 24
11	2.0112.405.2	1	screw m 12 p.1.75x16
12	0.009.6135.0	1	bracket
13	2.1011.103.2	6	nut m 6 p.1

Section: GEAR

INDEPENDENT CLUTCH CONTROL FOR P.T.O.

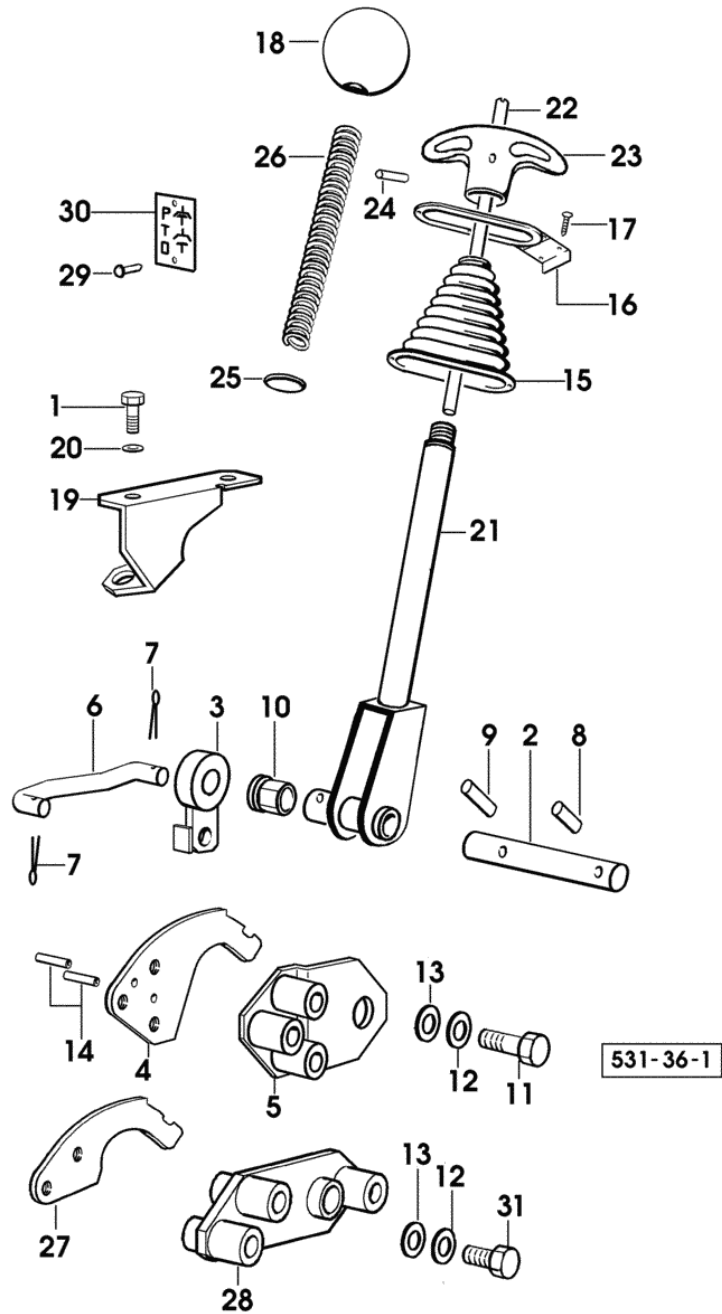
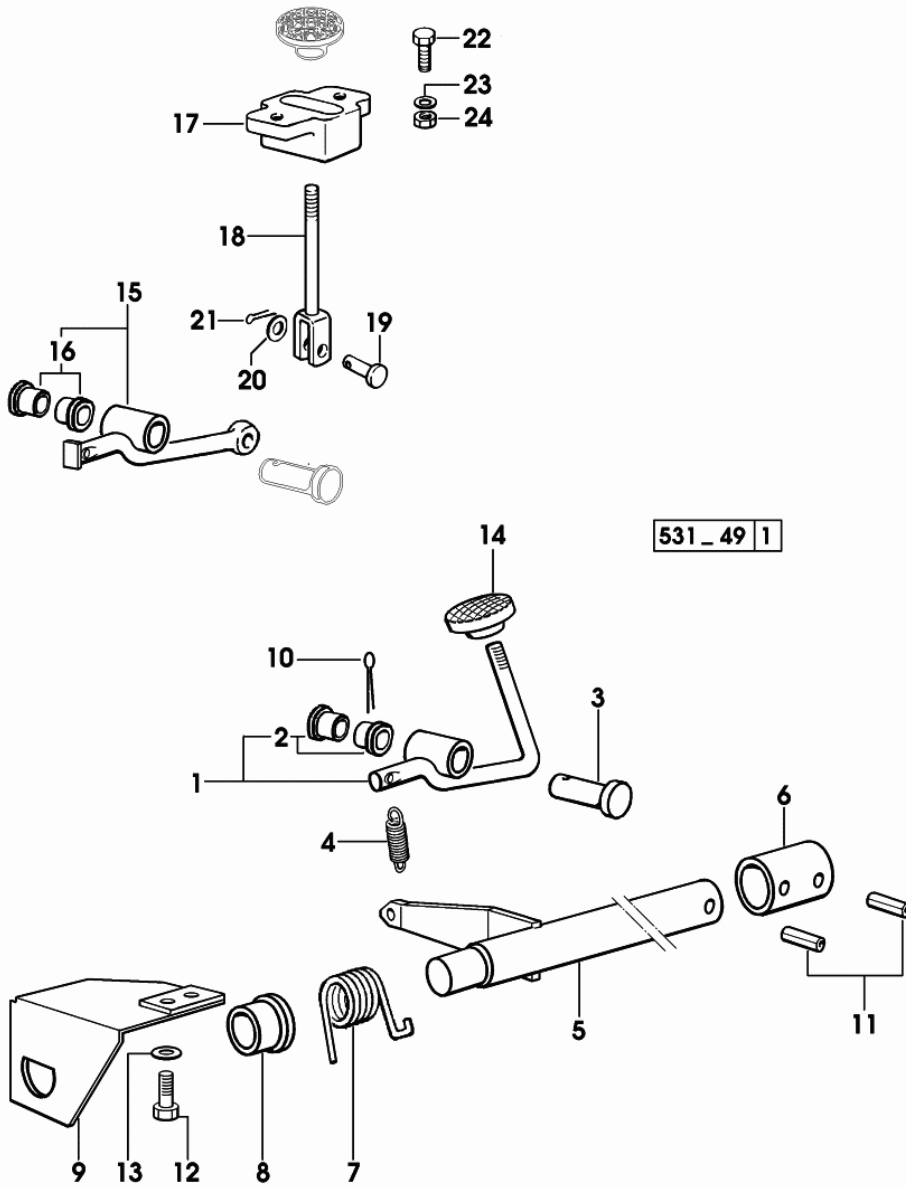


Fig.	Code	QTY	Name
			-> 2889 X 35HP WATERCOOLED ENGINE
			-> 1627 X 35HP AIRCOOLED ENGINE
29	2.1855.010.0	2	rivet 3.4
30	2.9929.355.0	1	plate
31	2.0112.307.2	1	screw m 10 p.1.5 x 20

Section: GEAR
DIFFERENTIAL LOCK CONTROL

Fig.	Code	QTY	Name
1	0.008.7399.4/10	1	lever (...) <-
2	2.1559.147.0	2	bushing 10 x 28 x 18
3	2.1670.414.2	1	pin 10x50x46.5
4	2.4049.174.2/10	1	spring
5	0.008.7403.3	1	rod - X 25HP - 35HP
5	0.008.7699.3	1	rod - X 42HP
6	0.008.6482.0/10	1	sleeve
7	2.4099.071.0/10	1	spring
8	2.1559.277.0	1	bushing 14.1x20x10
9	0.008.7406.3/20	1	support
10	2.1690.310.2	1	split pin 3.2 x 25
11	2.1630.713.0	2	roll pin 8x32
12	2.0112.308.2	2	screw m 10 p.1.5x22
13	2.1475.003.7	2	washer 10.5
14	0.008.7402.0	1	pedal
15	0.007.6866.4	1	lever -> (...)
16	2.1559.147.0	2	bushing 10 x 28 x 18
17	0.009.7657.0/10	1	guide
18	0.009.7656.2/20	1	rod
19	2.1672.306.2	1	pin 8x24
20	2.1310.004.2	1	flat washer 8.5
21	2.1690.206.2	1	split pin 2x16
22	2.0020.106.2	2	screw
23	2.1330.002.0	2	washer
24	2.1011.103.2	2	nut m 6 p.1



SOLARIS 45

S.A.C.

GENERAL

POWER-LIFT CASE.....	0D.00.1
HYDRAULIC PUMP.....	0D.00.2
LIFTING.....	0D.00.4
CONTROL TIE RODS AND LEVERS.....	0D.00.5
REGULATING DISTRIBUTOR.....	0D.00.6
DISTRIBUTOR PARTS.....	0D.00.7
CONTROL TIE RODS AND LEVERS.....	0D.00.8
POWER-LIFT CASE.....	0D.00.9
HYDRAULIC PUMP.....	0D.00.10
HYDRAULIC PUMP PARTS.....	0D.00.12
HYDRAULIC PUMP PARTS.....	0D.00.13
LIFTING.....	0D.00.14
REGULATING DISTRIBUTOR.....	0D.00.15
CONTROL TIE RODS AND LEVERS.....	0D.00.16
CONTROL TIE RODS AND LEVERS.....	0D.00.17
CONTROL TIE RODS AND LEVERS.....	0D.00.19
SENSITIVE ELEMENTS.....	0D.00.21

Section: S.A.C.

CONTROL TIE RODS AND LEVERS

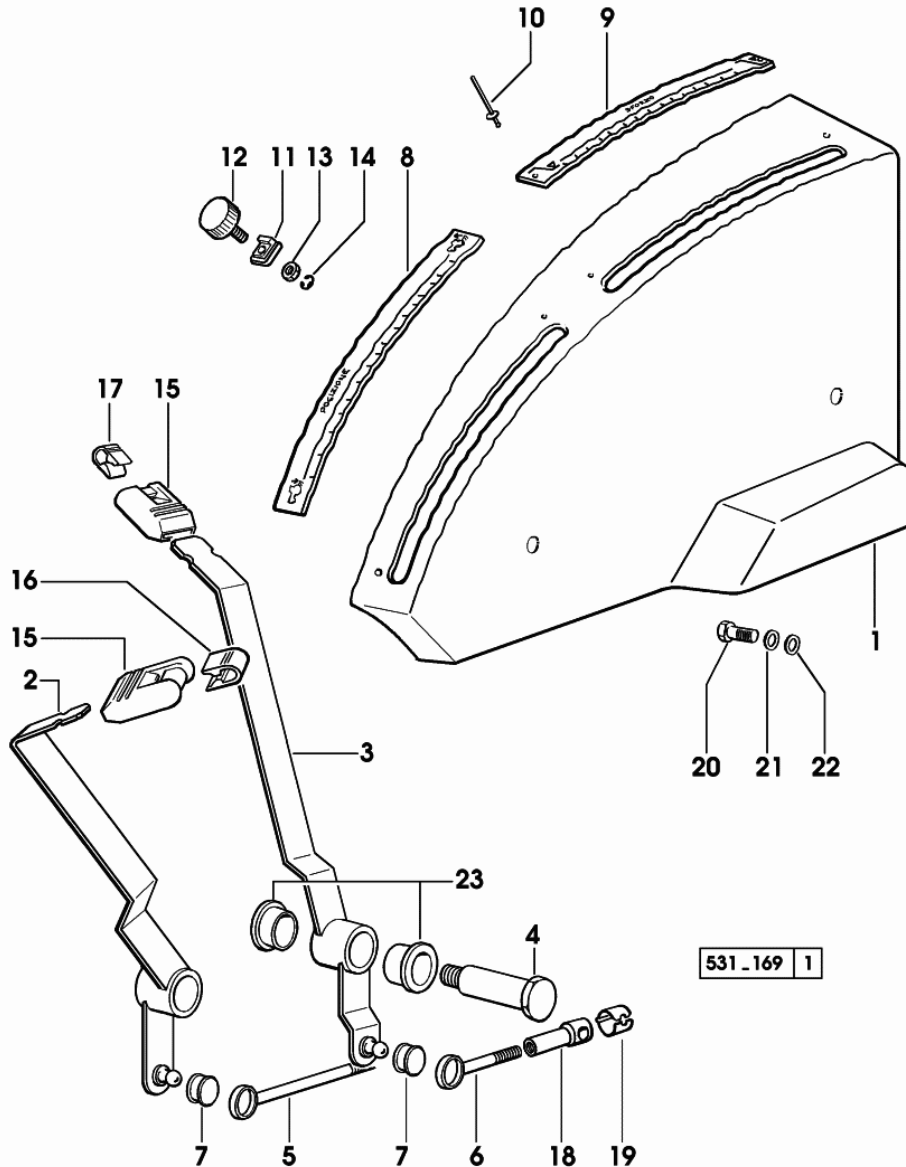


Fig.	Code	QTY	Name
------	------	-----	------

Notes:

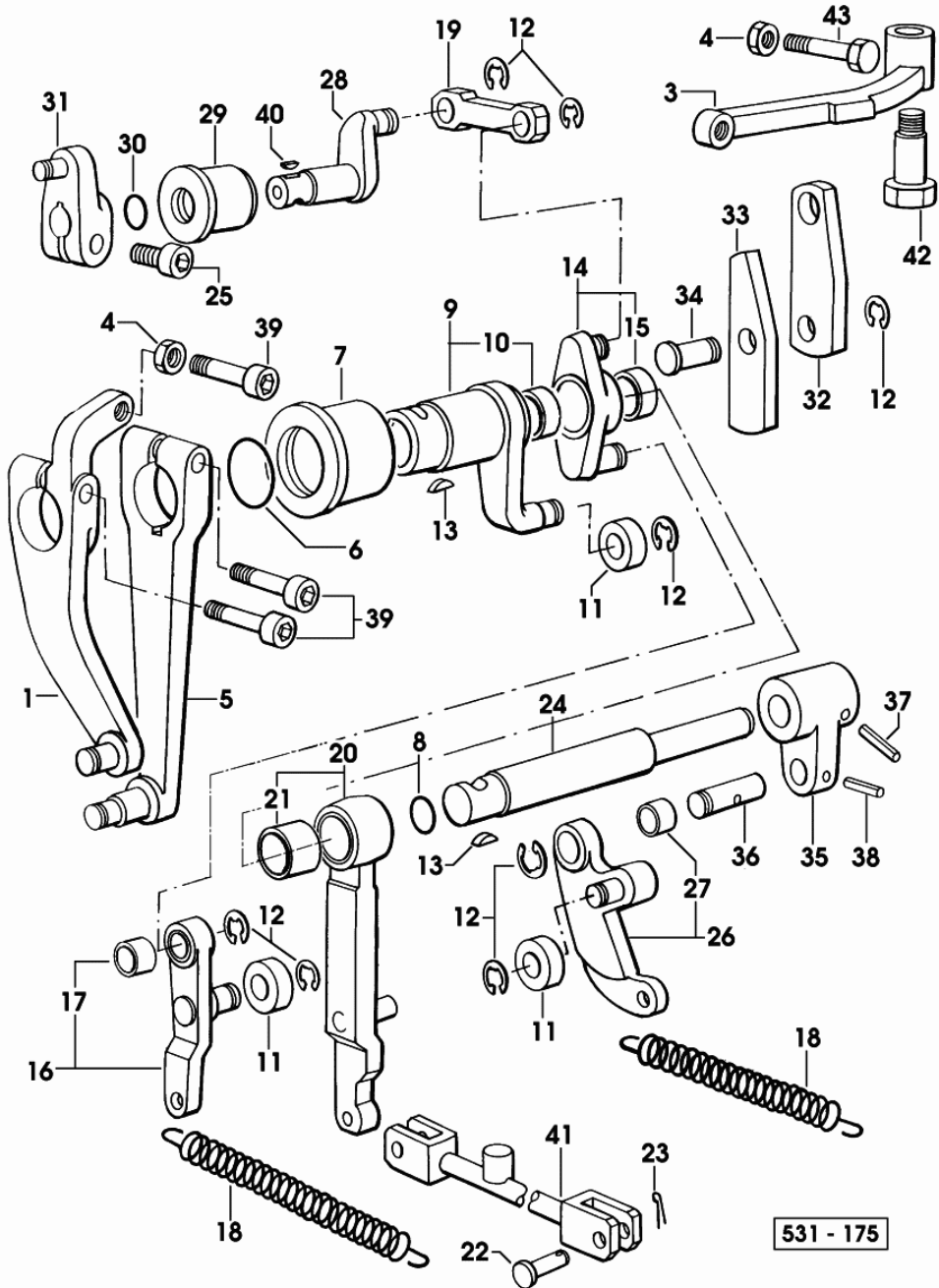
1351 <- X 25HP 3004 <- X 35HP WATERCOOLED ENGINE 1864 <- X 35HP AIRCOOLED ENGINE 1626 <- X 42HP

1	0.008.7688.3/20	1	console - X 25HP - 35HP
1	0.008.7689.3/20	1	console - X 42HP
2	0.008.7452.3/10	1	lever - X 25HP - 35HP
2	0.008.7707.3/10	1	lever - X 42HP
3	0.008.7451.3/10	1	lever - X 25HP - 35HP
3	0.008.7703.3/10	1	lever - X 42HP
4	0.008.7544.0	2	pin
5	0.008.7649.2/10	1	rod - X 25HP - 35HP
5	0.008.7709.2/10	1	rod - X 42HP
6	0.008.7648.2/10	1	rod - X 25HP - 35HP
6	0.008.7708.2/10	1	rod - X 42HP
7	0.255.6454.0	2	pin seat
8	0.008.7686.0	1	plate
9	0.008.7687.0	1	plate
10	2.1899.039.0	4	rivet 4.8x15.9x10.5
11	0.009.0136.0	2	slider
12	0.009.0133.3/10	2	knob
13	2.1011.105.2	2	nut m 8 p.1.25
14	2.1430.008.7	2	circlip 7
15	0.007.5561.0	2	knob
16	0.008.8383.0	1	coupling
17	0.008.8384.0	1	coupling
18	0.150.6759.0	2	head
19	0.257.6757.0	2	spring
20	2.0112.005.2	4	screw m 6 p.1 x 16
21	2.1472.003.2	4	washer 6, d128
22	2.1310.002.2	4	washer 6.6, d125
23	2.1559.276.0/10	4	bushing 16x20x15

Section: S.A.C.

CONTROL TIE RODS AND LEVERS

Fig.	Code	QTY	Name
42	2.0239.004.0/10	1	screw
43	2.0512.114.1	1	screw m 6 x 35



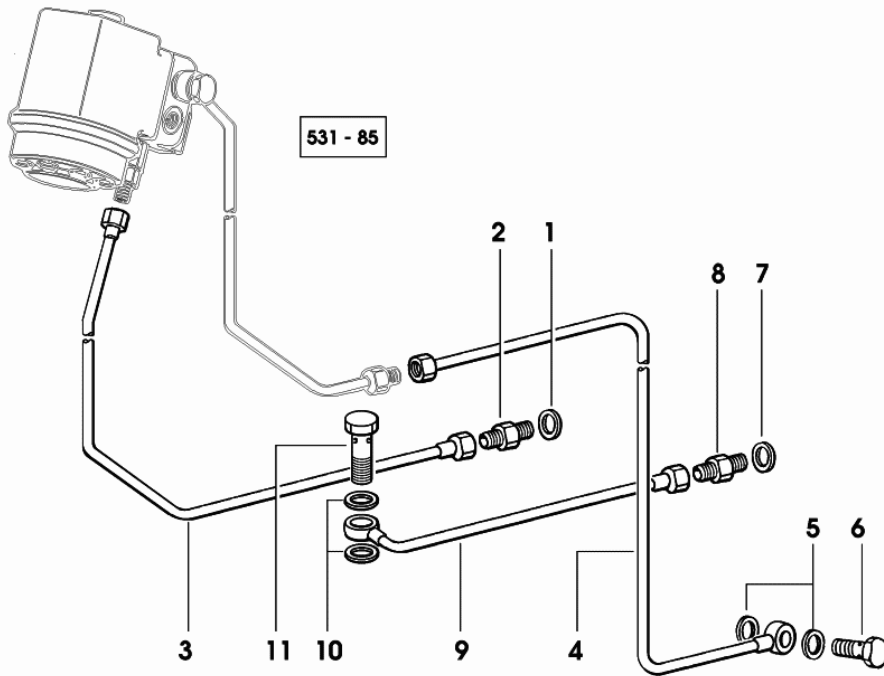
531 - 175

POWER STEERING

Fig.	Code	QTY	Name
------	------	-----	------

Notes:

1864 <- X 35HP 1626 <- X 42HP



1	2.1560.012.0	1	gasket 16.2 x 22 x 1.5
2	2.3261.007.2	1	pipe fitting m 16 p.1.5-9/16"
3	0.008.7191.3	1	tube - X 35HP AIRCOOLED ENGINE
3	0.008.7671.3	0	tube - X 42HP
4	0.008.7666.3/20	1	tube - X 35 HP AIRCOOLED ENGINE
4	0.008.7673.3/20	1	tube - X 42HP
5	2.1560.010.0	2	gasket 14.2 x 20 x 1.5
6	2.3335.006.2	2	pipe union m 14 p.1.5x24
7	2.1560.010.0	1	gasket 14.2 x 20 x 1.5
8	2.3261.005.2	1	pipe fitting m 14 p.1.5-1/2"
9	0.008.7665.3/10	1	tube - X 35 HP AIRCOOLED ENGINE
9	0.008.7672.3/10	1	tube - X 42HP
10	2.1560.008.0	2	gasket 12.2 x 18
11	2.3335.005.2	1	pipe union m 12 p.1.5 x 24

CLICK HERE TO **DOWNLOAD** THE COMPLETE MANUAL

- Thank you very much for reading the preview of the manual.
- You can download the complete manual from: www.heydownloads.com by clicking the link below



- Please note: If there is no response to CLICKING the link, please download this PDF first and then click on it.

CLICK HERE TO **DOWNLOAD** THE COMPLETE MANUAL