

# SOLARIS 35 WIND

## ACCESSORIES

### GENERAL

|                                  |                   |
|----------------------------------|-------------------|
| 4-WAY AUXILIARY DISTRIBUTOR..... | 0E.00.2           |
| HYDRAULIC PUMP PARTS.....        | 0E.00.3           |
| 4-WAY AUXILIARY DISTRIBUTOR..... | 0E.00.5           |
| 4-WAY AUXILIARY DISTRIBUTOR..... | 0E.00.6           |
| 4-WAY AUXILIARY DISTRIBUTOR..... | 0E.00.7           |
| 4-WAY AUXILIARY DISTRIBUTOR..... | 0E.00.8           |
| HYDRAULIC DISTRIBUTOR-PARTS..... | 0E.00.9           |
| HYDRAULIC DISTRIBUTOR-PARTS..... | 0E.00.10          |
| DISTRIBUTOR CONTROL.....         | 0E.00.11          |
| DISTRIBUTOR CONTROL.....         | 0E.00.12          |
| DISTRIBUTOR CONTROL.....         | 0E.00.13          |
| 3 POINT HITCH.....               | 0E.00.14          |
| 3 POINT HITCH.....               | 0E.00.15          |
| 3 POINT HITCH.....               | 0E.00.16          |
| 3 POINT HITCH.....               | 0E.00.18          |
| TOWING BAR.....                  | 0E.00.19          |
| REAR TOWING HITCH.....           | 0E.00.20          |
| FRONT TOWING HITCH.....          | 0E.00.21          |
| FRONT TOWING HITCH.....          | 0E.00.22          |
| REAR OSCILLATING HITCH.....      | 0E.00.23          |
| BALLAST.....                     | 0E.00.24          |
| BALLAST.....                     | 0E.00.25          |
| PNEUMATIC TRAILER BRAKING.....   | 0E.00.26          |
| PNEUMATIC TRAILER BRAKING.....   | 0E.00.27          |
| TOOL POUCH.....                  | 0E.00.28          |
| ENGAGEMENT.....                  | 0.98308.50.3/10.A |

CLICK HERE TO **DOWNLOAD** THE COMPLETE MANUAL

- Thank you very much for reading the preview of the manual.
- You can download the complete manual from: [www.heydownloads.com](http://www.heydownloads.com) by clicking the link below

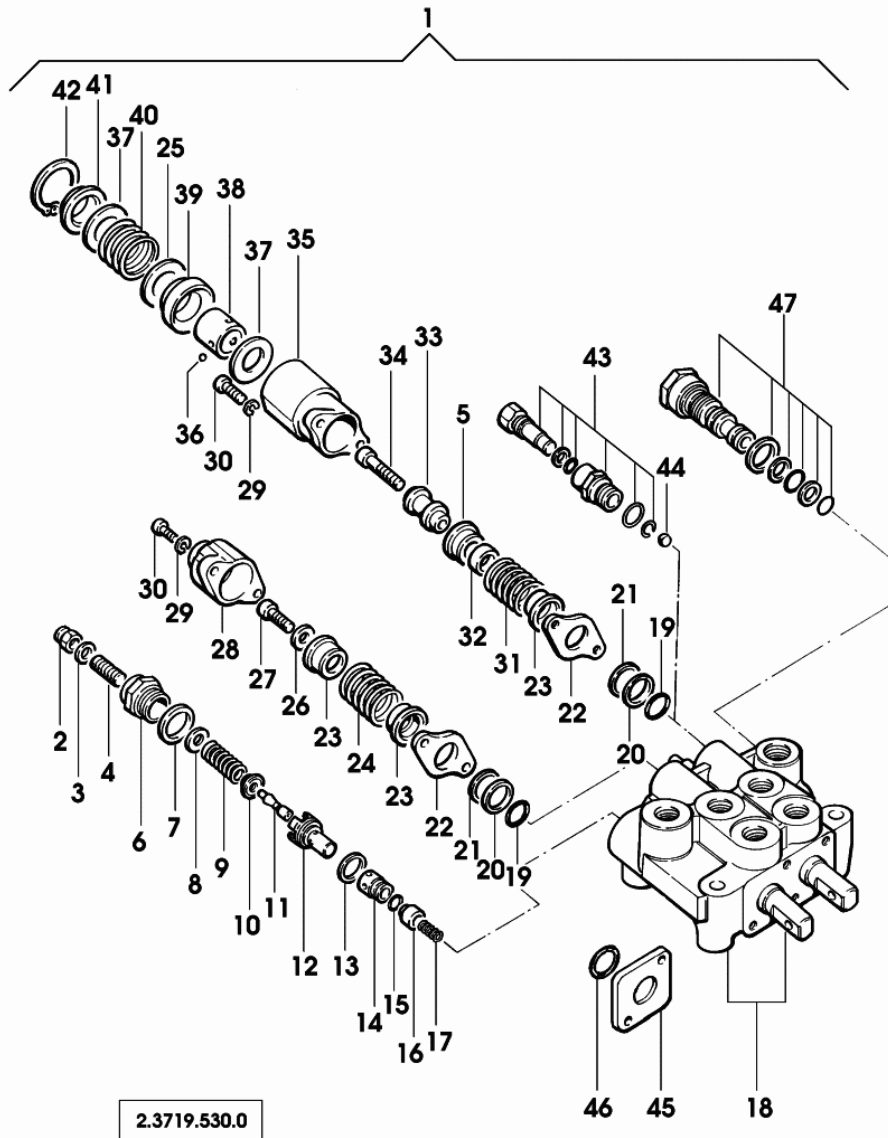


- Please note: If there is no response to CLICKING the link, please download this PDF first and then click on it.

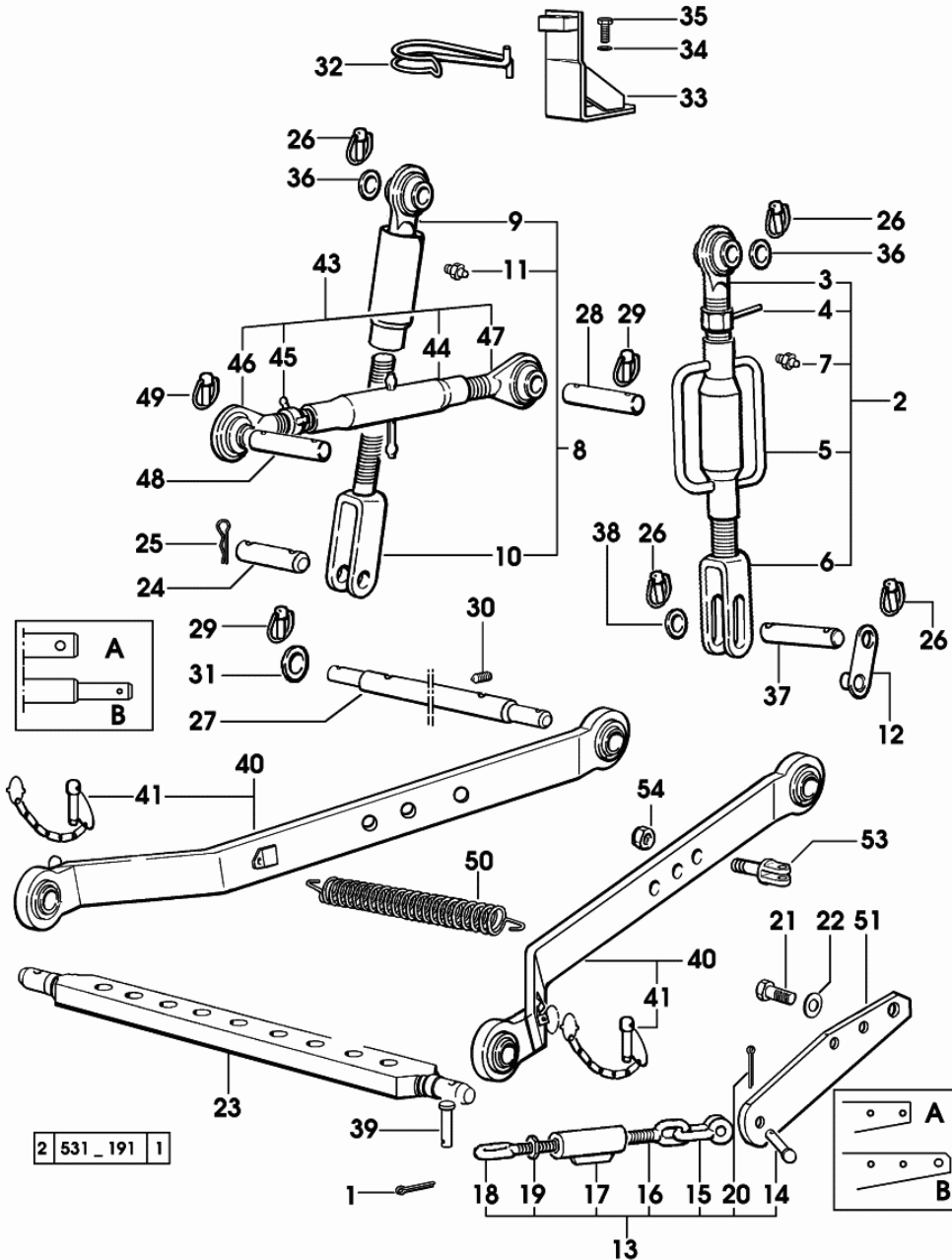
CLICK HERE TO **DOWNLOAD** THE COMPLETE MANUAL

**HYDRAULIC DISTRIBUTOR-PARTS**

| Fig. | Code         | QTY | Name                |
|------|--------------|-----|---------------------|
| 44   | 2.2810.009.0 | 1   | ball mm 11.906      |
| 45   | 0.009.4462.2 | 1   | shim                |
| 46   | 2.1530.044.0 | 1   | 'o' ring 17.17x1.78 |
| 47   | 0.009.4177.1 | 1   | accessories         |



**3 POINT HITCH**

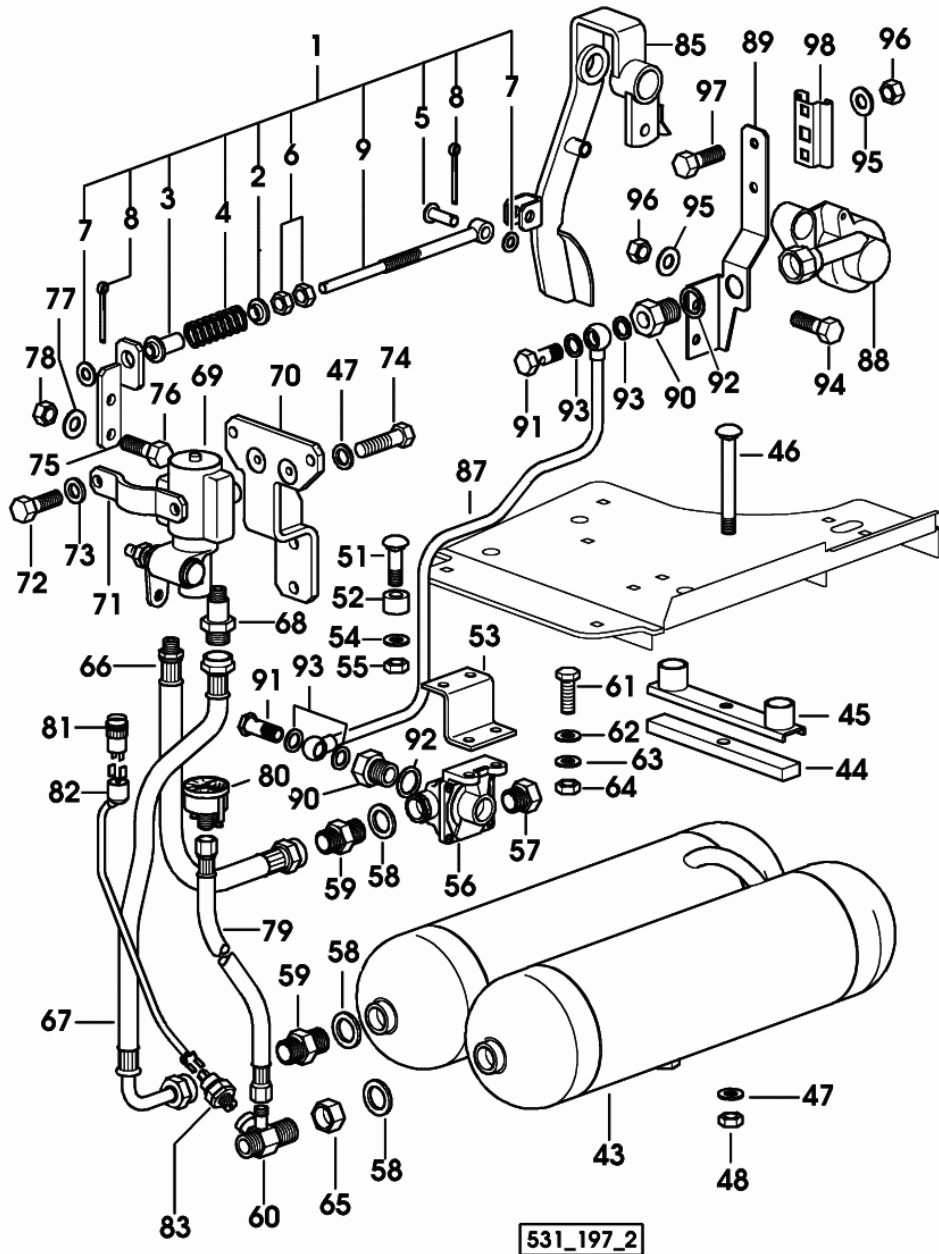


| Fig. | Code | QTY | Name |
|------|------|-----|------|
|------|------|-----|------|

Notes:  
- FOR MODELS WITH WIDENED FRONT AXLE

|                  |                 |   |                               |
|------------------|-----------------|---|-------------------------------|
| 1                | 2.1690.510.2    | 1 | split pin 5x25                |
| 2                | 0.009.7998.4/10 | 1 | adjustable tensioner dx/rh/re |
| 3                | 0.009.7999.3    | 1 | top link dx/rh/re             |
| 4                | 0.007.6070.3    | 1 | special nut                   |
| 5                | 0.007.6071.2/10 | 1 | rod                           |
| 6                | 0.007.6072.3/10 | 1 | rod                           |
| 7                | 2.3820.105.2    | 1 | lubricator m 10 p.1 x 7       |
| 8                | 0.010.4690.4    | 1 | adjustable tensioner sx/lh/li |
| 9                | 0.010.4691.3    | 1 | rod                           |
| 10               | 0.010.4693.3    | 1 | rod                           |
| 11               | 2.3820.105.2    | 1 | lubricator m 10 p.1 x 7       |
| 12               | 0.008.7640.2/10 | 1 | pin                           |
| 13               | 0.008.7615.4/10 | 2 | stabiliser                    |
| 14               | 2.1679.076.2    | 1 | pin 14                        |
| 15               | 0.96014.56.0    | 1 | fork                          |
| 16               | 0.008.7618.0/10 | 1 | tensioner sx/lh/li            |
| 17               | 0.008.7616.2/10 | 1 | sleeve                        |
| 18               | 0.008.7617.0/10 | 1 | tensioner dx/rh/re            |
| 19               | 2.1011.209.2    | 1 | nut m 16 p.2                  |
| 20               | 2.1690.510.2    | 1 | split pin 5x25                |
| 21               | 2.0112.411.2    | 4 | screw m 12 p.1.75 x 30        |
| 22               | 2.1310.007.2    | 4 | flat washer 13.5              |
| 23               | 0.96701.10.0/10 | 1 | draw bar                      |
| 24               | 2.1679.034.0/10 | 1 | pin 18x62x49                  |
| 25               | 2.1699.053.0    | 3 | roll pin m 4                  |
| 26               | 0.009.1725.3    | 4 | split pin                     |
| 27               | 0.010.9692.0    | 1 | shaft                         |
| * (...) <- = A   |                 |   |                               |
| - N.2 010.9666.2 |                 |   |                               |
| 28               | 2.1669.050.2    | 1 | pin 19x95                     |
| 29               | 0.010.9322.4    | 4 | pin Ø 11                      |
| 30               | 2.0532.205.1    | 1 | grain m 8 x 14                |
| 31               | 2.1599.627.0    | 6 | snoulder 22.5 x 35 x 6        |
| 32               | 0.467.5857.0    | 1 | spring                        |
| 33               | 0.008.7736.2/10 | 1 | bracket                       |
| 34               | 2.1472.005.2    | 2 | washer 8                      |
| 35               | 2.0112.205.2    | 2 | screw m 8 p.1.25 x 16         |
| 36               | 2.1599.019.0    | 2 | snoulder 19.5x31x2            |
| 37               | 2.1669.054.0    | 1 | pin                           |
| 38               | 2.1311.011.2    | 2 | flat washer 18                |
| 39               | 2.1679.076.2    | 2 | pin 14                        |

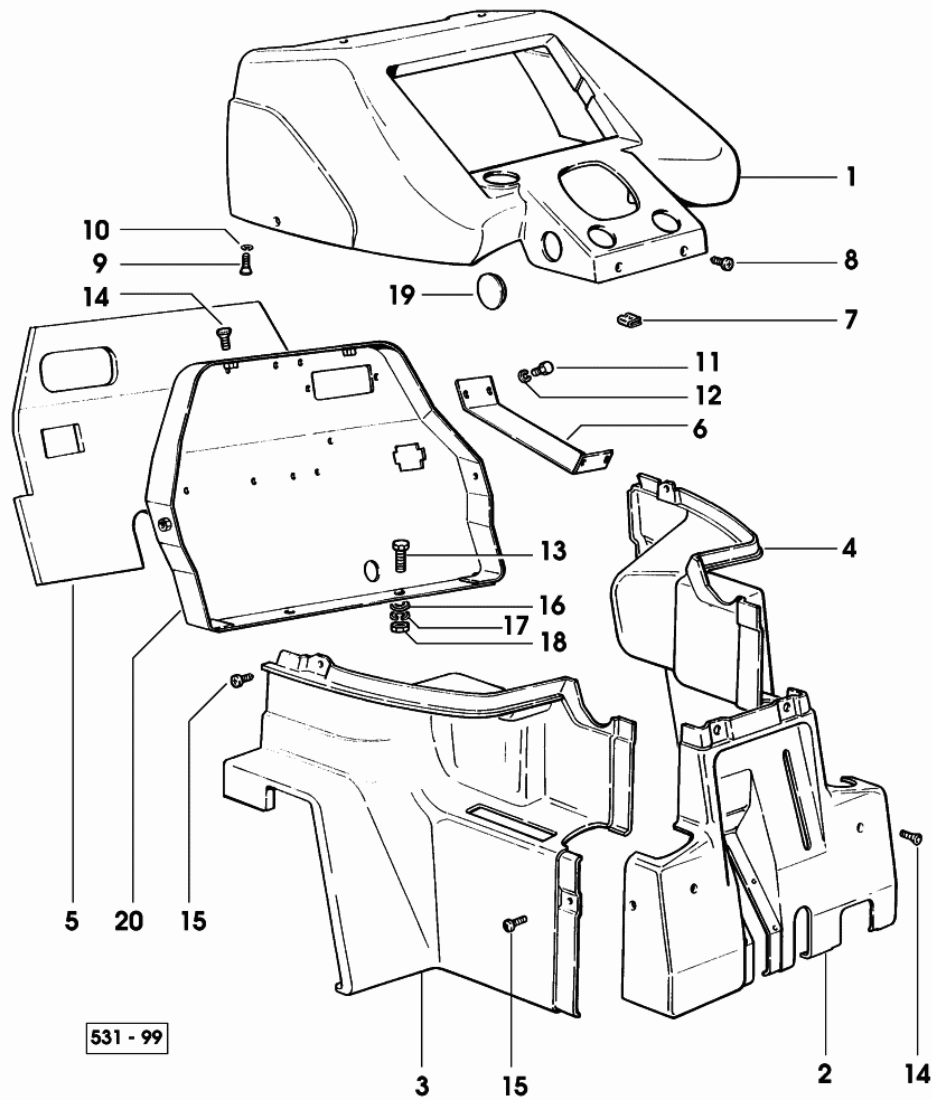
**PNEUMATIC TRAILER BRAKING**



| Fig. | Code         | QTY | Name                  |
|------|--------------|-----|-----------------------|
| 1    | 0.010.6658.4 | 1   | rod                   |
| 2    | 0.010.6660.0 | 1   | sleeve                |
| 3    | 0.010.6659.0 | 1   | sleeve                |
| 4    | 2.4019.658.2 | 1   | spring                |
| 5    | 2.1671.408.2 | 1   | pin 10x30             |
| 6    | 2.1011.107.2 | 2   | nut m 12 p.1.75       |
| 7    | 2.1311.007.2 | 2   | flat washer 10        |
| 8    | 2.1690.308.2 | 2   | split pin 3.2 x 20    |
| 9    | 0.010.6658.2 | 1   | rod                   |
| 43   | 0.010.6665.4 | 1   | accumulator           |
| 44   | 0.010.6664.0 | 2   | spacer                |
| 45   | 0.010.6663.2 | 2   | bracket               |
| 46   | 2.0029.506.2 | 2   | screw                 |
| 47   | 2.1474.010.2 | 4   | washer 10             |
| 48   | 2.1011.106.2 | 2   | nut m 10 p.1.5        |
| 51   | 2.0020.206.2 | 2   | screw m 8 p.1.25 x 25 |
| 52   | 2.1599.565.2 | 2   | shim 15 x 30 x 6      |
| 53   | 0.010.6673.0 | 1   | bracket               |
| 54   | 2.1474.009.2 | 2   | spring washer 8       |
| 55   | 2.1011.105.2 | 2   | nut m 8 p.1.25        |
| 56   | 0.010.7182.4 | 1   | valve                 |
| 57   | 2.3120.002.4 | 1   | plug m 22 x 1.5       |
| 58   | 2.1560.018.0 | 4   | gasket 22.2 x 29      |
| 59   | 2.3339.773.2 | 2   | pipe fitting          |
| 60   | 0.010.7035.4 | 1   | pipe fitting          |
| 61   | 2.0112.209.2 | 2   | screw m 8 p 1.25 x 25 |
| 62   | 2.1310.004.2 | 2   | flat washer 8.5       |
| 63   | 2.1470.004.2 | 2   | washer 8              |
| 64   | 2.1011.105.2 | 2   | nut m 8 p.1.25        |
| 65   | 2.1019.123.2 | 1   | nut m 22 p.1.5x10     |
| 66   | 0.010.7038.3 | 1   | tube                  |
| 67   | 0.010.7463.3 | 1   | tube                  |
| 68   | 2.3339.775.2 | 1   | pipe fitting          |
| 69   | 0.010.7299.4 | 1   | valve                 |
| 70   | 0.010.7297.2 | 1   | bracket               |
| 71   | 0.010.7298.0 | 1   | bracket               |
| 72   | 2.0332.406.2 | 2   | screw m 6 p.1.0 x 16  |
| 73   | 2.1474.007.2 | 2   | washer 6, d128        |
| 74   | 2.0112.321.2 | 2   | screw m 10 p.1.5 x 60 |
| 75   | 0.010.6672.2 | 1   | bracket               |
| 76   | 2.0112.309.2 | 1   | screw m 10 p.1.5 x 25 |
| 77   | 2.1470.006.2 | 1   | lock washer 10        |
| 78   | 2.1011.106.2 | 1   | nut m 10 p.1.5        |
| 79   | 0.010.7295.3 | 1   | tube                  |

Section: BODY WORK  
**DASHBOARD**

| Fig. | Code            | QTY | Name  |
|------|-----------------|-----|---|
| 1    | 0.008.7513.4/30 | 1   | instrument holder   |
| 1    | 0.010.6678.4    | 1   | instrument holder<br>- FOR TYPES WITH TRAILER AIR BRAKING |
| 2    | 0.009.6290.0/20 | 1   | division  |
| 3    | 0.008.7516.0/10 | 1   | lift hand side panel sx/lh/li                             |
| 4    | 0.008.7515.0/10 | 1   | right h.side panel dx/rh/re                               |
| 5    | 0.008.9964.0/10 | 1   | guard   |
| 6    | 0.008.7520.0    | 1   | rod   |
| 7    | 2.6819.020.0    | 2   | bracket   |
| 8    | 2.0351.555.3    | 2   | screw 4.8x16  |
| 9    | 2.0332.306.2    | 4   | screw m 5x0.8x16  |
| 10   | 2.1472.002.2    | 4   | washer 5  |
| 11   | 2.0112.005.2    | 4   | screw m 6 p.1 x 16  |
| 12   | 2.1475.001.7    | 4   | washer 6.4x12   |
| 13   | 2.0112.209.2    | 4   | screw m 8 p 1.25 x 25                                     |
| 14   | 2.0322.306.2    | 4   | screw m 5 x 16  |
| 15   | 2.0322.307.2    | 4   | screw m 5 x 20  |
| 16   | 2.1310.004.2    | 4   | flat washer 8.5   |
| 17   | 2.1499.117.2    | 4   | washer 8.4x14.4x2   |
| 18   | 2.1011.105.2    | 4   | nut m 8 p.1.25  |
| 19   | 0.009.0210.0/10 | 2   | plug 30 x 38 x 9.0  |
| 20   | 0.008.7519.3/20 | 1   | division  |



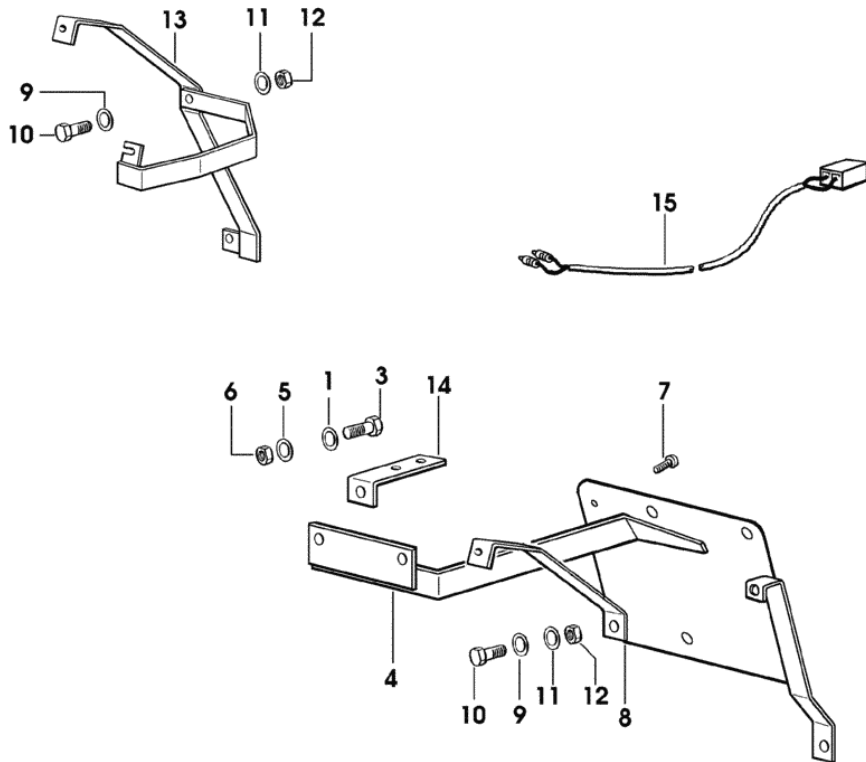
**LICENSE PLATE FRAME AND SUPPORT**

| Fig. | Code | QTY | Name |
|------|------|-----|------|
|------|------|-----|------|

**Notes:**

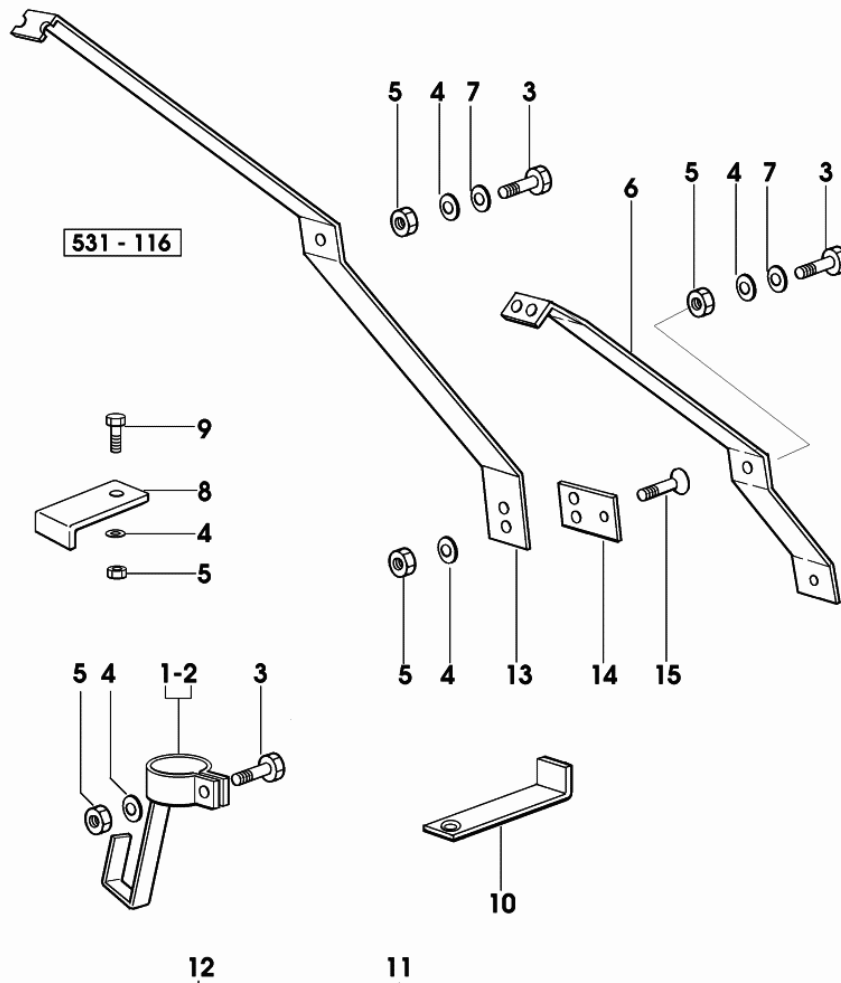
-> 3216

|    |                 |   |                       |
|----|-----------------|---|-----------------------|
| 1  | 2.1310.004.2    | 2 | flat washer 8.5       |
| 3  | 2.0112.207.2    | 2 | screw m 8 p 1.25 x 20 |
| 4  | 0.011.6176.3    | 1 | plate holder          |
| 5  | 2.1470.004.2    | 2 | washer 8              |
| 6  | 2.1011.105.2    | 2 | nut m 8 p.1.25        |
| 7  | 2.0332.303.3    | 4 | screw m 5x10          |
| 8  | 0.007.7613.0    | 1 | brace                 |
| 9  | 2.1310.002.2    | 2 | washer 6.6, d125      |
| 10 | 2.0112.007.2    | 2 | screw m 6 p.1 x 20    |
| 11 | 2.1470.002.2    | 2 | washer 6, d128        |
| 12 | 2.1011.103.2    | 2 | nut m 6 p.1           |
| 13 | 0.009.7671.2/20 | 1 | support               |
| 14 | 0.007.6721.0    | 2 | bracket               |
| 15 | 0.007.6724.3/10 | 1 | wire                  |



531\_106\_1

Section: BODY WORK  
**SPECIAL VERSION FOR EXPORT D**



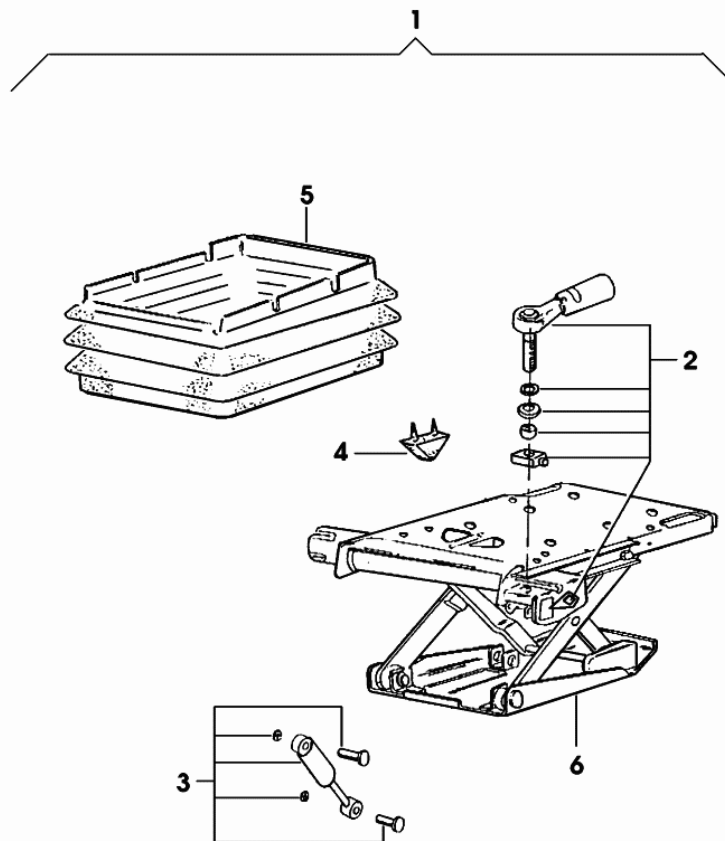
| Fig. | Code            | QTY | Name                               |
|------|-----------------|-----|------------------------------------|
| 1    | 0.009.6321.2    | 1   | bracket sx/lh/li                   |
| 2    | 0.009.6332.0/10 | 1   | bracket dx/rh/re                   |
| 3    | 2.0112.007.2    | 4   | screw m 6 p.1 x 20                 |
| 4    | 2.1470.002.2    | 7   | washer 6, d128                     |
| 5    | 2.1011.103.2    | 7   | nut m 6 p.1                        |
| 6    | 0.009.6316.0    | 2   | bracket<br>- WITH TYRES 320/70 R20 |
| 7    | 2.1310.002.2    | 2   | washer 6.6, d125                   |
| 8    | 0.201.7569.0    | 1   | square                             |
| 9    | 2.0112.011.2    | 1   | screw m 6 p.1x30                   |
| 10   | 0.203.7550.0    | 1   | square                             |
| 11   | 2.9929.067.0    | 2   | plate                              |
| 12   | 2.9929.068.0    | 1   | plate                              |
| 13   | 0.007.6250.0/10 | 2   | bracket dx/rh/re<br>- X 42HP       |
| 14   | 0.007.6735.0    | 1   | small plate                        |
| 15   | 2.0342.203.2    | 2   | screw m 6 p.1 x 14                 |

**Schutzvorrichtung außerhalb der Kulturen in Schutzstellung bringen**

**Die Beförderung von Personen auf Zugmaschinen ohne geeignete Sitzgelegenheit ist verboten !**

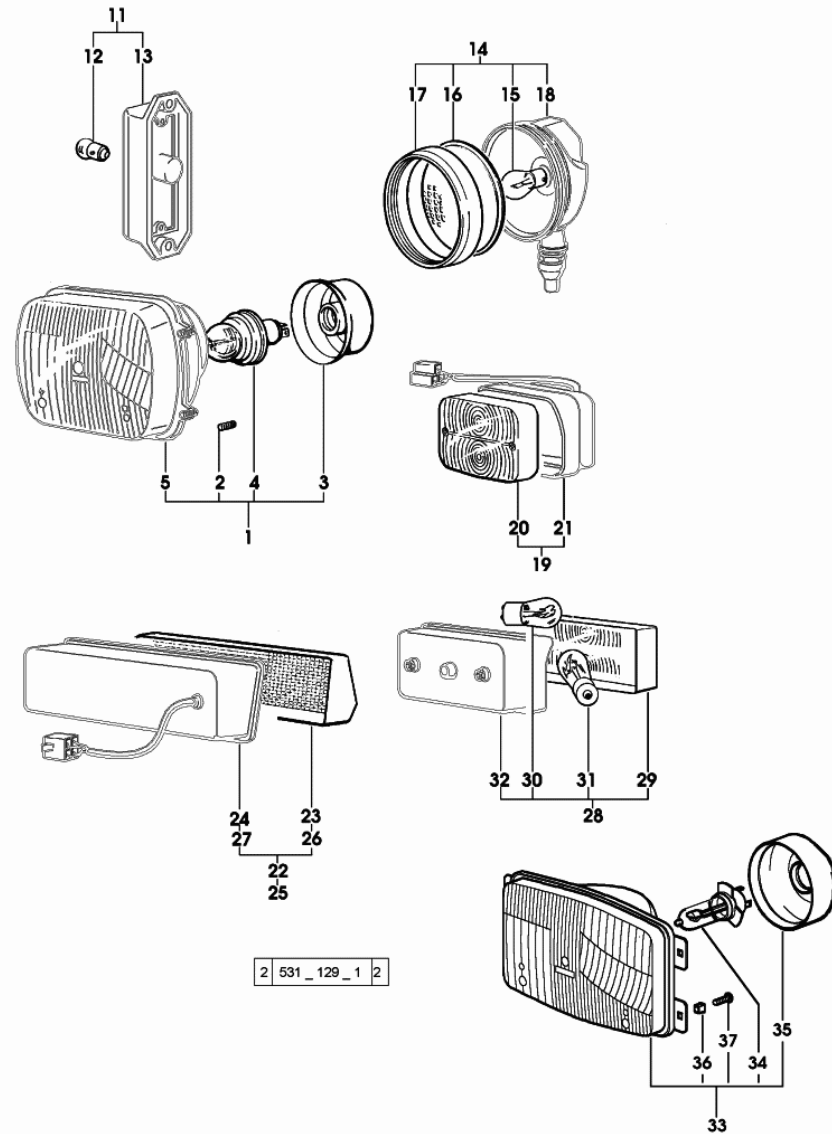
Section: BODY WORK  
**SEAT SPRINGING**

| Fig. | Code         | QTY | Name                                   |
|------|--------------|-----|--|
| 1    | 0.010.5357.4 | 1   | seat springs KAB XL2<br>☞ 0.010.5357.4 |
| 2    | 0.010.2228.0 | 1   | handle                                 |
| 3    | 0.010.2228.2 | 1   | shoch.absorber                         |
| 4    | 0.010.2229.0 | 1   | stopper                                |
| 5    | 0.010.2229.1 | 1   | guard                                  |
| 6    | 0.000.0000.1 | 0   | not serviceable                        |



2 | 566\_132\_1  
 010.5357.4

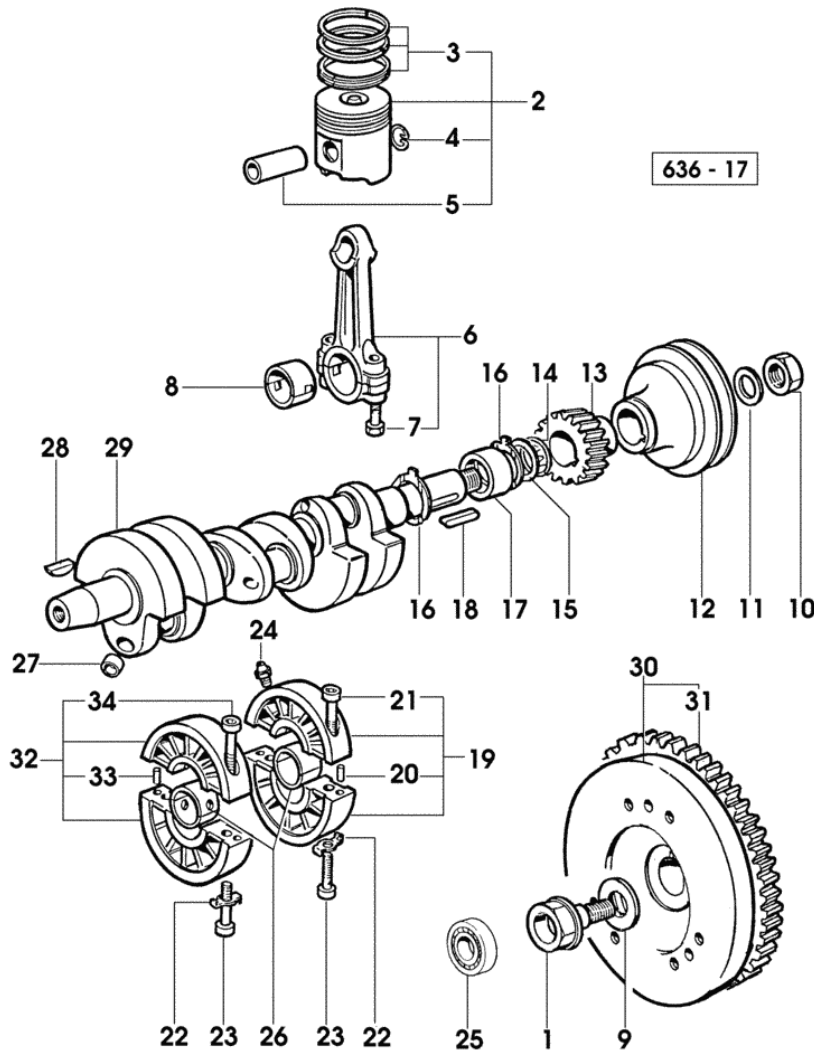
Section: ELECTRIC AL SYSTEM  
**HEADLAMP COMPONENTS**



| Fig. | Code            | QTY | Name                                  |
|------|-----------------|-----|---------------------------------------|
| 1    | 0.000.0000.1    | 0   | not serviceable<br>- UNIDEK -         |
| 2    | 0.009.4482.0    | 4   | screw                                 |
| 3    | 0.009.4482.1    | 1   | boot                                  |
| 4    | 2.8212.002.0    | 1   | lamp 12V-45/40W                       |
| 5    | 0.000.0000.1    | 0   | not serviceable                       |
| 11   | 2.8029.240.0/10 | 1   | side lamp<br>☞ 2.8029.240.0/10        |
| 12   | 2.8313.005.0    | 1   | lamp 12 V, 5 W                        |
| 13   | 0.000.0000.1    | 0   | not serviceable                       |
| 14   | 2.8029.300.0    | 1   | headlight<br>☞ 2.8029.300.0           |
| 15   | 2.8210.004.0    | 1   | lamp 12V-35W                          |
| 16   | 2.8029.120.1    | 1   | light body                            |
| 17   | 2.8029.120.2    | 1   | gasket                                |
| 18   | 0.000.0000.1    | 0   | not serviceable                       |
| 19   | 2.8059.220.0/10 | 1   | side lamp<br>☞ 2.8059.220.0/10        |
| 20   | 2.8019.200.1    | 1   | light body dx/rh/re                   |
| 21   | 0.000.0000.1    | 0   | not serviceable                       |
| 22   | 2.8059.230.0    | 1   | lamp sx/lh/li<br>☞ 2.8059.230.0       |
| 23   | 0.009.4483.1    | 1   | light body sx/lh/li                   |
| 24   | 0.000.0000.1    | 0   | not serviceable                       |
| 25   | 2.8059.240.0    | 1   | lamp dx/rh/re<br>☞ 2.8059.240.0       |
| 26   | 0.009.4483.2    | 1   | light body dx/rh/re                   |
| 27   | 0.000.0000.1    | 0   | not serviceable                       |
| 28   | 2.8019.800.0    | 1   | side lamp<br>☞ 2.8019.800.0           |
| 29   | 2.8019.750.2    | 1   | glass                                 |
| 30   | 2.8313.003.0    | 1   | lamp 12V 5W                           |
| 31   | 2.8313.001.0    | 1   | lamp 12V 21W                          |
| 32   | 0.000.0000.1    | 0   | not serviceable                       |
| 33   | 2.8029.740.0/20 | 1   | lamp<br>- COBO -<br>☞ 2.8029.740.0/20 |
| 34   | 0.010.2251.0    | 1   | lamp 60/55W - HALOGEN -               |
| 35   | 0.010.2263.0    | 1   | guard                                 |
| 36   | 0.010.2264.0    | 4   | nut m 5                               |
| 37   | 0.010.2265.0    | 4   | screw m 5                             |

Section: ENGINE  
**CRANKSHAFT**

| Fig. | Code            | QTY | Name                           |
|------|-----------------|-----|--------------------------------|
| 1    | 0.009.5007.0    | 1   | bolt                           |
| 2    | 0.308.0060.6    | 3   | complete piston STANDARD       |
| 3    | 0.308.0052.6    | 3   | piston ring set                |
| 4    | 0.009.5002.1    | 6   | circlip                        |
| 5    | 0.009.5049.0    | 3   | piston pin 22x64               |
| 6    | 0.009.5006.4    | 3   | engine connect.rod             |
| 7    | 0.009.5006.0    | 6   | screw                          |
| 8    | 0.009.5006.1    | 3   | con.rod half bushing STANDARD  |
| 8    | 0.009.5006.2    | 3   | con.rod half bushing - mm 0.25 |
| 8    | 0.009.5006.3    | 3   | con.rod half bushing - mm 0.50 |
| 9    | 0.009.5035.0    | 1   | lock-tab                       |
| 10   | 0.009.5001.2    | 1   | special nut 27x1.5 h12         |
| 11   | 0.009.5069.2    | 1   | flat washer 28x50 mm 4         |
| 12   | 0.009.6109.0    | 1   | pulley                         |
| 13   | 0.009.6219.0    | 1   | gear                           |
| 14   | 0.009.5066.2    | 1   | 'o' ring 37.47x3.00            |
| 15   | 0.009.5046.2    | 2   | shim mm 0.1                    |
| 16   | 0.009.5003.2    | 2   | snoulder                       |
| 17   | 0.009.5014.0    | 2   | main half bushing STANDARD     |
| 17   | 0.009.5014.1    | 2   | main half bushing - mm 0.25    |
| 17   | 0.009.5014.2    | 2   | main half bushing - mm 0.50    |
| 18   | 0.009.5065.1    | 1   | key 6x6x45                     |
| 19   | 0.009.5050.1    | 1   | support l.d.                   |
| 20   | 2.1652.505.0    | 2   | pin 6x12                       |
| 21   | 2.0312.215.1    | 2   | screw m 8 p.1.25 x 45          |
| 22   | 0.009.5072.2    | 4   | washer 8.4                     |
| 23   | 2.0112.219.2    | 4   | screw m 8 p.1.25x50            |
| 24   | 0.009.5055.2    | 4   | windscreen washer              |
| 25   | 2.2041.006.0    | 1   | ball bearing 15x35x11          |
| 26   | 0.009.5013.0    | 2   | main half bushing STANDARD     |
| 26   | 0.009.5013.1    | 2   | main half bushing - mm 0.25    |
| 26   | 0.009.5013.2    | 2   | main half bushing - mm 0.50    |
| 27   | 0.009.5073.0    | 6   | expansion plug 10              |
| 28   | 0.009.5065.2    | 1   | key 6x6x25                     |
| 29   | 0.009.5061.0    | 1   | crank shaft                    |
| 30   | 0.008.7998.3    | 1   | flywheel                       |
| 30   | 0.008.7973.3/20 | 1   | flywheel<br>1626 <-<br>>- 1627 |
| 31   | 0.008.7993.0    | 1   | crown wheel                    |
| 32   | 0.009.5050.2    | 1   | support l.v.                   |
| 33   | 2.1652.505.0    | 2   | pin 6x12                       |
| 34   | 2.0312.215.2    | 2   | screw m 8 p.1.25 x 45          |



CLICK HERE TO **DOWNLOAD** THE COMPLETE MANUAL

- Thank you very much for reading the preview of the manual.
- You can download the complete manual from: [www.heydownloads.com](http://www.heydownloads.com) by clicking the link below

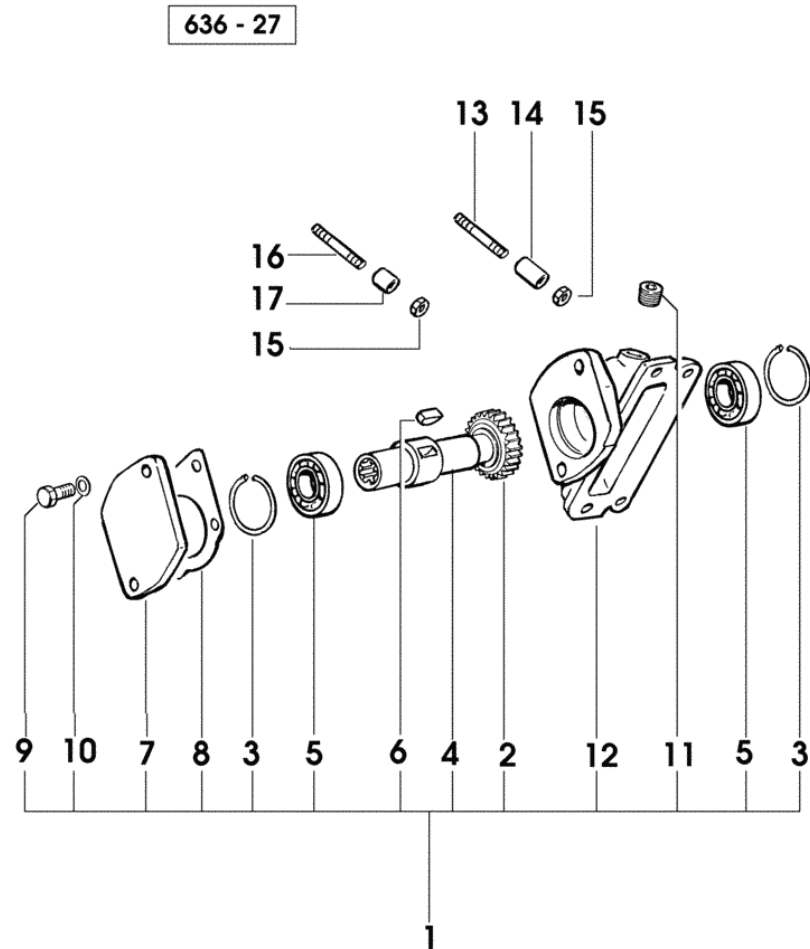


- Please note: If there is no response to CLICKING the link, please download this PDF first and then click on it.

CLICK HERE TO **DOWNLOAD** THE COMPLETE MANUAL

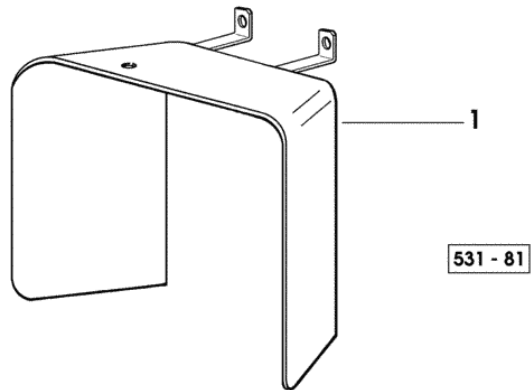
**HYDRAULIC PUMP POWER TAKEOFF**

| Fig. | Code            | QTY | Name                      |
|------|-----------------|-----|---------------------------|
| 1    | 0.009.6138.4/30 | 1   | support                   |
| 2    | 0.009.6106.0/10 | 1   | gear                      |
| 3    | 2.1411.019.1    | 2   | circlip 47                |
| 4    | 0.008.7996.0    | 1   | sleeve                    |
| 5    | 2.2030.006.0    | 2   | ball bearing 25 x 47 x 12 |
| 6    | 2.1720.006.0    | 1   | key 4x6.5                 |
| 7    | 0.007.1806.0    | 1   | plate                     |
| 8    | 0.9104.250.0/10 | 1   | gasket                    |
| 9    | 2.0112.307.2    | 2   | screw m 10 p.1.5 x 20     |
| 10   | 2.1310.006.2    | 2   | flat washer 10.5          |
| 11   | 2.3131.003.4    | 1   | plug m 16 p.1.5           |
| 12   | 0.008.7966.0    | 1   | support                   |
| 13   | 2.0422.218.2    | 5   | stud bolt m 8 x 65        |
| 14   | 0.009.5018.2    | 2   | spacer 8.5x14x40          |
| 15   | 2.1011.005.2    | 4   | nut m 8 p.1.25            |
| 16   | 0.009.5083.0    | 2   | stud bolt m 8x38          |
| 17   | 2.1579.171.2    | 2   | spacer 17x27x7            |

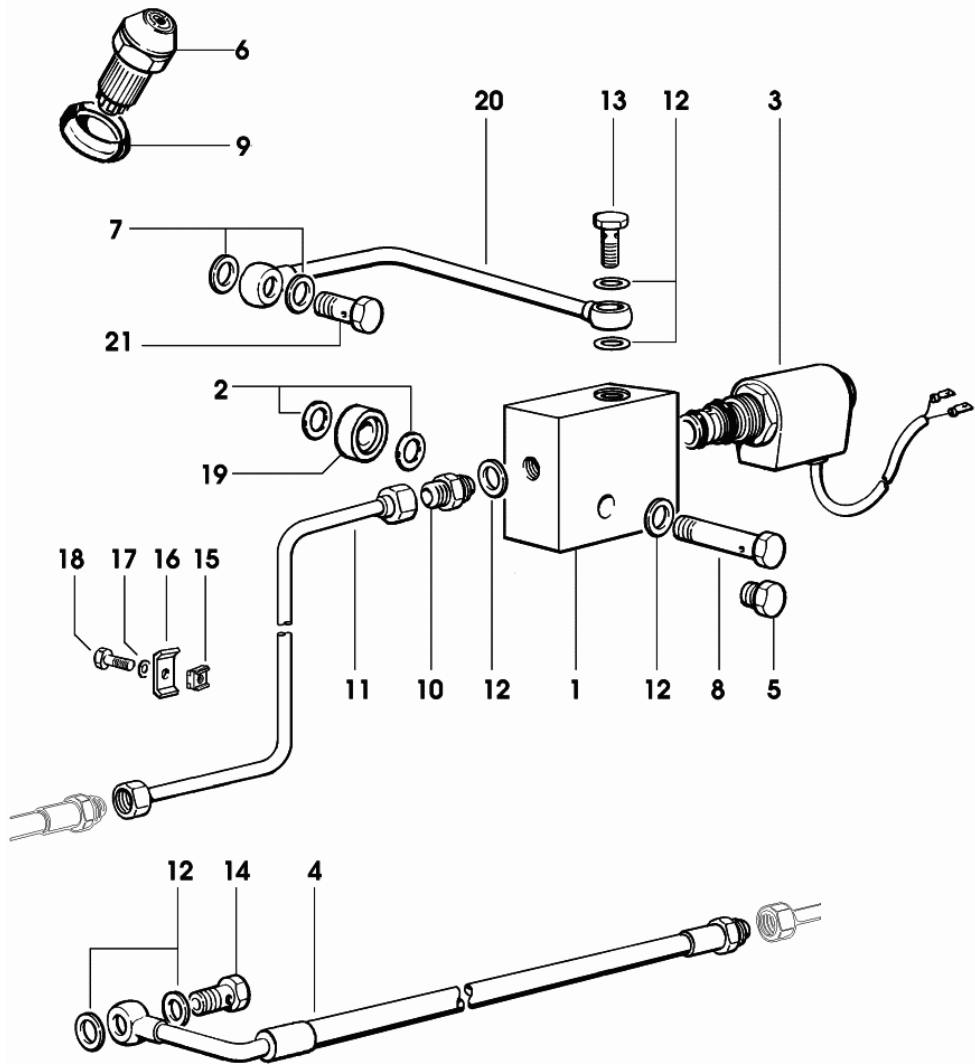


**P.T.O. GUARD**

| Fig. | Code            | QTY | Name                          |
|------|-----------------|-----|-------------------------------|
| 1    | 0.008.7834.3/20 | 1   | guard P.T.O.                  |
| 1    | 0.010.9681.3    | 1   | sump P.T.O.<br>- X 25HP HYDRO |



**4WD - DIFFERENTIAL LOCK CONTROL-FRONT**



531 - 68

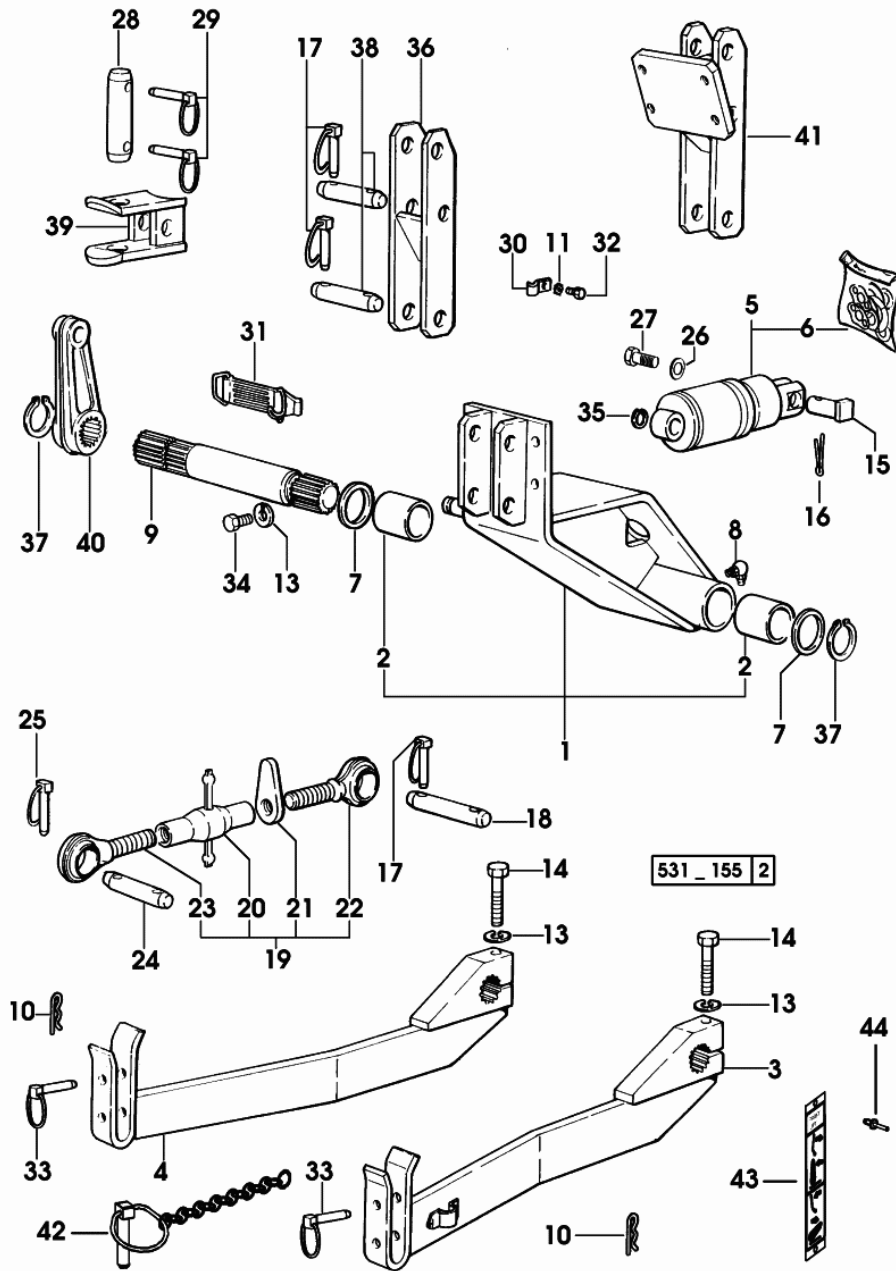
| Fig. | Code | QTY | Name |
|------|------|-----|------|
|------|------|-----|------|

**Notes:**

1351 <- X 25HP 3004 <- X 35HP WATERCOOLED ENGINE 1864 <- X 35HP AIRCOOLED ENGINE 1626 <- X 42HP

|    |                 |   |  |
|----|-----------------|---|--|
| 1  | 0.008.7840.3/10 | 1 | valve body   |
| 2  | 2.1530.033.0    | 2 | 'o' ring 13.10x2.62                                  |
| 3  | 0.008.3440.4/30 | 1 | electro valve  |
| 4  | 0.008.7869.3    | 1 | tube<br>- X 25HP                                     |
| 4  | 0.008.7843.3    | 1 | tube<br>- X 35HP                                     |
| 4  | 0.008.7870.3    | 1 | tube<br>- X 42HP                                     |
| 5  | 2.3110.422.1    | 1 | plug m 12 p.1.25 x 10<br>- WITHOUT DIFFERENTIAL LOCK |
| 6  | 0.007.5944.0/20 | 1 | push-button  |
| 7  | 2.1560.010.0    | 2 | gasket 14.2 x 20 x 1.5                               |
| 8  | 2.3339.591.2/10 | 1 | pipe union m 12 p.1.25                               |
| 9  | 0.009.6264.0    | 1 | switch   |
| 10 | 2.3339.453.2    | 1 | pipe fitting m 12 p.1.25-1/2"                        |
| 11 | 0.008.7842.3    | 1 | tube   |
| 12 | 2.1560.008.0    | 4 | gasket 12.2 x 18                                     |
| 13 | 2.3332.003.1    | 1 | pipe union m 12 p.1.25                               |
| 14 | 2.3335.005.2    | 1 | pipe union m 12 p.1.5 x 24                           |
| 15 | 2.6999.003.2    | 1 | special nut m 6                                      |
| 16 | 0.200.8152.0    | 1 | small plate  |
| 17 | 2.1310.002.2    | 1 | washer 6.6, d125                                     |
| 18 | 2.0112.008.2    | 1 | screw m 6 p.1x22                                     |
| 19 | 0.008.7908.0    | 1 | spacer   |
| 20 | 0.008.7910.3    | 1 | tube   |
| 21 | 2.3332.004.1    | 1 | pipe union m 14 p.1.5 x 27                           |

Section: FRONT HYDRAULIC POWER-LIFT  
**FRONT HYDRAULIC POWER-LIFT**



| Fig. | Code            | QTY | Name   |
|------|-----------------|-----|--|
| 1    | 0.008.7738.3    | 1   | support  |
| 2    | 2.1559.077.0    | 2   | bushing 40 x 46 x 60                             |
| 3    | 0.008.7746.3/20 | 1   | right hand arm sx/lh/li                          |
| 4    | 0.008.7745.3/20 | 1   | right hand arm dx/rh/re                          |
| 5    | 0.008.7741.4    | 1   | cylinder<br>☞ 0.008.7741.4                       |
| 6    | 0.009.4874.0    | 1   | seal ring kit                                    |
| 7    | 2.1599.209.0    | 2   | snoulder 40x56x3                                 |
| 8    | 2.3821.303.2    | 1   | lubricator m 10 p.1                              |
| 9    | 0.008.7744.0/20 | 1   | shaft  |
| 10   | 2.1699.180.2    | 2   | pin  |
| 11   | 2.1470.002.2    | 1   | washer 6, d128                                   |
| 13   | 2.1475.204.7    | 8   | washer 12x3.2                                    |
| 14   | 2.0112.422.2    | 2   | screw m 12 p.1.75 x 65                           |
| 15   | 0.9012.351.0/10 | 1   | pin 22x58  |
| 16   | 2.1690.516.2    | 1   | split pin 5x50                                   |
| 17   | 0.010.9322.4    | 6   | pin Ø 11   |
| 18   | 2.1669.025.2    | 1   | pin 19x115.5                                     |
| 19   | 0.008.7756.4/10 | 1   | 3 point hitch                                    |
| 20   | 0.008.7757.3    | 1   | sleeve   |
| 21   | 0.008.7597.0    | 1   | stop   |
| 22   | 0.008.7758.3    | 1   | rod dx/rh/re                                     |
| 23   | 0.008.7759.3    | 1   | rod sx/lh/li                                     |
| 24   | 2.1669.025.2    | 1   | pin 19x115.5                                     |
| 25   | 0.010.9322.4    | 2   | pin Ø 11   |
| 26   | 2.1560.010.0    | 2   | gasket 14.2 x 20 x 1.5                           |
| 27   | 2.3335.006.2    | 1   | pipe union m 14 p.1.5x24                         |
| 28   | 2.1669.027.2    | 1   | pin 28x115                                       |
| 29   | 0.010.9322.4    | 2   | pin Ø 11   |
| 30   | 0.008.7911.0    | 1   | bracket  |
| 31   | 0.008.8133.2    | 1   | rod  |
| 32   | 2.0112.005.2    | 1   | screw m 6 p.1 x 16                               |
| 33   | 0.008.7780.3/10 | 2   | pin  |
| 34   | 2.0112.411.2    | 6   | screw m 12 p.1.75 x 30                           |
| 35   | 2.1419.043.1    | 1   | circlip 16.5x1.2                                 |
| 36   | 0.008.7754.2/10 | 1   | bracket  |
| 37   | 2.1419.070.0    | 2   | circlip  |
| 38   | 2.1669.052.2    | 2   | pin  |
| 39   | 0.008.7755.2    | 1   | clevis   |
| 40   | 0.008.7743.0/20 | 1   | lever  |
| 41   | 0.009.6312.2    | 1   | support<br>- EXPORT D X 35HP AIRCOOLED<br>ENGINE |
| 42   | 0.012.2301.4    | 2   | chain  |

Section: GEAR

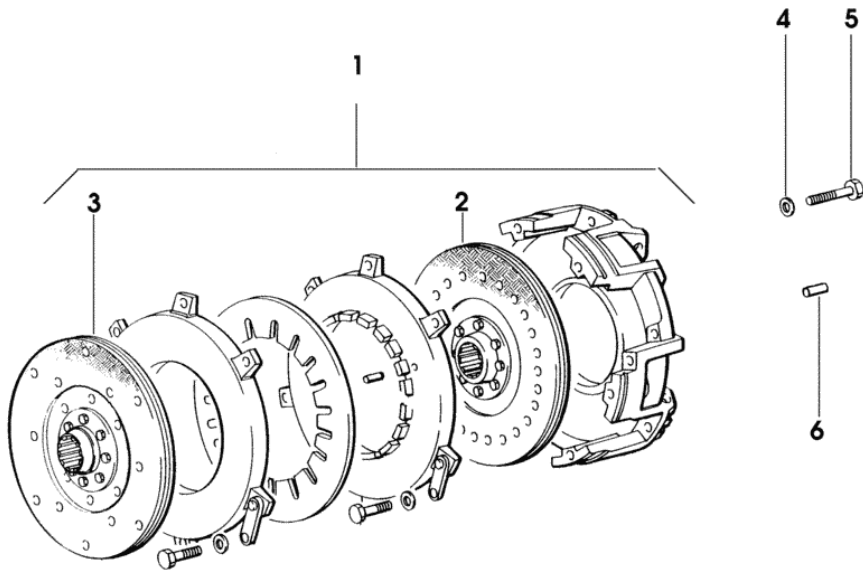
**CLUTCH**

| Fig. | Code | QTY | Name |
|------|------|-----|------|
|------|------|-----|------|

**Notes:**

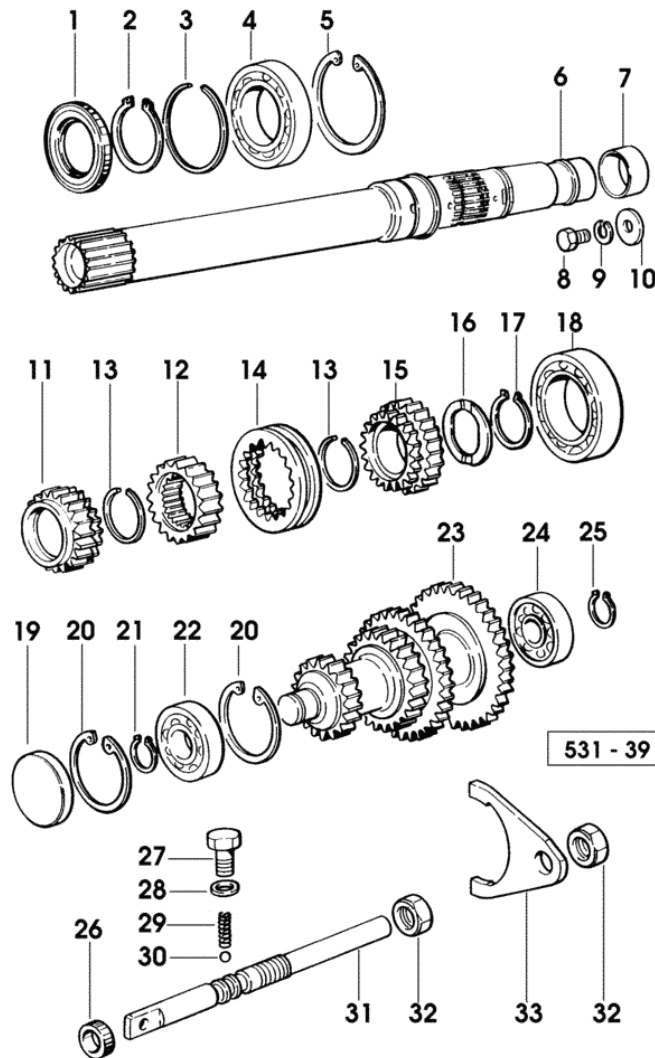
2888 <- X 35HP WATERCOOLED ENGINE    1626 <- X 35HP AIRCOOLED ENGINE

|   |                 |   |  |
|---|-----------------|---|--|
| 1 | 0.010.0288.4    | 1 | clutch assy 7"                                     |
| 2 | 0.010.0289.3    | 1 | clutch disc  |
| 3 | 0.008.7303.3/10 | 1 | clutch disc 7" - P.T.O.                            |
| 4 | 2.1474.009.2    | 6 | spring washer 8                                    |
| 5 | 2.0113.231.2    | 6 | screw m 8 p.1.25 x 110                             |
| 6 | 2.1653.509.0    | 3 | cylindrical plug 6x20<br>- X 35HP AIRCOOLED ENGINE |



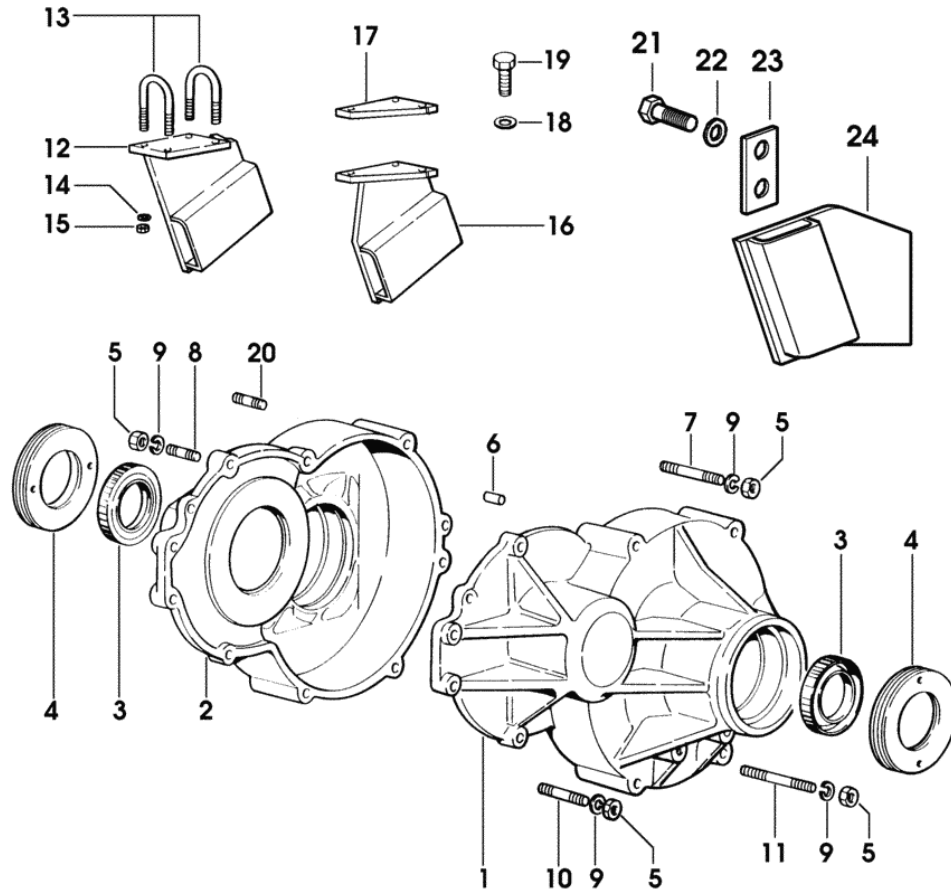
531 - 31

**MAIN GEARBOX AND REVERSE SHUTTLE GEARS**



| Fig. | Code            | QTY | Name                  |
|------|-----------------|-----|-----------------------|
| 1    | 2.1529.096.0    | 1   | 'o' ring 40x62x7      |
| 2    | 2.1410.016.1    | 1   | circlip 40            |
| 3    | 2.1423.045.7    | 1   | circlip 62x1.5        |
| 4    | 2.2999.264.0    | 1   | bearing 40x68x15      |
| 5    | 2.1411.027.1    | 1   | circlip 68            |
| 6    | 0.008.6800.0/50 | 1   | shaft                 |
| 7    | 2.2680.075.0    | 1   | bushing 28x32x17      |
| 8    | 2.0112.207.2    | 1   | screw m 8 p 1.25 x 20 |
| 9    | 2.1475.041.7    | 1   | washer 8.2x16.2       |
| 10   | 2.1549.029.0    | 1   | spacer 8.5x25x3       |
| 11   | 0.008.6801.0/20 | 1   | gear Z = 20           |
| 12   | 0.008.6809.0/20 | 1   | hub                   |
| 13   | 2.1422.026.7    | 2   | circlip 35 x 1.5      |
| 14   | 0.008.6810.0/20 | 1   | sleeve                |
| 15   | 0.008.6802.0/20 | 1   | gear Z = 24           |
| 16   | 2.1599.578.0/20 | 1   | shoulder              |
| 17   | 2.1410.013.1    | 1   | circlip 32            |
| 18   | 2.2030.010.0    | 1   | ball bearing 45x75x16 |
| 19   | 2.3179.013.0    | 1   | small cap 52x7        |
| 20   | 2.1411.021.1    | 2   | circlip 52            |
| 21   | 2.1410.006.1    | 1   | circlip 20            |
| 22   | 2.2060.005.0    | 1   | ball bearing 20x52x15 |
| 23   | 0.008.6805.0/20 | 1   | main shaft            |
| 24   | 2.2060.004.0    | 1   | ball bearing 17x47x14 |
| 25   | 2.1429.039.1    | 1   | circlip 17            |
| 26   | 2.1519.078.0    | 1   | 'o' ring 16 x 24 x 6  |
| 27   | 2.0399.155.0/10 | 1   | screw m 12 p.1.25     |
| 28   | 2.1560.008.0    | 1   | gasket 12.2 x 18      |
| 29   | 2.4019.478.0    | 1   | spring 6.7x7.9        |
| 30   | 2.2810.004.0    | 1   | ball 5/16"            |
| 31   | 0.008.6820.0/30 | 1   | rod av-rm             |
| 32   | 2.1019.131.0    | 2   | nut                   |
| 33   | 0.008.6824.0/30 | 1   | fork                  |

Section: REAR AXLE  
**REAR AXLE**



4 531\_50 2

| Fig. | Code | QTY | Name |
|------|------|-----|------|
|------|------|-----|------|

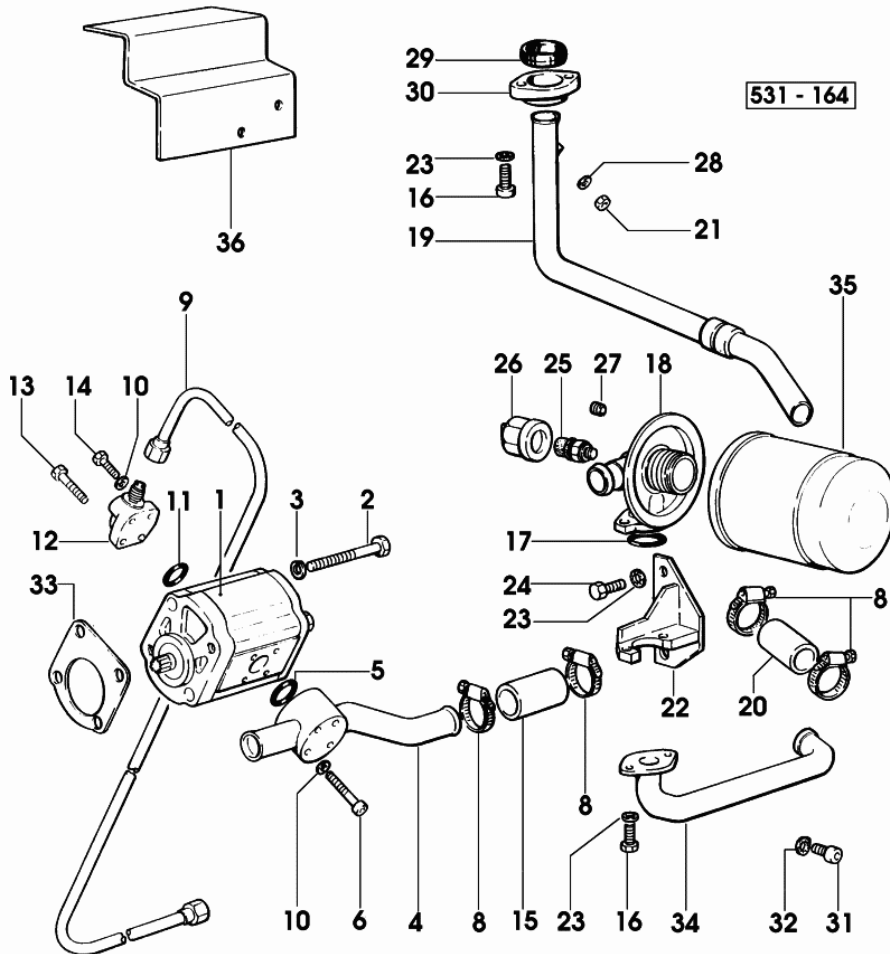
- X 25HP - 35HP - 42HP  
 WATERCOOLED ENGINE  
 - ITALY -

**HYDRAULIC PUMP**

| Fig. | Code | QTY | Name |
|------|------|-----|------|
|------|------|-----|------|

**Notes:**

1864 <- X 35HP AIRCOOLED ENGINE

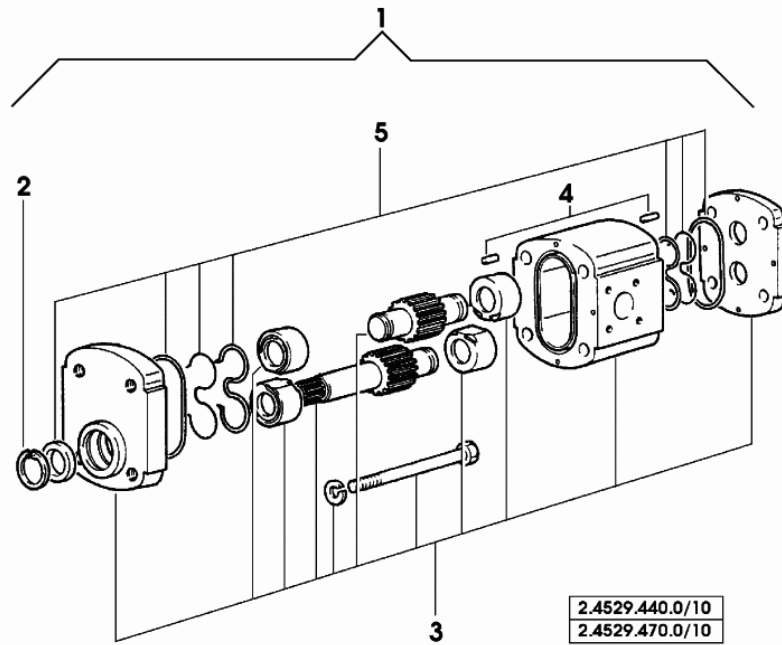


|    |                 |   |  |
|----|-----------------|---|--|
| 1  | 2.4539.300.0    | 1 | hydraulic pump 5.5 cc sx/lh/li - BOSCH<br>☞ 2.4539.300.0 |
| 2  | 2.0112.327.2    | 2 | screw m 10 p.1.5 x 90                                    |
| 3  | 2.1474.010.2    | 2 | washer 10  |
| 4  | 0.009.6281.3/10 | 1 | tube   |
| 5  | 2.1530.058.0    | 1 | 'o' ring 22.22x2.62                                      |
| 6  | 2.0312.115.1    | 4 | screw m 6 p.1x45   |
| 8  | 2.6850.008.0    | 5 | clamp 25-47  |
| 9  | 0.009.6279.3    | 1 | tube   |
| 10 | 2.1480.012.1    | 8 | washer 6, d128   |
| 11 | 2.1530.054.0    | 1 | 'o' ring 20.63x2.62                                      |
| 12 | 0.008.7324.0    | 1 | flange   |
| 13 | 2.0312.112.2    | 2 | screw m 6 p.1 x 35                                       |
| 14 | 2.0312.106.2    | 2 | screw m 6 p.1 x 20                                       |
| 15 | 0.445.6374.0    | 1 | sleeve 33x25x60  |
| 16 | 2.0312.206.2    | 4 | screw m 8 p 1.25 x 20                                    |
| 17 | 2.1530.071.0    | 1 | 'o' ring 26.64x2.62                                      |
| 18 | 2.4419.419.0/30 | 1 | head   |
| 19 | 0.008.6583.3/50 | 1 | tube   |
| 20 | 0.009.6403.0    | 1 | sleeve   |
| 21 | 2.1011.421.2    | 1 | nut m 10 p.1.25  |
| 22 | 0.008.7664.2    | 1 | support  |
| 23 | 2.1472.005.2    | 2 | washer 8   |
| 24 | 2.0112.211.2    | 2 | screw m 8 p.1.25 x 30                                    |
| 25 | 2.7099.180.0/10 | 1 | pressure switch  |
| 26 | 0.008.1331.0    | 1 | guard  |
| 27 | 2.3139.007.1    | 1 | plug 1/8" x 7.37   |
| 28 | 2.1475.203.7    | 1 | washer 10.5  |
| 29 | 0.255.8255.0/40 | 1 | gasket   |
| 30 | 0.009.7478.0    | 1 | flange   |
| 31 | 2.0112.411.2    | 1 | screw m 12 p.1.75 x 30                                   |
| 32 | 2.1470.007.2    | 1 | lock washer 12   |
| 33 | 0.9104.250.0/10 | 1 | gasket   |
| 34 | 0.008.7873.3/10 | 1 | tube   |
| 35 | 2.4419.470.0    | 1 | hydr.oil filter elem                                     |
| 36 | 0.009.6334.0/20 | 1 | shield   |

1864 <-  
- WITHOUT DIRECTIONAL CONTROL VALVE

**HYDRAULIC PUMP PARTS**

| Fig. | Code         | QTY | Name  |
|------|--------------|-----|---|
| 1    | 2.4529.960.0 | 1   | hydraulic pump 11 cc sx/lh/li - SAUER<br>☞ 2.4529.960.0 |
| 2    | 0.009.4129.1 | 1   | circlip   |
| 3    | 0.000.0000.1 | 0   | not serviceable   |
| 4    | 0.009.4130.1 | 4   | roller  |
| 5    | 0.009.4128.1 | 1   | seal ring kit   |



# SOLARIS 35 WIND

## POWER STEERING - HYDRAULIC SYSTEM

### GENERAL

|                                       |                   |
|---------------------------------------|-------------------|
| STEERING CONTROL.....                 | 06.00.1           |
| POWER STEERING.....                   | 06.00.3           |
| HYDR. STEERING DISTRIBUTOR PARTS..... | 06.00.4           |
| POWER STEERING.....                   | 06.00.6           |
| POWER STEERING.....                   | 06.00.7           |
| REAR HYDRAULIC CONNECTION.....        | 06.00.8           |
| MOTOR OIL.....                        | 06.00.9           |
| ENGAGEMENT.....                       | 0.98308.50.3/10.A |

CLICK HERE TO **DOWNLOAD** THE COMPLETE MANUAL

- Thank you very much for reading the preview of the manual.
- You can download the complete manual from: [www.heydownloads.com](http://www.heydownloads.com) by clicking the link below



- Please note: If there is no response to CLICKING the link, please download this PDF first and then click on it.

CLICK HERE TO **DOWNLOAD** THE COMPLETE MANUAL