

SILVER 100.4

ACCESSORIES

GENERAL

4-WAY AUXILIARY DISTRIBUTOR.....	0E.00.1
REXROTH 4-WAY AUXILIARY CONTROL VALVE.....	0E.00.2
REXROTH 4-WAY AUXILIARY CONTROL VALVE.....	0E.00.3
6-WAY AUXILIARY DISTRIBUTOR.....	0E.00.4
REXROTH 6-WAY AUXILIARY CONTROL VALVE.....	0E.00.5
REXROTH 6-WAY AUXILIARY CONTROL VALVE.....	0E.00.6
8-WAY AUXILIARY DISTRIBUTOR.....	0E.00.7
REXROTH 8-WAY AUXILIARY CONTROL VALVE.....	0E.00.8
REXROTH 8-WAY AUXILIARY CONTROL VALVE.....	0E.00.9
AUXILIARY HYDRAULIC DISTRIBUTOR.....	0E.00.10
4-WAY AUXILIARY DISTRIBUTOR.....	0E.00.11
6-WAY DISTRIBUTOR EQUIPMENT.....	0E.00.12
8-WAY DISTRIBUTOR EQUIPMENT.....	0E.00.13
HYDRAULIC DISTRIBUTOR-PARTS.....	0E.00.14
HYDRAULIC DISTRIBUTOR-PARTS.....	0E.00.15
DISTRIBUTOR PARTS.....	0E.00.16
DISTRIBUTOR PARTS.....	0E.00.17
DISTRIBUTOR PARTS.....	0E.00.18
HYDRAULIC DISTRIBUTOR-PARTS.....	0E.00.19
FREE OIL RETURN.....	0E.00.20
FREE OIL RETURN.....	0E.00.21
3 POINT HITCH.....	0E.00.26
3 POINT HITCH.....	0E.00.27
3 POINT HITCH.....	0E.00.28
3 POINT HITCH.....	0E.00.29
LIFTING ARM.....	0E.00.30
LIFTING ARM.....	0E.00.31
LIFTING ARM.....	0E.00.32
3 POINT HITCH.....	0E.00.33
3 POINT HITCH.....	0E.00.34
CYLINDER PARTS.....	0E.00.35
3-POINT HITCH - ADJUSTABLE RH RODS.....	0E.00.36
3 POINT HITCH.....	0E.00.37
CYLINDER PARTS.....	0E.00.39
3 POINT HITCH.....	0E.00.40
STABILIZER.....	0E.00.41
STABILIZER.....	0E.00.42
TOWING BAR.....	0E.00.43
REAR TOWING HITCH.....	0E.00.44
REAR TOWING HITCH.....	0E.00.45

CLICK HERE TO **DOWNLOAD** THE COMPLETE MANUAL

- Thank you very much for reading the preview of the manual.
- You can download the complete manual from: www.heydownloads.com by clicking the link below

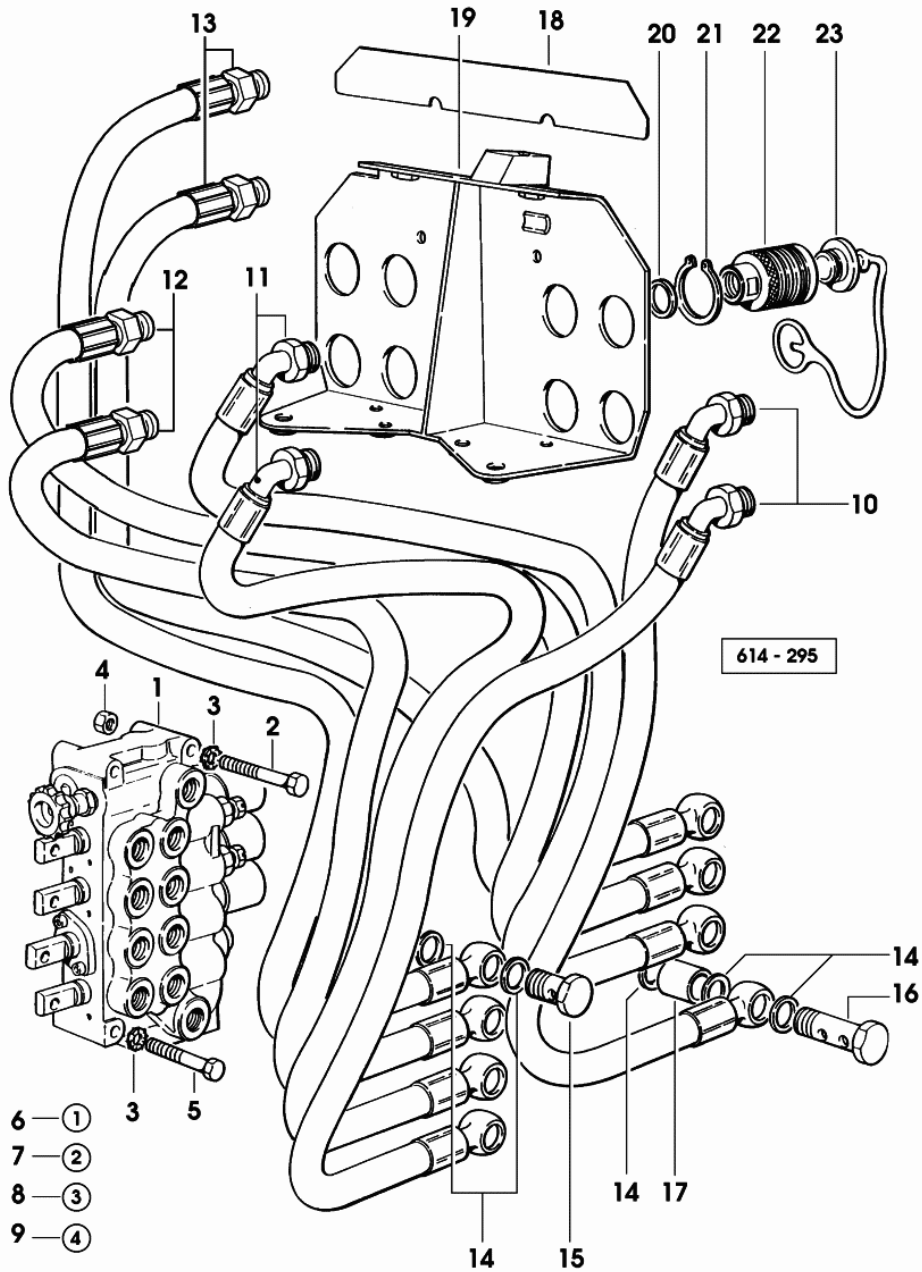


- Please note: If there is no response to CLICKING the link, please download this PDF first and then click on it.

CLICK HERE TO **DOWNLOAD** THE COMPLETE MANUAL

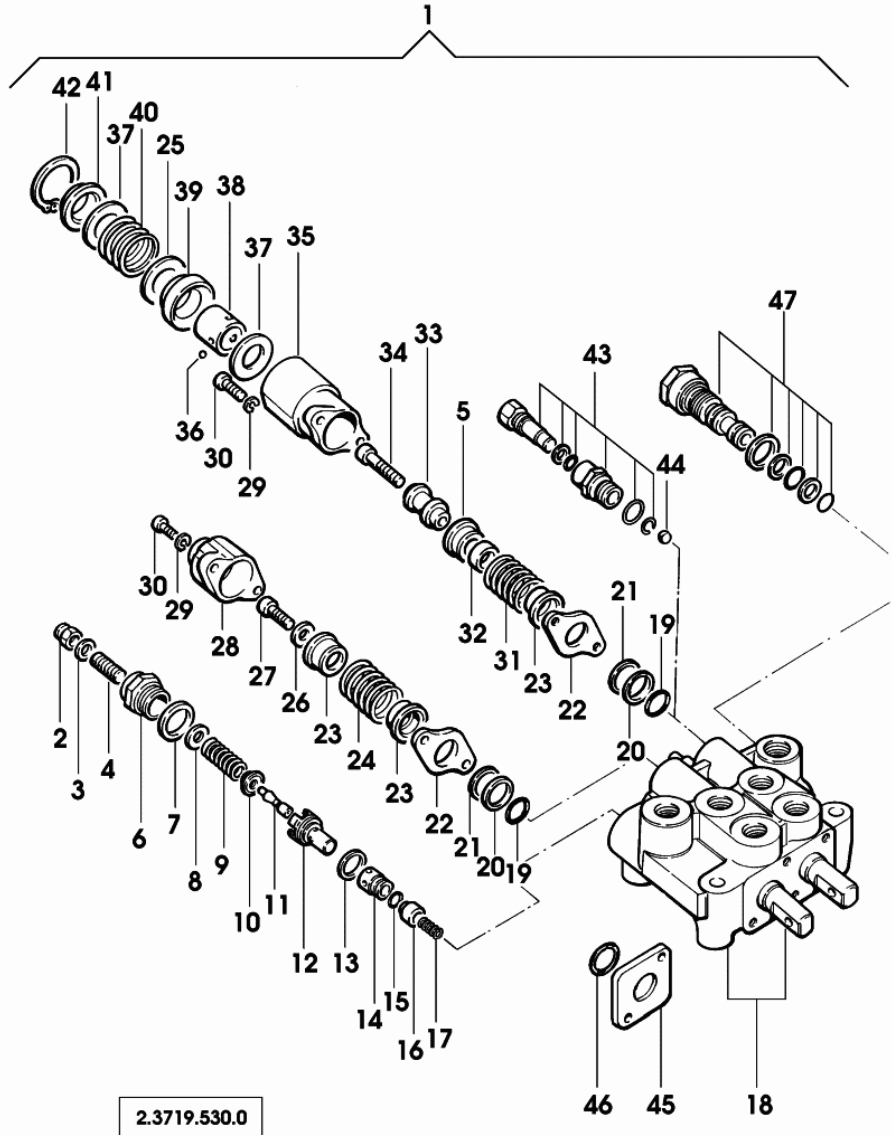
8-WAY AUXILIARY DISTRIBUTOR

Fig.	Code	QTY	Name
1	2.3719.590.0/10	1	distributor ☞ 2.3719.590.0/10 ☞ 0E.00.14
2	2.0112.223.2	1	screw m 8 p.1.25x70
3	2.1470.004.2	2	washer 8
4	2.1011.105.2	1	nut m 8 p.1.25
5	2.0112.221.2	1	screw m 8 p.1.25 x 60
6	2.9929.412.0	1	plate 1
7	2.9929.413.0	1	plate 2
8	2.9929.414.0	1	plate 3
9	2.9929.415.0	1	plate 4
10	0.008.9698.3/10	2	tube
11	0.008.9699.3/10	2	tube
12	0.008.9700.3/30	2	tube
13	0.008.9701.3/30	2	tube
14	2.1560.014.0	20	gasket 18.2 x 24 x 1.5
15	2.3335.008.2	4	pipe union m 18 p.1.5 x 32
16	2.3339.585.2/10	4	pipe union
17	2.1549.089.2	4	spacer 18.6x25x30
18	2.9929.388.0/10	1	plate
19	0.008.9996.2/30	1	plate
20	2.1560.054.0	8	gasket 21 x 26
21	2.1410.015.1	16	circlip 38
22	0.98309.50.3/10	8	coupling ☞ 0.98309.50.3/10
23	0.98309.52.0/10	8	plug tm 12



HYDRAULIC DISTRIBUTOR-PARTS

Fig.	Code	QTY	Name
1	2.3719.530.0	1	distributor - SALAMI ☞ 2.3719.530.0
2	0.009.4460.0	1	nut m 6
3	0.98282.76.0	1	washer
4	0.009.4460.1	1	register m 6 x 30
5	0.98281.90.0	1	cup
6	0.009.4460.2	1	plug
7	2.1560.015.0	1	gasket 20.2 x 24
8	0.9032.081.0	1	washer
9	0.9032.077.0	1	nut m 8
10	0.98282.73.0	1	spacer
11	0.9032.064.0	1	valve seat
12	0.9032.063.0	1	valve seat
13	0.9032.065.0	1	'o' ring
14	0.009.4178.1	1	valve seat
15	2.1530.019.0	1	'o' ring 9.25x1.78
16	0.009.4179.1	1	valve seat
17	0.009.4180.1	1	spring
18	0.000.0000.1	0	not serviceable
19	2.1530.038.0	4	'o' ring 15.54x2.62
20	0.98282.62.0	2	'o' ring
21	0.9032.061.0	2	washer
22	0.9032.058.0	2	shim
23	0.9032.056.0	3	cup
24	0.009.4181.1	1	spring
25	0.009.4186.1	2	shim
26	2.1310.003.2	1	flat washer 7.4x14
27	0.9032.055.0	1	screw m 7x16
28	0.9032.054.0	1	cover
29	2.1470.001.2	4	lock washer 5
30	2.0312.006.1	4	screw m 5 p.0.8 x 20
31	0.98281.89.0	1	spring
32	0.98281.91.0	1	spacer
33	0.009.4466.0	1	valve seat
34	0.98281.95.0	1	screw m 7x40
35	0.009.4466.1	1	sleeve
36	2.2899.507.0	6	ball 3/16"
37	0.98281.96.0	2	washer
38	0.98281.85.0	1	sleeve
39	0.98281.92.0	1	guide
40	0.98281.88.0	1	spring
41	0.98281.94.0	1	cup
42	0.98282.60.0	1	circlip
43	0.009.4185.1	1	reductions



3 POINT HITCH

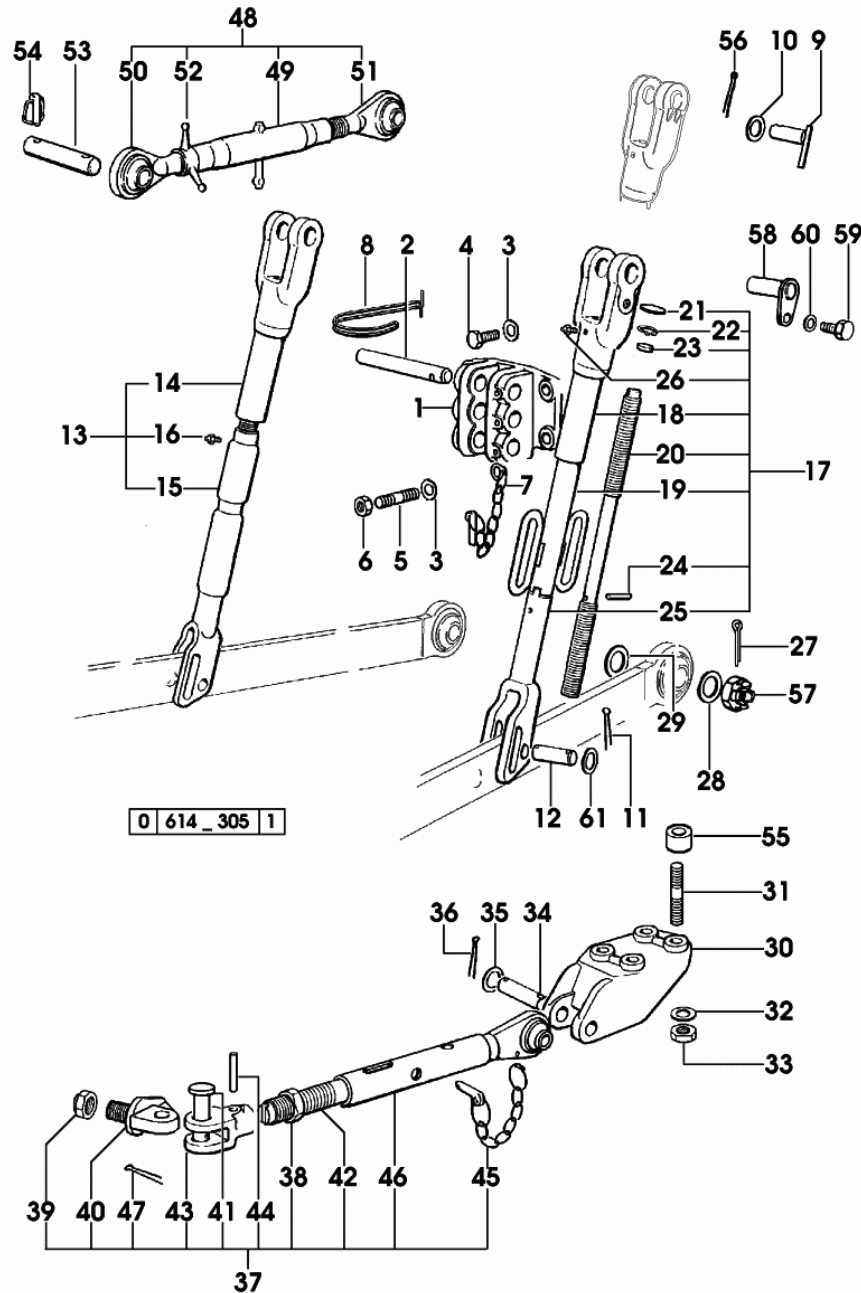


Fig.	Code	QTY	Name
28	0.96001.65.0/10	2	snoulder 21x45x6
29	0.96001.64.0/10	2	snoulder 35 x 55 x 6.0
30	0.008.2783.0	1	bracket sx/lh/li
30	0.008.2782.0	1	bracket dx/rh/re
31	2.0433.416.7	8	stud bolt m 16 p.1.5x55
32	2.1475.206.2	8	washer 16
33	2.1012.409.7	8	nut m 16
34	2.1669.001.0	2	pin 19x110x98
35	2.1310.013.2	4	flat washer 21x37
36	2.1690.513.2	4	split pin 5 x 36
37	0.000.0000.1	0	not serviceable * 010.5219.4
38	2.1120.214.2	2	selflock nut m 27 p.2
39	2.1011.412.2	2	nut m 24 p.2
40	0.96037.51.0/40	2	pin
41	2.1670.917.2	2	pin 20x65x59
42	0.96001.43.0/10	2	rod
43	0.96001.44.0/10	2	fork
44	2.1630.717.2	2	roll pin 8 x 50
45	0.96001.57.4/10	2	pin
46	0.009.7505.4	2	rod
47	2.1690.513.2	2	split pin 5 x 36
48	0.009.8298.4/20	1	3 point hitch
49	0.96047.13.3	1	sleeve
50	0.008.8461.3/10	1	rod dx/rh/re
51	0.008.8462.3/10	1	rod sx/lh/li
52	0.001.5059.0	1	nut
53	2.1669.024.2	1	pin 25.4 x 133
54	0.010.9322.4	2	pin Ø 11
55	2.1549.207.2	8	spacer 16.5x35x5
56	2.1699.374.2	4	split pin 6.3 x 40
57	2.1021.209.2	2	castellated nut m 20 p.1.5
58	0.009.3144.2/10	2	pin -> (...)
59	2.0112.409.2	2	screw m 12 p.1.75 x 25 -> (...)
60	2.1470.007.2	2	lock washer 12 -> (...)
61	2.1599.678.2	8	washer 25x45x3

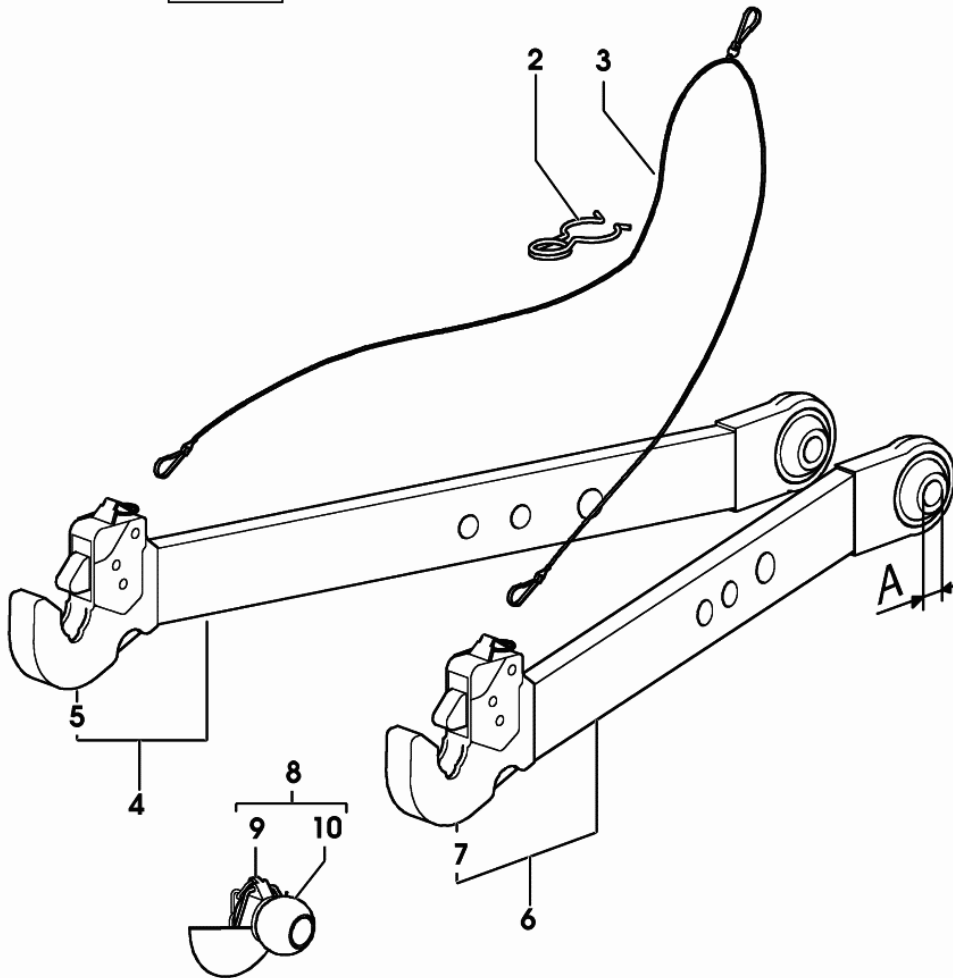
LIFTING ARM

Fig.	Code	QTY	Name
------	------	-----	------

Notes:

-> 2287 X SILVER 80 -> 3736 X SILVER 90 -> 2064 X SILVER 100.4 -> 3936 X SILVER 100.6

777_401

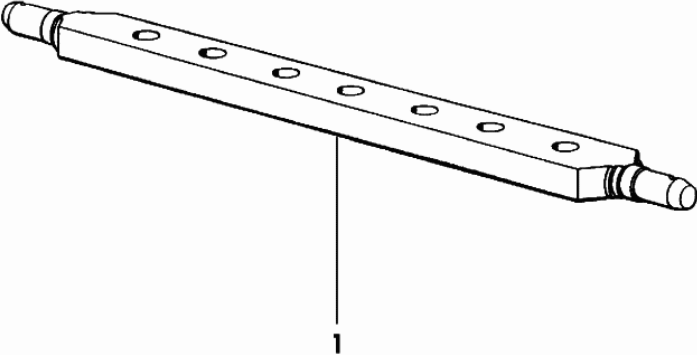


2	0.760.2262.0	2	spring
3	0.760.2258.3	1	cable
4	0.009.9645.3/20	1	left hand arm sx/lh/li - A = mm 30 - FOR TYPES WITH ELECTRONIC LIFTER
4	0.96066.21.3/80	1	left hand arm - X SILVER 80 - 90 - A = mm 34 - FOR TYPES WITH MECHANICAL LIFTER
4	0.009.9629.3/20	1	left hand arm sx/lh/li - X SILVER 100.4 - 100.6 - A = mm 34 - FOR TYPES WITH MECHANICAL LIFTER
5	0.010.1702.3	1	automatic hook 2 cat.- WALTERSCHEID F 307/1 ☞ 0.010.1702.3
6	0.009.9644.3/20	1	right hand arm dx/rh/re - A = mm 30 - FOR TYPES WITH ELECTRONIC LIFTER
6	0.96066.20.3/80	1	right hand arm - X SILVER 80 - 90 - A = mm 34 - FOR TYPES WITH MECHANICAL LIFTER
6	0.009.9626.3/20	1	right hand arm dx/rh/re - X SILVER 100.4 - 100.6 - A = mm 34 - FOR TYPES WITH MECHANICAL LIFTER
7	0.010.1702.3	1	automatic hook 2 cat.- WALTERSCHEID F 307/1 ☞ 0.010.1702.3
8	0.96066.53.4	2	old part
9	0.760.5951.3	2	pin 2 cat.
10	0.760.5952.0	2	cap Ø 56

TOWING BAR

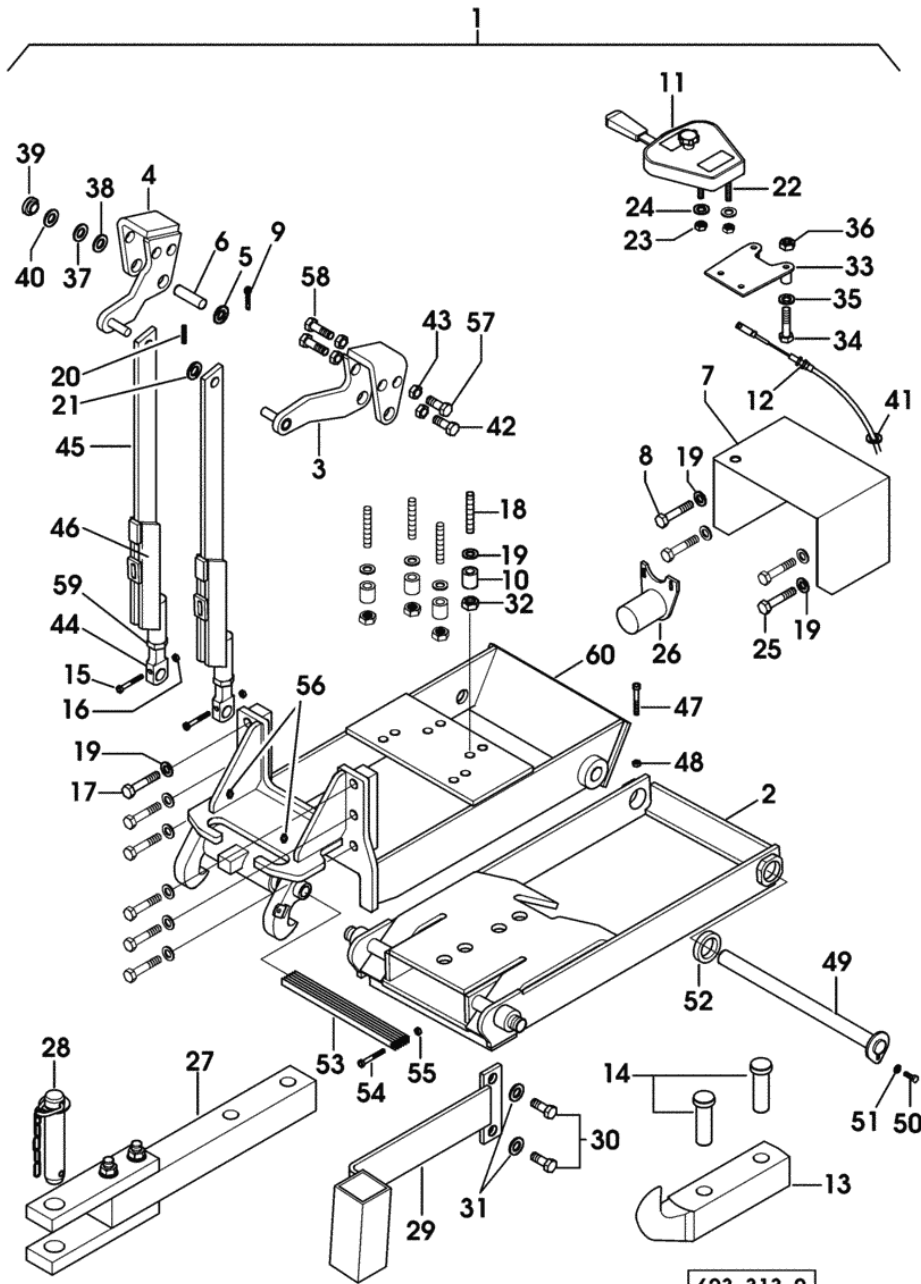
Fig.	Code	QTY	Name
1	0.96701.10.0/10	1	draw bar

96721



Section: ACCESSORIES
PICK-UP-HITCH

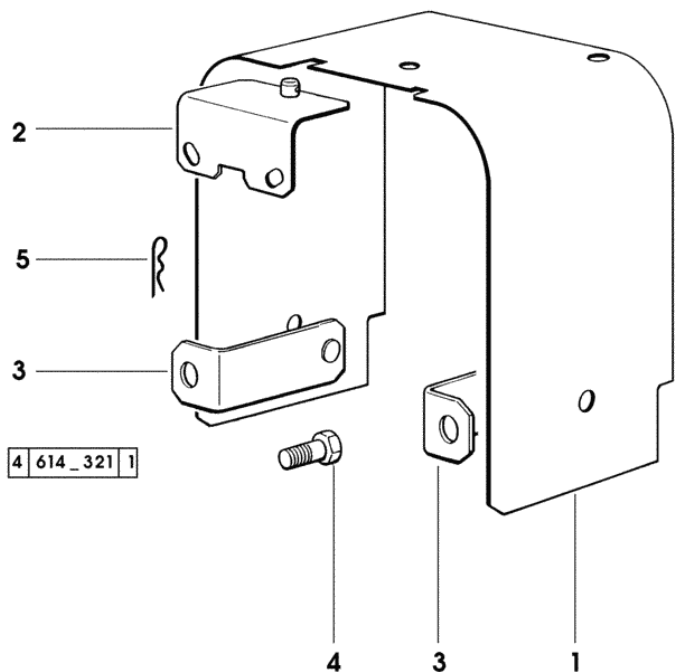
Fig.	Code	QTY	Name
1	0.012.6019.4/10	1	clevis ☞ 0.012.6019.4/10
2	0.010.3120.0	1	chassis frame
3	0.010.3120.1	1	bracket dx/rh/re
4	0.010.3120.2	1	bracket sx/lh/li
5	0.010.3112.0	2	washer
6	0.010.3121.0	2	pin
7	0.010.3121.1	1	guard
8	0.010.3107.1	3	screw m 16 x 30
9	0.010.3112.1	2	split pin
10	0.010.3121.2	4	spacer
11	0.010.3122.0	1	lever
12	0.010.3122.1	1	cable
13	0.010.3105.2	1	clevis
14	0.010.3122.2	2	pin
15	0.010.3108.1	2	screw m 6 x 50
16	0.010.3108.2	2	nut m 6
17	0.010.3123.0	6	screw m 16 x 50
18	0.010.3123.1	4	stud bolt m 16 x 50
19	0.010.3108.0	14	washer 17x30
20	0.010.3123.2	2	roll pin
21	0.010.3124.0	2	washer
22	0.010.3124.1	2	screw m 8 x 25
23	0.010.3124.2	2	nut m 8
24	0.010.3125.0	2	washer
25	0.010.3125.1	1	screw m 16 x 45
26	0.010.3125.2	1	guard
27	0.010.3113.1	1	rod
28	0.010.3113.2	1	pin
29	0.010.3126.0	1	bracket
30	0.010.3126.1	2	screw m 12 x 35
31	0.010.3110.1	2	washer
32	0.010.3115.0	4	nut m 16
33	0.010.3126.2	1	bracket
34	0.010.3127.0	2	screw m 10 x 55
35	0.010.3105.0	2	washer
36	0.010.3114.2	2	nut m 10
37	0.010.3127.1	2	spacer
38	0.010.3111.2	2	spacer
39	0.010.3127.2	2	spacer
40	0.010.3113.0	2	spacer
41	0.010.3115.1	1	grommet
42	0.010.3128.0	2	screw m 16 x 60
43	0.010.3128.1	8	nut m 16



623_313_2

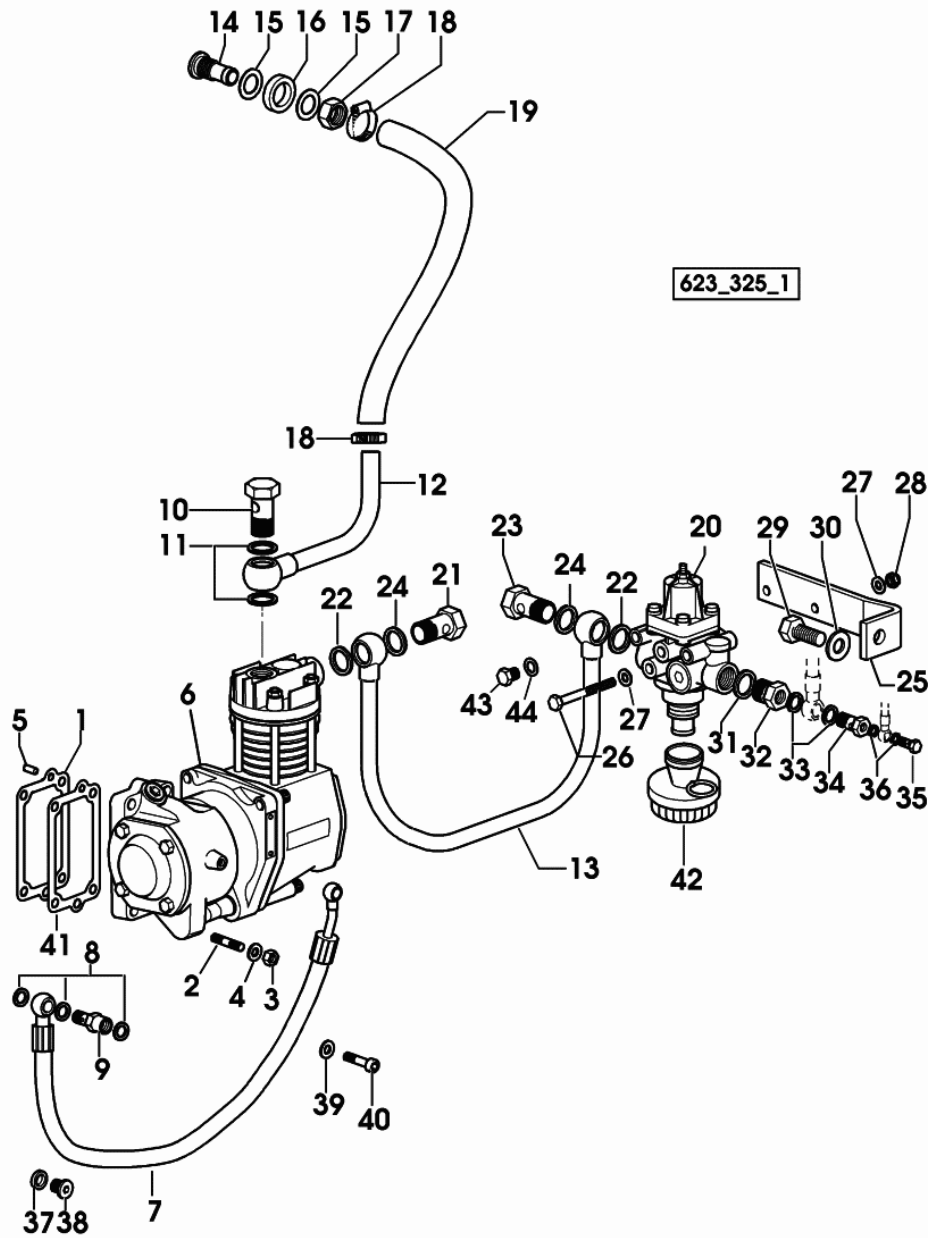
Section: ACCESSORIES
P.T.O. GUARD EXPORT GB

Fig.	Code	QTY	Name
1	0.445.3650.0/50	1	small sump
2	0.255.3668.2/20	1	square
3	0.255.3669.2	2	square
4	2.0112.609.2	2	screw m 16 p.2 x 25
5	2.1699.180.2	3	pin



Section: ACCESSORIES
PNEUMATIC TRAILER BRAKING

Fig.	Code	QTY	Name
			4695 <- X SILVER 90
			2679 <- X SILVER 100.4
			5112 <- X SILVER 100.6
			- X SILVER 100.6
13	0.010.7033.3/30	1	tube -> 2550 X SILVER 80 -> 4696 X SILVER 90 -> 2680 X SILVER 100.4 -> 5113 X SILVER 100.6 - X SILVER 100.6
14	0.010.6869.0	1	pipe union
15	2.1599.486.0	2	snoulder
16	2.1599.398.0	1	snoulder 21x32x3
17	2.1011.411.2	1	nut m 20 p.1.5
18	2.6850.004.0	2	clamp 20-35
19	0.010.6852.0	1	tube mm 1630
20	0.012.3379.0	1	valve * 2549 <- X SILVER 80 * 4695 <- X SILVER 90 * 2679 <- X SILVER 100.4 * 5112 <- X SILVER 100.6 - N.1 - 012.3382.0 ☞ 0.012.3379.0
21	2.3335.009.2	1	pipe union m 22 p.1.5 x 39
22	2.1569.167.0	2	gasket 22.2x27x4.5
23	2.3335.009.2	1	pipe union m 22 p.1.5 x 39
24	2.1560.018.0	2	gasket 22.2 x 29
25	0.010.6847.0/20	1	bracket
26	2.0112.225.2	2	screw m 8 p.1.25 x 80
27	2.1310.004.2	4	flat washer 8.5
28	2.1120.005.2	2	nut m 8 p.1.25
29	2.0112.511.2	1	screw m 14 p.2 x 30
30	2.1310.009.2	1	flat washer 14
31	2.1560.018.0	1	gasket 22.2 x 29
32	2.3339.766.2	1	reduction m 22 p.1.5/m 14 p.1.5
33	2.1560.010.0	2	gasket 14.2 x 20 x 1.5
34	2.3339.767.2	1	reduction
35	2.3339.768.2	1	pipe union
36	2.1560.004.0	2	gasket 8.2 x 14
37	2.1560.010.0	1	gasket 14.2 x 20 x 1.5
38	2.3199.292.0	1	(...) <- plug 1/4" gas
39	2.1480.014.2	1	(...) <- washer 8



Section: BODY WORK
HOOD

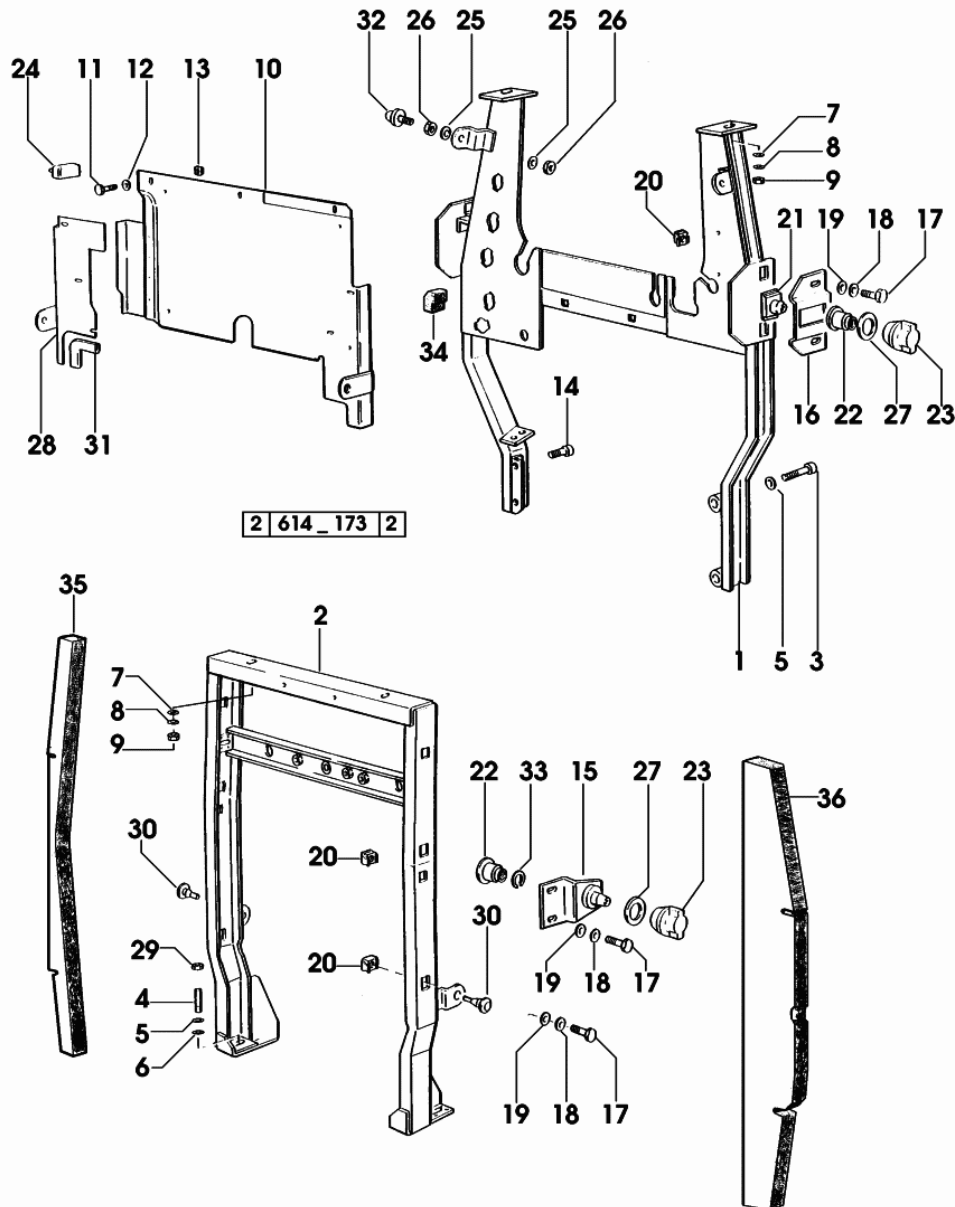


Fig.	Code	QTY	Name
1	0.008.9695.3/80	1	chassis frame
2	0.008.9682.3/10	1	support
3	2.0112.321.2	2	screw m 10 p.1.5 x 60
4	2.0422.303.2	4	stud bolt m 10 p.1.5 x 20
5	2.1470.006.2	8	lock washer 10
6	2.1310.006.2	4	flat washer 10.5
7	2.1312.004.2	4	washer 8.4
8	2.1470.004.2	4	washer 8
9	2.1011.105.2	4	nut m 8 p.1.25
10	0.008.9605.2/20	1	division
11	2.0112.007.2	9	screw m 6 p.1 x 20
12	2.1310.002.2	9	washer 6.6, d125
13	2.6999.031.2	9	special nut m 6
14	2.0312.308.1	2	screw m 10 p.1.5 x 25
15	0.008.9448.2/20	2	bracket
16	0.008.9449.0/20	2	bracket
17	2.0112.207.2	12	screw m 8 p 1.25 x 20
18	2.1470.004.2	12	washer 8
19	2.1312.004.2	12	washer 8.4
20	2.6999.008.2	12	special nut m 8 p.1.25
21	0.008.9450.0/10	2	small block
22	2.1559.337.0	4	bushing
23	0.008.3426.2/30	4	knob
24	0.007.6083.0/10	2	rubber plug
25	2.1310.004.2	8	flat washer 8.5
26	2.1011.105.2	8	nut m 8 p.1.25
27	2.1599.658.0	4	washer
28	0.008.9603.2/10	1	division dx/rh/re
29	2.1011.106.2	4	nut m 10 p.1.5
30	0.010.1532.0	2	block
31	0.159.7255.0	1	gasket mm 105
32	0.008.9965.2/20	4	rubber plug
33	2.1499.084.0	4	circlip
34	0.010.1904.0	2	block
35	0.010.0645.0/10	1	gasket
36	0.010.0646.0/10	1	gasket

Section: BODY WORK
PEDAL SUPPORT

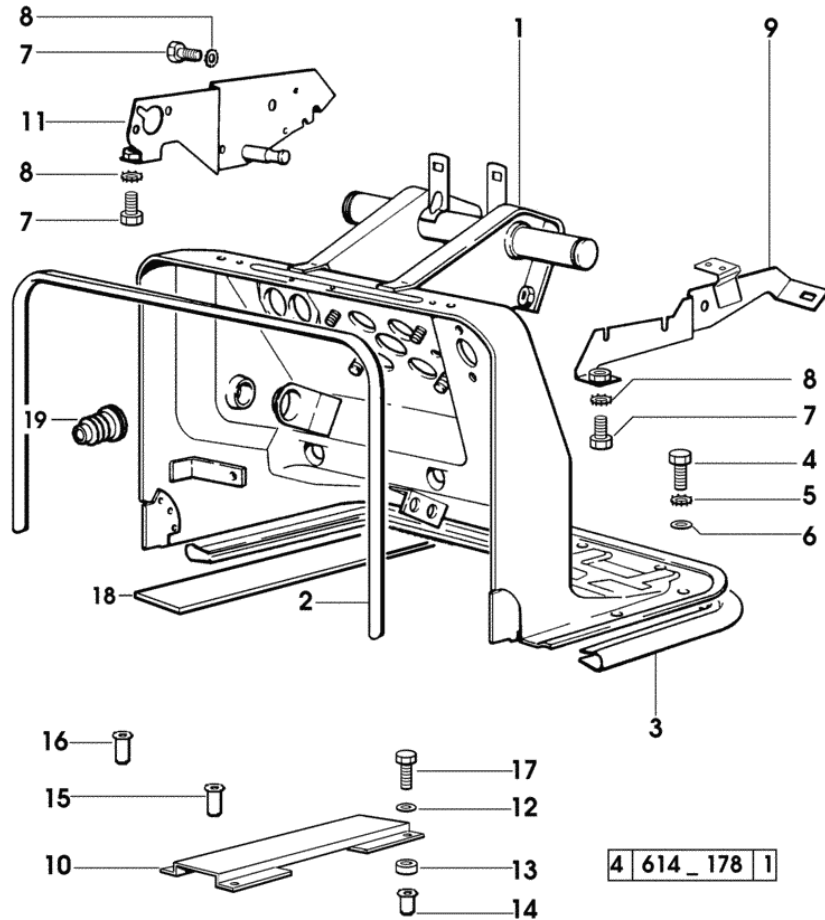
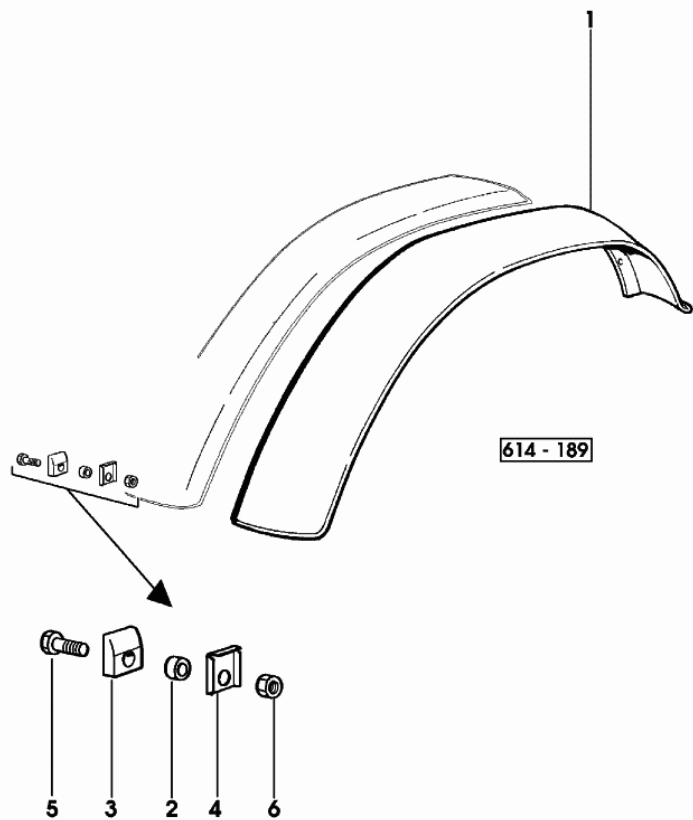


Fig.	Code	QTY	Name
1	0.008.9926.3/40	1	support
2	0.008.2198.0	1	gasket
3	0.008.2199.0/10	1	gasket
4	2.0112.209.2	10	screw m 8 p 1.25 x 25
5	2.1470.004.2	10	washer 8
6	2.1310.004.2	10	flat washer 8.5
7	2.0112.205.2	4	screw m 8 p.1.25 x 16
8	2.1470.004.2	4	washer 8
9	0.008.9829.3/10	1	bracket sx/lh/li
10	0.009.2964.0	1	channel dx/rh/re
11	0.009.0641.2/40	1	support dx/rh/re
12	2.1310.002.2	2	washer 6.6, d125
13	2.1579.726.2/10	2	spacer 8.4x11.5x6
14	2.1142.004.2	2	insert m 6
15	2.1140.024.2	4	special nut m 8 p.1.25
16	2.1140.023.2	6	special nut m 8 p.1.25
17	2.0112.011.2	2	screw m 6 p.1x30
18	0.467.8151.0	1	gasket
19	0.009.8175.0/10	1	bellows

Section: BODY WORK

MUDGUARDS EXTENSIONS

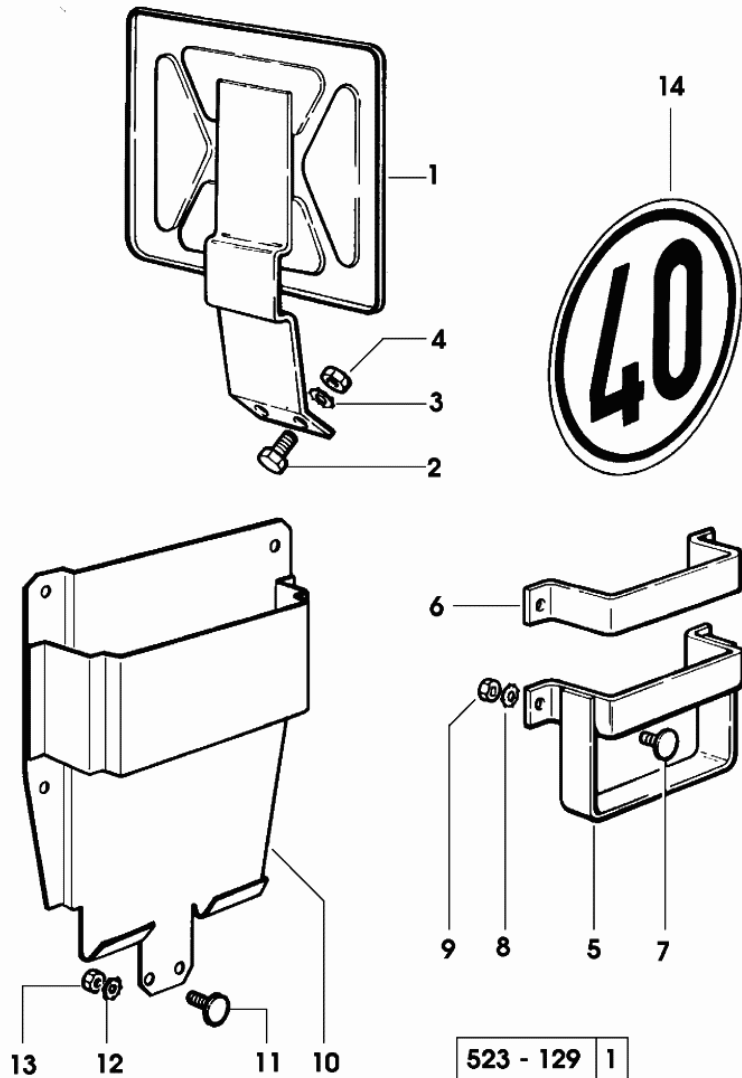
Fig.	Code	QTY	Name
1	0.009.0674.0/10	1	extension sx/lh/li
1	0.009.0675.0/10	1	extension dx/rh/re
2	2.1579.774.2	22	spacer 8.4x12x6.5
3	0.009.0676.0	22	small block
4	0.009.0677.0/10	22	brace
5	2.0112.209.2	22	screw m 8 p 1.25 x 25
6	2.1011.105.2	22	nut m 8 p.1.25



Section: BODY WORK

LICENSE PLATE FRAME AND SUPPORT

Fig.	Code	QTY	Name
1	0.009.0512.3/10	1	plate holder
1	0.009.0513.3/10	1	plate holder - EXPORT F
2	2.0122.207.2	2	screw m 8 p.1x20
3	2.1470.004.2	2	washer 8
4	2.1011.405.2	2	nut m 8 p.1
5	0.146.8581.3	1	support
6	0.154.8562.0	1	u bolt
7	2.0099.014.0/20	4	screw m 6 x 25
8	2.1499.097.3	4	washer 6, d128
9	2.1011.103.2	4	nut m 6 p.1
10	0.008.3438.2	1	support
11	2.0099.014.0/20	5	screw m 6 x 25
12	2.1499.097.3	5	washer 6, d128
13	2.1011.103.2	5	nut m 6 p.1
14	0.008.8331.0	1	disc 40 KM/H



Section: BODY WORK
FUEL SUPPLY SYSTEM

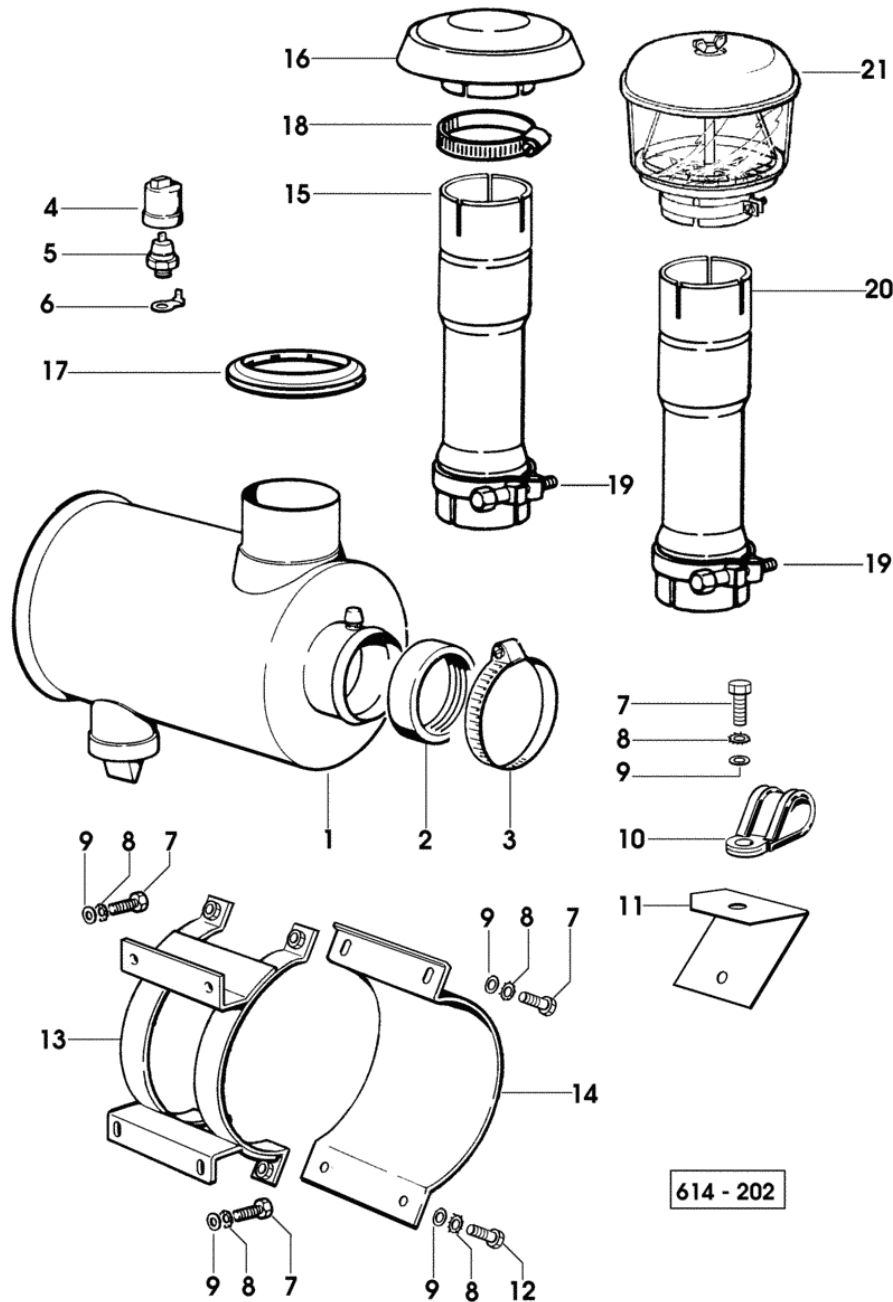




Fig.	Code	QTY	Name
1	2.4249.420.0	1	air filter 8 " ☞ 2.4249.420.0 ☞ 07.00.53
2	0.293.8152.0	1	ring
3	2.6850.014.0	1	clamp 60-115
4	2.6519.029.0	1	cap
5	2.7099.320.0/10	1	pressure switch
6	0.164.8450.0	1	terminal
7	2.0112.207.2	7	screw m 8 p 1.25 x 20
8	2.1470.004.2	9	washer 8
9	2.1310.004.2	9	flat washer 8.5
10	2.6839.052.0	1	clamp 30/20
11	0.009.3997.2	1	square
12	2.0112.211.2	2	screw m 8 p.1.25 x 30
13	0.008.9410.2/10	1	support
14	0.008.9622.0	1	clamp
15	0.258.8142.0/10	1	extension mm 310
16	0.200.8156.3	1	precleaner
17	0.008.9487.0	1	gasket
18	2.6850.014.0	1	clamp 60-115
19	0.164.8157.3/10	1	clamp
20	0.445.8166.0	1	extension mm 600
21	2.4239.110.0	1	precleaner ☞ 2.4239.110.0 ☞ 07.00.55

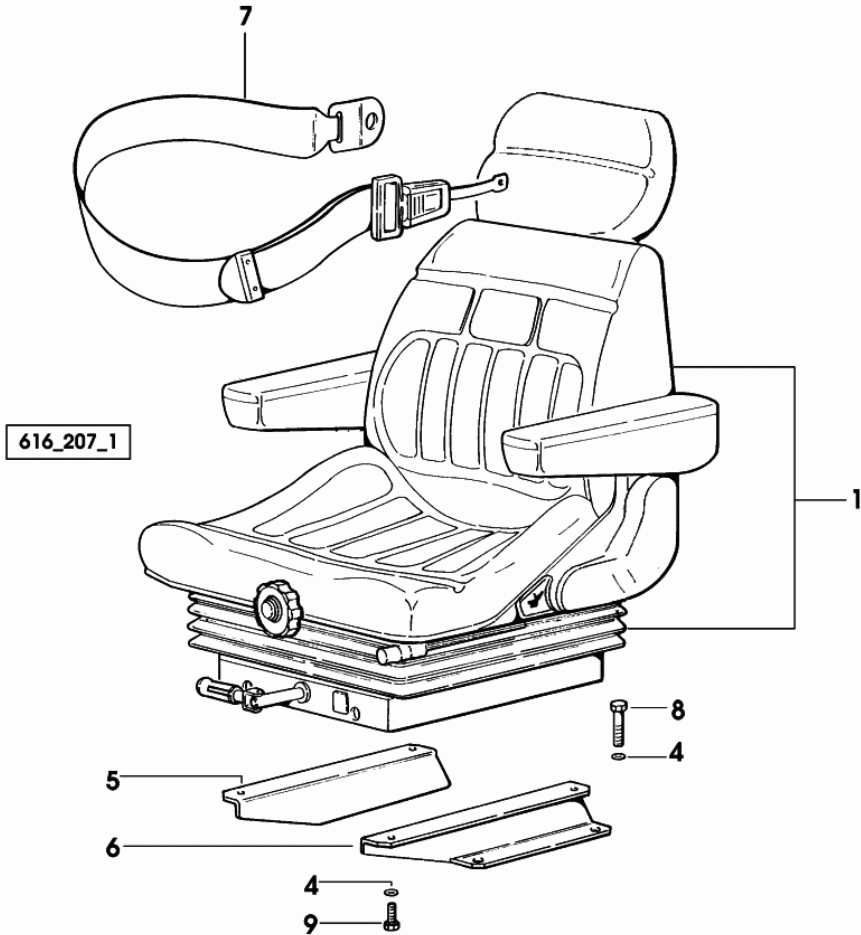
Section: BODY WORK
SEAT

Fig.	Code	QTY	Name
------	------	-----	------

Notes:

-> (...)

1	0.010.6541.4	1	sprung seat GRAMMER DS85H90AR  0.010.6541.4  0.010.6541.4
4	2.1499.096.3	4	washer 8
5	0.008.9653.0/10	1	bracket dx/rh/re
6	0.008.9654.0/10	1	bracket sx/lh/li
7	0.009.1755.4	1	safety belt
8	2.0365.311.3	4	screw m 8 x 40
9	2.0119.164.3	4	screw m 8 p.1.25 x 20



Section: BODY WORK
SEAT-COMPONENTS

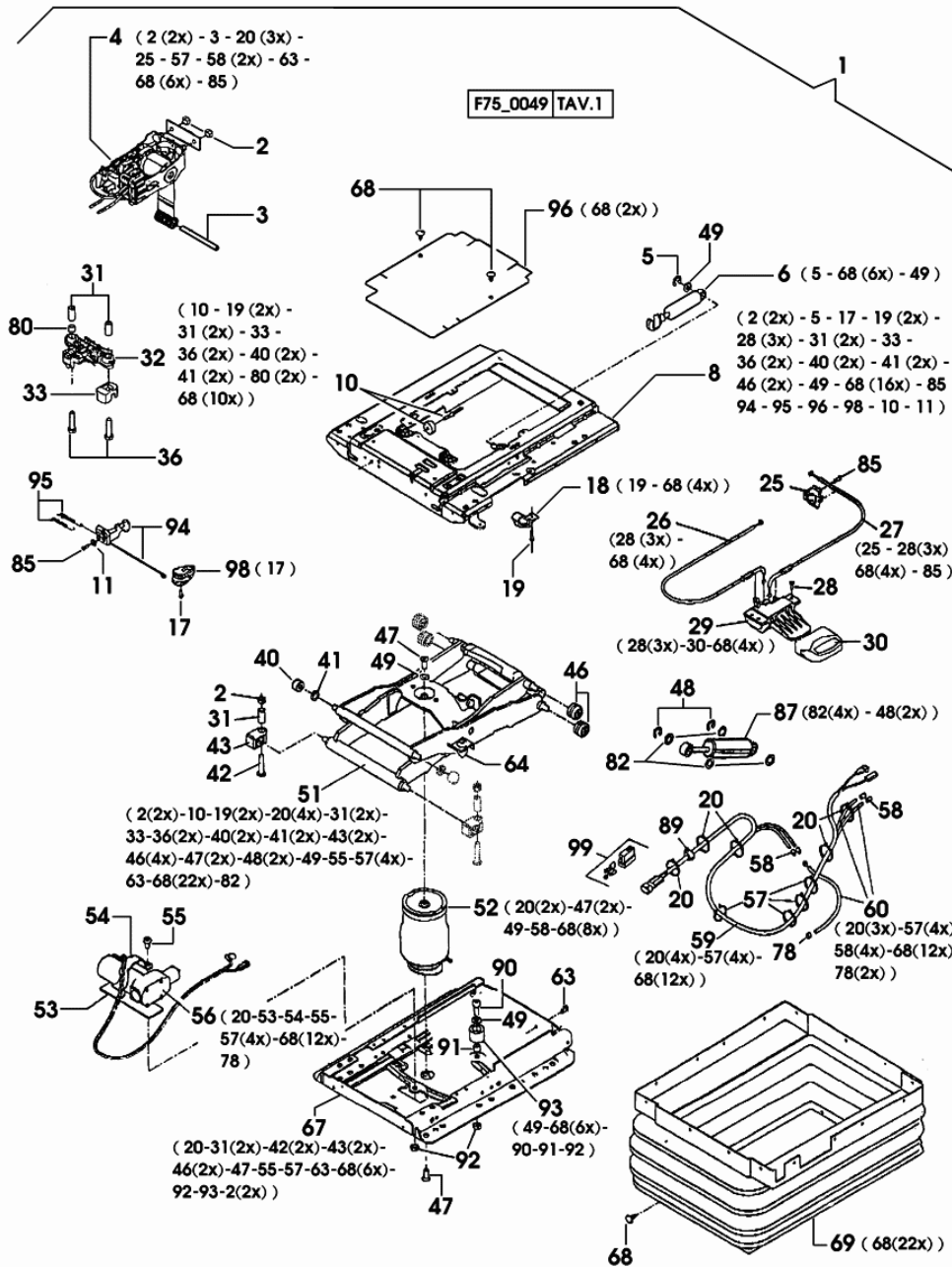
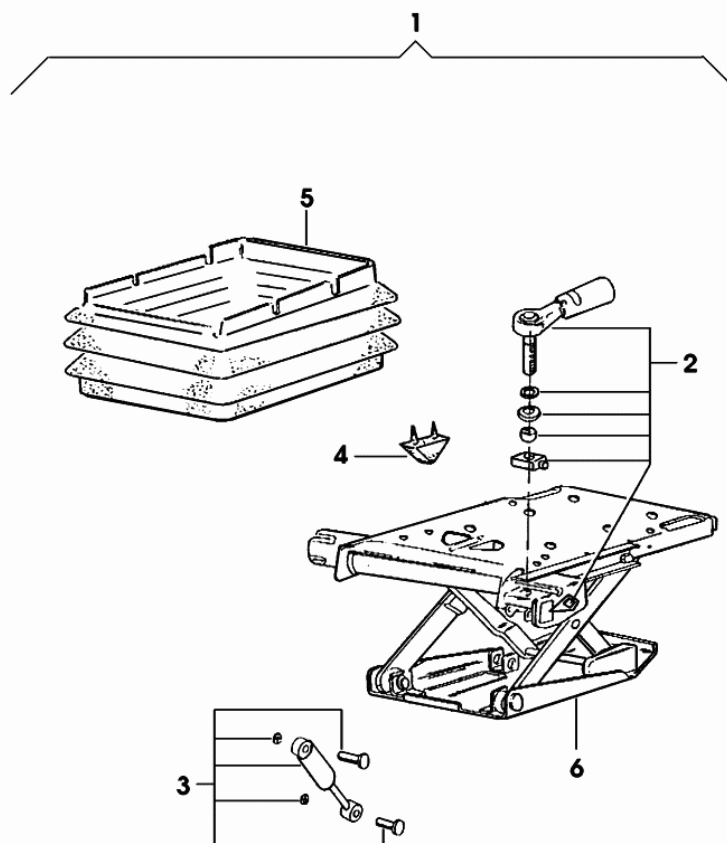


Fig.	Code	QTY	Name
68	0.000.0000.1	0	not serviceable
69	0.010.2276.0	1	guard
78	0.009.4381.0	2	terminal
80	0.000.0000.1	0	not serviceable
82	0.000.0000.1	0	not serviceable
85	0.000.0000.1	0	not serviceable
87	0.010.2276.1	1	shoch.absorber
89	0.000.0000.1	0	not serviceable
90	0.000.0000.1	0	not serviceable
91	0.009.4720.1	1	bushing
92	0.000.0000.1	0	not serviceable
93	0.010.2277.2	1	sub-assy parts
94	0.010.2276.2	1	lever
95	0.010.2277.0	2	spring
96	0.010.2277.1	1	cover
98	0.010.2077.2	1	knob
99	0.009.4381.1	1	connection

Section: BODY WORK

SEAT SPRINGING

Fig.	Code	QTY	Name
1	0.010.5357.4	1	seat springs KAB XL2 ☞ 0.010.5357.4
2	0.010.2228.0	1	handle
3	0.010.2228.2	1	shoch.absorber
4	0.010.2229.0	1	stopper
5	0.010.2229.1	1	guard
6	0.000.0000.1	0	not serviceable



2 | 566_132_1
010.5357.4

Section: CAB
GLASSES AND SEALS

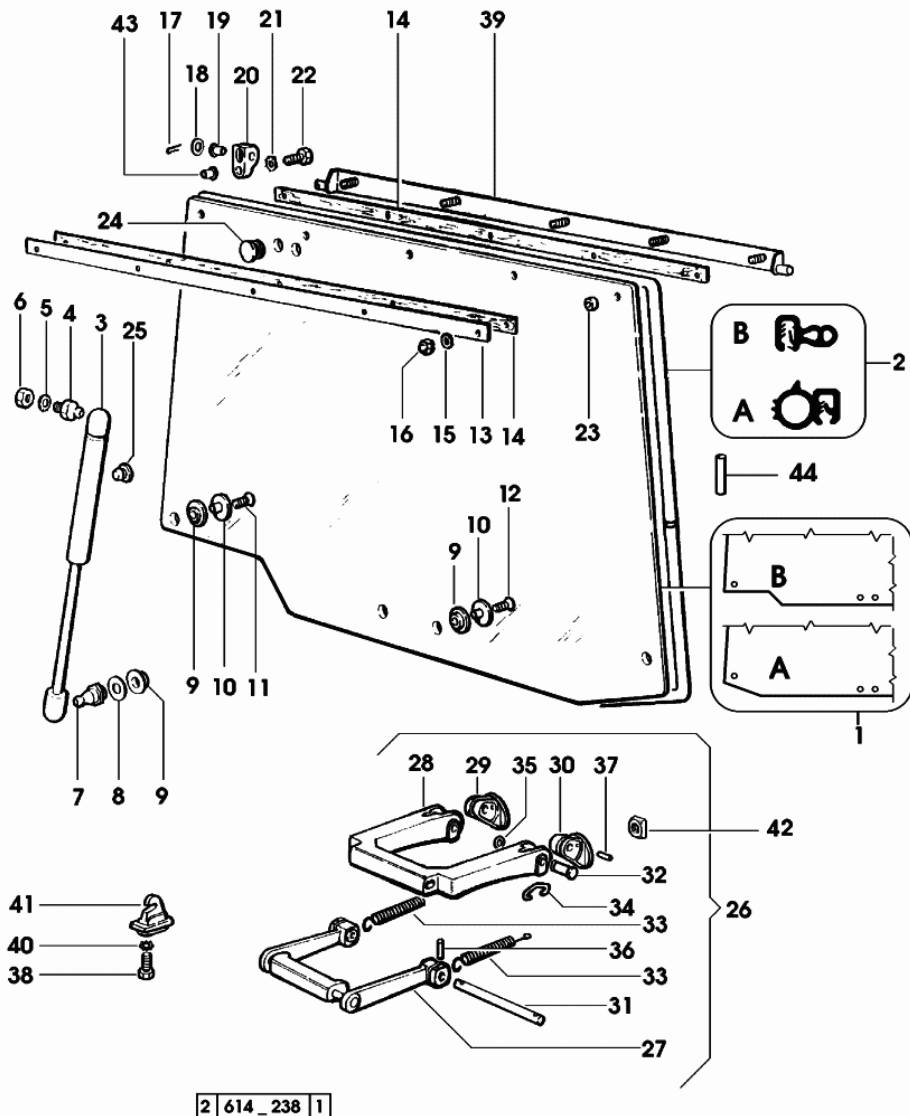
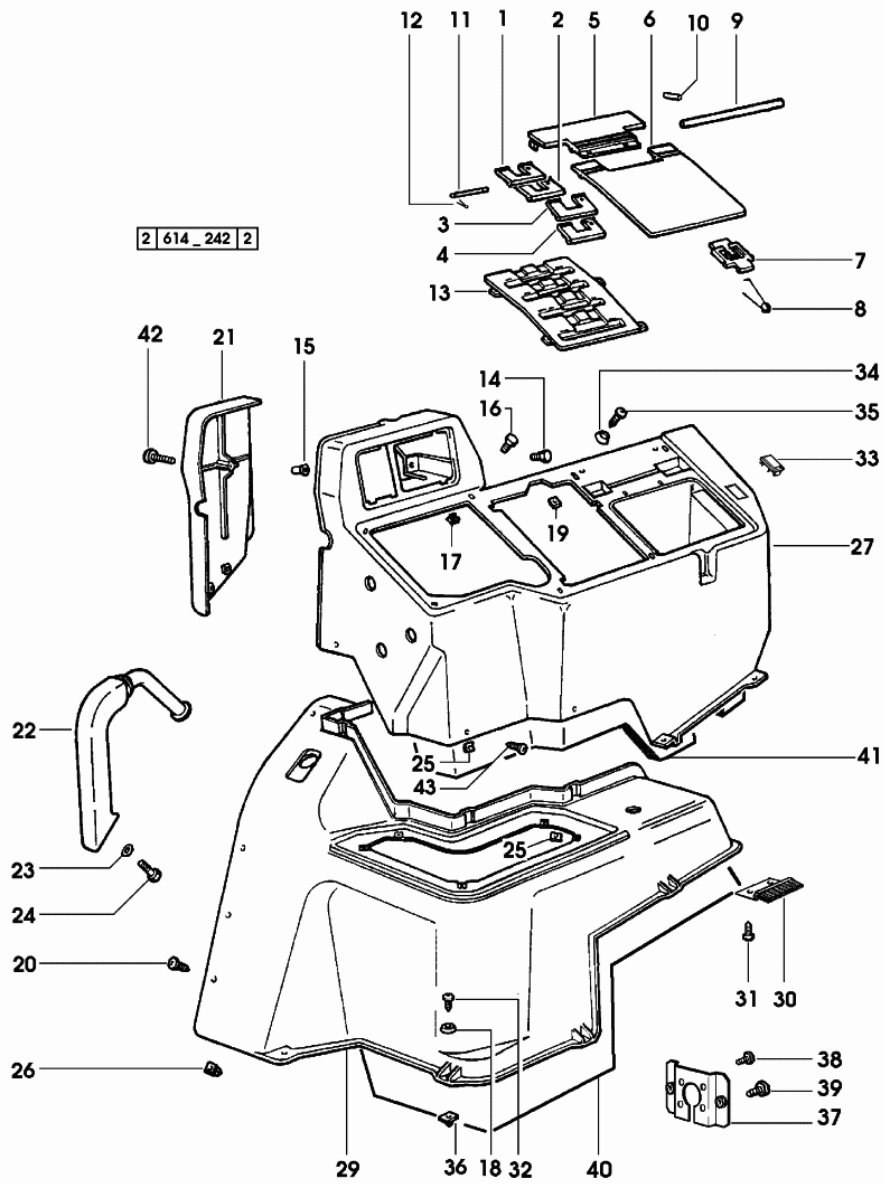


Fig.	Code	QTY	Name
13	0.010.1495.0	1	1681 <- X SILVER 80 2347 <- X SILVER 90 1558 <- X SILVER 100.4 2395 <- X SILVER 100.6 plate -> 1682 X SILVER 80 -> 2348 X SILVER 90 -> 1559 X SILVER 100.4 -> 2396 X SILVER 100.6
14	0.007.5665.0/10	2	gasket 1681 <- X SILVER 80 2347 <- X SILVER 90 1558 <- X SILVER 100.4 2395 <- X SILVER 100.6
14	0.010.1496.0	2	gasket -> 1682 X SILVER 80 -> 2348 X SILVER 90 -> 1559 X SILVER 100.4 -> 2396 X SILVER 100.6
15	2.1470.002.2	5	washer 6, d128 1681 <- X SILVER 80 2347 <- X SILVER 90 1558 <- X SILVER 100.4 2395 <- X SILVER 100.6
16	2.1030.001.1	5	nut m 6 1681 <- X SILVER 80 2347 <- X SILVER 90 1558 <- X SILVER 100.4 2395 <- X SILVER 100.6
16	2.1030.002.2	5	nut m 8 -> 1682 X SILVER 80 -> 2348 X SILVER 90 -> 1559 X SILVER 100.4 -> 2396 X SILVER 100.6
17	2.1690.307.2	2	split pin 3.2x18
18	2.1311.007.2	4	flat washer 10
19	2.1559.147.0	2	bushing 10 x 28 x 18
20	0.007.5497.0/20	1	hinge sx/lh/li
20	0.007.5496.0/20	1	hinge dx/rh/re
21	2.1470.006.2	2	lock washer 10
22	2.0312.310.2	2	screw m 10 p.1.5 x 30
23	0.007.5666.0	5	rubber plug 1681 <- X SILVER 80 2347 <- X SILVER 90

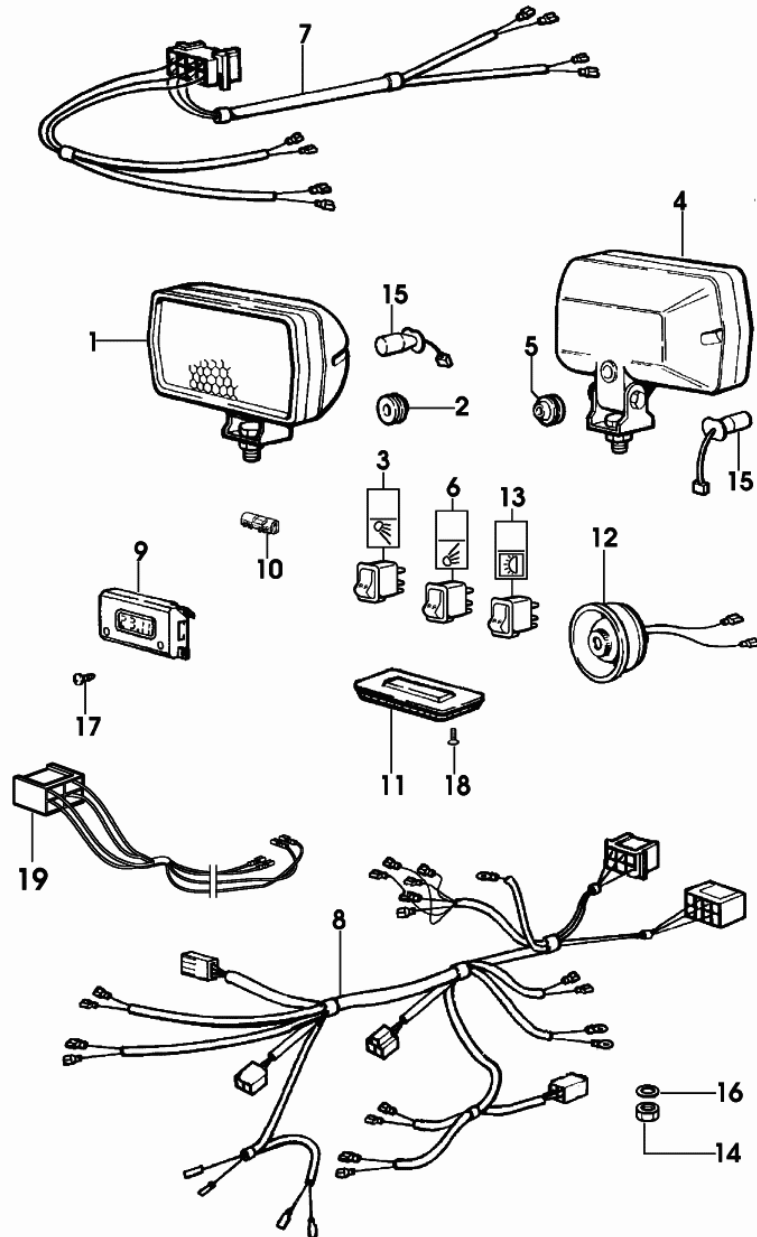
Section: CAB
INTERIOR TRIM

Fig.	Code	QTY	Name
40	0.007.1921.0	1	sound deadening
41	0.007.1922.0/10	1	sound deadening
42	2.0332.211.3	1	screw m 4 x 40
43	2.0351.556.3	3	screw 4.8x19



Section: CAB

ELECTRICAL SYSTEM



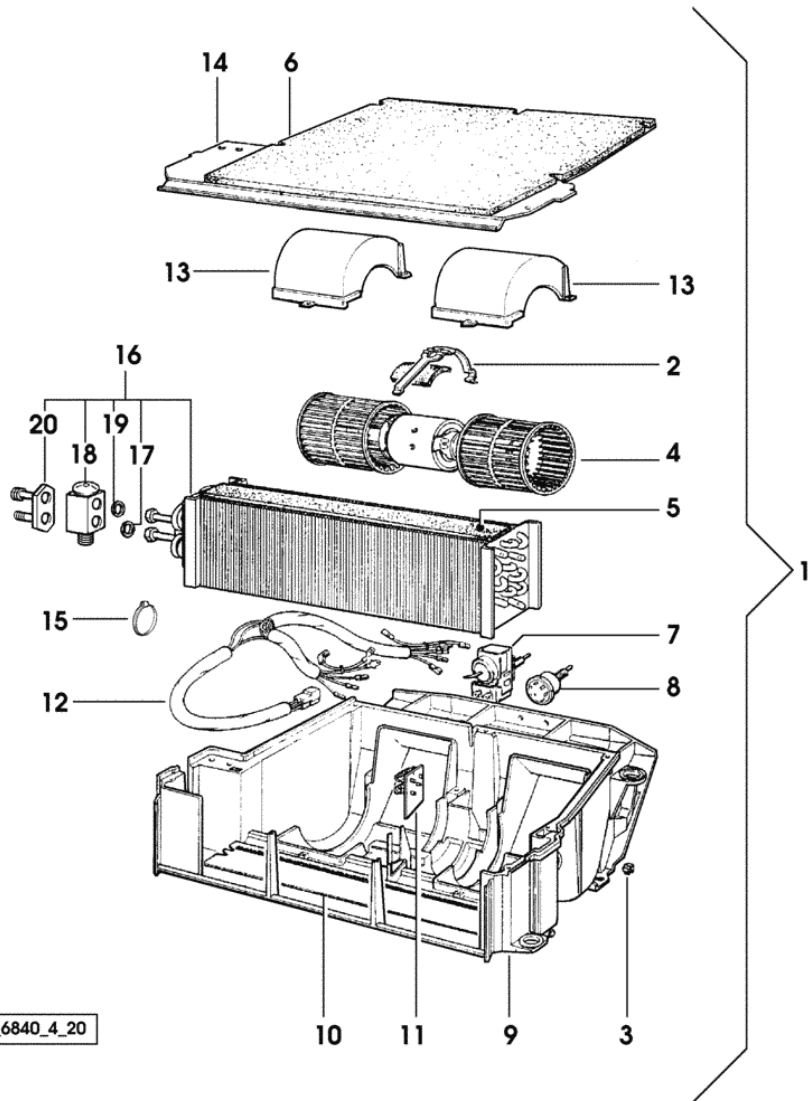
2 614_250 2

Fig.	Code	QTY	Name
1	2.8029.730.0	2	headlight ☞ 2.8029.730.0
2	2.6569.018.0	2	wire guide 20 x 8 x 15
3	2.7659.078.0	1	switch - FOR FRONT HEAD LIGHTS
4	2.8029.730.0	2	headlight ☞ 2.8029.730.0
5	2.6569.018.0	2	wire guide 20 x 8 x 15
6	2.7659.079.0	1	switch - FOR BACK LIGHTS
7	0.008.1298.3	1	wire
8	0.008.0400.3/20	1	electrical system
9	2.9389.002.0	1	digital chronometers
10	2.6039.010.0	4	guard
11	2.8339.097.0	1	interior light
12	2.8339.094.0/10	1	light
13	2.7659.081.0	1	switch
14	2.1011.105.2	1	nut m 8 p.1.25
15	2.8319.002.0	4	lamp 12V - 55W
16	2.1470.004.2	1	washer 8
17	2.0350.154.2	2	screw 2.9x13
18	2.0399.190.3	2	screw m 3.5 x 16 -AB-
19	0.011.0730.4	1	wire

Section: CAB

AIR CONDITIONER PARTS

Fig.	Code	QTY	Name
1	0.007.6840.4/20	1	climatization kit ☞ 0.007.6840.4/20
2	0.98710.81.1	1	bracket
3	0.98710.82.1	6	special nut
4	0.98710.71.4	1	fan motor
5	0.98710.83.1	1	gasket
6	0.98710.72.0/10	1	lining
7	2.7649.120.0	1	thermostat
8	2.7649.110.0	1	switch
9	0.011.2696.0	1	box
10	0.98710.84.1	1	guard
11	0.98710.73.3	1	resistance
12	0.98710.85.1	1	wire
13	0.98706.67.0	2	cover
14	0.98706.68.0	1	cover
15	2.6850.003.0	1	clamp 16-25
16	0.010.1713.4	1	radiator
17	2.1533.503.0	1	'o' ring
18	0.010.1714.3	1	valve R 134a
19	2.1533.012.0	1	'o' ring
20	0.010.1739.0	1	flange



007_6840_4_20

Section: CAB
ALTERNATOR PARTS

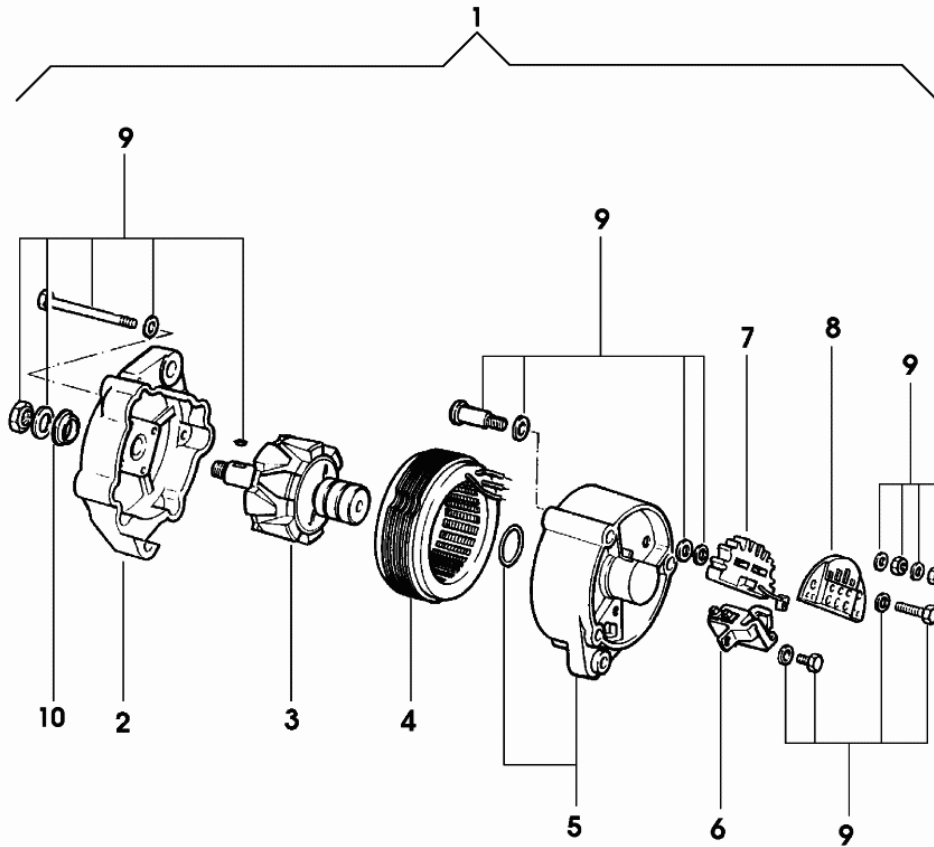

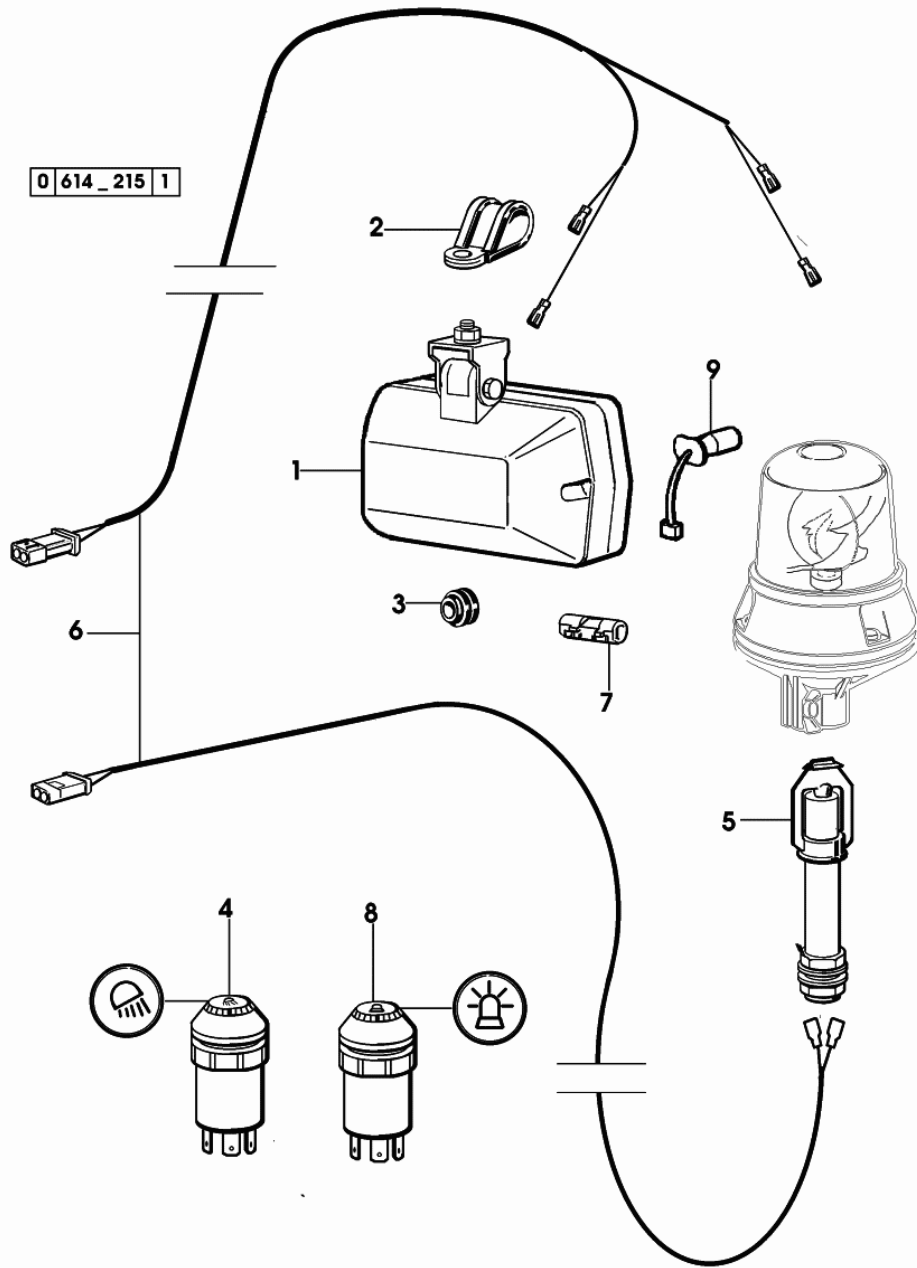


Fig.	Code	QTY	Name
1	2.9439.480.0	1	alternator 65A MARELLI  2.9439.480.0
2	2.9439.290.2	1	support
3	2.9439.290.3	1	rotor
4	2.9439.290.5	1	field winding
5	2.9439.290.6	1	support
6	2.9439.150.7	1	brush holder
7	2.9439.290.7	1	rectifier
8	2.9439.290.8	1	guard
9	0.000.0000.1	0	not serviceable
10	2.9439.290.1	1	spacer

2.9439.290.0

ELECTRIC LIGHTING SYSTEM FOR TYPE WITH PLATFORM

Fig.	Code	QTY	Name
1	2.8029.730.0	2	headlight ☞ 2.8029.730.0
2	2.6839.060.0	2	clamp 40/25
3	2.6560.018.0	1	rubber plug 22x5
4	2.7659.109.0	1	push-button
5	0.009.6742.4/10	1	coupling
6	0.009.6934.3/10	1	wire
7	2.6039.010.0	2	guard
8	2.7659.118.0	1	push-button
9	2.8319.002.0	2	lamp 12V - 55W



STARTER PARTS

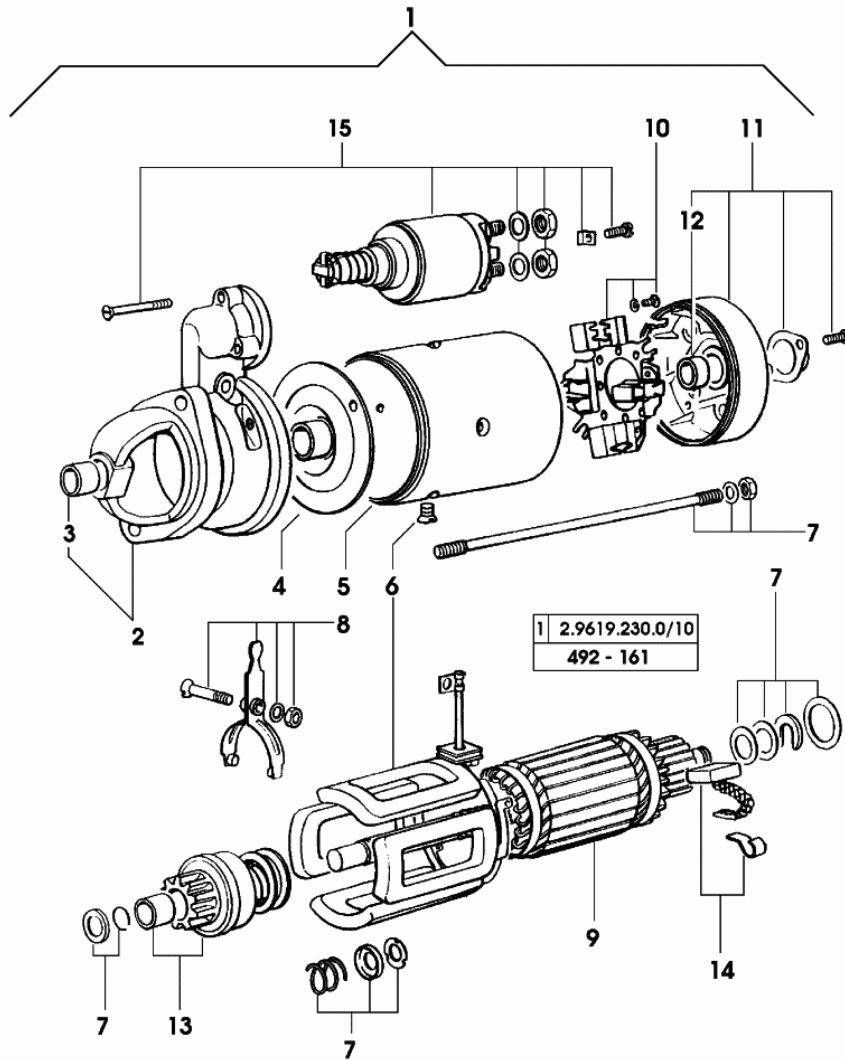


Fig.	Code	QTY	Name
1	0.000.0000.1	0	not serviceable - ISKRA - (2.9619.350.0)
2	0.009.4260.1	1	support
3	0.009.4260.2	1	bushing
4	0.009.4261.0	1	support
5	0.000.0000.1	0	not serviceable
6	0.009.4261.1	1	field winding
7	0.009.4261.2	1	accessories
8	0.009.4258.0	1	lever
9	0.009.4262.0	1	armature
10	0.009.4262.1	1	brush holder
11	0.009.4262.2	1	support
12	0.009.4259.1	0	bushing
13	0.009.4263.0	1	pinion z = 9
14	0.009.4263.1	1	brush set
15	0.009.4256.2	1	switch

ELECTRICAL SYSTEM FOR TYPE WITH CAB

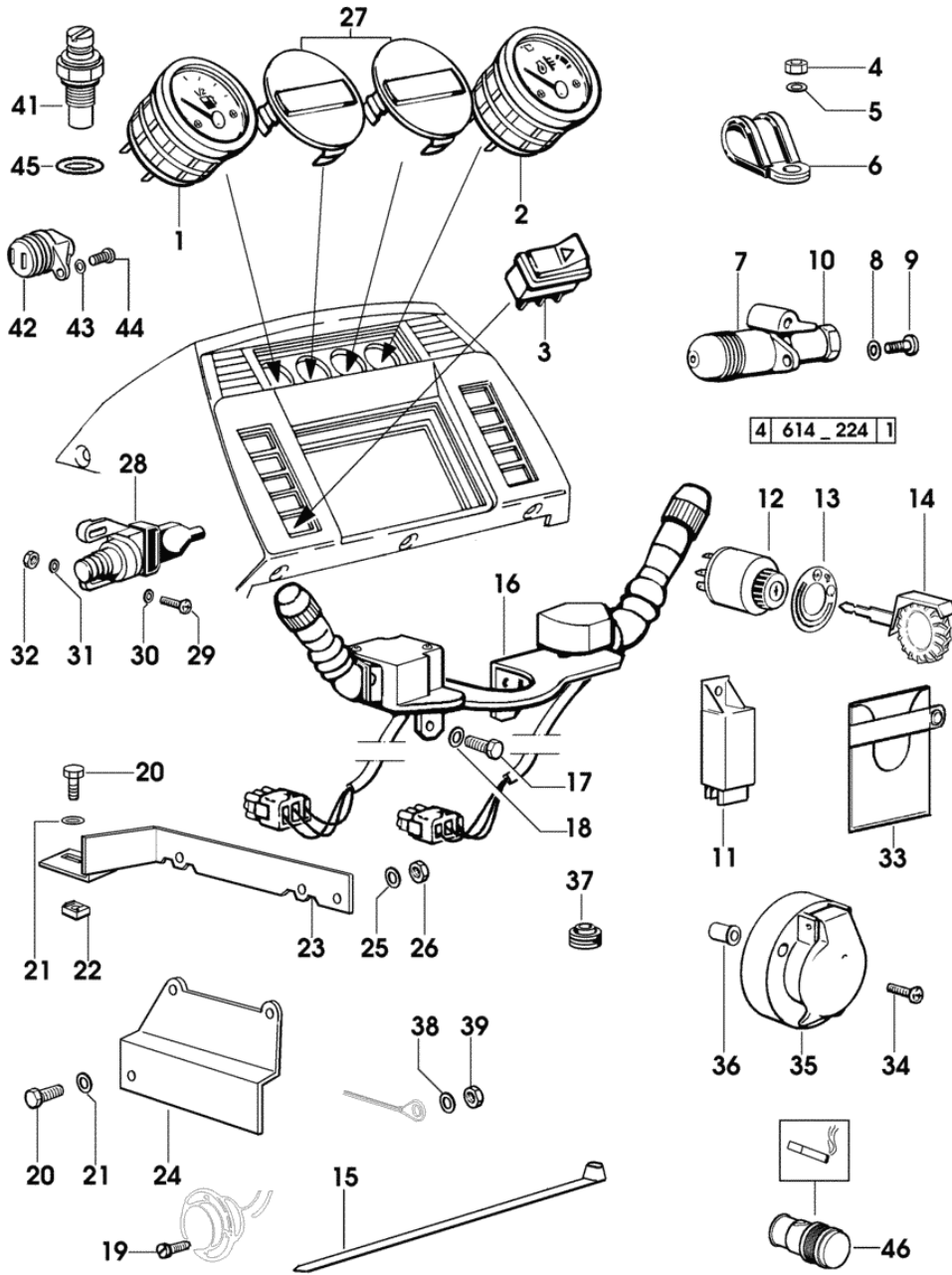


Fig.	Code	QTY	Name
1	0.008.1305.0	1	level indicator ☞ 0.008.1305.0
2	0.009.1735.0/10	1	tempe guage ☞ 0.009.1735.0/10
3	2.7659.080.0	1	switch
4	2.1011.103.2	1	nut m 6 p.1
5	2.1310.002.2	1	washer 6.6, d125
6	2.6839.051.0	1	clamp 20/20
7	2.6032.011.0	1	socket (...) <- ☞ 2.6032.011.0
8	2.1310.001.3	2	washer 5.3 x 10
9	2.0399.167.3	2	screw m 5 p.0.8 x 14
10	2.6032.021.0	1	socket
11	2.8639.007.0	1	intermitent switch
12	2.7659.071.0/30	1	switch
13	0.009.7118.0	1	plate
14	2.7439.017.0/10	2	key
15	0.98503.67.0	10	clamp
16	0.008.0392.4/10	1	switch
17	2.0119.160.3	2	screw m 6 p.1 x 14
18	2.1499.097.3	2	washer 6, d128
19	2.0399.175.3	4	screw m 4.2 x 19 -AB-
20	2.0112.005.2	3	screw m 6 p.1 x 16
21	2.1310.002.2	3	washer 6.6, d125
22	2.6999.031.2	1	special nut m 6
23	0.009.1906.2/10	1	bracket
24	0.009.1905.2	1	bracket
25	2.1310.002.2	4	washer 6.6, d125
26	2.1011.103.2	4	nut m 6 p.1
27	0.269.8454.0	1	plug
28	2.7659.097.0	2	switch
29	2.0332.207.2	4	screw m 4 p.0.7 x 20
30	2.1310.001.2	4	flat washer 5.3
31	2.1470.052.2	4	lock washer 4
32	2.1011.101.2	2	nut m 4 p.0.7
33	0.008.0385.0	1	plastic bag
34	2.0312.015.2	3	screw m 5 p.0.8x45
35	2.6030.011.0	1	socket
36	2.1142.003.2	3	nut m 5
37	2.6569.034.0	2	grommet 24x13x13.5
38	2.1470.004.2	1	washer 8
39	2.1011.105.2	1	nut m 8 p.1.25
41	2.7099.640.0/10	1	tempe guage

POWER-LIFT ELECTRONIC SYSTEM

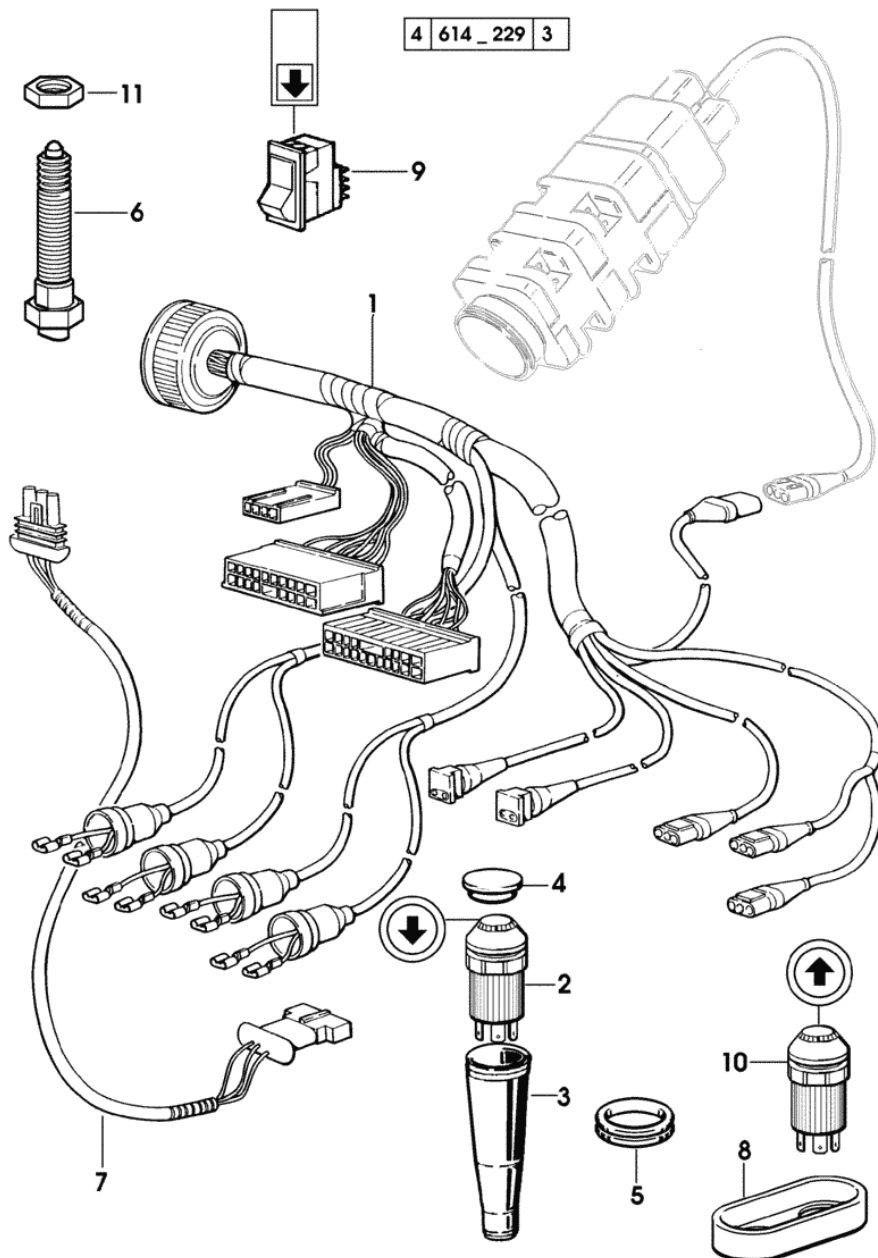


Fig.	Code	QTY	Name
1	0.009.7712.4/40	1	electrical system 1840 <- X SILVER 80 2416 <- X SILVER 90 1607 <- X SILVER 100.4 2554 <- X SILVER 100.6 * 1140 <- X SILVER 80 * 1748 <- X SILVER 90 * 1306 <- X SILVER 100.4 * 1702 <- X SILVER 100.6 - N.1 009.2887.0 - N.4 2.7659.141.0
1	0.009.7712.4/50	1	electrical system -> 1841 - 2421 <- X SILVER 80 -> 2417 - 4162 <- X SILVER 90 -> 1608 - 2328 <- X SILVER 100.4 -> 2555 - 4494 <- X SILVER 100.6
1	0.011.7600.4	1	electrical system -> 2422 X SILVER 80 -> 4163 X SILVER 90 -> 2329 X SILVER 100.4 -> 4495 X SILVER 100.6
2	0.008.8049.0	2	push-button 1140 <- X SILVER 80 1748 <- X SILVER 90 1306 <- X SILVER 100.4 1702 <- X SILVER 100.6
3	2.6519.025.0	2	guard 1140 <- X SILVER 80 1748 <- X SILVER 90 1306 <- X SILVER 100.4 1702 <- X SILVER 100.6
4	0.009.0210.0/10	7	plug 30 x 38 x 9.0 1140 <- X SILVER 80 1748 <- X SILVER 90 1306 <- X SILVER 100.4 1702 <- X SILVER 100.6
5	2.6569.039.0	1	wire guide 21.5x48x12
6	0.009.3954.0	1	sensor 2247 <- X SILVER 80 3592 <- X SILVER 90 2033 <- X SILVER 100.4 3773 <- X SILVER 100.6
6	0.009.2194.4	1	sensor -> 2248 X SILVER 80

CLICK HERE TO **DOWNLOAD** THE COMPLETE MANUAL

- Thank you very much for reading the preview of the manual.
- You can download the complete manual from: www.heydownloads.com by clicking the link below



- Please note: If there is no response to CLICKING the link, please download this PDF first and then click on it.

CLICK HERE TO **DOWNLOAD** THE COMPLETE MANUAL

Section: ENGINE
CRANKSHAFT

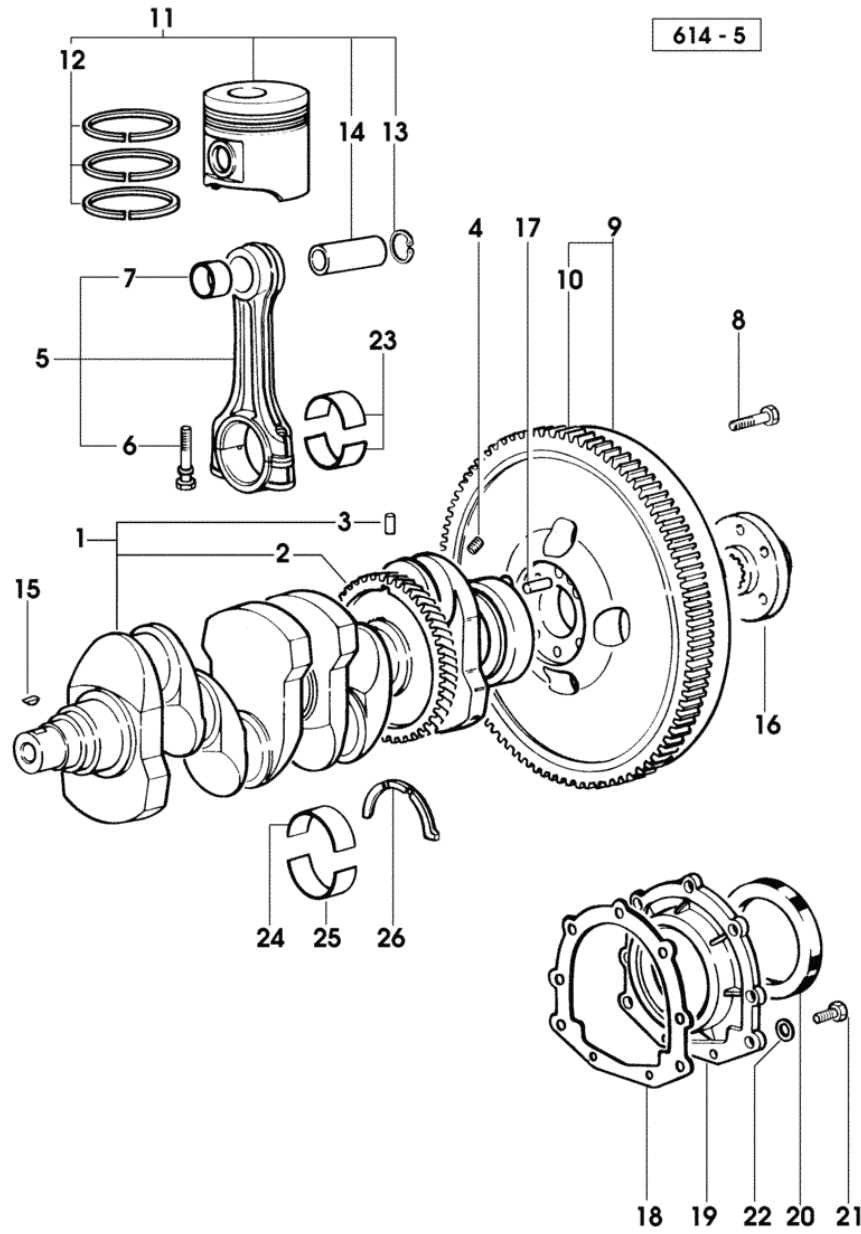
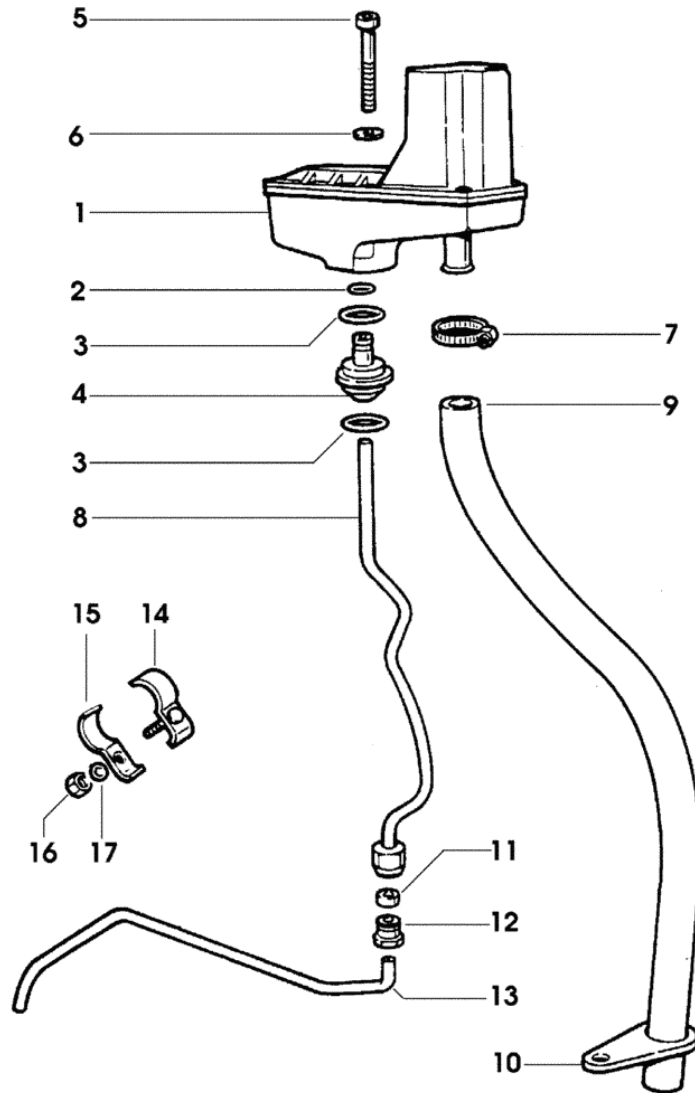


Fig.	Code	QTY	Name
18	0.065.1254.0/20	1	gasket
19	0.007.1711.0/10	1	cover
20	2.1529.073.0	1	'o' ring 110x130x13
21	2.0112.207.2	9	screw m 8 p 1.25 x 20
22	2.1475.002.3	9	washer 8
23	0.065.1225.0	8	con.rod half bushing STANDARD
23	0.065.1225.7	0	con.rod half bushing - mm 0.25
23	0.065.1225.8	0	con.rod half bushing - mm 0.50
24	0.065.1215.0	5	main half bushing STANDARD
24	0.065.1215.7	0	main half bushing - mm 0.25
24	0.065.1215.8	0	main half bushing - mm 0.50
25	0.065.1216.0	5	main half bushing
25	0.065.1216.7	0	main half bushing - mm 0.25
25	0.065.1216.8	0	main half bushing - mm 0.50
26	0.065.1218.0	4	shim STANDARD
26	0.065.1218.7	0	shim + mm 0.10
26	0.065.1218.8	0	shim + mm 0.15

Section: ENGINE
LUBRICATION



642 - 10

Fig.	Code	QTY	Name
1	0.066.1552.4/10	1	sediment bowl ☞ 01.00.27
2	2.1532.014.0	1	'o' ring 7.65 x 1.78
3	2.1539.072.0	2	'o' ring 23.52 x 1.78
4	0.066.1558.0	1	sleeve
5	2.0312.221.2	2	screw m 8 p.1.25x75
6	2.1480.014.1	2	washer 8
7	2.6859.073.2	1	clamp
8	0.066.1557.2	1	tube
9	0.066.1559.0	1	tube
10	0.075.1151.0	1	bracket
11	2.3350.003.1	1	nosepiece 8
12	2.3339.418.1	1	pipe fitting m 12 p.1
13	0.066.1556.0	1	tube
14	0.075.1552.2	1	bracket
15	0.075.1552.0	1	bracket
16	2.1011.103.2	1	nut m 6 p.1
17	2.1470.002.2	1	washer 6, d128

Section: ENGINE
GOVERNOR PARTS

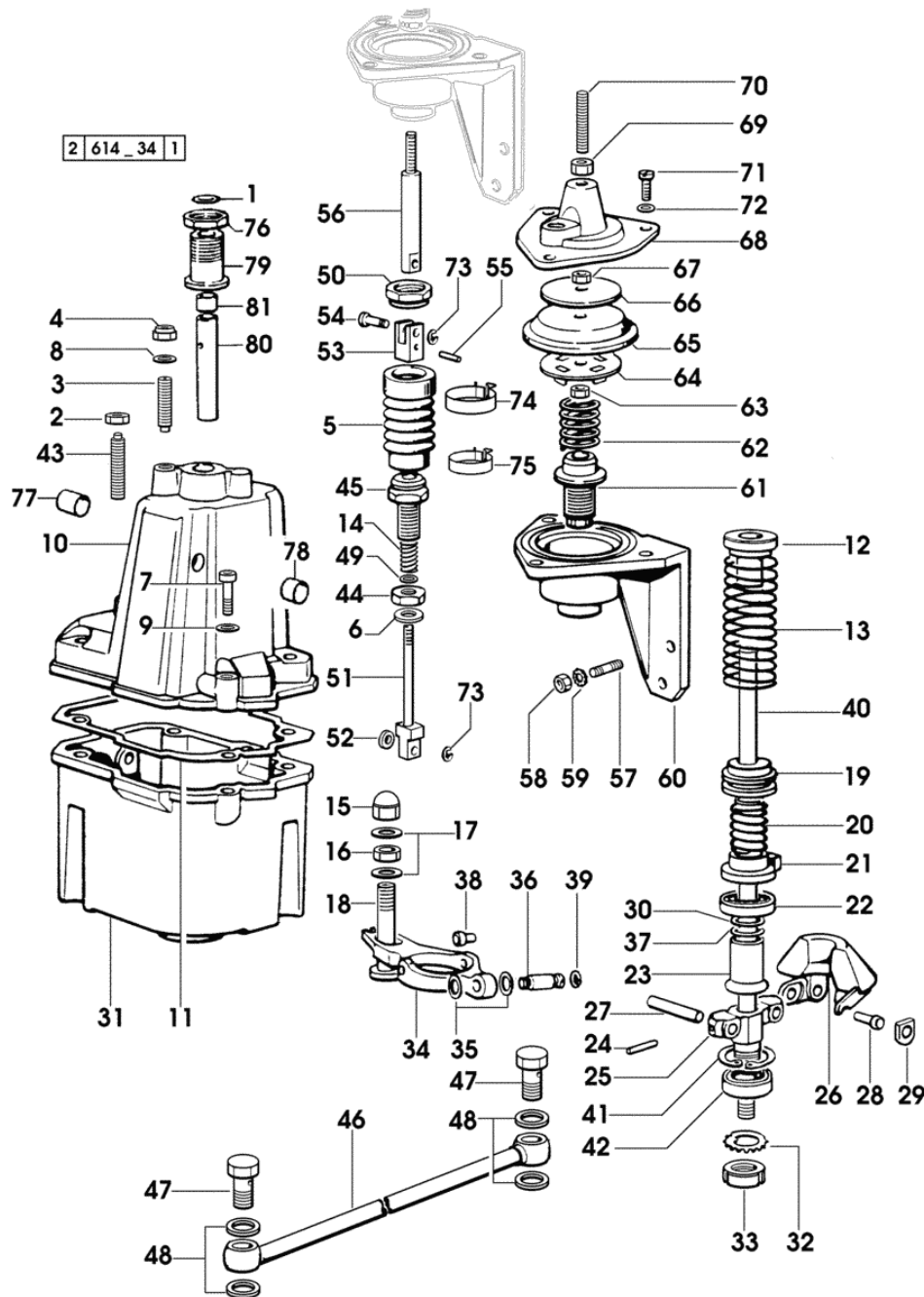


Fig.	Code	QTY	Name
45	0.007.0751.0/20	1	screw
46	0.007.0764.3	1	tube
47	2.3332.002.1	2	pipe union m 10 p.1.25
48	2.1560.005.0	4	gasket 10.2 x 14
49	2.1310.028.2	1	flat washer 4
50	2.1099.124.2	1	cap nut m 16 p.1.5
51	0.007.0753.2/20	1	small block
52	2.1599.559.2	1	spacer
53	2.3519.079.2	1	fork 4
54	0.007.0756.0	1	pin 4
55	2.1631.004.0	1	pin 2x10
56	0.007.0752.0	1	pin
57	2.0422.001.7	2	stud bolt m 6 p.1.0 x 16
58	2.1011.103.2	2	nut m 6 p.1
59	2.1474.007.2	2	washer 6, d128
60	0.007.0721.0/20	1	body
61	0.007.0748.0	1	screw
62	2.4019.410.7/10	1	spring
63	2.1011.102.2	1	nut m 5 p.0.7
64	0.007.0747.0	1	brake lining
65	0.007.0723.0	1	diaphragm
66	0.007.0746.0	1	cap-washer
67	2.1011.102.2	1	nut m 5 p.0.7
68	0.007.0722.0	1	body
69	2.1125.001.7	1	nut
70	2.0512.114.1	1	screw m 6 x 35
71	2.0220.408.6	3	screw m 6 p.1 x 12
72	2.1474.007.2	3	washer 6, d128
73	2.1430.004.7	2	circlip 3.2
74	2.6857.039.0	1	clamp 24
75	2.6857.029.0	1	clamp 19
76	2.1099.096.2	1	nut m 18 p.1.5
77	2.1579.729.7	1	sleeve 10x12x18
78	2.1579.728.7	1	sleeve 10x12x10
79	0.065.1677.0/10	1	pipe fitting
80	0.065.1678.0/10	1	tube
81	2.1555.005.0	1	bushing 10x12x10

Section: ENGINE

COOLING

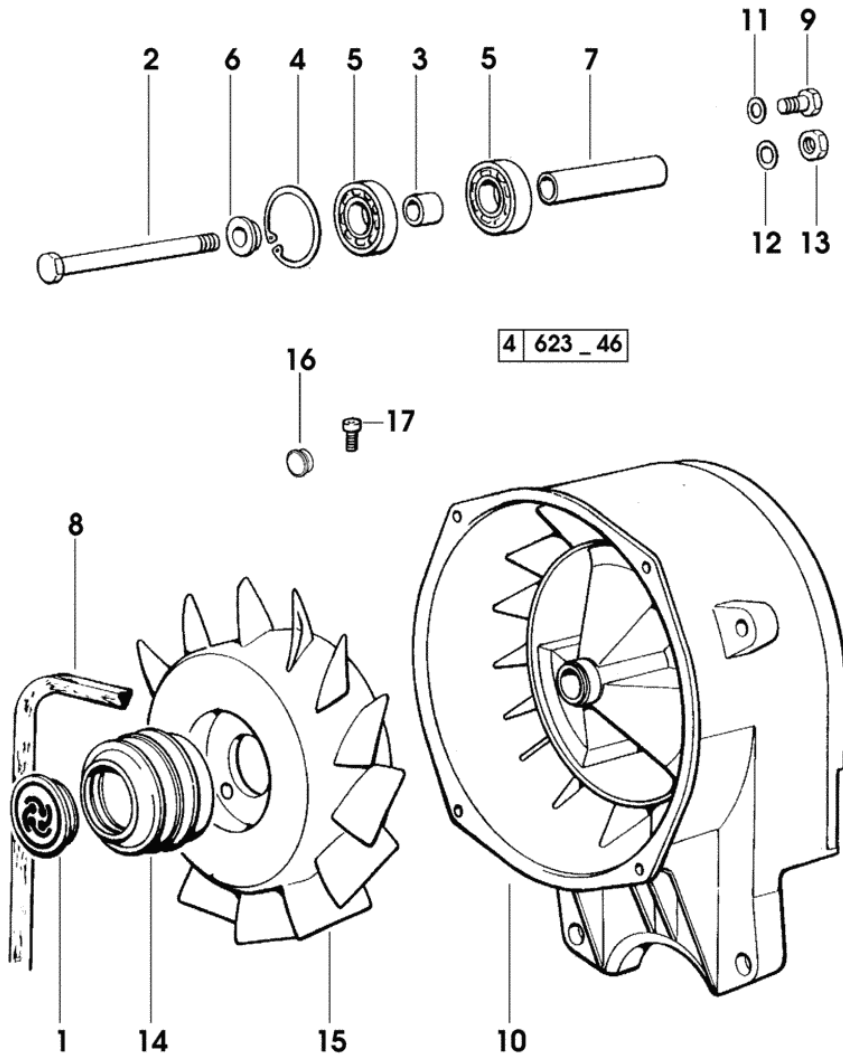


Fig.	Code	QTY	Name
1	0.006.5409.0	1	cover
2	2.0112.344.2	1	screw m 10 p.1.5 x 180
3	0.006.5407.0	1	spacer
4	2.1411.025.1	2	circlip 62
5	2.2041.012.0	2	ball bearing 30x62x16
6	0.006.5408.0	2	washer
7	0.006.5406.0	1	shaft
8	2.4119.148.0	1	belt AV 12.7x1330 mm
9	2.0112.207.2	3	screw m 8 p 1.25 x 20
10	0.006.5400.0/40	1	sump
11	2.1470.004.2	3	washer 8
12	2.1470.006.2	1	lock washer 10
13	2.1011.106.2	1	nut m 10 p.1.5
14	0.007.6843.0	1	pulley
15	0.006.5401.0	1	impeller
16	2.3199.298.0	1	plug
17	2.0312.001.2	2	screw m 5 p.0.8 x 10

P.T.O. FRONT

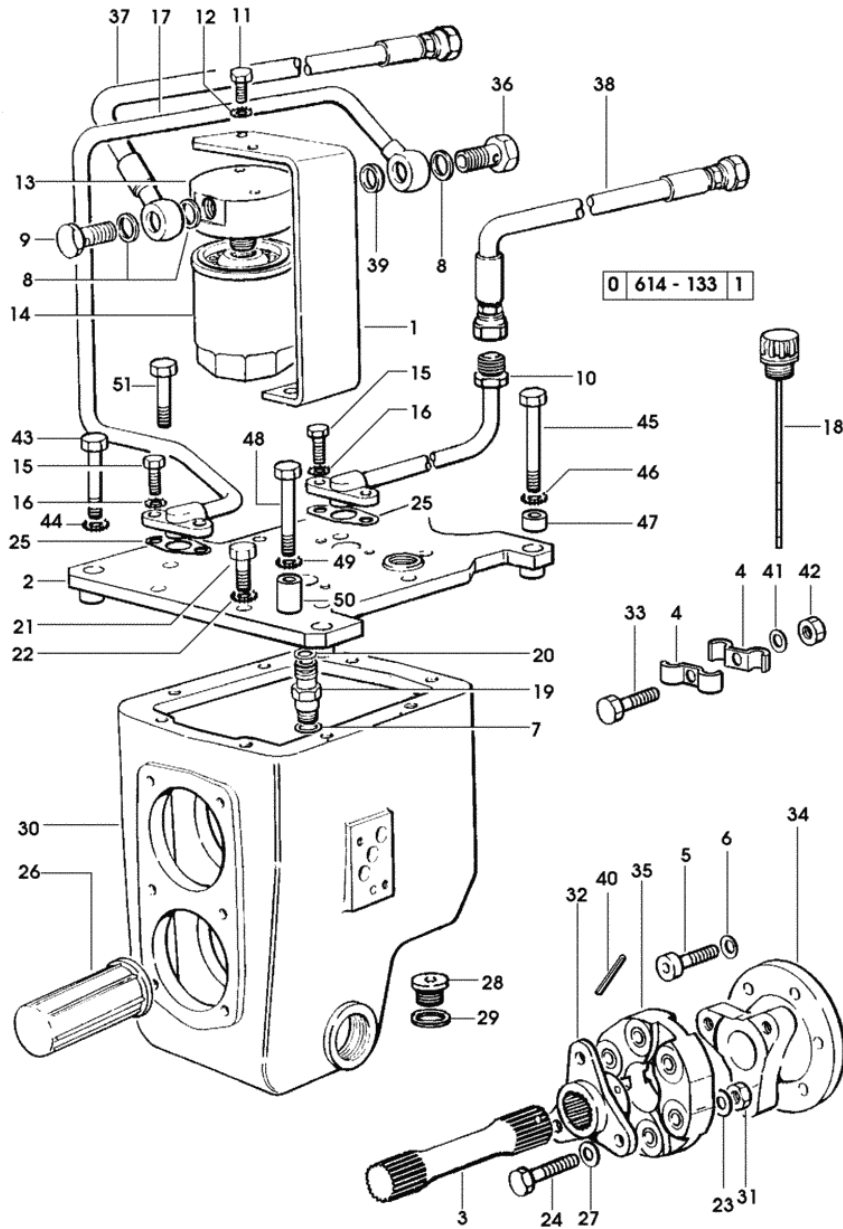


Fig.	Code	QTY	Name
45	2.0112.526.2	2	screw m 14 p.2x85
46	2.1470.008.2	2	lock washer 14
47	2.1549.174.2	2	spacer 16x32x20
48	2.0112.325.2	2	screw m 10 p.1.5 x 80
49	2.1470.006.2	2	lock washer 10
50	2.1549.173.2	2	spacer 12x25x60
51	2.0112.311.2	7	screw m 10 p.1.5 x 30

P.T.O. - ELECTROHYDRAULICALLY CONTROLLED HYDRAULIC CLUTCH

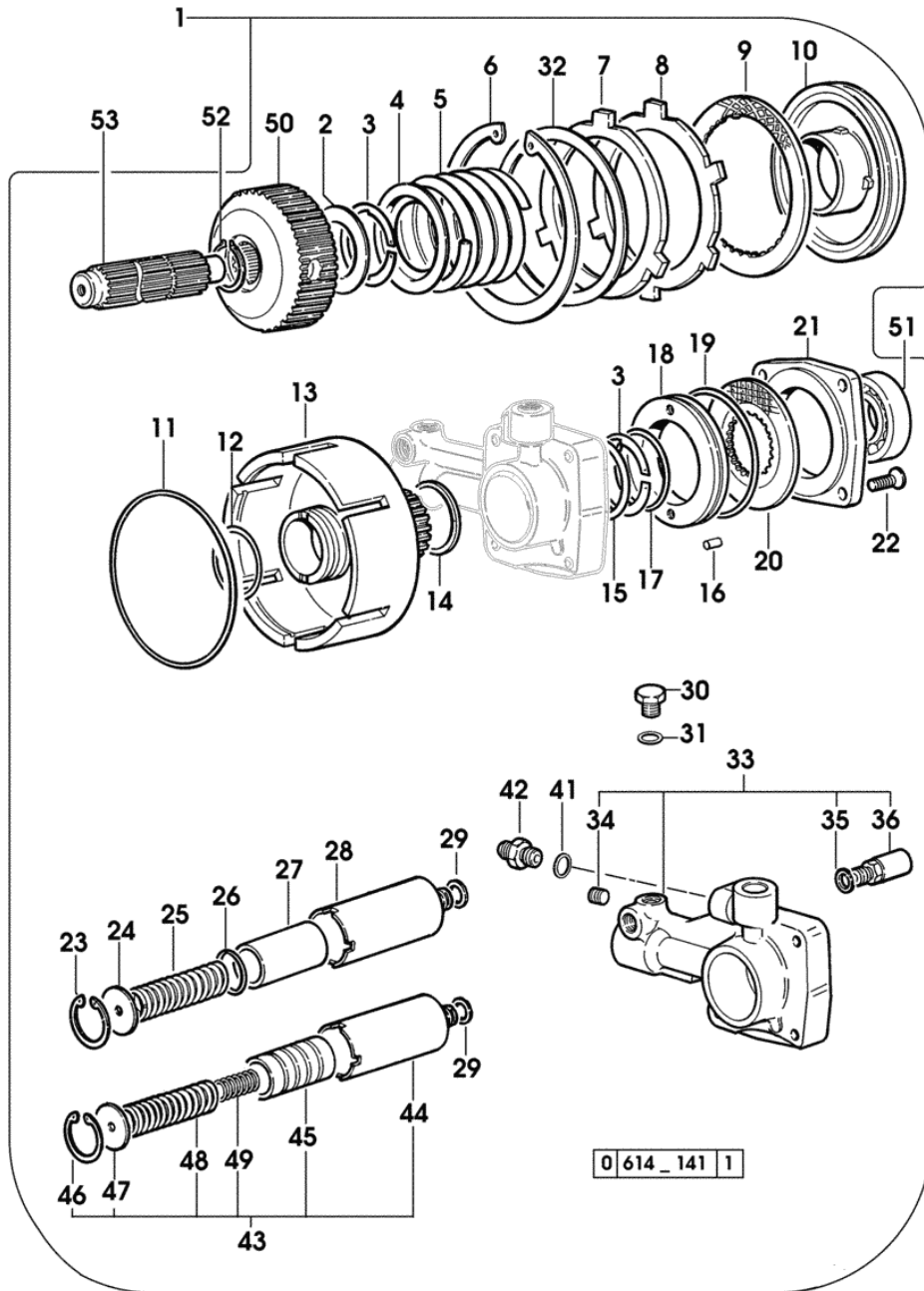


Fig.	Code	QTY	Name
1	0.008.4740.4/90	1	hydraulic pto clutch
2	2.1599.415.0	1	snoulder 35x52x1
3	2.1419.027.1	2	circlip 48
4	0.255.3933.0	1	disc
5	2.4019.373.1	1	spring 79.5x61.5x6.5
6	2.1419.035.1	1	circlip 127
7	0.255.3969.0/10	1	disc
8	0.255.3936.0	5	disc
9	0.255.3970.2	5	disc
10	0.255.3938.0/40	1	piston
11	2.1539.064.0	1	'o' ring 120.33x2.62
12	2.1539.067.0	1	'o' ring 44.12x2.72
13	0.008.4043.0/30	1	box
14	2.1569.109.0	3	gasket 46x50x2
15	2.1599.416.0	1	snoulder 50x58x1
16	2.1652.506.0	2	cylindrical plug 6 x 14
17	2.1532.133.0	1	'o' ring 53.64x2.62
18	0.255.3922.0/20	1	piston
19	2.1532.503.0	1	'o' ring 82.14x2.62
20	0.255.3924.2	1	disc
21	0.255.3926.0/10	1	cover
22	2.0342.305.2	4	screw m 8 p.1.25 x 20
23	2.1411.013.1	1	circlip 32
24	2.1599.241.0	1	(...) <- snoulder 6.0 x 31 x 2.0
25	2.4019.174.1	1	(...) <- spring 23.5x90x3.5
26	2.1530.072.0	1	(...) <- 'o' ring 26.70x1.78
27	0.164.8275.0/10	1	(...) <- piston
28	0.164.8274.0/10	1	(...) <- cylinder
29	2.1560.010.0	1	(...) <- gasket 14.2 x 20 x 1.5
30	2.3110.428.1	1	plug m 8 p.1 x 10
31	2.1560.003.0	1	gasket 8.2 x 12
32	2.1599.499.0	1	snoulder 110 x 126.5 x 1.2
33	0.008.3063.6/60	1	distributor
34	2.0512.202.1	1	screw m 8 p.1.25 x 8
35	2.1560.005.0	1	gasket 10.2 x 14
36	0.009.2445.4/20	1	valve
41	2.1560.008.0	1	gasket 12.2 x 18
42	2.3339.453.2	1	pipe fitting m 12 p.1.25-1/2"

P.T.O. - ECONOMICAL CONTROL

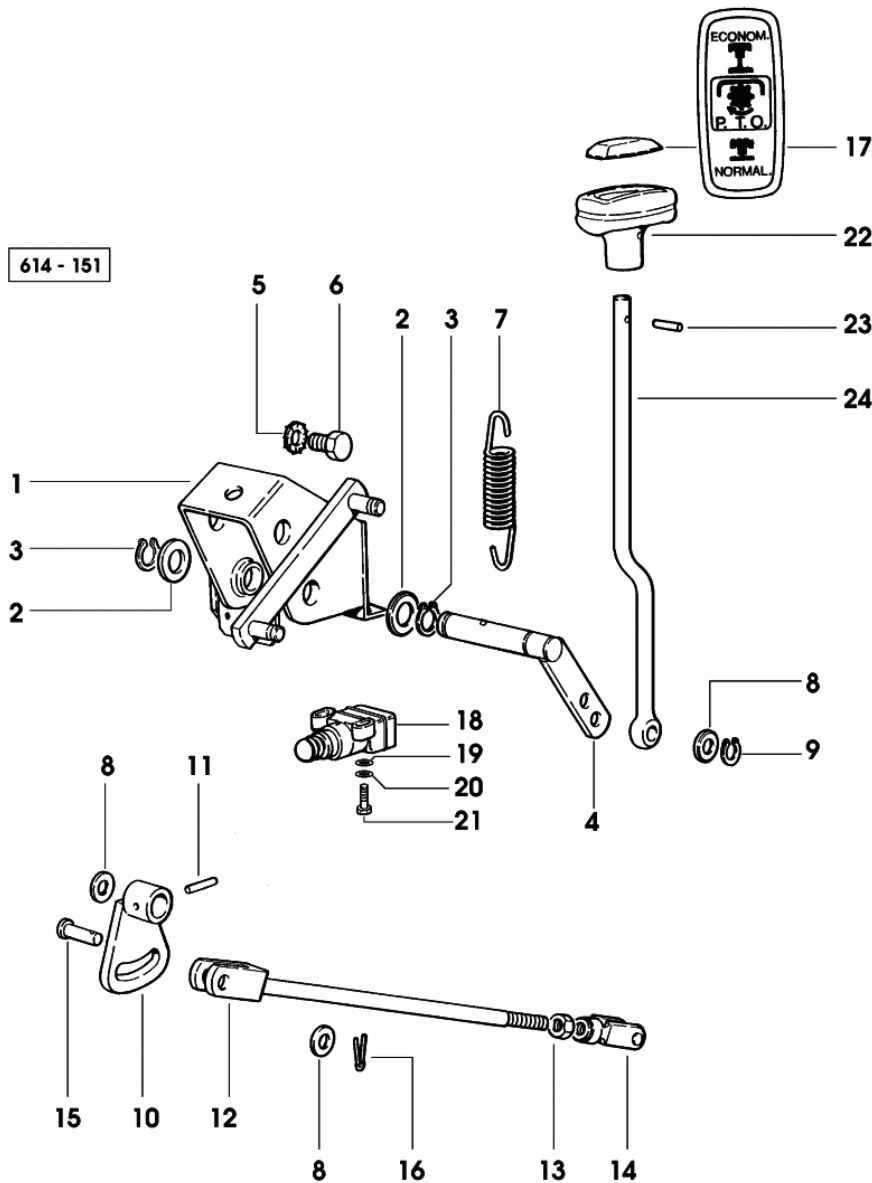


Fig.	Code	QTY	Name
1	0.008.9472.3/20	1	support - X SILVER 80 - 90
1	0.008.9075.3	1	support - X SILVER 100.4 - 100.6
2	2.1311.010.2	2	flat washer 16
3	2.1410.004.1	2	circlip 16
4	0.008.9475.3	1	lever
5	2.1470.006.2	2	lock washer 10
6	2.0112.307.2	2	screw m 10 p.1.5 x 20
7	2.4049.139.1/10	1	spring
8	2.1310.006.2	3	flat washer 10.5
9	2.1410.001.1	1	circlip 10
10	0.008.3659.3	1	lever
11	2.1631.412.0	1	roll pin 5x26
12	0.008.9033.3/30	1	rod
13	2.1011.105.2	1	nut m 8 p.1.25
14	2.3519.014.2/10	1	fork
15	2.1671.407.2	1	pin 10 x 28
16	2.1690.307.2	1	split pin 3.2x18
17	0.007.6147.0	1	cap
18	2.7659.202.0	1	switch
19	2.1310.028.2	2	flat washer 4
20	2.1470.052.2	2	lock washer 4
21	2.0119.070.6	2	screw m 4 p.0.7 x 16
22	0.009.9885.0/10	1	knob
23	2.1630.511.0	1	roll pin 5x24
24	0.008.9035.0/20	1	rod

Section: FRONT AXEL
2WD - EXTENDIBLE AXLE

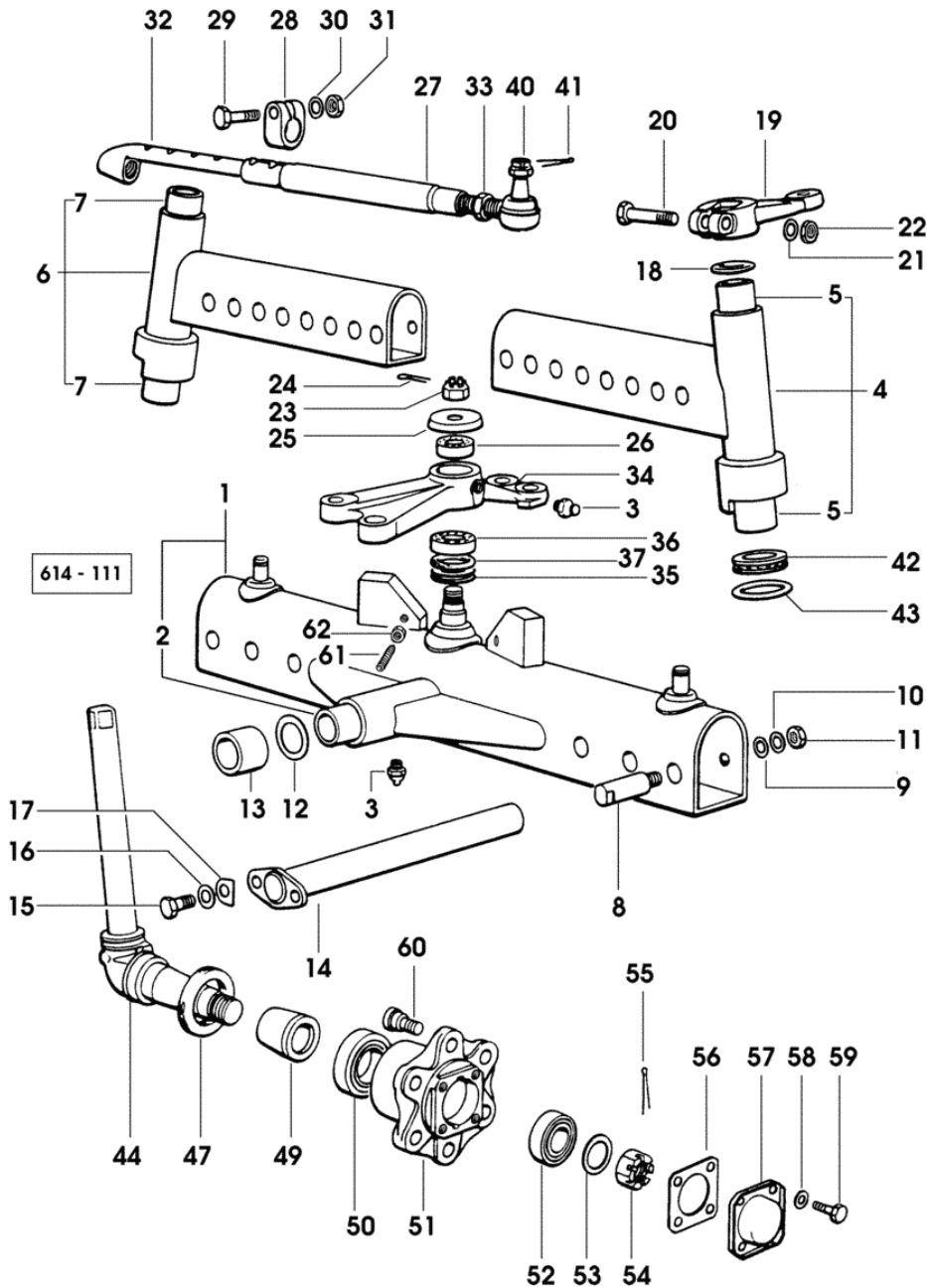
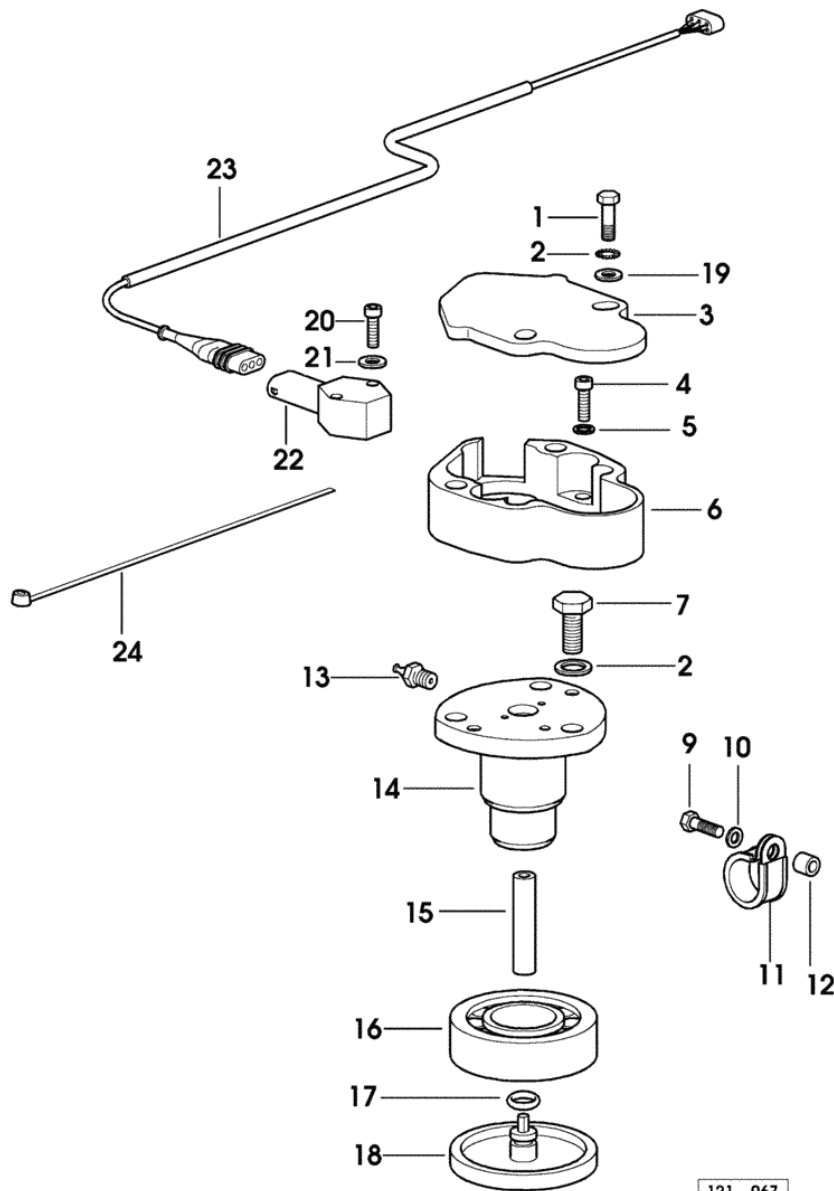


Fig.	Code	QTY	Name
47	2.1529.024.0	2	'o' ring 65x90x13
49	0.154.4257.0	2	spacer
50	2.2045.013.0	2	bearing 45 x 85 x 19
51	0.154.4224.0	2	wheel hub
52	2.2040.011.0	2	ball bearing iso 35 bc 02
53	2.1599.094.0	2	snoulder 32x48x5
54	2.1029.001.1	2	nut m 30 p.1.5
55	2.1690.516.2	2	split pin 5x50
56	0.001.2921.0	2	gasket
57	0.001.2920.0	2	small cover
58	2.1470.004.2	8	washer 8
59	2.0112.205.2	8	screw m 8 p.1.25 x 16
60	0.148.4737.0/10	12	small column m 20x58
61	2.0599.094.2/10	2	screw m 14 p.2 x 60
62	2.1011.108.2	2	nut m 14 p.2

Section: FRONT AXEL

SBA SENSOR



Notes:

-> 2422 X SILVER 80 -> 4163 X SILVER 90 -> 2329 X SILVER 100.4 -> 4495 X SILVER 100.6

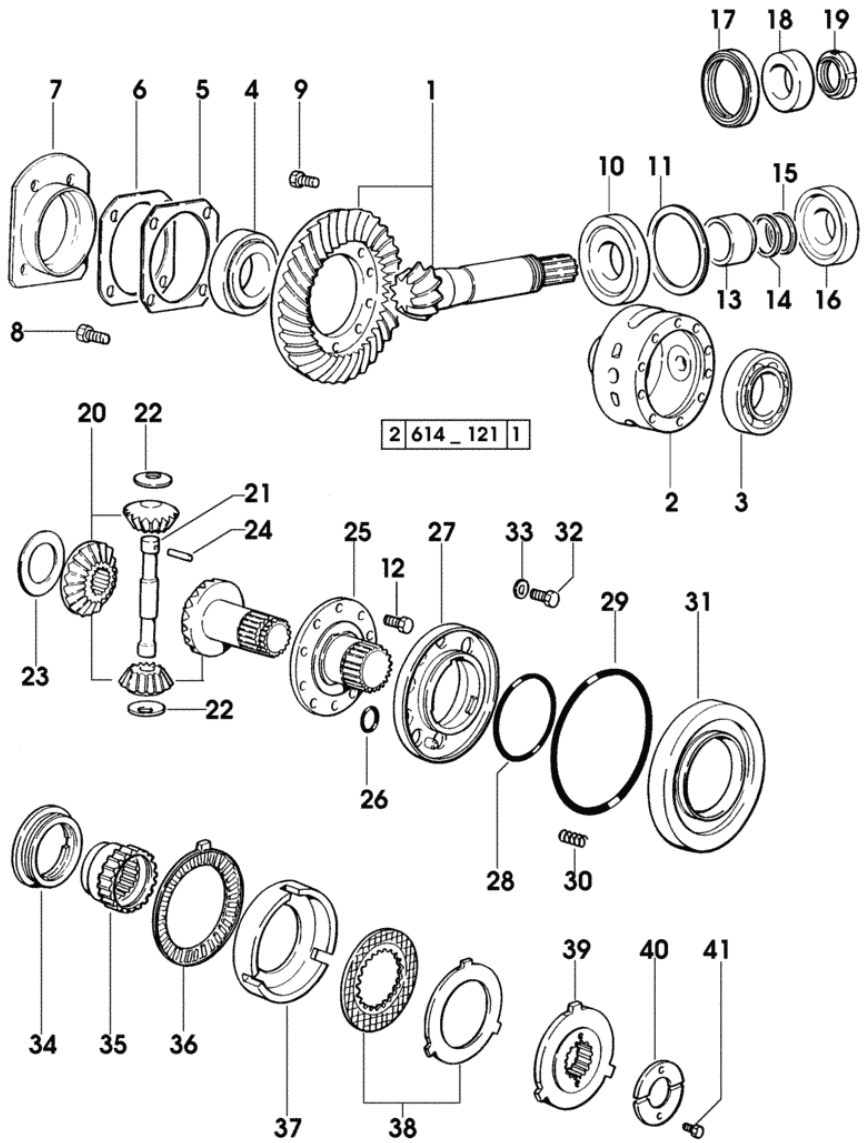
Fig.	Code	QTY	Name
1	2.0112.423.2	4	screw m 12 p.1.75 x 70
2	2.1470.007.2	5	lock washer 12
3	0.010.4355.0/10	1	cover
4	2.0312.206.2	2	screw m 8 p 1.25 x 20
5	2.1470.004.2	2	washer 8
6	0.010.4627.0/10	1	guard
7	2.0112.411.2	1	screw m 12 p.1.75 x 30
9	2.0112.009.2	1	screw m 6 p.1 x 25
10	2.1470.002.2	1	washer 6, d128
11	2.6839.066.0/10	1	clamp 16
12	2.1549.341.2	1	spacer 6.5x11x11
13	2.3821.102.2	1	lubricator m 8 p.1 x 8
14	0.011.2308.0/10	1	pin
15	0.010.0008.2	1	joint
16	2.2520.008.0	1	roller bearing 35x72x18,25
17	2.1530.024.0	1	'o' ring 10.78 x 2.62
18	0.011.2252.0	1	cap-washer
19	2.1310.007.2	2	flat washer 13.5
20	2.0332.211.3	2	screw m 4 x 40
21	2.1470.052.2	2	lock washer 4
22	2.7099.740.0	1	position sensor
23	0.011.3797.3	1	wire
24	0.98503.67.0	10	clamp

121_067

Section: FRONT AXEL

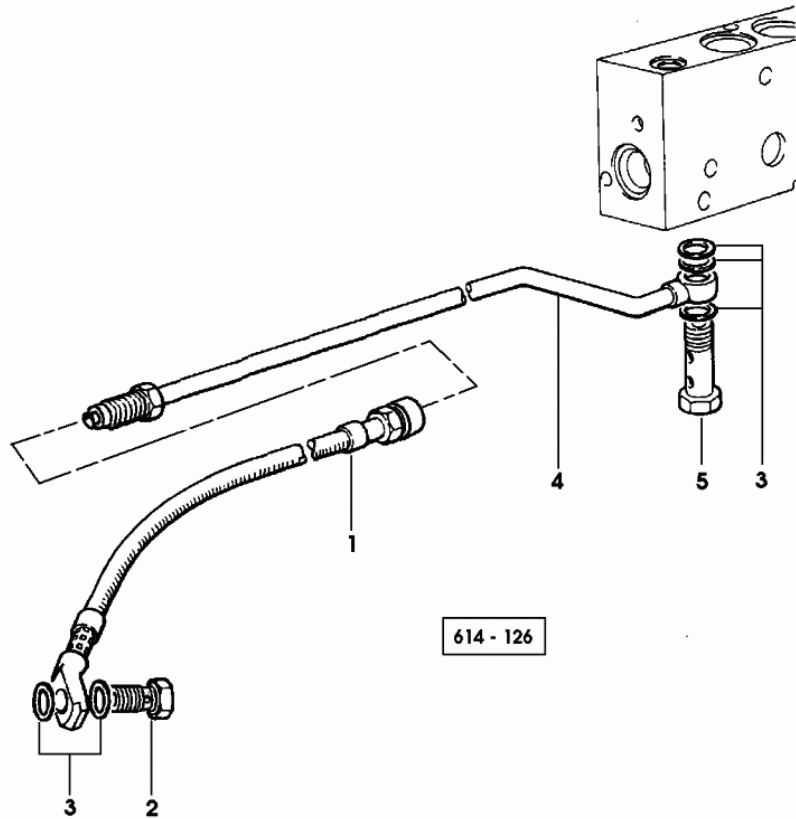
4WD-FRONT DIFFERENTIAL LOCK - S.B.A. MODEL

Fig.	Code	QTY	Name
38	0.009.7636.3	1	hydraulic pto clutch
39	0.009.7631.0/10	1	hub
40	0.009.7634.0/10	2	thrust plate
41	2.0312.102.2	2	screw m 6 p.1 x 12



DIFFERENTIAL LOCK CONTROL-ELECTROHYDRAUDLIC

Fig.	Code	QTY	Name
1	0.009.3583.3/20	1	tube mm 830 - X SILVER 80 - 90 - 100.4
1	0.009.3471.3/30	1	tube mm 1090 - X SILVER 100.6
2	2.3339.431.2/10	1	pipe union m 12 p.1.25x21
3	2.1560.010.0	5	gasket 14.2 x 20 x 1.5
4	0.009.3582.3	1	tube
5	2.3339.280.1/10	1	pipe union m 14 p.1.5X42



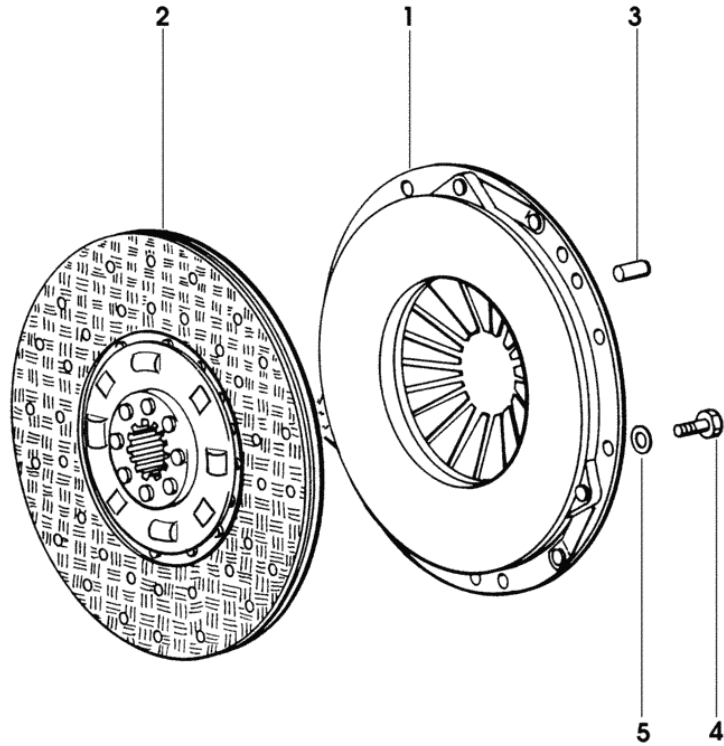
SILVER 100.4

FRONT HYDRAULIC POWER-LIFT

GENERAL

FRONT HYDRAULIC POWER-LIFT.....	0C.00.1
FRONT HYDRAULIC POWER-LIFT.....	0C.00.2
FRONT HYDRAULIC POWER-LIFT.....	0C.00.3
FRONT HYDRAULIC POWER-LIFT.....	0C.00.4

Section: GEAR
CLUTCH



713 - 24

Fig.	Code	QTY	Name
1	0.008.4184.3	1	clutch assy 13" 2073 <- X SILVER 80 2963 <- X SILVER 90 1874 <- X SILVER 100.4 3222 <- X SILVER 100.6
1	0.010.6912.3	1	clutch assy 14" -> 2074 X SILVER 80 -> 2964 X SILVER 90 -> 1875 X SILVER 100.4 -> 3223 X SILVER 100.6
2	0.008.9937.3	1	clutch disc 13" 2073 <- X SILVER 80 2963 <- X SILVER 90 1874 <- X SILVER 100.4
2	0.007.7928.3	1	clutch disc 13" -> 2074 X SILVER 80 -> 2964 X SILVER 90 -> 1875 X SILVER 100.4
2	0.009.6533.3	1	clutch disc 13" 3222 <- X SILVER 100.6
2	0.007.7929.3/10	1	clutch disc 14" -> 3223 X SILVER 100.6
3	2.1699.173.0	2	pin 7.9x18 2073 <- X SILVER 80 2963 <- X SILVER 90 1874 <- X SILVER 100.4 3222 <- X SILVER 100.6
3	2.1699.173.0	3	pin 7.9x18 -> 2074 X SILVER 80 -> 2964 X SILVER 90 -> 1875 X SILVER 100.4 -> 3223 X SILVER 100.6
4	2.0112.309.2	8	screw m 10 p.1.5 x 25 2073 <- X SILVER 80 2963 <- X SILVER 90 1874 <- X SILVER 100.4 3222 <- X SILVER 100.6
4	2.0313.206.7	9	screw m 8 p.1.25 x 20 -> 2074 X SILVER 80 -> 2964 X SILVER 90 -> 1875 X SILVER 100.4 -> 3223 X SILVER 100.6
5	2.1470.006.2	8	lock washer 10 2073 <- X SILVER 80

Section: GEAR
GEARBOX

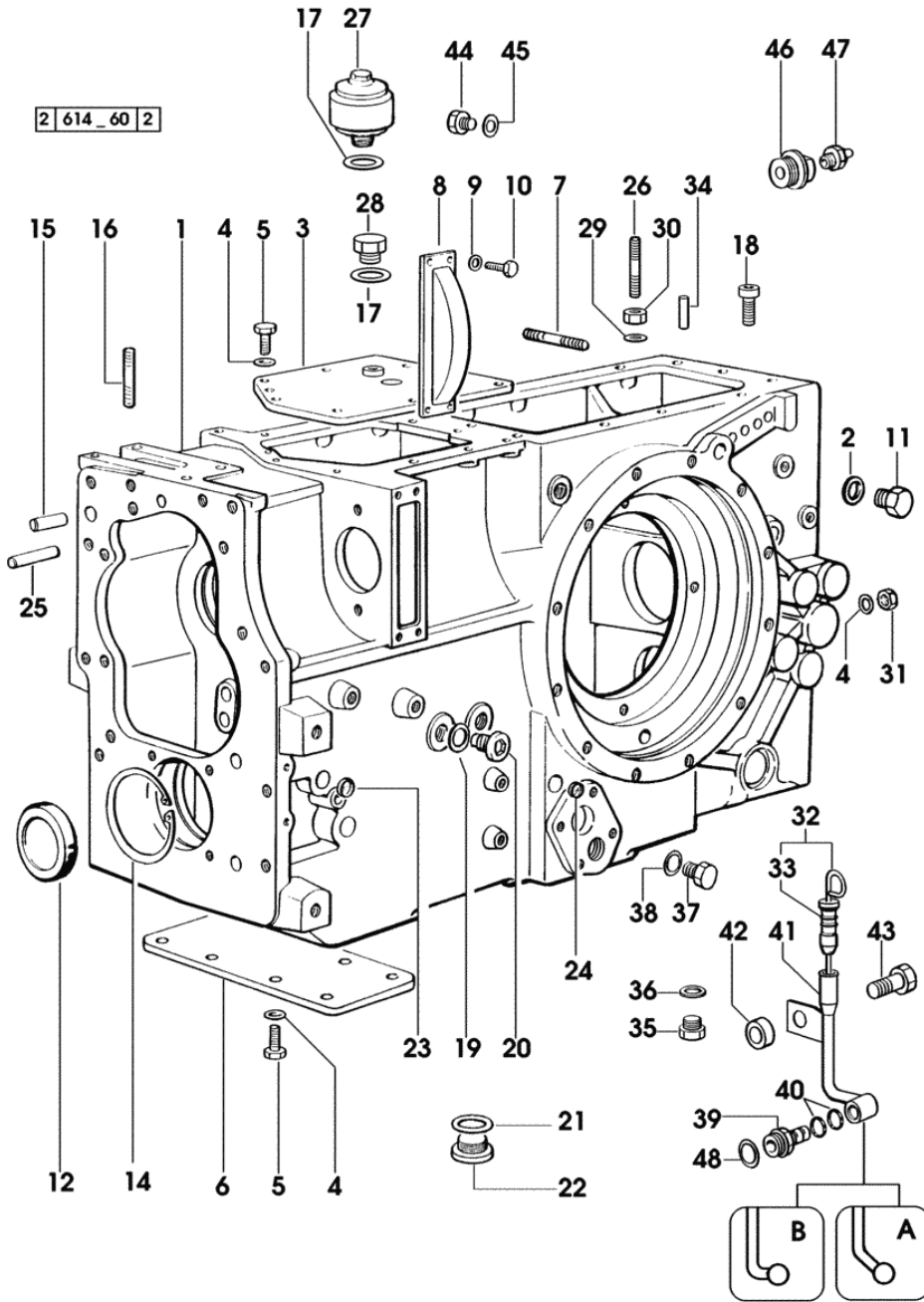


Fig.	Code	QTY	Name
1	0.008.5602.0/80	1	gear box * 2033 <- X SILVER 100.4 - N.1 011.2302.4 - 2.3199.287.2 - N.1 2.1579.228.0 - 2.1560.014.0 * -> 2034 - 2056 <- X SILVER 100.4 - N. 1 - 008.5630.0/30 - 008.5645.0/20 - N. 1 - 010.0992.4 - 2.0112.223.2
1	0.010.5192.0/40	1	gear box - X HYDRIVE - X SILVER 100.4 * 2033 <- X SILVER 100.4 - N.1 011.2302.4 - 2.3199.287.2 * -> 2034 - 2056 <- X SILVER 100.4 - N. 1 - 008.5630.0/30 - 008.5645.0/20 - N. 1 - 010.0992.4 - 2.0112.223.2
1	0.008.5609.0/90	1	gear box * 3773 <- X SILVER 100.6 - N.1 011.2302.4 - 2.3199.287.2 - N.1 2.1579.228.0 - 2.1560.014.0
1	0.010.5193.0/60	1	gear box - X HYDRIVE - X SILVER 100.6 * 3773 <- X SILVER 100.6 - N.1 011.2302.4 - 2.3199.287.2
2	2.1560.010.0	1	gasket 14.2 x 20 x 1.5
3	0.445.3121.3/20	1	cover
4	2.1470.006.2	20	lock washer 10
5	2.0112.307.2	16	screw m 10 p.1.5 x 20
6	0.255.3128.0/10	1	cover
7	2.0432.265.7	2	stud bolt m 12 p.1.75-1.25x50
8	0.255.3134.0	1	cover
9	2.1481.007.1	4	washer 8
10	2.0112.207.2	4	screw m 8 p 1.25 x 20
11	2.3110.403.1	1	plug m 14 p.1.5
12	2.3199.121.0	1	plug 95x10
14	2.1411.038.1	1	circlip 95
15	2.1653.811.0	1	pin 10x24
16	2.0422.318.7	1	stud bolt m 10 x 65
17	2.1560.010.0	1	gasket 14.2 x 20 x 1.5
18	2.0312.412.1	1	screw m 12 p.1.75x35
19	2.1560.020.0	2	gasket 24.3x32
20	2.3199.083.2	2	plug m 24 p.1.5
21	2.1560.026.0	1	gasket 35.3x41
22	2.3199.002.2	1	plug 1 gas
23	2.3171.007.4	3	plug Ø 18 - 2WD

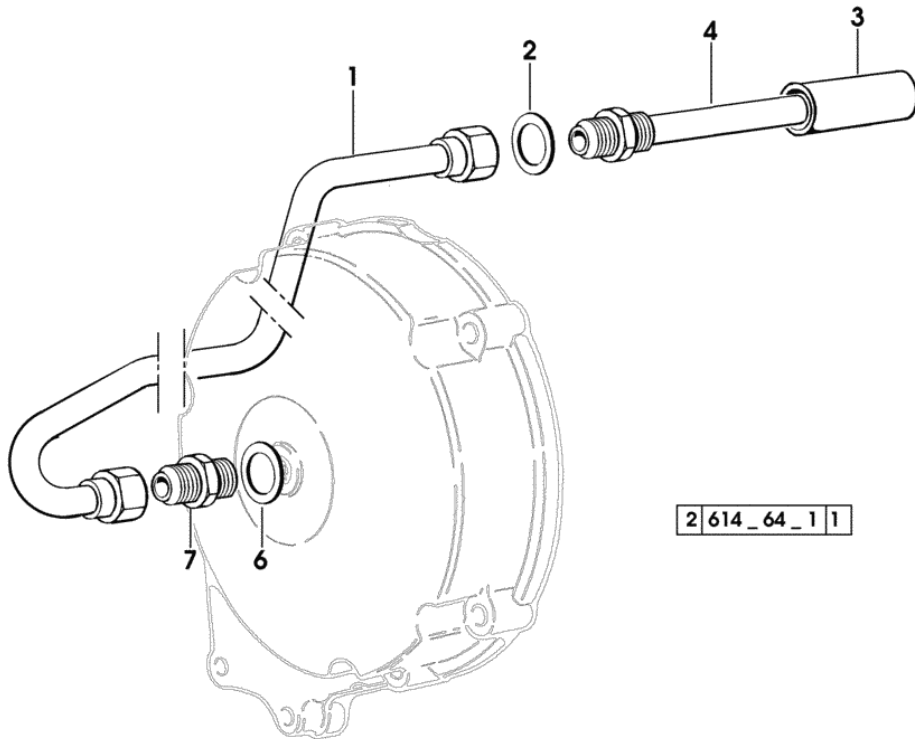
5 SPEED GEARBOX - WITH AGROSHIFT

Fig.	Code	QTY	Name
------	------	-----	------

Notes:

-> 1282 X SILVER 80 -> 1396 X SILVER 90 -> 1148 X SILVER 100.4 -> 1297 X SILVER 100.6

1	0.010.1278.3	1	tube
2	2.1560.011.0	1	gasket 16.2x20
3	0.010.1244.0	1	tube
4	0.010.1252.3	1	tube
6	2.1560.010.0	1	gasket 14.2 x 20 x 1.5
7	2.3261.006.2	1	pipe fitting m 14 p.1.5-9/16"



2 614 _ 64 _ 1 1

Section: GEAR
HYDRIVE

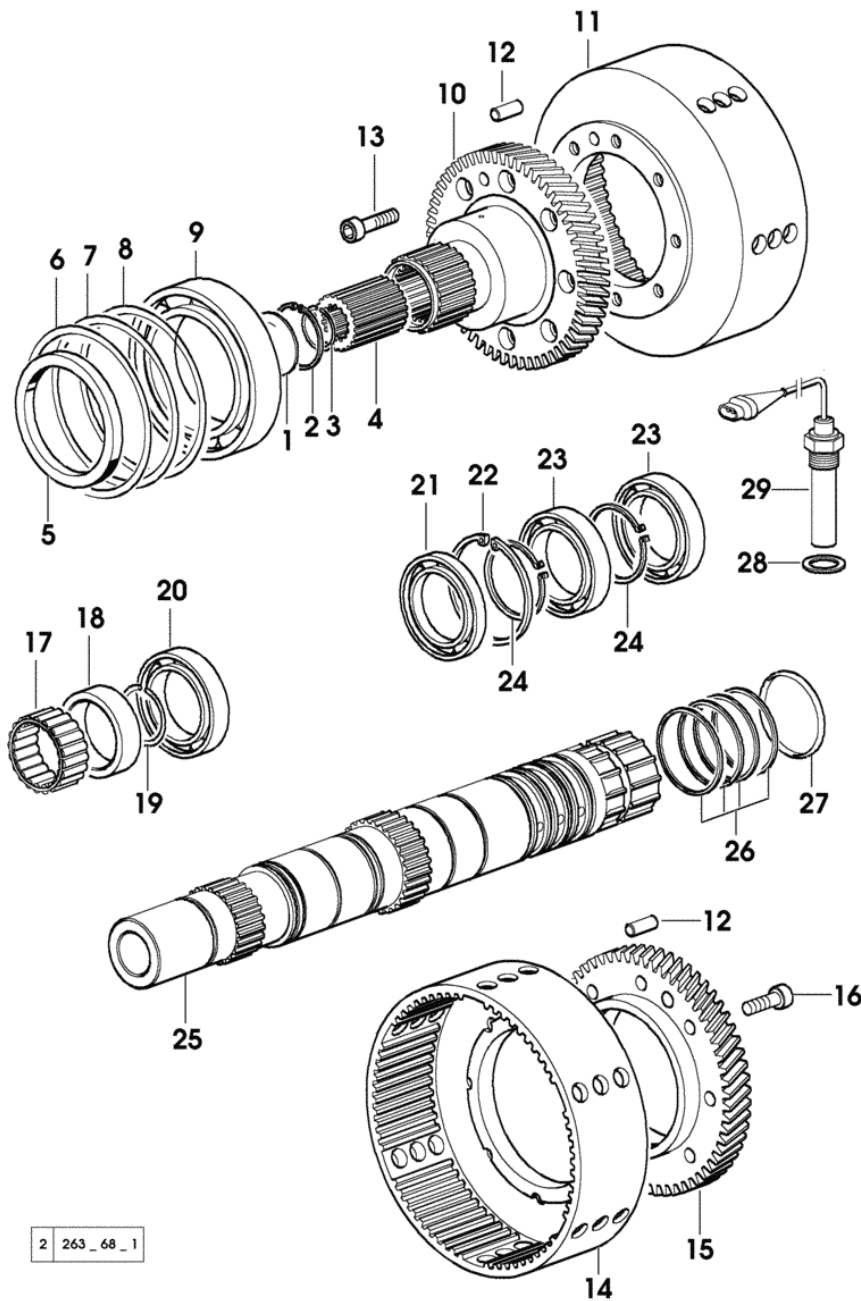


Fig.	Code	QTY	Name
------	------	-----	------

Notes:

-> 2140 X SILVER 80 -> 3043 X SILVER 90 -> 1880 X SILVER 100.4 -> 3234 X SILVER 100.6

1	2.3170.016.2	1	plug 40
2	2.1411.013.1	1	circlip 32
3	2.1421.009.7	1	circlip 24.3x2
4	0.010.9944.0	1	sleeve
5	2.1519.127.0/10	1	'o' ring
6	2.1580.305.0	1	shim 97x108x0.2
7	2.1580.305.0	1	shim 97x108x0.2
8	2.1580.312.0	1	shim 97x108x0.05
9	2.2030.015.0	1	ball bearing 110x70x20
10	0.010.8510.0/20	1	gear
11	0.010.8515.0	1	cover
12	2.1655.508.0	2	pin 10x24
13	2.0312.208.2	8	screw m 8 p.1.25 x 25
14	0.010.8516.0	1	cover
15	0.010.8517.0/10	1	gear
16	2.0312.206.2	8	screw m 8 p 1.25 x 20
17	2.2999.378.0	1	roller cage
18	2.1549.392.0/10	1	spacer 45x54.7x16
19	2.1412.017.7	1	circlip 45
20	2.2030.010.0	1	ball bearing 45x75x16
21	2.2020.010.0	1	ball bearing 90x55x11
22	2.1411.036.1	1	circlip 90
23	2.2030.012.0	2	ball bearing 55x90x18
24	2.1410.022.1	2	circlip 55
25	0.010.8512.3	1	shaft
25	0.010.8512.3/10	1	(...) <- shaft > (...)
26	2.1499.167.0	4	ring Ø 55
27	2.1531.123.0	1	'o' ring 49.20x3.53
28	2.1560.014.0	1	gasket 18.2 x 24 x 1.5
29	0.010.5612.0	1	speed sensor

TRANSMISSION SHAFT FOR FIVE SPEED GEARBOX WITHOUT AGROSHIFT

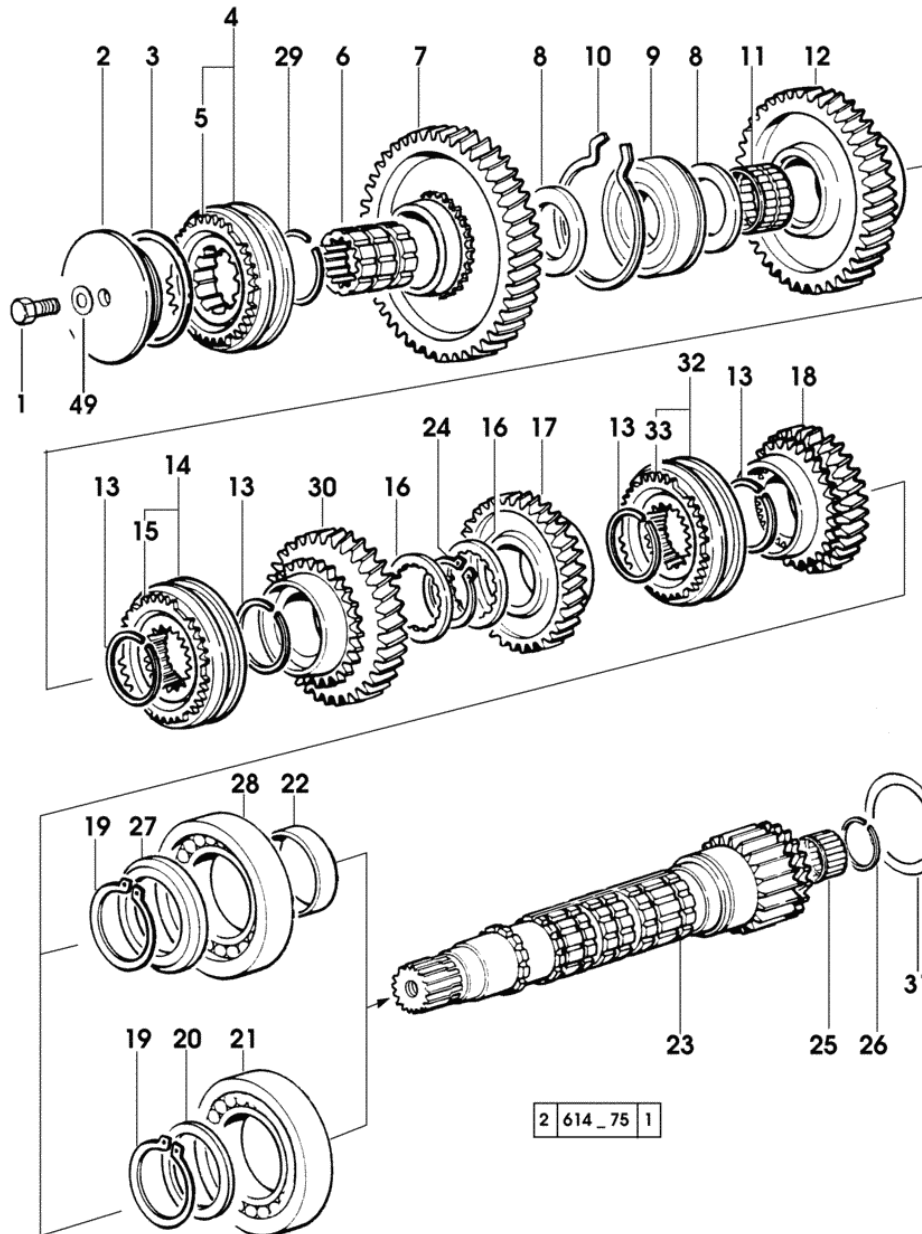


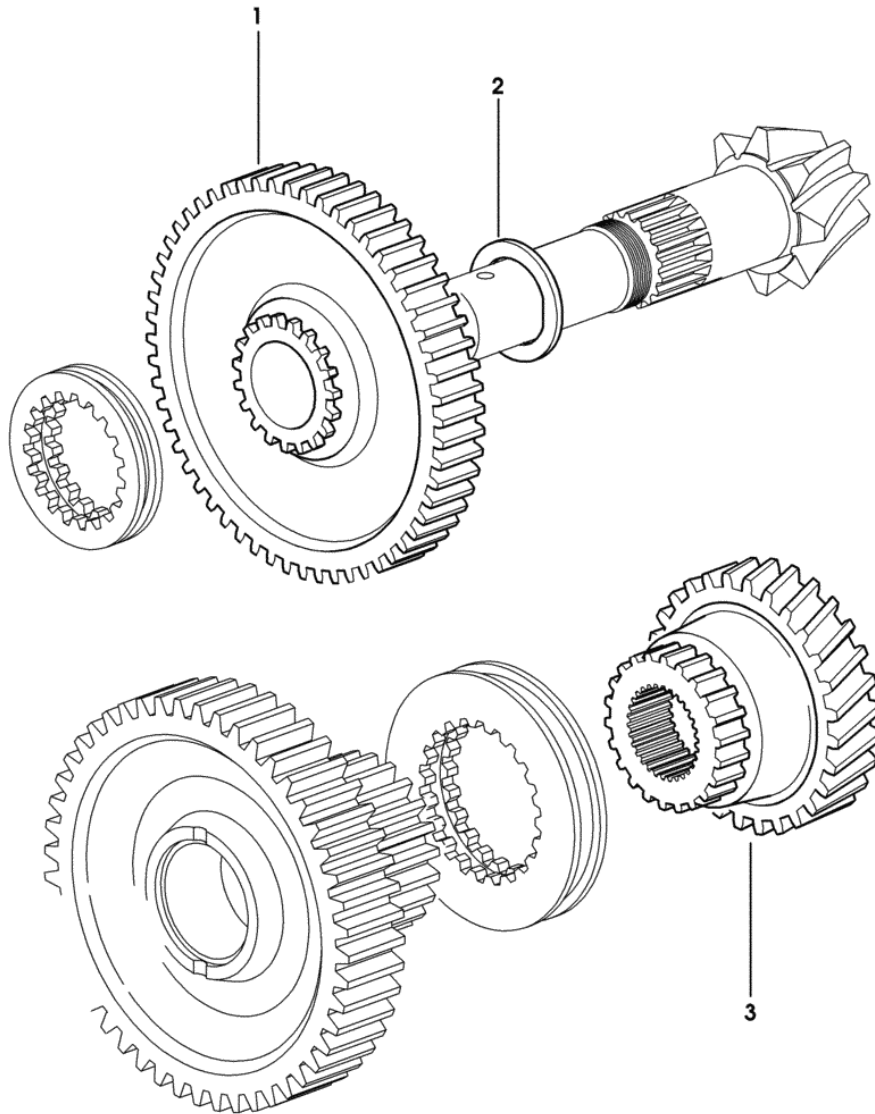
Fig.	Code	QTY	Name
------	------	-----	------

Notes:

- FOR TYPES WITHOUT HYDRIVE

1	2.0132.408.1	1	screw m 10 p.1.25 x 30
2	0.255.3369.0/20	1	snoulder
3	2.1530.141.0	1	'o' ring 57.15 x 3.53
4	0.007.7647.4	1	lock synchronizer Ø 68 mm ☞ 0.007.7647.4
5	0.009.4324.1	1	ring
6	0.255.3368.0/10	1	bushing
7	0.007.7986.3/10	1	gear Z = 48
8	0.255.3450.0	2	snoulder 40 x 60 x 3.5
9	2.2063.012.0	1	ball bearing 40 x 90 x 23
10	2.1499.037.1	1	circlip 90
11	2.2999.218.0	1	roller cage 40 x 45 x 30
12	0.445.3358.0/20	1	gear Z = 54
13	2.1499.153.7	4	circlip 41 x 1.5
14	0.007.7646.4	1	lock synchronizer 68 ☞ 0.007.7646.4
15	0.009.4324.1	2	ring
16	0.255.3372.0	2	shoulder
17	0.445.3360.0/10	1	gear z = 40
18	0.445.3332.3/10	1	gear Z = 34
19	2.1410.022.1	1	circlip 55
20	2.1599.422.0	1	snoulder 44
21	2.2999.125.0	1	bearing 55 x 100 x 21 - X SILVER 80 - 90
22	2.1559.239.0/10	1	bushing 55x60x16.5 - X SILVER 100.4 - 100.6
23	0.008.5979.0/20	1	shaft 1441 <- X SILVER 80 1829 <- X SILVER 90 1335 <- X SILVER 100.4 1547 <- X SILVER 100.6
23	0.010.0886.0	1	reduction shaft - FOR TYPES WITHOUT SYNCHROMESH RANGES -> 2165 X SILVER 80 -> 3246 X SILVER 90 -> 1955 X SILVER 1
23	0.010.9180.0	1	countershaft - FOR TYPES WITH SYNCHROMESH _{1/2} RANGES

Section: GEAR
3-RANGE BOX



614_77_2

Fig.	Code	QTY	Name
------	------	-----	------

Notes:

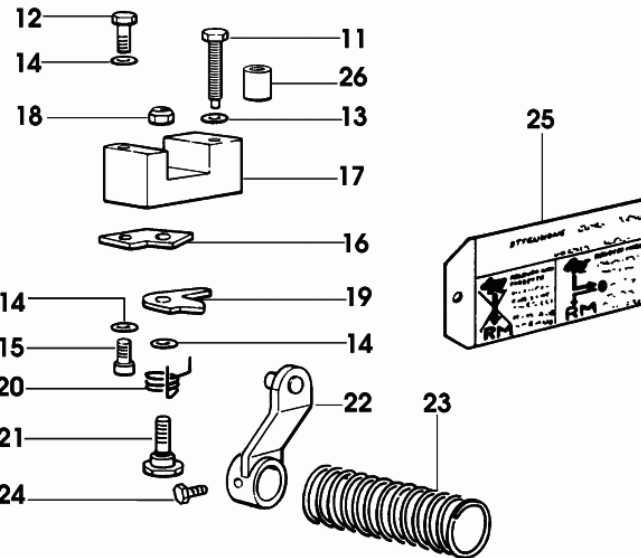
2164 <- X SILVER 80 3245 <- X SILVER 90 1954 <- X SILVER 100.4 3454 <- X SILVER 100.6

1	0.008.5589.0	1	gear wheel z=59 z=19 1441 <- X SILVER 80 1829 <- X SILVER 90 1335 <- X SILVER 100.4 1547 <- X SILVER 100.6
1	0.010.0861.0	1	gear z=58 z=19 -> 1442 X SILVER 80 -> 1830 X SILVER 90 -> 1336 X SILVER 100.4 -> 1548 X SILVER 100.6
2	0.445.3450.0	1	snoulder
3	0.445.3435.0	1	gear 1100 <- X SILVER 80 1163 <- X SILVER 90 1069 <- X SILVER 100.4 1196 <- X SILVER 100.6
3	0.010.0764.0	1	gear z=40 z=19 -> 1101 - 1041 <- X SILVER 80 -> 1164 1829 <- X SILVER 90 -> 1070 - 1335 <- X SILVER 100.4 -> 1197 1547 <- X SILVER 100.6
3	0.010.0845.0	1	gear z=28 z=19 -> 1442 X SILVER 80 -> 1830 X SILVER 90 -> 1336 X SILVER 100.4 -> 1548 X SILVER 100.6

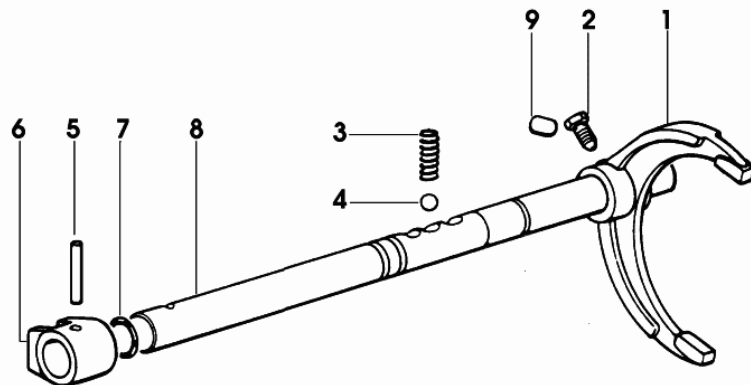
Section: GEAR

4 SPEED GEARBOX WITH MINI REDUCTION GEAR

Fig.	Code	QTY	Name
1	0.010.0202.0/10	1	fork
2	2.0399.019.1	1	screw m 8 p.1 x 16
3	2.4019.622.1	1	spring 6.3 x 9.5 x 1.6 x 22.4
4	2.2999.156.0	1	ball Ø 10
5	2.1631.514.0	1	roll pin 6 x 30
6	0.255.3463.0	1	rod-head
7	2.1530.033.0	2	'o' ring 13.10x2.62
8	0.445.3456.0/10	1	rod
9	2.1699.160.0	2	pin 8 x 15
11	2.0119.193.2	1	screw m 10x77
12	2.0112.221.2	1	screw m 8 p.1.25 x 60
13	2.1470.006.2	1	lock washer 10
14	2.1470.004.2	3	washer 8
15	2.0312.202.2	1	screw m 8 p.1.25 x 12
16	0.255.3464.0/10	1	plate
17	0.255.3467.0/20	1	small block
18	2.1121.005.2	1	nut m 8 p.1.25
19	0.255.3465.0	1	cam
20	2.4099.035.1/10	1	spring
21	2.0119.112.2/20	1	screw m 8x33
22	0.008.4409.2	1	clutch lever
23	2.4019.329.1	1	spring
24	2.0399.019.1	1	screw m 8 p.1 x 16
25	2.9919.881.0	1	plate
26	2.1549.226.0	2	spacer 10.5x20x35



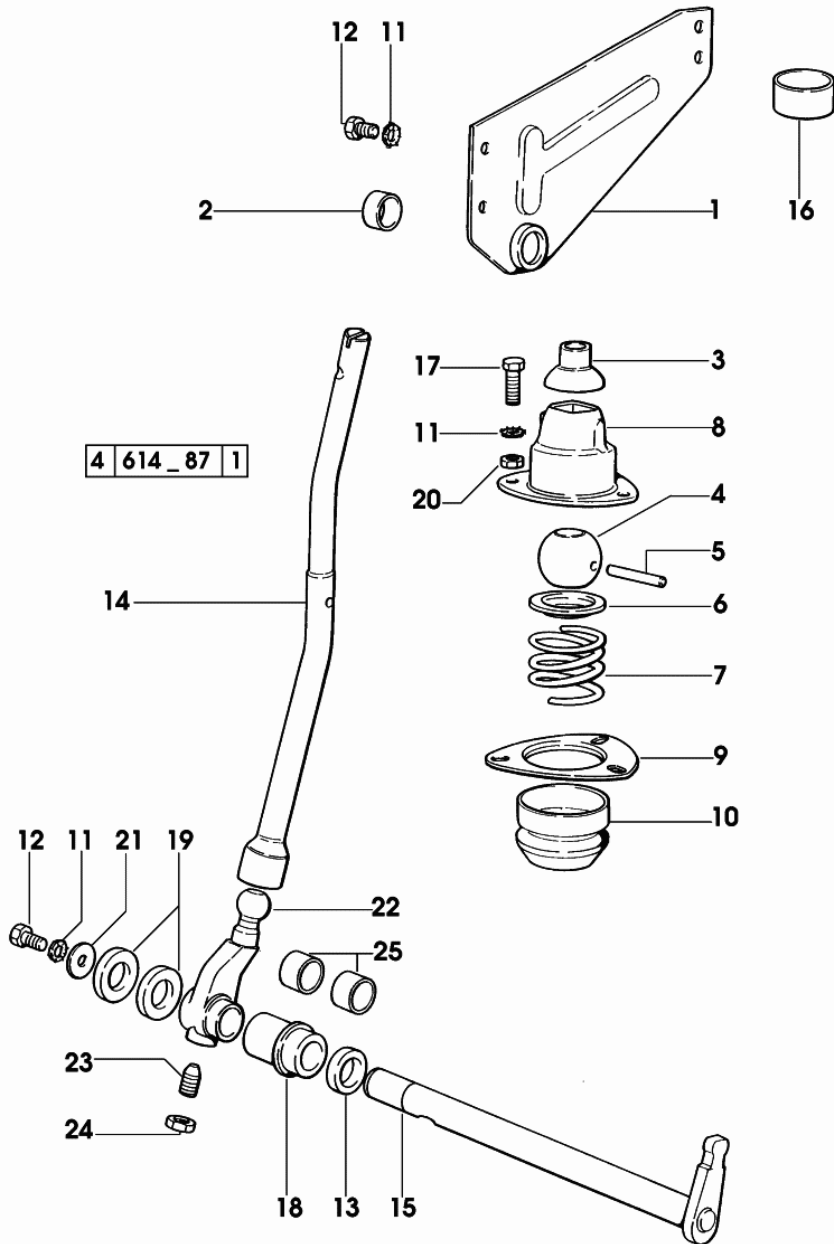
614 - 81



Section: GEAR

REVERSING GEAR UNIT CONTROLS

Fig.	Code	QTY	Name
1	0.008.9150.2/40	1	support
2	2.1555.211.0	1	bushing 20x23x15
3	0.255.6466.0/10	1	guard
4	0.008.4446.0	1	ball
5	2.1699.184.0	1	pin 6x52
6	0.255.6465.0	1	cup
7	2.4019.309.1/10	1	spring 51x40x4
8	0.467.6412.0	1	support
9	0.159.6450.0	1	support
10	0.255.6451.0/10	1	bellows
11	2.1470.004.2	8	washer 8
12	2.0112.205.2	5	screw m 8 p.1.25 x 16
13	2.1520.006.0	1	oil seal 20 x 30 x 7
14	0.008.9195.0/30	1	lever
15	0.009.9959.2/20	1	rod
16	2.1579.964.2/10	1	spacer 38x42x19.5
17	2.0112.209.2	3	screw m 8 p.1.25 x 25
18	0.009.9960.0/20	1	support
19	2.1549.117.0	2	spacer 20.1 x 36 x 4.6 - FOR TRANSMISSION WITHOUT MINI REDUCTION GEAR
20	2.1011.105.2	3	nut m 8 p.1.25
21	2.1599.006.2	1	snoulder 8.4x25x2
22	0.009.9961.0	1	lever
23	2.0399.050.2	1	screw m 10 p.1 x 30
24	2.1011.406.2	1	nut m 10 p.1
25	2.1555.311.0	2	bushing 20x23x20 -> 2225 X SILVER 80 -> 3411 X SILVER 90 -> 2007 X SILVER 100.4 -> 3652 X SILVER 100.6



Section: GEAR
DIFFERENTIAL - S.B.A. MODEL

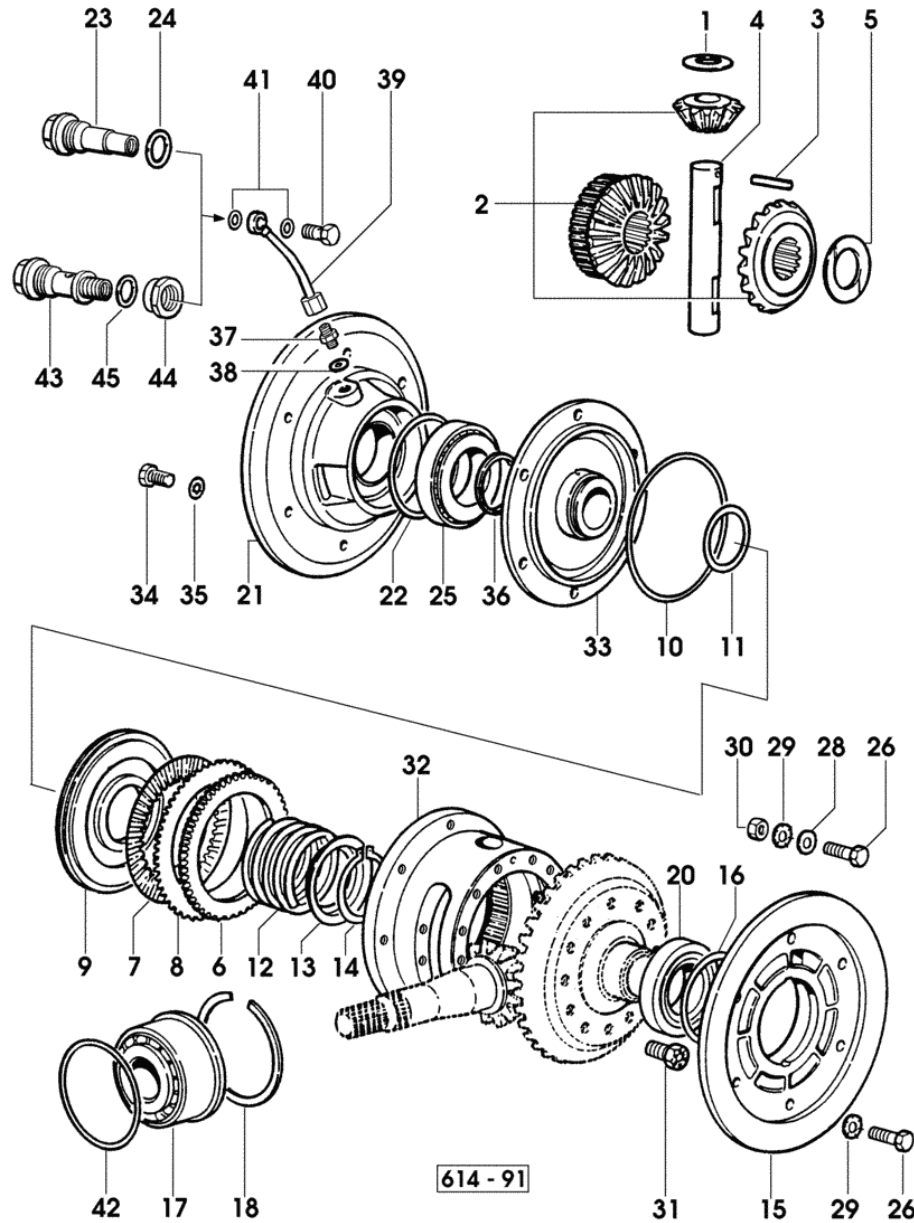


Fig.	Code	QTY	Name
15	0.009.6541.0/20	1	1155 <- X SILVER 100.4 1163 <- X SILVER 100.6 flange sx/lh/li -> 1075 X SILVER 80 -> 1110 X SILVER 90 -> 1156 X SILVER 100.4 -> 1164 X SILVER 100.6
16	2.1580.319.0	2	shim 86x98x0.5
16	2.1580.320.0	2	shim 86x98x0.2
16	2.1580.321.0	2	shim 86x98x0.15
17	2.2999.196.0	1	bearing
18	2.1499.061.1	1	circlip 120x3.4
18	2.1499.062.1	1	circlip 120x3.5
18	2.1499.063.1	1	circlip 120x3.6
18	2.1499.064.1	1	circlip 120x3.7
18	2.1499.065.1	1	circlip 120x3.8
18	2.1499.066.1	1	circlip 120x3.9
18	2.1499.067.1	1	circlip 120x4
18	2.1499.068.1	1	circlip 120x4.1
20	2.2520.012.0	1	roller bearing 55 x 100 x 22.75
21	0.008.5612.0/20	1	flange dx/rh/re * 1074 <- X SILVER 80 * 1109 <- X SILVER 90 * 1155 <- X SILVER 100.4 * 1163 <- X SILVER 100.6 - N.12 2.0312.314.2 - N.14 2.1480.015.2
22	2.1580.305.0	2	shim 97x108x0.2
22	2.1580.306.0	2	shim 97x108x0.5
22	2.1580.312.0	2	shim 97x108x0.05
23	2.3339.488.2/10	1	pipe fitting - X SILVER 80 - 90 - 100.4
24	2.1560.023.0	1	gasket 30.3 x 36 - X SILVER 80 - 90 - 100.4
25	2.2520.013.0	1	roller bearing 60x110x23.75
26	2.0112.313.2	12	screw m 10 p.1.5 x 35
28	2.1579.350.2	2	spacer 10.5x20x6
29	2.1480.015.1	14	washer 10
30	2.1011.106.2	2	nut m 10 p.1.5
31	2.0129.028.1	12	screw m 12 p.1.25x30
32	0.008.5741.0/10	1	differential carrier 1739 <- X SILVER 80 2347 <- X SILVER 90 1587 <- X SILVER 100.4

Section: REAR AXLE

HAND BRAKE

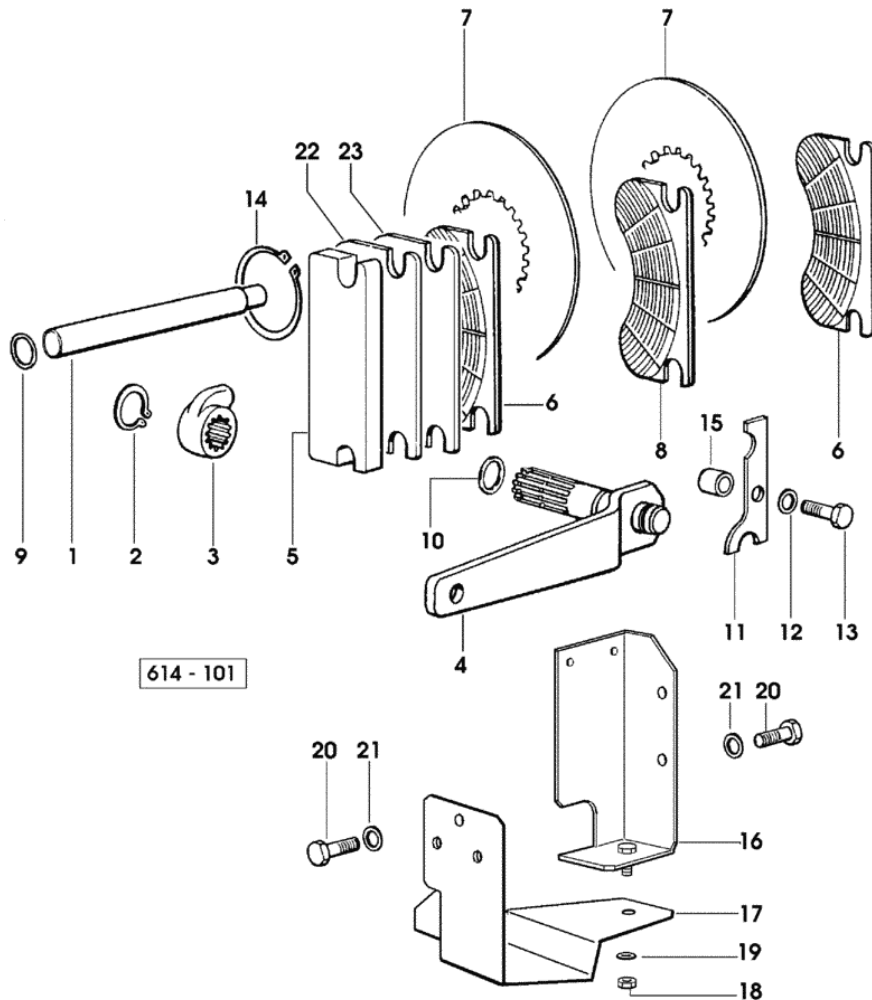


Fig.	Code	QTY	Name
1	0.445.5450.0	2	small column
2	2.1410.006.1	1	circlip 20
3	0.008.4287.0	1	brake lever
4	0.008.4286.2/10	1	h/brake lever
5	0.188.5459.0/20	1	plate
			- X SILVER 80 - 90
5	0.008.4240.0/20	1	plate
			- X SILVER 100.4 - 100.6
6	0.171.5451.2	2	sector
7	0.255.5452.0	3	brake disc 150
			- X SILVER 80 - 90
7	0.008.4255.0	3	brake disc 145
			- X SILVER 100.4 - 100.6
8	0.171.5459.2	2	sector
9	2.1530.034.0	1	'o' ring 13.95x2.62
10	2.1530.043.0	1	'o' ring 17.13x2.62
11	0.445.5451.0	1	small plate
			- X SILVER 80 - 90
11	0.255.5453.0	1	small plate
			- X SILVER 100.4 - 100.6
12	2.1470.004.2	1	washer 8
13	2.0112.209.2	1	screw m 8 p 1.25 x 25
14	2.1410.022.1	1	circlip 55
15	2.1549.015.0	1	spacer 9x20x14.5
16	0.008.9813.2/10	1	support
17	0.008.9815.2/20	1	sump
18	2.1011.105.2	1	nut m 8 p.1.25
19	2.1470.004.2	1	washer 8
20	2.0112.005.2	3	screw m 6 p.1 x 16
21	2.1470.002.2	3	washer 6, d128
22	0.011.5484.0	1	shim mm 1.00
23	0.011.5486.0	1	shim mm 2.00

Section: S.A.C.

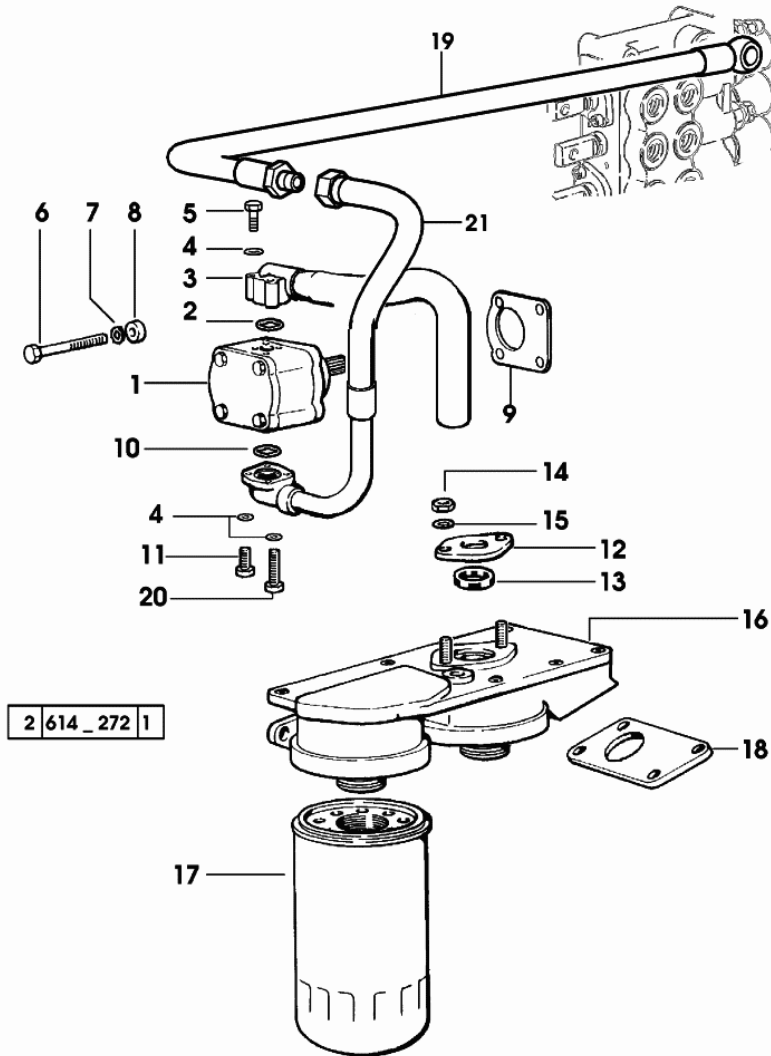
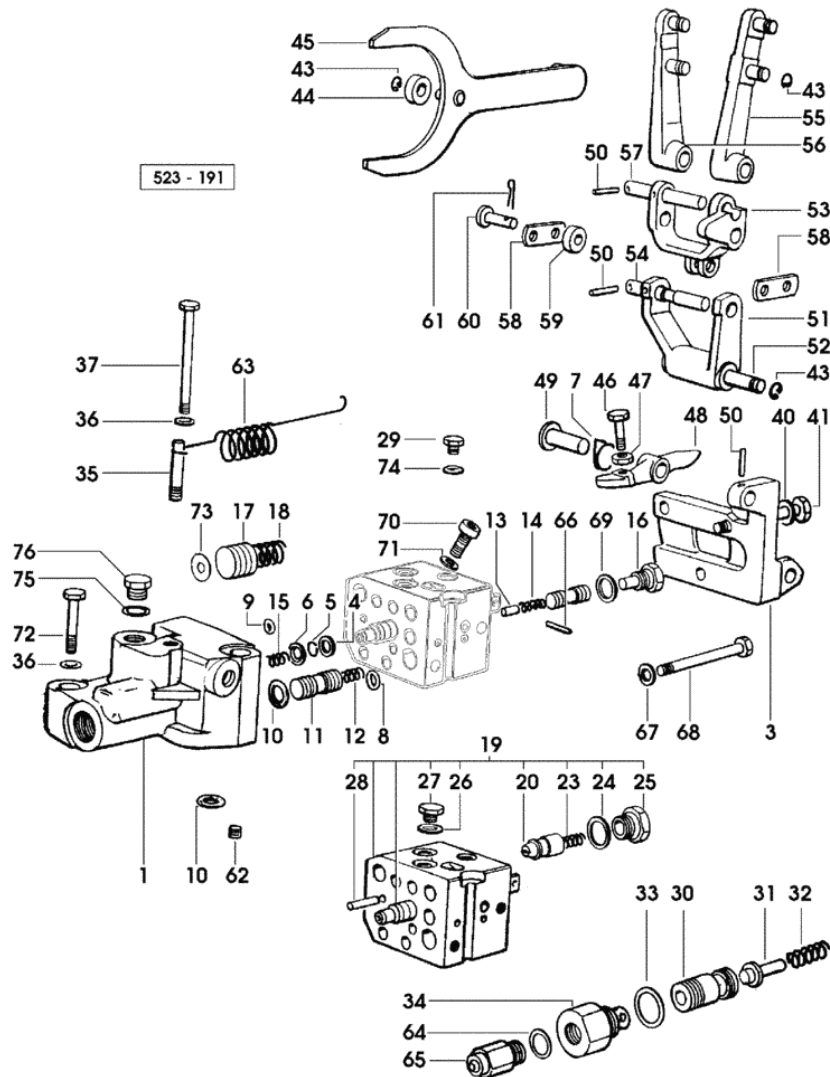
PUMP FILTER SUCTION 22.5 CC.

Fig.	Code	QTY	Name
1	2.4539.630.0	1	hydraulic pump 22.5 cc dx/rh/re SAUER ☞ 2.4539.630.0 ☞ OD.00.7
1	2.4539.620.0	1	hydraulic pump 22.5 cc dx/rh/re - BOSCH - ☞ 2.4539.620.0 ☞ OD.00.8
2	2.1530.062.0	1	'o' ring 23.81 x 2.62
3	0.006.6401.3	1	tube
4	2.1480.012.1	7	washer 6, d128
5	2.0312.114.2	3	screw m 6 p.1x40
6	2.0169.019.2	2	screw m 10x135
7	2.1470.006.2	2	lock washer 10
8	2.1579.350.2	2	spacer 10.5x20x6 (...) <-
9	0.9104.250.0/10	1	gasket
10	2.1530.052.0	1	'o' ring 20.24x2.62
11	2.0312.106.2	2	screw m 6 p.1 x 20
12	0.9107.253.0	1	flange
13	0.255.8255.0/40	1	gasket
14	2.1011.105.2	2	nut m 8 p.1.25
15	2.1470.004.2	2	washer 8
16	0.9107.227.3/20	1	support
17	2.4419.280.0	2	hydr.oil filter elem FT 4948
18	0.9107.254.0	1	flange
19	0.011.2363.3/10	1	tube mm 900
19	0.011.5715.3/10	1	tube mm 1040 - FOR TYPES WITH REXROTH CONTROL VALVE
20	2.0312.114.2	2	screw m 6 p.1x40
21	0.011.2362.3/10	1	tube

Section: S.A.C.
REGULATING DISTRIBUTOR

Fig.	Code	QTY	Name
1	0.006.6463.0	1	body
3	0.9087.427.0	1	bracket
4	0.9087.456.0	1	washer
5	2.1420.002.0	1	circlip a 8
6	0.9087.455.0	1	ring
7	2.4099.032.1/10	1	spring
8	2.1530.026.0	2	'o' ring 11.11x1.78
9	2.1530.009.0	1	'o' ring 5.28x1.78
10	2.1530.033.0	3	'o' ring 13.10x2.62
11	0.9087.457.0/10	1	valve
12	2.4019.256.1	1	spring 7.8 x 54 x 1.4
13	2.1699.155.0	1	pin 5x11.5
14	2.4019.258.1	1	spring 7.8x25.5x0.9
15	2.4019.259.1/10	1	spring 10.3x111.5x1.1
16	2.3199.061.0/10	1	plug m 10 p.1
17	0.9087.451.0/20	1	small piston
18	2.4019.257.1	1	spring 8.8x25x1.1
19	0.9087.420.6/40	1	distributor
20	0.9087.452.3/10	1	valve
23	2.4019.257.1	1	spring 8.8x25x1.1
24	2.1560.011.0	1	gasket 16.2x20
25	2.3199.062.0/10	1	plug m 16 p.1.5
26	2.1560.005.0	1	gasket 10.2 x 14
27	2.3110.401.1	1	plug m 10 p.1x8
28	0.9087.450.0/10	1	stem
29	2.0112.001.1	4	screw m 6 p.1 x 8
30	0.009.2171.0	1	small piston
30	0.9107.452.0	1	small piston - X SILVER 80 - 90
31	0.9107.453.0	1	pin
32	2.4019.306.0	1	spring 9.5x57.3x1.2
33	2.1560.015.0	1	gasket 20.2 x 24
34	0.9107.454.0	1	plug
35	0.9087.460.0	1	pin
36	2.1470.006.2	2	lock washer 10
37	2.0112.323.1	1	screw m 10 p.1.5x70
40	2.1470.004.2	3	washer 8
41	2.0112.225.2	3	screw m 8 p.1.25 x 80
43	2.1430.008.7	5	circlip 7
44	0.001.3702.0	1	roller
45	0.9131.437.3	1	fork
46	2.0119.019.1	1	screw m 8 x 40
47	2.1011.405.2	1	nut m 8 p.1



Section: S.A.C.

S.A.C. GROUND CONTROL

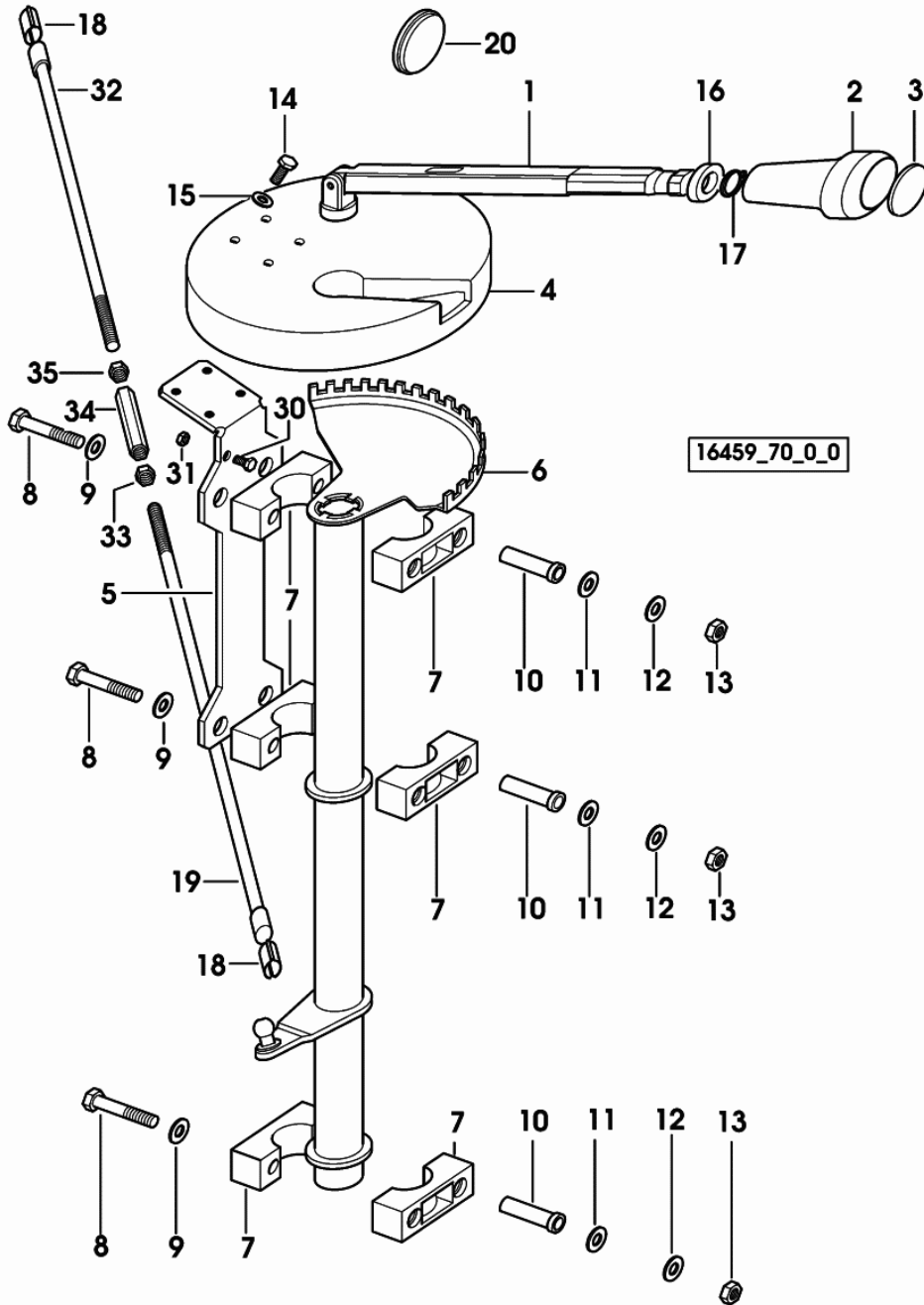


Fig.	Code	QTY	Name
------	------	-----	------

Notes:

-> 2421 X SILVER 80 -> 4162 X SILVER 90 -> 2329 X SILVER 100.4 -> 4536 X SILVER 100.6

1	0.011.7416.4	1	lever
2	0.257.6413.0	1	grip
3	0.011.7625.0/10	1	cap
4	0.011.7454.0/10	1	cover
5	0.011.7500.0/10	1	brace
6	0.011.7436.3/10	1	hydraulic controles
7	0.008.2619.0/10	6	small block
8	2.0112.223.2	6	screw m 8 p.1.25x70
9	2.1312.004.2	6	washer 8.4
10	2.1559.237.2	6	sleeve
11	2.1310.004.2	6	flat washer 8.5
12	2.1470.004.2	6	washer 8
13	2.1011.105.2	6	nut m 8 p.1.25
14	2.0332.406.3	4	screw m 6 p.1.0 x 16
15	2.1310.002.2	4	washer 6.6, d125 (...) <-
16	0.136.7387.0	1	rubber plug 15x27x5
17	2.1419.042.0	1	circlip 18
18	0.257.6757.0	2	spring
19	0.011.7672.0/10	1	rod
20	0.009.0210.0/10	4	plug 30 x 38 x 9.0
30	2.0112.005.2	1	screw m 6 p.1 x 16
31	2.1011.103.2	1	nut m 6 p.1
32	0.011.9215.0	1	rod
33	2.1011.106.2	1	nut m 10 p.1.5
34	0.467.6663.0	1	sleeve
35	2.1019.018.2	1	special nut m 10 speciale

SILVER 100.4

Section: POWER STEERING - HYDRAULIC SYSTEM

Ref.: 06.00.6

4WD - POWER STEERING

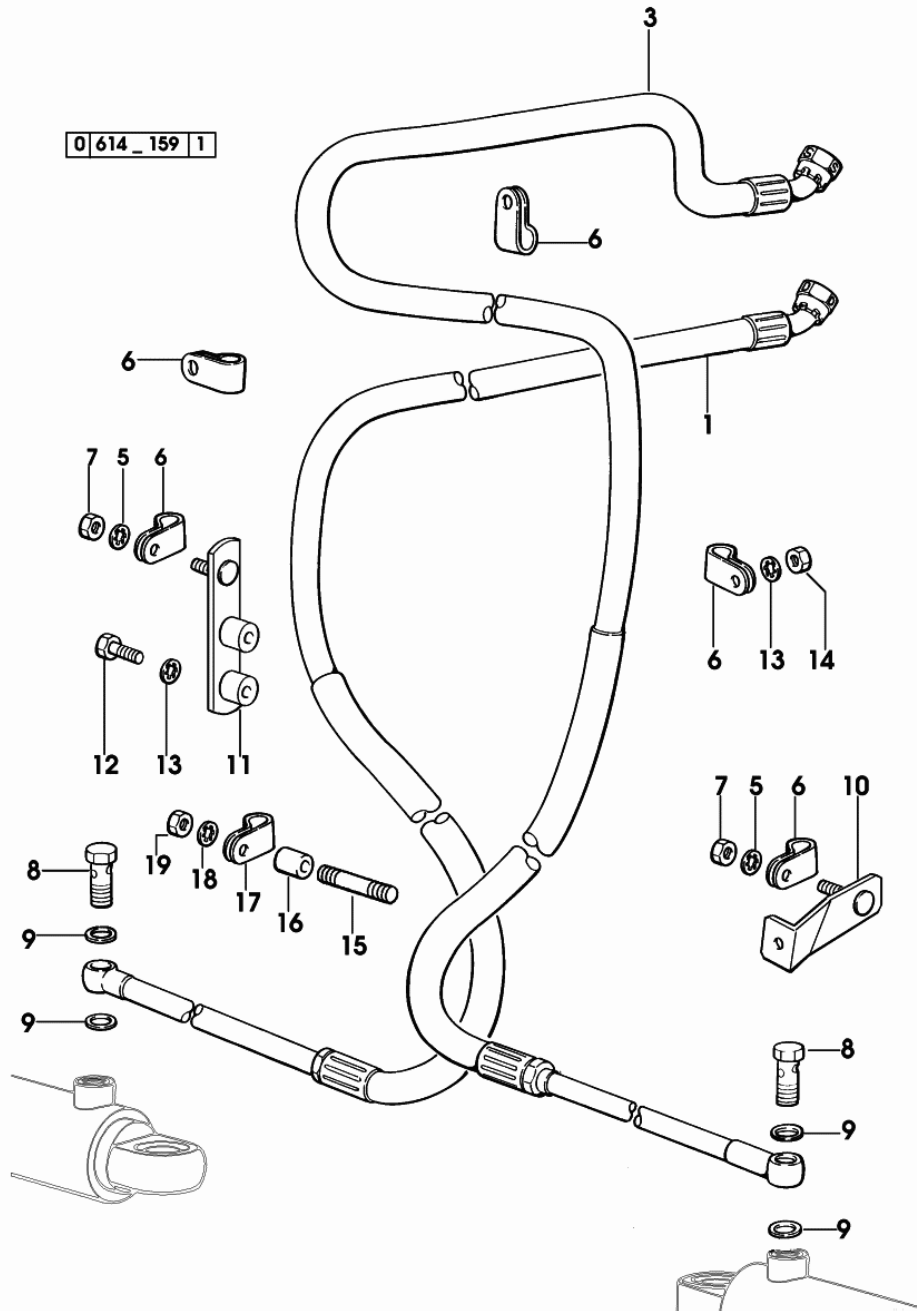
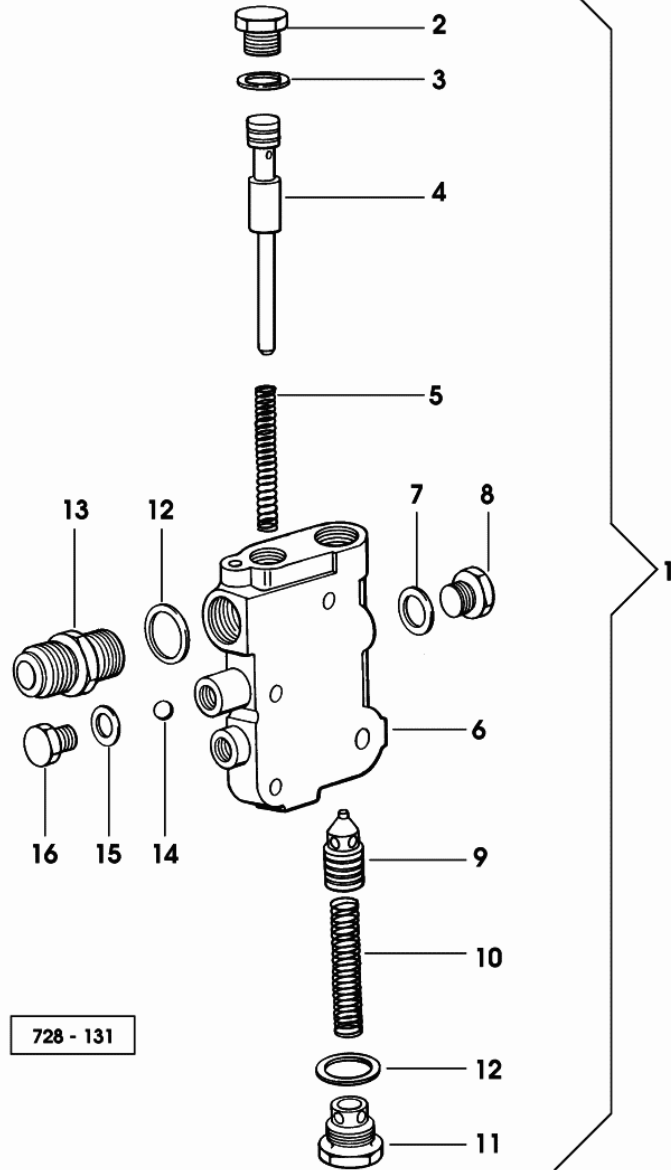


Fig.	Code	QTY	Name
1	0.008.9745.3/30	1	tube dx/rh/re - X SILVER 80 - 90 - 100.4
1	0.008.9747.3/30	1	tube dx/rh/re - X SILVER 100.6
3	0.008.9746.3/30	1	tube sx/lh/li - X SILVER 80 - 90 - 100.4
3	0.008.9748.3/30	1	tube sx/lh/li - X SILVER 100.6
5	2.1470.002.2	2	washer 6, d128
6	2.6839.051.0	5	clamp 20/20
7	2.1011.103.2	2	nut m 6 p.1
8	2.3339.210.1	2	pipe union m 14
9	2.1560.010.0	4	gasket 14.2 x 20 x 1.5
10	0.008.9674.2/20	1	bracket sx/lh/li
11	0.008.9663.2/10	1	bracket dx/rh/re - X SILVER 80 - 90 - 100.4
12	2.0112.211.2	1	screw m 8 p.1.25 x 30
13	2.1470.004.2	2	washer 8
14	2.1011.105.2	1	nut m 8 p.1.25
15	2.0422.213.2	1	stud bolt m 8 x 45 - X SILVER 100.6
16	2.1579.842.2	1	spacer - X SILVER 100.6
17	2.6839.051.0	1	clamp 20/20
18	2.1470.004.2	2	washer 8
19	2.1011.105.2	2	nut m 8 p.1.25

OIL FLOW CONTROL VALVE CASING



728 - 131

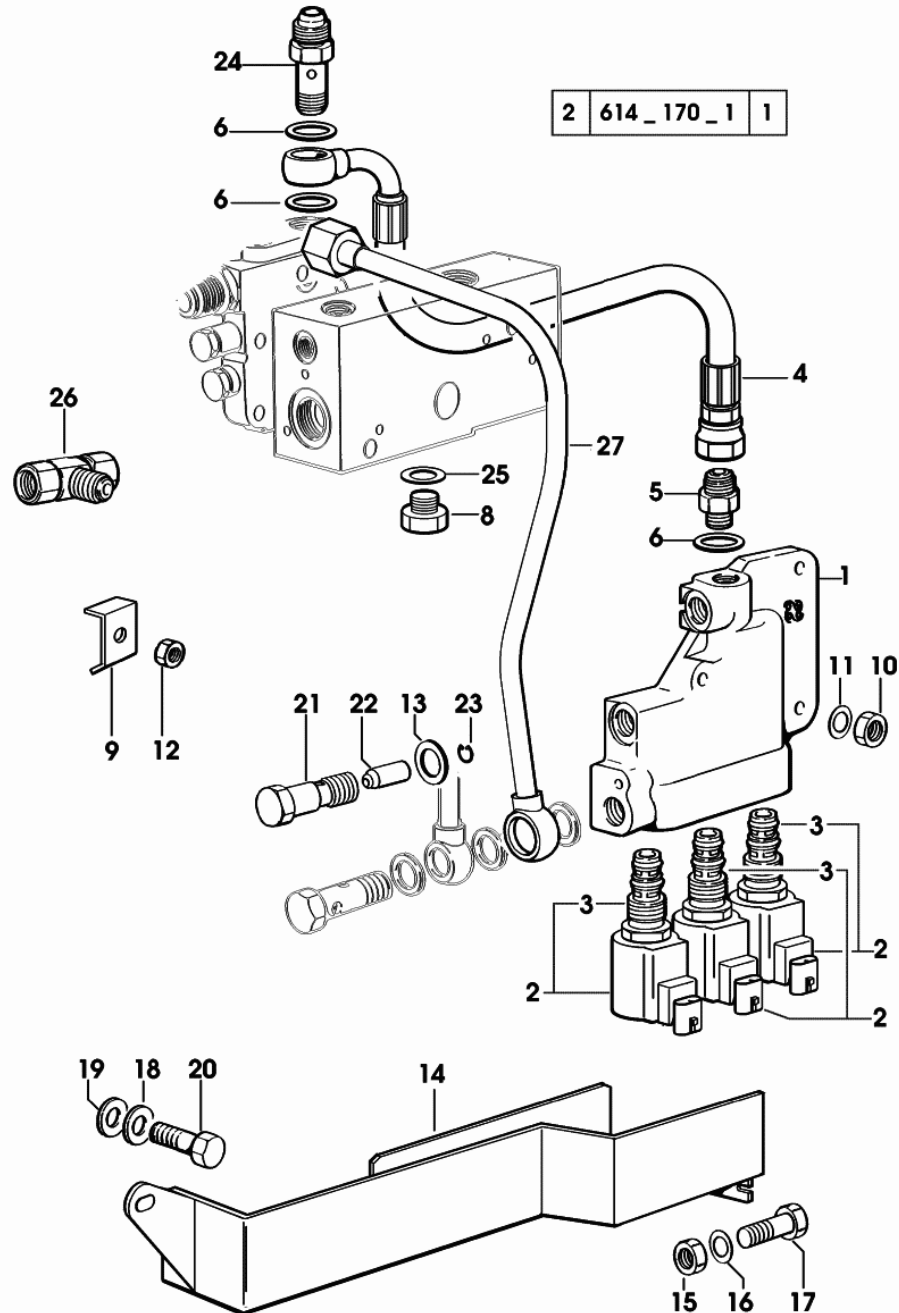
Fig.	Code	QTY	Name
1	0.009.3456.4/70	1	valve
2	2.3110.403.1	1	plug m 14 p.1.5
3	2.1560.010.0	1	gasket 14.2 x 20 x 1.5
4	0.009.3401.0	1	slider
5	2.4019.431.1/30	1	spring 6.9x11.3x2.2x64
6	0.000.0000.1	0	not serviceable
7	2.1560.008.0	1	gasket 12.2 x 18
8	2.3110.422.1	1	plug m 12 p.1.25 x 10
9	0.008.3365.0/10	1	valve
10	0.008.3371.0	1	spring
11	2.3199.251.2/10	1	plug
12	2.1560.014.0	2	gasket 18.2 x 24 x 1.5
13	2.3261.010.2	1	pipe fitting m 18 p.1.5 - 7/8" 14
14	2.2810.002.0	2	ball mm 6.350
15	2.1560.005.0	2	gasket 10.2 x 14
16	2.3199.252.2	2	plug m 10 p.1.5

SILVER 100.4

Section: POWER STEERING - HYDRAULIC SYSTEM

Ref.: 06.00.24

AGROSHIFT - HYDRAULIC CONTROL WITH HYDRIVE



2	614_170_1	1
---	-----------	---

Fig.	Code	QTY	Name
27	0.010.8493.3	1	3037 <- X SILVER 100.6 tube -> (...) - 2331 <- X SILVER 80 -> 2768 - 3812 <- X SILVER 90 -> 1774 - 2100 <- X SILVER 100.4 -> 3038 - 4053 <- X SILVRE 100.6

CLICK HERE TO **DOWNLOAD** THE COMPLETE MANUAL

- Thank you very much for reading the preview of the manual.
- You can download the complete manual from: www.heydownloads.com by clicking the link below



- Please note: If there is no response to CLICKING the link, please download this PDF first and then click on it.

CLICK HERE TO **DOWNLOAD** THE COMPLETE MANUAL