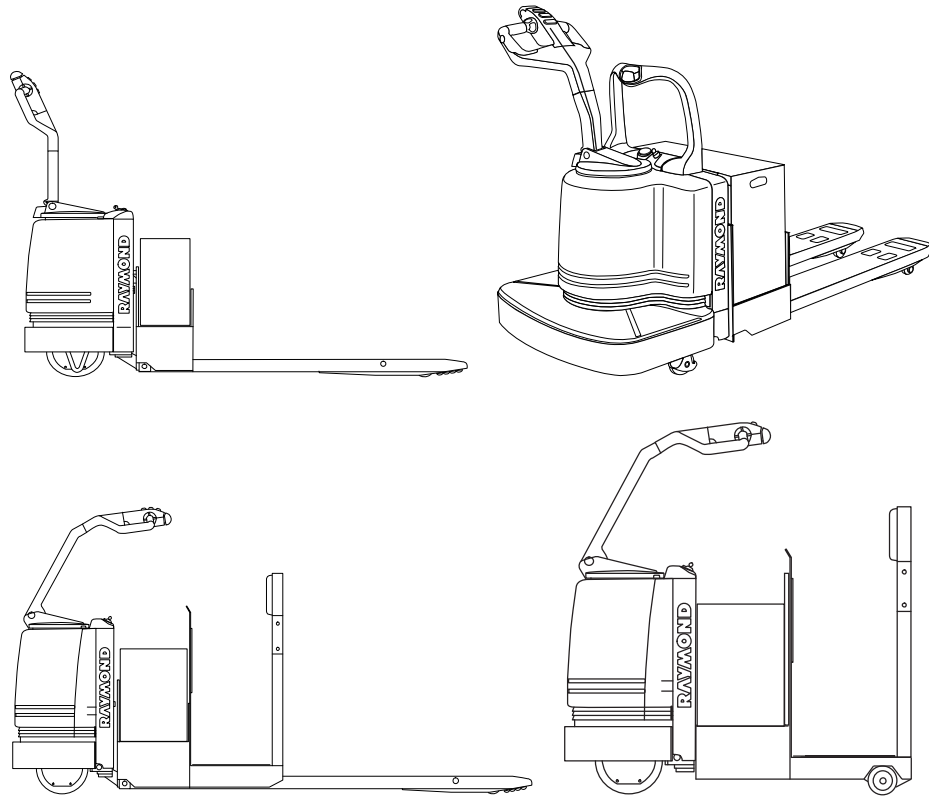


RAYMOND

Models - 111, 112, 113, 114 Pallet Trucks/Tow Tractor

Parts Catalog



1050188A
S/N 50000 & UP
Issued: 12/19/2005

CLICK HERE TO **DOWNLOAD** THE COMPLETE MANUAL

- Thank you very much for reading the preview of the manual.
- You can download the complete manual from: www.heydownloads.com by clicking the link below



- Please note: If there is no response to CLICKING the link, please download this PDF first and then click on it.

CLICK HERE TO **DOWNLOAD** THE COMPLETE MANUAL

Hardware Parts List

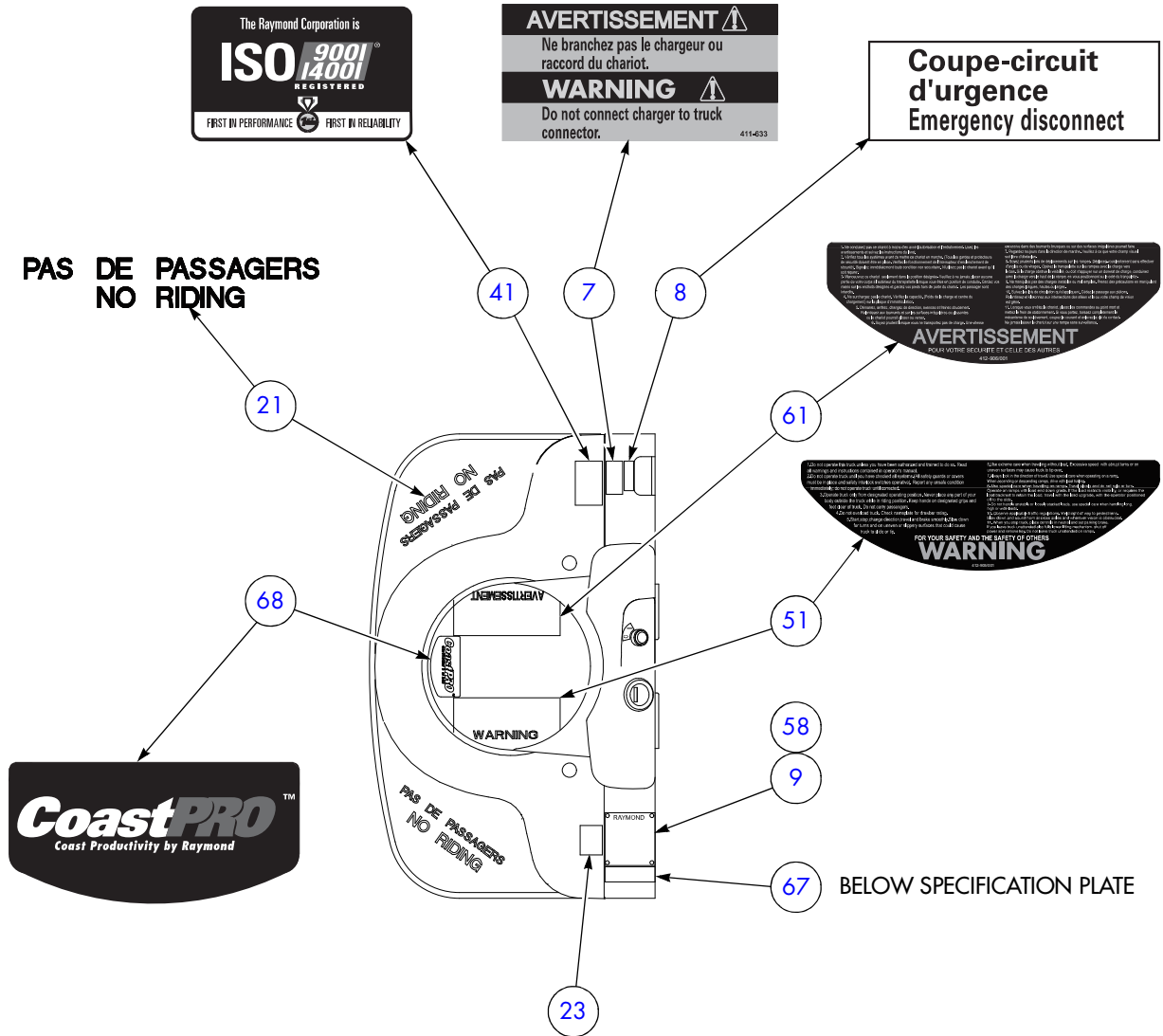
Description	Part No.	Qty.	Description	Part No.	Qty.
Bolt, Shoulder.....	716-020.....	2	Screw, Set.....	724-399.....	2
Bolt, Shoulder.....	716-121.....	1	Screw, Set.....	724-414.....	2
Bolt, Shoulder.....	716-135.....	1	Screw, Set.....	724-535.....	1
Bolt, Through.....	560-204/328.....	2	Screw, Shoulder.....	1030582.....	4
Bolt.....	400-080/04.....	1	Screw.....	5-001-002.....	2
Bolt.....	716-137.....	3	Screw.....	5-001-008.....	14
Key, Woodruff, #607.....	850-111.....	2	Screw.....	5-001-014.....	2
Key, Woodruff.....	7-850-100/015.....	1	Screw.....	5-001-015.....	4
Key, Woodruff.....	850-111.....	1	Screw.....	5-001-016.....	4
Nut.....	760-148.....	1	Screw.....	5-001-017.....	2
Nut, Hex, Slotted.....	761-856.....	2	Screw.....	5-001-024.....	4
Nut, Hex.....	750-025.....	2	Screw.....	5-004-035.....	4
Nut, Lock.....	671-041/21.....	3	Screw.....	570-869/721.....	2
Nut, Lock.....	760-006.....	4	Screw.....	570-869/733.....	4
Nut, Lock.....	760-013.....	6	Screw.....	701-001.....	4
Nut, Lock.....	760-103.....	8	Screw.....	701-016.....	4
Nut, Lock.....	760-148.....	1	Screw.....	701-058.....	4
Nut, Lock.....	760-176.....	1	Screw.....	701-060.....	14
Nut, Lock.....	760-920.....	2	Screw.....	701-062.....	9
Nut.....	400-080/03.....	1	Screw.....	701-066.....	2
Nut.....	5-016-004.....	4	Screw.....	701-070.....	8
Nut.....	540-047/417.....	1	Screw.....	701-075.....	3
Nut.....	570-869/714.....	2	Screw.....	701-086.....	8
Nut.....	570-869/729.....	4	Screw.....	701-100.....	2
Nut.....	671-015/06.....	1	Screw.....	701-111.....	6
Nut.....	750-005.....	4	Screw.....	701-115.....	4
Nut.....	750-006.....	4	Screw.....	701-119.....	4
Nut.....	750-008.....	8	Screw.....	701-132.....	4
Nut.....	750-013.....	7	Screw.....	701-190.....	5
Nut.....	750-020.....	6	Screw.....	701-241.....	3
Nut.....	750-033.....	5	Screw.....	701-246.....	4
Nut.....	750-036.....	4	Screw.....	701-251.....	4
Nut.....	750-049.....	2	Screw.....	701-270.....	4
Nut.....	750-054.....	4	Screw.....	710-006.....	3
Nut.....	750-234.....	12	Screw.....	710-008.....	11
Nut.....	750-412.....	6	Screw.....	710-010.....	5
Nut.....	750-419.....	4	Screw.....	710-012.....	8
Nut.....	750-434.....	4	Screw.....	710-025.....	2
Nut.....	750-455.....	1	Screw.....	710-069.....	16
Nut.....	760-013.....	5	Screw.....	710-071.....	5
Nut.....	760-147.....	1	Screw.....	710-080.....	1
Nut.....	760-148.....	2	Screw.....	710-127.....	2
Nut.....	760-920.....	3	Screw.....	710-130.....	4
Nut.....	761-944.....	2	Screw.....	710-132.....	8
Pin, Clevis.....	812-000-178.....	1	Screw.....	710-141.....	8
Pin, Clevis.....	861-014/007.....	1	Screw.....	710-177.....	1
Pin, Cotter.....	810-904.....	1	Screw.....	710-246.....	7
Pin, Cotter.....	810-910.....	2	Screw.....	710-399.....	2
Pin, Roll.....	810-728.....	2	Screw.....	714-014/004.....	2
Pin, Roll.....	810-744.....	1	Screw.....	714-021.....	8
Pin, Roll.....	811-120.....	2	Screw.....	714-031.....	4
Pin, Slotted Spring.....	810-813.....	2	Screw.....	714-036.....	4
Pin, Spiral.....	1026370.....	2	Screw.....	714-039.....	4
Pin, Spiral.....	810-717.....	2	Screw.....	714-047.....	14
Pin, Spring.....	810-724.....	1	Screw.....	714-052.....	2
Pin, Spring.....	810-747.....	1	Screw.....	714-068.....	2
Pin, Spring.....	811-140.....	2	Screw.....	714-080.....	2
Plug, Switch.....	900-276.....	2	Screw.....	714-098.....	4
Ring, Snap.....	7-810-002/03.....	1	Screw.....	714-127.....	12
Ring, Snap.....	810-086.....	1	Screw.....	714-131.....	2
Screw.....	724-363.....	1	Screw.....	714-137.....	4
Screw and Washer.....	570-869/720.....	4	Screw.....	714-145.....	12
Screw and Washer.....	671-012/05.....	1	Screw.....	714-147.....	2
Screw, Set.....	724-230.....	2	Screw.....	714-150.....	1
Screw, Set.....	724-341.....	2	Screw.....	714-158.....	1
Screw, Set.....	724-363.....	1	Screw.....	714-198.....	12

FIGURE 2-4 ITEM NO.	QTY	PART NUMBER	DESCRIPTION	USED ON
1	1	1017847/01	Housing	
2	1	671-041/02	Plate, Base	
3	1	671-041/03	Block, Torsion	
4	2	671-042/04	Plate, Adjusting	
5	2	671-041/05	Arm, Wheel Mounting	
6	2	671-041/06	Spacer, Tube	
7	1	671-041/07	Wheel	R
9	2	671-041/08	Bearing, Wheel	
10	2	671-041/09	Spacer, Wheel	
11	2	671-041/10	Washer, Thrust	
12	1	671-041/11	Bearing, Thrust	R
13	1	671-041/12	O-Ring	R
14	1	671-041/13	Bearing, Cup	R
15	1	671-041/14	Bearing, King Pin	R
16	1	671-041/15	Shield, Bearing	R
17	2	671-041/16	Nut, King Pin	
18	1	671-041/17	Pin, King	
19	1	671-041/18	Axle, Wheel	
20	2	671-041/19	Bolt, Assembly	
21	2	671-041/20	Fitting, Grease	
22	3	671-041/21	Nut, Lock	
23	1	671-042/22	Bolt, Assembly	

R= Recommended Spare

List 2-4: Caster Assembly, Springless

Finish Instructions, All Models

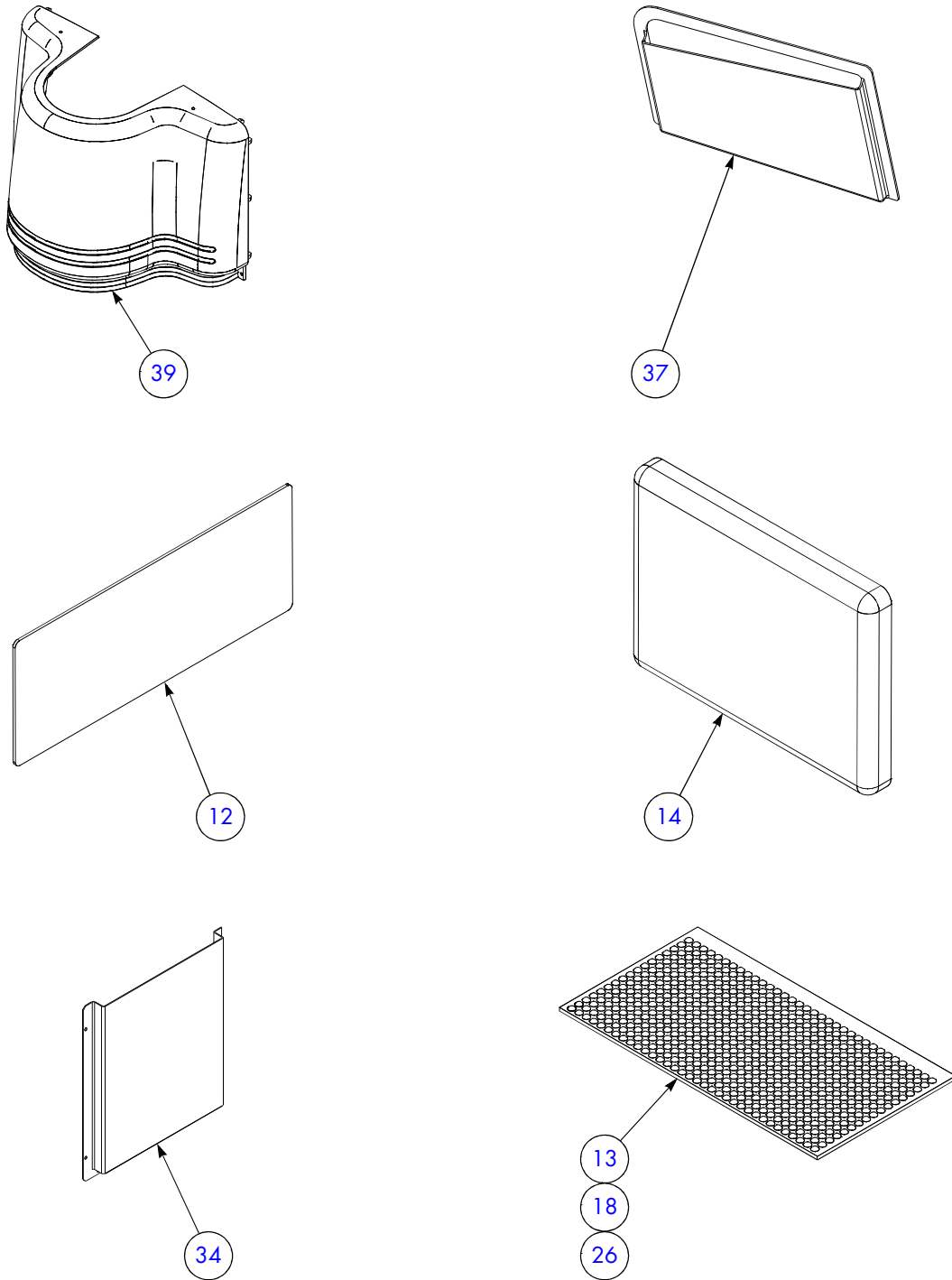


MODEL 113 TOP VIEW (BILINGUAL)

412-912-BW, W411-693, W411-637-001-BW, W412-906-001-BW, W412-905-001-BW, W1030432_113_01, W412-927-BW SHT 8 OF 19

Figure 2-6h: Finish Instructions, All Models

Finish Instructions, All Models



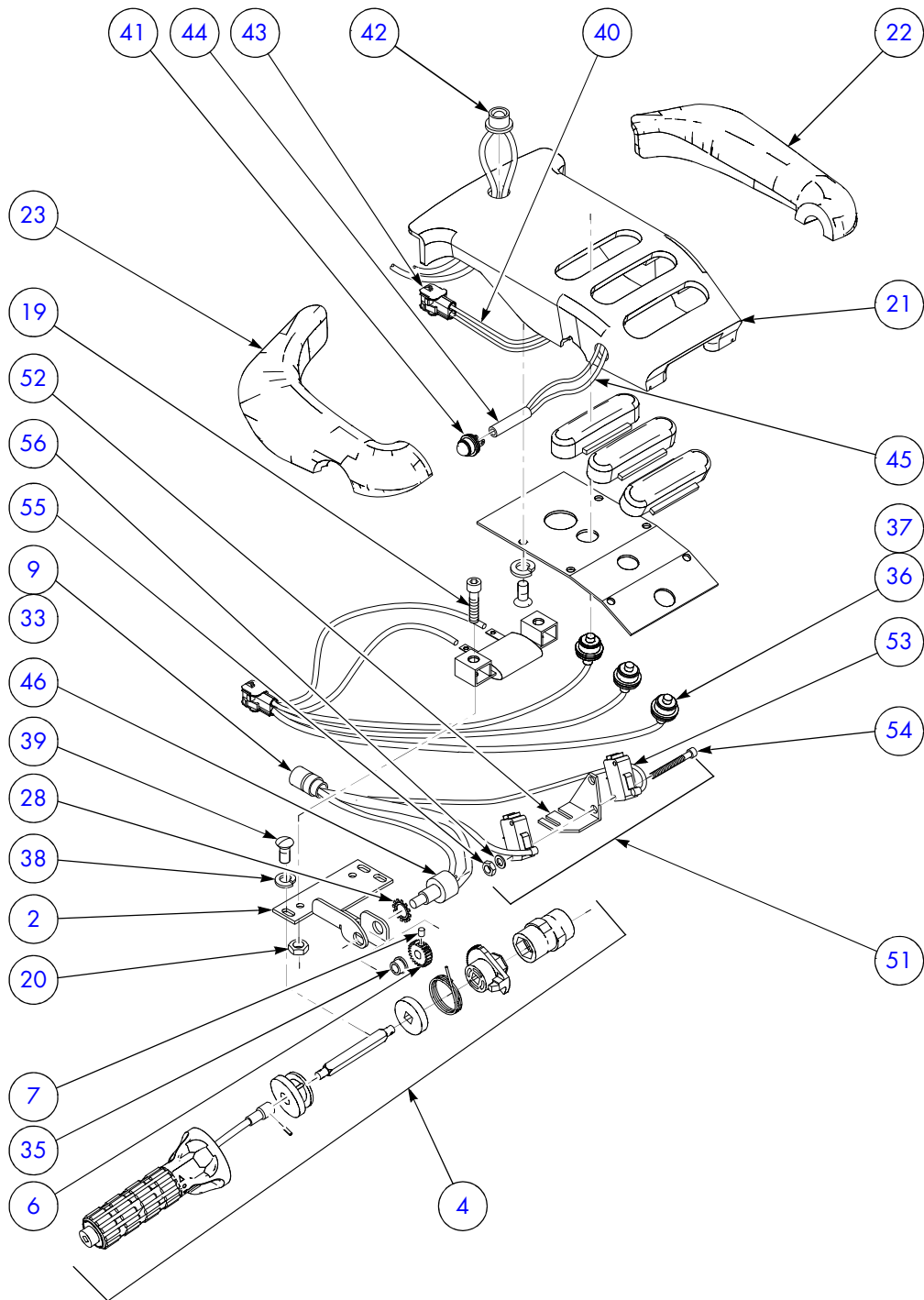
W850-138-601, W828-006-843, W850-138-599, W413-091, W413-035, W850-139-194-001 SHT 18 OF 19

Figure 2-6r: Finish Instructions, All Models

SECTION 3 Steering and Controls

Handle and Mounting, Models 111/112	3-2
Handle and Mounting, Models 113/114	3-4
Handle Installation, Model 113 With Deadman Brake.....	3-7
Handle Assembly, Models 111/112.....	3-11
Handle Assembly, Models 113/114.....	3-16
Control Assembly.....	3-22
Handle Arm Assembly	3-25
Switch Cover Assembly, All Models.....	3-28

Handle Assembly, Models 111/112



W1031149_A1 SHT 1 OF 2

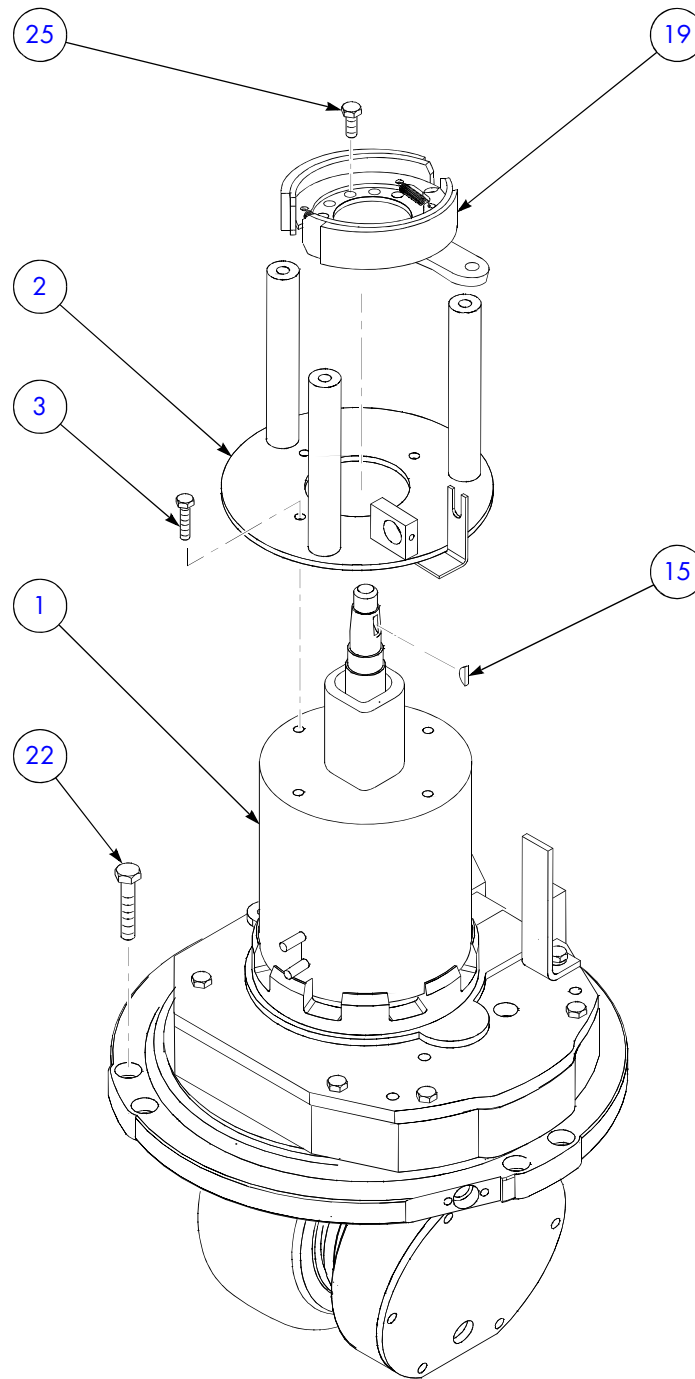
Figure 3-4a: Handle Assembly, Models 111/112

RAYMOND

SECTION 4 Drive and Brake

Drive and Brake Assembly, Models 111/112	4-3
Drive and Brake Assembly, Models 113/114	4-7
Drive and Brake Assembly, Model 113 With Deadman	4-11
Drive Unit Sub-Assembly	4-14
Lower Drive Unit Assembly, All Models	4-16
Motor Subassembly	4-18
Handle Assembly, Brake	4-20
Brake Assembly, Models 111/112 and Model 113 With Deadman	4-22
Brake Assembly, Models 113/114	4-23

Drive and Brake Assembly, Model 113 With Deadman



W850-138-891-C-1 SHT 1 OF 2

Figure 4-3a: Drive and Brake Assembly, Model 113 With Deadman

Pallet Truck/Tow Tractor Models 111, 112, 113, 114 - Drive and Brake

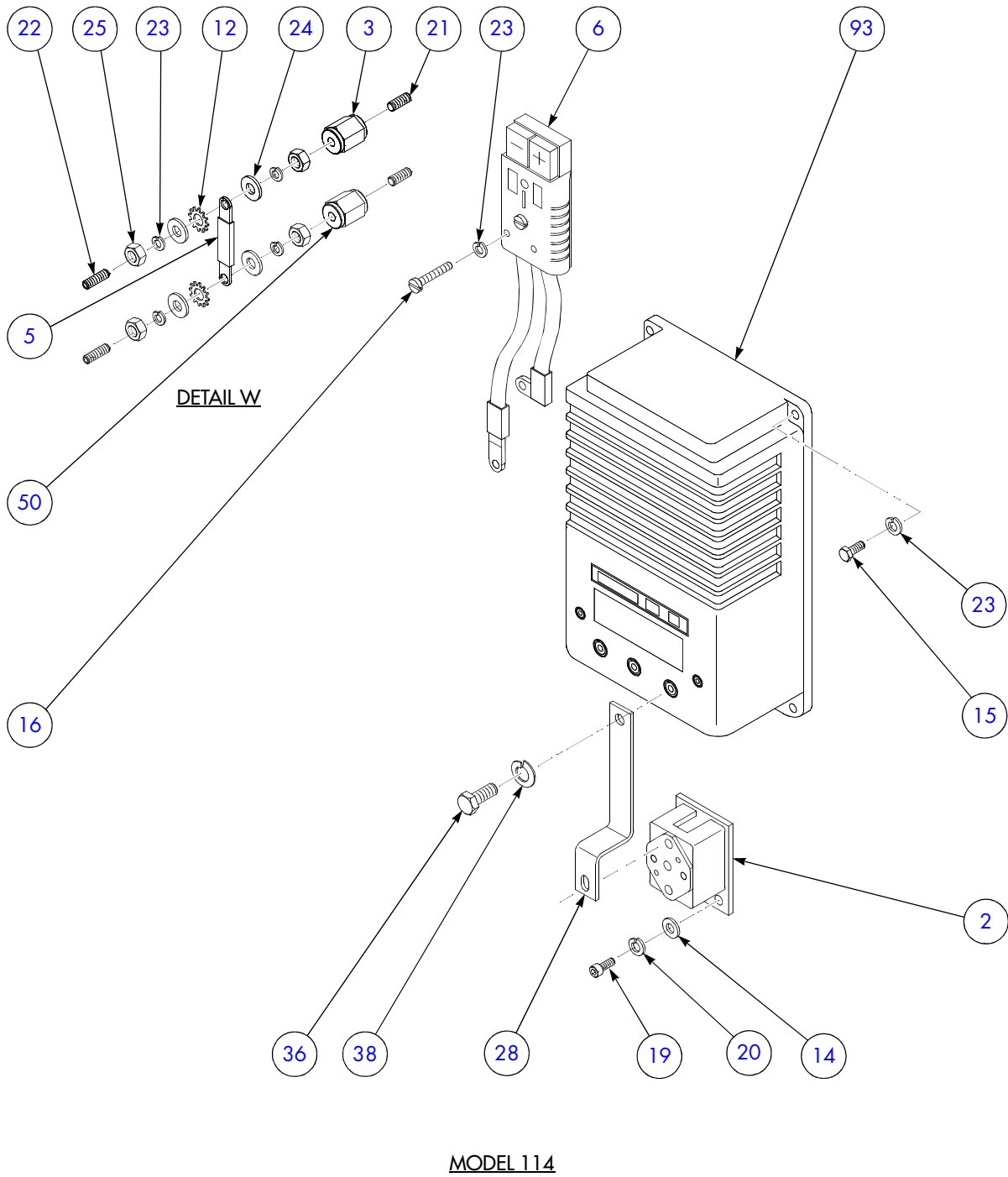
Handle Assembly, Brake

FIGURE 4-7 ITEM NO.	QTY	PART NUMBER	DESCRIPTION	USED ON
1	1	850-138-367	Bracket, Brake	
2	1	850-135-965	Handle, Brake, Left-Hand	
3	1	850-135-966	Handle, Brake, Right-Hand	
4	2	716-112	Screw	
5	2	860-730/005	Ball Joint	
6	2	860-727	Ball Joint, Slip	
7	1	850-135-961	Actuator, Brake Shaft	
8	1	850-135-964	Actuator, Brake	
9	2	462-032	Bushing, Flanged	R
10	1	850-138-364	Lock, Brake Weldment	
12	1	810-724	Pin, Spring	
13	1	850-138-365	Actuator, Parking Brake	
15	1	830-341	Spring, Parking Brake	R
16	1	701-241	Screw	
17	2	710-025	Screw	
18	1	830-339	Spring, Handle Return	R
19	4	750-005	Nut	
20	8	771-014	Washer	

R= Recommended Spare

List 4-7: Handle Assembly, Brake

Electrical System



W1029767_114_B2 SHT 6 OF 7

Figure 5-1f: Electrical System

CLICK HERE TO **DOWNLOAD** THE COMPLETE MANUAL

- Thank you very much for reading the preview of the manual.
- You can download the complete manual from: www.heydownloads.com by clicking the link below



- Please note: If there is no response to CLICKING the link, please download this PDF first and then click on it.

CLICK HERE TO **DOWNLOAD** THE COMPLETE MANUAL

FIGURE 5-2 ITEM NO.	QTY	PART NUMBER	DESCRIPTION	USED ON
1	1	771-116	Washer, Flat	
2	1	1-105-231	Contacting Assembly, EE (See Figure 5-6.)	
3	1	850-139-054	Enclosure Assembly, Fuse (See Figure 5-3.)	
4	1	850-139-055	Holder Assembly, Fuse (includes:)	
	1	590-514	Fuse, 15 amp	R
6	1	1-187-098	Controller, Motor	
7	2	811-325/006	Clamp, Cable	
8	AR	611-028	Strap	
9	AR	611-044	Mount, Strap	
10	1	1-012-070/04	Connector	
11	1	591-629/001	Indicator Assembly, LED	
12	1	850-136-961	Module Assembly, Hour Meter	
13	36	870-854/004	Guard, Loom (Not Shown)	
14	2	771-012	Washer, Flat	
15	4	710-012	Screw	
16	1	1020095	Strap, Static, EE	
17	5	710-008	Screw	
18	10	772-116	Washer, Lock	
19	2	701-119	Screw	
20	2	772-112	Washer, Lock	
21	2	7-710-006/012	Screw	
22	3	7-710-008/020	Screw	
23	2	5-019-005	Washer, Lock	
24	3	5-019-006	Washer, Lock	
25	4	771-016	Washer, Flat	
27	4.4	611-035	Tubing, Shrinkable	
28	1	850-136-976	Bar, Bus	
29	1	B23-020-060/534	Cable Assembly (FU2 to M1-1)	
30	1	F23-022-430/534	Cable Assembly (MD-A1 to M1-2)	
31	1	F23-022-350/524	Cable Assembly (MD-A2 to M-)	
32	1	029-005-450/014	Cable Assembly (F2 to MD-E2)	
33	1	029-005-390/013	Cable Assembly (F1 to MD-E1)	
34	1	850-139-057	Battery Connector Assembly (See Figure 5-9.)	
35	2	701-190	Screw	
50	1	771-116	Washer, Flat	
51	1	850-136-319	Wire Assembly, Snubber	
52	1	850-136-425/002	Suppressor Assembly	R
53	1	1-150-324	Switch	R
54	1	850-138-970	Bracket, Switch	
55	1	B24-022-220/286	Cable Assembly (P1 to FU1-2)	
56	1	B24-022-305/272	Cable Assembly (B- to MP-2)	
57	1	710-006	Screw	

A= Model 112

B= Model 113

R= Recommended Spare

List 5-2: Electrical System, EE, Models 112/113 (Sheet 1 of 2)

FIGURE 5-4 ITEM NO.	QTY	PART NUMBER	DESCRIPTION	USED ON
		850-138-495/001	Rail Assembly, Grab	A
		850-138-495/101	Rail Assembly, Grab	B
1	4	750-020	Nut	
2	4	772-123	Washer, Lock	
3	4	771-023	Washer, Flat	
4	1	850-139-149/001	Switch Assembly (includes: Items 8 thru 12)	A
	1	850-139-149/101	Switch Assembly (includes: Items 8 thru 12)	B
5	2	701-241	Screw	
6	2	771-012	Washer	
7	1	776-233	Washer, Nylon	
8	1	850-139-147/001	Case Module/Harness Assembly (includes: Items 13 thru 17)	A
	1	850-139-147/101	Case Module/Harness Assembly (includes: Items 13 thru 19)	B
9	1	850-138-654	Button, Lower/Lift (Rail)	
10	1	850-138-145	Button, Rabbit, Right (Rail)	
11	1	850-138-146	Button, Rabbit, Left (Rail)	
12	1	850-138-653	Button, Horn (Rail)	
13	1	1-012-070/05	Connector, 12 Pin	
14	10	1-012-071	Pin, Contact	
15	3	1-150-429	Switch, Rabbit/Horn	
16	2	1-150-430	Switch, Lift/Lower	
17	1	850-139-145	Module, Case	
18	1	1-012-500/012	Seal, Wire (12 Circuit)	B
19	2	1-012-498	Plug, Sealing	B
20	1	1014535	Rail, Grab, Finished	

A= Standard
B= Cold Storage

List 5-4: Grab Rail Assembly, Model 112

Battery Connector Assembly

FIGURE 5-9 ITEM NO.	QTY	PART NUMBER	DESCRIPTION	USED ON
		850-139-057	Battery Connector Assembly	A
1	1	590-701	Battery Connector	R
2	1	B23-002-150/419	Cable Assembly (B- to B-)	
3	1	B23-010-074/420	Cable Assembly (B+ to B+)	
	1	B23-002-180/420	Cable Assembly (B+ to B+)	A
4	2	590-741/005	Sleeve	
5	2	701-190	Screw	
6	2	772-116	Washer, Lock	

A= EE Only
R= Recommended Spare

List 5-9: Battery Connector Assembly

SECTION 6 Hydraulic Components

Hydraulic System	6-2
Lift Pump and Motor Assembly	6-5
Lift Cylinder	6-8

SECTION 7 Mast

Fork and Tractor Subassembly, Models 111/112/113	7-2
Undercarriage Installation, 6000 lb., Models 111/112/113, Up to 60 in. Fork Length	7-5
Under Carriage Installation, 6000 lb., Models 111/112, Over 60 in. Fork Length	7-9
Under Carriage Installation, 8000 lb., Models 112/113, Over 60 in. Fork Length	7-13
Pull Rod Assembly, Models 111/112/113 Up to 60 in. Fork Length.....	7-16
Pull Rod Assembly for 6000 lb., Models 112/113, Over 60 in. Fork Length.....	7-18
Pull Rod Assembly for 8000 lb., Models 112/113, Over 60 in. Fork Length.....	7-20
Load Wheel Assembly, 6000 lb., Models 111/112/113	7-22
Load Wheel Assembly, 8000 lb., Models 112/113, Single Wheel	7-24
Load Wheel Assembly, 8000 lb., Models 112/113, Tandem Split Wheel.....	7-26
Load Wheel Assembly, 8000 lb., Models 112/113, Tandem Full Wheel	7-28
Entry Roller Installation.....	7-30

Under Carriage Installation, 6000 lb., Models 111/112, Over 60 in. Fork Length

FIGURE 7-3 ITEM NO.	QTY	PART NUMBER	DESCRIPTION	USED ON
1	1	Ref.	Fork and Box Weldment	A
3	1	1023730	Bell Crank Subassembly, Left-Hand (includes: Items 25 thru 29)	
4	1	1023731	Bell Crank Subassembly, Right-Hand (includes: Items 25 thru 29)	
5	2	1026370	Pin, Spiral	
6	2	1026383	Shaft, Front Link Weldment	
7	2	1044708	Pin, Eccentric	
8	2	1026637	Shaft, Pivot	
9	2	Ref.	Wheel Assembly, Load (See Figure 7-8.)	
10	2	Ref.	Rod Assembly, Pull (See Figure 7-6.)	
11	2	1026377/001	Block, Pivot, Right-Hand	
12	2	1026378/001	Block, Pivot, Left-Hand	
13	2	1050893/001	Shaft, Rear Link	
14	2	850-139-277	Sleeve, Pin, Eccentric	
15	4	5-001-008	Screw	
16	2	5-018-006	Washer, Flat	
17	4	5-019-006	Washer, Lock	
18	2	360-067/004	Roller	
19	4	714-145	Screw	
20	4	716-008	Screw	
21	4	750-234	Nut	
22	6	771-033	Washer, Flat	
23	2	771-119	Washer, Flat	
24	2	1045247/001	Pipe, Spacer	
25	4	780-330/001	Bearing, Sleeve	
26	4	840-018	Fitting, Grease	
27	2	840-033	Fitting, Grease	
28	2	1025349/003	Bearing, Sleeve	
29	2	1025349/006	Bearing, Sleeve	
30	4	810-132	Ring, Snap	

A= Contact Technical Support

List 7-3: Under Carriage Installation, 6000 lb., Models 111/112, Over 60 in. Fork Length

Pull Rod Assembly for 8000 lb., Models 112/113, Over 60 in. Fork Length

FIGURE 7-7 ITEM NO.	QTY	PART NUMBER	DESCRIPTION	USED ON
1	2	1026364/084	Rod Assembly, Pull, 84 in. Fork Length (With two 42" Pallets)	A
	2	1026364/096	Rod Assembly, Pull, 84 in., 93 in. and 96 in. Fork Length	A
	2	1026364/103	Rod Assembly, Pull, 103 in. Fork Length	A
	2	1026364/122	Rod Assembly, Pull, 103 in. Fork Length	B
	2	1026364/284	Rod Assembly, Pull, 84 in. Fork Length	A
	2	1026364/396	Rod Assembly, Pull, 84 in. and 96 in. Fork Length	B
	2	1026364/496	Rod Assembly, Pull, 84 in. and 93 in. Fork Length, Extended	B, C
	2	1026364/120	Rod Assembly, Pull, 120 in., Triplet	A
	2	1026364/144	Rod Assembly, Pull, 144 in., Triplet (116.34 in. Rod Length Hole to Hole)	A
	2	1026364/244	Rod Assembly, Pull, 144 in., Triplet (95.845 in. Rod Length Hole to Hole)	A
	2	1026364/344	Rod Assembly, Pull, Triplet, Standard (133.905 in. Rod Length Hole to Hole)	B
	2	1026364/444	Rod Assembly, Pull, Triplet, Standard (113.405 in. Rod Length Hole to Hole)	B
	2	1026364/544	Rod Assembly, Pull, Triplet, Extended (139.905 in. Rod Length Hole to Hole)	B, C
	2	1026364/644	Rod Assembly, Pull, Triplet, Extended (119.405 in. Rod Length Hole to Hole)	B, C
2	4	1025349/007	Bearing, Sleeve	R
3	4	840-033	Fitting, Grease	

A= Model 112

B= Model 113

C= Extended Operator Compartment

R= Recommended Spare

List 7-7: Pull Rod Assembly for 8000 lb., Models 112/113, Over 60 in. Fork Length

FIGURE 7-12 ITEM NO.	QTY	PART NUMBER	DESCRIPTION	USED ON
1	1	850-137-670	Roller Assembly, Entry (includes: Items 4 thru 7)	
2	1	714-150	Screw	
3	1	714-158	Screw	
4	1	850-137-926	Bracket Weldment, Entry Roller	
5	3	360-067/002	Roller	
6	3	716-137	Bolt	
7	3	760-920	Nut	

List 7-12: Entry Roller Installation

Tow Coupler Installation

FIGURE 8-3 ITEM NO.	QTY	PART NUMBER	DESCRIPTION	USED ON
1	1	850-135-353	Coupler Assembly	A
2	24	683-012	Chain	A
3	2	860-502	Hook, S	A
4	4	714-298	Screw	
5	4	750-054	Nut	
6	4	771-128	Washer, Flat	
7	1	850-135-356	Coupling, Eye and Pin Weldment	B
8	4	772-128	Washer, Lock	

A= Latch Coupler
B= Pinned Coupler

List 8-3: Tow Coupler Installation

Pallet Truck/Tow Tractor Models 111, 112, 113, 114 - Options/Kits

Controls, Load Backrest Installation, Model 113 Only

FIGURE 8-8 ITEM NO.	QTY	PART NUMBER	DESCRIPTION	USED ON
1	1	850-138-586	Plate, Switch	
2	1	850-139-029	Cable, Platform, Load Backrest	
3	1	1017147/019	Cable, Tractor, Load Backrest	
	1	1017147/025	Cable, Tractor, Load Backrest	A
4	1	1-150-437/001	Switch, Lift	
5	1	1-150-437/002	Switch, Lower	
6	1	1-150-437/003	Switch, Horn	
7	3	600-253	Grommet	
8	4	701-115	Screw	
9	2	710-010	Screw	
10	4	772-112	Washer, Lock	
11	2	772-116	Washer, Lock	
12	2	811-325/007	Clamp, Cable	

A= Extended Compartment

List 8-8: Controls, Load Backrest Installation, Model 113 Only

Pallet Truck/Tow Tractor Models 111, 112, 113, 114 - Options/Kits

Spring Assembly, CoastPRO™

FIGURE 8-11 ITEM NO.	QTY	PART NUMBER	DESCRIPTION	USED ON
		850-139-432	Spring Assembly, CoastPRO™	B
		850-138-898	Spring Assembly, CoastPRO™	A
1	1	850-138-733	Housing	A
	1	850-139-431	Housing	B
2	1	850-138-897	Seat Assembly, Spring	
3	1	830-246	Spring, Compression	
4	1	850-137-722	Retainer, Spring	
5	1	810-086	Ring, Snap	
6	1	412-578	Decal, Disassembly Warning	
7	1	850-137-822	Bumper	
8	2	460-187	Bushing	

A= Model 112

B= Model 113 With Deadman

List 8-11: Spring Assembly, CoastPRO™

APPENDIX A Alphabetical Parts Index

Description	Part No.	Page	Description	Part No.	Page
Actuator Assembly, Coast PRO ™	850-137-755	8-23	Battery Connector Assembly	850-136-969	5-9
Actuator Assembly, Coast PRO ™	850-137-755	8-27	Battery Connector Assembly	850-139-057	5-17
Actuator Assembly, Coast PRO ™	850-137-755	8-30	Battery Connector	590-701	5-37
Actuator, Brake Shaft	850-135-961	4-21	Bearing, Commutator End	442-205	6-7
Actuator, Brake	850-135-964	4-21	Bearing, Commutator End	570-869/725	5-41
Actuator, Coast Spring	850-138-177	8-30	Bearing, Cone	447-045	2-5
Actuator, Coast	850-137-457	8-33	Bearing, Cone	671-012/08	2-11
Actuator, Coast PRO ™	1016907	8-30	Bearing, Cup	447-518	2-5
Actuator, Lift Limit	1-150-442	5-11	Bearing, Cup	671-012/07	2-11
Actuator, Parking Brake	850-138-365	4-21	Bearing, Cup	671-041/13	2-9
Actuator, Switch, Lift Limit	1-150-442	5-18	Bearing, Drive End	442-210	6-7
Actuator	1-150-385	3-14	Bearing, Handle	850-135-959	3-23
Adapter Kit	560-213/04	6-7	Bearing, King Pin	671-041/14	2-9
Adapter Machining, Motor	850-138-038	4-13	Bearing, Non-Shielded	441-015	7-23
Adapter Machining, Motor	850-138-089	4-9	Bearing, Non-Shielded	441-015	7-25
Adapter, Jog Switch	850-137-956	3-13	Bearing, Shield	441-127	7-23
Adapter, Motor	850-138-089	4-5	Bearing, Shield	441-127	7-25
Adapter, Motor	850-138-995	4-5	Bearing, Shield	441-127	7-27
Adaptor, O.R.B.	792-637	6-3	Bearing, Sleeve	1025348/007	7-23
Adjuster Weldment	850-137-327	8-33	Bearing, Sleeve	1025349/001	7-15
Adjuster, Spring	850-137-584	3-3	Bearing, Sleeve	1025349/003	7-11
Alarm, Horn	590-628/001	8-3	Bearing, Sleeve	1025349/003	7-7
Arm Assembly, Handle	850-138-108/001	3-13	Bearing, Sleeve	1025349/006	7-11
Arm Assembly, Handle	850-138-108/001	3-27	Bearing, Sleeve	1025349/006	7-15
Arm Assembly, Handle	850-138-108/003	3-19	Bearing, Sleeve	1025349/006	7-7
Arm Assembly, Handle	850-138-108/003	3-27	Bearing, Sleeve	1025349/007	7-19
Arm, Brake Actuator	850-137-781	3-3	Bearing, Sleeve	1025349/007	7-21
Arm, Machined	850-138-377	3-27	Bearing, Sleeve	1025349/007	7-25
Arm, Machined	850-138-385	3-27	Bearing, Sleeve	1025349/007	7-27
Arm, Wheel Mounting	671-041/05	2-9	Bearing, Sleeve	780-330/001	7-11
Armature and Fan Assembly	570-325/511	5-45	Bearing, Sleeve	780-330/001	7-7
Armature and Fan Assembly	570-450/512	5-43	Bearing, Sleeve	780-330/002	7-15
Armature	570-869/711	5-41	Bearing, Thrust	671-012/04	2-11
Axle Assembly	671-015/16	2-11	Bearing, Thrust	671-041/11	2-9
Axle Assembly	671-015/17	2-11	Bearing, Wheel	671-041/08	2-9
Axle Weldment, Suspension	850-139-168	2-5	Bearing	441-015	7-29
Axle, Wheel	671-041/18	2-9	Bearing	441-127	2-11
Backrest	850-139-329/001	8-13	Bearing	441-127	7-29
Backrest	850-139-329/002	8-13	Bearing	447-043	4-17
Backrest	850-139-330/001	8-13	Bearing	447-104	4-17
Backrest	850-139-330/002	8-13	Bearing	447-105	4-17
Ball Joint, Brake	860-730/007	3-3	Bearing	462-002	3-13
Ball Joint, Brake	860-730/008	3-9	Bearing	462-002	3-20
Ball Joint, Slip	860-727	4-21	Bearing	570-206/02	5-43
Ball Joint	860-730/005	4-21	Bearing	570-206/02	5-45
Ball, 1/2 in.	850-015	4-17	Bearing	7-441-201/00	4-19
Ball, 1/4 in. dia.	850-007	8-30	Bell Crank Subassembly, Left-Hand	1023730	7-11
Ball, 9/16 in.	850-017	4-17	Bell Crank Subassembly, Left-Hand	1023730	7-7
Band Assembly, Commutator	570-871/512	5-45	Bell Crank Subassembly, Left-Hand	1023732	7-15
Band Assembly, Fan	570-871/513	5-45	Bell Crank Subassembly, Right-Hand	1023731	7-11
Bar, Bus (M1-2 to B+)	850-136-976	5-9	Bell Crank Subassembly, Right-Hand	1023731	7-7
Bar, Bus	850-136-976	5-17	Bell Crank Subassembly, Right-Hand	1023733	7-15
Bar, Platform Weldment	Ref.	2-37	Block, Fuse	850-136-863	5-9
Base, Handle Mount With Coast	850-137-470	3-5	Block, Fuse	850-136-863	8-5
Base, Handle Mount	850-138-345	3-3	Block, Pivot, Left-Hand	1026378/001	7-11
Base, Handle Mount	850-138-346	3-3	Block, Pivot, Left-Hand	1026378/001	7-7
Battery Connector Assembly	850-139-057	5-37	Block, Pivot, Left-Hand	1026378/002	7-15

Pallet Truck/Tow Tractor Models 111, 112, 113, 114 - Alphabetical Parts Index

Description	Part No.	Page	Description	Part No.	Page
Washer, Flat	5-018-006	7-11	Washer, Lock	772-012	8-23
Washer, Flat	5-018-006	7-15	Washer, Lock	772-012	8-27
Washer, Flat	5-018-006	7-3	Washer, Lock	772-104	3-13
Washer, Flat	5-018-006	7-7	Washer, Lock	772-104	3-19
Washer, Flat	5-018-007	7-23	Washer, Lock	772-107	5-10
Washer, Flat	5-018-007	7-25	Washer, Lock	772-107	5-11
Washer, Flat	5-018-011	7-23	Washer, Lock	772-107	5-18
Washer, Flat	771-007	5-10	Washer, Lock	772-112	5-11
Washer, Flat	771-007	5-18	Washer, Lock	772-112	5-17
Washer, Flat	771-012	5-17	Washer, Lock	772-112	5-18
Washer, Flat	771-012	5-21	Washer, Lock	772-112	5-21
Washer, Flat	771-012	5-9	Washer, Lock	772-112	5-9
Washer, Flat	771-016	2-32	Washer, Lock	772-112	8-19
Washer, Flat	771-016	5-11	Washer, Lock	772-115	2-37
Washer, Flat	771-016	5-17	Washer, Lock	772-115	4-15
Washer, Flat	771-016	8-3	Washer, Lock	772-116	2-32
Washer, Flat	771-019	4-17	Washer, Lock	772-116	5-17
Washer, Flat	771-023	5-27	Washer, Lock	772-116	5-18
Washer, Flat	771-025	5-11	Washer, Lock	772-116	5-32
Washer, Flat	771-025	5-18	Washer, Lock	772-116	5-37
Washer, Flat	771-033	7-11	Washer, Lock	772-116	5-9
Washer, Flat	771-033	7-15	Washer, Lock	772-116	8-19
Washer, Flat	771-033	7-25	Washer, Lock	772-116	8-3
Washer, Flat	771-101	8-33	Washer, Lock	772-116	8-33
Washer, Flat	771-107	5-10	Washer, Lock	772-119	3-3
Washer, Flat	771-109	3-19	Washer, Lock	772-119	3-9
Washer, Flat	771-116	5-17	Washer, Lock	772-119	4-13
Washer, Flat	771-116	5-32	Washer, Lock	772-119	4-9
Washer, Flat	771-116	5-9	Washer, Lock	772-123	2-7
Washer, Flat	771-119	4-13	Washer, Lock	772-123	5-27
Washer, Flat	771-119	4-5	Washer, Lock	772-128	8-9
Washer, Flat	771-119	4-9	Washer, Lock	774-005	8-33
Washer, Flat	771-119	5-9	Washer, Lock	774-005	8-37
Washer, Flat	771-119	7-11	Washer, Lock	774-007	3-13
Washer, Flat	771-119	7-15	Washer, Lock	774-007	3-19
Washer, Flat	771-119	7-7	Washer, Lock	774-007	3-29
Washer, Flat	771-119	8-14	Washer, Lock	774-007	8-23
Washer, Flat	771-127	2-36	Washer, Lock	774-007	8-27
Washer, Flat	771-128	8-9	Washer, Lock	774-009	3-14
Washer, Flat	771-161	3-5	Washer, Lock	774-009	3-20
Washer, Flat	771-169	3-27	Washer, Lock	774-009	8-37
Washer, Flat	771-230	7-3	Washer, Lock	774-107	8-5
Washer, Lock	772-119	4-5	Washer, Lock	774-116	5-9
Washer, Lock	400-080/02	4-23	Washer, Lock	774-254	4-13
Washer, Lock	5-019-005	5-17	Washer, Lock	774-254	4-5
Washer, Lock	5-019-005	5-9	Washer, Lock	774-254	4-9
Washer, Lock	5-019-006	5-17	Washer, Lock	776-023	5-21
Washer, Lock	5-019-006	5-9	Washer, Nylon	776-233	5-27
Washer, Lock	5-019-006	7-11	Washer, Thrust	671-041/10	2-9
Washer, Lock	5-019-006	7-15	Washer, Wavey	570-869/715	5-41
Washer, Lock	5-019-006	7-3	Washer	570-869/722	5-41
Washer, Lock	5-019-006	7-7	Washer	570-869/730	5-41
Washer, Lock	5-019-007	7-23	Washer	671-012/06	2-11
Washer, Lock	5-019-007	7-25	Washer	671-015/05	2-11
Washer, Lock	5-019-008	7-3	Washer	771-012	5-27
Washer, Lock	570-869/716	5-41	Washer	771-014	4-21
Washer, Lock	570-869/717	5-41	Washer	771-016	8-13
Washer, Lock	570-869/732	5-41	Washer	771-019	2-32
Washer, Lock	570-869/734	5-41	Washer	771-023	8-33
Washer, Lock	772-007	5-10	Washer	771-025	8-15
Washer, Lock	772-007	5-18	Washer	771-101	3-14

CLICK HERE TO **DOWNLOAD** THE COMPLETE MANUAL

- Thank you very much for reading the preview of the manual.
- You can download the complete manual from: www.heydownloads.com by clicking the link below



- Please note: If there is no response to CLICKING the link, please download this PDF first and then click on it.

CLICK HERE TO **DOWNLOAD** THE COMPLETE MANUAL