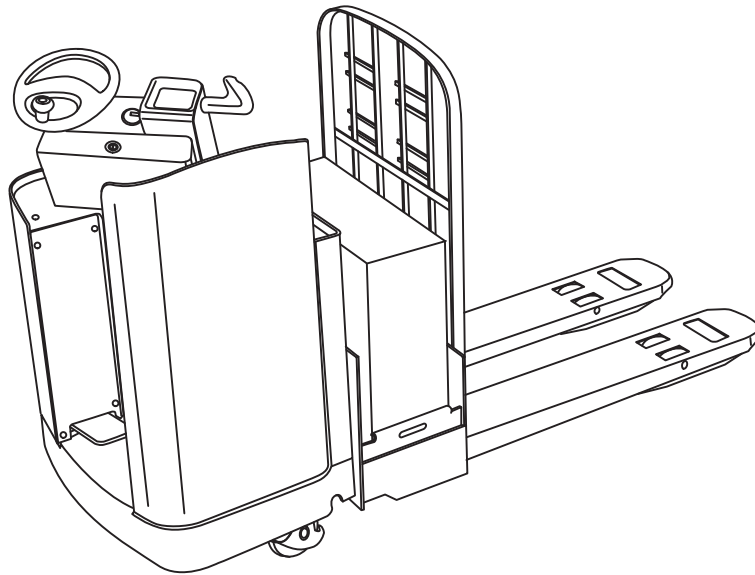


RAYMOND

**Model - 019 - ELF[®] Rider
Pallet Truck**

Parts Catalog



**PDPM - 0222
S/N 41,000 & UP
Issued 4/1/02**

CLICK HERE TO **DOWNLOAD** THE COMPLETE MANUAL

- Thank you very much for reading the preview of the manual.
- You can download the complete manual from: www.heydownloads.com by clicking the link below



- Please note: If there is no response to CLICKING the link, please download this PDF first and then click on it.

CLICK HERE TO **DOWNLOAD** THE COMPLETE MANUAL

Major Sections

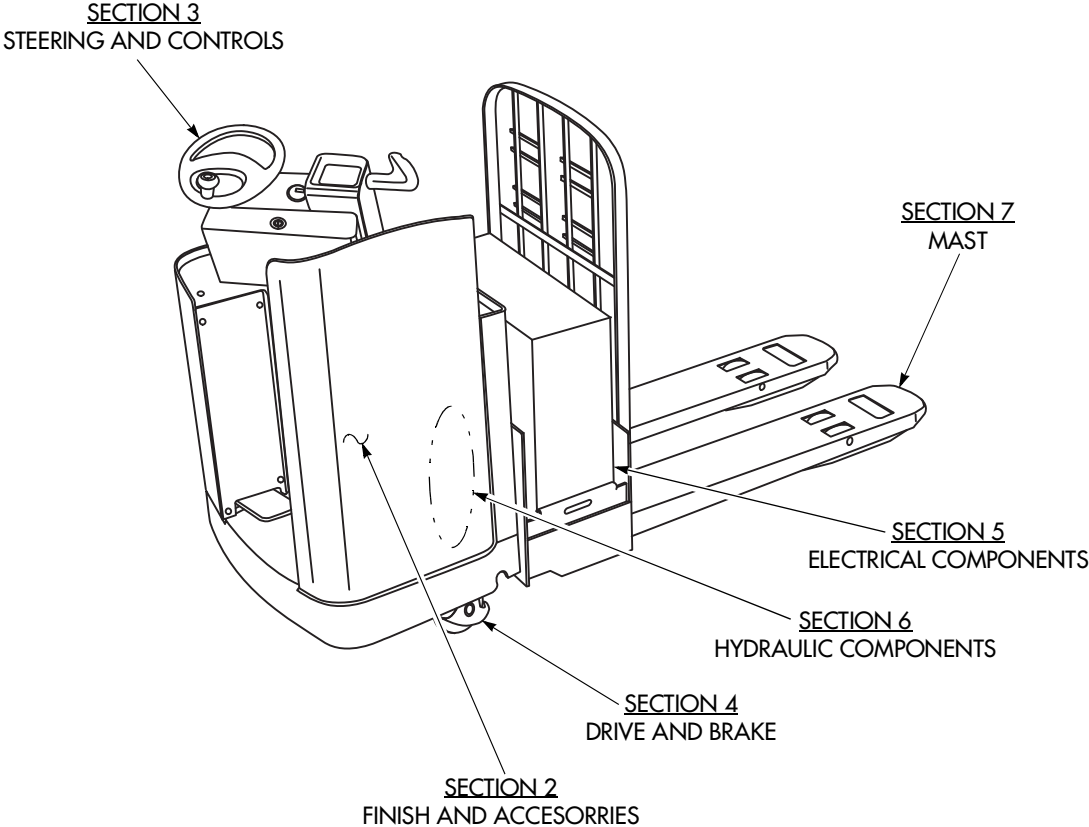


Figure 1-4: Major Sections

MODEL 19 ELF

FIGURE 2-1 ITEM NO.	QTY	PART NUMBER	DESCRIPTION	USED ON
1	Ref.	Ref.	Tractor Assembly (See Figure 2-2b.)	
2	Ref.	Ref.	Control Handle Assembly (See Figure 3-3.)	
3	Ref.	Ref.	Drive and Brake Assembly (See Figure 4-1 a.)	
4	Ref.	Ref.	Electrical System (See Figure 5-1 a.)	
5	Ref.	Ref.	Lift Pump and Motor Assembly (See Figure 6-2a.)	
6	Ref.	Ref.	Fork and Tractor Subassembly (See Figure 7-1 a.)	
7	Ref.	Ref.	Load Wheel Assembly (See Figure 7-5.)	
8	Ref.	Ref.	Load Wheel Assembly, 6000 lb. (Up to 60 in.) (See Figure 7-7.)	
9	Ref.	Ref.	Load Wheel Assembly, 6000/8000 lb. Long John (See Figure 7-11.)	
10	Ref.	Ref.	Load Wheel Assembly, Single, 6000/8000 lb. Long John (See Figure 7-12.)	
11	Ref.	Ref.	Load Wheel Assembly, 8000 lb., Tandem Split Wheel (See Figure 7-13.)	
12	Ref.	Ref.	Load Wheel Assembly, Tandem, 8000 lb. Full Wheel (See Figure 7-14.)	

FIGURE 2-5 ITEM NO.	QTY	PART NUMBER	DESCRIPTION	USED ON
		671-042	Caster Assembly, Standard	
1	1	671-041/01	Housing	
2	1	671-041/02	Plate, Base	
3	1	671-041/03	Block, Torsion	
4	2	671-042/04	Plate, Adjusting	
5	2	671-041/05	Arm, Wheel Mounting	
6	2	671-041/06	Spacer, Tube	
7	1	671-041/07	Wheel	R
9	2	671-041/08	Bearing, Wheel	
10	2	671-041/09	Spacer, Wheel	
11	2	671-041/10	Washer, Thrust	
12	1	671-041/11	Bearing, Thrust	R
13	1	671-041/12	O-Ring	R
14	1	671-041/13	Bearing, Cup	R
15	1	671-041/14	Bearing, King Pin	R
16	1	671-041/15	Shield, Bearing	R
17	2	671-041/16	Nut, King Pin	
18	1	671-041/17	Pin, King	
19	1	671-041/18	Axle, Wheel	
20	2	671-041/19	Bolt Assembly	
21	2	671-041/20	Fitting, Grease	
22	3	671-041/21	Nut, Lock	
23	1	671-042/22	Bolt Assembly	

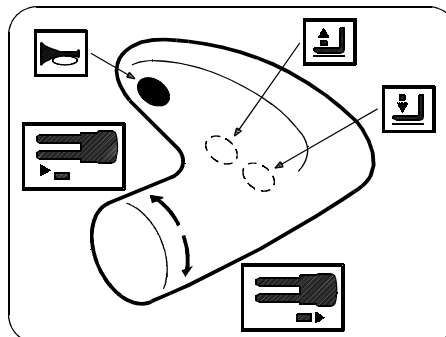
R= Recommended Spare

List 2-5: Caster Assembly, Standard

Finish Instructions

RAYMOND		
THE RAYMOND CORPORATION GREENE, NY 13778 USA		TAG NO. 412-829
MODEL	SERIAL NUMBER	VOLTS
TRUCK WEIGHT WITH MAX. BATTERY	BATTERY WEIGHT MAXIMUM	MAX. BATT. CAPAC.
XXXX lb (XXXX kg)	XXXX lb (XXXX kg)	XXX Ah
WITHOUT BATTERY	MINIMUM	OUR RATE
XXXX lb (XXXX kg)	XXXX lb (XXXX kg)	XX
HORIZONTAL MOTION OF BATTERY MUST NOT EXCEED 0.5 in (13 mm) ATTACH RESTRAINT TO COMPARTMENT AS REQUIRED.		
MAX. CAPACITY (UNIFORMLY DISTR. LOAD) XXXX lb (XXXX kg)		
THIS FORKLIFT TRUCK MEETS OR EXCEEDS DESIGN SPECIFICATIONS OF ASME B56.1 IN EFFECT ON THE DATE OF MANUFACTURE WHEN EQUIPPED WITH TYPE E BATTERY.		
MADE IN CANADA		

ITEM 21 - P/N 412-829



ITEM 22 - P/N 412-582



ITEM 25 - W412-093

RAYMOND		
RAYMOND INDUSTRIAL EQUIPMENT BURLINGTON, ONTARIO, CANADA		TAG NO. NUMERO DE PLAQUE 412-831
MODEL MODELE	SERIAL NUMBER NUMERO DE SERIE	VOLTS VOLTSTION
TRUCK WEIGHT POIDS DU CHARIOT WITH MAX. BATTERY AVEC BATTERIE MAX	BATTERY WEIGHT POIDS DE LA BATT	
XXXX lb (XXXX kg)	MAXIMUM XXXX lb (XXXX kg)	
WITHOUT BATTERY SANS BATTERIE	MINIMUM	
XXXX lb (XXXX kg)	XXXX lb (XXXX kg)	
MAX. BATT. CAPACITY CAPACITE MAX. DE LA BATT.	OUR RATE DEBIT HORAIRE	
XXX Ah	XX	
HORIZONTAL MOTION OF BATTERY MUST NOT EXCEED 0.5 in (13 mm) ATTACH RESTRAINT TO COMPARTMENT AS REQUIRED. LE DEPLACEMENT HORIZONTAL DE LA BATTERIE NE DOIT PAS DEPASSER 13 mm ATTACHER UNE FIXATION AU COMPARTIMENT, SI NECESSAIRE.		
MAX. CAPACITY (UNIFORMLY DISTR. LOAD) XXXX lb (XXXX kg) CAPACITE MAX. (CHARGE UNIFORMEMENT REPARTIE) poids (kg)		
THIS FORKLIFT TRUCK MEETS OR EXCEEDS DESIGN SPECIFICATIONS OF ASME B56.1 IN EFFECT ON THE DATE OF MANUFACTURE WHEN EQUIPPED WITH TYPE E BATTERY. CE CHARIOT A FOURNES RENCONTRE OU EXCEDE LES NORMES DE SPECIFICATIONS ASME B56.1 EN EFFET A LA DATE DE FABRICATION, LORSQUE MONT D'UNE BATTERIE DE TYPE E.		

ITEM 30 - P/N 412-831

INSTALLATION CHECKOUT FOR COMPLETE TROUBLESHOOTING PROCEDURES REFER TO THE MAINTENANCE MANUAL.

This checkout procedure is intended to assist when the vehicle is delivered and installed or when troubleshooting travel related problems.

Always follow good safety practices: secure the vehicle with the drive wheel off the ground, wear safety glasses and use insulated tools. Don't let anyone stand in front of or behind the vehicle. Make sure the Key Switch is off and the vehicle is in neutral before beginning.

A. If you have a PMT (Programmable Maintenance Tool), connect it to the Motor controller. Otherwise, observe the LED diagnostic codes.

B. Turn the Key Switch on. The PMT should "power up" with an initial display, and the controller's LED should begin steadily blinking a single flash. If the LED is off, check for continuity in the Key Switch circuit and Motor controller to B-.

C. Press the PMT's DIAGNOSTICS key: the display should indicate "No Faults Found." Close the brake switch. If there is a problem, the LED will flash a fault code and the PMT display will indicate a fault message.

D. With the brake switch closed, select a direction and operate the throttle. The motor should begin to turn in the selected direction. The motor should run proportionally faster with increasing throttle. If the motor operates properly go to step H.

E. Press the PMT's TEST key and scroll down to observe the status of the Forward, Reverse, Brake and Belly Button switches. Cycle each switch in turn, observing the programmer display.

F. Observe the Throttle value indicated on the PMT display. With the twist grips in neutral the display should indicate 0%. Rotate the twist grip fully in each direction: the displayed value should increase, proportional to the twist grip rotation, from 0 to 100%.

G. Verify the wiring to the FWD/REV switches, Throttle potentiometer, FWD/REV contactor and traction motor.

H. Take the vehicle down off the blocks and drive it in a clear area. It should have smooth acceleration and good top speed.

I. Test the plug braking.

J. Check the Belly Button circuit. For the Belly Button Check wiring, verify that the circuit is operational by momentarily disconnecting one of the Belly Button wires. The vehicle should be limited to 15% speed and a fault indicated.

K. If you used a PMT, disconnect it when you have completed the checkout procedure.

412-525

ITEM 27 - W412-526

FAULT CODE EXPLANATION

FOR COMPLETE TROUBLESHOOTING PROCEDURES REFER TO THE MAINTENANCE MANUAL.

PMT DISPLAY	LED CODE	EXPLANATION	POSSIBLE CAUSE
HW FAILSAFE	** ** 1,2	Hardware fail-safe error	1. Motor controller defective.
M- FAULT	** ** 1,3	M- output shorted	1. M- output shorted to B-. 2. Internal motor short to B-.
SRO	** ** 1,4	SRO fault (Static Return to Off)	1. Improper sequencing of Key Switch, Brake Switch and Direction Switch inputs. 2. Brake or direction switch circuit open. Sequencing delay too short.
THROTTLE FAULT1	** ** 2,1	Pot Wiper circuit fault	1. Pot Wiper wire open. 2. Pot Wiper wire shorted to B- or B+. 3. Throttle pot defective.
BB WIRING CHECK	** ** 2,2	Belly Button wiring fault	1. Belly Button wire open. 2. Belly Button Check wire open.
HPD	** ** 2,3	HPD sequencing fault (High Pedal Disable)	1. Improper sequencing of Key Switch, Brake Switch and Throttle inputs. 2. Mis-adjusted Throttle pot. 3. Sequencing delay too short.
THROTTLE FAULT2	** ** 2,4	Pot Low circuit fault	1. Pot Low wire open. 2. Pot Low wire shorted to B- or B+.
CONT DRVR OC	** * 3,1	Contactor driver output overcurrent	1. Direction contactor coil shorted. 2. Wire to direction contactor coil shorted to B+.
DIR CONT WELDED	** ** 3,2	Direction contactor welded	1. Direction contactor stuck closed.
MISSING CONTACTOR	** ** 3,4	Missing contactor	1. Direction contactor coil open. 2. Wire to direction contactor coil open or shorted to B-.
LOW BATTERY VOLTAGE	** * 4,1	Low battery voltage	1. Battery voltage <16 Volts. 2. Corroded or loose battery terminal. 3. Loose controller terminal.
OVERVOLTAGE	** ** 4,2	Overvoltage	1. Battery voltage >45 Volts. 2. Vehicle operating with charger attached.
THERMAL CUTBACK	** ** 4,3	Overtemperature or Undertemperature Cutback	1. Temperature >65°C or <-25°C. 2. Excessive load on vehicle. 3. Operation in extreme environments.

412-525

ITEM 26 - P/N 412-525

W412-829-A/W412-582-BW412-093/W412-525/W412-526/W412-831-A

Figure 2-9d: Finish Instructions

Control Handle Assembly

FIGURE 3-3 ITEM NO.	QTY	PART NUMBER	DESCRIPTION	USED ON
		850-200-236	Handle, Control Assembly	
1	1	1-012-339/005	Connector	
2	6	1-012-430/001	Pin, Connector	
4	3	611-029	Strap	
5	1	850-200-238	Handle, Control	
6	1	114-020-346/003	Switch, Handle, Control Assembly	A, R
7	1	114-020-346/001	Switch, Handle, Control Assembly	B, R
8	1	114-020-346/002	Switch, Handle, Control Assembly	C, R
9	1	810-173	Pin, Spirol	
10	1	530-426	O-Ring	R
11	3	7-590-006/001	Switch, Handle, Control (Not Shown)	R

A= Horn
 B= Lift
 C= Lower
 R= Recommended Spare

List 3-3: Control Handle Assembly

Drive and Brake Assembly

FIGURE 4-1 ITEM NO.	QTY	PART NUMBER	DESCRIPTION	USED ON
		850-200-283/	Drive and Brake Assembly	
1	1	Ref.	Drive Unit Assembly (See Figure 4-2.)	
2	1	850-200-173	Plate, Mounting Weldment	
3	4	710-132	Screw	
4	8	772-123	Washer, Lock	
5	1	724-372	Screw, Set	
6	1	812-000-176	Screw, Brake Adjustment	
8	1	1-150-324	Switch	B, R
9	1	812-000-178	Pin	
10	1	810-910	Pin, Cotter	
11	1	830-185	Spring	
12	1	774-254	Washer, Tooth	
13	1	870-747	Ram, Slave	R
14	1	870-846	Drum, Brake	B
15	1	850-111	Key, Woodruff	
16	1	760-148	Nut	
17	4	710-069	Screw	
19	1	400-060	Brake Shoe Assembly (See Figure 4-6.)	
21	1	828-001-514	Clevis Weldment	
22	6	714-198	Screw	
23	1	870-860	Drum, Brake	A
24	2	710-128	Screw	
25	1	774-123	Washer	
26	1	792-350	Elbow	
27	1	850-010-110	Pad, Locking	
28	1	812-000-177	Rod, Push	
29	4	710-139	Screw	
30	4	771-152	Washer	
31	1	850-200-247	Adapter, Ring Weldment	

A= Cold Storage
B= Standard
R= Recommended Spare

List 4-1: Drive and Brake Assembly

Brake Assembly with Deadman

FIGURE 4-6 ITEM NO.	QTY	PART NUMBER	DESCRIPTION	USED ON
		400-060	Brake Assembly	
1	1	400-060/01	Plate, Backing	
2	1	400-059/02	Cam	R
3	1	400-059/94	Lever	
4	1	400-059/04	Clip	
5	2	400-059/05	Shoe Assembly	R
6	2	400-059/06	Spring, Return	R

R= Recommended Spare

List 4-6: Brake Assembly with Deadman

FIGURE 5-1 ITEM NO.	QTY	PART NUMBER	DESCRIPTION	USED ON
	7	1-012-435	Pin, Contact	
93	1	850-200-145	Harness, External Function	A, C
94	1	850-136-885	Harness, Main	B, D
95	1	850-200-143/002	Harness, Travel (includes:)	B, D
	1	1-120-098	Potentiometer, Throttle	
	1	850-200-195	Bracket	
	2	1-150-383	Switch	
	2	1-150-386	Boot	
	2	701-314	Screw	
	2	750-036	Nut	
	2	1-012-450/004	Connector (J6)	
	4	1-012-451	Pin, Contact (J6)	
	3	1-012-452	Socket, Contact (J6)	
	1	1-012-459/001	Plug, Sealing (J6)	
97	1	850-200-203	Harness, External Function	B, D
98	2	701-093	Screw	
99	2	771-009	Washer, Flat	
101	1	850-200-287/001	Harness, Function Relay TF	A, B
102	1	850-200-287/002	Harness, Function Relay TF/FF	C, D

A= Standard
 B= Cold Storage
 C= Rabbit, Forward/Reverse, Standard
 D= Rabbit, Forward/Reverse, Cold Storage
 R= Recommended Spare

List 5-1: Electrical System (Sheet 3 of 3)

CLICK HERE TO **DOWNLOAD** THE COMPLETE MANUAL

- Thank you very much for reading the preview of the manual.
- You can download the complete manual from: www.heydownloads.com by clicking the link below



- Please note: If there is no response to CLICKING the link, please download this PDF first and then click on it.

CLICK HERE TO **DOWNLOAD** THE COMPLETE MANUAL

Model - 019 - ELF® Rider Pallet Truck - Electrical Components and Systems

Maintenance Tool, Programmable

FIGURE 5-6 ITEM NO.	QTY	PART NUMBER	DESCRIPTION	USED ON
		950-180	Tool, Maintenance, Programmable (includes:)	
1	1	950-180	Tool, Maintenance, Programmable	R
2	1	950-182	Cable for 6/8K	

R= Recommended Spare

List 5-6: Maintenance Tool, Programmable

FIGURE 6-1 ITEM NO.	QTY	PART NUMBER	DESCRIPTION	USED ON
1	1	560-217	Pump & Motor Assembly, Lift (See Figure 6-2a.)	
2	2	710-127	Screw	
3	1	792-568	O-Ring, Connector, Male	
4	1	792-480	Tee, Swivel Run	
5	1	792-514	Elbow, 90 Degree, Swivel	
6	1	792-478	Elbow, 45 Degree	
7	1	792-521	Elbow, 90 Degree, O-ring	
8	1	030-504-010/003	Hose Assembly	
9	1	030-504-021/003	Hose Assembly	
10	2	792-212/009	Elbow, 90 Degree, Male	
11	1	792-211/006	Tee, Branch, Male	
12	1	792-637	Adaptor, Pipe, O.R.B. X FE.	
13	14"	247-011/006	Tubing, Polyflo	R
14	12"	247-011/005	Tubing, Polyflo	R
15	2	540-116	Cylinder, Hydraulic (See Figure 6-3.)	

R= Recommended Spare

List 6-1: Hydraulic System

Model - 019 - ELF® Rider Pallet Truck - Hydraulic Components

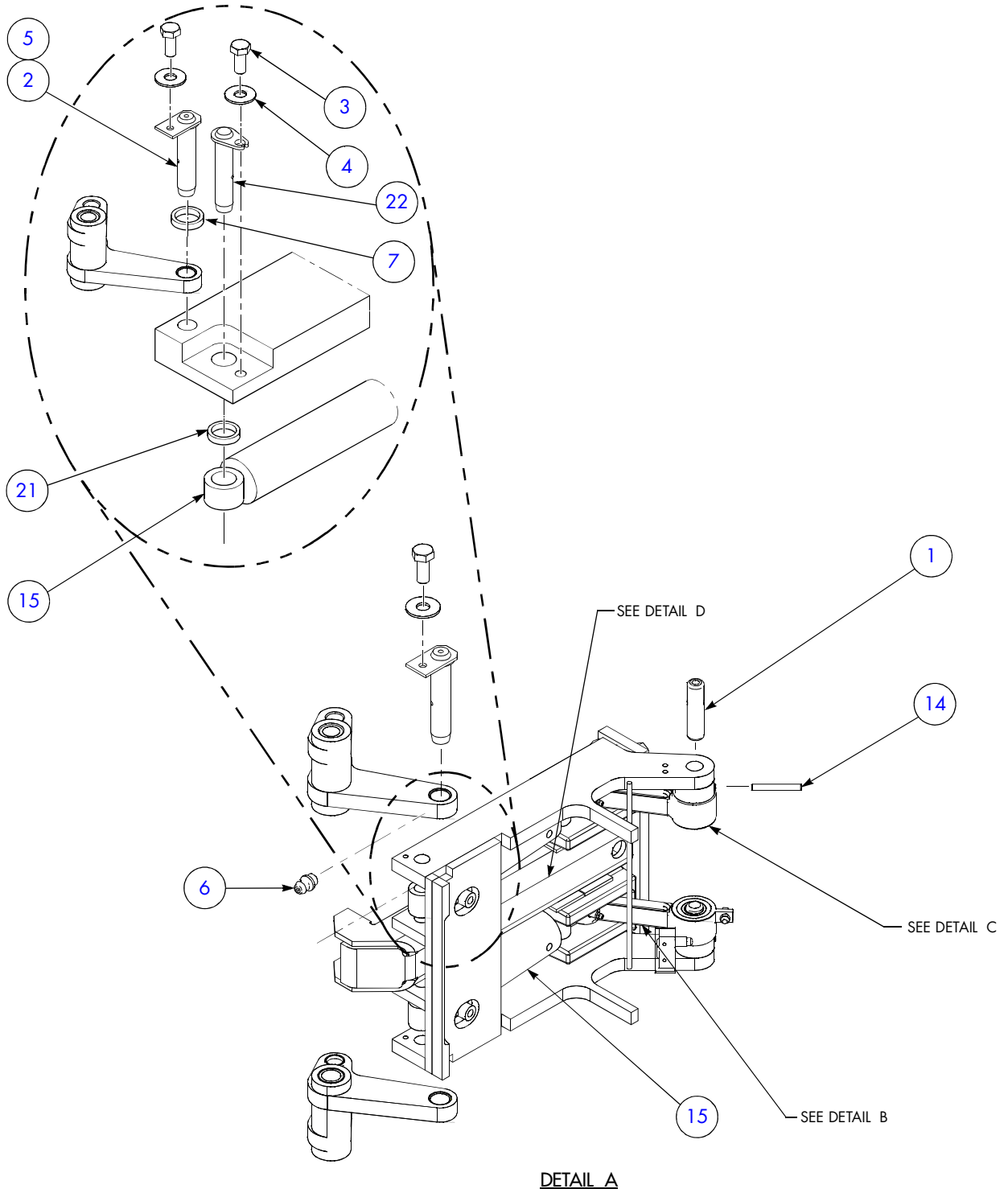
Reservoir Assembly

FIGURE 6-5 ITEM NO.	QTY	PART NUMBER	DESCRIPTION	USED ON
		850-200-213	Reservoir Assembly	
1	1	402-013	Reservoir	
2	2	790-421	Elbow	
3	1	782-320	Bushing, Reducing	
4	1	850-509	Cap, Breather	R
5	1	850-200-212	Hose Assembly	

R= Recommended Spare

List 6-5: Reservoir Assembly

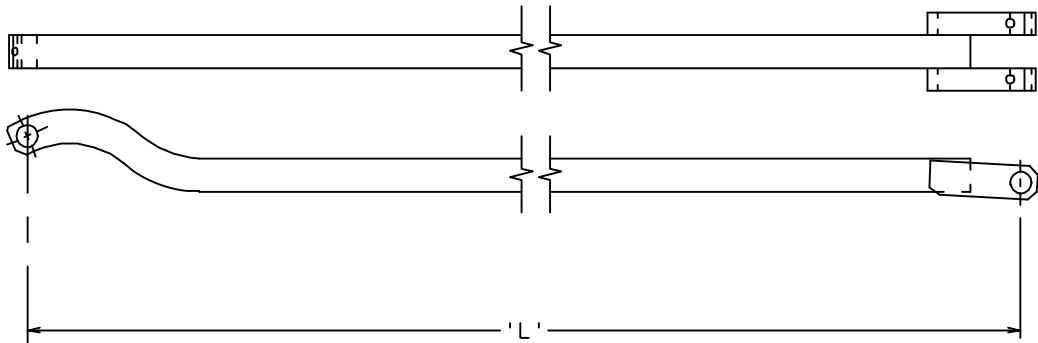
Fork and Tractor Subassembly, 6000 and 8000 lb.



W0218-701A, W0218-701E SHT 2 OF 3

Figure 7-1b: Fork and Tractor Subassembly, 6000 and 8000 lb.

Pull Rod Table, 6000 lb., Up to 60 inches



W07635

Figure 7-4: Pull Rod Table, 6000 lb., Up to 60 inches

PART NUMBER	"L"= LENGTH OF PART	FORK LENGTH/ MODEL NUMBER	USED ON
850-138-483/001	35.625 in.	36 in.	
850-138-483/002	41.625 in.	42 in.	
850-138-483/003	47.625 in.	48 in.	
850-138-483/004	59.625 in.	60 in.	

List 7-4: Pull Rod Table, 6000 lb., Up to 60 inches

Pull Rod Assembly, 6000 & 8000 lb., Long John, Over 60 in.

FIGURE 7-9 ITEM NO.	QTY	PART NUMBER	DESCRIPTION	USED ON
1	2	850-139-234	Pin, Pull Rod	
2	2	360-037/001	Roller	A
	2	360-037/003	Roller	B
3	2	Ref	Pull Rod Subassembly (includes:) (See Figure 7-10.)	
4	4	7-460-004/001	Bearing, Sleeve	A
	4	7-460-004/003	Bearing, Sleeve	B
5	4	7-460-004/004	Bearing, Sleeve	A
	4	7-460-004/008	Bearing, Sleeve	B
6	2	840-018	Fitting, Grease	
7	2	840-035	Fitting, Grease	A
	2	840-033	Fitting, Grease	B
8	2	Ref	Wheel, Load Assembly (See 711)	
9	2	771-133	Washer, Flat	
10	2	710-012	Screw	H
11	2	771-016	Washer, Flat	H

A= 6K Long John

B= 8K Long John

List 7-9: Pull Rod Assembly, 6000 & 8000 lb., Long John, Over 60 in.

Load Wheel Assembly, Tandem, 8000 lb., Full Wheel

FIGURE 7-14 ITEM NO.	QTY	PART NUMBER	DESCRIPTION	USED ON
1	4	632-071/002	Wheel, Load	A
	4	632-071/007	Wheel, Load	B
	4	632-071/003	Wheel, Load	C
	4	632-071/103	Wheel, Load	D
2	1	850-137-070	Shaft, Wheel	
3	2	441-015	Bearing	R
4	2	441-127	Bearing	R
5	2	771-156	Washer	
6	6	841-111	Fitting, Grease	

A= Vulkollan, Neutral
 B= Poly, Tan
 C= Poly, Black
 D= Poly, Green
 R= Recommended Spare

List 7-14: Load Wheel Assembly, Tandem, 8000 lb., Full Wheel

FIGURE 8-4 ITEM NO.	QTY	PART NUMBER	DESCRIPTION	USED ON
1	1	850-138-472	Tray, Tote	
2	1	850-138-757	Strip, Magnetic	
5	1	850-137-776	Clipboard	

List 8-4: Battery Top Tray

Model - 019 - ELF® Rider Pallet Truck - Alphabetical Parts Index

Description	Part No.	Page	Description	Part No.	Page
Ring, Retaining, External	540-068/418	6-9	Screw	710-012	7-23
Ring, Retaining, Internal	540-068/417	6-9	Screw	710-067	5-5
Ring, Retaining	870-613/02	6-19	Screw	710-068	8-3
Ring, Slewing Machined	850-138-730	4-11	Screw	710-069	4-11
Ring, Snap	7-810-002/037	4-13	Screw	710-069	2-7
Ring, Snap	870-613/01	6-19	Screw	710-069	3-3
Rod, Piston Weldment	540-116/413	6-9	Screw	710-069	4-5
Rod, Push	812-000-177	4-5	Screw	710-069	6-11
Roller, 6 K	360-037/001	7-23	Screw	710-074	4-17
Roller, 8 K	360-037/003	7-23	Screw	710-127	6-3
Roller, Battery Assembly	828-006-727/	2-19	Screw	710-127	7-19
Roller, Battery Assembly	828-006-727/010	2-17	Screw	710-127	2-7
Roller, Battery Assembly	828-006-727/012	2-17	Screw	710-127	6-19
Roller, Battery Kit Installation	850-138-499/001	2-17	Screw	710-128	4-5
Roller, Battery Kit Installation	850-138-499/002	2-17	Screw	710-130	2-17
Roller, Battery	828-006-726	2-19	Screw	710-132	4-5
Screw	710-141	2-9	Screw	710-132	7-29
Screw, Brake Adjustment	812-000-176	4-5	Screw	710-134	2-7
Screw, Set	724-372	3-11	Screw	710-139	4-5
Screw, Set	724-372	4-5	Screw	710-242	7-5
Screw, Set	724-399	5-5	Screw	710-246	4-7
Screw, Set	724-429	5-5	Screw	710-252	4-7
Screw, Top Cover	1-105-216/06	5-11	Screw	710-399	8-13
Screw, Top Cover	1-105-216/06	5-9	Screw	714-071	7-17
Screw, Washer	671-012/05	2-11	Screw	714-128	3-11
Screw	550-004/01	6-15	Screw	714-145	7-27
Screw	701-060	3-5	Screw	714-198	4-5
Screw	701-062	5-6	Screw	714-205	8-13
Screw	701-062	8-5	Screw	716-137	3-9
Screw	701-066	5-5	Screw	724-230	3-5
Screw	701-066	5-6	Screw	743-030	4-13
Screw	701-066	8-5	Screw	743-031	4-13
Screw	701-093	5-7	Screw	760-069	7-21
Screw	701-095	5-6	Screw	870-625/07	6-15
Screw	701-095	5-6	Seal Kit	540-116/421	6-9
Screw	701-115	5-5	Seal Kit	550-004/17	6-15
Screw	701-115	5-6	Seal Kit	560-213/01	6-7
Screw	701-123	5-6	Seal Kit	870-764/01	6-17
Screw	701-125	4-17	Seal, Felt	671-012/03	2-11
Screw	701-175	4-17	Seal, Oil	530-638	4-11
Screw	701-190	5-5	Seal, Oil	530-687	4-13
Screw	701-225	8-3	Seal, Oil	560-204/10	6-11
Screw	701-243	2-7	Shaft and Flange Assembly	870-613/07	6-17
Screw	701-244	2-15	Shaft and Flange Assembly	870-613/07	6-19
Screw	701-244	3-3	Shaft, Bell Crank	850-138-340	7-7
Screw	701-246	2-15	Shaft, Bottom Link Weldment	850-138-966	6-3
Screw	701-246	8-13	Shaft, Fork, Front, 6K	850-139-109	7-27
Screw	701-314	5-6	Shaft, Fork, Front, 8K	850-138-896	7-27
Screw	701-314	5-7	Shaft, Fork, Front	850-138-836	7-15
Screw	710-004	2-7	Shaft, Output	550-004/08	6-15
Screw	710-006	2-7	Shaft, Rear Link, Pull Rod, 6K	850-138-318	7-21
Screw	710-006	5-5	Shaft, Rear Link, Pull Rod, 8K	850-138-347	7-21
Screw	710-006	8-3	Shaft, Rear Link, Pull Rod	850-138-318	7-7
Screw	710-007	5-5	Shaft, Roller	828-001-335/006	2-19
Screw	710-008	3-5	Shaft, Roller	828-001-335/007	2-19
Screw	710-008	5-19	Shaft, Steering	870-613/06	6-19
Screw	710-008	8-5	Shaft, Truck Link	850-138-231	7-5
Screw	710-010	3-11	Shaft, Truck Link	850-138-232	7-5
Screw	710-010	3-3	Shaft, Wheel, Drive	400-027	4-11
Screw	710-010	6-3	Shaft, Wheel, Load	850-135-634	7-29
Screw	710-010	7-5	Shaft, Wheel	850-135-634	7-19

CLICK HERE TO **DOWNLOAD** THE COMPLETE MANUAL

- Thank you very much for reading the preview of the manual.
- You can download the complete manual from: www.heydownloads.com by clicking the link below



- Please note: If there is no response to CLICKING the link, please download this PDF first and then click on it.

CLICK HERE TO **DOWNLOAD** THE COMPLETE MANUAL