

# 35D Compact Excavator



**JOHN DEERE**

## **PARTS CATALOG**

**35D COMPACT EXCAVATOR (SN 265000- )**

**PC10116 (Sep-19) English**

**Worldwide Construction and Forestry Division**

Worldwide Edition  
Printed in U.S.A. (Revised)  
COPYRIGHT © 2019  
DEERE & COMPANY  
Moline, Illinois  
All rights reserved

CLICK HERE TO **DOWNLOAD** THE COMPLETE MANUAL

- Thank you very much for reading the preview of the manual.
- You can download the complete manual from: [www.heydownloads.com](http://www.heydownloads.com) by clicking the link below



- Please note: If there is no response to CLICKING the link, please download this PDF first and then click on it.

CLICK HERE TO **DOWNLOAD** THE COMPLETE MANUAL

## Au client

Les numéros de référence dans ce catalogue de pièces étaient corrects au moment de la publication du catalogue. Nous nous efforçons d'améliorer continuellement nos machines et, par conséquent, les numéros de référence peuvent changer. Lors de la commande de pièces, vérifier les numéros de référence auprès du concessionnaire.

## Unités de mesure SI

Les dimensions sont données en unités métriques, le cas échéant, dans ce catalogue de pièces.

## Identification de la résistance des boulons

Les boulons devant présenter des caractéristiques de haute résistance de qualité équivalente à la catégorie SAE 8 sont identifiés tout au long de ce catalogue par la description HS, SAE 8 (10,9 métrique). Tous les boulons standard sont de catégorie SAE 5 (8,8 métrique) ou inférieure.

## Informations concernant la liste des numéros de série

Le numéro de série est donné dans la liste pour indiquer sur quelles machines chaque pièce peut être utilisée.

- **La pièce peut être utilisée sur tous les produits.**
- 000000** - **La pièce peut être utilisée sur tous les produits à partir du numéro de série indiqué.**
- **000000** **La pièce peut être utilisée sur tous les produits jusqu'au numéro de série indiqué inclus.**
- 000000** - **000000** **La pièce peut être utilisée sur tous les produits entre les numéros de série indiqués inclus.**

Le XXXXXX à la place du numéro de série signale que celui-ci a été modifié mais que le nouveau numéro de série n'était pas encore disponible au moment de la publication du catalogue.

Si les numéros d'identification ou de série du produit sont nécessaires pour les réclamations sous garantie ou dans le cadre d'une correspondance concernant le produit, il est essentiel que l'ensemble des caractères soit indiqué. On ne peut trop insister sur ce point.

## Flèche directionnelle

Les flèches sont utilisées avec les illustrations pour indiquer l'avant de l'unité. Les côtés "droit" et "gauche" sont déterminés en faisant face au sens de marche avant de la machine.

## Illustrations encadrées

Un numéro de légende, indiqué dans la liste de pièces, est attribué à un encadré renfermant toutes les pièces vendues comme ensemble de rechange. Un encadré sans légende contient des pièces périmées.

## Listes de marchandises complètes

Les marchandises complètes sont indiquées en caractères gras. À commander séparément. Ne pas inclure sur la commande de pièces de rechange.

## Orientation du moteur

Les côtés "droit" et "gauche" sont déterminés en se mettant devant le volant-moteur et en faisant face au moteur.

## Composants John Deere Reman

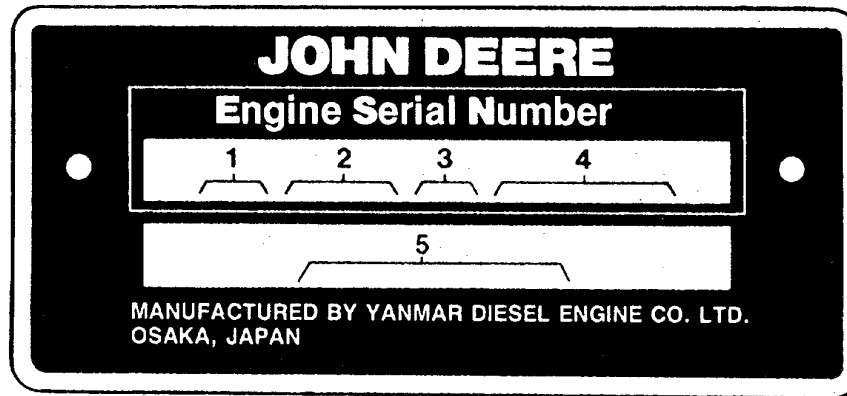
Les pièces de rechange répertoriées dans ce catalogue sont destinées à la réparation des composants d'équipement d'origine. Bien que la plupart des pièces de rechange puissent servir à réparer des composants réusinés, la procédure de réusinage peut modifier les pièces suffisamment pour que les pièces de rechange ne conviennent plus ou soient hors d'usage.

## Dents de benne

D'autres pièces de rechange de la benne sont indiquées dans le catalogue de composants de la benne. Dents de benne PC 9555

## Número de serie del motor

TX1074189 A.1



TX1074189

<b>Primer renglón</b>	<b>Designa</b>
CH	Fabricante — Yanmar, Japón
3	Cilindros
D — Diesel	Tipo de combustible o condiciones especiales
123456	Número de serie (ejemplo)
<b>Segundo renglón</b>	<b>Designa</b>
4TN78T	Modelo — Número

## Alphabetical Index - Continued

<i>Page</i>	<i>Page</i>
Hose, Hose Clamp, Air Conditioner Components	254
Hose, Hose Clamp, Air Conditioner Lines (1) (- 265197)	246
Hose, Hose Clamp, Air Conditioner Lines (2)	256
Hose, Hose Clamp, Air Conditioner Lines (2) (265198 - )	248
Hose, Hose Clamp, Air Conditioner Mounting	258
Hose, Hose Clamp, Cooling Package	128
Hose, Hose Clamp, Fuel Tank	142
Hose, Hose Clamp, Hydraulic Bucket Clamp	326
Hose, Hose Clamp, Intake Manifold	98
Hose, Hose Clamp, Radiator Lines	460
Hose, Hose Guard, Air Conditioner Condenser	244
Hose, Hose Guard, Air Conditioner Lines (1) (- 265197)	246
Hose, Hose Guard, Air Conditioner Lines (2)	256
Hose, Hose Guard, Boom Lines (Auxiliary)	456
Hose, Hose Guard, Boom Swing Pilot Valve Lines	450
Hose, Hose Guard, Control Levers and Auxiliary Function	352
Hose, Hose Guard, Control Valve Lines	448
Hose, Hose Guard, Fuel Filters	116
Hose, Hose Guard, Fuel Tank Lines	144
Hose, Hose Guard, Hydraulic Supply Lines and Filter	436
Hose, Hose Guard, Radiator Lines	460
Hose, Hose Guard, Travel Motor Hydraulic Lines	334
Hose, Hose Guard, Travel Motor Hydraulic Lines (Power Angle Blade)	86
Hose, Hose Guard, Travel Motor Lines and Fittings	84
Hose, Hose Kit, Travel Motor Hydraulic Lines	334
Hose, Hydraulic Hose, Air Conditioner	252
Hose, Hydraulic Hose, Air Conditioner Lines (2)	256
Hose, Hydraulic Hose, Air Conditioner Solenoid and Lines	242
Hose, Hydraulic Hose, Blade Control Lever and Lines	340
Hose, Hydraulic Hose, Blade Control Valve Lines	440
Hose, Hydraulic Hose, Blade Mounting	298
Hose, Hydraulic Hose, Boom Lines	442
Hose, Hydraulic Hose, Boom Lines (Auxiliary)	446
Hose, Hydraulic Hose, Control Levers and Auxiliary Function	352
Hose, Hydraulic Hose, Control Valve Lines	448
Hose, Hydraulic Hose, Control Valve To Swing Motor	434
Hose, Hydraulic Hose, Excavator Hammer Adapter Kit	328
Hose, Hydraulic Hose, Flow Rate Selector	468
Hose, Hydraulic Hose, Hydraulic Bucket Clamp	326
Hose, Hydraulic Hose, Hydraulic Supply Lines and Filter	436
Hose, Hydraulic Hose, Left Pilot Lines	452
Hose, Hydraulic Hose, Main Hydraulic Lines (Power Angle Blade)	464
Hose, Hydraulic Hose, Oil Cooler Lines and Fittings	290
Hose, Hydraulic Hose, Pattern Changer Valve and Lines	458
Hose, Hydraulic Hose, Radiator Lines	460
Hose, Hydraulic Hose, Standard Arm Assembly (1.31m)	364
Hose, Hydraulic Hose, Travel Motor Hydraulic Lines	334
Hose, Hydraulic Hose, Travel Motor Hydraulic Lines (Power Angle Blade)	86
Hose, Hydraulic Hose, Travel Motor Lines and Fittings	84
Hose, Hydraulic Oil Reservoir	292
HOSE, HYDRAULIC OIL RESERVOIR	292
Hose, Hydraulic Supply Lines and Filter	436
Hose, Long Arm Assembly (1.71m)	366
HOSE, MAIN FRAME	166
Hose, Oil Cooler Lines and Fittings	290
Hose, Pattern Changer Valve and Lines	458
Hose, Radiator Hose, Air Conditioner Mounting	258
Hose, Radiator Hose, Air Conditioning Compressor	260
Hose, Radiator Hose, Cooling Package	128
Hose, Radiator Hose, Radiator Fan Guard	126
Hose, Refrigerant Hose, Air Conditioner Condenser	244
Hose, Refrigerant Hose, Air Conditioner Lines (2)	256
Hose, Refrigerant Hose, Air Conditioner Lines (2) (265198 - )	248
Hose, Right Pilot Lines	454
Hose, Solenoid Valve Lines To Power Angle Blade Spool	466
Hose, Travel Motor Hydraulic Lines	334
Hose, Travel Motor Hydraulic Lines (Power Angle Blade)	86
Hose, Water, Radiator	126
Hose, WINDOW WASHER	208
HOSES, AIR CONDITIONER (1) (- 265197)	246
HOSES, AIR CONDITIONER (2)	256
HOSES, AIR CONDITIONER (265198 - )	248
Hoses, Air Conditioner Compressor	260
HOSES, AIR CONDITIONER COOLER	244
HOSES, CONTROL VALVE (TRAVEL)	456
HOSES, CONTROL VALVE LINES (ATTACHMENT PEDAL)	462
HOSES, COOLING PACKAGE	128
HOSES, FLOW RATE SELECTOR	468
HOSES, PATTERN CHANGER	458
HOSES, SOLENOID VALVE TO POWER ANGLE BLADE SPOOL	466
HOSES, TRAVEL MOTOR (POWER ANGLE BLADE)	86
Housing, Air Cleaner	134
Housing, Arm Section	398
Housing, Arm Section (Power Angle Blade)	418
Housing, Blade Section	392
Housing, Blade Section (Power Angle Blade)	428
Housing, Boom Section	380
Housing, Boom Section (Power Angle Blade)	410
Housing, Boom Swing Section	390
Housing, Boom Swing Section (Power Angle Blade)	424
Housing, Bucket Section	378
Housing, Bucket Section (Power Angle Blade)	408
HOUSING, EXHAUST MANIFOLD	100
Housing, Flow Rate Selector	388
Housing, Flow Rate Selector (Power Angle Blade)	422
HOUSING, FLYWHEEL	94
Housing, Flywheel Housing and Oil Pan	94
HOUSING, HYDRAULIC PUMP	286
HOUSING, HYDRAULIC PUMP (W/ A/C)	288
Housing, Hydraulic Pump Components	286
Housing, Hydraulic Pump Components (With Air Conditioning)	288
Housing, Inlet Section	382
Housing, Inlet Section (Power Angle Blade)	414
HOUSING, INTAKE MANIFOLD	98
Housing, Left Travel Section	396
Housing, Left Travel Section (Power Angle Blade)	412
Housing, Pilot Control Valve	354
Housing, Propel Motor Valve Assembly	82
Housing, Reserve 2 Section (Power Angle Blade)	432
Housing, Reserve Section	386
Housing, Reserve Section (Power Angle Blade)	420
Housing, Right Travel Section	384
Housing, Right Travel Section (Power Angle Blade)	416
Housing, Rotary Manifold	494
Housing, Rotary Valve	402
HOUSING, ROTARY VALVE	402
HOUSING, SOLENOID VALVE (TWO-WAY)	404
Housing, Starter	118
Housing, Swing Motor Lower Assembly	490
Housing, Swing Motor Pilot Valve	350
Housing, Swing Motor Pilot Valve Components	350
Housing, Swing Motor Upper Assembly	492
Housing, Swing Section	400
Housing, Swing Section (Power Angle Blade)	426
HOUSING, THERMOSTAT	108
Housing, Travel Motor Components	78
Housing, Travel Motor Gearbox	80
Housing, Travel Pilot Control Valve Components	356
Housing, Travel Section	394
Housing, Travel Section (Power Angle Blade)	430
Hydraulic Bucket Clamp	326
Hydraulic Clamp, Bucket	326
HYDRAULIC COUPLING	140
HYDRAULIC COVER	140
Hydraulic Cylinder, Blade	480
HYDRAULIC CYLINDER, BOOM SWING	478
HYDRAULIC LINES	436
HYDRAULIC LINES, BOOM	442
HYDRAULIC LINES, PROPEL MOTOR	334
HYDRAULIC LINES, SOLENOID VALVE TO POWER ANGLE BLADE SPOOL	466
HYDRAULIC LINES, TRAVEL MOTOR	334
HYDRAULIC LINES, TRAVEL MOTOR (POWER ANGLE BLADE)	86
HYDRAULIC MOTOR, LOWER ASSEMBLY	490
HYDRAULIC MOTOR, UPPER ASSEMBLY	492
Hydraulic Oil Reservoir	292
HYDRAULIC OIL RESERVOIR COMPONENTS	294
Hydraulic Oil Reservoir Parts	294
HYDRAULIC PISTON PUMP	286
HYDRAULIC PISTON PUMP (W/ A/C)	288
Hydraulic Pump Components	286
Hydraulic Pump Components (With Air Conditioning)	288
HYDRAULIC SOLENOID VALVE (COMPONENTS)	404
Hydraulic Supply Lines and Filter	436
Hydraulic Swing Motor Pilot Valve	350
HYDRAULIC OIL TANK COMPONENTS	294
IDLE CONTROL, ENGINE	130
IDLE GEAR	102
IDLE LIMITER	112
IDLER, FRONT (- 265712)	48

01 Wheels & Tires & Tracks  
0110 Powered Wheels, Tires & Fastenings

---

Key	Part No.	Part Name	Qty.	Serial No.	Remarks
1	1032282	Rubber Track Belt	2	-265118	Complete Single, (SUB FOR 4655380)
	FYD00009804	Rubber Track Belt	2	265119-	SUB FOR 4686520, Heavy Duty

---

Key	Part No.	Part Name	Qty.	Serial No.	Remarks
0	9269054	Idler	1		
0A	.....	Idler	1		1034443 NLA
0B	3119840	Bushing	2		
1	3119839	Shaft	1		
2	A810030	O-Ring	2		
3	4177260	Seal	2		
4	1035223	Yoke	2		
5	4718543	Bolt	2		
6	24M7346	Washer	2		11 X 20 X 2 mm, SUB FOR J222010
7	4689266	Plate	1		
8	.....	Bolt	4		J271060 NLA
	19M5536	Cap Screw	4		M10 X 60, SUB FOR J901060
	24M7346	Washer	4		11 X 20 X 2 mm
10	9269094	Idler	2		

Key	Part No.	Part Name	Qty.	Serial No.	Remarks
0	9237937	Roller	1		SUB FOR 9240379
0A	.....	Roller	1		2051289 NLA
0B	4618172	Bushing	2		
1	TH3101922	Bushing	2		SUB FOR 3101922
2	.....	Shaft	1		3101923 NLA
4	4618174	Snap Ring	2		
5	985099	O-Ring	2		
8	4623850	Seal	2	-265712	
	4274843	Seal	2	265713-	
12	19M6332	Cap Screw	16	-265712	M14 X 35, SUB FOR J921435
	FYD00000164	Bolt	16	265713-	
13	J222014	Washer	16		
20	9237937	Roller	8	-265712	NLA, ORDER FYD00008528
	4719574	Roller	8	265713-	NLA, ORDER FYD00008528
	FYD00008528	Roller	8		Services Only As An Assembly

Key	Part No.	Part Name	Qty.	Serial No.	Remarks
0	7060910	Cylinder	1		
1	4719727	Spring	1		
3	4719427	Nut	1		
4	4276113	Plug	1		
5	3121523	Rod	1		
6	4719428	Seal	1		
7	4719429	Seal	1		
8	4718883	Valve	1		
9	4235209	Lubrication Fitting	1		
10	4719728	Washer	1		
16	9325101	Spring	1		LH
	9325102	Spring	1		RH

Key	Part No.	Part Name	Qty.	Serial No.	Remarks
0	.....	Motor	1		
1	.....	Housing	1		
2	.....	Housing	1		
3	.....	Shaft	1		
4	.....	Cylinder	1		
5	.....	Plate	1		
6	.....	Piston	9		
7	.....	Plate	9		
8	.....	Plate	1		
9	.....	Retainer	1		
10	0920801	Plate	1		
11	.....	Piston	1		
12	.....	Pin	3		
13	.....	Spring	1		
14	.....	Retainer	2		
15	.....	Ball Bearing	1		
16	.....	Bearing	1		
17	A811125	O-Ring	1		
18	CH11568	Packing	2		(SUB FOR 4506407)
19	0474203	Seal	1		
20	0636509	Ball	2		
21	.....	Ball Bearing	1		
22	0474204	Cap Screw	7		
23	.....	Pin	1		
24	0473906	Dowel Pin	1		
25	0730702	Plate	1		
26	0730703	Plate	2		
27	0920803	Piston	1		
28	0920802	Spacer	1		
29	0730706	Spring	8		
30	AT264320	O-Ring	1		(SUB FOR A811110)
31	AT264319	O-Ring	1		(SUB FOR A811100)
32	0730707	Back-Up Ring	1		
33	0478601	Back-Up Ring	1		(SUB FOR 0474215)
40	0920805	Housing	1		
41	1193501	Housing	1		
42	0920807	Shaft	1		
43	0730710	Cylinder Kit	1		
51	4622087	Seal Kit	1		

Key	Part No.	Part Name	Qty.	Serial No.	Remarks
1	.....	Cylinder Block	1		
4	CH10314	Plug	1		1/8 in. PT
5	.....	Plug	1		(M809565 NLA)
6	CH10335	Plug	2		1/4 in. PT
7	CH10335	Plug	1		1/4 in. PT
8	CH18379	Plug	1		
9	M801189	Bolt	8		
12	MIU800573	Bushing	1		
13	M87801	Plug	2		
14	CH10642	Plug	6		
24	MIA880555	Bearing	2		
	.....	Bearing	2		0.25 mm, (OS)
27	M801186	Bolt	14		
28	M806811	Engine Cylinder Head Gasket	1		
29	MIA880554	Bearing	4		
	MIA880550	Bearing	4		0.25 mm, (US)

---

Key	Part No.	Part Name	Qty.	Serial No.	Remarks
1	M801746	Gasket	1		
2	AT318122	Exhaust Manifold	1		
3	M811081	Stud	2	M8 X 80	
4	M811082	Bolt	4	M8 X 80	
5	M808645	Stud	4	M8 X 22	
6	M810186	Nut	2	M8	
7	M805832	Gasket	1		

---

Key	Part No.	Part Name	Qty.	Serial No.	Remarks
1	.....	Fuel Injection Pump	1		MIA881024 NLA, SUB MIA881413
	MIA881413	Fuel Injection Pump	1	260001-264999	
	MIA881412	Pump	1	265000-	
	MIA883395	Pump	1	265000-	
2	M806438	Washer	2		
3	M811143	Washer	2		
4	CH11478	Washer	1		
5	M811144	Pin	2		
6	CH11499	Spring Pin	2		
7	RG61009	Shaft Key	1		
8	CH10567	Packing	1		
9	M811146	Packing	1		
10	M811147	Packing	1		
11	M87825	Bolt	1		M6 X 10
15	M800692	Bolt	4		M8 X 45
16	CH17448	Nut	1		M14
18	M812002	Bolt	1		
19	M811794	Junction Block	1		
20	M811249	Junction Block	1		
21	M811171	Junction Block	1		
23	AM881833	Pump	1		
24	MIU800143	O-Ring	1		
25	M811545	Universal Joint	1		
26	M806438	Washer	1		
28	M811374	Bracket	1		
29	CH18390	Bolt	1		M8 X 16
30	CH19139	Bolt	1		M8 X 20
32	.....	Bumper	1		M811243 NLA
33	M811239	O-Ring	1		
34	M811239	O-Ring	1		
35	.....	Valve	3		MIA880790 NLA
43	.....	Spring	3		M811241 NLA
44	.....	Holder	3		MIU800807 NLA
51	.....	Plug	1		M811247 NLA
52	.....	Plug	1		M811065 NLA
53	.....	Packing	3		M811166 NLA
54	.....	Packing	1		M811166 NLA
55	.....	Plug	1		M811236 NLA
56	M811248	Plug	1		
57	.....	Valve Lifter	1		M811167 NLA
58	.....	Timer Kit	1		AM881830 NLA
59	.....	Timer	1		AM881825 NLA
62	.....	O-Ring	1		M811226 NLA
63	.....	Back-Up Ring	1		M811069 NLA
64	.....	O-Ring	1		M811070 NLA
65	M811147	Packing	1		
66	M811148	Ring	1		
67	.....	Seal	1		M811169 NLA
68	.....	Spring	1		M811224 NLA
70	.....	Heating Element	1		M811225 NLA
71	.....	O-Ring	1		M811271 NLA
72	.....	Seal	1		M811227 NLA
80	MIU801824	O-Ring	1		SUB FOR RG61036
81	.....	O-Ring	1		M811522 NLA
92	.....	Piston	1		M811250 NLA
93	.....	Spring	1		
94	.....	Plug	1		M811251 NLA
95	M806438	Washer	1		
96	M811143	Washer	1		
97	CH19995	Plug	1		M12

Key	Part No.	Part Name	Qty.	Serial No.	Remarks
1	LVA12467	Alternator	1		SUB FOR M809216
2	M88124	Nut	1		
3	AM880509	Rotor	1		
4	.....	Ball Bearing	1		
5	M805134	Cover	1		
6	M810616	Frame	1		
7	M805135	Bearing	1		
8	M805136	Plate	1		
9	M805137	Screw	4		
10	M805138	Stud	2		
11	AM880511	Frame	1		
12	M806785	Pulley	1		
13	M806786	Nut	1		
14	M806787	Bushing	1		
15	.....	Voltage Regulator	1		
16	AM880512	Holder	1		
17	AM880513	Holder	1		
18	M805147	Screw	6		
19	M805148	Screw	1		
20	M805149	Bolt	3		
21	M805150	Screw With Washer	2		
22	M805151	Bolt	2		
23	M805152	Bushing	1		
24	M805153	Nut	2		
25	.....	Cover	1		
26	MILU800948	Bolt	1		M10 X 76
27	M810187	Nut	1		
28	M811547	Spacer	1		
29	M811548	Adjuster	1		
30	MILU800002	Bolt	1		
31	CH19101	Bolt	1		M8 X 45
32	AT318151	Relay	1		
33	MIA881863	Relay	1		SUB FOR RG60042, Glow Plug
36	RG60050	Timer	1		Glow Plug
37	LVU800961	Timer	1		

Key	Part No.	Part Name	Qty.	Serial No.	Remarks
0	4685752	Engine Controller	1		Auto Idle
2	4402565	Dial Knob	1		
5	4458520	Weld Nut	1		
6	19M8825	Screw	2		M3 X 10
7	J780305	Bolt	2		
8	12H233	Lock Washer	4		1/8", (SUB FOR 12M7048)
9	24M7029	Shim	6		
10	4458528	Grommet	1		
11	4625391	Bracket	1		
12	21M7277	Screw	2		M6 X 25
	12M7006	Lock Washer	2		6 mm
	24M7293	Washer	2		6.500 X 13 X 1.600 mm
14	4289709	Bracket	1		
15	R44302	Tie Band	1		
17	4632889	Potentiometer	1		

Key	Part No.	Part Name	Qty.	Serial No.	Remarks
1	8092738	Bracket	1		
2	.....	Screw With Washer	8		(J271030 NLA)
	19M7662	Cap Screw	8		M10 X 30, (SUB FOR J901030)
	24M7346	Washer	8		11 X 20 X 2 mm, (SUB FOR J222010)
5	24M7345	Washer	4		13.500 X 24 X 2.500 mm, (SUB FOR J222012)
6	4626818	Plate	2		
8	19M7908	Cap Screw	4		M12 X 110, (SUB FOR J901202)
9	2050045	Cover	1		
10	.....	Screw With Washer	8		(J271035 NLA)
	19M7550	Cap Screw	8		M10 X 35, (SUB FOR J901035)
	24M7346	Washer	8		11 X 20 X 2 mm, (SUB FOR J222010)
11	4605442	Coupling	1		Includes Mounting Bolts, NSEP
13	4276374	Holder	6		
14	19M8011	Cap Screw	2		M12 X 30, (SUB FOR 4609016)
15	4702306	Isolator	4		Black, Fan End of Engine, Top and Bottom
16	4702207	Isolator	4		Red, Flywheel End of Engine, Top and Bottom

**13 Miscellaneous Vehicle  
1320 Vehicle Finish & Trim**

Key	Part No.	Part Name	Qty.	Serial No.	Remarks
7	3106299	Label	1		Leaping Deer, Small
9	4439185	Label	1		Lubrication, Swing Bearing Grease Interval Decal
10	4458740	Label	1		Fuel
11	T235478	Label	1		Hydraulic Oil, SUB FOR 4687641
12	4431916	Label	1		Hydraulic Oil Cap
13	3088018	Label	1		Radiator
17	4702766	Label	1		Fuse Box
18	3076175	Label	1		Danger - Do Not Start
20	T184954	Label	1		SUB FOR 4642981, Caution Of Burn, Radiator
22	4433590	Label	1		Caution Of Burn, MUFFLER
23	4295807	Label	1		Unexpected Start
25	3079466	Label	1		Caution
26	4433590	Label	1		SUB FOR 4633324, Caution Of Burn, MUFFLER
30	4430516	Label	1		Caution Of Burn, Oil Tank
32	4450833	Label	1		Air Cleaner
33	3090482	Label	1		Caution - Boom Swing, For Canopy Equipped Machines
37	4635915	Label	1		Hood Lock
42	4697188	Label	1		Diesel Only
45	4605065	Label	1		Engine Stop
46	4654194	Label	1		Pilot Lines Joint Section
47	4654319	Label	1		Pilot Lines Joint Section
60	4705752	Label	1		Multi -Function

<i>Key</i>	<i>Part No.</i>	<i>Part Name</i>	<i>Qty.</i>	<i>Serial No.</i>	<i>Remarks</i>
1	4330649	Travel Warning Alarm	1		
2	4337246	Screw	1		
3	2052020	Bracket	1		
5	4381572	Screw	5		
10A	4712401	Monitor	1	-265686	
10B	4686827	Monitor	1	265687-	
11	4631771	Cover	1	-265686	
12	4630139	Cover	1	-265686	

<i>Key</i>	<i>Part No.</i>	<i>Part Name</i>	<i>Qty.</i>	<i>Serial No.</i>	<i>Remarks</i>
0	8102594	Bracket	1		
1	19M7872	Cap Screw	5		M12 X 25, (SUB FOR J921225)
2	4643705	Washer	5		

---

Key	Part No.	Part Name	Qty.	Serial No.	Remarks
16	..... 19M7550 24M7346	Screw With Washer Cap Screw Washer	2 2 2		(J271035 NLA) M10 X 35, (SUB FOR J901035) 11 X 20 X 2 mm, (SUB FOR J222010)
32	9245857	Tilt Unit	1		
33	8098392	Bracket	1		
34	9763444	Bolt	1		
35	24M7359	Washer	1		23 X 39 X 3 mm, (SUB FOR A590122)
36	4627409	Bushing	2		
37	24M7101	Washer	1		11 X 34 X 3 mm, (SUB FOR J217083)
38	4627407	Bearing	1		
39	4627411	Plate	1		
40	3103485	Bracket	1		
41	4627415	Pin	1		
42	4627414	Bushing	1		
43	4308365	Washer	1		
44	19M7865	Screw	1		M8 X 16, (SUB FOR J900812)
45	..... 19M7300	Screw With Washer Cap Screw	2 2		(J260610 NLA) M6 X 10, (SUB FOR J900610)
	24M7054	Washer	2		6.400 X 12 X 1.600 mm, (SUB FOR A590106)
46	4631279	Isolator	1		
47	24M7055	Washer	2		8.400 X 16 X 1.600 mm, (SUB FOR A590108)
48	4633219	Isolator	1		
49	4635824	Washer	1		
50	19M7647	Screw	2		M8 X 16, (SUB FOR J780816)
51	4633410	Isolator	1		
52	19M7647	Screw	1		M8 X 16, (SUB FOR J780816)
53	J222008	Washer	2		
54	4635822	Cover	1		
55	4635854	Seal	1		
56	3107842	Pin	1		
57	14M7274	Nut	1		M10, (SUB FOR J950010)
58	.....	Pin	1		(A762520 NLA)

Key	Part No.	Part Name	Qty.	Serial No.	Remarks
0	4700511	Cab	1		Components On Separate Page
1	4635162	Windowpane	1		
2	4642270	Sealing Trim	1		
22	4683794	Windowpane	1		
49	4683795	Sealing Trim	1		
53	4678701	Grip	1		
54	CC22170	Screw	2		(SUB FOR 4424764)
63	4736313	Sealing Trim	1		(SUB FOR 4642306)
66	4691319	Cover	1		
67	4698192	Rivet	11		
68	4691320	Cover	1		

Key	Part No.	Part Name	Qty.	Serial No.	Remarks
0	19M7404	Cap Screw	2		M14 X 40, (SUB FOR J901440)
2	14M7141	Nut	1		M14, (SUB FOR J950014)
3	12H317	Lock Washer	4		9/16", (SUB FOR A590914)
4	24M7085	Washer	4		15 X 28 X 2.500 mm, (SUB FOR A590114)
5	7050964	Bracket	1		
7	4628789	Isolator	4		
8	4610550	Spacer	2		
13	3104238	Stop	2		
19	4633288	Washer	4		
20	19M6754	Cap Screw	2		M16 X 75, (SUB FOR J901675)
21	24M7053	Washer	2		17 X 30 X 3 mm, (SUB FOR A590116)

Key	Part No.	Part Name	Qty.	Serial No.	Remarks
1	T184750	Knob	8		
4	T215460	Plate	2		
5	14H786	Nut	2	1/4"	
6	T216275	Stud	2		
7	4347062	Bumper	6		
8	24H1822	Washer	6		11/32" X 7/8" X 1/16"
9	03H2119	Bolt	2		1/4" X 5/8"
10	T216764	Plate	2		
12	21H1302	Screw	2		1/4" X 5/8"
15	R232304	Isolator	1		
20	.....	<b>Field Installation Kit</b>	<b>1</b>		<b>(AT362109 NLA) (ORDER COMPONENTS), SECONDARY EXIT KIT</b>
25	T251258	Window	1		
26	4424666	Nut	2		
27	4642284	Cushion	2		
28	4347060	Handle	2		
29	4424752	Washer	2		
30	4424711	Plate	2		
31	T249565	Bracket	2		

<i>Key</i>	<i>Part No.</i>	<i>Part Name</i>	<i>Qty.</i>	<i>Serial No.</i>	<i>Remarks</i>
0	4627532	Mat	1		
1	4627522	Mat	1		

---

Key	Part No.	Part Name	Qty.	Serial No.	Remarks
10	4714449	Bolt	2		
11	12H293	Lock Washer	2		7/16", (SUB FOR J219167)
12	8118107	Bracket	1		
13	24M7345	Washer	1		13.500 X 24 X 2.500 mm, (SUB FOR J222012)
14	4692386R	Seat Belt	1		(SUB FOR 4692386)
14A	.....	Seat Belt	1		(NSEP)
14B	.....	Seat Belt	1		(NSEP)
15	.....	Screw With Washer	2		(J460620 NLA)
	21M7267	Screw	2		M6 X 20
	24M7293	Washer	2		6.500 X 13 X 1.600 mm
	12M7006	Lock Washer	2		6 mm
16	4607546	Washer	2		
17	4656227	Spacer	2		
18	4643760	Isolator	1		

<i>Key</i>	<i>Part No.</i>	<i>Part Name</i>	<i>Qty.</i>	<i>Serial No.</i>	<i>Remarks</i>
1	AT171619	Seat Belt	1		Seat Belt Tether and Mounting Not Included, See Separate Page For Components

---

Key	Part No.	Part Name	Qty.	Serial No.	Remarks
2	4619147	Cover	1	-268409	
	FYD00000199	Cover	1	268410-	
3	.....	Screw With Washer	4		J260820 NLA
	19M7139	Cap Screw	4		M8 X 20, SUB FOR J900820
	24M7055	Washer	4		8.400 X 16 X 1.600 mm, SUB FOR A590108
7	.....	Screw With Washer	4		J260816 NLA
	19M7162	Cap Screw	4		M8 X 16, SUB FOR J900816
	24M7055	Washer	4		8.400 X 16 X 1.600 mm, SUB FOR A590108
14	7047316	Bracket	1		
16	J680620	Screw With Washer	4		
22	.....	Screw With Washer	1		J680612 NLA
	21M7285	Screw	1		M6 X 12
	12M7006	Lock Washer	1		6 mm
	24M7293	Washer	1		6.500 X 13 X 1.600 mm
23	4617533	Grille	2		
24	4377777	Grille	1	-268409	
	4682686	Grille	1	268410-	
26	4619149	Air Duct	1		
26A	4683668	Cap	1		
26B	4683675	Isolator	1		
26C	4683677	Electric Motor	1		
28	4619151	Air Duct	1	-268409	
	FYD00000224	Air Duct	1	268410-	
29	.....	Screw With Washer	2		J680512 NLA
	21M7265	Screw	2		M5 X 12
	12M7064	Lock Washer	2		5 mm
	24M7054	Washer	2		6.400 X 12 X 1.600 mm
36	4632727	Air Duct	1		
37	4631961	Bracket	1		
38	4632742	Isolator	1		
40	H77698	Tie Band	3		SUB FOR 4055311
42	9764373	Bushing	1		
44	4637748	Isolator	1		
45	4303547	Washer	1		
46	4672489	Isolator	3		
47	4672490	Isolator	1		
48	4672491	Isolator	1		
49	4672492	Isolator	1		
50	4672493	Isolator	1	-268409	
	FYD00000228	Isolator	1	268410-	

CLICK HERE TO **DOWNLOAD** THE COMPLETE MANUAL

- Thank you very much for reading the preview of the manual.
- You can download the complete manual from: [www.heydownloads.com](http://www.heydownloads.com) by clicking the link below



- Please note: If there is no response to CLICKING the link, please download this PDF first and then click on it.

CLICK HERE TO **DOWNLOAD** THE COMPLETE MANUAL

Key	Part No.	Part Name	Qty.	Serial No.	Remarks
1	7045704	Bracket	1		
2	.....	Screw With Washer	2		J260830 NLA
	19M7288	Cap Screw	2		M8 X 30, SUB FOR J900830
	24M7055	Washer	2		8.400 X 16 X 1.600 mm, SUB FOR A590108
3	.....	Screw With Washer	1		J260840 NLA
	19M7301	Cap Screw	1		M8 X 40, SUB FOR J900840
	24M7055	Washer	1		8.400 X 16 X 1.600 mm, SUB FOR A590108
4	3107854	Pulley	1		
7	.....	Screw With Washer	3		J271035 NLA
	19M7550	Cap Screw	3		M10 X 35, SUB FOR J901035
	24M7346	Washer	3		11 X 20 X 2 mm, SUB FOR J222010
9	9761980	Bolt	1		
11	4615852	V-Belt	1		
12	24M7346	Washer	4		11 X 20 X 2 mm, SUB FOR J222010
13	14M7274	Nut	4		M10, SUB FOR J950010
15	9767797	Cover	1		
16	.....	Screw With Washer	2		J260816 NLA
	19M7162	Cap Screw	2		M8 X 16, SUB FOR J900816
	24M7055	Washer	2		8.400 X 16 X 1.600 mm, SUB FOR A590108
35	2057899	Guard	1		
55	4615906	Tube	1		
64	.....	Screw With Washer	1		J260840 NLA
	19M7301	Cap Screw	1		M8 X 40, SUB FOR J900840
	24M7055	Washer	1		8.400 X 16 X 1.600 mm, SUB FOR A590108
69	4616939	Wiring Harness	1		
71	4602634	Bracket	1		SUB FOR 4257159
72	N198631	Clamp	1		SUB FOR 4190265
73	H77698	Tie Band	8		SUB FOR 4055312
77	.....	Screw With Washer	1		J271020 NLA
	19M7938	Cap Screw	1		M10 X 20, SUB FOR J901020
	24M7346	Washer	1		11 X 20 X 2 mm, SUB FOR J222010
79	2055967	Radiator Hose	1		For Cab With Air Conditioning
	3112910	Radiator Hose	1		For Canopy Machine
80	4615804	Compressor	1		
81	.....	Pulley	1	-265233	4615808 NLA, SUB 8121386, ALSO ORDER 4712753 AND 4712754
	.....	Pulley	1	265234-	NLA, Furnish Components
82	4615809	Pulley	1	-265233	
	8121386	Pulley	1	265234-	
83	4615810	Cover	1	-265233	
	4712753	Cover	1	265234-	
84	4615811	Cover	1	-265233	
	4712754	Cover	1	265234-	

Key	Part No.	Part Name	Qty.	Serial No.	Remarks
2	9761487	Bracket	1		
3	9761489	Bracket	1		
4	9761488	Bracket	1		
5	9761490	Bracket	1		
7	4610275	Link	2		
8	8095350	Link	1		
9	991334	Snap Ring	2		
10	40M7202	Snap Ring	8		
12	4436408	Bushing	8		
13	24M7047	Washer	8		13 X 24 X 2.500 mm
14	24M7028	Washer	4		10.500 X 20 X 2 mm
15	4627388	Spring	2		
16	4632392	Stop	1		
20	9231689	Hinge	1		

Key	Part No.	Part Name	Qty.	Serial No.	Remarks
0	4682716	Isolator	1		
1	4658332	Isolator	4		
2	4308365	Washer	2		
3	19M7865	Screw	2		M8 X 16, SUB FOR J900812
4	.....	Washer	2		12M7065 NLA
5	4683147	Isolator	1		
6	4683150	Isolator	1		
7	4633303	Isolator	1		
8	4629650	Isolator	1		
9	4685927	Isolator	1		
10	4469497	Grommet	1		
11	4666251	Isolator	1		
12	4629646	Isolator	1		
13	4629647	Isolator	1		
14	4629648	Isolator	1		
16	4622499	Isolator	1		
	4711685	Seal	1	265120-	-265119
17	4629633	Isolator	1		
	4711684	Seal	1	265120-	-265119
19	4207699	Bushing	2		
21	4636804	Isolator	1		
23	4477541	Isolator	1		
24	4630537	Isolator	1		
25	4630538	Isolator	1		
26	4624616	Isolator	1		
28	4683148	Isolator	1		
30	4688634	Seal	2	265122-	

21 Vehicle Main Hydraulic System  
2163 Hydraulic Lines & Hoses

Key	Part No.	Part Name	Qty.	Serial No.	Remarks
0	8093294	Bracket	1		
1	.....	Screw With Washer	4		J271030 NLA
	19M7662	Cap Screw	4		M10 X 30, SUB FOR J901030
	24M7346	Washer	4		11 X 20 X 2 mm, SUB FOR J222010
2	19M7938	Cap Screw	4		M10 X 20, SUB FOR 4623691
3	24M7346	Washer	4		11 X 20 X 2 mm, SUB FOR J222010
4	3116527	Hydraulic Hose	1		
6	8092770	Line	1		
7	3100099	Hose	1		
8	9750291	Line	1		SUB FOR 9752265
9	AR65293	Clamp	4		SUB FOR 4505385
10	.....	Screw With Washer	2		J271025 NLA
	19M7402	Cap Screw	2		M10 X 25, SUB FOR J901025
	24M7346	Washer	2		11 X 20 X 2 mm, SUB FOR J222010
11	CH14701	O-Ring	1		SUB FOR A810040
12	19M8440	Screw	4		M10 X 25, SUB FOR J781025
13	A885002	Plug	3		
	957366	O-Ring	1		
14	4622877	Tee Fitting	2		
15	4622878	Tee Fitting	1		
17	A852134	Adapter Fitting	1		
	4297380	O-Ring	1		SUB FOR 4622346, 4509180 AND 4674883
18	4276966	Adapter Fitting	1		
	4297380	O-Ring	1		SUB FOR 4622346, 4509180 AND 4674883
19	A852133	Adapter Fitting	1		
	4297380	O-Ring	1		SUB FOR 4622346, 4509180 AND 4674883
22	4627086	Hydraulic Hose	1		W/O Power Angle Blade
	4643094	Hose	1		W/ Power Angle Blade
23	4621216	Oil Tube	3		
24	H77698	Tie Band	3		SUB FOR 4055311
25	A852244	Elbow Fitting	1		
	4506418	O-Ring	1		
26	4682011	Adapter Fitting	1		
27	8112887	Oil Line	1		
28	4627084	Hydraulic Hose	1		Marked P1
29	4627085	Hydraulic Hose	1		
30	FYD00003438	Hose	1		SUB FOR 4682454
31	FYD00003437	Hose	3		SUB FOR 4682455
33	TY22467	Clamp	10		SUB FOR 4623907, 4505243 AND AT145650
36	4255212	Check Valve	1		
37	40M7123	Snap Ring	1		SUB FOR 446751
40	.....	Screw With Washer	4		J271025 NLA
	19M7402	Cap Screw	4		M10 X 25, SUB FOR J901025
	24M7346	Washer	4		11 X 20 X 2 mm, SUB FOR J222010
45	A852144	Adapter Fitting	1		
	4506418	O-Ring	1		
47	A852133	Adapter Fitting	1		
	4297380	O-Ring	1		SUB FOR 4622346, 4509180 AND 4674883
48	4154670	Elbow Fitting	1		SUB FOR A852322
	957366	O-Ring	1		
49	A852432	Tee Fitting	1		
	4297380	O-Ring	1		SUB FOR 4622346, 4509180 AND 4674883
64	4682461	Hydraulic Hose	1		
68	4653276	Hydraulic Hose	1		
69	4653277	Hydraulic Hose	1		
71	4653467	Hydraulic Hose	1	XXXXXX-265196	
	4719926	Hydraulic Hose	1	265197-XXXXXX	
72	A852143	Adapter Fitting	1		
	4506418	O-Ring	1		
73	4174541	Fitting	1		SUB FOR A885004
	4506418	O-Ring	1		
74	4707782	Hydraulic Hose	1	XXXXXX-265196	
	4719925	Hydraulic Hose	1	265197-XXXXXX	
75	8112891	Oil Line	1		
76	8112892	Oil Line	1		
77	4087298	Hose	1		
78	AT145651	Clamp	2		SUB FOR 4504199
79	19M7162	Cap Screw	3		M8 X 16, SUB FOR J900816
80	4308365	Washer	3		

Key	Part No.	Part Name	Qty.	Serial No.	Remarks
0	8117119	Blade	1		
0A	.....	Blade	1		5012366 NSEP
0B	FYD00002611	Bushing	2		
1	FYD00011110	Seal	4		SUB FOR 4423773, 4473085 AND 4275478
2	T116334	Lubrication Fitting	2		SUB FOR J75581

Key	Part No.	Part Name	Qty.	Serial No.	Remarks
0	FYD60000037	Blade	1		
0A	.....	Blade	1		
0B	4445477	Bushing	2		(SUB FOR 4334423)
0C	.....	Spacer	1		
1	T116334	Lubrication Fitting	1		(SUB FOR J75581)
3	FYD40000072	Pin	1		
4	4339355	Bushing	1		
5	19M6332	Cap Screw	1		M14 X 35, (SUB FOR J901435)
6	TH105979	Seal	2		(SUB FOR 4094086)
7	.....	Shim	4		
13	FYD40000073	Pin	1		
14	4339354	Bushing	2		
15	19M8011	Cap Screw	2		M12 X 30
17	4367639	Shim	2		
18	4367640	Shim	6		
21	FYD00000222	Cover	1		
22	.....	Screw With Washer	5		(J271020 NLA)
	19M7938	Cap Screw	1		M10 X 20, (SUB FOR J901020)
	24M7346	Washer	1		11 X 20 X 2 mm, (SUB FOR J2222010)
24	FYD40000404	Cover	1		
25	.....	Screw With Washer	2		(J271030 NLA)
	19M7662	Cap Screw	1		M10 X 30, (SUB FOR J901030)
	24M7346	Washer	1		11 X 20 X 2 mm, (SUB FOR J222010)
26	FYD00000222	Cover	1		
33	4704017	Shim	2		
34	4704018	Shim	2		
35	4704019	Shim	2		
36	4705251	Shim	2		
37	.....	Screw With Washer	4		(J271035 NLA)
	19M7550	Cap Screw	1		M10 X 35, (SUB FOR J901035)
	24M7346	Washer	1		11 X 20 X 2 mm, (SUB FOR J222010)

<i>Key</i>	<i>Part No.</i>	<i>Part Name</i>	<i>Qty.</i>	<i>Serial No.</i>	<i>Remarks</i>
<b>1</b>	<b>BYT10968</b>	<b>Excavator Bucket</b>	<b>1</b>		<b>76.2 cm (30 in) 0.147 m<sup>3</sup> (5.2 ft<sup>3</sup>), AT316559G NLA, Whole Goods, Black</b>
2	T212581	Cutting Edge	1		
3	T230X156	Shank	5		
4	TP156	Spring Pin	5		
5	TX156	Tooth	5		

Refer To PC 9555 For Additional Bucket Tooth Options  
 Se reporter à PC 9555 pour des options supplémentaires de dents de benne  
 Consultar el catálogo PC 9555 para opciones adicionales de dientes de cucharón

Key	Part No.	Part Name	Qty.	Serial No.	Remarks
2	..... 19M7938 24M7346	Screw With Washer Cap Screw Washer	4 4 4		(J271020 NLA) M10 X 20, (SUB FOR J901020) 11 X 20 X 2 mm, (SUB FOR J222010)
4	4612246	Pedal	2		
5	..... 19M7162	Bolt Cap Screw	4 4		(J260814 NLA) M8 X 16, (SUB FOR J900814)
9	24M7055 2051177	Washer Grip	4 1		8.400 X 16 X 1.600 mm, (SUB FOR A590108)
10	2051176	Grip	1		
11	4424185	Nut	2		
12	7053867	Lever	1		
13	7053868	Lever	1		

Key	Part No.	Part Name	Qty.	Serial No.	Remarks
0	9214705	Hydr./Pilot Control Valve	1		SUB FOR 4607487
1	8093731	Bracket	1		
2	.....	Screw With Washer	2		J260825 NLA
	19M7163	Cap Screw	2		M8 X 25, SUB FOR J900825
	24M7055	Washer	2		8.400 X 16 X 1.600 mm, SUB FOR A590108
4	.....	Bolt	2		J260816 NLA
	19M7162	Cap Screw	2		M8 X 16, SUB FOR J900816
	24M7055	Washer	2		8.400 X 16 X 1.600 mm, SUB FOR A590108
5	4399121	Grip	1		
6A	8093730	Lever	1	-265196	
6B	8107671	Lever	1	265197-	
7	.....	Screw With Washer	2		J260820 NLA
	19M7139	Cap Screw	2		M8 X 20, SUB FOR J900820
	24M7055	Washer	2		8.400 X 16 X 1.600 mm, SUB FOR A590108
8	A852122	Adapter Fitting	3		
	957366	O-Ring	1		
9	4652861	Screen	1		
	957366	O-Ring	1		
11	4648389	Tee Fitting	1		
13	14M7275	Nut	1		M12, SUB FOR J950012
14	24M7047	Washer	1		13 X 24 X 2.500 mm, SUB FOR A590112
16	4653592	Hose	1		
17	4653593	Hydraulic Hose	1		Marked X2
18	4653590	Hose	1		
19	4653591	Hose	1		
20	A852122	Adapter Fitting	1		
	957366	O-Ring	1		
22	FYD00000504	Hose	1		SUB FOR 4654641
27	4405673	Elbow Fitting	1		
	957366	O-Ring	1		

Key	Part No.	Part Name	Qty.	Serial No.	Remarks
0	8098559	Case	1		
0A	.....	Housing	1		NSEP
0B	.....	Spool	1		NSEP
3	4662206	Shim	4		SUB FOR 4203411
4	4410898	Spacer	4		
6	4623065	Spring	2		
7	4651556	Compression Spring	2		
8	4622653	Spring	2		
9	4651557	Compression Spring	2		
10	4615610	Guide	4		
11	4437333	Snap Ring	4		
14	9769467	Plunger	2		
15	9769466	Plunger	2		
17	9246436	Sleeve	4		
17A	.....	Sleeve	1		NSEP
17B	.....	Seal	1		NSEP
19	4201993	O-Ring	4		
21	4614296	Plate	1		
22	4335060	Universal Joint	1		
23	FYB00000019	Cam	1		SUB FOR 4639115 AND 4437106
24	4631248	Fitting	1		
26	4614286	Plug	1		
27	4170585	O-Ring	1		
28	4614331	Snap Ring	1		
30	9289085	Hydr./Pilot Control Valve	1		SUB FOR 4681778

Key	Part No.	Part Name	Qty.	Serial No.	Remarks
0	8117243G	Arm	1		(SUB FOR 8117243)
0A	.....	Arm	1		(6027077 NLA)
0B	4430457	Bushing	2		(SUB FOR 4340369)
0C	4428636	Bushing	4		(SUB FOR 4340371)
1	TH100074	Lubrication Fitting	1		(SUB FOR J75481)
2	AT318033	Seal	2		(SUB FOR 4279531)
3	FYJ00006026	Seal	4		(SUB FOR 4279530 AND 4473086)

Key	Part No.	Part Name	Qty.	Serial No.	Remarks
0	9758095	Pin Fastener	2		
1	9758093	Pin Fastener	1		
2	19M6332	Cap Screw	2		M14 X 35, (SUB FOR J901435)
3	12H317	Lock Washer	2		9/16", (SUB FOR A590914)
4	4339355	Bushing	2		
6	4349716	Bushing	1		
7	19M7489	Cap Screw	1		M16 X 45, (SUB FOR J901645)
8	12H294	Lock Washer	1		5/8", (SUB FOR A590916)
11	4354256	Shim	6		
12	4377449	Shim	4		
13	4377897	Solid Shim	4		
14	4377899	Shim	2		

Key	Part No.	Part Name	Qty.	Serial No.	Remarks
4	4707021	Hyd Actuated Control Valve	1		
16	4479042	Pressure Relief Valve	2		
20	.....	Housing	1		
21	.....	Spool	1		
22	0429310	Guide	2		
23	0974602	Extension Spring	2		
24	0801303	Guide	2		
25	0801304	Cover	1		
26	0429313	O-Ring	2		
27	CH11568	Packing	2		SUB FOR 4506407
28	0429314	Bolt	2		
29	0801305	Poppet	1		
30	0801306	Spring	1		
31	0801307	Fitting Plug	1		
32	957366	O-Ring	3		
33	0848202	Poppet	2		
34	0848203	Spring	2		
35	0848204	Spacer	2		
36	4092265	Back-Up Ring	2		
37	4506407	Packing	2		
38	0865401	Housing	1		
39	0791808	Spring	1		
40	0791818	Poppet	1		SUB FOR 0791811
41	0791809	Valve Seat	1		
42	0791818	Poppet	1		SUB FOR 0791810
43	4105067	Back-Up Ring	1		
44	CH11560	Packing	1		SUB FOR 939356
45	CH10571	Packing	1		SUB FOR 933226
46	0332924	Back-Up Ring	1		SUB FOR 4144044
47	0865402	Spool	1		
48	0848206	Plug	1		
49	R26906	O-Ring	1		SUB FOR 0103025
50	0848207	Spring	1		
51	0865403	Piston	1		
52	0735816	Plug	1		
53	0801503	Fitting Plug	2		
54	0848209	Bolt	5		
55	0801203	O-Ring	1		SUB FOR 4S00620

Key	Part No.	Part Name	Qty.	Serial No.	Remarks
11	4707026	Hyd Actuated Control Valve	1		
17	0848901	Flow Control Hyd. Valve	1		
17A	R26906	O-Ring	1		SUB FOR 0103025
20	.....	Housing	1		
21	.....	Spool	1		
22	0429310	Guide	2		
23	0974602	Extension Spring	2		
24	0801303	Guide	2		
25	0801304	Cover	2		
26	0429313	O-Ring	2		
27	0429314	Bolt	4		
28	0801305	Poppet	1		
29	0801306	Spring	1		
30	0801307	Fitting Plug	1		
31	957366	O-Ring	1		
32	0801203	O-Ring	1		SUB FOR 4S00620
33	0801502	Poppet	1		
34	0219010	Spring	1		

Key	Part No.	Part Name	Qty.	Serial No.	Remarks
11	4707014	Hyd Actuated Control Valve	1		
21	.....	Housing	1		
22	.....	Spool	1		
23	0429310	Guide	2		
24	0974602	Extension Spring	2		
25	0801303	Guide	2		
26	0801304	Cover	2		
27	0429313	O-Ring	2		
28	0429314	Bolt	4		
29	0801305	Poppet	1		
30	0801306	Spring	1		
31	0801307	Fitting Plug	1		
32	957366	O-Ring	1		
33	0801203	O-Ring	1		SUB FOR 4S00620

Key	Part No.	Part Name	Qty.	Serial No.	Remarks
4	.....	Section	1		
16	.....	Pressure Relief Valve	2		
20	.....	Housing	1		
21	.....	Spool	1		
22	0429310	Guide	2		
23	0974602	Extension Spring	2		
24	0801303	Guide	2		
25	0801304	Cover	2		
26	0429313	O-Ring	2		
27	0429314	Bolt	2		
28	0801305	Poppet	1		
29	0801306	Spring	1		
30	0801307	Fitting Plug	1		
31	957366	O-Ring	2		
32	0848202	Poppet	1		
33	0848203	Spring	1		
34	0848204	Spacer	1		
35	4092265	Back-Up Ring	1		
36	CH11568	Packing	2		SUB FOR 4506407
37	0865401	Housing	1		
38	0791808	Spring	1		
39	.....	Valve	1		
40	0791809	Valve Seat	1		
41	.....	Valve	1		
42	4105067	Back-Up Ring	1		
43	CH11560	Packing	1		SUB FOR 939356
44	CH10571	Packing	1		SUB FOR 933226
45	0332924	Back-Up Ring	1		SUB FOR 4144044
46	0865402	Spool	1		
47	0848206	Plug	1		
48	R26906	O-Ring	1		SUB FOR 0103025
49	0848207	Spring	1		
50	0865403	Piston	1		
51	0735816	Plug	1		
52	0801503	Fitting Plug	2		
53	0848209	Bolt	5		
54	0801203	O-Ring	1		SUB FOR 4S00620

Key	Part No.	Part Name	Qty.	Serial No.	Remarks
9	.....	Section	1		
18	4706149	Pressure Relief Valve	2		
20	.....	Housing	1		
21	.....	Spool	1		
22	0429310	Guide	2		
23	0974602	Extension Spring	2		
24	0801303	Guide	2		
25	0801304	Cover	2		
26	0429313	O-Ring	2		
27	0429314	Bolt	4		
28	0801305	Poppet	1		
29	0801306	Spring	2		
30	0801307	Fitting Plug	2		
31	957366	O-Ring	2		
32	0801904	Poppet	1		
33	0801203	O-Ring	1		SUB FOR 4S00620

Key	Part No.	Part Name	Qty.	Serial No.	Remarks
2	4690015	Nut	4		
14	.....	Section	1		
15	.....	Pressure Relief Valve	1		
30	.....	Housing	1		
31	.....	Spool	1		
32	0429310	Guide	1		
33	1121301	Spring	1		
34	0801303	Guide	1		
35	0802003	Cover	1		
36	0429313	O-Ring	2		
37	0429314	Bolt	4		
38	0946801	Cap	1		
38A	.....	Cap	1		
38B	.....	Filter	1		
38C	.....	Washer	1		
39	0801503	Fitting Plug	1		
40	0801203	O-Ring	1		SUB FOR 4S00620

---

<i>Key</i>	<i>Part No.</i>	<i>Part Name</i>	<i>Qty.</i>	<i>Serial No.</i>	<i>Remarks</i>
0	A852122	Adapter Fitting	1		
	957366	O-Ring	1		
2	4653594	Hydraulic Hose	1		
7	4405673	Elbow Fitting	1		
	957366	O-Ring	1		

---

Key	Part No.	Part Name	Qty.	Serial No.	Remarks
0	9214705	Hydr./Pilot Control Valve	1		SUB FOR 4607487, Components On Separate Page
2	A852122	Adapter Fitting	1		
	957366	O-Ring	1		
3	4154670	Elbow Fitting	2		SUB FOR A852322
	957366	O-Ring	1		
4	4652862	Screen	1		
	957366	O-Ring	1		
6	4609338	Plate	1		
8	.....	Screw With Washer	1		J260816 NLA
	19M7162	Cap Screw	1		M8 X 16, SUB FOR J900816
	24M7055	Washer	1		
10	4653585	Hose	1		8.400 X 16 X 1.600 mm, SUB FOR A590108
11	4653586	Hose	1		
12	4648389	Tee Fitting	1		
14	14M7275	Nut	1		M12, SUB FOR J950012
15	24M7047	Washer	1		13 X 24 X 2.500 mm, SUB FOR A590112
17	4653587	Hose	1		
18	4722292	Hose	1		SUB FOR 4653588, Marked W2
19	4327315	Hose Guard	2		4327293 NLA

Key	Part No.	Part Name	Qty.	Serial No.	Remarks
0	4340948	Selective Control Valve	1	-267841	
	4717806	Selective Control Valve	1	267842-	
1	9761376	Bracket	1	-267841	
	FYD40001168	Bracket	1	267842-	
3	.....	Screw With Washer	2		J260860 NLA
	19M6451	Cap Screw	2		M8 X 60, SUB FOR J900860
	24M7055	Washer	2		8.400 X 16 X 1.600 mm, SUB FOR A590108
4	.....	Screw With Washer	2		J271025 NLA
	19M7402	Cap Screw	2		M10 X 25, SUB FOR J901025
	24M7346	Washer	2		11 X 20 X 2 mm, SUB FOR J222010
6	A852144	Adapter Fitting	1	-267841	INCLUDES 4506418
	4506418	O-Ring	1	-267841	
7	4276966	Adapter Fitting	2		
	4297380	O-Ring	1		SUB FOR 4622346, 4509180 AND 4674883
8	A852344	Elbow Fitting	1		
	4506418	O-Ring	1		
9	4412566	Elbow Fitting	1		
	4506418	O-Ring	1		
10	4190246	Elbow Fitting	1		
	4506418	O-Ring	1		
11	4625614	Bracket	1		
12	XCL-19	Hose Clamp	1		SUB FOR 4192035
13	4463996	Bushing	1		
14	.....	Screw With Washer	2		J271030 NLA
	19M7662	Cap Screw	2		M10 X 30, SUB FOR J901030
	24M7346	Washer	2		11 X 20 X 2 mm, SUB FOR J222010
15	12M7066	Lock Washer	1		10 mm, SUB FOR A590910
16	24M7346	Washer	3		11 X 20 X 2 mm, SUB FOR J222010
17	14M7274	Nut	1		M10, SUB FOR J950010
18	XCL-29	Hose Clamp	1		SUB FOR 4190264
19	4625450	Grommet	1		
20	.....	Screw With Washer	1		J271020 NLA
	19M7938	Cap Screw	1		M10 X 20, SUB FOR J901020
	24M7346	Washer	1		11 X 20 X 2 mm, SUB FOR J222010
22	4682767	Hydraulic Hose	1		
26	4627211	Hydraulic Hose	1		
27	4246927	Grommet	1		
28	.....	Hose Guard	3		MF XHG-075 CTL 4327294 NLA
29	4432868	Sleeve	1		
30	H77698	Tie Band	1		SUB FOR 4055312
32	4692922	Hydraulic Hose	1		
33	4692923	Hydraulic Hose	1		
34	4656270	Adapter Fitting	2		
36	4465189	Nut	2		
37	12M7070	Lock Washer	2		20 mm, SUB FOR A590920

Key	Part No.	Part Name	Qty.	Serial No.	Remarks
0	4690141	Hydraulic Cylinder	1		
1	.....	Hydraulic Cylinder Barrel	1		1217501 NSEP
1A	4332744	Bushing	1		
2	.....	Rod	1		0948602 NSEP
2A	4332744	Bushing	1		
6	1217502	Oil Line	1		
7	1217503	Oil Line	1		
9	0948608	Bearing	1		
10	AT318033	Seal	4		SUB FOR 0478912
11	0920505	Lubrication Fitting	2		SUB FOR 1203312
30	0948609	Hydraulic Cylinder Cap	1		
31	.....	Hydraulic Cylinder Cap	1		0948610 NSEP
32	0948703	Bushing	1		
33	0478704	Packing	1		
34	0662901	Seal	1		
35	CH17160	Packing	1		SUB FOR 0654208
36	0891606	Back-Up Ring	1		
37	CH17854	Packing	1		SUB FOR 0654206
40	.....	Retainer	1		0891607 NLA
41	0891608	Retainer	1		
42	0891609	Spacer	1		
43	0891610	Seal	1		
44	0891611	Bushing	1		
45	CH17160	Packing	1		SUB FOR 0654208
46	0891612	Back-Up Ring	1		
50	0948606	Piston	1		
51	0948607	Piston	1		
52	AT264286	Ring	1		SUB FOR 0478910
53	0996803	Ring	2		
54	22M7080	Set Screw	1		M8 X 8, SUB FOR 0478720
55	0370110	Ball	1		SUB FOR 0478719
70	4634033	Seal Kit	1		
80	0986611	Plug	2		SUB FOR 0986610; ALSO ORDER 0986612, 0986613, AND 0986614
81	0986611	Plug	1		
82	0986612	O-Ring	2		
83	0986613	Bolt	1		
84	0986614	Clamp	1		

Key	Part No.	Part Name	Qty.	Serial No.	Remarks
0	4617784	Hydraulic Cylinder	1		
0A	4622066	Seal Kit	1		
1	.....	Hydraulic Cylinder Barrel	1		0920601 NLA
2	0920602	Bushing	1		
3	0920603	Seal	2		
4	0920504	O-Ring	2		
5	0920505	Lubrication Fitting	1		
6	0920604	Rod	1		
7	0920602	Bushing	1		
8	0920603	Seal	2		
9	0920507	Lubrication Fitting	1		
10	0920605	Cylinder Head	1		
11	0920509	Packing	1		
12	0920510	Seal	1		
13	0920511	Snap Ring	1		
14	0920606	Back-Up Ring	1		
15	0920607	O-Ring	1		
16	0920608	O-Ring	1		
17	0920515	Bushing	1		
18	0920609	Piston	1		
19	0920610	Back-Up Ring	1		
20	0920611	Ring	1		
21	0920519	Nut	1		

Key	Part No.	Part Name	Qty.	Serial No.	Remarks
1	.....	Housing	1	(NLA)	
2	.....	Shaft	1	(NLA)	
3	.....	Plate	1	(NLA)	
4	.....	Shift Collar	1	(NLA)	
5	.....	Cylindrical Roller Bearing	1	(NLA)	
6	0251311	Seal	1		
7	.....	Bearing	1	(NLA)	
8	.....	Plate	1	(NLA)	
9	.....	Shift Collar	1	(NLA)	
10	0749107	Holder	1		
11	0646807	Thrust Washer	4		
12	0733314	Bearing Race	4		
13	0733315	Needle Bearing	4		
14	0749108	Gear	4		
15	0749109	Wear Plate	1		
16	0434509	Cap Screw	4		
17	0648206	Sun Gear	1		
18	0749110	Holder	1		
19	0647414	Wear Plate	4		
20	0749111	Bearing Race	4		
21	0749112	Needle Bearing	4		
22	0749113	Gear	4		
23	0749114	Wear Plate	1		
24	0749115	Gear	1		
35	.....	Drain Plug	1	(NLA)	
36	4506408	O-Ring	1		
37	4608324	O-Ring	1		
40	0749116	Housing	1		Mounting Assembly
85	4607609	Hydraulic Motor	1		Additional Components On Separate Pages

## Numerical Index - Continued

<i>Part No.</i>	<i>Key</i>	<i>Page</i>	<i>Part No.</i>	<i>Key</i>	<i>Page</i>	<i>Part No.</i>	<i>Key</i>	<i>Page</i>
0920102	40G	469	0974602	17	393	1217902	2	475
0920104	10	405	0974602	54	397	1217903	4	475
0920104	42	469	0974602	18	399	1217904	41	475
0920105	13	405	0974602	24	401	2038764	61	205
0920105	43	469	0974602	34	409	2044332	8A	357
0920106	15	405	0974602	23	411	2044813	21	147
0920107	16	405	0974602	54	413	2044813	21	149
0920108	17	405	0974602	11	417	2048256	15	355
0920109	19	405	0974602	18	419	2048374	30	355
0920110	50	405	0974602	23	421	2050045	9	141
0920504	4	481	0974602	23	425	2050476	5	165
0920505	11	471	0974602	24	427	2050477	23	165
0920505	11	473	0974602	17	429	2050544	2	203
0920505	8	475	0974602	4	433	2051176	10	331
0920505	5	481	0986610	80	471	2051176	10	333
0920507	6	307	0986610	80	473	2051177	9	331
0920507	9	481	0986610	6	477	2051177	9	333
0920509	11	481	0986611	80	471	2051286	2	49
0920510	12	481	0986611	81	471	2051289	0A	61
0920511	13	481	0986611	80	473	2051292	5A	49
0920515	17	481	0986611	81	473	2051466	13	203
0920519	21	481	0986611	6	477	2051467	3	203
0920601	1	481	0986611	61	477	2051556	15	167
0920602	2	481	0986612	80	471	2051706	39	269
0920602	7	481	0986612	82	471	2051739	49	269
0920603	3	481	0986612	80	473	2051739J	49	269
0920603	8	481	0986612	82	473	2051785	50	269
0920604	6	481	0986612	6	477	2052020	3	161
0920605	10	481	0986612	62	477	2052034	35	147
0920606	14	481	0986613	80	471	2052034	35	149
0920607	15	481	0986613	83	471	2052821	8	147
0920608	16	481	0986613	80	473	2052821	8	149
0920609	18	481	0986613	83	473	2052822	4	147
0920610	19	481	0986613	6	477	2052822	4	149
0920611	20	481	0986613	63	477	2053912	44	157
0920701	9	79	0986614	80	471	2054425	31	253
0920703	17	79	0986614	84	471	2055869	1	77
0920705	50	79	0986614	80	473	2055967	5	127
0920706	51	79	0986614	84	473	2055967	79	261
0920801	10	81	0986614	6	477	2056225	63	155
0920802	28	81	0986614	64	477	2057898	9	127
0920803	27	81	0988101	1	477	2057899	35	261
0920805	40	81	0988102	5	477	2058054	10	135
0920807	42	81	0990701	41	469	3056637	0	373
0920901	11	83	0992610	3	475	3069396	24	149
0920902	18	83	0992611	31	475	3076175	18	151
0920903	23	83	0996803	53	471	3079466	25	151
0946101	22	289	0996803	53	473	3087987	26B	357
0946301	1	493	1032265	1	77	3087987	27B	357
0946302	11	493	1032266	7	63	3088018	13	151
0946801	11	383	1032282	1	41	3088058	31	147
0946801	38	395	1032465	0A	143	3088058	31	149
0946801	11	415	1034443	0A	51	3090482	33	151
0946801	38	431	1035223	4	51	3095375	10A	355
0947701	51	405	1036393	21	157	3099628	5A	357
0947701	40	469	1037007	21	157	3100099	7	291
0947803	60	495	1103302	43	475	3100576	33A	179
0948202	2	477	1121301	23	389	3100662	0	223
0948202G	2	477	1121301	33	395	3100908	15	447
0948203	4	477	1121301	23	423	3100908G	15	447
0948203	41	477	1121301	33	431	3100996	16	447
0948301	1	479	1121505	3F	307	3100996G	16	447
0948302	2	479	1121506	4	307	3101308	10	49
0948303	41	479	1121507	4A	307	3101915	0	299
0948602	2	471	1121508	4C	307	3101916	1	299
0948602	2	473	1153804	3B	307	3101917	2	69
0948606	50	471	1193501	41	81	3101917	2	73
0948606	50	473	1195204	6	307	3101918	0	69
0948607	51	471	1203312	11	471	3101918	0	73
0948607	51	473	1203312	11	473	3101922	1	61
0948608	9	471	1203312	8	475	3101923	2	61
0948608	9	473	1213801	26	399	3101950	5B	49
0948609	30	471	1213801	26	419	3101961	4	43
0948609	30	473	1214903	7	475	3101961	5	45
0948610	31	471	1215401	43	379	3101961	5	47
0948610	31	473	1215401	43	409	3102144	21	357
0948703	32	471	1217501	1	471	3102269	4	303
0948703	32	473	1217502	6	471	3102274	3	303
0974602	34	379	1217502	6	473	3102655	0	57
0974602	23	381	1217503	7	471	3102656	1	57
0974602	11	385	1217601	1	473	3103235	25	257
0974602	23	387	1217602	7	473	3103236	26	257
0974602	23	391	1217901	1	475	3103271	2	207

## Numerical Index - Continued

Part No.	Key	Page	Part No.	Key	Page	Part No.	Key	Page
9207568	27	357	957366	42	379	9762766	31	269
9214705	0	341	957366	31	381	9762796	39	263
9214705	50	355	957366	31	387	9762850	23	215
9214705	0	451	957366	31	391	9763054	1	375
9214706	10	355	957366	25	393	9763054J	1	375
9231689	1	269	957366	16	399	9763240	29	443
9231689	20	271	957366	32	401	9763256	47	269
9237912	16	73	957366	42	409	9763365	29	145
9237937	0	61	957366	31	411	9763378	42	269
9237937	20	61	957366	16	419	9763379	20	143
9237948	20	67	957366	31	421	9763426	3	227
9237960	5	63	957366	31	425	9763427	28	179
9238015	0	77	957366	32	427	9763444	34	181
9238036	0	55	957366	25	429	9763977	8	219
9238037	1	55	957366	12	433	9764373	42	251
9238038	10	55	957366	19	435	9764777	58	269
9238608	5	357	957366	13	437	9764802	34	167
9240379	0	61	957366	14	437	9764858	13	333
9240394	5	49	957366	15	437	9765018	14	333
9240394	5A	49	957366	18	437	9765030	11	213
9241721	0	335	957366	19	437	9765217	38	263
9241721	60	357	957366	23	437	9767573	0	283
9245857	32	181	957366	0	439	9767797	15	261
9246436	17	351	957366	6	439	9769237	28	263
9247309	33	179	957366	0	441	9769286	12	443
9247579	16	73	957366	7	441	9769466	15	351
9247739	16	69	957366	13	449	9769467	14	351
9247740	16	73	957366	21	449	9770486	2	443
9248372	16	69	957366	24	449	9770661	57	129
9248373	16	73	957366	2	451	9770663	33	245
9252080	0	253	957366	3	451	9770693	60	269
9252082	91	245	957366	4	451	9771247	48	263
9252088	1	257	957366	2	453	9773019	29	145
9261429	1	49	957366	5	453	9773022	30	263
9263946	2	335	957366	2	455	984618	29	399
9269054	0	51	957366	3	455	984618	29	419
9269094	10	51	957366	13	459	985099	26	493
9286959	10	57	957366	33	459	985099	5	61
9288915	0	293	957366	34	459	985582	11	403
9288915	0	295	957366	36	459	989335	1	135
9289085	2	343	957366	17	467	991334	9	271
9289085	2	345	957366	46	493	991722	34	287
9289085	2	347	957366	2	85	991722	34	289
9289085	30	351	957366	6	85	992444	14	69
9298490	0	49	957366	7	85	992444	14	73
9304580	0	235	957366	15	87	A58818	2	209
9309030	35	165	957366	2	87	A590106	10	127
9315079	0	253	957366	4	87	A590106	20	129
9324799	0	305	960323	11	495	A590106	25	129
9325101	16	71	960323	11	497	A590106	35	129
9325102	16	71	961042	5	67	A590106	16	133
9325103	16	75	964255	41	357	A590106	34	145
9325104	16	75	966689	22	83	A590106	93	155
933226	44	381	9750291	8	291	A590106	37	157
933226	44	411	9751493	4	365	A590106	16	159
939356	43	381	9751493	4	367	A590106	3	175
939356	43	411	9752265	8	291	A590106	29	179
94-2010	12	495	9754804	3	365	A590106	45	181
94-2010	12	497	9754804	3	367	A590106	35	215
94-2011	13	495	9758090	4	365	A590106	25	227
94-2011	13	497	9758090	4	367	A590106	17	245
94-2023	13	295	9758093	1	371	A590106	26	245
942011	13	495	9758095	0	371	A590106	63	245
942011	13	497	9758096	3	365	A590106	63	247
942517	36	289	9758096	3	367	A590106	63	249
942517	4	67	9758100	5	167	A590106	9	257
954495	01	143	9758896	10D	355	A590106	46	267
957366	9	133	9760775	9	437	A590106	49	267
957366	40	157	9761376	1	461	A590106	83	267
957366	5	243	9761487	2	271	A590106	14	269
957366	39	287	9761488	4	271	A590106	17	343
957366	43	287	9761489	3	271	A590106	19	345
957366	39	289	9761490	5	271	A590106	17	347
957366	43	289	9761544	0	197	A590106	33	357
957366	13	291	9761592	2	177	A590106	3	437
957366	48	291	9761592	2	217	A590108	10	129
957366	3	335	9761874	15	469	A590108	29	129
957366	4	335	9761889	30	263	A590108	42	129
957366	20	341	9761935	1	243	A590108	45	129
957366	27	341	9761980	9	261	A590108	60	129
957366	8	341	9762109	43	167	A590108	63	129
957366	9	341	9762188	0	175	A590108	9	129
957366	4	353	9762190	0	173	A590108	22	133

CLICK HERE TO **DOWNLOAD** THE COMPLETE MANUAL

- Thank you very much for reading the preview of the manual.
- You can download the complete manual from: [www.heydownloads.com](http://www.heydownloads.com) by clicking the link below



- Please note: If there is no response to CLICKING the link, please download this PDF first and then click on it.

CLICK HERE TO **DOWNLOAD** THE COMPLETE MANUAL