

**TOPLINER 4068 DAL/FROM/AB 8646**

**TOOLS AND ACCESSORIES**

**TOOLS AND ACCESSORIES**

IMPLEMENT AND CHAIN LINKS.....4U.35.1

ACCESSORY.....4U.35.2

**CHOPPER**

CHOPPER BLADE W.....4U.36.1

CLICK HERE TO **DOWNLOAD** THE COMPLETE MANUAL

- Thank you very much for reading the preview of the manual.
- You can download the complete manual from: [www.heydownloads.com](http://www.heydownloads.com) by clicking the link below



- Please note: If there is no response to CLICKING the link, please download this PDF first and then click on it.

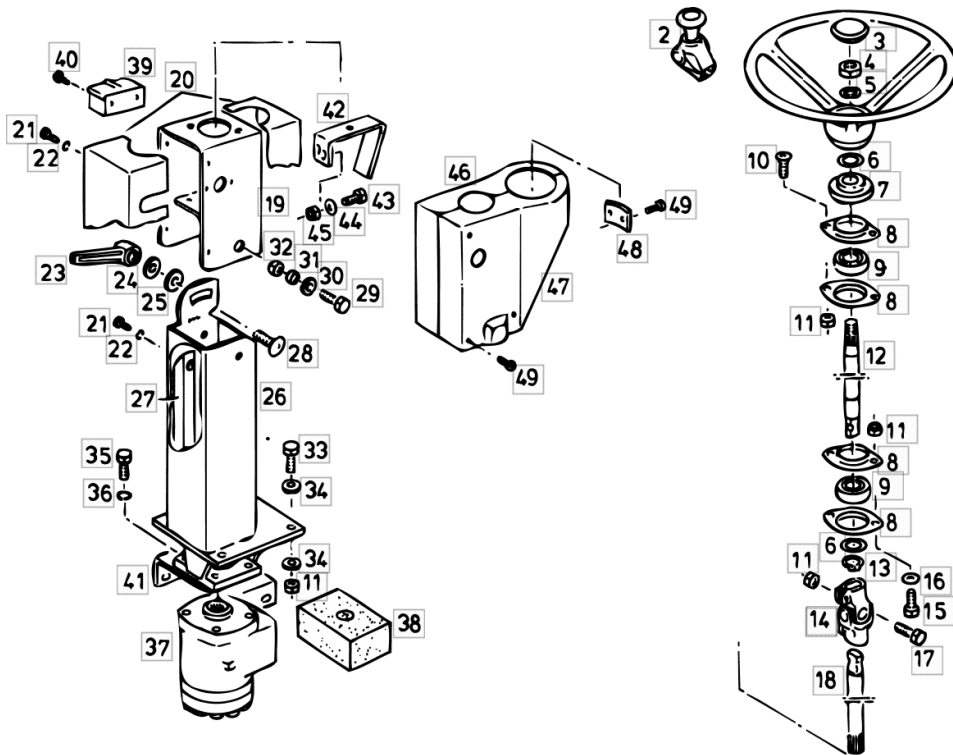
CLICK HERE TO **DOWNLOAD** THE COMPLETE MANUAL

**STEERING COLUMN, STANDARD VERSION**

Fig.	Code	QTY	Name
------	------	-----	------

**Notes:**

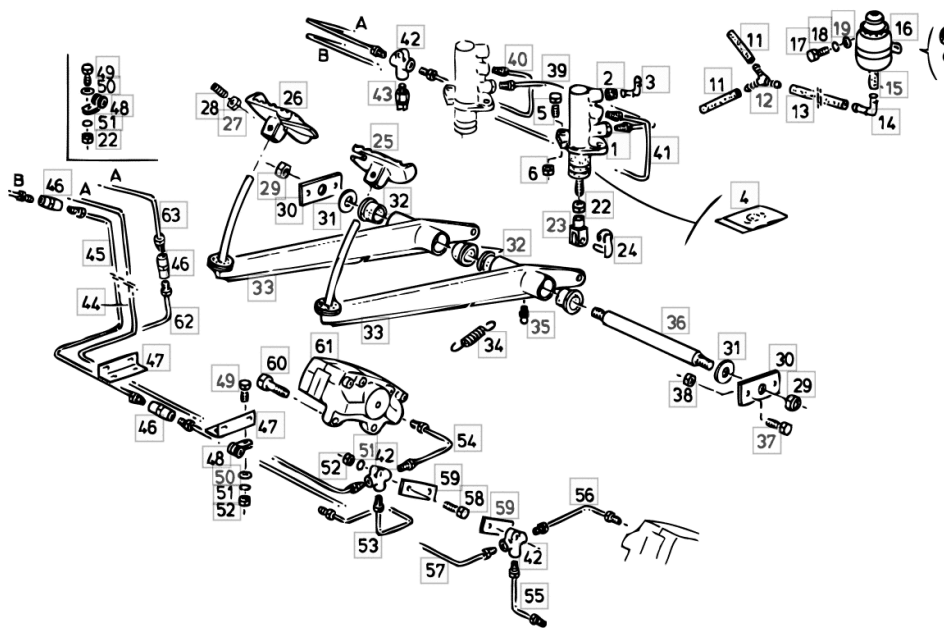
POS.NR. 42 - 49 ON REQUEST THROUGHTUT MONITOR -----



1	16052078	1	steering wheel
2	06256102	1	grip - 9930
3	04372644	1	cap
4	01138932	1	nut m 18 p.1.5
5	01102804	1	spring washer a18 d128
6	06214475	0	shim 25x35x0,3
6.1	06214477	0	washer 25 x 35 x 1.0
6.2	06214588	0	washer 25x35x2
7	16003909	1	ring
8	06215801	4	flange eb 25
9	01145513	2	bearing 25
10	01179541	2	screw
11	01104944	10	nut m 8, d985
12	16003916	1	mandrel
13	01107737	1	ring 25 x 1,2 d471
14	06261071	1	universal joint
15	01112322	2	screw m 8 p.1.25 x 20
16	01107163	2	washer 9, d126
17	01112350	2	screw m 8 x 35
18	16003917	1	shaft
19	16007360	1	valve
20	16006937	1	panel
21	01173052	4	screw m 4 x 10
22	01102795	4	ring 4.3
23	06544838	1	lever
24	06214206	1	washer 13.2
25	06214229	1	washer 21 x 32 x 2.0
26	16021712	1	steering column
27	16025809	1	rail
28	06207554	1	screw m 12 x 25
29	01112412	2	screw m 10 x 22, d933
30	01107165	2	washer 10.5
31	06283060	2	bushing
32	06209768	2	nut m 10, d985
33	01112333	4	screw m 8 x 25, d933
34	06214192	8	washer 8.4
35	01112317	4	screw
36	01102799	4	washer 8, d128
37	16020944	1	hydrosteering B D41

**HYDRAULIC BRAKING SYSTEM**

Fig.	Code	QTY	Name
45.1	16027222	1	tube W / BALANCE
46	06255060	2	pipe fitting
47	16004773	2	angular
48	06216395	16	clamp 5 x 15
49	01112264	0	screw m 6 x 20, d933
50	06214189	0	washer 6.4
51	01102797	0	washer 6, d128
52	01114357	0	nut m 6, d985
53	16003235	1	flange
54	16003229	1	tube
55	16003232	1	brake disc
56	16003226	1	tube
57	16004770	1	tube
57.1	16027224	1	tube W / BALANCE
58	01127031	2	screw m 6 x 30, d933
59	16003223	2	small plate
60	01145076	8	screw m 14 p.1.5 x 55
61	16031132	1	fixed yoke R / B B17 ABOVE
61.1	16031133	1	fixed yoke R / B B17 U N T E N
61.2	16031130	1	fixed yoke L / B B17 ABOVE
61.3	16031131	1	fixed yoke L / B B17 U N T E N
62	16027226	1	tube W / BALANCE
63	16027220	1	tube W / BALANCE



**DRIVER'S CAB ROOF**

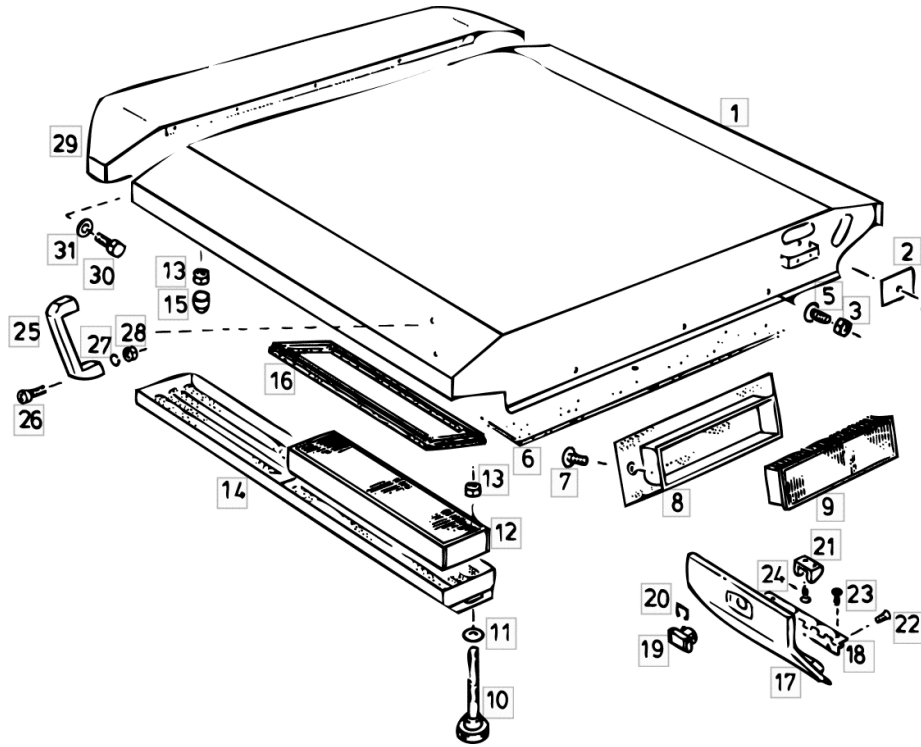


Fig.	Code	QTY	Name
1	16039228	1	roof
2	06302909	1	lamination
3	01114357	4	nut m 6, d985
4	01112240	1	screw m 6 x 12
5	06214131	3	screw m 6 x 12
6	16007925	1	lining
6.1	16007926	1	lining L
6.2	16007927	1	lining R
7	06214132	2	screw m 6 x 15, d921
8	06533646	1	panel
9	04336385	1	air filter element
10	06543016	4	washer
11	06214197	4	washer 10.5
12	06543590	4	filter
13	01104944	10	nut m 8, d985
14	06543008	1	filter casing
15	01174042	6	cap
16	06543063	4	gasket
17	16010227	1	cover
18	16010252	1	hinge
19	16010229	1	lock
20	16010230	1	small spring
21	16010231	1	small plate
22	01145177	3	screw m 5 x 8, d965
23	01145179	4	screw
24	01123045	2	washer b4,8x16 d7981
25	01141954	1	handle PVC
26	01126918	2	screw m 8 p.1.25 x 20
27	01102799	2	washer 8, d128
28	01112824	2	nut m 8, d934
29	16034690	1	support
30	01112322	10	screw m 8 p.1.25 x 20
31	01107163	10	washer 9, d126

**TOPLINER 4068 DAL/FROM/AB 8646**

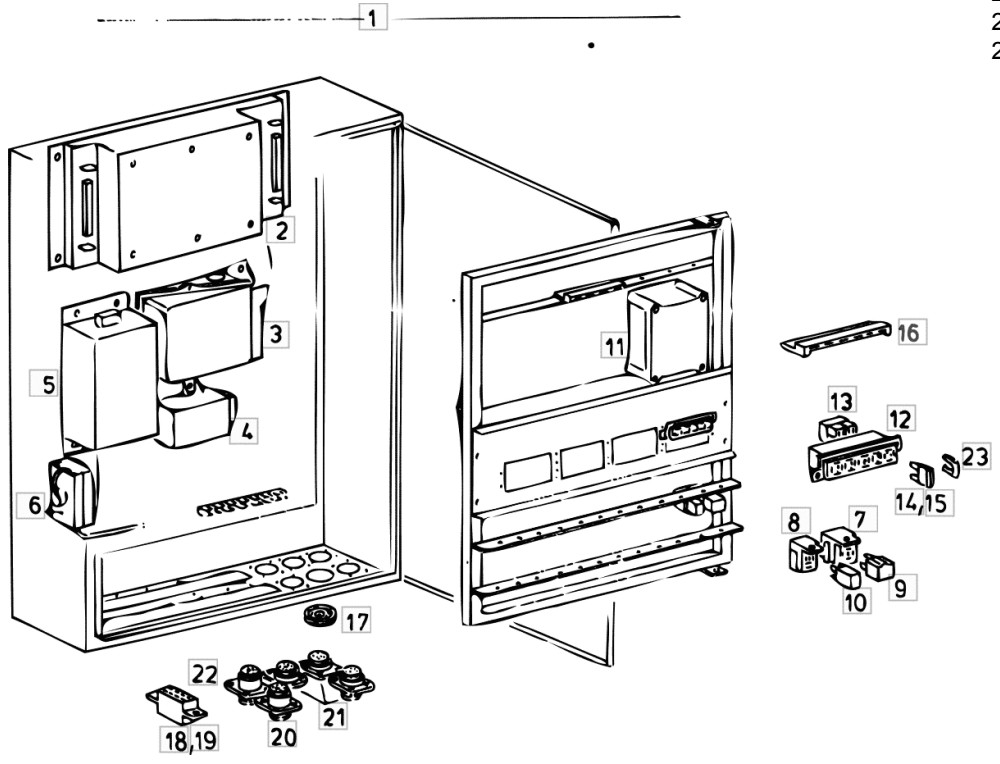
**CUTTING TABLE AND FEEDING ELEVATOR**

**CUTTING TABLE**

HIGH PERFORMANCE CUTTER BARS.....4P.31.1

**CENTRAL ELECTRICS TERIS / TCS / W**

Fig.	Code	QTY	Name
19.4	01178220	0	plug
19.5	01173037	0	plug
19.6	01178217	0	distributor
19.7	01178218	0	distributor
20	16048647	1	pin
21	16048646	3	pin
22	16048648	1	pin
23	01178266	0	axle



**ELECTRIC CLUTCH CONTROL DEVICE STANDARD VERSION**

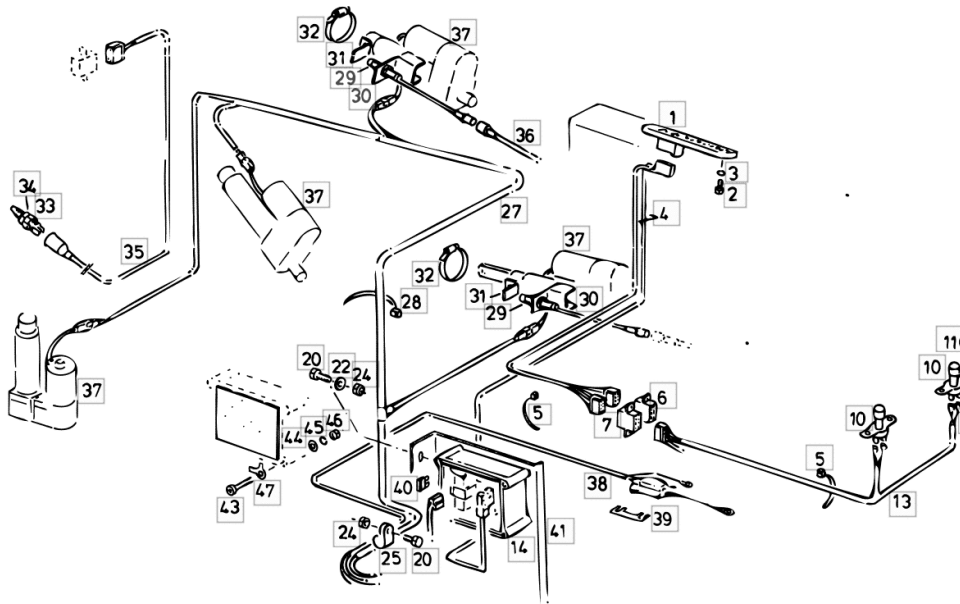
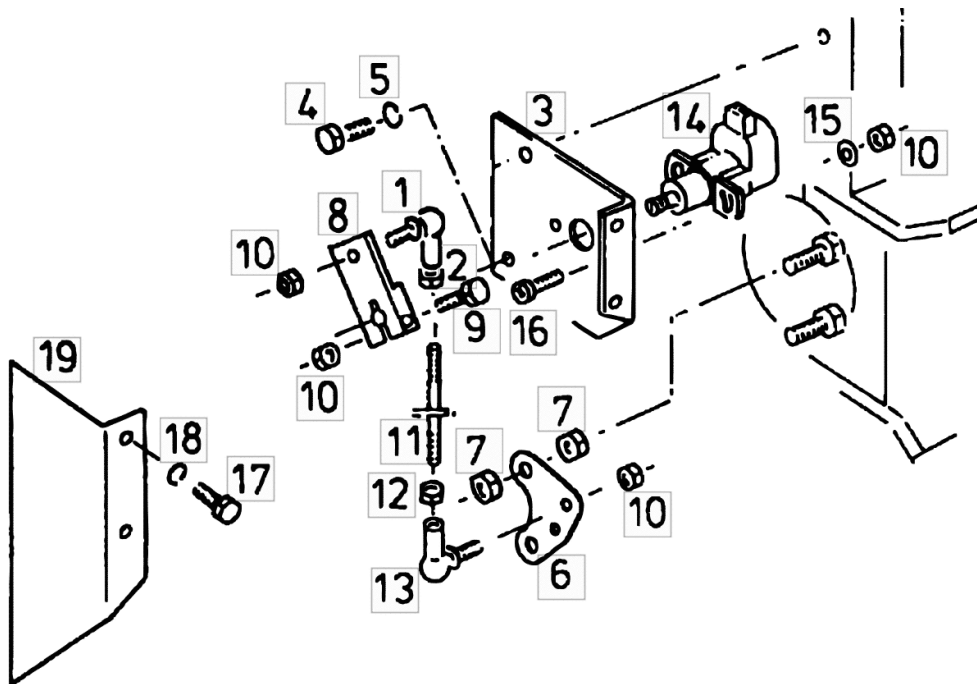


Fig.	Code	QTY	Name
1	16025745	1	hydraulic controles
2	01112228	3	screw m 6x8 d933
3	01102797	3	washer 6, d128
4	16037029	1	cable
5	01172065	0	clamp 4.6 x 146
6	01178221	1	distributor
7	01178225	1	plug
10	06535498	2	support
11	01112240	4	screw m 6 x 12
12	01114357	4	nut m 6, d985
13	16017198	1	cable
14	16027466	1	central device CCP2
20	01112307	3	screw m 8 p.1.25 x 15, d933
22	01107163	3	washer 9, d126
24	01104944	4	nut m 8, d985
25	04325384	1	clamp 19 x 23
27	16037027	1	cable
28	06216482	0	clamp 3.4 x 208
29	01145048	2	position sensor
30	16024827	2	console
31	16024828	2	square
32	01173941	2	stop b50-70/13 h3461
33	04191001	1	push-button W
34	01138932	1	nut m 18 p.1.5 W
35	16025403	1	cable W STRAW CHOPPER
36	16017185	1	insulated braid
37	16027276	3	electric motor
37.1	16027276	1	electric motor W
38	16037031	1	cable
39	16039248	0	fuse -a 60
40	01145787	0	fuse -a 30
41	16037035	1	lamination
43	01145777	4	screw m 5 x 60
44	06214189	4	washer 6.4
45	01102796	4	ring 5
46	01112803	4	nut m 5, d934
47	01145734	4	washer 5.3

**ELECTRICAL SYSTEM FOR ROTATION ANGLE SENSOR, STANDARD VERSION**

Fig.	Code	QTY	Name
1	01137531	1	joint as 8
2	01112803	1	nut m 5, d934
3	16017049	1	cover
4	01112299	1	screw m 8 x 12, d933
5	01102799	1	washer 8, d128
6	16017147	1	link
7	01102659	4	nut m 10, d934
8	16013959	1	lever
9	01123747	1	screw m 5 p.0.8 x 25
10	06209765	3	nut m 5, d985
11	16013960	1	rod L = mm 138 / m 5
12	01144462	1	nut m 5, d934
13	01144169	1	pipe fitting as 8 li
14	16037056	1	position sensor
15	01140498	2	washer 5.3
16	01124043	2	screw m 5 x 20
17	01112240	2	screw m 6 x 12
18	01102797	2	washer 6, d128
19	16017048	1	cover



**LIGHTING V / AUSTRIA**

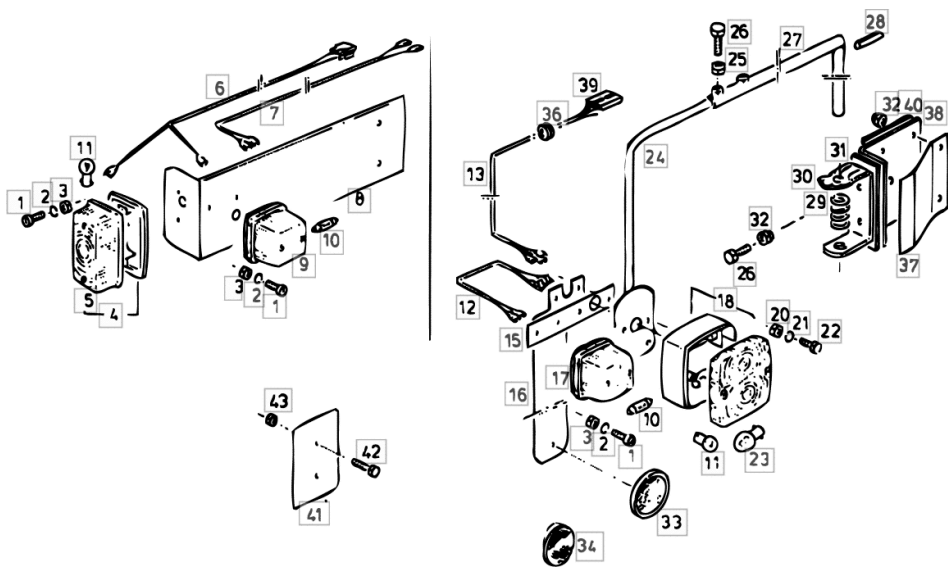
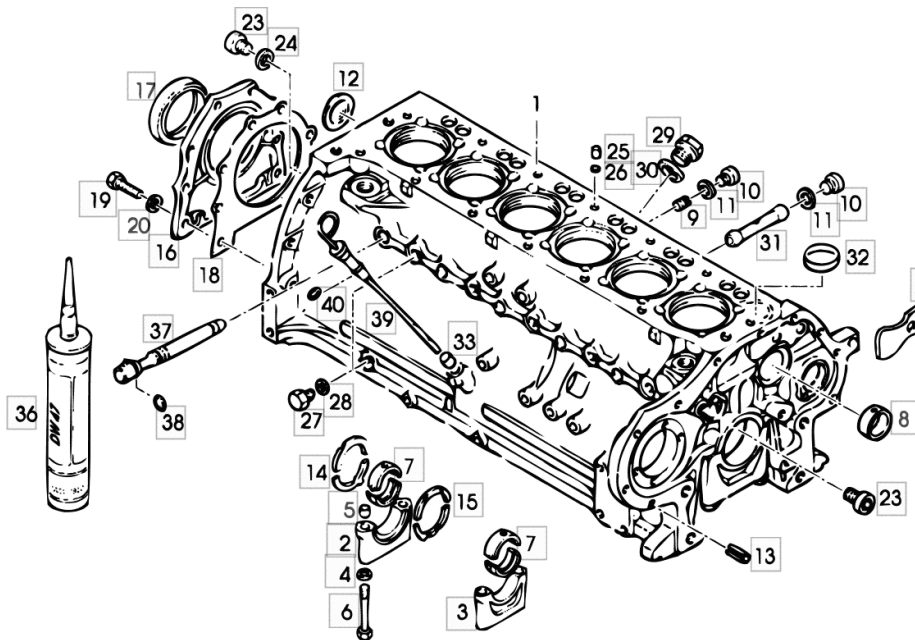


Fig.	Code	QTY	Name
29	06215382	2	spring
30	06303187	2	bracket
31	06520277	2	link
32	01104944	12	nut m 8, d985
33	06214034	2	reflector
34	06520316	2	reflector
34.1	06214039	2	reflector Ø 80
36	06257558	2	rubber ring 14x18x3
37	06544790	2	lamination
38	06544791	1	plate L
38.1	06544792	1	plate R
39	06213973	4	cup 2pol. d72586
40	06544789	2	link
41	16005957	2	shield
42	01102534	4	screw m 5x40 d931
43	01112803	4	nut m 5, d934

**ENGINE CRANKCASE 150 KW / 205 HP 176 KW / 240 HP**

Fig.	Code	QTY	Name
1.1	04158915	1	crankcase G 2-6,9-13,23,24,27-30,36
2	NL	0	not serviceable
3	NL	0	not serviceable
4	01216107	14	washer 15x23x1,5
5	04160764	14	bushing
6	04156058	14	screw
7	04231079	7	half-bushing D 75,00 MM
7.1	04231080	0	bearing D 74,75 MM
7.2	04231081	0	bearing D 74,50 MM
8	02139737	1	bushing
9	01215235	7	plug
10	01110422	7	screw
11	01118673	7	'o' ring
12	01216240	1	disc
13	01167266	2	sleeve
14	04232790	1	shim 2,94 MM
14.1	04232792	0	shim 3,14 MM
15	04232791	1	shim 2,94 MM
15.1	04232793	0	disc 3,14 MM
16	02234870	1	cover
17	04232267	1	'o' ring
18	03362337	1	gasket
19	01112322	8	screw m 8 p.1.25 x 20
20	01107101	8	washer 8.4
23	04159934	2	screw
24	04159935	2	'o' ring
25	NE	0	lamination
26	NE	0	lamination
27	01118997	5	screw cm10x1
28	01118659	5	'o' ring
29	01170580	1	plug
30	01167010	1	washer
31	NE	0	lamination
32	01176197	1	stop
33	01167269	1	sleeve
36	01016120	0	compound



**ENGINE CRANKSHAFT 150 KW / 205 HP 176 KW / 240 HP**

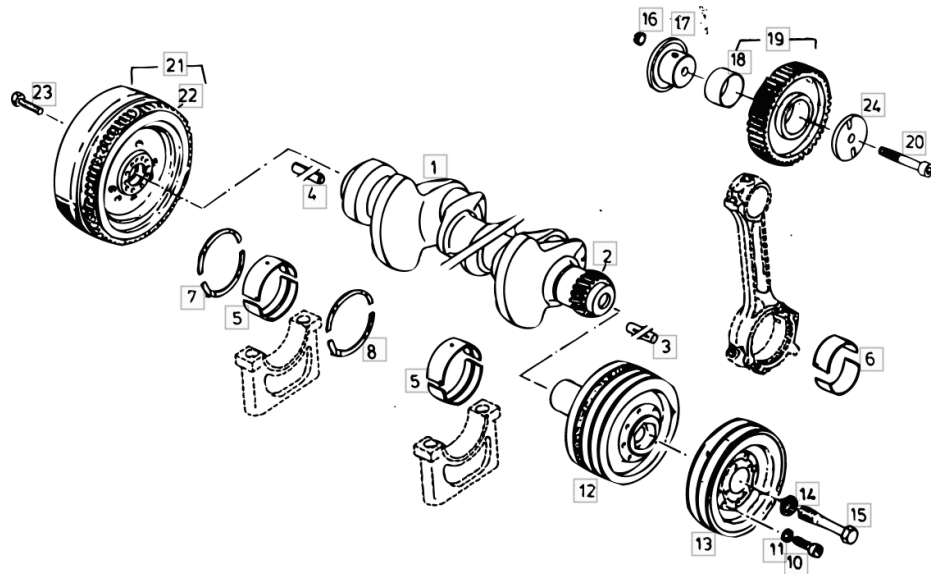
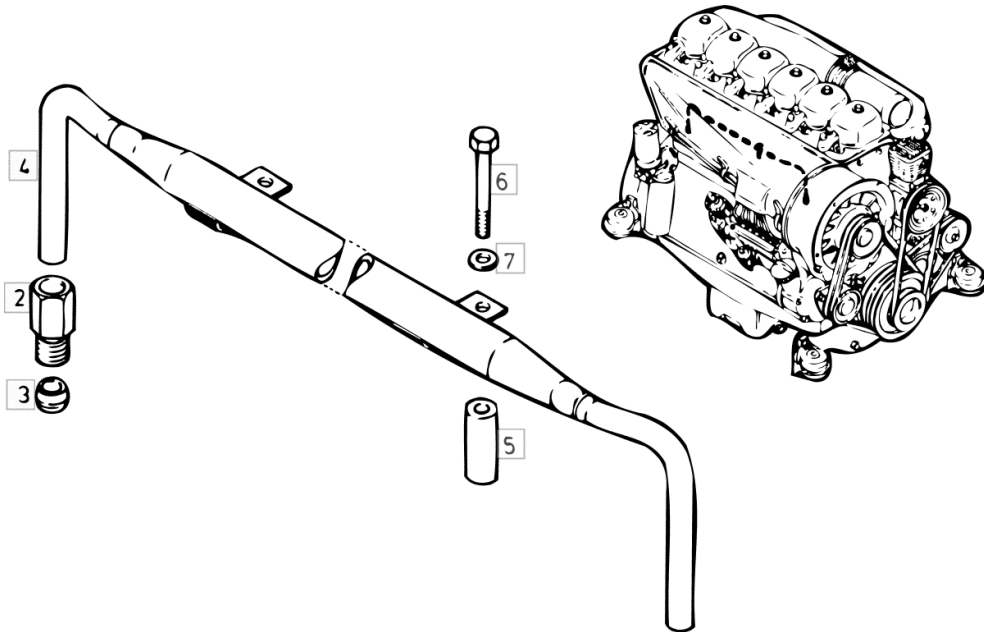


Fig.	Code	QTY	Name
1	02931059	1	crank shaft G 1-8
2	02237257	1	gear
3	01137239	1	pin
4	01115464	1	pin
5	04231079	7	half-bushing 75,00 MM
6	04232679	6	con.rod half bushing 66,00 MM
7.1	04232792	1	shim 3,14 MM
8	04232791	1	shim 2,94 MM
10	01103781	8	screw
11	01172303	8	washer
12	04154136	1	pulley
13	04230442	1	pulley
14	01216128	1	washer
15	01178931	1	screw
16	04156283	1	sleeve
17	04156284	1	pin
18	03362538	1	bushing
19	04153996	1	gear wheel
20	01110688	1	screw
21	02240193	1	flywheel
22	02131081	1	crown wheel
23	01104935	10	screw

**ENGINE BY-PASS LINE**

Fig.	Code	QTY	Name
2	04157445	2	nut
3	01216511	2	ring
4	04157365	1	pipng
5	02135693	2	bushing
6	01111186	2	screw m 8 x 75
7	01138374	2	washer 8,4x21x4



**ENGINE AIR GUIDE 150 KW / 205 HP 176 KW / 240 HP**

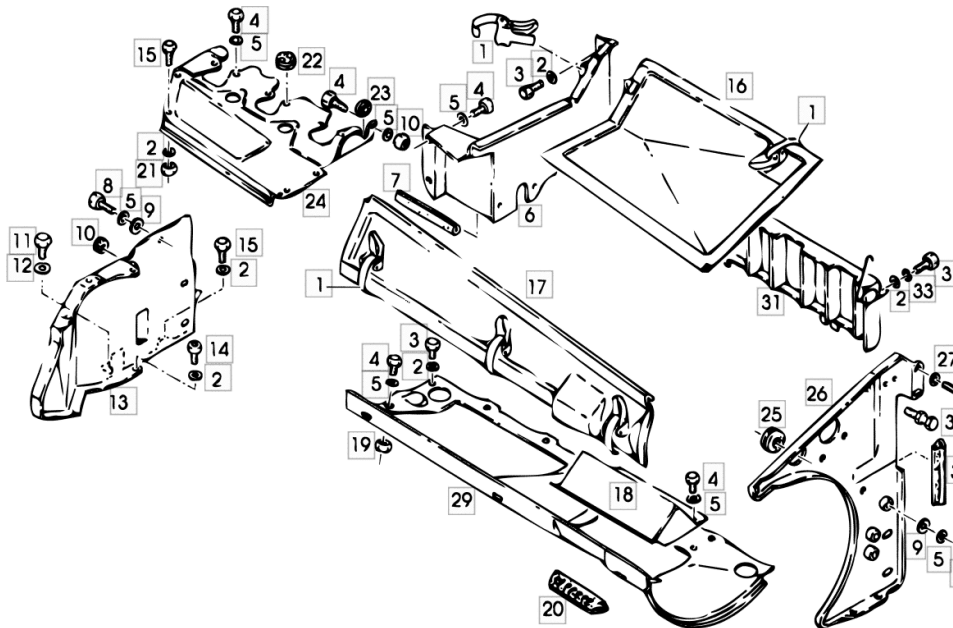
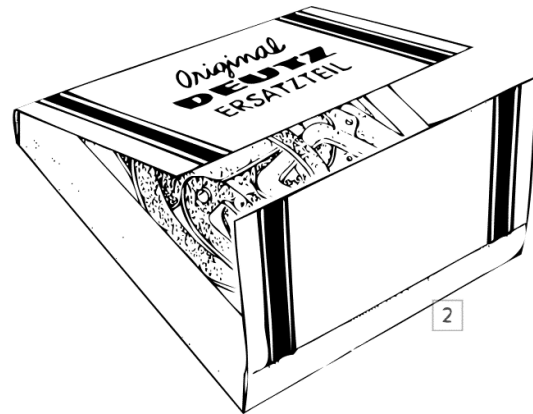
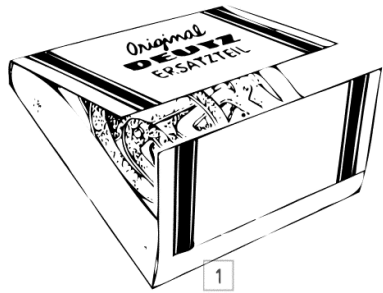


Fig.	Code	QTY	Name
1	01212482	5	plug
2	01107101	13	washer 8.4
3	01112307	9	screw m 8 p.1.25 x 15, d933
4	01112240	20	screw m 6 x 12
5	01107095	17	washer 6.4
6	04150812	1	lamination G 6,1
7	01401812	1	gasket PN1X85
8	01103316	2	screw m 6 p.1.0 x 16
9	01215850	2	washer
10	01167425	1	rubber bushing
11	01126186	1	screw m 10 x 16
12	01140501	1	washer 10.5
13	04151531	1	lamination
14	01102193	1	screw m 8 x 16
15	01112299	3	screw m 8 x 12, d933
16	04153920	1	cover
17	04150803	1	none
18	04150786	1	cover
19	01112813	1	nut m 6
20	02101802	0	rubber
21	01112824	2	nut m 8, d934
22	03361809	2	rubber bushing
23	01160592	1	rubber bushing
24	04150817	1	none
25	01167428	1	rubber bushing
26	04153650	1	lamination
27	02230053	2	washer
28	01112311	2	screw m 8 x 18
29	04154228	1	air duct hood
30	01404426	1	gasket
31	04153868	1	division
32	02101801	1	adjustable tensioner
33	01102799	3	washer 8, d128

**ENGINE SEALING SET**

Fig.	Code	QTY	Name
1	02928994	6	gasket set FOR CYLINDER
2	02929657	1	gasket set COMPLETE FOR MOTOR BF 6 L 913 WITHOUT SHAFT SEAL NR. 0423 2266 UND NR. 0423 2267



**PNEUMATIC SYSTEM W**

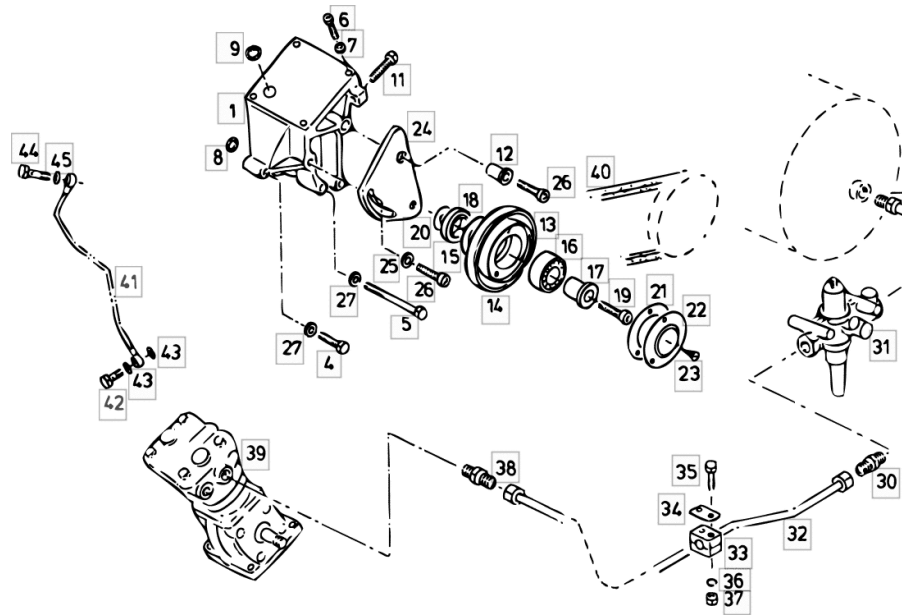
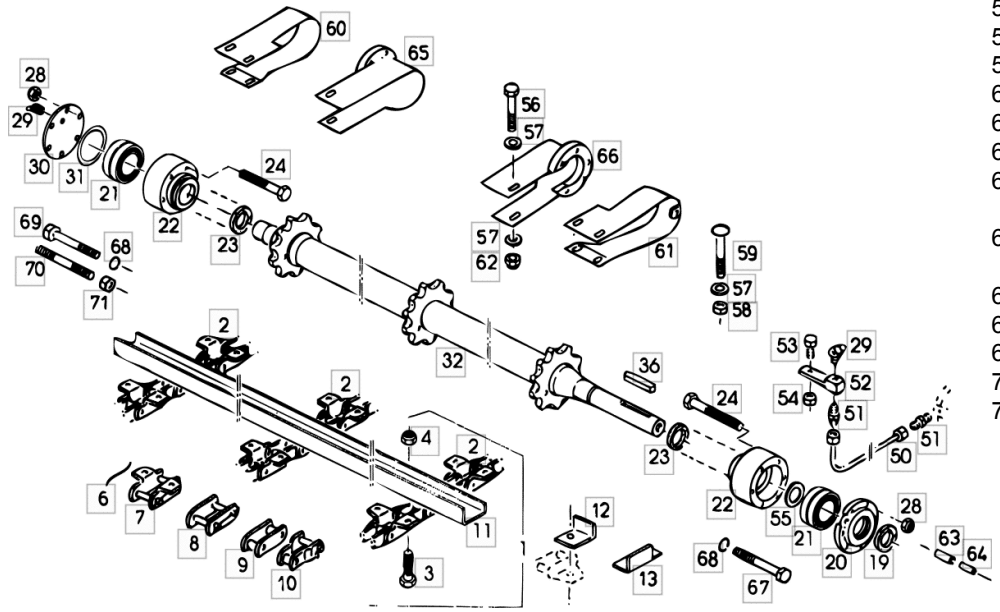


Fig.	Code	QTY	Name
1	04153150	1	console
4	01112356	1	screw m 8 x 40
5	01111207	3	screw m 8 x 100
6	01123700	4	screw m 8x35 d912
7	01107548	4	washer 8.4
8	01166007	1	'o' ring 16x4
9	01166036	1	'o' ring 25x4
11	01138516	1	screw
12	04153072	1	spacer
13	04157781	1	tensioner G 14-24
14	02237570	1	pulley
15	02237571	1	washer
16	01174065	1	ball bearing
17	02237572	1	bushing
18	02237573	1	ring
19	01126137	1	screw m10x40 d912
20	02237618	5	washer
21	02237574	1	gasket
22	02237575	1	cover
23	01164206	3	screw m10x40 d912
24	04157362	1	plate
25	01216110	1	washer
26	01110682	2	screw m 10 p.1.5 x 45
27	01107101	4	washer 8.4
28	01173057	1	insert
29	01172993	1	pipe fitting BL 18
30	01143421	2	tongue L 18 B
31	16018414	1	regulator
32	16018430	1	pipng
33	06262801	1	hose clip Ø 18, PVC
34	06261120	1	small plate
35	01127034	2	screw m 6 x 50, d933
36	01102797	2	washer 6, d128
37	01112813	2	nut m 6
38	01172886	1	tongue m 26x1,5/18
39	01177075	1	air compressor
40	01176330	1	small belt av13x1375la
41	04152894	1	pipng
42	01119237	1	pipe union
43	01118659	2	'o' ring
44	01178632	1	bolt a 8m
45	01118673	1	'o' ring

**TOP SHAFT GATHERING CHAIN FEEDER CHANNEL**

Fig.	Code	QTY	Name
29	01120697	2	lubricator bm 8 x 1
30	16014869	1	cover
31	06214529	0	shim 70 x 90 x 1,0
31.1	06214528	0	shim 70 x 90 x 0,5
32	16020095	1	shaft L = mm 1458
36	01118111	1	dowel 12 x 8.0 x 80
50	16033222	1	pipng Ø 4 / L = mm 217
51	06216815	2	pipe fitting 4M - ST
55	01137379	1	shim
56	01111339	2	screw m 10 x 80
57	06214197	0	washer 10.5
62	06209768	4	nut m 10, d985
63	01115487	4	pin 10 x 28
64	01125061	4	pin
65	16024653	1	interlock dx/rh/re R
66	16024655	1	interlock sx/lh/li L
67	01111342	6	screw m 10 x 85
68	01102800	10	washer 10.2
69	01111339	4	screw m 10 x 80
70	01152507	2	screw m 10 x 90
71	06209768	2	nut m 10, d985

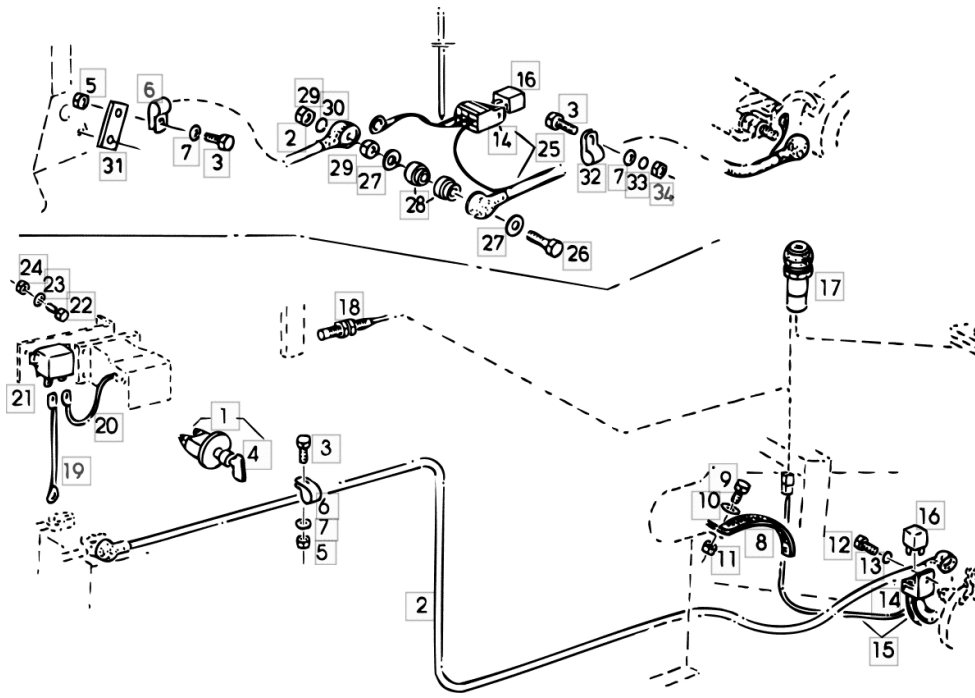


**REVERSER DEVICE ELECTRICAL SYSTEM**

Fig.	Code	QTY	Name
------	------	-----	------

**Notes:**

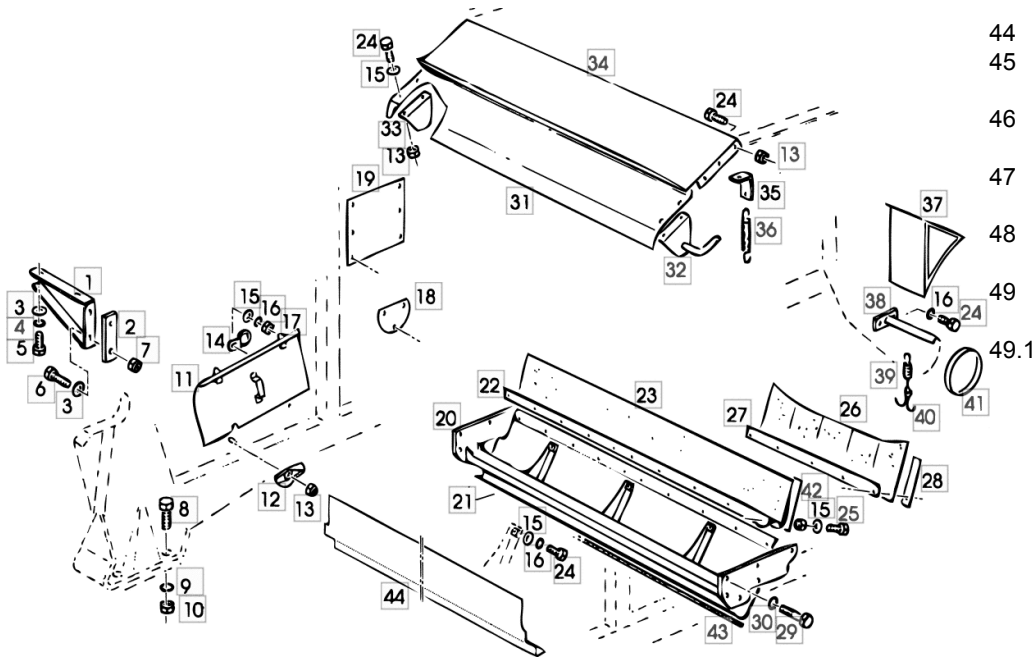
POS.NR. 19 - 24 NOT INSTALLED -----



1	01141854	1	switch kpl.
2	06544695	1	electrical system
3	01112322	6	screw m 8 p.1.25 x 20
4	16012263	0	key PVC
5	01104944	6	nut m 8, d985
6	04325384	6	clamp 19 x 23
7	01107163	6	washer 9, d126
8	01137447	2	wire 12 x 280
9	01112429	1	screw m 10 x 30, d933
10	01107165	2	washer 10.5
11	06209768	1	nut m 10, d985
12	01112232	1	screw m 6 p.1 x 10
13	01102797	1	washer 6, d128
14	01164650	1	base
15	06543346	1	cable
16	01178519	1	relay
17	01177155	1	switch
18	01145048	1	position sensor
25	16027186	1	cable harness
26	01111308	1	screw m 10 x 50
27	06214197	2	washer 10.5
28	06538575	2	disc
29	01102659	2	nut m 10, d934
30	01102800	1	washer 10.2
31	16026625	1	bracket
32	01145232	2	clamp Ø 22
33	01102799	2	washer 8, d128
34	01112824	2	nut m 8, d934

Section: FRAME  
**CHASSIS**

Fig.	Code	QTY	Name
37	06510466	1	plate
38	16039869	1	square
39	06215550	1	spring 3.5 x 18.5 x 174
40	06232540	1	clevis
41	16007833	2	cover
42	NE	0	lamination
43	06257697	1	gasket 15x5x1540 1273 MM
44	NE	0	lamination
45	01145878	8	screw m 24 p.2 x 150 + 10176
46	16054719	8	disc 25 + 10176
47	01102807	8	washer 24.5 + 10176
48	01145881	8	nut m 24 + 10176
49	16054382	1	brush dx/rh/re + 10072 / R
49.1	16054386	1	brush sx/lh/li + 10072 / L



CLICK HERE TO **DOWNLOAD** THE COMPLETE MANUAL

- Thank you very much for reading the preview of the manual.
- You can download the complete manual from: [www.heydownloads.com](http://www.heydownloads.com) by clicking the link below



- Please note: If there is no response to CLICKING the link, please download this PDF first and then click on it.

CLICK HERE TO **DOWNLOAD** THE COMPLETE MANUAL

**FRONT AXLE STANDARD EQUIPMENT - 10175**

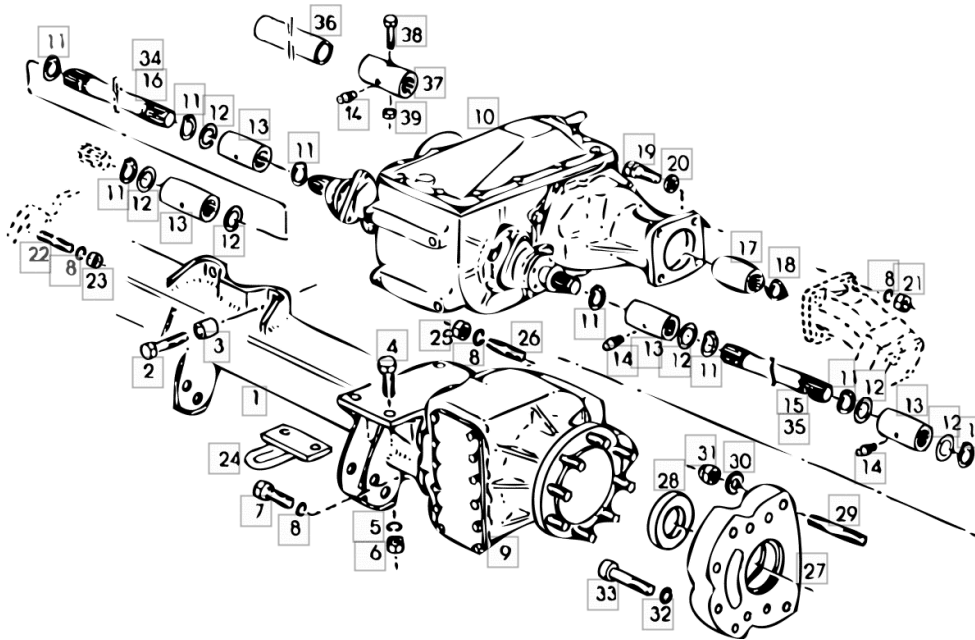


Fig.	Code	QTY	Name
1	16011961	1	axle
2	01124846	4	screw m 16 x 60
3	06260130	4	spacer 30 x 25
4	01145838	8	screw m20x55 d933-10
4.1	01143939	2	screw
5	01102805	8	washer 20.5
6	01139984	8	nut m20 d934-10
7	01144697	18	screw m 20 p.1.5 x 55
7.1	01144696	2	screw m 20 p.1.5 x 55
8	01102805	20	washer 20.5
9	16011977	2	reduction B B10
10	16013078	1	gear box 4 gg B B05 - B10
11	01124663	8	ring 45x2.5 - 9695
12	06214500	0	shim 45x55x1,0 - 9695
12.1	01137130	0	shim - 9695
13	06545324	4	sleeve - 9695
	01120694	4	lubricator am 10 x 1
	16001881	1	shaft I-455 - 9695 / L
	16001880	1	shaft I-332 - 9695 / R
17	16013076	1	sleeve
18	01107748	1	ring 35 x 1.5, d471
19	01124846	2	screw m 16 x 60
20	01174740	2	washer 16.5
21	01112886	0	nut m 16
22	NE	0	lamination
23	NE	0	lamination
24	16006967	1	clevis
25	01100326	4	nut m 20 p.1.5
26	16011975	4	screw m20x1,5x73
27	16011954	2	power control W
28	06546278	2	ring W
29	16013132	18	stud bolt m 20 p.1.5 x 145 W
30	01174743	18	washer 20.5

**FRONT AXLE BALANCE - 10175 / W**

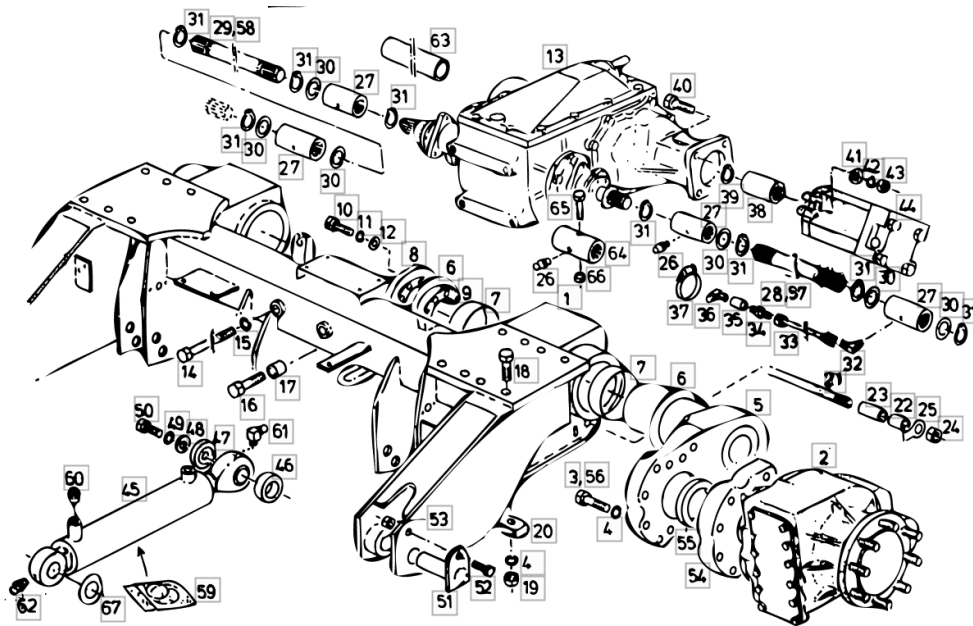
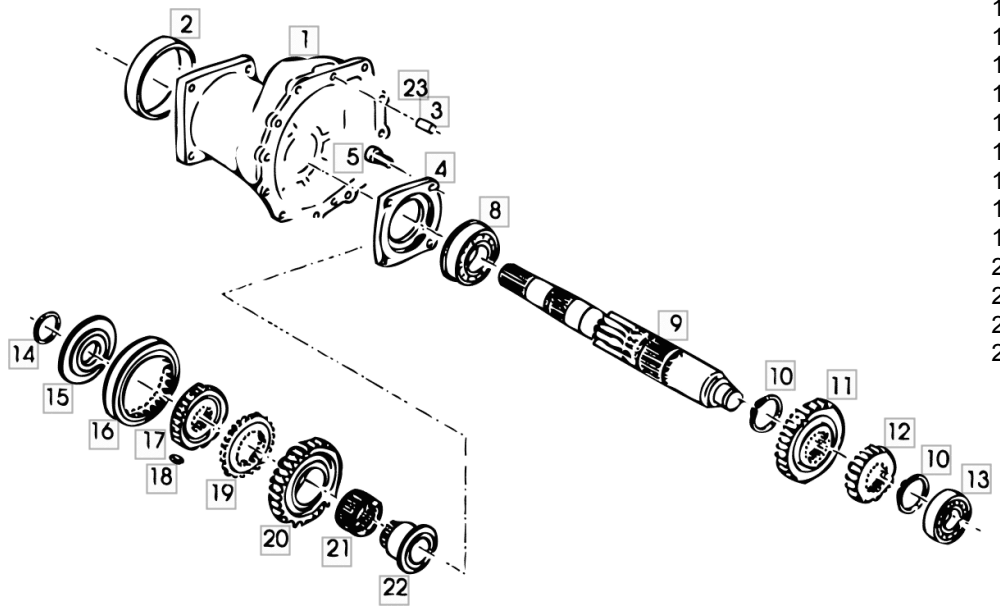


Fig.	Code	QTY	Name
33	16027241	1	tube sx/lh/li L
33.1	16027239	1	tube dx/rh/re R
34	06253075	2	pipe fitting
35	06253074	2	sleeve r 1/8 x 20
36	01128145	2	lubricator 1/8" D71412
37	01173941	2	stop b50-70/13 h3461
38	16013077	1	sleeve
39	01107748	1	ring 35 x 1.5, d471
40	01124846	2	screw m 16 x 60
41	01174740	2	washer 16.5
42	01102803	2	washer 16
43	01112886	2	nut m 16
44	16012844	1	hydraulic motor HMF 105-02
45	16029398	2	cylinder Ø 125 ☞ 16012844 ☞ 16029398
46	16022989	2	shim
47	16022988	2	disc Ø18/90 x 15
48	01124633	2	washer 18.5
49	01102803	2	washer 16
50	01112693	2	screw m 16 x 45, d933
51	16022995	2	pin
52	01112439	2	screw m 10 x 35, d933
53	06209768	2	nut m 10, d985
54	16011954	2	power control W
55	06546278	2	ring W
56	01145541	20	screw W
57.1	16049712	1	shaft I-497-sx + 9696 / L / W / X 54
58.1	16049715	1	shaft I-375-dx + 9696 / R / W / X 54
59	16031541	0	seal ring kit
60	16048771	2	valve
61	01120700	2	lubricator cm 8 x 1
62	01168225	2	lubricator m 8 x 1
63	16052550	1	tube 224 - 9695 / R
63.1	16052552	1	tube 284 - 9695 / R / W / X 54

**TRANSMISSION DRIVE SHAFT - 10175**

Fig.	Code	QTY	Name
1	16015332	1	body
2	16000321	1	ring
3	01105194	2	cylindrical plug 12x20 d7
4	16000271	1	cover
5	01131056	4	screw m10x20 6912-10
8	01179223	1	ball bearing
9	16012238	1	transmission shaft
10	01107773	2	circlip 60x2 d471
11	16019079	1	gear z-29
12	16019077	1	gear z-24
13	01109129	1	ball bearing
14	01107755	1	ring 40 x 1,75, d471
15	16006822	1	shim
16	16000324	1	sleeve
17	16000325	1	hub
18	16000326	2	heelpiece
19	16000323	1	crown wheel z-36
20	16006825	1	gear z-40
21	01171588	1	workshop tool
22	16006826	1	bushing
23	16015322	1	gasket



**TRANSMISSION DIFFERENTIAL + 10176**

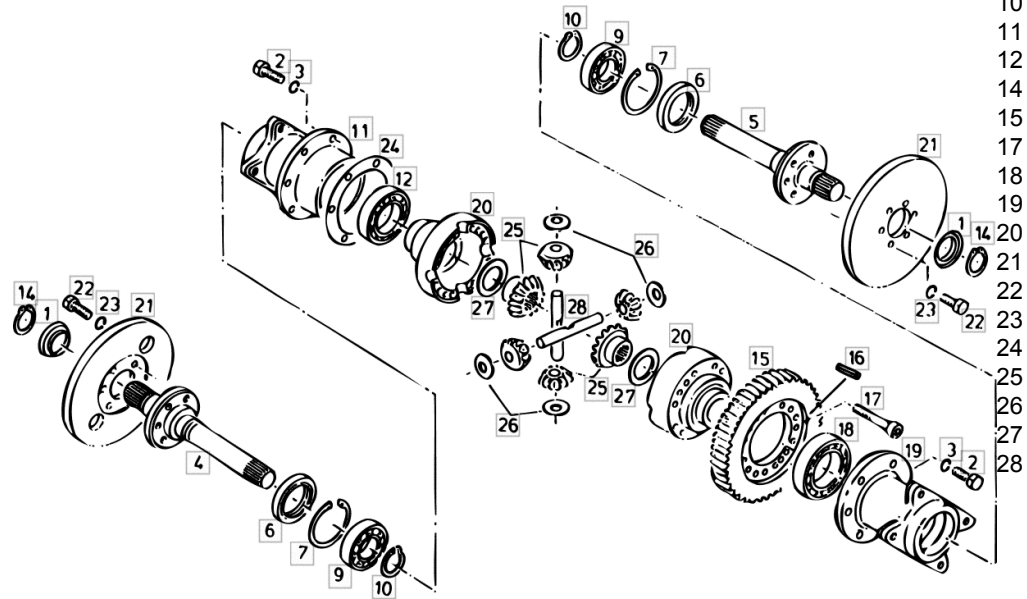


Fig.	Code	QTY	Name
1	16052968	2	lamination
2	01100235	12	screw m10x25 10.9
3	01107286	12	washer b10 d137
4	16053129	1	shaft
5	16053130	1	shaft
6	16000283	2	ring 70x90x10
7	01107788	2	circlip
9	01109132	2	ball bearing
10	01107755	2	ring 40 x 1,75, d471
11	16053131	1	support
12	01109078	1	ball bearing
14	01107760	2	circlip 45x1.75
15	16053133	1	gear wheel
17	01152831	16	screw m 10x110
18	01109091	1	ball bearing
19	16053132	1	plate
20	16053134	1	filter rod
21	16053139	2	brake disc
22	01137389	12	screw
23	01107286	12	washer b10 d137
24	16053144	1	disc
25	16053135	1	bevel gear
26	16053136	4	disc
27	16053137	2	disc
28	16053138	2	pin

**GRAIN TANK**

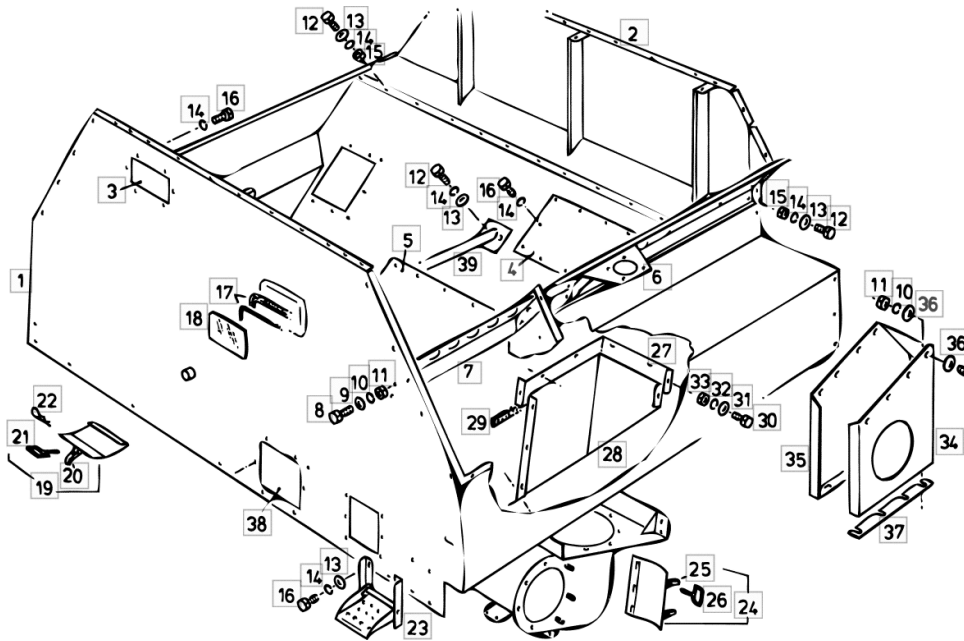


Fig.	Code	QTY	Name
1	16004945	1	tank
2	16005014	1	rear panel
3	06262827	1	cover
4	06257427	1	cover
5	16001037	1	cover
6	16003519	1	small frame
7	16003521	1	small frame
8	01112418	12	screw m 10 x 25, d933
8.1	01112429	10	screw m 10 x 30, d933
9	06214197	0	washer 10.5
10	01102800	22	washer 10.2
11	01102659	22	nut m 10, d934
12	01112322	0	screw m 8 p.1.25 x 20
12.1	01112333	0	screw m 8 x 25, d933
13	06214193	0	washer 8.4
14	01102799	0	washer 8, d128
15	01112824	0	nut m 8, d934
16	01112299	0	screw m 8 x 12, d933
17	06273337	1	gasket
18	06533680	1	glass
19	06332367	1	complete cover
20	06252860	1	stop
21	06253194	1	clevis
22	06264206	1	roll pin
23	16004970	2	foot board
24	06512053	1	complete cover
25	06253212	0	stop
26	06253194	2	clevis
27	16003544	1	gasket
28	16003546	1	cover
29	06508471	1	guard
30	01103316	0	screw m 6 p.1.0 x 16
31	06214189	0	washer 6.4
32	01102797	0	washer 6, d128
33	01112813	0	nut m 6
34	16001509	1	support sx/lh/li L
35	16001511	1	support R
36	01107165	0	washer 10.5
37	16003794	2	rail
38	16001051	1	cover
39	16004180	1	guide

**ELEVATOR HEAD WITH AUGER FOR GRAIN TANK TOP / W**

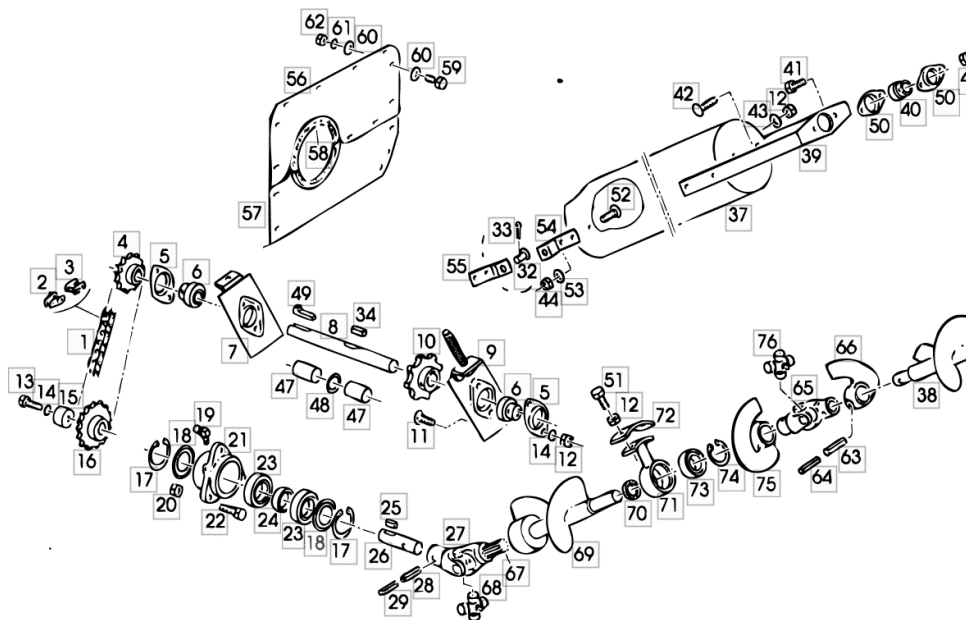


Fig.	Code	QTY	Name
			STANDARD EQUIPMENT
39	06544322	1	bearing block
40	06215753	1	ring 25 uel
41	01112322	2	screw m 8 p.1.25 x 20
42	01138842	2	screw m 10 x 25
43	06214197	4	washer 10.5
44	01104944	2	nut m 8, d985
47	06506819	2	spacer 38x89
48	06214481	0	shim 30x42x1,0
49	01118261	1	dowel 8x7x32
50	06215801	2	flange eb 25
51	01112429	2	screw m 10 x 30, d933
52	01108524	8	screw m 8 p.1.25 x 20
53	01107163	8	washer 9, d126
54	16010449	2	link
55	16010448	2	link
56	16010507	1	lamination
57	16010509	1	lamination
58	06500895	2	gasket L = MM 1400
59	01103316	14	screw m 6 p.1.0 x 16
60	01107158	0	washer 6.6, d125
61	01102797	14	washer 6, d128
62	01112813	14	nut m 6
63	01157404	2	pin 13x65
64	01157366	2	grain 8x65
65	06258782	1	universal joint
66	06258725	1	joint
67	06544245	1	shaft
68	16029940	0	universal joint
69	16010461		screw conveyor
69.1	16050637	1	screw conveyor - RICE EQUIPMENT
70	06258746	1	felt band 5 x 5 x 14
71	16010446	1	ring
72	16010480	1	link
73	01109061	1	bearing 6207 2rs
74	01107850	1	circlip 72 x 2.5
75	06258727	1	joint
76	06580149	1	universal joint
77	16054758	0	ring

## TOPLINER 4068 DAL/FROM/AB 8646

### HYDRAULIC SYSTEM

#### HYDRAULIC SYSTEM

WORKING HYDRAULIC SYSTEM - 9489.....	4D.07.1
WORKING HYDRAULIC SYSTEM + 9490.....	4D.07.2
WORKING HYDR.SYST.....	4D.07.3
WORKING HYDRAULIC SYSTEM - 9489.....	4D.07.4
WORKING HYDRAULIC SYSTEM + 9490.....	4D.07.5
WORKING HYDRAULIK SYSTEM / STEERING - 9489.....	4D.07.6
WORKING HYDRAULIK SYSTEM / STEERING + 9490.....	4D.07.7
MAIN HYDRAULIC STEERING.....	4D.07.8
WORKING HYDR. SYSTEM FOR CUTTING TABLE - 10175.....	4D.07.9
WORKING HYDR. SYSTEM FOR CUTTING TABLE + 10176.....	4D.07.10
LIFTING CYLINDER FOR CUTTER BARS.....	4D.07.11
WORKING HYDR. SYSTEM FOR CUTTING TABLE REEL.....	4D.07.12
OPERATING HYDRAULICS FOR GRAIN TANK PIPE.....	4D.07.13
WORKING HYDR. SYSTEM FOR GRAIN TANK TOP / W.....	4D.07.14
HYDRAULIK SYSTEM FIELD TRACKER / W.....	4D.07.15
HYDRAULIK SYSTEM FIELD TRACKER / W.....	4D.07.16
OPERATING HYDRAULICS FOR BALANCES / W.....	4D.07.17
INCLINATION HYDRAUL. SYSTEM BALANCE / W.....	4D.07.18
OPERATING HYDRAULICS FOR BALANCES / W.....	4D.07.19
WORKING HYDR. SYSTEM FIELD TRACKER BALANCE / W.....	4D.07.20
WORKING HYDR. SYSTEM FIELD TRACKER BALANCE / W.....	4D.07.21
WORKING HYDR. SYSTEM CUTTING ANGLE ADJUSTMENT BALANCE / W.....	4D.07.22
WORKING HYDR. SYSTEM OIL COOLER BALANCE / W.....	4D.07.23
WORKING HYDR. SYSTEM OIL COOLER COOLING BLOWER BALANCE / W.....	4D.07.24
WORKING HYDR.SYSTEM OIL RESERVOIR.....	4D.07.25
WORKING HYDR.SYSTEM HYDRAULIC PUMP S 3.....	4D.07.26
WORKING HYDR.SYSTEM HYDRAULIC PUMP BALANCE / W S 3.....	4D.07.27
CONTROL BLOCK S 2.....	4D.07.28
CONTROL BLOCK S 2.....	4D.07.29
CONTROL BLOCK S 2.....	4D.07.30
CONTROL BLOCK S 2.....	4D.07.31
CONTROL BLOCK S 2.....	4D.07.32
CONTROL BLOCK S 3 / W.....	4D.07.33
CONTROL BLOCK S 3 / W.....	4D.07.34
ADJUSTMENT VALVE S 2.....	4D.07.35
CHANGEOVER VALVE S 2.....	4D.07.36
CONTROL BLOCK INCLINATION HYDRAUL. SYSTEM BALANCE / W.....	4D.07.37
LIFTING CYLINDER FOR CUTTER BARS S 2.....	4D.07.38
LIFTING CYLINDER FOR GRAIN TANK PIPE S 2.....	4D.07.39
HYDROSTATIC STEERING S 3.....	4D.07.40

**WORKING HYDRAULIK SYSTEM / STEERING - 9489**

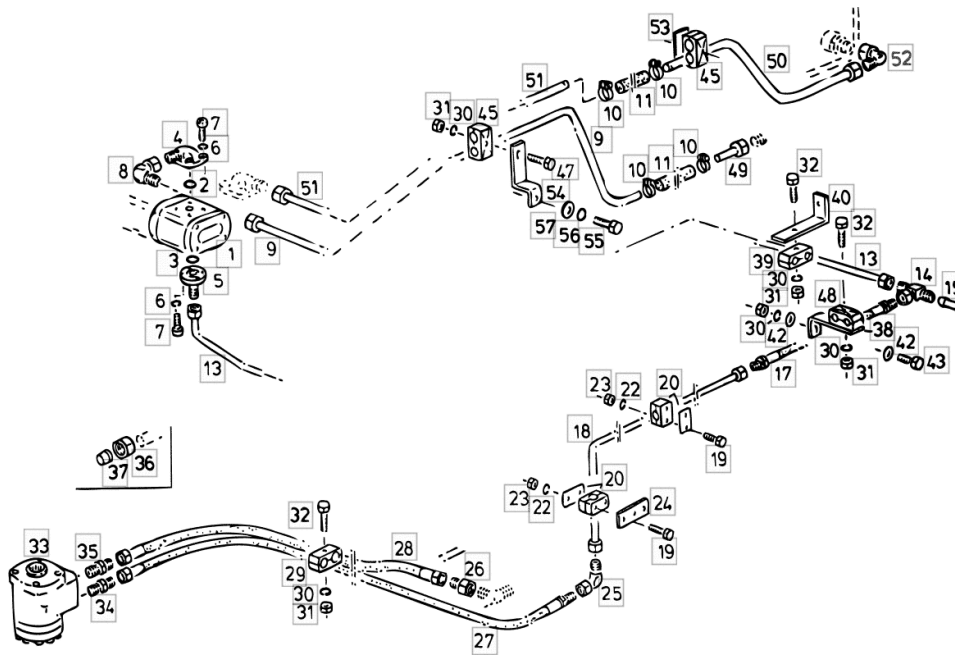


Fig.	Code	QTY	Name
1	06261693	1	hydraulic pump 8 cc B D27
2	04355526	1	'o' ring Ø 24 x 2,5
3	06214809	1	'o' ring 18x2,5
4	16033596	1	flange Ø 22 / m 30 p.2
5	03400563	1	flange Ø 40 / m 22 p.1.5
6	01102797	8	washer 6, d128
7	01110515	8	screw m 6 x 20
8	01172994	1	tongue evw 22-l
9	16004832	1	tube
10	01166378	2	hose clip Ø15/38
11	06237987	1	flexible hose Ø 22.2 / L = mm 220
13	16023804	1	tube
14	01141721	1	screw cl15h3131
15	01179134	0	stop 15-L
16	01179540	0	nut cl 15 h3105
17	06538796	1	flexible hose nw 12x400
18	16006054	1	tube
19	01127034	6	screw m 6 x 50, d933
20	16003281	3	clamp Ø 15
22	01102797	6	washer 6, d128
23	01112813	6	nut m 6
24	16004763	1	bracket
25	01172992	1	tongue evw 15 l
26	01178921	1	insert 22/18
27	06540163	1	flexible hose nw12x2200
28	16004759	1	flexible hose dn 16x1950
29	01141614	1	hose clip Ø 25/22
30	01102799	6	washer 8, d128
31	01112824	6	nut m 8, d934
32	01127046	2	screw m 8 x 60
33	16020944	1	hydrosteering B D41
34	01143416	1	pipe fitting 15 B
35	06216829	1	tongue 18 LM 1
36	01116652	0	nut
36.1	01116654	0	nut m18-l
36.2	01116655	0	nut cl 22
37	01116626	0	ring
37.1	01116628	0	ring
37.2	01116629	0	ring
38	16006095	1	bracket
39	06261591	2	clamp 18/15
40	06284188	1	bracket

**WORKING HYDR. SYSTEM FOR CUTTING TABLE REEL**

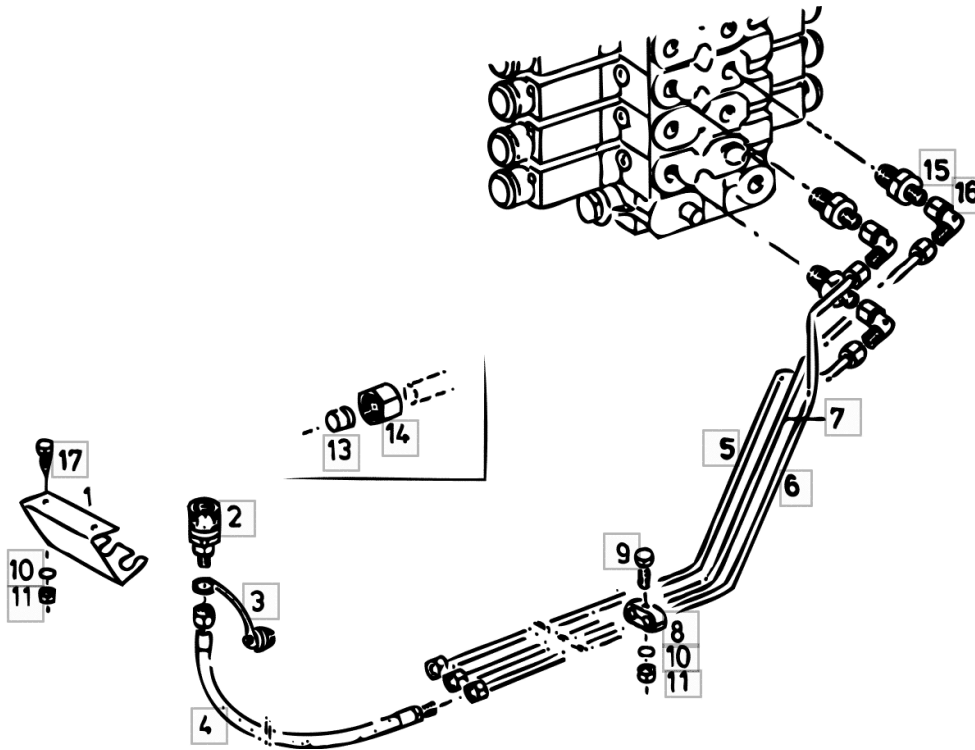


Fig.	Code	QTY	Name
1	16010161	1	small spring
2	06238755	3	pipe fitting m 24 p.2
3	06238738	3	guard
4	06257090	3	flexible hose
5	16018316	1	tube
6	16018310	1	tube
7	16018313	1	tube
8	01141548	4	clamp Ø 8/8
9	01127031	4	screw m 6 x 30, d933
10	01102797	4	washer 6, d128
11	01112813	4	nut m 6
13	01116635	0	ring
14	01127346	0	nut
15	01178305	3	tongue am18x1,5 h3132 - 9489
16.1	16040269	3	shaped part 90° + 9490
17	01103316	2	screw m 6 p.1.0 x 16
19	16048037	1	bracket W
20	01126918	4	screw m 8 p.1.25 x 20 W
21	01104944	8	nut m 8, d985 W
22	01112322	2	screw m 8 p.1.25 x 20 W
23	16040386	1	connection W ☞ 16040386
24	16048668	1	cover PVC W
25	16048665	2	pin W
26	16048666	3	sleeve W
27	16042851	3	pipe fitting ge 8-pl/r 3/8 W
28	16044568	3	flexible hose W
29	01127359	3	pipe fitting L8, d3902 W
30	16040269	3	shaped part 90° W
31	16053072	0	gasket

**OPERATING HYDRAULICS FOR BALANCES / W**

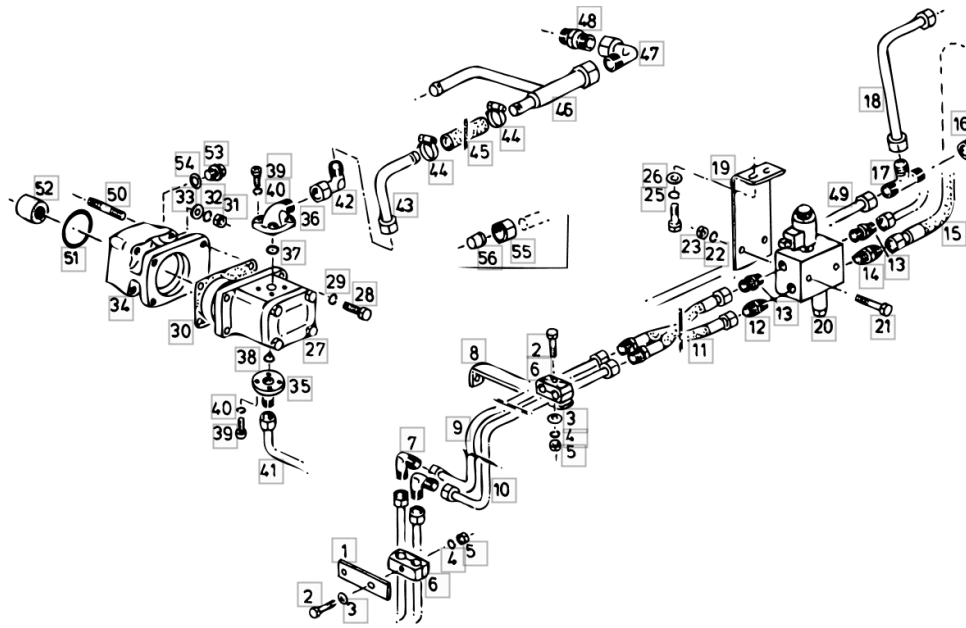
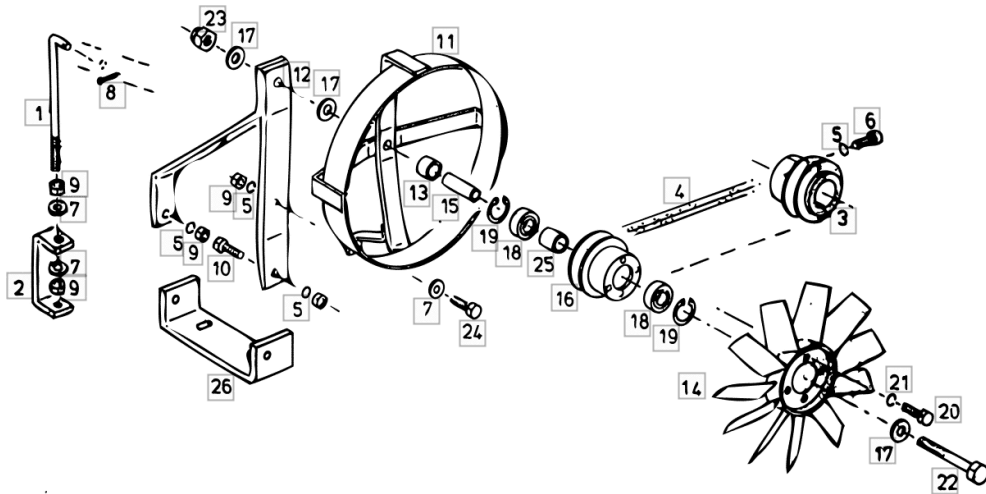


Fig.	Code	QTY	Name
42	16022707	1	pipe fitting EW 22 L
43	16056262	1	tube
44	06216440	2	hose clip Ø 25/40
45	06237987	1	flexible hose Ø 22.2 / L = mm 220
46	16026707	1	lamination
47	16025353	1	pipe fitting ew 35pl
48	16025358	1	shaped part Ø 35
49	16047373	1	tube
50	16025277	4	screw m 10 x 70
51	16025278	1	'o' ring 80x2
52	16025276	1	sleeve
53	01118985	1	screw am26x1,5 d7604
54	01118764	1	ring 26.5
55	01179540	0	nut cl 15 h3105
55.1	01116656	0	pipe fitting m 30 p.2
55.2	16025333	0	nut m 35-l
56	01116626	0	ring
56.1	01116629	0	ring
56.2	16025332	0	ring dpr 35-l

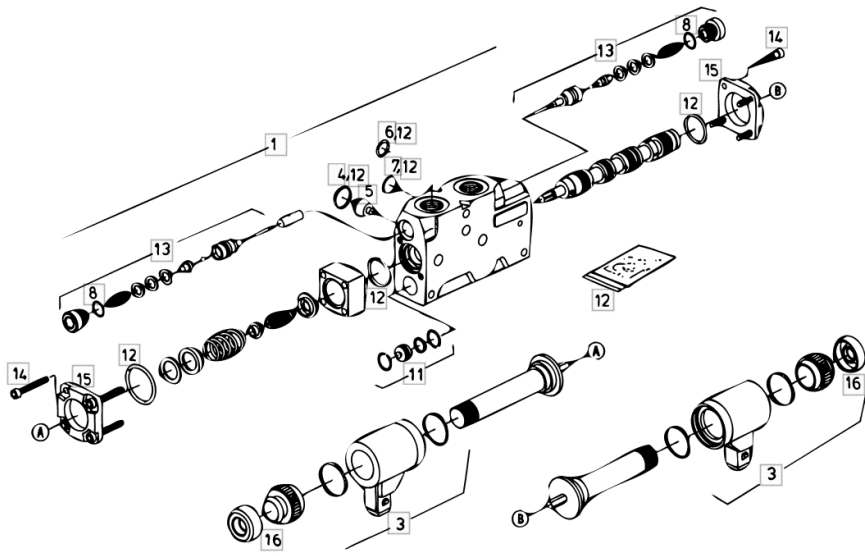
**WORKING HYDR. SYSTEM OIL COOLER COOLING BLOWER BALANCE / W**

Fig.	Code	QTY	Name
1	16016455	1	rod
2	16042817	1	rail
3	16016458	1	pulley
4	01145318	1	belt spa x 1120lw
5	01102800	5	washer 10.2
6	01122361	2	screw m 10 x 35
7	01107165	3	washer 10.5
8	01132625	1	split pin 3.2 x 20
9	01102659	5	nut m 10, d934
10	01112418	2	screw m 10 x 25, d933
11	16016468	1	ring
12	16042810	1	bracket
13	16016461	1	bushing
14	16019688	1	rotor blade
15	16016462	1	bushing
16	16016456	1	hub
17	06214295	0	washer 17.5
18	01178583	2	ring 6205 -2rs
19	01107838	2	circlip
20	01112333	4	screw m 8 x 25, d933
21	01102799	4	washer 8, d128
22	01111949	1	screw m16x140 d931
23	01127856	1	nut m 16, d985
24	01112429	1	screw m 10 x 30, d933
25	16022134	1	bushing
26	16042809	1	bracket



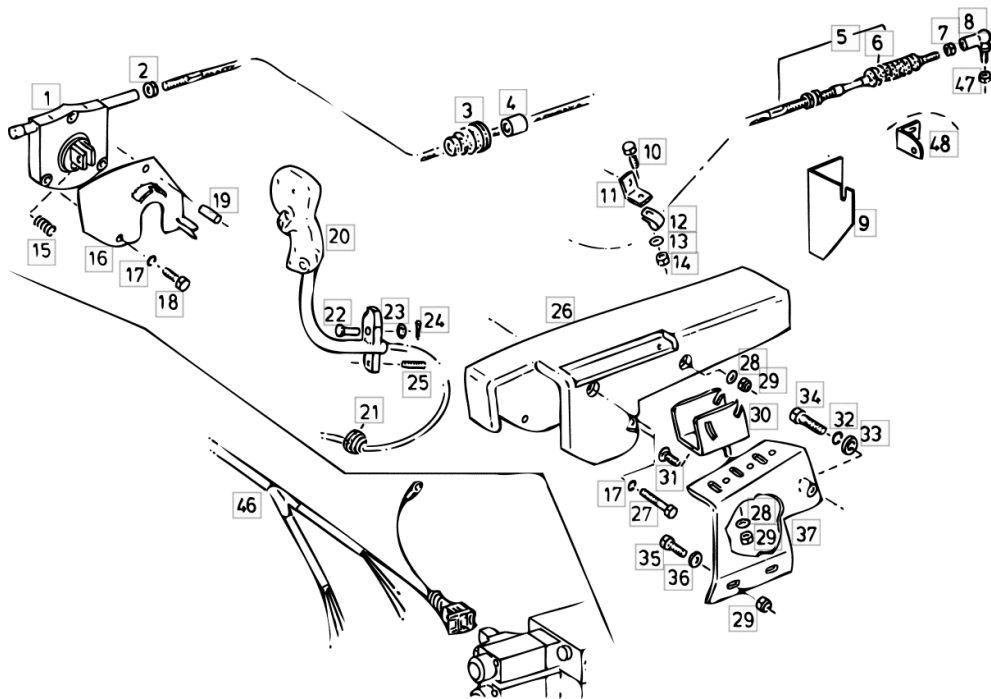
**CONTROL BLOCK S 3 / W**

Fig.	Code	QTY	Name
1	16033533	1	electro valve FIELD TRACKER ☞ 16033533
2	16039218	2	magneto
3	16039219	2	parts set
4	04386278	1	ring 18x2,5
5	16020341	1	valve
6	16020331	1	ring 9x2,5
7	16020332	4	ring 17x2,5
8	16020346	2	ring 13x2,5
11	16039216	1	parts set
12	16039215	0	gasket set
13	16039217	1	parts set
14	01126909	8	screw m 4 x 8
15	04438454	2	flange
16	04438443	2	rubber



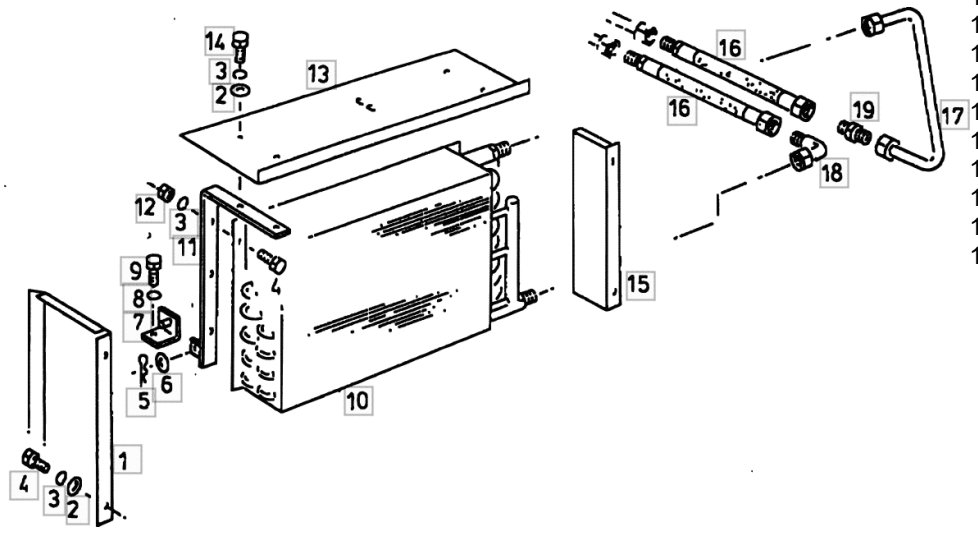
**TRAVELING SPEED REGULATION STANDARD EQUIPMENT**

Fig.	Code	QTY	Name
46.1	16040644	1	STANDARD EQUIPMENT cable harness W
47	01112824	1	BALANCE nut m 8, d934
48	NE	0	lamination
49	16056711	1	position sensor + A 2002



**TRAVELING HYDR.EQUIP OIL COOLER BALANCE / W**

Fig.	Code	QTY	Name
1	06516199	1	shield
2	06214189	8	washer 6.4
3	01102797	8	washer 6, d128
4	01112240	8	screw m 6 x 12
5	06264206	1	roll pin
6	01107165	1	washer 10.5
7	06502747	2	square
8	01102799	4	washer 8, d128
9	01112307	4	screw m 8 p.1.25 x 15, d933
10	06516192	1	oil cooler
11	06516202	2	support
12	01112813	12	nut m 6
13	16006415	1	diaphragm
14	01103316	4	screw m 6 p.1.0 x 16
15	16003457	1	guard
16	06258642	2	flexible hose
17	06516193	1	tube 22x595
18	01172994	1	tongue evw 22-l
19	01116713	1	tongue g 22 l



**STEP PLATE AND SCREENING DRAWER CONTROL**

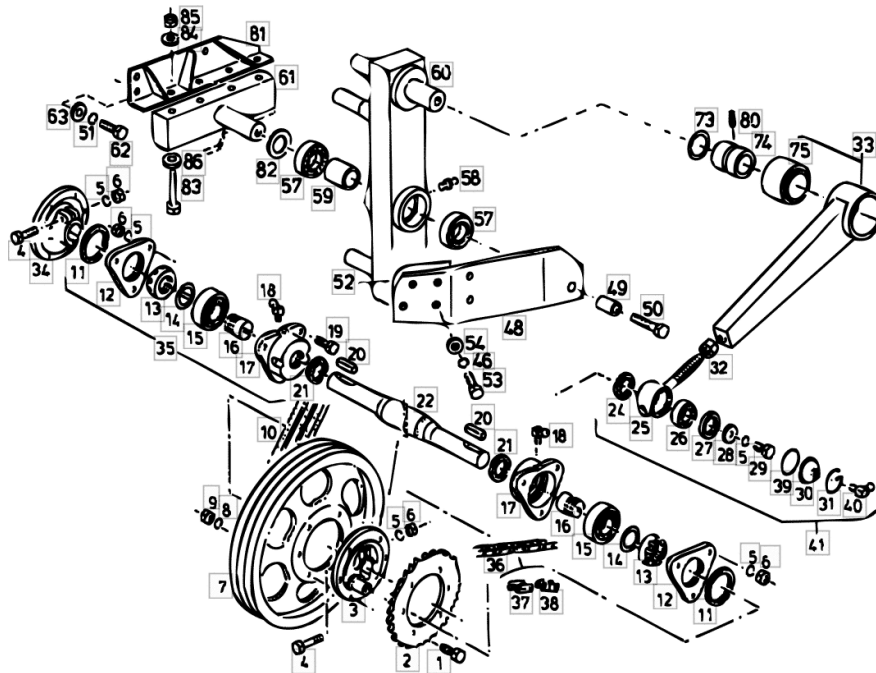
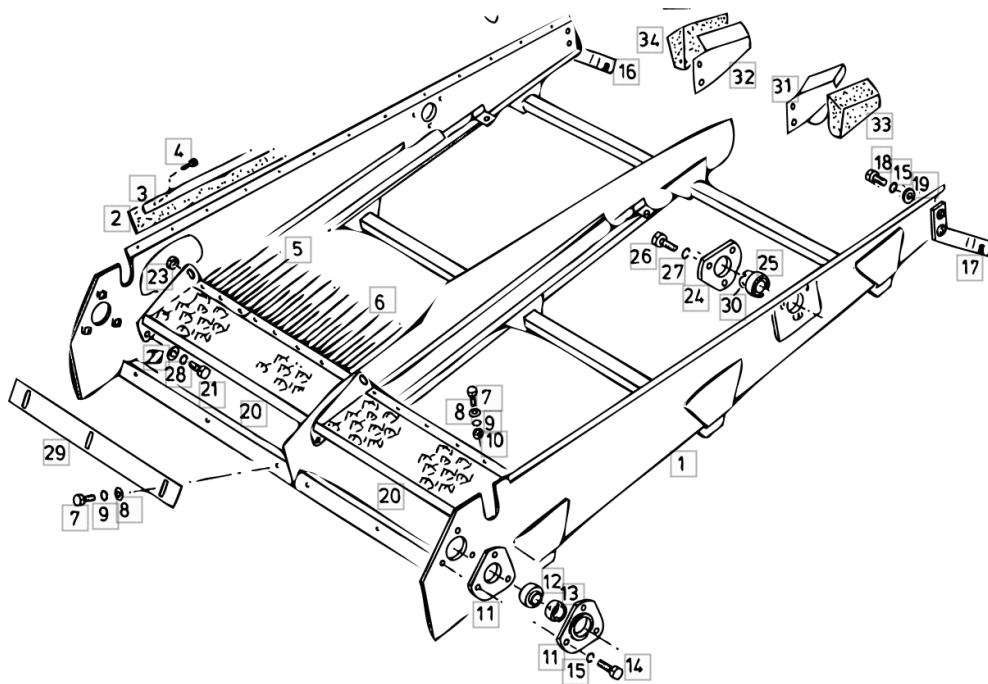


Fig.	Code	QTY	Name
48.1	16039885	1	link dx/rh/re R
49	16040928	2	spacer
50	01112641	2	screw m 14 x 60
51	01102801	6	washer 12
52	16042296	0	lamination mm 1.00
52.1	16042295	0	lamination mm 3.00
53	01112429	12	screw m 10 x 30, d933
54	06214197	12	washer 10.5
55	06209768	4	nut m 10, d985
57	01136765	4	ring 6207 rs d625
58	01120693	2	lubricator am 8 x 1
59	16041418	2	bushing
60	16043725	1	lever sx/lh/li L
60.1	16043724	1	lever dx/rh/re R
61	16038612	2	support
62	01112543	6	screw m 12 x 40
63	06214206	6	washer 13.2
73	06214515	0	shim 60 x 75 x 0,5
73.1	06214513	0	shim 60 x 75 x 0,2
74	16013091	2	bushing 45 x 59,5 x 77
75	16013085	2	bearing
76	16013106	2	washer 13 x 71 x 8
77	16013117	2	screw m 12 x 35
80	01115453	2	pin 6 x 24
81	16039328	1	square sx/lh/li - 8865 / L
81.1	16039330	1	square dx/rh/re - 8865 / L
82	01137526	2	shim 35 x 45 x 2,5
83	06209115	4	screw m 12 x 120 L
83.1	06209202	4	screw R
84	06214206	8	washer 13.2
85	06209778	8	nut m 12
86	16012311	4	washer 13

**TOP SCREENING DRAWER**

Fig.	Code	QTY	Name
29	16047684	2	+ 9490 lamination
30	16048663	2	+ 9490 ring
33	16054375	1	+ 9490 lamination sx/lh/li
34	16054377	1	+ 9490 sealing section dx/rh/re



**GRAIN PAN - 9885**

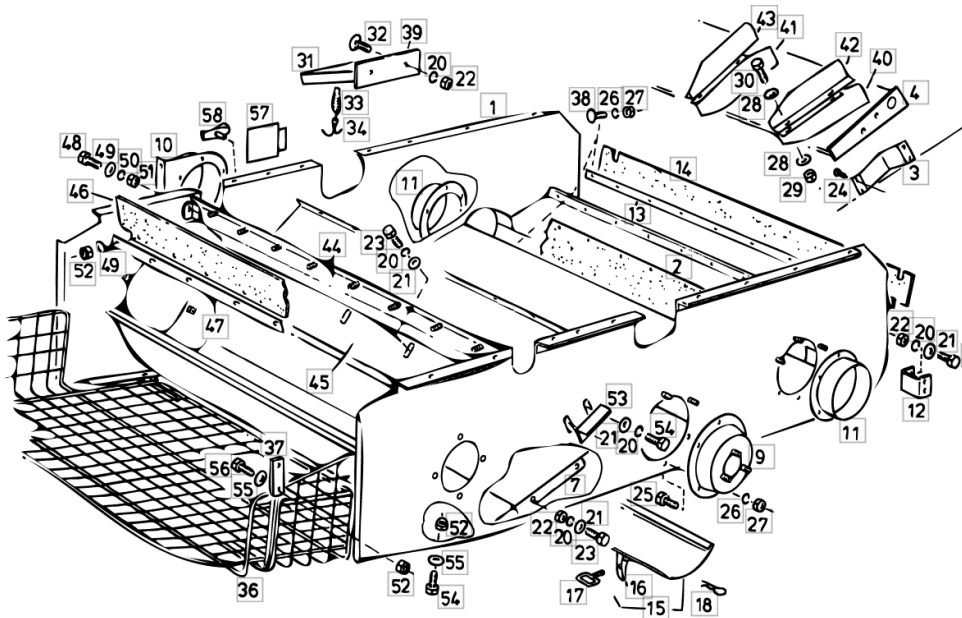


Fig.	Code	QTY	Name
1	16039845	1	sump - 9489
1.1	16048410	1	sump + 9490
2	16002382	1	guard
3	16012451	1	lamination sx/lh/li L
3.1	16012452	1	lamination dx/rh/re R
4	16022891	1	air duct - 9489 + 9490 / B L15
7	16001251	1	lamination
8	16005865	1	lamination
9	16002330	1	cover
10	16012507	1	connection
11	06288094	2	shim
12	06283473	3	bracket
13	06258461	2	lamination
14	06258460	2	guard
14	06256879	2	lamination STANDARD EQUIPMENT
15.1	06526468	2	cover W PIERCED
16	06252860	4	stop
17	06253194	4	clevis
18	06264206	4	roll pin
19	01112307	0	screw m 8 p.1.25 x 15, d933
20	01102799	0	washer 8, d128
21	01107163	0	washer 9, d126
22	01112824	0	nut m 8, d934
23	01112322	0	screw m 8 p.1.25 x 20
24	01143163	8	screw 4,2x9,5 d7981
25	01103316	0	screw m 6 p.1.0 x 16
26	01102797	0	washer 6, d128
27	01112813	0	nut m 6
28	01107158	0	washer 6.6, d125
29	01114357	0	nut m 6, d985
30	01112266	0	screw m 6 x 22
31	06295923	1	support
32	01108524	2	screw m 8 p.1.25 x 20
33	06215507	1	spring
34	06232540	1	clevis

**STRAW REMOVAL DEVICE VARIATOR**

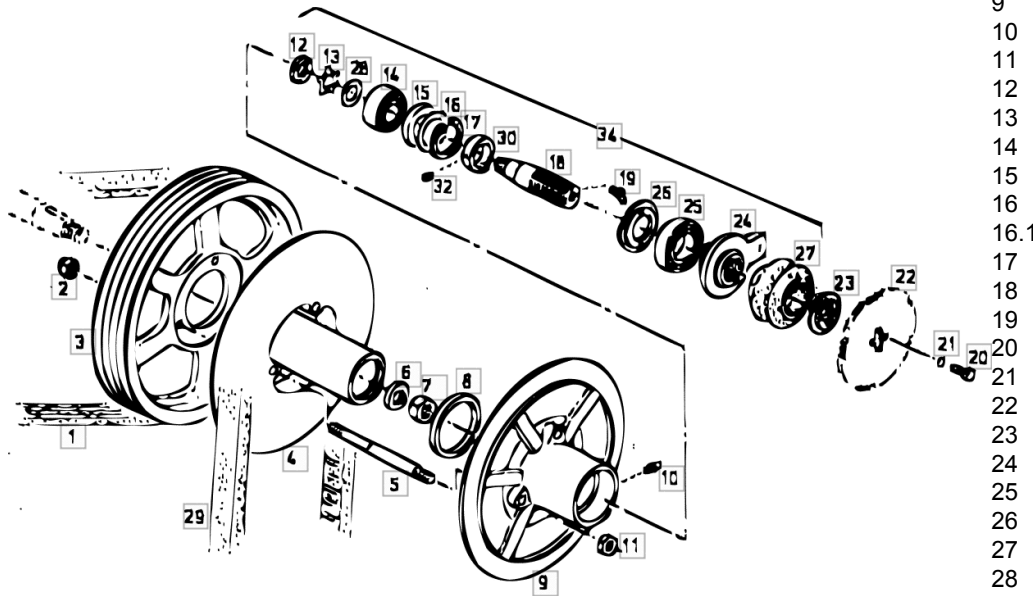


Fig.	Code	QTY	Name
1	01145050	1	belt 3hbx5140
2	01127856	3	nut m 16, d985
3	16002301	1	pulley 3/17 x 526
4	16002295	1	half pulley
5	06546228	3	pin 20 x 225
6	06296718	1	disc 25 x 55 x 10
7	01112943	1	nut m 24 p.1.5
8	06256552	1	ring
9	06549392	1	disc
10	01120692	2	lubricator am 6
11	01138938	6	nut m 16 p.1.5
12	01120600	1	nut m 30 p.1.5
13	01120663	1	ring nut a 30 d70952
14	01176285	1	ball bearing 3307, d628
15	06256569	1	spacer
16	06214517	0	shim 63 x 80 x 0.1
16.1	06214518	0	shim 63 x 80 x 0.2
17	01138971	1	circlip 80 x 4
18	06546229	1	sleeve
19	01120697	1	lubricator bm 8 x 1
20	01112333	2	screw m 8 x 25, d933
21	01102799	2	washer 8, d128
22	06515750	1	chain wheel Z = 48
23	06515751	1	disc
24	06546701	1	support
25	01109080	1	ball bearing 6212, d625
26	06508082	1	disc
27	06237700	1	bellows
28	06214320	1	washer 30.5
29	01145374	1	belt 63 x 25 x 2185Lw
30	06546703	1	ring G 30,32
32	01139633	2	grain m 6 x 6
34	16006811	1	accessories

**BEATER DRIVE TENSIONER ROLLER**

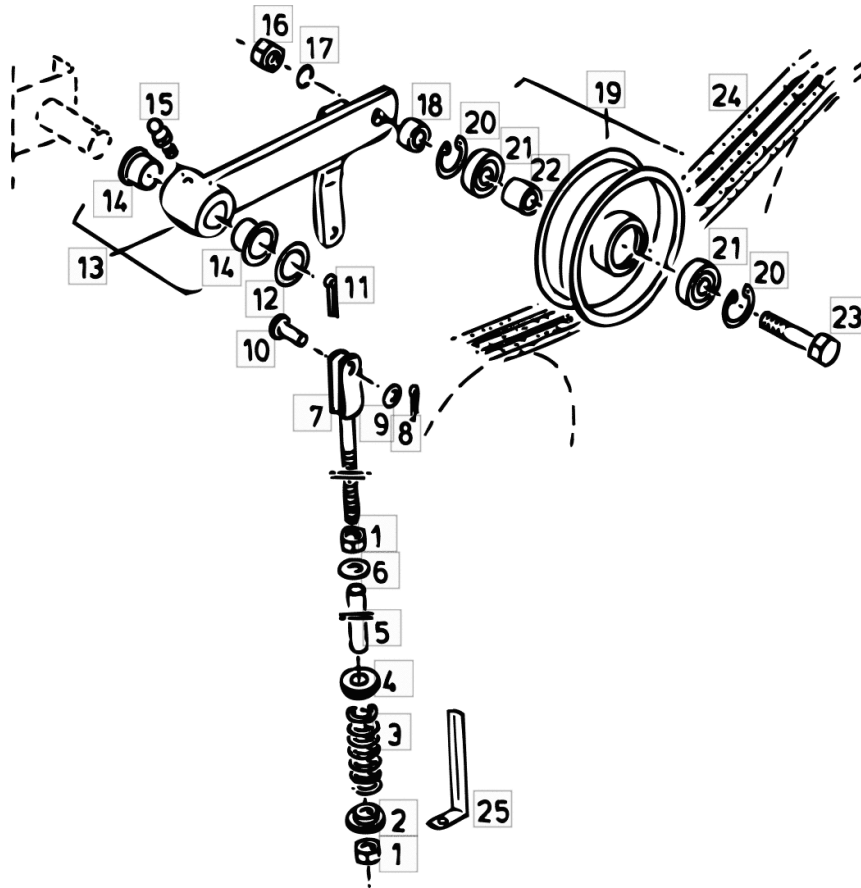


Fig.	Code	QTY	Name
1	01112858	2	nut m 12, d934
2	06515117	1	disc
3	06272836	1	spring 6 x 35
4	06519261	1	disc
5	06519227	1	tube
6	01123616	1	washer 13.5
7	06523938	1	stay m 12
8	01143003	1	split pin 3,2x 36 d94
9	01107165	1	washer 10.5
10	06210009	1	smau pin 10 x 28 x 24
11	01132647	1	split pin 6.3 x 40
12	01128377	1	washer 26x44x4
13	16000208	1	lever
14	06513031	2	sleeve 25 x 28 x 35
15	01120696	1	lubricator bm 6
16	01112886	1	nut m 16
17	01102803	1	washer 16
18	06256380	1	spacer
19	06255610	1	tensioner 64/180
20	01107827	2	circlip 40 x 1.75
21	01128197	2	bearing 2 RS
22	06256379	1	spacer
23	01111924	1	screw m 16 x 95
24	01145049	1	belt 3/17 x 2650Li
25	16046805	1	lamination + 9536

CLICK HERE TO **DOWNLOAD** THE COMPLETE MANUAL

- Thank you very much for reading the preview of the manual.
- You can download the complete manual from: [www.heydownloads.com](http://www.heydownloads.com) by clicking the link below



- Please note: If there is no response to CLICKING the link, please download this PDF first and then click on it.

CLICK HERE TO **DOWNLOAD** THE COMPLETE MANUAL