

1825 Uni-Loader

P.I.N. JAF0069587 and After

Bur 8-7252

NOTE: This catalog replaces Bur 8-7251
and Bur 8-7251R1.



B877387P

Bur 8-7252

Copyright © 1994 JI Case Company
Issued March, 1994

Printed in U.S.A.

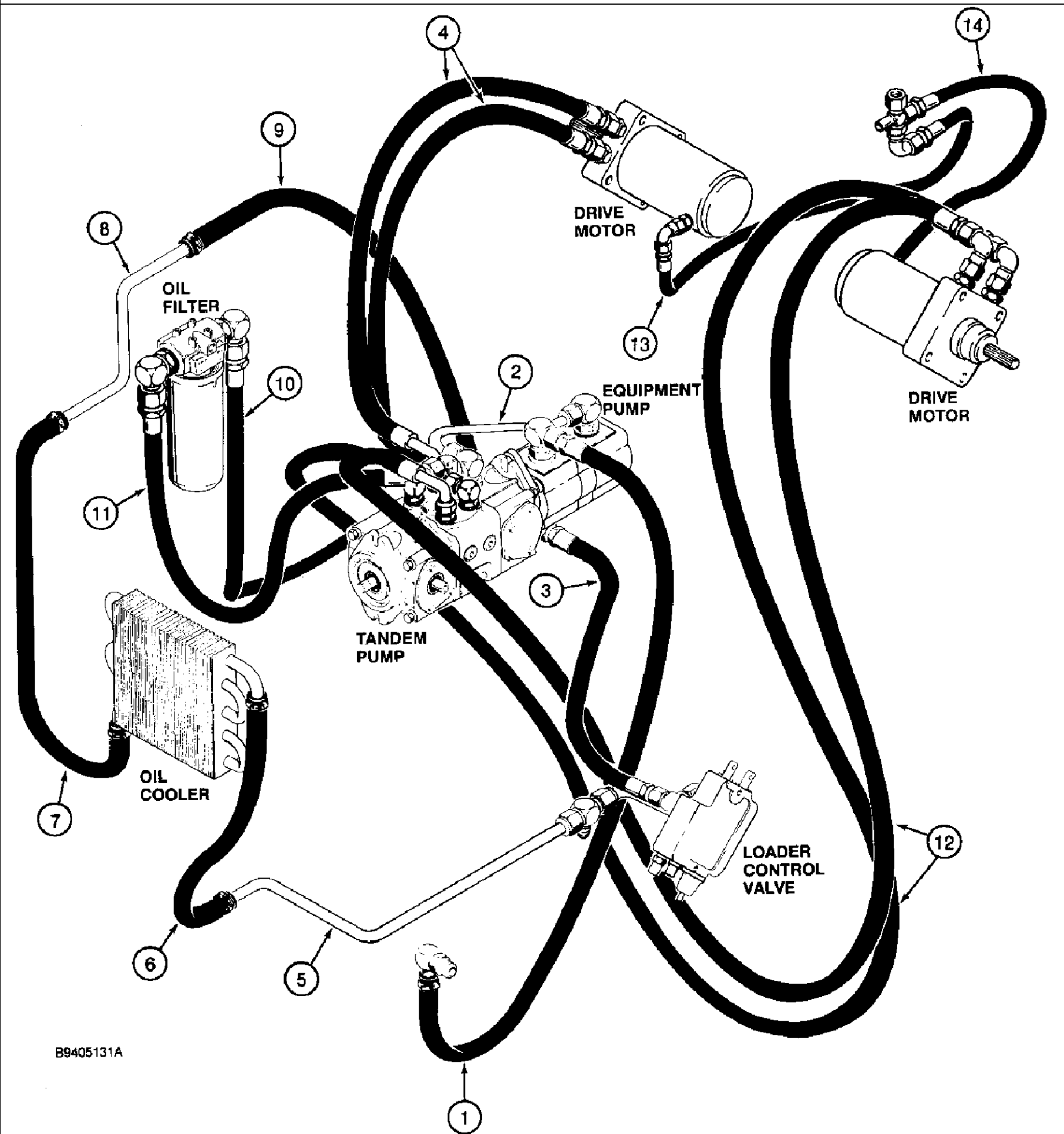
CLICK HERE TO **DOWNLOAD** THE COMPLETE MANUAL

- Thank you very much for reading the preview of the manual.
- You can download the complete manual from: www.heydownloads.com by clicking the link below



- Please note: If there is no response to CLICKING the link, please download this PDF first and then click on it.

CLICK HERE TO **DOWNLOAD** THE COMPLETE MANUAL



B9405131A

1825 CASE UNI-LOADER SKID STEER LOADER (S/N JAF0069587 & AFTER) - Engine

2-03C RADIATOR & MOUNTING PARTS, DIESEL MODELS, P.I.N. JAF0096438 & AFTER

Ref	Part Number	Qty	Description
1	109612A2	1	RADIATOR - engine cooling
2	D75755	2	INSULATOR - rubber
3	D52275	2	WASHER - flat, special, hardened
4	495-11041	2	WASHER, 3/8", SAE (Flat, 13/32 x 13/16 x 1/16")
5	413-624	2	BOLT - hex, 3/8 NC x 1-1/2 inch
6	110804A1	1	HOSE - formed, 90 degree bend, 25 mm ID, radiator, upper
7	A173839	1	HOSE - formed, 90 degree bend, 25 mm ID, radiator, lower
8	214-1416	4	CLAMP, HOSE, #16, 0.81/1.50 Type F Worm, Adj.
9	108657A1	1	SUPPORT - radiator, right-hand, BSN JAF014357
10	413-516	1	BOLT - hex, 5/16 NC x 1 inch
11	H426775	1-2	WASHER - flat, special, hardened
12	231-5145	1	NUT - hex serrated flange, 5/16 inch NC
13	109613A1	1	SHROUD - fan
14	110492A1	1	SUPPORT - radiator, left-hand, BSN JAF014357
15	614-8016	1	BOLT - hex, full threads, 8-1.25 x 16 mm
16	492-11031	1	WASHER, LOCK, 5/16"
17	492-11025	6	WASHER, LOCK, 1/4"
18	614-6016	3	Bolt, Hex, M6 x 16, 8.8
19	H426767	6	WASHER - flat, 9/32 x 5/8 x 3/64 inch, hardened
20	614-6010	3	BOLT, Hex, M6 x 10, 8.8, Full Thd, ref. #20 (P/N 614-6016) was replaced by 614-6010 bolt - M6 X 10 - class 8.8 znd effective 2/95 to shorten radiator mounting bolts to eliminate rubbing on radiator.
21	515-22127	1	CLAMP, 1/2", Insul, 5/16" Bolt, P-type, Closed
22	A170241	1	CAP, FILLER, radiator, 15 psi
23	176465A2	1	SUPPORT - radiator, right-hand, ASN JAF014357
24	175310A2	1	SUPPORT - radiator, left-hand, ASN JAF014357
25	413-510	2	BOLT - hex, 5/16 NC x 5/8 inch

1825 CASE UNI-LOADER SKID STEER LOADER (S/N JAF0069587 & AFTER) - Engine

2-09A MUFFLER & EXHAUST PIPE, EUROPEAN MODELS

Ref	Part Number	Qty	Description
1	A184808	1	MUFFLER - exhaust
2	D139178	1	SUPPORT - standard muffler, use with A184808 muffler
3	A184704	1	MUFFLER - exhaust, spark arrester (if equipped)
4	H674408	1	SUPPORT - muffler, use with A184704 muffler
5	413-516	2	BOLT - hex, 5/16 NC x 1 inch
6	H426775	3	WASHER - flat, hardened
7	232-4115	2	NUT, LOCK, 5/16"-18, GC
8	D135119	1	PIPE - exhaust
9	D61412	1	CLAMP - exhaust pipe, includes hardware

See Fig. 2-34 for muffler gasket and related parts

1825 CASE UNI-LOADER SKID STEER LOADER (S/N JAF0069587 & AFTER) - Engine

2-14 OIL PAN, DIESEL MODELS

Ref	Part Number	Qty	Description
1	1959161C1	1	PAN - oil
2	1981622C1	1	GASKET - oil pan
3	1959147C1	22	BOLT - hex, 6 x 19 mm
4	1959162C1	22	WASHER - head lock, oil pan
5	1959148C1	1	SCREEN - oil
6	1959164C1	1	BOLT - oil filter
7	1959166C1	1	O-RING - oil filter
8	1959168C1	1	DIPSTICK - oil
9	1959149C1	1	PLUG - drain
10	1510933660	1	WASHER - drain plug, 12 x 16 x 1.5 mm, was 1959150C1
	198614A1		TUBE oil dipstick
	198615A1		BRACKET oil dipstick
	126136A1	2	BOLT, for bracket
	0481110320		SEAL, O-ring, The seal ring, per vendor, is approximately 35.5 mm x 30 mm. Could possibly try 30606R1 O-ring or 239-5123 if no stock is available on 0481110320.

1825 CASE UNI-LOADER SKID STEER LOADER (S/N JAF0069587 & AFTER) - Engine

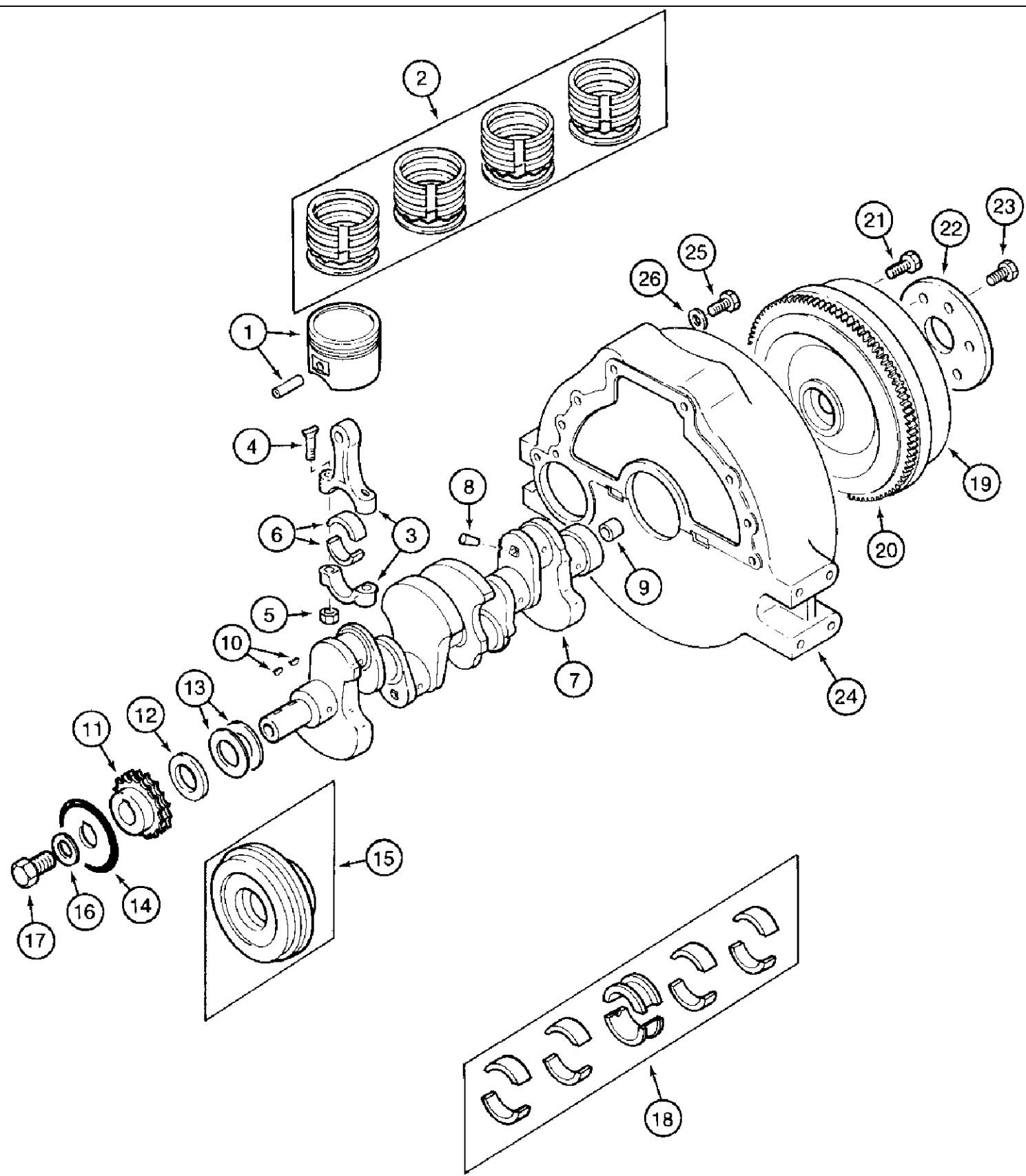
2-24 PISTONS AND CRANKSHAFT, DIESEL MODELS

Ref	Part Number	Qty	Description
1	1959345C1	4	PISTON - standard
2	1959346C1	4	SET - ring, piston
3	1959347C1	4	PIN - piston
4	1959348C1	8	RING - snap, piston pin
	1959349C2	4	ROD ASSEMBLY - connecting, was 1959349C1, Includes: Ref. 6 - 9
6	NSS	4	ROD - connecting, order connecting rod assembly 1959349C2
7	1959351C1	4	BUSHING - connecting rod, ref# 7 - small end bushing comes without hole. Hole must be drilled after installation using a 4. mm diameter (.157 in. diameter) drill. BE SURE TO CHAMPFER THE OIL HOLE CIRCUMFERENCE WITH AN OIL STONE.
8	1959352C1	8	BOLT - connecting rod, 7 x 42 mm
9	1959353C1	8	BEARING - crank pin
	1959358C1	1	CRANKSHAFT ASSEMBLY - engine, Includes: Ref. 11 - 13
11	NSS	1	CRANKSHAFT - engine
12	1959356C1	1	PLUG - pin
13	1959357C1	1	SLEEVE - crankshaft
14	1959360C1	1	GEAR - crankshaft
15	1959306C1	1	KEY - feather
16	1959361C1	1	DISC - crankshaft
17	1959362C1	1	COLLAR - crankshaft
18	1959363C1	1	O-RING - crankshaft
19	1959364C1	1	BEARING - main crankshaft 1, Ref #19 - (1 pc. Bushing) 05/29/96
20	1959365C1	8	BEARING - main crankshaft 2
21	1959366C1	2	PLATE - bearing thrust side 1
22	1959367C1	2	PLATE - bearing thrust side 2

1825 CASE UNI-LOADER SKID STEER LOADER (S/N JAF0069587 & AFTER) - Engine

2-34 INTAKE MANIFOLD & EXHAUST MANIFOLD, DIESEL MODELS

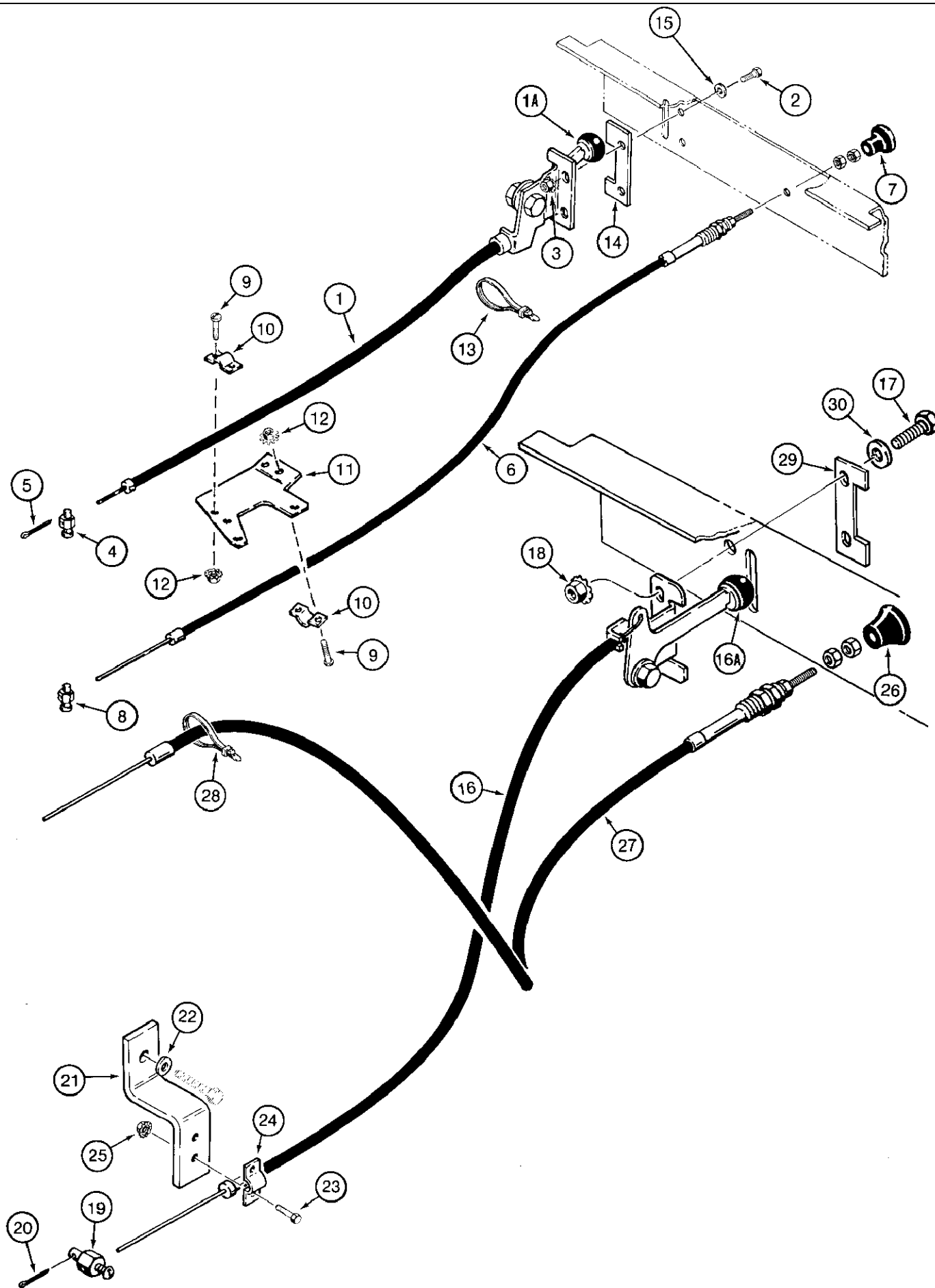
Ref	Part Number	Qty	Description
1	1959255C1	1	MANIFOLD - intake
2	1981636C1	1	GASKET - intake manifold, No. 1 cylinder
3	1981637C1	3	GASKET - intake manifold, No. 2, No. 3, and No. 4 cylinders
4	1959215C1	5	BOLT - bearing case cover
5	1959259C1	3	BOLT - manifold
6	1959206C1	3	WASHER - lock
7	1959261C1	1	MANIFOLD - exhaust
8	1959262C1	4	GASKET - exhaust manifold
9	1959263C1	8	STUD - exhaust manifold, 6 x 28 mm
10	1959205C1	8	NUT - cover stud, 6 mm
11	1959206C1	8	WASHER - lock
12	1959265C1	4	STUD - 10 mm
13	1981630C1	1	GASKET - muffler
14	1959269C1	4	NUT - 10 mm
15	1959171C1	4	WASHER - lock
16	1959271C1	1	CAP - intake manifold



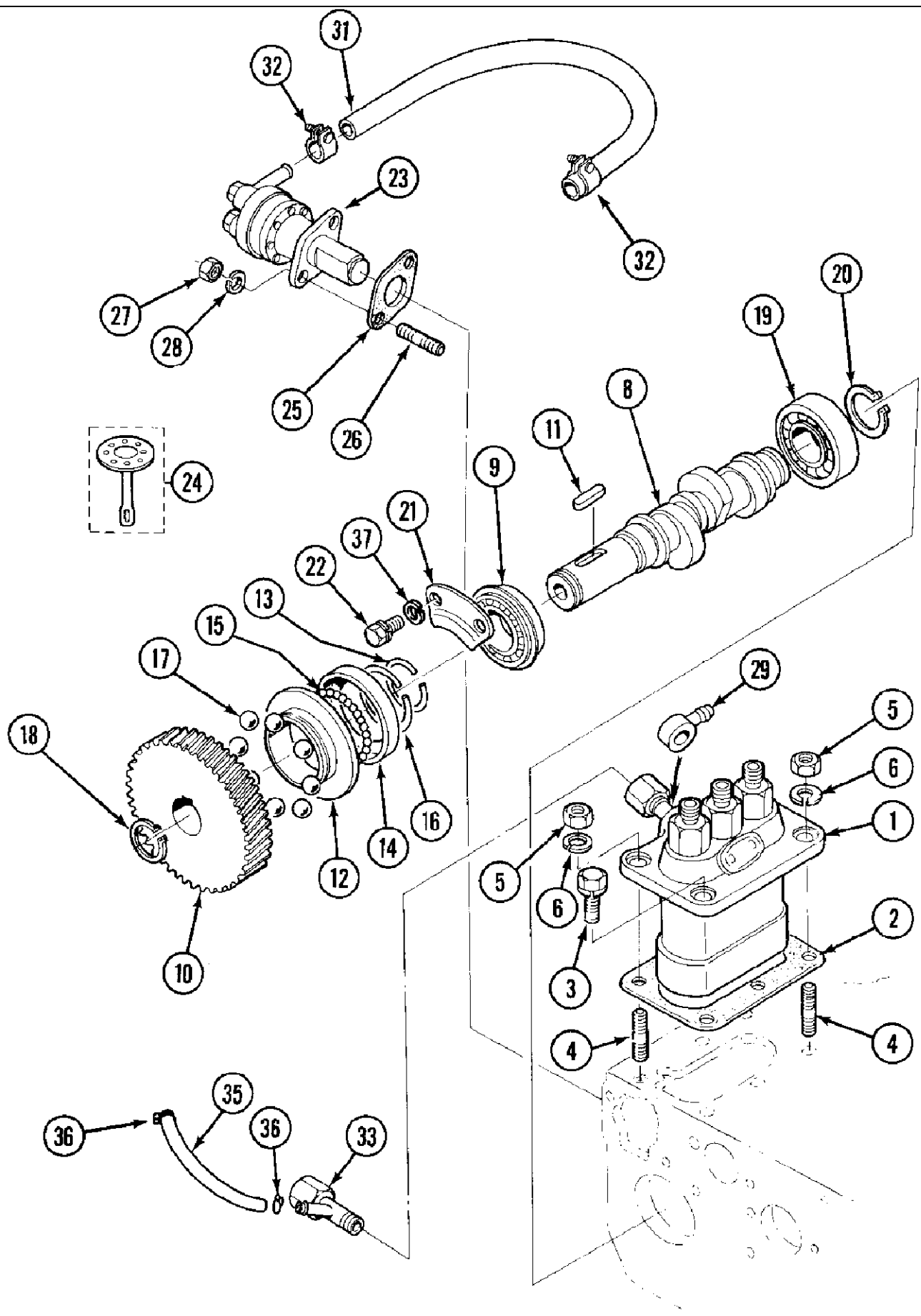
1825 CASE UNI-LOADER SKID STEER LOADER (S/N JAF0069587 & AFTER) - Engine

2-52 OIL PUMP AND FILTER, GASOLINE MODELS

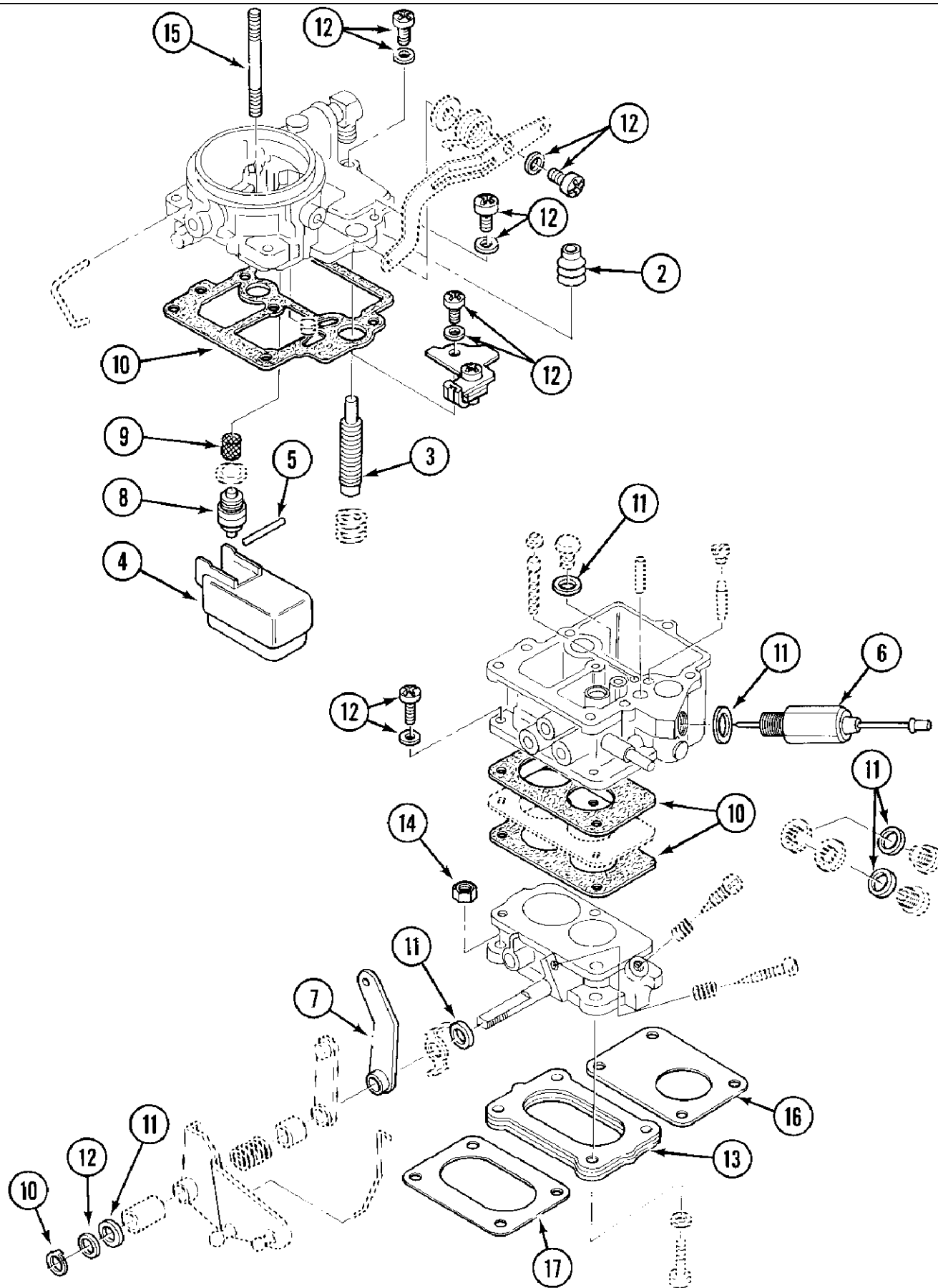
Ref	Part Number	Qty	Description
	1972197C1	1	PUMP ASSEMBLY - oil, Includes: Ref. 1 - 4
1	NSS	1	PUMP - oil
2	1972245C1	1	GASKET - oil pump cover
3	1972246C1	1	SCREW - pan head with lock washer
4	1972247C1	1	VALVE - regulator
5	1972198C1	1	GASKET - oil pump to cylinder block
6	892-11008	3	WASHER, LOCK, M8
7	1972199C1	2	BOLT - oil pump
8	814-8055	1	BOLT - hex, 8-1.25 x 55 mm
9	1972200C1	1	STRAINER - oil
10	1972201C1	1	GASKET - oil strainer
11	614-8020	2	BOLT - hex, 6-1.25 x 20 mm
12	892-11008	2	WASHER, LOCK, M8
13	1972202C1	1	ELEMENT - oil filter
14	1972203C1	1	SWITCH - oil pressure



3-16 INJECTION PUMP DRIVE, DIESEL MODELS



3-26 CARBURETOR, GASOLINE MODELS



B902440-45

All parts that are shown in phantom are not serviced separately.

1825 CASE UNI-LOADER SKID STEER LOADER (S/N JAF0069587 & AFTER) - Electrical System

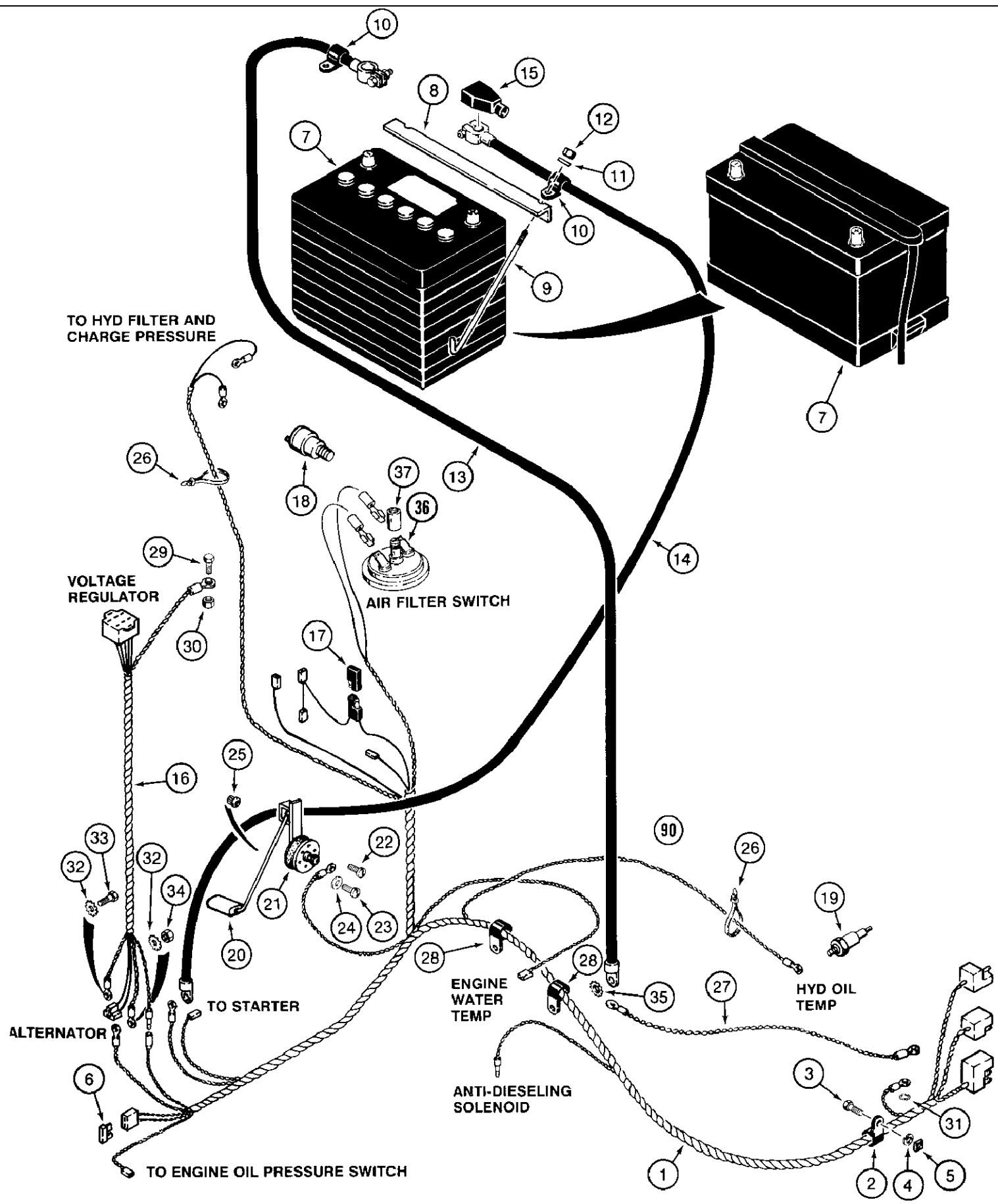
4-06 STARTER MOTOR, DIESEL MODELS

Ref	Part Number	Qty	Description
	1959380C1	1	STARTER ASSEMBLY - engine, for mounting hardware see Fig. 2-36, Includes: Ref. 1 - 22
1	1959587C1	1	RETAINER - gear
2	NSS	1	HOUSING - starter field
3	NSS	1	ARMATURE ASSEMBLY - starter, Includes: Ref. 4 and 5
4	1959588C1	2	BEARING - ball, commutator end
5	1959589C1	1	BEARING - ball, drive end
6	1959590C1	1	CLUTCH - drive
7	1959591C1	1	ROLLER - retainer
8	1959592C1	1	PINION - idler
9	1959593C1	1	GEAR - starter
10	NSS	1	HOUSING - drive end
11	1959594C1	1	BRUSH ASSEMBLY - starter, Includes: Ref. 12
12	NSS	1	SPRING - brush
13	NSS	1	FRAME - commutator end
14	1959595C1	1	SWITCH - magnetic
15	NSS	1	BOLT - through, with lock washer, frame
16	NSS	1	NUT - magnetic switch
17	211-209	1	BALL - 11/32 inch, grade 25, chrome alloy steel
18	1959596C1	1	SPRING - clutch drive
19	NSS	1	BOLT - special, frame
20	1959597C1	2	O-RING - starter
21	NSS	1	BOLT ASSEMBLY - frame
22	A49803	1	BREATHER - starter

1825 CASE UNI-LOADER SKID STEER LOADER (S/N JAF0069587 & AFTER) - Electrical System

4-16 FRONT HARNESS AND INSTRUMENT CLUSTER, PRIOR TO P.I.N. JAF0096778

Ref	Part Number	Qty	Description
1	D136819	1	HARNESS - front, BSN JAF0075034
1A	H439158	1	HARNESS - front, BTW JAF0075034 & JAF0096777
2	D139479	1	CLUSTER - instrument, no longer available, order Ref. 2A instrument cluster and Ref. 14 adapter harness for service
2A	H438453	1	CLUSTER - instrument
3	190-103	4	SCREW - machine, pan head Phillips, No. 10 NF x 1 inch
4	D122634	4	RETAINER - mounting screw
5	D93716	2	PLUG - 3 inch (76 mm) diameter, plastic
6	3107556R92	1	SWITCH - ignition, includes two keys, washer and nut, was K203992
7	D136931	1	COVER - front harness
8	413-512	2	BOLT - hex, 5/16 NC x 3/4 inch
9	495-11034	2	WASHER, 5/16" SAE (flat, 11/32 x 11/16 x 1/16")
10	231-5145	2	NUT - hex, flange, self-locking, 5/16 inch NC
11	353-407	1	PLUG - button, 11/16 inch, used on gasoline models
12	H603852	1	LAMP - warning, glow plug, used on diesel models, Includes: Ref. 12A
12A	114323A1	1	LENSE - lamp, red
13	A149802	1	FUSE - 20 amp
14	H439038	1	HARNESS - adapter (used with D136819 harness)



B9403200A

See Fig. 9-02 for battery mounting box. See Fig. 4-08 for voltage regulator.

CLICK HERE TO **DOWNLOAD** THE COMPLETE MANUAL

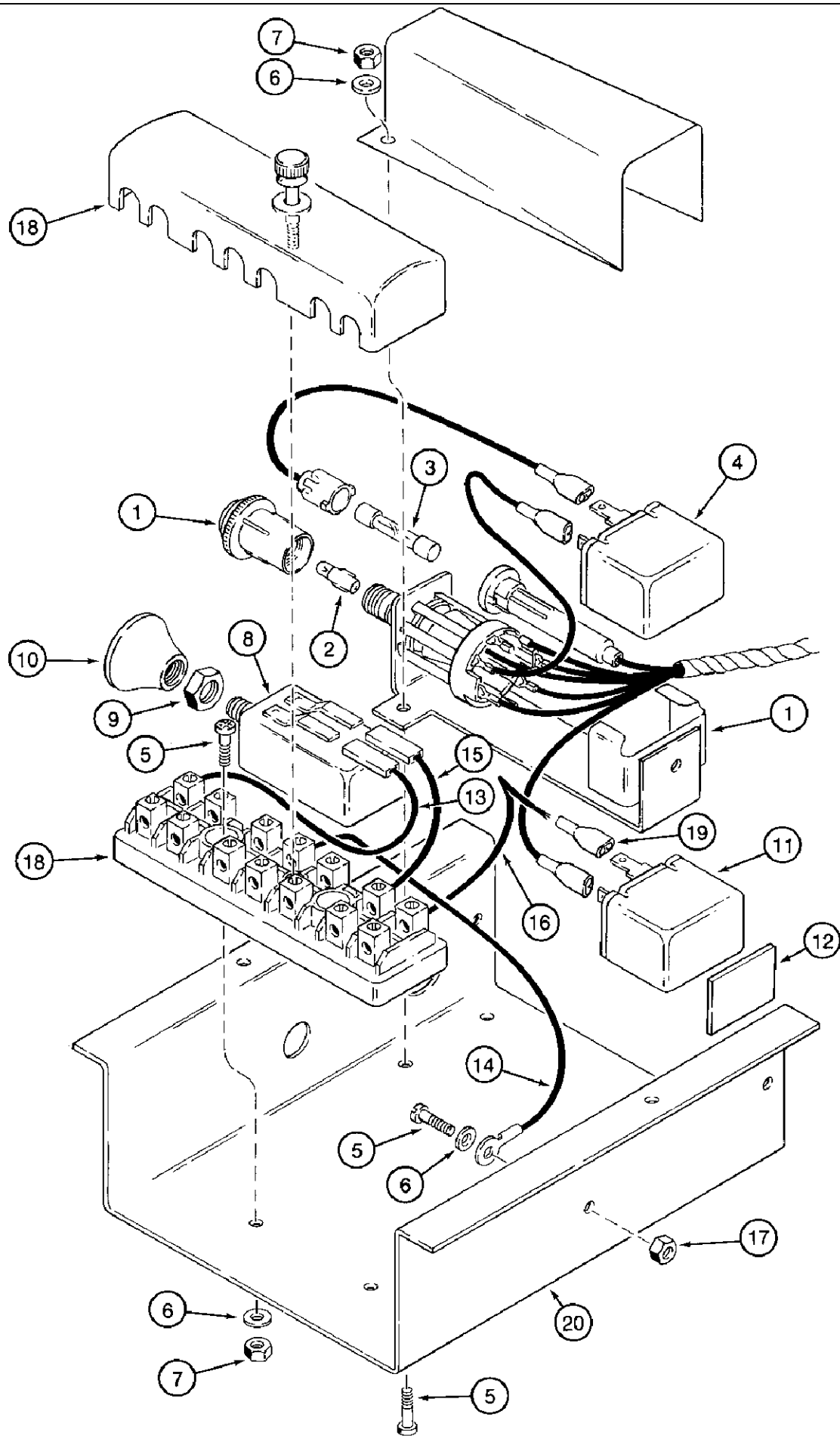
- Thank you very much for reading the preview of the manual.
- You can download the complete manual from: www.heydownloads.com by clicking the link below

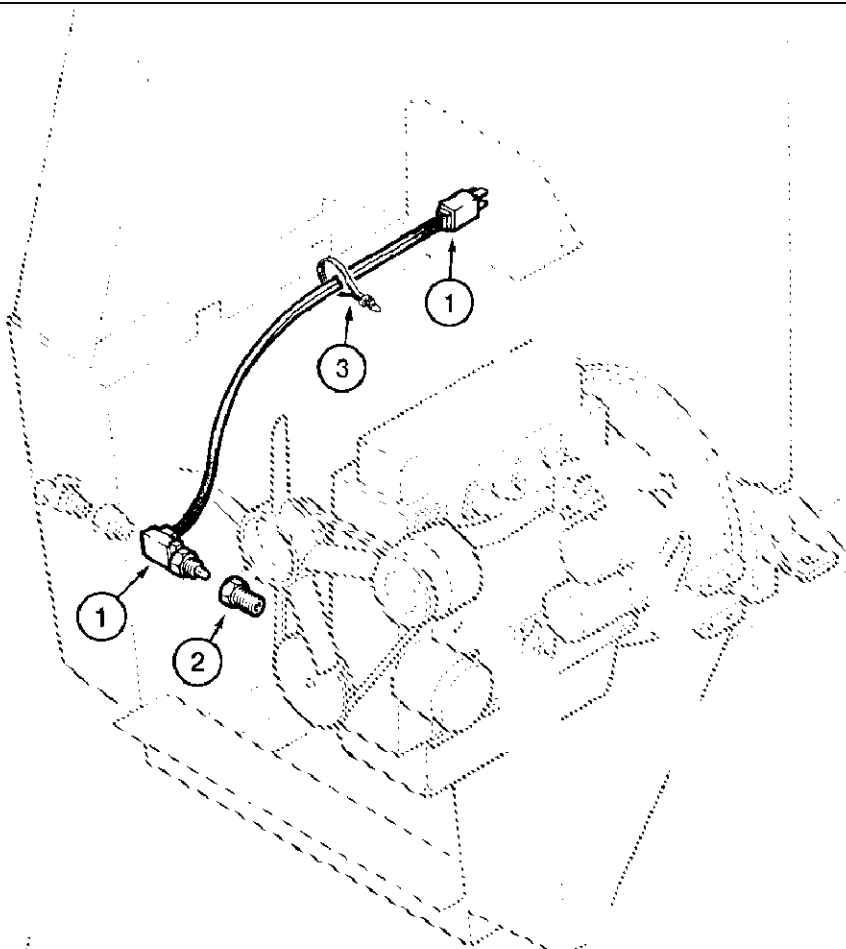


- Please note: If there is no response to CLICKING the link, please download this PDF first and then click on it.

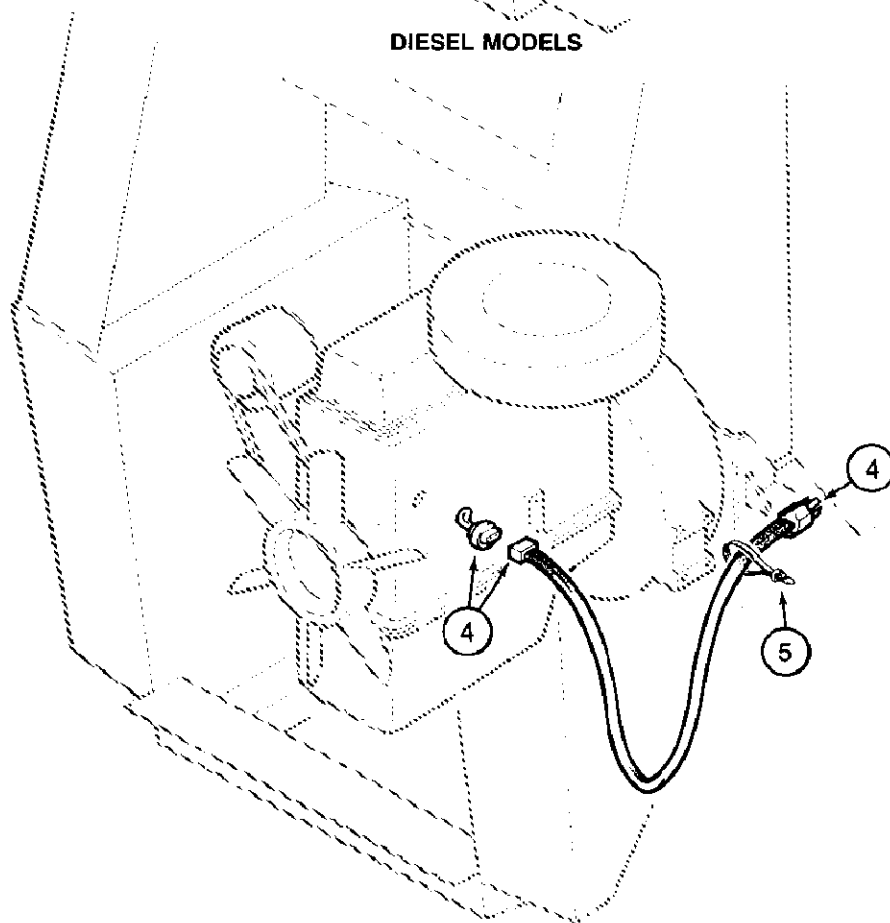
CLICK HERE TO **DOWNLOAD** THE COMPLETE MANUAL

4-23G ROAD LAMP SWITCH ASSEMBLY, EUROPEAN MODELS

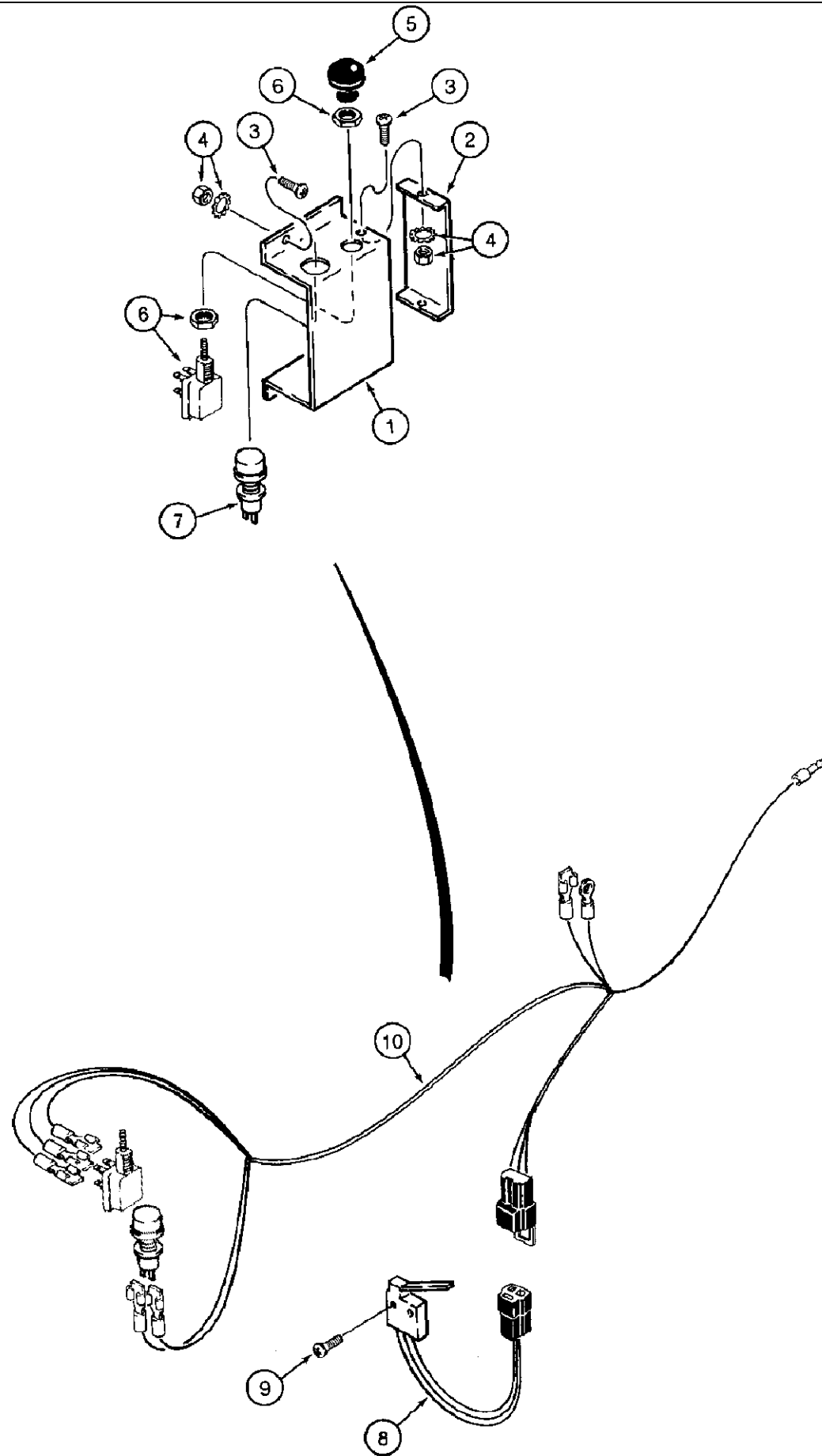


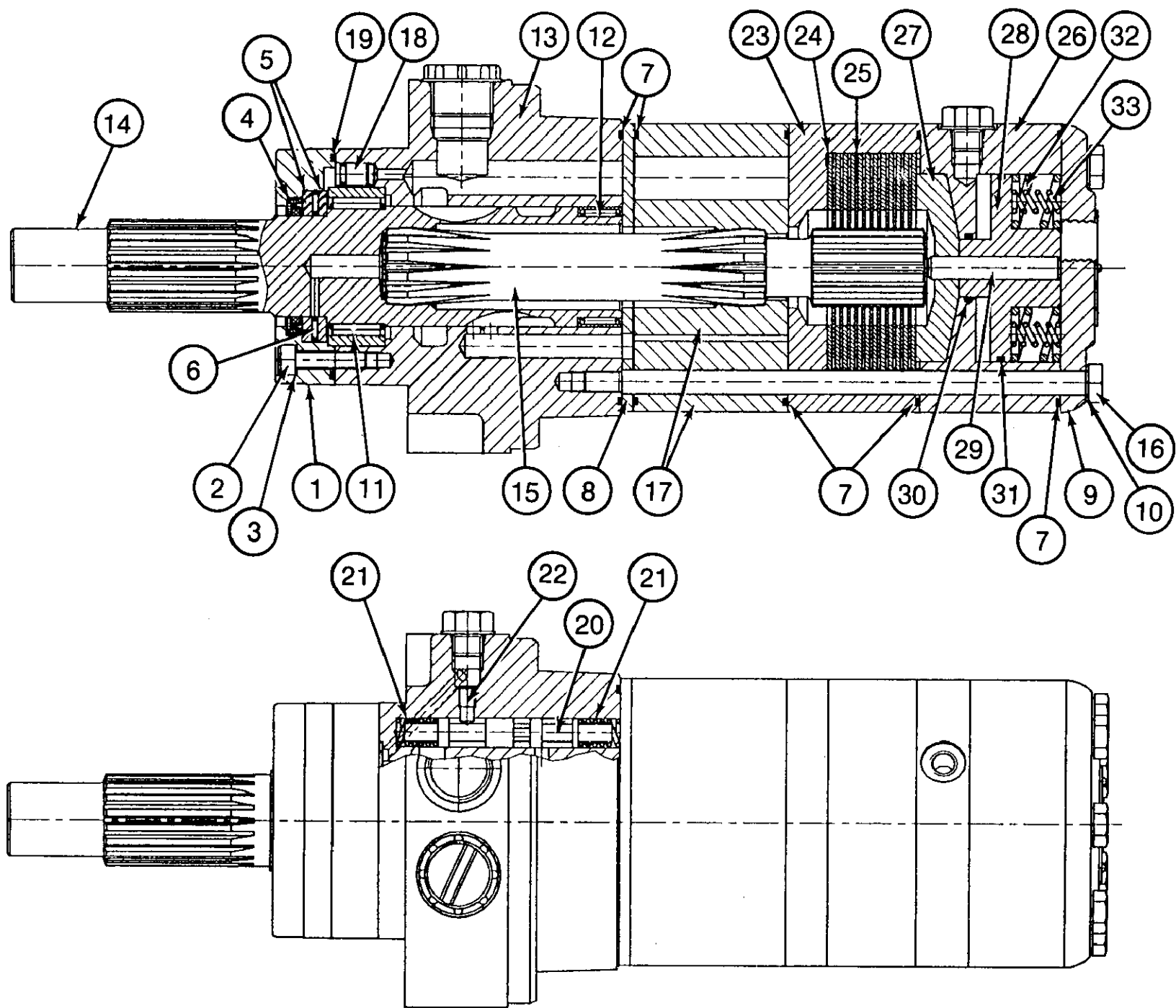


DIESEL MODELS



GASOLINE MODELS



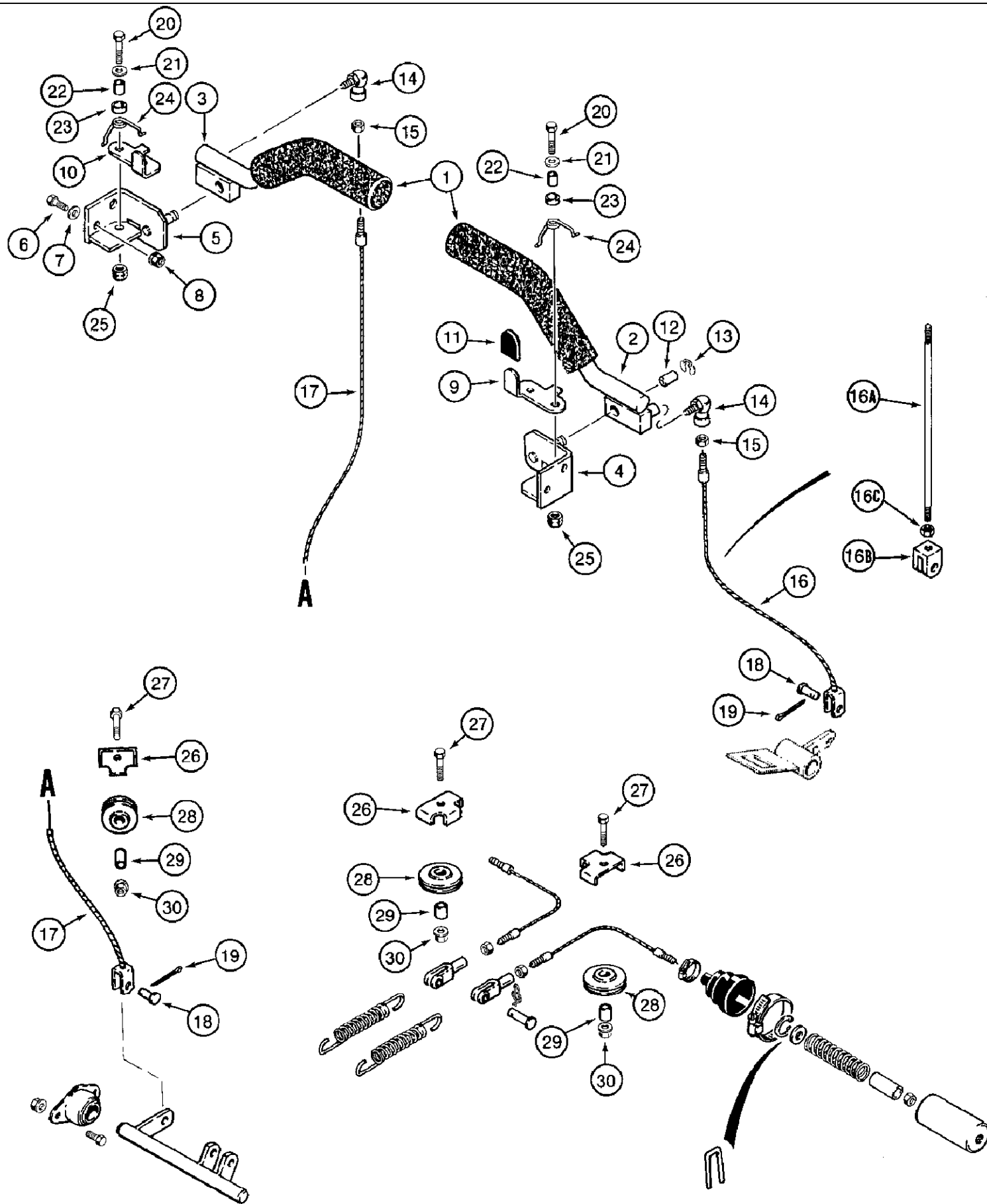


1825 CASE UNI-LOADER SKID STEER LOADER (S/N JAF0069587 & AFTER) - Power Train

6-18 AXLES AND DRIVE CHAINS, USED BEFORE P.I.N. JAF0096515

Ref	Part Number	Qty	Description
37	231-5146	4	NUT, Flg, USR, 3/8"-16
38	H438455	2	SPACER - drive sprocket, if used

7-02 PARKING LATCH AND SEAT BARS



1825 CASE UNI-LOADER SKID STEER LOADER (S/N JAF0069587 & AFTER) - Hydraulics

8-04 HYDRAULIC EQUIPMENT PUMP D136150, PRIOR TO P.I.N. JAF0096590

Ref	Part Number	Qty	Description
	D136150	1	PUMP ASSEMBLY - hydraulic, equipment, see Fig. 8-08 for mounting hardware, Includes: Ref. 1 - 19
1	166-163	8	BOLT - 12 point, 5/16 NC x 5 inch, grade 8
2	H83733	1	SEAL - shaft, Part of seal kit P/N N13954.
3	N13135	1	WASHER - special, shaft seal, Part of seal kit P/N N13954.
4	H435648	1	COVER - pump, drive shaft end, was N14632
5	238-5041	4	O-RING, -.041, 70 Duro, 2.989" ID x .070" Thk, Pump covers and center body, was H758599, Part of seal kit P/N N13954.
6	NSS	2	SEAL - molded, Part of seal kit P/N N13954.
7	NSS	2	SEAL - bearing, Part of seal kit P/N N13954.
8	NSS	2	GASKET - wear plate, Part of seal kit P/N N13954.
9	NSS	2	PLATE - wear, pump, Part of seal kit P/N N13954.
	N14647	1	GEAR SET - matched, drive shaft end, Includes: Ref. 10 and 11
10	NSS	1	GEAR - drive, pump, includes shaft
11	NSS	1	GEAR - driven, pump, includes shaft
12	N13443	1	KEY - drive gear shaft
	N13448	1	HOUSING ASSEMBLY - gear, drive shaft end, Includes: Ref. 13 and 14
13	NSS	1	HOUSING - gear
14	71120	4	PIN - dowel, gear housing
15	N14648	1	BODY - center
16	1960556C1	2	GEAR - pump, port end
17	N14649	1	HOUSING - gear, port end
18	71120	2	PIN - gear housing, port end
19	N14650	1	COVER - pump, port end
	N13954	1	KIT - seal, Includes: Ref. 2, 3 and 5 - 9, also includes one A7982 O-ring and two H755975 O-rings not used in this application

1825 CASE UNI-LOADER SKID STEER LOADER (S/N JAF0069587 & AFTER) - Hydraulics

8-14 HYDRAULIC OIL COOLER AND LINES, EUROPEAN DIESEL MODELS ONLY WITH P.I.N. JAF0140357 AND AFTER

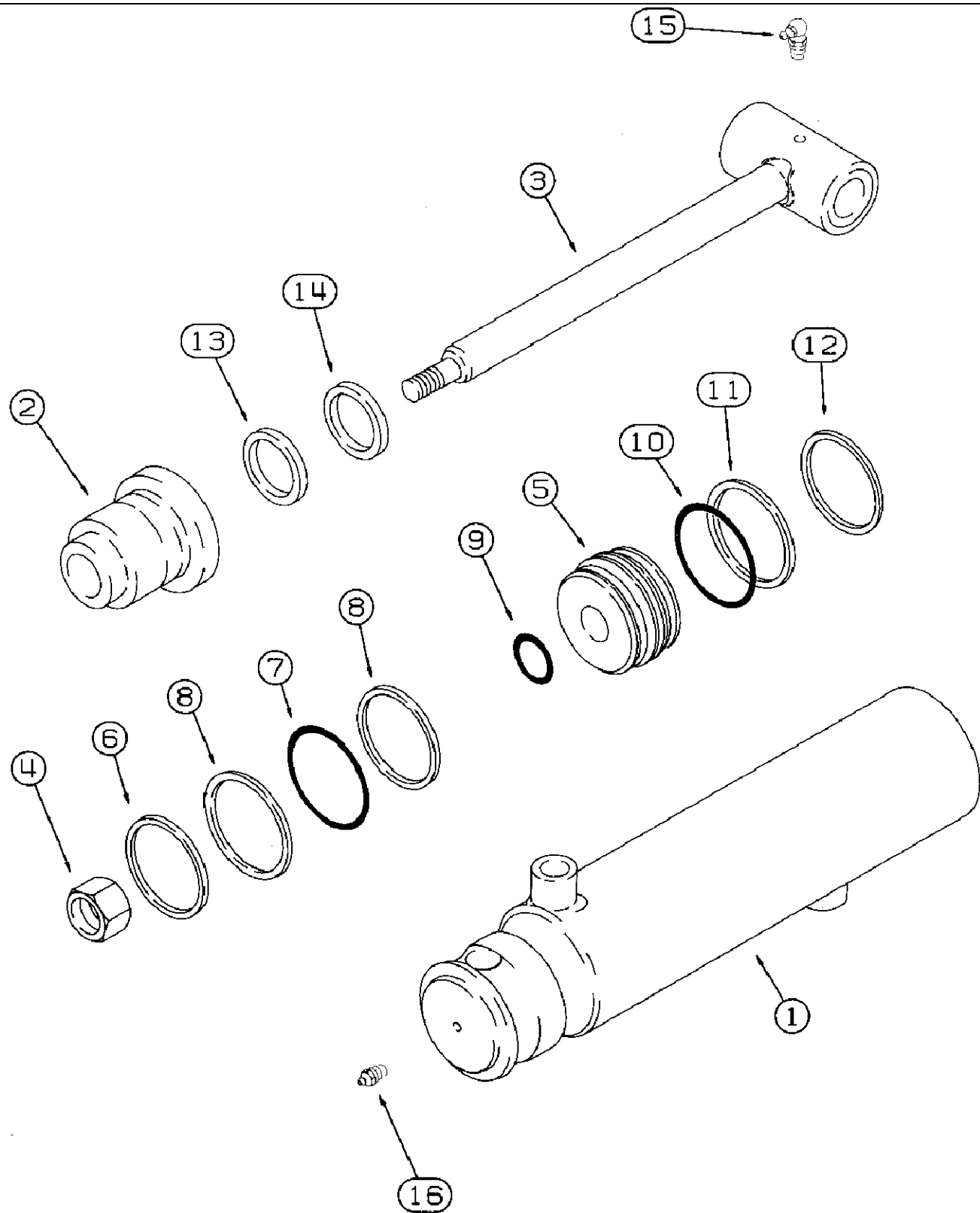
Ref	Part Number	Qty	Description
1	218-5065	1	ADAPTER - straight, 1-1/16-12 flare x 7/8-14 inch O-ring, Includes: Ref. 2
2	237-6010	1	O-RING, 10-1, 90 Duro, .755" ID x .097" Thk
3	H674468	1	TUBE - loader control valve to tee
4	218-756	1	CAP, 37c, 7/8"-14
5	218-1578	1	TEE - 3/4-16 flare branch x 1-1/16-12 inch flare x flare
6	111713A1	1	TUBE - tee to oil cooler
7	413-628	2	BOLT, Hex, 3/8"-16 x 1 3/4", G5
8	492-11038	2	3/8"
9	495-11041	2	WASHER, 3/8", SAE (Flat, 13/32 x 13/16 x 1/16")
10	D124301	2	CLAMP - tube
11	84899	2	NUT - square, 3/8 inch NC
12	214-1416	6	CLAMP, HOSE, #16, 0.81/1.50 Type F Worm, Adj.
13	120523A1	1	HOSE - 450 mm long, to left-hand side of oil cooler
14	H437219	1	SLEEVE - hose
15	L18337		UAR STRAP - tie, 15 inch, nylon
16	D57600	1	COOLER - hydraulic oil
17	H674175	2	BRACKET - mounting, oil cooler
18	614-6010	4	BOLT, Hex, M6 x 10, 8.8, Full Thd
19	492-11025	4	WASHER, LOCK, 1/4"
20	H426767	4	WASHER - flat, 1/4 inch, hardened, used on gasoline models
21	413-524	2	BOLT - hex, 5/16 NC x 1-1/2 inch
22	492-11031	2	WASHER, LOCK, 5/16"
23	D54416	2	CLAMP - at cooler hoses
24	D76195	2	SPACER - split, clamp
25	111710A1	1	HOSE - 3/4 (19) x 1-1/4 (32) x 17.7 inches (450 mm) long, cut from S118382 bulk hose below, from right-hand side of oil cooler
26	218-5064	1	ADAPTER - straight, 1-1/16-12 inch flare x O-ring boss, Includes: Ref. 27
27	237-6012	1	O-RING, 12-1, 90 Duro, .924 ID x .116" Thk
	S118382		UAR HOSE - 3/4 (19) x 1-1/4 (32) x 240 inch (6096 mm), bulk

1825 CASE UNI-LOADER SKID STEER LOADER (S/N JAF0069587 & AFTER) - Hydraulics

8-22 LOADER BUCKET TILT HYDRAULIC CIRCUIT

Ref	Part Number	Qty	Description
38	H434724	2	SLEEVE - hose, 290 mm long, rod end of bucket cylinder European machines P.I.N. JAF0140357 And After, was 135157A1
	F42827		UAR TRIM - edge, bulk, 116 inch (2946 mm) long
18	237-6006	1	O-Ring, 6-1, 90 Duro, .468" ID x .078" Thk

The part number is stamped on the tube



9-04 LOADER LIFT FRAME

Ref	Part Number	Qty	Description
1	H673989	1	FRAME - loader lift
2	D138891	4	PIN - loader lift frame and lift cylinders to chassis
3	426-636	4	BOLT - hex, 3/8 NC x 2-1/4 inch, Grade 8
4	232-4116	4	NUT, LOCK, 3/8"-16, GC
5	219-86	4	FITTING - grease, straight, self-tap 1/8 PT x 5/8 inch
6	H438090	1	STRUT - lift frame support, BSN JAF0096313
7	D79692	1	PAD - strut, lift arm
8	H438045	1	GROMMET - strut, use with H438090 strut
9	D134253	1	PIN - strut lock
10	136-159	1	PIN, SPLIT (COTTER), Int, 3/16 x .080"
11	100-1687	8	Ring, Snap, #87, Ext, Pin (Replaces D71829)
12	H437175	8	WASHER - flat, hardened
13	D138889	2	PIN - lift cylinder to loader lift frame
14	D138888	2	PIN - bucket tilt cylinder to loader lift frame
15	D136838	2	CYLINDER ASSEMBLY - lift, parts list Fig. 8-26
16	D136128	2	CYLINDER ASSEMBLY - bucket tilt, parts list Fig. 8-30, order 104517A1 See Fig. 8-32
17	119142A1	1	STRUT - lift frame support, Use only with 104516A1 lift cylinder with the 1-3/8 inch dia rod, ASN JAF0096313
18	49566	1	GROMMET - strut (use with 119142A1 strut)

9-14 SEAT MOUNTING AND SEAT BELT

Ref	Part Number	Qty	Description
1	D125141	1	SEAT - operators, brown, complete, Includes: Ref. 3 and 4, ASN JAF0096621
2	177641A1	1	SEAT - operators, gray, complete, Includes: Ref. 3 and 4
3	N6674	2	CLIP - trim, not shown
4	N14342	1	TRIM - cushion retaining, not shown
5	E20007	1	SEAT ASSEMBLY - operator, brown, complete, no longer available, order Ref. 1, BSN JAF0096621
6	D135014	1	SUPPORT - seat
7	409-7612	6	BOLT - hex serrated flange, 3/8 NC x 3/4 inch
8	D133868	1	BELT - seat, 2 inch (51 mm) wide
9	413-816	2	BOLT, Hex, 1/2"-13 x 1", G5, Full Thd
10	232-4118	2	NUT, LOCK, 1/2"-13, GC
11	E20008	1	PAD - head rest, brown, used with E20007 seat only
12	H437866	1	BRACKET - head rest, used with E20007 seat only
13	413-512	4	BOLT - hex, 5/16 NC x 3/4 inch
14	492-11031	4	WASHER, LOCK, 5/16"
15	495-11034	4	WASHER, 5/16" SAE (flat, 11/32 x 11/16 x 1/16")
16	413-510	2	BOLT - hex, 5/16 NC x 5/8 inch
17	495-21038	2	WASHER - flat, 3/8 x 7/8 x 3/32 inch
18	128181A1	1	PAD - headrest, brown, used with D125141 seat
19	177642A1	1	PAD - headrest, gray, used with 177641A1 seat, While the seat no longer has threaded holes (the nut plates were removed). There are nut plates on the back rest, 177642A1. In order to install, use a utility knife to cut the seat cover at the top of the seat to allow the back rest plate to slip into the seat. Align the threaded holes in the back rest plate with the holes in the seat back and install the hardware. This has been done this way for a while now in production. There are no other changes planned. 4-1-99 cw.

9-24 REAR WINDOW, EUROPEAN MODELS

Ref	Part Number	Qty	Description
1	102499A1	1	CHANNEL - glazing (2160 mm) long (was E20211)
2	102500A1	1	STRIP - filler
3	107996A1	1	RING - pull
4	108206A1	1	GLASS - rear (was 107147A1)

9-34 DECALS - ENGLISH, NORTH AMERICAN MODELS

Ref	Part Number	Qty	Description
1	321-6952	1	DECAL - Warning, do not use ether, diesel models
2	120950A1	1	DECAL - Danger, before leaving the seat (English)
3	120951A1	1	DECAL - Danger, keep out of this area (English)
4	D124209	1	DECAL - ignition switch pattern, graphic, brown
5	178664A1	1	DECAL - ignition switch pattern, graphic, gray
6	321-6686	1	DECAL - Warning, rotating fan (English)
7	321-7040	1	DECAL - Danger, starting in gear can cause death
8	H435049	1	DECAL - glow plug, diesel models only, brown
9	178663A1	1	DECAL - glow plug, diesel models only, grey
10	321-3587	4	DECAL - lift only (English), use with lift brackets
11	139729A1	4	DECAL - lift only, graphic, use with lift brackets
12	8-80909	1	DECAL - maintenance schedule
13	A180055	1	INSERT - Case Globe and Eagle, if used
14	321-2973	2	DECAL - Important, torque wheel nuts (English)
15	139948A1	1	DECAL - operating capacity
16	139728A1	4	DECAL - tie down
17	140026A1	1	DECAL - auxiliary hydraulics, if used
18	321-6375	1	DECAL - Gasoline

See additional model decals for this language on Fig. 9-32.00

1825 CASE UNI-LOADER SKID STEER LOADER (S/N JAF0069587 & AFTER) - Chassis/Attachments

9-44 DECALS - GERMAN, EUROPEAN MODELS

Ref	Part Number	Qty	Description
1	D139184	2	DECAL - 1825, brown models
2	179123A1	2	DECAL - 1825, gray models
3	E84620	1	DECAL - diesel fuel (German)
4	139879A1	1	DECAL - diesel fuel, graphic
5	D138195	1	DECAL - Case, with treads, left-hand side, 5 inch (127 mm) high, brown models
6	179180A2	1	DECAL - Case, with stripes, left-hand side, 5 inch (127 mm) high, gray models
7	D138196	1	DECAL - Case, with treads, right-hand side, 5 inch (127 mm) high, brown models
8	179181A2	1	DECAL - Case, with stripes, right-hand side, 5 inch (127 mm) high, gray models
9	D124236	1	DECAL - Case, with treads, 4 inch (102 mm) high, rear door, brown models
10	179177A2	1	DECAL - Case, with stripes, 4 inch (102 mm) high, gray models
11	D123964	2	DECAL - uni-loader, brown
12	321-5850	1	DECAL - bucket control, if used
13	139593A1	1	DECAL - bucket control, graphic
14	321-5849	1	DECAL - loader arm control, if used
15	139592A1	1	DECAL - loader arm control, graphic
16	321-5847	1	DECAL - throttle, slow-fast, black turtle symbol up on white background, if used
17	178662A1	1	DECAL - throttle, slow-fast, graphic, white rabbit symbol up on black background, if used
18	321-6724	1	DECAL - Warning, batteries contain acid and explosive gas (German)
19	321-6795	1	DECAL - Warning, check and service cooling system (German)
20	D136508	1	DECAL - Raised/Lowered, parking latch and operators restraint instructions (German), used on models with dual seat bars
21	175510A1	1	DECAL - hydraulic fluid, use SAE 15W/40 oil (German), HTO additive is required
22	321-6621	1	DECAL - Warning, before starting engine, fasten seat belt (German)
23	321-6794	1	DECAL - Warning, if you service the machine with loader lift arms raised (German)

See additional model decals for this language on Fig. 9-46.

9-54 DECALS - SPANISH, EUROPEAN MODELS

Ref	Part Number	Qty	Description
1	321-6963	1	DECAL - Warning, do not use ether (Spanish), diesel models
2	127532A1	1	DECAL - Danger, before leaving the seat (Spanish)
3	127533A1	1	DECAL - Danger, keep out of this area (Spanish)
4	D124209	1	DECAL - ignition switch pattern, graphic, brown
5	178664A1	1	DECAL - ignition switch pattern, graphic, gray
6	321-6796	1	DECAL - Warning, rotating fan (Spanish)
7	175504A1	1	DECAL - Warning, rotating fan, graphic
8	175509A1	1	DECAL - jump start, graphic
9	E20109	1	DECAL - glow plug, diesel models only (Spanish), brown
10	191039A1	1	DECAL - glow plug, diesel models only (Spanish), gray
11	321-5429	4	DECAL - lift only (Spanish), use with lift brackets
12	139729A1	4	DECAL - lift only, graphic, use with lift brackets
13	175520A1	1	DECAL - maintenance schedule (Spanish)
14	A180055	1	INSERT - Case Globe and Eagle, if used
15	139948A1	1	DECAL - operating capacity
16	139728A1	4	DECAL - tie down
17	140026A1	1	DECAL - auxiliary hydraulics, if used
18	D55310	4	STRIP - non-skid, black, 1 x 10 inch long, not shown

See additional model decals for this language on Fig. 9-52.

CLICK HERE TO **DOWNLOAD** THE COMPLETE MANUAL

- Thank you very much for reading the preview of the manual.
- You can download the complete manual from: www.heydownloads.com by clicking the link below



- Please note: If there is no response to CLICKING the link, please download this PDF first and then click on it.

CLICK HERE TO **DOWNLOAD** THE COMPLETE MANUAL