



93306-00153

October 2007

PARTS CATALOG

WHEEL LOADER

60Z V

Powered by ISUZU BB-6BG1T Engine

Serial No. 60J4-5001 ~

CLICK HERE TO **DOWNLOAD** THE COMPLETE MANUAL

- Thank you very much for reading the preview of the manual.
- You can download the complete manual from: www.heydownloads.com by clicking the link below



- Please note: If there is no response to CLICKING the link, please download this PDF first and then click on it.

CLICK HERE TO **DOWNLOAD** THE COMPLETE MANUAL

⑦ SERIAL(A) • SERIAL(B) (applicable chassis Nos.)

SERIAL(A) : Indicates the application start chassis No.

SERIAL(B) : Indicates the application end chassis No.

However, the torque converter, the transmission and the cab are different from the chassis No. (The serial number shown is for the component – not the machine or chassis.)

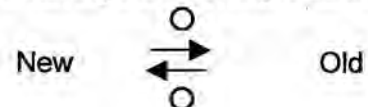
⑧ REMARKS: [N] (not for sale)

Parts not for sale are indicated as "N".

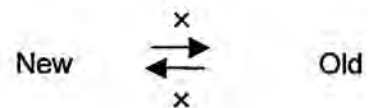
⑨ REMARKS: [P] (parts compatibility)

The parts compatibility is indicated in symbols, A, B and C having the following meanings:

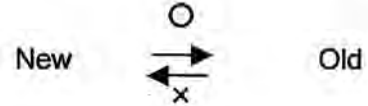
[A] A new part and an old part are completely interchangeable with each other.



[B] A new part and an old part are not interchangeable with each other.



[C] A new part is an alternative of an old part. In this case, an old part is not interchangeable with a new part.



⑩ REMARKS: [D]

[D] Indicates that the part is deleted.

[H] Indicates that production or supply of the part is stopped. An alternative is shown just below.

⑪ REMARKS: [(A)], [(B)], [(C)], [(D)]

Symbols indicated in this column have the following meanings.

(1) Assembly parts

(a) 01 - : Indicates parts which make up the assembly parts.

(b) Y01 - : Indicates assembly parts which is made up of the parts 01,02-09.

[Example 1] (Refer to the list in the previous page.)

The part 1A 34256-20050 front chassis has Y01 in the Remarks column, it means that the Front chassis includes the parts with 01[41A and 42A] in the Remarks column.

(2) Kit parts

(a) K1 - : Indicates parts which make up the kit.

(b) QK1 - : Indicates a kit which is made up of parts K1 -, K2 -.

(3) Parts which has a interchangeability when replace with the other related parts.

(a) A1 - : Indicates parts which need to make a interchangeability.

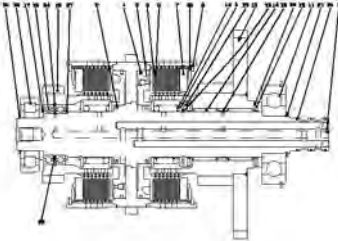
(b) WA1~ : Indicates parts which have a interchangeability when replace with A1 parts.

[Example 2] (Refer to the list in the previous page.)

The part 3B 44344-70020 [WA1] can replace the old part 3A 44340-70210 only if the plate 4B 41605-41290 [A1] is also replaced together.

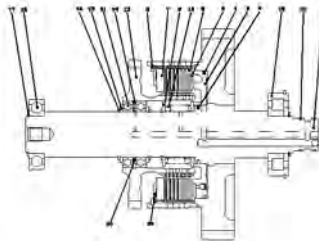
FORWARD & 2ND CLUTCH
.....p.109

SAFETY/PATROL: ALWAYS WEAR THE SEATBELT OR HELMETS



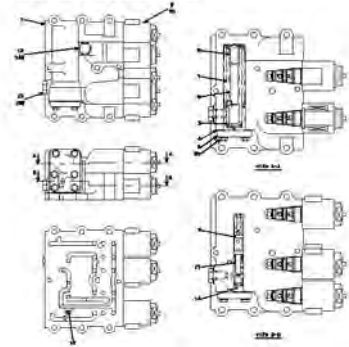
3RD CLUTCH
.....p.111

SAFETY/PATROL: ALWAYS WEAR THE SEATBELT OR HELMETS



TRANSMISSION CONTROL VALVE
.....p.113

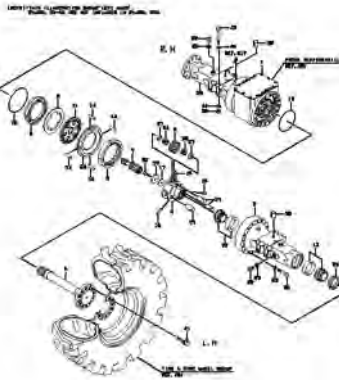
SAFETY/PATROL: ALWAYS WEAR THE SEATBELT OR HELMETS



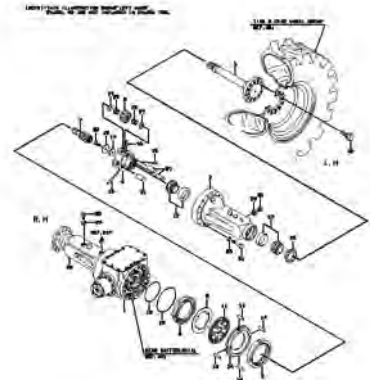
REPAIR KIT
.....p.115

LIST ONLY

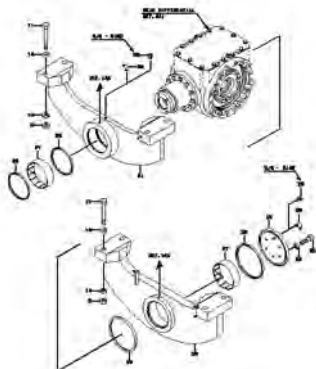
FRONT AXLE GROUP
.....p.117



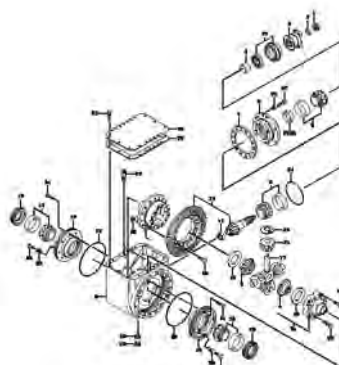
REAR AXLE GROUP
.....p.119



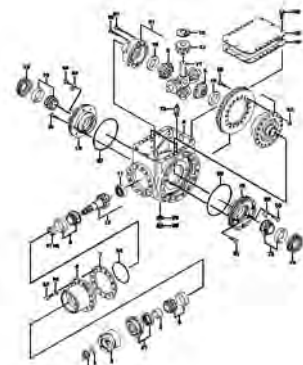
AXLE SUPPORT GROUP
.....p.121



FRONT DIFFERENTIAL
.....p.123



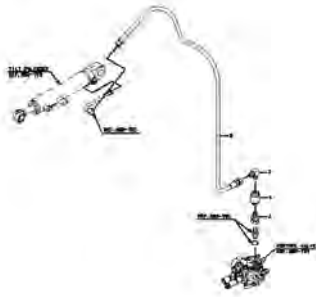
REAR DIFFERENTIAL
.....p.125



SLOW RETURN CHECK VALVE

.....p.283

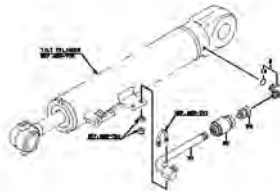
-SA 523 - 814-



SLOW RETURN CHECK VALVE

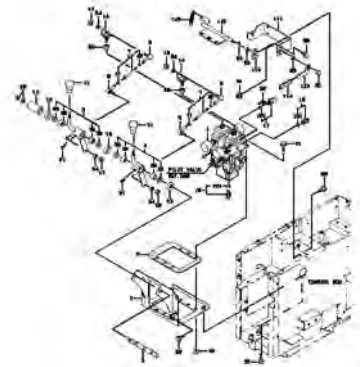
.....p.285

-SA 910 -



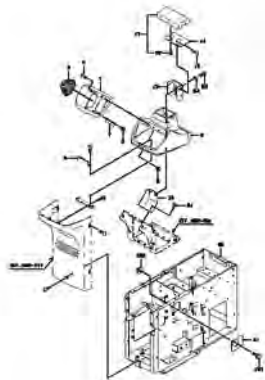
VALVE CONTROL GROUP

.....p.287



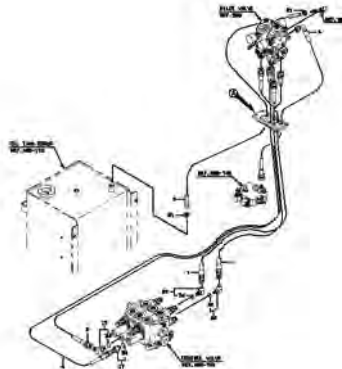
CONTROL BOX COVER MOUNT

.....p.289



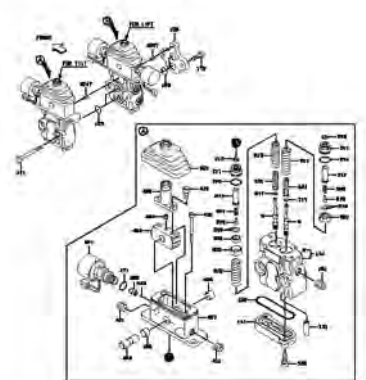
PILOT HYDRAULIC LINE

.....p.291



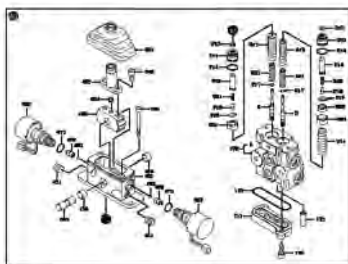
PILOT VALVE

.....p.293



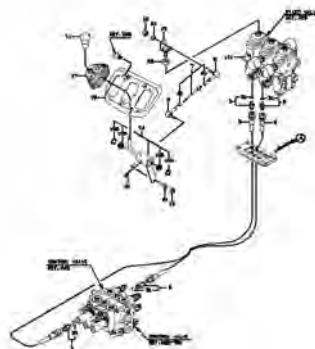
PILOT VALVE

.....p.294



PILOT HYDRAULIC LINE (3-WAY PIPING)

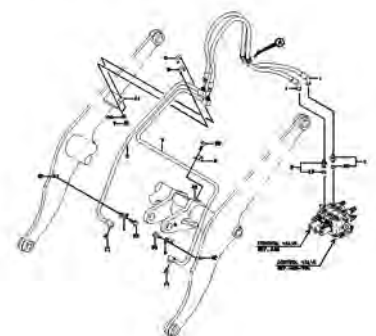
.....p.297



HYDRAULIC LINE (FOR ATTACHMENT)

.....p.299

-SA 523 - 814-



FRONT CHASSIS GROUP

SYM-BOL	PART NUMBER	PART NAME	UNIT Q,TY	SERIAL		REMARKS							
				(A)	(B)	N	P	D	(A)	(B)	(C)	(D)	REMARK
1A	00506-02490	CHASSIS ASSY,FRONT	1	5001	5108								
1B	00506-03130	CHASSIS ASSY,FRONT	1	5109	5140	B				Y01			
1C	00506-03270	CHASSIS,FRONT	1	5141		C				Y01			
27A	43780-22030	BOSS	1	5001						01			WELDING
29A	40840-22700	BUSHING	1	5001						01			
43A	43780-21710	BOSS	1	5001						01			WELDING
44A	43780-22030	BOSS	1	5001						01			WELDING
51A	61802-10020	BOLT,FLANGED	6	5001									
61A	61802-10040	BOLT,FLANGED	1	5001									
113A	43780-21710	BOSS	1	5001						01			WELDING
114A	43780-22030	BOSS	1	5001						01			WELDING
121A	40410-25580	FENDER	1	5001	5003								FR LH
121B	40410-27040	FENDER	1	5004		C							FR LH
122A	40410-25590	FENDER	1	5001	5003								FR RH
122B	40410-27050	FENDER	1	5004		C							FR RH
131A	41616-21430	PLATE	1	5001									
132A	40044-20020	PIN,HEAD	2	5001									
133A	40045-20200	PIN,SNAP	2	5001									

FUEL TANK GROUP

SYM-BOL	PART NUMBER	PART NAME	UNIT Q,TY	SERIAL		REMARKS						
				(A)	(B)	N	P	D	(A)	(B)	(C)	(D)
2A	35700-21410	SPACER	4	5001	-							
11A	36233-23890	TANK,FUEL	1	5001	-	5003						
11B	36233-23970	TANK,FUEL	1	5004	-	5020	C					
11C	36233-24130	TANK,FUEL	1	5021	-		C					
12A	41611-20140	PLATE	1	5001	-							
13A	31990-20020	GASKET	1	5001	-							
15A	88390-14208	PLUG	1	5001	-							
16A	35828-60150	SENSOR,FUEL LEVEL	1	5001	-							
17A	31990-70130	GASKET	1	5001	-							
18A	40314-60060	FILLER ASSY,FUEL	1	5001	-							
19A	40330-60200	FILTER	1	5001	-	5052						
19B	40330-60400	FILTER	1	5053	-		C					
21A	67001-40000	TUBE,NYLON	1 M	5001	-							L=900
22A	69021-10402	TUBE FITTING	1	5001	-			Y01				
23A	72001-10600	HOLDER,PIPE	2	5001	-							
31A	69029-04000	SLEEVE,FITTING	1	5001	-			01				
51A	61005-18070	BOLT	4	5001	-							
53A	46011-21160	WASHER,PLANE	4	5001	-							
61A	61033-05010	BOLT	5	5001	-							
62A	62480-21101	NUT,FLANGED	12	5001	-							
64A	62721-05100	WASHER,SPRING	5	5001	-							
71A	62480-21081	NUT,FLANGED	1	5001	-							

CONTROL BOX COVER MOUNT

SYM-BOL	PART NUMBER	PART NAME	UNIT Q,TY	SERIAL (A) - (B)	REMARKS					
					N	P	D	(A)	(B)	(C)
1A	31200-60140	COVER	1	5021 -						
2A	31200-60270	COVER	1	5021 -						
3A	31200-60150	COVER	1	5021 -						
4A	41610-30180	PLATE	1	5021 -						
5A	31200-60160	COVER	1	5021 -						
6A	31200-60170	COVER	1	5021 -						
8A	41613-35410	PLATE	1	5021 -						
13A	45870-25870	ROD	1	5021 -						
14A	41610-30270	PLATE	1	5021 -						
15A	41605-29820	PLATE	1	5021 -						
16A	41605-29800	PLATE	1	5021 -						
17A	41602-21440	PLATE	1	5021 -						
18A	41601-59120	PLATE	1	5021 -						
19A	67015-00001	TUBE,VINYL	1 M	5021 -						L=190
21A	32150-20210	CATCH	2	5021 -						
22A	46000-21020	WASHER	2	5021 -						
23A	41635-38650	PLATE	2	5021 -						
24A	35100-20200	SCREW	11	5021 -						
25A	35106-20020	SCREW,TAPPING	10	5021 -						
27A	30320-60030	ASHTRAY	1	5021 -						
28A	88031-06061	NUT,SELF-LOCKING	2	5021 -						
29A	43550-70290	HOLDER	2	5021 -						
31A	30062-60050	ARMREST	1	5021 -			Y01			
32A	41616-39080	PLATE	1	5021 -						
33A	41619-45190	PLATE	1	5021 -						
34A	35100-20200	SCREW	2	5021 -						
51A	35100-20010	SCREW	2	5021 -						
52A	61802-06010	BOLT,FLANGED	3	5021 -						
61A	62256-51820	SCREW	2	5021 -						
62A	62701-40081	WASHER,PLANE	2	5021 -						
92A	35106-70170	SCREW,TAPPING	4	5021 -			01			

MEMO

GAUGE GROUP

SYM-BOL	PART NUMBER	PART NAME	UNIT Q, TY	SERIAL		REMARKS							
				(A)	(B)	N	P	D	(A)	(B)	(C)	(D)	REMARK
1A	43123-20150	HOSE, GAUGE	1	5001	5003								
1B	68055-10090	HOSE, HIGH PRESSURE	1	5004									
2A	30230-20720	ADAPTER	1	5001	5003	B							
2B	30230-27250	ADAPTER	1	5003	5003	C							
2C	88201-06704	ADAPTER	1	5004		B	Y01						
3A	88390-14204	PLUG	1	5001	5003								
3B	88390-21304	PLUG	1	5004		B	Y01						
4A	72001-11500	HOLDER, PIPE	1	5001	5003								D=15
4B	72001-11500	HOLDER, PIPE	2	5003	5003								D=15
4C	72001-11200	HOLDER, PIPE	2	5004		B							D=12
5A	30230-24360	ADAPTER	1	5004					Y02				
11A	35829-60050	SENSOR, TEMPERATURE	1	5001									
12A	35830-70010	SENSOR, PRESSURE	1	5001									
21A	65210-12011	RING, O	1	5004				01					
32A	37600-23800	NUT	1	5004					02				
51A	62401-81222	NUT	1	5001	5003	D							
52A	62401-81081	NUT	1	5001	5003								
52B	62480-21081	NUT, FLANGED	2	5004		C							
53A	62721-08100	WASHER, SPRING	1	5001	5003	D							
54A	62701-40221	WASHER, PLANE	1	5001	5003	D							

BATTERY MOUNT

SYM-BOL	PART NUMBER	PART NAME	UNIT Q,TY	SERIAL		REMARKS						
				(A)	(B)	N	P	D	(A)	(B)	(C)	(D)
1A	38450-20010	BATTERY	2	5001	5060							(NS70)
1B	73301-07549	BATTERY	2	5061		A						
2A	41611-54310	PLATE	2	5001								
3A	45870-26680	ROD	4	5001								
4A	33713-20110	SHEET,RUBBER	12	5001								
5A	33713-20080	SHEET,RUBBER	4	5001								
51A	62401-81081	NUT	8	5001								
52A	62701-40081	WASHER,PLANE	4	5001								

ELECTRICAL WIRING - FLOOR BOARD

SYM-BOL	PART NUMBER	PART NAME	UNIT Q,TY	SERIAL		REMARKS						
				(A)	(B)	N	P	D	(A)	(B)	(C)	(D)
1A	32923-70120	CLAMP,HOSE	A/R	5001	-							FR M8
2A	32923-70090	CLAMP,HOSE	A/R	5001	-							L=202
3A	65801-12032	BUSHING,ELASTIC	1	5001	-	5017						
3B	65801-25032	BUSHING,ELASTIC	1	5018	-		B					
51A	62401-81101	NUT	1	5001	-							
52A	62721-10100	WASHER,SPRING	1	5001	-							
53A	46011-21650	WASHER,PLANE	3	5001	-							
56A	61802-08020	BOLT,FLANGED	A/R	5001	-	5056	D					
61A	61802-08030	BOLT,FLANGED	4	5001	-							
101A	33193-33440	CABLE ASSY	1	5001	-	5003						FLOOR
101B	33193-37180	CABLE ASSY	1	5004	-	5013	C					FLOOR
101C	33193-38370	CABLE ASSY	1	5014	-	5044	C					FLOOR
101D	33193-46280	CABLE ASSY	1	5045	-	5052	B					FLOOR
101E	33193-47500	CABLE ASSY	1	5053	-	5056	B					FLOOR
101F	33193-48460	CABLE ASSY	1	5057	-	5108	C					FLOOR
101G	33193-50960	CABLE ASSY	1	5109	-		B					FLOOR
102A	33190-24690	CABLE	1	5001	-							GROUNDING(F-R)
103A	33193-33460	CABLE ASSY	1	5001	-							STARTER SWITCH
111A	33057-21050	GROMMET	1	5001	-	5034						
111B	33057-21110	GROMMET	1	5035	-	5094	B					
111C	33057-21470	GROMMET	1	5095	-	5112	C					
111D	33057-21520	GROMMET	1	5113	-		B					
112A	41605-53600	PLATE	2	5001	-							
113A	35750-23790	SLEEVE	4	5001	-							
114A	41533-20080	PLUG,ELASTIC	1	5001	-							

RADIATOR MOUNT

SYM-BOL	PART NUMBER	PART NAME	UNIT Q,TY	SERIAL		REMARKS						
				(A)	(B)	N	P	D	(A)	(B)	(C)	(D)
1A	44721-63240	RADIATOR ASSY	1	5001	-							REF235
2A	43110-24760	HOSE,WATER	1	5001	-							
3A	43110-24770	HOSE,WATER	1	5001	-							
3B	43110-25650	HOSE,WATER	1	5025	-							
4A	40850-20110	BUSHING,ELASTIC	4	5001	-							
5A	46011-20630	WASHER,PLANE	6	5001	-							
6A	41605-43520	PLATE	2	5001	-							
7A	35750-20030	SLEEVE	2	5001	-							
8A	69002-07100	BAND,HOSE	6	5001	-							
11A	67040-19000	HOSE,HEAT RESISTIN	1 M	5001	-							L=550
12A	69002-03100	BAND,HOSE	2	5001	-							
13A	88511-01121	NIPPLE,HOSE	1	5001	-							
14A	69200-06000	FITTING,SOCKET	1	5001	-							
15A	88390-14212	PLUG	1	5001	-							
16A	43962-20030	BOLT,U	1	5001	-							
17A	31823-22390-7	GUARD,FAN	1	5001	-							
18A	31823-22400-7	GUARD,FAN	1	5001	-							
51A	61802-12060	BOLT,FLANGED	2	5001	-							
52A	61802-12045	BOLT,FLANGED	4	5001	-							
53A	61802-12030	BOLT,FLANGED	2	5025	-							
54A	61802-10020	BOLT,FLANGED	4	5025	-							
61A	62710-18121	WASHER,PLANE	6	5001	-							5084
61B	62710-18121	WASHER,PLANE	2	5085	-							
62A	62701-40101	WASHER,PLANE	2	5001	-							
71A	88031-06121	NUT,SELF-LOCKING	2	5001	-							
72A	62480-21121	NUT,FLANGED	2	5001	-							5024
72B	62480-21121	NUT,FLANGED	4	5025	-							
73A	88031-06101	NUT,SELF-LOCKING	2	5001	-							

TORQUE CONVERTER

SYM-BOL	PART NUMBER	PART NAME	UNIT Q,TY	SERIAL		REMARKS						
				(A)	(B)	N	P	D	(A)	(B)	(C)	(D)
00A	37430-20840	TORQUE CONVERTER	1	101	-							
1A	37900-24650	HOUSING	1	101	-							
2A	37419-60220	TRQ CONV SUB ASSY	1	101	-					Y01		
8A	34527-20300	SHAFT,TURBINE	1	101	-							
9A	45301-60310	RING,PISTON	1	101	-							(K)
10A	34507-20230	SHAFT ASSY,STATOR	1	101	-							
11A	42001-60650	BEARING,BALL	1	101	-							
12A	32400-24130	GEAR	1	101	-							
13A	45301-60280	RING,PISTON	1	101	-							(K)
14A	46000-23630	WASHER	2	101	-							
15A	34200-26450	SHIM	A/R	101	-							T=0.5
16A	34200-26460	SHIM	A/R	101	-							T=0.2
18A	46000-22920	WASHER	1	101	-							
19A	61034-16040	BOLT	1	101	-							
21A	34042-60500	SEAL,OIL	1	101	-							(K)
22A	31210-22650	COVER	1	101	-							
23A	47131-60320	RING,O	1	101	-							(K)
24A	61101-10030	BOLT,SOCKET	6	101	-							
26A	61802-08016	BOLT,FLANGED	3	101	-							
27A	63811-00030	RING,SNAP	1	101	-							
28A	32400-24160	GEAR	1	101	-							
29A	42001-60360	BEARING,BALL	1	101	-							
30A	42001-60370	BEARING,BALL	1	101	-							
31A	40510-24040	FLANGE	1	101	-							
32A	31990-25430	GASKET	1	101	-							(K)
33A	43963-20140	BOLT,FLANGED	6	101	-							
35A	32400-24150	GEAR	1	101	-							
36A	42001-60320	BEARING,BALL	1	101	-							
37A	63812-00100	RING,SNAP	1	101	-							
38A	34500-26090	SHAFT	1	101	-							
40A	65210-27055	RING,O	1	101	-							(K)
41A	61101-10070	BOLT,SOCKET	1	101	-							
42A	41618-54390	PLATE	1	101	-							
43A	61033-08012	BOLT	4	101	-							141
43B	61033-08012	BOLT	5	142	-							147
43C	61033-08012	BOLT	4	148	-							
44A	39960-21430	PISTON	1	101	-							
45A	35600-22700	SPRING	1	101	-							
46A	35600-22710	SPRING	1	101	-							
47A	41530-21890	PLUG	3	101	-							
48A	47131-60290	RING,O	3	101	-							(K)
49A	39960-21350	PISTON	1	101	-							
50A	35600-22550	SPRING	1	101	-							
51A	39960-21360	PISTON	1	101	-							
52A	35600-22560	SPRING	1	101	-							
53A	41101-60010	BREATHER ASSY	1	101	-							
54A	88390-16108	PLUG	4	101	-							
55A	88390-16104	PLUG	2	101	-					N		
56A	88390-16102	PLUG	3	101	-							
57A	35037-60050	SWITCH,TEMPERATURE	1	101	-							147
57B	35037-20200	SWITCH,TEMPERATURE	1	148	-					B		
60A	88390-16112	PLUG	1	101	-							
61A	41606-56450	PLATE	1	101	-							
65A	34200-26470	SHIM	A/R	101	-							T=0.1
66A	45200-27400	RING	1	101	-							
69A	46011-23000	WASHER,PLANE	1	101	-							115
69B	46011-23000	WASHER,PLANE	2	116	-							
71A	88111-11690	WASHER,SEAL	1	148	-							(K)
72A	61802-08025	BOLT,FLANGED	1	148	-							
102A	31930-20630	GUIDE	1	101	-						01	
103A	65210-27080	RING,O	1	101	-						01	(K)
104A	41685-20020	PLATE,FLEXIBLE	1	101	-						01	
105A	46000-22930	WASHER	1	101	-						01	
106A	61005-10040	BOLT	8	101	-						01	
107A	46000-70160	WASHER	8	101	-						01	

3RD CLUTCH

SYM-BOL	PART NUMBER	PART NAME	UNIT Q,TY	SERIAL		REMARKS						
				(A)	(B)	N	P	D	(A)	(B)	(C)	(D)
000A	32872-21020	CLUTCH ASSY	1	101	-							
1A	34501-22050	SHAFT ASSY	1	101	-							
2A	45301-60320	RING,PISTON	1	101	-							(K)
3A	39962-20010	PISTON ASSY	1	101	-							
4A	45301-60330	RING,PISTON	1	101	-							(K)
5A	37212-60150	DISC,SEPARATION	7	101	-							
6A	37213-60390	DISC,FRICTION	7	101	-	101						
6B	37213-60380	DISC,FRICTION	7	102	-							
7A	41621-29430	PLATE	1	101	-							
8A	45311-20750	RING,SNAP	1	101	-							
9A	46000-22970	WASHER	2	101	-							
10A	35600-22730	SPRING	1	101	-							
11A	42001-60280	BEARING,BALL	2	101	-							
12A	32400-23020	GEAR	1	101	-							
13A	46000-22950	WASHER	2	101	-							
14A	63812-00080	RING,SNAP	1	101	-							
15A	63811-00055	RING,SNAP	3	101	-							
16A	42001-60430	BEARING,BALL	1	101	-							
17A	63811-00045	RING,SNAP	2	101	-							
18A	45301-60560	RING,PISTON	2	101	-	119						(K)
18B	45301-60340	RING,PISTON	2	120	-							(K)
19A	42003-60640	BEARING,ROLLER	1	101	-							
20A	41621-29420	PLATE	1	101	-							
21A	46000-22800	WASHER	1	101	-							

AXLE SUPPORT GROUP

SYM-BOL	PART NUMBER	PART NAME	UNIT Q, TY	SERIAL		REMARKS						
				(A)	(B)	N	P	D	(A)	(B)	(C)	(D)
2A	62401-81241	NUT	8	5001	-							
11A	61033-24145	BOLT	8	5001	-							
14A	46011-22860	WASHER, PLANE	16	5001	-							
21A	33621-21030	SUPPORT, AXLE	1	5001	-	5044						
21B	33621-21880	SUPPORT, AXLE	1	5045	-		C					
22A	33621-21050	SUPPORT, AXLE	1	5001	-							
23A	41621-24340	PLATE	1	5001	-							
24A	39600-60230	PACKING	1	5001	-							
25A	39600-60130	PACKING	1	5001	-							
26A	39600-60140	PACKING	2	5001	-							
27A	40840-22430	BUSHING	2	5001	-							
28A	41100-60020	BREATHER	1	5001	-	5044						
28B	41100-60020	BREATHER	2	5045	-	5142						
28C	69100-20600	FLARED FITTING, ELB	2	5143	-		C					
51A	61005-12040	BOLT	6	5001	-							
52A	62710-18121	WASHER, PLANE	6	5001	-							

BRAKE LINE

SYM-BOL	PART NUMBER	PART NAME	UNIT Q,TY	SERIAL		REMARKS							
				(A)	(B)	N	P	D	(A)	(B)	(C)	(D)	REMARK
1A	36223-60040	TANK,BRAKE OIL	1	5001	-						Y01		
2A	38670-20010	BAND	1	5001	-								
3A	30241-21150	ADAPTER,ELBOW	1	5001	-						Y02		
4A	38705-24230	PIPE ASSY,FLARED	1	5001	-								
5A	38705-54940	PIPE ASSY,FLARED	1	5001	-	5108							
5B	38705-58230	PIPE ASSY,FLARED	1	5109	-		B						
6A	38705-31700	PIPE ASSY,FLARED	2	5001	-								
7A	67040-09000	HOSE,HEAT RESISTIN	2 M	5001	-	5003							L=2000
7B	67040-09000	HOSE,HEAT RESISTIN	2 M	5004	-	5108							L=1900
7C	67040-09000	HOSE,HEAT RESISTIN	2 M	5109	-								L=1750
8A	67040-09000	HOSE,HEAT RESISTIN	2 M	5001	-	5003							L=1900
8B	67040-09000	HOSE,HEAT RESISTIN	2 M	5004	-	5108							L=1800
8C	67040-09000	HOSE,HEAT RESISTIN	2 M	5109	-								L=1600
9A	43113-34640	HOSE,HIGH PRESSURE	1	5001	-	5003							
9B	43113-43710	HOSE,HIGH PRESSURE	1	5004	-		C						
11A	43113-34240	HOSE,HIGH PRESSURE	1	5001	-								
12A	43113-35380	HOSE,HIGH PRESSURE	1	5001	-								
13A	41410-30790	BLOCK	1	5001	-								
19A	30246-20090	ADAPTER,TEE	1	5001	-	5003					Y03		
19B	30246-23880	ADAPTER,TEE	1	5004	-		A				Y03		
21A	72001-12000	HOLDER,PIPE	A/R	5001	-								D=20
22A	72001-11500	HOLDER,PIPE	A/R	5001	-								D=15
23A	72001-10600	HOLDER,PIPE	A/R	5001	-								D=6.35
25A	38677-70330	BAND,HOSE	4	5001	-								
28A	38705-55960	PIPE ASSY,FLARED	1	5001	-	5108							
28B	38706-23630	PIPE ASSY,FLARED	1	5109	-		B						
29A	38705-55970	PIPE ASSY,FLARED	1	5001	-	5108							
29B	38706-23640	PIPE ASSY,FLARED	1	5109	-		B						
31A	88241-07104	ADAPTER,ELBOW	1	5001	-						Y02		
32A	40902-24190	BRACKET	1	5001	-	5108							
32B	40902-42520	BRACKET	1	5109	-	5114	B						
32C	40902-44680	BRACKET	1	5115	-		B						
33A	35047-60340	SWITCH,PRESSURE	1	5001	-							Y04	
35A	30241-20660	ADAPTER,ELBOW	3	5001	-						Y03		
36A	40732-20160	FLARED FITTING,ELB	2	5001	-	5108	D	Y05					
38A	38705-55980	PIPE ASSY,FLARED	1	5001	-	5108							
38B	38706-23650	PIPE ASSY,FLARED	1	5109	-		B						
39A	40730-20120	FLARED FITTING	2	5001	-						Y02		
41A	69081-11000	TUBE, SPIRAL	1 M	5001	-	5116							L=400
41B	69081-14000	TUBE, SPIRAL	1 M	5117	-		C						L=400
42A	69081-11000	TUBE, SPIRAL	1 M	5001	-	5116							L=300
42B	69081-14000	TUBE, SPIRAL	1 M	5117	-		C						L=300
43A	69081-19000	TUBE, SPIRAL	1 M	5117	-								L=500
44A	69081-19000	TUBE, SPIRAL	1 M	5117	-								L=400
51A	62480-21081	NUT, FLANGED	7	5001	-								
53A	61802-08050	BOLT, FLANGED	2	5001	-								
54A	61802-08020	BOLT, FLANGED	2	5001	-								
55A	61802-10020	BOLT, FLANGED	2	5001	-								
102A	36361-70040	DIAPHRAGM	1	5001	-						01		
104A	35824-70030	SENSOR,OIL LEVEL	1	5001	-						01		
114A	65210-12011	RING,O	1	5001	-						02		
124A	65210-12008	RING,O	1	5001	-							03	
138A	47131-71240	RING,O	1	5001	-							04	
139A	35010-70170	SWITCH	1	5001	-							04	
141A	65231-00041	RING,O	1	5001	-	5108					05		

CLICK HERE TO **DOWNLOAD** THE COMPLETE MANUAL

- Thank you very much for reading the preview of the manual.
- You can download the complete manual from: www.heydownloads.com by clicking the link below



- Please note: If there is no response to CLICKING the link, please download this PDF first and then click on it.

CLICK HERE TO **DOWNLOAD** THE COMPLETE MANUAL

MASTER CYLINDER

SYM-BOL	PART NUMBER	PART NAME	UNIT Q,TY	SERIAL		REMARKS								
				(A)	(B)	N	P	D	(A)	(B)	(C)	(D)	REMARK	
000A	44175-60330	MASTER CYLINDER AS	1	5001	-	5108								
1A	34810-70120	CYLINDER ASSY	1	5001	-	5108				Y01				
2A	34810-70180	CYLINDER ASSY	1	5001	-	5108						Y03		
3A	34000-70780	SEAL	1	5001	-	5108								
4A	43932-70560	BOLT,W/WASHER	3	5001	-	5108								
70A	49691-70740	REPAIR KIT	1	5001	-	5108								
80A	49691-70930	REPAIR KIT	1	5001	-	5108							QK1	
95A	35600-72730	SPRING	1	5001	-	5108				01				
96A	35600-72740	SPRING	1	5001	-	5108				01				
97A	38565-70060	VALVE,RELIEF	1	5001	-	5108				01				
98A	35600-72710	SPRING	1	5001	-	5108				01				
150A	39962-70320	PISTON ASSY	1	5001	-	5108				01	Y02			
171A	39960-71140	PISTON	1	5001	-	5108					02			
174A	39960-71340	PISTON	1	5001	-	5108					02			
180A	41585-70180	PLUNGER	1	5001	-	5108					02			
181A	35600-73590	SPRING	1	5001	-	5108					02			
183A	39960-71120	PISTON	1	5001	-	5108					02			
206A	35440-70070	STOPPER	1	5001	-	5108						03		
209A	37710-70110	NIPPLE	2	5001	-	5108						03		
210A	38670-70300	BAND	2	5001	-	5108						03		
211A	43751-70070	BALL	2	5001	-	5108						03		
212A	35107-70050	SCREW,BLEED	2	5001	-	5108						03		
213A	32210-70200	CAP	2	5001	-	5108						03	K1	

VALVE CONTROL GROUP

SYM-BOL	PART NUMBER	PART NAME	UNIT Q,TY	SERIAL		REMARKS						
				(A)	(B)	N	P	D	(A)	(B)	(C)	(D)
1A	38560-60550	VALVE,PILOT	1	5001	- 5044							REF.763
1B	38560-60610	VALVE,PILOT	1	5045	-							REF.763
2A	40902-28730	BRACKET	1	5001	- 5003							
2B	40902-31720	BRACKET	1	5004	- 5088							
2C	40902-42400	BRACKET	1	5089	-							
3A	41619-45200	PLATE	1	5001	- 5003							
3B	41619-58090	PLATE	1	5004	-							
4A	31990-25750	GASKET	1	5001	- 5003							
4B	31990-25940	GASKET	1	5004	-							
5A	88201-06704	ADAPTER	5	5001	-					Y01		
6A	40330-60180	FILTER	1	5001	-					Y01		
7A	41608-39930	PLATE	1	5001	-							
8A	41619-42380	PLATE	1	5001	-							
9A	38731-28460	PIPE	1	5001	-							
11A	37810-60060	KNOB	1	5001	-							
12A	03501-51070	COVER	1	5001	- 5003							
12B	03501-54740	COVER	1	5004	-							
13A	88511-03041	NIPPLE,HOSE	1	5001	-							
14A	40790-20010	BOOT	1	5001	-							
15A	37600-21080	NUT	2	5001	-							
16A	35100-20200	SCREW	3	5001	-							
21A	65210-12011	RING,O	1	5001	-					01		
51A	61802-06025	BOLT,FLANGED	4	5001	-							
52A	61802-10020	BOLT,FLANGED	14	5001	-							
53A	62401-81141	NUT	1	5001	-							

STEERING CYLINDER

SYM-BOL	PART NUMBER	PART NAME	UNIT Q, TY	SERIAL		REMARKS								
				(A)	(B)	N	P	D	(A)	(B)	(C)	(D)	REMARK	
1A	34820-64190	CYLINDER ASSY,OIL	1	5001	- 5140						Y01			FR LH
11A	36725-72210	TUBE,CYLINDER	1	5001	- 5140						01			FR LH
12A	45886-72020	ROD,PISTON	1	5001	- 5140						01		02	
13A	42791-70030	HEAD,CYLINDER	1	5001	- 5140						01		02	
14A	40840-72100	BUSHING	1	5001	- 5140						01		02	
15A	47142-70020	RING,U	1	5001	- 5140							K1		
16A	47181-70080	RING,WIPER	1	5001	- 5140							K1		
17A	65210-22055	RING,O	1	5001	- 5140							K1		
18A	47194-71150	RING,BACK-UP	1	5001	- 5140							K1		
19A	65210-21060	RING,O	1	5001	- 5140							K1		
20A	39960-71840	PISTON	1	5001	- 5140						01		02	
21A	34030-70030	SEAL RING ASSY	1	5001	- 5140							K1		
22A	47193-70110	RING,SLIPPER	2	5001	- 5140							K1		
23A	35104-70090	SCREW,SET	1	5001	- 5140						01		02	
24A	43751-70330	BALL	1	5001	- 5140						01		02	
25A	40840-72110	BUSHING	2	5001	- 5140						01		02	
26A	47181-70090	RING,WIPER	4	5001	- 5140						01		02	
40A	49691-70880	REPAIR KIT	1	5001	- 5140						01	QK1	02	
101A	34820-64200	CYLINDER ASSY,OIL	1	5001	- 5140								Y02	FR RH
111A	36725-72220	TUBE,CYLINDER	1	5001	- 5140								02	FR RH

MEMO

PILOT VALVE

SYM-BOL	PART NUMBER	PART NAME	UNIT Q,TY	SERIAL		REMARKS						
				(A)	(B)	N	P	D	(A)	(B)	(C)	(D)
000A	38560-60550	VALVE,PILOT	1	5001	-	5044						
000B	38560-60610	VALVE,PILOT	1	5045	-		C					
111A	41600-71480	PLATE	1	5001	-							
121A	46023-70190	WASHER,SEAL	2	5001	-							
122A	47131-73470	RING,O	1	5001	-							
125A	43956-70590	BOLT,SOCKET	2	5001	-							
126A	40033-70050	PIN,SPRING	1	5001	-							
131A	40840-71500	BUSHING	1	5001	-							
211A	41530-72410	PLUG	4	5001	-							
212A	45887-70270	ROD,PUSH	1	5001	-							
213A	34000-70600	SEAL	4	5001	-							
214A	65210-12020	RING,O	4	5001	-							
215A	46011-70380	WASHER,PLANE	8	5001	-							
217A	34200-70850	SHIM	4	5001	-							
218A	33930-70430	SEAT,SPRING	1	5001	-							
301A	34940-70270	JOINT	1	5001	-							
302A	41600-71470	PLATE	1	5001	-							
312A	37600-71330	NUT	1	5001	-							
401A	41600-71460	PLATE	1	5001	-							
402A	33100-70740	CASE	1	5001	-							
403A	61101-06012	BOLT,SOCKET	1	5001	-							
404A	33930-70830	SEAT,SPRING	4	5001	-	5024						
404B	33930-70830	SEAT,SPRING	2	5025	-	5044						PORT 2,3
404C	33930-70960	SEAT,SPRING	2	5045	-		B					PORT 2,3
405A	33930-70840	SEAT,SPRING	4	5001	-							
406A	45887-70320	ROD,PUSH	4	5001	-							
408A	35600-76620	SPRING	4	5001	-							
411A	40840-72670	BUSHING	2	5001	-							
412A	41600-71500	PLATE	1	5001	-							
413A	41600-71450	PLATE	1	5001	-							
414A	61101-06080	BOLT,SOCKET	4	5001	-							
442A	33930-70950	SEAT,SPRING	2	5025	-	5044						PORT 1,4
442B	33930-70970	SEAT,SPRING	2	5045	-		B					PORT 1,4
501A	40790-70460	BOOT	1	5001	-							
571A	45887-70280	ROD,PUSH	3	5001	-							
591A	35910-70360	SOLENOID	1	5001	-	5044						
591B	33300-71070	CONNECTOR	1	5045	-		B					
592A	35910-70370	SOLENOID	1	5001	-	5044						
592B	33300-71080	CONNECTOR	1	5045	-		B					
593A	35910-70380	SOLENOID	1	5001	-	5044						
593B	33300-71090	CONNECTOR	1	5045	-		B					
612A	35600-73920	SPRING	1	5001	-							
613A	35600-73940	SPRING	3	5001	-							
614A	35600-73910	SPRING	1	5001	-							
661A	33930-70460	SEAT,SPRING	1	5001	-							
663A	33930-70330	SEAT,SPRING	3	5001	-							
664A	33930-70440	SEAT,SPRING	1	5001	-							
711A	35600-74350	SPRING	2	5001	-	5044						PORT 2,3
711B	35600-73900	SPRING	1	5045	-		B					PORT 4
712A	35600-73900	SPRING	2	5001	-	5044						PORT 1,4
712B	35600-74350	SPRING	1	5045	-		B					PORT 2
713A	35600-77250	SPRING	1	5045	-							PORT 1
714A	35600-77260	SPRING	1	5045	-							PORT 3
762A	35600-73890	SPRING	1	5001	-							

MARKING GROUP

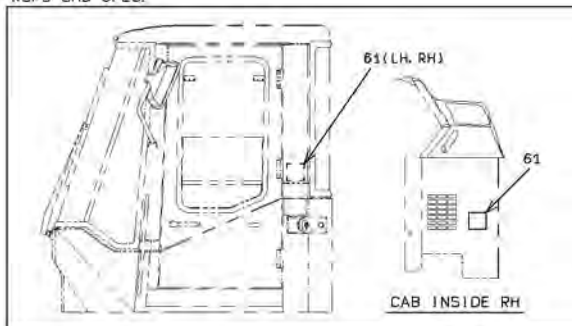
<S/N 5001 - 5017>

SYMBOL	LABEL KIT
80	LABEL KIT
3	TIRE AIR PRESSURE LABEL
4	HYDRAULIC OIL LABEL
5	GAUGE PORT LABEL
6	MANUAL LABEL
7	FUSE LABEL (FRAME)
9	FUSE LABEL (CAB)
15	T/M CONTROL LABEL
16	LOCK LABEL
18	FUEL LABEL
29	STARTER S/W LABEL
64	UNLOCK LABEL

SYMBOL	LABEL KIT
90	LABEL KIT
33	WARNING LABEL (BATTERY SERVICING)
38	WARNING LABEL (READ MANUAL)
44	WARNING LABEL (ACCUMULATOR)
45	WARNING LABEL (BOOM)
46	WARNING LABEL (STARTING ENGINE)
47	WARNING LABEL (T/C OIL CHECK)
53	WARNING LABEL (AIR CLEANER)
61	WARNING LABEL (ROPS)

SYMBOL	LABEL KIT
100	LABEL KIT
17	WARNING LABEL (BRAKE OIL)
39	WARNING LABEL (BELT)
48	WARNING LABEL (HOT FLUID)
49	WARNING LABEL (FAN)
52	WARNING LABEL (BATTERY LIQUID)

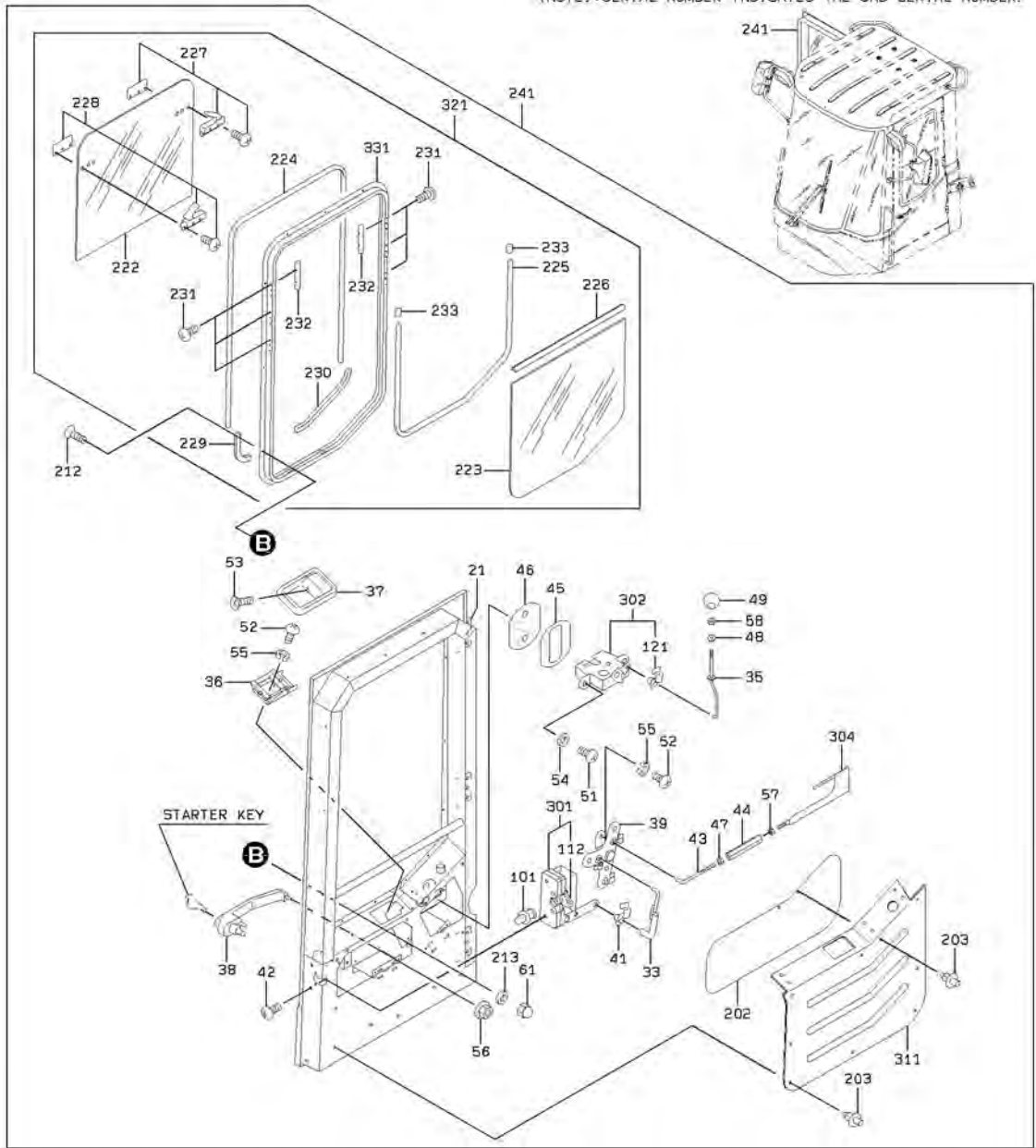
ROPS CAB SPEC.



2-A

DOOR GROUP

(NOTE): SERIAL NUMBER INDICATES THE CAB SERIAL NUMBER.



2-A

MEMO

ROPS,BACK MIRROR & COVER GROUP

SYM-BOL	PART NUMBER	PART NAME	UNIT Q,TY	SERIAL (A) - (B)	REMARKS					
					N	P	D	(A)	(B)	(C)
1A	45953-20380	ROPS	1	5001 -						
2A	44344-70020	MIRROR,ROOM	1	5001 -						
3A	41605-41290	PLATE	1	5001 -						
11A	35100-20200	SCREW	5	5001 -						
21A	41672-20810	PLATE,SPECIFICATIO	1	5001 -						
32A	40901-48410	BRACKET	1	5001 -						
33A	62451-51101	NUT,WING	2	5001 -						
41A	31205-43610	COVER	1	5001 -			Y01			
42A	34041-20990	STRIP, SEAL	2	5001 -						
43A	44160-70050	MAGNET	1	5001 -						
44A	33713-24130	SHEET,RUBBER	1	5001 -						
51A	61005-24070	BOLT	10	5001 -						
52A	62710-18241	WASHER,PLANE	10	5001 -						
53A	61802-08016	BOLT,FLANGED	2	5001 -						
61A	61802-06050	BOLT,FLANGED	2	5001 -						
62A	62710-18101	WASHER,PLANE	4	5001 -						
63A	88031-06101	NUT,SELF-LOCKING	2	5001 -						
71A	62256-29310	SCREW	2	5001 -						
72A	62721-03100	WASHER,SPRING	4	5001 -						
73A	62401-81031	NUT	2	5001 -						
81A	35100-20010	SCREW	4	5001 -						
82A	61802-06010	BOLT,FLANGED	2	5001 -						
91A	61802-08016	BOLT,FLANGED	2	5075 -						
92A	61802-06050	BOLT,FLANGED	2	5075 -						
105A	39890-70870	HINGE	1	5001 -			01			
114A	41641-34390	PLATE	1	5001 -						
115A	41610-31150	PLATE	1	5001 -						
121A	31200-33740	COVER	1	5001 -						
122A	33713-25120	SHEET,RUBBER	1	5001 -						
123A	33713-25130	SHEET,RUBBER	3	5001 -						
131A	31205-52200	COVER	1	5075 -						
132A	43780-42530	BOSS	2	5075 -						

MEMO

REAR GRILLE GROUP (OPENING AND CLOSED TYPE+STEEL PLATE)

SYM-BOL	PART NUMBER	PART NAME	UNIT Q,TY	SERIAL (A) - (B)	REMARKS					
					N	P	D	(A)	(B)	(C)
1A	33070-22890	GRILLE	1	5095 -						
2A	32151-60100	CATCH ASSY	1	5095 -						
3A	32150-20420	CATCH	1	5095 -						
4A	40600-39850	FRAME	1	5095 -				Y01		
5A	35211-60220	STAY ASSY	2	5095 -						
6A	63002-02016	PIN,SPLIT	4	5095 -						
7A	43900-24420	BOLT	1	5095 -						
8A	31200-40200	COVER	1	5095 -						
16A	39890-70040	HINGE	2	5095 -				01		WELDING
21A	33713-29060	SHEET,RUBBER	2	5095 -						
31A	03501-72350	ROOM ASSY,ENGINE	1	5095 -						
51A	61802-10025	BOLT,FLANGED	2	5095 -						
52A	61802-08020	BOLT,FLANGED	4	5095 -						
53A	62480-21081	NUT,FLANGED	8	5095 -						
54A	62701-40081	WASHER,PLANE	14	5095 -						

PRECLEANER MOUNT (MAINTENANCE-FREE)

SYM-BOL	PART NUMBER	PART NAME	UNIT Q,TY	SERIAL		REMARKS							
				(A)	(B)	N	P	D	(A)	(B)	(C)	(D)	REMARK
1A	42730-60030-7	PRECLEANER	1	5001	-						Y01		
2A	36430-24060	DUCT	1	5001	-								
3A	03501-54420	ROOM ASSY,ENGINE	1	5001	-								
11A	42730-70130-7	PRECLEANER	1	5001	-						01		
12A	32920-70890-7	CLAMP	1	5001	-						01		
51A	61802-10016	BOLT,FLANGED	5	5001	-								

MEMO

CLICK HERE TO **DOWNLOAD** THE COMPLETE MANUAL

- Thank you very much for reading the preview of the manual.
- You can download the complete manual from: www.heydownloads.com by clicking the link below



- Please note: If there is no response to CLICKING the link, please download this PDF first and then click on it.

CLICK HERE TO **DOWNLOAD** THE COMPLETE MANUAL