

93316-00260

November 2011



PARTS CATALOG

WHEEL LOADER

115ZV

ELB/TUBECITY IMS SPEC.

Powered by CUMMINS QSX19 Engine

Serial No. 11C4-0207, 0208, 0209

115ZV

(CUMMINS QSX19)

00010 00000

FOR PARTS

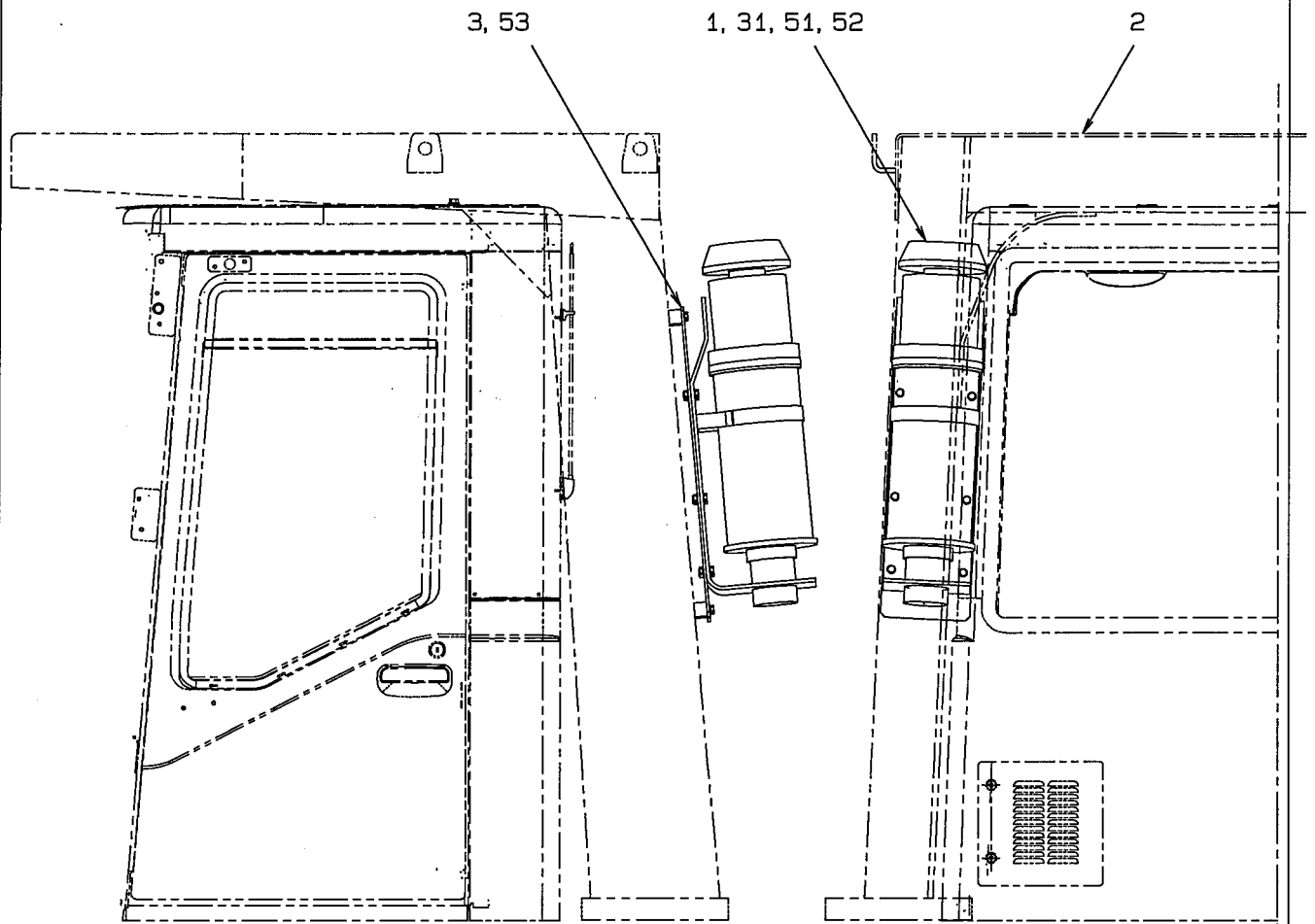
CLICK HERE TO **DOWNLOAD** THE COMPLETE MANUAL

- Thank you very much for reading the preview of the manual.
- You can download the complete manual from: www.heydownloads.com by clicking the link below



- Please note: If there is no response to CLICKING the link, please download this PDF first and then click on it.

CLICK HERE TO **DOWNLOAD** THE COMPLETE MANUAL



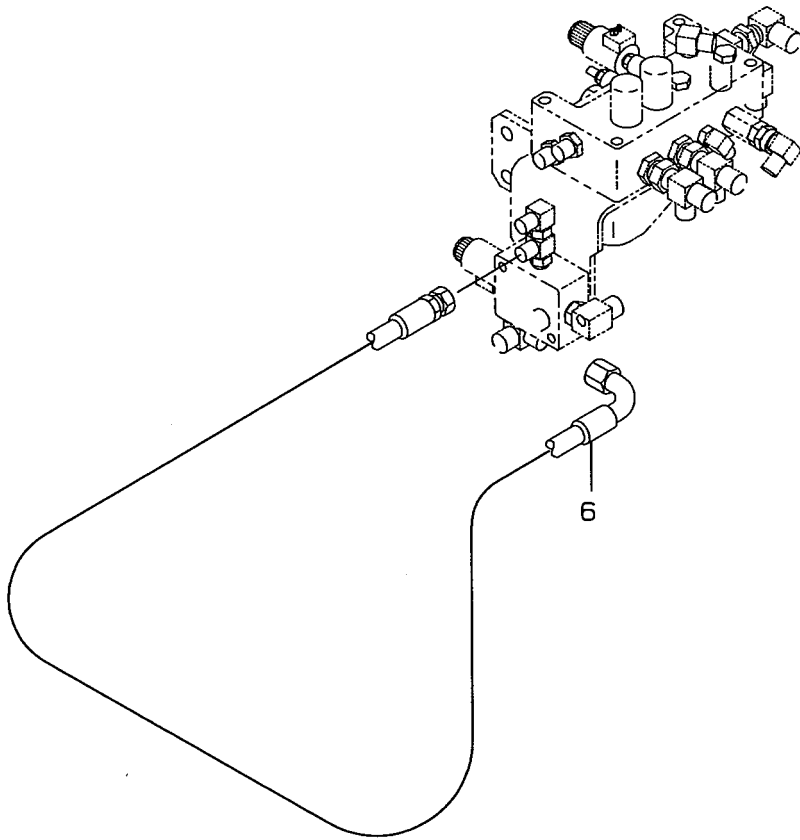
53	61802-12020	BOLT, FLANGED	4	
52	62480-21101	NUT, FLANGED	6	
51	61802-10025	BOLT, FLANGED	6	
31	40330-70640	FILTER	1	01
3	41619-54980	PLATE	1	
2	03502-11810	MODIFICATION	1	
1	40205-20040	FAN ASSY	1	Y01
NO.	PART.NO	PART NAME	Q, TY	REMARKS

NAME	FAN MOUNT
PART NO.	03173-01740 1/1

91	45531-20110	RESISTOR	1	
49	36406-20030	DIODE UNIT	1	
47	33190-43290	CABLE	1	
46	33193-22680	CABLE ASSY	2	
45	33190-43330	CABLE	1	
44	33190-43320	CABLE	1	
43	33193-22670	CABLE ASSY	1	
42	33190-47010	CABLE	1	
41	33190-43310	CABLE	1	
37	33193-52710	CABLE ASSY	1	
36	33190-43270	CABLE	1	
35	33190-43280	CABLE	1	
34	33190-43260	CABLE	1	
33	33190-34330	CABLE	1	
32	33190-47000	CABLE	1	
31	33190-43240	CABLE	1	
29	33190-43230	CABLE	1	
28	33190-43220	CABLE	1	
27	33194-31920	CABLE ASSY	1	
26	33193-57620	CABLE ASSY	1	
25	33194-36700	CABLE ASSY	1	
24	33193-57610	CABLE ASSY	1	
21	33194-36690	CABLE ASSY	1	
1010	33180-41830	CABLE SET	1	
NO.	PART NO.	PART NAME	Q'TY	REMARKS

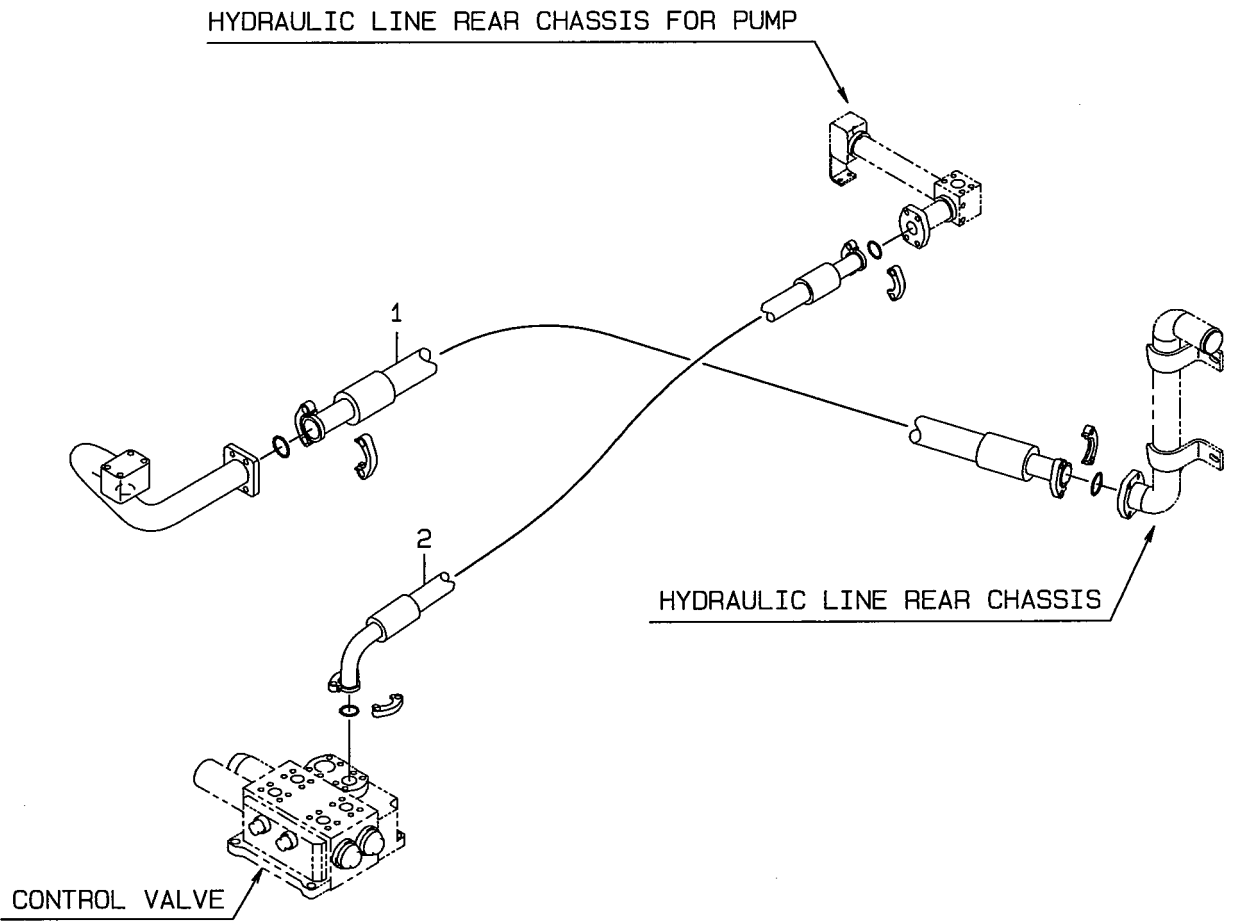
77	65801-10032	BUSHING, ELASTIC	2	
76	33713-22680	SEAT, RUBBER	2	
75	65801-25060	BUSHING, ELASTIC	1	
74	65801-63060	BUSHING, ELASTIC	6	
73	65801-31060	BUSHING, ELASTIC	4	
72	65801-12032	BUSHING, ELASTIC	1	
71	65801-40060	BUSHING, ELASTIC	1	
66	40901-28910	BRACKET	1	
62	61802-12035	BOLT, FLANGED	2	
61	61802-08020	BOLT, FLANGED	2	
59	62480-21081	NUT, FLANGED	2	
58	62701-40031	WASHER, PLANE	3	
57	62721-03100	WASHER, SPRING	3	
56	62256-51312	SCREW	3	
55	62721-06100	WASHER, SPRING	16	
54	62256-51610	SCREW	16	
53	46011-21650	WASHER, PLANE	10	
52	62721-10100	WASHER, SPRING	5	
51	62401-81101	NUT	5	
17	43571-60040	HOLDER, SPRING	2	
16	43550-60100	HOLDER	2	
14	43550-20680	HOLDER	2	
13	43571-20160	HOLDER, SPRING	1	
12	43571-20150	HOLDER, SPRING	7	
11	43571-20140	HOLDER, SPRING	2	
7	72010-46000	CLAMP, HOSE	2	
5	72001-12500	HOLDER, PIPE	1	
4	72001-11000	HOLDER, PIPE	5	
3	32923-70150	CLAMP, NILON	11	
2	32923-70140	CLAMP, NILON	70	
1	32923-70120	CLAMP, HOSE	79	
NO.	PART NO	PART NAME	Q, TY	REMARKS

NAME
CABLE MOUNT, REAR CHASSIS
PART, NO
03257-01910 3/3



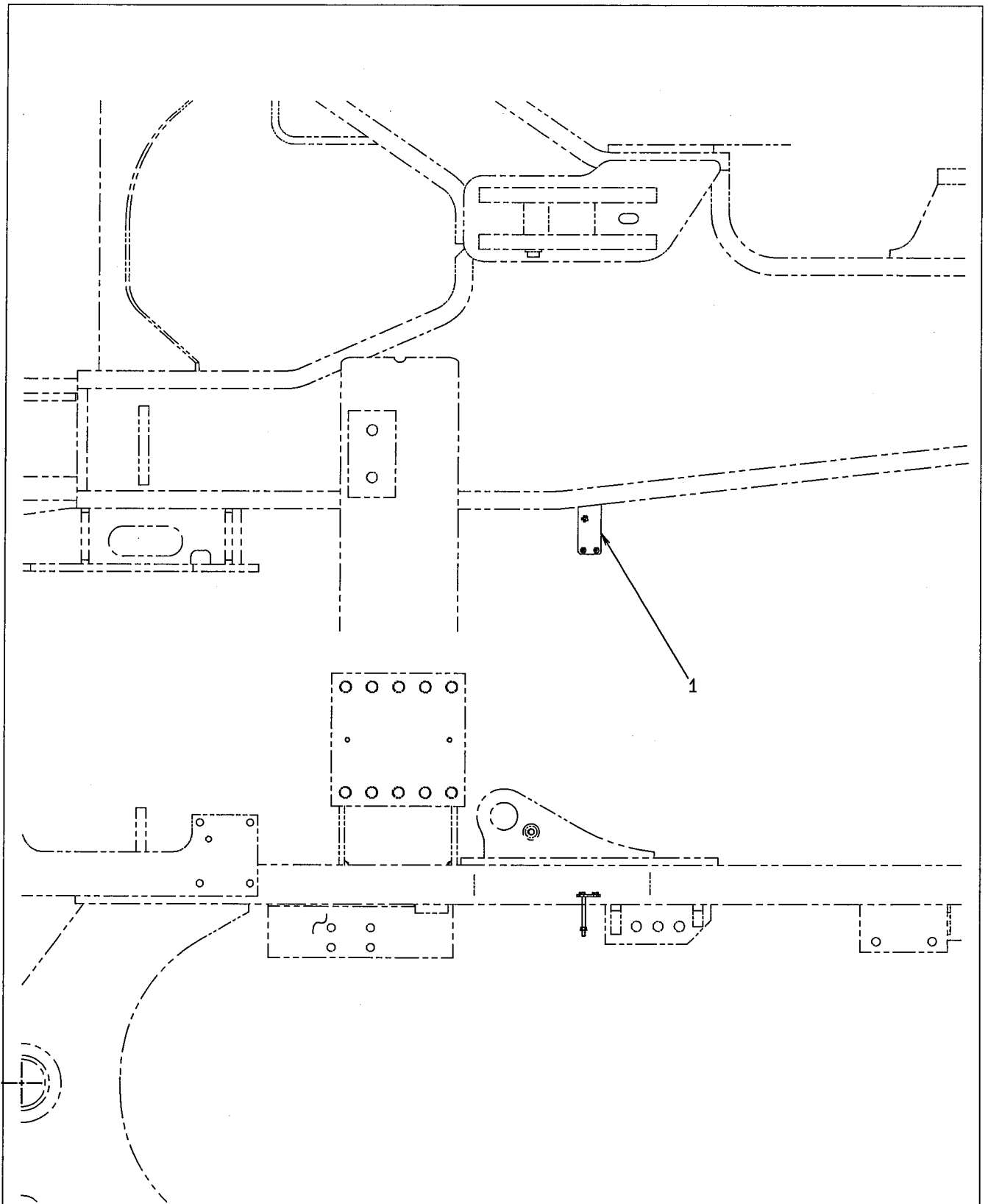
6	43113-54590	HOSE, HIGH PRESSURE	1	
NO.	PART .NO	PART NAME	Q, TY	REMARKS

NAME	VALVE ASSY
PART NO.	38511-32440 1/1



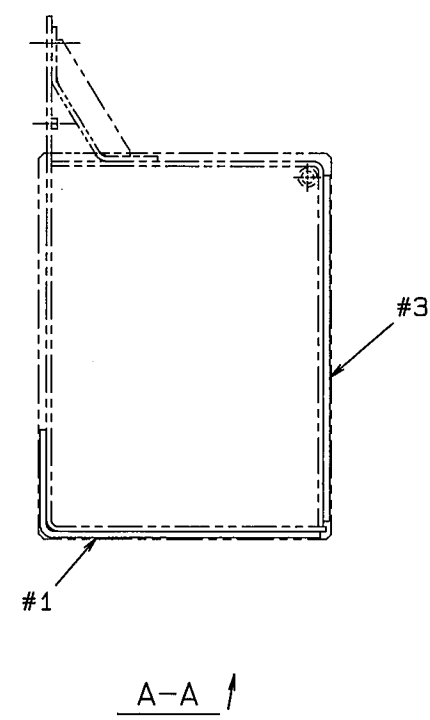
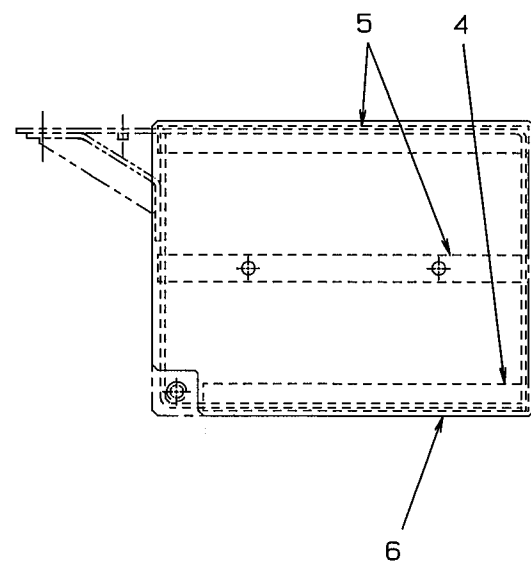
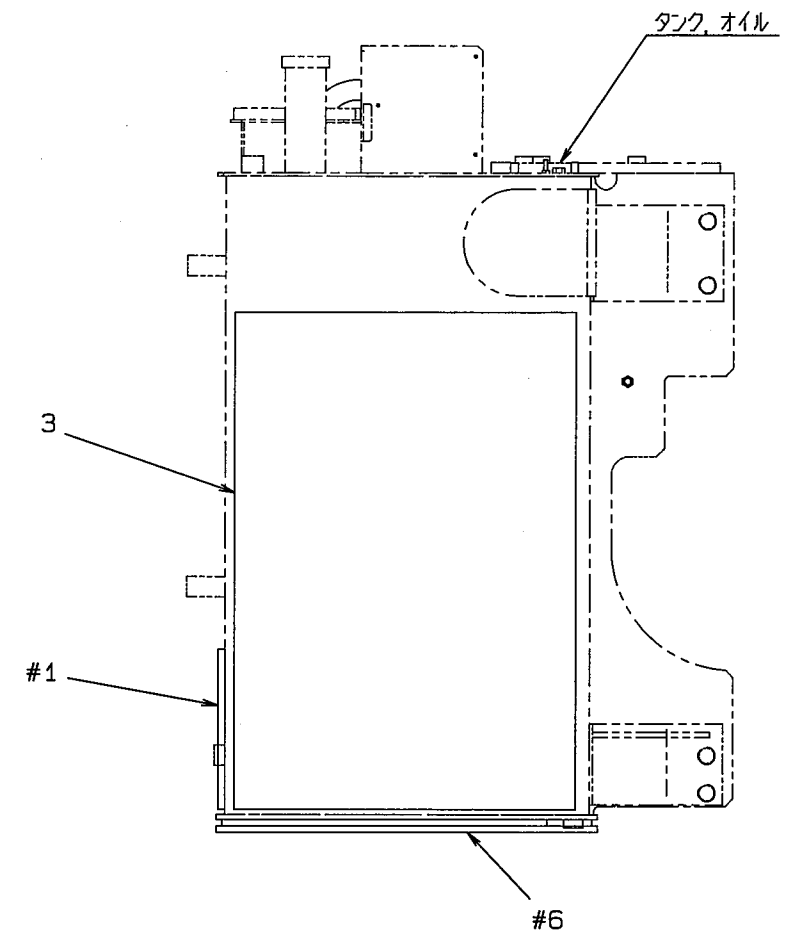
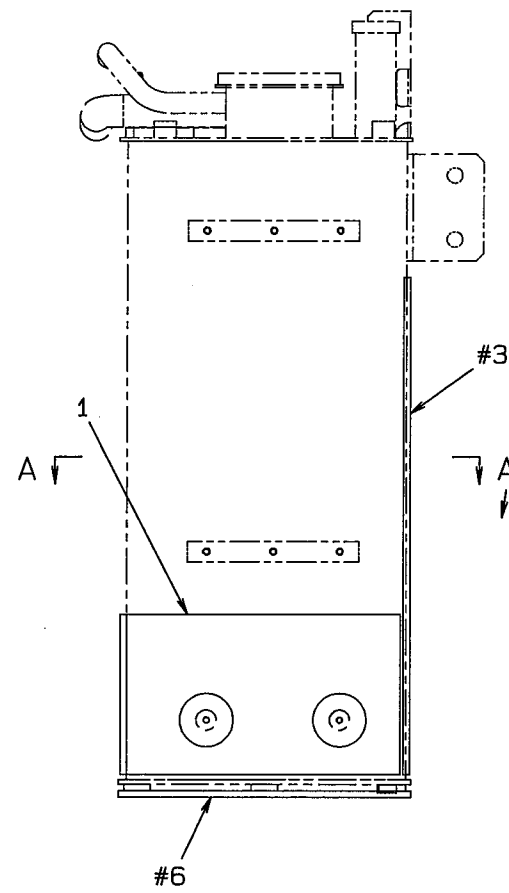
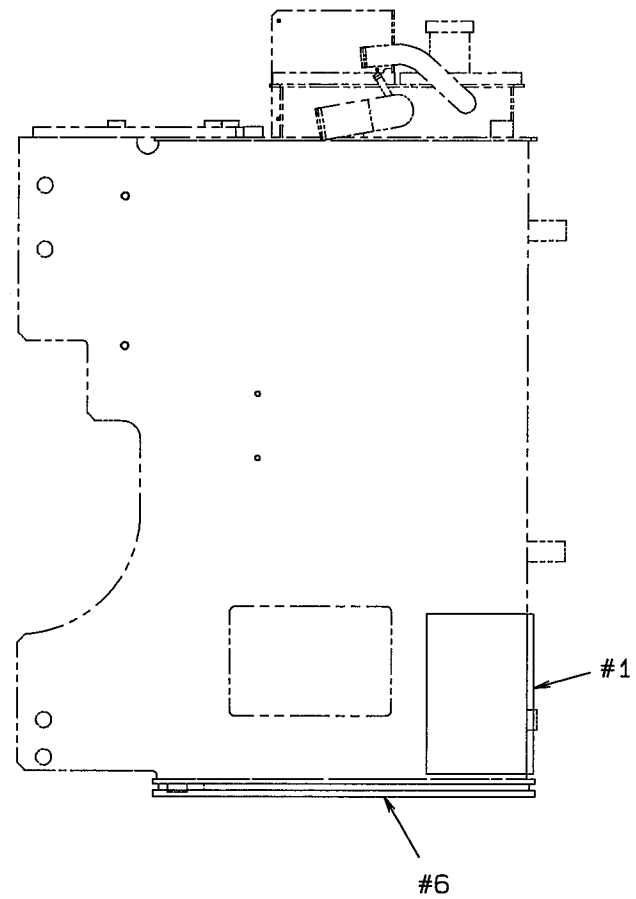
NO.	PART .NO	PART NAME	Q. TY	REMARKS
2	43113-45390	HOSE, HIGH PRESSURE	1	
1	43113-45380	HOSE, HIGH PRESSURE	1	

NAME	HYDRAULIC LINE, CENTERPIN
PART NO.	04014-11090 1/1



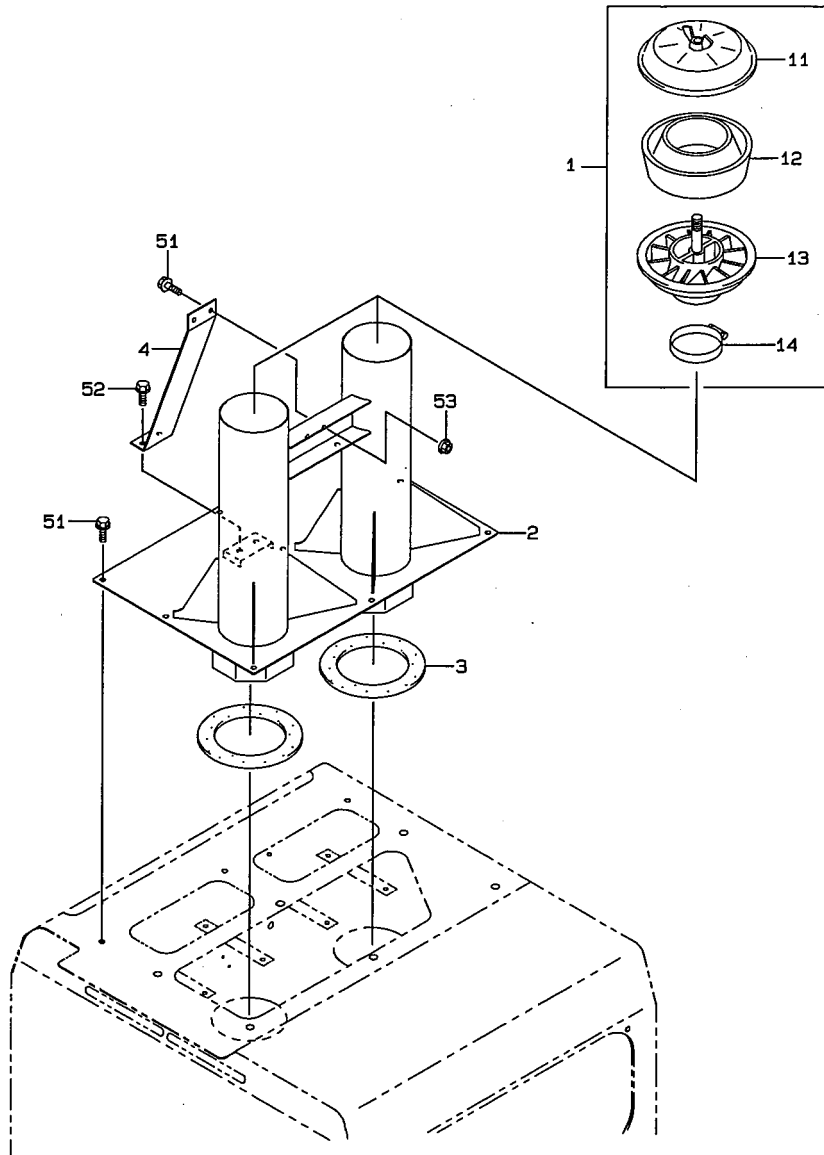
1	41751-30240	PLATE	1	WELDING
NO.	PART.NO	PART NAME	Q, TY	REMARKS

NAME	PLATE
PART NO.	03501-57090 1/1



NO.	PART.NO	PART NAME	Q. TY	REMARKS
6	41620-28330	PLATE	1	WELDING
5	41620-28320	PLATE	2	WELDING
4	41620-28310	PLATE	1	WELDING
2	41716-42690	PLATE	1	WELDING
1	41716-42680	PLATE	1	WELDING

NAME
GUARD MOUNT
PART. NO
03133-05490 1/1



53	62480-21101	NUT, FLANGED	2	
52	61802-10020	BOLT, FLANGED	2	
51	61802-10025	BOLT, FLANGED	11	
14	32920-70790	CLAMP	1	01
13	35755-70160	SLEEVE ASSY	1	01
12	43890-70360	BODY	1	01
11	31231-70150	COVER ASSY	1	01
4	40902-42900	BRACKET	1	
3	31990-24620	GASKET	2	
2	36430-24180	DUCT	1	
1	42730-70090	PRECLEANER	2	Y01
NO.	PART.NO	PART NAME	Q. TY	REMARKS

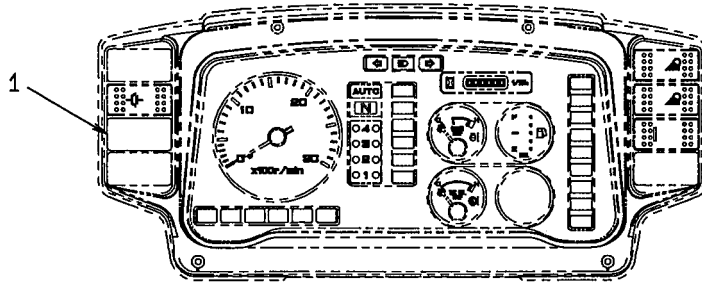
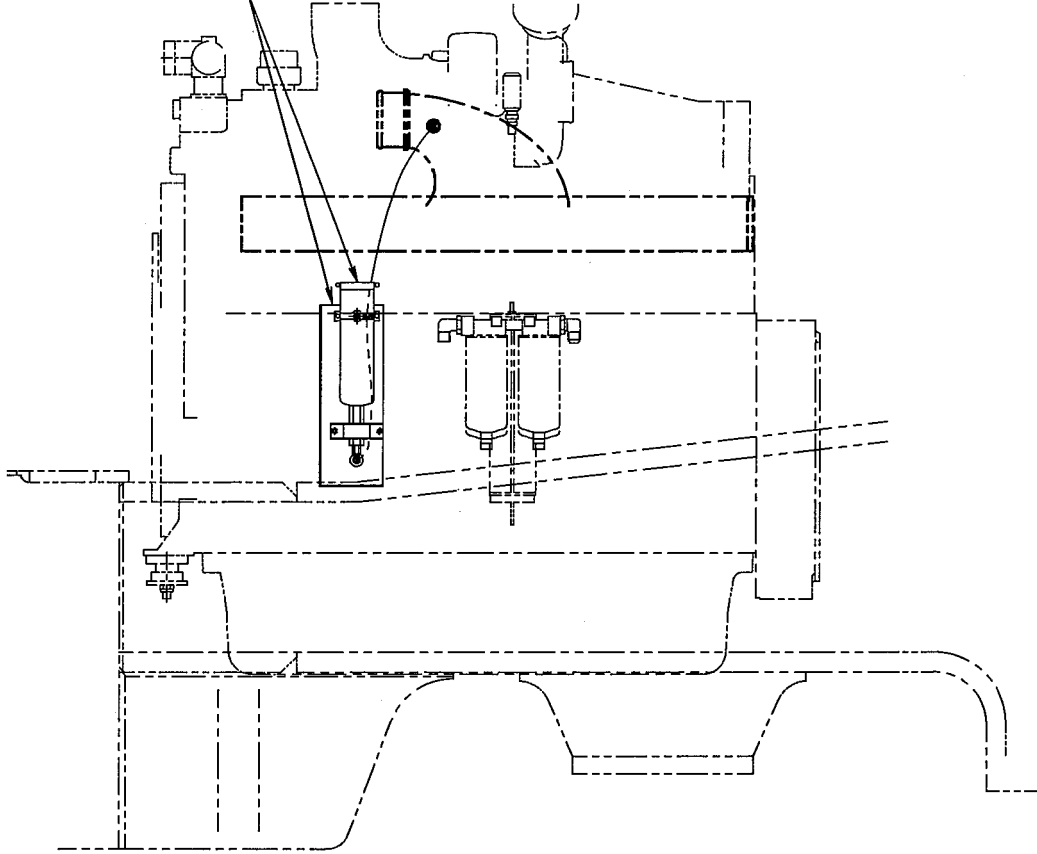
NAME

PRECLEANER MOUNT

PART NO.

03166-00361 1/1

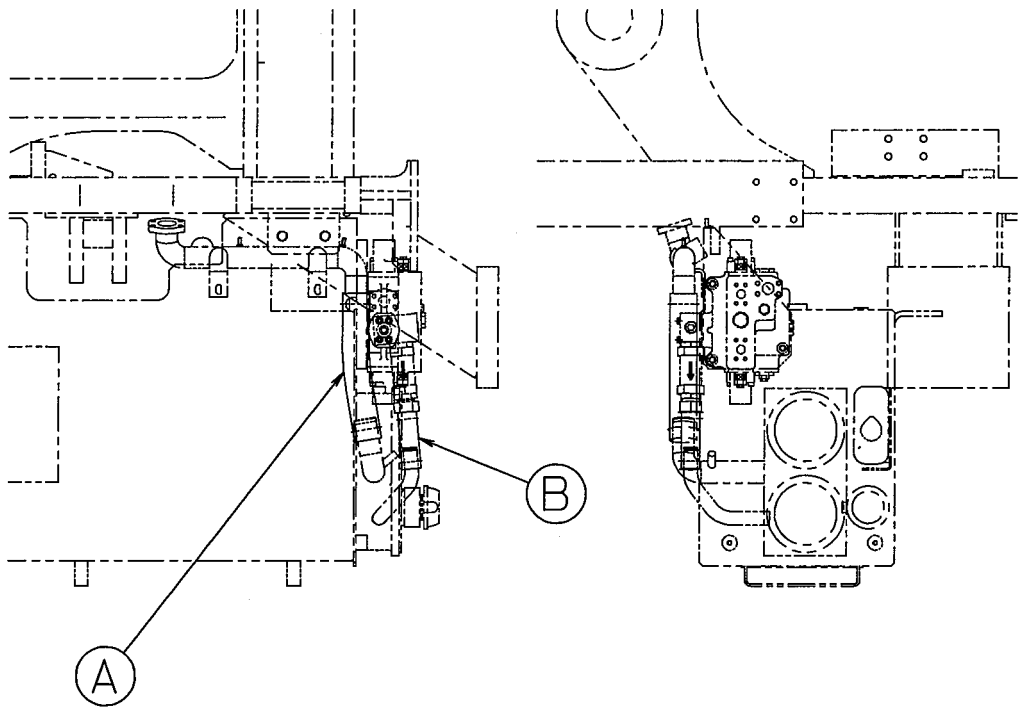
コールド スタータ及び
ブラケットを取外しのこと。



インパネ部詳細
(キャブ内)

1	41530-60080	PLUG	1	
NO.	PART.NO	PART NAME	Q, TY	REMARKS

NAME	PLUG
PART NO.	03501-55740 1/1



セラミックブランケット施工対象部品 (HYDRAULIC LINE, SUCTION)
04014-10760

NO.	PART NO.	PART NAME	Q'TY
Ⓐ	67040-60040	HOSE, HEAT RESISTING	1
Ⓑ	67040-38016	HOSE, HEAT RESISTING	1

NAME	INSULATOR MOUNT
PART NO.	03152-03370 1/1

CLICK HERE TO **DOWNLOAD** THE COMPLETE MANUAL

- Thank you very much for reading the preview of the manual.
- You can download the complete manual from: www.heydownloads.com by clicking the link below



- Please note: If there is no response to CLICKING the link, please download this PDF first and then click on it.

CLICK HERE TO **DOWNLOAD** THE COMPLETE MANUAL