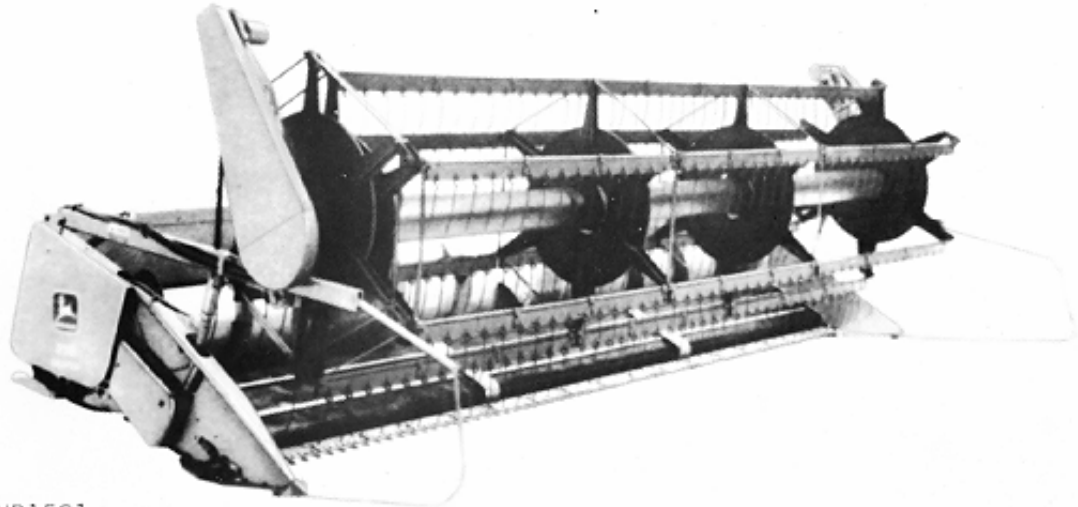


HP1521 -UN-01JAN94



HP1521

*JOHN DEERE 918 DRAPER PLATFORM (-635900)
JOHN DEERE 920 DRAPER PLATFORM (646301-)*

(SPECIFICATIONS AND DESIGN SUBJECT TO CHANGE WITHOUT NOTICE)

CLICK HERE TO **DOWNLOAD** THE COMPLETE MANUAL

- Thank you very much for reading the preview of the manual.
- You can download the complete manual from: www.heydownloads.com by clicking the link below



- Please note: If there is no response to CLICKING the link, please download this PDF first and then click on it.

CLICK HERE TO **DOWNLOAD** THE COMPLETE MANUAL

A13

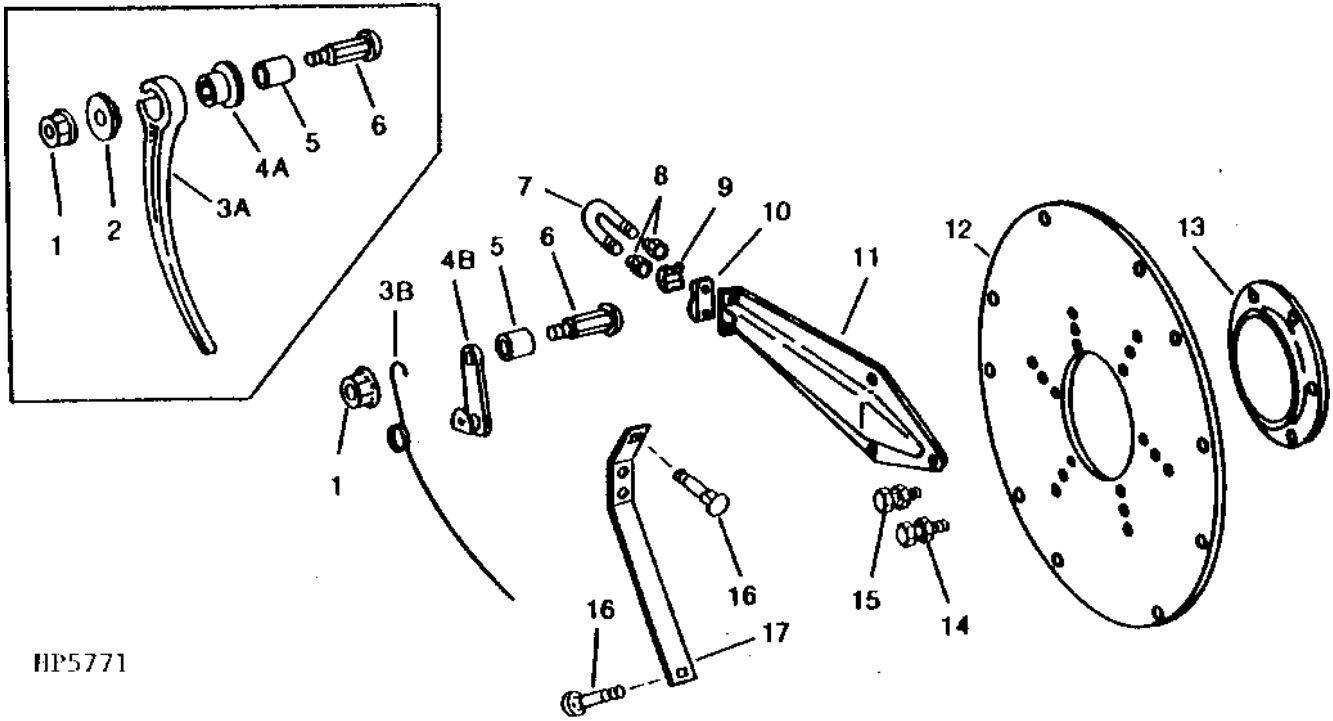
REEL

PICKUP REEL ECCENTRIC SPIDER

918 (-635900)

920 (646301-)

HP5771 -UN-01JAN94



HP5771

KEY	PART NO.	PART NAME	QTY	SERIAL NO.	REMARKS
1	E59584	FLANGE NUT	6		12.700 MM (1/2") (RIGID)
2	H132148	RETAINER	6		(RIGID)
3A	H132147	FINGER	6	-656329	(RIGID)
3B	AH97221	STRAP	6	656330-	
4A	H132149	BRACKET	6	-656329	(RIGID)
4B	H33332	FINGER	6	656330-	R.H.
	H33333	FINGER	6	656330-	L.H.
5	E40212	SPACER	6		(RIGID)
6	E59585	BOLT	6		(RIGID)
7	E40203	U-BOLT	6		
8	M63707	LOCK NUT	12		6.350 MM (1/4")
9	E40205	CAP	6		
10	E40206	BASE	6		
11	AH97207	ARM	6		
12	H98692	PLATE	1		
13	H98693	RING	1		
14	19H1900	CAP SCREW	6		5/16" X 3/4"
	12M7065	LOCK WASHER	6		8.100 MM (0.319")
	14H785	NUT	6		5/16"
15	19H2020	CAP SCREW	18		5/16" X 1/2"
	12M7065	LOCK WASHER	18		8.100 MM (0.319")
	14H785	NUT	18		5/16"
16	03H1893	BOLT	AR		1/4" X 1/2"
	E45229	LOCK NUT	AR		1/4"
17	H98764	BRACE	6		

NOTE: QUANTITIES SHOWN ARE FOR ONE END ONLY.

BH76722 (COMPLETE GOODS) FINGER ASSEMBLY - AUX PICKUP

A21

FRAME, STRIPPERS, DIVIDERS, AND PLATES

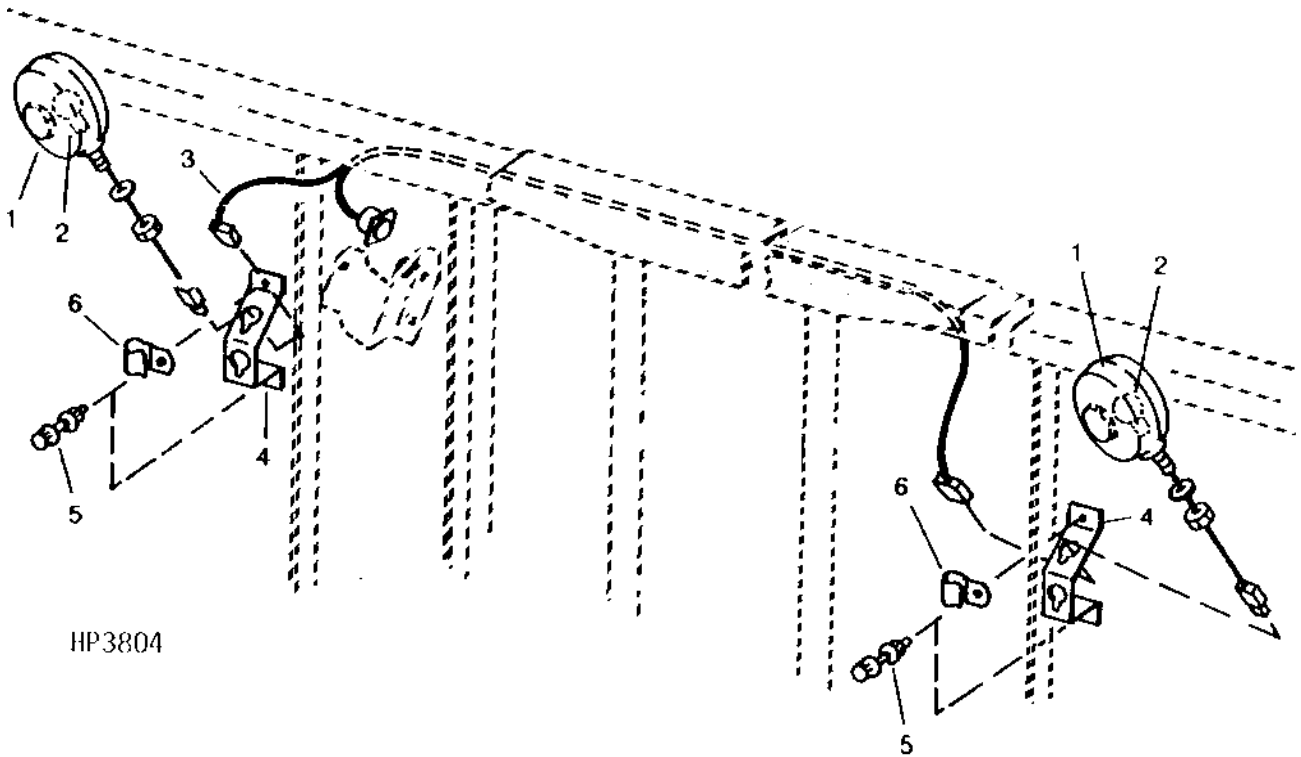
FRAME - CONTINUED 918 (-635900)

KEY	PART NO.	PART NAME	QTY	SERIAL NO.	REMARKS
1	AH119654	MAIN FRAME	1	-628000	(SUB AH136197, H136751, (2) H137143, H138262 AND H138263)
	AH132254	MAIN FRAME	1	-635100	(SUB AH136459)
	AH133918	MAIN FRAME	1	-635810	(SUB AH136459)
	AH136459	FRAME	1	-635825	(SUB AH136197, H138262, H138263, (6) 19H1905, (6) 24H1224)
	AH136197	MAIN FRAME	1	-635825	(SUB AH141311)
	AH141311	MAIN FRAME	1		
2A	03H1629	BOLT	6	-628000	5/8" X 2-1/4"
	12H294	LOCK WASHER	6	-628000	5/8"
	14H760	NUT	6	-628000	5/8"
2B	19M7784	SCREW	2		M10 X 20 (USE WITH QUIK-TACH AND NEW SERVICE FRAME)
3A	H133619	BRACKET	1	-628000	R.H.
	H133620	BRACKET	1	-628000	L.H.
3B	H137143	PLATE	1		(USE WITH QUIK-TACH AND NEW SERVICE FRAME)
4	H124261	SPACER	6	-628000	16.280 X 31.750 X 16.500 MM (0.641" X 1-1/4" X 0.650")
5	REINFORCEMENT	1		(USE WITH QUIK-TACH AND NEW SERVICE FRAME)
6	PLATE	1		(USE WITH QUIK-TACH AND NEW SERVICE FRAME)
7	H136751	DECAL	1		(INSTALLED ON L.H. SIDE OF BACKSHEET ONLY)
8	AH132905	PIN	1		R.H. (LATCH PIN ASSY)
	AH132906	PIN	1		L.H. (LATCH PIN ASSY)
9	03H1540	BOLT	8		5/16" X 3/4"
	12M7065	LOCK WASHER	8		8.100 MM (0.319")
	14H785	NUT	8		5/16"
10	SHIELD	1	-635800	(R.H.) (8820) (SUB AH137774)
11	SHIELD	1	-635800	(L.H.) (8820) (SUB AH137774)
12	H135908	SUPPORT	1	-640600	R.H. (SUB H138262)
	H138262	SUPPORT	1	640601-	R.H.
	H135909	SUPPORT	1	-640600	L.H. (SUB H138263)
	H138263	SUPPORT	1	640601-	L.H.
13	H135095	BOLT	2	-640600	
	19H1905	CAP SCREW	2		5/16" X 1"
	24H1224	WASHER	2		11/32" X 1" X 1/16"
14	03H1540	BOLT	12		5/16" X 3/4"
	A22698	NUT	12		7.925 MM (5/16")
15	03H1540	BOLT	12		5/16" X 3/4" (THRU BACKSHEET)
	A22698	NUT	12		7.925 MM (5/16")
16	03H1709	BOLT	4		5/16" X 1" (THRU BACKSHEET ANGLES)
	A22698	NUT	4		7.925 MM (5/16")
17	03H1540	BOLT	18		5/16" X 3/4"
	A22698	NUT	18		7.925 MM (5/16")
18	H135901	STRIPPER	2		
19	H86918	SCREW	AR		7.925 X 14.224 MM (5/16" X 0.560") (9400, 9500 - 2 USED; 9600 - 4 USED) (BUTTON HEAD) (ARC WELDED)
20	H113371	FLOOR	1		
21	H87337	PIN	6		31.750 X 162.560 MM (1-1/4" X 6.400") (SUB H147707, 19M7590 AND 14M7275)
	H92469	PIN	1		31.750 X 289.560 MM (1-1/4" X 11.400") (SUB H147711, 19M7590 AND 14M7275) L.H.
22	24H1111	WASHER	14		17/32" X 1-1/16" X 0.090"
23	19H2062	CAP SCREW	7		1/2" X 4"
	14H1040	NUT	7		1/2"
24	AH137774	KIT	1		
25	H137101	CLAMP	9		
26	H141678	CHANNEL	1		(LH GUIDE REINFORCEMENT)(WELDED)

B6

STUBBLE LIGHTS (OPTIONAL)

918 (-635900)
HP3804 -UN-01JAN94



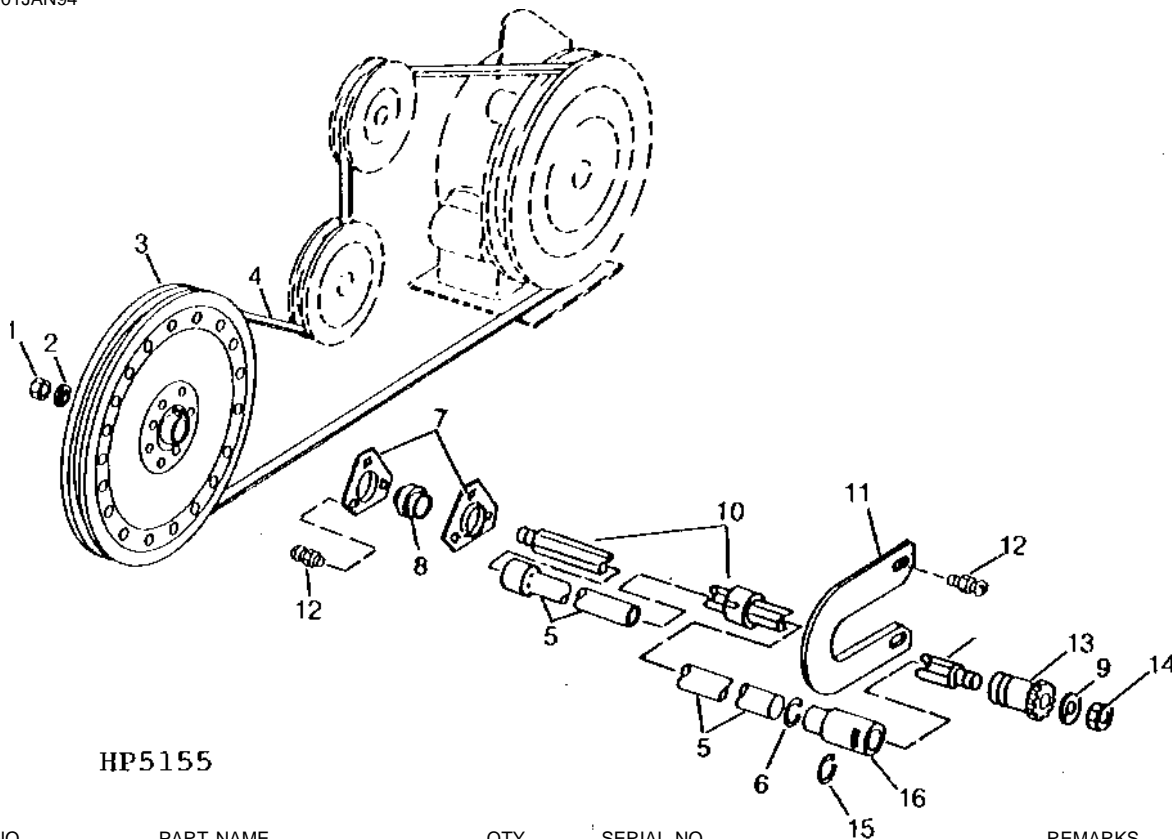
HP3804

KEY	PART NO.	PART NAME	QTY	SERIAL NO.	REMARKS
1	AH164499	LAMP	2		
2	AD2062R	BULB	2		
3	AH134204	WIRING HARNESS	1	-640499	(USE WITH H140664 AND 37M7066)
	AH134252	WIRING HARNESS	1	640500-	
4	H137423	BRACKET	2		
5	19M7775	SCREW	4		M6 X 16
	14M7303	FLANGE NUT	4		M6
6	AH89557	CLIP	2		
..	H140664	CONNECTOR	1		(USE IF NO HARNESS ON PLATFORM)
..	37M7066	SCREW	2		(THRU CONNECTOR INTO BRACKET)
BH81264 (COMPLETE GOODS) STUBBLE LIGHTS					

B17

KNIFE, CUTTERBAR, AND DRIVES

CUTTERBAR DRIVE
920 (646301-656300)
 HP5155 -UN-01JAN94



HP5155

KEY	PART NO.	PART NAME	QTY	SERIAL NO.	REMARKS
1	W29648	LOCK NUT	1	3/4"	
2	24H1399	WASHER	1	25/32" X 1-5/8" X 0.180"	
3	AH135569	SHEAVE	1		
4	H33473	BELT	1	(STANDARD) (529 RPM)	
5	AH126377	SHIELD	1	(L.H.) (CUT TO LENGTH)	
6	P50419	SNAP RING	1		
7	H103265	PRESSED FLANGED HOUSING	2		
8	AN102010	BEARING	1		
9	12H236	LOCK WASHER	1	3/4"	
10	AH131526	SHAFT	1	(L.H.) (SUB AH141464)	
11	H94980	BRACKET	1		
12	03H1765	BOLT	5	3/8" X 3/4"	
	E55662	FLANGE NUT	5	9.525 MM (3/8")	
13	AH91784	CHAIN SPROCKET	1	14 TEETH	
14	E43336	LOCK NUT	1	3/4"	
15	E62951	UNIVERSAL JOINT BEARING	1		
16	H93439	SHIELD	1		

MEMORANDA

CLICK HERE TO **DOWNLOAD** THE COMPLETE MANUAL

- Thank you very much for reading the preview of the manual.
- You can download the complete manual from: www.heydownloads.com by clicking the link below



- Please note: If there is no response to CLICKING the link, please download this PDF first and then click on it.

CLICK HERE TO **DOWNLOAD** THE COMPLETE MANUAL

C13

AUGER AND DRIVE

AUGER DRIVE - CONTINUED
920 (646301-656300)

KEY	PART NO.	PART NAME	QTY	SERIAL NO.	REMARKS
1	AH131526	SHAFT	1		1858 MM
2	AH126380	POWERSHAFT SHIELD	1		R.H.
3	H94980	BRACKET	1		
4	03H1765	BOLT	6		3/8" X 3/4"
	E55662	FLANGE NUT	6		9.525 MM (3/8")
5	H103265	PRESSED FLANGED HOUSING	4		
6	AN102010	BEARING	2		
7	AH126377	SHIELD	1		R.H. OUTER (CUT TO LENGTH)
8	03H2203	BOLT	1		1/2" X 2-1/4"
	24H1111	WASHER	1		17/32" X 1-1/16" X 0.090"
	A11455	NUT	1		1/2", (SUB 14H1069)
	14H1069	NUT	1		1/2"
9	H137514	SPACER	1	-640500	
	H147370	BUSHING	1	945301-	
10	AH89429	CHAIN SPROCKET	1		15 TEETH
11	AH97342	STRAP	1		
12	03H1500	BOLT	2		3/8" X 1"
	E55662	FLANGE NUT	1		9.525 MM (3/8")
13	AH141274	LINK CHAIN	1		(ROLLER, DRIVE, TYPE 60H, HEAVY DUTY, 3/4" PITCH, 87 LINKS)
14	AH130579	CHAIN SPROCKET	1		AUGER DRIVE, 13 TEETH, (SUB AH138180)
15	W29648	LOCK NUT	1		19.050 MM (3/4")
16	03H2040	BOLT	4		3/8" X 4-1/4"
17	E62951	UNIVERSAL JOINT BEARING	1		(USE WITH H135222)
18	H135222	SHIELD	1		(SLIP CLUTCH) (USE WITH E62951)
19	H86656	LOCK NUT	8		9.525 MM (3/8")
20	24H1653	WASHER	4		13/32" X 1-1/4" X 0.120"
21	H77433	SPRING	4		
22	H136976	SPACER	4		10.340 X 15.880 X 81.500 MM (0.407" X 0.625" X 3.209")
	H87206	SPACER	4	645301-	10.338 X 15.875 X 76.200 MM (0.407" X 5/8" X 3") FOR USE WITH RICE
23	H89525	RETAINER	1		
24	H136032	SLIP CLUTCH	2		
25	H135241	FORGING	1		
26	H89524	WASHER	1		45.237 X 88.900 X 2.005 MM (1-25/32" X 3-1/2" X 0.079")
27	AH87953	DRIVER	1	-635800	(SUB H143581)
	H143581	DRIVER	1		
28	12H236	LOCK WASHER	1		3/4"
29	E43336	LOCK NUT	1		19.050 MM (3/4")

C23

AUGER AND DRIVE

CROSS AUGER AND SHAFT - CONTINUED
920(646301-656300)

KEY	PART NO.	PART NAME	QTY	SERIAL NO.	REMARKS
1	H103265	PRESSED FLANGED HOUSING	2		
2	AN102010	BEARING	1		
3	03H1500	BOLT	3		3/8" X 1"
	14H812	NUT	3		3/8"
	E55662	FLANGE NUT	3		9.525 MM (3/8")
4	AH132334	DRIVER	1		(HEX SHAFT) (SUB AH142379)
5	11M7028	COTTER PIN	1		5 X 32 MM
6	AH139941	AUGER	1		(SUB AH142537) (920) (RICE)
7	19H1919	CAP SCREW	6		1/4" X 5/8"
8	P41706	NUT	6		6.350 MM (1/4") (SUB BP13712)
	BP13712	NUT	6		6.350 MM (1/4")
9	H136046	COVER	3		
10	H87193	COVER	4	-641579	
11	H86918	SCREW	4	-641579	7.925 X 14.224 MM (5/16" X 0.560")

D8

AUGER AND DRIVE

CROSS AUGER BRACKETS - CONTINUED

918 (-635900)

KEY	PART NO.	PART NAME	QTY	SERIAL NO.	REMARKS
1	H87395	EYEBOLT	3		
2	14H1040	NUT	6		1/2"
3	26H77	SHAFT KEY	1	-635100	3/16" X 3/4"
4	H96757	SUPPORT	1	-635100	(L.H.) (ROUND SHAFT)
	CM16596	SUPPORT	1	-635100	(L.H.) (ROUND SHAFT) (SUB H149440)
	H149440	SUPPORT	1		
	H141711	SUPPORT	1	635101-640600	(L.H.) (HEX SHAFT) (SUB CM21106)
	CM21106	SUPPORT	1	635101-	(L.H.) (HEX SHAFT) (SUB H149441)
	H149441	SUPPORT	1		
5	19H1726	CAP SCREW	1		3/8" X 2-1/4"
	12H304	LOCK WASHER	1	-635100	3/8"
	14H812	NUT	1	-635100	3/8"
	E55662	FLANGE NUT	1		3/8"
6	24H1111	WASHER	4	-635100	17/32" X 1-1/16" X 0.090"
7	AH108738	BRACKET	1	-635100	L.H.
	AH139082	BRACKET	1	635101-671310	L.H.
	AH153804	BRACKET	1	671311-	
8	03H1746	BOLT	4		1/2" X 1-1/4"
	12H301	LOCK WASHER	4	-635100	1/2"
	14H1040	NUT	4	-635100	1/2"
	A11455	NUT	5	635101-	1/2", (SUB 14H1069)
	14H1069	NUT	5		1/2"
9	H113355	NUT	1		12.700 MM (1/2")
10	03H1731	BOLT	2	-635100	1/2" X 1-1/2"
	03H1746	BOLT	2	635101-	1/2" X 1-1/4"
	12H301	LOCK WASHER	2	-635100	1/2"
	14H1040	NUT	2	-635100	1/2"
	A11455	NUT	3	635101-	1/2", (SUB 14H1069)
	14H1069	NUT	3		1/2"
11	H103265	PRESSED FLANGED HOUSING	2		
12	JD9209	BALL BEARING	1	-635100	
	AN102010	BEARING	1	635101-	
13	AH88838	BRACKET	1	-635100	R.H.
	AH133436	BRACKET	1	635101-	(R.H.)
14	03H1659	BOLT	2		1/2" X 1"
	12H301	LOCK WASHER	2		1/2"
	14H1040	NUT	2		1/2"
15	22H979	SET SCREW	1	-635100	3/8" X 3/8"
16	JD8576	ECCENTRIC LOCKING COLLAR	1	-635100	
17	03H1500	BOLT	3		3/8" X 1"
	12H304	LOCK WASHER	3		3/8"
	14H812	NUT	3		3/8"
18	AH97016	CHAIN SPROCKET	1	-635100	40 TEETH, DRIVE
	AH129328	CHAIN SPROCKET	1	635101-	40 TEETH, DRIVE
19	H139831	SPACER	1		
20	H98513	CHAIN SPROCKET	1		60 TEETH, DRIVE
21	24H1402	WASHER	1	-635100	25/32" X 1-7/8" X 1/4"
	24H1399	WASHER	1	635101-	25/32" X 1-5/8" X 0.180"
22	14H902	NUT	1	-635100	3/4" (FINE THREAD)
	14H912	NUT	1	635101-	3/4" (COURSE THREAD)
23	19H1824	CAP SCREW	4		5/8" X 2-1/4"
	12H294	LOCK WASHER	4		5/8"
	14H1039	NUT	4		5/8"

D19

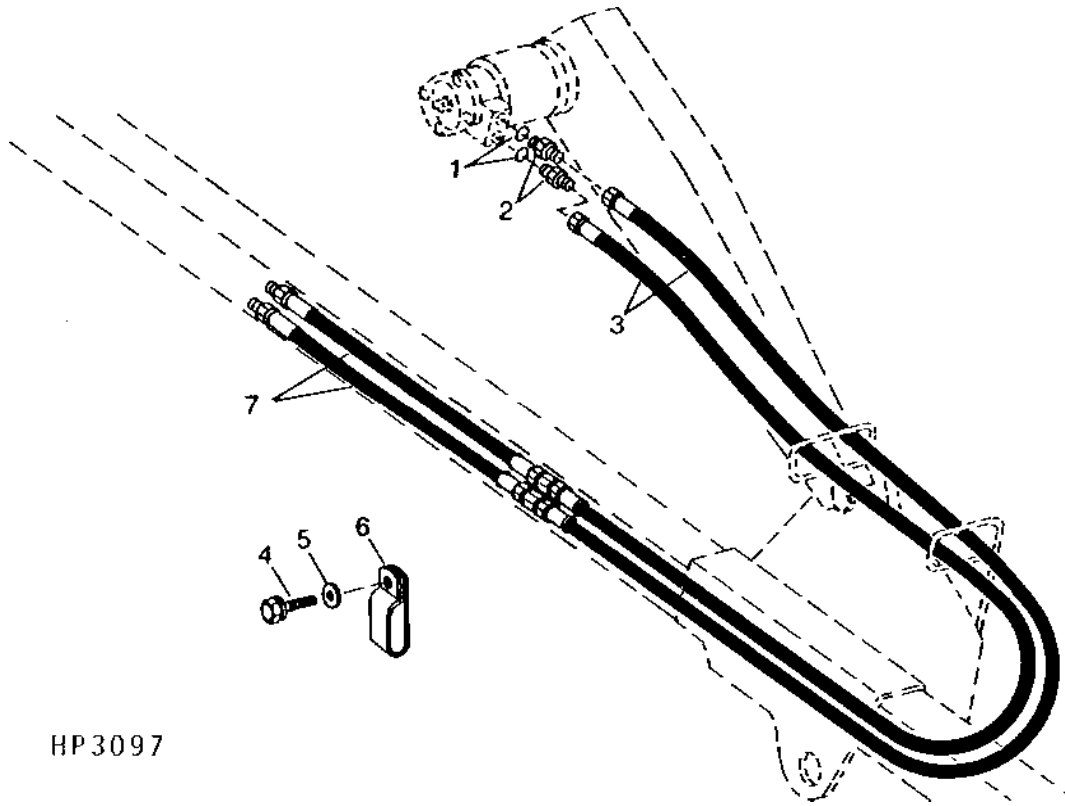
HYDRAULICS

REEL DRIVE LINES - (CONTINUED)
(920) (646301-656300)

KEY	PART NO.	PART NAME	QTY	SERIAL NO.	REMARKS
1	H128039	BRACKET	1		
2	AR94522	INTERNAL HALF COUPLER	1		
3	R26375	O-RING	2		16.358 X 2.210 MM (0.644" X 0.087")
4	H115890	UNION FITTING	1		
5	14H904	NUT	3	3/4"	
6	A15898	CAP	1		
7	AH123485	OIL LINE	1		R.H. (PRESSURE)
8	AH123475	OIL LINE	1		R.H. (RETURN)
9	03H2163	BOLT	1	-635100	1/4" X 1-3/4"
	24H1685	WASHER	AR		11/32" X 47/64" X 0.083"
	03H1813	BOLT	1		1/4" X 1-3/4"
	H122207	FLANGE NUT	AR		6.350 MM (1/4") (SUB R40694)
10	H108245	CLAMP	1		(SUB H135156)
	H135156	CLAMP	2		
11	H125403	PLUG	1		
12	AT35599	ELBOW FITTING	1		
13	19H1948	CAP SCREW	2		1/4" X 3/4"
	N10217	LOCK NUT	2		6.350 MM (1/4") FLANGE
14	H117229	YOKE	1		
15	AH128241	HYD. QUICK-CONNECT COUPLER	1		
16	R21722	O-RING	1		20.218 X 3.531 MM (0.796" X 0.139")
17	03H1540	BOLT	3		5/16" X 3/4"
	A22698	NUT	3		7.925 MM (5/16") FLANGE

HYDRAULIC DRIVE REEL HOSES, PICKUP REEL

920 (646301-)
 HP3097 -UN-01JAN94



HP 3097

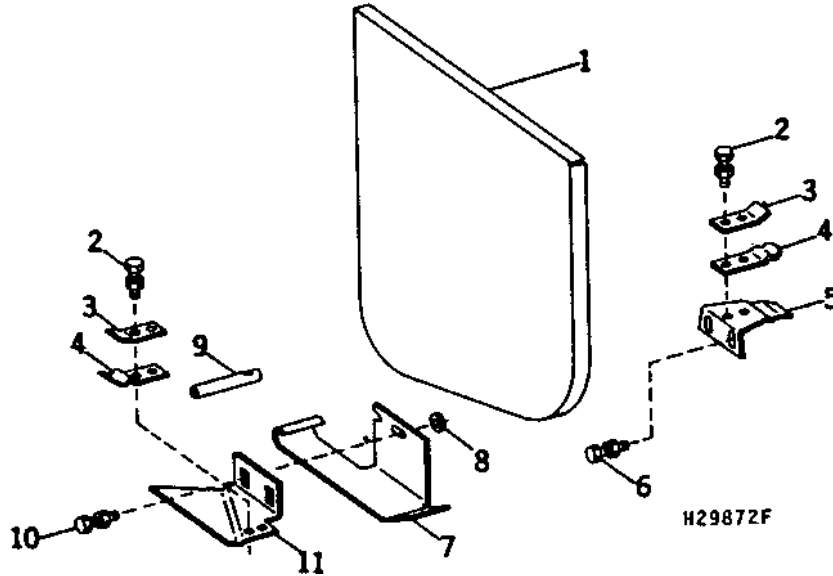
KEY	PART NO.	PART NAME	QTY	SERIAL NO.	REMARKS
1	R26906	O-RING	4		19.177 X 2.464 MM (0.755" X 0.097")
2	R27270	FITTING	4		STRAIGHT
3	AH117836	HYDRAULIC HOSE	4		3/4" X 2 540 MM (100") X 7/8"
4	H65108	SCREW	2		7.938 X 12.700 MM (5/16" X 1/2")
	H78354	SCREW	2		SELF-TAPPING, (SUB H78354)
5	24H1136	WASHER	2		7.938 X 14.224 MM (5/16" X 0.560")
6	AH77869	CLIP	2		11/32" X 11/16" X 0.065"
7	AN131672	HYDRAULIC HOSE	4		3/4" X 864 MM (34") X 3/4"

BH79870 (COMPLETE GOODS) PARTS ASSEMBLY - BAG OF

E14

SHIELDS

SHIELD
 918 (-635100)
 H29872F -UN-01JAN94



KEY	PART NO.	PART NAME	QTY	SERIAL NO.	REMARKS
1	AH113432	SHIELD	1	(L.H.)	
	AH92487	SHIELD	1	(R.H.)	
2	21H1226	SCREW	4	5/16" X 7/8"	
	N10213	LOCK NUT	4	7.925 MM (5/16")	
3	H92618	REINFORCEMENT	2		
4	H78884	LATCH	2		
5	H89114	SUPPORT	1	(R.H.)	
6	03H1765	BOLT	2	3/8" X 3/4"	
	E55662	FLANGE NUT	2	9.525 MM (3/8")	
7	H132654	RUNNER	1	(L.H.)	
	H96312	SHOE	1	(R.H.)	
8	24H1308	WASHER	4	13/32" X 1" X 0.134"	
9	H92469	PIN	1	31.750 X 289.560 MM (1-1/4" X 11.400") L.H.	
	H96313	PIN	1	31.750 X 257.556 MM (1-1/4" X 10.140") R.H.	
10	03H1557	BOLT	2	3/8" X 1-1/4"	
	12H304	LOCK WASHER	2	3/8"	
	14H812	NUT	2	3/8"	
11	H89115	SUPPORT	1	(L.H.)	

E24

BELTS, CHAINS, SHEAVES, SPROCKETS, AND DECALS

RIGHT-HAND AND LEFT-HAND DECALS - CONTINUED

918 (-635900)

KEY	PART NO.	PART NAME	QTY	SERIAL NO.	REMARKS
1	H170871	SAFETY SIGN	2		"WARNING" LOCATED ON L.H. AND R.H. REEL (ALSO INCLUDED IN DECAL SET)
2	H136162	REFLECTOR	2		(RED)
3	DECAL	2		(SUB AH100289) "LEAPING DEER"
4	H132179	LABEL	2		(918 DRAPER) (KIT AH100289)
5	JD5255	DECAL	1		(SUB E82510) "CAUTION"
6	JD5933	REFLECTOR	1		(AMBER) (ON WOBBLE BOX CASE)
7	H132865	DECAL	1		KNIFE TORQUES (L.H. CROP DIVIDER)
8	H135578	LABEL	1		(LUBE CHART)
9	JD5578	REFLECTOR	1		(REAR FACE OF L.H. SHIELD)
..	AH100289	DECAL KIT	1		(012223344455678)-ON R.H. AND L.H. SHIELD, MODEL DESIGNATION, LOCATED LOWER CENTER POSITION REFLECTIVE TAPE-(RED) LOCATED IN REAR, UPPER L.H. SHIELD; LOCATED IN REAR, UPPER, R.H. END SHEET ON PLATFORM
					REFLECTIVE TAPE-(AMBER) LOCATED ON STANDARD DIVIDER POINT, CENTER, L.H. "LEAPING DEER" 203 MM (8") LOCATED ON R.H. AND L.H. SHIELD, CENTER IN EMBOSSEMENT "WARNING", LOCATED ON L.H. AND R.H. REEL ARM

CLICK HERE TO **DOWNLOAD** THE COMPLETE MANUAL

- Thank you very much for reading the preview of the manual.
- You can download the complete manual from: www.heydownloads.com by clicking the link below



- Please note: If there is no response to CLICKING the link, please download this PDF first and then click on it.

CLICK HERE TO **DOWNLOAD** THE COMPLETE MANUAL