



H2000系列5-7t

内燃平衡重式叉车

Counterbalanced Type Forklift Truck With Engine

零件目录

PARTS MANUAL

CLICK HERE TO **DOWNLOAD** THE COMPLETE MANUAL

- Thank you very much for reading the preview of the manual.
- You can download the complete manual from: www.heydownloads.com by clicking the link below



- Please note: If there is no response to CLICKING the link, please download this PDF first and then click on it.

CLICK HERE TO **DOWNLOAD** THE COMPLETE MANUAL

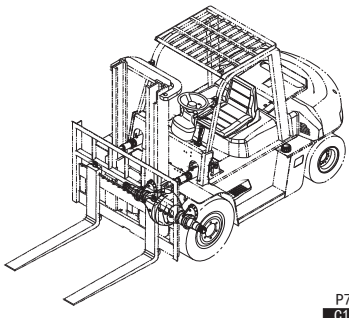
目录 INDEX

C

D

驱动桥
DRIVE AXLE

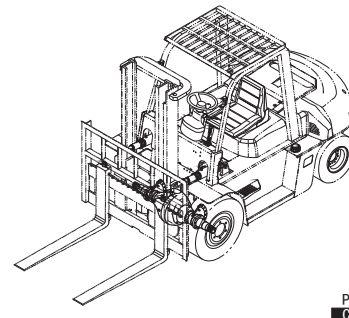
图61
FIG61



P79
C16

驱动桥
DRIVE AXLE

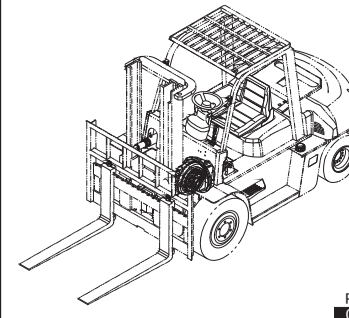
图62
FIG62



P81
C17

减速器和差速器
REDUCTION & DIFFERENTIAL

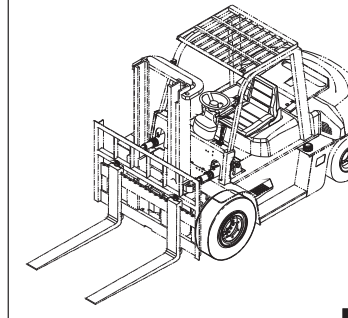
图63
FIG63



P83
C18

驱动轮
DRIVE WHEEL

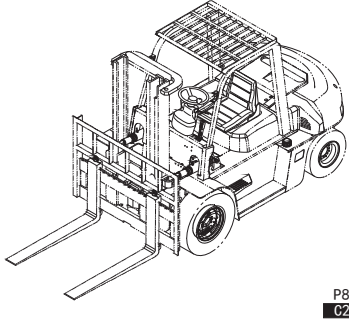
图64
FIG64



P85
C19

轮式制动器
WHEEL BRAKE

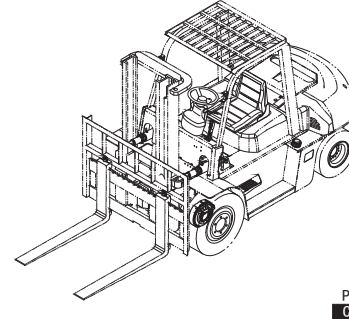
图65
FIG65



P86
C20

制动器
WHEEL BRAKE

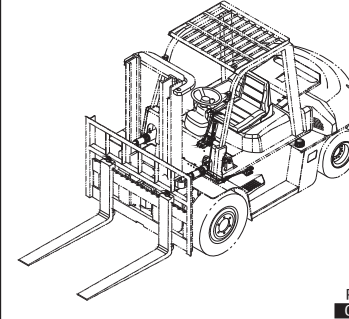
图66
FIG66



P88
C21

变速操纵
CONTROL LINKAGE

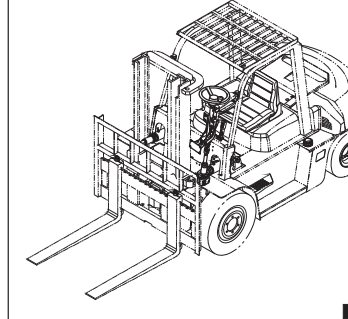
图67
FIG67



P89
C22

转向系统
STEERING SYSTEM

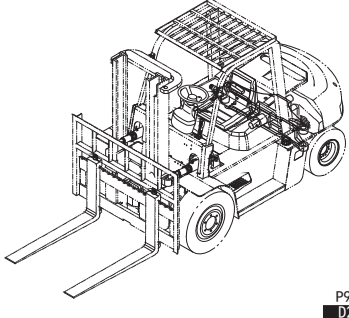
图68
FIG68



P91
D1

转向桥
STEERING AXLE

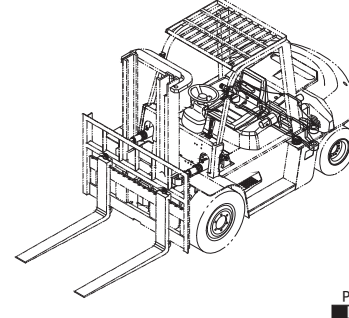
图69
FIG69



P93
D2

转向桥
STEERING AXLE

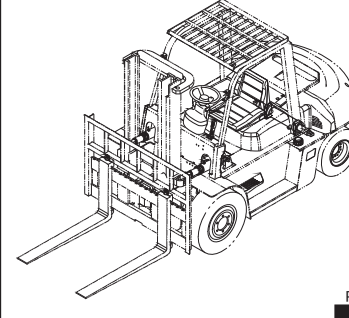
图70
FIG70



P95
D3

转向油缸
STEERING CYLINDER

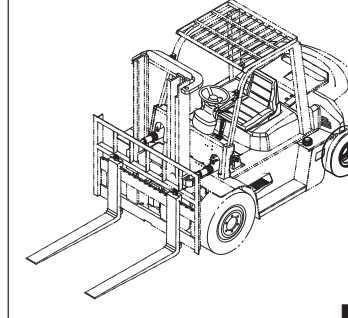
图71
FIG71



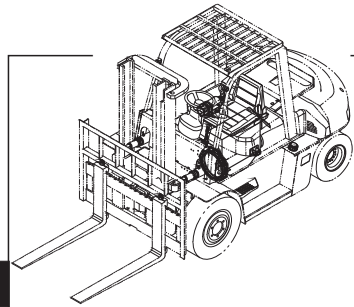
P97
D4

转向轮
STEERING WHEEL

图72
FIG72



P98
D5

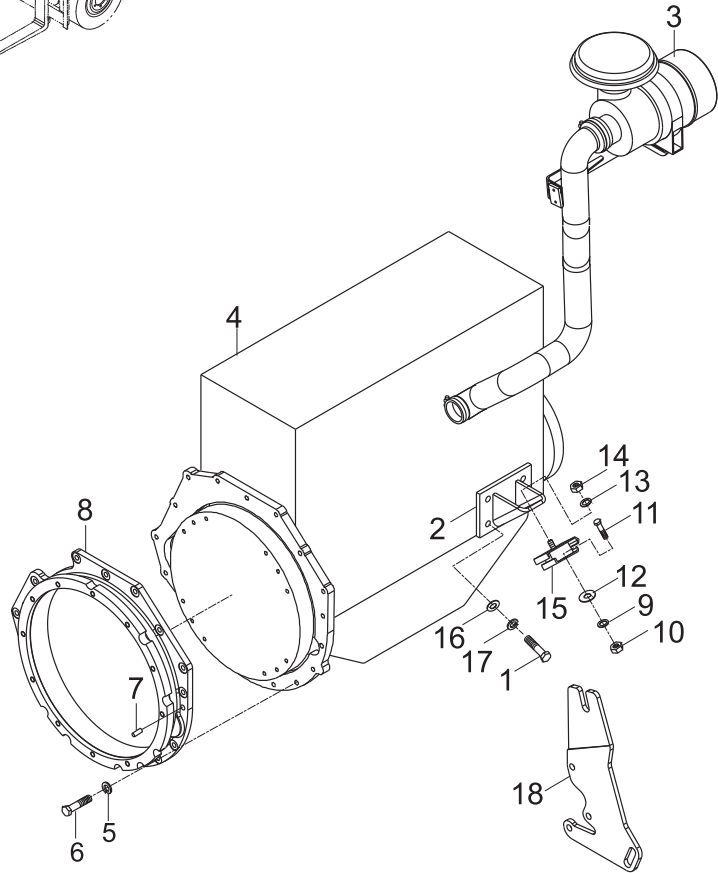


A6

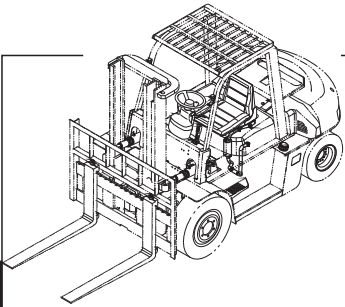
发动机安装/ENGINE MOUNT

图6/FIG6

CPCD50,60,70-M1



序号 Item No	图号 Part No	版本 Edition	零部件名称 Description	件数 Q'ty	备注 Remark
A	H46X1-00001	D03	Engine mount 发动机安装	1	
01	B0330-12025	00	Bolt 螺栓M12x25	8	GB5783-86
02	H42X1-00401	02	Engine support 发动机支脚	2	
03	H46X1-00211	02	Air intake 进气系统	1	See Fig.9
04	H46X1-00301	00	Engine 三菱发动机S6S-T	1	
05	B5050-00010	00	Washer,lock 垫圈10	14	GB93-87
06	B0530-10030	00	Bolt 螺栓M10x1.25x30	14	GB5786-86
07	B3120-12022	00	Pin 销B12x22	2	GB119-86
08	H42X1-02061	01	Flywheel case 飞轮壳体	1	
09	B5050-00010	00	Washer,lock 垫圈10	4	GB93-87
10	B4123-00010	00	Nut 螺母M10	4	GB6170-86
11	B0230-10040	00	Bolt 螺栓M10x40	4	GB5782-86
12	23651-02001	00	Washer 垫片	4	
13	B5050-00012	00	Washer,lock 垫圈12	2	GB93-87
14	B4223-00012	00	Nut 螺母M12x1.25	2	GB6171-86
15	A0351-00001-21	D00	Rubber 橡胶垫	2	
16	B5111-00012	00	Washer 垫圈12	8	GB95-85
17	B5050-00012	00	Washer,lock 垫圈12	8	GB93-87
18	H46X1-02011	01	Stryppoed-down, accelerator 发动机油门改制图	1	

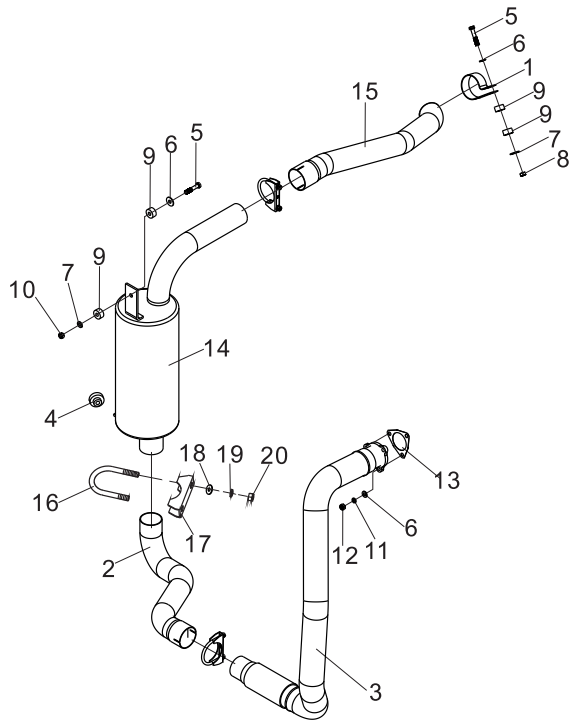


A25

排气系统/EXHAUST SYSTEM

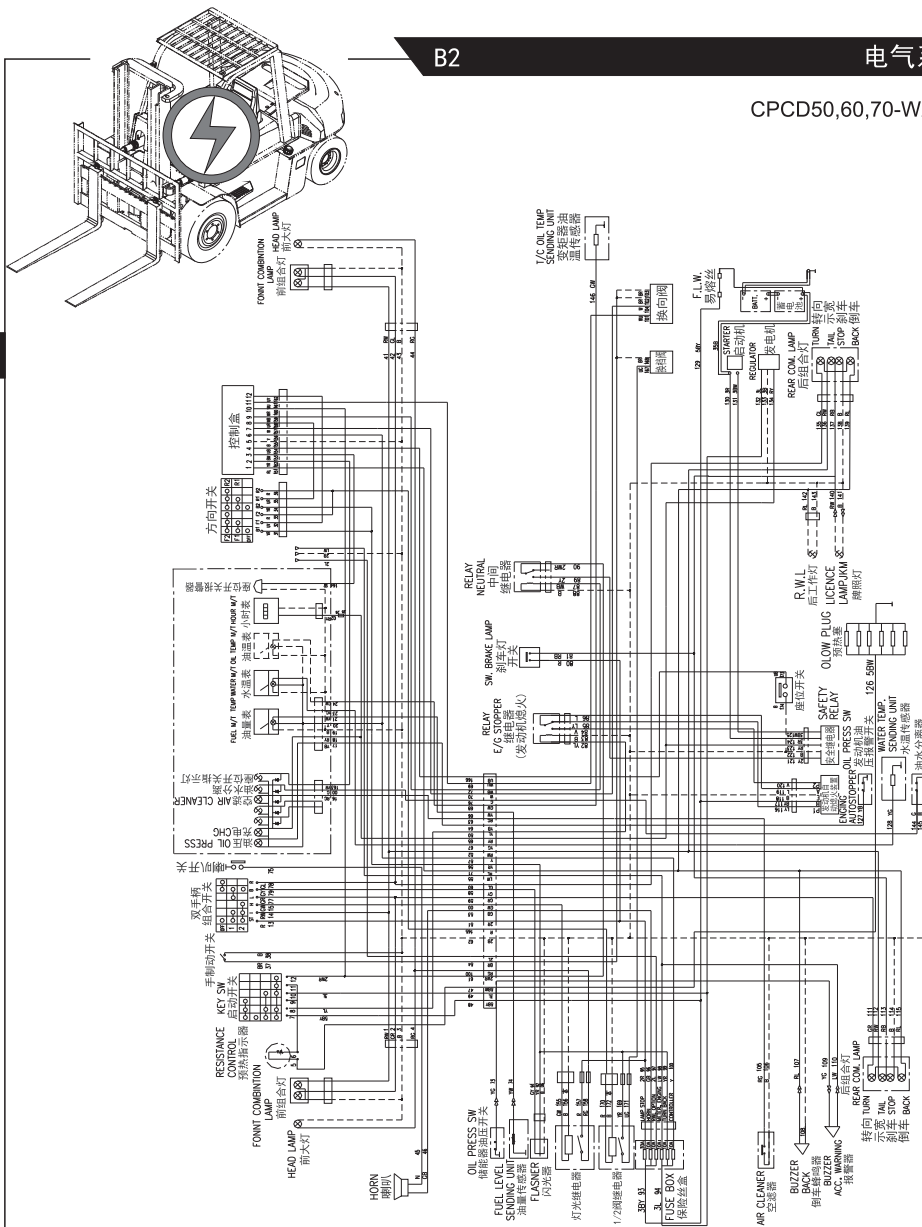
图25/FIG25

CPCD50,60,70-M1



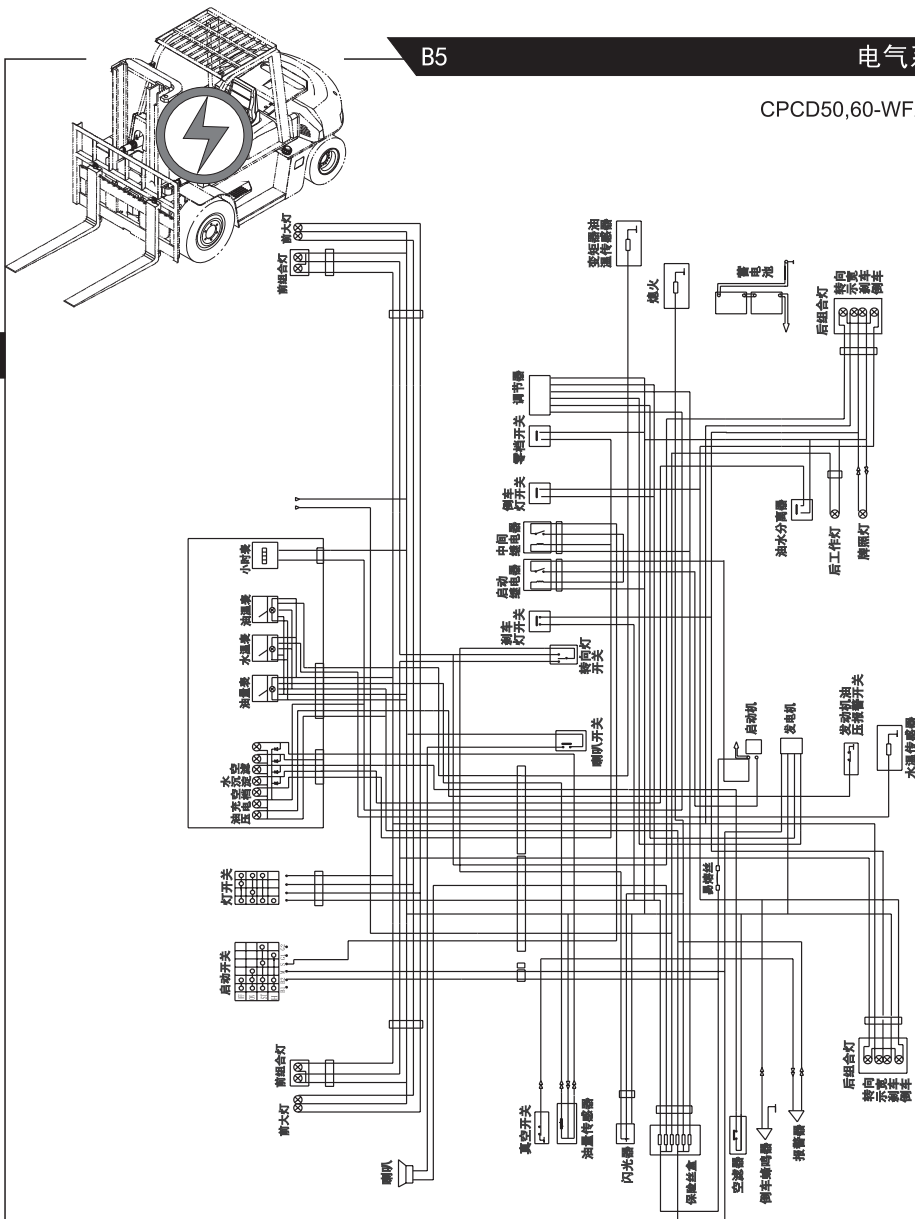
序号 Item No	图号 Part No	版本 Edition	零部件名称 Description		件数 Q'ty	备注 Remark
A	H46X2-30001	04	Exhaust system	排气系统	1	
01	H58J2-32131	00	Clip	卡箍	1	
02	H46X2-32061	03	Exhaust hose	排气管A	1	
03	H46X2-30201	04	Front exhaust hose	前排气管总成	1	
04	A22A2-12001	00	Rubber	橡胶垫I	1	
05	B0230-10055	00	Bolt	螺栓M10X55	2	GB5782-86
06	B5310-00010	00	Washer	垫圈10	3	GB97.1-85
07	22252-32251	00	Washer	垫片	2	
08	B4123-00010	00	Nut	螺母M10	1	GB6170-86
09	22252-32241	00	Rubber	橡胶垫	4	
10	B4116-00010	00	Nut	螺母M10	1	GB6170-86
11	B5050-00010	00	Washer,lock	垫圈10	3	GB93-87
12	B4216-00010	00	Nut	螺母M10X1.25	3	GB6171-86
13	H46X2-32051	00	Shim	法兰垫	1	
14	H46X2-30301	D00	Muffler	消声器总成	1	
-	H46X2-30301M	00	Muffler	灭火消声器总成	1	选用 Option
-	H46X2-30301J	D00	Muffler	净化消声器总成	1	选用 Option
15	H46X2-32091	00	Rear exhaust hose	排气尾管	1	
B	H05H2-44001	01	Clip	卡套	3	
16	H05H2-44011	01	U-bolt	U型螺栓	3	
17	H05H2-44021	01	Plate	卡板	3	
18	B5310-00008	00	Washer	垫圈8	6	GB97.1-85
19	B5050-00008	00	Washer,lock	垫圈8	6	GB93-87
20	B4123-00008	00	Nut	螺母M8	6	GB6170-86

CPCD50,60,70-W2



序号 Item No	图号 Part No	版本 Edition	零部件名称 Description	件数 Qty	备注 Remark
A	HRH43E2402	D17	Electric system	1	电气系统
01	H43E2-43611	D01	Rubber ring	1	出线胶圈
02	HRH43E2411	D01	Combination M/T ass'y	1	组合仪表总成
03	D016-QW-80	D00	Battery	2	蓄电池
04	25782-42071G	D00	Cable	1	电瓶引线(+)
05	25782-42091G	D00	Cable	1	电瓶引线(-)
06	B1210-10016	00	Screw	2	螺钉M10X16
07	B5310-00010	00	Nut	2	螺母M10
08	B5050-00010	00	Washer,lock	2	垫圈10
09	25782-42081G	D00	Cable	1	电瓶引线(+,-)
-	H43E2-42101	D03	Cabinet harness	1	仪表架线束 Electric-hydraulic without cab
10	H43E2-42122	D04	Cabinet harness	1	仪表架线束 Machine-hydraulic without cab
-	H43E2-42111	D04	Engine harness	1	电控液控制变速箱 Electric-hydraulic
11	H43E2-42131	D02	Engine harness	1	机液控制变速箱 Machine-hydraulic
12	H43E2-42261	D00	Head guard harness	2	护顶架线束
13	D0442111	D00	Resistance control	1	预热指示器 发动机附 With engine
14	H43E2-43601	D00	Rubber ring	1	出线胶圈
15	D07SG252	00	Flasher unit	1	闪光器 SG252
16	H24C2-42131	00	Belt clip	34	固定可松开式锁式扎带 GB67-85
17	D08XH7-4L	D01	Front combination lamp	2	前组合灯
18	D08WD100X902L	00	Head lamp	2	前大灯
19	Z8520-240DZ	D01	Back buzzer	1	倒车蜂鸣器
20	Z8620-24XH8	D00	Rear combination lamp(L.H.)	1	后组合灯(左)
21	Z8621-24XH8	D00	Rear combination lamp(R.H.)	1	后组合灯(右)
22	24352-42521	D00	Key switch	1	预热启动开关 发动机附 With engine
23	D06BX2083X	D01	Fuse box	1	保险丝盒 BX2083X
24	B0330-10020	00	Bolt	2	螺栓M10X20 GB5783-86
25	B5310-00010	00	Washer,lock	2	垫圈10 GB97.1-85
26	B5050-00010	00	Washer,lock	2	垫圈10 GB93-87
27	B1210-08010	00	Screw	1	螺钉M8X10 GB818-85

CPCD50,60-WF2



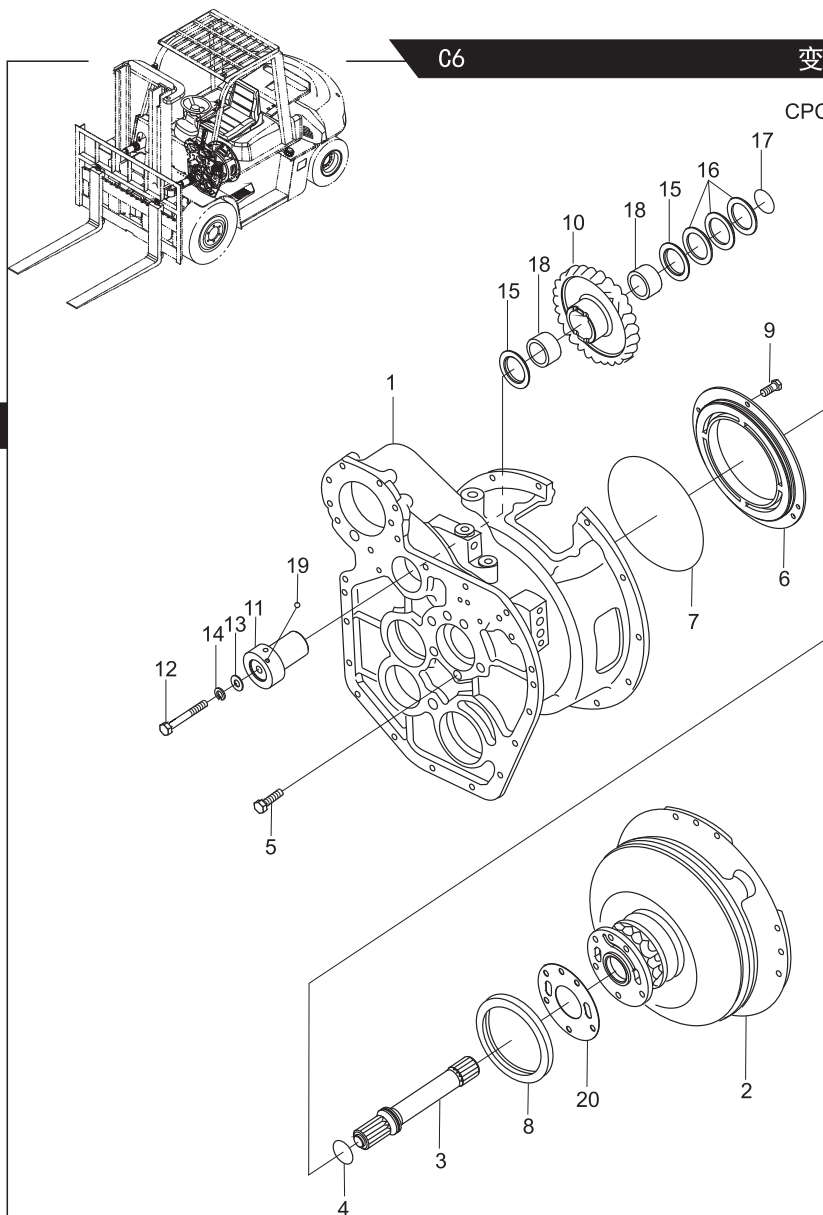
序号 Item No	图号 Part No	版本 Edition	零部件名称 Description	件数 Q'ty	备注 Remark
29	Z8740-JK205	D00	Bake switch 脚踏制动开关	1	JK205
30	JQ1030/04	D00	Relay 继电器	3	
31	Z8750-0611B	D00	Neutral lamp switch 零档(倒车)开关	2	变速箱附JK208
32	Z8540-EQ140	00	Mirror 后视镜	2	
33	H43E2-43601	D00	Rubber ring 出线胶圈	1	
34	22492-42091G	D00	Cable clip 电瓶正极引线卡	2	
35	Z8411-12703	D01	Water temp. sending unit 水温传感器	1	
36	25782-22001	D01	Fuel level sending unit 油量传感器	1	
37	Z8791-08362	D00	Vacuum waring switch 真空报警开关	1	8362GB
38	25782-42001	00	Press angle iron,battery 电瓶压紧角钢	1	
39	23652-42041	D03	Bolt rod 螺杆	3	
40	23452-42181	00	Plate 特殊平垫圈	3	
41	B4910-00006	00	Nut 蝶形螺母M6	3	GB62-88
42	Z8300-20147	D00	Adjustment 电压调节器	1	JFT147-28B
43	A0592-40240	D02	Cable 暖风机线束	1	选用件
44	Z8770-82210	D00	Oil pressure switch 油压报警开关	1	8221-GBA
45	Z8730-0802A	D00	Turn signal switch 转向灯开关	1	
46	Z9260-30100	D00	Belt clip 捆扎带3X100	12	
47	Z9260-40200	00	Belt clip 捆扎带4X200	8	
48	B1110-05010	00	Screw 螺钉M5X10	2	GB67-85
49	B4123-00006	00	Nut 螺母M6	2	GB6170-86
50	HRH43E2404	D00	Rubber ring 出线胶圈	1	
51	H43E2-43611	D01	Rubber ring 出线胶圈	1	
52	D07JD281A	D00	Relay 起动继电器	1	

C6

变矩器 (1/2) / TORQUE-CONVERTER (1/2)

图51/F1G51

CPCD50,60,70



序号 Item No	图号 Part No	版本 Edition	零部件名称 Description	件数 Qty	备注 Remark
A	LC-2.2-578	D00	Torque-converter(1/2) 变矩器 (1/2)	1	CPCD50-70-W2,C6,C8,M1 CPCD50,60,C10 CPCD50-70-Cu3
-	LC-2.2-01F	D00	Torque-converter(1/2) 变矩器 (1/2)	1	CPCD50,60-WF2 CPCD50,60,70-WX
-	LC-2.2-5T1	D00	Torque-converter(1/2) 变矩器 (1/2)	1	CPCD50,60,70-P1
-	LC-2.2-05H	D00	Torque-converter(1/2) 变矩器 (1/2)	1	CPCD50,60,70-WX3
01	15793-82001	03	Case,tor-con 变矩器壳	1	CPCD50-70-W2,C6,C8,M1 CPCD50,60-C10 CPCD50-70-Cu3
-	A01F3-82021	02	Case,tor-con 变矩器壳	1	CPCD50,60-WF2 CPCD50,60,70-WX,P1
-	A06H3-82001	01	Case,tor-con 变矩器壳	1	CPCD50,60,70-WX3
02	15943-80211	00	Tor-con ass'y 变矩器总成	1	CPCD50-70-W2,C6,C8 CPCD50,60-C10 CPCD50-70-Cu3
-	A01F3-80301	D00	Tor-con ass'y 变矩器总成	1	CPCD50,60-WF2 CPCD50,60,70-WX
-	H42X2-50301	00	Tor-con ass'y 变矩器总成	1	CPCD50,60,70-M1
-	H5T16-80201	00	Tor-con ass'y 变矩器总成	1	CPCD50,60,70-P1
-	A06H6-80701	00	Tor-con ass'y 变矩器总成	1	CPCD50,60,70-WX3
03	15793-82661	01	Shaft,turbin 涡轮轴	1	
04	15943-82071	00	Ring,sed 密封环	1	
05	B8030-10050	00	Screw 螺钉M10X50	6	GB70-85
06	15943-82091	01	Back cover 后盖	1	
07	15943-82101	D00	O-ring 0形圈220X5.7	1	GB1235-76
08	15943-82111	D00	Oil seal 油封SG130X160X15	1	
09	B0530-08016	00	Bolt 螺栓M8X1X16	3	GB5786-86
10	15943-82122	00	Gear 惰轮	1	
11	15943-82132	00	Supper 惰轮支承	1	
12	01103-10105	00	Bolt 螺栓	1	
13	B5310-00010	00	Washer 垫圈10	1	GB97.1-85
14	B5050-00010	00	Washer,lock 垫圈10	1	GB93-87
15	15943-82151	01	Bearing 推力滚针轴承	2	
16	G01L3-82111	00	Washer 止推垫圈	3	
17	15943-82841	00	Shim 调整垫片	2	
18	15793-82671	01	Bearing 滚针轴承	2	
19	Z1520-01004	00	Ball,steel 钢球1/4"	1	GB308-89
20	15943-80212	02	Gasket 变矩器垫	1	

C

C13

离合器I/HYDRAULIC CLUTCH I

图58/F1658

CPCD50,60,70



序号 Item No	图号 Part No	版本 Edition	零部件名称 Description	件数 Q'ty	备注 Remark	
A	15793-80241	03	Clutch	离合器I	1	
01	REF208821 15793-82981	00	Shaft ass'y	轴总成1	1	
02	15793-80231	01	Piston ass'y	活塞总成	2	
03	15793-82041	01	Gear	齿轮II	1	
04	15793-82111	01	Gear	齿轮I	1	
05	15793-82051	01	Gear	齿轮III	1	
06	15793-82591	01	Spring	弹簧	2	
07	15943-82401	01	Seat,spring	弹簧座	2	
08	Z-6309	00	Bearing	轴承6309	1	GB/T276-94
09	15943-82411	02	Ring,thrust	止推环	2	
10	15943-82421	02	Ring,thrust	止推环	2	
11	B6150-00050	00	Snap ring	挡圈50	5	GB894.1-86
12	B6150-00045	00	Snap ring	挡圈45	1	GB894.1-86
13	15943-82451	01	Plate,separator	隔片	14	
14	15943-82462	02	Plate,friction ass'y	摩擦片总成	15	
15	Z-6210	00	Bearing	轴承6210	1	GB/T276-94
16	15943-83241	01	Plate	压板	1	
17	15793-82571G	01	Plate,end	端板	2	
18	15943-82511	01	Snap ring	卡环	2	
19	15943-82482	01	Ring	密封环(C)	2	
20	15943-82492G	01	Ring	密封环(B)	2	
21	15943-82502	01	Ring	密封环(A)	3	
22	REF341231 23870-52871	00	Plug	螺塞ZG1/8"	2	
23	15793-82061	01	Bearing,needle	滚针轴承	4	
24	15793-82071	01	Spacer	隔圈	1	
25	15793-82081	01	Spacer	隔圈	1	

C

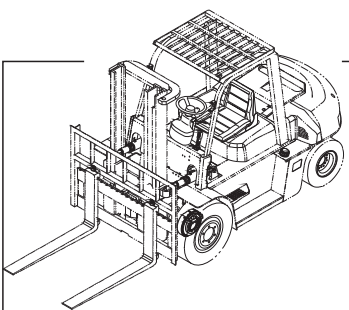
CLICK HERE TO **DOWNLOAD** THE COMPLETE MANUAL

- Thank you very much for reading the preview of the manual.
- You can download the complete manual from: www.heydownloads.com by clicking the link below



- Please note: If there is no response to CLICKING the link, please download this PDF first and then click on it.

CLICK HERE TO **DOWNLOAD** THE COMPLETE MANUAL

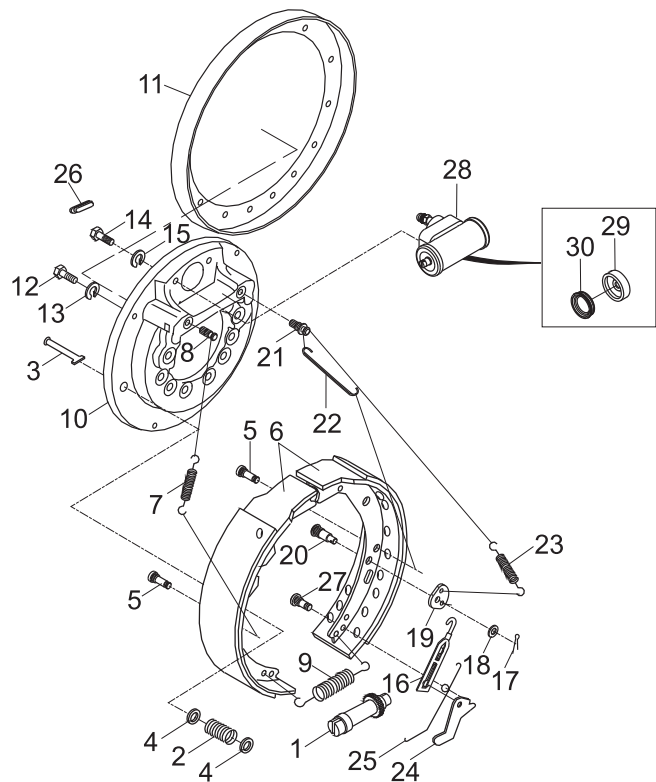


C20

制动器/WHEEL BRAKE

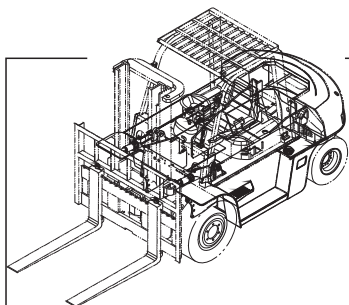
图 65/F I G65

CPCD50,60-WF2
CPCD50,60,70-C6,C8,Cu3,P1
CPCD50,60,70-W2,WX,WX3,M1



序号 Item No	图号 Part No	版本 Edition	零部件名称 Description	件数 Q'ty	备注 Remark
A	HRA45E3701 A45E3-70201	D00	Wheel brake ass'y L.H. 制动器总成(左)	1	动力制动器Power brake 除CPCD50-70-C6,WF2外
-	HRA45E3701 A45E3-70211	D00	Wheel brake ass'y R.H. 制动器总成(右)	1	动力制动器Power brake 除CPCD50-70-C6,WF2外
B	HRA45E3702 A45E3-70901	D00	Wheel brake ass'y L.H. 制动器总成(左)	1	选用 Option 除CPCD50-70-C6,WF2外
-	HRA45E3702 A45E3-70911 REF000649	D00	Wheel brake ass'y R.H. 制动器总成(右)	1	选用 Option 除CPCD50-70-C6,WF2外
C	25783-70421 REF000649	D03	Wheel brake ass'y L.H. 制动器总成(左)	1	真空助力制动器Hydromaster brake CPCD50-70-C6,WF2 无石棉 Without asbestos
-	25783-70431 REF000649	D03	Wheel brake ass'y R.H. 制动器总成(右)	1	真空助力制动器Hydromaster brake CPCD50-70-C6,WF2 无石棉 Without asbestos
01	HRA45E3714 25783-71160G	D00	Adjuster ass'y L.H. 间隙调整器总成(左)	1	
-	HRA45E3714 25783-71161G	D00	Adjuster ass'y R.H. 间隙调整器总成(右)	1	
02	25783-71350G	D00	Spring 弹簧F	2	
03	25783-71440G	D00	Pin, shoe hold down 压簧拉杆	2	
04	25783-71340G	D00	Cup, shoe hold down 压簧座	4	
05	25783-71420G	D00	Pin 销	2	
06	25783-70441	D02	Shoe pin & lining ass'y 制动蹄带摩擦片总成	2	无石棉 Without asbestos
07	25783-71330G	D00	Spring 弹簧E	1	
08	25783-71460G	D00	Pin 销	1	
09	25783-71370G	D00	Spring 弹簧B	1	
10	HRA45E3713 25783-71510G	D02	Backboard, brake L.H. 制动器底板(左)	1	
-	HRA45E3713 25783-71511G	D02	Backboard, brake R.H. 制动器底板(右)	1	
11	25783-71400G	D00	Shield dust 罩壳	1	
12	B0110-06012	00	Bolt 螺栓M6x12	4	GB5781-86
13	B5050-00006	00	Washer,lock 垫圈6	4	GB93-87
14	B0230-08045	00	Bolt 螺栓M8x45	2	GB5782-86
15	B5050-00008	00	Washer,lock 垫圈8	2	GB93-87
16	25783-71210G	D00	Spring joint unit 弹簧铆接装置	1	
17	B3010-02016	00	Pin 销2X16	1	GB91-86
18	B5310-00006	00	Washer 垫圈6	1	GB97.1-85
19	25783-71500G	D00	Link 摇臂	1	
20	25783-71430G	D00	Pin 销	1	
21	25783-71450G	D00	Pin 销	1	
22	HRA45E3711 25783-71470G	D00	Lever L.H. 上拉杆(左)	1	

C

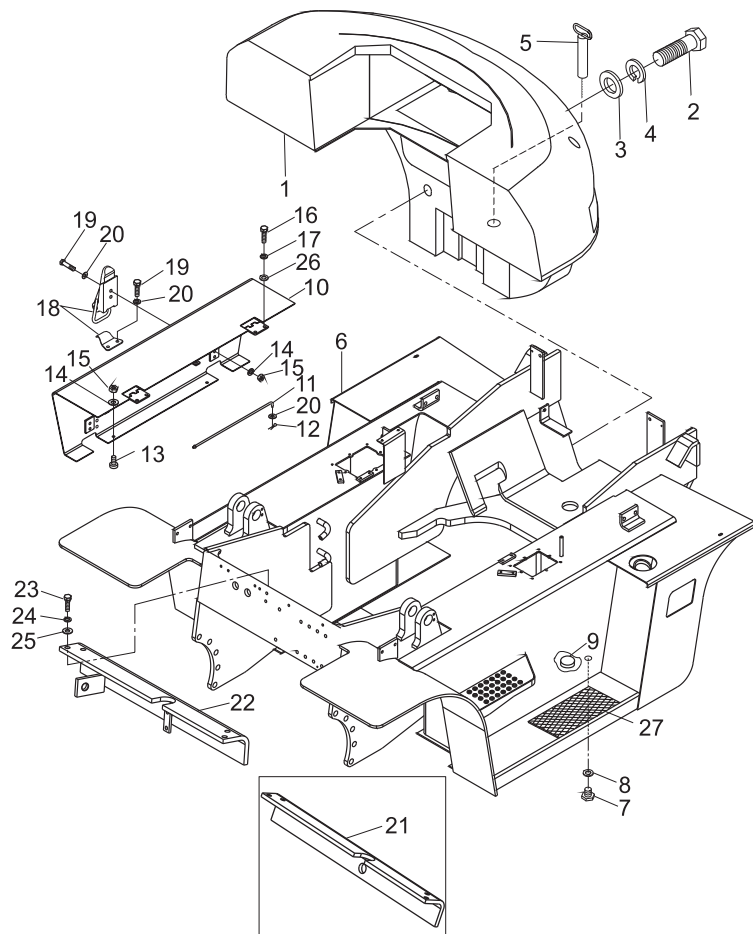


F1

车架与平衡重/FRAME & COUNTER WEIGHT

图85/FIG85

CPCD50,60,70-W2,C6,C8
CPCD50,60,70-WX,WX3
CPCD50,60-C10,WF2



序号 Item No	图号 Part No	版本 Edition	零件名称 Description	件数 Q'ty	备注 Remark
01	H43E6-30011	D01	Counter weight 平衡重体	1	其余 Etceteras 5t
-	H43F6-30011	D01	Counter weight 平衡重体	1	其余 Etceteras 6t
-	H43G6-30011	D02	Counter weight 平衡重体	1	其余 Etceteras 7t
-	H03X6-30011	D00	Counter weight 平衡重体	1	CPCD50-C10
-	H03Y6-30011	D00	Counter weight 平衡重体	1	CPCD60-C10
02	B0230-36200	00	Bolt 螺栓M36X200	2	GB5782-86
03	25786-32031	00	Washer 垫圈	2	
04	B5050-00036	00	Washer,lock 垫圈36	2	GB93-87
05	25786-32041	00	Pin,drag 牵引销	1	
06	H43E6-10013	D10	Frame 车架	1	CPCD50,60,70-W2
-	H08E6-10001	D05	Frame 车架	1	CPCD50,60,70-C6
-	H01X6-10011	D11	Frame 车架	1	CPCD50,60,70-C8
-	H09E6-10011	D10	Frame 车架	1	CPCD50,60-WF2
-	H04X6-10001	D07	Frame 车架	1	CPCD50,60,70-WX
-	H03X6-10001	D04	Frame 车架	1	CPCD50,60-C10
-	H08X6-10001	D06	Frame 车架	1	CPCD50,60,70-WX3
07	22197-52081	03	Plug,drain 放油螺塞	1	JB982-79
08	Z6700-03027	00	Washer 垫圈30	1	
09	G0176-10011	00	Magnet 磁铁 $\varnothing 68/\varnothing 37 \times 14$	3	
10	H43E6-10481	01	Cover ass'y 电瓶盖板总成	1	
11	25786-42301	00	Rod 拉杆	1	
12	B3010-02016	00	Pin 销2X16	1	GB91-86
13	23456-42181G	01	Cushion,rubber 缓冲胶垫	2	
14	B5050-00008	00	Washer,lock 垫圈8	2	GB93-87
15	B4123-00008	00	Nut 螺母M8	6	GB6170-86
16	B0530-10020	00	Bolt 螺栓M10X1.25X20	4	GB5786-86
17	B5050-00010	00	Washer,lock 垫圈10	4	GB93-87
18	25786-40651	D00	Catch 弹簧卡	2	
19	B0330-08016	00	Bolt 螺栓M8X16	8	GB5783-86
20	B5310-00008	00	Washer 垫圈8	8	GB97.1-85

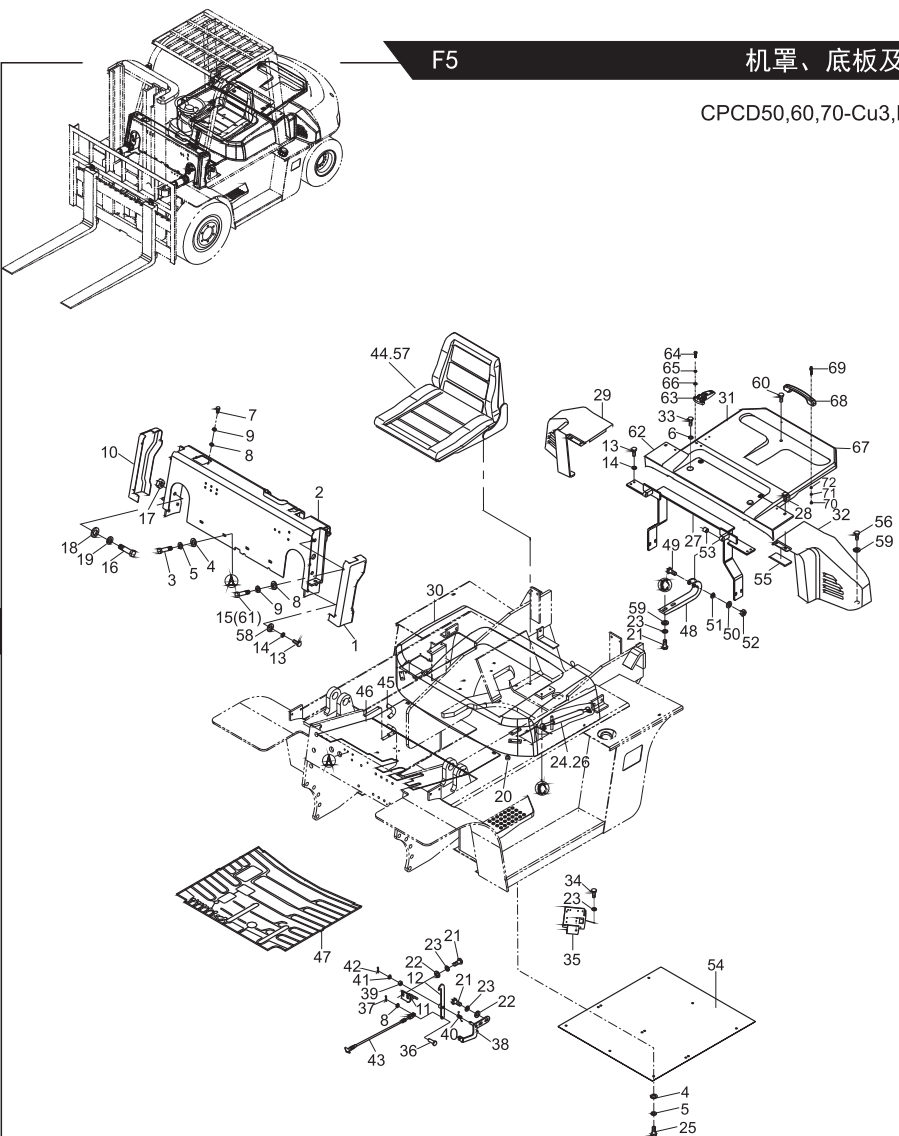
F

F5

机罩、底板及座椅/HOOD, FLOOR BOARD & SEAT

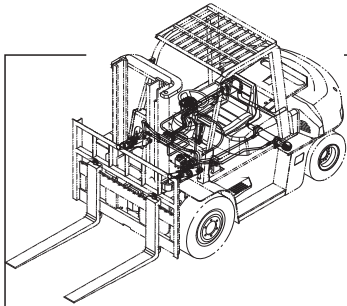
图89/F1G89

CPCD50,60,70-Cu3,P1



序号 Item No	图号 Part No	版本 Edition	零部件名称 Description	件数 Q'ty	备注 Remark
25	B0330-10030	00	Bolt 螺栓M10X30	9	GB5783-86 CPCD50-70-Cu3
26	B3010-3p216	00	Pin,cotter 销3. 2X16	2	GB91-86
27	H5T06-40301	D01	Bracket ass'y 支架总成	1	
28	H43E6-45051	D00	Screw 螺钉	2	
29	HRA43E6403 H43E6-42281	D00	Side cover R.H. 侧罩(右)	1	
30	H5T06-40601	D01	Bonnet 内燃机罩总成	1	
31	H43E6-41801	D03	Cover(Inc.62-72)铰链式水箱盖板(包含62-72)	1	配驾驶室用 CPCD50-70-Cu3,P1
32	03-12323-4	D00	Side cover 左侧罩	1	
33	B0330-08020	00	Bolt 螺栓M8X20	1	CPCD50-70-Cu3 GB5783-86
34	B0530-08020	00	Bolt 螺栓M8X1X20	4	GB5786-86
35	H43E6-40272	D06	Bracket 电气支架	1	
36	B3220-06016	00	Pin 销B6X16	1	GB882-86
37	B3010-02010	00	Pin,cotter 销2X10	1	GB91-86
38	A24K6-40811	00	Bracket 支架	1	
39	Z2131-01015	00	Bushing 钢背轴承1015	1	
40	A24K6-42511	D00	Spring 弹簧	1	
41	B5323-00010	00	Washer 垫圈10	1	GB97.1-85
42	B3010-04020	00	Pin,cotter 销4X20	1	GB91-86
43	H43E6-40232	D02	Cable ass'y 拉索总成	1	
44	A61Q6-80031	D02	Seat 座椅	1	
45	H43E6-50211	D01	Floor board,rear 后底板总成	1	
46	H43E6-50221	D01	Floor board,front 前底板总成	1	
-	H5T06-50201	D00	Floor board,front 前底板总成	1	
47	H43E6-52051	D02	Gasket 底板垫	1	CPCD50-70-P1
-	H5T06-52011	D01	Gasket 底板垫	1	CPCD50-70-Cu3
48	H24C6-42511	D01	Hinge 铰链	2	CPCD50-70-P1
49	A24K6-42411	D00	Bolt 螺栓	2	CPCD50-70-Cu3
50	B5050-00006	00	Washer,lock 垫圈6	2	GB93-87
51	B5310-00006	00	Washer 垫圈6	2	GB97.1-85
52	B4313-00006	00	Nut 螺母M6	2	GB6172-86

F

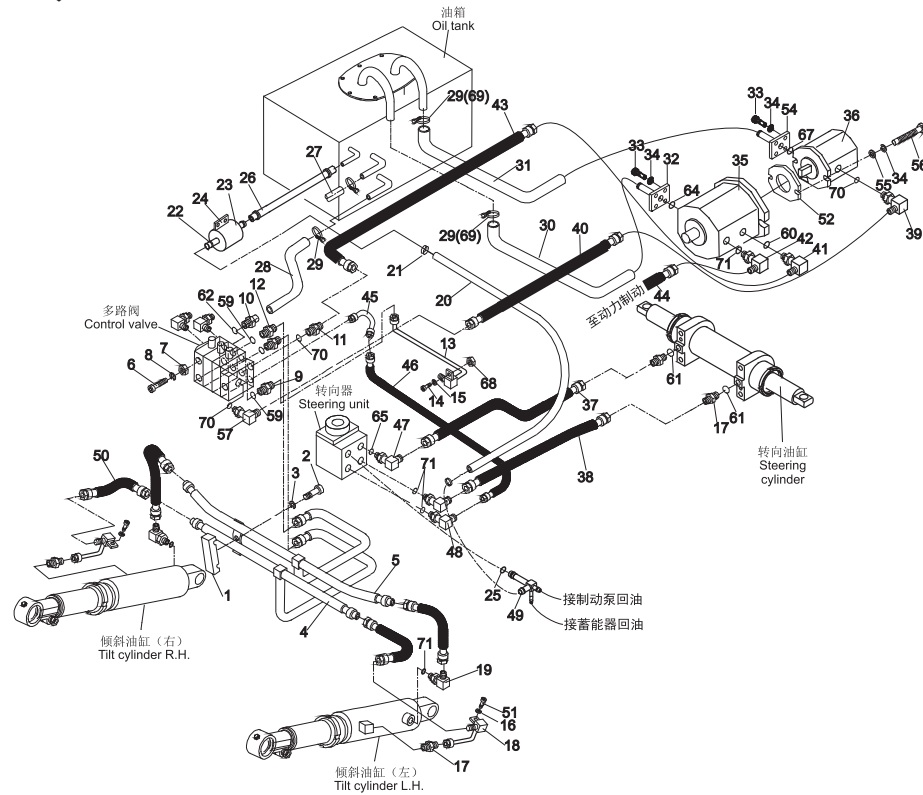


G7

液压管路系统/HYDRAULIC SYSTEM

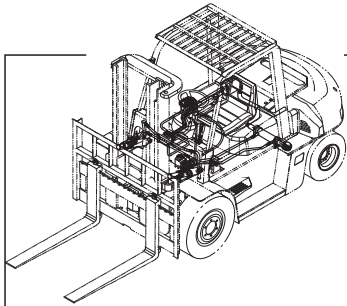
图97/FIG97

CPCD50,60,70-W2,WX,WX3
CPCD50,60,70-Cu3



序号 Item No	图号 Part No	版本 Edition	零部件名称 Description	件数 Q'ty	备注 Remark
23	25967-82001	00	Filter 滤油器	1	
24	25787-83011G	00	Filter bracket 滤油器支架	1	
25	Z6053-01802	00	O-ring 0型密封圈18X2.65	1	GB3452.1-92
26	Z7300-19020	D00	Hose 夹布压力胶管 \varnothing 19X200	1	
27	Z7300-19120	D00	Hose 夹布压力胶管 \varnothing 19X1200	1	CPCD50-70-W2,Cu3,WX3
-	Z7353-19100	00	Hose 夹布压力胶管 \varnothing 19X1000	1	CPCD50-70-WX
28	H43E7-69001	D00	Hose 多路阀回油管	1	CPCD50-70-W2,Cu3,WX3 二至四片阀 Two to four-throw
-	H43E7-69011	00	Hose 多路阀回油管	1	CPCD50-70-W2,Cu3,WX3 五片阀Five-throw
-	Z7353-38090	00	Hose 夹布压力胶管 \varnothing 38X900	1	CPCD50-70-WX
29	Z4590-00050	00	Clip 双钢丝卡箍 \varnothing 50	2	CPCD50-70-W2,Cu3
-	Z4542-38057	00	Clip 夹箍38-57	6	CPCD50-70-WX,WX3
30	A45E7-62402	00	Hose,suction 前泵吸油管	1	其余 Rest
-	H2E60-62001	01	Hose,suction 吸油管一	1	CPCD50-70-W2,Cu3 配岗村变速箱
31	A45E7-62412	00	Hose,suction 后泵吸油管	1	其余 Rest
-	H2E60-62011	02	Hose,suction 吸油管二	1	CPCD50-70-W2,Cu3 配岗村变速箱 基本型门架与湿式 制动器通用
32	25787-62101G	00	Flange(Inc.64) 油泵进油口法兰(包括64)	2	CPCD50-70-W2,Cu3 全自由门架前泵用 CPCD50-70-W2,Cu3
-	25787-62101G	00	Flange(Inc.64) 油泵进油口法兰(包括64)	1	全自由门架前泵用 CPCD50-70-W2,Cu3
-	A45E7-60601	D00	Flange(Inc.64) 油泵进油口法兰(包括64)	1	CPCD50-70-WX
-	H05H7-60231	00	Flange(Inc.53) 油泵进油口法兰(包括53)	1	全自由门架前泵用 CPCD50-70-WX3
				2	基本型门架用 CPCD50-70-WX3
33	B0330-10025	00	Bolt 螺栓M10X25	8	GB5783-86
34	B5050-00010	00	Washer,lock 垫圈10	12	GB93-87
35	A45E7-10202	D01	Pump,front 前齿轮泵(36R/4R)	1	基本型门架 CPCD50-70-W2,Cu3,WX3
-	H43E7-10101	D00	Pump,front 前齿轮泵(36R,后12.5R)	1	供湿式制动器用 CPCD50-70-W2,Cu3
-	A05E7-10202	D01	Pump,front 前齿轮泵(32R,4R)	1	全自由门架用 CPCD50-70-W2,Cu3,WX3
-	H46G7-10202	D01	Pump,front 前齿轮泵(25R/3.5R)	1	CPCD50-70-WX
36	A45E7-10301	D02	Pump,rear 后齿轮泵(36L)	1	基本型门架与 湿式制动器通用
-	H46G7-10301	D01	Pump,rear 后齿轮泵(25L)	1	CPCD50-70-WX及 其余全自由门架
37	Z9501-10250	00	Hose H.P. 高压胶管10IX2500	1	其余 Rest
-	Z9501-10260	00	Hose H.P. 高压胶管10IX2600	1	CPCD50-70-WX3

G

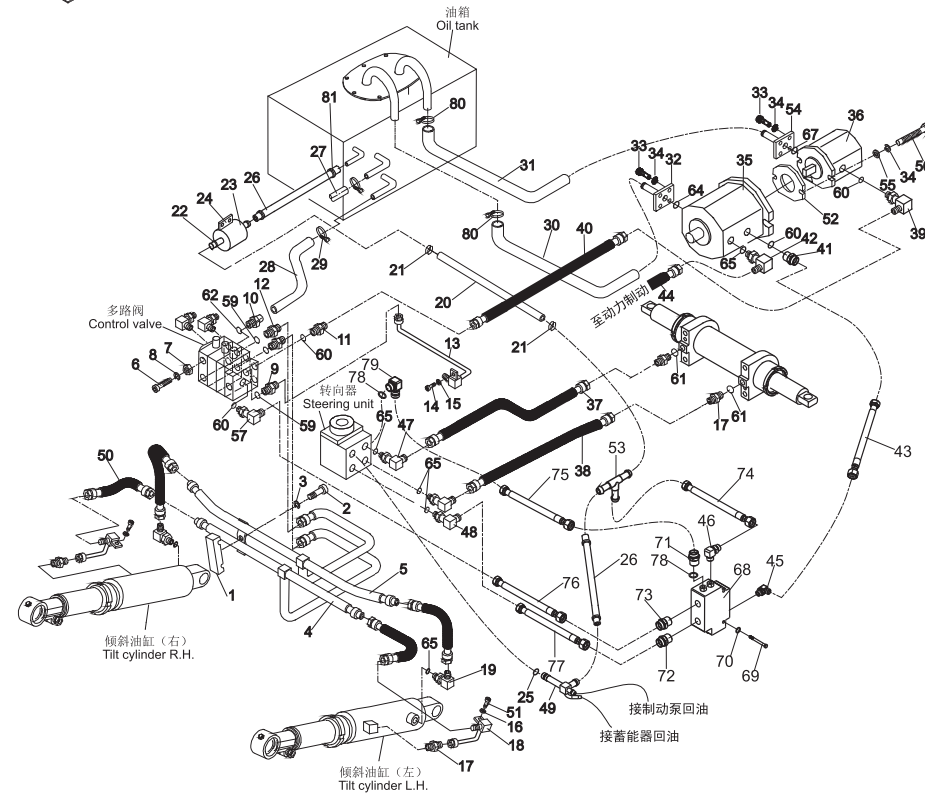


G10

液压管路系统/HYDRAULIC SYSTEM

图100/FIG100

CPCD50,60,70-M1



序号 Item No	图号 Part No	版本 Edition	零部件名称 Description	件数 Q'ty	备注 Remark
A	H46X7-60001	D10	Hydraulic system 液压管路系统	1	
01	20317-60331	D00	Clip 管夹	2	
02	B0330-08025	00	Bolt 螺栓M8X25	2	GB5783-86
03	B5050-00008	00	Washer,lock 垫圈8	4	GB93-87
04	H43E7-60202	D01	Steel pipe ass'y 倾斜油缸钢管总成(前)	1	
05	H43E7-60212	D01	Steel pipe ass'y 倾斜油缸钢管总成(后)	1	
06	B0230-12050	00	Bolt 螺栓M12X50	4	GB5782-86
07	B4123-00012	00	Nut 螺母M12	4	GB6170-86
08	B5050-00012	00	Washer 垫圈12	4	GB93-87
09	JT6021-30071	02	Nipple(Inc.59) 直通接头(包括59)	1	
10	JT6021-33011	02	Nipple(Inc.62) 直通接头(包括62)	1	
11	JT7021-34081	01	Nipple(Inc.82) 直通接头(包括82)	1	
12	JT6021-30011	02	Nipple(Inc.59) 直通接头(包括59)	2	
13	A40B7-60011	00	Steel pipe ass'y 升降缸钢管总成	1	
14	B0110-10025	00	Bolt 螺栓M10X25	1	GB5781-86
15	B5413-00010	00	Washer 垫圈10	1	GB97.2-85
16	B5310-00008	00	Washer 垫圈8	2	GB97.1-85
17	JT6021-18091	01	Nipple(Inc.61) 直通接头(包括61)	4	
18	HRH43E7601	D02	Nipple 接头总成	2	
19	JT6022-20021	02	Elbow(Inc.84) 直角接头(包括84)	2	
20	Z7300-19045	D00	Hose 夹布压力胶管 \varnothing 19X450	1	
21	Z4590-00028	00	Clip 双钢丝卡箍 \varnothing 28	8	
22	Z4535-92120	D00	Clip 夹箍92-120	1	
23	25967-82001	00	Filter 滤油器	1	
24	25787-83011G	00	Filter bracket 滤油器支架	1	
25	Z6053-01802	00	O-ring 0型密封圈18X2.65	1	GB3452.1-92
26	Z7300-19020	D00	Hose 夹布压力胶管 \varnothing 19X200	2	
27	Z7300-19120	D00	Hose 夹布压力胶管 \varnothing 19X1200	1	
28	H43E7-69001	D00	Hose 多路阀回油管	1	二至四片阀 Two to four-throw
-	H43E7-69011	00	Hose 回油胶管	1	五片阀 Three-throw

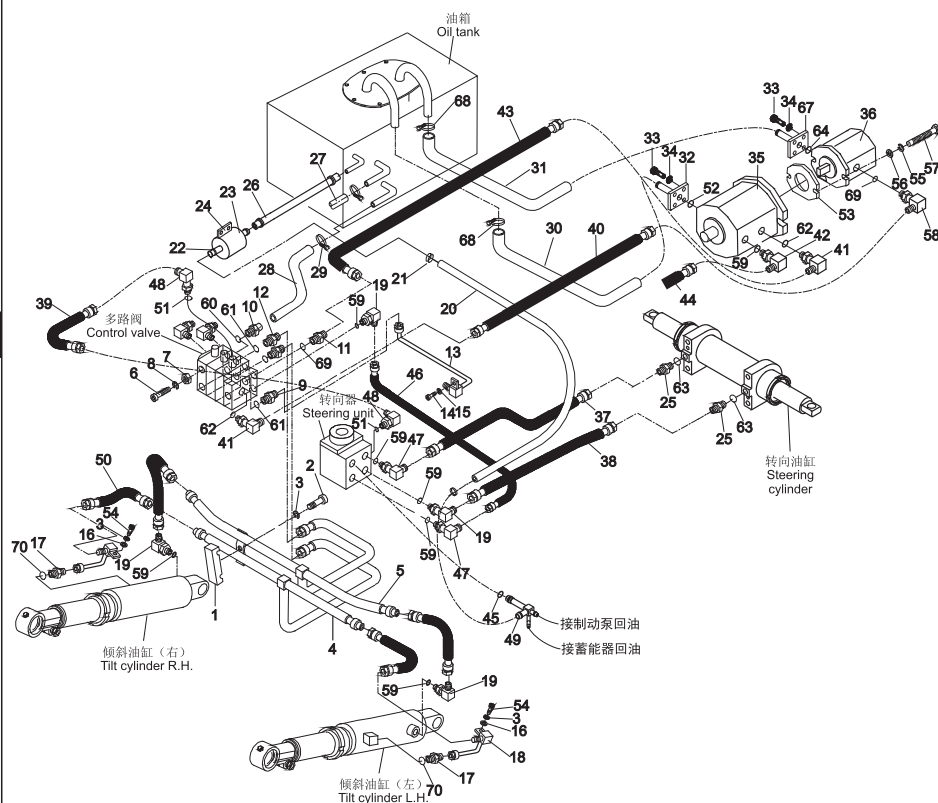
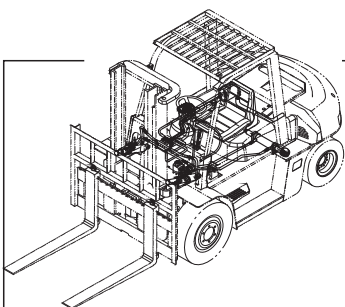
G

G13

液路管路系统(美制)/HYDRAULIC SYSTEM (SAE)

图103/FIG103

CPCD50,60,70-P1



序号 Item No	图号 Part No	版本 Edition	零部件名称 Description	件数 Q'ty	备注 Remark
A	E5T17-60001	D12	Hydraulic system 液路管路系统	1	
01	20317-60331	D00	Clip 管夹	2	
02	B0330-08025	00	Bolt 螺栓M8X25	2	GB5783-86
03	B5050-00008	00	Washer,lock 垫圈8	4	GB93-87
04	E43E7-60201	D01	Steel pipe ass'y 倾斜油缸钢管总成(前)	1	Front
05	E43E7-60211	D01	Steel pipe ass'y 倾斜油缸钢管总成(后)	1	Rear
06	B0230-12050	00	Bolt 螺栓M12X50	4	GB5782-86
07	B4123-00012	00	Nut 螺母M12	4	GB6170-86
08	B5050-00012	00	Washer,lock 垫圈12	4	GB93-87
09	JT6021-30071	02	Nipple(Inc.61) 直通接头(包括61)	1	
10	JT6021-33011	02	Nipple(Inc.60) 直通接头(包括60)	1	
11	JT8021-36011	01	Nipple(Inc.69) 直通接头(包括69)	2	
12	JT6021-30011	02	Nipple(Inc.61) 直通接头(包括61)	2	
13	E5T17-60201	00	Steel pipe ass'y 升降钢管总成	1	
14	B0330-10025	00	Bolt 螺栓M10X25	1	GB5783-86
15	B5310-00010	00	Washer 垫圈10	1	GB97.1-85
16	B5310-00008	00	Washer 垫圈8	2	GB97.1-85
17	JT6021-18091	01	Nipple(Inc.70) 直通接头(包括70)	4	
18	HRE56J7601	D01	Nipple 接头总成	2	
19	JT8022-96031	02	Elbow(Inc.59) 直角接头(包含59)	4	
20	Z7300-19070	D00	Hose 胶管 \varnothing 19X700	1	
21	Z4590-00028	00	Clip 双钢丝夹箍 \varnothing 28	6	
22	Z4535-19120	D00	Clip 夹箍92-120	1	
23	25967-82001	00	Filter 滤油器	1	
24	25787-83011G	00	Filter bracket 滤油器支架	1	
25	JT8025-96031	01	Nipple 直通接头体	2	
26	Z7300-19020	D00	Hose 夹布压力胶管 \varnothing 19X200	1	
27	Z7300-19120	D00	Hose 夹布压力胶管 \varnothing 19X1200	1	
28	H43E7-69001	D00	Hose 多路阀回油管	1	
29	Z4590-00050	00	Clip 双钢丝卡箍 \varnothing 50	4	

G

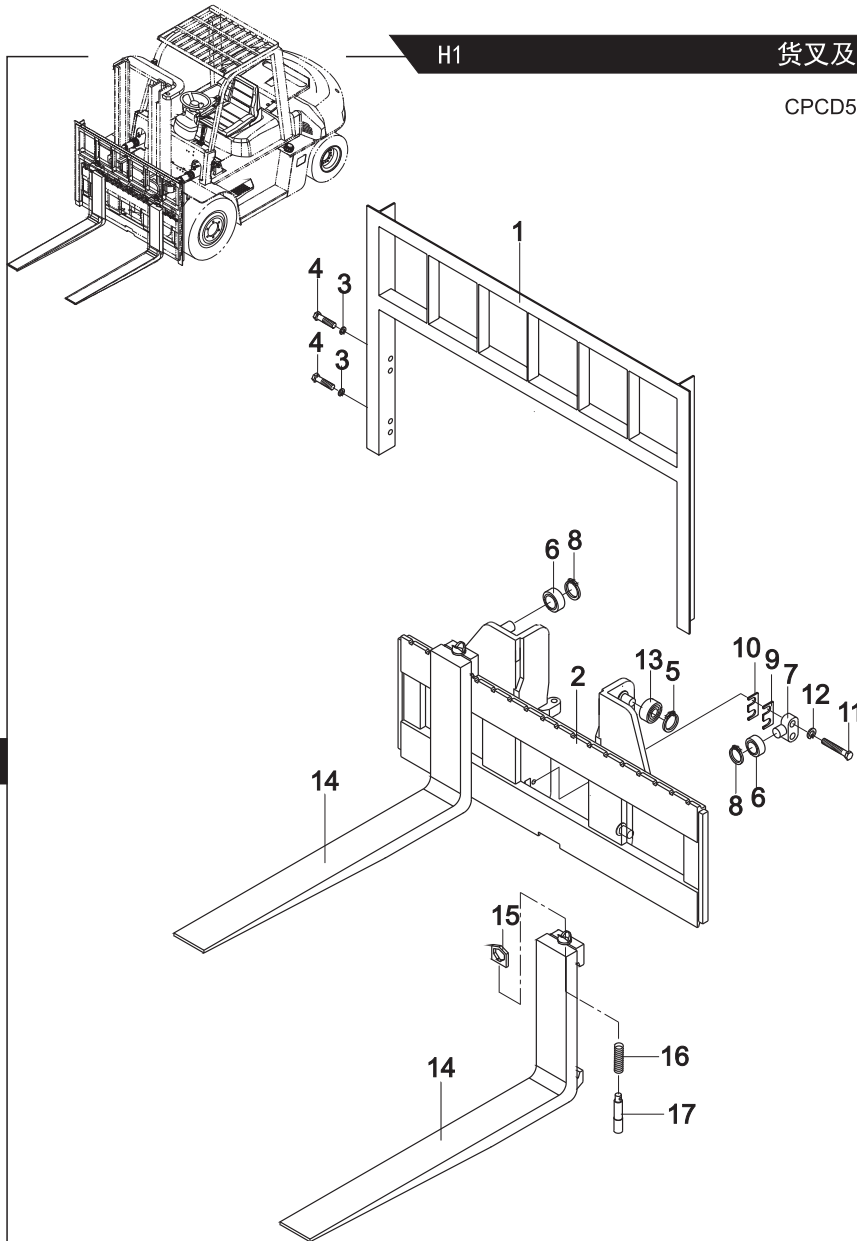
H1

货叉及货叉架/FORK & LIFT BRACKET

图106/FIG106

CPCD50,60,70

件02货叉架选用件表 Lift bracket optional parts



5-7t加宽系列货叉架代号
LIFT BRACKET PART NO.
(HRD408262W)

货叉架宽度
WIDTH

备注
REMARK

HRD40C8262-W1700

1700

D40C8-21211

1845

标准STD

HRD40C8262-W1900

1900

HRD40C8262-W2000

2000

HRD40C8262-W2100

2100

HRD40C8262-W2200

2200

D17HJ-14001

2240

HRD40C8262-W2300

2300

HRD40C8262-W2400

2400

D40C8-21251

2420

HRD40C8262-W2500

2500

HRD40C8262-W2600

2600

D18HJ-45001

2665

HRD40C8262-W2700

2700

HRD40C8262-W2800

2800

HRD40C8262-W2900

2900

HRD40C8262-W3000

3000

H

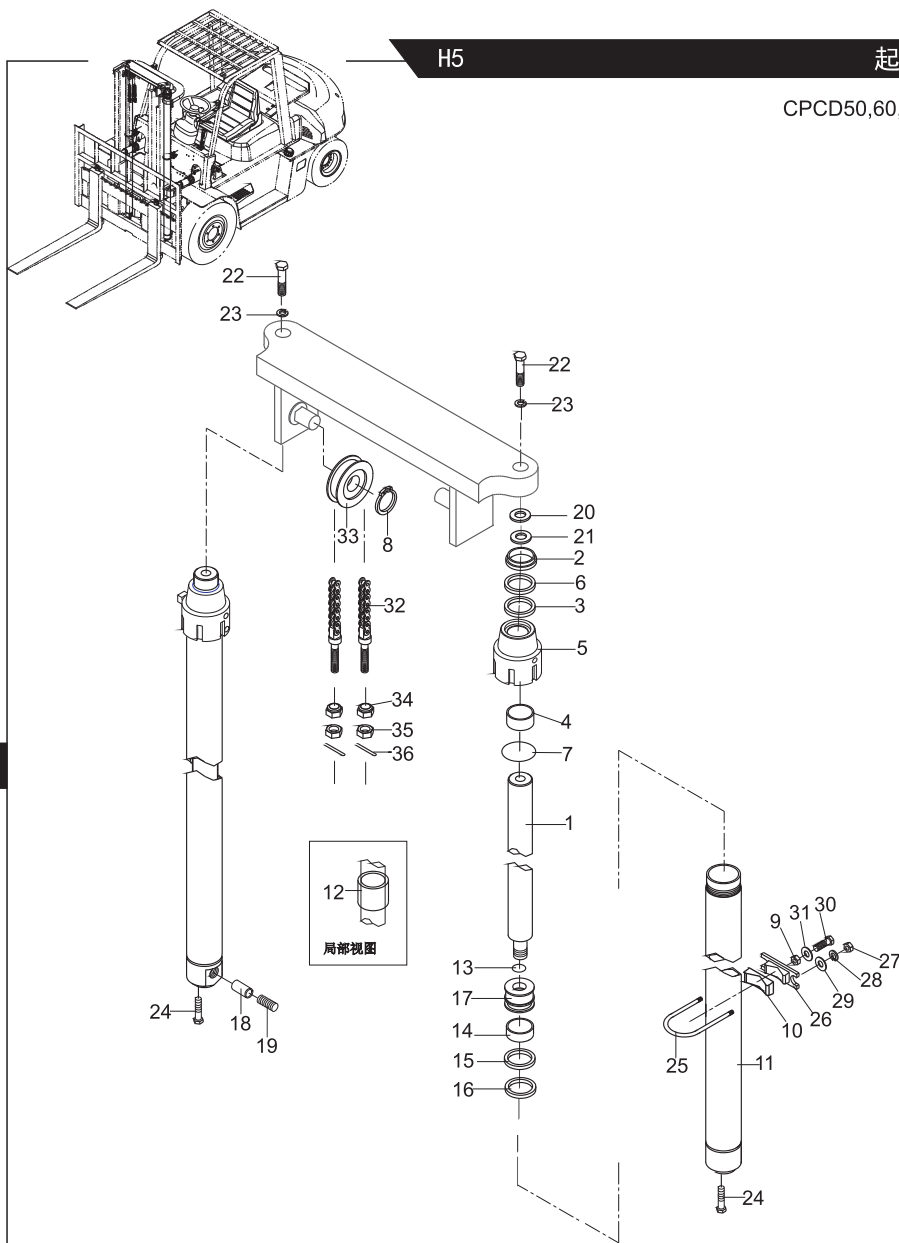
H5

起升油缸/LIFT CYLINDER

图110/FIG110

CPCD50,60,70

起升油缸选用件 OPTION TABLE FOR LIFT CYLINDER



起升高度 LIFTING HEIGHT	起升油缸 LIFT CYL	链条节数 (N) CHAIN, LEAF	件12调整套 SPACER	备注 REMARK
M200	D0U08-40511	HRLH2044011-61		
220	-40521	-67		
250	-40531	-53		
270	-40541	-57		
275	-40551	-57		
300	-40501	-61		标准 STD
325	-40561	-65		
330	-40571	-65		
350	-40581	-69		
375	-40591	-73		
400	-40601	-79	25788-42261	
425	-40611	-83	-42261	
450	-40621	-87	-42261	
475	-40631	-91	-42261	
500	-40641	-95	-42261	
530	-40651	-99	-42261	
550	-40661	-103	-42271	
600	-40671	-111	-42271	
650	-40681	-119	-42271	
700	-40691	-127	-42271	

H

CLICK HERE TO **DOWNLOAD** THE COMPLETE MANUAL

- Thank you very much for reading the preview of the manual.
- You can download the complete manual from: www.heydownloads.com by clicking the link below



- Please note: If there is no response to CLICKING the link, please download this PDF first and then click on it.

CLICK HERE TO **DOWNLOAD** THE COMPLETE MANUAL