

h2000  
SERIES



# 零件目录

## parts manual

H2000系列 **3.5~5t**

内燃牵引车(四轮制动)  
Engine Powered Tractor

CLICK HERE TO **DOWNLOAD** THE COMPLETE MANUAL

- Thank you very much for reading the preview of the manual.
- You can download the complete manual from: [www.heydownloads.com](http://www.heydownloads.com) by clicking the link below



- Please note: If there is no response to CLICKING the link, please download this PDF first and then click on it.

CLICK HERE TO **DOWNLOAD** THE COMPLETE MANUAL



图11/FIG. 11

变矩器 (1/2) / TORQUE-CONVERTER (1/2)

序号 Item No	图号 Part No	版本 Edition	零部件名称 Description	件数 Q'ty	备注 Remark
01	15793-82001	D.1	Case,tor-con 变矩器壳	1	
02	15943-80211	B.1	Tor-con ass'y 变矩器总成	1	
03	15793-82661	D.1	Shaft,turbin 涡轮轴	1	
04	15943-82071	B.0	Ring, sed 密封环	1	
05	B8030-10050	B.0	Screw 螺钉M10X50	6	GB70-85
06	15943-82091	D.1	Back cover 后盖	1	
07	Z6003-22005	B.0	O-ring O形圈220X5.7	1	GB1235-76
08	15943-82111	B.0	Oil seal 油封SG130X160X15	1	
09	B0430-08015	B.0	Bolt 螺栓M8X1X15	3	GB5785-86
10	15943-82122	D.1	Gear 惰轮	1	
11	15943-82132	D.1	Supper 惰轮支承	1	
12	01103-10105	D.1	Bolt 螺栓	1	
13	B5310-00010	B.0	Washer 垫圈10	1	GB97.1-85
14	B5050-00010	B.0	Washer,lock 垫圈10	1	GB93-87
15	15943-82151	D.1	Bearing 推力滚针轴承	2	
16	15943-82161	D.1	Washer 止推垫圈	3	
17	15943-82841	D.1	Shim 调整垫片	2	
18	15793-82671	D.1	Bearing 滚针轴承	2	
19	Z1520-01004	B.0	Ball,steel 钢球1/4"	1	GB308-89
20	15943-80212	D.1	Gasket 变矩器垫	1	

QYCD35-W1  
QYCD35-C1  
QYCD45-W1  
QYCD45-C1  
QYCD50-W1  
QYCD50-C1

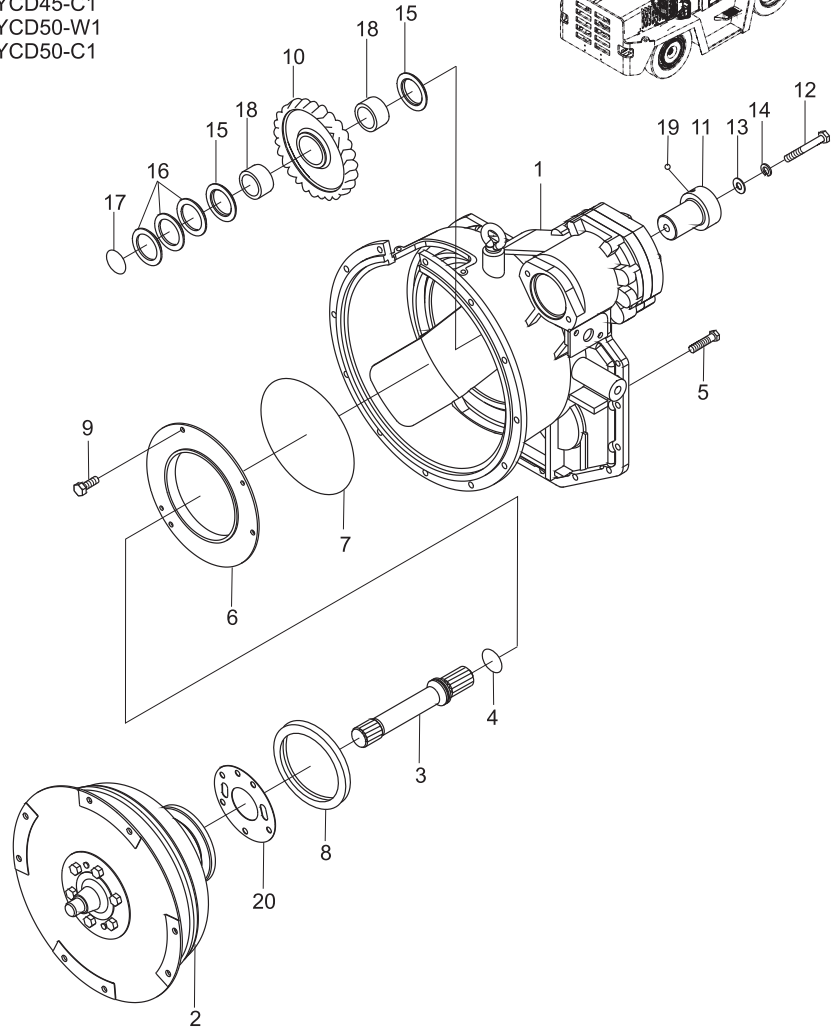
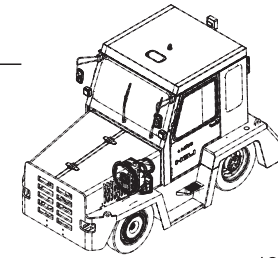


图20/FIG. 20

驱动桥/DRIVE AXLE

序号 Item No	图号 Part No	版本 Edition	零部件名称 Description	件数 Q'ty	备注 Remark
01	P32F3-00201	B.1	Housing axle 驱动桥壳总成	1	
02	25073-00031	B.1	Plug, drain 桥壳螺塞	2	
03	22253-02063b	B.1	Breather 透气塞总成	1	
04	B5111-00012	B.0	Washer 垫圈12	2	GB95-85
05	25783-02111	B.2	Shaft, axle 半轴	2	
06	HRA45E3701	B.1	Wheel brake ass'y 制动器总成	2	See Fig.21
07	25783-02311	B.1	Drum 制动鼓	2	
08	25783-02021	B.3	Hub 轮毂	2	
09	25783-02800G	B.2	Plate 支撑板	2	
10	25784-42111	B.1	Nut, hub outer 外螺母	20	
11	25784-42101	B.1	Nut, hub inner 内螺母	20	
12	25783-02101	B.2	Gear, internal 内齿圈	2	
13	REF101274	B.3	Washer, lock 防松垫圈	2	
14	24043-00240	B.2	Nut spindle inner 锁紧螺母(内)M75X2	2	
15	24043-00230	B.2	Nut spindle outer 锁紧螺母(外)M75X2	2	
16	B0530-10025	B.0	Bolt 螺栓M10X1.25X25	12	GB5786-86
17	B5050-00010	B.0	Washer 垫圈10	12	GB93-87
18	P32F3-03001	B.1	Carrier, planet 行星齿轮支架	2	
19	25783-02171	B.1	Cap, axle shaft 半轴端盖	2	
20	25783-02181	B.1	Washer 端盖纸垫	2	
21	25783-02211	B.1	Washer, thrust 止推垫块	2	
22	25783-02231	B.1	Washer, thrust 止推垫片	12	
23	25783-02801A	B.2	Bushing 轴套	2	
24	P32F3-03011	B.1	Shaft, planet gear 行星齿轮轴	6	
25	Z1510-G0060	B.0	Ball 钢球Ø6	6	GB308-89
26	P32F3-03021	B.1	Gear, planet 行星齿轮	6	
27	25783-02161	B.1	O-ring O型密封圈	2	
28	24453-02061	B.1	Bolt, reamer 螺栓	32	
29	22193-03001	B.1	Plug 堵塞	2	
30	Z1612-30238	B.0	Needle 滚针3x23.8	348	

QYCD35-W1  
QYCD35-C1  
QYCD45-W1  
QYCD45-C1  
QYCD50-W1  
QYCD50-C1

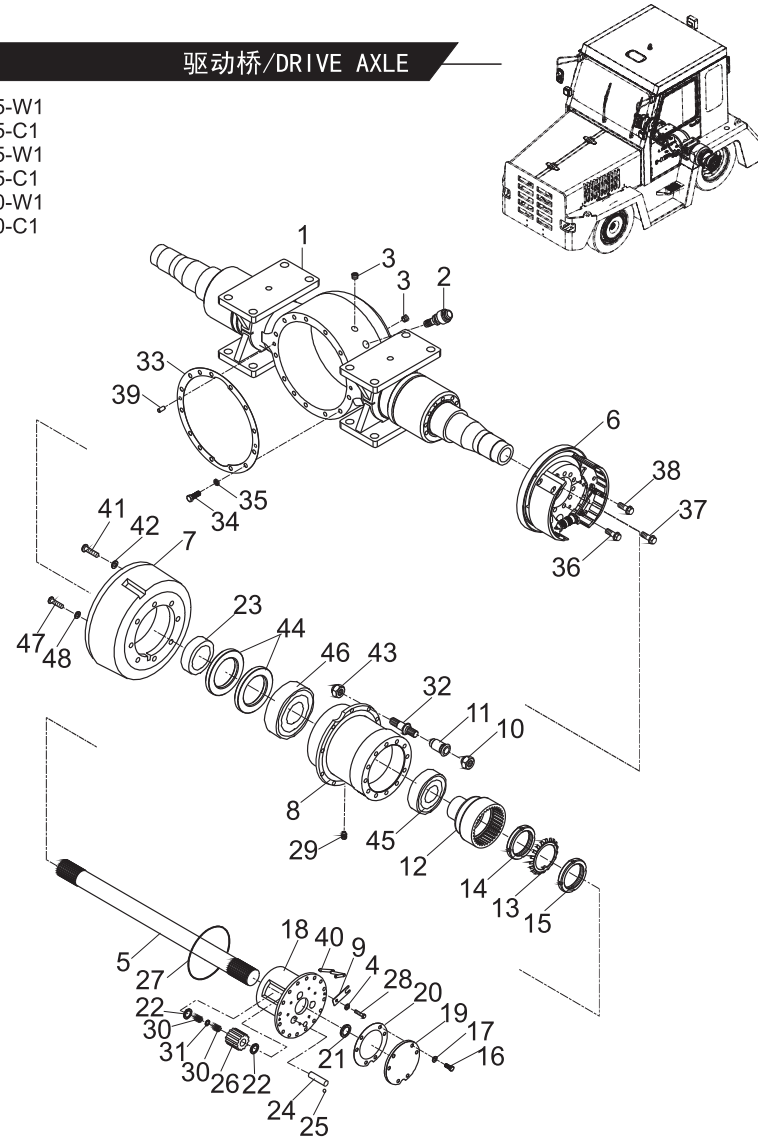




图35/FIG. 35

行车制动管路系统(选配)/BRAKE PIPING SYSTEM(OPTIONAL CONFIGURATION)

序号 Item No	图号 Part No	版本 Edition	零部件名称 Description	件数 Q'ty	备注 Remark
A	P34F5-40021	B.3	Brake pipe system 行车制动管路系统	1	
01	A45E5-43112	B.3	Rubber 橡胶垫	1	
02	H5T05-40201	B.0	Reserve 储能器	1	
03	B0530-08020	B.0	Bolt 螺栓M8x1x20	1	GB5786-86
04	B5050-00008	B.0	Washer,lock 垫圈8	2	GB93-87
05	A45E5-43161	B.2	Nipple 直通接头	1	
06	P32F5-40561	B.1	Nipple 直通接头	1	
07	Z9501-06045	B.0	Hose H.P. 高压胶管6 I X450	1	
08	P32F5-40541	B.2	Hose ass'y 油管总成(E)	1	
09	Z7300-06030	B.0	Hose 输油胶管 φ6X13X300	1	
10	Z4590-00020	D.1	Clip 双钢丝卡箍20	4	
11	A45E5-40631	B.1	Three-way 三通接头	1	
12	B0330-10020	B.0	Bolt 螺栓M10x20	4	GB5783-86
13	B5050-00010	B.0	Washer,lock 垫圈10	13	GB93-87
14	Z7300-06080	B.0	Hose 输油胶管 φ6X17X800	1	
15	Z9501-06085	B.0	Hose H.P. 高压胶管6 I X850	1	
16	JT8022-34051	D.2	Elbow 直角接头	1	
17	P32F5-42422	D.1	Bracket 支板	1	
18	A45E5-40611	B.0	Brake valve 制动阀	1	
19	P16	B.0	O-ring 0型密封圈15.8X2.4	2	
20	A45E5-43011	B.3	Nipple 接头	1	
21	A45E5-40621	B.0	Safety valve 安全阀	1	
22	Z4503-13019	B.0	Clip 喉箍13-19	2	
23	Z7351-13115	B.0	Hose 回油管 φ13x1150	1	
24	P32F5-42521	B.0	Clip 管夹	2	
25	P34F5-40501	B.1	Pipe,ass'y 油管总成(F)	1	
26	JT6025-14071	B.1	Nipple 过渡接头	1	
27	Z9501-06040	B.0	Hose H.P. 高压胶管6 I X400	1	
28	P32F5-43601	D.1	Nipple 过渡接头	3	
29	P32F5-40521	B.1	Pipe,ass'y 油管总成(C)	1	

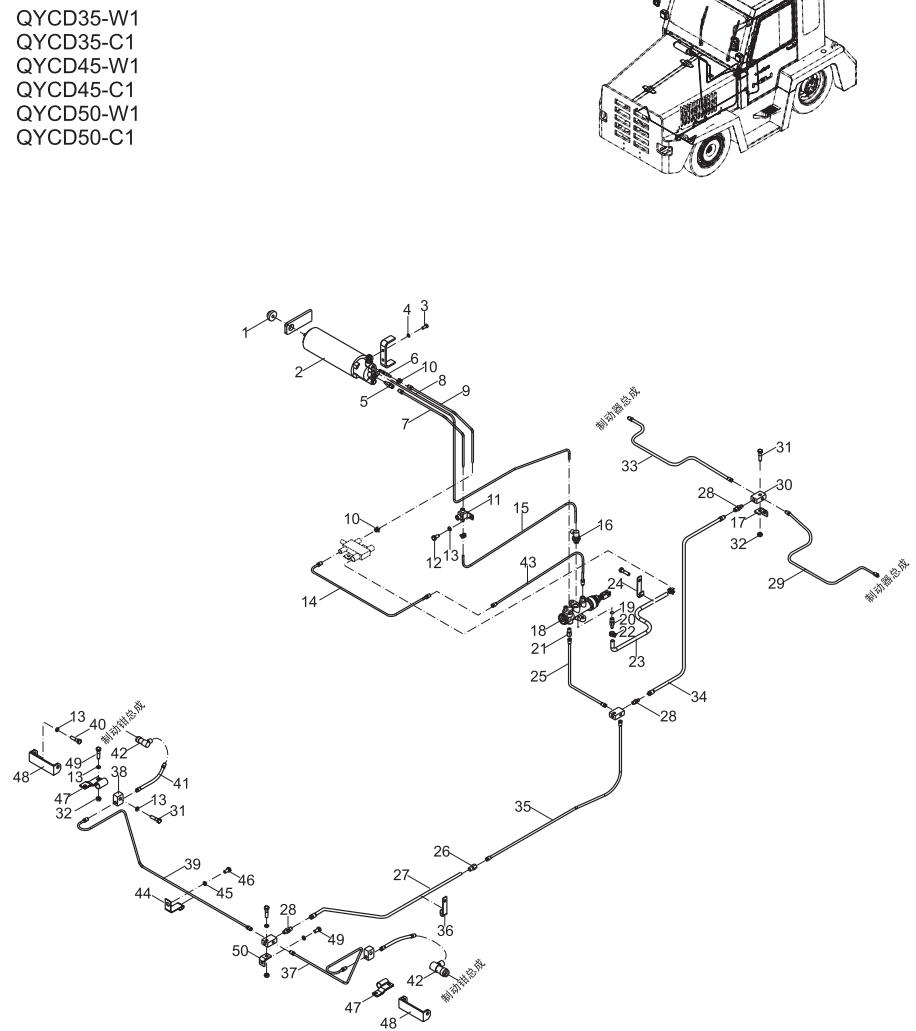
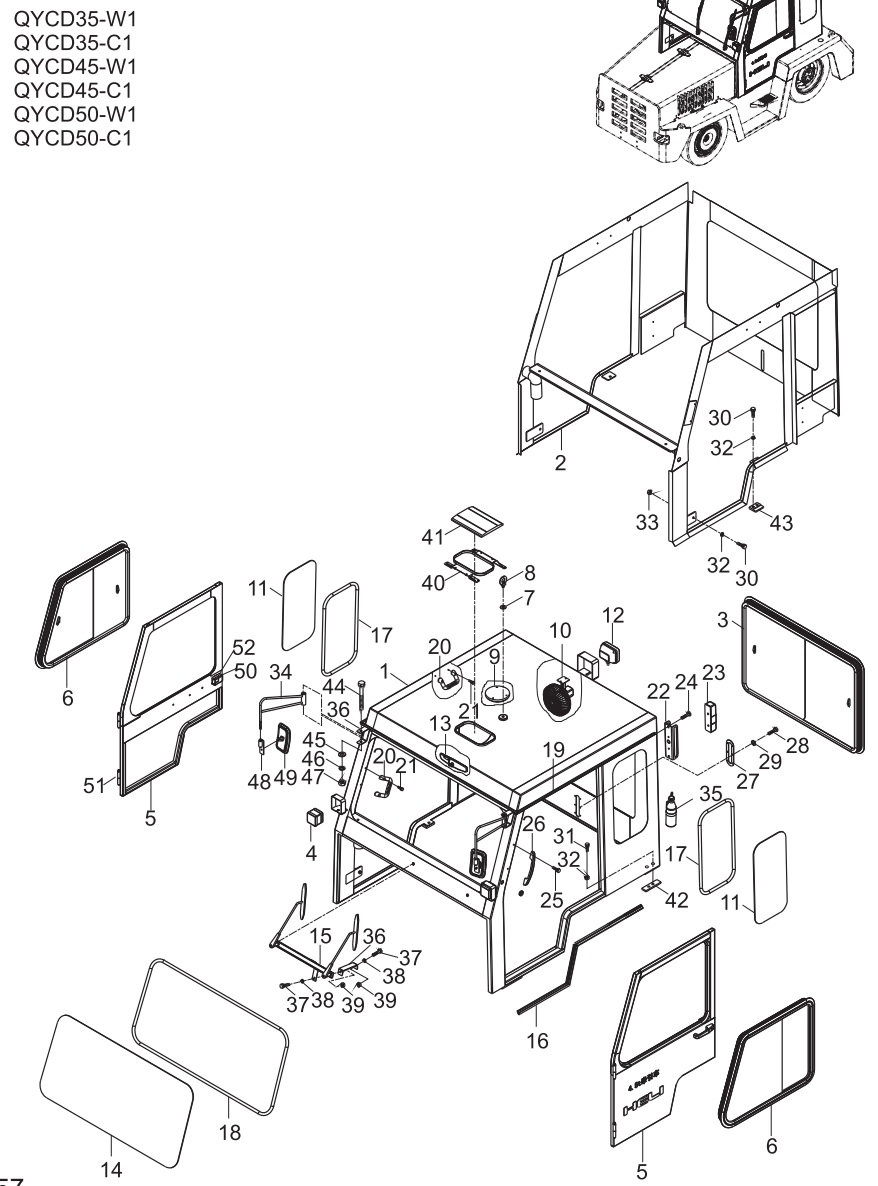


图42/FIG. 42

驾驶室总成/CAB ASS'Y

序号 Item No	图号 Part No	版本 Edition	零部件名称 Description	件数 Q'ty	备注 Remark
30	B0230-12045	B.0	Bolt 螺栓M12x45	6	GB5782-86
31	B0230-12050	B.0	Bolt 螺栓M12x50	4	GB5782-86
32	B5050-00012	B.0	Washer,lock 垫圈12	10	GB93-87
33	B4116-00012	B.0	Nut 螺母M12	10	GB6170-86
34	P32F5-70471	B.0	Bracket 转动支架	2	
35	MFLZ2	B.0	Fire extinguisher 2公斤干粉灭火器ABC	1	
36	P32F5-73021	B.0	Plate 固定角板	1	
37	B0010-08035	B.0	Bolt 螺栓M8x35	2	GB5780-86
38	B5050-00008	B.0	Washer,lock 垫圈8	2	GB93-87
39	B4116-00008	B.0	Nut 螺母M8	2	GB6170-86
40	P32F5-70511	B.0	Bracket 换气天窗支架	1	
41	P32F5-70541	B.0	Window 换气天窗	1	
42	P32F5-73101	B.0	Rubber spacer 后橡胶垫	2	
43	P32F5-73111	B.0	Rubber spacer 侧橡胶垫	2	
44	B0230-12120	B.0	Bolt 六角螺栓M12X120	2	GB5782-86
45	B5310-00012	B.0	Washer 垫圈12	2	GB97.1-85
46	B5050-0012	B.0	Washer,lock 垫圈12	2	GB93-87
47	B4116-00012	B.0	Nut 螺母M12	4	GB41-86
48	P32F5-70481	B.0	Board 倒车镜紧固板	2	
49	P32F5-70491	B.0	Back-mirror 中倒车镜	2	
50	P62A5-70331	B.0	Lock ass'y 门锁总成	2	左右对称各一 Left & right types
51	P62A6-70361	B.0	Hinge 圆柱形铰链	4	
52	P62A5-72571	B.0	Box ABS塑料锁盒	2	左右对称各一 Left & right types



CLICK HERE TO **DOWNLOAD** THE COMPLETE MANUAL

- Thank you very much for reading the preview of the manual.
- You can download the complete manual from: [www.heydownloads.com](http://www.heydownloads.com) by clicking the link below



- Please note: If there is no response to CLICKING the link, please download this PDF first and then click on it.

CLICK HERE TO **DOWNLOAD** THE COMPLETE MANUAL