

## Agroplus F 100 -> 3001

### V0 - BALLAST, TOWING HITCHES

#### FRONT HITCHES

FRONT TOWING HITCH..... V0.01.0 (1)

#### REAR HITCHES

SPACER FOR TYPES WITH 2-SPEED P.T.O. WITH INSERTED END SHAFTS 540-750..... V0.02.0 (1)

SEPARATOR..... V0.02.1 (1)

SUPPORTS..... V0.02.2 (1)

SUPPORTS..... V0.02.3 (1)

PIN FOR REAR TOW HOOK..... V0.02.4 (1)

REAR TOWING HITCH..... V0.02.5 (1)

REAR SWINGING TOWING-HITCH..... V0.02.7 (1)

REAR TOWING HITCH BRACKET..... V0.02.8 (1)

REAR TOWING HITCH BRACKET..... V0.02.9 (1)

REAR TOWING HITCH CAT. " D "..... V0.02.10 (2)

REAR TOWING HITCH CAT. " D2 "..... V0.02.11 (1)

REAR TOWING HITCH CAT. " C "..... V0.02.12 (2)

REAR TOWING HITCH..... V0.02.13 (1)

AUTOMATIC REAR TOWING HITCH CEE Ø 31..... V0.02.14 (1)

AUTOMATIC REAR TOWING HITCH CEE Ø 31..... V0.02.14 (2)

REAR TOWING HITCH CEE..... V0.02.15 (1)

REAR TOWING HITCH CEE..... V0.02.16 (1)

DRAWBAR COUPLING CRAMER..... 0.012.6876.4.A

REAR TOWING HITCH CAT: "C"..... 0.014.4450.3.A

REAR TOWING HITCH CAT: "D"..... 0.014.4451.3.A

DRAWBAR COUPLING CAT: "D2"..... 0.014.4452.3/10.A

DRAWBAR COUPLING JH..... 0.014.4457.3.A

SLIDE..... 0.014.8203.3/20.A

DRAWBAR COUPLING Ø 31, kpl..... 0.014.8208.3.A

CHASSIS..... 0.014.8233.3.A

DRAWBAR COUPLING Ø 31, kpl..... 0.015.5754.3.A

#### FRONT BALLAST WEIGHTS

FRONT WEIGHT CARRIER Kg 74..... V0.03.0 (1)

FRONT WEIGHT CARRIER..... V0.03.2 (1)

FRONT BALLAST Kg 176..... V0.03.3 (1)

FRONT BALLAST KG. 70..... V0.03.4 (1)

FRONT BALLAST Kg 80..... V0.03.5 (1)

FRONT BALLAST Kg 160..... V0.03.6 (1)

FRONT BALLAST KG. 250..... V0.03.7 (1)

BALLAST LOCK BAR mm 30x780..... V0.03.8 (1)

CLICK HERE TO **DOWNLOAD** THE COMPLETE MANUAL

- Thank you very much for reading the preview of the manual.
- You can download the complete manual from: [www.heydownloads.com](http://www.heydownloads.com) by clicking the link below



- Please note: If there is no response to CLICKING the link, please download this PDF first and then click on it.

CLICK HERE TO **DOWNLOAD** THE COMPLETE MANUAL

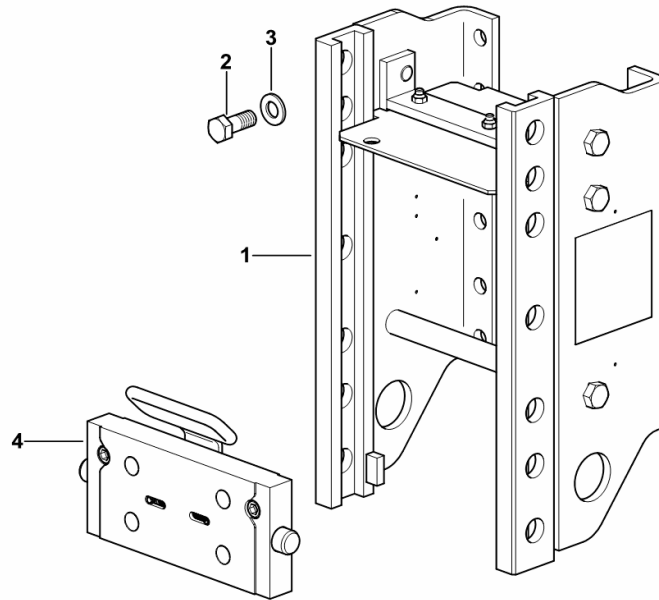
**REAR TOWING HITCH BRACKET**

Fig.	Code	QTY	Name
------	------	-----	------

**Notes:**

[Agroplus F 100 -> 3001] -> 3017

1	0.015.5748.3/10	1	chassis frame V.ORLANDI
2	2.0113.615.2	12	screw m 16 p.2 x 40
3	2.1475.006.2	12	washer 16
4	0.015.5751.3/10	1	plate V.ORLANDI



9\_H2831\_70\_0-A-001

**REAR TOWING HITCH CAT: "C"**

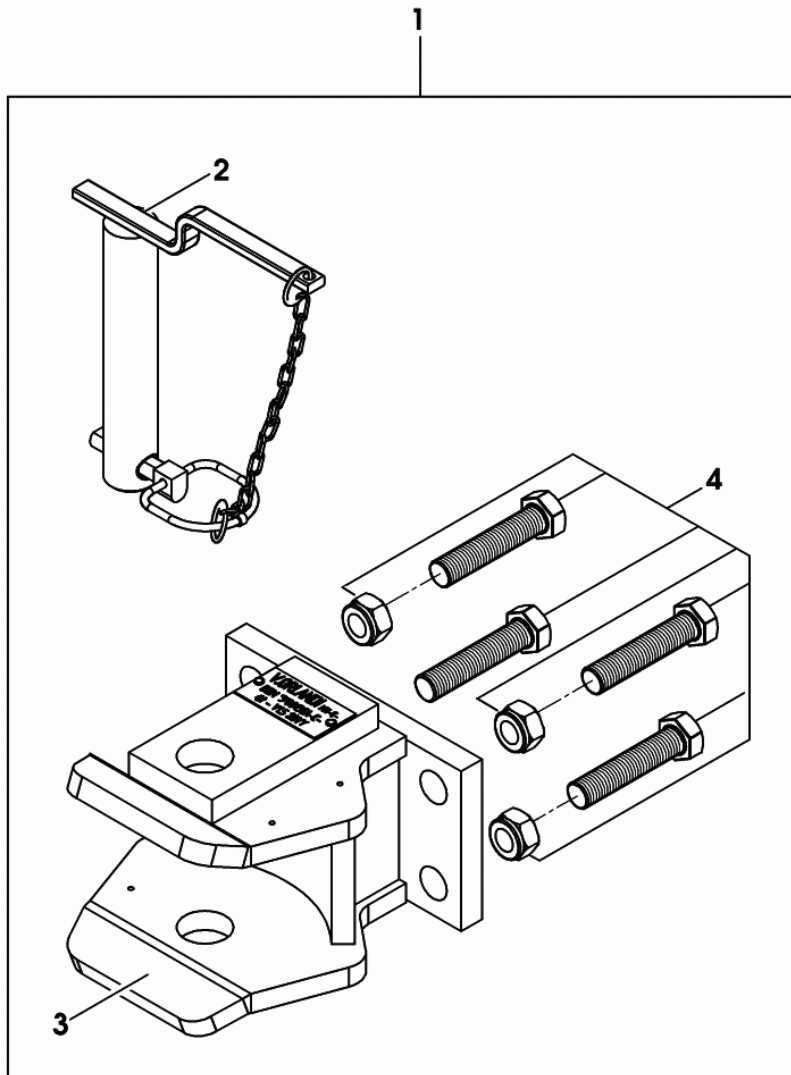


Fig.	Code	QTY	Name
1	0.014.4450.3	1	tow hook V.ORLANDI CAT. " C "
2	0.900.0457.9	1	pin
3	0.000.0000.1	0	not serviceable
4	0.900.0458.0	1	screw m 18, kit

0\_014\_4450\_3

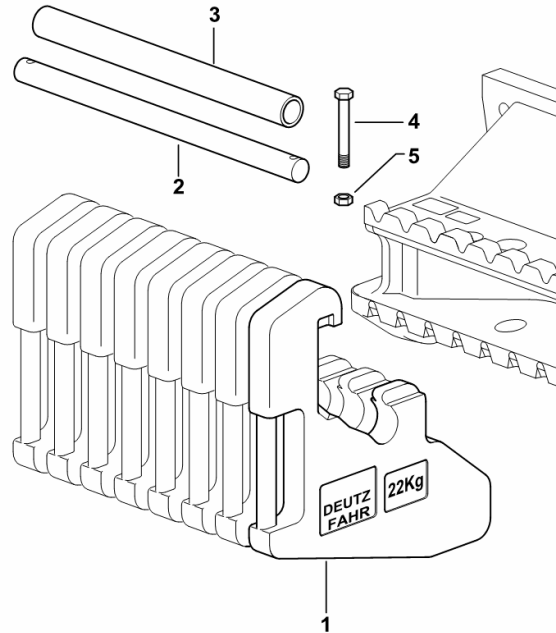
**FRONT BALLAST Kg 176**

Fig.	Code	QTY	Name
------	------	-----	------

**Notes:**

[Agroplus F 100 -> 3001] 3006 <-

1	0.010.5447.0/10	8	ballast 22 Kg
2	0.011.5549.0	1	pin 32x384
3	0.011.5554.0	1	tube
4	2.0112.331.2	2	screw m 10 p.1.5x110
5	2.1019.136.2	2	nut m 10



9\_78552\_40\_0-A-001

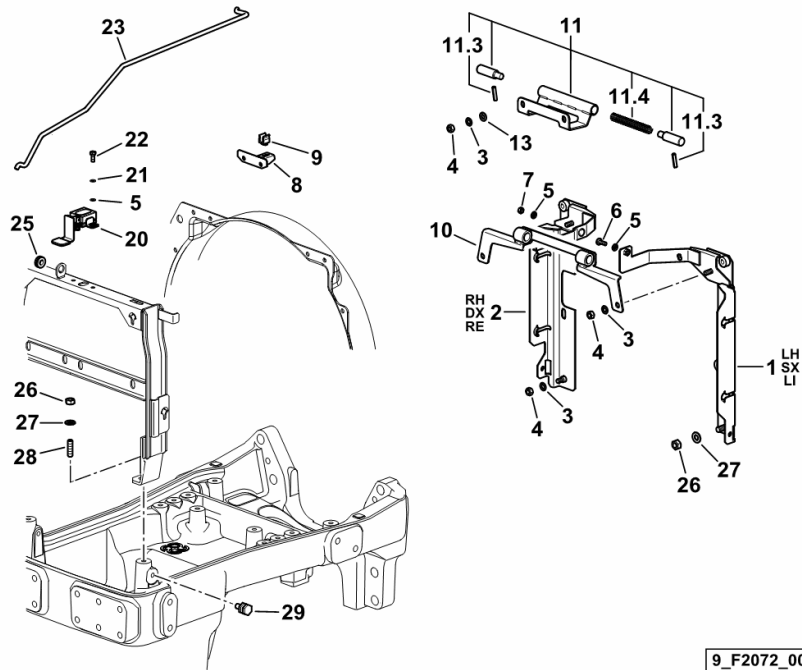
SAFETY BELT.....	G0.08.10 (1)
SEAT-COMPONENTS.....	0.014.7066.4.A
SEAT-COMPONENTS.....	0.014.7067.4.A
SEAT-COMPONENTS.....	0.014.7068.4.A
<b>HEATING AND AIR CONDITIONING</b>	
VENTILATION - HEATING.....	G0.09.0 (1)
VENTILATION - HEATING.....	G0.09.1 (1)
VENTILATION-AIR CONDITIONING-HEATING.....	G0.09.2 (1)
VENTILATION-AIR CONDITIONING-HEATING.....	G0.09.3 (1)
HEATING AND AIR CONDITIONING SYSTEM.....	G0.09.4 (1)
CONDENSER.....	G0.09.5 (1)
CONDENSER.....	G0.09.5 (2)
CONNECTING PIPING.....	G0.09.6 (1)
HEATING SYSTEM.....	G0.09.7 (1)
HEATING SYSTEM.....	G0.09.8 (1)
HEATING SYSTEM.....	G0.09.9 (1)
COMPRESSOR.....	G0.09.11 (1)
COMPRESSOR SUPPORTS.....	G0.09.12 (1)
COMPRESSOR PIPES.....	G0.09.14 (1)
SPIN-ON FILTER.....	0.007.6265.4/20.A
COMPRESSOR-PARTS.....	0.007.7197.4.A
ENGAGEMENT.....	0.009.7202.4/20.A
ENGAGEMENT.....	0.009.7203.4/20.A
VENTILATION - HEATING.....	0.009.8274.4/10.A
AIR-CONDITIONING HEATING.....	0.010.0001.4/10.A
<b>MECHANICAL CLUTCH CONTROLS</b>	
CLUTCH CONTROL.....	G0.10.0 (1)
<b>MECHANICAL BRAKE CONTROLS</b>	
BRAKE CONTROLS.....	G0.11.0 (1)
HAND BRAKE.....	G0.11.2 (1)
HAND BRAKE.....	G0.11.3 (1)
TRAILER HANDBRAKE CONTROL CABLE ITALY.....	G0.11.4 (1)
HANDBRAKE BRACKET FOR TRAILER.....	G0.11.5 (1)
<b>MECHANICAL - ELECTRONIC THROTTLE CONTROLS</b>	
THROTTLE.....	G0.12.0 (1)
HAND CONTROL FOR ELECTRONIC THROTTLE.....	G0.12.1 (1)
ELECTRONIC ACCELERATOR CONTROL.....	G0.12.2 (1)
<b>STEERING CONTROLS</b>	
STEERING WHEEL CAP.....	G0.13.3 (1)
STEERING COLUMN.....	G0.13.4 (1)
STEERING COLUMN.....	G0.13.5 (1)
<b>MECHANICAL GEARSHIFT CONTROLS</b>	
GEAR SHIFTING.....	G0.14.0 (1)
GEAR SHIFTING.....	G0.14.1 (1)

**HOOD SUPPORT**

Fig.	Code	QTY	Name
------	------	-----	------

**Notes:**

[Agroplus F 100 -> 3001]



1	0.013.9446.3/10	1	chassis frame sx/lh/li
2	0.013.9444.3/10	1	chassis frame dx/rh/re
3	2.1470.004.2	4	washer 8
4	2.1011.105.2	4	nut m 8 p.1.25
5	2.1310.002.2	4	washer 6.6, d125
6	2.0330.406.2	1	screw m 6 p.1.0 x 16
7	2.1011.103.2	1	nut m 6 p.1
8	0.013.4111.2	1	bracket
9	0.010.0351.0	1	small spring
10	0.014.5551.2/10	1	support
11	0.014.5563.4	1	bracket
11.3	2.1630.612.0	2	roll pin 6 x 28
11.4	2.4019.201.1	1	spring
13	2.1310.004.2	2	flat washer 8.5
20	0.014.0544.4/20	1	small block
21	2.1470.002.2	2	washer 6, d128
22	2.0112.005.2	2	screw m 6 p.1 x 16
23	0.014.0519.0	1	top link
25	2.6560.004.0	1	wire guide 10x2.5
26	2.1011.106.2	4	nut m 10 p.1.5
27	2.1310.006.2	4	flat washer 10.5
28	2.0422.303.2	2	stud bolt m 10 p.1.5 x 20
29	0.010.1383.0	2	screw m 10

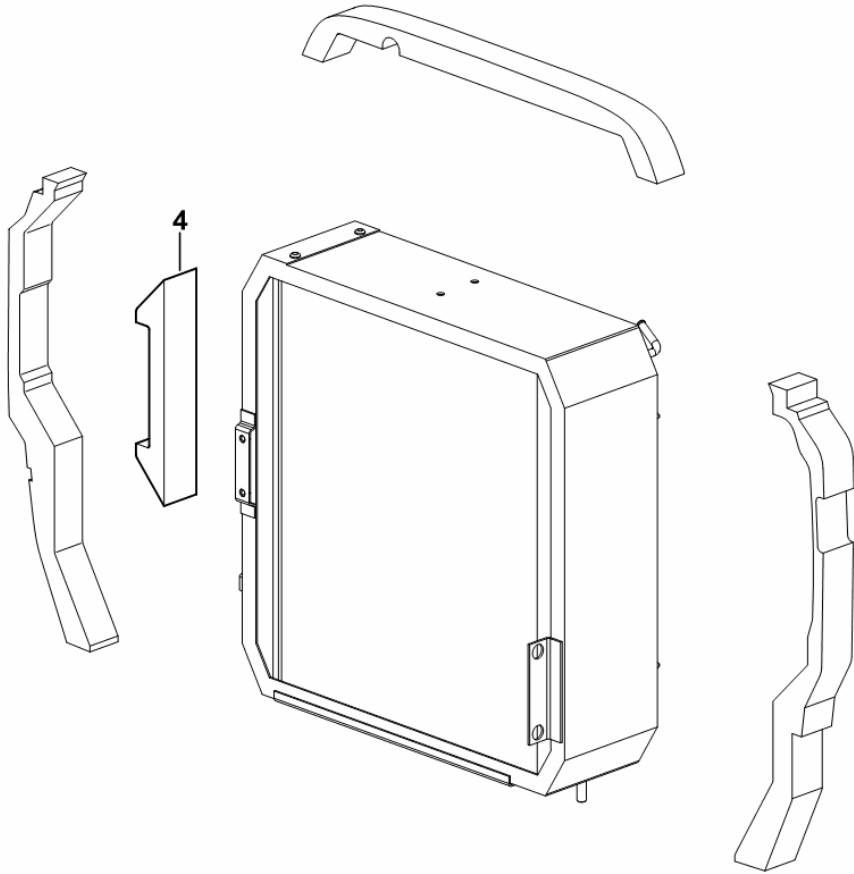
**ENGINE HOOD GASKETS**

Fig.	Code	QTY	Name
------	------	-----	------

**Notes:**

[Agroplus F 100 -> 3001]

4	0.013.4026.0/20	1	gasket dx/rh/re
---	-----------------	---	-----------------



9\_F9072\_02\_0-A-001

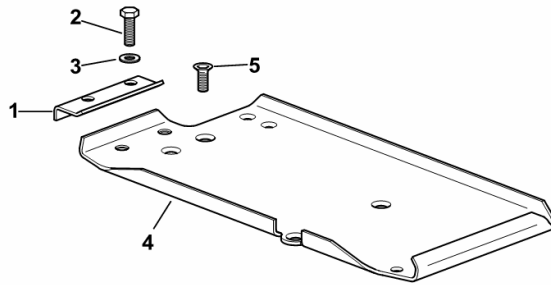
**BATTERY SUPPORT**

Fig.	Code	QTY	Name
------	------	-----	------

**Notes:**

[Agroplus F 100 -> 3001] -> 3118

1	0.016.7492.0	1	plate
2	2.0112.213.2	2	screw m 8 p.1.25 x 35
3	2.1310.004.2	2	flat washer 8.5
4	0.010.8251.3/20	1	battery support
5	2.0342.303.6	3	screw m 8 p. 1.25x16



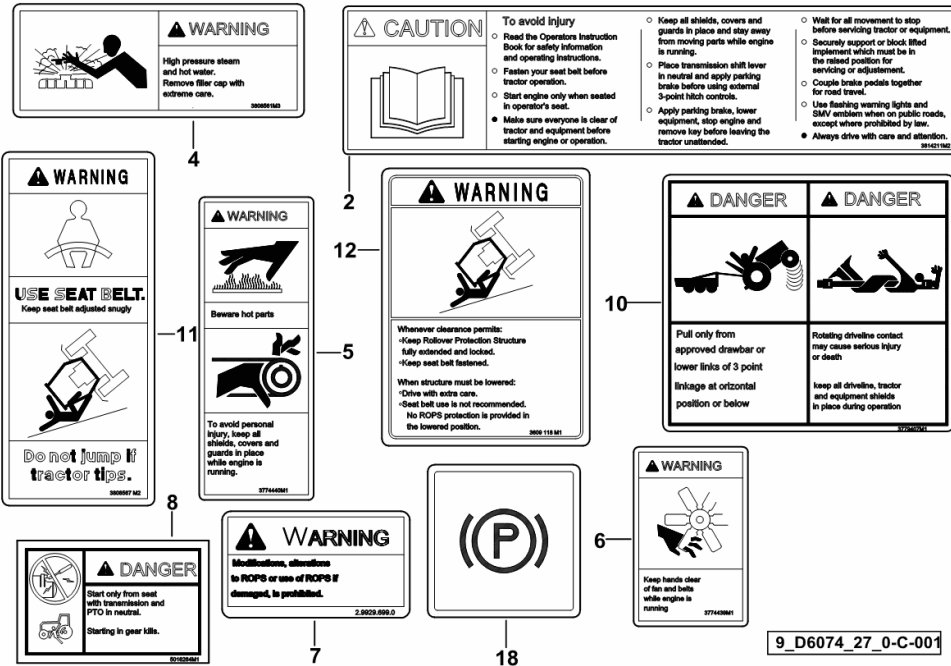
9\_70573\_00\_0-A-002

**PLATES**

Fig.	Code	QTY	Name
------	------	-----	------

Notes:  
[Agroplus F 100 -> 3001] 3066 <-

2	2.9929.848.0/10	1	plate
4	2.9929.792.0	1	plate
5	2.9929.791.0	2	plate
6	2.9929.794.0	2	plate
7	2.9929.699.0/10	2	plate
8	2.9929.854.0	1	plate
10	2.9929.856.0	1	plate
11	2.9929.857.0	1	plate
12	2.9929.858.0	1	plate
18	2.9929.702.0/10	1	plate



9\_D6074\_27\_0-C-001

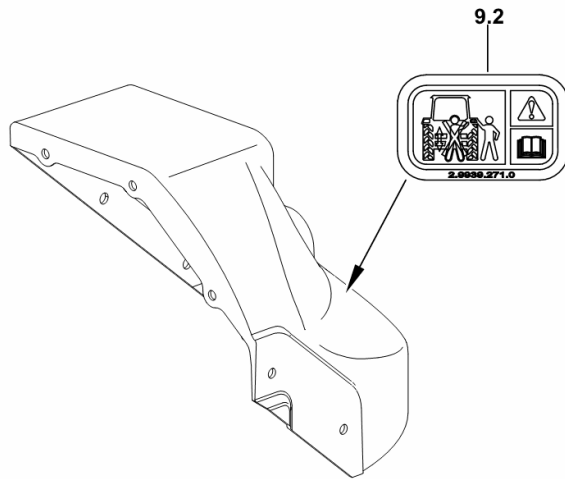
**REAR LIFT MOVEMENT WARNING LABEL DX/RH/RE**

Fig.	Code	QTY	Name
------	------	-----	------

**Notes:**

- FOR TYPES WITH MECHANICAL LIFT AND 24" PLATFORM [Agroplus F 100 -> 3001] -> 3005 - 3023 <- - FOR TYPES WITH CAB AND MECHANICAL LIFT [Agroplus F 100 -> 3001] -> 3005

9.2	2.9939.271.0	1	plate
-----	--------------	---	-------



9\_F1659\_52\_0-D-001

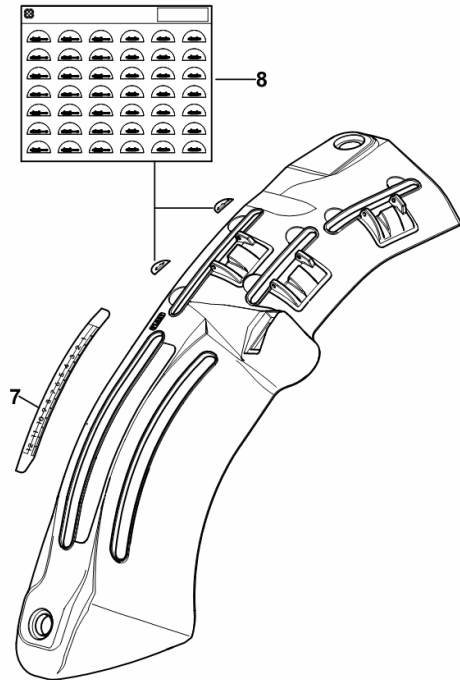
**RH CONSOLE IDENTIFICATION PLATES**

Fig.	Code	QTY	Name
------	------	-----	------

**Notes:**

- FOR TYPES WITH MECHANICAL LIFT AND 24" PLATFORM [Agroplus F 100 -> 3001] 3002 <- - FOR 28" PLATFORM AND FOR TYPES WITH CAB - WITH MECHANICAL LIFT [Agroplus F 100 -> 3001] 3002 <-

7	0.010.7140.0	0.1	plate
8	0.010.7141.0/10	0.51	plate



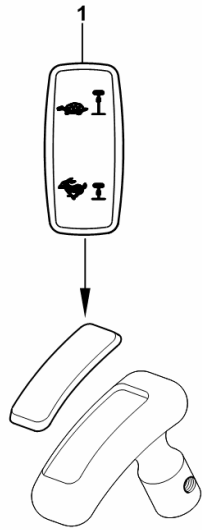
9\_70559\_52\_0-C-001

Section: G0 - BODYWORK - CAB  
**COVER FOR UNDERDRIVE**

Fig.	Code	QTY	Name
------	------	-----	------

Notes:  
 [Agroplus F 100 -> 3001]

1	0.014.5161.0/10	1	cap
---	-----------------	---	-----



9\_F2064\_04\_0-A-001

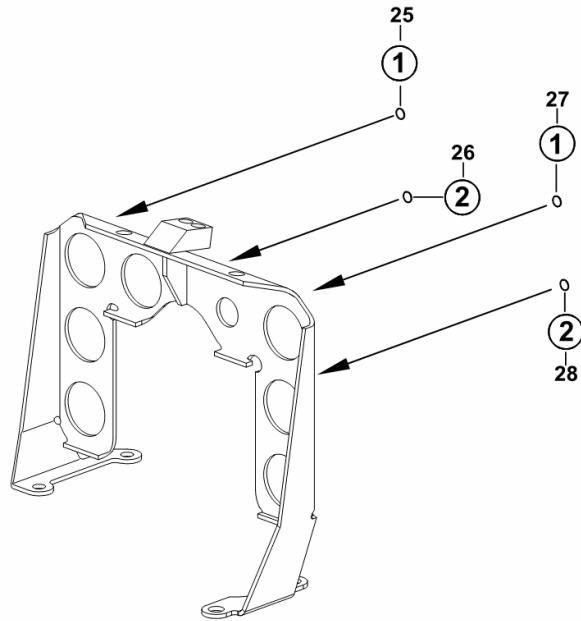
**IDENTIFICATION PLATES FOR REAR CONNECTORS**

Fig.	Code	QTY	Name
------	------	-----	------

**Notes:**

[Agroplus F 100 -> 3001]

25	2.9929.412.0	1	plate 1 - YELLOW COLOUR
26	2.9929.413.0	1	plate 2 - YELLOW COLOUR
27	2.9929.739.0	1	plate 1 - RED COLOUR
28	2.9929.740.0	1	plate 2 - RED COLOUR



9\_F2088\_00\_0-B-001

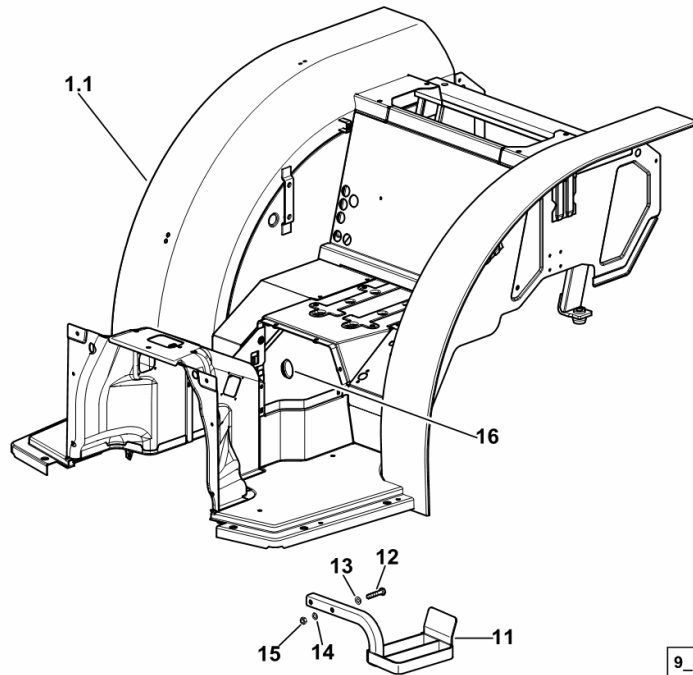
**PLATFORM**

Fig.	Code	QTY	Name
------	------	-----	------

**Notes:**

- FOR 420/85R24"(16.9R24") - 340/85R28"(13.6R28") - 380/70R28" - 380/85R28"(14.9R28") - 420/70R28" TYRES - [Agroplus F 100 -> 3001]

1.1	0.014.9729.3/40	1	platform
11	0.011.4260.2	1	climbing steps sx/lh/li
12	2.0112.319.2	2	screw m 10 p.1.5 x 50
13	2.1310.006.2	2	flat washer 10.5
14	2.1470.006.2	2	lock washer 10
15	2.1011.106.2	2	nut m 10 p.1.5
16	2.6070.054.0	1	plug Ø 40



9\_H3076\_02\_0-A-001

Section: G0 - BODYWORK - CAB  
**FRONT MUDGUARDS mm 310**

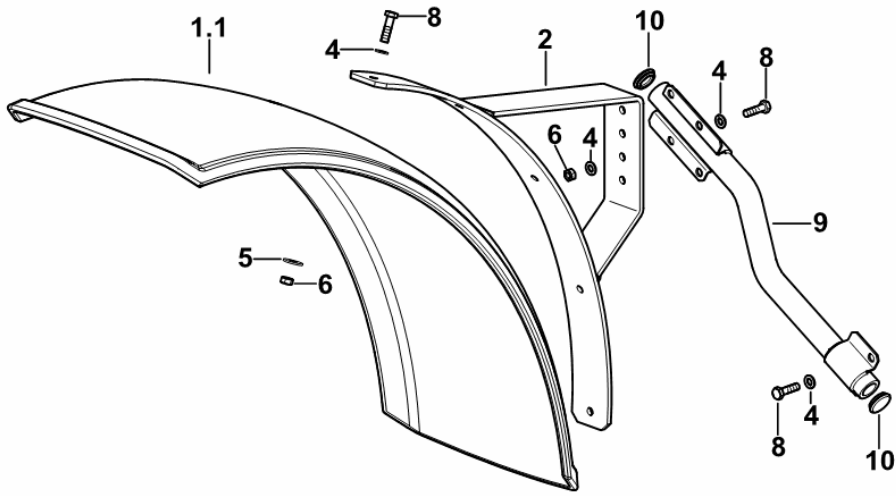
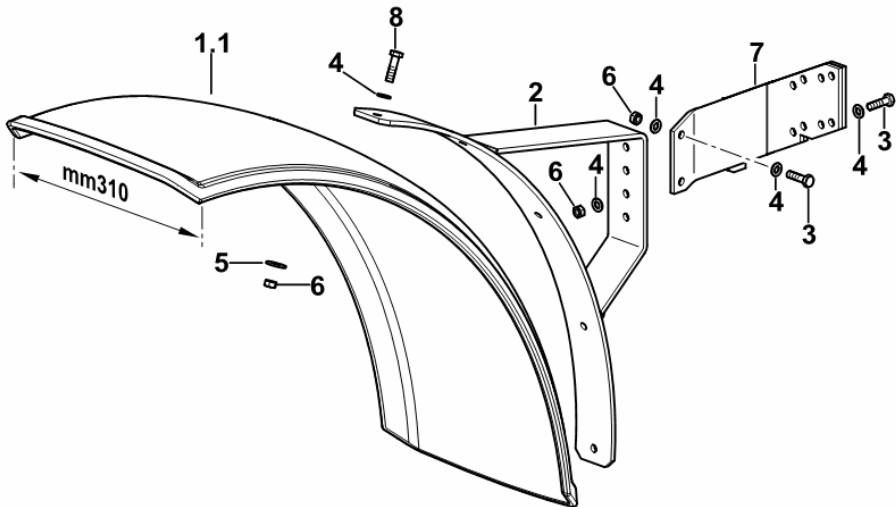


Fig.	Code	QTY	Name
------	------	-----	------

**Notes:**

- FOR TYPES WITHOUT SAFETY FRAME AND FRONT AUXILIARY CONTROL VALVE BUT WITH CENTRAL CONNECTORS [Agroplus F 100 -> 3001]

1.1	0.163.7632.5/10	1	fender mm 310
2	0.013.9065.2	2	chassis frame
3	2.0112.211.2	4	screw m 8 p.1.25 x 30
4	2.1310.004.2	24	flat washer 8.5
5	2.1312.004.2	10	washer 8.4
6	2.1011.105.2	16	nut m 8 p.1.25
7	0.013.8747.2	1	bracket
8	2.0112.209.2	14	screw m 8 p 1.25 x 25
9	0.015.2486.3	1	support
10	0.010.1453.0	2	plug 22



9\_F6376\_16\_0-A-001

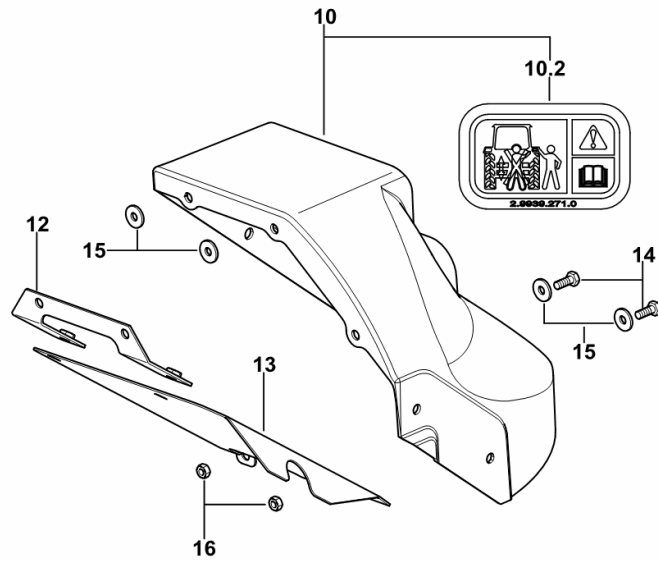
**SPRAY GUARD DX/RH/RE**

Fig.	Code	QTY	Name
------	------	-----	------

**Notes:**

- FOR TYPES WITH ELECTRONIC LIFTER [Agroplus F 100 -> 3001] -> 3003

10	0.015.9657.4	1	splash-guards dx/rh/re
10.2	2.9939.271.0	1	plate
12	0.013.8886.3	1	support
13	0.013.8887.0	1	cover
14	2.0112.005.2	2	screw m 6 p.1 x 16
15	2.1312.003.2	4	washer 6
16	2.1011.103.2	2	nut m 6 p.1



9\_F1659\_54\_0-B-001

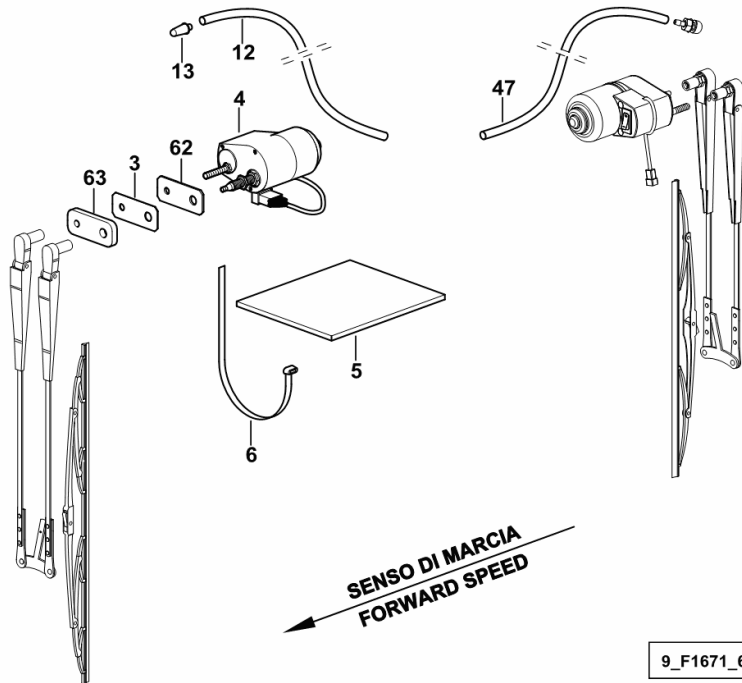
**FRONT AND REAR WINDSCREEN WIPER SYSTEM**

Fig.	Code	QTY	Name
------	------	-----	------

**Notes:**

- FOR TRACTORS WITH AIR HEATING [Agroplus F 100 -> 3001]

3	0.010.4557.0	2	gasket
4	2.9019.120.0/10	1	wiper motor
5	0.010.5062.0	1	panel 180x215x7
6	2.6852.203.0	4	clamp 292 x 4.8
12	0.011.3963.0	3.2	tube
13	0.013.9974.4	1	cooling nozzle
47	0.011.3963.0	2.2	tube
62	0.9241.560.0	1	small plate
63	0.9241.562.0	1	spacer



9\_F1671\_60\_0-C-001

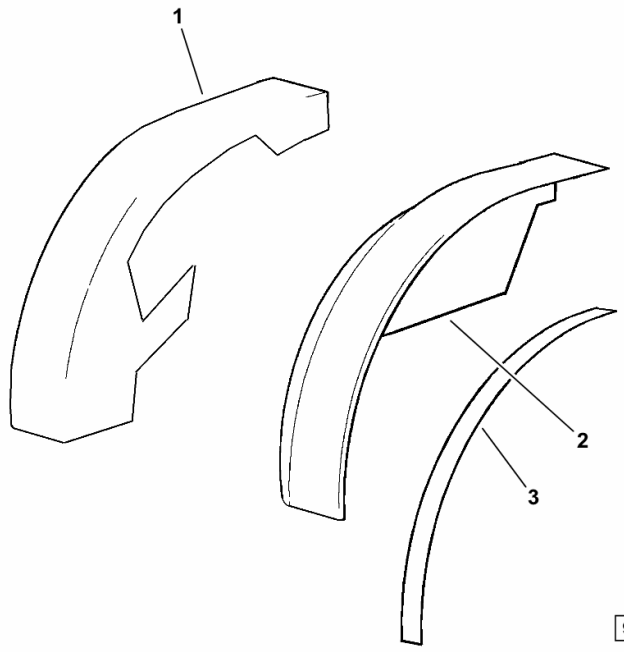
**FENDER COATINGS**

Fig.	Code	QTY	Name
------	------	-----	------

**Notes:**

- FOR MODELS WITH CAB - X 28" [Agroplus F 100 -> 3001] 3002 <-

1	0.010.9513.0/20	1	lining dx/rh/re
2	0.010.9514.0/20	1	lining sx/lh/li
3	0.010.1198.0	2	adhesive mm 4500



9\_70571\_27\_0-A-001

**CONTROL CONSOLE - LOWER PART**

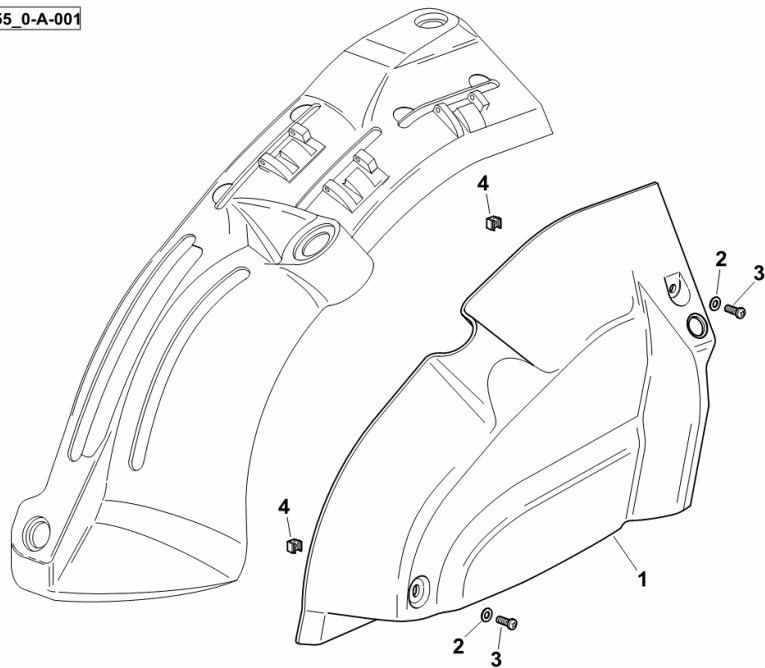
Fig.	Code	QTY	Name
------	------	-----	------

**Notes:**

- FOR TYPES WITH ELECTRONIC LIFT AND 24" PLATFORM [Agroplus F 100 -> 3001] -> 3060 - FOR 24" PLATFORM [Agroplus F 100 -> 3001] 3011 <-

1	0.010.5352.0/30	1	consolle
2	0.9125.662.0	2	washer 6.4 x 12.5
3	2.0332.406.3	2	screw m 6 p.1.0 x 16
4	2.6999.031.2	2	special nut m 6

9\_70259\_55\_0-A-001



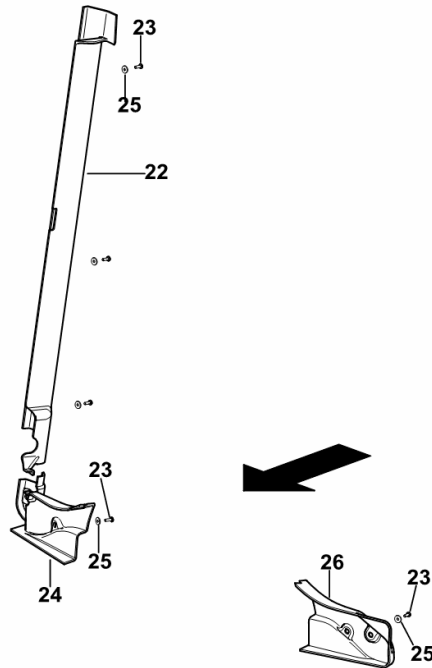
**CAB INTERIOR TRIM**

Fig.	Code	QTY	Name
------	------	-----	------

**Notes:**

[Agroplus F 100 -> 3001] 3059 <-

22	0.015.2289.0/10	1	cover dx/rh/re
23	2.0332.204.3	7	screw m 4 p.0.7 x 12
24	0.015.2288.0/10	1	cover dx/rh/re
25	2.1312.001.3	7	washer 4
26	0.015.2287.0/10	1	cover sx/lh/li



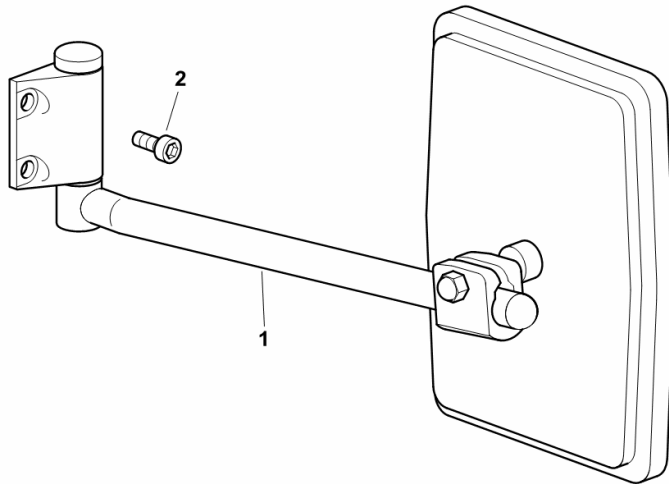
**REARVIEW MIRROR DX/RH/RE**

Fig.	Code	QTY	Name
------	------	-----	------

**Notes:**

- FOR TYPES WITH SAFETY FRAME [Agroplus F 100 -> 3001]

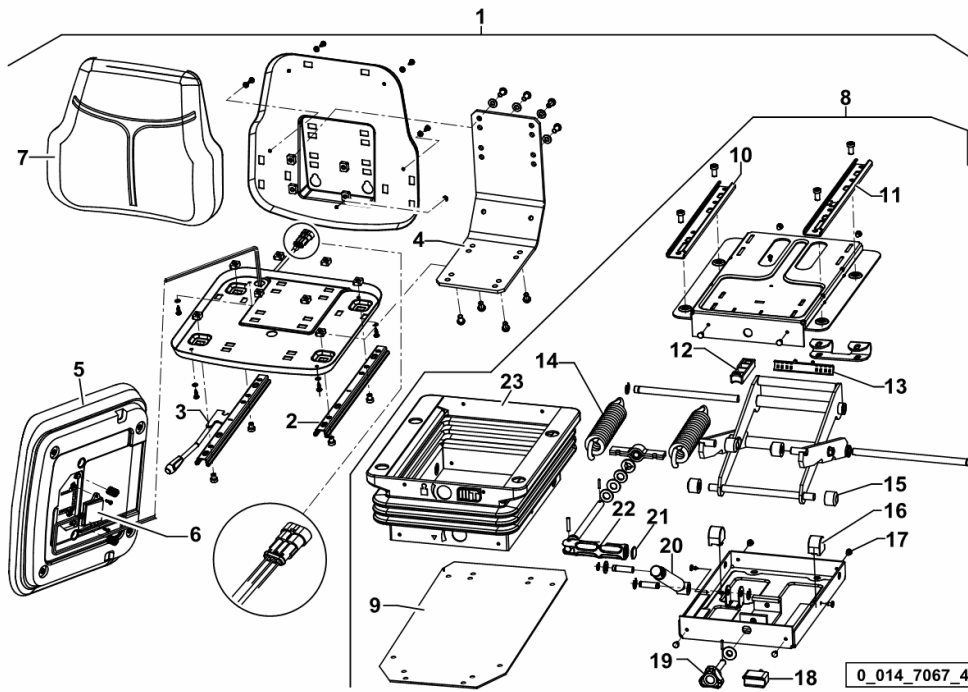
1	0.9234.147.4/10	1	rear view mirror sx/lh/li ☞ 0.9234.147.4/10
2	2.0312.206.2	2	screw m 8 p 1.25 x 20



9\_21076\_70\_0-A-001

**SEAT-COMPONENTS**

Fig.	Code	QTY	Name
1	0.014.7067.4	1	seat
2	0.010.3019.1	1	seat guide sx/lh/li
3	0.010.3019.0	1	seat guide dx/rh/re
4	0.010.3018.2	1	plate
5	0.900.0523.2	1	cushion
6	0.900.0522.8	1	sensor
7	0.900.0523.1	1	backrest
8	0.900.0523.3	1	seat springs M200
9	0.012.6131.0	1	plate
10	0.010.3020.0	1	seat guide dx/rh/re
11	0.010.3020.1	1	seat guide sx/lh/li
12	0.900.0516.2	1	small block
13	0.900.0516.7	1	bracket
14	0.900.0516.1	1	spring
15	0.010.3167.2	4	roller
16	0.900.0516.8	2	small cap
17	0.010.3021.2	11	plug
18	0.900.0517.0	1	small block
19	0.900.0516.6	1	knob
20	0.900.0516.5	1	small piston
21	0.900.0516.4	1	plug
22	0.900.0516.3	1	lever
23	0.900.0516.9	1	guard



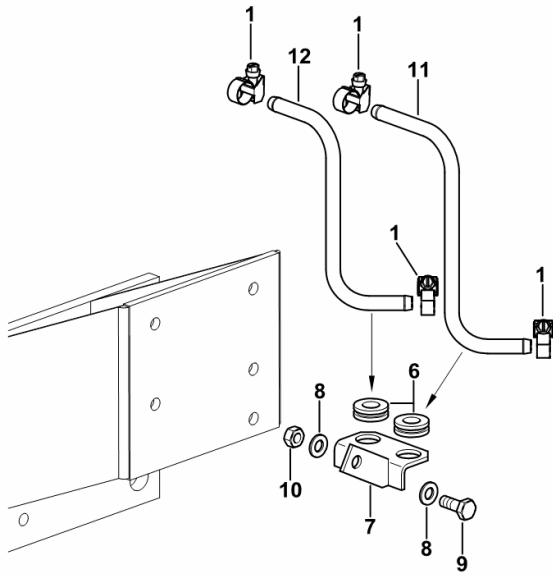
**HEATING SYSTEM**

Fig.	Code	QTY	Name
------	------	-----	------

**Notes:**

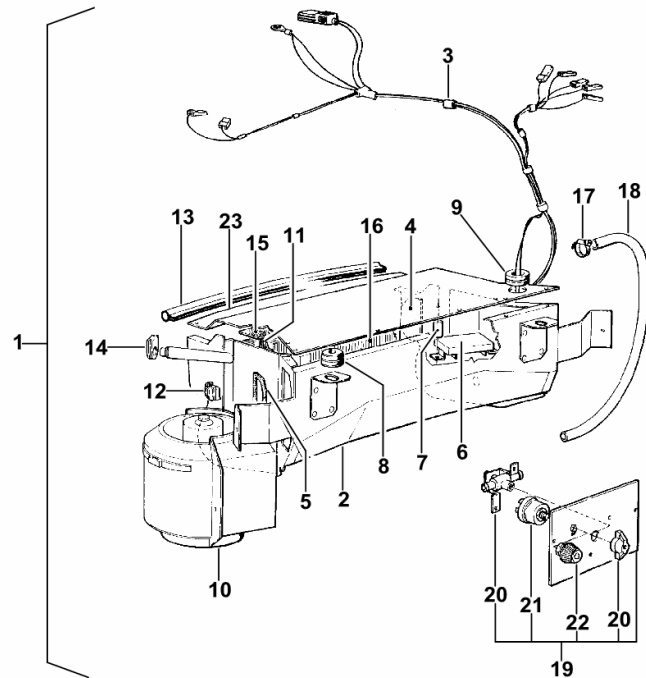
[Agroplus F 100 -> 3001] 3002 <-

1	2.6851.019.0	6	clamp Ø 13/20
6	2.6560.006.0	2	wire guide 12x1.5
7	0.009.8798.2	1	square
8	2.1310.004.2	2	flat washer 8.5
9	2.0112.207.2	1	screw m 8 p 1.25 x 20
10	2.1011.105.2	1	nut m 8 p.1.25
11	0.009.8796.0	1	tube
12	0.009.8797.0	1	tube



9\_F1686\_11\_0-A-001

**VENTILATION - HEATING**



009\_8274\_4\_10

Fig.	Code	QTY	Name
1	0.009.8274.4/10	1	fan
2	0.007.1910.3	1	box
3	0.009.9584.4	1	electrical system
4	0.009.9579.0	1	small plate
5	0.009.9525.0	2	gasket
6	0.010.2122.0	1	resistance
7	2.1549.206.0	2	spacer
8	0.009.9536.4	2	rubber plug
9	2.6569.041.0	2	rubber plug
10	0.009.9528.4	2	cab heating
11	0.009.9575.0	2	gasket
12	0.009.9507.0	4	small spring
13	0.009.9535.0	1	gasket
14	0.009.9534.0	1	gasket
15	0.009.9577.0	2	gasket
16	0.009.9508.2	1	resistance
17	2.6850.002.0	2	clamp 12-22
18	0.009.9533.0	1	tube
19	0.007.1911.3	1	control grp.
20	0.009.4745.0	1	cock or tap
21	0.009.4743.1	1	switch
22	0.009.4743.2	1	knob
23	0.009.9506.3	1	complete cover

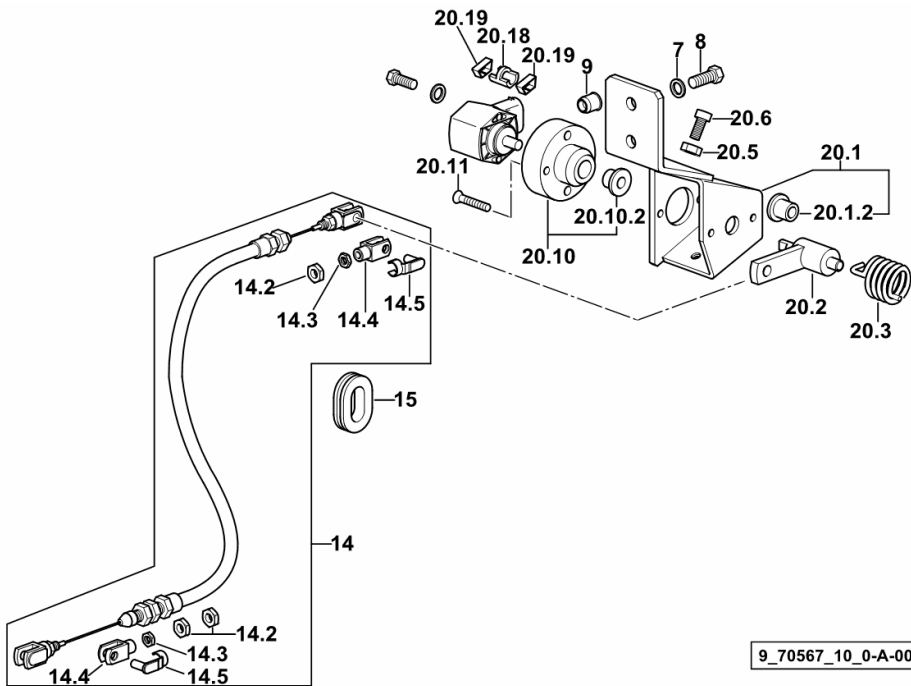
**ELECTRONIC ACCELERATOR CONTROL**

Fig.	Code	QTY	Name
------	------	-----	------

**Notes:**

[Agroplus F 100 -> 3001]

7	2.1470.002.2	2	washer 6, d128
8	2.0112.007.2	2	screw m 6 p.1 x 20
9	2.1142.004.2	2	insert m 6
14	0.010.4571.3/10	1	cable
14.2	2.1011.205.2	3	nut m 8 p.1.25
14.3	2.1011.203.2	2	nut m 6 p.1
14.4	2.3510.003.2	2	fork m 6
14.5	2.1673.004.2	2	pin
15	2.6569.046.0	1	rubber plug
20.1	0.010.4569.3/20	1	support
20.1.2	2.1559.273.0	1	bushing
20.2	0.010.4555.2/10	1	lever
20.3	0.009.8297.0	1	spring
20.5	2.1011.102.2	2	nut m 5 p.0.7
20.6	2.0312.010.2	2	screw m 5 p.0.8x30
20.10	0.010.7362.3/10	1	hub
20.10.2	2.1559.273.0	1	bushing
20.11	2.0342.005.3	2	screw m 4 p.0.7 x 20
20.18	0.011.6675.0	1	sleeve
20.19	0.011.3791.0	2	small spring



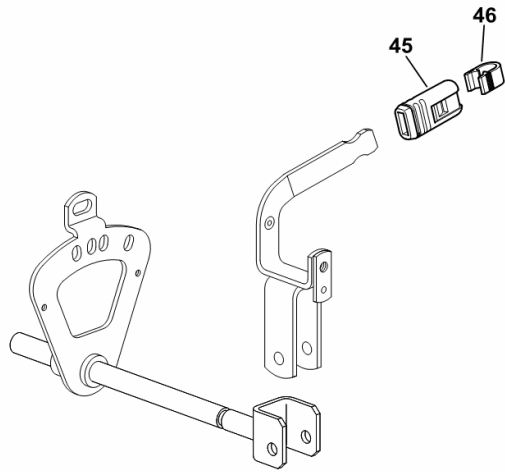
**P.T.O. - EXTERNAL CONTROLS 540-750**

Fig.	Code	QTY	Name
------	------	-----	------

**Notes:**

[Agroplus F 100 -> 3001]

45	0.008.8388.0	1	knob
46	0.008.8383.0	1	coupling - YELLOW COLOUR



9\_21136\_05\_0-A-001

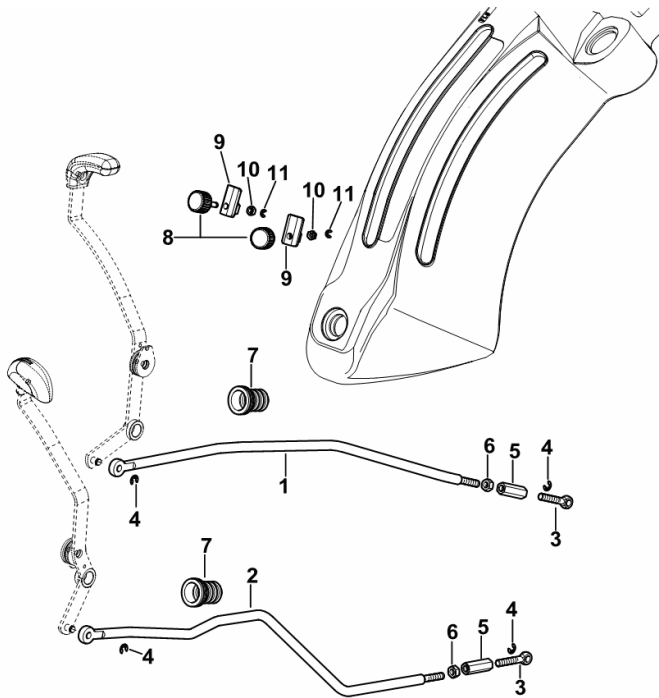
**TIE RODS FOR LIFT CONTROL LEVERS**

Fig.	Code	QTY	Name
------	------	-----	------

**Notes:**

- FOR MODELS WITH CAB [Agroplus F 100 -> 3001]

1	0.014.7762.0	1	rod
2	0.014.7761.0	1	rod
3	0.010.4186.0	2	tip m 8
4	2.1430.007.7	4	circlip 6, d128
5	2.1099.139.2/10	2	nut m 8
6	2.1019.127.2	2	nut m 8 p.1.25 x 6.8, sx/lh/li
7	0.013.3229.0	2	bellows
8	0.007.6770.3/10	2	knob
9	0.014.8194.0	2	slider
10	2.1430.005.7	2	circlip 4
11	2.1011.103.2	2	nut m 6 p.1



9\_F1759\_53\_0-A-001

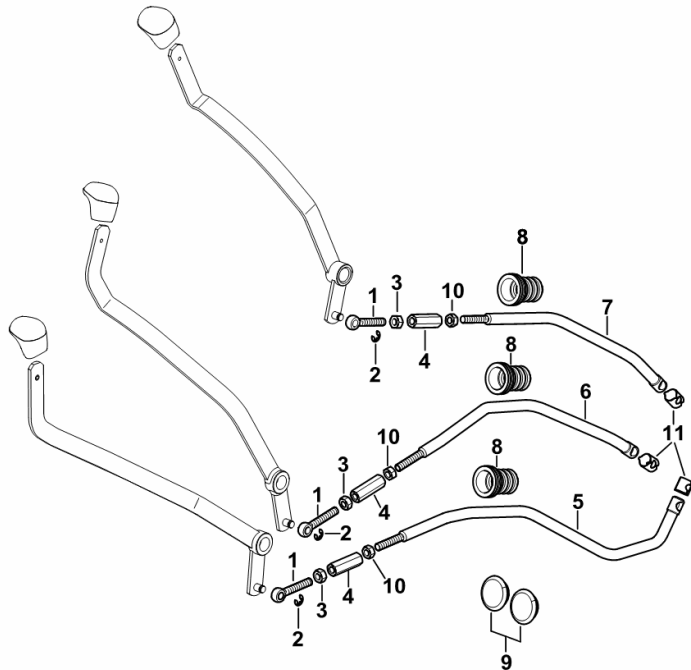
**CONTROLS FOR 6-WAY AUXILIARY SERVICES CONTROL VALVE**

Fig.	Code	QTY	Name
------	------	-----	------

**Notes:**

- FOR 28" PLATFORM AND FOR TYPES WITH CAB - WITH ELECTRONIC LIFT [Agroplus F 100 -> 3001]

1	0.010.4186.0	3	tip m 8
2	2.1430.007.2	3	circlip 6, d128
3	2.1019.127.2	3	nut m 8 p.1.25 x 6.8, sx/lh/li
4	2.1099.139.2/10	3	nut m 8
5	0.014.7891.0	1	rod
6	0.014.7890.0	1	rod
7	0.014.7889.0	1	rod
8	0.013.3229.0	3	bellows
9	2.6070.052.0	2	plug Ø 30
10	2.1011.105.2	3	nut m 8 p.1.25
11	0.257.6757.0	3	spring



PRESSURE SWITCH WIRING FOR HYDRAULIC BRAKING SYSTEM ITALY.....	L0.02.44 (1)
PREARRANGEMENT FOR WARNING BEACON.....	L0.02.45 (1)
PREARRANGEMENT FOR WARNING BEACON.....	L0.02.46 (1)
ELECTRICAL EQUIPMENT ROTARY WARN. LAMP.....	L0.02.48 (1)
BATTERY LEADS.....	0.010.6708.3/20.A
ELECTRICAL SYSTEM.....	0.011.2025.4/40.A
FLASHING LIGHT SUPPORT.....	0.011.7840.4.A
ELECTRICAL SYSTEM.....	0.012.0101.4.A
ELECTRICAL SYSTEM.....	0.013.6326.4.A
ELECTRICAL SYSTEM.....	0.013.8399.4/10.A
ELECTRICAL SYSTEM.....	0.013.8401.4.A
ELECTRICAL SYSTEM.....	0.014.4780.4/30.A
ELECTRICAL SYSTEM.....	0.015.1729.4/10.A
ELECTRICAL SYSTEM.....	0.015.1729.4/20.A
ELECTRICAL WIRING.....	0.015.1730.4.A
BRAKE SENSOR CABLES.....	0.015.2080.4.A
PARTS FOR ELECTRICAL SYSTEM.....	0.015.3149.4/20.A
ELECTRICAL WIRING.....	0.015.3154.4.A
PARTS FOR ELECTRICAL SYSTEM.....	0.015.3159.4.A

**ECUs**

HYDRAULIC SHUTTLE CONTROL UNIT.....	L0.03.0 (1)
ELECTRONICS BOX.....	L0.03.1 (1)
ELECTRONICS BOX.....	L0.03.2 (1)
ELECTRONICS BOX.....	L0.03.3 (1)
ELECTRICAL SYSTEM FOR REAR ELECTRONIC LIFT.....	L0.03.4 (1)
CONTROL UNIT FOR SHUTTLE SPEED SENSOR ADAPTATION.....	L0.03.5 (1)
CONTROL UNIT - P.T.O. SHAFT.....	L0.03.11 (1)

**SENSORS - POTENTIOMETERS - ENABLING SWITCHES**

COOLING SYSTEM MANIFOLD SENSORS.....	L0.04.3 (1)
COOLING SYSTEM MANIFOLD SENSORS.....	L0.04.4 (1)
AIR CLEANER AND ENGINE OIL FILTER CLOGGING PRESSURE SWITCH.....	L0.04.5 (1)
ENGINE OIL PRESSURE SWITCH.....	L0.04.8 (1)
HYDRAULIC SHUTTLE SENSOR.....	L0.04.9 (1)
HYDRAULIC SHUTTLE SENSOR.....	L0.04.9 (2)
SHUTTLE CONTROL ASSEMBLY PRESSURE SWITCH / OIL TEMPERATURE SENSOR AND LUBRICATION.....	L0.04.10 (1)
GEARBOX INPUT SHAFT SENSOR.....	L0.04.11 (1)
OIL CONTROL VALVES HOUSING PRESSURE SWITCH.....	L0.04.12 (1)
OIL FILTER CLOGGING SENSOR.....	L0.04.13 (1)
SPEED SENSOR.....	L0.04.15 (1)
SPEED SENSOR.....	L0.04.16 (1)
PICK-UP.....	L0.04.17 (1)
START ENABLE SWITCH.....	L0.04.18 (1)
START ENABLE SWITCH PROTECTION.....	L0.04.20 (1)
UNDERDRIVE SWITCH.....	L0.04.21 (1)

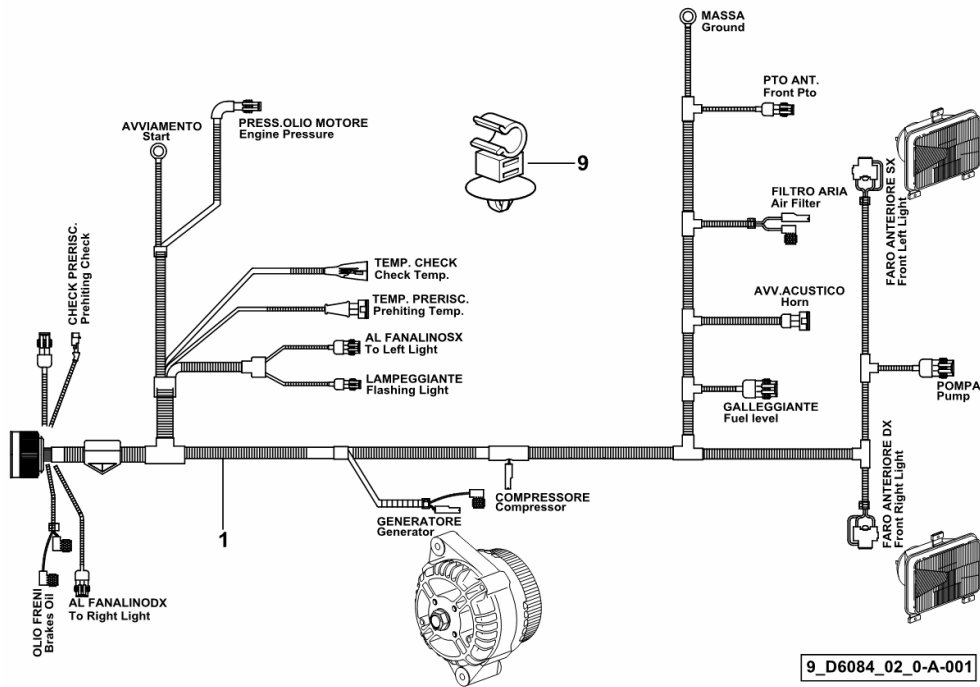
Section: L0 - ELECTRIC AL SYSTEM  
**ELECTRICAL EQUIPMENT FRONT**

Fig.	Code	QTY	Name
------	------	-----	------

**Notes:**

[Agroplus F 100 -> 3001] 3002 <-

1	0.013.8398.4/10	1	electrical system
9	0.013.6760.4	2	small spring

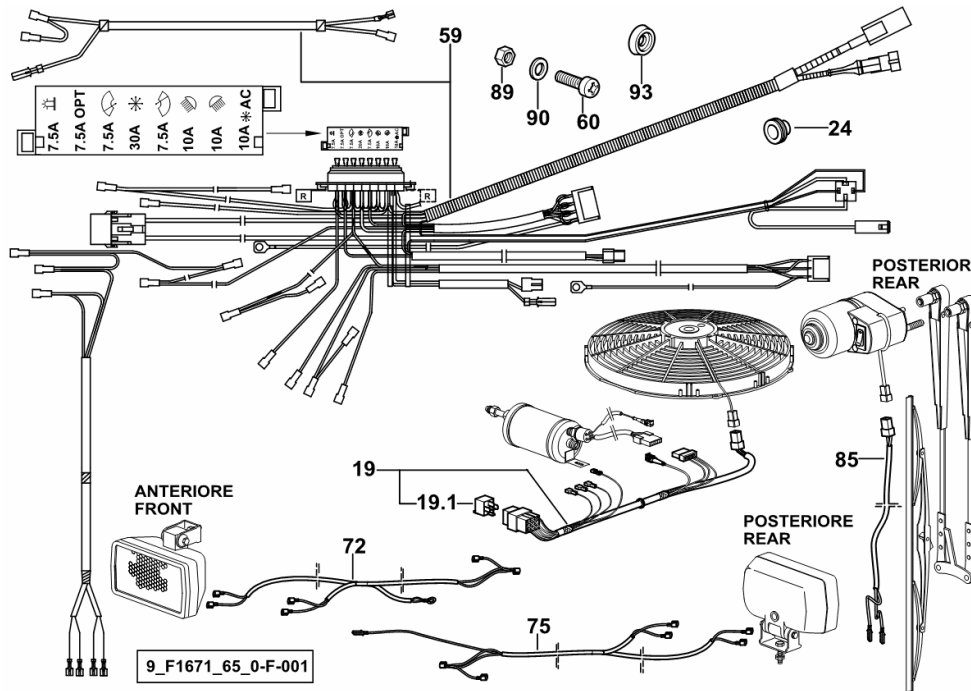


**CAB ELECTRICAL SYSTEM**

Fig.	Code	QTY	Name
------	------	-----	------

**Notes:**

- FOR TYPES WITH HEATING AND AIR CONDITIONING [Agroplus F 100 -> 3001]



19	0.010.0099.3/10	1	electrical system
19.1	2.7659.101.0	1	relay 12V-30A
24	2.6569.018.0	6	wire guide 20 x 8 x 15
59	0.015.1729.4/10	1	electrical system ( 3059 <- )
			☞ 0.015.1729.4/10
59	0.015.1729.4/20	1	electrical system ( -> 3055 )
			☞ 0.015.1729.4/20
60	2.0332.306.2	2	screw m 5x0.8x16
72	0.009.8585.4	1	electrical system
75	0.009.8586.4/10	1	electrical system
85	0.009.8762.3	1	electrical system
89	2.1011.102.2	1	nut m 5 p.0.7
90	2.1470.002.2	1	washer 6, d128
93	0.9200.358.0	4	washer 5.4x10x15.8

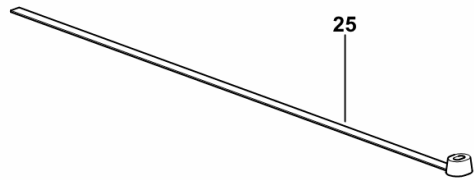
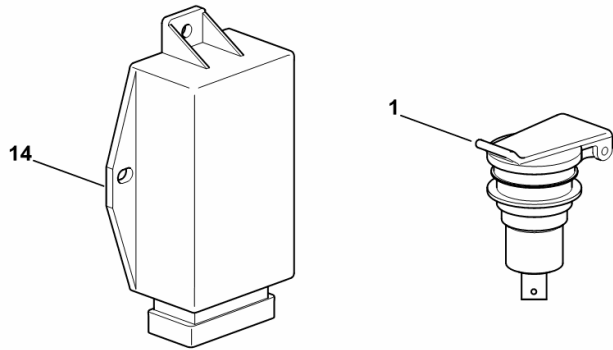
**SINGLE POLE SOCKET - LIGHTS FLASHER RELAY**

Fig.	Code	QTY	Name
------	------	-----	------

**Notes:**

- EXPORT U.S.A. [Agroplus F 100 -> 3001] -> 3030

1	0.008.1550.0	1	socket
14	2.8639.012.0	1	blinker
25	2.6852.203.0	30	clamp 292 x 4.8



9\_I8084\_03\_0-B-001

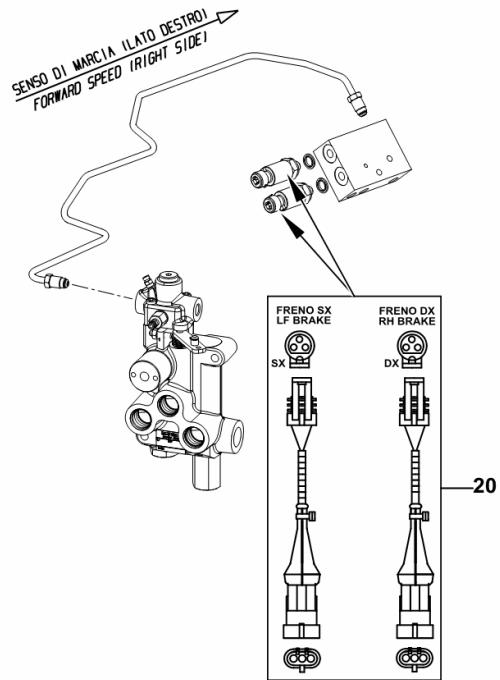
**BRAKE SENSOR CABLES**

Fig.	Code	QTY	Name
------	------	-----	------

**Notes:**

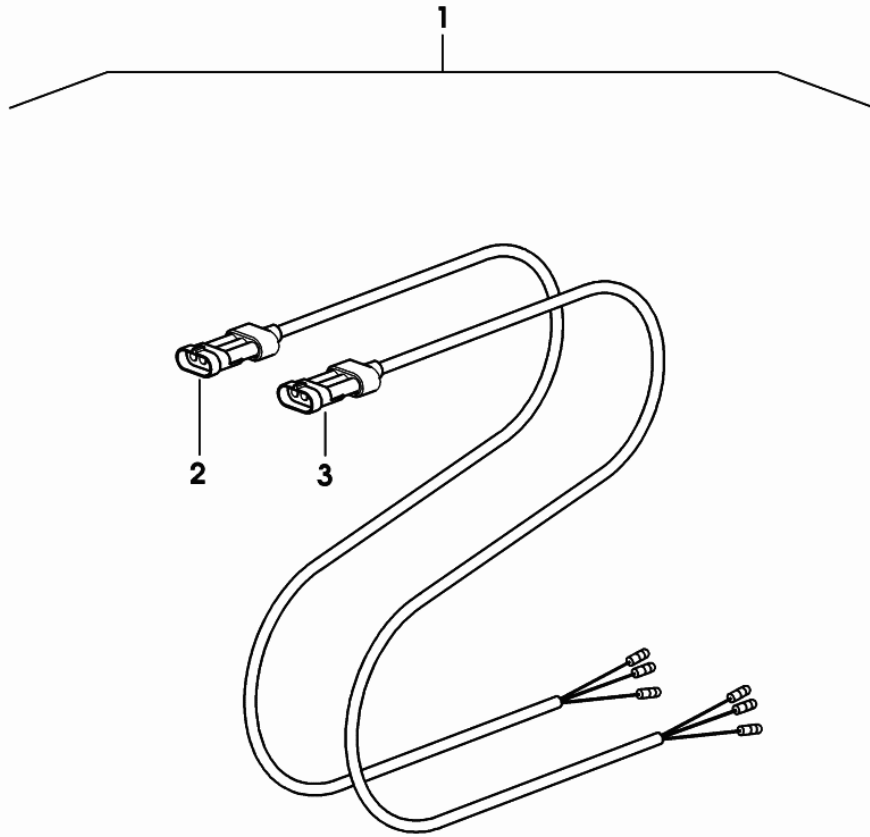
- FOR TRACTORS WITH HYDRAULIK BREAKING FOR TRAILER [Agroplus F 100 -> 3001]

20	0.015.2080.4	1	wire ☞ 0.015.2080.4
----	--------------	---	------------------------



**ELECTRICAL SYSTEM**

Fig.	Code	QTY	Name
1	0.013.6326.4	1	wire
2	0.900.0460.2	1	wire dx/rh/re
3	0.900.0460.3	1	wire sx/lh/li



0\_013\_6326\_4

Section: L0 - ELECTRIC AL SYSTEM  
**PARTS FOR ELECTRICAL SYSTEM**

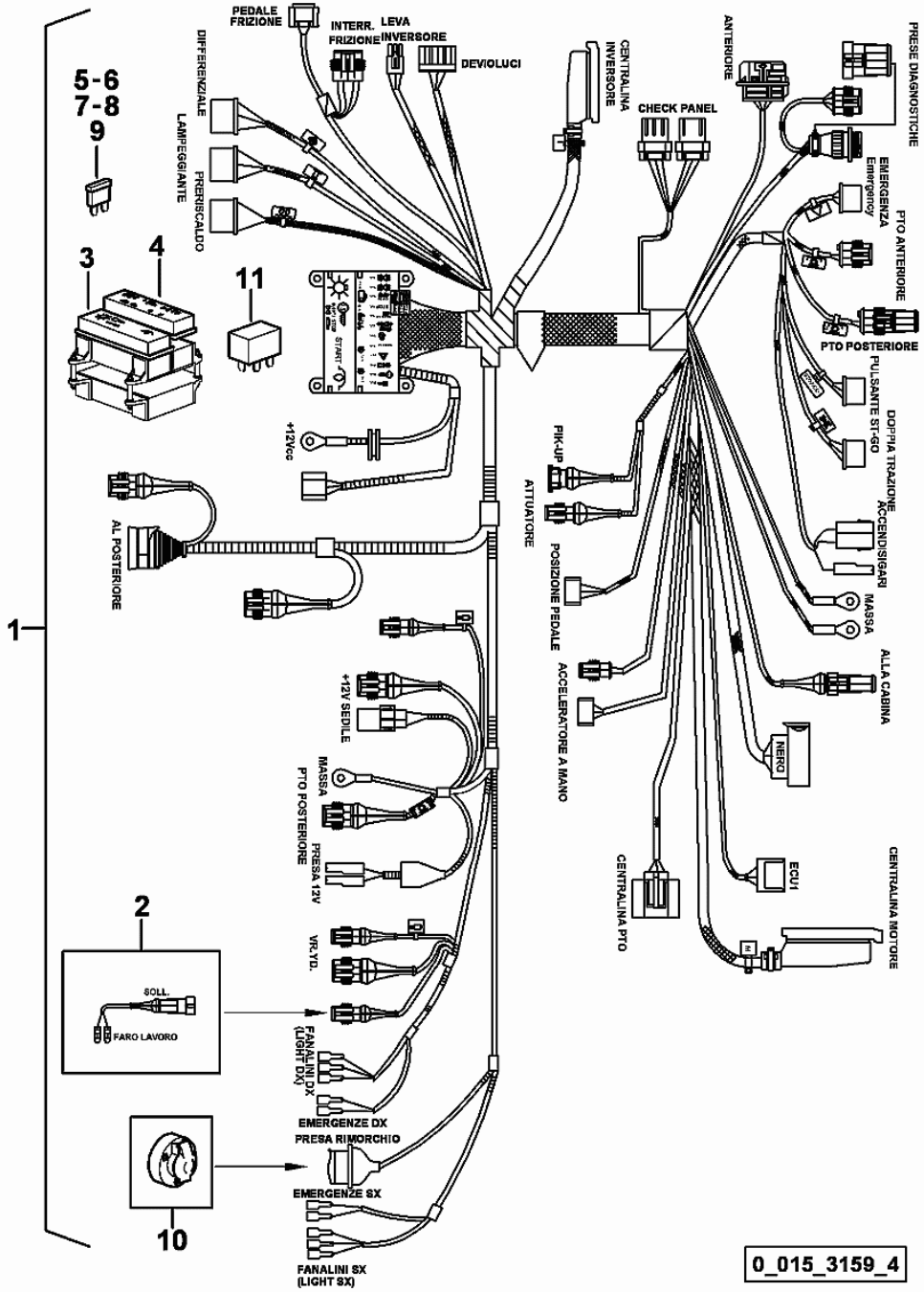


Fig.	Code	QTY	Name
1	0.015.3159.4	1	electrical system
2	0.900.0031.2	1	wire
3	0.900.0523.6	1	small cover
4	0.900.0877.5	1	small cover
5	0.010.2225.2	2	fuse 7.5 A unival
6	0.010.2087.2	5	fuse 10 A unival
7	0.010.2088.0	6	fuse 15 A unival
8	0.010.2088.1	3	fuse 20 A unival
9	0.010.2088.2	2	fuse 30 A unival
10	0.900.0017.0	1	socket
11	0.010.2089.2	4	relay 12V-30A

0\_015\_3159\_4

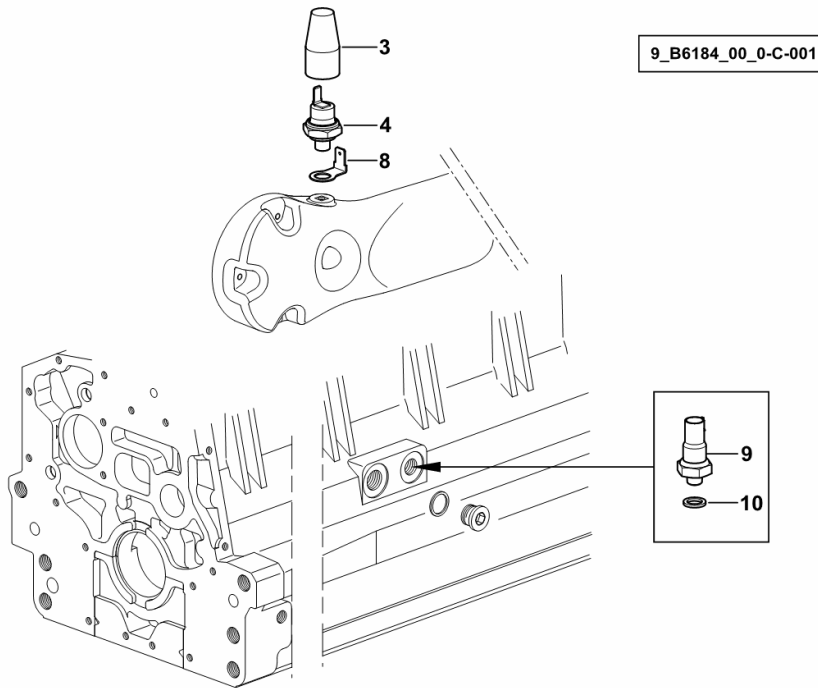
**AIR CLEANER AND ENGINE OIL FILTER CLOGGING PRESSURE SWITCH**

Fig.	Code	QTY	Name
------	------	-----	------

**Notes:**

[Agroplus F 100 -> 3001]

3	2.6519.029.0	1	cap
4	2.7099.320.0/10	1	pressure switch
8	0.164.8450.0	1	terminal
9	2.7099.940.0	1	pressure switch 0.4 - 0.7 BAR
10	2.1560.008.0	1	gasket 12.2 x 18



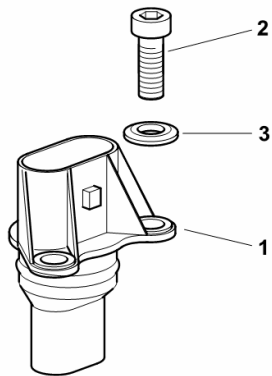
**PICK-UP**

Fig.	Code	QTY	Name
------	------	-----	------

**Notes:**

- EXPORT U.S.A. [Agroplus F 100 -> 3001]

1	0.010.1214.4	1	sensor
2	2.0312.003.2	2	screw m 5 p.0.8 x 14
3	2.1480.011.2	2	washer 5



9\_73184\_16\_0-A-001

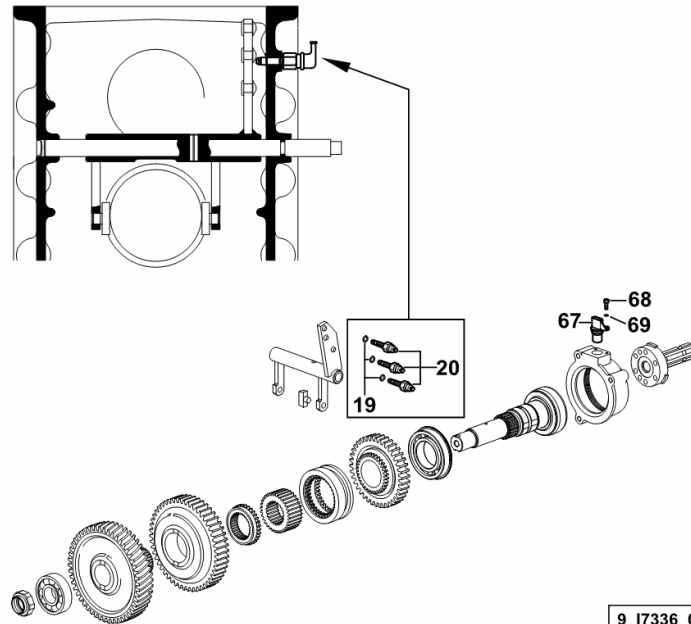
**SWITCHES AND SENSOR FOR 3-SPEED P.T.O. WITH INSERTED OUTPUT SHAFTS 540-750-1000**

Fig.	Code	QTY	Name
------	------	-----	------

**Notes:**

- EXPORT U.S.A. [Agroplus F 100 -> 3001]

19	2.1560.003.0	3	gasket 8.2 x 12
20	2.7659.131.0	3	switch
67	0.010.1214.4	1	sensor
68	2.0312.003.2	2	screw m 5 p.0.8 x 14
69	2.1480.011.2	2	washer 5



9\_I7336\_00\_0-B-001

**BRAKE SENSORS**

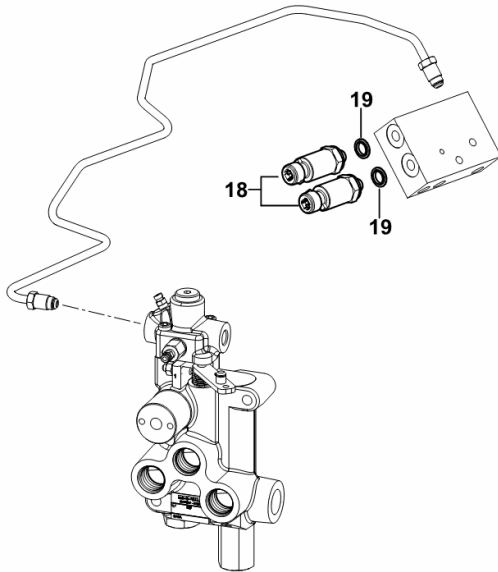
Fig.	Code	QTY	Name
------	------	-----	------

**Notes:**

- FOR TRACTORS WITH HYDRAULIK BREAKING FOR TRAILER [Agroplus F 100 -> 3001]

18	0.012.1507.4	2	sensor
19	2.1561.005.0	2	washer typ A

SENSO DI MARCIA (LATO DESTRO)  
FORWARD SPEED (RIGHT SIDE) →



9\_F1689\_05\_0-B-001

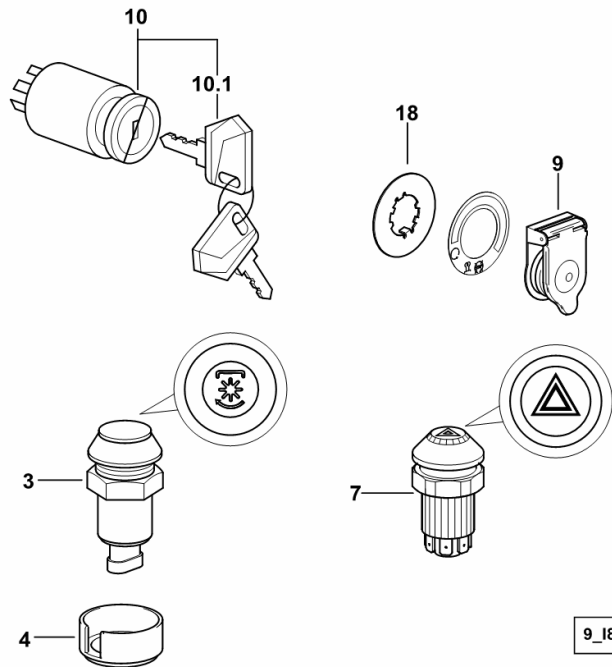
**KEYSWITCH BLOCK AND PUSHBUTTONS**

Fig.	Code	QTY	Name
------	------	-----	------

**Notes:**

- EXPORT U.S.A. [Agroplus F 100 -> 3001]

3	2.7659.177.0/20	1	push-button P.T.O.
4	0.009.3987.0	1	guard
7	2.7659.285.0	1	push-button
9	0.009.7140.2/10	1	small cover
10	04411512.4	1	start device
10.1	04418435	1	key
18	0.011.4625.0	1	washer



9\_I8084\_03\_0-A-001

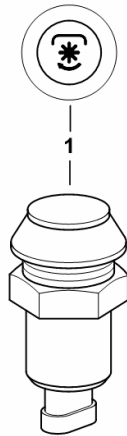
**OPERATION - FRONT P.T.O. SHAFT**

Fig.	Code	QTY	Name
------	------	-----	------

**Notes:**

[Agroplus F 100 -> 3001] -> 3004

1	2.7659.177.0/20	1	push-button P.T.O.
---	-----------------	---	--------------------



9\_F1684\_05\_0-A-001

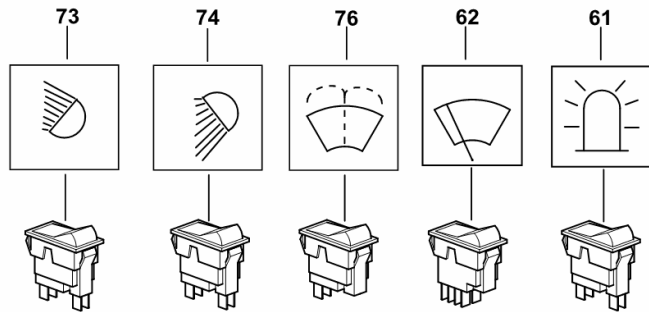
**CAB TOP SWITCHES**

Fig.	Code	QTY	Name
------	------	-----	------

**Notes:**

- FOR TYPES WITH HEATING AND AIR CONDITIONING [Agroplus F 100 -> 3001]

61	2.7659.126.0	1	switch
62	2.7659.092.0	1	switch
73	2.7659.078.0	1	switch
74	2.7659.079.0	1	switch
76	2.7659.091.0	1	push-button



9\_F1671\_65\_0-G-001

CLICK HERE TO **DOWNLOAD** THE COMPLETE MANUAL

- Thank you very much for reading the preview of the manual.
- You can download the complete manual from: [www.heydownloads.com](http://www.heydownloads.com) by clicking the link below



- Please note: If there is no response to CLICKING the link, please download this PDF first and then click on it.

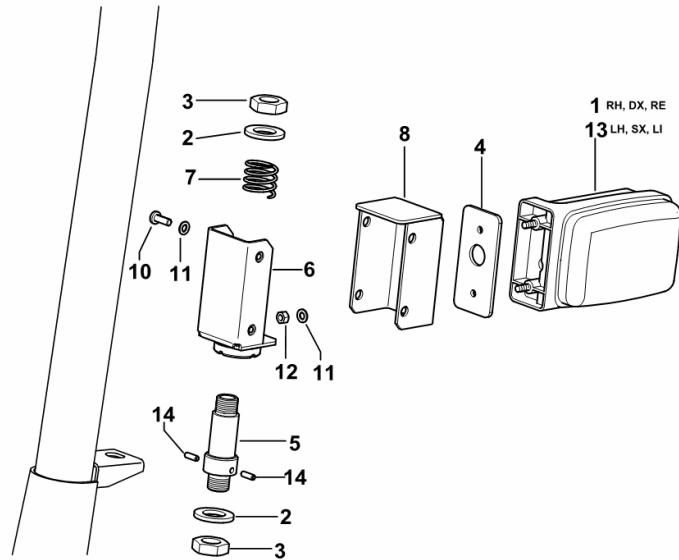
CLICK HERE TO **DOWNLOAD** THE COMPLETE MANUAL

Section: L0 - ELECTRIC AL SYSTEM  
**ROTATING BEACONS ON ROPS**

Fig.	Code	QTY	Name
------	------	-----	------

**Notes:**

- EXPORT U.S.A. [Agroplus F 100 -> 3001]

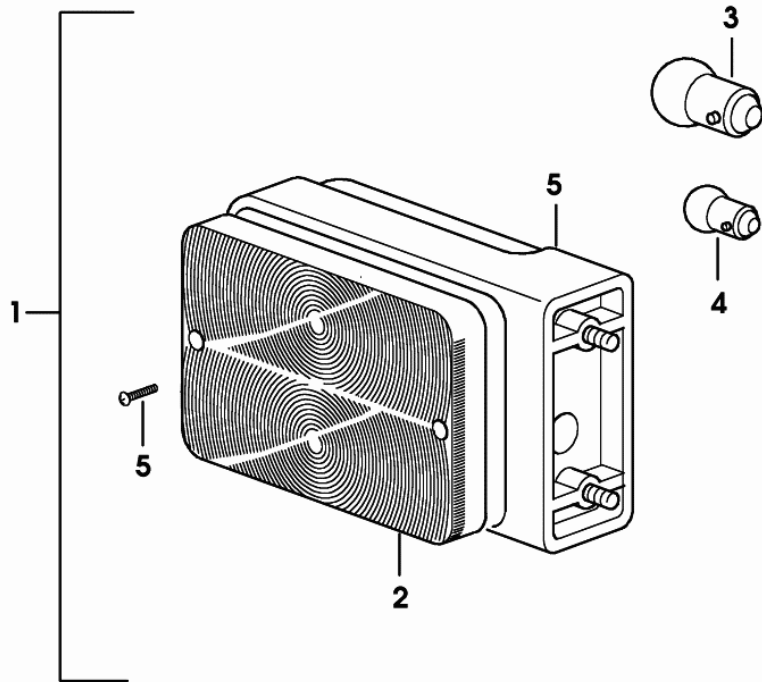


1	2.8059.490.0	1	side lamp dx/rh/re ☞ 2.8059.490.0
2	2.1310.010.2	4	flat washer 16
3	2.1011.509.2	4	nut m 16 p.1.5
4	0.467.8550.0	2	gasket
7	2.4019.732.2/10	2	spring
8	0.013.8740.0/10	2	lamp support
10	2.0332.305.2	8	screw m 5 p.0.8 x 14
11	2.1310.001.2	12	flat washer 5.3
12	2.1011.102.2	4	nut m 5 p.0.7
13	2.8059.460.0	1	side lamp sx/lh/li ☞ 2.8059.460.0
14	2.1630.406.0	4	roll pin 4 x 12

9\_E6685\_10\_0-A-001

**HEADLAMP COMPONENTS**

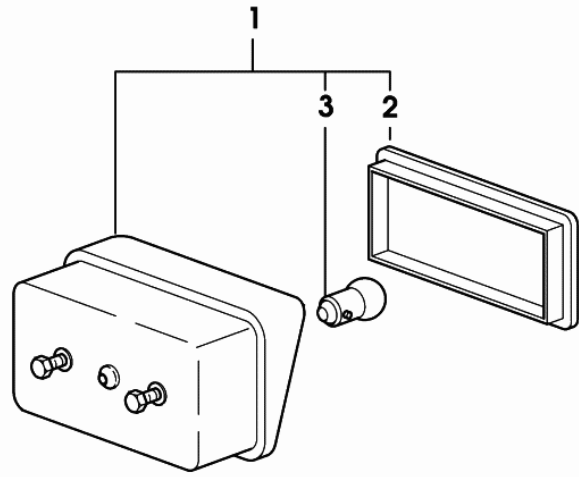
Fig.	Code	QTY	Name
1	2.8019.960.0	1	side lamp sx/lh/li
2	2.8019.200.1	1	light body dx/rh/re
3	2.8313.001.0	1	lamp 12V 21W
4	2.8311.005.0	1	lamp 12 V, 5 W
5	0.000.0000.1	0	not serviceable



2\_8019\_960\_0

**HEADLAMP COMPONENTS**

Fig.	Code	QTY	Name
1	2.8059.450.0	1	lamp
2	0.010.3487.1	1	guard
3	0.010.3487.2	1	lamp 12V - 5W



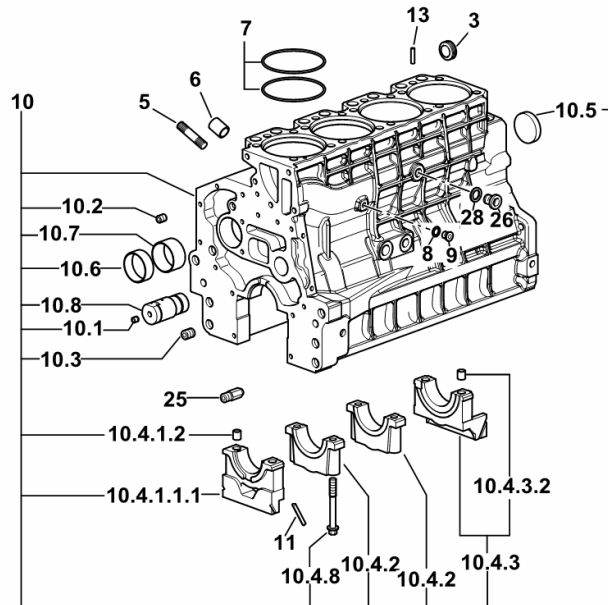
2\_8059\_450\_0

**CRANKCASE**

Fig.	Code	QTY	Name
------	------	-----	------

**Notes:**

- EXPORT U.S.A. [Agroplus F 100 -> 3001]



3	2.3199.312.2/20	1	plug m 35x1.5x9.5
5	2.0439.279.7	8	stud bolt m 8 p.1 x 25
6	2.1559.188.2	4	sleeve 11.4 x 14 x16
7	2.1539.259.0	8	'o' ring 107.62x2.62
8	2.1560.010.0	1	gasket 14.2 x 20 x 1.5
9	2.3199.292.0	1	plug 1/4" gas
10	0.014.9655.4/30	1	crankcase
10.1	2.3130.001.1	14	plug 1/8" gas
10.2	2.3130.002.1	4	plug 1/4" gas
10.3	2.3130.003.1	6	plug 3/8" gas
10.4.1.1.1	0.065.1112.7/10	1	support
10.4.1.2	2.1699.165.0	1	sleeve 12.3x15x16
10.4.2	0.065.1114.0/10	3	support
10.4.3	0.065.1116.3	1	support
10.4.3.2	2.1699.165.0	1	sleeve 12.3x15x16
10.4.8	0.065.1117.0	10	screw m 12 x 100
10.5	2.3179.012.0	1	plug 60
10.6	0.065.1140.0	4	bushing 59X55X20
10.7	0.065.1141.0	1	bushing 59X55X30
10.8	0.014.1340.0/10	1	pin
11	0.066.1152.0/10	4	gasket
13	2.1549.154.2	4	sleeve 4.8x5.8x16
25	0.013.4946.0/10	1	cooling nozze
26	2.3120.101.0	1	plug m 18 p.1.5
28	2.1560.014.0	1	gasket 18.2 x 24 x 1.5

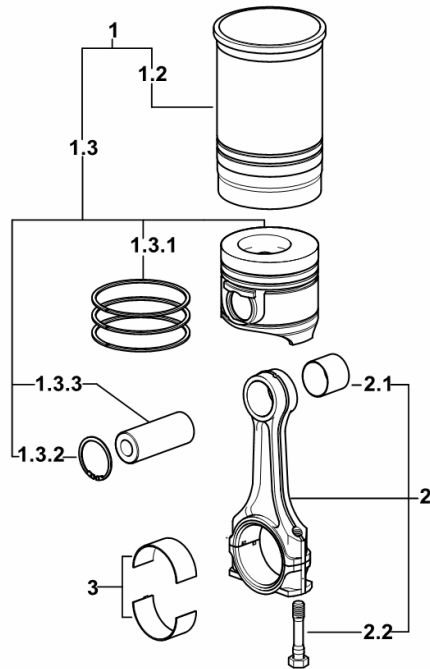
9\_O1011\_00\_0-A-001

**CYLINDER - PISTON - CONNECTING ROD**

Fig.	Code	QTY	Name
------	------	-----	------

**Notes:**

[Agroplus F 100 -> 3001]



1	0.099.0065.A	4	piston cyl.assembly "A" - CLASS A
1	0.099.0065.B	4	piston cyl.assembly "B" - CLASS B
1.2	0.A12.2675.0	1	engine cylinder "A" - CLASS A
1.2	0.B12.2675.0	1	engine cylinder "B" - CLASS B
1.3	0.099.0060.A	1	complete piston "A" - CLASS A
1.3	0.099.0060.B	1	complete piston "B" - CLASS B
1.3.1	0.081.0090.6/10	1	piston ring set
1.3.2	2.1411.014.1	2	circlip 35
1.3.3	0.078.1236.0	1	piston pin
2	0.078.1220.3/30	4	engine connect.rod
2.1	2.1559.114.0/10	1	bushing 35x39x35
2.2	2.0399.213.0	2	screw m 12 p.1.25x61.5
3	0.065.1225.0	8	con.rod half bushing STANDARD
3	0.065.1225.7	8	con.rod half bushing - mm 0.25
3	0.065.1225.8	8	con.rod half bushing - mm 0.50

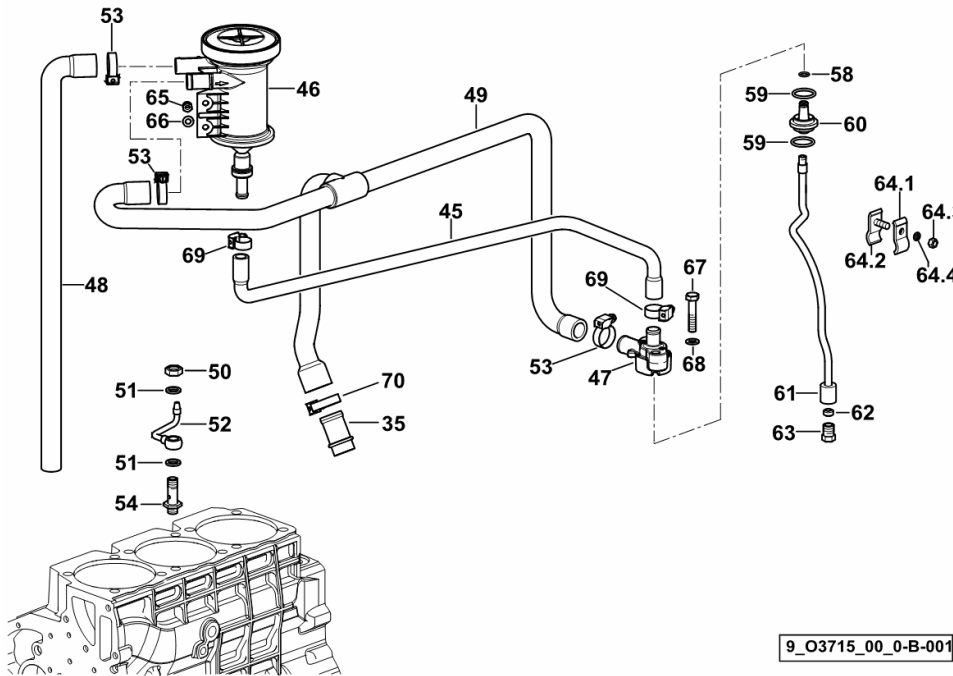
9\_M5212\_01\_M-A-001

**LUBRICATION**

Fig.	Code	QTY	Name
------	------	-----	------

**Notes:**

- EXPORT U.S.A. [Agroplus F 100 -> 3001]



35	0.011.5918.0/10	1	tube
45	0.013.6895.0	1	tube
46	0.013.5023.0	1	sediment bowl
47	0.013.5291.0	1	flange
48	0.013.8200.0	1	tube
49	0.013.6921.0	1	tube
50	2.1099.108.2	4	special nut m 10 p.1
51	2.1560.006.0	8	gasket 10.2 x 16
52	0.086.1550.2	4	cooling nozzle
53	2.6851.002.0	3	clamp Ø 20/32
54	0.065.1160.3/20	4	valve
58	2.1532.012.0	1	'o' ring 6.75 x 1.78
59	2.1539.072.0	2	'o' ring 23.52 x 1.78
60	0.066.1558.0	1	sleeve
61	0.066.1557.2	1	tube
62	2.3350.003.1	1	nosepiece 8
63	2.3339.418.1	1	pipe fitting m 12 p.1
64.1	0.075.1552.0	1	bracket
64.2	0.075.1552.2	1	bracket
64.3	2.1011.103.2	1	nut m 6 p.1
64.4	2.1470.002.2	1	washer 6, d128
65	2.1120.103.2	1	nut m 6
66	2.1310.002.2	1	washer 6.6, d125
67	2.0112.215.2	2	screw m 8 p.1.25 x 40
68	2.1474.009.2	2	spring washer 8
69	2.6851.001.0	3	clamp Ø 16/25
70	2.6851.003.0	1	clamp Ø 25/40

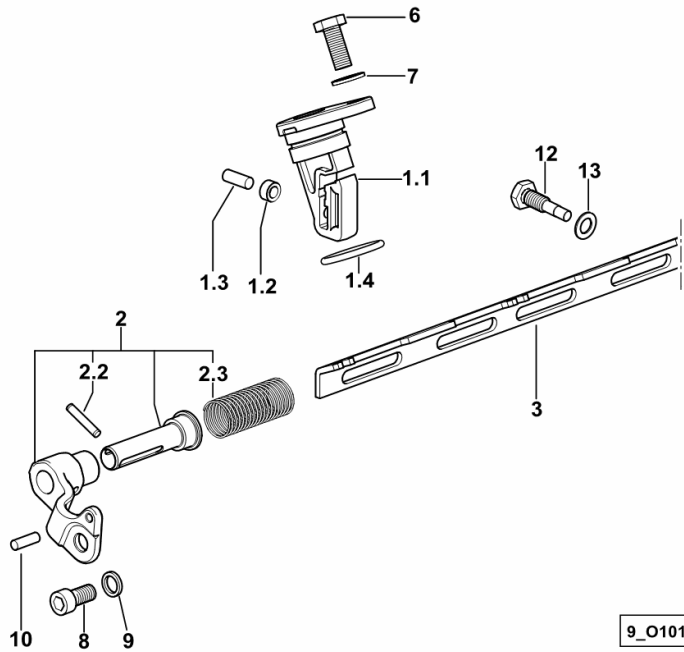
Section: B0 - ENGINE  
**INJECTION PUMP DRIVE**

Fig.	Code	QTY	Name
------	------	-----	------

**Notes:**

- EXPORT U.S.A. [Agroplus F 100 -> 3001]

1.1	0.012.5618.0/20	1	support
1.2	0.065.1660.0	1	roller
1.3	2.1651.507.0	1	pin 6 x 16
1.4	2.1530.072.0	1	'o' ring 26.70x1.78
2	0.013.4057.4	1	bracket
2.2	2.1631.310.0	1	pin 4x22
2.3	2.4019.761.1	1	spring
3	0.014.9234.3	1	rod
6	2.0112.207.2	2	screw m 8 p 1.25 x 20
7	2.1310.004.2	2	flat washer 8.5
8	2.0312.204.2	1	screw m 8 p.1.25 x 16
9	2.1475.202.2	1	spring washer 8.4 x 16
10	2.1631.305.0	1	roll pin 4 x 12
12	0.014.9232.0	1	screw
13	2.1560.004.0	1	gasket 8.2 x 14



9\_O1016\_00\_0-B-001

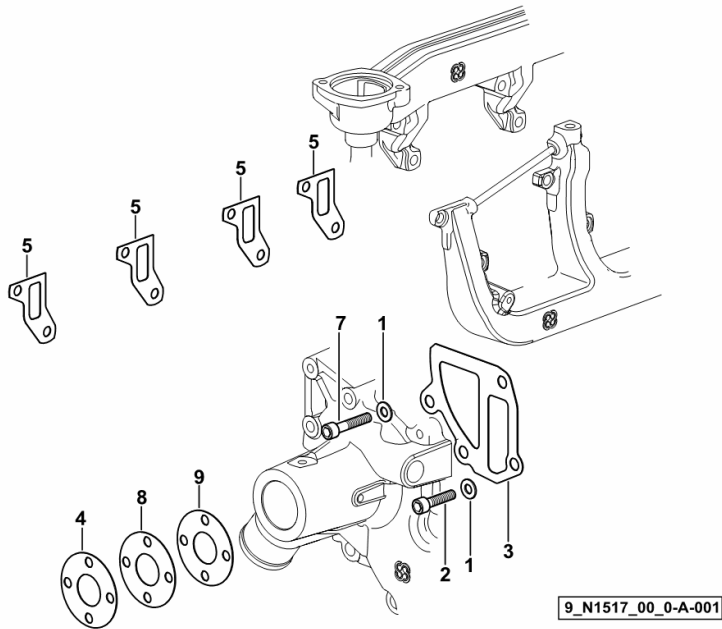
**WATER COOLING -SEALING**

Fig.	Code	QTY	Name
------	------	-----	------

**Notes:**

[Agroplus F 100 -> 3001]

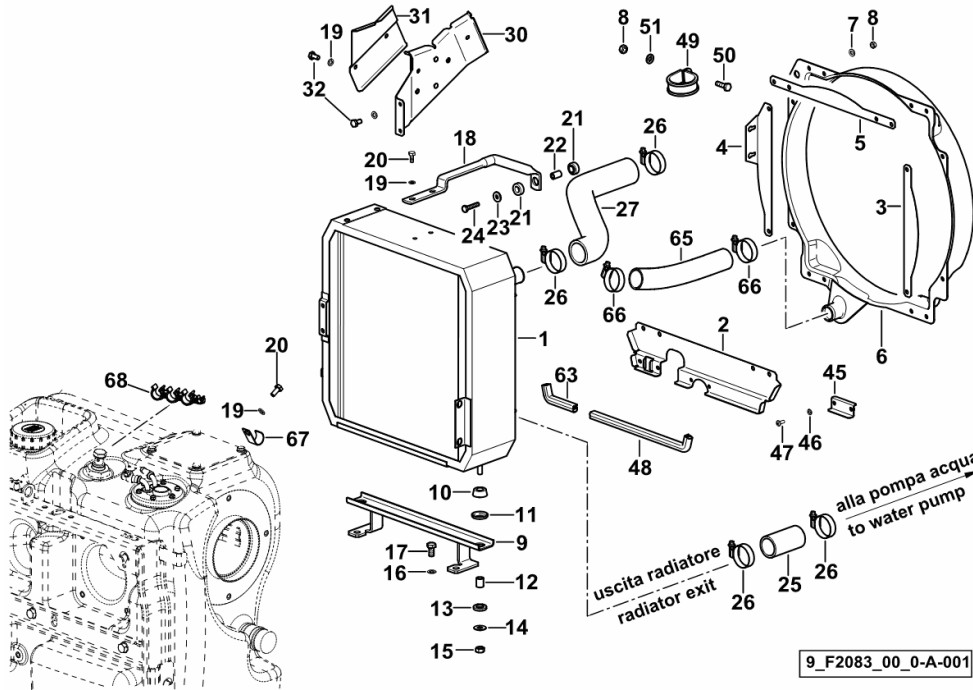
1	2.1480.015.1	4	washer 10
2	2.0313.312.7	3	screw m 10 p 1.5x35
3	0.066.1753.0/30	1	gasket
4	2.1589.130.0	1	snoulder 29 x 68 x 0.5
5	0.066.1759.0/40	4	gasket
7	2.0313.315.7	1	screw m 10 p.1.5 x 45
8	2.1589.131.0	1	snoulder 29 x 68 x 1.0
9	2.1589.131.0	2	snoulder 29 x 68 x 1.0



Section: C0 - ENGINE ACCESSORIES  
**COOLING - COOLANT RADIATOR**

Fig.	Code	QTY	Name
------	------	-----	------

Notes:  
 [Agroplus F 100 -> 3001] 3031 <-



1	0.013.8431.3/30	1	water cooler
2	0.014.0396.0/10	1	shield
3	0.013.0864.0	1	guard sx/lh/li
4	0.013.3136.0	1	guard dx/rh/re
5	0.013.0863.0/10	1	guard
6	0.014.0385.2/10	1	air duct hood
7	2.1310.002.2	12	washer 6.6, d125
8	2.1011.103.2	13	nut m 6 p.1
9	0.013.0856.2/10	9	bracket
10	0.136.7385.0	2	rubber plug
11	0.136.7384.0	2	cup
12	2.1579.090.2	2	spacer 10.1x15x18
13	0.136.7387.0	4	rubber plug 15x27x5
14	2.1599.044.2	2	snoulder 10.5x25.5x1.5
15	2.1011.106.2	2	nut m 10 p.1.5
16	2.1470.006.2	2	lock washer 10
17	2.0112.307.2	2	screw m 10 p.1.5 x 20
18	0.013.3351.0/10	1	rod
19	2.1470.002.2	8	washer 6, d128
20	2.0112.004.2	4	screw m 6 p.1 x 14
21	0.035.8459.0	2	rubber plug
22	2.1579.322.0	1	spacer 10.5x6.5x17
23	2.1312.003.2	1	washer 6
24	2.0112.011.2	1	screw m 6 p.1x30
25	0.014.1882.0	1	sleeve
26	2.6851.004.0	4	clamp Ø 32/50
27	0.013.9051.0	1	tube
30	0.013.3168.2/10	1	channel
31	0.013.3264.0	1	cover
32	2.0112.003.2	4	screw m 6 p.1 x 12
45	0.013.4009.3	2	small plate
46	2.1470.001.2	4	lock washer 5
47	2.0332.304.2	4	screw m 5 p.0.8 x 12
48	0.013.4991.0	0.27	gasket
49	2.6839.065.0	1	clamp 40
50	2.0112.007.2	1	screw m 6 p.1 x 20
51	2.1312.003.2	1	washer 6
63	0.013.4991.0	0.09	gasket
65	0.014.0257.0/10	1	tube
66	2.6851.004.0	2	clamp Ø 32/50
67	2.6839.059.0	2	clamp Ø 12 / 15

**AIR CLEANER**

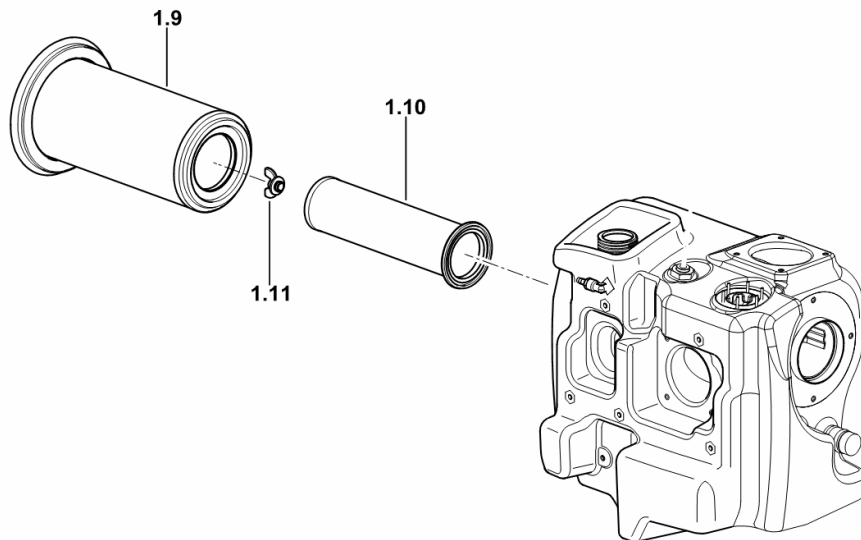
Fig.	Code	QTY	Name
------	------	-----	------

**Notes:**

- WITH FRONT PTO AND LIFT [Agroplus F 100 -> 3001]

1.9	0.013.9979.0	1	air filter element
1.10	0.013.9980.0	1	air filter element
1.11	0.013.9978.0	1	nut

9\_F2081\_12\_0-B-001



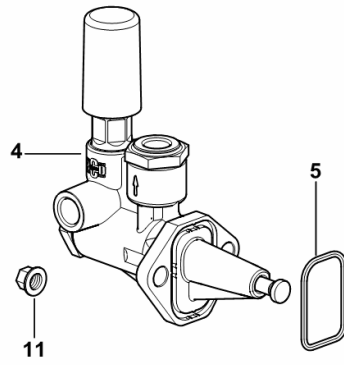
**FUEL FEED PUMP**

Fig.	Code	QTY	Name
------	------	-----	------

**Notes:**

- EXPORT U.S.A. [Agroplus F 100 -> 3001]

4	2.4519.330.0/50	1	feed pump ☞ 2.4519.330.0/50
5	2.1539.045.0	1	'o' ring 37.77x2.62
11	2.1099.159.2/10	2	nut m 8



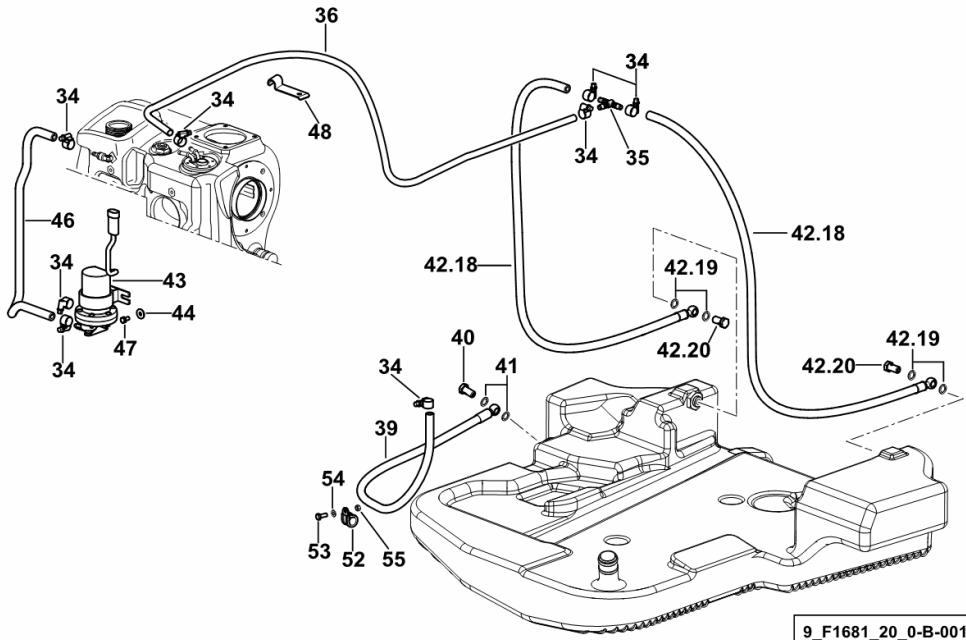
9\_O1016\_00\_0-A-001

**SUPPLEMENTARY FUEL TANK PIPES**

Fig.	Code	QTY	Name
------	------	-----	------

**Notes:**

[Agroplus F 100 -> 3001] -> 3016



34	2.6851.001.0	8	clamp Ø 16/25
35	0.009.8380.0	1	pipe fitting T
36	0.012.6343.0	1.9	tube
39	0.013.9810.2	1	tube mm 920
40	2.3332.003.2	1	pipe union m 12 p.1.25 x 23
41	2.1560.008.0	2	gasket 12.2 x 18
42.18	0.011.5935.3/10	2	tube mm 1400
42.19	2.1560.008.0	4	gasket 12.2 x 18
42.20	2.3332.003.2	2	pipe union m 12 p.1.25 x 23
43	0.012.3643.4/20	1	small pump
44	2.1312.003.2	2	washer 6
46	0.012.6451.0	0.6	tube Ø mm 8/15
47	2.0112.003.2	2	screw m 6 p.1 x 12
48	0.013.4550.0	1	bracket
52	2.6839.066.0/10	1	clamp 16
53	2.0112.005.2	1	screw m 6 p.1 x 16
54	2.1310.002.2	1	washer 6.6, d125
55	2.1011.103.2	1	nut m 6 p.1

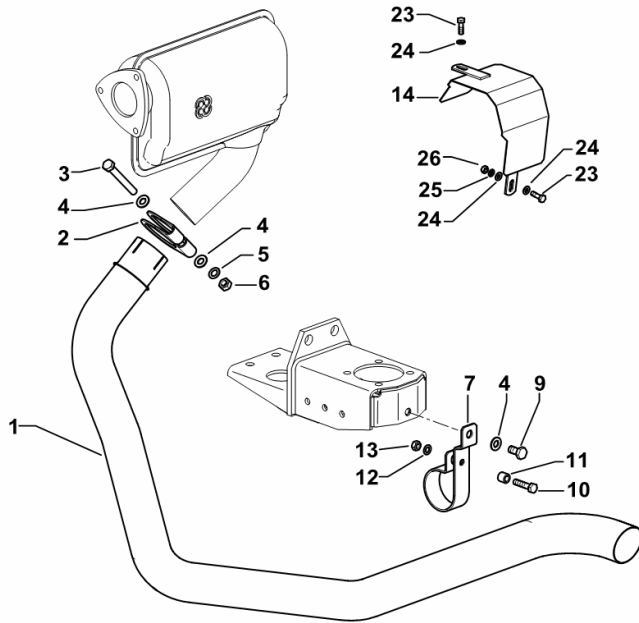
**EXHAUST SILENCER PIPE**

Fig.	Code	QTY	Name
------	------	-----	------

**Notes:**

[Agroplus F 100 -> 3001]

1	0.014.9052.2	1	tube
2	0.014.0131.0/10	1	clamp
3	2.0112.325.2	1	screw m 10 p.1.5 x 80
4	2.1310.006.2	3	flat washer 10.5
5	2.1470.006.2	1	lock washer 10
6	2.1011.106.2	1	nut m 10 p.1.5
7	0.014.9091.0	1	bracket
9	2.0114.307.2	1	screw m 10 x 20, d933
10	2.0112.213.2	1	screw m 8 p.1.25 x 35
11	2.1579.450.2	1	spacer 8.5 x 14 x 12
12	2.1470.004.2	1	washer 8
13	2.1011.105.2	1	nut m 8 p.1.25
14	0.010.9439.2/40	1	small sump
23	2.0112.007.2	2	screw m 6 p.1 x 20
24	2.1310.002.2	3	washer 6.6, d125
25	2.1470.002.2	2	washer 6, d128
26	2.1011.103.2	2	nut m 6 p.1



9\_F2056\_01\_0-A-001

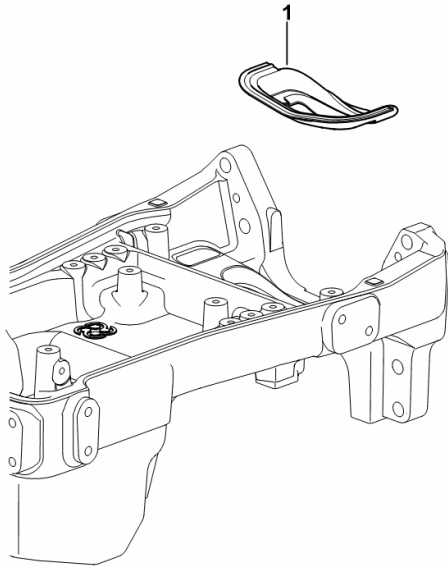
**COVER**

Fig.	Code	QTY	Name
------	------	-----	------

**Notes:**

- FOR TRACTORS WITHOUT AIR CONDITIONING [Agroplus F 100 -> 3001]

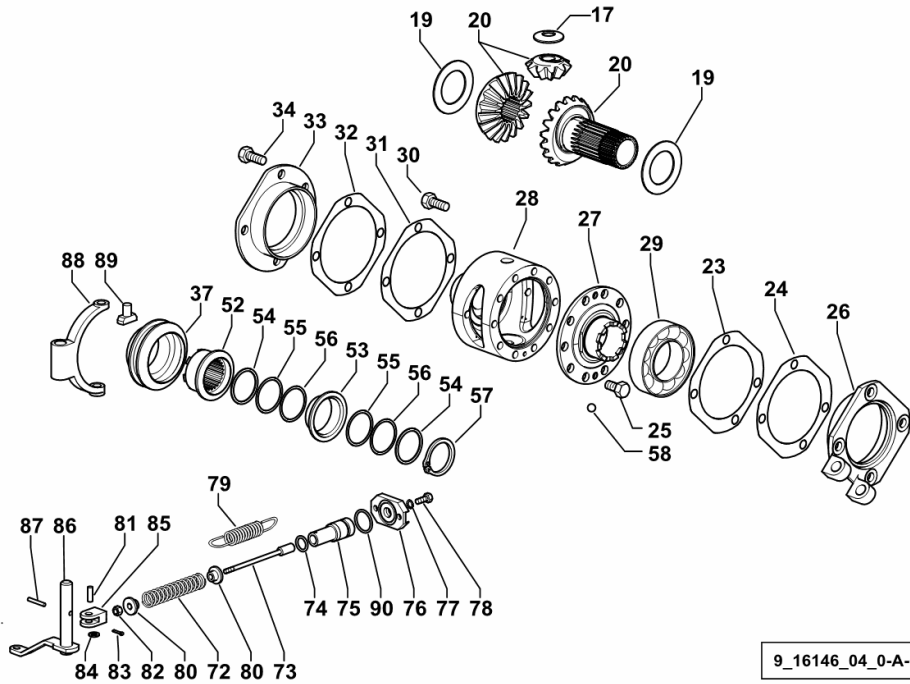
1	0.013.8955.0	1	cover
---	--------------	---	-------



9\_B6152\_01\_0-A-001

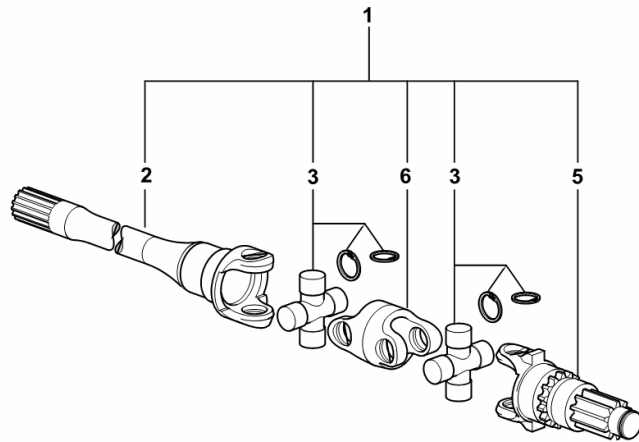
**4WD - ELECTROHYDRAULIC DIFFERENTIAL LOCK**

Fig.	Code	QTY	Name
86	0.007.2705.2/10	1	lever
87	2.1630.511.0	1	roll pin 5x24
88	0.467.4657.0/10	1	fork
89	0.467.4660.0	2	shoe
90	2.1530.071.0	1	'o' ring 26.64x2.62



Section: F0 - FRONT AXLE  
**4WD - AXLESHAFTS**

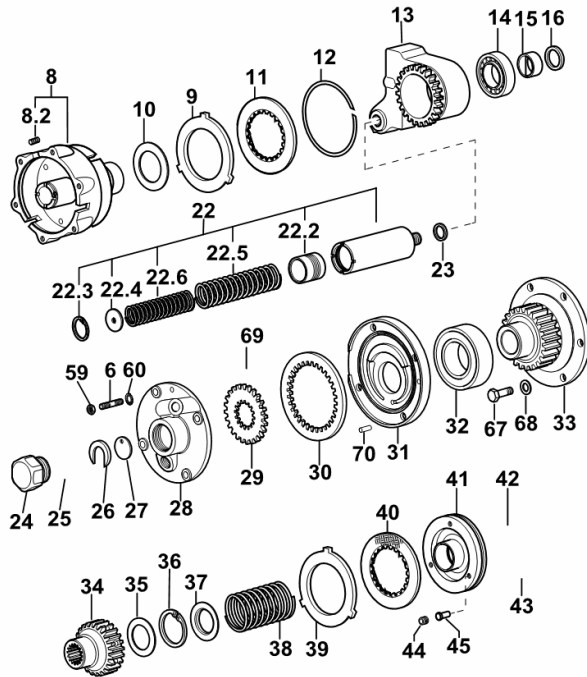
Fig.	Code	QTY	Name
1	0.013.1400.4	1	joint
2	0.900.0148.3	1	half-shaft
3	0.009.6696.3	2	universal joint
5	0.900.0300.4	1	half-shaft
6	0.900.0300.5	1	fork



0\_013\_1400\_4

Section: M0 - FRONT PTO  
**P.T.O. FRONT**

Fig.	Code	QTY	Name
60	2.1470.004.2	7	washer 8
67	2.0112.208.2	6	screw m 8 p.1.25 x 22
68	2.1475.102.2	6	washer 8.4 x 16
69	2.1539.103.0/10	1	'o' ring 101.32 x 1.78
70	2.1651.507.0	1	pin 6 x 16



9\_F1659\_85\_0-B-001

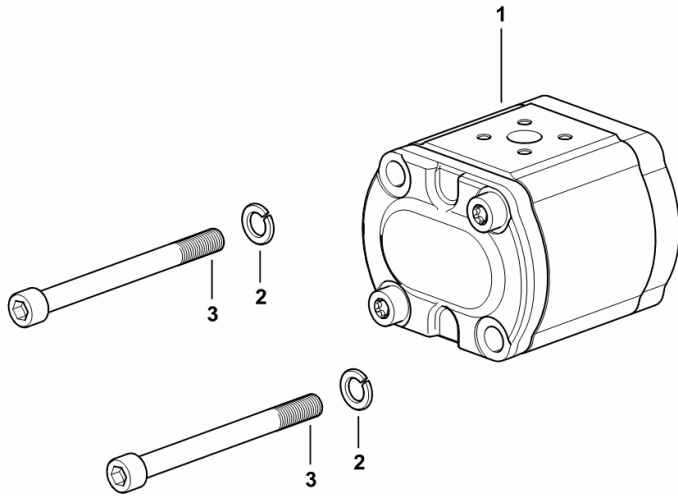
**HYDRAULIC PUMP 19 cc - sx/lh/li**

Fig.	Code	QTY	Name
------	------	-----	------

**Notes:**

[Agroplus F 100 -> 3001]

1	2.4539.090.0	1	hydraulic pump 19cc sx/lh/li - BOSCH ☞ 2.4539.090.0
2	2.1474.010.2	2	washer 10
3	2.0312.327.2	2	screw m 10 p.1.5x110



9\_F0282\_03\_0-A-001

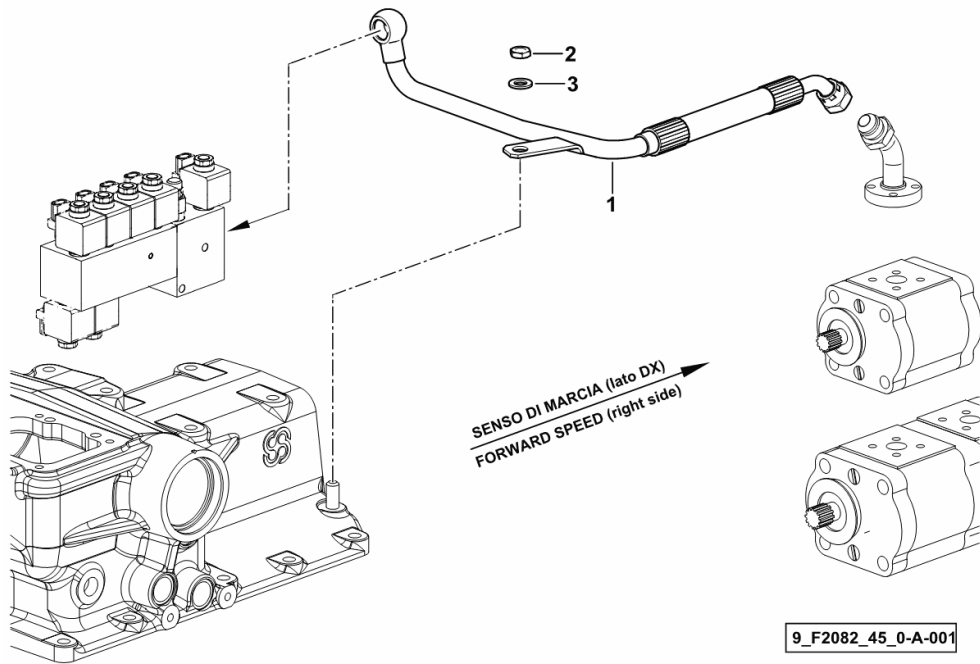
**SYSTEM FROM HYDRAULIC PUMP TO 3-POINT HITCH CONTROL SOLENOID VALVES**

Fig.	Code	QTY	Name
------	------	-----	------

**Notes:**

- FOR TYPES WITHOUT HYDRAULIC BRAKING [Agroplus F 100 -> 3001]

1	0.014.7074.3	1	tube
2	2.1011.521.2	1	nut m 10 p.1.25
3	2.1475.003.2	1	washer 10

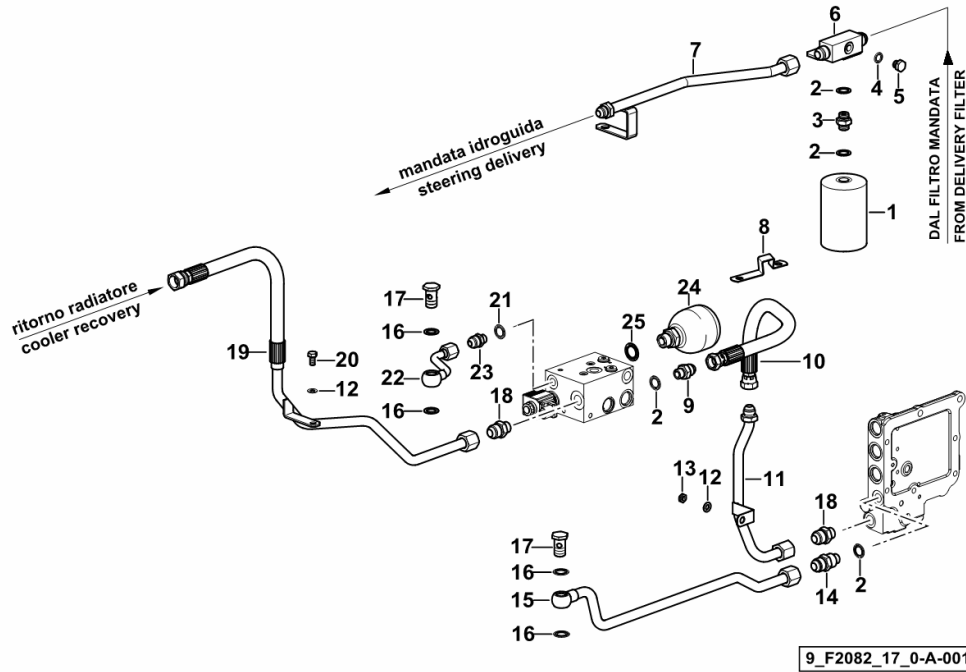


**HYDRAULIC SYSTEM**

Fig.	Code	QTY	Name
------	------	-----	------

**Notes:**

- FOR TYPES WITH H-M-L- (POWERSHIFT) [Agroplus F 100 -> 3001]

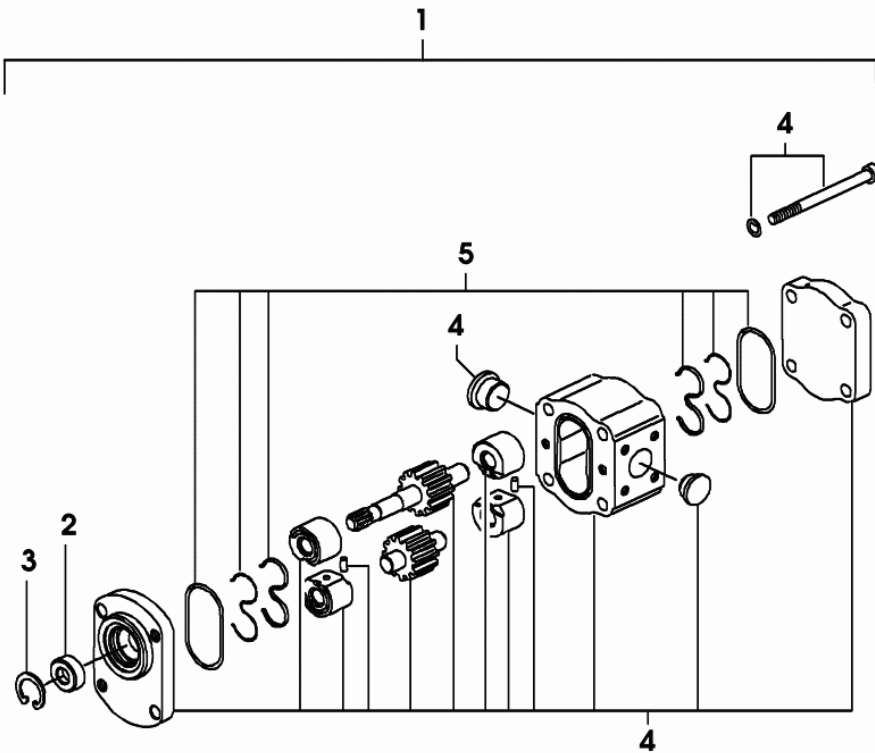


1	0.011.4186.2	1	vibration damper 270 cc
2	2.1561.008.0	4	'o' ring 16
3	0.299.6358.0/20	1	pipe fitting M 16/M 16 Ø5
4	2.1561.006.0	1	'o' ring 12
5	2.3110.402.2	1	plug m 12 p.1.5
6	0.014.5636.3	1	body
7	0.014.5632.3/10	1	tube
8	0.011.8415.0/10	1	bracket
9	2.3261.008.2	1	pipe fitting m 16 p.1.5-3/4"
10	0.014.5733.3	1	tube
11	0.014.5629.3	1	tube
12	2.1475.002.2	2	conical washer 8
13	2.1011.205.2	1	nut m 8 p.1.25
14	2.3249.110.2	1	pipe fitting 7/8" - 14 JIC M 16
15	0.014.5631.3/10	1	tube
16	2.1561.110.0	4	'o' ring Ø 18 -B-
17	2.3335.008.2	2	pipe union m 18 p.1.5 x 32
18	2.3249.141.2	2	pipe fitting 7/8 JIC-M18
19	0.014.5633.3/10	1	tube
20	2.0112.205.2	1	screw m 8 p.1.25 x 16
21	2.1561.007.0	1	gasket 14,8x22.2
22	0.014.5630.3	1	tube
23	2.3339.594.2/10	1	pipe fitting m 14 p.1.5-3/4-16
24	0.013.8759.0/10	1	accumulator
25	2.1561.112.0	1	gasket Ø 22 -B-

9\_F2082\_17\_0-A-001

**HYDRAULIC PUMP PARTS**

Fig.	Code	QTY	Name
1	2.4539.090.0	1	hydraulic pump 19cc sx/lh/li - BOSCH
2	0.009.4046.1	1	'o' ring
3	2.1411.012.1	1	circlip 30x1.2, din 472
4	0.000.0000.1	0	not serviceable
5	2.4529.330.1/10	1	seal ring kit



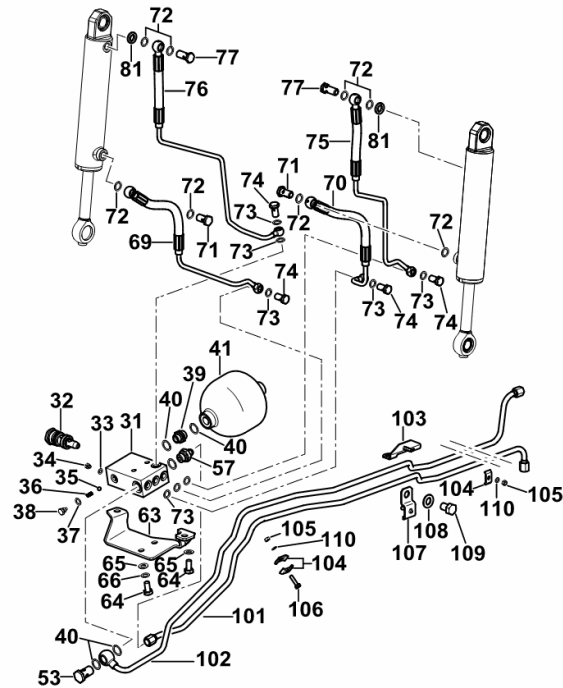
2\_4539\_090\_0

**FRONT LIFT - HYDRAULIC SYSTEM**

Fig.	Code	QTY	Name
------	------	-----	------

**Notes:**

[Agroplus F 100 -> 3001] -> 3024



9\_F1659\_80\_0-B-002

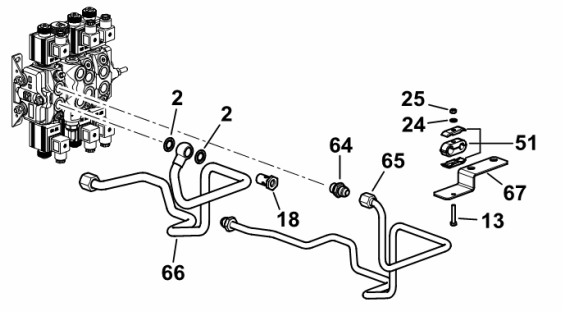
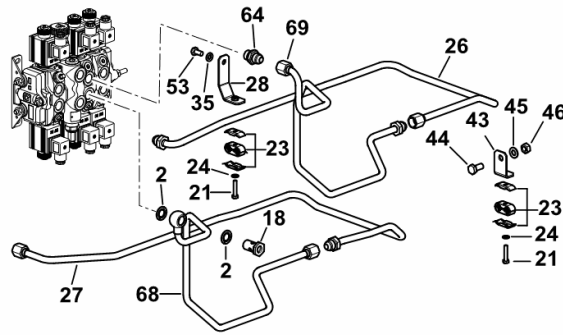
31	0.010.7899.0/20	1	valve body
32	0.009.2038.4/10	1	valve ☞ 0.009.2038.4/10
33	2.1560.002.0	1	gasket 6.12x12
34	2.3110.427.2	1	plug m 6 p.1
35	2.2810.003.0	1	ball mm 7.144
36	2.4019.378.1	1	spring 7.1x15x0.4
37	2.1560.006.0	1	gasket 10.2 x 16
38	2.3199.151.2	1	plug m10x1.5x13
39	2.3313.007.1	1	pipe fitting m 18 p.1.5-3/4 jic
40	2.1560.014.0	5	gasket 18.2 x 24 x 1.5
41	0.010.0427.0/20	1	accumulator
53	2.3335.008.2	1	pipe union m 18 p.1.5 x 32
57	2.3339.395.2/10	1	pipe fitting m 18 p.1.5-9/16"
63	0.015.0000.2	1	bracket
64	2.0112.307.2	4	screw m 10 p.1.5 x 20
65	2.1310.006.2	4	flat washer 10.5
66	2.1470.006.2	2	lock washer 10
69	0.015.0044.3	1	tube dx/rh/re
70	0.015.0045.3	1	tube sx/lh/li
71	2.3335.006.2	2	pipe union m 14 p.1.5x24
72	2.1560.010.0	8	gasket 14.2 x 20 x 1.5
73	2.1560.008.0	8	gasket 12.2 x 18
74	2.3332.003.2	4	pipe union m 12 p.1.25 x 23
75	0.015.0046.3	1	tube sx/lh/li
76	0.015.0047.3	1	tube dx/rh/re
77	2.3335.053.2	2	pipe union m 14 p.1.5x30
81	2.1599.683.0	2	snoulder 14.5x23x4
101	0.015.0113.3	1	tube
102	0.015.0116.3/10	1	tube
103	0.015.0371.3	1	bracket
104	0.200.8152.0	3	small plate
105	2.1011.103.2	2	nut m 6 p.1
106	2.0112.009.2	1	screw m 6 p.1 x 25
107	0.015.0367.2	1	bracket
108	2.1310.009.2	1	flat washer 14
109	2.0112.507.2	1	screw m 14 p.2x20
110	2.1470.002.2	2	washer 6, d128

**9+1 MID-MOUNT HYDRAULIC COUPLERS - FRONT**

Fig.	Code	QTY	Name
------	------	-----	------

**Notes:**

[Agroplus F 100 -> 3001]



2	2.1561.110.0	27	'o' ring Ø 18 -B-
13	2.0342.203.6	4	screw m 6 p.1.0 x 16
18	2.3335.008.2	5	pipe union m 18 p.1.5 x 32
21	2.0112.011.2	9	screw m 6 p.1x30
23	2.3321.010.0	9	collar Ø 12/12
24	2.1310.002.2	13	washer 6.6, d125
25	2.1011.103.2	10	nut m 6 p.1
26	0.014.7750.3	1	tube
27	0.014.7752.3	1	tube
28	0.014.7748.3	1	bracket
35	2.1310.004.2	3	flat washer 8.5
43	0.014.7573.3	2	bracket
44	2.0112.308.2	2	screw m 10 p.1.5x22
45	2.1310.006.2	2	flat washer 10.5
46	2.1011.106.2	2	nut m 10 p.1.5
51	2.3321.012.0	2	collar
53	2.0112.205.2	1	screw m 8 p.1.25 x 16
64	2.3249.138.2	2	pipe fitting m 18 - 3/4" JIC
65	0.014.7746.3	1	tube
66	0.014.7745.3	1	tube
67	0.014.7747.0	1	bracket
68	0.014.7749.3	1	tube
69	0.014.7751.3	1	tube

9\_F7088\_11\_0-C-001

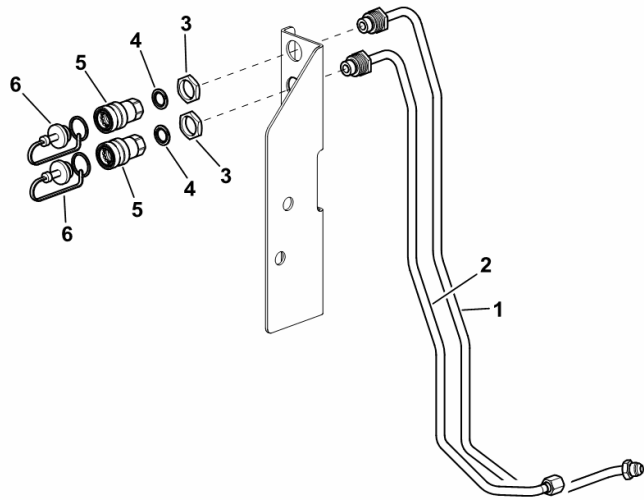
**4+1 MID-MOUNT HYDRAULIC COUPLERS - FRONT**

Fig.	Code	QTY	Name
------	------	-----	------

**Notes:**

- FOR TYPES WITH SAFETY FRAME [Agroplus F 100 -> 3001]

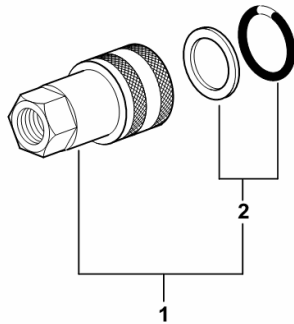
1	0.014.7809.3	1	tube
2	0.014.7808.3	1	tube
3	2.1019.091.2	2	special nut m 30 p.1.5x8
4	2.1569.206.0	2	gasket
5	0.98308.50.3/10	2	coupling FEMALE ☞ 0.98308.50.3/10
6	0.013.7997.0	2	plug - BLACK



9\_F7188\_08\_0-A-001

**ENGAGEMENT**

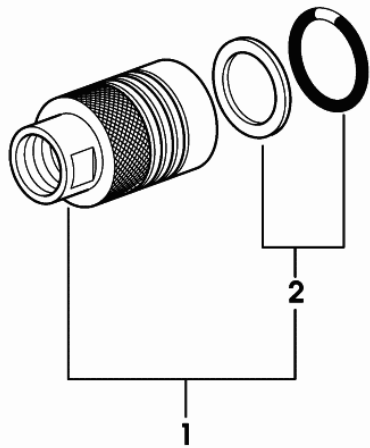
Fig.	Code	QTY	Name
1	0.98308.50.3/10	1	coupling
2	04438079	1	seal ring kit



0\_98308\_50\_3\_10

**ENGAGEMENT**

Fig.	Code	QTY	Name
1	0.98309.50.3/10	1	coupling
2	04438079	1	seal ring kit



0\_98309\_50\_3\_10

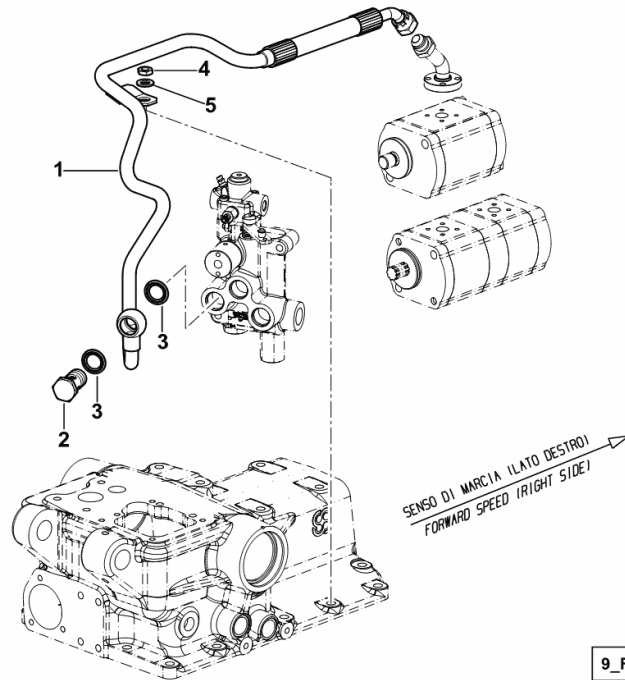
**SYSTEM FROM HYDRAULIC PUMP TO HYDRAULIC BRAKES**

Fig.	Code	QTY	Name
------	------	-----	------

**Notes:**

[Agroplus F 100 -> 3001]

1	0.015.2203.3	1	tube
2	2.3335.009.2	1	pipe union m 22 p.1.5 x 39
3	2.1561.112.0	2	gasket Ø 22 -B-
4	2.1011.521.2	1	nut m 10 p.1.25
5	2.1475.003.2	1	washer 10



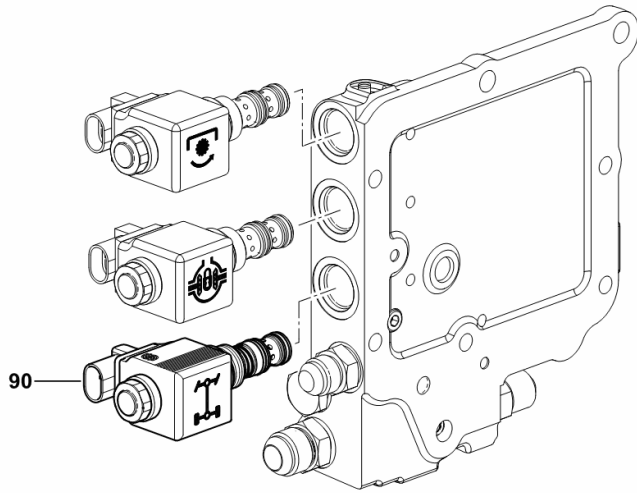
**SOLENOID VALVE - 4WD**

Fig.	Code	QTY	Name
------	------	-----	------

**Notes:**

[Agroplus F 100 -> 3001]

90	2.3729.697.0/20	1	electro valve 13V - 20W ☞ 2.3729.697.0/20
----	-----------------	---	--



9\_18382\_04\_0-A-001

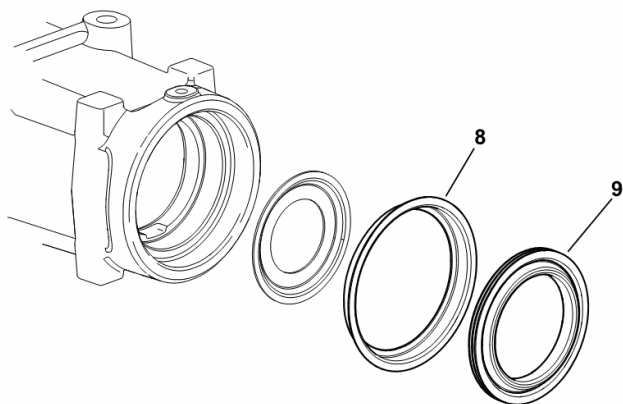
**PARTS SET FOR REAR AXLE - STANDARD SEAL**

Fig.	Code	QTY	Name
------	------	-----	------

**Notes:**

[Agroplus F 100 -> 3001]

8	0.255.4450.0/10	2	cup
9	2.1569.104.0	2	'o' ring 80 x 118.2 x 12



9\_64844\_11\_0-A-001

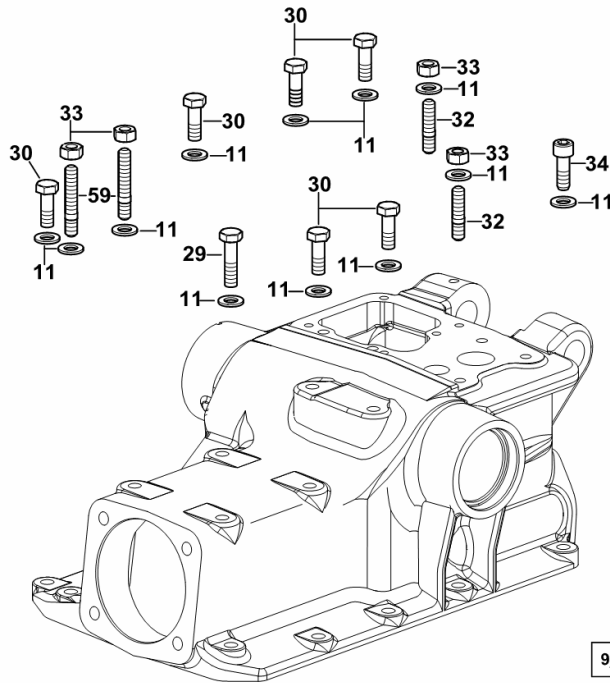
Section: R0 - REAR LIFT  
**LIFT FIXING COMPONENTS**

Fig.	Code	QTY	Name
------	------	-----	------

**Notes:**

[Agroplus F 100 -> 3001] 3115 <-

11	2.1475.003.2	20	washer 10
29	2.0112.315.2	1	screw m 10 p.1.5 x 40
30	2.0112.311.2	6	screw m 10 p.1.5 x 30
32	2.0432.157.2	2	stud bolt m 10 p.1.5 / p.1.25 x 30
33	2.1011.421.2	4	nut m 10 p.1.25
34	2.0312.310.2	1	screw m 10 p.1.5 x 30
59	2.0432.163.7	2	stud bolt m 10 p.1.5 / p.1.25 x 45

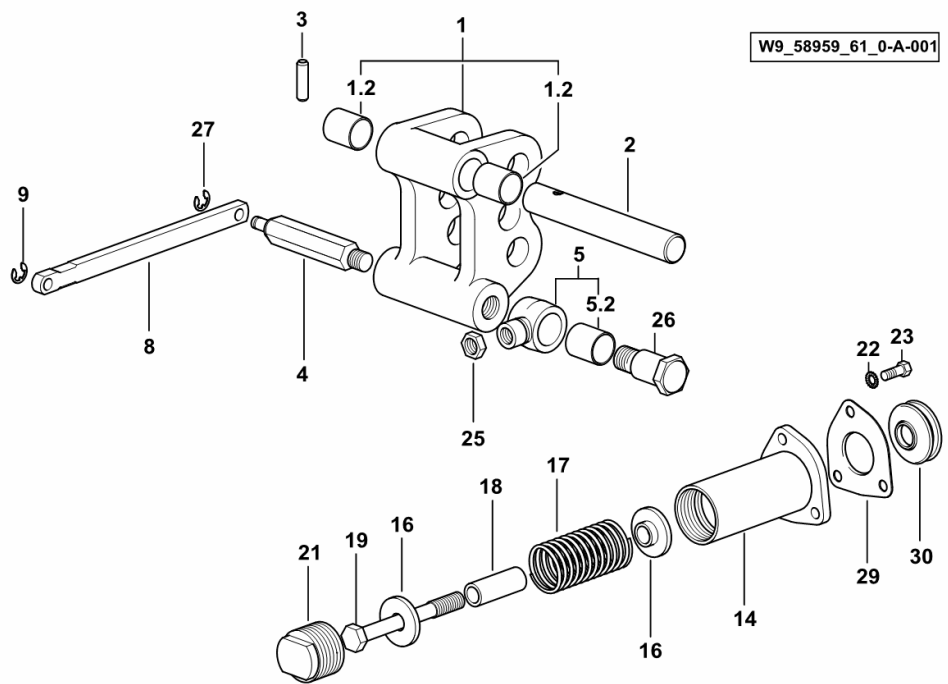


Section: R0 - REAR LIFT  
**SENSITIVE ELEMENTS**

Fig.	Code	QTY	Name
------	------	-----	------

**Notes:**

- FOR TYPES WITH MECHANICAL LIFTER [Agroplus F 100 -> 3001]



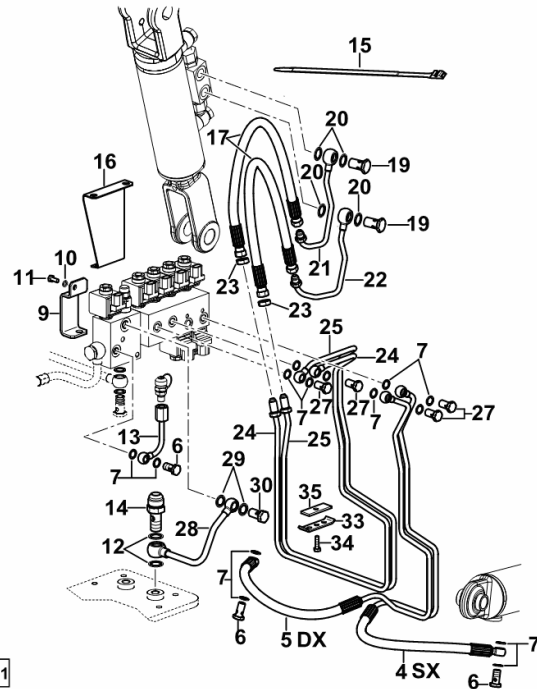
1	0.009.2396.3/20	1	bracket
1.2	2.1559.332.0	2	bushing 25 x 28 x 30
2	0.009.2402.0/10	1	pin
3	2.1631.721.0	1	roll pin 8 x 60
4	0.009.3432.0/10	1	pin
5	0.009.2404.3	1	eyelet
5.2	2.1559.332.0	1	bushing 25 x 28 x 30
8	0.009.2397.0/40	1	rod
9	2.1430.010.7	1	circlip 9
14	0.009.2399.3/60	1	flange
16	0.007.1969.0/10	2	snoulder
17	2.4019.569.1/10	1	spring
18	2.1549.090.2/30	1	spacer 14x20x53
19	2.0119.191.2/20	1	screw m 14 p.1.5 x 117
21	2.3199.230.0/20	1	plug
22	2.1470.004.2	3	washer 8
23	2.0112.207.2	3	screw m 8 p 1.25 x 20
25	2.1011.308.2	1	nut m 14 p.1.5
26	0.009.3434.0	1	pin
27	2.1430.010.7	1	circlip 9
29	0.007.1979.0	1	support
30	0.007.1978.0	1	bellows

**3-POINT LINKAGE HYDRAULIC SYSTEM WITH ELECTROHYDRAULIC CONTROL**

Fig.	Code	QTY	Name
------	------	-----	------

**Notes:**

[Agroplus F 100 -> 3001]



9\_F1658\_05\_0-B-001

4	0.015.2704.3	1	tube sx/lh/li
5	0.015.2579.3	1	tube dx/rh/re
6	2.3335.005.2	3	pipe union m 12 p.1.5 x 24
7	2.1561.106.0	14	gasket Ø 12 -B-
9	0.011.7769.0	1	bracket
10	2.1470.002.2	1	washer 6, d128
11	2.0112.004.2	1	screw m 6 p.1 x 14
12	2.1561.110.0	2	'o' ring Ø 18 -B-
13	0.012.2494.3	1	tube
14	2.3339.812.2/10	1	pipe fitting m 18 p.1.5
15	2.6859.030.0	2	clamp
16	0.015.2260.0	1	bracket
17	0.011.3362.3	2	tube
19	2.3335.007.2	2	pipe union m 16 p.1.5
20	2.1561.108.0	4	'o' ring 16
21	0.015.2723.3	1	tube
22	0.015.2728.3	1	tube
23	2.1019.093.2	2	nut 1/2 - 20 UNF-2B
24	0.015.2570.3	1	tube
25	0.015.2546.3	1	tube
27	2.3332.003.2	4	pipe union m 12 p.1.25 x 23
28	0.011.7764.3/20	1	tube
29	2.1561.107.0	2	'o' ring Ø 14 -B-
30	2.3332.004.2	1	pipe union m 14 p.1.5 x 27
33	0.465.6362.0	1	terminal
34	2.0112.007.2	1	screw m 6 p.1 x 20
35	0.015.7104.0	1	terminal

Section: D0 - TRANSMISSION  
H-M-L UNIT

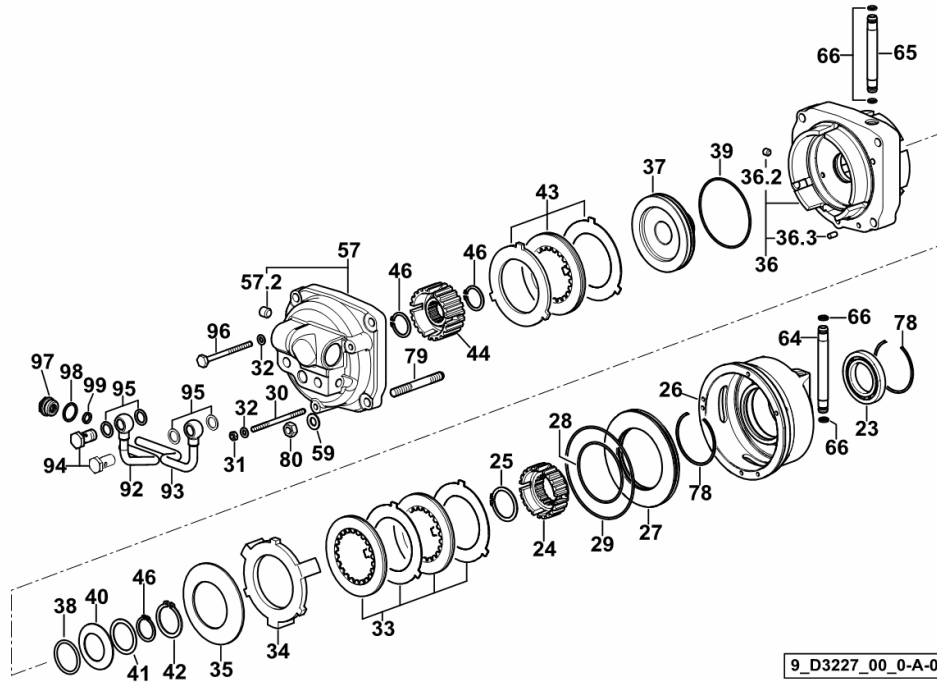


Fig.	Code	QTY	Name
<b>Notes:</b> (GEARSHIFT) [Agroplus F 100 -> 3001]			
23	2.2020.007.0	1	ball bearing 40x68x9
24	0.008.0267.0/30	1	hub Z = 22 / Z = 18
25	2.1410.016.1	1	circlip 40
26	0.013.0503.0/10	1	box
27	0.008.0281.0/10	1	piston
28	2.1532.179.0	1	'o' ring 78.97x3.53
29	2.1532.222.0	1	'o' ring 120.24x3.53
30	2.0439.239.2	2	stud bolt m 6 x 94
31	2.1012.103.7	2	nut m 6 p.1
32	2.1310.002.2	3	washer 6.6, d125
33	0.008.0323.3/10	1	multi-plate clutch
34	0.008.0269.0/10	1	spacer
35	2.4099.090.1	2	spring
36	0.010.1099.3	1	box
36.2	2.0512.202.7	1	screw m 8 p.1.25 x 8
36.3	2.1651.505.0	1	cylindrical plug 6x12
37	0.008.0280.0/10	1	piston
38	2.1532.098.0	1	'o' ring 37.70x3.53
39	2.1532.194.0	1	'o' ring 91.67 x 3.53
40	2.4099.091.1	5	spring
41	2.1599.694.0	1	snoulder 36.2x46x1
42	2.1419.086.7	1	ring 36
43	0.008.0322.3/10	1	multi-plate clutch
44	0.008.0268.0/20	1	hub
46	2.1410.011.7	4	circlip 28
57	0.013.4871.3	1	cover
57.2	2.0512.404.7	2	screw
59	2.1475.003.2	4	washer 10
64	0.010.0533.0	2	tube
65	0.013.1194.0	1	tube
66	2.1532.016.0	6	'o' ring 8.74 x 1.78
78	2.1423.048.7	2	circlip 68x1.5
79	2.0422.320.7	4	stud bolt m 10 p 1.5 x 15 / m 10 x 75
80	2.1011.106.2	4	nut m 10 p.1.5
92	0.013.4893.3/10	1	tube
93	0.013.3029.3/10	1	tube
94	2.3335.006.2	2	pipe union m 14 p.1.5x24
95	2.1560.010.0	4	gasket 14.2 x 20 x 1.5
96	2.0112.025.2	1	screw m 6 p.1x80
97	2.3119.049.2	2	plug m 20 p.1.5
98	2.1560.015.0	2	gasket 20.2 x 24

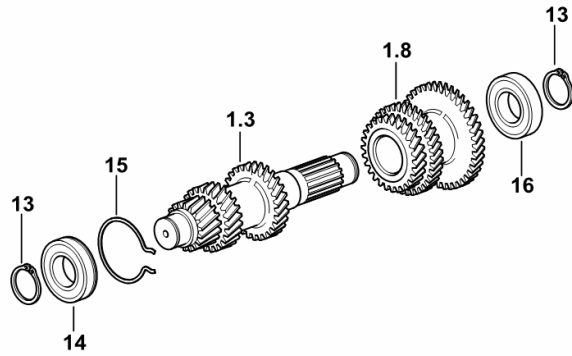
**5-SPEED GEARBOX PRIMARY SHAFT**

Fig.	Code	QTY	Name
------	------	-----	------

**Notes:**

- FOR TYPES WITH H-M-L- (POWERSHIFT) [Agroplus F 100 -> 3001]

1.3	0.013.1628.0	1	shaft Z = 19 / 23 / 30
1.8	0.013.1652.0	1	gear Z = 27 / 37 / 44
13	2.1410.014.1	2	circlip 35
14	2.2999.114.0	1	ball bearing 35 x 72 x 17
15	2.1499.124.1/10	2	circlip 68 x 1.7
16	2.2045.011.0	1	ball bearing 35 x 72 x 17



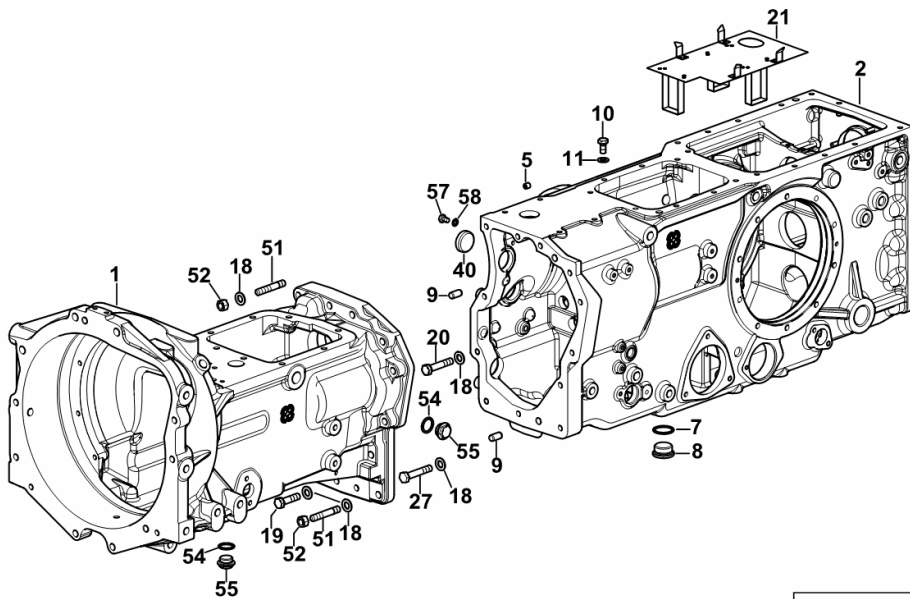
9\_D3233\_05\_0-A-001

Section: D0 - TRANSMISSION  
**GEARBOX**

Fig.	Code	QTY	Name
------	------	-----	------

**Notes:**

[Agroplus F 100 -> 3001] 3115 <-



1	0.014.1154.0/20	1	gear box ( 3005 <- )
1	0.014.1154.0/40	1	gear box ( -> 3006 )
2	0.013.7462.0/60	1	gear box ( 3018 <- )
2	0.015.2900.0/10	1	gear box ( -> 3019 )
5	2.0532.303.7	2	screw m 10 p.1.5 x 10
6	2.3199.250.0	1	plug m 30 p.1
7	2.1560.056.0	1	gasket 33x39
8	2.3199.002.2	1	plug 1 gas
9	2.1651.911.0	2	cylindrical plug 12 x 24
10	2.0112.307.2	8	screw m 10 p.1.5 x 20
11	2.1475.003.2	20	washer 10
18	2.1475.004.7	12	washer 13 x 24
19	2.0112.417.2	2	screw m 12 p.1.75 x 45
20	2.0112.421.2	4	screw m 12 p.1.75 x 60
21	0.013.9449.2	1	division
27	2.0112.422.2	2	screw m 12 p.1.75 x 65
40	2.3171.016.4	2	plug 40
51	2.0432.266.2	4	stud bolt m 12 p.1.25 / m 12 p.1.75
52	2.1011.422.2	4	nut m 12 p.1.25
53	2.0512.204.7	1	grain m 8 p.1.25 x 12
54	2.1560.019.0	2	gasket 24.3x30
55	2.3110.423.2	2	plug m 24 p.1.5x18.5
56	2.3179.018.4	1	plug
57	2.0112.203.2	1	screw m 8 p.1.25 x 12
58	2.1560.004.0	1	gasket 8.2 x 14

9\_F1431\_00\_0-A-001

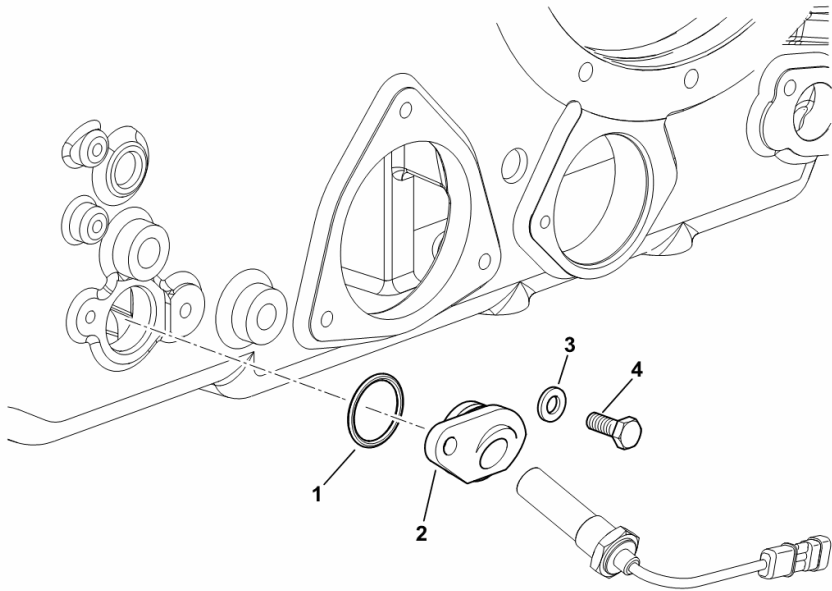
**SENSOR BRACKET**

Fig.	Code	QTY	Name
------	------	-----	------

**Notes:**

[Agroplus F 100 -> 3001]

1	2.1530.079.0	1	'o' ring 29.82 x 2.62
2	0.013.8097.0	1	support
3	2.0112.207.2	1	screw m 8 p 1.25 x 20
4	2.1475.202.2	1	spring washer 8.4 x 16



9\_B6133\_04\_0-A-001

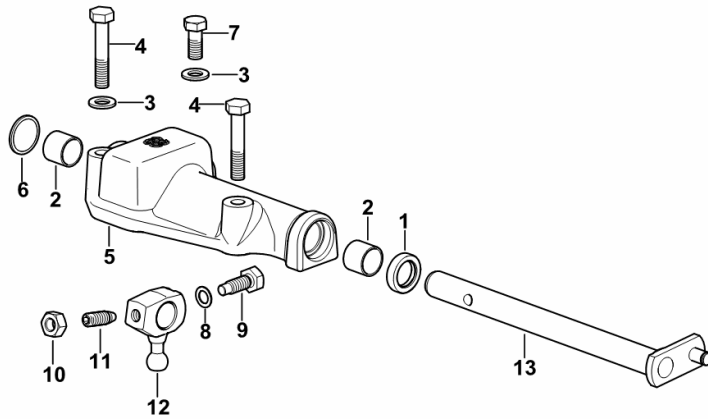
**DRIVE INTERMEDIATE GEARS**

Fig.	Code	QTY	Name
------	------	-----	------

**Notes:**

[Agroplus F 100 -> 3001]

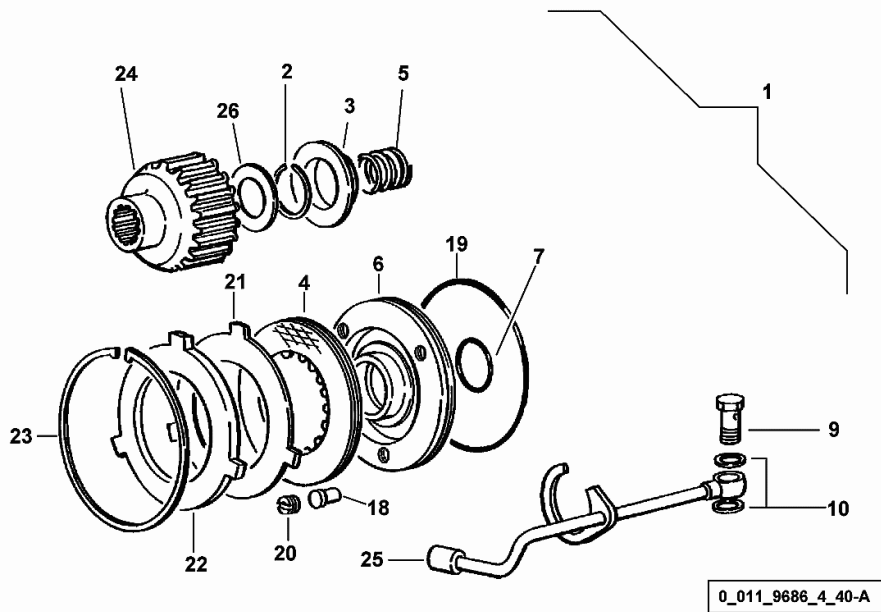
1	2.1520.006.0	1	oil seal 20 x 30 x 7
2	2.1555.311.0	2	bushing 20x23x20
3	2.1475.003.2	2	washer 10
4	2.0112.320.2	2	screw m 10 p.1.5 x 55
5	0.014.3612.0/10	1	support
6	2.3170.012.2	1	expansion plug Ø 30
7	2.0112.309.2	1	screw m 10 p.1.5 x 25
8	2.1560.006.0	1	gasket 10.2 x 16
9	2.0119.177.2/10	1	screw m 10x29.5
10	2.1011.406.2	1	nut m 10 p.1
11	2.0399.050.2	1	screw m 10 p.1 x 30
12	0.014.3613.0	1	lever
13	0.014.3614.3/10	1	lever



9\_D3264\_02\_0-A-001

**P.T.O. - HYDRAULIC CLUTCH**

Fig.	Code	QTY	Name
1	0.011.9686.4/40	1	hydraulic pto clutch
2	2.1420.014.7	1	circlip Ø 35
3	0.007.6115.0	1	small disc
4	0.008.9946.2	6	clutch disc
5	2.4019.725.1	1	spring
6	0.011.9682.0	1	piston
7	2.1539.140.0	1	'o' ring 34.5 x 2.62
9	2.3332.003.1	1	pipe union m 12 p.1.25
10	2.1560.007.0	2	gasket 12.2x16
18	2.1699.396.0/10	3	pin 6 x 13
19	2.1539.098.0	1	'o' ring 94.92 x 2.62
20	2.0599.111.1	3	grain
21	0.013.9480.0	6	disc
22	0.008.0324.0	1	disc mm 4.8
23	2.1499.082.0	1	ring 107
24	0.011.9678.0	1	hub
25	0.009.6715.3/10	1	tube
26	2.2685.006.0	1	thrust plate 25 x 42 x 1.0

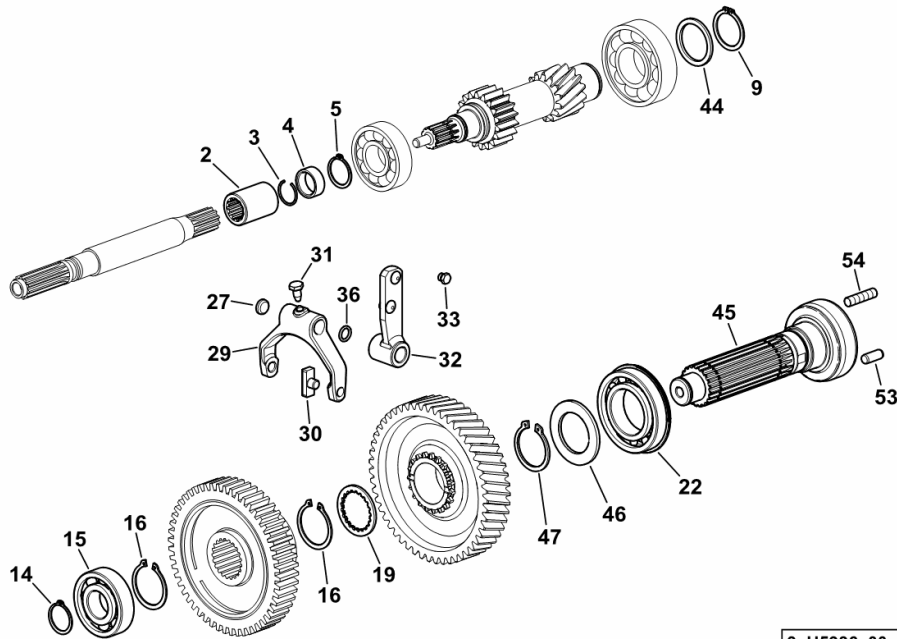


**PTO - 2-SPEED WITH INSERTED END SHAFT 540-750**

Fig.	Code	QTY	Name
------	------	-----	------

**Notes:**

[Agroplus F 100 -> 3001]



2	0.010.7696.0	1	sleeve Z = 11
3	2.1421.010.7	1	circlip 25
4	2.1549.172.0	1	spacer 24.7 x 31 x 12
5	2.1410.012.1	1	circlip 30
9	2.1410.016.1	1	circlip 40
14	2.1410.012.1	1	circlip 30
15	2.2060.009.0	1	ball bearing 30 x 72 x 19
16	2.1410.018.7	2	circlip 45
19	2.1599.828.0/10	1	thrust plate 41 x 55 x 3
22	2.2999.204.0	1	bearing 50 x 90 x 20
27	2.3171.006.4	5	plug Ø 16
29	0.010.0468.0	1	fork
30	0.255.6463.0	2	shoe
31	2.0399.019.1	2	screw m 8 p.1 x 16
32	0.012.0107.3	1	lever
33	2.3110.428.1	1	plug m 8 p.1 x 10
36	2.1530.028.0	1	'o' ring 11.91 x 2.62
44	2.1599.414.0	1	snoulder 40 x 50 x 3.0
45	0.014.3735.0	1	shaft
46	2.1599.891.0	1	snoulder 45 x 70 x 4
47	2.1412.017.7	1	circlip 45
53	2.1651.811.0	2	cylindrical plug 10x24
54	2.0432.155.7	6	stud bolt m 10 p.1.5 / p. 1.25 x 25

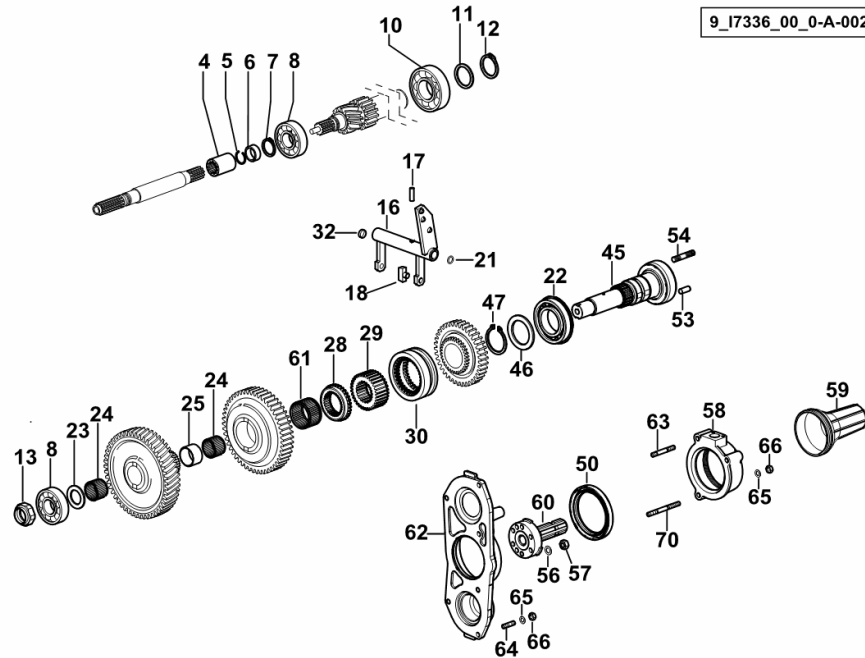
9\_H5936\_00\_0-A-001

**PTO - 3-SPEED WITH INSERTED END SHAFT 540-750-1000**

Fig.	Code	QTY	Name
------	------	-----	------

**Notes:**

- EXPORT U.S.A. [Agroplus F 100 -> 3001] -> 3040



4	0.010.7696.0	1	sleeve Z = 11
5	2.1421.010.7	1	circlip 25
6	2.1549.172.0	1	spacer 24.7 x 31 x 12
7	2.1410.012.1	1	circlip 30
8	2.2999.300.0	2	bearing 30 x 72 x 19
10	2.2062.012.0	1	ball bearing 40 x 90 x 23
11	2.1599.414.0	1	snoulder 40 x 50 x 3.0
12	2.1410.016.1	1	circlip 40
13	2.1219.038.0/40	1	ring nut m 30 p.1.5
16	0.010.7710.3	1	fork
17	2.1631.712.0	1	pin 8x26
18	0.255.6463.0	2	shoe
21	2.1530.028.0	1	'o' ring 11.91 x 2.62
22	2.2999.204.0	1	bearing 50 x 90 x 20
23	2.1589.321.0	1	snoulder 30x47x3
24	2.2770.062.0	2	roller cage 35x40x27
25	0.010.7712.0	1	spacer
28	0.009.3830.3/10	1	gear Z = 32
29	0.010.7701.0	1	hub z=32 z=21
30	0.009.3822.0/20	1	sleeve Z = 32
32	2.3171.006.4	5	plug Ø 16
45	0.014.3780.0	1	shaft
46	2.1599.779.0	1	thrust plate 50x70x4
47	2.1412.019.7	1	circlip 50x3
50	2.1520.043.0	1	oil seal 85 x 110 x 12
53	2.1651.811.0	2	cylindrical plug 10x24
54	2.0432.161.7	6	stud bolt m 10 p.1.5 / p.1.25 x 40
56	2.1470.006.2	6	lock washer 10
57	2.1011.421.2	6	nut m 10 p.1.25
58	0.012.3831.0	1	flange
59	0.008.0757.0	1	guard
60	0.012.3833.0	1	p.t.o.shaft Z = 6
61	2.2999.363.0	1	roller cage
62	0.014.3683.0/10	1	cover
63	2.0422.215.7	1	stud bolt m 8 p.1.25 x 50
64	2.0422.203.7	4	stud bolt m 8 p.1.25 x 20
65	2.1470.004.2	7	washer 8
66	2.1011.105.2	7	nut m 8 p.1.25
70	2.0422.221.7	2	stud bolt m 8 p.1.25 x 80

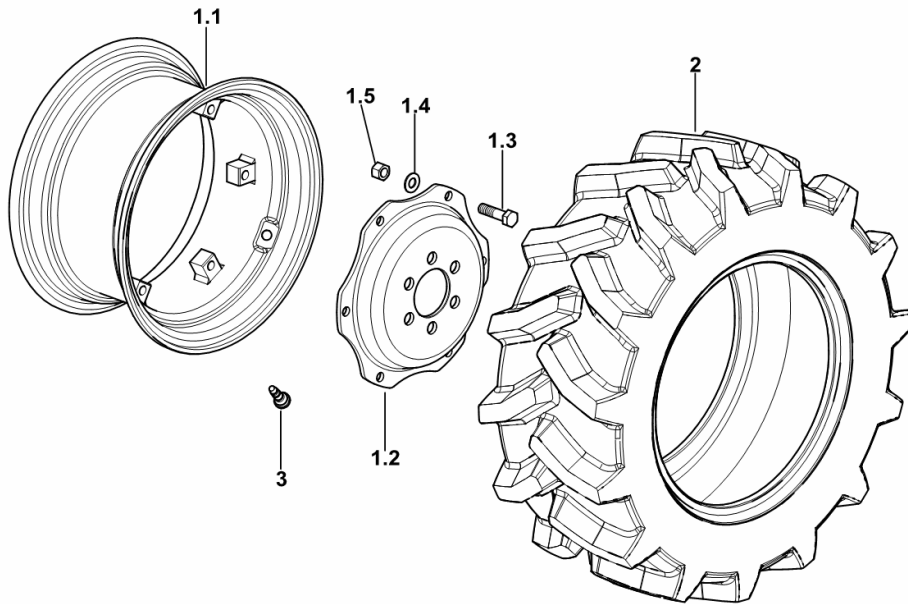


Section: S0 - WHEELS  
**WHEELS 280/70 R16"**

Fig.	Code	QTY	Name
------	------	-----	------

Notes:  
 [Agroplus F 100 -> 3001]

1.1	0.013.9184.3	1	rim W 9x16" C/BL
1.2	0.013.9184.0	1	rim center flange
1.3	2.0122.521.6	6	screw m 14 p.1.5 x 60
1.4	2.1475.105.6	6	conical washer 15 x 27
1.5	2.1011.308.6	6	nut m 14 p.1.5
2	2.4811.121.0	2	tyre 280/70 R16"
3	0.012.6364.0	2	valve



9\_F1655\_26\_0-A-001

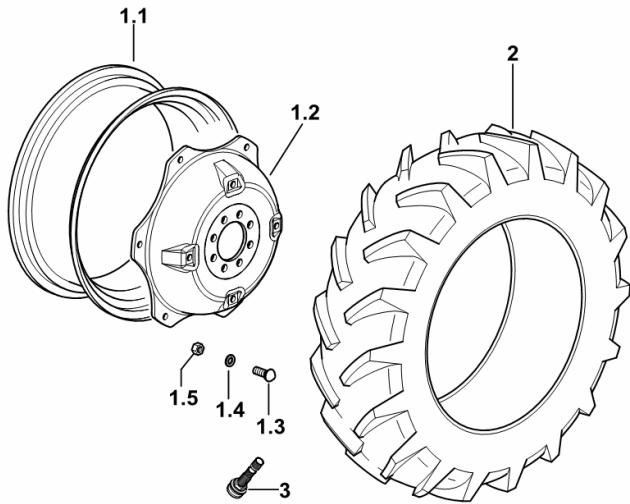
**WHEELS 380/85R24"(14.9R24")**

Fig.	Code	QTY	Name
------	------	-----	------

**Notes:**

[Agroplus F 100 -> 3001]

1.1	0.012.3047.3	1	rim W 12x24" C/ST
1.2	0.010.9752.0	1	flange 24"
1.3	2.0099.005.6	6	screw m 16 p.1.5 x 38
1.4	2.1499.019.6	6	washer 16.3 x 31.5
1.5	2.1019.059.6	6	nut m 16 p.1.5 x 16
2	2.4811.072.0	2	tyre 380/85R24"(14.9R24")
3	0.012.6364.0	2	valve



9\_56655\_43\_0-A-001

CLICK HERE TO **DOWNLOAD** THE COMPLETE MANUAL

- Thank you very much for reading the preview of the manual.
- You can download the complete manual from: [www.heydownloads.com](http://www.heydownloads.com) by clicking the link below



- Please note: If there is no response to CLICKING the link, please download this PDF first and then click on it.

CLICK HERE TO **DOWNLOAD** THE COMPLETE MANUAL