

AGROPLUS 320 F -> 1001

V0 - BALLAST, TOWING HITCHES

FRONT HITCHES

FRONT TOWING HITCH..... V0.01.0 (1)

REAR HITCHES

SUPPORTS..... V0.02.2 (1)

PIN FOR REAR TOW HOOK..... V0.02.3 (1)

REAR TOWING HITCH..... V0.02.4 (1)

REAR SWINGING TOWING-HITCH..... V0.02.5 (1)

REAR TOWING HITCH BRACKET..... V0.02.7 (1)

DRAWBAR COUPLING CUNA - cat. C..... V0.02.9 (1)

DRAWBAR COUPLING CEE Ø 31..... V0.02.10 (1)

DRAWBAR COUPLING CUNA - cat. D2..... V0.02.13 (1)

DRAWBAR COUPLING CEE..... V0.02.14 (1)

AUTOMATIC DRAWBAR COUPLING CEE Ø 31..... V0.02.16 (1)

DRAWBAR COUPLING CEE..... 0.017.0233.3.A

AUTOMATIC DRAWBAR COUPLING CEE Ø 31..... 0.017.0234.3.A

DRAWBAR COUPLING CUNA - cat. D2..... 0.017.0235.3.A

DRAWBAR COUPLING CUNA - cat. C..... 0.017.0236.3.A

FRONT BALLAST WEIGHTS

FRONT WEIGHT CARRIER..... V0.03.1 (1)

FRONT BALLAST..... V0.03.4 (1)

FRONT BALLAST KG. 70..... V0.03.5 (1)

FRONT BALLAST KG. 250..... V0.03.6 (1)

BALLAST LOCK BAR mm 30x780..... V0.03.7 (1)

CLICK HERE TO **DOWNLOAD** THE COMPLETE MANUAL

- Thank you very much for reading the preview of the manual.
- You can download the complete manual from: www.heydownloads.com by clicking the link below



- Please note: If there is no response to CLICKING the link, please download this PDF first and then click on it.

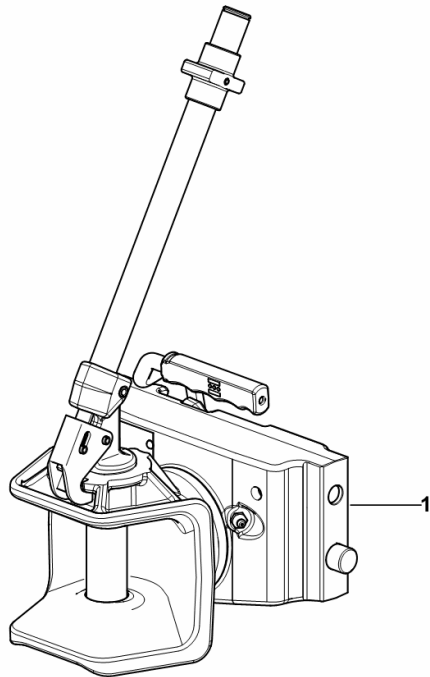
CLICK HERE TO **DOWNLOAD** THE COMPLETE MANUAL

DRAWBAR COUPLING CEE

Fig.	Code	QTY	Name
------	------	-----	------

Notes:
[AGROPLUS 320 F -> ZKDP3602W0TD01001]

1	0.017.0233.3	1	clevis CBM - CEE ☞ 0.017.0233.3
---	--------------	---	------------------------------------



9_P2531_65_0-A-001

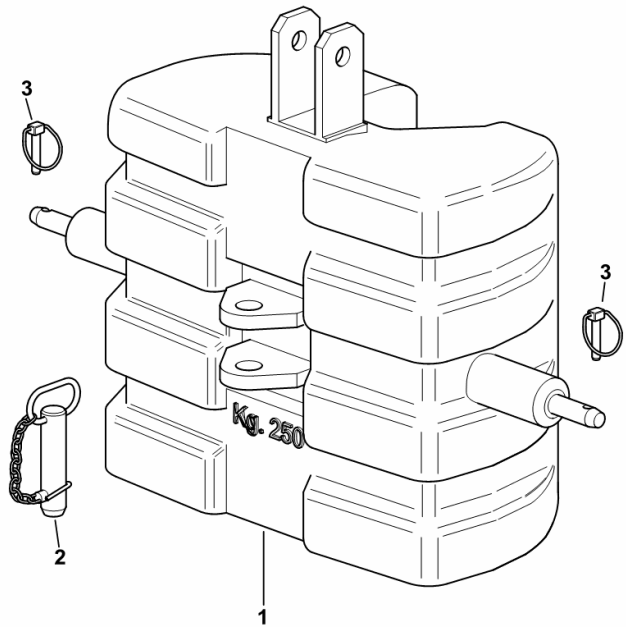
FRONT BALLAST KG. 250

Fig.	Code	QTY	Name
------	------	-----	------

Notes:

[AGROPLUS 320 F -> ZKDP3602W0TD01001]

1	0.010.4553.3/10	1	ballast KG. 250
2	0.96309.51.3	1	pin Ø 32
3	0.010.9322.4	2	pin Ø 11



9_64852_60_0-A-001

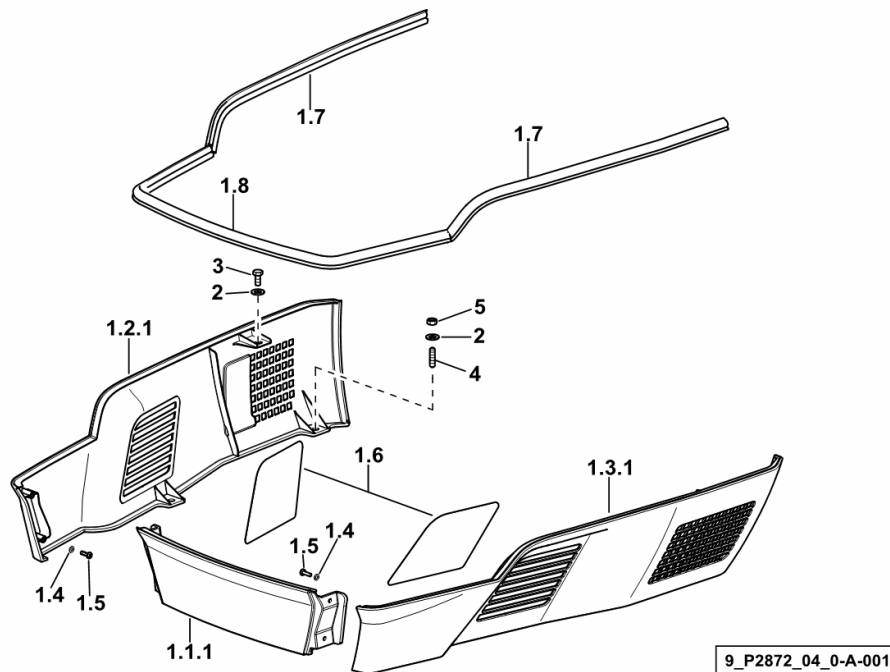
BONNET - FRONT PORTION

Fig.	Code	QTY	Name
------	------	-----	------

Notes:

[AGROPLUS 320 F -> ZKDP3602W0TD01001]

1.1.1	0.016.0409.0/10	1	headband and
1.2.1	0.016.0411.3/10	1	hose clip dx/rh/re
1.3.1	0.016.0410.3/10	1	hose clip sx/lh/li
1.4	2.1310.001.2	4	flat washer 5.3
1.5	2.0332.306.2	4	screw m 5x0.8x16
1.6	0.016.0412.0	2	grille
1.7	0.010.7094.0	2	gasket
1.8	0.010.7094.0	1	gasket
2	2.1310.006.2	8	flat washer 10.5
3	2.0112.206.2	2	screw m 8 p.1.25 x 18
4	2.0432.003.7	6	stud bolt m 8 p.1.25 / p.1 x 20
5	2.1011.405.2	6	nut m 8 p.1

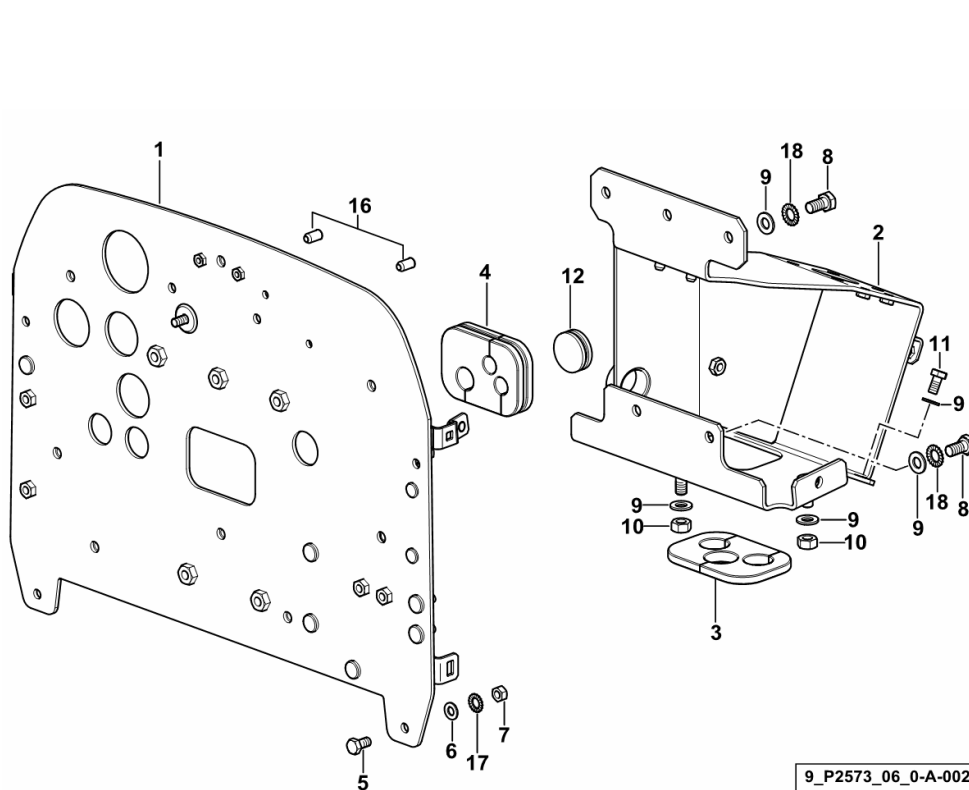


PEDAL SUPPORT

Fig.	Code	QTY	Name
------	------	-----	------

Notes:

[AGROPLUS 320 F -> ZKDP3602W0TD01001]



1	0.016.1340.3/20	1	division
2	0.016.3306.3/20	1	support
3	0.016.1940.0/20	1	wire guide
4	0.016.1984.0	1	wire guide
5	2.0112.205.2	2	screw m 8 p.1.25 x 16
6	2.1310.004.2	2	flat washer 8.5
7	2.1011.105.2	2	nut m 8 p.1.25
8	2.0112.307.2	5	screw m 10 p.1.5 x 20
9	2.1310.006.2	10	flat washer 10.5
10	2.1011.421.2	3	nut m 10 p.1.25
11	2.0112.305.2	2	screw m 10 p.1.5 x 16
12	2.3199.115.0	1	plug 38x12
16	2.1142.010.2	2	insert m 6
17	2.1470.004.2	2	washer 8
18	2.1470.006.2	5	lock washer 10

9_P2573_06_0-A-002

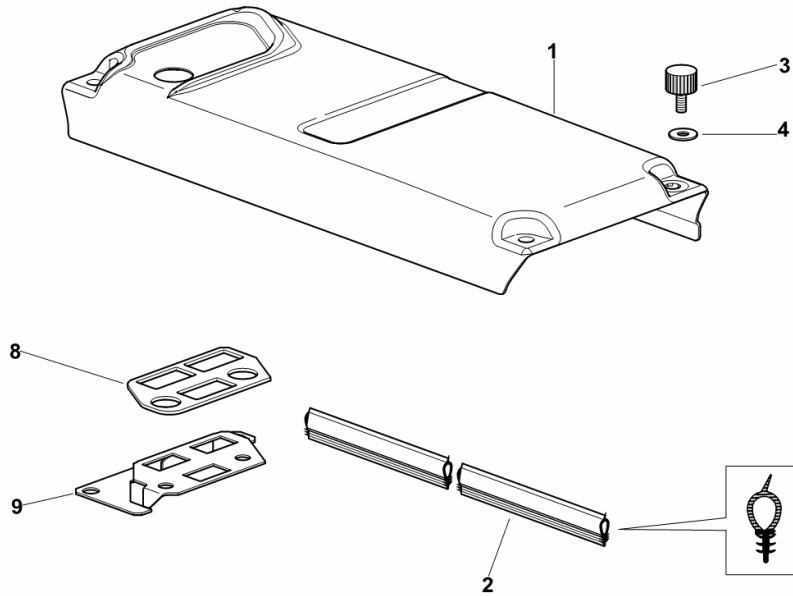
BATTERY COVER

Fig.	Code	QTY	Name
------	------	-----	------

Notes:

- FOR TYPES WITH MECHANICAL 3-POINT LINKAGE [AGROPLUS 320 F -> ZKDP3602W0TD01001]

1	0.013.0024.0/30	1	cover
2	0.010.8105.0	1	gasket mm 900
3	0.009.0133.3/10	4	knob
4	2.1312.004.3	4	washer 8,4x24x2
8	0.016.6975.0	1	gasket (-> 1001)
9	0.016.6977.2	1	support (-> 1001)



9_70573_05_0-A-001

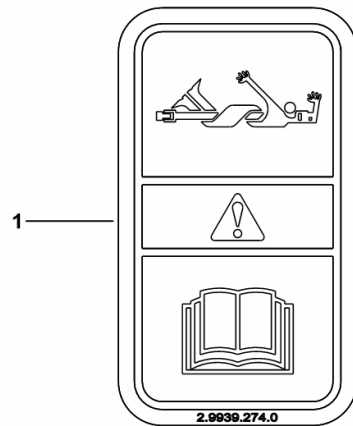
P.T.O. WARNING PLATE FRONT

Fig.	Code	QTY	Name
------	------	-----	------

Notes:
[AGROPLUS 320 F -> ZKDP3602W0TD01001]

1	2.9939.274.0	1	plate
---	--------------	---	-------

9_F1988_36_0-A-001



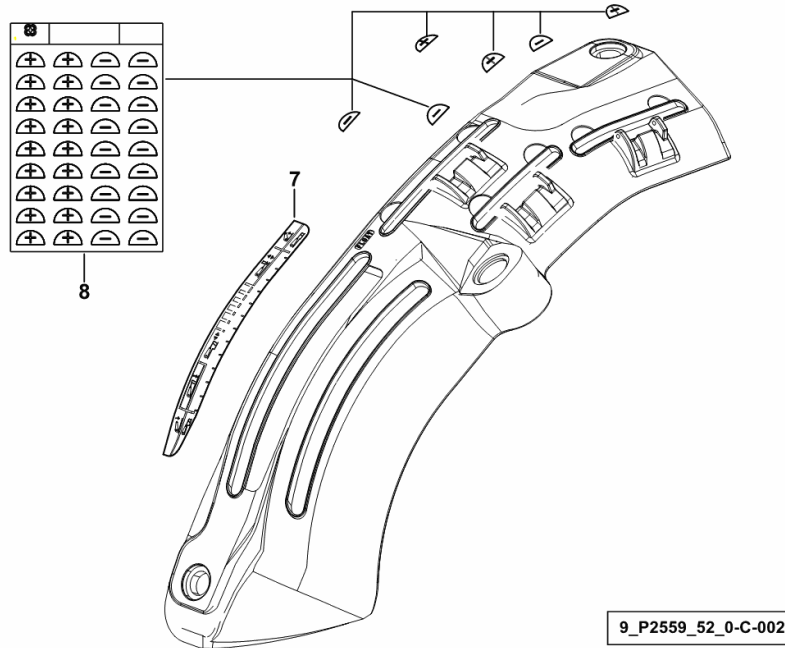
RH CONSOLE IDENTIFICATION PLATES

Fig.	Code	QTY	Name
------	------	-----	------

Notes:

- FOR TYPES W/ MECHANICAL REAR LIFT AND TYRES 420/85R24"(16.9R24") - 340/85R28"(13.6R28") - 380/70R28" - 380/85R28"(14.9R28") - 420/70R28" - [AGROPLUS 320 F -> ZKDP3602W0TD01001] -> 1016 - FOR TYPES W/ MECHANICAL REAR LIFT AND TYRES 380/70R20" - 360/70R24" - 380/70R24" - 380/85R24"(14.9R24") - 420/70R24" [AGROPLUS 320 F -> ZKDP3602W0TD01001] -> 1016 <- - FOR TYPES WITH CAB AND MECHANICAL LIFT [AGROPLUS 320 F -> ZKDP3602W0TD01001] -> 1016

7	0.010.7140.0	1	plate
8	0.017.3323.0	1	plate



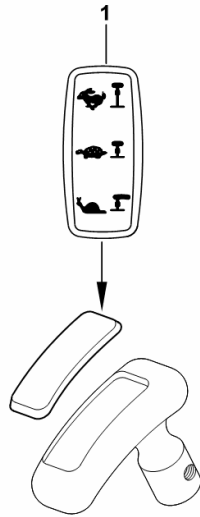
3-RANGE REDUCTION UNIT COVER

Fig.	Code	QTY	Name
------	------	-----	------

Notes:

[AGROPLUS 320 F -> ZKDP3602W0TD01001]

1	0.014.5164.0	1	cap
---	--------------	---	-----



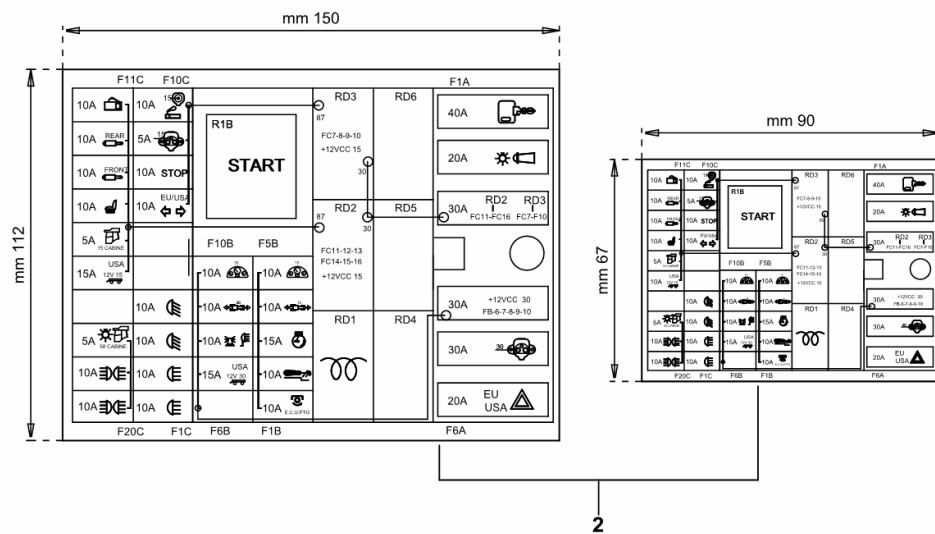
9_F2064_05_0-A-001

Fig.	Code	QTY	Name
------	------	-----	------

Notes:

- EXPORT U.S.A. [AGROPLUS 320 F -> ZKDP3602W0TD01001] 1010 <-

2	2.9939.309.0/10	1	adhesive
---	-----------------	---	----------



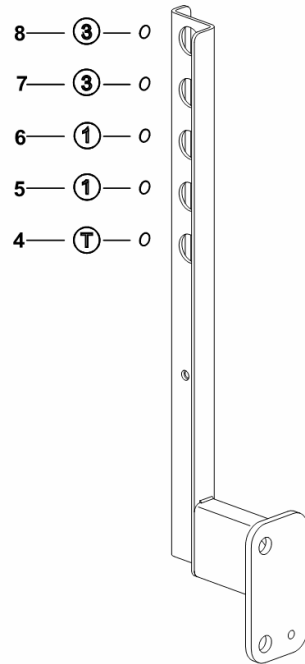
9_P3884_06_0-D-001

IDENTIFICATION PLATES FOR CENTRAL SOCKETS 4+1

Fig.	Code	QTY	Name
------	------	-----	------

Notes:

- FOR TYPES WITHOUT ROLL BAR [AGROPLUS 320 F -> ZKDP3602W0TD01001] 1018 <- - FOR TYPES WITHOUT FRONT CONTROL VALVE [AGROPLUS 320 F -> ZKDP3602W0TD01001] 1018 <-



4	2.9929.748.0	1	plate T - YELLOW COLOUR
5	2.9929.412.0	1	plate 1 - YELLOW COLOUR
6	2.9929.739.0	1	plate 1 - RED COLOUR
7	2.9929.414.0	1	plate 3 - YELLOW COLOUR
8	2.9929.741.0	1	plate 3 - RED COLOUR

9_P2588_09_0-B-001

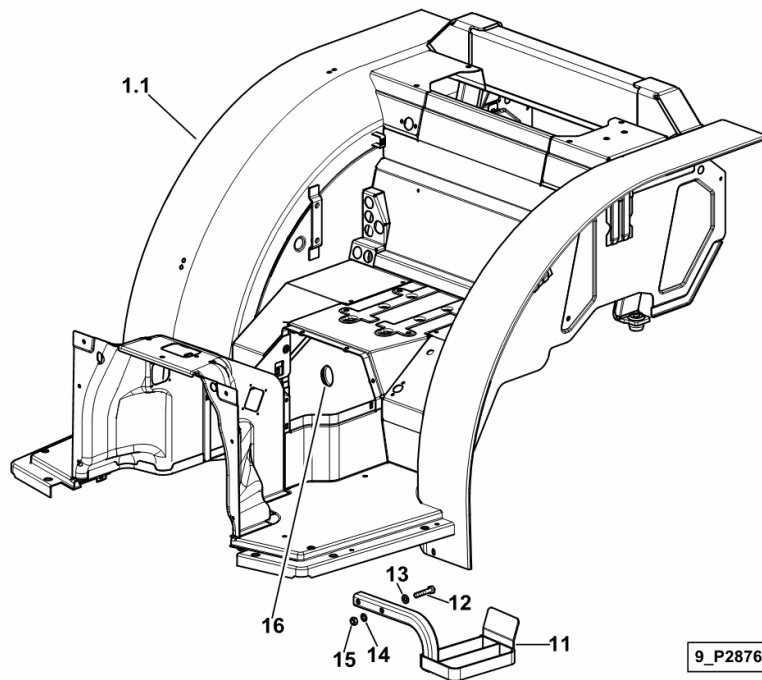
PLATFORM

Fig.	Code	QTY	Name
------	------	-----	------

Notes:

- FOR 380/70R20" - 360/70R24" - 380/70R24" - 380/85R24"(14.9R24") - 420/70R24" TYRES [AGROPLUS 320 F -> ZKDP3602W0TD01001]

1.1	0.016.3183.3	1	platform
11	0.011.4260.2	1	climbing steps sx/lh/li
12	2.0112.319.2	2	screw m 10 p.1.5 x 50
13	2.1310.006.2	2	flat washer 10.5
14	2.1470.006.2	2	lock washer 10
15	2.1011.106.2	2	nut m 10 p.1.5
16	2.6070.054.0	1	plug Ø 40



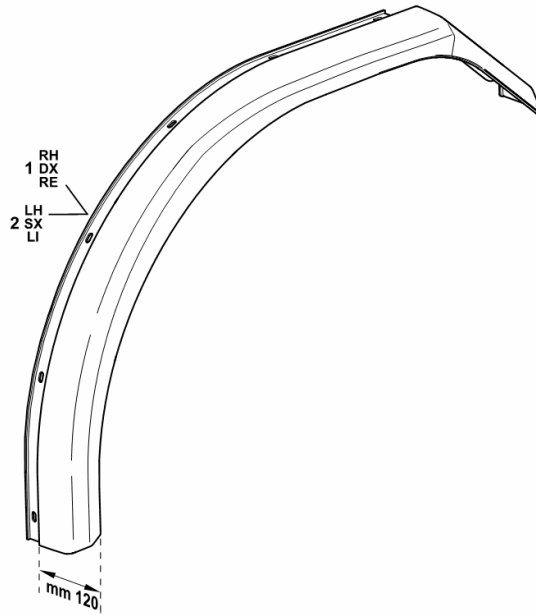
MUDGUARDS EXTENSIONS mm 120

Fig.	Code	QTY	Name
------	------	-----	------

Notes:

[AGROPLUS 320 F -> ZKDP3602W0TD01001]

1	0.014.1444.0	1	extension dx/rh/re - mm 120
2	0.014.1445.0	1	extension sx/lh/li - mm 120



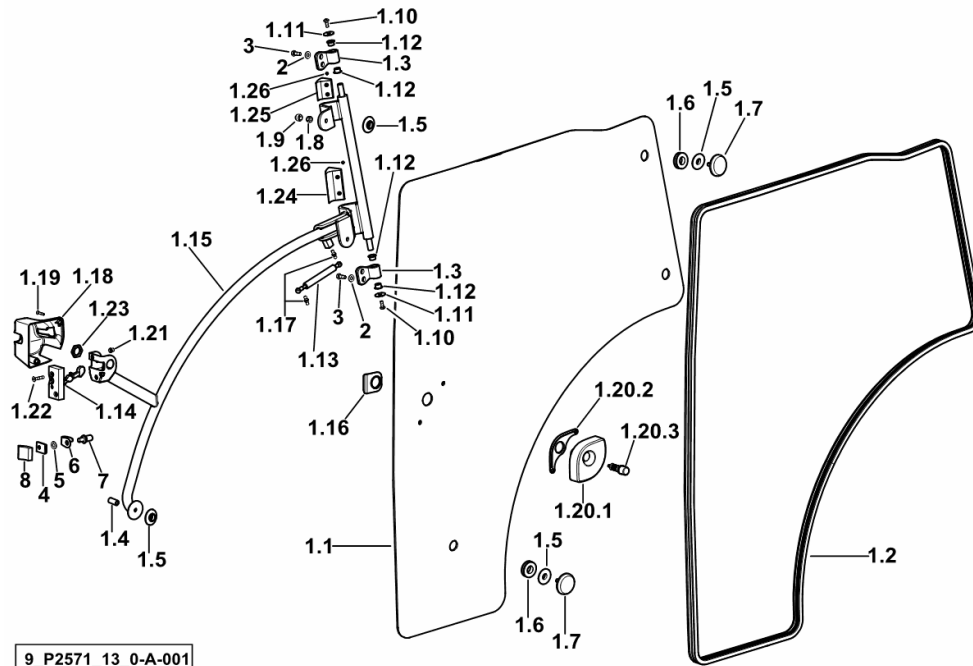
9_56676_25_0-A-001

CAB DOOR SX/LH/LI

Fig.	Code	QTY	Name
------	------	-----	------

Notes:

[AGROPLUS 320 F -> ZKDP3602W0TD01001]



9_P2571_13_0-A-001

1.1	0.016.1955.0	1	glass sx/lh/li
1.2	0.014.0992.0/10	4.9	gasket
1.3	0.015.5340.0	2	support
1.4	0.016.4467.0	1	special nut m 10
1.5	0.016.6279.0	6	washer
1.6	2.6569.073.0	3	rubber plug
1.7	0.012.6601.2	3	plug
1.8	2.1120.006.2	2	nut m 10 p.1.5
1.9	0.166.7868.0	2	cap
1.10	2.0330.507.2	2	screw m 8 p.1.25 x 20
1.11	2.1599.245.0	2	snoulder 8.5 x 32 x 2.0
1.12	2.2841.071.0	4	bushing 16x18x12
1.13	0.016.9733.4	1	shoch.absorber
1.14	0.016.4464.4/10	1	lock sx/lh/li
1.15	0.016.4452.3/10	1	chassis frame
1.16	0.016.4465.0	1	gasket
1.17	04399070	2	ball joint
1.18	0.016.5238.0	1	cover sx/lh/li
1.19	2.0342.208.3	2	screw m 6 p.1x30
1.20.1	0.014.2438.3	1	handle
1.20.2	0.014.2440.0	1	gasket
1.20.3	0.012.8679.0	1	push-button
1.21	0.012.9034.0	2	insert m 8
1.22	2.0342.310.3	2	screw m 8 p.1.25 x 40
1.23	04416537	1	nut m 28 x 1
1.24	0.016.5312.2/10	1	lining
1.25	0.016.5316.2/10	1	lining
1.26	2.0330.302.2	4	screw m 5x8
2	2.1599.560.2	4	washer 10.5x22x3
3	2.0112.309.2	4	screw m 10 p.1.5 x 25
4	0.015.5537.0/10	1	small plate
5	2.1310.007.2	1	flat washer 13.5
6	0.012.8678.0	1	bracket
7	0.012.8716.0	1	pin
8	0.016.5988.0	1	block

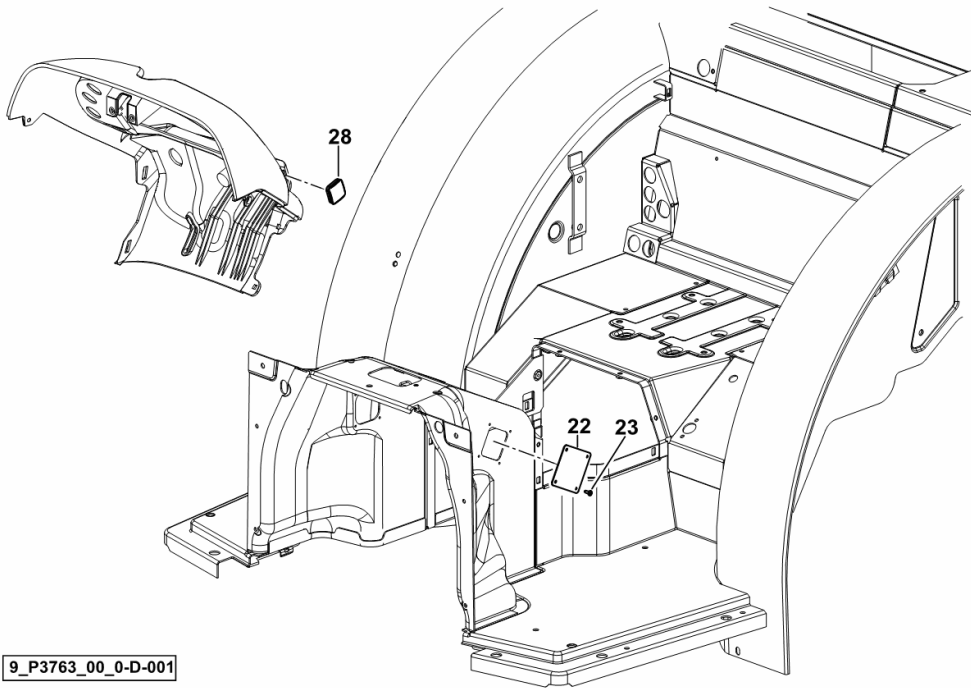
PLUGS

Fig.	Code	QTY	Name
------	------	-----	------

Notes:

[AGROPLUS 320 F -> ZKDP3602W0TD01001]

22	0.014.4870.0/10	1	cover
23	2.0350.454.3	4	screw m 4.2 x 13 -AB-
28	2.3199.256.0	1	plug 28X30



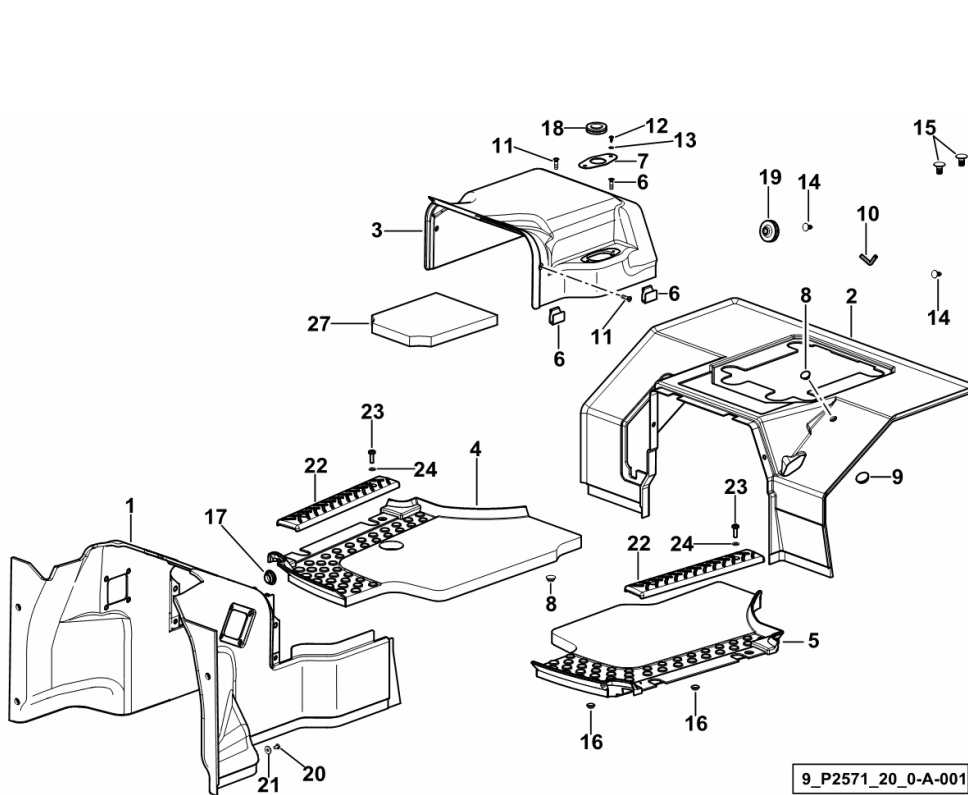
9_P3763_00_0-D-001

INTERIOR TRIM

Fig.	Code	QTY	Name
------	------	-----	------

Notes:

- FOR MODELS WITH CAB [AGROPLUS 320 F -> ZKDP3602W0TD01001]



1	0.014.4994.0/10	1	lining
2	0.015.0125.0	1	lining
3	0.015.3565.0	1	cover
4	0.016.6013.2/10	1	small carpet dx/rh/re
5	0.016.6014.2/10	1	small carpet sx/lh/li
6	0.012.5970.0/10	4	stop
7	0.015.3591.0	1	small plate
8	0.178.7455.0	2	plug Ø 12
9	0.9200.178.0	1	plug Ø 17
10	01393059	1	gasket
11	2.0322.407.3	4	screw m 6 p.1 x 20
12	2.0350.453.6	2	screw m 4.3 x 9.5
13	2.1310.028.3	2	washer 4
14	2.1899.084.0	2	button 8 x 19
15	2.3199.097.0	2	plug 10x20
16	2.3199.163.0	2	plug 10x6
17	2.6070.050.0	1	plug Ø 20
18	2.6560.016.0	1	wire guide Ø 22
19	2.6569.035.0/10	1	wire guide 15x30x10
20	2.0332.304.2	4	screw m 5 p.0.8 x 12
21	2.1312.002.2	4	washer 5
22	0.016.5945.0	2	stop
23	2.0330.407.2	4	screw m 6 p.1 x 20
24	2.1310.002.2	4	washer 6.6, d125
27	0.017.8222.0	1	sound deadening

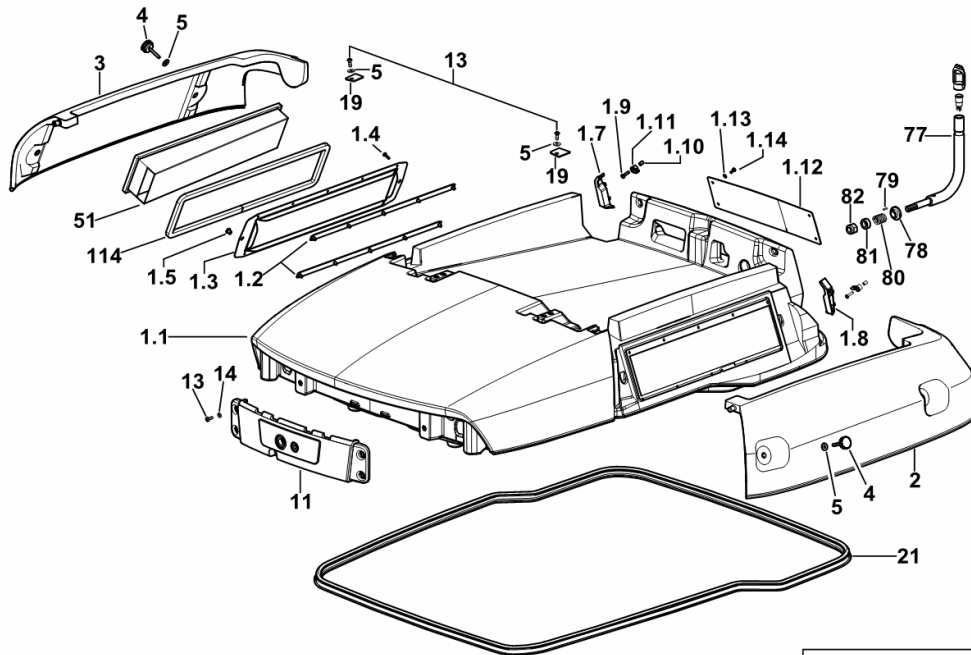
9_P2571_20_0-A-001

ROOF

Fig.	Code	QTY	Name
------	------	-----	------

Notes:

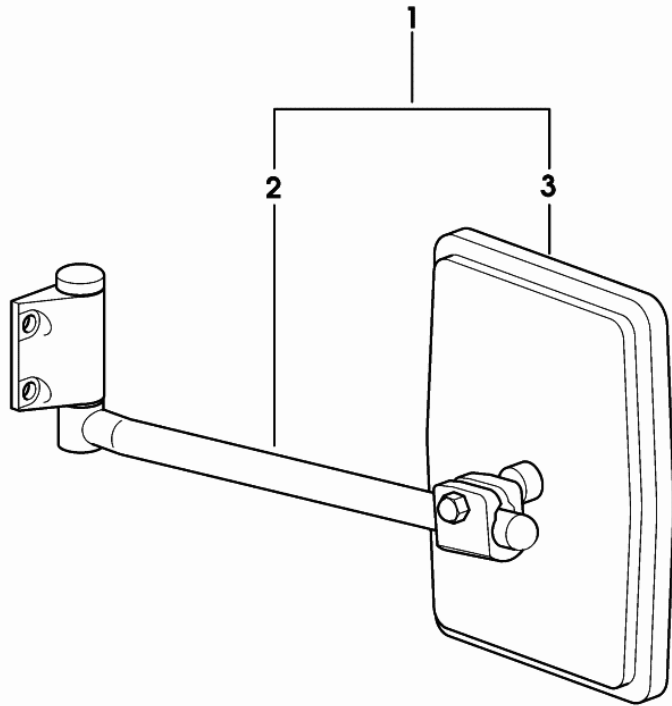
- FOR TRACTORS WITH AIR HEATING [AGROPLUS 320 F -> ZKDP3602W0TD01001] -> 1028



1.1	0.016.6821.2/30	1	roof
1.2	0.017.1832.3	4	small plate
1.3	0.012.1345.0/10	2	chassis frame
1.4	2.0330.206.2	20	screw m4x16 d933
1.5	2.1140.018.2	4	nut m 6 p.1, d934
1.7	0.017.3617.0	1	block dx/rh/re
1.8	0.017.3618.0	1	block sx/lh/li
1.9	2.0330.307.2	2	screw m 5 x 20
1.10	0.016.6515.0	2	bushing
1.11	0.016.5470.0	2	catch
1.12	0.017.6838.0	1	threshing basket
1.13	2.1310.028.2	4	flat washer 4
1.14	2.0330.204.2	4	screw m 4.0 x 12
2	0.015.9884.0	1	shield sx/lh/li
3	0.015.9885.0	1	shield dx/rh/re
4	0.012.2463.2/20	4	knob
5	2.1312.003.2	7	washer 6
11	0.016.6798.2/10	1	front grille
13	2.0330.406.2	15	screw m 6 p.1.0 x 16
14	2.1310.002.2	18	washer 6.6, d125
19	0.012.2490.0	2	small plate
21	0.012.7029.0	3.7	gasket
51	0.017.7130.2/10	2	air filter
77	0.012.1622.2	1	support
78	0.012.1627.0	1	bushing
79	2.1631.205.9	1	pin 3x12
80	2.4019.664.2	1	spring
81	2.1549.512.2	1	spacer 14.2 x 24.8 x 10
82	2.1120.008.2	1	selflock nut m 14 p.1.75
114	0.017.6882.0	2	gasket

REARVIEW MIRROR

Fig.	Code	QTY	Name
1	0.9234.147.4/10	1	rear view mirror sx/lh/li
2	0.010.3564.2	1	rod
3	0.9233.183.3	1	rear view mirror



0.9234.147.4/10

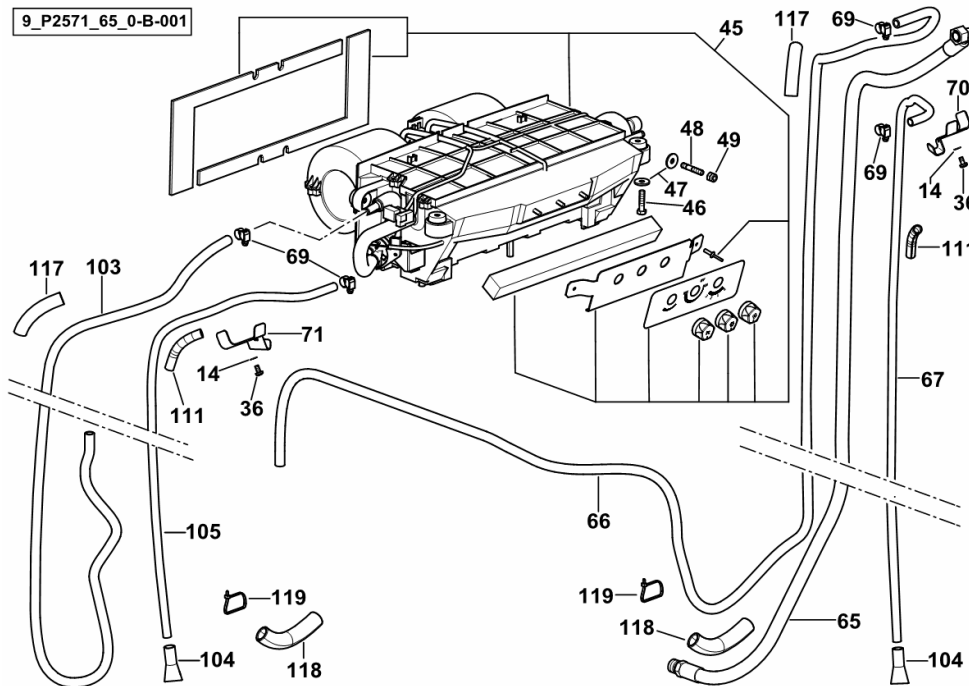
VENTILATION-AIR CONDITIONING-HEATING

Fig.	Code	QTY	Name
------	------	-----	------

Notes:

- FOR TYPES WITH HEATING AND AIR CONDITIONING [AGROPLUS 320 F -> ZKDP3602W0TD01001]

9_P2571_65_0-B-001



14	2.1310.002.2	18	washer 6.6, d125
36	2.0330.404.2	6	screw m 6 x 12
45	0.016.6668.4	1	cab heating ☞ 0.016.6668.4 ☞ 0.016.6668.4
46	2.0112.213.2	2	screw m 8 p.1.25 x 35
47	2.1579.837.2	4	spacer 8 x 25 x 3
48	2.0422.209.2	2	screw m 8 x 35
49	2.1120.005.2	4	nut m 8 p.1.25
65	0.016.6779.3	1	tube dx/rh/re
66	0.011.0466.0	3	tube Ø mm 16x10
67	0.011.3153.0	2	tube 13.5x10x1750
69	2.6851.019.0	4	clamp Ø 13/20
70	0.016.6537.0	1	bracket dx/rh/re
71	0.016.6538.0	1	bracket sx/lh/li
103	0.011.0466.0	2.5	tube Ø mm 16x10
104	0.009.0890.0	2	terminal
105	0.011.3153.0	2	tube 13.5x10x1750
111	0.013.4848.0	2	guard mm 100
117	0.018.0462.0	2	guard
118	0.018.0467.0	4	guard
119	2.6852.203.0	4	clamp 292 x 4.8

AIR CONDITIONER PARTS

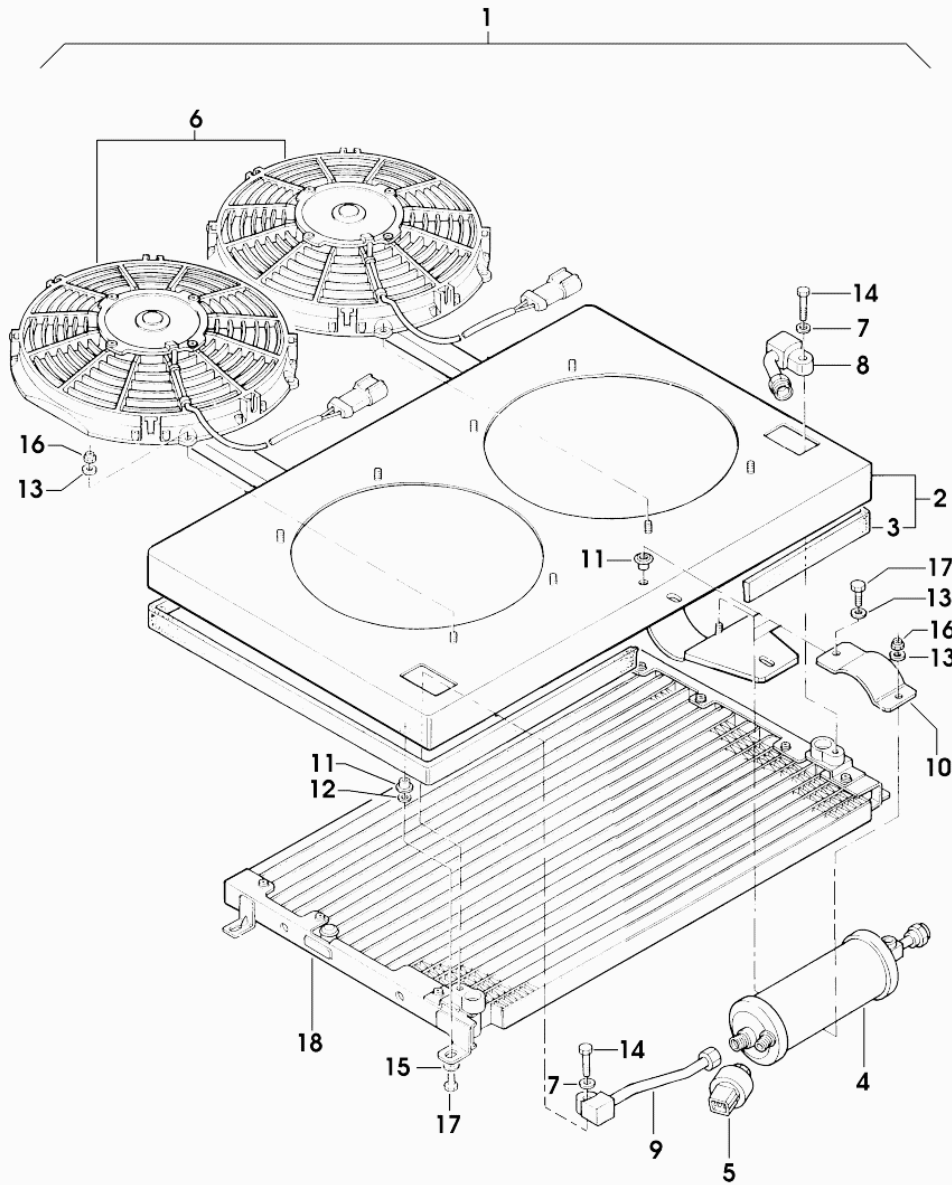


Fig.	Code	QTY	Name
1	0.012.1568.4/30	1	condenser
2	0.010.3311.1	1	duct
3	0.010.2545.1	1	gasket
4	0.010.2261.0	1	filter R 134a
5	0.010.2262.0	1	pressure switch
6	0.010.2545.2	2	fan
7	0.010.2148.2	2	washer 6x12
8	0.010.2546.0	1	tube
9	0.010.2550.1	1	tube
10	0.010.2546.2	1	bracket
11	0.010.2547.0	5	bushing m 5
12	0.010.2547.1	4	washer 5 x 20
13	0.010.2547.2	10	washer 5x11
14	0.010.2549.1	2	screw m 6 p.1 x 40
15	0.010.2548.1	4	washer 5 x 14
16	0.010.2550.2	9	nut m 5
17	0.010.2549.0	5	screw m 5 x 16
18	0.010.2551.0	1	radiator

012_1568_4_30

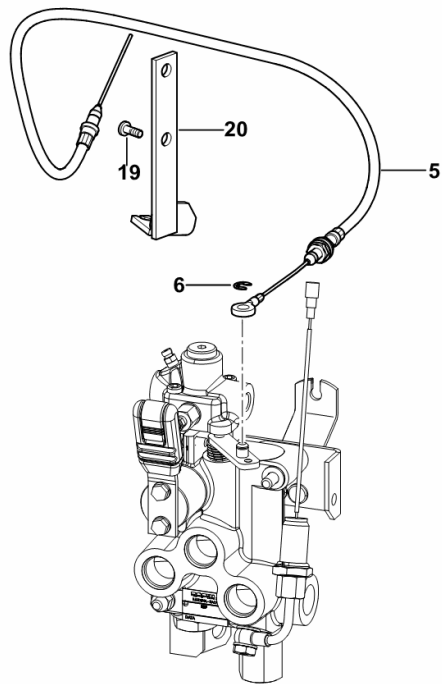
TRAILER HANDBRAKE CONTROL CABLE ITALY

Fig.	Code	QTY	Name
------	------	-----	------

Notes:

[AGROPLUS 320 F -> ZKDP3602W0TD01001]

5	0.011.2962.3	1	rod L = mm 1155
6	2.1430.007.7	1	circlip 6, d128
19	2.0332.305.2	1	screw m 5 p.0.8 x 14
20	0.011.3165.2	2	bracket



9_F1689_10_0-D-001

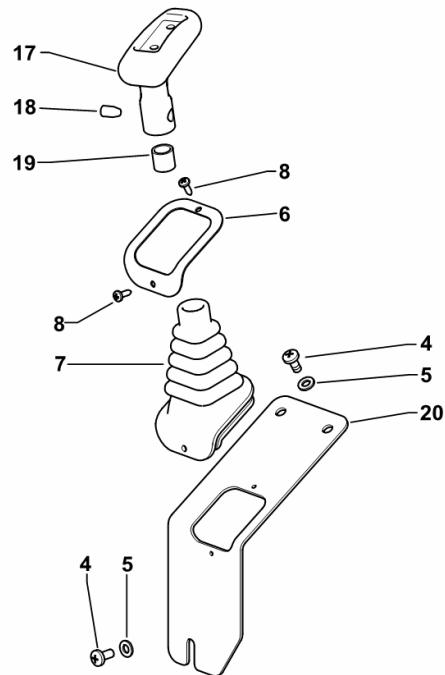
REDUCTION GEAR CONTROL

Fig.	Code	QTY	Name
------	------	-----	------

Notes:

[AGROPLUS 320 F -> ZKDP3602W0TD01001]

4	2.0332.405.3	3	screw m 6 p.1 x 14
5	2.1310.002.3	3	flat washer 6.4 x 12 x 1.6
6	0.010.5268.0	1	lamination
7	0.010.5306.0	1	boot
8	2.0350.454.3	2	screw m 4.2 x 13 -AB-
17	0.010.5232.2/20	1	grip
18	2.0599.084.1/10	1	screw m 8 p.1x14.5
19	2.1579.227.0	1	spacer
20	0.010.5273.0/30	1	guard



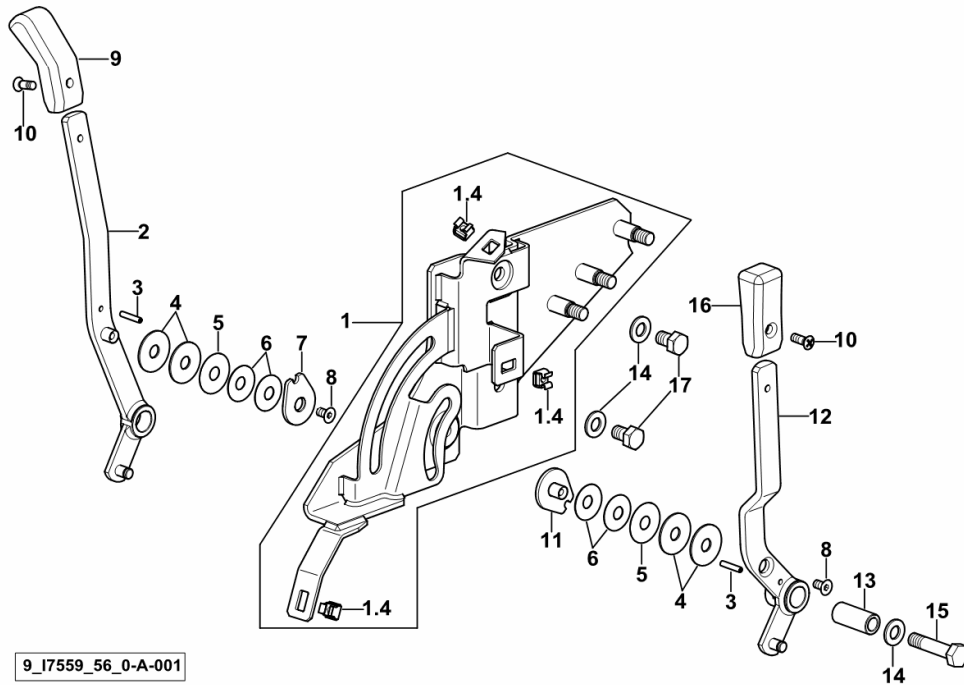
9_F2064_01_0-A-001

LIFT CONTROL LEVERS

Fig.	Code	QTY	Name
------	------	-----	------

Notes:

- FOR TYPES WITH PLATFORM WITH TYRES 380/70R20" - 360/70R24" - 380/70R24" - 380/85R24"(14.9R24)" - 420/70R24" [AGROPLUS 320 F -> ZKDP3602W0TD01001]



1	0.015.3451.3/10	1	support
1.4	2.6999.031.2	3	special nut m 6
2	0.015.3447.3/10	1	lift lever
3	2.1632.409.2	2	roll pin 4 x 20
4	0.010.4163.0	4	ring
5	2.1599.777.2	2	washer 31.5
6	2.4099.108.7	4	spring 10.2 x 28 x 0.8
7	0.010.4212.0	1	small plate
8	2.0399.239.6	2	screw m 6 x 12
9	0.9030.669.0	1	knob - YELLOW COLOUR
10	2.0322.406.6	2	screw m 6 p.1.0 x 16
11	0.010.6943.3	1	friction ring
12	0.015.3448.3/10	1	lever
13	2.1549.633.0	1	spacer
14	2.1310.006.2	3	flat washer 10.5
15	2.0112.317.2	1	screw m 10 p.1.5 x 45
16	0.9050.652.0	1	knob - GREEN COLOUR
17	2.0112.305.2	2	screw m 10 p.1.5 x 16

9_17559_56_0-A-001

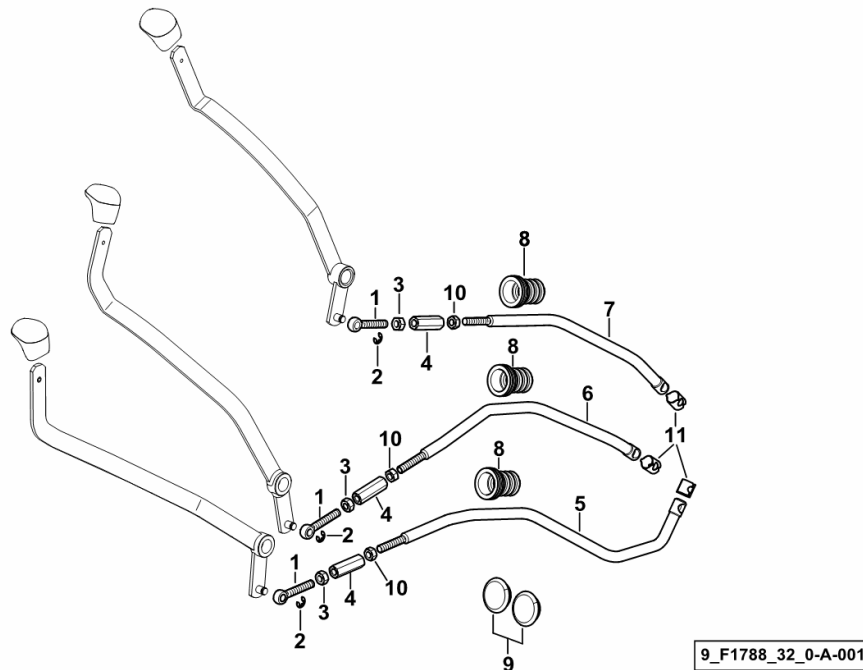
CONTROLS FOR 6-WAY AUXILIARY SERVICES CONTROL VALVE

Fig.	Code	QTY	Name
------	------	-----	------

Notes:

- FOR TYPES WITH ELECTRONIC REAR LIFT AND CAB [AGROPLUS 320 F -> ZKDP3602W0TD01001]

1	0.010.4186.0	3	tip m 8
2	2.1430.007.2	3	circlip 6, d128
3	2.1019.127.2	3	nut m 8 p.1.25 x 6.8, sx/lh/li
4	2.1099.139.2/10	3	nut m 8
5	0.014.7891.0	1	rod
6	0.014.7890.0	1	rod
7	0.014.7889.0	1	rod
8	0.013.3229.0	3	bellows
9	2.6070.052.0	2	plug Ø 30
10	2.1011.105.2	3	nut m 8 p.1.25
11	0.257.6757.0	3	spring



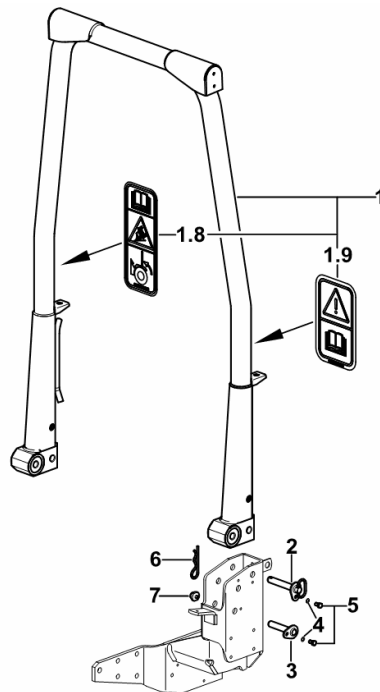
SAFETY ARCH

Fig.	Code	QTY	Name
------	------	-----	------

Notes:

[AGROPLUS 320 F -> ZKDP3602W0TD01001]

1	0.016.2590.3	1	safety frame
1.8	2.9939.276.0	1	plate
1.9	2.9939.272.0	1	plate
2	0.013.3097.2/10	2	pin
3	0.014.9803.2	2	pin
4	2.1475.102.2	4	washer 8.4 x 16
5	2.0112.205.2	4	screw m 8 p.1.25 x 16
6	2.1699.084.2	2	pin Ø 27
7	0.154.7969.2	2	rubber plug



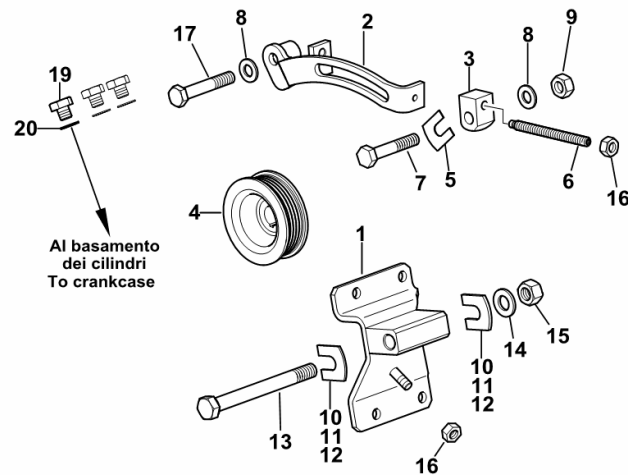
9_P2178_10_0-A-001

ALTERNATOR AND PULLEY SUPPORTS

Fig.	Code	QTY	Name
------	------	-----	------

Notes:

- FOR TRACTORS WITHOUT AIR CONDITIONING [AGROPLUS 320 F -> ZKDP3602W0TD01001] -> 1006



1	0.013.6369.3	1	support
2	0.013.6371.2/10	1	bracket
3	0.007.7715.0	1	small block
4	0.017.1480.0	1	pulley
5	0.167.8462.0	2	small plate mm 2.00
6	2.0399.221.2	1	screw m 8 p.1.25 x 95
7	2.0112.320.2	1	screw m 10 p.1.5 x 55
8	2.1310.006.2	2	flat washer 10.5
9	2.1011.106.2	1	nut m 10 p.1.5
10	0.167.8460.0	1	small plate mm 3.00
11	0.167.8461.0	1	small plate mm 1.00
12	0.167.8462.0	1	small plate mm 2.00
13	2.0122.483.2	1	screw m 12 x 120
14	2.1310.007.2	1	flat washer 13.5
15	2.1011.422.2	1	nut m 12 p.1.25
16	2.1011.105.2	2	nut m 8 p.1.25
17	2.0112.321.2	1	screw m 10 p.1.5 x 60
19	2.0112.302.2	3	screw m 10 p 1.5 x 10
20	2.1560.006.0	3	gasket 10.2 x 16

9_P2584_01_0-A-002

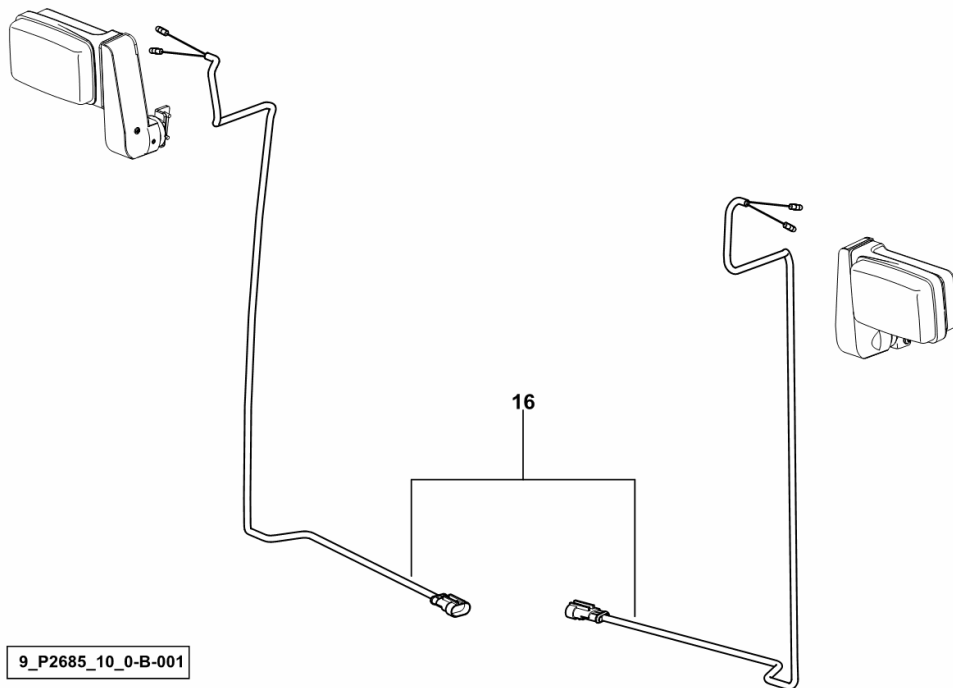
WIRING FOR CAB FRONT LIGHTS

Fig.	Code	QTY	Name
------	------	-----	------

Notes:

- EXPORT U.S.A. [AGROPLUS 320 F -> ZKDP3602W0TD01001]

16	0.016.0772.4	1	electrical system ☞ 0.016.0772.4
----	--------------	---	-------------------------------------



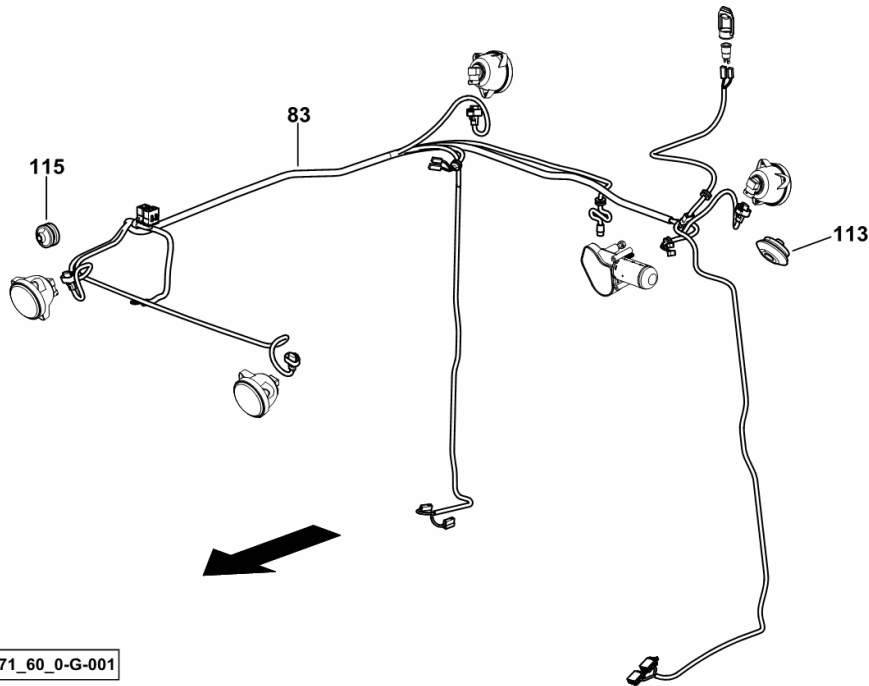
ELECTRICAL SYSTEM - ROOF

Fig.	Code	QTY	Name
------	------	-----	------

Notes:

- FOR TRACTORS WITH AIR HEATING [AGROPLUS 320 F -> ZKDP3602W0TD01001]

83	0.016.0768.4/10	1	electrical system ☞ 0.016.0768.4/10
113	2.6569.079.0	1	grommet
115	2.6569.018.0	1	wire guide 20 x 8 x 15



9_P2571_60_0-G-001

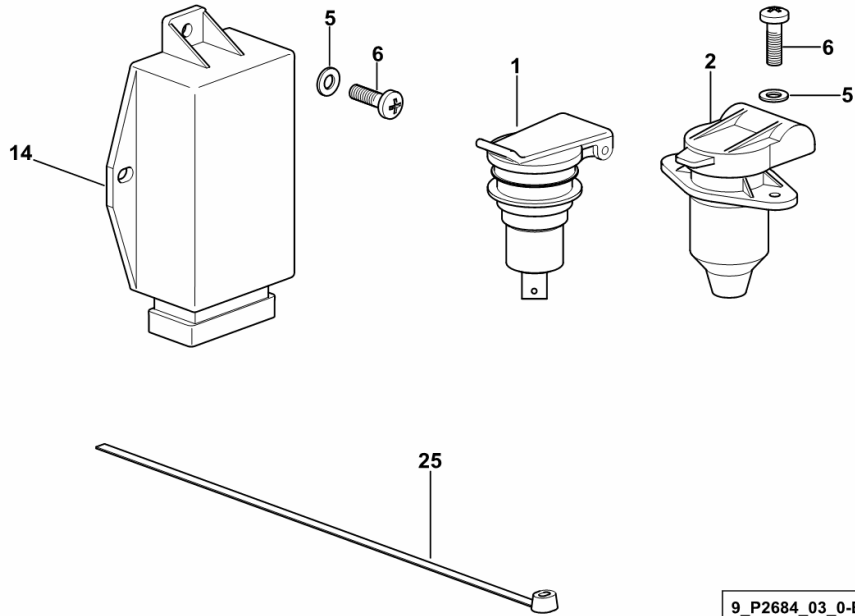
SINGLE POLE SOCKET - DOUBLE POLE SOCKET - LIGHTS FLASHER RELAY

Fig.	Code	QTY	Name
------	------	-----	------

Notes:

- EXPORT U.S.A. [AGROPLUS 320 F -> ZKDP3602W0TD01001]

1	0.008.1550.0	1	socket
2	2.6039.020.0	1	socket DIN 9680
5	2.1310.001.2	5	flat washer 5.3
6	2.0332.306.2	5	screw m 5x0.8x16
14	2.8639.012.0	1	blinker
25	2.6852.203.0	30	clamp 292 x 4.8



9_P2684_03_0-B-001

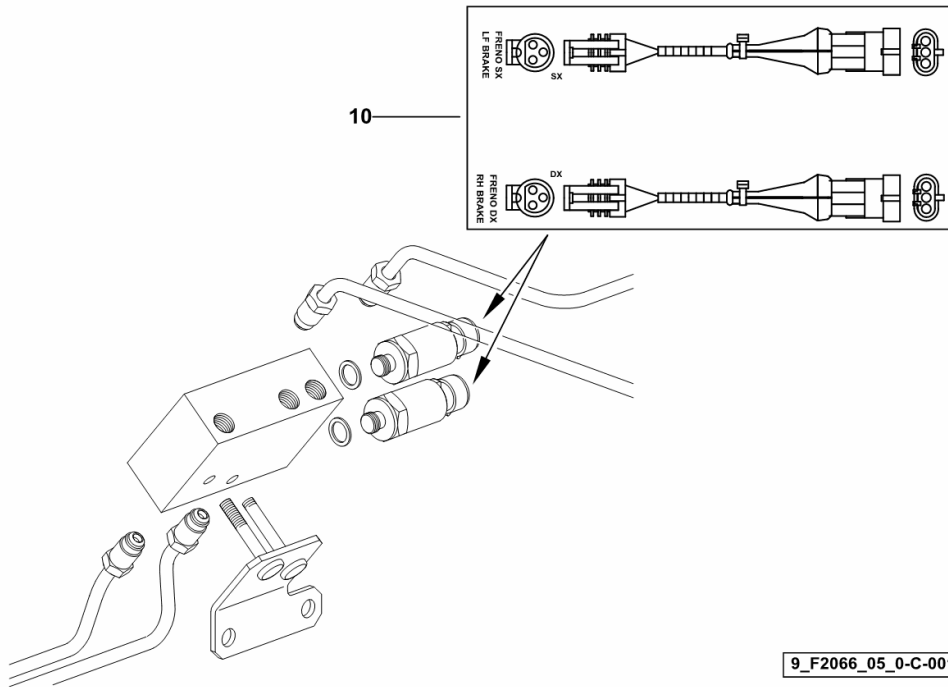
BRAKE SENSOR CABLES

Fig.	Code	QTY	Name
------	------	-----	------

Notes:

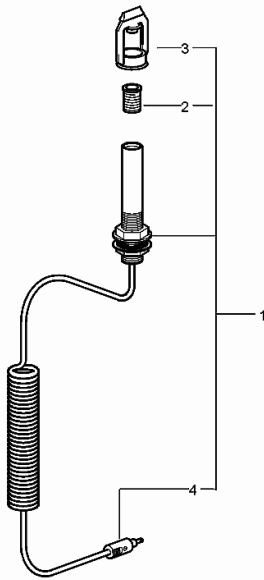
- FOR TYPES WITHOUT TRAILER BRAKING SYSTEM [AGROPLUS 320 F -> ZKDP3602W0TD01001]

10	0.015.2080.4	1	wire ☞ 0.015.2080.4
----	--------------	---	------------------------



FLASHING LIGHT SUPPORT

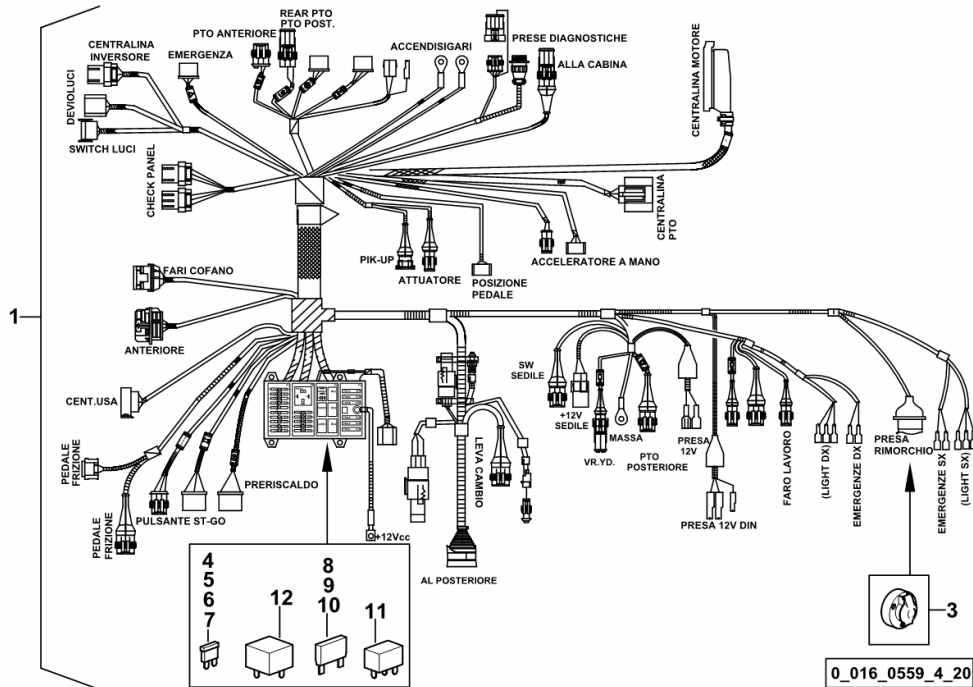
Fig.	Code	QTY	Name
1	0.011.7840.4	1	wire
2	0.010.3304.0	1	coupling
3	0.009.6650.0	1	cap
4	0.010.3304.2	1	piston pin



0.011.7840.4

CENTRAL WIRING LOOM

Fig.	Code	QTY	Name
1	0.016.0559.4/20	1	electrical system
3	0.900.0017.0	1	socket
4	0.900.1194.2	4	fuse 5 A minival
5	0.900.1194.3	25	fuse 10 A minival
6	0.900.1194.4	5	fuse 15 A minival
7	0.900.1194.5	1	fuse 7.5 A minival
8	0.010.3901.0	2	fuse 20 A maxival
9	0.010.3901.1	3	fuse 30 A maxival
10	0.010.2089.1	1	fuse 40 A maxival
11	0.900.0525.5	3	relay 12 V 30A
12	0.900.1194.6	1	relay 12 V 70A



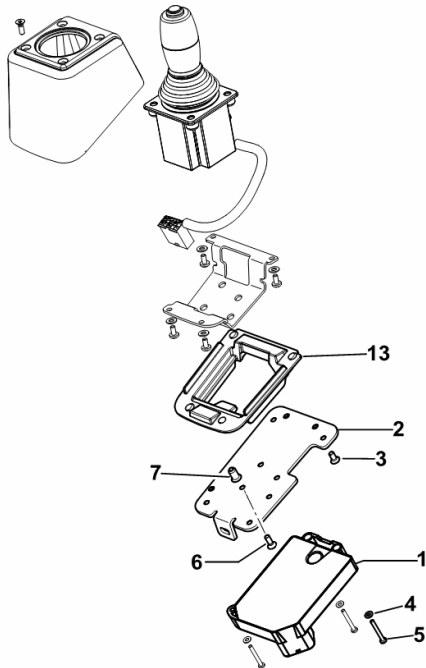
CONTROL UNIT FOR 4-WAY FRONT AUXILIARY CONTROL VALVE

Fig.	Code	QTY	Name
------	------	-----	------

Notes:

- ELECTROHYDRAULIC CONTROL [AGROPLUS 320 F -> ZKDP3602W0TD01001]

1	2.8519.084.0/10	1	central device
2	0.017.4138.2	1	bracket
3	2.0352.403.3	4	screw
4	2.1310.029.2	3	washer
5	2.0332.108.2	3	screw m 3x25
6	2.0342.002.3	8	screw m4x12
7	2.1141.001.2	4	insert
13	0.017.4926.0	1	gasket



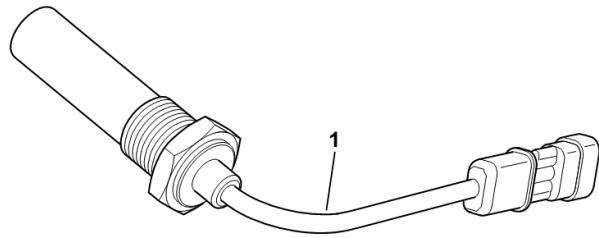
9_P2584_20_0-B-001

SPEED SENSOR

Fig.	Code	QTY	Name
------	------	-----	------

Notes:
[AGROPLUS 320 F -> ZKDP3602W0TD01001]

1	2.7099.972.0/10	1	speed sensor
---	-----------------	---	--------------



9_62084_63_0-A-001

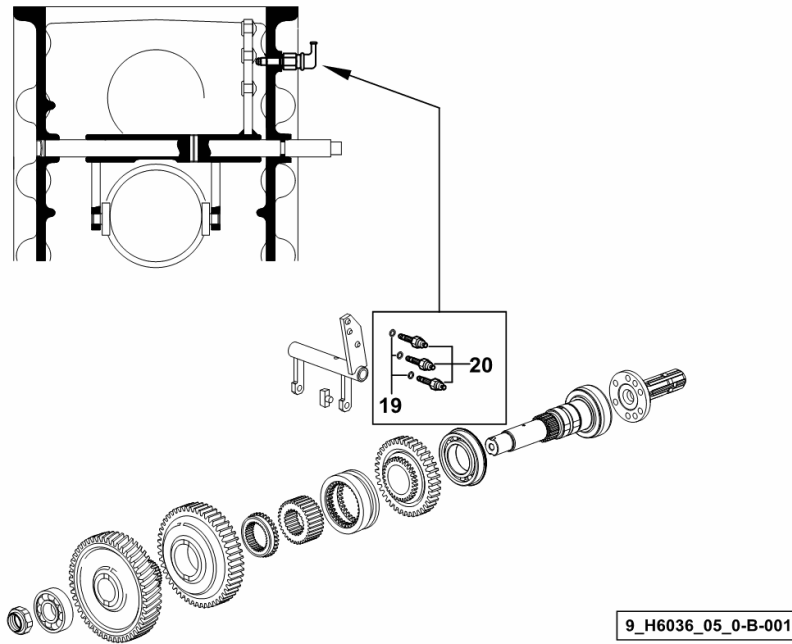
**SWITCH FOR P.T.O. WITH INSERTED END SHAFTS - 2 -SPEED + GROUNDSP.
AND 3- SPEED**

Fig.	Code	QTY	Name
------	------	-----	------

Notes:

[AGROPLUS 320 F -> ZKDP3602W0TD01001]

19	2.1560.003.0	3	gasket 8.2 x 12
20	2.7659.131.0	3	switch



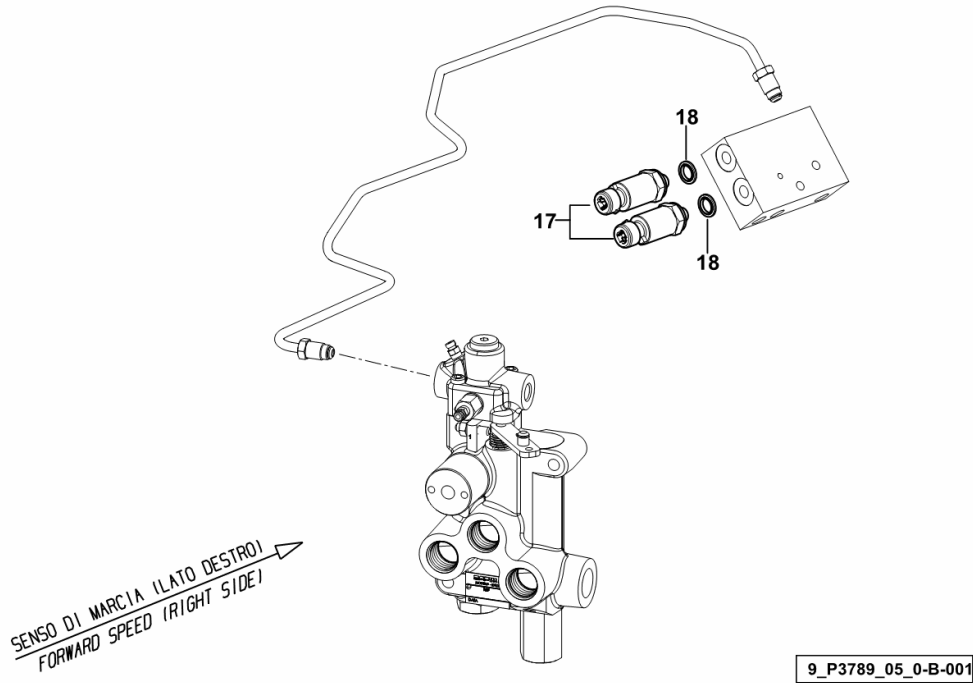
BRAKE SENSORS

Fig.	Code	QTY	Name
------	------	-----	------

Notes:

- FOR TRACTORS WITH HYDRAULIK BREAKING FOR TRAILER [AGROPLUS 320 F -> ZKDP3602W0TD01001]

17	0.012.1507.4	2	sensor
18	2.1561.005.0	2	washer typ A



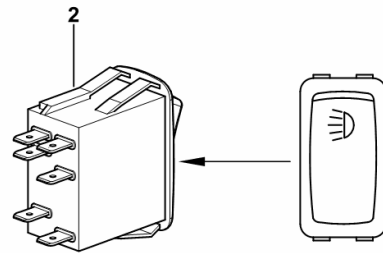
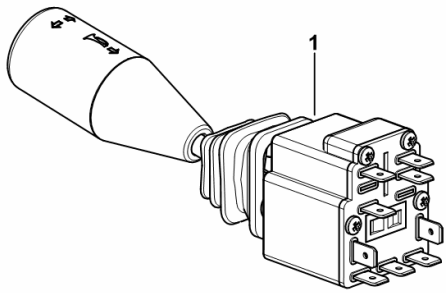
STEERING COLUMN SWITCH AND LIGHTS SWITCH

Fig.	Code	QTY	Name
------	------	-----	------

Notes:

[AGROPLUS 320 F -> ZKDP3602W0TD01001]

1	0.016.3805.4	1	switch
2	0.012.5940.4	1	switch



9_P3784_01_0-A-001

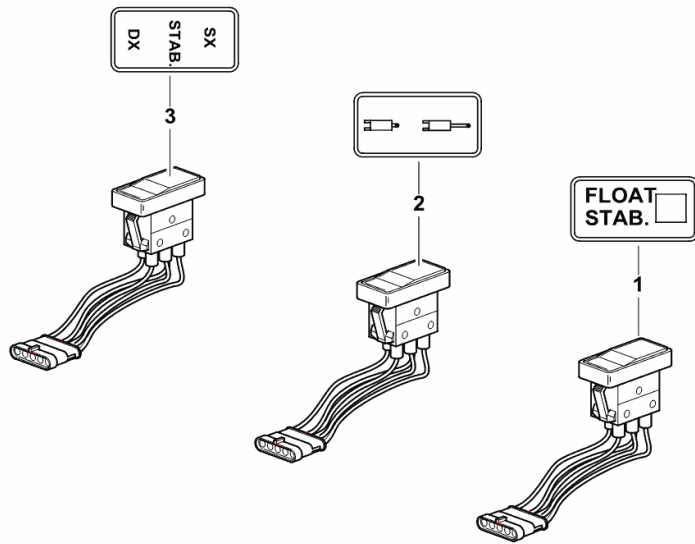
3-POINT LINKAGE CONTROLS WITH ELECTROHYDRAULIC CONTROL

Fig.	Code	QTY	Name
------	------	-----	------

Notes:

[AGROPLUS 320 F -> ZKDP3602W0TD01001]

1	2.7659.220.0	1	switch
2	2.7659.219.0	1	push-button
3	2.7659.218.0	1	push-button



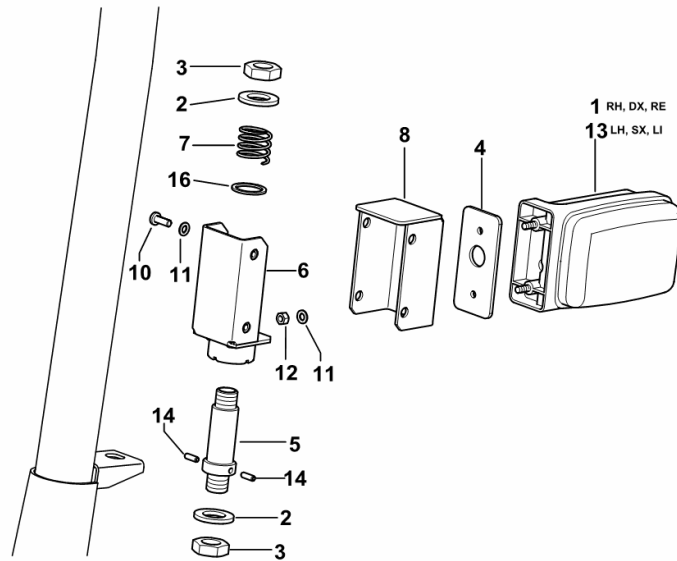
9_70584_15_0-B-001

ROTATING BEACONS ON ROPS

Fig.	Code	QTY	Name
------	------	-----	------

Notes:

- FOR TYPES WITH PLATFORM - EXPORT U.S.A. [AGROPLUS 320 F -> ZKDP3602W0TD01001]



1	2.8059.490.0	1	side lamp dx/rh/re ☞ 2.8059.490.0
2	2.1310.010.2	4	flat washer 16
3	2.1011.509.2	4	nut m 16 p.1.5
4	0.467.8550.0	2	gasket
5	0.013.8803.0/10	2	pin
6	0.014.3063.3/10	2	support
7	2.4019.732.2/10	2	spring
8	0.013.8740.0/10	2	lamp support
10	2.0332.305.2	8	screw m 5 p.0.8 x 14
11	2.1310.001.2	12	flat washer 5.3
12	2.1011.102.2	4	nut m 5 p.0.7
13	2.8059.460.0	1	side lamp sx/lh/li ☞ 2.8059.460.0
14	2.1630.406.0	4	roll pin 4 x 12
16	2.1560.016.0	2	gasket 20.2 x 26

9_E6685_10_0-A-002

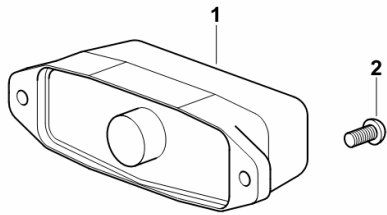
LICENCE PLATE LIGHT

Fig.	Code	QTY	Name
------	------	-----	------

Notes:

[AGROPLUS 320 F -> ZKDP3602W0TD01001]

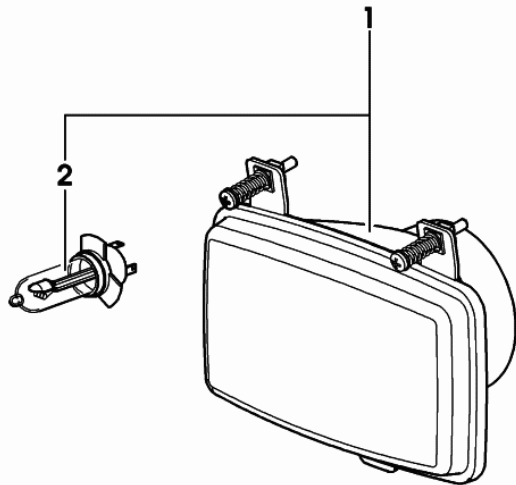
1	2.8029.240.0/10	1	side lamp ☞ 2.8029.240.0/10
2	2.0332.304.3	2	screw m 5 x 12



9_56685_31_0-A-001

FRONT LIGHTS

Fig.	Code	QTY	Name
1	2.8039.250.0	1	headlight
2	0.010.2251.0	1	lamp 60/55W - HALOGEN -



2_8039_250_0

CLICK HERE TO **DOWNLOAD** THE COMPLETE MANUAL

- Thank you very much for reading the preview of the manual.
- You can download the complete manual from: www.heydownloads.com by clicking the link below



- Please note: If there is no response to CLICKING the link, please download this PDF first and then click on it.

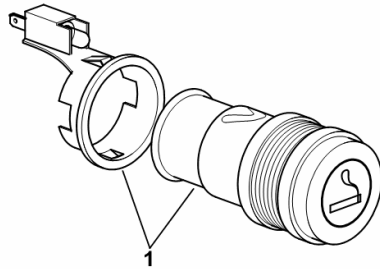
CLICK HERE TO **DOWNLOAD** THE COMPLETE MANUAL

CIGAR LIGHTER

Fig.	Code	QTY	Name
------	------	-----	------

Notes:
[AGROPLUS 320 F -> ZKDP3602W0TD01001]

1	2.7099.770.0	1	cigar lighter
---	--------------	---	---------------



9_64884_35_0-A-001

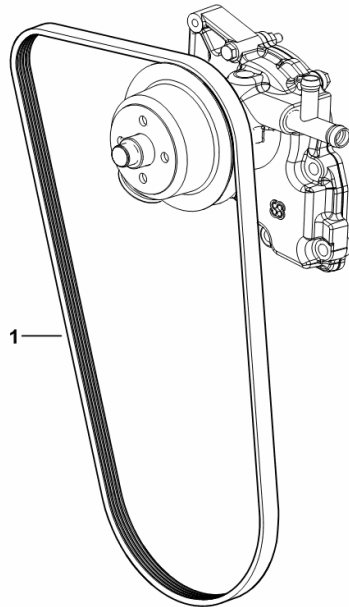
COOLANT PUMP AND ALTERNATOR DRIVEBELT

Fig.	Code	QTY	Name
------	------	-----	------

Notes:

- FOR TYPES WITHOUT CONDITIONING [AGROPLUS 320 F -> ZKDP3602W0TD01001] -> 1027

1	2.4119.188.0	1	belt PV-K5 17.4x1275 mm
---	--------------	---	-------------------------



9_N1817_09_0-A-001

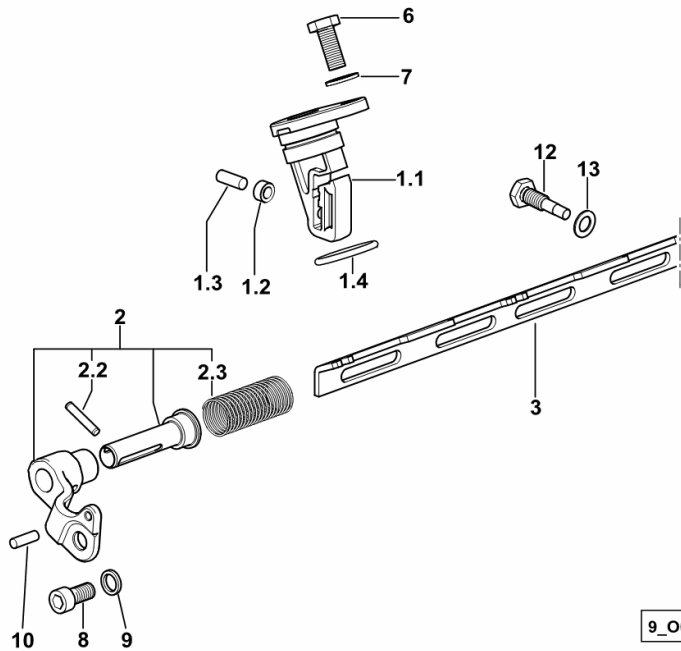
INJECTION PUMP DRIVE

Fig.	Code	QTY	Name
------	------	-----	------

Notes:

[AGROPLUS 320 F -> ZKDP3602W0TD01001]

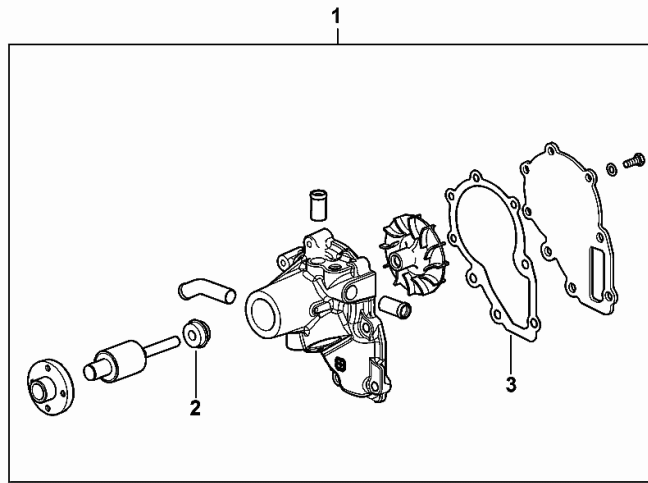
1.1	0.012.5618.0/20	1	support
1.2	0.065.1660.0	1	roller
1.3	2.1651.507.0	1	pin 6 x 16
1.4	2.1530.072.0	1	'o' ring 26.70x1.78
2	0.013.4057.4	1	bracket
2.2	2.1631.310.0	1	pin 4x22
2.3	2.4019.761.1	1	spring
3	0.014.9284.3	1	rod
6	2.0112.207.2	2	screw m 8 p 1.25 x 20
7	2.1310.004.2	2	flat washer 8.5
8	2.0312.204.2	1	screw m 8 p.1.25 x 16
9	2.1475.202.2	1	spring washer 8.4 x 16
10	2.1631.305.0	1	roll pin 4 x 12
12	0.014.9232.0	1	screw
13	2.1560.004.0	1	gasket 8.2 x 14



9_O0816_00_0-B-001

COOLING WATER PUMP

Fig.	Code	QTY	Name
1	0.016.0460.4	1	water pump
2	0.900.0941.9	1	'o' ring
3	0.900.0942.0	1	gasket



016_0460_4

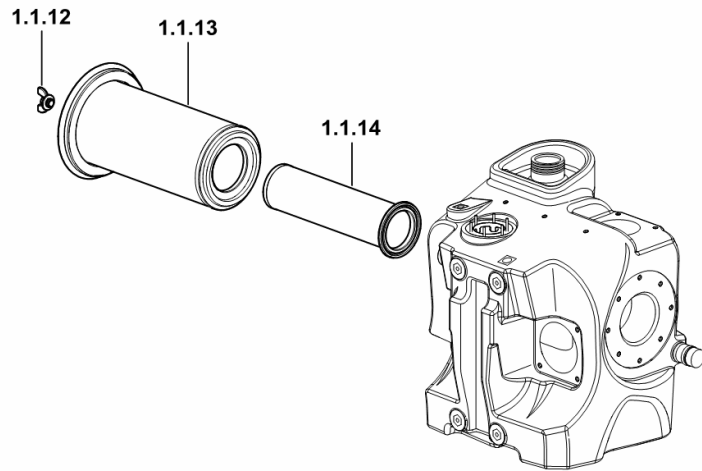
AIR CLEANER

Fig.	Code	QTY	Name
------	------	-----	------

Notes:

- FOR TYPES WITH LIFT AND P.T.O. FRONT [AGROPLUS 320 F -> ZKDP3602W0TD01001]

1.1.12	0.013.9978.0	1	nut
1.1.13	0.013.9979.0	1	air filter element
1.1.14	0.013.9980.0	1	air filter element



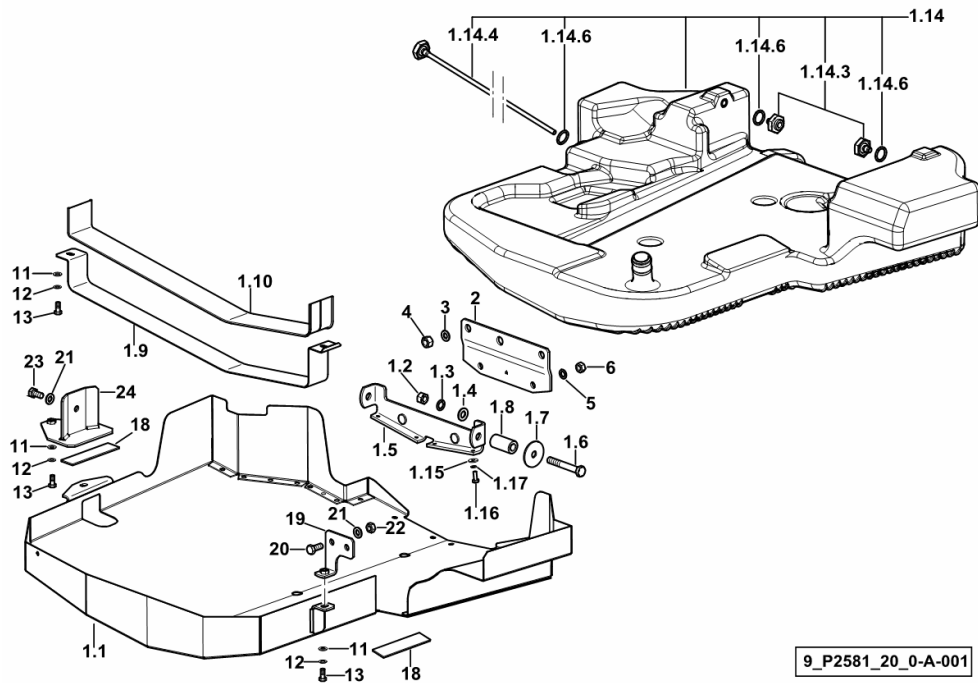
9_P2581_12_0-B-001

AUXILIARY TANK

Fig.	Code	QTY	Name
------	------	-----	------

Notes:

[AGROPLUS 320 F -> ZKDP3602W0TD01001]



9_P2581_20_0-A-001

1.1	0.015.4174.2/10	1	shield
1.2	2.1011.107.2	2	nut m 12 p.1.75
1.3	2.1470.007.2	2	lock washer 12
1.4	2.1310.007.2	2	flat washer 13.5
1.5	0.010.9866.3	1	bracket
1.6	2.0112.425.2	2	screw m 12 p.1,75 x 80
1.7	2.1599.354.2	2	washer 12.5x50x3
1.8	2.1549.256.2	2	spacer
1.9	0.015.4216.0	1	hose clip
1.10	0.012.3681.0	1	gasket
1.14	0.015.4070.3/10	1	fueltank
1.14.3	0.012.3677.0/10	2	pipe fitting m 12
1.14.4	0.015.4142.3	1	tube
1.14.6	2.1530.056.0	3	'o' ring 21.82 x 3.53
1.15	2.1312.003.2	4	washer 6
1.16	2.0112.005.2	4	screw m 6 p.1 x 16
1.17	2.1470.002.2	4	washer 6, d128
2	0.012.6053.0	1	bracket
3	2.1470.007.2	2	lock washer 12
4	2.1011.422.2	2	nut m 12 p.1.25
5	2.1470.006.2	2	lock washer 10
6	2.1011.421.2	1	nut m 10 p.1.25
11	2.1310.004.2	4	flat washer 8.5
12	2.1470.004.2	4	washer 8
13	2.0112.209.2	4	screw m 8 p 1.25 x 25
18	0.010.9933.0	2	shim
19	0.015.4217.3	1	bracket sx/lh/li
20	2.0112.309.2	2	screw m 10 p.1.5 x 25
21	2.1310.006.2	3	flat washer 10.5
22	2.1011.106.2	2	nut m 10 p.1.5
23	2.0122.357.2	1	screw m 10 p.1.25 x 20
24	0.015.4298.3	1	bracket dx/rh/re

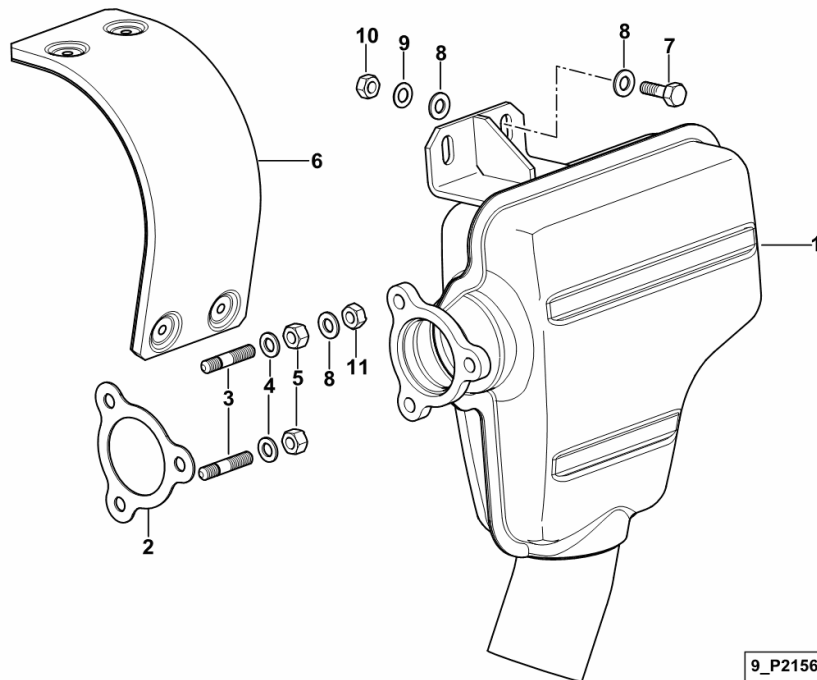
EXHAUST SILENCER

Fig.	Code	QTY	Name
------	------	-----	------

Notes:

[AGROPLUS 320 F -> ZKDP3602W0TD01001]

1	0.016.0248.2/10	1	exhaust silencer
2	0.016.2555.0	1	gasket
3	2.0432.007.2	3	stud bolt m 8 p.1.25 / p.1 x 30
4	2.1474.009.2	3	spring washer 8
5	2.1019.033.0	3	special nut m 8 p.1 x 8
6	0.016.2557.3/10	1	sump
7	2.0112.209.2	2	screw m 8 p 1.25 x 25
8	2.1310.004.2	6	flat washer 8.5
9	2.1470.004.2	2	washer 8
10	2.1011.105.2	2	nut m 8 p.1.25
11	2.1011.405.2	2	nut m 8 p.1



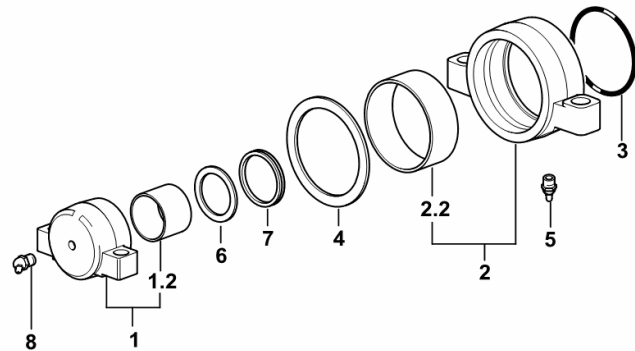
9_P2156_00_0-A-001

Section: F0 - FRONT AXLE
4WD - FRONT SUPPORT

Fig.	Code	QTY	Name
------	------	-----	------

Notes:
 [AGROPLUS 320 F -> ZKDP3602W0TD01001]

1	0.009.9278.3/20	1	support
1.2	2.1559.458.0	1	bushing 50x55x40
2	0.009.9279.3/10	1	support
2.2	2.1559.455.0	1	bushing 100x106x40
3	2.1530.205.0	1	'o' ring 101.2x5.34
4	2.1599.004.0	1	snoulder 101x125x4
5	2.3820.105.2	1	lubricator m 10 p.1 x 7
6	2.1599.870.0	1	snoulder 69x55x4
7	2.1535.026.0	1	ring 58x68x9
8	2.3821.303.2	1	lubricator m 10 p.1



9_16152_02_0-A-001

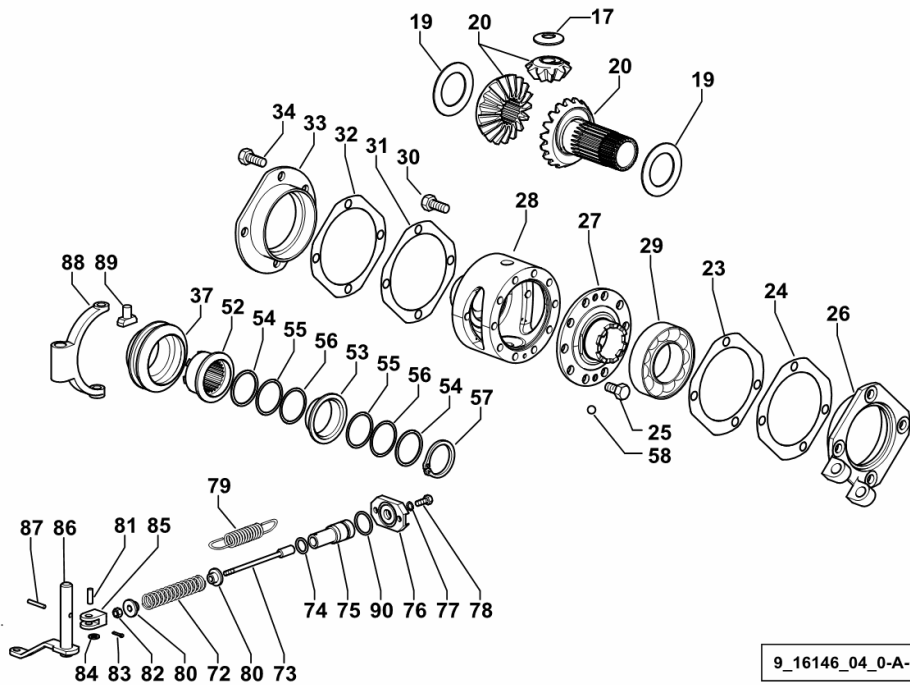
4WD - ELECTROHYDRAULIC DIFFERENTIAL LOCK

Fig.	Code	QTY	Name
------	------	-----	------

Notes:

[AGROPLUS 320 F -> ZKDP3602W0TD01001]

17	0.255.4629.0	2	snoulder 15.5x36x2
19	2.1599.431.0	2	snoulder 42x66x2
20	0.275.4622.3/30	1	crown wheel (-> 1001)
23	0.445.4656.0/10	2	shim 92x127x0.2
24	0.445.4655.0/10	2	shim 92x127x0.5
25	2.0139.002.1	10	screw m 10 p.1.25 x 20
26	0.467.4650.0/30	1	flange
27	0.255.4615.0/40	1	flange
28	0.275.4610.0/10	1	differential carrier
29	2.2520.011.0	1	roller bearing 50x90x21.75
30	2.0139.025.1	10	screw m 10 p.1.25 x 25
31	0.146.4653.0/10	4	shim 96x127x0.2
32	0.146.4654.0/10	4	shim 96x127x0.5
33	0.255.4652.0/20	1	flange
34	2.0132.207.2	8	screw m 10 p.1 x 25
37	0.255.4617.0	1	sleeve
52	0.255.4618.0/10	1	sleeve
53	0.255.4619.0/10	1	spacer (-> 1001)
54	2.1599.317.0/10	2	thrust plate 38.5 x 44.50 x 2 (-> 1001)
55	2.1580.130.0	4	shim 38.5 x 44.50 x 0.5
56	2.1580.131.0	4	shim 38.5 x 44.50 x 0.2
57	2.1412.014.7	1	circlip 38 (-> 1001)
58	2.2810.006.0	17	ball 3/8" WD
72	2.4019.397.2	1	spring
73	0.467.4659.0/10	1	ferrule
74	2.1530.043.0	1	'o' ring 17.13x2.62
75	0.007.6282.0/30	1	piston
76	0.011.6632.0	1	small plate
77	2.1470.002.2	2	washer 6, d128
78	2.0112.005.2	2	screw m 6 p.1 x 16
79	2.4049.164.2	1	spring
80	0.272.4651.0	2	spacer
81	2.1671.103.2	1	pin 6x18
82	2.1011.103.2	1	nut m 6 p.1
83	2.1690.205.2	1	split pin 2x12
84	2.1310.002.2	1	washer 6.6, d125
85	2.3510.003.2	1	fork m 6
86	0.007.2705.2/10	1	lever
87	2.1630.511.0	1	roll pin 5x24
88	0.467.4657.0/10	1	fork
89	0.467.4660.0	2	shoe



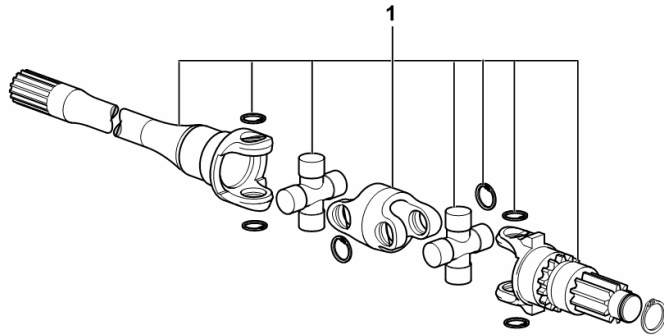
9_16146_04_0-A-001

Section: F0 - FRONT AXLE
4WD - AXLESHAFTS

Fig.	Code	QTY	Name
------	------	-----	------

Notes:
 [AGROPLUS 320 F -> ZKDP3602W0TD01001]

1	0.013.1400.4	2	joint  0.013.1400.4
---	--------------	---	---



9_B6146_00_0-A-001

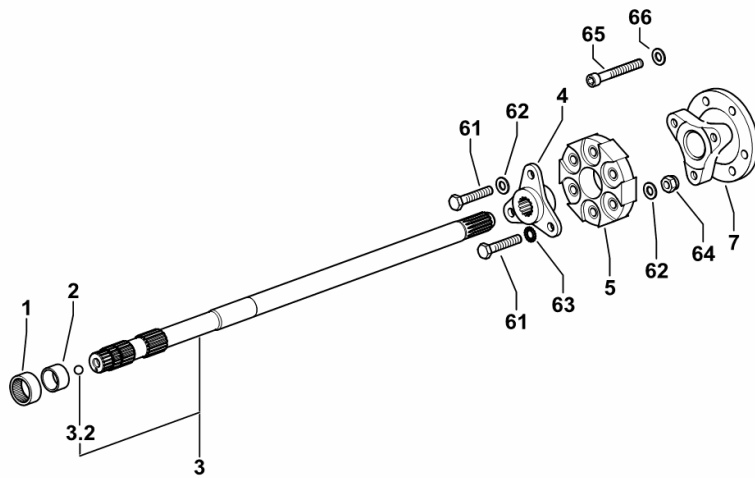
Section: M0 - FRONT PTO
PTO INPUT SHAFT

Fig.	Code	QTY	Name
------	------	-----	------

Notes:

[AGROPLUS 320 F -> ZKDP3602W0TD01001]

1	2.2725.040.0	1	roller cage 30 x 37 x 16
2	2.1559.374.0	1	bushing 25 x 30 x 17
3	0.016.3797.3	1	p.t.o.shaft
3.2	2.2810.007.0	1	ball 13/32"
4	0.010.1376.0/10	1	flange
5	0.008.8341.0/10	1	flex coupling
7	0.008.8342.0	1	flange
61	2.0112.320.2	6	screw m 10 p.1.5 x 55
62	2.1310.006.2	3	flat washer 10.5
63	2.1470.006.2	3	lock washer 10
64	2.1120.006.2	3	nut m 10 p.1.5
65	2.0312.321.2	6	screw m 10 p.1.5 x 75
66	2.1480.015.1	6	washer 10



9_P2559_85_0-A-001

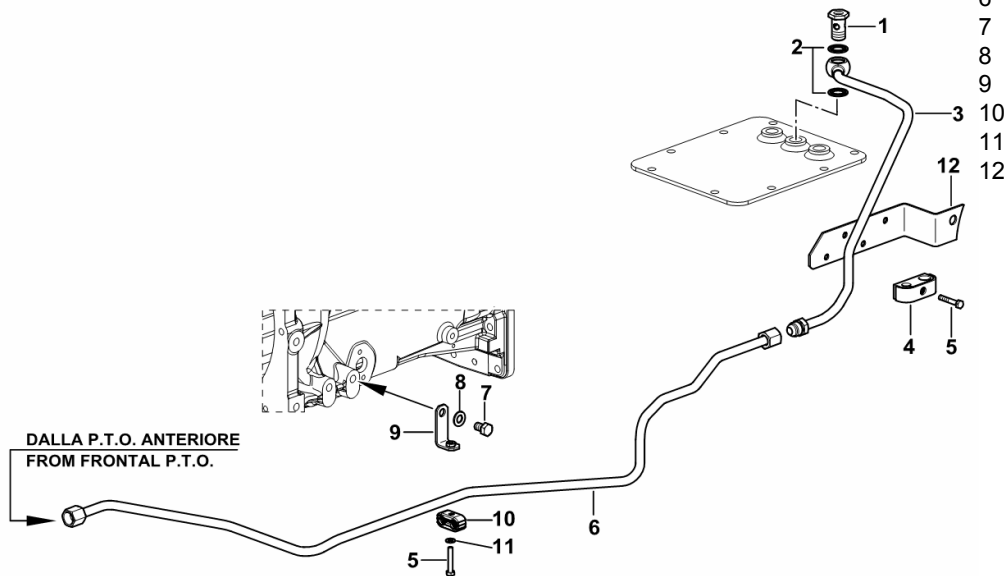
FRONT PTO HYDRAULIC SYSTEM

Fig.	Code	QTY	Name
------	------	-----	------

Notes:

[AGROPLUS 320 F -> ZKDP3602W0TD01001]

1	2.3335.008.2	1	pipe union m 18 p.1.5 x 32
2	2.1561.110.0	2	'o' ring Ø 18 -B-
3	0.017.8435.3	1	tube
4	2.3320.313.0	1	clamp
5	2.0112.013.2	2	screw m 6 p.1 x 35
6	0.017.8442.3	1	tube
7	2.0112.305.2	1	screw m 10 p.1.5 x 16
8	2.1475.003.2	1	washer 10
9	0.017.8441.3	1	bracket
10	2.3321.010.0	1	collar Ø 12/12
11	2.1310.002.2	1	washer 6.6, d125
12	0.014.7622.3/10	1	bracket



9_P2659_87_0-A-001

AGROPLUS 320 F -> 1001

Section: H0 - HYDRAULIC AND PNEUMATIC SYSTEM|

Ref.: H0.01.4 (2)

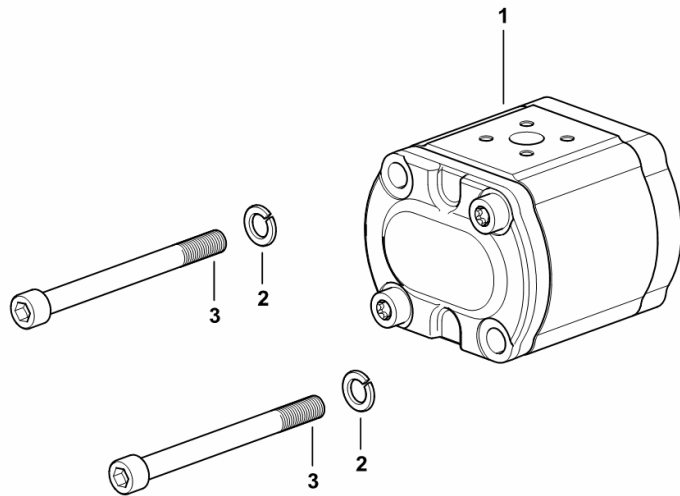
HYDRAULIC PUMP 16 cc - sx/lh/li

Fig.	Code	QTY	Name
------	------	-----	------

Notes:

- FOR TYPES WITHOUT H-M-L (POWERSHIFT) [AGROPLUS 320 F -> ZKDP3602W0TD01001] -> 1007

1	2.4539.310.0/10	1	hydraulic pump 16cc sx/lh/li - BOSCH ☞ 2.4539.310.0/10
2	2.1474.010.2	2	washer 10
3	2.0312.327.2	2	screw m 10 p.1.5x110



9_F0282_02_0-A-002

AGROPLUS 320 F -> 1001

Section: H0 - HYDRAULIC AND PNEUMATIC SYSTEM|

Ref.: H0.01.14 (1)

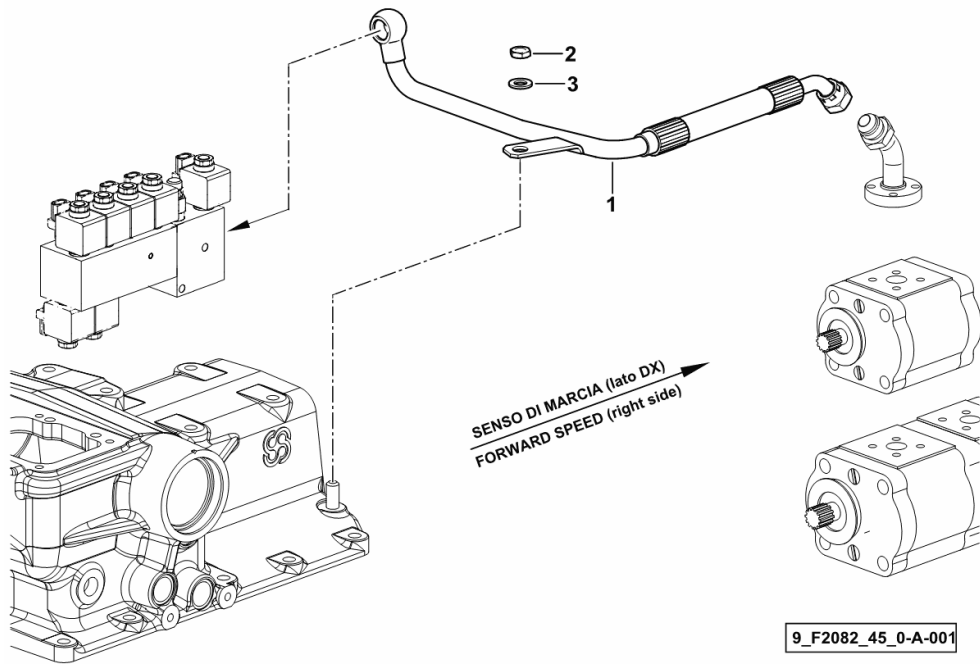
SYSTEM FROM HYDRAULIC PUMP TO 3-POINT HITCH CONTROL SOLENOID VALVES

Fig.	Code	QTY	Name
------	------	-----	------

Notes:

- FOR TYPES WITHOUT HYDRAULIC TRAILER BRAKING [AGROPLUS 320 F -> ZKDP3602W0TD01001]

1	0.014.7074.3	1	tube
2	2.1011.521.2	1	nut m 10 p.1.25
3	2.1475.003.2	1	washer 10

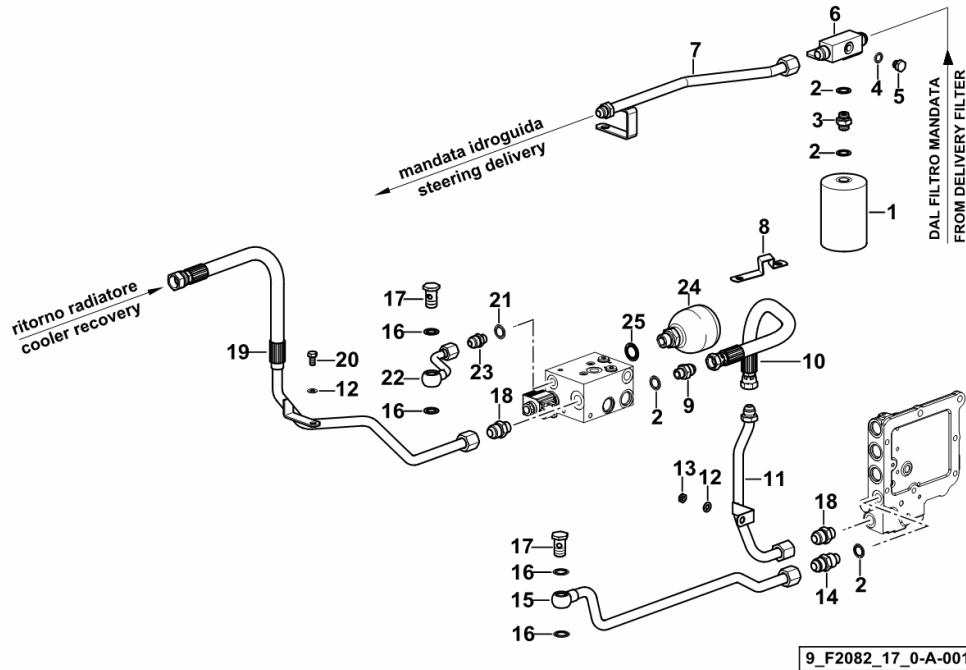


HYDRAULIC SYSTEM

Fig.	Code	QTY	Name
------	------	-----	------

Notes:

- FOR TYPES WITH H-M-L- (POWERSHIFT) [AGROPLUS 320 F -> ZKDP3602W0TD01001]



1	0.011.4186.2	1	vibration damper 270 cc
2	2.1561.008.0	4	'o' ring 16
3	0.299.6358.0/20	1	pipe fitting M 16/M 16 Ø5
4	2.1561.006.0	1	'o' ring 12
5	2.3110.402.2	1	plug m 12 p.1.5
6	0.014.5636.3	1	body
7	0.014.5632.3/10	1	tube
8	0.011.8415.0/10	1	bracket
9	2.3261.008.2	1	pipe fitting m 16 p.1.5-3/4"
10	0.014.5733.3	1	tube
11	0.014.5629.3	1	tube
12	2.1475.002.2	2	conical washer 8
13	2.1011.205.2	1	nut m 8 p.1.25
14	2.3249.110.2	1	pipe fitting 7/8" - 14 JIC M 16
15	0.014.5631.3/10	1	tube
16	2.1561.110.0	4	'o' ring Ø 18 -B-
17	2.3335.008.2	2	pipe union m 18 p.1.5 x 32
18	2.3249.141.2	2	pipe fitting 7/8 JIC-M18
19	0.014.5633.3/10	1	tube
20	2.0112.205.2	1	screw m 8 p.1.25 x 16
21	2.1561.007.0	1	gasket 14,8x22.2
22	0.014.5630.3	1	tube
23	2.3339.594.2/10	1	pipe fitting m 14 p.1.5-3/4-16
24	0.013.8759.0/10	1	accumulator
25	2.1561.112.0	1	gasket Ø 22 -B-

AGROPLUS 320 F -> 1001

Section: H0 - HYDRAULIC AND PNEUMATIC SYSTEM|

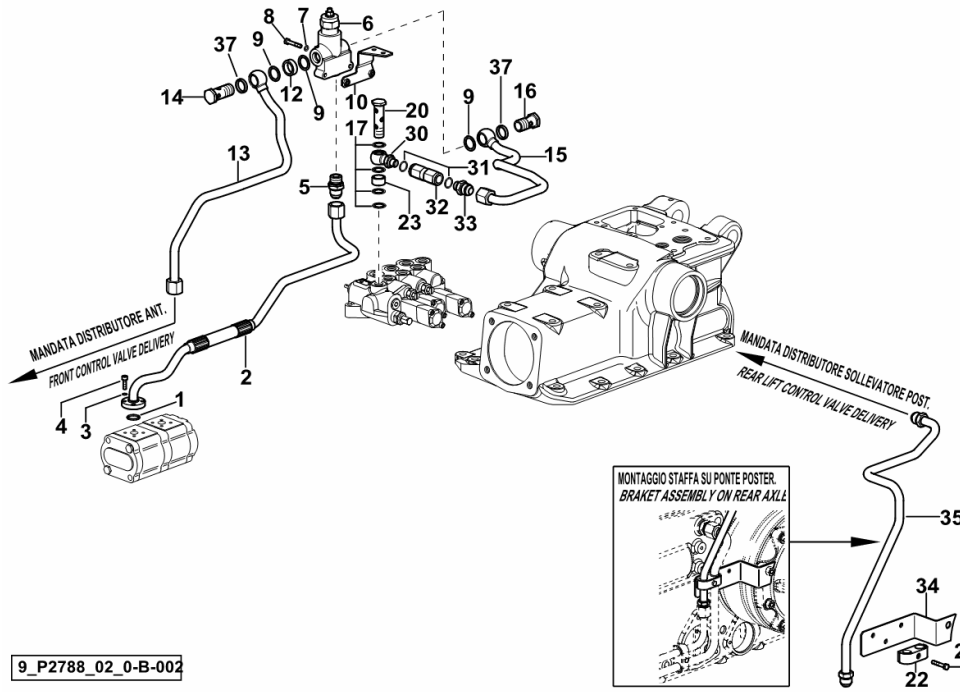
Ref.: H0.01.35 (2)

WORKING HYDR. SYSTEM CUTTING ANGLE ADJUSTMENT

Fig.	Code	QTY	Name
------	------	-----	------

Notes:

- FOR TYPES WITH ROLL BAR [AGROPLUS 320 F -> ZKDP3602W0TD01001] - WITH 4-WAY FRONT CONTROL VALVE [AGROPLUS 320 F -> ZKDP3602W0TD01001]

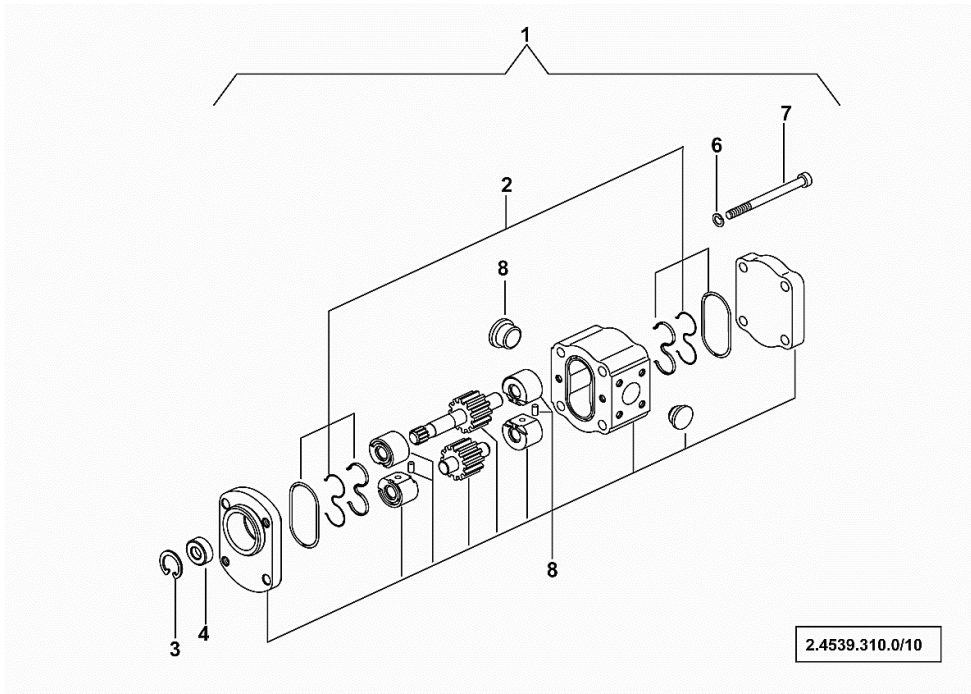


9_P2788_02_0-B-002

1	2.1531.052.0	1	'o' ring 20.29 x 2.62
2	0.016.4351.3	1	tube
3	2.1480.012.2	4	washer 6, d128
4	2.0312.106.2	4	screw m 6 p.1 x 20
5	2.3249.129.2	1	pipe fitting m 22 - 7/8" JIC
6	2.3729.729.0	1	valve MULTIPLE FLOW CONTROL VALVE
7	2.1470.002.2	2	washer 6, d128
8	2.0112.013.2	3	screw m 6 p.1 x 35
9	2.1560.018.0	3	gasket 22.2 x 29
10	0.016.4350.3	1	bracket
12	2.1549.670.2	1	spacer
13	0.016.4354.3	1	tube
14	2.3335.056.2	1	pipe union m 22 p.1.5 x 50
15	0.016.4355.3	1	tube
16	2.3335.009.2	1	pipe union m 22 p.1.5 x 39
17	2.1561.110.0	18	'o' ring Ø 18 -B-
20	2.3339.820.2/10	3	pipe union m 18 p.1.5 x 68
22	2.3320.317.0	1	terminal
23	2.1549.385.2	1	spacer 18.6 x 25 x 13
30	0.011.9574.3	1	pipe fitting
31	2.1560.053.0	2	gasket 17 x 21
32	0.445.6388.3/10	1	valve
33	2.3261.115.2	1	pipe fitting 3/8 gas - 7/8"
34	0.014.7622.3	1	bracket
35	0.016.4353.3	1	tube
37	2.1569.167.0	2	gasket 22.2x27x4.5

HYDRAULIC PUMP PARTS

Fig.	Code	QTY	Name
1	2.4539.310.0	1	hydraulic pump 16cc sx/lh/li - BOSCH
2	2.4529.330.1/10	1	seal ring kit
3	2.1411.012.1	1	circlip 30x1.2, din 472
4	0.009.4046.1	1	'o' ring
6	0.010.3145.0	2	spring washer
7	0.010.3548.0	2	screw
8	0.000.0000.1	0	not serviceable

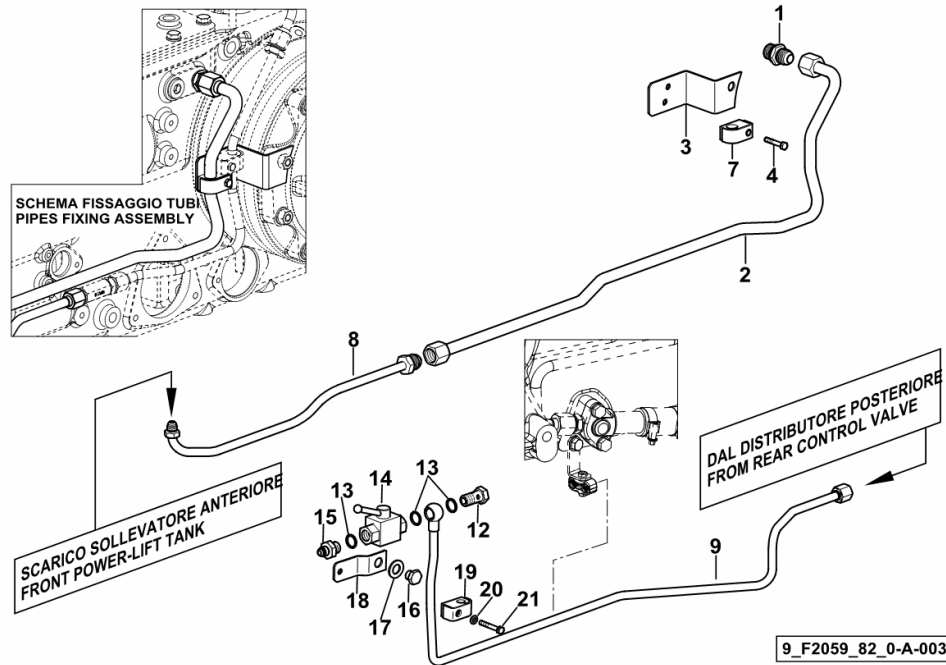


FRONT LIFT - HYDRAULIC SYSTEM

Fig.	Code	QTY	Name
------	------	-----	------

Notes:

- WITHOUT FRONT CONTROL VALVE - WITHOUT CENTRAL SOCKETS [AGROPLUS 320 F -> ZKDP3602W0TD01001] -> 1027



1	2.3249.129.2	1	pipe fitting m 22 - 7/8" JIC
2	0.014.7734.3/10	1	exhaust
3	0.014.8707.3	1	bracket
4	2.0112.013.2	1	screw m 6 p.1 x 35
7	2.3320.108.0	1	terminal
8	0.014.8708.3	1	exhaust
9	0.017.8865.3	1	tube
12	2.3339.063.2	1	pipe union 3/8" gas x 30
13	2.1560.053.0	3	gasket 17 x 21
14	0.009.0375.4/10	1	valve
15	2.3261.109.2	1	pipe fitting 9/16" - 18 J
16	2.3110.403.1	1	plug m 14 p.1.5
17	2.1475.005.2	1	washer 14
18	0.015.6498.3	1	bracket
19	2.3320.105.0	1	collar
20	2.1310.002.2	1	washer 6.6, d125
21	2.0112.015.2	1	screw m 6 p.1x40

AGROPLUS 320 F -> 1001

Section: H0 - HYDRAULIC AND PNEUMATIC SYSTEM|

Ref.: H0.06.2 (1)

MID-MOUNT HYDRAULIC COUPLERS - REAR

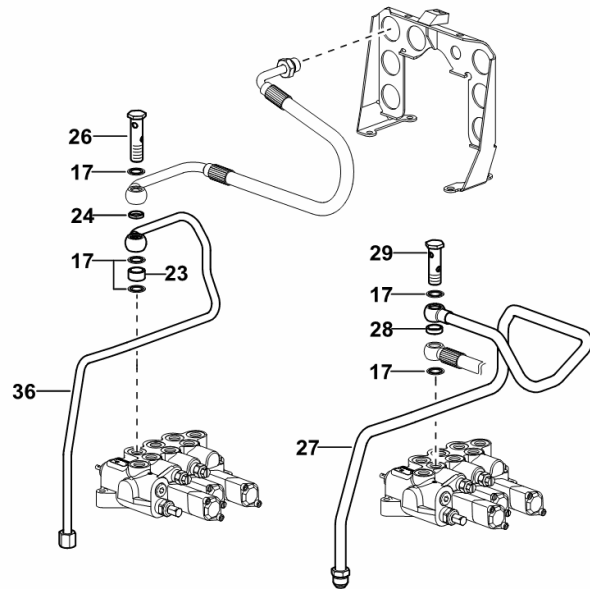
Fig.	Code	QTY	Name
------	------	-----	------

Notes:

- FOR TYPES WITHOUT ROLL BAR [AGROPLUS 320 F -> ZKDP3602W0TD01001] - WITH 4-WAY FRONT CONTROL VALVE [AGROPLUS 320 F -> ZKDP3602W0TD01001]

17	2.1561.110.0	19	'o' ring Ø 18 -B-
23	2.1549.385.2	2	spacer 18.6 x 25 x 13
24	2.1569.160.0	1	gasket 18.2x22x3.5
26	2.3339.970.2	1	pipe union m 18 p.1.5 x 71
27	0.016.4352.3	1	tube
28	2.1569.158.0/10	1	gasket 18.2 x 24 x 6.5
29	2.3339.932.2/10	1	pipe union m 18 p.1.5 x 60
36	0.016.4325.3	1	tube

9_P2688_02_0-C-001



AGROPLUS 320 F -> 1001

Section: H0 - HYDRAULIC AND PNEUMATIC SYSTEM|

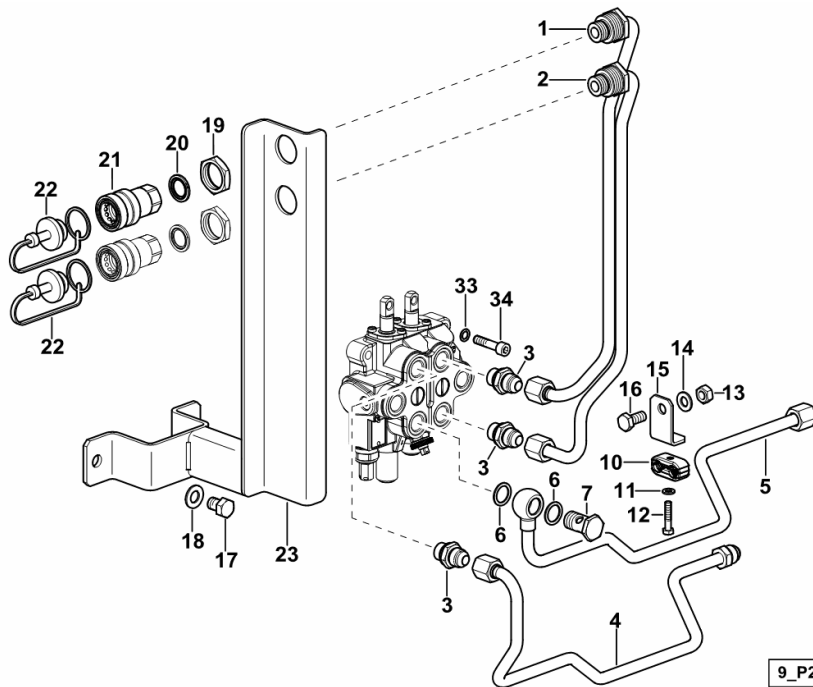
Ref.: H0.06.10 (2)

MID-MOUNT HYDRAULIC COUPLERS - FRONT - SX/LH/LI

Fig.	Code	QTY	Name
------	------	-----	------

Notes:

- FOR TYPES WITHOUT SAFETY FRAME WITH MECHANICAL 4-WAY FRONT CONTROL VALVE [AGROPLUS 320 F -> ZKDP3602W0TD01001]



1	0.016.4379.3	1	tube
2	0.016.4378.3	1	tube
3	2.3249.138.2	3	pipe fitting m 18 - 3/4" JIC
4	0.016.4366.3	1	tube
5	0.016.4365.3	1	tube
6	2.1560.014.0	6	gasket 18.2 x 24 x 1.5
7	2.3335.008.2	3	pipe union m 18 p.1.5 x 32
10	2.3321.010.0	1	collar Ø 12/12
11	2.1310.002.2	2	washer 6.6, d125
12	2.0112.011.2	1	screw m 6 p.1x30
13	2.1011.106.2	1	nut m 10 p.1.5
14	2.1310.006.2	1	flat washer 10.5
15	0.014.7573.3	1	bracket
16	2.0112.308.2	1	screw m 10 p.1.5x22
17	2.0112.405.2	2	screw m 12 p.1.75x16
18	2.1475.004.2	2	washer 12
19	2.1019.091.2	2	special nut m 30 p.1.5x8
20	2.1569.206.0	2	gasket
21	0.98308.50.3/10	2	coupling 0.98308.50.3/10
22	0.013.7997.0	2	plug - BLACK
23	0.016.4380.2	1	bracket
33	2.1480.014.2	3	washer 8
34	2.0312.212.2	3	screw m 8 p.1.25 x 35

AGROPLUS 320 F -> 1001

Section: H0 - HYDRAULIC AND PNEUMATIC SYSTEM|

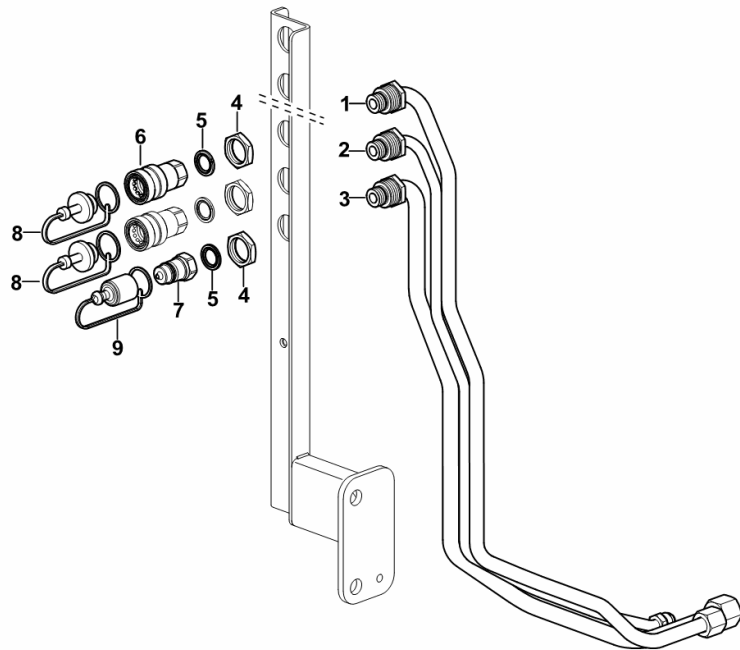
Ref.: H0.06.15 (2)

2+1 OR 4+1 MID-MOUNT HYDRAULIC COUPLERS - FRONT - DX/RH/RE

Fig.	Code	QTY	Name
------	------	-----	------

Notes:

- FOR TYPES WITHOUT ROLL BAR [AGROPLUS 320 F -> ZKDP3602W0TD01001] -> 1014 - FOR TYPES WITHOUT FRONT CONTROL VALVE [AGROPLUS 320 F -> ZKDP3602W0TD01001] -> 1014



9_P2588_05_0-A-002

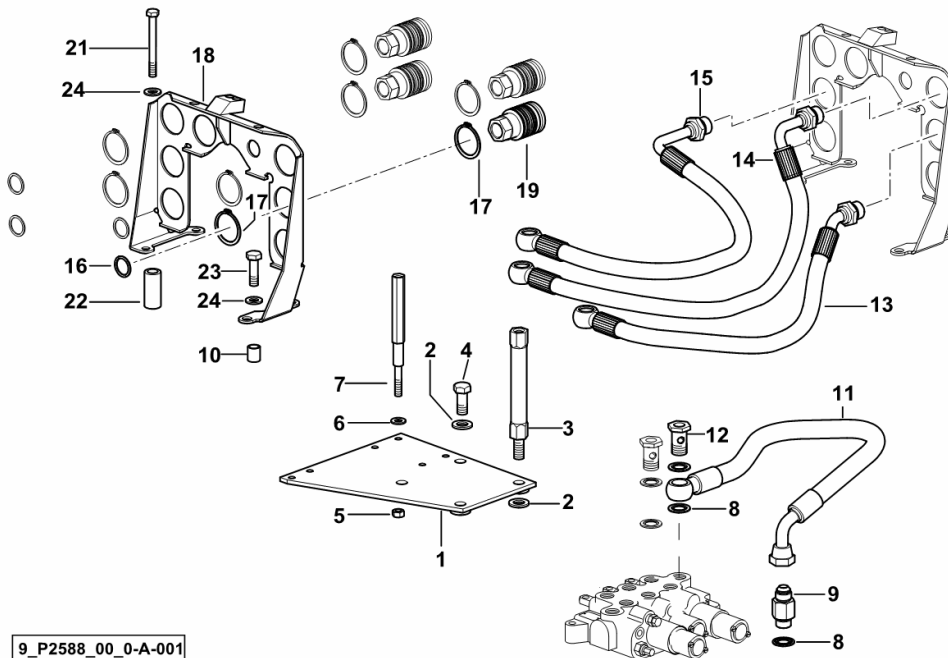
1	0.016.4332.3	1	tube
2	0.016.4329.3	1	tube
3	0.016.4328.3	1	tube
4	2.1019.091.2	3	special nut m 30 p.1.5x8
5	2.1569.206.0	3	gasket
6	0.98308.50.3/10	2	coupling ☞ 0.98308.50.3/10
7	0.98309.51.3/10	1	coupling 1/2
8	0.013.7997.0	2	plug - BLACK
9	0.009.3149.0	1	plug - BLUE COLOUR

AUXILIARY CONTROL VALVE SYSTEM

Fig.	Code	QTY	Name
------	------	-----	------

Notes:

[AGROPLUS 320 F -> ZKDP3602W0TD01001] -> 1016 - 1030 <-



1	0.010.8247.3	1	plate
2	2.1310.007.2	3	flat washer 13.5
3	0.010.8250.0	2	small column
4	2.0112.411.2	1	screw m 12 p.1.75 x 30
5	2.1011.105.2	1	nut m 8 p.1.25
6	2.1310.004.3	1	washer 8.4x17
7	0.010.8248.0	1	small column
8	2.1561.110.0	3	'o' ring Ø 18 -B-
9	2.3339.400.2	1	pipe fitting 3/4"-16 - m 18p.1.5
10	2.1579.294.2	2	spacer 11x20x17
11	0.010.9308.3	1	tube
12	2.3335.008.2	2	pipe union m 18 p.1.5 x 32
13	0.010.9305.3	1	tube mm 480
14	0.010.9307.3	1	tube mm 540
15	0.010.9304.3	1	tube mm 540
16	2.1569.206.0	4	gasket
17	2.1410.015.7	8	circlip 38
18	0.010.5279.2/20	1	plate
19	0.98309.50.3/10	4	coupling ☞ 0.98309.50.3/10
21	2.0112.224.2	2	screw m 8 p.1.25x75
22	2.1549.328.2	2	spacer 10.5x20x45
23	2.0112.313.2	2	screw m 10 p.1.5 x 35
24	2.1310.006.2	4	flat washer 10.5

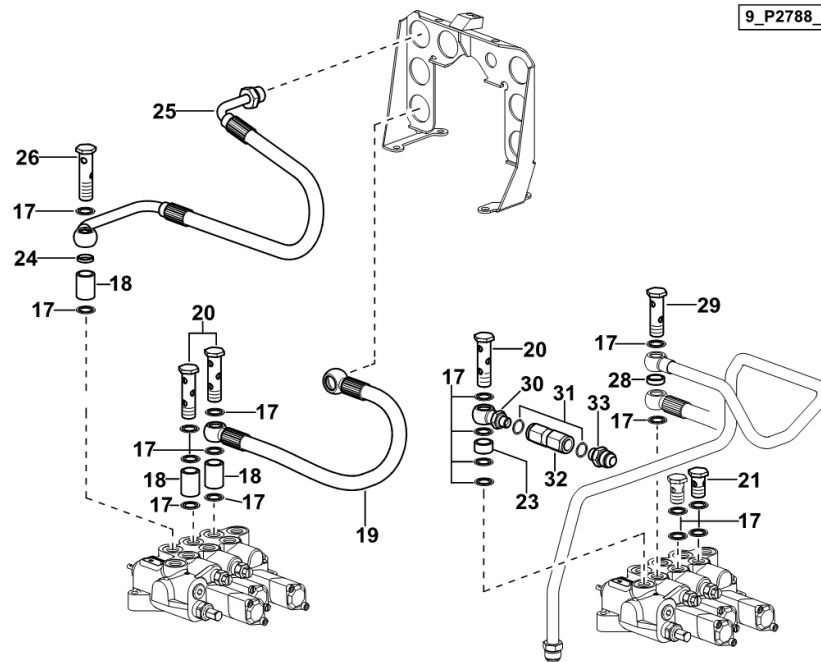
9_P2588_00_0-A-001

AUXILIARY CONTROL VALVE SYSTEM

Fig.	Code	QTY	Name
------	------	-----	------

Notes:

- FOR TYPES WITH ROLL BAR [AGROPLUS 320 F -> ZKDP3602W0TD01001] - WITH 4-WAY FRONT CONTROL VALVE [AGROPLUS 320 F -> ZKDP3602W0TD01001]



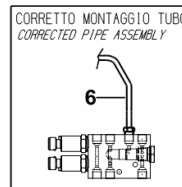
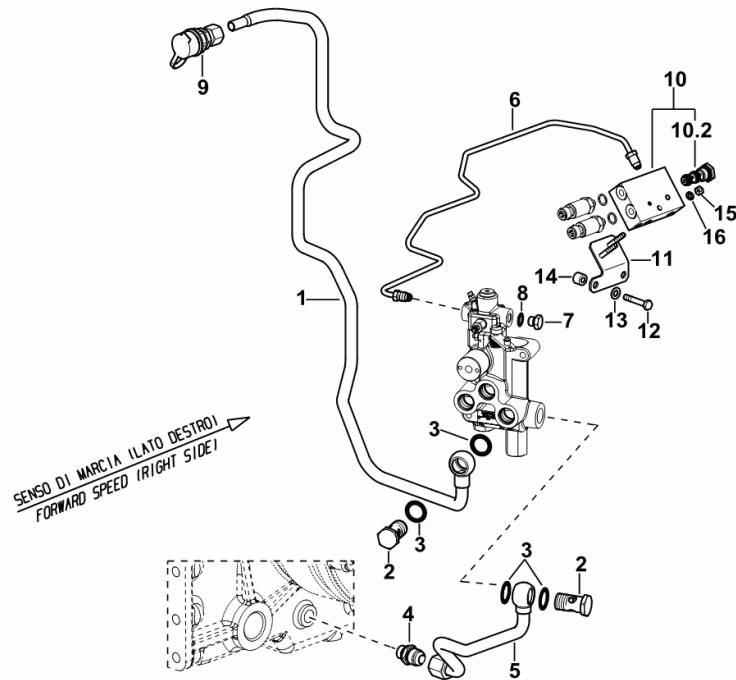
17	2.1561.110.0	18	'o' ring Ø 18 -B-
18	2.1549.548.2	3	spacer 19 x 25 x 34
19	0.010.9302.3	1	tube mm 575
20	2.3339.820.2/10	3	pipe union m 18 p.1.5 x 68
21	2.3335.008.2	2	pipe union m 18 p.1.5 x 32
23	2.1549.385.2	1	spacer 18.6 x 25 x 13
24	2.1569.160.0	1	gasket 18.2x22x3.5
25	0.016.4345.3	1	tube
26	2.3339.970.2	1	pipe union m 18 p.1.5 x 71
28	2.1569.158.0/10	1	gasket 18.2 x 24 x 6.5
29	2.3339.932.2/10	1	pipe union m 18 p.1.5 x 60
30	0.011.9574.3	1	pipe fitting
31	2.1560.053.0	2	gasket 17 x 21
32	0.445.6388.3/10	1	valve
33	2.3261.115.2	1	pipe fitting 3/8 gas - 7/8"

BRAKING SYSTEM

Fig.	Code	QTY	Name
------	------	-----	------

Notes:

- FOR TRACTORS WITH HYDRAULIK BREAKING FOR TRAILER [AGROPLUS 320 F -> ZKDP3602W0TD01001]



1	0.016.6143.3	1	tube
2	2.3335.009.2	2	pipe union m 22 p.1.5 x 39
3	2.1561.112.0	4	gasket Ø 22 -B-
4	2.3249.141.2	1	pipe fitting 7/8 JIC-M18
5	0.016.4302.3	1	tube
6	0.015.2148.3	1	tube
7	2.3110.422.1	1	plug m 12 p.1.25 x 10
8	2.1561.006.0	1	'o' ring 12
9	0.97112.68.4/10	1	coupling m 20
10	0.014.5670.4/20	1	valve
10.2	2.3719.760.0/20	1	valve
11	0.014.5671.3	1	bracket
12	2.0112.209.2	2	screw m 8 p 1.25 x 25
13	2.1475.002.2	2	conical washer 8
14	2.1579.980.2	2	spacer 7x15x11.5
15	2.1011.003.2	2	nut m 6 p.1, d934
16	2.1470.002.2	2	washer 6, d128

9_P3789_05_0-A-001

OIL FLOW CONTROL VALVE CASING

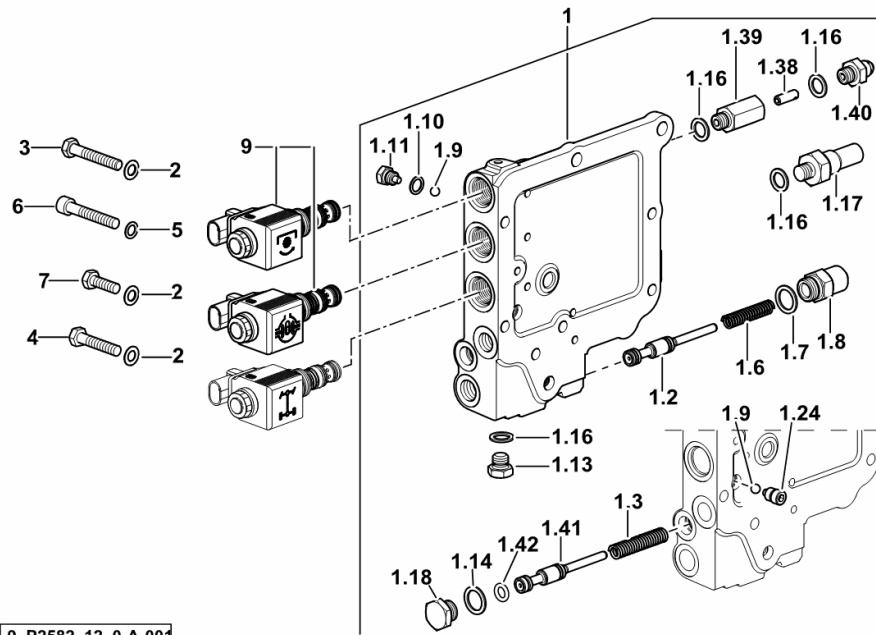
Fig.	Code	QTY	Name
------	------	-----	------

Notes:

[AGROPLUS 320 F -> ZKDP3602W0TD01001]

1	0.011.6761.4/40	1	valve
1.2	0.012.8814.0	1	slider
1.3	2.4019.431.1/30	1	spring 6.9x11.3x2.2x64
1.6	2.4019.428.1	1	spring 10.4x7.2x1.6
1.7	2.1560.014.0	1	gasket 18.2 x 24 x 1.5
1.8	2.3199.257.2/10	1	plug m 18 p.1.5
1.9	2.2810.002.0	2	ball mm 6.350
1.10	2.1560.005.0	1	gasket 10.2 x 14
1.11	2.3199.252.2	1	plug m 10 p.1.5
1.13	2.3110.402.2	1	plug m 12 p.1.5
1.14	2.1560.012.0	1	gasket 16.2 x 22 x 1.5
1.16	2.1560.008.0	4	gasket 12.2 x 18
1.17	2.7099.750.0/10	1	pressure switch 11 Bar
1.18	2.3110.404.2	1	plug m 16 p.1.5
1.24	2.3199.268.2	1	plug m 10 p.1.25
1.38	0.010.1827.0/10	1	ferrule
1.39	0.010.1994.0	1	pipe fitting
1.40	2.3339.728.2	1	pipe fitting
1.41	0.015.0236.0	1	slider
1.42	2.1531.016.0	1	ring 8.74 x 1.78
2	2.1470.004.2	4	washer 8
3	2.0112.219.2	2	screw m 8 p.1.25x50
4	2.0112.215.2	1	screw m 8 p.1.25 x 40
5	2.1480.014.1	1	washer 8
6	2.0312.216.2	1	screw m 8 p.1.25x50
7	2.0112.209.2	1	screw m 8 p 1.25 x 25
9	2.3729.697.0/20	2	electro valve 13V - 20W

☞ 2.3729.697.0/20



9_P2582_12_0-A-001

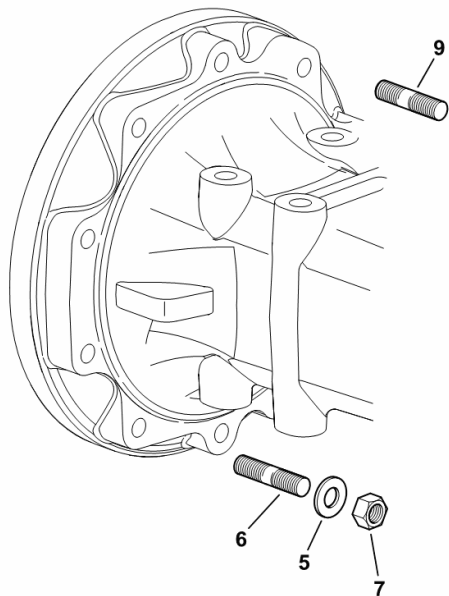
REAR AXLE - MOUNTINGS

Fig.	Code	QTY	Name
------	------	-----	------

Notes:

[AGROPLUS 320 F -> ZKDP3602W0TD01001]

5	2.1475.004.7	20	washer 13 x 24
6	2.0432.282.7	8	stud bolt m 12 p.1.75 / p. 1.25 x 170
7	2.1011.422.2	20	nut m 12 p.1.25
9	2.0432.281.7	12	stud bolt m 12 p.1.75 / p. 1.25 x 160



9_70544_00_0-A-001

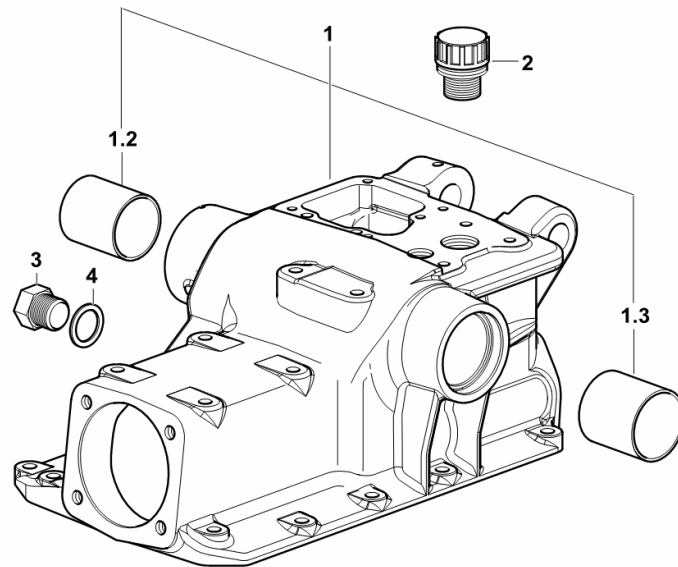
POWER-LIFT CASE

Fig.	Code	QTY	Name
------	------	-----	------

Notes:

[AGROPLUS 320 F -> ZKDP3602W0TD01001]

1	0.011.2299.3	1	hydraulics housing
1.2	2.1555.819.0	1	bushing 55x50x60
1.3	2.1555.820.0	1	bushing 60x55x60
2	2.3199.255.0	1	plug
3	2.3110.405.1	1	plug m 18 p.1.5 x 15
4	2.1560.014.0	1	gasket 18.2 x 24 x 1.5



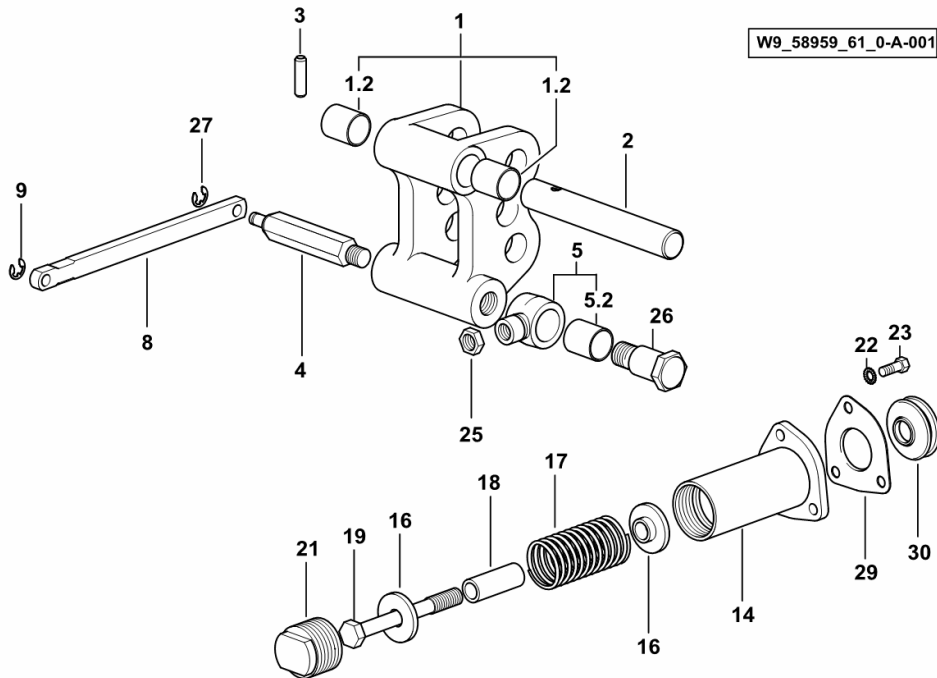
W9_70659_01_0-A-001

Section: R0 - REAR LIFT
SENSITIVE ELEMENTS

Fig.	Code	QTY	Name
------	------	-----	------

Notes:

- FOR TYPES WITH MECHANICAL LIFTER [AGROPLUS 320 F -> ZKDP3602W0TD01001]



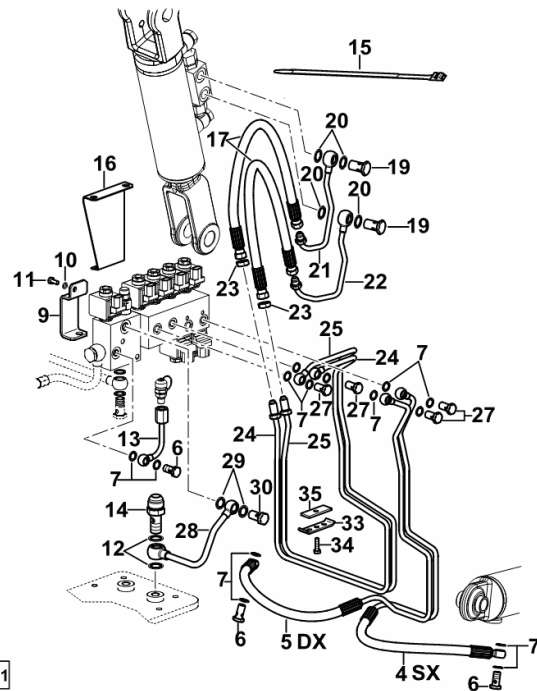
1	0.009.2396.3/20	1	bracket
1.2	2.1559.332.0	2	bushing 25 x 28 x 30
2	0.009.2402.0/10	1	pin
3	2.1631.721.0	1	roll pin 8 x 60
4	0.009.3432.0/10	1	pin
5	0.009.2404.3	1	eyelet
5.2	2.1559.332.0	1	bushing 25 x 28 x 30
8	0.009.2397.0/40	1	rod
9	2.1430.010.7	1	circlip 9
14	0.009.2399.3/60	1	flange
16	0.007.1969.0/10	2	snoulder
17	2.4019.569.1/10	1	spring
18	2.1549.090.2/30	1	spacer 14x20x53
19	2.0119.191.2/20	1	screw m 14 p.1.5 x 117
21	2.3199.230.0/20	1	plug
22	2.1470.004.2	3	washer 8
23	2.0112.207.2	3	screw m 8 p 1.25 x 20
25	2.1011.308.2	1	nut m 14 p.1.5
26	0.009.3434.0	1	pin
27	2.1430.010.7	1	circlip 9
29	0.007.1979.0	1	support
30	0.007.1978.0	1	bellows

3-POINT LINKAGE HYDRAULIC SYSTEM WITH ELECTROHYDRAULIC CONTROL

Fig.	Code	QTY	Name
------	------	-----	------

Notes:

[AGROPLUS 320 F -> ZKDP3602W0TD01001]



9_F1658_05_0-B-001

4	0.015.2704.3	1	tube sx/lh/li
5	0.015.2579.3	1	tube dx/rh/re
6	2.3335.005.2	3	pipe union m 12 p.1.5 x 24
7	2.1561.106.0	14	gasket Ø 12 -B-
9	0.011.7769.0	1	bracket
10	2.1470.002.2	1	washer 6, d128
11	2.0112.004.2	1	screw m 6 p.1 x 14
12	2.1561.110.0	2	'o' ring Ø 18 -B-
13	0.012.2494.3	1	tube
14	2.3339.812.2/10	1	pipe fitting m 18 p.1.5
15	2.6859.030.0	2	clamp
16	0.015.2260.0	1	bracket
17	0.011.3362.3	2	tube
19	2.3335.007.2	2	pipe union m 16 p.1.5
20	2.1561.108.0	4	'o' ring 16
21	0.015.2723.3	1	tube
22	0.015.2728.3	1	tube
23	2.1019.093.2	2	nut 1/2 - 20 UNF-2B
24	0.015.2570.3	1	tube
25	0.015.2546.3	1	tube
27	2.3332.003.2	4	pipe union m 12 p.1.25 x 23
28	0.011.7764.3/20	1	tube
29	2.1561.107.0	2	'o' ring Ø 14 -B-
30	2.3332.004.2	1	pipe union m 14 p.1.5 x 27
33	0.465.6362.0	1	terminal
34	2.0112.007.2	1	screw m 6 p.1 x 20
35	0.015.7104.0	1	terminal

Section: D0 - TRANSMISSION
H-M-L UNIT

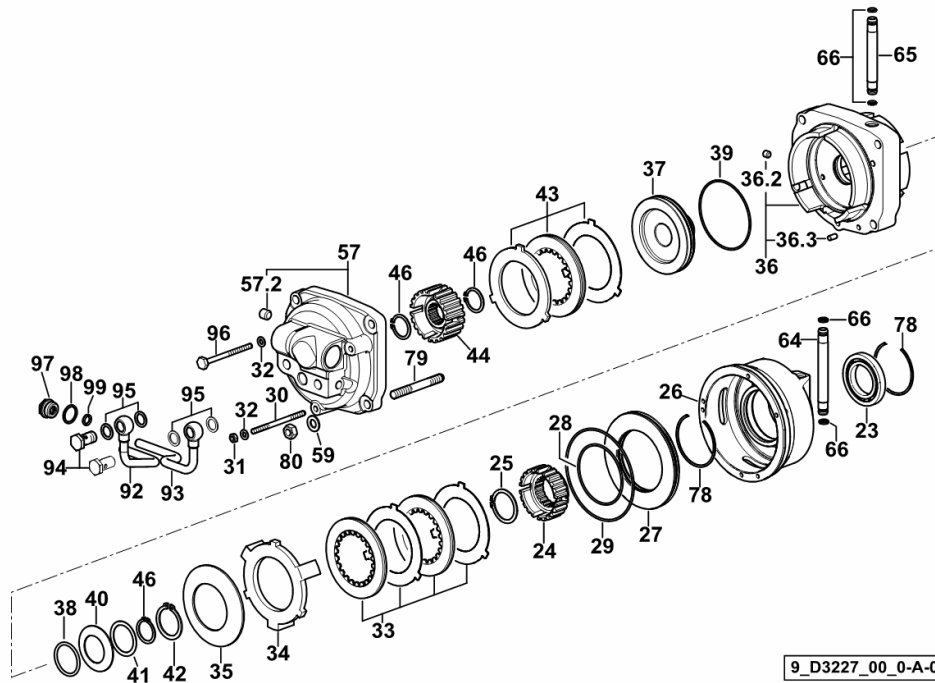


Fig.	Code	QTY	Name
Notes: (GEARSHIFT) [AGROPLUS 320 F -> ZKDP3602W0TD01001]			
23	2.2020.007.0	1	ball bearing 40x68x9
24	0.008.0267.0/30	1	hub Z = 22 / Z = 18
25	2.1410.016.1	1	circlip 40
26	0.013.0503.0/10	1	box
27	0.008.0281.0/10	1	piston
28	2.1532.179.0	1	'o' ring 78.97x3.53
29	2.1532.222.0	1	'o' ring 120.24x3.53
30	2.0439.239.2	2	stud bolt m 6 x 94
31	2.1012.103.7	2	nut m 6 p.1
32	2.1310.002.2	3	washer 6.6, d125
33	0.008.0323.3/10	1	multi-plate clutch
34	0.008.0269.0/10	1	spacer
35	2.4099.090.1	2	spring
36	0.010.1099.3	1	box
36.2	2.0512.202.7	1	screw m 8 p.1.25 x 8
36.3	2.1651.505.0	1	cylindrical plug 6x12
37	0.008.0280.0/10	1	piston
38	2.1532.098.0	1	'o' ring 37.70x3.53
39	2.1532.194.0	1	'o' ring 91.67 x 3.53
40	2.4099.091.1	5	spring
41	2.1599.694.0	1	snoulder 36.2x46x1
42	2.1419.086.7	1	ring 36
43	0.008.0322.3/10	1	multi-plate clutch
44	0.008.0268.0/20	1	hub
46	2.1410.011.7	4	circlip 28
57	0.013.4871.3	1	cover
57.2	2.0512.404.7	2	screw
59	2.1475.003.2	4	washer 10
64	0.010.0533.0	2	tube
65	0.013.1194.0	1	tube
66	2.1532.016.0	6	'o' ring 8.74 x 1.78
78	2.1423.048.7	2	circlip 68x1.5
79	2.0422.320.7	4	stud bolt m 10 p 1.5 x 15 / m 10 x 75
80	2.1011.106.2	4	nut m 10 p.1.5
92	0.013.4893.3/10	1	tube
93	0.013.3029.3/10	1	tube
94	2.3335.006.2	2	pipe union m 14 p.1.5x24
95	2.1560.010.0	4	gasket 14.2 x 20 x 1.5
96	2.0112.025.2	1	screw m 6 p.1x80
97	2.3119.049.2	2	plug m 20 p.1.5
98	2.1560.015.0	2	gasket 20.2 x 24

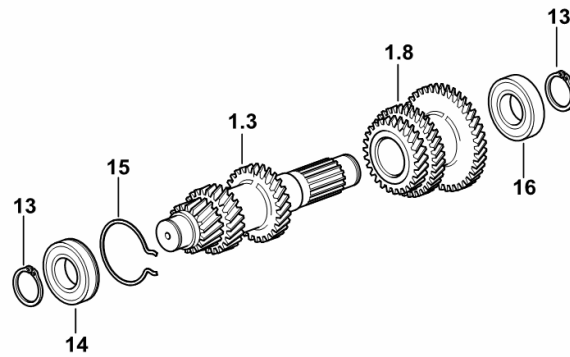
5-SPEED GEARBOX PRIMARY SHAFT

Fig.	Code	QTY	Name
------	------	-----	------

Notes:

- FOR TYPES WITH H-M-L- (POWERSHIFT) [AGROPLUS 320 F -> ZKDP3602W0TD01001]

1.3	0.013.1628.0	1	shaft Z = 19 / 23 / 30
1.8	0.013.1652.0	1	gear Z = 27 / 37 / 44
13	2.1410.014.1	2	circlip 35
14	2.2999.114.0	1	ball bearing 35 x 72 x 17
15	2.1499.124.1/10	2	circlip 68 x 1.7
16	2.2045.011.0	1	ball bearing 35 x 72 x 17



9_D3233_05_0-A-001

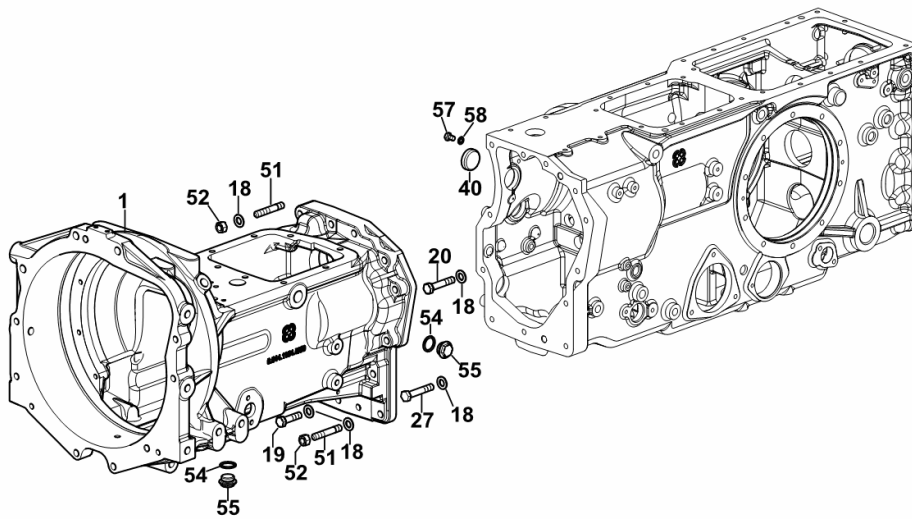
GEARBOX

Fig.	Code	QTY	Name
------	------	-----	------

Notes:

[AGROPLUS 320 F -> ZKDP3602W0TD01001]

1	0.014.1154.0/50	1	gear box
18	2.1475.004.7	12	washer 13 x 24
19	2.0112.417.2	2	screw m 12 p.1.75 x 45
20	2.0112.421.2	4	screw m 12 p.1.75 x 60
27	2.0112.422.2	2	screw m 12 p.1.75 x 65
40	2.3171.016.4	2	plug 40
51	2.0432.266.2	4	stud bolt m 12 p.1.25 / m 12 p.1.75
52	2.1011.422.2	4	nut m 12 p.1.25
54	2.1560.019.0	2	gasket 24.3x30
55	2.3110.423.2	2	plug m 24 p.1.5x18.5
57	2.0112.203.2	1	screw m 8 p.1.25 x 12
58	2.1560.004.0	1	gasket 8.2 x 14



9_F1431_00_0-A-002

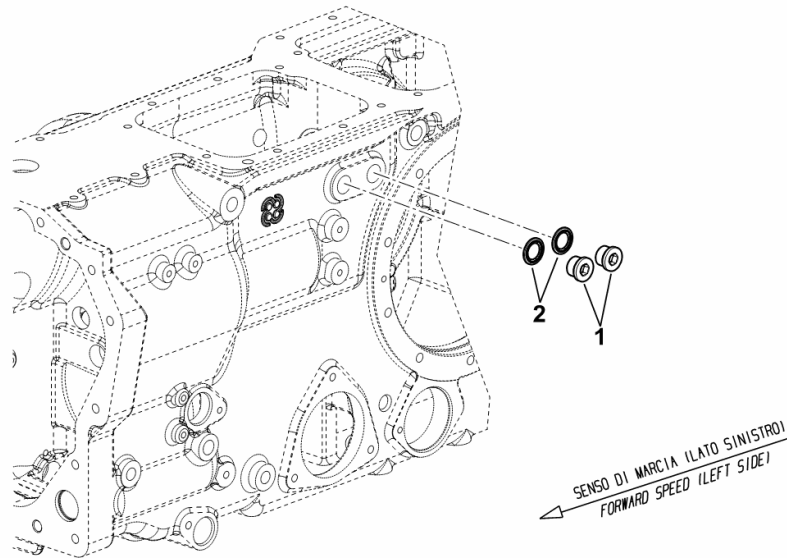
Section: D0 - TRANSMISSION
PLUGS FOR GEARBOX

Fig.	Code	QTY	Name
------	------	-----	------

Notes:

- WITHOUT FRONT CONTROL VALVE - WITHOUT CENTRAL SOCKETS [AGROPLUS 320 F -> ZKDP3602W0TD01001]

1	2.3120.002.4	2	plug m 22 x 1.5
2	2.1561.112.0	2	gasket Ø 22 -B-



9_F2082_39_0-A-001

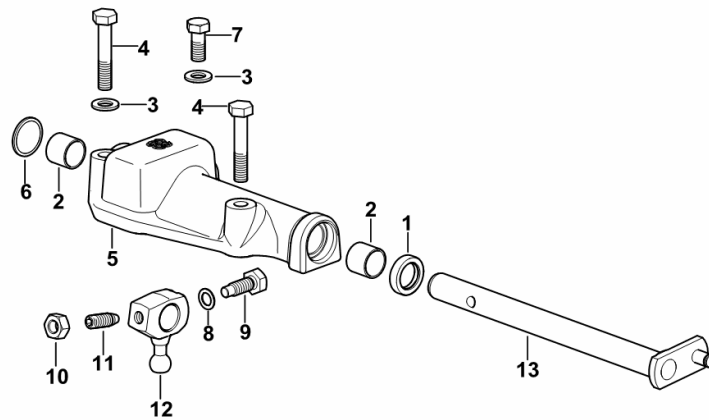
DRIVE INTERMEDIATE GEARS

Fig.	Code	QTY	Name
------	------	-----	------

Notes:

[AGROPLUS 320 F -> ZKDP3602W0TD01001]

1	2.1520.006.0	1	oil seal 20 x 30 x 7
2	2.1555.311.0	2	bushing 20x23x20
3	2.1475.003.2	2	washer 10
4	2.0112.320.2	2	screw m 10 p.1.5 x 55
5	0.014.3612.0/10	1	support
6	2.3170.012.2	1	expansion plug Ø 30
7	2.0112.309.2	1	screw m 10 p.1.5 x 25
8	2.1560.006.0	1	gasket 10.2 x 16
9	2.0119.177.2/10	1	screw m 10x29.5
10	2.1011.406.2	1	nut m 10 p.1
11	2.0399.050.2	1	screw m 10 p.1 x 30
12	0.014.3613.0	1	lever
13	0.014.3614.3/10	1	lever





9_D3264_02_0-A-001

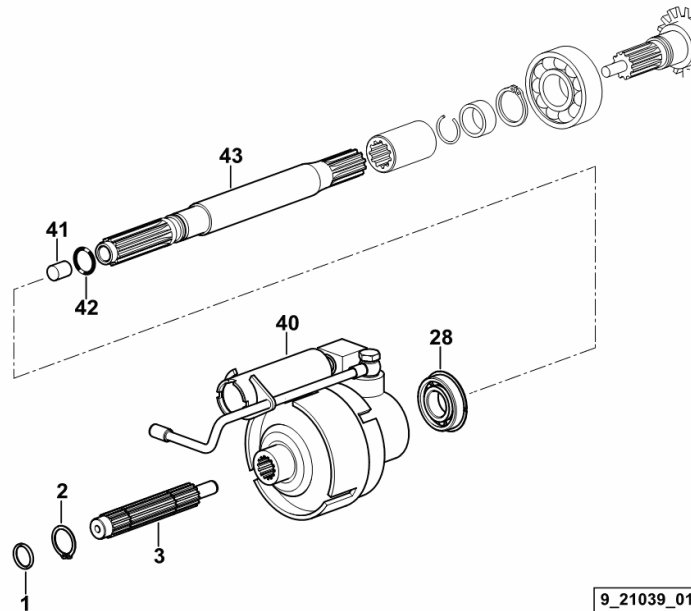
P.T.O. - HYDRAULIC CLUTCH

Fig.	Code	QTY	Name
------	------	-----	------

Notes:

[AGROPLUS 320 F -> ZKDP3602W0TD01001]

1	2.1530.048.0	1	'o' ring 18.72x2.62
2	2.1410.009.1	2	circlip 24
3	0.009.7017.0/10	1	shaft
28	2.2043.007.0	1	ball bearing
40	0.011.9686.4/40	1	hydraulic pto clutch  0.011.9686.4/40  0.011.9686.4/40
41	2.1555.206.0	1	bushing 12 x 14 x 15
42	2.1530.054.0	1	'o' ring 20.63x2.62
43	0.010.7695.0/10	1	p.t.o.shaft



9_21039_01_0-A-002

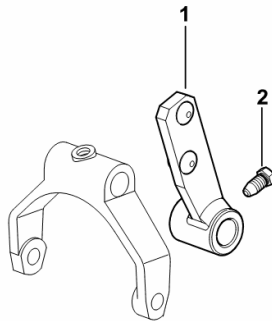
CONTROL LEVER P.T.O.

Fig.	Code	QTY	Name
------	------	-----	------

Notes:

- FOR 540/N EXPORT U.S.A. [AGROPLUS 320 F -> ZKDP3602W0TD01001]

1	0.012.0107.3	1	lever
2	2.0399.019.1	1	screw m 8 p.1 x 16



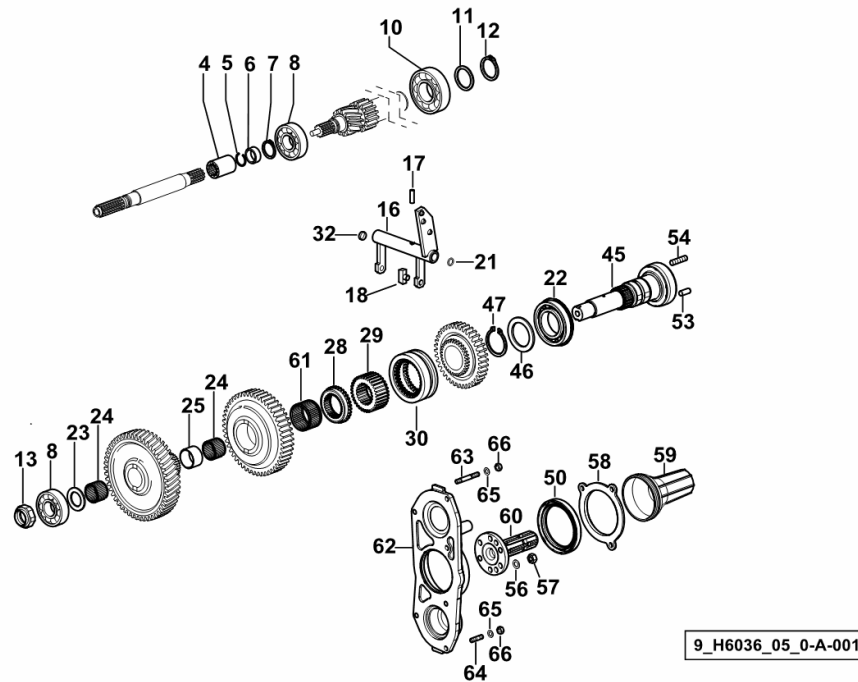
9_I7436_02_0-A-001

P.T.O. WITH INSERTED END SHAFTS - 2 -SPEED + GROUNDSP. AND 3- SPEED

Fig.	Code	QTY	Name
------	------	-----	------

Notes:

[AGROPLUS 320 F -> ZKDP3602W0TD01001]



4	0.010.7696.0	1	sleeve Z = 11
5	2.1421.010.7	1	circlip 25
6	2.1549.172.0	1	spacer 24.7 x 31 x 12
7	2.1410.012.1	1	circlip 30
8	2.2999.300.0	2	bearing 30 x 72 x 19
10	2.2062.012.0	1	ball bearing 40 x 90 x 23
11	2.1599.414.0	1	snoulder 40 x 50 x 3.0
12	2.1410.016.1	1	circlip 40
13	2.1219.038.0/40	1	ring nut m 30 p.1.5
16	0.010.7710.3	1	fork
17	2.1631.712.0	1	pin 8x26
18	0.255.6463.0	2	shoe
21	2.1530.028.0	1	'o' ring 11.91 x 2.62
22	2.2999.204.0	1	bearing 50 x 90 x 20
23	2.1589.321.0	1	snoulder 30x47x3
24	2.2770.062.0	2	roller cage 35x40x27
25	0.010.7712.0	1	spacer
28	0.009.3830.3/10	1	gear Z = 32
29	0.010.7701.0	1	hub z=32 z=21
30	0.009.3822.0/20	1	sleeve Z = 32
32	2.3171.006.4	5	plug Ø 16
45	0.014.3780.0	1	shaft
46	2.1599.779.0	1	thrust plate 50x70x4
47	2.1412.019.7	1	circlip 50x3
50	2.1520.043.0	1	oil seal 85 x 110 x 12
53	2.1651.811.0	2	cylindrical plug 10x24
54	2.0432.155.7	6	stud bolt m 10 p.1.5 / p. 1.25 x 25
56	2.1470.006.2	6	lock washer 10
57	2.1011.421.2	6	nut m 10 p.1.25
58	0.011.3274.0	1	cover
59	0.008.0757.0	1	guard
60	0.011.3221.0	1	p.t.o.shaft Z = 6
61	2.2999.363.0	1	roller cage
62	0.014.3683.0/10	1	cover
63	2.0422.215.7	2	stud bolt m 8 p.1.25 x 50
64	2.0422.203.7	5	stud bolt m 8 p.1.25 x 20
65	2.1470.004.2	7	washer 8
66	2.1011.105.2	7	nut m 8 p.1.25

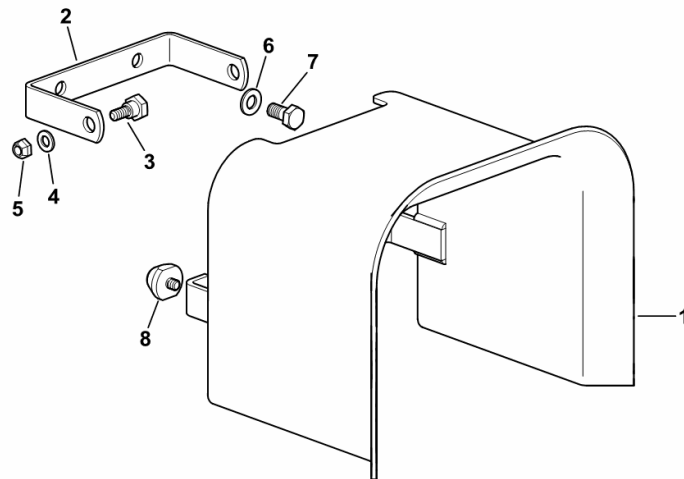
GUARD PLATE P.T.O.

Fig.	Code	QTY	Name
------	------	-----	------

Notes:

- EXPORT U.S.A. [AGROPLUS 320 F -> ZKDP3602W0TD01001]

1	0.012.5774.2/20	1	sump
2	0.015.6060.0	1	bracket
3	2.0399.250.2	2	screw
4	2.1475.102.7	2	washer 8
5	2.1121.005.2	2	nut m 8 p.1.25
6	2.1310.006.2	2	flat washer 10.5
7	2.0112.307.2	2	screw m 10 p.1.5 x 20
8	0.154.7969.2	2	rubber plug



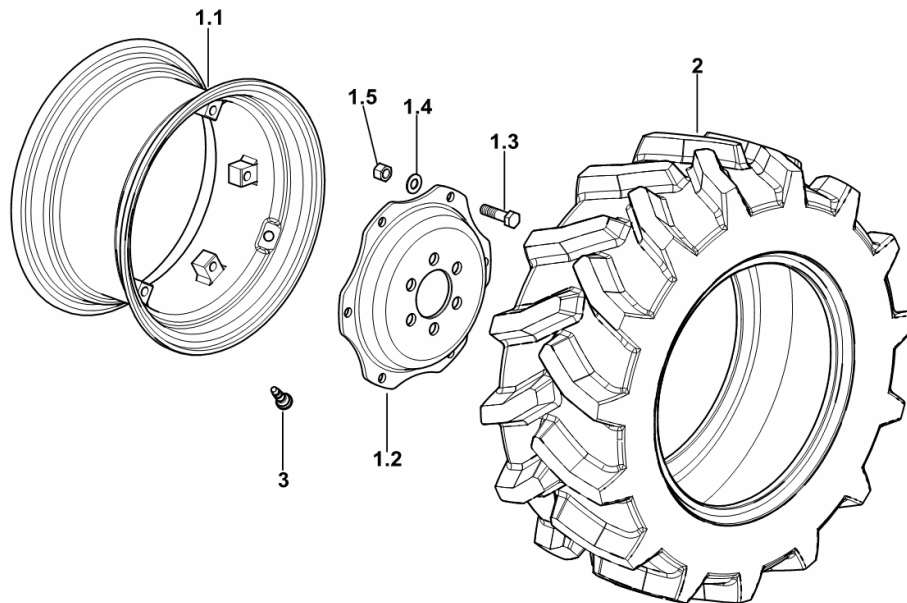
9_F1836_20_0-A-001

Section: S0 - WHEELS
WHEELS 240/70 R16"

Fig.	Code	QTY	Name
------	------	-----	------

Notes:
 [AGROPLUS 320 F -> ZKDP3602W0TD01001]

1.1	0.013.9184.3	1	rim W 9x16" C/BL
1.2	0.013.9184.0	1	rim center flange
1.3	2.0122.521.6	6	screw m 14 p.1.5 x 60
1.4	2.1475.105.6	6	conical washer 15 x 27
1.5	2.1011.308.6	6	nut m 14 p.1.5
2	2.4811.120.0	2	tyre 240/70 R16"
3	0.012.6364.0	2	valve



9_17555_20_0-A-001

CLICK HERE TO **DOWNLOAD** THE COMPLETE MANUAL

- Thank you very much for reading the preview of the manual.
- You can download the complete manual from: www.heydownloads.com by clicking the link below



- Please note: If there is no response to CLICKING the link, please download this PDF first and then click on it.

CLICK HERE TO **DOWNLOAD** THE COMPLETE MANUAL