

**5690 -> 6228-12226**

**TOOLS AND ACCESSORIES**

**TOOLS AND ACCESSORIES**

IMPLEMENT AND CHAIN LINKS.....4U.35.1

ACCESSORY.....4U.35.2

**CHOPPER**

CHOPPER BLADE W.....4U.36.1

CLICK HERE TO **DOWNLOAD** THE COMPLETE MANUAL

- Thank you very much for reading the preview of the manual.
- You can download the complete manual from: [www.heydownloads.com](http://www.heydownloads.com) by clicking the link below

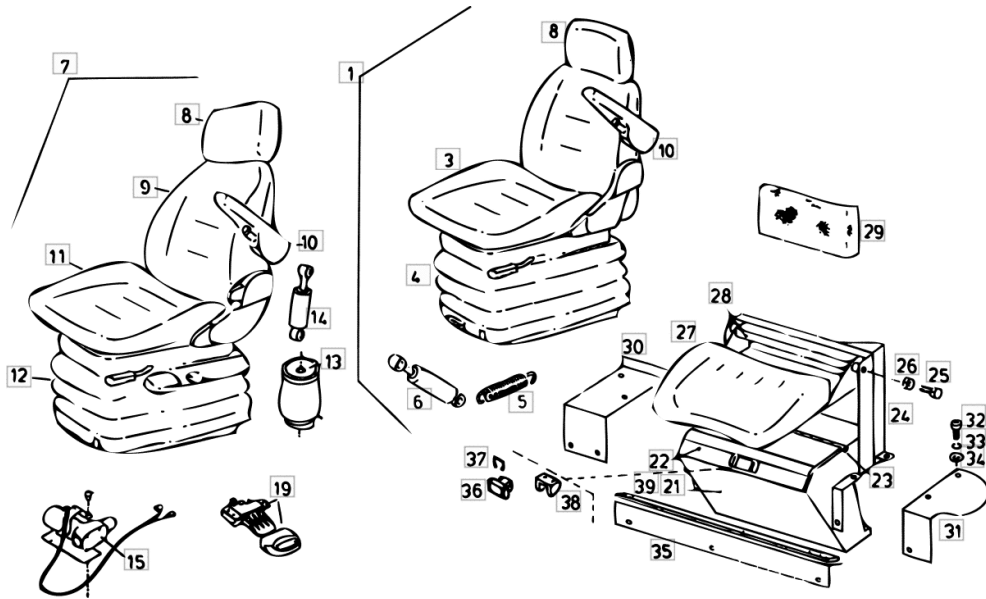


- Please note: If there is no response to CLICKING the link, please download this PDF first and then click on it.

CLICK HERE TO **DOWNLOAD** THE COMPLETE MANUAL

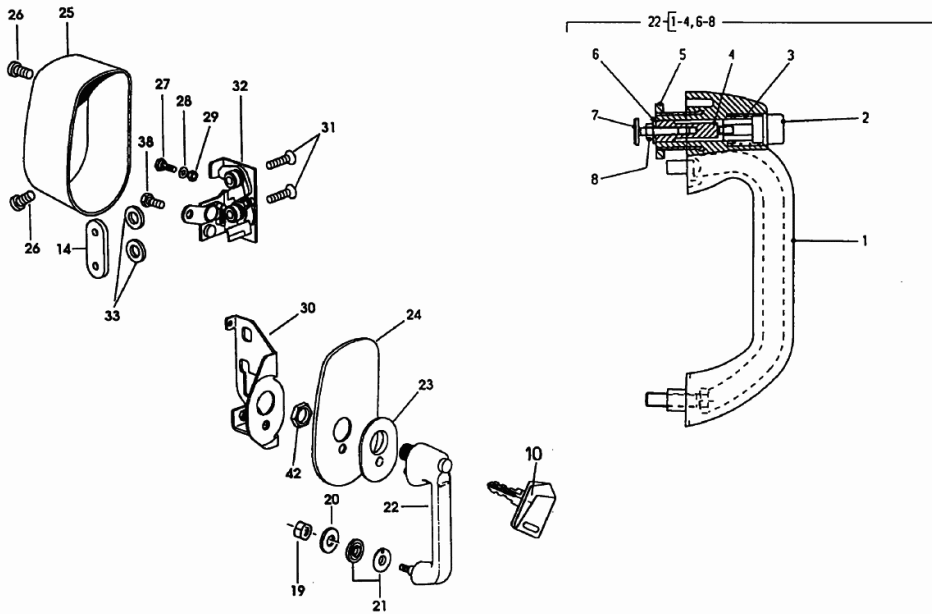
Section: CAB  
**DRIVER'S SEAT**

Fig.	Code	QTY	Name
36	16010229	1	lock
37	16010230	1	small spring
38	16010231	1	small plate
39	06257697	0	gasket 15x5x1540 640 MM



Section: CAB  
**DRIVERS'S CAB DOOR LOCK**

Fig.	Code	QTY	Name
1	04413591	1	handle
2	04413578	1	push-button G 2-4, 6-8
3	04414619	1	spring
4	04414618	1	stop
5	04416537	1	nut m 28 x 1
6	04413596	1	washer
7	04413597	1	latch m 8
8	01112813	1	nut m 6
10	04418435	1	key
14	04412840	1	small plate
19	06209768	1	nut m 10, d985
20	01107105	1	washer 10.5
21	04413571	2	disc
22	04413546	1	handle
23	04412845	1	stop
24	04413547	1	gasket
25	04413573	1	cap
26	04413811	2	screw m 6 p.1.0 x 16
27	04413581	1	screw
28	01107095	1	washer 6.4
29	01112813	1	nut m 6
30	04416201.4	1	support
31	04413568	2	screw m 8 x 35
32	04413582	1	lock
33	04412841	2	washer
38	01144692	2	screw m 8 p.1.25 x 20
42	04416537	1	nut m 28 x 1



**5690 -> 6228-12226**

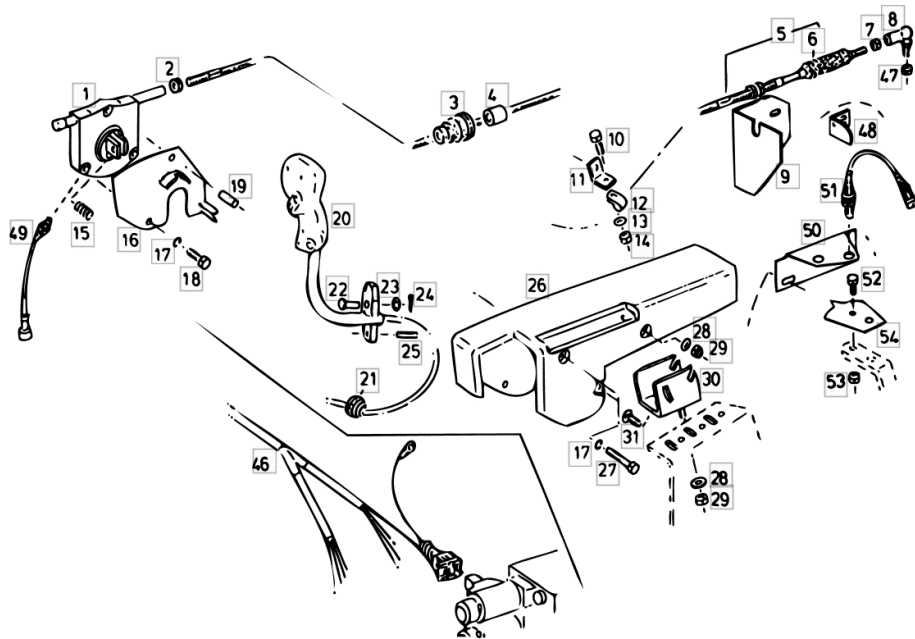
**COMPRESSOR-TYPE COOLING PLANT**

**COMPRESSOR-TYPE COOLING PLANT**

COMPRESSOR-TYPE COOLING PLANT FUEL COOLER.....	4I.16.2
COMPRESSOR-TYPE COOLING PLANT.....	4I.16.3
INDIVIDUAL COMPRESSOR COMPONENTS.....	4I.16.4

**ELECTRIC CONTROL WORKING HYDR. SYSTEM**

Fig.	Code	QTY	Name
1	16053195	1	operation
2	01145144	1	nut m12x1 d439
3	06547602	1	bellows
4	06547559	2	disc
5	16007302	1	stay m 6 / L = mm 4174
6	16006195	1	guard
7	01112813	2	nut m 6
8	01145145	1	joint 13/m6
9	16005147	1	support TYP 5670
9.1	16054408	1	support TYP 5680 / 5690
9.2	16033465	1	bracket TYP 5670 / HPV 135 / W
10	01112341	1	screw m 8 x 30, d933
11	16006188	1	angular
12	01145004	1	hose clip
13	01107163	1	washer 9, d126
14	01104944	1	nut m 8, d985
15	16006194	1	spring
16	16006288	1	plate
17	01102797	3	washer 6, d128
18	01112276	1	screw m 6 p.1 x 35
19	16005145	1	spacer
20	16027010	1	multifunction handle ☞ 16027010
21	06543583	1	grommet Ø 28.8
22	01143885	1	pin 11 x 3
23	01107165	1	washer 10.5
24	01143003	1	split pin 3,2x 36 d94
25	01151908	1	pin m 6 x 35
26	16006190	1	cover
27	01111090	2	screw m 6 p.1 x 75
28	01107163	3	washer 9, d126
29	01104944	5	nut m 8, d985
30	16005125	1	support
31	01137624	1	screw m 8 x 25
46	16050186	1	electrical system E2 (EV)
47	01112824	1	nut m 8, d934
48	16033372	1	contact surface TYP 5680 / 5690
48.1	16033372	1	contact surface TYP 5670 / HPV 135 / W
49	16056711	2	position sensor



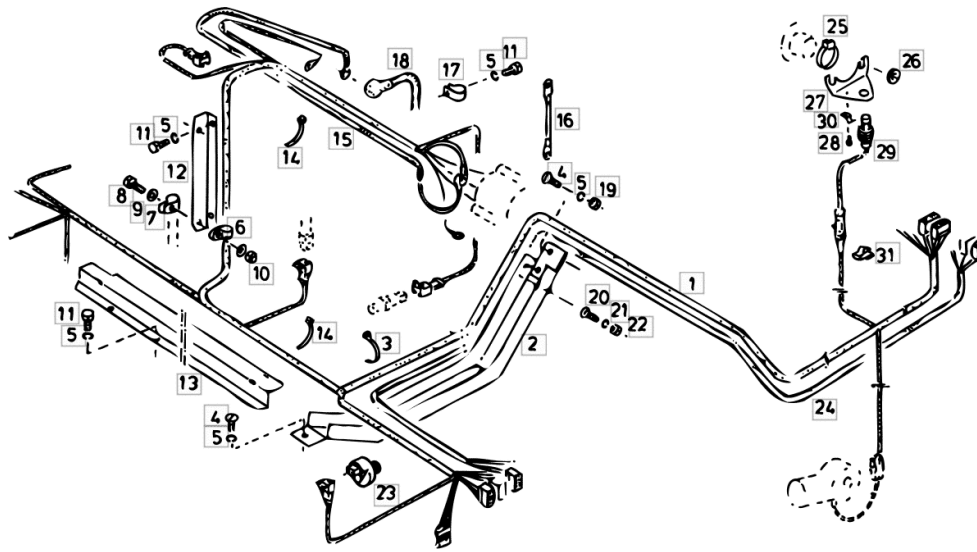
**ELECTRICAL EQUIPMENT ENGINE BF 6 M 1013**

Fig.	Code	QTY	Name
1	16050233	1	cable harness
2	16054625	1	support
3	06216482	10	clamp 3.4 x 208
4	06214134	0	screw m 8 x 16
5	01102799	0	washer 8, d128
6	01179998	2	clamp 16
7	01179997	2	clamp
8	01112264	2	screw m 6 x 20, d933
9	01107158	4	washer 6.6, d125
10	01104944	2	nut m 8, d985
11	01112299	2	screw m 8 x 12, d933
12	16052326	1	sump
13	16052338	1	sump
14	01172065	16	clamp 4.6 x 146
15	16050232	1	electrical system
16	16037089	1	electrical system
17	04333490	5	clamp 21
18	16002049	1	wire ( + )
19	01112824	1	nut m 8, d934
20	06214131	2	screw m 6 x 12
21	01102797	2	washer 6, d128
22	01112813	2	nut m 6
23	16052332	1	sensor
24	16050234	1	cable harness
25	16050240	1	magneto T 13
26	06214206	2	washer 13.2
27	16050244	1	bracket
28	01151385	1	screw m 3.5 x 9.5
29	16050180	1	sensor m 18 p.1
30	06216394	1	clamp Ø 5
31	06241450	1	interlock

## ITALIAN VERSION LIGHTING

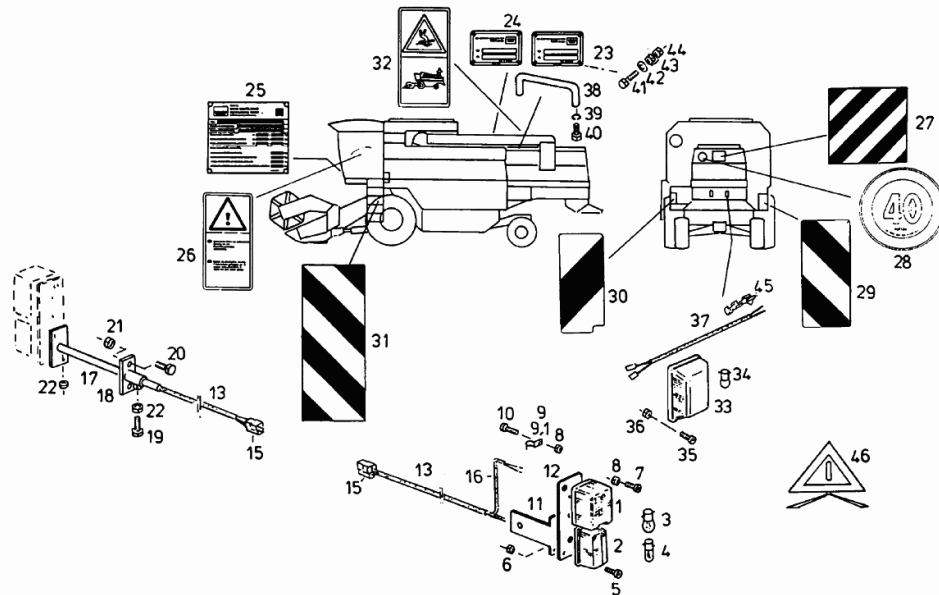
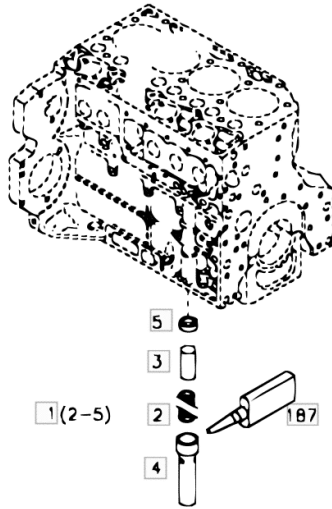
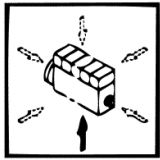


Fig.	Code	QTY	Name
1	01145200	2	side lamp
2	16006018	2	stop
3	01121407	2	lamp 12v 5w r19/5
4	01121426	2	lamp 12v 4w
5	01119630	4	screw m 4 x 16
6	06209764	4	nut m 4
7	01124044	0	screw m 5 p.0.8 x 25
8	06209765	0	nut m 5, d985
9	01121249	2	clamp 6.0 x 10 x 1.0
10	01119633	2	screw m 5 x 16
11	16056727	1	support
12	16046090	2	support
13	16056731	2	cable harness
15	06214004	2	sleeve
16	01403944	0	guard 5 x 0.6 x 200
17	16006014	1	extension
18	16006012	1	support
19	01112326	1	screw m 8 x 22
20	01112333	2	screw m 8 x 25, d933
21	01104944	2	nut m 8, d985
22	01112824	1	nut m 8, d934
23	06215816	1	number plate
24	16052036	1	number plate
25	04438639	1	number plate
26	01145917	1	stickers
27	01145916	1	reflector 500 x 500
28	04437960	1	plate
29	01145164	1	reflector dx/rh/re
30	01145165	1	reflector sx/lh/li
31	01145729	1	reflector sx/lh/li
32	01145741	1	stickers
33	16049688	2	side lamp
34	01121409	2	lamp g/10w d72601
35	01119629	4	screw m 4.0 x 12
36	06209764	4	nut m 4
37	16056728	1	cable harness
38	16006276	1	handle
39	01102799	2	washer 8, d128
40	01112299	2	screw m 8 x 12, d933
41	01127031	4	screw m 6 x 30, d933
42	06214189	12	washer 6.4
43	01112813	4	nut m 6
44	01114357	4	nut m 6, d985
45	06213732	4	terminal

Section: ENGINE  
**OIL PRESSUR.SWITCH**

Fig.	Code	QTY	Name
1	04207119	1	valve WITH ITEM .... (2-5)
2	04200782	1	spring
3	04207120	1	piston
4	04207121	1	spacer
5	04201794	1	ring
187	01016123	0	small plate H 000699-DEUTZ DW 71- 50 ML

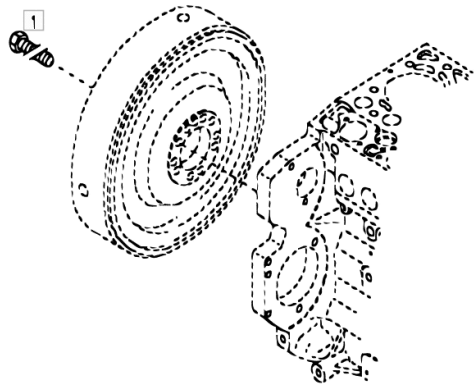
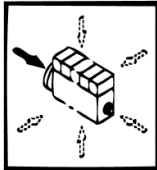


002 ©

Section: ENGINE

**FASTENINGS**

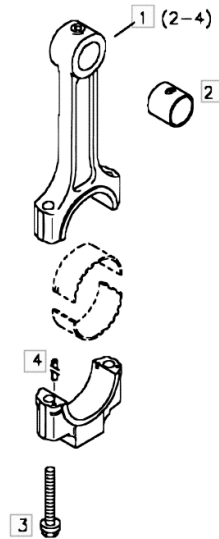
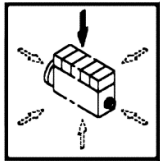
Fig.	Code	QTY	Name
1	04204130	10	screw M 10 p 1x50 M10X1X50



001 ©

Section: ENGINE  
**CONNECTING ROD**

Fig.	Code	QTY	Name
1	04200465	1	engine connect.rod WITH ITEM .... (2-4)
2	04200024	1	bushing
3	04200468	2	screw
4	01133876	2	pin ISO 008752- 5 X 10-ST-A4C



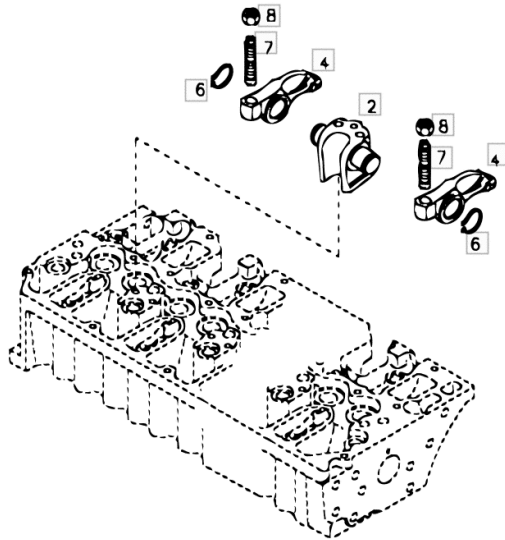
003 ©

Section: ENGINE

**ROCKER ARM BRACKET**

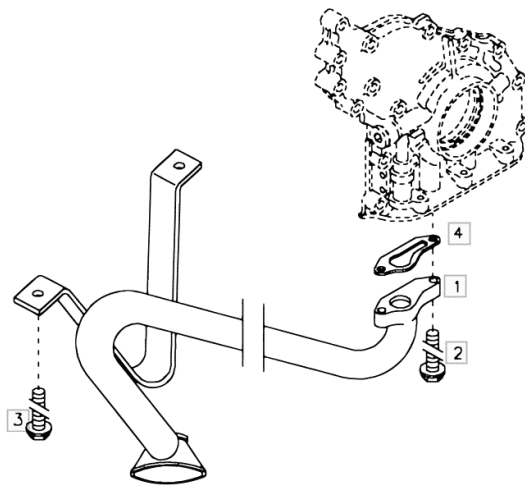
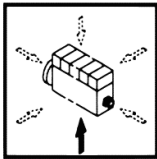
Fig.	Code	QTY	Name
2	04200960	1	pin QUANTITY BY TYPE 3X BF 4M1013 5X BF 6M1013
4	04204023	2	tappets
6	01107731	2	circlip DIN 000471- 21X1,2
7	03365861	2	register
8	02109637	2	nut

000 ©



Section: ENGINE  
**OIL SUCTION PIPE**

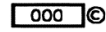
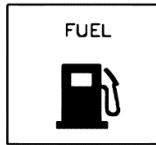
Fig.	Code	QTY	Name
1	04256591	1	primer
2	01181416	2	screw EN 001662-F-M 8 X 25- 10.9-ZNAL-A
3	01181436	2	screw EN 001662-F-M 8 X 16-LG 2,5-10.9-ZNAL-A
4	04198741	1	gasket



000 ©

Section: ENGINE  
**SPIN-ON FILTER**

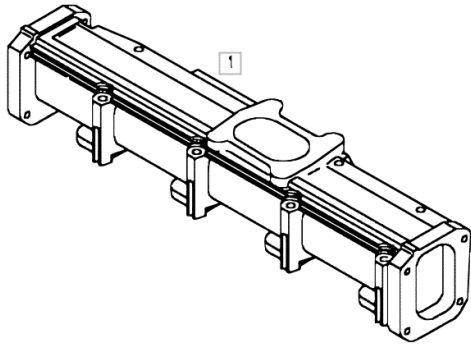
Fig.	Code	QTY	Name
1	01180597	1	fuel filter element H 004117- Q 0,6 -R-9,5BAR



Section: ENGINE  
**CHARGE AIR PIPE**

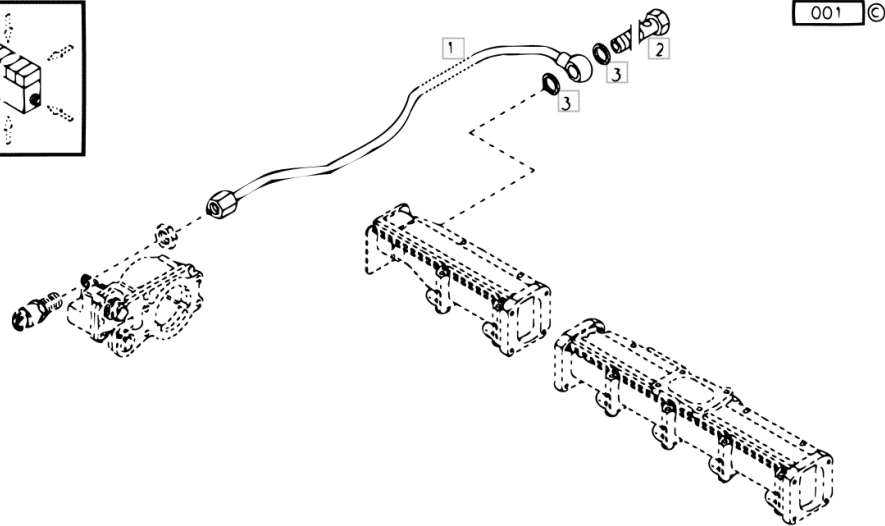
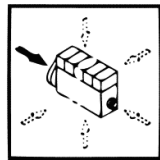
Fig.	Code	QTY	Name
1	04207503	1	tube

000 ©



Section: ENGINE  
INLET MANIFOLD

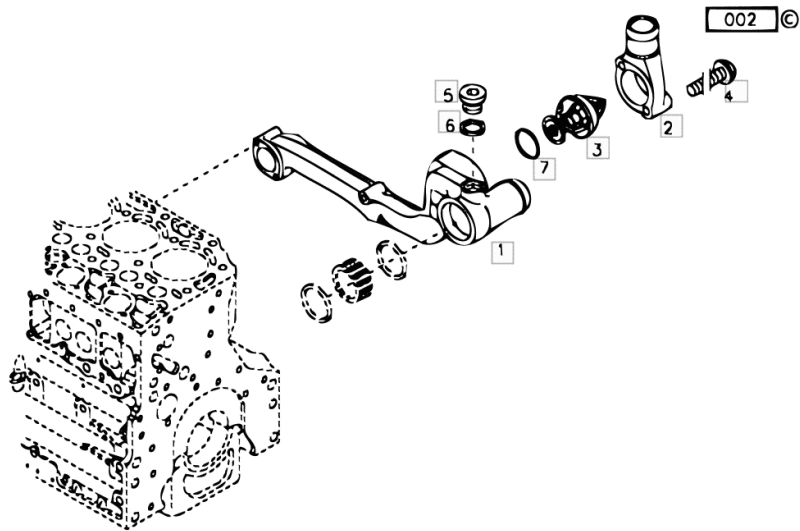
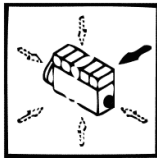
Fig.	Code	QTY	Name
1	04251567	1	tube
2	01119237	1	pipe union DIN 007643- 6-4-A3L
3	01118659	2	'o' ring DIN 007603-A 10 X 13,5 -CU



Section: ENGINE

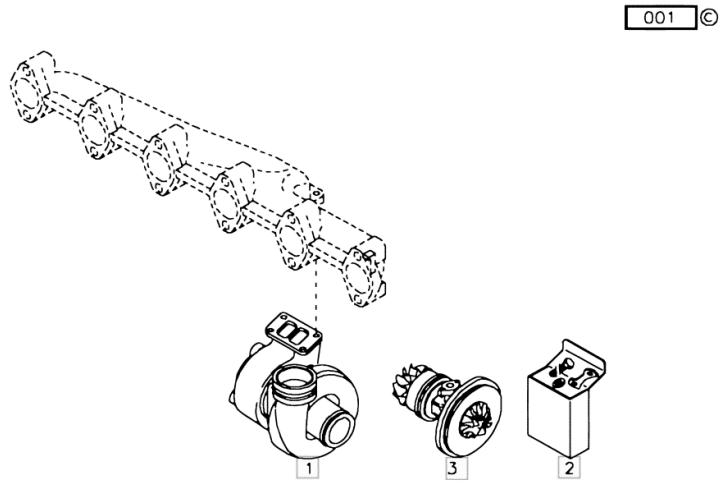
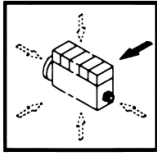
**COOLING WATER THERMOSTAT**

Fig.	Code	QTY	Name
1	04209429	1	box
2	04209425	1	tongue
3	04224846	1	thermostat
4	01180205	2	screw EN 001662-F-M 8 X 50- 10.9-GESCHW
5	01148158	1	plug DIN 000908-M26X1,5-ST-A4C
6	01118759	1	'o' ring DIN 007603-A 26 X 31 -AL
7	04221386	1	'o' ring



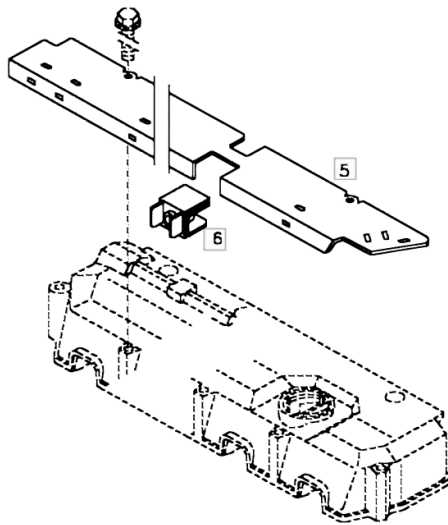
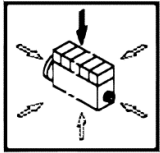
Section: ENGINE  
**TURBOCHARGER**

Fig.	Code	QTY	Name
1	04259605	1	turbo charger
2	01319955	1	repair kit direct gl
3	01319965	1	impeller



Section: ENGINE  
COVER PLATE

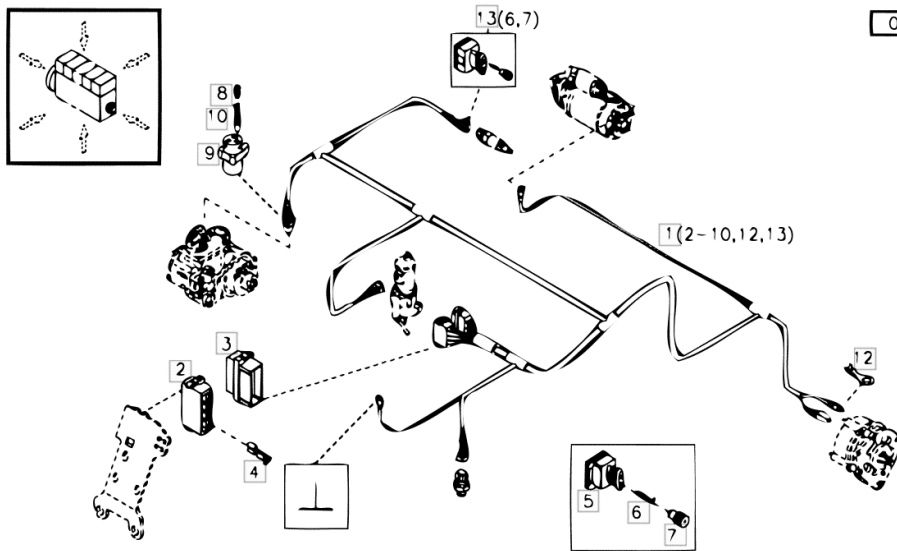
Fig.	Code	QTY	Name
5	04199252	1	lamination
6	04199234	2	cab.terminals



002 ©

Section: ENGINE  
**ENGINE ELECTRICAL SYSTEM**

Fig.	Code	QTY	Name
1	04199675	1	cable harness WITH POS....
2	01231159	1	box H 007642-NS6,3-8-NATUR
3	01242008	1	box H 007642-NS6,3-8-GELB
4	01169069	9	pin DIN 046343-B6,3-2,5-MS
5	04190847	2	box
6	04190852	6	pin
7	04190853	6	gasket
8	04199129	3	gasket
9	04199128	1	box
10	04199143	2	pin
12	01143324	1	cab.terminals DIN 046225-A 5- 2,5-CUSN-GAL SN
13	04199496	1	connection WITH POS....
950	04199145	0	connection WITH POS....

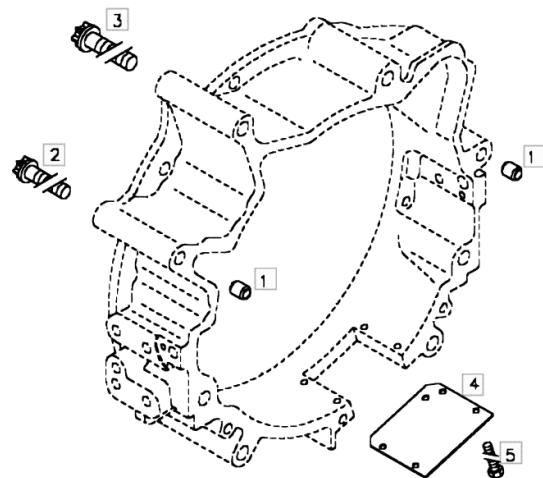


Section: ENGINE

**FASTENINGS**

Fig.	Code	QTY	Name
2	01181429	2	screw H 002032-HBM12X160-10.9 -ZNAL-A
3	01181430	4	screw H 002032-HBM16X150-10.9 -ZNAL-A
4	04195681	1	lamination
5	01148199	4	screw ISO 004017-M 6 X 12 - 8.8-ZNAL-A

000 ©



CLICK HERE TO **DOWNLOAD** THE COMPLETE MANUAL

- Thank you very much for reading the preview of the manual.
- You can download the complete manual from: [www.heydownloads.com](http://www.heydownloads.com) by clicking the link below

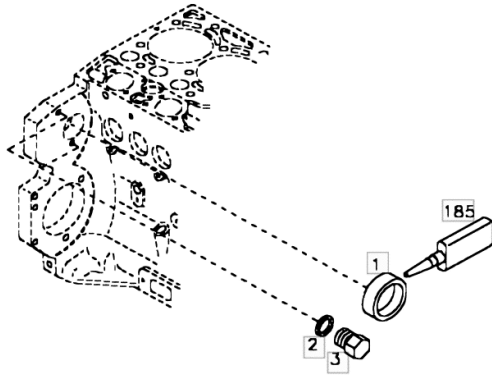
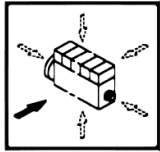


- Please note: If there is no response to CLICKING the link, please download this PDF first and then click on it.

CLICK HERE TO **DOWNLOAD** THE COMPLETE MANUAL

Section: ENGINE  
**BLANKING PARTS**

Fig.	Code	QTY	Name
1	01165839	1	stop H 000711-B50
2	01118659	2	'o' ring DIN 007603-A 10 X 13,5 -CU
3	01181401	2	screw
185	01016127	0	sealing compound ml. 50 H 000699-DEUTZ DW 72- 50 ML

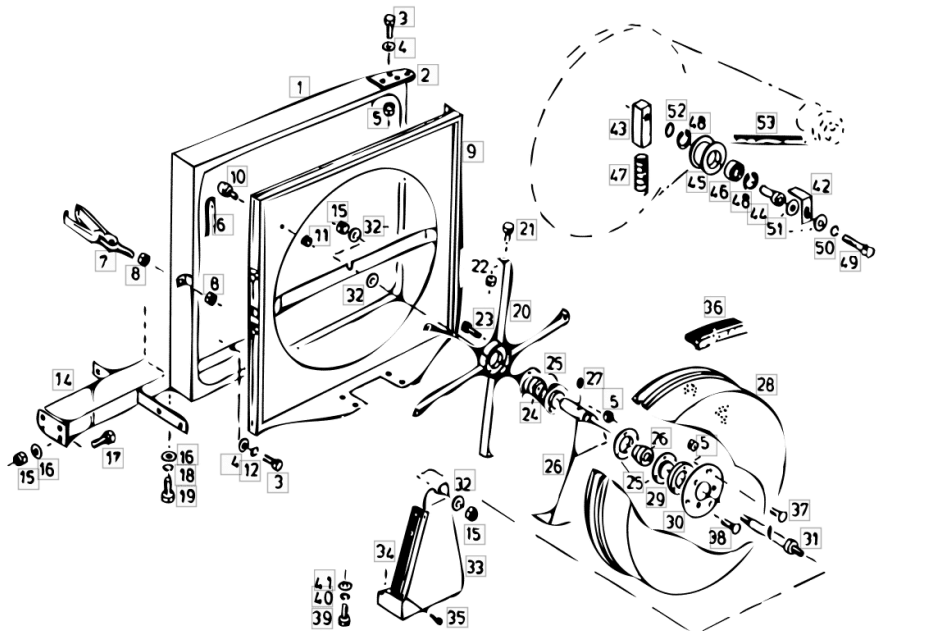


003 ©

## Section: ENGINE

**ENGINE COOLING SYSTEM STRAINER**

Fig.	Code	QTY	Name
1	16049972	1	casing
2	16049941	1	plate
3	01112330	0	screw m 8 x 25
4	01107163	0	washer 9, d126
5	01104944	0	nut m 8, d985
6	01396986	0	gasket 4300 mm
7	06259239	1	interlock
8	01112858	2	nut m 12, d934
9	16049934	1	casing
10	06253864	1	silent-block
11	01114357	1	nut m 6, d985
12	01102799	0	washer 8, d128
14	16049880	1	carrier
15	06209769	8	nut m 12, d985
16	06205230	0	washer 13 x 24 x 2.5
17	01112538	6	screw m 12 x 35, d933
18	01102801	2	washer 12
19	01112515	2	screw m 12 x 25
20	16053693	1	wheel
21	01103316	6	screw m 6 p.1.0 x 16
22	01114357	1	nut m 6, d985
23	01112350	3	screw m 8 x 35
24	06215739	2	bearing yb 20
25	06215781	4	bearing housing rb 20
26	16055226	1	lamination
27	01139633	1	grain m 6 x 6
28	16055288	1	drum
29	16035507	1	ring 7x12x1800
30	16035511	1	disc
31	16035478	1	shaft m 12
32	01133726	1	washer 13
33	16049857	1	lamination
34	16054422	1	brush
35	01143163	0	screw 4,2x9,5 d7981
36	16055286	1	brush L = mm 3650
36.1	16055287	1	brush L = mm 470
37	01138993	3	screw m 8 x 16
38	01138837	3	screw m 8 x 35
40	01102800	4	washer 10.2
41	01107165	4	washer 10.5
42	16050785	1	angular
43	16050786	1	small block
44	16055271	1	sleeve
45	16050788	1	tensioner

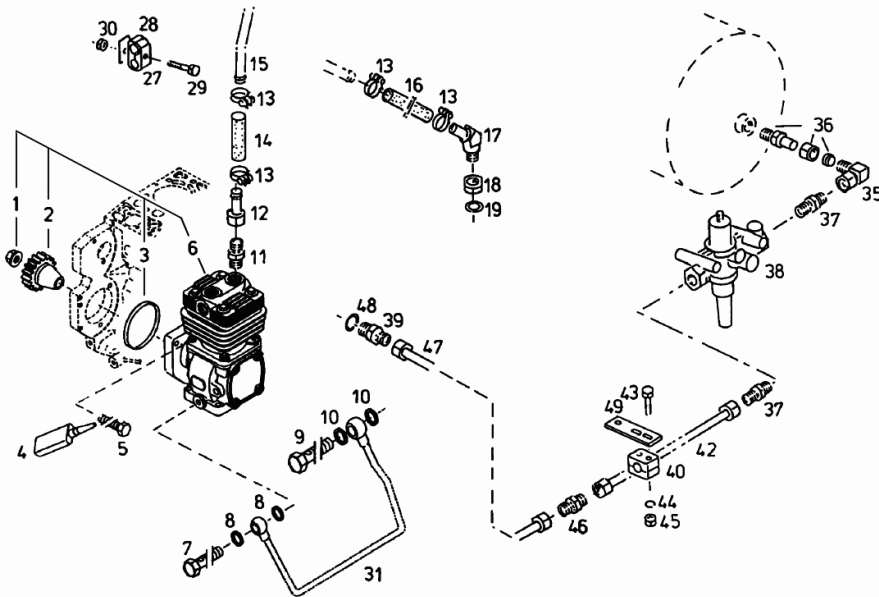


2.004514.00

## Section: ENGINE

**PNEUMATIC SYSTEM BF 6M 1013 / W**

Fig.	Code	QTY	Name
1	01121798	1	nut b 20 d74361
2	04425095.4	1	gear
3	01171114	1	ring
4	01016127	0	sealing compound ml. 50
5	01122447	3	screw m10x30 d933-10
6	04428408.4	1	air compressor 229 cm <sup>3</sup> ☞ 04428408.4
7	01119237	1	pipe union
8	01118659	2	'o' ring
9	01119246	1	pipe union H 3102 -D10 M
10	01118688	2	ring 14x17
11	01177225	1	tongue m 26x1,5/22
12	16050884	1	pipe fitting Ø 22 / m 30 p.2
13	01133514	4	clamp Ø 20/32
14	01175630	1	sleeve 22x29x71
15	16055249	1	pipng
16	06237987	1	flexible hose Ø 22.2 / L = mm 220
17	04345862	1	tongue
18	01102763	1	nut
19	01118764	1	ring 26.5
27	06262780	1	hose clip Ø 22/22
28	16044591	1	terminal
29	01111179	1	screw m 8 x 70, d931
30	01104944	1	nut m 8, d985
31	04204607	1	tube
35	01172993	1	pipe fitting BL 18
36	01173057	1	insert
37	01143421	2	tongue L 18 B
38	16018414	1	regulator
39	16048124	1	pipe fitting ge 18/m 26 x 1.5
40	16015213	1	hose clip Ø 18
42	16055251	1	pipng
43	01102689	2	screw m 6 x 55, d931
44	01102797	2	washer 6, d128
45	01112813	2	nut m 6
46	01127360	1	tongue l18 d3902
47	16055250	1	pipng
48	01118764	1	ring 26.5
49	16055280	1	support



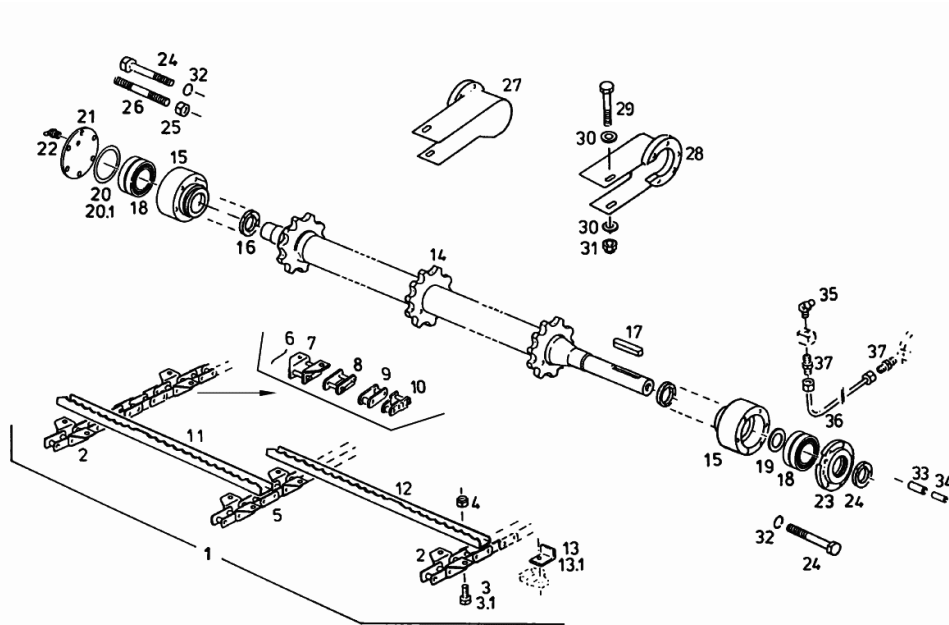
**TOP SHAFT GATHERING CHAIN FEEDER CHANNEL**

Fig.	Code	QTY	Name
1	16052174	1	chain
2	16052176	2	chain 38,4x130
3.1	01112418	12	screw m 10 x 25, d933
4	06209768	128	nut m 10, d985
5	16052175	1	chain 38,4x130
6	06277424	0	ring
7	16053080	0	chain link t38,4
8	16053078	0	chain link
9	16053077	0	chain link b 38,4-1
10	16053079	0	chain link gekr. h 38,4-1
11	16054372	16	crossbar dx/rh/re R
12	16054371	16	crossbar sx/lh/li L
13	16024682	6	square sx/lh/li L
13.1	16024683	6	pipe fitting dx/rh/re R
14	16020097	1	shaft L = mm 1710
15	16013347	2	bearing housing
16	06212000	2	ring 45 x 57 x 5.0
17	01118111	1	dowel 12 x 8.0 x 80
18	01109340	2	bearing 2308 d630
19	01137379	1	shim
20	06214529	0	shim 70 x 90 x 1,0
20.1	06214528	0	shim 70 x 90 x 0,5
21	16014869	1	cover
22	01120697	2	lubricator bm 8 x 1
23	16014870	1	cover
24	01111342	10	screw m 10 x 85
25	06209768	2	nut m 10, d985
26	01152507	2	screw m 10 x 90
27	16024653	1	interlock dx/rh/re R
28	16024655	1	interlock sx/lh/li L
29	01111339	2	screw m 10 x 80
30	06214197	4	washer 10.5
31	06209768	2	nut m 10, d985
32	01102800	10	washer 10.2
33	01115487	4	pin 10 x 28
34	01125061	4	pin
35	01120697	1	lubricator bm 8 x 1
36	16033222	1	pipng Ø 4 / L = mm 217

5690 -> 6228-12226

**FRAME**

**LETTERING**

COLOUR LABEL.....	4F.09.1
ADHESIVE CE LABEL.....	4F.09.2

**FRAME**

CHASSIS.....	4F.10.1
CHASSIS.....	4F.10.2

**COVERING**

L.H. LINING.....	4F.11.1
COVERING AT THE LEFT SIEVE CARRIER.....	4F.11.2
R.H. LINING.....	4F.11.3
R.H. LINING.....	4F.11.4

**STRAW HOOD**

STRAW BOX.....	4F.12.1
SERVICE PLATFORM.....	4F.12.2

## Section: FRAME

## R.H. LINING

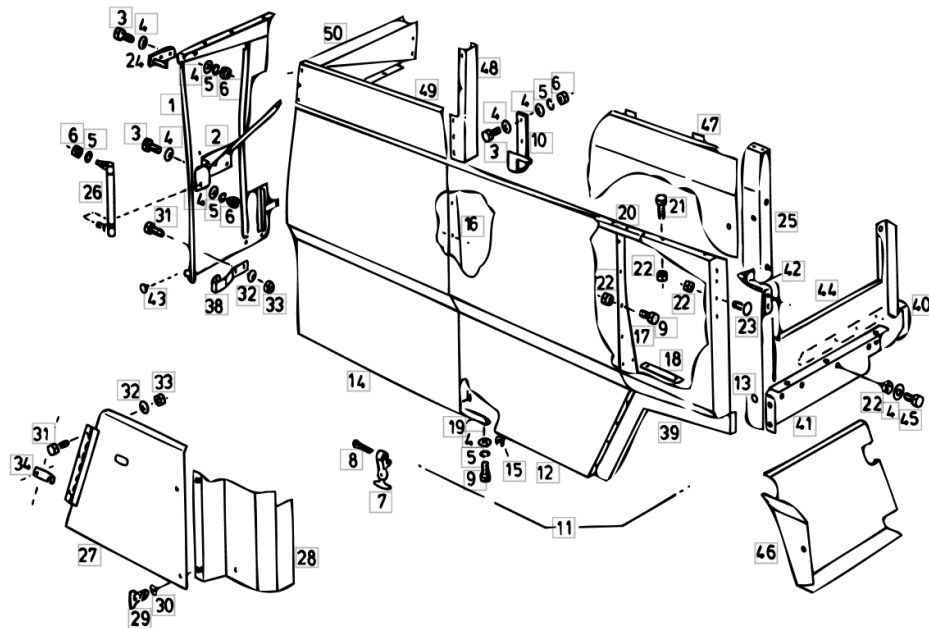
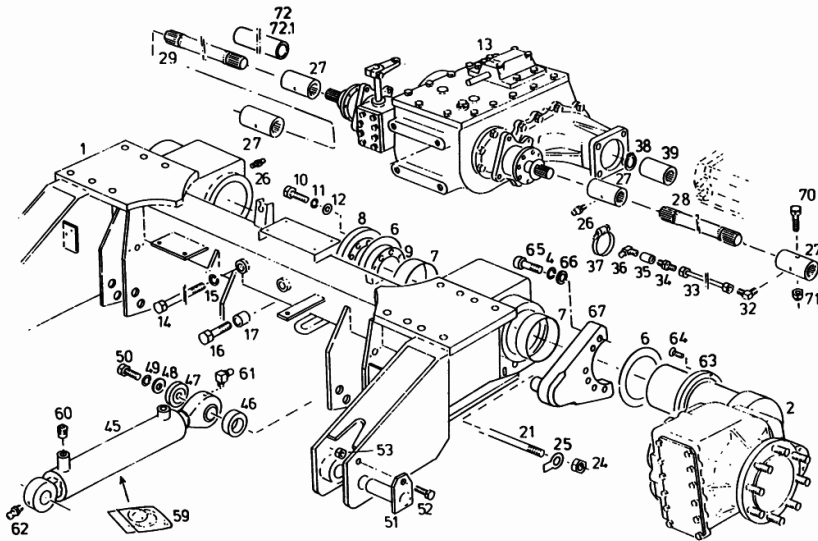


Fig.	Code	QTY	Name
1	16053278	1	lining dx/rh/re
2	16055510	1	plate
3	01112322	0	screw m 8 p.1.25 x 20
4	01107163	0	washer 9, d126
5	01102799	0	washer 8, d128
6	01112824	0	nut m 8, d934
7	06519313	1	rubber
8	01106474	1	split pin 5 x 5 x 50
9	01112322	0	screw m 8 p.1.25 x 20
10	16007142	1	bracket
11	16053267	1	cover kpl. (dx/rh/re) WITHOUT POS. 39
12	16053273	1	shutter
13	16053270	1	shutter
14	16053275	1	shutter
15	06334236	2	guard
16	16053290	1	brace
17	16053274	1	brace
18	16027654	1	brace
19	16004544	1	brace
20	16053268	1	pipe union
21	01137744	10	screw m 8 x 40
22	01104944	0	nut m 8, d985
23	01108524	6	screw m 8 p.1.25 x 20
24	16005221	2	bracket
25	16055500	1	support
26	16014618	1	shoch.absorber
27	16029060	1	lamination
28	16038575	1	lamination
29	06212242	2	interlock
30	06571317	2	washer
31	01103316	6	screw m 6 p.1.0 x 16
32	06214189	5	washer 6.4
33	01114357	6	nut m 6, d985
34	16005020	1	support
36	01144557	1	screw
37	06209768	1	nut m 10, d985
38	16016759	1	bracket
39	16034710	1	guard dx/rh/re
40	16054885	1	support
41	16055505	1	lamination
42	16055502	1	bracket
43	01145212	2	rubber plug
44	16055564	1	support

Section: FRONT AXEL  
**BALANCES FRONT AXLE / W**

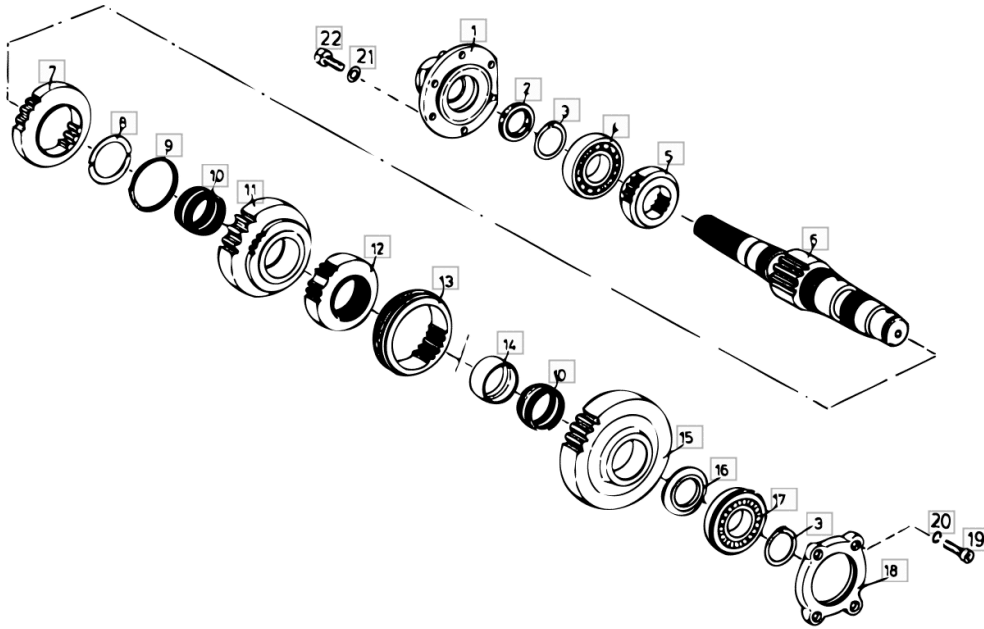
Fig.	Code	QTY	Name
1	16054813	1	axle (BAL)
2	16041806	2	side gear (BAL) B B17 ☞ 16041806
4	01102805	14	washer 20.5
6	16022983	4	shim Ø195/240 x 2.0
7	16054874	4	sleeve Ø195/200 x 60
8	16022991	2	disc Ø140/240 x 22.5
9	16026046	0	shim Ø140/193 x 0.5
10	01112560	22	screw m 12 x 50
11	01123616	22	washer 13.5
12	01102801	22	washer 12
13	16040895	1	gear box 5680/5690 B B09-B14
14.1	01111971	2	screw TYP 5670
15	01177982	2	washer 16
16	01155070	2	screw m 16 p.1.5 x 16 TYP 5680 / 5690
17	06260130	2	spacer 30 x 25
21	16049080	1	rod m 20
24	01133798	2	nut m 20 x 1.5
25	01106362	2	washer 21
26	01120694	2	lubricator am 10 x 1
27	16035074	4	sleeve
28	16035097	1	shaft sx / L = mm 435
29	16035096	1	shaft dx / L = mm 312
32	16027247	2	tongue we 6 plm
33	16027241	1	tube sx/lh/li L
34	06253075	2	pipe fitting
35	06253074	2	sleeve r 1/8 x 20
36	01128145	2	lubricator 1/8" D71412
37	01173941	2	stop b50-70/13 h3461
38	01107748	1	ring 35 x 1.5, d471
39	16052500	1	sleeve TYP 5680 / 5690
45	16029398	2	cylinder Ø 125 ☞ 16029398
46	16022989	2	shim
47	16022988	2	disc Ø18/90 x 15
48	01124633	2	washer 18.5
49	01177982	2	washer 16
50	01112693	2	screw m 16 x 45, d933



Section: FRONT AXEL

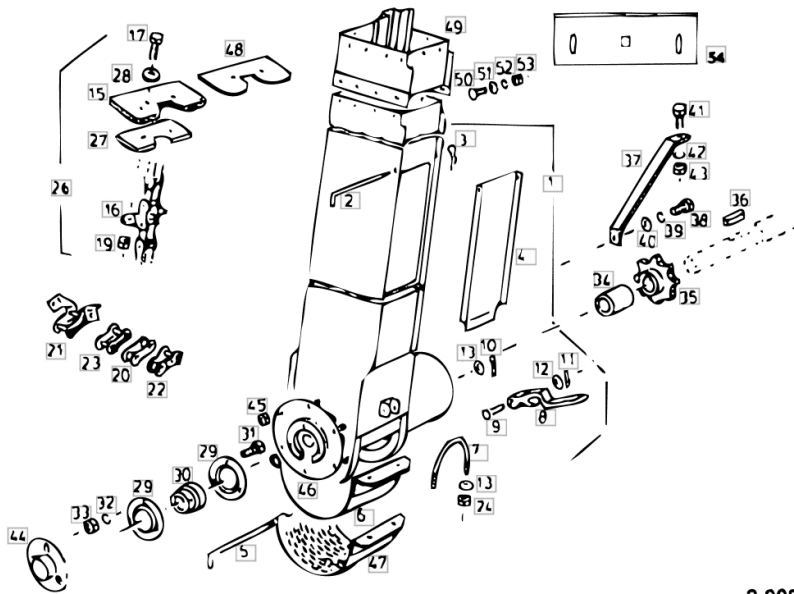
**INTERMEDIATE SHAFT TRANSMISSION**

Fig.	Code	QTY	Name
1	16052957	1	support
2	16052958	1	'o' ring 45x62x10
3	01107760	1	circlip 45x1.75
4	01117311	1	bearing nup 309 ec
5	16052959	1	gear Z = 25
6	16052960	1	shaft
7	16052961	1	gear Z = 36
8	16052962	1	snoulder
9	16052963	1	ring
10	01145355	1	ring k 58x65x36
11	16052964	1	gear Z = 41
12	16052948	1	hub
13	16052949	1	sleeve
14	16052965	1	ring
15	16052966	1	gear Z = 49
16	16052967	1	bushing
17	01109134	1	ball bearing
18	16052953	1	cover sx/lh/li
19	01110652	4	screw m10x25 d912-10
20	01102800	4	washer 10.2
21	06214280	6	washer 13 x 24 x 2.5
22	01102701	6	screw m12x30 10 d933



**GRAIN ELEVATOR**

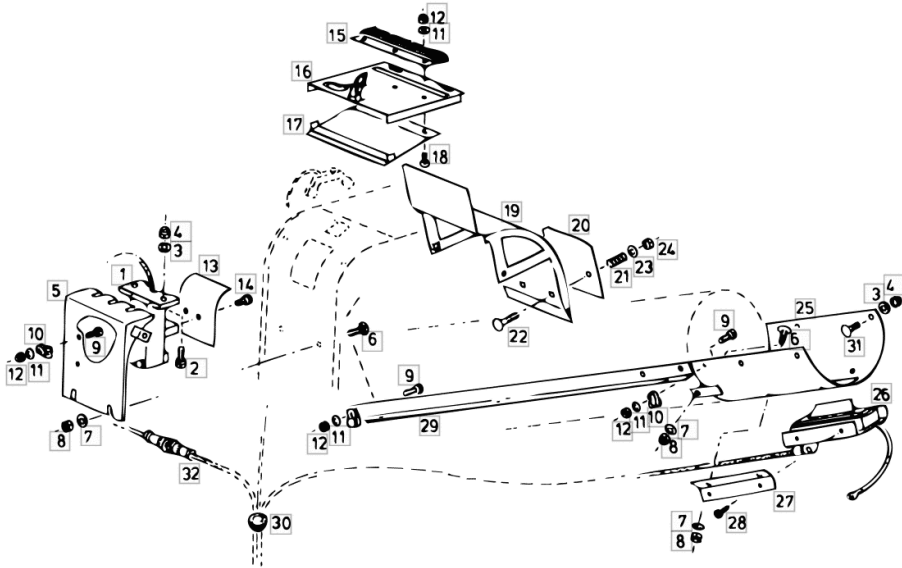
Fig.	Code	QTY	Name
43	01112824	1	nut m 8, d934
44	06237940	1	guard
45	01111357	6	screw
46	06515069	1	cover
47	06526469	1	cover
48	06526479	1	scraper
49	16006608	1	extension
50	06214133	10	screw m 6 x 20
51	06214189	10	washer 6.4
52	01102797	10	washer 6, d128
53	01112813	10	nut m 6
54	16047245	1	support



2.003206.00

**MEASUREMENT OF ELEVATOR THROUGHPUT AND GRAIN HUMIDITY / TCS / W**

Fig.	Code	QTY	Name
1	16027126	1	front-wheel drive G 1,13,14
2	01112429	0	screw m 10 x 30, d933
3	06214197	6	washer 10.5
4	06209768	6	nut m 10, d985
5	16034585	1	support
6	01137624	8	screw m 8 x 25
7	06214193	8	washer 8.4
8	01104944	8	nut m 8, d985
9	01112264	4	screw m 6 x 20, d933
10	06216402	2	clamp 15,9 ne
11	06214189	4	washer 6.4
12	01114357	4	nut m 6, d985
13	16047108	1	plate
14	01145882	2	screw
15	16034581	1	brush
16	16027504	1	cap
17	16034578	1	lamination
18	01138836	3	screw m 6 x 20, d603
19	16034572	1	lamination
20	16034580	1	plate
21	06215302	1	spring 2 x 12 x 20
22	01138838	2	screw m 8 x 50, d603
23	06214192	1	washer 8.4
24	01104944	1	nut m 8, d985
25	16034590	1	lamination
26	16027128	1	position sensor
27	16034574	2	square
28	01127683	4	screw m 4.2x13
29	16034587	1	rail
30	06543583	1	grommet Ø 28.8
31	01138843	4	screw m 10 x 30
32	16027548	1	cable harness



## HYDRAULIC SYSTEM

## HYDRAULIC SYSTEM

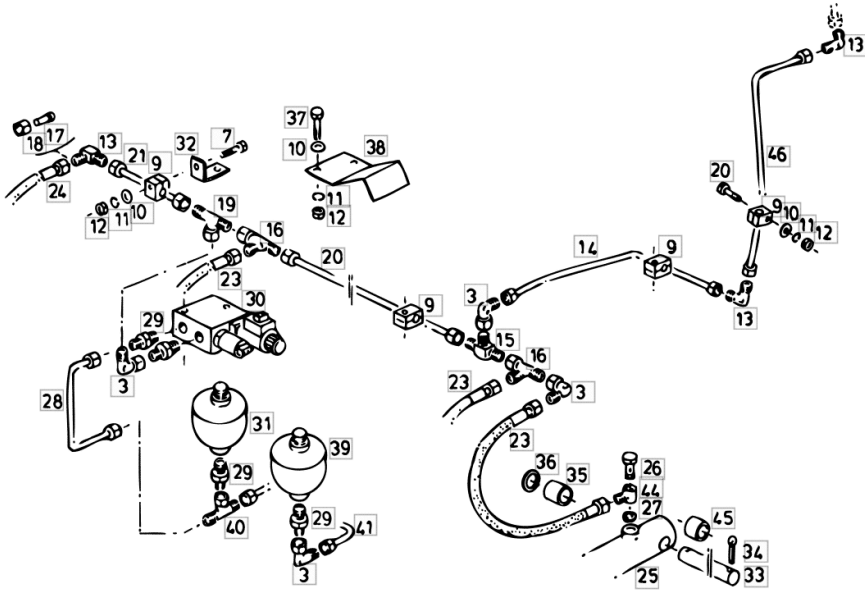
WORKING HYDRAULIK SYSTEM / ENGINE.....	4D.07.2
WORKING HYDRAULIK SYSTEM / ENGINE OIL COOLER.....	4D.07.4
WORKING HYDRAULIK SYSTEM CONTROL VALVES.....	4D.07.5
OPERATING HYDRAULICS FOR CUTTER BAR.....	4D.07.6
LIFTING CYLINDER FOR CUTTER BARS.....	4D.07.7
WORKING HYDR. SYSTEM FOR CUTTING TABLE REEL.....	4D.07.8
OPERATING HYDRAULICS FOR GRAIN TANK PIPE.....	4D.07.9
WORKING HYDR. SYSTEM FOR GRAIN TANK TOP.....	4D.07.10
MAIN HYDRAULIC STEERING.....	4D.07.11
MAIN HYDRAULIC STEERING.....	4D.07.12
WORKING HYDR.SYST.....	4D.07.13
OPERATING HYDRAULICS FOR BALANCES / W.....	4D.07.14
INCLINATION HYDRAUL. SYSTEM BALANCE / W.....	4D.07.15
OPERATING HYDRAULICS FOR BALANCES / W.....	4D.07.16
WORKING HYDR. SYSTEM FIELD TRACKER AND BALANCE / W.....	4D.07.17
WORKING HYDR. SYSTEM FIELD TRACKER AND BALANCE / W.....	4D.07.18
WORKING HYDR. SYSTEM CUTTING ANGLE ADJUSTMENT BALANCE / W.....	4D.07.19
HYDRAULIC SYSTEM OIL TANK.....	4D.07.24
WORKING HYDR.SYSTEM HYDRAULIC PUMP S 3.....	4D.07.26
WORKING HYDR.SYSTEM HYDRAULIC PUMP BALANCE / W S 3.....	4D.07.27
CONTROL BLOCK S 2.....	4D.07.28
MAIN VALVE CONTROL BLOCK S 2.....	4D.07.29
CONTROL BLOCK S 2.....	4D.07.30
CONTROL BLOCK S 2.....	4D.07.31
CONTROL BLOCK S 2.....	4D.07.32
CONTROL BLOCK S 3 / W.....	4D.07.33
CONTROL BLOCK S 3 / W.....	4D.07.34
ADJUSTMENT VALVE S 2.....	4D.07.35
CHANGEOVER VALVE S 2.....	4D.07.36
CONTROL BLOCK INCLINATION HYDRAUL. SYSTEM BALANCE / W.....	4D.07.37
LIFTING CYLINDER FOR GRAIN TANK PIPE S 2.....	4D.07.38
HYDROSTATIC STEERING S 3.....	4D.07.39
HYDRAULIC CYLINDER STEERING AXLE S 3.....	4D.07.40
TRAVELING SPEED REGULATION.....	4D.07.41
TRAVELING HYDRAULIC EQUIPMENT HPV 135 STANDARD EQUIPMENT.....	4D.07.47
VARIABLE PUMP HPV 135.....	4D.07.49
TRAVELING HYDR.EQUIP OIL COOLER.....	4D.07.51
TRAVELING HYDR.EQUIP OIL COOLER.....	4D.07.52



## Section: HYDRAULIC SYSTEM

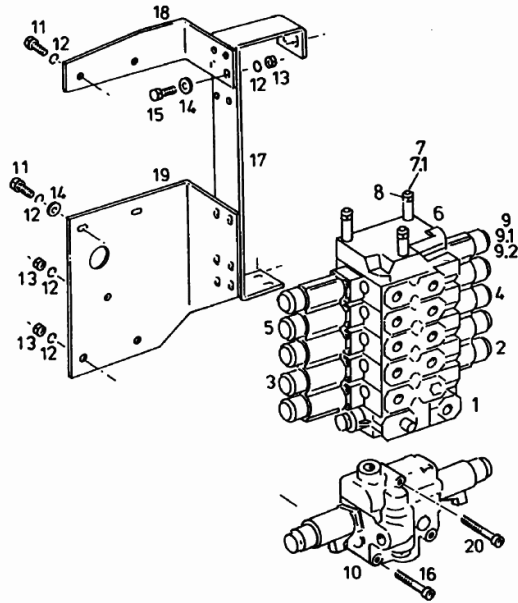
**OPERATING HYDRAULICS FOR BALANCES / W**

Fig.	Code	QTY	Name
39	16029213	1	accumulator 0.5 lt. / 160-45 bar
40	01179538	1	pipe fitting CL 12 S
41	16026667	1	tube
44	16034306	3	pipe fitting 12-LM
45	16056229	2	sleeve
46	16056224	1	tube



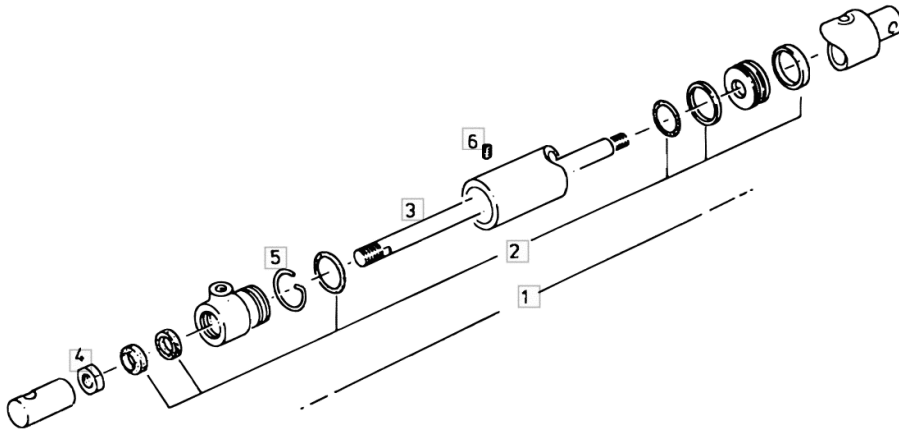
Section: HYDRAULIC SYSTEM  
**CONTROL BLOCK S 2**

Fig.	Code	QTY	Name
14	06214192	0	washer 8.4
15	01112341	0	screw m 8 x 30, d933
16	01144739	3	screw m8x80 d912-10
17	16018230	1	bracket
18	16029361	1	bracket
19	16018229	1	bracket



**LIFTING CYLINDER FOR GRAIN TANK PIPE S 2**

Fig.	Code	QTY	Name
1	06503194	1	roller Ø 45 ☞ 06503194
2	16000598	0	gasket set
3	16000597	1	piston m 18
4	01138932	1	nut m 18 p.1.5
5	16012262	1	ring
6	06208940	1	grain m 5x10



**5690 -> 6228-12226**

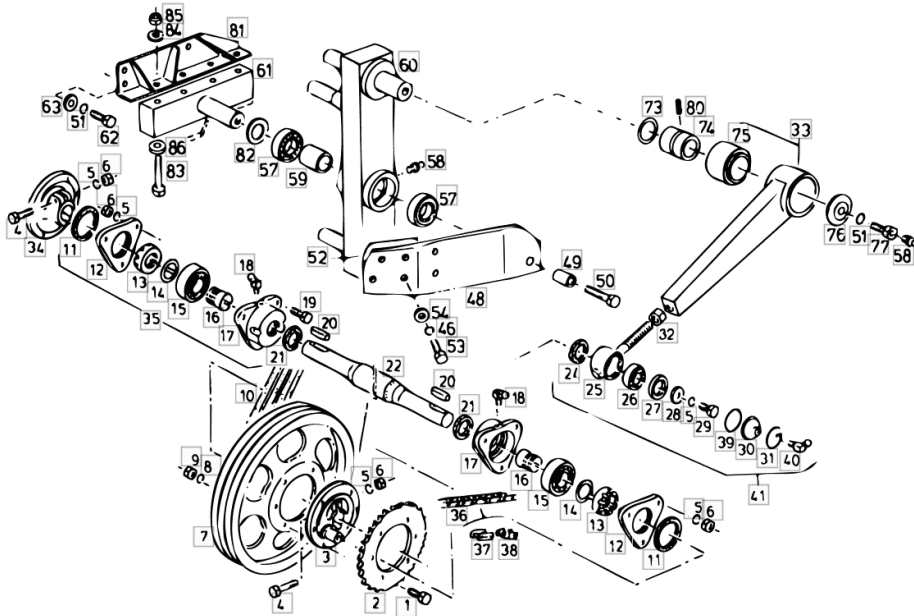
**MAIN DRIVE**

**V-BELTS AND CHAINS**

V-BELT AND L.H. CHAINS.....	4C.05.1
B-BELT AND R.H. CHAINS.....	4C.05.2
LUBE DEVICE AT THE LEFT.....	4C.05.3
LUBE DEVICE AT THE LEFT AND BALANCE.....	4C.05.4

**STEPPED FLOOR AND SIEVE BOX DRIVING PARTS STANDARD EQUIPMENT**

Fig.	Code	QTY	Name
			L
48.1	16039885	1	link dx/rh/re
			R
49	16040928	2	spacer
50	01112641	2	screw m 14 x 60
51	01102801	6	washer 12
52	16042296	0	lamination mm 1.00
52.1	16042295	0	lamination mm 3.00
53	01112429	12	screw m 10 x 30, d933
54	06214197	12	washer 10.5
55	06209768	4	nut m 10, d985
57	01136765	4	ring 6207 rs d625
58	01168225	2	lubricator m 8 x 1
59	16041418	2	bushing
60	16043725	1	lever sx/lh/li
			L
60.1	16043724	1	lever dx/rh/re
			R
61	16038612	2	support
62	01112542	6	screw m 12 x 40
63	06214206	6	washer 13.2
73	06214515	0	shim 60 x 75 x 0,5
73.1	06214513	0	shim 60 x 75 x 0,2
74	16013091	2	bushing 45 x 59,5 x 77
75	16013085	2	bearing
76	16013106	2	washer 13 x 71 x 8
77	16013117	2	screw m 12 x 35
80	01115452	2	pin 6x24 d1481
81	NE	0	lamination
82	01137526	2	shim 35 x 45 x 2,5
83	06209115	4	screw m 12 x 120
			L
83.1	06209202	4	screw
			R
84	06214206	8	washer 13.2
85	06209778	8	nut m 12
86	16012311	4	washer 13



Section: STRAW WALKERS  
**BOTTOM SCREENING DRAWER**

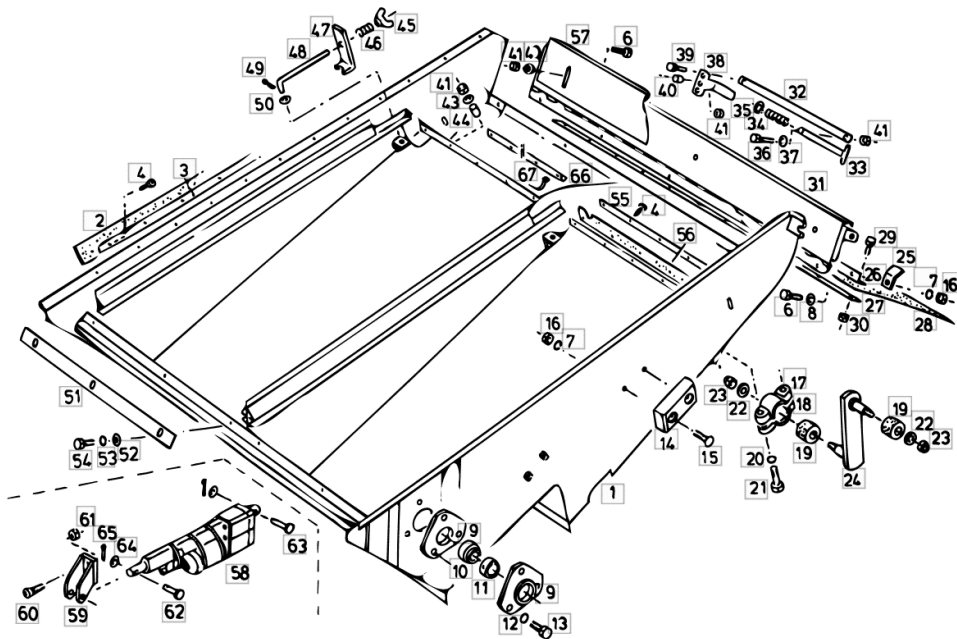


Fig.	Code	QTY	Name
47	16004587	4	link
48	06508208	4	screw
49	01132621	4	split pin 3.2 x 16
50	01107165	4	washer 10.5
51	16047687	2	lamination
52	06214189	6	washer 6.4
53	01102797	6	washer 6, d128
54	01103316	6	screw m 6 p.1.0 x 16
55	16046574	2	metal strap
56	16046576	2	hood
57	16052028	1	lamination
58	16057423	1	electric motor W / TERIS / TCS
59	16055007	1	plate W / TERIS / TCS
60	01126918	2	screw m 8 p.1.25 x 20 W / TERIS / TCS
61	01104944	2	nut m 8, d985 W / TERIS / TCS
62	16056520	1	pin W / TERIS / TCS
63	16056523	1	pin W / TERIS / TCS
64	01107095	2	washer 6.4 W / TERIS / TCS
65	01138902	2	split pin 2x16 W / TERIS / TCS
66	16056524	1	guide W / TERIS / TCS
67	01172065	0	clamp 4.6 x 146 W / TERIS / TCS

Section: STRAW WALKERS  
**GRAIN PAN AIR GUIDE PARTS**

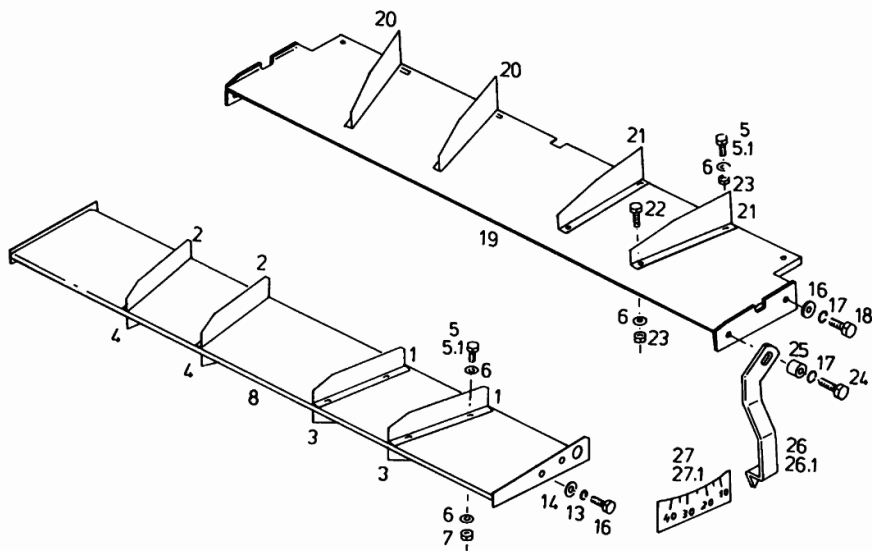


Fig.	Code	QTY	Name
1	16048416	2	lamination sx/lh/li L
2	16048417	2	lamination dx/rh/re R
3	16025510	2	lamination sx/lh/li L
4	16025511	2	lamination dx/rh/re R
5	01112266	4	screw m 6 x 22
5.1	01103316	4	screw m 6 p.1.0 x 16
6	01107158	0	washer 6.6, d125
7	01114357	8	nut m 6, d985
8	16022888	1	lamination
13	01102799	6	washer 8, d128
14	01107163	0	washer 9, d126
16	06214197	2	washer 10.5
17	01102800	2	washer 10.2
18	01112418	2	screw m 10 x 25, d933
19	16053729	1	lamination
20	16053734	2	lamination dx/rh/re R
21	16053733	2	lamination sx/lh/li L
22	01127031	4	screw m 6 x 30, d933
23	01114357	8	nut m 6, d985
24	01112445	2	screw m10x40 d933
25	06250003	2	spacer Ø 11 / Ø 20 x 16
26	16053745	1	lever sx/lh/li L
27.1	01145965	1	stickers dx/rh/re R

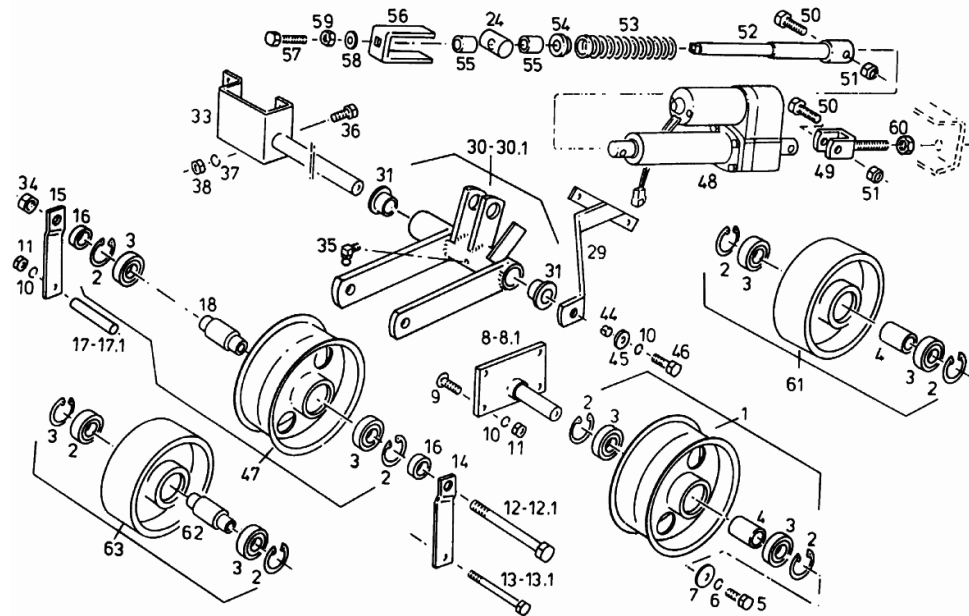
**BEATER ASSEMBLY DRIVE TENSIONER ROLLERS**

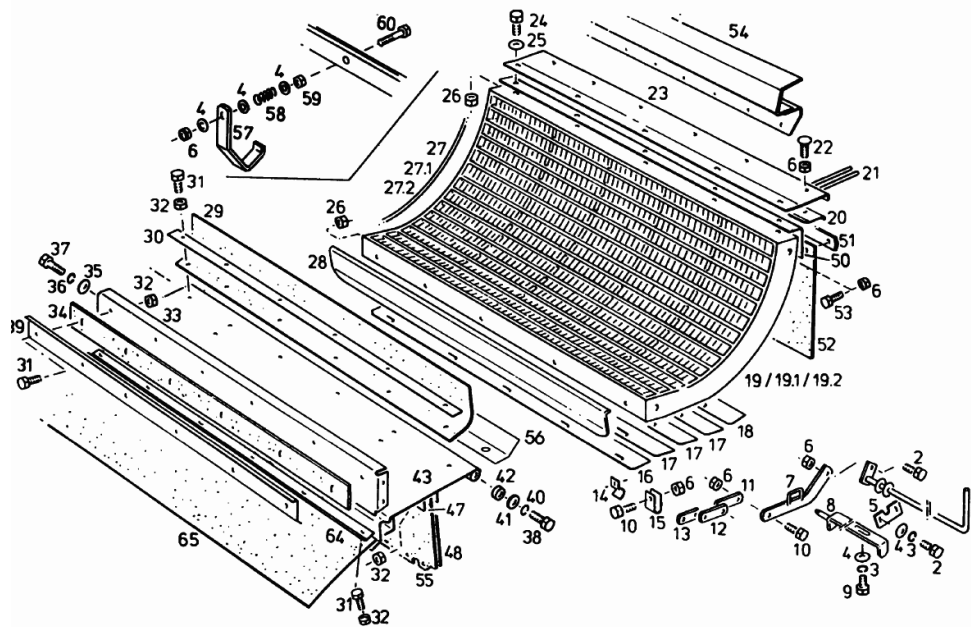
Fig.	Code	QTY	Name
35	01120700	1	lubricator cm 8 x 1
36	01112322	4	screw m 8 p.1.25 x 20
37	01102799	4	washer 8, d128
38	01112824	1	nut m 8, d934
44	01139192	1	pin 13x16
45	01127538	1	washer 10.5
46	06209433	1	screw m 10 x 40
47	16003987	1	pulley Ø 95/250 TYP 5670 / 5680
48	16027276	1	electric motor
49	16006207	1	fork m 16
50	01122455	2	screw m 12 x 55
51	06209769	2	nut m 12, d985
52	16021661	1	top link
53	01141655	1	spring 7 x 34.5 x 181
54	06515118	1	disc
55	06233233	2	bushing 25 x 19 x 31
56	16021662	1	support
57	01112456	1	screw m 10 x 50
58	06214197	1	washer 10.5
59	01102659	1	nut m 10, d934
60	01112886	2	nut m 16
61	16006237	1	tensioner 110/240 TYP 5690
62	16005108	1	bushing TYP 5690
63	16005109	1	tensioner 110/240 TYP 5690

**CONCAVE**

Fig.	Code	QTY	Name
------	------	-----	------

**Notes:**

POS.NR. 20 - 23 FOR MACHINES WITHOUT TURBO-SEPARATOR -----



1	06545711	1	rod
2	01112322	3	screw m 8 p.1.25 x 20
3	01102799	3	washer 8, d128
4	01107163	0	washer 9, d126
5	06531474	1	ring
6	01104944	45	nut m 8, d985
7	06531482	1	bracket
8	06545714	1	latch
9	01112307	1	screw m 8 p.1.25 x 15, d933
10	01112333	20	screw m 8 x 25, d933
11	06531485	1	link
12	06531484	1	link
13	06545726	1	link
14	06279031	6	bracket
15	06259930	18	lamination
16	06545718	1	lamination
17	06545721	3	lamination
18	06545723	1	lamination
19	06524042	1	threshing drum T-14 STANDARD EQUIPMENT
19.1	06545671	1	threshing basket W FOR HARD WHEAT
19.2	06545660	1	threshing basket V ( DK,N,S VARIANTE EXPORTATION
20	06545710	1	lamination
21	06542900	21	rake
22	01137624	8	screw m 8 x 25
23	06545706	1	lamination
24	01112418	6	screw m 10 x 25, d933
25	01107165	6	washer 10.5
26	06209768	12	nut m 10, d985
27	06529467	98	wire X 19
28	06545698	1	lamination
29	06546640	1	guard
30	06546638	1	lamination S = 2.00
31	01112322	14	screw m 8 p.1.25 x 20
32	01104944	20	nut m 8, d985
33	06546642	1	lamination

CLICK HERE TO **DOWNLOAD** THE COMPLETE MANUAL

- Thank you very much for reading the preview of the manual.
- You can download the complete manual from: [www.heydownloads.com](http://www.heydownloads.com) by clicking the link below



- Please note: If there is no response to CLICKING the link, please download this PDF first and then click on it.

CLICK HERE TO **DOWNLOAD** THE COMPLETE MANUAL