

## 5660 HTS COM 3 ->13500

### HU - ATTACHMENTS AND ACCESSORIES

#### CHAFF SPREADER

CHAFF SPREADER.....	HU.01.0 (1)
CHAFF SPREADER.....	16055056.A

#### STRAW CHOPPER

STRAW CHOPPER KPAB, SRX.....	HU.02.0 (1)
SHREDDER STD.....	16064265.A
BELTS AND GUIDES.....	16064265.B
REAR COVERS.....	16064265.C
ELECTRIC MOTOR.....	16064265.D
SHAFT WITH BLADES.....	16064265.E
COUNTER-BLADE.....	16064265.F
OPERATION - HAND LEVER.....	16064265.G
STRAW DEFLECTORS.....	16064265.H

#### REAR HITCHES

DRAWBAR COUPLING.....	HU.03.0 (1)
DRAWBAR COUPLING 6000 KG.....	HU.03.1 (1)
DRAWBAR COUPLING.....	HU.03.2 (1)
DRAWBAR COUPLING.....	06500047.A

#### REAR BALLAST WEIGHTS

REAR BALLAST 380 Kg.....	HU.04.0 (1)
--------------------------	-------------

CLICK HERE TO **DOWNLOAD** THE COMPLETE MANUAL

- Thank you very much for reading the preview of the manual.
- You can download the complete manual from: [www.heydownloads.com](http://www.heydownloads.com) by clicking the link below

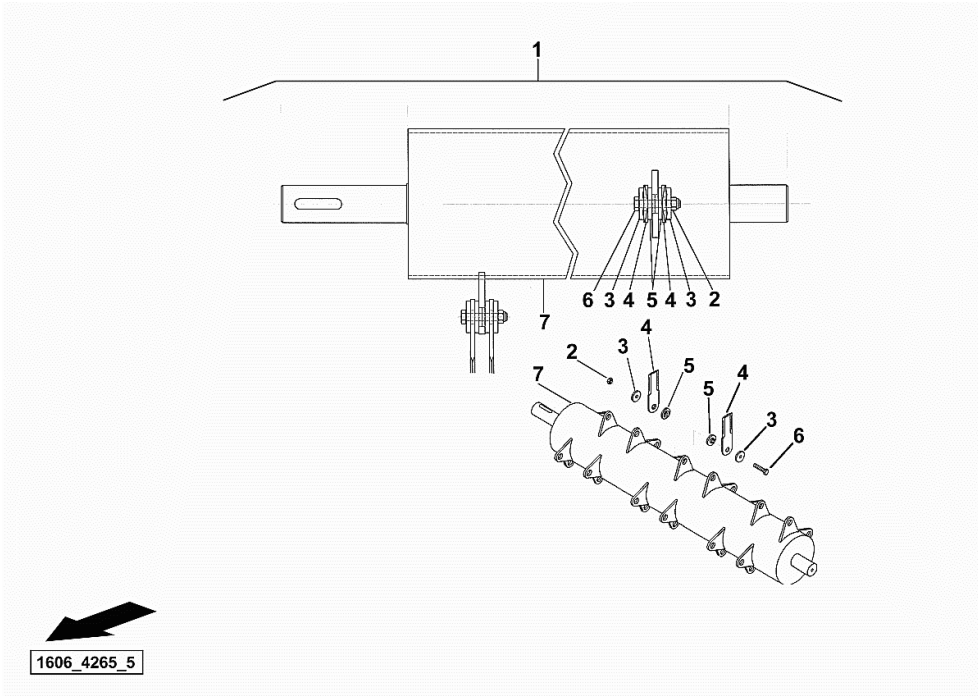


- Please note: If there is no response to CLICKING the link, please download this PDF first and then click on it.

CLICK HERE TO **DOWNLOAD** THE COMPLETE MANUAL

**SHAFT WITH BLADES**

Fig.	Code	QTY	Name
1	16062180	1	rotor 4 R, kpl.
2	06209777	24	nut m 10
3	16055785	48	cutter mm 5.00
4	16055785	48	cutter mm 5.00
5	16055786	48	sleeve
6	01111311	24	screw m 10
7	16063004	1	drum



## 5660 HTS COM 3 ->13500

### HB - AXLES

#### FRONT AXLE

FRONT AXLE.....	HB.01.0 (1)
ADAPTER.....	HB.01.3 (1)
FRONT AXLE.....	HB.01.6 (1)
HUB GEAR.....	HB.01.10 (1)
SENSORS COVER.....	HB.01.14 (1)
SENSOR BRACKET.....	HB.01.18 (1)
SENSOR BRACKET.....	HB.01.19 (1)
REDUCTION GEAR UNIT (STD).....	16040897.A
REDUCTION GEAR UNIT (BAL).....	16041806.A

#### TRANSMISSION

TRANSMISSION.....	HB.02.0 (1)
TRANSMISSION.....	HB.02.3 (1)
GEARBOX.....	16040895/20.A
DRIVE FOR GEAR CHANGE BOX.....	16040895/20.B
DRIVE SHAFT TRANSMISSION.....	16040895/20.C
INTERMEDIATE SHAFT TRANSMISSION.....	16040895/20.D
TRANSMISSION DIFFERENTIAL.....	16040895/20.E
PARKING BRAKE.....	16040895/20.F

#### INTERNAL-EXTERNAL TRANSMISSION CONTROLS

GEAR SHIFTING.....	HB.03.0 (1)
GEAR SHIFTING.....	HB.03.1 (1)

#### REAR AXLE

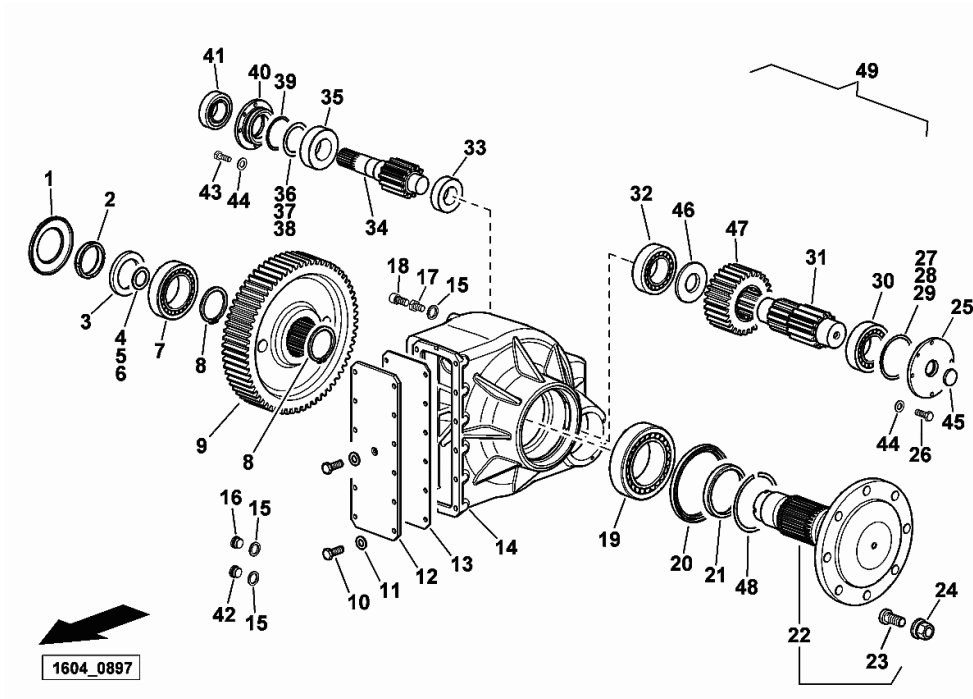
REAR AXLE.....	HB.05.0 (1)
REAR AXLE.....	HB.05.2 (1)
PIN.....	HB.05.3 (1)
WHEEL HUB FASTENING.....	HB.05.4 (1)
WHEEL HUB.....	HB.05.5 (1)
WHEEL HUB FASTENING.....	HB.05.6 (1)
WHEEL HUB.....	HB.05.7 (1)
STOP.....	HB.05.8 (1)
STEERING CYLINDER.....	HB.05.9 (1)
CYLINDER PARTS Ø 45.....	06540120.A
LINKAGE.....	16001674/10.A

#### TYRES

WHEEL BOLT.....	HB.06.0 (1)
FRONT WHEELS 620/75 R30" 168A8.....	HB.06.1 (1)
FRONT WHEELS 710/75 R32" 171A8.....	HB.06.2 (1)
FRONT WHEELS 800/65 R32" 178A8 TR.....	HB.06.3 (1)
FRONT WHEELS 800/65 R32" 178A8 TB.....	HB.06.4 (1)
FRONT WHEELS 620/75 R34" 170A8.....	HB.06.5 (1)

**REDUCTION GEAR UNIT (STD)**

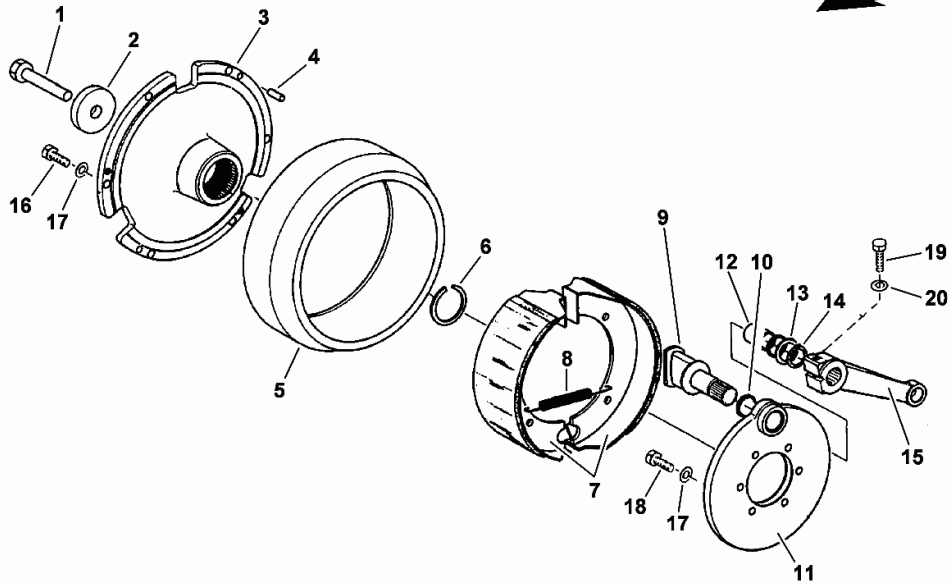
Fig.	Code	QTY	Name
43	01153251	8	screw
44	01107283	16	washer 8.2
45	16053024	2	cover
46	16053026	2	snoulder
47	16053025	2	gear
48	16053046	2	gasket Ø91 / Ø103 x 2.94
49	16040897	1	side gear (STD)



Section: HB - AXLES  
**PARKING BRAKE**

Fig.	Code	QTY	Name
1	01136993	1	screw m 12 x 70
2	16053002	1	pressure plate
3	16053003	1	brake drum
4	01157358	2	grain
5	16056325	1	brake drum 180 x 60
6	16053005	1	circlip
7	16031487	2	brake shoe
8	06260257	2	spring
9	16000316	1	shaft
10	16000314	2	'o' ring 22x2
11	04318614	1	flange
12	16053010	1	bushing
13	16000313	1	washer 20.5 x 28 x 2
14	01107730	1	ring 20 x 1.2, d471
15	16053012	1	brake lever
16	01139584	6	screw
17	01107283	12	washer 8.2
18	01112330	6	screw m 8 x 25
19	06209433	1	screw m 10 x 40
20	01107105	1	washer 10.5

1604\_0895\_20\_5



**STOP**

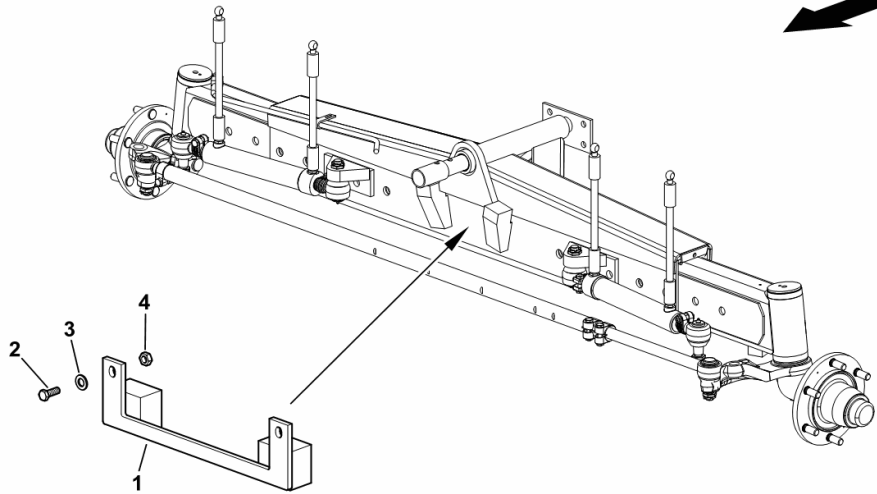
Fig.	Code	QTY	Name
------	------	-----	------

**Notes:**

[5660 HTS COM 3 ->13500]

1	16025794	1	contact surface
2	2.0113.322.7	2	screw m 10 x 65
3	2.1310.006.2	2	flat washer 10.5
4	2.1011.106.2	2	nut m 10 p.1.5

H9\_Z33B4\_40\_0-A-001



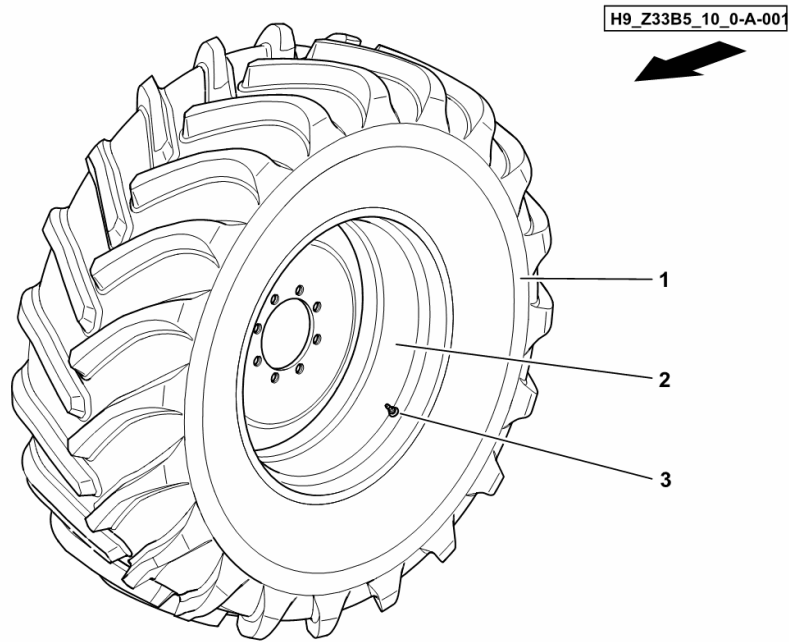
**FRONT WHEELS 800/65 R32" 172A8 GY**

Fig.	Code	QTY	Name
------	------	-----	------

**Notes:**

ET+85 L, ET+85 R [5660 HTS COM 3 ->13500]

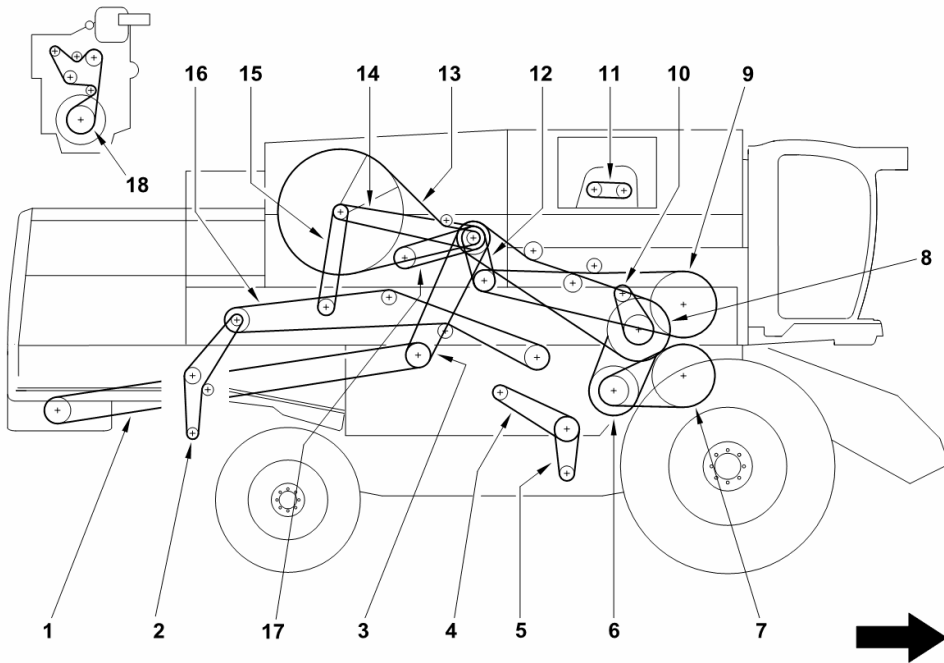
1	01145657	2	tyre 800/65 R32"
2	01145817	2	rim DWW 27Ax32"
3	06212941	2	valve 50 msw



Section: HC - BELTS AND CHAINS  
**BELTS AND CHAINS - DX/RH/RE**

Fig.	Code	QTY	Name
------	------	-----	------

Notes:  
 [5660 HTS COM 3 ->13500]



1	16062118	1	belt STRAW CHOPPER DRIVE STRAW CHOPPER
2	01145977	1	belt 1/17 x 1990Li STRAW WALKER SHAFT 2 CHAFF SPREADER
3	16062738	1	belt 2hc x 3355 ENGINE POWER TAKE OFF STRAW CUTTER DRIVE
4	01145331	1	belt 30 x 15 x 1683Li STRAW WALKER DRIVE FAN VARIATOR
5	01145369	1	belt 30 x 15 x 1600Li FAN VARIATOR FAN
6	01145374	1	belt 63 x 25 x 2185Lw BEATER VARIATOR BEATER DRIVE
7	01145049	1	belt 3/17 x 2650Li BEATER DRIVE BEATER
8	16062883	1	belt 3hmb x 5205 ENGINE POWER TAKE OFF BEATER VARIATOR
9	01145055	1	belt 1hc x 5505La ENGINE PTO DRIVE GRAIN HOPPER OUTLET
10	01145072	1	chain 085-1x 68-E BEATER VARIATOR VARIATOR CONTROL DEVICE
11	06213306	1	chain kpl. HOPPER FEED SCREW DRIVE
12	16062885	1	belt 2hc x 1666 ENGINE POWER TAKE OFF ENGINE POWER TAKE OFF DRIVE
13	01145970	1	belt 1/10 x 4060Li ROTARY FILTER BASKET CONTROL
14	01146013	1	belt 1/17 x 2435Li COOLING FAN CONTROL
15	01116096	1	belt 1/17 x 2360 ASPIRATOR CONTROL

**CHASSIS**

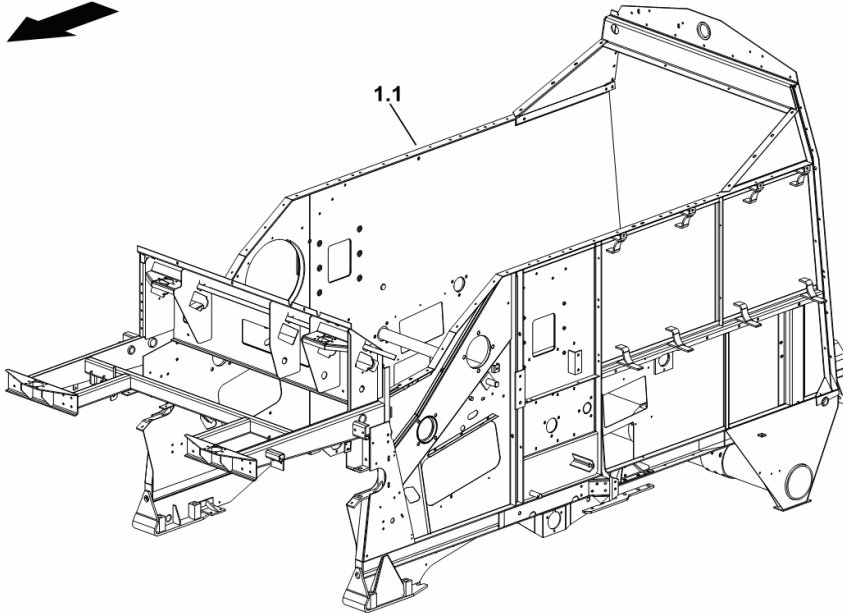
Fig.	Code	QTY	Name
------	------	-----	------

**Notes:**

[5660 HTS COM 3 ->13500] 13815 <-

1.1	16062042/20	1	chassis frame 5 SW
-----	-------------	---	--------------------

H9\_16062\_04\_1-A-001



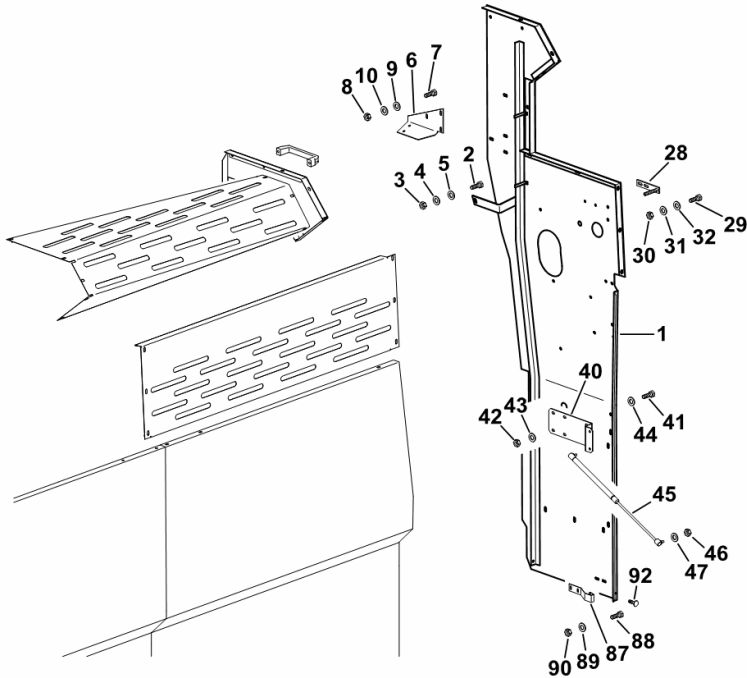
**L.H. LINING**

Fig.	Code	QTY	Name
------	------	-----	------

**Notes:**

[5660 HTS COM 3 ->13500]

1	0.015.3227.3/20	1	rear panel
2	01112429	3	screw m 10 x 30, d933
3	01102659	3	nut m 10, d934
4	01102800	3	washer 10.2
5	01107165	3	washer 10.5
6	16021082	1	support
7	01112307	11	screw m 8 p.1.25 x 15, d933
8	01112824	25	nut m 8, d934
9	01102799	28	washer 8, d128
10	01107163	28	washer 9, d126
28	0.015.2630.3/10	1	bracket
29	01112322	2	screw m 8 p.1.25 x 20
30	01112824	2	nut m 8, d934
31	01102799	2	washer 8, d128
32	01107163	2	washer 9, d126
40	16005241	1	plate
41	01112307	2	screw m 8 p.1.25 x 15, d933
42	01112824	2	nut m 8, d934
43	01102799	2	washer 8, d128
44	01107163	2	washer 9, d126
45	16005716	4	shoch.absorber 600 N
46	01112824	2	nut m 8, d934
47	01102799	2	washer 8, d128
87	16016759	1	bracket
88	01103316	2	screw m 6 p.1.0 x 16
89	06214189	2	washer 6.4
90	01114357	2	nut m 6, d985
92	01145212	3	rubber plug



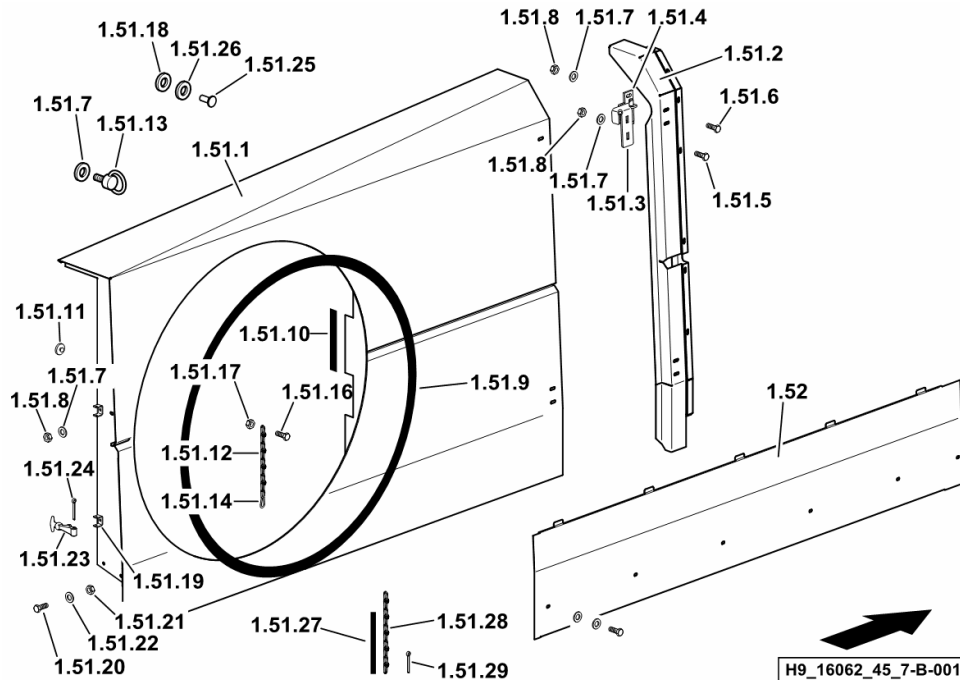
H9\_Z38F0\_00\_0-B-001

**R.H. LINING**

Fig.	Code	QTY	Name
------	------	-----	------

**Notes:**

[5660 HTS COM 3 ->13500]



1.51.1	16056429/10	1	lamination
1.51.2	16055533	1	lamination
1.51.3	16046458	2	square
1.51.4	16045952	2	square
1.51.5	01108524	11	screw m 8 p.1.25 x 20
1.51.6	01112322	4	screw m 8 p.1.25 x 20
1.51.7	01107163	30	washer 9, d126
1.51.8	01104944	15	nut m 8, d985
1.51.9	16054681	3.67	profile 3670 mm
1.51.10	01388766	1	gasket (mt. ...)
1.51.11	16035026	3	silent-block
1.51.12	16061636	1	small chain fi 2,8, d5686
1.51.13	16061793	1	screw
1.51.14	06211876	1	clevis c 60
1.51.16	01112264	1	screw m 6 x 20, d933
1.51.17	01114357	1	nut m 6, d985
1.51.18	06214189	3	washer 6.4
1.51.19	16061878	2	bracket
1.51.20	01102322	2	screw m 8 p.1.25 x 20
1.51.21	01104944	2	nut m 8, d985
1.51.22	01107163	4	washer 9, d126
1.51.23	06519313	2	rubber
1.51.24	01106474	2	split pin 5 x 5 x 50
1.51.25	04414182	6	rivet 4.8
1.51.26	01107155	6	washer 5.5 x 10 x 1
1.51.27	01390702	0.32	gasket PVC
1.51.28	16061636	0.5	small chain fi 2,8, d5686
1.51.29	01106447	2	split pin 4 x 20
1.52	16054838	1	cover

**ENGINE AIR GUIDE**

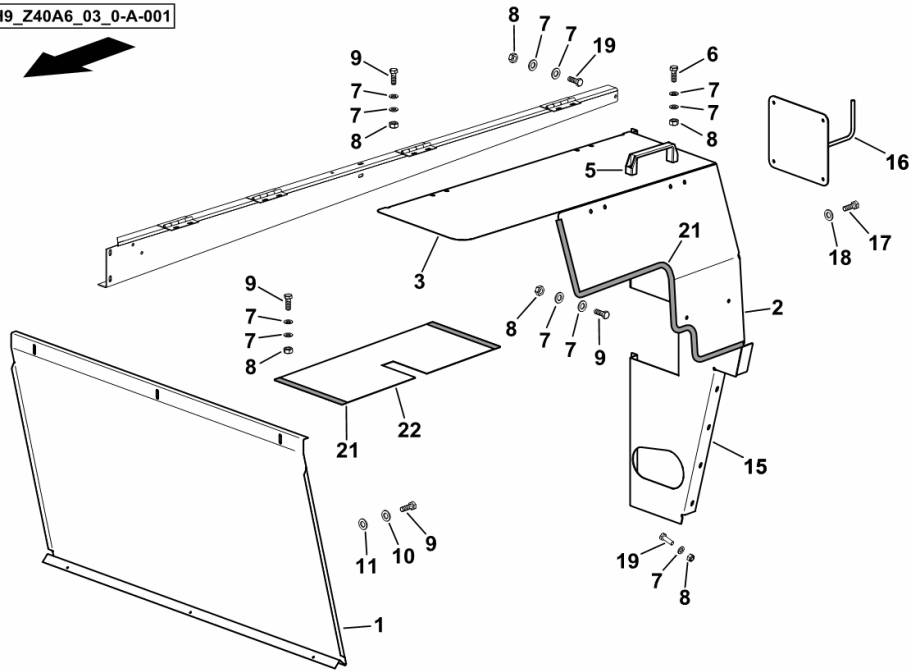
Fig.	Code	QTY	Name
------	------	-----	------

**Notes:**

[5660 HTS COM 3 ->13500]

1	16062365/10	1	cover
2	16062862	1	cover
3	16062864/10	1	cover
5	01141954	1	handle PVC
6	01123699	2	screw m 8 x 30
7	01107163	22	washer 9, d126
8	01104944	18	nut m 8, d985
9	01112322	13	screw m 8 p.1.25 x 20
10	06214192	3	washer 8.4
11	01102799	3	washer 8, d128
15	16062437/10	1	cover
16	0.016.9364.3	1	support
17	01123749	4	screw m 6 x 25
18	06214189	4	washer 6.4
19	01112333	6	screw m 8 x 25, d933
21	01390702	1.8	gasket PVC
22	16062395	1	cover

H9\_Z40A6\_03\_0-A-001



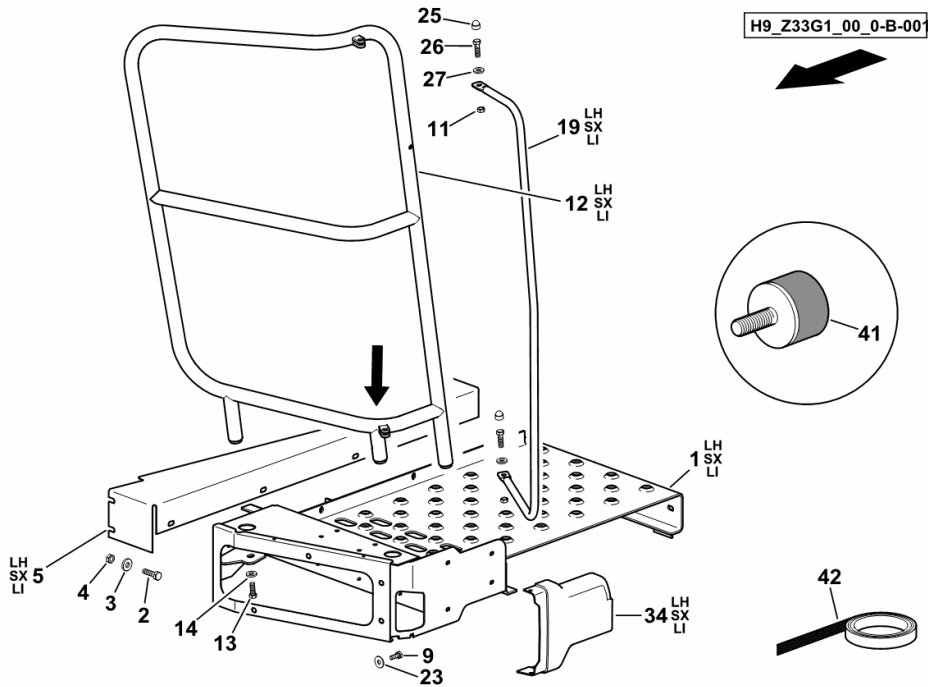
**CAB PLATFORM - SX/LH/LI**

Fig.	Code	QTY	Name
------	------	-----	------

**Notes:**

[5660 HTS COM 3 ->13500]

1	0.015.2506.3/30	1	platform sx/lh/li
2	2.0114.313.2	20	screw m 10 x 35
3	01127538	22	washer 10.5
4	2.1120.006.2	20	nut m 10 p.1.5
5	0.015.2516.0/10	1	lamination sx/lh/li
9	2.0114.207.2	15	screw m 8 p.1.25 x 20
11	2.1120.005.2	7	nut m 8 p.1.25
12	0.015.2693.3/10	1	handrail sx/lh/li
13	2.0114.209.2	6	screw m 8 x 25
14	2.1474.010.2	6	washer 10
19	0.015.2607.0/10	1	rod sx/lh/li
23	2.1312.004.2	12	washer 8.4
25	01174042	4	cap
26	2.0114.211.2	2	screw m 8 x 30
27	06214192	4	washer 8.4
34	0.015.2521.2	1	cover sx/lh/li
41	06285953	1	silent-block
42	16022556	0.47	anti-slip coating (mt. ...)



**PRODUCT PLATE - REAR**

Fig.	Code	QTY	Name
------	------	-----	------

**Notes:**

[5660 HTS COM 3 ->13500]

12	0.015.9341.0/10	1	adhesive DEUTZ-FAHR
----	-----------------	---	---------------------



**PRINTING FOR FUSE BOX**

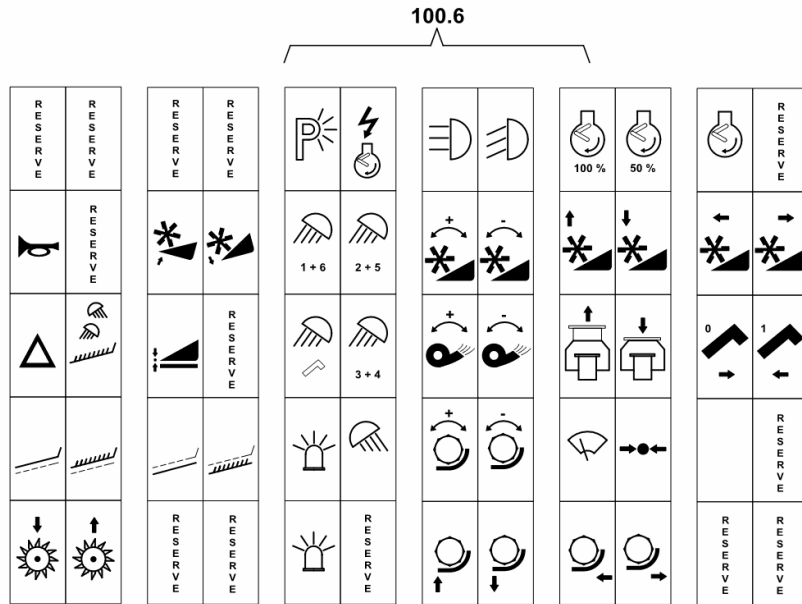
Fig.	Code	QTY	Name
------	------	-----	------

**Notes:**

[5660 HTS COM 3 ->13500]

100.6	2.9939.281.0/20	1	adhesive
-------	-----------------	---	----------

H9\_Z33H0\_02\_0-G-001

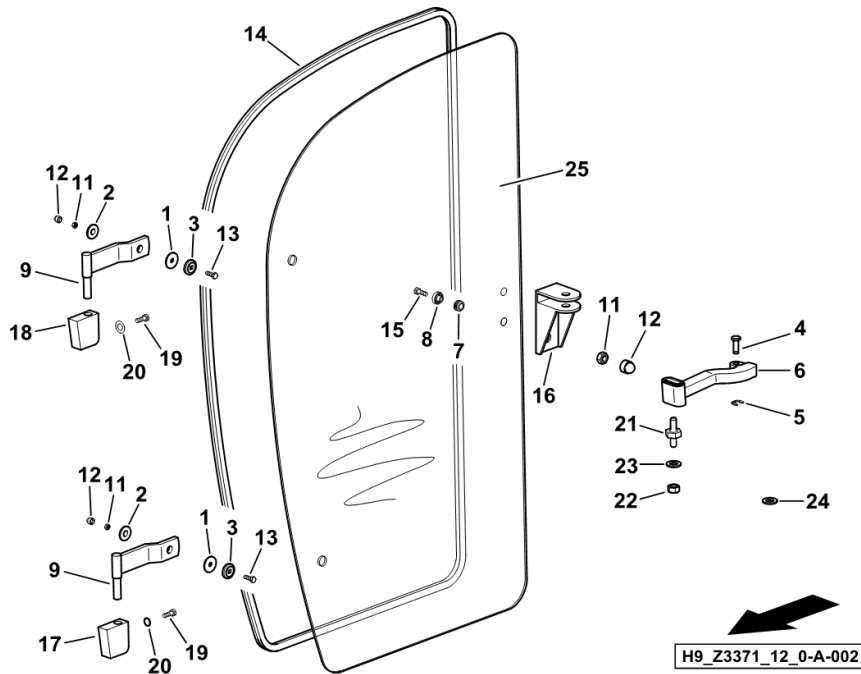


Section: HG - CAB  
**CAB DOOR - DX/RH/RE**

Fig.	Code	QTY	Name
------	------	-----	------

Notes:  
 [5660 HTS COM 3 ->13500]

1	06262286	2	washer
2	06262291	2	disc
3	06262288	2	disc
4	04366778	1	pin
5	2.1430.007.2	1	circlip 6, d128
6	04366776	1	handle
7	04366750	2	rubber bushing
8	04366751	2	disc
9	16054152	2	hinge
11	2.1011.105.2	3	nut m 8 p.1.25
12	01174042	3	cap
13	2.0114.211.2	2	screw m 8 x 30
14	16034854	1	gasket
15	2.0342.308.3	2	screw m 8 p.1.25 x 30
16	16053460	1	support
17	16054154	1	hinge
18	16054155	1	hinge
19	2.0114.007.2	4	screw m 6 p.1 x 20
20	2.1474.007.2	4	washer 6, d128
21	16007367	1	pin
22	2.1120.005.2	1	nut m 8 p.1.25
23	2.1310.004.2	1	flat washer 8.5
24	01118668	2	'o' ring
25	16055677	1	glass dx/rh/re

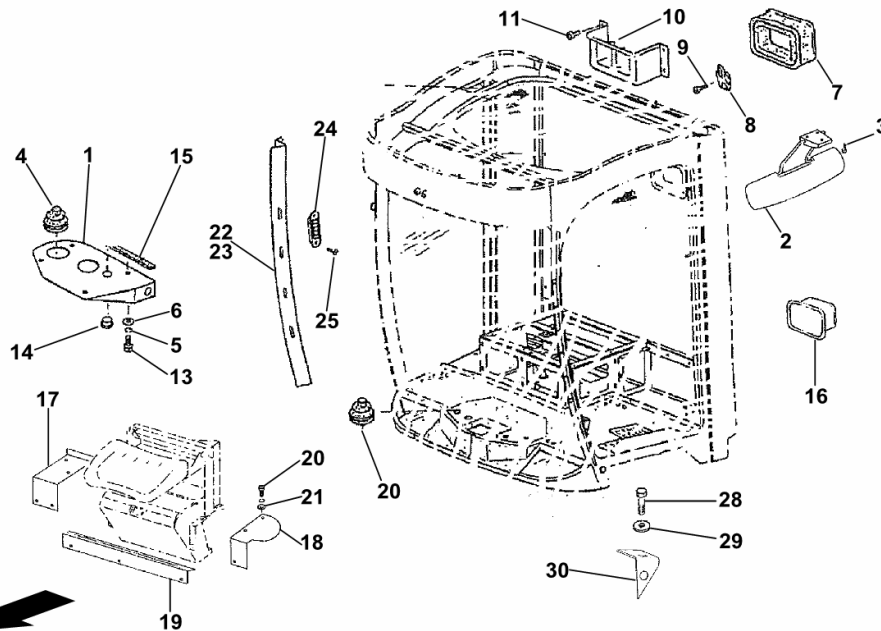


Section: HG - CAB  
**INTERNAL CAB LININGS**

Fig.	Code	QTY	Name
------	------	-----	------

Notes:  
 [5660 HTS COM 3 ->13500]

1	16056949	1	plate
2	06257795	1	canopy
3	2.0322.308.3	3	screw m 5 x 25
4	06530906	2	guard
5	2.1474.007.2	4	washer 6, d128
6	2.1312.003.2	4	washer 6
7	06546189	1	'o' ring
8	06262316	1	clip
9	2.0350.455.3	6	screw m 4.2
10	06536637	1	support
11	2.0350.556.3	4	screw m 4.8 x 19 - C
13	2.0114.005.2	4	screw m 6 p.1.0 x 16
14	06216510	1	plug
15	01395062	1	gasket
16	16057274	1	gasket
17	16054191	1	lamination
18	16054192	1	lamination
19	16054258	1	lamination
20	2.0312.204.2	10	screw m 8 p.1.25 x 16
21	2.1310.004.2	10	flat washer 8.5
22	16057224	1	panel dx/rh/re
23	16057225	1	panel sx/lh/li
24	16057273	16	nozzle
25	01146044	32	screw m 2.9 x 12
28	2.0112.202.2	1	screw m 8 p.1.25 x 10
29	2.1470.004.2	1	washer 8
30	0.015.9178.3	1	bracket



H9\_Z3371\_25\_0-A-001

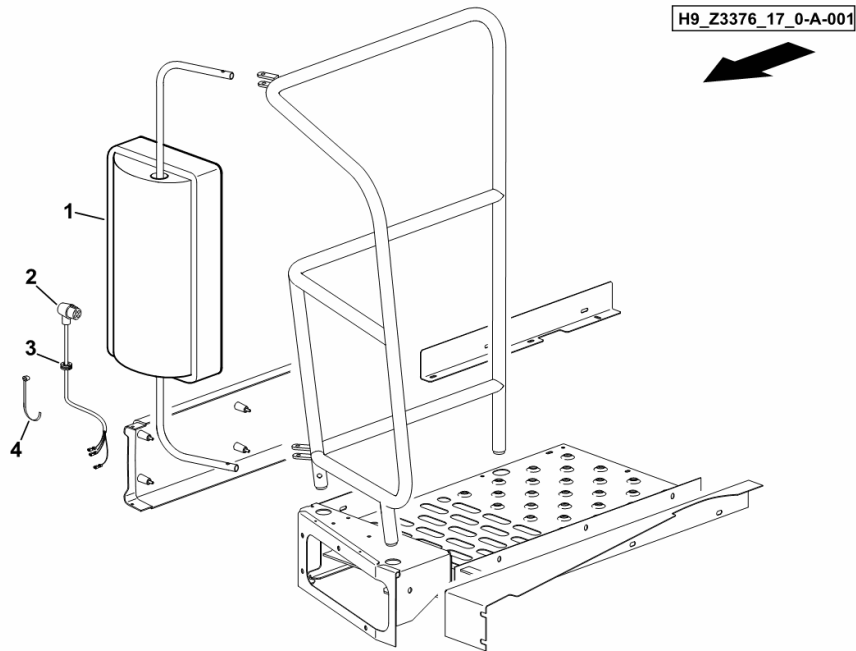
**ELECTRIC REAR VIEW MIRROR**

Fig.	Code	QTY	Name
------	------	-----	------

**Notes:**

[5660 HTS COM 3 ->13500]

1	16056742	2	mirror SX/DX
2	16056738	2	wire Ø6 x mm 4000
3	06262128	2	grommet Ø 21
4	01172065	30	clamp 4.6 x 146



Section: HG - CAB  
**DRIVER'S SEAT MSG 85/722**

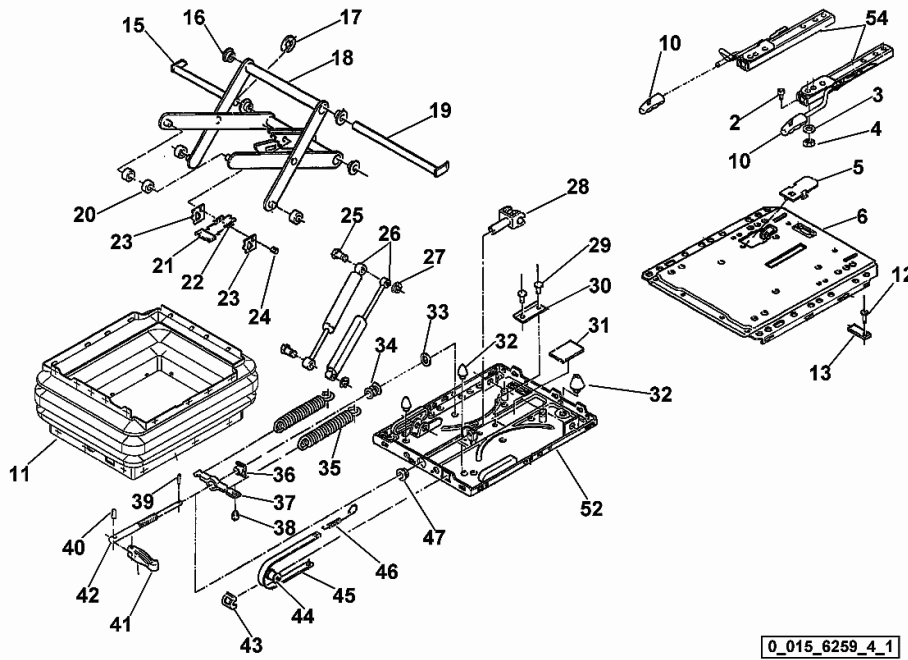
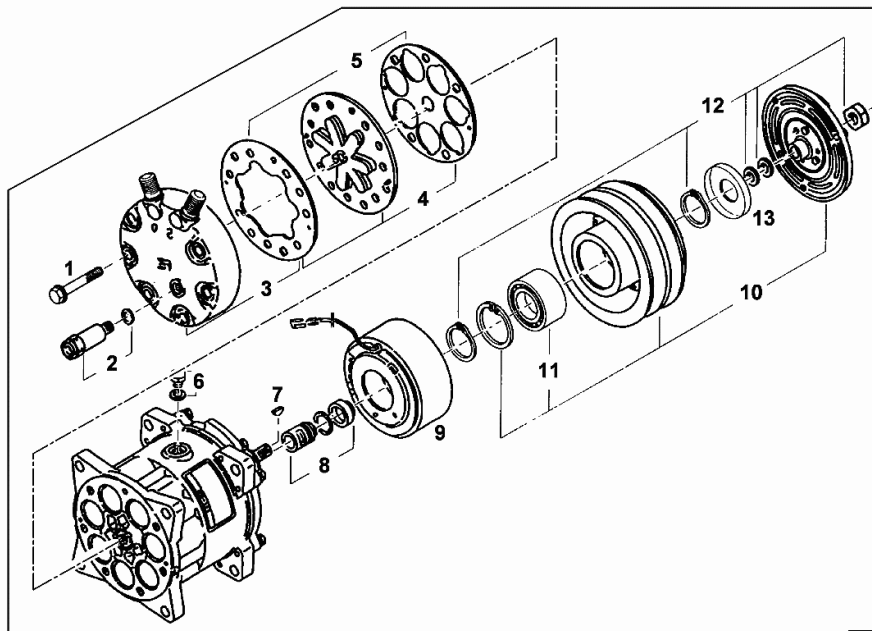


Fig.	Code	QTY	Name
2	0.010.2405.0	4	pin m 8 x 16
3	0.010.2945.0	4	washer 8.4
4	0.010.2401.0	4	nut m 8
5	04418336	1	cover
6	0.010.3079.0	1	plate 5; 12; 13
10	0.010.2943.2	1	knob
11	0.010.3079.1	1	bellows
15	04350897	1	pin
16	04367520	4	bushing
18	0.010.3079.2	1	arm 15; 16; 17; 19; 20; 21; 22; 23; 24
19	04418337	1	pin
20	04311716	4	roller
21	04311718	1	plate
22	04418338	2	spring
23	04311719	2	clutch.pres plate
24	04311720	1	pin
25	04311762	2	pin
26	04350980.4	1	shoch.absorber 25; 27
27	01126001	2	pin
28	04344957	1	fork
29	04418339	2	rivet
30	04350893	1	profile 29
31	04311699	1	rubber plate
32	04418340	1	shoch.absorber
33	04311692	1	disc
34	0.010.2983.0	1	sub-assy parts
35	04311768	1	spring
36	04311769	1	nut
37	04311765	1	support
38	04311748	1	plug
39	0.010.3876.0	1	pin 3x16
40	0.010.3874.1	1	pin 4x28
41	04418341	1	knob 40
42	04418342.4	1	mandrel 34; 36; 39; 41; 47
43	02374954	1	cap
44	04311694	1	roller
45	04350999	1	metal strap
46	04311749	1	spring

Section: HG - CAB  
**AIR COMPRESSOR**

Fig.	Code	QTY	Name
1	16015336	6	screw
2	16015335	1	valve
3	16015337	1	cap
4	16048649	1	plate
5	16048651	1	gasket set
6	16015340	1	screw
7	16015341	1	key
8	16048650	1	gasket set
9	16048653	1	coil
10	16048652	1	pulley
11	0.000.0000.1	0	not serviceable
12	16048654	1	stop set
13	16015346	1	dust guard



1604\_5127

Section: HG - CAB  
**STEERING COLUMN**

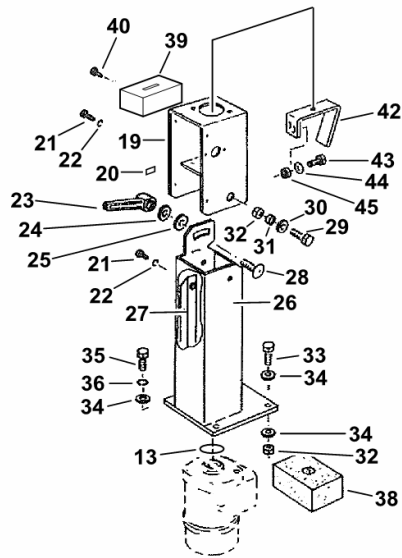
Fig.	Code	QTY	Name
------	------	-----	------

**Notes:**

[5660 HTS COM 3 ->13500]

13	2.1410.010.7	1	ring 25
19	16007360/10	1	support
20	2.6999.061.0	2	small spring 4.2
21	01173052	5	screw m 4 x 10
22	01102795	5	ring 4.3
23	06544838	1	lever
24	06214206	1	washer 13.2
25	06214229	1	washer 21 x 32 x 2.0
26	16021712/10	1	cover
27	16025809	1	rail
28	06207554	1	screw m 12 x 25
29	01103786	2	screw m 10 x 20
30	2.1310.006.2	2	flat washer 10.5
31	06283060	2	bushing
32	2.1120.006.2	6	nut m 10 p.1.5
33	2.0114.309.2	4	screw m 10 p 1.25 x 25
34	2.1310.006.2	8	flat washer 10.5
35	01112407	1	screw m 10 x 20, d933
36	2.1474.009.2	1	spring washer 8
38	16003746	1	plate
39	16027407	1	ash-try
40	2.0350.253.3	2	screw m 3.5 x 9.5 AB
42	16034743	3	bracket
43	2.0114.211.2	1	screw m 8 x 30
44	2.1310.002.2	2	washer 6.6, d125
45	2.1120.003.2	2	nut m 6

H9\_Z3361\_00\_0-C-001



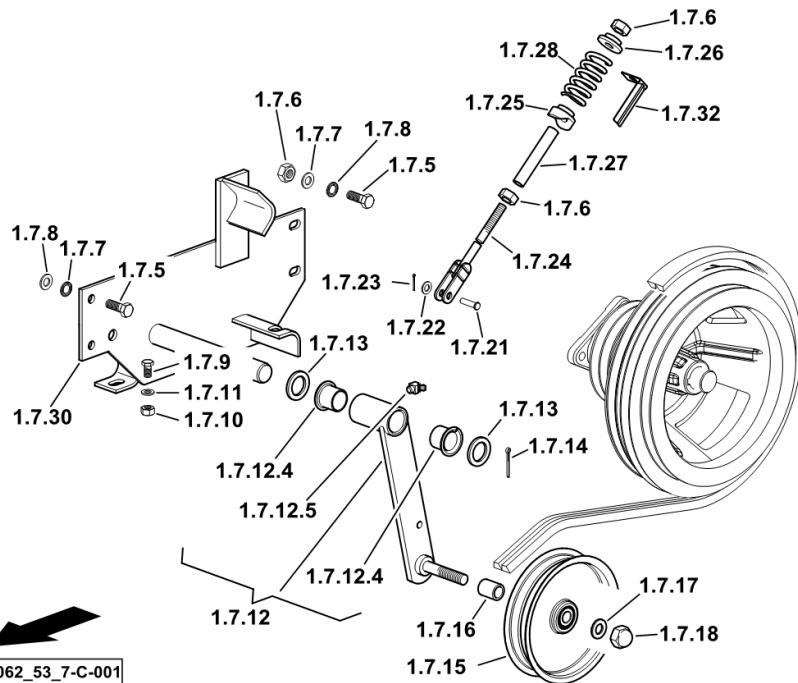
**BELT STRETCHER**

Fig.	Code	QTY	Name
------	------	-----	------

**Notes:**

[5660 HTS COM 3 ->13500]

1.7.5	01112529	4	screw m 12 x 30, d933
1.7.6	01112858	2	nut m 12, d934
1.7.7	01102801	4	washer 12
1.7.8	06214273	4	washer 13
1.7.9	01112418	1	screw m 10 x 25, d933
1.7.10	06209768	1	nut m 10, d985
1.7.11	01127538	1	washer 10.5
1.7.12	16006252	1	support
1.7.12.4	06262701	2	bushing
1.7.12.5	01120697	1	lubricator bm 8 x 1
1.7.13	06214234	11	disc 31 x 45 x 2
1.7.14	01106471	1	split pin 5 x 40
1.7.15	06260597	1	tensioner 40/200
1.7.16	06233233	1	bushing 25 x 19 x 31
1.7.17	01174923	1	washer 17
1.7.18	01127856	1	nut m 16, d985
1.7.21	06210002	1	smau pin 11 x 30
1.7.22	01107165	1	washer 10.5
1.7.23	01132625	1	split pin 3.2 x 20
1.7.24	06501950	1	stay m 12
1.7.25	06519261	1	disc
1.7.26	06515117	1	disc
1.7.27	06511966	1	tube
1.7.28	06215418	1	spring
1.7.30	16006254/10	1	support
1.7.32	16046800	1	lamination



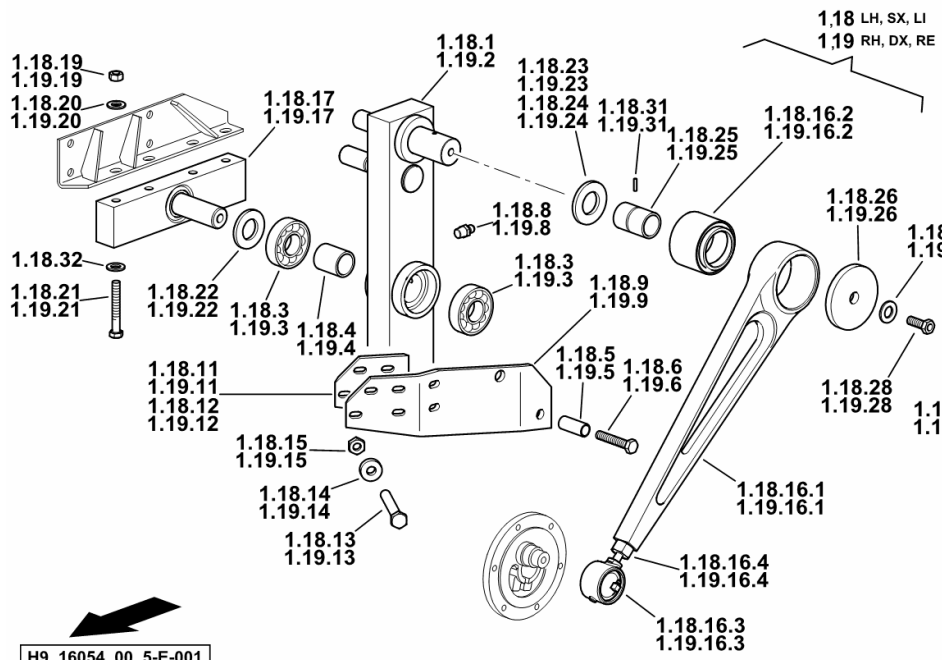
H9\_16062\_53\_7-C-001

Section: HL - CLEANER UNIT  
**MOVEMENT CONTROL**

Fig.	Code	QTY	Name
------	------	-----	------

**Notes:**

[5660 HTS COM 3 ->13500]



1.18.1	16043725	1	lever sx/lh/li
1.18.3	01136765	2	ring 6207 rs d625
1.18.4	16041418	1	bushing
1.18.5	16040928	1	spacer
1.18.6	16061802	1	screw m 14 x 60
1.18.8	01120693	1	lubricator am 8 x 1
1.18.9	16039884	1	link sx/lh/li
1.18.11	16042295	1	lamination mm 3.00
1.18.12	16042296	1	lamination mm 1.00
1.18.13	01112429	6	screw m 10 x 30, d933
1.18.14	01102800	6	washer 10.2
1.18.15	06214197	6	washer 10.5
1.18.16.1	0.015.3210.0	1	rod
1.18.16.2	16013085	1	bearing
1.18.16.3	16011695	1	bearing kpl. ⚙ 16011695
1.18.16.4	01133798	1	nut m 20 x 1.5
1.18.17	16038612	1	support
1.18.19	06209778	4	nut m 12
1.18.20	06214206	4	washer 13.2
1.18.21	06209115	4	screw m 12 x 120
1.18.22	01137526	2	shim 35 x 45 x 2,5
1.18.23	06214513	1	shim 60 x 75 x 0,2
1.18.24	06214515	1	shim 60 x 75 x 0,5
1.18.25	16013091	1	bushing 45 x 59,5 x 77
1.18.26	16043791	1	disc 13 x 71 x 8
1.18.27	01102801	1	washer 12
1.18.28	16013117	1	screw m 12 x 35
1.18.29	01120692	1	lubricator am 6
1.18.31	01115453	1	pin 6 x 24
1.18.32	16012311	4	washer 13
1.19.2	16043724	1	lever dx/rh/re
1.19.3	01136765	2	ring 6207 rs d625
1.19.4	16041418	1	bushing
1.19.5	16040928	1	spacer
1.19.6	16061802	1	screw m 14 x 60
1.19.8	01120693	1	lubricator am 8 x 1
1.19.9	16039885	1	link dx/rh/re
1.19.11	16042295	1	lamination mm 3.00
1.19.12	16042296	1	lamination mm 1.00
1.19.13	01112429	6	screw m 10 x 30, d933

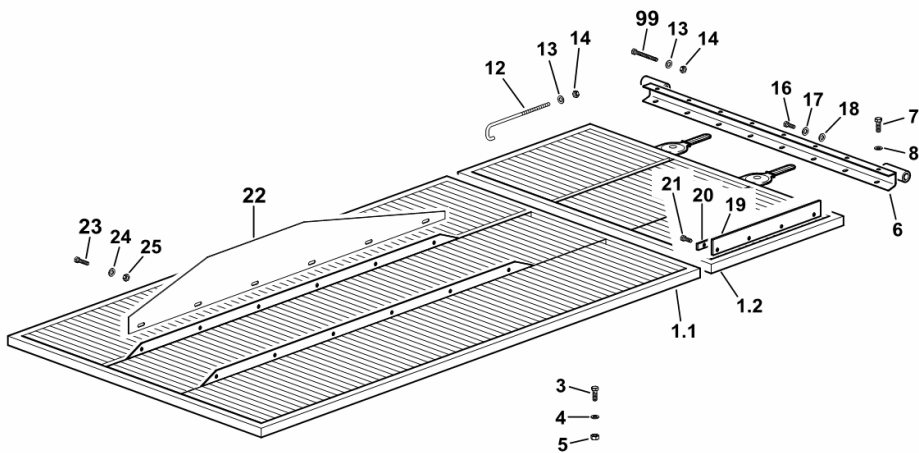
Section: HL - CLEANER UNIT  
**UPPER SIEVE BOX CZ 2**

Fig.	Code	QTY	Name
------	------	-----	------

**Notes:**

[5660 HTS COM 3 ->13500]

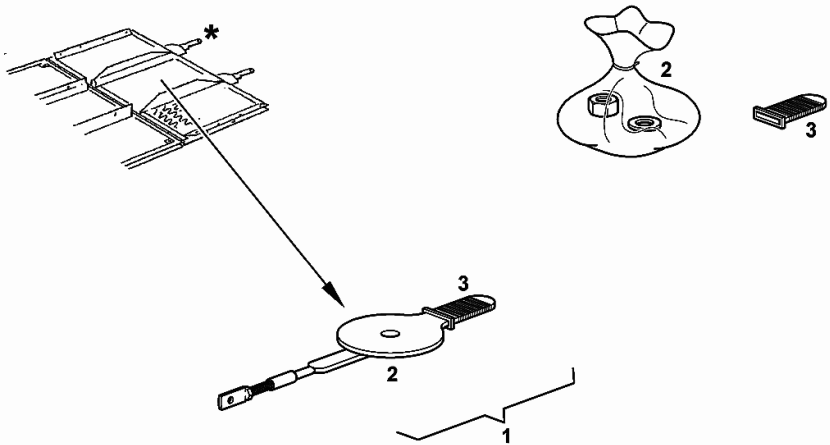
1.1	0.015.6597.4	1	element CZ 2 ☞ 0.015.6597.4
1.2	0.015.6596.4	1	extension CZ 2 ☞ 0.015.6596.4
3	01111298	4	screw m 10 p.1.5 x 45
4	01127717	4	washer 10.5
5	06209768	4	nut m 10, d985
6	16042514	2	lamination
7	01112307	4	screw m 8 p.1.25 x 15, d933
8	01102799	4	washer 8, d128
12	16042522/10	4	rod m 10
13	01127717	4	washer 10.5
14	06209768	4	nut m 10, d985
16	01111336	2	screw m 10 x 75
17	01107105	2	washer 10.5
18	01102800	2	washer 10.2
19	16004853	4	guard
20	16004854	4	rail
21	01127683	16	screw m 4.2x13
22	16041457	4	rail
23	01112240	24	screw m 6 x 12
24	06214189	24	washer 6.4
25	01114357	24	nut m 6, d985
99	01124803	1	screw m 10 x 130



H9\_Z38L2\_91\_0-A-001

Section: HL - CLEANER UNIT  
**UPPER SIEVE BOX CZ 2**

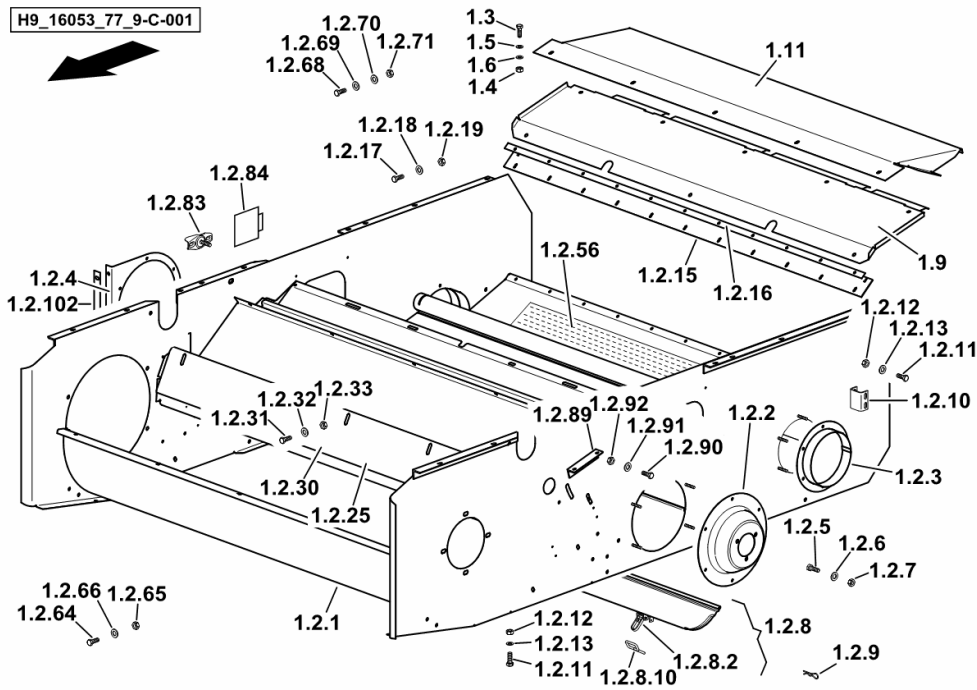
Fig.	Code	QTY	Name
1	0.900.0906.2	1	handle kpl.
2	0.900.0906.0	1	selflock nut kit
3	0.900.0906.1	1	grip - GREEN COLOUR



0\_015\_6596\_4

**GRAIN TANK**

Fig.	Code	QTY	Name
1.4	01112824	14	nut m 8, d934
1.5	01102799	18	washer 8, d128
1.6	01107163	18	washer 9, d126
1.9	16058612	1	lamination
1.11	16053899	1	lamination



## 5660 HTS COM 3 ->13500

### HP - CUTTER BAR

#### CUTTER BAR

CUTTER BAR.....	HP.01.1 (1)
LONG FIXED DIVIDER.....	HP.01.2 (1)
CARDAN SHAFT L = MM 1360.....	HP.01.3 (1)
CARDAN SHAFT L = MM 1360.....	HP.01.4 (1)
CARDAN SHAFT L = MM 1849.....	HP.01.5 (1)
CARDAN SHAFT L = MM 1862.....	HP.01.6 (1)

#### COMPONENTS

MULTIPLE CUTTER BAR ATTACHMENT.....	HP.02.0 (1)
-------------------------------------	-------------

#### TRUCK

SAFETY CABLE.....	HP.03.0 (1)
-------------------	-------------

#### EQUIPMENT PACKAGES

SIDE PANELLING SX/LH/LI.....	HP.04.0 (1)
SUPPORT SX/LH/LI ( MT. 5,4 / MT. 7,2 ).....	HP.04.1 (1)
SUPPORT SX/LH/LI ( MT. 6,3 ).....	HP.04.2 (1)
SUPPORT.....	HP.04.3 (1)
SIDE PANELLING DX/RH/RE.....	HP.04.4 (1)
SUPPORT DX/RH/RE ( MT. 5,4 / MT. 7,2 ).....	HP.04.5 (1)
SUPPORT DX/RH/RE ( MT. 6,3 ).....	HP.04.6 (1)
SUPPORTS FOR SEPARATORS - MT. 5,4.....	HP.04.7 (1)
SEPARATORS - MT. 5,4.....	HP.04.8 (1)
SUPPORTS FOR SEPARATORS - MT. 6,3.....	HP.04.9 (1)
SEPARATORS - MT. 6,3.....	HP.04.10 (1)
DIVIDERS SX/LH/LI - DX/RH/RE.....	HP.04.13 (1)
SHAFTS - MT. 5,4.....	HP.04.14 (1)
SHAFTS - MT. 6,3.....	HP.04.15 (1)
GEARS.....	HP.04.17 (1)
GEARS AND CHAINS.....	HP.04.18 (1)
SHAFT WITH BLADES DX/RH/RE ( MT. 5,4 ).....	HP.04.19 (1)
SHAFT WITH BLADES DX/RH/RE ( MT. 6,3 ).....	HP.04.20 (1)
SHAFT WITH BLADES SX/LH/LI ( MT. 5,4 ).....	HP.04.22 (1)
SHAFT WITH BLADES SX/LH/LI ( MT. 6,3 ).....	HP.04.23 (1)

**SUPPORT SX/LH/LI ( MT. 5,4 / MT. 7,2 )**

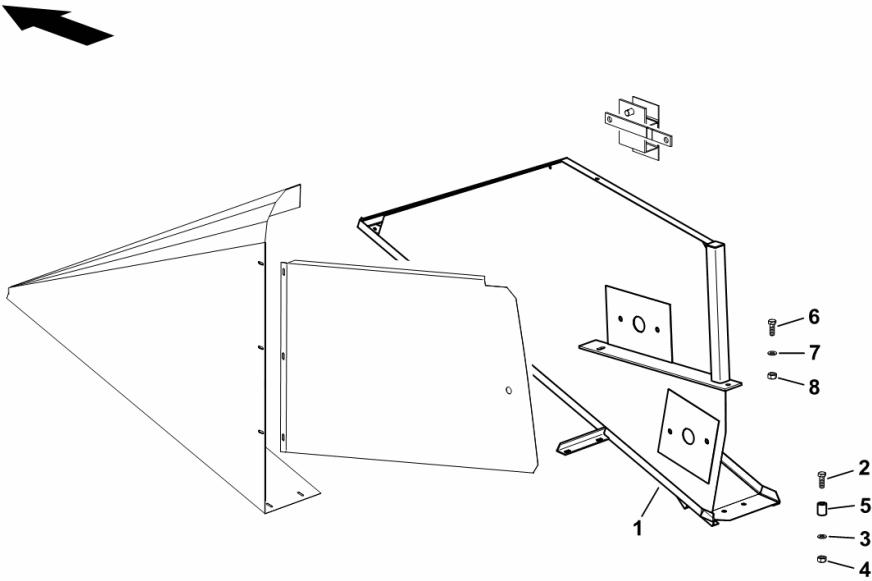
Fig.	Code	QTY	Name
------	------	-----	------

**Notes:**

- SUNFLOWER EQUIPMENT [5660 HTS COM 3 ->13500]

1	16064041	1	side member sx/lh/li
2	01111319	2	screw m 10 x 60
3	01140501	2	washer 10.5
4	06209768	2	nut m 10, d985
5	16044860	1	spacer Ø11/Ø20 x 20
6	01112429	2	screw m 10 x 30, d933
7	01140501	2	washer 10.5
8	06209768	2	nut m 10, d985

H9\_Z33P7\_05\_0-A-001



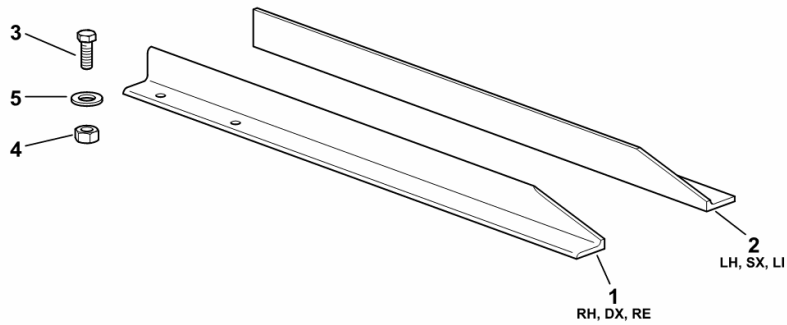
**DIVIDERS SX/LH/LI - DX/RH/RE**

Fig.	Code	QTY	Name
------	------	-----	------

**Notes:**

- SUNFLOWER EQUIPMENT [5660 HTS COM 3 ->13500]

1	16064090	1	square dx/rh/re
2	16064163	1	square sx/lh/li
3	01112264	4	screw m 6 x 20, d933
4	01114357	4	nut m 6, d985
5	06214189	4	washer 6.4



H9\_Z33P7\_55\_0-A-001

CAB LIGHT SWITCH.....	HH.04.0 (1)
SWITCH - HAND BRAKE.....	HH.04.1 (1)
THERMOSTAT.....	HH.04.2 (1)
TEMPERATURE SENSORS.....	HH.04.3 (1)
AIR FILTER BLOCKAGE SENSOR.....	HH.04.4 (1)
COOLANT TEMPERATURE SENSOR.....	HH.04.6 (1)
ROTATION ANGLE SENSOR.....	HH.04.8 (1)
INDUCTIVE POSITION ENCODER.....	HH.04.10 (1)
GRAIN TANK SENSORS.....	HH.04.12 (1)
GRAIN TANK SENSOR.....	HH.04.14 (1)
STRAW HOPPER SENSOR.....	HH.04.16 (1)
SENSOR - SPEED.....	HH.04.18 (1)
SPEED SENSOR - THRESHING DRUM.....	HH.04.20 (1)
SPEED SENSOR - FAN.....	HH.04.22 (1)
SPEED SENSOR - STRAW WALKER SHAFT.....	HH.04.24 (1)
EMERGENCY SWITCH - RECOVERY ELEVATOR - DX/RH/RE.....	HH.04.26 (1)
EMERGENCY SWITCH - RECOVERY ELEVATOR - SX/LH/LI.....	HH.04.28 (1)
EMERGENCY SWITCH - RECOVERY ELEVATOR - DX/RH/RE.....	HH.04.30 (1)
GRAIN OUTLET PIPE SENSOR.....	HH.04.32 (1)
OIL TEMPERATURE SENSOR.....	HH.04.34 (1)
OIL TEMPERATURE SENSOR.....	HH.04.35 (1)
TEMPERATURE SENSORS.....	HH.04.39 (1)
BRAKING SYSTEM SENSOR.....	HH.04.41 (1)
RECEIVER-DRIER.....	HH.04.42 (1)
POSITION SENSOR.....	HH.04.43 (1)
POSITION SENSOR.....	HH.04.44 (1)
LUMINOSITY SENSOR.....	HH.04.45 (1)
POSITION SENSOR.....	HH.04.47 (1)
GRAIN LOSS CONTROL SYSTEM.....	HH.04.49 (1)
SENSOR - SPEED.....	HH.04.51 (1)
<b>INSTRUMENT PANEL</b>	
PANEL INSTRUMENTS.....	HH.05.0 (1)
<b>MULTIFUNCTION ARMREST</b>	
MULTIFUNCTION CONTROL UNIT.....	HH.06.0 (1)
MULTIFUNCTION CONTROL UNIT.....	16027010.A
<b>ELECTRICAL CONTROLS - PUSHBUTTONS</b>	
WORKING COMPUTER COMMANDER CONTROL 2000.....	HH.07.0 (1)
ADJUSTER INSTRUMENT EMR-D.....	HH.07.1 (1)
AGRO LH 1000.....	HH.07.2 (1)
GRAIN LOSS CONTROL SYSTEM.....	HH.07.3 (1)
STEERING COLUMN SWITCH UNIT.....	HH.07.5 (1)
ELECTRIC CONTROL WORKING HYDR. SYSTEM.....	HH.07.6 (1)
WORKING COMPUTER BALANCE.....	HH.07.7 (1)
LIGHTING CONTROL.....	HH.07.8 (1)

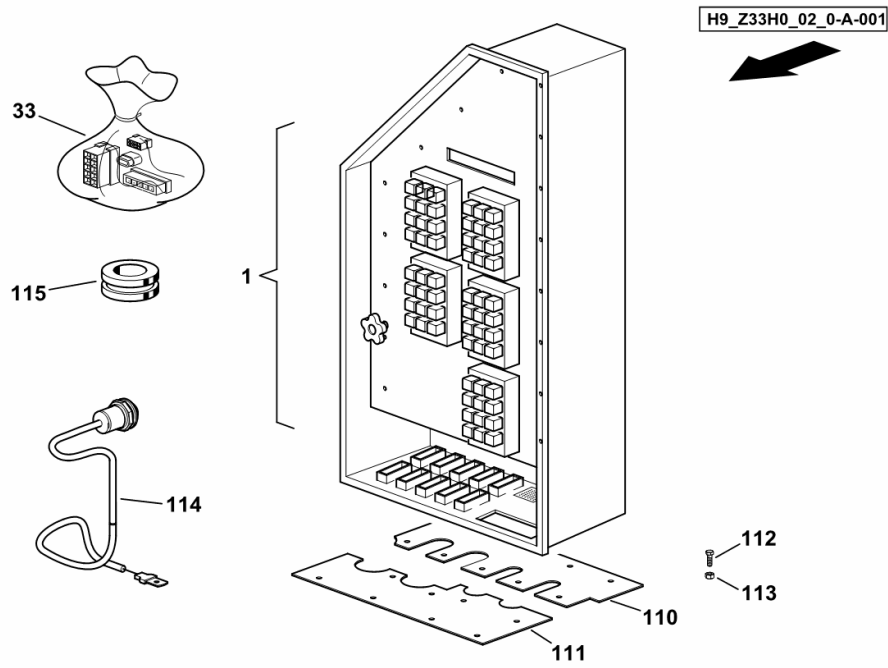
**FUSEBOX**

Fig.	Code	QTY	Name
------	------	-----	------

**Notes:**

[5660 HTS COM 3 ->13500]

1	0.015.5312.4/20	1	fuse-holder kpl. ☞ 0.015.5312.4/20 ☞ 0.015.5312.4/20
33	0.015.3120.4/30	1	kit
110	16052382/10	1	lamination
111	16052383	1	lamination
112	01112240	12	screw m 6 x 12
113	01114357	12	nut m 6, d985
114	0.015.9166.4	1	wire
115	16064292	1	grommet



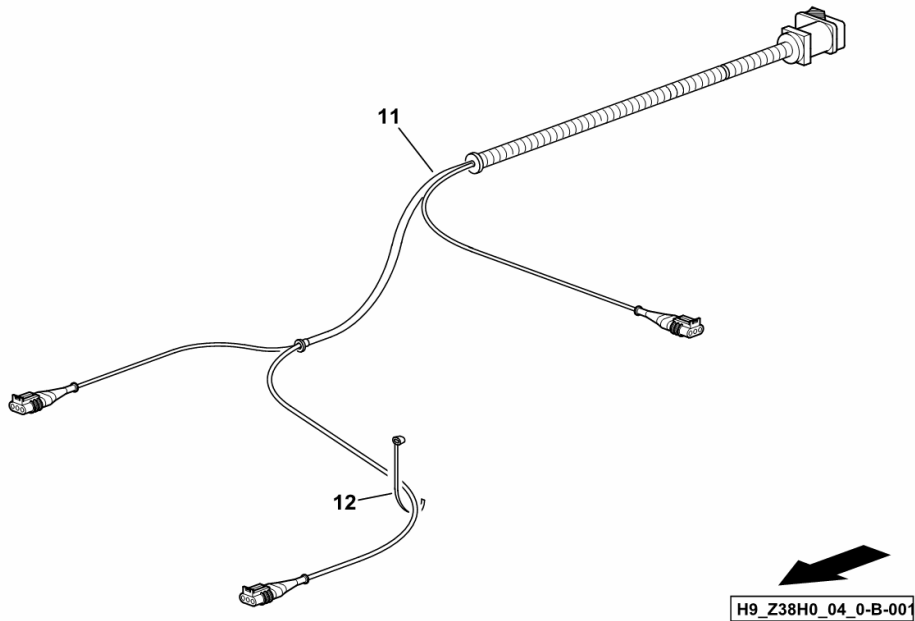
**ROTATION ANGLE SENSOR ELECTRICAL SYSTEM**

Fig.	Code	QTY	Name
------	------	-----	------

**Notes:**

[5660 HTS COM 3 ->13500]

11	0.015.5465.4/10	1	electrical system E3
12	01172065	3	clamp 4.6 x 146



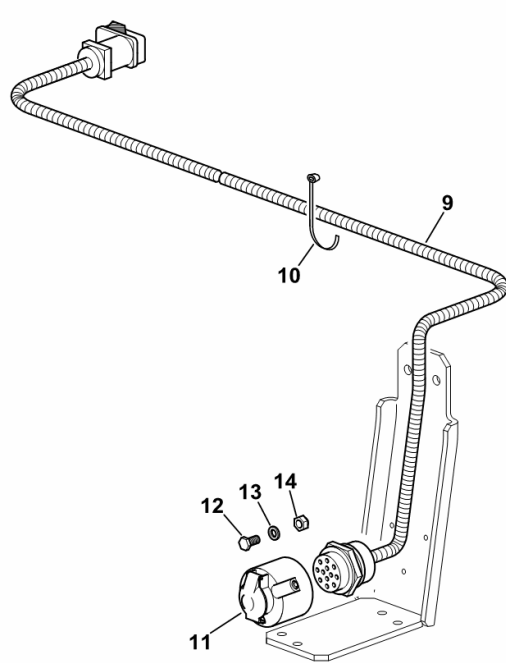
**POWER OUTLET SOCKET**

Fig.	Code	QTY	Name
------	------	-----	------

**Notes:**

[5660 HTS COM 3 ->13500]

9	0.015.5466.4/10	1	electrical system
10	01172065	15	clamp 4.6 x 146
11	01231937	1	socket
12	01123048	3	screw m 5 x 35
13	01117860	3	washer 5.3
14	01112803	3	nut m 5, d934



H9\_Z33H0\_03\_0-A-001



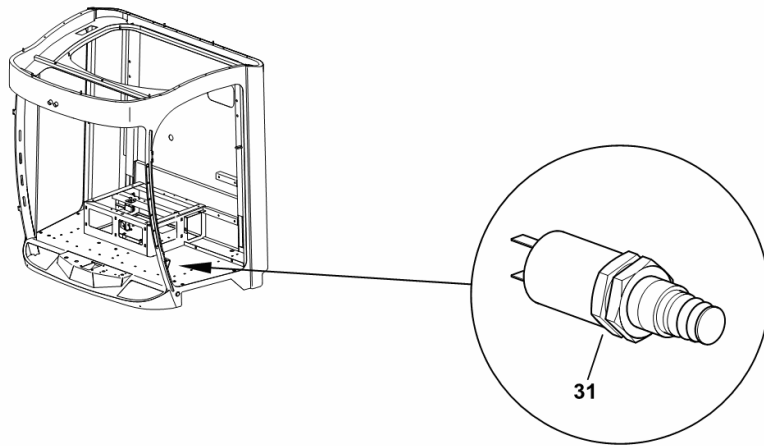
**CAB LIGHT SWITCH**

Fig.	Code	QTY	Name
------	------	-----	------

**Notes:**

[5660 HTS COM 3 ->13500]

31	2.7659.304.0	1	switch
----	--------------	---	--------



H9\_Z3371\_25\_0-B-001

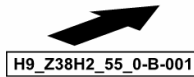
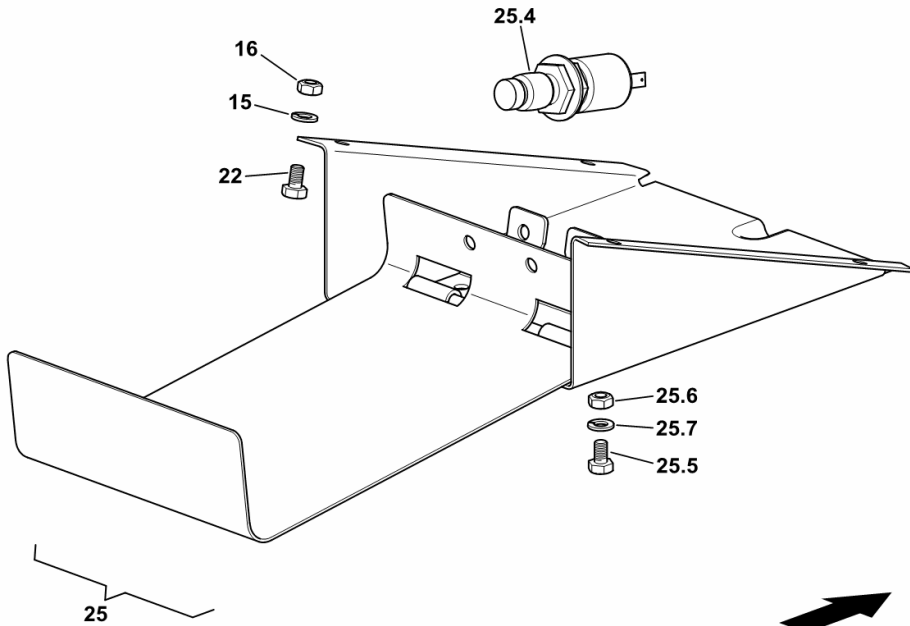
**STRAW HOPPER SENSOR**

Fig.	Code	QTY	Name
------	------	-----	------

**Notes:**

[5660 HTS COM 3 ->13500]

15	01102797	9	washer 6, d128
16	01112813	5	nut m 6
22	01103316	4	screw m 6 p.1.0 x 16
25	06302736	1	sensor
25.4	01175755	1	switch
25.5	01112232	2	screw m 6 p.1 x 10
25.6	01112813	2	nut m 6
25.7	01102797	2	washer 6, d128



**OIL TEMPERATURE SENSOR**

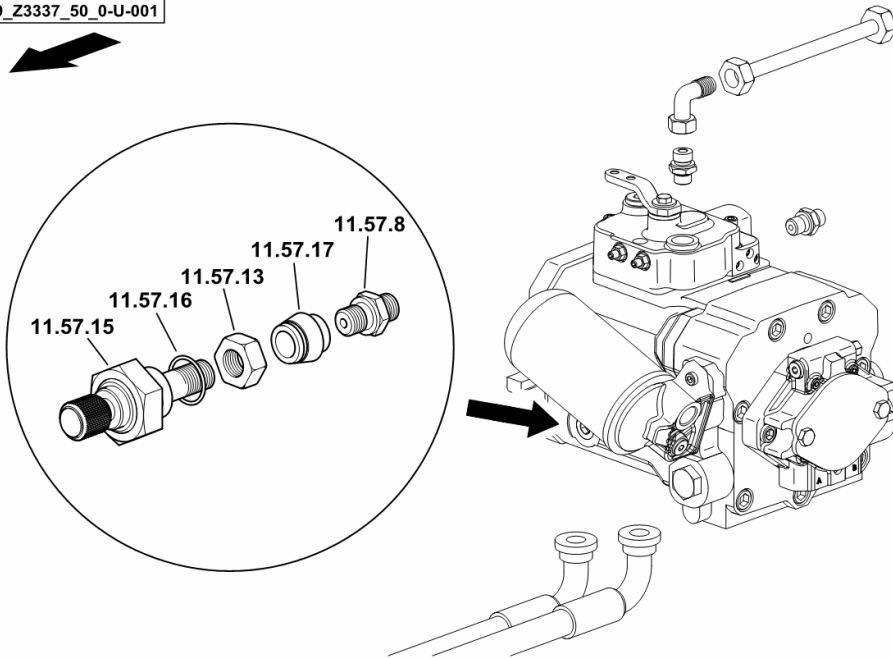
Fig.	Code	QTY	Name
------	------	-----	------

**Notes:**

BALANCE/AUTOCONTROL [5660 HTS COM 3 ->13500]

11.57.8	16033362	3	pipe fitting geo 22-l
11.57.13	01116656	2	pipe fitting m 30 p.2
11.57.15	06253949	1	tempe guage
11.57.16	01118707	1	ring 16
11.57.17	16040213	1	pipe fitting

H9\_Z3337\_50\_0-U-001



**PANEL INSTRUMENTS**

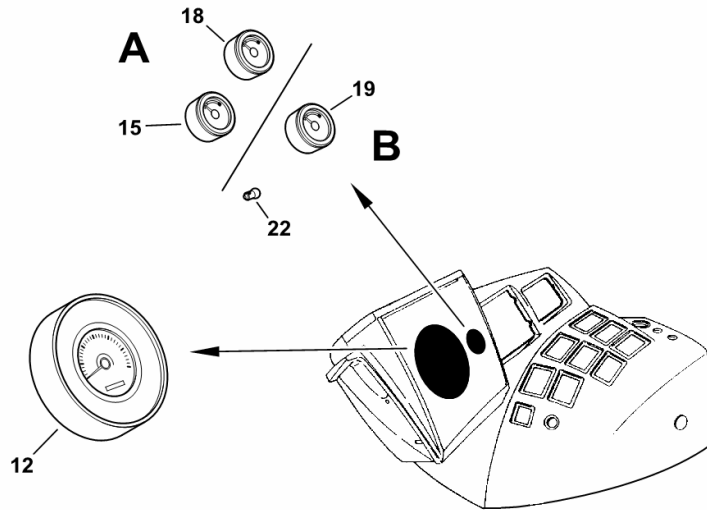
Fig.	Code	QTY	Name
------	------	-----	------

**Notes:**

[5660 HTS COM 3 ->13500]

12	06527010	1	combi-instrument
15	01175706	1	tempe guage ( 13508 <- ) HYDRAULIC OIL
18	01231716	1	tempe guage ( 13508 <- ) COOLING LIQUID
19	06261946	1	tempe guage ( -> 13537 ) HYDRAULIC OIL
22	01121432	2	lamp j/2w d72601

H9\_Z3376\_12\_0-B-001



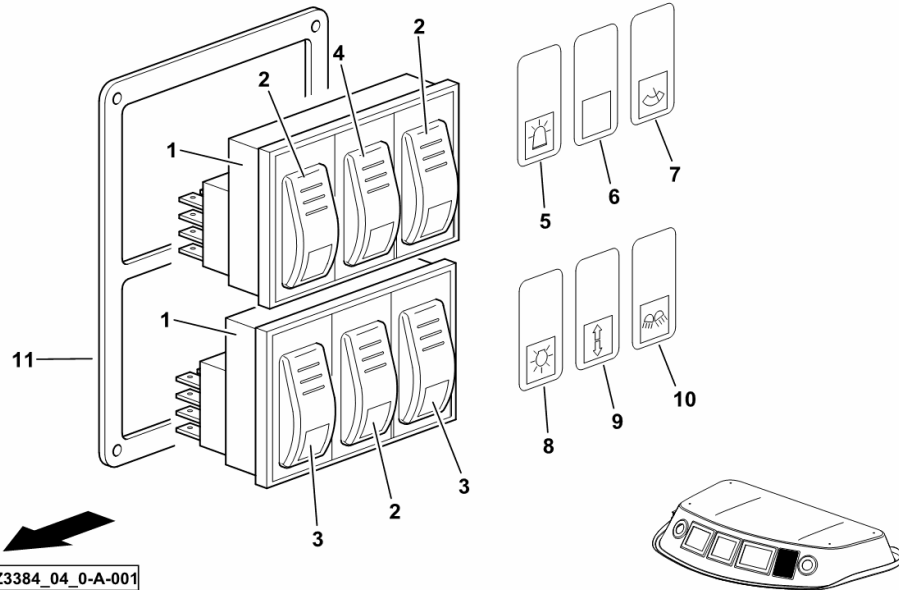
**LIGHTING CONTROL**

Fig.	Code	QTY	Name
------	------	-----	------

**Notes:**

[5660 HTS COM 3 ->13500]

1	2.7659.300.0	2	box
2	2.7659.290.0	3	switch
3	2.7659.291.0	2	switch
4	2.7659.303.0	1	switch
5	2.8339.163.0	1	graphical symbol - FLASHING LIGHT
6	2.8339.253.0	1	graphical symbol
7	2.8339.164.0	1	graphical symbol SCREEN WIPER
8	2.8339.165.0	1	graphical symbol - SIDELIGHTS
9	2.8339.166.0	1	graphical symbol TOP
10	2.8339.167.0	1	graphical symbol WORKING SPOTLIGHT
11	16056566	1	casing



H9\_Z3384\_04\_0-A-001

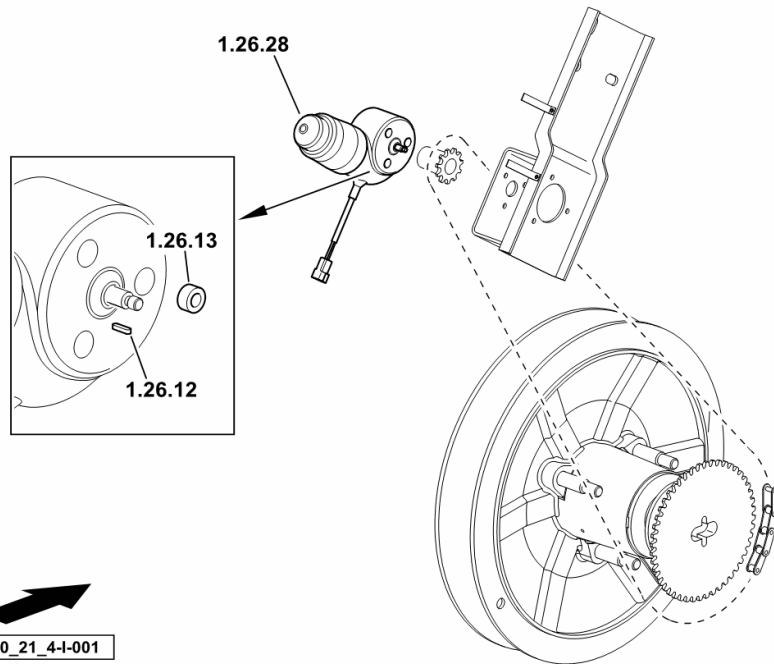
**ELECTRIC VARIATOR ADJUSTMENT DEVICE**

Fig.	Code	QTY	Name
------	------	-----	------

**Notes:**

[5660 HTS COM 3 ->13500]

1.26.12	01139545	1	dowel 2 x 3 x 10
1.26.13	06513113/10	3	spacer
1.26.28	16045076	2	electric motor



H9\_16000\_21\_4-I-001

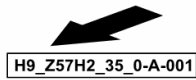
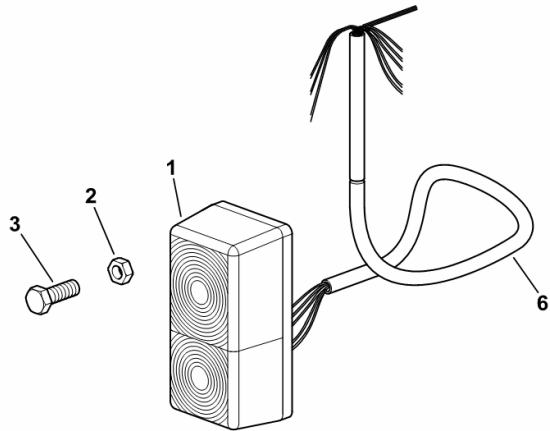
**ADDITIONAL FRONT LIGHTS**

Fig.	Code	QTY	Name
------	------	-----	------

**Notes:**

[5660 HTS COM 3 ->13500]

1	06217218	2	side lamp ☞ 06217218
2	01119629	4	screw m 4.0 x 12
3	06209764	4	nut m 4
6	0.016.6634.4/20	2	electrical system



H9\_Z57H2\_35\_0-A-001

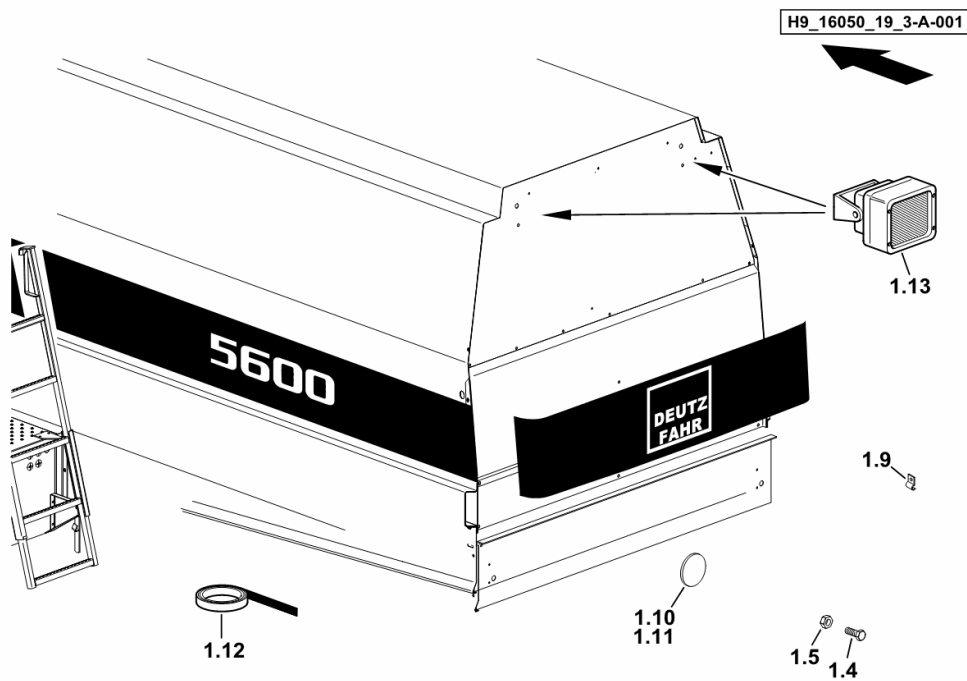
**REAR LIGHTING**

Fig.	Code	QTY	Name
------	------	-----	------

**Notes:**

[5660 HTS COM 3 ->13500]

1.4	01112240	4	screw m 6 x 12
1.5	01114357	4	nut m 6, d985
1.9	01115942	2	clamp 7
1.10	06214039	6	reflector Ø 80 - RED COLOUR
1.11	06214037	8	reflector Ø 60 mm - YELLOW COLOUR
1.12	06203346	0.25	band
1.13	16046038	2	headlight ☞ 16046038



CLICK HERE TO **DOWNLOAD** THE COMPLETE MANUAL

- Thank you very much for reading the preview of the manual.
- You can download the complete manual from: [www.heydownloads.com](http://www.heydownloads.com) by clicking the link below



- Please note: If there is no response to CLICKING the link, please download this PDF first and then click on it.

CLICK HERE TO **DOWNLOAD** THE COMPLETE MANUAL

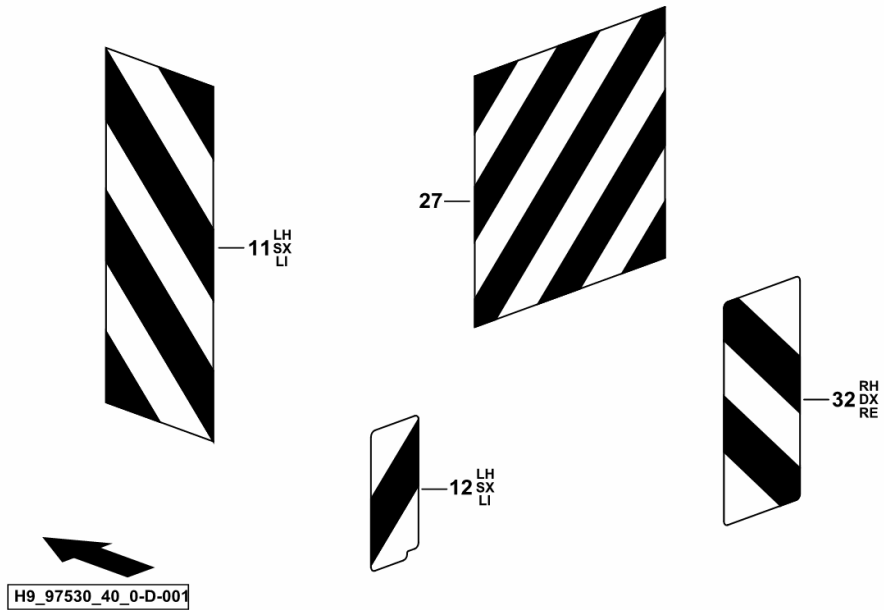
**INFORMATION PLATE**

Fig.	Code	QTY	Name
------	------	-----	------

**Notes:**

- ITALY [5660 HTS COM 3 ->13500]

11	01145729	1	reflector sx/lh/li
12	01145165/10	1	reflector sx/lh/li
27	01145916	1	reflector 500 x 500
32	01145164	1	reflector dx/rh/re



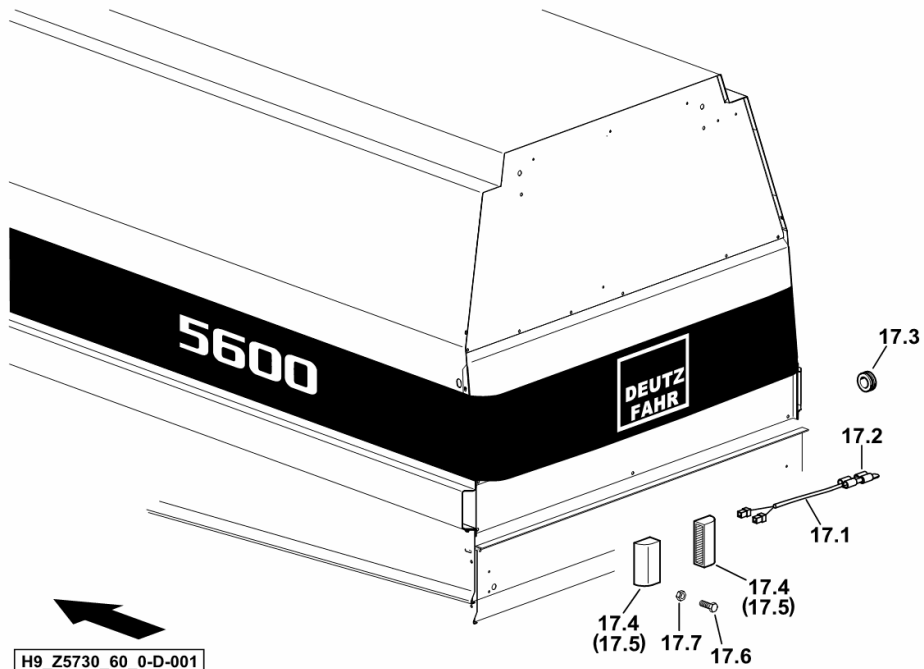
**REAR LIGHTING**

Fig.	Code	QTY	Name
------	------	-----	------

**Notes:**

- EXPORT F [5660 HTS COM 3 ->13500]

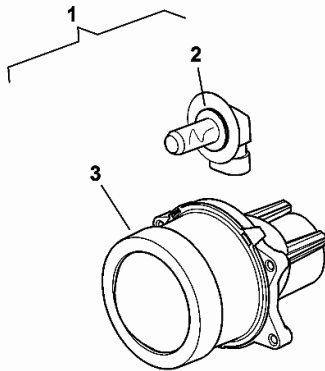
17.1	16006022/10	2	wire
17.2	06213732	2	terminal
17.3	01167404	2	rubber bushing
17.4	06538036	2	headlight
17.5	01121444	2	lamp 12V 5W
17.6	01119630	4	screw m 4 x 16
17.7	06209764	4	nut m 4



H9\_Z5730\_60\_0-D-001

**HEADLAMP COMPONENTS**

Fig.	Code	QTY	Name
1	2.8039.004.0	1	headlight
2	0.900.1539.2	1	lamp
3	0.000.0000.1	0	not serviceable



2\_8039\_004\_0

## 5660 HTS COM 3 ->13500

### B0 - ENGINE

#### GENERAL

DEUTZ ENGINE 183 kW / 250 CV.....	B0.00.1 (1)
ACCESSORIES.....	B0.00.6 (1)

#### CYLINDER BLOCK

FASTENINGS.....	B0.01.1007
FASTENINGS.....	B0.01.1013
GASKET SET.....	B0.01.1028
CRANKCASE BREATHER.....	B0.01.1056
CRANKCASE.....	B0.01.1076
OIL FILLER NECK.....	B0.01.1091
DIPSTICK.....	B0.01.1099
OIL MEASURING DEVICE.....	B0.01.1103
OIL MEASURING DEVICE.....	B0.01.1106
OIL MEASURING DEVICE.....	B0.01.1107
PLUG.....	B0.01.1113
CLOSING COMPONENTS.....	B0.01.1125
ACCESSORIES.....	B0.01.1134
ACCESSORIES.....	B0.01.1135
PISTON COOL.NOZZLE.....	B0.01.1160
FLANGE.....	B0.01.1167

#### CRANKSHAFT

FASTENINGS.....	B0.02.1001
V-GROOVED PULLEY.....	B0.02.1026
CRANKSHAFT.....	B0.02.1044
CRANKSHAFT.....	B0.02.1048
FLYWHEEL.....	B0.02.1063
PLUG.....	B0.02.1077
MAIN BEARINGS.....	B0.02.1084

#### CYLINDERS - PISTONS - CONNECTING RODS

PISTON.....	B0.03.1010
CONNECTING ROD.....	B0.03.1025

#### TIMING

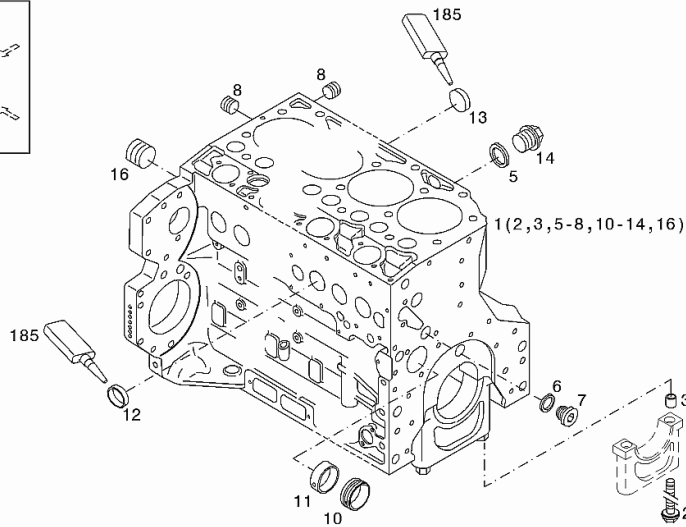
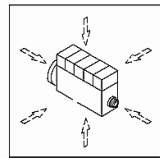
COVER PLATE.....	B0.04.1002
FASTENINGS.....	B0.04.1004
FASTENINGS.....	B0.04.1012
FASTENINGS.....	B0.04.1016
BUSH.....	B0.04.1024
BUSH.....	B0.04.1025
CAMSHAFT.....	B0.04.1069
CAMSHAFT.....	B0.04.1078
BUMPER.....	B0.04.1092

Section: B0 - ENGINE  
**CRANKCASE**

Fig.	Code	QTY	Name
------	------	-----	------

**Engine Serial Numbers:**

10518745 10518746 10518747 10518748 10518749 10549259 10549262 10549263 10549264 10549265 10549266  
 10549267 10560434 10560435 10560436 10560437 10560439 10560440 10560441 10560442 10560443 10582116  
 10582117 10582118 10582119 10582120 10582121 10582123 10582125 10590188 10590189 10590191 10590192  
 10590194 10590195 10590196 10600153 10600154 10600155 10600157 10600158 10600161 10609439 10609441  
 10609443 10609444 10609445 10609446 10609447 10623972 10627113 10627114 10627115 10627117 10627118  
 10627119 10627120 10627121 10627122 10627123 10627124 10627125 10627126 10627127 10627129 10627130  
 10740224 10740225 10740226 10740227 10740228 10740229 10740230 10740231 10740232 10740233



1	04296594	1	crankcase WITH POS.... (2,3,5-8,10-14,16)
2	04254240	14	screw
3	04160764	14	bushing
5	01118693	2	gasket 14x20 DIN 7603 -A14X20-CU
6	01101342	1	'o' ring DIN 7603 -D22X27-CU
7	04292706	1	plug
8	01182031	2	screw H 2812 -906-M14X1,5-ST-A3C-LOCTITE506
10	04251884	6	plug
11	04250086	1	ring
12	01148032	9	cover DIN 443 -A45-ZNPHR
13	01148031	5	plug DIN 443 -A36-ZNPHR
14	01100940	2	screw DIN 7604 -AM14X1,5-ST-A4C
16	04226536	1	bottom
185	01016125	1	guard H 0699 -DEUTZDW72-250ML

Section: B0 - ENGINE  
**PISTON COOL.NOZZLE**

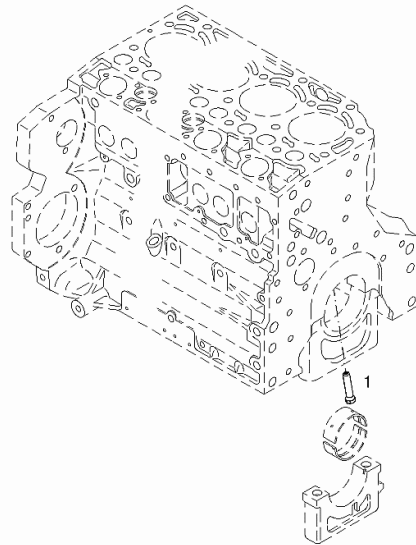
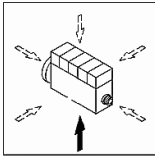
Fig.	Code	QTY	Name
------	------	-----	------

**Engine Serial Numbers:**

10518745 10518746 10518747 10518748 10518749 10549259 10549262 10549263 10549264 10549265 10549266  
 10549267 10560434 10560435 10560436 10560437 10560439 10560440 10560441 10560442 10560443 10582116  
 10582117 10582118 10582119 10582120 10582121 10582123 10582125 10590188 10590189 10590191 10590192  
 10590194 10590195 10590196 10600153 10600154 10600155 10600157 10600158 10600161 10609439 10609441  
 10609443 10609444 10609445 10609446 10609447 10623972 10627113 10627114 10627115 10627117 10627118  
 10627119 10627120 10627121 10627122 10627123 10627124 10627125 10627126 10627127 10627129 10627130  
 10740224 10740225 10740226 10740227 10740228 10740229 10740230 10740231 10740232 10740233

1	04207521	1	windscreen washer
---	----------	---	-------------------

001 ©



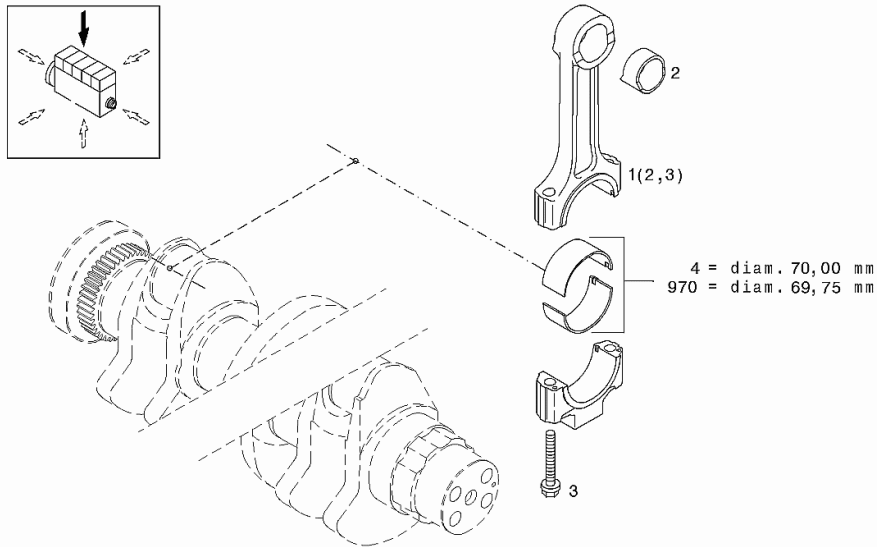
Section: B0 - ENGINE  
**CONNECTING ROD**

Fig.	Code	QTY	Name
------	------	-----	------

**Engine Serial Numbers:**

10518745 10518746 10518747 10518748 10518749 10549259 10549262 10549263 10549264 10549265 10549266  
 10549267 10560434 10560435 10560436 10560437 10560439 10560440 10560441 10560442 10560443 10582116  
 10582117 10582118 10582119 10582120 10582121 10582123 10582125 10590188 10590189 10590191 10590192  
 10590194 10590195 10590196 10600153 10600154 10600155 10600157 10600158 10600161 10609439 10609441  
 10609443 10609444 10609445 10609446 10609447 10623972 10627113 10627114 10627115 10627117 10627118  
 10627119 10627120 10627121 10627122 10627123 10627124 10627125 10627126 10627127 10627129 10627130  
 10740224 10740225 10740226 10740227 10740228 10740229 10740230 10740231 10740232 10740233

1	04293425	1	connecting rod WITH POS.... (2,3)
002 ©			
2	04288314	1	bushing
3	04284184	2	screw 30 Nm , 60° , 60°
4	02931578	1	conrod.bearing STANDARD STANDARD (A) MM RD, UNDERSIZE SEE POS. (B) A = 70.00 MM
970	02931579	1	conrod.bearing - mm 0.25 1st UNDERSIZE N A = 69.75 MM



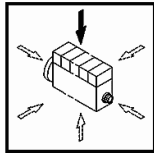
**CLOSING COMPONENTS**

Fig.	Code	QTY	Name
------	------	-----	------

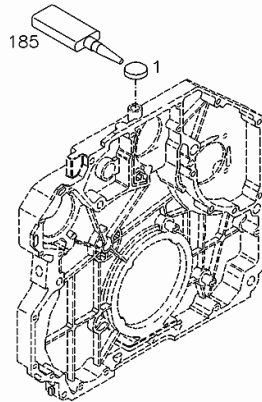
**Engine Serial Numbers:**

10560434 10560435 10560436 10560437 10560439 10560440 10560441 10560442 10560443 10582116 10582117  
 10582118 10582119 10582120 10582121 10582123 10582125 10590188 10590189 10590191 10590192 10590194  
 10590195 10590196 10600153 10600154 10600155 10600157 10600158 10600161 10609439 10609441 10609443  
 10609444 10609445 10609446 10609447 10623972 10627113 10627114 10627115 10627117 10627118 10627119  
 10627120 10627121 10627122 10627123 10627124 10627125 10627126 10627127 10627129 10627130 10740224  
 10740225 10740226 10740227 10740228 10740229 10740230 10740231 10740232 10740233

1	01181259	1	plug H 2860 -A16-ST-FE/ZNPHR
185	01016127	1	sealing compound ml. 50 H 0699 -DEUTZDW72-50ML



000 ©



0507 7796

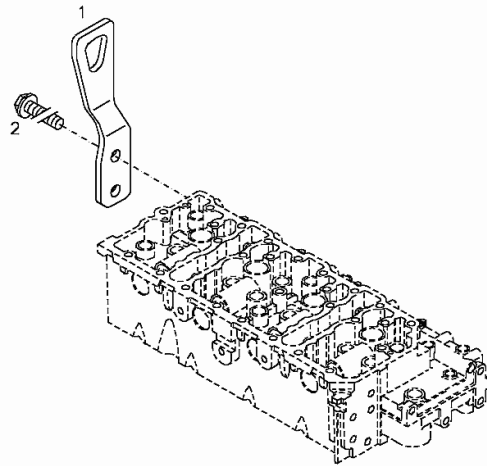
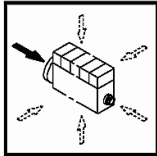
Section: B0 - ENGINE  
**ENGINE MOUNTING**

Fig.	Code	QTY	Name
------	------	-----	------

**Engine Serial Numbers:**

10518745 10518746 10518747 10518748 10518749 10549259 10549262 10549263 10549264 10549265 10549266  
 10549267 10560434 10560435 10560436 10560437 10560439 10560440 10560441 10560442 10560443 10582116  
 10582117 10582118 10582119 10582120 10582121 10582123 10582125 10590188 10590189 10590191 10590192  
 10590194 10590195 10590196 10600153 10600154 10600155 10600157 10600158 10600161 10609439 10609441  
 10609443 10609444 10609445 10609446 10609447 10623972 10627113 10627114 10627115 10627117 10627118  
 10627119 10627120 10627121 10627122 10627123 10627124 10627125 10627126 10627127 10627129 10627130  
 10740224 10740225 10740226 10740227 10740228 10740229 10740230 10740231 10740232 10740233

1	04289469	1	bracket
000 © 2	01181390	2	screw EN 1662 -F-M10X25-10.9-A4C



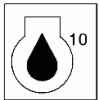
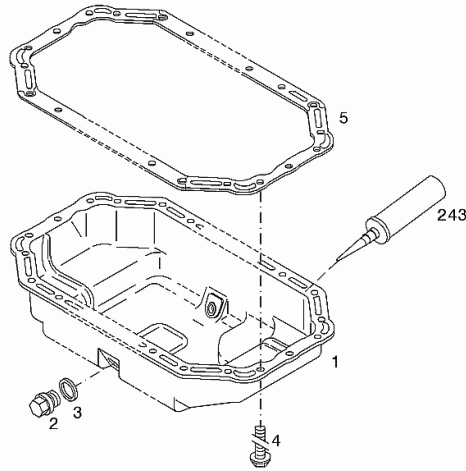
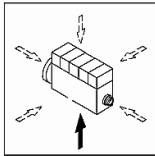
**OIL PAN**

Fig.	Code	QTY	Name
------	------	-----	------

**Engine Serial Numbers:**

10518745 10518746 10518747 10518748 10518749 10549259 10549262 10549263 10549264 10549265 10549266  
 10549267 10560434 10560435 10560436 10560437 10560439 10560440 10560441 10560442 10560443 10582116  
 10582117 10582118 10582119 10582120 10582121 10582123 10582125 10590188 10590189 10590191 10590192  
 10590194 10590195 10590196 10600153 10600154 10600155 10600157 10600158 10600161 10609439 10609441  
 10609443 10609444 10609445 10609446 10609447 10623972 10627113 10627114 10627115 10627117 10627118  
 10627119 10627120 10627121 10627122 10627123 10627124 10627126 10627127 10627129 10627130  
 10740224 10740225 10740226 10740227 10740228 10740229 10740230 10740231 10740232 10740233

1	04197671	1	oil pan
003 © 2	01133631	2	plug 55 Nm DIN 910 -M18X1,5-ST-A4C
3	01148891	2	'o' ring DIN 7603 -D18X24-CU-VERZINNT
4	01181436	28	screw 30 Nm EN 1662 -F-M8X16-LG2,5-10.9-ZNAL-A
5	04204453	1	gasket
10	01017932	0	ring Nr. material: only for calculating the quantity CALCULATION
243	01319906	1	sealing compound



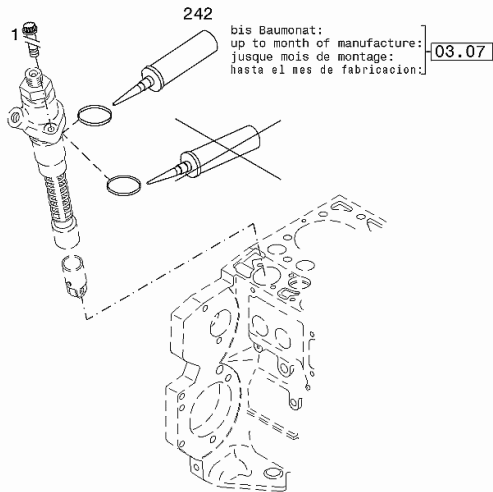
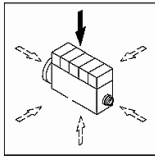
**FASTENINGS**

Fig.	Code	QTY	Name
------	------	-----	------

**Engine Serial Numbers:**

10518745 10518746 10518747 10518748 10518749 10549259 10549262 10549263 10549264 10549265 10549266  
 10549267 10560434 10560435 10560436 10560437 10560439 10560440 10560441 10560442 10560443 10582116  
 10582117 10582118 10582119 10582120 10582121 10582123 10582125 10590188 10590189 10590191 10590192  
 10590194 10590195 10590196 10600153 10600154 10600155 10600157 10600158 10600161 10609439 10609441  
 10609443 10609444 10609445 10609446 10609447 10623972 10627113 10627114 10627115 10627117 10627118  
 10627119 10627120 10627121 10627122 10627123 10627124 10627125 10627126 10627127 10627129 10627130  
 10740224 10740225 10740226 10740227 10740228 10740229 10740230 10740231 10740232 10740233

1	01182132	4	screw 10 Nm, 50 Nm
<span style="border: 1px solid black; padding: 2px;">002</span> ©	242	1	sealing compound FINO AL MESE DI MONTAGGIO - FINO AL MESE DI MONTAGGIO 03.2007 0116 4138 NON RIVESTITE CON FILM LUBRIFICANTE 0118 3004 RIVESTITE CON FILM LUBRIFICANTE 04.2007



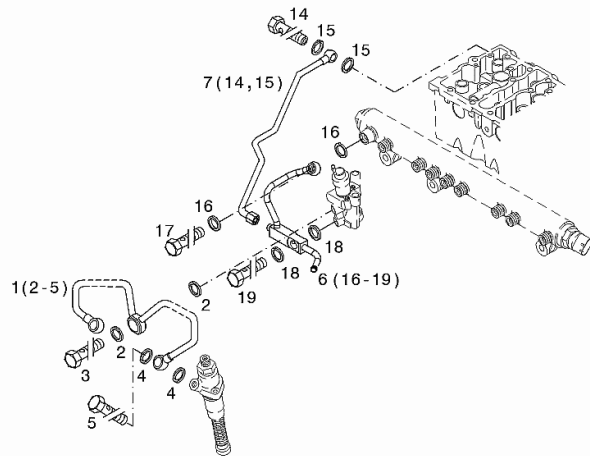
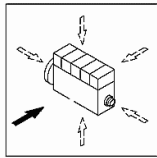
**FUEL LINE**

Fig.	Code	QTY	Name
------	------	-----	------

**Engine Serial Numbers:**

10740224 10740225 10740226 10740227 10740228 10740229 10740230 10740231 10740232 10740233

1	04500568	1	tube WITH POS.... (2-5)
2	01148836	2	'o' ring DIN 7603 -D14X20-CU-VERZINNT
3	01180412	1	pipe union H 3102 -E10M-ST-A4C
000 © 4	01148837	4	'o' ring DIN 7603 -D12X18-CU-VERZINNT
5	01119241	2	pipe union m 12 p.1.5 DIN 7643 -8
6	04500069	1	tube WITH POS.... (16-19)
7	04294316	1	tube WITH POS.... (14,15)
14	01119240	1	pipe union H 3102 -D8M-ST-ZNPHRF
15	01148893	2	'o' ring DIN 7603 -D12X16-CU-VERZINNT
16	01148899	2	rubber plug DIN 7603 -D14X18-CU-VERZINNT
17	01119246	1	pipe union H 3102 -D10 M H 3102 -D10M-ST-A4C
18	01148898	2	'o' ring DIN 7603 -D16X20-CU-VERZINNT
19	01100528	1	screw H 3102 -E12M-ST-A4C



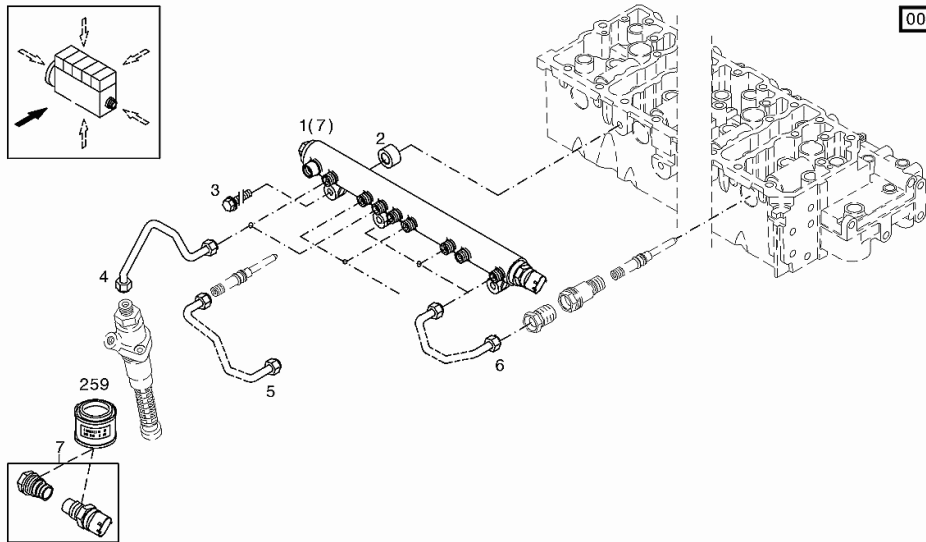
Section: B0 - ENGINE  
**COMMON RAIL**

Fig.	Code	QTY	Name
------	------	-----	------

**Engine Serial Numbers:**

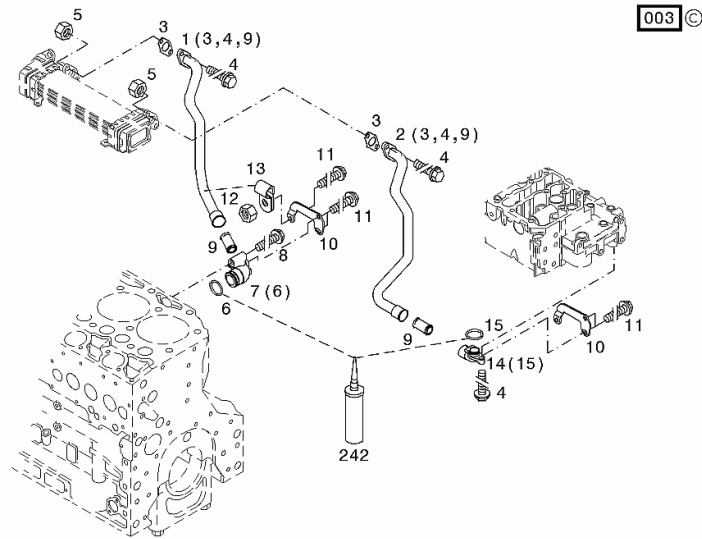
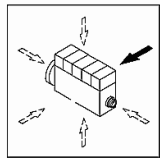
10518745 10518746 10518747 10518748 10518749 10549259 10549262 10549263 10549264 10549265 10549266  
 10549267 10560434 10560435 10560436 10560437 10560439 10560440 10560441 10560442 10560443 10582116  
 10582117 10582118 10582119 10582120 10582121 10582123 10582125 10590188 10590189 10590191 10590192  
 10590194 10590195 10590196 10600153 10600154 10600155 10600157 10600158 10600161 10609439 10609441  
 10609443 10609444 10609445 10609446 10609447 10623972 10627113 10627114 10627115 10627117 10627118  
 10627119 10627120 10627121 10627122 10627123 10627124 10627125 10627126 10627127 10627129 10627130  
 10740224 10740225 10740226 10740227 10740228 10740229 10740230 10740231 10740232 10740233

1	04290940	1	tube WITH POS.... (7)
2	04284937	3	sleeve
3	01181437	3	screw 30 Nm EN 1662 -F-M8X45-10.9-ZNAL-A
4	04288888	2	tube 10 Nm , 60° high pressure
5	04295848	3	tube 10 Nm , 60° Cyl.1-3
6	04297948	3	sheath 10 Nm , 60° Cyl.4-6
7	04297148	1	pressure kit THE KIT CONTAINS VALVE AND PRESSURE SWITCH
259	01016496	1	grease



Section: B0 - ENGINE  
**COOLANT PIPE**

Fig.	Code	QTY	Name
242	01016105	1	sealing compound



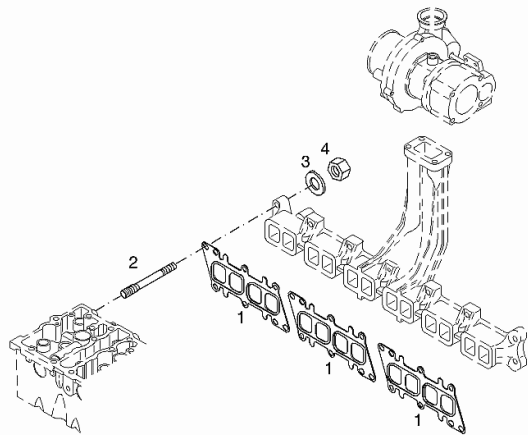
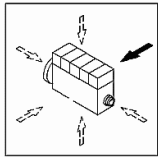
**ACCESSORIES**

Fig.	Code	QTY	Name
------	------	-----	------

**Engine Serial Numbers:**

10518745 10518746 10518747 10518748 10518749 10549259 10549262 10549263 10549264 10549265 10549266  
 10549267 10560434 10560435 10560436 10560437 10560439 10560440 10560441 10560442 10560443 10582116  
 10582117 10582118 10582119 10582120 10582121 10582123 10582125 10590188 10590189 10590191 10590192  
 10590194 10590195 10590196 10600153 10600154 10600155 10600157 10600158 10600161 10609439 10609441  
 10609443 10609444 10609445 10609446 10609447 10623972 10627113 10627114 10627115 10627117 10627118  
 10627119 10627120 10627121 10627122 10627123 10627124 10627125 10627126 10627127 10627129 10627130  
 10740224 10740225 10740226 10740227 10740228 10740229 10740230 10740231 10740232 10740233

1	04292563	3	gasket
000 2	04284637	14	screw
3	04285665	14	washer
4	01182036	14	nut



**FASTENINGS**

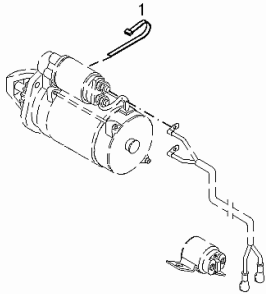
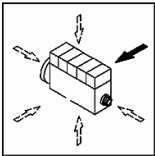
Fig.	Code	QTY	Name
------	------	-----	------

**Engine Serial Numbers:**

10518745 10518746 10518747 10518748 10518749 10549259 10549262 10549263 10549264 10549265 10549266  
 10549267 10560434 10560435 10560436 10560437 10560439 10560440 10560441 10560442 10560443 10582116  
 10582117 10582118 10582119 10582120 10582121 10582123 10582125 10590188 10590189 10590191 10590192  
 10590194 10590195 10590196

1	01182719	2	clamp H 7672 -P295X4,8X1,5
---	----------	---	-------------------------------

000 ©



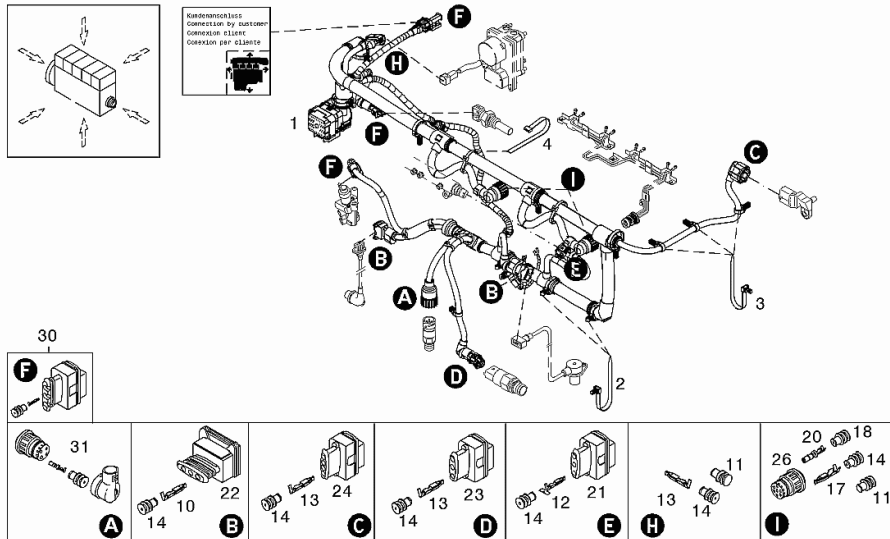
Section: B0 - ENGINE  
**ENGINE ELECTRICAL SYSTEM**

Fig.	Code	QTY	Name
------	------	-----	------

**Engine Serial Numbers:**

10518745 10518746 10518747 10518748 10518749 10549259 10549262 10549263 10549264 10549265 10549266  
 10549267 10560434 10560435 10560436 10560437 10560439 10560440 10560441 10560442 10560443 10582116  
 10582117 10582118 10582119 10582120 10582121 10582123 10582125 10590188 10590189 10590191 10590192  
 10590194 10590195 10590196 10600153 10600154 10600155 10600157 10600158 10600161 10609439 10609441  
 10609443 10609444 10609445 10609446 10609447

1	04215284	1	electrical system
2	04214077	11	clamp
3	04213481	6	clamp
000 © 4	01176435	11	clamp H 7672 -P160X4,8
10	04190848	6	gasket
11	04190860	12	plug
12	04194991	3	contact
13	04199863	16	contact
14	04190851	31	gasket
17	04213162	6	connection
18	04190853	2	gasket
20	04199565	2	pin
21	04194570	1	connection
22	04194629	2	covering
23	04194989	1	connection
24	04194198	1	connection
26	04199563	2	plug
30	04199973	3	connection
31	04214158	1	socket



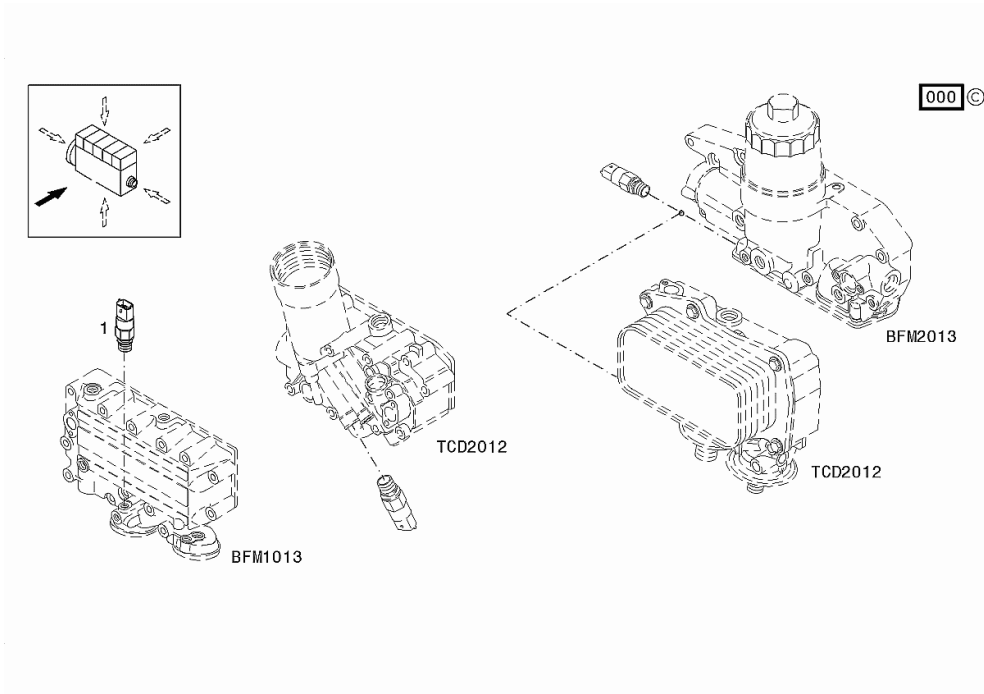
Section: B0 - ENGINE  
**OIL PRESSUR.SWITCH**

Fig.	Code	QTY	Name
------	------	-----	------

Engine Serial Numbers:

10740224 10740225 10740226 10740227 10740228 10740229 10740230 10740231 10740232 10740233

1	04215774	1	switch
---	----------	---	--------



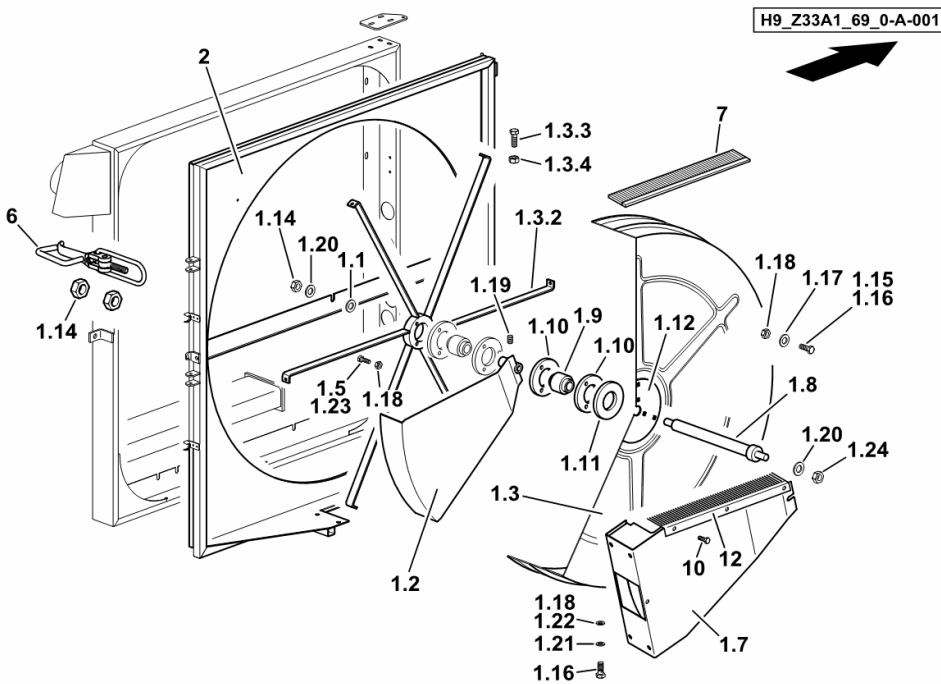
**ROTARY FILTER BASKET**

Fig.	Code	QTY	Name
------	------	-----	------

**Notes:**

[5660 HTS COM 3 ->13500]

1.1	06214587	2	shim 20 x 28 x 2,0
1.2	16055226	1	lamination
1.3	16055288/10	1	drum kpl. 1.3.2, 1.3.3, 1.3.4
1.3.2	16053693	1	wheel
1.3.3	01114357	6	nut m 6, d985
1.3.4	01103316	6	screw m 6 p.1.0 x 16
1.5	01112322	6	screw m 8 p.1.25 x 20
1.7	16049857	1	lamination
1.8	16035478	1	shaft m 12
1.9	06215739	2	bearing yb 20
1.10	06215781	4	bearing housing rb 20
1.11	16035507	1	ring 7x12x1800
1.12	16035511	1	disc
1.14	06209769	6	nut m 12, d985
1.15	01138993	3	screw m 8 x 16
1.16	01138837	3	screw m 8 x 35
1.17	01174941	9	disc 8,4x18x1,5
1.18	01112824	12	nut m 8, d934
1.19	01139633	1	grain m 6 x 6
1.20	01133726	15	washer 13
1.21	01102799	6	washer 8, d128
1.22	01107101	2	washer 8.4
1.23	01112350	3	screw m 8 x 35
1.24	06209769	8	nut m 12, d985
2	16061102	1	chassis frame
6	06259239	1	interlock
7	16055286	1	brush L = mm 3650
10	01100627	8	screw m 4.2 x 9
12	16055287	1	brush L = mm 470







**BEARING HOUSING**

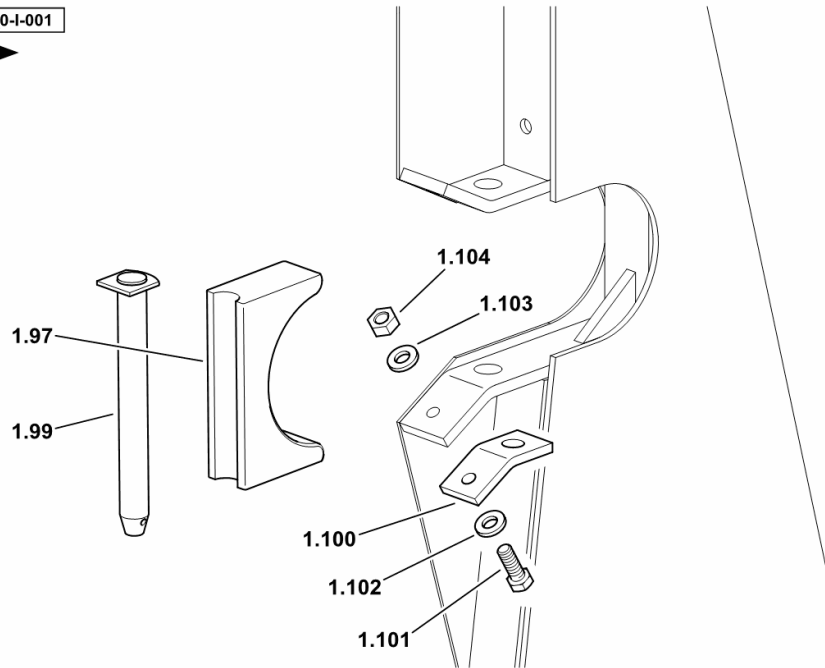
Fig.	Code	QTY	Name
------	------	-----	------

**Notes:**

[5660 HTS COM 3 ->13500] 13815 <-

1.97	06501758	2	support
1.99	06261209	2	pin Ø 22 x 205
1.100	06261190	2	bracket
1.101	01112439	2	screw m 10 x 35, d933
1.102	01107165	2	washer 10.5
1.103	01102800	2	washer 10.2
1.104	01102659	2	nut m 10, d934

H9\_Z38E0\_10\_0-I-001



Section: HE - FEED ELEVATOR  
**BELT ENGAGEMENT CONTROL**

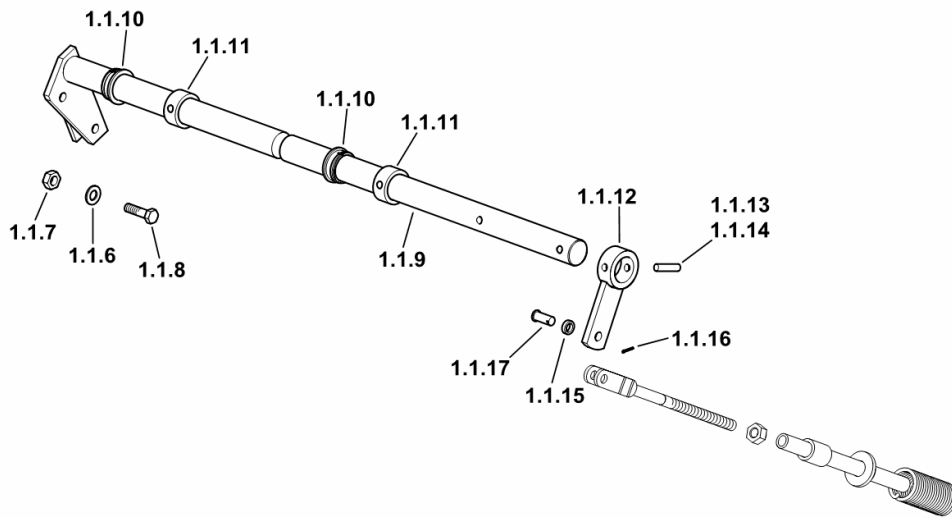
Fig.	Code	QTY	Name
------	------	-----	------

**Notes:**

[5660 HTS COM 3 ->13500]

1.1.6	06214197	2	washer 10.5
1.1.7	06209768	1	nut m 10, d985
1.1.8	01111298	1	screw m 10 p.1.5 x 45
1.1.9	16062506	1	shaft
1.1.10	06260833	2	bushing 30,3 x 35 x 15
1.1.11	06215810	2	ring 30 x 44
1.1.12	16062311	1	lever
1.1.13	01115476	1	pin 8 x 45, d1481
1.1.14	01157336	1	pin 5 x 45
1.1.15	01107165	3	washer 10.5
1.1.16	01132625	1	split pin 3.2 x 20
1.1.17	06210009	1	smau pin 10 x 28 x 24

H9\_16062\_50\_4-E-001



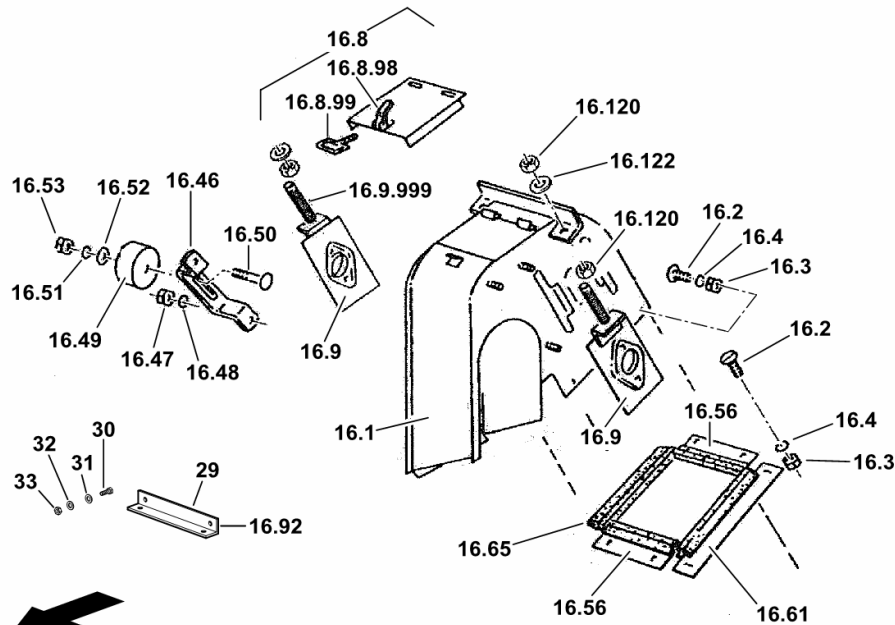
**ELEVATOR HEAD**

Fig.	Code	QTY	Name
------	------	-----	------

**Notes:**

[5660 HTS COM 3 ->13500]

16.1	16010501	1	tip
16.2	06214133	8	screw m 6 x 20
16.3	01112813	8	nut m 6
16.4	01102797	8	washer 6, d128
16.8	06505215	1	cover
16.8.98	06252860	1	stop
16.8.99	06253194	1	clevis
16.9	16058636	2	plate
16.9.999	01112521	2	stud bolt m 12
16.46	06283713	1	bracket
16.47	01104944	2	nut m 8, d985
16.48	01107163	2	washer 9, d126
16.49	06568997	1	tensioner 70x45
16.50	01138807	1	screw
16.51	01107165	2	washer 10.5
16.52	01102800	1	washer 10.2
16.53	01102659	1	nut m 10, d934
16.56	06525412	2	lamination
16.61	06525415	1	lamination
16.65	06525407	1	gasket
16.92	16047245	1	support
16.120	01112858	4	nut m 12, d934
16.122	01107110	6	washer 13.5
29	16004146	1	lamination
30	01103316	4	screw m 6 p.1.0 x 16
31	01107158	8	washer 6.6, d125
32	01102797	4	washer 6, d128
33	01112813	4	nut m 6



H9\_Z38M0\_10\_0-1-001



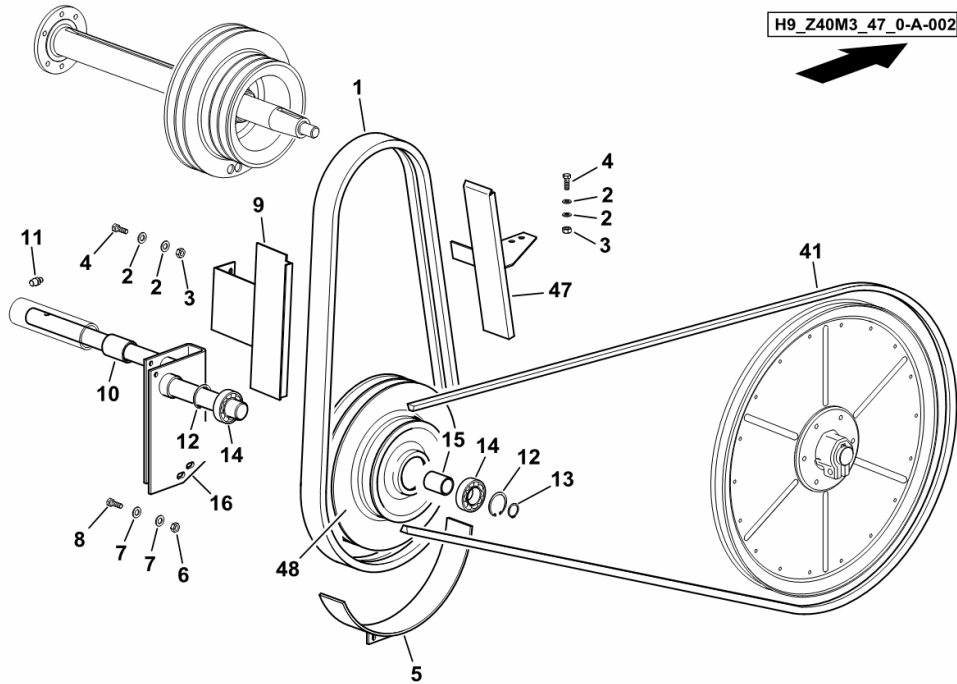
**GRAIN TANK CONTROL**

Fig.	Code	QTY	Name
------	------	-----	------

**Notes:**

[5660 HTS COM 3 ->13500] -> 13749

1	16062885	1	belt 2hc x 1666
2	06214192	8	washer 8.4
3	01104944	4	nut m 8, d985
4	01112333	4	screw m 8 x 25, d933
5	06518486/20	1	guide
6	01104944	2	nut m 8, d985
7	06214192	4	washer 8.4
8	01112333	2	screw m 8 x 25, d933
9	06288052	1	guide
10	06581885	2	bushing 30 x 40 x 45
11	01120697	1	lubricator bm 8 x 1
12	01107844	2	ring 62 x 2
13	01107748	1	ring 35 x 1.5, d471
14	01104530	2	bearing 6007 2rs
15	06282649	1	spacer 43 x 42
16	16004438/10	1	support
41	01145055	1	belt 1hc x 5505La
47	0.016.2748.3	1	guide
48	16005119	1	pulley



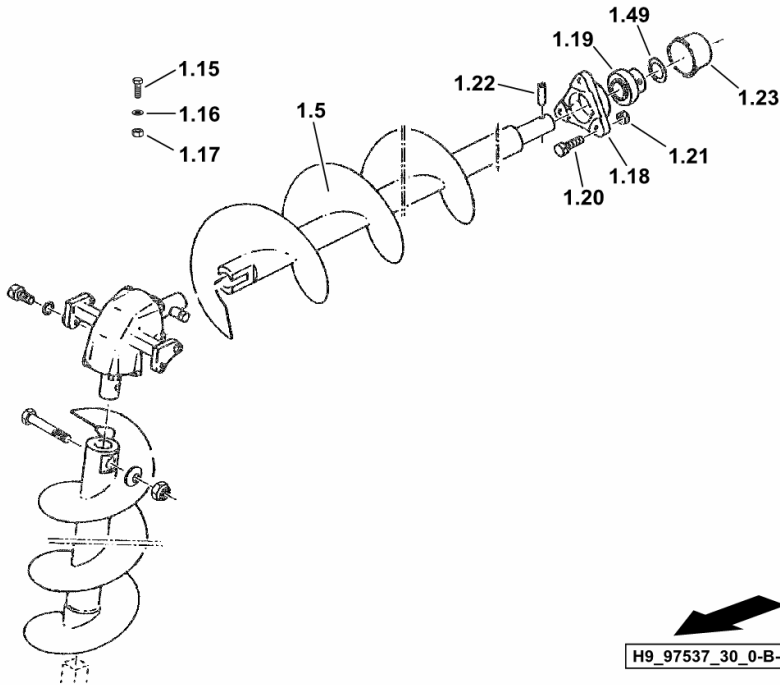
**FEED SCREW**

Fig.	Code	QTY	Name
------	------	-----	------

**Notes:**

- LENGTH 4 m [5660 HTS COM 3 ->13500]

1.5	06535196	1	screw conveyor L = mm 4017
1.15	01112515	2	screw m 12 x 25
1.16	01123616	4	washer 13.5
1.17	06209769	2	nut m 12, d985
1.18	06515174	1	bearing housing Ø 35
1.19	06215743	1	bearing ge 35 krrb
1.20	01112538	3	screw m 12 x 35, d933
1.21	06209769	3	nut m 12, d985
1.22	01115478	1	grain 8
1.23	06261841	1	cover PVC
1.49	01137526	7	shim 35 x 45 x 2,5



H9\_97537\_30\_0-B-001

**OIL RETURN PIPE**

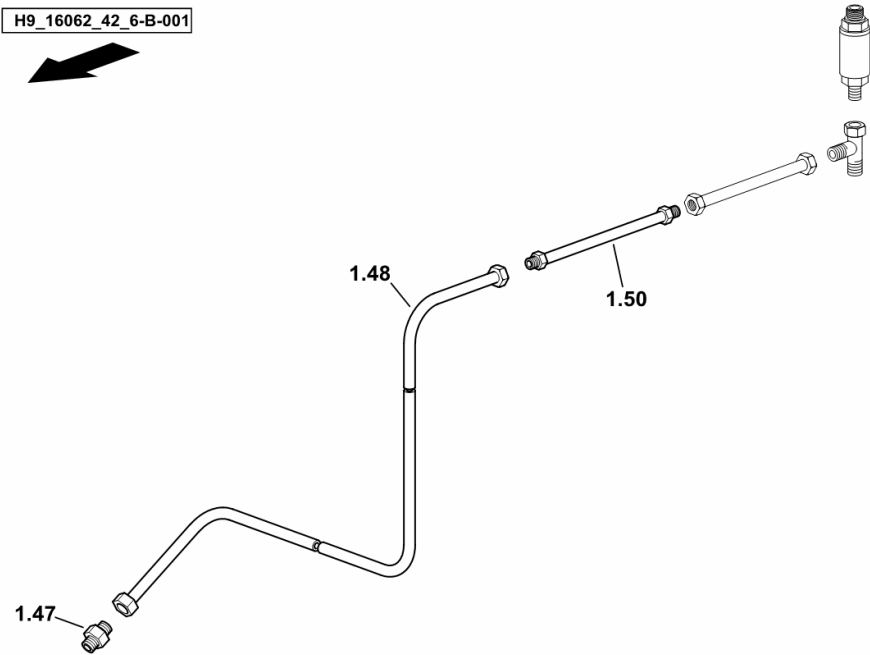
Fig.	Code	QTY	Name
------	------	-----	------

**Notes:**

[5660 HTS COM 3 ->13500]

1.47	01143421	1	tongue L 18 B
1.48	16062422	1	tube
1.50	16056027	1	flexible hose Ø 16 / L = mm 400

H9\_16062\_42\_6-B-001



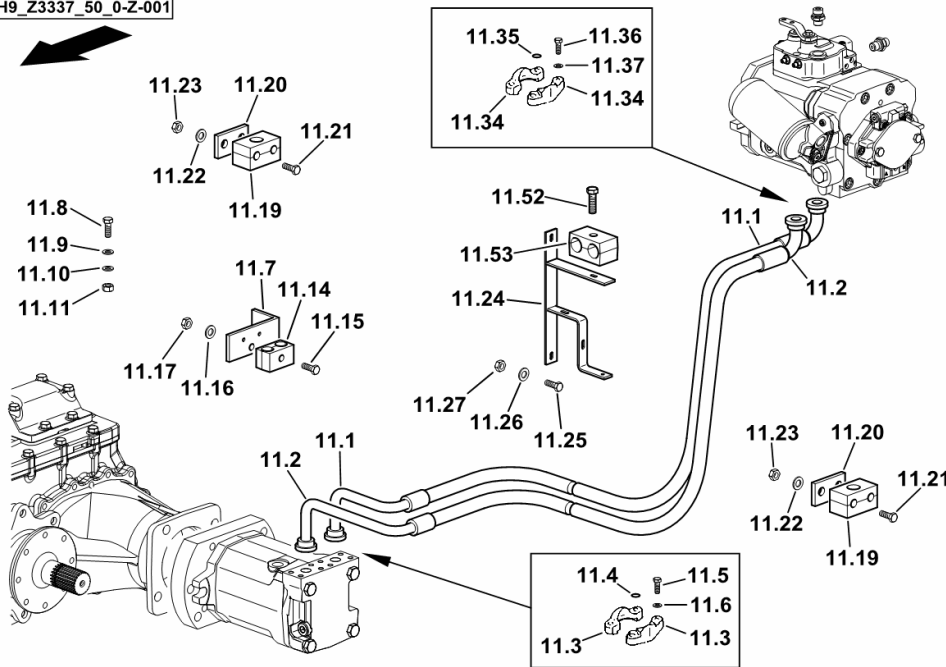
Section: HD - HYDRAULIC SYSTEM  
**HYDRAULIC DRIVE SYSTEM**

Fig.	Code	QTY	Name
------	------	-----	------

**Notes:**

BALANCE/AUTOCONTROL [5660 HTS COM 3 ->13500]

H9\_Z3337\_50\_0-Z-001



11.1	16062415	1	flexible hose 1 - 1/4" / L = mm 3580
11.2	16062416	1	flexible hose 1 - 1/4" / L = mm 3580
11.3	06516149	4	flange 1"
11.4	06214724	2	ring 32 x 3.5
11.5	01112547	8	screw m 12 x 40, d933
11.6	01102801	8	washer 12
11.7	16055353	2	bracket
11.8	01112429	2	screw m 10 x 30, d933
11.9	06214197	2	washer 10.5
11.10	01102800	2	washer 10.2
11.11	06209768	2	nut m 10, d985
11.14	06548460	3	hose clip Ø 38/38
11.15	01111193	4	screw m 8 p.1.25 x 80
11.16	01102799	4	washer 8, d128
11.17	01112824	4	nut m 8, d934
11.19	06262801	2	hose clip Ø 18, PVC
11.20	06261120	2	small plate
11.21	01127034	4	screw m 6 x 50, d933
11.22	01102797	4	washer 6, d128
11.23	01112813	4	nut m 6
11.24	16055347	1	support
11.25	01112333	2	screw m 8 x 25, d933
11.26	01102799	2	washer 8, d128
11.27	01112824	2	nut m 8, d934
11.34	06532006	4	flange 1 - 1/4"
11.35	01141775	2	ring 37.7 x 3.5
11.36	01112631	8	screw m 14 x 45
11.37	01102802	8	washer 14.2
11.52	01101504	1	screw m 10 p.1.5 x 45
11.53	01141780	1	hose clip Ø 32/32

**THIRD LIFTING CYLINDER FOR FEED ELEVATOR**

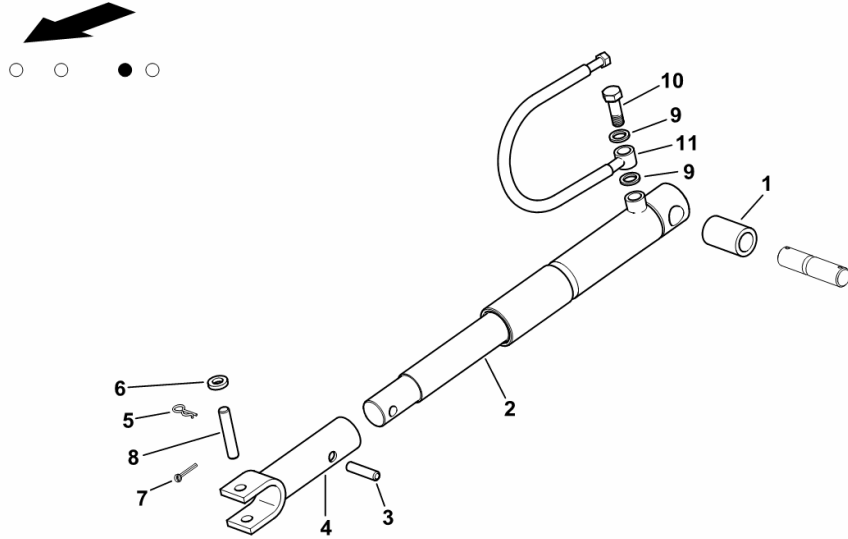
Fig.	Code	QTY	Name
------	------	-----	------

**Notes:**

[5660 HTS COM 3 ->13500]

1	16056221/10	1	sleeve
2	06548411	1	cylinder Ø 50 ( 13814 <- ) ☞ 06548411
2	0.016.2178.4	1	roller Ø 50 ☞ 0.016.2178.4
3	01157415	1	pin 16x55
4	16039911	1	fork
5	06235581	1	roll pin
6	01174923	1	washer 17
7	01106451	1	split pin 4 x 25
8	06209942	1	smau pin 11x85
9	01172949	2	'o' ring 16.7
10	01137064	1	pipe union m 16 p.1.5
11	16021812	1	tube

H9\_Z33D2\_21\_0-A-001



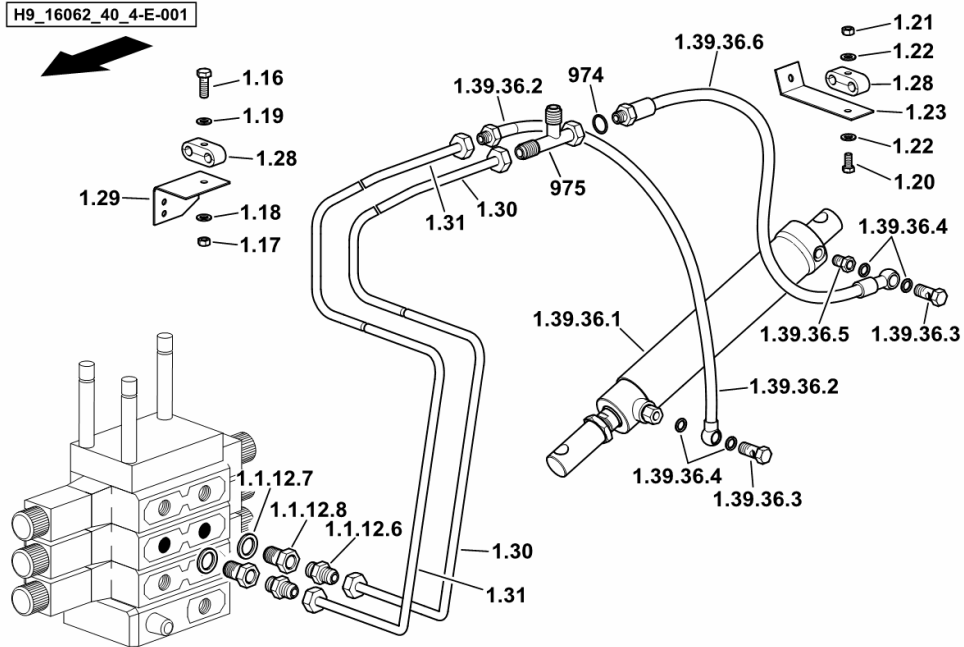
**HYDRAULIC SYSTEM FOR OUTLET PIPE**

Fig.	Code	QTY	Name
------	------	-----	------

**Notes:**

[5660 HTS COM 3 ->13500]

H9\_16062\_40\_4-E-001



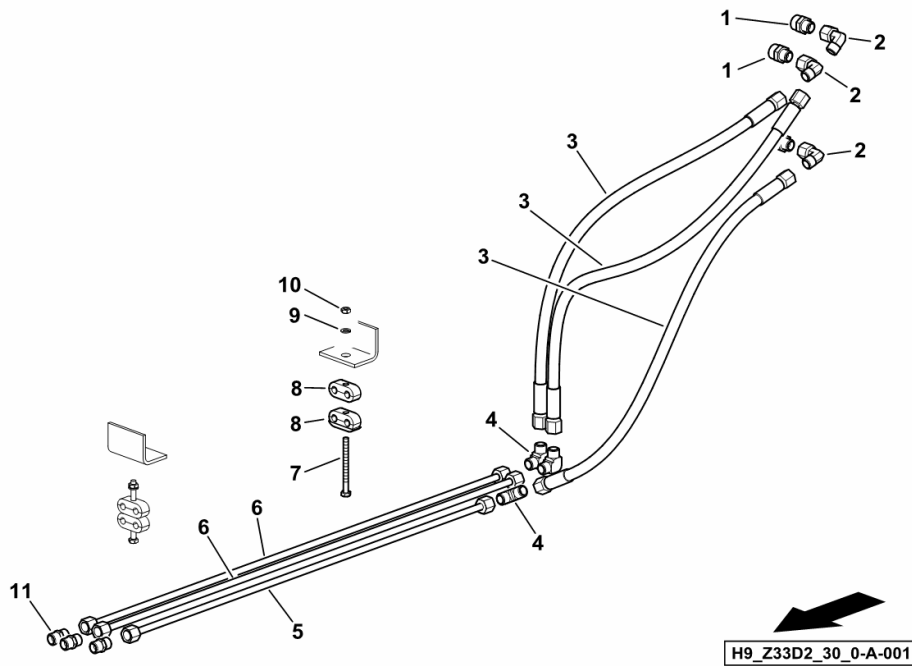
1.1.12.6	06543131	2	reduction
1.1.12.7	01118718	2	ring 18 x 24
1.1.12.8	01143424	2	tongue L6 B-M
1.16	01123749	5	screw m 6 x 25
1.17	01112813	5	nut m 6
1.18	01102797	5	washer 6, d128
1.19	06214189	10	washer 6.4
1.20	01112287	4	screw m 6 x 60, d933
1.21	01112813	8	nut m 6
1.22	01102797	8	washer 6, d128
1.23	16003289	1	bracket
1.28	01141605	1	terminal Ø 12/12
1.29	16004010	2	lamination
1.30	16018351	1	tube L = MM 1429 M12 X 1.5, Ø 6 X 1
1.31	16018354	1	tube L = mm 1421 M12 X 1.5, Ø6 X 1
1.39.36.1	06503194	1	roller Ø 45 ( 13815 <- ) ☞ 06503194
1.39.36.1	0.016.2180.4	1	roller Ø 45 ☞ 0.016.2180.4
1.39.36.2	06544956	1	flexible hose L = MM 500 M12 X 1.5, Ø12.1
1.39.36.3	01119241	2	pipe union m 12 p.1.5
1.39.36.4	01118675	6	ring 12 x 16
1.39.36.5	16062078	1	threaded joint
1.39.36.6	16062354	1	flexible hose L = MM 600 M12 X 1.5, Ø12.1
974	06520042	1	reduction Ø 0.6
975	16040273	1	pipe fitting T

Section: HD - HYDRAULIC SYSTEM  
**CUTTER BAR HYDRAULIC SYSTEM**

Fig.	Code	QTY	Name
------	------	-----	------

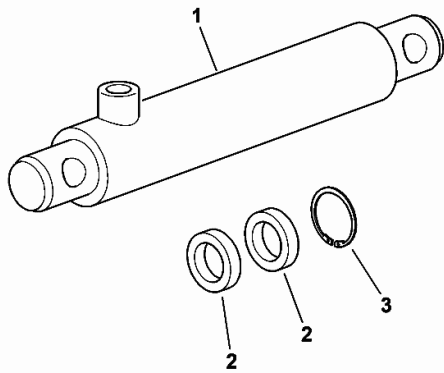
Notes:  
 [5660 HTS COM 3 ->13500]

1	16048019	3	pipe fitting m 18 p.1.5
2	16040269	3	shaped part 90°
3	16029212	3	flexible hose
4	01143305	3	pipe fitting
5	16047327	1	pipng
6	16048859	2	tube
7	01126975	2	screw m 6 x 70, d931
8	01141548	4	clamp Ø 8/8
9	2.1474.007.2	2	washer 6, d128
10	01112813	2	nut m 6
11	01127359	3	pipe fitting L8, d3902



**CYLINDER PARTS Ø 50**

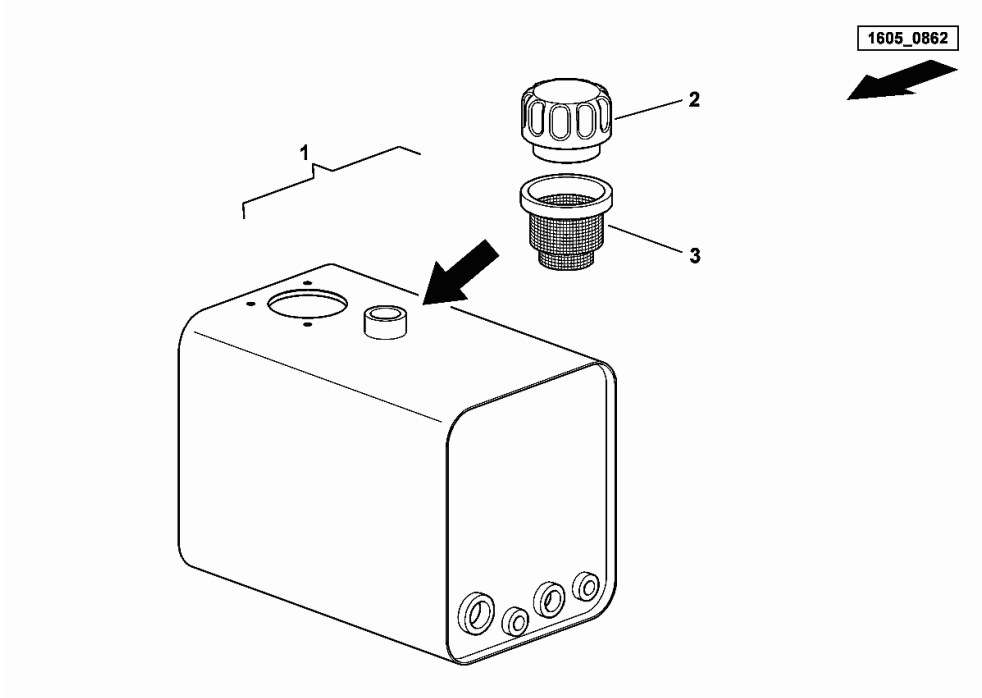
Fig.	Code	QTY	Name
1	06548411	1	cylinder Ø 50 SERTA HYDRAULIK Ø 50, MM 905 ÷ 1555 M16 X 1.5
2	16062103	1	gasket set
3	06532684	1	ring



0654\_8411

**OIL TANK - LT. 70**

Fig.	Code	QTY	Name
1	16050862	1	tank 70 lt. ( 2, 3 )
2	16035950	1	plug
3	16039229	1	small mesh



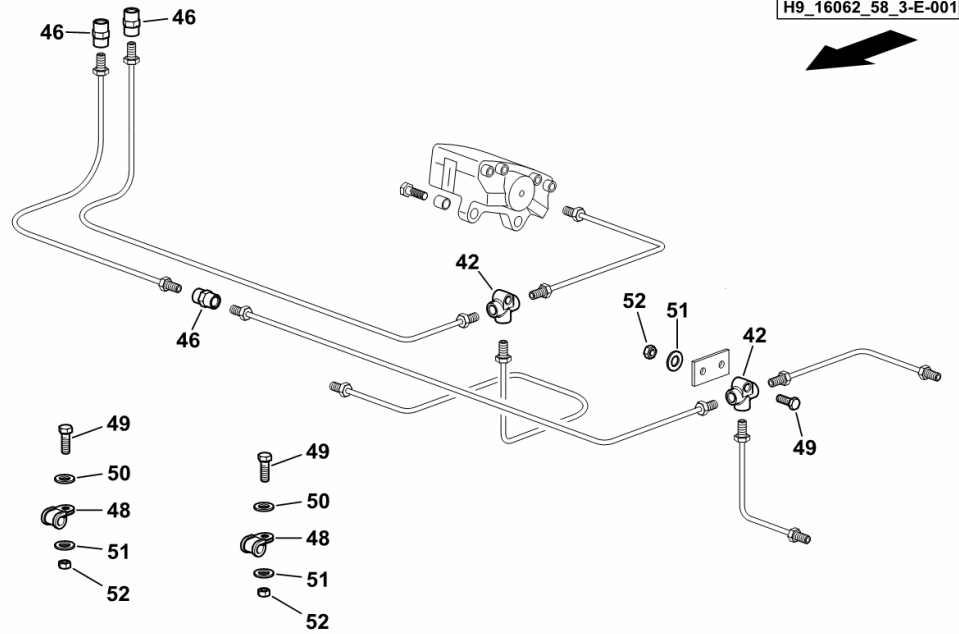
**BRAKING SYSTEM**

Fig.	Code	QTY	Name
------	------	-----	------

**Notes:**

[5660 HTS COM 3 ->13500]

42	06536974	2	pipe fitting
46	06255060	3	pipe fitting
48	06216395	8	clamp 5 x 15
49	2.0114.007.2	1	screw m 6 p.1 x 20
50	06214189	2	washer 6.4
51	2.1474.007.2	1	washer 6, d128
52	2.1120.003.2	2	nut m 6




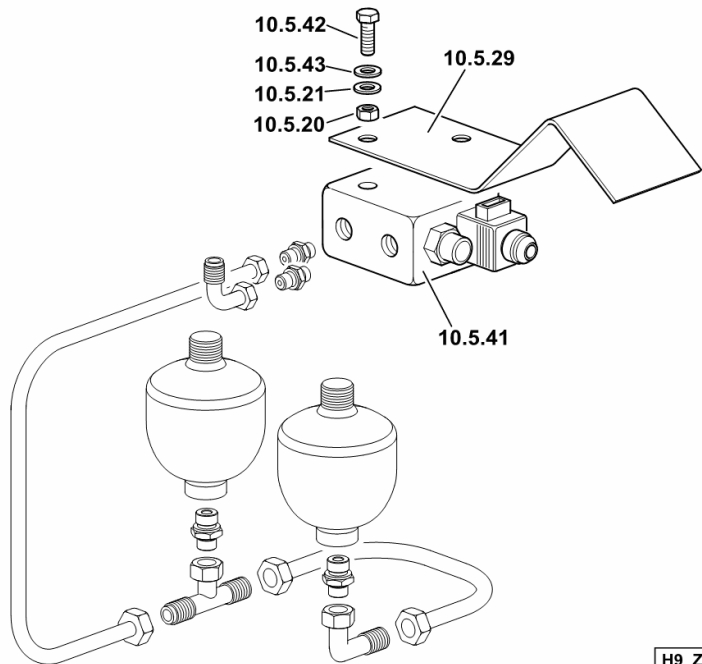
Section: HD - HYDRAULIC SYSTEM  
**SOLENOID VALVE ASSEMBLY**

Fig.	Code	QTY	Name
------	------	-----	------

**Notes:**

BALANCE/AUTOCONTROL [5660 HTS COM 3 ->13500]

10.5.20	01112813	3	nut m 6
10.5.21	01102797	3	washer 6, d128
10.5.29	16029762	1	small sump
10.5.41	16012861	1	small block ( EV )  16012861
10.5.42	01126975	2	screw m 6 x 70, d931
10.5.43	01102797	2	washer 6, d128

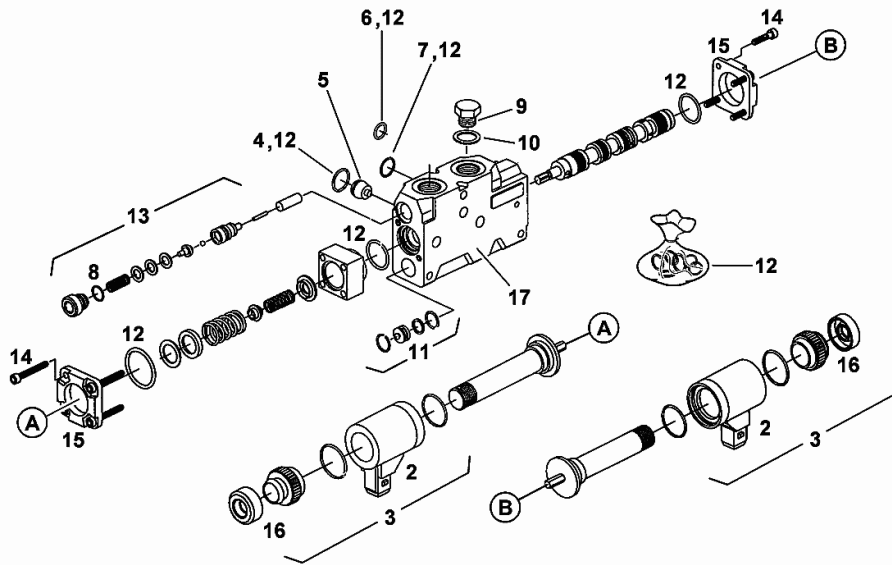


H9\_Z3337\_50\_0-Q-001

**SOLENOID VALVE**

Fig.	Code	QTY	Name
2	16039218	2	magneto
3	16039219	2	parts set
4	04386278	1	ring 18x2,5
5	04418197	1	valve
6	16020331	1	ring 9x2,5
7	16020332	4	ring 17x2,5
8	16020346	2	ring 13x2,5
9	0.000.0000.1	0	not serviceable
10	0.000.0000.1	0	not serviceable
11	16039216	1	parts set
12	16039215	1	gasket set
13	16039217	1	parts set
14	01126909	8	screw m 4 x 8
15	04438454	2	flange
16	04438443	2	rubber
17	0.000.0000.1	0	not serviceable

1603\_3533



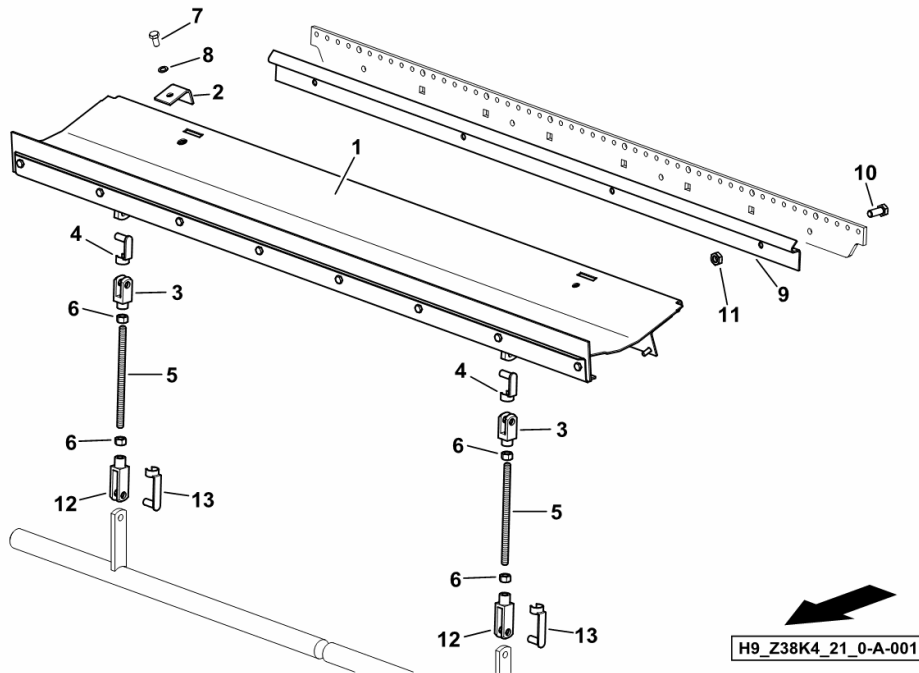
**STONE TRAP**

Fig.	Code	QTY	Name
------	------	-----	------

**Notes:**

- MAIZE EQUIPMENT [5660 HTS COM 3 ->13500] - WITH SEGMENTED CONCAVE [5660 HTS COM 3 ->13500]

1	16058610	1	stone trough
2	16056677	2	link
3	01120919	2	fork head
4	01164624	2	smau pin 12 x 24
5	16040595/10	2	stud bolt m 12 / L = mm 200
6	01112858	4	nut m 12, d934
7	01112407	2	screw m 10 x 20, d933
8	01102800	2	washer 10.2
9	16058602	1	support
10	01112418	4	screw m 10 x 25, d933
11	06209768	4	nut m 10, d985
12	01120923	2	fork head
13	06215265	2	smau pin 12 x 48



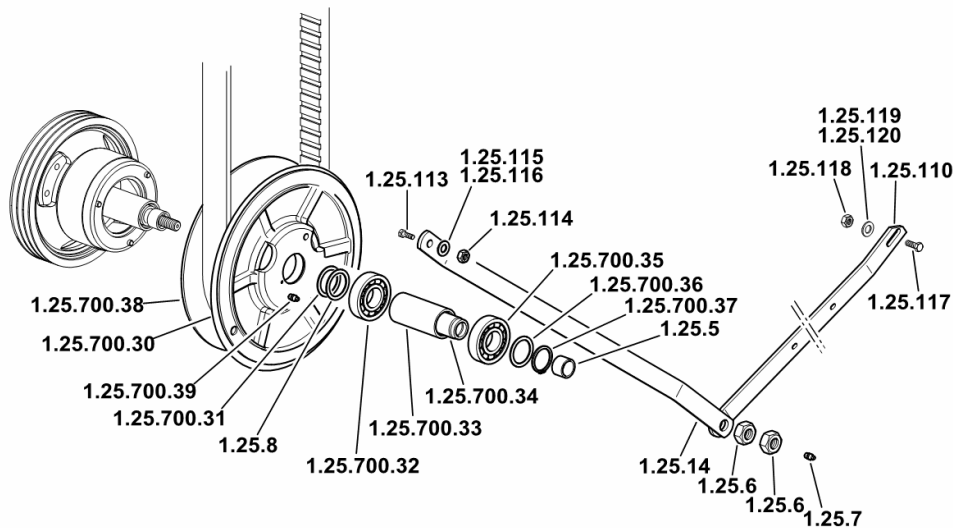
**THRESHING DRUM SPEED VARIATOR**

Fig.	Code	QTY	Name
------	------	-----	------

**Notes:**

[5660 HTS COM 3 ->13500]

1.25.5	06288084	1	spacer
1.25.6	01138935	2	nut m 24 p.1.5
1.25.7	01168225	1	lubricator m 8 x 1
1.25.8	06214486	4	shim 35 x 45 x 1.0
1.25.14	16003939	1	brace
1.25.110	16006172	1	brace
1.25.113	01112679	1	screw m 16 x 35
1.25.114	01112886	1	nut m 16
1.25.115	01102803	1	washer 16
1.25.116	06214220	1	washer 17
1.25.117	01138811	1	screw m 12 x 30
1.25.118	01112858	1	nut m 12, d934
1.25.119	01102801	1	washer 12
1.25.120	01133726	1	washer 13
1.25.700.30	16002260	1	disc
1.25.700.31	06214329	1	disc 36 x 51 x 3.0
1.25.700.32	01117257	1	roller bearing
1.25.700.33	06256557	1	spacer
1.25.700.34	06256574	1	spacer 50 x 145
1.25.700.35	01109060	1	ball bearing
1.25.700.36	01137876	1	shim 56 x 72 x 3.0
1.25.700.37	01107850	1	circlip 72 x 2.5
1.25.700.38	16002269	1	disc
1.25.700.39	06215166	1	lubricator m 6



H9\_16000\_21\_4-G-001

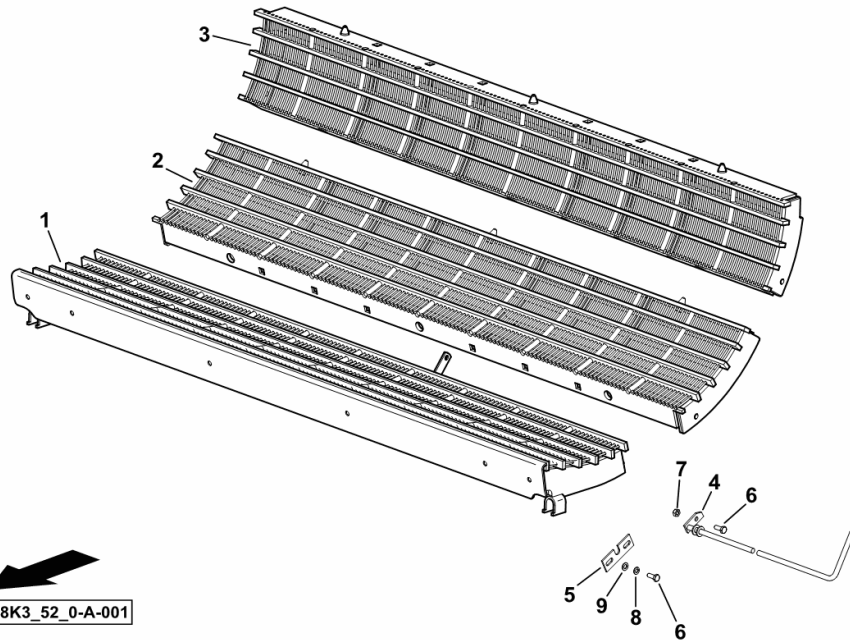
**MULTI-SEGMENT CONCAVE T11**

Fig.	Code	QTY	Name
------	------	-----	------

**Notes:**

[5660 HTS COM 3 ->13500]

1	0.015.9872.4/20	1	grille # 1 BOTTOM
2	0.015.9873.3/10	1	threshing basket # 2 - CENTRAL
3	16057040/10	1	threshing basket # 3 ABOVE
4	0.015.5653.3	1	rod
5	0.015.5587.0	1	lamination
6	01112322	3	screw m 8 p.1.25 x 20
7	01104944	1	nut m 8, d985
8	01102799	2	washer 8, d128
9	01107163	2	washer 9, d126



H9\_Z38K3\_52\_0-A-001

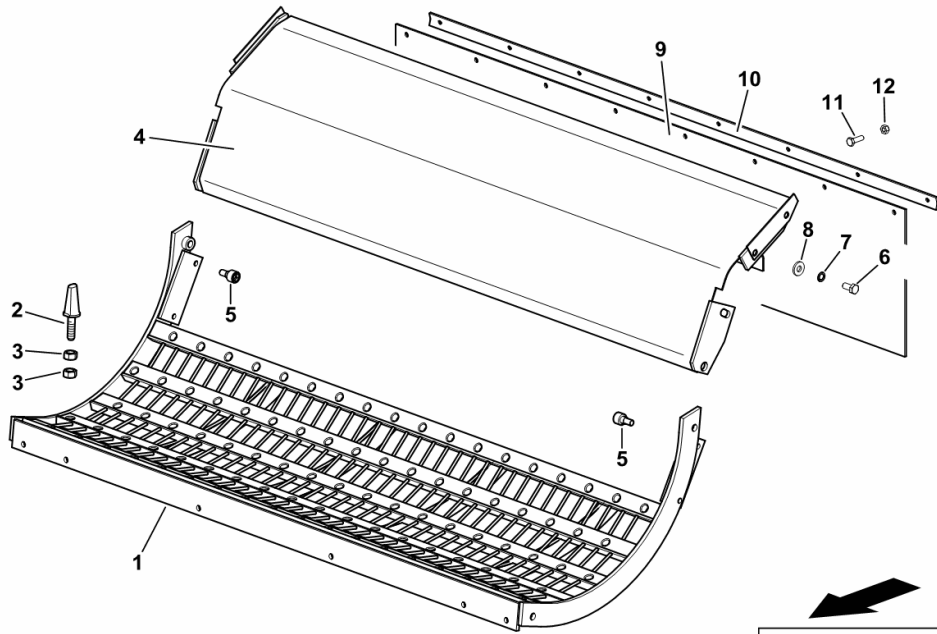
**CONCAVE**

Fig.	Code	QTY	Name
------	------	-----	------

**Notes:**

- RICE EQUIPMENT [5660 HTS COM 3 ->13500]

1	16019772	1	grille
2	06241591	75	tooth m 16
3	01112886	150	nut m 16
4	0.016.0031.3	1	stone trough
5	16029032	4	screw m 16 x 80
6	01112515	4	screw m 12 x 25
7	01102801	4	washer 12
8	06214206	4	washer 13.2
9	0.015.5548.0	1	guard PVC
10	0.015.5550.0	1	lamination
11	01112333	7	screw m 8 x 25, d933
12	01104944	7	nut m 8, d985



H9\_Z38K3\_20\_0-A-001

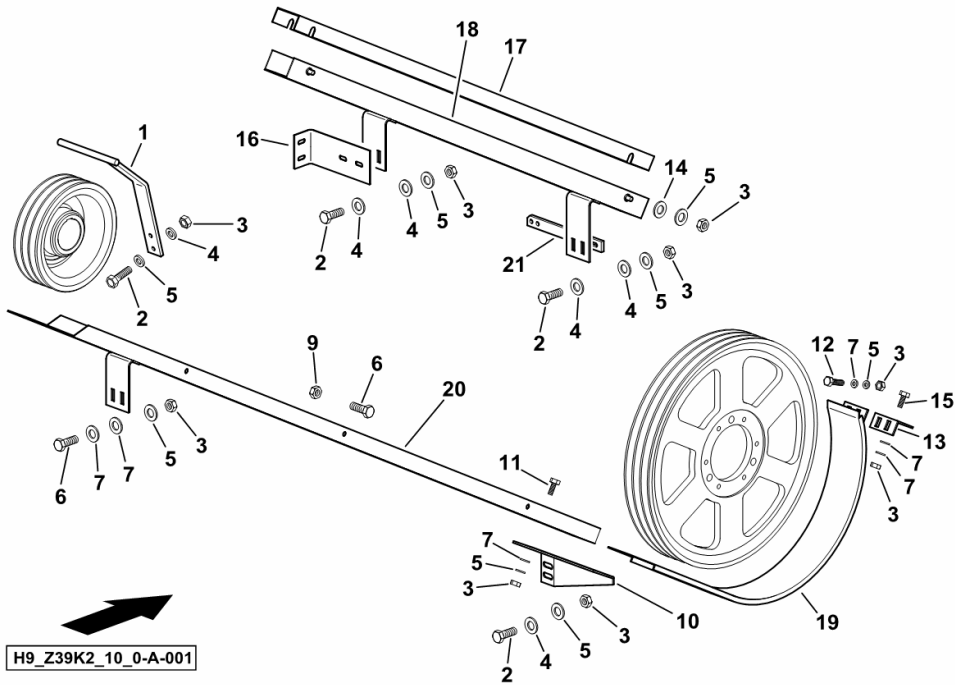
**BELT GUIDE**

Fig.	Code	QTY	Name
------	------	-----	------

**Notes:**

[5660 HTS COM 3 ->13500]

1	0.016.2666.3	1	guide
2	01112333	12	screw m 8 x 25, d933
3	01112824	24	nut m 8, d934
4	01107163	26	washer 9, d126
5	01102799	26	washer 8, d128
6	01111191	5	screw m 8 p.1.25 x 80
7	01174910	10	washer 9
9	01104944	3	nut m 8, d985
10	06549425	1	angular
11	01137624	2	screw m 8 x 25
12	01112322	2	screw m 8 p.1.25 x 20
13	06283319	1	square
14	06214192	4	washer 8.4
15	01108524	2	screw m 8 p.1.25 x 20
16	16003979	1	square
17	06549453	1	guide
18	06549457	1	guide
19	06549440	1	guide
20	06549423	1	guide ( 13809 <- )
20	06549423/10	1	guide ( -> 13814 )
21	06282880	1	bracket



H9\_Z39K2\_10\_0-A-001

CLICK HERE TO **DOWNLOAD** THE COMPLETE MANUAL

- Thank you very much for reading the preview of the manual.
- You can download the complete manual from: [www.heydownloads.com](http://www.heydownloads.com) by clicking the link below



- Please note: If there is no response to CLICKING the link, please download this PDF first and then click on it.

CLICK HERE TO **DOWNLOAD** THE COMPLETE MANUAL