

## 5660 H COM 3 ->13900

### HU - ATTACHMENTS AND ACCESSORIES

#### CHAFF SPREADER

CHAFF SPREADER.....	HU.01.0 (1)
CHAFF SPREADER.....	HU.01.1 (1)
CHAFF SPREADER.....	0.016.8204.4.A
LOAD BEARING FRAME.....	0.016.8204.4.B
COOLING FAN.....	0.016.8204.4.C
TENSION ROLLER.....	0.016.8204.4.D
TENSION ROLLER.....	0.016.8204.4.E
CHAFF SPREADER.....	16055056.A

#### STRAW CHOPPER

STRAW CHOPPER KPAB, SRX.....	HU.02.0 (1)
STRAW CHOPPER KPAB, 4R.....	HU.02.1 (1)
PROTECTIVE COVER.....	HU.02.2 (1)
STRAW CHOPPER GEARBOX.....	HU.02.3 (1)
STRAW CHOPPER.....	0.016.8147.4.A
SHAFT WITH BLADES - MM. 4.00.....	0.016.8147.4.B
COUNTER-BLADE.....	0.016.8147.4.C
SIDE COVERS.....	0.016.8147.4.D
TENSION ROLLER.....	0.016.8147.4.E
COVER PLATE SX / LH / LI.....	0.016.8147.4.F
COVER PLATE DX / RH / RE.....	0.016.8147.4.G
BELT GUIDE.....	0.016.8147.4.H
ENGAGEMENT.....	0.016.8147.4.I
CLUTCH.....	0.016.8147.4.J
TENSION ROLLER.....	0.016.8147.4.K
STRAW DEFLECTORS.....	0.016.8147.4.L
STRAW DEFLECTORS W.....	0.016.8147.4.M
SHAFT WITH BLADES - MM 5.0.....	0.016.8147.4.N
SPECIAL EQUIPMENT FOR MAIZE.....	0.016.8713.4.A
SHREDDER STD.....	16064265.A
BELTS AND GUIDES.....	16064265.B
REAR COVERS.....	16064265.C
ELECTRIC MOTOR.....	16064265.D
SHAFT WITH BLADES.....	16064265.E
COUNTER-BLADE.....	16064265.F
OPERATION - HAND LEVER.....	16064265.G
STRAW DEFLECTORS.....	16064265.H

#### REAR HITCHES

DRAWBAR COUPLING.....	HU.03.0 (1)
DRAWBAR COUPLING 6000 KG.....	HU.03.1 (1)
DRAWBAR COUPLING.....	HU.03.2 (1)

CLICK HERE TO **DOWNLOAD** THE COMPLETE MANUAL

- Thank you very much for reading the preview of the manual.
- You can download the complete manual from: [www.heydownloads.com](http://www.heydownloads.com) by clicking the link below

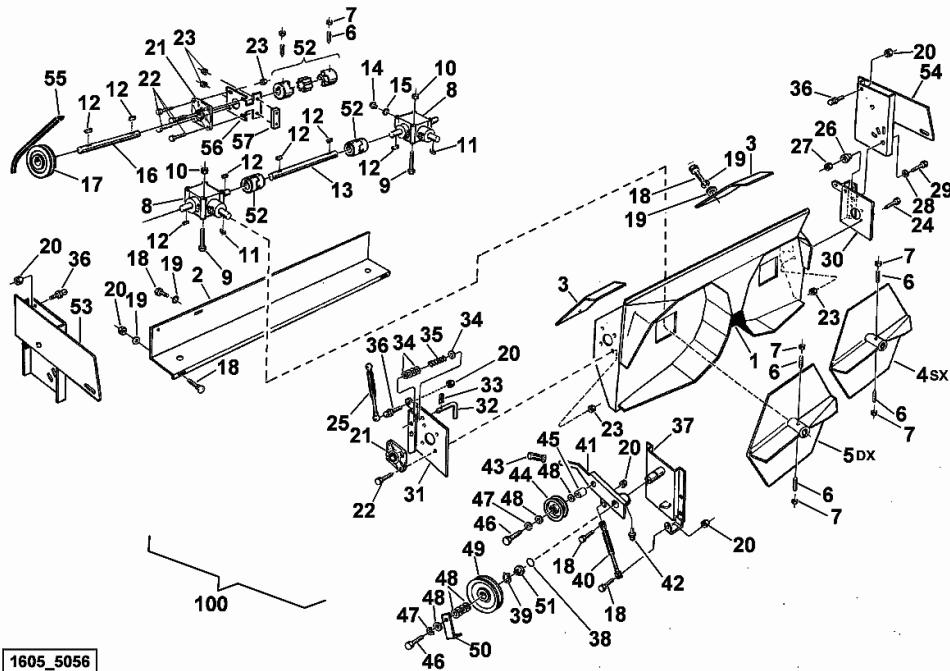


- Please note: If there is no response to CLICKING the link, please download this PDF first and then click on it.

CLICK HERE TO **DOWNLOAD** THE COMPLETE MANUAL

**CHAFF SPREADER**

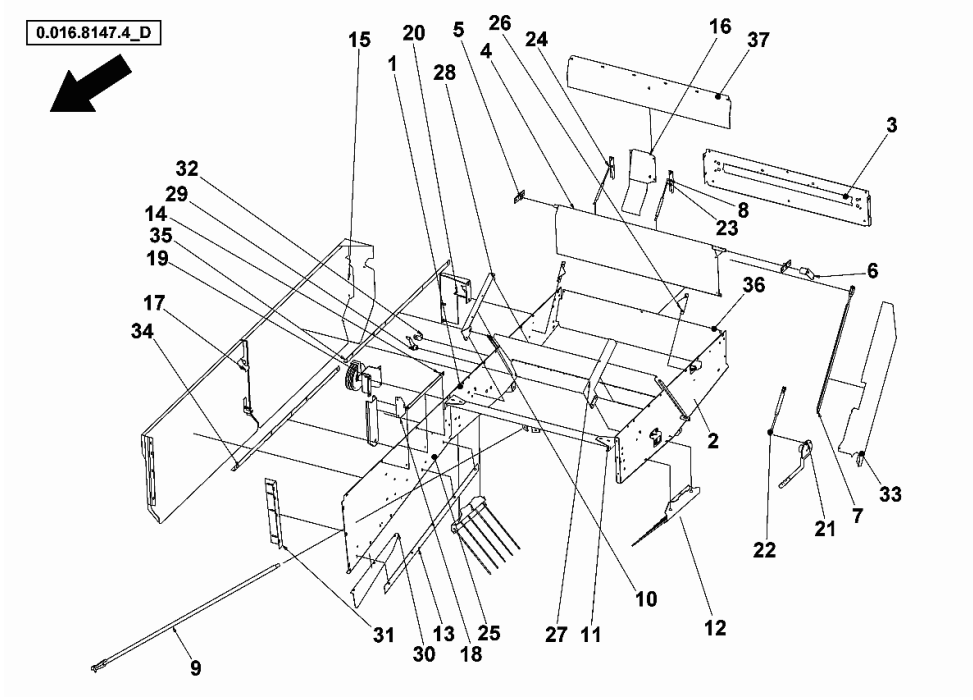
Fig.	Code	QTY	Name
1	16031457	1	body
2	16031459	1	guard
3	16031461	2	cap
4	16026212	1	rotor sx/lh/li
5	16026214	1	rotor dx/rh/re
6	0.900.0858.5	12	stud bolt
7	0.900.0858.6	12	nut
8	0.900.0858.7	2	universal joint
9	0.900.0859.3	8	screw
10	06209768	8	nut m 10, d985
11	06212425	2	dowel 8 x 7 x 40, d6885
12	01118031	7	stop
13	16031446	1	shaft
14	0.900.0858.8	2	screw
15	0.900.0858.9	2	ring
16	16031448	1	transmission shaft
17	16031450	1	pulley Ø 115
18	01112322	9	screw m 8 p.1.25 x 20
19	16023425	10	washer 8.4
20	01104944	10	nut m 8, d985
21	0.900.0859.0	2	bearing
22	01112429	8	screw m 10 x 30, d933
23	06209768	14	nut m 10, d985
24	01112407	4	screw m 10 x 20, d933
25	16020254	2	shoch.absorber
26	16023149	2	bushing
27	06209769	2	nut m 12, d985
28	16023427	2	washer 12,5 x 35
29	01112538	2	screw m 12 x 35, d933
30	16031462	1	support sx/lh/li
31	16031463	1	support
32	16031464	2	lever
33	16023039	2	roll pin
34	16023424	14	washer 14x28
35	16023147	2	spring
36	16023108	4	screw m 8, 4610
37	16055964	1	bracket
38	06214491	3	shim 40 x 50 x 0,3
39	01137321	1	ring 40 x 2.5, d471
40	16029868	1	shoch.absorber
41	16055965	1	support
42	16020268	1	body
43	16023060	1	handle
44	16031452	1	tensioner 25,4/117



1605\_5056

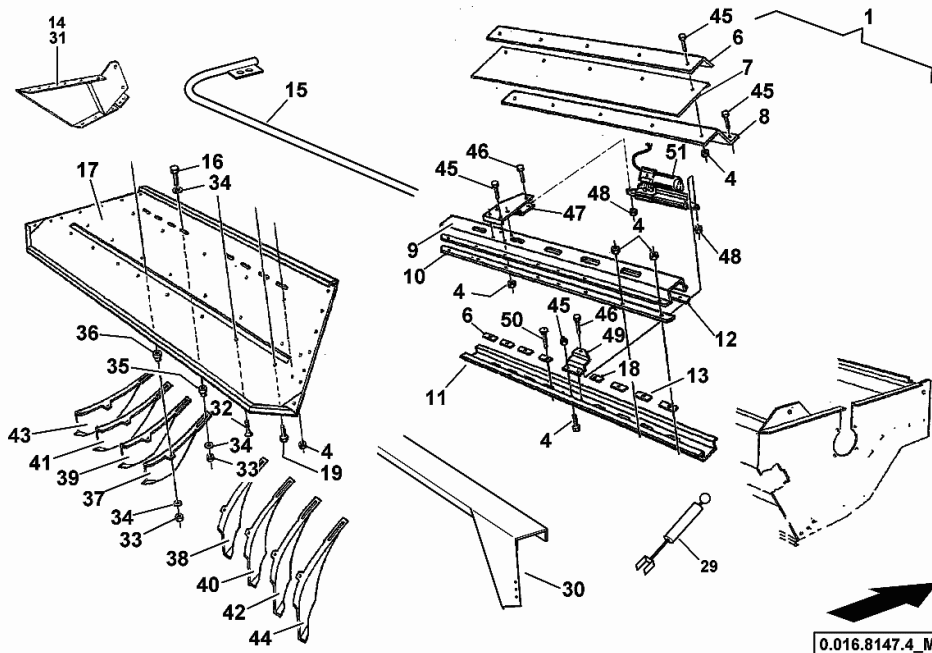
**SIDE COVERS**

Fig.	Code	QTY	Name
37	16023127	1	lamination - REAR



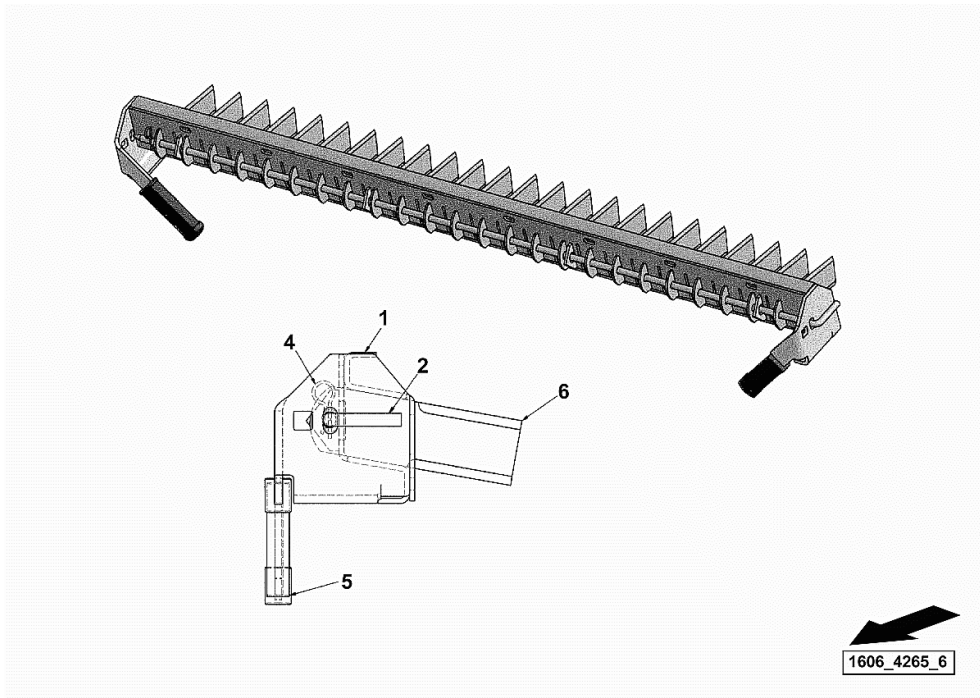
**STRAW DEFLECTORS W**

Fig.	Code	QTY	Name
1	0.900.1189.1	1	baffle kpl. - AUXILIARY ELECTRICAL COMPONENTS
4	01104944	41	nut m 8, d985
5	16023428	8	washer 9x28
6	16039254	1	rail
7	16039255	1	rubber plate
8	16039256	1	lamination
9	16039257	1	finger bar
10	16039258	1	slider
11	16039259	1	rail
12	16039260	1	slider
13	16039261	6	disc
14	16039106	1	lift hand side panel
15	16039133	1	tube
16	0.900.1189.3	0	screw m 8 x 22
17	16039263	1	valve
18	16039264	2	washer
19	01112333	17	screw m 8 x 25, d933
20	06209769	2	nut m 12, d985
21	16023427	2	washer 12,5 x 35
22	16023149	2	bushing
23	01112538	2	screw m 12 x 35, d933
24	16023424	2	washer 14x28
25	16023147	2	spring
26	16023039	2	roll pin
27	16023146	2	lever
28	16023108	2	screw m 8, 4610
29	16039109	2	shoch.absorber
30	16039135	1	rail
31	16039111	1	right h.side panel
32	01112307	6	screw m 8 p.1.25 x 15, d933
33	16023421	16	nut m 8
34	16023428	24	washer 9x28
35	0.900.1188.9	8	bushing
36	0.900.1189.0	8	bushing
37	16039112	1	lamination # 1 ( LH )
38	16039113	1	lamination # 1 ( RH )
39	16039114	1	lamination # 2 ( LH )
40	16039115	1	lamination # 2 ( RH )
41	16039116	1	lamination # 3 ( LH )
42	16039117	1	lamination # 3 ( RH )
43	16039118	1	lamination # 4 ( LH )
44	16039119	1	lamination # 4 ( RH )



**COUNTER-BLADE**

Fig.	Code	QTY	Name
1	16062199	1	blank holder
2	16063000	1	rod
4	16023039	1	roll pin
5	16039105	2	handle
6	16020245	24	cutter



## 5660 H COM 3 ->13900

### HB - AXLES

#### FRONT AXLE

FRONT AXLE STANDARD.....	HB.01.0 (1)
HUB GEAR STANDARD.....	HB.01.3 (1)
FRONT AXLE.....	HB.01.6 (1)
HUB GEAR.....	HB.01.10 (1)
SENSORS COVER.....	HB.01.14 (1)
SENSOR BRACKET.....	HB.01.18 (1)
SENSOR BRACKET.....	HB.01.19 (1)
REDUCTION GEAR UNIT (STD).....	16040897.A
REDUCTION GEAR UNIT (BAL).....	16041806.A

#### TRANSMISSION

TRANSMISSION.....	HB.02.0 (1)
TRANSMISSION.....	HB.02.3 (1)
GEARBOX.....	16040895/20.A
DRIVE FOR GEAR CHANGE BOX.....	16040895/20.B
DRIVE SHAFT TRANSMISSION.....	16040895/20.C
INTERMEDIATE SHAFT TRANSMISSION.....	16040895/20.D
TRANSMISSION DIFFERENTIAL.....	16040895/20.E
PARKING BRAKE.....	16040895/20.F

#### INTERNAL-EXTERNAL TRANSMISSION CONTROLS

GEAR SHIFTING.....	HB.03.0 (1)
GEAR SHIFTING.....	HB.03.1 (1)

#### REAR AXLE

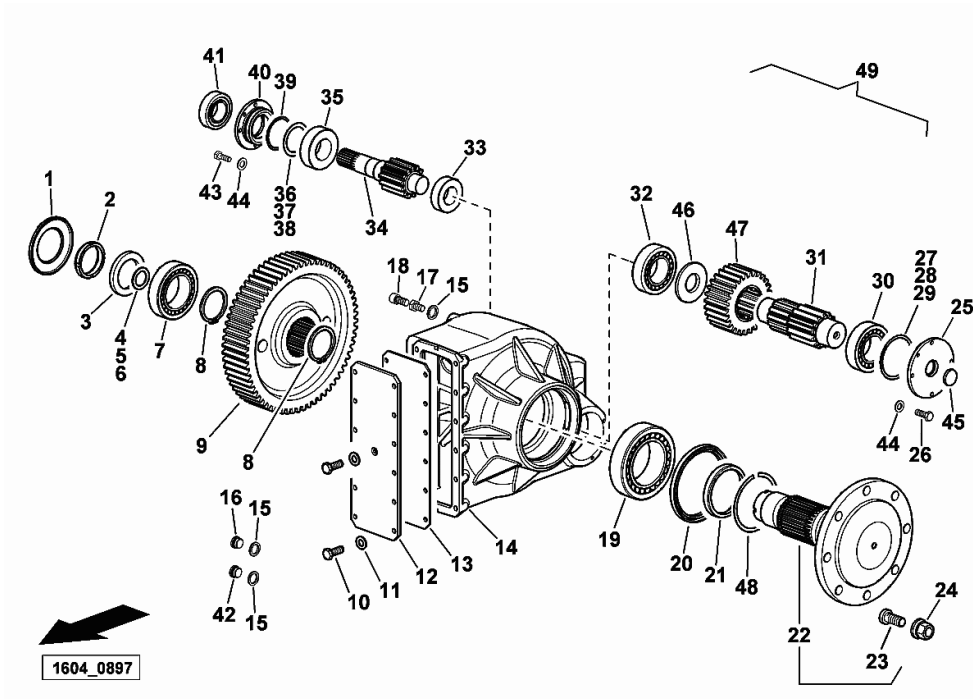
REAR AXLE.....	HB.05.0 (1)
REAR AXLE.....	HB.05.2 (1)
PIN.....	HB.05.3 (1)
WHEEL HUB FASTENING.....	HB.05.4 (1)
WHEEL HUB.....	HB.05.5 (1)
WHEEL HUB FASTENING.....	HB.05.6 (1)
WHEEL HUB.....	HB.05.7 (1)
STOP.....	HB.05.8 (1)
STEERING CYLINDER.....	HB.05.9 (1)
CYLINDER PARTS Ø 45.....	06540120.A

#### TYRES

WHEEL BOLT.....	HB.06.0 (1)
FRONT WHEELS 650/75 R32" 172A8.....	HB.06.1 (1)
FRONT WHEELS 620/75 R30" 168A8.....	HB.06.2 (1)
FRONT WHEELS 620/75 R34" 170A8.....	HB.06.3 (1)
FRONT WHEELS 710/75 R32" 171A8.....	HB.06.4 (1)
FRONT WHEELS 800/65 R32" 172A8 GY.....	HB.06.5 (1)
FRONT WHEELS 800/65 R32" 172A8 GY.....	HB.06.6 (1)

**REDUCTION GEAR UNIT (STD)**

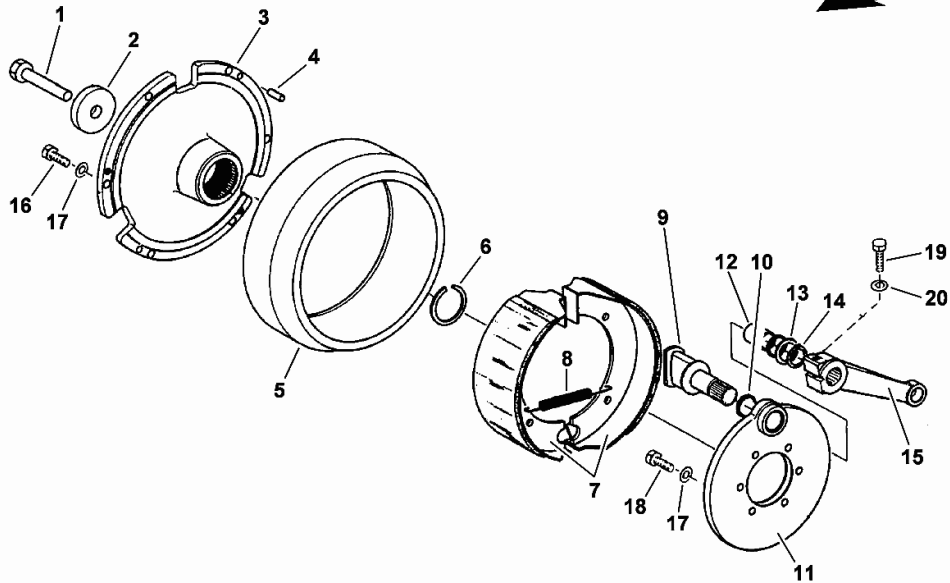
Fig.	Code	QTY	Name
43	01153251	8	screw
44	01107283	16	washer 8.2
45	16053024	2	cover
46	16053026	2	snoulder
47	16053025	2	gear
48	16053046	2	gasket Ø91 / Ø103 x 2.94
49	16040897	1	side gear (STD)



Section: HB - AXLES  
**PARKING BRAKE**

Fig.	Code	QTY	Name
1	01136993	1	screw m 12 x 70
2	16053002	1	pressure plate
3	16053003	1	brake drum
4	01157358	2	grain
5	16056325	1	brake drum 180 x 60
6	16053005	1	circlip
7	16031487	2	brake shoe
8	06260257	2	spring
9	16000316	1	shaft
10	16000314	2	'o' ring 22x2
11	04318614	1	flange
12	16053010	1	bushing
13	16000313	1	washer 20.5 x 28 x 2
14	01107730	1	ring 20 x 1.2, d471
15	16053012	1	brake lever
16	01139584	6	screw
17	01107283	12	washer 8.2
18	01112330	6	screw m 8 x 25
19	06209433	1	screw m 10 x 40
20	01107105	1	washer 10.5

1604\_0895\_20\_5



**STOP**

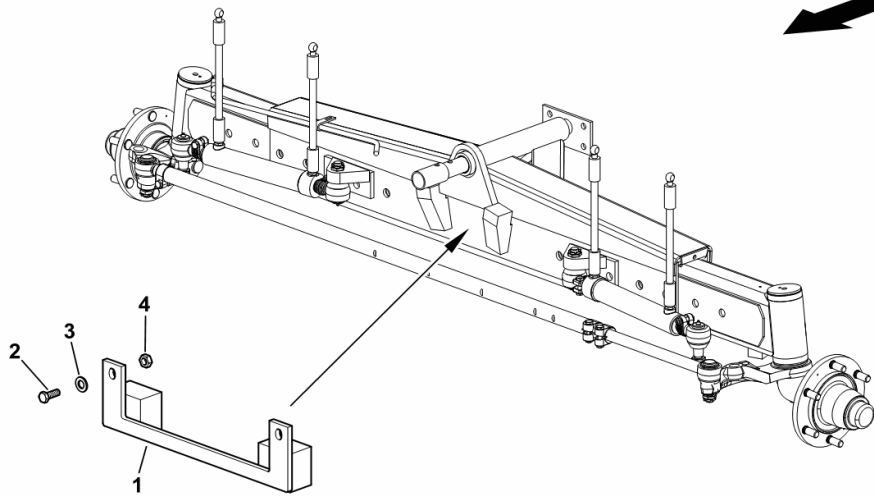
Fig.	Code	QTY	Name
------	------	-----	------

**Notes:**

[5660 H COM 3 ->13900]

1	16025794	1	contact surface
2	2.0113.322.7	2	screw m 10 x 65
3	2.1310.006.2	2	flat washer 10.5
4	2.1011.106.2	2	nut m 10 p.1.5

H9\_Z33B4\_40\_0-A-001



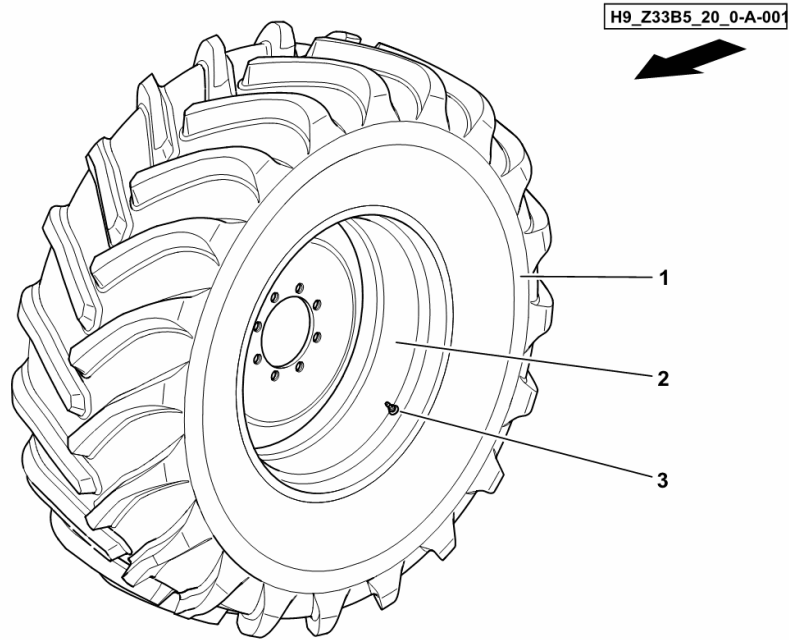
**FRONT WHEELS 800/65 R32" 172A8 GY**

Fig.	Code	QTY	Name
------	------	-----	------

**Notes:**

ET+25 L, ET+25 R [5660 H COM 3 ->13900]

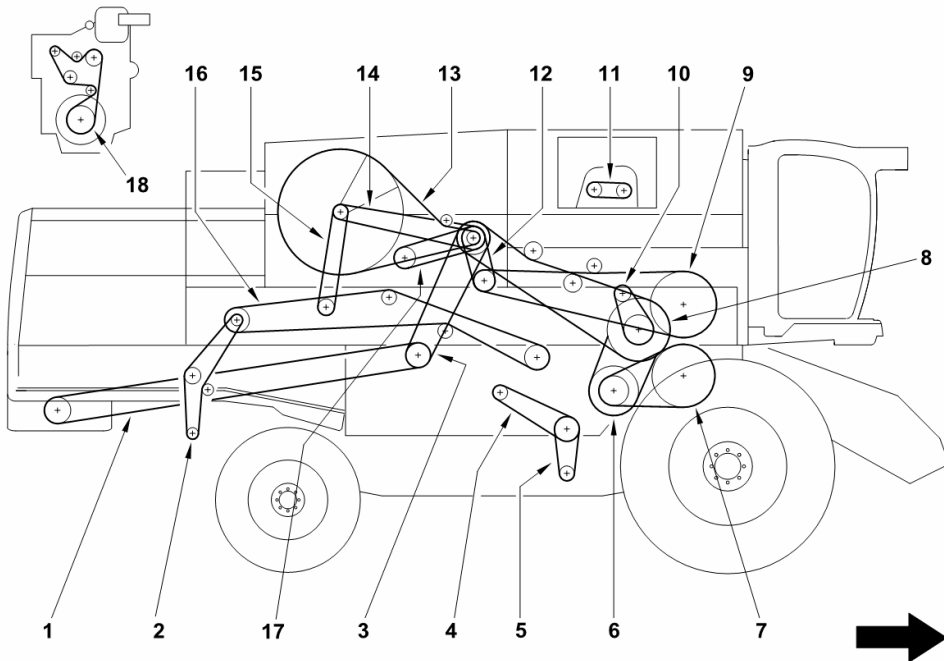
1	01145657	2	tyre 800/65 R32"
2	01145815	2	rim DWW 27Ax32"
3	06212941	2	valve 50 msw



Section: HC - BELTS AND CHAINS  
**BELTS AND CHAINS - DX/RH/RE**

Fig.	Code	QTY	Name
------	------	-----	------

Notes:  
 [5660 H COM 3 ->13900]



1	01146033	1	belt STRAW CHOPPER DRIVE STRAW CHOPPER
2	0.900.1172.1	1	belt STRAW WALKER SHAFT 2 CHAFF SPREADER
3	16062738	1	belt 2hc x 3355 ENGINE POWER TAKE OFF STRAW CUTTER DRIVE
4	01145331	1	belt 30 x 15 x 1683Li STRAW WALKER DRIVE FAN VARIATOR
5	01145369	1	belt 30 x 15 x 1600Li FAN VARIATOR FAN
6	01145374	1	belt 63 x 25 x 2185Lw BEATER VARIATOR BEATER DRIVE
7	01145049	1	belt 3/17 x 2650Li BEATER DRIVE BEATER
8	16062883	1	belt 3hmb x 5205 ENGINE POWER TAKE OFF BEATER VARIATOR
9	01145055	1	belt 1hc x 5505La ENGINE PTO DRIVE GRAIN HOPPER OUTLET
10	01145072	1	chain 085-1x 68-E BEATER VARIATOR VARIATOR CONTROL DEVICE
11	06213306	1	chain kpl. HOPPER FEED SCREW DRIVE
12	16062885	1	belt 2hc x 1666 ENGINE POWER TAKE OFF ENGINE POWER TAKE OFF DRIVE
13	16062841	1	belt 1/13 x 4022 ROTARY FILTER BASKET CONTROL
14	01146013	1	belt 1/17 x 2435Li COOLING FAN CONTROL
15	01116096	1	belt 1/17 x 2360 ASPIRATOR CONTROL

**CHASSIS**

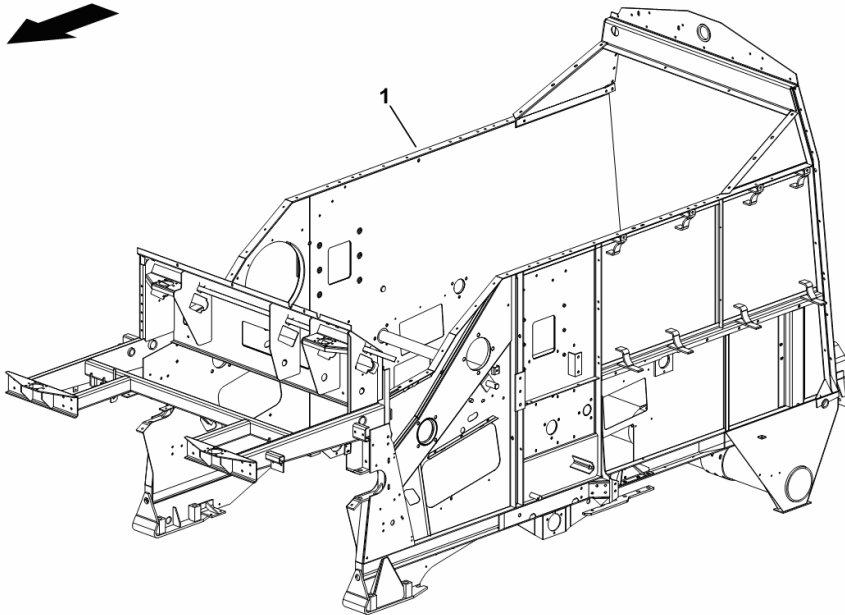
Fig.	Code	QTY	Name
------	------	-----	------

**Notes:**

[5660 H COM 3 -&gt;13900]

1	16062042/30	1	chassis frame 5 SW
---	-------------	---	--------------------

H9\_Z38F1\_00\_0-A-001



**L.H. LINING**

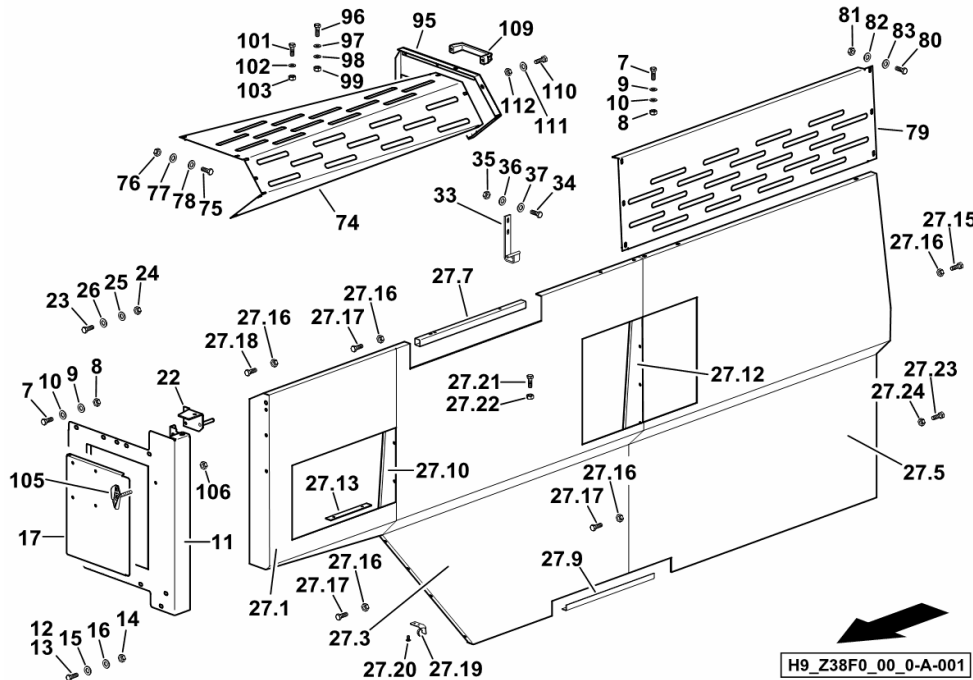


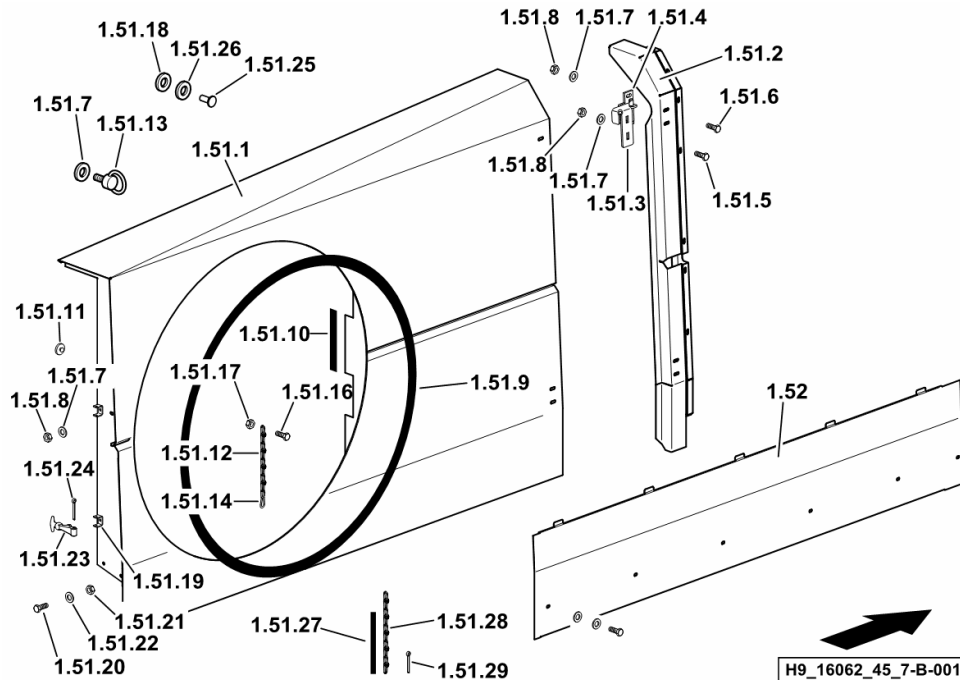
Fig.	Code	QTY	Name
76	01112824	8	nut m 8, d934
77	01102799	8	washer 8, d128
78	01107163	8	washer 9, d126
79	16061344	0.1	cover
80	01112307	6	screw m 8 p.1.25 x 15, d933
81	01112824	6	nut m 8, d934
82	01102799	6	washer 8, d128
83	01107163	6	washer 9, d126
95	16012557	1	lamination
96	01112307	3	screw m 8 p.1.25 x 15, d933
97	01107163	3	washer 9, d126
98	01102799	3	washer 8, d128
99	01112824	3	nut m 8, d934
101	01112322	2	screw m 8 p.1.25 x 20
102	01107163	4	washer 9, d126
103	01104944	2	nut m 8, d985
105	06538985/10	1	interlock
106	01104944	1	nut m 8, d985
109	01141954	1	handle PVC
110	01126918	2	screw m 8 p.1.25 x 20
111	01102799	2	washer 8, d128
112	01104944	2	nut m 8, d985

**R.H. LINING**

Fig.	Code	QTY	Name
------	------	-----	------

**Notes:**

[5660 H COM 3 ->13900]



1.51.1	16056429/10	1	lamination
1.51.2	16055533	1	lamination
1.51.3	16046458	2	square
1.51.4	16045952	2	square
1.51.5	01108524	11	screw m 8 p.1.25 x 20
1.51.6	01112322	4	screw m 8 p.1.25 x 20
1.51.7	01107163	30	washer 9, d126
1.51.8	01104944	15	nut m 8, d985
1.51.9	16054681	3.67	profile 3670 mm
1.51.10	01388766	1	gasket (mt. ...)
1.51.11	16035026	3	silent-block
1.51.12	16061636	1	small chain fi 2,8, d5686
1.51.13	16061793	1	screw
1.51.14	06211876	1	clevis c 60
1.51.16	01112264	1	screw m 6 x 20, d933
1.51.17	01114357	1	nut m 6, d985
1.51.18	06214189	3	washer 6.4
1.51.19	16061878	2	bracket
1.51.20	01102322	2	screw m 8 p.1.25 x 20
1.51.21	01104944	2	nut m 8, d985
1.51.22	01107163	4	washer 9, d126
1.51.23	06519313	2	rubber
1.51.24	01106474	2	split pin 5 x 5 x 50
1.51.25	04414182	6	rivet 4.8
1.51.26	01107155	6	washer 5.5 x 10 x 1
1.51.27	01390702	0.32	gasket PVC
1.51.28	16061636	0.5	small chain fi 2,8, d5686
1.51.29	01106447	2	split pin 4 x 20
1.52	16054838	1	cover

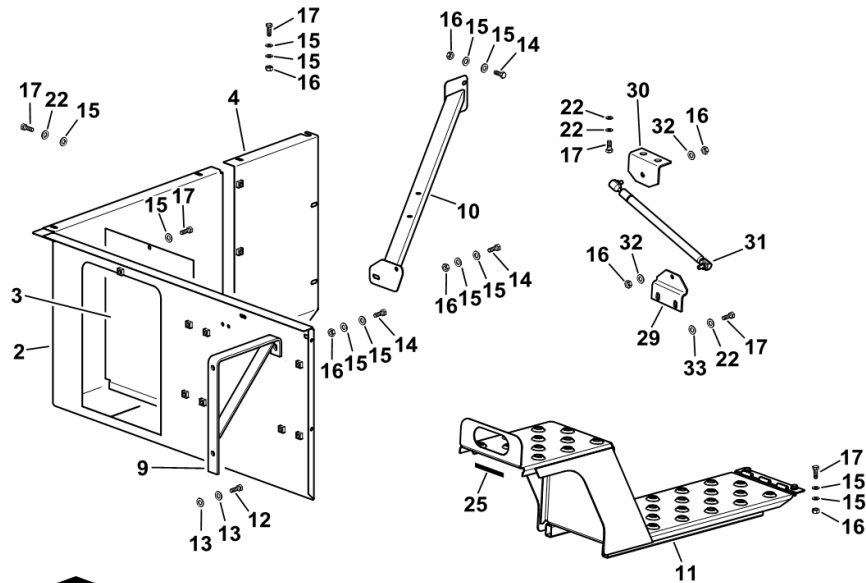
**ENGINE AIR GUIDE**

Fig.	Code	QTY	Name
------	------	-----	------

**Notes:**

[5660 H COM 3 ->13900]

2	16054678/10	1	guard
3	16054692	1	guard
4	16061227	1	guard
9	16054659	1	carrier
10	16063203	1	carrier
11	16062983	1	foot board
12	01112418	2	screw m 10 x 25, d933
13	06209768	2	nut m 10, d985
14	01112333	4	screw m 8 x 25, d933
15	01107163	39	washer 9, d126
16	01104944	21	nut m 8, d985
17	01112322	20	screw m 8 p.1.25 x 20
22	01102799	12	washer 8, d128
25	01390702	2.05	gasket PVC
29	16063436	1	support
30	16063437	1	support
31	16005716	1	shoch.absorber 600 N
32	01107101	2	washer 8.4
33	01126329	2	washer 8.4



H9\_Z33A6\_00\_0-B-001


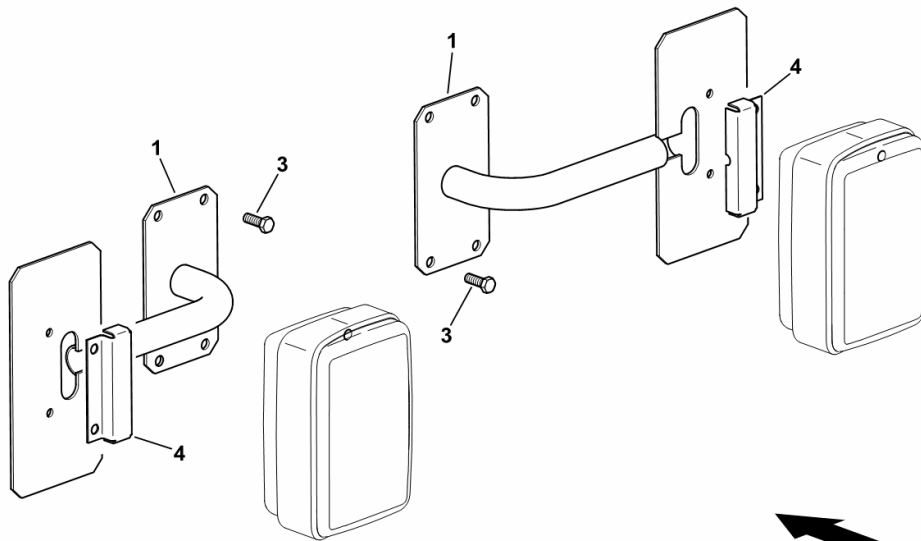
**REAR LIGHT EXTENSIONS**

Fig.	Code	QTY	Name
------	------	-----	------

**Notes:**

- FOR TYRES OUTSIDE CLEARANCE [5660 H COM 3 -&gt;13900]

1	0.015.8336.3	2	support
3	2.0114.205.2	8	screw m 8 p.1.25 x 16
4	0.016.3736.0/10	2	small sump

  
H9\_Z33H6\_31\_0-A-002

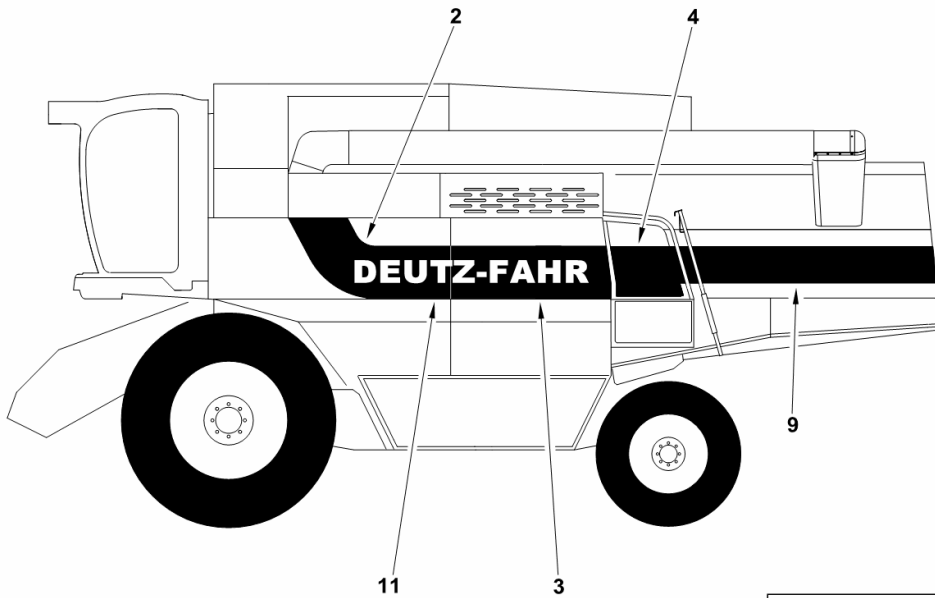
**ADHESIVE STRIPS - SX/LH/LI**

Fig.	Code	QTY	Name
------	------	-----	------

**Notes:**

[5660 H COM 3 ->13900]

2	0.015.9324.0	1	adhesive
3	0.015.9323.0	1	adhesive
4	0.015.7894.0	1	adhesive
9	0.015.9328.0	1	adhesive
11	0.015.9325.0/10	2	adhesive DEUTZ-FAHR



H9\_Z33F6\_10\_0-B-001

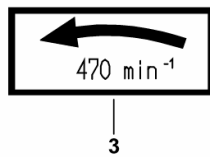
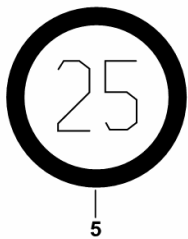
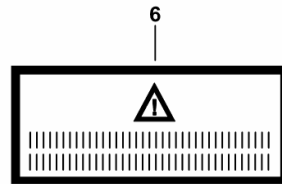
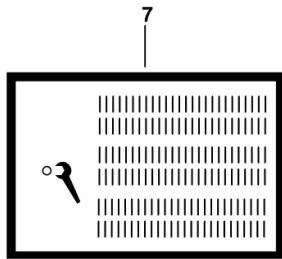
**PLATES**

Fig.	Code	QTY	Name
------	------	-----	------

**Notes:**

- EXPORT H [5660 H COM 3 ->13900]

2	01145417	1	stickers
3	01145914	1	stickers
5	01145809	1	plate 25 km/h
6	01145913	1	stickers
7	01145912	1	stickers



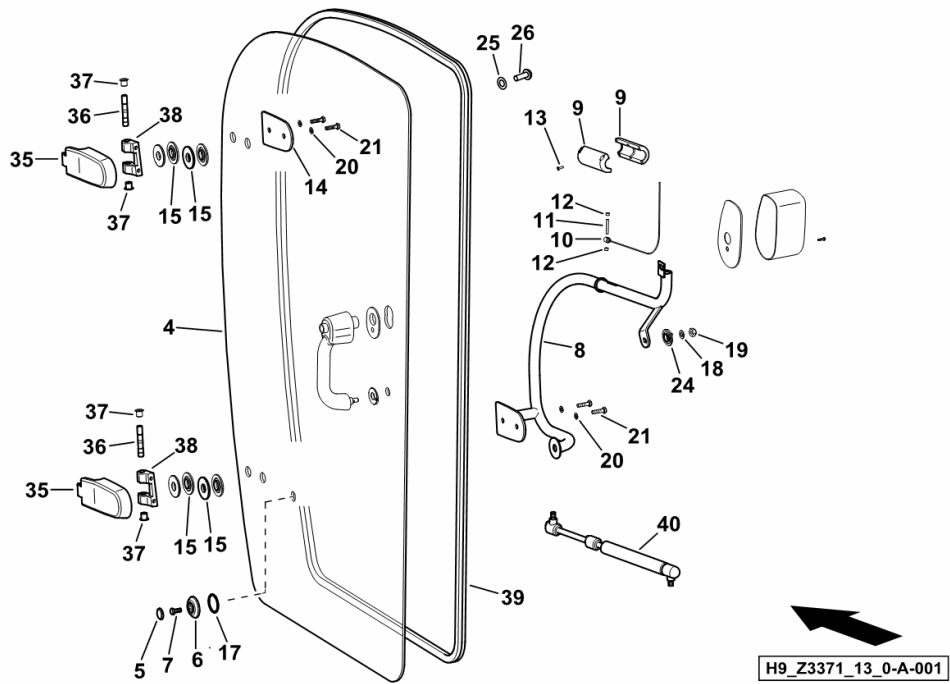
H9\_97531\_60\_0-B-001

Section: HG - CAB  
**CAB DOOR - SX/LH/LI**

Fig.	Code	QTY	Name
------	------	-----	------

Notes:  
 [5660 H COM 3 ->13900]

4	16044750	1	glass sx/lh/li
5	04413793	1	cap
6	04412814	1	washer
7	2.0114.207.2	1	screw m 8 p.1.25 x 20
8	0.015.3746.3	1	handle
9	04416216	2	grip
10	0.012.9033.4	1	crate
11	2.1651.415.2	1	pin 5 x 35
12	04416218	2	spacer
13	04413570	4	screw
14	16040735	1	lamination
15	04415424	8	disc
17	01166059	2	'o' ring 40x3
18	2.1310.006.2	1	flat washer 10.5
19	2.1120.006.2	1	nut m 10 p.1.5
20	2.1474.009.2	4	spring washer 8
21	2.0114.211.2	4	screw m 8 x 30
24	04413571	2	disc
25	04413581	2	screw
26	2.1310.002.2	2	washer 6.6, d125
35	16049414	2	hinge
36	04412819	2	pin
37	04414624	4	bushing
38	16054118	1	hinge
39	16034854	1	gasket
40	16041575	1	shoch.absorber 14 cc / 19 cc

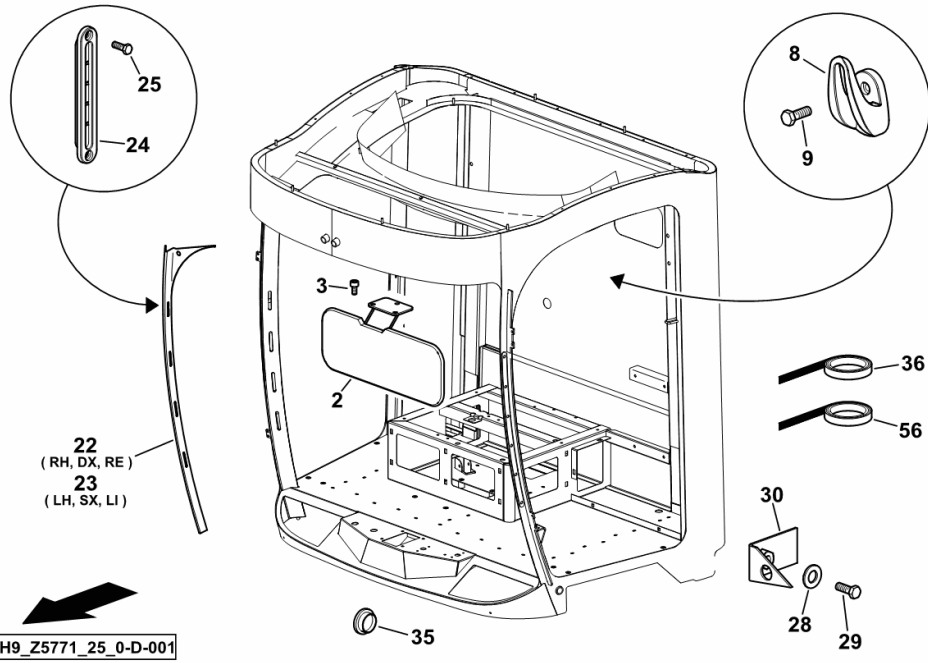


Section: HG - CAB  
**INTERIOR TRIM**

Fig.	Code	QTY	Name
------	------	-----	------

Notes:  
 [5660 H COM 3 ->13900]

2	0.016.4578.4	1	canopy
3	2.0322.308.3	3	screw m 5 x 25
8	06262316	2	clip
9	2.0350.455.3	8	screw m 4.2
22	0.016.4070.0	1	panel dx/rh/re
23	0.016.4071.0	1	panel sx/lh/li
24	16057273	16	nozzle
25	01146044	32	screw m 2.9 x 12
28	2.0112.202.2	1	screw m 8 p.1.25 x 10
29	2.1470.004.2	1	washer 8
30	0.015.9178.3/10	1	bracket
35	2.3199.338.0	8	plug
36	01390702	2	gasket PVC
56	0.016.5044.0	20	gasket



**COMPLETION**

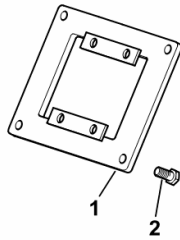
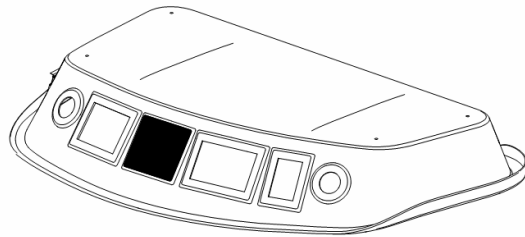
Fig.	Code	QTY	Name
------	------	-----	------

**Notes:**

BALANCE/AUTOCONTROL [5660 H COM 3 -&gt;13900]

1	16055619	1	support
2	2.0332.306.3	4	screw m 5 p.0.8 x 16

H9\_Z5771\_28\_0-A-001



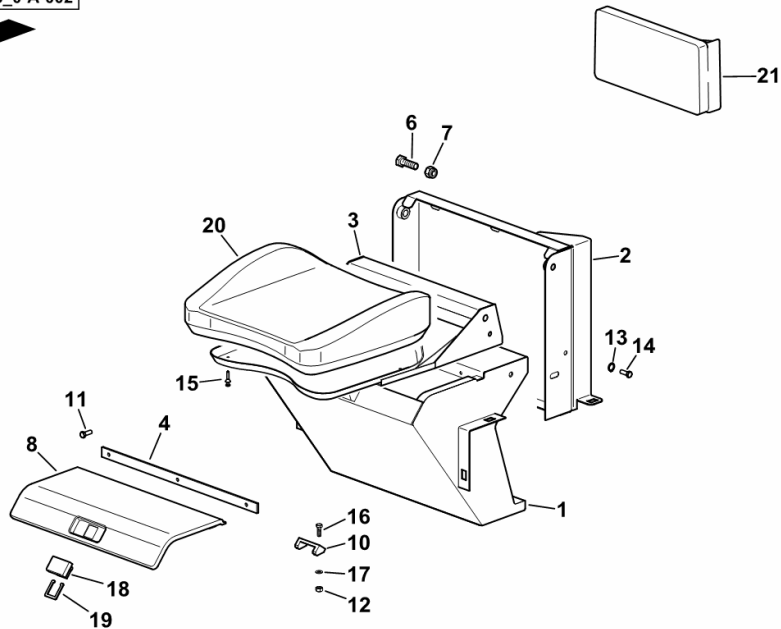
Section: HG - CAB  
**SEAT FOR 2ND OPERATOR**

Fig.	Code	QTY	Name
------	------	-----	------

Notes:  
 [5660 H COM 3 ->13900]

1	0.016.4605.3/10	1	bracket
2	0.016.4600.3	1	bracket ( 14119 <- )
2	0.016.4600.3/10	1	bracket
3	0.016.4599.3	1	seat support
4	0.016.4610.4	1	rail
6	2.0112.419.2	2	screw m 12 p.1.75 x 50
7	2.1120.007.2	2	nut m 12 p.1.75
8	16010252	1	hinge
10	16010231	1	small plate
11	2.0322.304.2	7	screw m 5 x 12
12	2.1120.002.2	2	selflock nut m 5
13	2.1310.004.2	2	flat washer 8.5
14	2.0312.202.2	2	screw m 8 p.1.25 x 12
15	01146036	4	pin 4.2 x 30
16	2.0114.105.2	2	screw m 5 x 16
17	2.1310.001.2	2	flat washer 5.3
18	16010229	1	lock
19	16010230	1	small spring
20	0.015.9392.0	1	seat
21	0.015.9564.4	1	embroiderhead

H9\_Z5778\_06\_0-A-002



Section: HG - CAB

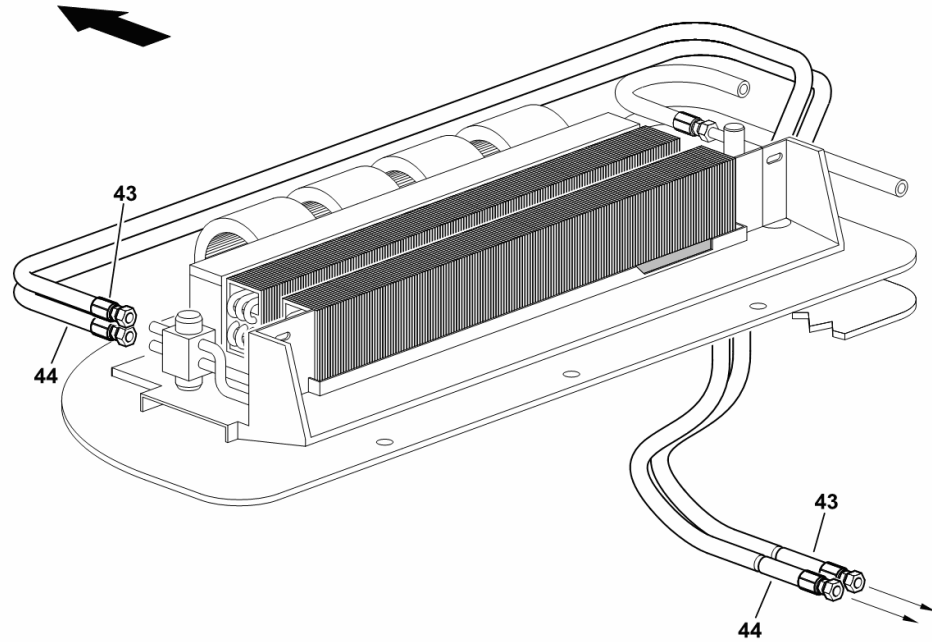
**HOSES**

Fig.	Code	QTY	Name
------	------	-----	------

Notes:  
[5660 H COM 3 ->13900]

43	16058754	1	flexible hose
44	16058755	1	flexible hose

H9\_Z3386\_21\_0-A-001

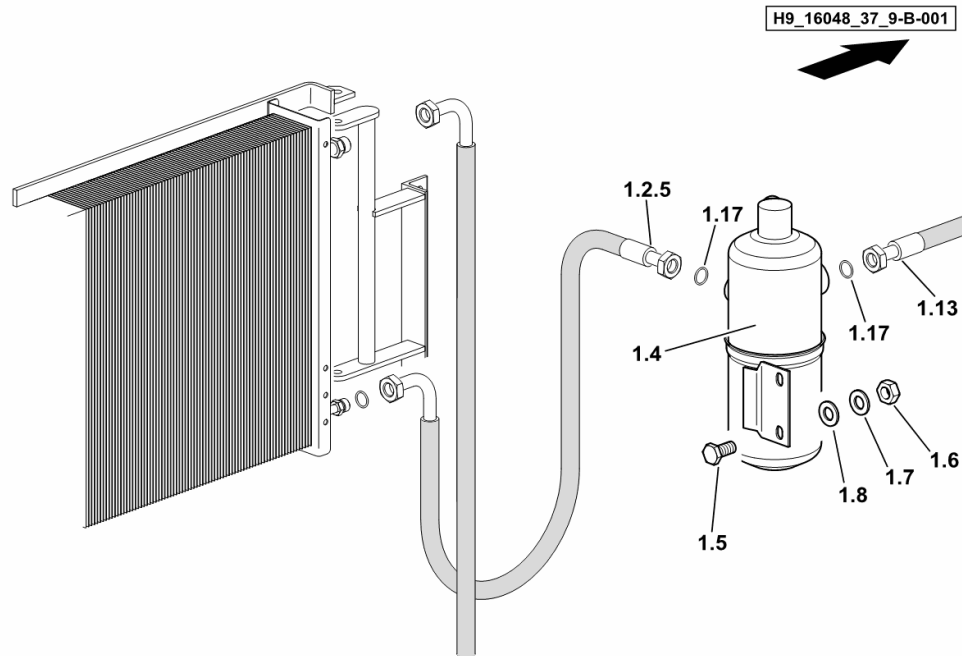


Section: HG - CAB  
**RECEIVER-DRIER**

Fig.	Code	QTY	Name
------	------	-----	------

Notes:  
 [5660 H COM 3 ->13900]

1.2.5	16021570	1	tube 5/8" / L = mm 3520
1.4	16011386	1	filter 0.80 dm <sup>3</sup> / 1.0 kg
1.5	01103316	2	screw m 6 p.1.0 x 16
1.6	01112813	2	nut m 6
1.7	01102797	2	washer 6, d128
1.8	06214189	2	washer 6.4
1.13	16048389	1	flexible hose 5/8" / L = mm 7100
1.17	04322184	2	rubber plug 5/8"



Section: HG - CAB  
**STEERING COLUMN**

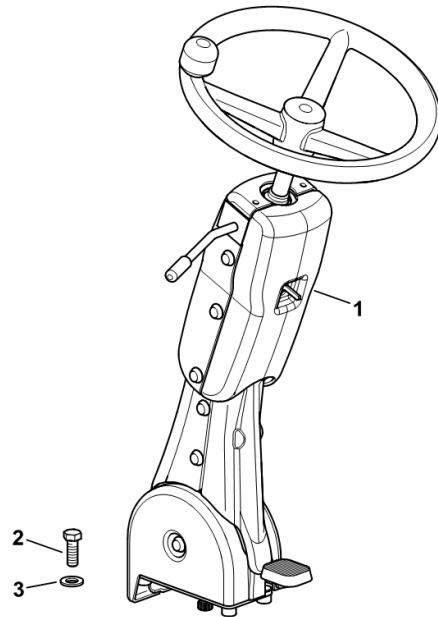
Fig.	Code	QTY	Name
------	------	-----	------

**Notes:**

[5660 H COM 3 -&gt;13900]

1	0.016.4658.4/20	1	steering column kpl. ( 14093 <- ) ☞ 0.016.4658.4/20
1	0.016.4658.4/30	1	steering column kpl. ( -> 14115 )
2	2.0112.313.2	4	screw m 10 p.1.5 x 35
3	2.1310.006.2	4	flat washer 10.5

H9\_Z5761\_00\_0-A-001



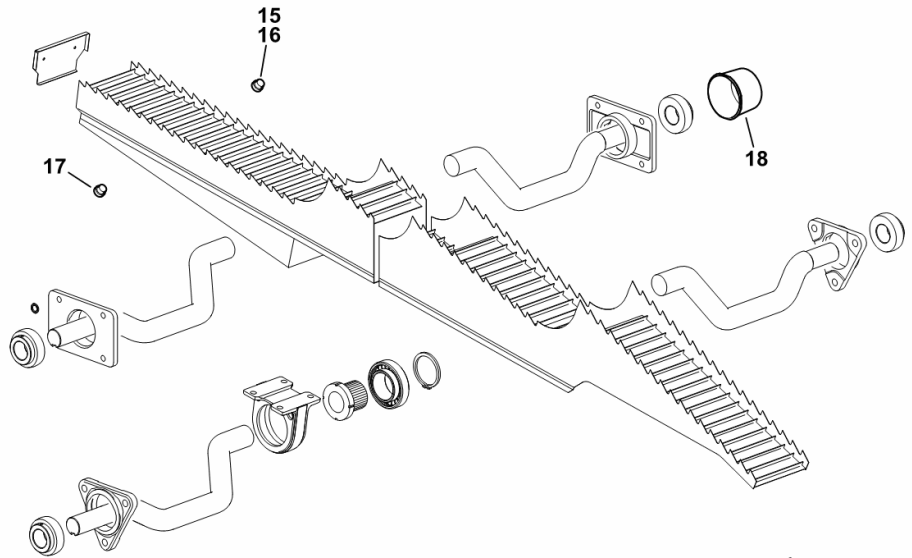
Section: HL - CLEANER UNIT  
**STRAW WALKERS**

Fig.	Code	QTY	Name
------	------	-----	------

**Notes:**

[5660 H COM 3 ->13900]

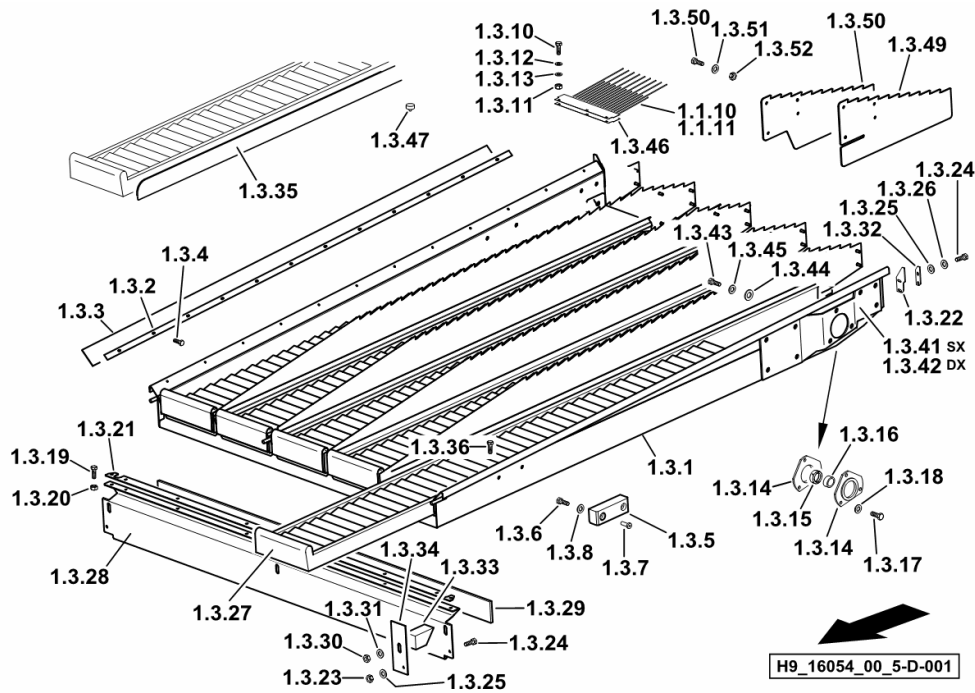
15	06216487	20	plug Ø 7.2 x 6, h2873
16	01097621	5	plug Ø 12.3 x 7, h2873
17	01180380	5	plug 25,5 x 9
18	06261841	1	cover PVC



**H9\_Z5662\_53\_6-E-001**

Section: HL - CLEANER UNIT  
**PREPARATION FLOOR**

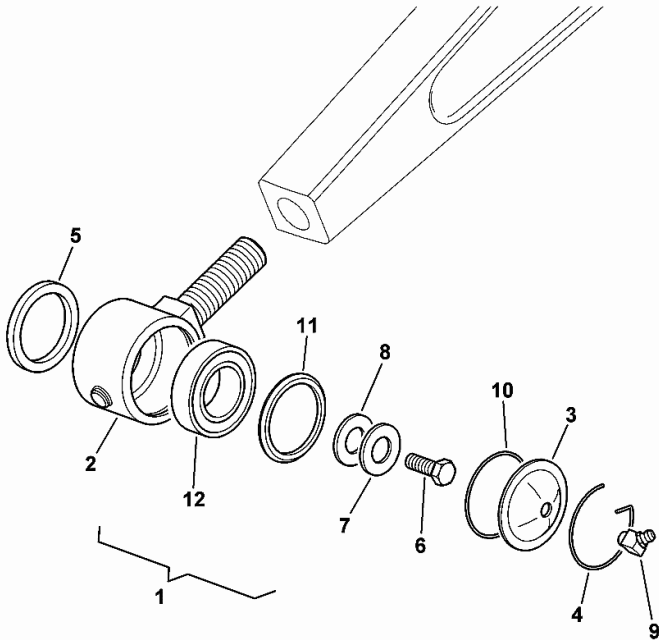
Fig.	Code	QTY	Name
1.3.45	01107165	14	washer 10.5
1.3.46	16052468	3	lamination
1.3.47	16035026	10	silent-block
1.3.49	16049201	4	lamination L = mm 390
1.3.50	06214132	16	screw m 6 x 15, d921
1.3.51	01102797	16	washer 6, d128
1.3.52	01112813	16	nut m 6



**BEARING**

Fig.	Code	QTY	Name
1	16011695/10	1	bearing kpl. (2-12)
2	06542684/10	1	bearing
3	06542678	1	small cover
4	01120649	1	ring 54 d70951
5	06211993	1	ring 32 x 45 x 5,5
6	2.1530.060.0	1	'o' ring 23.40x3.53
7	01102800	1	washer 10.2
8	06214197	1	washer 10.5
9	06213884	1	lubricator cm 6
10	01176295	1	'o' ring 48x2
11	06543685	1	ring
12	01130026	1	bearing 22205 E1

1601\_1695-10



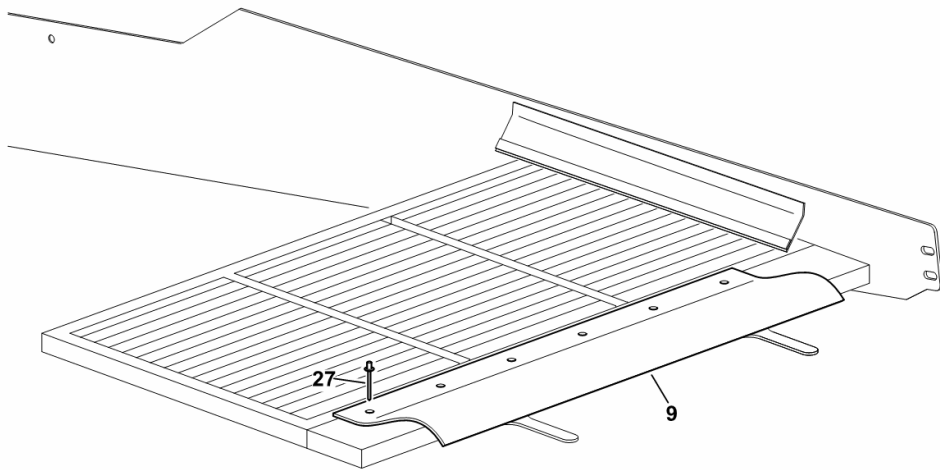
**ELECTRICAL SIEVES ADJUSTMENT**

Fig.	Code	QTY	Name
------	------	-----	------

Notes:  
[5660 H COM 3 ->13900]

9	16063570	1	cloth/tarpaulin? PVC
27	01145021	12	rivet 4.8 x 7.3

H9\_Z57L5\_10\_0-C-001



**STRAW RAKE**

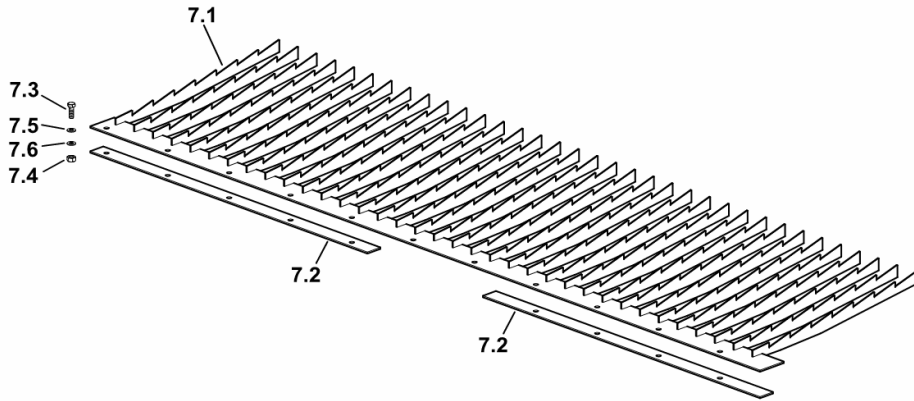
Fig.	Code	QTY	Name
------	------	-----	------

**Notes:**

- C.C.M. EQUIPMENT [5660 H COM 3 ->13900]

7.1	06333242	1	rake L = mm 1175
7.2	06258382	2	brace
7.3	01112264	8	screw m 6 x 20, d933
7.4	01112813	8	nut m 6
7.5	01102797	8	washer 6, d128
7.6	01107158	8	washer 6.6, d125

H9\_97348\_40\_0-E-001



**REINFORCEMENT**

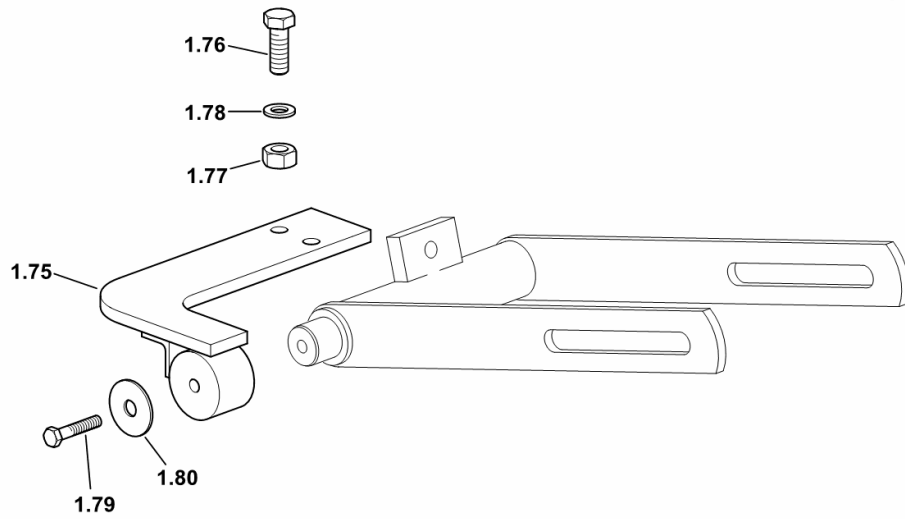
Fig.	Code	QTY	Name
------	------	-----	------

**Notes:**

[5660 H COM 3 ->13900]

1.75	16063420/10	1	brace
1.76	01112529	2	screw m 12 x 30, d933
1.77	06209769	2	nut m 12, d985
1.78	06205230	2	washer 13 x 24 x 2.5
1.79	01112451	1	screw m 10 p.1.5 x 45
1.80	01102801	1	washer 12

H9\_16019\_68\_7-D-001

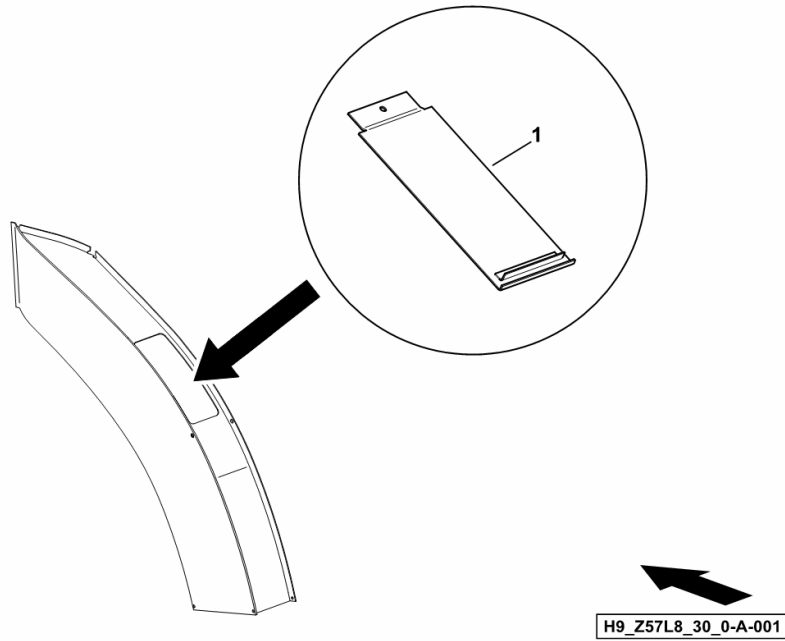


Section: HL - CLEANER UNIT  
**COVER**

Fig.	Code	QTY	Name
------	------	-----	------

Notes:  
[5660 H COM 3 ->13900]

1	06256914	2	small cover
---	----------	---	-------------



**SENSOR ARM**

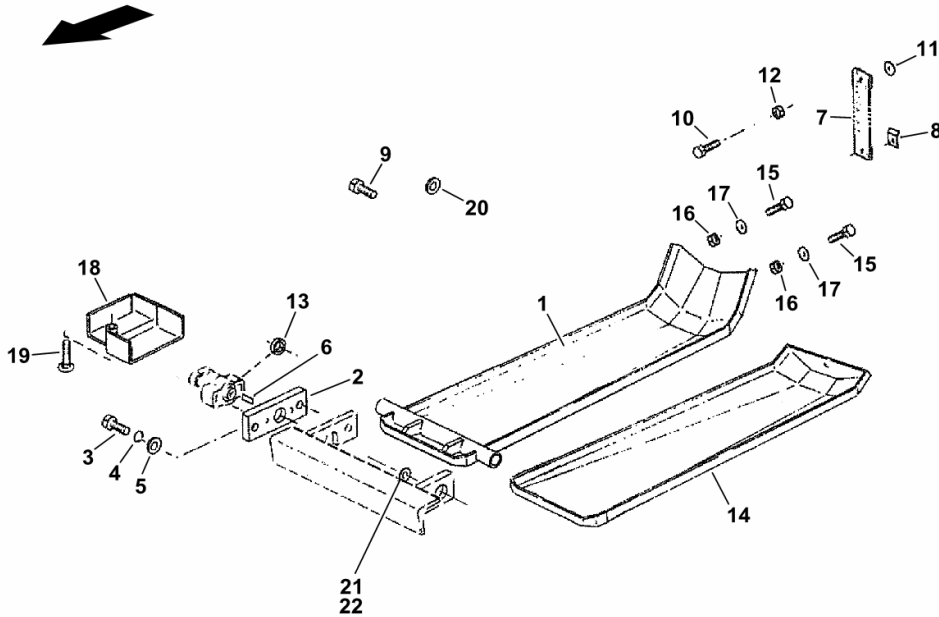
Fig.	Code	QTY	Name
------	------	-----	------

**Notes:**

[5660 H COM 3 ->13900]

1	16063104/10	1	slider
2	16063109	1	link
3	01112418	2	screw m 10 x 25, d933
4	01102800	2	washer 10.2
5	01107165	2	washer 10.5
6	0.017.8543.0	1	small block 2 x 9 x 27
7	16063110	1	band
8	16052124/10	1	plate
9	01144159	1	screw m 8 p.1.25 x 20
10	01112341	1	screw m 8 x 30, d933
11	06214194	2	shim 9
12	01104944	2	nut m 8, d985
13	16042638	1	ring
14	16063108	1	plate
15	01138843	2	screw m 10 x 30
16	06209768	2	nut m 10, d985
17	01107165	2	washer 10.5
18	16026026	1	cover
19	01138814	1	screw
20	06214206	1	washer 13.2
21	06214231	2	washer 26 x 40 x 2,0
22	06214311	1	disc 26

H9\_Z75P1\_70\_0-A-001



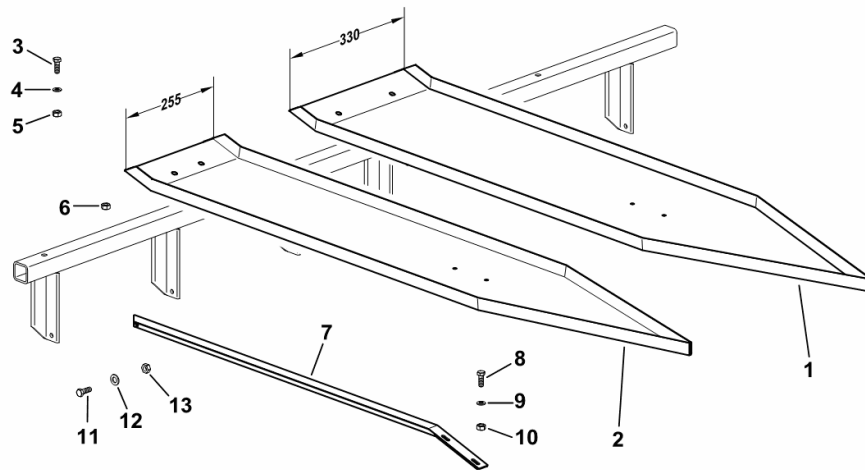
Section: HP - CUTTER BAR  
**SEPARATORS - MT. 5,4**


Fig.	Code	QTY	Name
------	------	-----	------

**Notes:**

- SUNFLOWER EQUIPMENT [5660 H COM 3 ->13900]

1	16064070	8	separator L = mm 330
2	16064078	6	separator L = mm 255
3	01111313	28	screw m 10 x 55
4	01140501	28	washer 10.5
5	06209768	28	nut m 10, d985
6	06209769	28	nut m 12, d985
7	16064058	14	support
8	01112264	28	screw m 6 x 20, d933
9	06214189	112	washer 6.4
10	01114357	28	nut m 6, d985
11	01112333	14	screw m 8 x 25, d933
12	01107163	14	washer 9, d126
13	01104944	14	nut m 8, d985



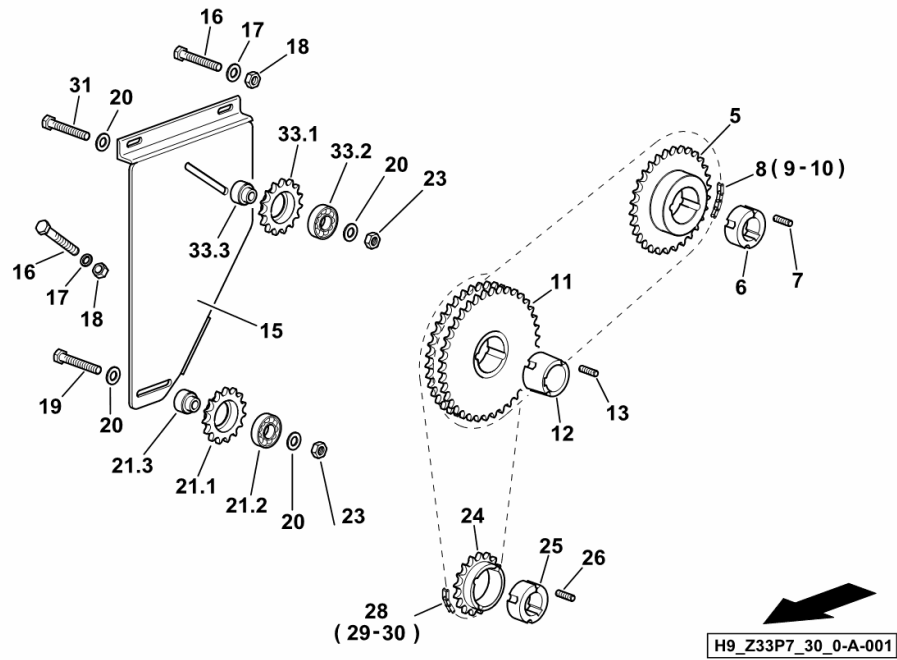
  
 H9\_Z33P7\_10\_0-A-001

**GEARS AND CHAINS**

Fig.	Code	QTY	Name
------	------	-----	------

**Notes:**

- SUNFLOWER EQUIPMENT [5660 H COM 3 ->13900]



5	16004298	1	chain wheel Z = 30
6	16012183	1	sleeve
7	16004306	2	grain 3/8" - 1/2"
8	16064197	1	chain 10 B-1 x 71
9	01119779	2	chain link 10 B-1 E
10	06213161	2	chain link gekr 10b-1d
11	16004304	1	chain wheel Z = 38
12	16012183	1	sleeve
13	16004306	2	grain 3/8" - 1/2"
15	16064098	1	carrier
16	01112333	3	screw m 8 x 25, d933
17	01107163	3	washer 9, d126
18	01104944	3	nut m 8, d985
19	01138805	1	screw m 10 x 50
20	01140501	1	washer 10.5
21.1	16004314	1	chain wheel Z = 15
21.2	01109042	1	ball bearing 6204 2RS
21.3	16064158	1	sleeve
23	06209768	1	nut m 10, d985
24	16004292	1	chain wheel Z = 17
25	16004294	1	sleeve
26	16004306	2	grain 3/8" - 1/2"
28	16064198	1	chain 10 B1 x 75
29	01119779	2	chain link 10 B-1 E
30	06213161	2	chain link gekr 10b-1d
31	01145550	1	screw m 10 x 70
33.1	16004314	1	chain wheel Z = 15
33.2	01109042	1	ball bearing 6204 2RS
33.3	16064160	1	sleeve

LIGHTING.....	HH.08.20 (1)
WARNING PLATES.....	HH.08.21 (1)
LIGHTING.....	HH.08.22 (1)
INFORMATION PLATE.....	HH.08.23 (1)
NUMBER PLATE LIGHT.....	HH.08.24 (1)
LIGHTING.....	HH.08.25 (1)
WARNING PLATES.....	HH.08.26 (1)
WARNING PLATES.....	HH.08.27 (1)
NUMBER PLATE LIGHT.....	HH.08.28 (1)
LIGHTING.....	HH.08.29 (1)
WARNING PLATES.....	HH.08.30 (1)
REAR LIGHTING.....	HH.08.31 (1)
SUPPORTS.....	HH.08.32 (1)
PLATES.....	HH.08.33 (1)
PARTS OF THE LIGHT.....	06217218.A
HEADLAMP COMPONENTS.....	06537048.A
HEADLAMP COMPONENTS.....	16037017.A
INTERIOR LIGHT.....	16046038.A
HEADLAMP COMPONENTS.....	16050281.A
HEADLAMP COMPONENTS XENON.....	16062476.A
HEADLAMP COMPONENTS.....	2.8039.004.0.A
HEADLAMP COMPONENTS.....	2.8039.005.0.A
HEADLAMP COMPONENTS.....	2.8039.008.0.A
HEADLAMP COMPONENTS.....	2.8039.011.0.A
HEADLAMP COMPONENTS.....	2.8059.009.0.A
FRONT LIGHTS.....	2.8059.014.0.A
HEADLAMP COMPONENTS.....	2.8059.028.0.A
<b>ACCESSORIES</b>	
LOUDSPEAKERS.....	HH.09.0 (1)
CIGAR LIGHTER.....	HH.09.1 (1)
MONITOR FOR VIDEOCAMERA.....	HH.09.2 (1)
VIDEOCAMERA # 1.....	HH.09.3 (1)

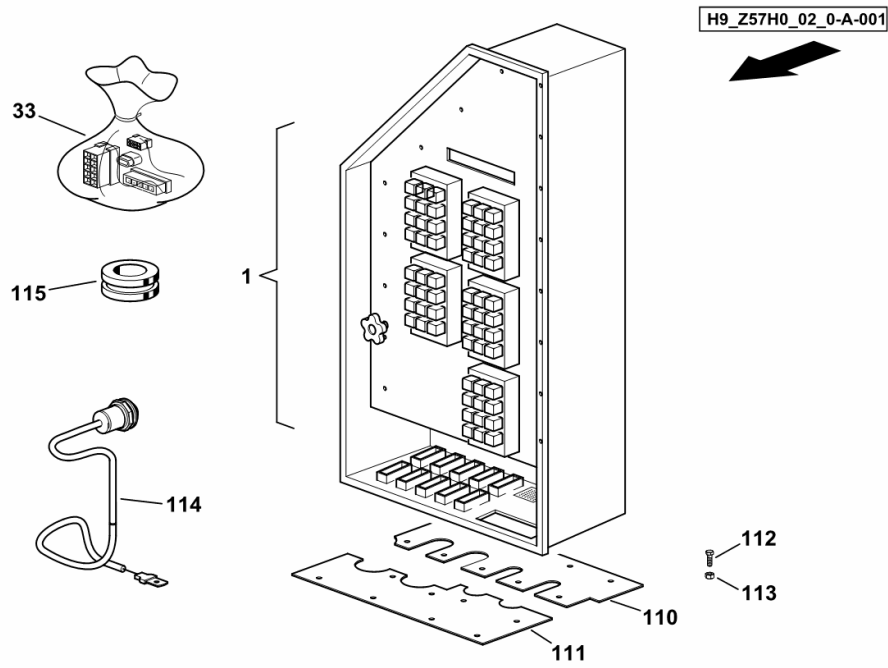
**FUSEBOX**

Fig.	Code	QTY	Name
------	------	-----	------

**Notes:**

[5660 H COM 3 ->13900] 14049 <-

1	0.016.6215.4/10	1	fuse-holder kpl. ☞ 0.016.6215.4/10 ☞ 0.016.6215.4/10
33	0.015.3120.4/40	1	plug kit
110	16052382/10	1	lamination
111	16052383	1	lamination
112	01112240	12	screw m 6 x 12
113	01114357	12	nut m 6, d985
114	0.017.6835.4	1	electrical system
115	16064292	1	grommet

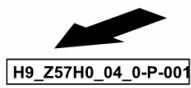
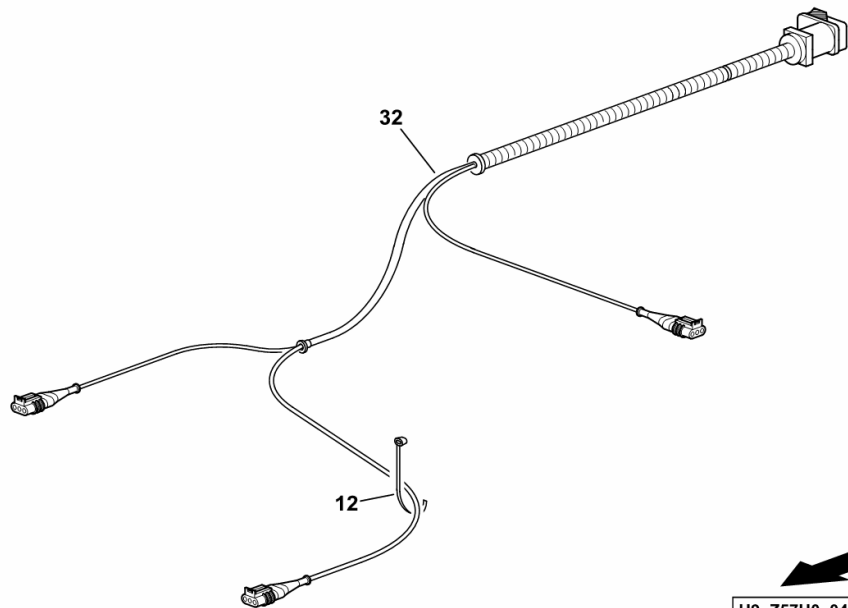


**ROTATION ANGLE SENSOR ELECTRICAL SYSTEM**

Fig.	Code	QTY	Name
------	------	-----	------

Notes:  
[5660 H COM 3 ->13900]

12	01172065	3	clamp 4.6 x 146
32	0.015.5465.4/10	1	electrical system E3



H9\_Z57H0\_04\_0-P-001

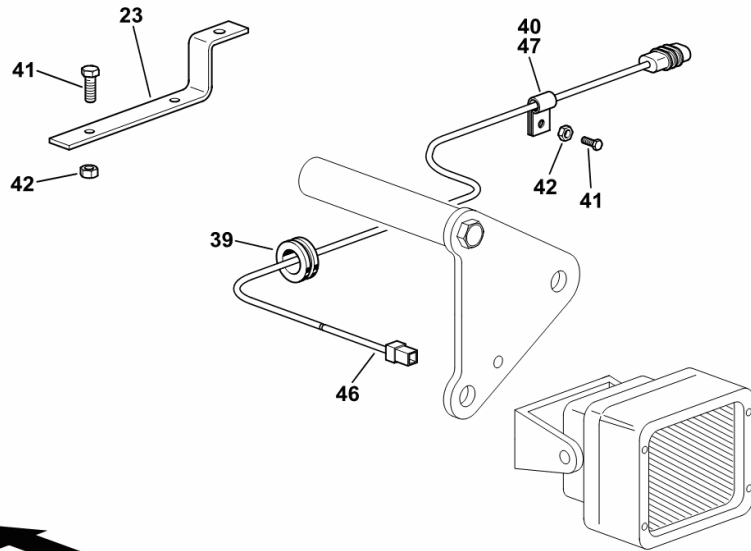
Section: HH - ELECTRICAL SYSTEM  
**GRAIN OUTLET PIPE LIGHTING**

Fig.	Code	QTY	Name
------	------	-----	------

**Notes:**

[5660 H COM 3 ->13900]

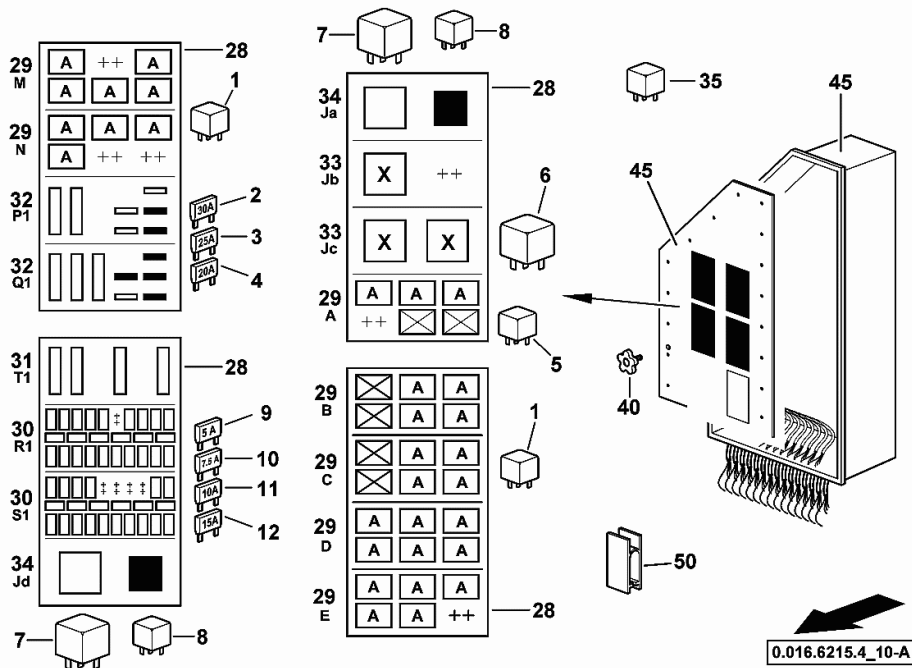
23	16011208	1	bracket
39	06262128	1	grommet Ø 21
40	06216395	1	clamp 5 x 15
41	01103316	1	screw m 6 p.1.0 x 16
42	01114357	1	nut m 6, d985
46	16062565/10	1	electrical system
47	2.6839.059.0	2	clamp Ø 12 / 15



H9\_Z38H0\_06\_0-F-001

**FUSE HOLDER**

Fig.	Code	QTY	Name
1	0.900.0908.2	38	relay 12V 20/25A
2	0.900.0908.3	9	fuse 30A
3	0.900.0908.5	4	fuse 25A
4	0.900.0908.6	31	fuse 20A
5	0.900.0908.7	6	relay 12V 20/10A
6	0.900.0908.8	3	diode 3A 1000V
7	0.900.0908.9	2	relay 12 V 70A - 125°
8	0.900.0909.0	2	relay 12V 30A
9	0.900.0909.1	3	fuse 5A
10	0.900.0909.2	26	fuse 7.5A
11	0.900.0909.3	9	fuse 10 A
12	0.900.0909.4	3	fuse 15A
28	0.900.0909.6	4	chassis
29	0.900.0910.3	7	box
30	0.900.0909.8	2	box
31	0.900.0909.9	1	box
32	0.900.0910.0	2	box
33	0.900.0910.1	2	box
34	0.900.0909.7	2	box
35	0.900.0910.2	1	intermitent switch
40	0.900.0909.5	1	knob
45	0.000.0000.1	0	not serviceable
50	0.900.1190.9	1	pliers



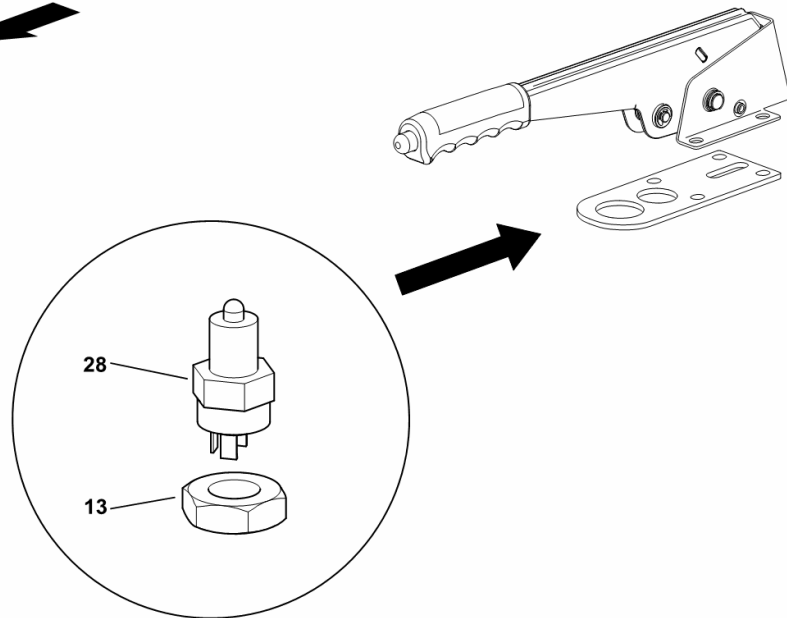
**HAND BRAKE SWITCHES**

Fig.	Code	QTY	Name
------	------	-----	------

Notes:  
[5660 H COM 3 ->13900]

13	01104589	1	nut m 18 p.1.5
28	04191001	1	push-button

H9\_Z5766\_03\_0-B-001



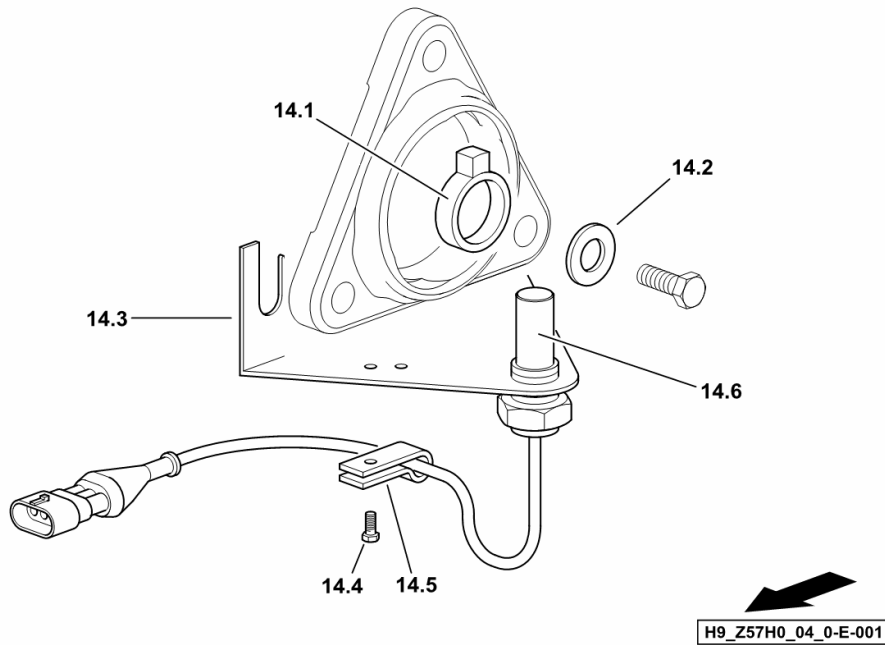
**SPEED SENSOR - ELEVATOR HEAD**

Fig.	Code	QTY	Name
------	------	-----	------

**Notes:**

[5660 H COM 3 ->13900]

14.1	16050240	1	magneto T 13
14.2	06214206	2	washer 13.2
14.3	16050244	1	bracket
14.4	01151385	1	screw m 3.5 x 9.5
14.5	06216394	1	clamp Ø 5
14.6	16050180	1	sensor m 18 p.1



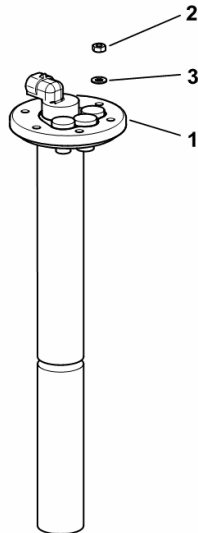
**TANK FLOAT**

Fig.	Code	QTY	Name
------	------	-----	------

**Notes:**

[5660 H COM 3 -&gt;13900]

1	2.7059.001.0	1	level indicator
2	2.1011.101.2	6	nut m 4 p.0.7
3	2.1310.028.2	6	flat washer 4



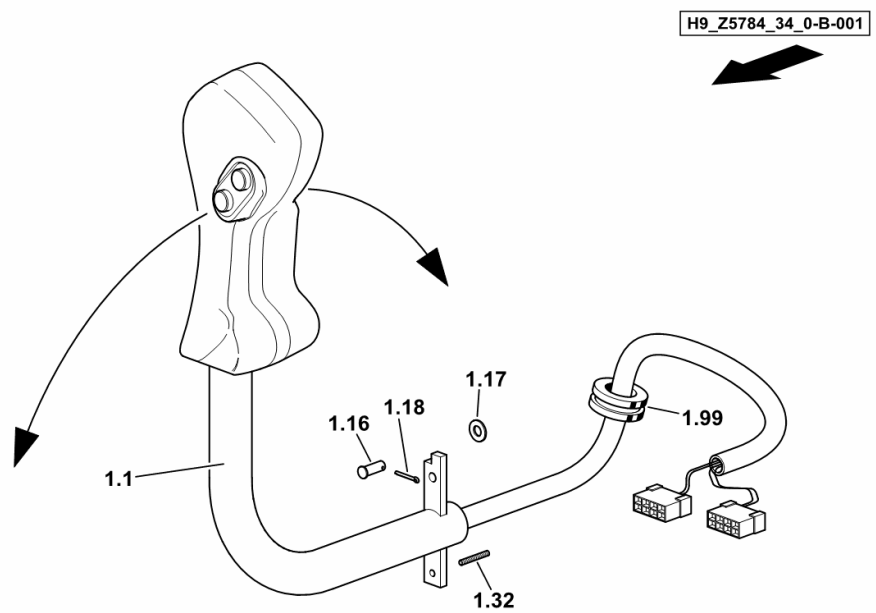
H9\_Z57H8\_00\_0-A-001

Section: HH - ELECTRICAL SYSTEM  
**MULTIFUNCTION CONTROL UNIT**

Fig.	Code	QTY	Name
------	------	-----	------

Notes:  
 [5660 H COM 3 ->13900]

1.1	0.016.5554.4/10	1	multifunction handle kpl. ↳ 0.016.5554.4/10 ↳ 0.016.5554.4/10
1.16	01143885	1	pin 11 x 3
1.17	01107165	1	washer 10.5
1.18	01132628	1	split pin 3.2 x 25
1.32	01151908	1	pin m 6 x 35
1.99	06543583	1	grommet Ø 28.8



**SWITCHES**

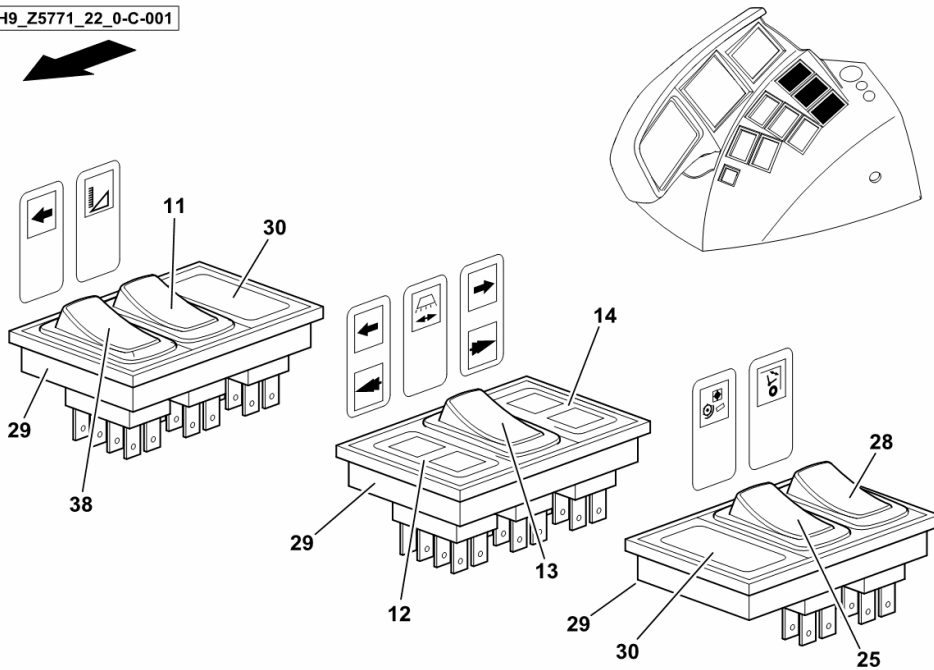
Fig.	Code	QTY	Name
------	------	-----	------

**Notes:**

[5660 H COM 3 ->13900]

11	2.7659.313.0	1	switch - RAPE HEADER
12	2.8339.259.0	1	light LEFT-HAND SIDE
13	2.7659.315.0	1	switch - STRAW GUIDE PLATES
14	2.8339.258.0	1	light RIGHT-HAND SIDE
25	2.7659.312.0	1	switch - BELTS CLUTCH
28	2.7659.318.0	1	shield
29	2.7659.333.0	8	body
30	0.012.6111.4	10	small cover
38	2.7659.314.0	1	switch - FEED ELEVATOR REVERSAL DEVICE

H9\_Z5771\_22\_0-C-001



CLICK HERE TO **DOWNLOAD** THE COMPLETE MANUAL

- Thank you very much for reading the preview of the manual.
- You can download the complete manual from: [www.heydownloads.com](http://www.heydownloads.com) by clicking the link below



- Please note: If there is no response to CLICKING the link, please download this PDF first and then click on it.

CLICK HERE TO **DOWNLOAD** THE COMPLETE MANUAL

**ELECTRIC MOTOR**

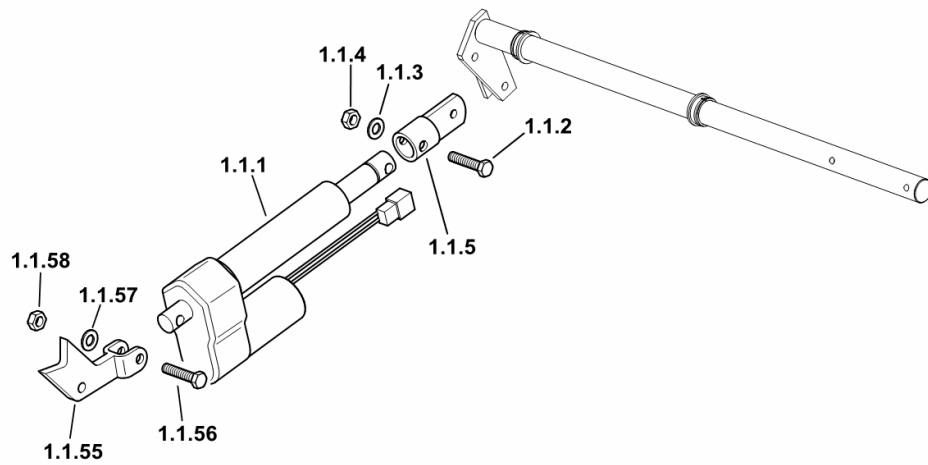
Fig.	Code	QTY	Name
------	------	-----	------

**Notes:**

[5660 H COM 3 ->13900]

1.1.1	16027276	1	electric motor
1.1.2	01111497	2	screw m 12 x 55
1.1.3	01107110	2	washer 13.5
1.1.4	06209778	2	nut m 12
1.1.5	16052581	1	support
1.1.55	16055184	1	bracket
1.1.56	01111488	1	screw m 12 x 50
1.1.57	01107110	2	washer 13.5
1.1.58	06209778	1	nut m 12

H9\_16062\_50\_4-C-001



**ROTATING BEACONS**

Fig.	Code	QTY	Name
------	------	-----	------

**Notes:**

[5660 H COM 3 ->13900]

1.1	16050281	1	flashing beacon - FRONT ☞ 16050281
1.5	16050286	1	gasket
1.6	06253950	1	grommet Ø 12.5 / Ø 15
1.7	16050281	1	flashing beacon - REAR ☞ 16050281
1.8	01100650	3	screw m 4.2x25
1.9	01112276	3	screw m 6 p.1 x 35



H9\_16050\_28\_3-A-001

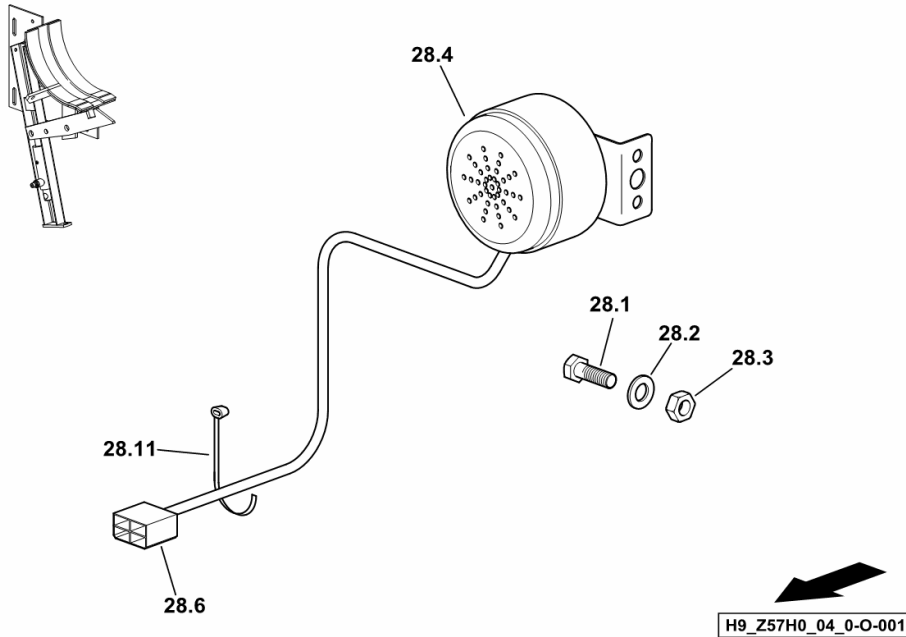
**GRAIN DISCHARGE PIPE AUDIBLE WARNING SIGNAL**

Fig.	Code	QTY	Name
------	------	-----	------

**Notes:**

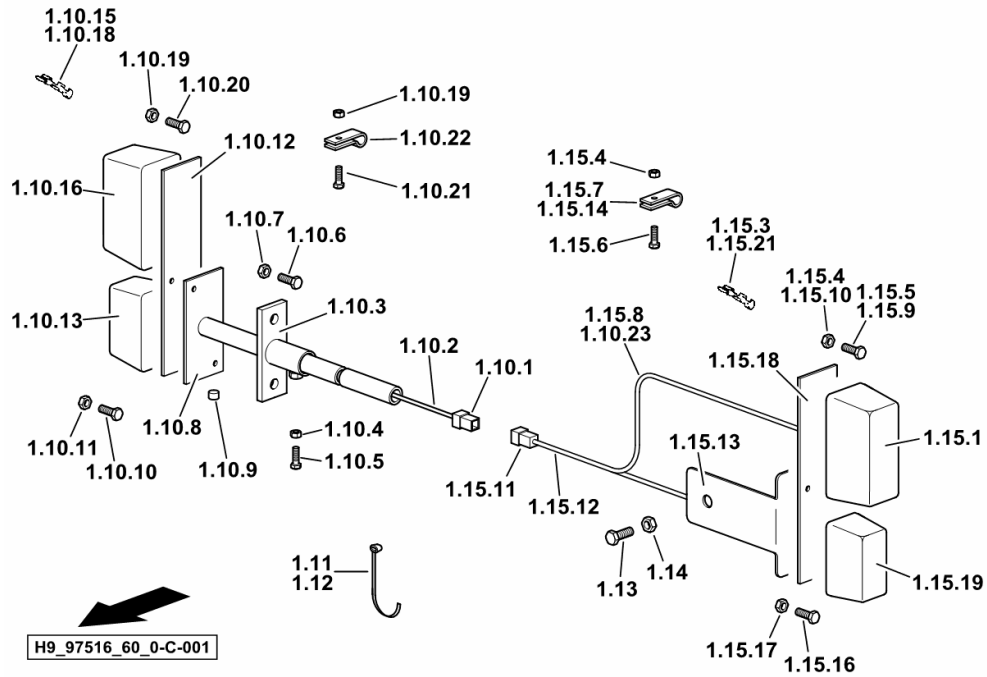
[5660 H COM 3 ->13900]

28.1	01112307	1	screw m 8 p.1.25 x 15, d933
28.2	01107163	10	washer 9, d126
28.3	01104944	1	nut m 8, d985
28.4	16037038	1	horn
28.6	01163203	1	connection PVC
28.11	01172065	2	clamp 4.6 x 146



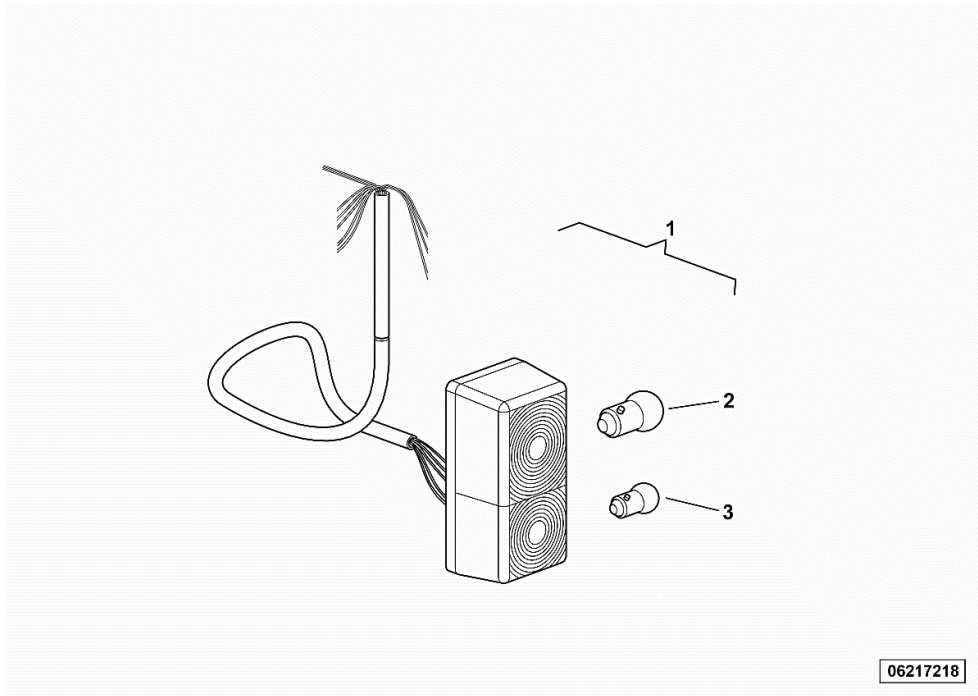
**LIGHTING**

Fig.	Code	QTY	Name
1.15.19	16006018	1	stop
1.15.21	06213723	2	terminal



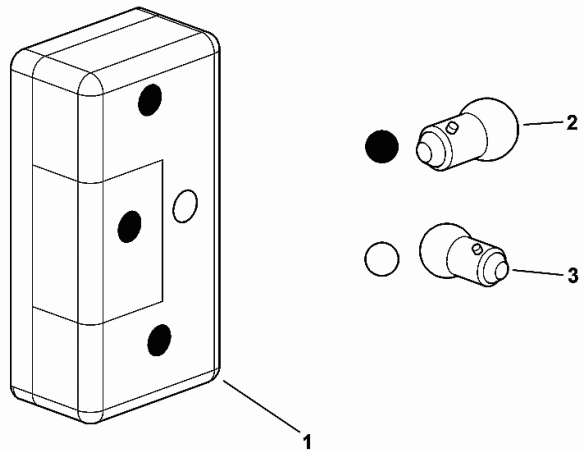
**PARTS OF THE LIGHT**

Fig.	Code	QTY	Name
1	06217218	1	side lamp
2	01102550	1	lamp r121w d72601
3	01121444	1	lamp 12V 5W



**HEADLAMP COMPONENTS**

Fig.	Code	QTY	Name
1	2.8059.009.0	1	lamp dx/rh/re BULBS NOT INCLUDED
2	0.015.9204.0	3	lamp
3	0.015.9205.0	1	lamp



2.8059.009.0

IMPULSE TRANSMITTER.....	B0.12.1052
GENERATOR.....	B0.12.1065
GENERATOR.....	B0.12.1068
GENERATOR.....	B0.12.1073
ENGINE ELECTRICAL SYSTEM.....	B0.12.1095
ENGINE ELECTRICAL SYSTEM.....	B0.12.1104
ENGINE ELECTRICAL SYSTEM.....	B0.12.1107
STARTER.....	B0.12.1127
STARTER.....	B0.12.1133
ACCESSORIES.....	B0.12.1145
ACCESSORIES.....	B0.12.1166
ACCESSORIES.....	B0.12.1173
DRIVING PARTS.....	B0.12.1190
OIL PRESSURE SWITCH.....	B0.12.1194
OIL PRESSURE SWITCH.....	B0.12.1196
PLUG-IN CONNECTOR.....	B0.12.1208
PLUG-IN CONNECTOR.....	B0.12.1215
TEMPERATURE TRANSMITTER.....	B0.12.1222
ELECTRICAL LEAD.....	B0.12.1230
ELECTRICAL LEAD.....	B0.12.1231

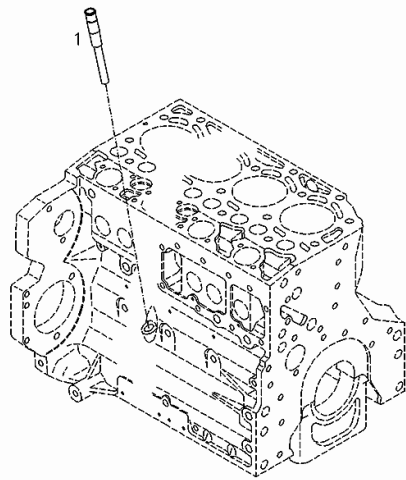
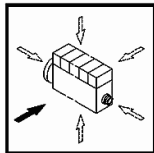
Section: B0 - ENGINE  
**OIL MEASURING DEVICE**

Fig.	Code	QTY	Name
------	------	-----	------

**Engine Serial Numbers:**

10649319 10763848 10778229 10778233 10779649

1	04252808	1	dipstick
---	----------	---	----------



001 ©

0507 4909

Section: B0 - ENGINE  
**V-GROOVED PULLEY**

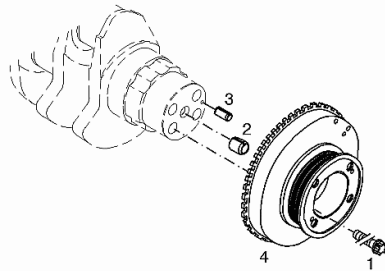
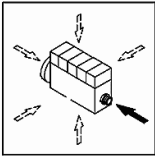
Fig.	Code	QTY	Name
------	------	-----	------

**Engine Serial Numbers:**

10649319 10763848 10778229 10778233 10779649

1	04253406	4	screw
2	01181404	1	sleeve
3	01125637	1	pin
4	04290616	1	ISO 8752 -5X14-ST pulley

000 ©



**FASTENINGS**

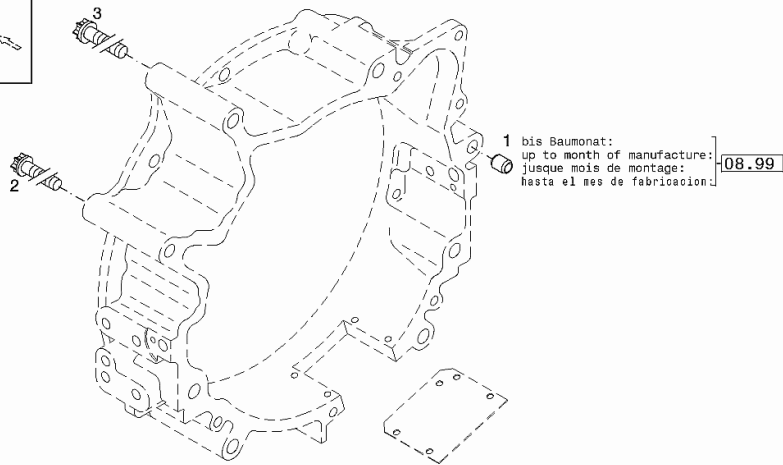
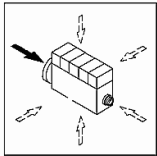
Fig.	Code	QTY	Name
------	------	-----	------

**Engine Serial Numbers:**

10649319 10763848 10778229 10778233 10779649

1	04198487	2	bushing UP TO MONTH OF ASSEMBLY 08.1999
2	01181445	2	screw 99 Nm H 2032 -HBM12X150-10.9-ZNAL-A
3	01181446	4	screw 243 Nm H 2032 -HBM16X140-10.9-ZNAL-A

002 ©



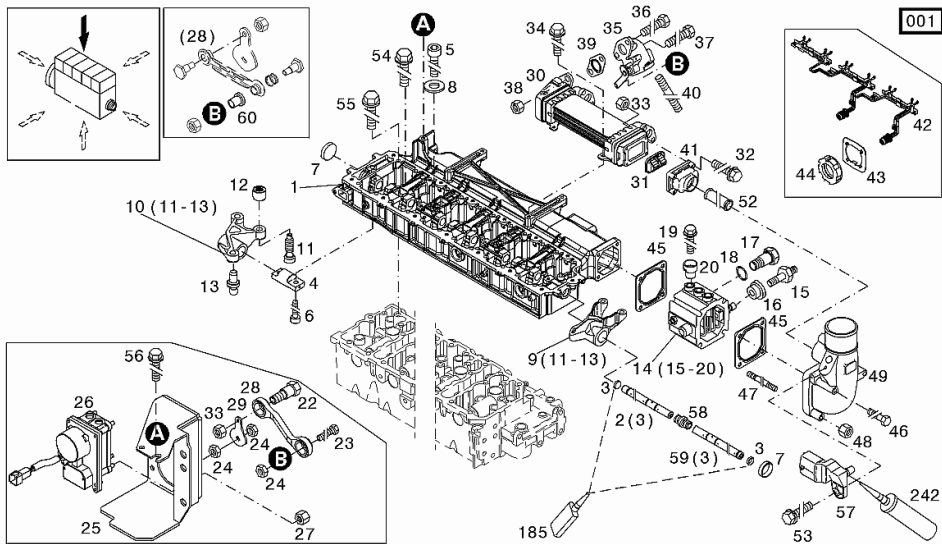
**COVER PLATE**

Fig.	Code	QTY	Name
------	------	-----	------

**Engine Serial Numbers:**

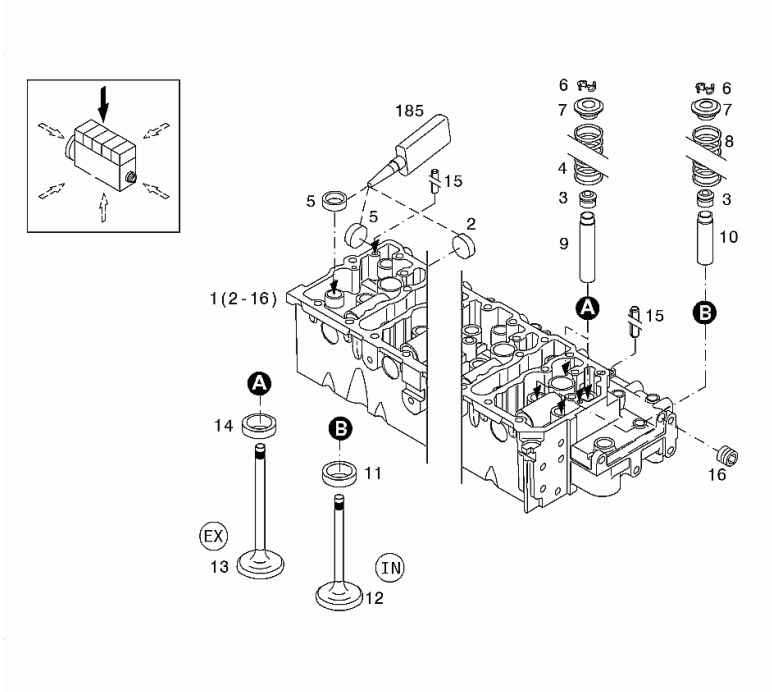
10649319

1	04294006	1	chassis
2	04503733	1	cover WITH POS.... (3)
3	01180113	2	plug DIN 443 -14
4	04251364	6	bracket
5	01148432	2	screw ISO 4762 -M6X25-8.8-ZNAL-A
6	01144736	12	screw ISO 4762 -M8X40-10.9-OELGESCHW
7	04250306	2	plug
8	03556806	2	washer
9	04299093	6	rocker WITH POS.... 11-13
10	04295936	6	rocker WITH POS.... 11-13
11	04250110	24	register
12	04254439	12	nut
13	04250598	6	cap
14	04258670	1	cab heating WITH POS.... (15-20)
15	04288651	1	valve
16	04258468	1	insulator
17	04258466	1	mass -
18	01182006	1	rubber plug H 2927 -12X1,5-FPM-1-80
19	04258613	5	screw
20	04258469	5	insulator
22	04904915	1	screw
23	04297989	1	screw
24	01103274	3	nut DIN 936 -M10-17H-A4C
25	04290863	1	support
26	04296631	1	actuator 40 Km/h - z=10 z=39
27	01148654	4	screw EN 1661 -M6-8-ZNAL-A
28	04298022	1	screw
29	04297554	1	small plate
30	04902996	1	radiator
31	04257888	1	valve
32	01148673	4	screw



Section: B0 - ENGINE  
CYLINDER HEAD

Fig.	Code	QTY	Name
1	04281520	1	engine head WITH POS.... (2-16)
2	01165830	5	plug H 711 -B25
3	04153728	24	gasket
4	04250028	12	spring
5	01165828	15	stop H 711 -B20
6	02108102	48	half shell H 7020 -MK8
000 © 7	04250029	24	cup
8	04250396	12	spring
9	04250074	12	rod
10	04250073	12	valve guide
11	04293334	12	valve seat
12	04287664	12	inlet valve
13	04289801	12	exhaust valve
14	04289455	12	ring
15	01125637	2	pin ISO 8752 -5X14-ST
16	01180889	1	screw H 2812 -906-M12X1,5-ST-A4C-PRE80
185	01016125	1	guard H 0699 -DEUTZDW72-250ML



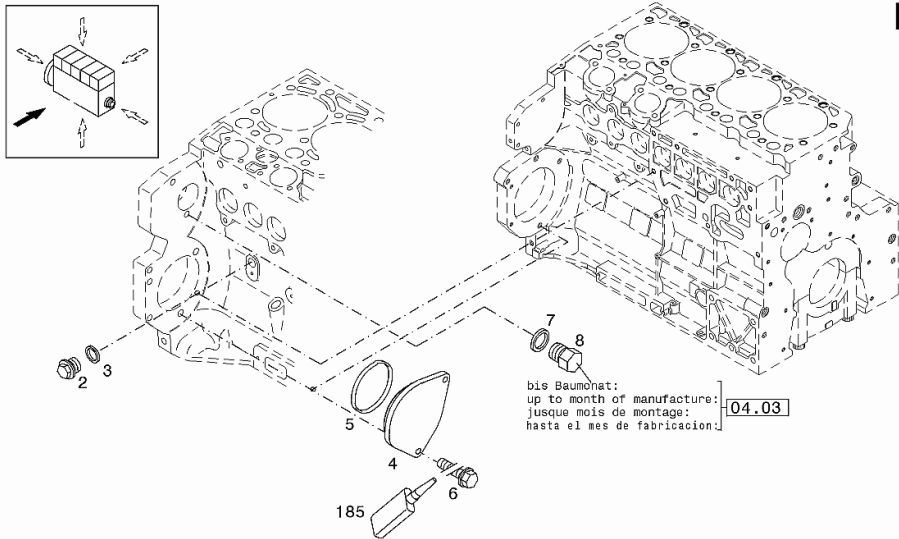
Section: B0 - ENGINE  
**CLOSING COMPONENTS**

Fig.	Code	QTY	Name
------	------	-----	------

**Engine Serial Numbers:**

10649319 10763848 10778229 10778233 10779649

2	01100940	1	screw 34 Nm DIN 7604 -AM14X1,5-ST-A4C
3	01118688	1	ring 14x17 DIN 7603 -A14X18-CU
4	04283180	1	cover
5	01180803	1	gasket H 2927 -96X4-NBR-1-70
6	01181393	2	screw 42 Nm EN 1662 -F-M10X20-10.9-A4C
7	01118659	1	'o' ring UP TO THE MONTH OF ASSEMBLY A = UP TO 04/2003 DIN 7603 -A10X13,5-CU
8	01181401	1	screw UP TO THE MONTH OF ASSEMBLY A = UP TO 04/2003
185	01016127	1	sealing compound ml. 50 H 0699 -DEUTZDW72-50ML



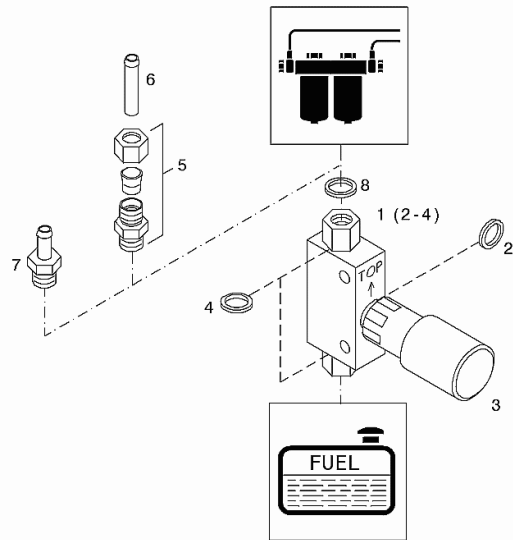
Section: B0 - ENGINE  
**FUEL FEED PUMP**

Fig.	Code	QTY	Name
------	------	-----	------

**Engine Serial Numbers:**

10649319 10763848 10778229 10778233 10779649

1	02111961	1	pump WITH POS.... (2-4)
2	01148356	1	'o' ring DIN 7603 -A16X20-ST
3	02111897	1	feed pump
4	01118727	2	'o' ring DIN 7603 -A20X24-CU
5	01319640	1	tongue
6	01319641	1	pipe fitting
7	01319642	1	tongue
8	01118713	1	washer 18.5 DIN 7603 -A18X22-CU



003 ©

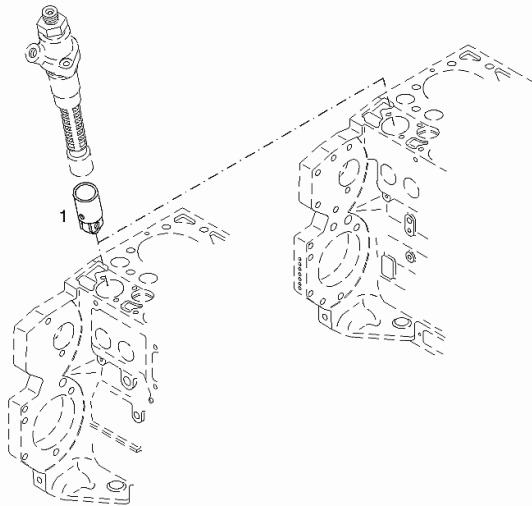
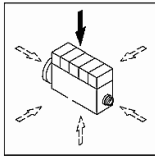
**ROLLER TAPPET**

Fig.	Code	QTY	Name
------	------	-----	------

**Engine Serial Numbers:**

10649319 10763848 10778229 10778233 10779649

1	04290358	2	cap
---	----------	---	-----



000 ©

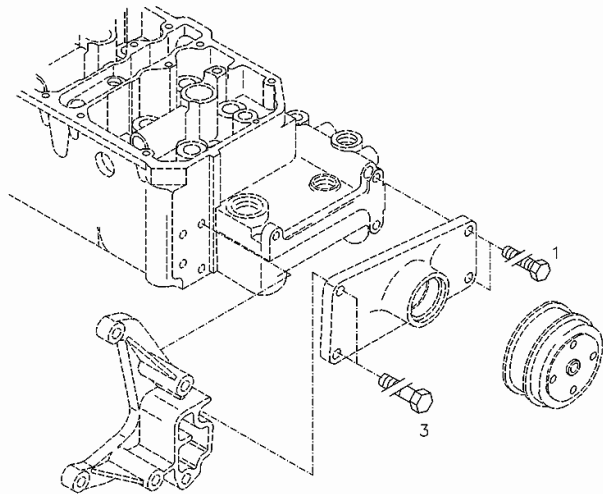
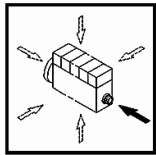
**FASTENINGS**

Fig.	Code	QTY	Name
------	------	-----	------

**Engine Serial Numbers:**

10649319 10763848 10778229 10778233 10779649

1	01148457	2	screw DIN 933 -M10X30-10.9-ZNAL-A
3	01148484	2	screw DIN 931 -M10X100-10.9-ZNAL-A



0507 4811

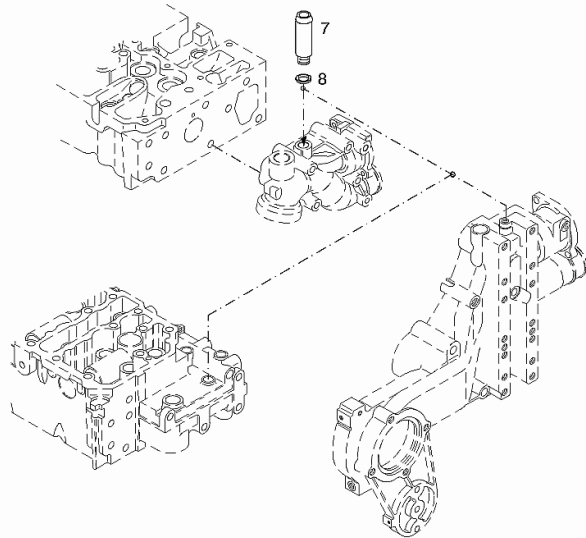
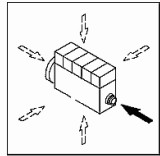
**CONNECTION**

Fig.	Code	QTY	Name
------	------	-----	------

**Engine Serial Numbers:**

10649319 10763848 10778229 10778233 10779649

7	04253750	1	pipe fitting
8	01118700	1	'o' ring Ø 16 x 20 DIN 7603 -A16X20-CU



002 ©

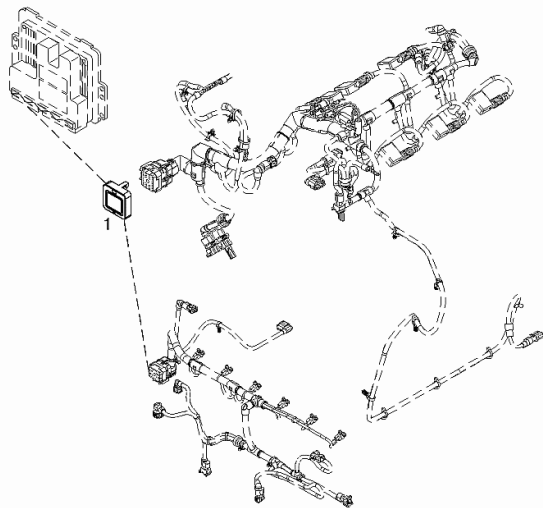
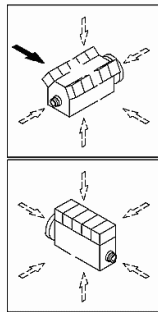
**COVER PLATE**

Fig.	Code	QTY	Name
------	------	-----	------

**Engine Serial Numbers:**

10763848 10778229 10778233 10779649

1	04214601	1	cover
---	----------	---	-------

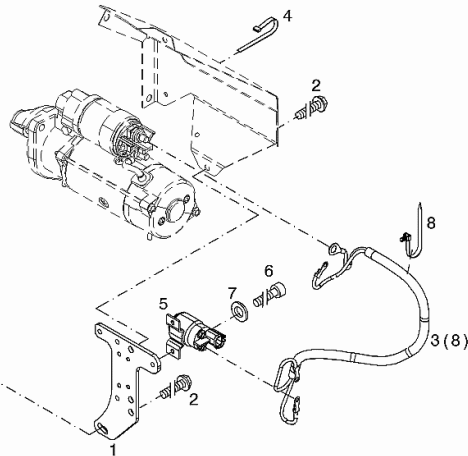
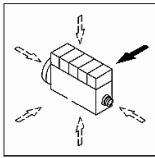


001 ©

Section: B0 - ENGINE

**FASTENINGS**

Fig.	Code	QTY	Name
1	04299543	1	bracket
2	01181436	3	screw EN 1662 -F-M8X16-LG2,5-10.9-ZNAL-A
3	04216250	1	electrical system WITH POS.... (8)
4	01182719	1	clamp H 7672 -P295X4,8X1,5
5	04216031	1	relay
6	01132986	2	screw ISO 4762 -M6X10-10.9-A4C
7	01124654	2	washer 6,4 d433 ISO 7092 -6-140HV-A4C*
8	04214077	1	clamp



000 ©

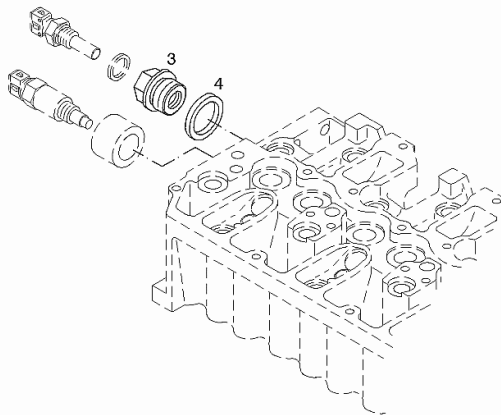
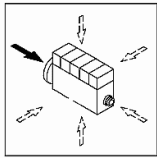
**ACCESSORIES**

Fig.	Code	QTY	Name
------	------	-----	------

**Engine Serial Numbers:**

10649319 10763848 10778229 10778233 10779649

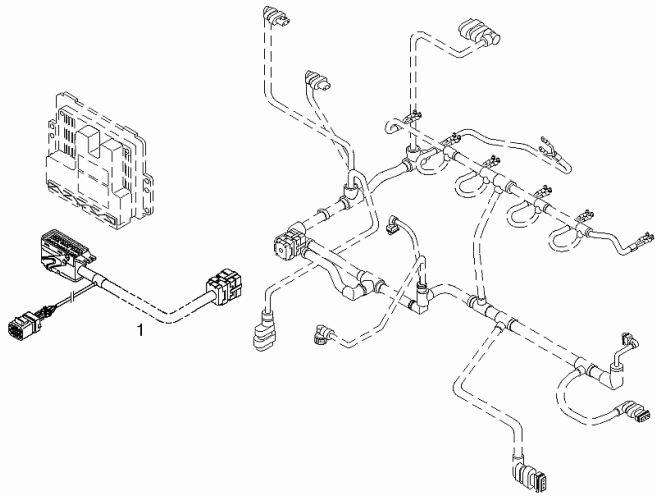
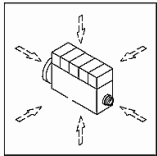
3	04199761	1	plug
4	01118760	1	gasket 26x31 DIN 7603 -A26X31-CU



001 ©

Section: B0 - ENGINE  
**ELECTRICAL LEAD**

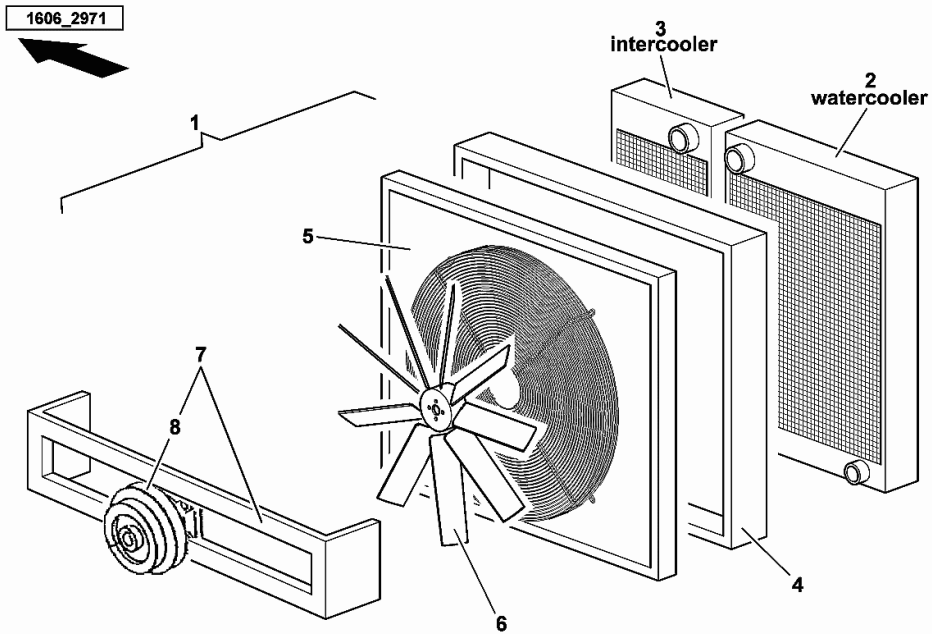
Fig.	Code	QTY	Name
1	04214874	1	wire



000 ©

**COOLING**

Fig.	Code	QTY	Name
1	16062971	1	cooler kpl. INCLUDES ITEMS 1 THRU 7 2-7
2	0.900.0906.5	1	radiator - WATER
3	0.900.0906.4	1	radiator - AIR
4	0.900.0906.6	1	casing
5	0.900.0906.7	1	protective mesh
6	0.900.0906.8	1	rotor blade
7	0.900.0906.9	1	pulley kpl. INCLUDES ITEM 8
8	0.000.0000.1	1	not serviceable



**ENGINE PTO**

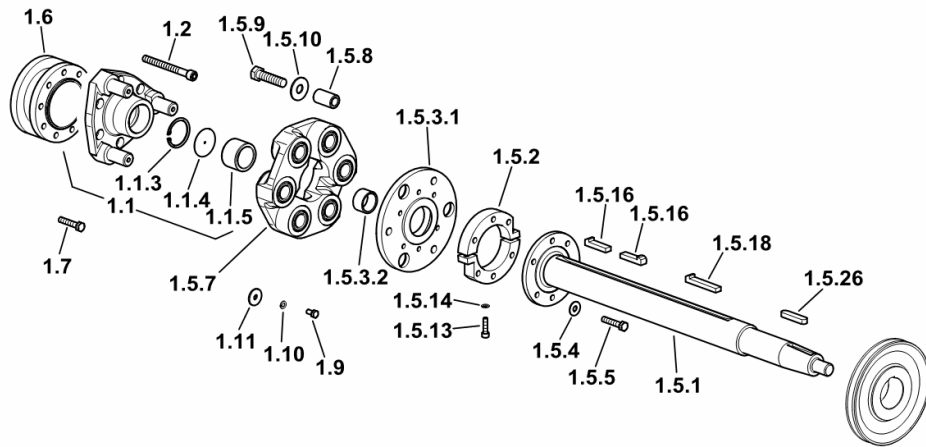
Fig.	Code	QTY	Name
------	------	-----	------

**Notes:**

[5660 H COM 3 ->13900]

1.1	16062757/10	1	flange kpl.
1.1.3	01107839	1	circlip 55
1.1.4	06286449	1	ring mm 0.508
1.1.5	16021507	1	bushing
1.2	01151466	6	screw m 12 x 30
1.5.1	16062851	1	shaft L = mm 703
1.5.2	06519625	1	flange
1.5.3.1	06548123	1	flange
1.5.3.2	16002970	1	ring
1.5.4	01111308	6	screw m 10 x 50
1.5.5	06214396	6	washer 10.5
1.5.7	06548127	1	disc
1.5.8	06548126	3	bushing
1.5.9	01122463	3	screw m 16 x 65, d933
1.5.10	06214296	6	washer 17.2
1.5.13	01123699	2	screw m 8 x 30
1.5.14	01102799	2	washer 8, d128
1.5.16	01139161	2	dowel 14 x 9 x 45
1.5.18	01118279	2	dowel 14 x 9 x 63
1.5.26	01118135	1	spring 14 x 9 x 63
1.6	04298783	1	adapter
1.7	2.0113.511.2	4	screw m 14 x 30 - 10.9
1.9	01112307	3	screw m 8 p.1.25 x 15, d933
1.10	01102799	3	washer 8, d128
1.11	06214248	3	washer 9.2

H9\_Z40A0\_10\_0-A-001



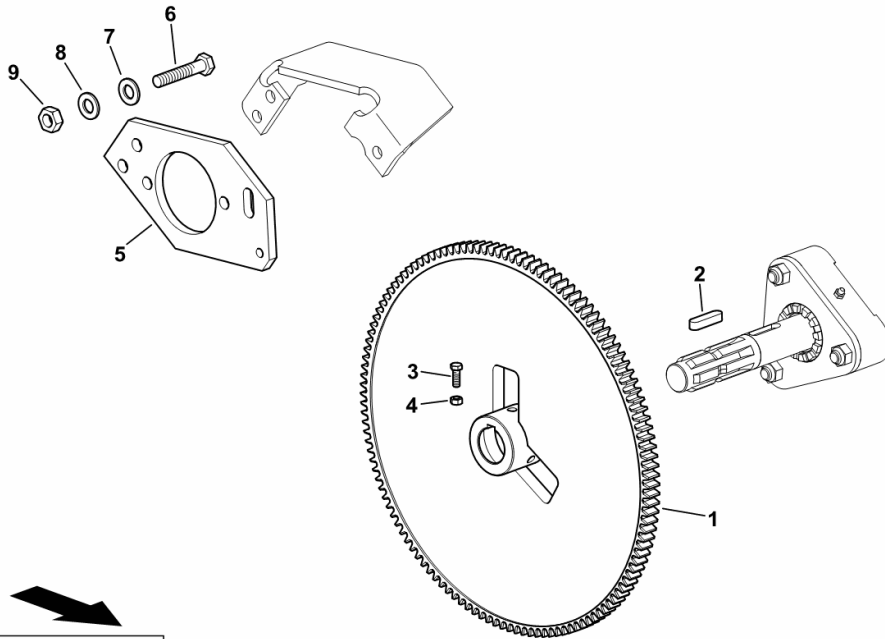
**FEED ELEVATOR REVERSAL DEVICE**

Fig.	Code	QTY	Name
------	------	-----	------

**Notes:**

[5660 H COM 3 ->13900]

1	16028348	1	gear Z = 129
2	06212455	1	dowel 10 x 8 x 40
3	2.0114.309.2	2	screw m 10 p 1.25 x 25
4	2.1011.106.2	2	nut m 10 p.1.5
5	16028330	1	plate
6	2.0114.415.2	3	screw m 12 p.1.75 x 40
7	2.1310.007.2	3	flat washer 13.5
8	2.1474.011.2	3	spring washer 12
9	2.1011.107.2	3	nut m 12 p.1.75



H9\_Z33E6\_00\_0-A-001

**L.H. LINING**

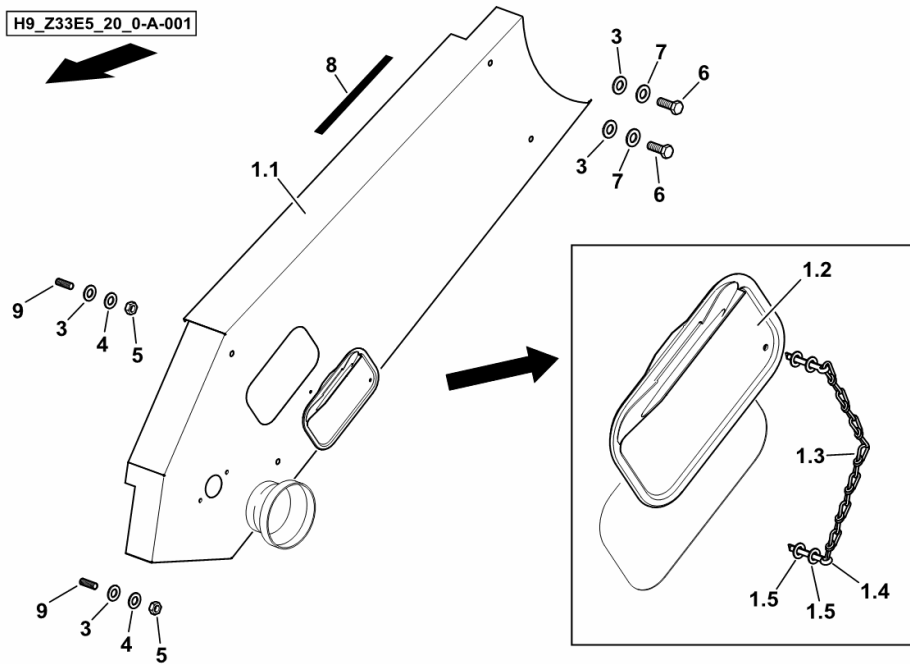
Fig.	Code	QTY	Name
------	------	-----	------

**Notes:**

- PER TIPI CON STRUTTURA OSCILLANTE [5660 H COM 3 ->13900]

1.1	0.016.3196.3/10	1	sump sx/lh/li
1.2	06261005	1	small cover PVC
1.3	16061636	0.22	small chain fi 2,8, d5686
1.4	01138904	2	split pin 5 x 36
1.5	06214189	4	washer 6.4
3	06214192	4	washer 8.4
4	2.1310.004.2	2	flat washer 8.5
5	2.1120.005.2	2	nut m 8 p.1.25
6	2.0114.213.2	2	screw m 8 x 35
7	2.1474.009.2	2	spring washer 8
8	01390702	1.5	gasket PVC
9	16063116	2	stud bolt m 8 x 40

H9\_Z33E5\_20\_0-A-001



**LINKAGE**

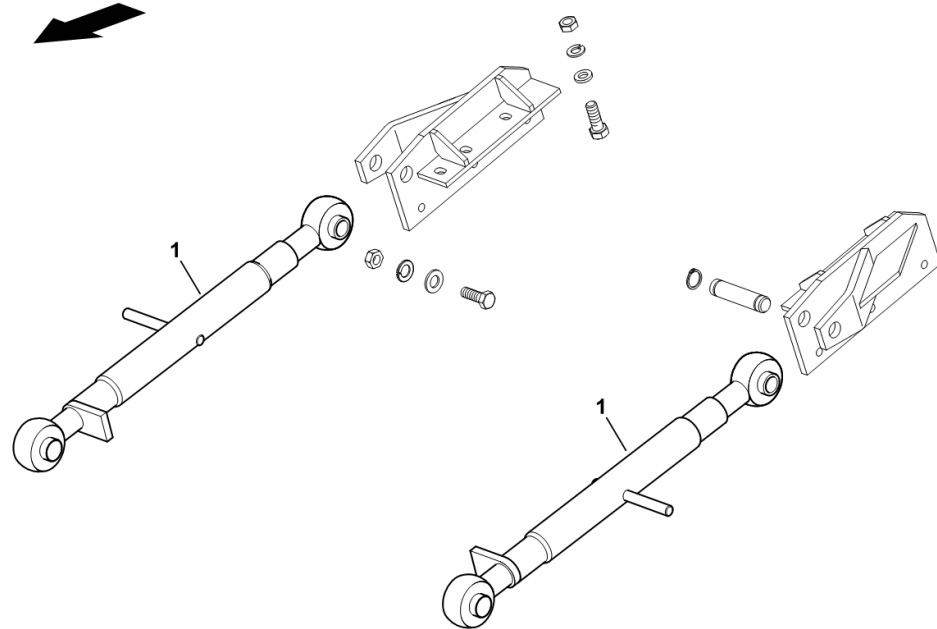
Fig.	Code	QTY	Name
------	------	-----	------

**Notes:**

[5660 H COM 3 ->13900]

1	16034179	2	adjustable tensioner ☞ 16034179
---	----------	---	------------------------------------

H9\_Z57E1\_03\_0-A-001



## 5660 H COM 3 ->13900

### HM - GRAIN TANK / ELEVATOR

#### ELEVATOR

GRAIN ELEVATOR.....	HM.01.0 (1)
GUARD PLATE.....	HM.01.4 (1)
ELEVATOR SCREW.....	HM.01.5 (1)
ELEVATOR HEAD.....	HM.01.9 (1)
CHAIN SPROCKET.....	HM.01.10 (1)
CHAIN TENSIONER.....	HM.01.11 (1)
CHAIN SPROCKET.....	HM.01.12 (1)
ELEVATOR HEAD FEED SCREW.....	HM.01.13 (1)

#### GRAIN TANK

GRAIN TANK - LT. 7500.....	HM.02.0 (1)
GRAIN TANK.....	HM.02.2 (1)
GRAIN TANK.....	HM.02.4 (1)
GRAIN TANK.....	HM.02.6 (1)
COMPLETION.....	HM.02.8 (1)
V-BELT - PULLEY.....	HM.02.9 (1)
GRAIN TANK OUTLET SCREW.....	HM.02.11 (1)
GRAIN SAMPLING DEVICE.....	HM.02.15 (1)
GRAIN TANK TOP SECTION.....	HM.02.17 (1)
GRAIN TANK COVER.....	HM.02.21 (1)
ANGULAR GEAR.....	HM.02.22 (1)
GRAIN TANK CONTROL.....	HM.02.24 (1)
BELT STRETCHER.....	HM.02.26 (1)
ANGULAR GEAR.....	16035371.A
ANGULAR GEAR.....	16035371/20.A

#### DISCHARGE PIPE

OUTLET PIPE BASE.....	HM.03.0 (1)
EXHAUST PIPE.....	HM.03.1 (1)
UNLOADING AUGER.....	HM.03.2 (1)
BEARING.....	HM.03.4 (1)
GRAIN TANK UNLOADING PIPE - MT. 5,0.....	HM.03.5 (1)
UNLOADING AUGER - MT. 5,0.....	HM.03.6 (1)
UNLOADING AUGER - MT. 5,0.....	HM.03.7 (1)
GRAIN TANK UNLOADING PIPE - MT. 5,0.....	HM.03.10 (1)
GRAIN TANK UNLOADING PIPE - MT. 4,0.....	HM.03.11 (1)
UNLOADING AUGER - MT. 4,0.....	HM.03.12 (1)
GRAIN TANK UNLOADING PIPE - MT. 4,0.....	HM.03.13 (1)
EXHAUST PIPE BRACKET.....	HM.03.14 (1)
EXHAUST PIPE ROTATION MECHANISM.....	HM.03.16 (1)
ANGULAR GEAR.....	06539730.A

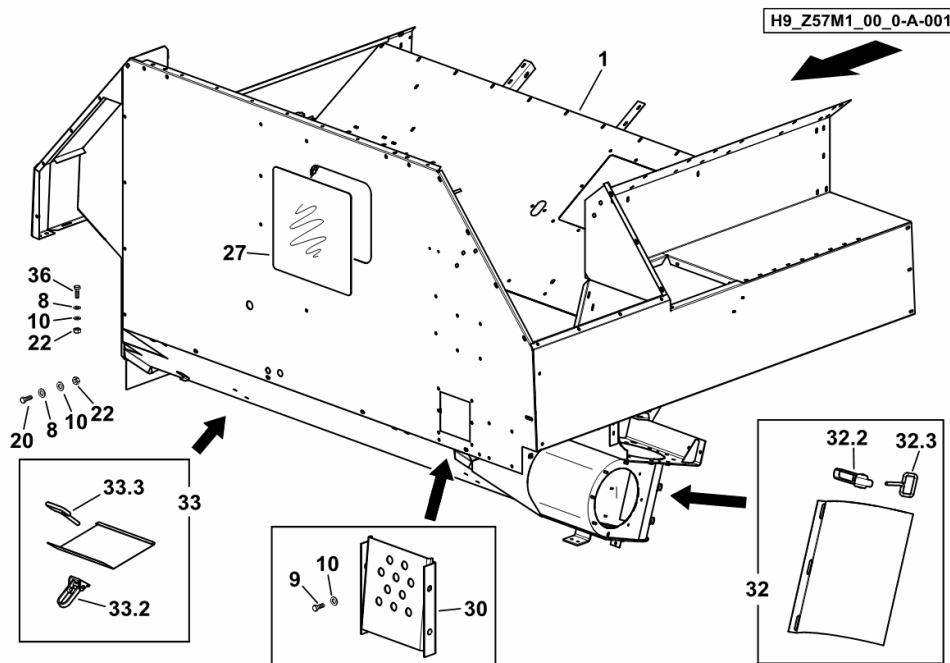
**GRAIN TANK - LT. 7500**

Fig.	Code	QTY	Name
------	------	-----	------

**Notes:**

[5660 H COM 3 ->13900]

1	0.016.4729.3/10	1	grain tank lt. 7500
8	06214193	14	washer 8.4
9	2.0114.205.2	36	screw m 8 p.1.25 x 16
10	2.1474.009.2	78	spring washer 8
20	2.0114.207.2	32	screw m 8 p.1.25 x 20
22	2.1011.105.2	40	nut m 8 p.1.25
27	0.016.1843.2	1	glass
30	16004970	2	foot board
32	06512053	1	complete cover
32.2	06253212	3	stop
32.3	06329643	3	clevis
33	06332367/10	1	complete cover
33.2	06252860	1	stop
33.3	06253194	1	clevis
36	2.0114.211.2	4	screw m 8 x 30



**GRAIN TANK COVER**

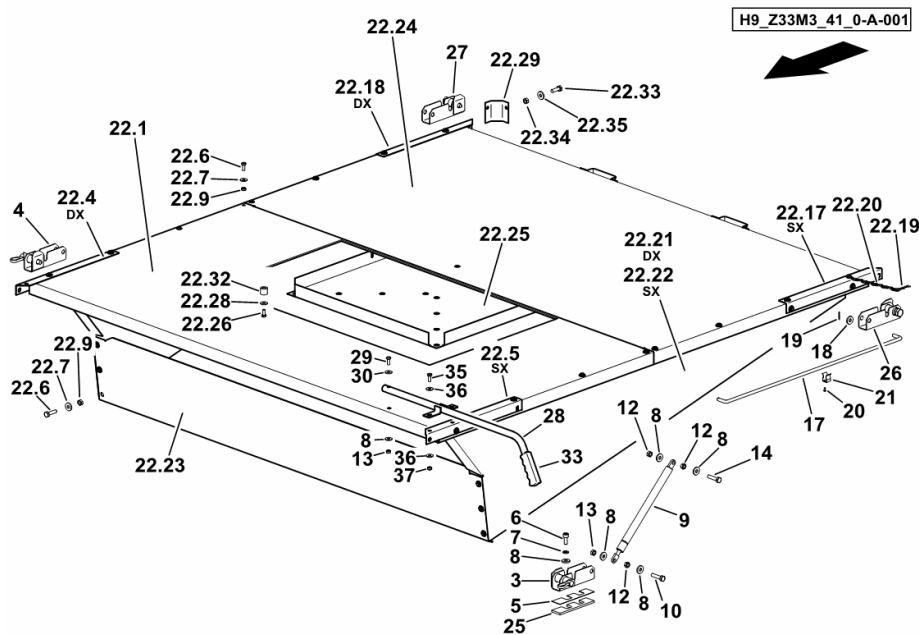


Fig.	Code	QTY	Name
<b>Notes:</b>			
[5660 H COM 3 ->13900]			
3	06521116/10	1	bearing block sx/lh/li - FRONT
4	06521117/10	1	bearing block dx/rh/re - FRONT
5	06524068/10	4	shim mm 1.00
6	01126918	8	screw m 8 p.1.25 x 20
7	01102799	8	washer 8, d128
8	06214192	17	washer 8.4
9	16004971	2	shoch.absorber 400 N
10	01112341	2	screw m 8 x 30, d933
12	01112824	6	nut m 8, d934
13	01104944	3	nut m 8, d985
14	01112350	2	screw m 8 x 35
17	06519839	1	rod
18	01107165	1	washer 10.5
19	01132625	1	split pin 3.2 x 20
20	06256098	1	brace
21	06214980	2	rivet
22.1	16007600/10	1	cover
22.4	06519023	1	angular dx/rh/re
22.5	06519024	1	angular sx/lh/li
22.6	01103316	33	screw m 6 p.1.0 x 16
22.7	06214189	66	washer 6.4
22.9	01114357	33	nut m 6, d985
22.17	06521126	1	angular sx/lh/li
22.18	06521133	1	angular dx/rh/re
22.19	06264206	1	roll pin
22.20	16061636	0.4	small chain fi 2,8, d5686
22.21	16007608	1	lamination dx/rh/re
22.22	16007609	1	lamination sx/lh/li
22.23	16010917	1	lamination
22.24	16007606/10	1	cover
22.25	16063161	1	plate
22.26	01111136	8	screw m 8 x 35
22.28	01102799	8	washer 8, d128
22.29	16010921	2	lamination
22.32	16022745	8	sleeve
22.33	01112307	4	screw m 8 p.1.25 x 15, d933
22.34	01104944	4	nut m 8, d985
22.35	01107163	4	washer 9, d126
25	16011808/10	4	shim mm 5.00

**BEARING**

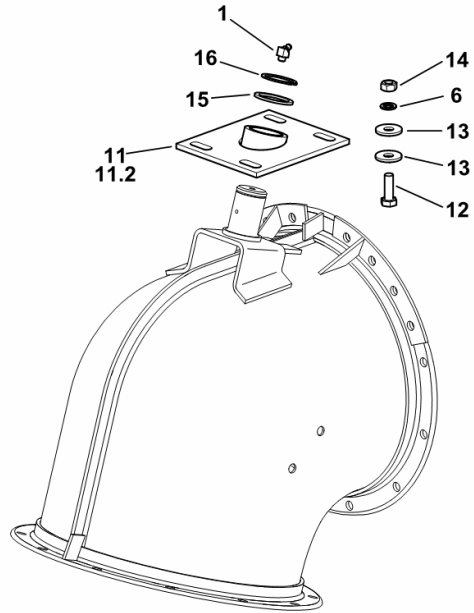
Fig.	Code	QTY	Name
------	------	-----	------

**Notes:**

[5660 H COM 3 ->13900]

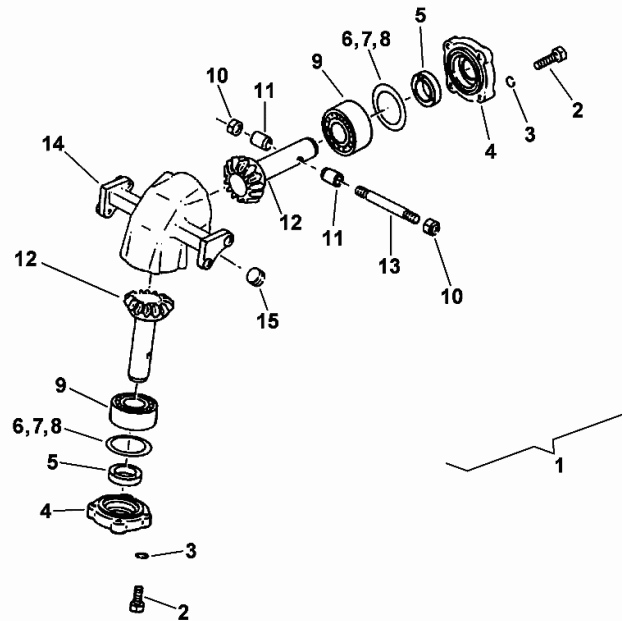
1	01120697	3	lubricator bm 8 x 1
6	01102800	16	washer 10.2
11	06523553	1	bearing kpl.
11.2	06255515	1	bushing 35 x 39 x 30
12	01112429	12	screw m 10 x 30, d933
13	06214197	8	washer 10.5
14	01102659	4	nut m 10, d934
15	01137526	4	shim 35 x 45 x 2,5
16	01107748	1	ring 35 x 1.5, d471

H9\_Z57M5\_30\_0-C-001



**ANGULAR GEAR**

Fig.	Code	QTY	Name
1	06539730	1	angle drive kpl.
2	01148239	8	screw m 8
3	01102799	8	washer 8, d128
4	06535832	2	cover
5	01141797	2	'o' ring 35x55x9/11
6	06214520	1	shim 63 x 80 x 0.5
7	06214519	1	shim 63 x 80 x 0.3
8	06214517	1	shim 63 x 80 x 0.1
9	01143033	2	roller bearing 2rs c3 d628
10	06209769	2	nut m 12, d985
11	06539726	2	bushing 18x20,5
12	06535179	2	gear
13	06539030	1	pin m 12
14	06535815	1	box
15	01104151	1	grain



0653\_9730

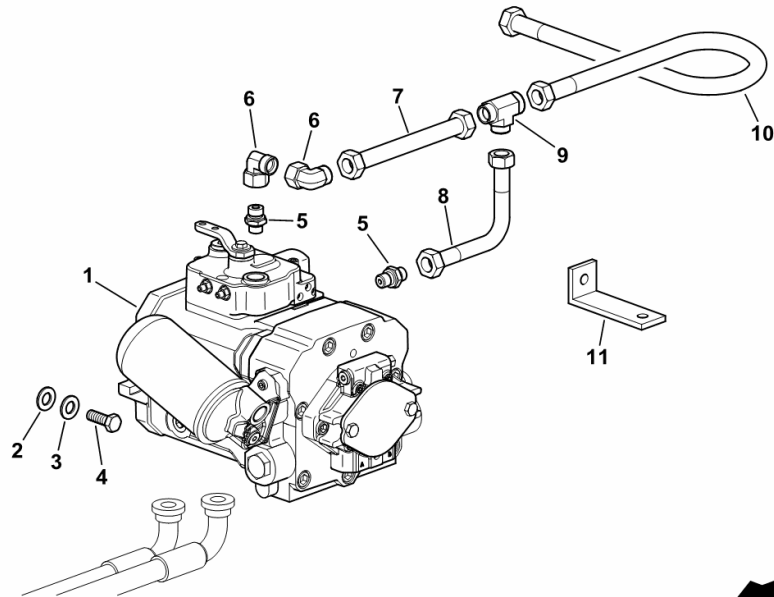
**HYDRAULIC PUMP 135 CC**

Fig.	Code	QTY	Name
------	------	-----	------

**Notes:**

BALANCE/AUTOCONTROL [5660 H COM 3 ->13900]

1	16025316/10	1	hydraulic pump HPV 135 ☞ 16025316/10
2	2.1310.013.2	2	flat washer 21x37
3	2.1470.011.2	2	washer 20
4	2.0112.817.2	2	screw m 20 p.2.5 x 45
5	16033362	2	pipe fitting geo 22-l
6	16022707	2	pipe fitting EW 22 L
7	16055364	1	tube
8	16055366	1	tube
9	16022065	1	pipe fitting 28/22/22
10	16056034	1	flexible hose Ø 25 / L = mm 600
11	16062347	1	bracket



H9\_Z61D5\_01\_0-A-001

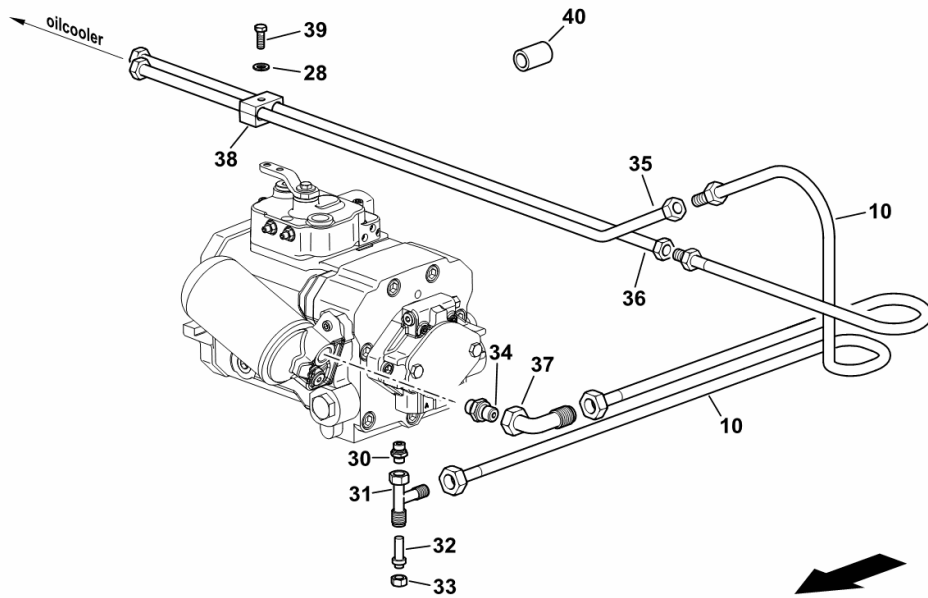
**OIL COOLER PIPE**

Fig.	Code	QTY	Name
------	------	-----	------

**Notes:**

[5660 H COM 3 ->13900]

10	06513403	2	flexible hose Ø 15 - m 30 p.2 / L = mm 850
28	01102799	4	washer 8, d128
30	16048126	1	pipe fitting m 22 x 1.5
31	16040270	1	pipe fitting XEL 22-L
32	01179136	1	plug H3107 - V1L 22
33	01116656	1	pipe fitting m 30 p.2
34	16033362	1	pipe fitting geo 22-l
35	16062424	1	tube
36	16062425	1	tube
37	16022707	1	pipe fitting EW 22 L
38	06262780	3	hose clip Ø 22/22
39	01124458	3	screw m 8 x 100, d933
40	06527083	2	spacer



H9\_Z57D5\_30\_0-A-001

**THIRD LIFTING CYLINDER FOR FEED ELEVATOR**

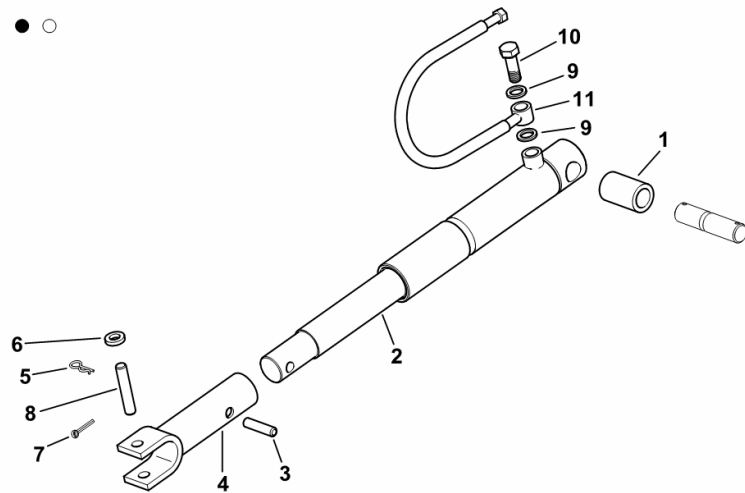
Fig.	Code	QTY	Name
------	------	-----	------

**Notes:**

BALANCE/AUTOCONTROL [5660 H COM 3 ->13900]

1	16029144	2	bushing Ø 30.5 x mm 40
2	0.016.2178.4	1	roller Ø 50 ( -> 14115 ) ☞ 0.016.2178.4
3	01157415	1	pin 16x55
4	16039911	1	fork
5	06235581	1	roll pin
6	01174923	1	washer 17
7	01106451	1	split pin 4 x 25
8	06209942	1	smau pin 11x85
9	01172949	2	'o' ring 16.7
10	01137064	1	pipe union m 16 p.1.5
11	16021812	1	tube

H9\_Z33D2\_26\_0-A-001



Section: HD - HYDRAULIC SYSTEM  
**CYLINDERS HYDRAULIC SYSTEM**

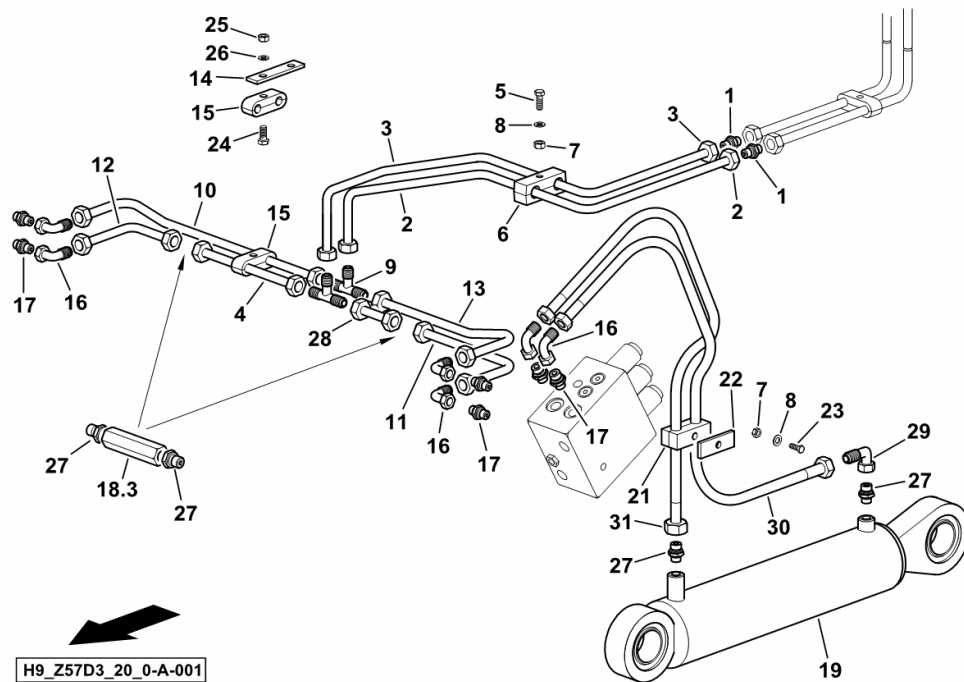


Fig.	Code	QTY	Name
<b>Notes:</b>			
BALANCE/AUTOCONTROL [5660 H COM 3 ->13900]			
1	01116711	2	tongue L 15
2	16062605	1	tube
3	16062606	1	tube
4	16056256	1	tube L = mm 350
5	01111153	1	screw m 8 x 45
6	16018347	1	hose clip Ø 15/15
7	01112824	5	nut m 8, d934
8	01102799	9	washer 8, d128
9	16025362	2	tongue TR 12/15/12
10	16056048	1	tube L = mm 951
11	16044562	1	tube L = mm 181
12	16056050	1	tube L = mm 406
13	16056052	1	tube L = mm 294
14	16025379	1	small plate
15	01141605	2	terminal Ø 12/12
16	16022056	8	pipe fitting EW 12 L
17	01143428	8	pipe fitting 12 L
18.3	16044558	2	valve
19	0.016.4068.4/20	2	roller Ø 110 0.016.4068.4/20
21	06261605	2	hose clip Ø 18/22
22	06283587	2	small plate
23	01111168	2	screw m 8 x 60
24	01111071	2	screw m 6 p.1 x 40
25	2.1011.003.2	2	nut m 6 p.1, d934
26	01102797	2	washer 6, d128
27	16025374	8	pipe fitting GE12 - 1/2"
28	06532907	1	tube L = mm 40
29	01179537	2	pipe fitting BL 12 H
30	16033330	2	flexible hose L = MM 1100 M18 X 1.5, Ø7.5
31	16033329	2	flexible hose L = MM 750 M18 X 1.5, Ø7.5

**CUTTER BAR ADJUSTMENT HYDRAULIC SYSTEM**

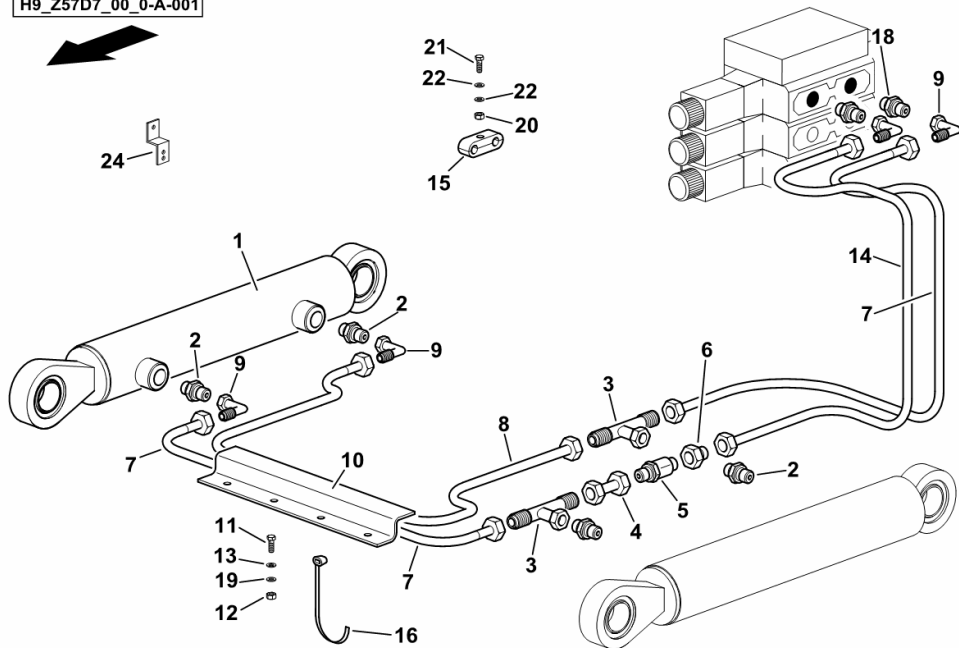
Fig.	Code	QTY	Name
------	------	-----	------

**Notes:**

AUTOCONTROL [5660 H COM 3 ->13900] BALANCE/AUTOCONTROL [5660 H COM 3 ->13900]

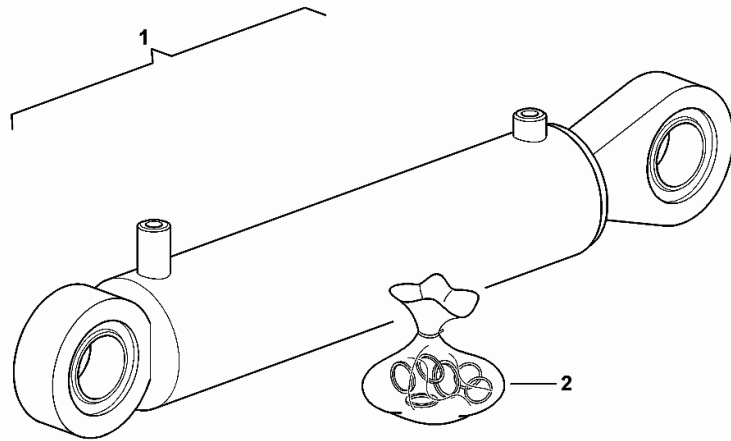
1	16029352	2	roller Ø 60 mm ☞ 16029352
2	01143418	4	tongue L8 BM
3	16040279	2	pipe fitting et8-l
4	16007541	1	tube L = mm 30
5	16029366	1	pipe fitting
6	16025285	1	reduction 12/8-PL
7	16029362	2	flexible hose L = MM 2100 M14 X 1.5, Ø4
8	16048020	1	flexible hose L = MM 2600 M14 X 1.5, Ø4
9	16040269	4	shaped part 90°
10	16044522	1	small sump
11	01129110	2	screw m 8 p.1.25 x 20
12	01112824	2	nut m 8, d934
13	01102799	2	washer 8, d128
14	16029363	1	flexible hose L = MM 2300 M14 X 1.5, Ø4
15	01141605	1	terminal Ø 12/12
16	01172065	6	clamp 4.6 x 146
18	16048019	2	pipe fitting m 18 p.1.5
19	06214192	2	washer 8.4
20	01111071	1	screw m 6 p.1 x 40
21	01112813	1	nut m 6
22	2.1474.007.2	1	washer 6, d128
24	16010148	1	bracket

H9\_Z57D7\_00\_0-A-001



**CYLINDER PARTS Ø 125**

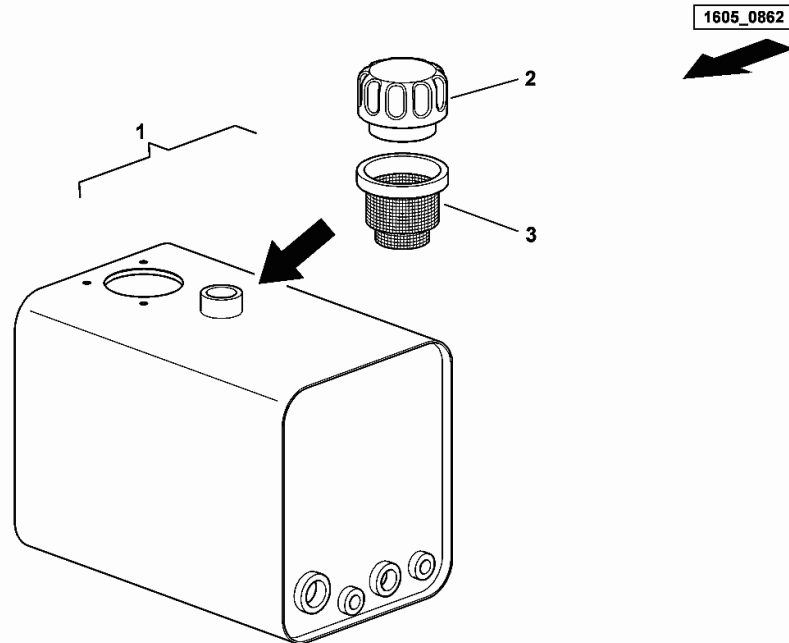
Fig.	Code	QTY	Name
1	0.016.4068.4/20	1	roller Ø 110
2	0.900.1423.2	1	gasket set



0.016.4068.4\_20

**OIL TANK - LT. 70**

Fig.	Code	QTY	Name
1	16050862	1	tank 70 lt. ( 2, 3 )
2	16035950	1	plug
3	16039229	1	small mesh



Section: HD - HYDRAULIC SYSTEM  
**LUBRIC. OIL COOLER**

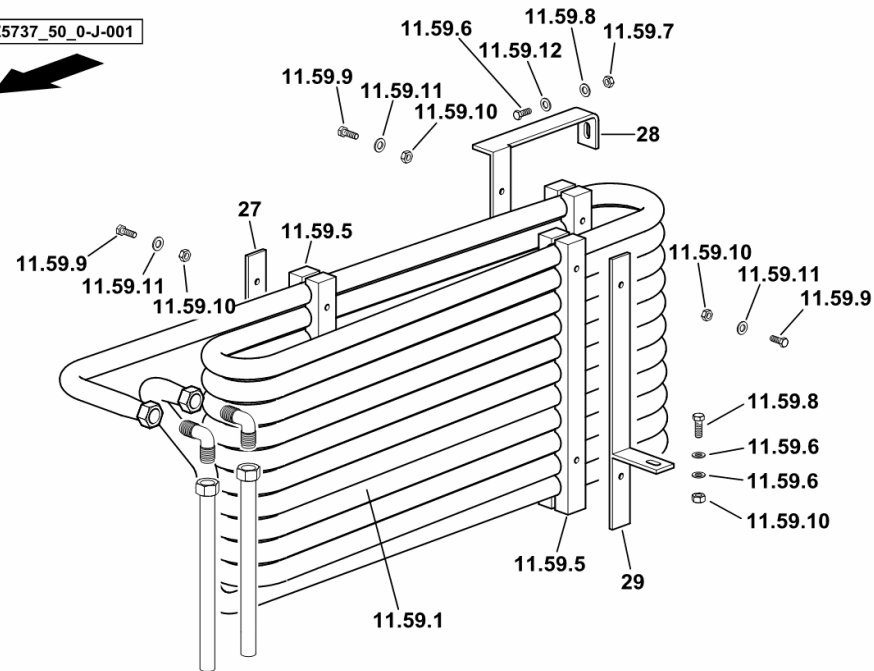
Fig.	Code	QTY	Name
------	------	-----	------

**Notes:**

BALANCE/AUTOCONTROL [5660 H COM 3 ->13900]

11.59.1	06257261	1	oil cooler
11.59.5	06258654	6	terminal
11.59.6	01112333	3	screw m 8 x 25, d933
11.59.7	01112824	3	nut m 8, d934
11.59.8	01102799	3	washer 8, d128
11.59.9	01126975	6	screw m 6 x 70, d931
11.59.10	01114357	6	nut m 6, d985
11.59.11	06214189	12	washer 6.4
11.59.12	06214355	3	washer 8.4
27	16062648	1	support
28	16062649	1	support
29	16062650	1	support

H9\_Z5737\_50\_0-J-001



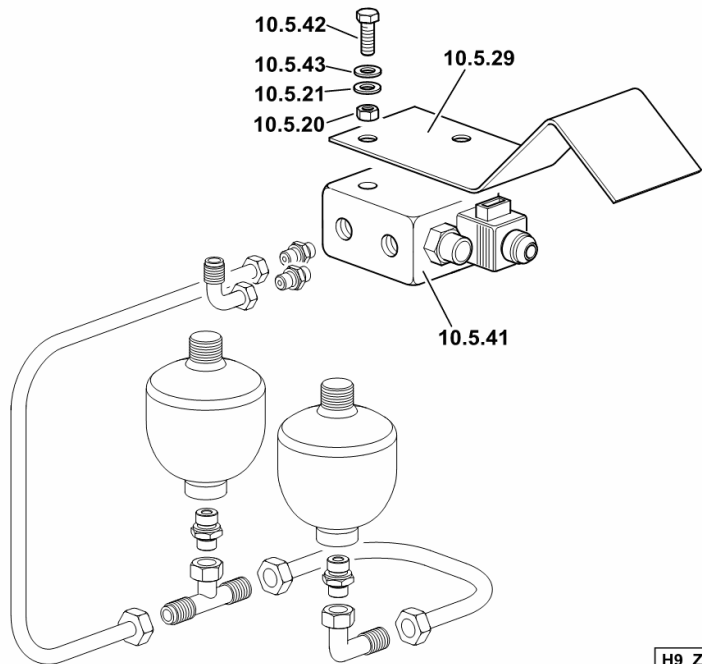
**SOLENOID VALVE**

Fig.	Code	QTY	Name
------	------	-----	------

**Notes:**

BALANCE/AUTOCONTROL [5660 H COM 3 ->13900]

10.5.20	01112813	3	nut m 6
10.5.21	01102797	3	washer 6, d128
10.5.29	16029762	1	small sump
10.5.41	16012861	1	small block ( EV ) ☞ 16012861
10.5.42	01126975	2	screw m 6 x 70, d931
10.5.43	01102797	2	washer 6, d128

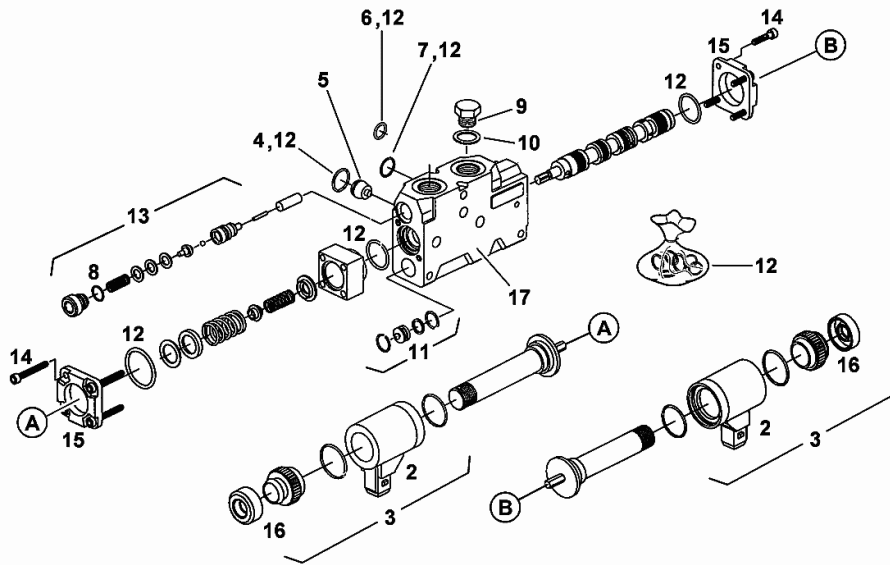


H9\_Z5737\_50\_0-L-001

**SOLENOID VALVE**

Fig.	Code	QTY	Name
2	16039213	2	magneto
3	16039247	2	parts set
4	04386278	1	ring 18x2,5
5	04418197	1	valve
6	16020331	1	ring 9x2,5
7	16020332	4	ring 17x2,5
8	16020346	2	ring 13x2,5
9	0.000.0000.1	0	not serviceable
10	0.000.0000.1	0	not serviceable
11	16039216	1	parts set
12	16039215	1	gasket set
13	16039217	1	parts set
14	01126909	8	screw m 4 x 8
15	04438454	2	flange
16	04438443	2	rubber
17	0.000.0000.1	0	not serviceable

1603\_3531



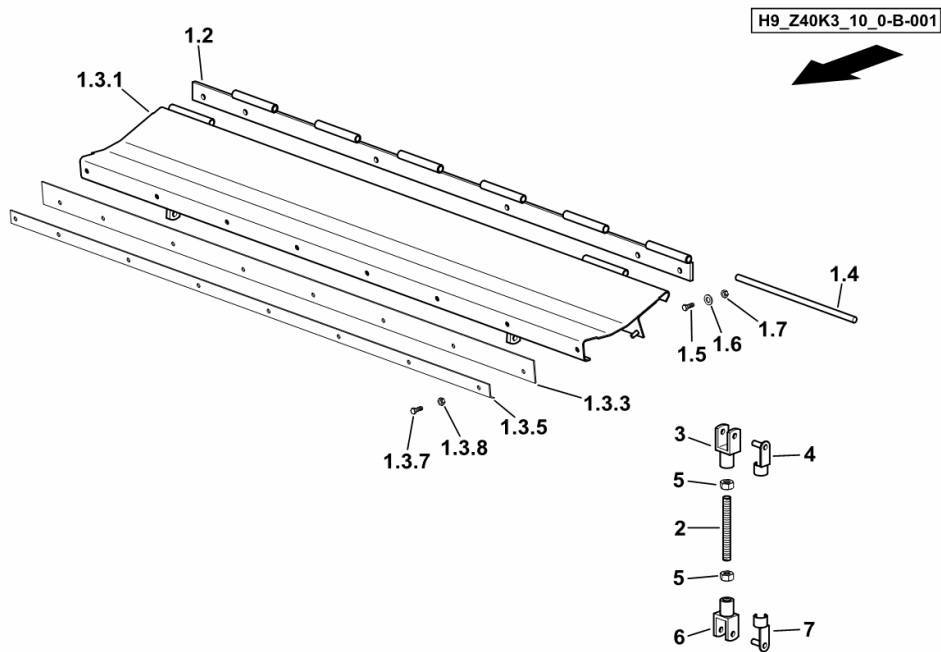
Section: HK - THRESHING UNIT  
**STONE TRAP**

Fig.	Code	QTY	Name
------	------	-----	------

**Notes:**

- MAIZE EQUIPMENT [5660 H COM 3 ->13900]

1.2	16005292	1	hinge
1.3.1	16048489	1	lamination
1.3.3	16040594	1	guard
1.3.5	16040593	1	lamination
1.3.7	01112322	7	screw m 8 p.1.25 x 20
1.3.8	01104944	7	nut m 8, d985
1.4	16005294	1	pin Ø 11 / L = mm 1252
1.5	01112429	4	screw m 10 x 30, d933
1.6	01107165	4	washer 10.5
1.7	06209768	4	nut m 10, d985
2	16040595/10	2	stud bolt m 12 / L = mm 200
3	01120919	2	fork head
4	01164624	2	smau pin 12 x 24
5	01112858	4	nut m 12, d934
6	01120923	2	fork head
7	06215265	2	smau pin 12 x 48



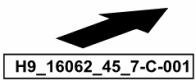
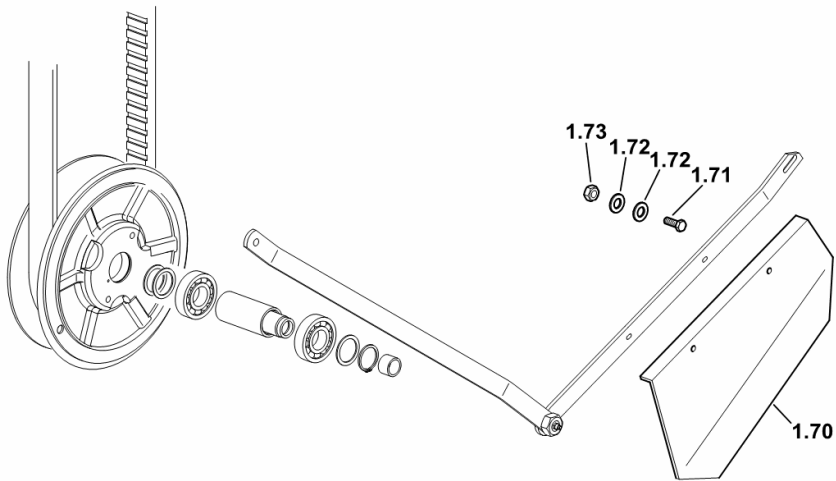
**GUARD PLATE**

Fig.	Code	QTY	Name
------	------	-----	------

**Notes:**

[5660 H COM 3 ->13900]

1.70	16042454	1	sump
1.71	01112322	2	screw m 8 p.1.25 x 20
1.72	01107163	2	washer 9, d126
1.73	01104944	2	nut m 8, d985



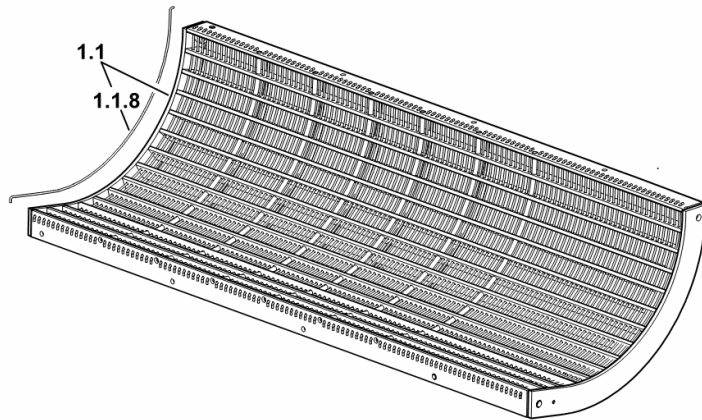
Section: HK - THRESHING UNIT  
**CONCAVE**

Fig.	Code	QTY	Name
------	------	-----	------

**Notes:**

- MAIZE EQUIPMENT [5660 H COM 3 ->13900]

1.1	0.016.0217.3	1	threshing basket
1.1.8	06533821	38	rail Ø8 / mm 658



H9\_Z40K3\_10\_0-A-001

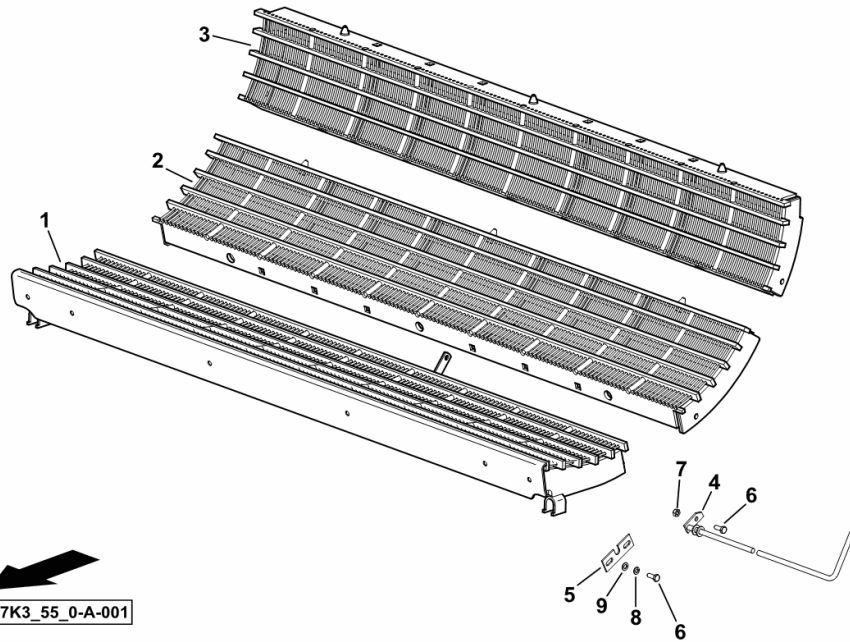
**MULTI-SEGMENT CONCAVE T11 - T14 - T28**

Fig.	Code	QTY	Name
------	------	-----	------

**Notes:**

[5660 H COM 3 ->13900]

1	0.015.9872.4/20	1	grille # 1
2	0.015.7730.3/10	1	threshing basket # 2
3	16056495/10	1	threshing basket # 3
4	0.015.5653.3	1	rod
5	0.015.5587.0	1	lamination
6	01112322	3	screw m 8 p.1.25 x 20
7	01104944	1	nut m 8, d985
8	01102799	2	washer 8, d128
9	01107163	2	washer 9, d126



H9\_Z57K3\_55\_0-A-001

CLICK HERE TO **DOWNLOAD** THE COMPLETE MANUAL

- Thank you very much for reading the preview of the manual.
- You can download the complete manual from: [www.heydownloads.com](http://www.heydownloads.com) by clicking the link below



- Please note: If there is no response to CLICKING the link, please download this PDF first and then click on it.

CLICK HERE TO **DOWNLOAD** THE COMPLETE MANUAL