



**6550, 6555, 6600, 6610,
6650 and 6655
Self-Propelled
Windrowers**

Parts Catalog

73253559

Reprinted

CLICK HERE TO **DOWNLOAD** THE COMPLETE MANUAL

- Thank you very much for reading the preview of the manual.
- You can download the complete manual from: www.heydownloads.com by clicking the link below



- Please note: If there is no response to CLICKING the link, please download this PDF first and then click on it.

CLICK HERE TO **DOWNLOAD** THE COMPLETE MANUAL

NOTICE

The right is reserved to change the construction or material of any parts where it seems desirable to do so without incurring the obligation of installing such changes on units already delivered.

Additional publications pertaining to this model and to all other FIATALLIS products are available through FIATALLIS dealers. Publications are generally available in several languages.

Refer to Service Publications Index form 604.07.026 for all such publications; the index is available from FIATALLIS dealers.

INSTRUCTIONS FOR ORDERING PARTS

At the time of this parts catalog was published the listed part numbers were current. It is our policy to constantly improve our machines and therefore, part numbers and design may change.

When ordering parts, verify part numbers through your dealer who has the latest parts information.

ORDER PARTS FROM THE DEALER COVERING THE LOCAL TERRITORY

Orders for spare parts must include the following data (see page 4):

- Model, Serial Number (Product Code and Unit Number), Engine model, Engine serial number (marked on engine block).
- Specify the part number (shown on Spare Parts Catalog list,) possibly completed by its description. If parts refer to an assembly which has a model or serial number, also include this information.
- Give post office address, town, county and state where parts are to be shipped.
- Also specify whether material is to be shipped by freight, express or parcel post, by surface or by air.
- Confirm all telephone or telegraph orders in writing.

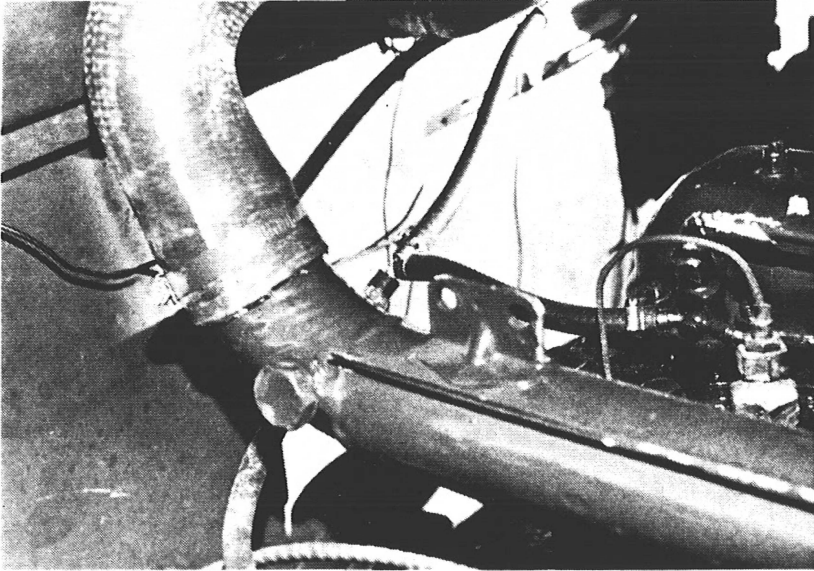
Parts can only be returned to/through the dealer from whom the parts were purchased and must have prior written authorization. Each return will be treated individually.

Unless claims for shortages or errors are made immediately upon receipt of goods, they will not be considered.

When damaged goods are received, a full description of the damage should be made by the carrier agent on the freight bill.

FIATALLIS responsibility is limited, and ceases upon completion of sale conditions provided for each delivery.

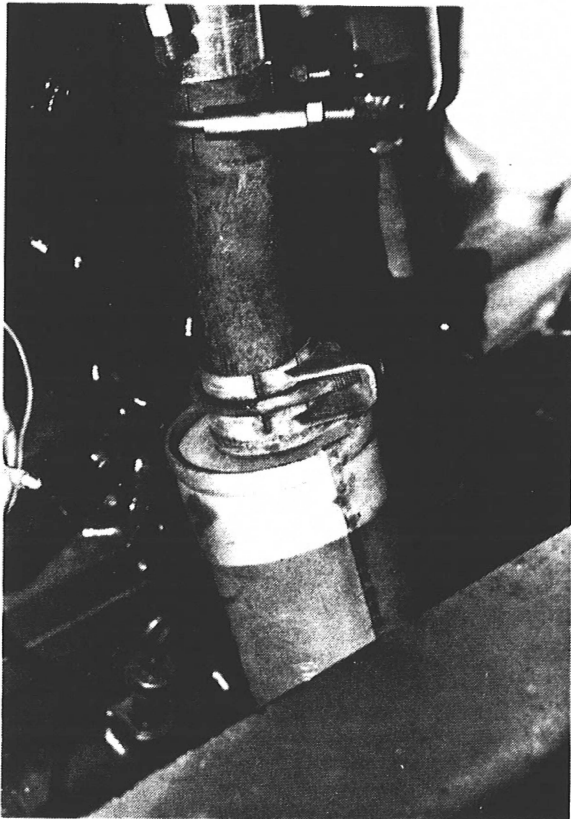
The Iveco F.I.P. does have a manual F.I.P. shut-off control lever; however, the Perkins manual fuel shut off cable need not be used with the improved Iveco electrical shut-off.



Fuel return lines
with tee.

Engine water
temperature gauge
connection.

Air inlet hose



Exhaust stack and muffler.

INDEX

- Aufstellung der Motoren
- Gültigkeit der Tafeln Grundmotor
- Tafeln Grundmotor
- Spezifische Anwendungen
- Gültigkeit der Tafeln Spezifische Anwendungen
- Tafeln Spezifische Anwendungen

NACHSCHLAGEN DES KATALOGES

— ERMITTLUNG DER ERSATZTEILE

Zur korrekten Ermittlung der im Katalog aufgeführten Ersatzteile muss man:

- die "Aufstellung der Motoren" (Seite 1) zur Ermittlung der AIFO Abkürzung des Motors, dessen Ersatzteile man benötigt, nachschlagen;
- die "Gültigkeit der Tafeln" nachschlagen, um in der dem Motor /Spezifische Anwendungen zugeordnete Spalte die entsprechende Tafel zu ermitteln.

— TAFELN

Jede Tafel nimmt zwei Seite ein. Rechte und Seite.

- RECHTE SEITE mit einer Explosionsansicht der Teile mit den entsprechenden Bezugsnummern (ITEMS);
- LUNKE SEITE mit einer Tabelle, in welcher die Bestellnummern der Teile sowie deren Menge für Zylinderzahl und deren Bezeichnung in fünf Sprachen aufgeführt sind.

Zur besseren Bezeichnung sind bei einigen Teilen neben der englischen Übersetzung (in Klammer) einige Zeichen und Abkürzungen aufgeführt, deren Bedeutung unter Punkt 3 näher erläutert wird.

ANLEITUNGEN ZUR ERSATZTEILBESTELLUNG

Ersatzteilbestellungen werden nur dann ausgeliefert, wenn sie nachstehend aufgeführte Angaben aufweisen:

- a) Motortyp und Fabrikationsnummer
- b) Nummer der Tafeln
- c) Bestellnummer und Menge (wie in den Tafeln und Ersatzteillisten aufgeführt) der gewünschten Teile.

Die Bestellungen sind an folgende Adressen zu richten:

- Magazzino centrale ricambi - Spare parts central warehouse
20010 Pregnana Milanese, Italy
tel. 93291201/2/3/4/5 - telex 311531 AIFO I
- IVECO UK LTD. DIESEL ENGINES
Road Five - Industrial Estate
Winsford CHESHIRE - CW7 3QP
tel. 6065/57595 - telex 665823 IVECOZ G
- IVECO AIFO FRANCE
Rue Ampère - CHASSIEU 69680
tel. 7/8901715 - telex 900873 F AIFO
- IVECO DIESELMOTOREN GMBH
Benzstrasse 1 - (Fiat Allis haus) - D-7100 Heilbronn
tel. 07131/106300 - telex 728960
- IVECO SWEDEN AB DIESEL MOTORER
Verkstandsvägen 2 - 43600 ASKIM
tel. 031/289700 - telex 2494 IVECO S

oder an das autorisierte AIFO — Verkaufnetz (die neueste Aufstellung anfordern).

— 9 —

BEZEICHNUNGEN UND ABKÜRZUNGEN IM KATALOG

MP	Ampère
R	gemäss Anfrage
SSY	Aggregat
SSY ALTERNATIVE USE	Aggregat in Alternative
OTTOM	unten
CM	Kubikzentimeter
DM	Kubikdezimeter
I. UP EN. Nr ...	bis Motor Nr... (für Teile vor der Änderung)
I. FR. EN. Nr	ab Motor Nr ... (für Teile nach der Änderung)
RONT	vorne
IEAR	Zahnrad
IK	Dichtungssatz
IR.	Ausgleichmassen
NNER	innen
IT	Satz Teile
EFT	links
AETER	meterweise
MIDDLE	zwischenliegend
MM	Millimeter
M 12x1.25x30	Schraubengewinde
M 12x1.25	Muttern
NOT ILL.	nicht abgebildet
PT.	Optional, Variante
MUTER	aussen

R = 1 :	Untersetzungsverhältnis 1 :
REAR	hinten
REV. GEAR	Umkehrrad
RIGHT	rechts
R. KIT	Satz Reparaturteile
SEE ITEM	siehe Abbildung
SEE PL.	siehe Tafel/Text
SP	Stärke
TO N.	Verweisung
TOP	oben
Z	Zähnezahl
+	Erhöhung (plus)
—	Verringerung (minus)

— 10 —

TABLES

TAVOLE

TABLES

TABELLEN

TABLAS

CLICK HERE TO **DOWNLOAD** THE COMPLETE MANUAL

- Thank you very much for reading the preview of the manual.
- You can download the complete manual from: www.heydownloads.com by clicking the link below

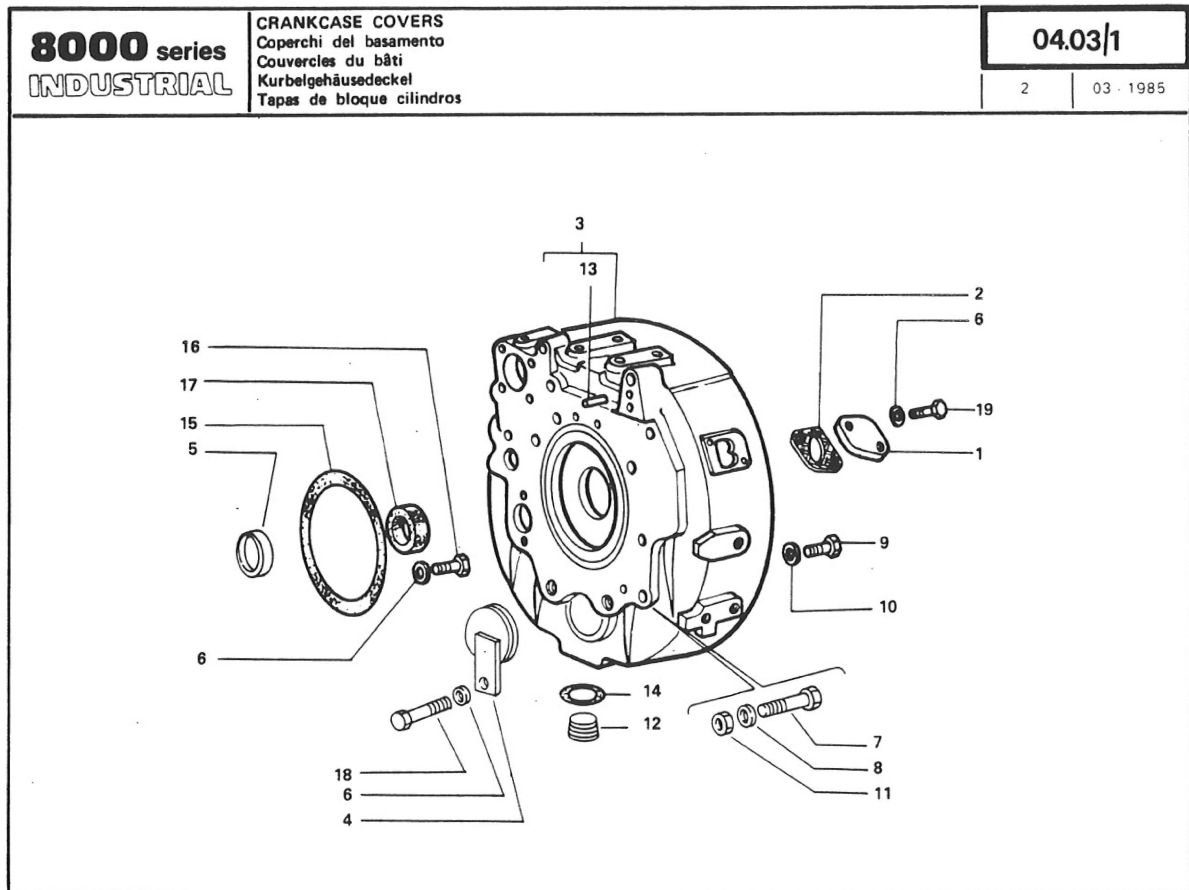


- Please note: If there is no response to CLICKING the link, please download this PDF first and then click on it.

CLICK HERE TO **DOWNLOAD** THE COMPLETE MANUAL

ITEM	PART NUMBER	CYL./QUANTITY			DESCRIPTION	DENOMINAZIONE	DESIGNATION	BENENNUNG	DENOMINACIONES
		3	4	5					
		8000 Series-3-4-5 cylinders-industrial engines							
		03 - 1985							
		04.03/1							
1	4607786		1		COVER	COPERCHIO	COUVERCLE	DECKEL	TAPA
2	4605564		1		GASKET	GUARNIZIONE	JOINT	DICHTUNG	JUNTA
3	4784723		1		SUPPORT (ASSY REAR)	SUPPORTO	SUPPORT	LAGER	SOPORTE
4	4718740		1		PLUG (ASSY)	TAPPO	BOUCHON	STOPFEN	TAPON
5	4787154		1		RING	ANELLO	BAGUE	RING	ANILLO
6	11193871		11		LOCKWASHER	ROSETTA DI SICUREZZA	RONDELLE FREIN	SICHERUNGSRING	ARANDELA DE FRENO
7	11408321		2		SCREW (M14x1,5x35)	VITE	VIS	SCHRAUBE	TORNILLO
8	11200171		4		WASHER	ROSETTA	RONDELLE	SCHEIBE	ARANDELA
9	11306921		4		SCREW (M10x1 25x30)	VITE	VIS	SCHRAUBE	TORNILLO
10	11198371		4		LOCKWASHER	ROSETTA DI SICUREZZA	RONDELLE FREIN	SICHERUNGSRING	ARANDELA DE FRENO
11	12164011		2		NUT	DADO	ECROU	MUTTER	TUERCA
12	14325601		1		PLUG	TAPPO	BOUCHON	STOPFEN	TAPON
13	10839710		1		DOWEL	GRANO	ERGOT	PASSTIFT	PITON
14	14463880		1		SEAL	ANELLO DI TENUTA	JOINT D'ETANCHEITE	DICHTRING	JUNTA HERMETICA
15	14483080		1		SEAL	ANELLO DI TENUTA	JOINT D'ETANCHEITE	DICHTRING	JUNTA HERMETICA
16	16043921		2		SCREW (M8x35)	VITE	VIS	SCHRAUBE	TORNILLO
17	40003800		1		GASKET (REAR)	GUARNIZIONE	JOINT	DICHTUNG	JUNTA
18	16043221		1		SCREW (M8x16)	VITE	VIS	SCHRAUBE	TORNILLO
19	16043421		2		SCREW (M8x20)	VITE	VIS	SCHRAUBE	TORNILLO

2/2



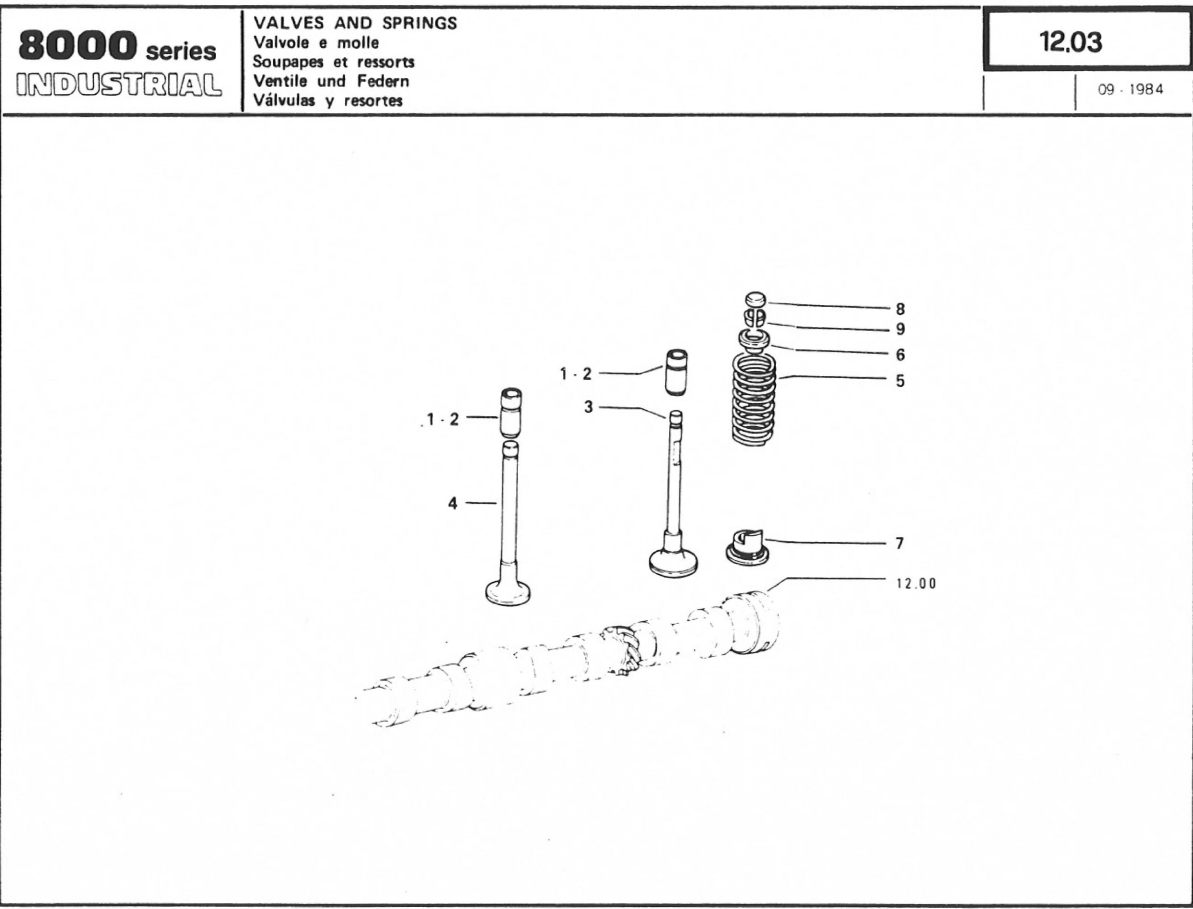
ITEM	PART NUMBER	CYL./QUANTITY			8000 Series : 3-4-5 cylinders - industrial engines		03 - 1985		08.00	
		3	4	5	DESCRIPTION	DENOMINAZIONE	DESIGNATION	BENENNUNG	DENOMINACIONES	
30	1901387	1	1	1	THRUST RING SET (+0.254)	SERIE ANELLI DI SPALLAMENTO	JEU CALE LATERAL	ANLAUFRINGSATZ	JUEGO DE SEMIANILLOS	
31	1901388	1	1	1	THRUST RING SET (+0.508)	SERIE ANELLI DI SPALLAMENTO	JEU CALE LATERAL	ANLAUFRINGSATZ	JUEGO DE SEMIANILLOS	
32	14328101	3	4	5	PLUG	TAPPO	BOUCHON	STOPFEN	TAPON	

2/2

8000 series INDUSTRIAL		CRANKSHAFT Albero motore Vilebrequin Kurbelwelle Cigüeñal	08.00	
			2	09 - 1984

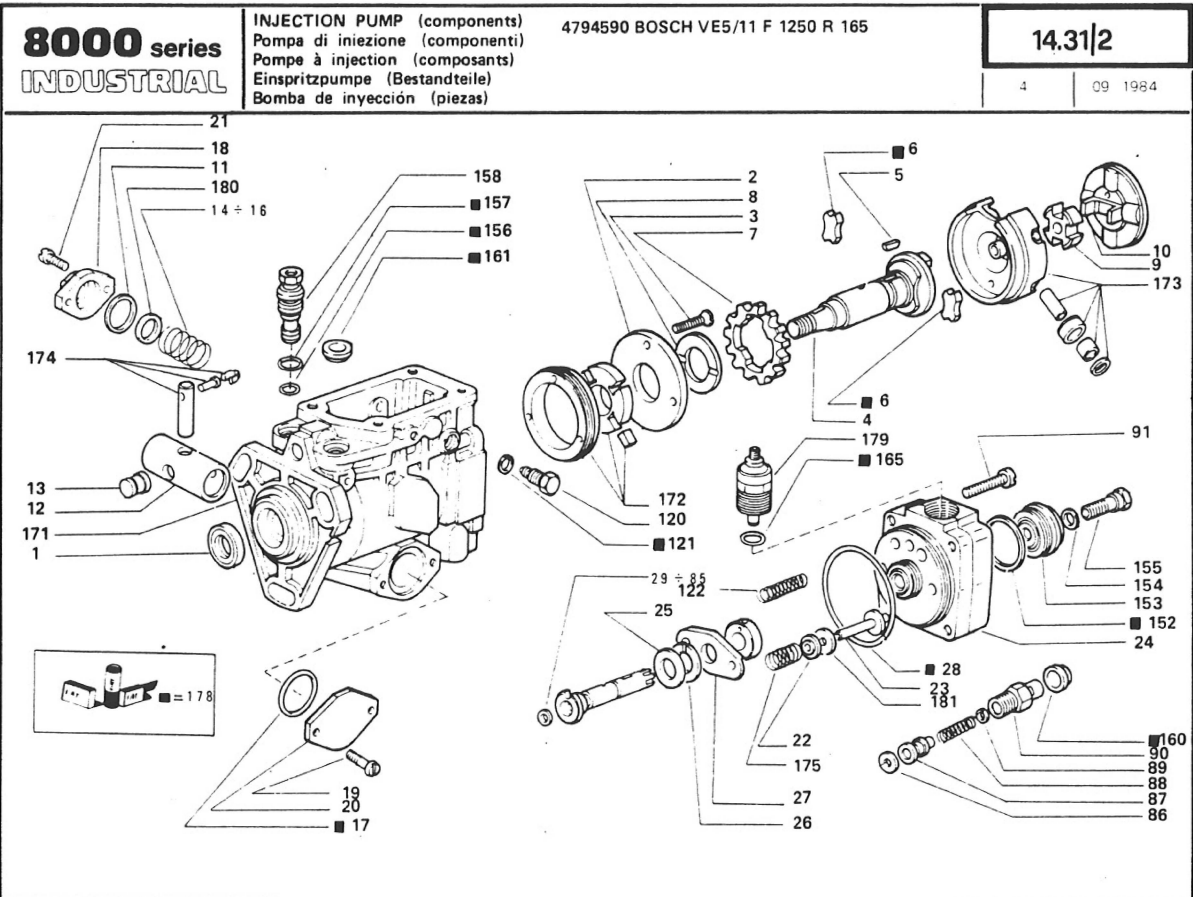
The image contains technical drawings of a crankshaft assembly. The main drawing shows the crankshaft with various components labeled with part numbers: 1, 2, 3, 4, 10 ÷ 14, 15 ÷ 18, 19 ÷ 22, 23 ÷ 27, 28 ÷ 31, 32, and 5 ÷ 9. Two inset drawings show the crankshaft with a single ring (23 ÷ 27) and two rings (28 ÷ 31) respectively.

ITEM	PART NUMBER	CYL./QUANTITY			DESCRIPTION	DENOMINAZIONE	DESIGNATION	BENENNUNG	DENOMINACIONES
		3	4	5					
8000 Series : 3-4-5 cylinders - industrial engines 09 - 1984									
								12.03	
1	4648421	6	8	10	VALVE GUIDE (+0.0)	GUIDA DELLA VALVOLA	GUIDE SOUPAPE	VENTILFUEHRUNG	GUIA DE VALVULA
2	4648422	6	8	10	VALVE GUIDE (+0.2)	GUIDA DELLA VALVOLA	GUIDE SOUPAPE	VENTILFUEHRUNG	GUIA DE VALVULA
3	4784888	3	4	5	INTAKE VALVE	VALVOLA DI ASPIRAZIONE	SOUPAPE D'ADMISSION	EINLASSVENTIL	VALVULA DE ADMISION
4	4784889	3	4	5	EXHAUST VALVE	VALVOLA DI SCARICO	SOUPAPE D'ECHAPPEMENT	AUSLASSVENTIL	VALVULA DE ESCAPE
5	4780108	6	8	10	SPRING	MOLLA	RESSORT	FEDER	RESORTE
6	4780558	6	8	10	CUP (TOP)	SCODELLINO	CUVETTE	TELLERSCHEIBE	PLATILLO
7	4780559	6	8	10	CUP (BOTTOM)	SCODELLINO	CUVETTE	TELLERSCHEIBE	PLATILLO
8	4625173	6	8	10	BOOT	CAPPUCCIO	CAPUCHON	SCHUTZKAPPE	CAPUCHON
9	14196670	12	16	20	LOCK CONE	SEMICONO	DEMI-CONE	KEGELSTUECK	CHAVETA CONICA



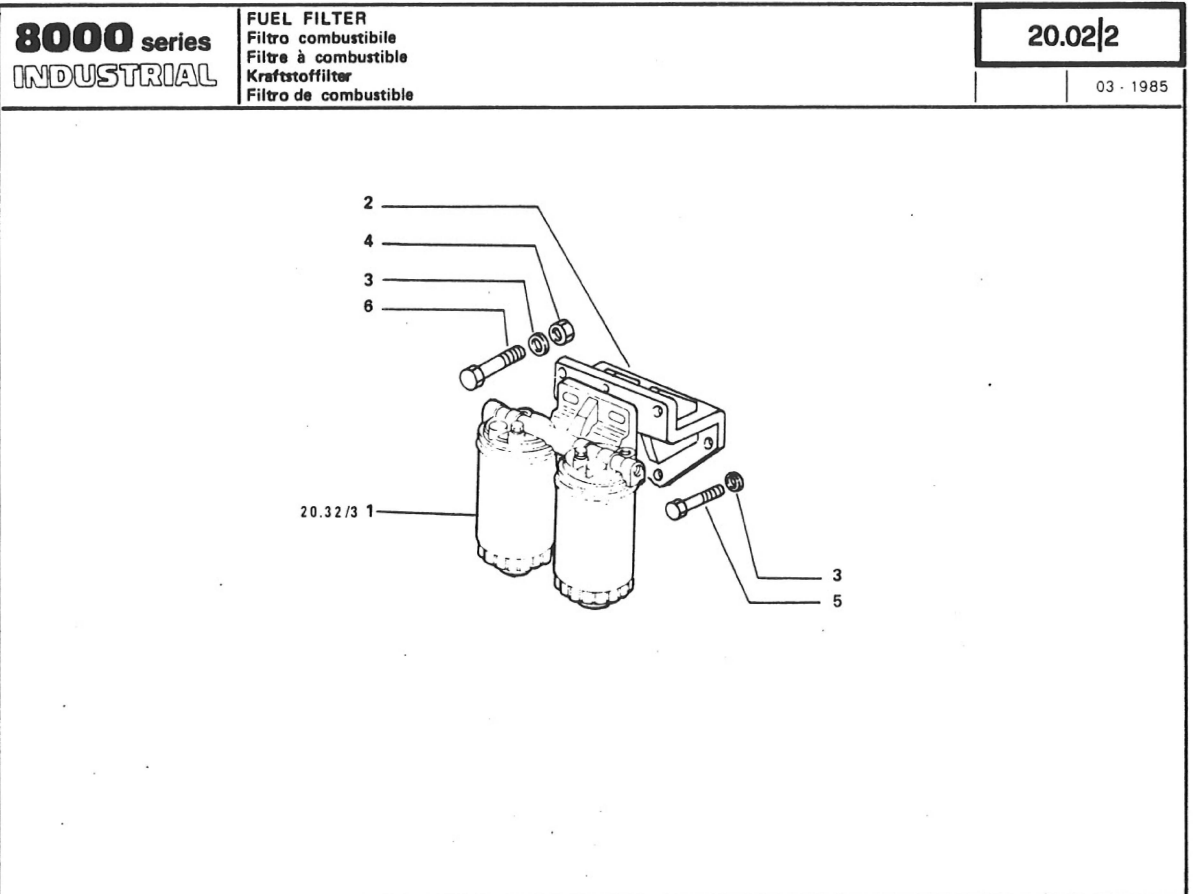
ITEM	PART NUMBER	CYL./QUANT.			DESCRIPTION	DENOMINAZIONE	DESIGNATION	BENENNUNG	DENOMINACIONES
		3	4	5					
					8000 Series : 3-4-5 cylinders- industrial engines		09 - 1984		14.31/2
106	BO 1463400301			1	PIN	PERNO	AXE	BOLZEN	EJE
107	BO 1460206303			1	GASKET	ROSETTA DI TENUTA	JOINT D'ETANCHEITE	DICHTRING	JUNTA HERMETICA
108	BO 1463161366			1	SHAFT	ALBERINO	ARBRE	WELLE	ARBOL
109	BO 1200101640			1	WASHER	ROSETTA	RONDELLE	SCHEIBE	ARANDELA
110	BO 1461902749			1	LEVER	LEVA	LEVIER	HEBEL	PALANCA
111	BO 2916899083			1	LOCKWASHER	ROSETTA DI SICUREZZA	RONDELLE FREIN	SICHERUNGSRING	ARANDELA DE FRENO
112	BO 2915011007			1	NUT	DADO	ECROU	MUTTER	TUERCA
113	BO 2916012015			1	WASHER	ROSETTA	RONDELLE	SCHEIBE	ARANDELA
114	BO 1463626346			1	PIN	PERNO	AXE	BOLZEN	EJE
115	BO 2915041001			1	NUT	DADO	ECROU	MUTTER	TUERCA
116	BO 1900210001			1	GASKET	ROSETTA DI TENUTA	JOINT D'ETANCHEITE	DICHTRING	JUNTA HERMETICA
117	BO 1460410302			1	SPACER	DISTANZIALE	ENTRETOISE	ABSTANDSTUECK	SEPARADOR
118	BO 1461902751			1	LEVER	LEVA	LEVIER	HEBEL	PALANCA
119	BO 2916012017			1	WASHER	ROSETTA	RONDELLE	SCHEIBE	ARANDELA
120	BO 1463452313			2	SCREW	VITE	VIS	SCHRAUBE	TORNILLO
121	BO 1460105304			2	GASKET	ROSETTA DI TENUTA	JOINT D'ETANCHEITE	DICHTRING	JUNTA HERMETICA
122	BO 1464613301			2	SPRING	MOLLA	RESSORT	FEDER	RESORTE
123	BO 1463300304			1	NUT	DADO	ECROU	MUTTER	TUERCA
124	BO 1463590311			1	PIN	PERNO	AXE	BOLZEN	EJE
125	BO 1900210104			1	SEAL	ANELLO DI TENUTA	JOINT D'ETANCHEITE	DICHTRING	JUNTA HERMETICA
126	BO 1460100329			-	WASHER (MM 1,40)	ROSETTA	RONDELLE	SCHEIBE	ARANDELA
127	BO 1460100338			-	WASHER (MM 1,30)	ROSETTA	RONDELLE	SCHEIBE	ARANDELA
128	BO 1460100339			-	WASHER (MM 1,35)	ROSETTA	RONDELLE	SCHEIBE	ARANDELA
129	BO 1466317319			1	REGULATOR	GRUPPO DI REGOLAZIONE	GROUPE DE REGULATEUR	REGLERGRUPPE	REGULADOR
130	BO 1460100366			1	WASHER	ROSETTA	RONDELLE	SCHEIBE	ARANDELA
131	BO 1460422324			1	ADJUSTMENT SLEEVE	MANICOTTO DI REGOLAZIONE	MANCHON DE REGLAGE	SPANNSCHLOSS	TUERCA DE REGLAJE
132	BO 1460508302			1	BOOT	CAPPUCCIO	CAPUCHON	SCHUTZKAPPE	CAPUCHON
133	BO 1463203905			1	PLUG	TAPPO	BOUCHON	STOPFEN	TAPON
134	BO 1463203346			1	PLUG (MM 7,60)	TAPPO	BOUCHON	STOPFEN	TAPON
135	BO 1463203347			1	PLUG (MM 7,80)	TAPPO	BOUCHON	STOPFEN	TAPON
136	BO 1463203348			1	PLUG (MM 8,00)	TAPPO	BOUCHON	STOPFEN	TAPON
137	BO 1463203349			1	PLUG (MM 8,20)	TAPPO	BOUCHON	STOPFEN	TAPON
138	BO 1463203350			1	PLUG (MM 8,40)	TAPPO	BOUCHON	STOPFEN	TAPON
139	BO 1463203351			1	PLUG (MM 8,60)	TAPPO	BOUCHON	STOPFEN	TAPON

4/



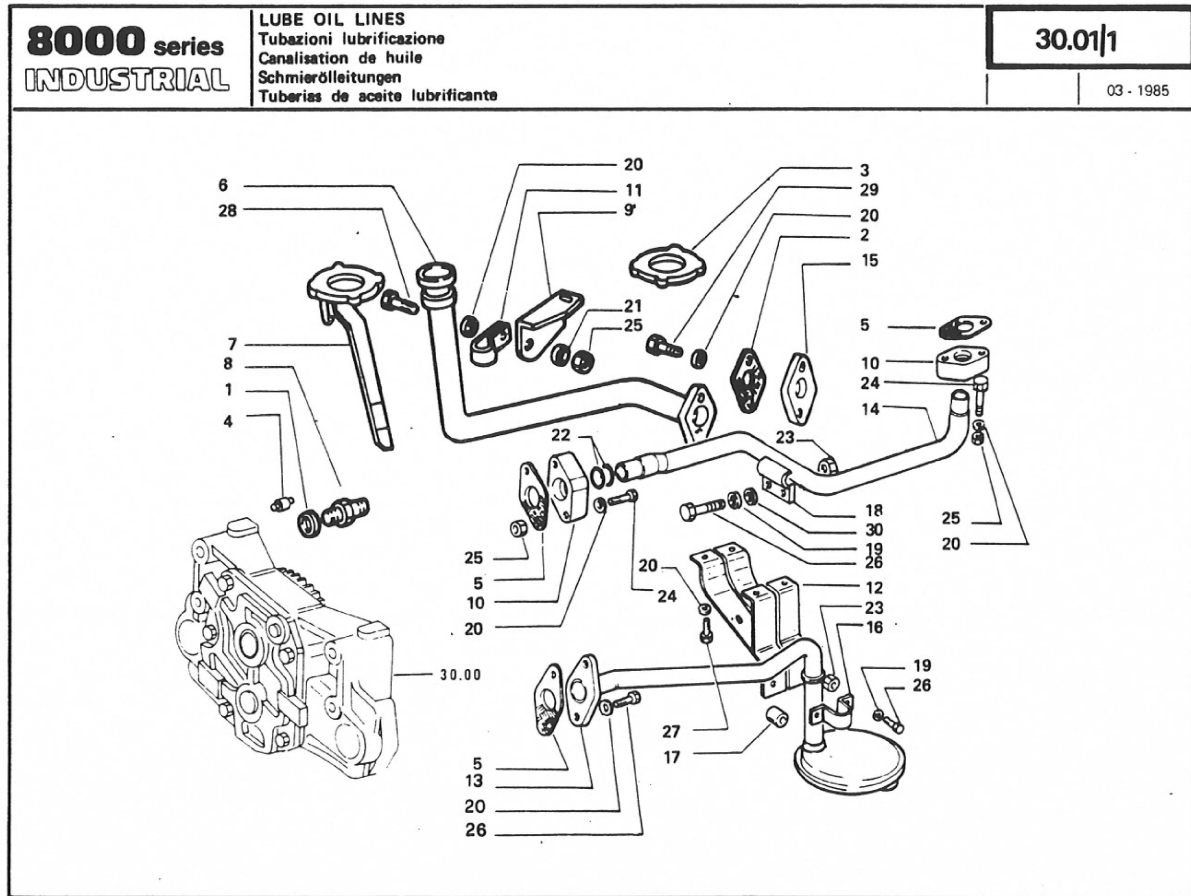
ITEM	PART NUMBER	CYL./QUANTITY			8000 Series : 3 4 5 cylinders-industrial engines		03 - 1985		20.02/2	
		3	4	5	DESCRIPTION	DENOMINAZIONE	DESIGNATION	BENENNUNG	DENOMINACIONES	
1	4764723			1	FUEL FILTER (ASSY-BOSCH)	FILTRO COMBUSTIBILE	FILTRE A COMBUSTIBLE	KRAFTSTOFFILTER	FILTRO DE COMBUSTIBLE	
2	4800456			1	SUPPORT	SUPPORTO	SUPPORT	LAGER	SOPORTE	
3	11190571			5	LOCKWASHER	ROSETTA DI SICUREZZA	RONDELLE FREIN	SICHERUNGSRING	ARANDELA DE FRENO	
4	12164711			2	NUT	DADO	ECROU	MUTTER	TUERCA	
5	15970721			3	SCREW (M10x1,25x25)	VITE	VIS	SCHRAUBE	TORNILLO	
6	15971921			2	SCREW (M10x1,25x35)	VITE	VIS	SCHRAUBE	TORNILLO	

1/1



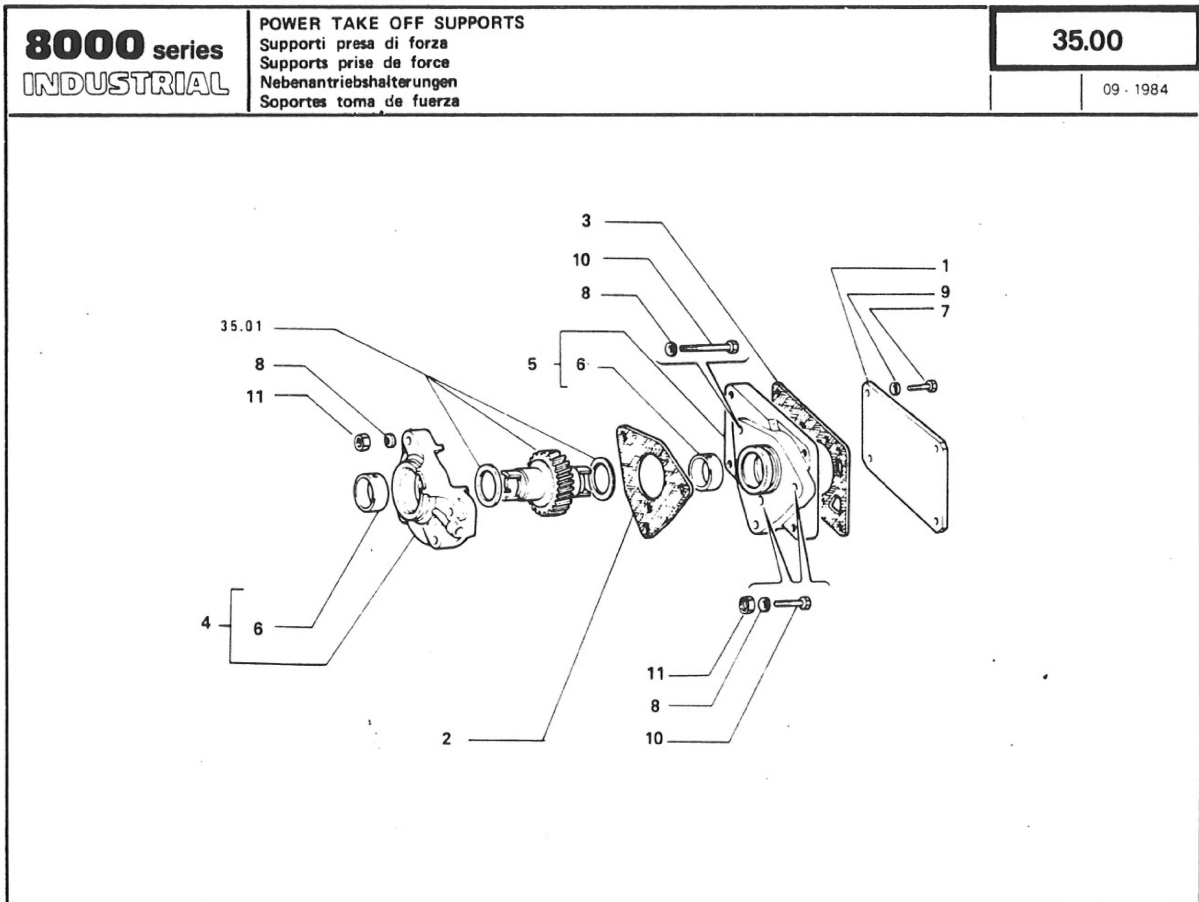
ITEM	PART NUMBER	CYL./QUANTITY			8000 Series : 3.4-5 cylinders - industrial engines		03 - 1985		30.01/1	
		3	4	5	DESCRIPTION	DENOMINAZIONE	DESIGNATION	BENENNUNG	DENOMINACIONES	
1	561293			1	SEAL	ANELLO DI TENUTA	JOINT D'ETANCHEITE	DICHTRING	JUNTA HERMETICA	
2	599777			2	GASKET	GUARNIZIONE	JOINT	DICHTUNG	JUNTA	
3	4232606			1	PLUG	TAPPO	BOUCHON	STOPFEN	TAPON	
4	4605220			1	JET	UGELLO	GICLÉUR	DUESE	BOQUILLA	
5	4617482			3	GASKET	GUARNIZIONE	JOINT	DICHTUNG	JUNTA	
6	4753137			1	PIPE	TUBO	TUYAU	ROHR	TUBO	
7	4753139			1	LEVEL ROD (ASSY)	ASTA LIVELLO	JAUGE DE NIVEAU	MESSTAB	VARILLA DE NIVEL	
8	4785501			1	UNION	BOCCHETTONE	VIS-RACCORD	HOHLSCHRAUBE	BOQUILLA	
9	4753141			1	RETAINER	STAFFETTA	COLLIER	HALTER	ABRAZADERA	
10	4773265			2	CONNECTION	RACCORDO	RACCORD	STÜTZEN	RACOR	
11	4731200			1	COLLAR	COLLARE	COLLIER	SCELLE	ABRAZADERA	
12	4739213			1	BRACKET	STAFFA	ETRIER	HALTER	SOPORTE	
13	4783913			1	PIPE (ASSY)	TUBO	TUYAU	ROHR	TUBO	
14	4777673			1	PIPE	TUBO	TUYAU	ROHR	TUBO	
15	4764745			1	COVER	COPERCHIO	COUVERCLE	DECKEL	TAPA	
16	4719705			1	RETAINER	STAFFETTA	COLLIER	HALTER	ABRAZADERA	
17	4719706			1	PIPE	TUBETTO	TUYAU	ROHR	TUBO	
18	4777690			1	COLLAR	COLLARE	COLLIER	SCELLE	ABRAZADERA	
19	10519601			4	WASHER	ROSETTA	RONDELLE	SCHLEIBE	ARANDELA	
20	11193871			15	LOCKWASHER	ROSETTA DI SICUREZZA	RONDELLE FREIN	SICHERUNGSRING	ARANDELA DE FRENO	
21	12646701			2	WASHER	ROSETTA	RONDELLE	SCHLEIBE	ARANDELA	
22	14457681			4	SEAL	ANELLO DI TENUTA	JOINT D'ETANCHEITE	DICHTRING	JUNTA HERMETICA	
23	14048217			4	NUT	DADO	ECROU	MUTTER	TUERCA	
24	16043921			2	SCREW (M8x35)	VITE	VIS	SCHRAUBE	TORNILLO	
25	16100811			3	NUT	DADO	ECROU	MUTTER	TUERCA	
26	16043421			6	SCREW (M8x20)	VITE	VIS	SCHRAUBE	TORNILLO	
27	16043221			4	SCREW (M8x16)	VITE	VIS	SCHRAUBE	TORNILLO	
28	16043621			3	SCREW (M8x25)	VITE	VIS	SCHRAUBE	TORNILLO	
29	16044421			2	SCREW (M8x60)	VITE	VIS	SCHRAUBE	TORNILLO	
30	4598124			2	WASHER	ROSETTA	RONDELLE	SCHLEIBE	ARANDELA	

1/1



ITEM	PART NUMBER	CYL./QUANTITY			DESCRIPTION	DENOMINAZIONE	DESIGNATION	BENENNUNG	DENOMINACIONES
		3	4	5					
1	564530	1	1	1	COVER	COPERCHIO	COUVERCLE	DECKEL	TAPA
2	4619405	1	1	1	GASKET	GUARNIZIONE	JOINT	DICHTUNG	JUNTA
3	4607590	1	1	1	GASKET	GUARNIZIONE	JOINT	DICHTUNG	JUNTA
4	4771242	1	1	1	SUPPORT (ASSY-FRONT)	SUPPORTO	SUPPORT	LAGER	SOPORTE
5	4788084	1	1	1	SUPPORT (ASSY-REAR)	SUPPORTO	SUPPORT	LAGER	SOPORTE
6	4788087	2	2	2	BUSH	BOCCOLA	DOUILLE	BUECHSE	CASQUILLO
7	10902321	4	4	4	SCREW (M6x18)	VITE	VIS	SCHRAUBE	TORNILLO
8	11193871	6	6	6	LOCKWASHER	ROSETTA DI SICUREZZA	RONDELLE FREIN	SICHERUNGSRING	ARANDELA DE FRENO
9	11197771	4	4	4	LOCKWASHER	ROSETTA DI SICUREZZA	RONDELLE FREIN	SICHERUNGSRING	ARANDELA DE FRENO
10	16044521	2	2	2	SCREW (M8x65)	VITE	VIS	SCHRAUBE	TORNILLO
11	16100811	4	4	4	NUT	DADO	ECROU	MUTTER	TUERCA

1/1



CLICK HERE TO **DOWNLOAD** THE COMPLETE MANUAL

- Thank you very much for reading the preview of the manual.
- You can download the complete manual from: www.heydownloads.com by clicking the link below



- Please note: If there is no response to CLICKING the link, please download this PDF first and then click on it.

CLICK HERE TO **DOWNLOAD** THE COMPLETE MANUAL