

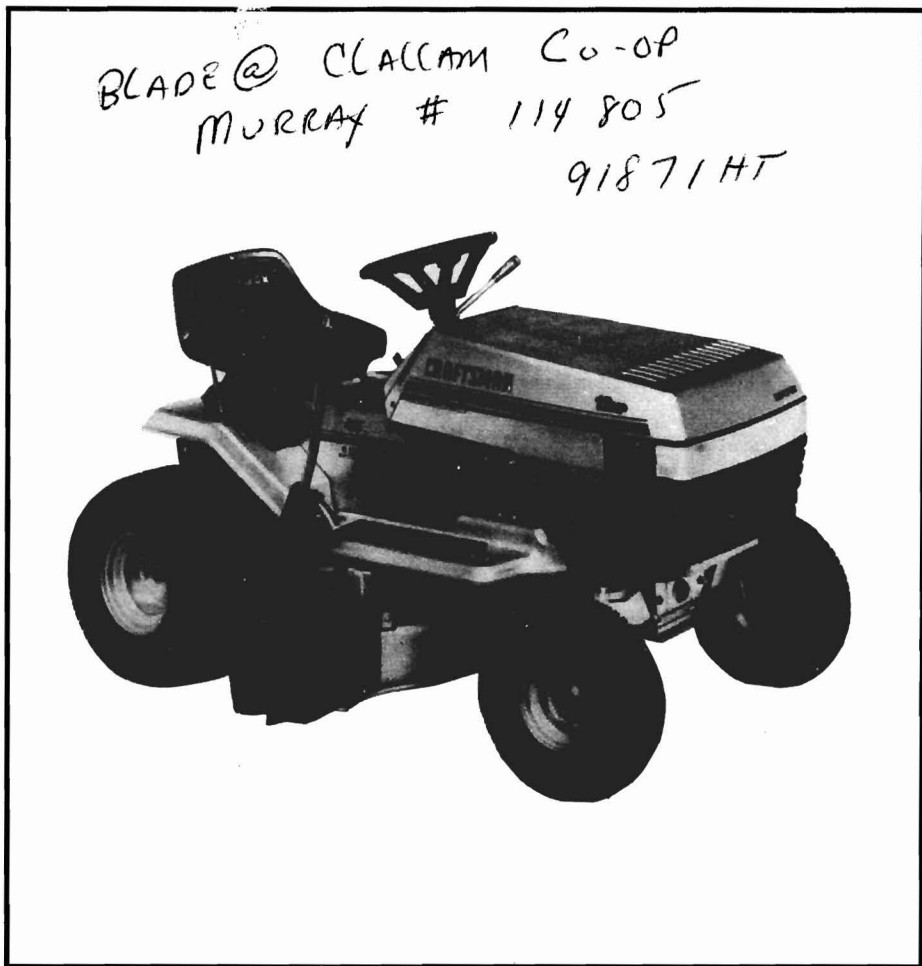
# SEARS

## owners manual

Model No.  
502.254982

### CAUTION:

Read And Follow  
All Safety Rules  
And Instructions Before  
Operating This  
Equipment.



# CRAFTSMAN

## 12 HP. ELECTRIC START 6 SPEED - 40" MOWER LAWN TRACTOR

- Assembly
- Operation
- Maintenance
- Service and Adjustment
- Repair Parts

BELT FOR MURRAY  
37x62  
#6400BR

NAPA 14.29

CLICK HERE TO **DOWNLOAD** THE COMPLETE MANUAL

- Thank you very much for reading the preview of the manual.
- You can download the complete manual from: [www.heydownloads.com](http://www.heydownloads.com) by clicking the link below



- Please note: If there is no response to CLICKING the link, please download this PDF first and then click on it.

CLICK HERE TO **DOWNLOAD** THE COMPLETE MANUAL

# OPERATION

## HOW TO SET THE PARKING BRAKE

1. Completely push the clutch/brake pedal forward.
2. Lift the parking brake lever.
3. Remove your foot from the clutch/brake pedal and then release the parking brake lever.
4. To release the parking brake, completely push the clutch/brake pedal forward. The parking brake will automatically release.



**WARNING:** Before you leave the operator's position, move the shift lever to the neutral (N) position. Set the parking brake. Move the blade engagement control to the DISENGAGE position. Stop the engine and remove the ignition key.

## HOW TO USE THE LIFT LEVER

The mower housing lift lever is on the right side of the unit as shown. Use the lift lever to raise or lower the mower housing. To operate the lift lever, push the button on top of the lever to release the lever. Move the lever forward to lower the mower housing and back to raise the mower housing.

## HOW TO USE THE BLADE ENGAGEMENT CONTROL

The blade engagement control is next to the steering wheel. Use the blade engagement control to rotate the blade or to operate a snow thrower attachment.

1. Before you start the engine, make sure the control lever is in the DISENGAGE position.
2. Move the control lever to the ENGAGE position to rotate the blade.
3. Move the control lever to the DISENGAGE position to stop the rotary blade. Before you leave the operator's position, make sure the blade has stopped rotating.
4. Before you ride the unit across a sidewalk or a road, move the control lever to the DISENGAGE position.



**WARNING:** Always keep your hands and feet away from the blade, deflector opening, and the mower housing when the engine runs.

## HOW TO USE THE SHIFT LEVER

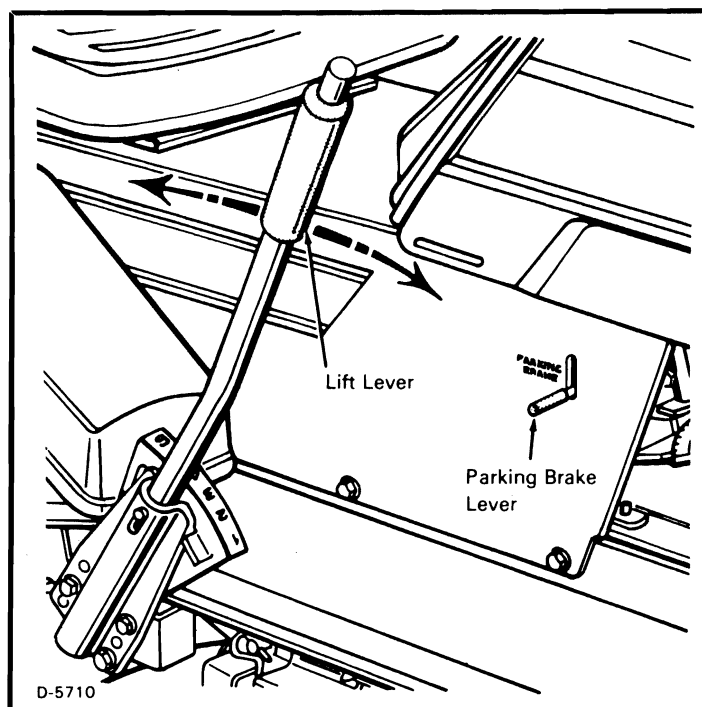
To change the forward speed or the direction of the unit, follow the steps below:

1. Completely push the clutch/brake pedal forward.



**WARNING:** Before you move the shift lever in or out of NEUTRAL or REVERSE, fully apply the clutch/brake pedal.

2. Move the shift lever to FIRST or REVERSE.
3. Slowly release the clutch/brake pedal. Do not ride with your foot on the clutch/brake pedal.
4. While the unit moves forward, you can select any forward speed. Just move the shift lever to the next faster or next slower speed. You do not have to use the clutch/brake pedal.
5. The shift lever positions for operation of your unit are shown in the chart below.



FUNCTION	SHIFT LEVER	THROTTLE
Trimming Snow Thrower	1	
Bagging grass	1 or 2	
Normal mowing	2 or 3	
Light mowing Snow Blade	4 or 5	
Transport	6	
Pull Behind Attachments	2 or 3	

# MAINTENANCE

## HOW TO CLEAN THE AIR FILTERS

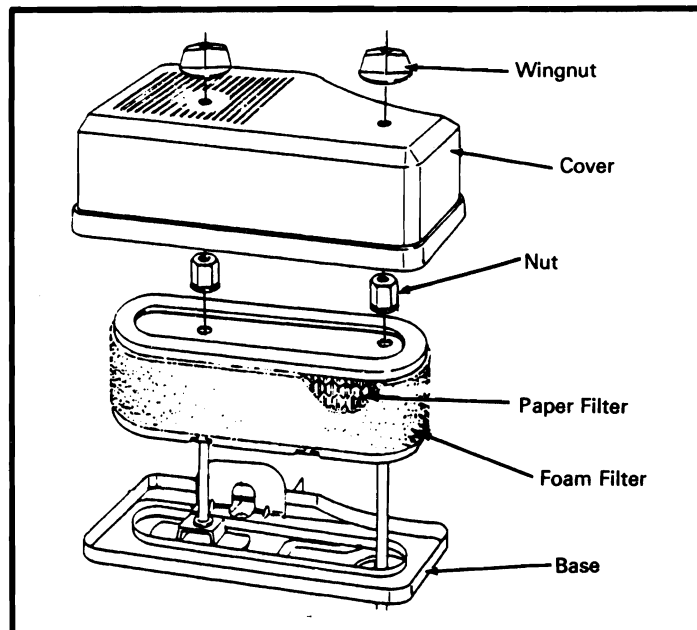
The engine has two filters, an outer foam filter around an inner paper filter. Clean the air filters every 50 hours. If you operate in dirty conditions, service more often.

**NOTE: Never run the engine with the air filters removed. The air filters will help protect the engine against wear. For the correct replacement filter, see the parts list for the engine.**

1. Remove the two wingnuts from the cover.
2. Remove the cover from the air cleaner.
3. Remove the two nuts from the filters.
4. Remove the filters.
5. Clean the inside of the base and the cover with a cloth.
6. Remove the foam filter, (if equipped ), from the paper filter.
7. If equipped, wash the foam filter in a detergent and water solution. To remove the water solution, tightly roll the foam filter in a dry cloth. Remove the foam filter from the cloth. Completely dry the foam filter.

**CAUTION: Do not wash the filters in gasoline or other solvents that will burn.**

8. Evenly apply S.A.E. 30W oil to the dry foam filter.
9. To clean the paper filter, lightly tap the paper filter against a hard flat surface.
10. If the paper filter is very dirty, replace the filter.
11. Assemble the air filters with the two nuts.
12. Install the cover. Fasten the cover with the two wingnuts.

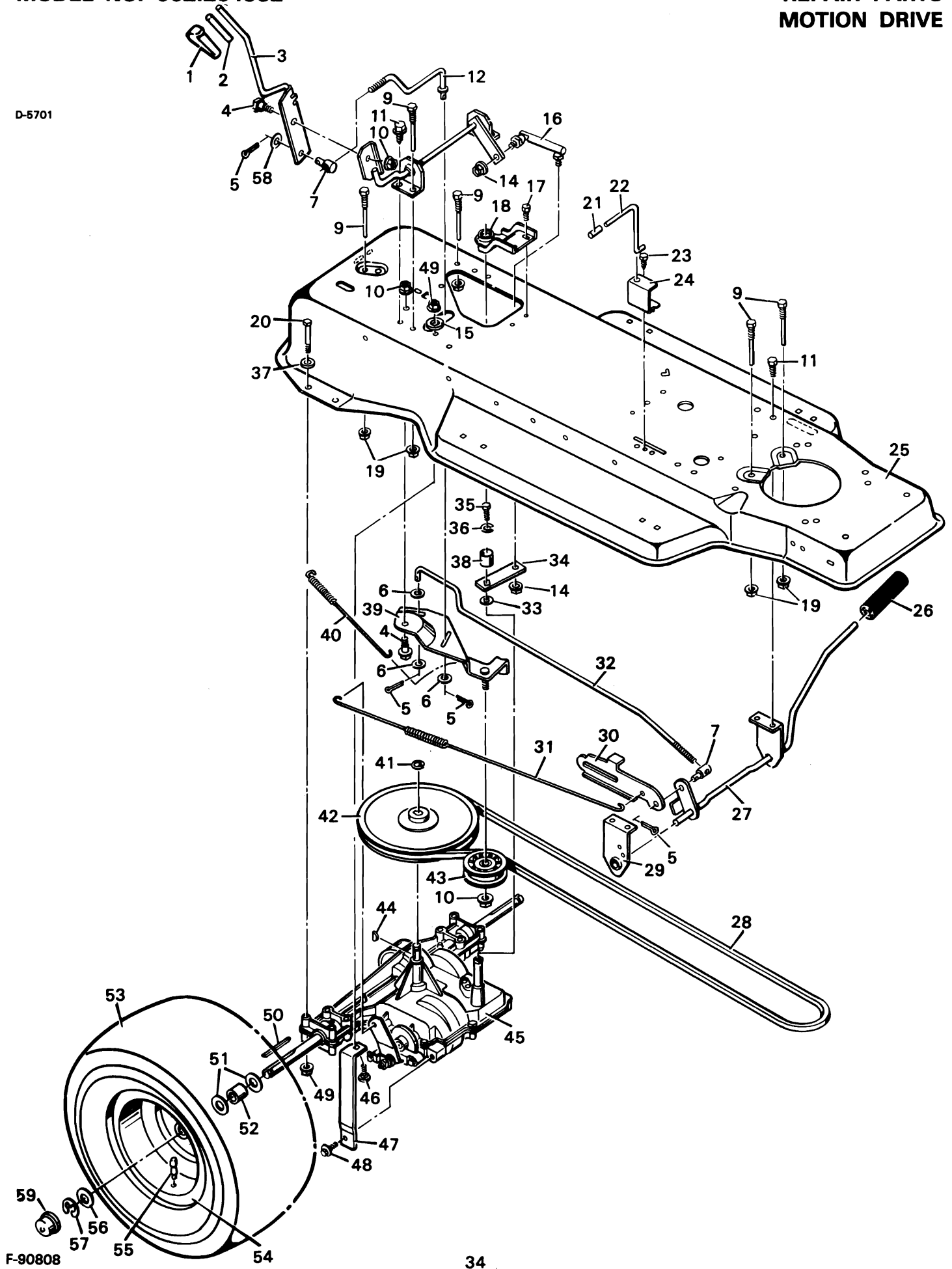


## HOW TO CHECK THE MUFFLER

Check the muffler every 50 hours. Make sure the muffler is correctly mounted and is not loose. If the muffler is worn or burnt, replace with a new muffler. A worn muffler is a fire hazard and also can damage the engine.

If you mount a spark arrestor to the muffler, also check the spark arrestor when you check the muffler. If the spark arrestor is worn or damaged, replace it with a new spark arrestor.

D-5701



F-90808

KEY NO.	DESCRIPTION	PART NO.	MFG. NO.
1	Fuel Cap	55989	
2	Fuel Tank	91869	
3	Hose Clamp	91174	
4	Fuel Line	92160	
5	Hose Clamp	23713	
6	Screw	26x214	
7	Screw	STD610803	26x201
8	Throttle Control	91983	
9	Engine Briggs & Stratton *	92099	
10	Bolt, Hex	1x134	
11	Shield, Muffler Heat	91277	
12	Muffler	91271	
13	Gasket	91309	
14	Washer	STD551237	19x8
15	Bolt, Engine Mount	25x7	
16	Stack Pulley Assembly	91557E701	
17	Washer	17x170	
18	Lockwasher	STD551243	19x35
19	Bolt, Hex	1x80	
20	Tube, Oil Drain	24066	
21	Cap, Oil Drain	21651	

\* For repair parts, see the engine parts list pages.

CLICK HERE TO **DOWNLOAD** THE COMPLETE MANUAL

- Thank you very much for reading the preview of the manual.
- You can download the complete manual from: [www.heydownloads.com](http://www.heydownloads.com) by clicking the link below



- Please note: If there is no response to CLICKING the link, please download this PDF first and then click on it.

CLICK HERE TO **DOWNLOAD** THE COMPLETE MANUAL