



# OWNER'S MANUAL

READ THIS MANUAL CAREFULLY.  
IT CONTAINS IMPORTANT SAFETY INFORMATION.



MPH/HIGHLY RECOMMENDED OPERATOR AGE 17+

**TRX90EX**  
**SPORTRAX 90EX**

CLICK HERE TO **DOWNLOAD** THE COMPLETE MANUAL

- Thank you very much for reading the preview of the manual.
- You can download the complete manual from: [www.heydownloads.com](http://www.heydownloads.com) by clicking the link below



- Please note: If there is no response to CLICKING the link, please download this PDF first and then click on it.

CLICK HERE TO **DOWNLOAD** THE COMPLETE MANUAL

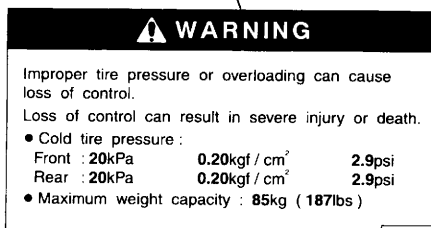
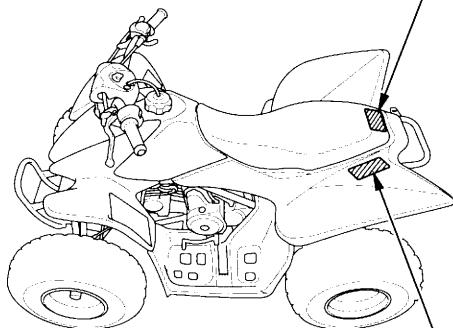
# ATV Safety

---

This section presents some of the most important information and recommendations to help you ride your ATV safely. Please take a few moments to read these pages. This section also includes information about the location of safety labels on your ATV.

Important Safety Information .....	2
Important Message to Parents .....	5
Safety Labels.....	9

# Safety Labels

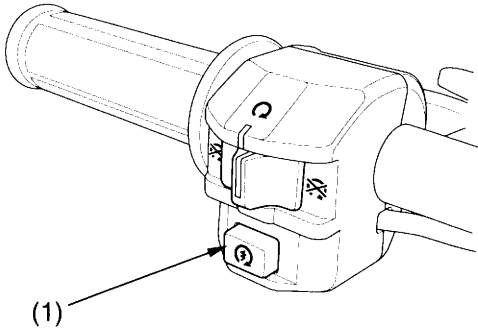


# Controls & Features

## Start Button




### LEFT HANDLEBAR



(1) start button

 START

The start button (1) is used for starting the engine. Pushing the button in starts the engine. See *Starting Procedure*, page 56.

When the start button is pushed, the starter motor will crank the engine. The starter motor will not operate if the engine stop switch is in the OFF (  ) position when the start button is pushed.

# Are You Ready to Ride?

---

An open-face helmet offers some protection, but a full-face helmet offers more. Always wear a face shield or goggles to protect your eyes and help your vision.

## **WARNING**

Operating this ATV without wearing an approved motorcycle helmet, eye protection, and protective clothing could increase your chances of severe injury or death in the event of an accident.

Always wear an approved motorcycle helmet that fits properly and wear eye protection (goggles or face shield), gloves, boots, long-sleeved shirt or jacket and long pants.

### Additional Riding Gear

In addition to a helmet and eye protection, we also recommend:

- Sturdy off-road motorcycle boots to help protect your feet, ankles, and lower legs.
- Off-road motorcycle gloves to help protect your hands.
- Riding pants with knee and hip pads, a riding jersey with padded elbows, and a chest/shoulder protector.

# Accessories & Modifications

---

## Modifications

We strongly advise you not to remove any original equipment or modify your ATV in any way that would change its design or operation. Such changes could seriously impair your ATV's handling, stability, and braking, making it unsafe to ride.

Removing or modifying your exhaust system, emission control system, or other equipment can also make your ATV illegal.

# Safe Riding Precautions

---

## Control Speed

Riding at excessive speed increases the chance of an accident. In choosing a proper speed, you need to consider the capability of your vehicle, the terrain, visibility and other operating conditions, plus your own skills and experience.

### **WARNING**

Operating this ATV at excessive speeds increases your chances of losing control of the ATV, which can result in an accident.

Always go at a speed that is proper for your vehicle, the terrain, visibility and other operating conditions, and your experience.

# Shifting Gears

---

With the engine stop switch in the RUN position and the transmission in neutral, the engine can be started.

1. With the transmission in neutral, release the parking brake, but continue squeezing the rear brake lever.
2. With the throttle closed, raise the shift lever one full stroke to shift into 1st (first) gear.
3. Release the rear brake lever and increase engine speed by gradually opening the throttle.
4. When speed increases, release the throttle and shift to 2nd gear by raising the shift lever one full stroke.
5. Repeat this sequence to progressively upshift to 3rd and 4th (top) gear.
6. To downshift, reverse this sequence. Remember to close the throttle each time you shift to the next lower gear.

# Riding Your ATV

---

## **Stalling the ATV and/or Rolling Backwards:**

If you incorrectly estimate climbing capability or terrain conditions, the ATV may not have enough power or traction to continue uphill. If this happens, the ATV can stall and/or roll backwards.

### **⚠ WARNING**

Stalling, rolling backwards or improperly dismounting while climbing a hill could result in the ATV overturning.

Always follow proper procedures for climbing a hill as described in this owner's manual.

## What to do if the ATV stalls or rolls backwards when climbing a hill:

If you are about to lose all forward speed:

1. Using the front and rear brakes together, bring the ATV to a stop with the vehicle pointed straight uphill.
2. Get off the ATV while you continue holding the brakes.
3. Shift into neutral, set the parking brake and turn the engine off.
4. Then assess the situation.

If the ATV starts rolling backwards before you begin braking:

1. Keep your weight uphill.
2. Carefully apply the front brakes first, then carefully apply the rear brake. Do not apply either brake abruptly if you are rolling backwards, or the vehicle may overturn.

If the ATV continues sliding backwards:

After you've applied the brakes, get off and away from the vehicle.

# The Importance of Maintenance

---

A well-maintained ATV is essential for safe, economical, and trouble-free riding. It will also help reduce air pollution. Careful pre-ride inspections and good maintenance are especially important because your ATV is designed to be ridden over rough off-road terrain.

To help you properly care for your ATV, this section of the manual provides a Maintenance Schedule. The service intervals in this schedule are based on average riding conditions.

More frequent service is needed if you subject your ATV to severe use or ride in unusually wet or dusty areas.

## **WARNING**

Improperly maintaining this ATV or failing to correct a problem before you ride can cause a crash in which you can be seriously hurt or killed.

Always follow the inspection and maintenance recommendations and schedules in this owner's manual.

Frequent servicing of the air cleaner is especially important to help you avoid a possible costly engine repair.

If your ATV overturns or is involved in a crash, be sure your Honda dealer inspects all major parts, even if you are able to make some repairs.

CLICK HERE TO **DOWNLOAD** THE COMPLETE MANUAL

- Thank you very much for reading the preview of the manual.
- You can download the complete manual from: [www.heydownloads.com](http://www.heydownloads.com) by clicking the link below

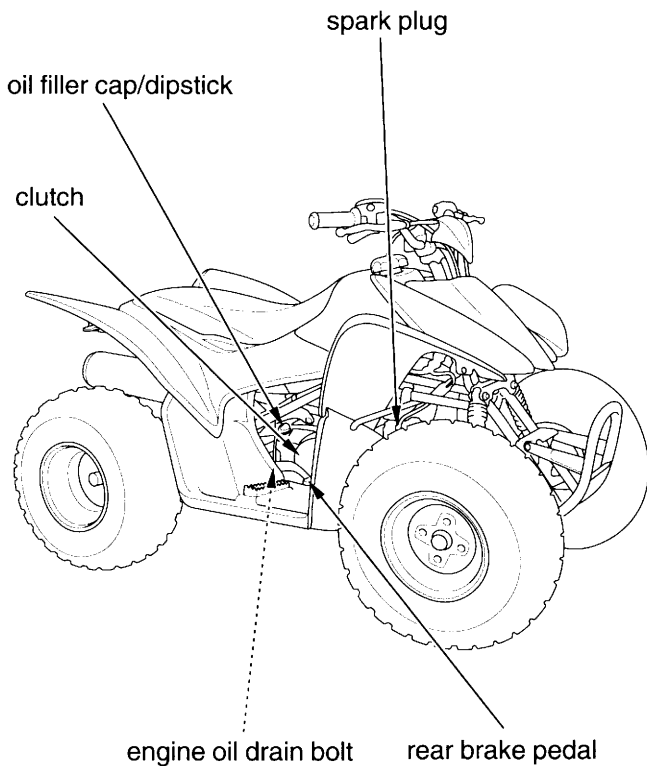


- Please note: If there is no response to CLICKING the link, please download this PDF first and then click on it.

CLICK HERE TO **DOWNLOAD** THE COMPLETE MANUAL

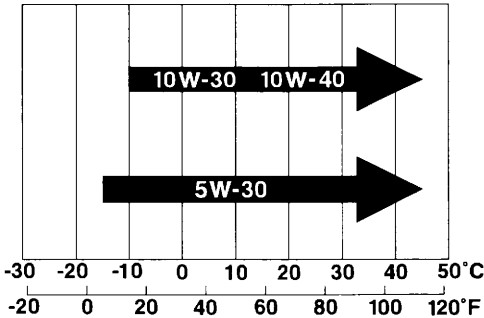
# Maintenance Component Locations

---



# Engine Oil

Other viscosities shown in the following chart may be used when the average temperature in your riding area is within the indicated range.

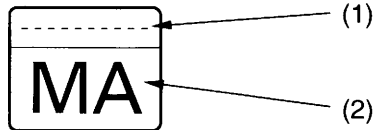


## JASO T 903 standard

The JASO T 903 standard is an index for engine oils for 4-stroke motorcycle engines.

There are two classes: MA and MB.

Oil conforming to the standard is labeled on the oil container. For example, the following label shows the MA classification.



PRODUCT MEETING JASO T 903  
COMPANY GUARANTEEING THIS MA PERFORMANCE:

- (1) code number of the sales company of the oil
- (2) oil classification

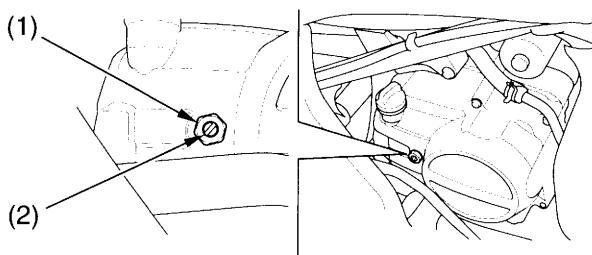
# Clutch System

Your ATV's shift-activated, wet, multiplate clutch is part of the primary drive system. Proper adjustment allows a smooth, gradual engagement when shifting gears.

## Clutch Adjustment

Refer to *Safety Precautions* on page 84.

### RIGHT SIDE



(1) lock nut

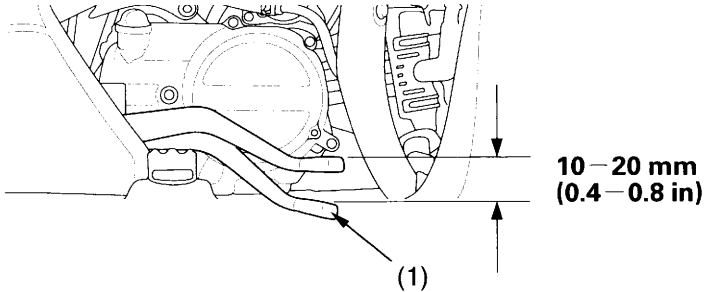
(2) clutch adjuster

1. Make sure the ignition switch is OFF (  $\circ$  ).
2. Loosen the lock nut ( 1 ).
3. Turn the clutch adjuster ( 2 ) counterclockwise until you feel slight resistance.
4. Turn the adjuster 1/8 turn clockwise, then tighten the lock nut to hold the adjuster in this position.
5. After adjustment, start the engine and test ride your ATV to be sure the clutch is operating properly.

If you cannot get proper adjustment, or the clutch does not work properly, the cable or clutch friction discs may be worn. See your Honda dealer or refer to official Honda Shop Manual.

## Rear Brake Pedal Freeplay

RIGHT SIDE



(1) rear brake pedal

Measure the distance the rear brake pedal (1) moves before the brake starts to take hold. Freeplay (measurement at the tip of the end of the brake pedal) should be:

10-20 mm (0.4-0.8 in)

If necessary, adjust to the specified range.

## **Tyre Repair**

Refer to *Safety Precautions* on page 84 .

A tyre that is repaired, either temporarily or permanently, will have lower speed and performance limits than a new or undamaged tyre.

A temporary repair can sometimes be made in an emergency situation. However, since a temporary repair may not hold, you must ride very slowly, preferably without any cargo, and have the tyre replaced or permanently repaired as soon as possible. (For more information on temporary repairs, see *If You Have a Flat Tyre*, page 167 .)

A permanent repair, such as an internal plug patch, can be made if a tyre has only a small puncture in the tread area. However you may not be able to safely carry as much weight. If you choose to have a tyre repaired, be sure the repair work is performed by a professional.

If you have a tyre professionally repaired at a non-Honda facility, we recommend that you have the work checked by your Honda dealer.

# Drive Chain

---

## Removal, Cleaning & Replacement

Refer to *Safety Precautions* on page 84.

Your ATV has an endless (riveted master link) type chain. It should only be removed or replaced by your Honda dealer.

The O-rings can be damaged by steam cleaning, high pressure washers, and certain solvents.

1. Clean the side surfaces of the chain with a dry cloth. Use a high flashpoint solvent such as kerosene — not petrol.  
Do not brush the rubber O-rings.  
Brushing will damage them. Use of a solvent may also damage the O-rings.
2. Inspect the drive chain for possible wear or damage.

Replace the drive chain if it has damaged rollers, loose fitting links, damaged O-rings, or otherwise appears unserviceable.

Replacement Chain:

DID 428V – 98LE or RK428 HOZ1 – 98LE

Here's helpful advice on how to prepare for an off-road adventure, how to transport and store your Honda, and how to be an environmentally responsible ATV owner.

Preparing for a Ride .....	152
What to Take to The Riding Area .....	152
What to Take on The Trail .....	153
Transporting Your Honda .....	154
Storing Your Honda .....	156
Preparation for Storage .....	157
Removal from Storage .....	159
You & the Environment .....	160

# Taking Care of the Unexpected

---

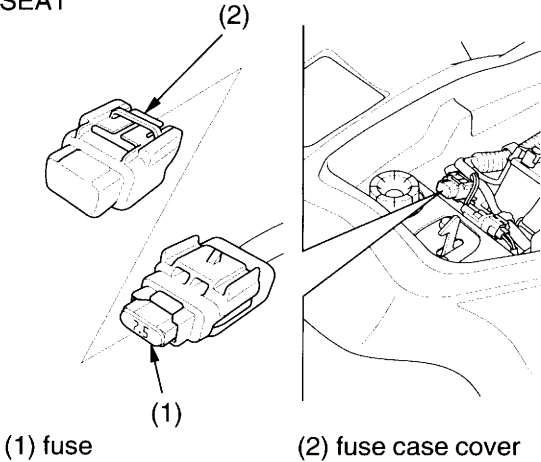
With all the challenges you can encounter off-road, there's a chance that sometime something may go wrong. This section gives practical advice to help you deal with a wide range of problems. Take time to read this section before you ride. Also review the tips in *Preparing for a Ride* (page 148).

General Guidelines.....	162
If Your Engine Quits or Won't Start.....	164
If You Have a Flat Tyre .....	167
If a Fuse Blows .....	170
If You Crash.....	173
If You Lose Your Key .....	174
If the Battery Is Low (or Dead) .....	175
If a Component Fails.....	176

# If a Fuse Blows

## Main Fuse Access

### UNDER SEAT



1. To prevent an accidental short circuit, turn the ignition switch OFF (  $\bigcirc$  ) before checking or replacing the fuse.
2. To access the fuse ( 1 ), remove the seat ( page 95 ).
3. Remove the fuse case cover ( 2 ).

(cont'd)

# Specifications

## Capacities

passenger capacity	operator only
maximum weight capacity	85 kg (187 lbs) rider and all accessories

## Engine Specifications

displacement	85.8 cm <sup>3</sup> (5.23 cu-in)
bore & stroke	47 × 49.5 mm (1.85 × 1.95 in)
compression ratio	9.2 : 1
spark plug (standard)	CR7HSA (NGK) or U22FSR-U (DENSO)
spark plug (cold climate)	CR6HSA (NGK) or U20FSR-U (DENSO)
spark plug (high speed riding)	CR8HSA (NGK) or U24FSR-U (DENSO)
spark plug gap	0.60 – 0.70 mm (0.024 – 0.028 in)
valve clearance (cold)	0.05 mm (0.002 in)
idle speed	1,600 ± 100 min <sup>-1</sup> (rpm)

## Power Transmission

primary reduction	4.058	
final reduction	3.846	
gear ratio	1st	2.833
	2nd	1.937
	3rd	1.300
	4th	0.958
final drive	chain DID 428V – 98LE or RK428 HOZ1 – 98LE	

# Table of Contents

---

<b>TECHNICAL INFORMATION</b> .....	<b>177</b>
Vehicle Identification .....	178
Specifications .....	180
Break-in Guidelines .....	183
High Altitude Carburetor Adjustment .....	184
Petrol Containing Alcohol.....	185
<b>TABLE OF CONTENTS</b> .....	<b>186</b>
<b>INDEX</b> .....	<b>192</b>

CLICK HERE TO **DOWNLOAD** THE COMPLETE MANUAL

- Thank you very much for reading the preview of the manual.
- You can download the complete manual from: [www.heydownloads.com](http://www.heydownloads.com) by clicking the link below



- Please note: If there is no response to CLICKING the link, please download this PDF first and then click on it.

CLICK HERE TO **DOWNLOAD** THE COMPLETE MANUAL