

# 2006

# OWNER'S MANUAL

## TRX250TM FOURTRAX RECON



Read this manual carefully,  
it contains important safety information.

Minimum recommended operator age: 16

 **HONDA**

CLICK HERE TO **DOWNLOAD** THE COMPLETE MANUAL

- Thank you very much for reading the preview of the manual.
- You can download the complete manual from: [www.heydownloads.com](http://www.heydownloads.com) by clicking the link below



- Please note: If there is no response to CLICKING the link, please download this PDF first and then click on it.

CLICK HERE TO **DOWNLOAD** THE COMPLETE MANUAL

# **Important Safety Information**

---

Your ATV can provide many years of service and pleasure — if you take responsibility for your own safety and understand the challenges you can meet while riding.

There is much that you can do to protect yourself when you ride. You'll find many helpful recommendations throughout this manual. The following are a few that we consider most important.

## **Follow the Age Recommendation**

The minimum recommended age for this ATV model is 16. Children under age 16 should never operate this vehicle.

## **Always Wear a Helmet**

It's a proven fact: helmets significantly reduce the number and severity of head injuries. So always wear an approved motorcycle helmet. We also recommend that you wear eye protection, sturdy boots, gloves, and other protective gear (page 28 ).

## **Never Carry a Passenger**

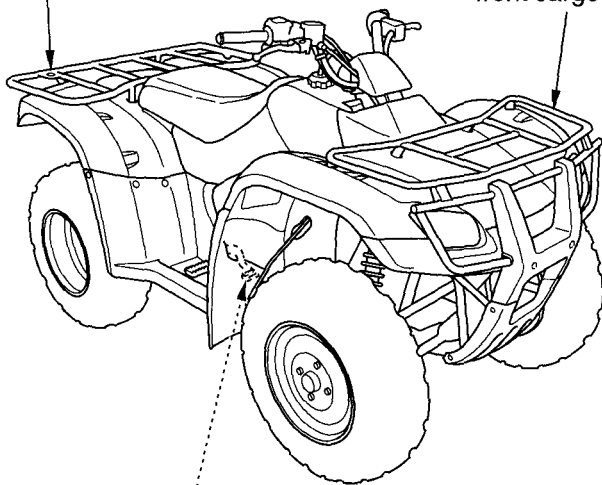
Your ATV is designed for one person only. There are no handholds, footrests, or seat for a second person — so never carry a passenger. A passenger could interfere with your ability to move around to maintain your balance and control of the ATV.

# Operation Component Locations

---

flag pole bracket

front cargo rack



rear brake pedal

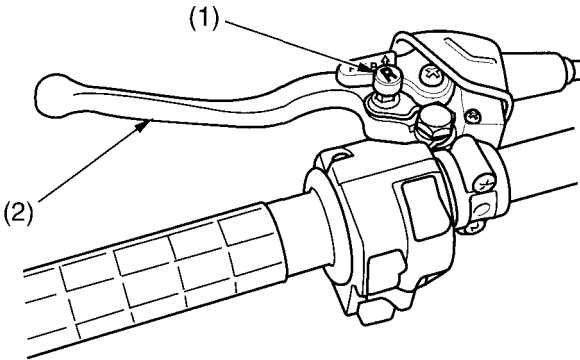
# Controls & Features

---

## Reverse Selector Knob

The reverse selector knob ( 1 ), located on the rear brake lever/parking brake lever ( 2 ), is used to shift into reverse. To operate, with your ATV stopped and the transmission in neutral (make sure the gear position indicator light), push in the knob, squeeze the rear brake lever/parking brake lever, then depress the shift lever. See *Riding in Reverse*, page 56.

### LEFT HANDLEBAR



(1) reverse selector knob

(2) rear brake lever/  
parking brake lever

# Are You Ready to Ride?

---

## No Alcohol or Drugs

Alcohol, drugs and ATVs don't mix. Even a small amount of alcohol can impair your ability to operate an ATV safely. Likewise, drugs — even if prescribed by a physician — can be dangerous while operating an ATV. Consult your doctor to be sure it is safe to operate a vehicle after taking medication.

### **WARNING**

Operating this ATV after consuming alcohol or drugs can seriously affect your judgement, cause you to react more slowly, affect your balance and perception, and result in serious injury or death.

Never consume alcohol or drugs before or while operating this ATV.

# Basic Operation & Riding

---

Braking.....	58
Riding Your ATV .....	60
Making Turns.....	60
Skidding or Sliding .....	62
Riding Up Hills .....	63
Riding Down Hills .....	67
Crossing or Turning on Hills or Slopes.....	68
Riding Over Obstacles .....	70
Riding Through Water .....	71
Parking .....	72

# Starting & Stopping the Engine

---

## Flooded Engine

If the engine fails to start after repeated attempts, it may be flooded with excess fuel. To clear a flooded engine:

1. Move the engine stop switch to OFF ( ☒ ).
2. Push the choke knob down all the way to fully OFF.
3. Open the throttle fully.
4. Press the start button for 5 seconds.
5. Wait 10 seconds, then turn the engine stop switch to RUN ( ○ ).
6. Repeat the “*Normal Air Temperature*” starting procedure, but don’t use the choke.

If the engine still won’t start, refer to *If Your Engine Quits or Won’t Start*, page 160.

## How to Stop the Engine

### Normal Engine Stop

To stop the engine, make sure the transmission is in neutral by checking that the neutral indicator lights, and turn the ignition switch OFF.

The engine stop switch should normally remain in the RUN ( ○ ) position even when the engine is OFF.

If your ATV is stopped with the engine stop switch OFF ( ☒ ) and the ignition switch ON ( | ), the battery will discharge.

### Emergency Engine Stop

To stop the engine in an emergency, use the engine stop switch. To operate, move the switch to either OFF ( ☒ ) position.

# Riding Your ATV

---

## Skidding or Sliding

The terrain surface can be a major factor affecting turns. Skidding during a turn is more likely to occur on slippery surfaces, such as snow, ice, mud and loose gravel. If you skid on ice, you may lose all directional control. To avoid skidding on slippery terrain, keep your speed low and ride with caution.

### **WARNING**

Skidding or sliding improperly may cause you to lose control of this ATV. You may also regain traction unexpectedly, which may cause the ATV to overturn.

Learn to safely control skidding by practicing at low speeds and on level, smooth terrain.

If your ATV skids sideways during a turn, steer in the direction of the skid. Avoid hard braking or accelerating until you have regained directional control.

# Parking

---

1. Look for level parking area. Make sure the ground surface is firm.
2. After bringing your ATV to a stop, hold the brakes while you shift into neutral.
3. Set the parking brake.
4. Turn the ignition switch OFF ( ○ ).
5. If you're through riding for the day, turn the fuel valve OFF.

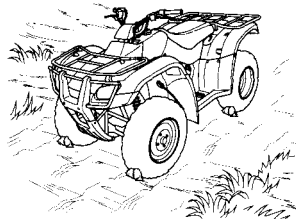
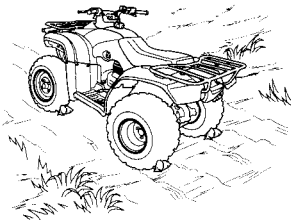
If it is necessary to start the engine when your ATV is stopped on a grade in gear, rock the vehicle back and forth to allow shifting the transmission into neutral.

The brakelights are activated by applying the parking brake. When using the parking brake, be sure to turn the ignition switch OFF ( ○ ) to avoid discharging the battery.

## Parking on a Steep Incline or a Loose or Slippery Surface

If you must park your ATV on a steep incline or loose or slippery surface, use the following procedure:

1. While holding the brakes, set the parking brake.
2. Turn the ignition switch OFF ( ○ ) and release the brakes.
3. If the ATV begins to move, either while sitting on it or after you dismount, find a better parking location.
4. If rocks or other objects are available, you can block the wheels as shown for additional security.



# Maintenance Record

---

Keeping an accurate maintenance record will help ensure that your ATV is properly maintained. Retain detailed receipts to verify the maintenance was performed. If the ATV is sold, these receipts should be transferred with the ATV to the new owner. Make sure whoever performs the maintenance completes this record. All scheduled maintenance, including the 100 mile (150 km) or 20 hours initial maintenance, is considered a normal owner operating cost and will be charged for by your dealer. Use the space under Notes to record anything you want to remind yourself about or mention to your dealer.

<b>Miles (km) or hours</b>	<b>Date</b>	<b>Performed By:</b>	<b>Notes</b>
100 (150) or 20			
600 (1,000) or 100			
1,200 (2,000) or 200			
1,800 (3,000) or 300			
2,400 (4,000) or 400			
3,000 (5,000) or 500			
3,600 (6,000) or 600			
4,200 (7,000) or 700			
4,800 (8,000) or 800			

# Engine Oil

---

Engine oil quality is a major factor that affects both the performance and the service life of the engine.

Using the proper oil (page 93 ) and filter, and regularly checking, adding, and changing oil will help extend your engine's life. Even the best oil wears out. Changing oil helps get rid of dirt and deposits in the engine. Operating the engine with old or dirty oil can damage your engine. Running the engine with insufficient oil can cause serious damage to the engine and transmission.

Change the engine oil as specified in the maintenance schedule on page 80 . When running in very dusty conditions, oil changes should be performed more frequently than specified in the maintenance schedule.

CLICK HERE TO **DOWNLOAD** THE COMPLETE MANUAL

- Thank you very much for reading the preview of the manual.
- You can download the complete manual from: [www.heydownloads.com](http://www.heydownloads.com) by clicking the link below



- Please note: If there is no response to CLICKING the link, please download this PDF first and then click on it.

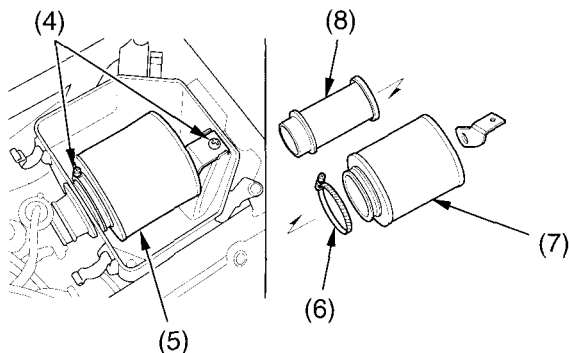
CLICK HERE TO **DOWNLOAD** THE COMPLETE MANUAL

# Air Cleaner

---

- Loosen the screws (4) and remove the air cleaner assembly (5) from the air cleaner housing.
- Unscrew the clamp (6).
- Remove the air cleaner (7) from the air cleaner body (8).
- Gently wash the air cleaner in clean, non-flammable (high flash point) solvent such as kerosene — not gasoline. After cleaning, gently squeeze out the remaining solvent. Avoid twisting or wringing the air cleaner. This can tear the foam.
- Inspect for tears or cracks in the foam or seams of the air cleaner. Replace the air cleaner if it is damaged.
- Allow the air cleaner to dry thoroughly before applying oil. A wet air cleaner will not fully absorb the oil.
- Pour clean Pro Honda Foam Filter Oil or an equivalent (Canada: Honda Foam Filter Oil or an equivalent) over the entire surface of the air cleaner. Use both hands to evenly spread the oil into the air cleaner. Gently squeeze out any excess oil. (To keep your hands dry, place the air cleaner in a clean plastic bag before spreading the oil into the air cleaner.)

## UNDER SEAT



- (4) screws  
(5) air cleaner assembly  
(6) clamp

- (7) air cleaner  
(8) air cleaner body

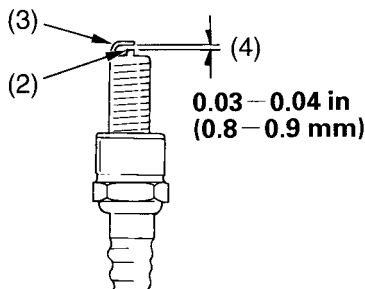
# Spark Plug

---

4. Inspect the electrodes and center porcelain for deposits, corrosion, or carbon fouling. If the corrosion or deposits are heavy, replace the plug. Clean a carbon or wet-fouled plug with a plug cleaner, if available, or a wire brush. Inspect the spark plug electrodes for wear. The center electrode (2) should have a flat tip and sharp edges, and the side electrode (3) should not be eroded. If the electrodes and insulator tip appear unusually fouled or burned, we suggest that you contact your Honda dealer.
5. Discard the spark plug if there is apparent wear or if the insulator is cracked or chipped.
6. Using a wire-type feeler gauge, check the spark plug gap (4). If adjustment is necessary, bend the side electrode carefully.

The gap should be:

0.03–0.04 in (0.8–0.9 mm)



- (2) center electrode
- (3) side electrode
- (4) spark plug gap

# Brakes

---

5. Back the adjuster off three clicks, then squeeze the brake lever several times. Spin the wheel manually to make sure the brake does not drag.
6. Line up the inspection hole with the second adjuster and repeat steps 3 through 5 .
7. Reinstall the inspection hole plug, seating it into the inspection hole as shown.
8. Follow steps 3 through 7 to adjust the other front brake.
9. Recheck the brake lever freeplay. If freeplay is still excessive after adjusting the brake lining clearance, there is probably air in the brake system and it must be bled out. See your Honda dealer for this service.

# Tires

---

Always check air pressure when your tires are “cold.” If you check air pressure when your tires are “warm” — even if your ATV has only been ridden for a few miles — the readings will be higher. If you let air out of warm tires to match the recommended cold tire pressures, the tires will be underinflated. Be sure to check tire pressure at the riding site, since changes in altitude can affect air pressure.

The recommended “cold” tire pressures are:

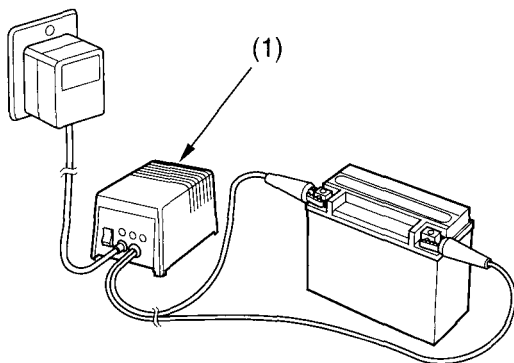
		FRONT	REAR
NO CARGO	RECOMMENDED PRESSURE	2.9 psi (20 kPa , 0.20 kgf/cm <sup>2</sup> )	2.9 psi (20 kPa , 0.20 kgf/cm <sup>2</sup> )
	MAXIMUM PRESSURE	3.3 psi (23 kPa , 0.23 kgf/cm <sup>2</sup> )	3.3 psi (23 kPa , 0.23 kgf/cm <sup>2</sup> )
	MINIMUM PRESSURE	2.5 psi (17 kPa , 0.17 kgf/cm <sup>2</sup> )	2.5 psi (17 kPa , 0.17 kgf/cm <sup>2</sup> )
WITH CARGO	RECOMMENDED PRESSURE	2.9 psi (20 kPa , 0.20 kgf/cm <sup>2</sup> )	2.9 psi (20 kPa , 0.20 kgf/cm <sup>2</sup> )

# Battery

---

## Battery Charging

Refer to *Safety Precautions* on page 77.



(1) “trickle” charger

Be sure to read the information that came with your battery charger and follow the instructions on the battery. Improper charging may damage the battery.

We recommend using a “trickle” charger (1) for home charging. These units can be left connected for long periods without risking damage to the battery. However, do not intentionally leave the charger connected longer than the time period recommended in the charger’s instructions.

Avoid using an automotive-type battery charger. An automotive charger can overheat an ATV battery and cause premature damage.

# Storing Your Honda

---

If you won't be riding for an extended period, such as during the winter, thoroughly inspect your ATV and correct any problem before storing it. That way, needed repairs won't be forgotten and it will be easier to get your ATV running again.

For more information about storage, refer to the *Honda Motorcycle Winter Storage Guide*, available from your Honda dealer (USA only).

We suggest you perform the following procedures to keep your ATV in top condition. These storage procedures will reduce the deterioration that can occur during storage.

# If Your Engine Quits or Won't Start

SYMPTOM: <b>Engine starts, but runs poorly.</b>	
POSSIBLE CAUSE	WHAT TO DO
idles roughly, too fast, stalls	Check engine idle adjustment (page 110). If the problem persists, see your Honda dealer.
poor engine performance at altitudes above 3,000 feet (1,000 m).	Ask your Honda dealer to modify the carburetion with a high altitude jet. Refer to <i>High Altitude Carburetor Adjustment</i> , page 181.
runs erratically, misfires	See your Honda dealer.
blubbers (rich fuel mixture)	See your Honda dealer.
sooty exhaust (rich fuel mixture)	See your Honda dealer.
detonates or pings under load	If applicable, switch to the recommended octane gasoline (page 89 ) or change your brand of gasoline. If the problem persists, see your Honda dealer.
afterfires (backfires)	See your Honda dealer.
pre-ignition (runs on after ignition switched OFF)	See your Honda dealer.

## If a Component Fails

---

The brake levers or pedal, control cables, and other components can be damaged as you ride in dense brush or over rocky terrain. Making a trailside repair depends on how serious the damage is and what tools and supplies you have with you.

- If any component of the brake system is damaged, you may be able to ride carefully back to your base using the other brake components for slowing or stopping.
- If you damage a throttle cable or other critical component, your ATV may be unsafe to ride. Carefully assess the damage and make any repairs that you can. But if there is any doubt, it's best to be conservative and safe.

# Emission Control Systems

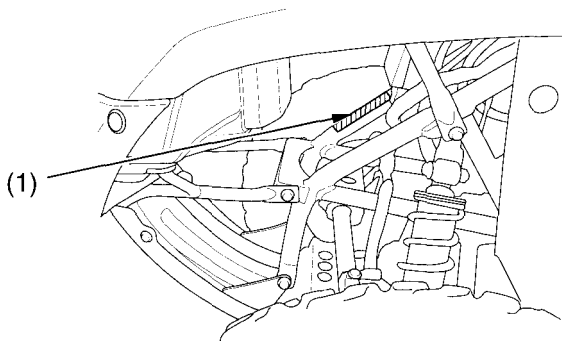
---

## Exhaust Emission Requirements (USA only)

The U.S. Environmental Protection Agency (EPA) and the California Air Resources Board (CARB) require that your ATV comply with applicable exhaust emission standards during its useful life, when operated and maintained according to the instructions provided.

The Vehicle Emission Control Information Label ( 1 ) is attached on the right side of the frame below the front fender.

FRONT



(1) vehicle emission control information label

# Warranty Coverage

---

Your new Honda is covered by these warranties:

- TRX Limited Warranty
- Exhaust Emission Warranty (USA Only)

There are responsibilities, restrictions, and exclusions which apply to these warranties. Please read the Warranties Booklet given to you by your Honda dealer at the time of purchase. Be sure to keep your Honda owner's card with your Warranties Booklet (USA only).

It is important to realize that your warranty applies to defects in material or workmanship of your Honda.

Your warranty coverage will not be voided if you choose to perform your own maintenance. However, you should have the proper tools and service information and be mechanically qualified. Failures that occur due directly to improper maintenance are not covered.

Almost all of your warranty coverage can be extended through the Honda Protection Plan (USA only). For more information, see your Honda dealer.

# Table of Contents

---

<b>TECHNICAL INFORMATION.....</b>	<b>173</b>
Vehicle Identification.....	174
Specifications.....	176
Break-in Guidelines.....	180
High Altitude Carburetor Adjustment.....	181
Emission Control Systems.....	182
Oxygenated Fuels.....	186
<b>CONSUMER INFORMATION.....</b>	<b>189</b>
Authorized Manuals.....	190
Warranty Coverage.....	193
Warranty Service.....	194
Contacting Honda.....	195
Your Honda Dealer.....	196
The Honda Rider's Club (USA only).....	197
<b>TABLE OF CONTENTS.....</b>	<b>198</b>
<b>INDEX.....</b>	<b>204</b>
<b>QUICK REFERENCE</b>	

CLICK HERE TO **DOWNLOAD** THE COMPLETE MANUAL

- Thank you very much for reading the preview of the manual.
- You can download the complete manual from: [www.heydownloads.com](http://www.heydownloads.com) by clicking the link below



- Please note: If there is no response to CLICKING the link, please download this PDF first and then click on it.

CLICK HERE TO **DOWNLOAD** THE COMPLETE MANUAL