

Operator's Manual

Track dumper

DT08



Machine model	DT08 PL
Edition	1.0
Language	en
Article number	1000268373



**WACKER
NEUSON**

CLICK HERE TO **DOWNLOAD** THE COMPLETE MANUAL

- Thank you very much for reading the preview of the manual.
- You can download the complete manual from: www.heydownloads.com by clicking the link below



- Please note: If there is no response to CLICKING the link, please download this PDF first and then click on it.

CLICK HERE TO **DOWNLOAD** THE COMPLETE MANUAL

1 Introduction

1.1 Important information on this Operator's Manual

Please store the Operator's Manual in the storage bin under the engine cover.

This Operator's Manual contains important information on how to work safely, correctly and economically with the machine. Therefore, it aims not only at new operators, but it also serves as a reference for experienced ones. It helps to avoid dangerous situations and reduce repair costs and downtimes. Furthermore, the reliability and the service life of the machine will be increased by following the instructions in the Operator's Manual. This is why **the Operator's Manual must always be kept at hand in the machine.**

The safety of the driver and other persons heavily depends on how safely the machine is used. Therefore, carefully read and understand this Operator's Manual prior to the first drive. This Operator's Manual will help to familiarise yourself more easily with the machine, thereby enabling you to use it more safely and efficiently.

Prior to the first drive, carefully read chapter "Safety Instructions" as well, in order to be prepared for possible dangerous situations, as it will be too late for it during operation. As a rule, keep the following in mind:

Careful and prudent working is the best way to avoid accidents!


Operational safety and readiness of the machine do not only depend on your skill, but also on maintenance and servicing of the machine. This is why regular maintenance and service work is absolutely necessary.

Extensive maintenance and repair work must always be carried out by an expert with appropriate training. Insist on using original spare parts when carrying out maintenance and repair work. This ensures operational safety and readiness of your machine, and maintains its value.

Your Wacker Neuson dealer will be pleased to answer any further questions regarding the machine or the Operator's Manual.

Abbreviations/symbols

- This symbol stands for a list
 - Subdivision within lists or an activity. Follow the steps in the recommended order

 This symbol requires you to carry out the activity described

 Description of the effects or results of an activity

n. s. = not shown

"Opt" = option

Stated whenever controls or other components of the machine are installed as an option.



This symbol shows the driving direction – for better orientation in figures and graphics.

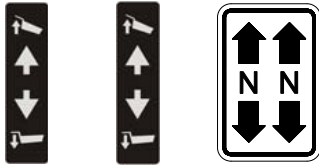


Fig. 21: Main label

Meaning

This label explains the machine's control elements

– see [chapter 3.1 Control stand overview \(machine with skip\)](#) on page 3-1

Location

On the control stand



Fig. 22: Throttle

Meaning

Indication of throttle.

Location

On the control stand



Fig. 23: Ear protection

Meaning

The machine's control stand is not enclosed, therefore always carry an ear protection.

Location

On the control stand

2.8 Warning of special hazards

Electrical energy

- Use only original fuses with the specified current rating!
Switch off the machine immediately and rectify the malfunction if trouble occurs in the electrical system!
- When working with the machine, maintain a safe distance from overhead electric lines!
If work must be carried out close to overhead lines, the equipment/attachments must be kept well away from them. Caution, danger! Get informed on the prescribed safety distances!
- If your machine comes into contact with a live wire
 - Warn others against approaching and touching the machine
 - Have the live wire de-energised
 - Do not leave the machine until the line that has been touched or damaged has been safely de-energised!
- Work on the electrical system may only be carried out by a technician with appropriate training, in accordance with the applicable electrical engineering rules
- Inspect and check the electric equipment of the machine at regular intervals. Defects such as loose connections or scorched cables must be rectified immediately
- Observe the machine's operating voltage!
- Always remove the earthing strap from the battery when working on the electrical system or when carrying out welding work!
- Starting with a battery jumper cable can be dangerous if carried out improperly. Observe the safety instructions regarding the battery!

Gas, dust, steam, smoke

- Operate the machine only on adequately ventilated premises! Before starting the internal combustion engine on enclosed premises, ensure that there is sufficient ventilation!
Observe the regulations in force at the respective site!
- Welding, burning and grinding work on the machine may only be carried out by a Wacker Neuson dealer. Risk of fire and explosion!
- Before carrying out welding, flame-cutting and grinding work, clean the machine and its surroundings from dust and other inflammable substances, and ensure that the premises are adequately ventilated – danger of explosions!
- In areas with special hazards (e.g. toxic gases, caustic vapours, toxic environments), wear appropriate protective equipment (breathing filters, protective clothing)!

Hydraulics

- Work on the hydraulic equipment of the machine must be carried out only by persons having specific technical knowledge and experience in hydraulic systems!
- Check all lines, hoses and screw connections regularly for leaks and obvious damage! Repair any damage and leaks immediately! Splashed oil can cause injury and fire
- In accordance with the Operator's Manual/instructions for the respective assembly, release the pressure in all system sections and pressure lines (hydraulic system) to be opened before carrying out any implementing/repair work!
- Hydraulic and compressed-air lines must be laid and fitted properly! Ensure that no connections are interchanged! The fittings, lengths and quality of the hoses must comply with the technical requirements

Stopping the diesel engine

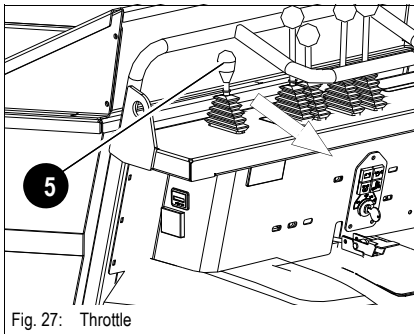


Fig. 27: Throttle

➡ Push throttle **5** fully backwards

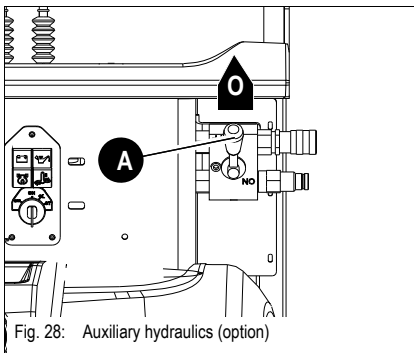


Fig. 28: Auxiliary hydraulics (option)

➡ Check whether the control lever for auxiliary hydraulics release **A** is in position **O**

➡ The auxiliary hydraulics is switched off

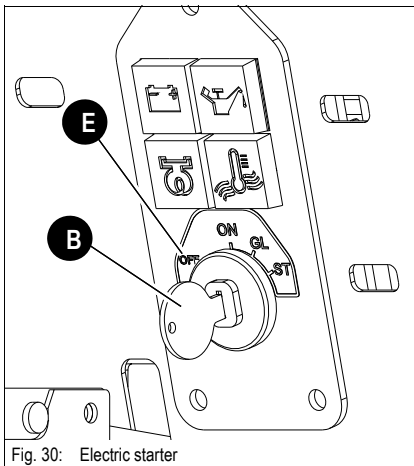


Fig. 30: Electric starter

➡ Turn starter **B** to position **E**

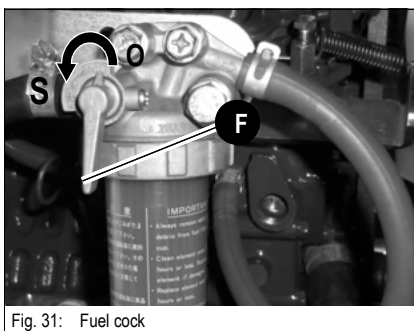


Fig. 31: Fuel cock

➡ Turn fuel cock **F** counterclockwise to position **S**

➡ The fuel cock is closed

CLICK HERE TO **DOWNLOAD** THE COMPLETE MANUAL

- Thank you very much for reading the preview of the manual.
- You can download the complete manual from: www.heydownloads.com by clicking the link below



- Please note: If there is no response to CLICKING the link, please download this PDF first and then click on it.

CLICK HERE TO **DOWNLOAD** THE COMPLETE MANUAL

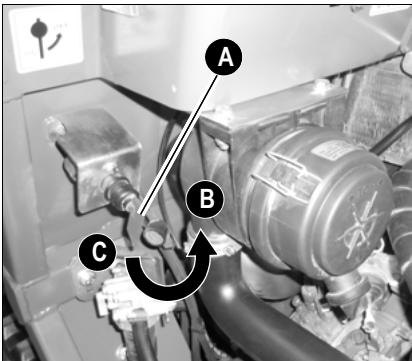
Battery master switch


Fig. 47: Battery master switch


Notice!

Do not disconnect the battery while the engine is running!


Notice!

Power supply is interrupted directly after the battery, by means of a key

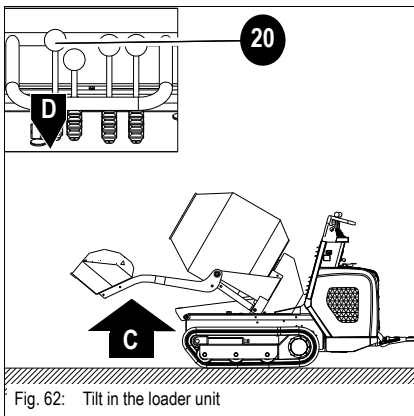
- Before working on the electrical system
- As an antitheft precaution

Interrupting power supply:

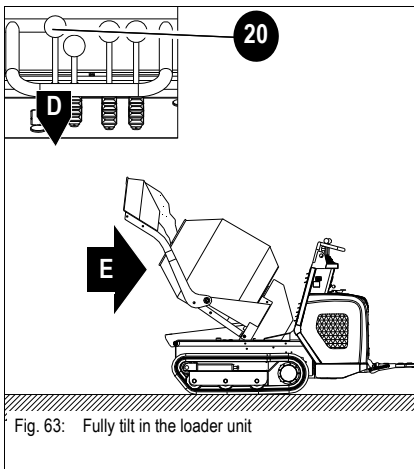
- ☞ Open the engine cover
- ☞ Turn key **A** of the battery master switch to position **B** and remove it

Switching on power supply:

- ☞ Insert key **A** in the battery master switch
- ☞ Turn the key down to the notched position **C**

Ending loading


- ☞ Set the loader unit to position **C**
- ☞ Pull control lever **20** backwards **D**

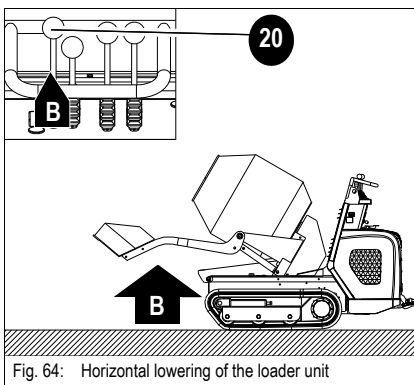


- ☞ Tilt in the loader unit fully **E**
- ☞ Pull control lever **20** backwards **D**

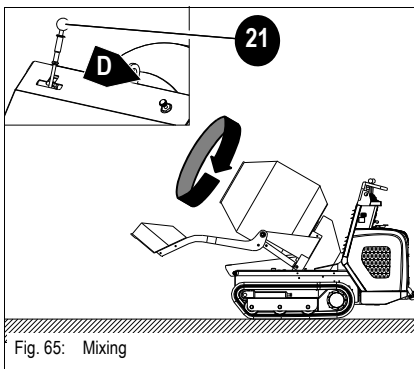
i

Notice!

Carry out the loader unit movements slowly.

Mixing


- ☞ Lower the loader unit (option) to transport position **B**
- ☞ Push control lever **20** forwards **B**



- ☞ Operate the concrete mixer
- ☞ Press control lever **21** to the right **D**

i

Notice!

The lever can be blocked in the mixing position. The concrete mixer does not rotate if the lever is in neutral position.

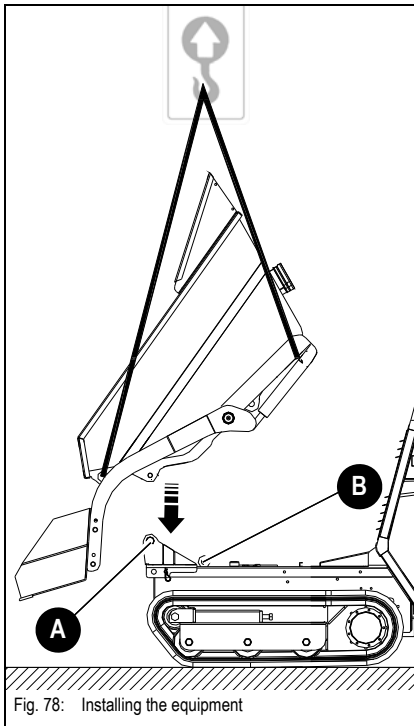
Mounting

Fig. 78: Installing the equipment

- ☞ Bring the work equipment close to the undercarriage to establish the hydraulic connections with the help of the quick couplers installed
- ☞ If the machine has a loader unit (option), the quick couplers are located under the skip
- ☞ Lower the work equipment and align the bores with those of the chassis
- ☞ Then insert lock pin **A** and the pin of ram **B**, and secure them with the corresponding locks.

**Important information for the use of biodegradable oil**

- Use only the biodegradable hydraulic fluids which have been tested and approved by Wacker Neuson GmbH. Always contact Wacker Neuson GmbH for the use of other products which have not been recommended. In addition, ask the oil supplier for a written declaration of guarantee. This guarantee is applicable to damage occurring on the hydraulic components, which can be proved to be due to the hydraulic fluid
- Use only biodegradable oil of the same type for filling up. In order to avoid misunderstandings, a label providing clear information is located on the hydraulic oil tank (next to the filler inlet) regarding the type of oil currently used!
The joint use of two different biodegradable oils can affect the quality of one of the oil types. Therefore, ensure that the remaining amount of initial hydraulic fluid in the hydraulic system does not exceed 8 % when changing biodegradable oil (manufacturer indications)
- Do not fill up with mineral oil – the content of mineral oil should not exceed 2 % in order to avoid foaming problems and to ensure biological degradability
- When running the machine with biodegradable oil, the same oil and filter replacement intervals are valid as for mineral oil
– see **Maintenance plan DT08 PL (diesel engine)** on page 5-27
- Always have the condensation water in the hydraulic oil tank drained by an authorised workshop before the cold season. The water content may not exceed 0.1 % by weight
- The instructions in this Operator's Manual concerning environmental protection are also valid for the use of biodegradable oil
- If additional hydraulic attachments are mounted or operated, use the same type of biodegradable oil for these attachments to avoid mixtures in the hydraulic system

Subsequent change from mineral oil to biodegradable oil must be carried out by an authorised workshop or by your Wacker Neuson partner

**5.11 Fluids and lubricants**

Component/application	Engine/machine fluid	Specification	Season/temperature	Capacities ¹
Kubota diesel engine	Engine oil	AGIP DIESEL SIGMA S 30 SAE ² 15W-40	Year-round	2.5 l
Travelling drive	Gearbox oil SAE 85W-90	TOTAL EP SAE 85W 90	Year-round	0.4 l
Hydraulic oil tank	Hydraulic oil	AGIP ARNICA 46 ³	Year-round	22.1 l
	Biodegradable oil ⁴	PANOLIN HLP Synth 46		
		FINA BIOHYDRAN SE 46		
Grease	Roller and friction bearings ⁵	AGIP GR SM	Year-round	As required
Lubrication point	Multipurpose grease	AGIP GR SM	Year-round	As required
Fuel tank of Kubota diesel engine	Diesel fuel	No. 2-D, DIN 51601 grade	Over 4 °C	9.0 l
		No. 1-D, DIN 51601 grade	Below 4 °C	

1. The capacities indicated are approximate values; the oil level check alone is relevant for the correct oil level
1. Capacities indicated are no system fills
2. According to DIN 51511
3. According to DIN 51524 section 3
4. Biodegradable hydraulic oil based on saturated synthetic esters with an iodine value of < 10, according to DIN 51524, section 3, HVLP, HEES
5. KF2K-25 according to DIN 51502 multipurpose lithium grease with MoS² additive



6 Specifications

6.1 Engine

Sturdy steel sheet chassis, rubber-mounted engine

Engine	Model DT08 PL
Product	Kubota diesel engine
Type	Z 482-E
Design	Water-cooled 4-stroke engine
No. of cylinders	2
Displacement	479 cm ³
Nominal bore and stroke	67 x 68 mm
Output	9.7 kW at 3600 rpm
Max. torque	30.0 Nm at 2600 rpm
Max. engine speed without load	3600 +/- 50 rpm
Idling speed	850 +/- 50 rpm
Fuel injection system	Mechanical governor
Starting aid	Glow plugs, electric starter
Battery	12 V/55 Ah
Max. inclined position (engine no longer supplied with oil):	20° continuously
Exhaust values according to	97/68 EC, EPA

6.2 Hydraulic system

Hydraulics	Model DT08 PL
Pump	2 pumps with variable displacement + 1 gear pump 14 + 14 + 7 l/min
Flow rate	35 l/min at 3600 rpm
Operating pressure for work hydraulics	145 bar
Operating pressure for drive hydraulics	220 bar
Hydraulic tank capacity	22.1 l

6.3 Undercarriage

Undercarriage	Model DT08 PL
Max. drive speeds	4.95 kph
Theoretical climbing ability	20°
Track width	180 mm
No. of track rollers on either side	3
Ground clearance	100 mm
Ground pressure	0.17 – 0.31 kg/cm ²

CLICK HERE TO **DOWNLOAD** THE COMPLETE MANUAL

- Thank you very much for reading the preview of the manual.
- You can download the complete manual from: www.heydownloads.com by clicking the link below



- Please note: If there is no response to CLICKING the link, please download this PDF first and then click on it.

CLICK HERE TO **DOWNLOAD** THE COMPLETE MANUAL