

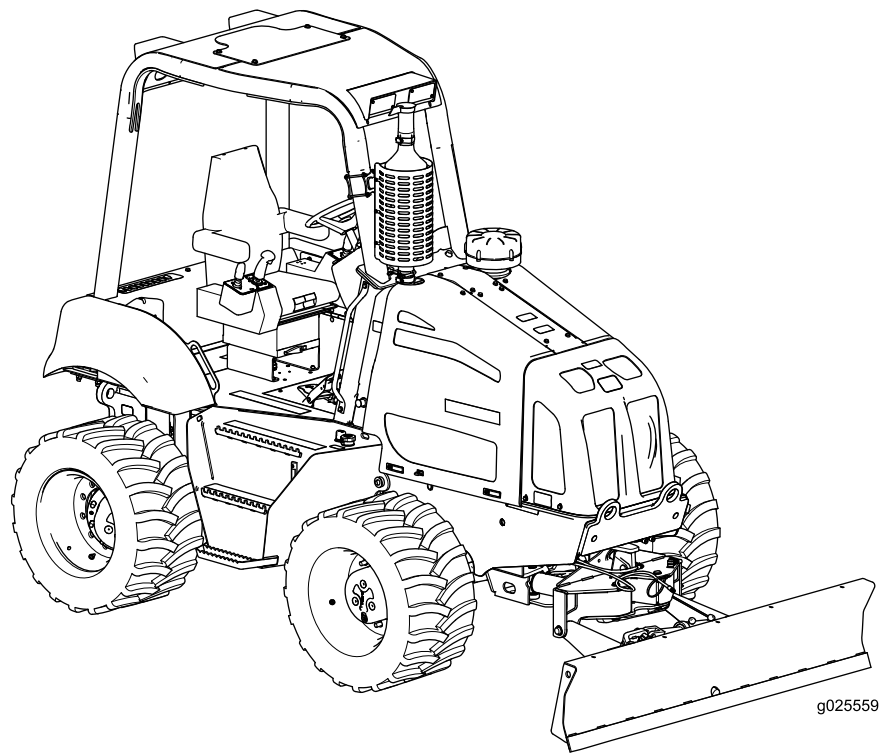


Count on it.

Operator's Manual

RT1200 Traction Unit

Model No. 25450—Serial No. 31400501 and Up



CLICK HERE TO **DOWNLOAD** THE COMPLETE MANUAL

- Thank you very much for reading the preview of the manual.
- You can download the complete manual from: www.heydownloads.com by clicking the link below



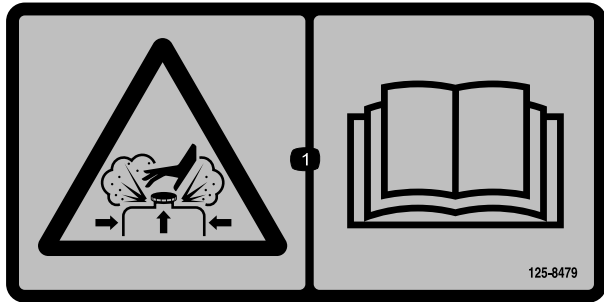
- Please note: If there is no response to CLICKING the link, please download this PDF first and then click on it.

CLICK HERE TO **DOWNLOAD** THE COMPLETE MANUAL



125-8473

1. Explosion hazard—wear eye protection.
2. Caustic liquid/chemical burn hazard—rinse affected area and seek medical assistance.
3. Fire hazard—keep open flames away.
4. Poison hazard—do not tamper with the battery.



125-8479

1. Burn hazard from contents under pressure—read the *Operator's Manual*.



125-8480

1. Warning—do not climb on ROPS.



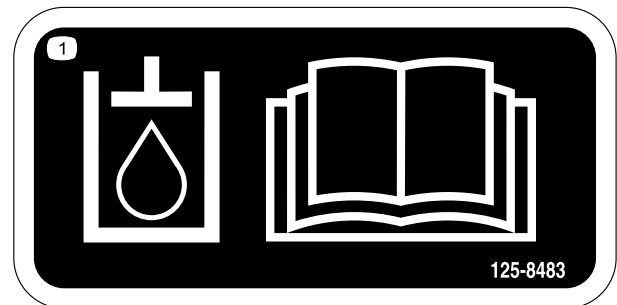
125-8481

1. Hydraulic supply



125-8482

1. Hydraulic return



125-8483

1. Hydraulic fluid; read the *Operator's Manual*.

Seat-Height and Seat-Slide Buttons

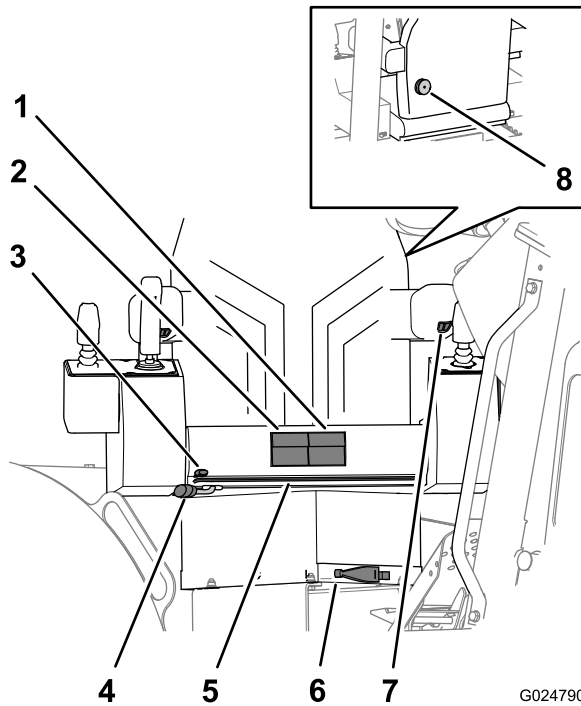


Figure 17

- | | |
|------------------------|---|
| 1. Seat-slide buttons | 5. Seat-frame slide bar |
| 2. Seat-height buttons | 6. Weight compensator |
| 3. Seat-slide lever | 7. Armrest-height control |
| 4. Seat-rotation lever | 8. Lumbar knob (located on the seat back) |

- **Seat-height buttons**—use them to adjust the seat pad up or down (Figure 17).
- **Seat-slide buttons**—use them to slide the seat pad forward or rearward (Figure 17).

Seat-Frame-Slide Lever and Seat-Base-Slide Lever

- **Seat-frame-slide lever**—Use this lever to adjust the entire seat and frame forward or rearward (Figure 17).
- **Seat-base-slide lever**—Use this lever to move the seat base forward or rearward on the seat frame (Figure 17).

Seat-Rotation Lever and Seat-Weight Compensator

- **Seat-rotation lever**—Use this lever to unlock the seat so that you can rotate the seat to the desired position. The seat will rotate 360° and lock into position at 10° increments (Figure 17).

Note: Rotate the seat to the Front position before driving the machine.

- **Seat-weight compensator**—Rotate this lever for the weight compensator to adjust the seat support tension for the weight of the operator (Figure 17).
 - Rotate the lever for the weight compensator clockwise to increase the support tension of the seat.

- Rotate the lever for the weight compensator counterclockwise to reduce the support tension of the seat.

Armrest-Height Control

Rotate the armrest-height control to raise or lower the armrest (Figure 17).

Seat-Lumbar Knob

Rotate the seat-lumbar knob, found behind the seat, to adjust the back lumbar support for best comfort (Figure 17).

Seat Belt

⚠ WARNING

Operating the machine without the rollover protection system (ROPS) securely in place can result in serious injury or death if the machine rolls over.

- Ensure that the roll bar is securely in place.
- Always wear a seat belt with the ROPS in place.
- Ensure that the operator seat is properly secured to the machine.

Note: Regulations in some localities require that seat belts on construction machines be 76 mm (3 inch) wide. Check with local authorities regarding the requirements for seat belts.

- To fasten the seat belt, insert the tab end into the left buckle.

Note: Ensure that the tab end and the buckle are securely fastened.

- To release the seat belt, push the button on the buckle.

Battery-Disconnect Switch

The battery-disconnect switch is located behind the right engine cowl (Figure 18); use it to electrically disconnect the battery from the machine.

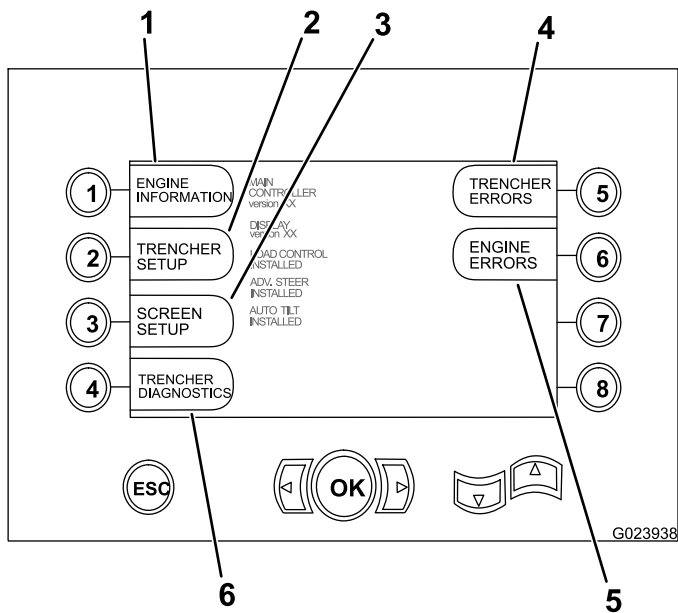


Figure 34

- | | |
|---|------------------------------------|
| 1. Engine information | 5. Trencher (traction unit) errors |
| 2. Trencher (traction unit) setup | 6. Up arrow and down arrow buttons |
| 3. Screen setup | 7. Engine errors |
| 4. Trencher (traction unit) diagnostics | |

Accessing the Engine Information Screen

To access the engine-information screen, press button number 1 on the main-selection screen; refer to [Accessing the Main-Selection Screen \(page 30\)](#).

This screen displays measurements for the following engine-operating parameters:

- Engine speed in rpm ([Figure 35](#))
- Engine load percentage ([Figure 35](#))
- Engine hours ([Figure 35](#))
- Oil pressure and boost pressure ([Figure 35](#))
- Engine coolant and intake temperature ([Figure 35](#))
- Voltage ([Figure 35](#))
- Amount of fuel used ([Figure 35](#))

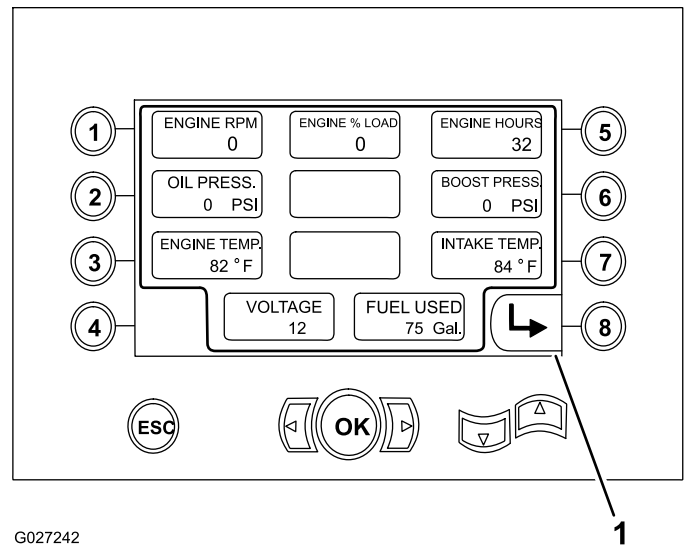


Figure 35

1. Return to the previous screen

Accessing the Trencher Setup Function Screen

You will need a PIN to access this screen; to obtain the PIN, contact an Authorized Toro Distributor.

Accessing the Screen Setup Function Screen

To access the screen setup function, press button number 3 on the main-selection screen; refer to [Accessing the Main-Selection Screen \(page 30\)](#).

This screen allows the user to increase or decrease the brightness of the monitor by pressing the following:

- Button 5—Increase the display brightness ([Figure 36](#))
- Button 6—Decrease the display brightness ([Figure 36](#))

Completing the Work for the Day

When you complete your work for the day, do the following:

1. Backfill the spoils in the part(s) of the trench in which you are finished working.
2. Move the machine to a safe and stable location.
3. Move all levers to the Neutral position.
4. Set the parking brake.
5. Lower all attachments to the ground.
6. Let the machine idle for a few moments to cool it down.
7. Stop the engine, wait for all moving part to stop, and remove the ignition key.
8. Turn the battery disconnect switch to the Off position; refer to [Battery-Disconnect Switch \(page 21\)](#).

Completing the Project

1. After you complete the project, return the spoils back into the trench with the backfill blade; refer to [Using the Backfill Blade \(page 39\)](#).
 - A. Move the machine to the end of the trench, a few meters (feet) away from the spoil pile.
 - B. Aim the machine at the outer edge of the pile.
 - C. Adjust the backfill blade to fit the slope of the ground.
 - D. Move the outer edge of the spoil pile toward the trench.

Note: Make at least 2 passes at the pile to move it.
 - E. Repeat the steps above for the spoil pile on the other side of the trench.
 - F. Float the backfill blade over the length of the trench.
2. Spray the dirt and mud off the machine with water.

Important: Do not spray the console or electrical components with water.

3. Transport the machine from the completed work site; refer to [Transporting the Machine \(page 40\)](#).

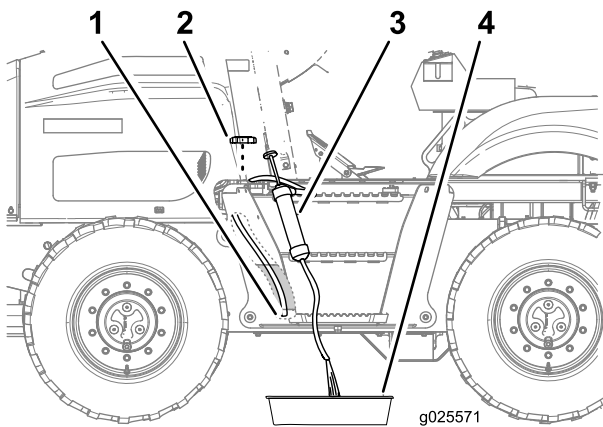


Figure 72

1. Intake hose (bottom of the tank)
 2. Fuel cap
 3. Siphoning equipment
 4. Drain pan
-
2. Route the intake hose of the siphoning equipment through the filler neck of the fuel tank and to the bottom of the tank (Figure 72).
 3. Direct the discharge hose of the siphoning equipment into a drain pan (Figure 72).
 4. Siphon the tank until clean fuel appears.
 5. Remove the siphoning equipment from the tank.
 6. Install the fuel cap onto the filler neck of the fuel tank (Figure 72).

Replacing the Fuel Tank Breather

Service Interval: Every 1,000 hours

1. Remove the left side panel; refer to [Removing the Side Panels \(page 45\)](#).
2. At the forward side of the engine compartment panel, remove the breather from the pipe coupling by rotating the breather counterclockwise (Figure 73).

Note: Discard the old breather.

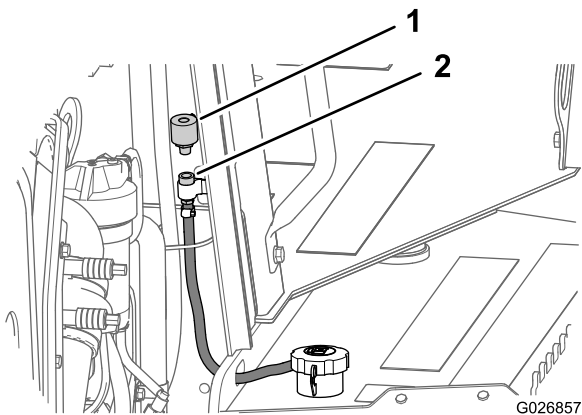


Figure 73

1. Fuel tank breather
2. Pipe coupling

3. Install a new breather into the pipe coupling hand tight (Figure 73).
4. Install the right side panel; refer to [Installing the Side Panels \(page 46\)](#).

Replacing the Fuel Filters

Service Interval: Every 500 hours

The engine on this machine uses a dual fuel-filter system, with a primary fuel filter and a secondary fuel filter. The primary fuel filter includes a fuel-water separator; it is not pressurized but operates under a vacuum. The secondary fuel filter is for filtration only and is pressurized by the fuel pump.

Removing the Primary and Secondary Fuel Filters

Important: Clean all around the filter area before disassembling the fuel filter system. Dirt or contaminants can damage the fuel system.

1. Rotate the battery disconnect switch to the Off position; refer to [Battery-Disconnect Switch \(page 21\)](#).
2. Remove the right side panel; refer to [Removing the Side Panels \(page 45\)](#).
3. Clean the area around the primary and secondary fuel filters.
4. Disconnect the wiring harness from the water-in-fuel sensor.

Note: The water-in-fuel sensor is located at the bottom of the fuel/water separator, next to the drain valve.

5. Place a small-drain container under the drain valve of the fuel water separator ; refer to [Draining Water from the Fuel-Water Separator \(page 24\)](#).

Note: The primary fuel filter is a component of the fuel/water separator.

6. Open the drain valve and allow the fuel-water separator to drain completely; refer to [Draining Water from the Fuel-Water Separator \(page 24\)](#).
7. Loosen and remove the primary fuel filter (Figure 74).

Note: If necessary, use a filter wrench to loosen the fuel filter.

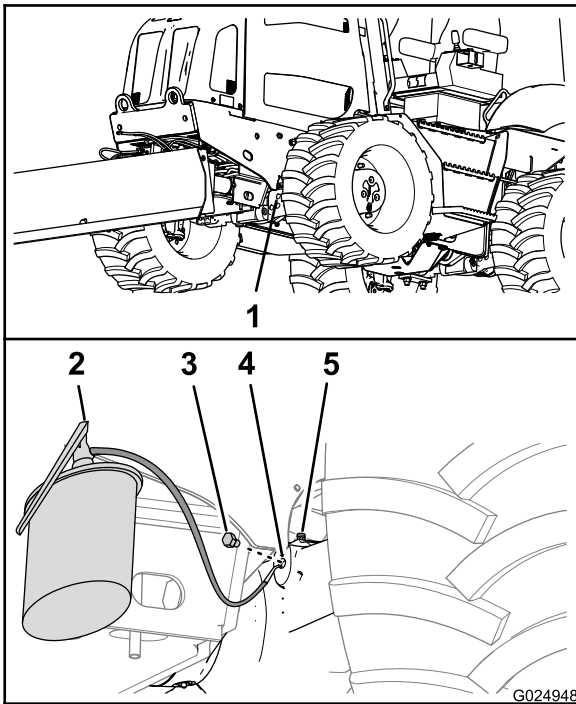


Figure 90
Front Axle

- | | |
|----------------------------|-------------------|
| 1. Front-axle housing | 4. Pinion housing |
| 2. Oil-servicing equipment | 5. Sight port |
| 3. Fill plug | |

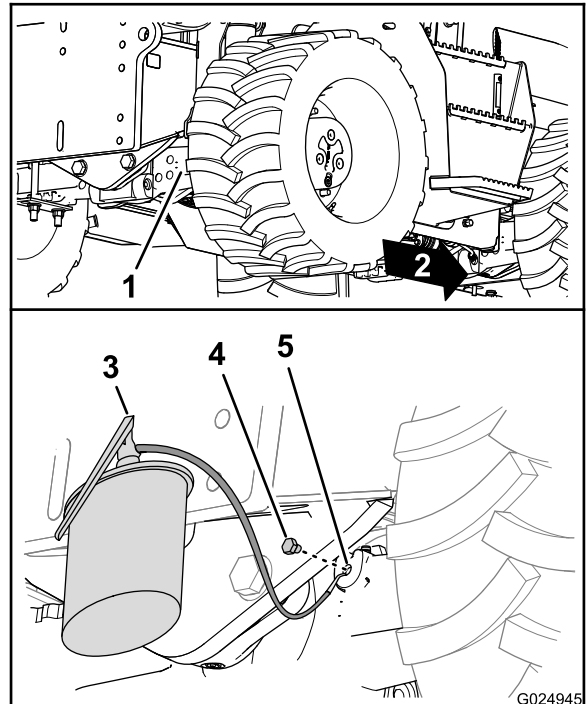


Figure 91
Rear Axle

- | | |
|----------------------------|---------------|
| 1. Rear-axle housing | 4. Fill plug |
| 2. Forward | 5. Sight port |
| 3. Oil-servicing equipment | |

6. Fill the axles with the specified oil through the sight port until the oil is level with the threads at the bottom of the port (Figure 90 and Figure 91).
7. Wait a few minutes for the oil to settle, then add more oil as necessary.

Note: Continue to add oil until the oil level stabilizes and is at the bottom of the threads of the sight port.

8. Install the fill plugs into the sight ports of the pinion housings for the axles (Figure 90 and Figure 91).

Cleaning the Axle Breathers

Service Interval: Every 1,000 hours

1. Clean the area around the breathers with a cleaning solvent (Figure 92 and Figure 93).

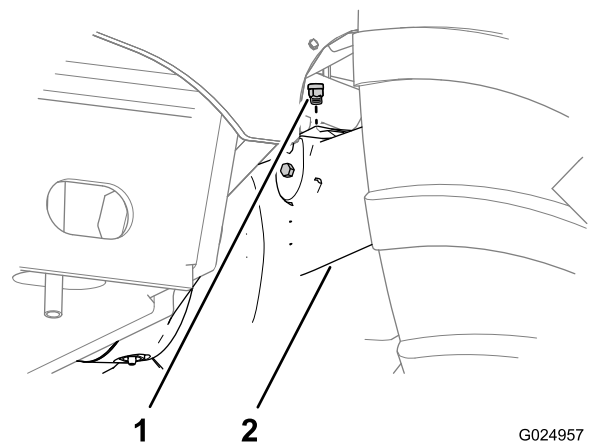


Figure 92

- | | |
|---------------------|---------------|
| 1. Breather fitting | 2. Front axle |
|---------------------|---------------|

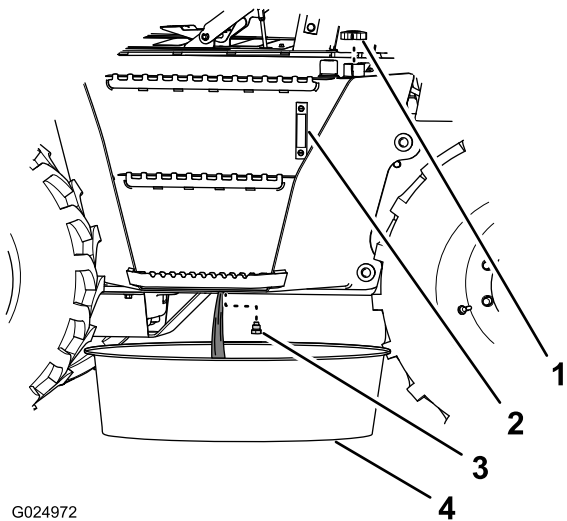


Figure 108

- | | |
|------------------------|--------------|
| 1. Fill cap | 4. Plug |
| 2. Sight gauge | 5. Drain pan |
| 3. Hydraulic reservoir | |

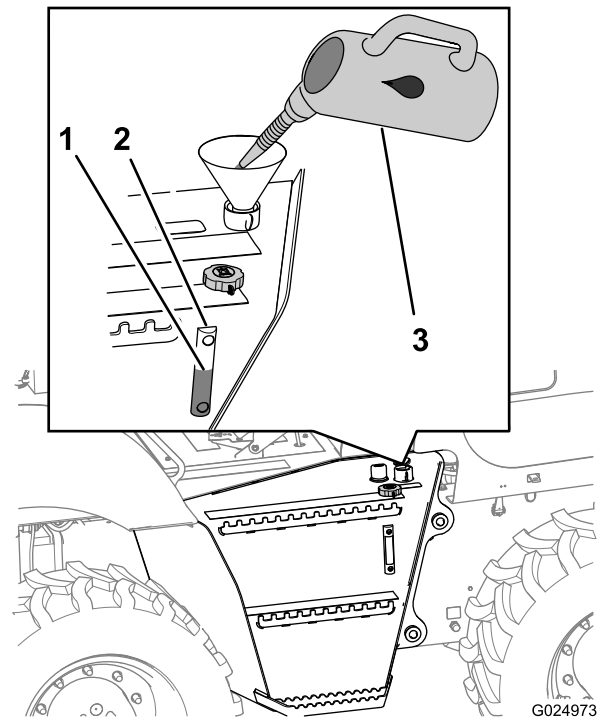


Figure 109

- | | |
|--------------------------|--------------------|
| 1. Fill level (midpoint) | 3. Hydraulic fluid |
| 2. Sight gauge | |

7. Remove the drain plug from the hydraulic reservoir (located underneath the reservoir), and drain the reservoir (Figure 108).
 8. Examine the condition of the seal on the drain plug.
Note: Replace the seal if it is worn or damaged.
 9. Install the drain plug (Figure 108).
- Important:** Change the hydraulic-pressure and hydraulic-return filters when you change the hydraulic fluid; refer to [Changing the Hydraulic-charge Filter \(page 72\)](#) and [Changing the Hydraulic-return Filter \(page 73\)](#).
10. Rotate the battery disconnect switch to the On position and install the right side panel; refer to [Battery-Disconnect Switch \(page 21\)](#) and [Installing the Side Panels \(page 46\)](#).

2. Clean the fill cap with solvent.
3. Install the fill cap (Figure 109).
4. Start the engine and let it idle for approximately 2 minutes.
5. Stop the engine and remove the key from the key switch.
6. Check around the pressure and return filters for leaks.
7. Check the drain plug for leaks.
8. Check the level of the hydraulic fluid.

Filling the Hydraulic-fluid Reservoir

1. Fill the hydraulic-fluid reservoir with the specified hydraulic fluid until the fluid level is at the midpoint of the sight gauge (Figure 109).

CLICK HERE TO **DOWNLOAD** THE COMPLETE MANUAL

- Thank you very much for reading the preview of the manual.
- You can download the complete manual from: www.heydownloads.com by clicking the link below



- Please note: If there is no response to CLICKING the link, please download this PDF first and then click on it.

CLICK HERE TO **DOWNLOAD** THE COMPLETE MANUAL